



PUBLIC ABSOLUTE AUCTION OF MAINTENANCE OF WAY & SURPLUS EQUIPMENT AUCTION

AUCTION DATE: WED. OCTOBER 7TH, 2020 @ 9AM CST

LOCATION: UP FACILITY, GRAND ISLAND, NE 68801

VIEWING TIMES: Mon & Tue, Oct 5th & 6th, 8am- 4pm
at Union Pacific Facility
1102 UPRR Drive, Grand Island, NE 68801

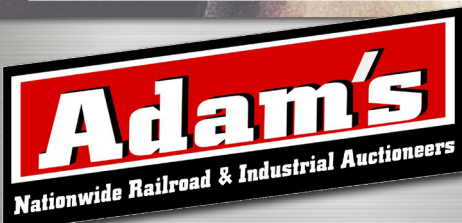
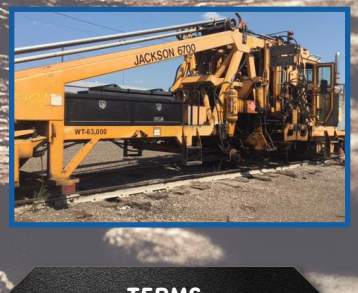
LOAD OUT TIMES: Thur., Oct 8th - Tue., Oct. 13th, 8am- 4pm

**LIVE ON-SITE
& ONLINE
AUCTION**

LARGE SELECTION OF SURPLUS M.O.W. EQUIPMENT, HEAVY EQUIPMENT

View Catalog & Register to Bid
www.proxibid.com or
www.bidspotter.com

AAO903 RACINE ANCHORMATIC; SERIAL NO: AM340-99
AAA9801 RACINE ANCHORMATIC; SERIAL NO: AM313-98
AAA9804 RACINE ANCHORMATIC; SERIAL NO: AM316-98
AAA9805 RACINE ANCHORMATIC; SERIAL NO: AM317-98
ATC883S BANTAM S488; SERIAL NO: 8205752
ATSI90J JACKSON 6700; SERIAL NO: 142455
ATS229J JACKSON 6700; SERIAL NO: 143975
ATS9002J JACKSON 6700; SERIAL NO: 146369
ATS9104 JACKSON 6700; SERIAL NO: 146424
ATS9105 JACKSON 6700; SERIAL NO: 146425
ATS9118 JACKSON 6700; SERIAL NO: 146812
ATS9204 JACKSON 6700S; SERIAL NO: 151875
ATSI76238 TAMPER CANON MARK IV
SERIAL NO: 7190324
BK9702 KERSHAW 163; SERIAL NO: 16-518-97
BK0105 KERSHAW 163; SERIAL NO: 16-526-01
BRI37 KERSHAW 26218; SERIAL NO: 26-1919-86
BRI55 KERSHAW 263; SERIAL NO: 2610787
BRI91S KERSHAW 2621; SERIAL NO: 26-1807
BR9102 KERSHAW 2631; SERIAL NO: 2616090
BR9109 KERSHAW 2631; SERIAL NO: 2616791
BR9301 KERSHAW 2631; SERIAL NO: 26-206-93
BR9302 KERSHAW 2631; SERIAL NO: 26-207-93
BR9313 KERSHAW 462; SERIAL NO: 46-350-93
BR9315 KERSHAW 462; SERIAL NO: 46-352-93
BR9406 KERSHAW 2622; SERIAL NO: 94-1631
BR9408 KERSHAW 2622; SERIAL NO: 94-166
BR9415 KERSHAW 2622; SERIAL NO: 94-199
BR9502 KERSHAW 2622; SERIAL NO: 056-990051-95
BR9503 KERSHAW 2622; SERIAL NO: 053-990051-95
BRI76059 KERSHAW 462; SERIAL NO: 46-271-90
BRP0604 PLASSER PBR2005; SERIAL NO: 3274
BRP0701 PLASSER PBR2005; SERIAL NO: 3316
BRP0901 PLASSER PBR2005; SERIAL NO: 3410
BRP0902 PLASSER PBR2005; SERIAL NO: 3411



Text Adams
To 1-800-496-6299
For Upcoming Auction
Notifications

TERMS

5% BUYERS PREMIUM
ITEMS MUST BE PAID FOR
WITHIN 24 HOURS OF SALE
MASKS & SAFETY GEAR
ARE REQUIRED
CASH, CHECK, CREDIT
CARD ACCEPTED
LIST SUBJECT TO
CHANGE WITHOUT NOTICE
LICENSE# 044000169

WWW.ADAMSAUCTIONS.COM



SDSG9406 FAIRMONT W130A1; SERIAL NO: 256941
 SDSG0501 HARSCO W130B134; SERIAL NO: 257781
 SPD444S NORDCO CLAW; SERIAL NO: 134
 SPD0106 NORDCO SUPERCLAW SLS; SERIAL NO: 930509
 SPD9507L FAIRMONT W133E; SERIAL NO: 257013
 SPD9721 NORDCO SUPERCLAW SLS; SERIAL NO: 272MDV
 SPD9901 NORDCO SUPERCLAW SLS; SERIAL NO: 477
 SPD9902 SUPERCLAW SLS; SERIAL NO: 478
 SS101 PETTIBONE 441C; SERIAL NO: 2740
 SS8903 SWINGMASTER 181; SERIAL NO: 88181L0025
 SS9504 PETTIBONE 445; SERIAL NO: 3071
 SS9903 SWINGMASTER 181; SERIAL NO: 99181L0191
 SSMP0701 GEISMAR KGT4RSC; SERIAL NO: 4663
 TAR9104 NORDCO A; SERIAL NO: 142
 THC9104 KERSHAW 124; SERIAL NO: 1282090
 THC9902 KERSHAW 125; SERIAL NO: 12-1001-99
 THC0304 KNOX KERSHAW KTC1200; SERIAL NO: 051-1200-03
 THC0307 KNOX KERSHAW KTC1200; SERIAL NO: 054-1200-03
 THCM0302 KNOX KERSHAW KTC1200; SERIAL NO: 049-1200-03
 TLH0120 CASE 580 MIT TURBO; SERIAL NO: N6C400120
 TLH3954 JOHN DEERE 310J TURBO; SERIAL NO: T0310JX173954
 TM173488 CASE 580C; SERIAL NO: 9010882
 TMT174299 TAMPER (CANRON) EAJDG; SERIAL NO: 689199
 TRIP9704 FAIRMONT RMC305; SERIAL NO: 257259
 MISC. STINGER; SERIAL NO: UNKNOWN
 MISC. TOOL CART; SERIAL NO: UNKNOWN
 MISC. TROLLEY CART; SERIAL NO: GEISMAR
 MISC. 2 & 3 AXLE CART; SERIAL NO: UNKNOWN
 MISC. UTILITY CART; SERIAL NO: UNKNOWN
 MISC. WATER CART; SERIAL NO: UNKNOWN
 MISC. WATER CART; SERIAL NO: UNKNOWN
 MISC. WATER CART; SERIAL NO: UNKNOWN
 MISC. WATER CART; SERIAL NO: UNKNOWN
 MISC. WATER CART; SERIAL NO: UNKNOWN
 MISC. WATER CART; SERIAL NO: UNKNOWN

BTC9303 KERSHAW 114; SERIAL NO: 11-238-93
 DD1223 VERMEER; SERIAL NO: V8550A
 DTL9601 JOHN DEERE 744E; SERIAL NO: CK744E8000600
 DTL40513S CATERPILLAR 966C; SERIAL NO: 76J15942
 DUMP CART WESTERN MFG; SERIAL NO: 114-99
 FORD TRACTOR UNKNOWN
 GP173191 GALION T500C; SERIAL NO: GC08793
 MHPU0107 STANLEY HYDROMAT MHP12211000; SERIAL NO: 113
 MHPU0302 STANLEY HYDROMAT MHP12211000; SERIAL NO: 190
 MPC0306 SHOP MADE MPC; SERIAL NO: DVMPC0306
 MPC0308 SHOP MADE MPC; SERIAL NO: DVMPC0308
 MHPU0309 STANLEY HYDROMAT MHP12211000; SERIAL NO: 199
 MHPU1003 MOBILE HYDRAULICS EQUIPMENT 2022SP
 SERIAL NO: 100152
 MPC0301 SHOP MADE MPC; SERIAL NO: DVMPC0301
 MPC0402 SHOP MADE MPC; SERIAL NO: DVMPC0402
 MPC0501 SPERLING RAILWAY PC42; SERIAL NO: 0001PC4
 MPC0701 SPERLING RAILWAY PC82; SERIAL NO: 0004PC8
 MPC0802 SUPERIOR SALES & SERVICE MPC4802
 SERIAL NO: MPC5698 2 08
 PEAR1201 BTE-302680; SERIAL NO: 67367
 PPC02M FAIRMONT TTII-2011; SERIAL NO: 254505
 PPC0201 FAIRMONT TTIIFI-2011; SERIAL NO: DV02PPC0201
 PTS8901 MODEL A; SERIAL NO: 195
 PTMM1301 SPERLING RAILWAY SERVICES TM 2; SERIAL NO: 8
 PTMM1302 SPERLING RAILWAY SERVICES TM 2; SERIAL NO: 9
 PTMM1303 SPERLING RAILWAY SERVICES TM 2; SERIAL NO: 10
 PTMM1304 SPERLING RAILWAY SERVICES TM 2; SERIAL NO: 11
 RLP9602 NORDCO LS; SERIAL NO: 564
 RLP9704 NORDCO LS; SERIAL NO: 579
 RRGAP0903 RACINE RA; SERIAL NO: ADZ-142-09
 RSAP8902 AG INDUSTRIES K100; SERIAL NO: K-100-015
 RSAP0902 MEADOWELD RS98; SERIAL NO: 448
 SDSG9603 FAIRMONT W130B1; SERIAL NO: 257131
 SDSG9406 FAIRMONT W130A1; SERIAL NO: 256941
 SDSG0501 HARSCO W130B134; SERIAL NO: 257781

