

# LIVE WEBCAST **ONLINE ONLY** AUCTION

SURPLUS TO THE ONGOING OPERATIONS OF

**HALLIBURTON** Carrollton,  
Texas



2003  
MORI SEIKI MT4000B/4000 CNC TURNING/MILLING CENTER



2010 MORI SEIKI NZL6000BY/4000 CNC TURNING CENTER

## SALE DATE

Tuesday, December 8  
at 10:00 AM CT

## SALE LOCATION

2601 E Belt Line Road,  
Carrollton, Texas 75006

## INSPECTION

Monday, December 7  
from 9:00 AM to  
3:00 PM CT –  
By Appointment Only

## FEATURING:

(59) Late Model  
Mori Seiki, Okuma,  
Mazak, Weiler,  
Makino & Niigata  
CNC Turning/Milling  
Centers,  
CNC Lathes,  
HMC's & VMC's,  
(2) EDM's,  
(6) Horizontal &  
Vertical Bandsaws,  
Grinders, Sunnen  
Horizontal Hones,  
Breakout Machines

**Pre-Auction Offers  
Invited  
on Major Assets**

## COMPLETE CATALOG & INFORMATION:

[https://perfection.  
global/halliburton](https://perfection.global/halliburton)



Joseph Lundvick, TX Auctioneer Lic. #17682  
Steve Kleba, TX Auctioneer Lic. #17683

Perfection Industrial Sales  
ph +1-847-545-6374 • fax +1-847-427-8884  
[www.perfectionindustrial.com](http://www.perfectionindustrial.com)

Bidding Available Through

**BidSpotter.com**

# (14) CNC TURNING/MILLING CENTERS



2005 MORI SEIKI MT3500S/3500 CNC TURNING/MILLING CENTER



2006 MORI SEIKI MT2500S/1500 CNC TURNING/MILLING CENTER

## (14) CNC TURNING/MILLING CENTERS

**2003 MORI SEIKI MT4000B/4000 CNC TURNING/MILLING CENTER**, s/n MT40CF0033, w/MSG-501 Control, 16" 3-Jaw Chuck, 160" Centers, 120 ATC, Omni Rest, Boring Bar Stocker, COOLJET Coolant System

**(3) 2005 MORI SEIKI MT3500S/3500 CNC TURNING/MILLING CENTERS**, s/n MT351EC0003, MT351EC0002, MT351EC0001, w/MSG-501 Control, 16" 3-Jaw Chuck, 160" Centers, 120 ATC, Omni Rest, Boring Bar Stocker, COOLJET Coolant System

**(1) 2006 AND (3) 2005 MORI SEIKI MT2500S/1500 CNC TURNING/MILLING CENTERS**, s/n MT251EL0125, MT251EB0098, MT251EB0097, MT251EB0096, w/MSG-501 Control, 16" 3-Jaw Chuck, 160" Centers, 120 ATC, Omni Rest, Boring Bar Stocker, COOLJET Coolant System

**2006 MORI SEIKI NT4300 DCG CNC TURNING/MILLING CENTER**, s/n NT430FH0014, MSX-711 III Control, 12" 3-Jaw Chuck, 62" Max. Length, Steady, 100 ATC, Capto C6 Taper, COOLJET Coolant System



MORI SEIKI NT4300 DCG CNC TURNING/MILLING CENTER



MAZAK INTEGREX 300SY CNC TURNING/MILLING CENTER



MAZAK INTEGREX 200SY CNC TURNING/MILLING CENTER

**2001 MAZAK INTEGREX 300SY CNC TURNING/MILLING CENTER**, s/n 157499, w/MAZATROL PC Fusion 640 MT Control, (2) 12" 3-Jaw Chucks, 48" CC, Tool Eye, KM63 Taper, 40 ATC

**2001 MAZAK INTEGREX 200SY CNC TURNING/MILLING CENTER**, s/n 154178, w/MAZATROL PC Fusion 640MT Control, 8" Front Chuck, 6.5" Rear Chuck, 40 ATC, KM63 Taper, 40 ATC

**MAZAK INTEGREX 50YR/2500 CNC TURNING/MILLING CENTER**, s/n 140204, w/MAZATROL 640 Control, 15" 3-Jaw Chuck, 100" Centers, 120 ATC, Cat 40 Taper

**MAZAK INTEGREX 30Y CNC TURNING/MILLING CENTER**, s/n 125811, w/MAZATROL T Plus Control, 10" 3-Jaw Chuck, 60" Centers, 80 ATC, Cat 40/ KM63 Spindle Taper, Omni Rest, Tool Eye

**MAZAK INTEGREX 30 CNC TURNING/MILLING CENTER**, s/n 119269, w/MAZATROL T Plus Control, 12" 3-Jaw Chuck, 60" Centers, 40 ATC, Cat 40/ KM63 Spindle Taper, Omni Rest

To avoid any public gatherings, there will be no onsite participation in this Webcast-only auction.

# (21) TURNING CENTERS



2015 OKUMA LU35II ST1500 TURNING CENTERS

## (21) TURNING CENTERS

(2) 2010 MORI SEIKI NZL6000BY/4000 TURNING CENTERS, s/n NZL60JH0011, NZL60JH0010, w/MSX-853IV CNC Control, Live Tooling, 35.4" Swing, (2) 31.5" 3-Jaw Chucks, 160" Centers, 36" Dia. Turning Dia., 12- and 10-Position Turrets, Boring Bar Stocker

(3) 2015 OKUMA LU35II ST1500 TURNING CENTERS, s/n 189300, 189297, 189290, w/OSP-P300L Control

2013 MORI SEIKI SL603C/3000 TURNING CENTER, s/n SL600130801, w/MORI SEIKI F32iB Control, 35.4" Max. Turning Dia, 118.1" Max. Turning Length, 24" 3-Jaw Chuck, 10.5" Hole, 120" Centers, Omni Rest, 12-Position Turret

2003 MORI SEIKI SL603B/2000 TURNING CENTER, s/n SL600CF0176, w/MSG-501 Control, 35.4" Max. Turning Dia., 78.7" Max. Turning Length, 15" 3-Jaw Chuck, 80" CC, Omni Rest, 12-Position Turret, COOLJET Coolant System

2013 BARDONS & OLIVER/CINCINNATI 18U TURNING CENTER, s/n R-1516, w/FANUC 32iA Control, 18" 3-Jaw Chuck, 100" CC, Crown/Circle Turret

MORI SEIKI SL7 TURNING CENTER, s/n 193, w/FANUC 6T Control, (2) 21" 3-Jaw Chucks, 8.25" Hole

(3) MAZAK ST50N TURNING CENTERS, s/n 137422, 132344, NA, w/MAZATROL T PLUS Control



MORI SEIKI SL603C/3000 TURNING CENTER



2003 MORI SEIKI SL603B/2000 TURNING CENTER



2013 BARDONS & OLIVER/CINCINNATI 18U TURNING CENTER



MAZAK ST50N TURNING CENTER



CINCINNATI MILACRON 15U TURNING CENTER

**Pre-Auction Offers Invited  
on Major Assets**

# (21) TURNING CENTERS CONTINUED, (9) VERTICAL MACHINING CENTERS

## (21) TURNING CENTERS CONTINUED

**MAZAK ST40N TURNING CENTER**, s/n 94202, w/MAZATROL T32-2 Control, 18" 3-Jaw Chuck, 80" Centers, 6.5" Hole, Omni Rest, Tool Eye, 5- and 10-Position Turrets

**CINCINNATI MILACRON 18U TURNING CENTERS**, s/n 5305U18-79-006, w/FANUC 18i-T Control, 21" 3-Jaw Chuck, 84" CC, Omni Rest, Crown/Circle Turret, 75 HP, NOTE: 2002 Rebuilt by Daniluk

**CINCINNATI MILACRON 15U X 100 TURNING CENTER**, s/n 5305U15-80-004, w/FANUC 18i-T Control, 15" 3-Jaw Chuck, 100" CC, Omni Rest, Crown/Circle Turret, NOTE: 2002 Rebuilt by Daniluk

**CINCINNATI MILACRON 15U TURNING CENTER**, s/n 5305U15-78-015, w/FANUC 18i-T Control, 15" 3-Jaw Chuck, 100" CC, Omni Rest, Crown/Circle Turret, Steady Rest, NOTE: 2001 Rebuilt by Daniluk

**MAZAK QTN40 TURNING CENTER**, s/n 148125856, w/MAZATROL T Plus Control, 15" 3-Jaw Chuck, 52" Centers, 4" Hole, 24-Position Turret, Tool Eye, Chip Conveyor

**MAZAK QT40 TURNING CENTER**, s/n 14813040, w/MAZATROL T Plus Control, 12" 3-Jaw Chuck, 52" Centers, 3" Hole, 24-Position Turret, Chip Coolant

**MAZAK SQT18M TURNING CENTER**, s/n 101507, w/MAZATROL T32-3 Control, Collet Chuck, (1) Live Tools, 24" CC, 12-Position Turret

**MAZAK QT8 TURNING CENTER**, s/n 84170, w/MAZATROL T32-2 Control, Collet Chuck, 11.81" Swing, 11.22" Max. Machining Length, X-3.75", Z-11.42", 6/6 Turret, Tool Eye,

**MAZAK QT-15 TURNING CENTER**, s/n 77383, w/FANUC 10T Control, 8" 3-Jaw Chuck, 17.32" Max. Swing, 11.81" Max. Cutting Dia., X-7.09", Z-20.08", 6/6 Turret

**SALE DATE:** Tuesday, December 8 at 10:00 AM CT



OKUMA MA650VB 4-AXIS VERTICAL MACHINING CENTER



MORI SEIKI NV5000 TWIN PALLET VERTICAL MACHINING CENTER



MAZAK AJV60/160 4-AXIS VERTICAL MACHINING CENTER

**INSPECT UNDER POWER**



OKUMA MILLAC 852V 4-AXIS VERTICAL MACHINING CENTER

## (9) VERTICAL MACHINING CENTERS

**2010 OKUMA MILLAC 852V 4-AXIS VERTICAL MACHINING CENTER**, s/n 85695, w/OSP-P200M Control, 33" x 82" Table, X-81", Y-33", Z-30", 6,000 RPM, Cat 40 Spindle, 60 ATC, Probe, 16" NIKKEN 4th Axis w/Tailstock

**2008 OKUMA MA650VB 4-AXIS VERTICAL MACHINING CENTER**, s/n 138149, w/26" x 60" Table, X-60", Y-26", Z-24", 48 ATC, 50 Taper, Chip Blaster, 4th Axis w/Tailstock

**2012 MORI SEIKI DURA VERTICAL 5100 4-AXIS VERTICAL MACHINING CENTER**, s/n DV005120221, w/MORI SEIKI F0iMD Control, 53" x 23" Table, X-41.3", Y-20.9", Z-20.1", 30 ATC, Cat 40 Spindle Taper, COOLJET Coolant System, TSUDAKOMA 4th Axis

**2011 MORI SEIKI NV5000 TWIN PALLET VERTICAL MACHINING CENTER**, s/n NV601110806, w/F18iMB Control, 19" x 47" Tables, X-31.5", Y-20.1", Z-29.1", 60 ATC, Cat 40 Spindle

**2001 MAZAK VTC 200C 4-AXIS VERTICAL MACHINING CENTER**, s/n 156054, w/MAZATROL Fusion 640M Control, 77.5" x 20" Table, X-65", Y-20", Z-20", 24 ATC, Cat 40, MAZAK/KITAGAWA 4th Axis

**MAZAK AJV60/160 4-AXIS VERTICAL MACHINING CENTER**, s/n 137161, w/M Plus Control, 49" x 160", 59" BH, 60 ATC, Cat 40 Spindle, 20" 4th Axis w/Tailstock

**MAZAK AJV35/80 4-AXIS VERTICAL MACHINING CENTER**, s/n 82468, w/M32 Control, 29.5" x 88" Table, X-78", Y-31.5", Z-20", 60 ATC, Cat 40 Spindle, Chip Conveyor, 15" 4th Axis

**(2) MAKINO FNC-106 4-AXIS VERTICAL MACHINING CENTERS**, s/n LM-353, LM-352, w/FANUC OM Control, 24" x 55" Table, X-41", Y-23", Z-22", 30 ATC, Cat 40 Spindle, RENISHAW Probe, TSUDAKOMA 4th Axis w/Tailstock



MORI SEIKI DURA VERTICAL 5100 4-AXIS VERTICAL MACHINING CENTER

# (13) CNC LATHES



**12" HOLE**

2007 MAZAK PMN-U CNC LATHE



**REBUILT 2006**

BARDONS & OLIVER/LEBLOND HOLLOW SPINDLE L-4625 CNC LATHE

## (13) CNC LATHES

**2007 MAZAK POWER MASTER N-U CNC LATHE**, s/n 196067, MAZATROL 640T Control, 26" 3-Jaw Chuck, Twin Turret, 12" Hole

**2002 MAZAK M5N CNC LATHE**, s/n 157162, w/MAZATROL 640T Control, 15" 3-Jaw Chuck, 5/10 Turrets, 72" Centers, Tool Eye, Steady Ret, Tailstock

**(3) WEILER E70 CNC LATHES**, s/n KG02, KG01, 413, w/WEILER Control, NEW as 2015, Please See Lot Catalog for Specs

**(2) WEILER E50 CNC LATHES**, s/n HD02, EB07, w/WEILER Control, NEW as 2012, Please See Lot Catalog for Specs

**(4) MAZAK POWER MASTER N CNC LATHES**, s/n 159502, 139670, 136166, 126705, w/MAZATROL T PLUS Control, NEW as 2002, Please See Lot Catalog for Specs

**(2) BARDONS & OLIVER/LEBLOND TAPE-TURN L-4625 15" HOLLOW SPINDLE CNC LATHES**, s/n R-1388 (Rebuilt 2006), R-1349 (Rebuilt 2004), w/FANUC 18i Control, 48" Swing x 175" Centers, (2) 32" 3-Jaw Chucks, 12-Position Turret, 24" and 14" Steadies, 20' Bar Feed, Deep Hole Boring Bars



**3 AVAILABLE**

WEILER E70 CNC LATHE



**2 AVAILABLE**

WEILER E50 CNC LATHE



**4 AVAILABLE**

MAZAK POWER MASTER N CNC LATHE



**REBUILT 2004**

BARDONS & OLIVER/LEBLOND HOLLOW SPINDLE L-4625 CNC LATHE

**SALE LOCATION:** Carrollton, Texas

# (3) HORIZONTAL MACHINING CENTERS, EDM's, BANDSAWS



NIIGATA HN80D HORIZONTAL MACHINING CENTER



AGIE CHARMILLES FORM 400 RAM TYPE EDM



## (3) HORIZONTAL MACHINING CENTERS

**2009 NIIGATA HN80D HORIZONTAL MACHINING CENTER**, s/n 46270682, w/FANUC 16iMB Control, Twin 31.5" x 31.5" Pallets, X-60.2", Y-48.4", Z-40.2", Cat 50 Spindle, 90 ATC, 6,000 Max. RPM, 50 HP, Probing, Chip Blaster

**2007 NIIGATA HN80C HORIZONTAL MACHINING CENTER**, s/n 46250068, w/FANUC 15M Control, Twin 31.5" x 31.5" Pallets, X-60.2", Y-48.4", Z-40.2", Cat 50 Spindle, 60 ATC, Probing, Chip Blaster

**MAZAK H630 HORIZONTAL MACHINING CENTER**, s/n 101831, w/24.75" x 24.75" Pallets, 5-Pallet Pool, X-39.37", Y-31.5", Z-29.53", Cat 40 Spindle, 80 ATC, 4,500 RPM, Probe, Conveyor, Thru-Spindle Coolant

## EDM'S

**2015 AGIE CHARMILLES FORM 400 RAM TYPE EDM**, s/n 592-064.010.0041, w/32" x 48" Table, 32" Under Head, X-35.4", Y-27.5", Z-19.6", 24" Max. Bath Depth, Tool Changer

**2009 MITSUBISHI EA30E RAM TYPE EDM**, s/n 56ME3075, w/43" x 29.5" Table, EDM Rotobore RBH-1C Spindle, FP100EA Power Supply, DONALDSON TORIT MM-500 Collection System

## BANDSAWS

**2010 HYD-MECH H28A AUTOMATIC HORIZONTAL BANDSAW**, s/n D0710045B

**(3) HYD-MECH H22A AUTOMATIC HORIZONTAL BANDSAWS**, s/n C1214470SA, C0313402S, C1207245S, New as 2014

**1980 MARVEL SERIES 8 VERTICAL BANDSAW**, s/n 821237



MITSUBISHI EA30E RAM TYPE EDM

## SALE DATE

Tuesday, December 8 at 10:00 AM CT

## SALE LOCATION

2601 E Belt Line Road, Carrollton, Texas 75006

## INSPECTION

Monday, December 7 from 9:00 AM to 3:00 PM CT – By Appointment Only

**HYD-MECH H28A AUTOMATIC HORIZONTAL BANDSAW**



**HYD-MECH H22A AUTOMATIC HORIZONTAL BANDSAWS**

**3 AVAILABLE**

# BUCKING MACHINES, MISCELLANEOUS MACHINERY



**WEATHERFORD  
CAM F 13.375  
BUCKING/  
BREAKOUT  
MACHINE**



**AMC  
ENGINEERING  
TR30:150 TO  
BUCKING/  
BREAKOUT  
MACHINE**



**KEARNS RICHARDS SH75 TABLE TYPE  
HORIZONTAL BORING MILL**



**2001 SUNNEN STH-2000 LAEM  
HORIZONTAL HONING MACHINE**



**SUNNEN HL-1502-E HORIZONTAL HONING MACHINE**

## BUCKING MACHINES

**WEATHERFORD CAM F 13.375 BUCKING/BREAKOUT MACHINE**, s/n 54, w/13.375" Max. Dia., 160" Support Slide, Hydraulic

**AMC ENGINEERING TR30:150 TO BUCKING/BREAKOUT MACHINE**, s/n 30:150/8657, w/30" Max. Dia. Pipe, 26' Max. Supported Length of Pipe, 150,000 Lb Torque

## MISCELLANEOUS MACHINERY

**2001 SUNNEN STH-2000 LAEM HORIZONTAL HONING MACHINE**, s/n 1Y1-1018, w/SUNNEN PLC Control, 1"-23.6" Dia., 78" Stroke, 4 HP, 68-340 RPM

**SUNNEN HL-1502-E HORIZONTAL HONING MACHINE**, s/n 1W1-1083, w/SUNNEN Control, 1"-19" Dia., 60" Travel, 4 HP, Magnetic Separator, Cartridge Filter, 67-336 RPM

**KEARNS RICHARDS SH75 TABLE TYPE HORIZONTAL BORING MILL**, s/n 6974, w/39" x 39" Table, X-52", Y-39", W-52", 40 Taper Spindle Adapter, 1370 Max. RPM, 18" Facing Head, NEWALL DP700 DRO, MITUTOYO KA Counter

**2001 BRIDGEPORT EZ TRAK CNC MILL**, s/n 8443E

**MAKINO RMC-55 CNC VERTICAL MILL**, s/n K-1096

**BRIDGEPORT SERIES I VERTICAL MILL**, s/n HDNG3460M

**SUMMIT RT-SUPER 12X60 UNIVERSAL CYLINDRICAL GRINDER**, s/n 1360

**LANDIS 10X48 CYLINDRICAL GRINDER**, s/n 848-45

**CINCINNATI MILACRON/HEALD NO 273A  
INTERNAL GRINDER**, s/n 49463

**HEALD NO 276 INTERNAL GRINDER**, s/n 49256

**BROWN & SHARPE 1030 HYDRAULIC  
SURFACE GRINDER**, s/n 523-1030-284

**SETCO TOOL AND CUTTER GRINDER**, s/n 19505

**2015 VORTEX WASHER**, s/n 1109, w/SIEMENS PLC Control, 72" Dia. Table, 64" Max. Height, 20 HP Pump, Gas Heat, Skimmer



**CINCINNATI MILACRON/HEALD 273A  
INTERNAL GRINDER**



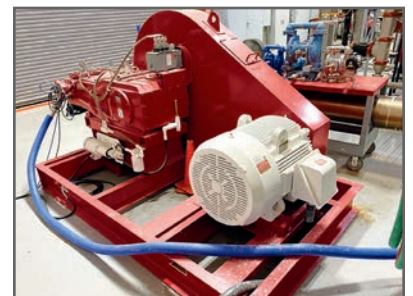
**BRIDGEPORT SERIES I  
VERTICAL MILL**



**2015  
VORTEX WASHER**



**KERR FLOW TEST SYSTEM**



**KERR FLOW TEST SYSTEM**



**PERFECTION  
Industrial Sales**

Perfection Industrial Sales –2550 Arthur Ave., Elk Grove Village, IL 60007

Phone: +1-847-545-6374 – Fax: +1-847-427-8884

[www.perfectionindustrial.com](http://www.perfectionindustrial.com)

Joseph Lundvick, TX Auctioneer Lic. #17682 & Steve Kleba, TX Auctioneer Lic. #17683



Presorted  
First Class Mail  
U.S. Postage  
PAID  
Eugene, Oregon  
Permit No. 17

# LIVE WEBCAST **ONLINE ONLY** AUCTION

**SALE DATE** Tuesday, December 8 at 10:00 AM CT **SALE LOCATION** 2601 E Belt Line Road, Carrollton, Texas 75006

**SURPLUS TO THE  
ONGOING OPERATIONS OF**  
**Carrollton, Texas**

## HALLIBURTON



**3 AVAILABLE**

2005 MORI SEIKI MT3500S/3500 CNC TURNING/MILLING CENTER

# LIVE WEBCAST **ONLINE ONLY** AUCTION

**SURPLUS TO THE ONGOING OPERATIONS OF**  
**HALLIBURTON**

**Pre-Auction Offers Invited on Major Assets**

**Carrollton, TX**

### TERMS OF SALE

All 18% Buyer's Premium will be charged on all assets purchased by buyers providing full payment is made within 48 hours following the sale. Acceptable forms of payment are cashier's check, company check (with bank letter of guarantee) or wire transfer within 48 hours of the sale close. For any Buyers failing to pay within the 48 hour stated payment period, the Buyer's Premium will be increased to 20%. Everything will be sold to the highest bidder, in accordance with the Auctioneer's customary "Terms of Sale", copies of which will be posted on the Auctioneer's website and subject to additional terms announced the day of sale. All items are sold "As is, Where is" without any warranty, express or implied.

### REMOVAL

All removal is by scheduled appointment only and all purchased lots must be removed no later than January 21st, 2021. There will be no removal of assets allowed from December 19th through January 3rd. **Rigging Note: All Buyers must use rigging companies specified by Halliburton.** A list of approved riggers can be found on this auction's sale details page on [www.perfectionindustrial.com](http://www.perfectionindustrial.com), as well as on [www.bidspotter.com](http://www.bidspotter.com) under the Rigging/Removals tab for each lot in the Halliburton sale catalog.

### FOR FURTHER INFORMATION

Please contact Jennifer Reiner at +1-847-545-6374 or [jennifer@perfectionindustrial.com](mailto:jennifer@perfectionindustrial.com)

### SALE DATE

Tuesday, December 8 at  
10:00 AM CT

### SALE LOCATION

2601 E Belt Line Road,  
Carrollton, Texas 75006

### INSPECTION

Monday, December 7  
from 9:00 AM to  
3:00 PM CT –  
By Appointment Only

**Complete Catalog & Information Available at <https://perfection.global/halliburton>**



**PERFECTION  
Industrial Sales**

Joseph Lundvick, TX Auctioneer Lic. #17682

Steve Kleba, TX Auctioneer Lic. #17683

Perfection Industrial Sales

ph +1-847-545-6374 • fax +1-847-427-8884

[www.perfectionindustrial.com](http://www.perfectionindustrial.com)

Bidding Available Through

**BidSpotter.com**