

ONLINE AUCTION

Wholesale CBD & Industrial Hemp Extract Company

By Order of
Howard B. Samuels,
Assignee for the
Benefit of Creditors:

Midwestern CBD EXTRACTOR

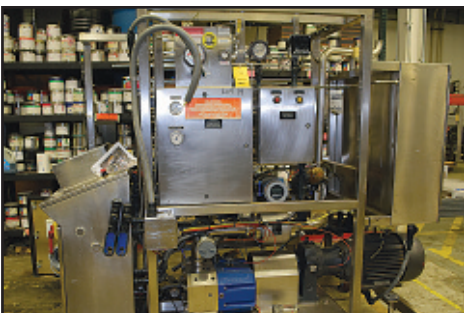
Moved for convenience of sale to:
555 Business Center Drive
Mount Prospect, Illinois 60056

BID ONLINE: Thurs. September 3 thru Thurs. September 10

INSPECTION: Wednesday, September 9

9:00 am - 4:00 pm CDT

**Centrifuges • Vial Filling Line • Evaporator Systems • UF System • Vacuum Pan
Ultraviolet Disinfection Systems • Heat Exchangers • Freezers • Valves
Electrical Equipment • Mixer • Screw Press • Material Handling Equipment
Battery Chargers • Lab Equipment • Cooling Water Equipment • Much More!**



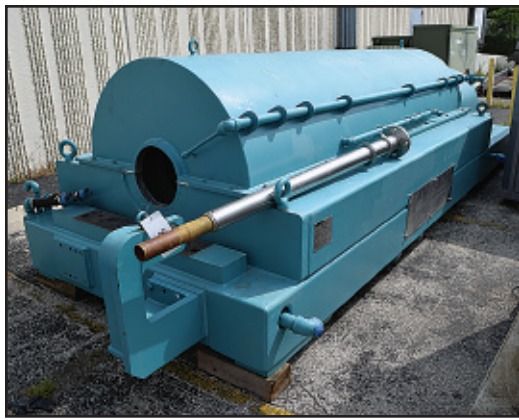
Place Bids Online Only at

BidSpotter.com

 **ppl** auctions
www.pplauctions.com

105 Revere Drive, Suite C
Northbrook, Illinois 60062
Phone: 224.927.5320
sales@pplauctions.com

AARON equipment company, inc.
201 Hansen Ct., #125 Wood Dale, IL 60191
Phone: 630.350.2200
www.aaronequipment.com



Bid Online at
BidSpotter.com



CENTRIFUGES

Alfa Laval Super-D-Canter Centrifuge Model SG-16, S/N 7000107,

316 Stainless Steel Construction (product contact areas), 2600 RPM Max. Bowl Speed, 300 HP Drive Motor, 60 HP ABB Back Drive Motor

Sharples Super-D-Canter Centrifuge Model P-5400, 316 Stainless Steel Construction (product contact areas), 2700 RPM Max. Bowl Speed

Sharples Conical Bowl Decanter Centrifuge Model P-1000,

Stainless Steel Construction (product contact areas), 20 HP Main Drive Motor, 7.5 HP Back Drive Motor

Delaval ATM 48" x 30" Perforated Basket Centrifuge,

Stainless Steel Construction (product contact areas), 1150 RPM Max. Bowl Speed, New Drive XP Motor

Delaval ATM 48" x 30" Perforated Basket Centrifuge,

Stainless Steel Construction (product contact areas), 1150 RPM Max. Bowl Speed, New Drive XP Motor

Westfalia Desludger Disc Centrifuge Model SB-80-06-177, S/N 1662-913 (1977),

Stainless Steel Construction (product contact areas), 4500 RPM Max. Bowl Speed

Westfalia Desludger Disc Centrifuge Model SA-100, S/N 1688-063 (1985),

316 Stainless Steel Construction (product contact areas), 4870 RPM Max. Bowl Speed, 75 HP Drive Motor

Westfalia Desludger Disc Centrifuge Model SA-100-36-777, S/N 1683937 (1984),

316 Stainless Steel Construction (product contact areas), 4870 RPM Max. Bowl Speed, 75 HP Drive Motor

Westfalia Portable Centrifuge Set-up Cart, Stainless Steel Construction, with Bowl Holder

Beckman Coulter Allegra-6 Bench Top Centrifuge, Catalog #366802, S/N ALS09L3

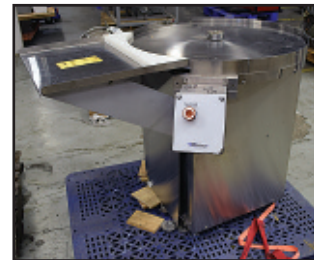
Beckman Coulter Knee-Well GS-6K Centrifuge, Catalog #362125, S/N GD93C05



VIAL FILLING LINE

Place Bids
Online Only at

BidSpotter.com



VIAL FILLING LINE

Bausch & Stroebel Container Tray Loader Model ME 515, S/N 53245 (2014),

Unit Rated at Over 1200 Container Transfers per Hour, Bausch & Stroebel HMI & Siemens PLC

Bausch & Stroebel In-Line Filler Model WDM 12002, S/N 58506 (1992), 12-Head Set-up with Free Standing Volumetric Load Cells

Cozzoli (MRM Elgin) 6-Head Vial Capper, S/N SICM200-85, Centrifugal Vibratory Cap Sorter with Feed Chute, Allen Bradley CompactLogix PLC

LSI Print & Apply Labeler Model 1300S, S/N 140605, Zebra Technologies Print Head Model 110PAX4, Allen Bradley Controls

Bosch Vial Inspection System Model KIV 1010, S/N 8100711627, Cognex Vision System, Allen Bradley Controls & HMI

Martin Baron Inc. Nitrogen Immersion Freezer Model MBI 1-18-0011-01, S/N J-040204

Cozzoli (MRM Elgin) Crimp Capper, S/N CM200-84, Centrifugal Vibratory Cap Feeder, Allen Bradley PLC Controls & Touch Screen HMI

(2) Cozzoli 30" Diameter Turntables, S/Ns AT30-977, UT30-976, Stainless Steel Construction

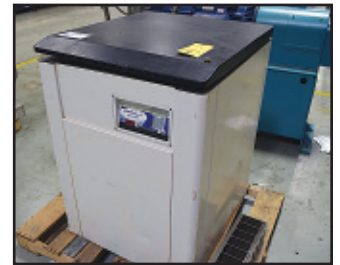
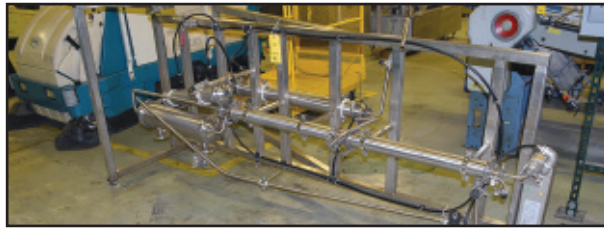
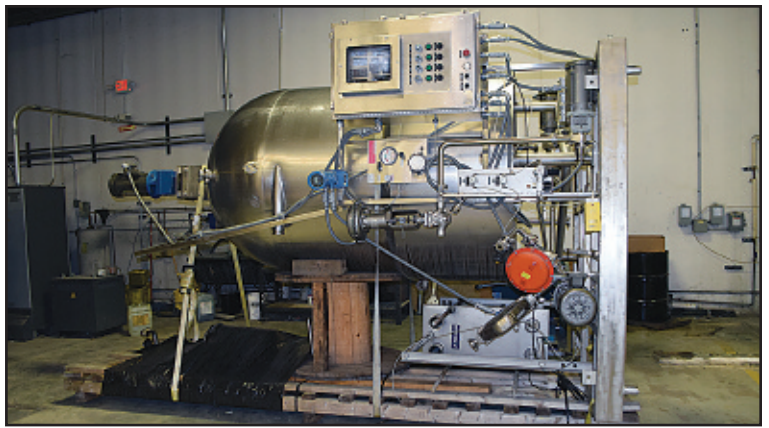
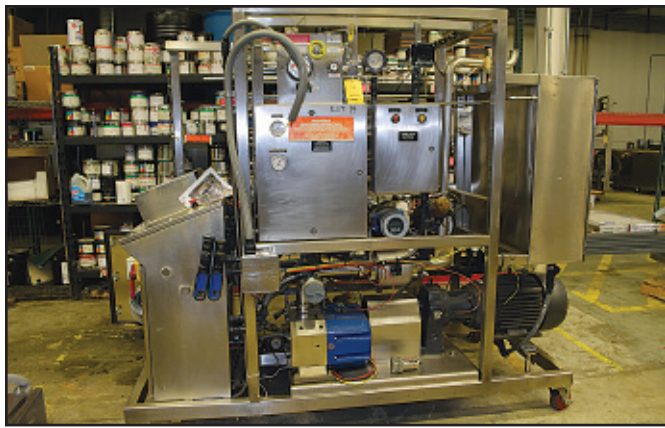
Bausch & Stroebel In-Line Capper Model RVE 6000, S/N 59170 (1999),

Centrifugal Bowl Feeder, Stainless Steel Construction Part Cart with Spare Bowls and Change Parts, PLC Controls

48" Diameter Accumulation Table, Stainless Steel Construction, with Variable Speed Controls • **LINX Inkjet Coder**

Bausch & Stroebel Monobloc Vial Filler & Pluggers Model IND8 10005, S/N 51210,

(10) Fill Nozzles & Pluggers with Centrifugal Vibratory Stopper/Pluggers Feeder



EVAPORATOR SYSTEMS • UF SYSTEM • VACUUM PAN

(1) Hydriion Scientific Rotary Evaporator Systems Model RE-750

Millipore UF System consisting of: (4) Filter Housings, Part #D030444, (1) Wright Flow Positive Displacement Pump

Lee Industries 400 Gallon Vacuum Pan Model 400D7S, S/N C1825A2 (1995), National Board #6444, Stainless Steel Construction, Vertical Vessel, with Alfa Laval Plate Heat Exchanger Model M10-MFHC, S/N 30105-57154 (2000), Mounted on Stainless Steel Construction Frame

ULTRAVIOLET DISINFECTION SYSTEMS

(5) Aquafine Optivenn Series Ultraviolet Disinfection Units Model 02CDM,

S/Ns 10025464-10-03-CPP, 10025464-10-05-CPP, 10025464-10-01-CPP, 10025464-10-04-CPP, 10025464-10-02-CPP (2019), 316L Stainless Steel Construction, Rated 12 - 2200 Gallons per Minute, 150 PSI Max. Pressure, 40° -104°F Temperature Range, includes UV Monitoring Station Control Panel System, S/N 10025464-10-03

HEAT EXCHANGERS • FREEZERS

Heat Transfer System, S/N 3081558413, consisting of:

(3) Stainless Steel Construction Shell & Tube Heat Exchangers, (1) Alfa Laval Brazed Plate Refrigerant Heat Exchanger Model CB60-40H-T06, Mounted on Stainless Steel Construction Frame

Bell & Gossett Plate Heat Exchanger, Part #5BY540900042200-5-409-23-098-001-P21, S/N 959168-01 (2005), National Board #137839, Stainless Steel Construction, Approx. (98) Plates, Rated 150 PSI at 302°F (certified by ITT Industries)

(2) Chart MVE Series Cryogenic Liquid Nitrogen Freezers Model MVE 1411F-GB & MVE 1411F-GB-BB, S/Ns CVFJ04C104, CVFL05F106, 31.75" (est.) Neck Opening, 28.7" (est.) Usable Height, 375 Liter Liquid Nitrogen Capacity, includes a TEC 2000 Systems Monitor

Chart MVE Series Cryogenic Liquid Nitrogen Freezer Model MVE 1426CAF-GB, S/N CAB2112320262

VWR Cryopro Series Auto-Fill Vapor Cryogenic Storage System Model AF-1-PS, S/N CAE2112320262 (2003)

VALVES

(33) Samson NC 4" Diaphragm Valves • (9) George Fischer 4" Electric Butterfly Valves • (2) Keystone (X2) Figure 222 Butterfly Valves

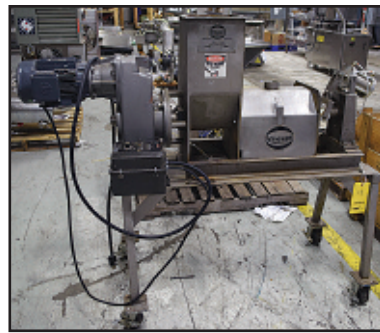
(6) George Fischer Signet 9900 Transmitters • (2) Anderson Instrument Co. MPP Modular Pressure Transmitters, S/Ns 1875167, 1875169

(4) Grundfos DDA 7.5-16 AR-PP/E/C-F-31U7UBG Dosing Pumps

(2) George Fischer Signet 515/2536 Rotor-X Flow Sensors, S/Ns 61702080919, 61702080032 • George Fischer Flow Meters & Sensors

Pulsar (X2) IMP6 Non-Contacting Ultrasonic Level Measurement & Digital Echo Processing • Assorted Pneumatic Diaphragm Valves

Place Bids at BidSpotter.com



MIXER • SCREW PRESS

Leo Agriculture Vertical TWR Feed Mixer Model 70500, 500 cu. ft. Capacity, 5' x 5' Max. Bale Size

Leo Agriculture XL Inclined Drag Chain Conveyor, Carbon Steel, Approx. 34" Wide x 256" Long, 2 HP Gear Motor

Vincent Corp. CP Horizontal Screw Press Model CP-4, S/N 16213-C, Stainless Steel Construction, 150 - 500 lbs. (est.) per Hour Capacity, Driven by 1.5 HP Gear Motor, includes Wedge Wire Screen, Mounted on Frame with Casters

MATERIAL HANDLING EQUIPMENT

Yale 8000 lb. LP Forklift Model GLP080L JNGBV085.5, S/N C813D02225X, Solid Rubber Tires, Overhead Guard, 122" Lift of 2-Stage Mast

Mitsubishi 5000 lb. LP Forklift Model FGC25K, S/N AF-82C-03524, Solid Rubber Tires, Overhead Guard, 3-Stage Mast, Side Shift

Caterpillar LP Forklift Model V50DSA, S/N 2NC990 • Crown 3000 lb. 3-Wheel Electric Forklift Model SC 4500

Enersys Pro Series Hydraulic Battery Remover Model PSBTC-30MPP, S/N VFGC70007032A, with Hydraulic Jack, Battery Transfer Cart, Mechanical Loader, 3000 lb. Max. Capacity, 30" Max. Battery Width

Tennant Electric Ride-on Floor Scrubber/Sweeper Model 8300, S/N 8300-3579

Uline 36" x 48" Forklift Aerial Platform Model H-2771, 1000 lb. Capacity, Approx. 43" High Guard Rails, 2-1/2" x 8" Forklift Pockets

Knight Global Pneumatic Air Balancer Hoist Model KBC225-067, S/N B22506700000468, 225 lb. Capacity, includes Clamp Arm

David Round 1 Ton Air Hoist, with Trolley and Panel • (2) Ingersoll Rand Air Hoists Model 08F260 & 08F263

Ingersoll Rand Air Hoist Model PAL1000KV-3HA10-06F1A, S/N S98C00989, 2200 lb. Max. Lift Capacity, 90 PSIG Max. Pressure

ARO Air Hoist, 3/4 Ton Capacity, with Trolley • (2) CM 1 Ton Hoists Model H, S/Ns L1589WL, L0914UX

Hustler Equipment Bale Handler Model Mega Soft Hands, S/N 1842218 (2018),

Carbon Steel, Up to 1800 kg Capacity, 90.55" - 15.75" Max. Opening/Closing, Handles Round or Square Bales

Hustler Equipment Bale Handler Model Mega Soft Hands, S/N 1868018 (2018), Carbon Steel, Up to 1800 kg Capacity

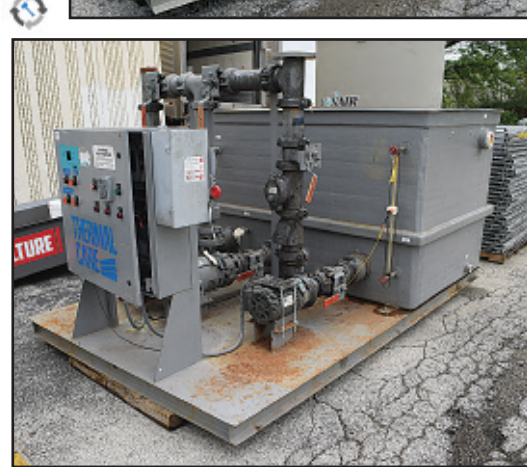
Big Joe 2200 lb. Electric Stacker Lift Model EMS-A2200, S/N M13050224, 63" Max. Lift

(9) Topper Industrial 40" x 40" x 36" Dia. Corrugated Steel Stacking Parts Tubs • Approx. (170) 44" x 48" Wire Pallet Rack Shelf Inserts

(2) Great Dane 28' Single-Axle Refrigerated Van Trailers • Wabash 53' Tandem-Axle Dry Van Trailer



Bid September 3-10



BATTERY CHARGERS • ELECTRICAL EQUIPMENT

(2) Enersys Workhog HF 36 Volt Battery Chargers Model WH3-18-1200, S/Ns GD32218, GD32220

Enersys Enforcer HF 24 Volt Battery Charger Model EH3-12-900, S/N IB59506

Bassi 24 Volt Electronic 2 Intelligent Microprocessor Control Battery Charger • C&D Ferro Five 12 Volt Battery Charger

Hobart Accucharger 24 Volt Battery Charger • C&D Ferro Five FR Series 48 Volt Battery Charger • GNB SCR 100 48 Volt Battery Charger

Workhorse Series 3 18 Volt Battery Charger • (4) Workhorse Series 3 12 Volt Battery Chargers

Allen Bradley Control Login 7 Slots Chassis, S/N 63559095 • Hoffman Instrument Control Panels

Hoffman Electric Panel with Chiller & Circuit Breaker • SCE 15-Motor Control Cabinet

(2) Commercial Proving Room Control Panels and Cabinets, (2) Main BMS Panels, (5) Remote Panels and Solenoid Valve Control Panel

(5) Assorted Franklin Control Panels • GEO FES Inc. Refrigeration Control Panel Model TBS-P155-1122, with GEA Touch Screen Panel

Square D 600V-250V Switch Panel • Teco-Westinghouse 20 HP Electric Motor

Dongan Dry Transformer, 3-Phase General Purpose 208/240/480V, 480V Delta 1 P 3W Primary, 230V P 3 4W Secondary

Dongan Dry Transformer, 3-Phase General Purpose 208/240/480V, 480V Delta 3 P 3W Primary, 230V Delta 3 P 4W Secondary

LAB EQUIPMENT • COOLING WATER EQUIPMENT

(5) Noshok Bimetal Thermometers, 5" AA Stem Length, 18" Glass Lens • SRI Instruments Gas Chromatograph Model 8610C

Shimadzu Gas Chromatograph Model GC-8A • (2) Delmhorst Hops Scales Model F-2000/H • (4) Hamilton RetractoFit PEEK Armatures

Transpring Automatic Dispensing Robot • Oxford Bench Mate VM-MT, S/N TF1804AA0088 • Benchmark Bench Mixer Multi Tube Vortexer

Cole-Parmer 6 x 10 ml Centrifuge, S/N LT1802143 • Talboys 7 x 7 CER Stirrer, 120V, S/N 190715001

Benchmark Bench Mixer BV1000 Vortex Mixer, S/N 17081736 • Barnstead Thermolyne Cimarec 2 Heat & Stir, S/N 1069991190187

Barnstead Thermolyne Cimarec 2 Heat, S/N 1071990975230 • Mettler Toledo Scale Weight Baseline Model WB, S/N 5577798-5JJ

Elmi Ltd. Centrifuge & Mixer Model CM-70M-07, S/N 1840009D & Model CM-70M-09, S/N 1830002D

Cgoldenwall Lab Balance Model HZ50002B, S/N 1840009D, 5000g Max. • (2) Gdealer Scales, 5000g Max. • Electric Arc Tester

Brecknell RS-232C Scale Model MBS-300, S/N 1402A009, 300g Max. • Helmer I Series Laboratory Refrigerator Model ILR120, S/N 986351

Conair Polyethylene Induced Draft Cooling Tower, S/N 61214

Conair Tempco Cooling Tower Reservoir System consisting of: (1) 450 Gallon (est.) Poly Holding Tank, (2) 20 HP Pumps, Mounted on Base

Conair Tempco Cooling Tower Reservoir System Model PT450, S/N 183269, consisting of:

(1) 450 Gallon (est.) Polyethylene Holding Tank, (2) 10 HP Pumps and Control Panel, Mounted on Base

Carrier Outdoor Chiller Model 30RAN050-611KA, S/N 1703F28901 • Heatcraft Chiller Model RC60S2S, S/N ST05H04895

Thermal Care Cooling Tower Reservoir System Model PTF700, S/N 10712010306, consisting of:

(1) 700 Gallon (est.) Fiberglass Holding Tank, (2) 15 HP Pumps, (1) 5 HP Pump, Control Panel, Mounted on Base

BidSpotter.com



MISCELLANEOUS EQUIPMENT

Guedu Pilot Filter Dryer, 100 Liter (est.), S/N 8042 (1991), National Board #24, 316 Stainless Steel Construction, 24" Dia. x 16" (est.) Vertical Chamber
Luwa Vertical Thin Film Evaporator Model L, S/N L-290, Stainless Steel Construction • **Husky Pro Air Compressor Model VT631403AJ**
Atlantic Fluidics Vacuum System, S/N 25486, consisting of: (1) Tuthill Vacuum Pump, Driven by 3 HP Motor
(5) Lee Industries 250 Liter Stainless Steel Portable Pressure Mix Tanks Model 250 LDBT, S/N B3834A (located in Belvidere, IL)
(4) Binder 30 Liter GMBH Pressure Tanks, S/Ns 795/1 (2002), 4676 (2005), 795/2 (2002), 795/3 (2002), Stainless Steel Construction
(3) Millipore HA Chromatography Columns Model G450X500, S/N 450-0167 (2001), includes Stainless Steel Construction Cart with Casters
(4) 15 Gallon (est.) Stainless Steel Siphon Tanks, (1) Piece Top Cover Mounted on Casters
Alpha Stainless Filtration System consisting of: (1) Filter Housing, (1) Alfa Laval Positive Displacement Pump Model SRU4/079/HS, S/N 137210
Douglas Machines Pan Washer Model UTM10-E-480/33, S/N 08/8666, Stainless Steel Construction
REC Industries 50 Gallon (est.) Vertical Jacketed Tank, S/N 7302-001-2 (2005), Stainless Steel Construction
Stainless Steel Construction Part Cart with Vibratory Bowls, Hoppers, and Miscellaneous Parts
U.S. Screen Print and Inkjet Technology Fast T-Jet Blaze Garment Printer Model TJB-1650, S/N TJB-B0125-1207
Filter System consisting of: (2) Cuno Filter Housings Model 16ZPB2, S/Ns 31649-5, 31649-5 (2011), 316L Stainless Steel Construction
Atmos-Tech Industries Hepa Filter Hood Model DF37-SS/SP, S/N 13561-1, Stainless Steel Construction
Grieve Industrial High Temperature Bench Oven Model NTR-800, 800°F Max. Operating Temperature, 2400 Watts
Chromalox Heating System Model PFCW-600B-350XX, 200 Gallons per Minute Design Capacity, 350 kw • **Schlemmer Sensors**
Udy Corp. Colorado Hay Probe • **(4) Pulsar (X2 or X3) IMP6 Non-Contacting Ultrasonic Level Measurement & Digital Echo Processor**
(4) Keystone Fittings • **IPS 3" PVC Flow Meter Body** • **IPS 3" PVC Pipe Accessories & Glue** • **Aquaterior Faucet Model 81FAU003-8-CHR**
Proflo (X4) Single-Handle Lavatory Faucet Model PFWSC3006CP • **Proflo Single-Handle Kitchen Faucet**
Cardboard Freezer Boxes, Test Tubes & Test Tube Racks • **Mustee Utilatub Laundry Tub**, with Filter (new) • **Supreme Air Fume Hood**
(5) Aquatec .8 GPM Delivery Pumps Model DDP5800 • **(2) Baxter Stainless Steel Feeding Hoppers**, S/Ns 129324-5, 51210-2, 6" Triclamp Outlet
Stainless Steel Surge Tank with Pneumatic Control • **(2) 10' Stainless Steel Double Sinks** • **45" Stainless Steel Single Sink** with Drain Boards
Modine Gas Furnace • **Sterling Gas Furnace** • **(2) Reznor Category III Unit Heaters**, S/Ns AUA66Q3N01054, AUA66Q3N01053
Assorted Control Boxes • **Assorted 4.75" Dia. x 8.5" Screw Top Plastic Jars** • **Assorted Tray Carts** • **(2) Ridgid Portable Shop Vacs**
Hix Corp. Bench Top T-Shirt Hot Stamper Model S650D • **Yardbird Chicken Plucker** • **(3) Antminer Bit Coin Mfr. Machines Model D3**
IMS Single-Drum Tumbler Model 111871, S/N 0908, Driven by 1.5 HP Gear Motor

BidSpotter.com

See Complete Auction Terms & Conditions On Our Website – www.pplauctions.com