

DREWEATTS

EST. 1759



JEWELLERY, SILVER, WATCHES,
PENS AND LUXURY ACCESSORIES (PART 1)

DONNINGTON PRIORY | MONDAY 15 JUNE 2020



DREWEATTS
EST. 1759

JEWELLERY, SILVER, WATCHES, PENS AND LUXURY ACCESSORIES (PART 2)
TIMED ONLINE AUCTION | TUESDAY 16 JUNE | 10.30AM

This is a timed online auction with lots closing at 30 second intervals from 10.30am on Tuesday 16 June (local time).

VIEWING:
Please see our website for viewing arrangements.

ENQUIRIES:
+44 (0) 1635 553 553
jsw@drewatts.com
Online catalogue at: the-saleroom.com
and drewatts.com



DREWEATTS
EST. 1759

**JEWELLERY, SILVER, WATCHES,
PENS AND LUXURY ACCESSORIES
(PART 1)**

MONDAY 15 JUNE 2020 | 10.30AM

AUCTION FORMAT: LIVE ONLINE

This is a live online auction with an auctioneer. Bidding is available online, by telephone or commission (absentee) bids. If not bidding online, please contact Drewatts to register all commission bids or telephone bids by 4pm (local time) on Friday 12 June.

**FREE ONLINE BIDDING IS AVAILABLE AT
DREWEATTS.COM:**

The Drewatts' bidding platform allows you to watch, listen and bid with no additional online bidding fees applicable. Live online bidding is also available via the-saleroom.com. Please note there is a surcharge for bidding via this platform.

REGISTRATION:

New clients wishing to bid in these auctions must register in advance. To register, you will need to provide two forms of identification. Please email a copy of the following information to live@drewatts.com:

1. Government issued photo ID (passport / driving licence / identity card)
2. Proof of address (utility bill / bank statement)

Registration for new clients will close at 7pm (local time) on Sunday 14 June.

BUYER'S PREMIUM:

Buyer's premium is charged per lot at 25% of the hammer price (30% including VAT) up to and including £500,000, 20% (24% including VAT) of the hammer price from £500,001 up to and including £1,000,000, and 12% of the hammer price (14.4% including VAT) in excess of £1,000,001.

PAYMENT:

Please note, we cannot accept payment by telephone for lots bought by first time bidders. For details on other payment methods, please see our website.

AUCTION NO. 14264

SPECIALISTS:

James Nicholson FGA, DGA
Nick Mann
Alexandra Francis GG
Tessa Parry FGA, DGA
Ian Pickford (Consultant, Silver)
Terry Taylor MBHI (Consultant, Watches)

VIEWING AT DONNINGTON PRIORY:

Viewing will be available by appointment only and in strict accordance with government Covid-19 regulations.

Monday 8 June	10am – 5pm
Tuesday 9 June	10am – 5pm
Wednesday 10 June	10am – 5pm
Thursday 11 June	10am – 5pm
Friday 12 June	10am – 5pm

There will be no viewing on auction days.

REMOTE VIEWING SERVICE:

Remote Viewing will also be available by appointment. Our Remote Viewing Service allows you to view specified Lots via your smartphone from the comfort of your own home at a time convenient to you. See our website for further details.

AUCTION:

Drewatts
Donnington Priory
Newbury
Berkshire RG14 2JE

**AUCTION ENQUIRIES OR TO BOOK A VIEWING
APPOINTMENT:**

+44 (0) 1635 553 553
jsw@drewatts.com
drewatts.com

Front cover:
Lot 200, 223, 224 & 243
Back cover: Lot 441 & 442



British and Continental Silver and Plated Ware



1

1
A George II silver coffee pot by Edward Vincent, London 1739, with a bell shaped finial to the foliate chased dome cover, a composition double scroll handle, the body chased with C-scrolls, foliate swags and foliate sprays, two shaped vacant reserves and on a circular foot, 23cm (9in) high, 816g (26.25 oz) gross

£400-600



2

2
A pair of George II silver pepperettes by Samuel Wood, London 1755, with bell shaped finial to the pierced cover, with pierced caps to the covers, unmarked, probably later, on circular moulded spreading feet, 12.5cm (5in) high, 186g (6 oz)

£150-250



3

3
An early George III silver cream jug, maker's mark obscured, London 1766, with a foliate capped double scroll handle, chased with floral sprays, foliate decoration and C-scrolls, a shaped vacant reserve, on a circular moulded spreading foot, 10cm (4in) high, 85g (2.75 oz)

£100-150



4

4
A George III silver shaped circular waiter by Richard Rugg I, London 1766, with a raised and gadrooned border, engraved R-M beneath and on three pad feet, 19.5cm (7 3/4in) diameter, 289g (9.3 oz)

£150-200



5

5
A pair of George III silver shell moulded sauce boats, maker's mark worn, London 1768, with serpent loop handles, foliate borders and engraved with a crest, on shaped oval pedestal feet, 17cm (6 3/4in) long, 579g (18.6 oz)

£150-250



6

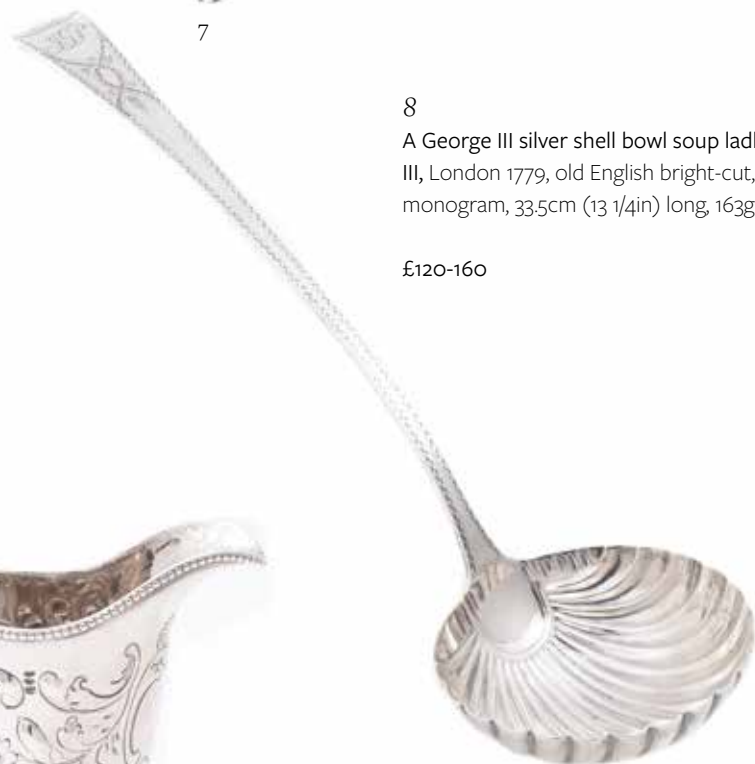
6
A George III silver marrow scoop by John Scofield, London 1778, 24cm (9 1/2in) long; and a George III marrow scoop, maker's mark obscured, London 1777, 24.5cm (9 3/4in) long, 66g (2.1 oz) gross

£120-180



7
A George III silver circular waiter by James Stamp, London 1778, with a beaded rim, beaded to base of incurve, on three bead outlined bracket feet, engraved with a crest within a wreath, 19cm (7 1/2in) diameter

£150-250



8
A George III silver shell bowl soup ladle by George Smith III, London 1779, old English bright-cut, engraved with a monogram, 33.5cm (13 1/4in) long, 163g (5.25 oz)

£120-160



9
A George III silver helmet shaped cream jug, maker's mark obscured, London 1782, with a beaded border, high clip handle, chased with floral sprays, a vacant reserve and on a circular pedestal foot, 16cm (6 1/4in) high, 185g (5.95 oz)

£100-150



10
A mid Georgian Irish silver salver, maker's mark possibly WT, Dublin no date letter, with a raised moulded scroll border, engraved with a crest above C, on three pad feet, 18.5cm (7 1/4in) diameter, 403g (12.95 oz)

Provenance: The Cairns family, Ireland; thence to Simon Dallas Cairns, 6th Earl Cairns. The maker may be William Townsend working from 1726 to 1775

£150-200



11
An Irish George III silver table spoon by Law & Bayly, Dublin 1789, engraved with a monogram, 23.5cm (9 1/4in) long; and an Irish Old English pattern basting spoon by John Smyth, Dublin 1857, 31.5cm (12 1/2in) long, 209g (6.7 oz) gross

£120-180



12
A pair of George III silver navette salts by Henry Chawner, London 1790, with high loop handles, reeded borders and on oval pedestal feet, 13.5cm (5 1/4in) long, 183g (5.85 oz)

£80-120

13

A George III Irish silver drum mustard pot by Joseph Jackson, Dublin 1793, with a scroll handle, engraved with decorative bands and a crest within a shield shaped reserve, 9cm (3 1/2in) long, with a blue glass liner; and a George IV drum mustard pot by Charles Fox II, London 1828, with a shell shaped thumb piece to the flat cover, the cover engraved with a crest (worn), a harp handle and reeded borders, 9cm (3 1/2in) long, with a blue glass liner, 22og (7.1 oz) gross



Provenance: The Cairns family, Ireland; thence to Simon Dallas Cairns, 6th Earl Cairns.

£200-300



14

14 Y

A George III silver oval tea pot by Peter, Ann & William Bateman, London 1799, with a wrythen finial to the domed cover, a loop handle with ivory warming bands, the half foliate chased body with reeded border and engraved with a scroll band, 30cm (11 3/4in) long, 364g (20.4 oz) gross

£200-300



15

15

Three William IV silver wine labels by Matthew Bolton, Birmingham 1830, chased with grape vine and shell borders for Bucellas, Bronti and Teneriffe, 6.5cm (2 1/2in) long, 39g (1.3 oz)

£150-250

16

A pair of George III silver pedestal salt cellars by Robert Sharp, London 1802, with gadrooned borders, on circular moulded spreading pedestal feet, 9cm (3 1/2in) diameter, 297g (9.55 oz)

£80-120



16

17

A late George III silver small tea pot by William Bennett, London 1817, with a foliate finial to the domed cover, composition scroll handle, chased with a seated figure and a figure serving fruit, floral sprays, foliate decoration and C-scrolls, a vacant reserve and four foliate feet, 21.5cm (8 1/2in) long, 367g (11.8 oz) gross

£150-200



17

18

A George IV silver coffee biggin by Howard, Battie & Hawskworth, Sheffield 1822, swollen with a flowerhead button finial to the dome centred hinged cover, a wooden loop handle and nulled rims, 20.5cm (8in) high, 674g (21.65 oz) gross

£300-500



18



19
A pair of old Sheffield plate rounded rectangular entrée dishes, covers, handles and warming stands, unmarked, circa 1825, with vine stock handles, gadrooned rims and on foliate and scroll feet, engraved with a crest, a shield and a motto Fortis Fortuna Juvat, 34cm (13 1/2in) long

The crest, shield and motto for DICKSON.

£200-300



19



20
A set of four Scottish George IV silver oval pedestal salts, no maker's marks, Edinburgh 1826, with two handled harp handles, reeded borders, flooded silver monogram and on rectangular pedestal feet, 15cm (6in) long, 456g (14.65 oz), with four electro-plated Old English pattern salt spoons

£100-150



21

21 Y
A George IV silver circular compressed tea pot by Charles Fox, London 1827, with a foliate capped loop handle with ivory warming bands, engraved with flowers, scrolls and a crest, a shaped vacant reserve and on a circular foot, 27.5cm (10 3/4in) long, 634g (20.4 oz) gross

Provenance: From the estate of Christopher and Rosemary Warren

£180-220

22
A William IV silver six division toast rack, maker's mark worn, London 1834, with a foliate loop handle, reeded and floral border, engraved with a crest, on four foliate bracket feet, 18cm (7in) long, 428g (13.75 oz)

£80-120



22



23

23
A pair of William IV silver circular pedestal salts by R. & S. Garrard & Co., London 1835, chased with a foliate band, engraved with a coronet above a monogram, on a circular pedestal foot with a cable band, 8cm (3 1/4in) diameter, 450g (14.45 oz)

£150-250

24 Y
An early Victorian silver vase shape coffee pot by Martin, Hall & Co., Sheffield 1842, with a pineapple finial to the waisted cover, a stiff leaf shoulder, a leaf-capped loop handle terminating in bifurcated leaves, chased with masks in wreaths and flower swags, engraved with tied ribbon swags and vacant oval reserves, the circular pedestal with a stiff leaf band, 29cm (11 1/2in) high, 1001g (32.15 oz) gross

£300-400



24



25

25

A Victorian silver gilt melon cutting knife and fork by H. J. Lias & Son, London 1858, with agate handles, engraved with foliate decoration, the knife with a crest, 26.5cm (10 1/2in) long, the fork 20cm (8in) long, in a later Garrard & Co. case

£200-300



26

26Y

A Victorian silver almost cylindrical beer jug by Robert Hennell III, London 1863, with a quadripartite foliate finial to the domed cover, ivory spacers to the S-scroll handle with a heart terminal, egraved with flower reserves on a strapwork ground, on a curved skirt base, 25.5cm (10in) high, 895g (28.75 oz) gross

£300-400



27

27Y

A pair of Victorian silver and ivory fish servers by Walker & Hall, Sheffield 1867, pierced and engraved with a fish amidst scrolls and strapwork and a shell band, the handles carved with stiff leaves, the slice 33cm (13in) long, in a fitted burr walnut case

£100-150

28

A matched pair of late Victorian silver small candlesticks, by Martin, Hall & Co. London 1890, and by the Goldsmiths & Silversmiths Co. Ltd, London 1898, with detachable sconces, leafy capitals, twist columns and stepped bases, 15cm (6in) high, loaded

£100-150



28



29

29

A late Victorian silver shaped oval pierced basket by Elkington & Co., Birmingham 1892, the body with pierced decoration and chased with floral sprays, with a shaped vacant reserve, 21cm (8 1/4in) long; and a pair of American silver coloured shell shaped dishes by Gorham, on two ball feet, 15cm (6in) long, 197g (16 oz) gross

Provenance: From the estate of Christopher and Rosemary Warren

£200-300



30

30

A Victorian silver shaped oblong baluster teapot by Charles Stuart Harris, London 1892, with a composition finial and harp handle, a gadrooned border, a reeded band, engraved with a monogram and presentation inscription, on four ball feet, 27cm (10 3/4in) long; and a Victorian silver baluster coffee pot by Walker & Hall, Sheffield 1897, with a composition finial and loop handle, the half gadrooned body with an engraved foliate band, 24cm (9 1/2in) high, 1325g (42.6 oz) gross

£220-260



31

31
A late Victorian silver shaped circular salver, indistinct maker's mark obscuring another, London 1893, with a raised moulded border, engraved with a crest with a C-scroll and floral reserve, on three pad feet, 25cm (9 3/4in) diameter, 594g (19.1 oz)

Provenance: The Cairns family, Ireland; thence to Simon Dallas Cairns, 6th Earl Cairns.

£120-160

32 (no lot)

33
A late Victorian silver gadrooned compressed circular kettle on stand by Horace Woodward & Co. Ltd., London 1898, with a composition loop handle and finial to the flat cover, on a circular stand, above a burner, on four pad feet, 25cm (9 3/4in) high, 1015g (32.6 oz) gross

£180-250



33

34 Y
A silver three piece oblong tea set by James Dixon & Son, Sheffield 1899 (1) and 1900, the teapot with a composition finial to the domed finial, the loop handle with ivory warming bands, the half gadrooned body engraved with a crest and on four ball feet, 22.5cm (8 3/4in) long, 768g (24.7 oz) gross

£150-250



34

35
Four late Victorian silver Corinthian candlesticks by William Hutton & Sons Ltd., London 1900 (3) and Sheffield 1900 (1), the sconces with beaded borders, foliate chased capitals and on stepped square bases, 14.5cm (5 3/4in) high, loaded

£250-350



35



36

36
A late Victorian silver oval tea pot by John Round & Son Ltd., Sheffield 1900, with a composition finial and harp handle, the half gadrooned body engraved with a crest, 26.5cm (10 1/2in) long; together with a similar Victorian cream jug and sugar basin by Charles Boyton, London 1889, the sugar basin 15cm (6in) long, 761g (24.5 oz) gross

£100-150

37
An Edwardian silver shaped circular salver by Thomas Bradbury & Sons, London 1901, with a raised moulded border, engraved with a crest above the motto Spero Meliora, on three foliate scroll feet, 25.5cm (10in) diameter, 665g (21.35 oz)

£80-120



37



38

38
An Edwardian silver shaped oval basket by Elkington & Co. Ltd., London 1901, with a beaded border, chased and applied with husk bands, pierced with scroll decoration and on four bun feet, 25cm (9 3/4in) long, 656g (21.1 oz)

£150-250

39
An Edwardian cased silver lobed baluster cruet set by S. W. Smith & Co., Birmingham 1901, comprising four salts, a mustard and two pepperettes, with four salt spoons and a mustard spoon, Birmingham 1900, 243g (7.8 oz), with five blue glass liners

Provenance: From the estate of Christopher and Rosemary Warren

£150-200



39

40
Two Edwardian glass and silver mounted canted square ink wells, maker's mark for Lambert & Co., possibly over striking that of another, London 1901 and 1902, the flat covers engraved with an unidentified crest and reeded borders, 10cm (4in) long

Property from the estate of the late Betty, Lady Grantchester.

£150-200



40

41

An Edwardian silver circular chamberstick by Williams (Birmingham) Ltd, London 1902, the detachable sconce and base with gadrooned rims, the handle with an electro-plated extinguisher, 14.5cm (5 3/4in) diameter, 321g (10.3 oz) weighable

£100-150



41



42

42
An Art Nouveau silver rectangular dressing table tray by Barker Brothers, Birmingham 1903, the shaped and pierced border with floral sprays and C-scrolls, the body chased with five cherubs, floral and foliate decoration, 30.5cm (12in) long, 303g (9.75 oz)

£200-250

43

A pair of Art Nouveau silver tapering vases by William Comyns & Sons, London 1904, embossed with irises, on circular spreading bases, monogrammed, 19cm (7 1/2in) high, loaded

£100-150



43



44

44

An Edwardian pair of silver Corinthian column candlesticks by Hawksworth, Eyre & Co. Ltd., Sheffield 1904, the shaped sconces with beaded borders, foliate chased capitals and on square bases, 18cm (11in) high, loaded

£400-600

45

An Edwardian silver novelty elephant pin cushion by Adie & Lovekin Ltd., Birmingham 1905, 6cm (2 1/4in) long

£100-150



45



46

46

An Edwardian silver oval swing handled basket by William Hutton & Sons Ltd., London 1905, with a foliate pierced swing handle and engraved with a crest above 1880-105, the body with a gadrooned border and pierced with foliate decoration, on four shell feet, 26cm (10 1/4in) long, 415g (13.35 oz)

£120-180

47

A large Edwardian silver shaped circular salver by Harrison Brothers & Howson, London 1905, with a bold raised gadrooned rim with large and small shells at intervals, on four scroll feet, engraved 1919 - 1944, 48.5cm (18 1/4in) diameter, 2028g (65.2 oz)

£400-600



47

48

An Edwardian silver oval half gadrooned tea pot and sugar basin by Robert Pringle & Sons, London 1906, the teapot with a composition finial and harp handle, 21.5cm (8 1/2in) long; and a Victorian oval half gadrooned jug by Isaac Summers, Chester 1898, with scroll handle, 9cm (3 1/2in) long, 304g (9.8 oz) gross

£100-150



48



49

49

An Edwardian silver pedestal rose bowl by James Deakin & Sons, Sheffield 1906, embossed with C-scrolls and foliate sprays, four shaped vacant reserves, on a circular pedestal foot, 19.5cm (7 3/4in) diameter, 350g (11.25 oz)

£100-150



50
An Edwardian silver carriage clock by John Pound & Co., London 1907, French movement, white dial, Roman numerals, blued steel hands, the case with a loop handle, engine turned decoration, engraved with a monogram within a circular reserve and on four bun feet, 7.5cm (3in) high

£150-250

51

An Edwardian silver epergne by Arthur Joseph Mason, Birmingham 1907, the shaped circular bowl on a circular foot, supporting one large vase and three smaller, 32.5cm (12 3/4in) high, 101g (3.25 oz) weighable

£150-200

52

An Edwardian silver pair of two-branch silver candelabra by Haworth, Eyre & Co. Ltd, Sheffield 1906 and 1908, octagonal with detachable sconces, octagonal capitals, central spire finials, inverted baluster stems, on spreading bases, the bases loaded, the branches 612g (19.7 oz)

£150-250



51

53

An Art Nouveau silver four handled vase, maker's mark .G, Birmingham 1908, with a shaped border, four angular handles, tapering stem and on a circular spreading foot, 24cm (9 1/2in) high, loaded

£150-200

54

An Edwardian silver shaped circular salver by Isadore Leapman, Birmingham 1908, with a raised moulded border, 20cm (8in) diameter; and a silver shaped circular salver by William Hutton & Sons Ltd, Sheffield 1917, with a raised moulded border and on three foliate scroll feet, 16cm (6 1/4in) diameter, 420g (13.5 oz) gross

£80-120



53



54

55

A silver slightly tapering two piece cafe au lait set by Martin Hall & Co. Ltd, Sheffield 1912, with composition finials to the domed covers and tapering handles, 16.5cm (6 1/2in) high, 654g (21 oz) gross

£200-300



55



56

56

A silver shaped circular salver by William Hutton & Sons Ltd., Sheffield 1917, with a raised moulded border and on three foliate scroll feet, 26cm (10 1/4in) diameter, 638g (20.5 oz)

£120-180

57

A silver sugar bowl and cover by Wakely & Wheeler, London 1919, with a reeded border, engraved C.D above 1920, on a circular moulded spreading foot, 10cm (4in) diameter, 190g (6.1 oz)

£100-150

58

A silver shaped circular salver, maker's C&A, Birmingham 1920, with a raised gadrooned border, 32cm (12 1/2in) diameter 782g (25.15 oz)

£200-300



58

59

A silver three piece compressed circular tea set by Charles Boyton & Son Ltd., London 1922, the tea pot with a composition finial and loop handle, 21cm (8 1/4in) long, 470g (15.1 oz) gross

£120-160



59



60

60

A silver shaped circular salver by Walker & Hall, Sheffield 1924, with a raised moulded border with flowers at intervals, engraved with a crest and armorial above Post Tenebras Spero Lucem, on three foliate bracket feet, 28cm (11in) diameter, 652g (20.95 oz)

£200-300



61

61

A silver shaped oblong baluster tea set by S. Blanckensee & Son Ltd., Chester 1929, the tea pot with composition finial and harp handle, on four bun feet, 27.5cm (10 3/4in) long, 987g (31.75 oz) gross

£200-300



62

62

A silver shaped circular salver by Mappin & Webb, Sheffield 1930, with a raised moulded and gadrooned border, engraved CS 1909-6. Oct.-1934, on four ball and claw feet, 42cm (16 1/2in) diameter, 1926g (61.95 oz)

£400-600

63

A silver circular tea pot on stand by Harrison Brothers & Howson, Sheffield 1931, with a wicker wrapped loop handle, a composition finial to the flat cover, on a circular stand on three lion paw feet, 25cm (9 3/4in) high, 802g (25.8 oz) gross

£150-250



63

64

A silver baluster coffee pot by S. Blanckensee & Son Ltd., Birmingham 1931, with a cone finial to the ogee domed cover, a composition double scroll handle, on a gadrooned circular moulded spreading foot, 23.5cm (9 1/4in) high; and a late Victorian silver coffee pot by Thomas Bradbury & Sons, London 1900, with a compressed finial to the ogee domed cover, a composition double scroll handle, engraved with a crest and a motto, on a circular moulded spreading foot, 22cm (8 1/2in) high, 822g (26.45 oz) gross

£150-250



64

65

A silver pedestal bowl by Walker & Hall, Sheffield 1932, with a reeded border and leaves at intervals, on a conforming circular pedestal foot, 23cm (9in) diameter, 413g (13.3 oz)

£150-200



65

66

A silver shaped circular salver by Goldsmiths & Silversmiths Co. Ltd., London 1933, with a gadrooned border, engraved with a presentation inscription and eight signatures, on four claw and ball feet, 26cm (10 1/4in) diameter, 646g (20.8 oz)

£120-180



66

67

A Britannia standard silver bullet shaped tea pot by C. F. Hancock & Co., London 1933, with a wood finial and loop handle, the body engraved with a crest and a motto, on a circular foot, 23cm (9in) long, 297g (19.2 oz) gross

Provenance: From the estate of Christopher and Rosemary Warren

£120-160



67



68

68

A silver straight-tapered coffee pot in George II style by Harrison Brothers & Howson, Sheffield 1936, with a domed finial to the ogee domed cover, a composition scroll handle and on a circular spreading foot, 18cm (7in) high, 427g (13.75 oz) gross

£150-200

69

A silver shaped circular pedestal bowl by Walker & Hall, Sheffield 1946, the shaped border with foliate swags at intervals, pierced decoration and on a circular pedestal foot, 26cm (10 1/4in) diameter, 519g (16.7 oz)

Property from the estate of the late Betty, Lady Grantchester.

£120-160



69



70

70

A silver shaped oval four piece tea set by Mappin & Webb, Sheffield 1948, the tea pot with a composition finial and harp handle, engraved AB, on an oval moulded spreading pedestal foot, 19cm (11 1/2in) long, the hot water pot 23.5cm (9 1/4in) high, 1822g (58.6 oz) gross

£300-500



71

71

A silver shaped circular twin handled tray by Mappin & Webb, Sheffield 1959, the bar and scroll handles lacking the inserts, the raised egg-and-dart rim with shells at intervals, 55cm (21 1/2in) long, 2928g (95.1oz)

£1,000-1,500



72

72

A silver strawberry set, maker's mark D.L (not traced), Birmingham 1965 and 1966, the cream jug with a scroll handle and Celtic band, engraved BC, on a circular moulded spreading foot, 12cm (4 3/4in) high, loaded, in a fitted case from Asprey & Co., with an applied BC

Provenance: Barbara Cairns; thence to Simon Dallas Cairns, 6th Earl Cairns.

£120-160

73

A silver baluster four piece coffee set by Walker and Hall, Birmingham 1965 (3) and 1966 (1), the coffee pot with a cone finial to the domed cover, gadrooned border, composition double scroll handle and on a circular foot, 23cm (9in) long, the hot water pot 24.5cm (9 3/4in) high, 1663g (53.45 oz) gross

£300-500



73



74

74

A pair of silver oval sauce boats by Roberts & Belk, Sheffield 1967, with foliate capped flying scroll handles, gadrooned borders and on three shell and stepped pad feet, 18cm (7in) long, 604g (19.45 oz)

£150-200

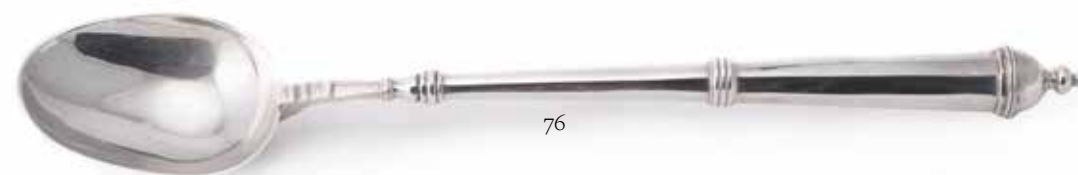


75



75
A pair of silver posy bowls by Garrard & Co., Birmingham 1967, the borders engraved The Perak Turf Club, on circular feet, 9.5cm (3 3/4in) diameter, 165g (5.3 oz), with white metal mesh covers

£100-150



76

76
An Irish silver basting spoon by Royal Irish Silver Co., Dublin 1970, 41cm (16in) long, 323g (10.4 oz)

£150-250



77

77

A set of six silver commemorative goblets by Garrard & Co. Ltd, London 1972, Queen Elizabeth and Prince Philip Silver Wedding Anniversary 1947-1972, limited edition nos., 15cm (6in) high, 1174g (37.75 oz)

£300-500

78

A set of eight silver goblets by C. J. Vander Ltd., London 1973, with turned stems and on circular spreading feet, 15cm (5 3/4in) high, 1669g (53.7 oz)

£300-500



78



79

79
A silver lobed oval twin handled tray, maker's mark M over WG, Sheffield 1976, the handles cast and chased with shell centred scrolls, with a raised moulded rim, 67.5cm (26 1/2in) long, 2878g (92.55 oz)

£700-1,000



80

80
A silver oblong entree dish handle and cover by Garrard & Co. Ltd., Sheffield 1979, with a foliate loop handle, the cover with a gadrooned boarder with shells at the corners, 27cm (10 1/2in) long; and an entree dish handle and cover by Atkin Brothers, Sheffield 1911, with a gadrooned loop handle, the cover with a gadrooned border with shells at the corners, 25.5cm (10in) long, 1742g (56 oz) gross

£200-300



81

81
A silver over resin model of a leaping salmon by Camelot Silverware Ltd, Sheffield 2008, filled, 12.5cm (5in) high

£200-300



82

82 Y
Edward Frederick Lindley Wood, Lord Irwin, and his wife, Lady Dorothy Evelyn Augusta, née Onslow, a pair of full-length portrait photographs, he in robes as a Knight Grand Commander of the Most Exalted Order of the Star of India, each signed and his dated 1931, 19.5cm x 12.5cm, in rectangular bird's eye maple frames with plain ivory fillets and headed by applied silver cypher's beneath baron's coronets, wooden backs with gilt metal easels by The Goldsmiths & Silversmiths Co. Ltd, 24cm (9 1/2in) x 17.5cm (6 7/8in) overall

Edward Frederick Lindley Wood, 1st Earl of Halifax, KG, OM, GCSI, GCMG, GCIE, TD, PC (1881-1959), styled the 1st Baron Irwin from 1925 until 1934 and The 3rd Viscount Halifax from 1934 until 1944, was a senior British Conservative politician of the 1930s. He held several senior ministerial posts during this time, most notably those of Viceroy of India from 1925 to 1931, as in the present photograph, and of Foreign Secretary between 1938 and 1940. From 1941 to 1946, he served as Ambassador to Washington.

£100-150



83

83
Two modern silver mounted rectangular photo frames by Carr's of Sheffield Ltd., with reed and stitch borders, 32cm (12 1/2in) high, each with a card box

£150-250

84
Two silver mounted photo frames by Carr's of Sheffield Ltd., Sheffield 1997 and 1998, chased with trellis, foliate and floral decoration, a shaped vacant reserve, five windows and an easel back, 26.5cm (10 1/2in) long, each with a card box

£200-300



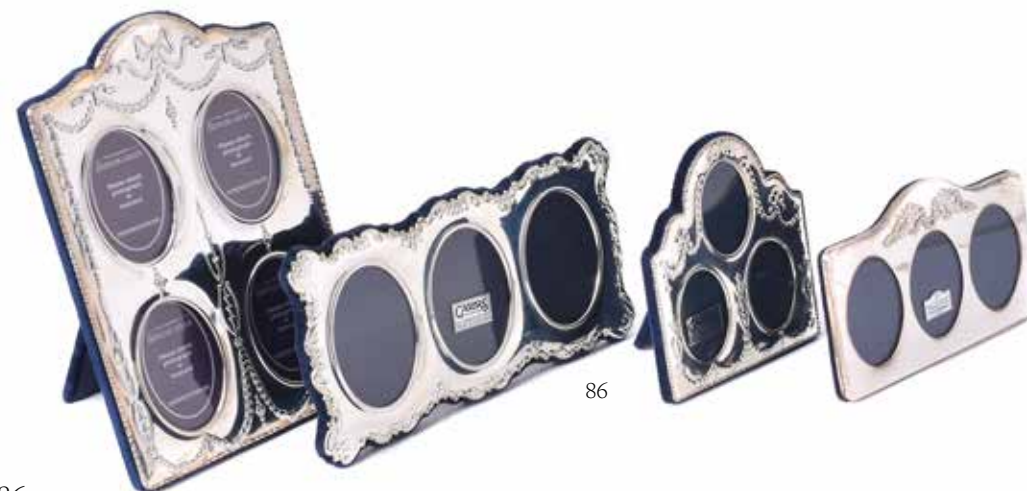
84



85

85
Four silver mounted photo frames by Ari. D. Norman, to include: a rectangular photo frame, London 1997, with applied cherubs and five windows, 21.5cm (8 1/2in) long; another similar, London 1998, with four windows, 19cm (7 1/2in) high; a rectangular photo frame, London 1997, with applied bow decoration and two windows, 11.5cm (4 1/2in) long; and a rectangular photo frame, London 1997, with a reed and stitch border, applied cherubs and two windows, 11.5cm (4 1/2in) long, each with a card box

£120-180



86

86
Three modern silver mounted photo frames by Carr's of Sheffield Ltd., to include: a shaped rectangular photo frame, Sheffield 2000, with a foliate border, three windows and an easel back, 24cm (9 1/2in) long; a rectangular photo frame, Sheffield 1998, with a bead and reel borders, chased with ribbon and husk decoration, four windows and an easel back, 24.5cm (9 3/4in) high; another smaller photo frame, Sheffield 1997, 14.5cm (5 3/4in) high; and a silver mounted photo frame by Ari D. Norman, London 1997, with applied cherubs, three windows and an easel back, 16.5cm (6 1/2in) long, all with card boxes

£120-180



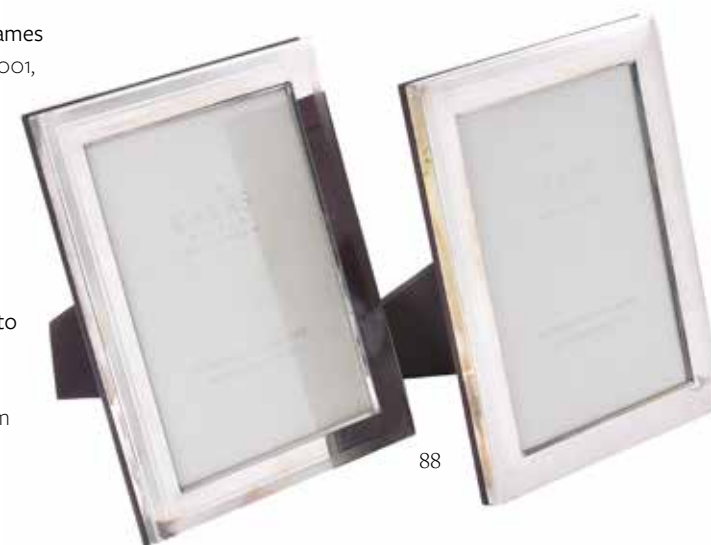
87

87
Two silver mounted square photo frames by Carr's of Sheffield Ltd., Sheffield 2001, embossed with crocodile grain decoration, with an easel back, 18cm (7in) long, each with a card box

£70-100

88
Two silver mounted rectangular photo frames by Carr's of Sheffield Ltd., Sheffield 2004 and 2005, with engine turned borders and easel backs, 21.5cm (8 1/2in) high, each with a card box

£80-120



88



89

89
Three silver mounted rectangular photo frames by Carr's of Sheffield Ltd., Sheffield 2006 and 2007, with reed and stitch borders, 26cm (10 1/4in) high, each with a card box

£120-180



90

90
Three silver mounted photo frames by Carr's of Sheffield Ltd., to include: a rectangular photo frame, Sheffield 2015, with basket weave decoration, 22cm (8 1/2in) high, with a card box; a rectangular photo frame, Sheffield 2006, with a beaded border, 26cm (10 1/4in) high, with a card box; a folding rectangular photo frame, Sheffield 2004, with six windows, 21.5cm (8 1/2in) high; and a continental silver coloured shaped rectangular photo frame, 830 standard, with a coronet finial, C-scroll and floral decoration, two vacant reserves, 26cm (10 1/4in) high, 212g (6.8 oz) weighable

£120-180



91

91
Two silver mounted address books by Keyford Frames Ltd., London 1990, chased with foliate and floral sprays, and a shaped vacant reserve, 14.5cm (5 3/4in) high; and two silver mounted address books by Keyford Frames Ltd., London 1989, chased with cherubs within a foliate border, 12cm (4 3/4in) high

£100-200

92

A collection of silver and silver mounted items, to include: two silver mounted address books by Keyford Frames Ltd., London 1990, chased with foliate and floral decoration, 14cm (5 1/2in) high; a silver beaker by Carr's of Sheffield Ltd., Sheffield 2004, with a loop handle, 6cm (2 1/2in) high, with a Carr's of Sheffield Ltd. box; a silver card case by Carr's of Sheffield Ltd., Sheffield 2001, with crocodile grain decoration and a rectangular vacant reserve, 9.5cm (3 3/4in) high; an egg cup and spoon by Carr's of Sheffield Ltd., Sheffield 2004; a silver mounted keepsake box with puzzle border; and a miniature three fold picture frame, 5cm (2in) high, 208g (6.7 oz) gross weighable

£120-180



92



93

93

A Victorian electro-plated small jewellery casket by Mappin & Webb, incuse stamped mark, late 19th century, with a recumbent cherub finial to the step domed cover, cast with flowers in urns and tied with ribbons, on toupie feet, 12cm (4 3/4in) wide

£100-150

94

An electro-plated novelty cocktail shaker by Hukin & Heath, Patent Applied for 20510/35, late 1930s, in the form of a dumbbell, 26.5cm (10 1/4in) high

£200-300



94



95

95
Three coloured glass and electro-plated pepper grinders retailed by Annabel Jones, with domed finials, baluster glass bodies and on circular moulded spreading bases, 9cm (3 1/2in) high, with three Hamilton & Inches pouches and card box

£80-120

96

A German electro-plated and frosted glass ice pail and cover by WMF (Württembergische Metallwarenfabrik), with a swing handle, a shaped finial to the domed cover, the body with chased floral and pierced decoration, on four pad feet, 24cm (9 1/2in) high

£80-120



96

97

Christofle, an electro-plated caviar dish, with shell handles and a reeded border, the glass dish with a domed cover and circular finial, 21.5cm (8 1/2in) diameter, with a Christofle box; and a Christofle electro-plated beaker, with reeded decoration, 7.5cm (3in) high, with a Christofle box

£70-100



97



98

98

Six electro-plated photo frames by Carr's of Sheffield Ltd., three with beaded borders, three with reel and bead borders, the smallest 23cm (9in) the tallest 29cm (11 1/2in) high, each with a card box

£100-150



99

99

Six electro-plated photo frames by Carr's of Sheffield Ltd., four with beaded borders, two with reel and bead borders, 23cm (9in) high, each with a card box

£100-150



100

100

A silver mostly Old English pattern part table service, various maker's and dates, comprising:

Twelve table forks, Dublin 1808 (1) and 1824 (11)

Twelve table spoons, Dublin 1812 (3), 1820 (8) and 1824 (1)

Twelve dessert forks, Dublin 1812 (9), 1822 (2) and 1824 (1)

Twelve dessert spoons, Dublin 1820 (6) and 1893 (6)

Eighteen tea spoons, Dublin 1829 (6), 1816 (6), London 1798 (1), 1794 (1) 1806 (2) and two unmarked

Eleven coffee spoons, London 1887 (3) and 1888 (8)

A pair of sugar tongs, London 1835 2737g (88 oz) gross

£500-700



101

101

A set of eight Art Deco silver fruit knives and forks by The Goldsmiths & Silversmiths Co. Ltd, London 1935, Reg. no. 798068, in Plain Pine pattern, the knives 20.3cm (8in) long, 741g (23.8 oz)

£150-250



102

102

A silver fiddle, thread and shell pattern table service, George III and later makers and dates, some engraved with a crest, comprising:

Six table forks; Six dessert forks; Six dessert spoons, 1384g (44.5 oz);

Together with the following with silver handles and stainless steel blades by C. J. Vander, Sheffield 1965: Six table knives, Six dessert knives

£300-500



103

103

An early Victorian silver Albert pattern part table service by Robert Williams & Sons of Bristol, Exeter 1847, engraved with a crest, comprising:

Nine table forks; Five table spoons; Eight dessert forks; Five dessert spoons; Six tea spoons; A sugar tongs; Two salt spoons; Two sauce ladles; A soup ladle, 2740g (88.1 oz)

By family repute this service was owned by the Owen family, which corresponds to the crest. The crest was used also by over one hundred other families.

£600-800



104

Three Victorian silver gravy spoons: King's pattern by Josiah Williams & Co. of Bristol, London 1887, crested, 32cm (12 1/2in) long; fiddle pattern by Samuel Hayne & Dudley Cater, London 1848, initialled; another fiddle pattern by John James Whiting, London 1854, monogrammed, 488g (15.65 oz) gross

£150-250

104



105

105

A collection of George III and later silver flatware, various makers and dates, comprising:

A late George III fiddle and shell pattern fish slice by Thomas Dicks, London 1819, 30.5cm (12in) long

Two George III Old English pattern spoons by Peter & Ann Bateman, London 1797, later chased as berry spoons, 22.5cm (9in) long

Six late Victorian Old English pattern dessert spoons by John Round & Son Ltd., Sheffield 1900, 8cm (7in) long

Another fiddle pattern fish slice and two fiddle pattern table spoons

Two Onslow pattern sauce ladles

A pair of Dutch spoons

1095g (35.2 oz) gross

Provenance: From the estate of Christopher and Rosemary Warren

£300-400

106Y

A cased set of twelve silver and ivory handled fish knives and forks by Martin, Hall & Co., the knives Sheffield 1900, the forks Sheffield 1901, engraved with foliate decoration, the knives 22cm (8 3/4in) long, the forks 19cm (7 1/2in) long

£100-150



106

107

A Victorian silver matched fiddle and thread pattern part table service, by various makers and dates, comprising:

Twelve table forks by Benjamin Smith III, London 1841 (7), 1843 (2) and 1847 (3)

Eight table spoons by Benjamin Smith III, London 1841 (3) and 1847 (3), and George Adams, London 1843 (2)

Eight dessert forks by Benjamin Smith III, London 1841 (3), George Adams, London 1843 (2), and maker's mark GS, London 1847 (3)

Eight dessert spoons by Benjamin Smith III, London 1841 (7) and George Adams, London 1843 (1)

Sauce ladle by Benjamin Smith III, London 1841

2882g (92.65 oz) gross



107

£500-700



108

108

A silver Hanoverian pattern table service for twelve place settings by Carr's of Sheffield Ltd, Sheffield 2007 and 2009, comprising:

- Twelve table forks
- Four table spoons
- Twelve dessert forks
- Twelve dessert spoons
- Twelve fish forks
- Twelve fish knives

- Twelve soup spoons
- Four tea spoons (Sheffield 2003)
- Twelve coffee spoons
- 5207g (167.4 oz)
- Together with twelve silver handled table and dessert knives with stainless steel blades
- In a fitted canteen

£1,500-2,000



109

109

A matched silver old English and later beaded pattern table service, various makers and dates, comprising:

- Twenty four table forks, London 1822 (1), 1825 (1), 1826 (10) and 1827 (12)
- Twenty four table spoons, London 1824 (22) and 1825 (2)
- Twelve dessert forks by Thomas Wallis (II) & Jonathan Hayne, London 1813
- Twelve dessert spoons by Thomas Wilkes Barker, London 1827
- Twelve tea spoons, London 1820 (1), 1822 (3), 1824 (2), 1827 (5) and 1828 (1)
- A sugar tongs by Richard Poulden, London 1820
- A butter knife by William & Samuel Knight, London 1812
- Four salt spoons, London 1805 (1), 1808 (2) and 1813
- Two sauce ladles by Jonathan Hayne, London 1825
- A cream ladle, Edinburgh 1815
- A sifting spoon, Edinburgh 1815
- Two gravy spoons by Jonathan Hayne, London 1831
- A fish slice by Solomon Hougham, London 1812
- A soup ladle, maker's IB, London 1794
- 4620g (148.5 oz)

£1,000-1,500

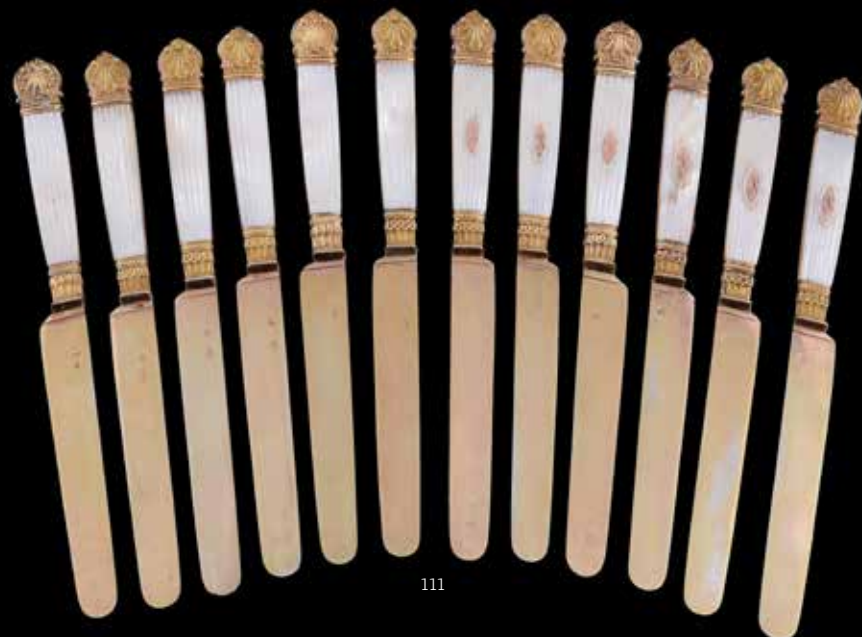


110

110

A set of twelve French silver coloured dessert spoons and forks by Henin & Cie., stamped with Minerva .925 standard mark, engraved with a monogram, 8.5cm (7 1/4in) long; twelve silver handled King's pattern dessert knives by Strickett & Loder, Sheffield 1979, with stainless steel blades, 21.5cm (8 1/2in) long; and five silver handled butter knives by Atkin Brothers, Sheffield 1925 (3) and 1926 (3), with stainless steel blades, 16.5cm (6 1/2in) long, 119.4g (38.35 oz) gross weighable

£500-700



111

111Y

A matched set of twelve French silver gilt dessert knives, nine with maker's mark LM, Paris 1819-38, .800 standard, three with maker's mark CB, 1838-1973, .800 standard, all with mother of pearl reeded handles, engraved JG to navette reserves, 20cm (8in) long, in a case

£300-400

112

A set of twelve French silver dessert knives and forks by Charles Tirbour, Paris 1838-1973, .950 standard, engraved with a monogram CA, the knives with silver knife-type handles and silver blades, the knives 20cm (8in) long, the forks 19cm (7 1/2in) long, the forks only 586g (18.85 oz), in the remains of a case

Tirbour traded from 23 rue Chapon, Paris from 1897 to 1951.

£400-600



112



113

113

A French silver coloured shaped oval sauce boat on integral stand, stamped with Minerva mark, maker's mark obscured, with a reeded border and an oval pedestal foot, on an integral shaped oval stand, 24cm (9 1/2in) long, 496g (15.95 oz)

£150-200

114Y

A French silver baluster coffee pot by Nicolas-Richard Masson, 1st standard Paris 1798-1809, with a button finial to the dome centred cover with a foliate border, the ivory scroll handle issuing from foliage and rocaille work, a fluted spout, on three stepped pad feet, engraved FQ, 28cm (11in) high, 1015g (32.6 oz) gross

£300-500



114



115

115

A Continental silver coloured circular plate, stamped 800, with a chased foliate border, 31cm (12 1/4in) diameter, 562g (18.05 oz)

£150-250



116

116

An Italian silver coloured oval tray, .800 standard, with a tongue and dart border, 40cm (15 3/4in) long, 776g (24.95 oz)

£150-250



117

117

A matched pair of mid 19th century Italian (Papal States) silver coloured candelabra and a table ornament, the candelabra each with twin branches held aloft by a young faun or satyr sitting on a tree stump, on circular bases, 19cm (7 1/2in) high; the ornament modelled as a beaded satyr riding a sea creature, on a circular base, 10.5cm (4 1/4in) high, all loaded (3); one candelabrum and the table ornament with maker's mark A38D, and punzoni for the Papal States 1815-70, the other candelabrum with punzoni for Ravenna, Papal States, 1863-70

£300-500



118

118

An Italian silver oval basket, maker's mark rubbed, Milan 1934-44, .800 standard, the loop handle derived from two parts, the half lobed body in two parts, on a foliate cast circular foot, 26cm (10 1/4in) long, 697g (22.4 oz)

£120-180



119

119

An Italian silver coloured bowl by Brandimarte, post 1968 Florence, .800 standard, circular and embossed with fruit, the interior gilt, 22.5cm (9in) diameter, 575g (18.5 oz)

£200-300

120

An Italian silver coloured bowl by Brandimarte, post 1968 Florence, .800 standard, circular and embossed with fruit, 19cm (7 1/2in) diameter, 285g (9.15 oz)

£100-200



120



121

A set of three Italian silver coloured wine carafes by Brandimarte, Florence, post 1968 .800 standard, each with a applied medallion, one marked 1l (one litre) 26cm (10 1/4in) high, two 1/2l (half litre) 20.5cm (8in) high, 1127g (36.25 oz)

£150-250

121



122

122

Three Italian silver electro-formed over resin bunches of grapes by Laminato AG, Modena, the largest 1968-1999 32cm (12 1/2in) long; the two smaller post 1999 24cm (9 1/2in) long, loaded

£100-200

123

An Italian silver coloured inverted baluster lobed wine cooler, stamped 800 only, mid-late 20th century, the swing handle chased with scroll foliage and roccaille work, the shoulders applied with four vine leaf and grapes, on a circular domed foot, 1813g (58.3 oz)

£400-600



123

124

Asprey, a Continental silver coloured gilt, agate and hardstone bowl, probably Italian, late 20th century, stamped 925 and with indistinct maker's mark, applied label of Asprey as retailers, the carved hardstone handle in the form of a horse's head, the bridle terminating in wire tassels, the oval agate bowl with fluted mounts, on five ball feet, 40.5cm (16in) long

£600-800



124



125

125

A pair of Austrian silver circular candlesticks, Vienna 1859, 13 loth (.812 standard), fixed sconces, embossed with fruit and foliage, 30cm (12in) high, 641g (20.6 oz)

£80-120

126

An Austrian silver shaped rectangular sugar box by Georg Friedrich Triesch, Vienna 1840, 13 loth, .812 standard, with a bunch of flowers finial, lobed overall with flowers and foliage to the pronounced angles, with a lock, on cartouche bracket feet, 15cm (6in) long, 524g (16.85 oz) (key lacking)

£250-350



126



127

A Danish silver pedestal bowl on four supports, apparently no maker's mark, national mark for 1933, the hemispherical bowl with twin lion mask ring handles and embossed with a scroll foliate band, the fluted curved supports with paw feet, the incurved base on four bun feet, 13cm (5 1/4in) high, 337g (10.85 oz)

£150-250



128

128

A Dutch silver twin handled shaped rectangular tray, sponsor's mark for Samuel Boyce, London 1905, with twin foliate scroll handles, a chased and pierced border with C-scrolls, floral decoration and masks to the corners, chased with a family in an interior scene, 29cm (11 1/2in) long, 350g (11.25 oz)

£80-120



129

129

A German silver mounted etched glass liquor decanter and stopper, import marked for London 1929, sponsor's mark of Adolph Barsach Davis, embossed with eagles amidst fruiting vine, 24cm (9 1/2in) high

£100-150



130

130

A pair of German silver coloured sahlep cups, covers and saucers for the Ottoman market by Lutz & Weiss, Pforzheim, post 1876 .900 standard, 20th century, with rose spray finials to the domed covers, leafy double scroll handles, scroll foliate engraved on frosted grounds, 12.5cm (5in) high, 629g (20.25 oz)

£300-400



131

131

A pair of Ottoman silver sahlep cups, covers and stands, Tughra and sah marks, probably Egyptian, early 20th century, with bird and foliage finials to the domed covers, leaf-capped scroll handles, the bodies tapered, engraved with arabesques, 11.5cm (4 1/2in) high, 671g (21.55 oz)

£300-500



132

132

An Ottoman silver coloured small shaped oval mirror, Tughra and sah marks, embossed with flowers and scrolls on a starburst ground bordered by scrolls, 41cm x 31.5cm (16in x 12 1/2in), with hanging chains

£100-200



133

133

An Ottoman silver coloured parcel gilt shaped oval mirror, apparently unmarked, embossed with flowerheads, 42.5cm x 53.5cm (16 3/4in x 21in), with hanging chains

£100-200

134

A pair of Ottoman silver spoon holders (sakizlik), Tughra and sah marks, probably Egyptian, late 19th century, with scroll foliate cast rims, conforming panelled and tapering bodies, plain liners, on circular pedestal bases, on broad scroll foliate aprons, 11cm (4 1/4in) high, 829g (26.65 oz)

£300-500



135

135

An Ottoman silver shaped oval hanging mirror, pre 1922 Tugrah marks, embossed with typical flowers and fruit, 39cm (15 1/2in) high

£200-300



134

136

A Turkish silver and niello rounded rectangular pocket box, two stamped marks, early 20th century, the cover with a view of the Hagia Sophia, Istanbul, on a chequered ground, the base conforming with a vacant reserve and flowers, 8.7cm (3 1/2in) long, 97g (3.1 oz)

£100-150



136



137

137

An Egyptian silver coloured incense burner on integral stand (buhurdan), pseudo Tughra and sah marks, Cairo 1978?, with a pinecone finial to the ogee domed hinged cover, chased overall with lotus flowers, 21cm (8 1/4in) diameter, 826g (26.55 oz) (hinge lacks the pin)

£150-250



138

138

A Turkish silver coloured circular dish by Urart, Istanbul, .925 standard, with twin flat handles cast with hunting scenes, the base of the bowl with an ivy circlet, 27cm (14 1/2in) across handles, 800g (25.7 oz)

£150-250

139



139

A Turkish silver coloured oval biscuit dish, .900 standard, embossed with five biscuits to one side, 35.5cm (14in) long, 647g (20.8 oz)

£100-200



140

140

A Turkish silver coloured rounded square salver by Aris, Istanbul, .900 standard, circa 2000, with a raised bound reed rim, 27.5cm (10 3/4in); and an Italian rounded rectangular twin handled small tray by Zaramella Argenti, Padua, post 1968, .800 standard, 28cm (11in) across handles, 1018g (32.75 oz) gross (2)

£150-200



141

141

Ten Turkish silver counter dishes, .900 standard, early 21st century, embossed with a coin-like centre and a band of palmettes, each engraved beneath Esma Sultan Palace, Istanbul 09.07.2001, 7.5cm (3in) diameter, 195g (6.25 oz), each in an embroidered muslin pouch

£100-200

142

A Mexican silver coloured shallow bowl by Maciel, .925 standard, with an applied scroll rim, 30.5cm (12in) diameter, 735g (23.6 oz)

£150-250



142

143

A silver, malachite and rock crystal specimen table ornament, unmarked, possibly Mexican late 20th century, the model of a peacock with malachite insets, standing with tail part fanned, on a rock crystal specimen base, 19cm (7 1/2in) high

£150-250



143

144

An American silver coloured circular tray by Tiffany & Co., New York, stamped to the reverse Tiffany & Co Sterling Silver 21254, of plain polished circular form, with a moulded rim and a deep well, 38cm (15in) diameter; a baluster cream jug by Tiffany & Co., no. 23343, in 18th century style, 10cm (4in) high, 1373g (44.15 oz) (2)

£280-320



144



145

145

Cartier, a set of two pairs of American silver coloured salt and pepper pots by Cartier, stamped Sterling, of octagonal baluster form, two with gilt covers, 3.5cm (1 1/2in) high, 33g (1.1 oz), in a Cartier fitted case

£100-150

146

An Indian colonial silver christening mug by Gordon & Co., Madras, 2nd quarter 19th century, with a leaf capped double scroll handle, the half gadrooned body chased with a foliate and floral band, engraved From H.D.P. to B.B., on a circular pedestal foot, 10.5cm (4in) high, 184g (5.9 oz)

Provenance: The Cairns family, Ireland; thence to Simon Dallas Cairns, 6th Gordon & Company traded from Popham's Broadway 1824-1830, 1831-1835 and 1846-1848.

£150-200

147

Three Iranian silver rectangular boxes, each with two stamps, .875 standard, each with engraved decoration: two cigarette boxes, 18cm (7in) and 16.5cm (6 1/2in) long; and a cigarette case, 11.5cm (4 1/2in) long, 977g (31.4 oz)

£150-180



146



147



148

148

An Iranian oval tea pot, two stamped marks, .900 standard, 20th century, with a fixed wooden handle over the lobed cone finial on the domed cover, a shaped oblong rope-twist rim, a plain body on a moulded oval foot, 25cm (9 3/4in) long, 1052g (33.85 oz) gross

£200-300

149

An Iranian oval tea pot, two stamped marks, .900 standard, 20th century, with a fixed wooden handle over the lobed cone finial on the domed cover, a shaped oblong rope-twist rim, a plain body on a moulded oval foot, 25.5cm (10in) long, 1141g (36.7 oz) gross

£250-350



149



150

150

A set of three graduated silver and niello sweet baskets, Iran, early 20th century, one stamped with calligraphy "Iran's Goldsmiths House" in Farsi, 11cm (4 1/4in) diameter, 300g (9.6 oz)

£300-400



151

151 Y

A Chinese export silver tea pot, a single and double chopmarks (SHANG 尚, BAI 白記), 1930s, spherical with a bamboo twig finial and similar loop handle with ivory spacers, the body with four shaped panels embossed with differing foliage, 24.5cm (9 1/2in) long, 477g (15.35 oz) gross

Although this makers mark is unrecorded, there was a Shang, artisan silversmith, recorded in Tianjin. There is no record of a Bai Ji.

£200-300

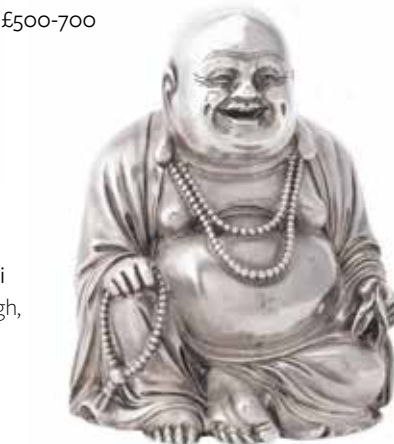


152

153 Y

Two modern Chinese silver gilt coloured filigree and enamel hexalobe shaped boxes and covers, stamped silver, with bud finials to the covers, decorated with enamel birds and trees, set with turquoise and coral, 14cm (5 1/2in) and 18cm (7in) high, 848g (27.25 oz) gross, each with a fitted box

£500-700



154

152

A Chinese export tapered mug by Tu Qing Yun, Jiujiang, circa 1895-1940, with a simulated bamboo loop handle, applied with two dragons in relief confronting a pearl, 14cm (5 1/2in) high, 457g (14.7 oz)

£200-300



153

154

An Italian silver coloured over resin figure of Budai (Hotei, 布袋) by Filli Magrino Argentieri, Florence post 1968, .925 standard, 16.5cm (6 1/2in) high, loaded

£150-250



155

155

A Russian silver asparagus tongs by Ivan Khlebnikov, Moscow 1884, 84 zolotniki, Imperial warrant mark, the blade backs finely engraved with vacant reserves, strapwork and engine turned, 24.3 (9 1/2in) long, 277g (8.9 oz)

£200-300



156

156

A set of three Soviet Russian silver coloured vodka tots, marked Tallin 1958, 835 standard, the tapering bodies engraved with buildings, on circular spreading and beaded feet, 7.5cm (3in) high, 97g (3.15 oz), with a fitted case

£80-120

157

A cased pair of late 19th century Russian silver coloured and cloisonne enamel spoons by Antip Kuzmichev, retailed by Tiffany & Co., 88 Zolotniki, stamped Made for Tiffany & Co. and A.K.K. maker's mark, with enamelled foliate decoration, rubbed Moscow assay marks pre 1896, 14cm (5 1/2in) long, 72g (2.3 oz) gross,

£500-700



157



158

158

A set of four Russian silver salt cellars by Ivan Khlebnikov, Moscow 1888, 84 zolotniki, Imperial warrant mark, with slightly everted rims, bulbous bodies, on three ball feet, the interiors gilt, engraved with a monogram, 4cm (1 1/2in) diameter, 85g (2.75 oz)

£150-200

Small Silver and Objects of Vertu



159

A Russian or Caucasian silver and niello belt, maker's mark MA (no traced), Tbilisi late 19th century, 84 zolotniki, thirteen foliate chased panels with niello flowers and looped lower fringe, stretch fabric core, 68cm (26 3/4in) long; and a German rectangular cigarette case by Louis Kuppenheim, Pforzheim, post 1886 .900 standard, g (17.65 oz) gross (2)

£200-300



160

160

A Russian silver and niello cigarette case, maker's mark NF (Cyrillic, not traced), Moscow 1863, 84 zolotniki, assay master Viktor Savinkov, the cover with a large building, within a scroll foliate border, the base with LS monogram in a shield, on a scroll foliate ground, the interior gilt, 13cm (5 1/4in) long, 211g (6.8 oz)

£200-300



161

161

An Austrian silver and rock crystal scent bottle, unmarked, circa 1900, with a man fighting a lion finial to the hinged cover, caryatides to the shoulders, oval crystal panels, on a cut pedestal base with arched scrolls and on four recumbent lion feet, 12cm (4 3/4in) high

Property from the estate of the late Betty, Lady Grantchester.

£150-250

162

A German silver and banded agate cylindrical box by B. Neresheimer & Sohne, Hanau, sponsor's mark of Berthold Muller, circa 1900, embossed with figural scenes, 3.3cm (1 1/4in) high; and a French rectangular snuff box, 1838-1972 1st standard, circa 1850, the cover engraved with a vacant cartouche and scrolls, the sides plain, the base engine turned, 8.5cm (3 3/8in) long (2)

Property from the estate of the late Betty, Lady Grantchester.

£150-200



162



163

163 Y

Two late 18th century portrait mounted tortoiseshell boxes, the first a canted-rectangular snuff box, inset with a portrait of a gentleman, watercolour on ivory, titled 'C. v. Deurs', gold piqué decorated, 8.8cm (3 1/2in) long; and a black lacquer bonbonniere, inset with a portrait miniature of a gentleman, watercolour on ivory, tooled gold bands, 6cm (2 3/8in) diameter

Property from the estate of the late Betty, Lady Grantchester. The van Deurs family are Danish.

£150-200



165

165

A silver gilt and shell cameo oval box by Frederick Thomas Buckthorpe, London 1916, carved with figures representing Faith, Hope and Charity, a banner 'At Spes Non Fracta' held up by angels, the rest plain, 7cm (2 3/4in) long

Property from the estate of the late Betty, Lady Grantchester.

£150-200



164

164

A Continental silver gilt and enamel canted-rectangular box, import marked for London 1926, sponsor's mark B C T Co Ltd (unknown), probably Austrian, painted with lovers in a landscape within white and green bands, the sides and base blue, 8cm (3 1/8in) long 116g (3.7 oz) gross

Property from the estate of the late Betty, Lady Grantchester.

£200-300



166

166 Y

An Austrian silver and ivory canted-rectangular box, Vienna 1872-1922 .900 standard, carved with a group of four cherubs within a fruiting vine border, flower, leaf and scroll sides, the plain base with a conforming border, 9cm (3 1/2in) long

Property from the estate of the late Betty, Lady Grantchester.

£100-150



167

167Y

A gilt metal and mother of pearl cartouche shape snuff box, probably French circa 1760, the cover now inset with a later portrait miniature on ivory, of a lady, her dress with a lace collar, 6.5cm (2 1/2in) long

Property from the estate of the late Betty, Lady Grantchester.

£100-150



169

169Y

Three various tortoiseshell mounted boxes, the first a bonbonniere mounted with an Italian School portrait of a young lady, gouache on ivory, signed and dated Qubourg 1808, 8.2cm (3 1/4in) diameter; the second oval, the mother of pearl cover carved with a lady with a parrot and an attendant, 12cm (4 3/4in) long; and thirdly silver and tortoiseshell, 10.5cm (4 1/8in) long

Property from the estate of the late Betty, Lady Grantchester.

£150-250



168

168Y

Two tortoiseshell piqué bonbonnières, 19th century, the dark with sunburst pins, the light with a vase of flowers on a dotted ground, each 7.5cm (3in) diameter

Property from the estate of the late Betty, Lady Grantchester.

£120-160



170

170Y

Two 19th century French portrait mounted ivory boxes, the first with a uniface striking of a medal for Marechal Pierre Augereau, duc de Castiglione (1757-1815), the box plain, 5cm (2in) diameter; the second mounted with an unfinished portrait miniature of a gentleman, watercolour on ivory, tortoiseshell lined, 6.3cm (2 1/2in) diameter

Property from the estate of the late Betty, Lady Grantchester.

£150-200

171Y

Three various silver and mother of pearl mounted boxes, unmarked, the first silver gilt and cartouche shape, mid 18th century, carved with a court scene, the base with a putto amidst scrollwork, 7.8cm (3in) long; the second oval, circa 1800, carved with lovers in a landscape, the base plain, 7.5cm (3in) long; and rectangular, mid 19th century, carved with three-quarter length lovers in an oval reserve, the base plain, 9.5cm (3 3/4in) long

Property from the estate of the late Betty, Lady Grantchester.

£200-300



171



172

172Y

Three George III ivory toothpick boxes, the first navette shaped and inset with a miniature of the sailor's farewell, gold mounts, 9.5cm (3 3/4in) long; the second oblong and inset with a hair curl with seed pearls and gilt wire under glass, gold mounted, 8.2cm (3 1/4in) long; the third with a gold vacant reserve and piqué, 8.5cm (3 1/4in) long

Property from the estate of the late Betty, Lady Grantchester.

£300-500

173Y

Two George III mother of pearl canted-rectangular toothpick boxes, the first gilt metal mounted and engraved with a monogram and decorative bands within a beaded border, 8.2cm (3 1/4in) long; the second silver mounted, engraved with a crest and RG, decorative bands, within a beaded border, 7.5cm (3in) long

Property from the estate of the late Betty, Lady Grantchester.

£150-200



173



174

Three silver boxes, comprising: an early Victorian rectangular snuff box by Charles Rawlings & William Summers, London 1842, engine turned overall, the interior gilt, applied with a reserve engraved with a baron's coronet and 'To F', 8cm (3 1/8in) long; a circular pyx, maker's mark R&TW (unknown), Birmingham 1918, the cover engraved with the Lamb of God within decorative bands, the interior gilt, 6cm (2 1/4in) diameter; and a George III canted-rectangular small vinaigrette by Cocks & Bettridge, Birmingham 1805, prick and wriggleworked cover, the sides and base plain with engraved borders, grille detached, 2.5cm (1in) long

Property from the estate of the late Betty, Lady Grantchester.

£150-200



176

176Y

A French plain ivory oblong etui with silver gilt fittings, 1838-1972 boar's head poinçons, complete fittings of a scissors, a thimble, a bodkin, a needle case and another item, 11.3cm (4 1/2in) long

Property from the estate of the late Betty, Lady Grantchester.

£150-200



175

175

Two mid 18th century gilt metal etuis, both suspension loops, with chased figural and floral rococo panels framed by C-scrolls, the implements of each incomplete, each 10cm (4in) long

Property from the estate of the late Betty, Lady Grantchester.

£200-300



177

177Y

A late 18th century French gilt metal etui, with chased and engraved decoration, silver floral mounts, and a part fitted interior including an ivory aide memoire, 7cm (2 3/4in) high; and a 19th century silver and agate oval box, unmarked, 8cm (3 1/8in) long (2)

Property from the estate of the late Betty, Lady Grantchester.

£200-300



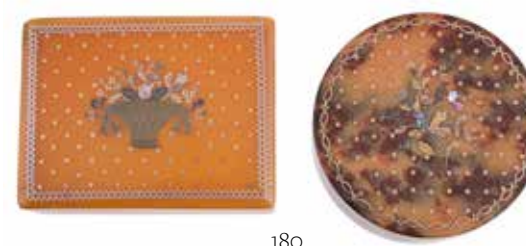
178

178Y

A George II or III silver etui, unmarked, circa 1760, oval section and tapered, rococo chased with shaped scroll panels, complete with an ivory aide memoire, a pencil, a tweezers, a bodkin or needle, a penknife and a ruler, 8cm (3 1/8in) high

Property from the estate of the late Betty, Lady Grantchester.

£150-250



180

180Y

Two early 19th century blonde tortoiseshell and mixed metals piqué bonbonnières, probably French, the cover of the rectangular centred by a basket of flowers, the circular a spray of flowers, 8.3cm (3 1/4in) long and 7.3cm (3in) diameter

£150-250



179

179Y

A late 18th century mother of pearl veneered oval snuff box, probably French, the cover with a portrait of a gentleman wearing a hat, the base with a cottage in a landscape, the interior gilt copper lined, 8.3cm (3 1/4in) long

£150-200



181

181Y

Three early 19th century ivory bonbonnières, the glazed covers with a portrait of a boy flying a kite, on a glass ground with gilt and coloured decoration; a gilt metal cherub with applied flower heads and Fidelity to a reserve; and verre églomisé centred by a flower, 6cm (2 3/8in) diameter and slightly smaller (3)

£150-250



182

182Y

A mid 19th century gilt metal and mother of pearl rectangular jewellery casket, probably French, the cover inset with dried flowers under an oval glass dome, the mother of pearl foliage engraved, the gilt metal embossed with flowers, white silk lined, on four paw feet, 12.5cm (5in) long

£150-200

183

A French two-colour gold mounted wrythen moulded glass cylindrical scent bottle or phial, mid 19th century with a cabochon garnet topped hinged cover, foliate raised bands, pricked to the linear ground, 6.5cm (2 1/2in) high

£200-300



183



184

184

A French two colour gold mounted plain glass cylindrical scent bottle or phial, mid 19th century, with a cabochon lapis lazuli to the hinged cover, raised foliate bands, prick and linear engraved mount, the stopper mounted with a cabochon sapphire, 7cm (2 3/4in) high

£200-300

185

A bone fan, French early 19th century, the paper leaf painted side-to-side to depict the family of Darius III before Alexander the Great, the bone guards and sticks pierced with flowers and foliage, 24cm (9 1/2in) long

£150-250



185

186

A bone fan, French second half 18th century, painted with a lover's tryst in a classical garden, with a cupid at an altar with a heart, figures in clouds looking on, two cupids verso, the guards and sticks, carved, pierced and part painted with figures, houses and scrolls, 29.5cm (11 1/2in) long

£150-250



186

187Y

A mother of pearl fan, third quarter 19th century, painted leaf, carved silver and gilded guards and sticks, in a poor state of repair, 29.5cm (11 3/4in) long (for restoration)

£100-200



187

188

A bone fan, French early 19th century, painted side-to-side with Alexander the Great and Roxana, the guards and sticks pierced with trellis and foliage and carved with figures, 21.5cm (8 1/2in) long, in a red leather covered case

£150-250



188



189

A French gold mounted enamel cylindrical scent bottle or phial, no apparent hallmark, partial maker's mark, circa 1900, painted with a country girl picking flowers in a garden, 5cm (2in) long

£100-150

189



190

190 Y

A French gilt metal and mother of pearl rectangular notebook, mid 19th century, engraved Souvenir, an applied vacant shield, floral panels, lyre spandrels, a spiral pencil holder, 10cm (4in) long; a blonde tortoiseshell and applied gilt metal, ivory leaves, 6.3cm (2 1/2in) long; and a miniature gilt metal and mother of pearl brush, with a rabbit at one end, 4.5cm (1 3/4in) long (3)

£150-200



191

191 Y

A late 19th century gilt metal and mother of pearl spy glass, probably French, with seven draws, the applied flower heads with pink glass jewellery, 5cm (2in) diameter

£150-250



192

192

A 19th century patinated bronze inkwell, probably French, with well, sander and two pen holders, the base with a cast stiff leaf border, 10cm (4in) long; and an agate and gilt metal rectangular table box, 19th century, probably Italian, 9cm (3 1/2in) long (2)

£150-250



195

193

A jewelled enamel and gilt metal inkwell, late 19th century, probably French, painted with flowers on a white ground, within jewelled and gilt borders, on a green ground, on a Louis XV style open work base, 9cm (3 1/2in) high

£100-150



193



194

194 Y

A tortoiseshell musical singing bird box, late 19th century, with a silver coloured oval cover, engraved with two birds and floral decoration, opening to a gilt metal foliate and pierced grille, revealing a multi coloured feathered bird, winding aperture beneath and a hinged compartment, 10 x 3.5 x 6.5cm; together with an Austrian enamel clock, 9.5cm high

£200-300



195

A 9 carat gold engine turned pill box by S. J. Rose & Son, London 1959, with foliate chased borders, 4cm (1 1/2in) long, 39g

£350-400



Jewellery

196
A 19th century Neo-Renaissance enamel, diamond and pearl religious pendant, the central red and blue enamelled saint with clasped hands, surrounded by red enamel flames set with pearls, to a flower head surround in vari coloured enamel and further set with pearls, accented with rose cut diamonds, to a similarly set surmount, on an unassociated chain, pendant 10cm long, 96.8g gross

£1,800-2,200

197
A mid-Victorian hairwork ouroboros ring, circa 1860, the plaited hairwork to the snake's head with it's tail in it's mouth, suspending two hearts, finger size M

£200-300

198
A pair of 19th century and later emerald and diamond ear pendants, the square cut emeralds within a surround of rose cut diamonds, with rose cut diamond drops and suspended below further rose cut diamonds, with later post fittings, 4cm long, 7g gross

£700-1,000

199
A George III enamel, diamond and hairwork mourning ring, the central circular black enamel set with rose cut diamond set urn, within a white enamel surround set with rose cut diamonds, on a white enamel band with a central section of plaited hairwork, engraved W'm Tipping, aged 17, died 23 Aug', 1792, finger size O 1/2, 6.4g gross

William Tipping was born on 11 March 1775 in Manchester, Lancashire. He died as a teenager on 23 August 1792 in Blackpool, Lancashire. He drowned while bathing in the sea at Blackpool. The Tipping family lived in Ardwick, a highly fashionable suburb of Manchester in the late 18th and early 19th centuries, where the very wealthy, such as Nathan Mayer Rothschild and John Rylands, built their mansions.

£300-500

200
A Georgian gilt metal red paste necklace, circa 1780, the flower head drop set with flat cut red pastes in foil backed closed back setting, on a red paste set necklace, 41cm long; and a similar pair of Georgian red paste and gilt metal bracelets, 17cm long

£150-250

201
A late 19th century ruby and diamond heart shaped brooch/pendant, circa 1900, the central rose cut diamond set urn, within a surround of vari cut rubies, 2.3cm long; a late 19th century Russian half pearl and diamond cross pendant, stamped 56 zolotniks with Moscow town mark, 3.7cm long; and a Georgian garnet witches heart brooch, circa 1790, set with flat cut garnets, 2.1cm long, 9.1g gross

£500-700

202
A diamond dolphin and anchor brooch, the dolphin entwined around an anchor, symbolising the phrase *Festina Lente*, set with old cut diamonds, 3cm long, 6.9g

£250-350

203
A diamond bee and flower brooch, the floral spray set with rose cut diamonds, with a bee set with rose cut diamonds, 6cm long, 9.4g gross

£150-250

204
A late Victorian half pearl and diamond ring, circa 1900, the marquise panel set with a pearl within a surround of old cut diamonds, approximately 0.60 carats total, finger size J 1/2, 3.8g gross; an 18 carat gold sapphire and diamond ring, stamped 750 with full London hallmarks, finger size M, 3.6g gross; and an early 20th century synthetic ruby and diamond ring, stamped 18, finger size M 1/2, 3.5g gross

£350-450



205

A mid 19th century turquoise and ruby St Esprit brooch, circa 1850, set with circular cabochon rubies and vari cut rubies, 3cm long; and a late 19th century and later turquoise, ruby, diamond and pearl foliate brooch, 7.3cm long, 18.6g gross

£500-700

206

A mid 19th century turquoise, ruby, diamond and pearl St Esprit brooch, circa 1860, set with cabochon turquoise, the head set with an old cut diamond, the eyes set with rubies, with a pearl suspended from the beak, on a later bar brooch, 4.8cm wide, 7.5g gross

£120-160

207

A Victorian banded onyx bead necklace, the graduating 11mm to 15mm banded onyx beads with faceted glass beads, 58cm long; a Victorian onyx bracelet, set with slightly graduated circular banded onyx in gold mounts to a concealed clasp, 17.4cm long; and another Victorian banded agate bracelet, the oval graduated agates rub over set in gilt metal mounts, to a concealed clasp, 17.9cm long

£300-500

208

A 19th century hardstone, pearl and enamel bangle, circa 1880, the two central panels with oval hardstones carved with forget-me-nots, within a surround of pearls and with a black enamel border, between two similar panels set with pearls, on a hinged bangle, 5.5cm inner width; and a late 19th century brooch, circa 1880, set with a central oval hardstone carved with flowers, within a pearl surround and with a black enamel border, 4cm wide, 42.9g gross

£300-500

209

A late 19th century diamond and enamel brooch/pendant, circa 1880, the circular scalloped openwork panel set with rose cut diamonds with black enamel detailing, suspending a rose cut diamond set drop, 5cm long, 15.2g gross

£200-300



210Y

A coral and diamond brooch, the three circular cabochon coral within surrounds of rose cut diamonds, 3cm wide; a coral and diamond pendant; and a pair of coral and diamond ear studs, with post fittings, 20.4g gross

£1,000-1,500

211

A 19th century shell cameo, the oval shell cameo carved with the profile of Jupiter, in a velvet mounted wooden frame, shell cameo approximately 4.4cm x 3.5cm

£100-150

212Y

A single strand of natural coral beads, composed of sixty-nine barrel shape beads, graduating from 7.0 x 6.0mm to 21.0 x 15.0 mm, interspersed with gilt metal rondels, hook clasp, 67cm long, 233g gross

Offered for sale with a GCS (Gemmological Certification Services) certificate, dated 07.01.2020, stating:
Natural Coral
No indications of treatment

£150-250

213Y

A 19th century tortoiseshell pique brooch, circa 1870, the circular tortoiseshell panel with honeycomb, star and foliate pique work, 4cm diameter, together with a pair of matching earrings, 1.9cm diameter; and five further mid 19th century tortoiseshell pique brooches, and a single ear clip

£1,000-1,500



214

An Edwardian peridot and white stone pendant, circa 1910, the flower head set with oval cut peridots and circular cut white stones, suspending a pear shaped peridot, below further fancy cut peridots to a white stone set flower head bale, 6cm long, 6.2g gross; a pink tourmaline and white stone necklace, spectacle set along the length with circular cut pink tourmalines and colourless stones, 41.5cm long, 6.8g gross

£150-250

215

A late Victorian half pearl necklace, circa 1890, the pearl set flower head clusters with pear set swags, on a pear set chain, 39.7cm long, 21g gross, in a gilt tooled brown leather Carmichael Ltd, Hull, case

£600-800

216

An early 20th century French diamond pendant, circa 1920, the openwork panel with scroll and foliate detail, set with rose cut diamonds and pearls, on a fancy link chain, the bolt ring stamped with French poinçons, 46cm long, 7.6g gross

Please note the pearls are untested and unwarranted as natural pearls

£400-600

217

An early 20th century diamond and enamel chick and egg brooch, circa 1910, the rose cut diamond set chick with a cabochon ruby eye, on a double bar brooch set with an enamelled cracked egg, 4.6cm wide, 5.9g gross

£380-420

218

An Edwardian diamond, enamel and pearl pendant, circa 1910, the circular pendant set with alternating old cut diamonds and pearls, with a green and white enamel ribbon bow set with further old cut diamonds, and suspending a pearl, 3.4cm long, 5.3g gross

£400-600

219

A late Victorian diamond, enamel and pearl brooch, circa 1900, the square panel with red guilloché enamel, set with two diamond set hearts, with a white enamel and pearl border, the reverse engraved VF 1899, 2.8cm wide, 7.5g gross

£250-350

220

An 18 carat gold and diamond snake ring, the coiled ring with two snake's heads in a crossover setting, set with brilliant cut diamonds, approximately 0.30 carats total, and ruby set eyes, hallmarked London 1954, finger size U 1/2, 11.2g gross

£300-400

221

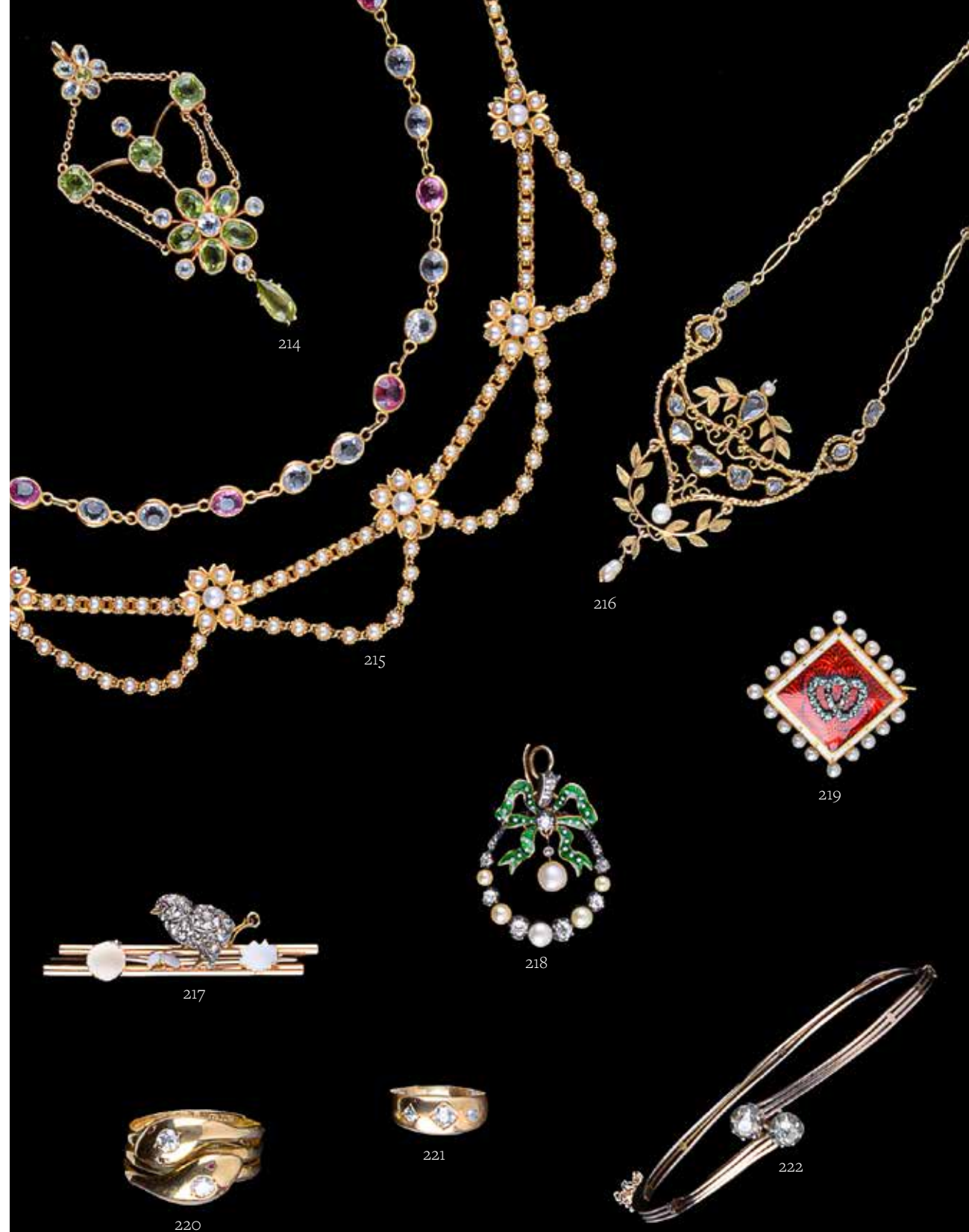
An 18 carat gold diamond ring, set with three old cut diamonds, approximately 0.20 carats total, stamped 18 with full London hallmarks for 1890, finger size K, 3g gross

£150-250

222

A diamond two stone hinged bangle, the two old cut diamonds, approximately 0.26 carats total, in a crossover setting, 5.6cm inner width, 8.9g gross

£100-200



223

An early 20th century garnet necklace, composed of graduating circular cut garnets in collet settings, 40cm long; and a Bohemian garnet brooch, 6cm long, 36.2g gross

£350-450

224

A mid-Victorian amethyst rivière necklace, circa 1870, the graduating cushion shaped amethysts in pinched collet settings, 38.7cm long, 38.2g gross

£750-850

225

A 9 carat gold watch chain, the fancy link chain with a t-bar fitting, stamped 375 with full Sheffield hallmarks for 1990, 25cm long, 37.8g

£500-550

226

A late Victorian gold coloured locket, circa 1900, the oval hinged locket with foliate decoration, unmarked, on a belcher link chain, unmarked, 38cm long, 27.4g gross

£250-350

227

An early 20th century opal and diamond cluster ring, the oval cabochon opal claw set within a surround of rose cut diamonds, stamped 18ct, finger size O, 5.2g gross

£150-200

228

An opal and diamond ring, the oval cabochon opal within a surround of eight cut diamonds, stamped 18ct, finger size M, 7g gross

£150-250

229

An early 20th century opal and curb link bracelet, nine curb links inset with collet set oval shape opals with double curb links between, no visible marks, the non associated, later attached padlock clasp with full 15ct gold hallmarks, 19cm long, 22g gross

£300-500

230

An Edwardian opal bracelet by Deakin & Francis, circa 1910, the oval cabochon opals in open oval links, with polished brick links in between, to a concealed clasp, stamped 9ct with D&F maker's mark, 20cm long, 15.2g gross

£150-250

231

A gold coloured bracelet, the three bar bracelet with baton links and bead links, 16cm long, 23.5g gross

£400-600

232

A gold coloured curb link bracelet, the hollow curb links to a gold coloured padlock clasp, stamped 9ct, 20cm long, 32.3g gross

£250-350



233

An early Victorian pearl flower head ring, circa 1840, the cluster of half pearls surrounding a green stone, with a glazed locker beneath the cluster, between foliate engraved shoulders, finger size O, 1.9g gross

£200-300

234

A diamond three stone ring, set with three old cut diamonds, approximately 0.90 carats total, finger size I, 3.3g gross

£500-700

235

A diamond foliate plaque brooch, of openwork design of floral and scroll design set throughout with old and old circular cut diamonds, approximately 1.50 carats, 4.2cm long, 12.4g gross

£300-500

236

A mid-Victorian blue enamel, diamond and pearl necklace, circa 1870, the heart shaped drop with applied diamond set flower, suspended from a blue enamel panel set with old cut diamonds and pearls, on a blue and white enamel chain set with seed pearls, 47cm long, 29.5g gross

£3,000-5,000

237

A cultured pearl, emerald and diamond necklace, the three row necklace composed of graduating 5mm to 8mm cultured pearls, on a knotted string, to the clasp centrally set with a circular cabochon emerald within a surround of old cut diamonds, 37.5cm long

£300-500

238

A Regency citrine swivel fob seal, circa 1835, the citrine engraved *remember me*, with a chased foliate setting, 3.2cm long; and a further Victorian gold cased seal, the oval agate panel intaglio engraved with an armorial, 2.9cm long, both on a Regency gold spilt ring, 28.3g gross

£200-300

239

An early 20th century cornelian and silver ring, possibly Persian or Turkish, the circular cornelian plaque intaglio engraved in a geometric pattern, rub over set in a beaded border with engraved patters to the under side, the plaque - 2.5cm diameter, finger size P 1/2, 17g gross

£200-300

240

A mid Victorian 18 carat gold and enamel Masonic ring, enamelled with red, white, black and blue enamel Masonic symbols, Hallmarked London 1864, finger size V, 10g

£200-300

241

A diamond ring, set with three old cut diamonds, approximately 0.25 carats total, in star settings, stamped 18ct, finger size R 1/2, 7.7g gross

£300-500

242

A diamond single stone ring, the cushion cut diamond estimated to weigh 0.65 carats total, in a squared setting, finger size P 1/2, 7.6g gross

£500-700



243

An Edwardian diamond and ruby pendant, circa 1910, the openwork scrolled panel set with old cut diamonds and circular cut rubies, on a belcher link chain, stamped 9ct, 38cm long, 8.5g gross, in a gilt tooled brown leather fitted case

£250-350

244

An early twentieth century spinel and diamond ring, circa 1920, the central circular cut spinel within a surround of old cut diamonds, approximately 0.45 carats total, finer size L, 2.4g gross

£250-350

245

An early 20th century 18 carat gold ruby and diamond cluster ring, circa 1900, the central oval cut ruby within a surround of old cut diamonds, approximately 0.25 carats total, stamped 18 with full Chester hallmarks for 1901, finger size N 1/2, 2.9g gross

£200-300

246

An 18 carat gold ruby and diamond ring, the three oval cut rubies with brilliant cut diamonds in between, stamped 750 with full Sheffield hallmarks for 2001, finger size M 1/2, 4.7g gross

£120-160

247

A diamond cluster ring, the central old cut diamond, estimated to weigh 0.25 carats, collet set within a surround of further old cut diamonds, approximately 0.80 carats total, finger size Q, 3.6g gross

£400-600

248

An early 20th century diamond and sapphire carved half hoop ring, the three oval cut sapphires with old cut diamonds in between, approximately 0.15 carats total, stamped 18ct, finger size M 1/2, 2.8g gross

£150-250

249

A diamond ring, the pear shaped rose cut diamond in a collet setting, finger size N, 3.3g gross

£200-300

250

An early 20th century sapphire and diamond cluster ring, circa 1920, the central circular cut sapphire claw set within a surround of old cut diamonds, approximately 0.45 carats total, stamped 18, finger size M, 2.8g gross

£150-250



243



244



245



246



247



248



249



250

251

A sapphire and diamond eternity ring, the ring with pairs of step cut sapphires with eight cut diamonds between, approximately 0.14 carats total, finger size R, 3g gross

£100-150

252

A diamond eternity ring, set with brilliant cut diamonds, approximately 0.70 carats total, finger size K, 3.9g gross

£150-250

253 (no lot)

254

An Art Deco onyx and pearl dress set, circa 1930, the double sided cufflinks with square onyx panels set with half pearls, stamped 9ct, 2cm long; with four buttons and two dress studs, 11.6g gross, in a fitted Garrard & Co Ltd case

£300-500

255

An Art Deco carved jadeite jade and pearl pendant, circa 1930, the carved jadeite jade drop below a pearl, on a belcher link chain, 40cm long, 10.8g gross; and an Art Deco carved jadeite jade bracelet, circa 1930, stamped 9ct, 16.9g gross

£300-500

256

An early 20th century diamond bracelet, circa 1920, the central panel set with old brilliant cut and eight cut diamonds, approximately 0.60 carats total, on an articulated bracelet, 15.5cm long, 8.2g gross

£400-600

257

A Belle Epoque diamond brooch, circa 1910, the pierced ribbon bow panels set with rose cut diamonds, on a similarly set tapered barette, 7.9cm long, 9.6g gross

£200-300

258

A pearl single stone ring, the 9mm pearl set above eight cut diamond shoulders, the shank stamped 750, finger size P, 3.6g gross

Please note the pearl is untested and unwarranted as natural pearl

£200-300



259

A late Victorian and later diamond and emerald brooch/pendant, circa 1890, the central circular cut emerald and old cut diamond cluster within a hooped diamond set surround, approximately 3.50 carats total, 3.4cm diameter, 11.3g gross

£700-1,000

260

A diamond dress ring, the octagonal panel set with baguette cut, tapered baguette cut and brilliant cut diamonds, between brilliant cut diamond set shoulders, approximately 1.30 carats total, stamped 750, finger size K, 8.2g

£250-350

261

A diamond single stone ring, the brilliant cut diamond, estimated to weigh 0.50 carats, in a six claw setting, stamped 750 with import marks, finger size K, 3.3g gross

£200-300

262

A blue zircon and white stone ring, the central circular cut blue zircon claw set between two baguette cut white stones, stamped plat 9ct, finger size M 1/2, 2g gross

£100-150

263

An antique coin pendant on a ruby bead chain, the antique coin collet set on a faceted ruby bead necklace, stamped 750, 73.5cm long

£200-300

264

An early 20th century ruby and diamond carved half hoop ring, set with four graduated oval shape rubies with diamonds between, stamped 18ct, finger size P, 3g gross; a sapphire and diamond ring, set with three oval and round shaped sapphires with diamonds between, mounted in 18 carat yellow gold, hallmarked Birmingham 1998, finger size 4g gross; and a tapered bar brooch set with round shaped rubies and sapphires and circular cut diamonds, approximately 0.40 carats, 7cm long, 5g gross

£400-600

265

A pair of cinnabar lacquer, diamond and black diamond pendent earrings by Bochic, New York, the modern carved cinnabar lacquer panels suspended from brilliant cut diamond and black diamond connections to brilliant cut diamond tops, with similarly set tapered drops beneath, colourless diamonds approximately 1.00 carat total, signed Bochic, stamped 18k, 8.5cm long, 22.5g gross; and a carved deer antler and diamond ring, the antler shank set on the top with brilliant and eight cut diamonds in an openwork quatrefoil, approximately 1.40 carats total, finger size L

£400-600

266

A pair of South Sea cultured pearl and diamond earrings, the 10mm South Sea cultured pearls with eight diamond set caps, suspended below a marquise cut diamond and a brilliant cut diamond, approximately 0.80 carats total, with post fittings, 2.3cm long, 6g gross

£500-800

267

A pair of opal doublet earrings by Natalia Josca, the flower head panels set with pear shaped and circular shaped opal doublets, suspending further pear shaped opal doublets, with post fittings, engraved NJ and 22K, 7.5cm long, 22.3g gross

From the collection of Natalia Josca

£500-700



268

A cultured pearl and gold coloured necklace by Natalia Josca, the central 14mm cultured pearl on a 5mm cultured pearl with gold spiral panels in between, to a gold scrolled clasp, 40cm long, 33g gross

From the collection of Natalia Josca

£400-600

269

A gold and turquoise fringe necklace by Natalia Josca, the principal oval cabochon turquoise in a collet setting within a scrolled rope work wire frame, the wirework swags and drops to either side suspending four spectacle set cabochon turquoise drops, bolt ring clasp, 39cm long, 23g gross

From the collection of Natalia Josca

£500-700

270

A pair of gold coloured pink sapphire earrings by Natalia Josca, the faceted pink sapphire beads in an orb suspended below a polished drop with shepherd's hook fittings, 5.6cm long, 8.7g gross

From the collection of Natalia Josca

£120-180

271

A pair of enamel and cultured pearl earrings by Natalia Josca, the 7mm cultured pearls suspended below circular polychrome enamel panels within a gold coloured granulated surround, with post and clip fittings, engraved NJ and 22K, 3.5cm long, 14.3g gross

From the collection of Natalia Josca

£150-250

272

A pair of green frosted Roman glass earrings by Natalia Josca, the reeded green frosted glass drops below panels with gold coloured granulated detail, with post and clip fittings, 4.1cm long, 19.2g gross

From the collection of Natalia Josca

£300-500

273

A ruby and diamond pendant by Natalia Josca, the hexagonal openwork plaque with wirework scroll motifs centred with a rose cut diamond quatrefoil motif within a surround of eight collet set cabochon rubies, to a similarly set suspension loop, applied stamp engraved NJ and 22k, 7cm long, 29g gross, suspended on a cultured freshwater pearl necklace, interspersed with ruby beads and ribbed biconical beads, hook fitting, 51cm long

From the collection of Natalia Josca

£500-800

274

A Byzantine style cross pendant by Natalia Josca, decorated to the front with cloisonné enamel images of the Mother of God, St Demetrius, St Nicholas and St John Chrysostum, the reverse etched with their Italian names, the border with cabochon pink tourmalines, sapphires and emeralds in collet and ropework settings, within enamel dot motif borders, with baroque freshwater pearls between, suspended on a gold plated chain necklace, engraved NJ and 22k, 10.5cm long, 127g gross

From the collection of Natalia Josca

£1,800-2,200



275

A 1960s jadeite and gem set brooch, the man with a ruby and diamond set hat carrying two jadeite jade buckets each set with a ruby, 4cm wide, 9.2g gross

£300-500

276

A pair of early 20th century green stone cufflinks, the cabochon green stones set in bub over mounts with chain link connections, stamped 9ct, 11.9g gross

£80-120

277

A pair of onyx pendent earrings, the elongated onyx pipkin drops suspended from articulated two colour connections to onyx bead terminals with screw fittings, unmarked, 8.5cm long, 14.3g gross; and an onyx single stone ring, the oval onyx cabochon rub over set above pierced foliate shoulders, unmarked, finger size L, 10.7g gross

£500-700

278

A single strand of lavender jadeite beads, composed of 87 5.5mm to 9mm graduated lavender jadeite beads, to a ball shaped clasp, 70cm long, 104.9g gross; a lavender jadeite ring, the lavender jadeite carved as a Buddha claw set above a textured foliate mount, stamped 14k, finger size O, 15.4g gross; and a jadeite pendant and necklace, the mutton fat white jadeite drop suspended from a cable link chain set with orange and mottled jadeite discs, stamped 585, 43.8cm long overall, 44.3g gross

£400-600

279

A 1980s shell cameo brooch, carved to depict Venus holding Cupid amongst clouds attended by two Nymphs and Apollo riding in a chariot in the top left, mounted in 9 carat gold, hallmarked Sheffield 1980, 6.3cm long, 19.2g gross

£60-80



280

A synthetic colour change sapphire necklace, the two square cut synthetic colour change sapphires suspended below a belcher link chain set with circular cut synthetic colour change sapphires, 42cm long, 53g gross

£400-600

281

An 18 carat gold signet ring, the circular carnelian panel on a polished band, stamped 18 with full Birmingham hallmarks for 1926, finger size Q, 8.8g gross

£200-300

282

A gold coloured signet ring by Garrard, the oval panel seal engraved with a family crest of a tree, signed Garrard, finger size L 1/2, 12.4g, in a Garrard ring box

£300-500

283

A gold coloured cornelian swivel seal pendant, the shell shaped panel with a cornelian swivel seal, carved with a crest, stamped 585, 3cm long, 23g gross

£150-250

284

A pair of three colour gold cufflinks, the baton shaped cufflinks with cabochon garnet terminals, belcher link connectors, hallmarked 9 carat gold with makers mark R & R, in an Asprey cufflink case

£80-120

285

A 9 carat gold garnet bracelet, composed of circular cut garnets in flower head settings, stamped 375 with full London hallmarks, 18cm long, 20g gross

£200-300

286

A 1950s Italian gold coloured bracelet, composed of partly textured panels, to a concealed clasp, stamped 750 with Italian punzoni for Vicenza pre-1968, maker untraced, 19cm long, 27.5g gross

£550-650

287

A gold coloured curb link bracelet, the curb link bracelet with a padlock clasp, stamped 375, 19cm long, 20g

£400-500

288

A 1970s multi gem set Sputnik style dress ring, set with various circular cut gemstones, including: amethyst, garnet, peridot, citrine and others, finger size L 1/2, 6.5g gross

£400-600

289

An emerald and diamond cluster ring, the panel ring set with circular cut emeralds and eight cut diamonds, approximately 0.40 carats total, on a reeded shank, stamped 750, finger size L, 7.4g gross

From the collection of Natalia Josca

£300-500

290

A pair of 1960s ruby, sapphire and diamond ear clips, designed as clusters of leaves, set with circular cut rubies and sapphires and brilliant cut diamonds, with clip fittings, stamped 14K, 2.2cm diameter, 26.9g gross

£300-500



291

A diamond pendant, of scrolling design, set throughout with brilliant cut diamonds, with a brilliant cut diamond set bale, approximately 0.90 carats total, 5.2cm long, 10.4g gross

£250-350

292

A diamond Koranic text pendant by Adler, set with brilliant cut diamonds, approximately 4.00 carats total, on a fancy link necklace, signed Adler, stamped 750, 46cm long, 32g gross

£400-600

293

A reconstituted turquoise and diamond ring, the oval cabochon reconstituted turquoise collet set between old cut diamonds, approximately 0.16 carats total, stamped 750, finger size O 1/2, 9.2g gross

£200-300

294

An amber coloured glass pendant by Baccarat, the polished glass pendant with a gold coloured cap and bale, signed Baccarat, stamped 750, 2.5cm long

£80-120

295

A diamond two row ring, set with old cut diamonds, approximately 0.70 carats total, finger size L 1/2, 12g gross

£300-500

296

An 18 carat gold diamond five stone ring, set with five brilliant cut diamonds, approximately 1.00 carats total, in claw settings, stamped 750 with full London hallmarks for 1994, finger size M, 4.1g gross

£400-600

297

A gold coloured bracelet, the articulated bracelet composed of polished two colour baton links, 16cm long, 54.8g gross

£1,000-1,500

298

A cultured pearl and diamond necklace, the single strand of 9mm cultured pearls, to the openwork clasp set with brilliant cut diamonds, approximately 0.80 carats total, stamped 18ct, 90cm long

£700-1,000

299

A diamond dress ring, the three bands set with eight cut diamonds, stamped 750, finger size Q 1/2, 20g gross

£350-450

300

A gold coloured ring by Mario Buccellati, the foliate engraved and pierced band set with an oval shaped cubic zirconia, signed M. Buccellati, stamped 750 with Italian control marks, finger size K, 5.9g gross

£300-500

301

A gold coloured diamond ring, the brilliant cut diamond, estimated to weigh 1.00 carat, in a collet and ropetwist setting, on a wide band with bead and ropetwist detail, set with two brilliant cut diamonds, finger size L, 12g gross

£1,000-1,500

302

A diamond crossover ring, the two Princess cut diamonds, estimated to weigh 0.60 carats total, in a crossover setting with brilliant cut diamond set shoulders, stamped 750, finger size N, 8g gross

£500-700

303

A pair of French gold coloured double sided cufflinks by Mellerio, the circular panels with spiralled detail, with belcher link connectors, signed Mellerio Paris, 2cm long, 10g gross

£750-850



304

A William IV chalcendony set gold cased fob seal, circa 1835, the chalcendony intaglio engraved with a reclining lady, a bottle of wine, a whip, a sporting rifle crossed with a fishing rod, and a horse and dog with the inscription 'Sine Qua Non', perhaps meaning 'without which [there is] nothing', in a chased foliate mount, attached to a later fancy cable link long chain with dog clip clasp stamped 9, the chain 144cm long, 46.1g gross

£300-500

305

A gold coloured coin necklace, the coins including: Russia, Nicholas II, 5 kopeks, 1903; Austria Hungary, Franz Joseph, 1 Ducat, 1915; Iran (Persia), Reza Pahlavi, 1/2 Toman, 1305h (1926); Persia, Qajar, Ahmad Shah, 1/2 Toman, 1335h (1916); Persia, Qajar, Nasir Al-Din Shah, 1/2 Toman, 1297h (1880), on a box link chain, 32.5cm long, 39g gross

£800-1,200

306

A coin necklace, set along the fringe with 11 jeweller's copy Middle Eastern coins, suspended from a fancy link collar, indistinctly marked, 38.5cm long, 73.9g gross

£1,500-2,000

307Y

A coral brooch, the carved foliate coral with textured leaves, stamped 18k, 5.2cm wide, 20.8g gross

£200-300

308Y

A coral crab brooch, the crab's shell formed from a large oval coral cabochon, claw set above textured legs, unmarked, 5.4cm long, 20.1g gross; and another gold coloured crab brooch, unmarked, 6.2cm long, 23.6g

£500-700

309Y

A pair of coral, onyx and diamond pendent earrings, the carved and pierced coral disc drops suspended by onyx discs with brilliant cut diamond connections from coral disc tops intaglio engraved with Venus and a winged putto, stamped 750, signed bj (Perhaps Bochic Jewels, New York), 5.5cm long, 14.8g gross

£200-300

310Y

A multi strand coral necklace, Japanese, probably mid 20th century, the multi strand coral necklace, to a clasp with a carved coral head of a philosopher, and engraved with Japanese script 貴 覃 業, stamped 750, 49cm long; together with a matching coral bracelet, stamped 750, 19.5cm long, 161g gross

£600-800



311

A multi gem set bead necklace, set along the entire length with briolette cut pink tourmalines, moonstones, garnets, citrines, orange agates and other gems, on a circular wire link collar, 38.5cm long, 36.8g gross; and a pair of gem set ear hoops, set with briolette cut peridots, pink tourmalines, citrines and other gems, 4cm, long, 9.4g gross

£300-500

312

A freshwater cultured pearl and gem set necklace, the multi strand of freshwater cultured pearls, with tassell ends set with emerald and ruby beads, 95cm long

£600-800

313

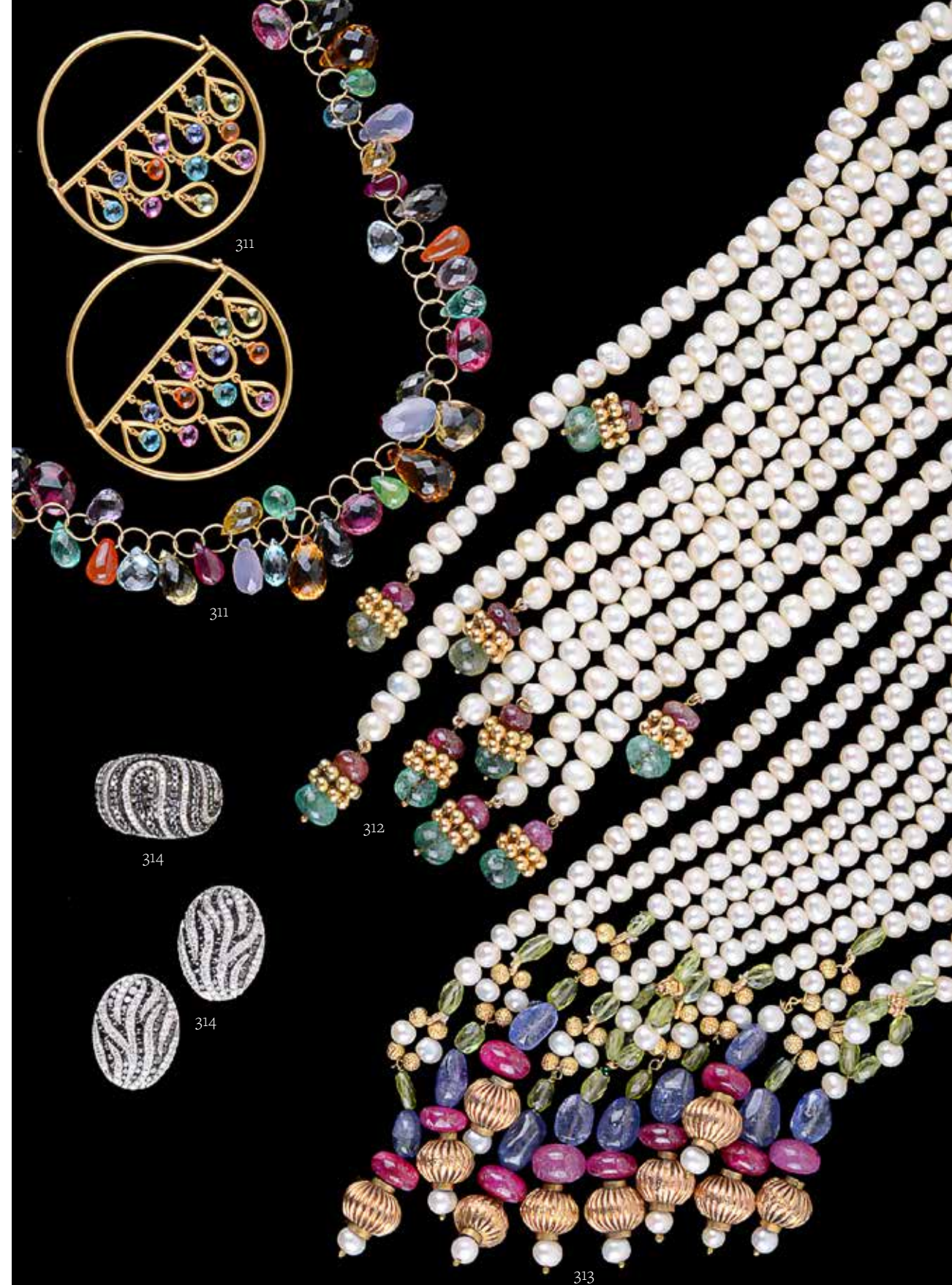
A freshwater cultured pearl and multi gem set necklace, the ten strands of freshwater cultured pearls, with tassell ends set with sapphire, ruby and peridot beads, 123cm long

£700-1,000

314

A black diamond and diamond ring, the pierced curved panel set with rows of circular cut black diamonds and brilliant cut diamonds, approximately 0.50 carats total, stamped 750, finger size M; together with a pair of matching earrings, approximately 1.00 carat total, with post fittings, 2cm long, 20g gross

£600-800



315

A diamond pendant by Atasay, set with brilliant cut diamonds, approximately 0.60 carats total, signed Atasay and stamped 750 on a belcher link chain, 43cm long, 6.5g gross, in an Atasay box

£150-250

316

A South Sea cultured pearl and diamond necklace, the graduated 10mm to 15mm South Sea cultured pearls to a spherical clasp set with eight cut diamonds, stamped 750, 46cm long

£700-1,000

317

A cultured pearl and diamond necklace, the 9mm to 11mm cultured pearls, to the clasp between two brilliant cut diamond set spheres, stamped 750, 46cm long; and another similar

£600-800

318

A ruby and pink sapphire heart pendant, set with circular cut pink sapphires and rubies, on a vari coloured cultured pearl set necklace, stamped 750, 91cm long, 13.2g gross

£200-300

319

A diamond and sapphire panther pendant, set with circular cut sapphires and brilliant cut diamonds, stamped K18, 4cm long, 12.3g gross

£250-350

320

A South Sea cultured pearl and diamond pendant, the 11mm South Sea cultured pearl suspended from a pave set brilliant cut diamond suspension loop, approximately 0.30 carats total, 2.5cm long, 4.5g gross

£150-200

321

A sapphire and diamond bombé ring, the circular cabochon sapphire collet set on a broad band set with brilliant cut diamonds, approximately 1.20 carats total, signed Raafy, finger size S, 15.8g gross

£500-700

322

A coloured diamond, diamond and gem set dress ring by Bochic, New York, the central brilliant cut champagne coloured diamond claw set above a cusped petal surround, set with baguette cut diamonds, circular cut pink sapphires and other gems, on a double hoop shank for two fingers, signed Bochic and stamped 18K, finger size O, 13.6 g gross

£800-1,200

323

A diamond set Lien cuff bracelet by Chaumet, circa 2103, the centre section pave set with brilliant cut diamonds, approximately 0.40 carats, on a double hoop pink gold coloured cuff, signed Chaumet, numbered 1254514 165, stamped Au750, inner diameter 5.6cm, 23.7g gross

£300-500

324 (no lot)



325

A sapphire and diamond sunburst brooch, the central old cut diamond set in a dome estimated to weigh 0.13 carats, to radiating polished bars with claw set circular cut sapphire accents, 6cm diameter, 21g gross

£300-500

326

A faceted sapphire bead necklace, the graduating carved sapphire beads, to a plaited thread, 60cm long, 691.7g gross

£800-1,200

327

A sapphire and diamond cluster ring, the central oval cut sapphire claw set within a surround of old cut diamonds, approximately 0.55 carats total, finger size O, 3.8g gross

£300-500

328

A mid 20th century enamel and diamond flower brooch, the hoop with alternating blue and turquoise enamelled flower heads, each centred with an eight cut diamond, approximately 0.08 carats total, stamped 750 with indistinct Italian control marks, 2.6cm diameter; together with a textured bow brooch, stamped 750, 3.7cm wide, 10g gross

£150-250

329

A diamond butterfly brooch, set throughout with rose cut diamonds, the eyes with circular cabochon rubies, 3.5cm wide, 7.9g gross

£80-120

330

A mother of pearl and sapphire dress ring, the central sugarloaf cabochon sapphire within an engraved surround, to a circular mother of pearl panel, with Greek key engraved border, stamped 750 with Italian control marks, 25g gross, finger size J

£250-350

331

A sapphire and diamond plaque brooch, circa 1935, the scrolled panel with circular sapphires within a surround of single and baguette-diamonds, approximately 1.00 carat, later brooch pin and catch, 3.9cm long, 10g gross

£600-800

332

A pair of ruby and diamond cufflinks, the square panels set with square cut rubies within a surround of brilliant cut diamonds, stamped 750, 1.5cm long, 13g gross

£850-950

333

An 18 carat gold diamond and pink sapphire pendant, designed as a padlock, set with brilliant cut diamonds, approximately 1.00 carat total, and circular cut pink sapphires, stamped 750 with full London hallmarks, 3.3cm long, 13.9g gross

£200-300

334

A pair of diamond and black diamond earrings, the curved panels half set with circular cut black diamonds and brilliant cut diamonds, approximately 2.30 carats total, with clip fittings, stamped 750, 3.1cm long, 14.3g gross

£600-800



335

A Tondo pendant by Bulgari, the circular pendant with a gold coloured cross in the centre, on a multi strand leather necklace, signed Bulgari, stamped 750 with Italian control marks, pendant 4.4cm diameter, 35g gross

£280-320

336

A diamond Allah pendant, set with brilliant cut diamonds, approximately 1.80 carats total, on a fancy link chain, stamped 750, 39.5cm long, 16.4g gross

£300-500

337

An emerald and diamond pendant, the rectangular cut emerald claw set below a princess cut diamond, estimated to weigh 0.25 carats, on a fancy chain, stamped 750, 41cm long, 6.6g gross

£300-500

338

A diamond single stone pendant, the brilliant cut diamond, estimated to weigh 0.65 carats, rub over set in a spectacle collet, attached to fine link chain, 41.5cm long, 3.9g gross

£200-300

339

A diamond charm bracelet, the belcher link bracelet set with brilliant cut diamonds spelling I LOVE YOU, approximately 1.10 carats total, suspending various charms, set with brilliant cut diamonds, stamped 750, 16.5cm long, 30.3g gross

£600-800

340

A diamond Allah bracelet, the belcher link bracelet with panels set with brilliant cut diamonds, 17cm long; and another similar bracelet, 18cm long

£200-300

341 Y

A coral ladybird pendant, signed Ciaravolo, the carved coral wings inset with onyx dots, with brilliant-cut diamonds to the head and tail, stamped 750, 2.2cm long including loop, 3g gross

£150-250

342 Y

A pair of mother of pearl, coral and diamond pendent earrings, the carved and pierced mother of pearl drops suspended by carved coral rose heads from carved mother of pearl flower head tops, centrally set with a brilliant cut diamond, stamped 750, signed bj (possibly Bochic Jewels, New York), 7cm long, 15.6g gross

£100-150

343

A pair of orange jadeite, green garnet and citrine pendant earrings by Bochic, New York, the tapering carved orange jadeite panels pierced and carved with flower heads, claw set within a surround of circular cut green garnets, with marquise cut citrine connections to green garnet set tops, signed Bochic, stamped 18k, 9cm long, 29.3g gross

£400-600



344

A diamond pendant, the brilliant cut diamond, estimated to weigh 0.85 carats, in a four claw setting, stamped 750, 1.3cm long, 1g gross

£1,000-1,500

345

A diamond pendant, the princess cut diamond, estimated to weigh 1.00 carat, on a curb link chain, stamped 750, 45.5cm long, 4.4g gross

£1,000-1,500

346

A diamond pendant, the heart shaped diamond, estimated to weigh 1.00 carat, in a claw setting, on a curb link chain, stamped 750, 45cm long, 4.3g gross

£1,000-1,500

347

A diamond N pendant, the N set with brilliant cut diamonds, approximately 0.34 carats total, on a belcher link necklace, stamped 750 with Italian control marks, 45cm long, 4.7g gross

£150-250

348

An 18 carat gold diamond single stone ring, the brilliant cut diamond, estimated to weigh 0.60 carats, in a four claw setting, stamped 750 with full London hallmarks for 2007, finger size K, 3.4g gross

£400-600

349

A diamond half eternity ring, set with brilliant cut diamonds, approximately 0.30 carats total, finger size R, 2.7g gross

£150-250

350

A diamond three stone ring, set with three brilliant cut diamonds, approximately 0.45 carats total, stamped 18ct Plat, finger size Q, 1.9g gross

£250-350

351

A blue topaz ring, the rectangular cut blue topaz, in a four claw setting, finger size H 1/2, 4.2g gross

£200-300

352

A pair of 18 carat white gold and diamond flower head ear studs, the textured flower heads each set with a brilliant cut diamonds, with post fittings, stamped 750 with full London hallmarks for 1978, maker's mark SS, 1.3cm diameter, 3.9g gross

£300-500

353

A pair of opal doublet and diamond earrings, the opal doublet panels within surrounds of eight cut diamonds, with rose cut diamonds in between, with post fittings, stamped 18K, 3.25cm long, 9.9g gross

£600-800

354

A blue topaz and diamond ring, the rectangular cut blue topaz in a four claw setting, between eight cut diamond set shoulders, stamped 14K, finger size R, 8g gross

£150-250

355

A pair of Art Deco diamond ear clips, circa 1930, the panels set with old brilliant cut and eight cut diamonds, approximately 2.60 carats total, with clip fittings, 1.5cm long

£1,000-1,500

356

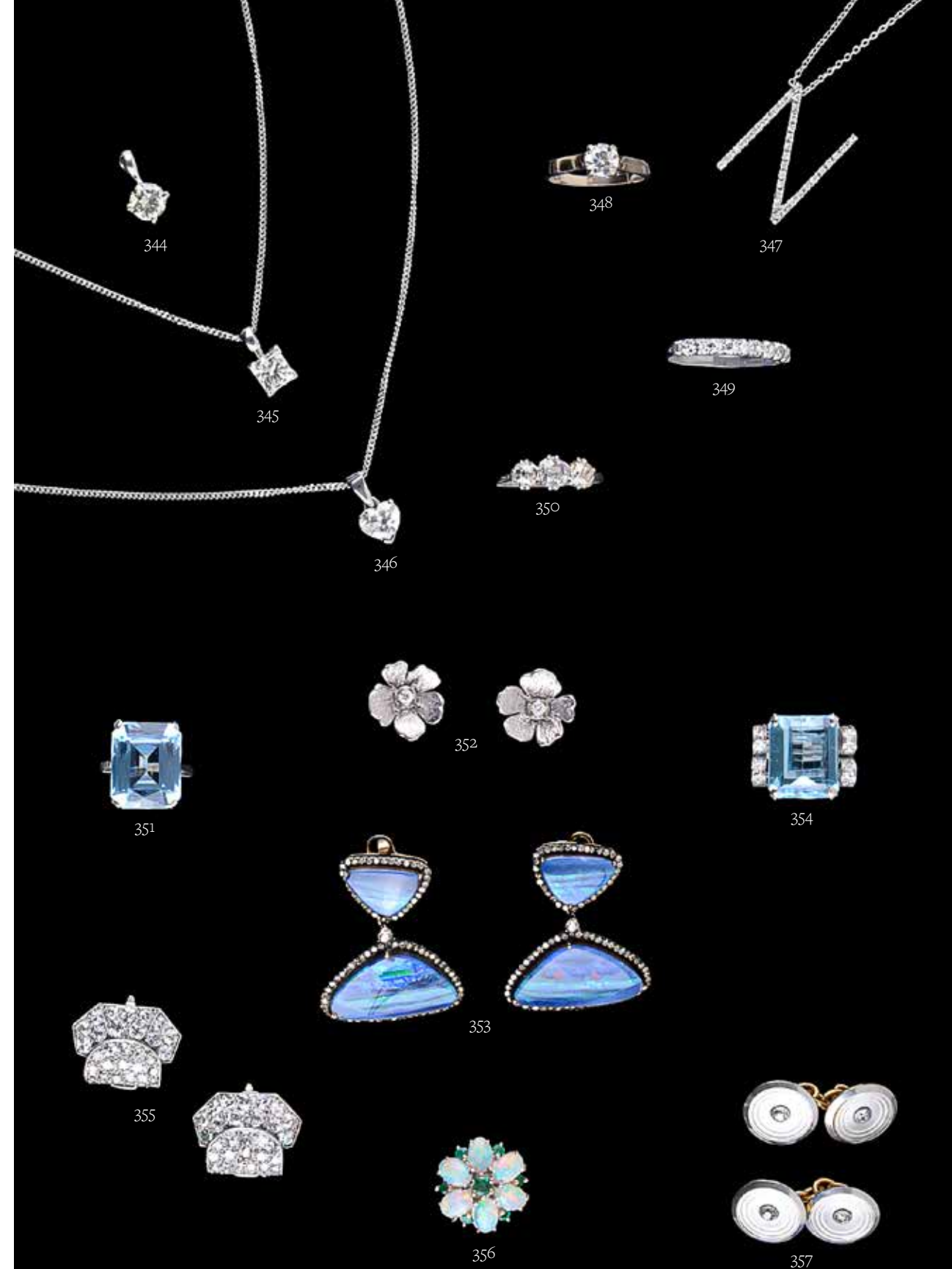
An opal and emerald cluster ring, the six opal cabochons claw set around a central circular cut emerald, with similarly cut emeralds between, mounted in 18 carat white gold, Birmingham import hallmarks for 1982, finger size P, 6.1g gross

£120-180

357Y

A pair of early 20th century diamond and mother of pearl double sided cufflinks, the circular panels with a circular cut diamond applied on a reeded plaque, approximately 0.30 carats total, stamped 18ct, 1.3cm long, 6.5g gross

£150-250



358

A ruby and diamond necklace, the central section designed as flower heads set with vari cut rubies and brilliant cut diamonds, on a flat link necklace, stamped 750, 40.5cm long, 13.9g gross

£300-500

359

A ruby and diamond necklace, the central section set with oval cut rubies and brilliant cut diamonds, on a flat link necklace, stamped 750, 44cm long, 15.9g gross

£300-500

360

A gemset poodle clip brooch, set with clusters of rubies and sapphires on a pavé set single cut diamond ground, highlighted with circular, cabochon and calibré cut rubies, double prong clip fitting, pendant loop, stamped 16k 750, 3.8cm long, 15g gross

£500-700

361

A sapphire and diamond ring, the central circular cut sapphire claw set within a surround of brilliant cut diamonds, approximately 0.30 carats total, finger size R 1/2, 2.4g gross

£250-350

362

A sapphire and diamond ring, the oval cut sapphire claw set within a surround of eight cut diamonds, approximately 0.52 carats total, finger size L, 5.2g gross

£400-600

363

A ruby and diamond cluster ring, the central old cut diamond within a surround of oval cut rubies and eight cut diamonds, finger size N 1/2, 3g gross

£400-600

364

A Nudo dress ring by Pomellato, the cushion shaped top set with brilliant cut diamonds in a honeycomb pattern, above pave set diamond shoulders, approximately 2.30 carats total, stamped 750 with Italian punzoni and maker's mark, numbered P180002517, finger size I, 10.4g gross

£600-800

365

An emerald and diamond pendant, the cut cornered step cut emerald, estimated to weigh 10.46 carats, rub over set within a surround of brilliant cut diamonds, approximately 1.80 carats total, with a plain suspension bale, 3.2cm long overall

Offered for sale with a GTL (Gem Testing Laboratory Athens) certificate, dated December 20, 2018, stating:

Natural Emerald
Evidence of moderate Oil/opticon enhancement

£1,000-1,500

366 Y

An Indian gem set Navratna pendant, set to the front with foil backed cabochon gems including garnet, coral, rock crystal, chrysoberyl and polki diamonds to the front, with green foliate enamel to the back, on a fine link chain, with

similar chain tassels below, 32cm long, overall; a pair of polki diamond, ruby and pink tourmaline drop earrings; an emerald bead necklace and a similar ruby bead necklace; and a small charm bracelet set with ruby rondels

£250-350

367

An 18 carat gold diamond three stone ring, set with three brilliant cut diamonds, approximately 2.25 carats total, in claw settings, stamped 750 with full London hallmarks for 1998, finger size M 1/2, 4.5g gross

£2,000-3,000

368

A diamond three stone ring, set with three old cut diamonds, approximately 1.05 carats total, in claw settings, stamped P, finger size M, 2.9g gross

£500-700

369

A diamond single stone ring, the brilliant cut diamond, approximately 0.35 carats, in an illusion claw setting and shoulders, , stamped 18ct Plat, finger size K 1/2, 2.6g gross

£80-120

370

An 18 carat gold diamond cluster ring, set with a cluster of brilliant cut diamonds, approximately 0.40 carats total, stamped 18 with full London hallmarks, finger size M, 5.1g gross

£100-150



371

A diamond and gem set dragonfly brooch, the openwork wings set with brilliant cut diamonds, approximately 1.00 carat total, the thorax set with step cut variegated yellow-blue stones, the head set with cabochon emerald eyes, stamped 750, 5.5cm long, 13.1g gross

£250-350

372

A diamond bracelet, set with graduated brilliant cut diamonds, approximately 1.00 carat total, in box link settings, to an articulated bracelet, stamped 585, 17cm long, 10.8g gross

£300-500

373

An early 20th century pearl and diamond bracelet, set with alternating 4.5mm bouton pearls and old cut and rose cut diamond links between, 18cm long

Please note the pearls are untested and unwarranted as natural pearls

£600-800

374

A diamond single stone ring, the brilliant cut diamond, estimated to weigh 3.00 carats, in a four claw mount on a platinum shank, Birmingham hallmarks, finger size L, 6.6g gross

£5,000-7,000

375

A pair of diamond single stone ear studs, the brilliant cut diamonds, estimated to weigh 2 carats each, in four claw mounts with post fittings, mounted in 18 carat white gold, London hallmarks

£6,000-8,000

376

A sapphire and diamond ring, the oval cut sapphire between pavé set brilliant cut diamonds, approximately 1.00 carat total, on a wide polished band, finger size N, 15.2g gross

£500-700

377

A 1970s diamond cluster ring, the central brilliant cut diamond, estimated to weigh 0.70 carats, claw set within a surround of brilliant cut diamonds, approximately 1.80 carats total, stamped 750 with London 1974 import marks, finger size N 1/2, 8.2g gross

£700-1,000



Luxury Accessories



378
Prada, a saffiano black leather clutch bag, with a loop side handle, open pocket and sliding clasp, the flap opening to a double gusset interior, with a zipped pocket and six card slots, 23.5 x 15 x 4.5cm, with a Prada dust bag and guarantee card

£100-200



379
Lalique, Ondine, a black suede handbag, with a loop handle and removeable chain shoulder strap, the crystal button clasp depicting a female figure, opening to a satin interior with an open pocket, 11.5 x 11.5 x 6.5cm, with a Lalique dust bag and box

£80-120



382
Prada, Paris, a silk scarf, decorated with a view of Paris, with rolled edges, 89 x 89cm, with a Prada box; and Prada, Venice, a silk scarf, decorated with a view of Venice, 89 x 89cm with a Prada box

£150-250



383
Hermes, a blue silk scarf, with orange borders to the ends, 167 x 29cm, with a Hermès box

£150-250



380
Prada, New York, a silk scarf, decorated with a view of New York including the Empire state building, with rolled edges, 89 x 89cm, with a Prada box; and Prada, Moscow, a silk scarf, decorated with a view of Moscow, with rolled edges, 89 x 89cm, with a Prada box

£150-250



381
Prada, Capri, a silk scarf, the silk scarf decorated with a scene of Capri in various colours, with a hand sewn rolled edge, 89 x 89cm, with a Prada box; and another silk scarf by Prada, in blue, pink and black, 89 x 89cm, with a Prada box

£150-250



384
Christian Dior, two silk scarves, with geometric patterns in reds, golds and purples on blue grounds, 75.5cm square and 72.5cm square; Christian Dior, Trousse Bijoux, a black leather Cannage drum shaped jewellery box with gold plated hardware, 8.5cm x 9.8cm; and Christian Dior, Boite Bijoux, a black patent leather petite Maro Cannage drum shaped jewellery box with gold plated hardware, 8.5cm x 9.8cm

£200-250



385
Christian Dior, Petit Boston, a marine blue Cannage microfibres quilted handbag, with twin loop handles, a zipped side pocket and yellow metal hardware, the zip opening to a red satin interior with a single zipped pocket, 20 x 18 x 14cm, with a Christian Dior dust bag

£150-250



386

387

386

Christian Dior, Trotteur 2 Zips, a Khaki polyester Cannage quilted shoulder bag, with twin shoulder straps and yellow metal hardware, with two zips opening to satin interiors, one with a zipped pocket, 19 x 16 x 12cm, with a Christian Dior dust bag

£150-250

387

Christian Dior, Totteur 2 Zips, a marron Cannage quilted polyester handbag, with twin shoulder straps and yellow metal hardware, with two zips opening to satin interiors, one with a zipped pocket, 19 x 16 x 12cm, with a Christian Dior dust bag

£150-250



388

388

Christian Dior, Boston, a brown quilted Cannage polyester handbag, with twin loop handles, a zipped side pocket and yellow metal hardware, the zip opening to a satin interior with a single zipped pocket, 30 x 21 x 17cm, with a Christian Dior dust bag

£250-350



389

389

Bulgari, Mare Allegro, a silk scarf by Davide Pizzigoni, the scarf decorated with fish and coral, with a rolled edge, 85 x 85cm, in a Bulgari box; together with two further silk scarves by Davide Pizzigoni for Bulgari, Invito al Balle and Don Giovanni, 85 x 85cm, both in Bulgari boxes

£250-350

390

Swarovski, a glitter clutch bag, studded throughout, with a plain interior, with a snake link chain strap, 16 x 8 x 5.5cm, with a dust bag and box

£100-200



390



391

391

Louis Vuitton, a black lacquer rollerball pen and leather monogram pen holder, the pen holder in Louis Vuitton monogram leather, with a black lacquer rollerball pen, with information booklet, box and outer bag, pen holder 16.5 x 6cm

£100-150

392

Louis Vuitton, a leather monogrammed purse, the zip opening to a brown leather interior, with a zip pocket and various compartments, 19 x 10.5 x 2cm, in a Louis Vuitton box

£100-200



392



393

393

Louis Vuitton, a monogrammed coated canvas jewellery case, the zip opening to a suede interior, with a strap for rings and earrings and three zipped pouches, 22 x 6 x 15cm, with a Louis Vuitton dust bag

£150-250



394
Louis Vuitton, a monogrammed coated canvas jewellery case, the double sided case with zip openings to cream leather interiors, with a straps for rings and earrings and and a pouch, 22,5 x 12 x 6,5cm, with a Louis Vuitton dust bag

£100-200



395
Louis Vuitton, a monogrammed jewellery case, no. 947197, with a leather wrapped loop handle and brass flip lock, the cover opening to a lift out five compartment tray, above two compartments, 31,5 x 10 x 22cm

£400-600



398
Louis Vutton, a monogrammed canvas suit carrier, with twin leather loop handles, button fastener and gilt metal hook, the zip opening to two coat hangers, with a leather luggage tag, 117cm long

£200-300



399
Louis Vutton, a monogrammed canvas suit carrier, with twin leather loop handles, button fastener and gilt metal hook, the zip opening to two coat hangers, with a leather luggage tag, 117cm long

£200-300



396
Louis Vuitton, a monogrammed canvas bag, with twin loop leather handles, an open pocket and two zipped compartments, each with an open pocket, 45 x 37 x 20cm, with a removable shoulder strap

£150-250



397
Louis Vutton, a monogrammed canvas suit carrier, with twin leather loop handles, button fastener and gilt metal hook, the zip opening to two coat hangers, with a leather luggage tag, 117cm long

£200-300



400
Louis Vuitton, a monogrammed canvas suit carrier, with a leather loop handle and gilt metal hardware, three zipped pockets, a zip opening to five coat hangers and a removable zipped pouch, with a leather luggage tag and a shoulder strap, 117cm long

£300-500



401
Louis Vuitton, a monogrammed canvas suit carrier, with a leather loop handle and gilt metal hardware, three zipped pockets, a zip opening to four coat hangers and a removable zipped pouch, with a dust bag, leather luggage tag and a shoulder strap, 117cm long

£300-500



402

402

Louis Vuitton, a monogrammed canvas suit carrier, with a leather loop handle and gilt metal hardware, three zipped pockets, a zip opening to five coat hangers and a removable zipped pouch, with a dust cover, leather luggage tag and a shoulder strap, 117cm long

£300-500



403

403

Louis Vuitton, a monogrammed canvas suit carrier, with a leather loop handle and gilt metal hardware, three zipped pockets, a zip opening to four coat hangers and a removable zipped pouch, with a leather luggage tag and a shoulder strap, 117cm long

£300-500



404

404

Brics, a faux brown crocodile travel case, with two loop handles and an extendable hands, on two wheels, a zipped exterior pocket, two flip lock and two number lock clasps, opening to a suede interior with two open pockets and two luggage straps, 64 x 24 x 40cm, with a dust bag; together with a matching black example

£500-700



405

405

Morabito, Paris, two brown leather suitcases, with two loop handles, on four wheels, two combination lock clasps, opening to a monogrammed interior with two open pockets and two luggage straps, 71 x 22.5 x 44cm, each with a canvas cover

£600-800



406

406

A collection of Asprey items, to include: two matched black leather and gilt metal book ends, one textured, 15.5cm high; a green and blue ostrich leather key rings; seven gilt metal and enamel clips, three modelled as turtle, two floral, a ships wheel and one as rope; an unsigned black leather address book, with gilt border, opening to an address book, note pad and gilt ball point pen, 18cm high, with an Asprey card box

£200-300



407



408

407

A white lacquered wood humidor, modern, of rectangular section, the hinged cover opening to a slatted lift out tray, the inside cover set with two humidifiers and a combined temperature and humidity gauge, 33 x 13 x 24cm, with an Asprey card box

£100-200

408

Hermès, l'instruction du Roy, a pair of silk braces, with leather and yellow metal fittings, with a Hermès box

£150-250



409

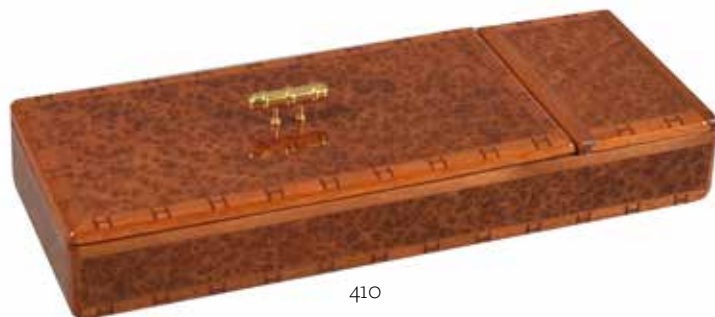
409

Lanvin, a brown leather tie case, the zip opening to a paisley interior, with two hangers, four straps and a button pocket, 42 x 5 x 16cm

£100-150

410

Hermès, a brown lacquered desk tidy, with a monogram border, the pull off cover with a gilt metal handle, opening to a three division compartment, the smaller sliding cover opening to a two division compartment, 16 x 4 x 10cm, with a Hermès box



410

£300-500



411

411

Asprey, a pair of black leather bookends, mounted with gilt metal horse heads, 15.5cm high, with an Asprey card box

£100-200

412

Gucci, a leather travelling back gammon, chequers, and chess set, with a loop handle and two flip lock clasps, opening to a removable tray with playing pieces, chess and back gammon boards, 36cm (closed)

£150-250



412

413

Van Cleef & Arpels, a gold coloured bamboo ball point pen, stamped 14KT, 24g gross, accompanied by a Van Cleef & Arpels box

£400-600



413



414



416



415

414

A gold coloured bamboo propelling pencil by T. & Son, stamped 14K, 25g gross

£350-450

415

Louis Vuitton, a gold plated and leather ball point pen, the engine turned cap with a clip, with a Louis Vuitton box; Louis Vuitton, a gilt metal propelling pencil and a white metal ball point pen, with a Louis Vuitton box

£60-80

416

S. T. Dupont, a gold plated roller ball pen, the cap with a clip, with a S. T. Dupont box and two refills

£60-80



417

Visconti, Aida, a green and mother of pearl roller ball pens, the cap with white metal clip and cap band, with a Visconti box, guarantee booklet, two refills and outer card packaging

£150-250

419

Montblanc, Writers Edition, Edgar Allen Poe, a limited edition blue marbled fountain pen, no. 13460/17000, issued in 1998, the cap with gilt clip and double cap band, the medium nib stamped 750 18K, piston filling system, uninked

£200-300

418

Cartier, Diabolo, a white metal fountain pen, the cap with a clip and set with a synthetic sapphire, the nib stamped 18K 750, cartridge filling system, inked, with cartridge convertor

£150-250

420

Montblanc, Meisterstück Solitaire, a gold plated and engine turned fountain pen, the cap with a clip and cap band, the nib stamped 18K 750, cartridge filling system, inked, with Montblanc box, international warranty card and booklet and outer card packaging

£150-250



421

421

Parker, Duofold, a rare retail sample gilt metal fountain pen and ball point pen, the fountain pen cap with arrow clip, cap band and stamped Metal, the medium reverse oblique nib stamped 18K 750, cartridge filling system, inked, with cartridge convertor, the ball point pen conforming, with a Parker box

These retail samples were produced to have the same weight and feel as the 18 carat gold examples.

£600-800

423

Parker, a 9 carat gold ball point pen and propelling pencil, hallmarked London 1973, with arrow clips, engine turned decoration and a rectangular shaped vacant reserve, accompanied by a Parker box

£400-600

422

422

Parker, Duofold, a rare retail sample gilt metal fountain pen and ball point pen, the fountain pen cap with arrow clip, cap band and stamped Metal, the medium reverse oblique nib stamped 18K 750, cartridge filling system, inked, with cartridge convertor, the ball point pen conforming, with a Parker box

These retail samples were produced to have the same weight and feel as the 18 carat gold examples.

£600-800

424

Namiki, Dunhill, a black lacquer fountain pen, the nib stamped Fine Dunhill Namiki 1 Made in Japan, decorated with floral decoration, signature untraced, lever filling system, inked

£1,000-1,500



425

425

Jaeger LeCoultre, Memovox,
Gold plated travel alarm watch, no. 786771

Movement: Cal. K814, manual wind alarm

Case: Gilt metal snap case, easel back

Size: 42mm

Signed: Case, dial, movement, crowns

Accessories: None

£150-250



426

426

Cartier,

Gilt metal and lapis lazuli desk clock, circa 1970

Movement: Swiss alarm

Case: Gilt metal case, easel back

Size: 80mm high

Signed: Dial

Accessories: Red box

£200-300



427

427

Cartier,

Gilt metal and lapis lazuli desk clock, circa 1970

Movement: Swiss alarm

Case: Gilt metal case, easel back

Size: 80mm high

Signed: Dial

Accessories: Red box

£200-300

Watches



428

428

Piaget, Ref. 9233,

Lady's gold coloured wrist watch with tiger's eye dial, no. 170946

Movement: Cal. 9P, manual wind, adjusted to 5 positions and temperature, 18 jewels

Case: Gold coloured case, screwed down case back with four screws, stamped 18K 0.750 with poinçon

Bracelet/Strap: Unsigned leather strap with a Piaget gold coloured pin buckle, stamped 750

Size: 23mm

Signed: Case back, dial, movement, buckle

Accessories: None

£200-300

429

Piaget, Ref. 9334,

Lady's white gold coloured wrist watch, no. 141314

Movement: Cal. 9P, manual wind, 18 jewels, adjusted to 5 positions and temperature

Case: White gold coloured case, screwed down case back with two screws, stamped 0.750 with a poinçon

Bracelet/Strap: Unsigned black leather strap with a stainless steel pin buckle

Size: 24mm

Signed: Case back, dial, movement

Accessories: Piaget box

£300-500



429

429



430

430 Y

Mauboussin, Ref. R908,

Stainless steel and diamond wrist watch with mother of pearl dial, no. 03149

Movement: Swiss quartz, 4 jewels

Case: Stainless steel case, diamond set bezel, screwed down case back with four screws

Bracelet/Strap: Mauboussin leather strap with stainless steel double deployant clasp

Size: 20mm

Signed: Case, dial, strap, clasp

Accessories: None

£80-120



431

431

Rolex, Oyster Perpetual Date, Ref. 79240,

Lady's stainless steel bracelet watch, no. Y127336, circa 2002

Movement: Cal. 2235, automatic, 31 jewels, adjusted to 5 positions and temperature

Case: Stainless steel case, screw down crown, screw down case back

Bracelet/Strap: Rolex Oyster stainless steel bracelet with fold over clasp

Size: 25mm, bracelet 16mm

Signed: Case, dial, movement, crown, clasp

Accessories: None

£800-1,200

432

Unsigned,
Lady's Art Deco platinum coloured, diamond and sapphire cocktail watch
Movement: Manual wind
Case: Platinum coloured case, set with diamonds and sapphire, snap case back
Bracelet/Strap: Unsigned black woven strap with pin buckle
Size: 14mm
Signed: Unsigned
Accessories: None

£200-300

433

Vertex,
Lady's precious white metal and diamond cocktail watch, no. 114/6023, circa 1965
Movement: Swiss manual wind, 17 jewels
Case: White metal case, diamond set bezel and lugs, snap case back, stamped Platinum
Bracelet/Strap: 9 carat gold woven bracelet with snap clasp, hallmarked Birmingham 1965
Size: 19mm, bracelet 17cm
Signed: Case, dial, movement
Accessories: None

£150-250

434

Reverso Luxe,
Lady's stainless steel reversible wrist watch, no. 26350
Movement: Manual wind, 17 jewels
Case: Stainless steel sliding case, snap case back
Bracelet/Strap: Unsigned black leather strap with pin buckle
Size: 16mm
Signed: Dial
Accessories: None

£400-600

435

Universal,
Lady's gold coloured bracelet watch, no. 1768402
Movement: Cal. 500, manual wind, 17 jewels
Case: Gold coloured case, snap case back, stamped 18K with a poinçon
Bracelet/Strap: Gold coloured bracelet with snap clasp, stamped 750 with a poinçon
Size: 24mm, bracelet 15.5cm
Signed: Case back, dial, movement, crown
Accessories: None

£500-700

436

Baume & Mercier,
Lady's gold coloured wrist watch, no. 477804 38307
Movement: Manual wind
Case: Gold coloured case, screwed down case back with four screws, stamped with a poinçon
Bracelet/Strap: Unsigned black leather strap with gold plated pin buckle
Size: 20mm
Signed: Dial
Accessories: None

£300-500

437 Y

Baume et Mercier, Ref. 38298,
Lady's gold coloured wrist watch, no. 448371
Movement: Manual wind
Case: Gold coloured case, cabochon sapphire set crown, screwed down case back with four screws, stamped with a poinçon
Bracelet/Strap: Unsigned brown lizard strap with gold plated pin buckle
Size: 21mm
Signed: Dial
Accessories: None

£200-300





438

438
Rolex, Oyster, a stainless steel bracelet, no. 593 78360, with a fold over clasp, 17.5cm, accompanied by a Rolex service pouch and a spare link

£300-500

439

Chaumet, Ref. 2217-0193,
18 carat gold wrist watch

Movement: Cal. SW300-1, automatic, 25 jewels

Case: 18 carat gold case, screwed down display case back with four screws, stamped with 750 common control mark

Bracelet/Strap: Chaumet white leather strap with Chaumet 18 carat gold pin buckle

Size: 34mm

Signed: Case, dial, movement, strap, buckle

Accessories: None

£1,000-1,500



439



440

440

Chaumet, Class one,

Black coated wrist watch, no. 628C-0214

Movement: Automatic

Case: Black coated case, rotating bezel, screw down crown, screwed down display case back with eight screws

Bracelet/Strap: Chaumet black rubber strap with stainless steel deployant clasp

Size: 38mm

Signed: Case, dial, movement, strap, clasp

Accessories: None

£400-600

441

Chaumet, Dandy, Ref. 1229-8165A,

Stainless steel wrist watch

Movement: Cal. ETA 2894-2, automatic chronograph, 37 jewels

Case: Stainless steel case, screwed down case back with four screws

Bracelet/Strap: Chaumet brown leather and rubber strap with stainless steel deployant clasp

Size: 40mm

Signed: Case, dial, movement, strap, clasp

Accessories: None

£500-700



441



442

442 Y

Chaumet,

Stainless steel and diamond bracelet watch with mother of pearl dial, no. 622-17929

Movement: Swiss quartz, 9 jewels

Case: Stainless steel case, diamond set rotating bezel, screw down crown, screwed down case back with eight screws

Bracelet/Strap: Chaumet stainless steel block link bracelet with concealed clasp

Size: 33mm, bracelet 15.5cm

Signed: Case, dial, movement, clasp

Accessories: None

£600-800

443

Boucheron, Reflet-Solis,

Stainless steel bracelet watch, no. AF210010

Movement: Cal. ETA 955412, quartz, 7 jewels

Case: Stainless steel case, rotating bezel, screw down crown, screw down case back

Bracelet/Strap: Boucheron stainless steel bracelet

Size: 32mm, bracelet 19cm

Signed: Case back, dial, bracelet

Accessories: Boucheron box, two blue leather straps with stainless steel buckles, outer card packaging

£150-250



443



444

444

Fred, Ref. 11115,

Black coated bracelet watch, no. 553566

Movement: Cal. ETA 976001, quartz, 6 jewels

Case: Black coated case, stainless steel snap case back

Bracelet/Strap: Black coated brick link bracelet with snap clasp

Size: 21mm, bracelet 19cm

Signed: Dial

Accessories: Fred pouch, two spare links

£150-250

445

Piaget, Ref. 17864,

18 carat white gold wrist watch, no. 579474

Movement: Cal. 19P ETA 210001, quartz, 8 jewels

Case: 18 carat white gold case, screwed down case back, stamped with 750 common control mark

Bracelet/Strap: Piaget black leather strap with an 18 carat white gold pin buckle

Size: 31mm

Signed: Case back, dial, movement, crown, strap, buckle

Accessories: Piaget box, outer card packaging

£500-700



446

446 Y

Dunhill,

Stainless steel wrist watch no. 115 11007

Movement: Cal. ETA 7001, manual wind, 17 jewels

Case: Stainless steel case, screwed down case back with four screws

Bracelet/Strap: Dunhill black lizard strap with stainless steel pin buckle

Size: 32mm

Signed: Case, dial, movement, strap, clasp

Accessories: None

£250-350



445

447

Milus, Alarm,

Bi-colour wrist watch with alarm, no. 40-94

Movement: Manual wind alarm, 17 jewels

Case: Gold plated case, stainless steel screw down case back

Bracelet/Strap: Non-original black leather strap with gold plated pin buckle

Size: 35mm

Signed: Case, dial

Accessories: None

£200-300



447



448

448 Y

Chimento,

18 carat gold wrist watch, no. 88

Movement: Wintex automatic, 19 jewels, adjusted to 5 positions

Case: 18 carat gold case, screwed down display case back with eight screws, stamped with 750 common control mark

Bracelet/Strap: Unsigned black crocodile strap with gold plated pin buckle

Size: 38mm

Signed: Dial signed

Accessories: None

£700-900

449

Longines, Ref. 5683 761,

Gold coloured bracelet watch, no. 20871440

Movement: Cal. L761.2, quartz, 6 jewels

Case: Gold coloured case, snap case back, stamped 18K 750 with poinçon

Bracelet/Strap: Longines integral gold coloured woven bracelet with snap clasp, stamped 750

Size: 25mm, bracelet 19.5cm

Signed: Case, dial, movement, clasp

Accessories: None

£1,000-1,500



449



450
Longines, Admiral Five Star, Ref. 8338 5,
Gold coloured wrist watch, no. 16257066, circa 1990
Movement: Cal. 506, automatic, 21 jewels
Case: Gold coloured case, screw down case back, stamped 18K 0.750 with a poinçon
Bracelet/Strap: Non-original black leather strap with gold plated pin buckle
Size: 35mm
Signed: Case, dial, movement
Accessories: None

£500-700

450

451 Y

Corum, Romulus,
18 carat gold wrist watch, no. 5010156 373634
Movement: Cal. ETA 210001, quartz, 8 jewels
Case: 18 carat gold case, snap case back, stamped with 750 common control mark
Bracelet/Strap: Corum brown crocodile strap with gold plated pin buckle
Size: 30mm
Signed: Case, dial, strap, movement, crown
Accessories: Corum pouch

£400-600



451



452 Y
Kutchinsky, Hippocampe,
Limited edition stainless steel and diamond wrist watch with mother of pearl dial, no. 021
Movement: Cal. ETA 251272, quartz chronograph, 22 jewels
Case: Stainless steel case, rotating diamond set bezel, screw down crown, screw down case back
Bracelet/Strap: Unsigned black rubber strap with stainless steel pin buckle
Size: 40mm
Signed: Dial
Accessories: Kutchinsky box, outer card packaging

£400-600

452

453
Locman, Ref. 293,
Stainless steel wrist watch, no. C2946
Movement: Miyota automatic, 21 jewels
Case: Stainless steel case, screwed down case back with four screws
Bracelet/Strap: Locman black leather strap with stainless steel pin buckle
Size: 38mm
Signed: Case, dial, strap, buckle
Accessories: None

£80-120



453



454

454
Meccaniche Veloci,
Limited edition titanium wrist watch, no. 117/250
Movement: Cal. ETA 7750, automatic chronograph, 25 jewels
Case: Titanium case, screw down crown, screwed down case back with four screws
Bracelet/Strap: Meccaniche Veloci black rubber strap with stainless steel double deployant clasp
Size: 44mm
Signed: Case, dial, crown, strap
Accessories: None

£300-500

455
Meccaniche Veloci, Ref. 385,
Titanium wrist watch
Movement: Cal. ETA 2671, automatic, 25 jewels (4)
Case: Titanium case, four screw down crowns, screwed down case back with four screws
Bracelet/Strap: Meccaniche Veloci black rubber strap with stainless steel double deployant clasp
Size: 48mm
Signed: Case, dial, movements, crowns, strap
Accessories: None

£300-500



455



456

456

SevenFriday, Industrial,

Black coated wrist watch, no. SF-P3/01-A0250

Movement: Japanese automatic, 24 jewels

Case: Black coated case, screwed down case back with eight screws

Bracelet/Strap: SevenFriday black leather strap with pin buckle

Size: 46mm

Signed: Case, dial, strap

Accessories: None

£250-350

457

Jahan, Select Power,

Black coated wrist watch with diamond set dial, no. 21

Movement: Cal. ETA 7750, automatic chronograph, 25 jewels

Case: Black coated stainless steel, screwed down display case back with ten screws

Bracelet/Strap: Condor black leather strap with stainless steel pin buckle

Size: 49mm

Signed: Case back, dial, movement, crown

Accessories: None

£350-550



457



458

458

Tag Heuer, 2000 Series, Ref. WK1111-1,

Stainless steel bracelet watch, no. SE1357, circa 2005

Movement: Cal. Fo6111, quartz, 3 jewels

Case: Stainless steel case, rotating bezel, screw down crown, screw down case back

Bracelet/Strap: Tag Heuer stainless steel block link bracelet with fold over clasp

Size: 40mm, bracelet 16.5cm

Signed: Case, dial, crown, clasp

Accessories: None

£200-300

459

Tag Heuer, Ref. WF 1120-0,

Bi-colour wrist watch, no. G19180

Movement: Cal. 1.95 ETA 955112, quartz, 7 jewels

Case: Stainless steel case, gold plated rotating bezel, screw down case back

Bracelet/Strap: Non-original brown leather strap

Size: 36mm

Signed: Case, dial, movement, crown

Accessories: None

£150-250



459



460

460

Tag Heuer, Ref. 974.013R,

Bi-colour bracelet watch, no. P93430, circa 1995

Movement: Cal. 3.92 ETA 955412, quartz, 7 jewels

Case: Stainless steel case, rotating bezel, screw down crown, screw down case back

Bracelet/Strap: Tag Heuer bi-colour block link bracelet with fold over clasp

Size: 36mm, bracelet 18.5cm

Signed: Case, dial, movement, crown, clasp

Accessories: None

£150-250

461

Tag Heuer, 4000 Series, Ref. WF2121-K,

Stainless steel bracelet watch, no. Co8414, circa 1995

Movement: Cal. 2824-2, automatic, 25 jewels

Case: Stainless steel case, rotating bezel, screw down crown, screw down case back

Bracelet/Strap: Tag Heuer stainless steel block link bracelet with fold over clasp

Size: 41mm, bracelet 18.5cm

Signed: Case, dial, movement, crown, clasp

Accessories: None

£250-350



461



462

462

Tag Heuer, Ref. WK1310-O,
Lady's stainless steel bracelet watch, no. MJ4994, circa 2004
Movement: Cal. 300, quartz, 7 jewels
Case: Stainless steel case, rotating bezel, screw down crown, screw down case back
Bracelet/Strap: Tag Heuer stainless block link bracelet with fold over clasp
Size: 28mm, bracelet 16cm
Signed: Case, dial, movement, clasp
Accessories: Tag Heuer case, guarantee booklet and card, instruction booklet, outer card packaging

£150-200



463

463

Tag Heuer, 2000, Ref. 165.306/1,
Bi-metal bracelet watch
Movement: Cal. ETA 2892-2, automatic chronograph, 40 jewels
Case: Stainless steel case, rotating bezel with gold coloured tabs, screw down case back
Bracelet/Strap: Tag Heuer stainless steel block link bracelet with fold over clasp
Size: 35mm, bracelet 17cm
Signed: Case, dial, movement, clasp
Accessories: None

£250-350

464

Hublot, Big Bang, Ref. 301,
Gold coloured and titanium wrist watch, no. 750715, circa 2010
Movement: Cal. 4100, automatic chronograph, 25 jewels
Case: Gold coloured and titanium case, screwed down display case back with six screws, stamped gold 750
Bracelet/Strap: Hublot black rubber strap with gold coloured and black coated stainless steel clasp
Size: 42mm
Signed: Case, dial, movement, crown, strap, clasp
Accessories: None

£4,000-6,000

465

Hublot, King Power Unico, Ref. 701.NX.0170.RX#,
Titanium wristwatch, no. 899124, circa 2012
Movement: Cal. 1240, automatic chronograph, 38 jewels
Case: Titanium case, screwed down display case back with six screws
Bracelet/Strap: Hublot black rubber strap with titanium deployant clasp
Size: 45mm
Signed: Case, dial, movement, crown, strap, clasp
Accessories: None

£3,000-5,000



464

465



466

Baume & Mercier,

Stainless steel wrist watch, no. 2928482

Movement: Cal. BM 13283A ETA 2892-A2, automatic chronograph, 39 jewels

Case: Stainless steel case, snap case back

Bracelet/Strap: Non-original brown leather strap with a Baume & Mercier stainless steel deployant clasp

Size: 33mm

Signed: Case, dial, movement, crown, clasp

Accessories: None

£300-500

466

467

Gerald Genta for Van Cleef & Arpels, Ref. G.1510B,

Gold coloured wrist watch, no., G.1285.7

Movement: Cal. 760, automatic, 25 jewels, adjusted in 4 positions

Case: Gold coloured case, black bezel, snap case back, stamped 18K 0.750 with a poinçon

Bracelet/Strap: Van Cleef & Arpels black leather strap with an 18 carat gold pin buckle

Size: 33mm

Signed: Case, dial, movement, strap, buckle

Accessories: Van Cleef & Arpels pouch

£400-600



467



468

468

Omega, Seamaster, Ref. 165.002,

Stainless steel wrist watch,

Movement: Cal. 552, automatic, 24 jewels

Case: Stainless steel case, screw down case back

Bracelet/Strap: Unsigned black leather strap with gold plated pin buckle

Size: 34mm

Signed: Case, dial, movement, crown

Accessories: None

£250-350

469

Jaeger LeCoultre,

Stainless steel wrist watch, no. 333910, circa 1945

Movement: Cal. P478, manual wind

Case: Stainless steel case, snap case back

Bracelet/Strap: Hirsch black leather strap with stainless steel pin buckle

Size: 33mm

Signed: Case back, dial, movement

Accessories: None

£150-250



469



470

470

Omega, Ref. 2364-4,

Stainless steel wrist watch, circa 1945

Movement: Cal. 30 T2 Rg, manual wind, 17 jewels, adjusted to 5 positions and temperature

Case: Stainless steel, snap back case

Bracelet/Strap: Unsigned brown leather strap with steel pin buckle

Signed: Case, dial, movement, crown

Accessories: None

£400-600

471

Omega, Seamaster, Ref. 2857-2856-2,

Bi-colour wrist watch, circa 1955

Movement: Cal. 501, automatic, 20 jewels

Case: Gold plated case, stainless steel snap case back

Bracelet/Strap: Unsigned brown leather strap with gold plated pin buckle

Size: 36mm

Signed: Case, dial, movement

Accessories: None

£400-600



471



472

472

Omega, Constellation, Ref. 396 1070.1,

Bi-colour bracelet watch, no. 53723222

Movement: Cal. ETA 255471, quartz, 6 jewels

Case: Stainless steel case, gold plated bezel, snap case back

Bracelet/Strap: Omega bi-colour bracelet with fold over clasp

Size: 32mm, bracelet 16cm

Signed: Case back, dial, crown, clasp

Accessories: Omega box, outer card packaging

£200-300

473

Smiths, Ref. W10,

Military stainless steel wrist watch, no. 6645-99-961-4045 2615/67, circa 1967

Movement: Cal. 60466E, manual wind, 17 jewels, antimagnetic cover

Case: Stainless steel case, fixed bars, screw down case back

Bracelet/Strap: Nato strap with pin buckle

Size: 35mm

Signed: Dial

Accessories: None

£250-350



473



474

474

Unsigned,

Gold filled open face minute repeating keyless wind pocket watch

Movement: Lever escapement, bimetallic split balance, overcoil balance spring, minute repeater work

Case: Gold filled four piece hinged case

Size: 56mm

Signed: Unsigned

Accessories: None

£300-500

475

H. W. Wheeler,

White gold coloured octagonal keyless wind pocket watch, no. 3991, circa 1920

Movement: Lever escapement, bimetallic split balance, overcoil balance spring, 17 jewels, 5 adjustments

Case: White gold coloured case, snap case back, engraved with a monogram, stamped 18KT

Size: 42mm

Signed: Case, movement

Accessories: None

£300-500



475



476

476

Tiffany & Co.,

Gold coloured half hunter keyless wind fob watch, no. 78382

Movement: Lever movement, bimetallic split balance, overcoil balance spring

Case: Gold coloured four piece hinged case, the front cover with a black enamel Roman numeral chapter ring, stamped 18K

Size: 35mm

Signed: Case, dial, movement

Accessories: None

£400-600



477

Unsigned,

18 carat gold full hunter keyless wind pocket watch with centre seconds, no. 76743, circa 1894

Movement: Three quarter plate, lever escapement, bimetallic split balance, flat balance spring

Case: 18 carat gold five piece hinged case, hallmarked Chester 1894

Size: 52mm

Signed: Unsigned

Accessories: 9 carat gold chain with a T-bar and double seal pendant

£800-1,200



477



478
Camerer Cuss & Co.,
9 carat gold open face keyless wind pocket watch, circa 1929
Movement: Lever escapement, bimetallic split balance, overcoil balance spring, 17 jewels, timed to six positions and temperature
Case: 9 carat gold four piece hinged case, hallmarked Birmingham 1929
Size: 49mm
Signed: Dial signed Camerer Cuss & Co. and Rolex
Accessories: None

£300-500

479
Unsigned,
Gold coloured open face pocket watch, 18th century
Movement: Verge fussee, undersprung three armed flat balance
Case: Gold coloured two piece hinged case, unmarked
Size: 54mm
Signed: Unsigned
Accessories: None

£300-500



480
Unsigned,
Gold coloured open face pocket watch
Movement: Lever escapement, three armed flat balance, flat balance spring
Case: Gold coloured three piece hinged case, metal cuvette, back cover engraved with figures below a large building and engraved below 'Capitole Washington'
Size: 47mm
Signed: Unsigned
Accessories: None

£250-350

481
Omega,
9 carat gold open face keyless wind pocket watch, no. 3540, circa 1921
Movement: Lever escapement, bimetallic split balance, overcoil balance spring, 17 jewels, adjusted to 2 positions
Case: 9 carat gold two piece hinged case, hallmarked Chester 1921
Size: 50mm
Signed: Dial, movement
Accessories: None

£250-350



479



481

Important Notices to Watch Buyers

DAMAGE, RESTORATION, ALTERATION

Although every effort is made to note any damage, restoration or alterations, the absence of any such information in catalogue descriptions does not imply the lot is in perfect condition and free from any such defects. Prospective buyers should satisfy themselves as to the condition of any lot prior to bidding. All watches are serviced from time to time, and Dreweatts are unable to guarantee that the working parts of any watch movement, glass or crystal, winding crowns, watch bracelet, strap or buckle are the manufacturers' original parts, unless otherwise stated in the catalogue description. We are unable to make any representation in our catalogue descriptions or condition reports as to the authenticity of such parts. Dreweatts are unable to make any representation, nor make any comment on, the authenticity of diamonds, or other gemstones, set into watch dials, bezels, cases and bracelets.

AUTHENTICATION

All watch movements have been inspected by Dreweatts watchmaker and specialists, and we have verified all inventory and movement numbers. For the information of potential bidders, all inventory and movement numbers are listed in the catalogue description for the relevant lot.

IMPORT/EXPORT RESTRICTIONS

There may be Import Restrictions into some territories outside

the United Kingdom placed on certain watch brands, or on the importation of watches with straps composed of animal skins which may fall under CITES Regulations. It is the sole responsibility of the buyer to comply with all Export/Import regulations and potential bidders are strongly recommended to check with their shipping agent as to any such regulations that may apply to any lot. Dreweatts are not shippers and are unable to offer any advice regarding such regulations.

CONDITION REPORTS

Dreweatts condition reports will identify whether a watch functions at the time of cataloguing, and suggest possible, but not comprehensive, restoration work that may need to be carried out for the watch to function properly. Dreweatts are unable to test watches for accuracy or running to time, and we cannot guarantee that any watch will function when purchased from us.

As we have examined all watch movements by removing the case backs, we cannot guarantee that water resistant watches will remain water resistant following purchase from us. Dreweatts recommend that any watch purchased from us is subsequently overhauled by a competent watchmaker to ensure proper functioning.

Important Notices to Jewellery Buyers

DAMAGE, RESTORATION, ALTERATION

Although every effort is made to note any damage, restoration or alterations, the absence of any such information in catalogue descriptions does not imply the lot is in perfect condition and free for any such defects. Prospective buyers should satisfy themselves as to the condition of any lot prior to bidding.

ENHANCEMENT

Prospective bidders should be aware that many coloured gems have been historically treated by a variety of methods to improve their appearance, both in terms of colour and transparency. Rubies and sapphires are routinely heat treated, emeralds are enhanced through the use of coloured and transparent oils and resins, and jadeite is routinely stained. These treatments, and others including irradiation and coating, are generally accepted by the jewellery trade as standard practice. Although most treatments are considered to be permanent, those gemstones which have been oiled may need to be re-treated to maintain their appearance. Any such treatments affect the market value of coloured gemstones, and Dreweatts pre-sale estimates published in the catalogue assume that all gemstones, unless otherwise stated in the catalogue, may have been enhanced. Dreweatts may obtain Gemmological Reports from a recognised laboratory where appropriate detailing any enhancements, or lack of, for certain gemstones, and such reports may be obtained for prospective bidders prior to the sale, provided such requests are made at least three weeks before the sale, and that the requesting party has pre-paid for such a report. However it is not possible for Dreweatts to obtain reports for every stone offered in the sale.

In the absence of a gemmological laboratory report, it is not possible for Dreweatts to make any comment on the possibility that any gemstone in any lot may have been subject to enhancement.

Dreweatts catalogue descriptions and condition reports adhere to the guidelines laid out in the 'Blue Book' of CIBJO,

the International Jewellery Confederation.

WEIGHTS

All gram weights have been obtained using an electronic balance, but weights stated in the catalogue are approximate and for guidance only, and potential bidders should satisfy themselves as to their accuracy.

'...approximately 1.20 carats total,...' all such stone weights are estimated using standard equipment and formulae, and are subject to the limitations imposed by the mount.

'...weighing 1.20 carats,...' where the description reads as such, the stones in question have been removed from the mount and weighted using an electronic balance.

SIGNATURES

'...by Lacroche,...' in our opinion is a piece made by or for the jeweller, bearing relevant signatures, maker's marks, and where appropriate, the maker's inventory number/s.

'...signed Lacroche,...' in our opinion is a piece retained by the jeweller, but not necessarily made by them. This may also mean that the piece has been mounted by the jeweller using stones supplied by the client; a special commission from a client's design; or has been altered or later added to.

COLOURED STONES OF BURMA (MYANMAR) ORIGIN

Buyers should be aware that certain territories (notably the United States of America) have import restrictions on certain coloured gemstones. All gemstones that maybe of Burma (Myanmar) origin, notably rubies and jadeite, may require a certificate of origin before they can be imported. Prospective bidders for such gemstones should check with their shipper, and relevant Government authorities regarding any necessary certification prior to bidding. Whilst Dreweatts are able to suggest a number of Gemmological Laboratories for such certification, we are unable to carry out any such certification for potential bidders or buyers.

Detailed condition reports for all lots are available from our website www.dreweatts.com, and upon direct request to the Saleroom.

Please note that Dreweatts are unable to give verbal condition reports for any lot, and all condition reports will be given in writing via our website www.dreweatts.com. Dreweatts jewellery specialists and qualified gemmologists are available during the view to answer any queries.

Dreweatts are unable to offer any form of packing, dispatch or shipping services, and clients should make their own collection arrangements for purchased lots. Dreweatts are happy to suggest the services of a number of dispatch and shipping carriers.

Please see Conditions of Business and Conditions of Sale on the following pages.

Dreweatts & Dreweatts 1759 are trading names of Dreweatts 1759 Ltd. Dreweatts 1759 Ltd is registered in England, company number: 10758982, registered office: Donnington Priory, Newbury, Berkshire RG14 2JE.

Important Notices

BUYING AT DREWEATTS

There are several ways you can bid at a Dreweatts auction; in person, by leaving a commission or absentee bid, on the telephone where available and live via the internet – please make arrangements before the sale. THIS NOTICE APPLIES ONLY TO A PERSON WHO WISHES TO BID IN PERSON, OR BY LEAVING A COMMISSION OR ABSENTEE BID, AT A DREWEATTS PUBLIC AUCTION. For bidding at an online auction or for online bidding at a public auction please see our Online Auction Terms published on our website at www.dreweatts.com.

BIDDING IN PERSON

If intending to buy you are required to register your name and details at reception prior to the commencement of the auction. You will be required to provide a proof of identity and address to register for bidding. You will then be allocated a bidding number, which you use when bidding for an item.

COMMISSION BIDS

Dreweatts will execute bids on your behalf if you are unable to attend the sale. Commission or absentee bids are accepted either directly at reception, or can be sent by post, fax, email, telephone or via the website: www.dreweatts.com.

Dreweatts will add these bids to the auctioneers' sale book and will undertake to purchase the lots on your behalf as cheaply as allowed by other bids and reserves. If two buyers submit identical commission bids Dreweatts may prefer the first bid received.

Dreweatts does not accept liability for failing to execute commission bids, or for any errors or omissions.

CONDITION

Bidders must satisfy themselves as to the condition of each lot. Condition reports are available on request – see the Conditions of Business at the back of this catalogue forming part of these Auction Terms and Conditions for more information regarding condition reports. Requests for condition reports must be submitted by 4pm on the day prior to the auction; condition reports may be available alongside the lot description on the online catalogue at: www.dreweatts.com.

COMMISSION CHARGES

All purchases are subject to a buyer's premium, which is charged per lot at 25% of the hammer price (30% including VAT) up to and including £500,000, 20% (24% including VAT) of the hammer price from £500,001 up to and including £1,000,000 and 12% of the hammer price (14.4% including VAT) in excess of £1,000,000. A theta symbol (Θ) indicates that the lot is a zero rated item and therefore not subject to VAT on the buyer's premium. This applies to bound books (manuscripts and printed), unframed maps and albums. In the event the lot has a dagger (†) beside the lot number in the catalogue, this indicates that the lot is owned by an entity or company required to pay VAT (generally not an Antique Dealer, as they operate under a dealers margin scheme). VAT is payable at 20% on the Hammer Price. Lots marked with a double dagger (‡) (presently a reduced rate of 5%) or Ω (presently at standard rate of 20%) have been imported from outside the European Union to be sold at auction and therefore the buyer must pay the import VAT at the appropriate rate on the hammer price.

PAYMENT

Payment will be accepted, if you are a successful bidder, by debit card issued in the name of the Buyer by a UK bank and registered to a UK billing address; by all major UK issued credit cards issued in the name of the Buyer and registered to a UK billing address with the exception of American Express and Diners Club; by bank

transfer direct into our bank account, Bank Details: NatWest, 30 Market Place, Newbury, Berkshire RG14 5AG. Account Name: Dreweatts 1759 Ltd. A/C: 62412949, Sort Code: 60-15-07, BIC: NWBKGB2L, IBAN: GB21NWBK60150762412949; or in cash up to £8,000 (subject to relevant money laundering regulations). The name of the bank account holder should match the name of the buyer. Payment may also be made by sterling personal cheques drawn on a UK bank account and made payable to 'Dreweatts 1759 Ltd', but Dreweatts regrets that purchases paid for by this method cannot be collected until your cheque has cleared. First time buyers who are not present at the saleroom are requested to pay by bank transfer.

Y CITES REGULATIONS

Please note that lots marked with the symbol (Y) in this catalogue may be subject to CITES Regulations when exported. Relevant CITES Regulations may be found at www.gov.uk/guidance/cites-imports-and-exports.

COLLECTION OR DELIVERY

Before being able to collect your purchases you are required to pay the hammer price, plus the applicable commissions, and obtain a receipt acknowledging payment. Collection of the purchased lots is at the purchaser's risk and expense and whilst Dreweatts do not provide packing and despatch service we can suggest some carriers.

Dreweatts also require that all purchased items are collected within four working days of the sale to avoid a storage charge being applied.

STORAGE CHARGES

All items not collected by 4pm, within four working days of the sale, will be automatically removed to commercial storage and subject to a minimum storage charge of £20 (plus VAT) per lot and to a further storage charge of £2 (plus VAT) per lot per part or full day thereafter. These charges will be the sole liability of the purchaser and will be billed directly to them by Vangaroo Ltd (Andover); Vangaroo may be willing to adjust their charges if they are instructed by the purchaser to deliver to them. On payment of all sales and storage costs, items will be available for collection by appointment from Vangaroo Ltd (Andover), tel: 01264 316970, mobile: 07528 291180, email: matt@vangaroo.co.uk. These charges are set by Vangaroo Ltd (Andover); we recommend that you contact them directly regarding queries relating to these charges and other questions relating to storage. Staff at the saleroom will be unable to answer questions relating to items that have been removed from the saleroom.

FURTHER INFORMATION

The colours printed in this catalogue are not necessarily a true reflection of the actual item. All weights and measures given in the catalogue should be regarded as approximate.

VALUATION SERVICES

Dreweatts provides a range of confidential and professional valuation services to private clients, solicitors, executors, estate managers, trustees and other professional partners. These services include auction valuations, insurance valuations, probate valuations, private treaty valuations, valuations for family division or for tax purposes. For more information, please see our website: www.dreweatts.com.

For directions to Donnington Priory, please see our website: www.dreweatts.com.

Parking is available at Donnington Priory in two car parks on either side of the saleroom.

Information for Buyers at Public Auctions

1. **INTRODUCTION.** The following notes are intended to assist Bidders and Buyers, particularly those inexperienced or new to our salerooms. All of our auctions and sales are conducted on our printed Auction Terms and Conditions, including these Conditions of Sale and Business, which are readily available for inspection and normally accompany catalogues. Our staff will be happy to help you if there is anything you do not fully understand.

Any particular auction and/or any particular lot in an auction may be subject to different or additional terms which will be published in our auction catalogue. All auctions and sales of wines and spirits, jewellery, watches and clocks are subject to the special terms set out in the relevant Notices in relation to those items published in our auction catalogue and, in the event of any conflict or inconsistency, those special terms prevail over any other terms in our Auction Terms and Conditions. By bidding at the auction, you agree to be bound by these terms.

2. **AGENCY.** As auctioneers we usually act as agents for the seller whose identity, for reasons of confidentiality, is not normally disclosed. Accordingly if you buy at auction your contract for the item or items purchased is with the seller and not with us as the auctioneer.

3. **ESTIMATES.** Estimates are designed to help buyers gauge what sort of sum might be involved for the purchase of a particular lot. Estimates may change and should not be thought of as the sale price. The lower estimate may represent the reserve price and certainly will not be below it. Estimates do not include the Buyer's Premium or VAT (where chargeable). Estimates are prepared some time before the sale and may be altered by announcement before the sale. They are in no sense definitive.

4. **BUYER'S PREMIUM.** The Conditions of Sale forming part of our Auction Terms and Conditions require the buyer to pay a buyer's premium on the hammer price of each lot purchased. The buyer's premium is 25% of the hammer price up to and including £500,000, 20% of the hammer price from £500,001 up to and including £1,000,000, and 12% of the hammer price in excess of £1,000,000. VAT at the prevailing rate of 20% is added to buyer's premium and additional charges as defined below.

5. **VAT.** A theta symbol (Θ) indicates that the lot is a zero rated item and therefore not subject to VAT on the buyer's premium. This applies to bound books (manuscripts and printed), unframed maps and albums. A dagger symbol (†) indicates that VAT is payable by the purchaser at the standard rate (presently 20%) on the hammer price as well as being an element in the buyers' premium. This imposition of VAT is likely to be because the seller is registered for VAT within the European Union and is not operating the Dealers Margin Scheme or because VAT is due at 20% on import into the UK. A double dagger (‡) indicates that the lot has been imported from outside the European Union and the present position is that these lots are liable to a reduced rate of Import VAT currently 5% on the hammer price. (Ω) indicates that the lot has been imported from outside the European Union and these lots are liable to the standard rate of Import VAT currently 20% on the hammer price. Lots which appear without the above symbols indicate that no VAT is payable on the hammer price; this is because such lots are sold using the Auctioneers Margin Scheme and it should be noted that the VAT included within the buyers' premium is not recoverable as input tax.

6. **DESCRIPTION AND CONDITION.** Condition reports are provided on our website or upon request. The absence of a report does not imply that a lot is without imperfections. The detail in a report will reflect the estimated value of the lot. Large numbers of such requests received shortly before the sale may mean that reports cannot be provided for all lots. Members of staff are not trained restorers or conservators and, particularly for higher value lots, you should obtain an opinion from such a professional. Dreweatts is not liable for damage to gilded picture frames, plaster picture frames or picture frame glass; if a Lot is or becomes dangerous, we may dispose of it without notice to bidders in advance in any manner we see fit and will be under no liability for doing so. We recommend that you always view a lot in person.

We are dependent on information provided by the seller about a lot and whilst we may inspect lots and act reasonably in taking a general view about them we are normally unable to carry out a detailed examination and frequently no examination of lots in order to ascertain their condition in the way in which it would be wise for a buyer to do. Intending buyers have ample opportunity for inspection of goods and, therefore, accept

responsibility for inspecting and investigating lots in which they may be interested and the corresponding risk should they not do so. Please note carefully the exclusion of liability for the condition of lots contained in the Conditions of Sale. Neither the seller nor we, as the auctioneers, accept any responsibility for their condition. In particular, mechanical objects of any age are not guaranteed to be in working order. However, in so far as we have examined the goods and make a representation about their condition in the auction catalogue, we shall be liable for any defect which is not reflected in that representation and which that examination ought to have revealed to the auctioneer but which would not have been revealed to the buyer had the buyer examined the goods. Additionally, in specified circumstances lots misdescribed because they are 'deliberate forgeries' may be returned and repayment made. There is a 3 week time limit. (The expression 'deliberate forgery' is defined in our Conditions of Sale).

7. **ELECTRICAL GOODS.** These are sold as 'antiques' only and if bought for use must be checked over for compliance with safety regulations by a qualified electrician before use.

8. **EXPORT OF GOODS.** Buyers intending to export goods should ascertain (a) whether an export licence is required and (b) whether there is any specific prohibition on importing goods of that character because, e.g. they may contain prohibited materials such as ivory. Ask us if you need help.

9. **BIDDING.** Bidders will be required to register before the sale commences and lots will be invoiced to the name and address on the sale registration form. Bidders are required to provide a government issued identity document and a proof of address. Please enquire in advance about our arrangements for telephone bidding.

10. **COMMISSION BIDDING.** Commission bids may be left with the auctioneers indicating the maximum amount to be bid excluding buyers' premium. Dreweatts will add these bids to the auctioneers' sale book and they will be executed as cheaply as possible having regard to the reserve (if any) and competing bids. If two buyers submit identical commission bids the auctioneers may prefer the first bid received. Please enquire in advance about our arrangements for the leaving of commission bids by telephone or fax. Dreweatts does not accept liability for failing to execute commission bids, or for any errors or omissions.

11. **METHODS OF PAYMENT.** Payment will be accepted, if you are a successful bidder, by debit card issued in the name of the Buyer by a UK bank and registered to a UK billing address; by all major UK issued credit cards issued in the name of the Buyer and registered to a UK billing address with the exception of American Express and Diners Club; by bank transfer direct into our bank account, Bank Details: NatWest, 30 Market Place, Newbury, Berkshire RG14 5AG. Account Name: Dreweatts 1759 Ltd. A/C: 62412949, Sort Code: 60-15-07, BIC: NWBKGB2L, IBAN: GB21NWBK60150762412949; or in cash up to £8,000 (subject to relevant money laundering regulations). The name of the bank account holder should match the name of the buyer. Payment may also be made by sterling personal cheques drawn on a UK bank account and made payable to 'Dreweatts 1759 Ltd', but Dreweatts regrets that purchases paid for by this method cannot be collected until your cheque has cleared. First time buyers who are not present at the saleroom are requested to pay by bank transfer.

12. **COLLECTION AND STORAGE.** Please note what the Conditions of Sale state about collection and storage. It is important that goods are paid for and collected promptly. Any delay may involve the buyer in paying storage charges.

13. **À DROIT DE SUITE ROYALTY CHARGES.** From 1st January 2012 all UK art market professionals (which includes but is not limited to; auctioneers, dealers, galleries, agents and other intermediaries) are required to collect a royalty payment for all works of art that have been produced by qualifying artists each time a work is re-sold during the artist's lifetime and for a period up to 70 years following the artists death. This payment is only calculated on qualifying works of art which are sold for a hammer price more than the UK sterling equivalent of EURO 1,000 – the UK sterling equivalent will fluctuate in line with prevailing exchange rates. It is entirely the responsibility of the buyer to acquaint himself with the precise EURO to UK Sterling exchange rate on the day of the sale in this regard, and the auctioneer accepts no responsibility whatsoever if the

qualifying rate is different to the rate indicated. All items in this catalogue that are marked with λ are potentially qualifying items, and the royalty charge will be applied if the hammer price achieved is more than the UK sterling equivalent of EURO 1,000. The royalty charge will be added to all relevant buyers' invoices, and must be paid before items can be cleared. All royalty charges are passed on to the Design and Artists Copyright Society (DACS), no handling costs or additional fees with respect to these charges will be retained by the auctioneers. The royalty charge

Terms of Consignment for Sellers in Public Auctions

The sale of goods at our public auctions and a seller's relationship with us are governed by our Auction Terms and Conditions including these Terms of Consignment for Sellers in Public Auctions and our Conditions of Sale for Public Auctions. Any particular auction and/or any particular lot in an auction may be subject to different or additional terms which will be published in our auction catalogue or separately announced prior to the auction. All auctions and sales of wines and spirits, jewellery, watches and clocks are subject to the special terms set out in the relevant Notices in relation to those items published in our auction catalogue and, in the event of any conflict or inconsistency, those special terms prevail over any other terms in our Auction Terms and Conditions. Please note that our Auction Terms and Conditions including these Terms of Consignment for Sellers in Public Auctions and our Conditions of Sale for Public Auctions relate to auctions held in our salerooms and we have separate terms and conditions for our online auctions.

If you, or another person acting on your behalf, provide goods to us to sell on your behalf at one of our auctions this signifies that you agree to and will comply with our Auction Terms and Conditions including these Terms of Consignment for Sellers in Public Auctions and our Conditions of Sale for Public Auctions.

1. **INTERPRETATION.** In these Terms the words 'you', 'yours', etc. refer to the Seller and if the consignment of goods to us is made by an agent or otherwise on the Seller's behalf we assume that the Seller has authorised the consignment and that the consignor has the Seller's authority to contract. All obligations that apply to the Seller under these Terms of Consignment for Sellers in Public Auctions shall apply to the owner of the goods and their agent jointly and separately. Similarly the words 'we', 'us', etc. refer to the Auctioneers.

2. **WARRANTY.** The Seller warrants that possession in the lots can be transferred to the Buyer with good and marketable title, free from any third party right and encumbrances, claims or potential claims. The Seller has provided all information concerning the item's ownership, condition and provenance, attribution, authenticity, import or export history and of any concerns expressed by third parties concerning the same.

3. **ALL COMMISSIONS** and fees are subject to VAT at the prevailing rate.

4. **COMMISSION** is charged to sellers and all selling terms are available from our salerooms.

5. **REMOVAL COSTS.** Items for sale must be consigned to the saleroom by any stated deadline and at your expense. We may be able to assist you with this process but any liability incurred to a carrier for haulage charges is solely your responsibility.

6. LOSS AND DAMAGE OF GOODS

(a) Loss and Damage Warranty - Dreweatts is not authorised by the FCA to provide insurance to its clients, and does not do so. However Dreweatts for its own protection assumes liability for property consigned to it at the lower pre-sale estimate until the hammer falls. To justify accepting liability, Dreweatts makes a charge of 15% of the hammer price plus VAT, subject to a minimum charge of £150, or if unsold 15% of our lower estimate. The liability assumed by Dreweatts shall be limited to the lower pre-sale estimate or the hammer price if the lot is sold. Dreweatts is not liable for damage to gilded picture frames, plaster picture frames or picture frame glass; if the Lot is or becomes dangerous, we may dispose of it without notice to you in advance in any manner we see fit and will be under no liability for doing so.

(b) If the owner of the goods consigned instructs us in writing not to take such action, the goods then remain entirely at the owner's risk unless and until the property in them passes to the Buyer or they are collected by or on behalf of the owner, and clause 6 (a) is inapplicable.

that will be applied to qualifying items which achieve a hammer price of more than the UK sterling equivalent of EURO 1,000, but less than the UK sterling equivalent of EURO 50,000 is 4%. For qualifying items that sell for more than the UK sterling equivalent of EURO 50,000 a sliding scale of royalty charges will apply – for a complete list of the royalty charges and threshold levels, please see www.dacs.org.uk. There is no VAT payable on this royalty charge.

7. **ILLUSTRATIONS AND PHOTOGRAPHS.** The cost of any illustrations or photographs is borne by you. The copyright in respect of such illustrations and photographs shall be the property of us, the auctioneers, as is the text of the catalogue.

8. **MINIMUM BIDS AND OUR DISCRETION.** Goods will normally be offered subject to a reserve agreed between us before the sale in accordance with clause 9. We may sell Lots below the reserve provided we account to you for the same sale proceeds as you would have received had the reserve been the hammer price. If you specifically give us a "discretion" we may accept a bid of up to 10% below the formal reserve.

9. RESERVES

(a) You are entitled to place prior to the auction a reserve on any lot consigned, being the minimum hammer price at which that lot may be sold. Reserves must be reasonable and we may decline to offer goods which in our opinion would be subject to an unreasonably high reserve (in which case goods carry the storage and loss and damage warranty charges stipulated in these Terms of Consignment).

(b) A reserve once set cannot be changed except with our consent.

(c) Where a reserve has been set which we consider unreasonably high, an unsold charge will be payable in the event that the lots fails to sell, being the agreed selling terms calculated on the reserve, LDW at 15% and any photographic charges.

(d) Where a reserve has been placed only we may bid on your behalf and only up to the reserve (if any) and you may in no circumstances bid personally.

(e) Reserves are not usually accepted for lots expected to realise below £100.

10. **ELECTRICAL ITEMS.** These are subject to detailed statutory safety controls. Where such items are accepted for sale you accept responsibility for the cost of testing by external contractors. Goods not certified as safe by an electrician (unless antiques) will not be accepted for sale. They must be removed at your expense on your being notified. We reserve the right to dispose of unsafe goods as refuse, at your expense.

11. **SOFT FURNISHINGS.** The sale of soft furnishings is strictly regulated by statute law in the interests of fire safety. Goods found to infringe safety regulations will not be offered and must be removed at your expense. We reserve the right to dispose of unsafe goods as refuse, at your expense. The rights of disposal referred to in clause 10 and 11 are subject to the provisions of The Torts (Interference with Goods) Act 1977.

12. **DESCRIPTION.** Please assist us with accurate information as to the provenance, lawful import etc. of goods where this is relevant. There is strict liability for the accuracy of descriptions under modern consumer legislation and in some circumstances responsibility lies with sellers if inaccuracies occur. We will assume that you have approved the catalogue description of your lots and that your lots match those descriptions unless informed to the contrary. Where we are obliged to return the price to the buyer when the lot is a deliberate forgery under Condition 15 of the Conditions of Sale and we have accounted to you for the proceeds of sale you agree to reimburse us the sale proceeds and in any event within 7 days of our written notice to do so.

13. **UNSOLD.** If an item is unsold it may at our discretion be re-offered at a future sale. Where in our opinion an item is unsaleable you must collect such items from the saleroom promptly on being so informed. Otherwise, storage charges may be incurred. We reserve the right to charge for storage in these circumstances at a reasonable daily rate.

14. **WITHDRAWN AND BOUGHT IN ITEMS.** These are liable to incur a charge of 15% commission, 15 % Loss and Damage Warranty and

any other costs incurred including but not limited to illustration and restoration fees all of these charges being subject to VAT on being bought in or withdrawn after being catalogued.

15. **CONDITIONS OF SALE.** You agree that all goods will be sold on our Conditions of Sale for Public Auctions. In particular you undertake that you have the right to sell the goods either as owner or agent for the owner with good and marketable title and free and clear of any third party rights or claims. You undertake to compensate us and any buyer or third party for all losses liabilities, costs and expenses suffered or incurred arising out of or in connection with any breach of this undertaking. We will also, at our discretion, and as far as practicable, confirm that an item consigned for sale does not appear on the Art Loss register, which is administered by an independent third party.

16. DUE DILIGENCE CHECKS AND ANTI-MONEY LAUNDERING PROCEDURES

Under the money laundering regulations in force we are required to carry out relevant due diligence checks. This includes verifying the identity of all customers we transact with as well as any beneficial owners on behalf of whom they may transact. Vendors who are unable to or refuse to supply required identification documents and proof of address will not be able to consign to Dreweatts auctions. Copies of customer due diligence checks will be stored for as long as it is necessary to satisfy legal requirements in an appropriate storage facility, which for the avoidance of doubt may include storage solely in electronic form.

17. AUTHORITY TO DEDUCT COMMISSION AND EXPENSES AND RETAIN PREMIUM AND INTEREST

(a) You authorise us to deduct commission at the stated rate and all

Conditions of Sale for Public Auctions

Dreweatts carries on business with bidders, buyers and all those present in the auction room prior to or in connection with a sale by auction at our salerooms on our Auction Terms and Conditions or Public Auctions including these Conditions of Sale for Public Auctions and all bidders, buyers and others participating in a public auction accept that these terms apply to the exclusion of any terms and conditions contained in any of those person's own documents even if the same purport to provide that that person's own or some other terms prevail. Any particular public auction and/or any particular lot in an auction may be subject to different or additional terms which will be published in our online auction catalogue. Please note that our Auction Terms and Conditions including these Conditions of Sale for Public Auctions relate to auctions held in one of our salerooms and we have separate terms and conditions for our online auctions.

1. DEFINITIONS

In these Conditions:

(a) "auctioneer" means the firm of Dreweatts or its authorised auctioneer, as appropriate;

(b) "deliberate forgery" means an imitation made with the intention of deceiving as to authorship, origin, date, age, period, culture or source but which is unequivocally described in the catalogue as being the work of a particular creator and which at the date of the sale had a value materially less than it would have had if it had been in accordance with the description;

(c) "hammer price" means the level of bidding reached (at or above any reserve) when the auctioneer brings down the hammer;

(d) "terms of consignment" means the stipulated terms and rates of commission on which Dreweatts accepts instructions from sellers or their agents;

(e) "total amount due" means the hammer price in respect of the lot sold together with any premium, Value Added Tax chargeable and any additional charges payable by a defaulting buyer under these Conditions;

(f) "sale proceeds" means the net amount due to the seller, being the hammer price of the lot sold less commission at the stated rate, Value Added Tax chargeable and any other amounts due to us by the seller in whatever capacity and however arising;

(g) "You", "Your", etc. refer to the buyer as identified in Condition 2.

(h) The singular includes the plural and vice versa as appropriate.

expenses incurred for your account from the hammer price and consent to our right to retain beneficially the premium paid by the buyer in accordance with our Conditions of Sale for Public Auctions and any interest earned on the sale proceeds until the date of settlement.

(b) In case of lots unsold at auction you authorise us at our discretion to reoffer such lots and negotiate a sale within seven days of the auction date, in which case the same charges will be payable as if such lots had been sold at auction and so far as appropriate these Terms apply.

18. **WAREHOUSING.** We disclaim all liability for goods delivered to our saleroom without sufficient sale instructions and reserve the right to make minimum warehousing charge of £10 per lot per day. Unsold lots are subject to the same charges if you do not remove them within a reasonable time of notification. If not removed within three weeks we reserve the right to sell them and defray charges from any net proceeds of sale or at your expense to consign them to the local authority for disposal.

19. **SETTLEMENT.** After sale settlement of the net sum due to you normally takes place within 28 days of the sale (by crossed cheque to the seller) unless the buyer has not paid for the goods. In this case no settlement will then be made but we will take your instructions in the light of our Conditions of Sale for Public Auctions. You authorise any sums owed by you to us on other transactions to be deducted from the sale proceeds. You must note the liability to reimburse the proceeds of sale to us as under the circumstances provided for in Condition 12 above. You should therefore bear this potential liability in mind before parting with the proceeds of sale until the expiry of 28 days from the date of sale.

2. BIDDING PROCEDURES AND THE BUYER

(a) Bidders are required to register their particulars before bidding by completing a sale registration form and to satisfy any security arrangements before entering the auction room to view or bid;

(b) Under the money laundering regulations in force we are required to verify the identity of all customers we transact with as well as any beneficiaries on behalf of whom they may transact. Customers who are unable to or refuse to supply required identification documents and proof of address will not be able to bid in Dreweatts auctions. Copies of customer due diligence checks will be stored for as long as it is necessary to satisfy legal requirements in an appropriate storage facility which for the avoidance of doubt may include storage solely in electronic form;

(c) the maker of the highest bid accepted by the auctioneer conducting the sale shall be the buyer at the hammer price and any dispute about a bid shall be settled at the auctioneer's absolute discretion by reoffering the Lot during the course of the auction or otherwise. The auctioneer shall act reasonably in exercising this discretion.

(d) Bidders shall be deemed to act as principals;

(e) Our right to bid on behalf of the seller is expressly reserved up to the amount of any reserve and the right to refuse any bid is also reserved.

3. **INCREMENTS.** Bidding increments shall be at the auctioneer's sole discretion.

4. **THE PURCHASE PRICE.** The buyer shall pay the purchase price together with a premium thereon of 30% which shall include VAT on the premium at the rate imposed by law. The buyer will also be liable for any royalties payable under Droit de Suite as set out under Information for Buyers.

5. **VALUE ADDED TAX.** Value Added Tax on the hammer price is imposed by law on all items affixed with a dagger (†) or double dagger (‡). Value Added Tax is charged at the appropriate rate prevailing by law at the date of sale and is payable by buyers of relevant Lots. (Please refer to "Information for Buyers" for a brief explanation of the VAT position).

6. PAYMENT

(a) Immediately a Lot is sold you will:

(i) give to us, if requested, proof of identity, and

(ii) pay to us the total amount due or in such other way as is agreed by us.

(b) Any payments by you to us may be applied by us towards any sums owing from you to us on any account whatever without regard to any directions of you or your agent, whether expressed or implied.

(c) In order to comply with money laundering regulations we reserve the right to require proof of source of funds and/or confirmation of the nature and source of wealth for all receipts of monies from clients directly or from third parties for payments on behalf of clients.

7. TITLE AND COLLECTION OF PURCHASES

(a) The ownership of any Lots purchased shall not pass to you until you have made payment in full to us of the total amount due.

(b) You shall at your own risk and expense take away any lots that you have purchased and paid for not later than 3 working days following the day of the auction or upon the clearance of any cheque used for payment after which you shall be responsible for any removal, storage and insurance charges.

(c) No purchase can be claimed or removed until it has been paid for.

8. REMEDIES FOR NON-PAYMENT OR FAILURE TO COLLECT PURCHASES

(a) If any Lot is not paid for in full and taken away in accordance with these Conditions or if there is any other breach of these Conditions, we, as agent for the seller and on our own behalf, shall at our absolute discretion and without prejudice to any other rights we may have, be entitled to exercise one or more of the following rights and remedies:

(i) to proceed against you for damages for breach of contract;

(ii) to rescind the sale of that Lot and/or any other Lots sold by us to you;

(iii) to resell the Lot (by auction or private treaty) in which case you shall be responsible for any resulting deficiency in the total amount due (after crediting any part payment and adding any resale costs). Any surplus so arising shall belong to the seller;

(iv) to remove, store and insure the Lot at your expense and, in the case of storage, either at our premises or elsewhere;

(v) to charge interest at a rate not exceeding 15% per month on the total amount due to the extent it remains unpaid for more than 3 working days after the sale;

(vi) to retain that or any other Lot sold to you until you pay the total amount due;

(vii) to reject or ignore bids from you or your agent at future auctions or to impose conditions before any such bids shall be accepted;

(viii) to apply any proceeds of sale of other Lots due or in future becoming due to you towards the settlement of the total amount due and to exercise a lien (that is a right to retain possession of) any of your property in our possession for any purpose until the debt due is satisfied.

(b) We shall, as agent for the seller and on our own behalf pursue these rights and remedies only so far as is reasonable to make appropriate recovery in respect of breach of these conditions.

9. THIRD PARTY LIABILITY. All bidders, buyers and other members of the public on our premises are there at their own risk and must note the lay-out of the accommodation and security arrangements. Accordingly neither the auctioneer nor our employees or agents shall incur liability for death or personal injury or for the safety of the property of persons visiting prior to or at a sale (except in each case as may be required by law by reason of our negligence)

10. COMMISSION BIDS. Whilst prospective buyers are strongly advised to attend the auction and are always responsible for any decision to bid for a particular Lot and shall be assumed to have carefully inspected and satisfied themselves as to its condition, we will if so instructed clearly and in writing execute bids on their behalf. Neither the auctioneer nor our employees or agents shall be responsible for any failure to do so.

Where two or more commission bids at the same level are recorded we reserve the right in our absolute discretion to prefer the first bid so made.

11. WARRANTY OF TITLE AND AVAILABILITY. The seller warrants to the auctioneer and you that the seller is the true owner of the property consigned or is properly authorised by the true owner to consign for sale and is able to transfer good and marketable title to the property free from any third party claims.

Save as expressly set out above, all other warranties, conditions or other terms which might have effect between the Seller and you, or us and you, or be implied or incorporated by statute, common law or otherwise are excluded to the fullest extent permitted by law.

12. AGENCY. The auctioneer normally acts as agent only and disclaims any responsibility for default by sellers or buyers.

13. TERMS OF SALE. The seller acknowledges that Lots are sold subject to the stipulations of these Conditions in their entirety and on the Terms of Consignment for Public Auctions as notified to the consignor at the time of the entry of the Lot.

14. DESCRIPTIONS AND CONDITION

(a) Whilst we seek to describe lots accurately, it may be impractical for us to carry out exhaustive due diligence on each lot. Prospective buyers are given ample opportunities to view and inspect before any sale and they (and any independent experts on their behalf) must satisfy themselves as to the accuracy of any description applied to a lot. Prospective buyers also bid on the understanding that, inevitably, representations or statements by us as to authorship, genuineness, origin, date, age, provenance, condition or estimated selling price involve matters of opinion. We undertake that any such opinion shall be honestly and reasonably held and accept liability for opinions given negligently or fraudulently. Subject to the foregoing neither we the auctioneer nor our employees or agents nor the seller accept liability for the correctness of such opinions and all conditions and warranties, whether relating to description, condition or quality of lots, express, implied or statutory, are hereby excluded. Dreweatts is not liable for damage to gilded picture frames, plaster picture frames or picture frame glass; if the Lot is or becomes dangerous, we may dispose of it without notice to you in advance in any manner we see fit and will be under no liability for doing so. This Condition is subject to the next following Condition concerning deliberate forgeries and applies save as provided for in paragraph 6 “information to buyers”.

(b) Private treaty sales made under these Conditions are deemed to be sales by auction for purposes of consumer legislation.

15. FORGERIES. Notwithstanding the preceding Condition, any Lot which proves to be a deliberate forgery (as defined) may be returned to us by you within 21 days of the auction provided it is in the same condition as when bought, and is accompanied by particulars identifying it from the relevant catalogue description and a written statement of defects. If we are satisfied from the evidence presented that the Lot is a deliberate forgery we shall refund the money paid by you for the Lot including any buyer’s premium provided that (1) if the catalogue description reflected the accepted view of scholars and experts as at the date of sale or

(2) you personally are not able to transfer a good and marketable title to us, you shall have no rights under this condition.

The right of return provided by this Condition is additional to any right or remedy provided by law or by these Conditions of Sale.

16. PRIVACY NOTICE. We will hold and process any personal data in relation to you in accordance with our current privacy policy, a copy of which is available on our website www.dreweatts.com/privacy-policy/.

GENERAL

17. We shall have the right at our discretion, to refuse admission to our premises or attendance at our auctions by any person.

18. (a) Any right to compensation for losses liabilities and expenses incurred in respect of and as a result of any breach of these Conditions and any exclusions provided by them shall be available to the seller and/or the auctioneer as appropriate.

(b) Such rights and exclusions shall extend to and be deemed to be for the benefit of employees and agents of the seller and/or the auctioneer who may themselves enforce them.

19. Any notice to any buyer, seller, bidder or viewer may be given by first class mail, email or Swiftmail in which case it shall be deemed to have been received by the addressee 48 hours after posting.

20. Special terms may be used in catalogue descriptions of particular classes of items in which case the descriptions must be interpreted in accordance with any glossary appearing at the commencement of the catalogue.

21. Any indulgence extended to bidders, buyers or sellers by us notwithstanding the strict terms of these Conditions or of the Terms of Consignment shall affect the position at the relevant time only and in respect of that particular concession only; in all other respects these Conditions shall be construed as having full force and effect.

22. These Conditions shall be governed by and construed in accordance with English law and the parties irrevocably submit to the exclusive jurisdiction of the English courts.

Group Departments

NEWBURY

Dreweatts

Donnington Priory

Newbury

Berkshire RG14 2JE

Auctions, exhibitions and valuations

LONDON

Dreweatts / Bloomsbury Auctions

16-17 Pall Mall

St James's

London SW1Y 5LU

Auctions, exhibitions and valuations
by appointment

+44 (0) 1635 553 553

info@dreweatts.com

dreweatts.com

CHAIRMAN

George Bailey

MANAGING DIRECTOR

Jonathan Pratt

ASIAN CERAMICS AND WORKS OF ART

Mark Newstead

Dr Yingwen Tao

BLOOMSBURY AUCTIONS

BOOKS AND MANUSCRIPTS

Dr Timothy Bolton

Camilla Previté

Roxana Kashani

BRITISH AND EUROPEAN CERAMICS
AND GLASS

Mark Newstead

Geoffrey Stafford Charles

CLOCKS AND SCIENTIFIC
INSTRUMENTS

Leighton Gillibrand

COUNTRY SPORTING

Geoffrey Stafford Charles

DECORATIVE ARTS

Geoffrey Stafford Charles

Ashley Matthews

EUROPEAN SCULPTURE AND
WORKS OF ART

Charlotte Schelling

ESTATES AND COLLECTIONS

Will Richards

Joe Robinson

FINE ART

Jennie Fisher

Lucy Gregory

Francesca Whitham

FURNITURE AND CARPETS

Ben Brown

Ashley Matthews

William Turkington

JEWELLERY, SILVER, WATCHES
AND OBJECTS OF VERTU

James Nicholson

Nick Mann

Alexandra Francis

Tessa Parry

LIVE STEAM AND MODEL
ENGINEERING

WORKS OF ART

Michael Matthews

WINE

Mark Robertson

Dianne Wall

