

DREWEATTS

EST. 1759

PROPERTY FROM THE BALLYEDMOND  
COLLECTION, BELGRAVE SQUARE

DONNINGTON PRIORY | THURSDAY 30 JULY 2020







(detail)

**DREWEATTS**

EST. 1759

**Already consigned:**

λ Charles Camoin (French 1879-1965)

*Bateaux dans le port*

Oil on canvas

Est. £12,000-18,000(+fees)

**INVITING ENTRIES | MODERN AND CONTEMPORARY ART**

We are now inviting entries for our auction on 15 October 2020

**AUCTION LOCATION**

Dreweatts

Donnington Priory

Newbury

Berkshire RG14 2JE

**ENQUIRIES**

Lucy Gregory

+44 (0) 1635 553 553

pictures@dreweatts.com

[dreweatts.com](http://dreweatts.com)



**DREWEATTS**

EST. 1759

**PROPERTY FROM THE  
BALLYEDMOND COLLECTION,  
BELGRAVE SQUARE**

DONNINGTON PRIORY | THURSDAY 30 JULY 2020 | 10.30AM

**AUCTION FORMAT: LIVE ONLINE**

This is a live online auction with an auctioneer. Bidding is available online, by telephone or commission (absentee) bids. If not bidding online, please contact Dreweatts to register all commission bids or telephone bids by 12 noon (local time) on Wednesday 29 July.

**FREE ONLINE BIDDING IS AVAILABLE AT DREWEATTS.COM:**

The Dreweatts' bidding platform allows you to watch, listen and bid with no additional online bidding fees applicable.

**REGISTRATION:**

New clients wishing to bid in these auctions must register in advance. To register, you will need to provide two forms of identification. Please email a copy of the following information to [live@dreweatts.com](mailto:live@dreweatts.com):

1. Government issued photo ID (passport / driving licence / identity card)
2. Proof of address (utility bill / bank statement)

Registration for new clients will close at 12 noon (local time) on Wednesday 29 July.

**BUYER'S PREMIUM:**

Buyer's premium is charged per lot at 25% of the hammer price (30% including VAT) up to and including £500,000, 20% (24% including VAT) of the hammer price from £500,001 up to and including £1,000,000, and 12% of the hammer price (14.4% including VAT) in excess of £1,000,001.

**PAYMENT:**

Please note, we cannot accept payment by telephone for lots bought by first time bidders. For details on other payment methods, please see our website.

**AUCTION NO. 14275**

**SPECIALISTS:**

Ashley Matthews (Furniture & Clocks)

Ben Brown MRICS (Furniture & Carpets)

Charlotte Schelling (European Sculpture & Works of Art)

Francesca Whitham (Pictures)

Geoffrey Stafford Charles MRICS (Ceramics, Decorative Arts, Glass & Country Sporting)

Mark Newstead (Asian Ceramics & Works of Art)

Will Turkington (Furniture & Carpets)

**VIEWING AT DONNINGTON PRIORY:**

Viewing will be available by appointment only and in strict accordance with government Covid-19 regulations.

Sunday 26 July	10am – 2pm
Monday 27 July	10am – 5pm
Tuesday 28 July	10am – 5pm
Wednesday 29 July	10am – 5pm

**REMOTE VIEWING SERVICE:**

Remote Viewing will also be available by appointment. Our Remote Viewing Service allows you to view specified Lots via your smartphone from the comfort of your own home at a time convenient to you. See our website for further details.

**AUCTION:**

Dreweatts

Donnington Priory

Newbury

Berkshire RG14 2JE

**ENQUIRIES:**

+44 (0) 1635 553 553

[info@dreweatts.com](mailto:info@dreweatts.com)

[dreweatts.com](http://dreweatts.com)

Front cover: Lot 5





## Foreword

Edward Haughey was born in Drogheda, County Louth, Ireland and made his fortune founding the Norbrook Group, a pharmaceutical company based in Newry, Northern Ireland. Under his guidance the company became extraordinarily successful, fostering his collecting zeal.

Equally as influential in the world of politics as he was in business, Lord Ballyedmond was renowned as only the third person in history, after the Marquess of Lansdowne in the 1940s and the Earl of Iveagh in the 1970s, to have sat in the upper houses of both the British and Irish parliaments. He sat firstly in the Irish Senate as Senator Haughey from 1994 and then in the House of Lords as Lord (Baron) Ballyedmond from 2004. His standing in politics was such that upon his death in 2014 the United States government was amongst the many to pay tribute to his remarkable accomplishments: “His achievements brought significant employment to Northern Ireland and other places around the world, while his philanthropic endeavours helped improve the quality of life of countless others.”

His extraordinarily sumptuous London home, which he bought in 2006, formed the backdrop to a life at the highest echelons of British society. A home to entertain guests, including heads of state, with the finest hospitality. The Collection stands as a testament to Lord Ballyedmond’s unerring eye as a collector, displaying a lifelong passion for art and antiques, with a rare attention to detail and considerable knowledge for objects spanning many types, styles and periods.

Lord Ballyedmond was primarily inspired by the Regency and the neoclassical designs of British architect, Robert Adam, as well as the French style made popular by Adam in British homes during the height of the Empire. He was entranced by aristocratic residences of 18th-century London.

As a result of an extensive three year restoration he transformed a once dormant property on one of London’s most prestigious squares into a modern evocation of a great Georgian town house, specifically designed to entertain on a grand, if not ambassadorial scale. The decorative scheme was mostly influenced by the fact that the house itself was called ‘The French House’ during the 19th century and thus it was these luxurious interiors he relished in recreating with only the finest available examples of period antiquity.

The Collection presented throughout this catalogue is the final part of the Collection to be sold from ‘The French House’ which includes English and European furniture, paintings, tapestries, porcelain and silver which were all thoughtfully amassed and curated to create something which would enthrall visitors to Belgrave Square.



## Belgrave Square

Not many addresses evoke visions of aristocratic splendour like London’s Belgrave Square. Ever since their construction during the first half of the nineteenth century, the stuccoed streets of Belgravia were said to attract the ‘richest population in the world’. To this day, the area’s palatial residences and imposing Neoclassical facades are synonymous with exclusivity and grandeur.

Belgravia takes its name from the Cheshire village of Belgrave, near Eaton Hall - the country seat of the Grosvenor family, to whom the land has belonged since the seventeenth century. The transformation of the area from marshy fields into urban palaces began in 1767, at a time when London was fast expanding. During that year King George III himself even made an attempt to buy the land, in order to prevent his private garden at nearby Buckingham House from being overlooked by the thriving new developments.

Developer Thomas Cubitt (1788-1855) was tasked with the construction of Belgravia, ensuring the success of the area with his innovative approach to the urban landscape, which included the creation of ample public spaces and the clever incorporation of stables and mews houses into the street blocks. For the design of the houses on Belgrave Square, Cubitt enlisted the eminent architect George Basevi (1794-1845). Basevi had been a pupil of Sir John Soane, and is perhaps best remembered for designing the Fitzwilliam Museum in Cambridge. His designs for the northern and eastern terraces of Belgrave Square were exhibited at the Royal Academy in 1826.







1



A pair of Sevres style pottery gilt-metal mounted vases and covers decorated in the Imperial manner, circa 1900, painted with battle scenes after Horace Vernet of Bonaparte at the battles of Friedland and Wagram, signed *H.F.M.* Faraguet, reserved on a blue and gilt ground, the waisted neck with Imperial 'N' cypher, 117cm high

£3,000-5,000





2

A gilt metal and glazed cylindrical hall lantern in Louis XVI style, 19<sup>th</sup> century, the egg-and-dart cast rim mounted with stylised foliage and suspending tasselled bead swags, above a further balustraded rim, on berried feet, with bowed panes, four candle branch fitments within, approximately 128cm high, 65.5cm diameter

£1,000-1,500

3

A pair of Louis XVI pastoral tapestry panels, late 18<sup>th</sup> century, each with country figures within a central reserve surrounded by foliage and swags, on a pale ground, slight size variants, 229 by 140cm and 225 by 156cm (2)

£1,000-1,500



3



4

A pair of white marble and verde antico stands in the Neo-Classical manner, 20<sup>th</sup> century, of tapering form with verde antico panels, 150cm high, 60cm square (2)

£3,000-5,000

4 (one of a pair)





5

5

A late 19th century French ormolu clock Graux Marly, Paris, the case richly decorated with seated female figures symbolic of fertility and twin cherub surmount, around Roman numeral enamelled dial signed "Graux Marly Ft De Bronzes A Paris", supporting twin train 8 day movement striking on a bell, approximately 60cm wide, 50cm high.

Graux-Marly Frères exhibited at the 1878 Paris Exhibition and were held in high regard for their figurative sculptures as well as decorative ornaments. Work by Graux-Marly is relatively uncommon on the market, perhaps their best known work is the mantel clock known as "Pendule a la gloire du Roi" after the 1755 model by Edmé-Jean Gallien that celebrated the life, success and regal splendour of Louis XIV.

£1,500-2,500



6

6Y

A French mahogany kingwood, parquetry, and gilt metal mounted commode in Louis XV style, 20th century, of serpentine bombe outline, the flecked grey marble top above two drawers, 84cm high, 93cm wide, 45cm deep

£600-1,000

7

A cut and moulded glass and gilt metal sixteen-light chandelier in Louis XV style, late 19th/early 20th century, the arms issuing around an s-scrollled frame hung with faceted pendants overall, 120cm high, 84cm wide

£800-1,200

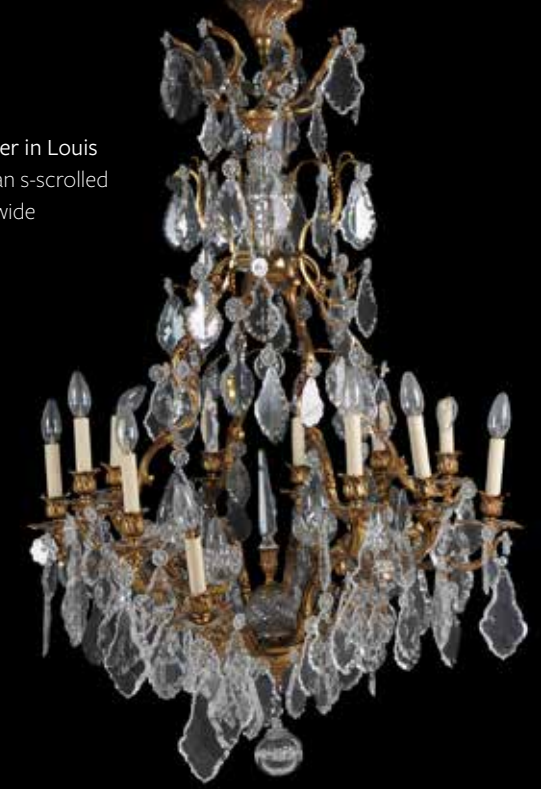
8

A late 19th century Aubusson tapestry window surround, woven throughout with trompe l'oeil drapery and swags with floral surmount, pale moss ground, approximately 224cm wide, 408cm high.

£400-800



8



7

9

A giltwood and composition wall mirror in the Rococo style, 20th century, surmounted by a cartouche and swags above the shaped oval central plate and the marginal plates, 138cm high, 93cm wide

£600-1,000



9





10

A French Sevres style porcelain and gilt metal mounted mantel clock, the eight day two train bell striking movement stamped for Japy Freres and with further stamp or retailer's mark for Villard, the dial bearing inscription for Leroy A Paris, the arched case surmounted by an urn with swags of fruit, the inset panels decorated with a child holding a bird, and with further birds and flowers, Sevres-style mark within, 48cm high overall

£1,000-1,500

11

A pair of French porcelain Sevres-style gilt-metal mounted urns, late 19th century, painted with alternative panels of flowers and Watteauesque scenes reserved on a turquoise ground, 30cm high

£300-500



11



12

12

A pair of French gilt bronze nine light wall appliques in Louis XV style, late 19th century, the scrolling acanthus branches issuing from rocaille cast backplates each centred by a seated putto holding wine goblets and grapes respectively, approx. 60cm x 56cm x 38cm

£1,000-1,500



13

A set of ten carved beech wood elbow chairs, 20th century in the Louis XV style, having floral upholstery raised on cabriole legs (10).

£800-1,200



13 (set of 10)





14

14

A gilt metal and frosted glass pendant ceiling light, 20<sup>th</sup> century, the recessed frame cast with stars and with dragon mounts, enclosing a globular shade inset with a band of greek keys and beading, approximately 110cm high

£200-300

15

A set of four framed painted decorative panels in the mid-18th century Chinoiserie manner, late 19th century, each panel of arched rectangular form, panels 65cms wide, 99cms high (4)

£1,000-1,500



16

16

A George II mahogany occasional table, circa 1740, the circular tilt top with bird cage action above a turned column and outswept legs, 73cm high, 92cm diameter

£500-800



15

17

A Japanese Kutani two-handled tray, third quarter 19th century, decorated with exotic birds and flowers, with iron-red character marks, 40cm long

£200-300

18

A Japanese Satsuma bowl, signed Ranzan, painted with figures in a spring riverscape scene, signed Ranzan Sei, gilt on a black seal, 14.5 cm diameter

£100-120

19

A group of Japanese Satsuma ware, Meiji period, including fourteen Kinkosan plates, 23cm diameter, twelve small Kinkosan plates, 19cm diameter, five Kinkosan plates, 16cm diameter, and four Kinkosan bowls, 13cm diameter, all with similar designs of figures within a patterned band, impressed mark (24)

£600-800



17



18



19





20 (one of a pair)

20

A pair of carved and gilded mirrors in the mid-18th century style, 20th century, each with oval plate within rosette slip, frame with elaborate pierced scrolling crest with trailing bellflower, shell below, 81cm wide, 167cm high (2)

£600-800



21 (part lot)

21

A pair of carved giltwood wall plaques in 18th century style, each centred by a maiden's mask, 30cm high, 50cm wide; and a French carved and giltwood wall ornament, 19th century, with crown surmount, 147cm wide (3)

£300-500

22

A George II mahogany side chair, circa 1750, the rectangular upholstered back and seat above acanthus carved cabriole legs terminating in claw and ball feet, 92cm high

£200-300



22

23 Y

A silver melon shaped four piece tea service by The Goldsmiths & Silversmiths Co. Ltd, London 1934 (Jubilee mark), the tea and hot water pots with ivory button finial and handles, the shoulders engraved with a band of cartouches against scale panels, on moulded circular bases, the tea pot 26cm (10 1/4in) long, the hot water pot 20cm (8in) high, 2004g (64.4 oz) gross

£500-700



23



24

24

A George II mahogany tea table, circa 1740, almost certainly Irish, the hinged top with rounded castellated corners above a frieze drawer, on cabriole legs with shell carved knees and pointed pad feet,

For closely related Irish tables, see James Peill and the Knight of Glin, Irish Furniture, Yale University Press, 2007, page 235, fig. 127 (Provenance: Glin Castle, County Limerick). This example has the slender cabriole legs and comparable detailing to the feet.

£600-800

25

25

A pair of yellow silk and hand embroidered curtains, 20th century, the main field possibly with earlier Continental needlework designs of floral still lives and trailing foliage banding, each approximately 253cm wide, 196cm high (2).

£300-500



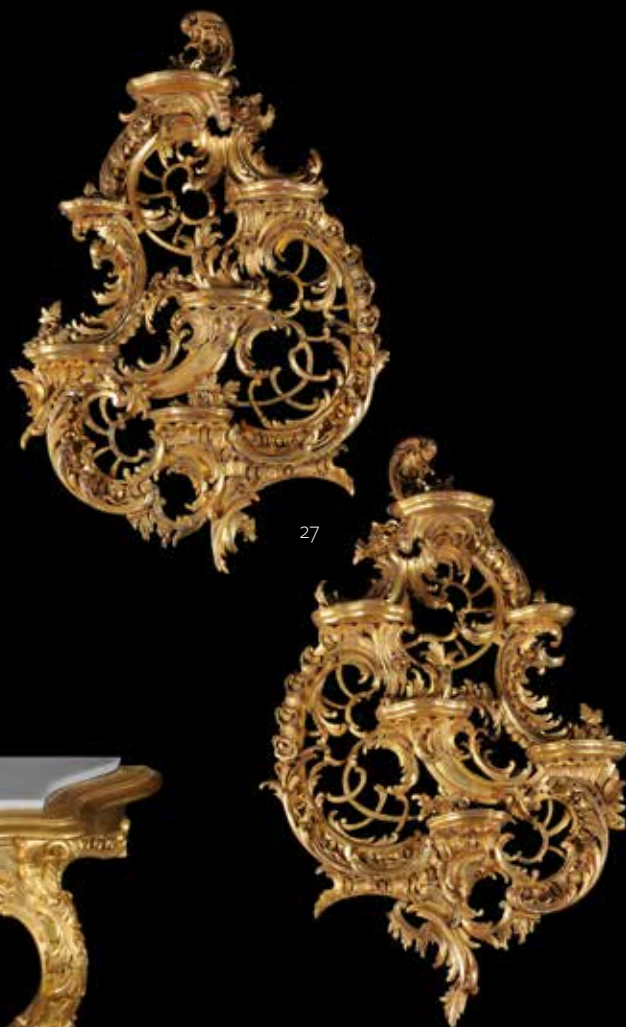




26

A gilt metal and cut glass eight branch chandelier in Louis XV style, 19th century, the s-scrollled and openwork cast frame hung with faceted pendants, beads and swags overall, with drop finial, approximately 90cm high overall

£500-700



27

A pair of carved giltwood wall brackets, 20th century, each of asymmetric form with six small platforms supported by numerous scrolls and pierced foliage, 111cm high, 74cm wide

£300-500



28

28

A carved giltwood console table in 18th century style, 19th century, of serpentine outline, with marble inset and cabriole legs, 94cm high, 107cm wide, 30cm deep

£300-500

29

A French gilt bronze Bacchic figural group, late 19th century, with two dancing nymphs and a satyr, with impressed mark for Jules Graux Foundry to the socle, 68,5cm high; presented on a later fluted variegated grey and white marble column, 117cm high (2)

£600-800



29 (part lot)

30

Attributed to Paul Brou (Dutch, fl. 19th century), a Continental sculpted white marble group, Bacchanal of infant satyrs, late 19th century, the central figure of the infant Silenus on a donkey surrounded by further cavorting putti holding cups, grapes and thyrsi, the moulded socle inscribed PAUL BROU 51cm high, 113cm wide

A group of the same subject and dimensions by Brou was offered at Sotheby's London, 20 March, 1992, lot 133

£2,000-3,000



30



31

A pair of substantial white marble planters in 18th century taste, modern, each with an everted egg-and-dart carved rim above a chain-link body, supported by three amorino caryatids joined by festoons, descending to hoof feet, on moulded circular bases, approximately 163cm high, 85cm diameter

£7,000-10,000



31 (one of a pair)





32

32  
A George III style brass hanging lantern, elements 19th century and later, with frosted glazed panels headed by anthemion, of hexagonal section, enclosing light fittings, approximately 108cm high including hanging loop, 51cm diameter

£600-900

33  
A George III mahogany tripod table, circa 1760, the circular top above a turned column and outswept legs, 73cm high, 85cm wide.

£400-600



33

34  
A Coalport bone china Sevres-style turquoise ground part dessert service, circa 1840, painted with exotic birds, comprising: sixteen plates; three shaped lozenge serving dishes; four shaped rectangular serving dishes; three trefoil serving dishes; and two cream tureens, covers and stands, some with blue interlaced 'L's' marks

£400-600



34

35  
A William IV silver shaped circular salver by Henry Wilkinson & Co., Sheffield 1833, with a raised shell, scroll and flower chased rim, engraved with scrolls and flowers, presentation inscription to Daniel Long Esq., Gloucester, dated 1868, on three bold scroll bracket feet, 42.5cm (16 3/4in) diameter, 1698g (54.6 oz)

£300-500

36  
Four silver sugar casters, comprising: an ogee baluster by Stokes & Ireland Ltd, Chester 1911, 21cm (8 1/4in) high; a lighthouse in William & Mary style by the Pairpoint Brothers, London 1907, engraved with mantling around a vacant shield, 20cm (8in) high; a floral embossed cylinder by Horace Woodward & Co. Ltd, London 1902, retailed by Whytock & Sons, Dundee, engraved with a crest, 17.5cm (7in) high; and baluster by William Henry Leather, Birmingham 1895, wrythen moulded and floral and scroll foliate embossed, 19.5cm (7 3/4in) high, 1008g (32.4 oz) gross

£250-350

37  
A George III silver oval sugar basin and cream jug, maker's marks worn (A..?), London 1804, with threaded rims and handles, engraved with a shoulder band of a ribbon meander with fern sprays, engraved with an armorial and two crests, the sugar 19cm (7in) long, 361g (11.6 oz)

The arms and crests of GORE-BOOTH, Baronets of Artarman co. Sligo. The assay date of 1804 directs us to Sir Robert Newcomen Gore (1752-1814) the 3<sup>rd</sup> Baronet, who at his marriage in 1804 to Hannah Irwin adopted by royal licence the name GORE-BOOTH.

Please see our website for full footnote.

£100-150

38  
A George III silver twin handled navette shape cruet stand, mark of John Harris III over-striking that of Thomas Daniell, London 1785 (incuse duty mark), with two silver mounted cut glass casters, unmarked, and two bottles for oil and vinegar by Thomas Daniell, with moulded loop handles threaded bottle holders, a beaded rim, on four scroll feet, 30cm (11 3/4in) long, the base and caster tops 544g (17.5 oz)

£300-400



35



36



37



38





39

39

A French ormolu and white marble figural mantel clock, mid-19<sup>th</sup> century, the eight-day two train countwheel bell striking movement with silk suspension, the dial with delicate Roman numeral enamel cartouche chapter ring applied to cast flowing drapery held aloft by a figure of Psyche, standing on billowing cloud enveloped dome applied to a two-stage white marble base, fronted by winged cherub mask mounts, 64cm high

£1,000-1,500

40

A pair of George III mahogany and inlaid side tables, late 18<sup>th</sup> century, each of semi-elliptical outline, chequer strung throughout and with square tapering legs, 74cm high, 124cm wide, 62cm deep

£600-1,000



40



41

41

An Aubusson verdure tapestry with Orpheus enchanting the animals, early 18<sup>th</sup> century, the draped male figure portrayed playing the lyre in an abundant landscape with exotic birds, a vista of a formal garden beyond, 238 by 160cm

£1,500-2,500





42



42

A pair of French gilt bronze Rococo Revival three-branch candelabra, circa 1850 and later adapted, cast with scrolling foliage and rocaille overall, each centred by a raised stem with flambeau finial, 97cm high, 38cm wide

£500-700

43 Y

A French rosewood, box strung and gilt metal mounted side table, late 19th century, the rectangular drop-leaf top above a single drawer and fluted tapering legs, 72.5cm high, 113cm wide, 52cm deep

£300-500



43



44

44

A French Sevres style porcelain and gilt metal library clock, late 19th century, the eight-day bell striking movement with Japy Freres roundel and logo for Richard & Cie serial number 1021, the Roman numeral dial above a panel with figures in a classical garden, inset with further conforming panels to sides, 28cm high

£500-700

45

A French mahogany and inlaid liquor cabinet, late 19th / early 20th century, the hinged lid inlaid with a musical instrument motif enclosing a fitted interior containing four gilt glass decanters and eight glasses

£300-500



45



46 (two pairs)

46

Two pairs of plain dark green velvet curtains, modern, each with brown, pale green and muted gold spiral edging, each approximately 390cm high, 236cm wide at the ground; together with matching pair of bag drapes and tassel tiebacks (quantity).

£500-800

47

A French mahogany and gilt metal mounted bookcase, second half 19th century, the pair of glazed doors enclosing shelves above a brushing slide and pair of further panels doors enclosing an arrangements of slide drawers, on a plinth base and spool feet, 159cm high, 141cm wide, 57cm deep

£1,500-2,500

47







48  
A French gilt bronze three light wall applique, 19th century, the fluted pilaster backplate surmounted with an oversize flambeau finial and issuing three acanthus cast scrolled arms, terminating in conforming foliate and strigilated nozzles, 55cm high, 39cm wide, 24cm protuberance

£300-500



49

49  
A Louis Philippe Aubusson portière, mid-19th century, with musical trophies on a pink ground woven with flowers, within a picture-frame border, 299cm high, 107cm wide

£400-600

50  
A French walnut, gilt metal mounted and floral marquetry inlaid centre table, mid 19th century, the lobed oval top with panels of elaborate floral decoration above a single frieze drawer, cabriole legs with herm mounts, 77cm high, 128cm wide, 78cm deep

£800-1,200



50

51

A carved giltwood overmantel mirror, circa 1830, the rectangular plate contained in a rococo style surround decorated with pierced foliate and scroll decoration, 200cm high, 167cm wide

£1,000-1,500



51

52

A pair of French gilt bronze and white marble mounted chenets in Louis XVI style, possibly by Bouhon et Cie, late 19th century, each with a festooned Neoclassical urn cast with twin scrolled handles, berried finial and cavorting putti in relief, the elongated bases cast with further recessed relief panels, fruiting vine, lambrequins and a further, smaller urn, on toupie feet, 62cm high, 47cm wide, 20cm deep

This model was produced by the Parisian foundry of the Bouhon freres during the later 19th century. A pair of identical design save for the toleware base of the urn was sold at Christie's London, the Opulent Eye, 15 March 2012, lot 142

£600-800



52

53

A giltwood firescreen in Louis XVI style, late 19th century, with a shaped red floral panel above supports and scroll feet, 102cm high, 66cm wide, 40cm deep

£200-300



53





54

54

A silver shaped circular salver by Elkington & Co., Birmingham 1919, with a raised moulded rim, on three stepped pad feet, 36cm (14in) diameter, 1294g (41.6 oz)

£250-350



55

55

A graduated set of three late Victorian silver salvers by Sibray, Hall & Co., Sheffield 1894, retailed by Edward & Sons, Glasgow, shaped circular with a raised scroll rim, engraved with trellis panels and scroll foliage and a central unidentified crest, each on three scroll feet, 20cm (8in) to 30cm (12in) diameter, 1403g (45.1 oz)

£300-500



56

56

A silver shaped circular salver by Carrington & Co., London 1923, with a raised gadrooned rim, on pad feet, 37cm (14 1/2in) diameter, 1251g (40.2 oz)

£300-400



57

57

A silver shaped circular salver by Frank Cobb & Co. Ltd, Sheffield 1925, the raised everted rim stamped with patera, on three scroll feet, 31.5cm (12 1/4in) diameter, 902g (29 oz)

£250-300

58

A Victorian cut and moulded glass and silvered metal five light chandelier, last quarter 19th century, the corona mounted with volute scrolls, descending to a stem moulded with twist-fluted baluster and inverted baluster, with scroll arms supporting foliate cut drip pans, hung with beaded chains and faceted pendants overall, 140cm high

£600-800

59

A mahogany six pillar dining table in Regency style, of recent manufacture, the satinwood strung rectangular top on the six base sections, each with four cluster columns, outswept legs terminating in brass caps and castors, 73.5cm high, 161cm wide, approximately 964cm long overall

£2,000-3,000

60

A set of twelve Victorian mahogany dining chairs, circa 1880, each with a pierced carved rail, padded seat on turned legs

£600-1,000



58



59 (part lot)



60 (set of 12)





61 (part lot)

61

A Paris porcelain (J. Rihouet) part dessert service, circa 1830, decorated with scattered floral sprays, comprising: a pair of sauce tureens, cover and integral stands associated with the service; eight various comports and approximately eighty-four plates, iron-red printed marks for the Paris porcelain decorator J. Rihouet

£800-1,200

62

A Royal Worcester blue-ground and gilt part dinner service, date codes circa 1911, comprising: fifteen dinner plates; ten soup plates; twelve side plates; twenty breakfast plates; twelve crescent plates; a soup tureen, cover and stand; a two-handled pedestal fruit bowl; two oval vegetable tureens and four covers; three various oval meat plates; a pair of sauce tureens, covers and stands and eight graduated serving dishes in sizes, puce marks

£200-400



62 (part lot)



63 (part lot)

63

A Limoges porcelain part breakfast, dinner and dessert service with monogram, circa 1900, decorated with a pale-blue and gilt foliate band and with monogram CM, comprising: a salmon dish and drainer; a large vegetable/soup tureen; two smaller vegetable tureens and covers; a fruit bowl; two oval serving dishes in sizes; a spoon tray; a pair of double-lipped gravy boats with integral stands; and oval egg-cup stand and nine egg-cups; a small salt tureen, cover and integral stand; four soup-plates; twenty-two dinner plates; twenty-three breakfast/dessert plates; six coffee cups and ten saucers; a coffee pot; a sucrier and cover; a sauce-tureen, cover and integral stand; four high comports; three low comports and three various round serving dishes

£600-800



64

64

A modern Moser clear glass and gilt part table service, decorated with an acid-etched and gilt band of bells and anthemia, comprising: a decanter and stopper, 37cm high; a jug, 29cm high; eleven champagne cups, 11.5cm high; twelve white wine glasses, 16cm high and twelve red wine glasses, 18cm high: and a pair of Moser carafes similar, 30cm high, acid-etched Moser

£800-1,200





65

**65**  
A matched silver fiddle and thread pattern table service, various William IV makers and dates, comprising: Twelve table forks, Twelve table spoons, Twelve dessert forks, Twelve dessert spoons, Twelve tea spoons, A gravy spoon, A soup ladle, 5004g (160.9 oz);

Together with the following with silver handles and stainless steel blades by Terry Shaverin, Sheffield 2005: Twelve table knives, Twelve dessert knives, In a refurbished oak canteen box by Lambert

£1,500-2,500

**66Y**  
An impressive pair of Victorian silver and ivory fish servers by Mappin & Webb (John Newton Mappin & George Webb), Sheffield 1880, the blade and tines engraved with a kingfisher in reserves framed by scroll foliage, the ivory handles boldly carved with clams and a water snake entwining a fish, the slice 33cm (13in) long

£300-500



66



68

**68**  
A pair of late Victorian silver oval dishes by Charles Stuart Harris, London 1894, each with twin cast scrolling handles, a shaped rim, embossed with flowers divided by lobing, 26cm (10 1/4in) long, 1085g (34.85 oz)

£300-500



67

**67**  
A rare Victorian silver five piece novelty cruet set by Thomas Smily, London 1878, modelled as sea urchins with gilt interiors, the mustard pot with a lobed ball finial and twin S-scroll handles, 6cm (2 1/4in) high, the four salts 7.5cm (3in) diameter, in a leather covered case with four spoons by Thomas Smily, London 1878, 329g (10.55 oz)

This mustard pot was not represented in the catalogue of The Colman Collection of Silver Mustard Pots.

£300-500

69

A pair of Italian silver coloured models of partridges, maker's mark erased, .800 standard, probably 1960s, 15.5cm (6 1/8in) high and smaller, 1462g (47 oz)

£400-600



69



70

70

Asprey, a pair of silver models of pheasants by Asprey plc, London 1987, engraved Asprey Sterling England, 12cm (4 3/4in) high and smaller, 26.5cm (10 1/2in) long and shorter, 911g (29.3 oz)

£400-600



71

71

A silver model of an alarmed pheasant, maker's mark R.H.H (not traced), Sheffield 1924, the head detachable, the wings raised, 19cm (7 1/2in) high, 43cm (17in) long, 856g (27.5 oz)

£500-700





72

72  
A set of six George III silver  
navette pedestal salt cellars  
by Henry Chawner, London  
1791, with threaded top and  
foot rims, 9.5cm (3 3/4in)  
long, 374g (12.05 oz)

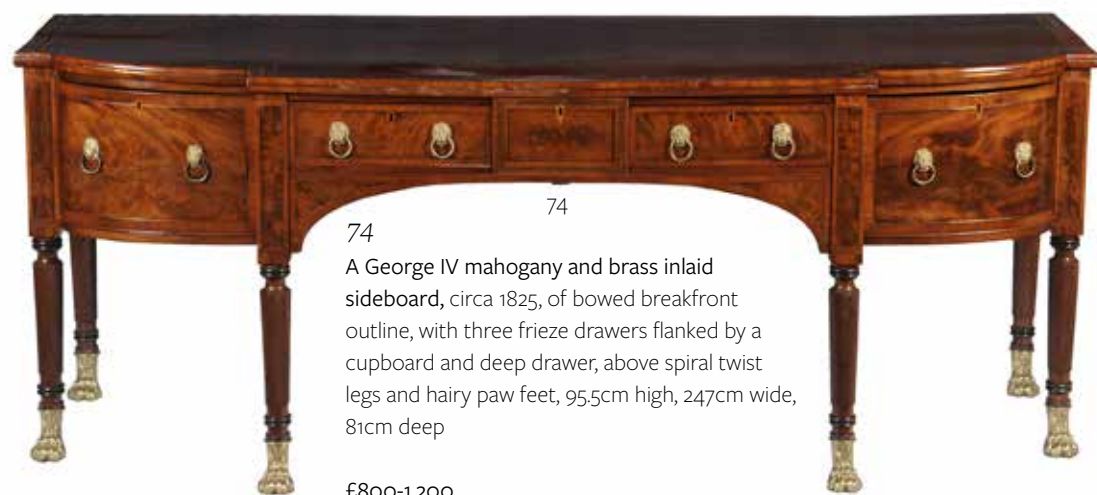
£150-200



73

73  
Two similar silver oval graduated vegetable dishes, one by Samuel Whitford, London 1869, engraved with a crest, 39cm (15 1/4in) long; the other by Frazer & Haws, London 1898, 34cm (13 1/2in) long, each with an oval loop handle bordered by gadrooning, the bases with a gadrooned rim, 2196g (70.6 oz)

£600-800



74

74  
A George IV mahogany and brass inlaid  
sideboard, circa 1825, of bowed breakfront  
outline, with three frieze drawers flanked by a  
cupboard and deep drawer, above spiral twist  
legs and hairy paw feet, 95.5cm high, 247cm wide,  
81cm deep

£800-1,200







75

**75**  
A Louis XIV Aubusson historical tapestry with Dido and Aeneas resting, last quarter 17th century, possibly after the designs by Giovanni Francesco Romanelli (Italian 1610-1662), depicting the lovers in a verdant landscape, the borders woven with acanthus overall, the top border centred by a Baronial coat of arms

This tapestry may depict an episode from the story of Dido and Aeneas, one of the tales from Ovid's *Heroides*, which revolved around legendary historical and mythological women and was a popular subject for tapestry weavers in France and Flanders alike.

A tapestry depicting this composition is in the collection of the Museo Piersanta, Matelica, Italy. That series is said to follow Romanelli's influential cartoons, which were most notably used for tapestries by the Flemish workshop of Michiel Wauters. A circa 1660 Aubusson tapestry of similar design in reverse is in the collection of the Museum of Decorative Arts, Prague.

£2,000-3,000

76

A French gilt bronze and glazed hall lantern in Louis XIV 'Versailles' style, late 19th century and later refitted, the inverted baluster frame inset with graduated panels and surmounted with a coronet finial, the glass bevelled, 84cm high, 33cm wide

£400-600



76



77

**77**

A pair of carved giltwood and gesso models of seated cherubs, each perched on a backplate of flowerheads and *rocaille*, 75cm high

£400-600

**78**

A Continental *Rosso di Levanto* and *Campan Rubané* marble pedestal, 19th century, the cylindrical stem descending to an octagonal section base, approximately 70cm high overall including associated square top and base

£250-350



78





79

79

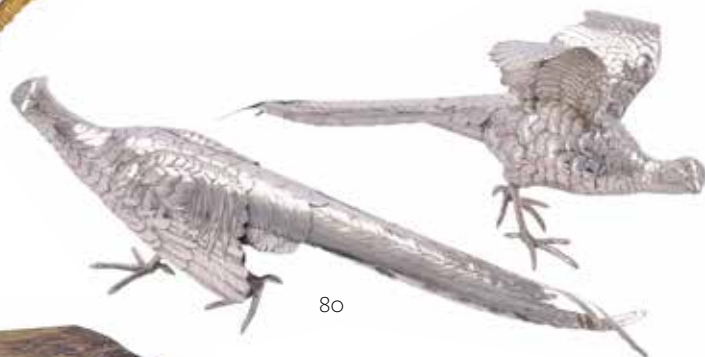
A Continental, probably French, gilt metal marginal wall mirror, late 19th century, the bevelled octagonal plate within marginal plates with leaf and scroll slip and pierced surmount, 104cm high, 69cm wide

£300-500

80

A pair of Continental silver large models of pheasants, pseudo marks, import marked for London 1909, one alarmed, the other glancing sideways, each approx. 50cm (19 1/2in) long, 1246g (40.05 oz)

£1,000-1,500



80



81

81

A walnut, marquetry inlaid, and gilt metal mounted commode in the Louis XV style, early 20th century, with a shaped marble top above two long drawers and cabriole legs, 84cm high, 85cm wide, 41cm deep

£500-700



82

82

A late 19th century French ormolu figural "chariot" mantel clock after the model by Frédéric-Eugène Piat, the eight-day countwheel bell striking movement stamped indistinctly \*R \*501, with slender white enamel Roman numeral chapter ring forming the rim of a six-spoke chariot wheel of the case "*Chérubins assis dans un char tiré par un tigre*", modelled as a Bacchic scene with seated satyr in leopard drawn chariot, attended by three putti, over a naturalistic scroll cast base signed "E Piat", the whole resting on conforming scroll mounted ebonised base, the case with Arrow foundry mark to underside of satyr's foot and stamped indistinctly also to interior of rear case door, 60cm high, 78.5cm wide

Frédéric-Eugène Piat (1827-1903) was artistic director of the Maison Marchand producing designs primarily in bronze for clocks, fireplace furniture, sculpture and fountains. Perhaps his most famous creation in association with Maison Millet Paris- was the "Grande Horloge"- a monumental clock in ormolu, bronze and Carrara marble standing 270cms high. The Saint-Loup museum of fine arts in Troyes, Champagne-Ardenne, holds the largest collection of his artwork and designs

£6,000-8,000







83

A giltwood and painted trumeau mirror, 19th century and later, with a shaped plate and a reserve painted with cherubs, 204cm high, 166cm wide

£600-1,000

84

A pair of French gilt metal nine light wall appliques in Louis XV style, last quarter 19th century and later refitted, each modelled as a ribbon-tied bouquet of lilies, 91cm high, 50cm wide, 33cm protuberance

£1,000-1,500

83

85

A set of four rubbed gilt fauteuils in Louis XV style, 20th century, each upholstered with Aubusson covers worked with Aesop's Fables, and on cabriole legs

£600-1,200



84



85



86

86

A substantial French gilt bronze and cut glass twenty-four light chandelier in Louis XV style, third quarter 19th century and later adapted, the cage frame and scrolling branches cast with foliage and rocaille, hung with shaped and faceted pendants and drops overall, approximately 120cm high

£2,000-3,000





87

87  
A pair of Aubusson tapestry window surrounds, early 20th century, each with bird in flight surmount above floral scrolling sides, claret red field, each approximately 388cm drop, 206cm wide; each mounted on associated giltwood and red velvet mounted scrolling pelmets, 40cm high, 223cm wide (4)

£2,000-3,000



88

A silver display basket by Martin, Hall & Co., Chester 1911, the fixed Staffordshire knot handle and rim of ovolo and beads, the pinched oval basket pierced with bands of bell flowers, the spreading foot bar pierced, 29cm (11 1/2in) high, 536g (17.25 oz)

£150-250

89

A pair of gilt metal and cut glass two light candelabra, the glass first quarter 19th century, the mounts later, the strawberry cut ovoid bodies surmounted with branches cast as lilies, 38cm high

£200-300



89



88

90

A near pair of mahogany and satinwood banded card tables in George III style, early 20th century, each of semi-elliptical outline, approximately 75cm high, 84cm wide, 42cm deep

£600-800



90







91 (one of a pair)



92



93

91

A pair of Chinese canton enamel basins for the Middle Eastern market, 19th century, each decorated with Arabic script on a blue ground, 46cm diameter

£250-350

92

A pair of Cantonese porcelain and gilt metal mounted twin handled tazzas, circa 1900, 22cm wide overall

£100-150

93

Assorted ceramics, various dates 19th/20th centuries, comprising: a Dresden porcelain quatrefoil cup and saucer, decorated with Watteauesques, a Continental porcelain mug with spurious Rockingham porcelain factory mark, 11.5cm high; a pair of Derby Crown Porcelain Company baluster vases and covers, 20.5cm high; and twelve Cauldon China Sevres style coffee cups and saucers retailed by Harrods

£50-80

94 Y

A French kingwood and gilt metal mounted vitrine, circa 1880, of serpentine outline, the arrangement of glazed shelves enclosed by a pair of glazed doors, 211cm high, 125cm wide, 43cm deep.

£1,500-2,500



94

95

Late 19th century Italian School

A pair of river capriccios in the 18th century manner, Oil on canvas in glazed front and reverse mounts, Images 125 by 55cm

£300-500



96



95 (one of a pair)

96

A pair of Japanese lacquer and gilt metal mounted pot pourri urns and covers, 20th century, the burgundy ground bodies mounted with pierced rims and covers, descending to conforming bases on scroll feet, each 18cm high

£100-200



97

97Y

A French rosewood, amboyna, and box strung lady's writing table, late 19th/early 20th century, with floral marquetry panels throughout, the curving superstructure with arrangement of drawers and shelves, the slide above three frieze drawers on gilt metal mounted cabriole legs, 93cm high, 77cm wide, 53cm deep.

£600-1,000

98

A French celadon glazed porcelain and gilt metal mounted oil lamp, later 19th century, the bottle form celadon glazed body mounted with twin scroll and mask handles, approximately 72cm high overall including floriform frosted glass shade

£200-300



98





99

An amboyna linen press in George III style, late 19th century, with broken scroll pediment above a pair of panelled doors enclosing a hanging rail, the base with two short and two long drawers and bracket feet, 245cm high, 133cm wide, 62cm deep

£600-800

99



100 (one of a pair)



101

100

A large Victorian and later giltwood pelmet, with scrolling ornament above moulded frame, approximately 263 cm wide, 28cm high; and two smaller pelmets, 124 and 133cm wide (one reduced) (3)

£400-600

101

A Victorian silver large dressing table mirror by Frederick Brasted, London 1881, rectangular with a shaped arch top pierced and embossed with a lyre flanked by birds and putti, the sides with classical maidens, the base with an oval cartouche flanked by putti and floral swags, engraved with a cypher CC tied with an earl's coronet, ebonised wooden easel back, 63.5cm (25in) high

£300-500

102

A Victorian silver oblong table box by Louis Dee, London 1882, the cover chased with a vacant centre, fruit in square, a strapwork band and devil masks, the first plain, 24cm (9 3/8in) long; and a late Victorian plain novelty vesta case by Joseph Braham, London 1896, in the form of a matchbox, 8.5cm (3 1/4in) long, 759g (24.4 oz) (2)

£300-400



102





103  
A set of six Edwardian silver coffee cup holders by Mappin & Webb, London 1907, scroll pierced, with inserts and saucers in blue and gilt by Royal Worcester, in a fitted case by Mappin & Webb, 202g (6.5 oz) weighable

£100-150



105  
A Victorian mahogany Canterbury, circa 1880, the carved scroll dividers above a single frieze drawer and turned bulbous legs terminating in brass caps and castors, 51cm high, 44cm wide, 35cm deep

£300-500

106  
A late Victorian silver columnar table lamp by Walker & Hall, Sheffield 1901, with a leafy knop, a classical urn capital, a square tapered fluted column, the square spreading base with drapery swags, beaded and nulled borders, 48cm (19in) high excluding fitment and shade

£300-500



104  
A Victorian upholstered armchair, late 19th century, with pale blue and blossom pattern upholstery, on turned tapering legs.

£400-600



106

107

A late Victorian silver cartouche shaped mirror by Samuel Jacob, London 1898, headed by a quatrefoil reserve, pierced and embossed with scroll foliage and cherub's heads, blue velvet covered easel back, 25cm (9 3/4in) high

£120-160

108

Two silver heart shaped photograph frames, the first late Victorian by William Comyns & Sons, London 1899, headed by a vacant reserve, pierced and embossed with cherubs, flowers and scroll foliage, black fabric cover easel back, 33cm (13 1/2in) high; the second Edwardian by Deakin & Francis, Birmingham 1904, headed by a vacant reserve, pierced and embossed with rocaillework and scroll foliage, leather covered easel back, 33cm (13 1/2in) high (2)

£200-300



107



108

109

A pair of George III mahogany side tables, circa 1800, of semi-elliptical outline, each with a plain frieze and square tapering legs terminating in caps and castors, 82cm high, 146.5cm wide, 71cm deep

£700-1,000



109





110

110

A Continental gilt-metal beaded and cut-glass chandelier, late 19th/early 20th century, possibly Italian, of bag form, hung with beaded clear and amethyst glass chains overall, enclosing light fittings, approximately 90cm high

£400-600



111

111

A French carved giltwood and gesso wall mirror, late 19th century, of large proportions, the oval shaped plate contained within a foliate 'c' scroll surround, 188cm high, 196cm wide.

£700-1,000

112

A French carved giltwood vitrine, circa 1920, with scroll cresting and cherub mask, 174cm high, 80.5cm wide, 46cm deep

£300-400



112



113

113

A French ormolu and white marble figural mantel clock in Louis XVI style, Grohé Freres Paris, late 19th century, with eight-day bell striking movement with outside countwheel stamped with Japy Frères roundel to backplate, the circular white enamel Roman numeral dial inscribed Grohé, A Paris to centre behind hinged glazed bezel, the case cast with a figure of Amor seated with a dove and scribing onto a scroll resting over the dial, above a white marble oval base mounted with a laurel cast band, 44.5cm high, 48cm wide

Provenance: probably purchased Christie's London lot 210, 1 November 2001, £7,050 (inc. premium).

Guillaume & Jean-Michel Grohé went into partnership in 1829 and formed the atelier "Grohé Frères" in 1847. They went on to supply the highest quality furniture, furnishings, clocks and bronzes to European royalty including Prince Albert at the Paris Exhibition of 1855.

£3,000-5,000





114

114

A French engraved clear glass and gilt metal mounted twin-handled pedestal punch bowl and cover, last quarter 19th century, 40cm high; a cut and engraved glass wine cooler, 20th century, with twin mask handles, 23cm high; and a circular glass and gilt metal box and cover, early 20th century

£300-500

115

A pair of gilt brass and four light candelabra fitted as table lamps, 20th century, in Louis XV style, the slender frame hung with clear, amethyst and pale amber tinted glass beads and drops overall, 61cm high

£250-350



115



116

116

A French painted side table, circa 1860, with single frieze drawer raised on slender cabriole legs, 75cm high, 84cm wide, 54cm deep

£200-300



117



117

A French carved white-painted salon suite in Louis XV style, 19th century, with Aubusson style upholstery depicting figures in bucolic landscapes and hunting scenes, comprising: a canape, 107cm high, 194cm wide, 70cm deep overall, and six armchairs, all with cabriole legs (7)

£2,500-3,500





118

118

A French porcelain Sevres-style gilt-metal mounted oval wall-plaque, late 19th century, mounted within a gilt-metal frame, 55cm x 38cm

£300-500

119 Y

A near pair of Louis Philippe palisander and kingwood jardinières, circa 1840, each with lobed top with cover, the frieze applied with Sevres style porcelain mounts painted with flowers and on shaped scrolling supports, 79cm high, 55cm wide, 40cm deep (2)

£1,000-1,500

120 Y

A French kingwood, Sevres style porcelain and gilt metal mounted vitrine, circa 1870, the arched cornice above a glazed panelled door enclosing velvet lined shelves, and above a drawer, raised on bracket feet, 233cm high, 109cm wide, 43cm deep

£2,000-3,000



119



120





121

**121**  
A French Sevres style porcelain and gilt metal mounted clock garniture Japy Frères, second half 19th century, the eight-day bell striking movement with roundel and serial number 229 to backplate, the case surmounted by cherubs, 36cm high, the garniture, of twin light candelabra, each 29cm high, all on parcel giltwood and blue painted platform bases, (3)

£1,500-2,500



122

**122 Y**

A matched Victorian silver four piece baluster tea and coffee service, the three piece by Elkington & Co., London 1880, the coffee pot by Martin, Hall & Co., London 1890, the tea and coffee pots with lobed bun finials to the almost flat covers, bead rimmed capes, leaf-capped reeded loop handles, engraved with a band of foliage, reeded at the bases, on collet bases, the tea pot 24.5cm (9 3/4in) long, the coffeepot 19cm (7 1/2in) high, 2085g (67.05 oz) gross

£500-800

**123**

Two silver shell dishes, one an Edwardian basket by Atkin Brothers, Sheffield 1903, embossed with flowers, a vacant reserve to the handle, flowers and lobing, on three reeded ball feet, 20.5cm (8in) long; another similar plainer, maker's mark RG (not traced), London 1994, with a shell handle, on three lobed paw feet, 24.5cm (9 5/8in) long, 624g (20.05 oz) gross

£150-250



123

**124**

A pair of satinwood and polychrome painted side tables in George III style, of recent manufacture, decorated after the manner of Seddon, Son & Shackleton, each with shaped top above square tapering legs, each 78cm high, 88cm wide, 44cm deep

£700-1,000



124





128 (part lot)

125

An Edwardian silver small circular dressing table mirror by Mappin & Webb, London 1907, plain with an embossed scroll border, blue velvet covered easel back, 29cm (11 1/4in) diameter

£150-200

126

An Edwardian silver long rectangular glove or trinket box by Mappin & Webb, London 1909, plain with a scroll and foliate border to the cover, later green velvet lined, 34cm (13 1/2in) long, loaded

£150-250



127



125

127

An Edwardian mahogany bowfront corner wardrobe, circa 1905, the door with an oval panel, 197cm high.

£100-150

128

Two pairs of pearlescent orange red silk curtains, modern, each approximately 280cm high, 240cm wide at the ground, one modern pelmet hung with similar material with tasselled drapes, 75cm wide; three orange red silk bag drapes and a set of eight red silk bag drapes (16)

£700-1,000



126

129

An early Victorian silver rectangular inkstand by Edward, Edward junior, John & William Barnard, London 1838, the to cut glass well covers and the base with gadrooned rims, on four scroll outlined bracket feet, 20cm (8in) long, 358g (11.5 oz)

£150-200



129



130

130

An Edwardian silver novelty desk timepiece by Grey & Co., London 1905, with a keyless wind open face pocket watch, unsigned, the nickel case 5cm diameter, the padlock shape case on four short feet, 11cm (4 1/4in) high

£100-150

131

An Edwardian mahogany, satinwood crossbanded, and inlaid Bonheur du jour in George III style, circa 1905, the superstructure with shelf and an arrangement of drawers, above the writing surface and further drawer, stamped H. Mawer & Stephenson, 118cm high, 72cm wide, 52cm deep.

H.Mawer & Stephenson are listed in The Dictionary of English Furniture Makers, FHS and Maney, 1986, though no address is recorded. It is probable that the company were furniture brokers and depositories rather than makers.

£300-500



131





132

132

A French gilt bronze and frosted glass electrolier, late 19th century, with downcast foliate scrolled arms terminating in bell shades and issuing around a central stem cast with foliate and swagged cartouches inset with frosted glass panes moulded with trophies, approximately 140cm high, 105cm wide

£700-1,000



133

133

A pair of Royal Worcester ivory-ground pot-pourri urns and covers signed and painted with flowers by *W. Hale*, puce factory marks, date code for 1909, shape number 1428, 30cm high

£400-600

134

An Edwardian painted satinwood occasional work table, circa 1905, with hinged top enclosing a fitted interior and decorated with floral swags and a music trophy, the square section legs united by an undertier, 73cm high, 40.5cm wide, 35cm deep

£150-250



134

135

A Royal Worcester claret-ground and gilt coffee service for six, in a fitted case with silver spoons, date codes for 1925, the spoons hall marked for London 1925

£100-150



135



136

136Y

A Victorian silver tapered coffee pot by Daniel & Charles Houle, London 1863, with a button finial to the flat hinged cover, a high angular handle with ivory spacers, engraved with decorative oval reserves, a monogram and dated June 14th 1921, 21.5cm (8 1/2in) high, 763g (24.55 oz) gross

£200-300

137

A Victorian silver shaped oval basket by William & Henry Stratford, Sheffield 1861, the pierced swing handle centred by a vacant reserve, the bead and baton rim with flower reserves at intervals, engraved with scroll foliage and a crest, on four scroll foliate bracket feet, 32cm (12 1/2in) long, 699g (22.5 oz)

£200-300



137





138

138

A cut glass and gilt metal mounted ceiling light, modern, the rope-twist ceiling supports descending to a bag-form body, suspending a further tier of pendants, approximately 45cm high, 57cm wide; and another, similar, smaller

£200-300

139

A French parcel giltwood trumeau wall mirror, late 19th/ early 20th century, the rectangular frame inset with an oval print of figures by a river, above the rectangular plate, 193cm high, 81cm wide

£400-600

140

A Louis XV carved giltwood and painted sofa, circa 1760/1780, upholstered in orange silk damask and raised on cabriole legs. 191cm wide overall.

£800-1,200



139



140



141

141

A French porcelain Sevres-style turquoise-ground tête-à-tête cabaret tea service, third quarter 19th century, comprising: a teapot and cover; a sucrier; a milk jug and two cups and saucers, Sevres style marks

£1,000-1,500

142Y

An Edwardian mahogany and marquetry inlaid side table, early 20th century, of kidney outline, with frieze drawer and on cabriole legs, 71cm high, 59cm wide, 43cm deep, together with a French rosewood and inlaid two tier occasional table, in 19th century style, 73cm high, the shaped circular top 47.5cm diameter (2)

£300-500



142 (part lot)





143

143

A pair of French green serpentine marble and gilt metal mounted table lamps in Louis XVI style, early 20th century, the fitments rising from swagged urn form bodies applied with twin rams' masks, above waisted and foliate cast socles descending to circular bases inset with beading and foliate panels, raised on toupie feet, 58cm high to top of fitment, 77cm high including shade

£500-700

144 Y

A French kingwood and marquetry inlaid secretaire a abattant, in Louis XV style, late 19th century, the fall enclosing a fitted interior, 135cm high, 71cm wide, 38cm deep

£700-1,000



144



145

145

Eugène Modeste Edmond Le Poitevin  
(French 1806-1870)

*Fishermen hauling a boat*

Oil on canvas

Signed and dated 1856 lower right, inscribed to the  
stretcher verso

68 x 115cm (26¾ x 45¼ in.)

£1,500-2,500

146 Y

A kingwood and gilt metal mounted commode, 18th  
century and later, of bombe outline, the serpentine  
marble top above three short and two long drawers  
raised on splayed feet, 88cm high, 125cm wide, 62cm deep

£3,500-5,000



146





147

Two simulated bronze models of Oliver Goldsmith and Edmund Burke after J. H. Foley RA (1818-1874), by Genesis Fine Arts, modern, portrayed standing, stamped to square socles, from an edition of 1000, 51 and 50cm high respectively

£150-250



148

148

An unusual gilt metal and marble "water well" timepiece, 19th century, with an eight-day movement and white enamel dial inscribed Burt & Escare London, the movement suspended above a marble wishing well with simulated brickwork and raised on a platform base with urns to the angles, 44cm high overall

Burt, Escare & Denelle are recorded as being glass, lighting and bronze manufacturers based in Wardour Street, London.

£600-1,000

149

A late George III mahogany and box strung secretaire bookcase, circa 1800, the swan neck pediment above a pair of astragal glazed doors, fitted secretaire drawer and a pair of cupboards, on square tapering feet, 227cm high, 115cm wide, 50.5cm deep

£300-500



149

150

An extra large silver and cut glass inkwell by Martin Hall & Co. Ltd, Birmingham 1912, with a plain domed hinged cover and collar, on a variously cut domed body, 15cm (6in) high, the base 25cm (10in) diameter

£300-500



150

151

A silver twin handled drinks tray by C. W. Fletcher & Son Ltd, Sheffield 1933, rectangular with inset curved angles and with a raised moulded rim, 46.5cm (18 1/4in) long, 1097g (35.25 oz)

£250-350



151

152

Two Victorian silver mounted clear glass decanters, the taller by Hukin & Heath, London 1888, plain mounts in the manner of Christopher Dresser, the body wrythen moulded, 212cm (8 3/4in) high; the second with a pierced foliate thumbpiece to the flattened dome cover, the plain collar with beaded rims, on a globe and shaft body, 22cm (8 1/2in) high (2)

£200-300



152





153

153

After Sir Edwin Henry Landseer

*The Death of a Stag in Glen Tilt*

Oil on canvas

62.4 x 74cm (24½ x 29 in.)

After the original by Sir Edwin Henry Landseer of c.1824-1830 exhibited at the Royal Academy in 1830, no.313, by descent in the Collections of the Dukes of Atholl. Depicted in *The Death of a Stag in Glen Tilt* is John Murray, 4th Duke of Atholl (1755-1830), George Augustus Frederick John Murray, 6th Duke of Atholl (1814-1864), Charles Crerar (active 1824-1843), Head Keeper to the 4th Duke of Atholl, John Crerar (died 1843) and Donald McIntyre.

154 λ

Camilla le May (British, 1973), a patinated bronze model of Sefton, the horse naturalistically modelled, inscribed SEFTON and Camille le May edition 3/20 to the maquette, 32cm high, 39.5cm wide overall including black slate base

£400-600



£500-700

154



155

155

A Regency Goncalo Alves work table, circa 1820, in the manner of Gillows, with twin dropleaf top above pair of drawers and opposing false drawers, on turned tapering legs terminating in brass caps and castors, 73.5cm high, 75.5cm wide (open), 52cm deep

£600-1,000



156

156

A carved giltwood wall bracket, the semi-elliptical platform supported on Prince of Wales feathers, 21cm high

£80-120



157

157

A pair of armchairs from the investiture of the Prince of Wales, 1969, designed by the Rt Hon. the Earl of Snowdon, Carl Toms and John Pound, each red stained beech back gilt indented with Prince of Wales's feather motif, the seat upholstered in red Welsh tweed, stamped to underside, 77.5cm high, 54cm wide

The investiture of the current Prince of Wales was held at the Medieval Caernarfon Castle on 1st July 1969, following the ceremony the chairs were dismantled and offered for sale 'flat-pack', the attendant guest then had first refusal on their purchase, the remainder being offered to the public. The 1st Lord Snowdon, who orchestrated the ceremony, purchased six for himself.

£600-1,000





158

**158**  
A set of four George IV silver circular coasters by Sebastian Crespel II, London 1820, later converted to a pair of decanter wagons, additions marked for London 1885, with nulled rims, shell and scroll foliate pierced panels, the turned wood bases with bossed engravings with a crest, each coaster on three silver casters, 31cm (12 1/4in) long, loaded

£1,500-2,500

**159**  
A late Victorian silver hexalobed salver by Charles Boyton II, London 1895, the raised nulled rim with foliate accents, embossed husks to the incurve, engraved with a band of fruit roundels within scrollwork, on three ball-and-claw feet, 40cm (15 3/4in) diameter, 1537g (49.45 oz)

£300-400



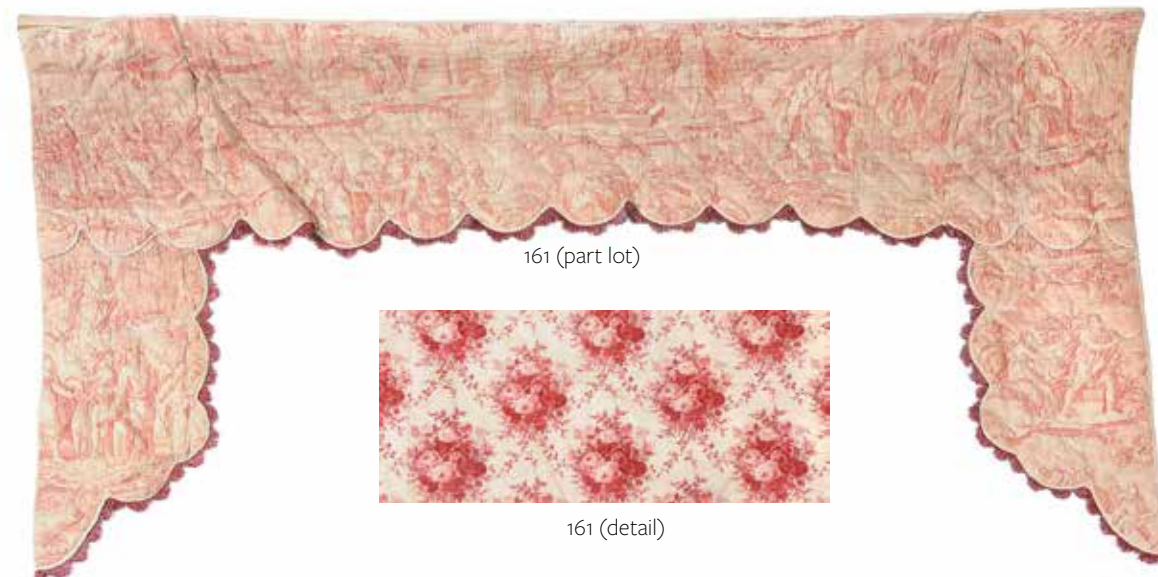
159



160

**160**  
An George IV Irish mahogany sofa table, circa 1825, by Gillingtons, Dublin, the twin drop-leaf top above a pair of frieze drawers and opposing false drawers to each long side, and on spiral turned legs terminating in foliate caps and castors, stamped and numbered GILLINGTONS 3068, 78cm high, 151cm wide, 76cm deep

£700-1,000



161 (part lot)

161 (detail)

**161**  
Two pairs of printed silk damask curtains, modern, each decorated with scrolling red "Redoute" roses on a cream ground, each approximately 247cm high, 188cm wide at the ground; together with two pairs of tied backs and a rosette, and an associated toile de Rouen figural decorated pelmet with another similar drape (curtains with Christies auction label, lot 64, 12-2-1998) (11)

£800-1,200

**162 Y**  
A George IV rosewood and brass inlaid cupboard or dwarf linen press, circa 1825, in the manner of Gillows, with a moulded rectangular top above a pair of panelled doors concealing slides, on carved lion paw feet, 153cm high, 110cm wide, 52cm deep.

£1,500-2,500



162





163

A French pastoral tapestry fragment, mid-18th century, loosely in the style of Oudry, depicting a flamboyant male figure in a rustic landscape, within a floral border, 267cm high, 103cm wide

£100-150

163



164

164

A French gilt and patinated bronze mantel clock, mid-19<sup>th</sup> century, the eight-day countwheel bell striking movement with stamped oval *GARDIEN, PARIS* trademark to backplate, set within a patinated bronze sphere applied with gilt Roman numerals and with serpent hands beneath surmount cast as a young seated Bacchus, on fluted socle base adorned with fruiting vine leaves and rococo scrolls, 36cm high

£500-700

165Y

A French kingwood and parquetry bureau, late 18th century, the fall enclosing a fitted interior and above an arrangement of three short drawers, on cabriole legs, 93cm high, 82cm wide, 45cm deep

£300-500



165



166

166

A substantial gilt bronze twenty-five light chandelier in Louis XV taste, circa 1900, the arms arranged in two tiers surrounding a frame cast with rocaille, foliage and putti overall, approximately 100cm high, circa 107cm wide

£2,000-3,000





167

167

A large and impressive giltwood mirror, early 20th century possibly originally a picture frame, now with arched plate within gilt frame boldly carved with fruit, flowers and foliage, approximately 287cm high, 195cm wide

£2,500-3,500



168

168

A pair of gilt metal and cut glass six branch wall appliques in Louis XV style, late 19th century, the scrolled branches issuing from cartouche backplates, hung with cut glass pendants overall, approximately 60cm high, 50cm wide, 37cm protuberance

£700-1,000



169

A pair of French giltwood bergeres armchairs in Louis XV style, each with a padded back and seat, the moulded frame carved with shells and foliage, 108cm high, 71cm wide, 76cm deep

£1,000-1,500



169







170

170

A French Sevres-style porcelain and gilt bronze mounted twin-handled pedestal centrepiece, second half 19th century, of navette form, the pink ground lustrous body painted with figural scenes in the style of Boucher, depicting a fishing amorino and a reclining maiden respectively, mounted with twin caryatid handles, the body signed A. Collot, approximately 46cm high

£400-600

171

A French walnut and gilt bronze mounted side cabinet, early 20th century, of reverse breakfront form, with a pair of panelled doors flanking a pair of doors with grilles and cabriole legs with leaf cast mounts, 178.5cm high, 221cm wide, 61cm deep

£700-1,000



171

172

A set of eighteen Scottish silver old English thread pattern fruit knives and forks by Hamilton & Inches, Edinburgh 1911, 1368g (44 oz), in a mahogany case from Hamilton & Inches

£300-400



172



173

173

A French porcelain Sevres style tête-à-tête part tea service, mid 19th century, decorated with a band of floral wreaths within a pair of blue and gilt ribbon bands, comprising: a teapot and cover; a milk jug; two cups and saucers and a sucrier and cover, interlaced 'L's' marks

£600-800

174 Y

A French rosewood banded and parquetry occasional table, early 20th century, the tray top with brass edge and flanking handles, 56cm high overall, the tray 77cm x 48cm; and another similar, plainer (2)

£150-250



174





175

175

A Limoges porcelain (Theodore Haviland) monogrammed part dinner service, early 20th century, sparsely decorated with a gilt-line rim, gilt SC monogram and moulded in relief with a floral border, comprising: three high comports; two low comports; a soup tureen, cover and stand; a vegetable tureen, cover and stand; a fruit bowl; three various shaped round serving dishes; a double-lipped sauce tureen and integral stand; a cream tureen and cover with integral stand; three oval spoon trays; eleven soup plates; thirty-two dessert plates and forty-two dinner plates

£400-600

176

A French cream and blue painted extending dining table, late 19th century and later, the shaped rectangular top, with additional leaf extensions to each end, on cabriole legs united by stretchers, 75cm high, 104cm wide, 137cm long (unextended), approximately 354cm long (fully extended).

£600-1,000



176

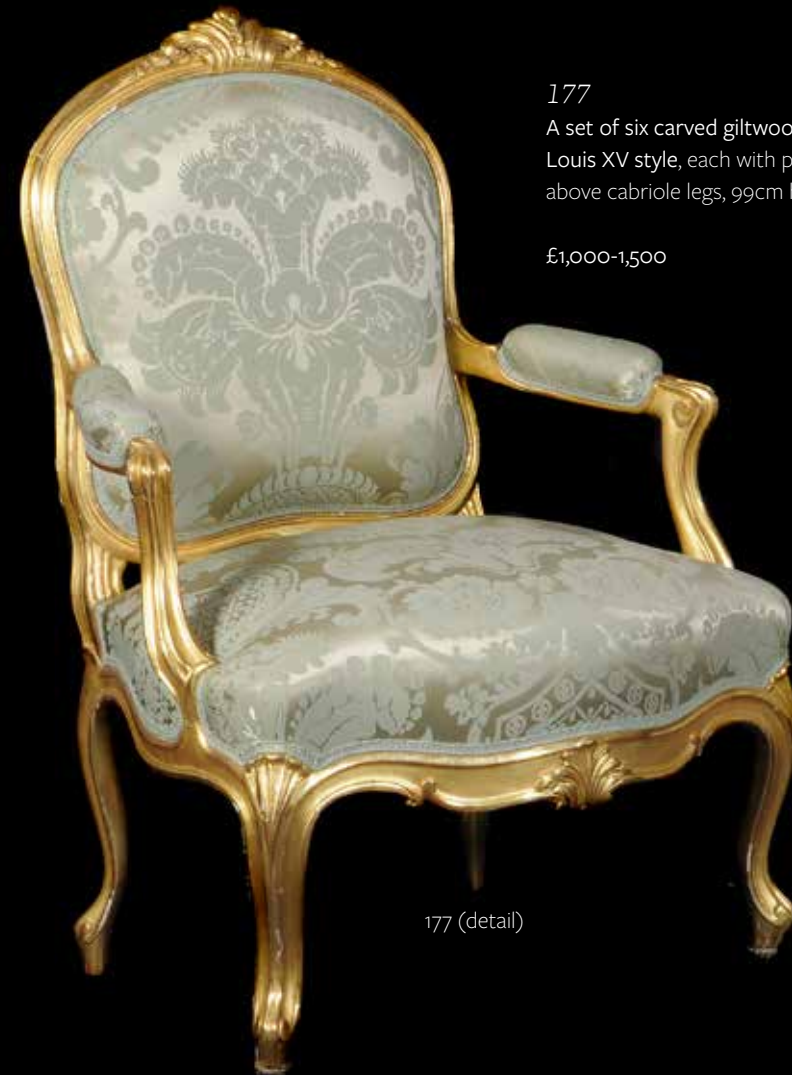


177

177

A set of six carved giltwood and upholstered fauteuils in Louis XV style, each with padded back, seat and open arms above cabriole legs, 99cm high, 70cm wide, 65cm deep (6)

£1,000-1,500



177 (detail)





178

**178**  
A matched set of six late Victorian and Edwardian silver holders by William Comyns & Sons, London 1892 (2), 1893 (3) and 1900 (2), pierced and embossed with flowers and C-scrolls, 9cm (3 1/2in) long, 178g (5.7 oz)

£200-300



179

**179**  
A matched suite of three Edwardian silver oval dessert baskets, by Carrington & Co. (2) and by, C. S. Harris, London 1906, the shaped rims chased with C-scrolls and flowers, the sides pierced and engraved with C-scrolls and flowers, vacant oval reserves, a C-scroll foot rim and each on four chased flower feet, one 28cm (11in) long, two 19cm (7 1/2in) long, 1487g (47.8 oz)

£400-600



180

**180**  
A giltwood tabletop jardinière, mid-19th century, of shaped D outline, liner within frieze with floral carved decorations, on later ball castors, 30cm high, 64cm wide, 26cm deep

£200-300



181

**181**  
A Portuguese silver coloured novelty large duck tureen or box, Oporto 1985-2015 .925 standard, naturalistically modelled standing, with a crossed feathers handle to the lift-off cover on its back, 31cm (12in) high, 33cm (13in) long, 1695g (54.5 oz)

£1,000-1,500





182

182

Two similar French giltwood wing armchairs, late 19th century, with open arms and upholstered in a pale cream and pink stylised foliate fabric, cabriole legs

£800-1,200

183

A pair of Continental mottled pink marble and gilt bronze mounted columns, 20th century, each with a Corinthian order capital and stepped square section plinth, 84cm high (2)

£300-500

183

184Y

A French rosewood, Boulle and ormolu mounted bracket clock, 18th century and later, with eight-day movement striking on two top bells, signed to the backplate and the enamelled Roman numeral dial inscribed to the centre Guillemin A Paris, the ornate case with surmount of woman holding a viola, above glazed main case with applied dragons and scrolling foliage mounts on dolphin feet approximately 117cm high, 53cm wide overall

Provenance: Christie's  
London lot 217,  
27 April 2010,  
sold for £3,750  
(inc. premium)

£1,000-1,500







185

185

A Continental gilt metal and glazed hall lantern, late 19th century and refitted, the ovoid frame cast with recessed foliage and inset with moulded cabochons and bowed oval panes, 65cm high excluding chain

£400-600

186

A pair of French carved two tone giltwood marginal wall mirrors, mid-19th century, each surmounted by a mask and urn above the arched plates, 134cm high, 88cm wide

£800-1,200

187

A pair of painted oak columns in the Ionic order, 18th century and later, each with scrolling gilt capital above a stop fluted tapering column, slight height variance- the taller 203cm high

£700-1,000



187



186



188

An Aubusson 'seaport' genre tapestry, in the manner of designs by Joseph Vernet (1714-1789), second half 18th century, depicting a Levantine man holding a pipe to another man's mouth, beside further seated figures, the maritime background with a ship and a turret, within a picture frame border, 217cm high, 171cm wide

For two Aubusson panels with similar compositions after Vernet's 'Marines', please see Sotheby's New York, 27 April 2007, lot 55

£1,000-1,500



188



189



189

A pair of French biscuit and glazed porcelain figural frill vases, late 19th century, modelled with a huntsman and companion, 36cm high

£100-150

190 Y

A French kingwood bureau, late 18th Century, with hinged fall, drawers and cupboard doors below enclosing safe compartments and drawers, on cabriole legs, 103cm high, 95cm wide, 50cm deep

£400-600



190





191



191 (detail)

191

A French Empire ormolu mantel clock, early 19<sup>th</sup> century, the eight-day countwheel bell striking movement with silk pendulum suspension and circular white enamel Roman numeral dial with blued steel *moon* hands within a leaf milled bezel, the rectangular architectural case with surmount cast as Amor seated bathing his feet next to a cheval mirror over foliate fluted pilasters flanking dial with applied foliate scroll infill to upper quadrants and conforming relief-cast figural panel, on leaf cast skirt base with disk feet, 46cm high, 25cm wide

£1,000-1,500



192

192 Y

A French tulipwood and floral inlaid and gilt metal mounted secretaire, early 20<sup>th</sup> century, with rising mechanism above a long drawer and cabriole legs, 94cm high (when risen), 76cm high (as a commode), 78cm wide, 50cm deep

£500-700



193

193

A cut glass and gilt metal eight branch chandelier in Charles X taste, 20<sup>th</sup> century, loosely of trumpet form, the corona cast with acanthus leaves suspending chains cast with masks and rosettes, descending to a circlet cast with seated *amorini*, urns and swags, hung with beaded chains and oblong pendants overall, 100cm high

£1,500-2,500

194

A extensive blue damask window suite, modern, comprising a pair of curtains, woven with trailing foliage and ribbons in muted gold on a night blue ground, each approximately 378cm high, 620cm wide at the ground; **together with a window surround**, approximately 215cm wide; **a pair of drape sections**, each of demilune form, approximately 115cm wide, 133cm high (5)

£1,500-2,500

195

A pair of gilt framed fauteuils in the Louis XVI style, 20<sup>th</sup> century, gilt upholstery within floral carved frames

£400-600



195

194 (pair of curtains)





196

196  
A pair of Charles X gilt bronze three light wall appliques, circa 1820, the reeded nozzles above drip pans cast with petals, raised on scrolled branches cast with acanthus and flowerheads, issuing from a conforming openwork backplate cast with central rosette, 28cm high, 25cm wide, 16cm protuberance

£300-500

197  
A Sèvres-style porcelain blue-ground and gilt-metal mounted three-handled pot pourri urn and cover, late 19th century, painted with Watteauesque and landscape panels, cover with spurious interlaced 'L's' mark, 66cm high

£800-1,200



197

198  
A pair of Empire style marble gilt metal and blue lacquered pedestals, early 20th century, each with square Verde Antico marble top raised on a column decorated with spiral floral ornament, descending to canted square section platform base, 114cm high, tops 32cm square

£500-700



198



200

199  
A French mahogany and gilt metal mounted secretaire in Louis XVI style, early 20th century, with a japanned fall front enclosing small drawers on square section supports joined by an undertier, 124cm high, 60cm wide, 41cm deep

£600-1,000



199

200Y  
A French gilt metal and tortoiseshell timepiece in early 19th century style, circa 1900, with an eight-day single train movement with replaced platform escapement and floral garland decorated Arabic numeral dial, in a lyre-shaped case with cherub cast surmount and dolphin supports over an oval brass inlaid tortoiseshell base, 32cm high

£500-700

201  
A French Sevres-style pottery and gilt metal mounted casket, late 19th century, the hinged cover painted with 17th century equestrian figures, 12cm high, 33cm wide, 22cm deep

£200-300



201





202  
A French Empire style gilt wall clock and barometer en-suite, late 19<sup>th</sup> century, the clock with eight-day two train gong striking movement and 10 inch circular verre eglomise Roman numeral dial inscribed *MOUTON A VERSAILLES* to the rosette decorated centre, the barometer with conforming dial calibrated for barometric inches and with weather observations annotated in French, each in gilt gesso square picture frame type case with palmette and scroll relief infill to spandrel areas, each 61cm square (2)

£600-800

203  
A Paris porcelain Empire-style green-ground and gilt part coffee service, mid 19<sup>th</sup> century, painted with panels of floral bouquets, comprising: a sucrier and cover, a slop bowl, a coffee pot and an associated cover\* and eight coffee cans and saucers



£300-500



204  
A William IV mahogany side table, circa 1835, with two frieze drawers later stamped by *Edwards & Roberts* above reeded tapering legs, 74cm high, 101cm wide, 57cm deep

£500-800



205  
A William IV giltwood and composition overmantel mirror, circa 1835, with rope-twist decoration surrounding the triptych plates, 172cm wide

£500-700



206  
A pair of French *Brocatelle* marble and gilt metal mounted urns in Louis XVI style, late 19<sup>th</sup>/early 20<sup>th</sup> century, each festooned oval body with a berried finial, pierced top and twin rams' masks, the circular socles descending to further square bases, 46cm high overall

£500-700

207  
A pair of French ebonised and gilt bronze mounted pedestals, late 19<sup>th</sup>/early 20<sup>th</sup> century, of columnar form applied with swags of flowers, stepped bases, each 110cm high, 37cm diameter

£800-1,200





208

A silver shaped square salver by Duncan & Scobbie, London 1940, with a raised simple moulded rim, on four scroll feet, 38cm (14in), 1525g (49 oz)

£400-600



208



209

209

A selection of Spode porcelain tea and coffee wares, early 19th century, comprising: a selection from pattern 944 to include: a small teapot and cover; a prow-shaped milk jug; a sugar box and cover; a slop bowl; a sandwich plate; two smaller; six 'Bute' shaped teacups; coffee cans and saucers, some pieces with painted pattern numbers; and the remnants of another Spode tea service, comprising an oval section teapot, cover and stand and two 'Bute' shape teacups and saucers, iron-red and gilt, un-marked

£300-500



210

210

A Regency mahogany and satinwood sofa table, circa 1815, with two frieze drawers and opposing false drawers, dual standard ends, brass cappings and castors, 74.5cm high, 145.5cm wide, 68cm deep

£400-600

211

A gilt-metal and glazed hall lantern in the manner of Regency Hundi lights, with three rams' head masks, of bell form, three candle arms within, approximately 90cm high including ceiling rose

£200-300



211

212

An English porcelain 'Etruscan' shape pale-yellow ground and gilt part tea service, circa 1820, painted with landscapes, comprising: a pair of sandwich plates and nine teacups, coffee cups and saucers, painted pattern no. 763

£400-600



212

213

A Regency simulated rosewood window seat, circa 1820, in the manner of Gillows, the padded and upholstered seat flanked by 'chair back' ends, each with a scrolled bar back, on reeded tapering legs, 66cm high, 98cm wide, 45cm deep

£400-600



213





214

214

A mid-Victorian carved giltwood and composition large overmantel mirror, third quarter 19th century, with an arched frame applied with foliage and flowerheads, 215cm high, 172cm wide.

£1,500-2,500

215

A pair of French or English bronzed metal lanterns, probably once crestings for lampposts, late 19th century, each with an open work gallery cast with crenelated turrets; the bodies with scroll and palmette rims, approximately 78cm high

£400-600



215



216

216

A Gothic Revival carved and giltwood corner bracket, French or English, late 19th century, carved with a dragon and foliage, 43cm high

£300-500



218

216





217

A pair of carved and gilded two branch wall lights in mid-18th century manner, 19th century, with curving arms issuing from backs set with an eagle, 79cm high, 37cm wide

£250-350



218

A Samuel Alcock and Co. A Parian figure of Arthur, 1st Duke of Wellington (1769-1852), circa 1852, modelled seated after George Abbott, printed marks, 30cm high



219

219

A William IV cut glass two light table lustre, circa 1835, with gilt metal scroll arms, the dish sconces with pendant drops raised on a stepped base, 38cm high overall

£250-350

220

A set of six rummers, circa 1820, the round bowls engraved with initial *M* above a fluted lower section and supported on a 'lemon squeezer' base, 12cm high

£180-220



220

221

An Edwardian cut and moulded glass and silver plated metal chandelier, circa 1900, with multi-knopped stem issuing scroll arms, hung with beaded chains, faceted drops and pendants overall, with drop terminal, 125cm high, 107cm wide

£600-900



221



222

222

A set of four Victorian cut and moulded glass and gilt metal mounted twin light lustre wall appliques, second half 19th century, each with a central foliate boss issuing a gargoyle mount and scrolled arms, hung with oblong pendants and beaded chains overall, 25cm high, 42cm wide

£600-800

223

An English porcelain 'Bute' shape part tea service, early 19th century, painted with flowers reserved on a gilt trellis ground, comprising: an oval teapot, cover and stand; a slop bowl; two sandwich plates; an oval sugar box and cover; a milk jug; two tea cups; three coffee cans and five saucers

£250-350



223





224

224

A Late George IV/Victorian solid satin birch circular centre library table, the top with moulded edge above four scrolling outswept supports, on castors, the underside of the top and one leg stamped 'VR, O, COBURG COTTAGE, MARCH, 1873', 72cm high, the top 132cm diameter

Provenance; Christie's London, lot 189, June 15, 2000. The stamp relates to The Royal Estate of Osborne, in East Cowes, Isle of Wight. Coburg Cottage was built by H. R. H. Prince Albert for Queen Victoria as a birthday present in 1852. Christie's footnote detailed the history that this table was "almost certainly supplied to King George IV, and by descent to George VI, by whom given to the vendor's father, a landscape gardener at Royal Lodge Windsor, to replace furniture lost when his house was destroyed by bombing in 1940".

£1,000-1,500

225

[British military interest] A matched Continental and English silver gilt dessert service, French or French occupation and by The Goldsmiths & Silversmiths Co. Ltd, London 1912, engraved R beneath an earl's coronet, comprising:

Twenty four dessert forks, Twenty four dessert spoons, Twenty four tea spoons, A sugar sifting spoon, A Dutch salt spoon, 3241g (104.2 oz);

Together with the following with silver handles and blades: Twenty four dessert knives;

In a fitted mahogany canteen case by The Goldsmiths & Silversmiths Co. Ltd, with a brass plaque engraved for presentation to Earl Roberts on his 80th birthday, 1912

Please see our website for full footnotes.

£800-1,200



225



226

226

Asprey, a pair of silver models of grouse by Asprey plc, London 1987, 11cm (4 1/4in) high and slightly smaller, 553g (17.8 oz)

£300-500

227

Asprey, a silver and glass caviar serving dish, frame and cover by Asprey plc, London 1995, stamped for Asprey as retailer, with a foliate finial to the shallow domed cover, a moulded glass liner, the circular dish with twin shell handles, 17.5cm (7in) diameter,

£250-350



227



228

A pair of carved giltwood wall mirrors in the Rococo taste, 20th century, each with with foliate and scroll decoration, 83cm high, 43cm wide

£300-500



228



229



229

A pair of carved giltwood girandoles in the George II style, probably circa 1840, each with a shaped oval plate within a scrolled asymmetric border surmounted by a ho-ho bird, 94cm high, 41cm wide

£500-700



230

230

An impressive Napoleon III French figural ormolu mantel clock- Lerolle Frères, circa 1875, the eight-day two train bell striking movement stamped *LEROLLE F., PARIS, 138, AH*, to backplate, the case depicting Minerva depicted standing supporting a shield surmounted by her attendant owl, the shield incorporating the clock dial with enamel cartouche Roman numerals, the foliate decorated gadroon moulded base with reclining figure of Ceres or Fortuna and palmette apron panel flanked by scrolling feet, approximately 70.5cm high, 50cm wide

A very similar clock numbered 92 was sold at Sotheby's New York, Lot 319, 22 October 2008 for £9,954 (inc. premium). The important firm of bronziers and sculptors Lerolle Freres was founded in 1836 when Louis Lerolle passed on the business to his two sons. They exhibited ornamental clocks, garnitures, chandeliers and candelabras, predominantly gilt-bronze or silvered, at most of the international exhibitions held during the second half of the 19th century including London 1851, New York 1853, and Paris 1855 (where the firm obtained a médaille de 1re classe). In 1862, Lerolle participated in the Exposition des Beaux Arts Appliqués à l'Industrie and the same year were manufacturing bronzes for the Maison S.A.I. le Prince Napoléon, and the l'Hôtel de la Commission Française.

£3,000-5,000





231

231

A gilt metal and cut glass nine light chandelier in Regency style, elements late 19th century and later, the outscrolled acanthus corona above an elongated trumpet form body hung with beaded chains and faceted oblong pendants, descending to further tiers of pendants with ball terminal, approximately 120cm high, circa 70cm wide

£1,200-1,800

232

A pair of modern Sevres-style porcelain and gilt metal mounted campana urns and stands, each painted with the same panel of a tea party, reserved on a blue and gilt ground, 91cm high

£800-1,200



232

233

A pair of French gilt bronze six branch wall appliques, third quarter 19th century and later adapted, each with beaded and scroll arms rising from a central torchere supporting a further raised sconce, issuing from foliate and pilaster backplates with fircone finials, stamped with serial numbers 3546 to the rear, 40cm high overall, 39cm wide, 33cm protuberance

£400-600



233



234

234

A pair of Aubusson entre-fenêtres, late 19<sup>th</sup>/early 20<sup>th</sup> century, each woven with Berain-style scrolling foliage on pale brown ground, reduced, each 262cm high, 77cm wide; together with a needlework entre-fenêtre, richly woven with roses within a blue border, 221cm high, 50cm wide (3)

£400-600

235

A French *Fleur de Pecher* and gilt bronze mounted columnar pedestal, late 19th/early 20th century, the composite order capital above a column encircled with a band of foliage, descending to a square section plinth, 145cm high

£800-1,200



235





236

236

A French gilt metal and cut glass twelve light chandelier in Louis XVI style, late 19<sup>th</sup>/early 20<sup>th</sup> century, the foliate cast branches issuing from a knopped stem with central flambeau finial, hung with beaded pendants and swags overall, approximately 80cm high

£400-600

237

A French carved giltwood sofa in Louis XV style, late 19<sup>th</sup> century, upholstered with a pale-blue and white striped fabric, 110cm high, 152cm, wide, 89cm deep

£700-1,000



237

238

A set of four giltwood and gesso three branch wall lights, each hung with bead swags and pendants, 81cm high, 40cm wide

£1,000-1,500

239

A French biscuit porcelain group 'Le Nid' (Nest), modelled after *Onésime-Aristide Croisy* (1840-99), late 19<sup>th</sup> century, the base impressed *LE NID* and *Croisy*, 40cm high

Aristide Croisy sculpted the original marble of *Le Nid*, widely seen as his most renown work, in 1882.

£600-800



238



240



239

240

A French white and grey veined marble and gilt-metal-mounted pedestal, late 19<sup>th</sup> century, the square top above a cylindrical column and stepped base, 102.5cm high, the top 25cm square

£300-500





241

241

A French gilt metal and Sevres style porcelain mounted mantel clock, Rollin Paris, mid-19th century, the eight-day bell striking movement with outside countwheel and serial numbered 1749 to backplate, with further stamp for *medaille d'argent*, the case with wheat sheaf surmount and flanking figure of a seated boy holding a scythe, 29cm high

£300-500

242 Y

A Louis XV tulipwood and floral marquetry inlaid dressing table or 'coiffeuse', circa 1750, of kidney shaped outline, the hinged top fitted with compartments and small drawers, one lock plate inscribed "BC, ME a Paris, 1753", on cabriole legs terminating in sabots, 70cm high, 77cm wide, 44cm deep

£1,200-1,800



242



243

243

A French giltwood and upholstered bergere armchair, late 19th/early 20th century, pale floral upholstery in moulded frame.

£300-500

244

An early 19th century carved giltwood bed canopy, pierced scrolling carved decorated shaped triangular frame later hung with red damask and with textile panel below, canopy approximately 143cm wide, 28cm high and 99cm deep.

£800-1,200

245 Y

A pair of French kingwood, inlaid, and gilt metal mounted petite commodes, late 19th century, each with a marble top above two drawers, 70cm high, 50cm wide, 30cm deep

£600-800



244



245



246

A French enamel and gilt-metal mounted trinket box and hinged cover, third quarter 19th century, 6cm x 10.5cm x 8cm; a Continental enamelled and silvered coffee cup, spoon and saucer, 20th century; and a French Sevres style porcelain and gilt metal mounted tazza, late 19th century, in Greek Revival style, the plate with spurious Sevres marks, 31cm wide overall

£300-500



246





247

247  
A Continental, probably French, gilt-metal and frosted glass four-branch ceiling light, late 19th/early 20th century, the ovoid shade suspending from an openwork circlet cast with star mounts and issuing scroll branches terminating in ball shades, approximately 95cm high, 65cm wide

£300-500



248

248  
A pair of pink damask curtains, 20th century, each richly woven with scrolling flowerhead and leaf design on pale pink ground, each approximately 295cm high, 360cm wide at the ground; with a modern pelmet with matching hangings (3)

£700-1,000



249

249  
A Russian porcelain (Kornilov Bros.) teacup and saucer, mid 19th century, moulded in relief and gilt with C-scroll reserves painted with landscapes, printed factory mark

£100-150

250  
A Continental mixed fruitwood occasional table, 19th century, with stylised heart shaped marquetry to the circular top above three frieze drawers and slender outswept legs, 71cm high, 34cm diameter

£150-250



250

251  
Follower of William Etty  
*Seated nude in a woodland setting*  
Oil on canvas  
35 x 21cm (13¾ x 8¼ in.)

£300-500

252  
A Louis XV style fauteuil, early 20th century, Aubusson style upholstery within a moulded frame carved with foliage and flowerheads and another, largest 72cm wide, 103cm high (2)

£600-800



252



251



253



253  
A French needlework carpet, woven in the Aubusson style, late 19th/early 20th century, with coral pink field with central floral medallion within an ivory flower head border, approximately 371 x 435cm

£1,000-1,500





254

254

A mahogany breakfast table, mid-19th century and later, the circular tilt top with a gilt bronze border, on a bulbous stem with downswept legs, 76cm high 168cm diameter

£300-500

255

A set of twelve Victorian mahogany dining chairs, each with a balloon back and padded seat and baluster turned legs

£400-600



255 (part lot)

256

A Sevres hardpaste porcelain sparsely decorated and gilt part breakfast service, mid 19th century, in part with floral LSS monogram, comprising: twelve plates, 22.5cm diameter; two milk jugs; two sucriers and covers; and twelve breakfast cups and saucers, printed factory marks and with potting and decorating dates around the mid 19th century

£400-600



256

257Y

An Art Deco silver circular muffin dish, liner and cover by Northern Goldsmiths Co., Birmingham 1936, with an ivory button finial to the segmented domed cover, the base with an everted rim, 21cm (8 1/4 in) diameter, 908g (29.2 oz) gross

£200-250

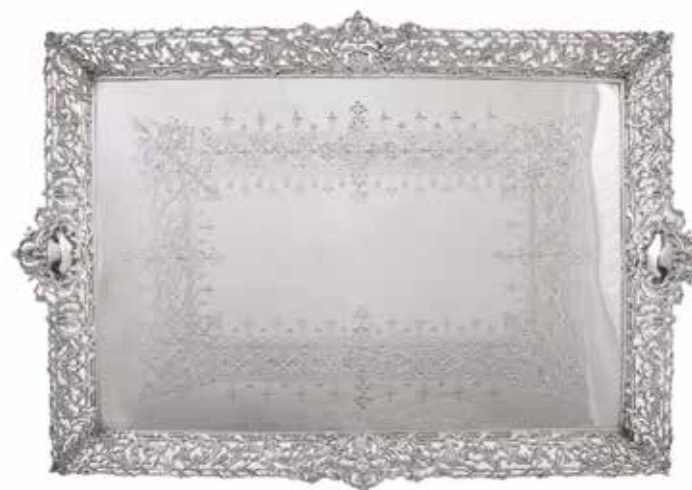


258

259Y

A Victorian silver tea urn, cover and liner by Derry & Jones, Birmingham 1864, shoulder ovoid, the twin handles with ivory spacers, a pineapple finial to the done centred cover. classical engraving in bands and with Elgin marbles type figures and horses, an ivory spacer to the spigot handle, the waisted pedestal with conforming banding, on four openwork foliate cast feet, 2767g (88.95 oz) gross

£700-1,000



260



257

258

A set of twelve silver fruit knives and forks by Tessiers Ltd, London 1938, threaded with zigzag bands, 902g (29 oz), in an oak case

£250-350



259

260

An electro-plated rectangular tray, unmarked, circa 1890, the lifts with vacant cartouches, the cast pierced border of shells and scroll foliage, engraved with a band of patera flanked by arcading, on four bun feet, 52cm (20.5 in) long

£100-150





261

261  
H. Watson (British 19th century)  
*Coastal landscape with fisherfolk in the foreground*  
Oil on canvas  
Signed lower left  
75 x 126cm (29½ x 49½ in.)

£200-300



262

262  
A pair of carved giltwood and gesso groups of cherubs, 19th century, each with two inclined busts of winged infants before a billowing cloud or drape, 43cm high, 67cm wide

£400-600

263  
A mahogany linen press, circa 1840 and later, with pierced broken scroll pediment above two doors with acorn ornament, with two short and two long drawers below, 238cm high, 129cm wide, 55cm deep

£300-500

263



264

264 Y

A Victorian carved walnut, rosewood and marquetry half-tester bed, third quarter 19th century, the rectangular canopy carved with foliage and a Vitruvian scroll frieze, above an embroidered blue and pleated cream silk and padded headboard, the footboard with an arched foliate top rail centred by a painted coat of arms for William Tyssen-Amherst above panels of carved and inlaid foliate centred by an oval medallion with the cypher 'WTA', the ends supported by herms on turned foliate feet, approximately 267cm high, 207cm wide, 218cm long overall

Provenance; Christie's, lot 245 29th April 2010 £22,500

William Amhurst Daniel Tyssen-Amherst (1835-1909), later Tyssen-Amherst, 1st Baron Amherst of Hackney. Possibly supplied in 1855-56 for Didlington Hall, Norfolk.

£2,500-4,000





265

A late Victorian silver mounted large dressing table mirror by William Comyns & Sons, London 1899, waisted with a rounded to centred by a vacant cartouche, pierced and embossed with cherubs, trellis and scroll foliage, the plate bevelled, blue velvet covered easel back, 72cm (28 1/2in) high

£400-600

265



266

266

A George III mahogany bedside night commode, circa 1780, with tray top, 78cm high, 55cm wide, 44cm deep

£500-800



267 (part lot)

267

A pair of pale green damask curtains, modern, each with pale green ground with paler embroidered flowerhead and floral decoration, each approximately 253cm high and 238cm wide at the ground; and a pair of swag drapes to match (4)

£400-600

268Y

A Victorian ebonised mahogany travelling dressing case with silver mounted fittings by Abraham Brownett, London 1865, retailed by P. West No. 1 St James's St., with ten silver covered jars, bottles and boxes, a mirror under the cover and an ivory handled manicure set, the brass edged case with an inset monogram, brass recessed handles, a Bramah lock, retailer's plaque for P. West and a drawer beneath, 36cm (14in) wide

£400-600



268



269

269

An Edwardian silver rectangular trinket box by Henry Matthews, Birmingham 1901, embossed with 16th century figures within C-scrolls, foliage and flowers, later velvet lined, 21cm (8 1/4in) long, loaded

£120-180

270

A late Victorian silver large rectangular dressing table tray by William Hutton & Sons, London 1893, with a shaped reserve, shells, flowers and C-scrolls, on a matted ground, 46cm (18in) long, 1727g (55.5 oz)

£400-600



270





271

271

An Edwardian mahogany and inlaid cheval mirror, circa 1905, on outswept legs terminating in lion paw caps and castors, 168cm high

£600-800



272

272

A Stourbridge engraved and polished clear glass pedestal fruit bowl, circa 1900, decorated with swags of fruit, 21cm high, 31.5cm; presented in an associated George III mahogany wash-stand, 80cm high (2)

£100-150



273

273

A pair of orange red velvet curtains, modern, with applied Turkoman style edging and tassels, each approximately 264cm high, 122cm wide at the ground; together with two 19<sup>th</sup> century and later gilt pelmets, with scrolling surmounts, 171 and 148cm wide (4)

£300-500

274

A pair of late Victorian black-painted cast-iron metal and glazed lanterns, late 19<sup>th</sup> century, each corner with a scrolling volute and simulated lancet glazing bars and domed tops, approximately 100cm high

£1,200-1,800



274



275

275

A late Victorian mahogany and brass hall stand, circa 1880, in the manner of Jas. Shoolbred, with two uprights, each with brass hooks above a divided stick stand with mid-rail and lower drip tray, supported on standard ends, 164cm high, 149.5cm wide, 54cm deep

£600-1,000

276

A Victorian black painted cast iron stick stand in the manner of Coalbrookdale, cast with openwork scrolling foliage overall, 72cm high, base 50cm wide; and another, smaller stickstand in Gothic taste, the openwork back cast with a lizard, 65cm high (2)

£100-150



276





277  
A giltwood mirror backed settle in Renaissance style, 20th century, the back carved with four female figures, the whole with strapwork and scrolling decoration, approximately 248cm high, 238cm wide, 45cm deep  
£2,000-3,000

278  
A Continental 'Medievalist' tapestry, in 15th century taste, 19th century, depicting courtly figures in conversation, within a floral border, 278 by 246cm  
£300-500



278



279

279  
A pair of gilt metal table lamps in Historicist taste, parts late 19th century and later refitted, the electrical sockets rising from openwork foliate finials, above cylindrical bases with cavaliers in relief, 43cm high overall  
£150-250

280  
A gilt bronze hall lantern in Renaissance Revival taste, later 19th century, the ovoid frame cast with lambrequins, helmeted soldiers and an openwork gallery with shells and scrolls, inset with bowed frosted glass panes, approximately 150cm high overall  
£1,200-1,800



280



281

281  
A French Faience plaque decorated with figures in 16th century dress, late 19th century, with Sevres style marks verso, 51cm diameter, set in a giltwood frame with elaborate C-scrolls, 63cm x 64cm overall  
£150-250

282  
A red silk window suite, modern, in red silk with green/gold tassels and red and green ball edging, comprising pair of panels each approximately 275cm high, 108cm wide at the top (tied to lower end), together with pelmet and drapes (quantity).  
£500-800



282





283 Y

An impressive Regence style gilt brass mounted tortoiseshell bracket clock, late 19<sup>th</sup> century, the two train eight-day ting-tang gong quarter striking movement with Vincenti et Cie stamped roundel to backplate and 9 inch circular blue on white enamel twenty-four piece cartouche dial with trophy cast centre and foliate apron beneath, the case with gilt seated Minerva surmount to the domed superstructure over shaped break-arch glazed front flanked by two pairs of female therms, the lower section with mask centred apron mount and further winged term supports over a shaped platform with foliate feet, the whole set on a matching ogee-shaped wall bracket with rams-head corner mounts, 176cm high overall

£2,000-3,000

284

A pair of substantial French gilt-metal ten light wall appliques in Empire style, 20<sup>th</sup> century, the foliate cast sconces and scrolled arms supported by a maiden caryatid, issuing from cartouche backplates, approximately 125cm high, 48cm wide, 36cm protuberance

£2,000-3,000



283

284





285

285

A Flemish mythological tapestry with Eurydice bitten by a snake, early 18th century, probably Antwerp, the three maidens in the foreground portrayed gathering flowers in a landscape before a distant architectural background, the border woven with foliage, trophies, lambrequin, exotic birds and *fleur-de-lys*, 304 x 229cm

For a highly comparable though shorter panel of the same scene, see Sotheby's Amsterdam, European Furniture and Good Decorations, 05 April 2005, lot 242

£3,000-5,000

286

A Continental carved giltwood wall mirror in the German Baroque manner, late 19th/ early 20th century, decorated with cherubs, birds and foliate ornament, the central rectangular plate flanked by marginal plates, 96cm high, 117cm wide

£400-600



286



287

287

A walnut and cut velvet upholstered wing armchair in the Continental 18th Century style, first quarter 20th century, together with a foot stool en-suite (2)

£200-300

288

A walnut double domed wardrobe in early 18th century style, early 20th century, the twin doors above single drawer and short shell carved cabriole legs, 209cm high, 142cm wide, 54cm deep

£200-400



288





289

289

A French gilt metal eight light chandelier in Louis XVI style, second quarter 20<sup>th</sup> century, the stem and circlet cast with fruiting vine, issuing alternating scrolled and reeded branches, 54cm high, 52cm wide

£300-500



290

290

A Meissen (outside decorated) yellow-ground part coffee service, late 19th century, Dresden decorated with panels of Watteauesque scenes within elaborate gilt borders, comprising: a coffee pot and cover; a sucrier and cover; a milk jug; three oggee coffee cups; four saucers and five plates, blue crossed swords and cancellation marks

£500-700

291 Y

A French rosewood and Vernis Martin vitrine, circa 1890, with swept dome top above a glazed door enclosing shelves, 170cm high 63cm wide, 39cm deep

£600-800



291

292 Y

A French kingwood and Vernis Martin bijouterie cabinet, circa 1900, of bombe outline, with glazed top with a hinged cover above a door painted with lovers in a landscape, 120cm high, 92cm wide, 39cm deep

£1,500-2,500



292



293

293 Y

A French kingwood and Vernis Martin gueridon, early 20th century, with a marble top and painted panels, single cupboard, 122cm high, 37cm wide, 36cm deep

£300-500

294

A pair of French gilt metal five light girandoles, second half 19th century, each ribbon-and-stave cast frame with a central mask finial, foliage and shell motifs overall, 68cm high, 49cm wide, 21cm deep

£300-500



294





295

295

An Austrian grande sonnerie striking 'Pendule d'Officier' with alarm, early 19<sup>th</sup> century, the circular three train short duration movement with verge escapement regulated by vertical sprung monometallic balance and sounding the quartets on one gong followed by the hours on a second every quarter-hour, the alarm mechanism with further winding square, the circular silvered Roman numeral dial with gilt hands and steel alarm setting pointer set within milled surround fitted with a hinged glazed bezel, the circular cushion-shaped engine-milled case with fixed foliate handle incorporating repeat plunger and cast dolphin feet, 17cm high, 10.5cm wide

£800-1,200

296

A pair of German porcelain crested burnished gilt-ground two-handled flared urns, late 19<sup>th</sup> century, each decorated with an Imperial German Empire eagle (1889-1918) and with biscuit porcelain and gilt mask handles, each impressed 'SP', 25cm high

£300-500



296



297

297

A George III mahogany and boxwood strung card table, circa 1790, of canted rectangular outline, the hinged top enclosing baize playing surface, 73cm high, 92cm wide, 45cm deep

£200-300



298

298Y

An Austro-Hungarian silver baluster five piece tea and coffee service by Vinzenz Mayer's Sohne, Vienna 1872-1922 .800 standard, the kettle on stand with an ivory handle over, a bud finial to the dome centred cover, scroll foliate panels, the stand with burner, an ivory handle, on four acanthus supports with palmette feet, 47cm (18 1/2in) high, the cream jug, tea and coffee pots with ivory handles, the tea pot 27.5cm (10 3/4in) long, the coffee pot 26.5cm (10 1/2in) high, 5087g (163.6 oz)

Mayer's Sons were one of the leading silversmiths and jewellers of the Austrian empire and were holders of an Imperial warrant.

£1,500-2,500

299

An Austro-Hungarian silver large twin handled rounded rectangular tray by Vinzenz Mayer's Söhne (1865-1922), Vienna 1872-1922 .800 standard, with bold double scroll handles, a raised scroll, flower and shell rim, engraved with scroll foliage, triform leaves and a monogram, on a mahogany backing frame, 91cm (36 in) long, loaded

Mayer's Sons were one of the leading silversmiths and jewellers of the Austrian empire and were holders of an Imperial warrant.

£1,000-1,500



299





300

300  
A pair of Restoration gilt metal and *verde antico* mounted six light candelabra, elements second quarter 19th century and later adapted, each cast with six scrolling arms issuing around a central filigree style basket, descending to baluster stems raised on paw feet, on further tripartite bases, each circa 93cm high overall including central uprights

£800-1,200



301

301  
A 19th Century French walnut writing table, the shaped top inset with leather panel raised on slender cabriole legs, 93cm wide, 76.5cm high, 46.5cm deep.

£200-300

302  
A French carved wall mirror, early 20th Century, the frame of stepped rectangular form and the oval plate contained within a moulded leaf slip, 101cm high, 91cm wide

£350-450



302



303

303  
An unusual Empire style gilt and patinated bronze cartel clock, circa 1900, the eight-day two train bell striking movement with vertically planted platform cylinder escapement, the dial formed as deep blue jappanned dome applied with gilt Roman numerals and stars set within gilt billowing clouds interspersed with sunburst rays, martial trophy elements and applied with three patinated bronze cherubs in flight around the dial attending to a floral garland, 71cm high

£3,000-5,000





304

304  
Follower of William Shayer Senior  
*Village folk on their way to church,  
with a child feeding a horse an apple  
in the foreground*  
Oil on canvas  
61 x 104cm (24 x 40¾ in.)

£500-700

305  
A pair of French green serpentine  
marble and gilt metal mounted table  
lamps in Louis XVI style, 20th century,  
each ovoid urn body cast with swags and  
rams' masks, on square bases, 51cm high  
to top of finnet

£500-700



305



306

306 Y  
A French kingwood and floral marquetry inlaid occasional table,  
late 19th century, the oval top above a single frieze drawer and  
cabriole legs, 71cm high, 50cm wide, 38cm deep

£150-250

307  
A Victorian carved giltwood and gesso wheel barometer, mid-19th century, the  
silvered round register inscribed *F. A. PIZZALA Maker 19 Hatton Garden LONDON*,  
beneath alcohol thermometer, 103cm high

£250-350

308  
A Royal Albert Crown China coffee service, 1930s, blue, white and gilt, of  
a coffee pot, a cream jug, a sugar bowl six cups and saucers, black printed  
marks, in a fitted cloth covered case

£70-100



308



307

309  
A gravity timepiece, early 20th century, the  
black dial with Arabic numerals, the rear  
stamped 'British Make Patent 15238 14066/19',  
26cm high; and a cast iron and brass door stop,  
late 19th century, of tapered form, 31cm high

£100-150



308





310

310

A giltwood and composition wall mirror, late 19th century, applied with oval plaques in the manner of Wedgwood Jasperware, 101cm high, 118cm wide

£500-800

311

A George III mahogany tripod table, circa 1780, circular top on birdcage support, bulbous stem and pad feet, 76cm diameter, 69.5cm high.

£300-500



311

312

A Paris porcelian (Boyer Sr de Feuillet) blue-ground and gilt Sevres-style part dessert service, second quarter 19th century, lavishly painted with specimens of ripe fruit, comprising: an ice-pail and cover, 26cm high; and twelve plates, 25.5cm diameter, script factory marks

£1,000-1,500



312

313

A pair of late George III silver shaped circular vegetable dishes and covers by William Stroud, London 1812, the covers unmarked except standard marks to the handle nuts, with leaf-capped scroll detachable handles to the domes, moulded towards the bases with nulled borders, engraved with armorials, the dishes with shaped gadroon and shell rims, 29cm (11 1/2in) diameter, 3495g (123.35 oz)



313

The arms of EARDLEY, baronets (né SMITH) to the covers, the crest of SMITH to the bases.

Sir Culling Smith, 2nd Baronet (1768-1829), was of Huguenot extraction and his mother, Charlotte Elizabeth (died 1826) was the daughter of Sampson Eardley, 1st Baron Eardley. She was heiress to much of the Eardley estate. His son Sir Culling Eardley Eardley, 3rd Baronet (né Smith; 1805-1863) was a Christian campaigner for religious freedom and for the Protestant cause, one of the founders of the Evangelical Alliance.

£800-1,200



314

314

A set of four George III silver oval pedestal salt cellars by Robert Hennell I, London 1775, with beaded rims, pierced with palmettes in arcading, on bar pierced oval pedestal bases, engraved with a harpy crest, 7cm (2 3/4in) high, approx. 360g (12.5 oz), with blue glass liners

The crest of HURRY.

£250-350

315

A set of twelve silver git Bright Vine pattern dessert knives and forks by Francis Higgins & Son Ltd, London 1927, 19cm (7 1/2in) long, 962g (30.9 oz)

£300-500



315





316

316

Two pairs of olive green damask curtains, 20th century, of large proportions, each worked with two-tone dark and golden olive green ribbon and floral decoration, each approximately 342cm high, 250cm wide at the ground (4)

£1,200-1,800



317

317

A Regency mahogany and inlaid occasional table, circa 1820, the octagonal top with central inlaid motif, above a turned column and outswept legs, 72cm high, the top 45 x 46cm; and another similar, later example, 75cm high, 89cm wide, 45cm deep (2)

£300-500



318

318

An early 19<sup>th</sup> century brass fender of bowfront form, circa 1820, approximately 105cm wide, 25cm high; another formerly silver plated and two other bowfront fenders (4)

£250-350

319

A George IV Irish silver rounded rectangular toasted cheese dish by Stephen Bergin, Dublin 1821, with a screw-out turned wood handle to allow for filling with hot water, a rounded oval finial to the detachable shallow domed cover, a nulled rim, in four paw feet, engraved with a crest, 21.5cm (8 1/2in) wide, 1386g (44.55 oz) gross (lacking the short chain)

The crest belongs to Henry BARRY (1770-1823), 8<sup>th</sup> Earl Barrymore. The BARRY family of Co. Cork were created Earls of Barrymore 1628, having been previously Viscount Barry (created 1541) and Baron Barry (created 1261) all in the Irish peerage. All titles became extinct in 1823 with the decease of the 8<sup>th</sup> Earl.

Please see our website for full footnote.

£400-600



319

320

A George IV Irish silver wine funnel by Edward Crofton, Dublin 1827, the strainer with an everted ovolo rim, embossed with flowers and fruit, 14.5cm (5 3/4in) high; and a George III example, maker's mark indistinct (S.), London 1802, the strainer with an everted threaded rim and a rounded clip, 14.5cm (5 3/4in) high, 310g (9.95 oz) gross (2)

£250-350

321

A George IV Irish silver fiddle pattern fish slice by Samuel Neville, Dublin 1826, the oblong blade pierced and engraved with two crossed fish, 29cm (11in) long, 163g (5.25 oz)

£100-150



321



322

322

A Regency mahogany and line inlaid bow front side table, circa 1815, the rectangular top above a frieze drawer and square section tapering legs, 80cm high, 91.5cm wide, 52cm deep

£100-150





323

324

323

A Belle Epoque gilt metal and frosted glass seven light chandelier, circa 1900, the scrolled arms issuing from a tripartite frame cast with oval panels and bellflower swags, 110cm high overall

£600-800

324

A pair of giltwood and upholstered fauteuils in Louis XV style, late 19th century, with padded back and seat and cabriole legs, 90cm high, 75cm wide, 67cm deep

£1,000-1,500

325

A set of four Rococo Revival gilt-metal and frosted glass wall lights, late 19th century, in Louis XVI taste, of cartouche form with six bell lights, 147cm high, 60cm wide, 30cm deep

£1,200-1,800

326

A French assembled porcelain and gilt-metal tripod occasional table in the rococo manner, late 19th century, the top inset with a French porcelain charger painted with flowers, 83cm high, 49cm diameter

£200-300



326



325





327

A pair of impressive gilt bronze chandeliers in Rococo Revival style, early 20th century, each with ribbon tied medallion finials above moulded supports, descending to an upper tier of branches cast with caryatids supporting twist-fluted quivers issuing foliate and berried fitments, above a further tier of conforming foliate cast branches, with fir cone terminals, approximately 230cm high (2)

£10,000-15,000



327





328  
A Bohemian Art Deco blue flash liqueur set with Indian silver mounts, unmarked, 1930s, the mounts pierced and engraved with scroll foliage, the decanter and stopper 19cm (7 1/2in) high, the six tots 6.5cm (2 5/8in) high

£200-300

329  
Three silver mounted cut glass cocktail shakers, comprising: one by Reid & Sons, Birmingham 1929, 22cm (8 5/8in) high; the second by John Grinsell & Sons, Birmingham 1931, 25.5cm (1in) high; and the last with swag cut body by John Grinsell & Sons, Birmingham 1951, 26cm (10 1/4in) high

£300-400



329



330

330  
An Edwardian/George V mahogany drinks cabinet retailed by Walker & Hall, first quarter 20th century the top in two sections hinged at the side with rising tray inside, with ivorine label for Walker and Hall, 76cm x 52cm x 54cm

£100-150

331  
A silver mounted large blue glass match striker, maker's mark C.G. (not traced), London 1996, 13cm (5in) high

£100-150



331

332  
A modern Venetian blue glass and gilt cylindrical vase, modern, decorated with classical gleaners, 49.5cm high

£80-120



332



333 (part lot)

333  
A Continental, probably Venetian, clear and gilt glass bowl, of bulbous form and with flared rim, 31cm high, together with a pair of similar vases, of cylindrical form (3)

£150-250



334

334  
A satinwood low occasional table in Edwardian style, 20th century, of large proportions, the top painted with trophies within a foliate and foliate border, 43cm high, the top 122cm square

£300-500





335

335

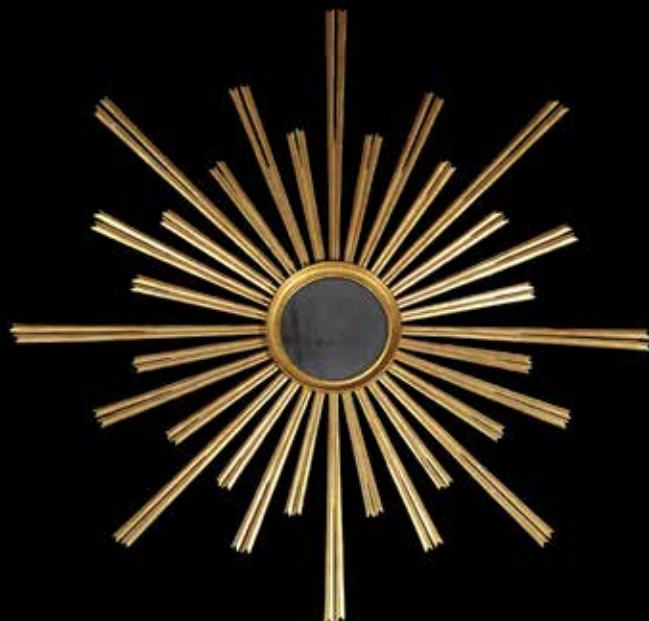
A Chinese Export porcelain *famille rose* bowl, early 19th century, decorated with flowers issuing from rockwork, 23cm diameter

£120-180

336

A gilt sunburst mirror, 20th century, circular plate within stylised ray surround, approximately 165cm wide overall

£400-600



336



337

337

An early 20th century French satinwood and inlaid wardrobe, the central mirrored door flanked by bow fronted doors each inlaid with oval panels featuring classical maidens, with ribbons and harebells above, 236.5cm high, 205cm wide, 64cm deep

£800-1,200



338

338

A glass and gilt metal mounted ceiling light, late 20<sup>th</sup> century, the circular frame hung with beaded chains and tiers of faceted drops overall, enclosing nine electrical fittings, 38cm high, 90cm diameter

£300-500

339

A pair of Continental Sarrancolin marble pedestals, 20th century, each with a square top above a tapering square section column, approximately 121cm high (2)

£700-1,000



339





340

340

A carved giltwood oval marginal wall mirror, late 19th century, in the George III style, plate within moulded foliate frame having flower head motifs, 99cm high, 74cm wide; and another similar plainer example (2)

£500-800



341

341

A French gilt bronze and cut glass centrepiece bowl, first half 20th century, the circular basin cut with diamonds and fans, raised on a faceted pedestal cast with three mermaid caryatids, above a triform base on toupie feet, inscribed *P. Jouve Paris* to the socle 46cm high

£800-1,200

342

A Sheraton Revival satinwood and polychrome painted occasional table, early 20th century, the circular top with central basket of flowers and with a floral swag border, 69cm high, 61cm diameter

£300-500



342

343

A set of six French gilt metal and cut glass seven light wall lights, 19th Century and later, each of large proportions and with four feather cresting above upper section with mirror backed chains of drops, and long faceted drops below, approximately 125cm high, 45cm wide (6)

£2,000-3,000



343 (one of six)





344

344

A pair of French *marmo portoro* and gilt metal mounted urns, in Louis XVI style, first half 20th century, the domed covers with grape finials and pierced rims, above festooned elongated bodies mounted with twin satyr mask mounts, descending to waisted socles cast with imbricated laurel, on a square bases, 33cm high, the bases 10cm square

£400-600

345

A pair of Edwardian mahogany, crossbanded and marquetry occasional tables, circa 1905, of semi-elliptical outline, each inlaid with urns and foliage, the square section tapering legs united by a shaped undertier, 75cm high, 56.5cm wide, 29cm deep (2)

£500-800



345



346

346

An Art Deco silver twin compartment rectangular cigar and cigarette box by Padgett & Braham Ltd., London 1940, the engine turned covers with curved edges flanking a central detachable cigar cutter for two sizes and vesta box, with a striking strip to the front, engine turned curved sides and faceted baton twin handles, on stepped square feet, cedar lined, 31.5cm (12 1/2in) long

£800-1,200

347

A large bronzed spelter figural lamp, modern in the late 19th century French style, in the form of a female figure upholding five lights with globe glass shades, 257cm high overall.

£1,200-1,800

348

A pair of olive green damask curtains, 20th century of large proportions, each worked with two-tone dark and golden olive green ribbon and floral decoration, crimson red lining, each approximately 358cm high, 530cm wide at the ground (2)

£1,000-1,500



348 (pair of curtains)



347





349

349

A gilt brass dressing mirror in Rococo style, circa 1900, the shaped surround in the form of an asymmetrical cartouche with putti holding a sconce to each side, 62cm high, 44cm wide

£300-500

350

A French porcelain Sevres-style and gilt metal mounted tripartite desk stand, late 19th century, painted with panels of butterflies, the corners with pen rests, 19cm high; and a Sevres-style gilt-metal mounted round box and cover, 20th century, 21cm in length; and three various Paris porcelain cups and saucer

£100-200



350



351

351

A French porcelain and gilt metal mounted twin-handled bowl, painted with panels of birds, and flowers, the interior with putti, 43cm wide

£200-300



352



352

A Meissen ornithological blue-ground and gilt porcelain tête-à-tête coffee service, late 19th century, Comprising tray, two cups and saucers, small coffee pot or hot water jug, milk jug and sugar bowl, painted with panels of birds, blue crossed swords mark, the tray 36cm long

£800-1,200

353

A Franco-Dutch palisander and fruitwood inlaid two tier occasional table, 19th century, the shaped crossbanded top above two end drawers and an undertier, 73.5cm high, 44cm wide, 51cm deep

£300-500



353





354

354  
A German silver parcel gilt oval dessert basket by Mehlbaum, stamped Mehlbaum and 12, 750 standard, circa 1840, the twin scroll handles centred by a lotus, pierced and embossed with fruiting vine and centred by a Bacchic mask, on four ball feet, 41cm (16in) long, 568g (18.25 oz)

The maker probably Heinrich Wilhelm Mehlbaum of Hanover.

£250-350

355  
A German silver oval basket by J. D. Schleissner & Sohne, Hanau, circa 1900, pierced and embossed with two reserves of an urns with putti and flowers, further putti and floral swags, 26.5cm (10 1/4in) long, 269g (8.65 oz), with a blue glass liner



355

£150-250



356

356  
A German silver small model of an alarmed pheasant by L. Neresheimer & Co., Hanau, import marked for London 1963, 14cm (5 1/2in) long, 119g (3.8 oz)

£120-180

357

A German silver gilt mounted clear glass lemonade set by Gebrüder Friedländer, Berlin, post 1886 .800 standard, circa 1910, the jug with a ball finial to the flat cover, an applied rope twist to the collar and forming the handle, 22cm (8 1/2in) high, the four cup holders conforming, with clear glass liners, 12.5cm (5in) high



357

£300-500



358

358

A Meissen (outside decorated) blue ground and gilt two-handed tray for a coffee service, second half 20th century, the centre painted with *deutsche Blumen*, blue crossed swords and cancellation marks, 42cm square

£200-300



359

359Y

An Edwardian satinwood and marquetry oval occasional table, circa 1905, with rosewood crossbanding the top with central patera, tied ribbon and harebell border, on turned tapering legs, 73cm high, the top 78cm x 50.5cm deep

£300-500





360

360

A Napoleon III gilt bronze and Sevres-style porcelain nine light chandelier, third quarter 19th century, in Louis XV style, the beaded and twist-fluted chains descending to a frame cast with scrolling foliage, issuing around a pink ground ovoid urn, previously an oil reservoir, approximately 100cm high

£600-800

361

A French carved giltwood and upholstered settee in the Louis XV style, 19th century, the Aubusson style upholstery depicting young children in a garden landscape, 141cm wide overall.

£600-800



361



362

362

A Napoleon III gilt brass framed dressing table mirror, third quarter 19th century, the frame with foliate and floral swags surrounding the rectangular plate, raised on paw feet and with openwork support to rear, 60cm high

£250-350

363

A pair of painted window or door surmounts, French or Italian, 19th century, each hand painted on linen with basket of fruit and mask surmount above cabriole decorated sides with scrolling foliage, moss green ground, 185cm high, 87.5cm wide (2)

£400-600



363



364

364 Y

A French rosewood and parquetry table a ecrire, late 18th century, of small proportions, with shaped top above three frieze drawers and with a sprung concealed compartment to the side, on cabriole legs, 73cm high, 40.5cm wide, 29cm deep

£400-600

365

A French porcelain green-ground and gilt solitaire absinthe service painted with flowers, circa 1860, comprising: a flask and stopper, 23.5cm high; a beaker; a sucrier and cover and a hexadecagonal tray, 28cm diameter

£200-300



365





366

366

A gilt metal and glass eight light chandelier, early 20<sup>th</sup> century, loosely of trumpet form, with palmette corona and further circlet cast with seated *amorini* and cornucopias, the scrolled arms supporting moulded rose petals, hung with pendants and beaded swags overall, 83cm high, 70cm diameter

£500-700



367

368

Two pairs of plum red damask curtains, modern, each with plum ground with darker embroidered flowerhead and floral decoration, each approximately 290cm high and 180cm wide at the ground (4)

£300-500



368 (two pairs of curtains)

369

A pair of Napoleon III ormolu nine light figural candelabra, mid-19th century, each with a central raised sconce above tiers of scrolling acanthus cast branches terminating in further conforming sconces, raised on urns supported by draped Vestal Virgins, on spreading circular bases and scrolled acanthus feet, 80cm high, 42cm wide

£1,500-2,500



369

370 Y

A French kingwood, gilt metal mounted, and marble topped commode, mid-19th century and later, of bombe outline, the shaped marble top above two long drawers and outswept legs, 87cm high, 121cm wide, 52cm deep

£800-1,200



370





371

A pair of vibrant pink damask curtains, modern, richly decorated with scrolling foliage in ivory on a pink ground, approximately 231cm high, 186cm wide at the ground; together with an associated gilt pelmet, hung with matching fabric drapes, 186cm wide (3)

£800-1,200

371

372

A pair of Napoleon III gilt bronze and clear glass trumpet vases, late 19th century, the flared and moulded bodies mounted to foliate cast paw feet, 34cm high; a cut glass and gilt metal mounted pedestal bowl, of navette form, 40cm long; and a French gilt metal Rococo Revival centrepiece, cast with bows and flowers overall, 31cm wide

£300-500



372



373

373

A French kingwood and marquetry side table, circa 1890, with crossbanded top centred by a spray of flowers above two drawers on cabriole legs, 77cm high, 62cm wide, 31cm deep

£300-500



374

374

A late 19th century French ormolu figural mantel clock, Deniere Paris, the twin train, eight-day bell striking movement stamped "DENIERE A PARIS", numbered 594 and stamped Juvenaux to backplate, and with circular floral garland decorated white enamel Arabic numeral dial inscribed "Denière F.t de Bronzes A Paris", gilt hands set behind hinged glazed bezel, the case modelled as a cherub seated on top of a column pedestal holding aloft the clock, on moulded red marble base with gilt feet, 61cm high

£1,800-2,500





375

375

A gilt metal and moulded glass four light chandelier, early 20<sup>th</sup> century, possibly French, the foliate cast scrolling arms festooned with foliate chains and issuing around a central globular boss, 91cm high including chain and ceiling rose, 58cm diameter

£300-500

376

A pair of French gilt brass three light wall brackets in 18th century style, each with frilly glass shades and tied laurel wreath to the back, 52cm high, 40cm wide

£300-500



376



377

377

A pair of French carved giltwood oval mirrors, late 19th/early 20th century, the frames decorated with bird, serpent and foliate ornament, 50cm high, 33.5cm wide

£100-150



379

378

A pair of gilt metal, glass and white marble mounted vases in Art Nouveau style, 20th century, the tapered square bodies descending to stepped square section bases mounted with eated musician putti, 24cm high

£150-250



378



379

A French gilt metal standard lamp, late 19th century and later adapted, formerly an oil lamp, the urn reservoir above a spiral twist stem, with onyx inset table mid-section, descending to a scrolling tripartite base, 162cm high

£300-500

380

A gros point needlework carpet, early 20th century, with twelve square reserves filled with floral bouquets within mint green border, approximately 270 x 348cm

£300-500

380



159





381

381

A French carved giltwood oval marginal wall mirror, last quarter 19th century, of large proportions, surmounted by a shell and pierced foliage, 189cm high, 151cm wide

£600-800

382

A pair of carved giltwood tub chairs, late 19th/ early 20th century, each upholstered in pale green fabric with foliate-carved frame and short cabriole legs

£800-1,200



382



383

A substantial French patinated and parcel gilt bronze figural floor lamp, circa 1900, modelled as an *amorino* holding aloft a torch terminating in a fruiting and foliate cast light basket, on a rouge griotte marble base, 151cm high; presented on a later green painted and gilded stand, 42cm high

£2,500-3,500



383





384

384

A Louis XV style gilt brass cartel clock, circa 1900, the eight-day two train gong striking movement with Brocot type pendulum regulation, the twelve-piece 8.25 inch blue on white Roman numeral cartouche dial set behind a hinged glazed bezel, the case cast with asymmetric scrolls incorporating shaped grille inset panels, cherub surmount and nude nymph and cherub applied apron, 93cm high

£1,000-1,500



385

385

A French or English tapestry fragment, probably mid-18th century, with a *trompe l'oeil* drapery flanking a cream ground worked with scrolling branches and flowerheads in the style of crewelwork, approximately 263cm high, 121cm wide

£600-800

386

Alexandre Jacques Chantron (French 1842-1918)

*Mother and child, with a basket of plums*

Oil on canvas

Signed and dated 1879 lower right

169 x 98cm (66½ x 38½ in.)

Provenance: Sale, Aguttes, France, *Tableaux Russes, Tableaux Impressionistes et Modernes, Art Contemporain, Photographies, Tableaux du XIXe Siècle, Tableaux Orientalistes*, 30 March 2007, Lot 288, sold for €16,110 (inc. premium)

£2,000-3,000



386



387

387

A Continental green and gilt part coffee service, 20th century, comprising: a coffee pot, sugar bowl and cover, a milk jug, five cups and saucers, and a tray, printed mark *F.M.C. Handgemall*

£100-150

388

A mahogany and marquetry gueridon, late 19th century, of trefoil form on curvilinear legs terminating in hoof feet, 83cm high, 46cm wide

£200-300



388





389

389

A Continental gilt metal and cut and moulded glass eight light chandelier, probably Italian, last quarter 19th century, the outscrolled corona hung with clear and pale amethyst coloured pendants, above a circlet hung with further pendants and beads, descending to a tier of scrolled arms hung with beaded swags, approximately 130cm high

£600-800



390 (three pairs of curtains)

390

Three pairs of pale peach damask curtains, modern, each with pale peach ground with silver white embroidered flowerhead and floral decoration and each applied with eau-de-nil silk swags to the upper section, each approximately 210cm high and 230cm wide at the ground (6)

£600-800



391

391

A pair of carved giltwood and tinted stools, early 20th century, possibly Italian, each with red floral over upholstered seat and carved cabriole legs, 41cm high, 61cm wide, 45cm deep

£400-600



392

A substantial giltwood Florentine overmantel mirror, late 19th/early 20th century, the rectangular plate within stiff leaf carved slip, and a pierced scrolling thick leaf frame, approximately 268cm high, 223cm wide

£3,000-5,000





393

393  
A French gilt bronze five branch figural wall light, late 19th century, modelled as an *amorino* holding aloft five scrolling foliate cast branches terminating in urn nozzles cast with further foliage and *rocaille*, 46cm high, 38cm wide, 55cm protuberance; and three various ormolu light fitments, 19th century, to include a Napoleon III single sconce wall light, another twin light wall applique, and a five light fitment

£400-600

394

A George III mahogany tripod occasional table, circa 1770, the rectangular top with a bird cage action above baluster column, 65.5cm high, the top 66cm x 53cm

£200-300



394



395

395  
A French needlework carpet, 20th century, the green field with central flower head motif within a light brown floral meander border, 270 by 373cm.

£300-500

396

A amboyna wardrobe in George III style, late 19th century, the broken pediment above two doors, one with a mirror plate concealing a fitted interior raised, 250cm high, 137cm wide, 57cm deep

£500-800

397

A pair of late 19th/early 20th century moiré silk and floral embroidered panels, possibly entre fenestres, each of pale sand-brown colour, each approximately 291cm high, 120cm wide at the ground (2)

£300-500



397 (a pair of curtains)



396

398

A set of eight pairs of gilt bronze curtain holdbacks by Beardmore, modern in the Neo-Classical taste, each 16.5 high, 18cm deep

£300-500



398 (set of eight)





399

399Y

A silver baluster four piece tea service by C. S. Harris & Sons Ltd, London 1928, the tea pot with an ivory button finial (lacking to hot water pot), ivory handles, scroll pierced cape rims, a cable band, on gadrooned base rims, the tea pot 27cm (10 3/4in) long, the hot water pot 21cm (8 1/4in) high, 202g (64.35 oz) gross

£500-700

400

A silver trilobed drinks tray by Pearce & Sons, Sheffield 1925, retailed by Pearce & Sons. Leeds, with a raised nulled rim, on three ball-and-claw feet, 47cm (18in) long, 1538g (49.75 oz)

£400-600



400

401

A mahogany tripod table in George III style, with shaped rectangular gallery tilt-top above a carved baluster stem and tripod base, 74cm high, 78cm wide, 63cm deep; and another similar and smaller example, George III and later, 61cm high, 56cm wide, 42cm deep (2)

£800-1,200



401



402

402

A George III silver shaped oval meat dish by John Mewburn, London 1802, with a raised gadrooned rim, scratch weight 103=18 verso, 56cm (22in) long, 2775g (89.25 oz)

£700-1,000

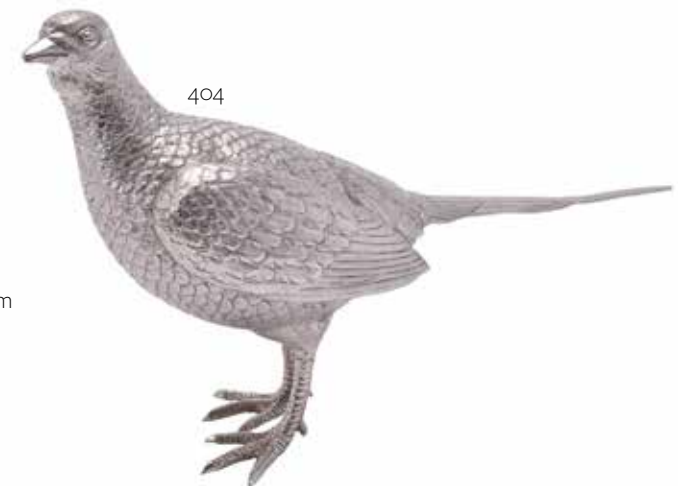


403

403

A matched set of six late George II silver cauldron salt cellars, by David Hennell I, London 1752 (4) and probably by David Hennell I (2), London 1759, with shaped nulled rim, each on three shell and C-scroll feet, the interiors gilt, 8cm (3in) diameter, 948g (30.45 oz)

£250-350



404

404

A silver model of a hen pheasant by Richard Comyns, London 1965, in a standing pose, 15cm (6in) high, 531g (17.1 oz)

£250-350





405

A Regency mahogany and inlaid linen press, circa 1815, of bowfront outline, the panelled doors enclosing an arrangement of five slides, the base with one long and two short drawers, 196cm high, 134cm wide, 80cm deep

£600-1,000

405

406

A French gilt-metal five-light chandelier, circa 1900, the ribbon tied stem with seated putto and issuing foliate cast branches, approximately 75cm high, 45cm wide

£250-350



406



407

407

A Louis XVI style gilt brass cartel clock, retailed by E. White, London, late 19<sup>th</sup> century, after a design by Jean-Charles Delafosse, the eight-day two train bell striking movement with Brocot type pendulum regulation and stamped W. WHITE, 20 COCKSPUR STREET to backplate, the blue-on-white 7.5 inch circular enamel Roman numeral dial similarly inscribed and with pierced gilt hands set behind hinged glazed bezel, the shouldered case with urn surmount over rams mask applied canted panels flanking dial, with pierced fretwork panel and generous laurel swags above inverted foliate pendant finial to base, 80cm high

£600-800



408

408

A carved and gilded long stool in the George II style, 20th century, the top upholstered with central crowned and winged cartouche enclosing crossed 'S's', surmounted by fleur-de-lys, and with shell and scroll ornament, above cabriole legs, 49cm high, 165cm wide, 63cm deep.

£700-1,000





409

**409**  
A pair of late 19th century French Aubusson tapestry window surrounds, each woven with drapes, tassels and flowers, each approximately 175cm wide, 276cm high; each mounted on associated later gilded pelmets, 180cm wide (4)

£1,200-1,800

**410**

A French giltwood and composition large overmantel mirror, circa 1860, with scroll surmount above the arched plate and surround with oak and laurel fruiting foliage decoration, 195cm high, 134cm wide.

£800-1,200



410

**411**

A French onyx and gilt bronze mounted centrepiece tazza, second half 19th century, in the manner of works by Emile Cornu, the dish cast with a beaded rim and raised on a waisted socle and square section base cast with lambrequins and outscrolled feet, 41cm high, 21cm diameter

£400-600



411

**412**

A late 19th century French white marble, ormolu and bronze mounted mantel clock, Raingo Frères, with eight-day bell striking movement with outside countwheel, stamped for the maker and serial numbered 2707 to the backplate, with white enamel Roman numeral dial, the case surmounted by two cherubs, the case identically serial numbered, 42cm high

£600-800



412





413

413

A silver twin handled shaped oval tray by Thomas Bradbury & Sons Ltd, Sheffield 1913, retailed by Sussex Goldsmiths Co., Brighton, with moulded handles and a raised moulded rim, 62.5cm (24 1/2in) long, 2606g (83.8 oz)

£700-1,000

414

An Irish silver twin handled shaped oblong tray by Royal Irish Silver Co., Dublin 1969, import marked for Sheffield 1969, sponsor's mark of Sheffield Assay Office, with a raised moulded rim, plain shaped loop handles, engraved with shells, trellis filled arcading and scroll pendants, on four scroll feet, 62.5cm (24 1/4in) long, 2852g (91.7 oz)

£800-1,200



414

415

A Meissen cabaret coffee service, circa 1930, modelled in relief with gilt foliate C-scrollbaands and painted with scattered flowers, comprising: an oval tray; a coffee pot and cover; a sucrier and cover; a milk jug and four cups and saucers, blue crossed swords and reverse *punkt* marks

£600-800



415



416

416

A selection of coloured glass, various dates late 19th century and later: including: five similar modern tulip cups and saucers and a modern Venetian coffee set for two; and a pair of Spanish clear glass and gilt decanters and stoppers, 30cm high

£200-300

417 Y

A French rosewood, marquetry, and gilt metal mounted secretaire display cabinet, circa 1880, of serpentine outline, with stepped top above a glazed and floral decorated panel door, with flanking ram mask mounts and raised on slender outswept legs, 174cm high, 81cm wide, 45cm deep

£1,000-1,500



417



418Y

A French gilt metal and scarlet tortoiseshell mantel clock in Rococo style, late 19th century, with eight day bell striking movement, the waisted case surmounted by Chronos and raised on cabriole legs, 55cm high, together with a wall bracket ensuite, 19cm high (2)

£400-600



419

A French gilt bronze twelve light chandelier in Louis XV style, last quarter 19<sup>th</sup> century, the sconces cast with *rocaille* and flowerheads, raised on scrolling acanthus cast arms issuing from a stem cast with knops, openwork quatrefoils and a *toupie* terminal, 88cm high, 55cm wide

£500-800



419



420

420Y

A French rosewood and gilt metal mounted vitrine, late 19th century, of serpentine outline, with glazed door enclosing shelves above a bombe shaped Vernis Martin panel, 166cm high, 77.5cm wide, 41cm deep

£500-700

421

A Napoleon III Rouge Royal and gilt bronze mounted centrepiece stand, circa 1870, the circular upper tier supported by seated mermaids and cast with festoons, above a further cartouche form tier raised on a *rocaille* base, 18cm high, 44cm wide

£300-500



421





422

A late 19th century French ormolu and patinated bronze clock in the Louis XV style, Raingo Frères and Defreville, the case of ornate scrolling form with addorsed Bacchic cherubs flanking white enamel dial inscribed Raingo Frères Paris, twin train movement striking on a bell, movement with circular Raingo stamp, case, movement and pendulum numbered 1175, inscribed Defreville to the underside, 75cm wide, 52cm high.

Although apparently unsigned the design of the clock is in the manner

of one of Defreville's leading designers and bronze fondeurs Henri Picard (fl. 1831-1864).

£1,200-1,800



423

423 Y

A rosewood, kingwood, and gilt metal mounted commode in Louis XV style stamped 'Daide F', first half 20th century probably by Maison Francois Daides, of bombe outline, with shaped marble top above a pair of cupboard doors concealing two long drawers and on cabriole legs, 89cm high, 135cm wide, 61cm deep

£1,500-2,500

424

A French pottery and gilt metal mounted urn and cover in Sevres style, late 19th century, the body mounted with twin caryatid handles and painted with a Watteauesque figural scene to one side, a landscape vista to the other, the square base raised on scrolled foliate feet, 56cm high

£600-800



424



425

425

Two pairs of golden ochre damask curtains, modern, each with golden ochre ground with golden embroidered flowerhead and floral decoration, each approximately 255cm high and 173cm wide at the ground; together with tie back and swept drapery pelmet sections (quantity)

£500-800

426

A brass fire fender in Louis XVI style, each end cast with a festooned urn, flanking the adjustable pierced centre, approximately 180cm wide, 52cm high, 44cm deep

£200-400



426





427

427

A set of seven French gilt bronze wall appliques in Louis XVI style, late 19th century, each with two S-scroll branches issuing from a backplate cast with a central ram's mask, 34cm high, 40cm wide

£600-800



428

428

A pair of French carved giltwood low chairs in Louis XV style, 20th century, 85cm high; and a modern carved giltwood and caned window seat with lyre back, 122cm in length

£500-800

429

A French giltwood and composition banquette or jardiniere, late 19th century, with upholstered top above interior with liner, the base with rounded ends, 47cm high, 155cm wide, 36cm deep

£500-800



429



430

430

A substantial pair of Sevres-style porcelain gilt-metal-mounted floor vases fitted as lamps, late 19th century painted with watteauesque scenes and landscapes verso, pseudo Sevres marks, with scrolling branches and thirteen lights, approx. 159cm high (2)

£4,000-6,000







431

431

A John Rose Coalport 'London' part tea service, circa 1812, painted with a band of pink convolvulus and gilt foliage reserved on a pale-blue ground, comprising: a teapot, cover and stand; a sugar box and cover; a milk jug; a slop bowl; two sandwich plates; six teacups; six coffee cups and twelve saucers, painted pattern no. 270

£700-900

432

A carved giltwood vitrine, 20th century, with a glazed door to each side with richly ornate foliate and trellis decoration, 226cm high, 129cm wide, 48cm deep

£700-1,000



432

433

A Rococo Revival gilt and patinated bronze four branch chandelier, late 19<sup>th</sup>/early 20<sup>th</sup> century, in Louis XVI style, each arm issuing twin lights centred by an *amorino* caryatid, issuing from an openwork foliate canopy with a frosted flambeau shade within, circa 100cm high

£400-600



433

434

A giltwood mirror in Louis XV style, early 20th century, the foliate carved frame enclosing the bevelled rectangular plate, an arched pediment and subsidiary plates, 177cm high, 107cm wide

£600-1,000



434

435

435

A late 19<sup>th</sup>/early 20<sup>th</sup> century Aubusson carpet, with an ivory cartouche filled with roses, on a red ground with floral border, approximately 330 by 450cm.

£400-600







436

436

A gilt metal and moulded glass chandelier, later 20<sup>th</sup> century, of baluster form, the circlets cast with swags and ribbons, hung with beaded chains overall, approximately 135cm high overall

£700-1,000

437

Two pairs of pale salmon damask curtains, modern, each with pale salmon red ground with golden embroidered flowerhead and floral decoration, each approximately 220cm high and 240cm wide at the ground; together with tie back and swept drapery pelmet sections (quantity)

£500-800



437

438

Curtain holdbacks assorted, including; set of three pairs of modern brass backs of angular form with pommel fronts, 17cm high; a set of four late 19<sup>th</sup> century French pressed brass loop holdbacks, 24cm high and two pairs of loop holdbacks (14)

£200-400



438

439

An Italian giltwood and composition wall mirror, mid-19<sup>th</sup> century, the rectangular plate surmounted by composition scrolls and central urn of flowers, 164cm high, 90cm wide

£400-600

440

A pair of French porcelain Sevres style gilt-metal mounted inverted baluster vases from a series of the Four Seasons, third quarter 19<sup>th</sup> century, painted with panels of putti emblematic of Summer and Autumn, verso landscapes, 46cm high

£400-600



440

441

A French gilt metal mantel clock, second half 19<sup>th</sup> century, the eight-day bell striking movement with outside countwheel and stamped *E. Robert-Houdin* and serial numbered 6603 to backplate and with enamel Arabic numeral dial, the case surmounted with an urn with festoons, masks and foliate decoration, 37cm high

£300-500



439



441





442

442  
A late Victorian carved giltwood and composition overmantel mirror, circa 1890, with cherub scroll fretwork and foliate cresting above a ropetwist surround and stepped scrolling base, approximately 128cm high, 180cm wide.

£1,000-1,500

443

A pair of electro-plated tall trumpet vases, unmarked, of recent manufacture, with shaped everted rims and pierced with scroll foliate reserves, the bases loaded, 60 cm (23 1/2in) high

£200-300



444

444  
A French marquetry, parquetry, and gilt metal mounted card table, circa 1870, 75cm high, 89cm wide, 45cm deep

£500-800



443

445

A Victorian silver shaped oval basket by Susannah Brasted, London 1889, the twin loop handles centred by flowers, the C-scroll rim with flowers at the quarters, pierced trellis panels divided by further flowers, on four shell feet, 31.5cm (12 1/4in) across handles, 728g (23.4 oz)

£200-300



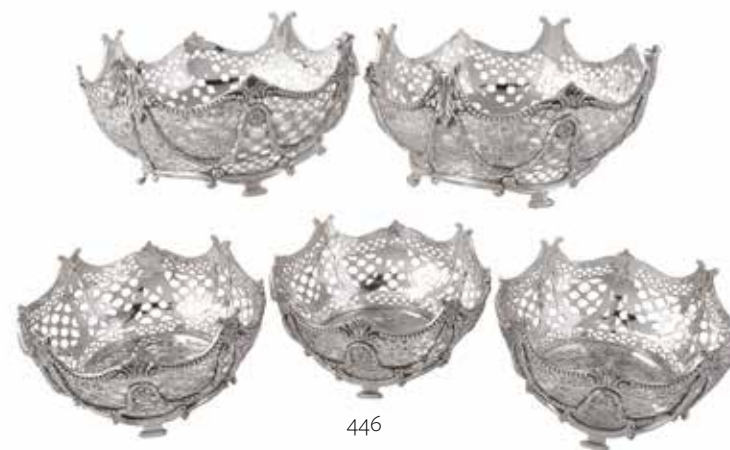
445

446

A suite of five Victorian silver shaped circular dessert baskets by Robert Harper, London 1882, the shaped beaded rims with shells at intervals, pierced with a roundel band above trellis with husk swags, C-scroll lower rims and on short baton feet, engraved with a crest and a motto, two 22.5cm (9in) diameter, three 15cm (6in) diameter, 2395g (77 oz)

The crest and motto for LABOUCHERE.

£600-800



446

447

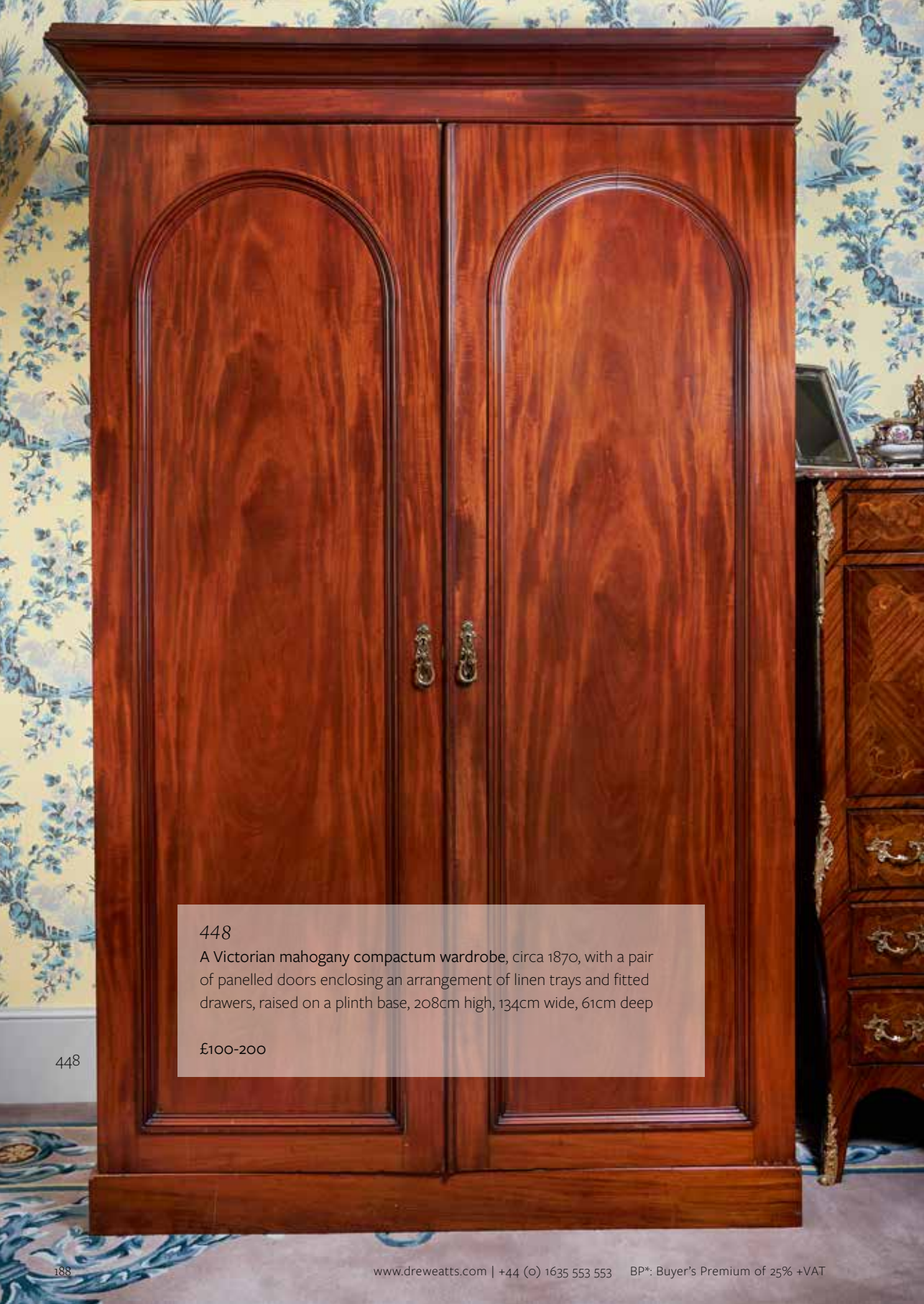
A Victorian silver square galleried salver by Elkington & Co., London 1883, with a beaded rim, pierced circlet gallery, engraved with stylised Greek key bands, on four toupe feet, 25.5cm (10in), 934g (30 oz)

£300-400



447





448  
A Victorian mahogany compactum wardrobe, circa 1870, with a pair of panelled doors enclosing an arrangement of linen trays and fitted drawers, raised on a plinth base, 208cm high, 134cm wide, 61cm deep

£100-200

448

449

Two pairs of pale salmon damask curtains, modern, each with pale salmon ground with golden embroidered flowerhead and floral decoration, each approximately 216cm high and 140cm wide at the ground (4)

£400-600



449 (two pairs of curtains)



450

450

A pair of Edwardian mahogany bedside cupboards, circa 1905, each with a frieze drawer above cupboard and square tapering legs, each 76cm high, the top 40cm square (2)

£300-500

451

An Edwardian silver mounted dressing table mirror by Henry Matthews, Birmingham 1901, rectangular with a serpentine top centred by a vacant cartouche, pierced and embossed with flowers, scroll foliage, scrolls and trellis, beige velvet covered easel back, 50cm (19 3/4in) high

£200-300



451





452

452

An American silver jewellery box by Dominick & Haff (1868-1928), New York, formed as a side table, plain with a scroll foliate apron, on four cabriole supports, green plush fitted interior, engraved with a monogram EGR, 15.5cm (6in) high, 24.5cm (9 1/4in) long, loaded

£200-300



453

453

A German silver shaped oval trinket box by Simon Rosenau, Bad Kissingen, import marked for Sheffield 1896, sponsor's mark of Samuel Boyce Landeck, formed as a French style dressing table, embossed with 18th century figure groups within scroll borders, on four cabriole supports, 7.5cm (3in) high, 17cm (6 5/8in) long, 295g (9.5 oz)

£150-250



454

454

A Belgian silver twin handled rectangular tray by Delheid Frères, Brussels, 1868-1942. 800 standard, model 686, in Louis XV style, the scroll handles with rocaille work, the shaped rim with further rocaille work, shells and flowers, 57.5cm (22 3/4in) long, 2201g (70.75 oz)

See ten Bokum, Anne-Marie 'Delheid 1828-1980: van Michel tot Climax'. Antwerp 2010, p. 67 for an illustration of a page from a catalogue of 1932-33 showing a model 686 tray (bottom left).

£400-600

455

A red and gold damask curtain suite, modern, with rich golden floral design on claret field and comprising; a pair of curtains, emerald green lining, each approximately 228cm high, 180cm wide at the ground, pair of emerald green curtains to match, 240cm high, 380cm wide; and a giltwood pelmet, hung with matching drapery, approximately 189cm wide (5)

£800-1,200



455

456

A late 19th century ormolu and white marble mantel clock, Raingo Freres, Paris, with eight-day bell striking movement with outside countwheel, the backplate stamped for the maker and serial numbered 3076, with white enamel Roman Numeral dial, the case surmounted by three cherubic figures, 48cm high overall

£500-700



456

457

A set of six French silver mounted porcelain coffee cups and saucers by Edouard Ernie, 1878-1973 1st standard export mark, import mark for London 1991, sponsor's mark for Edwin Thompson Bryan, stamped for Maple & Co. Ltd as retailers, wrythen rocaille decoration, the porcelain liners blue glazed and unmarked; with six French tea spoons by another maker, in a fitted case by Maple & Co. Ltd, 878g (28.25 oz) weighable

£200-300



457



458

A French gilt brass 'Pendule d'Officier' mantel clock, mid 19th century, the eight-day two train bell striking movement with two-plane lever escapement incorporating curved rack and pinion regulation adjustment, the backplate stamped *P.G. Brevete*, the circular silvered Roman numeral dial with steel *moon* hands within milled surround incorporating regulation square at 12 o'clock set behind a hinged bevel-glazed bezel, the drum-shaped case with hinged foliate handle over repeating floral band to circumference over stepped skirt base with block feet, 21.5cm high

£400-600



458



459

459Y

A French rosewood, parquetry inlaid, and gilt metal mounted petite commode, of serpentine outline, with marble top above two long drawers and cabriole legs, 82cm high, 82cm wide, 52cm deep

£500-800

460

A set of eight gilt metal three light wall appliques in Louis XVI taste, in the manner of designs by Jean-Charles Delafosse, 20th century, each with three scrolled arms issuing from a pilaster backplate with flambeau urn finial, 49cm high, 29cm wide, 25cm protuberance

£500-700



460



461



461

A pair of French porcelain and gilt metal mounted potpourri urns and covers, late 19th century, of squat bulbous form, the blue ground bodies painted with coastal vignettes, signed *Callard*, 32cm high

£600-800

462

A pair of dark green silk curtains, modern, each with applied mulberry pink banding, each approximately 205cm high, 320cm wide at the ground; and a similar plainer pair, approximately 220cm high, 198cm wide at the ground; together with associated swags, tie backs and drape sections (quantity)

£300-500



462





463

463  
Style of François Boucher  
*Courting couple, a pair*  
Oil on canvas  
Each 149 x 163cm (58½ x 64 in.) (2)

It has been suggested that these decorative works were possibly cartoons for tapestry designs

£800-1,200

464

A Meissen (outside decorated) gilt-metal mounted kettle and cover, late 19th century, typically Dresden decorated with Watteauesque panels reserved on a turquoise ground, blue crossed swords and cancellation mark, 25cm x 23.5cm

£300-500



464



465

465

A French Sevres style porcelain and gilt metal mounted mantel clock, second half 19th century, with eight day bell striking movement engraved *Breguet, Paris, 2200*, the white enamel Roman numeral dial similarly inscribed, the case surmounted by an urn finial, the porcelain panels depicting cherubs and birds, 38cm high

£400-600

466 Y

A French kingwood, floral inlaid, and gilt metal mounted vitrine, last quarter 19th century, of serpentine outline, the stepped top above a glazed panel door, and raised on short cabriole legs, the rear with old atelier label for "A Monin Genoble", 165cm high, 83cm wide, 45cm deep.

£400-600



466



467

A substantial gilt metal and cut and moulded glass chandelier, 20th century, the baluster frame suspended from a guilloche cast circlet festooned with floral swags, descending to a further, larger circlet cast with cabochons, approximately 160cm high overall, 80cm diameter

£2,000-3,000



468

468

An early 20<sup>th</sup> century embroidered silk window surmount, floral gold ground with pale blue floral decoration and tied ribbon banding, adapted, approximately 430cm wide, 183cm high; together with an early 20<sup>th</sup> century pelmet section, on modern wooden frame, scrolling golden yellow floral rocaille design on pale pink ground, approximately 283cm wide, 58cm high (2)

£400-600

469

A Victorian satinbirch wardrobe, circa 1880, the single mirrored door enclosing a fitted interior with an arrangement of hanging rail, slides, and drawers, 210cm high, 146cm wide, 58cm deep

£300-500

470

An unusual Edwardian silver mounted dressing table mirror with timepiece, the nickel plated keyless wind Goliath watch inset into the circular bevelled plate, in a plain balloon outline silver frame, blue velvet covered easel back, 42cm (\*16 1/2in) high

£200-300



470



469



471

A large Continental cut glass ceiling light, second quarter 20<sup>th</sup> century, of quatrefoil outline, inset with pendants and swags overall, 116cm long, 86cm wide

£400-600



472

An Edwardian ebonised and gilt-metal mounted quarter chiming bracket clock, circa 1900, the eight-day quarter-striking triple fusee movement chiming on either ten bells or four coiled gongs, the break-arch dial inscribed *A HAMILTON, CRIGHTON & CO., 41 GEORGE ST. EDINBURGH* within silvered chapter ring with Roman numerals, beneath chime silent and Westminster Chimes/eight bells/ten bells subsidiary selection dials, the elaborate case surmounted with flamiform finials, 66cm high

£2,000-3,000



472

473

An Edwardian mahogany and marquetry shaped triangular card table, crossbanded and inlaid with musical trophies, flowers and foliage, 75cm high, 97.5cm wide, 97cm deep

£300-500



473





474

474 Y

A French Boulle wall clock in the Regence taste, late 19<sup>th</sup> century, the eight-day two train gong striking movement with decorative sunburst bob pendulum and 8.75 inch Roman numeral enamel cartouche dial with blued steel hands, the case with gilt surmount cast as a cherub holding aloft a torch to the brass inlaid shell ogee caddy over break-arch cornice applied with seated putti, the door with female term mounts to angles and gilt-edged glazing, the base of conforming ogee outline applied with female masks to angles, 135cm high

£800-1,200

475

A glazed copper hanging light of octagonal section, late 19th century, with a series of glazed panels within a lattice frame, 50cm high, 45cm wide

£200-300



475

476

A Flemish tapestry fragment, late 17th century, probably previously a border, woven with seated figures and animals amongst fruiting foliage, below a band of flowerheads and *fleur-de-lys*, approximately 33cm high, 278cm wide; together with a fragment of floral embroidered silk, possibly English, late 18th century, 198cm wide, 66cm high (2)

£200-400



476

477

A Continental beadwork and wirework six light chandelier, possibly Venetian, the cobalt and clear glass beaded frame surmounted with an outscrolled corona suspending conforming lozenge chains, descending to a flared urn rising from a central globular boss, festooned with beaded chains overall, approximately 160cm high overall

See Christie's New York, 20 May 2014, Lot 197, for a very similar example (\$17,500)

£1,000-1,500







478

A Continental 'Teniers' tapestry, 18th century, possibly Brussels, emblematic of Spring and fertility, depicting a shepherd with sheep, a milk maid milking a cow and figures in the background, approximately 249 by 271cm

The milkmaid seated prominently in the foreground is a recurring feature in genre tapestries of milking scenes after Teniers, see for example Sotheby's New York, 17 October 2015, lot 731

The unusual composition of the present tapestry may also have been influenced by the influential 'months' tapestries from the workshops of Gilles, Urbanus and Jan Leyniers, woven during the late 17th/18th centuries. In this series, the month of June is rendered as a sheep shearing scene. See Sotheby's London, 1 November 2005, lot 163

£2,000-3,000



479Y

A preserved male lion, *Panthera leo*, late 19th/early 20th century, modelled standing, 112cm high, 191cm long

£600-800





480

A Victorian copper lantern, circa 1900, of tapered hexagonal section with domed top, formerly crests for the lamp posts, traces of red lacquer, approx. 110cm high

£250-350



481

A late Victorian oak traveling writing table, circa 1900, the folding action in the manner of a coaching table, with fitted interior above X-frame supports, 101cm high, 54cm wide, 8cm deep (closed)

£100-150



482

A silver cased desk timepiece and perpetual calendar by Padgett & Braham Ltd, London 1935, with a Smiths captive wind 8 day movement, square cream dial with Arabic numerals and a chrome plated bezel, the cylindrical calendar atop the plain angular case. on four square black Bakelite feet, 11cm (4 1/4in) long

£150-250



483

483

A pair of Victorian silver trumpet vases by Alexander Macrae, London 1865, openwork fruiting vine on rocky domed bases, 34cm (13 1/2in) high, 1128g (36.25 oz), with later enamel painted blue glass liners, 45.5cm (17 3/4in) high overall

£300-400



485

485

A silver twin handled drinks tray by Harrison Brothers & Howson, Sheffield 1929, rectangular, the inset angles with shells, a raised nulled rim and nulled handles, 58cm (22 3/4in) long, 1633g (52.5 oz)

£400-600



484

484

A late Victorian silver gilt mounted ruby glass claret jug by Elkington & Co., Birmingham 1891, with a bunch of grapes finial to the domed cover, a squeeze opening handle, meandering fruiting vine cage over the hobnail cut globe and shaft body, 29cm (11 1/4in) high

£250-350



486

486

A Victorian silver mounted glass oinochoe shape ewer by George Fox, London 1865, with a leaf-capped high handle terminating with a mask, trefoil plain neck, the body frosted and engraved with palmettes, 28cm (11 1/2in) high; a wrythen moulded liqueur decanter and stopper by Hukin & Heath, Birmingham 1899, 30cm (12in) high; a small ovoid decanter by William Hutton & Sons, London 1905, engraved with the regimental crest of the 4th Battalion Royal Dublin Fusiliers; and a label engraved Chartreuse by William Hutton & Sons, London 1906 (4)

£300-500





487

487

A motor car travelling picnic set for four, 1930s, the complete fitments with chromium plated mounts, including: cutlery, two vacuum flasks, two wicker covered bottles, cups and saucers, three various boxes, jars for butter and preserve by Coracle brand, glass and two smaller bottles, wicker covered frame, the rectangular case black leather cloth cover, with chromium plate swing side handles, 63cm (24in) long

£400-600

488

A pair of French cast iron and green enamel low torcheres in early 19th Century style, 20th century, each with circular dish top above caryatids, on tripartite base with paw feet, 85,5cm high, 33cm diameter

£300-500



488

489

A companion pair of verdigris copper porch lights, modern, of pagoda form, enclosing four light fitments within, 90cm high, 64cm square

£500-700



489

490

A blue painted cast iron and glazed lantern, English or French, late 19th century, the domed top and tapered cylindrical body cast with openwork foliate and geometric cresting, approximately 90cm high, 50cm diameter

£1,000-1,500



490



491

491

A copper and glazed hanging lantern, French or English, circa 1900, of canted square section, the rim pierced with circular apertures, above a tapered body with moulded base, enclosing a single light fitting, approximately 85cm high, 51cm square

£500-800

492

A painted copper and plate-glass hexagonal hall lantern, late 19th/early 20th century, with pierced pagoda top and scalloped gallery, raised on ball feet, 115cm high, 70cm wide

£400-600



492





493

493

A painted cast iron garden urn by A. Motteau of Buenos Aires, late 19th century, the lobed rim above a Vitruvian scroll cast neck, above a festooned cylindrical body cast with rams' masks and bows, the square socle mounted with a plaque inscribed A. MOTTEAU GARAY 1272 BUENOS AIRES, 72cm high, 55cm wide

£1,000-1,500



494

494

Alfred Corneau & Charleville, a French cast iron pedestal, late 19th century, the tapered body relief cast with scrolling foliage in reserves, and with raised maker's mark to the square socle, 116cm high

£1,500-2,500



495

495

A French cast iron urn on plinth, last quarter 19th century, the festooned and twin handled urn raised on a swagged square section pedestal cast with lion masks, swags and paw feet, 180cm high overall

£1,500-2,500





496  
A pair of lead planters in George II style, the square section bodies cast with geometric strapwork motifs overall, each approximately 53cm high, 45cm wide, 41cm deep (2)

£300-500

496

497  
A patinated metal basin or jardiniere, probably 20th century, of demilune form, the bulbous body relief cast with bellflower swags, 35cm high, approximately 136cm wide

£0-350



497



498  
A white painted reconstituted stone planter in the 17th century taste, modern, the rectangular basin with vine motif and raised on four balusters, 94cm high, 25cm deep

£200-300

498



499  
A pair of black painted cast iron planters in late 18th Century style, each with circular basket top raised on baluster columns and splayed tripod legs terminating in paw feet in the Herculeum manner, 85cm high, 79cm diameter (2)

£400-600

500  
A set of four painted metal planters in 18th Century style, of demi-lune form, decorated with mask ornament, 33cm high, each 63cm wide

£300-500



500



Please see Conditions of Business and Conditions of Sale on the following pages.

Dreweatts & Dreweatts 1759 are trading names of Dreweatts 1759 Ltd. Dreweatts 1759 Ltd is registered in England, company number: 10758982, registered office: Donnington Priory, Newbury, Berkshire RG14 2JE.

## Important Notices

### BUYING AT DREWEATTS

There are several ways you can bid at a Dreweatts auction; in person, by leaving a commission or absentee bid, on the telephone where available and live via the internet – please make arrangements before the sale. THIS NOTICE APPLIES ONLY TO A PERSON WHO WISHES TO BID IN PERSON, OR BY LEAVING A COMMISSION OR ABSENTEE BID, AT A DREWEATTS PUBLIC AUCTION. For bidding at an online auction or for online bidding at a public auction please see our Online Auction Terms published on our website at [www.dreweatts.com](http://www.dreweatts.com).

### BIDDING IN PERSON

If intending to buy you are required to register your name and details at reception prior to the commencement of the auction. You will be required to provide a proof of identity and address to register for bidding. You will then be allocated a bidding number, which you use when bidding for an item.

### COMMISSION BIDS

Dreweatts will execute bids on your behalf if you are unable to attend the sale. Commission or absentee bids are accepted either directly at reception, or can be sent by post, fax, email, telephone or via the website: [www.dreweatts.com](http://www.dreweatts.com).

Dreweatts will add these bids to the auctioneers' sale book and will undertake to purchase the lots on your behalf as cheaply as allowed by other bids and reserves. If two buyers submit identical commission bids Dreweatts may prefer the first bid received.

Dreweatts does not accept liability for failing to execute commission bids, or for any errors or omissions.

### CONDITION

Bidders must satisfy themselves as to the condition of each lot. Condition reports are available on request – see the Conditions of Business at the back of this catalogue forming part of these Auction Terms and Conditions for more information regarding condition reports. Requests for condition reports must be submitted by 4pm on the day prior to the auction; condition reports may be available alongside the lot description on the online catalogue at: [www.dreweatts.com](http://www.dreweatts.com).

### COMMISSION CHARGES

All purchases are subject to a buyer's premium, which is charged per lot at 25% of the hammer price (30% including VAT) up to and including £500,000, 20% (24% including VAT) of the hammer price from £500,001 up to and including £1,000,000 and 12% of the hammer price (14.4% including VAT) in excess of £1,000,000. A theta symbol (Θ) indicates that the lot is a zero rated item and therefore not subject to VAT on the buyer's premium. This applies to bound books (manuscripts and printed), unframed maps and albums. In the event the lot has a dagger (†) beside the lot number in the catalogue, this indicates that the lot is owned by an entity or company required to pay VAT (generally not an Antique Dealer, as they operate under a dealers margin scheme). VAT is payable at 20% on the Hammer Price. Lots marked with a double dagger (‡) (presently a reduced rate of 5%) or Ω (presently at standard rate of 20%) have been imported from outside the European Union to be sold at auction and therefore the buyer must pay the import VAT at the appropriate rate on the hammer price.

### PAYMENT

Payment will be accepted, if you are a successful bidder, by debit card issued in the name of the Buyer by a UK bank and registered to a UK billing address; by all major UK issued credit cards issued in the name of the Buyer and registered to a UK billing address with the exception of American Express and Diners Club; by bank

transfer direct into our bank account, Bank Details: NatWest, 30 Market Place, Newbury, Berkshire RG14 5AG. Account Name: Dreweatts 1759 Ltd. A/C: 62412949, Sort Code: 60-15-07, BIC: NWBKGB2L, IBAN: GB21NWBK60150762412949; or in cash up to £8,000 (subject to relevant money laundering regulations). The name of the bank account holder should match the name of the buyer. Payment may also be made by sterling personal cheques drawn on a UK bank account and made payable to 'Dreweatts 1759 Ltd', but Dreweatts regrets that purchases paid for by this method cannot be collected until your cheque has cleared. First time buyers who are not present at the saleroom are requested to pay by bank transfer.

### Y CITES REGULATIONS

Please note that lots marked with the symbol (Y) in this catalogue may be subject to CITES Regulations when exported. Relevant CITES Regulations may be found at [www.gov.uk/guidance/cites-imports-and-exports](http://www.gov.uk/guidance/cites-imports-and-exports).

### COLLECTION OR DELIVERY

Before being able to collect your purchases you are required to pay the hammer price, plus the applicable commissions, and obtain a receipt acknowledging payment. Collection of the purchased lots is at the purchaser's risk and expense and whilst Dreweatts do not provide packing and despatch service we can suggest some carriers.

Dreweatts also require that all purchased items are collected within four working days of the sale to avoid a storage charge being applied.

### STORAGE CHARGES

All items not collected by 4pm, within four working days of the sale, will be automatically removed to commercial storage and subject to a minimum storage charge of £20 (plus VAT) per lot and to a further storage charge of £2 (plus VAT) per lot per part or full day thereafter. These charges will be the sole liability of the purchaser and will be billed directly to them by Vangaroo Ltd (Andover); Vangaroo may be willing to adjust their charges if they are instructed by the purchaser to deliver to them. On payment of all sales and storage costs, items will be available for collection by appointment from Vangaroo Ltd (Andover), tel: 01264 316970, mobile: 07528 291180, email: [matt@vangaroo.co.uk](mailto:matt@vangaroo.co.uk). These charges are set by Vangaroo Ltd (Andover); we recommend that you contact them directly regarding queries relating to these charges and other questions relating to storage. Staff at the saleroom will be unable to answer questions relating to items that have been removed from the saleroom.

### FURTHER INFORMATION

The colours printed in this catalogue are not necessarily a true reflection of the actual item. All weights and measures given in the catalogue should be regarded as approximate.

### VALUATION SERVICES

Dreweatts provides a range of confidential and professional valuation services to private clients, solicitors, executors, estate managers, trustees and other professional partners. These services include auction valuations, insurance valuations, probate valuations, private treaty valuations, valuations for family division or for tax purposes. For more information, please see our website: [www.dreweatts.com](http://www.dreweatts.com).

For directions to Donnington Priory, please see our website: [www.dreweatts.com](http://www.dreweatts.com).

Parking is available at Donnington Priory in two car parks on either side of the saleroom.

## Information for Buyers at Public Auctions

1. **INTRODUCTION.** The following notes are intended to assist Bidders and Buyers, particularly those inexperienced or new to our salerooms. All of our auctions and sales are conducted on our printed Auction Terms and Conditions, including these Conditions of Sale and Business, which are readily available for inspection and normally accompany catalogues. Our staff will be happy to help you if there is anything you do not fully understand.

Any particular auction and/or any particular lot in an auction may be subject to different or additional terms which will be published in our auction catalogue. All auctions and sales of wines and spirits, jewellery, watches and clocks are subject to the special terms set out in the relevant Notices in relation to those items published in our auction catalogue and, in the event of any conflict or inconsistency, those special terms prevail over any other terms in our Auction Terms and Conditions. By bidding at the auction, you agree to be bound by these terms.

2. **AGENCY.** As auctioneers we usually act as agents for the seller whose identity, for reasons of confidentiality, is not normally disclosed. Accordingly if you buy at auction your contract for the item or items purchased is with the seller and not with us as the auctioneer.

3. **ESTIMATES.** Estimates are designed to help buyers gauge what sort of sum might be involved for the purchase of a particular lot. Estimates may change and should not be thought of as the sale price. The lower estimate may represent the reserve price and certainly will not be below it. Estimates do not include the Buyer's Premium or VAT (where chargeable). Estimates are prepared some time before the sale and may be altered by announcement before the sale. They are in no sense definitive.

4. **BUYER'S PREMIUM.** The Conditions of Sale forming part of our Auction Terms and Conditions require the buyer to pay a buyer's premium on the hammer price of each lot purchased. The buyer's premium is 25% of the hammer price up to and including £500,000, 20% of the hammer price from £500,001 up to and including £1,000,000, and 12% of the hammer price in excess of £1,000,000. VAT at the prevailing rate of 20% is added to buyer's premium and additional charges as defined below.

5. **VAT.** A theta symbol (Θ) indicates that the lot is a zero rated item and therefore not subject to VAT on the buyer's premium. This applies to bound books (manuscripts and printed), unframed maps and albums. A dagger symbol (†) indicates that VAT is payable by the purchaser at the standard rate (presently 20%) on the hammer price as well as being an element in the buyers' premium. This imposition of VAT is likely to be because the seller is registered for VAT within the European Union and is not operating the Dealers Margin Scheme or because VAT is due at 20% on import into the UK. A double dagger (‡) indicates that the lot has been imported from outside the European Union and the present position is that these lots are liable to a reduced rate of Import VAT currently 5% on the hammer price. (Ω) indicates that the lot has been imported from outside the European Union and these lots are liable to the standard rate of Import VAT currently 20% on the hammer price. Lots which appear without the above symbols indicate that no VAT is payable on the hammer price; this is because such lots are sold using the Auctioneers Margin Scheme and it should be noted that the VAT included within the buyers' premium is not recoverable as input tax.

6. **DESCRIPTION AND CONDITION.** Condition reports are provided on our website or upon request. The absence of a report does not imply that a lot is without imperfections. The detail in a report will reflect the estimated value of the lot. Large numbers of such requests received shortly before the sale may mean that reports cannot be provided for all lots. Members of staff are not trained restorers or conservators and, particularly for higher value lots, you should obtain an opinion from such a professional. Dreweatts is not liable for damage to gilded picture frames, plaster picture frames or picture frame glass; if a Lot is or becomes dangerous, we may dispose of it without notice to bidders in advance in any manner we see fit and will be under no liability for doing so. We recommend that you always view a lot in person.

We are dependent on information provided by the seller about a lot and whilst we may inspect lots and act reasonably in taking a general view about them we are normally unable to carry out a detailed examination and frequently no examination of lots in order to ascertain their condition in the way in which it would be wise for a buyer to do. Intending buyers have ample opportunity for inspection of goods and, therefore, accept

responsibility for inspecting and investigating lots in which they may be interested and the corresponding risk should they not do so. Please note carefully the exclusion of liability for the condition of lots contained in the Conditions of Sale. Neither the seller nor we, as the auctioneers, accept any responsibility for their condition. In particular, mechanical objects of any age are not guaranteed to be in working order. However, in so far as we have examined the goods and make a representation about their condition in the auction catalogue, we shall be liable for any defect which is not reflected in that representation and which that examination ought to have revealed to the auctioneer but which would not have been revealed to the buyer had the buyer examined the goods. Additionally, in specified circumstances lots misdescribed because they are 'deliberate forgeries' may be returned and repayment made. There is a 3 week time limit. (The expression 'deliberate forgery' is defined in our Conditions of Sale).

7. **ELECTRICAL GOODS.** These are sold as 'antiques' only and if bought for use must be checked over for compliance with safety regulations by a qualified electrician before use.

8. **EXPORT OF GOODS.** Buyers intending to export goods should ascertain (a) whether an export licence is required and (b) whether there is any specific prohibition on importing goods of that character because, e.g. they may contain prohibited materials such as ivory. Ask us if you need help.

9. **BIDDING.** Bidders will be required to register before the sale commences and lots will be invoiced to the name and address on the sale registration form. Bidders are required to provide a government issued identity document and a proof of address. Please enquire in advance about our arrangements for telephone bidding.

10. **COMMISSION BIDDING.** Commission bids may be left with the auctioneers indicating the maximum amount to be bid excluding buyers' premium. Dreweatts will add these bids to the auctioneers' sale book and they will be executed as cheaply as possible having regard to the reserve (if any) and competing bids. If two buyers submit identical commission bids the auctioneers may prefer the first bid received. Please enquire in advance about our arrangements for the leaving of commission bids by telephone or fax. Dreweatts does not accept liability for failing to execute commission bids, or for any errors or omissions.

11. **METHODS OF PAYMENT.** Payment will be accepted, if you are a successful bidder, by debit card issued in the name of the Buyer by a UK bank and registered to a UK billing address; by all major UK issued credit cards issued in the name of the Buyer and registered to a UK billing address with the exception of American Express and Diners Club; by bank transfer direct into our bank account, Bank Details: NatWest, 30 Market Place, Newbury, Berkshire RG14 5AG. Account Name: Dreweatts 1759 Ltd. A/C: 62412949, Sort Code: 60-15-07, BIC: NWBKGB2L, IBAN: GB21NWBK60150762412949; or in cash up to £8,000 (subject to relevant money laundering regulations). The name of the bank account holder should match the name of the buyer. Payment may also be made by sterling personal cheques drawn on a UK bank account and made payable to 'Dreweatts 1759 Ltd', but Dreweatts regrets that purchases paid for by this method cannot be collected until your cheque has cleared. First time buyers who are not present at the saleroom are requested to pay by bank transfer.

12. **COLLECTION AND STORAGE.** Please note what the Conditions of Sale state about collection and storage. It is important that goods are paid for and collected promptly. Any delay may involve the buyer in paying storage charges.

13. **À DROIT DE SUITE ROYALTY CHARGES.** From 1st January 2012 all UK art market professionals (which includes but is not limited to; auctioneers, dealers, galleries, agents and other intermediaries) are required to collect a royalty payment for all works of art that have been produced by qualifying artists each time a work is re-sold during the artist's lifetime and for a period up to 70 years following the artists death. This payment is only calculated on qualifying works of art which are sold for a hammer price more than the UK sterling equivalent of EURO 1,000 – the UK sterling equivalent will fluctuate in line with prevailing exchange rates. It is entirely the responsibility of the buyer to acquaint himself with the precise EURO to UK Sterling exchange rate on the day of the sale in this regard, and the auctioneer accepts no responsibility whatsoever if the



qualifying rate is different to the rate indicated. All items in this catalogue that are marked with λ are potentially qualifying items, and the royalty charge will be applied if the hammer price achieved is more than the UK sterling equivalent of EURO 1,000. The royalty charge will be added to all relevant buyers' invoices, and must be paid before items can be cleared. All royalty charges are passed on to the Design and Artists Copyright Society (DACS), no handling costs or additional fees with respect to these charges will be retained by the auctioneers. The royalty charge

## Terms of Consignment for Sellers in Public Auctions

The sale of goods at our public auctions and a seller's relationship with us are governed by our Auction Terms and Conditions including these Terms of Consignment for Sellers in Public Auctions and our Conditions of Sale for Public Auctions. Any particular auction and/or any particular lot in an auction may be subject to different or additional terms which will be published in our auction catalogue or separately announced prior to the auction. All auctions and sales of wines and spirits, jewellery, watches and clocks are subject to the special terms set out in the relevant Notices in relation to those items published in our auction catalogue and, in the event of any conflict or inconsistency, those special terms prevail over any other terms in our Auction Terms and Conditions. Please note that our Auction Terms and Conditions including these Terms of Consignment for Sellers in Public Auctions and our Conditions of Sale for Public Auctions relate to auctions held in our salerooms and we have separate terms and conditions for our online auctions.

If you, or another person acting on your behalf, provide goods to us to sell on your behalf at one of our auctions this signifies that you agree to and will comply with our Auction Terms and Conditions including these Terms of Consignment for Sellers in Public Auctions and our Conditions of Sale for Public Auctions.

1. **INTERPRETATION.** In these Terms the words 'you', 'yours', etc. refer to the Seller and if the consignment of goods to us is made by an agent or otherwise on the Seller's behalf we assume that the Seller has authorised the consignment and that the consignor has the Seller's authority to contract. All obligations that apply to the Seller under these Terms of Consignment for Sellers in Public Auctions shall apply to the owner of the goods and their agent jointly and separately. Similarly the words 'we', 'us', etc. refer to the Auctioneers.

2. **WARRANTY.** The Seller warrants that possession in the lots can be transferred to the Buyer with good and marketable title, free from any third party right and encumbrances, claims or potential claims. The Seller has provided all information concerning the item's ownership, condition and provenance, attribution, authenticity, import or export history and of any concerns expressed by third parties concerning the same.

3. **ALL COMMISSIONS** and fees are subject to VAT at the prevailing rate.

4. **COMMISSION** is charged to sellers and all selling terms are available from our salerooms.

5. **REMOVAL COSTS.** Items for sale must be consigned to the saleroom by any stated deadline and at your expense. We may be able to assist you with this process but any liability incurred to a carrier for haulage charges is solely your responsibility.

### 6. LOSS AND DAMAGE OF GOODS

(a) Loss and Damage Warranty - Dreweatts is not authorised by the FCA to provide insurance to its clients, and does not do so. However Dreweatts for its own protection assumes liability for property consigned to it at the lower pre-sale estimate until the hammer falls. To justify accepting liability, Dreweatts makes a charge of 15% of the hammer price plus VAT, subject to a minimum charge of £150, or if unsold 15% of our lower estimate. The liability assumed by Dreweatts shall be limited to the lower pre-sale estimate or the hammer price if the lot is sold. Dreweatts is not liable for damage to gilded picture frames, plaster picture frames or picture frame glass; if the Lot is or becomes dangerous, we may dispose of it without notice to you in advance in any manner we see fit and will be under no liability for doing so.

(b) If the owner of the goods consigned instructs us in writing not to take such action, the goods then remain entirely at the owner's risk unless and until the property in them passes to the Buyer or they are collected by or on behalf of the owner, and clause 6 (a) is inapplicable.

that will be applied to qualifying items which achieve a hammer price of more than the UK sterling equivalent of EURO 1,000, but less than the UK sterling equivalent of EURO 50,000 is 4%. For qualifying items that sell for more than the UK sterling equivalent of EURO 50,000 a sliding scale of royalty charges will apply – for a complete list of the royalty charges and threshold levels, please see [www.dacs.org.uk](http://www.dacs.org.uk). There is no VAT payable on this royalty charge.

7. **ILLUSTRATIONS AND PHOTOGRAPHS.** The cost of any illustrations or photographs is borne by you. The copyright in respect of such illustrations and photographs shall be the property of us, the auctioneers, as is the text of the catalogue.

8. **MINIMUM BIDS AND OUR DISCRETION.** Goods will normally be offered subject to a reserve agreed between us before the sale in accordance with clause 9. We may sell Lots below the reserve provided we account to you for the same sale proceeds as you would have received had the reserve been the hammer price. If you specifically give us a "discretion" we may accept a bid of up to 10% below the formal reserve.

### 9. RESERVES

(a) You are entitled to place prior to the auction a reserve on any lot consigned, being the minimum hammer price at which that lot may be sold. Reserves must be reasonable and we may decline to offer goods which in our opinion would be subject to an unreasonably high reserve (in which case goods carry the storage and loss and damage warranty charges stipulated in these Terms of Consignment).

(b) A reserve once set cannot be changed except with our consent.

(c) Where a reserve has been set which we consider unreasonably high, an unsold charge will be payable in the event that the lots fails to sell, being the agreed selling terms calculated on the reserve, LDW at 15% and any photographic charges.

(d) Where a reserve has been placed only we may bid on your behalf and only up to the reserve (if any) and you may in no circumstances bid personally.

(e) Reserves are not usually accepted for lots expected to realise below £100.

10. **ELECTRICAL ITEMS.** These are subject to detailed statutory safety controls. Where such items are accepted for sale you accept responsibility for the cost of testing by external contractors. Goods not certified as safe by an electrician (unless antiques) will not be accepted for sale. They must be removed at your expense on your being notified. We reserve the right to dispose of unsafe goods as refuse, at your expense.

11. **SOFT FURNISHINGS.** The sale of soft furnishings is strictly regulated by statute law in the interests of fire safety. Goods found to infringe safety regulations will not be offered and must be removed at your expense. We reserve the right to dispose of unsafe goods as refuse, at your expense. The rights of disposal referred to in clause 10 and 11 are subject to the provisions of The Torts (Interference with Goods) Act 1977.

12. **DESCRIPTION.** Please assist us with accurate information as to the provenance, lawful import etc. of goods where this is relevant. There is strict liability for the accuracy of descriptions under modern consumer legislation and in some circumstances responsibility lies with sellers if inaccuracies occur. We will assume that you have approved the catalogue description of your lots and that your lots match those descriptions unless informed to the contrary. Where we are obliged to return the price to the buyer when the lot is a deliberate forgery under Condition 15 of the Conditions of Sale and we have accounted to you for the proceeds of sale you agree to reimburse us the sale proceeds and in any event within 7 days of our written notice to do so.

13. **UNSOLD.** If an item is unsold it may at our discretion be re-offered at a future sale. Where in our opinion an item is unsaleable you must collect such items from the saleroom promptly on being so informed. Otherwise, storage charges may be incurred. We reserve the right to charge for storage in these circumstances at a reasonable daily rate.

14. **WITHDRAWN AND BOUGHT IN ITEMS.** These are liable to incur a charge of 15% commission, 15 % Loss and Damage Warranty and

any other costs incurred including but not limited to illustration and restoration fees all of these charges being subject to VAT on being bought in or withdrawn after being catalogued.

15. **CONDITIONS OF SALE.** You agree that all goods will be sold on our Conditions of Sale for Public Auctions. In particular you undertake that you have the right to sell the goods either as owner or agent for the owner with good and marketable title and free and clear of any third party rights or claims. You undertake to compensate us and any buyer or third party for all losses liabilities, costs and expenses suffered or incurred arising out of or in connection with any breach of this undertaking. We will also, at our discretion, and as far as practicable, confirm that an item consigned for sale does not appear on the Art Loss register, which is administered by an independent third party.

### 16. DUE DILIGENCE CHECKS AND ANTI-MONEY LAUNDERING PROCEDURES

Under the money laundering regulations in force we are required to carry out relevant due diligence checks. This includes verifying the identity of all customers we transact with as well as any beneficial owners on behalf of whom they may transact. Vendors who are unable to or refuse to supply required identification documents and proof of address will not be able to consign to Dreweatts auctions. Copies of customer due diligence checks will be stored for as long as it is necessary to satisfy legal requirements in an appropriate storage facility, which for the avoidance of doubt may include storage solely in electronic form.

### 17. AUTHORITY TO DEDUCT COMMISSION AND EXPENSES AND RETAIN PREMIUM AND INTEREST

(a) You authorise us to deduct commission at the stated rate and all

## Conditions of Sale for Public Auctions

Dreweatts carries on business with bidders, buyers and all those present in the auction room prior to or in connection with a sale by auction at our salerooms on our Auction Terms and Conditions or Public Auctions including these Conditions of Sale for Public Auctions and all bidders, buyers and others participating in a public auction accept that these terms apply to the exclusion of any terms and conditions contained in any of those person's own documents even if the same purport to provide that that person's own or some other terms prevail. Any particular public auction and/or any particular lot in an auction may be subject to different or additional terms which will be published in our online auction catalogue. Please note that our Auction Terms and Conditions including these Conditions of Sale for Public Auctions relate to auctions held in one of our salerooms and we have separate terms and conditions for our online auctions.

### 1. DEFINITIONS

In these Conditions:

(a) "auctioneer" means the firm of Dreweatts or its authorised auctioneer, as appropriate;

(b) "deliberate forgery" means an imitation made with the intention of deceiving as to authorship, origin, date, age, period, culture or source but which is unequivocally described in the catalogue as being the work of a particular creator and which at the date of the sale had a value materially less than it would have had if it had been in accordance with the description;

(c) "hammer price" means the level of bidding reached (at or above any reserve) when the auctioneer brings down the hammer;

(d) "terms of consignment" means the stipulated terms and rates of commission on which Dreweatts accepts instructions from sellers or their agents;

(e) "total amount due" means the hammer price in respect of the lot sold together with any premium, Value Added Tax chargeable and any additional charges payable by a defaulting buyer under these Conditions;

(f) "sale proceeds" means the net amount due to the seller, being the hammer price of the lot sold less commission at the stated rate, Value Added Tax chargeable and any other amounts due to us by the seller in whatever capacity and however arising;

(g) "You", "Your", etc. refer to the buyer as identified in Condition 2.

(h) The singular includes the plural and vice versa as appropriate.

expenses incurred for your account from the hammer price and consent to our right to retain beneficially the premium paid by the buyer in accordance with our Conditions of Sale for Public Auctions and any interest earned on the sale proceeds until the date of settlement.

(b) In case of lots unsold at auction you authorise us at our discretion to reoffer such lots and negotiate a sale within seven days of the auction date, in which case the same charges will be payable as if such lots had been sold at auction and so far as appropriate these Terms apply.

18. **WAREHOUSING.** We disclaim all liability for goods delivered to our saleroom without sufficient sale instructions and reserve the right to make minimum warehousing charge of £10 per lot per day. Unsold lots are subject to the same charges if you do not remove them within a reasonable time of notification. If not removed within three weeks we reserve the right to sell them and defray charges from any net proceeds of sale or at your expense to consign them to the local authority for disposal.

19. **SETTLEMENT.** After sale settlement of the net sum due to you normally takes place within 28 days of the sale (by crossed cheque to the seller) unless the buyer has not paid for the goods. In this case no settlement will then be made but we will take your instructions in the light of our Conditions of Sale for Public Auctions. You authorise any sums owed by you to us on other transactions to be deducted from the sale proceeds. You must note the liability to reimburse the proceeds of sale to us as under the circumstances provided for in Condition 12 above. You should therefore bear this potential liability in mind before parting with the proceeds of sale until the expiry of 28 days from the date of sale.

### 2. BIDDING PROCEDURES AND THE BUYER

(a) Bidders are required to register their particulars before bidding by completing a sale registration form and to satisfy any security arrangements before entering the auction room to view or bid;

(b) Under the money laundering regulations in force we are required to verify the identity of all customers we transact with as well as any beneficiaries on behalf of whom they may transact. Customers who are unable to or refuse to supply required identification documents and proof of address will not be able to bid in Dreweatts auctions. Copies of customer due diligence checks will be stored for as long as it is necessary to satisfy legal requirements in an appropriate storage facility which for the avoidance of doubt may include storage solely in electronic form;

(c) the maker of the highest bid accepted by the auctioneer conducting the sale shall be the buyer at the hammer price and any dispute about a bid shall be settled at the auctioneer's absolute discretion by reoffering the Lot during the course of the auction or otherwise. The auctioneer shall act reasonably in exercising this discretion.

(d) Bidders shall be deemed to act as principals;

(e) Our right to bid on behalf of the seller is expressly reserved up to the amount of any reserve and the right to refuse any bid is also reserved.

3. **INCREMENTS.** Bidding increments shall be at the auctioneer's sole discretion.

4. **THE PURCHASE PRICE.** The buyer shall pay the purchase price together with a premium thereon of 30% which shall include VAT on the premium at the rate imposed by law. The buyer will also be liable for any royalties payable under Droit de Suite as set out under Information for Buyers.

5. **VALUE ADDED TAX.** Value Added Tax on the hammer price is imposed by law on all items affixed with a dagger (†) or double dagger (‡). Value Added Tax is charged at the appropriate rate prevailing by law at the date of sale and is payable by buyers of relevant Lots. (Please refer to "Information for Buyers" for a brief explanation of the VAT position).

### 6. PAYMENT

(a) Immediately a Lot is sold you will:

(i) give to us, if requested, proof of identity, and

(ii) pay to us the total amount due or in such other way as is agreed by us.

(b) Any payments by you to us may be applied by us towards any sums owing from you to us on any account whatever without regard to any directions of you or your agent, whether expressed or implied.



(c) In order to comply with money laundering regulations we reserve the right to require proof of source of funds and/or confirmation of the nature and source of wealth for all receipts of monies from clients directly or from third parties for payments on behalf of clients.

7. TITLE AND COLLECTION OF PURCHASES

(a) The ownership of any Lots purchased shall not pass to you until you have made payment in full to us of the total amount due.

(b) You shall at your own risk and expense take away any lots that you have purchased and paid for not later than 3 working days following the day of the auction or upon the clearance of any cheque used for payment after which you shall be responsible for any removal, storage and insurance charges.

(c) No purchase can be claimed or removed until it has been paid for.

8. REMEDIES FOR NON-PAYMENT OR FAILURE TO COLLECT PURCHASES

(a) If any Lot is not paid for in full and taken away in accordance with these Conditions or if there is any other breach of these Conditions, we, as agent for the seller and on our own behalf, shall at our absolute discretion and without prejudice to any other rights we may have, be entitled to exercise one or more of the following rights and remedies:

(i) to proceed against you for damages for breach of contract;

(ii) to rescind the sale of that Lot and/or any other Lots sold by us to you;

(iii) to resell the Lot (by auction or private treaty) in which case you shall be responsible for any resulting deficiency in the total amount due (after crediting any part payment and adding any resale costs). Any surplus so arising shall belong to the seller;

(iv) to remove, store and insure the Lot at your expense and, in the case of storage, either at our premises or elsewhere;

(v) to charge interest at a rate not exceeding 15% per month on the total amount due to the extent it remains unpaid for more than 3 working days after the sale;

(vi) to retain that or any other Lot sold to you until you pay the total amount due;

(vii) to reject or ignore bids from you or your agent at future auctions or to impose conditions before any such bids shall be accepted;

(viii) to apply any proceeds of sale of other Lots due or in future becoming due to you towards the settlement of the total amount due and to exercise a lien (that is a right to retain possession of) any of your property in our possession for any purpose until the debt due is satisfied.

(b) We shall, as agent for the seller and on our own behalf pursue these rights and remedies only so far as is reasonable to make appropriate recovery in respect of breach of these conditions.

9. THIRD PARTY LIABILITY. All bidders, buyers and other members of the public on our premises are there at their own risk and must note the lay-out of the accommodation and security arrangements. Accordingly neither the auctioneer nor our employees or agents shall incur liability for death or personal injury or for the safety of the property of persons visiting prior to or at a sale (except in each case as may be required by law by reason of our negligence)

10. COMMISSION BIDS. Whilst prospective buyers are strongly advised to attend the auction and are always responsible for any decision to bid for a particular Lot and shall be assumed to have carefully inspected and satisfied themselves as to its condition, we will if so instructed clearly and in writing execute bids on their behalf. Neither the auctioneer nor our employees or agents shall be responsible for any failure to do so.

Where two or more commission bids at the same level are recorded we reserve the right in our absolute discretion to prefer the first bid so made.

11. WARRANTY OF TITLE AND AVAILABILITY. The seller warrants to the auctioneer and you that the seller is the true owner of the property consigned or is properly authorised by the true owner to consign for sale and is able to transfer good and marketable title to the property free from any third party claims.

Save as expressly set out above, all other warranties, conditions or other terms which might have effect between the Seller and you, or us and you, or be implied or incorporated by statute, common law or otherwise are excluded to the fullest extent permitted by law.

12. AGENCY. The auctioneer normally acts as agent only and disclaims any responsibility for default by sellers or buyers.

13. TERMS OF SALE. The seller acknowledges that Lots are sold subject to the stipulations of these Conditions in their entirety and on the Terms of Consignment for Public Auctions as notified to the consignor at the time of the entry of the Lot.

14. DESCRIPTIONS AND CONDITION

(a) Whilst we seek to describe lots accurately, it may be impractical for us to carry out exhaustive due diligence on each lot. Prospective buyers are given ample opportunities to view and inspect before any sale and they (and any independent experts on their behalf) must satisfy themselves as to the accuracy of any description applied to a lot. Prospective buyers also bid on the understanding that, inevitably, representations or statements by us as to authorship, genuineness, origin, date, age, provenance, condition or estimated selling price involve matters of opinion. We undertake that any such opinion shall be honestly and reasonably held and accept liability for opinions given negligently or fraudulently. Subject to the foregoing neither we the auctioneer nor our employees or agents nor the seller accept liability for the correctness of such opinions and all conditions and warranties, whether relating to description, condition or quality of lots, express, implied or statutory, are hereby excluded. Dreweatts is not liable for damage to gilded picture frames, plaster picture frames or picture frame glass; if the Lot is or becomes dangerous, we may dispose of it without notice to you in advance in any manner we see fit and will be under no liability for doing so. This Condition is subject to the next following Condition concerning deliberate forgeries and applies save as provided for in paragraph 6 “information to buyers”.

(b) Private treaty sales made under these Conditions are deemed to be sales by auction for purposes of consumer legislation.

15. FORGERIES. Notwithstanding the preceding Condition, any Lot which proves to be a deliberate forgery (as defined) may be returned to us by you within 21 days of the auction provided it is in the same condition as when bought, and is accompanied by particulars identifying it from the relevant catalogue description and a written statement of defects. If we are satisfied from the evidence presented that the Lot is a deliberate forgery we shall refund the money paid by you for the Lot including any buyer’s premium provided that (1) if the catalogue description reflected the accepted view of scholars and experts as at the date of sale or

(2) you personally are not able to transfer a good and marketable title to us, you shall have no rights under this condition.

The right of return provided by this Condition is additional to any right or remedy provided by law or by these Conditions of Sale.

16. PRIVACY NOTICE. We will hold and process any personal data in relation to you in accordance with our current privacy policy, a copy of which is available on our website [www.dreweatts.com/privacy-policy/](http://www.dreweatts.com/privacy-policy/).

GENERAL

17. We shall have the right at our discretion, to refuse admission to our premises or attendance at our auctions by any person.

18. (a) Any right to compensation for losses liabilities and expenses incurred in respect of and as a result of any breach of these Conditions and any exclusions provided by them shall be available to the seller and/or the auctioneer as appropriate.

(b) Such rights and exclusions shall extend to and be deemed to be for the benefit of employees and agents of the seller and/or the auctioneer who may themselves enforce them.

19. Any notice to any buyer, seller, bidder or viewer may be given by first class mail, email or Swiftmail in which case it shall be deemed to have been received by the addressee 48 hours after posting.

20. Special terms may be used in catalogue descriptions of particular classes of items in which case the descriptions must be interpreted in accordance with any glossary appearing at the commencement of the catalogue.

21. Any indulgence extended to bidders, buyers or sellers by us notwithstanding the strict terms of these Conditions or of the Terms of Consignment shall affect the position at the relevant time only and in respect of that particular concession only; in all other respects these Conditions shall be construed as having full force and effect.

22. These Conditions shall be governed by and construed in accordance with English law and the parties irrevocably submit to the exclusive jurisdiction of the English courts.

# Group Departments

NEWBURY

Dreweatts

Donnington Priory

Newbury

Berkshire RG14 2JE

Auctions, exhibitions and valuations

LONDON

Dreweatts / Bloomsbury Auctions

16-17 Pall Mall

St James's

London SW1Y 5LU

Auctions, exhibitions and valuations  
by appointment

+44 (0) 1635 553 553

[info@dreweatts.com](mailto:info@dreweatts.com)

[dreweatts.com](http://dreweatts.com)

CHAIRMAN

George Bailey

MANAGING DIRECTOR

Jonathan Pratt

ASIAN CERAMICS AND WORKS OF ART

Mark Newstead

Dr Yingwen Tao

BLOOMSBURY AUCTIONS

BOOKS AND MANUSCRIPTS

Dr Timothy Bolton

Camilla Previt 

Roxana Kashani

BRITISH AND EUROPEAN CERAMICS  
AND GLASS

Mark Newstead

Geoffrey Stafford Charles

CLOCKS AND SCIENTIFIC  
INSTRUMENTS

Leighton Gillibrand

COUNTRY SPORTING

Geoffrey Stafford Charles

DECORATIVE ARTS

Geoffrey Stafford Charles

Ashley Matthews

EUROPEAN SCULPTURE AND  
WORKS OF ART

Charlotte Schelling

ESTATES AND COLLECTIONS

Will Richards

Joe Robinson

FINE ART

Jennie Fisher

Lucy Gregory

Francesca Whitham

FURNITURE AND CARPETS

Ben Brown

Ashley Matthews

William Turkington

JEWELLERY, SILVER, WATCHES  
AND OBJECTS OF VERTU

James Nicholson

Nick Mann

Alexandra Francis

Tessa Parry

LIVE STEAM AND MODEL  
ENGINEERING

WORKS OF ART

Michael Matthews

WINE

Mark Robertson

Dianne Wall





DREWEATTS

EST. 1759