

DREWEATTS

EST. 1759



JEWELLERY, SILVER, WATCHES, OBJECTS OF VERTU, COINS AND MEDALS (PART 1)

DONNINGTON PRIORY | WEDNESDAY 12 AUGUST 2020



DREWEATTS
EST. 1759

JEWELLERY, SILVER, WATCHES, PENS AND OBJECTS OF VERTU (PART 2)
TIMED ONLINE AUCTION | THURSDAY 13 AUGUST | 10.30AM

This is a timed online auction with lots closing at 30 second intervals from 10.30am on Thursday 13 August (local time).

VIEWING:
Please see our website for viewing arrangements.

ENQUIRIES:
+44 (0) 1635 553 553
jsw@drewatts.com
Online catalogue at: the-saleroom.com
and drewatts.com



DREWEATTS
EST. 1759

**JEWELLERY, SILVER, WATCHES,
OBJECTS OF VERTU, COINS AND
MEDALS (PART 1)**

DONNINGTON PRIORY | WEDNESDAY 12 AUGUST 2020 | 10.30AM

AUCTION FORMAT: LIVE ONLINE

This is a live online auction with an auctioneer. Bidding is available online, by telephone or commission (absentee) bids. If not bidding online, please contact Drewatts to register all commission bids or telephone bids by 12 noon (local time) on Tuesday 11 August.

FREE ONLINE BIDDING IS AVAILABLE AT DREWEATTS.COM:

The Drewatts' bidding platform allows you to watch, listen and bid with no additional online bidding fees applicable.

REGISTRATION:

New clients wishing to bid in the auctions must register in advance. To register, you will need to provide two forms of identification. Please email a copy of the following information to live@drewatts.com:

1. Government issued photo ID (passport / driving licence / identity card)
2. Proof of address (utility bill / bank statement)

Registration for new clients will close at 12 noon (local time) on Tuesday 11 August.

BUYER'S PREMIUM:

Buyer's premium is charged per lot at 25% of the hammer price (30% including VAT) up to and including £500,000, 20% (24% including VAT) of the hammer price from £500,001 up to and including £1,000,000, and 12% of the hammer price (14.4% including VAT) in excess of £1,000,001.

PAYMENT:

Please note, we cannot accept payment by telephone for lots bought by first time bidders. For details on other payment methods, please see our website.

AUCTION NO. 14262

SPECIALISTS:

James Nicholson FGA, DGA
Nick Mann
Tessa Parry FGA, DGA
Ian Pickford (Consultant, Silver)
Terry Taylor MBHI (Consultant, Watches)

VIEWING:

Viewing will be available by appointment only and in strict accordance with government Covid-19 regulations.

Thursday 6 August:	10am – 5pm
Friday 7 August:	10am – 5pm
Monday 10 August:	10am – 5pm
Tuesday 11 August:	10am – 5pm

Please note there is no viewing on the morning of the sale.

REMOTE VIEWING SERVICE:

Remote Viewing will also be available by appointment. Our Remote Viewing Service allows you to view specified Lots via your smartphone from the comfort of your own home at a time convenient to you. See our website for further details.

AUCTION:

Drewatts
Donnington Priory
Newbury
Berkshire RG14 2JE

ENQUIRIES:

+44 (0) 1635 553 553
jsw@drewatts.com
drewatts.com

Front cover: Lot 156, Lot 276
Back cover: Lot 208



British and Continental Silver and Plated Ware



1

1
A Queen Anne Britannia standard silver slightly tapering wine flagon by Timothy Ley, London 1702, with an ogee domed cover, scroll thumb piece and handle, moulded spreading base, 23cm (9in) high, 925g (29.75 oz)

£600-800



2

2
A late George II silver oil and vinegar stand by John King, London 1759, shaped oblong with an alternating gadrooned rim and pierced scroll work to the body, on four cast scroll feet, with two removable cut glass bottles, the hinged covers engraved with a worn crest and with an acanthus thumb piece, with leaf-capped scroll handles, scratch engraved Lady F. Balfour beneath, 17cm (6 3/4in) high, the stand 29.5cm (11 1/2in) long and weighing 668g (21.45 oz)

Perhaps Lady Florence Balfour (1779-1862) or Lady Francis Balfour (1858-1931).

See Grimwade 1445 for John King's mark which also notes variations of the mark.

£300-500



3

3
A George III Irish silver twin handled cup by Matthew West, Dublin no date letter, with leaf-capped double scroll handles, a beaded girdle, on a moulded pedestal base, engraved with a crest and Max Safron beneath, 13.5cm (5 1/4in) high, 433g (13.9 oz)

This maker's mark used from circa 1765 to 1792.

£250-350

4

A George III silver baluster reeded coffee pot by Daniel Smith & Robert Sharp, London 1769, with a ovoid foliate finial to the domed cover, a leather wrapped scroll handle, engraved with a crest and a motto, on a gadrooned circular moulded spreading foot, 27cm (10 1/2in) high, 740g (23.8) oz gross

The crest and motto for BRADSHAW

£200-300

5

A George III silver pierced box, maker's mark obscured, possibly Richard Morton & Co., Sheffield 1776, the cover pierced and engraved with a foliate band and a central scroll panel, the body with a pierced and engraved foliate band and a beaded border, 15.5cm (6in) long, with a velvet liner

£100-150



5

6

A George III silver cream jug, maker's mark obscured, London 1776, with a leaf capped double scroll handle, chased with flowers and swags, a shield shaped vacant reserve and on a circular moulded spreading foot, 11.5cm (4 1/2in) high; and a late George III silver cream jug, maker's mark obscured, London 1819, with a leaf capped double scroll handle, chased with swag decoration, engraved with a monogram and on a shaped circular moulded spreading foot, 12cm (4 3/4in) high, 147g (4.75 oz) gross

£150-250



6



7
A George III silver pierced swing handle basket by Ann Chesterman, London 1778, with a beaded swing loop handle and border, the pierced body with an oval vacant reserve and on a stepped square base with later presentation engraving, 23cm (9in) high, 188g (6.5 oz), with a blue glass liner

£150-250



8
A George III silver circular waiter by Hester Bateman, London 1783, with a beaded border, engraved BEB, on three beaded feet, 19cm (7 1/2in) diameter, 335g (10.75 oz)

£150-200



9
A George III silver pounce pot/sugar shaker, no maker's mark, London 1789, with a pierced domed cover, the half octagonal body with reeded bands, to a square base on four ball feet, 13cm (5in) high, 116g (3.7 oz)

£150-250

10
A George III silver octagonal mustard pot by Hester Bateman, London 1789, with a ball finial to the domed cover, a shell shaped thumb piece and a scroll handle, the body engraved and pierced, 11cm (4 1/4in) long, with an Old English pattern spoon, engraved with a crest, 11cm (4 1/4in) long, 110g (3.55 oz) gross, with a blue glass liner

£150-250



10



11
A George III silver oval tea pot by John Robins, London 1792, with a composition oblong finial and loop handle, engraved with decorative borders and a crest, 29cm (11 1/2in) long, 428g (13.8 oz) gross

£200-300

12
A George III silver meat skewer by Peter, Ann & William Bateman, London 1799, engraved L, 30cm (12in) long, 82g (2.65 oz)

£80-120



12



13

13

A George III Irish silver twin handled cup by William Doyle, Dublin 1808, with high loop handles, on a waisted pedestal and spreading foot, engraved with a crest above a script NC, within a tablet, 20cm (8in) high, 659g (21.2 oz)

The crest for CAIRNS.

Provenance: The Cairns family, Ireland; thence to Simon Dallas Cairns, 6th Earl Cairns.

£200-300

14

An Old Sheffield plate table twin wine coaster wagon, with a loop handle, gadrooned borders, engraved with a crest above the motto Forward, wood bases and on faux ivory wheels, 36cm (14in) long



14

£150-250



15

15

A George IV silver tea pot by Rebecca Emes & Edward Barnard I, London 1822, with a composition domed finial and loop handle, a gadrooned border, a foliate chased spout and on a circular foot, 28cm (11in) long, 645g (20.75 oz) gross

£150-250

16

A George IV silver shaped circular salver by Edward Farrell, London 1822, with a raised shell and scroll border, engraved with a crest and on four foliate and paw feet, 20.5cm (8in) diameter, 332g (10.7 oz)

£80-120



16



17

17

A George IV silver melon shaped tea pot by Charles Fox I, London 1822, with a composition lobed finial and loop handle, on a lobed circular foot, 25cm (9 3/4in) long, 567g (18.2 oz) gross

£150-250

18

A George IV silver six division toast rack by John & Thomas Settle, Gunn & Co., Sheffield 1827, with a loop handle and on four scroll bracket feet, 16.5cm (6 1/2in) long, 304g (9.75 oz)

£100-150



18



19

19Y

A George and William IV matched silver circular lobed three piece tea set by William Bateman II, London 1829 and 1834, the tea pot with a melon finial, a leaf capped loop handle with ivory warming bands, a chased floral border, the body engraved with flower sprays within oval shaped reserves, a monogram and a vacant reserve, on four foliate bracket feet, 28.5cm (11 1/4in) long, 1417g (45.6 oz) gross

£500-700

20

A William IV silver pedestal trophy cup, maker's mark poorly struck, London 1833, with a chased floral border, twin foliate and mask capped scroll handles, the lobed body chased with floral and foliate decoration, two shaped vacant reserves, a multi knopped stem and on a foliate chased circular pedestal foot, 562g (18 oz)

£250-350



21

21

A Victorian electrotype globe inkstand, engraved, designed by John Leighton (1822-1912) for the 1851 Great Exhibition, with a central gilt globe inkwell, opening to reveal a faceted glass well, the circular base with nine panels of various craftsmen and an outer border with the names of celebrated names in their field, 23cm (9in) diameter

£150-250



20

22Y

A Victorian silver gilt baluster bachelor tea pot by R. & S. Garrard & Co., London 1852, with a ball finial with ivory spacer to the domed cover and a horn handle, 18cm (7in) long, 419g (13.45 oz) gross

£150-250



22

23

A Victorian silver shaped circular egg cup stand and six egg cups by Henry Wilkinson & Co., Sheffield 1852, the stand with a shaped circular pierced gallery, a central loop handle and on a circular rotating foot, 22cm (8 1/2in) high, loaded, the egg cups with beaded borders, pierced bodies, baluster stems and on circular moulded spreading feet, 9.5cm (3 3/4in) high, 365g (11.75 oz)

£250-350



23

24

A Victorian silver quatrefoil four cup egg stand by Henry Wilkinson & Co., Sheffield 1858, with trellis pierced cups, a cable twist swing handle, the stand with a beaded rim and basket weave sides, on four ball feet, 18cm (7in) long; and four rat-tail coffee spoons, Sheffield 1907, 462g (14.85 oz) gross

£120-160



24



25

25
A Victorian silver shaped rectangular ink stand by Henry Wilkinson & Co., London 1858, with a chased foliate and C-scroll border, with a chamber stick to the centre, flanked by two cut glass bottles with silver mounted fittings, Sheffield 1857, on four foliate bracket feet, 24.5cm (9 3/4in) long, 542g (17.4 oz) weighable

£150-250

26
A pair of Victorian silver menu or place card holders by George Angell & Co., London 1873, formed as putti holding banners, to circular moulded spreading bases, with beaded borders and chased foliate bands, 19.5cm (7 3/4in) high, 333g (10.7 oz)

£150-250



26

27Y
A Victorian circular silver kettle on stand by Elkington & Co., London 1873, the reeded loop handle with ivory warming bands, a lobed and foliate finial and chased Celtic band to the domed cover, a beaded border, the half reeded body engraved with a foliate band, the stand with a burner, engraved foliate band, two retaining pins and on four lion paw feet, 1827g (58.75 oz) gross

£400-600



27



28

28Y
A Victorian Indian style three piece tea set by David Crichton Rait, Glasgow 1876, the tea pot with a cone finial to the slightly domed cover, an angular handle with ivory warming bands, chased and engraved with foliate bands, animals and figures, engraved with a presentation inscription, 18cm (7in) long, the sugar bowl and cream jug conforming and engraved with a monogram, 696g (22.4 oz) gross

£250-350



29

29
A Victorian silver baluster half reeded coffee pot by Martin, Hall & Co., London 1883, with a wrythen finial to the ogee dome cover and beaded borders, a wood double scroll handle and on a beaded circular pedestal foot, 26cm (10 1/4in) high, 505g (16.24 oz) gross

£150-250

30
A Victorian silver twin handled shaped circular basket by Dobson & Sons (Thomas William Dobson), London 1886, with twin flower and scroll handles, a flower and scroll rim, trellis pierced and engraved scrolls, on four shell feet, 24.5cm (9 3/4in) long, 355g (11.4 oz), with a blue glass liner

£150-250



30



31



31

A pair of Victorian silver cluster column square candlesticks by Hawksworth, Eyre & Co. Ltd, Sheffield 1888, the detachable sconces with egg-and-dart borders, stiff leaf capitals, the stepped bases with foliate borders, 14.5cm (5 3/4in) high, loaded

£200-300



32

32

A Victorian silver oblong twin handled tray, maker's mark for Goldsmiths & Silversmiths Co., overstriking that of another, London 1891, with twin loop gadrooned handles, a gadrooned border with shells at intervals, engraved with a crest, 69.5cm (27 1/4in) long, 2913g (93.7 oz)

The crest for NICOLL

£700-1,000

33

A Victorian silver chased goblet by Dobson & Sons, London 1893, the body chased with beaded and foliate bands, Zum Wohlsein, Jana 30th 1893 and with a monogram, the stem with stepped beaded bands, 17cm (6 3/4in) high, 655g (21.1 oz)

£200-300



33

34

A Victorian silver oblong baluster tea caddy by Thomas Bradbury & Sons, London 1895, with a foliate finial to the foliate chased domed cover, the body chased with foliate decoration and two shaped vacant reserves, on four foliate scroll feet, stamped West & Son College Green Dublin beneath, 14cm (5 1/2in) high, 251g (8.05 oz)

£100-150



34



35

35

A late Victorian silver shaped circular salver by Edward Barnard & Sons Ltd, London 1897, retailed by Bristol Goldsmiths Alliance, the raised scroll rim with shells at intervals, on four scroll and leaf bracket feet, 44.5cm (17 1/2in) diameter, 2276g (73.15 oz)

£600-800



36

36

A late Victorian silver shaped circular salver by William Mammatt & Son, Sheffield 1897, retailed by Bowman Ltd, London, in Regency style with a raised shell, flower and scroll foliate rim, engraved with a crest within a scroll foliate band, on three shell and foliate bracket feet, 24.5cm (9 1/2in) diameter, 525g (16.9 oz)

£150-200



37
A late Victorian silver shaped circular salver by Edward Barnard & Sons Ltd., London 1897, with a raised moulded border with shells at intervals, on three foliate scroll feet, 39cm (15 1/4in) diameter, 1329g (42.75 oz)

£300-500

38
A late Victorian rectangular inkstand by Charles Stuart Harris, London 1898, with a gadrooned and shell border, two pen trays, a central box, two cut glass ink wells with silver covers, on four foliate scroll feet, 17.5cm (10 3/4in) long, 907g (29.15 oz) weighable



£150-250



39
A late Victorian silver shaped rectangular twin handled tray by John Hines, Birmingham 1899, with twin loop handles, the border chased with C-scrolls, foliate swags and floral sprays, the body engraved with a foliate swag band, 60cm (23 1/2in) long, 1812g (58.25 oz)

£300-500



40

40Y

A set of twelve late Victorian silver and mother of pearl fruit knives and forks by John Round & Son, Sheffield 1900, the blades and tines with bright-cut bands, the handles plain, the knives 19cm (7 1/2in) long, in a walnut case

Provenance: From the estate of Christopher and Rosemary Warren

£100-150

41Y

An Edwardian set of twelve silver and mother of pearl fruit knives and forks by The Goldsmiths & Silversmiths Co. Ltd, London 1908, in a case from Goldsmiths & Silversmiths

£150-250



41



42

42Y

A set of twelve silver and ivory fish knives and forks by John Round & Son, Sheffield 1936, the blades engraved with trellis, scroll and foliage, the handles plain, the knives 20.5cm (8in) long

Provenance: From the estate of Christopher and Rosemary Warren

£200-300



43 (part lot)

43

A silver Old English pattern table service for twelve by Josiah Williams & Co. of Bristol, London 1931, engraved 'R', comprising:

Twelve table forks, Six table spoons, Twelve dessert forks, Twelve dessert spoons, Six tea spoons, Twelve coffee, spoons, Six salt spoons, Twelve soup spoons, Two sauce ladles, A soup ladle, 4251g (136.65 oz);

Together with the following with xylo handles and stainless steel blades:

Twelve table knives, Twelve dessert knives

All contained in an oak two drawer side table with a presentation plaque from the Bristol Society of Merchant Venturers dated 1931

Provenance: From the estate of Christopher and Rosemary Warren

Provenance: Lalonde, Bros. & Parnham, Bristol sale, 7th July 1978, lot 369 (£1500)

£800-1,200

44

A pair of late Victorian silver tapering coffee pots by Charles Stuart Harris, London 1900, with domed finials to the domed covers, a composition handle and on a circular moulded spreading base, 16cm (6 1/4in) high, 612g (19.7 oz) gross

£100-150



44



45

45

Four silver place holders by Stuart Clifford, 1900 (2) and 1901 (2), chased with equestrian decoration, 8.5cm (3 1/4in) long, 76g (2.45 oz)

£80-120

46

A cased seven piece cruet set by Haseler Brothers, Chester 1901 and 1902, the mustard with an urn shaped finial and a scroll handle, gadrooned borders and pierced body, 9cm (3 1/2in) long, 348g (11.2 oz), with seven blue glass liners

£100-150



46



47

47
An Edwardian silver shaped oval pierced bowl by Josiah Williams & Co., London 1902, with a gadrooned and shell border, the body pierced with foliate swag decoration and on a moulded oval pedestal foot, 24cm (9 1/2in) long, 312g (10 oz)

£80-120



48

48
An Edwardian silver shaped circular salver by James Dixon & Sons Ltd., Sheffield 1902, with a chased scroll, foliate and shell border, 31.5cm (12 1/2in) diameter, 688g (22.1 oz)

£200-300



49

49
An Edwardian silver shaped circular waiter by Edward Barnard & Sons Ltd., London 1902, with a shaped scroll border, engraved with foliate and scroll decoration, on three scroll feet, 20cm (8in) diameter, 298g (9.6 oz)

£150-200



50

50
An Edwardian silver shaped oval tray by Boardman, Glossop & Co. Ltd., Sheffield 1903, with a chased C-scroll and shell border, pierced loop handles, engraved with C-scroll and foliate decoration, 35cm (25 1/2in) long, 3530g (113.45 oz)

£1,000-1,500



51

51

An Art Nouveau silver three piece tea set by Albert Edward Jones, Birmingham 1904, the tea pot with a composition loop handle and chased with a heart band, 19cm (7 1/2in) long, 246g (7.9 oz) gross

£200-300

52

An Edwardian silver shaped circular salver by Barker Brothers, Birmingham 1904, with a moulded raised scroll border with shells at intervals, on three scroll feet, 31.5cm (12 1/2in) diameter, 827g (26.6 oz)

£200-300

53

An Edwardian silver circular three piece tea set by George Nathan & Ridley Hayes, Chester 1905, the tea pot with a composition finial and loop handle, shaped border and on four trefoil feet, 497g (16 oz) gross

£100-150



53



52

54

An Art Nouveau silver spill vase by James Deakin & Sons, Sheffield date letter obscured, with a shaped circular border, textured tapering stem and on a circular spreading foot, 28cm (11in) high, loaded; and an Art Nouveau silver pedestal rose bowl by James Dixon & Sons Ltd., Sheffield 1905, with three scroll handles, a hammered body and on a circular moulded spreading pedestal foot, 18cm (7in) wide, 441g (14.18 oz) gross weighable

£200-300



54



55

55

A pair of Art Nouveau silver pepperettes by John Round & Son Ltd., with loop handles to the pierced covers, the baluster bodies with three scroll arms and on circular spreading feet, 8cm (3 1/4in) high; an Art Nouveau beaker by Charles Weale, Birmingham 1911, with four loop handles, 5.5cm (2 1/4in) high; and an Art Nouveau mug by Robert Pringle & Sons, Chester 1905, with a scroll handle, embossed with flowers, engraved with a presentation inscription and on a circular spreading foot, 10cm (4in) high, 208g (6.7 oz) gross

£80-120

56

An Edwardian silver twin handled shaped oval tray by Barker Brothers, Chester 1906, with twin foliate scroll loop handles, a C-scroll and foliate shaped border, engraved with C-scrolls, floral sprays, a presentation inscription and a crest, on four foliate bracket feet, 61cm (24in) long, 2628g (84.5 oz)

£600-800



56



57

57

A cased pair of matched Edwardian oval pedestal salt cellars, maker's mark W.B, Birmingham 1907 and 1908, with animal mask scroll handles, chased C-scroll borders and on oval pedestal feet, 11.5cm (4 1/2in) long, with a pair of matching salt spoons by Thomas Latham & Ernest Morton, Birmingham 1907 and Chester 1907, 7cm (2 3/4in) long, 201g (6.45 oz) gross

£80-120



58

58

An Edwardian silver shaped oblong basket by James Dixon & Sons Ltd, Sheffield 1909, with a fixed handle over a scroll pierced border, interlocking oval beneath, on a moulded pedestal foot, 26.5cm (10 1/2in) high, 571g (18.35 oz), with a green glass liner

£150-250

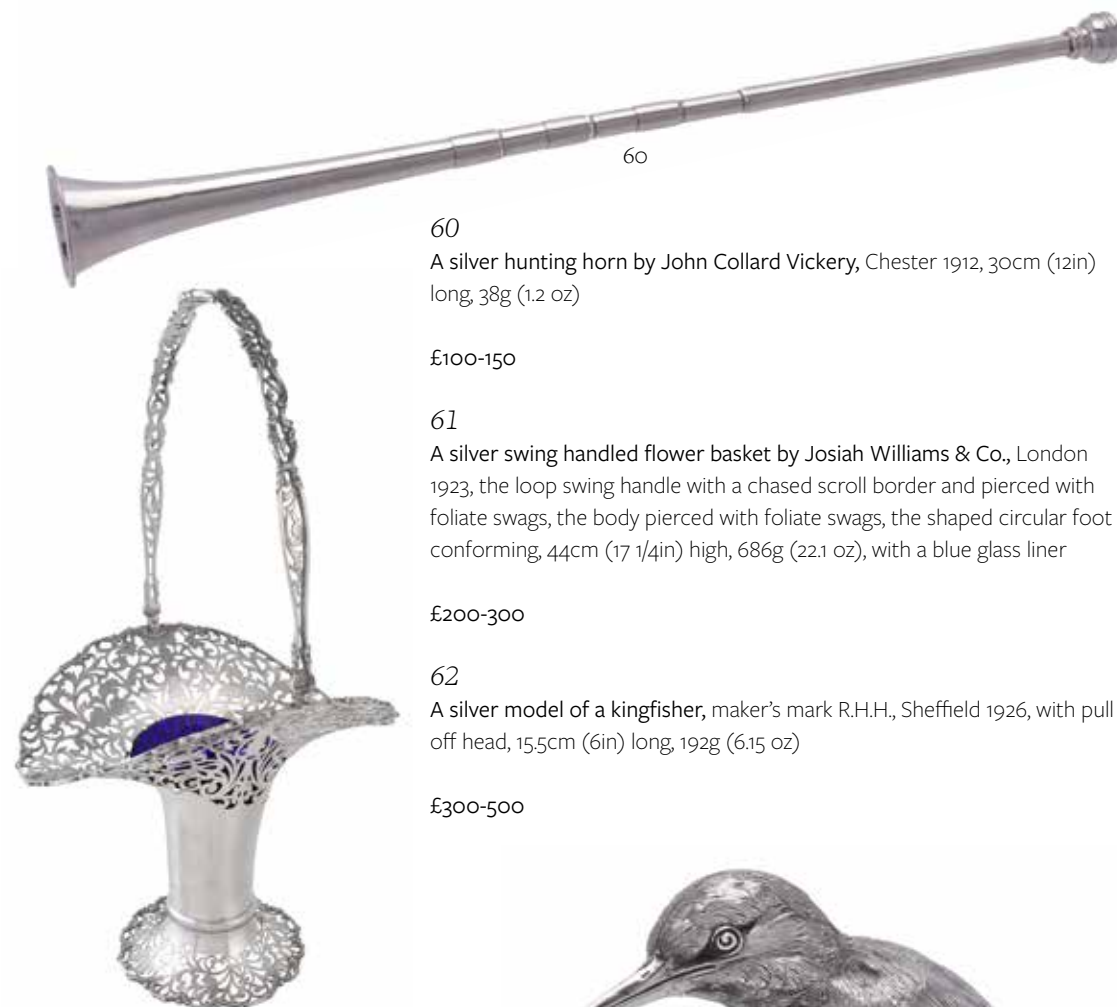


59

59

An Art Nouveau silver plate by G. L. Connell Ltd, Birmingham 1911, chased and engraved with stylised trees, 35.5cm (14in) diameter, 683g (21.95 oz)

£250-350



60

60

A silver hunting horn by John Collard Vickery, Chester 1912, 30cm (12in) long, 38g (1.2 oz)

£100-150



61

61

A silver swing handled flower basket by Josiah Williams & Co., London 1923, the loop swing handle with a chased scroll border and pierced with foliate swags, the body pierced with foliate swags, the shaped circular foot conforming, 44cm (17 1/4in) high, 686g (22.1 oz), with a blue glass liner

£200-300

62

A silver model of a kingfisher, maker's mark R.H.H., Sheffield 1926, with pull off head, 15.5cm (6in) long, 192g (6.15 oz)

£300-500



62

63

A silver shaped circular salver by Goldsmiths & Silversmiths Co. Ltd, Sheffield 1926, with a gadrooned border and on four ball and claw feet, 31cm (12 1/4in) diameter, 814g (26.15 oz)

£150-250



63



64

64

A silver shaped circular salver by William Hutton & Sons Ltd., Sheffield 1929, with a raised moulded border and on three foliate scroll feet, 34cm (13 1/2in) diameter, 1230g (39.55 oz)

£300-500



65

65

A silver shaped circular salver by Edward Barnard & Sons Ltd., London 1931, with a gadrooned border and on four pad feet, 36cm (14in) diameter, 1271g (40.9 oz)

£300-500



66

66

A silver shaped circular salver by James Dixon & Sons Ltd., Sheffield 1933, with a raised moulded scroll and shell border, on four foliate scroll feet, 36cm (14in) diameter, 1256g (40.4 oz)

£250-350

67

An Edwardian silver octagonal shaped four piece tea set by Harrison Fisher & Co., Sheffield 1938, the tea pot with a composition finial and loop handle, on four paw feet, 17.5cm (10 3/4in) long, 1547g (49.75 oz) gross

£300-500



67



68

68

A silver shaped circular dish by Viner's Ltd., Sheffield 1938, the border chased and pierced with grape vine decoration, on a circular foot, 27.5cm (10 3/4in) diameter, 515g (16.55 oz)

£80-120



69

69

A silver four piece oblong baluster tea set by Adie Bros., Birmingham 1939, the tea pot with a composition finial and loop handle, a gadrooned border and on four bun feet, 28cm (11in) long, 1396g (44.9 oz)

£300-500



70

70

A silver shaped circular salver by James Dixon & Sons Ltd., Sheffield 1943, with a raised moulded border and on four ball and claw feet, 27cm (10 1/2in) diameter, 704g (22.65 oz)

£150-250

71

A silver twin handled oval tray by Ollivant & Botsford Ltd., Sheffield 1957, with twin loop handles and a raised moulded border, 56cm (22in) long, 1628g (52.35 oz)

£400-600



71



72

72

A matched pair of silver models of pheasants, by L. Neresheimer & Co., Hanau, one import marked for London 1963, sponsor's mark JMR (unknown), the other by C. J. Vander Ltd, London 1973, 9cm (3 1/2in) high and smaller, each 18cm (7in) long, 327g (10.5 oz)

£250-350

73

A silver shaped circular salver by Viners, Sheffield 1967, with a raised moulded rim, on three scroll feet, 31.5cm (12 1/4in) diameter, 775g (24.9 oz)

£200-300



73

74

A pair of silver models of grouse by Crichton Brothers, London 1970, 9.5cm (3 3/4in) high and smaller, 580g (18.65 oz)

£300-500



74

75

A silver twin handled oval tray by Asprey & Co. Ltd., Sheffield 1967, with twin gadrooned loop handles, a gadrooned border with shells at intervals, 47cm (18 1/2in) long, 1167g (37.55 oz)

£250-350



75



76

An Irish silver coloured shaped oval twin handled tray by Royal Irish Silver Co., Dublin 1970, the loop handles engraved with flowers and leaves, engraved with a broad band of rural scenes, flowers and leaves above scrolls and rocaille work, on four scroll and leaf feet, 62.5cm (24 1/2in) long, 2704g (86.95 oz)

£700-1,000

77

Four silver pepper mills by M. C. Hersey & Son Ltd., London 1988, with waisted bodies, 10cm (4in) high

£80-120

78

A cased set of four decanter labels, maker's mark EM, London 1988, chased with grape vines, gilt coat of arms and cask barrel, two pierced Madeira and two pierced port, 7cm (2 3/4in) long, 128g (4.15 oz) gross, the case with silver hinges

£80-120



77



78

79

A silver mounted shaped rectangular mirror by Carr's of Sheffield Ltd., Sheffield 1997, chased with foliate swags and floral sprays and a shaped vacant reserve, 42cm (16 1/2in) high

£100-150

80

An Edwardian silver novelty roller skate pin cushion by Crisford & Norris Ltd., Birmingham 1909, engraved Strand Lodge 1987 1910, 7cm (2 3/4in) long

£100-150



79



80



81

81

Four silver novelty pin cushions, early 20th century, the largest modelled as a chick by Henry Matthews, Birmingham 1919, 5cm (2in) high; the three smaller as chicks emerging from eggs, one maker's mark worn Birmingham 1902, and two by Sampson Mordan & Co., Chester 1905 and 1907, two 4.5 cm (1 3/4in) and one 3cm (1 1/4in) high

£200-300



82

82
Three late Victorian silver two-part buckles, the first formed as two cherub's heads with wings by Samuel Jacob, London 1898, 16cm (6 1/4in) long; the second with putti amidst fruiting vine by Loewe Rosenthal, London 1897, 11cm (4 3/8in) long; and pierced with flowers and scroll foliage by Levi & Salaman, Birmingham 1894, 233g (7.5 oz)

£120-180



83

83
An Edwardian silver shaped rectangular box by William Comyns & Sons, London 1909, the hinged cover chased with bells, horse drawn carriage and C-scrolls, 13cm (5in) long, together with another similar example by Charles & Richard Comyns, London 1918, 13cm (5in) long, 202g (6.5 oz) gross

£100-200



84

84
Eight various silver small boxes, comprising: a Swiss twin ring handled casket, .935 standard, blue fabric lined, 4.5cm (1 3/4in) long; an American coin box by William B. Meyers Co.; a Continental circular box, import marked for London 1894; a German embossed circular box by Simon Rosenau, import marked for London 1895; a late Victorian wrythen moulded circular box by Sampson Mordan & Co., London 1893; two Dutch embossed boxes; and a plain oval nutmeg grater, unmarked, circa 1800 (8)

£250-350



85

85
An Arts and Crafts silver desk clock by William Neale, Chester 1905, the brass timepiece movement with a vertical balance wheel escapement, the 2in white enamel dial with black Arabic numerals and blued steel spade hands, a swing handle, the rounded square case with moulded panels, on four ball feet, 14.5cm (5 3/4in) high with handle raised

£200-300

86
Three silver mounted desk timepieces, comprising: one Edwardian by The Goldsmiths & Silversmiths Co. Ltd, London 1904, with a brass carriage type movement, the 1 1/2in white dial with Arabic numerals, flower garlands and blued steel spade hands, in a plain rectangular case, on four bun feet, 10cm (4in) high with handle raised, in a leather covered case; a folding travelling clock, stamped Sterling only, with a fixed pocket type keyless wind movement and open face dial, with Arabic numerals and blued steel spade hands, the case plain curved rectangular, 10cm (4in) long; and a square easel clock by Charles Perry & Co., Chester 1928, engine turned, 12.5cm (5in)

£200-300



86



87

87
A collection of silver miniature furniture, comprising: a two seater sofa, import marked for London 1896, sponsor's mark of Benjamin Phillips, 3.3cm (2 1/8in) long; a pair of armchairs, import marked for London 1900, sponsor's mark of John George Smith; a pair of side chairs, import marked for Sheffield 1899, sponsor's mark of Samuel Boyce Landeck; and an Edwardian sedan chair by Levi & Salaman, Birmingham 1909 (6)

£200-300



88
A collection of Dutch silver toys, various tax marks, mainly 20th century, the bow front standing corner cabinet with figural embossed doors, pseudo marks, 12.5cm (5in) high; a model of a windmill, import marked for Sheffield 1896; and other items

£200-300

89

A collection of Chinese export silver and silver coloured toys, comprising: a wirework, filigree and enamel pedestal table and two chairs by Shing Wo, Hong Kong, circa 1900-35, the table 6.7cm (2 5/8in) diameter; a novelty pagoda pepperette by Luen Wo, Shanghai, circa 1880-1940, 8cm (3 1/4in) high; a further pagoda pepperette and one of a pavillion, both stamped Sterling only, probably post war; and a gilt, jade and enamel circular pill box, stamped Silver only, post war (7)



89

£250-350



90

90

An Italian silver coloured miniature model of a gramophone and two telephones, Vicenza, 1944 - 1968, .835 standard, the gramophone 9cm (3 1/2in) high, 262g (8.4 oz) gross

£100-200

91

A silver coloured model of a dhow, unmarked, Middle Eastern 20th century, with unfurled sail, 35.5cm (14in) long, 766g (24.6 oz), on a stained wood plinth with silver coloured mounts

£150-250



91



92

92

A German silver parcel gilt nef, stamped Sterling, 925 and Germany, circa 1930, the three-masted ship with unfurled sails, three figures climbing the rigging, 'boarded' deck with a lamppost and a stylised lion's head figurehead, on an ebonised rectangular plinth base, 51cm (20in) long from bowsprit to aft spar, loaded

£800-1,200



93
A Chinese export silver model of a three-masted ship by Wang Hing & Co., Hong Kong, Canton & Shanghai ('WH', '90' and a character mark), fl. circa 1854-1925, circa 1900, with fluttering pennants, the deck with cannon, a cabin, sailors, etc., 20cm (8in) long, 228g (7.3 oz) on a wooden stand carved as waves

£150-250



94



94
Two Chinese export silver small bowls, the first circular, retail silversmith Hung Chong & Co., Shanghai circa 1900, the mark of the retail silversmith Luen Wo partially erased, pierced and chased with two dragons confronting a flaming pearl, 8cm (3 1/8in) diameter; the second square, retail silversmith Wang Hing & Co., Hong Kong, Canton & Shanghai, fl. circa 1854-1925, circa 1900, each side applied with a dragon amidst clouds, 4cm (1 1/2in) high, 152g (4.9 oz) (2)

£150-200

95
A French silver gilt beaker by Louis Tassin, circa 1800, chased and engraved with two Chinese figures, 9cm (3 1/2in), 128g (4.15 oz)

£80-120



95

96
An 18th century French silver double salt cellar, Paris 1783-89, with a central urn handle, an embossed and pierced base with putti and floral swags, oval blue glass liners, on toupe feet, 15cm (6in) long; and a pedestal sugar basket by Mappin & Webb, London 1913, with a swing handle, wirework basket, on a moulded base, with a blue glass liner, 10.5cm (4 1/4in) high, 306g (9.85 oz) weighable (2)

£100-150



96



97

97
A Dutch silver spoon by Albertus Antonius Rooswinkel, Leeuwarden (fl. 1771-1812), with a cast figural handle, pricked H.J 1781, 18.5cm (7 1/4in) long, 53g (1.7 oz)

£100-150

98
A Dutch silver navette shaped table box, possibly Schoonhoven 1795, 1807-12 mark without payment of duty, 1852-1927 for silver brought back into the trade, the cover engraved with figures in an interior within a bright-cut border, the base with a flower head, diaper and drapery band, 13cm (5 1/4in) long, 149g (4.8 oz); and a Continental enamelled vanity case, import marked for London 1926, sponsor's mark of Stockwell & Co., light green guilloche enamel, the cover interior with a mirror, 8cm (3 1/4in) long (2)

£200-300



98





99

99

A pair of silver pepperettes modelled as a Dutch boy and girl, sponsor's mark for Berthold Hermann Muller, import mark for London 1920, 10cm (4in) high, 162g (5.2 oz)

£150-250

100

An Italian silver oval meat plate, maker's mark mis-struck, 1934-44, .800, retailed by Janesich, Trieste, with a raised gadrooned rim, 45cm (17 3/4in) long, 1364g (43.85 oz)

£300-500



100



101

101

An Italian silver wine cooler by Enrico Messulam, Milan 1934-1944, .800 standard, shaped circular and inverted baluster, the everted rim bordered with scrolls, twin scroll handles, the body panelled, on a roccaille work and scroll foot, 17.5cm (6 3/4in) (high), 848g (27.25 oz)

£200-300

102

Five Italian silver coloured plates by Gianni Pietrasanta & C., Alessandria, 1944-68, .800 standard, with gadrooned rims, 19cm (7 1/2in) diameter; and a larger gadrooned rim plate, maker's mark GE (not traced), .800 standard, 1608g (51.7 oz) (6)

£300-500

103

Three Italian silver coloured large plates and one small by Perigga & C., Alessandria, 1944-68, .800 standard, 35.5cm (14in) and 25.5cm (10in) diameter, 2392g (76.9 oz)

£500-800



102



103

104

Two cased sets of six silver and silver gilt coloured tea spoons, unmarked, with Italian city terminals and mask shaped bowls, 13cm (5 1/4in) long, 238g (7.65 oz)

£100-150



104



105

105
A Portuguese silver circular salver by Joao Joaquim Monteiro & Filho, Oporto circa 1875, with a pierced fruiting vine gallery, the centre engraved with leafy vines, on three asymmetrical vine bracket feet, 26.5cm (10 1/2in) diameter, 676g (21.75 oz)

£200-300



106

106
An Egyptian silver shaped circular plate, date code for 1959-61, .900 standard, geometric design with flowerheads and calligraphy, 28cm (11in) diameter, 495g (15.9 oz)

£100-150



107

107
A Middle Eastern silver coloured twin handled tray, with twin scroll and reeded handles, a tongue and dart border and shells, on four ball feet, 49cm (19 1/4in) long, 1820g (58.55 oz)

£400-600



108

108
An American Art Deco silver circular bowl by International Silver Co., circa 1935, tapering and stepped, on four stepped button feet, 199g (6.4 oz), with a clear glass liner; and a plain moulded rectangular photograph frame by A. & J. Zimmerman, oak easel back, 25.5cm (10in) high (2)

£150-200



109

109
Three American silver water pitchers or jugs, the tallest by Gorham & Co., stamped marks for circa 1852-65 and Coin, pedestal ovoid, scroll foliate engraved around a vacant reserve, 33.5cm (13 1/4in) high; one shaped oval and fluted by Meriden Britannia Co., 23.5cm (10in) high; and inverted ogee baluster by Stieff, 27cm (10 3/4in) high, 2324g (74.7 oz)

£600-800

Small Silver and Objects of Vertu

110

An Edwardian plain silver combination vesta case and sovereign holder by William Neale & Sons, Chester 1901, stamped Patent No. 47087, the interiors gilt, 6.5cm (2 1/2in) long

£100-200

111

A Victorian silver combination scent bottle, vinaigrette and pill box by S. Mordan & Co., London 1875, one cover opening to a foliate pierced grill, 6cm (2 1/2in) high, 70g (2.25 oz)

£200-300

112

A silver match holder by H. S. Benzie, London 1923, the cover with enamelled flag for the Royal Yacht Squadron, the inside engraved K. T. from R.P. 9.8.24, 6cm (2 1/4in) high, 44g (1.4 oz)

£100-200

113

A Victorian silver mounted cranberry glass combination scent bottle and vinaigrette by S. Mordan & Co., London 1871, with a screw on cover, the hinged cover opening to a gilt pierced foliate and engraved grill, 7cm (2 3/4in) high

£200-300

114

A Victorian silver novelty horn vinaigrette and scent bottle by Thomas Johnson I, London 1871, with a flat cover revealing a gilt interior with a foliate star pierced grille, the scent cap with a captive chain, with a suspension chain, 10cm (4in) long, 157g (1.85 oz)

£250-350

115

An Edwardian silver combination whistle and vesta case by A. & J. Zimmerman Ltd., Birmingham 1901, with a suspension loop, 6.5cm (2 1/2in) long, 38g (1.2 oz)

£150-250



110



112



111



113



114



115

116

A Victorian silver shaped rectangular card case by Frederick Marson, Birmingham 1853, engraved to front and back with a fountain supported by putti flanked by flower and by leaf pendants, 10cm (4in) long, in its leather covered case

£150-250

117Y

A William IV silver mounted castle top aide memoir by Taylor & Perry, Birmingham 1835, the covers chased with a view of Abbotsford house and foliate decoration, opening to ivory pages, 9cm (3 1/2in) high

£100-200

118

An early Victorian silver castle top snuff box Nathaniel Mills, Birmingham 1838, the cover with Abbotsford in relief, the sides concave and engine turned, the base with a vacant reserve on a tartan ground, the interior gilt, 7cm (2 3/4in) long, 57g (1.8 oz)

£200-300

119

A late George III or early George IV Irish silver and enamel circular box, maker's mark IW (not traced), Dublin circa 1810-20 (no date letter), probably for pills, chased with C-scrolls, flowers and leaves, the cover enamelled with a Jack of Clubs playing card, the interior gilt, 3.1cm (1 1/4in) diameter

The shape of the Harp and duty marks correspond to the given dates.

£100-150

120

A late Victorian silver rectangular vesta case by Cornelius Desormeaux Saunders & James Francis Hollings (Frank) Shepherd, Birmingham 1898, chased with a horse racing scene, 5cm (2in) long; and a German silver coloured matchbox cover, German post 1886 .800 standard, chased with foliate decoration, 6cm (2 1/4in) long, 58g (1.85 oz) gross

£80-120

121

An early Victorian silver bosun's call by Joseph Willmore, Birmingham 1838, the curved gun with four quadruple bands, engraved with foliage on the keel, the barrel shape buoy with crown and anchor to the ends, 10cm (4in) long, 18g

£150-250



116



117



118



119



120



120



121

122

Two silver rectangular card cases, the larger Victorian by Hilliard & Thomason, Birmingham 1880, engraved back and front with interwoven bands, the front with a vacant reserve, 10cm (4in) long; the smaller Edwardian by Robert Chandler, Birmingham 1904, scroll foliate engraved, the front with a vacant reserve, 8.5cm (3 1/2in) long

£100-150

123

A George III silver box by Samuel Pemberton, Birmingham 1814, with engraved fruit borders, the cover engraved NA, 6.5cm (2 1/2in) long; and a George III box by John Thropp, Birmingham 1814, the cover engraved with a monogram, 6.5cm (2 1/2in) long, 79g (2.55 oz) gross

£150-250

124

A George III silver rectangular snuff box by William Pugh, Birmingham 1808, engraved with foliate decoration, the cover with an oval vacant reserve, 7.5cm (3in) long, 77g (2.5 oz)

£100-200

125

An early Victorian silver rectangular snuff box by Francis Clark, Birmingham 1839, the cover engraved with a shield to the tablet within an engine turned border, a floral chased rim incorporating the thumbpiece, the sides threaded, the base engine turned, the interior gilt, 7.5cm (3in) long, 103g (3.3 oz)

£150-250



122



123



123



122



124



125

126Y

A George III silver mounted mother of pearl and tortoiseshell navette shaped snuff box, unmarked, circa 1800, the cover with a monogram on a shield, the mother of pearl diaper engraved with a piqué dot border, tortoiseshell sides and a plain silver base, 7.8cm (3in) long

£150-250

127Y

An 18th century silver, tortoiseshell and mother of pearl mounted oblong box, the cover inlaid with floral decoration, 6cm (2 1/4in) long; an 18th century silver and tortoiseshell mounted oval box, stamped WC only, 7.5cm (3in) long; and a French mother of pearl box, with a beaded border, 6.5cm (2 1/2in) long

£300-500

128

A late 18th century French gold and enamel canted-rectangular snuff box, maker's mark incuse F.J (not traced), indistinct pre-revolution marks, blue, light blue and white enamelled in bands and stripes, urns to the side angles, 8.3cm (3 1/4in) long, 88g gross (top later enamelled)

£1,500-2,000



126



127



127



127



128

129

A Russian silver and niello rectangular snuff box, maker's mark AS (Latin, untraced), Moscow 1840, assay master Andrei Kovalsky, 84 zolotniki, the cover with a city river landscape, the sides with trellis, the base with further buildings, the interior gilt, 7.5cm (3in) long, 75g (2.4 oz)

£200-300

130

A Russian silver and niello rectangular snuff box, maker's mark I.A (Cyrillic, unknown, 1846-52), Moscow 1852, 84 zolotniki, the cover and base with cityscapes within scrolling reserves, 8.2cm (3 1/4in) long, 99g (3.2 oz)

£250-350

131

An Italian silver shaped rectangular powder compact by Renato Ristrori, Florence 1934-44 .800 standard, the cover with an inset miniature of 18th century figures in a landscape, the pierced scroll foliate ground with eight circular cut citrines, the base engraved with scroll foliage, a mirror inside the cover, 9.5cm (3 3/4in) long, loaded

£120-180

132

An Austrian silver and enamel rectangular box, maker's mark R-S (not traced), Vienna 1872-1922 .900 standard, the cover painted with Venus disarming Cupid, a gilt shaped thumbpiece, the white base of envelope form, the interior gilt, 9cm (3 1/2in) long, 145g (4.65 oz) gross

Property from the estate of the late Betty, Lady Grantchester.

£300-500



129



130



131



132



133

133

A Continental porcelain scent bottle, 19th century, painted with Cupid, flowers verso, gilt and pink rococo outlining, gilt metal dolphin stopper, 10cm (4in) high

Provenance: Private Collection, Wantage.

£80-120



134

134

A south Staffordshire urn shaped enamel scent bottle and bonbonniere, circa 1760, painted with panels of two landscapes and two flower sprays, gilt scrolls, on a white ground, chained gilt metal flower spray stopper, 10cm (4in) high

Provenance: Private Collection, Wantage.

£250-350

135

A south Staffordshire tapered oval section enamel etui, circa 1780, painted with flower bouquets and sprays, on a white ground, the hinged cover revealing a snuff spoon, scissors, penknife, bodkin, tweezers etc., 8cm (3 1/4in) high

Provenance: John Jaffa Antiques, London (label); private collection, Wantage.

£200-300



135

136

A south Staffordshire cylindrical enamel bodkin case, circa 1780, painted with landscape panels, gilt scrolls and flower sprays, on a blue ground, pull-off cover, 13.5cm (5 1/4in) high

Provenance: Private Collection, Wantage.

£150-250



136



137

137Y

A German silver and ivory mounted oval box, post 1886 .800 standard, the cover inset with a carved ivory panel of two cherubs among clouds, a chased reed and stitch border, the body with a grape vine border, 10cm (4in) long

Property from the estate of the late Betty, Lady Grantchester.

£200-300



138

138Y

A 19th century ivory rectangular and white metal box, unmarked, the cover carved with Poseidon and Amphitrite, with an attendant with two horses in the background, 7cm long, the interior with a written note *Ring formerly belonging to Marie Antoinette, given by her, to one of her attendants...* the base of the box has a loan label stating *On loan from Lady Fellows N28. 18, together with a thin band ring with attached label stating Lady Fellows, finger size N 1/2*

Property from the estate of the late Betty, Lady Grantchester.

£300-500



139

139Y

An ivory circular box and cover, the cover with a beaded border and inset with an early 19th century French portrait miniature of a young lady, wearing white Empire dress embellished at the shoulders with two gold buttons, pendant pearl drop earring and double strand pearl necklace with a chateau by a lake in the background, signed Holmes, 8.5cm diameter

Property from the estate of the late Betty, Lady Grantchester.

£300-500



140

140

A late Victorian 9 carat gold and gilt steel sewing scissors probably by Horton & Allday, Birmingham 1898, scroll embossed with oval ring handles, 10cm (14in) long, in a leather covered case from Beaver Ltd, Jewellers, Manchester

£100-150

141

A William IV gold rectangular vinaigrette, maker's mark WH, London 1837, with engine turned decoration, the cover engraved with a crest in a rectangular reserve, the grille pierced and engraved with a bird among foliage, 3.5cm (1 1/2in) long, 22g

£400-600

142

A gold and coloured paste set book shaped 'regard' vinaigrette, unmarked, circa 1820, the cover engraved with a monogram within a shaped reserve, the reverse set with chased foliate decoration and set with six circular cut coloured pastes, opening to a pierced and engraved floral grill, 2cm (3/4in) high, 6.5g gross

£200-300

143

A gold coloured watch key in the form of a cannon, stamped 18ct, engraved with foliate sprays, 5.5cm (2 1/4in) long, 11g gross

£150-250

144

A gold coloured combination propelling pencil and dip pen by S. Mordan & Co., the bloodstone matrix with a G, engraved R, L, S and with floral and foliate decoration, 10cm (4in) long, 26g gross

£200-300

145

A 9 carat gold propelling pencil by S. Mordan & Co., London 1910, with engine turned decoration and a rectangular shaped vacant reserve, 7.5cm (3in) long; and another gold coloured propelling pencil by S. Mordan & Co., with engine turned decoration, the foil backed white stone carved with a crest, 9cm (3 1/2in) long

£250-350

146

A Victorian 9 carat gold vesta case by Henry Matthews, Birmingham 1896, chased with foliate swags and C-scrolls, 5cm (2in) high; and another 9 carat gold vesta case by Henry Matthews, Birmingham 1910, engraved with striated decoration and a monogram within a circular reserve, 4.5cm (1 3/4in) high, 42g gross

£400-600

147

A gold coloured combination dip pen and propelling pencil, unmarked, engraved with foliate swags and floral sprays; a 9 carat gold propelling pencil, Birmingham 1936, with a clip and engine turned decoration; another gold coloured propelling pencil; Yard O Led, a silver coloured propelling pencil, with a clip, engine turned decoration and a card box; and a silver plated propelling pencil

£100-150





148

148
Swan, an 18 carat gold fountain pen, hallmarked London 1938, the cap with a clip, the nib stamped 14C, piston filling system, inked

£300-500



149

149
Onoto, William Hill 80th Anniversary, a limited edition silver fountain pen, no. 22/25, circa 2014, the cap with gilt clip and hand painted portrait of William Hill, the two tone broad nib stamped 18ct, cartridge filling system, uninked, with an Onoto box, certificate of authenticity, polishing cloth, cartridge convertor, two ink cartridges, information booklets and outer card packaging

£800-1,200



150

150
Montblanc, Meisterstück, a black fountain pen, the cap with gilt clip and triple cap band, the two tone nib stamped 14K, cartridge filling system, inked, with a cartridge convertor

£100-150



151

151
Montblanc, Meisterstück, a burgundy fountain pen, the cap with a gilt clip and triple cap band, the two tone nib stamped 14K 585, cartridge filling system, inked

£100-150



152

152

Cartier, Ref. 7507,
Gilt metal and lacquer alarm clock, no. 15569
Movement: Alarm movement
Case: Gilt metal case, black lacquer bezel, easel back
Size: 75mm
Signed: Case, dial
Accessories: Cartier pouch

Together with a Must de Cartier Trinity gilt metal fine felt pen, the cap with a trinity band and red lacquer clip; and a Dunhill gilt metal lighter, with engine turned decoration

£200-300

153 Y

Asprey, a green crocodile jewellery box, with a loop handle and combination lock, opening to a green suede interior, the top compartment with four divisions above three pull out trays, 27 x 20 x 18cm

£250-350



153

Jewellery

154

An 19th century white paste Iberian brooch, the pierced silver panel set with circular cut white pastes with closed foiled backs, with a pear shaped white paste drop, 9.1cm long; together with a similarly set pendant, 5.1cm long, on a fancy link chain, 59cm long; 44.7g gross

£250-350

155

An 19th century French rock crystal, peridot and pyrite flower pendant, circa 1890, the circular flowerhead drop pavé set with pyrites with oval cut rock crystal in foiled closed back settings and peridot accents, suspended from a similarly set bow surmount, stamped with French poinçon and maker's mark GR, 5.5cm long

£80-120

156

An Edwardian paste pendant, circa 1910, the scrolling pendant set with foil backed pink and green pastes and half pearl accents, mounted in silver, unmarked, 8.3cm long, on an associated chain, 16.1g gross

£250-350

157

A late Victorian silver collar and locket, circa 1880, the rectangular hinged locket with applied yellow and rose gold decoration in the Aesthetic Movement style, on Gothic style foliate engraved link collar, the collar 44cm long, 70.4g gross

£150-250

158

A mid Victorian Scottish hardstone hunting horn brooch, circa 1870, the scrolled floral decorated silver fitments with a foiled citrine top and citrine thistle base, with polished and shaped coloured Scottish agates between with an applied foiled citrine accent, unmarked, 7cm long, 15.6g gross

£80-120

159

A late Victorian silver mounted Scottish agate brooch, circa 1880, centrally set with a circular cut citrine above a surround of Scottish agates including jasper and blue Montrose stone, in an engraved mount, unmarked, 5.5cm diameter, 36.4g gross; and a late Victorian silver mounted Scottish agate bracelet, circa 1880, set with blue Montrose stone agates in engraved mounts, with a glazed compartment at the centre, unmarked, 16.2cm long, 47.9g gross

£200-300

160

A late Victorian gold, agate, citrine and amethyst Scottish pennanular tara brooch, circa 1880, the circle inset with coloured Scottish agates, with foiled amethyst terminals and citrine thistle top, with a steel pin, 6cm long, 15.7g gross; and a late Victorian gold, agate and citrine Scottish Skean Dhu brooch, circa 1880, set with coloured Scottish agates, citrine accents and a citrine thistle top, 5.5cm long, 4.3g gross

£300-400



161 Y

A collection of early 19th century seed pearl jewellery, circa 1810, to include a pair of seed pearl ear pendants, the graduated pierced mother of pearl sunburst panels with seed pearl tassels between, with shepherds hook fittings, 4.5cm long, in a period John Cockburn box; together with a seed pearl and garnet brooch, the pieced radiating panel set with graduated seed pearls and centred with a foil backed garnet set cluster, 4.3cm wide; a further similar seed pearl brooch, 3cm wide; and a multi strand seed pearl necklace, to a gold coloured box clasp, 43cm long, suspending a later brilliant cut diamond and black enamel drop, diamonds approximately 0.57 carats total, 5.7cm long

£300-500

162

A pair of early 19th century Continental seed pearl and gold filigree pendent earrings, circa 1840, the articulated filigree fan and bow tops set with seed pearls, with similar filigree and seed pearl basket drops suspended below, unmarked, with later associated screw fittings, 7.6cm long, 17.4g gross

£300-500

163

A Regency gold, ruby and emerald bracelet, circa 1830, the central clasp panel centrally set with a later step cut emerald, within a border of collet set rubies and step cut emeralds, in a chased gold surround, the articulated back links with chased decoration, with a concealed tongue clasp, unmarked, 16cm long, 16.9g gross

£300-500

164

A mid 19th century Continental gold and foiled quartz brooch, circa 1850, the oval mixed cut quartz in foil backed settings amongst gold filigree foliage to an engraved outer border, with a glazed compartment verso, unmarked, 5.7cm long, 15.6g gross

£200-300

165

An early Victorian two colour gold and citrine cross brooch, circa 1840, the four pear shaped citrines claw set within a foliate surround of two colour gold flower heads and leaves, unmarked, 5.2cm long, 7.4g gross

£200-300

166

A mid 19th century ruby, emerald and gold Etruscan Revival bangle, circa 1875, the hinged bangle alternately set all around with square and circular cut rubies and emeralds in beaded and wirework mounts, with wire work flower head accented hinges, 5.7cm inner diameter, 15.4g gross

£250-350

167

A mid 19th century Continental pearl cluster brooch, circa 1850, the slightly baroque 4mm to 5.5mm pearls set in an open work filigree mount, unmarked, 3cm diameter, 7.5g gross

Please note the pearls are untested and unwarranted as natural pearls

£150-250

168 Y

A George III half pearl portrait miniature frame brooch, circa 1780, the oval gold frame set with half pearls, containing a miniature of a gentleman in a periwig and blue and red coat, 4cm long, 16.1g gross; and a Regency gold miniature frame, circa 1830, containing a miniature on ivory of an army officer in a red and white tunic with black neck scarf, with a glazed locket verso, 5.9cm long

£250-350



169

An early Victorian gold and turquoise necklace, circa 1840, the scrolled gold open work panels set with turquoise forget-me-not clusters and naturalistic vine leaf panels, on a later curb link back chain, unmarked, 38.5cm long, 13.3g gross

£250-350

170

A mid Victorian gold and turquoise drop necklace, circa 1860, the five drops set with turquoise quatrefoils, three have glazed locket backs, suspended by buckle connections from a serpentine link chain, with fancy knot link festoons between, to a barrel clasp, unmarked, 40.5cm long, 30.4g gross

£600-800

171

A mid 19th century Continental gold, turquoise and half pearl pendant, circa 1870, the fluted gold centre set with turquoise and half pearls, suspending a similar turquoise, half pearl and old cut diamond drop, attached to a box link chain with a barrel clasp, unmarked, the chain 42cm long, 14.1g gross

£200-300

172

A mid Victorian gold and turquoise brooch, circa 1860, the scrolled surmount with turquoise cabochon buds set amongst engraved naturalistic foliage, suspending a turquoise set drop with a glazed locket verso, unmarked, 6cm long, 11g gross, in a fitted brown leather case

£200-300

173

A mid Victorian gold, turquoise and diamond brooch, circa 1860, the central rose cut diamond and turquoise bombé cluster set in a textured foliate border, to tapering bar terminals, with fringe drops below, unmarked, 5.3cm long, 8.8g gross

£120-180

174

A mid Victorian gold and turquoise brooch, circa 1860, the trefoil pediment set with turquoise cabochons against a textured ground, suspending a similarly set swag drop, unmarked, 6cm long, 7g gross, in a 20th century fitted green leather case

£100-150

175

An early Victorian gold and turquoise knot brooch, circa 1850, the chased tied bow top set with cabochon turquoise forget-me-nots, suspending a circular drop with a turquoise forget-me-not, with a glazed compartment verso, unmarked, 6.5cm long, 10.8g gross

£200-300



176

A mid Victorian chalcedony and gem set foliate brooch, circa 1850, the oval chalcedony plaque applied with a turquoise forget-me-not amongst gold foliage and foiled pink topaz buds, in a gold engraved scroll mount, unmarked, 4.2cm long, 10.7g gross; and a mid Victorian chalcedony and turquoise set foliate brooch, circa 1850, the oval chalcedony plaque applied with a turquoise forget-me-not amongst gold foliage, in a gold engraved scroll mount set with turquoise cabochons, unmarked, 4.8cm long, 16.2g gross

£150-250

177

A late 19th century Continental turquoise and half pearl necklace, circa 1890, the central section with a turquoise and half pearl cluster above a chased foliate surmount, with turquoise set drops suspended beneath, on a fancy link back chain with a concealed clasp, unmarked, 35cm long, 10.1g gross

£150-250

178

A late Victorian opal and diamond crescent brooch, circa 1890, set with nine graduated opal cabochons with old cut diamond points between, unmarked, 2cm long, 4g gross; and a late Victorian opal bar brooch, set along the length with eleven graduated opal cabochons, unmarked, 5cm long, 4.6g gross

£300-500

179

A late Victorian turquoise and half pearl bracelet, circa 1900, the open heart shaped links centrally set with a turquoise cabochon, interspersed with turquoise and half pearl clusters, to a concealed clasp stamped 9ct, 18.5cm long, 11.6g gross

Please note the pearls are untested and unwarranted as natural pearls

£80-120

180

A mid Victorian aquamarine brooch, circa 1870, designed as a scrolling bow set with three oval mixed aquamarines, with an aquamarine single stone drop below, unmarked, 7.7cm long, 17.8g gross

£120-180

181

A late Victorian gold and opal brooch, circa 1900, centrally set with a heart shaped opal on a spear head bar, with an opal and rock crystal drop below, stamped 15ct, 4cm long, 31g gross; an Edwardian opal and half pearl brooch, circa 1910, unmarked, 4.5cm long, 6.2g gross; and an Edwardian black opal matrix, enamel and half pearl brooch, circa 1910, the polished circular black opal matrix set within a black and white enamel border, and outer border of half pearls, with a glazed locket verso, unmarked, 2.5cm diameter, 9.4g gross

£120-180

182

A mid 19th century Continental aquamarine brooch, circa 1860, the oval cut aquamarine estimated to weigh 11.16 carats, within a rectangular chased gold foliate setting with ropetwist border, 3.2cm wide, 8.5g gross

£300-500

183

A late Victorian turquoise and half pearl hinged bangle, circa 1900, the scrolled top set with half pearls and circular turquoise cabochons on a knife edge setting, to a polished hinged bangle, unmarked, 5.5cm inner diameter, 8.4g gross, in a late Victorian hinged bangle case

£80-120



184

A late Victorian gold hinged locket, circa 1880, the engine turned covers with chased foliate borders, containing two photographic portraits on porcelain, unmarked, 6cm long, 31.3g gross

£300-400

185

An early Victorian gold and hair work brooch, circa 1850, the central swivel glazed compartment with sprays of hair tied with seed pearls, within a naturalistic grape bunch and vine leaf gold border, unmarked, 5cm long, the mount 19g, a brown leather domed case

£250-350

186

A late Victorian black enamel and half pearl hinged locket, circa 1880, the front with a half pearl foliate spray, with two internal glazed compartments, unmarked, 4.5cm long, 16.6g gross

£150-250

187Y

A Regency gold cannetille and sepia wash mourning brooch, circa 1820, the oval sepia wash and hair work panel depicting a skull and tomb beneath a weeping willow, as well as a winged hour glass and scythe, in a gold cannetille mount, 6.5cm long, 22g gross; and a Regency gold cannetille and sepia wash mourning brooch, circa 1820, the oval sepia wash and hair work panel depicting a tomb beneath a weeping willow, in a gold cannetille mount later adapted from a bracelet clasp, 6.5cm long, 13.6g gross

The winged hour glass and scythe signifying the flight of time and the certainty of death, as well as the skull, are typical symbols seen in earlier Memento Mori jewellery.

£300-500

188Y

An early Victorian gold and sepia wash brooch, circa 1840, the central glazed compartment with a circular panel painted with sepia and applied hair depicting an urn on an alter with initials JRN below a weeping willow, the circular gold brooch mount with applied foliage, with a serpentine link tassel suspended beneath, unmarked, 9cm long overall, 24.8g gross

£300-500

189

A Georgian gold and hair work sentimental ring, circa 1800, containing a flaming column swathed in roses, with the black enamelled initials L.H.R.H.G., above a hair work ground beneath a glazed panel, in a rub over mount on a plain shank, unmarked, finger size M, 11g gross

£200-300

190Y

A mid Victorian gold pendant locket, circa 1870, of Gothic design, with glazed compartments front and back, the front containing a miniature of a bearded gentleman, stamped 15ct, 5cm long, 13.2g gross; and an early Victorian gold miniature locket, circa 1850, the glazed compartment containing a later miniature of a child, 5.6cm long, 14.7g gross

£300-500

191

A late Victorian gold locket bracelet, circa 1880, the central foliate engraved hinged locket with an interior glazed compartment and a glazed compartment to the back, on a serpentine bracelet with a concealed clasp, unmarked, 16.5cm long, 16.5g gross, in a burgundy leather fitted case

£200-300



192

A late 19th century gold and pietra dura brooch, circa 1870, the peitra dura panel depicting a peony an a forget-me-not, in a gold foliate mount with a glazed locket verso, 3.9cm long, 16.5g gross; a late 19th century gold and pietra dura brooch, circa 1870, the peitra dura panel depicting a foliate spray, 3.3cm long, 7g gross; a late 19th century gold and pietra dura pendant, circa 1870, the pietra dura panel depicting a foliate spray in a gold foliate mount, with a hinged glazed locket verso, suspended from a plain bale, 3.9cm long, on a later belcher link chain, unmarked, 11.9g gross

£200-300

193

A mid Victorian gold and scarab beetle pendant, circa 1870, the four scarab beetles set in a quatrefoil of beaded mounts with an engraved gold cross at the centre, with a fluted pendant bale, 7.4cm long, 10.5g gross

£150-250

194

A mid Victorian gold Etruscan Revival brooch, circa 1870, the circular brooch with bead and wire work decoration, with a glazed compartment verso, 4.1cm diameter, 17.7g gross

£100-150

195

A late Victorian reverse painted intaglio brooch, circa 1900, the circular reverse painted intaglio depicting a horse and carriage in a rope twist mount on a bar pin, stamped 9c, maker's mark M&M, 5.2cm long, 9.1g gross; and a late Victorian reverse painted intaglio brooch, circa 1900, depicting the head of a wire haired terrier wearing a blue collar, unmarked, 1.9cm diameter, 4.7g gross

£200-300

196 Y

A late Victorian reverse painted intaglio pendant, circa 1880, the reverse painted intaglio carved with Leda and The Swan on a mother of pearl ground, in a gold rope twist mount with a glazed locket verso, stamped 15ct, 3.4cm long, 12.7g gross

£250-350

197 Y

A mid 19th century gold and enamel Etruscan Revival fibula brooch, circa 1880, the fibula arch with turquoise, coral, dark blue and white enamel jewellery, to a ram's head terminal, unmarked, 7.7cm long, 113.7g gross

£250-350

198 Y

A mid Victorian gold and coral brooch, circa 1870, centrally set with four coral balls above a wirework scroll and Greek key border, with a pipkin coral drop and tassel fringe beneath, 6.5cm long, 13g gross

£150-250

199

A mid 19th century painted porcelain brooch, circa 1870, the oval porcelain plaque painted to depict the bust of a bejewelled lady after the manner of Guido Reni, in a scrolling gold frame, unmarked, 5.6cm long, 20.2g gross

£100-150

200

A mid Victorian reverse painted intaglio brooch, circa 1880, the reverse intaglio painted with a pair of collared doves on a branch, within a gold wire work decorated mount, with a glazed locket verso, maker's mark F.B & R, 4cm diameter, 28.2g gross

£300-500

201

A mid Victorian gold Etruscan Revival brooch, circa 1870, with bead and wire work decoration to palmette terminals, stamped 15ct, 5.1cm long, 6.7g; a mid Victorian gold Etruscan Revival brooch, circa 1870, with bead and wire work decoration, stamped 15, 4.7g; and a third mid Victorian gold Etruscan Revival brooch, circa 1870, of lozenge form, with bead and wire work decoration, 4.5cm long, 4.7g

£200-300

202 Y

A late 19th century Swiss enamel hinged bangle, circa 1890, the three graduated oval plaques painted with young adults in rural scenes, with mother of pearl backs, on a triple hoop hinged bangle, unmarked, 5.8cm inner diameter, 22.2g gross

£300-400



203

A late 19th century gold and micro mosaic brooch, circa 1880, the oval micro mosaic panel depicting a swallow above a foliate garland, set in a concave mount with black and red tesserae decoration, with gold bead work at the cardinal points, with a glazed locket verso, 4.5cm long, 14.6g gross

£150-250

204

A mid 19th century Italian gold micro mosaic brooch, Papal States circa 1870, the micro mosaic disc depicting Pliny's Doves on a blue ground, rub over set in an inner wire work decorated concave mount to a gold wire work outer border, partial Papal States marks 1815 - 1870 on the pin, 3.8cm diameter, 14g gross

£300-500

205

A mid 19th century micro mosaic brooch, circa 1870, the oval panel depicting a lady in traditional Italian costume, set within a wire work decorated border, with a glazed locket verso, unmarked, 4.6cm long, 20.7g gross

£150-250

206

A mid 19th century Italian Grand Tour souvenir micro mosaic bracelet, circa 1850, the rectangular micro mosaic panels showing views of St Peters Basilica, the temple of Hercules in Cori near Velletri, the Temple of Hercules Victor in the Forum Boarium, the Temple of Vesta in the Roman Forum, the Pantheon, and the Colosseum, with circular polished dome accented links, 18cm long, 38.7g gross

£700-1,000

207

A pair of mid 19th century micro mosaic earrings, circa 1870, the pear shaped drops depicting the Pantheon in Piazza della Rotonda, and the columns of the Temple of Castor and Pollux in the Forum, beneath circular micro mosaic tops, in rub over mounts with shepherd's hook fittings, 5cm long, 9.9g gross

£250-350

208

A mid 19th century micro mosaic brooch, circa 1870, the rectangular micro mosaic panel depicting a mother hen and chicks, in a gold scroll brooch mount, unmarked, 5.5cm long, 25.5g gross

£300-500



209

A late 19th century French gold, garnet and pearl locket pendant, circa 1890, the central cluster set with a circular cut garnet within a surround of pearls, in a scrolled wire work frame with three fresh water pearl drops, a hinged locket to the reverse, French poinçons on the bale, 6.4cm long, 8.7g gross

Please note the pearls are untested and unwarranted as natural pearls

£150-250

210

A Georgian gold and flat cut garnet fringe necklace, circa 1780, the graduated flat cut garnet fringe drops in foiled closed back mounts, suspended from a necklace of similarly set flat cut garnets to a concealed clasp, 37.5cm long, 17.6g gross

£400-600

211

A late Victorian gold and garnet bracelet, circa 1880, the flexible link bracelet with a foliate chased snap clasp stamped 15c, 20cm long, suspending a foliate chased quatrefoil drop set with a central oval cabochon garnet, stamped 15c, 43.8g gross

£500-700

212

An early Victorian gold and garnet serpent necklace, circa 1840, the snake's head set with an oval cabochon garnet and circular cabochon garnet eyes in scrolled gold mounts, suspending a similar heart shaped locket in its mouth with a glazed locket verso, on a serpentine link chain to a concealed clasp, unmarked, 39cm long, 21.1g gross

£800-1,200

213

A mid Victorian gold and garnet brooch, circa 1860, set with four cabochon garnets in a scrolled cartouche mount, with a glazed locket verso, unmarked, 4.9cm long, 16.4g gross

£220-280

214

A mid Victorian gold and garnet knot brooch, circa 1870, the central carved cabochon garnet inset with a half pearl star, with a glazed locket verso, rub over set above a foliate scroll mount with cabochon garnets at the cardinal points, 4.4cm long, 17g gross

£80-120

215

A mid Victorian gold, garnet and half pearl brooch, circa 1860, the oval mixed cut garnet set within a surround of half pearls to a quatrefoil scrolled foliate chased brooch mount, unmarked, 4.5cm long, 13.5g gross

£100-150

216

A late Victorian gold and garnet brooch, circa 1890 and later, the central cabochon garnet inset with a half pearl star, within a gold foliate mount, with a glazed locket verso, and an associated tassel drop suspended below, 6cm long, 24.8g gross

£350-450



217

A mid Victorian gold and garnet brooch, circa 1860, the gold lovers knot with wire work decoration and cabochon garnet flower buds around a central cabochon garnet and half pearl cluster, suspending an oval cabochon garnet drop with a glazed locket verso, 7.2cm long, 20.8g gross

£250-350

218

An Edwardian 9 carat gold doublet and diamond hinged bangle, the alternating red doublets and rose cut diamonds in star settings, with bead and ropetwist detail, stamped 375 with full Chester hallmarks for 1909, 6cm wide, 14.3g gross

£100-150

219

A mid Victorian garnet lovers knot brooch, circa 1850, the knotted ribbon panels with engraved foliate detail, set with oval cut garnets, 5.2cm wide, 11.4g gross

£120-180

220

A late Victorian rhodolite garnet and topaz bracelet, circa 1900, the three yellow topaz set in ropetwist mounts above quatrefoil links set with circular cut garnets, to a box snap clasp, stamped 9c, maker's mark CDB for Charles Daniel Broughton, 18.3cm long, 15.9g gross

£150-250

221

A late Victorian garnet bracelet, circa 1900, the five circular cut garnets rub over set in knot links, on a curb link bracelet with a concealed clasp, stamped 9c, 18.5cm long, 12.7g gross

£80-120

222

A mid Victorian gold and garnet bracelet, circa 1860, the central open work scroll panel set with three oval cabochon garnets, above a scroll link bracelet with a concealed clasp, unmarked, 18.5cm long, 19.8g gross

£150-250

223

A mid Victorian gold, garnet and chrysoberyl brooch, circa 1860, the central circular cut chrysoberyl set within a surround of oval mixed cut garnets, with applied bead and ropetwist decoration and further garnets to the outer border, with glazed locket verso, 3.2cm diameter, 11.6g gross

£100-150

224

A mid Victorian garnet and chrysoberyl brooch, circa 1860, the vari cut garnets and chrysoberyls set amongst engraved gold foliage, above wire work decorated hoops, unmarked, 4.7cm long, 11.2g gross; and a mid Victorian garnet brooch, circa 1860, the garnets set amongst textured gold foliage, unmarked, 3.2cm long, 5.5g gross

£180-220



225

A late Victorian amethyst intaglio swivel ring, circa 1900, the amethyst intaglio engraved with a Roman centurion with three Greek letters ΑΥΠ, claw set in a swivel mount, on a tapered shank with snake head terminals, stamped 18, approximate finger size U, 10.5g gross

£150-250

226

A late 19th century gold, amethyst, diamond and half pearl brooch, circa 1880, the central oval cabochon amethyst inset with a rose cut diamond set star, with further rose cut diamonds accents to the cardinal points, within a semi circular mount with half pearl and blue enamel highlights, with a gold tassel drop below and a glazed locket verso, unmarked, 8cm long, 29.3g gross

£350-450

227

A late Victorian amethyst brooch, circa 1880, the oval mixed cut amethyst claw set in a bead and rope work oval mount, with a glazed locket verso, unmarked, 4.3cm long, 10.8g gross, in a domed red leather fitted case

£180-220

228

An early Victorian gold and amethyst brooch, circa 1840, claw set with seven scissor cut amethysts in a gold filigree flower head mount, unmarked, 2.8cm diameter, 5.9g gross

£70-100

229

An Arts and Crafts amethyst and half pearl bracelet, circa 1900, set with seven cabochon amethysts in rub over mounts, with open work gold and silver flower heads between set with half pearls, to a concealed clasp, unmarked, 19.5cm long, 9.7g gross

£150-250

230

An amethyst and half pearl hinged bangle, the oval cut amethyst claw set above a pierced gallery, to pierced shoulders each set with a trio of half pearls in raised claw settings, to scrolled bar borders, the clasp stamped with unidentified gold marks, possibly Poland post 1963, 5.8cm wide

£80-120

231

A late Victorian gold, foiled quartz and half pearl hinged bangle, circa 1880, the three pink foiled quartz cabochons inset with half pearl stars, above a rope twist and foliate engraved mount, unmarked, inner diameter 5.5cm, 21.1g gross

£300-500

232

A late Victorian amethyst hinged bangle, circa 1900, the oval mixed cut amethyst collet set within a ropetwist border, to a scrolled foliate open work mount on a polished hinged bangle, stamped 15ct, inner diameter 5.3cm, 20.1g gross

£300-500



225



228



227



226



229



230



231



232

233

An early Victorian gold and diamond buckle brooch, circa 1850, the foliate chased closed buckle set with rose cut diamonds, suspending a heart shaped rose cut diamond drop with a glazed locket verso, unmarked, 5cm long, 5.6g gross, in a domed green leather fitted case

£80-120

234

A late Victorian ruby and diamond bar brooch, circa 1890, the central circular cut ruby and cushion shaped old cut diamond three leaf clover set on a knife edge bar to similar palmette terminals, mounted in gold backed silver, unmarked, 4.6cm long, 5.2g gross; and a late Victorian sapphire and diamond crescent brooch, circa 1890, the three circular cut sapphires set above graduated cushion shaped old cut and rose cut diamonds, approximately 0.56 carats total, mounted in gold backed silver, unmarked, 5.7cm long, 3.8g gross

£100-150

235

A ruby and diamond cluster ring, the central circular cut ruby within a surround of old cut diamonds, approximately 0.20 carats total, finger size L 1/2, 2.1g gross

£250-350

236

A three stone diamond ring, the three brilliant cut diamonds, approximately 0.50 carats total, finger size L 1/2, 2.3g gross

£100-200

237

An Edwardian 18 carat gold demantoid garnet and diamond ring, the oval cut demantoid garnet claw set between two old cut diamonds, approximately 0.10 carats total, stamped 18 with full Birmingham hallmarks for 1905, finger size J, 3.8g gross

£250-350

238

An Edwardian diamond bracelet, circa 1905, the arched top claw set with thirteen slightly graduated cushion shaped old brilliant cut diamonds, approximately 1.75 carats total, on an expandable link bracelet stamped 18ct maker's mark MPC, to a concealed clasp, approximately 18cm long, 9.5g gross

£800-1,200

239

A mid Victorian ruby, emerald and seed pearl brooch, 1868 registration mark, the central star shaped panel set with a cluster of seed pearls centred with an emerald, to a bead and wirework decorated quatrefoil setting, with step cut ruby accents, with registration mark for 8th December 1868, glazed compartment verso, 4cm wide, 11.4g gross

£80-120

240

Two similar ruby spray brooches, each brooch set throughout in flower head clusters and foliage with circular cut rubies, unmarked, 6.1cm long, 32.7g gross, in a later blue velvet fitted S. J. Phillips Ltd case

£300-500

241

An early 20th century synthetic ruby bangle, circa 1910, claw set with thirteen oval mixed cut synthetic rubies with rose cut diamond points between, on a tapered hinged bangle, unmarked, inner diameter 5.5cm, 19.4g gross

£180-200



242 Y

A pair of mid Victorian tortoiseshell pique earrings, circa 1870, the articulated tortoiseshell drops inset with gold pique flower heads, with shepherd's hook fittings, 3.8cm long, 4.1g gross; a mid Victorian tortoiseshell pique brooch, circa 1870, inset with gold pique flower heads, 3.5cm long, 5.9g gross; and a mid Victorian tortoiseshell pique brooch, circa 1870, the domed circular tortoiseshell inset with gold pique flower heads, 3.5cm diameter, 8.1g gross

£200-300

243

A mid 19th century lava cameo brooch of Ceres, circa 1860, the cameo carved with a seated Ceres (Demeter) holding a sheaf of wheat, with flowers to one side, the reverse lightly inscribed Cerere and signed Perotti Rue S. Lucie N.12 Naples, within a scrolled gold floral filigree setting, stamped with a gold mark and an indistinct makers mark, 6.5cm long, 28.7g gross, in a silk lined burgundy leather case

£100-200

244

A late 19th century Continental hardstone cameo brooch/pendant, circa 1880, the hardstone carved with the classical profile of a lady with beads in her hair and a drop earring, claw set in a gold mount applied with laurel wreaths below a bow surmount, with half pearl accents, with brooch and pendant fittings, unmarked, 5cm long, 22.4g gross

£250-350

245

A late 19th century hardstone cameo pendant, the oval hardstone carved with Hebe wearing flowing robes, pouring nectar from a ewer into a bowl, within a seed pearl border, to scrolled seed pearl and pearl set gold surround, suspending a fringe of baroque pearls on knife edge bars, glazed compartment verso, 8.4cm long, 24.2g gross

£300-500

246

A Continental late 19th century agate cameo brooch in a half pearl mount, circa 1890, the oval agate carved with the profile of a Bacchante with ivy in her hair, within a half pearl border, unmarked, 4.5cm long, 16.3g gross

£250-350



247

A mid Victorian shell cameo brooch, circa 1860, carved to depict the dextral profile of Mary, Queen of Scots, in a gold wire work frame with a glazed compartment verso, 5.5cm long, 29.7g gross

£100-150

248

An early Victorian shell cameo of a classical lady, the carved classical profile of a lady with her hair styled up and wearing classical robes, in a gold setting, 5.2cm long, 16.4g gross

£80-120

249

A mid Victorian shell cameo of a Bacchante, circa 1870, the oval panel carved with the profile of a Bacchante, with grapes and vines in her hair, to a gold naturalistic grape and vine gold mount, 5.6cm long, 20.9g gross

£120-180

250

An early 19th century shell cameo of Venus and the Three Graces dancing in the presence of Mars, circa 1820, the oval panel carved with Mars seated with Cupid, Agalia plays a lyre as the Venus dances with Euphrosyne and Thalia, a putti is shown holding a flaming torch, after Venus and the Graces Dancing in the Presence of Mars by Antonio Canova (1794-9), there is a partial signature to the base of the cameo, possibly reading *Nori*, within a gold setting, 5.1cm wide, 18.4g gross

£80-120

251

An 1840s shell cameo bracelet, the five graduated oval cameos carved with scenes after Thorvaldsen, including Nyx and Mercury Brings Bacchus to Ino, together with a further cameo of Hebe and Hera, Venus and Cupid catching butterflies, and Venus and Cupid, in gold mounts, 18cm long

£300-500

252

A mid 19th century shell cameo of Nike (Victory) guiding four horses, circa 1850, the oval panel carved with the winged Nike holding a palm and guiding four prancing horses, within a gold ropetwist setting, 6.2cm wide, 22.7g gross

£100-200

253

A Victorian shell cameo carved with Hebe and the Eagle, circa 1870, Hebe is seated holding a cup and ewer, with the Eagle drinking from her cup, within a polished gold mount with scrolled leaf detail at the cardinal points, 7cm long, 26.7g gross

£100-200



254

A Victorian diamond star brooch/pendant on chain, circa 1870, the star set with graduated cushion cut diamonds, approximately 1.73 carats total, 1.6cm wide, 4.9g gross; with a silver coloured chain, 44cm long

£600-800

255

A late Victorian diamond crescent brooch, circa 1880, the graduated old brilliant cut diamonds approximately 1.50 carats total, in a gold backed silver setting, 2.8cm long, 4.8g gross

£800-1,200

256

A diamond cockerel brooch, set throughout with rose cut diamonds, with red enamel head comb and wattle, unmarked, 3.2cm long, 8.1g gross

£300-500

257

A pair of converted Art Deco diamond ear pendants, the articulated geometric panels set with rose cut diamonds, to a brilliant cut diamond drop, approximately 0.44 carats total, shepherds hook fittings, 5.5cm long, 6.7g gross

£80-120

258

A pair of early 19th century rose cut diamond earrings, circa 1820 and later, the pear shaped rose cut diamond drops suspended within an articulated surround of rose cut diamonds, suspended from rose cut diamond cluster tops, all set in gold backed silver closed back mounts, with modern post fittings, 3.3cm long, 8.3g gross

£600-800

259

An early 20th century diamond bracelet, circa 1910, the central articulated panels set with old brilliant cut and rose cut diamonds, approximately 1.35 carats total, on a platinum flashed gold flexible link bracelet to a concealed clasp, unmarked, 18cm long, 13.3g gross

£700-1,000

260

A pair of Continental diamond clip brooches, each centrally set with a cushion shaped old brilliant cut diamond, approximately 0.40 carats total, in tapered cartouche shaped mounts set with rose cut diamonds, unmarked, 2.1cm long

£100-200

261

A Continental Art Nouveau diamond brooch/pendant, circa 1900, the open work cartouche collet set with rose cut diamonds in closed back mounts, mounted in gold backed silver with brooch pin and necklace fittings, unmarked, 6.5cm long, 13.6g gross

£200-300

262

A late 19th century diamond starburst brooch, circa 1890, set throughout with cushion shaped old brilliant cut and rose cut diamonds, approximately 2.80 carats total, mounted in gold backed silver, with a removable brooch fitting, 3.9cm long, 11.6g gross

£700-1,000

263

An oval panel cluster ring, the three central graduated old brilliant cut diamonds within a surround of rose cut diamonds, approximately 0.73 carats total, the shank stamped 585, finger size M 1/2, 3.8g gross

£700-1,000

264

A late 19th century diamond brooch/pendant, circa 1890, of open swag design, set throughout with old cut and rose cut diamonds, approximately 0.85 carats total, mounted in gold backed silver with a removable brooch pin, 5cm long, 7.6g gross

£250-350



265

An Edwardian half pearl floral spray brooch, circa 1910, with bouton and half pearl set flowerheads and seed pearl set foliage, unmarked, 5cm long, 8g gross, in a Goldsmiths and Silversmiths case

Please note the bouton pearls are untested and unwarranted as natural pearls

£100-150

266

An Edwardian half pearl and bouton pearl necklace, circa 1910, the central Art Nouveau style foliate festoons set with half pearls with bouton pearl buds, on a fine trace link back chain to a barrel clasp, unmarked, 50cm long, 16.2g gross

Please note the bouton pearls are untested and unwarranted as natural pearls.

£200-300

267

An Edwardian half pearl collar necklace, circa 1910, the front section with a half pearl crescent and foliage flanked by half pearl fringe drops, stamped 15ct, on a rope twist back chain with a barrel clasp, 39cm long, 16g gross

£200-300

268

An Edwardian half pearl necklace, circa 1910, the central half pearl section designed as a crowned heart with foliate spray connections, and a removable half pearl star pendant below, stamped 15ct, on a rope twist back chain to a barrel snap clasp, the chain unmarked, 44cm long, 10.1g gross

£120-180

269

A late Victorian half pearl necklace, circa 1900, the removable half pearl flower head cluster drop suspended from swags and festoons of half pearls, to a curb link back chain with bolt ring clasp, the flower head drop stamped 9ct, with maker's mark for S. Blanckensee Ltd, the necklace and chain unmarked, 39.5cm long, 19.1g gross, in a fitted burgundy leather case from W. L. Parkhouse, Southampton case

£200-300

270

An Edwardian half pearl bracelet, circa 1910, set with bouton pearl and half pear flowerhead clusters, with half pearl connections between, to a curb link bracelet with a concealed clasp, unmarked, 16cm long, 12.6g gross

Please note the bouton pearls are untested and unwarranted as natural pearls

£100-150

271

An Edwardian half pearl hinged bangle, circa 1910, the central flowerhead set with a bouton pearl with half pearl set petals to decorative pierced tapering half pearl set mount, on a triple hoop knife edge hinged bangle, unmarked, inner diameter 5.5cm, 12.4g gross

Please note the bouton pearl is untested and unwarranted as natural pearl

£100-150

272

A late Victorian gold and half pearl hinged bangle, circa 1900, the central half pearl flower head to tapered half pearl set shoulders, on a triple hoop hinged bangle, unmarked, inner diameter 5.8cm, 13.9g gross

£120-180



273

An Edwardian half pearl, demantoid garnet and diamond necklace, circa 1910, centrally set with a half pearl and diamond cluster to scrolls of half pearls with demantoid garnet accents, on a curb link back chain, maker's mark S S, 42cm long, 9.4g gross

£150-250

274

An Edwardian half pearl and diamond collar, circa 1910, the central old cut diamond and half pearl flowerhead cluster to half pearl connecting links with half pearl accented fringe drops, on a curb link back chain to a box snap clasp, unmarked, 35.5cm long, 18.8g gross

£250-350

275

An Edwardian sapphire and half pearl fringe necklace, circa 1910, set with alternating mixed cut sapphire and half pearl drops, on a fine trace link chain to a barrel clasp, stamped 15ct, 44.5cm long, 12.2g gross

£150-250

276

An Edwardian multi gem set necklace, circa 1910, set with step cut pink tourmalines and peridots, circular cut aquamarines and half pearl accents, on a curb link back chain with a bolt ring clasp, unmarked, 45.5cm long, 13.9g gross

£300-500

277

An Arts and Crafts peridot brooch by Liberty & Co., circa 1900, of scrolling form, set with three peridots, applied with two L&Co. plaques to the reverse, stamped 9ct, 4.7cm long, 4.7g gross; and an Arts and Crafts peridot and freshwater pearl pendant necklace by B. H. Joseph & Co., circa 1900, the peridot and freshwater pearl pendant stamped B.H.J. 9ct, suspending a freshwater pearl tassel, on a fine belcher link chain, 40.5cm long, 4.3g gross

£200-300

278

An Edwardian peridot and half pearl pendant, circa 1910, the circular mixed cut peridot set within a foliate swag mount of half pearls, stamped 15ct, 3cm long, 3.8g gross; an Edwardian pink tourmaline and half pearl brooch, the circular cut pink tourmaline set within a half pearl bow, with a similarly set swag drop below, unmarked, 3.1cm long, 5.5g gross; and an Edwardian half pearl and peridot brooch, circa 1910, centrally set with a half pearl flower head, within an open work quatrefoil mount set with circular cut peridots and half pearls, stamped 15ct, 3cm long, 5.2g gross

£200-300

279

An Edwardian 15 carat gold, sapphire and half pearl bangle, circa 1905, the Art Nouveau scroll top set with half pearls around a central sapphire, on a hinged knife edge bangle, hallmarked Birmingham 1901 or 1907, 5.6cm inner diameter, 8.1g gross, in a green leather bangle case

£100-150

280

An Edwardian half pearl and cat's eye chrysoberyl hinged bangle, circa 1910, the central half pearl flower head above a tapered open work shoulders set with circular cabochon cat's eye chrysoberyl and half pearls, on a triple hoop hinged bangle, unmarked, inner diameter 5.2cm, 19g gross

£300-400



281

An Edwardian swallow brooch, circa 1910, the naturalistic textured swallow holding a double sided circular hinged locket in it's beak, stamped 15ct, 6.2cm long, 12.5g gross

£80-120

282

A mid 19th century Continental gold and enamel negligee necklace, circa 1860, the serpentine link necklace with scrolled foliate chased gourd shaped terminals, with a blue enamelled scrolled seed pearl set slide, suspending a textured coiled serpent to a blue enamelled heart shaped drop with applied half pearl flower head, with a glazed locket verso, unmarked, approximately 36cm long, 22.2g gross, in a brown leather fitted case

£300-500

283

A pair of Regency gold foliate ear pendants, circa 1830, the flower head pediments above a shell shaped panel set with vari shaped white paste, with leaf detail, suspending an articulated fringe, with later screw fittings, 5.2cm long, 5.8g gross; together with a pair of Victorian gold ear pendants, circa 1870, the oval domed centre to beaded surrounds, with scallop shell detail to the cardinal points, suspending an articulated fringe, 5.4cm long, 9.7g gross

£150-250

284

An Art Nouveau style ruby and diamond locket, the hinged front with the dextral profile of a lady with rose cut diamonds and a ruby in her hair, on a clover leaf ground, the inner locket with a mirror, stamped 15ct to the reverse, on an associated curb link chain, unmarked, 13.9g gross

£200-300

285

A late Victorian curb link bracelet, circa 1900, the polished curb links to a heart shaped padlock clasp, stamped M&N 15c, 21cm long, 17.3g

£250-350

286

An early 20th century fetter and three link Albert watch chain, with a T bar and dog clip clasp, each link stamped 18ct, 38.5cm long, 33.5g gross

£500-700

287

An early 20th century pheasant brooch, with three colour gold plumage and polychrome enamel head, stamped 15ct 18ct, 5cm long, 5.8g

£100-150

288

A late Victorian gold and half pearl brooch, dated 1898, the centre with a half pearl cross with blue enamel highlights, within a circular brooch mount with a rope twist border, unmarked, engraved L.G.J. I.T.B Xmas 1898, 3.9cm diameter, 21.3g gross

£300-400

289

A mid Victorian foiled emerald and gold lovers knot brooch, circa 1860, the knot with applied wire work decoration and foiled emerald foliate buds, with a tassel drop below and a glazed locket verso, 6.9cm long, 16.2g gross; and a similar smaller mid Victorian aquamarine and gold lovers knot brooch, circa 1860, 3.6cm long, 7.2g gross

£300-400

290

A gold coloured knot hinged bangle, the front section with two intersecting floral decorated hoops, to polished twisted shoulders, the front section stamped 9ct, to a later undulating back, inner width 6.3cm, 20.4g gross

£120-180



291

A sapphire and diamond cluster ring, the central oval cut sapphire within a surround of brilliant cut diamonds, approximately 0.25 carats total, finger size I, 3.2g gross
£200-300

292

An emerald, diamond and ruby leopard ring, the leopard set with circular cut emeralds and brilliant cut diamonds, with ruby set eyes, clutching an oval cabochon emerald, stamped 14K, finger size N 1/2, 8.8g gross
£200-300

293

A 9 carat gold enamel burgee pin by Benzie, the blue and white enamel flag for the Royal Ocean Racing Club, stamped 375 with full London hallmarks for 1995, signed Benzie Cowes, 3cm wide, 4.8g gross
£100-150

294

An 18 carat gold ruby and diamond violin brooch, the textured violin with circular cut ruby set fingerboard, with brilliant cut diamonds set tuning pegs and chin rest, approximately 0.11 carats total, stamped 18K, 5.5cm long, 11.3g gross
£300-500

295

A pair of 18 carat gold diamond earrings, the half hoops set with brilliant cut diamonds, approximately 0.54 carats total, Birmingham hallmark, 1.7cm long, 3g gross
£250-350

296

An emerald and diamond ring, the principal step cut emerald claw set within a border and highlighted gallery of brilliant cut diamonds with

pavé set circular emerald sections between, inner ring sizing band, 12g gross
£1,500-2,000

297

A diamond set fly brooch, the body set with brilliant cut diamonds, approximately 0.55 carats total, stamped 750, 2cm long, 5.3g gross
£200-300

298

A pair of honeycomb diamond earrings, the honeycomb panels set with brilliant cut diamonds, approximately 0.70 carats total, with an applied bee, with post fittings, 1.7cm wide, 12g gross
£400-600

299

A pair of 1970s tiger's eye cufflinks, the oval cabochon tiger's eyes in rub over mounts, with chain link connection and T bar backs, stamped Oslo with indecipherable marks, 16.6g gross
£80-120

300

A yellow sapphire and emerald salamander brooch, the lizard set throughout with circular cut yellow sapphires, with circular cabochon emerald eyes, 4cm long, 9g gross
£300-500

301

A Continental painted miniature brooch, the central black and white painted panel depicting a nymph reaching out to a ram, possibly a depiction of Aries, in a mottled blue glass frame to an outer foliate gold coloured brooch mount, stamped K.18, 5.2cm long, 31.1g gross
£500-700

302

An aquamarine and diamond ring, the cushion shaped aquamarine flanked by two trios of brilliant cut diamonds, approximately 0.06 carats total, the shank stamped 750, finger size T, 3g gross
£200-300

303

A 1970s 18 carat gold single stone aquamarine ring, the step cut aquamarine with canted corners estimated to weigh 8.89 carats, in a two colour four claw setting, hallmarked London 1976, finger size M, 7.2g gross
£300-500

304

A 1960s cultured pearl, emerald and sapphire bracelet by Verdura, the multi strand bracelet consisting of four rows of graduated 4mm to 8mm cultured pearls, and four rows of sapphire and emerald beads, the clasp set with a cluster of circular cut sapphires beneath a gold lattice, within a surround of oval cabochon emeralds, signed Verdura, 20.5cm long, 84g gross
£1,500-2,000

305

A diamond, ruby, sapphire and emerald ring, the five bands set with square rubies, sapphires, emeralds and brilliant cut diamonds, finger size L 1/2, 6.6g gross
£200-300



306

A diamond cornucopia pendant, the cornucopia shaped pendant set with graduated old cut, brilliant cut and step cut diamonds, approximately 1.18 carats total, 3cm long, suspended from a fancy link chain, 46cm long

£300-500

307

A 1960s diamond and sapphire bombé dress ring, the central bombé panel set with brilliant cut diamonds, approximately 0.63 carats total, to step cut sapphire shoulders, the shank stamped 18ct, finger size N, 4.3g gross

£250-350

308

A 1970s diamond dress ring, with three rows of slightly graduated brilliant cut diamonds, the shank stamped 18ct, approximately 1.78 carats total, finger size N, 4.5g gross

£600-800

309

A single stone diamond ring, the old brilliant cut diamond weighing 2.30 carats, in a six claw setting, flanked by two trios of old cut diamonds in leaf shaped settings, finger size N 1/2, 5g gross

£5,000-8,000

310

A South Sea cultured pearl and diamond dress ring, the 15mm South Sea cultured pearl within a surround of brilliant cut diamonds, approximately 1.50 carats total, stamped 750, finger size M 1/2, 16g gross

£600-800

311

A 9 carat white gold fancy link bracelet, the polished textured hexagonal links with rectangular matt links between, with London 1991 import marks, 18.5cm, long 16.5g

£100-150

312Y

An Art Deco mother of pearl dress set, circa 1930, comprising a pair of cufflinks with squared mother of pearl panels, with two matching mother of pearl studs and four buttons, all stamped 9ct, 11.8g gross, in a fitted brown leather box

£100-150

313

A diamond pendant/ring by Baraka, the band rubover set with brilliant cut diamonds, suspending an articulated brilliant cut diamond set flower head, approximately 1.00 carat total, on a fancy link chain, signed Baraka, stamped 750 with Italian control marks, 32.5cm long, 17g gross

£400-600

314

A diamond heart pendant, the open heart set all around with brown tinted old brilliant cut diamonds, centred with a brown tinted diamond trefoil drop, approximately 3.40 carats total, unmarked, 3.9cm long, 6.6g gross

£800-1,200

315

An aquamarine, ruby and cultured pearl brooch, the central pear shaped aquamarine claw set amongst scrolling foliate mount set with cabochon rubies, cultured pearls and brilliant cut diamonds, with a ruby drop suspended beneath, stamped 18ct WG, 5.7cm long, 19.5g gross

£300-500

316

An emerald, diamond and ruby frog brooch, set with circular cut emeralds and brilliant cut diamonds, the eyes set with cabochon rubies, stamped 585, 5.7cm long, 10g gross

£250-350

317

A multi gem set bow brooch, the looped style bow set with carved ruby, emerald and sapphire leaves and old cut diamonds, edged with rose cut diamonds and centred with a cultured pearl, unmarked, 7.2cm long, 25.6g gross

£600-800



318

A pair of 18 carat gold woven earrings, the pear shaped panels with plaited wirework detail, stamped 18k Italy with rubbed London import marks, 2cm long, 10.1g

£250-350

319

A ruby and diamond pendant, the central section set with marquise rubies and marquise cut diamonds, approximately 2.10 carats total, on a flat link necklace, stamped 750, 41cm long, 17g gross

£500-700

320

A ruby and diamond crossover ring, set with circular cut rubies and brilliant cut diamonds, approximately 0.56 carats total, finger size M, 9.8g gross

£250-350

321

A 9 carat gold brick link necklace, composed of polished brick links, stamped 375 with import marks, 40cm long, 20g gross

£150-250

322

A 1960s two colour broad bracelet, composed of plain polished and foliate oval links, with a snap fitting, stamped 750, 3.3cm wide, 18.5cm long, 58g gross

£1,000-1,500

323

A late 1960s diamond and turquoise brooch by Alan Martin Gard, the 18 carat gold abstract textured panels with oval cabochon turquoise accents, with eight cut diamond set white gold panels, approximately 0.25 carats total, hallmarked London 1969 and stamped with maker's mark, 6.9cm long, 26.2g gross

£800-1,200

324

A 1960s diamond double clip brooch, the brilliant and eight cut diamond set floral sprays, approximately 5.12 carats total, to double clip fittings, and removable brooch fitting, unmarked, 5.3cm and 5.7cm long, 37.9g gross

£1,000-1,500

325

A single stone diamond ring, the old mine cut diamond in an eight claw setting, weighing 2.84 carats, Birmingham 18 carat gold hallmark, finger size L 1/2, 4.7g gross

£5,000-8,000

326

A three stone diamond ring, the three old mine cut diamonds estimated to weigh 2.15 carats total, in claw settings, to a pierced and scrolled gallery, finger size L, 3.5g gross

£1,000-1,500

327

A three stone diamond ring, the three brilliant cut diamonds estimated to weigh 2 carats total, in eight claw settings, the shank stamped 18ct Plat, finger size N, 4.1g gross

£1,200-1,800

328

A pair of ruby and diamond ear studs, claw set with three oval mixed cut rubies within brilliant cut diamond borders, approximately 0.54 carats total, with post fittings, unmarked, 1.7cm long, 9g gross

£200-300

329 (no lot)



330

A suite of 18 carat gold diamond and ruby Happy Clown jewellery by Chopard, the ear pendants with articulated clowns with two moveable brilliant cut diamonds and a circular cut ruby to the stomach, suspended from detachable hoop earrings, stamped 750, signed Chopard and numbered 2024, 5.7cm long; and a matching Happy Clown pendant by Chopard, 3.2cm long, on a Chopard ropetwist chain, 42cm long, 42.2g gross

£1,500-2,500

331

An 18 carat gold citrine, diamond and black diamond locket pendant by Theo Fennell, the oval locket set with a central oval cut citrine, within a surround of circular cut black diamonds, with applied bees and foliage, to a border of brilliant cut diamonds, the bale set with further circular cut black diamonds, stamped Theo Fennell to the reverse, with a personal inscription inside, on a curb link chain, stamped 750 with full London hallmarks, maker's mark TF, pendant 4.1cm long, 26.7g gross

£400-600

332

A pair of 18 carat gold two colour earrings, the woven two colour gold wire bombé panels, with stud and clip fittings, London 1991 import marks, 1cm diameter, 7.1g

£150-250

333

A pair of 18 carat gold emerald, diamond and freshwater cultured pearl earrings by Theo Fennell, the heart shaped emeralds collet set within a surround of brilliant cut diamonds, approximately 1.10 carats total, suspending a freshwater cultured pearl, with post fittings, maker's mark TF, stamped 750 with full London hallmarks for 2014, 3.5cm long, 11.4g gross

£800-1,200

334

A South Sea cultured pearl and diamond ring, the 15mm South Sea cultured pearl within a surround of brilliant cut diamonds, approximately 0.80 carats total, stamped 750, finger size O 1/2, 13g gross

£700-1,000

335

A five stone diamond ring, the uniform brilliant cut diamonds estimated to weigh 2 carats total, in a channel setting, stamped 750, finger size L 1/2, 7.8g gross

£800-1,200

336

A diamond and cultured pearl Othello brooch by Vesco, the carved wooden head with a brilliant cut diamond and cultured pearl set turban, and a brilliant cut diamond set tunic, approximately 2.50 carats total, signed Vesco, stamped 750, 5.2cm long, 28.7g gross

£1,000-1,500

337

A Quiver pendant and earrings by Theo Fennell, the pierced arrow shaped pendant with a band of brilliant cut diamonds to the top, approximately 0.24 carats total, signed Theo Fennell and stamped 750, 5.2cm long, suspended from a snake link chain with a pierced Theo Fennell panel by the clasp, 5.1cm long; together with a matching pair of Quiver earrings, signed Theo Fennell, with London 2009 hallmark to the post fittings, 2.8cm long; 36.2g gross, with a Theo Fennell pouch

£1,000-1,500

338

A pair of diamond hoop ear pendants by Elie Chatila, each polished band suspending twelve brilliant cut diamond collet drops, approximately 2.00 carats total, stamped with maker's mark, 750 and Swiss Geneva gold marks, post fittings, 4.8cm long, 18.2g gross, in an Elie Chatila box

£600-800



Watches



339

339Y
Chopard, Happy Sport, Ref. 8425,
Lady's stainless steel bracelet watch with floating
diamonds and mother of pearl dial, no. 27/8250 -23652813
Movement: Cal. ETA 956102, quartz, 7 jewels
Case: Stainless steel case, screwed down case back with
four screws
Bracelet/Strap: Chopard stainless steel block link
bracelet with concealed clasp
Size: 23mm, bracelet 17cm
Signed: Case, dial, movement, clasp
Accessories: None

£600-800



340

340
Cartier,
Lady's gold coloured and diamond set wrist watch
Movement: Cal. 852, manual wind, 22 jewels
Case: Gold coloured case, screwed down case back with
two screws, stamped 18K with poinçon
Bracelet/Strap: Cartier strap with gold coloured
deployant clasp, stamped 18K
Size: 21mm
Signed: Case, dial, movement, strap, clasp
Accessories: None

£2,000-3,000

341
Gerald Genta, Success, Ref. G.3386.7,
Stainless steel bracelet watch
Movement: Cal. GA 10, automatic movement, 25 jewels
Case: Stainless steel case, screwed down case back with
eight screws
Bracelet/Strap: Gerald Genta stainless steel block link
bracelet with fold over clasp
Size: 34mm, bracelet 19cm
Signed: Case, dial, movement, clasp
Accessories: Gerald Genta box, guarantee certificate

£300-500



341



342

342
Heuer, Autavia GMT,
Stainless steel wrist watch, circa 1970
Movement: Cal. 724, manual wind chronograph, 17 jewels
Case: Stainless steel case, two tone rotating bezel, snap
case back
Bracelet/Strap: Non-original brown leather strap with
stainless steel pin buckle
Size: 41mm
Signed: Case, dial, movement, crown
Accessories: None

£2,500-3,500



343
Girard Perregaux, Gyromatic,
9 carat gold wrist watch, circa 1960
Movement: Automatic, 39 jewels
Case: 9 carat gold case, snap case back, hallmarked Birmingham 1960
Bracelet/Strap: Girard Perregaux black leather strap with gold plated pin buckle
Size: 33mm
Signed: Case, dial, movement, crown, strap, buckle
Accessories: None

£300-500

344

J. W. Benson,
9 carat gold bracelet watch, no. 72368, circa 1937
Movement: Manual wind, 15 jewels
Case: 9 carat gold case, snap case back, hallmarked Birmingham 1937
Bracelet/Strap: 9 carat gold woven bracelet with snap clasp, hallmarked Birmingham 1960
Size: 29mm, bracelet 19.5cm
Signed: Dial
Accessories: None

£300-500



345

345
Unsigned,
18 carat gold keyless wind open face pocket watch, no. 102203, circa 1909
Movement: Lever escapement, 19 jewels
Case: 18 carat gold four piece hinged case, the back cover engraved with a monogram, import mark for London 1909
Size: 45mm
Signed: Unsigned
Accessories: Suspended on a two colour chain, stamped 18, with a gold coloured propelling pencil, unmarked

£300-500



344

346

Unsigned,
18 carat gold open face pocket watch, no. 25641, circa 1857
Movement: Three quarter plate, duplex escapement, bimetallic split balance, flat balance spring
Case: 18 carat gold four piece hinged case, the back cover with engine turned decoration and a cartouche shaped vacant reserve, hallmarked Chester 1857
Size: 50mm
Signed: Unsigned
Accessories: Suspended on a two colour gold chain, stamped 18c, 35cm long

£600-800



347

348

Unsigned,
9 carat gold half hunter pocket watch, no. 344231, circa 1926
Movement: Lever escapement, bimetallic split balance, flat balance spring
Case: 9 carat gold five piece hinged case, the front cover with a blue enamel Roman numeral chapter ring, hallmarked Birmingham 1926
Size: 48mm
Signed: Unsigned
Accessories: Suspended on a 9 carat gold Albert chain, 40cm long, and a 9 carat gold propelling pencil by Sampson Mordan & Co., 6cm long

£600-800



346

347

Unsigned,
18 carat gold open face pocket watch, no. 7786, circa 1865
Movement: Lever fusée, bimetallic split balance, flat balance spring, dust cover
Case: Three piece hinged case, the back cover engraved with foliate and floral decoration, hallmarked London 1865
Size: 50mm
Signed: Unsigned
Accessories: None

£500-700



348



349

Alliez, Bachelard et Terond Fils,

Silver open face calendar quarter repeating pocket watch, no. 52687, circa 1830

Movement: Full plate repeater movement, three armed undersprung balance, pierced and engraved balance cock

Case: Silver three piece hinged case, the back cover with engine turned decoration and circular shaped vacant reserve

Size: 55mm

Signed: Cuvette, dial, movement

Accessories: None

£200-300

350 Y

Unsigned,

White metal and tortoiseshell quarter repeating pair cased pocket watch, circa 1810

Movement: Verge fusée quarter repeating movement, three armed undersprung balance, pierced and engraved bridge balance cock, polished steel endpiece, silvered disc regulator

Case: Two piece hinged inner case, with beaded bezel and a pierced and engraved back, two piece hinged outer case with tortoiseshell back

Size: Inner case 56mm, outer case 65mm

Signed: Unsigned

Accessories: None

£200-300



350

351

Tarts,

Silver pair cased pocket watch, no. 53242, circa 1787

Movement: Verge fusée, undersprung three armed balance, pierced and engraved balance cock, disc type regulator

Case: Silver two piece hinged inner case, silver two piece hinged outer case, the back cover chased with two figures

Size: Inner case 42mm, outer case 50mm

Signed: Dial, movement

Accessories: Suspended on a silver coloured chain with three seals and a watch key

£250-350

Coins and Medals

352

Ancient British, Trinovantes, silver

Unit, horned animal left, bird above, rev. seated figure with hammer, DVBN[O] behind (BMC 2502-3; S 180). About very fine, rare

£300-500



352



353

Ancient British, Catuvellauni,

Tasciovanus, silver Unit, TASC in panel, rev. winged horse (BMC 1664-5; S 237). Good very fine, reverse a little off-centre

£150-200



353



354

Ancient British, Corieltauvi, Volisios

Dumnovellaunos, gold Stater, VOL[IS]IO between three lines on wreath, rev. horse left, [DV] MNOVELLA[VNOS] around, 4.86g (BMC 3343; S 419). Good very fine, very rare

£800-1,200



354



355

Ancient British, Iceni, uninscribed

series, silver Unit, Bury type, female head left. Snake before, rev. horse left, pellet in circle below (BMC 3524-7; S 432). Good fine

£80-120



355





356



356
Aethelred II (978-1016), Penny,
Long Cross type, Lincoln, Aelfsige,
AELFSIGE MO LINC (N 774; S
1151). Good very fine, die breaks in
obverse field

£180-220



357



357
Aethelred II (978-1016), Penny,
Helmet type, Lincoln, Osferth,
OSFERD MO LINC (N 775; S 1152).
Very fine but crimped

£180-220



358



358
Cnut (1016-1035), Penny, Quatrefoil
type, Lincoln, Bruntat, BRVNTAT
ON LINC (N 781; s 1157). Almost
extremely fine, light tone

£250-350



359



359
Cnut (1016-1035), Penny, Pointed
Helmet type, Thetford, Wineman,
PINEMAN ON DEOD (N 787; S 1158).
Very fine or better

£200-250

360

Henry VI, first reign (1422-1461),
gold Noble, annulet issue (1422-
c.1430), i.m. lis (N 1414; S 1799).
Extremely fine, attractive

£3,500-4,500



360



361

Henry VI, first reign (1422-1461),
gold Quarter-Noble, annulet issue,
London, i.m. large lis (N 1420; S
1810). Very fine or better

Provenance: A H Baldwin & Sons
2017

£700-900



361



362

Edward IV, first reign (1461-1470),
gold Quarter-Ryal, light coinage, i.m.
crown/rose (N 1560; S 1965). Good
very fine

Provenance: A H Baldwin & Sons
2017

£600-800



362



363

Edward IV, first reign (1461-1470),
Heavy coinage, Groat, type II,
London, i.m. cinquefoil, quatrefoils
at neck, crescent on breast (N 1531;
S. 1972). Good very fine

Provenance: Motcomb collection,
Morton & Eden 2016 (lot 88), A H
Baldwin & Sons 2017, and with an
old ticket priced at 20/-

£500-600



363





364



364
Edward IV, second reign (1471-1483), gold Angel, i.m. cinquefoil (N 1626; S 2091). Good very fine, small dig near obverse centre

Provenance: A H Baldwin & Sons
2017

£1,800-2,200



365



365
Henry VIII (1509-1547), gold Angel, first coinage, i.m. castle (N 1760; S 2265). Good very fine

£2,200-2,500



366



366
Philip and Mary (1553-1554), Shilling 1554, full titles, XII (S 2500). Very fine

£800-1,200



367



367
James I (1603-1625), gold Laurel, third coinage, fourth bust, i.m. lis (N 2114; S 2638B). Almost extremely fine

Provenance: A H Baldwin & Sons
2017

£1,800-2,200

368

Charles II, Farthing 1674 (S 3394). Extremely fine or nearly so

Provenance: A H Baldwin & Sons

£400-500



368



369

George IV, Sovereign 1826 (S 3801). Extremely fine, reverse better

£1,200-1,500



369



370

George IV, Halfcrown 1820 (S 3807). Extremely fine, lightly toned

£250-350



370



371

William IV, Halfcrown 1836 (S 3834). About extremely fine, toned.

£280-320



371





372



372
Victoria, Sovereign 1889M. Very fine

£250-280



373



373
Victoria, Sovereign 1900M.
Extremely fine.

£250-280



374



374
Victoria, Gothic Crown 1847, edge
UNDECIMO (S 3883). Extremely
fine or better, some light obverse
hairlining

£2,500-3,500



375

375
Victoria, Maundy set 1849, Maundy
Penny to Fourpence, cased, and
two empty Maundy cases. Maundy
set extremely fine, toned (4)

£80-120



376



376
Edward VII, silver Florins (3), 1902, 1903, 1910 (S 3981).
Generally good very fine or better, toned, some mottled
(3)

Provenance: Baldwin Auction 101 (3377)

£180-220

377
Edward VII, Half-Sovereigns (3), 1906, 1908, 1910. Very
fine and better (3)

£380-420



377





378

378
Elizabeth II, gold Proof Set 1985, Five-Pounds, Two-Pounds, Sovereign, Half-Sovereign, with certificate no. 05950, in Royal Mint case of issue. As struck (4)

£2,000-2,500



379

379
Elizabeth II, silver Proof Set 2006, Queen's 80th Birthday, silver Five-Pounds to Penny, Maundy Fourpence to Penny, in Royal Mint case of issue with booklet. As issued, Maundy starting to tone (13)

£120-150



380

380
Elizabeth II, One-Pound Presentation set 2008, fourteen silver proof One-Pounds, all different reverses, these highlighted in gilt, in fitted case of issue. As struck (14)

£70-90



381



382



383

381
Elizabeth II, Proof Sovereign 1980,
in Royal Mint case of issue with
certificate. As struck.

£250-280

382
Elizabeth II, Proof Sovereign 1981,
in Royal Mint case of issue with
certificate. As struck

£250-280

383
Elizabeth II, Proof Half-Sovereign
1980, in Royal Mint case of issue
with certificate. As struck.

£120-150



384

384
Elizabeth II, Trafalgar Bicentenary
2005, gold proof Five-Pounds (2),
different reverses, in Royal Mint
double case of issue (S L14, 15). As
issued (2)

£2,400-2,600



385
Elizabeth II, Brunel Bicentenary
2006, gold proof Two-Pounds (2),
different reverses with certificates
no. 0996 and 1215, in Royal Mint
double case of issue (S K20, 21). As
issued (2)

£900-1,100



385



386



387



388



386
Elizabeth II, Steam Locomotive, 200th Anniversary 2004, gold proof Two-Pounds, with certificate no.1426, in Royal Mint case of issue (S K17). As issued

£500-550

387
Elizabeth II, End of Second World War, 60th Anniversary 2005, gold proof Two-Pounds, in Royal Mint case of issue (S K19). As issued

£500-550

388
Elizabeth II, Charles Darwin, Centenary of Birth 2009, gold proof Two-Pounds, with certificate no. 0799, in Royal Mint case of issue (S K25). As issued

£500-550



389

389
Elizabeth II, proof gold One-Pound (3), Bridges series, Wales 2005, Northern Ireland 2006, England 2007 (lacks Scotland), each 19.6g (S J19, 20, 21), in Royal Mint case. As issued (3)

£1,800-2,000

390
Elizabeth II, commemorative coins, sets and proofs, some silver, a few foreign issues, a quantity, good variety. Generally about as issued (lot)

£150-250



390



391
British and other coins, a large quantity, contained loos in two hardwood cabinets. Varied state (Lot)

£400-600

392
Gibraltar, Elizabeth II, fine gold proof 70-Ecus 1993 (2), rev. Eurotunnel, 6.22g each. As issued (2)

£400-450



393
Gloucestershire, Badminton, Halfpenny 1795/1796, plough, rev. scales (DH 42). Extremely fine Provenance: Spink

£40-60

394
Middlesex, Coventry Street, Halfpenny 1795, a filtering stone, FOR PURIFYING WATER around, date in exergue, rev. legend (DH 292). Good very fine, some original lustre

£20-30



395
Somerset, Bath, Halfpenny 1794, a tree beside a ruin, rev. botanic garden entrance. Good very fine

£20-25

396
Buckinghamshire, Slough, William Till, Halfpenny 1794, plain edge (DH 24). Good very fine or better

Provenance: Spink

£50-70

397
Warwickshire, Birmingham, Halfpenny circa 1797, William Lutwyche, Justice seated holding cornucopiae, rev. coin press (DH 219a). Extremely fine with much original lustre, very rare

£50-80

398
Durham, Sunderland Halfpenny, a bridge span, WEARMOUTH BRIDGE ERECTED A.D. 1796 around, rev. arms on shield (DH 11). Extremely fine, scarce

£150-250

399
Wiltshire, Marlborough, Marlborough Old Bank Token, King Gosling Tanner & Griffiths, One Shilling 1811 (D 1). Good extremely fine, some lustre, very rare

Provenance A H Baldwin & Sons, and with a B A Seaby ticket priced 32/6

£200-250



400



400
Worcestershire, County and City,
One Shilling 1811 (D 1). Good
extremely fine, some mint bloom

Provenance: A H Baldwin & Sons

£50-80



401



401
Somerset, Bath, Halfpenny circa
1795, arms, view of a street (DH 63).
Almost extremely fine, traces of
original lustre

Provenance: A H Baldwin & Sons

£40-60



402



402
Ancient Greece, Kings of Macedon,
Philip II (359-336 BC), gold Stater,
Pella (circa 340-328 BC), laureate
head of Apollo right, rev. biga driven
right, name in exergue, 8.6g (Le
Rider 111A). Good extremely fine,
small mark in reverse field, attractive
specimen

£2,500-3,500



403



403
Ancient Greece, Thrace, Odessus,
silver Tetradrachm in name and
style of Alexander III (the Great),
struck circa 280-200 BC, head of
Herakles right in lion skin, rev. Zeus
seated holding eagle and sceptre.
Good very fine

£250-300

404

Ancient Greece, Thrace,
Mesembria, silver Tetradrachm
in name and style of Alexander III
(the Great), struck circa 175-125 BC,
head of Herakles right in lion skin,
rev. Zeus seated holding eagle and
sceptre. Good very fine

£300-500



404



405

Rome, Republic, C. Servilius M. f.,
silver Denarius, 136 BC, helmeted
head of Roma right, ROMA below ,
rev. Dioscuri riding to left and right
(S 116). Good very fine or better

£200-300



405



406

Rome, Republic, L. Plautius Plancus,
silver Denarius, 47 BC, Gorgon head
facing, rev. Victory with four horses
(S 429). Good very fine or better,
rare

£300-400



406



407

Rome, Caracalla (AD 198-217),
silver Denarius, struck AD 201-10,
ANTONINVS PIVS AVG, laureate
and draped bust right, rev. ADVENT
AVGG, galley left with oarsmen.
Good very fine, scarce

Provenance: Baldwin Auction 100
(759)

£120-150



407





408

408
Rome, Elagabalus (AD 218-222), silver Denarius, ANTONINVS PIVS FEL AVG, laureate, draped and cuirassed bust facing right, rev. sailing ship with oarsmen, FELICITAS TEMP around. Good very fine, scarce

Provenance: Baldwin Auction 100 (808)

£120-150



409

409
Rome, Allectus (AD 293-296), bronze Quinarii (12), mint of Camulodunum, radiate and cuirassed bust right, rev. galley, VIRTVS AVG above, QC in exergue. Mostly fine, some better (12)

Provenance: Baldwin Auction 100 (892)

£180-220



410

410
Rome, Allectus (AD 293-296), bronze Quinarii (2), mint of Londinium, radiate and cuirassed bust right, rev. galley, VIRTVS AVG above, QL in exergue, good fine and fair; earlier large Roman bronze, about fine (3)

£50-70

411
Canada, Montreal Olympics 1976, set of sterling silver commemorative coins, comprising 10-Dollars (14), each 48.6g, 5-Dollars (14), each 24.3g, in fitted case of issue. About as issued, some edge toning (28)

£280-320



411

412
China, Yunnan Province, Dollar, undated (1908) (KM Y254; LM 418)). Good very fine or better, lightly cleaned in the past, in a PCGS holder

£500-700



412

413
China, Kwangtung Province, 50-Cents, undated (1895-1905) (KM Y202; LM 134). Good extremely fine, some mint bloom, hairline scratch by dragon tail

£350-450



413



414

414
China, silver 50-Tael Boat Sycee or Yuanbao, Qing dynasty, 127mm long, stamped with the mark of '协泰丰' ('Xie Tai Feng'), 1831g

"协泰丰"五十两银锭一枚
克重: 1831g

£1,000-1,500



415



415
Anglo-Gallic, Henry VI (1422-1453), gold Salut d'Or, St Lo mint, i.m. lis (E 271a; S 8164). Extremely fine, attractive

Provenance: A H Baldwin & Sons 2017

£800-1,200

416

Netherlands, Dordrecht, reckoning counter dated 1601, Capture of Rheinberg and defence of Ostend, Rheinberg in sunbeams, army of Prince Maurice around, rev, ships off Ostend, 28mm. Good fine

£30-50



416



417



417

USA, gold Five-Dollars Half-Eagle 1909, good very fine, and a fantasy 9ct gold Republic of Camala 1-Tallar dated 1853 in imitation of Liberty head gold Dollar, 0.3g, fine (2)

£240-260

418

Masonic, The Lodge of Antiquity, The Royal Medal, Lodge No.1, royal arms with shield of Hanover in centre, rev. infant genii either side of arms, gold and enamel, date 1843 below, edge engraved BAYFORD and VII, 42mm with crown suspender and ribbon, with original case from H T Lamb, masonic jewellers of Clerkenwell. Extremely fine and very rare, these medals were supposed to be surrendered on death or leaving the Lodge.

£500-800



418





419

419
A Distinguished Service Order group plus miniatures to Major N.V. Johnstone DSO 3 D G, comprising Distinguished Service Order, 1939-45 star, Burma star, Defence Medal, War Medal, Korea Medal, UN Medal bar Korea, mounted on board and framed.

DOB - 14.08.1915

Major Nial Vernon Johnstone, 3rd Dragoon Guards, service no. 67081

£3,000-5,000



420

420

Elizabeth I, Phoenix badge, 19th century silvered electrotype, half-length bust of Elizabeth left, rev. phoenix arising from a fire, crowned ER above, floral border and lion's head below on each side, 50x65mm, integral suspension loop (cf. E 48B for similar). Good very fine

£80-120

421

James I, The Gunpowder Plot 1605, copper jeton of Dutch manufacture, a snake glides amongst lilies and roses, rev. the name of Jehovah in Hebrew, radiate, within a crown of thorns, 29mm (MI i 196/19; E 86). Very fine

£100-150



421



422

422

Charles I, Dominion of the Sea 1630, silver medal by N Briot, cast and chased, bust in ruff of Charles I right, rev. ship in full sail, 57mm (MI I 256/40; E 118a). Good very fine

Provenance: A H Baldwin & Sons

£4,000-5,000

423

Naval Action Against the Dutch 1666, silver medal by C Adolfszoon, bust almost facing of Admiral de Ruyter, rev. naval battle, PVGNANDO in exergue, 70mm (MI I 522/169; E 238; vL III/176). Good very fine

£1,200-1,500



423



424



424
William and Mary, Invitation to head the Protestant Party 1688, silver medal, conjoined busts right, rev. Religion tramples on popish symbols, hand rests on cap of liberty on an altar and holds a declaration, 62 (MI I 634/58; E 296; Woolf 3:1). Good very fine

Note: the invitation led to the Glorious Revolution the following year

£800-1,200



425



425
William and Mary, the Pacification of Ireland 1691, silver medal by D Drappentier, conjoined busts right, rev. lion tramples on a hydra, observed by a lioness with a dog cowering nearby, city in the distance, ships in harbour, 54mm (MI ii 39/220; E 340; Woolf 11.10). Very fine, obverse edge bruise at 8 o'clock, rare

£1,000-1,500



426



426
William III, Namur Retaken 1695, silver medal by I Boskam & N Chevalier, laureate bust of William right, rev. an ostrich with the key to Namur in its beak, Namur in the distance, 60mm (MI ii 132/385; E -). Very fine or better, a couple of minor edge bruises, extremely rare

£1,000-1,500

427

James III, The Old Pretender, Appeal Against the House of Hanover 1721, silver medal, by O Hamerani, draped and cuirassed bust right, VNICA SALVS around, rev. Hanoverian horse trampling lion and unicorn, view of London beyond, 49mm. (MI ii 454/63; Eimer 493; Woolf 40:1). Good very fine

£400-600



427



428

James III, The Old Pretender, Appeal Against the House of Hanover 1721, bronze medal, by O Hamerani, draped and cuirassed bust right, VNICA SALVS around, rev. Hanoverian horse trampling lion and unicorn, view of London beyond, 49mm. (MI ii 454/63; Eimer 493; Woolf 40:1). Extremely fine

£180-220



428



429

The Battle of Culloden 1746, silver medal by R Yeo, cuirassed bust of the Duke of Cumberland right, rev. the Duke as Hercules tramples on Discord and assists Britannia seated, 51mm (MI ii 613/278; E 604; Woolf 55:2). Extremely fine, uneven toning, obverse edge knock at 6 o'clock

£200-250



429



430

Battle of the First of June 1794, bronze medal by C H Kuchler, bust of Earl Howe right, rev. naval battle, 48mm (BHM 383; E 855). Extremely fine

£150-200



430





431



431

Battle of the Nile 1798, bronze medal by T Wyon, uniformed bust of Nelson almost facing, rev. naval battle, 38mm (BHM 452; E 893). About extremely fine, some original lustre

£100-150



432



432

Battle of Waterloo, 1815, an original bronzed electrotype of the famous medal by Benedetto Pistrucci, produced in the 1840s, conjoined laureate busts of George, Prince Regent, Franz I of Austria, Alexander I of Russia and Friedrich Wilhelm III of Prussia, circle of mythological figures around, rev. Victory rides with Wellington and Blücher, Jupiter in quadriga above casts lightning bolts, warring giants in border, 133mm (BHM 870; E 1067). Extremely fine, in case of issue (slightly distressed), rare

£800-1,200



433



433

London Bridge, Stone Laid 1825, silver medal by W Bain, bust of John Rennie left, rev. legend below view of the new London Bridge, 64mm, in contemporary red leather case (BHM 1253; E 1179). Good very fine, very rare

£200-250

434

Institute of Civil Engineers Incorporated 1828, Telford Medal, silver, by W Wyon, bust of Thomas Telford left, rev. view of the Menai suspension bridge, ships below, edge engraved 'Telford Premium, 1882, Wilfrid Swanwick Boulton, Assoc.M.Inst.C.E.', 58mm (BHM 1328; E 1206). Good very fine or better, scarce

£180-220



434



435

Liverpool and Manchester Railway opened 1830, bronze medal, bust of George Stephenson left, rev. view of a train crossing the viaduct at Newton, 46mm (BHM 1459; E 1224; Moyaux 3). Extremely fine, rare

£150-180



435



436

Liverpool and Manchester Railway opened 1830, bronze medal, bust of George Stephenson left, rev. view of a train crossing the viaduct at Newton, 46mm (BHM 1459; E 1224; Moyaux 3). Almost extremely fine, rare

£130-160



436



437

London Bridge opened 1831, bronze medal by B Wyon, barehead bust of William IV right, rev. view of the bridge, 51mm, issued by the Corporation of the City of London (BHM 1544; E 1245). Extremely fine

£80-120



437





438
London Bridge opened 1831, bronze medal by B Wyon, barehead bust of William IV right, rev. view of the bridge, 51mm, issued by the Corporation of the City of London (BHM 1544; E 1245). Extremely fine

£80-120



439
Sussex, Shoreham, The Norfolk Suspension Bridge opened 1833, bronze medal by J Langridge, view of the bridge over the Adur, rev. Brighton Royal Pavilion entrance, 57mm (BHM and Eimer unlisted). Very fine, attempted piercing on reverse at 12 o'clock, very rare

£60-90



440
Grand Junction Railway opened 1837, white metal medal by T Halliday, Liverpool railway station, rev. view of Liverpool, 48mm (BHM 1789; E 1308; Moyaux 11), another by TW Ingram, three viaducts linking London, Liverpool and Birmingham, rev. details of train destinations, 48mm (BHM 1790; E -; Moyaux 10). Good very fine (2)

£70-90



441
Institute of Civil Engineers, Stevenson Prize Medal 1848, silver-gilt by JS & AB Wyon, bust of George Stephenson left, rev. view of locomotive, No.2 on side, edge engraved 'Edgar Worthington, B.Sc., Assoc.M.Inst.C.E., Session 1888-89', 47mm (BHM 2311; E 1429; Moyaux 52). Almost extremely fine, rare

£200-250

442
Newcastle-upon-Tyne, Opening of the High Level Bridge 1850, bronze medal, view of the bridge, rev. construction details, 45mm (BHM 2409; E -). About extremely fine, very rare

£60-90



443
London, Blackfriars Bridge and the Holborn Viaduct opened 1869, bronze medal by G G Adams for the Corporation of the City of London, crowned bust of Victoria left, rev. views of the bridge and viaduct, 76mm (BHM 2906; E 1604). Good extremely fine

£100-150



444
Nottingham, New Trent Bridge 1871, bronze medals (2), view of Old Trent Bridge, rev. view of New Trent Bridge, 54mm (BHM 2924; E 1615). First about as struck, second good very fine (2)

£80-120



445
George Stephenson, Centenary of Birth 1881, a pair of medals in bronze and white metal by T P Chapman, bust of Stephenson left, rev. the Rocket locomotive, 45mm (BHM 3096; E 1681A; Moyaux 39). Extremely fine and good very fine (2)

£50-80



446
London, Tower Bridge, Memorial Stone Laid 21st June 1886, circular gold medal within wreath, view of proposed bridge, rev. monogram, crown suspender with enamel suspension bar with City of London arms, 30mm including wreath, total wt. 24.4g. Extremely fine, rare and unusual

Note: the 'Memorial' stone (foundation stone) was laid by The Prince of Wales

£450-550

447
London, Tower Bridge opened 1894, bronze medal by F Bowcher, conjoined busts three-quarters left of Prince and Princess of Wales and Queen Victoria, rev. vessel passing through Tower bridge, 76mm, issued by the Corporation of the City of London (BHM 3476; E 1790). Almost extremely fine

£140-180

448
Northeastern Railway, King Edward Bridge over the Tyne opened 1906, bronze medal by Elkington, view of the bridge, rev. legend, 48mm (BHM 3942; E 1893; Moyaux 73). Extremely fine, scarce

£50-80

449
London School of Economics, Isambard Kingdom Brunel, silver prize medal awarded 1909, by Elkington, bust of Brunel three-quarters right, rev. Royal Albert Bridge over the Tamar, edge engraved 'Leonard Bryant Walter Carter 1909', 51mm (E 1919). Extremely fine, heavily polished, scarce

£40-60

450
Sunderland, Queen Alexandra Bridge opened 1909, silver medal by Elkington, suspension bridge spanning river, rev. arms of Sunderland Corporation and the railway company, 64mm (BHM 3978; E 1910; Moyaux 74). Good extremely fine, much mint bloom and steel-blue iridescent toning, in case of issue from Elkington, rare

£150-180

451
Sunderland, Queen Alexandra Bridge opened 1909, bronze medal by Elkington, suspension bridge spanning river, rev. arms of Sunderland Corporation and the railway company, 64mm (BHM 3978; E 1910; Moyaux 74). Good extremely fine, in case of issue from Elkington, scarce

£80-120

452
Newcastle Tramways Extension 1923, silvered bronze medal by Lomax, Mercury standing with outstretched arms, rev. legend on tablet, city arms above, bridge below, 51mm (BHM 4180; E 1982), in case of issue from Fattorini. Good very fine

£30-50

453
General Strike, Service Medal 1926, bronze, by E Gillick, Britannia seated, rev. three figures hold two locomotives, 51mm (BHM 4210; E 2003). Good very fine.

£20-30





454

454

Great Western Railway, 150th Anniversary 1985, set of three large medals in 9ct gold, silver and bronze, a locomotive, arms of City of London and Bristol above, rev. shields of six towns connected by the railway around GWR, with dates of connection around, each medal 63mm, the gold medal wt. 190g, in fitted Royal Mint case of issue. Almost as issued, silver medal lightly toned, small stain to gold medal obverse (3)

£2,400-2,600

455

Scotland, Dunkeld Bridge opened 1808, bronze medal, view of the bridge, rev. details of funding and opening, 50mm (BHM 639; E 987). Very fine, rare

Note: John Murray, 5th Duke of Atholl, funded the bridge which was designed by Thomas Telford

£60-90

456

Scotland, Dunkeld Bridge opened 1808, silver-gilt medal, view of the bridge, rev. details of funding and opening, 50mm (BHM 639; E 987). Very fine, onetime cleaned, rare

Note: John Murray, 5th Duke of Atholl, funded the bridge which was designed by Thomas Telford

£150-200

457

Scotland, Edinburgh to Glasgow Railway opened 1842, bronze medal by S Woolfield, train crossing the Almond viaduct, rev. two trains near Glasgow railway station, 48mm (BHM 2068; E 1365; Moyaux 18). Extremely fine, rare

£200-250

458

Scotland, Forth Bridge opened 1890, bronze medal by Lauer, detailed view of the bridge, 1890 in exergue, rev. legends, 64mm (BHM 3399; E 1754; Moyaux 42). Good extremely fine, very rare

£200-250



455



456



457



458





459



459
Scotland, Edinburgh, Opening of North Bridge 1897, bronze medal by A Kirkwood, bust left of Sir Andrew McDonald, Lord Provost, rev. view of bridge over railway, arms below, 64mm (BHM 3619; E 1823). Extremely fine or nearly so, scarce

£80-120

460
Wales, Menai Strait Bridge 1850, bronze medal by LC Wyon, bust of Robert Stephenson right, rev. a train crossing the bridge, 1846-1850 in exergue, 58mm (BHM 2402; E 1441; Moyaux 36). Extremely fine or better

£130-160



460



461

461
Railway and Bridge medals (13) in white metal, subjects include Sankey Canal Valley and Liverpool Railway station 1830, 48mm (2), Weaver Valley Viaduct and Liverpool Railway station 1837, 55mm, Liverpool Railway station entrance and Birmingham Viaduct 1837, 48mm, Clifton Suspension Bridge 1864, 46mm, Forth Bridge 1890, 34mm, Menai Suspension & Britannia Tubular bridges, 64mm, others (6). Generally fine to very fine, some better, good variety (13)

£130-160

462

Railway medals (5), Waterloo Bridge opening 1817, silver medalet, bust of Prince Regent left, rev. bridge, 20mm, extremely fine, Manchester, Queen Victoria's Visit 1851, white metal, 51mm, extremely fine, Maidstone, New Bridge 1879, bronze, arms, rev. bridge, 41mm, good very fine, Devon, Bradley Wood fete 1855, white metal medal, Dawlish Infirmary, rev. locomotive, 35mm, very fine, Corporation of the City of London, London Bridge 1973, 51mm, cased, as issued, and a L & NWR Crewe Works cap badge, very fine (6)

£60-80



462



463



463
Wales, Rhuddlan Eisteddfod 1850, bronze medal by Allen & Moore for J Aronson, harp rests against a tree, crossed leeks below, rev. view of Rhuddlan castle, bridge over river below, Welsh legends, 64mm (BHM 2411). Extremely fine, rare

£120-150



464



464
Scotland, Edinburgh Photographic Society Instituted 1861, silver medal by E W Thomson, Edinburgh arms, rev. Edinburgh castle, 48mm. Extremely fine

£30-50



465



465
Scotland, Henry Bell and Paddle Steamer 'Comet', Centenary of construction 1912, bronze medal, bust of Bell almost facing, rev. the Comet, 47mm (BHM 4091), in case of issue. Extremely fine, very rare

Notes: The 'Comet' carried passengers to and from Clyde destinations and from Glasgow to the West Highlands. She was wrecked off Argyll in 1820.

£30-50



466



466
Medallic Illustrations of Science,
set of four white metal medals
published by E Thomason circa
1828, comprising large medals for
Savery's Steam Engine, Newcomen's
Steam Engine, Watt's Single Acting
Steam Engine, Watt's Double
Acting Steam Engine, each 73mm,
contained in a contemporary fitted
case, green leather with gilt blocked
STEAM ENGINES on lid (lid loose)
(BHM 1336, 13-16). Extremely fine,
scarce (4)

Provenance: A H Baldwin & Sons

£200-300



467



467
Lancashire, Oldham Blue Coat
School founded 1829, silver medal
by T Halliday, façade of school, rev.
legend in wreath, 54mm (BHM 1356;
E -). Extremely fine, very rare

£80-120



468



468
Somerset, Bath, Prior Park, bronze
medal circa 1835 by T Halliday,
St Peter and St Paul, dove above,
armorial shield at centre, rev.
palladian façade of the School,
51mm. Good extremely fine, rare

£60-90



469



469
Birmingham, Town Hall enlarged
1837, bronze medal by J Davis,
exterior view, rev. interior view,
51mm (BHM 1754; E-). Extremely fine

£20-30

470

Birmingham, New Oscott, St Mary's
Seminary 1838, silver medal, view of
buildings, rev. interior view of chapel,
56mm (E 1325). Extremely fine

£40-60

471

Birmingham, New Oscott, St Mary's
Seminary 1838, silver medal, view of
buildings, rev. interior view of chapel,
56mm (E 1325). Good very fine

£30-50

472

Liverpool, Sailors' Home founded
1846, bronze medal, bust of Prince
Albert right, rev. view of the home,
53mm (BHM 2249; E-). Extremely
fine

£30-50

473

Devon, Plymouth Breakwater and
Lighthouse 1848, bronze medal by
Allen & Moore, the lighthouse, rev.
the breakwater and legends, 54mm
(BHM 2326, unlisted in bronze).
Extremely fine, rare

£60-80

474

London, Coal Exchange opened
1849, bronze medal by B Wyon
for the Corporation of the City of
London, central medallion of Queen
Victoria, Royal Family members
around, rev. interior view, 89mm
(BHM 2357; E 1435), in gilt blocked
case of issue. Extremely fine

£300-500



470



471



472



473



474





475



475
London, The Great Exhibition 1851, white metal medal by T Otley, oval medallions of Victoria and Albert above exhibition building and wreath, rev. Britannia standing on a seashore, hand resting on beehive and globe, and holding an olive branch, 74mm (BHM 2447; E 746). Extremely fine, much mint bloom

£80-120



476
Manchester, Exhibition of Art Treasures 1857, white metal medal, 63mm (BHM 2605; E 1513), good extremely fine with original brass shells, another, 41mm, (BHM 2606), extremely fine with original brass shells, set of three white metal medalets, Victoria, Albert, Prince of Wales, each 27mm, good extremely fine with original brass shells, and a white metal medal for Foundation of New Royal Exchange, 61mm, extremely fine (6)

£80-120



476



477



477
Lancashire, Rochdale, Town Hall opened 1871, silver medal, bust of Mayor Ashworth three-quarters right, rev. view of the town hall, 51mm, in case of issue (BHM and Eimer unlisted). Extremely fine, rare

£40-60

478

Yorkshire, Ackworth School, Centenary 1879, bronze medal by J Moore, bust of founder Dr John Fothergill right, rev. view of the school, 51mm (BHM -, E 1667, unlisted in bronze). Extremely fine, scarce

Notes: the school was founded near Pontefract as a Quaker school, on the site of a foundling hospital and still exists.

£30-50

479

London, Alexandra Palace, Industrial Exhibition, silver prize medal awarded 1881, view of Alexandra Palace, rev. legend and award engraving 'S J Dunning 1881', 48mm. Good very fine or better, scarce

£30-50

480

London, New Guildhall Council Chamber 1884, bronze medal by L C Wyon for the Corporation of the City of London, Londinia attended by Mercury and Commerce addresses the Council, rev. interior view, 77mm (BHM 3177; E 1705), in gilt blocked case of issue. Extremely fine

£250-350

481

Yorkshire, Wentworth and District Exhibition 1886, bronze medal by J Moore, view of Wentworth Woodhouse in high relief, rev. space with date below in laurel wreath, 57mm (BHM -). Extremely fine, rare

£40-60



478



479



480



481





482



482

Berkshire, Beaumont College, silver medal circa 1912, holy figure standing, angels each side, rev. view of Beaumont College, 56mm, 79.8g, in case of issue, lid named Ralph Cox. Good extremely fine, light steel-blue tone, rare

Notes: St Stanislaus College in Old Windsor, known as Beaumont College, was a prominent Jesuit boarding school from 1861-1967. Ralph Cox is mentioned in the Slough Chronicle of 12th July 1912 in an article about the school's speech day.

£40-60



483



483

Bedfordshire, Sandy & District Floral & Horticultural Society, silver prize medal by J A Restall, awarded 1931, view of Sande Place, rev. engraved J B COOPER BEST MEMBERS' PIGEON IN SHOW SANDY SHOW AUG. 1931 in field, 51mm, in case of issue. Extremely fine

£40-60



484



484

London, Olympic Games 1908, Participant's medal, white metal by B. Mackennal for Vaughton, Victory standing holding laurel spray and trumpet, rev. two athletes in quadriga left, 51mm (BHM 3963; E 1904). Extremely fine

£180-220



485



485

Rowing, London, Metropolitan Amateur Regatta, Eight Oared Challenge Cup, bronze prize medal by Pinches, trophy cup, rev. space for naming within laurel wreath, 70mm, in Pinches case of issue. Extremely fine, scarce

£60-80

486

Rowing, London, Metropolitan Amateur Regatta, Thames Challenge Cup Senior Fours, bronze prize medal by Pinches, Father Thames reclining, Putney Bridge in the distance, rev. trophy, 64mm (Pinches p.106), in Pinches case of issue. Extremely fine, scarce

£60-80



486



487

Rowing, Henley Royal Regatta, Thames Challenge Cup, silver prize medal by Pinches, awarded 1920, trophy cup, rev. 'Henley Regatta Established 1839' within laurel wreath, edge stamped 1920, 45mm, in Pinches case of issue. Almost extremely fine

£60-80



487



488

Rowing, London, Metropolitan Amateur Regatta, Horton Challenge Cup for Four Oars, silver prize medal, trophy cup, rev. blank field for naming within laurel wreath, 57mm, in Mappin and Webb case of issue. Extremely fine, scarce

£40-60



488



489

Rowing, London, Metropolitan Amateur Regatta, Old Barnes Challenge Cup for Eight Oars, silver prize medal by Pinches, trophy cup, rev. blank field for naming within laurel wreath, 57mm, in Pinches case of issue. Extremely fine

£40-60



489





490



490
Rowing, London, Metropolitan Amateur Regatta, Old Barnes Challenge Cup for Eight Oars, bronze prize medal by Pinches, trophy cup, rev. blank field for naming within laurel wreath, 57mm, in Pinches case of issue. Extremely fine

£25-35



491



491
Argentina, Buenos Aires Province, Puentes en la Campana (Bridges in the Countryside) 1870, bronze medal by JS & AB Wyon, implements, cornucopiae and shield in foreground, canal with bridges in countryside, train crossing ships at sea beyond, rev. legends, 58mm. Good very fine, scarce

£60-80



492



492
Argentina, Carmen de Areco to Salto Tramway opened 1896, bronze medal by Orzali, locomotive, rev. workman's barrow and tools, 37mm; Railway to Alvear, bronze medal, locomotive, rev. legend, 34mm. Extremely fine, a little dirty (2)

£30-50



493



493
Argentina, Pact with Chile 1902, silver bronze medal, battle cruisers 'San Martin' and 'O'Higgins' side by side, rev. rainbow over mountains, 57mm. Good very fine

£30-50

Notes: this medal commemorates the pact between the two countries, arbitrated by Britain, which decided a border dispute.

494

Austria, Emperor Ferdinand Northern Railway opened 1837, bronze medal, façade of the Northern Railway Station in Vienna, rev. locomotive, 41mm. Extremely fine, nice dark tone

£80-120



494



495

Australia, Sydney International Exhibition 1879, large bronze medal by JS & AB Wyon, female with shield of arms holds aloft laurels, implements at feet, exhibition building in the background, rev. Australian flora around field, in which recipient engraved BATES, GILDEA & WALKER FIRST AWARD ETC, 77mm. Extremely fine

£80-120



489



496



496

Belgium, Leopold I, Belgian Railway System Law 1834 and Opening 1835, bronze medal by Braemt, bust of Leopold left, rev. Belgica seated holding cornucopiae and map, locomotive behind, 50mm, extremely fine, Seraing Bridge on the Meuse opened 1843, bronze medal by C Jehoote, bridge, rev. legend, 38mm, very fine, Northern Railway opened 1843, bronze medalet by Lecomte, locomotives between pedestals of France and Belgium, 26mm, extremely fine (3)

£40-60



497



497

Belgium, Leopold I, Railway Inauguration from Verviers to Aix-la-Chapelle 1843, bronze medal by Hart, bust almost facing of Leopold in high relief, rev. allegorical figures, trains in background, 72mm (Moyaux 65). Good extremely fine

£100-150

498

Belgium, West Flanders Railway, Inauguration of Central Station at Lichtervelde 1847, silver medal by Wurden, locomotive passing over viaduct, rev. legend within wreath, 40mm. Almost extremely fine

£30-50

499

Belgium, Leopold I, Belgian Railway System Law, 25th Anniversary 1859, bronze medal by A Geefs, bust of Leopold left, rev. winged figure above locomotive, 55mm. Extremely fine or better

£40-60

500

Bosnia-Herzegovina, Littoral Railway opened joining Bosnia with Dubrovnik 1901, rectangular bronze medal by R Maarschall (1903), Balkan peasant standing with donkey, rex. Incuse legend below train entering tunnel, 60x44mm. Very fine

£40-60



500



501

Canada, Grand Trunk Railway of Canada, Directors' General Efficiency and Good Conduct Medal circa 1860, bronze by JS Wyon, bust of Richard Trevithick in high relief left, legend within maple border, central cartouche for naming and for year below, edge impressed F H TREVITHICK LOCO. SUPERINTT, 45mm (Moyaux 49). Extremely fine, rare with an interesting recipient association

Note: Frederick Henry Trevithick (1816-1881) was the youngest son of Richard Trevithick, the inventor of the locomotive. He was appointed as locomotive superintendent of the Grand Trunk Railway.

£80-120

502

Canada, Grand Trunk Railway of Canada, Montreal, Victoria Bridge Opening 1860, white metal medal by A Hoffnung, view of the bridge, arms above, rev. details of construction, arms above, Royal family medallions around, 51mm. Good extremely fine, scarce

Note: this is the scarcer variety with the bridge cost stated incorrectly as \$5 million.

£40-60

503

Canada, Toronto, Dominion & Industrial Exhibition 1887, bronze medal by P W Ellis & Co., Exhibition building, maple leaves around border, rev. three shields of arms, 64mm. Extremely fine

£50-70

504

France, Lorraine, Leopold I, Construction of New Roads 1727, bronze medal by F de St Urbain, cuirassed bust of Leopold right, rev. horseman crossing small bridge in countryside, 63mm. Extremely fine

£120-150



501



502



503



504





505



505

France, Louis XVI, Pont de Louis XVI 1788, bronze medal by B Duvivier, bust of Louis XVI right, VILLE DE PARIS in exergue, rev. view of the bridge, boats on the Seine, 56mm. Good extremely fine

Note: this is now the Pont de la Concorde. Its construction continued throughout the Revolution, including reusing stone taken from the demolished Bastille.



506



506

France, St Etienne to Lyon Railway 1826, silver medal by N Tiolier, arms of St Etienne and Lyon, rev. Mercury flies above figures of Loire and Plenty, train in distance, 36mm. Good very fine

£20-30



507



507

France, Louis Philippe I, Grandes Lignes de Chemin de Fer 1842, large bronze medal by A Bovy, laureate bust left of Louis Philippe, rev. France atop pedestal flanked by Minerva and Mars, four railways in the distance, 113mm (Collignon 1288; Moyaux 121), in a fitted wooden case, slightly damaged. Extremely fine, one of the most impressive French medals of this period

£180-220



508



508

France / Great Britain, Railway laudatory medal 1843, by Caqué, steamship with sails, rev. steam locomotive, English legends each side in praise of steam and railway, 52mm. Extremely fine, rare

£40-60

509

France, Francois Guizot 1844, large bronze laudatory medal by J Feuchere, bust left, rev. Guizot speaking in the National Assembly in front of fellow deputies, advocating the abolition of slavery, 100mm. Extremely fine, magnificent medal

Notes: Francois Guizot (1787-1874), historian, orator, statesman, political activist

£180-220

510

France, Paris to Strasbourg Railway completed 1854, bronze medal by A Bovy, bust of Napoleon III left, rev. view of the old and new bridges across the Meurthe, train crossing the new bridge on the right, in foreground the River God of the Rhine and Goddess of the Seine celebrate, 69mm (Divo 225; Moyaux 151). Extremely fine or nearly so

£100-150

511

France, Ecole Polytechnique Centenary 1894, bronze medal by M Bourgeois, semi-naked female seated surrounded by objects, viaduct and air balloon in distance, 68mm (CGMP 3/65B). Good very fine

£50-70

512

France/ Italy, Turin, International Exposition 1911, bronze rectangular medal by P Dautel for the Comité Français des Expositions à l'Etranger, France and Italy greet each other, worker overlooks city, rev. shields of Paris, Turin, France and Italy, other symbols, army at top, dates 1859, 1861, 1911, 72x54mm. Good very fine

£20-30



509



510



511



512



513

France, La Vapeur 1914, bronze medal by R Lamourdedieu, Denis Papin seated before his steam digester, rev. a steam engine, a steamship and other steam-operated devices, A.P.P.A.V. 1874-1924 on cartouche below, 57mm (CGMP 3/222C). Very fine



Notes: Denis Papin (1647-c.1712), invented the forerunner of the pressure cooker. He died destitute in London.

£25-35

514

France, Paris to Lyon Railway Electrification 1952, bronze medal by M Renard, view of electric train leaving a tunnel, rev. legend between Parisian galley and Lyonnais lion, 59mm. Good very fine



£20-30



515

Germany, Berlin, Industrial Exhibition 1844, bronze medals (2) by Loos, Lorenz and Schilling, Germania seated holding laurel wreath, rev. locomotive crosses viaduct, wreath around, 45mm. Extremely fine (2)

£50-70

516

Italy, Vatican, Pius IX, Construction of the Ariccia Bridge 1851, silver medal by G Cerbara, bust of the Pope left, rev. view of the bridge, 48mm. Good very fine, rare



£120-150

517

Italy, Compania Bomberos Ytaliana Garibaldi, locomotive, NOVEMBRE 6 1887 in exergue, rev. patrons' names in field, hexagonal 30mm. Extremely fine

£25-35



518

Netherlands, Iron Railway Company Founded 1839, bronze medal by P van de Goor, 'Snelheid' locomotive, rev. shields of Amsterdam and Haarlem, 42mm. Extremely fine

£60-80



519

Netherlands, Great War 1914-1919, bronze plaquette medal by J C Wienecke, Dutch ship of State in a storm, rev. Dutch royal arms and symbolic devices, 80x61mm; other bronze medals (3) from Netherlands, Britain and France. Good very fine or better (4)

£100-150



520

Peru, Salaverry Dock (Trujillo) opened 1889, silver medal by J F Rodriguez, griffin standing holding shield of arms, rev. train arriving at the dock, 50mm. Extremely fine, rare

£100-150





521



521
Peru / USA, Henry Meiggs, Verrugas railway viaduct and Peruvian Central Trans-Andean Railway completed, bronze medal 1872 by JS & AB Wyon for Tiffany & Co., bust of Meiggs right, rev. view of a train passing over the Verrugas Viaduct, 58mm (Julian UN-17). Very fine, scarce

Notes: Henry Meiggs (1811-1877) was an American who ended up in South America on the run from the US authorities, having perpetrated a huge financial fraud. He became a successful railway builder, building railways in Peru, Chile and Costa Rica. 206 medals were struck in bronze.

£130-160



522



522
Peru, Compania de Bomberos Union Chalaca, silver medalet, primitive steam engine locomotive, rev. legends, 28mm. Good extremely fine

£25-35



523



523
Portugal, Opening of the Eastern Railway in Lisbon 1856, bronze medal, crowd before a locomotive, rev. legend, 50mm; Portuguese Railway Centenary 1956, male and female figures beside a plinth, rev. legend and locomotive, 49mm. Very fine and better (2)

£50-70

524
Russia, Alexander III, Survival of Tsar's Family after the Borki Railway Disaster 1888, bronze medal by A Grilliches, Tsar, Tsarina and family standing, rev. kneeling woman prays to an angel, train crash scene and victims in exergue, 89mm (Diakov 1010.1). Extremely fine, small trace of verdigris by obverse exergue, scarce

£250-350



524



525
Spain, Columbus 400th Anniversary 1892, bronze medal by B. Maura, Columbus on ship spies the New World, rev. Columbus pays homage to King Ferdinand and Queen Isabella, native Americans in attendance, 70mm (Eggit 111; Forrer III/124). Extremely fine

£150-200

526
Spanish Netherlands, Archduke Albert of Austria and Infanta Isabella Clara Eugenia of Spain, Marriage 1599, bronze medal by Coenraad Bloc, bust of Albert in ruff right, rev. bust of Isabella in ruff left, 42mm (cf. vL I/511, 2), probably 18th century. Very fine, rare

£200-250

527
Sudan, The El Obeid Railway opened 1912, bronze medal, view of the railway crossing a river, a section raised, rev. TO COMMEMORATE THE OPENING OF THE EL OBEID RAILWAY FEBRUARY 1912 within laurel wreath, 51mm. Extremely fine, very rare

Note: the railway was opened by Lord Kitchener

£80-120

528
Sweden, Count Admiral Baltzar Bogislaus von Platen, 50th Anniversary of the Gotha Canal 1882, bronze medal by L Ahlborn, bust of von Platen left, rev. two sailing ships in a canal, 52mm. Good very fine

£40-60



525



526



527



528





529



529
Sweden, Bergslagens Järnvägar
(Swedish Railway Company),
Golden Jubilee 1929, silver
medal by C Milles, route through
mountains, rev. hammers, dates,
male and female symbols, legend,
50mm. Good very fine

£20-30



530



530
Switzerland, Bern, Opening of
Nydeck Bridge 1844, bronze medal,
bridge, arms above, rev. legend in
wreath, 48mm. Good very fine

£40-60



531



531
Switzerland, Bern, Opening of
Nydeck Bridge 1844, bronze medal,
bridge, arms above, rev. legend in
wreath, 48mm. Very fine

£30-50



532



532
Switzerland, Lyon to Geneva
Railway Inaugurated 1858, bronze
medal by A Bovy, locomotive with
flags and caduceus, rev. arms, 48mm.
Good very fine

£30-50



533



533
Switzerland, Mont Blanc Tunnel
opened 1862, bronze medal by
A Bovy, Alpine town with bridge
across a lake, rev. legend in wreath,
50mm. Almost extremely fine,
Verdigris spot to reverse rim at 6
o'clock

£30-50

534

Sailing of the Mayflower 1620, 350th
Anniversary, a set of six medals
issued by Metalimport Company
1971, comprising four sterling silver,
each 52.9g, two bronze, obverses
pilgrim standing and the Mayflower,
common reverses Jacobean Royal
arms, arms of New Plymouth
Society, each 50mm, in fitted case of
issue with certificates numbered B
0069. About as issued, silver toned
(6)

£60-90



534

535

USA, New Jersey, Paterson
Centennial 1892, bronze medal,
bust right of Alexander Hamilton,
rev. train and view of a bridge, 51mm.
Extremely fine

£30-50



535

536

USA, Delaware River Bridge
completed 1926, uniface bronze
plaquette medal for the New
York Medallist Art Company by L
Hermant, view of the bridge linking
Philadelphia and Camden, 52x89mm.
Very fine, scarce

£100-150



536

537

Russia / Soviet Union, Valentina
Tereshkova, First Woman in Space
1963, proof gold medal, bust right,
rev. cosmonaut and rocket reaching
for the stars, .900 fine, 10g, 25mm, in
case of issue. As struck

£300-500



537



538
Moon Landings 1969, a 9ct gold concave pendant, terrestrial and lunar surfaces, rev. three-dimensional representation of the lunar module with astronaut on ladder, 5.9g. About as made, unusual and interesting

£80-120



540
British and foreign commemorative medals, 18th to 20th century, including silver Victoria, Science & Art Department silver medal awarded Walter Scott Coventry 1868, 55mm, London, Metropolitan Amateur Regatta, silver, 43mm, Basel Bridge 1905, silver, 60mm, USA, Gutenberg 500th Year of Birth 1900, bronze, 69mm, and sundry. Varied state (11)

£150-180



540

£20-30



541

541
British and Foreign commemorative medals, mostly 20th century. some earlier, a few coins and tokens. Varied state (Lot)

£100-150

Important Notices to Watch Buyers

DAMAGE, RESTORATION, ALTERATION

Although every effort is made to note any damage, restoration or alterations, the absence of any such information in catalogue descriptions does not imply the lot is in perfect condition and free from any such defects. Prospective buyers should satisfy themselves as to the condition of any lot prior to bidding. All watches are serviced from time to time, and Dreweatts are unable to guarantee that the working parts of any watch movement, glass or crystal, winding crowns, watch bracelet, strap or buckle are the manufacturers' original parts, unless otherwise stated in the catalogue description. We are unable to make any representation in our catalogue descriptions or condition reports as to the authenticity of such parts. Dreweatts are unable to make any representation, nor make any comment on, the authenticity of diamonds, or other gemstones, set into watch dials, bezels, cases and bracelets.

AUTHENTICATION

All watch movements have been inspected by Dreweatts watchmaker and specialists, and we have verified all inventory and movement numbers. For the information of potential bidders, all inventory and movement numbers are listed in the catalogue description for the relevant lot.

IMPORT/EXPORT RESTRICTIONS

There may be Import Restrictions into some territories outside

the United Kingdom placed on certain watch brands, or on the importation of watches with straps composed of animal skins which may fall under CITES Regulations. It is the sole responsibility of the buyer to comply with all Export/Import regulations and potential bidders are strongly recommended to check with their shipping agent as to any such regulations that may apply to any lot. Dreweatts are not shippers and are unable to offer any advice regarding such regulations.

CONDITION REPORTS

Dreweatts condition reports will identify whether a watch functions at the time of cataloguing, and suggest possible, but not comprehensive, restoration work that may need to be carried out for the watch to function properly. Dreweatts are unable to test watches for accuracy or running to time, and we cannot guarantee that any watch will function when purchased from us.

As we have examined all watch movements by removing the case backs, we cannot guarantee that water resistant watches will remain water resistant following purchase from us. Dreweatts recommend that any watch purchased from us is subsequently overhauled by a competent watchmaker to ensure proper functioning.

Important Notices to Jewellery Buyers

DAMAGE, RESTORATION, ALTERATION

Although every effort is made to note any damage, restoration or alterations, the absence of any such information in catalogue descriptions does not imply the lot is in perfect condition and free for any such defects. Prospective buyers should satisfy themselves as to the condition of any lot prior to bidding.

ENHANCEMENT

Prospective bidders should be aware that many coloured gems have been historically treated by a variety of methods to improve their appearance, both in terms of colour and transparency. Rubies and sapphires are routinely heat treated, emeralds are enhanced through the use of coloured and transparent oils and resins, and jadeite is routinely stained. These treatments, and others including irradiation and coating, are generally accepted by the jewellery trade as standard practice. Although most treatments are considered to be permanent, those gemstones which have been oiled may need to be re-treated to maintain their appearance. Any such treatments affect the market value of coloured gemstones, and Dreweatts pre-sale estimates published in the catalogue assume that all gemstones, unless otherwise stated in the catalogue, may have been enhanced. Dreweatts may obtain Gemmological Reports from a recognised laboratory where appropriate detailing any enhancements, or lack of, for certain gemstones, and such reports may be obtained for prospective bidders prior to the sale, provided such requests are made at least three weeks before the sale, and that the requesting party has pre-paid for such a report. However it is not possible for Dreweatts to obtain reports for every stone offered in the sale.

In the absence of a gemmological laboratory report, it is not possible for Dreweatts to make any comment on the possibility that any gemstone in any lot may have been subject to enhancement.

Dreweatts catalogue descriptions and condition reports adhere to the guidelines laid out in the 'Blue Book' of CIBJO,

the International Jewellery Confederation.

WEIGHTS

All gram weights have been obtained using an electronic balance, but weights stated in the catalogue are approximate and for guidance only, and potential bidders should satisfy themselves as to their accuracy.

'...approximately 1.20 carats total...' all such stone weights are estimated using standard equipment and formulae, and are subject to the limitations imposed by the mount.

'...weighing 1.20 carats...' where the description reads as such, the stones in question have been removed from the mount and weighted using an electronic balance.

SIGNATURES

'...by Lacloche...' in our opinion is a piece made by or for the jeweller, bearing relevant signatures, maker's marks, and where appropriate, the maker's inventory number/s.

'...signed Lacloche...' in our opinion is a piece retained by the jeweller, but not necessarily made by them. This may also mean that the piece has been mounted by the jeweller using stones supplied by the client; a special commission from a client's design; or has been altered or later added to.

COLOURED STONES OF BURMA (MYANMAR) ORIGIN

Buyers should be aware that certain territories (notably the United States of America) have import restrictions on certain coloured gemstones. All gemstones that maybe of Burma (Myanmar) origin, notably rubies and jadeite, may require a certificate of origin before they can be imported. Prospective bidders for such gemstones should check with their shipper, and relevant Government authorities regarding any necessary certification prior to bidding. Whilst Dreweatts are able to suggest a number of Gemmological Laboratories for such certification, we are unable to carry out any such certification for potential bidders or buyers.

Detailed condition reports for all lots are available from our website www.dreweatts.com, and upon direct request to the Saleroom.

Please note that Dreweatts are unable to give verbal condition reports for any lot, and all condition reports will be given in writing via our website www.dreweatts.com. Dreweatts jewellery specialists and qualified gemmologists are available during the view to answer any queries.

Dreweatts are unable to offer any form of packing, dispatch or shipping services, and clients should make their own collection arrangements for purchased lots. Dreweatts are happy to suggest the services of a number of dispatch and shipping carriers.

Please see Conditions of Business and Conditions of Sale on the following pages.

Dreweatts & Dreweatts 1759 are trading names of Dreweatts 1759 Ltd. Dreweatts 1759 Ltd is registered in England, company number: 10758982, registered office: Donnington Priory, Newbury, Berkshire RG14 2JE.

Important Notices

BUYING AT DREWEATTS

There are several ways you can bid at a Dreweatts auction; in person, by leaving a commission or absentee bid, on the telephone where available and live via the internet – please make arrangements before the sale. THIS NOTICE APPLIES ONLY TO A PERSON WHO WISHES TO BID IN PERSON, OR BY LEAVING A COMMISSION OR ABSENTEE BID, AT A DREWEATTS PUBLIC AUCTION. For bidding at an online auction or for online bidding at a public auction please see our Online Auction Terms published on our website at www.dreweatts.com.

BIDDING IN PERSON

If intending to buy you are required to register your name and details at reception prior to the commencement of the auction. You will be required to provide a proof of identity and address to register for bidding. You will then be allocated a bidding number, which you use when bidding for an item.

COMMISSION BIDS

Dreweatts will execute bids on your behalf if you are unable to attend the sale. Commission or absentee bids are accepted either directly at reception, or can be sent by post, fax, email, telephone or via the website: www.dreweatts.com.

Dreweatts will add these bids to the auctioneers' sale book and will undertake to purchase the lots on your behalf as cheaply as allowed by other bids and reserves. If two buyers submit identical commission bids Dreweatts may prefer the first bid received.

Dreweatts does not accept liability for failing to execute commission bids, or for any errors or omissions.

CONDITION

Bidders must satisfy themselves as to the condition of each lot. Condition reports are available on request – see the Conditions of Business at the back of this catalogue forming part of these Auction Terms and Conditions for more information regarding condition reports. Requests for condition reports must be submitted by 4pm on the day prior to the auction; condition reports may be available alongside the lot description on the online catalogue at: www.dreweatts.com.

COMMISSION CHARGES

All purchases are subject to a buyer's premium, which is charged per lot at 25% of the hammer price (30% including VAT) up to and including £500,000, 20% (24% including VAT) of the hammer price from £500,001 up to and including £1,000,000 and 12% of the hammer price (14.4% including VAT) in excess of £1,000,000. A theta symbol (Θ) indicates that the lot is a zero rated item and therefore not subject to VAT on the buyer's premium. This applies to bound books (manuscripts and printed), unframed maps and albums. In the event the lot has a dagger (†) beside the lot number in the catalogue, this indicates that the lot is owned by an entity or company required to pay VAT (generally not an Antique Dealer, as they operate under a dealers margin scheme). VAT is payable at 20% on the Hammer Price. Lots marked with a double dagger (‡) (presently a reduced rate of 5%) or Ω (presently at standard rate of 20%) have been imported from outside the European Union to be sold at auction and therefore the buyer must pay the import VAT at the appropriate rate on the hammer price.

PAYMENT

Payment will be accepted, if you are a successful bidder, by debit card issued in the name of the Buyer by a UK bank and registered to a UK billing address; by all major UK issued credit cards issued in the name of the Buyer and registered to a UK billing address with the exception of American Express and Diners Club; by bank

transfer direct into our bank account, Bank Details: NatWest, 30 Market Place, Newbury, Berkshire RG14 5AG. Account Name: Dreweatts 1759 Ltd. A/C: 62412949, Sort Code: 60-15-07, BIC: NWBKGB2L, IBAN: GB21NWBK60150762412949; or in cash up to £8,000 (subject to relevant money laundering regulations). The name of the bank account holder should match the name of the buyer. Payment may also be made by sterling personal cheques drawn on a UK bank account and made payable to 'Dreweatts 1759 Ltd', but Dreweatts regrets that purchases paid for by this method cannot be collected until your cheque has cleared. First time buyers who are not present at the saleroom are requested to pay by bank transfer.

Y CITES REGULATIONS

Please note that lots marked with the symbol (Y) in this catalogue may be subject to CITES Regulations when exported. Relevant CITES Regulations may be found at www.gov.uk/guidance/cites-imports-and-exports.

COLLECTION OR DELIVERY

Before being able to collect your purchases you are required to pay the hammer price, plus the applicable commissions, and obtain a receipt acknowledging payment. Collection of the purchased lots is at the purchaser's risk and expense and whilst Dreweatts do not provide packing and despatch service we can suggest some carriers.

Dreweatts also require that all purchased items are collected within four working days of the sale to avoid a storage charge being applied.

STORAGE CHARGES

All items not collected by 4pm, within four working days of the sale, will be automatically removed to commercial storage and subject to a minimum storage charge of £20 (plus VAT) per lot and to a further storage charge of £2 (plus VAT) per lot per part or full day thereafter. These charges will be the sole liability of the purchaser and will be billed directly to them by Vangaroo Ltd (Andover); Vangaroo may be willing to adjust their charges if they are instructed by the purchaser to deliver to them. On payment of all sales and storage costs, items will be available for collection by appointment from Vangaroo Ltd (Andover), tel: 01264 316970, mobile: 07528 291180, email: matt@vangaroo.co.uk. These charges are set by Vangaroo Ltd (Andover); we recommend that you contact them directly regarding queries relating to these charges and other questions relating to storage. Staff at the saleroom will be unable to answer questions relating to items that have been removed from the saleroom.

FURTHER INFORMATION

The colours printed in this catalogue are not necessarily a true reflection of the actual item. All weights and measures given in the catalogue should be regarded as approximate.

VALUATION SERVICES

Dreweatts provides a range of confidential and professional valuation services to private clients, solicitors, executors, estate managers, trustees and other professional partners. These services include auction valuations, insurance valuations, probate valuations, private treaty valuations, valuations for family division or for tax purposes. For more information, please see our website: www.dreweatts.com.

For directions to Donnington Priory, please see our website: www.dreweatts.com.

Parking is available at Donnington Priory in two car parks on either side of the saleroom.

Information for Buyers at Public Auctions

1. **INTRODUCTION.** The following notes are intended to assist Bidders and Buyers, particularly those inexperienced or new to our salerooms. All of our auctions and sales are conducted on our printed Auction Terms and Conditions, including these Conditions of Sale and Business, which are readily available for inspection and normally accompany catalogues. Our staff will be happy to help you if there is anything you do not fully understand.

Any particular auction and/or any particular lot in an auction may be subject to different or additional terms which will be published in our auction catalogue. All auctions and sales of wines and spirits, jewellery, watches and clocks are subject to the special terms set out in the relevant Notices in relation to those items published in our auction catalogue and, in the event of any conflict or inconsistency, those special terms prevail over any other terms in our Auction Terms and Conditions. By bidding at the auction, you agree to be bound by these terms.

2. **AGENCY.** As auctioneers we usually act as agents for the seller whose identity, for reasons of confidentiality, is not normally disclosed. Accordingly if you buy at auction your contract for the item or items purchased is with the seller and not with us as the auctioneer.

3. **ESTIMATES.** Estimates are designed to help buyers gauge what sort of sum might be involved for the purchase of a particular lot. Estimates may change and should not be thought of as the sale price. The lower estimate may represent the reserve price and certainly will not be below it. Estimates do not include the Buyer's Premium or VAT (where chargeable). Estimates are prepared some time before the sale and may be altered by announcement before the sale. They are in no sense definitive.

4. **BUYER'S PREMIUM.** The Conditions of Sale forming part of our Auction Terms and Conditions require the buyer to pay a buyer's premium on the hammer price of each lot purchased. The buyer's premium is 25% of the hammer price up to and including £500,000, 20% of the hammer price from £500,001 up to and including £1,000,000, and 12% of the hammer price in excess of £1,000,000. VAT at the prevailing rate of 20% is added to buyer's premium and additional charges as defined below.

5. **VAT.** A theta symbol (Θ) indicates that the lot is a zero rated item and therefore not subject to VAT on the buyer's premium. This applies to bound books (manuscripts and printed), unframed maps and albums. A dagger symbol (†) indicates that VAT is payable by the purchaser at the standard rate (presently 20%) on the hammer price as well as being an element in the buyers' premium. This imposition of VAT is likely to be because the seller is registered for VAT within the European Union and is not operating the Dealers Margin Scheme or because VAT is due at 20% on import into the UK. A double dagger (‡) indicates that the lot has been imported from outside the European Union and the present position is that these lots are liable to a reduced rate of Import VAT currently 5% on the hammer price. (Ω) indicates that the lot has been imported from outside the European Union and these lots are liable to the standard rate of Import VAT currently 20% on the hammer price. Lots which appear without the above symbols indicate that no VAT is payable on the hammer price; this is because such lots are sold using the Auctioneers Margin Scheme and it should be noted that the VAT included within the buyers' premium is not recoverable as input tax.

6. **DESCRIPTION AND CONDITION.** Condition reports are provided on our website or upon request. The absence of a report does not imply that a lot is without imperfections. The detail in a report will reflect the estimated value of the lot. Large numbers of such requests received shortly before the sale may mean that reports cannot be provided for all lots. Members of staff are not trained restorers or conservators and, particularly for higher value lots, you should obtain an opinion from such a professional. Dreweatts is not liable for damage to gilded picture frames, plaster picture frames or picture frame glass; if a Lot is or becomes dangerous, we may dispose of it without notice to bidders in advance in any manner we see fit and will be under no liability for doing so. We recommend that you always view a lot in person.

We are dependent on information provided by the seller about a lot and whilst we may inspect lots and act reasonably in taking a general view about them we are normally unable to carry out a detailed examination and frequently no examination of lots in order to ascertain their condition in the way in which it would be wise for a buyer to do. Intending buyers have ample opportunity for inspection of goods and, therefore, accept

responsibility for inspecting and investigating lots in which they may be interested and the corresponding risk should they not do so. Please note carefully the exclusion of liability for the condition of lots contained in the Conditions of Sale. Neither the seller nor we, as the auctioneers, accept any responsibility for their condition. In particular, mechanical objects of any age are not guaranteed to be in working order. However, in so far as we have examined the goods and make a representation about their condition in the auction catalogue, we shall be liable for any defect which is not reflected in that representation and which that examination ought to have revealed to the auctioneer but which would not have been revealed to the buyer had the buyer examined the goods. Additionally, in specified circumstances lots misdescribed because they are 'deliberate forgeries' may be returned and repayment made. There is a 3 week time limit. (The expression 'deliberate forgery' is defined in our Conditions of Sale).

7. **ELECTRICAL GOODS.** These are sold as 'antiques' only and if bought for use must be checked over for compliance with safety regulations by a qualified electrician before use.

8. **EXPORT OF GOODS.** Buyers intending to export goods should ascertain (a) whether an export licence is required and (b) whether there is any specific prohibition on importing goods of that character because, e.g. they may contain prohibited materials such as ivory. Ask us if you need help.

9. **BIDDING.** Bidders will be required to register before the sale commences and lots will be invoiced to the name and address on the sale registration form. Bidders are required to provide a government issued identity document and a proof of address. Please enquire in advance about our arrangements for telephone bidding.

10. **COMMISSION BIDDING.** Commission bids may be left with the auctioneers indicating the maximum amount to be bid excluding buyers' premium. Dreweatts will add these bids to the auctioneers' sale book and they will be executed as cheaply as possible having regard to the reserve (if any) and competing bids. If two buyers submit identical commission bids the auctioneers may prefer the first bid received. Please enquire in advance about our arrangements for the leaving of commission bids by telephone or fax. Dreweatts does not accept liability for failing to execute commission bids, or for any errors or omissions.

11. **METHODS OF PAYMENT.** Payment will be accepted, if you are a successful bidder, by debit card issued in the name of the Buyer by a UK bank and registered to a UK billing address; by all major UK issued credit cards issued in the name of the Buyer and registered to a UK billing address with the exception of American Express and Diners Club; by bank transfer direct into our bank account, Bank Details: NatWest, 30 Market Place, Newbury, Berkshire RG14 5AG. Account Name: Dreweatts 1759 Ltd. A/C: 62412949, Sort Code: 60-15-07, BIC: NWBKGB2L, IBAN: GB21NWBK60150762412949; or in cash up to £8,000 (subject to relevant money laundering regulations). The name of the bank account holder should match the name of the buyer. Payment may also be made by sterling personal cheques drawn on a UK bank account and made payable to 'Dreweatts 1759 Ltd', but Dreweatts regrets that purchases paid for by this method cannot be collected until your cheque has cleared. First time buyers who are not present at the saleroom are requested to pay by bank transfer.

12. **COLLECTION AND STORAGE.** Please note what the Conditions of Sale state about collection and storage. It is important that goods are paid for and collected promptly. Any delay may involve the buyer in paying storage charges.

13. **À DROIT DE SUITE ROYALTY CHARGES.** From 1st January 2012 all UK art market professionals (which includes but is not limited to; auctioneers, dealers, galleries, agents and other intermediaries) are required to collect a royalty payment for all works of art that have been produced by qualifying artists each time a work is re-sold during the artist's lifetime and for a period up to 70 years following the artists death. This payment is only calculated on qualifying works of art which are sold for a hammer price more than the UK sterling equivalent of EURO 1,000 – the UK sterling equivalent will fluctuate in line with prevailing exchange rates. It is entirely the responsibility of the buyer to acquaint himself with the precise EURO to UK Sterling exchange rate on the day of the sale in this regard, and the auctioneer accepts no responsibility whatsoever if the

qualifying rate is different to the rate indicated. All items in this catalogue that are marked with λ are potentially qualifying items, and the royalty charge will be applied if the hammer price achieved is more than the UK sterling equivalent of EURO 1,000. The royalty charge will be added to all relevant buyers' invoices, and must be paid before items can be cleared. All royalty charges are passed on to the Design and Artists Copyright Society (DACS), no handling costs or additional fees with respect to these charges will be retained by the auctioneers. The royalty charge

Terms of Consignment for Sellers in Public Auctions

The sale of goods at our public auctions and a seller's relationship with us are governed by our Auction Terms and Conditions including these Terms of Consignment for Sellers in Public Auctions and our Conditions of Sale for Public Auctions. Any particular auction and/or any particular lot in an auction may be subject to different or additional terms which will be published in our auction catalogue or separately announced prior to the auction. All auctions and sales of wines and spirits, jewellery, watches and clocks are subject to the special terms set out in the relevant Notices in relation to those items published in our auction catalogue and, in the event of any conflict or inconsistency, those special terms prevail over any other terms in our Auction Terms and Conditions. Please note that our Auction Terms and Conditions including these Terms of Consignment for Sellers in Public Auctions and our Conditions of Sale for Public Auctions relate to auctions held in our salerooms and we have separate terms and conditions for our online auctions.

If you, or another person acting on your behalf, provide goods to us to sell on your behalf at one of our auctions this signifies that you agree to and will comply with our Auction Terms and Conditions including these Terms of Consignment for Sellers in Public Auctions and our Conditions of Sale for Public Auctions.

1. **INTERPRETATION.** In these Terms the words 'you', 'yours', etc. refer to the Seller and if the consignment of goods to us is made by an agent or otherwise on the Seller's behalf we assume that the Seller has authorised the consignment and that the consignor has the Seller's authority to contract. All obligations that apply to the Seller under these Terms of Consignment for Sellers in Public Auctions shall apply to the owner of the goods and their agent jointly and separately. Similarly the words 'we', 'us', etc. refer to the Auctioneers.

2. **WARRANTY.** The Seller warrants that possession in the lots can be transferred to the Buyer with good and marketable title, free from any third party right and encumbrances, claims or potential claims. The Seller has provided all information concerning the item's ownership, condition and provenance, attribution, authenticity, import or export history and of any concerns expressed by third parties concerning the same.

3. **ALL COMMISSIONS** and fees are subject to VAT at the prevailing rate.

4. **COMMISSION** is charged to sellers and all selling terms are available from our salerooms.

5. **REMOVAL COSTS.** Items for sale must be consigned to the saleroom by any stated deadline and at your expense. We may be able to assist you with this process but any liability incurred to a carrier for haulage charges is solely your responsibility.

6. LOSS AND DAMAGE OF GOODS

(a) Loss and Damage Warranty - Dreweatts is not authorised by the FCA to provide insurance to its clients, and does not do so. However Dreweatts for its own protection assumes liability for property consigned to it at the lower pre-sale estimate until the hammer falls. To justify accepting liability, Dreweatts makes a charge of 15% of the hammer price plus VAT, subject to a minimum charge of £150, or if unsold 15% of our lower estimate. The liability assumed by Dreweatts shall be limited to the lower pre-sale estimate or the hammer price if the lot is sold. Dreweatts is not liable for damage to gilded picture frames, plaster picture frames or picture frame glass; if the Lot is or becomes dangerous, we may dispose of it without notice to you in advance in any manner we see fit and will be under no liability for doing so.

(b) If the owner of the goods consigned instructs us in writing not to take such action, the goods then remain entirely at the owner's risk unless and until the property in them passes to the Buyer or they are collected by or on behalf of the owner, and clause 6 (a) is inapplicable.

that will be applied to qualifying items which achieve a hammer price of more than the UK sterling equivalent of EURO 1,000, but less than the UK sterling equivalent of EURO 50,000 is 4%. For qualifying items that sell for more than the UK sterling equivalent of EURO 50,000 a sliding scale of royalty charges will apply – for a complete list of the royalty charges and threshold levels, please see www.dacs.org.uk. There is no VAT payable on this royalty charge.

7. **ILLUSTRATIONS AND PHOTOGRAPHS.** The cost of any illustrations or photographs is borne by you. The copyright in respect of such illustrations and photographs shall be the property of us, the auctioneers, as is the text of the catalogue.

8. **MINIMUM BIDS AND OUR DISCRETION.** Goods will normally be offered subject to a reserve agreed between us before the sale in accordance with clause 9. We may sell Lots below the reserve provided we account to you for the same sale proceeds as you would have received had the reserve been the hammer price. If you specifically give us a "discretion" we may accept a bid of up to 10% below the formal reserve.

9. RESERVES

(a) You are entitled to place prior to the auction a reserve on any lot consigned, being the minimum hammer price at which that lot may be sold. Reserves must be reasonable and we may decline to offer goods which in our opinion would be subject to an unreasonably high reserve (in which case goods carry the storage and loss and damage warranty charges stipulated in these Terms of Consignment).

(b) A reserve once set cannot be changed except with our consent.

(c) Where a reserve has been set which we consider unreasonably high, an unsold charge will be payable in the event that the lots fails to sell, being the agreed selling terms calculated on the reserve, LDW at 15% and any photographic charges.

(d) Where a reserve has been placed only we may bid on your behalf and only up to the reserve (if any) and you may in no circumstances bid personally.

(e) Reserves are not usually accepted for lots expected to realise below £100.

10. **ELECTRICAL ITEMS.** These are subject to detailed statutory safety controls. Where such items are accepted for sale you accept responsibility for the cost of testing by external contractors. Goods not certified as safe by an electrician (unless antiques) will not be accepted for sale. They must be removed at your expense on your being notified. We reserve the right to dispose of unsafe goods as refuse, at your expense.

11. **SOFT FURNISHINGS.** The sale of soft furnishings is strictly regulated by statute law in the interests of fire safety. Goods found to infringe safety regulations will not be offered and must be removed at your expense. We reserve the right to dispose of unsafe goods as refuse, at your expense. The rights of disposal referred to in clause 10 and 11 are subject to the provisions of The Torts (Interference with Goods) Act 1977.

12. **DESCRIPTION.** Please assist us with accurate information as to the provenance, lawful import etc. of goods where this is relevant. There is strict liability for the accuracy of descriptions under modern consumer legislation and in some circumstances responsibility lies with sellers if inaccuracies occur. We will assume that you have approved the catalogue description of your lots and that your lots match those descriptions unless informed to the contrary. Where we are obliged to return the price to the buyer when the lot is a deliberate forgery under Condition 15 of the Conditions of Sale and we have accounted to you for the proceeds of sale you agree to reimburse us the sale proceeds and in any event within 7 days of our written notice to do so.

13. **UNSOLD.** If an item is unsold it may at our discretion be re-offered at a future sale. Where in our opinion an item is unsaleable you must collect such items from the saleroom promptly on being so informed. Otherwise, storage charges may be incurred. We reserve the right to charge for storage in these circumstances at a reasonable daily rate.

14. **WITHDRAWN AND BOUGHT IN ITEMS.** These are liable to incur a charge of 15% commission, 15 % Loss and Damage Warranty and

any other costs incurred including but not limited to illustration and restoration fees all of these charges being subject to VAT on being bought in or withdrawn after being catalogued.

15. **CONDITIONS OF SALE.** You agree that all goods will be sold on our Conditions of Sale for Public Auctions. In particular you undertake that you have the right to sell the goods either as owner or agent for the owner with good and marketable title and free and clear of any third party rights or claims. You undertake to compensate us and any buyer or third party for all losses liabilities, costs and expenses suffered or incurred arising out of or in connection with any breach of this undertaking. We will also, at our discretion, and as far as practicable, confirm that an item consigned for sale does not appear on the Art Loss register, which is administered by an independent third party.

16. DUE DILIGENCE CHECKS AND ANTI-MONEY LAUNDERING PROCEDURES

Under the money laundering regulations in force we are required to carry out relevant due diligence checks. This includes verifying the identity of all customers we transact with as well as any beneficial owners on behalf of whom they may transact. Vendors who are unable to or refuse to supply required identification documents and proof of address will not be able to consign to Dreweatts auctions. Copies of customer due diligence checks will be stored for as long as it is necessary to satisfy legal requirements in an appropriate storage facility, which for the avoidance of doubt may include storage solely in electronic form.

17. AUTHORITY TO DEDUCT COMMISSION AND EXPENSES AND RETAIN PREMIUM AND INTEREST

(a) You authorise us to deduct commission at the stated rate and all

Conditions of Sale for Public Auctions

Dreweatts carries on business with bidders, buyers and all those present in the auction room prior to or in connection with a sale by auction at our salerooms on our Auction Terms and Conditions or Public Auctions including these Conditions of Sale for Public Auctions and all bidders, buyers and others participating in a public auction accept that these terms apply to the exclusion of any terms and conditions contained in any of those person's own documents even if the same purport to provide that that person's own or some other terms prevail. Any particular public auction and/or any particular lot in an auction may be subject to different or additional terms which will be published in our online auction catalogue. Please note that our Auction Terms and Conditions including these Conditions of Sale for Public Auctions relate to auctions held in one of our salerooms and we have separate terms and conditions for our online auctions.

1. DEFINITIONS

In these Conditions:

(a) "auctioneer" means the firm of Dreweatts or its authorised auctioneer, as appropriate;

(b) "deliberate forgery" means an imitation made with the intention of deceiving as to authorship, origin, date, age, period, culture or source but which is unequivocally described in the catalogue as being the work of a particular creator and which at the date of the sale had a value materially less than it would have had if it had been in accordance with the description;

(c) "hammer price" means the level of bidding reached (at or above any reserve) when the auctioneer brings down the hammer;

(d) "terms of consignment" means the stipulated terms and rates of commission on which Dreweatts accepts instructions from sellers or their agents;

(e) "total amount due" means the hammer price in respect of the lot sold together with any premium, Value Added Tax chargeable and any additional charges payable by a defaulting buyer under these Conditions;

(f) "sale proceeds" means the net amount due to the seller, being the hammer price of the lot sold less commission at the stated rate, Value Added Tax chargeable and any other amounts due to us by the seller in whatever capacity and however arising;

(g) "You", "Your", etc. refer to the buyer as identified in Condition 2.

(h) The singular includes the plural and vice versa as appropriate.

expenses incurred for your account from the hammer price and consent to our right to retain beneficially the premium paid by the buyer in accordance with our Conditions of Sale for Public Auctions and any interest earned on the sale proceeds until the date of settlement.

(b) In case of lots unsold at auction you authorise us at our discretion to reoffer such lots and negotiate a sale within seven days of the auction date, in which case the same charges will be payable as if such lots had been sold at auction and so far as appropriate these Terms apply.

18. **WAREHOUSING.** We disclaim all liability for goods delivered to our saleroom without sufficient sale instructions and reserve the right to make minimum warehousing charge of £10 per lot per day. Unsold lots are subject to the same charges if you do not remove them within a reasonable time of notification. If not removed within three weeks we reserve the right to sell them and defray charges from any net proceeds of sale or at your expense to consign them to the local authority for disposal.

19. **SETTLEMENT.** After sale settlement of the net sum due to you normally takes place within 28 days of the sale (by crossed cheque to the seller) unless the buyer has not paid for the goods. In this case no settlement will then be made but we will take your instructions in the light of our Conditions of Sale for Public Auctions. You authorise any sums owed by you to us on other transactions to be deducted from the sale proceeds. You must note the liability to reimburse the proceeds of sale to us as under the circumstances provided for in Condition 12 above. You should therefore bear this potential liability in mind before parting with the proceeds of sale until the expiry of 28 days from the date of sale.

2. BIDDING PROCEDURES AND THE BUYER

(a) Bidders are required to register their particulars before bidding by completing a sale registration form and to satisfy any security arrangements before entering the auction room to view or bid;

(b) Under the money laundering regulations in force we are required to verify the identity of all customers we transact with as well as any beneficiaries on behalf of whom they may transact. Customers who are unable to or refuse to supply required identification documents and proof of address will not be able to bid in Dreweatts auctions. Copies of customer due diligence checks will be stored for as long as it is necessary to satisfy legal requirements in an appropriate storage facility which for the avoidance of doubt may include storage solely in electronic form;

(c) the maker of the highest bid accepted by the auctioneer conducting the sale shall be the buyer at the hammer price and any dispute about a bid shall be settled at the auctioneer's absolute discretion by reoffering the Lot during the course of the auction or otherwise. The auctioneer shall act reasonably in exercising this discretion.

(d) Bidders shall be deemed to act as principals;

(e) Our right to bid on behalf of the seller is expressly reserved up to the amount of any reserve and the right to refuse any bid is also reserved.

3. **INCREMENTS.** Bidding increments shall be at the auctioneer's sole discretion.

4. **THE PURCHASE PRICE.** The buyer shall pay the purchase price together with a premium thereon of 30% which shall include VAT on the premium at the rate imposed by law. The buyer will also be liable for any royalties payable under Droit de Suite as set out under Information for Buyers.

5. **VALUE ADDED TAX.** Value Added Tax on the hammer price is imposed by law on all items affixed with a dagger (†) or double dagger (‡). Value Added Tax is charged at the appropriate rate prevailing by law at the date of sale and is payable by buyers of relevant Lots. (Please refer to "Information for Buyers" for a brief explanation of the VAT position).

6. PAYMENT

(a) Immediately a Lot is sold you will:

(i) give to us, if requested, proof of identity, and

(ii) pay to us the total amount due or in such other way as is agreed by us.

(b) Any payments by you to us may be applied by us towards any sums owing from you to us on any account whatever without regard to any directions of you or your agent, whether expressed or implied.

(c) In order to comply with money laundering regulations we reserve the right to require proof of source of funds and/or confirmation of the nature and source of wealth for all receipts of monies from clients directly or from third parties for payments on behalf of clients.

7. TITLE AND COLLECTION OF PURCHASES

(a) The ownership of any Lots purchased shall not pass to you until you have made payment in full to us of the total amount due.

(b) You shall at your own risk and expense take away any lots that you have purchased and paid for not later than 3 working days following the day of the auction or upon the clearance of any cheque used for payment after which you shall be responsible for any removal, storage and insurance charges.

(c) No purchase can be claimed or removed until it has been paid for.

8. REMEDIES FOR NON-PAYMENT OR FAILURE TO COLLECT PURCHASES

(a) If any Lot is not paid for in full and taken away in accordance with these Conditions or if there is any other breach of these Conditions, we, as agent for the seller and on our own behalf, shall at our absolute discretion and without prejudice to any other rights we may have, be entitled to exercise one or more of the following rights and remedies:

(i) to proceed against you for damages for breach of contract;

(ii) to rescind the sale of that Lot and/or any other Lots sold by us to you;

(iii) to resell the Lot (by auction or private treaty) in which case you shall be responsible for any resulting deficiency in the total amount due (after crediting any part payment and adding any resale costs). Any surplus so arising shall belong to the seller;

(iv) to remove, store and insure the Lot at your expense and, in the case of storage, either at our premises or elsewhere;

(v) to charge interest at a rate not exceeding 15% per month on the total amount due to the extent it remains unpaid for more than 3 working days after the sale;

(vi) to retain that or any other Lot sold to you until you pay the total amount due;

(vii) to reject or ignore bids from you or your agent at future auctions or to impose conditions before any such bids shall be accepted;

(viii) to apply any proceeds of sale of other Lots due or in future becoming due to you towards the settlement of the total amount due and to exercise a lien (that is a right to retain possession of) any of your property in our possession for any purpose until the debt due is satisfied.

(b) We shall, as agent for the seller and on our own behalf pursue these rights and remedies only so far as is reasonable to make appropriate recovery in respect of breach of these conditions.

9. THIRD PARTY LIABILITY. All bidders, buyers and other members of the public on our premises are there at their own risk and must note the lay-out of the accommodation and security arrangements. Accordingly neither the auctioneer nor our employees or agents shall incur liability for death or personal injury or for the safety of the property of persons visiting prior to or at a sale (except in each case as may be required by law by reason of our negligence)

10. COMMISSION BIDS. Whilst prospective buyers are strongly advised to attend the auction and are always responsible for any decision to bid for a particular Lot and shall be assumed to have carefully inspected and satisfied themselves as to its condition, we will if so instructed clearly and in writing execute bids on their behalf. Neither the auctioneer nor our employees or agents shall be responsible for any failure to do so.

Where two or more commission bids at the same level are recorded we reserve the right in our absolute discretion to prefer the first bid so made.

11. WARRANTY OF TITLE AND AVAILABILITY. The seller warrants to the auctioneer and you that the seller is the true owner of the property consigned or is properly authorised by the true owner to consign for sale and is able to transfer good and marketable title to the property free from any third party claims.

Save as expressly set out above, all other warranties, conditions or other terms which might have effect between the Seller and you, or us and you, or be implied or incorporated by statute, common law or otherwise are excluded to the fullest extent permitted by law.

12. AGENCY. The auctioneer normally acts as agent only and disclaims any responsibility for default by sellers or buyers.

13. TERMS OF SALE. The seller acknowledges that Lots are sold subject to the stipulations of these Conditions in their entirety and on the Terms of Consignment for Public Auctions as notified to the consignor at the time of the entry of the Lot.

14. DESCRIPTIONS AND CONDITION

(a) Whilst we seek to describe lots accurately, it may be impractical for us to carry out exhaustive due diligence on each lot. Prospective buyers are given ample opportunities to view and inspect before any sale and they (and any independent experts on their behalf) must satisfy themselves as to the accuracy of any description applied to a lot. Prospective buyers also bid on the understanding that, inevitably, representations or statements by us as to authorship, genuineness, origin, date, age, provenance, condition or estimated selling price involve matters of opinion. We undertake that any such opinion shall be honestly and reasonably held and accept liability for opinions given negligently or fraudulently. Subject to the foregoing neither we the auctioneer nor our employees or agents nor the seller accept liability for the correctness of such opinions and all conditions and warranties, whether relating to description, condition or quality of lots, express, implied or statutory, are hereby excluded. Dreweatts is not liable for damage to gilded picture frames, plaster picture frames or picture frame glass; if the Lot is or becomes dangerous, we may dispose of it without notice to you in advance in any manner we see fit and will be under no liability for doing so. This Condition is subject to the next following Condition concerning deliberate forgeries and applies save as provided for in paragraph 6 “information to buyers”.

(b) Private treaty sales made under these Conditions are deemed to be sales by auction for purposes of consumer legislation.

15. FORGERIES. Notwithstanding the preceding Condition, any Lot which proves to be a deliberate forgery (as defined) may be returned to us by you within 21 days of the auction provided it is in the same condition as when bought, and is accompanied by particulars identifying it from the relevant catalogue description and a written statement of defects. If we are satisfied from the evidence presented that the Lot is a deliberate forgery we shall refund the money paid by you for the Lot including any buyer's premium provided that (1) if the catalogue description reflected the accepted view of scholars and experts as at the date of sale or

(2) you personally are not able to transfer a good and marketable title to us, you shall have no rights under this condition.

The right of return provided by this Condition is additional to any right or remedy provided by law or by these Conditions of Sale.

16. PRIVACY NOTICE. We will hold and process any personal data in relation to you in accordance with our current privacy policy, a copy of which is available on our website www.dreweatts.com/privacy-policy/.

GENERAL

17. We shall have the right at our discretion, to refuse admission to our premises or attendance at our auctions by any person.

18. (a) Any right to compensation for losses liabilities and expenses incurred in respect of and as a result of any breach of these Conditions and any exclusions provided by them shall be available to the seller and/or the auctioneer as appropriate.

(b) Such rights and exclusions shall extend to and be deemed to be for the benefit of employees and agents of the seller and/or the auctioneer who may themselves enforce them.

19. Any notice to any buyer, seller, bidder or viewer may be given by first class mail, email or Swiftmail in which case it shall be deemed to have been received by the addressee 48 hours after posting.

20. Special terms may be used in catalogue descriptions of particular classes of items in which case the descriptions must be interpreted in accordance with any glossary appearing at the commencement of the catalogue.

21. Any indulgence extended to bidders, buyers or sellers by us notwithstanding the strict terms of these Conditions or of the Terms of Consignment shall affect the position at the relevant time only and in respect of that particular concession only; in all other respects these Conditions shall be construed as having full force and effect.

22. These Conditions shall be governed by and construed in accordance with English law and the parties irrevocably submit to the exclusive jurisdiction of the English courts.

Group Departments

NEWBURY

Dreweatts

Donnington Priory

Newbury

Berkshire RG14 2JE

Auctions, exhibitions and valuations

LONDON

Dreweatts / Bloomsbury Auctions

16-17 Pall Mall

St James's

London SW1Y 5LU

Auctions, exhibitions and valuations
by appointment

+44 (0) 1635 553 553

info@dreweatts.com

dreweatts.com

CHAIRMAN

George Bailey

MANAGING DIRECTOR

Jonathan Pratt

ASIAN CERAMICS AND WORKS OF ART

Mark Newstead

Dr Yingwen Tao

BLOOMSBURY AUCTIONS

BOOKS AND MANUSCRIPTS

Dr Timothy Bolton

Camilla Previté

Roxana Kashani

BRITISH AND EUROPEAN CERAMICS

AND GLASS

Mark Newstead

Geoffrey Stafford Charles

CLOCKS AND SCIENTIFIC

INSTRUMENTS

Leighton Gillibrand

COUNTRY SPORTING

Geoffrey Stafford Charles

DECORATIVE ARTS

Geoffrey Stafford Charles

Ashley Matthews

EUROPEAN SCULPTURE AND

WORKS OF ART

Charlotte Schelling

ESTATES AND COLLECTIONS

Will Richards

Joe Robinson

FINE ART

Jennie Fisher

Lucy Gregory

Francesca Whitham

FURNITURE AND CARPETS

Ben Brown

Ashley Matthews

William Turkington

JEWELLERY, SILVER, WATCHES

AND OBJECTS OF VERTU

James Nicholson

Nick Mann

Tessa Parry

LIVE STEAM AND MODEL

ENGINEERING

WORKS OF ART

Michael Matthews

WINE

Mark Robertson

Dianne Wall

