

DREWATTS

EST. 1759

THE SUMMER SALE

TO INCLUDE PROPERTY
OF THE LATE BETTY, LADY
GRANTCHESTER (1925-2019)

DONNINGTON PRIORY |
WEDNESDAY 19 AUGUST 2020





(detail)

DREWEATTS

EST. 1759

Already consigned:

λ Charles Camoin (French 1879-1965)

Bateaux dans le port

Oil on canvas

Est. £12,000-18,000(+fees)

INVITING ENTRIES | MODERN AND CONTEMPORARY ART

We are now inviting entries for our auction on 15 October 2020

AUCTION LOCATION

Dreweatts

Donnington Priory

Newbury

Berkshire RG14 2JE

ENQUIRIES

Lucy Gregory

+44 (0) 1635 553 553

pictures@dreweatts.com

dreweatts.com



DREWEATTS

EST. 1759

THE SUMMER SALE

**TO INCLUDE PROPERTY OF THE LATE BETTY,
LADY GRANTCHESTER (1925-2019)**

DONNINGTON PRIORY | WEDNESDAY 19 AUGUST 2020 | 10.30AM

AUCTION FORMAT: LIVE ONLINE

This is a live online auction with an auctioneer. Bidding is available online, by telephone or commission (absentee) bids. If not bidding online, please contact Dreweatts to register all commission bids or telephone bids by 12 noon (local time) on Tuesday 18 August.

FREE ONLINE BIDDING IS AVAILABLE AT DREWEATTS.COM:

The Dreweatts' bidding platform allows you to watch, listen and bid with no additional online bidding fees applicable.

REGISTRATION:

We advise clients to register at least 48 hours in advance of the auction as you may be asked to provide documents to verify your identity. Registration for new clients will close at 12 noon (local time) on Tuesday 18 August.

BUYER'S PREMIUM:

Buyer's premium is charged per lot at 25% of the hammer price (30% including VAT) up to and including £500,000, 20% (24% including VAT) of the hammer price from £500,001 up to and including £1,000,000, and 12% of the hammer price (14.4% including VAT) in excess of £1,000,001.

PAYMENT:

Please note, we cannot accept payment by telephone for lots bought by first time bidders. For details on other payment methods, please see our website.

AUCTION NO. 14276

SPECIALISTS:

Ashley Matthews (Furniture & Clocks)

Ben Brown MRICS (Furniture & Carpets)

Charlotte Schelling (European Sculpture & Works of Art)

Francesca Whitham (Pictures)

Geoffrey Stafford Charles MRICS (Ceramics & Glass)

Mark Newstead (Asian Ceramics & Works of Art)

Will Turkington (Furniture & Carpets)

VIEWING:

Viewing will be available by appointment only and in strict accordance with government Covid-19 regulations.

Sunday 16 August 10am – 2pm

Monday 17 August 10am – 5pm

Tuesday 18 August 10am – 5pm

Please note there is no viewing on the morning of the sale.

AUCTION:

Dreweatts

Donnington Priory

Newbury

Berkshire RG14 2JE

ENQUIRIES:

+44 (0) 1635 553 553

info@dreweatts.com

dreweatts.com

Front cover: Lot 185

Back cover: Lot 178



The Property of the Late Betty, Lady Grantchester (1925-2019)
Removed from The Gate House, Kingston, Surrey



The Gate House, Kingston, Surrey



Betty Suenson-Taylor was born Betty Moores in 1925. She was the eldest child of the Littlewoods founder Sir John Moores (1896-1993). Betty was educated at Cheltenham Ladies College and Newnham College, Cambridge. It was as an undergraduate at Cambridge that she met her husband Kenneth Suenson-Taylor, who became 2nd Baron Grantchester in 1975.

In the early 1970s Betty joined the board of Littlewoods, and took over as Director in 1977, at a time when there were few women board directors. Betty was exceptionally renowned for her charitable work through the Moores Family Charity, as well as supporting women's education at both Newnham College and Lucy Cavendish College in Cambridge. Her other charitable works included support for the Mersey Forest, Liverpool John Moores University and the Welsh National Opera. Lady Grantchester died in 2019 at the age of 93.



1
A pair of silvered metal three light sconces in William and Mary taste, circa 1900, each with three acanthus scrolled arms issuing from a cartouche backplate cast with swags, a central cabochon, and putti, 44cm high, 33cm wide, 20cm protuberance

Property from the estate of the late Betty, Lady Grantchester

£150-250

2Y

A Franco-Flemish ivory Corpus Christi, late 17th/early 18th century, characteristically portrayed with crown of thorns and draped perizonium, the head inclined slightly to dexter, mounted to a later ebonised cross, 29cm high, 18.5cm wide overall

Property from the estate of the late Betty, Lady Grantchester

£200-300



2



3

3
A giltwood side chair in 17th century style, 19th century, together with a giltwood chair in George II style, circa 1900, (2)

Property from the estate of the late Betty, Lady Grantchester

£250-350



4

4

Follower of Christian Seybold
Portrait of a gentleman, small bust-length in a fur lined red coat and hat
Oil on copper, feigned oval
8 x 5.7cm (3 x 2 in.)

Together with another portrait of a gentleman, bust-length, in a blue coat and cap, oil on copper, oval by another hand
8 x 5.7cm (3 x 2 in.) (2)

Provenance: Sale, 8 July 1981, Lot 210

Property from the estate of the late Betty, Lady Grantchester

£2,000-3,000





5

After Justus Sustermans

Portrait of Prince Waldemar Christian of Denmark in armour with a lace collar

Oil on canvas

76 x 60cm (29¾ x 23½ in.)

After a painting held at the Palazzo Pitti, Florence.

Property from the estate of the late Betty, Lady Grantchester

£500-700

6

A pair of lacquered and patinated bronze table lamps in Gothic Revival taste, late 19th century and refitted, of hexagonal section, the faceted stems with central hexafoil knops and conforming spreading bases, 76cm overall including later electrical fittings

Property from the estate of the late Betty, Lady Grantchester

£250-350

7

A set of Minton models of the Queen's Beasts, circa 1955, after the original models by James Woodford, OBE, RA, printed gilt titles and factory marks, in the original presentation case

Property from the estate of the late Betty, Lady Grantchester

£400-600



6



7



8

8
A pair of cut and moulded clear glass and gilt metal mounted lustre candlesticks, possibly Northern Europe, third quarter 19th century, in Gothic Revival taste, the everted and lozenge cut drip pans hung with faceted drops overall, rising from openwork stems cast with quatrefoils and inset with further faceted pendants, descending to stylised flowerhead bases, 28cm high

Property from the estate of the late Betty, Lady Grantchester

£250-350



9

9
A mahogany and inlaid occasional table, incorporating late 19th century and later associated elements, the shaped oval top inset with a penwork view of Pembroke above a slender baluster stem and a quadripartite acanthus carved base, 68cm high, 73cm wide, 57cm deep

Property from the estate of the late Betty, Lady Grantchester

£250-350

10
A George III satinwood chest on chest, circa 1800, with ebonised stringing throughout, 191cm high, 109cm wide, 55cm deep

Property from the estate of the late Betty, Lady Grantchester

£400-600



10

11
A group of leather clad desk items comprising; a Florentine brown leather envelope casket, with divided interior and gilt tooling, a similar blotting pad, stationery rack, and pen tray, Standish, and two further similar blotters (6)

Property from the estate of the late Betty, Lady Grantchester

£200-300



11



12

12
A Regency patinated and gilt bronze standish, circa 1820, the ink and pen holders enclosed in an oval shell, supported by twin dolphins, on a spreading square base, 12cm high, 15cm wide; a pair of Regency or George IV patinated bronze perfume burners, circa 1825 and later adapted as candlesticks, of campana form, 16.5cm high; and a large Continental gilt metal and moulded glass inkwell, later 19th century, surmounted by a spread-eagle, 21cm high

Property from the estate of the late Betty, Lady Grantchester

£300-500

13
A satinwood and rosewood banded Pembroke table, circa 1790 and later, with frieze drawer and ring-turned tapering legs terminating in brass and rolled leather castors, 72cm high, 99cm wide (open), 82cm deep

Property from the estate of the late Betty, Lady Grantchester

£300-500



13



14

14
Two similar gilt metal and glass pendant ceiling lights, 20th century, the reeded circlets suspending a moulded and frosted ovoid shade respectively, with foliate finials and berried terminals, each enclosing a single light fitment, approximately 51cm high; along with a green and gold painted metal and frosted glass four light hanging lamp, 73cm high

Property from the estate of the late Betty, Lady Grantchester

£200-300



16 (part lot)

15 (no lot)

16Y
A suite of kingwood and gilt metal mounted bedroom furniture, in Louis XV style, 20th century, including two dressing tables and a drop leaf side table, the largest dressing table 75cm high, 74cm wide, 50cm deep (3)

Property from the estate of the late Betty, Lady Grantchester

£800-1,200

17Y

A French enamel, tortoiseshell and composition bonbonniere, circa 1790, the cover with a semi relief profile portrait of Henri IV, on a blue guilloché ground against sunburst engraving, the gold border with crossed ribbons, dark cream composition box with tortoiseshell lining, 7.8cm (3in) diameter

Property from the estate of the late Betty, Lady Grantchester.

£600-800



17

18

A pair of French gilt metal and champlévé enamel twin handled side or garniture urns and covers, circa 1870, in the style of work by Alphonse Giroux, the knopped finials and domed covers descending to cylindrical bodies cast with a band of lambrequin, on waisted circular socles, enamelled with diapering and arabesques overall, 25cm high, 15cm wide

Property from the estate of the late Betty, Lady Grantchester

£200-300



18



19

A pair of gilt metal mounted green Serpentine marble table lamps, in Louis XVI style, 20th century, of urn form, each with twin rams' masks and swags, on square bases, 42cm high including electrical fittings

Property from the estate of the late Betty, Lady Grantchester

£150-250

20

A pair of Continental gilt and silvered metal and pottery mounted jardinières, late 19th/ early 20th century, with ropework mounts and twin putto handles flanking the rust-ground campana form bodies, 41cm high, 43cm wide

Property from the estate of the late Betty, Lady Grantchester

£150-250



20



21



21

A pair of French gilt metal *chenets* in Louis XVI style, circa 1900, possibly previously ends of a fender, each with a twin handled urn finial cast with rams' masks and a writhing serpent, descending to pilaster bases inset with medallions, supporting reclining putti, with cast iron supports to rear, 40cm high, 38cm wide

Property from the estate of the late Betty, Lady Grantchester

£300-500



22

22

A pair of Russian malachite veneered and ormolu mounted small tazze, mid-19th century, the dished circular tops with sections of malachite and raised on baluster stems and spreading circular fluted socles, 9cm high; an agate, malachite inset and silvered metal mounted folio, last quarter 19th century, with cruciform central design, 25 x 19cm; a Continental malachite veneered and slate lined envelope box, later 19th century, of domed rectangular form, the interior with removable dividers, 13 x 21 x 12cm; and a malachite, gilt and silver plated letter opener

Property from the estate of the late Betty, Lady Grantchester

£600-800

23

A giltwood urnstand, second half 19th century, with circular malachite top above a petal frieze, the legs in the form of adorsed dolphins, 39cm high, 46cm wide overall

Property from the estate of the late Betty, Lady Grantchester

£300-500



23



24 (part lot)



24

An extensive modern Royal Copenhagen 'Golden Basket' pattern part dinner and breakfast service, comprising: approximately twenty-seven soup plates; sixty dinner plates; thirty-six breakfast plates; twelve side plates; twenty-four fish plates; twelve crescent shaped salad plates; two small octagonal butter dishes; a pair of oval butter dishes; three bowls; a pedestal bowl with knopped stem; three other comports; twelve two handled soup bowls and covers and twenty-three stands; eleven various serving plates in sizes; twenty-two various preserve dishes; a pair of vegetable tureens, covers and stands; three oval sauce tureens, covers and integral stands; a pair of sauce boats and stands; three small pedestal dishes; a pair of stem cups; six candlesticks; a match-strike; a trumpet vase; four other small oval section vases; four solifleur menu holders; twelve teacups and saucers; ten small coffee cups and twelve saucers; three further coffee cups and saucers; and a coffee pot and cover; and two boxed sets of modern Bing & Grøndahl blue printed square dishes, decorated with Danish scenes

Property from the estate of the late Betty, Lady Grantchester

£1,000-1,500

Other properties

25

A pair of brass and glazed hexagonal hall lanterns, of recent manufacture, each frame surmounted with six serpentine ceiling supports, and enclosing three light fittings, 79cm high, 33cm diameter

£500-700



25

26

A Victorian oak hall bench, circa 1880, in the manner of James Shoolbred & Co., 51cm high, 92cm wide, 28cm deep

A similar model of hall bench is illustrated in the Pictorial Dictionary of British 19th Century Furniture Design, page 337 with an illustration taken from Shoolbred, dated 1876

£200-300



26

27

27

A Tabriz rug, approximately 235 x 137cm

£250-350



28

28

A Victorian giltwood and composition mirror and console table, last quarter 19th century, in the manner of C. & R. Light, comprising: a tryptic mirror plate, divided by fluted columns and surmounted overall by a shell cresting, 200cm high, 165cm wide above a console table, of serpentine outline with mirrored back and shelves, 84cm high, 167cm wide, 51cm deep

A Similar model of mirror with console is illustrated in the Pictorial Dictionary of British 19th Century Furniture Design, page 394, with an illustrations taken from C. & R. Light, dated 1881

£800-1,200



29

29 +
Joseph Kirkpatrick (British 1872-1936)
An orchard at Pershore, Worcestershire
Pencil and watercolour
Signed lower right
24 x 34cm (9¼ x 13¼ in.)

£150-250



30

30
A Victorian bird's-eye maple cabinet, circa 1860, in the manner of Holland & Sons, of small proportions, the doors opening to a fitted interior incorporating four mahogany lined drawers, 115cm high, 51cm wide, 31cm deep

£250-350

31
A pair of Victorian walnut and upholstered stools, circa 1860, each approximately 42cm high, the tops 43 x 41cm

£300-500



31

32

An early Victorian bird's-eye maple wall mirror, circa 1840 and with later mirror plate, with gilt slip, 109cm high, 80cm wide

£200-300



32

33

A pair of English porcelain gilt-metal mounted two-handled vases fitted as lamps, the vases circa 1830, painted with flowers within Greek key pattern bands, fitted for electricity as lamps, the porcelain approximately 30cm high, with fittings and shades, 71cm high

£300-500



33

34

A Victorian bird's-eye maple library table, circa 1870, in the manner of Holland & Sons, 73cm high, 114.5cm wide, 63cm deep

£600-800



34



35

35
A mahogany extending dining table, late 19th century, of oval outline with moulded edge, and with two additional leaf insertions, on tapering reeded supports united by V-shaped stretchers, 77cm high, 164cm long (unextended), 137cm wide

£400-600



36

36
A Tabriz carpet, approximately 373 x 282cm

£600-800

37

A pair of George III turned mahogany and brass mounted candlesticks, circa 1790, the beaded and foliate sconces rising from fluted and twist fluted baluster stems, with domed and dished bases, lead-weighted, 38.5cm high

£400-600



37

38

A George III mahogany sideboard, circa 1780, of semi elliptical outline, the central drawer flanked by deep drawers fronted by twin false drawer fronts, and further flanked by cupboard doors, 94cm high, 183cm wide, 65cm deep

£300-500



38

39Y

A George III mahogany cellaret, circa 1770, of rectangular form, the rosewood banded lid enclosing a divided interior, on ogee bracket feet with concealed roller castors, 48cm high, 54cm wide, 30cm deep

Provenance: Ashfield Hall, Neston, Cheshire

£300-500



39



40

40
A pair of cut glass and rock crystal mounted gilt metal twin light candelabra in 18th century taste, second quarter 20th century, each with three scrolled branches hung and mounted with floral and teardrop pendants overall, issuing from baluster form and faceted stems with scroll cresting and spire finials, with domed and foliate cast circular bases, 71cm high

Provenance: Property from a Private Collection

£500-700



41

41 Y
A kingwood, tulipwood inlaid, and gilt metal mounted commode in Louis XV style, first half 20th century, of bombe outline, the rouge marble top above two long drawers and cabriole legs, serial numbered 6010, 91cm high, 141cm wide, 66cm deep

Provenance: Property from a Private Collection

£1,000-1,500

42

A pair of gilt-bronze and white marble mounted cassolettes in Louis XVI style, 19th century, the domed covers each enclosing a candle nozzle, and cast with fircone finials, descending to ovoid bodies inset with recessed bands of Vitruvian scrolls and mounted with rams' masks and festoons, raised on hoof feet, above beaded circular bases, 26cm high overall

£500-700



42

43

A Louis XV grey painted centre table, mid 18th century, 72cm high, 130cm wide, 82cm deep

£300-500



43

44

A pair of carved beech and painted tub shaped armchairs, in Louis XV style, late 19th/early 20th century, each 93cm high, 69cm wide, 80cm deep

£300-500



44



45

45
A stripped pine over door in George III style, 19th century, after the manner of John Vardy, 27cm high, 140cm wide, 11cm deep

£0-0



46

46
A modern gypsum and metal mounted architectural model of the Burlington House Arch, by Timothy Richards, of recent manufacture, with paper label to the rear and monogram to socle, 20.5cm high, 18cm wide

£150-250

47
A cut and moulded glass columnar table lamp, 20th century, with Corinthian column capital above a faceted stem and spreading stepped base, 64cm high overall (including fitment)

£800-1,200



47

48
A stripped pine wall mirror in George II style, of recent manufacture but probably utilising 19th century timber, after the manner of William Kent, 120cm high, 84cm wide

£200-300



48



49

49
A stripped wood, probably Lime, chimney piece in George III style, 19th century, with applied moulded decoration, the aperture, 95cm high, 88cm wide, the chimney piece 118cm high, 133cm wide, 15cm deep overall

£300-500

50
An engraved steel basket grate in George III style, incorporating period elements, later fitted for gas, with railed basket flanked by finials, the frieze pierced with ovals and the central tablet decorated with patera, on square section tapering legs, the back numbered 3908, 58cm high, 79cm wide, 48cm deep

£400-600



50



51

51
A Victorian sculpted terracotta relief by George Tinworth for Doulton & Co, Lambeth, Gethsemane, circa 1880, rectangular, the figures modelled in the round and in high relief, extensively inscribed with verse, inscribed *H. Doulton & Co Lambeth, G Tinworth Sc.*; within a green velvet lined mount, later framed and glazed, the relief 14cm high, 32cm wide; the overall dimensions 32cm high, 50cm wide

Please see our website for full footnote

£250-350

52

A Charles II oak joint stool, circa 1680, the rectangular top with moulded edge, above the channel moulded frieze, on turned legs joined by a rectangular peripheral stretcher, 54cm high, 45cm wide, 27cm deep

Provenance: Waystrode Manor, Kent

£200-300



52

53

An oak coffer, late 17th century, the three panel front with geometric motifs, on V-cut end boards, 59cm high, 112cm wide

£250-350



53

54

A pair of Charles II caved walnut armchairs, circa 1670, the pierced and foliate carved top rail centred by a putti, above the caned back flanked by barley twist supports and downswept scrolling arms, the caned seat on barley twist legs incorporating flowerhead terminals, joined by a pieced and foliate carved stretcher centred by a putti at the front, each 118cm high, 62cm wide, 55cm deep

Provenance: Waystrode Manor, Kent

£1,000-1,500



54



55

55

An oak refectory table, in late 17th century style, 20th century, 74cm high, 254cm wide, 90.5cm deep

£400-600

56

A Tetex carpet, circa 1930, approximately 243 x 171cm

£400-600

56





57

57
A Japanese Bronze Base of rounded form modelled as a wicker fish-trap, supported on three legs formed as warty toads, the whole cast and applied with a further toad, cicada, mantis and ant in copper and silver, diameter approximately 38cms, height 14cms, Meiji Period: And a Pair of Japanese Bronze Flasks, each of flattened circular form decorated with geese and Cranes inlaid in silver beneath a band of lappets, with silver lining to the neck, height 19cms, Meiji-Taisho era

£200-300



59



58

58
A Japanese Iron Tetsubin of squat, circular form decorated on the roughly cast ground with panels of birds and flowers in gold and silver nunome, with overhead swing handle and bronze cover inscribed Ryobundo sei, height 21cms, 19th Century; And An Iron Tetsubin of conical form cast in relief with silver details showing a dragon before Fujiyama, overhead swing handle and bronze cover signed Ryobundo sei, height 21.2cms, 19th Century

£200-300

59
A Japanese Bronze Lantern, formed at the base with three elephant on a lobed stand, rising in a column to support a lattice work lantern cast with sparrows and peony flowers beneath a typical, pagoda-like roof with winged dragons at the corners and surmounted by a staged finial of acanthus leaves and a flaming tama, foundry seal to base, height 83cms, 20th Century

£200-300

60

A Japanese bronze dish, of circular form decorated in relief and gilding with Daikoku and ebisu beside a kadomatsu and two rice bales, cast signature, 36.8cm diameter, Meiji-Taisho Era

£120-180



60



61

61

A Japanese Bronze Figure of Hotei, the smiling deity stands with his rotund belly hanging out of his loose robe as he points skywards, his left hand grips the cords of a double-gourd bottle, height 32.7cms, unsigned, Meiji-Taisho era

£300-400

62

A Japanese Bronze Ikebana Vase with bulbous body cast with dragons on a diaper ground, rising to a broad mouth with manji diaper edge, the whole on a circular base with animal mask legs, height 4.7cms, foundry seal to base, Meiji Period

£200-300



62



63

63

A black lacquered and gilt Chinoiserie decorated bureau bookcase, early 18th century and later, probably Anglo-Dutch, 235cm high, 98cm wide, 51cm deep

Provenance: From the Collection of the late Max Harari

£2,000-3,000

64

A mahogany and parcel gilt wood wall mirror, in George II style, 19th century, after the manner of William Kent, 140cm high, 79cm wide

£600-800



64



65

65

A George II green painted and parcel gilt chinoiserie decorated corner cupboard, circa 1750, 92.5cm high, 59cm deep, 39cm deep

£200-300

66

A black lacquered centre table in George II style, of recent manufacture, the top inset with a specimen marble insert, with plain frieze and tapering legs terminating in claw and ball feet, 75cm high, 135cm wide, 89cm deep

£400-600



66



67

67

A gilt brass and glazed cylindrical hall lantern in Louis XVI taste, 20th century, the Rocaille ceiling hook above alternating scrolled and knopped supports, descending to a recessed frame mounted with flowerheads and floral bud finials, on conforming feet; a tubular stem suspending six candle arm light fittings within; 114 cm high, 48cm diameter

£500-800

68

A carved giltwood picture frame in Louis XVI style, 20th century, surmounted by a ribbon tie and with flower encrusted festoons and drapery, containing a portrait of a French nobleman, oil on canvas, the frame 89cm high overall, 36cm wide

Provenance: formerly from a Private Collection

£200-300



68

69

A suite of giltwood seat furniture in Louis XVI style, early 20th century, comprising a pair of armchairs and eight side chairs, all upholstered in grey watered silk (10)

Provenance: Property from a Private Collection

£700-1,000



69 (set of 10)

70

A pair of substantial French gilt composition three light wall appliques in Louis XVI style, 20th century, in the manner of examples by Jean-Charles Delafosse, the foliate and imbricated laurel carved sconces above scrolled conforming arms issuing from fluted pilaster backplates, each with festooned ram's head mount and a flambeau and festooned urn finial, 89cm high, 58cm wide, 30cm protuberance

£150-200



70



71

71

A French gilt metal mantel clock, Raingo Freres, Paris, late 19th century, the eight day bell striking movement with outside countwheel stamped for the maker and serial numbered 3155 to the backplate, the Roman numeral dial with inset enamel cartouche numerals, the case with an openwork cartouche with festoons of flowers above the dial supported on S-scrolls and a platform base, the case stamped H PICARD and with corresponding serial number, 30cm high overall

£150-250

72

A Continental figured walnut commode, mid 18th century, 93cm high, 128cm wide, 67cm deep

£800-1,200



72



73
A pair of striped marble desk obelisks in the style of Grand Tour souvenirs, 20th century, comprised of specimens of black and white veined and Siena marble, of tapered square section, 25cm high; and a Siena marble obelisk, late 19th/20th century, circa 41cm high; each presented on an ebonised square plinth

£100-150

74

A William IV bird's-eye maple teapoy, circa 1835, in the manner of Gillows, the lid enclosing a fitted interior with two central velvet lined recesses for mixing bowls and a pair of flanking lidded canisters, on a lappet carved stem and quadripartite platform with concealed cups and castors, 76cm high, 47cm wide, 36cm deep

In Gillows of Lancaster and London 1730-1840 Susan E Stuart remarks that teapoys were produced by the firm from 1814 and were frequently reproduced in estimate sketch books during the second quarter of the 19th century (Vol II p. 123-124)

£300-500



74



75

75
A William IV simulated rosewood side cabinet, circa 1835, of breakfront outline, 95cm high, 188cm wide, 37cm deep

£600-800

76

A collection of twenty two specimen hardstone models of eggs, including alabaster, granite, and onyx, in varying sizes, contained within a walnut oval footed bowl, 9cm high, 41cm long

£180-220



76



77

77Y

A William IV rosewood breakfast table, circa 1835, the book-matched veneered circular top above a faceted tapering stem and tri-form concave sided platform with moulded bun feet and concealed castors, 71cm high, the top 124cm diameter

£400-600

78

A Persian rug, probably Kashan, the cream ground with all over blue trellis work enclosing formal flower sprays, within a narrow border, approximately 209 x 132cm

£400-600

78





79

79

A Scottish George III mahogany longcase clock, circa 1780, Robert Welsh, Dalkeith, with eight-day bell striking movement, the 12inch arched dial with applied boss to the arch engraved Robt. Welsh, Dalkeith, above the Roman numeral chapter ring with Arabic five minutes, the case with quarter fluted pilasters to the angles, some old paper labels inscribed Thorburn present to the case, 224cm high overall

Robert Welsh is recorded in Baillie G. H. Watchmakers & Clockmakers of the World as working in Dalkeith 1768-77

Provenance: by repute previously in the collection of Sir Michael Thorburn of Glenormiston, Peeblesshire

£300-500

80 Y

A George III mahogany and tulipwood banded oval Pembroke table, circa 1780, the top incorporating a pair of hinged leaves, above a frieze drawer and an opposing false drawer, on square section fluted tapering legs terminating in brass caps and castors, 72cm high, the top 79.5 x 104cm (open)

£500-700



80

81



81

A Kashan carpet, the central medallion within a claret coloured field decorated overall with flowering foliage, cornered by spandrels and within a profusely decorated border, approximately 437 x 318cm

£1,000-1,500



82

82 Y

A set of seven mahogany dining chairs, 19th century, to include one armchair, the top rails each with a rosewood inset tablet above C-scroll vertical splats, overstuffed seats and turned legs

£500-700

83

A George III mahogany and crossbanded sideboard, circa 1790, 95cm high, 198cm wide, 82cm deep

£600-1,000



83



84

84

A pair of turned walnut candlesticks, probably Scandinavian, 19th century and later fitted as lamps, with wide drip pans above a turned stem, triform socle and paw feet, each 32cm high excluding fitment

£150-200

85

A walnut and oyster veneered side table, in William & Mary style, incorporating late 17th century and later elements, 68cm high, 72cm wide, 49.5cm deep

£400-600



85



86

86

A walnut armchair, late 17th century, with caned back and seat panel and with barley twist supports throughout, 120cm high, 64cm wide, 58cm deep

Provenance: Waystrode Manor, Kent

£250-350

87

Bullock, John. An English Expositour, or Compleat Dictionary . . . first set forth by J.B. . . . and now the fifth time revised, corrected, and very much augmented . . . by a Lover of the Arts. Cambridge, printed by John Hayes, printer to the University and are to be sold by G. Sawbridge at the Bible on Ludgate-hill, London. 1676

£300-500



87



88

88

A William III oak chest of drawers, circa 1695, 75cm high, 80cm wide, 48cm deep

£300-500

89

89

A Bokhara Carpet, approximately 318 x 224cm

£1,000-1,500





90

90
A pair of carved, painted, ebonised and parcel gilt wood blackamoor torcheres, 20th century, in the manner of 18th century Venetian examples, each fitted for electricity, the metal sconces held aloft, 213cm high overall

£1,500-2,000

91

A French gilt bronze fifteen light chandelier in Louis XIV taste, second half 19th century and later refitted, possibly previously for oil, the knopped central stem with stylised urn and circular boss, applied with foliate and dolphin mounts, above conforming branches, hung with slender cut glass pendants, 102cm high, 78 cm diameter

Provenance: Property from a Private Collection

£500-700



91

92

A composite marble bust of a maiden in 19th century style, 20th century, portrayed looking forward with tied back hair with a wrapped plait, her blouse loosely draped and open to the neck, on a socle 54cm high overall

£500-700



92

93

A carved giltwood console table, late 19th century, the moulded, shaped rouge royale marble top above a guilloche carved frieze on a single pierced scrolling and leaf carved support, 80cm high, 68cm wide, 33cm deep

Provenance: Christie's, London, 19 March 1981, lot 102

£400-600



93



94
A Victorian Derbyshire black Ashford marble and pietra dura candlestick, circa 1880, the rectangular shaft inlaid with trailing lilies and leaves, 28.5cm high; a pair of Breccia spheres, 12cm diameter, presented on perspex stands; and three various items of stone and specimen interest, including a curved fragment from a vase in Roman style

£200-300

95
A Victorian figured walnut and specimen marquetry pier cabinet, circa 1870, 111cm high, 85cm wide, 30cm deep

£500-700



95

96
A Victorian walnut and button upholstered armchair, circa 1870, the shaped back flanked by padded arms headed by scrolling foliate terminals, centred by a loose cushion seat, on foliate carved scrolling cabriole legs at the front, terminating in brass carps and castors

Provenance: Oakley House, the Collection of Eustace Gibbs, 3rd Baron Wraxall, KCVO, CMG

£400-600



96

97
A Victorian cream painted, parcel gilt wood and composition oval mirror, circa 1880, 164cm high, 102cm wide

£800-1,200



97

98
An upholstered Knole sofa, recently manufactured by George Smith, labelled for the maker to the underside of the frame, with removable seat cushions and bolsters, 115cm high, 185cm wide, 100cm deep

£1,000-1,500



98



99

99Y

A George IV rosewood and brass inlaid secretaire side cabinet, circa 1825, attributed to Gillows of Lancaster, the shelves superstructure above an arrangement of two drawers, the secretaire drawer enclosing a fitted interior with arrangement of drawers and pigeonholes, 130cm high, 94cm wide, 46.5cm deep

£3,000-5,000



100

100Y

A rosewood and parcel gilt overmantel mirror, in Regency style, late 19th century, the rectangular plate flanked by reeded columns with acanthus vases, 77cm high, 182cm wide

£250-350



101

102

101Y

A George IV rosewood circular centre table, circa 1825, 81cm high, the top 132cm diameter

£400-600

102

A Heriz carpet, the central madder field and flowerhead medallion, profusely foliate decorated with stylised flowers, within cream spandrels, navy borders and multiple guard stripes, approximately 334 x 242cm

£700-1,000





103

A modern jade seated Budai, 34cm wide, wood stand

Provenance: From a Private Collection

£200-300

103



104

104

A Chinese hardwood scroll cabinet, late 19th/ early 20th century, the dished top above a single drawer and pair of cabinet doors, the whole with carved blind fretwork decoration

£400-600



105

105

A Chinese elm altar table, 83cm high, 205cm wide, 55cm deep

£250-350

106

A Chinese hardwood and marble inlaid jardinière stand, the shaped top with pink marble centre above the pierced frieze, supports and stretchers, 70cm high, 37cm wide

£200-300



106

107

A Chinese occasional table, with painted decoration/surface, 85cm high, the top 95cm square

£300-500



107

108

108

A Chinese pale yellow wool rug, 19th century, Qing Dynasty, with 'Shou' symbols, 290cm x 245cm

Provenance: Private Collection purchased, *Illulian*, Milan, June 2001

清 寿字纹北京毯
拍品来源：意大利私人收藏，2001年购自米兰

£300-500





109

109

A rectangular easel mirror, late 20th century, the frame applied with square sections of malachite, 52cm high, 36cm wide

£80-120

110

An oak and brass mounted three tier etagere, 20th century, 84cm high, 59cm wide, 53cm deep

Provenance: From the Collection of the late Max Harari

£300-500



110

111

A pair ebonised and upholstered window seats or dressing stools in Art Deco taste, mid 20th century, 57cm high, 75cm wide, 45cm deep

£200-300



111

112

A gilt brass 'Atmos' timepiece. Jaeger-LeCoultre, model 526-6, circa 1970. The single train movement wound via the expansion and contraction of an aneroid chamber mounted to the rear of the mechanism and regulated by torsion escapement with rotating balance suspended at the base of the movement and numbered 138261 to suspension platform, the circular gilt on white baton numeral chapter ring with Arabic quarters enclosing motionwork inscribed *ATMOS, JAEGER LECOULTRE, FAB. SUISSE, SWISS MADE*, the rectangular five-glass case with canted angles and pin-hinged front door over plinth base incorporating bubble level to the engine-turned interior, with adjustable feet to underside, 23.5cm (9.25ins) high.

£200-300



112



113

113

A pair of stained hardwood and upholstered corner chairs, 20th century, each approximately 88cm high, 89cm wide, 88cm deep overall

£300-500

114

A companion pair of modern red pottery models of big cats, comprising a tiger and a jaguar, each naturalistically coloured and modelled seated on their haunches, 89cm & 83cm high respectively

£300-500



114



115

115

A George IV mahogany dressing mirror, circa 1825, attributed to Gillows, the rectangular plate above the inverted breakfront platform, 69cm high, 57cm wide, 25cm deep

£200-300

116

A Scottish Regency mahogany dressing table, by James Mein of Kelso, circa 1815, with remains of the makers label to underside, 93cm high, 100cm wide, 53cm deep

The Mein family are recorded as cabinet makers in Kelso from 1784- 1851. James Mein (the elder) founded the firm as makers of fine quality furniture and following his death in 1830 his nephew (also called James Mein) took over the business until its dissolution due to bankruptcy in 1851. Their many important patrons are known to have included the 5th & 6th Dukes of Roxburghe at Floors Castle, and the Earl of Haddington at Mellerstain.

£400-600



116

117

A Persian rug, probably Afshar, the field with twin large blue and white hexagonal medallions, approximately 178 x 127cm

£200-300



117

118

A red and gold painted toleware columnar table lamp, probably French, first half 20th century, the baluster stem rising to an everted frosted glass light fitment, enclosed inside a conforming galleried shade painted with laurel motif, approximately 75cm high overall including carrying loop

£300-500



118



119

119

A Regency mahogany chest of drawers, circa 1820, of bowfront outline, 81cm high, 72cm wide, 46.5cm deep

£300-500



120

120

A carved beech and parcel painted rocking horse, 19th century, modeled as a racehorse with legs outstretched, on a cammed rocker base, numbered 060 to the underside of the neck and one of the supports, 55cm high, 115cm long, 30cm wide

£200-300



121

121

A Victorian giltwood and composition oval wall mirror, circa 1860, of large proportion, surmounted by a cartouche and scrolled leaves, 151cm high, 124cm wide

£600-800

122

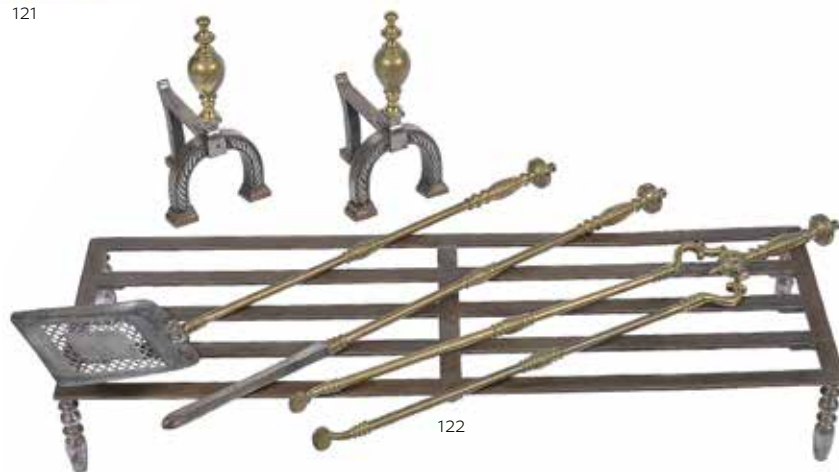
A collection of fireplace furniture, to include; a set of early Victorian brass and steel mounted fire tools, circa 1850, to include shovel, poker and tongs, each with rib-moulded knobs to the handles and shafts, the shovel pierced, each approximately 75cm long; a pair of small steel and brass mounted andirons, George III style, 19th century, with urn finials, 29cm high, 18cm deep; and a steel grille or kettle stand, raised on multi-knopped legs

£250-350

123

A steel and button upholstered club fender, of recent manufacture, the upholstered seat above a double rail of supports and moulded plinth base, 38cm high, 203cm wide, 67cm deep

£300-500



122



123

124Y

A Victorian rosewood three tier whatnot, mid 19th century, with single drawer to the lowest tier, 97.5cm high, 39cm wide, 34cm deep

£400-600

125Y

A rosewood Canterbury, second quarter 19th century, in the manner of W. Smee & Sons, the carved scroll dividers above a single frieze drawer and turned legs terminating in brass caps and castors, 50cm high, 52cm wide, 38cm deep

Similar models of Canterbury are illustrated in the Pictorial Dictionary of British 19th Century Furniture Design, page 422, with illustrations taken from W. Smee & Sons, dated 1850

£300-500



125



124

126Y

A Victorian rosewood inverted breakfront side cabinet, circa 1850, with grey veined white marble top, 92cm high, 210cm wide, 47cm deep

£800-1,200



126



127

127

A giltwood and composition marginal wall mirror, early 20th century, with blue mirror plates surrounding the central oval plate, 84cm high, 64cm wide

£300-500



128

128

A Louis XVI carved giltwood console table, late 18th century, with variegated marble top, 86cm high, 90cm wide, 39cm deep

£700-1,000



129

129

A pair of grey painted and upholstered armchairs in Louis XVI style, 20th century

£250-350

130

A French Louis XVI giltwood mercury wall barometer Unsigned, late 18th century, with mercury syphon tube and 8 inch circular white painted register annotated in barometric inches from twenty-six and two thirds to twenty-nine and one third divided into twelfths, the outer track with the usual weather observations in French, the case with surmount carved with a globe within laurel wreath over moulded glazed bezel to the register flanked by *Centigrade* and *Reaumur* scale twin alcohol and mercury tube thermometers beneath outswept fruiting C-scroll decoration, the lower section with bevelled rectangular mirror plate flanked by palm foliage over scallop-shell and scroll carved base, 103cm (40.5ins) high.

£500-700



130



131

131

After Jean-Antoine Houdon (French, 1741-1828), a sculpted white marble bust of Diana, the deity portrayed looking to dexter, with crescent moon diadem in her loosely tied hair, nude for a sash running across her chest, the rear inscribed *Houdon* along the truncation, on a waisted circular socle, 72cm high

£500-700



132

132 Y

A George III partridge wood and ivory mounted dressing mirror, circa 1800, the rectangular plate above a canted platform with three frieze drawers, 56cm high, 62cm wide, 26cm deep

£250-350

133 Y

A George III mahogany serpentine fronted chest of drawers, circa 1790, the shaped top with moulded edge, above a four long graduated drawers and a brushing slide beneath the top drawer, on outswept tapering bracket feet, 98cm high, 105cm wide, 58cm deep

£500-700



133

134

134

A Tabriz rug, the cream panel with all over flowering branch design and red medallion and pendants along the central axis, the main border with stylised lotus meander, approximately 143 x 100cm

£300-500



135

Five various framed George III silk work pictures, various dates 18th/early 19th century, to include; a pair of oval pastoral examples depicting a shepherd and shepherdess respectively, 24cm high, 20.5cm wide including verre eglomise and giltwood frames; a primitive needlework picture of a country scene, 18.5cm high, 46cm wide overall; and two further oval pictures of shepherdesses

£250-350



135



136

136

A George III yew Pembroke table, circa 1790, 72cm high, 99cm wide (open), 81cm deep

£500-800

137

A George III mahogany and satinwood linen press, circa 1790, 203.5cm high, 131cm wide, 58cm wide

Provenance: Inherited from vendor's grandfather, who was Governor of Malta during the Second World War

£500-800



137



138

138

A George III circular mahogany and brass bound bucket, circa 1800, of coopered construction, with a brass swing handle, 30cm high (excluding handle), 30cm diameter

Provenance: From the Collection of the late Max Harari

£300-500



139

139

A mahogany campaign folding table, 19th century, the hinged rectangular top above the folding supports, 85cm high, the top 61cm x 46cm

£250-350



140

140

A Victorian hide leather traveling trunk, second half 19th century, Peal & Co. 487 Oxford St. London, almost certainly for riding boots, the lid impressed for F. W. Clemenston Esq., 19th Hussars, the leading edge for the makers

Provenance: From the Collection of the late Max Harari

F.W. (Francis Woodward) Clemenston is listed in the Alumni Cantabrigienses, he graduated St John's College with a B.A in 1880, passed as a Gentleman Cadet, from the Royal Military College, as a Lieutenant in 1884, he remained in the 19th Hussars, serving in Soudan, and present at the battle of Giniss, he died intestate on the 11th October, 1889.

£200-300

141

A 14 inch library table globe, George Philip and Son Ltd, London circa 1920, the sphere applied with twelve coloured printed gores incorporating oval trade label *PHILIPS', 14 INCH TERRESTRIAL GLOBE... LONDON, GEOGRAPHICAL INSTITUTE, GEORGE PHILIP & Son LTD, 32 FLEET STREET, LONDON* and with keys for steamer and railway routes to North Pacific, extensively annotated with principal cities, towns, rivers, lakes, mountains and other significant topographical features, the oceans with all significant islands labelled, the Equator and Elliptic lines graduated in minutes and each pole with brass hour ring and pivots for mounting within the iron meridian circle divided for degrees, resting in wooden stand with coloured paper horizon ring graduated in degrees in two directions, days-of-the-month and houses of the Zodiac with names and symbols and also displaying compass directions, raised on three ebonised baluster turned supports with conforming baluster stretcher to support the meridian ring at the base, 54cm, (21.5ins) high approx.



141

£500-700



142

142

A surveyor's transit theodolite, Casella & Co, London, early 20th century, the platform marked FITTED WITH REEVES'S PATENT / TANGENT MICROMETER, SOLE MAKERS / CASELLA & Co. / 15, ROCHESTER ROW, / LONDON S. W. / No. 7791, the tube 23cm long, in the original mahogany fitted case with various accessories, the front similarly serial numbered, the case 16cm high, 30cm wide

£150-250

143

A Victorian mahogany twin pedestal desk, circa 1870, the brown tooled leather inset top above the arrangement of drawers, 76cm high, 123cm wide, 78cm deep

£400-600



143



144

144

A collection of 25 semi-precious stone specimen models of eggs, to include examples in quartz, aventurine, jasper, opaline and others, presented in a fitted card collecting case with typed index to cover, the case 14.5 x 11.5cm overall; and another, similar collection of 16 specimen models of eggs, the fitted card case 10.5 x 14cm overall

£200-300

145Y

A French Renaissance Revival ebony cabinet, late 19th century, 144.5cm high, 59cm wide, 40cm deep

£500-800



145

146

A Tabriz carpet, approximately 355 x 262cm

£700-1,000



146

147

A pair of Continental patinated bronze models of the Medici Vase, after the Antique, 19th century, French or Italian, each of Campana form with egg-and-dart cast everted rim, the bodies with figural scenes in relief and each with twin reeded handles, the knopped and fluted socles on square section bases

£800-1,200



147



148

148

A Renaissance Revival walnut and parcel gilt library table, second half 19th century, 74cm high, 122cm wide, 60cm deep

£600-900

149

A set of four Renaissance Revival walnut and leather upholstered side chairs, circa 1880, each with carved soldier head terminals, each chair with one leg stamped HOLLAND & SONS, MOUNT STREET, LONDON

£600-800



149



150

A mahogany extending dining table in early Victorian style, circa 1900, with six additional leaf insertions, the rectangular moulded top on six turned and carved legs, 76cm high, 138cm wide, 182cm long (unextended), approximately 548cm long (fully extended)

Provenance: Property from a Private Collection

£1,500-2,500

150



151

151

A Kashan carpet, approximately 390 x 278cm

£600-800

152

A late Victorian silver plated three-bottle tantalus, Betjemann's Patent London, circa 1800, the action stamped for the maker and serial numbered 10427, containing a set of three hobnail-cut decanters and stoppers, the tantalus 32cm high, 41cm wide

£150-250



152



153

153

A William IV mahogany side or serving table, circa 1835, 116cm high, 122cm wide, 54cm deep

£800-1,200

154Y

A set of six Victorian rosewood dining chairs, circa 1870, in the manner of Holland & Sons, each with button upholstered seat

£400-600



154



155

A George III mahogany mercury stick barometer

Charles Aiano, London, circa 1810, with open triangular pediment above line-edged glazed door enclosing rectangular silvered Vernier scale calibrated in barometric inches and with the usual observations to the opposing Fahrenheit scale spirit thermometer to the , the upper margin signed *C. Aiano*, the caddy moulded trunk with visible tube flanked by figured mahogany veneers within chevron line border over rounded base with hemispherical cistern cover and level adjustment screw to underside, 97cm (38ins approx.) high.

Charles Aiano is recorded in Banfield, Edwin *BAROMETER MAKERS AND RETAILERS 1660-1900* as working in London circa 1790-1820; he is believed to have moved to Canterbury in around 1825.

£400-600

156

A mahogany bowfront whatnot in Regency style, incorporating 19th century and later elements, of 'Country House' type, 160cm high, 62cm wide, 33cm deep

£250-350



156

157

A North West Persian runner, approximately 400 x 120cm

£250-350



157

158

A giltwood and composition convex wall mirror in Regency style, 19th century, with a concave surround applied with spheres and an ebonised slip, 47cm diameter

£250-350



158



159

159

A George IV mahogany and inlaid secretaire Pembroke table, circa 1825, the top above two frieze drawers to each of the short ends, one fitted with hinged inset writing surface, 70cm high, 114cm wide (open), 104cm deep

£250-350

160

A mahogany Canterbury, circa 1900, with dividers and open sides, on turned porcelain castors, 52cm high, 31cm wide, 40cm deep

£200-300



160



161



161
Neapolitan School (19th century)
Cenere Del 1793; Golfo Di Maja
Gouache
31 x 44cm (12 x 17¼ in.) (2)

Provenance: The Parker Gallery,
London

£500-700

162
Neapolitan School (19th century)
Napoli; Napoli Dal Carmine
Gouache
31 x 44cm (12 x 17¼ in.) (2)

Provenance: The Parker Gallery,
London

£500-700



162



163

163
Neapolitan School (19th century)
Eruzione del anno 1771; 1779
Gouache
43 x 66,5cm (16¾ x 26 in.) (2)

Provenance: The Parker Gallery, London

£3,000-5,000



164
Neapolitan School (19th century)
Isola Di Capri; Solo D' Ischia
Gouache
31 x 44cm (12 x 17¼ in.) (2)

Provenance: The Parker Gallery, London

£800-1,200



164



165
Neapolitan School (19th century)
Cenere Del 1830
Gouache
30 x 44cm (11¾ x 17¼ in.)

Provenance: The Parker Gallery, London

£400-600

165



166

166
Neapolitan School (19th century)
Eruzione del 1834; Etna in Sicilia
Gouache
29 x 41cm (11¼ x 16 in.) (2)

Provenance: The Parker Gallery, London

£1,500-2,000



167
Neapolitan School (19th century)
Bay of Naples, a pair
Gouache
18,5 x 27cm (7¼ x 10½ in.)

Together with another Neapolitan School (19th century) gouache titled *Eremitaggio del Vesuvio del 1838*, 15,5 x 22,5cm (6 1/8 x 8 7/8 in.) (3)

£400-600



167



168

168
Neapolitan School (19th century)
Napoli da Posilipo, and another view
Gouache heightened with white
18 x 25cm (7 x 9¾ in.) (2)

£250-350



169

169
A pair of giltwood framed arrangements of brass intaglio casts after the Antique, 20th century, presented on marbled paper, each 35cm high, 29cm wide overall; and a framed collection of plaster intaglio casts after the Antique, modern, in oval frame, 48cm high, 38cm wide overall

£300-500



170

170
A pair of unusual gold and green painted and gessoed pine models of sphinxes, early 19th century, possibly Italian, the recumbent figures modelled with serene visages and tied hair, on stepped and spreading rectangular bases, 14cm high, the bases 17cm x 11cm

£200-300

171
An Italian Grand Tour Siena marble souvenir model of a Roman bath, second half 19th century, the oval basin raised on paw feet, on a rectangular black marble base, 7cm high, 21cm wide

£300-500



171



172

172

A Commonwealth oak joint stool, mid 17th century, the rectangular top with moulded edge above the channel moulded frieze, on turned legs joined by a rectangular peripheral stretcher, 53cm high, 43cm wide, 26cm deep

Provenance: Waystrode Manor, Kent

£400-600

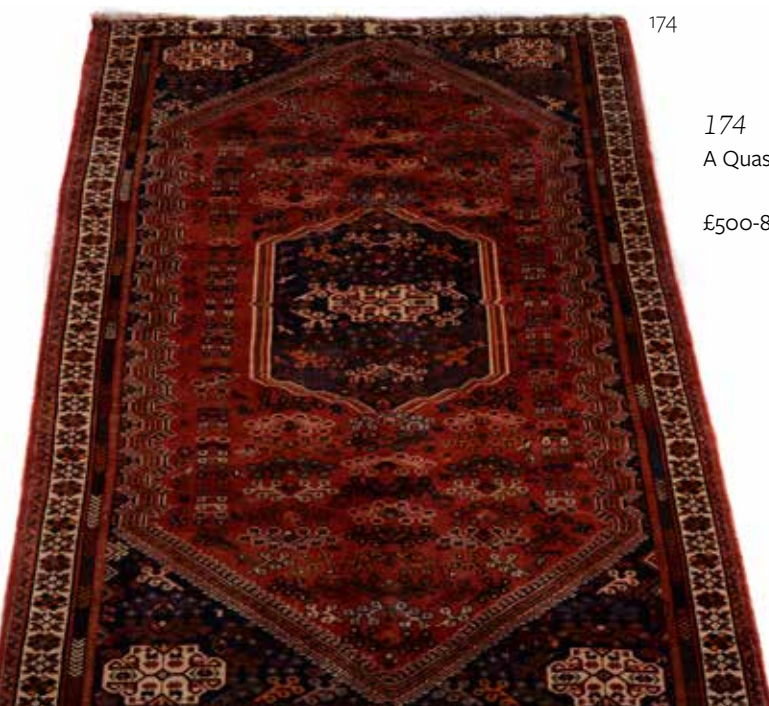


173

173 +

An oak child's gateleg table, circa 1700, one short end with single frieze drawer above the rectangular supports and action, 52cm high, 76cm wide (open), 61cm deep

£150-250



174

174

A Quashqai carpet, approximately 281 x 197cm

£500-800

175

Italian School (17th century)

Studies for grotesque decorations

Ink on vellum

32 x 22cm (12½ x 8½ in.)

£200-300



175



176

176

An Italian carved walnut chair, circa 1700 and later, possibly Tuscan, with scroll carved panelled back and scrolling arm supports above a plank seat 114cm high, 61cm wide, 43cm deep

Provenance: Oakley House, the Collection of Eustace Gibbs, 3rd Baron Wraxall, KCVO, CMG

£500-800

177

A carved oak coffer, early 18th century and later, with hinged panel cover, 59cm high, 92cm wide, 47cm deep

£150-200



177



178
A pair of French patinated bronze relief roundels of nymphs, late 19th century, the maidens portrayed nude and with flowing hair, in recessed gilt-bronze frames, approximately 24cm diameter

£300-500

179
A mahogany, parcel git and gilt metal mounted daybed, in Empire style, late 19th century, 92cm high, 163cm wide, 75cm deep

£500-700



179



180

180
A group of occasional furniture, 20th century, comprising: a mahogany and brass oval two tier etagere, in Regency style, a brass standing Canterbury or magazine rack, with wirework divisions, a flight of mahogany shelves, in 19th century campaign style, and a mahogany waste paper basket, on gilt lion paw feet (4)

£250-350

181
A Restauration parcel gilt and patinated bronze model of a Chinese man, circa 1820, portrayed standing and attired in traditional garb, a bird perched on his hand, the shaft of a parasol in his ; on a square section *marmo Siena* plinth and base, 28cm high overall

£200-300

182
A mahogany side table, in Empire style, 20th century, the rectangular top above X-frame supports, 77cm high, 87cm wide (with flaps open), 49cm deep

Provenance: From the Collection of the late Max Harari

£400-600



182



181



183

183
A pair of Empire *tôle peinte* twin handled cachepots in Chinoiserie taste, early 19th century, each with scalloped rim and painted with landscape vistas and figural scenes, 11cm high, 32cm wide

£200-300



184

184 Y

A George III rosewood, satinwood, and tulipwood banded secretaire side cabinet, circa 1790, with shelved superstructure, above a secretaire drawer enclosing a fitted interior with an arrangement of drawers and pigeonholes above a writing surface, with a pair of cupboard doors enclosing an adjustable shelf, 154cm high overall, 85cm wide, 34cm deep

Provenance: Oakley House, the Collection of Eustace Gibbs, 3rd Baron Wraxall, KCVO, CMG

£2,000-3,000

185

A George III giltwood oval mirror, late 18th century, 97cm high, 56cm wide

£600-800

186

A George III satinwood, mahogany and inlaid Pembroke table, circa 1790, 72cm high, 98cm wide (open), 73cm deep

£300-500



186



185

187

A mahogany and upholstered sofa in George III style, probably incorporating late 18th century and later elements, 94cm high, 196cm wide, 76cm deep

£500-700



187



188

188

An Austrian cold-painted bronze model of a Kingfisher, early 20th century, in the manner of work by Franz Bergman, naturalistically modelled, painted in shades of ochre, cream and blue, approximately 6cm high

£150-250

189

An Indian polychrome painted carved wood model of an Elephant, portrayed with a howdah upon the creature's back, 34cm high, together with an ebonised and parcel painted carved wood model of an elephant, portrayed with a mahout riding and seated on a rug, 39cm high, and two further naturalistically modeled example, the larger 36cm high (4)

£300-500



189



190



190

A Russian malachite veneered and gilt metal mounted casket, second half 19th century, of rounded rectangular form, the hinged cover and body with engine milled borders, mounted with lions' masks, the escutcheon with a floral wreath, 6 x 11 x 8cm; a Continental gilt metal and malachite mounted model of a hound, late 19th century, on a stepped rectangular plinth, 11cm high overall, the base 22 x 15cm; and a malachite veneered desk weight, inset with a gilt medallion of Adolphus Frederick, Duke of Cambridge, after George Gamon Adams (1821-98), 10.5 x 16cm

£300-500

191

A patinated bronze model of a seated mastiff, probably English, early 20th century, 11cm high, 14cm wide overall including rectangular variegated rouge marble plinth; and a patinated bronze model of a standing bulldog in the manner of Charles Curry, early 20th century, 7cm high

£150-250



191



192

192

A German or Austrian cold painted terracotta model of a seated dachshund, first half 20th century, with inset glass eyes, 18cm high, 20cm long overall

£150-250

193

An Austrian cold painted terracotta model of a seated pug, first half 20th century, portrayed looking upwards and slightly to dexter, with inset glass eyes, 31cm high, 22cm long overall

£400-600



193



194

194 +
 Claude Hayes (Irish 1852-1922)
Farmers watering their carthorses
 Pencil and watercolour heightened
 with bodycolour
 Signed lower right
 22.5 x 42cm (8¾ x 16½ in.)

£200-300

195 Y

A Victorian maple and rosewood banded secretaire Wellington chest, circa 1860, the hinged fall fronted by three false drawer fronts, opening to an arrangement of drawers and pigeon holes, 139.5cm high, 69cm wide, 36.5cm deep

£250-350

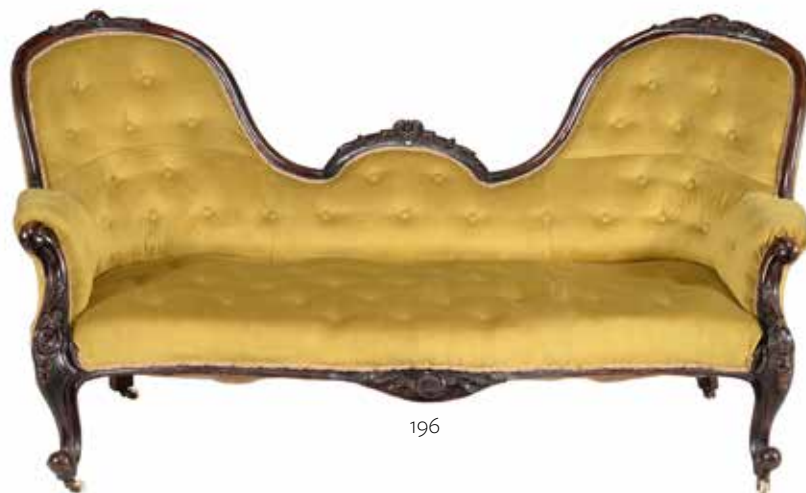
196 Y

A Victorian rosewood and upholstered sofa, circa 1860, the carved show frame with two spoon backs, on cabriole legs, one rear leg stamped 11066, 91cm high, 172cm wide, 85cm deep

£400-600



195



196

197

A collection of desk items, all late 20th century comprising: four various burr yew lidded boxes, a leather clad magnifying glass, a smaller bamboo handles example, a model of a foot, stamped U2A to underside, a burr yew model of a conch, a glass model of a duck-billed platypus containing bands of coloured sand, a bottle of similar coloured sand

£200-300



197



198

198

A Victorian bird's-eye maple dressing table, circa 1860, in the manner of Holland & Sons, 75cm high, 97cm wide, 55cm deep

£400-600

199

A Qum carpet, approximately 323 x 236cm

£800-1,200

199





200

200

A set of George III steel fire tools, late 18th/early 19th century, comprising shovel, poker and tongs, each cast with an urn grip and knopped shaft, the pierced shovel 60cm long

£300-500

201

A George III steel fender, late 18th century, with pierced front, 18cm high, 139cm wide, 32cm deep, and a brass and cast iron fire basket, the frieze with applied Tudor Rose, 51cm high, 55cm wide, 30cm deep

£500-800



201

202

A steel and upholstered club fender, recently manufactured by Acres Farm, 46cm high, 225cm wide, 56cm deep

£400-600



202

203

A carved giltwood wall mirror in George III style, by D J Smith, circa 1991, century, after the manner of Thomas Chippendale, carved with maker's signature to reverse of the surmount, 99cm high, 87cm wide

The original invoice from the craftsman D J Smith of Pamber Heath, dated 1991 is present with this lot.

£600-800



203



204

204

A George III mahogany Pembroke table, late 18th century, the rectangular top above a frieze drawer and cluster column supports united by a stretcher, with brass and leather castors, 70cm high, 100cm wide open, 61cm deep

£250-350

205

A George III mahogany armchair, circa 1770, 93cm high, 68cm wide, 67cm deep overall

£300-500



205



206

206

A rectangular overmantel wall mirror, 19th century, with a classical frieze painted en grisaille and trompe l'oeil above the rectangular plate, 102cm high, 132cm wide

£400-600



207

207

A Regency mahogany extending dining table, circa 1815, of small proportion, with three additional leaf insertions, 73cm high, 186cm long (fully extended), 66cm wide

£600-800



208

208

A Tabriz Carpet, approximately 365 x 297cm

£600-800



209

209

A set of six mahogany dining chairs, in Regency style, third quarter 19th century, to include a pair of armchairs

£500-700



210

210Y

A Regency rosewood side cabinet, circa 1815, with gilt brass trellis panels to the doors, 122cm high, 101cm wide, 32cm deep

£200-300

211

A Regency mahogany wine cooler, circa 1820, the hinged lid enclosing a divided interior, on wrythen turned legs, 59cm high, 47cm wide, 33cm deep

£300-500



211



212

212
A green painted and parcel gilt trumeau mirror in 18th century style, 20th century, with a rectangular plate beneath a canvas painted with a scene of lovers discovered in a pastoral setting, 195cm high, 109cm wide

Provenance: Property from a Private Collection

£500-700



213



214

213Y
A kingwood, satinwood and marquetry inlaid petit commode in Louis XV style, 19th century, 77cm high, 61cm wide, 30cm deep

£600-800

214
A pair of beech and upholstered armchairs, Louis XVI style, 20th century, 94cm high, 62cm wide, 60cm deep

£250-350

215

After Jean Bulio (French, 1827-1911), a patinated bronze model of a musician satyr, late 19th century, portrayed dancing and playing pipes, inscribed *BULIO* to the socle, on a square Siena marble plinth, 18.5cm high

£200-300

216

A French mahogany and marble topped circular occasional table, in Louis XVI style, late 19th/early 20th century, 68cm high, the top 56.5cm

Provenance: From the Collection of the late Max Harari

£300-500



216



215



217

217

A Louis XVI beech and upholstered armchair, circa 1780, stamped 'MINISTERE' to underside of the seat rail, 95cm high, 62cm wide, 48cm deep

£400-600



218

218 Y

A Swiss rosewood and inlaid musical box, circa 1890, playing a choice of airs via a pinned brass cylinder and tuned steel combs, the movement driven by a single wound spring drum mounted on a gilt iron bed beneath a hinged glass internal cover, with selection levers to the sides, the case of typical rectangular form with ebonised mouldings, 14.5cm high, 51cm wide, 23cm deep

£300-500

219 Y

A Victorian burr walnut and tulipwood banded side cabinet, by Gillow & Co, circa 1870, the door stamped 'GILLOW & CO', 107cm high, 92cm wide, 42cm deep

£600-800



219



220

220 +

An Heriz rug, approximately 176 x 94cm

£200-300

221

Pamela Searight (British 20th century)

A pair of polo ponies and handler
Watercolour heightened with white
Signed and dated 1949 lower
49 x 64cm (19¼ x 25 in.)

£150-250



221



222

222

A Victorian satinwood lectern or clerks desk, circa 1880, the slope with leather inset above the frieze drawer with ebonised handles, on turned tapering supports united by an galleried undertier, 117cm high, 92cm wide, 69cm deep

Provenance: Property from a Private Collection

£300-500

223

A pair of hardwood and upholstered armchairs, in Victorian style, probably 20th century, 100cm high, 78cm wide, 80cm deep

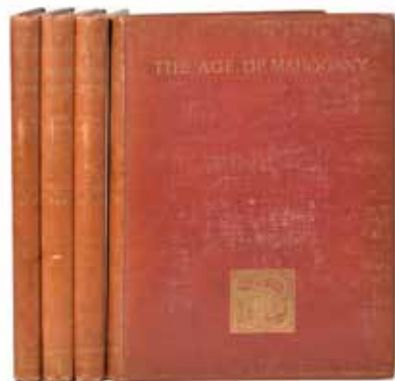
Provenance: Humphrey-Carrasco Antiques, London

£600-800



223





224

224 0

Macquoid, Percy, R.I.. A History of English Furniture, London: Lawrence & Bullen, 1904, four volumes comprising 'The Age of Oak', 'The Age of Walnut', 'The Age of Satinwood' and 'The Age of Mahogany' (4)

£150-250



226

225

225 Y

A rosewood and gilt metal mounted open bookcase in Regency taste, constructed from 19th century elements, with green variegated marble top, 95cm high, 137cm wide, 19cm deep

Provenance: From the Collection of the late Max Harari

£400-600

226

A Persian carpet, approximately 304 x 216cm

£300-500



227

A pair of French patinated and lacquered metal candlesticks in Neoclassical style, mid-19th century, the squat engine turned nozzles raised on triform bases in the manner of atheniennes, terminating in paw feet, on triform black marble bases; a small lead table top box or planter, of canted rectangular form and cast with scrolling foliage; and a cast iron doorstop modelled as a sheaf of wheat

£300-500



227



228

228

A Regency mahogany twin pedestal desk, circa 1820, the pedestals each raised on turned tapering legs terminating in brass caps and castors, 77cm high, 116cm wide, 61cm deep

£700-1,000

229

A Regency mahogany bergere armchair, circa 1820, with canework and removable squab seat above sabre legs

£300-500



229



230

230

A companion set of six mahogany dining chairs, including late 18th century and later examples, in the manner of Thomas Chippendale

£250-350



232

231

A George III mahogany side cabinet, circa 1800, the rectangular top with dentil apron above a pair of tambour doors, 77cm high, 75cm wide, 50cm deep

Provenance: Waystrode Manor, Kent

£300-500

232

A mahogany standing corner cupboard, circa 1780 and later, the arched panel doors enclosing shaped shelves and three drawers, 140cm high, 62cm wide, 62cm deep

Provenance: Oakley House, the Collection of Eustace Gibbs, 3rd Baron Wraxall, KCVO, CMG

£300-500



231

233

A Victorian giltwood and composition triptych wall mirror, late 19th century, in George III style, 65cm high, 114cm wide

£200-300



233



234

234

A George III mahogany alcove sideboard, late 18th century, inlaid throughout with yew wood bandings and quartered veneers, the serpentine top above three frieze drawers with oval veneers on tapered square legs with leaf carved spade feet, 92cm high, 118cm wide, 78cm deep

Provenance: Sotheby's, 20 February 1987, lot 109

£500-700

235

Two mahogany and brass bound buckets or tea kettle stands, probably English or Dutch, last quarter 18th century, each of coopered navette form and with swing handles, the larger 34cm high, 36cm wide, 29cm deep, the other 30cm high, 35cm wide, 30cm deep (2)

£300-500



235



236

236 Y

A George IV tortoiseshell veneered and ivory banded tea caddy, circa 1830, of shaped rectangular section, with serpentine front, on coquilla nut feet; the hinged cover opening to an ivory banded interior, 13cm high, 15cm wide, 10cm deep

£400-600

237

A George IV mahogany draw-leaf table, circa 1825, in the manner of George Bullock, 76cm high, 121.5cm wide (fully extended), 56cm deep

£500-800



237



238

238

A Regency mahogany Canterbury, circa 1815, the swept top incorporating carry handle above slatted divisions, single frieze drawer and turned legs, 53cm high, 45.5cm wide, 30.5cm deep

Provenance: From the Collection of the late Max Harari

£400-600

239 Y

A late Regency or George IV tortoiseshell veneered, ivory mounted and metal strung octagonal tea caddy, circa 1820, of bombe outline, the hinged cover opening to reveal two conforming subsidiary covers, on ball feet, 15cm high, 16cm wide

£500-700



239



240

240

A Regency black lacquered and parcel gilt occasional table, circa 1815, with painted inset top, 75cm high, 55.5cm wide, 40cm deep

Provenance: From the Collection of the late Max Harari

£200-300

241

A Regency ebonised day bed, circa 1820, with Hessian upholstery, 70cm high, 220cm long, 73cm wide

£800-1,200



241



242

242

A carved and stained oak desk chair, early 20th century, with bar back fronted by lion scrolls above the padded seat and carved scrolled legs

£300-500

243

A Victorian wrought and cast iron and copper mounted fire grate, last quarter 19th century, the arched rectangular section basket flanked by twin scrolled and writhen front legs, mounted with lions sejant holding armorial cartouches, 65cm high, 103cm wide, 48cm deep

£250-350



243



244

244

A Charles II oak joint stool, circa 1670, the solid seat with moulded edge, above a moulded frieze, on square section and turned tapering legs joined by peripheral stretchers, 51cm high, 46cm wide, 28cm deep

Provenance: Waystrode Manor, Kent

£300-500

245

A pair of giltwood cartouche shaped mirrors, late 18th/early 19th century, each 81cm high, 55cm wide

£600-800

246

A pair of hardwood armchairs in 18th century Portuguese colonial style, late 19th century

£400-600



246



245 (one of a pair)

247

A French carved oak and marble topped centre table, late 19th century, 73cm high, 123cm wide, 78cm deep

£800-1,200



247



248

248
A Louis Philippe
Aubusson window
surround, circa 1840,
woven with trailing
flowers and foliage
within a crimson
border, approximately
222cm wide at the top,
334cm drop

£500-700

249
A Louis Philippe figured walnut and
marble mounted commode, circa
1840, 104cm high, 97.5cm wide, 52cm
deep

£400-600

250
A French needlework carpet of
Aubusson design, approximately
546 x 364cm

£200-300



250



249

251
A pair of toleware columnar table
lamps in Empire taste, later 20th
century, the red ground bodies and
shades painted with laurel overall,
above stepped square section
plinths decorated with lyres, 53cm
high, the shades approximately 27cm
diameter

£300-500

252
A French mahogany centre table, second quarter 19th century, the grey marble top with moulded edge, 78cm high,
129cm diameter

£700-1,000



251



252



253 (part lot)

253

A set of twelve Chinese floral paintings on pith paper, late 19th/20th century, depicting exotic flowers, later framed and glazed

£300-500

254

A Chinese 'clobbered' tureen and unmatched cover, late 18th century, painted in underglaze blue and coloured enamels, 34cm diameter and a similar rectangular dish, 37.5cm diameter

Provenance: Private English Collection

£80-120



254

255

A Korean hardwood, probably elm and metal mounted chest, 138cm high, 93cm wide, 45cm deep, and another similar (2)

£400-600



255

256

A set of twelve Chinese ornithological paintings on pith paper, late 19th century/20th century, depicting species of exotic birds, later framed and glazed

£300-500



257

A Chinese 'Famille Rose' oval dish, Qianlong, 35cm diameter and a Chinese 'Famille Rose' Plate, Qianlong, 23cm diameter (2)

Provenance: From the Collection of the late Max Harari

£250-350



256 (part lot)



257



258

Two Korean hardwood, probably elm, and metal mounted chests, one 75cm high, 94cm wide, 46cm deep, the smaller 68cm high, 90cm wide, 45cm deep

£300-400



258



259

259 Y

A Regency rosewood desk tidy, circa 1820, in the manner of Gillows, the turned carry handle above twin hinges to the lids enclosing a pen tray and a pair of copper lidded inkwells, with a drawer to one short side, 14cm high, 24cm wide, 14cm deep

£300-500

260

A George IV mahogany octagonal library table, circa 1825, of small proportion, with arrangement of four frieze drawers interspersed by false drawer fronts, 74cm high, 69cm wide, 69cm deep

£400-600



260

261 Y

A Regency rosewood open bookcase, circa 1815, the black marble top above the bank of shelves and flanking turned column pilasters, 91cm high, 72cm wide, 27cm deep

Provenance: From the Collection of the late Max Harari

£400-600



261



262 (part lot)

262

A set of four Napoleonic caricatures, coloured etchings, each 23.5 x 29cm (9 1/4 x 11 3/8in.) (4)

£150-250

263

A mahogany and burr yew banded centre table, second quarter 19th century, 74cm high, the top 130cm diameter

£800-1,200



263

264

A Persian rug, probably Hamadan, all over interlocking lozenge shape panels, containing stylised flower sprays, peacocks and cypress trees, approximately 214 x 150cm

£300-500

264





265

265

An oak longcase clock case, circa 1780, containing an associated later eight-day clock movement with 13inch painted dial inscribed John Hayes, Wrexham, with Roman numerals and Arabic five minutes applied to a false plate inscribed WILSON, the case with quarter pilasters to the angles, 222cm high overall

John Hayes is recorded in Baillie G. H. Watchmakers & Clockmakers of the World as working in Wrexham 1747-1822

£300-500



266

267



266

A late George III oak press, circa 1810, the book press top above three drawers and square section legs, 48cm high, 77cm wide, 45cm deep

£300-500

267

An Heriz runner, approximately 358 x 122cm

£600-800

268

After William Hogarth

First Stage of Cruelty; Second Stage of Cruelty; Cruelty in Perfection; The Reward of Cruelty

Engravings

Each 38.5 x 32cm (15 x 12½ in.) (4)

£100-150



268 (part lot)



269 (part lot)

269

A George III yew and satinwood inlaid tea caddy, circa 1790, 11cm high, 11cm wide, 9cm deep, an Edwardian mahogany and inlaid box, the front with central Mauchline ware type panel decoration with a lady, 10cm high, 21cm wide, and a Chinese export enamel tea pot (3)

£200-300

270

A George III mahogany tea table, circa 1780, of serpentine outline, the hinged top enclosing a baize playing surface, 72cm high, 95cm 45cm deep

£400-600



270



271

271

A Japanese Cast Bronze Figure of a Laughing Bijin, she wears a long kimono and geta and holds her hand to her hair, she stands beside a garden lantern perched on a gnarled tree trunk, incised signature to base, height 63.5cms, Meiji Period

£200-300

272

A Japanese Bronze Figure of a Peasant, the man wears a short coat, waraji sandals and a bandana round his head, he stands on an irregular base holding a broom in one hand, the other extended to pick a fruit, foundry stamp to base, height 55.5cms, Meiji Period

£150-250



272

273 Y

A group of four Japanese Okimono carvings, including a figure of a seated monk, 14.5cm high and smaller (4)

£150-200



273

274

A porcelain table lamp, 19th century and later fitted as a lamp, in the Japonesque taste, decorated with turtles within a fishing net and reserved on a celadon green ground, 71cm high overall including fitments, **together a French bronze vase**, in Japanese style, the body with palmate leaf decoration the stalks forming the handles, 24cm high overall (2)

£600-800

275

A set of four Japanese painted panels, from a four fold screen, each with an exterior scene, two with character text to upper corner, each 186cm high, 51cm wide

£500-700



274



275



276

After William Hogarth, a selection of plates from Industry and Idleness, six plates altogether frame in pairs, Plates 2 & 10, Plates 4 & 8, Plates 5 & 6, each plate 26.5 x 34.5cm (10 1/4 x 13 5/8in.) Each overall including frame 73 x 53cm (28 3/4 x 20 7/8in.) (3)

£100-150

277

A George III mahogany and inlaid kneehole desk or dressing table, circa 1780, 74.5cm high, 83cm wide, 47cm deep

£400-600



276



277

278

278

A modern carpet in Persian style, approximately 290 x 201cm

£150-250



279 θ

Humphreys, Arthur L., F.S.A. Bucklebury A Berkshire Parish the Home of Bolingbroke 1701-1715, Reading, by the Author at York Lodge, 1932, large 4to (295 x 215mm.), half title, title printed in red and black, frontispiece portrait plate of John Winchcombe, plates, and folding maps, original vellum backed spine, spine lettered in gilt

£80-120

280

A George III fruitwood side table, last quarter 18th century, with single drawer and carved apron, 76cm high, 85cm wide, 47cm deep

£300-500



280

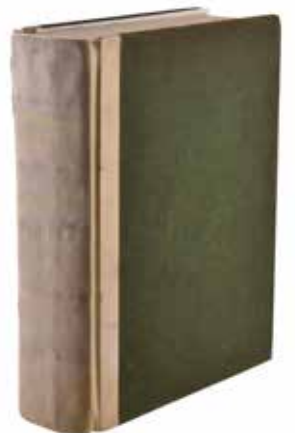
281

A George III mahogany and inlaid secretaire bookcase, circa 1800, the secretaire drawer enclosing a fitted interior with an arrangement of drawers and pigeon holes, 234cm high, 125cm wide, 58cm deep

£400-600



281



279



282

A German porcelain and gilt metal mounted twin light table lamp, late 19th/early 20th century, the central figural group with two *amorini* milking a goat and bocage, set inside a birdcage frame mounted with Vincennes-style flowers, enclosing twin light fittings, 42cm high, approximately 25cm wide; and a French gilt metal and porcelain mounted three light table lamp, with rouge griotte and ebonised base, and pleated silk shade, 73cm high overall

£200-300

283

A George III mahogany chest of drawers, circa 1780, with three long graduated drawers flanked by canted and line inlaid angles and on conforming square tapering legs and spade feet, 89cm high, 109cm wide, 60cm deep

Provenance: Oakley House, the Collection of Eustace Gibbs, 3rd Baron Wraxall, KCVO, CMG

£1,200-1,800



283

284 †

William Knox (British 20th century)

Off to the fishing grounds

Watercolour heightened with white

Signed lower left

27 x 36cm (10½ x 14 in.)

Provenance: Sale, Christie's, sale no. 5128, Lot 1471

£200-300



284



285

285

A pair of bedside cupboards in George III style, 20th century, each 74cm high, 39cm wide, 41cm deep

£400-600

286

A George III mahogany linen press, circa 1800, in the manner of Gillows, the upper section with four sliding trays, the lower section with three sliding trays, 204cm high, 126cm wide, 60cm deep

£600-800



286



287

287

A Russian brass samovar, Vanykin, Tula, circa 1900, of typical form, the fluted body fitted with twin wood mounted handles and spout, and descending to a circular base with lappet feet, stamped with maker's mark to the top, 45cm high

£100-200

288

An elm, fruitwood and mahogany Windsor armchair, mid 19th century, of High Wycombe type, the pierced splat initialled 'R.Y', the rear of the seat stamped 'J.L', 112.5cm high, 60cm wide, 55cm deep

For closely related designs of chair of the period attributed to High Wycombe, see Bernard D. Cotton, The English Regional Chair, The Antique Collectors Club, 1990, page 88, figures TV193 & TV194.

£400-600

289

A carved oak plank coffer, constructed from 17th century and later elements, 74cm high, 152cm wide, 58cm deep

£600-800



288



289

290

A matched pair of six light brass chandeliers, in 17th century Dutch style, late 19th/early 20th century, one 43cm high and approximately 40cm diameter, the other 38cm high and approximately 48cm diameter

£300-500



290 (one of a pair)



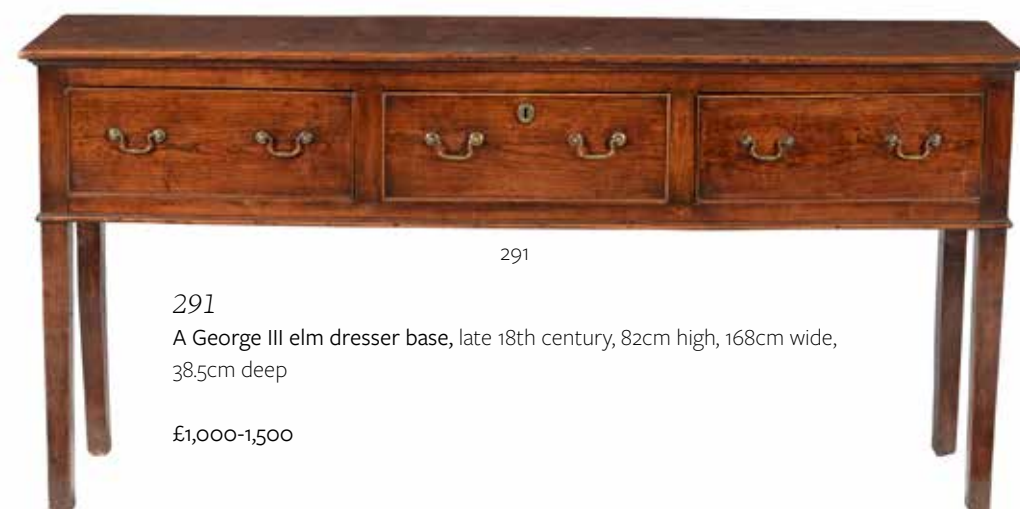
290A

290A

A set of six ash, elm and fruitwood Windsor chairs, second quarter 19th century, of Buckinghamshire type

For closely related designs of chair of the period attributed to Buckinghamshire see Bernard D. Cotton, The English Regional Chair, The Antique Collectors Club, 1990, page 61, figures TV73, TV75 & TV76.

£1,000-1,500



291

291

A George III elm dresser base, late 18th century, 82cm high, 168cm wide, 38.5cm deep

£1,000-1,500



292

292
A giltwood and composition wall mirror in Regence style, circa 1900, 137cm high, 91cm wide

£400-600

293
A burr walnut, walnut and chestnut crossbanded commode, in Louis XIV style, 20th century, with shaped variegated green marble top, 81cm high, 131cm wide, 62cm deep

£1,000-1,500



293



294

294
A set of three giltwood and gesso twin branch wall lights in Regence style, 20th century, each with gadrooned urn sconces and square section arms issuing from pilaster backplates carved with lions' masks, 59cm high, 39cm wide, 39cm protuberance

£400-600



295 (part lot)

295
A suite of giltwood seat furniture in Louis XVI style, early 20th century, comprising a set of four side chairs, an armchair, and a canape (6)

Provenance: Property from a Private Collection

£400-600

296
An Aubusson carpet, approximately 375 x 275cm

£600-800



296



297 (part lot)

297+
Wycliffe Egginton (British 1875-1951)
A Dartmoor clapper bridge
Pencil and watercolour
Signed lower right, further signed and inscribed verso
37 x 52cm (14½ x 20¼ in.)

Together with a watercolour by Clifford George Blampied (British 1875-1962), *A Coastal Landscape, Jersey*, signed lower left, 23.5 x 34cm (9½ x 13 3/8 in.) (2)

£200-300

298
A companion pair of Victorian mahogany tripod occasional tables, circa 1860, both approximately 69cm high, the tops 48cm diameter

£500-700



298

299
An early Victorian mahogany chest of drawers, circa 1850, 127cm high, 61cm wide, 51cm deep

£500-700



299

300+
George Parsons Norman (British 1840-1915)
A brief rest
Watercolour and ink
Signed lower left
23 x 31.5cm (9 x 12¼ in.)

Together with two further watercolours by the same hand (3)

£150-250



300 (part lot)



301

301
A Victorian mahogany dressing table, circa 1860, one drawer stamped Edwards & Roberts and also with an ivorine plaque for the firm to the interior, 80cm high, 108cm wide, 54cm deep

£300-500

302
A Victorian mahogany armchair, circa 1870, the 'spoon' shaped back above padded arms with scroll terminals, 103cm high, 69cm wide, 86cm deep

£300-500



302



303

303

A group of six cushions incorporating Aubusson style tapestry fragment facings, each with a pastoral vignette within a floral border, together with three further, larger cushions, with floral tapestry style facings (9)

£200-300

304

A Regency mahogany and upholstered sofa, circa 1815, rectangular back on arms with paw supports, 87cm high, 183cm wide, 72cm deep

£400-600



304



305

305

A Regency mahogany and ebonised strung sofa table, circa 1815, 72cm high, 144cm wide, 70.5cm deep

£400-600

306

A giltwood and composition rectangular wall mirror, early 19th century, surmounted by a wreath and foliage, 137cm high, 101cm wide

£400-600



306



307

307Y†

A Regency mahogany, rosewood banded, and brass strung work-table, circa 1815, with rising silk pleated screen to the rear, the single frieze drawer with fitted baize lined writing surface, with ratchet action and 'secret' stationary drawer, and with sliding work bag, 77cm high, 53cm wide, 48cm deep

Provenance: Christie's, 2 October 2007, lot 177

£200-300



308

308Y

A Regency rosewood and brass inlaid circular centre table, circa 1820, on a lyre shaped supports above the quadripartite platform and outswept legs, 71cm high, the top 120cm diameter

£600-800



309

309
Judith da Fano (British 1919-2000)
Figures at the seaside
Oil on canvas
Signed lower left
40 x 49cm (15½ x 19¼ in.)

£150-200

310
A Victorian mahogany side table, mid 19th century, with two frieze drawers, 75cm high, 91cm wide, 56cm deep

£300-500



310

311
A pair of mahogany and red leather upholstered chairs in Victorian style, probably by Soane Britain, together with a similar sidechair, probably by Soane Britain, with U-shaped top rail and reeded legs, and a coromandel low occasional table (4)

£400-600



311

312

A mahogany letter rack, circa 1840, in the manner of Gillows, the fan supports centred by a paterae and above the single frieze drawer, 23cm high, 32cm wide, 22cm deep, together with a George III mahogany and line inlaid tea caddy, circa 1790, the hinged lid enclosing a pair of metal canisters, 15cm high, 28cm wide, 15cm deep, and a George III mahogany and inlaid tea caddy, circa 1790, 11cm high, 16cm wide (3)

£300-500



312



313

313
A late Victorian mahogany kidney shaped desk, circa 1890, the reverse with an arrangement of open shelves, 78cm high, 106cm wide, 54cm deep

£800-1,200

314

A Ghiordes rug, approximately 162 x 106.5cm

£400-600





315

315

A pair of Italian carved giltwood circular wall mirrors, late 19th century, almost certainly Florentine, each with a modern mirror plate surrounded by pierced foliate scrolls and cherub masks, 58cm diameter

£400-600

316

A Continental walnut and 'star burst' marquetry commode, late 18th century, with grey marble top, 94cm high, 120cm wide, 54cm deep

£400-600



317

317

An Italian carved and painted wood six light chandelier in Baroque taste, 20th century, with craquelure finish overall, the scrolled and cavetto moulded arms hung with tassels, issuing around a central baluster stem, with lobed and foliate terminal, approximately 114cm high including hanging loop, 90cm diameter

£400-600



318

318

A Continental framed cut and voided velvet panel in Baroque taste, probably 19th century, almost certainly French and loosely in the manner of Jean Berain, with sphinxes, caryatids and lambrequin within a border of arabesques, 131 x 76cm overall including later frame

£200-300



319

319

An Italian red painted and parcel gilt console table, in 17th century style, 20th century, with variegated marble top, 75cm high, 199cm wide, 55.5cm deep

£1,000-1,500



316



320

320 Y

An ebony rectangular wall mirror, second half 19th century, 103cm high, 81cm wide

£200-300

321

A collection of twenty five specimen hardstone models of eggs, including alabaster, marble, and granite, varying sizes, contained within an aluminium bowl of dished form on an integral foot, 11cm high, 31cm diameter

£100-150



321



322

322 Y

A William IV rosewood centre table, circa 1835, the book-matched veneered top above a cylindrical stem with lappet vase and triform base, 73cm high, 123cm diameter

£600-800

323

Three pairs of cushions, of recent manufacture but some incorporating antique tapestry elements, comprising one pair with panels including birds, 42 x 35cm, one oval pair with central garland of flowers, 59 x 48cm, and a pair in Chinese style, together with an Italian cotton carpet, recently manufactured by Society, approximately 245 x 175cm

£120-180



323 (part lot)



324

324

A stained beech and upholstered two-seat sofa, recently manufactured by George Smith, after the manner of Howard & Sons, labelled for the maker to the underside of the frame, 97cm high, 191cm wide, 102cm deep

£1,000-1,500

325

A Victorian upholstered centre stool, circa 1890, in the manner of Howard & Sons, the button velvet seat above a cut coloured velvet frieze and on turned ebonised legs terminating in back porcelain castors, 35cm high, 65cm x 140cm

£300-500



325



326

A pair of French patinated bronze, gilt metal and *marmo nero Belgio* five light candelabra, circa 1880, each with rocaille and foliate cast candle branches, held aloft by a cherub seated on a stepped canted square section plinth, approximately 60cm high overall

£400-600



327Y

A Napoleon III rosewood and specimen marquetry inlaid occasional table, circa 1870, the top with four hinged leaves, 77cm high, 91cm wide, 91cm deep (open)

£500-800

328

A pair of cream painted armchairs, in Louis XVI style, 20th century, the backs and seats with and needlepoint style upholstery

£250-350



329

329

A set of four French gilt metal twin branch wall lights, second half 19th century, the acanthus cast and scrolling branches and finials issuing from spherical bosses with floral mounts, issuing from rosette backplates, approximately 31cm high overall, 32cm wide, 23cm protuberance

£600-800

330

A Louis XV walnut commode, mid 18th century, 89cm high, 125cm wide, 58cm deep

£600-800



330



331

331

A George III mahogany night commode, circa 1780, with tray top incorporating carrying handles above a tambour door and slide containing aperture, 80cm high, 50cm wide, 44cm deep

Provenance: Oakley House, the Collection of Eustace Gibbs, 3rd Baron Wraxall, KCVO, CMG

£400-600

332

A George III mahogany bowfront chest of drawers, circa 1800, 104.5cm high, 109cm wide, 57cm deep

£500-700



332

333

A pair of Tabriz rugs or prayer mats, each with a large oval cream panel and floral garland surrounding a blue medallion centre on a red ground, each approximately 89 x 63cm

£300-500

333



334 †

Aaron Edwin Penley (British 1807-1870)

An extensive lake, India, 1867

Watercolour and pencil, heightened with bodycolour

Signed and dated 1867 lower left

23 x 33.5cm (9 x 13 in.)

Together with an additional watercolour by an unknown hand, 20 x 33.5cm (7 7/8 x 13 1/4 in.) (2)

£300-500



334 (part lot)

335 Y

A late George III mahogany and ebony inlaid chest on chest, circa 1810, of bow front outline, the yoke shaped pediment with central inset starburst, 113cm wide

£600-800

336

A pair of mahogany corner armchairs, in George III style, 20th century

£300-500



335



336



337

337

A pair of gilt bronze Egyptian Revival candlesticks, second half 19th century, French or possibly English the lobed campana nozzles descending to knopped and beaded stems terminating in monopodial sphinx caryatids, above shaped bases, 22.5cm high

£300-500

338

A Louis Phillipe mahogany and gilt metal mounted miniature cabinet, second quarter 19th century, in the form of a secretaire a abbatant, with marble top

£400-600



338



339

339

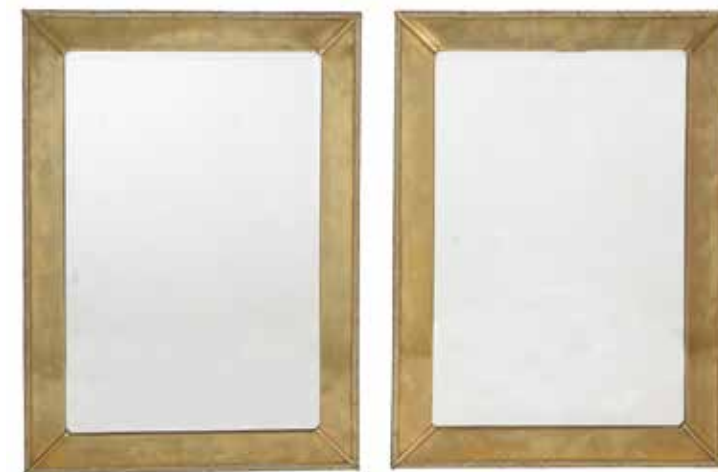
A mahogany and gilt metal mounted side cabinet, in Empire style, mid 19th century, with variegated yellow marble top, 85cm high, 126cm high, 53cm deep

£300-500

340

A pair of brass framed wall mirrors, mid 20th century, each 73cm high, 52cm wide

£500-700



340



341

341

A French gilt metal and glass inset table top bijouterie tray, late 19th/early 20th century, the pierced and hinged rectangular section body mounted with maidens' masks and inset with a bevelled panel, opening to a satin cushion; raised on knopped and outscrolled legs, 15.5 x 16 x 11cm; along with a French parcel gilt, silver plated and Paris porcelain inset jewellery casket, last quarter 19th century, of rounded rectangular form, circa 7cm high, 20cm wide; and a Dutch brass casket, 20th century, cast to simulate a wooden crate

£500-800

342

A French mahogany and gilt metal display cabinet, late 19th/early 20th century, 149cm high, 81cm wide, 34.5cm deep

£300-500



342



343

343
A Victorian giltwood and composition wall mirror, circa 1880, of large, impressive proportion, surmounted by a cherub mask cartouche, 225cm high, 185cm wide

£400-600



345

345
A Victorian figured walnut and parcel ebonised wardrobe, circa 1880, one lower drawer stamped Lamb, Manchester, the doors centred by a relief plaque of a classical maiden, 234cm high, 281cm wide, 66cm deep

Provenance: Property from a Private Collection

£600-1,000



344

344
A pair of Victorian oak and chestnut hall benches, mid-19th century, each with fan motifs to the lower corners of the back, 76cm high, 182cm wide, 35cm deep overall

£700-1,000



346

346
A Kirman carpet, approximately 403 x 285cm

£800-1,200



347

347

A gilt metal circular hall lantern, first half 20th century, the knopped ceiling supports above a galleried frame with recessed bands of fretwork and knopped pilasters, on ball feet; the interior with cylindrical stem suspending three candle arms, 76cm high, 36cm wide excluding hanging chain

£600-800

348

A large plaster bust of Herakles after the Antique, 20th century, to the Roman 2nd century original held at the British Museum, the head inclined slightly to sinister, truncated, on a waisted circular socle, approximately 103cm high

£400-600



348

349

A Tetex carpet, of overall design, the cream field decorated with stylised flowerheads and foliage in polychrome, within a similarly decorated border on a navy blue ground, approximately 330 x 252cm

£700-1,000



350

350

A Continental satin birch and inlaid billiard table, Seifert & Söhne, Budapest, Vienne, early 20th century, the tablet to one end for with a Seifert és Fiai and inscribed CS. ES. KIR. UDVARI TEKEASZTALGYAR, B.PEST BECS, 77cm high, 220cm long, 123cm wide, together with two cues, three balls, and a rack, 151cm high 36cm wide

Please note: This is sold disassembled and will not be on view at Donnington Priory but can be viewed, by prior appointment, at our off-site storage premises which are approximately 10 minutes drive from the saleroom.

£600-800



350 (detail)



351

351

A collection of eight various table lamps, to include; a pair of gilt metal and jasper columnar table lamps, English or French, possibly refitted from gas, 54cm high overall including fitments; a Victorian gilt metal candlestick, mid 19th century and later refitted, cast with foliage and rocaille overall, 64cm high; and various further examples in brass

£400-600



352

352

A George III oak and mahogany banded dresser, circa 1770, the plate rack superstructure with a pair of cupboards flanking the bank of shelves above the base with three drawers and shaped apron and cabriole legs

£600-800

353

An Heriz carpet, approximately 402 x 305cm

£800-1,200



354

354

British School (17th century)

Two portraits of elegantly dressed women, in lace trimmed gowns, a pair

Oil on canvas, oval

41 x 33cm (16 x 12 in.)

£400-600



355

A pair of oak and ebonised obelisks, mid-20th century, the tapered frames and square section plinths of panelled design overall, each surmounted with a ball finial, 48cm high

£250-350



355

356

A Charles II oak coffer, circa 1680, 52cm high, 91cm wide, 47cm deep

£400-600



356



357

357

A modern Herend porcelain 'Chinese Bouquet' (blue) part breakfast and dinner service, comprising: a bullet-shaped teapot and cover; a milk jug; twelve coffee cups and saucers; twelve side plates; twelve breakfast plates; twelve dinner plates; a sauce boat; three oval vegetable dishes; two oval serving dishes in sizes; a trumpet vase, 10cm high and a hexagonal section table lamp, 37cm high overall diameter, 20th century and a Chinese lusted pottery bowl, 20th century (2)

£800-1,200



358

358

A mahogany breakfast table, circa 1820, the rectangular top with ebonised string inlay, above four turned supports and a outswept legs with further inlaid decoration, 72cm high, the top 134 x 100cm

£300-500

359Y

An Anglo-Indian carved rosewood child's high chair, circa 1825, with floral and foliate carved decoration throughout, the arm's carved with animal heads holding the retaining bar, and on wrythen turned supports, 89cm high, 47cm wide, 48cm deep

£300-500



359

360

A carved ebonised and painted wood model of a blackamoor, early 20th century, modeled holding a tray and resting it upon one outstretched and betrousered leg, on a simulated marble rectangular plinth, 43cm high

Provenance: From the Collection of the late Max Harari

£200-300



360



361

361

A George IV mahogany two-tier whatnot, circa 1825, in the manner of Gillows, the circular tiers divided by gilt metal columnar supports, 95cm high, the top tier 58cm diameter

£400-600

362

A set of six George IV mahogany dining chairs, circa 1830, in the manner of Gillows, to include a pair of armchairs

£600-800



362



363

363
A pair of grey painted and parcel gilt trumeau mirrors in 18th century style, 19th century, each with a rectangular plate beneath a canvas painted with card players and a family warming themselves by a fire, respectively, each 195cm high, 125cm wide

Provenance: Property from a Private Collection

£800-1,200

364

A Continental gilt metal and frosted glass circular hall lantern, Louis XVI style, 20th century, openwork frame cast with circlets and mounted with flambeau finials, on berried feet, enclosing a rope-twist stem suspending a light fitment

£600-800



364



365

365

A French carved giltwood display cabinet, circa 1900, in the rococo style, the arched cornice decorated with foliate and scroll ornament above a pair of glazed panelled doors enclosing shelves, 163cm high, 129cm wide, 50cm deep

Provenance: Property from a Private Collection

£400-600



366

366

A pair of French side chairs in Louis XV style, early 20th century, with green and grey silk upholstery

£300-500





367

367
After Bernard de Montfaucon
Book plates from *L'Antiquité Expliquée, et Représentée en Figures*
33.5 x 42cm (13 x 16½ in.) (6)

£150-250

368

A Regency mahogany and leather inset library table,
circa 1820, with two frieze drawers to each long side,
73cm high, 147cm wide, 105cm deep

£1,500-2,000



368

369 λ

Sir Muirhead Bone (British 1876-1953)

Study of architectural restoration at St. Paul's Cathedral

Pencil

Signed and titled lower right

35 x 13.5cm (13¾ x 5¼ in.)

Provenance: From the Collection of the late Max Harari

£120-180



369



370

370

A mahogany secretaire bookcase, early 19th century, the
glazed doors enclosing shelves, the base with a secretaire
drawer with fitted interior, and three further long drawers,
203cm high, 94cm wide, 52cm deep

£500-800

371

A pair of mahogany and brass bound peat buckets in George
III Irish style, 19th century, of coopered construction and with
a wrythen body

£500-700



371



372

372

A group of fifteen Chinese Imari wares, Kangxi (1662-1722), all decorated in iron red and with gilt, including a mug with flowering sprays, 16.5cm high; one small sauce dish with birds, 9.3cm diameter; seven various dishes, the smallest 11.7cm diameter and the largest 13.5cm diameter; a pair of mugs with handles, 9.6cm high; two beakers of tapered cylindrical form, 8cm high; a square tea caddy, 10.5cm high; a cream jug, 11.2cm high; and a small oval spoon dish, 13.5cm long; and a blue and white small bowl, 18th century, 8cm diameter (16)

Provenance: Private English Collection

清康熙 外销伊万里式矾红描金瓷十五件
清18世纪 青花小杯一件

£200-400



373 (part lot)

373

One Chinese Imari punch bowl, Kangxi, painted on the exterior with a long-tail bird perched on a garden rock, 26.5cm diameter; two Chinese Imari punch bowls, Kangxi, one painted with peonies and garden rocks, the other with scholar's objects, 22.5cm diameter; three Imari bowls, Kangxi, 14.5cm diameter, and one damaged famille rose 'Wushuangpu' snuff bottle, 19th century (7)

Provenance: Private English Collection

清康熙 外销矾红描金伊万里式碗六件
晚清 无双谱鼻烟壶（坏）

£200-400



374

374

A group of eleven Chinese Imari dishes, 18th century, decorated in the Japanese Imari style with garden rocks and peony sprays, the smallest 22cm diameter and the largest 27cm diameter (11)

Provenance: Private English Collection

£200-400



375

375

A Chinese tixi lacquer cup stand, the hollow, rounded cup holder deeply carved on the exterior through layers of red and black lacquer with a band of large ruyi scrolls, repeated on both sides of the dish-like flange and again on the splayed foot, and the interior lacquered black, 10.5cm high x 18cm diameter

剔犀盏托

£300-400

376

A pair of Chinese or Samson gilt-metal mounted 'Famille Rose' hexagonal tea bowls, 18th or 19th century, painted with floral panels, each 6cm high (2)

Provenance: From the Collection of the late Max Harari

£200-300



376



377

377

A Continental, possibly Italian, silk and silver thread woven wall hanging, 18th or 19th century, with cartouche and strapwork design overall, within a geometric border, later backed, 259 x 143cm

£300-500

378

A North Italian figured walnut bureau, mid 18th century, of *arc en arbutte* outline, the shaped fall above a frieze drawer and two cupboard doors fronted by three false drawer fronts and enclosing a shelved interior, 110cm high, 132cm wide, 68cm deep

Provenance: Oakley House, the Collection of Eustace Gibbs, 3rd Baron Wraxall, KCVO, CMG

£2,000-3,000



378

379

A walnut and feather banded tea caddy, circa 1740 and later, hinged lid enclosing a later divided interior, probably for use with stationery, 15cm high, 25cm wide, 16cm deep

£300-500



379



380

380

A Continental birch, burr wood and painted work table, second quarter 19th century, the top incorporating hand painted engravings, the lid opening to a divided interior, 78cm high, the top 60cm diameter

£200-300



381

381

A walnut and oyster veneered knee hole desk, first half 20th century, possibly incorporating some 18th century elements, 74cm high, 72cm wide, 47cm deep

£500-800



382

382
A pair of brass barley twist candlesticks, early 20th century, with openwork wrythen stems and round bases, circa 31cm high; and another pair of Victorian brass candlesticks, later 19th century, with multi-knopped stems and canted square bases, 24.5cm high

£250-350

383
A George III oak dresser, late 18th century, 206cm high, 208cm wide, 55cm deep

£500-700



383



384

384
A Kayseri prayer rug, approximately 134.5 x 89.5cm

£250-350

385
Cusco School (19th century)
The Virgin Mary
Oil on canvas
74 x 56cm (29 x 22 in.)

£300-500



385



386

386
A pair of Continental lacquered spelter models of rustic folk, late 19th century, portraying a man and woman respectively, each holding farm implements, on waisted circular socles, each indistinctly inscribed to the maquette, the tallest model circa 61cm high

£300-500

387
A Sorrento ware souvenir butler's tray on stand, circa 1900, the tray inlaid with exterior folk scene to one side and a chess board to the other, the stand turned to simulate bamboo, 71cm high, the tray 75 x 47cm

£250-350



387



388 (part lot)

388

A set of twelve botanical prints, framed in cream modern frames, each 24.3 x 19.3cm (9 1/8 x 7 5/8in.) including frame (12)

£200-300

389

Audrey Johnson (British 20th century)

Still life of flowers in a brown jug

Oil on board

Signed and dated 1966 lower right

18 x 15.5cm (7 x 6 in.)

£100-150



389

390

Audrey Johnson (British 20th century)

Still life of flowers in a white jug

Oil on board

Signed and dated 1986 lower right

25 x 20cm (9 3/4 x 7 3/4 in.)

Exhibited:

Lakes Artists Exhibition, Grasmere, 1986

Provenance: Property of the artist;

Purchased on 5th August 1986 from the above exhibition;

Thence by descent to the present owner

£200-300



390

391

A pair of gilt metal and marble mounted urn table lamps, 20th century, the ovoid bodies with cast with flanking rams' masks and bands of fruiting vine, on circular campan marble socles, 37cm high including fitment; and a gilt bronze and dove grey marble figural table lamp, modelled with a seated infant, approximately 37cm high including fitment

£200-300



391



392

392

A George III mahogany chest of drawers, circa 1780, with two short and four long drawers and on bracket feet, 84cm high, 91cm wide, 45cm deep

£500-700

393

A George III mahogany night commode, circa 1780, 79cm high, 55cm wide, 46cm deep, together with another similar George III mahogany night commode, circa 1780, 78cm high, 54cm wide, 48cm deep (2)

Provenance: From the Collection of the late Max Harari

£300-500



393



394

394 †

A Flemish or French 'Teniers' tapestry, 'The Fish Quay', in the manner of David Teniers the Younger, mid-18th century, woven in wool and silk, depicting fishing boats at sea beside a scene of figures at a market, before an architectural background, within a picture frame border woven with ribbon and fruiting vine, approximately 188.5 x 240.5 cm

Please see our website for the full footnote

£400-600



395 (part lot)

395Y

A French or Italian gouache, paper and ivory mounted fan, late 18th century, the leaf painted with a figural scene, probably representing 'Mars disarmed by Venus', before an architectural background and with further figures, the openwork sticks carved with foliage and trophies, with parcel gilt guard, presented in a giltwood case, 34cm high, 59cm wide overall; a French painted and sequin embroidered parchment, silk inset and mother-

of-pearl mounted fan, late 18th/early 19th century, painted with a shepherdess and trophies in reserves, signed *H Verremin* (?) to the leaf, 42cm fully extended; a Victorian painted silk and mother-of-pearl mounted fan, late 19th century, the lace-trimmed leaf painted with birds, 64cm wide fully extended; a Victorian lace and papier mache mourning fan, third quarter 19th century; and four various feather fans, early 20th century, including three ostrich feather court fans with tortoiseshell sticks and guards

£200-300



396

396Y

A rosewood and ormolu mounted low centre table in Louis XV style, first half 20th century, 42cm high, 72cm wide, 44cm deep

£400-600



397

397

A set of four gilt bronze twin light wall appliques in Louis XVI style, 20th century, each with twin scrolled arms issuing from ribbon tied backplates with tassel terminals, 54cm high, 31cm wide, 16cm protuberance

£500-700



398

398Y

A Louis XV walnut, kingwood and tulipwood side table, circa 1760, of stylised kidney shaped form and veneered on all exterior sides, 73cm high, 56cm wide, 35cm deep

£300-500



399

399

A pair of French beech chairs, early 20th century and recently upholstered

£300-500



400

400 λ

Sir Muirhead Bone (British 1876-1953)

Rye, Sussex

Charcoal and pencil

Signed lower left

22 x 30cm (8½ x 11¾ in.)

Provenance: From the Collection of the late Max Harari

£180-220



401

401 Y

A Regency mahogany, rosewood crossbanded and gilt metal mounted sofa table, circa 1820, 74cm high, 144cm wide (open), 65cm deep

Provenance: From the Collection of the late Max Harari

£800-1,200



402

402

A pair of polychrome painted stools, early 19th century and recently upholstered, the frames painted with stylised floral decoration, each 46cm high, the tops 46 x 43cm

£400-600

403 Y

A flight of three Regency mahogany and brass mounted shelves, circa 1820, 53cm high, 53cm wide, 22cm deep, a tulipwood and gilt metal two tier etagere in Regency style, 20th century, 59cm high, and a Regency rosewood X-frame stool, circa 1820, 42cm high, 48cm wide, 35cm deep (3)

£400-600



403



404

404

A Regency goncalo alves side cabinet, circa 1820, in the manner of John McLean, the Carrara marble top above the rounded panel doors, 91cm high, 86cm wide, 24cm deep

£300-500

405

A Tabriz rug, approximately 228 x 174cm

£300-500

405





406

406

After N. R. Black, View of London, taken from Albion Place, Blackfryars Bridge, Vue de Londres, Prise d'Albion Place, Pont de Blackfryars, Etching and aquatint by Joseph Constantine Stadler, 56 x 90.5cm (22 x 35 5/8in.), Overall 76 x 111cm (29 7/8 x 43 5/8in.)

£200-300

407Y

A specimen parquetry occasional table, 19th century, possibly Irish, incorporating oak, rosewood and mahogany, 74cm high, 46cm diameter

£300-500



408



407

408Y

An early Victorian rosewood centre table, circa 1840, the inverted bookmatch veneered circular top above a tapered triform column and platform base with paw feet to the angles, 73cm high, 132cm diameter

£400-600

409

A Victorian gilt brass and enamel casket by Howell, James & Co, Regent Street, last quarter 19th century, of rectangular section, the raised turquoise and cream coloured roundels within engraved scrolling foliate cartouches, on bracket feet, the hinged cover opening to reveal a maker's label to the velvet lined interior, 13 x 20 x 11cm;



409



and a German oak and silver plate mounted casket in Gothic taste, 19th century, of domed rectangular form, inset with allegorical plaques, 13 x 19 x 10cm

£500-800



410

410

A William IV mahogany library table, circa 1835, the rectangular top above two blind frieze drawers and carved scrolled supports, bipedal base and concealed castors, 74cm high, 148cm wide, 68cm deep

£600-800

411

A carpet in Mahal style, approximately 382 x 282cm

£800-1,200





412

412

A map print of the Eastern Hemisphere, with hand coloured land borders and the mail route, published John Tallis & Company, mounted framed and glazed 49 x 56cm overall, **together with a map print of Arabia**, mounted framed and glazed, 49 x 55cm overall

£120-180

413

A map print of New Zealand, after Rapkin and published by John Tallis, mounted, framed and glazed, 49 x 40cm overall

£120-180



413

414

Three decorative map prints, comprising: Peru & Bolivia, Chilli & La Plata, and Egypt, all after Rapkin and published by John Tallis & Company, mounted, framed and glazed, each approximately 49 x 40cm

£120-180



414

415

A George III mahogany and crossbanded roll top desk, circa 1800, 103cm high, 107cm wide, 67cm deep

£300-500



415



416

416

A mahogany chest of drawers, first quarter 19th century and later, 89cm high, 94cm wide, 49cm deep

£300-500

417

A Turkish kushier prayer rug, approximately 186 x 115cm

£400-600

417





418

418
Italian School (19th century)
Floral swags, a pair
Oil on canvas
56 x 109.5cm (22 x 43 in.) (2)

£200-300

419

An Italian cut and voided velvet large seat cover or panel, probably Genoa, incorporating late 17th/early 18th century elements, with foliage and flowering vases overall, within a gilt thread border, 90 x 96cm overall including later satin mount

For a Genoese velvet furnishing textile with similar use of colour and patterning, see Los Angeles County Museum of Art, M.63.4.2

£200-400



419

420Y

A Dutch walnut, floral marquetry, ivory, and mother of pearl inlaid centre table, late 18th century, the shaped to above a faceted baluster stem and scrolling outswept legs, 70cm high, the top 82cm diameter

£500-800



420

421

A pair of large brass and clear glass five light wall appliques in Louis XV style, 20th century, the slender scroll branches issuing from ribbon tied backplates, hung with moulded, shaped drops and flowerhead pendants overall, 107cm high, 38cm wide

£600-800



421



422

422

A pair of Continental gilt metal, moulded and engraved glass three light candelabra, in 18th century style, 20th century, the slender scrolled frames hung with drops, beads and shaped pendants engraved with floral sprays overall, mounted to square section plinths painted to simulate Siena marble, 72cm high overall

£300-500



423

423
A pair of 'plum pudding' mahogany bedside cabinets, in George III style, early 20th century, with porcelain lined interiors, each 80cm high, 50cm wide, 36cm deep

£800-1,200

424
A George III mahogany and inlaid chest on chest, late 18th century, almost certainly Channel Islands, the canted angles inlaid in the manner of Tunbridgeware, 201cm high, 115cm wide, 56cm deep

£400-600



424

425
A Hamadan runner, the dark blue ground with formal design of large rosettes on trellis stems, approximately 488 x 91cm

£500-700



425

426
Continental School (19th/20th century)
A pair of still lives of flowers
Oil on board
Each 49 x 41cm (19¼ x 16 in.) (2)

£500-700

427
A George III mahogany and goncalo alves banded serpentine fronted chest of drawers, circa 1780, incorporating a brushing slide above four long graduated drawers, 83cm high, 108cm wide, 52cm deep

£700-1,000



426 (part lot)



427



428 (part lot)

428
John Faulkner (Irish 1835-1894)
Dee Side Ballitea; A river landscape
Watercolour, a pair
Both signed and inscribed lower left,
the latter illegibly
Each 34.5 x 69cm (13½ x 27 in.) (2)

£400-600



429

429
A pair of mahogany bookcases, in George II
style, 20th century, with astragal glazed doors,
each 162cm high, 105cm wide, 33.5cm deep

£600-800



430

430
A carved mahogany centre table, in George
II style, early 20th century, 77cm high, 155cm
wide, 86cm deep

£500-700

431
A carved giltwood overmantel mirror, in George III style,
20th century, 119cm high, 116cm wide

£400-600

432
A George III mahogany tripod supper table, circa 1780, in
Irish style, 72cm high, the top 92cm diameter

£700-1,000



432



431

433
A carved beech and upholstered armchair, in
eighteenth century Chippendale style, 20th
century, 90cm high, 73cm wide, 86cm deep,
together with a Regency simulated rosewood
and upholstered low chair (2)

£300-500



433





434
Continental School (early 20th century)
Portrait of a lady
Oil on canvas
60 x 49cm (23½ x 19¼ in.)

£400-600

435
A curved giltwood and upholstered sofa, in mid 18th century style, 20th century, 82cm high, 230cm wide, 82cm deep

£600-800



435



436

436
An Heriz carpet, approximately
367 x 298cm

£400-600

437 λ
Sir Muirhead Bone (British 1876-1953)
View of London
Ink
Signed with initials lower right and
further signed in pencil lower centre
18 x 27.5cm (7 x 10¾ in.)

Provenance: From the Collection of the
late Max Harari

£180-220



437



438

438
A George III mahogany and line inlaid side
or serving table, circa 1790, 76cm high,
137cm wide, 61cm deep

£300-500

439
A George III mahogany and satinwood
crossbanded chest of drawers, circa 1780,
87cm high, 94cm wide, 52cm deep

£1,000-1,500



439



440
 Attributed to Jean Louis De Marne
 (Belgian 1754-1829)
A country lane with figures and animals
 Black chalk
 37 x 51.5cm (14½ x 20¼ in.)

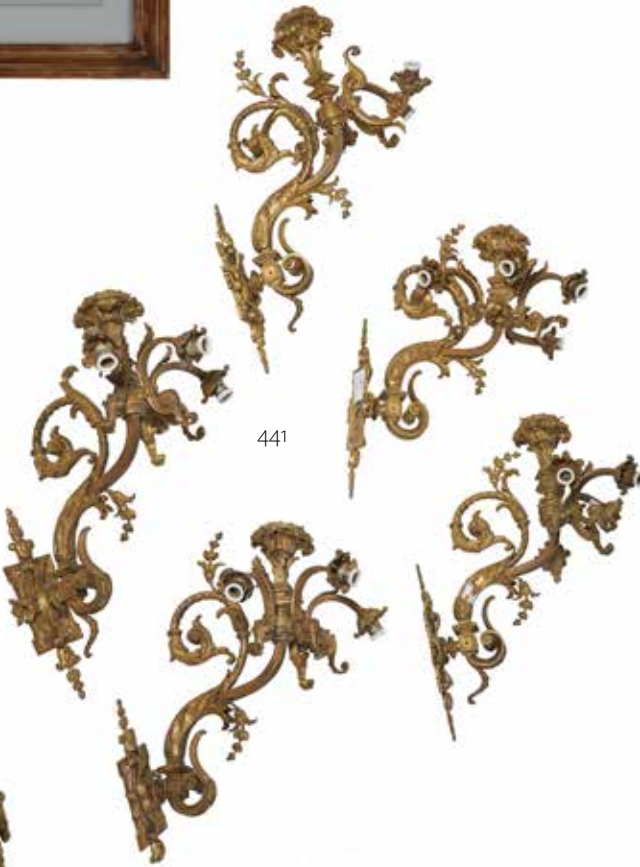
 Provenance: Oakley House, the Collection of
 Eustace Gibbs, 3rd Baron Wraxall, KCVO, CMG

 £300-500

441
 A set of five French gilt bronze five light
 wall appliques, first quarter 20th century,
 each with a raised foliate cast scone above
 a baluster stem suspending four foliate cast
 branches with further fitments, issuing from
 scrolled and wrythen conforming stems
 leading to cartouche backplates, 73cm high,
 63cm wide, 52cm protuberance

Provenance: Property from a Private
 Collection

£800-1,200



442
 A pair of Sevres-style gilt-metal mounted pottery vases, early
 20th century, painted with alternate panels of Watteauesques
 and landscapes reserved on a blue and gilt vermicular ground,
 Sevres-style marks, 70cm high

£300-500



443 (part lot)

443
 A group of ten 18th century figural pen and ink
 sketches, each approximately 15.5 x 20cm

£200-300



444
 A French carved walnut armoire, mid-18th century,
 231cm high, 163cm wide, 61cm deep

£300-500

445

445
 A Sarouk Feraghan carpet, the madder field
 decorated profusely with polychrome floral
 branches, centred by a sectional medallion
 and cornered by conforming spandrels, within
 a navy border and multiple guard stripes,
 approximately 390 x 310cm

£1,200-1,800





446

446
Continental School (19th century)
Father with two children and a model ship; Interior scene with three figures
Oil on canvas
Each 39 x 32cm (15¼ x 12½ in.) (2)

£200-300



447

448
A French or Italian patinated bronze four light candelabrum in Pompeian Revival taste, circa 1875 and later adapted, with three foliate sockets issuing around a further central sconce, descending to three elephants' masks and a tapered, reeded stem, rising from a triform base cast with leaves and a salamander, raised on paw feet, 50cm high overall; and a Louis Philippe gilt and patinated bronze table oil lamp base, circa 1830 and later adapted for electricity, the tapered reeded shaft terminating in an acanthus cast baluster, descending to a triform base raised on winged paw feet, 41cm high

£300-500



448

449
A wool work wall hanging, decorated with roses, approximately 365cm x 213cm

£400-600



449



450

450
A Continental silver plated jewellery casket, second half 19th century, of sloping square section, the hinged cover cast with a central raised medallion with an allegory of spring, flanked by twin winged maidens, the front back and sides cast with Bacchic putti and floral swags overall, inset with burgundy glass and turquoise cabochons, the interior velvet lined, 17.5cm high, approximately 18.5cm square

£400-600

451
A French mahogany wardrobe, circa 1860 and later, the moulded cornice above a pair of panelled doors enclosing a hanging space, raised on a plinth base, 242cm high, 145cm wide, 67cm deep

Provenance: Property from a Private Collection

£250-350



451



452 (part lot)

452

Henry Mayo Bateman (British 1887-1970)

"May I Come In?"

Ink

Signed with initials lower right

7.5 x 6.5cm (2¾ x 2½ in.)

Provenance:

Langton Gallery Ltd., London

Purchased from the above by the present owner

Exhibited:

London, Langton Gallery Ltd., December 1980

Together with "You Do Ask Some Tricky Questions." by W. Scully, Ink, pen and wash, 26.5 x 26.5cm (10 1/4 x 10 1/4 in.) (2)

453

After Francisco Jose De Goya

La Tauromaquia

Three black and white prints

Each image: 20.5 x 30.5cm (8 x 12 in.) (3)

£300-400

£150-250

454

A set of twenty-one political engravings after John Doyle (HB) published by Thomas MacLean, some stamped and some later inscribed with pencil, seven 35 x 27cm (13 3/4 x 10 5/8 in.), fourteen 27 x 35cm (10 5/8 x 13 3/4 in.) (21)

£400-600



453 (part lot)



454 (part lot)

455

A set of four Victorian carved, giltwood and composition three-light girandoles, mid-19th century, the oval frames carved with cabochons and foliage and issuing three scroll branches respectively, 68cm high, 22cm wide, 18cm protuberance

£500-700



455 (part lot)



456

456

A Victorian mahogany half tester bed, circa 1870, the moulded cornice to the canopy with curtain rail above the headboard, the arched footboard with flanking turned supports

Provenance: By repute purchased from auction held at Stowe House, 1923 and thence by direct family descent

£400-600

457

A pair of Victorian walnut and button upholstered armchairs, mid 19th century, with turned legs to the front terminating in caps and castors

£300-500



457



458

458

A Continental, probably Bohemian, brass and clear glass mounted eighteen branch chandelier, second half 20th century, the frame hung with flowerhead and shaped pendants and bead swags overall, and enclosing a further central light fitting, with domed and etched finial and conforming terminal suspending ball pendant, approximately 122cm high, 84cm diameter

£400-600

459

A French lacquered brass and iron baker's rack, 20th century, of bowfront outline, 195cm high, 65cm wide, 35cm deep

£300-500



459

460

A pair of large Limoges porcelain (M. Frères) ovoid vases signed by *N. Etienne*, circa 1900, painted in blue with wading birds in a river landscape, gilt-line borders, one signed *N. Etienne*, printed marks, 50cm high

£600-800



460

461

A pair of sectional Breche Romaine and veined cream marble columnar pedestals, early 20th century, with rib-moulded cylindrical stems and stepped circular bases, each 126cm high, the tops 127cm square

£200-300



461

462

A specimen marble table top, with central inlaid star motifs, 65cm diameter, on a lacquered brass table base with castors, 55cm high overall, together with a pair of black marble topped and gilt metal occasional tables, each 46cm high, 41cm diameter

Provenance: From the Collection of the late Max Harari

£400-600



462



463

463

A wrought and sheet iron roof finial modelled as a flowering vase, second half 19th century, French or English, loosely in Gothic Revival taste, the waisted urn form body issuing a tier of gargoyles and scrolling stems terminating in stylised flowers, acorns and clovers, heightened with gold paint, around a central wrythen stem, mounted to a later ebonised circular socle, 67cm high overall

£300-500

464

A pair of Continental, probably French, green and gold painted cast and wrought iron railing ends, second half 19th century, each of openwork design and centred by a flower basket, 89.5cm high, 55cm wide

£150-250



464



465

465

A part croquet set, recently manufactured by Wood Mallets, New Zealand, comprising six mallets, stamped 3.00 and each with a rectangular head gilt stamped for the maker and The Croquet Association, five coloured balls, hoops, wicket, corner pegs, mallet, and a printed rule book (fourth ed. 2007), contained within the original pine box inscribed CROQUET and again for the makers, the box 26cm high, 106cm wide, 27cm deep

The manufacture's website notes that this set contains competition mallets which are made to the exact specifications of World Champion player Joe Hogan, each with an overall weight of 3.00 lbs.

£300-500

466

A late Victorian or Edwardian cast iron bootscape in the form of a Scottish terrier, circa 1900, approximately 48cm high, 42cm wide

£200-250



466

467

A pair of zinc twin handled vessels utilised as planters, mid 20th century, of slightly tapering cylindrical form, each with embossed lettering to one side, later red painted interiors, 58cm high, 53cm wide

£100-200



467



468
A pair of rough-hewn stone planters, 19th/20th century, of tapered square form, 32cm high, the tops 38cm square

£200-300

469

A Continental white and veined marble mortar, possibly 18th century, of ovoid form, lobed to each corner, on a tapered stone plinth, 57cm high, 50cm wide overall

£200-300

470

A pair of small white painted cast iron urns on plinths, English or French, late 19th/early 20th century, mounted to stone bases, possibly previously gate post finials, 27cm high, 56cm wide overall

£300-500



470



469

471

A pair of galvanised metal twin handled planters, modern, of tapered square form, 71cm high, the tops 63cm square

£200-300



471

472

A green painted metal garden suite, of recent manufacture, comprising: a pair of armchairs; a circular table; and a bench, all of openwork design, the seat furniture with arched backs and slatted seats, the bench 95cm high, 114cm wide; together with a green painted metal circular table and parasol

£400-600



472



473

473
A Regency white painted wrought and cast iron garden seat, early 19th century, of reeded, slatted design, 92cm high, 154cm wide

£300-500



474

474
A Regency white painted wrought and cast iron garden seat, circa 1810, of strapwork design, with double domed back, 85cm high, 110cm wide

£400-600



475

475
A black painted wrought iron garden bench, circa 1820, of strapwork design, 73cm high, 150cm wide

£400-600

476
A pair green painted cast iron garden urns, second half 19th century, English or French, the part-lobed bodies twin handled campana form, on tapered square section plinths, 90cm high overall

£200-300



476



477

A cast lead figural bird bath or small fountain, early 20th century, modelled as a putto standing on a shall, supported on a triform dolphin base, 77cm high

£200-300

478

A pair of reconstituted stone finials modelled as fruit and flower vases, 20th century, approximately 55cm high; along with a small lead planter

£100-200



478



479

479

A pair of stone composition birdbaths, 20th century and possibly incorporating earlier elements, the circular basins cast as shells, raised on rough-hewn foliate balusters; on circular socles with paw feet, 97cm high, the basins 60cm diameter

£400-600



480

A large wooden garden bench in Arts and Crafts style, second half 20th century, in the manner of exedra benches, with relief carved floral ornament and acorn finials, 115cm high

£300-500

480

481

A pair of teak garden benches, of recent manufacture, in the manner of designs by Lutyens, the arched and serpentine backrest above a slatted seat and outscrolled arms, 104cm high, 166cm wide

Benches of this form were originally supplied to the garden at Little Thakeham near Storrington, West Sussex. The bench was then a common feature of other gardens designed by Lutyens

£300-500



481



482

A pair of stone composition and cast iron mounted water pumps, 20th century, each with lobed finial and fluted shaft, descending to conforming circular bases, 100cm high, 57cm wide

£200-300

482

483

A white painted metal garden armchair in Chinese Chippendale style, 20th century; 91cm high, 71cm wide; and a low table en suite

£250-350



483



484

484

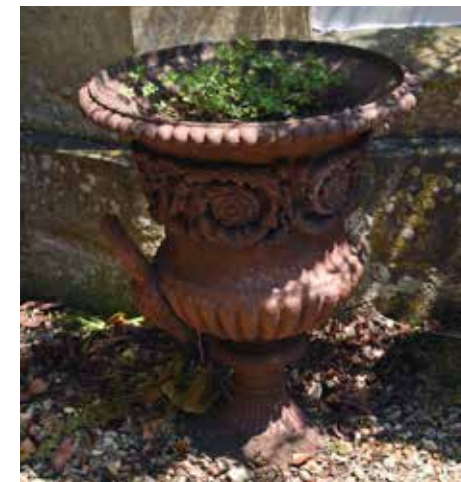
A pair of miniature cast iron garden benches in the manner of Coalbrookdale, circa 1900, each openwork bench of naturalistic tree-branch design, 34cm high, 41cm wide

£80-120

485

A Victorian cast iron 'Medici style' campana garden urn, late 19th century, the part-lobed body relief cast with a band of foliate scrolls, with a Bacchic mask handle to one side, on a fluted circular foot, now used as a planter, 67cm high, 58cm diameter

£200-300



485



486

486

A pair of Victorian white painted cast iron urns, last quarter 19th century, the everted rims and circular section bodies cast with stylised foliage, on waisted socles and descending to square plinths, circa 40cm high overall

£200-300

487

A pair of English stone planters, 19th century, of tapering square form, the sides fluted, 29cm high, the tops approximately 40cm square

£200-300



487



488

488
A metal planter, modern, of demilune section and with trellis frame to top

£100-200

489
A pair of small pine trees, in modern terracotta pots, the planters of square section, resting on further plinths, overall height approximately 125cm

£80-120



489

490
A set of four stone composition garden urns, 20th century, the ovoid bodies cast with swags, 34cm high

£250-350



490

491
Two olive trees, in matched modern terracotta pots, approximately 240cm high; and another, larger

£300-500



491



492

492
Two large camellia plants, in modern terracotta planters, the tapered planters with rib moulded design, the tallest plant approximately 225cm high

£250-350



493

493

A stained wood garden furniture set in the style of designs by Heal's, late 20th century, comprising a table and four armchairs, when not in use the elements fitting together to form a cube

£400-600

494

A white painted garden seat, to designs by J. P. White, early 20th century, of slatted construction and with outscrolled armrests, 97cm high, 148cm wide

£400-600



494

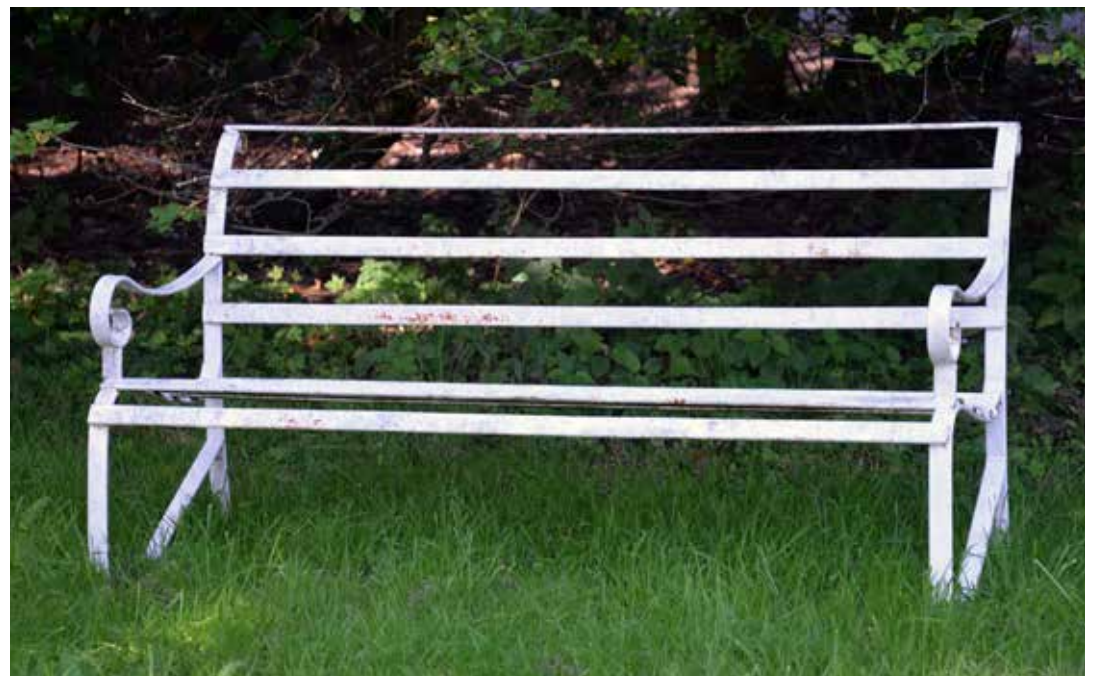


495

495

A pair of white painted wrought iron garden benches, first half 19th century, each of strapwork design and with scroll handles, 80cm high, 159cm wide, 65cm deep overall approximately

£900-1,200



Please see Conditions of Business and Conditions of Sale on the following pages.

Dreweatts & Dreweatts 1759 are trading names of Dreweatts 1759 Ltd. Dreweatts 1759 Ltd is registered in England, company number: 10758982, registered office: Donnington Priory, Newbury, Berkshire RG14 2JE.

Important Notices

BUYING AT DREWEATTS

There are several ways you can bid at a Dreweatts auction; in person, by leaving a commission or absentee bid, on the telephone where available and live via the internet – please make arrangements before the sale. THIS NOTICE APPLIES ONLY TO A PERSON WHO WISHES TO BID IN PERSON, OR BY LEAVING A COMMISSION OR ABSENTEE BID, AT A DREWEATTS PUBLIC AUCTION. For bidding at an online auction or for online bidding at a public auction please see our Online Auction Terms published on our website at www.dreweatts.com.

BIDDING IN PERSON

If intending to buy you are required to register your name and details at reception prior to the commencement of the auction. You will be required to provide a proof of identity and address to register for bidding. You will then be allocated a bidding number, which you use when bidding for an item.

COMMISSION BIDS

Dreweatts will execute bids on your behalf if you are unable to attend the sale. Commission or absentee bids are accepted either directly at reception, or can be sent by post, fax, email, telephone or via the website: www.dreweatts.com.

Dreweatts will add these bids to the auctioneers' sale book and will undertake to purchase the lots on your behalf as cheaply as allowed by other bids and reserves. If two buyers submit identical commission bids Dreweatts may prefer the first bid received.

Dreweatts does not accept liability for failing to execute commission bids, or for any errors or omissions.

CONDITION

Bidders must satisfy themselves as to the condition of each lot. Condition reports are available on request – see the Conditions of Business at the back of this catalogue forming part of these Auction Terms and Conditions for more information regarding condition reports. Requests for condition reports must be submitted by 4pm on the day prior to the auction; condition reports may be available alongside the lot description on the online catalogue at: www.dreweatts.com.

COMMISSION CHARGES

All purchases are subject to a buyer's premium, which is charged per lot at 25% of the hammer price (30% including VAT) up to and including £500,000, 20% (24% including VAT) of the hammer price from £500,001 up to and including £1,000,000 and 12% of the hammer price (14.4% including VAT) in excess of £1,000,000. A theta symbol (Θ) indicates that the lot is a zero rated item and therefore not subject to VAT on the buyer's premium. This applies to bound books (manuscripts and printed), unframed maps and albums. In the event the lot has a dagger (†) beside the lot number in the catalogue, this indicates that the lot is owned by an entity or company required to pay VAT (generally not an Antique Dealer, as they operate under a dealers margin scheme). VAT is payable at 20% on the Hammer Price. Lots marked with a double dagger (‡) (presently a reduced rate of 5%) or Ω (presently at standard rate of 20%) have been imported from outside the European Union to be sold at auction and therefore the buyer must pay the import VAT at the appropriate rate on the hammer price.

PAYMENT

Payment will be accepted, if you are a successful bidder, by debit card issued in the name of the Buyer by a UK bank and registered to a UK billing address; by all major UK issued credit cards issued in the name of the Buyer and registered to a UK billing address with the exception of American Express and Diners Club; by bank

transfer direct into our bank account, Bank Details: NatWest, 30 Market Place, Newbury, Berkshire RG14 5AG. Account Name: Dreweatts 1759 Ltd. A/C: 62412949, Sort Code: 60-15-07, BIC: NWBKGB2L, IBAN: GB21NWBK60150762412949; or in cash up to £8,000 (subject to relevant money laundering regulations). The name of the bank account holder should match the name of the buyer. Payment may also be made by sterling personal cheques drawn on a UK bank account and made payable to 'Dreweatts 1759 Ltd', but Dreweatts regrets that purchases paid for by this method cannot be collected until your cheque has cleared. First time buyers who are not present at the saleroom are requested to pay by bank transfer.

Y CITES REGULATIONS

Please note that lots marked with the symbol (Y) in this catalogue may be subject to CITES Regulations when exported. Relevant CITES Regulations may be found at www.gov.uk/guidance/cites-imports-and-exports.

COLLECTION OR DELIVERY

Before being able to collect your purchases you are required to pay the hammer price, plus the applicable commissions, and obtain a receipt acknowledging payment. Collection of the purchased lots is at the purchaser's risk and expense and whilst Dreweatts do not provide packing and despatch service we can suggest some carriers.

Dreweatts also require that all purchased items are collected within four working days of the sale to avoid a storage charge being applied.

STORAGE CHARGES

All items not collected by 4pm, within four working days of the sale, will be automatically removed to commercial storage and subject to a minimum storage charge of £20 (plus VAT) per lot and to a further storage charge of £2 (plus VAT) per lot per part or full day thereafter. These charges will be the sole liability of the purchaser and will be billed directly to them by Vangaroo Ltd (Andover); Vangaroo may be willing to adjust their charges if they are instructed by the purchaser to deliver to them. On payment of all sales and storage costs, items will be available for collection by appointment from Vangaroo Ltd (Andover), tel: 01264 316970, mobile: 07528 291180, email: matt@vangaroo.co.uk. These charges are set by Vangaroo Ltd (Andover); we recommend that you contact them directly regarding queries relating to these charges and other questions relating to storage. Staff at the saleroom will be unable to answer questions relating to items that have been removed from the saleroom.

FURTHER INFORMATION

The colours printed in this catalogue are not necessarily a true reflection of the actual item. All weights and measures given in the catalogue should be regarded as approximate.

VALUATION SERVICES

Dreweatts provides a range of confidential and professional valuation services to private clients, solicitors, executors, estate managers, trustees and other professional partners. These services include auction valuations, insurance valuations, probate valuations, private treaty valuations, valuations for family division or for tax purposes. For more information, please see our website: www.dreweatts.com.

For directions to Donnington Priory, please see our website: www.dreweatts.com.

Parking is available at Donnington Priory in two car parks on either side of the saleroom.

Information for Buyers at Public Auctions

1. **INTRODUCTION.** The following notes are intended to assist Bidders and Buyers, particularly those inexperienced or new to our salerooms. All of our auctions and sales are conducted on our printed Auction Terms and Conditions, including these Conditions of Sale and Business, which are readily available for inspection and normally accompany catalogues. Our staff will be happy to help you if there is anything you do not fully understand.

Any particular auction and/or any particular lot in an auction may be subject to different or additional terms which will be published in our auction catalogue. All auctions and sales of wines and spirits, jewellery, watches and clocks are subject to the special terms set out in the relevant Notices in relation to those items published in our auction catalogue and, in the event of any conflict or inconsistency, those special terms prevail over any other terms in our Auction Terms and Conditions. By bidding at the auction, you agree to be bound by these terms.

2. **AGENCY.** As auctioneers we usually act as agents for the seller whose identity, for reasons of confidentiality, is not normally disclosed. Accordingly if you buy at auction your contract for the item or items purchased is with the seller and not with us as the auctioneer.

3. **ESTIMATES.** Estimates are designed to help buyers gauge what sort of sum might be involved for the purchase of a particular lot. Estimates may change and should not be thought of as the sale price. The lower estimate may represent the reserve price and certainly will not be below it. Estimates do not include the Buyer's Premium or VAT (where chargeable). Estimates are prepared some time before the sale and may be altered by announcement before the sale. They are in no sense definitive.

4. **BUYER'S PREMIUM.** The Conditions of Sale forming part of our Auction Terms and Conditions require the buyer to pay a buyer's premium on the hammer price of each lot purchased. The buyer's premium is 25% of the hammer price up to and including £500,000, 20% of the hammer price from £500,001 up to and including £1,000,000, and 12% of the hammer price in excess of £1,000,000. VAT at the prevailing rate of 20% is added to buyer's premium and additional charges as defined below.

5. **VAT.** A theta symbol (Θ) indicates that the lot is a zero rated item and therefore not subject to VAT on the buyer's premium. This applies to bound books (manuscripts and printed), unframed maps and albums. A dagger symbol (†) indicates that VAT is payable by the purchaser at the standard rate (presently 20%) on the hammer price as well as being an element in the buyers' premium. This imposition of VAT is likely to be because the seller is registered for VAT within the European Union and is not operating the Dealers Margin Scheme or because VAT is due at 20% on import into the UK. A double dagger (‡) indicates that the lot has been imported from outside the European Union and the present position is that these lots are liable to a reduced rate of Import VAT currently 5% on the hammer price. (Ω) indicates that the lot has been imported from outside the European Union and these lots are liable to the standard rate of Import VAT currently 20% on the hammer price. Lots which appear without the above symbols indicate that no VAT is payable on the hammer price; this is because such lots are sold using the Auctioneers Margin Scheme and it should be noted that the VAT included within the buyers' premium is not recoverable as input tax.

6. **DESCRIPTION AND CONDITION.** Condition reports are provided on our website or upon request. The absence of a report does not imply that a lot is without imperfections. The detail in a report will reflect the estimated value of the lot. Large numbers of such requests received shortly before the sale may mean that reports cannot be provided for all lots. Members of staff are not trained restorers or conservators and, particularly for higher value lots, you should obtain an opinion from such a professional. Dreweatts is not liable for damage to gilded picture frames, plaster picture frames or picture frame glass; if a Lot is or becomes dangerous, we may dispose of it without notice to bidders in advance in any manner we see fit and will be under no liability for doing so. We recommend that you always view a lot in person.

We are dependent on information provided by the seller about a lot and whilst we may inspect lots and act reasonably in taking a general view about them we are normally unable to carry out a detailed examination and frequently no examination of lots in order to ascertain their condition in the way in which it would be wise for a buyer to do. Intending buyers have ample opportunity for inspection of goods and, therefore, accept

responsibility for inspecting and investigating lots in which they may be interested and the corresponding risk should they not do so. Please note carefully the exclusion of liability for the condition of lots contained in the Conditions of Sale. Neither the seller nor we, as the auctioneers, accept any responsibility for their condition. In particular, mechanical objects of any age are not guaranteed to be in working order. However, in so far as we have examined the goods and make a representation about their condition in the auction catalogue, we shall be liable for any defect which is not reflected in that representation and which that examination ought to have revealed to the auctioneer but which would not have been revealed to the buyer had the buyer examined the goods. Additionally, in specified circumstances lots misdescribed because they are 'deliberate forgeries' may be returned and repayment made. There is a 3 week time limit. (The expression 'deliberate forgery' is defined in our Conditions of Sale).

7. **ELECTRICAL GOODS.** These are sold as 'antiques' only and if bought for use must be checked over for compliance with safety regulations by a qualified electrician before use.

8. **EXPORT OF GOODS.** Buyers intending to export goods should ascertain (a) whether an export licence is required and (b) whether there is any specific prohibition on importing goods of that character because, e.g. they may contain prohibited materials such as ivory. Ask us if you need help.

9. **BIDDING.** Bidders will be required to register before the sale commences and lots will be invoiced to the name and address on the sale registration form. Bidders are required to provide a government issued identity document and a proof of address. Please enquire in advance about our arrangements for telephone bidding.

10. **COMMISSION BIDDING.** Commission bids may be left with the auctioneers indicating the maximum amount to be bid excluding buyers' premium. Dreweatts will add these bids to the auctioneers' sale book and they will be executed as cheaply as possible having regard to the reserve (if any) and competing bids. If two buyers submit identical commission bids the auctioneers may prefer the first bid received. Please enquire in advance about our arrangements for the leaving of commission bids by telephone or fax. Dreweatts does not accept liability for failing to execute commission bids, or for any errors or omissions.

11. **METHODS OF PAYMENT.** Payment will be accepted, if you are a successful bidder, by debit card issued in the name of the Buyer by a UK bank and registered to a UK billing address; by all major UK issued credit cards issued in the name of the Buyer and registered to a UK billing address with the exception of American Express and Diners Club; by bank transfer direct into our bank account, Bank Details: NatWest, 30 Market Place, Newbury, Berkshire RG14 5AG. Account Name: Dreweatts 1759 Ltd. A/C: 62412949, Sort Code: 60-15-07, BIC: NWBKGB2L, IBAN: GB21NWBK60150762412949; or in cash up to £8,000 (subject to relevant money laundering regulations). The name of the bank account holder should match the name of the buyer. Payment may also be made by sterling personal cheques drawn on a UK bank account and made payable to 'Dreweatts 1759 Ltd', but Dreweatts regrets that purchases paid for by this method cannot be collected until your cheque has cleared. First time buyers who are not present at the saleroom are requested to pay by bank transfer.

12. **COLLECTION AND STORAGE.** Please note what the Conditions of Sale state about collection and storage. It is important that goods are paid for and collected promptly. Any delay may involve the buyer in paying storage charges.

13. **À DROIT DE SUITE ROYALTY CHARGES.** From 1st January 2012 all UK art market professionals (which includes but is not limited to; auctioneers, dealers, galleries, agents and other intermediaries) are required to collect a royalty payment for all works of art that have been produced by qualifying artists each time a work is re-sold during the artist's lifetime and for a period up to 70 years following the artists death. This payment is only calculated on qualifying works of art which are sold for a hammer price more than the UK sterling equivalent of EURO 1,000 – the UK sterling equivalent will fluctuate in line with prevailing exchange rates. It is entirely the responsibility of the buyer to acquaint himself with the precise EURO to UK Sterling exchange rate on the day of the sale in this regard, and the auctioneer accepts no responsibility whatsoever if the

qualifying rate is different to the rate indicated. All items in this catalogue that are marked with λ are potentially qualifying items, and the royalty charge will be applied if the hammer price achieved is more than the UK sterling equivalent of EURO 1,000. The royalty charge will be added to all relevant buyers' invoices, and must be paid before items can be cleared. All royalty charges are passed on to the Design and Artists Copyright Society (DACS), no handling costs or additional fees with respect to these charges will be retained by the auctioneers. The royalty charge

Terms of Consignment for Sellers in Public Auctions

The sale of goods at our public auctions and a seller's relationship with us are governed by our Auction Terms and Conditions including these Terms of Consignment for Sellers in Public Auctions and our Conditions of Sale for Public Auctions. Any particular auction and/or any particular lot in an auction may be subject to different or additional terms which will be published in our auction catalogue or separately announced prior to the auction. All auctions and sales of wines and spirits, jewellery, watches and clocks are subject to the special terms set out in the relevant Notices in relation to those items published in our auction catalogue and, in the event of any conflict or inconsistency, those special terms prevail over any other terms in our Auction Terms and Conditions. Please note that our Auction Terms and Conditions including these Terms of Consignment for Sellers in Public Auctions and our Conditions of Sale for Public Auctions relate to auctions held in our salerooms and we have separate terms and conditions for our online auctions.

If you, or another person acting on your behalf, provide goods to us to sell on your behalf at one of our auctions this signifies that you agree to and will comply with our Auction Terms and Conditions including these Terms of Consignment for Sellers in Public Auctions and our Conditions of Sale for Public Auctions.

1. **INTERPRETATION.** In these Terms the words 'you', 'yours', etc. refer to the Seller and if the consignment of goods to us is made by an agent or otherwise on the Seller's behalf we assume that the Seller has authorised the consignment and that the consignor has the Seller's authority to contract. All obligations that apply to the Seller under these Terms of Consignment for Sellers in Public Auctions shall apply to the owner of the goods and their agent jointly and separately. Similarly the words 'we', 'us', etc. refer to the Auctioneers.

2. **WARRANTY.** The Seller warrants that possession in the lots can be transferred to the Buyer with good and marketable title, free from any third party right and encumbrances, claims or potential claims. The Seller has provided all information concerning the item's ownership, condition and provenance, attribution, authenticity, import or export history and of any concerns expressed by third parties concerning the same.

3. **ALL COMMISSIONS** and fees are subject to VAT at the prevailing rate.

4. **COMMISSION** is charged to sellers and all selling terms are available from our salerooms.

5. **REMOVAL COSTS.** Items for sale must be consigned to the saleroom by any stated deadline and at your expense. We may be able to assist you with this process but any liability incurred to a carrier for haulage charges is solely your responsibility.

6. LOSS AND DAMAGE OF GOODS

(a) Loss and Damage Warranty - Dreweatts is not authorised by the FCA to provide insurance to its clients, and does not do so. However Dreweatts for its own protection assumes liability for property consigned to it at the lower pre-sale estimate until the hammer falls. To justify accepting liability, Dreweatts makes a charge of 15% of the hammer price plus VAT, subject to a minimum charge of £150, or if unsold 15% of our lower estimate. The liability assumed by Dreweatts shall be limited to the lower pre-sale estimate or the hammer price if the lot is sold. Dreweatts is not liable for damage to gilded picture frames, plaster picture frames or picture frame glass; if the Lot is or becomes dangerous, we may dispose of it without notice to you in advance in any manner we see fit and will be under no liability for doing so.

(b) If the owner of the goods consigned instructs us in writing not to take such action, the goods then remain entirely at the owner's risk unless and until the property in them passes to the Buyer or they are collected by or on behalf of the owner, and clause 6 (a) is inapplicable.

that will be applied to qualifying items which achieve a hammer price of more than the UK sterling equivalent of EURO 1,000, but less than the UK sterling equivalent of EURO 50,000 is 4%. For qualifying items that sell for more than the UK sterling equivalent of EURO 50,000 a sliding scale of royalty charges will apply – for a complete list of the royalty charges and threshold levels, please see www.dacs.org.uk. There is no VAT payable on this royalty charge.

7. **ILLUSTRATIONS AND PHOTOGRAPHS.** The cost of any illustrations or photographs is borne by you. The copyright in respect of such illustrations and photographs shall be the property of us, the auctioneers, as is the text of the catalogue.

8. **MINIMUM BIDS AND OUR DISCRETION.** Goods will normally be offered subject to a reserve agreed between us before the sale in accordance with clause 9. We may sell Lots below the reserve provided we account to you for the same sale proceeds as you would have received had the reserve been the hammer price. If you specifically give us a "discretion" we may accept a bid of up to 10% below the formal reserve.

9. RESERVES

(a) You are entitled to place prior to the auction a reserve on any lot consigned, being the minimum hammer price at which that lot may be sold. Reserves must be reasonable and we may decline to offer goods which in our opinion would be subject to an unreasonably high reserve (in which case goods carry the storage and loss and damage warranty charges stipulated in these Terms of Consignment).

(b) A reserve once set cannot be changed except with our consent.

(c) Where a reserve has been set which we consider unreasonably high, an unsold charge will be payable in the event that the lots fails to sell, being the agreed selling terms calculated on the reserve, LDW at 15% and any photographic charges.

(d) Where a reserve has been placed only we may bid on your behalf and only up to the reserve (if any) and you may in no circumstances bid personally.

(e) Reserves are not usually accepted for lots expected to realise below £100.

10. **ELECTRICAL ITEMS.** These are subject to detailed statutory safety controls. Where such items are accepted for sale you accept responsibility for the cost of testing by external contractors. Goods not certified as safe by an electrician (unless antiques) will not be accepted for sale. They must be removed at your expense on your being notified. We reserve the right to dispose of unsafe goods as refuse, at your expense.

11. **SOFT FURNISHINGS.** The sale of soft furnishings is strictly regulated by statute law in the interests of fire safety. Goods found to infringe safety regulations will not be offered and must be removed at your expense. We reserve the right to dispose of unsafe goods as refuse, at your expense. The rights of disposal referred to in clause 10 and 11 are subject to the provisions of The Torts (Interference with Goods) Act 1977.

12. **DESCRIPTION.** Please assist us with accurate information as to the provenance, lawful import etc. of goods where this is relevant. There is strict liability for the accuracy of descriptions under modern consumer legislation and in some circumstances responsibility lies with sellers if inaccuracies occur. We will assume that you have approved the catalogue description of your lots and that your lots match those descriptions unless informed to the contrary. Where we are obliged to return the price to the buyer when the lot is a deliberate forgery under Condition 15 of the Conditions of Sale and we have accounted to you for the proceeds of sale you agree to reimburse us the sale proceeds and in any event within 7 days of our written notice to do so.

13. **UNSOLD.** If an item is unsold it may at our discretion be re-offered at a future sale. Where in our opinion an item is unsaleable you must collect such items from the saleroom promptly on being so informed. Otherwise, storage charges may be incurred. We reserve the right to charge for storage in these circumstances at a reasonable daily rate.

14. **WITHDRAWN AND BOUGHT IN ITEMS.** These are liable to incur a charge of 15% commission, 15 % Loss and Damage Warranty and

any other costs incurred including but not limited to illustration and restoration fees all of these charges being subject to VAT on being bought in or withdrawn after being catalogued.

15. **CONDITIONS OF SALE.** You agree that all goods will be sold on our Conditions of Sale for Public Auctions. In particular you undertake that you have the right to sell the goods either as owner or agent for the owner with good and marketable title and free and clear of any third party rights or claims. You undertake to compensate us and any buyer or third party for all losses liabilities, costs and expenses suffered or incurred arising out of or in connection with any breach of this undertaking. We will also, at our discretion, and as far as practicable, confirm that an item consigned for sale does not appear on the Art Loss register, which is administered by an independent third party.

16. DUE DILIGENCE CHECKS AND ANTI-MONEY LAUNDERING PROCEDURES

Under the money laundering regulations in force we are required to carry out relevant due diligence checks. This includes verifying the identity of all customers we transact with as well as any beneficial owners on behalf of whom they may transact. Vendors who are unable to or refuse to supply required identification documents and proof of address will not be able to consign to Dreweatts auctions. Copies of customer due diligence checks will be stored for as long as it is necessary to satisfy legal requirements in an appropriate storage facility, which for the avoidance of doubt may include storage solely in electronic form.

17. AUTHORITY TO DEDUCT COMMISSION AND EXPENSES AND RETAIN PREMIUM AND INTEREST

(a) You authorise us to deduct commission at the stated rate and all

Conditions of Sale for Public Auctions

Dreweatts carries on business with bidders, buyers and all those present in the auction room prior to or in connection with a sale by auction at our salerooms on our Auction Terms and Conditions or Public Auctions including these Conditions of Sale for Public Auctions and all bidders, buyers and others participating in a public auction accept that these terms apply to the exclusion of any terms and conditions contained in any of those person's own documents even if the same purport to provide that that person's own or some other terms prevail. Any particular public auction and/or any particular lot in an auction may be subject to different or additional terms which will be published in our online auction catalogue. Please note that our Auction Terms and Conditions including these Conditions of Sale for Public Auctions relate to auctions held in one of our salerooms and we have separate terms and conditions for our online auctions.

1. DEFINITIONS

In these Conditions:

(a) "auctioneer" means the firm of Dreweatts or its authorised auctioneer, as appropriate;

(b) "deliberate forgery" means an imitation made with the intention of deceiving as to authorship, origin, date, age, period, culture or source but which is unequivocally described in the catalogue as being the work of a particular creator and which at the date of the sale had a value materially less than it would have had if it had been in accordance with the description;

(c) "hammer price" means the level of bidding reached (at or above any reserve) when the auctioneer brings down the hammer;

(d) "terms of consignment" means the stipulated terms and rates of commission on which Dreweatts accepts instructions from sellers or their agents;

(e) "total amount due" means the hammer price in respect of the lot sold together with any premium, Value Added Tax chargeable and any additional charges payable by a defaulting buyer under these Conditions;

(f) "sale proceeds" means the net amount due to the seller, being the hammer price of the lot sold less commission at the stated rate, Value Added Tax chargeable and any other amounts due to us by the seller in whatever capacity and however arising;

(g) "You", "Your", etc. refer to the buyer as identified in Condition 2.

(h) The singular includes the plural and vice versa as appropriate.

expenses incurred for your account from the hammer price and consent to our right to retain beneficially the premium paid by the buyer in accordance with our Conditions of Sale for Public Auctions and any interest earned on the sale proceeds until the date of settlement.

(b) In case of lots unsold at auction you authorise us at our discretion to reoffer such lots and negotiate a sale within seven days of the auction date, in which case the same charges will be payable as if such lots had been sold at auction and so far as appropriate these Terms apply.

18. **WAREHOUSING.** We disclaim all liability for goods delivered to our saleroom without sufficient sale instructions and reserve the right to make minimum warehousing charge of £10 per lot per day. Unsold lots are subject to the same charges if you do not remove them within a reasonable time of notification. If not removed within three weeks we reserve the right to sell them and defray charges from any net proceeds of sale or at your expense to consign them to the local authority for disposal.

19. **SETTLEMENT.** After sale settlement of the net sum due to you normally takes place within 28 days of the sale (by crossed cheque to the seller) unless the buyer has not paid for the goods. In this case no settlement will then be made but we will take your instructions in the light of our Conditions of Sale for Public Auctions. You authorise any sums owed by you to us on other transactions to be deducted from the sale proceeds. You must note the liability to reimburse the proceeds of sale to us as under the circumstances provided for in Condition 12 above. You should therefore bear this potential liability in mind before parting with the proceeds of sale until the expiry of 28 days from the date of sale.

2. BIDDING PROCEDURES AND THE BUYER

(a) Bidders are required to register their particulars before bidding by completing a sale registration form and to satisfy any security arrangements before entering the auction room to view or bid;

(b) Under the money laundering regulations in force we are required to verify the identity of all customers we transact with as well as any beneficiaries on behalf of whom they may transact. Customers who are unable to or refuse to supply required identification documents and proof of address will not be able to bid in Dreweatts auctions. Copies of customer due diligence checks will be stored for as long as it is necessary to satisfy legal requirements in an appropriate storage facility which for the avoidance of doubt may include storage solely in electronic form;

(c) the maker of the highest bid accepted by the auctioneer conducting the sale shall be the buyer at the hammer price and any dispute about a bid shall be settled at the auctioneer's absolute discretion by reoffering the Lot during the course of the auction or otherwise. The auctioneer shall act reasonably in exercising this discretion.

(d) Bidders shall be deemed to act as principals;

(e) Our right to bid on behalf of the seller is expressly reserved up to the amount of any reserve and the right to refuse any bid is also reserved.

3. **INCREMENTS.** Bidding increments shall be at the auctioneer's sole discretion.

4. **THE PURCHASE PRICE.** The buyer shall pay the purchase price together with a premium thereon of 30% which shall include VAT on the premium at the rate imposed by law. The buyer will also be liable for any royalties payable under Droit de Suite as set out under Information for Buyers.

5. **VALUE ADDED TAX.** Value Added Tax on the hammer price is imposed by law on all items affixed with a dagger (†) or double dagger (‡). Value Added Tax is charged at the appropriate rate prevailing by law at the date of sale and is payable by buyers of relevant Lots. (Please refer to "Information for Buyers" for a brief explanation of the VAT position).

6. PAYMENT

(a) Immediately a Lot is sold you will:

(i) give to us, if requested, proof of identity, and

(ii) pay to us the total amount due or in such other way as is agreed by us.

(b) Any payments by you to us may be applied by us towards any sums owing from you to us on any account whatever without regard to any directions of you or your agent, whether expressed or implied.

(c) In order to comply with money laundering regulations we reserve the right to require proof of source of funds and/or confirmation of the nature and source of wealth for all receipts of monies from clients directly or from third parties for payments on behalf of clients.

7. TITLE AND COLLECTION OF PURCHASES

(a) The ownership of any Lots purchased shall not pass to you until you have made payment in full to us of the total amount due.

(b) You shall at your own risk and expense take away any lots that you have purchased and paid for not later than 3 working days following the day of the auction or upon the clearance of any cheque used for payment after which you shall be responsible for any removal, storage and insurance charges.

(c) No purchase can be claimed or removed until it has been paid for.

8. REMEDIES FOR NON-PAYMENT OR FAILURE TO COLLECT PURCHASES

(a) If any Lot is not paid for in full and taken away in accordance with these Conditions or if there is any other breach of these Conditions, we, as agent for the seller and on our own behalf, shall at our absolute discretion and without prejudice to any other rights we may have, be entitled to exercise one or more of the following rights and remedies:

(i) to proceed against you for damages for breach of contract;

(ii) to rescind the sale of that Lot and/or any other Lots sold by us to you;

(iii) to resell the Lot (by auction or private treaty) in which case you shall be responsible for any resulting deficiency in the total amount due (after crediting any part payment and adding any resale costs). Any surplus so arising shall belong to the seller;

(iv) to remove, store and insure the Lot at your expense and, in the case of storage, either at our premises or elsewhere;

(v) to charge interest at a rate not exceeding 15% per month on the total amount due to the extent it remains unpaid for more than 3 working days after the sale;

(vi) to retain that or any other Lot sold to you until you pay the total amount due;

(vii) to reject or ignore bids from you or your agent at future auctions or to impose conditions before any such bids shall be accepted;

(viii) to apply any proceeds of sale of other Lots due or in future becoming due to you towards the settlement of the total amount due and to exercise a lien (that is a right to retain possession of) any of your property in our possession for any purpose until the debt due is satisfied.

(b) We shall, as agent for the seller and on our own behalf pursue these rights and remedies only so far as is reasonable to make appropriate recovery in respect of breach of these conditions.

9. THIRD PARTY LIABILITY. All bidders, buyers and other members of the public on our premises are there at their own risk and must note the lay-out of the accommodation and security arrangements. Accordingly neither the auctioneer nor our employees or agents shall incur liability for death or personal injury or for the safety of the property of persons visiting prior to or at a sale (except in each case as may be required by law by reason of our negligence)

10. COMMISSION BIDS. Whilst prospective buyers are strongly advised to attend the auction and are always responsible for any decision to bid for a particular Lot and shall be assumed to have carefully inspected and satisfied themselves as to its condition, we will if so instructed clearly and in writing execute bids on their behalf. Neither the auctioneer nor our employees or agents shall be responsible for any failure to do so.

Where two or more commission bids at the same level are recorded we reserve the right in our absolute discretion to prefer the first bid so made.

11. WARRANTY OF TITLE AND AVAILABILITY. The seller warrants to the auctioneer and you that the seller is the true owner of the property consigned or is properly authorised by the true owner to consign for sale and is able to transfer good and marketable title to the property free from any third party claims.

Save as expressly set out above, all other warranties, conditions or other terms which might have effect between the Seller and you, or us and you, or be implied or incorporated by statute, common law or otherwise are excluded to the fullest extent permitted by law.

12. AGENCY. The auctioneer normally acts as agent only and disclaims any responsibility for default by sellers or buyers.

13. TERMS OF SALE. The seller acknowledges that Lots are sold subject to the stipulations of these Conditions in their entirety and on the Terms of Consignment for Public Auctions as notified to the consignor at the time of the entry of the Lot.

14. DESCRIPTIONS AND CONDITION

(a) Whilst we seek to describe lots accurately, it may be impractical for us to carry out exhaustive due diligence on each lot. Prospective buyers are given ample opportunities to view and inspect before any sale and they (and any independent experts on their behalf) must satisfy themselves as to the accuracy of any description applied to a lot. Prospective buyers also bid on the understanding that, inevitably, representations or statements by us as to authorship, genuineness, origin, date, age, provenance, condition or estimated selling price involve matters of opinion. We undertake that any such opinion shall be honestly and reasonably held and accept liability for opinions given negligently or fraudulently. Subject to the foregoing neither we the auctioneer nor our employees or agents nor the seller accept liability for the correctness of such opinions and all conditions and warranties, whether relating to description, condition or quality of lots, express, implied or statutory, are hereby excluded. Dreweatts is not liable for damage to gilded picture frames, plaster picture frames or picture frame glass; if the Lot is or becomes dangerous, we may dispose of it without notice to you in advance in any manner we see fit and will be under no liability for doing so. This Condition is subject to the next following Condition concerning deliberate forgeries and applies save as provided for in paragraph 6 “information to buyers”.

(b) Private treaty sales made under these Conditions are deemed to be sales by auction for purposes of consumer legislation.

15. FORGERIES. Notwithstanding the preceding Condition, any Lot which proves to be a deliberate forgery (as defined) may be returned to us by you within 21 days of the auction provided it is in the same condition as when bought, and is accompanied by particulars identifying it from the relevant catalogue description and a written statement of defects. If we are satisfied from the evidence presented that the Lot is a deliberate forgery we shall refund the money paid by you for the Lot including any buyer’s premium provided that (1) if the catalogue description reflected the accepted view of scholars and experts as at the date of sale or

(2) you personally are not able to transfer a good and marketable title to us, you shall have no rights under this condition.

The right of return provided by this Condition is additional to any right or remedy provided by law or by these Conditions of Sale.

16. PRIVACY NOTICE. We will hold and process any personal data in relation to you in accordance with our current privacy policy, a copy of which is available on our website www.dreweatts.com/privacy-policy/.

GENERAL

17. We shall have the right at our discretion, to refuse admission to our premises or attendance at our auctions by any person.

18. (a) Any right to compensation for losses liabilities and expenses incurred in respect of and as a result of any breach of these Conditions and any exclusions provided by them shall be available to the seller and/or the auctioneer as appropriate.

(b) Such rights and exclusions shall extend to and be deemed to be for the benefit of employees and agents of the seller and/or the auctioneer who may themselves enforce them.

19. Any notice to any buyer, seller, bidder or viewer may be given by first class mail, email or Swiftmail in which case it shall be deemed to have been received by the addressee 48 hours after posting.

20. Special terms may be used in catalogue descriptions of particular classes of items in which case the descriptions must be interpreted in accordance with any glossary appearing at the commencement of the catalogue.

21. Any indulgence extended to bidders, buyers or sellers by us notwithstanding the strict terms of these Conditions or of the Terms of Consignment shall affect the position at the relevant time only and in respect of that particular concession only; in all other respects these Conditions shall be construed as having full force and effect.

22. These Conditions shall be governed by and construed in accordance with English law and the parties irrevocably submit to the exclusive jurisdiction of the English courts.

Group Departments

NEWBURY

Dreweatts

Donnington Priory

Newbury

Berkshire RG14 2JE

Auctions, exhibitions and valuations

LONDON

Dreweatts / Bloomsbury Auctions

16-17 Pall Mall

St James's

London SW1Y 5LU

Auctions, exhibitions and valuations
by appointment

+44 (0) 1635 553 553

info@dreweatts.com

dreweatts.com

CHAIRMAN

George Bailey

MANAGING DIRECTOR

Jonathan Pratt

ASIAN CERAMICS AND WORKS OF ART

Mark Newstead

Dr Yingwen Tao

BLOOMSBURY AUCTIONS

BOOKS AND MANUSCRIPTS

Dr Timothy Bolton

Camilla Previté

Roxana Kashani

BRITISH AND EUROPEAN CERAMICS
AND GLASS

Mark Newstead

Geoffrey Stafford Charles

CLOCKS AND SCIENTIFIC
INSTRUMENTS

Leighton Gillibrand

COUNTRY SPORTING

Geoffrey Stafford Charles

DECORATIVE ARTS

Geoffrey Stafford Charles

Ashley Matthews

EUROPEAN SCULPTURE AND
WORKS OF ART

Charlotte Schelling

ESTATES AND COLLECTIONS

Will Richards

Joe Robinson

FINE ART

Jennie Fisher

Lucy Gregory

Francesca Whitham

FURNITURE AND CARPETS

Ben Brown

Ashley Matthews

William Turkington

JEWELLERY, SILVER, WATCHES
AND OBJECTS OF VERTU

James Nicholson

Nick Mann

Tessa Parry

LIVE STEAM AND MODEL
ENGINEERING

WORKS OF ART

Michael Matthews

WINE

Mark Robertson

Dianne Wall

