



7% Buyer Premium On Line,
5% Buyer Premium Onsite

Auctioneers
Sixto Paiz - #17750
Eric Dyess - TX Lic# 16926



Online Bidding Provided by



ONLINE BIDDING
Powered By
proxibid

Like us on
facebook 

MIDLAND, TEXAS AUCTION

**3 COMPLETE
FRAC SPREADS**

**Preview Starting
November 13th, 2020**

**JOIN US NOVEMBER
16th @ BJ SERVICES (YD 2)
FOR BBQ LUNCH!**

BidSpotter.com

**HUGE SELECTION OF BJ SERVICES FRAC EQUIPMENT • CEMENT & ACID EQUIPMENT
TRUCKS • TRAILERS • PICK UPS • DRILLING RIG COMPONENTS • DRILLING TOOLS •
DRILL COLLARS/ DRILL PIPE • WELL SERVICING TOOLS**

**TUESDAY &
WEDNESDAY
NOV
17th & 18th,
2020**

**9:00AM (CST)
Each Day**

**REGISTER TO BID
ONLINE!**

www.PermianInt.com

or Call Steve Taylor (432-448-0406), Eric Dyess (940-452-4132), OR Michael Hardwick (432-448-3208)



CAT 3512C- Power/ CAT-TH55 Trans D1 • YD2



2014-2011 Peterbilt 367 Trucks D1 • YD2



Frac Blenders D1 • YD2



Surplus Frac Pumps D1 • YD2



Private Treaty Frac Spread YD2



Private Treaty Frac Spread YD2



Private Treaty Frac Spread YD2



Private Treaty Frac Spread YD2



Private Treaty Frac Spread YD2



Private Treaty Frac Spread YD2



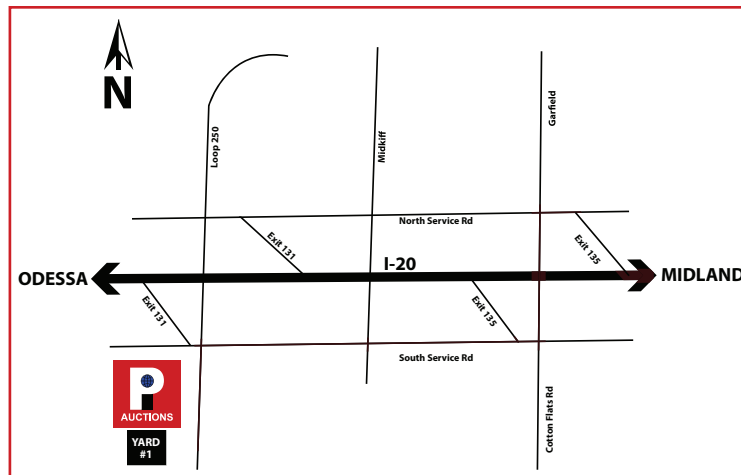
Private Treaty Frac Spread YD2



Private Treaty Frac Spread YD2



Private Treaty Frac Spread YD2



DAY 1

YARD #1 - MIDLAND, TX

Directions: 4006 SCR 1232 MIDLAND, TX 79706. Exit 131 off I-20, go South .5-mile, yard on right.

Checkout: Monday- Friday 8AM-5PM thru DEC 4, Saturday by APPT ONLY!

Contact: Bubba Koiner - 940-224-8071

ACID / WINCH TRUCKS

2010 MACK GU813 TRI AXLE DAY CAB ACID PUMP TRUCK, P/B MP8 MACK ENGINE, 8 SPD EATON FULLER TRANS., W/ WESTERN ROUGH RIDER 500 TRIPLEX PUMP, 10K# FLUID END W/ 4-1/2" PLUNGERS, MISSION 4X3 CENT PUMP, (2) 750 GAL TANKS, ASSORTED HARDLINE & CHICKSANS, PLUG VALVES, FITTINGS, CONTROL PANEL, SHOWS 217,489 MILES & 12,422 HRS

1938 INT'L KB-8 WINCH TRUCK - ALL PROCEEDS WILL BE DONATED TO LEA COUNTY SHRINERS. DONATED BY UNITED DRILLING - ANGEL SALAZAR

FRAC WATER HEATER / MISC.

2012 RUSH OVERLAND 35 MBTU FRAC WATER HEATER MTD ON TRI AXLE TRAILER

(4) 16V149 DETROIT DIESEL ENGINE CORES

OMEGA W1300 TRIPLEX PUMP W/ FLUID END

(2) GARDNER DENVER 5" QUINTUPLEX FLUID ENDS

(2) NOV WS 2400 6X8 TRIPLEX FLUID ENDS

YARD #2 - ODESSA, TX

Directions: BJ Services, 6165 W Murphy St., Odessa, TX 79763

Checkout: Monday- Friday 8AM-5PM thru DEC 4

Contact: Terry Jones 254-434-1528

PRIVATE TREATY
LIMITED NUMBER OF
CAT 3512C POWER, CAT TH55 TRANS.,
FRAC SPREAD AVAILABLE.
WON'T LAST LONG!

The Following CAT 3512C Powered / CAT TH55 Trans Frac Spread is available for immediate purchase!

2018 GARDNER DENVER 2500Q QUINTUPLEX FRAC PUMP, P/B CAT 3512C DIESEL ENGINE CAT TH55 TRANS., MTD ON DRAGON 3 AXLE TRAILER, SHOWS 10494 ENGINE HRS & 1692 TRANS. HRS

2017 GARDNER DENVER 2500Q QUINTUPLEX FRAC PUMP, P/B CAT 3512C DIESEL ENGINE, CAT TH55 TRANS., MTD ON DRAGON 3 AXLE TRAILER, SHOWS 7336 ENGINE HRS & 1806 TRANS. HRS

2019 GARDNER DENVER 2500Q QUINTUPLEX FRAC PUMP, P/B CAT 3512C DIESEL ENGINE, CAT TH55 TRANS., MTD ON 2013 DRAGON 3 AXLE TRAILER, SHOWS 6908 ENGINE HRS & 5831 TRANS. HRS

2019 SMP2500XL QUINTUPLEX FRAC PUMP, P/B CAT 3512C DIESEL ENGINE, CAT TH55 TRANS., MTD ON 2015 DRAGON 3 AXLE TRAILER, SHOWS 7383 ENGINE HRS & 5299 TRANS. HRS

2014 GARDNER DENVER 2500Q QUINTUPLEX FRAC PUMP, P/B CAT 3512C DIESEL ENGINE, CAT TH55 TRANS., MTD ON DRAGON 3 AXLE

TRAILER, SHOWS 2429 ENGINE HRS & 5136 TRANS. HRS

2014 GARDNER DENVER 2500Q QUINTUPLEX FRAC PUMP, P/B CAT 3512C DIESEL ENGINE, CAT TH55 TRANS., MTD ON DRAGON 3 AXLE TRAILER, SHOWS 2912 ENGINE HRS & 5033 TRANS. HRS

2019 SPMQWS2500N QUINTUPLEX FRAC PUMP, P/B CAT 3512C DIESEL ENGINE, CAT TH55 TRANS., MTD ON DRAGON 3 AXLE TRAILER, SHOWS 11135 ENGINE HRS & 4624 TRANS. HRS

2019 SPMQWS2500N QUINTUPLEX FRAC PUMP, P/B CAT 3512C DIESEL ENGINE, CAT TH55 TRANS., MTD ON DRAGON 3 AXLE TRAILER, SHOWS 656 ENGINE HRS & 3463 TRANS. HRS

2019 SPMQWS2500N QUINTUPLEX FRAC PUMP, P/B CAT 3512C DIESEL ENGINE, CAT TH55 TRANS., MTD ON DRAGON 3 AXLE TRAILER, SHOWS 4435 ENGINE HRS & 3918 TRANS. HRS

2018 GARDNER DENVER 2500Q QUINTUPLEX FRAC PUMP, P/B CAT 3512C DIESEL ENGINE, CAT TH55 TRANS., MTD ON DRAGON 3 AXLE TRAILER, SHOWS 6666 ENGINE HRS & 8454 TRANS. HRS

2019 GARDNER DENVER 2500HD QUINTUPLEX FRAC PUMP, P/B CAT 3512C DIESEL ENGINE, CAT TH55 TRANS., MTD ON 2015 DRAGON 3 AXLE TRAILER, SHOWS 4179 ENGINE HRS & 3966 TRANS. HRS

2019 GARDNER DENVER 2500Q QUINTUPLEX FRAC PUMP, P/B CAT 3512C DIESEL ENGINE, CAT TH55 TRANS., MTD ON 2014 DRAGON 3 AXLE TRAILER, SHOWS 2920 ENGINE HRS & 5229 TRANS. HRS

2017 GARDNER DENVER 2500Q QUINTUPLEX FRAC PUMP, P/B CAT 3512C DIESEL ENGINE, CAT TH55 TRANS., MTD ON 2012 DRAGON 3 AXLE TRAILER, SHOWS 15139 ENGINE HRS & 771 TRANS. HRS

2019 GARDNER DENVER 2500Q QUINTUPLEX FRAC PUMP, P/B CAT 3512C DIESEL ENGINE, CAT TH55 TRANS., MTD ON 2014 DRAGON 3 AXLE TRAILER, SHOWS 716 ENGINE HRS & 14218 TRANS. HRS

2019 GARDNER DENVER 2500 QUINTUPLEX FRAC PUMP, P/B CAT 3512C DIESEL ENGINE, CAT TH55 TRANS., MTD ON DRAGON 3 AXLE TRAILER, SHOWS 4562 ENGINE HRS & 633 TRANS. HRS

2018 GARDNER DENVER 2500Q QUINTUPLEX FRAC PUMP, P/B CAT 3512C DIESEL ENGINE, CAT TH55 TRANS., MTD ON 2015 DRAGON 3 AXLE TRAILER, SHOWS 5055 ENGINE HRS & 3466 TRANS. HRS

2012 KALYN MODEL- MHU100TH T/A HYDRATION UNIT, P/B DETROIT S-60 DIESEL ENGINE, (2) 12 STATION MANIFOLDS, OPERATORS CONSOLE

2012 WORLEY 10 STATION T/A FRAC MANIFOLD TRAILER, W/ HYDRAULIC LEVELING JACKS, HYDRAULIC ARTICULATING FRAC ARMS

2014 GENERAL 40' T/A COMMAND CENTER / DATA VAN TRAILER W/ ISOLATED BREAKROOM/ KITCHEN, SLIDE OUT ROOM EXTENSION, A/C, HEAT

2012 PRATT MODEL- DF40 BLENDER, P/B (2) DETROIT S-60 DIESEL ENGINES, (2) GORMAN RUPP 14X12X20 CENT PUMPS, 16 BBL TUB W/ (2) AUGERS, (2) MANIFOLDS W/ (10) 4" CONNS & (2) CONNS EACH, OPERATORS CABIN

(20) 2014-2011 PETERBILT 367 T/A HAUL TRUCKS P/B CUMMINS ISX DIESEL ENGS, W/ WET KITS

FRAC SPREAD 1

2013 SPM TWS 2400 TRIPLEX FRAC PUMP, P/B CAT 3512C DIESEL ENGINE, CAT CX48 TRANS., MTD ON 2013 MERTZ T/A TRAILER, SHOWS 2280 ENGINE HRS

2012 SPM TWS2400 TRIPLEX FRAC PUMP, P/B CUMMINS QSK50 DIESEL ENGINE, CAT TH55 TRANS., MTD ON

2012 MERTZ T/A TRAILER, SHOWS 12015 ENGINE HRS & 892 TRANS. HRS
2017 DRAGON 2250G1 TRIPLEX FRAC PUMP, P/B CUMMINS QSK45 DIESEL ENGINE, CAT TH48 TRANS., MTD ON 2011 EDMONTON TRAILER MFG T/A TRAILER, SHOWS 2787 ENGINE HRS & 56 TRANS. HRS

2019 GARDNER DENVER 2500Q QUINTUPLEX FRAC PUMP, P/B CAT 3512C DIESEL ENGINE, CAT TH55 TRANS., MTD ON 2015 DRAGON 3 AXLE TRAILER, SHOWS 7105 ENGINE HRS & 3839 TRANS.

2011 GARDNER DENVER 2250 TRIPLEX FRAC PUMP, P/B CUMMINS QSK45 DIESEL ENGINE, CAT TH48 TRANS., MTD ON 2011 EDMONTON T/A TRAILER, SHOWS 8581 ENGINE HRS, 479 TRANS. HRS

2016 GARDNER DENVER 2500Q QUINTUPLEX FRAC PUMP, P/B CAT 3512C DIESEL ENGINE, CAT TH55 TRANS., MTD ON 2012 DRAGON 3 AXLE TRAILER, SHOWS 7955 ENGINE HRS & 811 TRANS. HRS

2020 GARDNER DENVER 2250T TRIPLEX FRAC PUMP, P/B CUMMINS QSK50 DUAL FUEL ENGINE, ALLISON S9820-DTE TRANS., MTD ON 2007 PRATT T/A TRAILER, SHOWS 18563 ENGINE HRS & 518 TRANS. HRS

2017 GARDNER DENVER 2250T TRIPLEX FRAC PUMP, P/B CUMMINS QSK50 DIESEL ENGINE, CAT TH55 TRANS., MTD ON 2012 MERTZ T/A TRAILER, SHOWS 12962 ENGINE HRS & 1031 TRANS. HRS

2014 GARDNER DENVER 2250T TRIPLEX FRAC PUMP, P/B CUMMINS QSK50 DIESEL ENGINE, CAT TH55 TRANS., MTD ON 2012 MERTZ T/A TRAILER, SHOWS 18960 ENGINE HRS & 2517 TRANS. HRS

2014 GARDNER DENVER 2500Q QUINTUPLEX FRAC PUMP, P/B CAT 3512C DIESEL ENGINE, CAT TH55 TRANS., MTD ON 2015 DRAGON 3 AXLE TRAILER, SHOWS 4786 ENGINE HRS & 7974 TRANS.

2017 GARDNER DENVER 2500Q QUINTUPLEX FRAC PUMP, P/B CAT 3512C DIESEL ENGINE, CAT TH55 TRANS., MTD ON 2012 DRAGON 3 AXLE TRAILER, SHOWS 5000 ENGINE HRS & 416 TRANS. HRS

2017 JMAC J2250HS TRIPLEX FRAC PUMP, P/B CUMMINS QSK50 DIESEL ENGINE, CAT TH48 TRANS., MTD ON 2011 EDMONTON TRAILER MFG T/A TRAILER, SHOWS 1745 ENGINE HRS

2012 GARDNER DENVER 2250T TRIPLEX FRAC PUMP, P/B CUMMINS QSK5 DIESEL ENGINE, CAT TH55 TRANS., MTD ON 2012 MERTZ T/A TRAILER, SHOWS 7830 ENGINE HRS & 830 TRANS. HRS

2019 GARDNER DENVER 2500Q QUINTUPLEX FRAC PUMP, P/B CAT 3512C DIESEL ENGINE, CAT TH55 TRANS., MTD ON 2015 DRAGON 3 AXLE TRAILER, SHOWS 7632 ENGINE HRS & 4423 TRANS. HRS

2018 GARDNER DENVER 2250T TRIPLEX FRAC PUMP, P/B CUMMINS QSK50 DIESEL ENGINE, CAT TH55 TRANS., MTD ON 2012 MERTZ T/A TRAILER, SHOWS 17385 ENGINE HRS



Frac Spread 1 D1 • YD2



Frac Spread 1 D1 • YD2



Frac Spread 1 D1 • YD2



Frac Spread 1 D1 • YD2



Frac Spread 1 D1 • YD2



Frac Spread 1 D1 • YD2



Frac Spread 1 D1 • YD2



Frac Spread 1 D1 • YD2



Frac Spread 1 D1 • YD2



AUCTIONS

1-432-694-2018

Office & Yard:
4006 SCR 1232
Midland, TX 79706

www.piauction.com
www.permianint.com

AUCTION INFORMATION

Date & Time

Tuesday & Wednesday Nov. 17 & 18,
2020 @ 9AM (CST)

Auction Location:

Permian International Auctions
4006 SCR 1232
Midland, TX 79706

Airport & Hotels: Midland
International Air & Space Port
Serviced by major airlines and car
rental companies

Best Western Midland Suites
432-218-7549
Holiday Inn & Suites Midland S-I-20
432-695-9020
Country Inn & Suites 432-218-7980
Comfort Inn 432-695-6900
Quality Inn 520-505-2281
Suburban Extended Stay

432-689-0430

Four Points 432-704-5300

TERMS OF SALE

All bidders must register and provide proper identification. All purchases must be PAID IN FULL on sale date before equipment will be released. Acceptable forms of payment include Cashier's Check, Travelers Checks, Wire Transfer or Personal/Company Check Accompanied by BANK LETTER OF GUARANTEE. No drafts will be accepted. All printed information regarding this sale is merely a guide, subject to change, and neither the auction Company, Sellers, nor Publishers shall be liable for any errors in this brochure. All items will be sold "AS IS, WHERE IS, WITH ALL

FAULTS" and without guarantee or warranty of any kind, either expressed or implied

TAX NOTICE

Purchasers who are tax exempt MUST provide a copy of their SALES and USE TAX PERMIT at the time of BIDDER REGISTRATION. The company Federal Identification Number, or for a proprietorship, the purchaser's social security number will also be required at registration.

BRING A COPY OF YOUR SALES AND USE TAX PERMIT!

ABSENTEE BIDS

Absentee Bids Only Allowed with **50% DEPOSIT OF MAXIMUM BID** and **WRITTEN INSTRUCTIONS** to Midland Office 24 HOURS PRIOR TO AUCTION, NO EXCEPTIONS. Preview Starting November 13, 2020



Frac Spread 2 D1 • YD2



Frac Spread 2 D1 • YD2



Frac Spread 2 D1 • YD2



Frac Spread 2 D1 • YD2



Frac Spread 2 D1 • YD2



Frac Spread 2 D1 • YD2



Frac Spread 2 D1 • YD2



Frac Spread 2 D1 • YD2



Frac Spread 2 D1 • YD2

& 1135 TRANS. HRS

2017 GARDNER DENVER 2250T TRIPLEX FRAC PUMP, P/B CUMMINS QSK50 DIESEL ENGINE, CAT TH55 TRANS., MTD ON 2012 MERTZ T/A TRAILER, SHOWS 14537 ENGINE HRS

2012 GARDNER DENVER 2250T TRIPLEX FRAC PUMP, P/B CUMMINS QSK50 DIESEL ENGINE, CAT TH55 TRANS., MTD ON 2012 MERTZ T/A TRAILER, SHOWS 12533 ENGINE HRS & 1381 TRANS. HRS

2017 GARDNER DENVER 2250T TRIPLEX FRAC PUMP, P/B CUMMINS QSK50 DIESEL ENGINE, CAT TH55 TRANS., MTD ON 2012 MERTZ T/A TRAILER, SHOWS 18805 ENGINE HRS

2018 GARDNER DENVER 2250T TRIPLEX FRAC PUMP, P/B CUMMINS QSK50 DIESEL ENGINE, CAT TH55 TRANS., MTD ON 2012 MERTZ T/A TRAILER, SHOWS 17372 ENGINE HRS & 992 TRANS. HRS

2019 GARDNER DENVER 2250T TRIPLEX FRAC PUMP, P/B CUMMINS QSK50 DUAL FUEL ENGINE, ALLISON S9823 TRANS., MTD ON 2008 KALYN T/A TRAILER, SHOWS 16130 ENGINE HRS & 5984 TRANS. HRS

2014 BAKER HUGHES DOTF HYDRATION TRAILER, MODEL-DPHU100, P/B DETROIT S-60 DIESEL ENGINE, (2) MIXING HOPPERS, OPERATORS CONTROL STAND, MTD ON 2014 PRATT T/A TRAILER

2012 PRATT MODEL-DF40 BLENDER, P/B (2) DETROIT S-60 DIESEL ENGINES, (2) GORMAN RUPP 41X12X20 CENT PUMPS, 16 BBL TUB W/ (3) AUGERS, (2) MANIFOLDS W/ (16) 4" CONNS

2011 PRATT T/ HARDLINE TRANSPORT TRAILER, W/ FASSI F210 HYDRAULIC CRANE, HARDLINE RACKS, HYDRAULIC STABILIZING JACKS

2011 WORLEY T/A 10 STATION SPM IRON MANIFOLD TRAILER, HYDRAULIC JACKS

2014 GENERAL 40' T/A COMMAND CENTER/ DATA VAN TRAILER W/ ISOLATED BREAK ROOM/ KITCHEN, SLIDE OUT ROOM EXTENSION, A/C, HEAT, CUMMINS POWER GENERATION ELECTRIC GENERATOR

2007 SPMQWS2500 TRIPLEX FRAC PUMP, P/B CUMMINS QSK50 DUAL

FUEL ENGINE, ALLISON S9820DTE TRANS., MTD ON 2007 KALYN T/A TRAILER, SHOWS 10298 ENGINE HRS & 2375 TRANS. HRS

2008 FMC2450 TRIPLEX FRAC PUMP, P/B CUMMINS QSK50 DUAL FUEL ENGINE, ALLISON S9820 TRANS., MTD ON 2010 PRATT T/A TRAILER, SHOWS 11336 ENGINE HRS

2017 JMAC2250HSC FRAC PUMP, P/B CUMMINS QSK50 DUAL FUEL ENGINE, ALLISON D9820DTE TRANS., MTD ON 2008 KALYN T/A TRAILER, SHOWS 17725 ENGINE HRS

2018 GD2250HD TRIPLEX FRAC PUMP, P/B CUMMINS QSK50 DIESEL ENGINE, ALLISON S9820DTE TRANS., MTD ON 2011 PRATT T/A TRAILER, SHOWS 7460 ENGINE HRS & 6460 TRANS. HRS

2012 GARDNER DENVER 2250T TRIPLEX FRAC PUMP, P/B CUMMINS QSK50 DUAL FUEL ENGINE, ALLISON S9820DTE TRANS., MTD ON 2013 PRATT T/A TRAILER, SHOWS 5239 ENGINE HRS

2019 GARDNER DENVER 2250T TRIPLEX FRAC PUMP, P/B CUMMINS QSK50 DUAL FUEL ENGINE, ALLISON S9820DTE TRANS., MTD ON 2011 PRATT T/A TRAILER, SHOWS 16566 ENGINE HRS & 6791 TRANS. HRS

2019 SPMTWS2400 TRIPLEX FRAC PUMP, P/B CUMMINS QSK50 DUAL FUEL ENGINE, ALLISON S9820 TRANS., MTD ON 2009 PRATT T/A TRAILER, SHOWS 23071 ENGINE HRS & 5131 TRANS. HRS

2019 GARDNER DENVER 2250T TRIPLEX FRAC PUMP, P/B CUMMINS QSK50 DIESEL ENGINE, ALLISON S9820 TRANS., MTD ON 2012 PRATT T/A TRAILER, SHOWS 7331 ENGINE HRS & 5399 TRANS. HRS

2017 SPMTWS2250 TRIPLEX FRAC PUMP, P/B CUMMINS QSK50 DUAL FUEL ENGINE, ALLISON S9820DTE TRANS., MTD ON 2013 KALYN T/A TRAILER, SHOWS 18030 ENGINE HRS & 4210 TRANS. HRS

2017 WEIR SPMTWS2400 TRIPLEX FRAC PUMP, P/B CUMMINS QSK50 DUAL FUEL ENGINE, ALLISON S9820DTE TRANS., MTD ON 2013 PRATT T/A TRAILER, SHOWS 20636 ENGINE HRS

2017 GARDNER DENVER 2250T TRIPLEX FRAC PUMP, P/B CUMMINS QSK50 DIESEL ENGINE, ALLISON S9820DTE TRANS., MTD ON 2011 SUREFIRE T/A TRAILER, SHOWS 326

ENGINE HRS & 506 TRANS. HRS

2013 GARDNER DENVER 2250T TRIPLEX FRAC PUMP, P/B CUMMINS QSK50 DIESEL ENGINE, ALLISON S9820DTE TRANS., MTD ON 2011 CHOICE TRAILER MFG T/A TRAILER, SHOWS 14639 ENGINE HRS & 1813 TRANS. HRS

2017 GARDNER DENVER 2250T TRIPLEX FRAC PUMP, P/B CUMMINS QSK50 DIESEL ENGINE, ALLISON S9820 TRANS., MTD ON 2011 SUREFIRE T/A TRAILER, SHOWS 14897 ENGINE HRS & 3379 TRANS/ HRS

2019 SPMTWS2250-SS TRIPLEX FRAC PUMP, P/B CUMMINS QSK50 DIESEL ENGINE, ALLISON S9820DTE TRANS., MTD ON 2008 KALYN T/A TRAILER, SHOWS 8289 ENGINE HRS & 7710 TRANS. HRS

2017 GARDNER DENVER 2250T TRIPLEX FRAC PUMP, P/B CUMMINS QSK50 DIESEL ENGINE, ALLISON S9820DTE TRANS., MTD ON 2011 CHOICE TRAILER MFG T/A TRAILER, SHOWS 17600 ENGINE HRS & 2018 TRANS. HRS

2011 GARDNER DENVER 2250T TRIPLEX FRAC PUMP, P/B CUMMINS QSK50 DUAL FUEL ENGINE, ALLISON S9820DTE TRANS., MTD ON 2013 PRATT T/A TRAILER, SHOWS 11436 ENGINE HRS

2018 FMCWT2400 TRIPLEX FRAC PUMP, P/B CUMMINS QSK50 DIESEL ENGINE, ALLISON D9820DTE TRANS., MTD ON 2010 PRATT T/A TRAILER, SHOWS 3830 ENGINE HRS & 3689 TRANS. HRS

2017 GARDNER DENVER 2250T TRIPLEX FRAC PUMP, P/B CUMMINS QSK50 DUAL FUEL ENGINE, ALLISON S9820 TRANS., MTD ON 2013 KALYN T/A TRAILER, SHOWS 20069 ENGINE HRS & 1588 TRANS. HRS

2019 GARDNER DENVER 2250T TRIPLEX FRAC PUMP, P/B CUMMINS QSK50 DIESEL ENGINE, ALLISON S9820DTE TRANS., MTD ON 2011 PRATT T/A TRAILER, SHOWS 14125 ENGINE HRS & 6846 TRANS. HRS

2018 GARDNER DENVER 2250T TRIPLEX FRAC PUMP, P/B CUMMINS QSK50 DUAL FUEL ENGINE, ALLISON S9820 TRANS., MTD ON 2013 SUREFIRE T/A TRAILER, SHOWS 1967 ENGINE HRS

2014 BAKER HUGHES DOTF HYDRATION TRAILER, MODEL-DPHU100, P/B DETROIT S-60 DIESEL ENGINE, (2) MIXING HOPPERS, OPERATORS CONTROL STAND, MTD

FRAC SPREAD 2

ON 2014 PRATT T/A TRAILER

(FBF136) 2012 PRATT MODEL- DF40 BLENDER, VIN- 1P9CP4022CB343084, P/B (2) DETROIT S-60 DIESEL ENGINES, (2) 14X12X20 CENT PUMPS, 16 BBL TUB, 3 AUGERS, OPERATORS STAND, (2) MANIFOLDS W/ (12) 4" CONNS EACH

2012 PRATT T/A HARDLINE TRANSPORT TRAILER, W/ FASSI F210 HYDRAULIC CRANE, HARDLINE RACKS, HYDRAULIC STABILIZING JACKS

2014 MERTZ T/A 10 STATION MANIFOLD TRAILER, W/ HYDRAULIC LEVELING JACKS

2012 GENERAL 40' DATA VAN TRAILER, W/ SLIDE OUT ROOM EXTENSION, CUMMINS POWER GENERATIONS ELECTRIC GENERATOR

FRAC SPREAD 3

2018 SPMQWS2500 QUINTUPLEX FRAC PUMP, P/B CAT 3512C DIESEL ENGINE, CAT TH55 TRANS., MTD ON 2013 DRAGON 3 AXLE TRAILER, SHOWS 17387 ENGINE HRS & 17387 TRANS. HRS

2018 GARDNER DENVER 2500Q QUINTUPLEX FRAC PUMP, P/B DETROIT 12V4000 DUAL FUEL ENGINE, ALLISON S9832 TRANS., MTD ON 2011 STEWART & STEVENSON 3 AXLE TRAILER, SHOWS 8317 ENGINE HRS & 8317 TRANS. HRS

2010 FMCWT2400 TRIPLEX FRAC PUMP, P/B DETROIT 12V4000 DUAL FUEL ENGINE, ALLISON S9820 TRANS., MTD ON 2011 STEWART & STEVENSON 3 AXLE TRAILER, SHOWS 4311 ENGINE HRS & 238 TRANS. HRS

2017 GARDNER DENVER 2500Q QUINTUPLEX FRAC PUMP, P/B CUMMINS QSK50 DUAL FUEL ENGINE, ALLISON S9820DTE TRANS., MTD ON 2007 KALYN T/A TRAILER, SHOWS 3738 ENGINE HRS & 640 TRANS. HRS

2019 SPMQWS2500 QUINTUPLEX FRAC PUMP, P/B DETROIT 12V4000 DUAL FUEL ENGINE, ALLISON S9820 TRANS., MTD ON 2011 STEWART & STEVENSON 3 AXLE TRAILER, SHOWS 3282 ENGINE HRS & 3282 TRANS. HRS

2017 SPMQWS2500XL FRAC PUMP, P/B CUMMINS QSK50 DIESEL ENGINE, ALLISON S9820DTE TRANS., MTD ON 2006 KALYN T/A TRAILER, SHOWS 3875 ENGINE HRS

2018 GARDNER DENVER 2500Q FRAC PUMP, P/B DETROIT 12V4000 DUAL FUEL ENGINE, ALLISON S9820 TRANS., MTD ON 2011 STEWART & STEVENSON 3 AXLE TRAILER, SHOWS 2263 ENGINE HRS & 527 TRANS. HRS

2014 GARDNER DENVER 2500 QUINTUPLEX FRAC PUMP, P/B DETROIT 12V4000 DUAL FUEL ENGINE, ALLISON S9820 TRANS., MTD ON 2009 STEWART & STEVENSON 3 AXLE TRAILER, SHOWS 5530 ENGINE HRS & 5530 TRANS. HRS

2017 GARDNER DENVER 2500Q QUINTUPLEX FRAC PUMP, P/B CUMMINS QSK50 DUAL FUEL ENGINE, ALLISON S9823 TRANS., MTD ON 2011 PRATT T/A TRAILER, SHOWS 5421 ENGINE HRS & 5749 TRANS. HRS

2019 GARDNER DENVER 2500 QUINTUPLEX FRAC PUMP, P/B CUMMINS QSK50 DUAL FUEL ENGINE, ALLISON S9820DTE TRANS., MTD ON 2007 RHINO T/A TRAILER, SHOWS 11798 ENGINE HRS & 4133 TRANS. HRS

2018 GARDNER DENVER 2500Q QUINTUPLEX FRAC PUMP, P/B DETROIT 12V4000 DUAL FUEL ENGINE, ALLISON S9820 TRANS., MTD ON 2011 STEWART & STEVENSON 3 AXLE TRAILER, SHOWS 3846 ENGINE HRS & 4532 TRANS. HRS

2011 FMCWT2400 TRIPLEX FRAC PUMP, P/B DETROIT 12V4000 DUAL FUEL ENGINE, ALLISON S9823 TRANS., MTD ON 2011 STEWART & STEVENSON 3 AXLE TRAILER, SHOWS 1114 ENGINE HRS & 2641 TRANS. HRS

2017 SPMQWS2500 QUINTUPLEX FRAC PUMP, P/B CUMMINS QSK50 DIESEL ENGINE, ALLISON S9820DTE TRANS., MTD ON 2007 KALYN T/A TRAILER, SHOWS 8330 ENGINE HRS & 434 TRANS. HRS

2020 GARDNER DENVER 2500HD QUINTUPLEX FRAC PUMP, P/B CUMMINS QSK50 DIESEL ENGINE, ALLISON S9820DTE TRANS., MTD 2007 KALYN T/A TRAILER, SHOWS 4395 ENGINE HRS & 4207 TRANS. HRS

2017 SPMQWS2500 QUINTUPLEX FRAC PUMP, P/B CUMMINS QSK50 DIESEL ENGINE, ALLISON S9820DTE TRANS., MTD ON 2007 KALYN T/A TRAILER, SHOWS 19073 ENGINE HRS & 4276 TRANS. HRS

2017 SPMTWS2250 TRIPLEX FRAC PUMP, P/B DETROIT 12V4000 DIESEL

ENGINE, ALLISON S9820 TRANS. MTD ON 2001 RHINO T/A TRAILER, SHOWS 5720 ENGINE HRS & 968 TRANS. HRS

2010 FMCWT2450C TRIPLEX FRAC PUMP, P/B DETROIT 12V4000 DUAL FUEL ENGINE, ALLISON S9823 TRANS., MTD ON 2011 STEWART & STEVENSON 3 AXLE TRAILER, SHOWS 7741 ENGINE HRS & 443 TRANS. HRS

2018 GARDNER DENVER 2500Q QUINTUPLEX FRAC PUMP, P/B DETROIT 12V4000 DUAL FUEL, ALLISON S9832 TRANS., MTD ON 2011 STEWART & STEVENSON 3 AXLE TRAILER, SHOWS 6859 ENGINE HRS & 1388 TRANS. HRS

2014 BAKER HUGHES DOTF HYDRATION TRAILER, MODEL-DPHU100, P/B DETROIT S-60 DIESEL ENGINE, (2) MIXING HOPPERS, OPERATORS STAND MTD ON 2014 PRATT T/A TRAILER,

2011 SUREFIRE MODEL- SHF100 T/A BLENDER TRAILER, P/B (2) CUMMINS QSX15 DIESEL ENGINES, (2) 14X12X20 CENT PUMPS, 16 BBL TUB, 3 AUGERS, OPERATORS CABIN

2014 FMC MODEL- P549974-NJ, 10 STATION MANIFOLD TRAILER W/ HYDRAULIC LEVELING JACKS

2012 PRATT HARDLINE TRANSPORT TRAILER, W/ FASSI F210 HYDRAULIC CRANE, HARDLINE RACKS, HYDRAULIC OUT RIGGERS

2012 GENERAL T/A 40' DATA VAN TRAILER, W/ CUMMINS POWER GENERATION ELECTRIC GENERATOR, A/C, HEAT, SLIDE OUT ROOM EXTENSION

SURPLUS FRAC PUMPS

2018 SPMQWS2500 QUINTUPLEX FRAC PUMP, P/B CUMMINS QSK50 DIESEL ENGINE, ALLISON S9820 DTE TRANS., MTD ON 2008 KALYN T/A TRAILER, SHOWS 18591 ENGINE HRS & 4190 TRANS. HRS

2017 GARDNER DENVER 2250T TRIPLEX FRAC PUMP, P/B CUMMINS QSK50 DIESEL ENGINE, ALLISON S9820 TRANS., MTD ON 2012 PRATT T/A TRAILER, SHOWS 2146 ENGINE HRS

2017 GARDNER DENVER HD2250 TRIPLEX FRAC PUMP, P/B CUMMINS QSK50 DIESEL ENGINE, ALLISON S9823 TRANS., MTD ON 2011 PRATT T/A TRAILER, SHOWS 4707 ENGINE HRS & 5571 TRANS. HRS



Frac Spread 3 D1 • YD2



Frac Spread 3 D1 • YD2



Frac Spread 3 D1 • YD2



Frac Spread 3 D1 • YD2



Frac Spread 3 D1 • YD2



Frac Spread 3 D1 • YD2



Frac Spread 3 D1 • YD2



Frac Spread 3 D1 • YD2



Frac Spread 3 D1 • YD2



2013 Cryo Technologies D1 • YD2



Surplus Frac Pumps D1 • YD2



2015 BGRS Dust Collectors D1 • YD2



Acid Transport Trailers D1 • YD2



2012 Rolligon 880HP Acid Pump Trailer D1 • YD2



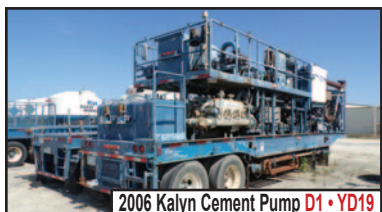
2006 Kalyn Cement Pump D1 • YD19



1980 J&L D1 • YD19



2007 Loadcraft 1600 D1 • YD19



2006 Kalyn Cement Pump D1 • YD19

2017 SPMTWS2250 TRIPLEX FRAC PUMP, P/B CUMMINS QSK50 DIESEL ENGINE, ALLISON S9820 TRANS., MTD ON 2007 PRATT T/A TRAILER, SHOWS 7894 ENGINE HRS & 77 TRANS. HRS

2017 SPMTWS2250 TRIPLEX FRAC PUMP, P/B CUMMINS QSK50 DIESEL ENGINE, ALLISON S9820 TRANS., MTD ON 2010 PRATT TRAILER, SHOWS 314 ENGINE HRS

TRUCKS

(15) 2014 PETERBILT 367 T/A HAUL TRUCK TRACTORS P/B CUMMINS ISX DIESEL ENGS. W/ WET KITS

(8) 2013 PETERBILT 367 T/A HAUL TRUCK TRACTORS P/B CUMMINS ISX DIESEL ENGS. W/ WET KITS

(15) 2012 PETERBILT 367 T/A HAUL TRUCK TRACTORS P/B CUMMINS ISX DIESEL ENGS. W/ WET KITS

(13) 2011-2009 PETERBILT 367 HAUL TRUCK TRACTORS P/B CUMMINS ISX DIESEL ENGS. W/ WET KITS

ACID EQUIPMENT

2014 MAD T/A SINGLE PUMP ACID TRAILER, P/B DETROIT S-60 DIESEL ENGINE, JASON O&G TRIPLEX PUMP, (2) 750 GALLON TANKS

(2) 2012 ROLLIGON T/A 880HP SINGLE PUMP ACID TRAILERS, P/B CUMMINS QSK19 DIESEL ENGINE, SPM QWS100S QUINTUPLEX PUMP

(8) 2013-2005 WORLEY & OVERBILT 5000 GALLON 3 COMPARTMENT ACID TRANSPORT TRAILERS

CEMENT EQUIPMENT

2012 VIKING 600ST BULK CEMENT TRAILER

(2) 2014 WILCO 600ST BULK CEMENT TRAILERS

SURPLUS FRAC BLENDERS

2011 SUREFIRE SHP100 BLENDER 2010 & 2009 PRATT DF40 BLENDERS, (4) 2008-2007 KALYN 125E BLENDERS, (2) 2002 FONTAINE DFT 125E BLENDERS

CHEMICAL ADD TRAILERS

2015 DRAGON CHEMICAL ADD TRAILER, (9) 2016-2011 PRATT CHEMICAL ADD TRAILERS, 2012 JEREJ CHEMICAL ADD TRAILER, (3) 2007-2006 KALYN CHEMICAL ADD TRAILERS

CRYO TRAILERS

(2) 2013 CRYO TECHNOLOGIES LIQUID METHANE TRAILERS

FRAC DATA TRUCKS & VAN

(7) 2013-2011 PETERBILT 337 FRAC DATA VAN TRUCKS

(5) 2012-2011 PETERBILT 348 FRAC DATA VAN TRUCKS

(3) 2009-2007 PETERBILT 340 FRAC DATA VAN TRUCKS

2011 SUREFIRE DATA VAN TRAILER

SAND EQUIPMENT

(4) SANDKING SK4013 TRAILERS

(8) SANDKING SK4000 TRAILERS

(5) SANDKING SK3000 TRAILERS

(9) APPCO SK4000 TRAILERS

(4) 2014 KEYSTON DUAL BELT SAND CONVEYORS

(2) 2014 APPCO DUAL BELT SAND CONVEYORS

(3) 2015 BGRS MODEL- DC24LPTDH TRAILER MTD DUST COLLECTORS

(8) 2014 TRAIL KING 1350CF 3 COMPARTMENT DRY BULK TRAILERS

(5) 2015 EXA INDUSTRIAL 1000CF PNEUMATIC DRY BULK TRAILERS

MISC

PRESSURE WASHER

GENERATOR TRAILERS

SAFETY SHOWER TRAILERS

BBQ TRAILERS

COMPRESSOR TRAILERS

FORKLIFTS

YARD #19 - WIXON VALLEY, TX

Directions: 9301 E SH 21, WIXON VALLEY, TX 77808

Checkout: Monday- Friday 8AM-5PM thru DEC 4

Contact: J.D. 432-260-5266

CEMENT TRAILERS

(3) 2005 KALYN SIEBERT T/A DBL PUMPER CEMENT TRAILERS, (2) BJ PACEMAKER 10K# TRIPLELX PUMPS, P/B (2) DETROIT D-60 DIESEL ENGINES W/ ALLISON 6061 TRANS., 20 BBL MIXING TANK, BLENDING TUB, TOP MTD CONTROL CONSOLE

1980 FIELD BULK STORAGE

(2) 2007 WILCO S/A 4 POD FIELD

BULK STORAGE TRAILER W/ GARDNER DENVER COMPRESSOR P/B CUMMINS DIESEL ENGINES

1974 HEIL CO S/A FIELD BULK 3 POD STORAGE TRAILER, W/ COMPRESSOR, P/B DETROIT 2 CYL ENGINE

1980 J&L TANK BULK CEMENT BIN F/ FIELD

2007 LOAD CRAFT BULK CEMENT 2 POD CHEM MIXING TRAILER, P/B 6 CYL CUMMINS ENGINE, W/ HYD PUMP LOAD CRAFT T/A 2 POD CEMENT BULK TRAILER

(36) 2011-2004 WILCO FAB, PEERLESS, KALYN SIEBERT, PRATT, LOAD CRAFT 2 POD BULK CHEM MIXING TRAILERS, P/B DETROIT 550 ENGINE W. HYD PUMPS

(3) 2007-2006 WILCO FAB WST-1600 S/A 4 POD BULK CEMENT TRAILERS, P/B CUMMINS B3.3 DIESEL ENGINES W/ GARDNER DENVER APOGAA COMPRESSOR

(3) SHOPBUILT T/A BUMPER PULL TRAILERS W/ COMPRESSORS

(3) 2010-2002 TOPHAND T/A BUMPER PULL TRAILERS

T/A BUMPER PULL TOOL TRAILER

(2) 2012-2011 AMERI TRAILER T/A BUMPER PULL COMPRESSOR TRAILER W/ GARDNER DENVER APOGAA COMPRESSOR, P/B 4 CYL DIESEL ENGINE W/ TWIN DISC SP111HP3 CLUTCH & HEADER

(3) 2007-2001 SHOPBUILT T/A GOOSENECK COOLING TRAILERS

(3) 2012-2007 SHOPBUILT T/A GOOSENECK TOOL HOSE TRAILERS W/ 4X4 TOOL CASE, HOSE RACKS

SHOPBUILT S/A BUMPER PULL STEEL FLOOR UTILITY TRAILER W/ APPROX 250 DIESEL TANK & 12V ELECTRIC FUEL PUMP

2012 PETERBILT 367 T/A HEAVY HAUL TRUCK, P/B CUMMINS ISX15 485 ENGINE, 18 SPD, 325" WB

2013 PETERBILT 337 S/A TRUCK, P/B PACCAR PX-8 DIESEL ENGINE, 10 SPD TRANS., W/ PTO, 155" WB, W/ 12'L FLAT BED W/ GOOSE NECK CHANNEL, TOOLBOXES & HR

1999 PETERBILT 357 T/A BED TRUCK, P/B DETROIT S-60 DIESEL ENGINE, 18 SPD TRANS., W/ PTO, 250" WB, W/ 26' BED W/ HYD LIFTING HOOKS, P/B BRADEN 20 HYD WINCH W/ HR, ROLLERS & TAIL ROLLER

YARD #5 - ROCK SPRINGS, WY

Directions: Jonah Dr., Rock Springs, WY 82901

Checkout: Monday – Friday 8AM-5PM
thru DEC 4, by APPT ONLY!

Contact: Tyson 830-837-0912

BUCKET TRUCKS

2000 ALTEC AA600L BUCKET TRUCK
W/ 51' PLATFORM HEIGHT, 9 BOX
STEEL TRUCK BED, (4) STABILIZING
JACKS, ALL MTD ON INTERNATIONAL
DAY CAB S/A TRUCK, P/B DT466E,
SHOWS 139,708 MILES

SAND TRAILER

T/A END DUMP FRAC SAND TRAILER,
W/ (4) ROOFTOP HATCHES, (2) HYD
REAR DUMPS, STABILIZING JACKS,
LANDING GEAR, KP

YARD #6 - BUCKHANNON, WV

Directions: 395 Mudlick, Buckhannon,
West Virginia

Checkout: Monday – Friday 8AM-5PM
thru DEC 4, by APPT ONLY!

Contact: Tyson 830-837-0912

MANIFOLD TRAILERS

(4) 2011-2005 BO'S BETTER BUILT
HIGH-PRESSURE S/A MANIFOLD
TRAILERS

T-BELT TRAILERS

(2) 2010 APPCO MS-82-30 T/A T-BELT
TRAILERS, P/B (2) CAT C4.4 DIESEL
ENGINE W/ HPU'S, CONV. BELTS,
DUAL REAR CHUTES

CONVEY ALL 30" S/A T- BELT
TRAILER, P/B (2) ISUZU DIESEL
ENGINE W/ HPU'S CONV. BELTS,
SWINGING REAR CHUTE

CONVEY ALL 30" S/A T- BELT
TRAILERS, P/B (2) JOHN DEERE 4.5L
DIESEL ENGINE, W/ HPU'S, CONV.
BELTS, SWINGING REAR CHUTE

DATA VANS

(5) STEWART & STEVENSON DATA
VANS, P/B ONAN PTO GENERATOR,
MTD ON KENWORTH T300 S/A DAY
CAB TRUCKS

CHEM ADD TRUCKS

ROLLIGON 6 STATION CHEM ADD
TRUCK, W/ HYD PUMPS, HOSE

REELS, METERS, CONTROL PANEL,
ALL MTD ON MACK TRI AXLE DAY
CAB TRUCKS

CHEM ADD TRAILER

2012 SERVA GROUP T/A CHEM ADD
TRAILER, 10 STATION, P/B CAT C7,
HPU, HYD & DIESEL TANKS,
CONTROL PANEL, HOSE REELS

YARD #7 - WILLISTON, ND

Directions: 13551 Hamilton Ln., Williston,
ND 58801

Checkout: Monday – Friday 8AM-5PM
thru DEC 4, by APPT ONLY!

Contact: Tyson 830-837-0912

CONVEYOR TRAILERS

2005 PROCESS T/A GN CONVEYOR
TRAILER, P/B DIESEL ENGINE W/
HPU, KING PIN, SHOWS 851 HRS

DAY 2

YARD #1 - MIDLAND, TX

GENERATORS / LIGHT TOWERS

2014 TEREX RL4 S/A 6KW LIGHT
TOWER, P/B 3 CYL KUBOTA,
PANCAKE 6KW GENERATOR, SHOWS
2,286 HRS

2012 MAGNUM MLT5060K S/A LIGHT
TOWER, P/B 3 CYL KUBOTA DIESEL
ENGINE, PANCAKE 6KW
GENERATOR, SHOWS 5,716

(6) GENERAC INDUSTRIAL POWER
130 KW, 277/480V 3- PHASE
ELECTRIC GENERATORS, P/B
NATURAL GAS V8 ENGINE MTD ON
S/A TRAILER

380 KW AC GENERATOR, P/B
DETROIT S-60, 14L DIESEL ENGINE,
RADIATOR, STARTER, GAUGES,
SKIDDED

(2) KATO 800 KW GENERATORS, (3)
PH, 60HZ, 347/600 VOLT, P/B CAT 398
DIESEL ENGINE, NO STARTER,
GAUGE PANEL, RADIATOR, DAY
TANK, MTD ON 10'W X 32'L COVERED
SKID

(2) GENERAL ELECTRIC 930 KW AC
GENERATORS, (3) PH, 600 VOLT, P/B
CAT D398 DIESEL ENGINE, AIR START,
GAUGE PANEL, RADIATOR, MTD ON
39'L X 9'W COVERED SKID

PICKUPS

2019 FORD F550 XL SUPER DUTY 4X4
MECHANICS TRUCK, P/B 5.7L POWER
STROKE DIESEL ENGINE, AUTO
TRANS., CRUISE, TILT, AC, PW, PDL,
TMAX ALUMINUM CUSTOM
MECHANICS BED, (2) HYD LEVELING
JACKS, STELLAR 7630 HYD CRANE,
7K CAP W/ REMOTE, SHOWS 48,558
MILES

(20) 2012-2005 FORD, CHEVROLET
2500 & 1500 PICKUPS

DELIVERY TRUCKS

2014 MACK GU713 T/A DAY CAB OIL
DELIVERY TRUCK, P/B MACK MP7
ENGINE, ALLISON AUTO TRANS., 245"
WB, W/ 2013 OILMANS 5 COMP., TANK
BED, DUAL HYD PUMPS, (2) PETRO
PUMPS, (2) HOSE REELS, LIFT
MOORE 3,200# CRANE, SHOWS
354,331 MILES

(2) 2014 MACK GU433 GRANITE T/A
DAY CAB FUEL TRUCKS, P/B ISL9
CUMMINS ENGINE, ALLISON AUTO
TRANS., 245" WB, DUEL PTO'S W/
2013 OILMANS 4 COMP., TANK BED,
(2) PETRO PUMPS W/ METERS, (2)
ELECTRIC HOSE REELS, SHOWS
29,942 & 175,193 MILES

2012 MACK GU713 T/A DAY CAB
STAKE BED DELIVERY TRUCK, P/B
MACK MP7 DIESEL, ALLISON AUTO
TRANS., DUEL PTO, 245" WB, 24'
STAKE BED, (2) PETRO PUMPS, (2)
HOSE REELS, REAR LIFT GATE, AIR
RIDE SUSP., SHOWS 213,306 MILES

2009 KENWORTH T800, T/A DAY CAB
STAKE BED DELIVERY TRUCK, P/B
ISM CUMMINS, EATON FULLER ULTRA
SHIFT AUTO TRANS., 280" WB, WET
KIT, 24' STAKE BED, HOSE REELS,
PETRO PUMPS W/ METERS, HYD
TANK, LIFT MOORE 4K# CRANE,
SHOWS 597,000 MILES & 19, 815 HRS

2006 CHEVROLET C7500 S/A DAY CAB
STAKE BED TRUCK, P/B CAT C7
ENGINE, ALLISON AUTO TRANS., PTO
195" WB, 16' STAKE BED W/ PETRO
PUMP, HOSE REEL, REAR LIFT GATE

1992 GMC T/A DAY CAB STAKE BED
DELIVERY TRUCK, P/B CAT 3306
ENGINE, EATON FULLER 10 SPD
TRANS., 260" WB, 24' STAKE BED W/
LIFT MOORE 4K# CRANE & REAR LIFT
GATES, SHOWS 72,474 MILES





2015 Kenworth T800 D2 • YD1



Porta Potty Combo Trailers D2 • YD1



2000 Peterbilt 378 D2 • YD1



2019 Load Trail 40' D2 • YD1



2015 Kenworth T800 D2 • YD1



2019-2018 Pull Do Mono Rail GN D2 • YD1



Int'l Paystar Knuckle Boom

D2 • YD1



Kato 800kw D2 • YD1



1966 Ford D350 Custom Wrecker D2 • YD11

HAUL TRUCKS

(11) 2012-2015 KENWORTH T800 HAUL TRUCKS, P/B CUMMINS ISX15 DIESEL ENGINE, EATON FULLER 10 SPD TRANS., AIR RIDE SUSP., WALK IN SLEEPER

2013 MACK CHU613 PINNACLE T/A DAY CAB HAUL TRUCK, P/B MP8 MACK, EATON FULLER 10 SPD TRANS., WET KIT, STEEL FENDERS, AIR RIDE SUSP, SHOWS 145,599 MILES

2011 MACK CHU613 T/A HAUL TRUCK, P/B MP8 485HP DIESEL ENGINE, 13 SPD TRANS., W/ WET KIT & 5TH WHEEL

2007 PETERBILT 379 T/A SLEEPER HAUL TRUCK, P/B CAT C15 DIESEL ENGINE, EF 10 SPD TRANS, SHOWS 621,867 MILES

WINCH / KNUCKLE BOOM TRUCKS

2008 MACK GU713 T/A GIN POLE WINCH TRUCK, 350" WB, P/B MACK MP7 DIESEL ENGINE, MAXITORQUE EST 18 SPD TRANS., 3 WINCHES, SHOWS 58,222 MILES

1998 PETERBILT 357 T/A RIG UP TRUCK, P/B CUMMINS M-14 DIESEL ENGINE, EATON FULLER 8 SPD TRANS., 325" WB, RTB, HR, (3) WINCHES, (2) FUEL TANKS

1997 MACK RD690S T/A DAY CAB ROAD WINCH TRUCK, P/B MACK EM7-300, MAXITORQUE 7 SPD TRANS., 205"WB, PTO, BRADEN WINCH, AIR RIDE SUSP., SHOWS 531,158 MILES & 28,292 HRS

2007 WESTERN STAR POLE TRUCK, SHOWS 326,163 MILES

1996 PETERBILT T/A POLE TRUCK, SHOWS 75,838 MILES

INTERNATIONAL PAYSTAR T/A KNUCKLE BOOM TRUCK P/B CUMMINS ISX 500, 18-SPD TRANS

PUMP TRUCK

2008 MACK GU713 T/A PUMP TRUCK, 298" WB, P/B MP8-485HP DIESEL ENGINE, 13 SPD TRANS., W/ OPI 600 TRIPLEX PUMP, (2) MISSION 2500 4X3X13 CENT PUMPS, CEMENT MIX HOPPER, 5TH WHEEL, 24' BED W/ POLES, SHOWS 178,589 MILES

HOT OIL TRUCK

CHANDLER MFG HOT OIL TRUCK, W/ 12,000,000 BTU UNIT, 5,000 PSI TRIPLEX GARDNER DENVER PUMP

HIGH VOLUME ROPER PUMP, 700 PSI VIKING PUMP, ALL MTD ON 2000 PETERBILT 378 T/A DAY CAB TRUCK, P/B DETROIT S- 60 DIESEL ENGINE, 10 SPD EATON FULLER TRANS., DUAL PTO, SHOWS 8,690 MILES

VAC TRUCKS

(3) 2012-2011 MACK CHU613 VAC TRUCKS, P/B MP8 485HP DIESEL ENGINE, 13 SPD TRANS., W/ VAC PUMP, SHOWS 336,674 MILES, 181,445, 257,508, MILES

2012 MACK GU713 GRANITE T/A DAY CAB VAC TRUCK, VIN-1M2AX09Y5CM013649, P/B MP8 MACK, 10 SPD MAXITORQUE TRANS., 225" WB, WET KIT, FRUITLAND VAC PUMP, HR, 5TH WHEEL, AIR RIDE SUSP., SHOWS 204,877 MILES

2003 MACK CHU613 T/A DAY CAB VAC TRUCK, P/B MACK E7-427, EATON FULLER 10 SPD TRANS., PTO, 190" WB, FRUITLAND VAC PUMP, SPRING SUSP., DBL FRAME, SHOWS 141,940 MILES & 26,983 HRS

VAC TRAILERS

(2) 2014 TANKO 130 BBL T/A VAC TRAILERS, W/ SCRUBBER, HOSE TROUGHS, SIDE MTD WALKWAY, TB, LANDING GEAR, SPRING SUSP

(2) 2008- 2007 DRAGON 130 BBL T/A VAC TRAILERS, W/ SIDE MTD WALKWAY, HOSE TROUGHS, TB, LANDING GEAR, SPRING SUSP

KILL TRUCK

2008 MACK GU713 GRANITE T/A PUMP/ KILL TRUCK, 310" WB, P/B MACK MP8 - 485C DIESEL ENGINE, MACK 8 SPD TRANS., HR, TOOL BOXES, HYD OIL TANK, LIGHTS, PTO, IN CAB CONTROL PANEL W/ TOTCO 10K GAUGE, GARDNER DENVER OP1600 10K FE TRIPLEX PUMP, 6" STROKE, (2) MISSION 2500 SUPREME 3X4 CENT PUMPS, SHEAR RELIEF, MUD GAUGE, SLURRY TANK, 5TH WHEEL

KILL TRAILER

2007 DRAGON 130 BBL KILL TRAILER, W/ SIDE MTD WALKWAYS, HOSE TROUGHS, TOOLBOX, HARD LINE RACKS W/ (5) JTS 1-1/2" 602 HARDLINE

HYDRAULIC PIPE HANDLER

2014 HYDRA CAT HYDRAULIC PIPE HANDLING TRAILER

TRAILERS

2019 LOAD TRAIL 40' TANDEM DUAL WHEEL FLATBED GN TRAILER, 102" W, 12K# AXLES, ELECTRIC/ HYD DISC BRAKES, ADJ SUSP., DUAL JACKS

(4) 2019 ROCK SOLID CARGO OFFICE TRAILERS

(5) 2019-2018 PULL DO GN MONORAIL TRAILERS

2007 DOONAN 48' SGL DROP TRAILER

(2) 2018 CARGO CRAFT BP TRAILERS

1983 TRANSPORT SYSTEMS 75 TON 3 AXLE RGN DROP DECK TRAILER

(2) SHOP BUILT 37' T/A BUMPER PULL PIPE TRAILERS W/ PIPE STAYS, 6 LUG AXLES, RATCHET STRAPS, ELECTRIC BRAKES

(25+) PORTA POTTY TRASH COMBO TRAILERS

TANKS

(18) FRAC TANKS

35'L X 10'W X 10'H DIESEL STORAGE TANK W/ 5' (4) COMP LUBESTER, SKIDDED

(20) HALF PITS W/ GAS BUSTERS

WELL SERVICE TOOLS

CAVINS MODEL B & C AIR OPERATED TUBING SPIDERS

GUIBERSON T-60 TUBING SPIDER W/ 2-7/8" SLIP BODIES

BJ STYLE "MYT" SLIP TYPE ELEVATOR

FOSTER STYLE 58-93R HYDRAULIC TUBING TONG

FOSTER DRAG RING ASSY. W/ JAWS AND INSERTS

FOSTER 58-93R AIR BACKUP W/ 2-3/8" - 2-7/8" JAWS AND

FOSTER HYDRAULIC LIFT CYLINDER

2 3/8" - 2 7/8" FOSTER TONG DIES

7-1/16" 5,000 PSI TOWNSEND T-81 BOP W/ RAMS

2-1/16" 5,000 PSI RTJ FLANGED GATE VALVE

(SET) COOPER 42 X 12 6-HOLE BRAKE BLOCKS WITH HARDWARE

COOPER 42 X 12 BRAKE BANDS

2-7/8" EUE 5K TIW SAFETY VALVES

ASSORTED STRIPPER RUBBERS

CAMERON TYPE U RAMS

1 QUINCY AIR COMPRESSOR WITH ELECTRIC MOTOR

1 - 2 STATION MEYER CLOSING UNIT

4 - 5 1/8" 10,000PSI CAMERON FLS GATE VALVES (UNUSED)

4 - 3 1/16" 10,000PSI CAMERON FLS GATE VALVES (UNUSED)

1 - 7 1/16" 5,000PSI SHAFFER LWS DOUBLE BOP WITH STRIPPER HEAD

1 - 7 1/16" 5,000PSI HYDRIL DOUBLE BOP

TOP DRIVE PACKAGE

TESCO 500 TON ECI (S) 900HP HYDRAULIC TOP DRIVE PACKAGE TO INCLUDE: TESCO 500 TON HYDRAULIC TOP DRIVE, TRACKS & PIPE HANDLER SYSTEM, TESCO ECI 500 TON, 900HP, HYDRAULIC POWER UNIT, P/B CAT C32 DIESEL ENGINES, START, RADIATOR, GAUGE PANEL, HEAT BLANKETS ON EXHAUST W/ (4) SUEER DANFROSS HYD PUMP DRIVES, FILTRATION SYSTEM, ELETRIC & HYD CONTROL STATIONS W/ RESEVOIR/ COOLER TOP DRIVE POWER LOOP ON INTEGRATED REEL SYSTEM W/ CONTROL CABLES, LIGHTS, MTD ON 8'W X 25'L COVERED SKID

DRILLING RIG COMPONENTS

NATIONAL 80B MECHANICAL S/D 1000 HP DRAWWORKS, GROVVED F/ 1-1/4" LINE, AIR DRILLERS CONSOLE, CROWN-O-MATIC, MD WEIGHT INDICATOR W/ ROTARY & TONG TORQUE GAUGES, (2) PULL MASTER HYD UTILITY WINCHS, BRAKE WATER COOLING UNIT, CANTEX HYD WIRELINE W/ .092 WIRE, PARMAC 481 BRAKE W/ OVER RUNNING CLUTCH & CRADLE, NATIONAL (3) ENGINE SECTIONAL COMPOUND, EACH SECTION MTD ON 10'H X 7.6'W X 36'L COVERED SKID, DUAL (2) PUMP DRIVES, QUINCY AIR COMPRESSOR (3) CAT D379 DIESEL ENGINES, AIR START, GAUGES, RADIATOR, NATIONAL C-245-125 TORQUE CONVERTER, MTD ON COMPOUND SKID

OILWELL 660E DRAWWORKS, SN-H44-11 W/ (2) CAT HEADS, DRILLERS CONSOLE, P/B 1000HP DC DRILLING MOTOR W/ BLOWER, PARMAC WATER COOLED BRAKE, SN- D631228, ALL MTD ON 20'L X 11'W SKID

(2) OILWELL A1100-PT TRIPLEX MUD PUMPS, P/B GULF ELECTRO QUIP 1000HP DC ELECTRIC MOTOR, W/ RELIEF, 6X5X11 CHARGE PUMP, P/B 25HP ELECTRIC MOTOR, ROD COOLING PUMP, ALL MTD ON 25'L X 11'W SKID

(2) NATIONAL 9-P-100 TRIPLEX MUD PUMP, 1000 HP, 6-3/4" X 9-1/4", CE PULSATION DAMPENR, BULL WHEEL, ROD OILER PUMP, MUD GAUGE, SKIDDED, MTD IN 9'H X 10'W X 30'L FLAT TOP HOUSE, STORAGE CABINETS, LIGHTS, SKIDDED

9'H X 10'W X 25'L FLAT TOP DOGHOUSE W/ 4'L PORCH EXTENSION, WALL LOCKERS, HEATERS, LIGHTS, BENCH, CABINET & SHELF STORAGE, KNOWLEDGE BOX, SKIDDED

KOOMEY MODEL- T20180-3S, (6) STATION HYDRAULIC CLSOING UNIT, TRIPLEX CHARGE PUMP, P/B 20HP ELECTRIC MOTOR, (1) AIR ACTUATED PUMP, (18) 10 GALLON ACUMMULATOR BOTTLES, REMOTE LINE, GAUGES, SKIDDED

2 STATION 10 BOTTLE MEYER CLOSING UNIT W/ TRIPLEX PUMP, P/B 20 HP ELECTRIC MOTOR, SKIDDED VARIOUS SIZE CAMERON TYPE U RAMS

CAMERON 5000# CHOKE MANIFOLD, (2) 2" CAMERON ADJ CHOKES, (7) 2-1/16" CAMERON GATE VALVES, (2) 4-1/16" CAMERON GATE VALVES, (1) 4 WAY CROSS, (1) 3 WAY CROSS, MANIFOLD, MUD GAUGE, MTD ON ADJ HEIGHT SKID

5000# CHOKE MANIFOLD W/ (5) 4 WAY (2) 3 WAY CROSSES, (1) 2-1/16" FLANGED GATE VALVE, (13) 3-1/16" FLANGED GATE VALVES, MUD GAUGE MTD IN 9'H X 10'W X 20'L RD TOP HOUSE, STORAGE SHELVES W/ FLANGE & BOP STUDS, LIGHTS, SKIDDED

31'L X 9'W X 8'H STEEL RD TOP PARTS/ CHANGE HOUSE W/ LOCKERS, BENCH, WASHER, DRYER, HOT WATER HEATER, SINK & STORAGE, SKIDDED

18'L X 8'W HYD POWERED SPOOLING SKID, CHAIN DRIVEN W/ 1-1/4" DRILL LINE

12'W X 20'L GAS BUSTER SKID W/ 24" X 15" GAS BUSTER, (2) 2-1/16" X 5K# CHOKES, (2) 4-1/16" GATE VALVES, (9) 2-1/16" GATE VALVES, 4 WAY CROSS, MTD ON ADJ HEIGHT SKID

24" X 9' STAND UP GAS BUSTER W/ (2) 2-1/16" CHOKES, (7) 2-1/16" 5K# GATE VALVES, (2) 4-1/16" GATE VALVES, MANIFOLD, MUD GAUGE, MTD ON 7'W X 12'L SKID

THERMAL TRANSFER PRODUCTS 3003 IPS HYD POWER UNIT P/B APPROX 50 HP ELECTRIC MOTOR, W/ OIL COOLER & HYD TANK

(3) 4 COMPARTMENT LUBESTERS 5 COMPARTMENT LUBESTER

(2) 42"H X 7.5'W X 40'L, 2 SECTION CATWALK (SQ TUBING) W/ EQUIP STORAGE BINS, STAIR WAYS, STEEL DECK

PIPE RACKS, RIG MATS, CATWALKS

(3) HYDRAULIC POWER UNITS, P/B 6.7L CUMMINS TURBO DIESEL W/ (2) PARKER 3K PSI HYD PUMPS, HYD TANK, DIESEL TANK, SKIDDED

ELECTRIC/ HYDRAULIC WIRELINE MACHINE

HYDROMATIC BRAKES

MISC

(200+) PORTA POTTIES

CF POWERLINE 6' SHREDDER F/ 3 PNT TRACTOR, UNUSED)

MOORE W/S RIG DRIVE AXLES, TAG AXLES, STEERABLE DRIVE AXLES

(6) DROPBOXES F/ ALLISON TRANSMISSIONS

CATERPILLAR SKID STEER 299D

YARD #3 - ELECTRA, TX

Directions: 100 E FM 1811 Electra, TX 76360

Checkout: Monday - Friday 8AM-5PM thru DEC 4, by APPT ONLY!

Contact: Keisha Nava 940-839-1803

TRAILER

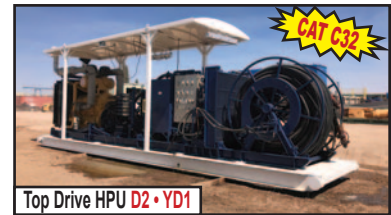
1988 HOLDEN TRI/AXLE LOWBOY RGN, W/ 21' WELL, 8' NECK, GAS PONY MOTOR, AIR RIDE SUSP., OUTRIGGERS)

YARD #4 - ODESSA, TX

Directions: 2674 South CR West Odessa, TX

Checkout: Monday - Friday 8AM-5PM thru DEC 4, by APPT ONLY!

Contact: Eric Dyess 940-452-4132





1971 Chevrolet C20 Cheyenne D2 • YD11



Half Rounds w/ Gas Busters D2 • YD1



1983 Transport Sys. 75-Ton RGN D2 •



Hydra Cat Hydraulic Pipe Handler D2 • YD1



500 Bbl Water Tank D2 • YD10



2008 Mack GU713 D2 • YD1



Yale GDP120VXN D2 • YD9



Shaffer 13 5/8" D2 • YD20



1938 Int'l KB-8 D1 • YD1

PUMP

MI9 TRIPLEX PUMP W/ DAMPENER, P/B CAT 398 DIESEL ENGINE, WN-66B-866, W/ DBL LIFE 6X5X11 CENT CHARGE PUMP

YARD #5 - ROCK SPRINGS, WY

Directions: Jonah Dr., Rock Springs, WY 82901

Checkout: Monday – Friday 8AM-5PM thru DEC 4, by APPT ONLY!

Contact: Tyson 830-837-0912

BUCKET TRUCK

2000 ALTEC AA600L BUCKET TRUCK W/ 51' PLATFORM HEIGHT, 9 BOX STEEL TRUCK BED, (4) STABILIZING JACKS, ALL MTD ON INTERNATIONAL DAY CAB S/A TRUCK, P/B DT466E, SHOWS 139,708 MILES

YARD #8 - CARRIZO SPRINGS, TX

Directions: 544 Refinery Rd., Carrizo Springs, TX 78834

Checkout: Monday – Friday 8AM-5PM thru DEC 4, by APPT ONLY! NO LOAD OUT EQUIPMENT @ THIS YARD

Contact: Bo Bollier 830-876-8874

ARTIFICIAL LIFTS

(5) 2012 ICI ARTIFICIAL LIFTS, Model GS, P/B VORTX V6 NATURAL GAS ENGINE, W/ HYD TOWER F/ PUMPING WELL

YARD #9 - ODESSA, TX

Directions: Hinton Enterprises 7111 Andrews HWY, Odessa, TX 79765

Checkout: Monday – Friday 8AM-5PM thru DEC 4, by APPT ONLY! \$75/ hr. Forklift Fee

Contact: Kirk Dickman 432-339-0411 or 432-238-3394.

FORKLIFT

YALE GDP120VXN, 11350# CAP, SN-H813V01601K, P/B KUBOTA 3.8L DIESEL ENGINE, 74HP, TECHTRONIX 100X TRANS., 6'L FORKS ROPS, 300-15 FRONT, 7.00-12 REAR SOLID TIRES GENIE 4WD DIESEL TELESCOPIC BOOM LIFT (MANLIFT), 60' MAX LIFT HEIGHT, 500 MAX WEIGHT CAP., HYD LEVELING, 15-19.5" TIRES

PIPE / WELL SERVICE TOOLS / MISC

(120) FT. (4) JTS 5-1/2", 16.87#, RNG 2 WASHPIPE, WP CONN

(318) FT. (10) JTS, 5-5/8" 17.18#, RNG 2 WASHPIPE, WP CONN

(6) JTS STRUCTURAL PIPE, (1) 3-1/2" DRILL COLLAR, (1) 4" WASHPIPE, (1) 1-1/2", (1) 2-3/8", (2) 2-7/8" TUBING CH-D 120 TON TUBING SPIDER, DRESSED 5"

CH-C 82-1/2 TON TUBING SPIDER, DRESSED 2-7/8"

(1) BJ 4-1/2" 150 TON SD, DL (1) BJ TYPE A, 8-1/4" SL ELEVATORS

(1) WILSON 8-5/8" SD, SL (1) BJ "AA", 4-1/2" 150 TON DL ELEVATORS

5-1/2" CASING SCRAPER W/ 2-7/8" REG CONN

9" CONCAVE MILL W/ 4-1/2" REG CONN

(1) 2-3/8" HILLSIDE SUB, (1) 5-1/2" OD FLUTED SCREW GUIDE

(1) 3-3/4" X 12.70'L, (1) 3-3/4" X 9.59'L WP EXT W/ WP CONN

(1) 9-1/8" OD CUTLIP GUIDE, (1) 5-1/2" OD CUTLIP GUIDE, APPROX 10'L

(2) 2-1/16" 5000# FLANGED GATE VALVES, ASST'D FLANGES

PALLET CHICKSANS, PLUG VALVE, SUCTION SCREEN, 2" PIPE CONN

(2) PALLETS WELL HEAD ACC & HOSES, 2" PIPE CONN

(2) PALLETS FILTERS, TOOLBOX, TRAILER SPRING, WHEELS & TIRES F/ DOLLY, 12V FUEL PUMP

(1) 1-13/16" 4 WAY CROSS, (1) 4-1/16" 6 WAY CROSS

7-1/16" CASING HEAD SPOOL W/ (2) 1-13/16" 5000# FLANGED GATE VALVES

(2) PALLET UNIONS, CASING HEAD & CHOKE MANIFOLD ACCESSORIES

(5) 2-1/16" 5000# FLANGED GATE VALVES

(2) PALLETS ASST'D SIZE & TYPE FLANGES

(2) 2-1/16" 5000# FLANGED GATE VALVES, (1) 4 WAY CROSS WELL HEAD TOP ADAPT

(2) 2-9/16" 5000# FLANGED GATE VALVES, (1) 3 WAY CROSS

(1) 2-1/16" 5000#, (1) 4-1/16" 5000# GATE VALVES, (1) 4 WAY CROSS

PALLET WASH PIPE THREAD

PROTECTOR

PALLET LIFT NUBBINS, X-OVER SUB, HAMMER WRENCH

PALLET APPROX (26) JTS 2" HARDLINE, VARIOUS LENGTHS W/ UNIONS

4'H X 18.6'L METAL STORAGE RACK (1) 3.3"H X 12'L, (1) 2'H X 20'L, (1) 2'H X 15'L METAL STORAGE RACK

WEATHERFORD TYPE C PIPE VISE W/ STAND

RIGID ADJ HEIGHT PIPE STANDS

CHAIN TONGS & WINCH LINE BLOCKS

RIGID PIPE THREADERS & CUTTERS LOAD CHAIN & RATCHET BINDERS

(2) PALLETS TRADESMAN TOOLBOXES

PALLET (1) RIGID TOOLBOX, (1) TRADESMEN TYPE TOOLBOX

FRUITLAND RCF 500 VACUUM PUMP (1) 2 WHEEL POWER SWIVEL DOLLY

YARD #10 - ODESSA, TX

Directions: 5540 Andrews HWY (HWY 385), Odessa, TX 79765 (behind Fox Pest Control)

Checkout: Monday – Friday 8AM-5PM thru DEC 4, by APPT ONLY! NO LOAD OUT EQUIPMENT @ THIS YARD

Contact: Kirk Dickman 432-339-0411 or 432-238-3394.

TRAILERS

2005 GALYEAN T/A 130 BBL VAC TRAILER, AIR RIDE SUSP., KINGPIN, LANDING GEAR, HOSE TROUGHS, SIDE MTD WALKWAY, TOOLBOX

SHOPMADE T/A GN PIPE TRAILER, 8'W X 40'L OAL, R.T LANDING GEAR, 7.00R15" TIRES, 8K AXLES

TANKS

2012 DESERT TANK, 10'D 500 BBL FRAC TANK, (5) VALVE MANIFOLD, LADDER, CLEAN OUT DUMP, SKIDDED

(2) 10'D X 40' OAL 500 BBL WATER TANKS W/ (2) 3X4 CENT PUMPS, P/B 20 HP ELECTRIC MOTORS, HOSE RACKS & HOSES, CLEAN OUT DUMP, LADDER, PLUMBING, SKIDDED

10'D X 35' OAL 500 BBL WATER TANK, LADDER, CLEAN OUT DUMP, PLUMBING, SKIDDED

MISC

VARIOUS SIZE SUCTION & VIB
HOSES

YARD #11 - FULSHEAR, TX

Directions: 32501 Gordon Side Rd.,
Suite F, Fulshear, TX 77441

Checkout: Monday – Friday 8AM-5PM
thru DEC 4, by APPT ONLY!

Contact: Steve 832-421-4998

CLASSIC CARS

1949 FORD CUSTOM 2 DOOR "SHOE
BOX" CAR, P/B FORD FLATHEAD V8,
MANUAL 3 ON THE TREE W/ OVER
DRIVE TRANS., UPGRADED
OFFERHAUSER HEADS, INTAKE &
DUAL CARBS, SHOWS 65,000 MILES

1971 CHEVROLET MONTE CARLO
LANDAU, P/B SMALL BLOCK
CHEVROLET, AUTO TRANS., A/C,
BLACK ON BLACK, COLUMN SHIFT,
BENCH SEAT

1966 FORD F350 CUSTOM WRECKER
W/ HOLMES 480 TWIN BOOMS, P/B
351 SMALL BLOCK V8, 4 SPD MANUAL
TRANS.

(X) 1950 OLDSMOBILE EIGHTY-EIGHT
4 DOOR CUSTOM, P/B V8, ORIGINAL
DRIVETRAIN, 12 VOLT CONVERSION
W/ NEW ALTERNATOR, REBUILT
CARB, ELECTRIC CHOKE, CUSTOM
LEATHER INTERIOR W/ HEATED
POWER SEATS & CENTER CONSOLE,
SHOWS 8,000 MILES

1971 CHEVROLET C20 2500
CHEYENNE FACTORY BIG BLOCK AC
TRUCK, P/B BIG BLOCK CHEVROLET,
AUTO TRANS., POWER STEERING,
POWER BRAKES, NON-WORKING
FACTORY A/C

YARD #12 - ODESSA, TX

Directions: 2700 I-20 Service Rd.,
Odessa, TX 79766

Checkout: Monday – Friday 8AM-5PM
thru DEC 4, by APPT ONLY!

Contact: Raul Gomez 830-854-0350

PIPE BEVELER / HAUCK BURNERS

MSI CHAMFERMATE CS-H PIPE
BEVELER 1/2" - 4-1/2"

HAUCK BURNER, 38MMBTU, TRI
FUEL, MODEL- TBAB1-100-330-H-15,
SN- B140239 NEW)

HAUCK BURNER, 25MMBTU MULTI

FUEL, MODEL- TBAB, SN- B120392, W/
SPECIAL BASE HYD DRIVE

AKG HIGH FLOW COOLER, 500 GPM,
MODEL- AC350-3 NEW)

PIONEER 5X3 CENT PUMP, MODEL-
PP53C14L72-H0

HANNAY POWER CABLE REEL,
MODEL- EP-6622-48-20-15.5LT

YARD #13 - SHAFTER, CA

YARD 13 – SHAFTER, CA

Directions: 8920 DeSwan Ct., Shafter,
CA 93262

Checkout: Monday – Friday 8AM-5PM
thru DEC 4, by APPT ONLY!

Contact: Carlos Ochoa 661-667-1363

TRUCK

2002 MACK RD6885 TRUCK, 8 SPD
TRANSMISSION, W/ FRUITLAND
PUMP, 80Bbl TANK

PICKUPS

2012 FORD F450 2X4 CREW CAB
PICKUP, DUAL REAR WHEELS, GAS
ENGINE, SHOWS 22399

2012 FORD F250 4X4 PICKUP, BED,
SGL REAR WHEEL, GAS ENGINE,
SHOWS 44,347 MILES

YARD #14 - BAKERSFIELD, CA

Directions: 18835 Hwy 65 Bakersfield,
CA 93308

Checkout: Monday – Friday 8AM-5PM
thru DEC 4, by APPT ONLY!

Contact: Carlos Ochoa 661-667-1363

PICKUPS

2012 FORD F450 4X4 STANDARD CAB
PICKUP, DUAL REAR WHEEL, DIESEL

2012 FORD F450 2X4 CREW CAB
PICKUP, FLAT BED, DUAL REAR
WHEEL, GAS ENGINE

2012 FORD F450 3X4 STANDARD
CAB PICKUP, DUAL REAR WHEEL,
GAS ENGINE

REEL

CTU REEL W/ TUBING, CMPJ125R128-1-08

YARD #15 - SAN ARDO, CA

Directions: 62397 Sargents Canyon Rd.,
San Ardo, CA 93450

Checkout: Monday – Friday 8AM-5PM
thru DEC 4, by APPT ONLY!

Contact: Carlos Ochoa 661-667-1363

FRAC TANKS

2010 Dragon 500 Bbl Flat Top Frac Tank

2001 Wichita 500 Bbl Slope Top Frac Tank

YARD #16 - EL DORADO, TX

Directions: 8.9 Miles West of El Dorado,
TX on US HWY 190

Checkout: Monday – Friday 8AM-5PM
thru DEC 4, by APPT ONLY!

Contact: Gene Townsend 325-338-0185

DRILLING COMPONENTS

24'L X 8'W X 10'H SUBSTRUCTURE,
SKIDDED W/ ROTARY TABLE 40'L X
10'W X 9'H STEEL GEN HOUSE, W/ (1)
CAT 3306/ SR4B GENERATOR, (1) CAT
3406/ SR4 GENERATOR, SYLVANIA
480V TRANSFORMER, SULLIVAN
PALATEK 30DG ELECTRIC AIR
COMPRESSOR, MISC PARTS/
CONTENTS, SKIDDED CONTINENTAL
EMSCO DC700 DUPLEX PUMP, P/B
CAT D353 TURBO DIESEL ENGINE,
BELT DRIVEN, W/ HYDRIL PULSATION
DAMPENER, SHEAR RELIEF, AIR
VOLUME TANK, AIR STARTER,
SKIDDED, 33'L X 12.6'W X 11'H

CONTINENTAL EMSCO DB550
DUPLEX PUMP, P/B CAT D379 TWIN
TURBO DIESEL ENGINE, BELT
DRIVEN, W/ HYDRIL PULSATION
DAMPENER, SHEAR RELIEF, AIR
VOLUME TANK, AIR STARTER,
SKIDDED, 27'L X 12.6'W X 11'H

38'L X 11'W X 5'H 3 COMP RD
BOTTOM MUD SHAKER TANK W/
SHALE SHAKER, 2 CONE DE-
SANDER, CENT PUMP, AGITATOR,
WORK LIGHTS, HANDRAILS & HOSES,
SKIDDED

38'L X 10'W X 5'H 3 COMP RD
BOTTOM MUD TANK, W/ (3)
AGITATORS, INTERNAL PLUMBING,
HOSES, 11' PORCH W/ MUD HOPPER,
CENT PUMP P/B ELECTRIC MOTOR

CABLE RAISED DOG HOUSE/ PARTS
HOUSE/ 7'L X 10'W X 8'H DIESEL
TANK/ 20'L X 10'W X 8'H WATER TANK
W/ STAIRS & HAND RAILS, ALL MTD
ON 50'L X 10'W SKID

YARD #17 - MIDLAND, TX

Directions: 9701 FM 307, Midland, TX 79706

Checkout: Monday – Friday 8AM-5PM
thru DEC 4, by APPT ONLY!

Contact: Randy Bibby 432-813-2886



1971 Chevrolet Monte Carlo D2 • YD11



G. Denver PZ-9 D2 • YD4



National 80B D2 • YD1



Gas Buster D2 • YD1



National 9-P-100 D2 • YD1



IROCK RDS-20 D2 • YD1



2018 Cargo Craft D2 • YD1



(20) Complete Artificial Lifts D2 • YD8



2007 Peterbilt 379 D2 • YD1



Surplus Sand Kings D1 • YD2



3-Complete Frac Spreads D1 • YD2



2015 - 2011 Kenworth T800 Heavy Haul D2 • YD1



2010 Mack GU813 Acid Pump Truck D1 • YD2



2012 Mack Vac Trucks D2 • YD1



1998 Peterbilt 357 D2 • YD1



2008 Mack GU713 D2 • YD1



Permian International
Energy Services, LLC

P.O. BOX 3820
Midland, TX 79702

www.piauction.com
www.permianint.com

AUCTION

DRAWWORKS

(2) RIG TECH 400B 750HP
DRAWWORKS, 1-1/8" DRILL LINE,
EATON BRAKE, P/B CAT C-18
ENGINES, ALLISON TRANS.,
500K# MAST, BRADEN WINCHES,
PIPE BROOM, LEVELING JACKS

WELL CONTROL

(6) 12 BOTTLE 5 STATION SKID MTD
KOOMEYS

8 BOTTLE 4 STATION SKID MTD KOOMEY

HOUSES

TRAILER MTD DOGHOUSE W/
DIESEL TANK

TRAILER MTD DOGHOUSE/ CHANGE
HOUSE

(2) SKID MTD HYDRAULIC RAISING
DOGHOUSE W/ 8 BOTTLE STATION
KOOMEYS

SHAKERS

DUAL SHAKERS DERRICK/ 3 PANEL W/
POSSUM BELLY

SINGLE MI SWACO 4 PANEL SHAKER

CATWALK

ARROW SELF CONTAINED
HYDRAULIC CATWALK

MISC

(3) BUCKETS F/ LOADERS

DUAL AXLE JEEP

YARD #18 - STANTON, TX

Directions: Top Dog Enterprises – 3234
CR 1900, Stanton, TX 79782

Checkout: Monday- Friday 8AM-5PM thru
DEC 4, by APPT ONLY!

Contact: RUEBEN NIXON 432-557-9331

TANKS

10'DIA X 32' L 500 BBL FUEL TANK
(14) HALF ROUND FRAC TANKS

YARD #20 - MERKEL, TX

Directions: 5449 FM 1235, MERKEL, TX
79536

Checkout: Monday- Friday 8AM-5PM thru
DEC 4, BY APPT ONLY!

Contact: Gene Townsend 325-338-0185

DRILLING COMPONENTS

(2) PIECE MUD BOAT, 60'L X 8'W X 7'H
W/ MUD, WATER, HYD LINES, &
VOLUME TANKS

HYDRAULIC WIRELINE MACHINE,
SKIDDED W/ TANK & PUMP, P/B
ELECTRIC MOTOR

1982 NABORS 96" X 40' TRI-AXLE
OILFIELD RGN LOWBOY TRAILER, W/
9' NECK, 5TH WHEEL, RTB

(9) SLICK DRILL COLLARS 6-1/8" X
30'L, 4-1/2" XH CONNS

1 SPIRAL DRILL COLLAR 6-1/8"X30'L,
4- 1/2" XH CONN

11" 5K# RUCKER SHAFFER ANNULAR
BOP, STUDDED TOP & FLANDED
BOTTOM

REGISTER ON PIES LIVE

WWW.PERMIANINT.COM
& CHECK OUT OUR
ONLINE TIMED
AUCTION!

SELLING SURPLUS
PARTS & SUPPLIES
FROM
SUPPLY SPECIALTY, LP
& OTHER
CONSIGNMENTS

BIDDING STARTS
NOVEMBER 2ND &
ENDS DECEMBER 2ND
12:00 NOON (CST)

TUES/WED • NOV 17/18, 2020 • MIDLAND, TEXAS • 9AM (CST) EACH DAY