

2-DAY PUBLIC ONLINE AUCTION

INSPECT ONSITE AND BID ONLINE

WEAR RESISTANT HARDFACING ALLOYS MANUFACTURER

WEARTECH INTERNATIONAL - A LINCOLN ELECTRIC COMPANY

**ONLINE AUCTION CLOSES: TUESDAY, SEPTEMBER 15 AND
WEDNESDAY, SEPTEMBER 16 AT 10:00 AM PDT**

INSPECTION: MONDAY, SEPTEMBER 14 FROM 9:00 AM TO 3:00 PM PDT

LOCATION: 1177 N. GROVE STREET, ANAHEIM, CA



2018 INVESTMENT & CENTRIFUGAL CASTING FOUNDRY EQUIPMENT, HARDFACING, (2) 2007 PTA WELDING SYSTEMS, (13) 2013-2006 HAAS & ROMI CNC LATHES TO 80" CENTERS, 2012 HAAS VF-3 MACHINING CENTER, ENGINE LATHES, VERTICAL MILLS, SAWS, GRINDERS, AIR COMPRESSORS, COOLING TOWERS, HYSTER & CAT FORKLIFTS, LINCOLN WELDERS, JIB CRANES, METAL MATERIAL, RACKING, HUGE AMOUNT OF TOOLING, FACTORY CAT FLOOR SCRUBBER, 2011 TOYOTA PICK-UP AND RELATED ITEMS



UNITED
ASSET SALES
ROY GAMITYAN, AUCTIONEER

ROY GAMITYAN, AUCTIONEER CA BOND# 63388305

23945 Calabasas Road, Suite 209, Calabasas, CA 91302
Office 818.264.4232 | roy@unitedassetsales.com

WWW.UNITEDASSETSALES.COM

2-DAY PUBLIC ONLINE AUCTION

INSPECT ONSITE AND BID ONLINE

WEAR RESISTANT HARDFACING ALLOYS MANUFACTURER

ONLINE BIDDING CLOSES:

TUESDAY, SEPTEMBER 15 AND WEDNESDAY, SEPTEMBER 16 AT 10:00 AM PDT

INSPECTION:

MONDAY, SEPTEMBER 14 FROM 9:00 AM TO 3:00 PM PDT

LOCATION:

1177 N. GROVE STREET, ANAHEIM, CA

TERMS OF PAYMENT:

CASH, CASHIER'S CHECK, BUSINESS CHECK WITH BANK LETTER OF GUARANTEE, BANK WIRE TRANSFER. FULL PAYMENT MUST BE MADE NO LATER THAN 24 HOURS OF WINNING BID.

REMOVAL:

ALL ITEMS MUST BE REMOVED NO LATER THAN FRIDAY, OCTOBER 2. NO EXCEPTIONS. PREPPING, LOADING & TRUCKING IS THE RESPONSIBILITY OF THE BUYER.

BUYER'S PREMIUM:

18% FOR ALL ONLINE PURCHASES.

FOR COMPLETE SALE INFORMATION

CALL ROY GAMITYAN: 818-264-4232
EMAIL: ROY@UNITEDASSETSALES.COM
OR VISIT: WWW.UNITEDASSETSALES.COM

ONLINE BIDDING PROVIDED BY

BidSpotter.com



UNITED
ASSET SALES
ROY GAMITYAN, AUCTIONEER

WWW.UNITEDASSETSALES.COM

23945 Calabasas Rd., Ste. 209, Calabasas, CA 91302
Office 818.264.4232 | roy@unitedassetsales.com

ROY GAMITYAN, AUCTIONEER
CA Bond# 63388305

INVESTMENT CASTING EQUIPMENT

2018 MPI SYSTEMS SM 55-25-18 C FRAME WAX INJECTOR, 25 TON, MPR SMART CONTROLS II, 12" COLOR OPERATOR INTERFACE PANEL, TABLE: 30" X 42.625", 18" MAX. DAYLIGHT, 5 ZONE CONTROL, 18" DL CLAMPING UNIT, (2) COOLING PLATENS, AUTOMATIC PATTERN EJECTOR, 30 GALLON WAX RESERVOIR, 50 LB/HR WAX MELTER, VACUUM LOADER, 2 AXIS MANUAL NOZZLE POSITIONER, S/N 3050

MPI SYSTEMS WAX INJECTOR, MODEL 34-34, S/N 52

(2) 2018 SHELL-O-MATIC 36" SLURRY TANKS, MODEL SO-00349-SL01, VARI SPEED DRIVE, ADDITIONAL COOLING TEMPERATURE CONTROLLER, REMOTE STOP/START PACKAGE, HEAVY DUTY BELT DRIVEN, WETTED PARTS MADE IN STAINLESS STEEL 304, SWING OUT PADDLES, S/N'S 1 & 2

EPENDORF CENTRIFUGE 5702

KING'S BARREL SANDER

BLOWER SANDER



2018

LIKE NEW



1 OF 2

2018



PRECISION METAL CASTING PATTERN 3D PRINTER

2018 3D SYSTEMS PROJET, MJP 3600W, TOUCH SCREEN CONTROL, PROJET ACCELERATOR SOFTWARE, PRINTING MODES: HD, UHD, XHD, BUILD MATERIAL: VISJET M# CAST AND M# HI-CAST, SUPPORT MATERIAL VISIJET S400, S/N 30521267002



2018

LIKE NEW

2012

LOW HOURS

CNC VERTICAL MACHINING CENTERS

2012 HAAS VF-3 CNC VERTICAL MACHINING CENTER, TRAVELS: 40" X, 20" Y, 25" Z, 48" X 18" TABLE, CAT 40-TAPER, 24 ATC, 30 HP, 4TH AXIS READY, S/N 1096058

1997 HAAS VF-1 CNC VERTICAL MACHINING CENTER, TRAVELS: 20" X, 16" Y, 20" Z, 26" X 14" TABLE, CAT 40-TAPER, 24 ATC, 15 HP, HIGH TORQUE, 4TH AXIS READY, S/N 11719



TURNING CENTERS

2013 ROMI C680, SIEMENS 802D SL PRO CNC CONTROL, (2) 15" CHUCKS, 26.77" MAX CUTTING DIA, 80" MAX CUTTING LENGTH, 6" BAR CAPACITY, 6" INDEPENDENT REAR CHUCK, TOOL POST, 1,800 RPM, 40 HP, 2 SPEED, STEADY REST, CHIP CONVEYOR, S/N 016-016819-471

2013 ROMI C510, SIEMENS 802D CNC CONTROL, 10" CHUCK, 20.5" MAX CUTTING DIA, 59" MAX CUTTING LENGTH, 2" BAR CAPACITY, TOOL POST, 3,000 RPM, 30 HP, 2 SPEED, CHIP CONVEYOR, S/N 016-016400-458

2004 HAAS SL-30T, 8" CHUCK, 23" SWING, 15" MAX CUTTING DIA, 32.5" MAX CUTTING LENGTH, 3" BAR CAPACITY, TOOL PE-SETTER, TAILSTOCK, 30 HP, 2 SPEED, CHIP CONVEYOR, S/N 66898

1999 HAAS SL-20T, 8" CHUCK, 20" SWING, 10.3" MAX CUTTING DIA, 20" MAX CUTTING LENGTH, 2" BAR CAPACITY, 10 STATION TURRET, TOOL PE-SETTER, TAILSTOCK, 30 HP, 2 SPEED, CHIP CONVEYOR, S/N 62333

2013 HAAS TL-3, 12" CHUCK, 20" SWING, 20" MAX CUTTING DIA, 60" MAX CUTTING LENGTH, 3" BAR CAPACITY, 8 STATION TURRET, TAILSTOCK, 30 HP, S/N 3095969

2013 HAAS TL-2, 10" CHUCK, 16" SWING, 20" MAX CUTTING DIA, 48" MAX CUTTING LENGTH, 3" BAR CAPACITY, 8 STATION TURRET, TAILSTOCK, 30 HP, S/N 3095962

(2) 2006 HAAS TL-2, 10" CHUCK, 16" SWING, 20" MAX CUTTING DIA, 48" MAX CUTTING LENGTH, 3" BAR CAPACITY, 8 STATION TURRET, TAILSTOCK, 12 HP, S/N'S 72548, 73417

2005 HAAS TL-1, 8" CHUCK, 16" SWING, 16" MAX CUTTING DIA, 30" MAX CUTTING LENGTH, 2" BAR CAPACITY, 8 STATION TURRET, TAILSTOCK, 7.5 HP, S/N 70622

2006 HAAS GT-20, 8" CHUCK, 12" SWING, 12" MAX CUTTING DIA, 11" MAX CUTTING LENGTH, 2" BAR CAPACITY, 8 STATION TURRET, TAILSTOCK, 20 HP, S/N 73254

ROMI BRIDGEPORT EZ PATH II, 10" CHUCK, 16.5" X 40", TAILSTOCK, , CHIP CONVEYOR, S/N 002081682-349

ROMI BRIDGEPORT EZ PATH II, 10" CHUCK, 16.5" X 40", TAILSTOCK, S/N 0161001139-349

GANESH GT-2050, 12" CHUCK, FAGOR CNC CONTROL, 18 SWING, 49" CENTERS

2013

LIKE NEW



6" HOLE THRU



2013

LOW HOURS



2013

LOW HOURS



2004



2013

LOW HOURS



MACHINE SHOP

40"



CINCINNATI HORIZONTAL BORING MILL, MODEL 10 HC-1500, ACRAMATIC 850 SX CONTROL, S/N 48840

NILES 40" VERTICAL TURRET LATHE, 40" ROTARY 4-JAW CHUCK, 5 STATION TURRET, S/N 21033

BULLARD VERTICAL TURRET LATHE, 34" ROTARY 4-JAW CHUCK, 5 STATION TURRET, ANILAM DRO

GANESH ENGINE LATHE, MODEL GT 2060, 20" X 60" CC, 16" 3-JAW CHUCK, TAILSTOCK, 3" HOLE THRU

MONARCH ENGINE LATHE, MODEL 61, 18.5" X 30" CC, TAILSTOCK, S/N 43531

MORI SEIKI MS-850 LATHE, 10" CHUCK

AXELSON 20 LATHE

WARNER SWASEY 2A TURRET LATHE, 15" CHUCK

WARNER SWASEY 2A TURRET LATHE, 15" CHUCK

GANESH VERTICAL MILL, MODEL DELUXE GMV-3, POWER FEED, NEWALL DRO, S/N E1231C

ROUND TOWER VERTICAL MILL, SARAGON DRO

CINCINNATI BICKFORD RADIAL ARM DRILL

LANDIS 14" X 36" TYPE 2R UNIVERSAL GRINDER, S/N 833-33

ENERPAC H-FRAME PRESS

HAMMOND DBL GRINDER

SUNNEN MBB-1690 HONE, S/N 84621

EISEN & JET HORIZONTAL BAND SAWS

RIGID PIPE THREADER

2019 ZORIAN MATERIAL BARREL CRUSHER/COMPACTOR, MODEL HDC-905-IDC 460, HYDRAULIC, 55 GALLON DRUM, S/N S1828417

2007 DELTA 30-XL DRILL PRESS

2006 CONQUEST 12"/6" BELT SANDER

BURR KING 760 BELT SANDER, S/N BK-38379

2019 KALAMAZOO ABRASIVE MITRE SAW, MODEL 20-22, S/N 01190038

DOALL VERTICAL BAND SAW, MSW-50, 24" THROAT, S/N 293-66435

DEWALT 20" RADIAL ARM SAW



2019

LIKE NEW

PAINT BOOTHS

J & M, DIMENSIONS: 15' HIGH, 16' WIDE, 20' DEEP, LIGHTS, FILTERS



PTA WELDING CELLS

2007 PRIMO AUTOMATION SYSTEMS, AUTOMATIC, 48" ROTARY WELDING POSITIONER, LINCOLN PRECISION TIG 375 WELDING SOURCE

2005 WEARTECH AUTO PTA 2000, MODEL W.P. PTA 2000, 30 WELDING POSITIONER, LINCOLN PRECISION TIG 375 & TIG 185 WELDING SOURCE

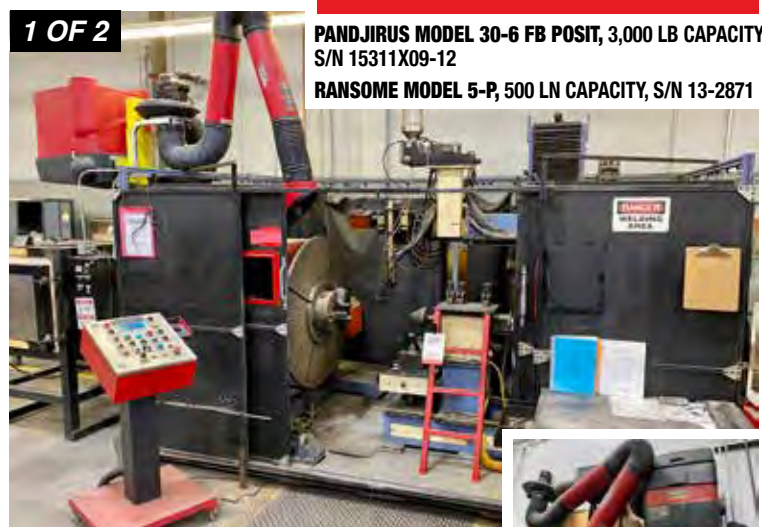


WELDER POSITIONERS

1 OF 2

PANDJIRUS MODEL 30-6 FB POSIT, 3,000 LB CAPACITY, S/N 15311X09-12

RANSOME MODEL 5-P, 500 LN CAPACITY, S/N 13-2871



AIR COMPRESSORS & DRYER

(3) SULLAIR LS-10, LS-100, SCREW TYPE

GREAT LAKES DRYER



DUST COLLECTORS

(6) TORIT DOWN FLO & DONALDSON, BLOWERS



1 OF 6



FOUNDRY MACHINERY & EQUIPMENT

EXCELLENT

ITC 800 LB FURNACE, ITC 1300 LB FURNACE, (3) ITC 550 LB FURNACES, ITC 300 LB FURNACE, ITC 150 LB FURNACE, ITC 50 LB FURNACE

INDUCTOTHERM VIP POWER TRAK 250 POWER SUPPLY, 250 KW, S/N 82-31610-246-11

INDUCTOTHERM VIP POWER TRAK 250 POWER SUPPLY, 250 KW, S/N 77-36345-245-21

INDUCTOTHERM VIP POWER SUPPLY, 200 KW, S/N 76-27085

ITC POWER SUPPLY, MODEL ITC-200-30R, S/N 10-A-51156-3757

INDUCTOTHERM VIP POWER SUPPLY, 150 KW, S/N 81-27725-246-11

INDUCTOTHERM VIP POWER SUPPLY, 50 KW, S/N 73-D-360

4, 2 & 1 SPINDLE CENTRIFUGAL CASTERS

GEIL MODEL GF-60 GAS FIRED FURNACE, S/N 60488024FF

JLS OVEN, NATURAL GAS, 550 DEGREE TEMP

FULTON NATURAL GAS FIRED BOILER, MODEL ICS-20LE

AUTOCLAVE, S/N 646

METAL TUBS & STANDS, LADLES AND RELATED ITEMS



2013

LIKE NEW



6" HOLE THRU

2-DAY PUBLIC ONLINE AUCTION

INSPECT ONSITE AND BID ONLINE

WEAR RESISTANT HARDFACING ALLOYS MANUFACTURER

WEARTECH INTERNATIONAL - A LINCOLN ELECTRIC COMPANY

ONLINE AUCTION CLOSING: TUESDAY, SEPTEMBER 15 AND WEDNESDAY, SEPTEMBER 16 AT 10:00 AM PDT

INSPECTION: MONDAY, SEPTEMBER 14 FROM 9:00 AM TO 3:00 PM PDT
LOCATION: 1177 N. GROVE STREET, ANAHEIM, CA

CALL FOR DETAILS:
818.264.4232



UNITED
ASSET SALES
ROY GAMITYAN, AUCTIONEER

WWW.UNITEDASSETSALES.COM

23945 Calabasas Road, Suite 209
Calabasas, CA 91302

ROY GAMITYAN, AUCTIONEER
CA Bond# 63388305

ATTENTION! PLANT MANAGER OR EQUIPMENT BUYER

2018 INVESTMENT & CENTRIFUGAL CASTING FOUNDRY EQUIPMENT, HARDFACING, (2) 2007 PTA WELDING SYSTEMS, (13) 2013-2006 HAAS & ROMI CNC LATHES TO 80" CENTERS, 2012 HAAS VF-3 MACHINING CENTER, ENGINE LATHES, VERTICAL MILLS, SAWS, GRINDERS, AIR COMPRESSORS, COOLING TOWERS, HYSTER & CAT FORKLIFTS, LINCOLN WELDERS, JIB CRANES, METAL MATERIAL, RACKING, HUGE AMOUNT OF TOOLING, FACTORY CAT FLOOR SCRUBBER, 2011 TOYOTA PICK-UP AND RELATED ITEMS

PRSR STD
U.S. POSTAGE
PAID
LOS ANGELES, CA
PERMIT NO. 3389

FORKLIFTS & SCISSOR LIFT

(3) HYSTER MODEL S50XM, 4,000 LB. CAPACITY, LPG, 3 STAGE MAST, SIDE SHIFT

CATERPILLAR ELECTRIC AILE, 3,000 LB CAPACITY, 204" REACH, LEGACY BATTERY CHARGER



1 OF 3

FLOOR SCRUBBER

FACTORY CAT, MODEL 40-C



2-DAY PUBLIC ONLINE AUCTION

INSPECT ONSITE AND BID ONLINE

WEAR RESISTANT HARDFACING ALLOYS MANUFACTURER

WEARTECH INTERNATIONAL - A LINCOLN ELECTRIC COMPANY

ONLINE AUCTION CLOSING: TUESDAY, SEPTEMBER 15 AND WEDNESDAY, SEPTEMBER 16 AT 10:00 AM PDT

INSPECTION: MONDAY, SEPTEMBER 14 FROM 9:00 AM TO 3:00 PM PDT
LOCATION: 1177 N. GROVE STREET, ANAHEIM, CA

COMPLETE CATALOG & BIDDING INFO: WWW.UNITEDASSETSALES.COM



MEZZANINES, (7) JIB CRANES, 1/2 TON HOISTS, LISTA CABINETS, TOOLBOXES, VISES, 5C SPIN FIXTURE AND COLLET CLOSERS, RADIUS-ANGLE DRESSER, CARBIDE INSERTS, DRILLS, TAPS, REAMERS, MILL SLOT CUTTERS AND ENDMILLS, INSPECTION TOOLS, GRANITE SURFACE PLATES, WELDING TABLES, FLAMMABLE CABINETS, HAND TOOLS AND RELATED

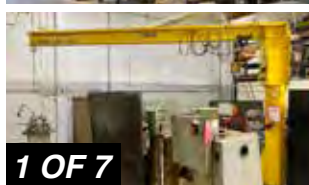
OFFICES



CONFERENCE ROOM, EXECUTIVE OFFICES, FILE CABINETS, OFFICE SUPPLIES, ETC.

SUPPORT EQUIPMENT

MEZZANINE



1 OF 7

PICK UP TRUCK

2011 TOYOTA, MODEL TACOMA, V6 ENGINE, AUTOMATIC TRANSMISSION, SINGLE CAB, 231,336 ODOMETER READING

