

Total Liquidation
RECENTLY
CLOSED WORLD
CLASS AUGUSTA
NEWSPRINT
PAPER MILL

2434 Doug Barnard Pkwy.,
 Augusta, Georgia 30906

DATES:

Online Bidding Closes
Wednesday, April 28th
& Thursday, April 29th
at 10:00 A.M. EDT
Each Day

INSPECTION:

Tuesday, April 27th from
 9:00 A.M. – 4:00 P.M. EDT
 or by Appointment

HIGHLIGHTS:

- (2) Updated Valmet SymFormer Paper Machines
- Refiners & Screens
- Vacuum Pumps, Centrifugal & Split Case Pumps
- Roll Splitters & Core Cutters
- Wood Chippers
- Forklifts & Material Handling
- Air Compressors to 500 HP
- Millwright, Rigging, & Lifting Equipment
- Welders & Tools
- Bridge Cranes
- Safety Equipment
- Electrical Switch Gear & MCC's

This Auction is Proudly in Conjunction With:



CRG AUCTION



PAPER MACHINES

MASSIVE 2-DAY SALE

**ONLINE
BIDDING ONLY!**

Over \$15MM original cost spare parts, supplies, and stores inventory including spare pumps and motors, valves and actuators, bearings and pillow blocks, PLC and electrical drive controls, sensors, gauges and flow meters, hardware and fittings, spare rolls, including all Vidmar storage cabinets, racking, parts bins, and more!

BID ONLINE AT
BidSpotter.com



(1 OF 10) NASH 9000 CFM VACUUM PUMPS

10 AVAILABLE

For more information

crgllc.com 1.800.300.6852

Auction Specialists • Appraisal Experts • Online or On-site
 1654 King Street, Enfield, Connecticut 06082
 (860) 623-9060 • (800) 300-6852 • Fax: (860) 623-9160
 GA Lic. #AUNR003013 • Bill Firestone, President



(1 OF 2) METSO MS50 PRESSURE SCREEN



(1 OF 6) JYLHAVAARA PRESSURE SCREENS



NASH 2,000 CFM REBUILT VACUUM PUMP



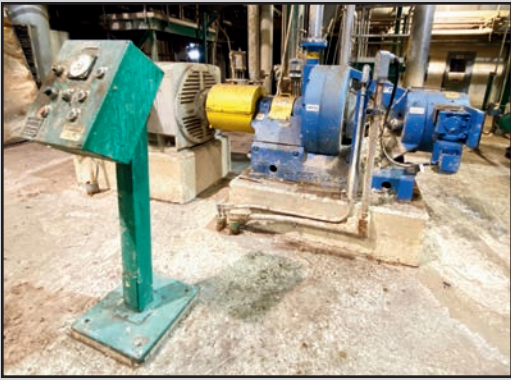
(1 OF 12) ROTOJET HIGH PRESSURE PUMPS



CORELINK PLC AUTOMATIC CORE CUTTER



LAM COMPLETE AUTOMATIC ROLL WRAPPING SYSTEM



SPROUT WALDRON DOUBLE DISC REFINER
WITH 800 HP DRIVE

SCREENS & REFINERS

(2) 2012 METSO MS-50 VT10 Pressure Screens.

(6) JYLHAVAARA Pressure Screens.

SPROUT WALDRON Double Disc Refiner, with 800 HP drive.

PARKINSON Helisieve In-Channel Fine Screen, with change parts.

VACUUM PUMPS, CENTRIFUGAL, SPLIT CASE & ROTOJET PUMPS

(8) NASH 9,000 CFM Rebuilt Vacuum Pumps, in trains of (2) with 1,200 HP synchronous drives.

NASH Rebuilt 6,000 and 2,000 CFM Vacuum Pumps.

(125+) GOULDS Centrifugal Pumps, in sized up to 10 x 12-14 with drives to 300 HP.

Split Case Pumps in Assorted Sizes, with drives to 1,500 HP.

(12) ROTOJET 2100 2X2 D-600 High Pressure Pumps, with 125 HP drives.

PARKSON
HELISIEVE
IN-CHANNEL
FINE SCREEN



SAMPLE GOULDS STAINLESS STEEL CENTRIFUGAL PUMPS



HYMAC HYDRAULIC ROLL SPLITTER WITH SUNDS DEFIBRATOR
AND CONVEYOR



24" DIAMETER X 15' STAINLESS STEEL SCREW CONVEYORS



LAM ROLL WRAPPING SYSTEM (REAR VIEW)

PAPER MACHINES

VALMET SymFormer Top-Wire Unit on
BELOIT Fourdrinier, all stainless steel head
box and press section, 338" width, 310" trim,
with Measurex controls, (68) can dryer,
upgraded drive motors, multi-stand calender
and Beloit winder, 3,000 FPM.

VALMET SymFormer All Stainless Steel
Head Box And Press Section, 364" width,
336" trim, with Measurex controls, (74) can
dryer, multi-stand calender and Wartsila
winder, 3,000 FPM.

ROLL SPLITTERS & CORE CUTTER

NEILSEN-HIEBERT Hydraulic
Roll Splitter, with roll lift and
discharge conveyor.

HYMAC Hydraulic Roll Splitter,
with Sunds defibrator and conveyor
system.

CORELINK CL-4090 Automatic
Core Cutter, with Allen Bradley
PLC controls, auto feed system with
large capacity core magazine, core
notcher, beveler, and capper.



NIELSEN HIEBERT HYDRAULIC
ROLL SPLITTER WITH
LIFT DISCHARGE CONVEYOR



ANDRITZ SPLIT CASE SUCTION
PUMP WITH 750 HP DRIVE

BID ONLINE AT
BidSpotter.com



WILLIAMS BARK HOG WITH 800 HP DRIVE



METSO CARTHAGE 84" DISC CHIPPER WITH 1,200 HP DRIVE

WOOD CHIPPERS

WILLIAMS 52" x 29" Bark Hog, with 350 HP drive.

METSO Carthage 84" Disc Chipper, with 1,200 HP drive.

ONLINE BIDDING ONLY!



LINDE 8,759-LB. CAPACITY DIESEL FORKLIFT



TEREX 60' DIESEL BOOM MANLIFT



LINDE H300 DIESEL FORKLIFT



NEW DIESEL MOTOR FOR TEREX LIFT



(4) LINDE 6,000-LB. LP FORKLIFTS WITH ROLL CLAMPS



HYDRAULIC TRUCK DUMPER WITH RECEIVING HOPPER AND CONVEYOR



JLG 36' ELECTRIC BOOM MANLIFT



HI-VAC PORTABLE VACUUM UNIT WITH .5 YARD HOPPER



FORD F-450 SERVICE TRUCK



BRODERSON CARRY DECK CRANE



FORD CRANE TRUCK

FORKLIFTS & MATERIAL HANDLING EQUIPMENT

VOLVO L-70E wheel loader, with 134 HP diesel motor, 3-yard QC bucket.

LINDE 6,000-Lb. and 9,000-Lb. Diesel Forklifts, with side shift.

LINDE 6,000-Lb. LP Forklifts, with roll clamps.

TEREX 60' Diesel Boom Manlift, with new diesel motor.

JLG 36' Electric Boom Manlift.

JOHN DEERE 486E Diesel Forklift, 6,000-lb. capacity with side shift.

BRODERSON LP Carry Deck Crane.

(2) BOBCAT S175 Skid Steer Loaders, one with grapple bucket.

FORD Flatbed Crane Truck.

FORD F-450 Flatbed Service Truck.

HI-VAC Portable Vacuum Loader/Unloader.

72' Total Length Hydraulic Truck Tipper, with receiving hopper and discharge conveyor.

INSPECTION:

Tuesday, April 27th from 9:00 A.M. – 4:00 P.M. EDT or by Appointment

MILLWRIGHT, RIGGING & LIFTING EQUIPMENT

GREENLEE Complete Cable Pulling System, in job box.

Hydraulic Multi-Jack System, with assorted piston jacks, hoses, manifolds, in job boxes.

Extensive Assortment of Rigging Slings, Chains, Lifting Eyes, Lifting Bars, Come-Alongs, Machine Rollers, Chain Hoists, and All Related.

BRIDGE CRANES

Double-Girder Bridge Cranes to 65-Ton x 100' Spans, with radio frequency controls.

SAFETY EQUIPMENT

Large Quantity of SCBA Systems, and fall protection equipment.

WELDERS & TOOLS

MILLER LP and Diesel Welding Generators.

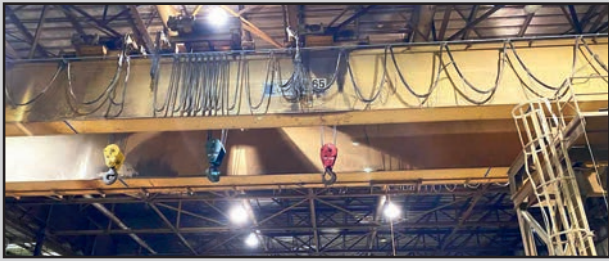
RIGID Pipe Threaders.

Huge Assortment of Power and Pneumatic Hand Tools.

Double-Door Vertical and Horizontal Job Boxes.



GREENLEE CABLE PULLING SYSTEM



65-TON DOUBLE GIRDER BRIDGE CRANE



HYDRAULIC JACK SYSTEM, COMPLETE IN JOB BOXES



ASSORTED JOB BOXES



SAMPLE CRANE SLINGS



SAMPLE SCBA SYSTEM



SAMPLE MILLWRIGHT AND RIGGING EQUIPMENT

TRANSFORMERS, MCC'S SWITCH GEAR & DRIVE CONTROLS

Large Assortment of Transformers Including: 13,800–2,400 step down and 13,800–480 step down, all PCB free.

(4) ALLEN BRADLEY Power Flex DC Drive Control Centers.

Massive Selection of MCC's, Distribution Panels, Switch Gear, and Related.

\$15MM Original Cost Spare Parts, Supplies, and Stores Inventories Including:

(6) Structural Steel A-Frame Roll Storage Racks, with (75+) spare machine rolls, all types and materials.

Multiple Pallet Loads of New Bearings, in assorted sizes and configurations.

(250+) New and Rebuilt Electric Motors, from 5–1,500 HP.

Huge Selection of Gear Boxes and Reducers.

(150+) Assorted Drive Shafts.

Extensive Selection of Motor Armatures (New and Rewound), in crates, all sized.

Valves and Valve Actuators.

Massive Selection of AB, ABB, and Honeywell Electrical Components, PLC Controls Parts, Breakers, Drive Controls, Boards, Switches, and Related – Thousands of Pieces.

(500+) Stainless Steel Pumps and Pump Parts Including Impellers, Shafts, and Related.

Stainless Steel Flex Hoses, High Pressure Hoses, Fittings, Hardware, Connectors, and More.

Hardware, Fasteners, Brass, Copper, and Stainless Steel.



(1 OF 4) ALLEN BRADLEY DRIVE CONTROL CENTERS



ASSORTED TRANSFORMERS



SAMPLE MCC'S AND SWITCH GEAR



SAMPLE MASS FLOW CONTROL



SAMPLE ASSORTED NEW MOTOR ARMATURES



SAMPLE PILLOW BLOCKS



SAMPLE BEARINGS



SAMPLE ASSORTED NEW GEAR BOXES



(1 OF 6) A-FRAME ROLL RACKS WITH SPARE ROLLS

BID ONLINE AT [BidSpotter.com](https://www.bidspotter.com)



SAMPLE 350 HP WEG ELECTRIC DRIVE MOTOR



SAMPLE NEW MOTORS



SAMPLE PUMP IMPELLER



SAMPLE ASSORTED 200–1,500 HP MOTORS



SAMPLE STAINLESS STEEL PUMP IMPELLERS



TERMS OF SALE: To be sold in accordance with CRG and Rabin Worldwide Terms of Sale as published on our websites and in the auction catalog. A buyer's premium will apply.

All Covid-19 safety protocols, including mandatory masking and social distancing will be enforced.



INSPECTION: Tuesday, April 27th from 9:00 A.M. – 4:00 P.M. EDT or by Appointment

ONLINE BIDDING ONLY!

For complete catalog crgllc.com 1.800.300.6852