

Surplus Asset Management Experts

Auctioneer: Jean A. Harris, Jr.
Lic. #18210

Live Online Webcast Auction

PNI ACCUFLOW – Precision Landis Pipe and Nipple + CNC Machine Shop

Including Rare Offering of LANDIS PIPE & NIPPLE Threading Machines, Raw Material Inventory, MAZAK QTN CNC Lathes, HYD-MECH Band Saws, SCHMIDT Marking Machines, Shop Support Equipment, Forklifts & More

Auction

Wednesday, July 21, 10:00 am CST

6430 Springer St., Houston, TX 77087

Inspection

Tuesday, July 20, 9:00 am – 3:00 pm CST



2014 Mazak QTN 350-II Slant Bed CNC Lathe, 12" Kitigawa bb212a115a hydraulic chuck, tool presetter, hydraulic tailstock, 12 pos. turret, Mazatrol Matrix Nexus 2 CNC control, S/N 251362



Hyd-Mech H-10A Horizontal Bandsaw, 10" round capacity, 1.25" blade size, 5 HP blade drive, 24" shuttle vise stroke with multiple indexing, split front vise, PLC control with 99 job storage, chip auger, extra infeed conveyor, S/N HSA1206082



1-1/4" Landis Double Spindle Pipe and Nipple Machine, S/N UNK, (2) 1-1/4" Lanco die heads 10T, S/N T00001-900450-2, S/N 10TSR710, reamer tube and rods

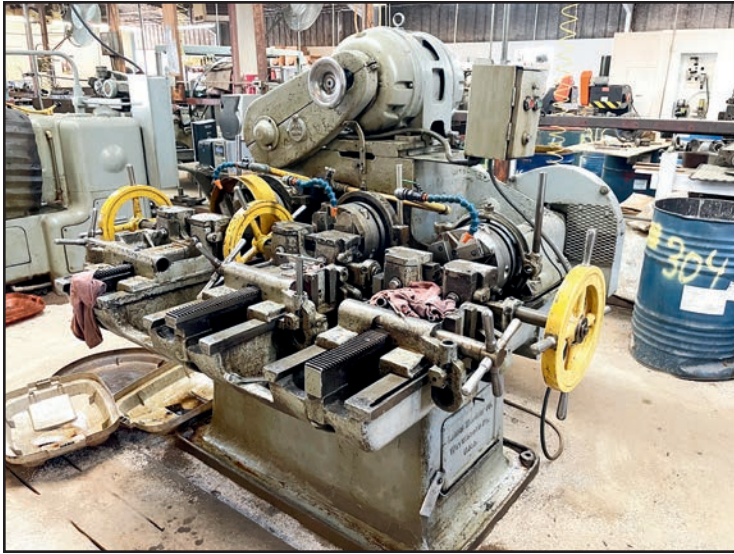


Landis Model 48C Pipe and Nipple Machine, S/N 48CNIP-06 w/6 holders, head, S/N 48T03, 30" bed, reamer tube and rod

Bid online at:
www.bidspotter.com

BidSpotter.com

Wednesday July 21, 10:00 am CST
Inspection Tues., July 20, 9 am – 3:00 pm
Call 713.462.5800



1-1/4" Triple Spindle Pipe and Nipple Machine, standard model, S/N UNK, 213 RPM, (3) Lanco 10T 1-1/4" heads, S/N 10T-2125, S/N 10T2126, S/N 10T-00001-900450-1, reamer tube and rods



Landis 2" Model 16C Pipe and Nipple Machine, S/N 16CNIA-158, Lanco head, S/N 16T-3295, 2" to 2-1/2" capacity, reamer tube and rod **(2 Available)**



7/8" Double Spindle Pipe and Nipple Machine, S/N 7/8D-286-3, (2) 3/4" Lanco heads, S/N 6T1579, S/N 6T1379



Don Coniglo Chaser Grinder, S/N UNK, 3 HP



Schmidt Hydraulic Roll Marking Machine, Model 365, S/N 9119



Solid and Tubular Stainless Raw Material and Racks with MTR's.

For machine specifications, download the catalog on www.harris-auctions.com

Bid online at:
www.bidspotter.com

BidSpotter.com

Wednesday July 21, 10:00 am CST
Inspection Tues., July 20, 9 am – 3:00 pm



Mazak QTN 250-II Slant Bed CNC Lathe, 10" B210-A8150 hydraulic chuck, hydraulic tailstock, 12 pos. turret, tool presetter, Mazatrol Matrix Nexus control, new 2007, S/N 192520



Mazak Quick Turn 15N CNC Lathe, 10" chuck, tool presetter, tailstock, Mazatrol T32B control with Mazak Micro disk system, new 1991, S/N 98518



Warner & Swasey Model 3A Turret Lathe, with fixed rear turret, taper on front carriage, 21" 4-jaw chuck, rapid traverse, S/N 528182



Jones and Lamson No. 3 Ram Type Turret Lathe, S/N 200159, 12" 3-jaw chuck



Hyd-Mech Model H12 Automatic Horizontal Bandsaw, 12" round capacity, 1.25" blade size, 5 HP blade drive, 40" shuttle vise stroke, extra infeed conveyor, S/N A0991005



Bridgeport Vertical Turret Mill, S/N BR30117, table 9" x 42", power on longitude, J-head, S/N 18956, 2,720 RPM, pulley, 1 HP, (1) vise



Komatsu Forklift Model FG25T-16, 5,000-lb. capacity, solid tires, triple stage mast, side shift, new 2012, S/N A225603, (665 hours on meter)



P.O. Box 272404
Houston Texas 77277
www.harris-auctions.com

T: 713.462.5800
F: 713.462.8222



DATED MATERIAL - PLEASE DELIVER

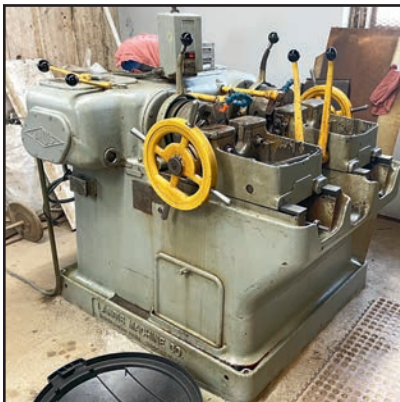
**Attention: Plant Manager
or Equipment Buyer**

Presorted
First Class Mail
U.S. Postage
PAID
Eugene, Oregon
Permit No. 17



2014 Mazak QTN 350-II Slant Bed CNC Lathe

Live Online Webcast Auction of Surplus Assets of PNI ACCUFLOW – Wednesday, July 21, 10:00 am CST



1-1/4" Landis Double Spindle Pipe and Nipple Machine

Live Online Webcast Auction – Assets of PNI ACCUFLOW

Tuesday, July 20, 9:00 am – 3:00 pm CST



Hyd-Mech H-10A Horizontal Bandsaw



Landis Model 48C Pipe and Nipple Machine



Komatsu 5,000-lb. Forklift



Stainless and Other Raw Material