

# PUBLIC AUCTION



ALLTRA PG14-10/12 LHTR 3-Head Plasma / Oxy Cutting Table



BERTSCH 75-10 3/4"x10' 4-Roll Plate Bending Roll

## Complete Liquidation MOORHEAD MACHINERY & BOILER

3477 University Ave. in Minneapolis, Minnesota 55418

WEBCAST ONLY - NO ONSITE BIDDING

**TUES. 5/11 & WED. 5/12**

**Starting at 9AM CT**

INSPECTION: Mon. 5/10, Tues. 5/11 & Wed. 5/12 from 9AM-4PM



CINCINNATI 600 FM Series x12 600-Ton Hydraulic Press Brake



CINCINNATI 3DL12 Power Shear



FREIGHTLINER M2 S/A Stake Bed Truck



(8) TOYOTA, HYSTER & CLARK  
Forklifts to 15,000-lb. Capacity







BERTSCH 75-10 3/4"x10' 4-Roll Plate Bending Roll



CINCINNATI 600 FM Series x12 600-Ton Hydraulic Press Brake



ALLTRA PG14-10/12 LHTR 3-Head Plasma / Oxy Cutting Table



ROUND0 R-2-S Angle Roll



HASSLEHOLMS MEKANISKA  
AB R-6 Angle Roll



WEBB Plate Bending Roll



HILLES & JONES Plate Bending Roll



(20+) Press Brake Dies - 4-Ways,  
Saddle Bottom Dies, Cut Dies & More

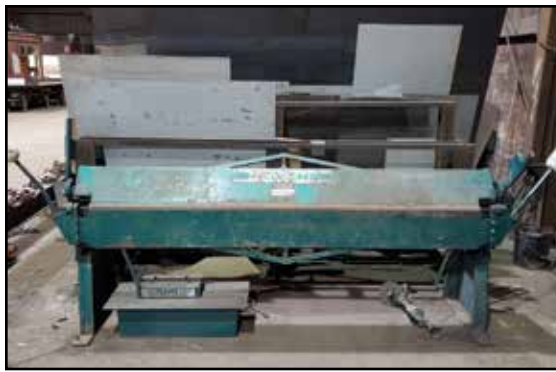


Tank Turning Drive & Idler Rolls to 120,000-lb. Capacity





CINCINNATI 3DL12 Power Shear



TENNSMITH 8' Metal Pan Brake



TEMPRESS HydroPull CTP 900



WHITNEY Hydraulic Punch Press



HENDLEY & WHITMORE 3-Roll Vertical Angle Roll



PEDRICK A5 Power Tube Bender



WACHS Model E Trav-L-Cutter



(2) TOYOTA 8FGC70U 15,000-lb. Forklifts



HYSTER S80FT 8,000-lb. Forklift



(4) HYSTER SF50FT 5,000-lb. Forklifts



(2) GULLCO KAT KBM-18



(2) Welding Manipulators



(2) LINDE Track Cutting Torch Machines



(6) THERMAL DYNAMICS & HYPERTHERM Plasma Cutters



(2) RANSOME & ARONSON Welding Positioners to 4,000-lbs.



ARONSON 2,000-lb. Welding Positioner



ARONSON 4,400-lb. Welding Positioner





(40+) LINCOLN, MILLER, HOBART & Other MIG, TIG & Ark Welders



GROB NS24 Vertical Band Saw



MARVEL Series 81  
Automatic Vertical Band Saw



FILTER 1 Rollatron Fume Collector



IKEDA Radial Arm Drill



LEBLOND 6' Engine Lathe



(3) RIDGID 535 & 300 Pipe Threaders



(2) 61" x 86" Acorn Type Welding Tables

## ANGLE & PLATE BENDING ROLLS

**BERTSCH** 3/4" x 10' 4-Roll Plate Bending Roll  
**1981 HASSLEHOLMS MEKANISKA** AB 5" x 5" x 5/8" Angle Roll, Model R-6  
**1999 ROUNDO** 2-1/2" x 2-1/2" x 3/8" Angle Roll, Model R-2-S  
**HENDLEY & WHITMORE** 3-Roll Vertical Angle Roll  
**WEBB** 122" x 12" Plate Bending Roll  
**HILLES & JONES** 16' Plate Bending Roll  
**68" 3-Roll Power Plate Bending Roll**  
**Tank Turning Drive & Idler Rolls** to 120,000-lbs.  
**Angle Roll Dies**

## PLASMA / OXY CUTTING TABLE

**2012 ALLTRA** 3-Head Plasma / Oxy Cutting Table, Model PG14-10/12  
**LHTR**, 42" x 140" Table, Burny 10 LCD Plus Control

## PRESS BRAKE

**CINCINNATI** 600-Ton x 16' Hyd. Press Brake  
**(20+) Press Brake Dies**

## FABRICATING

**CINCINNATI** 3/8" x 12' Power Shear,

**Model 3DL12**  
**(2) 2017 GULLCO KAT KBM-18** Plate Bevelers  
**TENNSMITH** 8' Pan Brake  
**RAMS** Sheet Metal Worker  
**WHITNEY** Hyd. Punch Press  
**PEDRICK** A5 Power Tube Bender  
**(7) Sets of Tank Turning Drive & Idler** Rolls to 60-Tons  
**(2) IIS** 8,000-lb. & Other Skip Pans

## WELDING RELATED

**(40+) LINCOLN, MILLER, HOBART & WESTINGHOUSE** Welders (to be sold on both days)  
**(4) LINCOLN & MILLER** Welder/Generators to 17,000 Watts  
**(2) Welding Manipulators** w/Power Sources & Wire Feeders  
**(2) LINDE** Track Cutting Torch  
**(6) THERMAL DYNAMICS & THERMAL ARC** Plasma Cutters  
**(4) RANSOME & ARONSON** Welding Positioners  
**Welding Tables** • (100+) Jobsite Rod Ovens • Welding Support

## TOOLROOM

**(3) GROB & MARVEL** Vertical Band Saws  
**CINCINNATI GILBERT & IKEDA** Radial Arm Drills  
**LEBLOND** 6' Engine Lathe  
**WALKER TURNER** Drill Press  
**STERLING** Drill Sharpener • Grinders

**(3) RIDGID** Pipe Threaders & Dies  
**(11) Mag Base Drills**

## RAW MATERIAL & SCRAP STEEL

**Bar, Round & Channel Stock** • Cable  
**100's of Sheets of Steel Plate** & Stainless Steel to 3/4" x 98" x 24"  
**(8) Sheets of HARDOX** 450 Steel  
**Wear Plate & Assorted Plate**  
**Steel I-Beams** to 14' • Cutoffs & Scrap Steel to 7" Thick  
**Steel A-Frame, Material & Cantilever** Racks • Fixtures  
**8' Dia. Steel Caps** • Boiler & Pipe Caps • Boiler Enclosures

## TRUCK

**2012/13 FREIGHTLINER** Business Class M2 S/A Stake Bed Truck w/Lift Gate, 100,000 Miles

## TRAILERS

**Portable Kewanee Boiler** in a **FRUE-HAUF** 24' S/A Van Trailer  
**(6) Trailers** - Tri & T/A Dovetails, Flatbeds, Enclosed

## CARRY DECK CRANES

**2000 BRODERSON** Carry Deck Crane, Model IC-200-3F, 17,000-lb. Deck Load, 73' 3-Stage Telescoping Boom

**BRODERSON** Carry Deck Crane & Crane Arm  
**PETTIBONE** Crane, 3-Stage Telescoping Boom (Repair Machine)

## FORKLIFTS & MATERIAL HANDLING

**(8) TOYOTA, HYSTER & CLARK** LPG Forklifts to 15,000-lbs., New As 2017  
**19' PAC CRAFT** 500-lb. Scissor Lift  
**12' CALDWELL** 7,000-lb. Forklift Boom  
**(2) 1-Ton Free-Standing Jib Cranes**  
**Electric Cable & Chain Hoists** to 10-Tons  
**STAR** 6-Ton Universal Fit Lift Hook  
**ROUST-A-BOUT** 25' Cable Lift  
**GENIE** Superlift  
**2-Person Man Baskets** • Crane Bottle Baskets  
**Spreader Bars** • Rigging Equipment • Lifting Magnets • Clamps  
**Pallet Jacks** • Self-Dumping Hoppers

## GENERATOR & AIR COMPRESSORS

**CUMMINS** Standby Diesel Generator, Model 350DFN L289630, S/N R890198516, 350KW, 437.5KVA, with Square D 225 KVA Transformer  
**INGERSOLL-RAND** G150 Towable Air Compressor  
**SULLAIR** 12-40 Air Compressor



# HUGE ASSORTMENT OF STEEL & STAINLESS PLATE, BAR, ROUND, I-BEAM STOCK & SCRAP



FREIGHTLINER Business Class M2 S/A Stake Bed Truck



29' Tri-Axle Dovetail Trailer



PJ 28' T/A Flatbed Trailer



H & H 17' Enclosed Aluminum T/A Trailer



FRUEHAUF 24' S/A Portable Boiler Van Trailer w/Kewanee Boiler



BRODERSON IC-200-3F Carry Deck Crane



CUMMINS Standby Diesel Generator



CLARK CGP30 5,200-lb. LPG Forklift



# HUGE ASSORTMENT OF INDUSTRIAL & FIELD SERVICES EQUIPMENT – 100S OF HAND, POWER & PNEUMATIC TOOLS, JOB BOXES, RIGGING EQUIPMENT, TRAILERS & MORE



## INSPECTION

(20+) MSA ALTAIR SX Digital Air Gauges, Air Quality Test Systems & Charging Stations  
 DRYCAL DC-Lite Primary Flow Meter  
 GALAXY GX2 Automated Test Systems  
 Inspection / Precision Equipment

## MISCELLANEOUS

(12) CONEX Storage Containers  
 (12+) Jobsite Power Station w/440V

Shutoffs & 220V Single Phase Panels & 3-Phase 480V Shutoffs, Transformers  
 (12) Portable Dolly Power Stations w/ Shutoff & Transformers  
 COASTAL TOOL Line Blaster  
 Boiler Shells & Pipe to 5' Dia.  
 Dust & Fume Collectors  
 Cooling Coils • Portable Blast Pots  
 Plate Marking Equipment  
 QUALITY + NOE Ultra-Sonic Cleaner  
 HOTSYS 200°F Pressure Washer  
 SAFETY CLEAN Paint Spray Gun

**FLEXIGUARD** Portable Safety Fall Rail System • 100's of Safety Fall Protection Items  
 Pipe Stands & 100's of Extension Stands • Banding Carts  
 Scaffolding • Job Boxes • Toolboxes • Flammable Storage Cabinets  
 Material Patterns & Jigs  
 (1,000+) Power & Manual Tools • 2,000' + 2" Air Hose • C-Clamps  
 Lots of Field & Shop Support Equipment  
 Office Furniture & Equipment



PAC CRAFT 19' Electric Scissor Lift

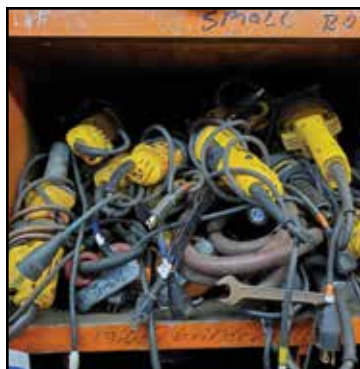
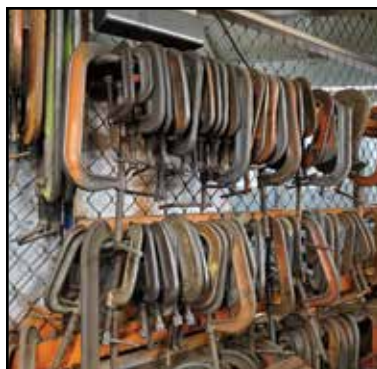




12 Available



75+







Complete Liquidation

# MOORHEAD MACHINERY & BOILER

3477 University Ave. in Minneapolis, MN

WEBCAST ONLY - NO ONSITE BIDDING

**TUES. 5/11 & WED. 5/12**

**Starting at 9AM CT**

INSPECTION: Mon. 5/10, Tues. 5/11 & Wed. 5/12 from 9AM-4PM



**ALLTRA PG14-10/12 LHTR 3-Head Plasma / Oxy Cutting Table**



**BERTSCH 75-10 3/4"x10' 4-Roll Plate Bending Roll**

Auction conducted by:

**MYRON BOWLING AUCTIONEERS, INC.**

P. O. Box 369, Ross, Ohio 45061

**FIRST CLASS MAIL**

PRESORTED  
FIRST CLASS MAIL  
U.S. POSTAGE  
PAID  
CINCINNATI, OH  
PERMIT NO. 5714



**CINCINNATI 600 FM Series x12  
600-Ton Hydraulic Press Brake**

## HEAVY PLATE FABRICATION FACILITY AND FIELD SERVICES OPERATIONS



**CUMMINS Standby Diesel Generator**



**40+**

**(40+) LINCOLN, MILLER & HOBART Welders**

**Thinking about having an auction? Call one of us.**



Myron Bowling  
513/604-4957



Joe Oliver  
513/604-4958



Kevin Gamm  
513/235-6430



Greg Hengehold  
513/520-7636



Christopher Lee  
513/720-1687



Tom Bowling  
513/738-3311

## WEBCAST AUCTION

**Bid Online in Real Time at [BidSpotter.com](http://BidSpotter.com)**

**Register:** You must register as an online bidder through Bidspotter.com, 24 hours prior to the auction start time to allow sufficient time to be approved. You'll find the Bidspotter link on the specific auction page on our Website.

**Deposit:** A deposit of 25% of your anticipated purchase or a bank letter of guarantee is required to bid online. Mail deposit check to: Myron Bowling Auctioneers, P.O. Box 369, Ross, Ohio 45061. Call 513/738-3311 for wire instructions. Fax your bank letter of guarantee to 513/738-0221.

**Approval:** Once the registration process has been completed and your deposit received, you will be notified through an automated Bidspotter email, that you are approved to bid.

ALL ONLINE BIDS ARE SUBJECT TO A 18% BUYER'S PREMIUM

## LIMITED ON TIME? WE ACCEPT PROXY BIDS.

Register and be approved for the sale.

**Call our Office at 513-738-3311  
and give us your proxy bid.**

We bid on your behalf, up to and including the maximum amount you specify. Your purchase will be obtained at the lowest bid possible. We will notify you of the selling price if you've won the lot.

## FOLLOW US ON



**For Information  
on Upcoming  
Auctions**

## TERMS & CONDITIONS

**TERMS OF SALE:** Copies of Terms of Sale will be posted at the auction. Additional terms may be announced during the auction. We make every effort to accurately describe each item in the auction; however, a mistake may occur. Buyers must take responsibility to thoroughly inspect the items on which they intend to bid. Each item will be sold "As is, where is." There is absolutely no warranty or guarantee of any kind either written or implied. Occasionally, additional information may come to light regarding any and all items being sold during the auction. When this occurs the new information takes precedence.

**BUYER'S PREMIUM: 18% ONLINE w/Bidspotter.com**

**INSPECTION: MONDAY 5/10, TUESDAY 5/11 & WEDNESDAY 5/12 FROM 9AM - 4PM**

**REMOVAL & PAYMENT:** Machinery removal is the responsibility of the buyer. All equipment must be removed in accordance with the specific auction timeline and terms of sale. See the specific auction web page for details. Anyone (rigger or buyer), using a powered vehicle to remove items must have a certificate of insurance on file with Myron Bowling Auctioneers in the amount of \$1,000,000.00. Item removal generally begins at the conclusion of the auction and after payment in full is received by cash, wire transfer, or company check (if approved by the auction company or bank letter of guarantee). All checks should be made payable to Myron Bowling Auctioneers. Taxes will be charged unless you have provided a proper written exemption from your state.

**SAMPLE BANK LETTER:** Dear Sirs, (BANK NAME) irrevocably guarantees payment in full to Myron Bowling Auctioneers by (BUSINESS NAME) drawn on account (NUMBER) up to the amount of \$ (DOLLARS) to purchase items at your (AUCTION NAME). This letter of guarantee is valid until (MONTH, DAY, YEAR). Regards, (BANK REPRESENTATIVE, TITLE, BANK NAME).

COMPLETE TERMS & CONDITIONS  
can be found at [myronbowling.com](http://myronbowling.com), or call 513/738-3311 if you have questions



P.O. Box 369 | Ross, Ohio 45061  
Phone: 513/738-3311 | Fax: 513/738-0221  
[www.myronbowling.com](http://www.myronbowling.com)



**INDUSTRIAL  
AUCTIONEERS  
ASSOCIATION**

