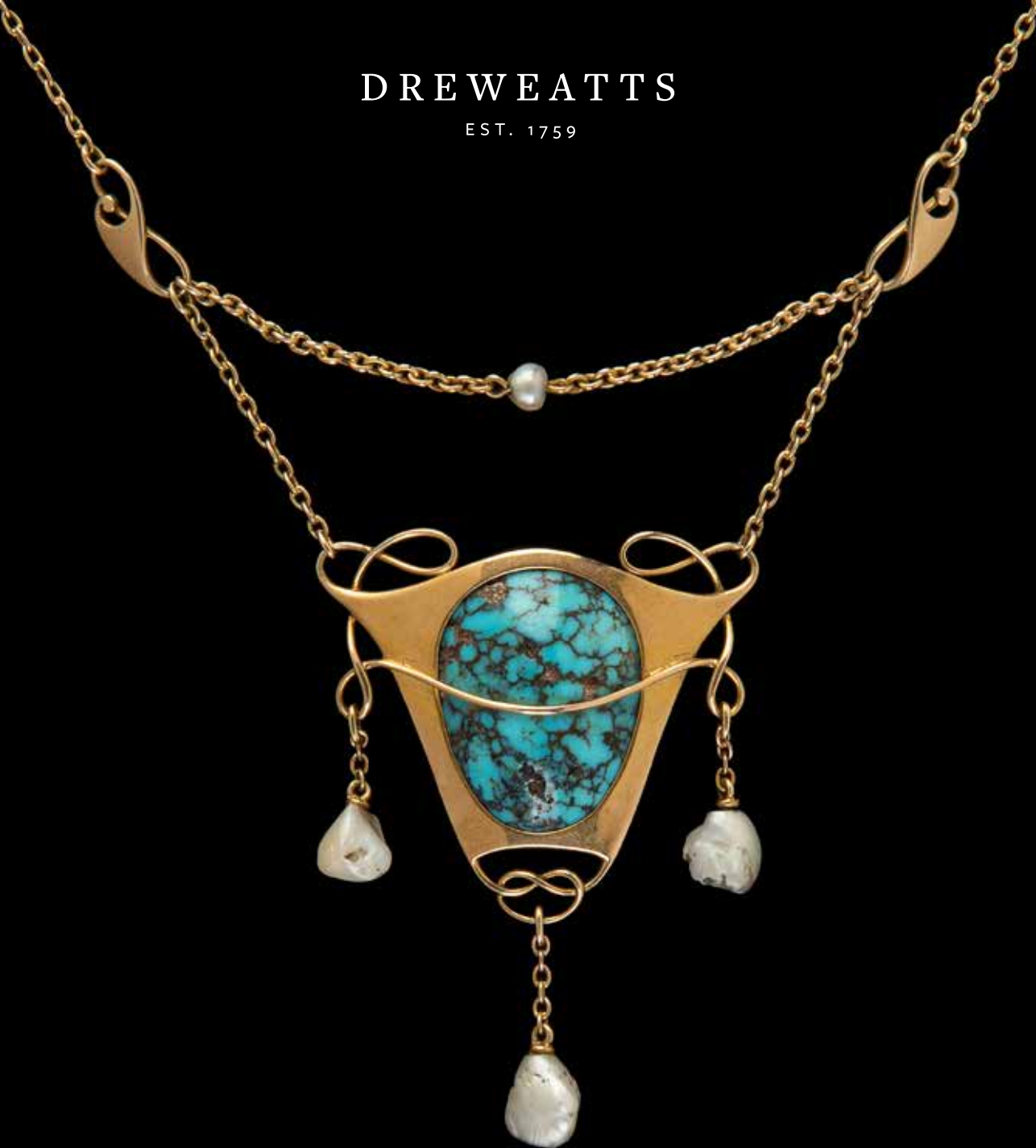


DREWEATTS

EST. 1759



JEWELLERY, SILVER, WATCHES, PENS AND
LUXURY ACCESSORIES (PART 1)

DONNINGTON PRIORY | WEDNESDAY 13 JANUARY 2021

Coming Up at Dreweatts

Auctions

13 January | Live Online

Jewellery, Silver, Watches, Pens and Luxury Accessories (Part 1)

14 January | Timed Online

Jewellery, Silver, Watches, Pens and Luxury Accessories (Part 2)

15 January | Timed Online

The General Sale

20 January | Live Online

Aynhoe Park: The Celebration of A Modern Grand Tour – Day 1

21 January | Live Online

Aynhoe Park: The Celebration of A Modern Grand Tour – Day 1

22 January | Timed Online

Aynhoe Park: The Celebration of A Modern Grand Tour – Day 1

27 January | Live Online

Interiors

24 February | Live Online

Interiors

25 February | Timed Online

Fine and Rare Wine and Spirits

9 March | Live Online

The Transport Sale

10 March | Live Online

Fine Clocks, Barometers and Scientific Instruments

17 March | Live Online

Fine Jewellery, Watches and Silver

18 March | Live Online

Modern and Contemporary Art

Valuations

Every Tuesday | London

Jewellery, Silver, Watches & Luxury Accessories

We hold regular auctions of fine art, antiques, jewellery and other collectibles. Our specialists carry out valuations nationwide so if you are unable to attend one of our valuation days, please request a valuation via our website or call us to discuss a home visit.



DREWEATTS NOW INVITING ENTRIES FOR OUR 2021 AUCTIONS

EST. 1759

NEWBURY
Dreweatts
Donnington Priory
Newbury
Berkshire RG14 2JE

Auctions, exhibitions
and valuations

HAMBRIDGE LANE
Dreweatts General Sales
1 Hambridge Lane
Newbury
Berkshire RG14 5TU

General sales viewing and
collections by appointment

LONDON
Dreweatts
16-17 Pall Mall
St James's
London SW1Y 5LU

Auctions, exhibitions
and valuations

ENQUIRIES
For more information,
please contact
+44 (0) 1635 553 553
info@dreweatts.com

dreweatts.com



DREWEATTS

EST. 1759

JEWELLERY, SILVER, WATCHES, PENS AND LUXURY ACCESSORIES (PART 1)

DONNINGTON PRIORY | WEDNESDAY 13 JANUARY 2021 | 10.30AM

AUCTION FORMAT: LIVE ONLINE

This is a live online auction with an auctioneer. Bidding is available online, by telephone or commission (absentee) bids. If not bidding online, please contact Dreweatts to register all commission bids or telephone bids by 12 noon (local time) on Tuesday 12 January.

FREE ONLINE BIDDING IS AVAILABLE AT DREWEATTS.COM:

The Dreweatts' bidding platform allows you to watch, listen and bid with no additional online bidding fees applicable.

REGISTRATION:

We advise clients to register at least 48 hours in advance of the auction as you may be asked to provide documents to verify your identity. Registration for new clients will close at 12 noon (local time) on Tuesday 12 January.

BUYER'S PREMIUM:

Buyer's premium is charged per lot at 25% of the hammer price (30% including VAT) up to and including £500,000, 20% (24% including VAT) of the hammer price from £500,001 up to and including £1,000,000, and 12% of the hammer price (14.4% including VAT) in excess of £1,000,001.

PAYMENT:

Please note, we cannot accept payment by telephone for lots bought by first time bidders. For details on other payment methods, please see our website.

REMOTE VIEWING SERVICE:

Remote Viewing will also be available by appointment. Our Remote Viewing Service allows you to view specified Lots via your smartphone from the comfort of your own home at a time convenient to you. See our website for further details.

AUCTION NO. 14300

SPECIALISTS:

James Nicholson FGA, DGA

Nick Mann

Tessa Parry FGA, DGA

Ian Pickford (Consultant, Silver)

Terry Taylor MBHI (Consultant, Watches)

VIEWING:

Viewing will be available by appointment only and in strict accordance with government Covid-19 regulations.

Thursday 7 January: 10am – 5pm

Friday 8 January: 10am – 5pm

Monday 11 January: 10am – 5pm

Tuesday 12 January: 10am – 5pm

Please note there is no viewing on the morning of the sale.

AUCTION:

Dreweatts

Donnington Priory

Newbury

Berkshire RG14 2JE

ENQUIRIES:

+44 (0) 1635 553 553

jsw@dreweatts.com

dreweatts.com

Front cover: Lot 298

Back cover: A selection from lots 205-216



British Silver



- 1
A George II silver baluster pepperette, maker's mark obscured, London 1727, with a pierced and domed cover, on a circular moulded spreading foot, 9cm (3 1/2in) long; a George III baluster pepperette by Thomas Wallis I, London 1773, with a turned finial to the pierced and domed cover, on a circular moulded spreading foot, 10.5cm (4in) high; and a baluster caster, the marks obscured, cover unmarked, with a cone finial to the pierced and domed cover, on a circular moulded spreading foot, 19.5cm (7 3/4in) high, 345g (11.1 oz) gross

£200-300

- 2
A pair of George II silver cauldron salts by James Stone, London 1735, engraved GAC and on three stepped pad feet, 7cm (2 3/4in) diameter, 184g (6.9 oz)

£100-150



- 3
A George II silver straight tapered tankard, probably by Richard Bayley, London 1737, the double domed cover with a scroll thumbpiece, the S-scroll handle with a heart terminal and engraved D over S.M, a moulded girdle, on a spreading foot, 18cm (7in) high, 692g (22.25 oz)

£700-1,000



- 4
A George II silver shaped oval sauce boat, maker's mark obscured, London 1749, with a leaf capped flying scroll handle, on three shell and stepped pad feet, 15cm (6in) long; and a matching George III sauce boat by George Smith (II) & Thomas Hayter, London 1792, 289g (9.3 oz)

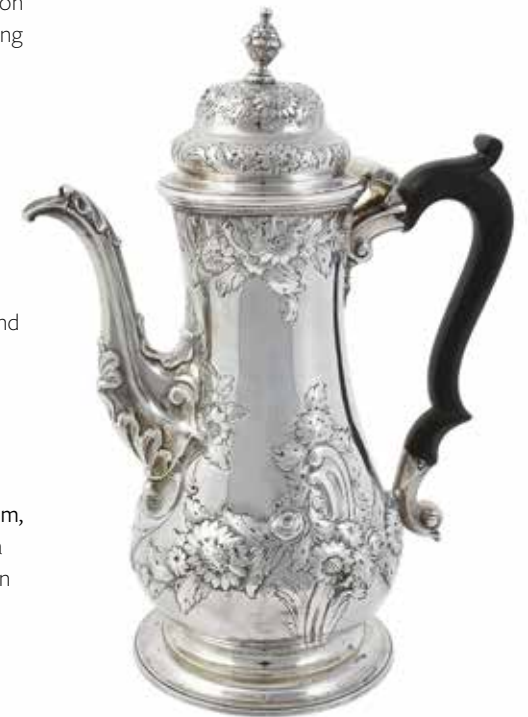
£80-120

- 5
A pair of George II silver shaped oval sauce boats, maker's mark JH, possibly John Harvey I, London 1751, with leaf capped flying scroll handles, engraved with a crest and on three shell and stepped pad feet, 15cm (6in) long, 349g (11.25 oz)

£300-500

- 6
A late George II silver baluster coffee pot by Thomas Whipham, London 1756, with a cone finial to the ogee domed cover and a composition double scroll handle, chased with floral decoration and on a circular moulded spreading foot, 25cm (9 3/4in) high, 700g (22.5 oz) gross

£250-350





7

7
A pair of George III silver wine coasters, maker's mark obscured, London 1763, with gadrooned borders and pierced with foliate swags, 12cm (4 3/4in) diameter, with turned wood bases

£250-350



8

8
A George III silver cream jug, maker's mark W.K., London 1764, with a leaf capped flying scroll handle, chased with fluted and floral decoration, a shaped vacant reserve and on a circular pedestal foot, 12.5cm (5in) high, 113g (3.65 oz)

£100-150

9
A George III silver shaped circular salver by Elizabeth Cooke, London 1765, with a shell and C-scroll border, engraved with a crest and on four foliate scroll feet, 36.5cm (14 1/4in) diameter, 1219g (39.2 oz)

£300-500



9

10
A George III silver pierced sugar basket by William Plummer, London 1772, with a twisted loop handle, the tapering body chased and pierced with a dog and a swan among foliage, 6.5cm (2 1/2in) high, 75g (2.4 oz), with a blue glass liner

£60-80



10

11
A George III set of four silver oval salts by Robert Hennell I, London 1774, with nulled borders, the pierced bodies with foliate swags and roundels, on four ball and claw feet, 8.5cm (3 1/4in) long, 252g (8.1 oz), with four blue glass liners

£200-300



11

12
A George III silver cream jug by Thomas Shepherd, London 1775, with a cable twist border, a double scroll handle, engraved D and on a conforming circular moulded spreading pedestal foot, 11.5cm (4 1/2in) high, 107g (3.4 oz)

£80-120



12



13

13
Three George III Irish silver salts, maker's mark W.B (not traced), Dublin circa 1780, with gadrooned borders, the wreath bodies embossed with floral decoration and on circular pedestal feet, 8.5cm (3 1/4in) high, together with three similar examples, unmarked, 603g (19.4 oz) gross

£250-350



14

14
A George III silver circular salver by John Crouch I & Thomas Hannam, London 1782, with a beaded border and on four beaded bracket feet, 36cm (14in) diameter, 1250g (40.15 oz)

£300-500



15

15
A George III silver oval mustard, maker's mark I.B overstriking that of another, London 1790, with a pierced shell thumb piece to the domed cover, a scroll handle and reeded borders, 10cm (4in) long, 101g (3.25 oz), with a blue glass liner

£100-150

16
A George III circular waiter by Peter & Anne Bateman, London 1791, with a beaded border, engraved with the motto Forward above a crest, on three beaded pedestal feet, 17.5cm (7in) diameter, 135g (4.35 oz)

£100-150



16



17

17
A George III silver urn shaped mustard pot by Richard Crossley, London 1791, with a domed cover, a double scroll handle, the body pierced and engraved with foliate decoration, an oval vacant reserve and on a circular foot, 10cm (4in) high, 133g (4.3 oz), with a blue glass liner and a Victorian silver mustard spoon

£120-180

18
A George III silver oval teapot by George Smith II and Thomas Hayter, London 1792, with a wood oval finial and loop handle, the body with spiral fluted decoration, 27cm (10 1/2in) long, 522g (16.8 oz) gross

£200-300



18



19
A George III silver circular waiter by William Stephenson, London 1793, with a reeded border, engraved with swag decoration and on three scroll feet, 15.5cm (6in) diameter, 151g (4.85 oz)

£80-120

20
A George III silver oval swing handled pedestal basket by Henry Chawner, London 1795, with a reeded loop swing handle and border, engraved with a floral and Greek key band, engraved with a crest and the motto Sub Tegmine Fagi, on an oval reeded pedestal foot, 18cm (7in) high, 239g (7.7 oz)

£150-250



20

21
A pair of George III Irish octagonal serving dishes and matched covers, Dublin 1796, the dishes with maker's mark JM, the covers with maker's mark TJ, the covers with loop handles (unmarked) and engraved with a crest, the dishes with reeded loop handles, 2171g (69.8 oz) gross

£600-800



21

22

A George III Irish silver set of four cauldron salts, maker's marks obscured, no date letter, chased with floral sprays, engraved B within a shaped reserve, on three lion mask and paw feet, 8cm (3 1/4in) diameter, 498g (16 oz) with three blue glass liners

£250-350



22



23

23

A George III silver oval salver by William Bennett, London 1802, with a reeded border, engraved with an armorial, on four bracket feet, 30.5cm (12in) long, 711g (22.85 oz)

The arms are those of John ANNAND (died 1812) merchant of Aberdeen and his wife Helen SMITH. They married in 1771 at St Nicholas Aberdeen. John ANNAND was the youngest and only surviving son to produce issue of Alexander ANNAND and Barbara nee CUMINE, and as a result a descendant of the ancient family of Auchterellon Aberdeenshire.

£200-300

24

Four George III silver navette salts by Solomon Hougham, London 1802, engraved with a monogram and on four pad feet, 9cm (3 1/2in) long; another pair similar, marks obscured; and a navette salt by George Nathan & Ridley Hayes, Chester 1900, with pierced bands, engraved with foliate swags and on four pad feet, 10cm (4in) long, with a blue glass liner, 361g (11.6 oz) gross

£200-300



24



25

25
A matched pair of George III silver circular salts by Robert Hennell I & Samuel Hennell, London 1806 and 1809, with reeded borders, 8.5cm (3 1/4in) diameter, 122g (3.9 oz), with two clear glass liners

£80-120



26

26
A George III silver oblong tea pot by Solomon Hougham, London 1806, with a composition oval finial and angular handle, the body with a girdle, 29.5cm (11 1/2in) long, 565g (18.15 oz) gross

£150-150



27

27
A George III silver coffee biggin by Matthew Boulton, Birmingham 1806, with a domed finial to the domed cover, a wooden scroll handle, an ovolo band and on a circular foot, 21cm (8 1/4in) high, 624g (20.05 oz) gross, with an associated electro-plated stand and burner, on three lion paw feet, 29.5cm (11 1/2in) high overall

£300-500

28

A George III silver coffee biggin by Thomas & Joseph Guest & Joseph Craddock, London 1807, with a lobed finial to the domed cover, a wooden scroll handle, an ovolo band and on a circular foot, 22cm (8 3/4in) high, 751g (24.15 oz) gross

£300-500



28

29
A George III silver compressed circular tea pot by Rebecca Emes & Edward Barnard I, London 1813, with a wooden domed finial and loop handle, a reeded band and on a circular foot, 22cm (8 3/4in) long, 460g (14.8 oz) gross

£120-180



29

30

A George III silver twin handled sugar bowl by Samuel Hennell & John Terry, London 1815, with leaf capped angular handles, a gadrooned border, a half lobed body and on a circular foot, 21.5cm (8 1/2in) long, 428g (13.75 oz)

£150-250



30



31

31
A George III silver half lobed cream jug by Samuel Hennell & John Terry, London 1815, with a leaf capped angular handle, on a circular foot, 16.5cm (6 1/2in), 242g (7.8 oz)

£80-120



32

32 Y
A late George III silver oblong baluster tea pot and sugar basin by William Barret II, London 1819, the tea pot with a floral and foliate chased oblong finial, a leaf capped loop handle with ivory spacers, a gadrooned and floral border, the half lobed body engraved with a monogram and on four paw feet, 29cm (11 1/2in) long, 988g (31.75 oz) gross

£300-500



33

33
A set of four George IV shaped oval salts by Joseph Angell I, London 1822, with a gadrooned and shell border, chased with floral sprays, on three foliate and paw feet, 23cm (9in) diameter, 651g (20.95 oz)

£150-250

34
A set of four George IV shaped ova salts by Joseph Angell I, London 1823, with chased shell and foliate borders, the fluted baluster bodies chased with crests and on four foliate scroll feet 11.5cm (4 1/2in) long, 610g (19.6 oz)

£200-300



34



35

35
A George IV silver six division toast rack by Joseph Angell I, London 1824, with a loop handle, chased with floral and C-scroll decoration, on four foliate bracket feet, 17cm (6 3/4in) long, 466g (15 oz)

£250-350

36
A set of four George IV silver shaped circular cauldron salts by Joseph Angell I, London 1826, with chased foliate, shell and mask borders, the bodies chased with floral sprays, engraved with crests and on three mask and scroll feet, 9.5cm (3 3/4in) diameter, 612g (19.7 oz), with four blue glass liners

£200-300



36



37
A George IV silver shaped circular waiter by William Brown, London 1828, with a shell and scroll border, engraved with a crest above a monogram, on three foliate scroll feet, 21cm (8 1/4in), 347g (11.15 oz)

£150-250



40



40
A William IV silver six division toast rack, maker's mark obscured, London 1831, with a loop handle, engraved with a crest and on four foliate feet, 16cm (6 1/4in) long; and a Victorian six division toast rack by Thomas Smily, London 1861, with a loop handle, two shaped vacant reserves and on four scroll feet, 17.5cm (7in) long, 749g (24.1 oz) gross

£200-300

38
A William IV silver shaped oval sauce boat by Michael Starkey, London 1830, with a leaf capped flying scroll handle and on three shell and steeped pad feet, 17cm (6 3/4in) long, 266g (8.55 oz)

£100-150



38

39
A William IV silver shaped circular pedestal bowl, maker's mark obscured, London 1830, with a foliate and scroll border, chased with lobed panels of floral sprays, the centre with birds among foliage, two shaped vacant reserves and on a shaped circular pedestal foot, 30cm (11 3/4in) diameter, 636g (20.45 oz)

£150-250



39



41

41
An Early Victorian silver lobed baluster coffee pot by Robert Hennell, London 1838, with a flower finial to the domed cover, a leaf capped scroll handle with ivory warming bands, the body engraved with a crest and on four foliate scroll feet, 23cm (9in) high, 818g (26.3 oz) gross

£250-350

42
A pair of Victorian silver circular pierced salts by Charles Fox II, London 1839, with pierced scroll decoration and chased C-scroll border, 11.5cm (4 1/2in) diameter, with two blue glass liners; and a pair of late Victorian pierced oval swing handled salts by Henry Matthews, Birmingham 1899, with twisted loop handles, pierced with strapwork and chased with floral sprays, 11.5cm (4 1/2in) long, with two blue glass liners 455g (14.6 oz) gross

£150-250



42



43

43
A Victorian matched set of five silver pierced cauldron salts, three by John Wellby, London 1841 (2) and 1842 (1), two by William Robert Smily, London 1856, with shaped and pierced foliate borders, the bodies pierced with foliate decoration, on three mask and foliate pad feet, 8.5cm (3 1/4in) diameter, 584g (18.8 oz), with five blue glass liners

£300-500

44

A Victorian silver swing handle sugar basket by John Le Gallais, London 1848, with a finial to the loop handle, pierced and engraved with guilloche bands and C-scroll decoration, on a circular foot, 20cm (8in) high, with a blue and red glass liner; an Edwardian silver oval sugar basket by William Henry Sparrow, Birmingham 1909, 13cm (5in) high, with a red glass liner; and a German silver coloured Art Nouveau sugar bowl, post 1886 .800 standard, with a shaped border, chased with floral decoration and on four bracket feet, 12cm (4 3/4in) diameter, with a blue glass liner, 362g (11.65 oz) gross



44

£120-180



45

45
A Victorian silver twin baluster sugar bowl by A. B. Savory & Sons, London 1857, with twin leaf capped double scroll handles, chased with C-scrolls and floral sprays, two vacant reserves and on four foliate pad feet, 22cm (8 3/4in) long, 403g (12.95 oz)

£150-250

46

A Victoria silver gilt mounted cut glass bottle and a pair of glasses by Robert Hennell III, London 1861 and 1862, with beaded borders, chased with flower heads in lozenge panels, the bottle 26cm (10 1/4in) high, the glasses 12.5cm (5in) high

£200-300

47

A Victorian silver cylindrical basket by William Wrangham Williams, London 1862, with a cable twist swing handle, with pierced strapwork bands and female figures, 18cm (7in) high, with a blue glass liner; a silver loop handle basket by Jones & Crompton, Birmingham 1913, the loop handles with a bow, the body with a reed and stitch border, pierced with ribbon and bow bands, 22cm (8 1/2in) high, with a blue glass liner; and a swing handled basket by Barker Brothers Silver Ltd., Birmingham 1935, with a swing loop handle, pierced body and on a conforming circular foot, 15cm (6in) high, with a blue glass liner, 477g (15.35 oz) gross

£150-250



46



47



48

48
A cased Victorian silver christening bowl by Robert Hannel, London 1866, with stylised basket weave decoration, engraved with a presentation inscription within a circular reserve, 11.5cm (4 1/2in) diameter, with a conforming spoon by Francis Higgins, London 1864, 16.5cm (6 1/2in) long, 344g (11.05 oz) gross

£200-300



49

49

A Victorian silver gilt mounted frosted glass ice pail by George Fox, London 1867, with a loop swing handle, beaded borders and pierced with scroll decoration, 15.5cm (6in) high

£80-120

50

A Victorian silver shaped circular salver by Goldsmiths Alliance Ltd. (Samuel Smily), London 1868, with a beaded border, engraved with birds, a monogram and scroll decoration, on three ball and claw feet, 20cm (8in) diameter, 346g (11.15 oz)

£150-250



50

51

A Victorian silver gilt four piece christening set, London 1871, the plain tapered mug with a tongue-capped capped S-scroll handle by R. & S. Garrard & Co., stamped for Garrards as retailers, 7.5cm (3in) high; the old English pattern knife, fork and spoon by Francis Higgins II, the mug, fork and spoon 261g (8.4 oz), in a leather covered fitted case from Garrard

£250-350



51



52

52Y

A Victorian silver lobed and fluted tea pot by Martin, Hall & Co., London 1874, with an urn shaped finial to the domed cover, the reeded scroll handle with ivory warming bands, with a beaded border, engraved with foliate and floral decoration, two shield shaped vacant reserves and on a circular pedestal foot, 23cm (9in) high, 747g (24 oz) gross

£200-300



53

53

A Victorian silver drum mustard by Andrew Crespel & Thomas Parker, London 1874, with a scroll thumb piece to the monogrammed flat cover and a scroll handle, 10cm (4in) long, with a glass liner and an old English pattern mustard spoon; and a Victorian silver mounted Ware mustard pot by George Fox, London 1871, with a foliate thumb piece to the monogrammed flat cover, 10cm (4in) high, together with a silver mustard spoon, 164g (5.25 oz) gross weighable

£150-250



54

54

A pair of Victorian silver cauldron salt cellars by Hukin & Heath, London 1875, with gadrooned borders, embossed with floral sprays, a shaped vacant reserve and on three shell and stepped pad feet, 7.5cm (3in) diameter, with two salt spoons by Goldsmiths & Silversmiths Co. Ltd., London 1904, 8cm (3in) long, 165g (5.3 oz) gross

£80-120

55Y

A Victorian silver half lobed bachelor's tea pot by Frederick Brasted, London 1876, with an ivory finial and loop handle, on a circular foot, 18cm (7in) high; and a Victorian half lobed oblong tea caddy by Horace Woodward & Co., London 1891, with an ivory finial to the domed cover and on four ball feet, 8cm (3 1/4in) long, 481g (15.45 oz) gross

£120-180



55



56

56

A Victorian silver oval swing handled basket by James Dixon & Sons, Sheffield 1878, with a beaded loop handle, beaded border, pierced with a scroll band and on four foliate feet, 33cm (13in) long, 774g (24.85 oz)

£200-300



57 (part lot)

57

A cased Victorian silver christening mug by Martin, Hall & Co., Sheffield 1881, with a scroll handle, chased with C-scrolls and floral sprays, engraved with a presentation inscription and on a circular pedestal foot, 12.5cm (5in) high; a Victorian cased silver mug by James Dixon & Son, Sheffield 1887, with a loop handle, chased with foliate swags and an oval vacant reserve, 7.5cm (3in) high; and a cased silver tapering beaker, import mark for London 1888, chased with putti among foliage, 7.5cm (3in) high, 337g (10.85 oz) gross

£100-150



58

58

A Victorian silver gilt cream jug, sugar bowl, sifting spoon, six tea spoons and a pair of sugar tongs by Henry Lias & James Wakely, London 1883, engraved with birds among foliage, the sugar bowl 9cm (3 1/2in) diameter, 272g (8.75 oz)

£100-150



59



60



61

59

Two Dutch silver twin handled oval baskets, import mark for London 1886, sponsor's mark I.S.M, with twin foliate loop handles, chased foliate borders, pierced with lattice decoration and on an oval foot, 25.5cm (10in) and 16.5cm (10 1/2in) long, 751g (24.15 oz)

£300-500

60

A Victorian silver shaped oval bowl by Charles Stuart Harris, London 1888, chased with floral and foliate sprays, 22cm (8 1/2in) long, 190g (6.1 oz)

£70-80

61

A Victorian Scottish silver mounted cut glass double decanter by Mackay & Chisholm, Edinburgh circa 1890, etched with floral decoration, brandy and whisky, on a circular foot, 29cm (9 1/2in) high

£100-150

62

A cased set of four silver swan salts and spoons by Hilliard & Thomson, the salts Birmingham 1890 and the spoons Birmingham 1894, the salts on oval pedestal feet, 7cm (2 3/4in) long, 208g (6.7 oz)

£150-250



63 (part lot)

63

A cased set of twelve Victorian silver mounted liqueur glasses by William Comyns & Sons Ltd., London (1891), Birmingham 1892 (1) and 1893 (10), with scroll handles, chased with C-scrolls and putti, 5cm (2in) high; and a cased set of six Edwardian silver cups and saucers by A. & J. Zimmerman Ltd., Birmingham 1906, the cups with scroll handles, 4cm (1 1/2in) high, the saucers 7cm (2 3/4in) diameter, 365g (11.7 oz) gross

£100-150

64

A Victorian silver sugar castor by Thomas Hayes, Birmingham 1891, with a cone finial to the pierced and domed cover, the body with spiral fluted and foliate decoration, a shaped vacant reserve and on a circular moulded spreading foot, 24cm (9 1/2in) high, 330g (10.6 oz)

£80-120



62



64



65

65

A pair of Victorian silver candlesticks, maker's marks obscured, London 1892, with shaped and pierced baluster capitals, the knopped stems chased with foliate decoration, to square bases, 34cm (13 1/4in) high, loaded

£250-350

66Y

A Victorian silver oval baluster tea pot by Horace Woodward & Co., London 1893, with a foliate chased domed cover, the loop handle with ivory warming bands, the body chased with foliate swags, engraved with a crest above the motto Je Vis En Espoir, on four trefoil pad feet, 25cm (9 3/4in) long, 414g (13.3 oz) gross

£100-150



66



67

67

A late Victorian oval baluster tea caddy by Nathan & Hayes, Birmingham 1893, with an oval and ball finial to the domed cover, a gadrooned border, embossed with floral sprays and C-scrolls, 10cm (4in) high, 143g (4.6 oz)

£80-120

68

A Victorian silver shaped oval baluster sugar bowl by Charles Stuart Harris, London 1894, with a hinged cover, engraved with two crests above the motto Gwell angau na cywilydd, on four pad feet, 13.5cm (5 1/4in), 268g (8.6 oz)

£80-120



68



69

69

A late Victorian silver oblong twin handled tray by James Dixon & Co., Sheffield 1895, with twin loop handles, 60cm (23 1/2in) long, 1059g (34.05 oz)

£250-350

70

A matched set of three menu holders by William Hutton & Sons Ltd., London 1895 (1) and 1903 (2), formed as cherub among foliage, on two scroll feet, 6cm (2 1/4in) high, 98g (3.15 oz)

£100-200



70



71

71
A pair of late Victorian silver shaped oval sauce boats by Thomas Bradbury & Sons, London 1896, with double scroll handles, engraved with a crest above a motto and on three shell and stepped pad feet, 17cm (6 3/4in) long, 490g (15.75 oz)

£150-250



72

72
A late Victorian silver mounted cut glass bowl by Thomas Latham & Ernest Morton, Birmingham 1896, the shaped circular border chased with C-scrolls and floral sprays, pierced with chased lattice panels, 25.5cm (10in) diameter

£80-120



73

73
A late Victorian silver shaped rectangular dish by Maxfield & Sons, London 1896, with a pierced band and engraved with a crest, 29.5cm (11 1/2in) long, 422g (13.55 oz)

£80-120

74

A set of four late Victorian silver easel back menu holders by James Dudley, London 1897, with foliate scroll borders and pierced with galleons, 7cm (2 3/4in) high, 145g (4.65 oz)

£100-150



74



75

75

A late Victorian silver shaped oblong fruit bowl by James Dixon & Son, Sheffield 1897, with a chased foliate, C-scroll and shell border, on four ball feet, 27cm (10 1/2in) long, 719g (23.1 oz)

£150-250

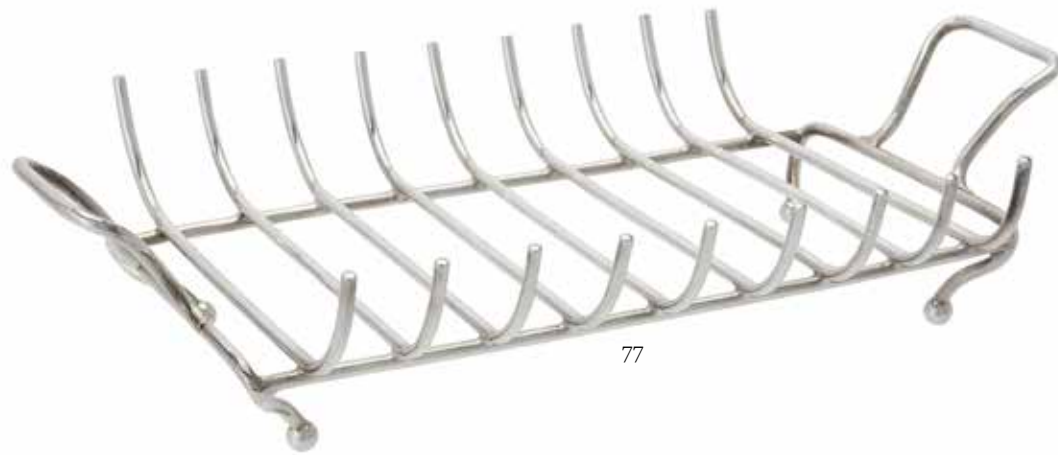
76

A late Victoria Britannia standard silver octagonal baluster sugar caster by Charles Stuart Harris, London 1899, with a baluster finial to the pierced and domed cover, on an octagonal moulded spreading foot, 22cm (8 1/2in) high, 452g (14.5 oz)

£250-350



76



77

77

A late Victorian silver asparagus rack by Maxfield & Son, Sheffield 1899, with twin loop handles and on four ball feet, 30cm (11 3/4in) long, 416g (13.4 oz)

£100-150



78 (part lot)

78

A late Victorian silver oblong baluster four piece tea set, maker's mark JRO, Birmingham 1899, the kettle with a fixed foliate chased loop handle, a composition lobed oval finial to the domed cover, the body chased with foliate swags and floral sprays, two vacant reserves, on an oblong reeded stand above a burner, on four scroll legs, 33cm (13in) high, the tea pot with a composition angular handle, 30.5cm (12in) long, 1932g (62.1 oz) gross

£600-800

79

A late Victorian silver lobed baluster water jug by Goldsmiths & Silversmiths Co., London 1899, with a composition urn finial to the domed cover and an angular handle, on a circular moulded spreading foot, 24cm (9 3/4in) high, 405g (13.05 oz) gross

£100-150

80

A Victorian silver oval half lobed three piece tea set by W. & G. Sissons, London 1889 (1) and 1890 (2), the tea pot with a composition lobed oval finial and angular handle, the cream jug and sugar basin engraved with a crest, the tea pot 23.5cm (9 1/4in) long, 520g (16.7 oz) gross

£150-250



79



80

81

A late Victorian silver twin handled rose bowl by Sibray, Hall & Co., London 1899, with twin leaf capped scroll handles, a girdle and on a circular pedestal foot, 33cm (13in) long, 961g (30.9 oz)

£250-350



81



82

82Y

A silver kettle on stand, cancelled marks by the London Assay Office, with a leather wrapped loop swing handle, a domed finial to the lift off cover, engraved with a strapwork and mask band and an armorial, on a circular stand above a burner on three ivory bun feet, 34cm (13 1/4in) high, 1753g (56.35 oz) gross

£400-600



83

83

An Art Nouveau silver mounted and enamel shaped square photo frame by William Hutton & Sons Ltd., London 1902, 18cm (7in) high

£200-300

84

An Art Nouveau silver mounted and enamel shaped rectangular photo frame by William Hutton & Sons Ltd., London 1903, 25.5cm (10in) high

£300-500



84

85

An Art Nouveau silver mounted and enamel shaped square photo frame by William Hutton & Sons Ltd., London 1903, 19.5cm (7 3/4in) high

£150-250

86

An Edwardian silver mounted photo frame by Henry Charles Freeman, Birmingham 1904, chased with farmers and Peace hath her victories, 10.5cm (4 1/2in) high; and an Edwardian silver mounted and enamel photo frame by John Thompson & Sons, Birmingham 1905, 13cm (5in) high

£100-200



85



86

87

An Art Nouveau silver mounted and enamel shaped rectangular photo frame by William Hutton & Sons Ltd., date letter rubbed, circa London 1905, the centre with a hammered finish, 20.5cm (8in) high

£150-250



87



88
An Art Nouveau silver mounted and enamel shaped rectangular photo frame by William Hutton & Sons Ltd., London 1907, the centre with a hammered finish, 21cm (8 1/4in) high

£150-250



89
A cased matched silver circular cruet set, various maker's and dates, comprising: three salts, two sugar bowls, two mustards, three pepperettes, two sauce ladles, a mustard spoons and three salts spoons, 1300g (41.8 oz) gross, with five clear glass liners

£400-600



90
A pair of late Victorian silver shaped circular second course dishes by Catchpole & Williams Ltd., London 1900, with a chased foliate, shell, C-scroll and coronet border, 29cm (11 1/2in) diameter, 1964g (63.15 oz)

£500-700



91
A pair of Edwardian silver shaped oval sauce boats by George Nathan & Ridley Hayes, Chester 1901, with leaf capped flying scroll handles and on three paw feet, 18cm (7in) long, 484g (15.55 oz)

£100-150

92
An Edwardian silver oval salver by James Dixon & Son, Sheffield 1901, with a beaded border and husk band, engraved with a monogram above 4th June 1902 within a shield shaped reserve, on four ball and claw feet, 25cm (9 3/4in) long, 397g (12.75 oz)

£150-250



93
An Edwardian silver shaped circular drum mustard by Charles Stuart Harris, London 1902, with a flat cover, double scroll handle and reeded borders, 9.5cm (3 3/4in) long, with a blue glass liner; and a Victorian silver drum mustard, maker's mark obscured, Sheffield 1849, with a scroll thumb piece to the domed cover and a double scroll handle 10cm (4in) long, with a blue glass liner; together with a silver and an electro-plated mustard spoon, 292g (9.4 oz) gross weighable

£100-150





94

An Edwardian silver oval pedestal dish by S. Glass, Birmingham 1902, with a gadrooned border, chased with floral and foliate decoration, a pierced band, on a chased shaped oval pedestal foot, 25cm (9 3/4in) long, 396g (12.7 oz)

£120-180

95

An Edwardian silver oblong pierced bowl by Harrison Brothers & Howson, London 1902, with a reeded border and pierced with loop decoration, on an oblong foot, 14cm (9 1/2in) long, 344g (11.05 oz)

£100-150



95



96

96

An Edwardian silver shaped circular salver by Hawksworth, Eyre & Co. Ltd., London 1902, with a raised moulded border and on four scroll feet, 21cm (8 1/4in) diameter, 385g (12.4 oz)

£100-200



97

97

An Edwardian silver shaped oval pierced bowl by Sibray, Hall & Co. Ltd., London 1902, with a scroll and mask border, pierced with scroll decoration and on four bracket feet, 28cm (11in) long, 423g (13.6 oz)

£100-150

98

An Edwardian cased silver mounted coffee set for twelve, the porcelain by Coalport, on yellow and white ground with gilt swags, the cups with silver mounts, maker's marks obscured, Chester 1904, with a scroll handle, pierced with putti and engraved with a monogram; twelve coffee spoons by William Hutton & Sons Ltd., London 1904, 11cm (4 1/4in) long, the saucers 12cm (4 3/4in) diameter, 263g (8.45 oz) weighable

£300-500



98



99

99
An Edwardian silver mounted glass cigarette box by Grey & Co., London 1904, retailed by Asprey, on four bun feet, 16.5cm (6 1/2in) long

£80-120

100Y
An Edwardian silver circular kettle on stand by George Perkins, London 1904, with a wicker wrapped hinged scroll handle, an ivory finial to the floral chased domed cover, the body chased with floral sprays and C-scrolls, engraved with a crest, armorial and the motto Humaniter et fideliter, above a circular stand and burner, chased with masks among floral swags, on three foliate scroll feet, 36cm (14in) high, 1826g (58.7 oz) gross

£600-800



100

101
A matched pair of military menu holders, one by James Samuel Bell & Louis Willmott, London 1904, the other by James Samuel Bell, London 1913, with the pennant and regimental flags of the 9th Lancers, on circular moulded bases, 7cm (2 3/4in) diameter, 290g (9.35 oz)

£80-120



101

102
An Edwardian set of six silver swan menu holders by Horace Woodward & Co. Ltd., London 1904, 5.5cm (2in) high, 341g (10.95 oz)

£100-150



102



103

103
An assembled cased silver cruet set, comprising: four Edwardian mustards and pepperettes by Goldsmiths & Silversmiths Co. Ltd., London 1904, the mustards with cone finials to the domed covers and scroll handles, 7cm (2 3/4in) long, with four blue glass liners; four Scottish circular salts by Robert Sawers Ltd., Edinburgh 1922, on a circular foot, 5.5cm (2 1/4in), with four blue glass liners; and eight spoons, three by Goldsmiths & Silversmiths Co. Ltd, London 1905 and five by Michael D. Hilliar, Dublin 2001, 7cm (2 3/4in) long, 679g (21.85 oz) gross

£150-250

104
An Edwardian silver circular salver by Z. Barraclough & Sons, Sheffield 1905, with a beaded border and husk band, engraved with a shield shaped vacant reserve and on three ball and claw feet, 20.5cm (8in) diameter, 383g (12.3 oz)

£80-120



104



105

105

A cased matched Edwardian silver gilt three piece cruet set, London 1905, the mustard by John Chapple & John Mantle, the pepperettes and spoon by George Fox, the mustard with a bud finial and shell thumb piece to the domed cover, a scroll handle, the half foliate body with rams heads and husk bands, on square base with four foliate feet, 12cm (4 3/4in) high, with a glass liner, the pepperettes conforming, 464g (14.95 oz) gross

£100-150



106

106

An Edwardian silver oblong toilet tray by J. & R. Griffin, Chester 1905, chased with foliate swags and a shaped circular vacant reserve, 25.5cm (10in) long; and a plain silver oblong tray by S. Blanckensee & Son Ltd., Birmingham 1933, with a raised border, 28cm (11in) long, 631g (20.3 oz) gross

£200-300



107

107

An Edwardian silver shaped circular bowl by William Aitken, Birmingham 1905, pierced with foliate swags and on a conforming circular pedestal foot, 18.5cm (7 1/4in) diameter; and a shaped circular bowl by Henry Matthews, Birmingham 1925, with a pierced body and on three pad feet, 18.5cm (7 1/4in) diameter, 535g (17.16 oz) gross

£100-200



108

108

A set of four Edwardian silver menu holders by William Comyns, London 1905, chased with a husk border and two figures at a plinth, on a circular moulded spreading foot, 6cm (2 1/4in) high, loaded

£80-120



109

109

An Edwardian silver shaped rectangular inkstand by Goldsmiths & Silversmiths Co. Ltd., London 1905, with a shaped border, two pen trays, engraved with a presentation inscription, the two cut glass bottles with silver covers, the covers engraved with a crest, on four stepped pad feet, 27.5cm (10 3/4in) long, 770g (24.75 oz) weighable

£150-250



110

110
An Edwardian silver oval tray by William Comyns & Sons, London 1905, with a chased husk border, engraved with ribbon and foliate decoration, musical instruments and a circular vacant reserve, 32cm (12 1/2in) long, 415g (13.35 oz)

£120-180



111

111
An Edwardian silver shaped circular salver by Joseph Rodgers & Sons, Sheffield 1906, with a raised moulded border, 32cm (12 1/2in) diameter, 859g (27.6 oz)

£250-350



112

112
An Edwardian silver shaped circular salver by Walker & Hall, Chester 1906, with a raised moulded border with foliate sprays at intervals and on three foliate scroll feet, 21.5cm (8 1/2in) diameter, 374g (12 oz)

£120-180



113

113
An Edwardian silver oval baluster bowl by Daniel & John Wellby, London 1906, with a gadrooned border and on an oval foot, 28.5cm (11 1/4in) long, 791g (25.4 oz)

£200-300



114

114
An Edwardian silver oval tea pot by Atkin Brothers, Sheffield 1907, with a composition finial and angular handle, a nulled border, embossed with floral decoration, two shaped vacant reserves and on an oval foot, 23.5cm (9 1/4in) long, 493g (15.85 oz) gross

£120-180

115
An Edwardian silver shaped square salver by William Aitken, Birmingham 1908, with a raised moulded border, 18cm (7in) wide, 251g (8.05 oz)

£80-120



115



116

116

An Edwardian silver bowl and stand by Goldsmiths & Silversmiths Co. Ltd., London 1908, with a pierced Greek key border and on four scroll feet, 21cm (8 1/4in) diameter, 525g (16.9 oz)

£150-250



117

117

An Edwardian silver oval three piece tea set by Maxfield & Sons Ltd., Sheffield 1908, the tea pot with a composition oval finial and angular handle, chased with two husk bands, 26cm (10 1/4in) long, 826g (26.55 oz) gross

£250-350



118

118

A silver replica of the Holmes Cup by George Nathan & Ridley Hayes, Chester 1908, the circular bowl engraved BENEDICTUS DEUS IM DONA SUIS AME, on a circular lobed pedestal foot, 10.5cm (4 1/4in) high, 342g (11 oz)

£150-250

119

An Edwardian silver dish ring by Carrington & Co., London 1908, with a shaped border, chased and pierced with animals, fruit, figures and C-scrolls, 21.5cm (8 1/2in) diameter, 716g (23 oz), with a glass bowl

£300-500



119

120

An Edwardian silver shaped circular salver by Mappin & Webb, Sheffield 1908, with a raised moulded border and on three stepped pad feet, 30.5cm (12in) diameter, 778g (25 oz)

£200-300



120

121

An Edwardian silver shaped circular and pierced bowl by Goldsmiths & Silversmiths Co. Ltd., London 1909, with a gadrooned border, pierced with lattice and foliate scroll decoration, engraved with a later presentation inscription and on four paw feet, 25cm (8in) diameter, 470g (15.1 oz)

£80-100



121



122

122
An Edwardian silver shaped circular fruit stand by Walker & Hall, Sheffield 1909, with a pierced foliate scroll border and on four foliate scroll feet, 31.5cm (12 1/2in) diameter, 1169g (37.6 oz)

£300-500



123

123
An Edwardian silver oblong baluster three piece tea set by The Alexander Clark Manufacturing Co., Birmingham 1909, the tea pot with a composition lobed oval finial and angular handle, a half lobed body and on an oblong foot, 24cm (9 1/2in) long, 634g (20.4 oz) gross

£200-300



124

124
A set of four silver and enamel menu holders by Levi & Salaman, Birmingham 1910 (1), 1912 (1) and 1913 (2), with blue enamel borders, pierced menu and on circular bases, 3.5cm (1 1/4in) diameter, loaded

£80-120



125

125Y
A cased set of four silver mounted and tortoiseshell menu holders by E. S. Barnsley & Co., Birmingham 1911, with chased husk borders, the tortoiseshell inlaid with a basket of flowers, on a circular base, 3cm (1 1/4in) diameter

£150-250



126

126
A silver lighthouse castor by Mappin & Webb, London 1911, with a turned finial to the domed and pierced cover, the body with a girdle and on a lobed circular base, 20.5cm (8in) high, 339g (10.9 oz)

£70-100

127
A silver oval pierced bowl by C. S. Harris & Sons Ltd., London 1911, with a chased floral and C-scroll border, the body pierced and engraved with floral sprays and C-scrolls, two circular vacant reserves and on four floral feet, 9cm (7 1/2in) long, 347g (11.15 oz)

£100-150



127



128
A pair of silver tazza by Wakely & Wheeler, London 1912, with twin flying shell handles, a shaped scroll and shell border, on a conforming pedestal foot, 24cm (9 1/2in) diameter, 964g (31 oz)

£250-350

129
A silver circular salver by James Dixon & Son, Sheffield 1913, with a beaded border, chased with a husk band, engraved with a crest, a moto and a monogram, the reverse engraved with monograms and on three ball and claw feet, 30.5cm (12in) diameter, 857g (27.55 oz)

£200-300



129



130

130Y
A set of four silver and tortoiseshell mounted menu holders by Goldsmiths & Silversmiths Co. Ltd., London 1913, the circular tortoiseshell panels inlaid with birds, on a circular foot, 3cm (1 1/4in) diameter

£80-120



131

131
A silver octagonal three piece tea set by Barrett & Thompson, Birmingham 1915, the tea pot with a composition domed finial and angular handle, on four paw feet, 28cm (11in) long, 1014g (32.6 oz) gross

£250-350



132

132
A silver baluster coffee pot and hot water jug by Blackmore & Fletcher Ltd., London 1914 and 1915, with composition compressed finials to the domed covers and scroll handles, on circular moulded spreading feet, 23cm (9in) high, 1091g (35.05 oz) gross

£300-500

133
A silver mounted cut glass caviar bowl by Asprey & Co. Ltd., Birmingham 1915, with a flat circular finial to the slightly domed cover, the bowl 24.5cm (9 1/2in) diameter, the ladle 25cm (9 3/4in) long, 498g (16 oz) weighable

£200-300



133



134

134

A Britannia standard silver gilt tea caddy, maker's mark obscured, Chester 1915, with an octagonal domed pull off cover, 16.5cm (6 1/2in) high, 355g (11.4 oz)

£100-150

135

A Queen Anne style silver framed toilet mirror by Wakely & Wheeler, London 1916, with a wavy crest with mask, scallop shell and pendant moulding, above a rectangular bevelled plate within a gadrooned and beaded edge border with further masks to the corners, engraved with a coat of arms, 61cm (24in) high

£400-600



135

136

A silver shaped circular muffin dish, liner and cover by Harrison Brothers & Howson, Sheffield 1918, with a wooden button finial to the domed cover, the base with a shaped rim, 617g (19.85 oz) gross

£200-300



136



137

137

A silver circular salver by James Dixon & Son, Sheffield 1918, with a beaded border, chased with a husk band, engraved with an armorial, on three ball and claw feet, 35.5cm (14in) diameter, 1193g (38.35 oz)

£300-500

138

A cased silver five piece oblong cruet set by Haseler & Bill, Chester 1922, the mustard with a thumb piece to the domed cover, reeded border, a scroll handle, wirework body and on a reeded oblong foot, 10.5cm (4in) long, with five blue glass liners, a mustard spoon by Haseler & Bill, Chester 1920, and two salt spoons by Cooper Brothers & Sons Ltd., London 1921, 434g (13.95 oz) gross

£100-150



138

139

A cased set of four menu holders by Crisford & Norris Ltd., Birmingham 1924, on circular moulded spreading bases, 4.5cm (1 3/4in) diameter, loaded

£80-120



139

140

A pair of shaped oval sauce boats by Jenkins & Timm, Sheffield 1924, with flying scroll handles and on three foliate and scroll feet, 18cm (7in) long, 398g (12.8 oz)

£100-150

141

A large silver quaich by Robert Stewart, London 1925, on a circular foot, 30.5cm (12in) long, 588g (18.9 oz)

£150-250



140



141

142

A silver mounted glass box by Hukin & Heath, Birmingham 1925, with a swing handle and a loop handle to the pull of cover, 17cm (6 3/4in) high, 90g (2.9 oz) weighable

£100-150

143

A silver oval bowl by William Comyns & Sons Ltd., London 1926, with a gadrooned border, pierced bands and on four foliate scroll feet, 33cm (13in) long, 563g (18.1 oz)

£150-250



142



143

144

A cased pair of silver shaped circular butter dishes by George Unite & Sons, Birmingham 1926 and 1927, 11cm (4 1/4in) diameter, 130g (4.15 oz), with two glass dishes

£70-100



144



145

145
Seven assorted silver graduating quiches, various makers and dates, the largest by Elkington & Co., Birmingham 1927, 20cm (8in) long, the smallest by Asprey & Co. Ltd., London 1963, 11cm (4 1/4in) long, 1033g (33.2 oz) gross

£300-500



146

146
A Scottish silver shaped square salver by Hamilton & Inches, Edinburgh 1928, with a raised moulded border and on four stepped pad feet, 30.5cm (12in) long, 1224g (39.35 oz)

£300-500



147

147
A silver baluster jug, maker's mark obscured, Birmingham 1928, with a composition scroll handle, on four trefoil pad feet, 19cm (7 1/2in) high, 377g (12.15 oz) gross

£100-150

148

A silver tea pot by James Dixon & Son, Sheffield 1929, with a composition domed finial and scroll handle, a gadrooned and shell border, a girdle and on a gadrooned circular foot, 28cm (11in) long, 993g (31.9 oz) gross

£250-350



148



149

149

A silver twin handled oblong fruit bowl by Goldsmiths & Silversmiths Co. Ltd., Sheffield 1929, with twin loop handles, a chased acorn border, pierced with foliate and scroll decoration, two shaped vacant reserves and on foliate bracket feet, 34cm (13 1/4in) long, 1020g (32.8 oz)

£250-350

150

An Edwardian silver mounted lockable glass decanter, maker's mark J.C.V., Birmingham 1909, with a white metal padlock, 16cm (6 1/4in) high

£70-100



150



151

151

A silver mounted lockable glass decanter by Hukin & Heath Ltd., Birmingham 1923, with a keylock flip clasp, 19.5cm (7 3/4in) high

£100-150



152

152

A pair of silver mounted lockable glass decanters by Hukin & Heath Ltd., Birmingham 1927, with keylock flip clasps, 25cm (9 3/4in) high

£250-350

153

A silver mounted lockable glass decanter by Hukin & Heath Ltd., Birmingham 1928, with keylock flip clasp, 31cm (12 1/4in) high

£200-300



153

154

A silver mounted lockable glass decanter by Mappin & Webb., Birmingham 1933, with keylock flip clasp, 31cm (12 1/4in) high

£200-300



155

155

A silver mounted lockable glass decanter by Hukin & Heath Ltd., Birmingham 1934, with keylock flip clasp, 25.5cm (10in) high

£120-180

156

A silver mounted lockable glass decanter by Hukin & Heath Ltd., Birmingham 1936, with a keylock flip clasp, 19.5cm (7 3/4in) high

£100-150



154



156



157

A graduated suite of three shaped circular strawberry dishes by William Comyns & Sons Ltd., London 1930, of lobed form, the largest 30.5cm (12in) diameter, the smallest 25.5cm (10in) diameter, 3037g (97.65 oz)

£700-1,000



159

158

A scarce Arts and Crafts hammered circular small bowl by Philip Frederick Alexander, London 1931, the rim bead, heart and cinquefoil punched, 13cm (5 1/8in) diameter, 140g (4.5 oz)

£150-250

159

A silver tapering coffer pot by Catchpole & Williams Ltd., London 1931, with a composition compressed finial to the domed cover and double scroll handle, engraved with a lattice band with masks and foliate decoration at intervals, on a circular moulded spreading foot, 12cm (8 1/2in) high, 609g (19.6 oz) gross

£150-250



158



160

A silver shaped oval tray by Cooper Brothers & Sons Ltd., Sheffield 1932, with pieced loop handles and foliate scroll decoration, engraved with a presentation inscription, 65cm (5 1/2in) long, 2521g (81.1 oz)

£700-1,000



161

161

A silver circular baluster three piece tea set by Richard Comyns, London (2) and 1935 (1), the tea pot with a composition orb finial to the ogee domed cover and scroll handle, on a circular foot, 24cm (9 1/2in) long, 1289g (41.45 oz) gross

£400-600

162

A silver shaped square salver by Viner's Ltd., Sheffield 1937, with a raised moulded border and on four foliate scroll feet, 19cm (7 1/2in) long, 339g (10.85 oz)

£100-200



162



163



164



165

163

A silver shaped circular salver by Elkington & Co. Ltd., Birmingham 1937, with a gadrooned and shell border, on three scroll feet, 25.5cm (10in) diameter, 519g (16.7 oz)

£150-250

164

A silver shaped circular salver by Barker Brothers Silver Ltd., Birmingham 1937, with a gadrooned border and on four ball and claw feet, 25.5cm (10in) diameter, 658g (21.15 oz)

£150-250

165

A silver square pedestal fruit stand by Alexander Clark Co. Ltd., Sheffield 1938, with a chased and pierced grape vine border, on a square pedestal foot, 26cm (10in) wide, 714g (22.95 oz)

£220-280

166

A cased silver five piece cruet set, maker's mark for O & B Ltd., untraced, Birmingham 1938 and 1939, the mustard with a stepped finial to the stepped domed cover, an angular handle and on a circular moulded spreading foot, 7cm (2 3/4in) long, 147g (4.7 oz), with two blue glass liners

£80-120



166

167

A cased pair of silver sugar casters by G. Bryan & Co., Birmingham 1939, struck with import mark for Dublin 1940, with a stepped finial to the pierced and domed cover and on a circular moulded spreading circular foot, 21cm (8 1/4in) high, 420g (13.55 oz)

£150-250



167

168

An Art Deco silver mounted mirror by Mappin & Webb, Birmingham 1939, with engine turned decoration, 39.5cm (15 1/2in) high

£100-150



168



169

169
A set of four silver shell shaped salts by S. Blanckensee & Son Ltd., Chester 1939, the shell shaped bowls on foliate scroll bases, 10cm (4in) long, with four salt spoons by S. Blanckensee & Son Ltd., Chester 1938, with foliate swag handles and shell shaped bowls, 10cm (4in) long, 936g (30.1 oz) gross

£250-350



170

170
A silver shaped square salver by Viner's Ltd., Sheffield 1946, with a raised moulded border and on four foliate scroll feet, 34.5cm (13 1/2in) wide, 1484 (47.7 oz)

£350-550



171

171
A set of six silver mounted glasses by Mappin & Webb, Sheffield 1948 (3), 1963 (2) and 1964 (1), with scroll handles and pierced bodies, 12cm (4 3/4in) high, 387g (12.45 oz)

£80-120



172

172
A silver shaped circular pedestal bowl by Viner's Ltd., Sheffield 1957, with pierced foliate decoration and on a shaped circular moulded pedestal foot, 24cm (9 1/2in) diameter, with a glass liner; together with six conforming loop handled pedestal bowls, 13.5cm (5 1/4in) long, with six glass liners, 1541g (49.55 oz)

£500-700



173

173
A pair of silver six division toast racks by Elkington & Co., Birmingham 1965, with a loop handle, 11.5cm (4 1/2in) long, 256g (8.2 oz)

£80-120



174

174
A Scottish silver quaich by Deakin & Francis, Edinburgh 1972, the twin handles chased with Celtic bands and on a circular foot, 16.5cm (6 1/2in) long; another similar, 15cm (6in) long; and a late Victorian pierced quaich by William Comyns, London 1894, with twin cherub mask handles, the body pierced and engraved with foliate sprays, engraved with a crest and on a circular foot, 14.5cm (5 3/4in) long, 372g (11.95 oz) gross

£100-150

175

A pair of cast silver candlesticks by Spink & Son, London 1975, with octagonal baluster capitals, knopped tapering stems and on a stepped octagonal base, 16.5cm (6 1/2in) high, 932g (30 oz)

£400-600



175

176

A silver horse trophy by Wakely & Wheeler, London 1978, modelled as a bearded figure riding a horse, mounted on a black plinth with a silver presentation engraved plaque, 18cm (7in) high

£150-200



176

177

A silver limited edition circular plate by St. James House Company, London 1978, no. 109/900, commemorating the 900th anniversary of the Tower of London, 20cm (8in) diameter, 294g (9.45 oz), with a fitted a case

£80-120



177



178

178

A large silver armada dish by Mappin & Webb, London 1994, with a reeded band, 34.5cm (13 1/2in) diameter, 1454g (46.75 oz)

£300-500



179

179

A pair of silver shaped circular twin handled bowls, cancelled Georgian marks, re-struck marks for London Assay Office, London 1996, with mask capped loop handles, the half fluted body chased with fruit, foliate and shell decoration, engraved with a crest, 23cm (9in) long, 1040g (33.45 oz)

£300-500

180

A silver circular waiter, maker's mark for Barry M Witmond, overstruck by that of another, stamped Tessier, London 2000, with a cable twist border and on three compressed feet, 15cm (6in) diameter, 362g (11.65 oz)

£100-150



180



181

181
Four George III silver Old English and feather edge pattern dessert forks by Charles Hougham, London 1783, engraved with a crest, 20cm (8in) long; together with two matching Irish examples by Law & Bayly, Dublin 1794, 414g (13.3 oz) gross

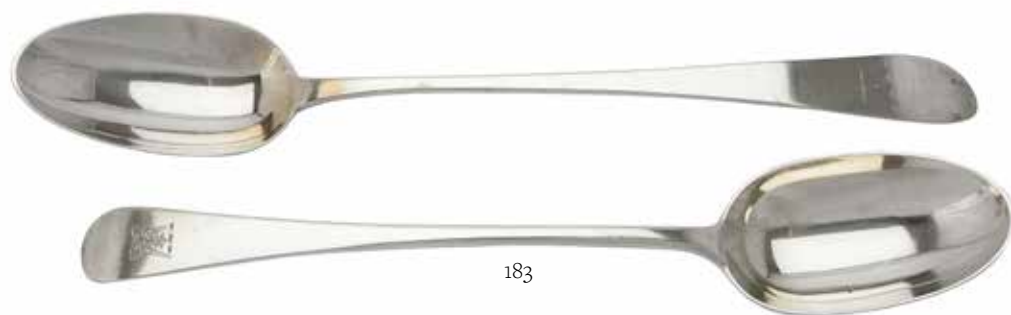
£80-120



182

182
Four George III Irish Provincial silver bright cut dessert spoons by John Nicholson, Cork circa 1790, stamped Sterling, engraved with a bow and oval shaped vacant reserve, 17cm (6 3/4in) long, 119g (3.8 oz)

£150-250



183

183
A George III Irish silver serving spoon, possibly by John Shiels, London 1796, engraved with a crest, 32cm (12 1/2in) long; and a Victorian Old English pattern serving spoon by John Hunt & Robert Roskell, London 1878, engraved with a crest, 29cm (11 1/2in) long, 218g (7 oz) gross

£120-180

184
Five silver Old English pattern table spoons, to include: a pair of George III table spoons by William Sumner I, London 1796, engraved with a monogram and From S.C Dec 25th 1843 to the reverse, 21cm (8 1/4in) long; a George III table spoon by Richard Ferris, Exeter 1805, engraved EB over IB over 1806, 21cm (8 1/4in) long; and two other table spoons, 293g (9.45 oz) gross

£80-120



184



185

185
A George III silver old English pattern caddy spoon, maker's mark IT, Birmingham 1800, engraved D and with a shell shaped bowl, 6.5cm (2 1/2in) long; a George III silver old English pattern caddy spoon by Taylor & Perry, Birmingham 1828, with a foliate shaped bowl, 8cm (3in) long; and a George III silver old English pattern caddy spoon by Ledsam, Vale & Wheeler, Birmingham 1826, the bowl chased with foliate swags, 8cm (3in) long, 23g (0.75 oz) gross

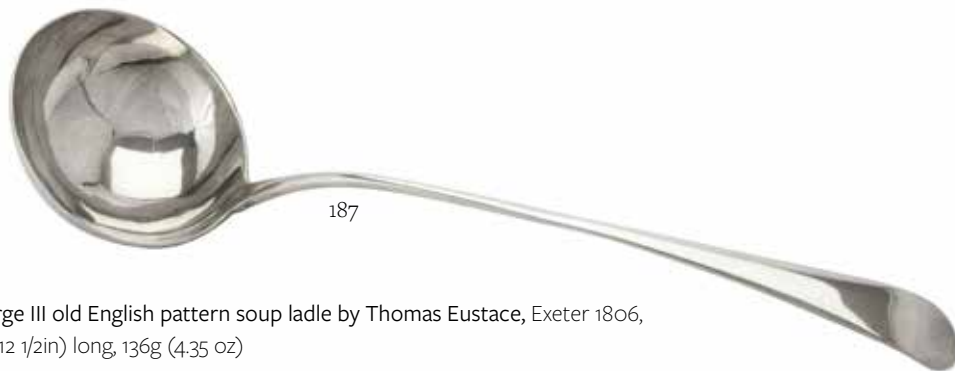
£80-120

186
A cased set of four George III silver gilt Old English pattern berry spoons, maker's mark AG, circa 1800, the handles with oval vacant reserves and engraved with foliate decoration, the shaped bowls chased with floral decoration, 23cm (9in) long, 266g (8.55 oz)

£80-120



186



187

A George III old English pattern soup ladle by Thomas Eustace, Exeter 1806, 32cm (12 1/2in) long, 136g (4.35 oz)

£80-120



188

188

A George III silver Old English pattern serving spoon by Peter & Ann Bateman, London 1813, engraved with a crest, 29cm (11 1/2in) long; a George III Old English pattern serving spoon, maker's mark W.E, London 1808, engraved with a monogram, 30cm (11 3/4in) long; and a George III Old English pattern serving spoon by Thomas Tookey, London 1775, engraved with a monogram, 29cm (11 1/2in) long, 292g (9.4 oz) gross

£150-250



189

189

A Scottish George IV silver King's pattern meat skewer, maker's mark for William Forrest & Co., overstruck by another, Edinburgh 1823, with a loop handle and engraved with a crest, 36cm (14in) long, 148g (4.75 oz)

£150-200

190

A cased set of four William IV Old English table spoons by Randall Chatterton, London 1834, engraved with a monogram and birds among foliage, 22cm (8 3/4in) long, 227g (7.3 oz)

£80-120



191



190

191

A cased Victorian silver three piece christening set by Francis Higgins II, London 1844, comprising of a dessert knife, fork and spoon, the handles formed as arms holding pistols, the knife 19cm (7 1/2in) long, loaded

£70-100



192

192

A pair of Victorian silver fish servers by Aaron Hadfield, Sheffield 1848, engraved with C-scrolls, the blade pierced with scroll decoration, the knife 31cm (12 1/4in) long

£80-120



193
A cased set of four Victorian silver gilt apostle spoons by Henry Holland, London 1863, 19cm (7 1/2in) long; and a cased set of six silver gilt fruit knives by Atkin Brothers, the blades Sheffield 1925, the handles 1928, 16cm (6 1/4in) long, 318g (10.2 oz) weighable

£100-150

194
A case Victorian silver butter spade by Chawner & Co., London 1866, the reverse engraved with a crest, 18cm (7in) long, 105g (3.35 oz)

£50-70

195
A cased Victorian silver three piece christening set by John Gilbert, Birmingham 1869, comprising of a dessert knife, fork and spoon, engraved with a monogram and foliate swags, the knife 19cm (7 1/2in) long; and another cased Victorian silver three piece christening set by William Hutton & Sons, Sheffield 1877, comprising a dessert knife, fork and spoon, with a shaped vacant reserve and engraved with floral decoration, the knife 20.5cm (8in) long, 224g (7.2 oz) gross

£150-250



194



195

196
A cased set of four Victorian silver gilt fruit spoons and a sifting spoon by Henry William Curry, London 1873 (1) and 1874 (4), chased with cherubs and floral decoration, 18cm (7in) long, 359g (11.55 oz)

£150-250



197 (part lot)



196

197
A collection of Victorian Hanoverian pattern flatware by Z. Barraclough & Sons, London 1895, engraved with a crest, comprising: three table forks, ten table spoons, twelve dessert forks, nine dessert spoons and two serving spoons, 2114g (67.95 oz)

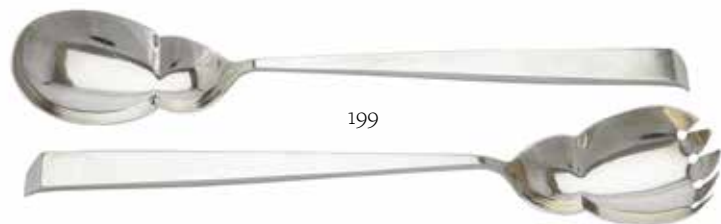
£1,000-1,500

198
A Victorian pair of beaded Old English pattern asparagus tongs by Holland, Aldwinckle & Slater, London 1896, 25.5cm (10in) long; and a pair of silver King's pattern asparagus tongs by Francis Higgins & Son Ltd., London 1912, 22cm (8 1/2in) long, 352g (11.35 oz) gross

£80-120



198



199

A pair of late Victorian salad servers by John Grinsell & Sons, London 1896, with shaped bowls, 275cm (10 3/4in) long, 169g (5.45 oz)

£80-120

200

A collection of silver King's pattern flatware, comprising: Three table spoons, one by Goldsmiths & Silversmiths Co. Ltd., London 1902, two by William Hutton & Sons Ltd., London 1913, Four dessert spoons by Viner's Ltd., Sheffield 1956, Eight dessert forks by Viner's Ltd., Sheffield 1957, 1074g (34.55 oz) gross

Together with the following with stainless steel blades: Six table knives by Viner's Ltd., Sheffield 1957, A carving knife and fork by Viner's Ltd., Sheffield 1957

£300-500



200 (part lot)



201

201

A cased pair of Edwardian silver sifter spoons by Josiah Williams & Co., London 1905, the handles and bowls pierced with scroll decoration, 18.5cm (7 1/4in) long, 90g (2.9 oz)

£70-100

202

A cased silver gilt pistol grip handled melon server, the blade by William Comyns, Birmingham 1910, the handle by William Hutton & Sons Ltd., Sheffield 1910, 27cm (10 1/2in) long

£150-250



202



203

203

American Royal Family, a cased set of ten silver commemorative spoons by Library of Imperial History, London 1975, each with a silver gilt cast bust from James I to George III, 11.5cm (4 1/2in) long, 329g (10.55 oz)

£150-250

204

An assembled King's pattern part table service, George III to 20th century, various makers, engraved with a crest, comprising: Fourteen table spoons, Fourteen table forks, Thirteen dessert spoons, Eighteen dessert forks, Five tea spoons, Six egg spoons, A mustard spoon, A sauce ladle, 5547g (178.65 oz)

Together with the following electro-plated pieces: Fourteen table spoon, Twelve table forks, Eight dessert spoons, Eight dessert forks, Eight tea spoons

£1,500-2,500



204 (part lot)

Small Silver and Boxes

- 205

A George III silver wine label by James Phipps, circa 1770, maker's mark only, pierced and engraved with an urn and Port, 5cm (2in) long, 12g (0.4 oz)

£80-120
- 206

A George III silver crescent shaped wine label by Hester Bateman, circa 1780, maker's and sterling marks only, with a pierced border and engraved Brandy, 4.5cm (1 3/4in) long, 10g (0.35 oz)

£80-120
- 207

A George III silver wine label by Hester Bateman, circa 1780, maker's mark and sterling mark only, with a gadrooned border, oval vacant reserve and engraved Madeira, 4.5cm (1 3/4in) long, 12g (0.4 oz)

£100-150
- 208

A George III silver wine label by Peter, Ann & William Bateman, London 1800, with a feather border and engraved Brandy, 5cm (2in) long, 9g (0.3 oz)

£100-150
- 209

A George IV silver wine label by Edward Farrell, London 1823, chased with a putto astride a barrel and grape vine decoration, engraved Hock, 5cm (2in) long, 14g (0.45 oz)

£150-250
- 210

A George IV silver shaped rectangular wine label by Mary Ann & Charles Riley, London 1827, with a chased foliate and shell border, engraved Maidstone, 6cm (2 1/2in) long, 22g (0.7 oz)

£80-120
- 211

A George III silver wine label by Peter & William Bateman, London 1807, with foliate sprays and engraved Raspberry Brandy, 5cm (2in) long, 9g (0.3 oz)

£100-150
- 212

A George III silver shaped oblong wine label by Elizabeth Morley, London 1814, with an engine turned border, engraved with foliate decoration and Bucellas, 5.5cm (2 1/4in) long, 9g (0.3 oz)

£80-120



213

A pair of George IV silver wine labels by William Eaton, London 1820, with chased gadrooned and shell borders, pierced Madeira and Claret, 5cm (2in) long; and a George IV wine label by William Eley II, London 1826, with a chased gadrooned and shell border, pierced Hermitage, 5cm (2in) long, 67g (2.15 oz) gross

£150-250

214

A pair of George III silver wine labels by Thomas Phipps & Edward Robinson, circa 1800, with engraved foliate borders, M within an oval reserve, Port and W*Wine, 5cm (2in) long, 19g (0.6 oz)

£150-250

215

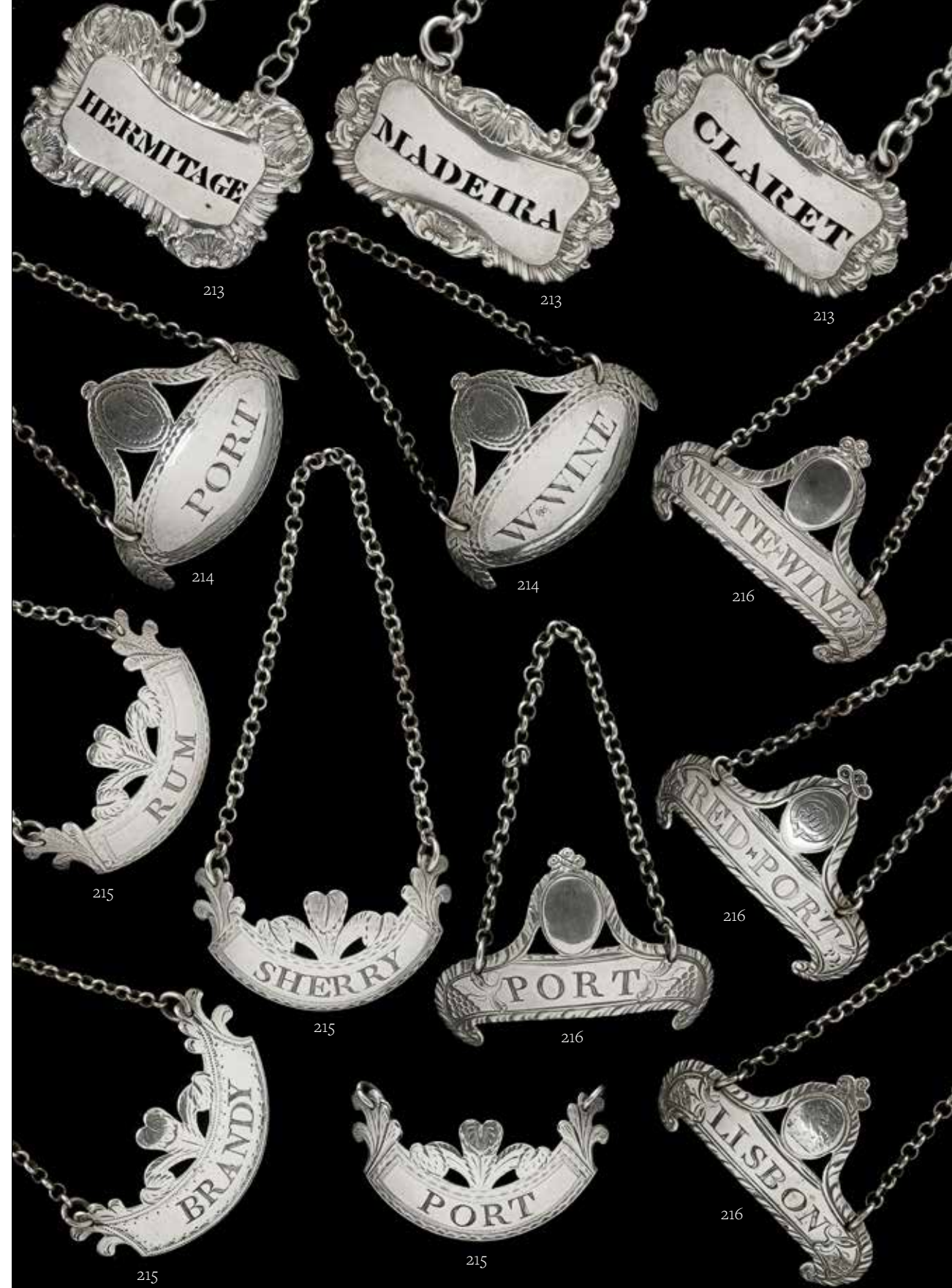
A set of four George III silver wine labels by Peter & Ann Bateman, London 1791, with a feather border, engraved Brandy, Port, Rum & Sherry, 5cm (2in) long, 36 (1.15 oz) gross

£500-800

216

A set of four George III silver wine labels by Hester Bateman, circa 1780, maker's mark and sterling marks only, with feather band borders, oval reserves, one engraved with a crest and another with a monogram, engraved Lisbon, Port, Red Port and White Wine, 5cm (2in) long, 37g (1.2 oz)

£400-600





217
A George IV silver oblong wine label by Charles Rawlings, London 1827, chased with grape vines, dogs and foliate swags, engraved Port, 5.5cm (2 1/4in) long; a Victorian silver shaped rectangular wine label by Charles Rawlings & William Summers, London 1854, with a gadrooned border, engraved Madeira and a crest to the reverse, 5cm (2in) long; together with two further wine labels, 61g (.95 oz) gross

£200-300

218
A collection of silver wine labels, to include: a pair of Victorian shaped oval labels by Alfred Taylor, Birmingham 1855 and 1856, with engraved C-scroll borders, Port and the other Sherry, 5.5cm (2 1/4in) long; a George III wine label by Matthew Linwood, Birmingham 1819, chased as a grape vine, engraved Lisbon, 6.5cm (2 1/2in) long; a Victorian shaped rectangular wine label by Nathaniel Mills, Birmingham 1852, pierced and engraved with scroll decoration and brandy, 6.5cm (2 1/2in) long; together with two other wine labels, 65g (2.1 oz) gross



218

£250-350



219

219
A Victorian silver bottle neck and label by Charles Thomas Fox & George Fox, London 1848, the rectangular label engraved Sherry, 4.5cm (1 3/4in) long; a George III silver bottle neck and label by Thomas Phipps & Edward Robinson, London 1796, the oblong label with a reeded border and engraved Gin, 4.5cm (1 3/4in) long; a William IV silver bottle neck and label, London 1831, the shaped rectangular label with a moulded border and pierced Port, 4cm (1 1/2in) long; a kidney shaped whiskey label and a canted rectangular brandy label, 59g (1.9 oz) gross

£150-250

220
Three silver and enamel wine labels by Turner & Simpson Ltd., Birmingham 1951 (2) and 1966 (1), with engine turned borders, enamelled Port, Sherry and Whisky, 5cm (2in) long, 48g (1.55 oz) gross

£80-120



220



221

221
A collection of wine labels, to include: a silver crescent shaped wine label, possibly by George Brace, circa 1880, maker's mark only, with pierced loop decoration and engraved Port, 5cm (2in) long; a silver shaped rectangular wine label, maker's mark I.S only, pierced Lisbon, 5cm (2in) long; an American silver coloured rectangular wine label by Stieff, Williamsburg, stamped sterling, with a gadrooned border and engraved Gin, 5cm (2in) long; two other silver wine labels; together with five enamel examples, 50g (1.6 oz) gross weighable

£250-350

222
A George III silver cylindrical nutmeg grater by Samuel Pemberton, Birmingham 1791, the domed cover engraved with a monogram, the body engraved with a foliate swag band, the pull of base opening to a steel grater, 3cm (1 1/4in) high, 11g (.35 oz) gross

£100-150



222



223

223

A George III silver oval nutmeg grater by George Burrows, London 1795, the cover engraved with a chequered pattern and MC within a diamond shaped reserve, opening to a steel grater, 5.5cm (2 1/4in) long, 42g (1.35 oz) gross

£200-300



224

224

A George III silver oblong nutmeg grater, maker's mark obscured, Birmingham 1808, with reeded decoration, opening to a steel grater, 4.5cm (1 3/4in) long, 38g (1.2 oz) gross

£200-300



225

225

A late William IV silver rectangular nutmeg grater by Joseph Willmore, Birmingham 1836, the cover engraved with foliate swags and a rectangular vacant reserve, opening to a steel grater, the base engraved with floral decoration, 3.5cm (1 1/2in) long, 30g (.95 oz) gross

£150-250



226

226

A Victorian silver cigar case by Nathaniel Mills, Birmingham 1844, engraved with foliate swags, a crest and the motto Virtute et opera, 13cm (5in) long, 90g (2.9 oz)

£100-150

227

A Victorian silver twin compartment cigarette box by Thornhill & Co., London 1877, with a loop handle engraved XMAS 1886, the covers engraved G. F. T. and a crest, 19.5cm (7 3/4in) long, with a wood liner

£100-150



227



228



228

A Victorian silver and gold coloured mounted rectangular cigarette box by John Millward Banks, Birmingham 1892, the cover with an applied crest with the monogram Christo Duce above a monogram, 17cm (6 3/4in) long, with a cedar liner; together with a silver rectangular cigarette box by Walker & Hall, Sheffield 1951, with an engine turned cover, 14.5cm (5 3/4in) long, with a cedar liner

£80-120

229Y

A Victorian red leather travelling toilet case by Leuchars & Son, with a loop handle and the cover stamped M.E.M.W., opening to five monogrammed ivory handled brushes and a pair of glove stretches, a manicure set and five silver mounted jars, London 1894, chased with foliate decoration and engraved M, 72g (2.3 oz), the case 27 x 34 x 21cm

£100-200



229



230

230

A silver sandwich box, maker's mark ... W & S, Birmingham 1913, the cover engraved A.T.B.R. and 2-8-14, 14cm (5 1/2in) long, 297g (9.55 oz)

£100-150

231

A silver mounted desk compendium by A. Wilcox, Birmingham 1936, with engine turned decoration, opening to a barometer, thermometer and a clock, 12cm (4 3/4in) long

£200-300



231

232

A silver plain rectangular cigar box by Padgett & Braham Ltd., London 1980, 33.5cm (13 1/4in) long, with a cedar liner

£200-300



232

Continental Silver and Allied Wares

233

A Continental silver coloured wager cup, stamped with French import mark, modelled as a lady in a wide skirt holding aloft a swinging cup, 9cm (3 1/2in) high, 59g (1.9 oz)

£150-250



233



234

234

A continental silver coloured fluted baluster water jug, stamped 925, with a scroll handle and on a circular moulded spreading foot, 26cm (10 1/4in) high, 712g (22.9 oz)

£250-350



235

235

A 17th century German silver cup, maker's mark TS or ST monogram between pellets, possibly Frankfurt am Main, post 1893 French import mark, lobed with C-scrolls, knopped stem, on four scrolls pinned to the circular foot, 16cm (6 1/4in) high, 142g (4.55 oz)

Provenance: the Barons, later Comtes, van den Steen de Jehay, Belgium

£150-250



236

236

An Austrian silver baluster coffee pot, maker's mark SV, circa 1778, with a bell shaped finial to the ogee domed cover, a composition scroll handled and on an oval moulded spreading foot, 30cm (11 3/4in) high, 934g (30.05 oz) gross

£300-500

237

A pair of Dutch silver oval salts, import mark for Chester 1906, sponsors mark for George Bedingham, pierced and chased with wreaths and figures, painting, sculpting and playing musical instruments, on four pad feet, 11.5cm (4 1/2in) long, together with two silver spoons with shaped bowls, 228g (7.35 oz) gross

£80-120



237



238

238

A Dutch silver oblong compressed teapot, 1814-1953 .934 standard, mark for Bonebakker en Zoon, with a composition circular finial and loop handle, engraved with a crest and a motto, with a girdle and on an oblong pedestal foot, 23cm (9in) long, 443g (14.25 oz) gross

£150-250



239

239

A set of four French silver cups and saucers, circa 1900, .800 standard, import mark, the cups with foliate loop handles and on circular moulded spreading foot, 10cm (4in) long, the saucers 13.5cm (5 1/4in) diameter, 833g (26.8 oz)

£300-500



240

240

A French silver gilt cup and saucer by François Durand, Pairs circa 1850, the cup with a shaped border, the scroll handle and body chased with foliate decoration, on six scroll feet, 11cm (4 1/4in) high, the saucer conforming, 17cm (6 3/4in) diameter, 481g (15.45 oz)

£150-250



241

241

A set of three French silver coloured menu holders, maker's mark CC, Minerva .925 standard mark, formed as foliate garland, engraved RL within an oval reserve, 8cm (3in) long, 101g (3.25 oz)

£60-80



242

242
A collection of French silver salts, to include: a pair of French double oval salts, Paris 1784-1785, Maison Commune mark, with foliate chased loop handles, gadrooned borders, pierced bodies and on eight claw and ball feet, 14cm (5 1/2in) long; a pair of French silver gilt oval salts, circa 1810, pierced and engraved with pillar decoration, on four hoof feet, 7.5cm (3in) long, with two blue glass liners; another pair of similar salts; and a pair of French silver circular salts, circa 1809, with applied bird legs, 7.5cm (3in) diameter, with two blue glass liners, 746g (24 oz) gross

£300-500

243
A French silver coloured twin bottle frame, Minerva mark, with a cone finial to the foliate pierced tapering stem, the two cylindrical bottle holder with a chased guilloche band, pierced with foliate decoration, engraved with a monogram within oval reserves, on eight ball feet, 26.5cm (10 1/2in) high, 619g (19.9 oz), with two blue cut glass bottles and stoppers

£200-300



244

244 Y
A French silver coloured fluted baluster milk jug, maker's mark obscured, Minerva .925 mark, leaf capped scroll handle with ivory warming bands, engraved with strap work and foliate decoration, 10cm (4in) high, 347g (11.15 oz)

£70-100



243

245
A French silver taste du vin, Paris 1798 - 1809 .950 standard, the half lobed body with a loop handle and engraved J. Bertier, 10.5cm (4 1/4in) long; another similar, engraved L. Delaplanche, 11cm (4 1/4in) long; and another continental silver taste du vin, with a loop handle, chased with bows and floral sprays, inset with a coin, 11cm (4 1/4in) long, 265g (8.55 oz) gross

£100-150



245



246

246
A silver shaped oval dish, stamped Tiffany & Co. Paris, import mark for London 1891, with a chased foliate border, a putto and a dragonfly, 16cm (6 1/4in) long, 114g (3.65 oz)

£100-150



247

247
A cased French silver gilt set of twelve tea spoons, a caddy spoon, tea strainer and a pair of sugar tongs by Eusèbe Callot, Paris 1847 - 1865, Minerva .800 standard mark, the tea spoons 15cm (6in) long, the tea strainer 6cm (2 1/4in) wide, 211g (6.8 oz)

£150-250



248

248

A cased set of twelve French silver lamb shank holders by Louis Ravinet & Charles Denfert, 1891 - 1912, boar's head .800 standard mark, 10cm (4in) long, 224g (7.2 oz)

£100-200



249

249

A French silver gilt serving set by Henin & Cie, Minerva .925 standard, comprising a pair of sugar tongs, a pickle fork and three spoons, 130g (4.2 oz)

£100-150



250

250Y

A French electro-plated four piece baluster tea set by Chrisofle, the tea pot with a domed finial to the domed cover, a loop handle with ivory warming bands and on a circular foot, 23cm (9in) long; a Malmaison pattern oval sauce boat on stand, twin handled circular bowl and eight fish forks and twelve fish knives

£100-150

251

An Italian silver coffee pot, circa 1810, stamped NS, with a bird finial to the ogee domed cover, a wood scroll handle, on three bust and paw feet, 27cm (10 1/2in) high, 670g (21.5 oz) gross

£300-500



252

253

An Italian silver coloured sugar bowl, cover and stand, pre 1968 .800 standard, with a foliate chased domed cover, twin scroll handled and chased with a foliate border, on a conforming circular moulded spreading pedestal foot 20cm (8in) long, the stand conforming, 18.5cm (7 1/4in) diameter, 529g (17 oz)

£150-250



251

252

An Italian silver coloured wrythen baluster chocolate pot, circa 1920s, .800 standard, with a foliate loop finial to the domed cover, a turned wood handle and on four pad feet, 25.5cm (10in) high, 836g (26.9 oz) gross

£250-350



253



254

254
A set of twelve Italian silver coloured menu holders, Firenze post 1968 .925 standard, formed as cherubs playing musical instruments and on oblong bases, 3.5cm (1 1/2in) long, 135g (4.35 oz)

£80-120



257

257
Four Italian silver coloured dishes, to include: a shaped circular bowl, stamped Fornari Roma 800, with lobed fluted decoration and on a circular foot, 23cm (9in) diameter; a shaped circular bowl, stamped 800, on four scroll feet, 19.5cm (7 3/4in) diameter; a shaped oblong pedestal bowl, stamped 800, with a gadrooned border and on an oblong pedestal foot, 15cm (6in) long; and shaped oval bowl, with a gadrooned border and on four paw feet, 17cm (6 3/4in) long, 829g (26.65 oz) gross

£200-300

255

An Italian silver coloured square tray, Padova post 1968 .925 standard with a reeded border, 23.5cm (9 1/4in) long, 440g (14.15 oz)



255

£150-250



258

258

A silver coloured rectangular box, stamped 800, with an engine turned cover and lobed sides, 13cm (5in) long; an Italian silver coloured plain rectangular box, 1944 - 1968 .925 standard, 8cm (3 1/4in) high; an Italian silver coloured circular box by Romeo Miracoli & Figlio, .800 standard, the cover engraved M.S., 5.5cm (2 1/4in) diameter; an Italian silver coloured domed box by Romeo Miracoli & Figlio, .800 standard, with applied coronets and armorials to the cover, 7cm (2 3/4in) diameter; and another similar, 567g (18.25 oz) gross

£150-250

259

An Italian silver coloured mounted rectangular photo frame, Firenze post 1968 .925 standard, with canted corners, 33cm (13in) high

£80-120



259

256

An Italian silver coloured plate, .800 standard, with a reeded border, 33cm (13in) diameter, 825g (26.5 oz)

£250-350



256



260

An Italian silver coloured mounted photo frame by Brandimarte, Firenze post 1968 .925 standard, chased with fruit decoration, 27cm (10 1/2in) high

£100-150



261

261

A collection of Italian silver coloured mounted photo frames, to include: a silver coloured mounted shaped rectangular photo frame, marks obscured, 30.5cm (12in) high; a silver coloured mounted photo frame, Firenze post 1968 .925 standard, with a lozenge border, 14cm (9 1/2in) high; a silver coloured mounted photo frame, Firenze post 1968 .925 standard, chased with foliate decoration and hammered finish, 18cm (7in) high; together with four other Italian silver coloured mounted photo frames

£150-250



262

262

A continental silver circular salver, possibly Portuguese 19th century, with a reeded border and on three scroll feet, 19cm (7 1/2in) diameter, 263g (8.45 oz)

£100-200



263

263

A pair of Spanish silver low comports by Josep Buxeda, Barcelona, pre 1934 .916 standard, circa 1930, with an everted rim embossed with foliage, scroll meander and flowerheads, the foot rim with stiff leaves, engraved with a monogram beneath a coronet, 28cm (11in) diameter; another oval en suite, apparently unmarked, 33.3cm (13in) long, 1574g (50.6 oz) (3)

£300-500



264

264
A Hungarian silver rectangular cigar box, Pest 1872 - 1922, .800 standard, the cover with chased foliate borders and engraved with two armorials, 31cm (12 1/4in) long, with a painted cedar liner

£200-300



265

265Y
A Swedish silver shaped oval coffee pot, import mark, Göteborg 1916, with a shaped oval finial to the domed cover, ivory warming bands to the loop handle, beaded and reed and stitch bands, on an oval foot, 23cm (9in) high, 498g (16 oz) gross

£200-300



266

266
A Russian silver throne salt, Moscow 1865, 84 zolotniki, the back rest set with cabochon emeralds, the engine turned seat presentation engraved, the underside of the seat engraved with a bird within a circular reserve, 8cm (3in) high, 97g (3.15 oz) gross

£250-350

267

A Russian silver and niello beaker, Moscow 1871, the tapering body chased with an inscription band, the oval panels with buildings in niello, on a circular moulded spreading foot, 15cm (6in) high; and a silver and niello spoon, Assay master I. Avdyeyev, Moscow 1857, the back of the bowl with foliate swags, 19cm (7 1/2in) long, 263g (8.45 oz) gross

£150-200



267



268

268

A set of six Russian silver vodka tots, Assay master Lev Oleks, Moscow 1895, 84 zolotniki, engraved J.P and floral decoration, 5cm (2in) high, 150g (4.8 oz)

£80-120

269

A Chinese export silver cream jug and sugar basin for the Japanese market by Gan Qing He, Shanghai circa 1860 to 1910, hammered overall with faux bamboo handles, applied prunus blossom and bird shaped panels and a chop mark reading 'Japan lasts forever', the cream jug 6cm (2 3/8in) high, 249g (8 oz)

£300-500



269



270 (part lot)



272

272

A silver coloured shaped oval dish, stamped Habis, with a lobed border and on four foliate bracket feet, 50cm (19 3/4in) long, 1486g (47.75 oz)

£300-500

Objects Of Vertu



271

270

A silver coloured mounted glass bowl, stamped Sterling with a cable twist border, 26.5cm (10 1/2in) diameter; and a silver coloured mounted rectangular glass tray, stamped Sterling, with twin loop handles, pierced gallery and on four compressed feet, 45cm (17 3/4in) long

£80-120

271

Two American glass decanters with silver coloured overlay, the tapering stoppers stamped Sterling, the overlay with shield shaped reserves, engraved Rye and Scotch, 30.5cm (12in) high

£80-120



273

273 Y

An oval ivory, enamel, gilt metal and half pearl toothpick case, the cover applied with Souvenir to a blue enamel background within a half pearl border, opening to a mirror and velvet interior, 9.5cm (3 3/4in) long; together with another ivory toothpick case, engraved Rosie within an applied silver coloured reserve, opening to a mirror and velvet interior, 9cm (3 1/2in) long

£100-150

274

A collection of four 18th century South Staffordshire oval enamel boxes, circa 1770 and later, comprising a box printed with Athena seated holding a spear in one hand, and a laurel wreath with Peace in the other, a ship at sea in the background, within a blue enamel surround with raised dot decoration, with a gilt border, John Jaffa sticker to the interior, 4.6cm long; together with an oval box printed with a courting couple in a pastoral scene, 5.1cm wide; another with a man and dog caught in a rainstorm, with mirror to the lid, 4.5cm wide; and a further box the lid printed with a maiden dancing in front of the ruin of a castle, with a John Jaffa sticker to the base, 4.8cm long

£250-350

275

An 18th century South Staffordshire enamel rabbit box, unmarked, the base painted with a floral spray to a white ground, opening to a mirror, 4.5cm (1 3/4in) long

£300-500

276

A rare South Staffordshire enamel rosebud bonbonniere, unmarked, circa 1770, painted in pink enamel, the sepals in two tones of green, 5cm (2in) high

£250-350

277

An 18th century South Staffordshire enamel rectangular box, the cover painted with a river running through a town, the body painted with floral sprays, 4.5cm (1 3/4in) long; and another South Staffordshire enamel oval box, the cover painted with a riverscape, opening to a mirror, 4cm (1 1/2in) long

£80-120

278

Four 18th century South Staffordshire enamel boxes, 1770 and later, the first oval box with a printed picture of the Annunciation, 6.1cm wide; the second a rectangular box printed with a courting couple standing beside an urn on plinth in a rural setting, 5.9cm long; together with a circular box printed with a young maid eating berries, with a marbled blue and white base, 4.5cm diameter; and a further oval box with red printed scene of a lady seated in architectural garden, with a young man attentively playing the flute, 5.5cm wide

£250-350



Jewellery

279

An antique carved hydrogrossular garnet intaglio of Athena in later composite ring setting, the oval panel carved with Athena, standing partially disrobed holding a helmet and spear, with a shield at her feet, to a later composite ring setting, finger size H, 3.9g gross

£200-300

280

A late 19th century black pressed glass intaglio of Cupid with a lion, the cushion shaped pressed glass panel with Cupid walking alongside a lion, his bow discarded on the floor, within a gold ropetwist surround, finger size M, 4.1g gross

£200-300

281

A late 19th century glass intaglio ring, the pressed glass intaglio of a bacchante, shown in profile with her hair decorated with a vine, in a gold collet setting, to tapered broad shank, finger size L, 10.7g gross

£200-300

282

A mid Victorian gold Celtic cross Tay pearl pendant, circa 1860, the Celtic cross with white and black enamel decoration, set with graduating half Tay pearls, 8.2cm long, 12.2g gross

£150-250

283

A pair of French early 20th century diamond earrings, circa 1910, the old brilliant cut diamonds within raised pierced arrow shaped gallery, with rose cut diamond surmount, approximately 0.45 carats total, to hinged shepherds hook fittings, both numbered 2920 and stamped with French gold poinçon, 1.4cm long; and a pair of French early 20th century pearl and diamond flower head earrings, circa 1910, the quatrefoil of pearls and simulated pearls centred with a rose cut diamond, above polki diamond set

pointed panels, to hinged shepherds hook fittings, stamped with French gold poinçon, 1.5cm long; 5.8g gross

£300-500

284

A single strand of cultured pearls, the graduated pearls measuring from 2mm to 5.5mm, to an eight cut diamond accented clasp, stamped 9ct plat, 40cm long, 6.6g gross

£150-250

285

A diamond and amethyst flower head cluster ring, the central circular cabochon amethyst within a surround of old cut diamonds, approximately 2 carats total, to a reeded shank, finger size L 1/2, 9.6g gross

£300-500

286

A garnet and diamond navette shaped cluster ring, the mixed cut garnets within a surround of rose cut diamonds, the panel measuring 3.3cm long, finger size P, 6.9g gross

£200-300

287

A late Victorian 9 carat gold watch chain, the pierced lozenge and faceted belcher links to a lobster claw clasp and T bar attachment, stamped JM 9c, 36cm long, 20.3g

£250-350

288

A late 19th century 18 carat gold fancy link Albert chain, the rectangular shaped double tube links interspaced with circular links, to a lobster claw and ring bolt attachments, with partial 18 carat gold hallmark, 38cm long, 53.7g

£600-800

289

A late 19th/early 20th century gold prospectors watch chain, the graduating nuggets of gold joined

by belcher links, to a lobster claw clasp stamped 14k B, 27.5cm long, 27.3g gross

The 14k stamp is a common control mark used in America around the turn of the 20th century, it is possible that this chain originates from gold mined in western North America or Canada at this time

£800-1,200

290

A jeweller's coin bracelet, the Ottoman style jewellers copy coins to a concealed clasp, 19cm long, 32.3g gross

£600-800

291

An early 20th century demantoid garnet stickpin, the entwined initials LS set with graduated round cut demantoid garnets, panel 1.4cm long, 2.9g gross

£80-120

292

A late 19th century French Diamond locket on chain, circa 1890, the hexagonal panel centred with an old cut diamond, approximately 0.35 carats, within a polished scrolled surround, with a hinged glazed panel, stamped with French gold poinçons, 4.2cm long, to a fancy link chain with applied disc panels, stamped with French gold poinçons, 31cm long, to a later belcher link extension chain, stamped 9ct, 25.5cm long, 58.7g gross

£1,200-1,600

293

A late 19th century French half pearl and rose cut diamond trèfle bangle, circa 1880, the trios of half pearls with rose cut diamond highlights on the form of five clover leaves, the tongue stamped with French gold Poinçon, inner width 5.8cm, 27g gross

£600-800



294 Y

A 19th century and later coral necklace, the central panel set with carved acorns, fruits, buds and a rose, to three rows of uniform coral beads, to an oval coral clasp, 44cm long, 31.6g gross

£200-300

295

An early 20th century turquoise matrix bead necklace, the two rows of graduated oval beads, measuring 10mm to 23mm, set with panels of turquoise matrix to a black resin, and silver coloured wire detailing, to a gold coloured ring bolt clasp stamped 9c, shortest length 45cm long, 118g gross

£100-150

296

A pair of early 20th century blue and white paste ear pendants, the blue and white paste cluster drops suspended by white paste set leaf shaped panels, to shepherds hook fittings, 4cm long, 7g gross

£80-120

297

A citrine dress ring and brooch, the ring with a circular cut citrine in a foliate engraved claw setting, to a later ring setting, finger size O; together with a late Victorian citrine brooch, the oval cut citrine within a ropetwist wire accented surround, with beaded detail, 3.5cm long, 17.8g gross

£150-250

298

A turquoise matrix and freshwater pearl pendant necklace by Murrle Bennett & Co., circa 1900, the central shaped scrolled panel centrally set with an ovoid cabochon turquoise matrix, suspending three baroque freshwater pearls, suspended from belcher link chains with whiplash motif panels, stamped with Murrle Bennett maker's mark and 15ct, 45cm long, 15.6g gross, in an associated purple velvet case

The pearls are untested and unwarranted as natural pearl

£600-800

299

A pair of mid Victorian gold amphora ear pendants, circa 1860, the amphora shaped drops with applied ropetwist and beaded decoration, with later stud fittings, 5.3cm long, 8.9g gross; together with a pair of Victorian jet earrings, the polished circular cabochon jet pediments with fish hook fittings, suspending carved foliate drops, 6cm long, 6.8g gross

£300-500

300

A 1920s 15 carat gold serpent bracelet, the naturalistic head clasp set with a central oval cabochon opal, with ruby eyes, stamped 15ct BE, to a woven link bracelet, 15.5cm long, 16.3g gross

£300-500

301

A late Victorian turquoise bracelet, circa 1890, the curb link bracelet set throughout with circular cabochon turquoise, to a concealed clasp stamped 15ct, 19.2cm long, 37.9g gross

£500-700

302

An Edwardian gate link bracelet, circa 1910, the polished brick and shaped links to a concealed clasp, 19cm long, 19.1g gross

£300-500

303

A continental gold coloured chain, the ropetwist chain with rubbed continental marks, stamped 750, 72cm long, 21.9g

£350-450



304

A late Victorian diamond and pearl brooch/pendant, circa 1890, the pierced panel with a central pearl and old cut diamond open flower head, with scrolled old cut diamond foliate detail and diamond bud drops, approximately 1.48 carats total, with a later screw in brooch fitting, 4.8cm long, suspended from a belcher link chain, 41cm long, 10.3g gross

Please note the pearls are untested and unwarranted for natural origin

£700-1,000

305

An Edwardian aquamarine, seed pearl and diamond necklace, circa 1910, the front panel with a curved knife edge bar with a central cushion shaped aquamarine and seed pearl accents, to circular cut aquamarine terminals with rose cut diamond ribbon detail, suspending a seed pearl set chain to a rose cut diamond and seed pearl tassel drop, 6.5cm long, with a belcher link back chain, 39cm long, together with a pair of circular cut aquamarine and seed pearl set chain drop earrings, 2.3cm long, 7.2g gross, in an associated Elkington & Co.Ltd. case

£700-1,000

306

An Edwardian diamond, emerald and pearl leaf brooch/pendant, circa 1905, the pierced maple leaf set with old cut and rose cut diamonds, approximately 0.28 carats total, to a small section of branch set with circular cut emeralds, suspending an articulated pearl drop, with removable screw in brooch pin and clasp, 3.9cm long, 7.8g gross

Please note the pearls are untested and unwarranted as natural pearl

£200-300

307

A French Art Nouveau diamond, pearl and enamel brooch, circa 1905, the trio of textured green enamelled leaves with a spray of rose cut diamond set leaves and pearl flower heads on knife edge bars, a French poincon to the reverse, suspending a later simulated pearl with a diamond accent, 3.1cm long, 6.8g gross

Please note the pearls are untested and unwarranted as natural pearl

£200-300

308

A single stone diamond ring, the old cut diamond estimated to weigh 0.75 carats, within a rose cut diamond accented surround, finger size L 1/2, 2.1g gross

£1,000-1,500

309

A diamond, sapphire and ruby three stone cluster ring, the brilliant cut diamond estimated to weigh 0.22 carats claw set above a circular cut ruby and sapphire, the shank stamped 585 with maker's mark FE within a diamond shaped punch, numbered 24723?, finger size H 1/2, 2.2g gross

£250-350

310

A mid 20th century diamond and emerald cluster ring, the central step cut emerald with canted corners, within a surround of old brilliant cut diamonds, approximately 0.30 carats total, to trifurcated shoulders, the shank numbered 1803, finger size I, 3.2g gross

£300-500

311

A mid 20th century diamond pin brooch, the tapered bar set with graduated eight cut diamonds, to an old brilliant cut diamond terminal, approximately 0.47 carats total, later signed Cartier London, 5.4cm long, 3.8g gross

£600-800

312

A late Victorian diamond bar brooch, circa 1900, the gold backed silver bar set with graduated old cut diamonds, approximately 1.48 carats total, 5.4cm long 5.1g gross, in a J.W. Benson Ltd. case

£700-1,000

313

A 1920s diamond bracelet, the graduated articulated squared millegrained panels each set with an old brilliant cut diamond, approximately 2 carats total, to an expandable bracelet strap, stamped E&H33 18ct, 15cm long, 9g gross

£1,000-1,500

314

A Victorian double heart bar brooch, circa 1890, the double heart with bow surmount set with old cut diamonds, approximately 0.56 carats total, to a knife edge bar with pearl terminals, 3.9cm long, 4.8g gross

£200-300

315

An Edwardian Naval crown sweetheart brooch, circa 1910, the crown set with old brilliant cut and rose cut diamonds, approximately 0.60 carats total, to a polished bar stamped 15ct Plat, 6.4cm wide, 7.8g gross

£300-500

316

A 1950s diamond and enamel Royal Navy sweetheart brooch, the laurel leaves set with eight cut diamonds, approximately 0.74 carats total, with a red enamelled crown, the reverse stamped Pt with maker's mark A&W, 2.8cm wide, 7.3g gross

£200-300

317

A mid 20th century diamond panel brooch, the pierced panel set with eight cut, brilliant cut and triangular cut diamonds, approximately 0.97 carats total, 3.3cm wide, 5.5g gross

£300-500

318

A mid 20th century sapphire and diamond double clip brooch, the pierced geometric panels set with eight cut and old brilliant cut diamonds, with baguette cut diamond accents, 2.60 carats total, with vari cut sapphires, with removable brooch fitting, 5.3cm wide, 23.5g gross

£1,000-1,500

319

An early 20th century amethyst and diamond heart pendant, the heart shaped faceted amethyst estimated to weigh approximately 80 carats, with a rose cut diamond set attachment, to a rose cut diamond set bow shaped panel, 4.5cm long, suspended from a belcher link chain, 36cm long, stamped 9ct, 31g gross

£1,000-1,500



320

A early 20th century enamelled salmon and fishing rod brooch by Alabaster & Wilson, the leaping salmon with naturalistic enamelling, stamped silver, set behind a gold coloured fishing rod, stamped A&W and 9ct, 6.4cm long, 4.9g gross

£200-300

321 Y

An Art Deco mother of pearl gentleman's dress set, circa 1920, the pair of cufflinks and four buttons composed of squared of mother of pearl panels centred with a crossed wire thread motif, stamped EAP 9ct, 11mm wide, the cufflinks with belcher link connectors, together with a matching pair of dress studs, the squared panels measuring 5mm wide, 12.8g gross, in fitted case

£250-350

322 Y

A set of six early 20th century mother of pearl and enamel buttons, circa 1920, the circular mother of pearl panels with ropetwist gold button thread centres, to blue enamelled borders, stamped 9ct, in original purple leather gold tooled case

£100-200

323

A pair of late Victorian diamond and red enamel cufflinks, circa 1900, the cufflinks with circular red enamelled target panels, 1.5cm diameter, each centrally set with an old cut diamond, approximately 0.16 carats total, stamped 18 with registration number Rd602584, to belcher link connectors, 10.9g gross, in an associated blue velvet lined cufflink case

£250-350

324

An early 20th century two colour gold Albert chain, the baton links of alternating white and yellow gold, to later lobster claw and ring bolt clasp, 39cm long, 10.6g gross

£150-250

325

A pair of red enamelled diamond cufflinks, the red enamelled octagonal panels each centred with a brilliant cut diamond, 13mm wide, bar connectors, to a polished gold coloured panel, the connectors stamped 750 with Italian control marks, 8.6g gross

£200-300



326

An Edwardian seed pearl and aquamarine pendant, circa 1910, the pierced circular panel set with three graduated circular cut aquamarines with seed pearl accents at the cardinal points, to half seed pearl set leaf detail and border, 3.1cm diameter, suspended from a curb link chain, the ring clasp stamped 9ct, 51cm long, 10g gross

£150-250

327

A peridot, amethyst and seed pearl necklace, the graduated drops set with alternating pear cut peridots and amethysts suspended from seed pearl set trefoil leaves, to a belcher link chain with a barrel clasp, partial 9 carat gold hallmark, 40cm long, 8.1g gross

£200-300

328

An Edwardian half pearl necklace with brooch/pendant, circa 1910, the necklace with articulated half pearl set foliate panels to a central flower head with a suspensory hook verso, to a ropetwist back chain, 38cm long, with a seed pearl set brooch/pendant, stamped 15ct, 3.6cm long, 17.4g gross, in a fitted Thos Lancaster Whipp Rochdale case

£600-800

329

An Edwardian aquamarine and seed pearl pendant, the oval cut aquamarine within a surround of half seed pearls, to a pierced lobed setting with half seed pearls to the cardinal points, stamped 9ct, 4.1cm long, suspended from a later 9 carat gold box link chain, 44cm long; together with a pair of aquamarine and cultured freshwater pearl earrings, the screw fittings stamped 9ct, 2.3cm long

£120-160

330

An Edwardian seed pearl and diamond necklace, the gold necklace with graduated seed pearl set articulated vine leaf panels, to a belcher link back chain, to a box clasp, 41cm long, suspending a diamond and seed pearl cluster pendant/brooch, the circular panel with leaf detail and old cut diamond accents, approximately 0.21 carats total, 2.4cm diameter, 15.6g gross, with additional hair slide attachment and fitted case

£600-800

331

An Edwardian half pearl and aquamarine hinged bangle, circa 1910, the front with curved interlocking foliate panels set with graduated half pearls, to a central circular cut claw set aquamarine, stamped 15ct, with belcher link safety chain, 5.5cm inner width, 9.4g gross

£400-600



332

A 1920s gold Murrel Bennett & Co. ruby, seed pearl and moonstone brooch, the central oval cabochon moonstone, within a pierced surround with half seed pearl set leaves and pairs of circular cut rubies between, stamped with maker's mark and 15c, 2.5cm long, 4.9g gross

£80-120

333

A 1970s 18 carat gold abstract sapphire brooch, the central cluster of circular cut sapphires within a textured radiating setting, London 1970 import marks, 3.6cm wide, 8.6g gross; together with a 1970s sapphire and cultured pearl spray brooch, stamped 9ct, 5.5cm long, 4.7g gross

£250-350

334

A diamond set two colour ring, with polished crossover bands and two bands set with brilliant cut diamonds, approximately 0.38 carats total, finger size N, 4g gross

£100-150

335

A sapphire and diamond cluster ring, the central oval cut sapphire claw set within a surround of eight cut diamonds, approximately 0.30 carats total, finger size T, 2.6g gross

£100-150

336

A sapphire dress ring, the Retro style ring with channel set step cut and a French cut sapphire, to stepped shoulders, set with pear cut white stones, stamped 585, finger size O, 9.4g gross

£200-300

337

A sapphire and diamond dress ring, the trio of oval cut sapphires collet set above two rows of brilliant cut diamonds, approximately 0.50 carats total, the shank stamped 750 with Italian control marks, finger size O, 6.9g gross

£300-500

338

A Lebanese gold coloured woven bracelet, the woven mesh bracelet with applied gold polished dome accents, to a concealed clasp stamped with Lebanon post 1953 gold control marks, 20cm long, 25.1g

£500-700

339

A gold coloured double hoop ring by Pomellato, the softly undulating brushed gold hoops joined at a point, signed Pomellato and stamped 750 with Italian control marks, finger size M 1/2, 20g

£400-600

340

A ruby and diamond dress ring, the trio of oval cut rubies collet set above two rows of brilliant cut diamonds, approximately 0.50 carats total, the shank stamped 750 with Italian control marks, finger size P, 6.8g gross

£300-500

341

A ruby and diamond cluster dress ring, the central oval cut ruby within a surround of brilliant cut and triangular cut diamonds, approximately 1.80 carats total, to bifurcated shoulders, finger size M, 7.9g gross

£800-1,200

342

A diamond, ruby, emerald and bouton pearl cat brooch, the cat pavé set with rose cut diamonds, with a mixed cut ruby collar and cabochon emerald eyes, playing with a bouton pearl ball, above sugar tong style bars, 5.9cm long, 15.5g gross
Please note the pearl is untested and unwarranted for natural origin

£1,000-1,500

343

A pair of diamond ear hoops, the hoops set throughout with brilliant cut diamonds, approximately 3.80 carats total, 4.7cm diameter, 17.8g gross

£1,200-1,800



344

A South Sea cultured pearl and diamond necklace, the belcher link necklace with brilliant cut diamond spacers, each suspending a graduated South Sea cultured pearl, approximately 0.64 carats total, to a lobster claw clasp stamped 750, 39cm long, together with a matching pair of ear pendants, the brilliant cut diamond stud pediments suspending a belcher link chain to a South Sea cultured pearl terminal, 3.9cm long; 33.5g gross

£800-1,200

345

An emerald and diamond seven stone ring, the step cut emerald with canted corners, flanked by two trios of brilliant cut diamonds, approximately 0.84 carats total, finger size N, 4.6g gross

£400-600

346

An emerald and diamond crossover ring, the step cut emerald with canted corners, to crossover old cut and brilliant cut diamond shoulders, approximately 0.48 carats total, finger size M 1/2, 6.3g gross

£300-500

347

A diamond and emerald dress ring, the central step cut emerald with canted corners within a pavé surround of brilliant cut diamonds, approximately 1.70 carats total, the shank stamped with Italian control marks, finger size M, 7.5g gross

£700-1,000

348

An emerald and diamond dress ring, the step cut emerald with canted corners, set above a shaped pavé set brilliant cut diamond setting, approximately 1.68 carats total, finger size M, 13.6g gross

£800-1,200

349

A 1960s 9 carat gold bracelet, the broad bracelet composed of alternating shaped textured and polished hexagonal links, stamped with Italian control marks and Sheffield 1964 import marks, 20cm long, 14.7g gross

£150-250

350

An emerald and diamond line bracelet/necklace, the slightly graduated oval cut emeralds interspaced with duos of brilliant cut diamonds in gold coloured settings, approximately 1.28 carats total, to a concealed clasp, 17.4cm long, with necklace extension, the emerald and diamond set end pieces to a flattened curb link chain, 17cm long, 17.3g gross

£600-800

351

A green tourmaline and diamond three stone ring, the central step cut green tourmaline with canted corners, set between two baguette cut diamonds, approximately 0.16 carats total, stamped 18ct, finger size P, 3.9g gross

£80-120

352

A pair of diamond accented ear hoops by Anita Ko, the brilliant cut diamond pediments above gold coloured polished tubular hoops, approximately 0.26 carats total, signed Anita Ko and stamped 18k 750, 5cm diameter, 8.7g gross

£200-300



353 Y

A pair of coral and diamond ear studs, the circular cabochon coral measuring 1.5cm diameter, the brilliant cut approximately 0.16 carats total, 1.9cm long, with stud and clip fittings; together with a pair of coral ear studs, the circular cabochon coral to stud backs, 9.5mm diameter; 13.3g gross

£400-600

354 Y

A two row coral bead necklace, the graduated coral beads measuring 7mm to 11mm, to a floral carved coral panel clasp with a gold coloured setting, stamped 585 14k with maker's mark K.S, shortest length 53cm long, 103.3g gross

£500-700

355

A vintage curb link charm bracelet, the bracelet suspending various 9 carat gold charms including, an owl, an egg, a magicians hat which opens to reveal a rabbit, and various others, with heart shaped padlock clasp, 16.5cm long, 47.3g gross; together with a polished 9 carat gold stock pin, 3.8cm long, 1.4g, in an associated Collingwood (Jewellers) Ltd box

£300-500

356

A vintage charm bracelet, the 9 carat gold curb link bracelet suspending various charms, including a George III spade guinea, a Victorian quatrefoil hardstone fob, two locket, further 9 carat gold and other charms, with later ring bolt clasp, 19cm long, 118.5g gross

£700-1,000

357 Y

A graduated coral bead necklace, the polished coral beads measuring 13mm to 17mm, with smaller coral bead spacers, to a silver coloured disc shaped clasp, 51cm long, 116.6g gross; together with a simulated coral bead necklace, 63cm long

£600-800

358 Y

A graduated coral bead necklace, the graduated coral beads measuring 11mm to 16mm, to a reeded clasp stamped 750 with Italian control marks, 81cm long, 173g gross

£600-800



359

A blue topaz and diamond pendant, the rectangular cut blue topaz, estimated to weigh 90.00 carats, claw set within a surround of brilliant cut diamonds with marquise cut diamonds at the cardinal points, approximately 2.30 carats total, 5.8cm long, on a curb link chain, stamped 750, 50cm long

£800-1,200

360

A 1950s silver brooch by Georg Jensen, No 178, the pierced oval panel with flower, leaf and scroll detail, the reverse with Georg Jensen maker's mark, hallmarked London 1957, 5.1cm long, 7.4g gross

£80-120

361

A pair of 1960s garnet earrings and brooch, the brooch with a pierced oval panel set with an oval cabochon garnet, suspending a similar garnet set drop, hallmarked London 1966, 6.4cm long, together with a pair of matching garnet set ear pendants, 4.5cm long; 31g gross

£400-600

362

A 9 carat gold 1970s hawk's eye pendant, the oval cabochon hawk's eye within a textured geometric surround, stamped H&M and hallmarked London 1973, with detachable textured bale, 9cm long, 54.4g gross

£500-700

363

A pair of stirrup shaped cufflinks, the curb link style hoops with polished swivel bars, stamped 18k Italy, the bars 2.5cm long, 13.3g, with an associated Cartier box; together with a pair of onyx and gold coloured cufflinks, the graduated onyx batons within a coil of ropetwist wire, to belcher link connectors, 6.8g gross

£300-500

364

A 1970s amethyst dress ring, the amethyst crystal within an enclosed textured undulating bar setting, to polished shank, finger size M, 21.4g gross

£300-500

365

A citrine dress ring, the oval cut citrine estimated to weigh 71.40 carats, to a polished wirework setting with bead accent, finger size M 1/2, 29.3g gross

£500-800



359



360



363



361



362



363



361



364



365

366

A green tourmaline and diamond three stone ring, the step cut tourmaline with canted corners, between two brilliant cut diamonds, approximately 0.20 carats total, partial 18 carat gold hallmark, finger size N 1/2, 4.8g gross

£200-300

367

A diamond and aquamarine seven stone ring, the step cut aquamarine flanked by two trios of brilliant cut diamonds, 0.30 carats total, finger size M 1/2, 4.7g gross

£250-350

368

A diamond drop necklace, the front set with brilliant cut diamonds, suspending brilliant cut and marquise cut diamond drops, approximately 2.07 carats total, to a fancy link necklace, 44cm long, 12.5g gross

£800-1,200

369

A mabé pearl and diamond ring, the mabé pearl measuring 13mm diameter, flanked by two trios of brilliant cut diamonds, approximately 0.32 carats total, finger size K, 7.2g gross

£300-500

370

A pair of diamond and onyx ear pendants, the circular cabochon onyx panels enclosed by swirls of brilliant cut diamonds and a brilliant cut diamond border, approximately 0.86 carats total, suspended by polished hinged hoop surmounts, stamped 750, 2.8cm long, 7.3g gross

£250-350

371

A three stone diamond ring, the central old mine cut diamond estimated to weigh 0.93 carats, flanked by two old brilliant cut diamonds, approximately 0.42 carats total, finger size N 1/2, 5.1g gross

£600-800

372

A diamond dress ring, the pierced looped panel set with eight cut

diamonds, approximately 0.63 carats total, stamped 750, finger size N, 7g gross

£300-500

373

A seven stone diamond ring, the brilliant cut diamonds in a channel setting, approximately 0.56 carats total, platinum setting, finger size P, 3.9g gross; together with a 9 carat gold diamond band ring, the sixteen brilliant cut diamonds in a channel setting, approximately 0.16 carats total, finger size P, 3.7g gross

£150-250

374

A diamond eternity ring, set with eight and old brilliant cut diamonds, approximately 0.48 carats total, finger size M, 3.3g gross; together with a band ring with foliate engraved decoration, inscribed C.B. 14. X. 38. W.B. and stamped Platinum, finger size L, 3.6g

£250-350

375

A sapphire and diamond cluster ring, the oval cut sapphire within a radiating surround off baguette cut diamonds, approximately 0.36 carats total, stamped 18k, finger size P, 4.6g gross

£150-250

376

A sapphire and diamond cluster ring, the central brilliant cut diamond estimated to weigh 0.80 carats, claw set above marquise cut sapphire and brilliant cut diamond surround, the shank stamped 18ct, finger size M 1/2, 6.3g gross

£200-300

377

A yellow diamond and diamond cluster ring, the natural fancy yellow diamond weighing 2.50 carats, within a double surround of brilliant cut diamonds, to bifurcated brilliant cut diamond accented shoulders, approximately 0.68 carats total, finger size O, 6.5g gross

Offered for sale with a Gemmological Institute of America Coloured Diamond Identification and Origin Report, dated November

02, 2011, number 6147043674, stating:

Origin Natural
Grade Fancy Yellow

£3,000-5,000

378

A pair of diamond and sapphire drop ear pendants, the articulated entwined panels set with brilliant cut and eight cut diamonds, with marquise cut sapphire accents, to an eight cut diamond and sapphire marquise shaped cluster panel, approximately 1.86 carats total, with clip fittings, 6.2cm long, 20.7g gross

£500-800

379

A sapphire and diamond bee brooch, the pierced wings and abdomen set with brilliant cut diamonds, approximately 0.96 carats total, with an oval cut sapphire thorax, and emerald set eyes, 2.3cm long, 6.2g gross

£200-300

380

A pair of sapphire and diamond cluster ear studs, the circular panels centred with a circular cut sapphire within a surround of eight cut diamonds, approximately 0.36 carats total, 1cm diameter, 3.9g gross, in an associated Garrard & Co. Ltd. box

£400-600

381

A ruby and diamond ring, the central ruby claw set above channel set step cut diamonds, to brilliant cut diamonds set borders, approximately 0.72 carats total, finger size N, 9.6g gross

£400-600

382

A diamond set hinged bangle, the tubular bangle with brilliant cut diamond accents, approximately 0.25 carats total, the concealed clasp stamped with a Birmingham 18 carat gold import mark, inner width 6.2cm, 21.3g gross

£500-700



383
Stephen Webster, Jewels Verne Sushi Hematite Crystal Haze and diamond bangle, the hinged white gold bangle with brilliant cut diamond accented bone style cage holding a facettted hardstone interior, approximately 2 carats total, with Stephen Webster maker's mark and numbered SW564, hallmarked London 2009, inner width 5.5cm, 47.4g gross

£600-800

384
A diamond Love ring by Cartier, alternately set with brilliant cut diamonds and screw motifs, the shank signed Cartier and numbered G37756, stamped 750 with Swiss gold control mark, finger size N 1/2, 9.9g

£500-800

385
A pair of diamond cufflinks by Mouawad, the cushion shaped panels set with a diamond and brown diamonds, approximately 1.36 carats total, the bars signed Mouawad, with swivel terminals, 15.1g gross, with original Mouawad box

£600-800

386
A baguette cut diamond dress ring, the two vertical bars set with baguette cut diamonds, approximately 0.70 carats total, to a tapered polished shank, stamped 750, finger size R, 7.8g gross

£150-250

387
A pair of diamond cufflinks, the

pierced circular panels set with rose cut diamonds, each centred with an old cut diamond, approximately 1 carat total, 1.4cm diameter, with belcher link connectors, 9.3g gross

£400-600

388
A diamond and white ceramic Ultra ring by Chanel, the polished ceramic links to brilliant cut diamond accented bars, approximately 0.30 carats total, to a central panel signed Chanel and hallmarked London 2007, finger size N 1/2, 17.4g gross

£300-500

389
A watermelon tourmaline gift brooch, the strawberry shaped panel set with a central step cut tourmaline within a surround of oval cabochon tourmalines, within a brilliant cut diamond cross banded setting, and brilliant cut diamond bow surmount, approximately 1.76 carats total, stamped 750, 5.8cm long, 41.4g gross

£1,000-1,500

390
A pair of two colour blue topaz cufflinks by Trudel, the stirrup shaped cufflinks each set with a step cut blue topaz, signed Trudel and stamped 750, 1.7cm long, 20.8g gross

£400-600

391
A pink tourmaline and pink sapphire dress ring, the central step cut tourmaline with canted corners, within a pavé set round cut pink sapphire surround, the shank stamped 18k 750 and 12.35

and PS3.14 indicating stone weights, finger size O 1/2, 15.2g gross

£1,000-1,500

392
An Astro Ball Libra pendant on chain by Stephen Webster, the purple facettted ball with a coiled serpent to the front with green stone eyes, suspending two arrow shaped drops pavé set with black stones, stamped 925 with maker's mark, 6cm long, suspended from an oxidised silver belcher link chain, 78cm long, 53.9g gross

£100-200

393
A silver coloured hinged bangle by Hermès, with shaped tapered curved interlocking panels, stamped Hermès Au925s with French silver poincons, inner width approximately 5.5cm, 174.5g, with a Hermès pouch

£200-300

394 Y
A bangle and three dress rings by Kara Ross, the bangle with geometric panels set with circular cut white stones and facettted mother of pearl panels, with a hinged arm, pierced with Kara Ross to the reverse and stamped 925, inner width 5.8cm ; together with a matching dress ring finger size O; a further black version dress ring, finger size O 1/2; and a black panel cluster dress ring, finger size N 1/2

£200-300



395

A citrine dress ring by H. Stern, the step cut citrine with canted corners, set above a star shaped panel set with a single small diamond, the shank with maker's mark and 750, finger size N, 11.3g gross; together with an unset citrine in a H Stern box

£400-600

396

A pair of brown diamond and citrine cufflinks by Ashley, the step cut citrines within a surround of brilliant cut brown diamonds, approximately 2.24 carats total, 1.8cm wide, the setting signed Ashley, to bar attachments with swivel terminals, 18.1g gross, in a Mouawad box

£600-800

397

A gold coloured dress ring, the shaped slightly concave panel stamped 18K RLM, finger size approximately L, 14g

£250-350

398

A gold coloured domed dress ring, the panel shaped to fit over a knuckle, stamped 18k RLM, finger size approximately M-N, 25g gross

£500-700

399

A pair of sapphire cufflinks, the bar connectors with step cut sapphire set pierced swivel terminals, stamped 750, 3.8cm long open, 19.4g gross

£300-500

400

A diamond and sapphire knot pendant, the pierced knotted panels set with either circular cut

sapphires or brilliant cut diamonds, approximately 0.48 carats, stamped 750, 4.2cm long, 11.6g gross

£200-300

401

An amethyst and turquoise Menotte dress ring by Cartier, the crossover panels channel set with step cut amethyst, with polished pointed turquoise accents, signed Cartier and numbered 29549A, 18 carat gold hallmarked, with French poincons, finger size M 1/2, 12.8g gross

£700-1,000

402

A diamond and smoky quartz Horse Bit dress ring by Hermès, the domed smoky quartz between brilliant cut diamond set snaffle shoulders, to a brilliant cut diamond surround, approximately 1.06 carats total, the shank signed Hermès and stamped 750, with Swiss control mark, finger size L 1/2, 14.9g gross

£800-1,200

403

Two gold coloured mid 20th century bead necklaces, the uniform gold coloured beads measuring 1cm diameter, on a gold chain, 40.5cm long and 44cm long, 86.1g gross

£1,200-1,800

404

A gentleman's sapphire dress set, the cufflinks each set with an oval cut sapphire within a claw setting, to swivel backs, together with five sapphire studs, 15.9g gross

£250-350

405

A nephrite Eternal Circle necklace by Elsa Peretti for Tiffany & Co.,

the polished nephrite pendant measuring 1.6cm diameter, suspended by an 18 carat gold belcher link chain, signed Elsa Peretti and Tiffany & Co., 41cm long, 3.9g gross; together with a silver coloured pierced rectangular pendant by Tiffany & Co., stamped T&Co. 925 Germany, 3.8cm long, 5.5g gross

£80-120

406

A two colour dress ring by Pesavento, with polished intersecting panels, stamped 750, signed Pesavento and Italian control marks, finger size N 1/2, 22.5g

£400-600

407Y

A pair of American inlaid hardstone mosaic earrings by Asch Grossbardt, the squared panels set with various hardstones, coral and mother of pearl to form abstract faces, with brilliant cut diamond accents, approximately 0.16 carats total, signed to the reverse and stamped 14k, with stud and clip fittings, 2cm long, 15.2g gross

£300-500

408

A Trinity ring by Cartier, the three colour interlocking rings, signed Cartier and numbered DS1160, approximate finger size L, 14.7g

£350-450

409

A Must de Cartier Trinity ring, the interlocking three colour rings, signed Must de Cartier and numbered A0910X, with French poincons, finger size M, 8.2g

£200-300



Luxury Accessories



410Y
Hermes, a red alligator Collier de Chien bracelet, the cuff with chrome hardware stud detail, stamped Hermes Paris, Made in France, numbered NN40, 20.5cm long; together with a cream leather cuff, with rose coloured metal hardware, with swivel clasp, stamped Hermes Paris, Made in France, numbered T MZ 9 CH S, 21cm long; with three squared stud slides, each stamped Hermes

£200-300



411
Louis Vuitton, a pair of gold plated handcuffs bracelet, circa 2011, each cuff 7.5cm diameter, accompanied by a Louis Vuitton pouch

£300-500



412
Chanel, a pair of faux pearl oversized clip earrings, the circular mounts modelled as linked chain, 3.5cm diameter; and a Chanel gilt oval bracelet, chased with cushioned decoration, 7cm wide

£200-300

413
Chanel, a black quilted lambskin shoulder bag, circa 1996-1997, with double woven yellow hardware chain handles, with two exterior pockets and central zipped pocket, the zipper with leather and yellow hardware Chanel tag, the leather interior with a pocket and zipped pocket, stamped Chanel Made in Italy, hologram number 4230064, 28 x 18 x 9cm, with Chanel dust bag

£400-600



414
Chanel, a vintage black leather flap bag, the yellow metal hardware chain with woven leather strap, the single flap with a double C twist lock, the burgundy fabric interior with a zip pocket, and gold coloured stamp Chanel Made In France, 24 x 14 x 5cm, with Chanel bag and box

£250-350

415
Celine, a blue leather handbag, blue leather bag with a single handle, the flap with a yellow hardware flip clasp, the red leather interior with a small zipped pocket, with an interior leather panel printed Celine Paris Made in Italy M16 1, 23 x 20 x 10cm

£70-100



413

414



415



416Y

Dolce & Gabbana, a python skin handbag, the single strap to signed white metal hardware loops, with signed white metal hardware clasp and pieced hardware detail, with monogrammed fabric interior, with a single internal zipped pocket with an applied white metal hardware plaque signed Dolce & Gabbana Made in Italy, approximately 38 x 20 x 10cm

£80-120

417Y

Fendi, Baguette, a black silk and leather handbag, the silk bag with faux crocodile leather handle and detailing, the signed yellow hardware clasp with white crystal accents, the interior with a zipped pocket with a yellow metal hardware plaque stamped Baguette Made In Italy Fendi, approximately 25 x 14 x 4cm, with a Fendi pocket mirror, 6.5cm x 5cm x 2mm, in a suede pouch; and a black python skin clutch bag by Judith Leiber, the pleated clutch with yellow metal hardware and black resin thumb piece, the gusseted interior with a signed yellow hardware panel, a tuck in shoulder strap which folds into a small pocket, and a zipped internal pocket, 21 x 27.5 x 4.5cm, with a Judith Leiber dust bag

416



417

£80-120



418

418

Prada, a dusky pink leather shoulder bag, the bag with two length straps, with polished white metal hardware, the single flap with a signed lockable slide button clasp, key for lock, the black and dusky pink leather interior with two main gusseted sections, one with a popper close pocket, and two addition interior pockets, black enamelled white metal hardware Prada panel, 23.8 x 15 x 5cm, with a Prada dust bag

£70-100

419Y

Prada, a beige fabric and python handbag, the beige woven fabric to brown leather D shaped handles and python trim, with leather lining to three inner compartments and a zipped pocket, with associated Prada chain handle, interior leather Prada panel, approximately 33 x 19 x 10cm

£80-120



419



420

420

Prada, a black leather handbag, the black leather bag with two side pockets and single handle, and additional black leather shoulder bag strap, with applied yellow hardware Prada detail, the monogrammed fabric interior with a zipped pocket, approximately 36 x 18 x 12cm, with a Prada dust bag

£70-100

421

Prada, a black leather shoulder bag, with adjustable woven fabric strap, the black leather bag with a popper closing outer pocket and white metal hardware with black enamelled detail, monogrammed fabric lined zipped interior, with an interior zipped pocket, 30 x 25 x 6cm, with Prada dust bag

£60-80



421



422

422

Valentino, a brown leather shoulder bag, the brown leather bag with a single leather strap with yellow metal hardware plaited loops, and a plaited yellow metal hardware V clasp, the bag with strap detail and outer pocket, the cream fabric lining with a zipped pocket, with a red fabric Valentino label, approximately 31 x 18 x 10cm; with a small brown leather Lancel Paris coin purse, 11,5 x 8 x 1cm

£70-100

423

Louis Vuitton, a blue taurillon leather Keepall, the rolled leather twin handles with yellow metalware, cream detailing, with fabric monogrammed interior with zip pocket, 42 x 25 x 23cm

£250-350



423



424

424

Louis Vuitton, a brown leather Keepall, with twin looped rolled leather handles, fabric shoulder strap, with distressed look brass coloured hardware, the canvas interior with a zipped pocket, approximately 50 x 33 x 24cm

£250-350

425

Louis Vuitton, Vaslav Carpet Tote bag, Limited Edition 2005, the patterned carpet with mottled brown leather trim, brown leather looped handles, brown ostrich leather key cover and accents, with brass coloured hardware and padlock clasp, the canvas interior with a zipped pocket and four further internal pockets, with label printed Louis Vuitton Paris Made in France, numbered AS0065, 44 x 44 x 18cm

£700-1,000



425



426

426

Louis Vuitton, Monogram, a coated canvas and leather hard vanity case, with leather trim, handle and brass fittings, the lock stamped 162725, Made in France, opening to a leather interior with looped leather straps and mirror set lid, with inner tray with two additional boxes, 40 x 20,5 x 23cm

£200-300



427

427
Louis Vuitton, Monogram, a coated canvas and leather hard suitcase, with leather trim, loop handle and brass fittings, the lock stamped 162726, Made in France, opening to a leather interior with canvas straps, bearing a label numbered 976???, with additional inner tray, 80 x 52 x 25,5cm

£300-500



428

428
Louis Vuitton, Damier, a hard shell suitcase, with monogrammed leather trim, a leather loop handle, two flip locks and a keylock clasp, opening to a red suede interior, with two straps, 63 x 40 x 20cm, with a black canvas dustcover

£600-800



429

429
Louis Vuitton, Damier, a hard shell suitcase, with monogrammed leather trim, a leather loop handle, two flip locks and a keylock clasp, opening to a red suede interior, with two straps, 76 x 50 x 22cm, with a black canvas dustcover

£800-1,200



430

430
A Victorian gold propelling pencil by S. Mordan & Co., the scrolled floral barrel signed S. Mordan & Co. with registration mark for 8th October 1856, 16.9g gross; together with a Victorian silver and gold coloured propelling pencil by Hicks, stamped Hicks Pat. March 21 7, 7.7g gross

£100-200



431

431
A gold filled fountain pen, circa 1900, the black hardened rubber cap and barrel within a gold filled pierced scrolled overlay, the nib stamped Parker Lucy Curve 3, eyedropper filling system, inked

£80-120



432

432
Aikin Lambert & Co., a fountain pen, circa 1904, the cap and barrel with rolled gold woven floral chased decoration, initialled and dated 1904, the nib stamped Aikin Lambert & Co. No 1, eyedropper filling system, inked, with original box; together with a Wahl fountain pen, circa 1920, the silver filled fountain pen with engine turned decoration, the nib stamped Wahl 2 14k, lever filling system, inked

£70-100



433



434



435



436



437



438

433

Dunhill, Namiki, a maki-e lacquered fountain pen, circa 1930, the black lacquer barrel decorated with a branch of wisteria and a seated crested pheasant, the cap decorated with a further branch of wisteria, signed Shozan, with red lacquer Kao and Namiki-kan, the gilt metal clip signed Dunhill, the nib signed Dunhill London 14ct. Namiki Made In Japan, lever filling system, inked

£800-1,200

434

Mabie Todd & Co., Swan Pen, circa 1910, the black resin cap to an engine turned rolled gold barrel, stamped Swan Pen Mabie Todd & Co. New York Made in U.S.A, over/under feed system, inked

£60-100

435

Mabie Todd & Co., Swan Pen Safety Screw Cap Fountain pen, circa 1917, the gold filled metal pierced scrolled case over black resin body, initialled M.T.M 1917, stamped Swan Pen Safety Screw Cap Mabie Todd & Co. New York, over/under feed system, inked, in Swan fountain pen box with pipette

£80-120

436

Mabie Todd & Co. New York, Swan Pen, circa 1920, the engine turned cap and barrel stamped 14k and 14ct, the barrel stamped "Swan Pen" Mabie Todd & Co. New York Made In U.S.A., the barrel engraved with initials, the nib signed Mabie Todd & Co. NY 2, lever filling system, inked, in a Mabie Todd & Co., Ltd Swan Pen card box

£80-120

437

Conway Stewart, 58, a light and dark brown brickwork (tigers eye) fountain pen, circa 1949, the cap with gilt metal clip and bands, the nib signed Conway Stewart 14ct Gold lever filling system, inked

£40-60

438

Omas, Paragon, 75 Years, an arco brown fountain pen, the cap with gilt clip and Greek key cap band, the nib stamped 18K 750, piston filling system, inked

£700-1,000



439

439

Omas, Paragon, 75 Years, an arco brown fountain pen, the cap with gilt clip and Greek key cap band, the nib stamped 18K 750, piston filling system, inked

£700-1,000



440

440

Waterman, Ideal, a silver Filigree fountain pen, circa 1900, the black hard rubber cap and barrel within a scrolled foliate silver overlay, signed Waterman's Ideal Fountain Pen and stamped Sterling, the nib signed Waterman's Ideal Canada 14.585, eyedropper filling system, inked; together with a Waterman's, Ideal, No 412 1/2 Filigree, circa 1914, the black hard rubber within a scrolled foliate sterling silver overlay, signed Waterman's Ideal Fountain Pen and stamped Sterling, the nib signed Waterman's Ideal Reg U.S., eyedropper filling system, inked

£120-160



441

441

Waterman, Ideal, No. 512 1/2, a gold cased fountain pen, circa 1920, the barrel and cap with engraved floral decoration, initialled, signed Waterman's Ideal Fountain Pen 14kt, the nib signed Waterman's Ideal New York 2, lever filling system, inked

£100-200



442

442

Montblanc, Meisterstück, a black fountain pen, the cap with a gilt clip and triple cap band, the two tone nib stamped 14K 585, cartridge filling system, inked

£100-150



443

443

Montblanc, Meisterstück, a black ball point pen, the cap with a gilt clip and triple cap band

£150-250



444

444

Montblanc, Boheme, a black fine liner pen, the cap with a synthetic ruby set clip and cap band

£150-250



445

445
Montblanc, Etoile de Montblanc, a black ball point pen, the cap inset with floating diamond and a white metal clip

£400-600



446

446
Chopard, Ref. T1095 0189, Gilt metal desk clock
Movement: Quartz
Case: Gilt metal case, easel back
Size: 145mm
Signed: Case, dial
Accessories: Chopard box

£300-500



447

447
Cartier, Santos, Ref. 7508, Brass and brown lacquer desk alarm clock, no. 18646
Movement: Quartz alarm
Case: Brass and brown lacquer case, easel back
Size: 73mm
Signed: Case back, dial
Accessories: None

£200-300

Watches

448
Dent, London, 18 carat gold open face pocket watch, no. 6452, circa 1841
Movement: Three quarter plate, bimetallic split balance, flat balance spring
Case: 18 carat gold three piece hinged case, the back cover engraved Mackworth Praed Bulkley John and an armorial
Size: 46mm
Signed: Dial, movement
Accessories: Suspended on a gold coloured chain with a watch key and swivel seal

£700-1,000



448



449

449
Unsigned, Lady's 18 carat gold and diamond wrist watch, no. 148262, circa 1912
Movement: Swiss manual wind, 15 jewels
Case: 18 carat gold, old brilliant cut diamond set bezel, snap case back, import mark for London 1912
Bracelet/Strap: Black leather strap with stainless steel pin buckle
Size: 24mm
Signed: Unsigned
Accessories: None

£400-600

450
Unsigned, Lady's platinum coloured and diamond cocktail watch, circa 1945
Movement: Swiss manual wind, 17 jewels
Case: Platinum coloured case, diamond set bezel and lugs, snap case back, stamped platinum
Bracelet/Strap: Platinum coloured diamond set and expandable link bracelet with box and tongue clasp
Size: 16mm, bracelet 14.5cm
Signed: Unsigned
Accessories: None

£300-500



450



451

451

Rolex, Orchid, Ref. 9809,

Lady's gold coloured bracelet watch, circa 1960

Movement: Manual wind, 17 jewels

Case: Gold coloured case, snap case back, stamped 18K 0.750 with a poinçon

Bracelet/Strap: Rolex gold coloured bracelet with snap clasp

Size: 15mm, bracelet 14cm

Signed: Case, dial, movement, clasp

Accessories: None

£250-350

452

Longines,

Lady's gold coloured bracelet watch

Movement: Cal. L 111.2, quartz

Case: Gold coloured case, screw down crown, screw down case back, stamped 750

Bracelet/Strap: Longines gold coloured block link bracelet with fold over clasp, stamped 750

Size: 24mm, bracelet 16cm

Signed: Dial, movement, clasp

Accessories: None

£400-600



453

453

Boucheron, Reflet,

Lady's gold coloured wrist watch, no. 98468, circa 1977

Movement: Cal. ETA 2512, manual wind, 17 jewels

Case: 18 carat gold case, snap case back, import mark for London 1977

Bracelet/Strap: Boucheron brown leather strap with gold sliding clasp

Size: 22mm

Signed: Case, dial, movement, strap

Accessories: Boucheron pouch

£600-800



452

454

Piaget, Ref. 9451,

Lady's 18 carat gold wrist watch, no. 226312, circa 1973

Movement: Cal. 9P1, manual wind, 18 jewels, adjusted to 5 positions and temperature

Case: 18 carat gold case, screwed down case back with four screws, import mark for Birmingham 1973

Bracelet/Strap: Piaget black leather strap with gold coloured pin buckle, stamped 750

Size: 26mm

Signed: Case, dial, movement, strap, buckle

Accessories: Piaget pouch

£300-500



454



455

455 Y

Hysek, Abyss,

Lady's stainless steel, mother of pearl and diamond wrist watch, no. 108

Movement: Quartz

Case: Stainless steel case, mother of pearl dial, diamond set bezel, screwed down case back with four screws

Bracelet/Strap: Non-original black leather strap with Hysek stainless steel deployant clasp

Size: 38mm

Signed: Case, dial, crown, clasp

Accessories: None

£800-1,200

456

SevenFriday, Ref. SF-M1/01-C158,

Stainless steel and PVD wrist watch

Movement: Miyota automatic, 21 jewels

Case: Stainless steel and PVD case, screwed down case back with eight screws

Bracelet/Strap: SevenFriday black leather strap with stainless steel pin buckle

Size: 47mm

Signed: Case, dial, movement, crown, strap, clasp

Accessories: None

£250-350



456



457

457

SevenFriday, Freedom Series for Handicap International, Ref. SF-M1/05-X058,

Limited edition stainless steel and PVD wrist watch

Movement: Miyota automatic, 21 jewels

Case: Stainless steel and PVD case, screwed down case back with eight screws

Bracelet/Strap: SevenFriday black leather strap with stainless steel pin buckle

Size: 47mm

Signed: Case, dial, crown, strap and buckle

Accessories: None

£250-350

458

Frederique Constant, Carree Heartbeat, Ref. 303/310/315X4c4/5/6,

Stainless steel wrist watch, no. 1535513

Movement: Automatic, 26 jewels

Case: Stainless steel case, screwed down display case back with four screws

Bracelet/Strap: Non-original black leather strap with stainless steel deployant clasp

Size: 31mm

Signed: Case, dial, movement

Accessories: None

£150-250



458



459

459

Corum, 57155,

Stainless steel wrist watch, no. 314637

Movement: Cal. P 7001, manual wind, 21 jewels, adjusted to 3 positions

Case: Stainless steel case, snap case back

Bracelet/Strap: Non-original black leather strap

Size: 30mm

Signed: Case, dial, movement

Accessories: None

£120-180

460

Bulova,

9 carat gold wrist watch

Movement: Cal. 8AC, manual wind, 21 jewels

Case: 9 carat gold case, snap case back, import mark for London 1986

Bracelet/Strap: Unsigned brown leather strap with pin buckle

Size: 26mm

Signed: Case, dial, movement

Accessories: None

£300-500



460



461

461

Eternamatic, Centenaire,

18 carat gold wrist watch, no. 26360, circa 1962

Movement: Cal. 142BU, automatic, 21 jewels

Case: 18 carat gold case, snap case back, engraved W.B. 1938 -63 C.B., hallmarked London 1962

Bracelet/Strap: Unsigned brown leather strap with gold plated pin buckle

Size: 33mm

Signed: Dial, movement, crown

Accessories: None

£150-250

462

Longines, Conquest, Ref. 1011,

Gold coloured wrist watch, no. 16731684, circa 1970

Movement: Cal. 428, manual wind, 17 jewels

Case: Gold coloured case, snap case back, stamped 18K 750 with a poincon

Bracelet/Strap: Non-original black leather strap with a Longines gold plated pin buckle

Size: 36mm

Signed: Case, dial, movement, crown, clasp

Accessories: None

£300-500



462



463 Y
 Zenith,
 Gold coloured wrist watch, no. 060820616
Movement: Cal. 61.6, quartz, 6 jewels
Case: Gold coloured case, snap case back, stamped 750
Bracelet/Strap: Non-original black crocodile strap with gold plated pin buckle
Size: 33mm
Signed: Case, dial, movement
Accessories: None

£300-500

464

Superatic, Cuervo Sobrinos,
 Bi-colour wrist watch, no. 305786
Movement: Automatic, 25 jewels
Case: Gold plated case, stainless steel case back
Bracelet/Strap: Non-original brown leather strap with gold plated deployant clasp
Size: 33mm
Signed: Case, dial, movement
Accessories: Cuervo Sobrinos box

£100-150



464



465

465
 Bulgari, Ref. BB26SS,
 Lady's stainless steel bracelet watch, no. D413539, circa 2010
Movement: Quartz, 7 jewels
Case: Stainless steel case, snap case back
Bracelet/Strap: Bulgari stainless steel bracelet with concealed clasp
Size: 26mm, bracelet 14cm
Signed: Case, dial, movement, clasp
Accessories: None

£300-500

466

Bertolucci, Pulchra Maris, Ref. 2229,
 Bi-colour bracelet watch, no. 629 8055 49, circa 1991
Movement: Cal. ETA 2892-2, automatic, 21 jewels
Case: Stainless steel case, rotating bezel, screw down case back, screw down crown
Bracelet/Strap: Bertolucci stainless steel bracelet with fold over clasp
Size: 37mm, bracelet 18.5cm
Signed: Case, dial, movement, crown, clasp
Accessories: Bertolucci box, guarantee and outer card packaging

£400-600



467

467

Ebel,
 Bi-colour bracelet watch, no. 181902
Movement: Cal. 81, quartz
Case: Stainless steel case, screwed down case back with four screws
Bracelet/Strap: Ebel bi-colour bracelet with box clasp
Size: 27mm, bracelet 18cm
Signed: Case, dial, movement, clasp
Accessories: Ebel pouch, spare link, card box

£300-500



466

468

IWC for Porsche Design, Ref. 3317.3,
 Titanium bracelet watch, no. 2310241, circa 1980
Movement: Cal. IWC 2250, quartz, 7 jewels
Case: Titanium case, screw down case back
Bracelet/Strap: Porsche Design titanium block link bracelet with fold over clasp
Size: 32mm, bracelet 17cm
Signed: Case and movement signed IWC, dial and clasp signed Porsche Design
Accessories: None

£250-350



468



469

469

Junghans, Meister Telemeter, Ref. 027/3381.44,

Stainless steel bracelet watch, no. 0579, circa 2017

Movement: Cal. ETA 2892A2, automatic chronograph

Case: Stainless steel case, screwed down display case back with four screws

Bracelet/Strap: Junghans stainless steel brick link bracelet with concealed clasp

Size: 40mm, bracelet 17cm

Signed: Case, dial, movement, crown, clasp

Accessories: Junghans box, guarantee and instruction booklets, three spare links and outer card packaging

£400-600

470

Tag Heuer, 2000 Exclusive, Ref. WN 1351,

Lady's bi-metal bracelet watch, no. PW6372

Movement: Cal. 298, quartz, 7 jewels

Case: Stainless steel case, bi-metal rotating bezel, screw down crown, screw down case back

Bracelet/Strap: Tag Heuer stainless steel bracelet with fold over clasp

Size: 27mm, bracelet 16cm

Signed: Case, dial, movement, crown

Accessories: Tag Heuer service box

£200-300



471

471

Tag Heuer, 2000 Series, Ref. 665.706F,

Bi-colour bracelet watch, no. W10994

Movement: Cal. 291, automatic movement

Case: Stainless steel case, gold plated rotating bezel, screw down crown, screw down case back

Bracelet/Strap: Tag Heuer bi-colour block link bracelet with fold over clasp

Size: 36mm, bracelet 17.5cm

Signed: Case, dial, movement, crown, clasp

Accessories: None

£200-300



470



473

474

Cartier, Santos,

Lady's bi-metal bracelet watch, no. 66921017586

Movement: Cal. 157, quartz, 4 jewels

Case: Stainless steel case, gold coloured bezel, screwed down case back with eight screws

Bracelet/Strap: Cartier bi-metal bracelet with concealed clasp

Size: 22mm, bracelet 15cm

Signed: Case, dial, movement, clasp

Accessories: None

£500-800



472

472

Tag Heuer, Kirium, Ref. CL1210,

Stainless steel bracelet watch, no. UR7133, circa 2005

Movement: Cal. ETA 251471, quartz chronograph, 23 jewels

Case: Stainless steel case, rotating bezel, screw down crown, screw down case back

Bracelet/Strap: Tag Heuer stainless steel block link bracelet with fold over clasp

Size: 36mm, bracelet 18cm

Signed: Case, dial, movement, crown, clasp

Accessories: A spare link

£250-350

473

Tag Heuer, Aquaracer, Ref. CAF1110,

Stainless steel bracelet watch, no. FG6016, circa 2008

Movement: quartz chronograph, 27 jewels

Case: Stainless steel case, rotating bezel, screw down crown, screw down case back

Bracelet/Strap: Tag Heuer stainless steel bracelet with fold over clasp

Size: 42mm, bracelet 20cm

Signed: Case, dial, movement, crown, clasp

Accessories: Tag Heuer box, guarantee card, instruction booklet, outer card packaging

£400-600



474



475

Cartier, Ronde Solo, Ref. 2934,

Stainless steel bracelet watch, circa 2010

Movement: Cal. 115A, quartz, 7 jewels

Case: Stainless steel case, cabochon sapphire set crown, screwed down case back with eight screws and engraved A. Popal

Bracelet/Strap: Cartier stainless steel bracelet with concealed clasp

Size: 35mm, bracelet 16cm

Signed: Case, dial, movement, clasp

Accessories: None

£600-800



476

476

Cartier, Santos,

Bi-metal wrist watch

Movement: Cal. ETA 2671, automatic, 17 jewels

Case: Stainless steel case, gold coloured bezel, screwed with eight screws

Bracelet/Strap: Unsigned brown ostrich strap with Cartier stainless steel deployant clasp

Size: 34mm

Signed: Case, dial, movement, clasp

Accessories: None

£600-800

477

Cartier, Pasha, Ref. 2324,

Mid size stainless steel wrist watch, no. 925594UF, circa 2005

Movement: Cal. 049, automatic, 21 jewels

Case: Stainless steel case, screw down crown guard, screwed down case back with eight screws

Bracelet/Strap: Cartier purple leather strap with stainless steel deployant clasp

Size: 35mm

Signed: Case, dial, movement, strap, clasp

Accessories: Cartier box

£700-1,000



477



478

478

Cartier, Santos 100, Ref. 2878,

Stainless steel and rubber wrist watch, no. 203905LX, circa 2010

Movement: Cal. 076, automatic, 25 jewels

Case: Stainless steel case, white rubber screwed down bezel, screwed down case back with eight screws

Bracelet/Strap: Cartier white rubber strap with stainless steel pin buckle

Size: 33mm

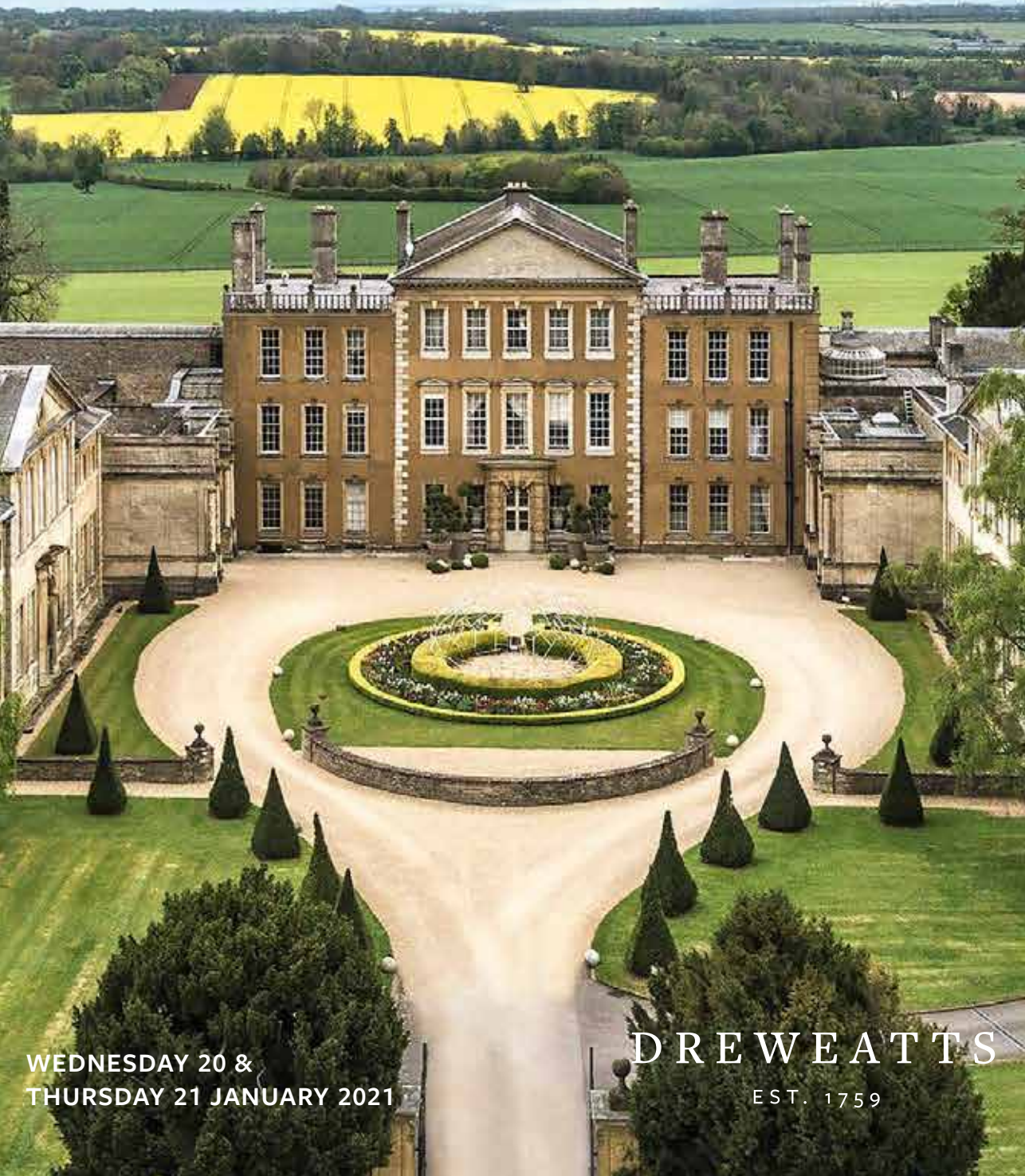
Signed: Case, dial, movement, strap, buckle

Accessories: Cartier box

£1,200-1,800

AYNHOE PARK

THE CELEBRATION OF A MODERN GRAND TOUR



WEDNESDAY 20 &
THURSDAY 21 JANUARY 2021

DREWEATTS
EST. 1759

Important Notices to Watch Buyers

DAMAGE, RESTORATION, ALTERATION

Although every effort is made to note any damage, restoration or alterations, the absence of any such information in catalogue descriptions does not imply the lot is in perfect condition and free from any such defects. Prospective buyers should satisfy themselves as to the condition of any lot prior to bidding. All watches are serviced from time to time, and Dreweatts are unable to guarantee that the working parts of any watch movement, glass or crystal, winding crowns, watch bracelet, strap or buckle are the manufacturers' original parts, unless otherwise stated in the catalogue description. We are unable to make any representation in our catalogue descriptions or condition reports as to the authenticity of such parts. Dreweatts are unable to make any representation, nor make any comment on, the authenticity of diamonds, or other gemstones, set into watch dials, bezels, cases and bracelets.

AUTHENTICATION

All watch movements have been inspected by Dreweatts watchmaker and specialists, and we have verified all inventory and movement numbers. For the information of potential bidders, all inventory and movement numbers are listed in the catalogue description for the relevant lot.

IMPORT/EXPORT RESTRICTIONS

There may be Import Restrictions into some territories outside

the United Kingdom placed on certain watch brands, or on the importation of watches with straps composed of animal skins which may fall under CITES Regulations. It is the sole responsibility of the buyer to comply with all Export/Import regulations and potential bidders are strongly recommended to check with their shipping agent as to any such regulations that may apply to any lot. Dreweatts are not shippers and are unable to offer any advice regarding such regulations.

CONDITION REPORTS

Dreweatts condition reports will identify whether a watch functions at the time of cataloguing, and suggest possible, but not comprehensive, restoration work that may need to be carried out for the watch to function properly. Dreweatts are unable to test watches for accuracy or running to time, and we cannot guarantee that any watch will function when purchased from us.

As we have examined all watch movements by removing the case backs, we cannot guarantee that water resistant watches will remain water resistant following purchase from us. Dreweatts recommend that any watch purchased from us is subsequently overhauled by a competent watchmaker to ensure proper functioning.

Important Notices to Jewellery Buyers

DAMAGE, RESTORATION, ALTERATION

Although every effort is made to note any damage, restoration or alterations, the absence of any such information in catalogue descriptions does not imply the lot is in perfect condition and free for any such defects. Prospective buyers should satisfy themselves as to the condition of any lot prior to bidding.

ENHANCEMENT

Prospective bidders should be aware that many coloured gems have been historically treated by a variety of methods to improve their appearance, both in terms of colour and transparency. Rubies and sapphires are routinely heat treated, emeralds are enhanced through the use of coloured and transparent oils and resins, and jadeite is routinely stained. These treatments, and others including irradiation and coating, are generally accepted by the jewellery trade as standard practice. Although most treatments are considered to be permanent, those gemstones which have been oiled may need to be re-treated to maintain their appearance. Any such treatments affect the market value of coloured gemstones, and Dreweatts pre-sale estimates published in the catalogue assume that all gemstones, unless otherwise stated in the catalogue, may have been enhanced. Dreweatts may obtain Gemmological Reports from a recognised laboratory where appropriate detailing any enhancements, or lack of, for certain gemstones, and such reports may be obtained for prospective bidders prior to the sale, provided such requests are made at least three weeks before the sale, and that the requesting party has pre-paid for such a report. However it is not possible for Dreweatts to obtain reports for every stone offered in the sale.

In the absence of a gemmological laboratory report, it is not possible for Dreweatts to make any comment on the possibility that any gemstone in any lot may have been subject to enhancement.

Dreweatts catalogue descriptions and condition reports adhere to the guidelines laid out in the 'Blue Book' of CIBJO,

the International Jewellery Confederation.

WEIGHTS

All gram weights have been obtained using an electronic balance, but weights stated in the catalogue are approximate and for guidance only, and potential bidders should satisfy themselves as to their accuracy.

'...approximately 1.20 carats total,...' all such stone weights are estimated using standard equipment and formulae, and are subject to the limitations imposed by the mount.

'...weighing 1.20 carats,...' where the description reads as such, the stones in question have been removed from the mount and weighted using an electronic balance.

SIGNATURES

'...by Lacloche,...' in our opinion is a piece made by or for the jeweller, bearing relevant signatures, maker's marks, and where appropriate, the maker's inventory number/s.

'...signed Lacloche,...' in our opinion is a piece retained by the jeweller, but not necessarily made by them. This may also mean that the piece has been mounted by the jeweller using stones supplied by the client; a special commission from a client's design; or has been altered or later added to.

COLOURED STONES OF BURMA (MYANMAR) ORIGIN

Buyers should be aware that certain territories (notably the United States of America) have import restrictions on certain coloured gemstones. All gemstones that maybe of Burma (Myanmar) origin, notably rubies and jadeite, may require a certificate of origin before they can be imported. Prospective bidders for such gemstones should check with their shipper, and relevant Government authorities regarding any necessary certification prior to bidding. Whilst Dreweatts are able to suggest a number of Gemmological Laboratories for such certification, we are unable to carry out any such certification for potential bidders or buyers.

Detailed condition reports for all lots are available from our website www.dreweatts.com, and upon direct request to the Saleroom.

Please note that Dreweatts are unable to give verbal condition reports for any lot, and all condition reports will be given in writing via our website www.dreweatts.com. Dreweatts jewellery specialists and qualified gemmologists are available during the view to answer any queries.

Dreweatts are unable to offer any form of packing, dispatch or shipping services, and clients should make their own collection arrangements for purchased lots. Dreweatts are happy to suggest the services of a number of dispatch and shipping carriers.

Please see Conditions of Business and Conditions of Sale on the following pages.

Dreweatts & Dreweatts 1759 are trading names of Dreweatts 1759 Ltd. Dreweatts 1759 Ltd is registered in England, company number: 10758982, registered office: Minerva House | Lower Bristol Road | Bath BA2 9ER.

Important Notices

BUYING AT DREWEATTS

There are several ways you can bid at a Dreweatts auction; in person, by leaving a commission or absentee bid, on the telephone where available and live via the internet – please make arrangements before the sale. THIS NOTICE APPLIES ONLY TO A PERSON WHO WISHES TO BID IN PERSON, OR BY LEAVING A COMMISSION OR ABSENTEE BID, AT A DREWEATTS PUBLIC AUCTION. For bidding at an online auction or for online bidding at a public auction please see our Online Auction Terms published on our website at www.dreweatts.com.

BIDDING IN PERSON

If intending to buy you are required to register your name and details at reception prior to the commencement of the auction. You will be required to provide a proof of identity and address to register for bidding. You will then be allocated a bidding number, which you use when bidding for an item.

COMMISSION BIDS

Dreweatts will execute bids on your behalf if you are unable to attend the sale. Commission or absentee bids are accepted either directly at reception, or can be sent by post, fax, email, telephone or via the website: www.dreweatts.com.

Dreweatts will add these bids to the auctioneers' sale book and will undertake to purchase the lots on your behalf as cheaply as allowed by other bids and reserves. If two buyers submit identical commission bids Dreweatts may prefer the first bid received.

Dreweatts does not accept liability for failing to execute commission bids, or for any errors or omissions.

CONDITION

Bidders must satisfy themselves as to the condition of each lot. Condition reports are available on request – see the Conditions of Business at the back of this catalogue forming part of these Auction Terms and Conditions for more information regarding condition reports. Requests for condition reports must be submitted by 4pm on the day prior to the auction; condition reports may be available alongside the lot description on the online catalogue at: www.dreweatts.com.

COMMISSION CHARGES

All purchases are subject to a buyer's premium, which is charged per lot at 25% of the hammer price (30% including VAT) up to and including £500,000, 20% (24% including VAT) of the hammer price from £500,001 up to and including £1,000,000 and 12% of the hammer price (14.4% including VAT) in excess of £1,000,000. A theta symbol (Θ) indicates that the lot is a zero rated item and therefore not subject to VAT on the buyer's premium. This applies to bound books (manuscripts and printed), unframed maps and albums. In the event the lot has a dagger (†) beside the lot number in the catalogue, this indicates that the lot is owned by an entity or company required to pay VAT (generally not an Antique Dealer, as they operate under a dealers margin scheme). VAT is payable at 20% on the Hammer Price. Lots marked with a double dagger (‡) (presently a reduced rate of 5%) or Ω (presently at standard rate of 20%) have been imported from outside the European Union to be sold at auction and therefore the buyer must pay the import VAT at the appropriate rate on the hammer price.

PAYMENT

Payment will be accepted, if you are a successful bidder, by debit card issued in the name of the Buyer by a UK bank and registered

to a UK billing address; by all major UK issued credit cards issued in the name of the Buyer and registered to a UK billing address with the exception of American Express and Diners Club; by bank transfer direct into our bank account, Bank Details: NatWest, 30 Market Place, Newbury, Berkshire RG14 5AG. Account Name: Dreweatts 1759 Ltd. A/C: 62412949, Sort Code: 60-15-07, BIC: NWBKGB2L, IBAN: GB21NWBK60150762412949. The name of the bank account holder should match the name of the buyer. First time buyers who are not present at the saleroom are requested to pay by bank transfer.

Y CITES REGULATIONS

Please note that lots marked with the symbol (Y) in this catalogue may be subject to CITES Regulations when exported. Relevant CITES Regulations may be found at www.gov.uk/guidance/cites-imports-and-exports.

COLLECTION OR DELIVERY

Before being able to collect your purchases you are required to pay the hammer price, plus the applicable commissions, and obtain a receipt acknowledging payment. Collection of the purchased lots is at the purchaser's risk and expense and whilst Dreweatts do not provide packing and despatch service we can suggest some carriers.

Dreweatts also require that all purchased items are collected within four working days of the sale to avoid a storage charge being applied.

STORAGE CHARGES

All items not collected by 4pm, within four working days of the sale, will be automatically removed to commercial storage and subject to a minimum storage charge of £20 (plus VAT) per lot and to a further storage charge of £2 (plus VAT) per lot per part or full day thereafter. These charges will be the sole liability of the purchaser and will be billed directly to them by Vangaroo Ltd (Andover); Vangaroo may be willing to adjust their charges if they are instructed by the purchaser to deliver to them. On payment of all sales and storage costs, items will be available for collection by appointment from Vangaroo Ltd (Andover), tel: 01264 316970, mobile: 07528 291180, email: matt@vangaroo.co.uk. These charges are set by Vangaroo Ltd (Andover); we recommend that you contact them directly regarding queries relating to these charges and other questions relating to storage. Staff at the saleroom will be unable to answer questions relating to items that have been removed from the saleroom.

FURTHER INFORMATION

The colours printed in this catalogue are not necessarily a true reflection of the actual item. All weights and measures given in the catalogue should be regarded as approximate.

VALUATION SERVICES

Dreweatts provides a range of confidential and professional valuation services to private clients, solicitors, executors, estate managers, trustees and other professional partners. These services include auction valuations, insurance valuations, probate valuations, private treaty valuations, valuations for family division or for tax purposes. For more information, please see our website: www.dreweatts.com.

For directions to Donnington Priory, please see our website: www.dreweatts.com.

Parking is available at Donnington Priory in two car parks on either side of the saleroom.

Information for Buyers at Public Auctions

1. **INTRODUCTION.** The following notes are intended to assist Bidders and Buyers, particularly those inexperienced or new to our salerooms. All of our auctions and sales are conducted on our printed Auction Terms and Conditions, including these Conditions of Sale and Business, which are readily available for inspection and normally accompany catalogues. Our staff will be happy to help you if there is anything you do not fully understand.

Any particular auction and/or any particular lot in an auction may be subject to different or additional terms which will be published in our auction catalogue. All auctions and sales of wines and spirits, jewellery, watches and clocks are subject to the special terms set out in the relevant Notices in relation to those items published in our auction catalogue and, in the event of any conflict or inconsistency, those special terms prevail over any other terms in our Auction Terms and Conditions. By bidding at the auction, you agree to be bound by these terms.

2. **AGENCY.** As auctioneers we usually act as agents for the seller whose identity, for reasons of confidentiality, is not normally disclosed. Accordingly if you buy at auction your contract for the item or items purchased is with the seller and not with us as the auctioneer.

3. **ESTIMATES.** Estimates are designed to help buyers gauge what sort of sum might be involved for the purchase of a particular lot. Estimates may change and should not be thought of as the sale price. The lower estimate may represent the reserve price and certainly will not be below it. Estimates do not include the Buyer's Premium or VAT (where chargeable). Estimates are prepared some time before the sale and may be altered by announcement before the sale. They are in no sense definitive.

4. **BUYER'S PREMIUM.** The Conditions of Sale forming part of our Auction Terms and Conditions require the buyer to pay a buyer's premium on the hammer price of each lot purchased. The buyer's premium is 25% of the hammer price up to and including £500,000, 20% of the hammer price from £500,001 up to and including £1,000,000, and 12% of the hammer price in excess of £1,000,000. VAT at the prevailing rate of 20% is added to buyer's premium and additional charges as defined below.

5. **VAT.** A theta symbol (Θ) indicates that the lot is a zero rated item and therefore not subject to VAT on the buyer's premium. This applies to bound books (manuscripts and printed), unframed maps and albums. A dagger symbol (†) indicates that VAT is payable by the purchaser at the standard rate (presently 20%) on the hammer price as well as being and element in the buyers' premium. This imposition of VAT is likely to be because the seller is registered for VAT within the European Union and is not operating the Dealers Margin Scheme or because VAT is due at 20% on import into the UK. A double dagger (‡) indicates that the lot has been imported from outside the European Union and the present position is that these lots are liable to a reduced rate of Import VAT currently 5% on the hammer price. (Ω) indicates that the lot has been imported from outside the European Union and these lots are liable to the standard rate of Import VAT currently 20% on the hammer price. Lots which appear without the above symbols indicate that no VAT is payable on the hammer price; this is because such lots are sold using the Auctioneers Margin Scheme and it should be noted that the VAT included within the buyers' premium is not recoverable as input tax.

6. **DESCRIPTION AND CONDITION.** Condition reports are provided on our website or upon request. The absence of a report does not imply that a lot is without imperfections. The detail in a report will reflect the estimated value of the lot. Large numbers of such requests received shortly before the sale may mean that reports cannot be provided for all lots. Members of staff are not trained restorers or conservators and, particularly for higher value lots, you should obtain an opinion from such a professional. Dreweatts is not liable for damage to gilded picture frames, plaster picture frames or picture frame glass; if a Lot is or becomes dangerous, we may dispose of it without notice to bidders in advance in any manner we see fit and will be under no liability for doing so. We recommend that you always view a lot in person.

We are dependent on information provided by the seller about a lot and whilst we may inspect lots and act reasonably in taking a general view about them we are normally unable to carry out a detailed examination

and frequently no examination of lots in order to ascertain their condition in the way in which it would be wise for a buyer to do. Intending buyers have ample opportunity for inspection of goods and, therefore, accept responsibility for inspecting and investigating lots in which they may be interested and the corresponding risk should they not do so. Please note carefully the exclusion of liability for the condition of lots contained in the Conditions of Sale. Neither the seller nor we, as the auctioneers, accept any responsibility for their condition. In particular, mechanical objects of any age are not guaranteed to be in working order. However, in so far as we have examined the goods and make a representation about their condition in the auction catalogue, we shall be liable for any defect which is not reflected in that representation and which that examination ought to have revealed to the auctioneer but which would not have been revealed to the buyer had the buyer examined the goods. Additionally, in specified circumstances lots misdescribed because they are 'deliberate forgeries' may be returned and repayment made. There is a 3 week time limit. (The expression 'deliberate forgery' is defined in our Conditions of Sale).

7. **ELECTRICAL GOODS.** These are sold as 'antiques' only and if bought for use must be checked over for compliance with safety regulations by a qualified electrician before use.

8. **EXPORT OF GOODS.** Buyers intending to export goods should ascertain (a) whether an export licence is required and (b) whether there is any specific prohibition on importing goods of that character because, e.g. they may contain prohibited materials such as ivory. Ask us if you need help.

9. **BIDDING.** Bidders will be required to register before the sale commences and lots will be invoiced to the name and address on the sale registration form. Bidders are required to provide a government issued identity document and a proof of address. Please enquire in advance about our arrangements for telephone bidding.

10. **COMMISSION BIDDING.** Commission bids may be left with the auctioneers indicating the maximum amount to be bid excluding buyers' premium. Dreweatts will add these bids to the auctioneers' sale book and they will be executed as cheaply as possible having regard to the reserve (if any) and competing bids. If two buyers submit identical commission bids the auctioneers may prefer the first bid received. Please enquire in advance about our arrangements for the leaving of commission bids by telephone or fax. Dreweatts does not accept liability for failing to execute commission bids, or for any errors or omissions.

11. **METHODS OF PAYMENT.** Payment will be accepted, if you are a successful bidder, by debit card issued in the name of the Buyer by a UK bank and registered to a UK billing address; by all major UK issued credit cards issued in the name of the Buyer and registered to a UK billing address with the exception of American Express and Diners Club; by bank transfer direct into our bank account, Bank Details: NatWest, 30 Market Place, Newbury, Berkshire RG14 5AG. Account Name: Dreweatts 1759 Ltd. A/C: 62412949, Sort Code: 60-15-07, BIC: NWBKGB2L, IBAN: GB21NWBK60150762412949. The name of the bank account holder should match the name of the buyer. First time buyers who are not present at the saleroom are requested to pay by bank transfer.

12. **COLLECTION AND STORAGE.** Please note what the Conditions of Sale state about collection and storage. It is important that goods are paid for and collected promptly. Any delay may involve the buyer in paying storage charges.

13. **À DROIT DE SUITE ROYALTY CHARGES.** From 1st January 2012 all UK art market professionals (which includes but is not limited to; auctioneers, dealers, galleries, agents and other intermediaries) are required to collect a royalty payment for all works of art that have been produced by qualifying artists each time a work is re-sold during the artist's lifetime and for a period up to 70 years following the artists death. This payment is only calculated on qualifying works of art which are sold for a hammer price more than the UK sterling equivalent of EURO 1,000 – the UK sterling equivalent will fluctuate in line with prevailing exchange rates. It is entirely the responsibility of the buyer to acquaint himself with the precise EURO to UK Sterling exchange rate on the day of the sale in this regard, and the auctioneer accepts no responsibility whatsoever if the

qualifying rate is different to the rate indicated. All items in this catalogue that are marked with λ are potentially qualifying items, and the royalty charge will be applied if the hammer price achieved is more than the UK sterling equivalent of EURO 1,000. The royalty charge will be added to all relevant buyers' invoices, and must be paid before items can be cleared. All royalty charges are passed on to the Design and Artists Copyright Society (DACS), no handling costs or additional fees with respect to these charges will be retained by the auctioneers. The royalty charge

Terms of Consignment for Sellers in Public Auctions

The sale of goods at our public auctions and a seller's relationship with us are governed by our Auction Terms and Conditions including these Terms of Consignment for Sellers in Public Auctions and our Conditions of Sale for Public Auctions. Any particular auction and/or any particular lot in an auction may be subject to different or additional terms which will be published in our auction catalogue or separately announced prior to the auction. All auctions and sales of wines and spirits, jewellery, watches and clocks are subject to the special terms set out in the relevant Notices in relation to those items published in our auction catalogue and, in the event of any conflict or inconsistency, those special terms prevail over any other terms in our Auction Terms and Conditions. Please note that our Auction Terms and Conditions including these Terms of Consignment for Sellers in Public Auctions and our Conditions of Sale for Public Auctions relate to auctions held in our salerooms and we have separate terms and conditions for our online auctions.

If you, or another person acting on your behalf, provide goods to us to sell on your behalf at one of our auctions this signifies that you agree to and will comply with our Auction Terms and Conditions including these Terms of Consignment for Sellers in Public Auctions and our Conditions of Sale for Public Auctions.

1. **INTERPRETATION.** In these Terms the words 'you', 'yours', etc. refer to the Seller and if the consignment of goods to us is made by an agent or otherwise on the Seller's behalf we assume that the Seller has authorised the consignment and that the consignor has the Seller's authority to contract. All obligations that apply to the Seller under these Terms of Consignment for Sellers in Public Auctions shall apply to the owner of the goods and their agent jointly and separately. Similarly the words 'we', 'us', etc. refer to the Auctioneers.

2. **WARRANTY.** The Seller warrants that possession in the lots can be transferred to the Buyer with good and marketable title, free from any third party right and encumbrances, claims or potential claims. The Seller has provided all information concerning the item's ownership, condition and provenance, attribution, authenticity, import or export history and of any concerns expressed by third parties concerning the same.

3. **ALL COMMISSIONS** and fees are subject to VAT at the prevailing rate.

4. **COMMISSION** is charged to sellers and all selling terms are available from our salerooms.

5. **REMOVAL COSTS.** Items for sale must be consigned to the saleroom by any stated deadline and at your expense. We may be able to assist you with this process but any liability incurred to a carrier for haulage charges is solely your responsibility.

6. LOSS AND DAMAGE OF GOODS

(a) Loss and Damage Warranty - Dreweatts is not authorised by the FCA to provide insurance to its clients, and does not do so. However Dreweatts for its own protection assumes liability for property consigned to it at the lower pre-sale estimate until the hammer falls. To justify accepting liability, Dreweatts makes a charge of 15% of the hammer price plus VAT, subject to a minimum charge of £150, or if unsold 15% of our lower estimate. The liability assumed by Dreweatts shall be limited to the lower pre-sale estimate or the hammer price if the lot is sold. Dreweatts is not liable for damage to gilded picture frames, plaster picture frames or picture frame glass; if the Lot is or becomes dangerous, we may dispose of it without notice to you in advance in any manner we see fit and will be under no liability for doing so.

(b) If the owner of the goods consigned instructs us in writing not to take such action, the goods then remain entirely at the owner's risk unless and until the property in them passes to the Buyer or they are collected by or on behalf of the owner, and clause 6 (a) is inapplicable.

that will be applied to qualifying items which achieve a hammer price of more than the UK sterling equivalent of EURO 1,000, but less than the UK sterling equivalent of EURO 50,000 is 4%. For qualifying items that sell for more than the UK sterling equivalent of EURO 50,000 a sliding scale of royalty charges will apply – for a complete list of the royalty charges and threshold levels, please see www.dacs.org.uk. There is no VAT payable on this royalty charge.

7. **ILLUSTRATIONS AND PHOTOGRAPHS.** The cost of any illustrations or photographs is borne by you. The copyright in respect of such illustrations and photographs shall be the property of us, the auctioneers, as is the text of the catalogue.

8. **MINIMUM BIDS AND OUR DISCRETION.** Goods will normally be offered subject to a reserve agreed between us before the sale in accordance with clause 9. We may sell Lots below the reserve provided we account to you for the same sale proceeds as you would have received had the reserve been the hammer price. If you specifically give us a "discretion" we may accept a bid of up to 10% below the formal reserve.

9. RESERVES

(a) You are entitled to place prior to the auction a reserve on any lot consigned, being the minimum hammer price at which that lot may be sold. Reserves must be reasonable and we may decline to offer goods which in our opinion would be subject to an unreasonably high reserve (in which case goods carry the storage and loss and damage warranty charges stipulated in these Terms of Consignment).

(b) A reserve once set cannot be changed except with our consent.

(c) Where a reserve has been set which we consider unreasonably high, an unsold charge will be payable in the event that the lots fails to sell, being the agreed selling terms calculated on the reserve, LDW at 15% and any photographic charges.

(d) Where a reserve has been placed only we may bid on your behalf and only up to the reserve (if any) and you may in no circumstances bid personally.

(e) Reserves are not usually accepted for lots expected to realise below £100.

10. **ELECTRICAL ITEMS.** These are subject to detailed statutory safety controls. Where such items are accepted for sale you accept responsibility for the cost of testing by external contractors. Goods not certified as safe by an electrician (unless antiques) will not be accepted for sale. They must be removed at your expense on your being notified. We reserve the right to dispose of unsafe goods as refuse, at your expense.

11. **SOFT FURNISHINGS.** The sale of soft furnishings is strictly regulated by statute law in the interests of fire safety. Goods found to infringe safety regulations will not be offered and must be removed at your expense. We reserve the right to dispose of unsafe goods as refuse, at your expense. The rights of disposal referred to in clause 10 and 11 are subject to the provisions of The Torts (Interference with Goods) Act 1977.

12. **DESCRIPTION.** Please assist us with accurate information as to the provenance, lawful import etc. of goods where this is relevant. There is strict liability for the accuracy of descriptions under modern consumer legislation and in some circumstances responsibility lies with sellers if inaccuracies occur. We will assume that you have approved the catalogue description of your lots and that your lots match those descriptions unless informed to the contrary. Where we are obliged to return the price to the buyer when the lot is a deliberate forgery under Condition 15 of the Conditions of Sale and we have accounted to you for the proceeds of sale you agree to reimburse us the sale proceeds and in any event within 7 days of our written notice to do so.

13. **UNSOLD.** If an item is unsold it may at our discretion be re-offered at a future sale. Where in our opinion an item is unsaleable you must collect such items from the saleroom promptly on being so informed. Otherwise, storage charges may be incurred. We reserve the right to charge for storage in these circumstances at a reasonable daily rate.

14. **WITHDRAWN AND BOUGHT IN ITEMS.** These are liable to incur a charge of 15% commission, 15 % Loss and Damage Warranty and

any other costs incurred including but not limited to illustration and restoration fees all of these charges being subject to VAT on being bought in or withdrawn after being catalogued.

15. **CONDITIONS OF SALE.** You agree that all goods will be sold on our Conditions of Sale for Public Auctions. In particular you undertake that you have the right to sell the goods either as owner or agent for the owner with good and marketable title and free and clear of any third party rights or claims. You undertake to compensate us and any buyer or third party for all losses liabilities, costs and expenses suffered or incurred arising out of or in connection with any breach of this undertaking. We will also, at our discretion, and as far as practicable, confirm that an item consigned for sale does not appear on the Art Loss register, which is administered by an independent third party.

16. DUE DILIGENCE CHECKS AND ANTI-MONEY LAUNDERING PROCEDURES

Under the money laundering regulations in force we are required to carry out relevant due diligence checks. This includes verifying the identity of all customers we transact with as well as any beneficial owners on behalf of whom they may transact. Vendors who are unable to or refuse to supply required identification documents and proof of address will not be able to consign to Dreweatts auctions. Copies of customer due diligence checks will be stored for as long as it is necessary to satisfy legal requirements in an appropriate storage facility, which for the avoidance of doubt may include storage solely in electronic form.

17. AUTHORITY TO DEDUCT COMMISSION AND EXPENSES AND RETAIN PREMIUM AND INTEREST

(a) You authorise us to deduct commission at the stated rate and all

Conditions of Sale for Public Auctions

Dreweatts carries on business with bidders, buyers and all those present in the auction room prior to or in connection with a sale by auction at our salerooms on our Auction Terms and Conditions or Public Auctions including these Conditions of Sale for Public Auctions and all bidders, buyers and others participating in a public auction accept that these terms apply to the exclusion of any terms and conditions contained in any of those person's own documents even if the same purport to provide that that person's own or some other terms prevail. Any particular public auction and/or any particular lot in an auction may be subject to different or additional terms which will be published in our online auction catalogue. Please note that our Auction Terms and Conditions including these Conditions of Sale for Public Auctions relate to auctions held in one of our salerooms and we have separate terms and conditions for our online auctions.

1. DEFINITIONS

In these Conditions:

(a) "auctioneer" means the firm of Dreweatts or its authorised auctioneer, as appropriate;

(b) "deliberate forgery" means an imitation made with the intention of deceiving as to authorship, origin, date, age, period, culture or source but which is unequivocally described in the catalogue as being the work of a particular creator and which at the date of the sale had a value materially less than it would have had if it had been in accordance with the description;

(c) "hammer price" means the level of bidding reached (at or above any reserve) when the auctioneer brings down the hammer;

(d) "terms of consignment" means the stipulated terms and rates of commission on which Dreweatts accepts instructions from sellers or their agents;

(e) "total amount due" means the hammer price in respect of the lot sold together with any premium, Value Added Tax chargeable and any additional charges payable by a defaulting buyer under these Conditions;

(f) "sale proceeds" means the net amount due to the seller, being the hammer price of the lot sold less commission at the stated rate, Value Added Tax chargeable and any other amounts due to us by the seller in whatever capacity and however arising;

(g) "You", "Your", etc. refer to the buyer as identified in Condition 2.

(h) The singular includes the plural and vice versa as appropriate.

expenses incurred for your account from the hammer price and consent to our right to retain beneficially the premium paid by the buyer in accordance with our Conditions of Sale for Public Auctions and any interest earned on the sale proceeds until the date of settlement.

(b) In case of lots unsold at auction you authorise us at our discretion to reoffer such lots and negotiate a sale within seven days of the auction date, in which case the same charges will be payable as if such lots had been sold at auction and so far as appropriate these Terms apply.

18. **WAREHOUSING.** We disclaim all liability for goods delivered to our saleroom without sufficient sale instructions and reserve the right to make minimum warehousing charge of £10 per lot per day. Unsold lots are subject to the same charges if you do not remove them within a reasonable time of notification. If not removed within three weeks we reserve the right to sell them and defray charges from any net proceeds of sale or at your expense to consign them to the local authority for disposal.

19. **SETTLEMENT.** After sale settlement of the net sum due to you normally takes place within 28 days of the sale unless the buyer has not paid for the goods. In this case no settlement will then be made but we will take your instructions in the light of our Conditions of Sale for Public Auctions. You authorise any sums owed by you to us on other transactions to be deducted from the sale proceeds. You must note the liability to reimburse the proceeds of sale to us as under the circumstances provided for in Condition 12 above. You should therefore bear this potential liability in mind before parting with the proceeds of sale until the expiry of 28 days from the date of sale.

2. BIDDING PROCEDURES AND THE BUYER

(a) Bidders are required to register their particulars before bidding by completing a sale registration form and to satisfy any security arrangements before entering the auction room to view or bid;

(b) Under the money laundering regulations in force we are required to verify the identity of all customers we transact with as well as any beneficiaries on behalf of whom they may transact. Customers who are unable to or refuse to supply required identification documents and proof of address will not be able to bid in Dreweatts auctions. Copies of customer due diligence checks will be stored for as long as it is necessary to satisfy legal requirements in an appropriate storage facility which for the avoidance of doubt may include storage solely in electronic form;

(c) the maker of the highest bid accepted by the auctioneer conducting the sale shall be the buyer at the hammer price and any dispute about a bid shall be settled at the auctioneer's absolute discretion by reoffering the Lot during the course of the auction or otherwise. The auctioneer shall act reasonably in exercising this discretion.

(d) Bidders shall be deemed to act as principals;

(e) Our right to bid on behalf of the seller is expressly reserved up to the amount of any reserve and the right to refuse any bid is also reserved.

3. **INCREMENTS.** Bidding increments shall be at the auctioneer's sole discretion.

4. **THE PURCHASE PRICE.** The buyer shall pay the purchase price together with a premium thereon of 30% which shall include VAT on the premium at the rate imposed by law. The buyer will also be liable for any royalties payable under Droit de Suite as set out under Information for Buyers.

5. **VALUE ADDED TAX.** Value Added Tax on the hammer price is imposed by law on all items affixed with a dagger (†) or double dagger (‡). Value Added Tax is charged at the appropriate rate prevailing by law at the date of sale and is payable by buyers of relevant Lots. (Please refer to "Information for Buyers" for a brief explanation of the VAT position).

6. PAYMENT

(a) Immediately a Lot is sold you will:

(i) give to us, if requested, proof of identity, and

(ii) pay to us the total amount due or in such other way as is agreed by us.

(b) Any payments by you to us may be applied by us towards any sums owing from you to us on any account whatever without regard to any directions of you or your agent, whether expressed or implied.

(c) In order to comply with money laundering regulations we reserve the right to require proof of source of funds and/or confirmation of the nature and source of wealth for all receipts of monies from clients directly or from third parties for payments on behalf of clients.

7. TITLE AND COLLECTION OF PURCHASES

(a) The ownership of any Lots purchased shall not pass to you until you have made payment in full to us of the total amount due.

(b) You shall at your own risk and expense take away any lots that you have purchased and paid for not later than 3 working days following the day of the auction after which you shall be responsible for any removal, storage and insurance charges.

(c) No purchase can be claimed or removed until it has been paid for.

8. REMEDIES FOR NON-PAYMENT OR FAILURE TO COLLECT PURCHASES

(a) If any Lot is not paid for in full and taken away in accordance with these Conditions or if there is any other breach of these Conditions, we, as agent for the seller and on our own behalf, shall at our absolute discretion and without prejudice to any other rights we may have, be entitled to exercise one or more of the following rights and remedies:

(i) to proceed against you for damages for breach of contract;

(ii) to rescind the sale of that Lot and/or any other Lots sold by us to you;

(iii) to resell the Lot (by auction or private treaty) in which case you shall be responsible for any resulting deficiency in the total amount due (after crediting any part payment and adding any resale costs). Any surplus so arising shall belong to the seller;

(iv) to remove, store and insure the Lot at your expense and, in the case of storage, either at our premises or elsewhere;

(v) to charge interest at a rate not exceeding 15% per month on the total amount due to the extent it remains unpaid for more than 3 working days after the sale;

(vi) to retain that or any other Lot sold to you until you pay the total amount due;

(vii) to reject or ignore bids from you or your agent at future auctions or to impose conditions before any such bids shall be accepted;

(viii) to apply any proceeds of sale of other Lots due or in future becoming due to you towards the settlement of the total amount due and to exercise a lien (that is a right to retain possession of) any of your property in our possession for any purpose until the debt due is satisfied.

(b) We shall, as agent for the seller and on our own behalf pursue these rights and remedies only so far as is reasonable to make appropriate recovery in respect of breach of these conditions.

9. THIRD PARTY LIABILITY. All bidders, buyers and other members of the public on our premises are there at their own risk and must note the lay-out of the accommodation and security arrangements. Accordingly neither the auctioneer nor our employees or agents shall incur liability for death or personal injury or for the safety of the property of persons visiting prior to or at a sale (except in each case as may be required by law by reason of our negligence)

10. COMMISSION BIDS. Whilst prospective buyers are strongly advised to attend the auction and are always responsible for any decision to bid for a particular Lot and shall be assumed to have carefully inspected and satisfied themselves as to its condition, we will if so instructed clearly and in writing execute bids on their behalf. Neither the auctioneer nor our employees or agents shall be responsible for any failure to do so.

Where two or more commission bids at the same level are recorded we reserve the right in our absolute discretion to prefer the first bid so made.

11. WARRANTY OF TITLE AND AVAILABILITY. The seller warrants to the auctioneer and you that the seller is the true owner of the property consigned or is properly authorised by the true owner to consign for sale and is able to transfer good and marketable title to the property free from any third party claims.

Save as expressly set out above, all other warranties, conditions or other terms which might have effect between the Seller and you, or us and you, or be implied or incorporated by statute, common law or otherwise are excluded to the fullest extent permitted by law.

12. AGENCY. The auctioneer normally acts as agent only and disclaims any responsibility for default by sellers or buyers.

13. TERMS OF SALE. The seller acknowledges that Lots are sold subject to the stipulations of these Conditions in their entirety and on the Terms of Consignment for Public Auctions as notified to the consignor at the time of the entry of the Lot.

14. DESCRIPTIONS AND CONDITION

(a) Whilst we seek to describe lots accurately, it may be impractical for us to carry out exhaustive due diligence on each lot. Prospective buyers are given ample opportunities to view and inspect before any sale and they (and any independent experts on their behalf) must satisfy themselves as to the accuracy of any description applied to a lot. Prospective buyers also bid on the understanding that, inevitably, representations or statements by us as to authorship, genuineness, origin, date, age, provenance, condition or estimated selling price involve matters of opinion. We undertake that any such opinion shall be honestly and reasonably held and accept liability for opinions given negligently or fraudulently. Subject to the foregoing neither we the auctioneer nor our employees or agents nor the seller accept liability for the correctness of such opinions and all conditions and warranties, whether relating to description, condition or quality of lots, express, implied or statutory, are hereby excluded. Dreweatts is not liable for damage to gilded picture frames, plaster picture frames or picture frame glass; if the Lot is or becomes dangerous, we may dispose of it without notice to you in advance in any manner we see fit and will be under no liability for doing so. This Condition is subject to the next following Condition concerning deliberate forgeries and applies save as provided for in paragraph 6 “information to buyers”.

(b) Private treaty sales made under these Conditions are deemed to be sales by auction for purposes of consumer legislation.

15. FORGERIES. Notwithstanding the preceding Condition, any Lot which proves to be a deliberate forgery (as defined) may be returned to us by you within 21 days of the auction provided it is in the same condition as when bought, and is accompanied by particulars identifying it from the relevant catalogue description and a written statement of defects. If we are satisfied from the evidence presented that the Lot is a deliberate forgery we shall refund the money paid by you for the Lot including any buyer's premium provided that (1) if the catalogue description reflected the accepted view of scholars and experts as at the date of sale or

(2) you personally are not able to transfer a good and marketable title to us, you shall have no rights under this condition.

The right of return provided by this Condition is additional to any right or remedy provided by law or by these Conditions of Sale.

16. PRIVACY NOTICE. We will hold and process any personal data in relation to you in accordance with our current privacy policy, a copy of which is available on our website www.dreweatts.com/privacy-policy/.

GENERAL

17. We shall have the right at our discretion, to refuse admission to our premises or attendance at our auctions by any person.

18. (a) Any right to compensation for losses liabilities and expenses incurred in respect of and as a result of any breach of these Conditions and any exclusions provided by them shall be available to the seller and/or the auctioneer as appropriate.

(b) Such rights and exclusions shall extend to and be deemed to be for the benefit of employees and agents of the seller and/or the auctioneer who may themselves enforce them.

19. Any notice to any buyer, seller, bidder or viewer may be given by first class mail, email or Swiftmail in which case it shall be deemed to have been received by the addressee 48 hours after posting.

20. Special terms may be used in catalogue descriptions of particular classes of items in which case the descriptions must be interpreted in accordance with any glossary appearing at the commencement of the catalogue.

21. Any indulgence extended to bidders, buyers or sellers by us notwithstanding the strict terms of these Conditions or of the Terms of Consignment shall affect the position at the relevant time only and in respect of that particular concession only; in all other respects these Conditions shall be construed as having full force and effect.

22. These Conditions shall be governed by and construed in accordance with English law and the parties irrevocably submit to the exclusive jurisdiction of the English courts.

Group Departments

NEWBURY

Dreweatts

Donnington Priory

Newbury

Berkshire RG14 2JE

Auctions, exhibitions and valuations

LONDON

Dreweatts / Bloomsbury Auctions

16-17 Pall Mall

St James's

London SW1Y 5LU

Auctions, exhibitions and valuations by appointment

+44 (0) 1635 553 553

info@dreweatts.com

dreweatts.com

MANAGING DIRECTOR

Jonathan Pratt

ASIAN CERAMICS AND WORKS OF ART

Mark Newstead

Dr Yingwen Tao

BLOOMSBURY AUCTIONS

BOOKS AND MANUSCRIPTS

Dr Timothy Bolton

Camilla Previté

Roxana Kashani

BRITISH AND EUROPEAN CERAMICS

AND GLASS

Mark Newstead

Geoffrey Stafford Charles

CLOCKS AND SCIENTIFIC

INSTRUMENTS

Leighton Gillibrand

COUNTRY SPORTING

Geoffrey Stafford Charles

DECORATIVE ARTS

Geoffrey Stafford Charles

Ashley Matthews

EUROPEAN SCULPTURE AND

WORKS OF ART

Charlotte Schelling

FINE ART

Jennie Fisher

Brandon Lindberg

Lucy Darlington

Francesca Whitham

FURNITURE AND CARPETS

Ben Brown

Ashley Matthews

William Turkington

HOUSE SALES AND

PRIVATE COLLECTIONS

Will Richards

Joe Robinson

JEWELLERY, SILVER, WATCHES

AND OBJECTS OF VERTU

James Nicholson

Nick Mann

Tessa Parry

LIVE STEAM AND MODEL

ENGINEERING

WORKS OF ART

Michael Matthews

WINE

Mark Robertson

Dianne Wall



HERMITAGE

MADEIRA

PORT

MADEIRA

PORT

CLARET

WINE

UM

MAIDSTONE

SHERRY

PORT

ED-PORT

PORT

BRANDY

BRANDY

LISBON