

DREWEATTS

EST. 1759

INTERIORS

TO INCLUDE PROPERTY FROM THE COLLECTION OF
THE LATE MR. & MRS. JOHN DA SILVA

DONNINGTON PRIORY | WEDNESDAY 24 FEBRUARY 2021



Coming Up at Dreweatts

Auctions

24 February | Live Online

To include Property from the Collection of the Late Mr. & Mrs. John da Silva

25 February | Live Online

Fine and Rare Wine and Spirits

4 March | Timed Online

The General Sale

10 March | Live Online

Space Exploration Photography and Ephemera

11 March | Timed Online

Art on a Postcard International Women's Day Auction in aid of The Hepatitis C Trust

18 March | Live Online

Modern and Contemporary Art

31 March | Live Online

Fine Furniture, Sculpture, Carpets, Ceramics and Works of Art

13 April | Live Online

Jewellery, Silver, Watches, Pens and Luxury Accessories – Part 1

14 April | Timed Online

Jewellery, Silver, Watches, Pens and Luxury Accessories – Part 2

20 April | Live Online

The Transport Sale

21 April | Live Online

Fine Clocks, Barometers and Scientific Instruments

19 May | Live Online

Chinese Ceramics and Works of Art (Part 1)

20 May | Live Online

Japanese & Chinese (Part 2) and Indian & Islamic Ceramics & Works of Art



We hold regular auctions of fine art, antiques, jewellery and other collectibles. Our specialists carry out valuations nationwide so if you are unable to attend one of our valuation days, please request a valuation via our website or call us to discuss a home visit.

DREWEATTS

EST. 1759

INTERIORS

TO INCLUDE PROPERTY FROM THE COLLECTION OF THE LATE MR. & MRS. JOHN DA SILVA

DONNINGTON PRIORY | WEDNESDAY 24 FEBRUARY 2021 | 10.30AM

AUCTION FORMAT: LIVE ONLINE

This is a live online auction with an auctioneer. Bidding is available online, by telephone or commission (absentee) bids. If not bidding online, please contact Dreweatts to register all commission bids or telephone bids by 12 noon (local time) on Tuesday 23 February.

FREE ONLINE BIDDING IS AVAILABLE AT DREWEATTS.COM:

The Dreweatts' bidding platform allows you to watch, listen and bid with no additional online bidding fees applicable.

REGISTRATION:

We advise clients to register at least 48 hours in advance of the auction as you may be asked to provide documents to verify your identity. Registration for new clients will close at 12 noon (local time) on Tuesday 23 February.

BUYER'S PREMIUM:

Buyer's premium is charged per lot at 25% of the hammer price (30% including VAT) up to and including £500,000, 20% (24% including VAT) of the hammer price from £500,001 up to and including £1,000,000, and 12% of the hammer price (14.4% including VAT) in excess of £1,000,001.

PAYMENT:

Please note, we cannot accept payment by telephone for lots bought by first time bidders. For details on other payment methods, please see our website.

AUCTION NO. 14303

SPECIALISTS:

Ashley Matthews (Furniture, Clocks, & Decorative Arts)
Ben Brown MRICS (Furniture & Carpets)
Charlotte Schelling (European Sculpture & Works of Art)
Francesca Whitham (Pictures)
Geoffrey Stafford Charles MRICS
(Ceramics, Glass & Country Sporting)
Mark Newstead (Asian Ceramics & Works of Art)
Will Turkington (Furniture)

VIEWING:

Please note due to current Covid-19 restrictions, there is no viewing of the sale. Condition reports and detailed images are available on [dreweatts.com](https://www.dreweatts.com) or by request.

AUCTION:

Dreweatts
Donnington Priory
Newbury
Berkshire RG14 2JE

ENQUIRIES:

+44 (0) 1635 553 553
info@dreweatts.com
[dreweatts.com](https://www.dreweatts.com)

Front cover: Lot 185

Back cover: Lot 342

DREWEATTS

EST. 1759

NOW INVITING ENTRIES FOR OUR 2021 AUCTIONS

NEWBURY
Dreweatts
Donnington Priory
Newbury
Berkshire RG14 2JE

Auctions, exhibitions
and valuations

HAMBRIDGE LANE
Dreweatts General Sales
1 Hambridge Lane
Newbury
Berkshire RG14 5TU

General sales viewing and
collections by appointment

LONDON
Dreweatts
16-17 Pall Mall
St James's
London SW1Y 5LU

Auctions, exhibitions
and valuations

ENQUIRIES
For more information,
please contact
+44 (0) 1635 553 553
info@dreweatts.com

[dreweatts.com](https://www.dreweatts.com)



John Burke da Silva (1918-2003) and Jennifer da Silva (1932-2020) | lots 1-37

The collection of Mr. and Mrs. John da Silva comprises items inherited from their respective families and pieces they purchased throughout their marriage.

John da Silva was born in the United States of a Portuguese father and American mother, whose parents had come to America from France in the middle of the 19th century and founded a chocolate factory in San Francisco which still exists. He was brought up and educated in England, firstly at Stowe and then at Trinity College, Cambridge.

He married Jennifer Parker in 1963, born 1932, who was a descendant of the Kleinwort banking family.

John served in the British army from 1940-1946, reaching the rank of major, and was mentioned in despatches. After the war he joined the Foreign Service which took him to many parts of the world, including Bahrain in 1960 and later posts in Hamburg, Aden and Washington. He was made a CMG in 1969 and retired in 1972, after which he joined Commercial Union Assurance as a Political and Economic Advisor where he remained until 1984.

John regularly visited the London auction houses making one of his first purchases in 1960 where he recalled, when the lot was knocked down to him, ‘a muted cheer went up from the assembled dealers who by that time knew me by sight’.

John died in 2003 and Jennifer on the 27th August 2020, aged 88.



Left:
The former home of
Mr. and Mrs. John da Silva

1 Y
A George III mahogany and ebony strung knife box, circa 1760, with brass escutcheon, feet and flanking carrying handles, the fitted interior lined with velvet, 35cm high, together with a collection of cutlery contained within

£200-300



2



1

2 Y
A George III ivory octagonal tea caddy, circa 1800, the pagoda cover enclosing a subsidiary lid, banded in tortoiseshell, with silver coloured metal escutcheon, handle and hinge, 13cm high

£300-400



3

3
A red walnut side table in late 17th century style, 18th century, with three frieze drawers, collard cabriole legs and shaped apron, 76cm high, 98cm wide, 51cm deep

£500-700



4Y

A red tortoiseshell and brass inlaid 'Boulle' mantel clock, Rollin, Paris, second half 19th century, with eight-day bell striking movement with outside countwheel, the backplate stamped for the maker and numbered 302, the dial with blue Roman numeral cartouches behind a convex glazed bezel, the case of waisted form with seated putto finial, 41cm high

£400-600

4



5

5

A Dutch walnut and marquetry Pembroke table, 19th century, the rectangular top with twin flaps above two short drawers, the top drawer with fitted interior, on turned tapering legs, 70cm high, 74cm wide (open), 51cm deep

£300-500

6

An Anglo Indian satinwood occasional table, circa 1850, 73cm high, 61cm diameter

£250-350



6

7Y

A Victorian tortoiseshell and silver octagonal tea caddy, dated 1899, with the pagoda top enclosing a subsidiary cover, with applied silver keyhole, handles, and foliate scroll bands to the top and bottom, full English hallmarks JR Ltd, Birmingham 1899, 13cm high

£700-1,000



8

8Y

A collection of three tortoiseshell and gold coloured metal inlaid snuff boxes, 19th century, 8cm diameter, and smaller

£150-200

9

An Edwardian mahogany and satinwood banded ladies writing desk, the lid enclosing a fitted interior with pocket timepiece and various compartments and drawers, with a frieze drawer and further pigeonholes, the rear with further short drawers, 83cm high, 66cm wide, 44cm deep

£250-350



7



9



10
British School (20th century)
Venetian canal
Oil on canvas-board
33 x 23cm (12 x 9 in.)

Label to verso
bears attribution to
Terrick Williams
(British 1860-1936).

£150-250

10



11

11
A George III mahogany bedside night commode, circa 1780, with galleried top and inset silk panel, 76cm high, 55cm wide, 45cm deep

£300-400



12



12
A George III mahogany pole screen, circa 1780, the screen with inset Islamic panel of silver and gold thread, above a tripod base, 136cm high, the screen 43cm square, together with a similar mahogany occasional table, 61cm high, 46cm wide, 37cm deep

Provenance: According to the family archive the pole screen was purchased by the late J.B. da Silva's mother in 1929 for £15.00

£150-250

13

A George III mahogany wine table, circa 1800, with galleried circular top above a spiral twist column, 74cm high, 40cm diameter

£200-300

14

A George III mahogany kneehole desk, circa 1780, with brushing slide above the arrangement of drawers and a kneehole cupboard, on bracket feet, 77cm high, 82cm wide, 46cm deep

Provenance: According to the family archive this table was purchased by the late J.B. da Silva's mother in 1931 from J. H. Roberts & Co., High Street, Camberley for £24.00

£400-600



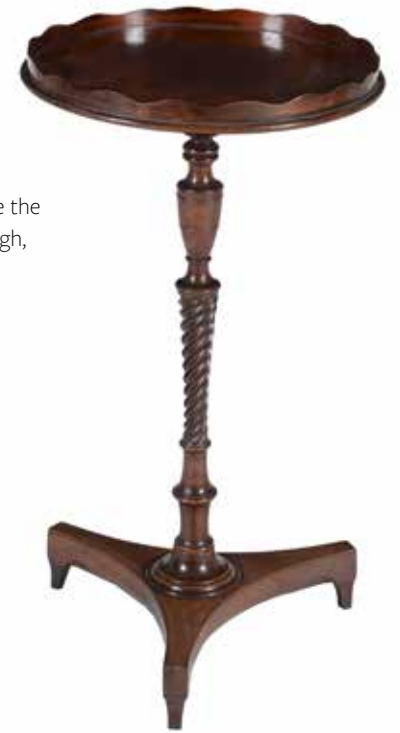
14

15

A Nain rug, in Herati design with red and cream flowers on pale blue ground and blue borders, circa 1930, approximately 239 x 161cm

Provenance: According to the family archive this rug was given to the late J.B. da Silva (1918-2003) by the Shah of Iran as a retirement present in 1973, with whom he had had regular meetings over the preceding four years.

£600-800



13



15



16

16
Charlotte Blakney Ward (British fl. 1898-1939)
Portrait of Jennifer Jane Parker

Pastel
Signed lower right
61 x 51cm (24 x 20 in.)

Jennifer Jane da Silva, born 1932 [née Parker], died 27 August, 2020, aged 88, was descended from the Kleinwort baronets, and was the granddaughter paternally of the life baron, Robert John Parker, the Baron Parker of Waddington [1857-1918].

She was born 3 July, 1932, daughter of Commander the Hon Trevor Tempest Parker, RN, DSC [1890-1973], of Grantham Manor, Liss, co Hampshire, by his wife the former Marieka Louise Kleinwort [1892-1949], scion of the Kleinwort baronets, fifth daughter of Herman Greverus Kleinwort [1856-1942], merchant banker, of Wierton Place, Maidstone, Kent, by his wife the former.

£150-250

18

A Dresden porcelain baluster vase and cover, late 19th century, painted with birds and insects in the Meissen style, 58cm high

£250-350



17

17
Frieda Menshausen-Labriola (German 1861-1939)
Portrait of Marieke Kleinworth (1892-1942)

Pastel
Signed and dated 1899 lower left
87 x 69.5cm (34¼ x 27¼ in.)

The sitter was the daughter of merchant banker Herman Greverus Kleinwort (1856-1942).

£150-250



18

19

A George III burr yew and yew occasional table, circa 1810, the rectangular tilt top above a turned column and tripod feet, 72cm high, the top 46 x 47cm

Provenance: According to the family archive this table was purchased by the late J.B. da Silva's mother in December 1939 for £4.00

£300-500



19



20

20

A mahogany drum table in George III style, 19th century, with arrangement of four short drawers interspersed with false drawer fronts, 74cm high, 61cm wide

£300-500

21

A set of six Regency chestnut side chairs, circa 1815, each with a dished seat, together with a set of four Regency mahogany dining chairs, circa 1820, each with a pierced horizontal splat (10)

£300-500



21 (part lot)



22
Two maps of the Turkish Empire, comprising, Turcici Imperii Imago, Jodocus Hondius, [Amsterdam first half 17th century], with latin text verso, framed and glazed, 43 x 55cm overall, Vaugondy, framed and glazed and with Baynton Williams label version, 54 x 63cm overall, Judee, Vaugondy, with inset plans of Jerusalem, and Moderne, mounted, framed, and glazed, 55 x 64cm

£300-500



23
A Chinese hardwood *Kang* low table, early 20th century, with carved apron, 29cm high, 78cm wide, 42cm deep

Provenance: According to the family archive this table was purchased by the late J.B. da Silva (1918-2003), in Kensington in 1966 and then by family descent.

民国 红木炕桌
拍品来源：前英国情报局官员J.B. da Silva (1918-2003) 私人收藏，其于1966年12月7日购自伦敦肯辛顿地区

£300-400



23

24
A cold painted terracotta shop window figure, late 19th century, depicting a baker standing by a brick oven, modelled holding a carved wood spoon, 53cm high

£300-500

25
Two similar yew and elm armchairs, early 19th century, each with typical comb back above the solid elm seat, each 87cm high

£300-500



25



24

26
A coopered stick stand, 52cm high, together with a collection of various fire furniture, to include bellows, tools, a folding firescreen, 79cm high, a 'peacock' fire screen, 45cm high, and a brass coal helmet, 47cm long overall

£200-300



26



27
An English or Dutch brass mortar, 18th century, of flared form and with line decoration, presented with an associated pestle, 11cm high; **together with a bronze vessel**, probably a mortar, of bulbous form, 9cm high

£120-180



28
An oak side table, last quarter 17th century, with single frieze drawer above turned supports and shaped X-stretcher, 68cm high, 80cm wide, 57cm deep

£300-400



29
A pair of walnut side chairs, early 18th century, each with vase splat and cabriole legs, the drop-in seats with bargello tapestry covers, 96cm high

Provenance: According to the family archive these chairs were purchased by the late J.B. da Silva in 1970, from Phillips, for £240.00

£500-700

30
A giltwood and composition framed reverse painted glass picture of a vase of flowers, probably 19th century, 60cm high, 49cm wide

£150-250



30



31
A walnut standing corner cupboard, mid 18th century and later, the paneled door enclosing shelves, 132cm high, 76cm wide

£200-300



32
An oak side table in William & Mary style, 19th century, the rectangular top with drop leaves above a frieze drawer and cabriole legs united by stretchers, 63cm high, 93cm wide (open) 41cm deep

£300-500



33

33

A mahogany and line inlaid wheel barometer, 19th century, with dry/damp dial, mercury thermometer, mirrored boss, silvered dial with the usual observations, the terminal with a storm dial inscribed Cattaneo & Co, Leeds, 98cm high

Edwin Banfield identifies a number of addresses and dates for Cattaneo & Co. in the Yorkshire area in the 19th century

£100-150



34

34

A pair of Regency parcel gilt and patinated bronze lustre candlesticks, circa 1815, the acanthus cast nozzles descending to tiers of palmette scrolls suspending faceted pendants, on octagonal bases, 22cm high (2)

£200-300

35 Y

A George IV mahogany and rosewood banded Pembroke dining table, circa 1825, with single frieze drawer and opposing false drawer, above a turned pillar and out swept legs with scrolled knees and terminating in castors, 70cm high, 124cm wide (open), 99cm deep

£200-300



35



36

36

A George III mahogany drum library table, circa 1810, the leather inset top above a frieze with arrangement of four drawers interspersed with false drawer fronts, on turned pillar with outswept legs terminating in brass castors, 73cm high, 82cm diameter

Provenance: According to the family archive this table was purchased by the late J.B. da Silva at Phillips in 1973 for £850.00

£800-1,200

37 (one of a pair)

37

A pair of Kashan rugs, with floral borders design on dark blue ground and two red borders, each approximately 219 x 137cm

Provenance: According to the family archive given to the late J.B. da Silva (1918-2003) in Aden 'in 1966 by an Arab acquaintance for whom I had done a good turn by getting his talented son a place at Cambridge.'

£1,000-1,500



Other Properties



38

38
A giltwood overmantel wall mirror in Victorian style, 20th century, with central shell to the cresting rail, 155cm high, 124cm wide

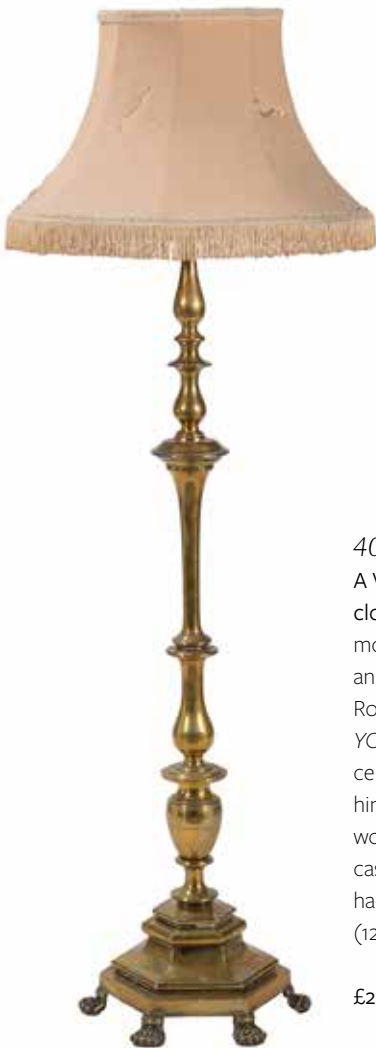
£300-500



39

39 Y
A Victorian walnut, burr walnut, and tulipwood banded credenza, circa 1870, of bowfront outline, the central mirrored doors enclosing shelves, and flanked by banks of three open shelves, 101cm high, 183cm wide, 46cm deep

£500-700



40

40
A Victorian mahogany fusee dial wall clock, late 19th century, the four pillar movement with anchor escapement and 10 inch circular cream painted Roman numeral inscribed *EDW: J. YOUNG, 25 LEADENHALL ST.* to centre, with *spade* hands set behind hinged brass bezel within turned wooden surround fronting box to case incorporating doors to the right hand side and curved base, 30.5cm (12ins) diameter overall

£200-300



41

41
An Edwardian brass standard lamp, early 20th century, the knopped stem descending to a hexagonal base raised on paw feet to the angles, approximately 160cm high excluding fringed silk shade

£200-300



42

42
A French carved walnut and upholstered sofa or day bed, late 19th century, with an arrangement of various removable back, seat and bolster cushions, on cabriole legs, 96cm high, 217cm wide, 77cm deep

£300-400



43



43

A pair of George III mahogany armchairs, circa 1780, each with a shaped rectangular back above a pierced vase splat incorporating carved scroll terminals, and a drop in seat flanked by a pair of shaped arms, on moulded square section legs

£600-800



44

44

A George III mahogany card table, circa 1770, of serpentine outline with canted angles, the top opening to a baize playing surface, 76cm high, 92cm wide, 44cm deep

£400-600

45

A Northwest Persian rug, approximately 258 x 167cm

£200-300



46

A George III mahogany and brass mounted circular tray, late 18th century, with flanking handles, 9cm high, 49cm wide overall, together with a George III mahogany knife box, circa 1780, the lid enclosing a fitted interior, 39cm high, 24cm wide, 33cm deep (2)

£200-300



46



47

47

A George III Pembroke table, late 18th century, in the manner of Thomas Chippendale, with two drop flaps above a frieze drawer and on chamfered legs united by an X-shaped undertier, 71cm high, 111cm wide (open), 58cm deep

£400-600

48

A George III oak chest of drawers, circa 1780, 81cm high, 85cm wide, 51cm deep

£600-800



48



49
A George III giltwood rectangular wall mirror, circa 1800, with triptych plates within a cavetto frame, 72cm high, 134cm wide

£300-500

49



50
An Edwardian mahogany and inlaid sideboard, circa 1905, in George III style and of serpentine outline, 80cm high, 153cm wide, 57cm deep

£250-350

50



51
A set of eight mahogany dining chairs in George III style, late 19th century, to include a similar armchair

£300-500

51

52
Two Worcester mugs, circa 1770, both painted with flowers, the larger reserved with a later nineteenth century yellow ground, 14.5cm and 8.5cm high

£200-300



52



53
A George III mahogany side table, circa 1780, with single frieze drawer, 73cm high, 85cm wide, 53cm deep

£300-500

53

54
A George III mahogany hexagonal wine cooler, circa 1780, the hinged top enclosing a segmented interior, on a stand with three moulded legs, 73cm high

£300-500



54



55

55
A Continental polychrome painted and parcel giltwood model of a putto, 18th century, as a winged bust, German or Italian, 26 x 40cm; together with a Regency spreadeagle surmount, circa 1815 and later re-gilt, possibly from a mirror, 29cm high, 34cm wide

£250-350

56
A walnut chest of drawers, early 18th century and later, 87cm high, 101cm wide, 55cm deep

£400-600



56



57



57
A George III mahogany armchair, circa 1800, 103cm high, together with an armchair in George I style, with shepherds crook pattern arms, 96cm high, (2)

£300-500

58
A George II walnut girandole wall mirror, circa 1740, with re-entrant corners above the fretwork terminal incorporating the candle arms, 71cm high, 48cm wide

£500-700



58

59
A George II walnut and feather banded bureau bookcase, circa 1740, the glazed doors enclosing adjustable shelves, the fall enclosing a fitted interior, 195cm high, 81cm wide, 53cm deep

£400-600



59

60
An Heriz rug, approximately 176 x 94cm

£200-300



60



61

61

A Victorian sampler, undated probably mid 19th century, by Charlotte Jane Kerry Aged 11 Years, with verse *Where Wisdom is to be Found* above central field with birds, insects, floral and foliate motifs, now glazed in a later burr yew effect laminate frame, 46 x 38cm overall

The England and Wales Birth Registration Index, 1837-2008, gives a result for a Charlotte Jane Kerry, born 1839 in Edmonton, Middlesex, she would have been 11 in 1850 which would tally with the probable date of this sampler.

£200-300

62

A Victorian mahogany half tester bed, second half 19th century, the canopy above square section posts to the rear and velvet covered headboard, the footboard with twist columns and central panel, all on brown porcelain castors, 212cm high, 201cm long overall, 151cm wide, together with velvet drapes and curtains

£400-600



62



63

63

A Victorian walnut and upholstered chair, circa 1870, together with a walnut and painted side table, late 19th century, the centre with musical motifs, 67cm high, 35cm wide (2)

£150-200



64

64

A group of four various dressing table mirrors, 19th and 20th centuries, the largest 62cm high, 59cm wide, 23cm deep

£250-350



65

65

A Victorian mahogany chest of drawers, circa 1870, one short drawer with ivory label for COOTE / WITHAM, 119cm high, 114cm wide, 53cm deep

£400-600

66

A Victorian carved walnut and upholstered chaise longue, circa 1870, 80cm high, 185cm wide, 72cm deep

£200-300



66



67

A carved oak figural table lamp, elements 19th century and later fitted, with a man wearing a short tunic carrying a floral basket, 52cm high overall

£200-300

68

A carved oak two panel coffer, circa 1700, with lunette frieze, the lid enclosing a candle box, 57cm high, 103cm wide, 50cm deep

£400-600



68

69

A pair of Italian carved walnut Savonarola armchairs, in Renaissance Revival taste, 19th century, each with tooled and polychrome painted backs above tooled seats, 80cm high

£600-800



69



70

A William and Mary oyster veneered and marquetry inlaid box, circa 1690, 14cm high, 58cm wide, 45cm deep

£600-800



70



71

71

A William & Mary walnut gateleg table, circa 1690, the oval top with hinged flaps above barley-twist supports united by stretchers, 67cm high, 88cm wide, 110cm wide (open)

£250-350



72

72

A pair of cherry trestle benches, 19th century, each with narrow top above end supports and bipedal feet, 54cm high, 235cm long, 35cm wide overall

£300-500



73



73

A pair of mahogany occasional tables, circa 1835 and later, the octagonal tops above triform bases, formerly pole-screens, 47cm high, 44cm wide, 44cm deep

£250-350

74

A William IV mahogany side table, circa 1835, 78cm high, 95cm wide, 51cm deep

£200-300



74



75

75

A William IV mahogany wine cooler, circa 1835, in the manner of Gillows, the hinged top enclosing an interior with later baize lining, 45cm high, 70cm wide, 49cm deep

£600-800

76

A pair of fruitwood and polychrome painted tea caddies, second quarter 19th century, each in the form of an apple, the stalked lid enclosing a silvered interior, 11cm high

£300-500



76



77

77 Y

A William IV rosewood occasional table, circa 1835, the bookmatched veneered top above a faceted bulbous stem with acanthus vase and triform base, the angles with lion paw feet, 73cm high, 69cm diameter

£500-700

78

A William IV mahogany centre table, circa 1835, 73cm high, 115cm wide, 81cm deep

£200-300



78



79

A collection of twenty two models of eggs, in various sizes including specimen marble, alabaster and fossilised examples, contained within a hexafoil wooden bowl, 9cm high, 31cm wide overall

£150-200

80

A Victorian mahogany side table, circa 1850, 74cm high, 108cm wide, 61cm deep

£200-300



81

81

An Edwardian gilt brass and cast iron stick stand, circa 1905, 61cm high, 41cm wide

£200-300



82

82

A Victorian mahogany hall stand, circa 1870, with four tiers of bracket supports to the turned stem above the triform base, 195cm high

Provenance: From The Hon. William McAlpine Collection

A similar model of hall stand chair is illustrated in the Pictorial Dictionary of British 19th Century Furniture Design, page 355, with an illustration taken from W. Smee & Sons, dated 1850. The model in this catalogue differing from the Smee design with the additional tier of supports and no allowance for the storage of canes.

£250-350



83

83

A Victorian mahogany jardinière stand, mid-19th century, the circular top with aperture for a planter, above a dished shelf supported on scrolled supports and a triform base and bun feet, 79cm high, the top 40cm diameter

£250-350

84

A runner, probably Bakshaish, approximately 267 x 101cm

£300-500

84





85

85 θ

Yarrell, William V.P.Z.S F.L.S; A History of British Fishes, in two volumes, 4to, tan leather bound, published John Van Voorst, London 1836

The estate of Christopher and Rosemary Warren

£150-250

86

A mahogany bureau bookcase, circa 1790 and later, the glazed cabinet top above the associated bureau base, the fall enclosing a fitted interior, 247cm high, 92cm wide, 53cm deep

£300-500



87

87

An Edwardian mahogany and satinwood banded display cabinet, early 20th century, of small proportion, with two internal glass shelves, 100cm high, 33cm wide, 33cm deep

Provenance: From The Hon. William McAlpine Collection

£300-500



86

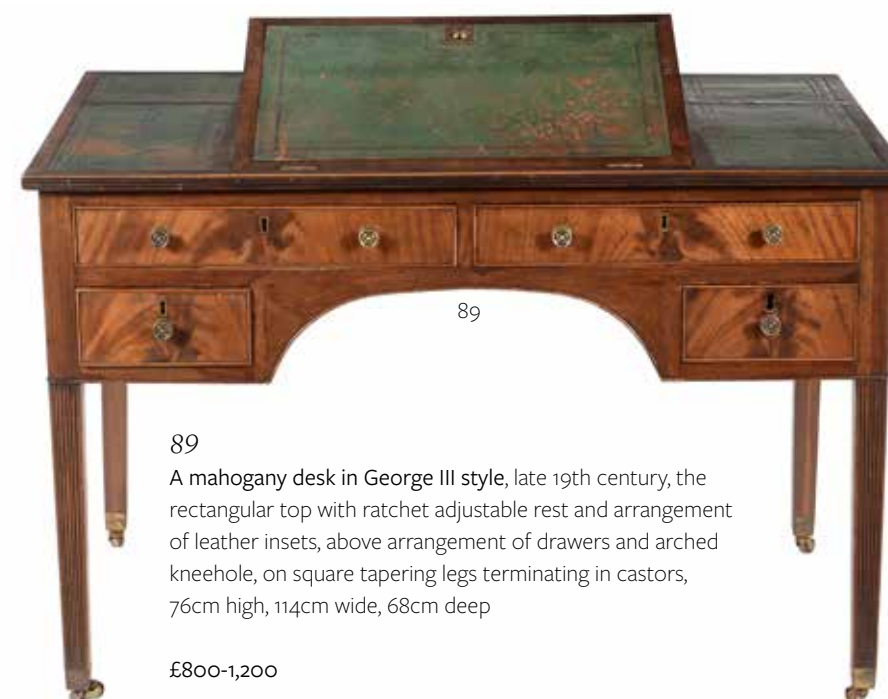
88

A George III Old Sheffield Plate standish, early 19th century, in the manner of Matthew Boulton, with central taperstick above wax compartment, flanked by an inkwell and a pounce pot, the stand with recessed pen wells to each side, on scrolled brackets and lion paw feet, 15cm high, 29cm wide, 20cm deep

£300-500



88



89

89

A mahogany desk in George III style, late 19th century, the rectangular top with ratchet adjustable rest and arrangement of leather insets, above arrangement of drawers and arched kneehole, on square tapering legs terminating in castors, 76cm high, 114cm wide, 68cm deep

£800-1,200

90

A George III mahogany sidechair, circa 1805, in the manner of Thomas Sheraton, the pieced bar back above turned vertical splats with acanthus capitals, with stuffed seat and turned tapering legs to the front

£400-600



90



91

91
A George III mahogany and inlaid chest on chest, circa 1780, 190cm high, 106cm wide, 56cm deep

£500-700

92
A George III mahogany night commode, circa 1770, 82cm high, 60cm wide, 48cm deep

£300-500



92

93

93
A Caucasian rug, approximately 196 x 121cm

£250-350



94

A walnut and parcel gilt fretwork wall mirror in George II style, 19th century, 79cm high, 44cm wide

£250-350

95Y

A rosewood miniature model of a bureau, in the form of a George III example, late 19th century, the fall enclosing a fitted interior, and with three long drawers, 28cm high, 28cm wide, 20cm deep, together with a Victorian satinwood, rosewood, and marquetry inlaid writing slope, circa 1870, the double hinged top enclosing a velvet writing surface and stationery compartments, 8cm high, 40cm wide, 25.5cm deep (2)

£200-300



95



94



96

A George III mahogany and inlaid chest of drawers, circa 1780, 108cm high, 117cm wide, 56cm deep

£400-600



96



97

A Japanese Bronze Vase, of elongated ovoid form with short neck and everted mouth, cast and chased in relief with a long-tailed Ho-o bird in flight amid the branches of a kiri tree, the whole with a coppery patina, the base incised with a seal, height 36cms, Meiji period

£600-800



98

98

A Pair of Japanese Bronze Vases, each of multi-layered form resting on a broad circular base, the upper section (of two) bearing panels of the poet Narihira and of a rat eating a daikon, the broad, usubata-style top chased and inlaid with grasses amid rocks, the sides with dragon handles, details inlaid in silver and gold, height 25.7cms, Meiji Period (2)

£1,000-1,500

99

Makino: A Tokyo School Bronze Vase, the body of compressed hexagonal form on a splayed foot and rising to a tall, hexagonal section neck with everted mouth, decorated to the neck with a bird perched on a gnarled prunus branch from which blossoms are springing, height 38.6cms, seal to base Makino kore o tsukuru, Meiji Period

£300-500



99



100 (part lot)



101

100

Mitsuyasu: A Japanese Bronze Vase, of cylindrical form rising to a hexagonal neck with everted mouth, the shoulder cast with elaborate foliate handles, the whole rests on a circular base with four ruyi-head feet, incised Mitsuyasu saku, height 36cms, Meiji Period, together with a Pair of Japanese Bronze Vases, each of "Gu" shape with a central boss cast in relief with a stylised Tiaoteh masks, with simple tapered handles, height 30.5cms, Meiji-Taisho Era, (3)

£200-300

101

A Japanese Inlaid Bronze Vase, of simple ovoid form with incurved mouth, decorated in silver, copper, gold and shibuichi hon-zogan with trailing branches of flowering cherry, details in kebori and katakiri-bori, height 27.6cms, Meiji Period

£250-350



102
An early Victorian walnut Davenport, circa 1850, with 'harlequin' action the rest sliding forward to release the stationary compartments, with bank of four drawers and opposing false drawers, the front with turned columnar supports, 79cm high, 69cm wide, 65cm deep

A similar model of Davenport is illustrated in the Pictorial Dictionary of British 19th Century Furniture Design, page 349, with an illustration taken from W. Smee & Sons, dated 1850

£300-500

102

103

A George IV mahogany sofa table, circa 1825, in the manner of Gillows, the top with drop flaps above a pair of drawers, 76cm high, 161cm wide, 76cm deep

£500-800

104

A Regency simulated rosewood sofa, circa 1820, in the manner of Gillows, 80cm high, 200cm wide, 61cm deep

£600-800



104



103

105

A pair of Regency gilt and patinated bronze and alabaster mounted candlesticks, circa 1820, the nozzles and stems modelled as thistles, descending to circular socles with moulded collars and further square plinths, 21cm high

£200-300



105



106

106

A George IV mahogany centre table, circa 1825, the circular top above a turned pillar and outswept legs, 73cm high, 146cm diameter

£300-500

107

107

A small carpet, 20th century, probably Portuguese, with all over rose decoration, approximately 260 x 215cm

£200-400





108

108

A George III giltwood and composition oval wall mirror, late 18th century, the frame with anthemion above the pierced surround and later plate, 105cm high, 56cm wide

£800-1,200

109

A George III mahogany Pembroke table, circa 1770, in the manner of Thomas Chippendale, the rectangular top with drop flaps above a fretwork frieze and square section legs, 70cm high, 80cm wide, 80cm deep (open)

£400-600



109



110

110

A George III mahogany and upholstered side chair, circa 1770, the back and seat above blind fretwork legs united by pierced stretchers, 96cm high

£300-500

111

Circle of William Giles

Highland landscape

Oil on canvas laid to board

Bears signature J. W. Giles lower right

41 x 51cm (16 x 20 in.)

£400-600



111



112

112

A George III mahogany tripod table, circa 1780, the single plank top above a turned baluster stem and outswept legs, 70cm high, the top 69cm diameter

£300-500

113

A George III oak chest of drawers, mid 18th century, almost certainly Northern English, with arrangement of short drawers above two long drawers, now on a later stand, 19th century, 126cm high, 114cm wide, 57cm deep

Provenance: Purchased Christie's, The Sunday Sale - Property from the Collection of the Late J.S.Goddard, removed from Camp Hill, Baldwin Estate, Staffordshire, Lot 238, 20 Jan 2008

£400-600



113



114

114
A set of eight mahogany dining chairs in George III style, late 19th century, to include a pair of armchairs, each with carved horizontal splat above a drop in seat

£300-500



115

115
A mahogany twin pedestal dining table, in George III style, second half 20th century, with two additional leaf insertions, 73cm high, 324cm long (fully extended), 121.5cm wide

£300-500

116
A George III mahogany tea table, circa 1780, of semi-elliptical outline, 76cm high, 97cm wide, 43cm deep

£300-500



116

117

A George II brass bound mahogany oval tray, circa 1740, on an associated later stand, 58cm wide, 58cm wide, 39cm deep overall, together with three further trays, comprising: a cutlery tray, 10cm high, 40cm wide, 23cm deep, a two handled tray, 34 x 25cm, and a navette shaped tray 32 x 17cm

£300-500



117



118

118

A George III mahogany and brass bound wine cooler, circa 1780, with removable liner, on a stand base, 61cm high, 65cm long, 45cm deep

£300-500

119

A mahogany and inlaid sideboard, circa 1790 and later, in the manner of Thomas Sheraton, 89cm high, 162cm wide, 60cm deep

£300-500



119



120

120

A carved stripped pine chimney piece, in George III style, 20th century, the aperture 108 x 115cm, 143cm high, 149cm wide, 18cm deep overall

£300-500

121

An iron and brass mounted fire grate in Regency taste, late 19th/early 20th century, the twin rail basket mounted with urn finials, raised on toupie front legs, and with rectangular section backplate, 46cm high, 51cm wide, 21cm deep

£400-600



121

122

A set of unusual Victorian engraved brass fire tools, second half 19th century, comprising shovel, poker and tongs, cast with tiered knobs and engraved with trailing foliage and flowerheads, the pierced and steel mounted shovel 68cm long

£400-600



122

123 Y

A Regency ebonised, rosewood, and pen work occasional table, circa 1820, the top with Chinoiserie exterior scene, with single frieze drawer and tripod base, 69cm high, 37cm wide, 47cm deep

£300-500



123

124

A polychrome painted and parcel gilt desk or dressing table, in 18th century Venetian style, late 19th century, 74cm high, 117cm wide, 60cm deep

£800-1,200



124

125

125

A Persian carpet, approximately 364 x 270cm

£400-600





126 (part lot)

126

A Royal Limoges porcelain 'Grand Palais Or' pattern extensive part dinner service, 20th Century, white with acid-etched gilt border, comprising approximately ninety-nine dinner plates; a hundred breakfast plates; forty-eight breakfast bowls; fifty side plates; forty two-handled soup bowls and saucers and fifty coffee cups and saucers

£1,500-2,500



127 (part lot)

127

A modern composite Haviland Limoges 'Val de Loire' pattern part dinner/breakfast service, comprising approximately: three shaped rectangular trays; four baluster salt pots; a pair of round butter dishes; a pierced fruit basket; twenty-two coffee cups and twenty-one saucers; eighteen breakfast cups and saucers; two teapots and covers; six oval serving dishes; six round serving dishes; thirty-five soup plates; thirty-four breakfast bowls; thirty five breakfast plates with decorated wells contrary to the remainder of the service; thirty-six sandwich plates; thirty-six side plates and thirty-three dinner plates, printed marks

£2,000-3,000



126 (part lot)



127 (part lot)



128

128

A Chinese large export Mandarin palette mug, Qianlong, cylindrical with spreading foot, decorated in underglaze blue and iron-red enamels with a panel depicting figures in a pavilion garden on a fret ground, dragon moulded handle, 16cm high and another export Mandarin palette mug, Qianlong, with figures on a lake before boats, 12cm high (2)

Provenance: Private English Collection

清乾隆 粉彩外销满大人图杯两件
拍品来源：英国私人收藏

£200-300

129

A Chinese hardwood, almost certainly elm side table, in the manner of an altar table, 87cm high, 57cm wide, 180cm deep

£300-500



129



130



130

A pair of Chinese hardwood armchairs, recently manufacture by Charlotte Horstmann, each of tub shape and with removable pad cushion, 89cm high

£300-500

131

A Chinese celadon and russet jade carving of a deer, late Qing Dynasty, recumbent with head turned back holding a *Lingzhi* fungus in its mouth, 4.7cm high x 4.5cm wide x 2cm deep

Provenance: Property of a Gentleman collected in the 1980's or 1990's

晚清 青白玉炉衔灵芝

拍品来源：英国私人收藏，购自上世纪80-90年代间

£250-350



131



132

132

A Chinese blue and white vase, 18th/19th century, Qing Dynasty, decorated with a continuous garden scene depicting three immortals and a deer, the neck painted with rockery and prunus trees, 34.5cm high

清中晚期 青花仙人采药图瓶

£300-500

133

A Chinese cloisonné hu-shaped vase and cover, Qing Dynasty, of compressed globular form, decorated to the globular body with a wide band of stylised lotus blooms, the neck with Buddhist emblems and flanked by two loop handles, the cover 20th century, 11.8cm high

清 掐丝珐琅佛教八宝图双耳瓶

£300-500



133



134

134

A central Italian maiolica berettino-ground wet drug jar, 17th century, named within a cartouche for MEL.ROSS.SOLV., reserved on a scrolling foliate ground above the fleur-de-Lis arms of Florence (Firenze), 20.5cm high

£150-250

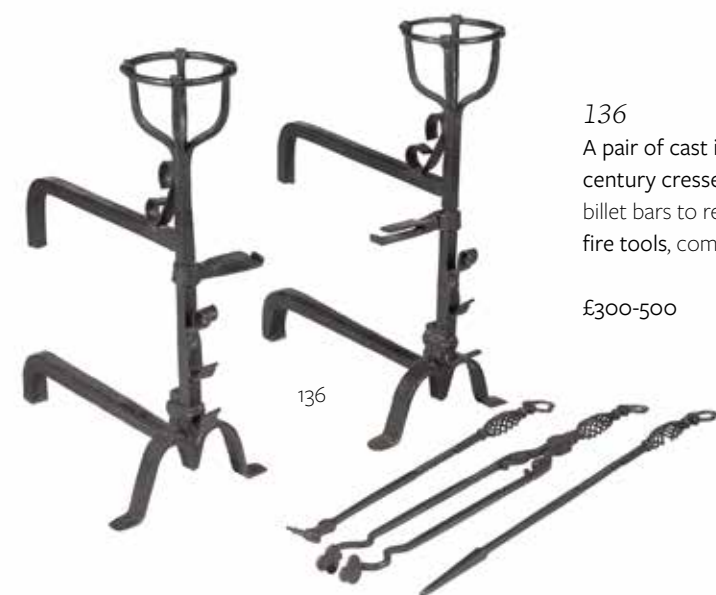
135

A Charles II oak and walnut chest, circa 1680, the rectangular top above a pair of mitre moulded doors, and two short drawers, on stile feet, 106cm high, 126cm wide, 62cm deep

£500-800



135



136

136

A pair of cast iron fire dogs in the style of 17th century cresset baskets, with twin splayed feet and billet bars to rear; presented with an associated set of fire tools, comprising shovel, poker and tongs

£300-500



137

137

A Victorian giltwood framed tapestry panel, circa 1890, in the manner of Herbert Newton Wethered, decorated with four medieval figures reserved on a striped foliate ground, within a diamond band border, 59cm high, 56cm wide, together with another similar, of a maiden at a draped window, 57 x 48cm

There are several examples of the work of Herbert Newton Wethered at the National Trust's Knightshayes Court, Devon, some of which have very similar borders

£150-250



138

138

A William & Mary walnut side table, circa 1690, 74cm high, 83cm wide, 50cm deep

£300-500

139

A Victorian walnut and velvet tapestry upholstered armchair in early 18th century style, mid 19th century, 122cm high

£200-300



139



140

140
A Continental gilt metal and cut glass chandelier, 20th century, of baluster form, the frame mounted with two concentric foliate cast circlets issuing twenty scrolled branches, terminating in scrolled arms supporting frosted drip pans, containing further fittings within, approximately 100cm high, 145cm long

£500-800

141

141
An Italian carved walnut library or centre table, circa 1870, the cartouche shaped top with gadrooned edge and leather inset, the carved and pierced frieze incorporating a central shell motif flanked by scroll motifs with swags of flowers, each conforming cabriole shaped leg incorporating similar motifs and joined by an X-stretcher centred by a seated cherub, on scroll carved feet, the underside with branded stamp 'BARBETTI, FIRENZE', 84cm high, 142cm wide, 73cm deep

£700-1,000



141

142

A pair of gilt metal twin light wall appliques in Louis XV style, circa 1900 and later adapted for electricity, each cast with swirling foliage overall, 54cm high, 29cm wide

£300-500



142



143

143

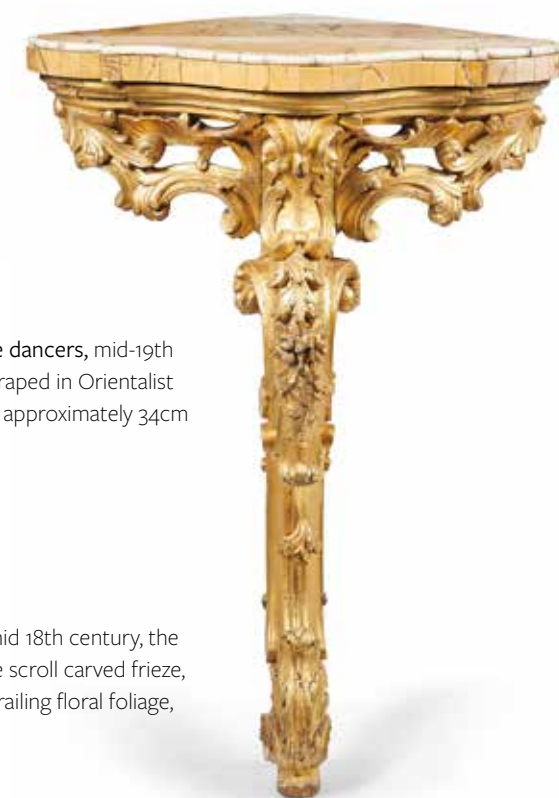
A pair of French patinated bronze models of Levantine dancers, mid-19th century, the man and woman each portrayed partially draped in Orientalist costume, mounted to *noir Belge* bases, the taller model approximately 34cm high overall

£400-600

144

A Continental carved giltwood corner console table, mid 18th century, the shaped quarter circle marble top above a pierced foliate scroll carved frieze, on a C-scroll moulded tapering cabriole leg headed by trailing floral foliage, 88cm high, 60cm wide, 47cm deep

£500-700



144



145

145

A bronzed metal and glazed 'globe' lantern or porch light, modern, the segmented globular body with central pierced band, enclosing light fittings, approximately 90cm high overall

£400-600



146

146

A pair of three seater sofas, recently manufactured by Watts of Chelsea, each 85cm high, 230cm wide, 100cm deep overall, together with a centre stool en-suite, 47cm high, 185cm wide, 95cm deep

£800-1,200

147

A patinated bronze model of a white rhinoceros, modern, portrayed standing, loosely modelled overall, with indistinct signature to the maquette, mounted to a rectangular section *Portoro* marble plinth, 14.5cm high overall

£250-350



147



148

148

A pair of mottled pink and black marble mounted gilt metal side tables or stands, second half 20th century, the rectangular tops on frames each raised on four straight and fluted legs, each 47cm high, the tops 49.5 x 41.5cm

£200-300

149

A pair of French gilt metal and cloisonné enamel mounted onyx stands, second quarter 20th century, the square top above a finned column, with spread base and square section plinth, stamped *MADE IN FRANCE*, each 107cm high, the tops 25cm square, together with a similar gueridon, 79cm high, 40cm diameter (3)

£800-1,200



149



150

A pair of French lead portrait roundels of Napoleon, 19th century, one with the Emperor in profile, the other a double portrait with Josephine, each inscribed *ANDRIEU* to the truncation and in stained hardwood frames; 18cm diameter; a Victorian copper medal with Prince Albert and other monarchs in relief, within an elaborate figural border, in ebonised frame, 17cm diameter; and another roundel of Napoleon

£100-200



151



152

151 Y

A late Victorian rosewood and mahogany table top collector's cabinet, circa 1890, the interior with two banks of drawers labelled with letters "A to S", 52cm high, 55cm wide, 44cm deep

Provenance: From The Hon. William McAlpine Collection

£250-400

152

A Victorian mahogany twin pedestal desk, circa 1870, with leather inset top above pedestals each with four graduated drawers, 76cm high, 123cm wide, 68cm deep

£300-500

153

A collection of six assorted wax and composition portrait reliefs, late 18th and 19th centuries, comprising; a pair of red reliefs of Napoleon and Josephine in profile, presented in oval hardwood frames, 16 x 15cm overall; and others

£150-250



153



154

154

A late Victorian mahogany tabletop collector's cabinet, circa 1890, in the form of a miniature Wellington chest, retailed by S. & H. Jewell, stamped to reverse and to base of one drawer, 62cm high, 40cm wide, 29cm deep

Provenance: From The Hon. William McAlpine Collection

£200-400

155

A Victorian damask style upholstered sofa, late 19th century, 91cm high, 200cm wide, 85cm deep

£300-500



155



156

156

A George III mahogany linen press, circa 1790, 208cm high, 119cm wide, 65cm deep

£400-600

157

A George III mahogany and crossbanded washstand, late 18th century, 85cm high, 55cm wide, 48cm deep

£300-500



157

158

An Heriz rug, approximately 193 x 101cm

£250-350



158

159Y

A group of three Victorian boxes, second half 19th century, comprising; a gilt metal and agate mounted coromandel perfume box, the hinged lid enclosing a pair of scent bottles, 12cm high, 12cm wide, 7.5cm deep, a gilt brass and walnut glove box, Parkins & Gotto, London, the domed lid enclosing a watered silk interior and ivory label for the makers, 9cm high, 25cm wide, 11cm deep, and a rosewood and gilt brass inlaid box, 7cm high, 23.5cm wide, 15.5cm deep

£300-500



159



160

160

A George III mahogany dressing table, circa 1800, 75cm high, 113cm wide, 55cm deep

£300-500

161

A George III mahogany and line inlaid chest of drawers, circa 1800, 104cm high, 98cm wide, 49cm deep

£400-600



161



162

An early Victorian transfer decorated iron and brass mounted tobacco box, of early Railway interest, second quarter 19th century, the domed and hinged burgundy ground body mounted with brass knob and lock plate, decorated with birds, a galleon, a beehive, and, to the rear, an image of a steam locomotive and railway carriage with indistinct inscription below, possibly the 'Planet', raised on bracket feet, 16 x 13 x 9cm overall

£200-300

162

163

A mahogany boardroom or library table in 19th century style, mid 20th century, possibly railway related, the leather inset top with Greek key gilt tooled border, with a frieze drawer to each short end, on fluted tapering legs, 77cm high, 224cm long, 103cm wide

Provenance: From The Hon. William McAlpine Collection

Although referred to as the "railway" table there seem to be no stamps or marks that would indicate the provenance or initial commissioning of this table. It would seem to date from the mid-20th century onwards and the underside is copiously marked with the cabinet maker's pencil guides and notes

£400-600



163



164

164

A walnut library bookcase, early 21st century, manufactured by David Battle, bearing marker inscription, 240cm high, 240cm wide, 60cm deep

£700-1,000

165

A modern carpet in Amritsar style, approximately 447 x 372cm

£800-1,200



165



166

166
A collection of domestic metalware, to include; a Salter's Quadrant Balance, 34cm high overall, a trivet, 27cm long, two candle moulds, one for a pair of candles the other a set of six, and a pair of callipers, 34cm long (closed)

£100-150

167
A walnut armchair, second half 19th century, of Windsor type

£300-500



167



168

168Y
A Dutch Colonial hardwood and ebony chest, 18th century, 84cm high, 119cm wide, 59cm deep

For a closely related example of chest see, Christie's, London, Interiors, 20th May 2015, Lot 587 (£2,000).

£400-600

169
A giltwood wall mirror, in late 17th century style, mid 19th century, 141cm high, 98cm wide

£500-700



169

170
A Charles II oak chest of drawers, circa 1660, with four long drawers each with geometrically moulded front, on stile feet, 98cm high, 95cm wide, 59cm deep

£500-700



170



171

171

An Edwardian stained beech library armchair, in Regency style, early 20th century, with canework panels to the back, seat, and arms, 96cm high

£300-500

172 Y

A Regency rosewood open bookcase, circa 1820, the ratchet top above the four open sides with shelved divisions, the short sides with false book bindings, 81cm high, 52cm wide, 39cm deep

£300-500



172

173 Y

A George IV rosewood chiffonier, circa 1830, the superstructure with C-scroll support, the frieze drawer above lyre and columnar supports with shelf and shaped undertier, 109cm high, 79cm wide, 54cm deep

£500-700

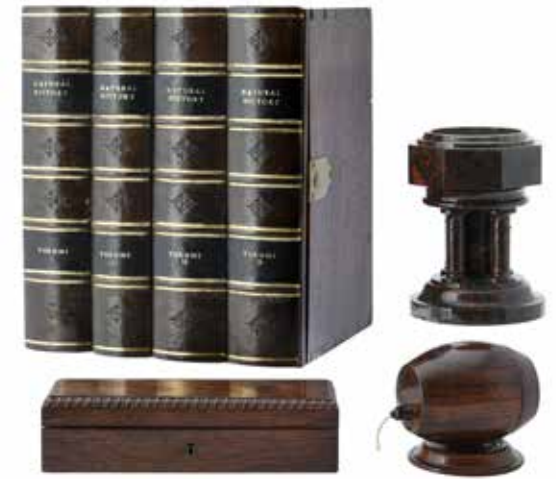


173

174 Y

A collection of desk items, comprising: a mahogany and leather clad box, late 19th century, the door in the form of four false book bindings enclosing a shelved interior, 30cm high, 26cm wide, 22cm deep, a Victorian rosewood string caddy, 12cm long, a rosewood beaded stationery box, 24cm long, and a Cornish serpentine desk font, 16.5cm high

£300-500



174



175

175 Y

An early Victorian rosewood low collector's cabinet, circa 1840, the fossilised marble top above two banks of drawers, 85cm high, 118cm wide, 48cm deep

Provenance: From The Hon. William McAlpine Collection

£400-600

176

A Belouch rug, approximately 196 x 121cm

£200-300



176



177

177
Follower of Jean-Baptiste Monnoyer
Still life of flowers in a basket with a parakeet, peaches and grapes in the foreground
Oil on canvas
55 x 46cm (21½ x 18 in.)

£200-400



178

178
A Dutch walnut and marquetry inlaid desk box, late 19th century, in the form of a cylinder bureau, the fall enclosing an arrangement of drawers, with single drawer, on lion paw feet, 32cm high, 52cm wide, 31cm deep

£400-600



179

179
A Dutch mahogany and marquetry inlaid bureau, late 18th century, the fall enclosing a fitted interior with an arrangement of drawers above a concealed well, with two short and two long drawers, 108cm high, 111cm wide, 68cm deep

£700-1,000

180
A walnut and featherbanded corner cabinet, mid-18th century and later, the door inset with a floral embroidered panel and enclosing shelves, 105cm high, 71cm wide

£400-600



180



181

181
A Continental gilt and onyx mounted model of a maiden at her toilette, second quarter 20th century, the maiden portrayed standing and gazing into a mirror, on an integral canted socle and square plinth, 26cm high

£200-300

182
A George II mahogany drop leaf table, circa 1740, possibly Irish, the twin drop leaves above cabriole legs ending in pad feet, 74cm high, 122cm wide (open), 107cm deep

£300-500



182



183

183
A pair of blue ground and gilt Vienna style Campana urns on plinth bases, circa 1900, printed and painted in figural scenes, each 35cm high

£200-300

184
A George III mahogany side table, circa 1800, with single frieze drawer, 74cm high, 77cm wide, 47cm deep

£300-500

185
A set of six Sheraton Revival mahogany and satinwood dining chairs, late 19th century, each with spider-web back above an upholstered seat and square section legs

£400-600



184



185



186

186
A pair of painted plaster wall brackets in George III style, the platform supported upon scrolls and a cartouche, above theatrical masks, 46cm high, 39cm wide, 19cm deep

£700-1,000



187

187
A George III mahogany and inlaid sideboard, circa 1790, 88cm high, 110cm wide, 49cm deep

£400-600

188
A George III mahogany occasional table, late 18th century, the canted top above a turned stem and outswept legs, 74cm high, the top 49 x 37cm

£300-500



188



189

A pair Persian textiles, late 19th or early 20th century, comprising: a pair of square panels embroidered in bright colours on a black velvet ground, 83cm x 83cm; a pair of square panels embroidered in pink on a claret velvet ground, 88cm x 85cm, another similar larger 83cm x 109cm and another on purple velvet, 77cm x 82cm (6)

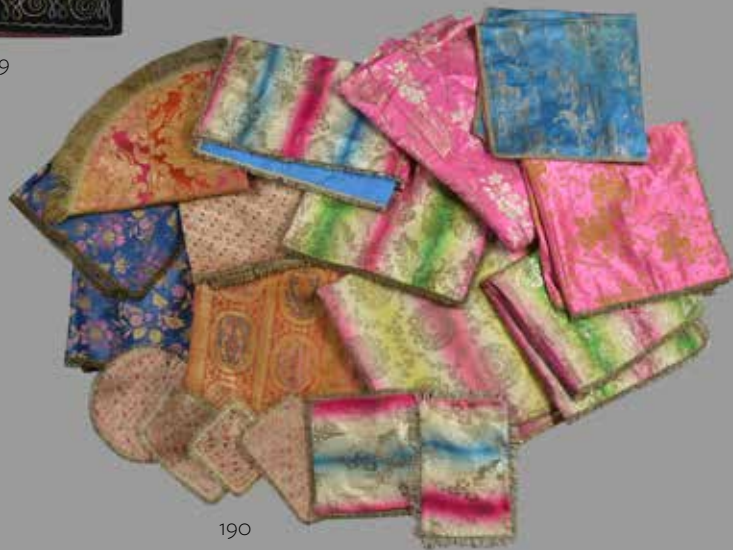
£120-180

189

190

A group of Persian Textiles, 19th and early 20th century, mainly woven metal thread and silk brocade panels, various sizes, largest in bright pink 185cm x 100cm and smaller in various sizes (18)

£300-500



190

191

Two panels of woven silk, Central Asia, circa 1900, one with overlapping stripe, the other with *ikat* leaf decoration, 100cm x 100cm and 118cm x 67cm; a length of woven silk cloth, with design of gold and purple stripes, Persia or Central Asia, probably circa 1900, 194cm x 194cm; a woven silk *ikat* panel, Central Asia, circa 1900, with Russian printed cloth floral lining, 101cm x 104cm an embroidered wool shawl with *boteh* design, Persia, 19th century, 181cm x 112cm and two large embroidered muslin panels, with stylised floral decoration and a late decorative inlaid and enamel photograph frame, 33.5cm x 27.5cm (8)

£200-300

191



192

Two relief moulded polychrome painted tiles, Qajar type, Persia, late 19th or first half 20th century, each depicting a horseman shooting a simurgh with bow and arrow, 28cm x 23cm and 32cm x 23cm, both framed (2)

£200-300

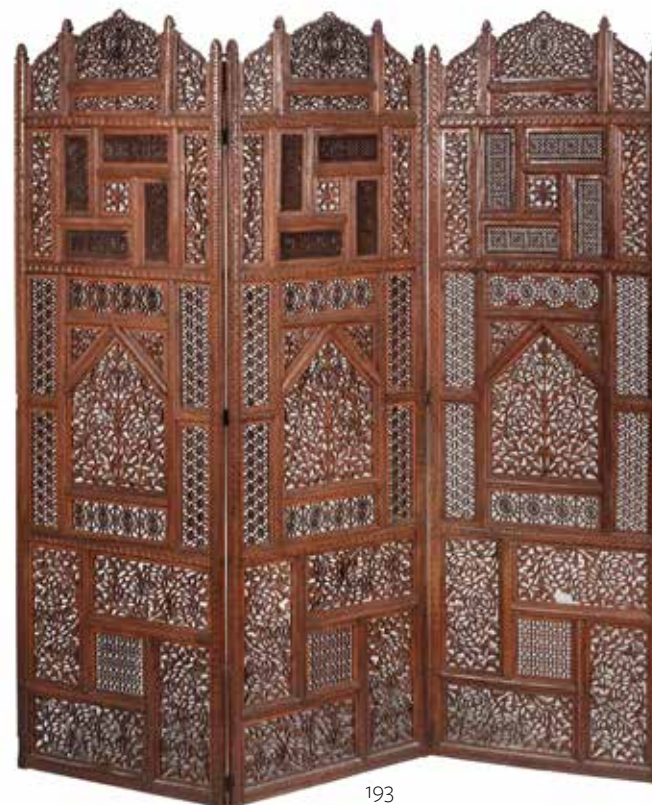


192

193

A carved pierced wood three fold screen, in Syrian taste, each panel 182cm high, 58cm wide

£300-500



193

194

A North East Persian rug, with red ground with a plethora of small botehs, approximately 118 x 74cm

£200-300

194





195
A group of five various carved wood fragments, including furniture mounts in the forms of column capitals, the largest 26cm high, together with a carved oak panel in Renaissance revival taste, within an oak frame, 20th century, 35cm high, 48cm wide

£350-450

196
A French chestnut and damask style upholstered armchair, mid 18th century

£400-600



197



196

197
A French chestnut and damask style upholstered armchair, mid 18th century, 107cm high, 66cm wide, 66cm deep

£400-600

198
A carved a limewood wall mirror in 18th century style, late 19th/early 20th century, 91cm high 64cm wide

£300-500



198

199
A carved limewood armorial crest modelled as an oak tree, the central coat-of-arms supported by hounds, 75cm high, 65cm wide

£250-350



199

200
A Flemish oak *meuble d'appui*, 19th century and incorporating some earlier elements, 113cm high, 85cm wide, 56cm deep

Provenance: Purchased Christie's, Important Early European Furniture, Sculpture and Tapestries, Lot 144, 8 November 2007

£800-1,200



200



201

201
A Victorian giltwood and composition overmantel mirror, circa 1870, 93cm high, 136cm wide

£250-350

202
A Victorian walnut and burr walnut centre table, circa 1870, 76cm high, 129cm diameter

£400-600



202

203
A William IV mahogany pedestal table, circa 1835, the circular top above a turned stem and triform base with bun feet to the angles, 73cm high, 59cm diameter

£200-300



203

204 Y

An early Victorian rosewood and needlework fire screen, circa 1840, 162cm high, 98cm wide, 59cm deep

£400-600

205

A collection of fireplace furniture, to include; a set of early Victorian brass and steel mounted fire tools, circa 1850, to include shovel, poker and tongs, each with rib-moulded knobs to the handles and shafts, the shovel pierced, each approximately 75cm long; a pair of small steel and brass mounted andirons, George III style, 19th century, with urn finials, 29cm high, 18cm deep; and a steel grille or kettle stand, raised on multi-knopped legs

£250-350



205



204

206

A Victorian brass and wirework nursery fender, late 19th century, of typical bowed outline and latticed design, with sheet iron foot to rear, 76cm high, 99cm wide, 28cm deep

£500-800



206



207
A George II walnut and feather banded chest of drawers, circa 1740, 100cm high, 100cm wide, 51cm deep

£300-500

208
A George II mahogany and damask style upholstered armchair, the back and wings above the outscrolled arms and removable seat cushion, on cabriole front legs terminating in claw and ball feet, 112cm high, 91cm wide, 82cm deep

£700-1,000



209
A Hamadan rug or gallery carpet, approximately 252 x 111cm

£300-500



208



210

A Dutch or English brass six light chandelier, of small proportions, probably 18th century and later adapted for electricity, the knopped stem mounted with dished circular reflectors, 46cm high, 28cm wide; and another North European brass chandelier, late 18th or 19th century, with scroll arms issuing around a central boss, 62cm high, 42cm wide

£300-500



210



211

211
A walnut and feather banded chest of drawers, circa 1730 and later, the caddy top above an arrangement of four drawers, 75cm high, 64cm wide, 51cm deep

£400-600

212
A George II walnut and pine chest on chest, circa 1733, 176cm high, 102cm wide, 56cm deep

£500-800



212



213
A pair of Restoration patinated bronze and Siena marble tazzas on plinths, circa 1830, each twin-handled shallow bowl raised on stiff-leaf cast circular socles, and mounted to stepped plinths, each with a floral wreath centred by the possibly memorial inscriptions 'DOMAT THOMAS DESAIN (?) CHABROT' and 'PASCAL LHOSPITAL (?) SIRMONT DELILLE' respectively, 25cm high overall, 18cm wide

Provenance: Purchased from Queen's Parade Antiques Ltd, 16th November 2000, £2,700

£500-700



214
A French mahogany folding card table, circa 1860, 76cm high, 87cm wide, 43cm deep

£300-500



215
A mahogany and upholstered four-fold room screen, 175cm high, 77cm wide

£600-800



216
A Louis Philippe mahogany and marble topped centre table, circa 1830, 72cm high, 98cm diameter

£700-1,000

217
An Empire flame mahogany and upholstered sofa, circa 1820, 93cm high, 205cm wide, 67cm deep

£800-1,200





218

A Chinese hardwood and mother-of-pearl inlaid corner wall bracket, late 19th century, 35cm high

£300-500



219

219

A Chinese hardwood and marble inlaid jardinière stand, the shaped top with pink marble centre above the pierced frieze, supports and stretchers, 70cm high, 37cm wide

£120-180

220

A Chinese giltwood and lacquered head and footboard, from an Opium bed, the headboard with pieced scenes including a crab surrounded by koi carp, later mounted to fabric board, 161cm wide

Provenance: Acquired by the vendor's late parents in the late 1950s

£200-400



220 (part lot)

221

A Chinese gilt bronze and champlevé enamel figure of *luohan*, mark of Qianlong and of the period, cast seated and wrapped with long robe, bearing happy expression to his face, to the reverse incised with a four-character *qian long nian zao* mark, 17.8cm high

For a set of nine similar *luohans*, see Roger Keverne, 2004, *Fine and Rare Chinese Works of art and Ceramics Summer Exhibition*, pp. 62, no. 61.

Provenance: Property of a gentleman

清乾隆 铜珐琅彩鎏金“乾隆年制”罗汉像
拍品来源：英国私人收藏

£600-800



221



222

222

Two Chinese gilt bronze and champlevé enamel figures of *luohans*, 18th century, the largest 12cm high (2)

Provenance: Property of a gentleman

清18世纪 铜鎏金珐琅彩弥勒像两座
拍品来源：英国私人收藏

£300-500



223



223

A Chinese silver gilt filigree and enamel model of goldfish, 17cm long, and a small Chinese silver gilt filigree and enamel model of fish, 7.4cm long

银累丝鎏金烧珐琅金鱼等两件

£300-500



224

224
A collection of desk items, comprising; a Victorian mahogany writing slope, of traditional form, 14cm high, 41cm wide, a pair of brass taper sticks, each modelled as a seated Oriental gentleman holding the scone aloft, 12.5cm high, a rectangular tea caddy, 12cm high, 13cm wide, and a Victorian oak and brass domestic post tray, 18cm high, 17cm wide

£200-300

225 Y

A William IV rosewood library table, circa 1835, the rectangular top above two blind frieze drawers, above faceted bulbous supports and platforms with lion paw feet, 74cm high, 153cm wide, 68cm deep

£400-600



225

226

A Victorian walnut and upholstered sofa, late 19th century, in the manner of Howard & Sons, possibly by George Sherlock, 86cm high, 235cm wide, 110cm deep

£300-500



226

227

Two similar Wemyss style Abbotsford Ware tapered cylindrical candlesticks painted with cabbage roses, late 19th century, decorated in shades of green and pink, printed marks, 20.5cm & 21cm high

£200-300



227



228

228

An Aesthetic Movement ebonised, burr walnut, inlaid and gilt metal mounted open bookcase, circa 1870, in the manner of Gillows, 101cm high, 75cm wide, 41cm deep

£300-500

229

A pair of ebonised and upholstered armchairs, early 20th century, in the manner of Howard & Sons, 82cm high

£500-700



229





230

230
A French walnut armoire, late 19th century, with mirrored panel doors enclosing a hanging rail, 244cm high, 160cm wide, 58cm deep

£400-600



231

231
A brass adjustable standard lamp, 20th century, 105cm high (at its lowest)

£150-250



232

232
A William IV mahogany occasional table, circa 1835, 73cm high, 59cm wide, 43cm deep

£200-300

233 Y

An ivory snuff box, 19th century, the convex glazed lid enclosing a portrait miniature of a young Napoleon Bonaparte, signed H Brun, 8cm diameter, **together with another two-sided ivory snuff box**, late 18th century, the obverse with a view and cartouche with an L and signed Schmid, the reverse with an exterior scene with inset cartouche with silhouette signed and dated Cecil Schmid, 1799, 8cm diameter, **and a further French ivory snuff box**, second quarter 19th century, 5.5cm diameter (3)

£300-500



233



234

234
A mahogany chest of drawers in early Victorian style, circa 1890 and later, 99cm high, 132cm wide, 62cm deep

£300-500



235

235
An American mahogany and line inlaid single bed, late 19th century, with box, 168cm high, 215cm long, 111cm wide

£600-800



236

236

Four modern Royal Worcester hand painted plaques, signed by Michael Powell and Arthur Badham, comprising a pair of upland landscapes, by Powell, each 11.55 x 16.5cm, and a pair of river landscapes with Silver Birches by Badham, 17 x 11.5cm, black printed factory marks, each in a gilt frame and with three factory certificates

£500-800

237

Four modern Royal Worcester hand painted plaques, signed by Michael Powell and Arthur Badham, comprising a pair of river landscapes with fishermen, by Badham, a boating scene by Badham, and a river landscape with cottage by Powell, all 17 x 11.5cm, black printed factory marks each in a gilt frame and the plaques by Badham each with factory certificates

£500-800



237



238

238

A pair of stained hardwood and upholstered wingback armchairs, circa 1930, by Howard & Sons, the rear legs stamped 3491 / 17667, HOWARD & SONS LTD. BERNER'S ST., 121cm high, 78cm wide, 65cm deep

£800-1,200

239

A pair of George II mahogany console tables, circa 1740, each pentagonal D-shaped top, above a plain frieze, on turned tapering legs, terminating in pad feet, each 70.5cm high, 117cm wide, 58cm deep

£800-1,200



239



240

240

After Eutrope Bouret (French, 1833-1906), a patinated bronze model of a flower seller, the standing boy portrayed in rustic dress and holding baskets and flowers, on a circular socle, inscribed *Bouret* in the maquette and with *Bronze Garanti* foundry stamp, 41cm high

£300-500

241

A Louis XV oak commode, mid 18th century, 91cm high, 122cm wide, 60cm deep

£300-500



241

242

A Louis XV walnut and needlework upholstered sofa, third quarter 18th century, 99cm high, 195cm wide, 75cm deep

£800-1,200



242

243

A selection of Continental yellow ground porcelain, late 19th century and later, comprising: a Dresden globular vase and cover, painted with Watteauesques, 39cm high, a pair of Berlin vases, similarly decorated, and with mask handles, each 16cm high, and a modern Limoges porcelain vase in Empire style, 32cm high (4)

£300-500



243



244

244 Y

A French walnut, tulipwood banded, and inlaid tea table, circa 1870, the folding top enclosing a circular baize inset top, 74cm high, 91cm wide, 47cm deep

£300-400

245

A French gilt metal and mesh firescreen in Rococo Revival style, early 20th century, of cartouche form and cast with *rocaille* overall, raised on twin conforming legs; with two fenders, one with pierced frieze loosely in Gothic style raised on ball feet, the other a wirework and gilt metal spark guard

£200-300



245



246



246
A Victorian mahogany lazy Susan, circa 1880, the dished top above a turned stem and spreading base, 23cm high, 52cm diameter, together with an invalids tray, circa 1900, by Carter's Ltd, with ivory label and serial number 91454, 24cm high, 66cm wide, 36cm deep (2)

£200-300



247

247
An early Victorian mahogany extending dining table, circa 1850, with one additional leaf insertion, 74cm high, 254cm long (fully extended), 125cm wide

Provenance: Property from a Private Collection

£1,000-1,500

248
A brass and plum-pudding mahogany two tier side table in Regency style, later 19th century, 59cm high, 35cm wide, 31cm deep

£200-300



248



249

249
A Spode porcelain botanical part dessert service, circa 1815, decorated with pattern 2329, comprising: a two handled navette-shaped bowl; three various shaped quatrefoil dishes in sizes; a sauce tureen and stand; four hexagonal dishes and fourteen plates, iron-red marks

£500-800

250
A George IV mahogany two-tier rectangular dumb-waiter or side table, circa 1830, in the manner of Gillows, 91cm high, 98cm wide, 51cm deep

£400-600

251
A set of eight Regency mahogany and brass line inlaid dining chairs, circa 1815, to include a pair of armchairs, each with bar back and turned rope-twist splat

£400-600



250



251



252

252 Y

A mahogany, tulipwood banded and ebony strung brass mounted set of "jockey" scales, 19th century, with integral height measure and cup weights, apparently unmarked, 135cm high

Provenance- From The Hon. William McAlpine Collection *Though usually referred to as "jockey scales" the decorative elegant nature of these items suggests that they were intended for domestic interiors- possibly for children.*

£300-500

253

An Edwardian satinwood and mahogany banded worktable in George III style, circa 1910, with frieze drawer and lined work bag, 69cm high, 47cm wide, 34cm deep

£200-300



253

254

A George IV mahogany and later upholstered stool, circa 1825, 47cm high, the top 56 x 36cm, together with a Regency hall chair, circa 1815, of 'cock-fighting' form, 74cm high (2)

£200-300



254



255

255

A Victorian satinwood collectors cabinet bookcase, circa 1890, in Sheraton Revival taste, the arcade moulded cornice above a pair of astragal glazed doors, each centred by a foliate inlaid oval and opening to adjustable shelves, above an open recess, the lower section with a pair of panel door opening to two banks of eleven short drawers, above a shaped apron and outswept tapering bracket feet, 213cm high, 110cm wide, 49cm deep

£1,500-2,000



256

256

An embroidered wall hanging, 20th century, the cream field worked with scrolling foliage and flowerheads, within a pale blue border, 180 x 120cm

£200-300

257

A Regency mahogany reading stand, circa 1815, the adjustable rest too above a ring turned stem and hipped outswept legs, 72cm high, the top 43cm wide, 40cm deep

£300-500



257



258

258

A Regency mahogany tilt top table, circa 1820, the rectangular top with canted corners, above a turned stem and outswept legs, 75cm high, 101cm wide, 72cm deep

£300-500

259

A Staffordshire drabware shaped rectangular plaque modelled in relief with Sir Sidney Smith on the walls at Acre, circa 1840, 33cm x 25cm

£150-200



259



260

260

A Regency mahogany side cabinet, circa 1820, the shelved superstructure above a pair of frieze drawers and pleated cupboard doors, 170cm high, 86cm wide, 34cm deep

£300-500



261

261

A George IV simulated rosewood card table, circa 1825, in the manner of Gillows, the folding top enclosing a baize playing surface, on turned, reeded and tapering legs, 76cm high, 91cm wide, 43cm deep

£500-700



262

Two polychrome painted models of French revolutionary wars/Napoleonic wars soldiers, late 19th century, one a Chasseur à cheval, 44cm high, the other a Dragoon, 47cm high

£300-500



264



263 (part lot)

263

A Russian black lacquered snuff box, Vishnyakov, the lid decorated with a lady and child by a stream, the interior of the lid inscribed in Russian for the maker and stamped with medallions, 7cm high, 10cm wide, 8cm deep, together with a collection of six black lacquered papier mache snuff boxes, comprising: one of William III and inscribed, Jan Muder Fecit, 7cm diameter, one of Sir Robert Peel, 7cm diameter, one inscribed the amputating port bill, 7cm diameter, one of a carriage indistinctly entitled English Blacking (?), 9.5cm diameter, one with a Continental coastal scene, 7cm diameter, one with a lady clutching a goblet, 7.5cm diameter, (7)

£300-500

264

A Continental walnut and gilt metal mounted bonheur-du-jour, late 19th century, 119cm high, 91cm wide, 66cm deep

£300-500

265

A Russian bronze group of a Circassian on Horseback, Chopin foundry, after the model by Evgeny Lanceray, dated 1873, the rider portrayed in traditional dress of a fur hat and coat, standing atop his horse's saddle and aiming a rifle, on a naturalistically modelled rectangular base with canted corners, approximately 28cm high

This model by the prolific St. Petersburg born painter and sculptor Lanceray depicts a Circassian rider practicing the traditional equestrian sport of *Dzhigitovka*, in which the rider performs complex stunts and acrobatic tricks on horseback.

The Chopin foundry received a patent to cast this model in bronze in 1874, and in 1876 it was presented at the Centennial Exposition in Philadelphia.

£600-800



265

266

A Russian mahogany and gilt metal mounted twin pedestal desk in 19th century style, 20th century, 76cm high, 181cm wide, 92cm deep, together with a similar armchair, late 19th century, 120cm high

£500-800



266



267

267
A French gilt bronze fifteen light chandelier in Louis XIV taste, second half 19th century and later refitted, possibly previously for oil, the knopped central stem with stylised urn and circular boss, applied with foliate and dolphin mounts, above conforming branches, hung with slender cut glass pendants, 102cm high, 78 cm diameter

Provenance: Property from a Private Collection

£400-600

268

Two similar clear glass pear-shaped chemist's bottles and faceted spire stoppers, late 19th century, 75cm high, and 60cm high respectively

£150-250



268

269

Three items of flat-cut glass, circa 1790 and later, comprising an ogee section oval epergne dish with fan-cut rim, 36 cm in length and a pair of later flat-cut candlesticks, 26 cm high

£200-300



269



270

270

A modern Royal Copenhagen blue and porcelain 'Fluted Half Lace' pattern part coffee service, comprising: a coffee pot and cover; a sugar bowl and cover; a cream jug and twelve coffee cups and saucers, green printed marks and blue wave marks

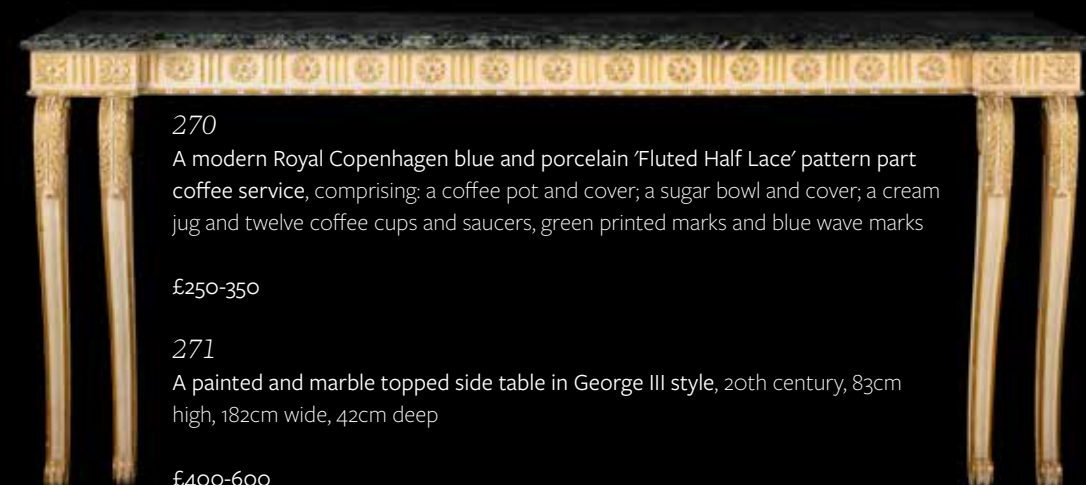
£250-350

271

A painted and marble topped side table in George III style, 20th century, 83cm high, 182cm wide, 42cm deep

£400-600

271



272

272

A Mahal carpet, approximately 410cm x 338cm

Provenance: Previous sold in these rooms
2 June 2016, lot 453 when purchased by the vendor

£500-700





273

273

A pale-green glass sealed wine bottle with seal for the Clive family, early 19th century, 29cm high

£300-400



274

274

A George III mahogany centre table, circa 1780, probably Irish, the circular top above a birdcage action, 74cm high, 107cm diameter

£500-700

275

A set of eight mahogany dining chairs, in George III style, 20th century, to include a pair of armchairs

£600-800



275

276

A George II fret frame wall mirror, circa 1750, 97cm high, 52cm wide

£300-500



276



277

277

A pair of mahogany torchere stands in George III style, probably incorporating a pair of bed posts, each 165cm high, the dished top 24cm diameter and another, smaller, 140cm high and the dished top 18cm diameter.

£250-350

278

A mahogany silver table in George II style, later 18th century, the dished top with re-entrant corners above the single frieze drawer and cabriole legs, 72cm high, 80cm wide, 52cm deep

£600-800



278



279 (one of a pair)

279

A pair of walnut bookcase cabinets in Queen Anne style, late 19th century, 216cm high, 246cm wide, 41cm deep

£1,000-1,500

280

A Bakshaish carpet, the ochre field decorated with a repeated pattern of boteh in red and blue, the blue border decorated with geometric motifs, approximately 413 x 327cm

£700-1,000



280



281

281

Three floral still life panels in 17th century style, 20th century, oil on wood, each signed Joyce Norwich, in ebonised frames, the largest 82 x 32cm overall

£600-900

282

A walnut and featherbanded folding side table, in William & Mary style, late 19th century, in the manner of examples by Charles Tozer, 75cm high, 79cm wide, 31cm deep

£600-800



282



283

A Victorian stained oak and brass bound cigar box, late 19th century, the lid enclosing an internal divider pierced for the storage of seventy 72 cigars, 15cm high, 25cm wide, 14cm deep, **together with and a Victorian black leather tobacco box, Hewitts Universal Tobacco Box, in Regency style, the lid with recumbent greyhound, enclosing compartments and internal lid, this lid with manufacturers label and registration diamond for February, 3rd, 1852, 15.5cm high (2)**

£250-350



284

A Victorian lady's writing table, circa 1880, of kidney outline, 74cm high, 90cm wide, 55cm deep

£400-600



285

285

A Victorian burr walnut folding card table in French taste, circa 1880, by Gillow & Co, the folding top with baize playing surface, the rear legs on drawer action, the top edge stamped for the maker 1370, 75cm high, 84cm wide, 48cm deep

£700-1,000

286

A late Victorian mahogany coin sorting machine, Henry Howard Hanmer, Liverpool, late 19th century, comprising eight trays marked for the denomination of coin, each hinged and with carrying handles, together with the original pine carrying case, the exterior marked HANMERS / COIN SORTER CO. LTD. / LIVERPOOL, 46.5cm high, 45cm wide, 33cm deep

Together with a printed facsimile copy of the patent 566,453 dated Aug. 25, 1896 for 'Coin Assorting Apparatus'

£600-800



286



287

287

A Victorian mahogany collector's cabinet, circa 1870, the moulded top hinged to conceal a compartment above an arched panel door enclosing a bank of drawers 145cm high, 79cm wide, 60cm deep

Provenance: From The Hon. William McAlpine Collection

£400-600

288

An Heriz runner, approximately 447 x 91cm

£300-500

288





289

A pair of Derby white porcelain figures of the Whig politicians Field Marshall Henry Seymour Conway and John Wilkes, circa 1770, 31cm & 28cm high

£300-500

290

A pair of Derby porcelain models of John Milton and William Shakespeare, circa 1820, 28cm and 29cm high, typically modelled, and a later 'Tythe Pig' group, possibly Sampson Hancock, 17cm high

£150-250

291

A Chamberlain's Worcester green-ground and gilt topographical urn, circa 1830, painted with a view of Worcester from the River Severn, iron-red script mark, 13.5cm high; together with a Chamberlain's Worcester cup and saucer painted with feathers, iron-red script marks, and a Spode Felspar porcelain spill vase or urn shape pedestal form, circa 1820, decorated in the famille rose palette and gilt with exotic waterfowl and flowering shrubs, black printed mark, painted iron red pattern number '2975', 15.5cm high

£160-240



290



291



292

292

A modern Rorstrand blue-band and gilt part dinner service, comprising: A pair of round serving dishes; a pair of large oval meat dishes; seven assorted lozenge shaped serving dishes in sizes; five various oval serving dishes in sizes; two vegetable tureens and a cover; two other smaller vegetable tureens; a two-handled soup tureen and stand; two other tureens and covers in sizes; a sauce boat with integral stand; twenty six soup plates; thirty breakfast plates; thirty-five dinner plates; six side plates and eighteen desert plates

£300-500



293

293

A companion pair of giltwood console tables, second half 19th century, each with a white marble top above the pierced scroll frieze and cabriole legs, 95cm high, 159cm wide, 45cm deep, and 95cm high, 137cm wide, 47cm deep

£500-700



293



294
A Regency giltwood convex wall mirror, circa 1815, with candle arms, 106cm wide overall

£300-500

295
A burr oak library table, in Regency style, 20th century, after a design by Gillows, 72cm high, 122cm wide, 61cm deep

£500-800



295



296

296
A Regency mahogany library chair, circa 1820, with rattan back and seat, with squab cushion, on sabre legs, 82cm high

With old Christies label, lot 116, 13 May 2003

£250-350

297
A mahogany, simulated rosewood and parcel gilt occasional table, circa 1815 and later, the crossbanded oval top above a tripod base, 75cm high, the oval top 50 x 40cm

Provenance: From The Hon. William McAlpine Collection

£300-500



297

298
A Regency mahogany centre table, circa 1820, in the manner of Gillows, the top with beaded edge above a panelled pillar, quadripartite base with carved feet to the angles, 73cm high, 126cm diameter

£700-1,000



298

299

299
A Turkish carpet, approximately 390 x 285cm

£400-600





300

300

A black lacquered papier Mâché tray, B. Walton, Wolverhampton, circa 1845, King's-gothic shape, with gilt rim and central painted scene with equestrian travellers greeting on a road with attendant terriers, the rear impressed B. WALTON & CO., / WARRENTED, 63 x 83cm overall

See Yvonne Jones, Japanned Papier Mâché and Tinware c. 1740-1940, pages 188-190 for a biography of the firm of Benjamin Walton & Co (1841-1847)

£200-300

302

A *Tôle Peinte* octagonal wall clock, 19th century, the French eight-day bell striking movement with outside countwheel numbered 7 2 to the backplate, with silvered Roman numeral dial behind a convex glazed bezel, the case to simulate inlaid rosewood, with hanging loop surmount, 47cm high overall

£300-500



302

303

A painted tinware and Old Sheffield Plate mounted tray, painted with perching macaw and exotic starlings, later mounted on an associated simulated bamboo stand, 50cm high, 59cm wide, 45cm deep

£800-1,200



303

301 Y

A near pair of early Victorian black lacquered and parcel gilt papier Mâché pole screens, circa 1850, in the manner of Jennens & Bettridge, each with shaped guard inlaid with mother-of-pearl, the twist stems above the tripod base, each 134cm high

£500-800



301



304

304

A pair of tinware tea canisters, each painted with exterior scenes, 10cm high, 13cm wide, together with a tinware box in the manner of a Chinese lacquer gaming box, 7cm high, 16cm wide, and a Huntley & Palmers Literature biscuit tin, in the form of false book bindings, named for the makers to the base, 16cm high, 16cm wide (4)

£200-400



305

305

A Tôle Peinte egg carrier, 19th century and later painted, the acorn knob above two further acorn finials and concealed hinged tops enclosing the stand for the six eggs, with flanking handles modelled as swans, 21cm high

£150-200

306

A painted tinware tray, 19th century, of sandwich-edged rectangular form, decorated with floral spray centre with peacock and gilt S-scroll borders, 62 x 47cm, on an associated ebonised and parcel gilt stand, modern, as a table 50cm high overall

£100-200



306

307

A painted tinware tray, 19th century, with central vignette of lady (possibly Lady Hamilton) holding a pineapple, on a cream ground and with a swagged border, the gallery incorporating carrying handles, 67cm wide

£300-600



307



308

A Regency hand painted tinware tray, probably Pontypool, circa 1820, with cattle decoration after George Morland, the octagonal gallery incorporating carrying handles, 76cm wide, 51cm deep

£300-600

309

A painted tinware tray, 19th century, of shaped rectangular form, with central flower spray on green ground and within parcel gilt borders, 68cm wide, together with a painted tinware tray, 19th century, of rectangular form, with central scene with peacock and swan by fruiting bushes and architectural fragment, 73cm wide, and a painted tinware tray, 19th century, of shaped oval form, decorated in green and plum and parcel gilt borders, 62cm wide (3)

£100-200

308



309



310

310
A painted tinware tray, 19th century, of rectangular form, with faint central peacock decoration, 68cm wide, together with a painted tinware tray, 19th century, of small proportion, with Chinoiserie decoration, 30cm wide, and two painted tinware trays, 19th century, of King's-gothic form, one with central red Asiatic pheasant, 80cm wide, the other with birds of paradise, 78cm wide (4)

£100-200



311

311
A painted tinware tray, 19th century, probably Pontypool, of rectangular form and with Dutch style still life to centre, with pierced border incorporating carrying handles, 55cm wide, together with a smaller oval tray, 28cm wide (2)

£120-180



312

312
A painted tinware tray, 19th century, of oval form with central birds in foliage, 60cm wide, together with A painted tinware tray, 19th century, of oval form with central floral spray, 76cm wide, and a painted tinware tray, 19th century, of King's-Gothic form, with central floral spray, 65cm wide (3)

£100-200



313

313
A painted tinware tray, 19th century, of oval form, the central scene with three children playing blind man's buff, the galleried edge incorporating two carrying handles, 66cm wide

£150-250



314

314
A Regency and black and parcel gilt painted tinware hat box, 36cm high, 47cm wide, 40cm deep, together with a tinware box with scumbled decoration to simulate tortoiseshell, 29cm high, 34cm wide, 24cm deep, and a black painted tinware tray, 19th century, with oak twisting leaf border to the gallery, 61cm wide (3)

£120-180



315

315
A Swedish set of three graduated hand painted tinware oval trays, 19th century, 63cm wide overall and smaller, together with a further Swedish hand painted tinware oval tray, 19th century, with mustard yellow ground and gilt band, 61cm wide (4)

£150-250



316

316Y

A painted tinware tray, 19th century, of oval form and with faint decoration of birds, 58cm wide, together with a painted tinware tray, 19th century, of oval form, with rose floral spray on a red ground, 66cm wide, and a tray, 19th century, of oval form, with mother-of-pearl and painted floral decoration, 61cm wide (3)

£120-180

317

A late George III mahogany and satinwood banded card table, circa 1810, of D-shape, the folding top enclosing a red baize playing surface, 75cm high, 92cm wide, 45cm deep

£300-500



317



318

318

A mahogany Pembroke table, circa 1825 and later, in the manner of Gillows, 72cm high, 98cm wide (when open), 92cm deep

£200-300



320



319

319

A copper relief plaque of Dante Alighieri, late 19th or 20th century, portrayed in profile and presented in ebonised frame, 17 x 14cm overall; a bronzed medal of Zeus in Roman style, of oval form, mounted and framed; and a slate roundel, inscribed CAIO CALIGOLA and with associated composition portrait of an 18th century gentleman in profile

£150-250

320

A Regency mahogany whatnot, circa 1820, of country house type, the four square tiers divided by turned supports, the lower two tiers each incorporating a drawer, on turned legs terminating in brass caps and castors, 157cm high, the top 51 x 51cm

£500-800

321

A set of eight regency mahogany dining chairs, circa 1820, to include a pair of armchairs, each with an acanthus carved horizontal splat

£300-500



321



322

A set of seven architectural prints, after Rossini, variously dated *Roma 1819-23*, to include *Veduta del Tempio di Vesta*, various sizes, the largest overall 73 x 57.5cm (28 3/4 x 22 5/8in.) (7)

£250-350



322 (part lot)

323

A mahogany display cabinet, in George III style, early 20th century, the pair of arched doors enclosing three glass shelves, 132cm high, 48cm wide, 28cm deep

£200-300



324

324

A George III mahogany two tier side table, circa 1780, with single frieze drawer, the square section supports united by a rectangular undertier, 72cm high, 72cm wide, 50cm deep

£600-800



323



325 (part lot)



326 (part lot)

325

A set of five architectural prints, after Rossini, variously dated *Roma 1820-22*, to include *Veduta del Interno del Pronao del Pantheon*, various sizes, the largest overall 58 x 71.5cm (22 3/4 x 28 1/4in.) (5)

£200-300

326

A set of seven architectural prints, after Rossini, variously dated *Roma 1820-23*, to include *Veduto dell' Arco di Settimio Severo nel Foro Boario*, various sizes, the largest overall 59 x 77cm (23 1/4 x 30 1/4in.) (7)

£250-350

327

An upholstered sofa in George III style, 20th century, the upholstery by Watts of Chelsea, 90cm high, 165cm wide, 90cm deep

£400-600



327



328

A pair of Chinese Armorial rectangular dishes, circa 1795, the centres painted with the arms of Smith impaling Cazalet, underglaze blue borders, 37cm diameter (2)

Provenance: Private English Collection

See David Sanctuary Howard, *Chinese Armorial Porcelain*, vol 1, p.723.

约清1795年 粉彩外销纹章瓷盘一对
拍品来源: 英国私人收藏

£300-500

328

329

A Chinese Export part dinner service, circa 1795, each piece painted in vivid blue enamels with gilded details, comprising: twelve soup bowls, 25cm wide, six side plates 19.4cm wide and an oval dish, 30.5cm wide (19)

Provenance: English Private Collection

约清1795年 蓝彩描金外销餐具一组19件
拍品来源: 英国私人收藏

£400-600



329



330



330

A Chinese silver filigree and enamelled openwork 'Double gourd' bottle with cover, 20th century, 9cm high; and a Chinese silver enamelled openwork 'Butterfly' pendant, 5.9cm wide (2)

银烧蓝葫芦小瓶及蝴蝶佩两件

£300-500



331

331

A Korean hardwood, probably elm and metal mounted chest, 138cm high, 93cm wide, 45cm deep, and another similar (2)

£400-600



332



332

Two Korean hardwood, probably elm, and metal mounted chests, one 75cm high, 94cm wide, 46cm deep, the smaller 68cm high, 90cm wide, 45cm deep

£250-350



333

A carved giltwood and composition oval wall mirror in George III style, mid 19th century, with urn and foliate scrolls above the plate and with spreading foliage and cartouche terminal, 147cm high, 88cm wide

£600-800

334

A mahogany tripod table, circa 1800 and later, 63cm high, the top 44.5 x 38cm

£300-500



335

A set of four George III mahogany dining chairs, circa 1780, each with carved shell to the cresting rail above a pierced vertical splat and drop in seat, together with two similar George III mahogany dining chairs, circa 1780, each with pierced vertical splat and drop in seat, and two further George III mahogany dining chairs (8)

£250-350



335 (part lot)

336

A pair of Victorian brass Gothic Revival pricket candlesticks, late 19th century, the circular drip pans, faceted stems and lappet feet engraved with foliage and quatrefoils in Medieval taste overall, 45cm high

£200-300



336

337Y

A George III mahogany, ebony and satinwood inlaid sideboard, circa 1790, of inverted break front outline, with central drawer flanked by a deep drawer and a cellaret drawer, 93cm high, 203cm wide, 75cm deep

£400-600



337

338

338

An Indian wool carpet, approximately 308 x 243cm

Provenance: From M & N Oriental Rugs

£500-700



339Y

W. Haines; a portrait miniature, watercolour on ivory, Mrs Mason and her daughter Clarentia, under bevelled glass and with gilt metal slip, in a folding case, with pencil and pen inscriptions, the case 18cm high, 14cm wide overall, together with another portrait miniature, watercolour on ivory, circa 1830, of a lady, in a folding case, 14cm high, 11cm wide overall, and A B Colthurst, an Edwardian portrait miniature, watercolour on ivory, of a baby, in a gold coloured frame and within a folding case, 11cm high, 9cm wide overall (3)

£200-300



339



340

340

A Victorian mahogany collector's cabinet, circa 1850, the beaded top above a panel door enclosing an arrangement of 15 drawers, and with gilt metal carrying handles to the sides, the inside of the door with ivorine plaque for S. & H. JEWELL, 132, HIGH HOLBORN, LONDON. W.C. 101cm high, 47cm wide, 48cm deep

Provenance: From The Hon. William McAlpine Collection

£300-500

341

A Victorian hardwood and brass bound campaign chest of drawers, mid 19th century, in two parts, 98cm high, 92cm wide, 50cm deep

£400-600



341



342

342

An American walnut and marquetry inlaid compactum wardrobe, circa 1890, in the manner of Edwards & Roberts, retailed by Maple & Co, with central cupboard doors above a bank of two short and three long drawers, flanked by mirror panel cupboard doors enclosing hanging spaces, one cupboard door with enamel plaque for the retailers, 235cm high, 220cm wide, 59cm deep

£500-700

343

A Tabriz carpet, approximately 343 x 245cm

£400-600





344

A set of six engravings of Ancient statues, each inscribed for engraver Carloni, to late 18th century designs by Vincenzo Dolcibeni and Franz Smuglewicz, later mounted, framed and glazed, 69 x 53cm overall

£250-350



344 (part lot)

345

A French or Italian patinated bronze model of Ceres after the Antique, second half 19th century, portrayed standing and fully draped, mounted to a stepped marble plinth and further mahogany base, 49cm high overall

£300-500



345

346

After Antonio Canova, a patinated bronze allegorical model of a putto, late 19th century, emblematic of science, mounted to a stepped verde antico plinth, 26cm high overall

£300-500



346

347

After Richard Houston
Astronomy, men and women using astronomical instruments in a garden surrounded by classical ruins
Gouache
31.5 x 48cm (12¼ x 18¾ in.)

£300-500



347

348

An Italian white marble fragment of a rearing horse, 16th/17th century, possibly an armorial fragment, modelled with the neck turned slightly to dexter, its body emerging from a wreath and acanthus back, mounted to a later rectangular mottled grey marble plinth, 10cm high, 12cm wide overall

The handling of the present model bears strong similarities to that of a fragmentary horse in the collection of the Kunsthistorisches Museum, Vienna, Inv. Nr. Schloss Ambras Innsbruck, PA 922.

£200-300



348

349

A pair of Italian bronze candle holders, in Pompeian Revival taste, possibly Chiurazzi, early 20th century, the bases issuing arms in the manner of Roman oil lamps, and surmounted by cranes, 21cm high, 20cm wide

£200-300



349



350



high, and a Cozzi porcelain baluster hot water jug and cover, circa 1770, with crabstock handle and painted in green and puce with shaped cell panels and foliate springs, iron red 'anchor' mark, 15cm high

£300-400



351

351

A miscellaneous selection of Worcester porcelain tea wares, mostly circa 1770

£300-500

352

A group of assorted Worcester porcelain, circa 1770, to include: four sparrow-beak jugs, one with a cover; a pair of 'gu' vases; a mug; a tea pot and cover; two coffee cups; a two-quails pattern beaker and a tea bowl

£400-600



352

353

A George III mahogany washstand, circa 1780, the top tier with fretwork frieze above a lower tier incorporating a drawer, 79cm high, 38cm wide, 38cm deep, together with a George III mahogany occasional table, circa 1780, the fretwork carved edge to the dished top above a turned stem and tripod base, 67cm high, 57cm diameter

£200-300



353



354

354

A set of three George III mahogany side chairs, circa 1800, in the manner of designs by George Hepplewhite

£200-300

355

A George III mahogany chest of drawers, circa 1770, the rectangular top with re-entrant corners above a brushing slide and four long drawers, 85cm high, 81cm wide, 50cm deep

£700-1,000



355



356



356Y

A Victorian mahogany platform dressing mirror, circa 1860, 75cm high, 64cm wide, 31cm deep together with a Regency mahogany, rosewood banded, and bone mounted platform dressing mirror, 66cm high, 57cm wide, 22cm deep

£200-300



357

357

A George IV mahogany dressing table, circa 1825, 79cm high, 96cm wide, 48cm deep

£250-350

358

A large velvet embroidered textile, late 19th century, English or French, the terracotta ground worked with animal motifs including leopards, pigs and hounds, with tassel trim, later damask backed, approximately 224cm high, 188cm wide

£300-500



358

359

A carved and scrolled giltwood wall mount, late 19th century and later painted with a heraldic crest for Ballyedmond and with motto *Scientia Et Judicium*, 85cm high, 185cm wide

£300-500



359



360

360

A George III mahogany linen press, early 19th century, with bead moulding throughout, 214cm high, 58cm wide, 128cm wide

£400-600

361

A mahogany chest of drawers, in George III style, early 20th century, of serpentine outline, with brushing slide and four long drawers, 89cm high, 99cm wide, 54cm deep

£700-900



361



362Y
A Louis XVI rosewood, walnut, and inlaid secrétaire à abattant, late 18th century, in the manner of Charles Topino, 144cm high, 97cm wide 39cm deep

£600-800



363

362



364

363
A giltwood armchair in Louis XV style, 19th century, 101cm high

£300-500

364
A Kashkuli rug, approximately 210 x 148cm

£700-1,000



365

365

A pair of Aubusson tapestry window surrounds, early 20th century, each with bird in flight surmount above floral scrolling sides, claret red field, each approximately 388cm drop, 206cm wide; each mounted on associated giltwood and red velvet mounted scrolling pelmets, 40cm high, 223cm wide

£600-800



366

366

Three pairs of French gilt bronze curtain tie backs in Rococo taste, mid 19th century, each pair cast with foliate and rocaille motifs, and stamped with registration marks and numbers to the backplates, the largest pair 19cm high, 15cm wide, the smallest 14cm high, 14cm wide

£80-120

367

A Louis Philippe mahogany and gilt brass mounted chest of drawers or Semainier, mid 19th century, with arrangement of seven long drawers flanked by turned columns, on an inverted breakfront plinth, 146cm high, 119cm wide, 63cm deep

£500-700



365



367



368

368

A silvered wood marginal wall mirror, of recent manufacture and large proportion, with double domed top above the split plates, 184cm high, 122cm wide

£250-350

369

A pair of stained wood and upholstered sofas, modern, possibly by Louise Bradley, each 84cm high, 248cm wide, 95cm deep, **together with a black lacquered side cabinet**, modern, the panel doors opening to an arrangement of drawers, shelves and adjustable shelves, 81cm high, 250cm wide, 57cm deep

£2,000-3,000



369



370

370

A flat woven carpet, modern, approximately 314 x 171cm

£500-800

371

A group of five cushions, comprising: a pair of green and tasselled fringed cushions, 41cm square, a pair of multicoloured printed cushions, and a single tapestry style cushion (5)

£150-250



371



372

372

A green painted and silver leather mounted four-fold room screen, 20th century, each panel inset with two botanical prints, each panel 198cm high, 55cm wide

£300-500

373

A pair of simulated tortoiseshell low cabinets, in Chinese taste, 20th century, each 48cm high, 66cm wide, 61cm deep

£400-600



373





374
Emily Stackhouse (British 1811-1870)
Flower studies, a group of eleven
Watercolour and ink
Each variously inscribed
Approx. 26.5 x 21.5cm (10¼ x 8 3/8 in.)
Unframed (11)

£1,500-2,500



375
Emily Stackhouse (British 1811-1870)
Flower studies, a group of eleven
Watercolour and ink
Each variously inscribed
Approx. 26.5 x 21.5cm (10¼ x 8 3/8 in.)
Unframed (11)

£1,500-2,500



375



376

A walnut and gilt metal mounted snuff box, late 19th century, of large proportion, with applied armorial to the lid, 15cm diameter, together with an oak snuff box, the lid enclosing an erotic copper relief with fawn and female, 8.5cm diameter

£200-300



376



377

377

A Regency mahogany five tier whatnot, circa 1815, the top with ratchet action top, the lowest tier incorporating a drawer, 103cm high, 44cm wide, 37cm deep

£200-300



378 (part lot)

378

Two similar Edwardian upholstered chairs, early 20th century, in the manner of Howard & Sons, one chair with straight crestring rail 107cm high, the other 108cm high

£200-300



379

380



379

A giltwood mirror backed settle, in the Renaissance style, 20th Century and later, the back carved with four herm figures, the whole with strapwork and scrolling decoration, approximately 248cm high, 238cm wide, 45cm deep

£600-800

380

A Ziegler Mahal carpet, approximately 317 x 235cm

£600-800

381

A French verdigris bronze and glazed hanging lantern, late 19th century, of octagonal section, the domed top cast with acanthus scrolls, approximately 120cm long excluding hanging chain, 63cm diameter

£700-1,000



382

383

A Caucasian long rug, approximately 288 x 149cm

£300-500

382

A carved giltwood Solomonic column, in 18th century style, 19th or early 20th century, with Corinthian capital and carved with intertwining fruiting grape vines, on a moulded plinth base, 170cm high, the base 45 x 45cm

Provenance: By direct descent from Lady Enid Doreen Scudamore-Stanhope Browne (1899-1985)

£400-600



381

383





384

384
A reverse painted glass picture with Japanese figure in an exterior landscape, in a mahogany and parcel gilt frame in George II style, 77cm high, 60cm wide

£300-500



385

385
A pair of carved wood corbels, 19th century, with volute above a lion mask, 74cm high

£250-350

386
A mahogany and upholstered wing armchair, circa 1760 and later, 112cm high

£400-600



386

387
A pair of Dutch Delft blue and white tobacco jars and brass covers, 18th century, inscribed within elaborate cartouches *R RIBE SIOR* and *S FLOR.TUNIC*, one cover probably of the period, one probably later, circa 36cm high overall

£400-600



387

388
A George III mahogany two tier dumb waiter, circa 1780, 82cm high, 48cm diameter

£300-500



388

389
A George III oak and upholstered wing armchair, circa 1760, the arched cresting rail above the wings and outscrolled arms, on cabriole front legs terminating in pad feet to the front, 138cm high, 80cm wide, 70cm deep

£500-800



389



390Y

A Regency rosewood etagere, circa 1820, 73cm high, 38cm wide, 38cm deep, together with a George III tilt-top table, (2)

£400-600

390 (part lot)

391

A Regency mahogany and gilt brass two tier dumb waiter, circa 1815, the dished tiers supported on brass finned columnar supports, above a turned pillar and tripod base, 100cm high, 56cm diameter

£300-500



392



391

392

A Regency library step commode, circa 1820, the steps with leather inset treads and rattan panelled sides, incorporating a flip-top and a drop 70cm high, 46cm wide, 69cm deep

£300-500



393

393

A set of six Anglo-Indian hardwood arm chairs, in Regency style, 20th century, each with a bar back above a pad and drop in seat

£500-700

394

A mahogany circular concentric extending dining table, in 19th century style, second half 20th century, in the manner of William Tillman, the circular top with moulded edge with five additional leaves adding to the exterior of the top, above the cylindrical body with turned uprights and four outswept legs terminating in brass caps and castors, serial numbered 175, 73cm high, 215cm diameter (extended)

£500-700



394



395

395

A giltwood wall mirror, late 19th century, with a pierced foliate scroll surround, 129cm high, 103cm wide

£300-500

396

A South German chestnut and fruitwood bureau cabinet, early 19th century, possibly Munich, 181cm high, 125cm wide, 80cm deep

£500-800



396



397

397

A George III mahogany and upholstered wing armchair, circa 1780, 121cm high, 83cm wide, 80cm deep

£400-600



398

398Y

A Kingwood, Vernis Martin and gilt metal mounted display cabinet, circa 1900, 191cm high, 171cm wide, 46cm deep

£500-700

399

A Tetex carpet, approximately 353 x 266cm

£600-800





400

A George II walnut and parcel gilt wall mirror, circa 1740, 96cm high, 52cm wide

Provenance: Purchased Christie's Interiors, 26 Oct 2010, lot 543

£500-700

401 Y

A pair of George III mahogany and rosewood banded card tables, circa 1780, of semi-elliptical outline, each with a green baize playing surface, 74cm high, 91cm wide, 45cm deep

£700-1,000



400

401



402



402

A Kirman runner, approximately 691 x 120cm

£500-800



403

403 λ

Raoul Millais (British 1901-1999)

The Ford

Oil on canvas

Signed lower right

70 x 89.5cm (27½ x 35 in.)

Provenance: Sold by the artist to a New York dealer in the 1970s

Incurable Collector Inc., New York City

Sale, NYE & Company, Bloomfield, USA, 30 October 2018, lot 346

Purchased from the above by the present owner, a descendent of the artist (by marriage)

£1,000-1,500



404

404

A pair of gilt metal mounted and polychrome painted toleware twin handled table lamps, 20th century, each with waisted neck flanked by scrolling handles on a waisted socle with gadrooned border on a further square stepped pedestal base with foliate cast rim, with white silk pleated shade, fitted for electricity, approximately 60cm high overall

£800-1,200

405

A William IV figured mahogany dressing table, circa 1835, the galleried top above two short drawers, 78cm high, 91cm wide, 53cm deep

£250-350



405

406



406

A Karabagh runner, approximately 371 x 100cm

£300-500



407

407

A pair of framed sets of plaster intaglios after the Antique, late 19th/20th century, each frame containing two plaques with mythological figures, mounted on marbled paper and presented in ebonised and parcel gilt frames, each 20 x 17cm overall; together with a shell cameo of a maiden in Neoclassical style, late 19th century, mounted and framed

£200-300



408

408

A George III silkwork picture of a lady reading, late 18th century, within verre eglomise border and gilt composition oval frame; and two coloured mezzotints, late 18th/early 19th century, one with a young woman in a landscape, the other with a gentleman in relief, each framed and glazed, the largest item 33 x 30.5cm overall

£100-200

409

A hardwood armchair, late 18th/early 19th century, after a design by Ince & Mayhew, with spindleback and open arms, above a drop in seat, on square section supports joined by stretchers, 88cm high

Please see our website for full footnote regarding the design of this chair

£200-300



409



410
Three Chinese Imari teapots and covers, Kangxi (1662-1722), comprising a pair of lobed ovoid teapots, 11.5cm high, and a flattened globular one, 8.5cm high; and two Chinese Imari cups and a small jug, Kangxi (1662-1722), all decorated in underglaze blue and finely painted in iron-red and gilt, the cups 8.2cm high and the jug 9.2cm high (6)

Provenance: Private English Collection

清康熙 青花矾红描金壶及小杯等共六件
拍品来源: 英国私人收藏

£300-500

411
A large 'Zhangzhou' 'Bird and Dragon' dish, 17th century, brightly painted with red, green, turquoise and black enamels, 37cm diameter

Provenance: The Property of an English Gentleman

明17世纪 漳州窑龙纹盘
拍品来源: 英国绅士收藏

£200-300



412
A bilingual map of Beijing with English names transposed over a map in Chinese, circa 1935, detailed map with buildings on the street blocks delineated and a large number of them identified with Chinese characters, 79 x 54cm unframed, in the original red slipcase with gilt lettering, 22cm x 11cm, together with another detail map, showing part of the Forbidden City, 69 x 33cm unframed, and a Guide to Peking, dated 1931, published by The Leader, and containing a Tourists' Map of Peiping, 19 x 13cm (3)

约1935年 《北京全图》及《紫禁城地图》

£150-250



413
An attractive sandstone Bayon style head of Buddha, the face with serene expression, downcast eyes under continuous arched eyebrows, with elongated earlobes, the forehead with the 'third eye' and, the mouth with moustache, the hair worked in tight curls rising to the *ushnisha*, overall the head approximately 35cm high x 21cm wide x 21 cm deep, on stand

Provenance: Purchased by the current owner from an antique shop in Thailand circa 1990's.

£600-1,000

414
A glass topped and composite stone centre table, 20th century, the circular top above the base modelled as a Corinthian capital, 94cm high, 136cm diameter

£300-500





415
A collection of ten alabaster models of fruit, contained within a turned wooden bowl, together with eight further plastic models of fruit

£100-150

415

416
A George III mahogany chest of drawers, circa 1780, the rectangular top with moulded edge, above two short and three long graduated drawers, on shaped bracket feet, approximately 78cm high, 85cm wide, 46cm deep

Provenance: Property from a Sibyl Colefax & John Fowler Interior, London

£600-800

417
A pair of Kashan rugs, Central Persia, central floral medallion and flowering stems in colours, on a buff ground with red and blue spandrel panels, the border with palmettes and stems on a buff ground, each approximately 203 x 129cm

£400-600



416



417

418
An embossed leather four fold screen, 19th century, polychrome and tooled leather, each panel 199cm high, 53cm wide

£300-500

419
A set of seven mahogany dining chairs, in George III style, 19th century, each rectangular 'ladder' back with four pierced cross splats, each centred by a foliate scroll motif, above the padded and upholstered tapering rectangular seat, on moulded square section legs, joined by an H-shaped stretcher, together with three similar dining chairs, (10)

£700-1,000



418



419



420

420
Two Bokhara rugs, the larger approximately 235 x 153cm, the smaller approximately 211 x 147cm

£300-500



421
After I. Gruyn, engraved by Hall,
Ruyland and Gruyn
The School of Fencing
Hand-coloured engravings
Various sizes, the largest 39.5 x
50.5cm (15½ x 19¾ in.) (6)

£150-200

421 (part lot)

422

A George IV oak centre table, circa 1825, the
circular tilt top above a turned pillar and carved
triskelion type legs, 72cm high, 102cm diameter

£300-500



422

423



423

A carpet, approximately 514 x 185cm

Provenance: Previously purchased from Christie's

£1,000-1,500



424 (part lot)

424

Thirty-six chromolithographs from Album de Sillerie Cercle Militaire du
Camp-de-chalons, late 19th century, later framed 16 x 12in. (40.5 x 30cm) overall

Provenance: Purchased Christie's Interiors, 17 Aug 2010, lot 35

£600-1,000



425

425

An Albany Fine China model of the racehorse, Mill Reef,
modelled standing on a walnut plinth, 37cm high, with
original certificates (No. 90 of 500), and in original green
leather effect card box, 22cm high, 37cm wide, 41cm deep

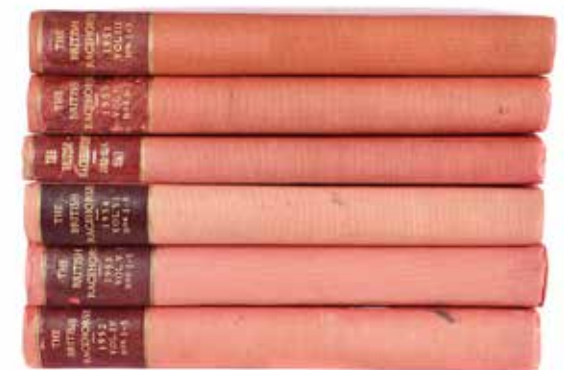
£100-150



426 0

The British Racehorse, bound, 32 volumes, an
unbroken run of the magazine, from Vol I, 1 July 1949
to Vol XXXII, 1980, in wire strung publisher's volumes,
with gilt titling, illustrations and advertising

£150-250



426



427

427 θ

Assorted ephemera portraying the history of the Animal Health Trust, comprising: 1) Five visitors' books, with numerous visits marked spanning from 1950 to 1980s marked; signed multiple times by the patron of Animal Health Trust, Queen Elizabeth II (5), Princess Anne, as well as other numerous prominent international research and medical professionals within the related industries. Vintage gelatin silver print of Her Majesty the Queen Elizabeth II by Cecil Beaton is included. 2) Large assortment of photography featuring visits the Royal Family, political figures (including Margaret Thatcher) and numerous research and veterinary professionals; clinics and laboratories 3) Stallion register and a scrap book containing related press cuttings

The Animal Health Trust was a large national independent charity in the United Kingdom, under patronage of Her Majesty the Queen Elizabeth II. It employed over 200 scientists, vets and support workers. Its objectives were to study and to cure diseases in pet animals, and to advance the teaching and practice of veterinary art and science.

£300-500

428 θ

Goos (Herman), *Die Stamm-Mütter des Englischen Vollblutpferdes*, Hamburg, F.W. Rademacher, 1907. 4th edition. Two text booklets including 1) Alphabetical index, corrections and additions (38.5 x 27 cm) and 50 tables of the English thoroughbred equine pedigrees, enclosed - as intended - in a clock bound folder. Animal Health Trust stamp featured on the inside cover.

Provenance: Animal Health Trust, Equine Research Station, Derby Library

£100-200



428

429 θ

Stubbs (George), *The Anatomy of the Horse including A Particular Description of the Bones, Cartilages, Muscles, Fascias, Ligaments, Nerves*. Gibbings and Company Limited, 1899, third edition, 147 pages, with 12 double-page and 24 full page bookplates containing 18 anatomical tables, plates reprinted from original coppers, bound in red cloth boards and green-grey cloth spine, gold lettering in gilt on spine; folio **together with** Stubbs (George), *The Anatomy of the Horse*, G. Heywood Hill, Ltd., London, 1938, fourth edition, with 12 double-page and 24 full page bookplates including 15 anatomical tables, includes full anatomical descriptions of the bones, cartilages, muscles, fascias, ligaments, nerves, arteries, veins and glands. Bound in brown paper-covered board and cloth, brown cloth to spine, lettering in gilt on spine; folio (2)



429

Provenance: Animal Health Trust

£400-600

430 λ

Anthony Buckley (British 1912-1993), *Queen Elizabeth II*, Signed and dated by ("Elizabeth R 1981") on the photographer's mount Inscribed in pencil ("Anthony Buckley and Constantine, London") on the photographer's Photograph on mount 33 x 43 cm (13 x 17 in), frame 50 x 64 cm (20 x 25 in)

Provenance: Animal Health Trust

£400-600



430



431

431 λ

Terry O'Neill (British 1938-2019)

Queen Elizabeth II

Signed and dated "Elizabeth R 1994" on the photographer's mount

Photograph on mount 35 x 49 cm (13 x 19¼ in), frame 56 x 70 cm (22 x 27½ in)

together with

Terry O'Neill (British 1938-2019)

HRH Princess Anne

Signed and dated "Anne 1994" on the photographer's mount

Photograph on mount 48 x 39 cm (19 x 15½ in), frame 67 x 60 cm (27½ x 23½ in)

Provenance: Animal Health Trust

£400-600



432

432

A model of a house, circa 1920, probably an architect's model, the roof lifting to reveal the attic space, this floor removable to view the first floor rooms, 24cm high, the baseplate 45cm wide, 25cm deep, together with a pencil drawn scale floor plan of the two floors, all contained within a marbled paper case, 26cm high, 47cm wide, 29cm deep

£250-350

433

An Elizabeth II limed oak and velvet upholstered coronation chair, with applied label '130' to the top of the back, 84cm high, together with a stool en-suite, one rail stamped ER CORONATION and numbered 53, 47cm high (2)

Provenance: Manufactured for the Coronation of HM Queen Elizabeth II, 2 June 1953, Westminster Abbey, London. These seats were for General Sir Frederick Pile, Bt, GCB, DSO, MC and, his wife, Lady (Molly) Pile.

Sir Frederick, always known as Tim, was General Officer Commanding-in-Chief (GOC-in-C) Anti Aircraft Command and the only British general to hold his command for the entire war's duration.

Lady Pile was also distinguished, having been Chief Commander of the ATS

£200-300



433

434

A wrought iron and leather upholstered club fender, early 20th century, of bow front outline, 59cm high, 155cm wide, 65cm deep overall, the internal dimensions 137cm wide, 55cm deep

£400-600



434

435

James Peake (c.1839-1918), a late Victorian carved lime and soft wood exhibition quality plaque, dated 1895, decorated with corn, grapes, and berries in a scrolling floral decorated frame, signed and dated 1895, 103cm long, presented in a glazed mahogany display case

Provenance: From The Hon. William McAlpine Collection

James Peake was listed in censuses, in 1871 as a carver and gilder at 274-6 Waterloo Road. In an article in the local newspaper, perhaps dating to about 1914, Peake was described as 'the modern Grinling Gibbons'. According to this account, he was a wood carver's son and was apprenticed to a Mr Gobell for five years from the age of 14, that is probably from about 1853. Subsequently, he undertook work for Archbishop Temple and his family and exhibited at one of the Paris Exhibitions.

£500-800



435

436

A pair of etched glass mirror panels in moulded frame, each 205cm high, 73cm wide overall, together with another similar panel, and ten similar narrow panels, of varying sizes, the largest 225cm high, some marked to the rear BRITISH SILVERED GLASS

Provenance: Property from a Private Collection

These are probably architectural salvage from a public house or bar

£500-800



436



437

437
A Luba Kifwebe tribal mask, Congolese, 35cm high, on a display stand, 51cm high overall

£100-200

438 Y
A preserved model of a grey heron, *Ardea cinerea*, early 20th century, in an ebonised case, the avian naturalistically modelled in a marsh, 92cm high, 61cm wide, 27cm deep

£200-400

439
A painted papier Mache model of a giraffe, 20th century, naturalistically modelled standing four square, approximately 250cm high overall

The species *Giraffa camelopardalis* is currently split into nine sub-species. The name Giraffe probably coming from the Arabic *Zarafah* which translates to fast walker, *camelopardalis* originating from an archaic English name as a portmanteau of Camel and Leopard referring to the camel-like shape and leopard-like markings.

£400-600



438



439



440

440
A pair of blackamoor side tables, late 19th century, each modelled in athletic acrobat pose with the circular tops above the hand-standing figure, 83cm high

£500-700



441

441
A black slate and variegated red marble inlaid centre table, 20th century, of hexagonal section and in the manner of Moorish examples, 75cm high, the top 152cm x 133cm

£700-1,000



442

443

444

442

A pair of lead garden urns, 20th century, of ovoid form, with palmettes in rope-twist reserves, 33cm high, 36cm wide

£200-300

443

A pair of lead garden urns, early 20th century, of hexagonal section, relief cast with frogs, birds and flowers in reserves, 39cm high, 47cm diameter

£200-300

444

A pair of large lead garden urns, early 20th century, of hexagonal section, with frogs, birds and flowers in reserves below lozenge borders, 49cm high, 55cm diameter

£300-500

445

A sculpted limestone model of a crouching armadillo, believed to be by Vega Bermejo Castelnau (British), modern, carved with textured surface and stylised features, 54cm long

£250-350



446



445

446

Two sculpted limestone models of animals, believed to be by Vega Bermejo Castelnau (British), including a baboon and a rabbit, modern, each rendered with stylised features, the tallest 25cm high

£250-300

447

A sculpted red limestone model of a seated dog, believed to be by Vega Bermejo Castelnau (British), modern, with stylised features, 45cm high

£250-350



447



448

448

A wirework garden vase on stand, early 20th century, the urn of loose Campana form above a square section plinth base, 165cm high overall, 64cm diameter

£300-500

449

A pair of late Victorian clay chimney pots, late 19th century, with remnants of Terracotta glaze, 110cm high overall, together with another pair of Edwardian clay chimney pots, circa 1905, 74cm high (4)

£200-300



449



Please see Conditions of Business and Conditions of Sale on the following pages.

Dreweatts & Dreweatts 1759 are trading names of Dreweatts 1759 Ltd. Dreweatts 1759 Ltd is registered in England, company number: 10758982, registered office: Minerva House | Lower Bristol Road | Bath BA2 9ER.

Important Notices

BUYING AT DREWEATTS

There are several ways you can bid at a Dreweatts auction; in person, by leaving a commission or absentee bid, on the telephone where available and live via the internet – please make arrangements before the sale. THIS NOTICE APPLIES ONLY TO A PERSON WHO WISHES TO BID IN PERSON, OR BY LEAVING A COMMISSION OR ABSENTEE BID, AT A DREWEATTS PUBLIC AUCTION. For bidding at an online auction or for online bidding at a public auction please see our Online Auction Terms published on our website at www.dreweatts.com.

BIDDING IN PERSON

If intending to buy you are required to register your name and details at reception prior to the commencement of the auction. You will be required to provide a proof of identity and address to register for bidding. You will then be allocated a bidding number, which you use when bidding for an item.

COMMISSION BIDS

Dreweatts will execute bids on your behalf if you are unable to attend the sale. Commission or absentee bids are accepted either directly at reception, or can be sent by post, fax, email, telephone or via the website: www.dreweatts.com.

Dreweatts will add these bids to the auctioneers' sale book and will undertake to purchase the lots on your behalf as cheaply as allowed by other bids and reserves. If two buyers submit identical commission bids Dreweatts may prefer the first bid received.

Dreweatts does not accept liability for failing to execute commission bids, or for any errors or omissions.

CONDITION

Bidders must satisfy themselves as to the condition of each lot. Condition reports are available on request – see the Conditions of Business at the back of this catalogue forming part of these Auction Terms and Conditions for more information regarding condition reports. Requests for condition reports must be submitted by 4pm on the day prior to the auction; condition reports may be available alongside the lot description on the online catalogue at: www.dreweatts.com.

COMMISSION CHARGES

All purchases are subject to a buyer's premium, which is charged per lot at 25% of the hammer price (30% including VAT) up to and including £500,000, 20% (24% including VAT) of the hammer price from £500,001 up to and including £1,000,000 and 12% of the hammer price (14.4% including VAT) in excess of £1,000,000. A theta symbol (Θ) indicates that the lot is a zero rated item and therefore not subject to VAT on the buyer's premium. This applies to bound books (manuscripts and printed), unframed maps and albums. In the event the lot has a dagger (†) beside the lot number in the catalogue, this indicates that the lot is owned by an entity or company required to pay VAT (generally not an Antique Dealer, as they operate under a dealers margin scheme). VAT is payable at 20% on the Hammer Price. Lots marked with a double dagger (‡) (presently a reduced rate of 5%) or Ω (presently at standard rate of 20%) have been imported from outside the European Union to be sold at auction and therefore the buyer must pay the import VAT at the appropriate rate on the hammer price.

PAYMENT

Payment will be accepted, if you are a successful bidder, by debit card issued in the name of the Buyer by a UK bank and registered

to a UK billing address; by all major UK issued credit cards issued in the name of the Buyer and registered to a UK billing address with the exception of American Express and Diners Club; by bank transfer direct into our bank account, Bank Details: NatWest, 30 Market Place, Newbury, Berkshire RG14 5AG. Account Name: Dreweatts 1759 Ltd. A/C: 62412949, Sort Code: 60-15-07, BIC: NWBKGB2L, IBAN: GB21NWBK60150762412949. The name of the bank account holder should match the name of the buyer. First time buyers who are not present at the saleroom are requested to pay by bank transfer.

Y CITES REGULATIONS

Please note that lots marked with the symbol (Y) in this catalogue may be subject to CITES Regulations when exported. Relevant CITES Regulations may be found at www.gov.uk/guidance/cites-imports-and-exports.

COLLECTION OR DELIVERY

Before being able to collect your purchases you are required to pay the hammer price, plus the applicable commissions, and obtain a receipt acknowledging payment. Collection of the purchased lots is at the purchaser's risk and expense and whilst Dreweatts do not provide packing and despatch service we can suggest some carriers.

Dreweatts also require that all purchased items are collected within four working days of the sale to avoid a storage charge being applied.

STORAGE CHARGES

All items not collected by 4pm, within four working days of the sale, will be automatically removed to commercial storage and subject to a minimum storage charge of £20 (plus VAT) per lot and to a further storage charge of £2 (plus VAT) per lot per part or full day thereafter. These charges will be the sole liability of the purchaser and will be billed directly to them by Vangaroo Ltd (Andover); Vangaroo may be willing to adjust their charges if they are instructed by the purchaser to deliver to them. On payment of all sales and storage costs, items will be available for collection by appointment from Vangaroo Ltd (Andover), tel: 01264 316970, mobile: 07528 291180, email: matt@vangaroo.co.uk. These charges are set by Vangaroo Ltd (Andover); we recommend that you contact them directly regarding queries relating to these charges and other questions relating to storage. Staff at the saleroom will be unable to answer questions relating to items that have been removed from the saleroom.

FURTHER INFORMATION

The colours printed in this catalogue are not necessarily a true reflection of the actual item. All weights and measures given in the catalogue should be regarded as approximate.

VALUATION SERVICES

Dreweatts provides a range of confidential and professional valuation services to private clients, solicitors, executors, estate managers, trustees and other professional partners. These services include auction valuations, insurance valuations, probate valuations, private treaty valuations, valuations for family division or for tax purposes. For more information, please see our website: www.dreweatts.com.

For directions to Donnington Priory, please see our website: www.dreweatts.com.

Parking is available at Donnington Priory in two car parks on either side of the saleroom.

Information for Buyers at Public Auctions

1. **INTRODUCTION.** The following notes are intended to assist Bidders and Buyers, particularly those inexperienced or new to our salerooms. All of our auctions and sales are conducted on our printed Auction Terms and Conditions, including these Conditions of Sale and Business, which are readily available for inspection and normally accompany catalogues. Our staff will be happy to help you if there is anything you do not fully understand.

Any particular auction and/or any particular lot in an auction may be subject to different or additional terms which will be published in our auction catalogue. All auctions and sales of wines and spirits, jewellery, watches and clocks are subject to the special terms set out in the relevant Notices in relation to those items published in our auction catalogue and, in the event of any conflict or inconsistency, those special terms prevail over any other terms in our Auction Terms and Conditions. By bidding at the auction, you agree to be bound by these terms.

2. **AGENCY.** As auctioneers we usually act as agents for the seller whose identity, for reasons of confidentiality, is not normally disclosed. Accordingly if you buy at auction your contract for the item or items purchased is with the seller and not with us as the auctioneer.

3. **ESTIMATES.** Estimates are designed to help buyers gauge what sort of sum might be involved for the purchase of a particular lot. Estimates may change and should not be thought of as the sale price. The lower estimate may represent the reserve price and certainly will not be below it. Estimates do not include the Buyer's Premium or VAT (where chargeable). Estimates are prepared some time before the sale and may be altered by announcement before the sale. They are in no sense definitive.

4. **BUYER'S PREMIUM.** The Conditions of Sale forming part of our Auction Terms and Conditions require the buyer to pay a buyer's premium on the hammer price of each lot purchased. The buyer's premium is 25% of the hammer price up to and including £500,000, 20% of the hammer price from £500,001 up to and including £1,000,000, and 12% of the hammer price in excess of £1,000,000. VAT at the prevailing rate of 20% is added to buyer's premium and additional charges as defined below.

5. **VAT.** A theta symbol (Θ) indicates that the lot is a zero rated item and therefore not subject to VAT on the buyer's premium. This applies to bound books (manuscripts and printed), unframed maps and albums. A dagger symbol (†) indicates that VAT is payable by the purchaser at the standard rate (presently 20%) on the hammer price as well as being and element in the buyers' premium. This imposition of VAT is likely to be because the seller is registered for VAT within the European Union and is not operating the Dealers Margin Scheme or because VAT is due at 20% on import into the UK. A double dagger (‡) indicates that the lot has been imported from outside the European Union and the present position is that these lots are liable to a reduced rate of Import VAT currently 5% on the hammer price. (Ω) indicates that the lot has been imported from outside the European Union and these lots are liable to the standard rate of Import VAT currently 20% on the hammer price. Lots which appear without the above symbols indicate that no VAT is payable on the hammer price; this is because such lots are sold using the Auctioneers Margin Scheme and it should be noted that the VAT included within the buyers' premium is not recoverable as input tax.

6. **DESCRIPTION AND CONDITION.** Condition reports are provided on our website or upon request. The absence of a report does not imply that a lot is without imperfections. The detail in a report will reflect the estimated value of the lot. Large numbers of such requests received shortly before the sale may mean that reports cannot be provided for all lots. Members of staff are not trained restorers or conservators and, particularly for higher value lots, you should obtain an opinion from such a professional. Dreweatts is not liable for damage to gilded picture frames, plaster picture frames or picture frame glass; if a Lot is or becomes dangerous, we may dispose of it without notice to bidders in advance in any manner we see fit and will be under no liability for doing so. We recommend that you always view a lot in person.

We are dependent on information provided by the seller about a lot and whilst we may inspect lots and act reasonably in taking a general view about them we are normally unable to carry out a detailed examination

and frequently no examination of lots in order to ascertain their condition in the way in which it would be wise for a buyer to do. Intending buyers have ample opportunity for inspection of goods and, therefore, accept responsibility for inspecting and investigating lots in which they may be interested and the corresponding risk should they not do so. Please note carefully the exclusion of liability for the condition of lots contained in the Conditions of Sale. Neither the seller nor we, as the auctioneers, accept any responsibility for their condition. In particular, mechanical objects of any age are not guaranteed to be in working order. However, in so far as we have examined the goods and make a representation about their condition in the auction catalogue, we shall be liable for any defect which is not reflected in that representation and which that examination ought to have revealed to the auctioneer but which would not have been revealed to the buyer had the buyer examined the goods. Additionally, in specified circumstances lots misdescribed because they are 'deliberate forgeries' may be returned and repayment made. There is a 3 week time limit. (The expression 'deliberate forgery' is defined in our Conditions of Sale).

7. **ELECTRICAL GOODS.** These are sold as 'antiques' only and if bought for use must be checked over for compliance with safety regulations by a qualified electrician before use.

8. **EXPORT OF GOODS.** Buyers intending to export goods should ascertain (a) whether an export licence is required and (b) whether there is any specific prohibition on importing goods of that character because, e.g. they may contain prohibited materials such as ivory. Ask us if you need help.

9. **BIDDING.** Bidders will be required to register before the sale commences and lots will be invoiced to the name and address on the sale registration form. Bidders are required to provide a government issued identity document and a proof of address. Please enquire in advance about our arrangements for telephone bidding.

10. **COMMISSION BIDDING.** Commission bids may be left with the auctioneers indicating the maximum amount to be bid excluding buyers' premium. Dreweatts will add these bids to the auctioneers' sale book and they will be executed as cheaply as possible having regard to the reserve (if any) and competing bids. If two buyers submit identical commission bids the auctioneers may prefer the first bid received. Please enquire in advance about our arrangements for the leaving of commission bids by telephone or fax. Dreweatts does not accept liability for failing to execute commission bids, or for any errors or omissions.

11. **METHODS OF PAYMENT.** Payment will be accepted, if you are a successful bidder, by debit card issued in the name of the Buyer by a UK bank and registered to a UK billing address; by all major UK issued credit cards issued in the name of the Buyer and registered to a UK billing address with the exception of American Express and Diners Club; by bank transfer direct into our bank account, Bank Details: NatWest, 30 Market Place, Newbury, Berkshire RG14 5AG. Account Name: Dreweatts 1759 Ltd. A/C: 62412949, Sort Code: 60-15-07, BIC: NWBKGB2L, IBAN: GB21NWBK60150762412949. The name of the bank account holder should match the name of the buyer. First time buyers who are not present at the saleroom are requested to pay by bank transfer.

12. **COLLECTION AND STORAGE.** Please note what the Conditions of Sale state about collection and storage. It is important that goods are paid for and collected promptly. Any delay may involve the buyer in paying storage charges.

13. **À DROIT DE SUITE ROYALTY CHARGES.** From 1st January 2012 all UK art market professionals (which includes but is not limited to; auctioneers, dealers, galleries, agents and other intermediaries) are required to collect a royalty payment for all works of art that have been produced by qualifying artists each time a work is re-sold during the artist's lifetime and for a period up to 70 years following the artists death. This payment is only calculated on qualifying works of art which are sold for a hammer price more than the UK sterling equivalent of EURO 1,000 – the UK sterling equivalent will fluctuate in line with prevailing exchange rates. It is entirely the responsibility of the buyer to acquaint himself with the precise EURO to UK Sterling exchange rate on the day of the sale in this regard, and the auctioneer accepts no responsibility whatsoever if the

qualifying rate is different to the rate indicated. All items in this catalogue that are marked with λ are potentially qualifying items, and the royalty charge will be applied if the hammer price achieved is more than the UK sterling equivalent of EURO 1,000. The royalty charge will be added to all relevant buyers' invoices, and must be paid before items can be cleared. All royalty charges are passed on to the Design and Artists Copyright Society (DACS), no handling costs or additional fees with respect to these charges will be retained by the auctioneers. The royalty charge

Terms of Consignment for Sellers in Public Auctions

The sale of goods at our public auctions and a seller's relationship with us are governed by our Auction Terms and Conditions including these Terms of Consignment for Sellers in Public Auctions and our Conditions of Sale for Public Auctions. Any particular auction and/or any particular lot in an auction may be subject to different or additional terms which will be published in our auction catalogue or separately announced prior to the auction. All auctions and sales of wines and spirits, jewellery, watches and clocks are subject to the special terms set out in the relevant Notices in relation to those items published in our auction catalogue and, in the event of any conflict or inconsistency, those special terms prevail over any other terms in our Auction Terms and Conditions. Please note that our Auction Terms and Conditions including these Terms of Consignment for Sellers in Public Auctions and our Conditions of Sale for Public Auctions relate to auctions held in our salerooms and we have separate terms and conditions for our online auctions.

If you, or another person acting on your behalf, provide goods to us to sell on your behalf at one of our auctions this signifies that you agree to and will comply with our Auction Terms and Conditions including these Terms of Consignment for Sellers in Public Auctions and our Conditions of Sale for Public Auctions.

1. **INTERPRETATION.** In these Terms the words 'you', 'yours', etc. refer to the Seller and if the consignment of goods to us is made by an agent or otherwise on the Seller's behalf we assume that the Seller has authorised the consignment and that the consignor has the Seller's authority to contract. All obligations that apply to the Seller under these Terms of Consignment for Sellers in Public Auctions shall apply to the owner of the goods and their agent jointly and separately. Similarly the words 'we', 'us', etc. refer to the Auctioneers.

2. **WARRANTY.** The Seller warrants that possession in the lots can be transferred to the Buyer with good and marketable title, free from any third party right and encumbrances, claims or potential claims. The Seller has provided all information concerning the item's ownership, condition and provenance, attribution, authenticity, import or export history and of any concerns expressed by third parties concerning the same.

3. **ALL COMMISSIONS** and fees are subject to VAT at the prevailing rate.

4. **COMMISSION** is charged to sellers and all selling terms are available from our salerooms.

5. **REMOVAL COSTS.** Items for sale must be consigned to the saleroom by any stated deadline and at your expense. We may be able to assist you with this process but any liability incurred to a carrier for haulage charges is solely your responsibility.

6. LOSS AND DAMAGE OF GOODS

(a) Loss and Damage Warranty - Dreweatts is not authorised by the FCA to provide insurance to its clients, and does not do so. However Dreweatts for its own protection assumes liability for property consigned to it at the lower pre-sale estimate until the hammer falls. To justify accepting liability, Dreweatts makes a charge of 15% of the hammer price plus VAT, subject to a minimum charge of £150, or if unsold 15% of our lower estimate. The liability assumed by Dreweatts shall be limited to the lower pre-sale estimate or the hammer price if the lot is sold. Dreweatts is not liable for damage to gilded picture frames, plaster picture frames or picture frame glass; if the Lot is or becomes dangerous, we may dispose of it without notice to you in advance in any manner we see fit and will be under no liability for doing so.

(b) If the owner of the goods consigned instructs us in writing not to take such action, the goods then remain entirely at the owner's risk unless and until the property in them passes to the Buyer or they are collected by or on behalf of the owner, and clause 6 (a) is inapplicable.

that will be applied to qualifying items which achieve a hammer price of more than the UK sterling equivalent of EURO 1,000, but less than the UK sterling equivalent of EURO 50,000 is 4%. For qualifying items that sell for more than the UK sterling equivalent of EURO 50,000 a sliding scale of royalty charges will apply – for a complete list of the royalty charges and threshold levels, please see www.dacs.org.uk. There is no VAT payable on this royalty charge.

7. **ILLUSTRATIONS AND PHOTOGRAPHS.** The cost of any illustrations or photographs is borne by you. The copyright in respect of such illustrations and photographs shall be the property of us, the auctioneers, as is the text of the catalogue.

8. **MINIMUM BIDS AND OUR DISCRETION.** Goods will normally be offered subject to a reserve agreed between us before the sale in accordance with clause 9. We may sell Lots below the reserve provided we account to you for the same sale proceeds as you would have received had the reserve been the hammer price. If you specifically give us a "discretion" we may accept a bid of up to 10% below the formal reserve.

9. RESERVES

(a) You are entitled to place prior to the auction a reserve on any lot consigned, being the minimum hammer price at which that lot may be sold. Reserves must be reasonable and we may decline to offer goods which in our opinion would be subject to an unreasonably high reserve (in which case goods carry the storage and loss and damage warranty charges stipulated in these Terms of Consignment).

(b) A reserve once set cannot be changed except with our consent.

(c) Where a reserve has been set which we consider unreasonably high, an unsold charge will be payable in the event that the lots fails to sell, being the agreed selling terms calculated on the reserve, LDW at 15% and any photographic charges.

(d) Where a reserve has been placed only we may bid on your behalf and only up to the reserve (if any) and you may in no circumstances bid personally.

(e) Reserves are not usually accepted for lots expected to realise below £100.

10. **ELECTRICAL ITEMS.** These are subject to detailed statutory safety controls. Where such items are accepted for sale you accept responsibility for the cost of testing by external contractors. Goods not certified as safe by an electrician (unless antiques) will not be accepted for sale. They must be removed at your expense on your being notified. We reserve the right to dispose of unsafe goods as refuse, at your expense.

11. **SOFT FURNISHINGS.** The sale of soft furnishings is strictly regulated by statute law in the interests of fire safety. Goods found to infringe safety regulations will not be offered and must be removed at your expense. We reserve the right to dispose of unsafe goods as refuse, at your expense. The rights of disposal referred to in clause 10 and 11 are subject to the provisions of The Torts (Interference with Goods) Act 1977.

12. **DESCRIPTION.** Please assist us with accurate information as to the provenance, lawful import etc. of goods where this is relevant. There is strict liability for the accuracy of descriptions under modern consumer legislation and in some circumstances responsibility lies with sellers if inaccuracies occur. We will assume that you have approved the catalogue description of your lots and that your lots match those descriptions unless informed to the contrary. Where we are obliged to return the price to the buyer when the lot is a deliberate forgery under Condition 15 of the Conditions of Sale and we have accounted to you for the proceeds of sale you agree to reimburse us the sale proceeds and in any event within 7 days of our written notice to do so.

13. **UNSOLD.** If an item is unsold it may at our discretion be re-offered at a future sale. Where in our opinion an item is unsaleable you must collect such items from the saleroom promptly on being so informed. Otherwise, storage charges may be incurred. We reserve the right to charge for storage in these circumstances at a reasonable daily rate.

14. **WITHDRAWN AND BOUGHT IN ITEMS.** These are liable to incur a charge of 15% commission, 15 % Loss and Damage Warranty and

any other costs incurred including but not limited to illustration and restoration fees all of these charges being subject to VAT on being bought in or withdrawn after being catalogued.

15. **CONDITIONS OF SALE.** You agree that all goods will be sold on our Conditions of Sale for Public Auctions. In particular you undertake that you have the right to sell the goods either as owner or agent for the owner with good and marketable title and free and clear of any third party rights or claims. You undertake to compensate us and any buyer or third party for all losses liabilities, costs and expenses suffered or incurred arising out of or in connection with any breach of this undertaking. We will also, at our discretion, and as far as practicable, confirm that an item consigned for sale does not appear on the Art Loss register, which is administered by an independent third party.

16. DUE DILIGENCE CHECKS AND ANTI-MONEY LAUNDERING PROCEDURES

Under the money laundering regulations in force we are required to carry out relevant due diligence checks. This includes verifying the identity of all customers we transact with as well as any beneficial owners on behalf of whom they may transact. Vendors who are unable to or refuse to supply required identification documents and proof of address will not be able to consign to Dreweatts auctions. Copies of customer due diligence checks will be stored for as long as it is necessary to satisfy legal requirements in an appropriate storage facility, which for the avoidance of doubt may include storage solely in electronic form.

17. AUTHORITY TO DEDUCT COMMISSION AND EXPENSES AND RETAIN PREMIUM AND INTEREST

(a) You authorise us to deduct commission at the stated rate and all

Conditions of Sale for Public Auctions

Dreweatts carries on business with bidders, buyers and all those present in the auction room prior to or in connection with a sale by auction at our salerooms on our Auction Terms and Conditions or Public Auctions including these Conditions of Sale for Public Auctions and all bidders, buyers and others participating in a public auction accept that these terms apply to the exclusion of any terms and conditions contained in any of those person's own documents even if the same purport to provide that that person's own or some other terms prevail. Any particular public auction and/or any particular lot in an auction may be subject to different or additional terms which will be published in our online auction catalogue. Please note that our Auction Terms and Conditions including these Conditions of Sale for Public Auctions relate to auctions held in one of our salerooms and we have separate terms and conditions for our online auctions.

1. DEFINITIONS

In these Conditions:

(a) "auctioneer" means the firm of Dreweatts or its authorised auctioneer, as appropriate;

(b) "deliberate forgery" means an imitation made with the intention of deceiving as to authorship, origin, date, age, period, culture or source but which is unequivocally described in the catalogue as being the work of a particular creator and which at the date of the sale had a value materially less than it would have had if it had been in accordance with the description;

(c) "hammer price" means the level of bidding reached (at or above any reserve) when the auctioneer brings down the hammer;

(d) "terms of consignment" means the stipulated terms and rates of commission on which Dreweatts accepts instructions from sellers or their agents;

(e) "total amount due" means the hammer price in respect of the lot sold together with any premium, Value Added Tax chargeable and any additional charges payable by a defaulting buyer under these Conditions;

(f) "sale proceeds" means the net amount due to the seller, being the hammer price of the lot sold less commission at the stated rate, Value Added Tax chargeable and any other amounts due to us by the seller in whatever capacity and however arising;

(g) "You", "Your", etc. refer to the buyer as identified in Condition 2.

(h) The singular includes the plural and vice versa as appropriate.

expenses incurred for your account from the hammer price and consent to our right to retain beneficially the premium paid by the buyer in accordance with our Conditions of Sale for Public Auctions and any interest earned on the sale proceeds until the date of settlement.

(b) In case of lots unsold at auction you authorise us at our discretion to reoffer such lots and negotiate a sale within seven days of the auction date, in which case the same charges will be payable as if such lots had been sold at auction and so far as appropriate these Terms apply.

18. **WAREHOUSING.** We disclaim all liability for goods delivered to our saleroom without sufficient sale instructions and reserve the right to make minimum warehousing charge of £10 per lot per day. Unsold lots are subject to the same charges if you do not remove them within a reasonable time of notification. If not removed within three weeks we reserve the right to sell them and defray charges from any net proceeds of sale or at your expense to consign them to the local authority for disposal.

19. **SETTLEMENT.** After sale settlement of the net sum due to you normally takes place within 28 days of the sale unless the buyer has not paid for the goods. In this case no settlement will then be made but we will take your instructions in the light of our Conditions of Sale for Public Auctions. You authorise any sums owed by you to us on other transactions to be deducted from the sale proceeds. You must note the liability to reimburse the proceeds of sale to us as under the circumstances provided for in Condition 12 above. You should therefore bear this potential liability in mind before parting with the proceeds of sale until the expiry of 28 days from the date of sale.

2. BIDDING PROCEDURES AND THE BUYER

(a) Bidders are required to register their particulars before bidding by completing a sale registration form and to satisfy any security arrangements before entering the auction room to view or bid;

(b) Under the money laundering regulations in force we are required to verify the identity of all customers we transact with as well as any beneficiaries on behalf of whom they may transact. Customers who are unable to or refuse to supply required identification documents and proof of address will not be able to bid in Dreweatts auctions. Copies of customer due diligence checks will be stored for as long as it is necessary to satisfy legal requirements in an appropriate storage facility which for the avoidance of doubt may include storage solely in electronic form;

(c) the maker of the highest bid accepted by the auctioneer conducting the sale shall be the buyer at the hammer price and any dispute about a bid shall be settled at the auctioneer's absolute discretion by reoffering the Lot during the course of the auction or otherwise. The auctioneer shall act reasonably in exercising this discretion.

(d) Bidders shall be deemed to act as principals;

(e) Our right to bid on behalf of the seller is expressly reserved up to the amount of any reserve and the right to refuse any bid is also reserved.

3. **INCREMENTS.** Bidding increments shall be at the auctioneer's sole discretion.

4. **THE PURCHASE PRICE.** The buyer shall pay the purchase price together with a premium thereon of 30% which shall include VAT on the premium at the rate imposed by law. The buyer will also be liable for any royalties payable under Droit de Suite as set out under Information for Buyers.

5. **VALUE ADDED TAX.** Value Added Tax on the hammer price is imposed by law on all items affixed with a dagger (†) or double dagger (‡). Value Added Tax is charged at the appropriate rate prevailing by law at the date of sale and is payable by buyers of relevant Lots. (Please refer to "Information for Buyers" for a brief explanation of the VAT position).

6. PAYMENT

(a) Immediately a Lot is sold you will:

(i) give to us, if requested, proof of identity, and

(ii) pay to us the total amount due or in such other way as is agreed by us.

(b) Any payments by you to us may be applied by us towards any sums owing from you to us on any account whatever without regard to any directions of you or your agent, whether expressed or implied.

(c) In order to comply with money laundering regulations we reserve the right to require proof of source of funds and/or confirmation of the nature and source of wealth for all receipts of monies from clients directly or from third parties for payments on behalf of clients.

7. TITLE AND COLLECTION OF PURCHASES

(a) The ownership of any Lots purchased shall not pass to you until you have made payment in full to us of the total amount due.

(b) You shall at your own risk and expense take away any lots that you have purchased and paid for not later than 3 working days following the day of the auction after which you shall be responsible for any removal, storage and insurance charges.

(c) No purchase can be claimed or removed until it has been paid for.

8. REMEDIES FOR NON-PAYMENT OR FAILURE TO COLLECT PURCHASES

(a) If any Lot is not paid for in full and taken away in accordance with these Conditions or if there is any other breach of these Conditions, we, as agent for the seller and on our own behalf, shall at our absolute discretion and without prejudice to any other rights we may have, be entitled to exercise one or more of the following rights and remedies:

(i) to proceed against you for damages for breach of contract;

(ii) to rescind the sale of that Lot and/or any other Lots sold by us to you;

(iii) to resell the Lot (by auction or private treaty) in which case you shall be responsible for any resulting deficiency in the total amount due (after crediting any part payment and adding any resale costs). Any surplus so arising shall belong to the seller;

(iv) to remove, store and insure the Lot at your expense and, in the case of storage, either at our premises or elsewhere;

(v) to charge interest at a rate not exceeding 15% per month on the total amount due to the extent it remains unpaid for more than 3 working days after the sale;

(vi) to retain that or any other Lot sold to you until you pay the total amount due;

(vii) to reject or ignore bids from you or your agent at future auctions or to impose conditions before any such bids shall be accepted;

(viii) to apply any proceeds of sale of other Lots due or in future becoming due to you towards the settlement of the total amount due and to exercise a lien (that is a right to retain possession of) any of your property in our possession for any purpose until the debt due is satisfied.

(b) We shall, as agent for the seller and on our own behalf pursue these rights and remedies only so far as is reasonable to make appropriate recovery in respect of breach of these conditions.

9. THIRD PARTY LIABILITY. All bidders, buyers and other members of the public on our premises are there at their own risk and must note the lay-out of the accommodation and security arrangements. Accordingly neither the auctioneer nor our employees or agents shall incur liability for death or personal injury or for the safety of the property of persons visiting prior to or at a sale (except in each case as may be required by law by reason of our negligence)

10. COMMISSION BIDS. Whilst prospective buyers are strongly advised to attend the auction and are always responsible for any decision to bid for a particular Lot and shall be assumed to have carefully inspected and satisfied themselves as to its condition, we will if so instructed clearly and in writing execute bids on their behalf. Neither the auctioneer nor our employees or agents shall be responsible for any failure to do so.

Where two or more commission bids at the same level are recorded we reserve the right in our absolute discretion to prefer the first bid so made.

11. WARRANTY OF TITLE AND AVAILABILITY. The seller warrants to the auctioneer and you that the seller is the true owner of the property consigned or is properly authorised by the true owner to consign for sale and is able to transfer good and marketable title to the property free from any third party claims.

Save as expressly set out above, all other warranties, conditions or other terms which might have effect between the Seller and you, or us and you, or be implied or incorporated by statute, common law or otherwise are excluded to the fullest extent permitted by law.

12. AGENCY. The auctioneer normally acts as agent only and disclaims any responsibility for default by sellers or buyers.

13. TERMS OF SALE. The seller acknowledges that Lots are sold subject to the stipulations of these Conditions in their entirety and on the Terms of Consignment for Public Auctions as notified to the consignor at the time of the entry of the Lot.

14. DESCRIPTIONS AND CONDITION

(a) Whilst we seek to describe lots accurately, it may be impractical for us to carry out exhaustive due diligence on each lot. Prospective buyers are given ample opportunities to view and inspect before any sale and they (and any independent experts on their behalf) must satisfy themselves as to the accuracy of any description applied to a lot. Prospective buyers also bid on the understanding that, inevitably, representations or statements by us as to authorship, genuineness, origin, date, age, provenance, condition or estimated selling price involve matters of opinion. We undertake that any such opinion shall be honestly and reasonably held and accept liability for opinions given negligently or fraudulently. Subject to the foregoing neither we the auctioneer nor our employees or agents nor the seller accept liability for the correctness of such opinions and all conditions and warranties, whether relating to description, condition or quality of lots, express, implied or statutory, are hereby excluded. Dreweatts is not liable for damage to gilded picture frames, plaster picture frames or picture frame glass; if the Lot is or becomes dangerous, we may dispose of it without notice to you in advance in any manner we see fit and will be under no liability for doing so. This Condition is subject to the next following Condition concerning deliberate forgeries and applies save as provided for in paragraph 6 “information to buyers”.

(b) Private treaty sales made under these Conditions are deemed to be sales by auction for purposes of consumer legislation.

15. FORGERIES. Notwithstanding the preceding Condition, any Lot which proves to be a deliberate forgery (as defined) may be returned to us by you within 21 days of the auction provided it is in the same condition as when bought, and is accompanied by particulars identifying it from the relevant catalogue description and a written statement of defects. If we are satisfied from the evidence presented that the Lot is a deliberate forgery we shall refund the money paid by you for the Lot including any buyer’s premium provided that (1) if the catalogue description reflected the accepted view of scholars and experts as at the date of sale or

(2) you personally are not able to transfer a good and marketable title to us, you shall have no rights under this condition.

The right of return provided by this Condition is additional to any right or remedy provided by law or by these Conditions of Sale.

16. PRIVACY NOTICE. We will hold and process any personal data in relation to you in accordance with our current privacy policy, a copy of which is available on our website www.dreweatts.com/privacy-policy/.

GENERAL

17. We shall have the right at our discretion, to refuse admission to our premises or attendance at our auctions by any person.

18. (a) Any right to compensation for losses liabilities and expenses incurred in respect of and as a result of any breach of these Conditions and any exclusions provided by them shall be available to the seller and/or the auctioneer as appropriate.

(b) Such rights and exclusions shall extend to and be deemed to be for the benefit of employees and agents of the seller and/or the auctioneer who may themselves enforce them.

19. Any notice to any buyer, seller, bidder or viewer may be given by first class mail, email or Swiftmail in which case it shall be deemed to have been received by the addressee 48 hours after posting.

20. Special terms may be used in catalogue descriptions of particular classes of items in which case the descriptions must be interpreted in accordance with any glossary appearing at the commencement of the catalogue.

21. Any indulgence extended to bidders, buyers or sellers by us notwithstanding the strict terms of these Conditions or of the Terms of Consignment shall affect the position at the relevant time only and in respect of that particular concession only; in all other respects these Conditions shall be construed as having full force and effect.

22. These Conditions shall be governed by and construed in accordance with English law and the parties irrevocably submit to the exclusive jurisdiction of the English courts.

Group Departments

NEWBURY

Dreweatts

Donnington Priory

Newbury

Berkshire RG14 2JE

Auctions, exhibitions and valuations

LONDON

Dreweatts / Bloomsbury Auctions

16-17 Pall Mall

St James's

London SW1Y 5LU

Auctions, exhibitions and valuations
by appointment

+44 (0) 1635 553 553

info@dreweatts.com

dreweatts.com

MANAGING DIRECTOR

Jonathan Pratt

ASIAN CERAMICS AND WORKS OF ART

Mark Newstead

Dr Yingwen Tao

BLOOMSBURY AUCTIONS

BOOKS AND MANUSCRIPTS

Dr Timothy Bolton

Camilla Previté

Denise Kelly

BRITISH AND EUROPEAN CERAMICS

AND GLASS

Mark Newstead

Geoffrey Stafford Charles

CLOCKS AND SCIENTIFIC

INSTRUMENTS

Leighton Gillibrand

COUNTRY SPORTING

Geoffrey Stafford Charles

DECORATIVE ARTS

Geoffrey Stafford Charles

Ashley Matthews

EUROPEAN SCULPTURE AND

WORKS OF ART

Charlotte Schelling

FINE ART

Jennie Fisher

Brandon Lindberg

Will Porter

Lucy Darlington

Francesca Whitham

FURNITURE AND CARPETS

Ben Brown

Ashley Matthews

William Turkington

HOUSE SALES AND

PRIVATE COLLECTIONS

Will Richards

Joe Robinson

JEWELLERY, SILVER, WATCHES

AND OBJECTS OF VERTU

James Nicholson

Nick Mann

Tessa Parry

LIVE STEAM AND MODEL

ENGINEERING

WORKS OF ART

Michael Matthews

WINE

Mark Robertson

Dianne Wall

