

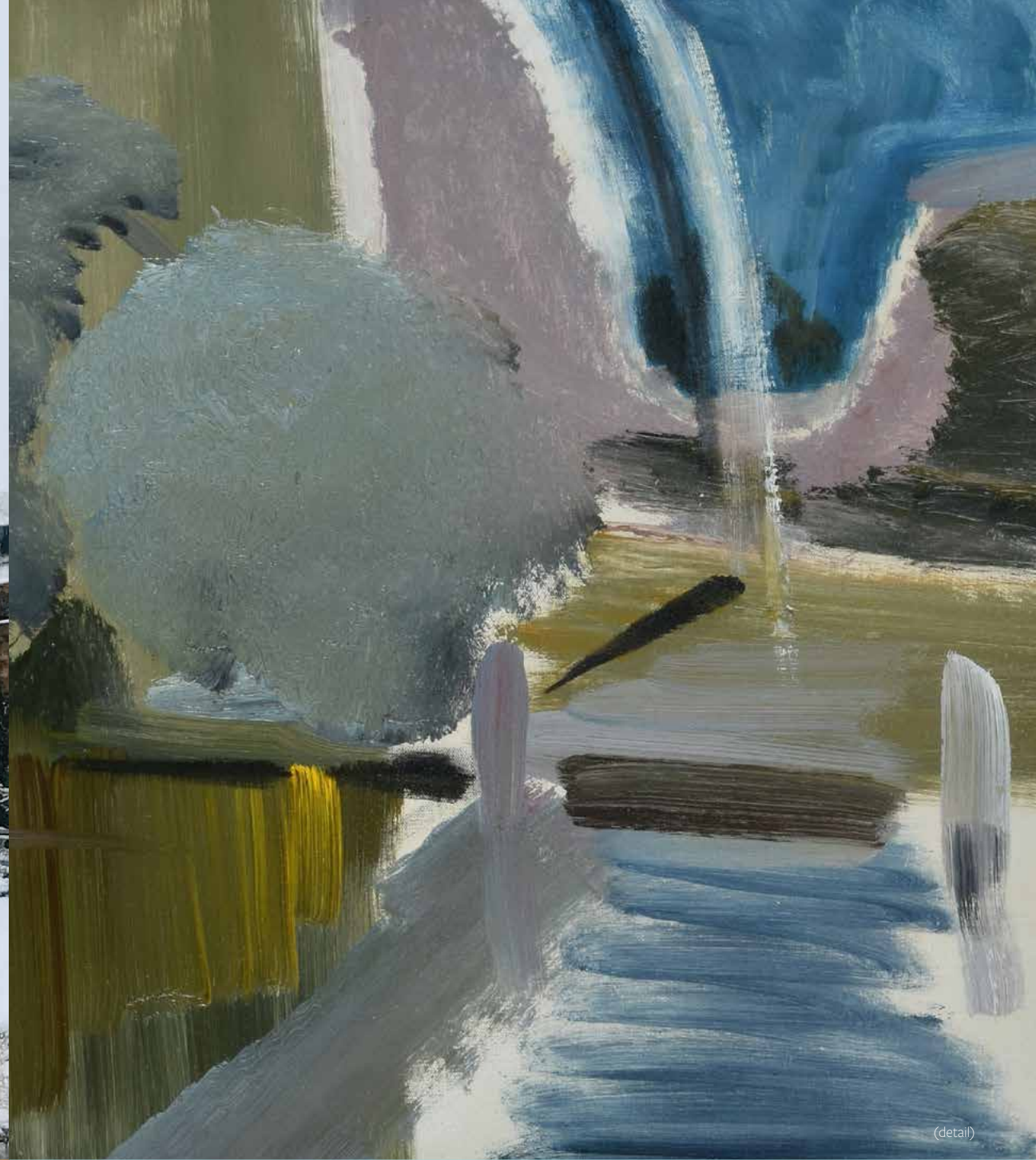
DREWEATTS

EST. 1759



FINE AND RARE WINE AND SPIRITS

DONNINGTON PRIORY | THURSDAY 25 FEBRUARY 2021 | 10.30AM



(detail)

DREWEATTS

EST. 1759

INVITING ENTRIES FOR 29 APRIL 2021
FINE AND RARE WINE AND SPIRITS

Our specialists can provide valuations on single bottles and entire cellars, as well as advice on starting and maintaining your cellar.

AUCTION LOCATION
Dreweatts
Donnington Priory
Newbury
Berkshire RG14 2JE

ENQUIRIES
Mark Robertson | Dianne Wall
+44 (0) 1635 553 553
wine@dreweatts.com
dreweatts.com



DREWEATTS

EST. 1759

MODERN AND CONTEMPORARY ART
18 MARCH 2021 | 10.30AM

Ivon Hitchens (British 1893-1979)
Wittenham Clumps from Days Lock
Oil on canvas

Est £30,000-50,000 (+ fees)

AUCTION LOCATION
Dreweatts
Donnington Priory
Newbury
Berkshire RG14 2JE

ENQUIRIES
Jennie Fisher
+44 (0) 1635 553 553
pictures@dreweatts.com
dreweatts.com



Coming Up at Dreweatts

Auctions

24 February | Live Online

Interiors | to include Property from the Collection of the Late Mr. & Mrs. John da Silva

25 February | Live Online

Fine and Rare Wine and Spirits

11 March | Timed Online

Art on a Postcard International Women's Day Auction in aid of The Hepatitis C Trust

12 March | Timed Online

The General Sale

17 March | Live Online

Space Exploration Photography and Ephemera

18 March | Live Online

Modern and Contemporary Art

31 March | Live Online

Fine Furniture, Sculpture, Carpets, Ceramics and Works of Art

13 April | Live Online

Jewellery, Silver, Watches, Pens and Luxury Accessories – Part 1

14 April | Timed Online

Jewellery, Silver, Watches, Pens and Luxury Accessories – Part 2

20 April | Live Online

The Transport Sale

21 April | Live Online

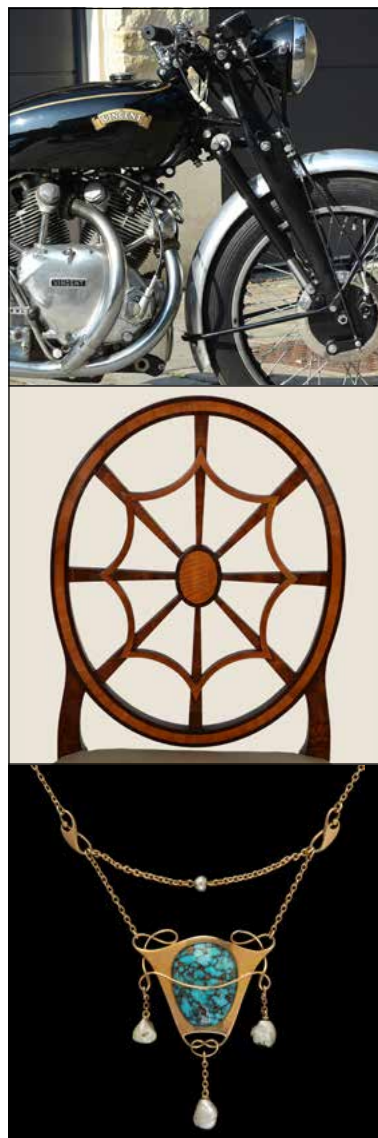
Fine Clocks, Barometers and Scientific Instruments

19 May | Live Online

Chinese Ceramics and Works of Art (Part 1)

20 May | Live Online

Japanese & Chinese (Part 2) and Indian & Islamic Ceramics & Works of Art



We hold regular auctions of fine art, antiques, jewellery and other collectibles. Our specialists carry out valuations nationwide so if you are unable to attend one of our valuation days, please request a valuation via our website or call us to discuss a home visit.

DREWEATTS | FINE AND RARE WINE AND SPIRITS

EST. 1759

DONNINGTON PRIORY | THURSDAY 25 FEBRUARY 2021 | 10.30AM

AUCTION FORMAT: LIVE ONLINE

This is a live online auction with an auctioneer. Bidding is available online, by telephone or commission (absentee) bids. If not bidding online, please contact Dreweatts to register all commission bids or telephone bids by 12 noon (local time) on Wednesday 24 February.

FREE ONLINE BIDDING IS AVAILABLE AT DREWEATTS.COM:

The Dreweatts' bidding platform allows you to watch, listen and bid with no additional online bidding fees applicable.

REGISTRATION:

We advise clients to register at least 48 hours in advance of the auction as you may be asked to provide documents to verify your identity. Registration for new clients will close at 12 noon (local time) on Wednesday 24 February.

BUYER'S PREMIUM:

Buyer's premium is charged per lot at 17.5% of the hammer price (21% including VAT) up to and including £150,000, and 15% of the hammer price (18% including VAT) in excess of £150,000

PAYMENT:

Please note, we cannot accept payment by telephone for lots bought by first time bidders. For details on other payment methods, please see our website.

AUCTION NO. 14304

SPECIALISTS:

Mark Robertson
Dianne Wall

VIEWING/CONDITION:

All wine and spirits are stored off-site. Images of lots for the purposes of condition can be viewed online and should be referred to prior to bidding. Descriptions, ullages and conditions of wines are described as correctly as possible at the time of the publication of this catalogue. Purchasers of old wines must assure themselves regarding ullage levels, labels etc. No returns will be accepted.

AUCTION:

Dreweatts
Donnington Priory
Newbury
Berkshire RG14 2JE

ENQUIRIES:

+44 (0) 1635 553 553
wine@dreweatts.com
dreweatts.com



DREWEATTS NOW INVITING ENTRIES FOR OUR 2021 AUCTIONS

EST. 1759

NEWBURY
Dreweatts
Donnington Priory
Newbury
Berkshire RG14 2JE

Auctions, exhibitions
and valuations

HAMBRIDGE LANE
Dreweatts General Sales
1 Hambridge Lane
Newbury
Berkshire RG14 5TU

General sales viewing and
collections by appointment

LONDON
Dreweatts
16-17 Pall Mall
St James's
London SW1Y 5LU

Auctions, exhibitions
and valuations

ENQUIRIES
For more information,
please contact
+44 (0) 1635 553 553
info@dreweatts.com

dreweatts.com



CONDITIONS OF SALE RELATING TO WINE AND SPIRITS SALES

1. **Buyer's premium** is charged per lot at 17.5% of the hammer price (21% including VAT) up to and including £150,000, and 15% of the hammer price (18% including VAT) in excess of £150,000.

2. **VAT. (†)** indicates that VAT is payable by the purchaser at the standard rate (20%) on the hammer prices as well as being an element in the buyer's premium. See "Commission Charges" for further details.

3. **IN BOND. (β)** indicates the wine is offered In Bond.

4. **Bidding** will be at Duty Paid prices other than for those lots marked "IN BOND/β". For Commission Bidding see "Conditions of Sale for Public Auctions" no 10.

5. **Description of the lots:** Descriptions, ullages and conditions of wines are described as correctly as possible at the time of the publication of this catalogue. Purchasers of old wines must assure themselves regarding ullage levels, labels etc. No returns will be accepted.

6. **Vintages:** Where a vintage cannot be ascertained from a label, it may still be noted based on cork branding, cellar records or other corroborating evidence including other lots from the same source.

7. **Condition Reports: Images of the majority of the lots for the purposes of condition can be viewed online at www.dreweatts.com and should be referred to prior to bidding.** It is the responsibility of potential buyers to obtain any additional information (if any) on lots on which they intend to bid. Catalogue descriptions are for reference as to the contents of a lot and should not be relied upon as a statement as to the condition of a lot.

8. **Collections and Delivery/Transfers:** Collections can be made 5 days following the sale from Vinotheque (Burton-on-Trent). Delivery/transfers are available immediately after the sale at very competitive rates. Please contact Dreweatts Wine Department for a quote.

9. **Storage:** Our storage and distribution is managed by Vinotheque, Burton-on-Trent. If you would like to store your wine/spirits with Dreweatts, please contact the department directly.

10. **Each lot** shall be at the Purchaser's risk from the conclusion of the auction until payment and collection are made.

11. **Bottle sizes** are 75cl unless otherwise stated in the lot description.

12. **International Shipping:** Please contact Dreweatts Wine Department

General abbreviations used in this catalogue

OWC – Original Wooden Case

OC – Original Case

Further abbreviations are used in relation to the level of wines for **Bordeaux style bts:**

Into Neck (IN)

Base of Neck (BN)

Very Top Shoulder (VTS)

Top Shoulder (TS)

High Shoulder (HS)

Mid Shoulder (MS)

Upper Shoulder (US)

Duty Rates (effective 1st February 2019)

Duty Rates	Duty Per 75cl Bottle	Duty Per 6x75cl or equivalent	Duty Per 12x75cl or equivalent
Still Wine 15%:	£2.23	£13.39	£26.78
Champagne/Sparkling Wine:	£2.86	£17.15	£34.30
Wine over 15%:	£2.98	£17.85	£35.70

THINKING OF SELLING?

Now welcoming consignments for our forthcoming Wine and Spirits Sales.

For further details or a free auction valuation, please contact: Mark Robertson

Tel: +44 (0) 1635 553 553 | Direct: +44 (0) 1635 553527 | wine@dreweatts.com | www.dreweatts.com

DREWEATTS

EST. 1759

FINE AND RARE WINE AND SPIRITS

DONNINGTON PRIORY | THURSDAY 25 FEBRUARY 2021 | 10.30AM

Order of Sale

Champagne	Lots 1 - 23
Port	Lots 24 - 77
Cognac & Armagnac	Lots 78 - 88
Madeira	Lots 89 - 91
Whisky	Lot 92
White Burgundy	Lots 93 - 135
Red Burgundy	Lots 136 - 192
White Bordeaux	Lots 193 - 201
Red Bordeaux	Lots 202 - 418
Sweet Wines	Lots 419 - 436
Rhone	Lots 437 - 460
French Country Wine	Lots 461 - 474
Mixed Lots	Lots 475 - 479
Alsace	Lots 480 - 485
Germany	Lots 486 - 500
Italy	Lots 501 - 524
Spain	Lots 525 - 526
USA	Lots 527 - 533
Australia / New Zealand / Chile	Lots 534 - 549
Wine Accessories	Lots 550 - 552



DREWEATTS

EST. 1759



◆ FINE WINE & SPIRITS ◆

What are yours worth?

Champagne

1

1990 Dom Perignon
Presented in original gift box
1x75cl

£150-250

2

1995 Dom Perignon
Presented in original gift box
1x75cl

£180-240

3

1985 Krug
Presented in original gift box
1x75cl

£320-420

4

1990 Krug
Some of the bottles have damaged labels
6x75cl

£1,500-2,200

5

1995 Krug
1x75cl

£100-150

6

1982 Bollinger RD Extra Brut (Disgorged 1995)
Presented In original wooden gift box
1x75cl

£200-300

7

Ruinart Blanc de Blancs
Damaged labels
6x75cl

£150-250

8

1961 Louis Roederer
1x75cl

£100-200

9

2004 Louis Roederer Cristal
Presented in original gift boxes
3x75cl

£350-420

10

Delamotte NV
10x75cl
Jacquart NV
1x75cl
Total 11x75cl

£150-250

11

Delamotte NV
6x75cl

£100-150

12

1978 Perrier Jouet, La Belle Epoque Rose
Presented in original case with 4 glasses
Some staining to the inside of the presentation case
1x150cl

£100-200

13

1973 Laurent Perrier Tour Sur Marne
1x75cl

£50-70



14
 1975 Joseph Perrier Cuvee Royale
Purchased from Hicks & Don and held in storage since first release
 OC
 12x75cl

£2,000-3,000

15
 1975 Joseph Perrier Cuvee Royale
Purchased from Hicks & Don and held in storage since first release
 OC
 12x75cl

£2,000-3,000

16
 1975 Joseph Perrier Cuvee Royale
Purchased from Hicks & Don and held in storage since first release
 OC
 12x75cl

£2,000-3,000

19
 1975 Joseph Perrier Cuvee Royale
Purchased from Hicks & Don and held in storage since first release
 OC
 12x75cl

£2,000-3,000

20
 1975 Joseph Perrier Cuvee Royale
Purchased from Hicks & Don and held in storage since first release
 OC
 12x75cl

£2,000-3,000

21
 1975 Joseph Perrier Cuvee Royale
Purchased from Hicks & Don and held in storage since first release
 12x75cl

£2,000-3,000



17
 1975 Joseph Perrier Cuvee Royale
Purchased from Hicks & Don and held in storage since first release
 OC
 12x75cl

£2,000-3,000

18
 1975 Joseph Perrier Cuvee Royale
Purchased from Hicks & Don and held in storage since first release
 OC
 12x75cl

£2,000-3,000

22
 1975 Joseph Perrier Cuvee Royale
Purchased from Hicks & Don and held in storage since first release
 12x75cl

£2,000-3,000

23
 1975 Joseph Perrier Cuvee Royale
Purchased from Hicks & Don and held in storage since first release
 12x75cl

£2,000-3,000



Port

24

1963 Fonseca

Bottled by Avery's of Bristol and stored at a Cambridge college since first release

B/N

6x75cl

£700-900

25

1963 Fonseca

Bottled by Avery's of Bristol and stored at a Cambridge college since first release

5 bottles B/N

1 bottle I/N

6x75cl

£700-900

26

1963 Fonseca

Bottled by Avery's of Bristol and stored at a Cambridge college since first release

Slight damage to one capsule

B/N

6x75cl

£700-900

27

1963 Fonseca

Bottled by Avery's of Bristol and stored at a Cambridge college since first release

B/N

6x75cl

£700-900

28

1963 Fonseca

Bottled by Avery's of Bristol and stored at a Cambridge college since first release

B/N, 1 bottle high shoulder

6x75cl

£700-900

29

1963 Fonseca

Bottled by Avery's of Bristol and stored at a Cambridge college since first release

B/N, 1 bottle high shoulder

6x75cl

£700-900

30

1963 Fonseca

Bottled by Avery's of Bristol and stored at a Cambridge college since first release

1 bottle T/S

1 bottle B/N

2x75cl

£200-300

31

1955 Taylor's

Stored at a Cambridge college since first release

6x75cl

£1,300-1,600

32

1955 Taylor's

Stored at a Cambridge college since first release

6x75cl

£1,300-1,600

33

1955 Taylor's

Stored at a Cambridge college since first release

6x75cl

£1,300-1,600

34

1955 Taylor's

Stored at a Cambridge college since first release

6x75cl

£1,300-1,600

35
1955 Taylor's
Stored at a Cambridge college since first release
1 bottle mid shoulder
6x75cl

£1,000-1,500

36
1955 Taylor's
Stored at a Cambridge college since first release
2x75cl

£320-550

37
1967 Cockburn's
Damaged/missing labels
7x75cl
1960 Fonseca
Missing label
1x75cl
Total 8x75cl

£500-700

38
2000 Cockburn's
OWC
12x75cl

£200-300

39
1960 Fonseca
Missing label
Evidence of slight seepage
1x75cl

£80-120

40
1977 Taylor's
12x75cl

£700-1,000

41
1977 Warre's
Slightly damaged labels
12x75cl

£450-650

42
1977 Graham's
Some label damage
12x75cl

£650-850

43
1908 Taylor's
1x75cl

£700-1,200

44
1927 Taylor's
1x75cl

£700-1,000

45
1991 Fonseca Guimaraens
OWC
12x75cl

£300-400

46
1991 Morgans
12x75cl
Morgans was a subsidiary of Taylor's and when they decided to liquidate, stocks from all their subsidiaries were put into auction

£400-600

47
1967 Cockburn's
1x75cl

£50-80

48
1947 Constantinos
1x75cl

£200-300

49
1966 Taylor's
3x75cl

£250-400

50
1958 Ferreira
1x75cl
1960 Dow's
OWC
1x75cl
Total 2x75cl

£200-280

51
1977 Graham's
1 bottle has a damaged label
2x75cl

£80-120

52
1977 Graham's
OWC (lid missing)
11x75cl

£300-400

53
1900 Fonseca
T/S
1x75cl

£1,000-2,000

54
1920 Gilbey's
M/S
1x75cl

£200-300

55
1927 Croft
M/S
Hand written label
1x75cl

£300-400

56
1927 Taylor's
B/N
1x75cl

£700-1,200

57
1934 Tuke Holdsworth
Wine Society
B/S
1x75cl

£300-500

58
1934 Fonseca
T/S
1x75cl

£700-1,200

59 1935 Gonzalez B/N 1x75cl £250-350	65 1945 Sandeman M/S 1x75cl £300-400	71 1948 Fonseca T/S 1x75cl £400-800	76 1908 Taylor's 1x75cl £700-1,200
60 1935 Croft B/N 1x75cl £250-350	66 1945 Fonseca M/S 1x75cl £700-1,000	72 1957 Krohn Colheita M/S 1x75cl £100-200	77 1900 Taylor's 1x75cl £800-1,400
61 1935 Croft B/N 1x75cl £250-350	67 1947 Sandeman M/S 1x75cl £200-300	73 1958 Royal Oporto L/S 1x75cl £100-200	
62 1935 Sandeman B/N 1x75cl £300-400	68 1947 Warre's Army & Navy Re-waxed L/S 1x75cl £450-550	74 1979 Graham's LBV 1x75cl 1963 Borges 1x75cl 1977 Gould Campbell 1x75cl 1977 Sandeman 1x75cl Real Companhia Velha 1x75cl Total 5x75cl £80-120	
63 1935 Cockburn's M/S 1x75cl £400-500	69 1947 Warre's Bottled by Eldridge Pope 1x75cl £450-650	75 1945 Dow's (Recorked by BBR in 1983) 2x75cl £900-1,400	
64 1945 Amandios Old Tawny M/S 1x75cl £150-250	70 1947 Dow's M/S 1x75cl £400-600		



Cognac & Armagnac

78

1985 Hine Vintage Grande Champagne Cognac
Landed in 1987 and bottled in 2000
John Harvey & Sons, Bristol
6x70cl

£700-1,200

79

1893 Cognac Tres Vieille Grand Champagne Cognac
Heritage des Comtes de Mareuil
Collection XIX
1x70cl

£800-1,500

80

1893 Cognac Tres Vieille Grand Champagne Cognac
Heritage des Comtes de Mareuil
Collection XIX
1x70cl

£800-1,500

81

Courvoisier Napoleon Cognac
2x70% proof
2x40% proof - 1 bottle has a damaged label
3 bottles in original box
4x70cl

£300-400

82

1947 Bas Armagnac VSOP, Chateau de Laubade
1x70cl
Armagnac VSOP
J de Malliac
1x70cl
Total 2x70cl

£250-350

83

1961 Hine
Landed in 1963 and bottled in 1978
1x70cl

£100-200

84

1961 Hine
Landed in 1963 and bottled in 1978
1x70cl

£100-200

85

1995 Delamain
Landed 1996 and bottled in 2015
6x70cl

£400-600

86

1995 Delamain
Landed 1996 and bottled in 2015
6x70cl

£400-600

87 B

Eau de Vie de Prunes de Mouton Rothschild
1x70cl
IN BOND

£200-300

88

1983 Hine Grande Champagne Cognac
2x70cl

£300-400

Madeira

89

1880 Harvey's Verdelho
Bottled in 1973
2x75cl

£300-500

90

1900 Malvazia D'Oliveiras
1x75cl

£350-550

91

1895 Bual
Cossart Gordon
1x75cl

£450-650

Whisky

92

Macallan 18 Year Old
Presented in original gift box which has slight damaged
to the bottom right corner
1x75cl

£140-180



White Burgundy

93 B

2014 St Aubin 1er Cru , Le Charmois
Domaine Jean-Claude Bachelet
OC
12x75cl
IN BOND

£300-400

94 B

2015 Vire Clesse
Domaine de Bongran, Jean Thenevet
OC
12x75cl
IN BOND

£100-150

95 B

2008 Chablis Grand Cru, Bougros
La Maison Romane
6x75cl
IN BOND

£250-350

96 B

2008 Chassagne Montrachet 1er Cru, Les Baudines
Domaine Moret-Nomine
6x75cl
IN BOND

£200-300

97 B

2008 Chassagne Montrachet 1er Cru, Les Baudines
Domaine Moret-Nomine
6x75cl
IN BOND

£200-300

98 B

2010 Corton Charlemagne Grand Cru, Vieilles Vignes
Domaine Ludovic Belin
6x75cl
IN BOND

£250-300

99 B

2010 Chablis Grand Cru, Les Clos
La Maison Romane
6x75cl
IN BOND

£250-350

100 B

2011 Puligny Montrachet Les Tremblots
Domaine A Joly
6x75cl
IN BOND

£150-250

101 B

2011 Puligny Montrachet Les Charmes
Domaine A Joly
6x75cl
IN BOND

£150-250

102 B

2012 Chablis
Domaine Nathalie et Gilles Fevre
12x75cl
IN BOND

£80-120

103 B

2011 Beaune Chaume Gaugriot Blanc
Domaine Audiffred
6x75cl
IN BOND

£90-140

104

1999 Meursault 1er Cru, Charmes
Domaine des Comtes Lafon
1x75cl
1999 Meursault 1er Cru, Clos de la Barre
Domaine des Comtes Lafon
2x75cl

1999 Meursault 1er Cru, Perrieres
Domaine des Comtes Lafon

1x75cl

1999 Meursault 1er Cru, Goutte D'or
Domaine des Comtes Lafon

1x75cl

1999 Meursault 1er Cru
Domaine des Comtes Lafon

2x75cl

Total 7x75cl

£950-1,300

105

2018 Chablis 1er Cru, Chapelots
Domaine F Raveneau
6x75cl

£800-1,200

106

2009 Meursault 1er Cru, Sous Le Dos D'ane
Domaine Leflaive
OWC
12x75cl

£700-900

107

2000 Chablis 1er Cru, La Foret
Domaine Dauvissat-Camus
OC
12x75cl

£550-750

108 B

2000 Chablis Grand Cru, Grenouilles
Domaine Louis Michel
OC
12x75cl
IN BOND

£350-550

109 B

2000 Chassagne Montrachet 1er Cru, Les Caillerets
Domaine Vincent Girardin
OC
12x75cl
IN BOND

£380-480

110 B

2000 Chassagne Montrachet 1er Cru, Les Ruchottes
Domaine Ramonet
OC
12x75cl
IN BOND

£800-1,200

111 B

2000 Meursault, Les Clousots
Domaine Patrick Javillier
12x75cl
IN BOND

£300-400

112
2000 Meursault 1er Cru, Perrieres
Domaine Pierre Morey
OC
6x75cl

£600-800

113
2000 Puligny Montrachet 1er Cru, Clavoillon
Domaine Leflaive
6x75cl

£700-900

114 B
2000 Pouilly Fuisse Vieilles Vignes
JJ Vincent
OC
12x75cl
IN BOND

£150-250

115 B
2002 Chassange Montrachet 1er Cru, Les Ruchottes
Domaine Ramonet
6x75cl
IN BOND

£600-800

116 B
2002 Puligny Montrachet 1er Cru, Les Folatieres
Chateau de Puligny Montrachet
OC
6x75cl
IN BOND

£300-400

117 B
2009 Corton Charlemagne Grand Cru
Domaine Bonneau du Martray
OWC
6x75cl
IN BOND

£600-800

118 B
2005 Corton Charlemagne Grand Cru
Domaine Alex Gambal
6x75cl
IN BOND

£400-500

119 B
2005 Corton Charlemagne Grand Cru
Domaine Alex Gambal
6x75cl
IN BOND

£400-500

120 B
2005 Meursault 1er Cru, Charmes
Alain Michelot
12x75cl
IN BOND

£300-400

121 B
2004 Chassange Montrachet 1er Cru, Les Caillerets
Domaine Morey-Coffinet
12x75cl
IN BOND

£300-500

122 B
2006 Puligny Montrachet 1er Cru, Les Champ Gains
Domaine Etienne Sauzet
6x75cl
IN BOND

£200-300

123
2000 Chablis 1er Cru, Beauroy
Domaine Laurence Tribut
5x75cl
1998 Chablis 1er Cru, Fourchaume
Domaine Verget
1x75cl
Total 6x75cl

£100-200

124
2000 Chassange Montrachet 1er Cru, Les Champ-gains
Domaine Amoit et Fils
11x75cl

£650-950

125
2018 Bourgogne Blanc
Domaine Fourrier
OC
6x75cl

£100-200

126
2008 St Aubin 1er Cru, En Remilly
Domaine Pierre Yves Colin-Morey
6x75cl

£250-350

127
2008 St Aubin 1er Cru, Champlots
Domaine Pierre Yves Colin-Morey
Some label damage
8x75cl

£250-350

128
2015 Macon Milly Lamantine
Heritiers du Comte Lafon
3x75cl
2018 Bourgogne Blanc
Dominique Lafon
2x75cl
2010 Pouilly Fuisse, Clos de Quarts
Domaine Merlin
4x75cl
Total 9x75cl

£80-140

129
2017 Bourgogne Blanc
Domaine Fourrier
4x75cl
2018 Bourgogne Blanc
Domaine Fourrier
1x75cl
Total 5x75

£100-200

130
2017 Pouilly-Loche, Clos des Rocs Monopole
Domaine Oliver Giroux
OC
9x75cl

£100-150

131
2015 Meursault 1er Cru, Les Chevalieres
Domaine J-P Fichet
3x75cl
2015 Meursault 1er Cru, Genevrieries
Domaine Antoine Jobard
9x75cl
Total - 12x75cl

£600-700

132

2015 Chassagne Montrachet 1er Cru, Tete du Clos
Domaine Benjamin Leroux
7x75cl
2015 Puligny Montrachet
Domaine de la Vougeraie
2x75cl
Total - 9x75cl

£300-400

133

2015 Chassagne Montrachet, 1er Cru Les Chaumees
Clos de la Truffiere
Domaine Michel Niellon
10x75cl

£380-480

134

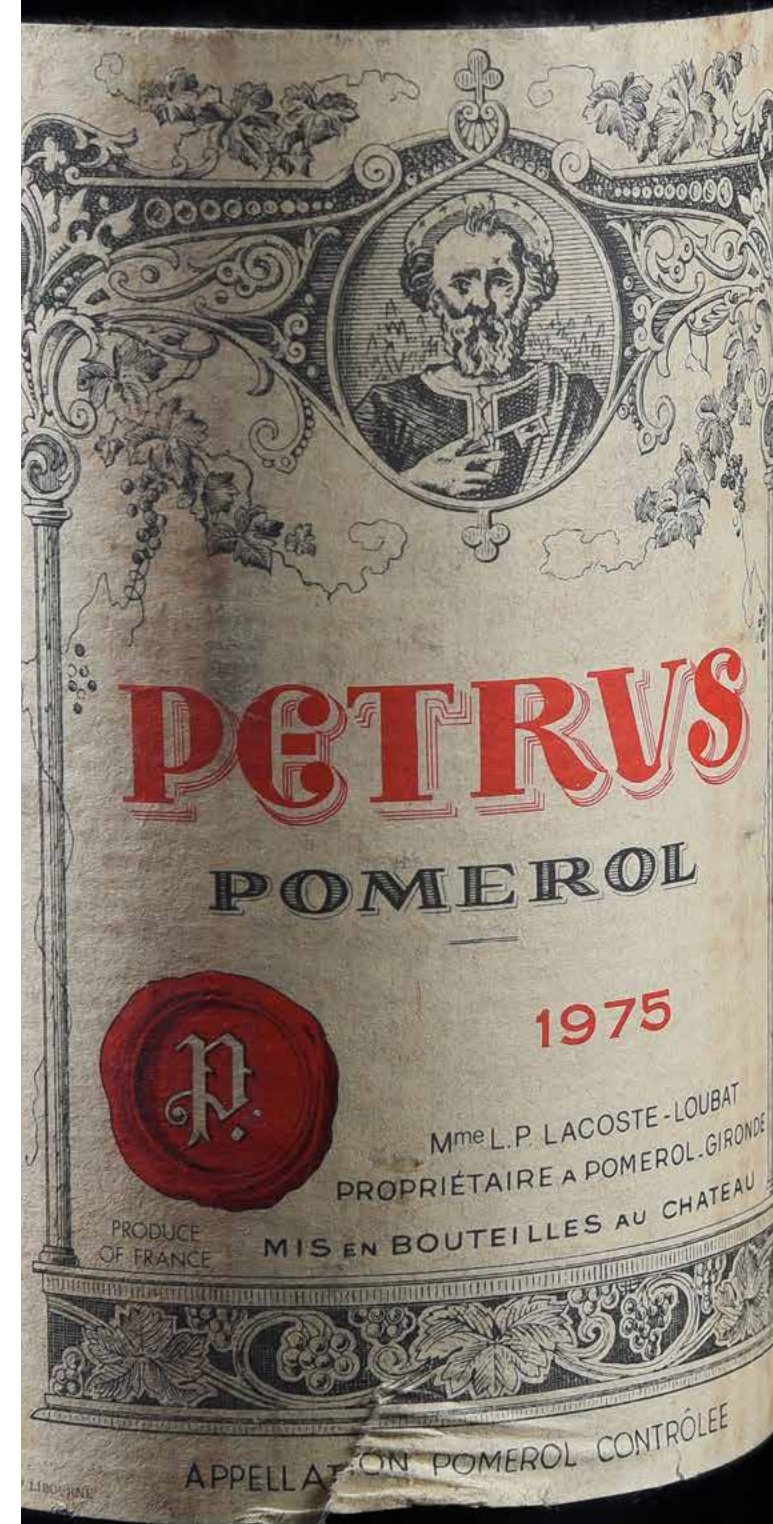
2015 Chassagne Montrachet, Les Enseignerres
Domaine Marc Colin
10x75cl

£300-400

135

2015 Chablis Grand Cru Vaudesir
Domaine Samuel Billaud
3x75cl

£80-120



Red Burgundy

136

2000 Vougeot 1er Cru, Petit Vougeot
Domaine Fourrier
12x75cl

£700-900

137

2000 Vougeot 1er Cru, Petit Vougeot
Domaine Fourrier
12x75cl

£700-900

138

2000 Vougeot 1er Cru, Petit Vougeot
Domaine Fourrier
11x75cl

£600-800

139

2000 Gevrey Chambertin 1er Cru, Les Cherbaudes
Domaine Fourrier
12x75cl

£800-1,200

140

1988 Clos de Tart
Slight label and capsule damage
1x75cl

£150-200

141

1996 Morey St Denis Clos de la Busseires
Domaine Roumier
Slight label damage
1x75cl

£100-180

142

1996 Pommard 1er Cru, Le Epenots
Domaine Champy

1x75cl

1989 Beaune 1er Cru, Les Epenottes

Domaine Pierre Bouree

2x75cl

2010 Beaune

Francoise Chauvenet

1x75cl

1995 Cotes de Beaune Villages

Louis Latour

2x75cl

Total 6x75cl

£100-150

143 B

2007 Morey Saint Denis 1er Cru, La Riottes

Domaine Odoul-Coquard

6x75cl

IN BOND

£150-200

144 B

2007 Vosne Romanee 1er Cru

Domaine Henri Felettig

6x75cl

IN BOND

£250-350

145 B

2008 Vosne Romanee Aux Reas

Domaine Guyard

6x75cl

IN BOND

£180-240

146 B

2008 Vosne Romanee Aux Reas

Domaine Guyard

6x75cl

IN BOND

£180-240

147 B

2008 Corton Renardes, Grand Cru

Domaine Parent

6x75cl

IN BOND

£300-400

148 B

2008 Corton Renardes, Grand Cru

Domaine Parent

6x75cl

IN BOND

£300-400

149 B

2009 Pommard 1er Cru, Les Chanlins

Domaine Perrin

6x75cl

IN BOND

£150-200

150 B

2009 Pommard 1er Cru, Les Chanlins

Domaine Perrin

6x75cl

IN BOND

£150-200

151 B

2009 Chambolle Musigny 1er Cru, Les Baudes

Domaine Odoul-Coquard

6x75cl

IN BOND

£180-280

152 B

2009 Gevrey Chambertin

Domaine Desaunay-Bissey

6x75cl

IN BOND

£150-250

153 B

2009 Santenay Rouge Clos de Hautes, Vieilles Vignes

Domaine Bachey-Legros

6x75cl

IN BOND

£80-140

154 B

2009 Santenay Rouge Clos de Hautes, Vieilles Vignes

Domaine Bachey-Legros

6x75cl

IN BOND

£80-140

155 B

2010 Gevrey Chambertin 1er Cru, Aux Combottes

Domaine Odoul-Coquard

6x75cl

IN BOND

£180-220

156 B

2010 Corton Renardes Grand Cru, Vieilles Vignes

Domaine Ludovic Belin

6x75cl

IN BOND

£200-250

157 B

2010 Beaune 1er Cru, Teurons

Domaine M Martin

6x75cl

IN BOND

£140-180

158 B
2010 Beaune 1er Cru, Teurons
Domaine M Martin
6x75cl
IN BOND

£140-180

159 B
Volnay 1er Cru Carelle sous la Chapelle,
Domaine Marie Christine & Vincent Perrin
6x75cl

£100-200

160 B
2011 Bourgogne Passe-tout-grain
Domaine Odoul-Coquard
12x75cl
IN BOND

£100-150

161 B
2011 Volnay 1er Cru, Gigottes Monopole
Domaine Perrin
6x75cl
IN BOND

£250-350

162
2014 Volnay 1er Cru, Clos des Chenes
Christophe Vaudoisey
4x75cl

£70-120

163
1999 Volnay
Domaine des Comtes Lafon
2x75cl
1999 Volnay Santenots Du -Milieu
Domaine des Comtes Lafon
2x75cl
1999 Montheleie les Duresses
Domaine des Lafon
1x75cl
Total 5x75cl

£650-900

164
1967 Corton Grancey
Maison Louis Latour
2x75cl

£70-140

165
1971 Grands Echezeaux, Grand Cru
Domaine Romanee Conti
Mid to High Shoulder
1x75cl

£750-1,100

166
1971 Grands Echezeaux, Grand Cru
Domaine Romanee Conti
Damaged label
L/S
1x75cl

£400-600

167 B
2010 Morey St Denis
Domaine des Lambrays
OC
12x75cl
IN BOND

£1,100-1,400

DREWEATTS

EST. 1759



• FINE WINE & SPIRITS •

What are yours worth?

168
2000 Gevrey Chambertin 1er Cru, Les Cherbaudes
Domaine Fourrier
12x75cl

£800-1,200

169
2000 Gevrey Chambertin 1er Cru, Les Cherbaudes
Domaine Fourrier
12x75cl

£800-1,200

170
2000 Gevrey Chambertin 1er Cru, Les Cherbaudes
Domaine Fourrier
7x75cl

£460-700

171 B
2005 Chambolle Musigny 1er Cru, Les Charmes
Alex Gambal
12x75cl
IN BOND

£500-700

172 B
2009 Nuits St Georges 1er Cru, Aux Perdrix
Domaine des Perdrix
12x75cl
IN BOND

£400-500

173
2000 Chambolle Musigny 1er Cru, Feusselottes
Georges Mugneret
8x75cl

£800-1,200

174
2000 Charmes Chambertin Grand Cru
Pierre Magnien
1 label has been re-attached
11x75cl

£400-600

175
1997 Clos Vougeot Grand Cru
Domaine Georges Mugneret
5x75cl

£1,000-1,500

176
1998 Echezeaux Grand Cru
Domaine Mugneret-Gibourg
1 bottle has a slightly stained label
8x75cl

£1,800-2,500

177
1997 Gevrey Chambertin 1er Cru, Lavaux St Jacques
Domaine Denis Mortet
5x75cl

£600-800

178
1996 Nuits St Georges, Les Chaignots
Domaine Georges Mugneret
9x75cl

£700-1,000

179
2000 Pernand Vergelesses
Domaine Chandon de Brailles
Some label damage
8x75cl

£200-300

180
2000 Volnay
Domaine J-M Boillot
6x75cl

£130-180

181
1997 Clos Vougeot Grand Cru
Domaine Francois Lamarche
3x75cl

£150-200

182
1996 Nuits St Georges 1er Cru, Les Cailles
Domaine Jean Boillot
3x75cl
2000 Nuits St Georges 1er Cru, Les Pruliers
Domaine Jean Grivot
1x75cl
1997 Gevrey Chambertin 1er Cru, Lavaux St Jacques
Louis Jadot
2x75cl

1999 Charmes Chambertin Grand Cru
Domaine Girardin
1x75cl
2000 Corton Rognet Grand Cru
Domaine Rene Durand
1x75cl
2012 Craggy Range Pinot Noir, Te Munha Road
Vineyard
1x75cl
Total 9x75cl

£300-400

183
2011 Corton Clos du Roi Grand Cru
Domaine Camille Giroud
2x150cl

£150-200

184
2013 Morey St Denis 1er Cru, Aux Cheseaux
Domaine Castagnier
4x75cl

£150-220

185
2000 Bonne Mares Grand Cru
Domaine de La Vougerie
2x75cl

£100-150

186
2005 Bourgogne Rouge, Le Messandier
Dupuis
OWC
12x75cl

£100-150

187
2002 Bonne Mares, Grand Cru
Domaine Lucien Le Moine
7x75cl

£1,500-2,200

188
2000 Clos des Lambrays Grand Cru
Domaine des Lambrays
OWC
12x75cl

£1,200-1,500

189

1987 Le Chambertin Grand Cru

Domaine Armand Rousseau

4x75cl

Originally purchased from Threshers in the early 1990's, the eagle eyed vendor spotted this wine on his way to a dinner party. He noticed the price was very good, the manageress of the branch told him that they had been sent something different to their normal Gevrey Chambertin delivery and she had tried it and thought it was rather good. More innocent times!

£5,000-6,000

190 B

Climats de Corton

A celebration of 'The Hill of Corton', birthplace of

Maison Louis Latour

2016 Chateau Corton Grancey, Grand Cru

Louis Latour

1x75cl

2016 Corton-Charlemagne Grand Cru

Louis Latour

2x75cl

2016 Corton Grand Cru, Perriers

Louis Latour

1x75cl

2016 Corton Grand Cru, Clos de la Vigne au Saint

Louis Latour

1x75cl

2016 Corton Grand Cru, Clos du Roi

Louis Latour

1x75cl

IN BOND

Total - 6x75cl

£500-600

191

2018 Bourgogne Rouge

Domaine Groffier

6x75cl

£120-150

192

2013 Marsannay Clos du Roy

Domaine Sylvian Pataille

12x75cl

£300-400

White Bordeaux

193

2004 Pavillon Blanc de Chateau Margaux

Margaux

OWC

6x75cl

£600-800

194

2009 Blanc de Lynch Bages

Pauillac

5x75cl

£150-220

195

2000 Pavillon Blanc de Chateau Margaux

Margaux

6x75cl

£500-800

196 B

2005 Chateau La Louviere

Pessac Leognan

12x75cl

IN BOND

£140-180

197 B

2005 Chateau La Louviere

Pessac Leognan

12x75cl

IN BOND

£140-180

198

1989 Chateau Pavillon Blanc

Chateau Margaux

OWC

12x75cl

£1,400-1,800

199

1997 Domaine de Chevalier Blanc, Grand Cru Classe

Pessac Leognan

5x75cl

£250-300

200

2005 Pavillon Blanc de Chateau Margaux

Margaux

OWC

12x75cl

£1,800-2,200

201

2006 Chateau Pape Clement Blanc

Pessac Leognan

5x75cl

£350-450

Bordeaux | Lot Index

St Estephe

Chateau Phelan Segur – 219, 346
Chateau Calon Segur – 261, 292, 293, 339
Chateau Montrose – 281, 283, 338, 339, 340, 341, 374
Chateau Cos D'Estournel –
282, 284, 296, 297, 298, 299, 367, 374, 402

Pauillac

Chateau Mouton Rothschild –
197, 209, 210, 211, 212, 214, 260, 273, 342, 343, 399
Chateau Grand Puy Lacoste – 220, 305, 376, 389, 403
Chateau Pichon Baron –
222, 238, 347, 348, 349, 350, 351, 352, 362, 404
Reserve de la Comtesse – 227
Chateau Batailley – 234, 239
Chateau Pichon Lalande – 248, 279, 370
Chateau Lynch Bages – 258, 33, 334, 335, 336, 405
Chateau Latour – 264, 265, 268, 286, 316, 317, 364
Chateau Lafite – 266, 267, 270, 313
Chateau Haut Batailley – 385, 386
Chateau Pontet Canet – 394, 395, 398
La Tourelles de Longueville – 359
Chateau Duhart Milon – ??
Prelude de Grand Puy Ducasse – 381
Chateau D'Armailhac – 407

St Julien

Chateau Leoville Poyferre – 194, 330, 365, 396
Chateau Leoville La Cases – 195, 327, 328, 329
Chateau Leoville Barton –
198, 199, 200, 201, 202, 213, 223, 245, 246, 257, 321, 322, 232,
324, 325, 326
Chateau Gruaud Larose – 206, 306, 307, 308
Les Fiefs de Lagrange – 242
Chateau Langoa Barton – 244, 315
Chateau Talbot – 249, 277, 354, 355
Reserve Leoville Barton – 250
Chateau Lagrange – 257, 314
Chateau Ducru Beaucaillou – 262, 300, 301, 302, 400

Margaux

Chateau Dufort Vivens – 196
Chateau Giscours – 216, 225, 254, 406
Chateau La Gurgue – 229, 230
Chateau D'Issan – 241, 252
Chateau Margaux – 256, 259, 337
Chateau Brane Cantenac – 263
Chateau Kirwan – 289
Chateau Palmer – 344, 369, 401
Chateau Rauzan Segla – 353
Pavillon Rouge de Margaux – 360, 361
Chateau Castelbruck – 375
Alter Ego de Palmer – 390

Pessac Leognan/Graves

Chateau La Mission Haut Brion – 203, 210
Domaine de Chevalier – 217, 357
Clarence de Haut Brion – 274
Chateau Haut Brion – 285
Chateau La Tour Haut Brion – 311, 312
Chateau Smith Haut Lafitte – 397

St Emilion

Chateau Troplong Mondot – 204, 356, 371
Chateau Cheval Blanc – 205, 207, 208, 215, 275, 276, 295
Chateau Belair – 218
Chateau Pavie – 280, 287, 288, 366
Chateau Angelus – 290
Chateau Canon la Gaffeliere – 294
Chateau Figeac – 303, 304
Chateau La Grave Figeac – 309
Chateau Leydet Figeac – 331
Chateau Lucia – 332
Chateau Pavie Macquin – 345
Chateau Puy Blanquet – 382, 383, 384

Pomerol

Chateau La Pointe – 224, 233
Chateau Petit Villages – 255
Chateau Petrus – 269, 387
Chateau Gazin – 278
Chateau Beaugard – 291
Chateau L'Eglise Clinet – 318, 319, 320
La Petit Eglise – 358
Chateau L'Evangile – 388

Mixed Cases – 226, 235, 237, 251, 271, 272, 363, 368

Haut Medoc/Others

Chateau Cissac – 221, 377, 378, 379,
Chateau Mazeris – 228
Domaine de Bellevue – 193, 231, 232
Chateau Cantemerle – 236, 240, 372
Chateau Lannessan – 243
Domaine Cordeillac – 380
G Act 7, Guinaudeau – 391, 392, 393

White

Pavillon Blanc de Chateau Margaux – 184, 186, 189, 191
Blanc de Lynch Bages – 185
Chateau la Louviere Blanc – 187, 188
Domaine de Chevalier Blanc – 190
Chateau Pape Clement Blanc – 192

Sauternes & Barsac

Chateau D'Yquem – 408, 417, 421
Chateau Rieussec – 409, 416, 418
Chateau Coutet – 409
Chateau Suduiraut – 410, 413, 420
Chateau Climens – 412
Chateau la Tour Blanche – 414
Chateau Doisy Daene – 416
Chateau Guiraud – 419



Red Bordeaux

202

2013 Domaine de Bellevue, La Grand Cuvee
Cadillac
OWC
12x75cl

£150-250

203

1945 Chateau Leoville Poyferre, 2eme Cru Classe
St Julien
M/S
1x75cl
Stored by the same owner since first release

£280-380

204

1945 Chateau Leoville Las Cases, 2eme Cru Classe
St Julien
M/S
1x75cl
Stored by the same owner since first release

£350-450

205

1978 Chateau Durfort Vivens, 2eme Cru Classe
Margaux
OWC
12x75cl

£400-600

206

1973 Mouton Rothschild, 1er Cru Classe
Pauillac
M/S
1x75cl

£100-150

207

1990 Chateau Leoville Barton, 2eme Cru Classe
St Julien
12x75cl

£950-1,350

208

1998 Chateau Leoville Barton, 2eme Cru Classe
St Julien
12x75cl

£400-600

209

1985 Chateau Leoville Barton, 2eme Cru Classe
St Julien
T/S
2x75cl

£80-140

210

1996 Chateau Leoville Barton, 2eme Cru Classe
St Julien
4x75cl

£240-320

211

1990 Chateau Leoville Barton, 2eme Cru Classe
St Julien
5x75cl

£320-420

212

1995 La Mission Haut Brion, Grand Cru Classe
Pessac Leognan
2x150cl

£500-800

213
1995 Troplong Mondot, Grand Cru Classe
St Emilion
3x150cl

£260-350

214
1970 Cheval Blanc, 1er Grand Cru Classe
St Emilion
1 bottle M/S
1 bottle T/S
3x75cl

£500-900

215
1985 Chateau Gruaud Larose, 2eme Cru Classe
St Julien
4 bottles T/S
OWC
12x75cl

£600-800

216
1995 Chateau Cheval Blanc, 1er Grand Cru Classe
St Emilion
OWC
12x75cl

£3,000-4,000

217
1981 Chateau Cheval Blanc, 1er Grand Cru Classe
St Emilion
1x75cl

£100-200

218
1975 Chateau Mouton Rothschild, 1er Cru Classe
Pauillac
1 stained label
3 bottles T/S
1 bottle H/S
8x75cl

£900-1,200

219
1985 Chateau Mouton Rothschild, 1er Cru Classe
Pauillac
1x75cl

£150-200

220
1981 Chateau Mouton Rothschild, 1er Cru Classe
Pauillac
1 bottle T/S
11 bottles B/N
OWC
12x75cl

£2,200-3,200

221
1981 Chateau Mouton Rothschild, 1er Cru Classe
Pauillac
1 bottle L/S
1 bottle T/S
OWC - damaged lid
11x75cl

£1,800-2,500

222
1985 Chateau Leoville Barton, 2eme Cru Classe
St Julien
3 badly damaged labels
OWC
12x75cl

£550-850

223
1981 Chateau Mouton Rothschild, 1er Cru Classe
Pauillac
10x75cl

£1,800-2,400

224
1990 Chateau Cheval Blanc, 1er Grand Cru Classe
St Emilion
2x75cl

£1,200-1,500

225
1982 Chateau Giscours, 3eme Cru Classe
Margaux
Mixed Levels
Damage to labels and capsules
11x75cl

£300-400

226
1970 Domaine de Chevalier
Pessac Leognan
1 bottle M/S
2x75cl

£80-120

227
1982 Chateau Belair
St Emilion
12x75cl

£600-800

228
1982 Chateau Phelan Segur, Cru Bourgeois
St Estephe
12x75cl

£300-500

229
1982 Chateau Grand Puy Lacoste, 5eme Cru Classe
Pauillac
Stained labels
12x75cl

£1,300-1,700

230
1975 Chateau Cissac, Cru Bourgeois
Haut Medoc
5 bottles T/S
6x75cl

£100-200

231
1982 Chateau Pichon Longueville Baron, 2eme Cru Classe
Pauillac
12x75cl

£1,500-2,200

232
1983 Chateau Leoville Barton, 2eme Cru Classe
St Julien
Slightly stained labels
3x75cl

£100-150

233
1998 Chateau La Pointe
Pomerol
3x75cl

£60-120

234
1970 Chateau Giscours, 3eme Cru Classe
Margaux
1x150

£100-200

235
1986 Chateau Montrose, 2eme Cru Classe
St Estephe
1x75cl
1983 Chateau Talbot, 4eme Cru Classe
St Julien
1x75cl
2004 Chateau Pichon Longueville Baron, 2eme Cru Classe
Pauillac
1x75cl
Total 3x75cl

£150-225

236
2009 Reserve de la Comtesse (2nd wine of Chateau Pichon Lalande)
Pauillac
6x75cl

£150-250

237 B
2003 Chateau Mazeris
Canon-Fronsac
12x75cl
IN BOND

£100-200

238 B
2004 Chateau La Gurgue
Margaux
12x75cl
IN BOND

£150-200

239 B
2004 Chateau La Gurgue
Margaux
12x75cl
IN BOND

£150-200

240
2012 Domaine de Bellevue, La Grand Cuvee
Cadillac
OWC
12x75cl

£150-250

241
2013 Domaine de Bellevue, La Grand Cuvee
Cadillac
OWC
12x75cl

£150-250

242
1998 Chateau La Pointe
Pomerol
OWC
12x75cl

£240-480

243
2001 Chateau Batailley, 5eme Cru Classe
Pauillac
2x75cl
2004 Chateau Batailley, 5eme Cru Classe
Pauillac
2x75cl
Total - 4x75cl

£80-120

244
2001 Chateau Belgrave, 5eme Cru Classe
Haut Medoc
Slightly stained label
1x75cl
2001 Chateau du Tertre, 4eme Cru Classe
Margaux
1x75cl
2001 Chateau Leoville Barton, 2eme Cru Classe
St Julien
1x75cl
2001 Chateau Langoa Barton, 4eme Cru Classe
St Julien
1x75cl
2001 Chateau Pontet Canet, 5eme Cru Classe
Pauillac
1x75cl
2001 Chateau Rauzan Gassies, 2eme Cru Classe
Margaux
1x75cl
6x75cl

£150-250

245
2005 Chateau Cantemerle, 5eme Cru Classe
Haut Medoc
5x75cl
2006 Chateau Cantemerle, 5eme Cru Classe
Haut Medoc
6x75cl
Total 11x75cl

£150-250

246
1995 Chateau Branaire Ducru, 4eme Cru Classe
St Julien
1x75cl
2009 Chateau Cantemerle, 5eme Cru Classe
Haut Medoc
2x75cl
1998 Chateau Leoville Barton, 2eme Cru Classe
St Julien
3x75cl
2001 Chateau Lafon Rochet, 4eme Cru Classe
St Estephe
2x75cl
2001 Chateau Langoa Barton, 4eme Cru Classe
St Julien
1x75cl
2004 Chateau Tour St Bonnet, Cru Bourgeois
Medoc
2x75cl
Total - 11x75cl

£200-300

247
1999 Chateau Pichon Longueville Baron, 2eme Cru Classe
Pauillac
1x75cl
2001 Chateau Pichon Longueville Baron, 2eme Cru Classe
Pauillac
2x75cl
2004 Chateau Pichon Longueville Baron, 2eme Cru Classe
Pauillac
1x75cl
Total - 4x75cl

£200-300

248
2002 Chateau Batailley, 5eme Cru Classe
Pauillac
15x375cl

£120-160

249
2008 Chateau Cantemerle, 5eme Cru Classe
Haut Medoc
10x75cl

£140-180

250
2006 Chateau d'Issan, 3eme Cru Classe
Margaux
8x75cl

£250-350

251
2010 Les Fiefs de Lagrange (Second wine of Chateau Lagrange)
St Julien
OWC
12x75cl

£200-300

252
2005 Chateau Lanessan, Cru Bourgeois
Haut Medoc
9x75cl

£100-150

253
2002 Chateau Langoa Barton, 3eme Cru Classe
St Julien
8x75cl

£150-200

254
2009 Chateau Leoville Barton, 2eme Cru Classe
St Julien
4x75cl

£180-240

255
2004 Chateau Leoville Barton, 2eme Cru Classe
St Julien
6x75cl

£200-280

256
2008 Chateau Leoville Barton, 2eme Cru Classe
St Julien
10x75cl

£350-450

257
2004 Chateau Pichon Longueville Comtesse de Lalande, 2eme Cru Classe
Pauillac
3x75cl

£200-300

258
2003 Chateau Talbot, 4eme Cru Classe
St Julien
6x75cl

£200-300

259
2012 Reserve de Leoville Barton, (2nd wine of Chateau Leoville Barton)
St Julien
OWC
12x75cl

£120-180

260
2006 Reserve de Leoville Barton, (Second wine of Chateau Leoville Barton)
St Julien
5x75cl
2002 Moulin de la Lagune (2nd wine of Chateau La Lagune)
Haut Medoc

1x75cl
2004 Chateau Tour St Bonnet, Cru Bourgeois
Haut Medoc
6x75cl
Total - 12x75cl

£100-200

261
2003 Chateau d'Issan, 3eme Cru Classe
Margaux
5x75cl

£150-200

262
1982 Croft
1x75cl
1970 Offley Boa Vista
1x75cl
1970 Sandeman
1x75cl
1985 Warres's
1x75cl
Total 4x75cl

£150-200

263
1961 Chateau Giscours, 3eme Cru Classe
Margaux
Bottled by Justerini & Brooks, label designed by Cecil Beaton
2x75cl

£300-500

264
1959 Chateau Petit Villages
Pomerol
1 bottle - T/S
1 bottle - H/S
2x75cl

£140-240

265
1964 Chateau Margaux, 1er Cru Classe
Margaux
Damaged labels
Mid-High Shoulder
2x75cl

£200-300

266
1928 Chateau Lagrange, 4eme Cru Classe
St Julien
B/N
1x75cl

£150-250

267
1961 Chateau Lynch Bages, 5eme Cru Classe
Pauillac
Damaged labels
1 bottle - H/S
1 bottle - M/S
2x75cl

£200-400

268
1961 Chateau Margaux, 1er Cru Classe
Margaux
Damaged label
Mid-low shoulder
1x75cl

£100-200

DREWEATTS

EST. 1759



• FINE WINE & SPIRITS •

What are yours worth?

269
1985 Chateau Mouton Rothschild, 1er Cru Classe
Pauillac
T/S
2x75cl

£200-350

270
1961 Chateau Calon Segur, 3eme Cru Classe
St Estephe
1 bottle - T/S
2 bottle - H/S
3x75cl

£250-350

271
1961 Chateau Ducru Beaucaillou, 2eme Cru Classe
St Julien
1 bottle H/S
1 bottle M/S
2x75cl

£200-300

272
1961 Chateau Brane Cantenac, 2eme Cru Classe
Margaux
3 bottles - M/S
1 bottle - H/S
1 bottle has a damaged label
4x75cl

£240-380

273
1970 Chateau Latour, 1er Cru Classe
Pauillac
3 bottles - H/S
1 bottle - T/S
4x75cl

£500-700

274
1970 Chateau Latour, 1er Cru Classe
Pauillac
M/S
2x75cl

£200-300

275
1964 Chateau Lafite, 1er Cru Classe
Pauillac
Mid to high Shoulder
1x75cl

£180-280

276
1955 Chateau Lafite, 1er Cru Classe
Pauillac
L/S
1x75cl

£100-200

277
1964 Chateau Latour, 1er Cru Classe
Pauillac
Damaged labels
1 bottle - M/S
1 bottle - H/S
2x75cl

£250-350

278
1975 Chateau Petrus
Pomerol
Slightly damaged label
M/S
1x75cl

£500-800

279
1961 Chateau Lafite, 1er Cru Classe
Pauillac
Damaged label
H/S
1x75cl

£250-450

280
1961 Boyd Cantenac, 3eme Cru Classe
Margaux
Damaged Labels
L/S
2x75cl
1961 Brane Cantenac, 2eme Cru Classe
Margaux
L/S
1x75
1961 Chateau Batailley, 5eme Cru Classe
Pauillac
L/S
1x75cl
1961 Chateau Lynch Bages, 5eme Cru Classe
Pauillac
Damaged Label
L/S
1x75cl
1961 Chateau Pontet Canet, 5eme Cru Classe
Pauillac
Badly damaged label
L/S
1x75cl
1961 Chateau Margaux, 1er Cru Classe
Margaux
Damaged label
L/S
1x75cl
Total 7x75cl

£300-600

281
1961 Chateau Pontet Canet, 5eme Cru Classe
Pauillac
Badly damaged label
L/S
1x75cl
1978 Beychevelle, 4eme Cru Classe
St Julien
T/S
1x75cl
1962 Chateau Margaux, 1er Cru Classe
Margaux
M/S
1x75cl
1982 Chateau Durfort Vivens, 2eme Cru Classe
Margaux
Damaged capsule
1x75cl
1970 Chateau Mouton Rothschild, 1er Cru Classe
Pauillac
Damaged label
M/S
1x75cl
Total 5x75cl

£200-350

282
1977 Chateau Mouton Rothschild, 1er Cru Classe
Pauillac
T/S
1x75cl

£100-200

283 B
2008 Le Clarence de Haut Brion (2nd Wine of Chateau Haut Brion)
Pessac Leognan
OWC
12x75cl
IN BOND

£750-950

284
1995 Chateau Cheval Blanc, 1er Grand Cru Classe
St Emilion
OWC
12x75cl

£3,000-4,000

285
1981 Chateau Cheval Blanc, 1er Grand Cru Classe
St Emilion
OWC
12x75cl

£2,000-3,000

286
1989 Chateau Talbot, 4eme Cru Classe
St Julien
2 bottles have slightly stained labels
OWC - slightly damaged
12x75cl

£650-850

287
1988 Chateau Gazin
Pomerol
OWC
12x75cl

£600-800

288
1985 Chateau Pichon Longueville Comtesse de Lalande, 2eme Cru Classe
Pauillac
OWC (damaged faceplate)
12x75cl

£1,400-1,800

289 B
2003 Chateau Pavie, 1er Grand Cru Classe
St Emilion
OWC (damaged base)
12x75cl
IN BOND

£1,500-2,200

290 B
2003 Chateau Montrose, 2eme Cru Classe
St Estephe
OWC
12x75cl
IN BOND

£1,000-1,500

291 B
2000 Chateau Cos d'Estournel, 2eme Cru Classe
St Estephe
OWC
12x75cl
IN BOND

£1,000-1,500

292 B
2000 Chateau Montrose, 2eme Cru Classe
St Estephe
OWC
12x75cl
IN BOND

£900-1,200

293 B
2008 Chateau Cos d'Estournel, 2eme Cru Classe
St Estephe
OWC
12x75cl
IN BOND

£700-900

294 B
2004 Chateau Haut Brion, 1er Cru Classe
Pessac Leognan
OWC
12x75cl
IN BOND

£2,500-3,000

295 B
2008 Chateau Latour, 1er Cru Classe
Pauillac
OWC
12x75cl
IN BOND

£3,500-4,200

296 B
2008 Chateau Pavie, 1er Grand Cru Classe
St Emilion
OWC
12x75cl
IN BOND

£1,400-1,800

297 B
2008 Chateau Pavie, 1er Grand Cru Classe
St Emilion
OWC
12x75cl
IN BOND

£1,400-1,800

298 B
2005 Chateau Kirwan, 3eme Cru Classe
Margaux
OWC
12x75cl
IN BOND

£400-500

299
1997 Chateau Angelus, 1er Grand Cru Classe
St Emilion
6x75cl

£800-1,200

300
1988 Chateau Beaugard
Pomerol
4x75cl

£100-200

301
1998 Chateau Calon Segur, 3eme Cru Classe
St Estephe
12x75cl

£700-900

302
2003 Chateau Calon Segur, 3eme Cru Classe
St Estephe
12x75cl

£650-850

303
2000 Chateau Canon La Gaffeliere, 1er Cru Classe
St Emilion
12x75cl

£800-1,000

304
2002 Chateau Cheval Blanc, 1er Grand Cru Classe
St Emilion
12x75cl

£3,200-3,800



305
1997 Chateau Cos d'Estournel, 2eme Cru Classe
St Estephe
12x75cl

£800-1,200

306
1998 Chateau Cos d'Estournel, 2eme Cru Classe
St Estephe
12x75cl

£800-1,200

307
2002 Chateau Cos d'Estournel, 2eme Cru Classe
St Estephe
12x75cl

£750-1,100

308
2008 Chateau Cos d'Estournel, 2eme Cru Classe
St Estephe
12x75cl

£1,000-1,500

309
1996 Chateau Ducru Beaucaillou, 2eme Cru Classe
St Julien
OWC
12x75cl

£1,200-1,600

310
2001 Chateau Ducru Beaucaillou, 2eme Cru Classe
St Julien
12x75cl

£750-1,000

311
2003 Chateau Ducru Beaucaillou, 2eme Cru Classe
St Julien
12x75cl

£800-1,200

312
1995 Chateau Figeac, 1er Grand Cru Classe
St Emilion
12x75cl

£1,700-2,200

313
2001 Chateau Figeac, 1er Grand Cru Classe
St Emilion
12x75cl

£1,500-2,000

314
2000 Chateau Grand Puy Lacoste, 5eme Cru Classe
Pauillac
5x75cl

£600-800

315
1988 Chateau Gruaud Larose, 2eme Cru Classe
St Julien
3x15ocl

£400-800

316
1988 Chateau Gruaud Larose, 2eme Cru Classe
St Julien
3x15ocl

£400-800

317
2003 Chateau Gruaud Larose, 2eme Cru Classe
St Julien
12x75cl

£500-600

318
2000 Chateau La Grave Figeac, Grand Cru
St Emilion
4x75cl

£100-200

319
2001 Chateau La Mission Haut Brion, Grand Cru Classe
Pessac Leognan
12x75cl

£2,200-2,600

320
1995 Chateau La Tour Haut Brion, Cru Classe
Pessac Leognan
OWC
12x75cl

£350-450

321
1996 Chateau La Tour Haut Brion, Cru Classe
Pessac Leognan
OWC
12x75cl

£350-450

322
2001 Chateau Lafite Rothschild, 1er Grand Cru Classe
Pauillac
12x75cl

£4,500-5,500

323
1996 Chateau Lagrange, 3eme Cru Classe
St Julien
OWC
12x75cl

£550-750

324
2000 Chateau Langoa Barton, 3eme Cru Classe
St Julien
10x75cl

£300-500

325
1995 Chateau Latour, 1er Cru Classe
Pauillac
9x75cl

£4,000-5,000

326
1995 Chateau Latour, 1er Cru Classe
Pauillac
5x75cl

£2,000-2,500

327
1997 Chateau L'Eglise Clinet
Pomerol
12x75cl

£650-850

328
1999 Chateau L'Eglise Clinet
Pomerol
12x75cl

£900-1,200

329
2001 Chateau L'Eglise Clinet
Pomerol
12x75cl

£1,200-1,500

330
1989 Chateau Leoville Barton, 2eme Cru Classe
St Julien
7x75cl

£500-600

331
1998 Chateau Leoville Barton, 2eme Cru Classe
St Julien
OWC
12x75cl

£400-600

332
1998 Chateau Leoville Barton, 2eme Cru Classe
St Julien
3x15ocl

£200-300

333
1998 Chateau Leoville Barton, 2eme Cru Classe
St Julien
3x15ocl

£200-300

334
1999 Chateau Leoville Barton, 2eme Cru Classe
St Julien
12x75cl

£400-600

335
2002 Chateau Leoville Barton, 2eme Cru Classe
St Julien
12x75cl

£400-600

336
1985 Chateau Leoville Las Cases, 2eme Cru Classe
St Julien
8x75cl

£1,200-1,500

337
1997 Chateau Leoville Las Cases, 2eme Cru Classe
St Julien
5x75cl

£450-550

338
2002 Chateau Leoville Las Cases, 2eme Cru Classe
St Julien
12x75cl

£950-1,200

339
2000 Chateau Leoville Poyferre, 2eme Cru Classe
St Julien
11x75cl

£900-1,100

340
2000 Chateau Leydet Figeac, Grand Cru
St Emilion
5x75cl

£150-200

341
2000 Chateau Lucia, Grand Cru
St Emilion
12x75cl

£200-300

342
1995 Chateau Lynch Bages, 5eme Cru Classe
Pauillac
OWC
12x75cl

£1,100-1,400

343
1997 Chateau Lynch Bages, 5eme Cru Classe
Pauillac
6x15ocl

£750-950

344
2001 Chateau Lynch Bages, 5eme Cru Classe
Pauillac
11x75cl

£800-1,100

345
2002 Chateau Lynch Bages, 5eme Cru Classe
Pauillac
12x75cl

£750-950

346
2001 Chateau Margaux, 1er Cru Classe
Margaux
12x75cl

£3,500-4,200

347
1995 Chateau Montrose, 2eme Cru Classe
St Estephe
5x75cl

£350-550

348
1995 Chateau Montrose, 2eme Cru Classe
St Estephe
4x75cl
1995 Chateau Calon Segur, 4eme Cru Classe
St Estephe
1x75cl
Total 5x75cl

£300-450

349
2000 Chateau Montrose, 2eme Cru Classe
St Estephe
11x75cl

£850-1,100

350
2003 Chateau Montrose, 2eme Cru Classe
St Estephe
12x75cl

£1,200-1,500

351
1997 Chateau Mouton Rothschild, 1er Cru Classe
Pauillac
5x75cl

£1,000-1,500

352
2001 Chateau Mouton Rothschild, 1er Cru Classe
Pauillac
3x75cl

£750-950

353
2002 Chateau Palmer, 3eme Cru Classe
Margaux
12x75cl

£1,400-1,800

354
1999 Chateau Pavie Macquin, Grand Cru Classe
St Emilion
12x75cl

£400-600

355
1996 Chateau Phelan Segur, Cru Bourgeois
St Estephe
OWC
12x75cl

£350-450

356
1996 Chateau Pichon Longueville Baron, 2eme Cru Classe
Pauillac
OWC
12x75cl

£1,300-1,800

357
1997 Chateau Pichon Longueville Baron, 2eme Cru Classe
Pauillac
1x150cl

£100-150

358
2003 Chateau Pichon Longueville Baron, 2eme Cru Classe
Pauillac
12x75cl

£800-1,200

359
1985 Chateau Pichon Longueville Baron, 2eme Cru Classe
Pauillac
7x75cl

£750-950

360
1997 Chateau Pichon Longueville Baron, 2eme Cru Classe
Pauillac
6x75cl

£350-450

361
2002 Chateau Pichon Longueville Baron, 2eme Cru Classe
Pauillac
12x75cl

£750-950

362
1983 Chateau Rauzan Segla, 2eme Cru Classe
Margaux
9x75cl

£400-500

363
1986 Chateau Talbot, 4eme Cru Classe
St Julien
7x75cl

£450-650

364
2003 Chateau Talbot, 4eme Cru Classe
St Julien
12x75cl

£550-650

365
1997 Chateau Troplong Mondot, 1er Grand Cru Classe
St Emilion
12x75cl

£450-550

366
2002 Domaine de Chevalier, Cru Classe
Pessac Leognan
12x75cl

£400-500

367
1999 La Petit Eglise (2nd wine of L'Eglise Clinet)
Pomerol
7x75cl
2002 Les Fiefs de Lagrange (2nd wine of Chateau Lagrange)
Pomerol
3x75cl
Total 10x75cl

£150-220

368
2000 Les Tourelles de Longueville (2nd Wine of Chateau Pichon Baron)
Pauillac
5x75cl

£120-160

369
1996 Pavillon Rouge de Chateau Margaux (2nd Wine of Chateau Margaux)
Margaux
OWC
12x75cl

£1,800-2,200

370
1996 Pavillon Rouge de Chateau Margaux (Second Wine of Chateau Margaux)
Margaux
9x75cl

£1,200-1,600

371
1995 Chateau Pichon Longueville Baron, 2eme Cru Classe
Pauillac
7x75cl

£450-650

372
1997 Chateau Angelus, Grand Cru Classe
St Emilion
1x75cl
1997 Chateau Lynch Bages, 5eme Cru Classe
Pauillac
1x75cl
1997 Chateau Pichon Longueville Baron, 2eme Cru Classe
Pauillac
1x75cl
1997 Chateau Grand Puy Lacoste, 5eme Cru Classe
Pauillac
1x75cl
Total 4x75cl

£280-380

373
2000 Chateau Latour, 1er Cru Classe
Pauillac
OWC
12x75cl

£7,000-8,000

374
1989 Chateau Leoville Poyferre, 2eme Cru Classe
St Julien
3x75cl

£180-260

375
1998 Chateau Pavie, 1er Grand Cru Classe
St Emilion
3x75cl

£400-600

376
1989 Chateau Cos D'Estournel, 2eme Cru Classe
St Estephe
1x75cl

£80-120

377
1996 Chateau Ducru Beaucaillou, 2eme Cru Classe
St Julien
1x75cl
1996 Chateau Talbot, 4eme Cru Classe
St Julien
1x75cl
1996 Chateau Beychevelle, 4eme Cru Classe
St Julien
1x75cl
1994 Chateau Leoville Barton, 2eme Cru Classe
St Julien
2x75cl
Total - 5x75cl

£200-300

378
1996 Chateau Palmer, 3eme Cru Classe
Margaux
2x75cl

£200-300

379
1996 Chateau Pichon Lalande, 2eme Cru Classe
Pauillac
2x75cl

£180-240

380
1997 Chateau Troplong Mondot, Grand Cru Classe
St Emilion
3x75cl

£100-150

381
1975 Chateau Cantemerle, 5eme Cru Classe
Haut Medoc
6x150cl
The property of a retired Wine Merchant

£350-450

382
2000 Chateau Duhart-Milon, 4eme Cru Classe
Pauillac
6x75cl

£250-350

383
2003 Chateau Montrose, 2eme Cru Classe
St Estephe
2x75cl
2003 Chateau Cos D'Estournel, 2eme Cru Classe
St Estephe
2x75cl
Total 4x75cl

£300-400

384
2004 Chateau Castelbruck
Margaux
12x75cl

£120-180

385
2000 Chateau Grand Puy Lacoste, 5eme Cru Classe
Pauillac
OWC
12x75cl

£750-950

386
2011 Chateau Cissac, Cru Bourgeois
Haut Medoc
OWC
12x75cl

£120-160

387
2011 Chateau Cissac, Cru Bourgeois
Haut Medoc
OWC
12x75cl

£120-160

388
2011 Chateau Cissac, Cru Bourgeois
Haut Medoc
10x75cl

£100-130

389
1989 Domaine Cordeillac
12x75cl

£60-100

390
2006 Prelude de Chateau Grand Puy Ducasse (2nd
wine of Chateau Grand Puy Ducasse)
Pauillac
12x75cl

£100-200

391
2006 Chateau Puy Blanquet
St Emilion
12x75cl

£100-150

392
2006 Chateau Puy Blanquet
St Emilion
12x75cl

£100-150

393
2006 Chateau Puy Blanquet
St Emilion
12x75cl

£100-150

394
1995 Chateau Haut Batailley, 5eme Cru Classe
Pauillac
OWC
12x75cl

£380-480

395
1996 Chateau Haut Batailley, 5eme Cru Classe
Pauillac
OWC
12x75cl

£350-450

396 B
1949 Chateau Petrus
Pomerol
1x75cl
IN BOND

£2,000-3,000

397
2013 Chateau L'Evangile
Pomerol
OWC
12x75cl

£750-850

DREWEATTS

EST. 1759



• FINE WINE & SPIRITS •

What are yours worth?

398
2014 Chateau Grand Puy Lacoste, 5eme Cru Classe
Pauillac
OWC
12x75cl

£380-480

399 B
2015 Alter Ego de Palmer, (2nd Wine Of Chateau
Palmer)
Margaux
OWC
12x75cl
IN BOND

£500-600

400 B
2015 G Acte 7 Guinaudeau
OC
12x75cl
IN BOND

£160-220

401 B
2015 G Acte 7 Guinaudeau
OC
12x75cl
IN BOND

£160-220

402 B
2015 G Acte 7 Guinaudeau
OC
6x75cl
IN BOND

£80-110

403
2000 Chateau Pontet Canet, 5eme Cru Classe
Pauillac
OWC
12x75cl

£700-900

404
2003 Chateau Pontet Canet, 5eme Cru Classe
Pauillac
OWC
12x75cl

£650-850

405
2003 Chateau Leoville Poyferre, 2eme Cru Classe
St Julien
OWC
12x75cl

£800-1,000

406
2005 Chateau Smith Haut Lafite, Grand Cru Classe
Pessac Leognan
OWC
12x75cl

£900-1,300

407
2003 Chateau Pontet Canet, 5eme Cru Classe
Pauillac
OWC
12x75cl

£650-850

408
2003 Chateau Mouton Rothschild, 1er Cru Classe
Pauillac
1x75cl

£250-300

409
1983 Chateau Ducru Beaucaillou, 2eme Cru Classe
St Julien
3x75cl

£200-300

410
1983 Chateau Palmer, 3eme Cru Classe
Margaux
3x75cl

£700-1,000

411
1982 Chateau Cos D'Estournel, 2eme Cru Classe
St Estephe
3x75cl

£500-800

412
1982 Chateau Grand Puy Lacoste, 5eme Cru Classe
Pauillac
3x75cl

£300-500

413
1989 Chateau Pichon Longueville Baron, 2eme Cru Classe
Pauillac
3x75cl

£400-600

414
1989 Chateau Lynch Bages, 5eme Cru Classe
Pauillac
3x75cl

£550-850

415
1982 Chateau Giscours, 3eme Cru Classe
Margaux
6x75cl

£180-220

416
2010 Chateau d'Armailhac, 5eme Cru Classe
Pauillac
6x75cl

£150-200

417
2004 Chateau Montrose, 2eme Cru Classe
St Estephe
OWC
12x75cl

£600-750

418
2004 Chateau Montrose, 2eme Cru Classe
St Estephe
OWC
12x75cl

£600-750

Sweet Wines

419
1984 Chateau D'Yquem, 1er Grand Cru Classe
Sauternes
Stained/damaged labels
8x75cl

£800-1,200

420
1975 Chateau Rieussec, Grand Cru Classe
Sauternes
Stained labels
2x75cl

1988 Chateau Coutet, 1er Grand Cru Classe
Sauternes
4x75cl
Total 6x75cl

£200-300

421
1989 Chateau Suduiraut, 1er Cru Classe
Sauternes
12x75cl

£350-550

422
1983 Cuvee Speciale Botrytis
Domaine de La Bongran
1 bottle L/S and has a corroded capsule
7x75cl

£200-300

423
1996 Chateau Climens, 1er Cru Classe
Barsac
3x75cl

£70-100

424
1970 Chateau Suduiraut, 1er Cru Classe
Sauternes
1 bottle T/S
3x75cl

£80-140

425 B
2003 Chateau La Tour Blanche, 1er Cru
Sauternes
OWC
24x375cl
IN BOND

£150-220

426 B
2011 Chateau Doisy Daene, 2eme Cru Classe
Sauternes
OWC
12x375cl
IN BOND

£100-150

427
1983 Chateau Rieussec, 1er Cru Classe
Sauternes
OWC
12x75cl

£380-480

428
1999 Chateau D'Yquem, 1er Grand Cru Classe
Sauternes
12x75cl

£1,200-1,800

429
2001 Chateau Rieussec, 1er Cru Classe
Sauternes
OWC
12x75cl

£500-800

430
1980 Chateau Guiraud, 1er Cru Classe
T/S
Sauternes
7x37.5cl

£70-120

431
1982 Chateau Suduiraut, Cuvee Madam, 1er Cru Classe
Sauternes
1x75cl

£100-200

432
1976 Chateau D'Yquem, 1er Grand Cru Classe
Sauternes
1x75cl

£280-380

433
1993 Tokaji Aszu Eszcencia
Szepsy
3x50cl

£400-600

434
1945 Rose Muscat (South Coast) Massandra Collection
Presented in original gift box
1x70cl

£170-250

435
1945 Pedro Ximenez, Crimea Massandra Collection
Presented in original gift box
1x70cl

£170-250

436
1945 Selected Tokay Massandra Collection
Presented in original gift box
1x70cl

£170-250

436A
2003 Chateau Doisy Daene, 2eme Cru Classe
Barsac
19x37.5cl
2004 Chateau Doisy Daene, 2eme Cru Classe
Barsac
1x37.5cl
Total 20x37.5cl

£200-300



Rhone

437
2001 Hermitage La Chapelle
Paul Jaboulet Aine
OWC
3x150cl

£300-400

438 B
2016 Cotes du Rhone Vieilles Vignes
Xavier Vignon
OC
12x75cl
IN BOND

£70-100

439 B
2016 Cotes du Rhone Vieilles Vignes
Xavier Vignon
OC
12x75cl
IN BOND

£70-100

440 B
2016 Cotes du Rhone Vieilles Vignes
Xavier Vignon
OC
12x75cl
IN BOND

£70-100

441
1976 Hermitage La Chapelle
Paul Jaboulet Aine
Slightly stained labels
2x75cl

1982 Hermitage La Chapelle
Paul Jaboulet Aine
Slightly stained labels
2x75cl

1983 Hermitage La Chapelle
Paul Jaboulet Aine
Slightly stained labels
3x75cl
Total 7x75cl

£400-700

442
1982 Hermitage Blanc
J-L Chave
3x75cl

£300-400

443
1981 Cornas
Domaine Auguste Clape
1 bottle L/S and has a damaged label and capsule
4x75cl

£900-1,400

444
1983 Cornas
Domaine Auguste Clape
1x75cl

£150-200

445
2005 Chateauneuf du Pape
Domaine du Vieux Telegraphe
1x75cl
2006 Cote Rotie
Pierre Gaillard
1x75cl
2009 Crozes Hermitage, Domaine de Thalabert
Jaboulet
2x75cl
2012 St Joseph
Domaine Bernard Gripa
2x75cl
Total 6x75cl

£100-200

446 B
2004 Condrieu
Giles Barge
OC - Damaged case
6x75cl
IN BOND

£140-180

447
2001 Chateauneuf du Pape, Chateau de Beaucastel
3x75cl
2001 Hermitage La Chapelle
Domaine Jaboulet
2x75cl
1999 Lirac, Domaine de la Mordoree
3x75cl
Total - 8x75cl

£200-300

448
1995 Cote Rotie, Brune et Blonde
Etienne Guigal
Slightly damaged labels
OCC
6x75cl

£200-300

449
2000 Chateauneuf du Pape
Domaine Tardieu Laurent
6x75cl

£150-200

450
1999 Chateauneuf du Pape, Clos des Papes
Domaine Paul Avril
6x75cl

£300-400

451
1994 Hermitage La Chappelle
Paul Jaboulet Aine
3x75cl

£420-550

452
1998 Chateauneuf du Pape, Clos des Papes
Paul Avril
3x150cl

£320-420

453
1999 Hermitage La Chappelle
Paul Jaboulet Aine
6x75cl

£300-400

454
2004 Hermitage La Chappelle
Paul Jaboulet Aine
OWC
6x75cl

£300-400

French Country Wine

455

2008 Chateauneuf du Pape, Clos des Papes
Paul Avril
6x75cl

£150-200

456

2000 Chateauneuf du Pape, Clos des Papes
Paul Avril
3x75cl

£80-120

457

2002 Chateauneuf du Pape, Clos des Papes
Paul Avril
1x75cl
2002 Chateauneuf du Pape, Clos des Papes, Blanc
Paul Avril
3x75cl
Total 4x75cl

£120-150

458

1998 Chateauneuf du Pape
Chateau de Beaucastel
12x75cl

£500-600

459

1983 Cote Rotie La Mouline
Etienne Guigal
1x75cl

£350-450

460

1983 Cote Rotie La Landonne
Etienne Guigal
1x75cl

£350-450

461

2006 Domaine de Trevallon Rouge
Coteaux des Beaux
6x75cl

£250-350

462

2009 Domaine de Trevallon Rouge
Coteaux des Beaux
OWC
6x75cl

£250-300

463

2010 Domaine de Trevallon Rouge
Coteaux des Beaux
OWC
6x75cl

£325-350

464

2012 Garrus Rose
Chateau d'Esclans
1x300cl

£150-200

465

2017 Garrus Rose
Chateau d'Esclans
1x300cl

£150-200

466

2012 Garrus Rose
Chateau d'Esclans
3x150cl

£150-250

467 B

2012 Closerie des Bories
Nicholas Thienpont
12x75cl
IN BOND

£70-100

468 B

2012 Closerie des Bories
Nicholas Thienpont
12x75cl
IN BOND

£70-100

469 B

2012 Closerie des Bories
Nicholas Thienpont
12x75cl
IN BOND

£70-100

470 B

2012 Closerie des Bories
Nicholas Thienpont
12x75cl
IN BOND

£70-100

471 B

2012 Closerie des Bories
Nicholas Thienpont
12x75cl
IN BOND

£70-100

472

2011 Domaine de Bila-Haut
M Chapoutier
OWC
6x75cl
2012 Domaine de Bila-Haut
M Chapoutier
OWC
6x75cl
Total 12x75cl

£80-120

473

1978 Mas de Daumas, Gassac
2x75cl
1979 Mas de Daumas, Gassac
2x75cl
1980 Mas de Daumas, Gassac
2x75cl
1981 Mas de Daumas, Gassac
2x75cl
1982 Mas de Daumas, Gassac
2x75cl
1983 Mas de Daumas, Gassac
2x75cl
12x75cl

£800-1,400

474

1985 Mas de Daumas, Gassac
10x75cl

£700-1,200

Mixed Lots

475

2010 Lethbridge Muetta Pinot Noir
Geelong
1x75cl
2011 Mullineux, Syrah
Swartland
1x75cl
2013 Marques de Murrieta Rioja Reserva
Rioja
1x75cl
2006 Baron de Chirel Rioja Reserva
Rioja
1x75cl
1998 Chateau Pontet Canet, 5eme Cru Classe
Pauillac
1x75cl
1999 Chateau Latour A Pomerol
1x75cl
2003 Chateau La Tourette
Pauillac
2x75cl
Total 8x75cl

£250-350

476

1999 Opus 1
Napa Valley
1x75cl
1998 Chateau Canon la Gaffeliere, Grand Cru Classe
St Emilion
1x75cl
Total 2x75cl

£150-250

477

1992 Puligny Montrachet 1er Cru, Les Combettes
Domaine Remoissnet
2x75cl
1983 Gevrey Chambertin 1er Cru, Clos St Jacques
Domaine Remoissnet
2x75cl
1983 Charmes Chambertin, Grand Cru
Domaine Remoissnet
M/S
1x75cl

1983 Corton Grand Cru, Clos de Roi
Domaine Remoissnet
1x75cl
1989 Nuits St Georges, Clos de Corvess
Domaine Remoissnet
2x75cl
Total 8x75cl
Originally shipped by The Wine Society

£180-380

478

2001 Chateau Arche Lafaurie
Sauternes
1x37.5cl
1983 Chateau Rieussec
Sauternes
1x37.5cl
Codorniu Brut
1x75cl
1997 St Aubin 1er Cru Les Perrieres
Domaine Henri Prudhon
1x75cl
1999 Bourgogne Blanc
Domaine Rene Jobard
2x75cl
2000 Chassagne Montrachet, 1er Cru Morgeot
Domaine Lequin Colin
2x75cl
Nicolas Feuillet Champagne NV
1x37.5cl
1986 Garrafeira Tino Rosso
1x75cl
Total 7x75cl/3x37.5cl

£120-220

479

2009 Clos des Argillieres, 1er Cru, Rion
2x75cl
2008 Mas de Maumas, Gassac
2x75cl
Total 4x75cl

£130-170

Alsace

480

1997 Riesling, Vieilles Vignes
Paul Blanck
OWC
12x75cl
Property of a retired Wine Merchant

£250-350

481 B

2001 Pinot Blanc Reserve
Domaine Weinbach
12x75cl
IN BOND

£80-120

482 B

2001 Pinot Blanc Reserve
Domaine Weinbach
12x75cl
IN BOND

£80-120

483 B

2001 Gewurztraminer Altenbourg, Cuvee Laurence
Domaine Weinbach
12x75cl
IN BOND

£150-250

484 B

2000 Gewurztraminer, Cuvee Laurence
Domaine Weinbach
12x75cl
IN BOND

£100-200

485

2000 Trimbach Riesling
Cuvee Frederic Emile
9x75cl

£250-350

Germany

486 B

2006 Riesling Brand VT
Zind Humbrecht
OC
6x75cl
IN BOND

£300-350

487 B

2014 Cuvée Max, Spatburgunder, Trocken
August Kessler
6x75cl
IN BOND

£100-180

488

2010 Schlossbockelheimer Riesling Trocken
Gut Hermannsberg
12x75cl

£80-120

489

2010 Schlossbockelheimer Riesling Trocken
Gut Hermannsberg
12x75cl

£80-120

490

2010 Graacher Domprobst Riesling Kabinett
Kesselstatt
12x75cl

£80-120

491

2010 Graacher Domprobst Riesling Kabinett
Kesselstatt
12x75cl

£80-120

492
2010 Niederhauser Riesling Trocken
Gut Hermannsberg
12x75cl

£80-120

493
2010 Niederhauser Riesling Trocken
Gut Hermannsberg
12x75cl

£80-120

494
2013 Piesporter Goldtropfchen Riesling Spatlese
Kesselstatt
12x75cl

£70-120

495
2013 Piesporter Goldtropfchen Riesling Spatlese
Kesselstatt
12x75cl

£70-120

496
2010 Oestricher Lenchen Riesling Kabinett
Josef Spreitzer
12x75cl

£70-120

497
2010 Oestricher Lenchen Riesling Kabinett
Josef Spreitzer
12x75cl

£70-120

498
2011 Riesling Trocken
Josef Spreitzer
12x75cl

£80-120

499
1992 Oppenheimer Herrenberg Weisburgunder
Dr Dahlem
12x37.5cl

£200-300

500
2001 Oppenheimer Sactrager, Eiswen
Dr Dahlem
12x37.5cl

£200-300

Italy

501 B
2016 "Titolo" Elena Fucci
Aglianico Vulture
OC
6x75cl
IN BOND

£120-140

502 B
2016 "Titolo" Elena Fucci
Aglianico Vulture
OC
6x75cl
IN BOND

£120-140

503
1999 Sangioveto di Toscana
1x75cl
1998 Il Futuro
1x75cl
1998 Sassoforte
1x75cl
2000 Villa Fidelia, Sportoletti
1x75cl
1999 Vignorello
1x75cl
1999 Luenzo Cesani
1x75cl
1997 Stignano
1x75cl
1999 Camelot, Firriato (Sicily)
1x75cl
2000 EA La Ripa, Podere Sopra
1x75cl
1999 Felsina Beradenga Fontalloro
1x75cl
Damaged label
Badia a Coltibuona Riserva
1x75cl
Total - 11x75cl

£200-300

504 B
2003 Carmignano, Riserva Plaggia
Mauro Vannucci
6x75cl
IN BOND

£100-200

505 B
2003 Carmignano, Riserva Plaggia
Mauro Vannucci
6x75cl
IN BOND

£100-200

506 B
2001 Langhe Bianco
Rocco Albino
12x75cl
IN BOND

£100-200

507 B
2003 Dolcetto d'Alba, Bricco dell'Oriolo
Azelia
12x75cl
IN BOND

£70-100

508 B
2003 Dolcetto d'Alba, Bricco dell'Oriolo
Azelia
12x75cl
IN BOND

£70-100

509 B
2003 Dolcetto d'Alba Vinalunga
Albino Rocco
12x75cl
IN BOND

£70-100

510 B
2004 Brancaia, Il Blu
Brancaia
OWC
6x75cl
IN BOND

£200-300

511 B
2010 Brancaia Ilatraia
Brancaia
OWC
12x75cl
IN BOND

£350-400

512 B
2001 Barbaresco Cocito Rosse
Cocito
OWC
6x75cl
IN BOND

£200-300

513 B
2001 Barbaresco Cocito Rosse
Cocito
OWC
6x75cl
IN BOND

£200-300

514 B
2009 Amarone della Valpolicella Classico, Calcarole
Guerrieri Rizzardi
6x75cl
IN BOND

£200-300

515 B
2002 Barrua, Isola dei Nuraghi
Agricola Punica
6x75cl
IN BOND

£300-400

516 B
2002 Barrua, Isola dei Nuraghi
Agricola Punica
6x75cl
IN BOND

£300-400

517
2002 Sassicaia
Tenuta San Guido
1x150cl

£200-300

518
2013 Avignonesi Desiderio Merlot
Toscana
6x75cl

£180-240

519
2015 Avignonesi Desiderio Merlot
Toscana
6x75cl

£180-240

520
2011 Barolo Ginestra Riserva
Paolo Conterno
6x75cl

£400-500

521 B
2015 "Titolo" Elena Fucci
Aglianico Vulture
OC
12x75cl
IN BOND

£160-220

522 B
2015 "Titolo" Elena Fucci
Aglianico Vulture
OC
12x75cl
IN BOND

£160-220

523 B
2015 "Titolo" Elena Fucci
Aglianico Vulture
OC
6x75cl
IN BOND

£80-110

524
2012 Tignanello
Antinori
OC
12x75cl
2 case of 6

£700-900

Spain

525
2015 Louro Godello
Raphael Palacio
2x75cl
2015 As Sortes, Val Bibe
Raphael Palacio
2x75cl
Total 4x75cl

£60-120

526
2001 La Rioja Alta Gran Reserva 904
6x150cl

£400-500



USA

527

1992 Screaming Eagle

Napa Valley

1x75cl

Slight scuffing at the top of the front label

Please note - Capsule cut for verification

£2,800-3,800

528

2012 Black Stallion Cabernet Sauvignon

Napa Valley

2x75cl

2013 Black Stallion Cabernet Sauvignon

Napa Valley

2x75cl

2012 Stags Leap Artemis Cabernet Sauvignon

Napa Valley

2x75cl

Total 6x75cl

£100-150

529

2013 Clos du Ciel Pinot Noir

Peter Michael Winery

12x75cl

£1,000-1,500

530

2007 Les Pavots

Peter Michael Winery

6x75cl

£600-900

531

2014 Ma Danseuse Pinot Noir

Peter Michael Winery

12x75cl

£900-1,500

532 B

2013 Sauvignon Blanc

Screaming Eagle

1x75cl

IN BOND

£3,000-4,000

533

2013 Les Pavots

Peter Michael Winery

4x75cl

£450-650

Australia / New Zealand / Chile

534

2005 Wolf Blass Black Label 32nd Vintage Cabernet Sauvignon

2x75cl

2004 Wolf Blass Black Label 32nd Vintage Cabernet Sauvignon

2x75cl

2006 Wolf Blass Platinum Shiraz

1x75cl

2005 Turkey Flat Cabernet Sauvignon

1x75cl

2005 Turkey Flat Shiraz

1x75cl

Total - 7x75cl

£100-200

535

2004 E&E Black Pepper Shiraz

Barossa Valley

6x75cl

£200-300

536

2005 Mitolo Gam Shiraz

McLaren Vale

OC

12x75cl

£200-300

537

2005 Mitolo Gam Shiraz

McLaren Vale

OC

12x75cl

£200-300

538

2006 Mitolo Gam Shiraz

McLaren Vale

OC

12x75cl

£200-300

539

2006 Mitolo Gam Shiraz

McLaren Vale

OC

12x75cl

£200-300

540

2006 Mitolo Savitar Shiraz

McLaren Vale

OC

12x75cl

£200-300

541

2006 Mitolo Savitar Shiraz

McLaren Vale

OC

12x75cl

£200-300

542

2003 Mitolo Serpico Cabernet Sauvignon

McLaren Vale

OC

12x75cl

£175-225

543

2003 Mitolo Serpico Cabernet Sauvignon

McLaren Vale

OC

12x75cl

£175-225

544

2004 Mitolo Serpico Cabernet Sauvignon

McLaren Vale

OC

12x75cl

£175-225

545

2006 Two Hands Lily's Garden Shiraz

McLaren Vale

12x75cl

£150-200

546

2006 Two Hands Lily's Garden Shiraz

McLaren Vale

12x75cl

£150-200

547

2007 Two Hands Barney's Block Shiraz

McLaren Vale

12x75cl

£150-200

548

2012 Sena

Aconcagua Valley

OC

6x75cl

£250-350

549

1999 Cloudy Bay Pinot Noir

Marlborough

3x75cl

2005 Cloudy Bay Pinot Noir

Marlborough

2x75cl

2006 Felton Road Block 3 Pinot Noir

Bannockburn

1x75cl

Total 6x75cl

£100-150

Wine Accessories

550

Smeg S36STRP

Double height units measuring: H1680 x 600 x 600mm.

Stainless steel cabinet, wooden shelves and dark glass doors.

Total capacity 72 bottles in two x 36 compartments independently temperature controlled.

The fridge is in good condition and fully operational. It is still covered in the manufacturers protective film.

Purchased new circa 2011/2012

Collection from Hambridge Lane, Newbury

£600-1,000

551

Smeg S36STRP

Double height units measuring: H1680 x 600 x 600mm.

Stainless steel cabinet, wooden shelves and dark glass doors.

Total capacity 72 bottles in two x 36 compartments independently temperature controlled.

The fridge is in good condition and fully operational. It is still covered in the manufacturers protective film.

Purchased new circa 2011/2012

Collection from Hambridge Lane, Newbury

£600-1,000

552

Smeg S36STRP

Single height unit measuring H920 x 600 x 600mm.

Stainless steel cabinet, dark glass door.

Capacity 36 bottles in one compartment. Wooden shelves. Designed to fit under worktop.

The fridge is in good condition and fully operational. It is still covered in the manufacturers protective film.

Purchased new circa 2011/2012

Collection from Hambridge Lane, Newbury

£300-500

DREWEATTS

EST. 1759



• FINE WINE & SPIRITS •

What are yours worth?

Please see **Conditions of Business and Conditions of Sale on the following pages.**

Dreweatts & Dreweatts 1759 are trading names of Dreweatts 1759 Ltd. Dreweatts 1759 Ltd is registered in England, company number: 10758982, registered office: Minerva House | Lower Bristol Road | Bath BA2 9ER.

Important Notices for Buyers of Wine and Spirits

BUYING AT DREWEATTS

There are several ways you can bid at a Dreweatts auction; in person, by leaving a commission or absentee bid, on the telephone where available and live via the internet – please make arrangements before the sale. This notice applies only to a person who wishes to bid in person, or by leaving a commission or absentee bid, at a Dreweatts public auction. For bidding at an online auction or for online bidding at a public auction please see our Online Auction Terms published on our website at www.dreweatts.com.

BIDDING IN PERSON

If intending to buy you are required to register your name and details at reception prior to the commencement of the auction. You will be required to provide a proof of identity and address to register for bidding. You will then be allocated a bidding number, which you use when bidding for an item.

COMMISSION BIDS

Dreweatts will execute bids on your behalf if you are unable to attend the sale. Commission or absentee bids are accepted either directly at reception, or can be sent by post, fax, email, telephone or via the website: www.dreweatts.com.

Dreweatts will add these bids to the auctioneers’ sale book and will undertake to purchase the lots on your behalf as cheaply as allowed by other bids and reserves. If two buyers submit identical commission bids Dreweatts may prefer the first bid received.

Dreweatts does not accept liability for failing to execute commission bids, or for any errors or omissions.

COMMISSION CHARGES

All purchases are subject to a buyer’s premium, which is 17.5% of the hammer price (21% including VAT) up to and including £150,000 and 15% of the hammer price (18% including VAT) in excess of £150,000. In the event that a lot has a dagger (†) beside the lot number in the catalogue, this indicates that the item is owned by an entity or company required to pay VAT (generally not a Dealer, as they operate under a dealer’s margin scheme). VAT is payable at 20% on the hammer price. Lots marked with a double dagger ‡ (presently a reduced rate of 5%) or Ω (presently at standard rate of 20%) have been imported from outside the European Union to be sold at auction and therefore the buyer must pay the import VAT at the appropriate rate on the hammer price.

IN BOND LOTS

Bidding will be at duty paid prices other than for those lots marked ‘IN BOND/β’. Dreweatts Wine Department will contact buyers who have purchased wine ‘IN BOND/β’ to ascertain if the wine is to be removed from bond or transferred to a bonded account. Buyers of wine to be removed from bond will be invoiced duty and vat on the hammer price at the prevailing rates. VAT will also be added to the buyer’s premium on lots purchased whether or not they remain ‘in bond’.

VIEWING / CONDITION

All wine and spirits are stored off-site. Images of lots for the purposes of condition can be viewed online and should be referred to prior to bidding. It is the responsibility of potential buyers to obtain any additional information (if any) on lots on which they intend to bid. Catalogue descriptions are for reference as to the contents of a lot and should not be relied upon as a statement as to the condition of a lot. Please note that Dreweatts are unable to give verbal condition reports for any lot, and all condition reports will be given in writing via our website.

No returns will be accepted. Each lot shall be at the Purchaser’s risk from the conclusion of the auction until payment and collection are made.

DESCRIPTION OF THE LOTS

1. **Descriptions, ullages and conditions** of wines are described as correctly as possible at the time of the publication of the catalogue. Purchasers of old wines must assure themselves regarding ullage levels, labels etc. No returns will be accepted.

2. **Vintages:** Where a vintage cannot be ascertained from a label, it may still be noted based on cork branding, cellar records or other corroborating

evidence including other lots from the same source.

3. **Bottle sizes** are 75cl unless otherwise stated in the lot description.

ABBREVIATIONS USED IN THE CATALOGUE

OWC:Original Wooden Case

OC:Original Case

ABBREVIATIONS USED IN RELATION TO THE LEVEL OF WINES FOR BORDEAUX STYLE BOTTLES

Into Neck (IN)

Base of Neck (BN)

Very Top Shoulder (VTS)

Top Shoulder (TS)

High Shoulder (HS)

Mid Shoulder (MS)

Upper Shoulder (US)

DUTY RATES – EFFECTIVE FROM 1 FEBRUARY 2019

Duty per 75cl bottle

Still Wine 15% - £2.23

Champagne/Sparkling Wine - £2.86

Wine over 15% - £2.98

Duty per 6 x 75cl or equivalent

Still Wine 15% - £13.39

Champagne/Sparkling Wine - £17.15

Wine over 15% - £17.85

Duty per 12 x 75cl or equivalent

Still Wine 15% - £26.78

Champagne/Sparkling Wine - £34.30

Wine over 15% - £35.70

PAYMENT

Payment will be accepted, if you are a successful bidder, by debit card issued by a UK bank and registered to a UK billing address; by all major UK issued credit cards registered to a UK billing address with the exception of American Express and Diners Club; by bank transfer direct into our bank account, Bank Details: NatWest, 30 Market Place, Newbury, Berkshire RG14 5AG. Account Name: Dreweatts 1759 Ltd. A/C: 62412949, Sort Code: 60-15-07, BIC: NWBKGB2L, IBAN: GB21NWBK60150762412949. The name of the bank account holder should match the name of the buyer.

STORAGE

Wine and spirits offered for sale via Dreweatts are stored at Vinotherapie in Burton-on-Trent.

Dreweatts

c/o Vinotherapie

Derby Road

Derby Turn

Burton-on-Trent

DE14 1RY

Storage charges will apply for any lots not collected within 10 days of the sale: £2.50 per lot fixed charge and £0.20 per week or part week thereafter. Please note for large consignments there may be additional charges. These charges will be the sole liability of the purchaser and will be billed directly to them by Dreweatts. To arrange long term wine storage with Dreweatts, please contact the Dreweatts Wine Department.

COLLECTION FROM VINOTHEQUE, BURTON ON TRENT

Collections can be made 5 days following the sale, Monday to Friday 9am to 4.30pm. Written notice is required 72 hours in advance of a collection, all collections are subject to payment having been received by Dreweatts. Please contact the Wine Department to arrange. Please note that Vinotherapie are not able to deal with customers directly so all enquires need to be referred to the Dreweatts Wine Department.

COLLECTION FROM DREWEATTS, HAMBRIDGE LANE

Collection from our Hambridge Lane warehouse is available 7-10 days following the sale and subject to a £2.50 per lot charge. Collection can be made Monday to Friday 9am-5pm.

DELIVERY & TRANSFER

Lots can be delivered to buyers via Vinotherapie’s delivery service at very competitive rates. Warehouse transfers can also be made within the LCB network and to all other UK warehouses. Delivery arrangements should be confirmed when settling your account. Please contact Dreweatts Wine Department to obtain a quotation.

A National and international delivery service is also available via our logistics partner LCB Vinotherapie. Please contact the Wine department to schedule a delivery.

DREWEATTS WINE DEPARTMENT

Mark Robertson | Dianne Wall

Direct tel: + 44 (0) 1635 553 527

Main tel: + 44 (0) 1635 553 553

E-mail: wine@dreweatts.com

Information for Buyers at Public Auctions

1. **INTRODUCTION.** The following notes are intended to assist Bidders and Buyers, particularly those inexperienced or new to our salerooms. All of our auctions and sales are conducted on our printed Auction Terms and Conditions, including these Conditions of Sale and Business, which are readily available for inspection and normally accompany catalogues. Our staff will be happy to help you if there is anything you do not fully understand.

Any particular auction and/or any particular lot in an auction may be subject to different or additional terms which will be published in our auction catalogue. All auctions and sales of wines and spirits, jewellery, watches and clocks are subject to the special terms set out in the relevant Notices in relation to those items published in our auction catalogue and, in the event of any conflict or inconsistency, those special terms prevail over any other terms in our Auction Terms and Conditions. By bidding at the auction, you agree to be bound by these terms.

2. **AGENCY.** As auctioneers we usually act as agents for the seller whose identity, for reasons of confidentiality, is not normally disclosed. Accordingly if you buy at auction your contract for the item or items purchased is with the seller and not with us as the auctioneer.

3. **ESTIMATES.** Estimates are designed to help buyers gauge what sort of sum might be involved for the purchase of a particular lot. Estimates may change and should not be thought of as the sale price. The lower estimate may represent the reserve price and certainly will not be below it. Estimates do not include the Buyer’s Premium or VAT (where chargeable). Estimates are prepared some time before the sale and may be altered by announcement before the sale. They are in no sense definitive.

4. **BUYER’S PREMIUM.** The Conditions of Sale forming part of our Auction Terms and Conditions require the buyer to pay a buyer’s premium on the hammer price of each lot purchased. The buyer’s premium is charged per lot at 17.5% of the hammer price (21% including VAT) up to and including £150,000, and 15% of the hammer price (18% including VAT) in excess of £150,000. VAT at the prevailing rate of 20% is added to buyer’s premium and additional charges as defined below.

5. **VAT.** A dagger symbol (†) indicates that VAT is payable by the purchaser at the standard rate (presently 20%) on the hammer price as well as being and element in the buyers’ premium. This imposition of VAT is likely to be because the seller is registered for VAT within the European Union and is not operating the Dealers Margin Scheme or because VAT is due at 20% on import into the UK. A double dagger (‡) indicates that the lot has been imported from outside the European Union and the present position is that these lots are liable to a reduced rate of Import VAT currently 5% on the hammer price. Ω indicates that the lot has been imported from outside the European Union and these lots are liable to the standard rate of Import VAT currently 20% on the hammer price. Lots which appear without the above symbols indicate that no VAT is payable on the hammer price; this is because such lots are sold using the Auctioneers Margin Scheme and it should be noted that the VAT included within the buyers’ premium is not recoverable as input tax.

6. **DESCRIPTION AND CONDITION.** Condition reports are provided on our website or upon request. The absence of a report does not imply that a lot is without imperfections. The detail in a report will reflect the estimated value of the lot. Large numbers of such requests received shortly before the sale may mean that reports cannot be provided for all lots. Members of staff are not trained restorers or conservators and, particularly for higher value lots, you should obtain an opinion from such a professional. Dreweatts is not liable for damage to gilded picture frames, plaster picture frames or picture frame glass; if a Lot is or becomes

FURTHER INFORMATION

The colours printed in this catalogue are not necessarily a true reflection of the actual item. All weights and measures given in the catalogue should be regarded as approximate.

VALUATION SERVICES

Dreweatts provides a range of confidential and professional valuation services to private clients, solicitors, executors, estate managers, trustees and other professional partners. These services include auction valuations, insurance valuations, probate valuations, private treaty valuations, valuations for family division or for tax purposes. For more information, please see our website: www.dreweatts.com

dangerous, we may dispose of it without notice to bidders in advance in any manner we see fit and will be under no liability for doing so. We recommend that you always view a lot in person.

We are dependent on information provided by the seller about a lot and whilst we may inspect lots and act reasonably in taking a general view about them we are normally unable to carry out a detailed examination and frequently no examination of lots in order to ascertain their condition in the way in which it would be wise for a buyer to do. Intending buyers have ample opportunity for inspection of goods and, therefore, accept responsibility for inspecting and investigating lots in which they may be interested and the corresponding risk should they not do so. Please note carefully the exclusion of liability for the condition of lots contained in the Conditions of Sale. Neither the seller nor we, as the auctioneers, accept any responsibility for their condition. In particular, mechanical objects of any age are not guaranteed to be in working order. However, in so far as we have examined the goods and make a representation about their condition in the auction catalogue, we shall be liable for any defect which is not reflected in that representation and which that examination ought to have revealed to the auctioneer but which would not have been revealed to the buyer had the buyer examined the goods. Additionally, in specified circumstances lots misdescribed because they are ‘deliberate forgeries’ may be returned and repayment made. There is a 3 week time limit. (The expression ‘deliberate forgery’ is defined in our Conditions of Sale).

7. **ELECTRICAL GOODS.** These are sold as ‘antiques’ only and if bought for use must be checked over for compliance with safety regulations by a qualified electrician before use.

8. **EXPORT OF GOODS.** Buyers intending to export goods should ascertain (a) whether an export licence is required and (b) whether there is any specific prohibition on importing goods of that character because, e.g. they may contain prohibited materials such as ivory. Ask us if you need help.

9. **BIDDING.** Bidders will be required to register before the sale commences and lots will be invoiced to the name and address on the sale registration form. Bidders are required to provide a government issued identity document and a proof of address. Please enquire in advance about our arrangements for telephone bidding.

10. **COMMISSION BIDDING.** Commission bids may be left with the auctioneers indicating the maximum amount to be bid excluding buyers’ premium. Dreweatts will add these bids to the auctioneers’ sale book and they will be executed as cheaply as possible having regard to the reserve (if any) and competing bids. If two buyers submit identical commission bids the auctioneers may prefer the first bid received. Please enquire in advance about our arrangements for the leaving of commission bids by telephone or fax. Dreweatts does not accept liability for failing to execute commission bids, or for any errors or omissions.

11. **METHODS OF PAYMENT.** Payment will be accepted, if you are a successful bidder, by debit card issued in the name of the Buyer by a UK bank and registered to a UK billing address; by all major UK issued credit cards issued in the name of the Buyer and registered to a UK billing address with the exception of American Express and Diners Club; by bank transfer direct into our bank account, Bank Details: NatWest, 30 Market Place, Newbury, Berkshire RG14 5AG. Account Name: Dreweatts 1759 Ltd. A/C: 62412949, Sort Code: 60-15-07, BIC: NWBKGB2L, IBAN: GB21NWBK60150762412949. The name of the bank account holder should match the name of the buyer. First time buyers who are not present at the saleroom are requested to pay by bank transfer.

12. **COLLECTION AND STORAGE.** Please note what the Conditions of Sale state about collection and storage. It is important that goods are paid for and collected promptly. Any delay may involve the buyer in paying storage charges.

13. **À DROIT DE SUITE ROYALTY CHARGES.** From 1st January 2012 all UK art market professionals (which includes but is not limited to; auctioneers, dealers, galleries, agents and other intermediaries) are required to collect a royalty payment for all works of art that have been produced by qualifying artists each time a work is re-sold during the artist's lifetime and for a period up to 70 years following the artists death. This payment is only calculated on qualifying works of art which are sold for a hammer price more than the UK sterling equivalent of EURO 1,000 – the UK sterling equivalent will fluctuate in line with prevailing exchange rates. It is entirely the responsibility of the buyer to acquaint himself with the precise EURO to UK Sterling exchange rate on the day of the sale in this regard, and the

auctioneer accepts no responsibility whatsoever if the qualifying rate is different to the rate indicated. All items in this catalogue that are marked with λ are potentially qualifying items, and the royalty charge will be applied if the hammer price achieved is more than the UK sterling equivalent of EURO 1,000. The royalty charge will be added to all relevant buyers' invoices, and must be paid before items can be cleared. All royalty charges are passed on to the Design and Artists Copyright Society ("DACS"), no handling costs or additional fees with respect to these charges will be retained by the auctioneers. The royalty charge that will be applied to qualifying items which achieve a hammer price of more than the UK sterling equivalent of EURO 1,000, but less than the UK sterling equivalent of EURO 50,000 is 4%. For qualifying items that sell for more than the UK sterling equivalent of EURO 50,000 a sliding scale of royalty charges will apply – for a complete list of the royalty charges and threshold levels, please see www.dacs.org.uk. There is no VAT payable on this royalty charge.

Terms of Consignment for Sellers in Public Auctions

The sale of goods at our public auctions and a seller's relationship with us are governed by our Auction Terms and Conditions including these Terms of Consignment for Sellers in Public Auctions and our Conditions of Sale for Public Auctions. Any particular auction and/or any particular lot in an auction may be subject to different or additional terms which will be published in our auction catalogue or separately announced prior to the auction. All auctions and sales of wines and spirits, jewellery, watches and clocks are subject to the special terms set out in the relevant Notices in relation to those items published in our auction catalogue and, in the event of any conflict or inconsistency, those special terms prevail over any other terms in our Auction Terms and Conditions. Please note that our Auction Terms and Conditions including these Terms of Consignment for Sellers in Public Auctions and our Conditions of Sale for Public Auctions relate to auctions held in our salerooms and we have separate terms and conditions for our online auctions.

If you, or another person acting on your behalf, provide goods to us to sell on your behalf at one of our auctions this signifies that you agree to and will comply with our Auction Terms and Conditions including these Terms of Consignment for Sellers in Public Auctions and our Conditions of Sale for Public Auctions.

1. **INTERPRETATION.** In these Terms the words 'you', 'yours', etc. refer to the Seller and if the consignment of goods to us is made by an agent or otherwise on the Seller's behalf we assume that the Seller has authorised the consignment and that the consignor has the Seller's authority to contract. All obligations that apply to the Seller under these Terms of Consignment for Sellers in Public Auctions shall apply to the owner of the goods and their agent jointly and separately. Similarly the words 'we', 'us', etc. refer to the Auctioneers.

2. **WARRANTY.** The Seller warrants that possession in the lots can be transferred to the Buyer with good and marketable title, free from any third party right and encumbrances, claims or potential claims. The Seller has provided all information concerning the item's ownership, condition and provenance, attribution, authenticity, import or export history and of any concerns expressed by third parties concerning the same.

3. **ALL COMMISSIONS** and fees are subject to VAT at the prevailing rate.

4. **COMMISSION** is charged to sellers and all selling terms are available from our salerooms.

5. **REMOVAL COSTS.** Items for sale must be consigned to the saleroom by any stated deadline and at your expense. We may be able to assist you with this process but any liability incurred to a carrier for haulage charges is solely your responsibility.

6. **LOSS AND DAMAGE OF GOODS.**

(a) Loss and Damage Warranty – Dreweatts is not authorised by the FCA to provide insurance to its clients, and does not do so. However Dreweatts for its own protection assumes liability for property consigned to it at the lower pre-sale estimate until the hammer falls. To justify accepting liability, Dreweatts makes a charge of 15% of the hammer price plus VAT, subject to a minimum charge of £150, or if unsold 15% of our lower estimate. The liability assumed by Dreweatts shall be limited to the lower pre-sale estimate or the hammer price if the lot is sold. Dreweatts is not liable for damage to gilded picture frames, plaster picture frames or picture frame glass; if the Lot is or becomes dangerous, we may dispose of it without notice to you in advance in any manner we see fit and will be under no liability for doing so.

(b) If the owner of the goods consigned instructs us in writing not to take such action, the goods then remain entirely at the owner's risk unless and

until the property in them passes to the Buyer or they are collected by or on behalf of the owner, and clause 6 (a) is inapplicable.

7. **ILLUSTRATIONS AND PHOTOGRAPHS.** The cost of any illustrations or photographs is borne by you. The copyright in respect of such illustrations and photographs shall be the property of us, the auctioneers, as is the text of the catalogue.

8. **MINIMUM BIDS AND OUR DISCRETION.** Goods will normally be offered subject to a reserve agreed between us before the sale in accordance with clause 9. We may sell Lots below the reserve provided we account to you for the same sale proceeds as you would have received had the reserve been the hammer price. If you specifically give us a "discretion" we may accept a bid of up to 10% below the formal reserve.

9. **RESERVES.**

(a) You are entitled to place prior to the auction a reserve on any lot consigned, being the minimum hammer price at which that lot may be sold. Reserves must be reasonable and we may decline to offer goods which in our opinion would be subject to an unreasonably high reserve (in which case goods carry the storage and loss and damage warranty charges stipulated in these Terms of Consignment).

(b) A reserve once set cannot be changed except with our consent.

(c) Where a reserve has been set which we consider unreasonably high, an unsold charge will be payable in the event that the lots fails to sell, being the agreed selling terms calculated on the reserve, LDW at 15% and any photographic charges.

(d) Where a reserve has been placed only we may bid on your behalf and only up to the reserve (if any) and you may in no circumstances bid personally.

(e) Reserves are not usually accepted for lots expected to realise below £100

10. **ELECTRICAL ITEMS.** These are subject to detailed statutory safety controls. Where such items are accepted for sale you accept responsibility for the cost of testing by external contractors. Goods not certified as safe by an electrician (unless antiques) will not be accepted for sale. They must be removed at your expense on your being notified. We reserve the right to dispose of unsafe goods as refuse, at your expense.

11. **SOFT FURNISHINGS.** The sale of soft furnishings is strictly regulated by statute law in the interests of fire safety. Goods found to infringe safety regulations will not be offered and must be removed at your expense. We reserve the right to dispose of unsafe goods as refuse, at your expense. The rights of disposal referred to in clause 10 and 11 are subject to the provisions of The Torts (Interference with Goods) Act 1977.

12. **DESCRIPTION.** Please assist us with accurate information as to the provenance, lawful import etc. of goods where this is relevant. There is strict liability for the accuracy of descriptions under modern consumer legislation and in some circumstances responsibility lies with sellers if inaccuracies occur. We will assume that you have approved the catalogue description of your lots and that your lots match those descriptions unless informed to the contrary. Where we are obliged to return the price to the buyer when the lot is a deliberate forgery under Condition 15 of the Conditions of Sale and we have accounted to you for the proceeds of sale you agree to reimburse us the sale proceeds and in any event within 7 days of our written notice to do so.

13. **UNSOLD.** If an item is unsold it may at our discretion be re-offered at a future sale. Where in our opinion an item is unsaleable you must collect such items from the saleroom promptly on being so informed. Otherwise,

storage charges may be incurred. We reserve the right to charge for storage in these circumstances at a reasonable daily rate.

14. **WITHDRAWN AND BOUGHT IN ITEMS.** These are liable to incur a charge of 15% commission, 15 % Loss and Damage Warranty and any other costs incurred including but not limited to illustration and restoration fees all of these charges being subject to VAT on being bought in or withdrawn after being catalogued.

15. **CONDITIONS OF SALE.** You agree that all goods will be sold on our Conditions of Sale for Public Auctions. In particular you undertake that you have the right to sell the goods either as owner or agent for the owner with good and marketable title and free and clear of any third party rights or claims. You undertake to compensate us and any buyer or third party for all losses liabilities, costs and expenses suffered or incurred arising out of or in connection with any breach of this undertaking. We will also, at our discretion, and as far as practicable, confirm that an item consigned for sale does not appear on the Art Loss register, which is administered by an independent third party.

16. **DUE DILIGENCE CHECKS AND ANTI-MONEY LAUNDERING PROCEDURES.**

Under the money laundering regulations in force we are required to carry out relevant due diligence checks. This includes verifying the identity of all customers we transact with as well as any beneficial owners on behalf of whom they may transact. Vendors who are unable to or refuse to supply required identification documents and proof of address will not be able to consign to Dreweatts auctions. Copies of customer due diligence checks will be stored for as long as it is necessary to satisfy legal requirements in an appropriate storage facility, which for the avoidance of doubt may include storage solely in electronic form.

Conditions of Sale for Public Auctions

Dreweatts carries on business with bidders, buyers and all those present in the auction room prior to or in connection with a sale by auction at our salerooms on our Auction Terms and Conditions or Public Auctions including these Conditions of Sale for Public Auctions and all bidders, buyers and others participating in a public auction accept that these terms apply to the exclusion of any terms and conditions contained in any of those person's own documents even if the same purport to provide that that person's own or some other terms prevail. Any particular public auction and/or any particular lot in an auction may be subject to different or additional terms which will be published in our online auction catalogue. Please note that our Auction Terms and Conditions including these Conditions of Sale for Public Auctions relate to auctions held in one of our salerooms and we have separate terms and conditions for our online auctions.

1. **DEFINITIONS**

In these Conditions:

(a) "auctioneer" means the firm of Dreweatts or its authorised auctioneer, as appropriate;

(b) "deliberate forgery" means an imitation made with the intention of deceiving as to authorship, origin, date, age, period, culture or source but which is unequivocally described in the catalogue as being the work of a particular creator and which at the date of the sale had a value materially less than it would have had if it had been in accordance with the description;

(c) "hammer price" means the level of bidding reached (at or above any reserve) when the auctioneer brings down the hammer;

(d) "terms of consignment" means the stipulated terms and rates of commission on which Dreweatts accepts instructions from sellers or their agents;

(e) "total amount due" means the hammer price in respect of the lot sold together with any premium, Value Added Tax chargeable and any additional charges payable by a defaulting buyer under these Conditions;

(f) "sale proceeds" means the net amount due to the seller, being the hammer price of the lot sold less commission at the stated rate, Value Added Tax chargeable and any other amounts due to us by the seller in whatever capacity and however arising;

(g) "You", "Your", etc. refer to the buyer as identified in Condition 2.

(h) The singular includes the plural and vice versa as appropriate.

17. **AUTHORITY TO DEDUCT COMMISSION AND EXPENSES AND RETAIN PREMIUM AND INTEREST.**

(a) You authorise us to deduct commission at the stated rate and all expenses incurred for your account from the hammer price and consent to our right to retain beneficially the premium paid by the buyer in accordance with our Conditions of Sale for Public Auctions and any interest earned on the sale proceeds until the date of settlement.

(b) You authorise us in our discretion to negotiate a sale by private treaty not later than the close of business 48 hours after the day of sale in the case of lots unsold at auction, in which case the same charges will be payable as if such lots had been sold at auction and so far as appropriate these Terms apply.

18. **WAREHOUSING.** We disclaim all liability for goods delivered to our saleroom without sufficient sale instructions and reserve the right to make minimum warehousing charge of £10 per lot per day. Unsold lots are subject to the same charges if you do not remove them within a reasonable time of notification. If not removed within three weeks we reserve the right to sell them and defray charges from any net proceeds of sale or at your expense to consign them to the local authority for disposal.

19. **SETTLEMENT.** After sale settlement of the net sum due to you normally takes place within 28 days of the sale unless the buyer has not paid for the goods. In this case no settlement will then be made but we will take your instructions in the light of our Conditions of Sale for Public Auctions. You authorise any sums owed by you to us on other transactions to be deducted from the sale proceeds. You must note the liability to reimburse the proceeds of sale to us as under the circumstances provided for in Condition 12 above. You should therefore bear this potential liability in mind before parting with the proceeds of sale until the expiry of 28 days from the date of sale.

2. **BIDDING PROCEDURES AND THE BUYER**

(a) Bidders are required to register their particulars before bidding by completing a sale registration form and to satisfy any security arrangements before entering the auction room to view or bid;

(b) Under the money laundering regulations in force we are required to verify the identity of all customers we transact with as well as any beneficiaries on behalf of whom they may transact. Customers who are unable to or refuse to supply required identification documents and proof of address will not be able to bid in Dreweatts auctions. Copies of customer due diligence checks will be stored for as long as it is necessary to satisfy legal requirements in an appropriate storage facility which for the avoidance of doubt may include storage solely in electronic form;

(c) the maker of the highest bid accepted by the auctioneer conducting the sale shall be the buyer at the hammer price and any dispute about a bid shall be settled at the auctioneer's absolute discretion by reoffering the Lot during the course of the auction or otherwise. The auctioneer shall act reasonably in exercising this discretion.

(d) Bidders shall be deemed to act as principals.

(e) Our right to bid on behalf of the seller is expressly reserved up to the amount of any reserve and the right to refuse any bid is also reserved.

3. **INCREMENTS.** Bidding increments shall be at the auctioneer's sole discretion.

4. **THE PURCHASE PRICE.** The buyer shall pay the purchase price together with a premium thereon of 18% which shall include VAT on the premium at the rate imposed by law. The buyer will also be liable for any royalties payable under Droit de Suite as set out under Information for Buyers.

5. **VALUE ADDED TAX.** Value Added Tax on the hammer price is imposed by law on all items affixed with a dagger (†) or double dagger (‡). Value Added Tax is charged at the appropriate rate prevailing by law at the date of sale and is payable by buyers of relevant Lots. (Please refer to "Information for Buyers" for a brief explanation of the VAT position).

6. **PAYMENT.**

(a) Immediately a Lot is sold you will:

(i) give to us, if requested, proof of identity, and

(ii) pay to us the total amount due or in such other way as is agreed by us.

(b) Any payments by you to us may be applied by us towards any sums owing from you to us on any account whatever without regard to any directions of you or your agent, whether expressed or implied;

(c) In order to comply with money laundering regulations we reserve the right to require proof of source of funds and/or confirmation of the nature and source of wealth for all receipts of monies from clients directly or from third parties for payments on behalf of clients.

7. TITLE AND COLLECTION OF PURCHASES. (a) The ownership of any Lots purchased shall not pass to you until you have made payment in full to us of the total amount due.

(b) You shall at your own risk and expense take away any lots that you have purchased and paid for not later than 3 working days following the day of the auction after which you shall be responsible for any removal, storage and insurance charges.

(c) No purchase can be claimed or removed until it has been paid for.

8. REMEDIES FOR NON-PAYMENT OR FAILURE TO COLLECT PURCHASES.

(a) If any Lot is not paid for in full and taken away in accordance with these Conditions or if there is any other breach of these Conditions, we, as agent for the seller and on our own behalf, shall at our absolute discretion and without prejudice to any other rights we may have, be entitled to exercise one or more of the following rights and remedies:

(i) to proceed against you for damages for breach of contract;

(ii) to rescind the sale of that Lot and/or any other Lots sold by us to you;

(iii) to resell the Lot (by auction or private treaty) in which case you shall be responsible for any resulting deficiency in the total amount due (after crediting any part payment and adding any resale costs). Any surplus so arising shall belong to the seller;

(iv) to remove, store and insure the Lot at your expense and, in the case of storage, either at our premises or elsewhere;

(v) to charge interest at a rate not exceeding 15% per month on the total amount due to the extent it remains unpaid for more than 3 working days after the sale;

(vi) to retain that or any other Lot sold to you until you pay the total amount due;

(vii) to reject or ignore bids from you or your agent at future auctions or to impose conditions before any such bids shall be accepted;

(viii) to apply any proceeds of sale of other Lots due or in future becoming due to you towards the settlement of the total amount due and to exercise a lien (that is a right to retain possession of) any of your property in our possession for any purpose until the debt due is satisfied.

(b) We shall, as agent for the seller and on our own behalf pursue these rights and remedies only so far as is reasonable to make appropriate recovery in respect of breach of these conditions

9. THIRD PARTY LIABILITY. All bidders, buyers and other members of the public on our premises are there at their own risk and must note the lay-out of the accommodation and security arrangements. Accordingly neither the auctioneer nor our employees or agents shall incur liability for death or personal injury or for the safety of the property of persons visiting prior to or at a sale (except in each case as may be required by law by reason of our negligence)

10. COMMISSION BIDS. Whilst prospective buyers are strongly advised to attend the auction and are always responsible for any decision to bid for a particular Lot and shall be assumed to have carefully inspected and satisfied themselves as to its condition, we will if so instructed clearly and in writing execute bids on their behalf. Neither the auctioneer nor our employees or agents shall be responsible for any failure to do so.

Where two or more commission bids at the same level are recorded we reserve the right in our absolute discretion to prefer the first bid so made.

11. WARRANTY OF TITLE AND AVAILABILITY. The seller warrants to the auctioneer and you that the seller is the true owner of the property consigned or is properly authorised by the true owner to consign for sale and is able to transfer good and marketable title to the property free from any third party claims.

Save as expressly set out above, all other warranties, conditions or other terms which might have effect between the Seller and you, or us and you, or be implied or incorporated by statute, common law or otherwise are excluded to the fullest extent permitted by law.

12. AGENCY. The auctioneer normally acts as agent only and disclaims any responsibility for default by sellers or buyers.

13. TERMS OF SALE. The seller acknowledges that Lots are sold subject to the stipulations of these Conditions in their entirety and on the Terms of Consignment for Public Auctions as notified to the consignor at the time of the entry of the Lot.

14. DESCRIPTIONS AND CONDITION.

(a) Whilst we seek to describe lots accurately, it may be impractical for us to carry out exhaustive due diligence on each lot. Prospective buyers are given ample opportunities to view and inspect before any sale and they (and any independent experts on their behalf) must satisfy themselves as to the accuracy of any description applied to a lot. Prospective buyers also bid on the understanding that, inevitably, representations or statements by us as to authorship, genuineness, origin, date, age, provenance, condition or estimated selling price involve matters of opinion. We undertake that any such opinion shall be honestly and reasonably held and accept liability for opinions given negligently or fraudulently. Subject to the foregoing neither we the auctioneer nor our employees or agents nor the seller accept liability for the correctness of such opinions and all conditions and warranties, whether relating to description, condition or quality of lots, express, implied or statutory, are hereby excluded. Dreweatts is not liable for damage to gilded picture frames, plaster picture frames or picture frame glass; if the Lot is or becomes dangerous, we may dispose of it without notice to you in advance in any manner we see fit and will be under no liability for doing so. This Condition is subject to the next following Condition concerning deliberate forgeries and applies save as provided for in paragraph 6 "information to buyers".

(b) Private treaty sales made under these Conditions are deemed to be sales by auction for purposes of consumer legislation.

15. FORGERIES. Notwithstanding the preceding Condition, any Lot which proves to be a deliberate forgery (as defined) may be returned to us by you within 21 days of the auction provided it is in the same condition as when bought, and is accompanied by particulars identifying it from the relevant catalogue description and a written statement of defects. If we are satisfied from the evidence presented that the Lot is a deliberate forgery we shall refund the money paid by you for the Lot including any buyer's premium provided that (1) if the catalogue description reflected the accepted view of scholars and experts as at the date of sale or

(2) you personally are not able to transfer a good and marketable title to us, you shall have no rights under this condition.

The right of return provided by this Condition is additional to any right or remedy provided by law or by these Conditions of Sale.

16. PRIVACY NOTICE. We will hold and process any personal data in relation to you in accordance with our current privacy policy, a copy of which is available on our website <http://www.dreweatts.com/privacy-security/>.

GENERAL

17. We shall have the right at our discretion, to refuse admission to our premises or attendance at our auctions by any person.

18. (a) Any right to compensation for losses liabilities and expenses incurred in respect of and as a result of any breach of these Conditions and any exclusions provided by them shall be available to the seller and/or the auctioneer as appropriate.

(b) Such rights and exclusions shall extend to and be deemed to be for the benefit of employees and agents of the seller and/or the auctioneer who may themselves enforce them.

19. Any notice to any buyer, seller, bidder or viewer may be given by first class mail, email or Swiftmail in which case it shall be deemed to have been received by the addressee 48 hours after posting.

20. Special terms may be used in catalogue descriptions of particular classes of items in which case the descriptions must be interpreted in accordance with any glossary appearing at the commencement of the catalogue.

21. Any indulgence extended to bidders, buyers or sellers by us notwithstanding the strict terms of these Conditions or of the Terms of Consignment shall affect the position at the relevant time only and in respect of that particular concession only; in all other respects these Conditions shall be construed as having full force and effect.

22. These Conditions shall be governed by and construed in accordance with English law and the parties irrevocably submit to the exclusive jurisdiction of the English courts.

Group Departments

NEWBURY

Dreweatts

Donnington Priory

Newbury

Berkshire RG14 2JE

Auctions, exhibitions and valuations

LONDON

Dreweatts / Bloomsbury Auctions

16-17 Pall Mall

St James's

London SW1Y 5LU

Auctions, exhibitions and valuations by appointment

+44 (0) 1635 553 553

info@dreweatts.com

dreweatts.com

MANAGING DIRECTOR

Jonathan Pratt

ASIAN CERAMICS AND WORKS OF ART

Mark Newstead

Dr Yingwen Tao

BLOOMSBURY AUCTIONS

BOOKS AND MANUSCRIPTS

Dr Timothy Bolton

Camilla Previté

Denise Kelly

BRITISH AND EUROPEAN CERAMICS

AND GLASS

Mark Newstead

Geoffrey Stafford Charles

CLOCKS AND SCIENTIFIC

INSTRUMENTS

Leighton Gillibrand

COUNTRY SPORTING

Geoffrey Stafford Charles

DECORATIVE ARTS

Geoffrey Stafford Charles

Ashley Matthews

EUROPEAN SCULPTURE AND

WORKS OF ART

Charlotte Schelling

FINE ART

Jennie Fisher

Brandon Lindberg

Will Porter

Lucy Darlington

Francesca Whitham

FURNITURE AND CARPETS

Ben Brown

Ashley Matthews

William Turkington

HOUSE SALES AND

PRIVATE COLLECTIONS

Will Richards

Joe Robinson

JEWELLERY, SILVER, WATCHES

AND OBJECTS OF VERTU

James Nicholson

Nick Mann

Tessa Parry

LIVE STEAM AND MODEL

ENGINEERING

WORKS OF ART

Michael Matthews

WINE

Mark Robertson

Dianne Wall



2018

2018

2018

2018

Chablis Premier Cru
Chapelot
APPELLATION CHABLIS PREMIER CRU CONTRÔLÉE
13% Vol
PRODUIT DE FRANCE
Mis en bouteilles à la propriété
DOMAINE FRANÇOIS RAVENEAU À CHABLIS - FRANCE

Chablis Premier Cru
Chapelot
APPELLATION CHABLIS PREMIER CRU CONTRÔLÉE
13% Vol
PRODUIT DE FRANCE
Mis en bouteilles à la propriété
DOMAINE FRANÇOIS RAVENEAU À CHABLIS - FRANCE

Chablis Premier Cru
Chapelot
APPELLATION CHABLIS PREMIER CRU CONTRÔLÉE
13% Vol
PRODUIT DE FRANCE
Mis en bouteilles à la propriété
DOMAINE FRANÇOIS RAVENEAU À CHABLIS - FRANCE

Chablis Premier Cru
Chapelot
APPELLATION CHABLIS PREMIER CRU CONTRÔLÉE
13% Vol
PRODUIT DE FRANCE
Mis en bouteilles à la propriété
DOMAINE FRANÇOIS RAVENEAU À CHABLIS - FRANCE