

DREWATTS

EST. 1759

INTERIORS

TO INCLUDE THE SELECTED CONTENTS OF BERWICK HOUSE,
SHROPSHIRE AND OTHER PROPERTIES

DONNINGTON PRIORY | WEDNESDAY 12 MAY 2021



Coming Up at Dreweatts

Auctions

20 April | Live Online

The Transport Sale

21 April | Live Online

Fine Clocks, Barometers and Scientific Instruments

29 April | Live Online

Fine and Rare Wine and Spirits

5 May 2021 | Live Online

Jewellery, Silver, Watches, Pens and Luxury Accessories – Part 1

6 May 2021 | Live Online

Piet Jonker | Garden Statuary and Ornament

6 May 2021 | Live Online

Jewellery, Silver, Watches, Pens and Luxury Accessories – Part 2

12 May | Live Online

Interiors to include the selected contents of Berwick House, Shropshire and other properties

13 May 2021 | Timed Online

Hambridge Sale

19 May | Live Online

Chinese Ceramics and Works of Art (Part 1)

20 May | Live Online

Japanese & Chinese (Part 2) and Indian & Islamic Ceramics & Works of Art

27 May | Live Online

Old Master, British and European Art

We hold regular auctions of fine art, antiques, jewellery and other collectibles. Our specialists carry out valuations nationwide so if you are unable to attend one of our valuation days, please request a valuation via our website or call us to discuss a home visit.



DREWEATTS NOW INVITING ENTRIES FOR OUR 2021 AUCTIONS

EST. 1759

NEWBURY
Dreweatts
Donnington Priory
Newbury
Berkshire RG14 2JE

LONDON
Dreweatts / Bloomsbury Auctions
16-17 Pall Mall
St James's
London SW1Y 5LU

HAMBRIDGE LANE
Dreweatts
1 Hambridge Lane
Newbury
Berkshire RG14 5TU

ENQUIRIES
For more information,
please contact
+44 (0) 1635 553 553
info@dreweatts.com

dreweatts.com



DREWEATTS

EST. 1759

INTERIORS

TO INCLUDE THE SELECTED CONTENTS OF
BERWICK HOUSE, SHROPSHIRE AND OTHER
PROPERTIES

DONNINGTON PRIORY | WEDNESDAY 12 MAY 2021 | 10.30AM

AUCTION FORMAT: LIVE ONLINE

This is a live online auction with an auctioneer. Bidding is available online, by telephone or commission (absentee) bids. If not bidding online, please contact Dreweatts to register all commission bids or telephone bids by 12 noon (local time) on Tuesday 11 May.

FREE ONLINE BIDDING IS AVAILABLE AT DREWEATTS.COM:

The Dreweatts' bidding platform allows you to watch, listen and bid with no additional online bidding fees applicable.

REGISTRATION:

We advise clients to register at least 48 hours in advance of the auction as you may be asked to provide documents to verify your identity. Registration for new clients will close at 12 noon (local time) on Tuesday 11 May.

BUYER'S PREMIUM:

Buyer's premium is charged per lot at 25% of the hammer price (30% including VAT) up to and including £500,000, 20% (24% including VAT) of the hammer price from £500,001 up to and including £1,000,000, and 12% of the hammer price (14.4% including VAT) in excess of £1,000,001.

PAYMENT:

Please note, we cannot accept payment by telephone for lots bought by first time bidders. For details on other payment methods, please see our website.

AUCTION NO. 14409

SPECIALISTS:

Ashley Matthews (Furniture, Clocks, & Decorative Arts)

Ben Brown MRICS (Furniture & Carpets)

Francesca Whitham (Pictures)

Geoffrey Stafford Charles MRICS

(Ceramics, Glass & Country Sporting)

Mark Newstead (Asian Ceramics & Works of Art)

Nick Mann (Silver and Silverplate)

Will Turkington (Furniture)

VIEWING:

Viewing will be available by appointment only and in strict accordance with Government Covid-19 regulations

Sunday 9 May: 10am – 4pm

Monday 10 May: 10am – 5pm

Tuesday 11 May: 10am – 5pm

Please note there is no viewing the morning of the sale.

AUCTION:

Dreweatts

Donnington Priory

Newbury

Berkshire RG14 2JE

ENQUIRIES:

+44 (0) 1635 553 553

info@dreweatts.com

dreweatts.com

Front cover: Berwick House, Shropshire

Back cover: Lot 189



The Selected Contents from Berwick House, Shropshire (lots 1-144)

In August 1875, James Watson bought Berwick House at auction, with its fine well-timbered park and estate. He prospered as a shipbroker and merchant miller in the period following the Repeal of the Corn Laws in 1846. This legislation introduced by Sir Robert Peel's Conservative administration, served to supply the fast-expanding cities of the Victorian age with cheap bread from imported wheat and without tariffs in order to relieve inner city hardship.

James Watson was born in Edgbaston, Birmingham in 1818. He clearly harboured a wish one day to live a rural life. By the 1870s he was resident at Warley Hall, a country estate within sight of Birmingham which had been remodelled by Repton in the last decade of the 18th century. It was here that he kept Jersey cattle.

The effect on agriculture post Corn Laws precipitated a general decline in agricultural incomes which lasted beyond the end of Queen Victoria's reign and up to the start of World War I. It was thus a shrewd decision to avoid relying on arable crops and establish the Berwick Herd of Jersey Cattle, a tradition renowned in the Jersey Cattle Society's ledgers. Watson became a JP and in due course the Conservative MP for Shrewsbury from 1885 to 1892.

Berwick House, at the time of acquisition, comprised the splendidly neat George II Smith of Warwick Baroque brick and sculptured stone (southerly façade), together with impressive service ranges and stables. To this he added the magnificent west façade with its suite of reception rooms with plate glass windows facing a meander in the River Severn. To the east a new entrance was created with a porte-cochere topped by a belvedere tower. The alterations undertaken by George Stevens and Osborn & Reading were completed within four years and produced the ultimate in Victorian comfort and convenience. Internally the alterations included an impressive double height inner entrance hall, top-lit with medieval revival style stained glass depicting military heroes. Everywhere was embellished with exquisitely carved woodwork in the living room hall, staircase, library and dining room. This complements the Smith of Warwick former entrance hall (oak room) with its remarkable virtuoso carved door cases attributed to Warwick's renowned carver Edward Poynton. Unfortunately, at the time of Watson's purchase, Berwick House lost the superb Robert Bakewell wrought iron screen which was removed by the former owner Rudolph Feilding 8th Earl of Denbigh, to his seat at Newnham Paddox, Warwickshire.

With the mansion house nearing completion, by 1879 Watson turned his sights to forming a collection of suitably impressive paintings and furnishings for the recreated rooms. An appraisal of the collection with the contribution of successive generations are separately explained.



Descent of ownership of Berwick House from the reign of George I

Thomas Powys initiated the rebuilding of the Hall in 1731

By descent through the female line to Rudolph Feilding 8th Earl of Denbigh

From whom acquired by James Watson, JP, MP (1818-1897)

By descent to his daughter Florence Mary (died 1936) who married 1894
Lieut. William Walter Graham Phillipps

By descent to their daughter Gwendolyn who married Folliott Sandford Neale

By descent to their daughter Mary Jane, who married Roger Angell-James, JP, CBE

By descent to Henry Angell-James

The sale of the contents of Berwick House is conducted in conjunction with Michael Thompson,
Stanley Hall, WV16 4SP

Fine Art Adviser | Michaelthompsonart@stanleyhall.org



1
After John Hoppner (British 1758-1810)
Portrait of a lady, half-length, wearing a white dress
Pastel
74 x 62cm (29 x 24¼ in.)

£300-500

2
A mahogany and line inlaid longcase clock, 19th century, the eight-day gong striking movement with anchor escapement and a 14 ½ inch painted circular Roman numeral dial, 210cm high

£300-400



2

3
A North West Persian runner, possibly Hamadan, approximately 257 x 117cm

£400-600



4
A George IV mahogany cellaret, circa 1825, of sarcophagus form, the lid with central gilt metal mount enclosing a lined interior, with flanking mask handles, on lion paw feet, with Tompson patent box-lock, 64cm high, 67cm wide, 47cm deep

£400-600



4



5

5Y
A nest of three William IV rosewood occasional tables, circa 1835, the middle sized table with inlaid chequerboard top, all rectangular tops above the C-scooled supports, and conforming bi-pedal feet, the largest table 73cm high, 51cm wide, 36cm deep

£300-500

6Y
A rosewood side cabinet, circa 1835 and later, in the manner of Gillows, with a pair of glazed doors enclosing a glass shelf, 111cm high, 125cm wide, 39cm deep

£300-500



6



7
A set of four electro-plated candle sticks, with circular sconces and knopped capitals, chased with gadrooned and grape vine borders, foliate baluster stems and on conforming circular bases, 31cm (12in) high; together with another pair of electro-plated candlesticks, with circular capitals and tapering stems, chased with foliate swags and flowers, on circular moulded spreading bases, 31cm (12in) high

£250-350

8
A George III mahogany tea table, circa 1780, the shaped top with canted angles, on chamfered square section legs, 72cm high, 91cm wide, 42cm deep

£250-350



8



9

9
A George III mahogany and upholstered wing armchair, circa 1770, the rounded topped rectangular back above outscrolled arms and seat, on square section legs united by stretchers, on leather roller castors, 122cm high

£500-800

10
A set of four electro-plated circular chambersticks by Elkington & Co., with circular sconces, beaded borders, foliate loop handles, engraved with a crest and with conforming tapering snuffers 14.5cm (5 3/4in) long; an electro-plated circular chamberstick by Matthew Boulton, with gadrooned borders, an oval thumb piece to the scroll handle with a loop handle to the tapering snuffer 16cm (6 1/4in) long; and another electro-plated chamberstick, with a chased foliate swag border, a shell thumb piece to the scroll handle, with a ball finial to the tapering snuffer, 18cm (17in) long

£100-150



10



11

11
A George III mahogany and inlaid chest of drawers, circa 1790, the rectangular top inlaid with fan motifs to the angles, with two short and three long drawers, 85cm high, 101cm wide, 51cm deep

£400-600

12
A set of four oak and upholstered armchairs in George III style, late 19th century, each cresting rail with central heraldic motif of an eagles head, each with a maker's label for COLLIER & PLUCKNETT, 101cm high, together with a further George III mahogany and upholstered side chair, 98cm high

£300-500



12 (part lot)



13

13
A large Meissen (outside decorated) ewer emblematic of Water, late 19th century, blue crossed swords and cancellation mark, 61cm high

£600-800



14

14
A Meissen ewer emblematic of Air, late 19th century, possibly outside decorated, 64cm high

£600-800



15

15
A Dresden pale-blue ground and gilt two-handled porcelain vase and cover, circa 1900, painted with panels of Watteauesques, 'AR' marks, 59cm high

£600-800

16
A pair of German porcelain Berlin style vases and covers with eagle finials, circa 1900, of fluted form and painted with panels of Watteauesques, blue sceptre marks, 32cm high

£400-600



16



17

17
A Meissen model of a parrot perched upon a tree stump, circa 1900, blue crossed swords mark, incised A436, 42cm high

£400-600



18



18
Two similar Meissen models of parrots, circa 1900, blue crossed swords marks, 32cm high

£500-700



19



19
Two similar Meissen models of parrots, circa 1900, blue crossed swords marks, 22cm & 23cm high

£400-600



20

20
A Meissen model of a Golden Oriole, circa 1900, blue crossed swords mark, 25.5cm high

£300-500



21



21
A pair of Dresden yellow ground double gourd vases painted with various birds, blue KPM marks, 35cm high

£400-600



22

22
Fourteen similar Meissen ornithological plates, circa 1900, ozier-moulded borders, one 26cm diameter, the remainder 23cm diameter

£700-900



23

23
An oak bible box on stand, late 17th century and later, the hinged lid above the vacant compartment, the stand with turned supports united by stretchers, 86cm high, 72cm wide, 41cm deep

£300-500



24

24
A William & Mary carved fruitwood armchair, circa 1690, the caned oval back above the open arms and seat, on turned supports united by stretchers, 137cm high

£250-350



25

25
An oak side table, formerly the base from a chest on stand, early 18th century and later, now with a solid top above two drawers, with arcades and turned legs, 67cm high, 99cm wide, 58cm deep

£200-300



26

26
An oak refectory table, incorporating late 16th century and later elements, the rectangular top above a lobed frieze, and bulbous cup-and-cover supports, united by low stretchers, 82cm high 213cm long, 96cm deep

£3,000-5,000



26 (detail)



27

27
A George III mahogany and upholstered armchair, circa 1770, the camel topped rectangular back above outrolled arms and seat, on square section legs united by stretchers, 107cm high

£800-1,200

28
A group of three similar George III mahogany folding tables, all circa 1780, comprising; a tea table, with a frieze drawer to one short side, 73cm high, 89cm wide, 43cm deep, a card table with green baize inset to the interior, 72cm high, 92cm wide, 45cm deep and a card table with red rexine inset to the interior, 76cm high, 91cm wide, 45cm deep

£1,000-1,500



28



29

29
A mahogany chair back settee, late 18th century and later, the Cockpen style double chair back with conforming arms above the drop-in seat and square section supports, 76cm high, 125cm wide, 41cm deep

With an old handwritten paper label stating *Rout Settee, from the Bath Assembly Rooms*

The National trust have an image of a 'Rout Seat' in their archive that matches the example offered here, there is also a photograph in Bath Central Library of a three-seat version.

Robert Cruikshank's *The Fancy Ball at the Upper Rooms Bath* (1825) features a pair of these seats in the lower right corner

£1,500-2,500



30
A Victorian figured walnut stereoscope, Regent Street Photographic Company, London, circa 1880, of typical form, with enamel makers label to one side, the hinged top enclosing the cards and action, and with viewing goggles to each side, on a plinth base, 45cm high, enclosing a number of stereoscope cards of mainly North American interest, including The White House, New York, Montreal (qty)

£500-700

30



31



31
A Victorian figured walnut Sutherland table, circa 1870, with bookmatched veneers, of typical form and with fluted supports, 67cm high, 92cm wide, together with an Edwardian mahogany and inlaid centre table, circa 1905, serial numbered to the underside of one rails L 40617, 76cm high, 77cm wide

£200-300



32

32
A Victorian walnut and upholstered low armchair, by Gillows, circa 1870, the rear legs stamped for the maker and serial numbered 6353, 79cm high together with a pair of Victorian walnut and upholstered side chairs, circa 1880, the upholstery in the manner of crewel work, 89cm high, (3)

£300-500



33



33 Y
A graduated pair of Victorian walnut and tulipwood banded side cabinets, circa 1870, Holland & Sons, each with a variegated red marble top above a pair of glazed doors enclosing shelves, the larger stamped for the maker to the door, 102cm high, 133cm wide, 47cm deep, the smaller, 97cm high, 107cm wide, 47cm deep

£1,000-1,500



34

34 Y

A tortoiseshell and gilt metal mounted mantel clock, Japy Freres, early 20th century, with eight-day gong striking movement, the backplate with roundel for the maker and MADE IN FRANCE, the dial with cabochon porcelain Roman numerals indicators, the case of waisted form, 32cm high

£250-350

35 Y

A near pair of Napoleon III red tortoiseshell and boule inlaid card table, circa 1870, the hinged top enclosing a circular playing surface, with inlaid playing card details to the angles, the frieze centred by a mask, on gilt metal mounted cabriole legs, 75cm high, 85cm wide, 43cm deep

£1,500-2,500



35



36



36

Two similar Paris porcelain clock cases, one pale-green, the other pale-blue, each painted with flowers, mid 19th century; each with an eight-day two-train movement, one inscribed *Raingo a Paris*, circa 36cm high; and another similar, 30.5cm high

£600-800

37

A walnut, parquetry inlaid, and gilt metal mounted occasional table, in Louis XVI style, circa 1900, attributed to Donald Ross and in the manner of Riesener, 71cm high, 41cm wide, 36cm deep

Donald Ross (1830-1916) was one of the most celebrated Victorian furniture makers. Located at 13 Denmark Square, Soho, his firm supplied furniture to some of the most important retailers of the period including Edwards & Roberts, Gillows and John Watson of Oxford Street, as well as exhibiting in the 1851 Great Exhibition.

His work is characterised by its distinctive dot and trellis parquetry (as seen on this lot), a technique Ross developed in the fourth quarter of the 19th century inspired by the work of renowned 18th century Parisian makers such as Jean-Henri Riesener and Pierre Garnier.

For a pair of tables by Ross incorporating dot and trellis parquetry are currently held at the Victoria & Albert Museum in London (W.47:1, 2-1911, W.47A&B-1911).

£800-1,200



37



38

A carved oak and pine mantel clock of Black Forest type, circa 1900, with architectural gothic case, the eight day two-train fusee movement with twin bellows and cuckoo automaton, 50cm high

£300-500

39

A Victorian carved oak writing table, circa 1870, in Antiquarian taste, with two blind frieze drawers, 79cm high, 138cm wide, 69cm deep

£300-500



40

A set of six Victorian stained and carved oak dining chairs in Carrollian style, circa 1890, each with carved back above the velvet upholstered seat, turned supports united by X-stretchers, 106cm high

£400-600



41

A Reformed Gothic oak and inlaid washstand, circa 1880, in the manner of Charles Bevan, the tiled upstand above the marble top and carved square section supports, 102cm high, 126cm wide, 64cm deep, together with a similar Reformed Gothic oak and inlaid dressing mirror, the rectangular surround with lancet plate above carved supports and bipedal feet, 87cm high

£500-700



42

A Reformed Gothic oak and inlaid writing table, circa 1880, in the manner of Charles Bevan, with two frieze drawers, 76cm high, 122cm wide, 57cm deep

£300-500



43

A Chinese *Famille Verte* rouleau vase, Qing Dynasty, 19th century, painted with a Phoenix perched on a rock amongst flowering shrubs, the vase height 46cm, adapted for electricity and drilled

£500-700

44

A group of Chinese *Famille Rose* plates, Qianlong, comprising a pair bamboo and peony, 22.5cm diameter; another pair with peonies within a scroll cartouche, 22.5cm diameter; another pair painted with scattered flowers, 23cm diameter; four others, approximately 22.5cm diameter; a larger dish, painted with Mandarin figures, 31.5cm diameter; a soup bowl, 22.7cm diameter and two bowls, the largest 20cm diameter (14)

£360-450



44

45

A Chinese Imari dish, Kangxi, the centre painted with interlocking foliate scrolls, 28.5cm diameter

£150-250



45



46

46

A Chinese carved hardwood and marble inset jardiniere stand, of octagonal form, 91cm high, the top 38cm

£300-500

47

A pair of Chinese of carved hardwood and marble inset low tables or stands, each with a pierced frieze and anthropomorphic masks to the knees, on cabriole legs, 46cm high, 45cm diameter together with a Chinese carved hardwood and marble inset low table or stand, with a pierced frieze and cabriole legs, 38cm high, the top 34cm diameter (3)

£600-800



47



48

48
A George III chinoiserie black lacquer and parcel gilt longcase clock, the eight day two train movement with anchor escapement and striking on a gong, the twelve inch arched dial with Roman numerals and subsidiary 'strike/silent' dial and inscribed *Joseph Stephens London*, the case with unusual maker's label for *Hall & Son, KING STREET, RICHMOND SURREY*, 262cm high

£1,000-2,000



48 (makers label)

49

A pair of English Ironstone pale-green ground rectangular section chinoiserie vases and domed covers, circa 1840, moulded in relief and gilt with pagodas, 68cm high

£300-500



49

50

A George II walnut drop leaf dining table, circa 1735, the cabriole legs with carved decoration to the sides of the knees, on carved pad feet, 74cm high, 137cm wide (open), 121cm deep

£200-400



50

51

A George III mahogany and upholstered corner armchair, circa 1760, the scrolled arms above the pierced splats, fully upholstered seat, and square section legs, 77cm high

£250-350



51



52



53



54



52

A cold-painted bronze model of a hound, possibly Austrian, circa 1900, 23cm in length; and a cold painted bronze model of a bulldog, 9cm high

£400-600

53

After Pierre Jules Mêne (1810-1879), a patinated bronze model of a gun dog, probably a setter, modelled alert with tail outstretched and on a naturalistic thistle base, on a velvet clad plinth base 17cm high, 31cm long, 15cm wide, together with a cast iron model of a lion, in the manner of the Borghese Lion, possibly a door stop, 19th century, 17cm high, 23cm long, 8cm wide (2)

£250-400

54

A Japanese Bronze Model of a Crab, the back lifts to show it fitted as an inkwell, width 16.5cms, 20th Century; And A Japanese Bronze Model of a squatting toad, length 8.6cms, 19th Century

£100-150

54A Y

A Japanese Ivory Group of a man and boy seated on a large tree trunk, a basket of kumquats beside them, another boy stands on the log, red lacquer signature panel "Munehisa", length 18.5cms, Meiji Period; An Ivory Netsuke of Ebisu catching a large carp; A Chinese Ivory Basket of lobed circular form; Another Japanese Ivory Okimono of a walking peasant; And a Chinese soapstone fish. Please see our website for images.

£100-150



55



55

A bronze model of a whippet, after Pierre Jules Mêne (1810-1879), modelled seated on a carpet fragment, inscribed PJ Mene to the base, 11cm high, 15cm long, 9cm wide, together with a patinated metal model of a standing greyhound, 18cm high, 20cm long, 10cm wide, and a patinated metal model of a crouching whippet and a ball, 9cm high, 14cm long, 8cm wide (3)

£200-400



56

56

After Pierre Jules Mêne (1810-1879), a bronze model of a goat grazing, inscribed BRONZE, 15cm high, 25cm long, 10cm wide

£300-500

57

Pierre-Jules Mêne (1810-1879), a bronze animalier group of a ewe and her suckling lamb, inscribed to the base P J Mene 1845, and impressed COALBROOKDALE COMPANY, BRONZE, 14.5cm high, 23cm long, 10cm wide

£300-500



57



58



58

A suite of oak Aesthetic movement bedroom furniture, third quarter 19th century, Collier & Plunknett, Warwick & Leamington, with painted and gilt panels throughout, comprising; a breakfront wardrobe, 245cm high, 191cm wide, 60cm deep, a breakfront compactum wardrobe, 245cm high, 191cm wide, 60cm deep, a washstand, with Japonisme tiles above the variegated grey marble top, 123cm high, 135cm wide, 69cm deep, a writing table, with glazed superstructure, 148cm high, 133cm wide, 60cm deep, a half-tester bed frame, with heraldic lions to the footboard, 253cm high, 206cm long 161cm wide, and an overmantel or wall mount, 140cm high, 175cm wide, 25cm protuberance, some elements with maker's label

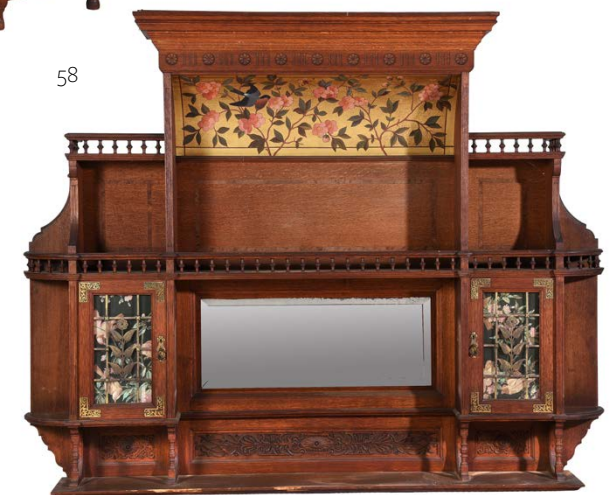
James Plucknett was originally in partnership with Frederick Collier with showroom in Leamington Spa and workshops in Warwick. The firm advertised in various trade directories between 1872-1880 and gained many commissions from well heeled local families as well as from further afield.

They advertised themselves as '... Manufacturers of rich carved furniture in the peculiar styles characteristic of the Gothic, Tudor and Elizabethan ages'



58 (maker's stamp)

58



Perhaps Collier and Plucknett's best known commission was for Tyntesfield, the celebrated Victorian Mansion, which was re-modelled for William Gibbs (1790-1875). Collier and Plucknett supplied much of the Gothic revival furniture to Tyntesfield. Today Tyntesfield is owned by the national trust and as well as examples of furniture visitors can also view the fully fitted Collier and Plucknett bathroom of Matilda Blanche Gibbs.

£2,000-3,000



59

59Y

An electro-plated wind bottle stand and pourer, with a scroll handle and a circular base, 25cm (10in) high; and an electro-plated cocktail shaker, the tapering body with an ivory handle and a circular base, 29.5cm (11 3/4in) high

£100-150

60

A Victorian large electro-plated oval heated meat platter by Elkington & Co., circa 1860, with a beaded border, twin loop handles and on four bun feet, 61cm (24in) long; an electro-plated oval meat cover/dome by Matthew Boulton, with a foliate loop handle, engraved with a coat of arms above a motto, 45cm (17 3/4in) long; and a set of four electro-plated lobed oval meat covers/domes, with foliate loop handles and engraved with crests, the largest 50.5cm (19 3/4in) long, the smallest 38cm (15in) long

£150-250



60



61

61Y

A satinwood, tulipwood banded, and polychrome painted side table, late 18th century, of demi-lune outline, in the manner of Thomas Sheraton, with central vignette with cavorting amorini, 85cm high, 136cm wide, 65cm deep

£600-800

62

A pair of electro-plated campana urn shaped wine coolers, the gadrooned borders with foliate sprays at intervals, foliate loop handles and on circular moulded spreading feet, 26cm (10in) high

£200-300



62



63

63Y

A mahogany, tulipwood banded, and inlaid oval centre table in George III style, early 20th century, the top with central inlaid motif, with swag inlaid frieze and on square section tapering legs inlaid with bell flowers, 73cm high, the top 116cm x 82cm

£300-500

64

A near pair of mahogany and painted tub armchairs, early 19th century, in need of re-upholstery, each 88cm high

£300-500



64

65

A Staffordshire pearlware commemorative and dated General Election jug for 1835, gilt with inscriptions recording the General Election and the commemorating the election of the twelve Conservative Members for the County of Shropshire 1835, 22.5cm high

£300-500



65



66

66

An English porcelain flower-encrusted pot pourri urn and cover of Coalbrookdale type, mid 19th century, 32cm high

£180-220

67

A pair of Sevres (outside decorated) two-handed seaux, circa 1860, gilt with the cypher of Napoleon III beneath an anthemion band, pseudo palace inventory marks, cancelled Sevres potting mark for 1860, 20cm wide; and a pair of wine glasses gilt with Napoleon III cypher, circa 1860, 13.5cm high

£120-180



67



68

68

A Regency mahogany library bookcase, circa 1815, of breakfront outline, the moulded cornice above glazed bookcase doors, the base with arrangement of cupboard doors, 236cm high, 251cm wide, 56cm deep

£2,000-3,000



69

A balustroid wine glass, circa 1740, the bell bowl supported on a stem with annular knop above an inverted baluster section with tear inclusion, on a folded conical foot, 16cm high

£250-350

70

Six various balustroid wine glasses, mid 18th century, including one engraved example, all with folded conical feet, 16cm high

£250-350



70

71

An airtwist wine glass, mid 18th century, the round funnel bowl supported on a double-knopped stem filled with spiral threads and with a conical foot, 16cm high: and a composite-stemmed wine glass of drawn trumpet form, 18cm high

£120-180



71



72

72

A mercury-twist wine glass, circa 1760, the ogee bowl with spirally fluted lower section, on a double series stem, 15cm high; and another similar, 14.5cm high

£120-180

73

A pair of engraved commemorative opaque-twist ale glasses, third quarter 18th century, engraved with daffodils and each inscribed *Mrs A. Gof*, 18.5cm high

£400-600



73



74

An engraved plain-stemmed ale flute, mid 18th century, decorated with a bird and convolvulus, folded conical foot, 17cm high; and another with an engraved ovoid bowl, 12cm high

£150-250

74



75

75

Fourteen various plain-stemmed wine glasses, for the most part mid 18th century (at least one later copy), 16.5cm high and smaller

£200-300

76

Eight various engraved plain-stemmed wine glasses, mid 18th century, folded conical feet, 15.5cm high and smaller

£250-350



76

77

An opaque-twist wine glass, circa 1760, the round funnel bowl above a double-knopped stem filled with spiral threads, on a conical foot, 14.5cm high, paper dealer's label

Provenance: With Churchill Glass

£200-300



77

78

Three various opaque-twist wine glasses, third quarter 18th century, including a firing glass with an engraved bowl and two other wine glasses with hammered flute lower sections, double series stems, conical feet, 14.5cm high and smaller

£200-300



78

79

Four various opaque-twist wine glasses, third quarter 18th century, including an example with an ogee bowl with honeycomb-moulded lower section, another with a spirally-fluted ogee bowl, on double series stems and conical feet, 16.5cm high and smaller

Provenance: The two leading glasses with Churchill Glass

£250-350



79



80

80

A firing glass, mid 18th century, the funnel bowl supported on a substantial foot, 10.5cm high

£100-150

81

A pedestal stemmed sweetmeat glass, second half 18th century, the honeycomb-moulded ogee bowl supported on a Silesian stem and a domed and folded foot, 15.5cm high; and another sweetmeat glass, 16cm high

£250-350



81



82



82

Two similar composite stemmed wine glasses, mid 18th century, of drawn trumpet form and with inverted baluster airtwist stems and conical feet, 17cm & 18cm high

£400-600

83

A facet-stemmed wine glass of James Giles type, circa 1770, the round funnel bowl with faceted lower section and gilt with flowers, possibly in the atelier of James Giles, conical foot, 15.5cm high

£400-600

84

A group of six facet-stemmed wine glasses, late 18th century, four with bowls engraved and polished with flowers and two undecorated examples, 15.5cm high and smaller

£250-350



84



83



85

A pair of engraved facet-stemmed wine glasses, late 18th century, the round funnel bowls engraved with lily-of-the-valley, conical folded feet, 16cm; and a pair of facet-stemmed candlesticks, late 18th century, 16.5cm and smaller

£400-600



85





86



86

An engraved commemorative rummer for Admiral Lord Nelson, possibly from William Absolon Jnr.'s workshop, Yarmouth, early 19th century, engraved and polished with HMS Victory and inscribed *A TOKEN OF REGARD FROM YARMOUTH* and *THE VICTORY 110 GUNS, LORD NELSON FLAG SHIP*, on a knopped stem and round foot, 12.5cm high; and a dated commemorative rummer for George IV, engraved with an equestrian knight in armour, with GR cypher and dated 1821, 13cm high

£600-800

87

An English cut-glass and engraved beer glass, circa 1820, decorated with an oval panel engraved with a classical maiden emblematic of Justice, reserved on a ground strawberry diamonds, 12.5cm high

£100-150



87

88

A Coalport blue ground and gilt commemorative and dated jug for the General Election of 1841, gilt with inscriptions recording the General Election and the Restoration of the Conservative Members for the County of Salop in 1841, 29cm high

£600-800

89

Seven green and engraved plain-stemmed wine glasses, mid 19th century, the round funnel bowls engraved with fruiting vine, 13.5cm high

£100-200

90

A selection of English coloured glass, various dates 18th and 19th centuries, comprising: an amethyst and gilt goblet with a knopped stem, 14.5cm high; and four items of coloured glass, three various cream jugs and a boot-shaped stirrup cup

£300-500



88



89



90



91

91

A George III oak longcase clock of North Country type, the eight-day two-train gong striking movement with anchor escapement, the 13inch arched dial with automaton and inscribed *John Evans Shewfbury*, 237cm high

£700-1,000



92

92

A Sarouk rug, approximately 156 x 126cm, together with a woven rug, in Agra style, approximately 213 x 138cm

£300-500

93

A group of eight George III and Regency silkwork pictures, late 18th and first quarter 19th century, comprising five in oval gilt frames and three rectangular examples with verre eglomise inserts, various sizes

£300-500



93

94

A pair of mahogany and brass candlesticks in George III style, each of fluted and spiral twist stem form on spreading circular bases, 31.5cm high

£150-250



94

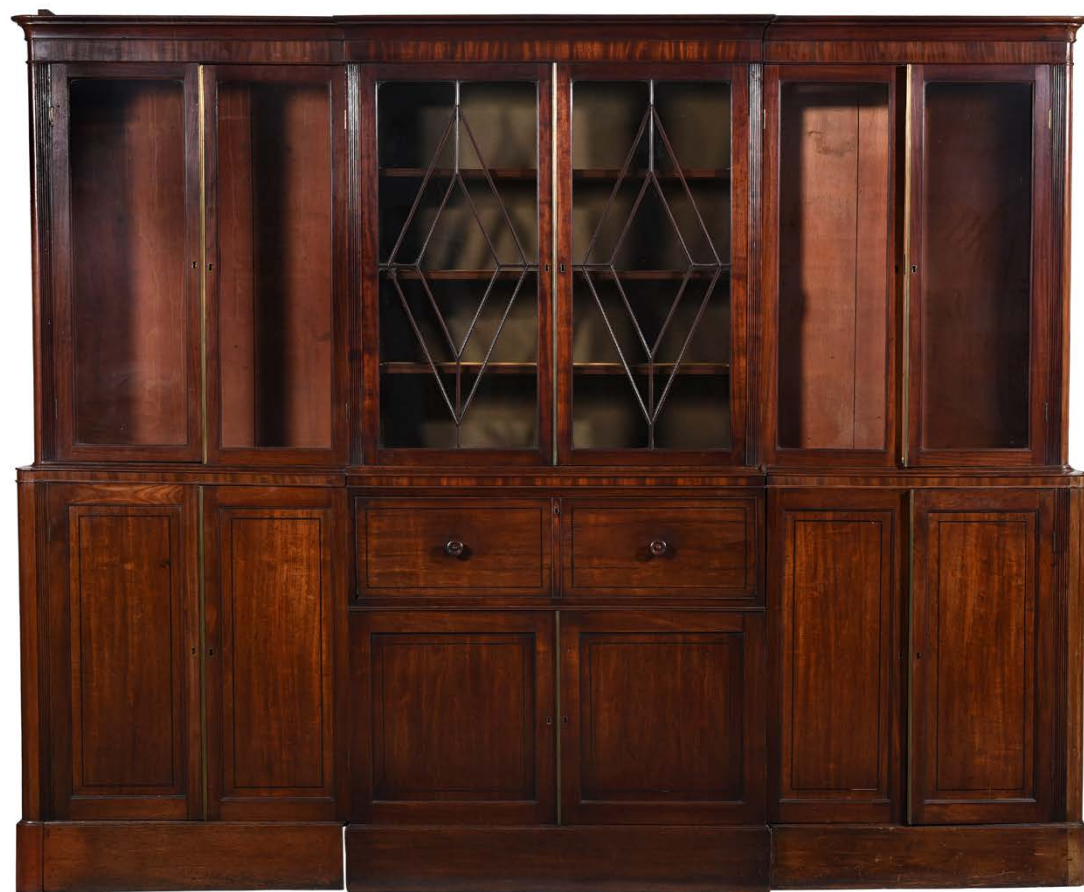
95

An oak and mahogany side table, circa 1800, probably Scottish, the rectangular top above six fluted and wrythen legs with cast metal rope-twist swags, 67cm high, 96cm wide, 46cm deep

£300-500



95



96

96 Y

A mahogany and ebony inlaid breakfront bookcase, circa 1815 and later, the glazed bookcases above a secretaire drawer enclosing a satinwood fitted interior, 227cm high, 278cm wide, 46cm deep

£1,500-2,500



97

97

A mahogany bracket clock, Robert Morris, London, with eight-day twin fusee movement striking on a gong and signed for the maker to the backplate, the silvered arched Arabic numeral dial with strike/silent to the arch and subsidiary seconds dial signed for the maker, the case with central handle finial and flaming urn finials, on a plinth base and gilt metal bracket feet, 41cm high

£1,200-1,800

98

A Central Persian carpet, with all over design, approximately 504 x 402cm

£800-1,200

98





99

99

A giltwood and composition dial wall timepiece case, late 18th century the silvered dial signed for Robt. Henderson, St. Martin's Court, London, behind convex bezel, 66cm high, now with an associated 19th century timepiece movement

£1,000-1,500



100

100

A George III mahogany cabinet bookcase, circa 1800, the glazed helix-moulded doors enclosing adjustable shelves, above a frieze drawer and a pair of cabinet doors, 235cm high, 118cm wide, 57cm deep

£600-800

101

A flight of four mahogany wall shelves in George III style, 19th century, 88cm high, 41cm wide, 16cm deep

£150-250



101

102

A George III mahogany bedside night commode, circa 1780, the tray top incorporating carrying handles, the tambour front enclosing a compartment, the slide with aperture for a chamber pot, 77cm high, 49cm wide, 44cm deep

£300-500



102

103

A pair of George III mahogany armchairs, late 18th century, the each with a ladder back and open arms above an upholstered dished seat square section legs united by stretchers, 96cm high

One with old paper label for Sir Brooke Grey-Egerton, 1st Bart

£500-700



103





104

104

A French gilt metal portico mantel clock, in Empire style, mid 19th century, the eight-day bell striking movement with white enamel Roman numeral dial inscribed FICOU ALLAMAND, A PARIS, the case of architectural form with pediment, columnar supports, and stepped plinth base, 43cm high

£250-350

105

An ebonised, metal clad, and glazed vitrine, circa 1900, with superstructure above the table base and with velvet lining to the interior, 159cm high, 103cm wide, 52cm deep

£600-800



105

106

A gilt metal table lamp base, 20th century, in the form of a fish, the finment issuing from its gaping mouth, indistinctly signed, on a marble base

£300-500

107

A substantial Continental gilt bronze Renaissance Revival charger, third quarter 19th century, the dished centre cast with figural scene of Neptune in his chariot, with elaborate rim cast with masks, putti, flowers and strapwork, 62cm diameter

£400-600



107

108

An Aesthetic Movement amboyna and ebonised jardinière, circa 1880, in the manner of Gillows, the lined top above a frieze centred by a Jasperware style plaque, on fluted supports each with rectangular vase mounted with further Jasperware style plaques and united by a conforming stretcher, 82cm high, 78cm wide, 44cm deep

£250-350



108



106



109
A gilt brass carriage clock, R & Co, Paris, circa 1900, with eight-day strike/repeat gong striking movement and platform lever escapement, the white enamel chapter ring with Arabic numerals applied to a pierced gilt mask, the case with Solomonic columns to the angles, 17cm high, in the original leatherette and velvet lined carry case, 20cm high

£300-400

110
A Victorian gilt brass microscope, J Parkes & Son, Birmingham, circa 1870, 49cm high together with a mahogany case of accessories, many signed for the same maker, 14cm high, 47cm wide, 25cm deep

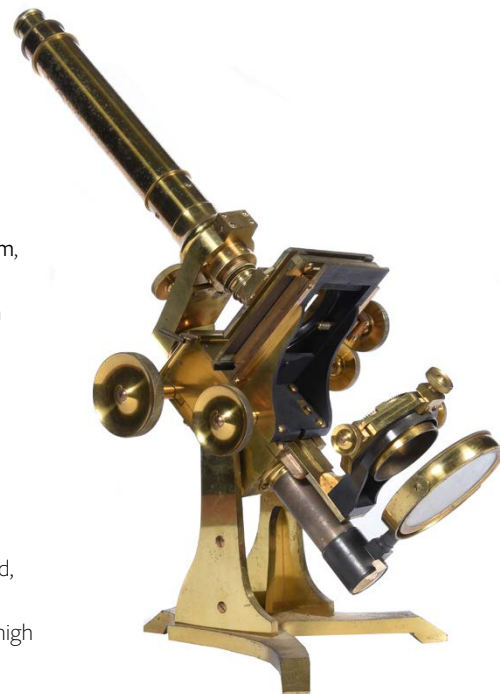
£350-450

111
A George III mahogany desk, circa 1780, the crossbanded top above an arrangement of drawers around a kneehole cupboard, 76cm high, 135cm wide, 50cm deep, together with a George III mahogany armchair, late 18th century, with drop-in seat, 96cm high

£400-600



111



110

112
A stained pine wall-clock, Fearnley, Wigan, with gong striking movement, the Arabic dial with subsidiary alarm dial, the case with broken pediment, 58cm high

£600-800



112



113

113
A George III mahogany secretaire bookcase, circa 1790, the glazed arcaded doors enclosing adjustable shelves, the secretaire drawer enclosing a fitted interior with an arrangement of drawers, pigeonholes, central cupboard, and a baize writing surface, and with three further long drawers, 236cm high, 115cm wide, 57cm deep

£700-1,000

114
A pair of George III mahogany stools, circa 1770, in need of re-upholstery, with spandrels to the angles and on chamfered supports, 48cm high, 49cm wide, 38cm deep, together with another similar stool, circa 1800 and later, with drop-in seat, 48cm high, 49cm wide, 41cm deep

£800-1,200



114



115

115

A picture clock, mid 19th century, depicting a church by a river with an extensive landscape beyond, with three-train gong striking movement, inscribed 'Huguerin a Paris, quarter striking on two gongs and the hour on another gong and connected to a separate train for the Angelus on a further two gongs, the whole in a gilt foliate frame, 94cm high, 81cm wide

£400-600

116

A late Victorian silver mounted dressing mirror, London 1893, of large proportion, with full English hallmarks for William Comyns & Sons, the bevelled plate within the pierced surround with central vacant cartouche, and with easel back, 69cm high, 54cm wide

£300-500

117

A Tabriz carpet, approximately 642 x 448cm

£400-600



117

116



118

An assortment of Victorian black lacquer papier mache wares, comprising: a large oval black and gilt tray decorated with scrolling vines, 80cm x 64cm; a King's Gothick shaped tray with central flowering urn 60cm x 78cm and other items including a Jennens & Bettridge cylindrical box and cover, 13cm high

£200-300



118



119

119

An early Victorian oak metamorphic three tier dinner buffet, circa 1850, with cantled angles, on scrolled feet, 83cm high, 146cm wide, 60cm deep

£300-500

120

A Victorian oak and button upholstered sofa, circa 1880, the out scrolled back and arms above the seat and the wrythen carved legs to the front, 102cm high, 200cm wide, 90cm deep

£600-800



120



121

121

A japanned longcase clock, 18th century and later, the eight day two-train gong striking movement with anchor escapement and 12inch dial inscribed *William Franklin London*, 228cm high

£200-400

122

A carved mahogany stool, mid 18th century and later, the interior of the rails with old metal label for PEPPERCORN BROS, DEPTFORD, 48cm high, 56cm wide, 41cm dee

£500-700



122

123

A George III black Japanned 'Act of Parliament' clock case, late 18th century, the case with 30inch painted circular Roman numeral dial, inscribed *John Vincent Baxter, Bristol*, now with a later replacement wall timepiece movement, 152cm high overall

£1,000-1,500



123



124

124

A mahogany side cabinet, incorporating 18th century elements, the glazed top section above an arrangement of four drawers and the stand base, with cabriole legs terminating in faceted feet, 170cm high overall, 82cm wide, 45cm deep

£800-1,200



125

A patinated bronze model of Silenus after the Antique, attributed to Chiurazzi, late 19th/early 20th century, with bearded and wreathed standing male with an arm raised, on a spreading circular base, approximately 55cm high

£400-600

126

A patinated bronze model of a sphinx, 19th century, modelled recumbent and wearing Egyptian headdress above the lionine body, 25cm long

£200-300



126

127Y

A Milanese hardwood and ivory inlaid panel, 19th century and later set into a low centre table base, with turned supports, 47cm high, 122cm wide, 44cm deep

£600-800



127

128

Two mahogany wall brackets of similar form, one 19th century the other later and probably made to match, each with rectangular shelf and pierced back panel and support, 46.5cm high, 32cm wide

£300-500



128



129

129

A Victorian mahogany quarter-chiming bracket clock, Lattey Brothers & Co. London & Calcutta, late 19th century, the eight-train three-train fusee movement with anchor escapement and striking the hour on a coiled gong and chiming the quarters on concentric bells, inscribed *Lattey Brothers & Co. London* to the backplate, the shaped and silvered dial with Roman numerals and inscribed *Lattey Brothers London & Calcutta 5024*, 62cm high

£800-1,200



130

A pair of sculpted alabaster ewers, 19th century, each with a phoenix pattern handle above the ovoid bodies and raised on a turned socle and rectangular plinth base, approximately 145cm high overall

£1,000-1,500

131

A Victorian cast iron and leather upholstered rocking armchair, second half 19th century, the brown button upholstered leather seat above the metal frame with gilt brass screw-caps and bent stops, 109cm high

Similar models of cast iron rocking chairs are shown in Georg Himmelheber's Cast Iron Furniture, Philip Wilson, London, plates 352-357, the most similar example, albeit without armrests, is shown in plate 353, dated circa 1850 by Sotheby's in 1988

£600-1,000



132

A pair of blue tarquin marble urns-on-plinths, the urns each with an everted rim above the bulbous body, socle and spread foot, 51cm high, on section cylindrical plinths, 179cm high overall

£2,000-3,000



133

An Anatolian carpet, with all over design, approximately 1012cm x 538cm

£1000-2,000

133

134

A George III mahogany drop trunk wall timepiece, Stephenson, Congleton, late 18th century, with eight-day bell striking movement, the 15inch circular dial signed for the maker and with motto MIND YOUR OWN BUSINESS, the case with hood above the tapering body, 138cm high

£1,200-1,800



135



134

135

A George III mahogany standing corner cabinet, circa 1780, the astragal glazed doors enclosing a proscenium arch with gilt vine decoration surrounding the shaped shelves and the arrangement of short drawers, the base with a pair of panel doors enclosing further shelves, 224cm high overall

£400-600



136

136

A Victorian mahogany and brass inlaid quarter chiming bracket clock, Joseph Davie, London, the eight day three-train fusee movement with anchor escapement and striking on a coiled gong and chiming on concentric bells, the painted dial with Roman numerals and inscribed *JOSEPH DAVIE, 201, HIGH HOLBORN*, the clock case with pagoda top, 76cm high, together with an associated and later mahogany bracket, 45cm high

£700-900

137Y

A circular case of preserved butterflies, Shelley W. Denton & Co., circa 1920, with various preserved specimens in a naturalistic setting, with ivorine manufacturer's plaque verso, 49cm diameter; and another similar and smaller, 41cm diameter

£300-500



137



138

138Y

A late Victorian case of two preserved otters, *Lutra lutra*, circa 1890, modelled in a naturalistic setting and posed with fish, in an oak and glazed case, 92cm high, 140cm wide, 57cm deep

£600-800



139

139Y

A late Victorian preserved model of a pike, *Esox lucius*, dated 1898, modelled in a naturalistic setting and an oak and glazed case, bearing legend *CAUGHT BY W. W. G. PHILLIPS. ESQre..DEC.. 4TH.. 1898 12 1/2lbs, 70cm high, 105cm wide, 34cm deep*

£300-500

140Y

A preserved tench, *Tinca tinca*, 20th century, in naturalistic setting and an oak and glazed case, 40cm high, 60cm wide, 18cm deep

£200-300



140



141

141Y

A late Victorian case of two preserved tench, *Tinca*, dated 1900, in a naturalistic setting and an oak and glazed case, bearing the legend *TENCH TAKEN AUG. 8TH 1900 (5 1/2 lbs) TAKEN AUG. 17TH 1900 (4lbs), 74cm high, 94cm wide, 34cm deep*

£300-500

142Y

A late Victorian preserved perch, *Perca*, in a naturalistic setting and mounted in an oak and glazed case bearing the legend *TAKEN IN THE ALKMOND POOL 2nd JULY 1895 WEIGHT 3 1/2LBS, 44cm high, 62cm wide, 17cm deep*

£200-300



142



143 Y

A late Victorian preserved model of a grouse, probably a Spruce grouse, *Falcipennis canadensis*, circa 1890, in an oak glazed case, 62cm high, 65cm wide, 28cm deep together with a preserved model of a wading bird, possibly a species of rail, beneath a glass dome, on an oval base, 31cm high

£200-300



144 Y

A late Victorian oak and glazed mixed case of preserved British birds, circa 1890, including pheasant, snipe, jay, magpie, lapwing, kingfisher and others, 141cm high, 138cm wide, 48cm deep

£600-800

The Collection of Countess Veronica Munster (lots 145-201)

Countess Veronica Munster was born Veronica Naylor-Leyland in 1932, only daughter of Sir Albert Edward Herbert Naylor-Leyland, and Marguerite de Belabre. She grew up in their family home, Nantclwyd Hall in Wales, as well as Hyde Park House in Albert Gate, Knightsbridge.



(Ernst Friedrich Herbert Graf zu Münster)

When Veronica married Count Peter Munster in 1955, they moved to Germany and spent their married years restoring his ancestral home, Schloss Derneburg, near Hanover. Schloss Derneburg has a 1000-year history with a rich tapestry of uses and occupants. In 1815 the secularized monastery and its estate was given by King George III to Ernst Friedrich Herbert Graf zu Münster for his contributions at the Congress of Vienna, thus establishing it as the Munster family seat. Ernst Friedrich, as well as his son, Georg Herbert commissioned the renowned Hanoverian architect Georg Laves to redesign the aged monastery into a stately home, as well as landscaping the grounds in the style of a grand English country house. Veronica, Peter and their children lived in Derneburg in apartments decorated in English style, furnished with the collections amassed by their ancestors. In 1975 Schloss Derneburg was sold and Countess Munster moved to London where she resided until her death in 2019. Many of the items in the sale came with her from Derneburg. Schloss Derneburg is now an art museum owned by the Hall Art Foundation.

The Munster's Anglo-German background plays a significant role in the curation of their collection that has developed over nearly two centuries, with many of the works representing artists and furniture makers from both countries. The young Ernst Friedrich accompanied the sons of George III on an extensive grand tour of southern Europe, awakening an affinity for international styles that the family has continued to nurture, which is reflected in the exhibited collection. He is known to have collected intaglios and the Italian specimen marble table top, lot 189, is believed to be a souvenir of these travels.

As a painter himself, Ernst Friedrich was also a personal friend and student of the artist Johann Heinrich Wilhelm Tischbein, thus establishing a strong relationship with the arts that would prosper for generations to follow. The portraits of 'Commandeur von Munster' (Ernst Friedrich Herbert Graf zu Münster), lot 147, and Catarina de Medici, lot 148, probably originated from the time of their friendship.

Veronica's mother-in-law, Countess Peggy Munster neé Ward, was an early partner with Sibyl Colefax in her interior decorating business before her marriage to Peter's father, Count Paul Munster.



3 Queen's Gate Place Mews SW7



145

145

Ernst Friedrich Herbert zu Munster (German 1766-1839)

View from the Ziegelberg (Brick Hill) onto Derneburg Castle

Oil on canvas laid down on board

Signed and inscribed lower right, further inscribed and dated 1818 to label verso

76.5 x 135.5cm (30 x 53¼ in.)

Schloss Derneburg's history dates almost a thousand years. Originally a fortified castle it became a religious sanctuary in 1130. Over the centuries it served the Augustinian, Cistercian and finally Lutheran orders, as a nunnery and later a monastery. After the defeat of Napoleon in 1815, Schloss Derneburg and its estates became part of the Kingdom of Hanover, under the rule of George III of England. He gifted them to Ernst Friedrich Herbert Graf zu Münster in appreciation of his services to the crown at the Congress of Vienna. As ministers to both George III and George IV members of the Munster family became increasingly anglicized over the following 150 years but retained ownership of Schloss Derneburg from 1816 until 1974 when it was sold to the painter Georg Baselitz by Count Peter Munster, Countess Veronica's husband from 1955 -1975. It has been the home of the Hall Art Foundation since 2006.

£1,200-1,800



146

146
German School (18th century)
Returning from the hunt, Derneburg landscape
Watercolour and pencil
40 x 50.5cm (15½ x 19¾ in.)

£300-500



147

147
Attributed to Johann Heinrich Wilhelm Tischbein (1751-1829)
Portrait of Ernst Friedrich Herbert Graf zu Münster (1766-1839),
Pencil

Ernst Friedrich Herbert Graf zu Münster studied law at Göttingen University until 1788 with the three youngest sons of George III. From 1793 - 1798 he studied art history in Italy as the official companion of Prince Augustus Frederick, Duke of Sussex, son of George III, who he subsequently accompanied back to England. He is known to have collected intaglios (such as lot XX) and the marble table top, (lot XX) is likely also a souvenir of these travels. He counted the artist Wilhelm Tischbein among his friends at this time.

£400-600



148

148
Johann Heinrich Wilhelm Tischbein (German 1751-1829)
Donna Catarina de Medici, Napoli 1797
Pencil
Signed, inscribed and dated 1797 (lower edge)
37.5 x 28cm (14¾ x 11 in.)

£1,500-2,500



149

149
Attributed to Johann Heinrich Wilhelm Tischbein (German 1751-1829)
Head study, purported to be a portrait of Lady Hamilton
Black chalk and pencil on buff paper
31 x 27cm (12 x 10½ in.)

£1,000-1,500



150

150
French School (early 19th century)
Still life of flowers in a vase
Oil on canvas laid to board
69 x 54cm (27 x 21¼ in.)

£500-800



151

151
Julius Elias Kasten
(German 1774-1855)
*Still life of roses, together with a
bird's nest*
Watercolour and bodycolour
Signed and inscribed Hanover
(lower centre)
57 x 47cm (22¼ x 18½ in.)

£300-500



152

152
A Continental gilt wood
wall mirror, late 18th/
early 19th century, the
foliate carved frame
with mirrored panels,
148cm high, 90cm wide

£1,500-2,000

153
A South German walnut
commode, 18th century,
81cm high, 123cm wide,
54cm deep

£300-500



153



154

154

A pair of French Breccia marble and gilt metal mounted ornamental urns, 19th century, each ovoid body mounted with a fircone finial and beaded bands, and raised on waisted circular socles and square section plinths, 26cm high overall

£250-350

155 Y

A Continental elm and ebony inlaid side table, probably North German, circa 1820, with frieze drawer 78cm high, 83.5 wide, 58 cm deep

£300-500

156

A pair of North European elm open armchairs, 19th century

£200-400



155



156



157

157

A German porcelain composite leaf-shaped part dessert service, late 19th century, comprising: a pair of round dishes and possible covers and nine various leaf-shaped dishes in sizes, four leaf-shaped dishes with a Berlin style septre mark

£600-800

158

A North European ash and elm silver table in 18th century style, 19th century, the figured top with raised moulded edge above a plain frieze and carved cabriole legs, 71cm high, 80cm wide, 58cm deep

£800-1,200



158



159 (part lot)



159

A set of eight Chinese Export watercolours on silk paintings of birds, mounted framed and glazed in later bamboo applied frames, each approximately 35 x 43cm overall

£500-700



160

160

A Chinese black and gilt lacquered chinoiserie painted work table, mid 19th century, the lid enclosing a fitted interior with compartments, 71cm high, 65cm wide, 45cm deep

£300-500



161

161

A Chinese Export black lacquered and parcel gilt and floral painted games table, mid 19th century, 75cm high, 101cm wide, 61cm deep

£500-800

162

A Chinese Export black lacquer and gilt chinoiserie decorated cabinet on stand, first half 19th century, decorated throughout with traditional village scenes, the arched cabinet with a pair of panel doors opening to an arrangement of small drawers and pigeon holes around a pair of sliding pierced panel doors, the two tier stand with spirally turned supports, the lower tier with a pierced apron and shaped bracket feet, 140cm high, 51cm wide, 34cm deep

£1,500-2,000



162



163

163

A pair of gilt wood and composition wall brackets in 18th century taste, 19th century, the shaped platform above fern leaf supports, 35cm high, the platform 32.5cm wide, 24cm deep

£300-500

164

A George III mahogany chest on chest, circa 1780, with three short and three long drawers flanked by fluted canted corners, the base with three further long drawers, 181cm high, 114cm wide, 57cm deep

£500-800



165

165

A George III mahogany tray top night commode, circa 1780, 79cm high, 52cm wide, 42cm deep

£200-300



164

166

A George III giltwood wall mirror, circa 1765, possibly Irish, the rectangular plate within a foliate C-scroll and trailing foliage carved and pierced frame, surmounted overall by a pierced C-scroll and acanthus cresting, 134cm high, 65cm wide

£1,500-2,500

167

A walnut and olivewood oyster veneered chest of drawers, mid 18th century, possibly a Huguenot maker, 95cm high, 111cm wide, 54cm deep

£1,500-2,500



166



167



168

168
An oval wall mirror, circa 1900, with shell encrusted frame
68cm high, 54cm wide,

£150-250

169

A George III black lacquered longcase clock case, circa 1780, 231cm high, with an arched brass dial with Roman numeral chapter ring and moonphase signed Joseph Wood, Scarborough to the chapter ring, now with a later quartz movement, together with an eight-day movement with rack and snail and anchor escapement

Joseph Wood is recorded in Baillie, G.H. 'Watchmakers & Clockmakers of the World' as working in Scarborough circa 1760-90, p.348

£400-600



170

170
A Regency stained beech and gilt metal mounted bergere armchair, early 19th century, with removable squab cushion

£300-500



169



171

171

A Regency black lacquered and gilt chinoiserie decorated desk, circa 1815, decorated with figures, animals and village scenes throughout, the tooled leather inset rectangular top with raised section to rear edge, incorporating two hinged panels opening to an arrangement of pigeon holes and shelves, above three frieze drawers, on S-scroll legs joined by shaped peripheral stretchers centred by a flambeau terminal, on acanthus carved pad feet, 93cm high, 149cm wide, 77cm deep

£1,500-2,000



171 (detail)

172

172

An Heriz carpet, early 20th century approximately
454 x 351cm

£400-600





173
Jeremy Holt (20th century)
Portrait of a girl wearing a blue headband
Oil on board
Inscribed to the board (verso)
375 x 30cm (14¾ x 11¾ in.)

£80-120



174 (part lot)

174
A decorative oil on papier mache oval, "Still life of flowers with birds", possibly originally the base to a tray, 62 x 50cm (24 3/8 x 19 3/4 in.); together with two watercolour studies, Rose Purity by Margaret Birkenhead, 28 x 22cm; and A study of a blue Iris, oval, 34 x 24.5cm (3)

£100-200



175 (part lot)

175
A composite set of sixteen decorative prints, depicting French ladies, all reproductions of 18th century prints, in matching giltwood frames, 43 x 37cm, together with a set of twenty prints of various Viennese scenes, in satinwood and ebonised frames, 26 x 32cm overall

£80-120

176

James Ward (British 1769-1859)
Portrait of a young girl carrying a basket
Watercolour
Signed with initials (lower right)
11.5 x 8.5cm (4½ x 3¼ in.)

£300-500

177

A Drost (Continental early 19th century)
A pair of 'fancy' pigeons- possibly Capuchine
Watercolour
Signed and dated AD VIV
26.5 x 38cm (10¼ x 14¾ in.)

And an early 19th century featherwork and watercolour folk art picture by Miss Lowther, inscribed to label to reverse "Miss Lowther's own doing to Caroline, April 21st", 34 by 41cms.

£100-200



176



177 (part lot)

178

A set of six Continental botanical watercolour studies, early 19th century, unsigned but with Latin genus titles, various page details, images variously sized but Geranium 43.5 by 28cms, all set within printed borders and similarly framed in faux burr wood glazed frames 61 x 44cm overall

£150-250



178 (part lot)



179 (part lot)

179
British School (19th century)
A collection of 15 botanical studies
Watercolour
Each inscribed and numbered
Each 60.5 x 45cm (23 3/4 x 17 3/4in.) including frame (15)

£800-1,500



180

180Y

A matched pair of Victorian tulipwood, parquetry and gilt metal mounted two tier oval etageres, in Louis XVI style, late 19th century, in the manner of Donald Ross, the undersides of the bases stamped '209' and '206' respectively, each 83cm high, the lower tiers 42cm wide, 30cm deep

Donald Ross (1830-1916) was one of the most celebrated Victorian furniture makers. Located at 13 Denmark Square, Soho, his firm supplied furniture to some of the most important retailers of the period including Edwards & Roberts, Gillows and John Watson of Oxford Street, as well as exhibiting in the 1851 Great Exhibition.

His work is characterised by its distinctive dot and trellis parquetry (as seen on this lot), a technique Ross developed in the fourth quarter of the 19th century inspired by the work of renowned 18th century Parisian makers such as Jean-Henri Riesener and Pierre Garnier.

For a pair of tables by Ross incorporating dot and trellis parquetry are currently held at the Victoria & Albert Museum in London (W.47:1, 2-1911, W.47A&B-1911).

£1,200-1,800



180 (detail)

181

A Chinese *Famille Rose* Dish, Qianlong, 28.2cm; ten various Chinese *Famille Rose* plates, Qianlong, each approximately 22.5cm diameter; two Chinese *Famille Rose* dishes, Qianlong, 22.5cm diameter; a Chinese *Famille Rose* soup bowl, Qianlong, 23cm diameter; a Chinese *Famille Verte* plate, Kangxi, 22cm diameter and six various Chinese Imari plates, mainly Kangxi, between 23cm and 21.5cm wide (21)

£80-120



181



182



182

A pair of Cantonese *Famille Rose* vases, circa 1880, each painted with two panels of figures on the body and two on the neck, on a brightly coloured ground of fruit, flowers and birds, 34.5cm high (2)

£200-300

183

A pair of Chinese ceramic garden seats, modern, of typical barrel form, decorated in blue and white, 47cm high

£200-300



183



184

A pair of Arita porcelain blue and white fluted chargers with scalloped rims, first quarter 20th century, painted with flowering shrubs, 46cm diameter

£200-300



184

185

An assortment of mostly Dutch Delft blue and white plates and chargers, various dates 18th & 19th centuries, comprising: six small plates painted with birds perched on a fence in a stylised chinoiserie garden, 23cm diameter; a pair of 'peacock' pattern chargers with a brown-line rim, 30.5cm diameter; another pair with a bird and basket of fruit within yellow-line rim, 32cm diameter and a pair of English pearlware plates, 24cm diameter

£100-200



185



186

186

A black lacquered and parcel gilt low centre table, of recent manufacture, in Chinese taste and in the manner of examples by Mallett, 40cm high, 151cm wide, 91cm deep

£200-400



187
A pair of Carl Thieme (Potschappel, Dresden) models of parakeets in the Meissen style, circa 1900, 31cm high

£100-200

188
A group of Nymphenburg 'Frankenthal Hunt' models, various dates third quarter 20th century, comprising: three various equestrian groups and two hounds, impressed Wittelsbach shield marks and painted blue 'Carl Theodor' Frankenthal style marks, all but one dated, 19cm high and smaller

£200-300



188



189

189
An Italian specimen marble table top, late 18th/early 19th century, 107cm wide, 60cm deep, now on an associated and later simulated rosewood and parcel giltwood stand, as a low centre table, 42cm high

£600-800

190
A floral flatweave rug, first half 20th century, woven with roses and flowers, polychrome floral spandrels, approximately 218 x 189cm

£150-250



190



191

191
A framed set of 31 plaster intaglios, in the Grand Tour manner, each with gilt detailed paper wrapping and numbered, now in a modern green and gilt glazed octagonal frame, 46 by 47cm overall

£150-250



192

192
Attributed to Herman Saftleven (Dutch 1609-1685)
A study of two grindstones and a boat
Black chalk, watercolour and wash
9.5 x 15cm (3½ x 5¾ in.)

£200-300

193
A stained wood cased wall barometer, with inset bookplate prints of various insects, 89cm high

£150-250



193

194 λ
Adrian Maurice Daintrey (British 1902-1988)
The Mall
Ink and watercolour
Signed, titled and dated *July 1952*
(along lower edge)
24.5 x 35cm (9½ x 13¾ in.)

£300-500



194



195

195 Y
A Victorian tortoiseshell tea caddy, circa 1860, of rectangular form, the lid with silver plated rectangular tablet, the interior vacant, 12cm high, 17cm wide, 9.5cm deep

£100-200

196
A nest of three mahogany and satinwood banded tables, early 20th century, each with an inset glass top, on stained beech supports joined by stretchers, the largest table 68cm high, 45cm wide, 33cm deep

£150-250



196



197

197 λ
Josselin Reginald Courtenay Bodley
(British 1893-1974)
Mill house
Oil on canvas
Signed and dated 33 (lower right)
44.5 x 37cm (17½ x 14½ in.)

Provenance: Leicester Galleries, London

£500-800



198

198 λ
Josselin Reginald Courtenay Bodley
(British 1893-1974)
Church
Oil on canvas
Signed and dated 32 (lower left)
54 x 37cm (21¼ x 14½ in.)

Provenance: Leicester Galleries, London

£500-800



199

199
Three Wemyss (Griselda Hill) biscuit jars and covers, similarly decorated with pink cabbage roses and foliage, the covers inscribed Biscuits, 11cm high

£100-150



200

200
Two similar Wemyss pottery (Griselda Hill) models of large pigs, last quarter 20th century, one painted with black patches, the other thistles, script marks, approx. 42cm in length

£400-600

201
Six various Wemyss (Griselda Hill) and Plichta small models of pigs, various dates 20th century, variously decorated, script and printed marks, circa 15cm in length

£300-400



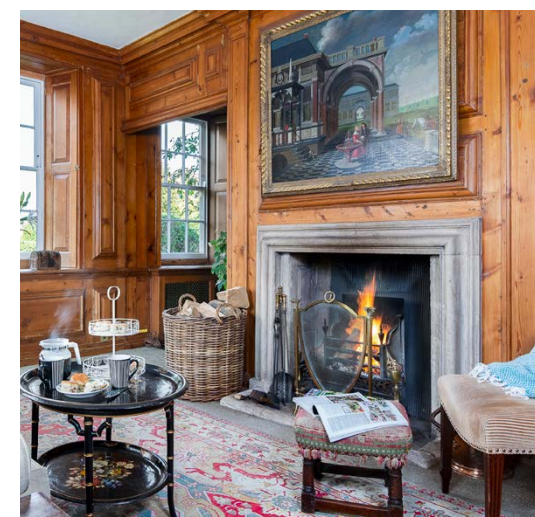
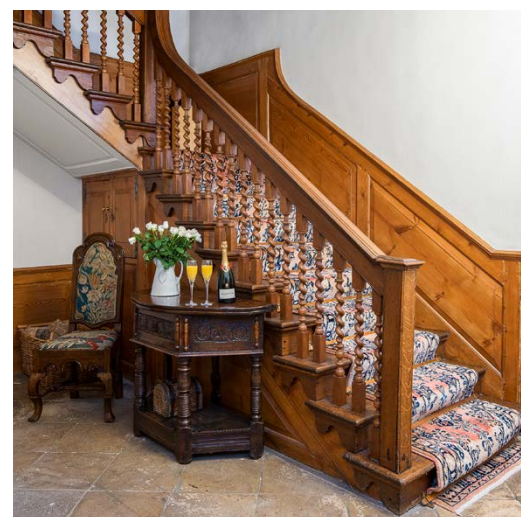
201



Other Properties to include selected contents from
The Manor House, Stanford in the Vale, Oxfordshire



Among the following lots are selected items from a Private Collection,
previously forming part of the furnishings of The Manor House,
Stanford in the Vale, Oxfordshire



Photography credit: Stowhill Estates & Miriam Sheridan



202

202
A mahogany and parcel gilt fret framed wall mirror in George III style, 19th century, with pierced central motif, 68cm high, 45cm wide

£200-300

203
A George III solid chestnut tripod occasional table, late 18th century, 72cm high, 81cm diameter

£300-400



203

204
An Heriz runner, approximately 349 x 111cm

£500-800



204

205
A Meissen model of a shepherd with a sheep-dog and sheep, mid 18th century, modelled holding a wreath, blue crossed swords mark verso, 25,5cm high

£300-500

206
A George III mahogany side table, circa 1790, 74cm high, 103cm wide, 49cm deep

£1,000-1,500



205



206



207

A painted plaster bust of a maiden in Renaissance style, probably 19th century, simulating terracotta, portrayed with serene visage declined a little to sinister, her eyelids half closed, her hair falling in tresses either side of her neck to her décolleté, her shoulders covered by thicker drapery; above an integrally modelled waisted socle, 39.5cm high, 40cm wide

£300-500

208

An oak chest or small coffer, mid 18th century, the double hinged top with brass handles, raised on bracket feet, with fitted interior, 59cm high, 60cm wide 37cm deep, together with an oak close stool, late 17th century, the hinged top above three dummy drawers to the front, 49cm high, Width 48cm, 42cm deep



208



Provenance: From the estate of Jacqueline Diffing (1920-2020), Châteauneuf-Grasse, French Riviera.

£400-600



209

209

An oak plank chest or coffer, mid 17th century, bearing stamped or branded ownership initials 'IR' to the front panel, 61cm high, 98cm wide, 36cm deep

Provenance: Property from The Manor House, Stanford in the Vale

£300-400

210

A patinated bronze portrait bust of Charles I, late 19th century, portrayed gazing slightly to sinister, mounted on a waisted socle and parcel gilt base with trailing foliate motifs, 24cm high

£200-300

211

A William & Mary oak side table, circa 1690, 72cm high, 89cm wide, 59cm deep

£800-1,200



211



210

212

An oak stool, mid 18th century and later, with tapestry covered drop-in seat, 39cm high, 51cm wide, 39cm deep

Provenance: Property from The Manor House, Stanford in the Vale

£300-500



212



213

213
A set of Regency steel fire tools, early 19th century, comprising shovel, poker and tongs, cast with rounded urn knobs

£400-600



214

214
A brass and chrome fire grate in George III style, 20th century, 59cm high, 67cm wide, 32cm deep

Provenance: Property from The Manor House, Stanford in the Vale

£300-500

215
A brass and leather upholstered club fender, late 20th century and manufactured by Robin Gage, with leather rests on columnar supports and chamfered plinth base, external measurements: 53cm high, 190cm wide, 61cm deep; internal measurements: 168cm wide, 58cm deep

£300-500



215

216
A pair of Regency mahogany hall chairs, circa 1820, in the manner of designs recorded by Loudon, each 84cm high, 39.5cm wide, 50cm deep

Two very similar models of the back of this hall chair is illustrated in the Pictorial Dictionary of British 19th Century Furniture Design, pages 237 & 238, with illustrations taken from Loudon, dated 1833.

£800-1,200



216



217

217
A fiddle back mahogany nest of quartetto tables, late 19th century, each with a book-matched veneered top above turned supports and uniting stretchers, the largest table 64cm high, 51cm wide, 29cm deep

£400-600

218
A George IV mahogany Canterbury, circa 1825, 49.5cm high, 47cm wide, 34cm deep

Provenance: Property from The Manor House, Stanford in the Vale

£200-300



218



219

219
A George III mahogany chest on chest, circa 1780, the dentil moulded cornice above two short and six long graduated drawers, flanked by stop fluted canted angles, on shaped bracket feet, 182cm high, 115cm wide, 58cm deep

£1,000-1,500

220

A George III mahogany dressing mirror, circa 1800, with angle adjustable mirror plate, 58.5cm high, 46cm wide, 19cm deep

£400-600



221

222

A George III mahogany bedside commode, circa 1780, 80cm high, 56cm wide, 48cm deep

£700-1,000



220

221

A George III mahogany chest of drawers, circa 1780, 94cm high, 96cm wide, 53cm deep

£800-1,200



222



223

223

An Italian carved and painted wood six light chandelier in Baroque taste, 20th century, with craquelure finish overall, the scrolled and cavetto moulded arms hung with tassels, issuing around a central baluster stem, with lobed and foliate terminal, approximately 114cm high including hanging loop, 90cm diameter

£300-500



224

224

A William & Mary oak side table, circa 1790, 72cm high, 75.5cm wide, 49.5cm deep

£400-600



225

225

A carved walnut and upholstered stool, early 18th century and later, the cabriole legs each with acanthus carved knees and terminating in hoof feet, 45cm high, 58cm wide, 52cm deep

£300-500

226

An Aubusson tapestry fragment, with crane and Gothic pavilion, approximately 180cm high, 66cm wide

£300-500

227

An oak joint stool or stand in late 17th century style, with moulded rectangular top on turned legs united by stretchers, 63cm high, 57cm wide, 32cm deep, together with a walnut torchere stand in William & Mary style, 19th century, 90cm high (2)

Provenance: Property from The Manor House, Stanford in the Vale

£200-300



227



226

228

An oak coffer, late 17th century, 50cm high, 100cm wide, 39cm deep

Provenance: Property from The Manor House, Stanford in the Vale

£500-800



228



229

229

A Victorian sampler, undated, probably mid 19th century, by Charlotte Jane Kerry Aged 11 Years, with verse *Where Wisdom is to be Found* above central field with birds, insects, floral and foliate motifs, now glazed in a later burr yew effect laminate frame, 46 x 38cm overall

The England and Wales Birth Registration Index, 1837-2008, gives a result for a Charlotte Jane Kerry, born 1839 in Edmonton, Middlesex, she would have been 11 in 1850 which would tally with the probable date of this sampler.

£200-300



230

230

A group of red and gilt painted tinware (toleware) desk items, late 19th century, comprising a rectangular box and hinged cover, 9cm high, 14cm wide, a cylindrical box and hinged cover, 9cm high, 13cm diameter, and a small tray, 29 x 22cm

Provenance: Property from The Manor House, Stanford in the Vale

£100-150



231

231 Y

A Victorian painted and mother of pearl inset papier mache two tier table, circa 1880, 51cm high, 75cm wide, 60cm deep

Provenance: Property from The Manor House, Stanford in the Vale

£200-300

232 Y

A Swiss rosewood and tulipwood banded musical box, Nicole Freres, circa 1890, playing a choice of twelve airs via a pinned brass cylinder and tuned steel combs, the movement driven by a single wound spring drum mounted on a gilt iron bed beneath a hinged glass internal cover, with selection levers to the side, the combs stamped by the maker, the lid with applied printed and hand written tune sheet also printed for the maker and inscribed Gme. 1882 and serial numbered 45620, the tunesheet also bearing Keith Prowse & Co., Cheapside, Londrés retailer's name, the case of typical rectangular form with marquetry inlaid lid and lid, and with flanking handles, 22cm high, 65cm wide, 31cm deep

£800-1,200



232

233

A Victorian walnut and upholstered sofa, circa 1890, of Chesterfield type and in the manner of Howard & Sons, 74cm high, 195cm wide, 83cm deep

£700-1,000



233



234

234

A large Dutch Delft blue and white shaped oval plaque, Makkum, 19th century, painted with figures skating on a frozen river above an elaborate shell cartouche, moulded with a marbled frame, un-marked, 59cm high

Cf. Rob Michiels Auctions, European Ceramics, 3/2/18, lot 361 for a polychrome example with an almost identical skating scene.

Provenance: From a deceased Surrey estate and thence by decent.

£300-400



235

235

Two similar Dutch Delft blue and white shaped oval wall-plaques, probably Makkum, 19th century; one with a fisherman in a river landscape, the other with a farmyard scene, 61cm x 52.5cm

Provenance: From a deceased Surrey estate and thence by decent.

£300-500



236

236

A Dutch Delft blue and white horizontal wall-plaque, probably Makkum, 19th century, painted with shipping on the Meuse near Oostendam, inscribed *Het Dorp Oostendam aan de Maas*, overglaze painted N.1 verso, within frame-moulded border, 45cm x 55cm

Provenance: From a deceased Surrey estate and thence by decent.

£300-400



237

237

A pair of Dutch Delft polychrome shaped oval horizontal wall-plaques, possibly Makkum, 19th century, each painted in shades of blue, ochre, green and manganese with canal scenes, within a moulded frame border, approx. 55cm x 46cm

Provenance: From a deceased Surrey estate and thence by decent.

£500-700





238

238

A carved giltwood wall mirror, in George III style, of recent manufacture, 150cm high, 75cm wide

Provenance: Property from a Private Collection, Herefordshire

£300-500

239

A George III mahogany serpentine serving table, circa 1780, with two blind frieze drawers, 79cm high, 138cm wide, 67cm deep

£1,000-1,500



239

240

A George III mahogany cellaret, circa 1800, the hinged lid enclosing a divided interior, and with a frieze drawer, 76cm high, 42cm wide, 33cm deep

£300-400



241

242

242

A Hamadan rug, approximately 189 x 156cm

Provenance: Property from The Manor House, Stanford in the Vale

£200-300



240

241

A George III mahogany and inlaid chest of drawers, circa 1800, 92cm high, 91cm wide, 44cm deep

Provenance: Property from The Manor House, Stanford in the Vale

£300-500





243

243

A George III satinwood, inlaid, and rosewood strung knife box, circa 1790, the hinged lid enclosing a vacant interior, 37cm high, 22cm wide, 27cm deep

£200-300

244

A George III satinwood and mahogany side table, circa 1790, of semi elliptical outline, 74cm high, 99cm wide, 45cm deep

£800-1,200



244



245

245Y

A pair of George III satinwood, rosewood banded, and marquetry inlaid corner cabinets, late 18th century, each with shelved upstand, the panel door inlaid with musical motifs and enclosing a shelf, 135cm high

£2,000-3,000





246

A pair of French or English gilt bronze and moulded glass mounted lustre candle holders, mid-19th century, with birds perched on tree trunks, on engine milled circular bases, 27cm high

£250-350

247

A flame mahogany and glazed display cabinet, 19th century, with black tooled leather inset top above the bevelled glazed doors enclosing a pair of shelves, 99cm high, 104cm wide, 49cm deep

£800-1,200

246



247

248

A late Victorian or Edwardian mahogany model of a four poster bed, late 19th/early 20th century, of doll's proportion, with hangings and drapes, 54cm high, 48cm long, 35cm deep, together with a fitted muslin protective cover

£200-300



248



249

249 Y

A William IV rosewood duet stand, circa 1835, the dual angle adjustable rests above a turned support and triform base, 123cm high, 43cm wide

£300-500

250

A damask button upholstered sofa, in Victorian style, 20th century and later, of kidney outline, 84cm high, 171cm wide, approximately 91cm deep overall

Provenance: Property from a Private Collection, Herefordshire

£300-500



250



251

251

A French Sevres-style porcelain and gilt-metal mounted clock garniture, late 19th century, the clock case fitted with an eight-day two-train movement, the case surmounted with an urn finial, 40cm high; and a pair of urns ensuite, 31.5cm high

£400-600



252

252 Y

A pair of French mahogany, rosewood and gilt metal mounted book stands, late 19th century, each 73cm high, 64cm wide, 20cm deep

Provenance: Property from a Private Collection, Herefordshire

£600-800



254

254 Y

A French tulipwood and rosewood marquetry side table, circa 1880, the hinged top lifting and the frieze drawer pulling out to reveal a mirror above a bird's eye maple veneered divided interior, 72cm high, 59cm wide, 43cm deep

Provenance: Property from The Manor House, Stanford in the Vale

£500-800

253

A pair of French gilt bronze twin light wall appliques in Louis XVI style, second half 19th century, the ribbon-tied backplates issuing twin scrolled and acanthus cast branches, above further foliage and grapes, later wired for electricity, 66cm high, 31cm wide, 18cm protuberance

Provenance: Reputedly, Crowthers, North End Road, London, before 1975
Ray Mill House, Chippenham, Wiltshire, until 1995,
Thence by descent, until sold
Woolley & Wallis, 11 January 2017, lot 560
(£2,500)
After which, Private Collection, The Manor House, Stanford in the Vale, Oxfordshire

£600-800



253



255

255

A walnut miniature coffer, late 17th century and later, with linen fold panels to the front, 13cm high, 25cm wide, 12cm deep

Provenance: Private Collection, The Manor House, Stanford in the Vale, Oxfordshire

£200-400

256

A Charles II oak chest of drawers, circa 1670, 89cm high, 102cm wide, 52cm deep

£300-500



256



257

257

A William and Mary oak wine table, circa 1690, 51cm high, the octagonal top 34cm wide, 33cm deep, together with an oak stool table, 17th century and later, with gateleg action to support the hinged top, 52cm high, 45cm wide, 51cm deep (open) (2)

Provenance: Property from The Manor House, Stanford in the Vale

£200-300



258

A Spanish brass mortar, probably 16th/17th century, the everted circular section body cast with vertical buttressing and scallop shells in relief, 7cm high, 12cm diameter; and two other, similar Southern European brass mortars, one with scallop shells and lug handles, 12cm diameter; the other with amorini masks and protruding handles; presented with three pestles

Provenance: Property from The Manor House, Stanford in the Vale

£150-250



258



259

259

An oak dresser base, incorporating some 17th century elements, 83cm high, 183cm wide, 55cm deep

£1,000-1,500

260

A Tabriz carpet, approximately 380 x 284cm

£700-1,000

260





261

261 Y

A Regency rosewood and simulated occasional table, circa 1820, 74cm high, the top 41cm square

£500-800



262

262

A Regency mahogany and line inlaid bowfront sideboard, circa 1820, 80.5cm high, 104cm wide, 56cm deep

£1,000-1,500



263

263 Y

A Regency mahogany and ebony strung wine cooler or jardinière, circa 1815, of canted rectangular form and with removable linings, 45cm high, 75cm wide, 49cm deep

Provenance: Property from a Private Collection, Herefordshire

£800-1,200



264

264

A selection of English clear and coloured glass, various dates late 18th and early 19th centuries, comprising: a set of twelve blue glass cylindrical beakers, 7cm high; a pair of engraved rummers with moulded pedestal bases, 15cm high; and a set of four engraved facet-stemmed wine glasses, 13cm high

£200-300

265

Six similar opaque-twist wine flutes, circa 1760, of drawn trumpet form, the stems filled with spiral threads, on conical feet, circa 19-19.5cm high

£600-800



265



266

266Y

A calamander and tulipwood banded book trough, second quarter 19th century, the raised sides above a drawer fitted for stationary, 22cm high, 35cm wide, 24cm deep

Provenance: Private Collection, The Manor House, Stanford in the Vale, Oxfordshire

£200-300

267

A George IV figured walnut, marquetry and zebrawood crossbanded centre table, circa 1830, the circular top centred by a floral marquetry and bird motif, on a turned and lappet moulded stem, the shaped tri-form base on turned bun feet and concealed castors, 70cm high, the top 69cm diameter

£800-1,200



267

268

A George IV mahogany and upholstered X-frame stool, circa 1830, in the manner of Gillows, 42cm high, 42cm wide, 42cm deep

£400-600



268

269

A Regency mahogany dressing mirror, circa 1815, attributed to Gillows, 55cm high, 72cm wide, 28cm deep

£600-800

270Y

A late regency rosewood occasional table, circa 1820, 72cm high, the top 47 x 54cm

£500-800



269



270

271Y

A Regency mahogany wardrobe, circa 1820, in the attributed to Gillows, with solid turned ebony handles, the doors opening to a hanging rail and hooks, 175cm high, 116cm wide, 50cm deep

£800-1,200



271



272

A collection of various tapestry cushions, comprising; three various cushions incorporating various antique tapestry fragments on a velvet ground, the largest 48 x 40cm, a similar cushion with tasselled fringing, 31cm square, an abstract woven cushion, 41cm square, a long bolster type cushion, with phoenixes around a vase, 62 x 24cm, and a silver tread applied cushion, 35cm square, together with a table runner, 58 x 22cm, and a pair of table mats, 27 x 14cm

Provenance: Property from The Manor House, Stanford in the Vale

£200-300

273

A collection of various tapestry cushions, panels, fragments and carpets, various dates, comprising; a set of four needlework seat 39 x 50cm, a pair of similar needlework cushion covers, 48 x 54cm, a needlework panel with silver thread fringes, 52 x 37cm, an embroidered textile panel, probably Turkish, 95 x 38cm, a circular needlework and velvet backed panel, 32cm diameter, a triptych panel incorporating antique carpet fragments, probably North West Persian, 157 x 44cm, another European hooked runner, 215 x 64cm, a woolwork runner with floral motifs, 232 x 65cm, a yellow entre-fenetre, with label for John Kiel, Bristol, 234cm long, 84cm wide, a pair of green cushions, 44 x 26cm, a yellow ground cushion with central panel 104 x 48cm, and a panel to match, 122 x 28cm

Provenance: Property from The Manor House, Stanford in the Vale

£200-300



274

A Chinese rectangular woven rug or panel, approximately 89cm high, 94cm wide together with a Persian shaped oval rug, with long fringes, approximately 120 x 130cm (excluding fringing)

Provenance: Property from The Manor House, Stanford in the Vale

£200-300



275

275

A collection of various cushions, comprising; a pair of seat cushions, 47 x 55cm, and a scatter cushion en-suite, 41cm square, a pair of cushions with gold and silver thread, 40cm square, a seat cushion with tassel fringing, 50cm square, a modern cushion with stumpwork type decoration, 37 x 43cm, and seven various tapestry panel cushions, together with a needlework panel, with central courting couple, 59 x 67cm

Provenance: Property from The Manor House, Stanford in the Vale

£400-600

276

A collection of various verdure tapestry and other tapestry cushions and fragments, comprising; a group of five cushions, the largest 60 x 40cm, a pair of drop in seats, with timber frames, 34 x 33cm, a pair of table runners, 106 x 44cm, a tapestry panel, 148 x 50cm, a fragment with silver thread fringing, 59 x 22cm, and a further panel with yellow bound edges, 87 x 36cm

Provenance: Property from The Manor House, Stanford in the Vale

£400-600



276



277

277
A Hicks, Meigh & Johnson Stone China Chinoiserie part dinner service circa 1835, printed in blue and painted in colours and gilt with an urn issuing flowers in a stylised Chinese garden, comprising: fourteen soup plates; twelve breakfast plates; twenty seven dinner plates; twelve oval serving dishes in size; a drainer; three vegetable tureens and covers; a two-handled fruit bowl; a soup tureen cover and stand; a sauce tureen cover and stand; a sauce tureen and cover and two sauce tureens without covers, printed Royal Coat

of Arms mark, eighteen similar Stone China plates by the same maker and a Derby oval dish

£600-800



278



279

278
An early Victorian mahogany extending dining table, circa 1850, with one additional leaf insertion, 74cm high, 254cm long (fully extended), 125cm wide

Provenance: Property from a Private Collection

£500-700

279
A Kashan rug, approximately 216 x 131cm

£500-700

280
A Victorian giltwood and composition overmantel mirror, second half 19th century, with central tired rope twist decoration and tassels to the lower angles,

£400-600



280

281
A set of six William IV dining chairs, circa 1835, in the manner of Gillows, each with a drop in seat, and on wythen and lobed legs

£300-500



281



282

282
A Regency mahogany and line inlaid sofa table, circa 1820, 72.5cm high, 152cm wide (when open), 69cm deep

Provenance: Property from The Manor House, Stanford in the Vale

£200-300



283
A George I walnut and feather banded travelling writing box, circa 1720, the hinged fall enclosing a fitted interior, and with a long drawer, the base inscribed K.P to the underside, 21cm high, 42cm wide, 30cm deep

Provenance: Property from The Manor House, Stanford in the Vale

£800-1,200

284
A George II walnut and feather banded kneehole desk, circa 1735, with caddie top, 70.5cm high, 76cm wide, 47cm deep

For a desk of closely related form, see Christie's, London, Important English Furniture, 7th June 2007, Lot 72 (£18,000).

Provenance: Property from The Manor House, Stanford in the Vale

£800-1,200



284

285
A George II mahogany side table, circa 1750, 71cm high, 76cm wide, 46cm deep

£800-1,200



285

286
A pair of walnut and beech armchairs in George I style, circa 1900, with 'shepherds crook' pattern arms, each 96cm high

£500-800



286



287

287
A Bokhara rug, approximately 203 x 139cm

Provenance: Property from The Manor House, Stanford in the Vale

£200-300





288

288
A pair of large carved, stripped cedar columns, of ionic order, each 279cm high

Provenance: Previously from a Private Collection

£1,000-2,000



289

A George III mahogany and brass bound bucket, circa 1780, of navette shape and coopered construction, 36cm high, together with a similar jardinière, of oval form and with twin carrying handles, 23cm high, 48cm wide

Provenance: Property from The Manor House, Stanford in the Vale

£300-500



289

290

An iron and brass fire grate in George III style, 19th century, with urn finials and pierced panels, 71cm high, 71cm wide, 36cm deep

Provenance: Property from The Manor House, Stanford in the Vale

£300-400



290

291

A gilt brass and faux leather upholstered club fender, late 20th century, the upholstered rests above square section and twist supports and U-shaped front, on an oak plinth base, external measurements: 57cm high, 224cm wide, 70cm deep; internal measurements: 206cm wide, 59cm deep

£400-600



291



292

A William IV mahogany cheval mirror, circa 1835, 159cm high, 83cm wide, 64cm deep

£1,000-1,500

292

293

A Nain carpet, part silk, approximately 442 x 301cm

£2,500-3,500

293



294

A mahogany platform dressing table, circa 1825, in the manner of Gillows, the rectangular plate above the platform with bookmatched flame mahogany veneers, 59cm high, 39cm wide, 24cm deep

£400-600



294



295



295

A pair of French patinated and parcel gilt bronze and marble mounted figural table lamps in Louis XVI style, late 19th century, each modelled with an *amorino* raising a foliate cast light fitting, raised on fluted and shaped circular section bases, 39cm high

Provenance: Property from The Manor House, Stanford in the Vale

£200-300

296

A William IV mahogany dressing table, circa 1835, 82cm high, 122cm wide, 54cm deep

£800-1,200



296



297
A Spanish walnut and oak side table, 18th century, 70cm high, 118cm wide, 49cm deep

£300-500

297



298

298
An oak cricket table, early 18th century and later, the circular top on three turned and cabriole supports united by a triangular undertier, 61cm high, 69cm diameter

£300-500

299
An oak cupboard, early 18th century, the panel moulded door opening to a shelved interior, 166cm high, 81cm wide, 48cm deep

£300-500

299

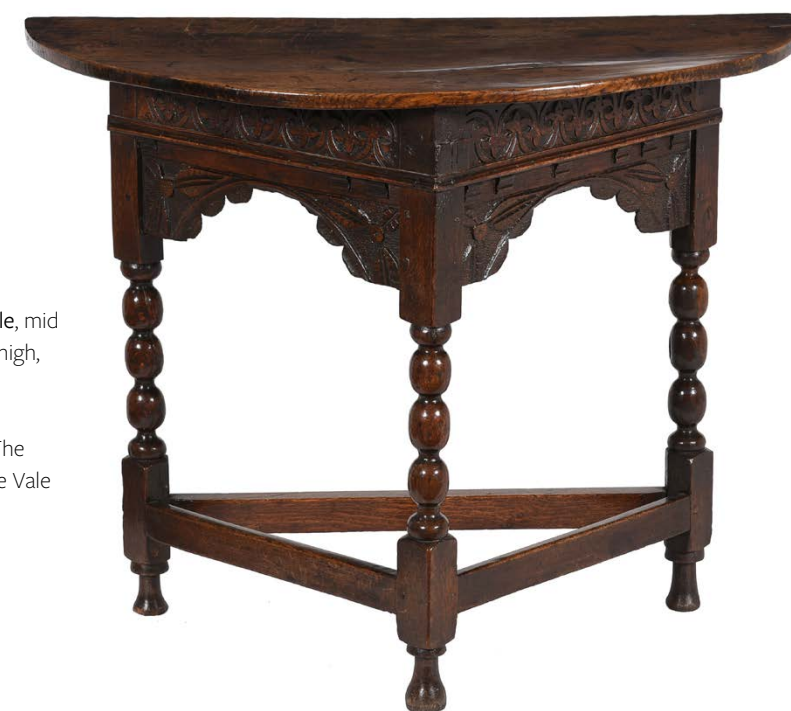


300

300
A woven tapestry, in North European 17th century style, approximately 132cm high, 214cm wide

Provenance: Property from The Manor House, Stanford in the Vale

£700-1,000



301

301
An oak side or credence table, mid 17th century and later, 74cm high, 94cm wide, 47cm deep

Provenance: Property from The Manor House, Stanford in the Vale

£700-1,000



302

A George II walnut dressing mirror, circa 1735, the bevelled plate within a gilt cut gesso sight edge and moulded frame, flanked by moulded uprights surmounted by acorn finials, on a serpentine fronted stepped plinth base housing an arrangement of drawers of varying size, on turned bun feet, 73.5cm high, 42cm wide, 19cm deep

£500-800

302

303

A George III walnut side table, circa 1780, 71cm high, 84cm wide, 47cm deep

£600-800



303

304

A George III mahogany clothes press, circa 1780, the doors opening to three sliding trays, 199cm high, 127cm wide, 58.5cm deep

£400-600

305

A George III mahogany night commode or thunder-box, circa 1780, in the form of a serpentine fronted chest of drawers, 74cm high, 69cm wide, 45cm deep

Provenance: Property from a Private Collection, Herefordshire

£400-600



305



304

306

306

A Caucasian rug, approximately 180 x 120cm

Provenance: Property from The Manor House, Stanford in the Vale

£200-300





307

307

A carved giltwood wall mirror, in 19th century style, 20th century, 130cm high, 130cm wide

Provenance: Property from a Private Collection, Herefordshire

£400-600

308

A Knole sofa, upholstered in Kilim style fabric, recently manufacture by George Smith, Tiplady pattern, 115cm high, 205cm wide, 100cm deep

£800-1,200



308

309

A Regency mahogany Davenport, circa 1820, the leather inset fall enclosing two short drawers, with bank of five graduated long drawers and opposing false drawer fronts, 89cm high, 46cm wide, 61cm deep

Provenance: Property from a Private Collection, Herefordshire

£400-600

310

A Victorian mahogany and Aubusson upholstered centre stool, circa 1850, on ring turned legs terminating in white porcelain castors, 50cm high, 149cm wide, 105cm deep

£700-1,000



310

311

311

A woven carpet, in Aubusson style, approximately 358 x 400

£250-350



309



312

312

A pair of German or Dutch repousse brass pricket candlesticks, 17th century, possibly Nuremberg, with everted and lobed drip pans, diapered stems and twist-lobed and domed circular bases, 29cm high

Provenance: Property from The Manor House, Stanford in the Vale

£150-250



313

313

A walnut and laburnum banded writing slope, late 19th century, possibly for a clerk, the steel hinges with scrolled decoration, 13cm high, 71cm wide, 49cm deep

£300-500

314

A walnut and featherbanded chest on stand, circa 1730 and later, with arrangement of three short and three long drawers, above the base with three further drawers, 137cm high, 103cm wide, 59cm deep

£700-1,000



314



315

315Y

An English bentside spinet, 18th century, unsigned name batten and seemingly undated, the casework veneered crossbanded mahogany, the lid solid mahogany with shaped brass strap hinges and oak rear fillet section, the soundboard surround veneered with ash, the key well similarly veneered, the five octave keyboard, GG to g3, with ebony naturals and ivory accidentals in the French manner, on later oak trestle stand with turned legs. Length 6ft 1in, 1185cm, 64cms deep, case 18cms high, 82.5cms high overall

£1,500-2,500

316

316

A Heriz carpet, approximately 315 x 237cm

£1,200-1,800





317
A Continental gilt brass mounted wall mirror,
late 19th century, 113cm high, 89cm wide
£300-500



318
A figural plaster relief panel in Neoclassical
taste, later 20th century, of oval form, depicting
a Bacchanal of putti, the central reclining
drunken Silenus partially draped and flanked by
two further putti, 59cm high, 70cm wide
£120-180



319
A Ziegler Mahal carpet, approximately
317 x 235cm
£600-800



320
An ebonised, gilt and polychrome
painted carved wood Blackamoor
torchere stand, 19th century, with
simulated porphyry top held aloft by
the figure, 97cm high
Provenance: Property from a Private
Collection, Herefordshire
£500-800

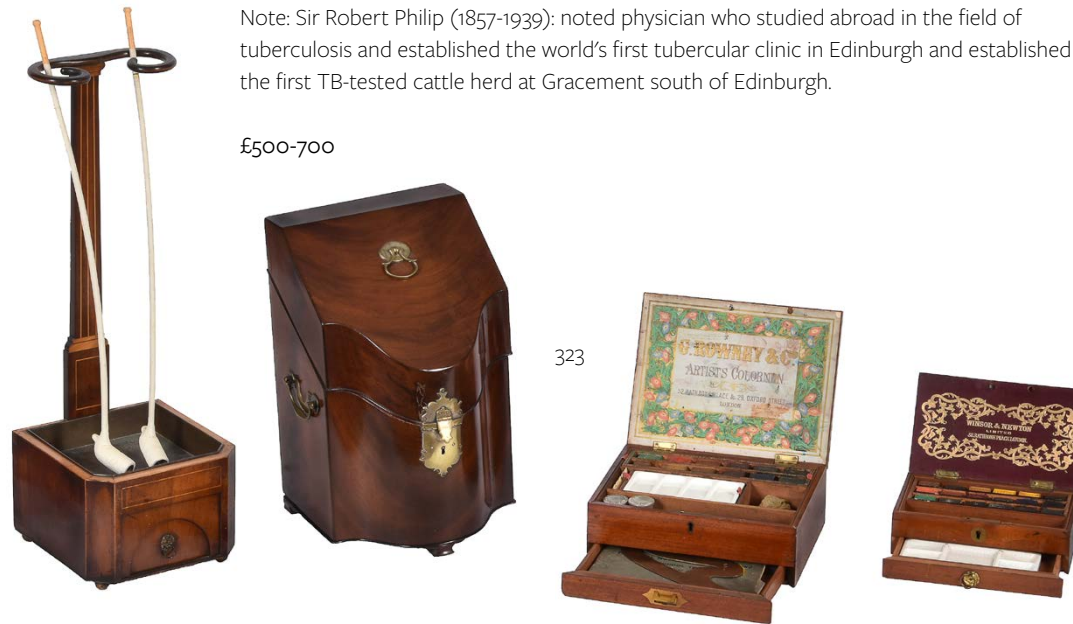


321
An ebonised, gilt and polychrome
painted carved wood Blackamoor
torchere stand, 20th century, in the
manner of 18th century Venetian
examples, 92cm high
Provenance: Property from a Private
Collection, Herefordshire
£200-300



322
A white marble and Scagliola
pedestal, 19th century, of cylindrical
form, 101cm high
£300-500

323
A George III mahogany and satinwood banded church warden's pipe rack, circa 1790, with copper liner and single drawer, 57cm high, with assorted copies of clay pipes, with paper note indicating that it was given Sir Robert Philip; a George III mahogany and silver-plate mounted knife box, the interior later fitted for stationery, 37cm high; a Windsor & Newton Ltd. mahogany artist's paint box with fitted interior, 7cm x 20cm x 12cm; and a G. Rowney & Co. paint box similar, 9cm high, 24cm wide, 18cm deep



Note: Sir Robert Philip (1857-1939): noted physician who studied abroad in the field of tuberculosis and established the world's first tubercular clinic in Edinburgh and established the first TB-tested cattle herd at Gracemont south of Edinburgh.

£500-700



324

324 Y
A George III mahogany, burr yew and tulipwood crossbanded side table, circa 1790, 75.5cm high, 78cm wide, 45cm deep

£800-1,200

325 Y
A rare set of five sailor's scrimshaw on ivory depicting steamships, 19th century, including "Alecto" "Great Western" "Great Eastern", "Great Britain" "Rattler", and "James Watt", heart shaped ivory tokens each approximately 6cm wide, framed and glazed, 33 x 36cm overall

Provenance: From The Hon. Sir William McAlpine Collection.

These tokens display the development of marine technology in the mid-19th century- a celebration of the power of steam-through propeller and paddle wheels. Isambard Kingdom Brunel's engineering work set new standards of excellence and innovation in the development of ships for passenger, transport and military applications- which these 5 tokens celebrate.

£300-500



326

326
A satinwood and polychrome painted revolving bookcase, circa 1890, with spindle supports and rotating on the stem and four downswept legs, 75cm high, the shaped top 62cm square

£500-700



327

327
A mahogany chest of drawers, circa 1790 and later inlaid, 81cm high, 98cm wide, 47cm deep

£400-600



328 (part lot)

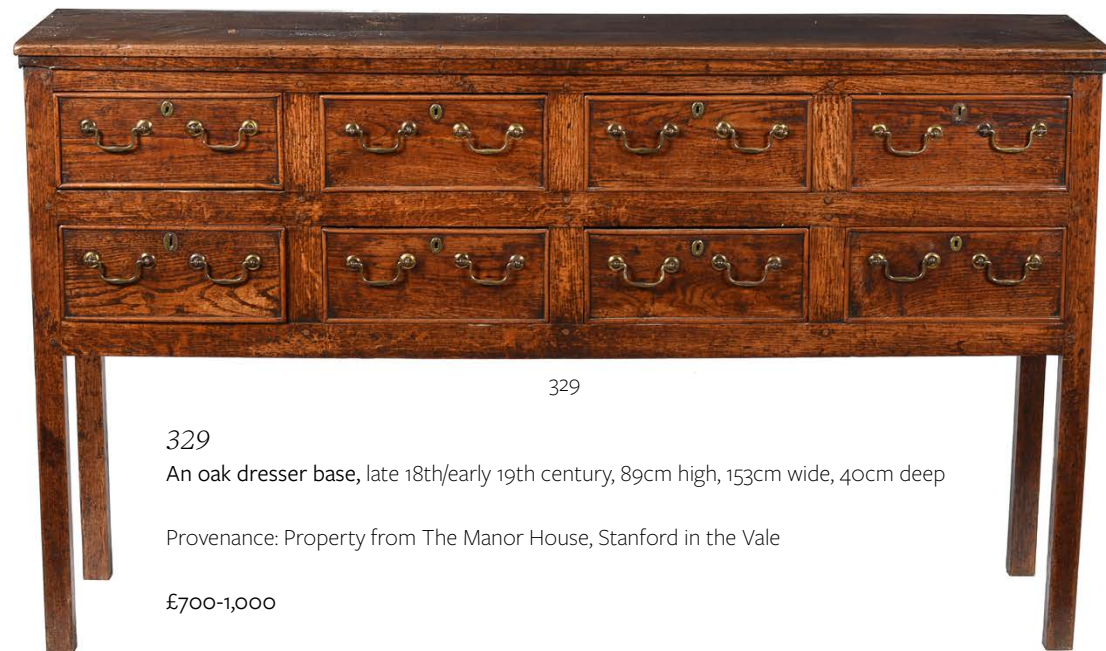


328

A painted wood wall mirror in Continental 18th century style, 20th century, with simulated verdigris decoration and shell carved surmount, 85cm high, 53cm wide, together with a painted wood wall mirror in late 17th century style, 43cm high, 36cm wide, and a carved wood wall mirror in mid 18th century style, with carved stiff leaf corners, 87cm high, 69cm wide (3)

Provenance: Property from The Manor House, Stanford in the Vale

£200-300



329

329

An oak dresser base, late 18th/early 19th century, 89cm high, 153cm wide, 40cm deep

Provenance: Property from The Manor House, Stanford in the Vale

£700-1,000

330

Two similar twin handled wicker baskets, presented as log baskets, each approximately 67cm high, together with a set of three fire tools, comprising, poker, shovel, and tongs each with a brass finial, the shovel 76cm long, and a brass firescreen, in Neo-classical taste, with shield shaped screen on columnar supports, 78cm high

Provenance: Property from The Manor House, Stanford in the Vale

£300-400



330 (part lot)



331

331

A collection of various fire furniture, various dates 19th and 20th century, comprising; a pair of brass andirons with ball finials, 42cm high, a set of three steel fire tools, comprising a poker, shovel, and tongs, each with spiral twist shaft and faceted finial, the shovel 78cm long, and a cast iron fire back, 68cm high, 87cm wide

Provenance: Property from The Manor House, Stanford in the Vale

£200-300

332

A collection of various fire furniture, various dates 19th century, comprising a cast iron and brass fire grate, of serpentine outline, 65cm high, 73cm wide, 35cm deep, a Regency pierced brass fender, of bow front outline, 26cm high, 110cm wide, 31cm deep, and a harlequin set of three fire tools, comprising poker, shovel, and tongs, each approximately 73cm long

Provenance: Property from The Manor House, Stanford in the Vale

£300-500



332



333

333

A George III fret framed wall mirror, circa 1770, with pierced ho-ho bird above the rectangular frame

£400-600

334

A George III mahogany tripod table, circa 1780, 70cm high, the top 58 x 58cm

£600-800



334

335

A George III mahogany night commode, circa 1780, the three quarter gallery incorporating pierced side carrying handles, 76cm high, 51cm wide, 48cm deep

£1,000-1,500



335

336

A George III mahogany chest of drawers, circa 1790, 84cm high, 90cm wide, 52cm deep

£1,000-1,500

337

A Kashan carpet, the pale field decorated with stylised flowerheads and vines, within a similarly decorated border, approximately 384 x 305cm

£1,000-1,500



336

337





338

338

Two French patinated bronze models of animals, late 19th century, one a pheasant after Pierre-Jules Mene (1810-1879), the naturalistically cast oval socle inscribed *P. J. MENE* to the maquette, 9cm high, 24cm long; the other a prancing horse after Jules Moigniez, (1835-1894), inscribed *MOIGNIEZ* to the maquette, 11cm high, 14cm long

Provenance: Property from The Manor House, Stanford in the Vale

£300-500



339

A Victorian oak and walnut pedestal desk, by Gillow & Co, circa 1880, with green leather inset top above the frieze drawers and the pedestals each with three further graduated drawers, the top drawer of one pedestal stamped for the maker and serial numbered 14102 76cm high, 137cm wide, 68cm deep

£800-1,200



339



340 (part lot)

340

English Provincial School (19th century)

Portrait of a two girls, standing

Watercolour

Indistinctly signed and dated *July 30th 18* (lower right)

20 x 15.5cm (7¾ x 6 in.)

Together with three further watercolours of children by another hand, various sizes (4)

Provenance: Property from The Manor House, Stanford in the Vale

£150-200



341

341 Y

A Regency rosewood two tier whatnot, circa 1815, the tiers each with a spindle gallery, 80cm high

Provenance: Property from The Manor House, Stanford in the Vale

£400-600

342

A Regency mahogany child's chair, circa 1815, 88cm high, 48cm wide, 43cm deep overall

£600-800



342



343

343

A selection of German porcelain, various dates 18th, 19th & early 20th centuries, comprising: a Meissen (outside decorated) flower-encrusted cabinet cup and saucer painted with insects, blue crossed swords and cancellation marks; a pair of small campana urns painted with Watteauesques, Berlin type sceptre marks, 10cm high; a Frankenthal tea cannister with later 19th century white-metal mounts, remnants of a Carl Theodor

mark, 13cm high overall; a Meissen blue-ground coffee cup and saucer painted with Watteauesques, blue crossed swords marks; a Vienna-style blue-ground and gilt cabinet cup and saucer, RL Limoges France mark and two items of English ceramics, comprising: a porcelain two-handled urn painted with a vase issuing flowers, 13cm high; and a Mason's Ironstone China blue-ground square section bottle vase painted with flowers, impressed mark, 11.5cm high

£300-400

344

A mahogany side cabinet, in George III style, first half 20th century, of breakfront outline, with glazed doors enclosing adjustable shelves above central bank of four long graduated drawers and flanking cupboard doors, 188cm high, 122cm wide, 41cm deep

Provenance: Property from a Private Collection, Herefordshire

£400-600



344

345

An unusual George III mahogany enclosed bijouterie table, circa 1810, the hinged top opening to a further glass panelled and solid satinwood framed hinged panel, 73cm high, 70cm wide, 43cm deep

Provenance: Property from The Manor House, Stanford in the Vale

£300-500



345

346

A George III mahogany and satinwood crossbanded Pembroke table, circa 1800, the butterfly drop flaps above a frieze drawer to each short side, 72cm high, 98cm wide, 78cm deep

£400-600



346



347

347

A George III mahogany secretaire chest of drawers, circa 1800, the secretaire drawer with moulded front enclosing a fitted interior with burr yew veneers, above three further long drawers, 108cm high, 111cm wide, 52cm deep

£400-600

348

A Qum carpet, approximately 378 x 274cm

£600-800

348





349

349

A turned elm wool winder, carved with initials and date to the base F W H D ANNO 1763, 44cm high to the stand, 64cm high overall

Provenance: Private Collection, Worcestershire

£200-300

350

An oak side table, circa 1690 and later, the rectangular top over a single short frieze drawer, and bobbin turned supports united by stretchers, 70cm high, 69cm wide, 45cm deep

£300-500



350



351

351

An oak plank chest or coffer, mid 17th century, decorated with drilled designs to the front and sides, 67cm high, 73cm wide, 33cm deep

Provenance: Property from The Manor House, Stanford in the Vale

£500-800



352

352

An oak and upholstered sofa, late 17th century and later, 113cm high, 201cm wide, 62cm deep

£400-600

353

An oak draw-leaf table, mid 17th century and later, 77cm high, 121cm wide (when closed), 79cm deep

£400-600



353



354
A George II mahogany kneehole desk, circa 1750, 76cm high, 76cm wide, 48cm deep

£800-1,200

355
A Tabriz carpet, approximately 430 x 327cm

£800-1,200



356

357
A chestnut, fruitwood and oak gate leg table, early 18th century, 71cm high, 145cm wide (when open), 93.5cm deep

£300-500

358
A walnut and cut velvet upholstered foot stool, mid 18th century and later, of serpentine outline, with carved frieze and cabriole legs, 43cm high, 64cm wide, 54cm deep

Provenance: Property from The Manor House, Stanford in the Vale

£500-800



358



356
A walnut platform dressing mirror, circa 1740 and later, the two-tiers of platforms each with serpentine fronts and with arrangement of drawers, 56cm high, 39cm wide, 19cm deep

Provenance: Property from a Private Collection, Herefordshire

£200-300



359



360

359

Manner of Richard Cosway

Releasing the birds

Pencil, oval

15.5 x 18.5cm (6 x 7¼ in.)

Together with two additional watercolours of children, various sizes (3)

£80-120

360

English School (19th century)

Portrait of a lady seated, reading a book

Watercolour and pencil

12 x 9.5cm (4½ x 3½ in.)

Together with three prints depicting children, various sizes (4)

£50-70



362

362

S. Woodhouse (19th century)

Portrait of a three children, playing with their toys

Oil on canvas

Signed and dated 1825 to the column (upper right)

34 x 29cm (13¼ x 11¼ in.)

£300-500



363

363

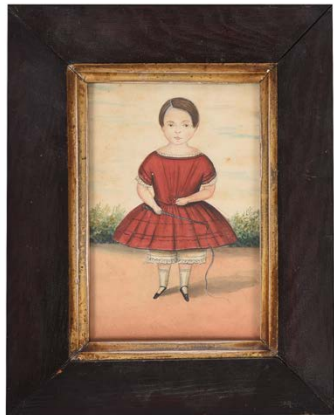
English Provincial School (19th century)

Portrait of a girl holding a doll

Oil on canvas

24 x 19cm (9¼ x 7¼ in.)

£200-300



361

361

English Provincial School (19th century)

Portrait of a girl in a red dress holding a riding crop

Portrait of a girl in a red dress picking flowers

Portrait of a girl in a white dress holding a book

Watercolours

Various sizes, the largest 16 x 10.5cm (6 1/4 x 4 1/8 in.) (3)

£80-120



364

364

English Provincial School (19th century)

A portrait of a girl seated holding her dog; Portrait of a boy standing holding a gun

Watercolour

Various sizes, the largest 17.5 x 11cm (6¾ x 4¼ in.) (2)

£150-200





365
A Continental carved giltwood wall mirror, mid 18th century, 55cm high, 31cm wide overall
£600-800



365

366
A pair of Italian polychrome painted torcheres, 18th century and later adapted, each 136cm high (excluding light fixtures)

£400-600



366



367
A woven tapestry, probably French, late 18th/ 19th century, approximately 261 x 246cm

£800-1,200

367



368

368
A harlequin group of three beech and walnut triangular two tier stands, 18th century and later, the largest approximately 82cm high, 43cm diameter overall

Provenance: Property from The Manor House, Stanford in the Vale

£500-800



369

369
A pair of patinated and parcel gilt metal blackamoor figural torchers, in Venetian style, 20th century, each modelled standing and holding a staff with glass flambeau shade, 161cm high (excluding fitments), 65cm wide

£1,500-2,500

370
A pair of reverse painted glass paintings, one of a younger lady in diaphanous veil, the other of an older woman (perhaps the same lady) with black cowl and her hands in a muff, in ebonised frames, 28 x 23cm overall

Provenance: Property from The Manor House, Stanford in the Vale

£200-300



370

371
A set of four reverse painted glass pictures, three with scenes of a courting couple, and one of a gentleman looking forlorn by water, all in giltwood frames, 33 x 27cm overall

Provenance: Property from The Manor House, Stanford in the Vale

£700-1,000



371



372

372

A pair of green and gold painted toleware columnar table lamps, in Empire style, modern, 45cm high to fitment; and two bouillotte lamps in Louis Philippe style, 20th century, one with two light fitments, the other three, the tallest example 61cm high

Provenance: Property from The Manor House, Stanford in the Vale

£150-250



373

373

A Continental gilt brass coiled wax jack holder or *Bougie box*, 19th century, in the form of a clam shell with scroll handle and feet, 12cm high

£100-200

374

A George III mahogany desk, circa 1780, with tooled red leather inset top, 80cm high, 125cm wide, 93cm deep

£1,200-1,800



374

375

A George III mahogany bookcase, late 18th century, the glazed doors enclosing four adjustable shelves, 200cm high, 113cm wide, 36cm deep

£1,000-1,500

376

A Tabriz carpet, approximately 383 x 285cm

£1,500-2,000



375

376





377

377

A pair of Continental opaque blue glass vase table lamps, late 20th century, of compressed globular form, on gilt painted base, 32cm high to fitment

Provenance: Property from The Manor House, Stanford in the Vale

£300-500

378

A Regency mahogany bowfront side table, circa 1815, 76cm high, 92cm wide, 51cm deep

£800-1,200



378



379

379

A Regency mahogany and gilt metal mounted Pembroke table, circa 1815, decorated with ebonised stringing, 71cm high, the top 91 x 100cm overall when extended

£400-600

380Y

A George IV rosewood occasional table, circa 1825, with blind frieze drawer, 73cm high, 56cm wide, 48cm deep

£1,000-1,500

381

A Victorian carved burr walnut library table, circa 1870, 78cm high, 142cm wide, 70cm deep

£1,500-2,500



380



381



382

382
A Charles II oak chest of drawers, circa 1680,
91cm high, 95cm wide, 62cm deep

£400-600

383
A pine mule chest, first
half 18th century, 71cm
high, 125cm wide, 48cm
deep

£300-500



383



384

384
A Kashan tree of life rug, approximately
184 x 138.5cm

Provenance: Property from The Manor House,
Stanford in the Vale

£400-600

385

A French giltwood and composition wall mirror, 19th century, the
crest with pair of doves, above the shaped rectangular plate, 212cm
high, 81cm wide

£400-600



385

386

A patinated and gilt metal jardinière, 19th century, 36cm high, 45cm
wide, 34cm deep

Provenance: Property from The Manor House, Stanford in the Vale

£700-1,000



386

387

A George III pine butlers tray, late
18th century, of typical form with
hinged sides incorporating carrying
handles, together with a later pine
stand to use as a low table, 56cm
high overall, 81cm wide, 60cm deep

£300-500



387



388

388
A George III 'red walnut' concertina action card table, circa 1775, 73cm high, 84.5cm wide, 43cm deep (when closed)

£800-1,200



389

389
A mahogany stool in George III style, late 19th century, the front of serpentine outline, on fluted legs, 44cm high, 90cm wide, 46cm deep

Provenance: Property from The Manor House, Stanford in the Vale

£500-700



390

390
A George III mahogany boot and whip stand, late 18th century, 81cm high, 73cm wide, 35cm deep

£600-800



391

391
A George III mahogany bowfront chest of drawers, circa 1800, 110cm high, 106cm wide, 51cm deep

£1,000-1,500



392

392
A Dutch rectangular ebonised and gilt metal mounted wall mirror, 19th century, 86cm high, 73cm wide

Provenance: Property from The Manor House, Stanford in the Vale

£800-1,200



393

393
A pair of brass columnar table lamp bases, late 19th/early 20th century, probably oil lamp bases, 51cm high excluding fitments

Provenance: Property from The Manor House, Stanford in the Vale

£150-250



394

394
A George III mahogany and line inlaid side table, circa 1790, of semi-elliptical outline, 82.5cm high, 108.5cm wide, 40cm deep

£600-800

395
A George III mahogany and crossbanded chest of drawers, circa 1780, 80cm high, 77cm wide, 51cm deep

£1,000-1,500

396
A Kashan carpet, approximately 362 x 256cm

£700-1,000



395

396





397

397

A walnut and parcel gilt dressing table mirror, incorporating mid 18th century elements, the shaped rectangular mirror above the platform base with three drawers, 69cm high, 51cm wide, 24cm deep

Provenance: Private Collection, The Manor House, Stanford in the Vale, Oxfordshire

£300-500

398

A burr elm writing table in William & Mary style, 20th century, incorporating a hinged top and twin gateleg supports, 75cm high, the top 80.5cm wide, 29cm deep when closed

Provenance: Property from The Manor House, Stanford in the Vale

£500-800



398



399

399

A George II walnut and pine chest on chest, circa 1733, 176cm high, 102cm wide, 56cm deep

£800-1,200



400

400
A figured mahogany and inlaid chest of drawers, circa 1800 and later, 81.5cm high, 95cm wide, 59cm deep

£1,000-1,500

401
A Kashan carpet, approximately 416 x 306cm

£1,500-2,000

401



402

402
A Large Japanese Cast Bronze Figure of a Warrior, he stands on an uneven, rocky base with one leg thrust aggressively forward, his hands positioned to draw his separately cast sword, his robes decorated with a diaper design and Ho-o birds, height 90.2cms, Meiji Period

£1,500-2,000



403

403

A Russian bronze group of a Circassian on Horseback, Chopin foundry, after the model by Evgeny Lanceray, dated 1873, the rider portrayed in traditional dress of a fur hat and coat, standing atop his horse's saddle and aiming a rifle, on a naturalistically modelled rectangular base with canted corners, approximately 28cm high

This model by the prolific St. Petersburg born painter and sculptor Lanceray depicts a Circassian rider practicing the traditional equestrian sport of *Dzhigitovka*, in which the rider performs complex stunts and acrobatic tricks on horseback.

The Chopin foundry received a patent to cast this model in bronze in 1874, and in 1876 it was presented at the Centennial Exposition in Philadelphia.

£400-600

404

A pair of George VI sword guard brass and steel candlesticks, assembled first half 20th century, the brass quadripartite bases supporting the grip and guard of the current pattern infantry officer's sword beneath a brass sconce, 27.5cm high

Provenance: Property from The Manor House, Stanford in the Vale

£150-250



404



405

405

A Victorian mahogany campaign pedestal desk, third quarter 19th century, the underside of the main draw with the underside of the main draw with pencil inscription for 'Pattern 45 No 5/3, Wardroom', 78cm high, 127cm wide, 61cm deep

For a related desk bearing similar inscription to underside of drawer for 'Wireless Room' see, Christie's, London, 20th December 2005, Furniture and Decorative Objects, Lot 176 (£1,320).

ADD FOOTNOTE Naval interest/Wardroom

£800-1,200



406

406

Four various swords, various dates 19th & 20th centuries, comprising; a court sword and black leather scabbard with cut-steel handle, guard and grip, 100cm in length overall; A Royal Naval officer's sword and black leather scabbard, 1827 pattern, Batson, London, 101cm in length overall; a French 1831 pattern artillery sword and black leather scabbard, 70cm in length; and a tulwar with damascene handle, 83cm in length

Provenance: Private Collection, Worcestershire

£300-400

407Y

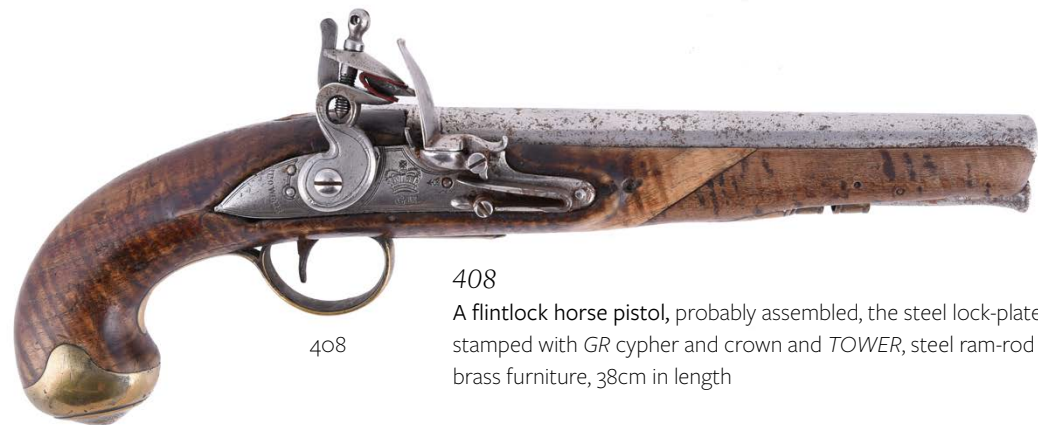
Two similar Ottoman shamshirs, late 19th century, with curved single-edge French blades and iron hilt with down-swept quillons, knuckle guards and rhinoceros horn handles, the marginally larger of the two 95cm long

NB. Please note that the buyer is unlikely to be able to export these swords outside the UK due to current CITES restrictions (unless the hammer price of the estimated weight of the Rhino horn exceeds \$100 per gram.)

£700-900



407



408

408

A flintlock horse pistol, probably assembled, the steel lock-plate stamped with *GR* cypher and crown and *TOWER*, steel ram-rod and brass furniture, 38cm in length

£200-300

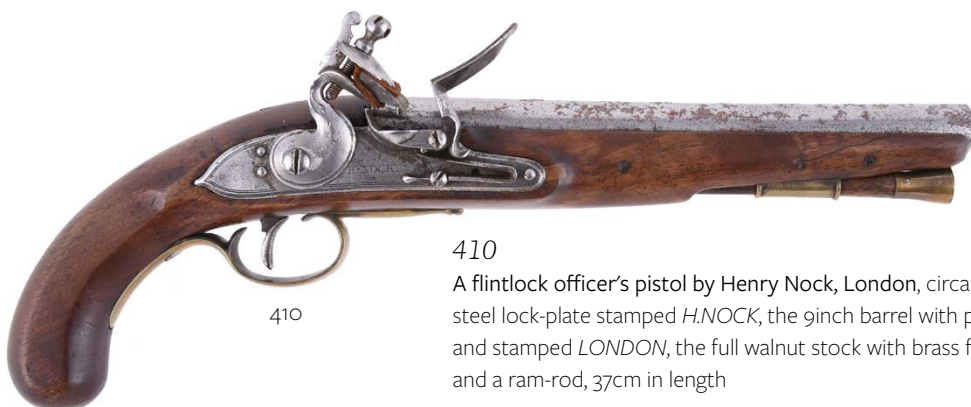


409

409

A British Flintlock brass-barrelled blunderbuss pistol, possibly assembled in the 19th century from earlier parts, the steel lock-plate inscribed *TRULOCK*, the 8inch brass barrel stamped *LONDON*, the walnut stock with brass furniture and ram-rod, 36cm in length

£250-350



410

410

A flintlock officer's pistol by Henry Nock, London, circa 1800, the steel lock-plate stamped *H.NOCK*, the 9inch barrel with proof marks and stamped *LONDON*, the full walnut stock with brass furniture and a ram-rod, 37cm in length

H. (Henry) Nock produced many innovative weapons including the seven-barrelled volley gun, although he did not invent this weapon it is commonly referred to as the Nock gun and is referenced as the weapon of choice of Sgt. Patrick Harper in Bernard Cornwell's Sharpe series.

£250-350



411

411

A British flintlock cavalry pistol, circa 1800, the full walnut stock with unmarked steel lock and plate, brass furniture and ram-rod, 9inch barrel, 40cm in length overall

£300-500



412

412

A John Harcourt of Ipswich (1780-1830) flintlock travelling pistol, first quarter 19th century, full walnut stock and chequered butt, the steel lock-plate stamped *HARCOURT*, 4 1/2inch octagonal barrel, fitted with a ram-rod, 23cm in length

£300-500



413

413

A flintlock single barrelled fusil, probably by Daniel Moore the second of Fenchurch St., London, circa 1770, the steel lock plate engraved *DL Moore*, the octagonal section breech with London proof marks, 42inch barrel, the walnut full stock with brass furniture including family crest, the butt plate stamped *GEO. FORBES BELLABEG*, 142cm in length overall

Note: MOORE: Daniel 1 Apprentice to John Jackson, 1722; free of Gunmakers Co., 1734. died 1746. Daniel 2 Son of Daniel 1. Apprenticed to George Mark by, 1746; free of Gunmakers Co., 1756. Proof piece & mark, 1758. Elected Assistant, 1761. Furbisher, Tower of London, 1754. Gunmaker, corner of Rood Lane, Fenchurch Street, 1762; 24 Fenchurch St., 1767-77; 34 Lime St., 1771-8; 15 Fenchurch St., 1779-83; 9 Cullum Street, 1784-6. Contractor to Ordnance, 1778-80; East India Co., 1772-1802. Died 1802.

Bellabeg is a village in Aberdeenshire near Forbestown (founded by the Forbes family). George Forbes of Bellabeg (1668-1745) was the first Forbes of Bellabeg and would not have been the owner of this gun. It would appear likely that this gun was ordered by his son George, a London wine merchant, or perhaps his grandson George from his other son James Forbes.

£300-500



414

414
A flintlock 'cannon' barrelled pocket pistol by Brazier of London, circa 1770, walnut stock with wire filigree ornament and green man butt plate, steel lock and twist-off barrel with London proof marks, 19.5cm in length

£300-500



415

415
A double-barrelled tap-action over and under flintlock pocket pistol by Knubley, London, circa 1790, the box-lock named within trophies of war, 20.5cm in length

£300-400



416

416
A W. Ketland & Co. London flintlock brass pocket pistol, circa 1800, the box-lock named within trophies of war, turn-off barrel, 18cm in length

£250-350



417

Two percussion-lock travelling pistol, various dates 19th century, one converted from flintlock 20cm and 24cm in length

£150-250

417



418

418
A Snider-Enfield three-band officer's rifle, Tower 1869, sliding ramp rear sight, brass furniture, .577 cal, ramrod, 138cm in length overall

£600-800



419

419
A French model 1842 military percussion lock musket, third quarter 19th century, the lock plate stamped Mre. Impale de St. Etienne, barrel 87cm, 120cm in length overall

£120-180



420



421



422

420

A Belgian single barrel .410 shotgun, 27 3/4 inch barrel, serial number 3320, 109cm in length overall

Please note this lot will only be released to holders of a valid shotgun certificate.

£60-80

421

A Bettinsoli Armi Gardone V.T. Italy 3 inch chambered over and under 12 bore wildfowling shotgun with 32 inch barrels, serial number 68519

Please note this lot will only be released to holders of a valid shotgun certificate.

£100-200

422

A matched pair of W.P. Jones 12 bore boxlock ejector shotguns, serial numbers 14207 & 13848, with 28 inch barrels and walnut stocks and forends, 112cm in length overall

Please note: these will only be released to persons carrying a valid shotgun licence for purposes of Section 2 of the Fire Arms Act 1968.

£300-500

The Constable Collection:
A Private Collection of Painted Truncheons, Tipstaves, and Early Weapons | lots 423-472





423

423

A George III painted and gilt wood short staff, possibly Scottish, early 19th century, the upper quarter painted and gilt with Royal crown above G. R. III royal cypher and inscribed M. L. 5th District No-30., the remaining three quarters painted in red, 75.5cm long

£300-350



424

424

A George III carved and painted wood East Anglian staff-shaped truncheon with ball finial, the upper half painted G. R. III cypher and Polstead (Suffolk), 49cm long

£350-400



425

425

A George III painted wood and dated mace tipstaff, with turned crown finial above a square section head painted and gilt with G. III cypher and crown and UP initials with date 1801, above a bannister-shaped lower section, 58cm in length

UP is believed by the vendor to related to Upper Pine, Devon and was purchased at auction as such from a previous collector

£500-600

426

A George III wood and brass Bristol tipstaff, the brass top section with ball finial and inscribed G. III R. ST. MARY PORT WARD II with turned mahogany lower section, 38cm long

See Mervyn Mitton, *The Policeman's Lot* (1985), page 87, top illustration for this tipstaff and on the front of the dust jacket

£800-1,000

427

A George III carved mahogany and painted mace for the Governor of the Hospital of Poor's Portion (Plymouth Work House), of bannister form, the square-section head decorated with royal coat of arms, coat of arms of the City of Plymouth, another coat of arms and initials W. H., above two inverted baluster sections, 59cm long

See Mervyn Mitton, (1985) *The Policeman's Lot*, p. 6 for this mace.

£800-1,000



426



427



428

428
A George IV painted wood truncheon, the turned head painted with Royal crown above *IV G.R 2* and the arms of the town of Birmingham, reserved on black ground, with ribbed grip handle, 40.5cm long

£200-250



429

429
A George IV dated truncheon, each end of the painted cylindrical shaft applied with lead weights, inscribed *G.P 1821* and *G.R* beneath crown, 47cm long, 48.5cm extended

£200-250



430

430
A George IV carved and painted wood dated truncheon, with ball terminal and cylindrical shaft, with Crown above *GR 4* cypher, 1826 verso, 47cm long

£150-200



431

431
A George IV ball-end painted wood dated short staff, of tapered form, painted and gilt with *GR IV* cypher above royal crown and date *1822*, inscribed beneath *J. SMAILLES Constable*, reserved on an ebonised ground, 56cm in length

£400-600



432

432
A George IV painted wood and dated ceremonial short staff with ball finial, painted and gilt Royal Coat of Arms, surmounted with a crown and above the arms of the City of Winchester and inscribed verso *C. W 1821*, reserved on a chocolate ground, 53.5cm long

£400-500



433

433
A George IV painted and gilt wood London truncheon, decorated with Royal crown above *G R IIII* and with spiral ribbon and inscribed *ST. MARY WHITECHAPEL* and *24* in an oval red ground cartouche, 52.5cm long

£400-600



434



435

434

A George IV carved and painted slender ovoid-shaped truncheon, decorated with a naïve Royal Coat of Arms, G.R. / (M upside down) F / W. / IV, 48.5 cm long

£350-400

435

A George IV carved wood and dated West Country truncheon of bannister form, the square section head painted in black with G R 4 cypher and castle and keys of Totnes, Devon and a union flag, with inverted baluster central section above ball knob and handle, 36cm long

£350-400

436

George IV painted and turned wood truncheon, decorated with royal coat of arms surmounted with a crown, above G I V R cypher and red and gilt cartouche inscribed BOW STREET N.P., with plain turned and ribbed grip, 51.5cm long

£700-800

437

George IV painted wood short staff, decorated with G I V R cypher above royal coat of arms above a Baron's coronet, coat of arms and motto SPES . MEA . IN . DEO (My Hope is in God), 71cm in length

Cf. Arms of Roper: *Per fesse azure and or, a pale counter-changed and three buck's heads erased of the second.* Baron Teynham in the county of Kent.

£500-600



436



437



438

438
A William IV painted wood short staff, of turned cylindrical, the upper half painted in black with IV W.R above a crown and DEAL, the lower section of the lower half painted in iron red, 51cm long

£300-350



439

439
A William IV painted and turned wood London long truncheon, inscribed BOW and numbered 14 verso and W.R IV cypher and crown in oval cartouche, 58cm long

£400-500



440

440
A William IV painted wood short staff, gilt with W.R cypher and crown above IV Spl / (Special), reserved on a red ground with green terminals, 62 cm long

£150-200



441

441 Y
A William IV exotic hardwood truncheon, the cylindrical turned head painted and gilt with Royal Coat of Arms above W.R IV cypher and the Coat of Arms of Oldham, tapered to a slender handle with shaped terminal, 38cm long

£200-250



442

442
A William IV green painted wood short truncheon, the head decorated in shades of ochre and red with W.R and 4, and with crown, and deeply impressed I P, 25.5 cm long

£100-150



443

443
A William IV civic truncheon, for the mayoral office of Bath, the turned wood head painted with W IIII R cypher above Royal crown and Arms of the City of Bath, with red painted and turned grip, 41cm long

Mayor of Bath 1826-1837: Eleazer Pickwick, Director of Somerset Coal Canal

£250-300



444

444
A George IV/ William IV painted wood City of London short staff or truncheon, indistinctly inscribed *Cornhill*, above the shield of the city of London and inscribed *WARD 42*, 59.5cm long

Cf. E.R.H. Dicken, (1952) *The History of Truncheons*, p. 83

£400-500



445

445
A painted wood truncheon by Parker of Holborn, first half 19th century, gilt with *SPECIAL CONSTABL*, reserved on a black ground and with undecorated ribbed grip, the terminal stamped *PARKER HOLBORN*, 46cm long

£150-200



446

446
A Victorian Parker of Holborn church warden's truncheon, possibly for St Mary's, Islington, gilt *ST. M. I* above a red and gilt cartouche inscribed *90*, reserved on black ground with ribbed 'bee-hive'-shaped handle, stamped *PARKER 233 HOLBORN*, 43.5cm long

Provenance: Mervyn Mitton Collection, (1985) *The Policeman's Lot*, p. 34

£350-400



447

447
An early Victorian painted and gilt wood dated short truncheon, decorated for Portsmouth, the cylindrical upper section with *V. R* cypher and crown and bearing date *1837*, the lower section with ribbed handle, 32cm long

£400-500



448

448
An early Victorian painted and gilt wood truncheon for the Hundred of Whalesbone, painted and gilt with crown above Royal Coat of Arms and inscribed *HUNDRED OF WHALESBONE* about a cartouche with two dolphins and with date *1843* and named for *FREDK. BOORE*, verso Arms of the Marquess of Abergavenny, above a ribbed grip handle, 47cm long

£800-1,000



449

449
A Victorian painted and carved wood truncheon by Parker of Holborn, of Welsh Interest, the turned and tapered handle painted and gilt with Royal crown above *V.R* cypher and C-Scroll bordered panel inscribed *BORO' OF WREXHAM*, above an undecorated ribbed handle, the end section stamped *PARKER 233 HOLBORN*, 44.5cm long

£300-350



450

450
A Victorian Manx truncheon, carved wood tapered form, decorated with crown and V.R cypher and triskelion, anatomical turned grip handle, 39cm long

£300-350



451

451
A Victorian Cornish ebonised and painted ceremonial mace, of bannister form, the square section head with ball terminal and painted with flower sprays, inscribed VR beneath a crown and ST. COLUMB, reserved on a claret ground, 61cm long overall

£300-350



452

452
A Victorian painted wood mace tipstaff for Totnes, Devon, of bannister form, the square section top painted and gilt with Union Flag, VR cypher, royal coat-of-arms and arms of the town of Totnes, above an ebonised lower section, 60cm long

£400-600



453

453
A Victorian painted wood truncheon, the painted and tapered shaft painted with a crown above V.R cypher, and a ribbon inscribed LIVERPOOL and a Liver Bird, above an undecorated turned handle, 47cm long

£250-300



454

454
A Victorian Scottish carved oak truncheon, the turned shaft tapered to the ribbed grip and decorated with crown above V. R cypher within a garter border, inscribed LEITH POLICE, 37cm long

£250-300



455

455
A Victorian Scottish carved oak truncheon, for the city of Aberdeen, the turned and tapered head decorated with Royal crown the Arms of Aberdeen within a garter belt border, inscribed CITY OF ABERDEEN and BON ACCORD, with ribbed grip, 35.5cm long

£300-350



456

456
A Victorian dated truncheon with a gilt ball end, a cylindrical turned upper section inscribed *V. R BURGH 1848* beneath a Royal crown and reserved on black ground, above a ribbed double handle shaft, 54.5cm long

£300-350



457

457
A Victorian truncheon, the knopped cast iron handle with rosette boss and spirally fluted brass central section and fluted beech 'bee-hive' terminal, 30cm in length

£100-150



458

458
A Victorian hardwood, possibly *lignum vitae*, truncheon with integrally turned grip, 37 cm in length and with leather martingale and belt and black leather service scabbard and cover, 41cm overall

£100-150



459

459
A Victorian mallet shaped Royal Naval petty officer's truncheon or start, the painted wood mallet section above a brass knop and tarred cord grip and martingale, the lead central weight with broad arrow mark and impressed VR and the carved wood mallet section similarly impressed, 26cm long

£100-150



460

460
A Victorian painted wood truncheon, the shaped oval top section gilt with V.R cypher above a red and gilt shaft with black terminal, 31 cm long

£150-200



461

461
A Victorian painted wood special constable's truncheon, painted and gilt with royal crown above V. R cypher and foliate bordered panel inscribed *SPECIAL*, and *DEFENCE ..T(NOT) DEFIANCE*, 45cm long

£200-250



462

462
A Victorian church warden's truncheon, the black painted shaft inscribed *St. * A M 59* above ribbed lower section, 50cm long

£200-250



463

463
A Victorian painted and carved wood church warden's truncheon, decorated with Royal crown and *V. R* cypher and inscribed *ST. M S.C. F.*, 46.5cm long

£300-350



464

464
A Victorian carved fruitwood long truncheon or bat, with a ribbed handle, undoubtedly one of the longest, if not the longest, in existence, 91.5 cm long

£350-400



465

465
A Victorian carved elm regimental provost's truncheon for the Essex regiment, the turned and tapered wood shaft inset with gilt metal regimental badge, ribbed 'bee-hive grip' and ball terminal, 45.5cm long

£300-350



466

466
A Victorian carved ash truncheon for the London & North West Railway Co., the tapered cylindrical head inscribed *V.R No. 104 L & NWR*, with ribbed handle, 47.5cm long

£400-500



467

467
A late Victorian lead-weighted bamboo cosh or blackjack, 34.5 cm long

£80-100



468

468

A Victorian City of London ceremonial dated tipstaff, silver-plated, the remaining short stained wood section with a silver-plated armorial surmount with dragon supporters coats of arms and inscribed and dated *GUILDHALL 1865* and with assorted mottos, the lower section inscribed *LORD MAYOR & SHERIFFS COMMITTEE Robert White Esq 1865*, the silver plated surmount 13cm high, 19.5cm high overall

£400-500



469

469 Y

A Victorian ebony and pewter-mounted Channel Islands tipstaff, applied with two shields, recto, engraved *STATES OF GUERNSEY* above a shield with three lions passant, verso blank, 16cm high

£600-700



470

470

A carved oak Canal Zoners truncheon, third quarter twentieth century, carved *MONSCAR / FAIED / GENEIFA*, 50cm in length, applied with leather martingale

The Association formed for those serving in the Suez Canal Zone of Egypt and in the surrounding areas

£100-150



471

471

A green painted ceremonial sceptre or mace, 19th century, possibly a Tibetan Monk's sceptre, 60cm long

A similar example is described and illustrated in Erland Fenn Clark, 'Truncheons Their Romance and Reality', 1935, pp. 192-3

£350-400



472

472

A Bronze Age Iranian Luristan royal baton mace-head cudgel, 2000 B.C. - 1500 B.C. the upper half cast with herringbone pattern panels, 24.5cm long

£700-800

Please see Conditions of Business and Conditions of Sale on the following pages.

Dreweatts & Dreweatts 1759 are trading names of Dreweatts 1759 Ltd. Dreweatts 1759 Ltd is registered in England, company number: 10758982, registered office: Minerva House | Lower Bristol Road | Bath BA2 9ER.

Important Notices

BUYING AT DREWEATTS

There are several ways you can bid at a Dreweatts auction; in person, by leaving a commission or absentee bid, on the telephone where available and live via the internet – please make arrangements before the sale. THIS NOTICE APPLIES ONLY TO A PERSON WHO WISHES TO BID IN PERSON, OR BY LEAVING A COMMISSION OR ABSENTEE BID, AT A DREWEATTS PUBLIC AUCTION. For bidding at an online auction or for online bidding at a public auction please see our Online Auction Terms published on our website at www.dreweatts.com.

BIDDING IN PERSON

If intending to buy you are required to register your name and details at reception prior to the commencement of the auction. You will be required to provide a proof of identity and address to register for bidding. You will then be allocated a bidding number, which you use when bidding for an item.

COMMISSION BIDS

Dreweatts will execute bids on your behalf if you are unable to attend the sale. Commission or absentee bids are accepted either directly at reception, or can be sent by post, fax, email, telephone or via the website: www.dreweatts.com.

Dreweatts will add these bids to the auctioneers' sale book and will undertake to purchase the lots on your behalf as cheaply as allowed by other bids and reserves. If two buyers submit identical commission bids Dreweatts may prefer the first bid received.

Dreweatts does not accept liability for failing to execute commission bids, or for any errors or omissions.

CONDITION

Bidders must satisfy themselves as to the condition of each lot. Condition reports are available on request – see the Conditions of Business at the back of this catalogue forming part of these Auction Terms and Conditions for more information regarding condition reports. Requests for condition reports must be submitted by 4pm on the day prior to the auction; condition reports may be available alongside the lot description on the online catalogue at: www.dreweatts.com.

COMMISSION CHARGES

All purchases are subject to a buyer's premium, which is charged per lot at 25% of the hammer price (30% including VAT) up to and including £500,000, 20% (24% including VAT) of the hammer price from £500,001 up to and including £1,000,000 and 12% of the hammer price (14.4% including VAT) in excess of £1,000,000. A theta symbol (Θ) indicates that the lot is a zero rated item and therefore not subject to VAT on the buyer's premium. This applies to bound books (manuscripts and printed), unframed maps and albums. In the event the lot has a dagger (†) beside the lot number in the catalogue, this indicates that the lot is owned by an entity or company required to pay VAT (generally not an Antique Dealer, as they operate under a dealers margin scheme). VAT is payable at 20% on the Hammer Price. Lots marked with a double dagger (‡) (presently a reduced rate of 5%) or Ω (presently at standard rate of 20%) have been imported from outside the European Union to be sold at auction and therefore the buyer must pay the import VAT at the appropriate rate on the hammer price.

PAYMENT

Payment will be accepted, if you are a successful bidder, by debit card issued in the name of the Buyer by a UK bank and registered

to a UK billing address; by all major UK issued credit cards issued in the name of the Buyer and registered to a UK billing address with the exception of American Express and Diners Club; by bank transfer direct into our bank account, Bank Details: NatWest, 30 Market Place, Newbury, Berkshire RG14 5AG. Account Name: Dreweatts 1759 Ltd. A/C: 62412949, Sort Code: 60-15-07, BIC: NWBKGB2L, IBAN: GB21NWBK60150762412949. The name of the bank account holder should match the name of the buyer. First time buyers who are not present at the saleroom are requested to pay by bank transfer.

Y CITES REGULATIONS

Please note that lots marked with the symbol (Y) in this catalogue may be subject to CITES Regulations when exported. Relevant CITES Regulations may be found at www.gov.uk/guidance/cites-imports-and-exports.

COLLECTION OR DELIVERY

Before being able to collect your purchases you are required to pay the hammer price, plus the applicable commissions, and obtain a receipt acknowledging payment. Collection of the purchased lots is at the purchaser's risk and expense and whilst Dreweatts do not provide packing and despatch service we can suggest some carriers.

Dreweatts also require that all purchased items are collected within four working days of the sale to avoid a storage charge being applied.

STORAGE CHARGES

All items not collected by 4pm, within four working days of the sale, will be automatically removed to commercial storage and subject to a minimum storage charge of £20 (plus VAT) per lot and to a further storage charge of £2 (plus VAT) per lot per part or full day thereafter. These charges will be the sole liability of the purchaser and will be billed directly to them by Vangaroo Ltd (Andover); Vangaroo may be willing to adjust their charges if they are instructed by the purchaser to deliver to them. On payment of all sales and storage costs, items will be available for collection by appointment from Vangaroo Ltd (Andover), tel: 01264 586566, mobile: 07528 291180, email: info@vangaroo.co.uk. These charges are set by Vangaroo Ltd (Andover); we recommend that you contact them directly regarding queries relating to these charges and other questions relating to storage. Staff at the saleroom will be unable to answer questions relating to items that have been removed from the saleroom.

FURTHER INFORMATION

The colours printed in this catalogue are not necessarily a true reflection of the actual item. All weights and measures given in the catalogue should be regarded as approximate.

VALUATION SERVICES

Dreweatts provides a range of confidential and professional valuation services to private clients, solicitors, executors, estate managers, trustees and other professional partners. These services include auction valuations, insurance valuations, probate valuations, private treaty valuations, valuations for family division or for tax purposes. For more information, please see our website: www.dreweatts.com.

For directions to Donnington Priory, please see our website: www.dreweatts.com.

Parking is available at Donnington Priory in two car parks on either side of the saleroom.

Information for Buyers at Public Auctions

1. **INTRODUCTION.** The following notes are intended to assist Bidders and Buyers, particularly those inexperienced or new to our salerooms. All of our auctions and sales are conducted on our printed Auction Terms and Conditions, including these Conditions of Sale and Business, which are readily available for inspection and normally accompany catalogues. Our staff will be happy to help you if there is anything you do not fully understand.

Any particular auction and/or any particular lot in an auction may be subject to different or additional terms which will be published in our auction catalogue. All auctions and sales of wines and spirits, jewellery, watches and clocks are subject to the special terms set out in the relevant Notices in relation to those items published in our auction catalogue and, in the event of any conflict or inconsistency, those special terms prevail over any other terms in our Auction Terms and Conditions. By bidding at the auction, you agree to be bound by these terms.

2. **AGENCY.** As auctioneers we usually act as agents for the seller whose identity, for reasons of confidentiality, is not normally disclosed. Accordingly if you buy at auction your contract for the item or items purchased is with the seller and not with us as the auctioneer.

3. **ESTIMATES.** Estimates are designed to help buyers gauge what sort of sum might be involved for the purchase of a particular lot. Estimates may change and should not be thought of as the sale price. The lower estimate may represent the reserve price and certainly will not be below it. Estimates do not include the Buyer's Premium or VAT (where chargeable). Estimates are prepared some time before the sale and may be altered by announcement before the sale. They are in no sense definitive.

4. **BUYER'S PREMIUM.** The Conditions of Sale forming part of our Auction Terms and Conditions require the buyer to pay a buyer's premium on the hammer price of each lot purchased. The buyer's premium is 25% of the hammer price up to and including £500,000, 20% of the hammer price from £500,001 up to and including £1,000,000, and 12% of the hammer price in excess of £1,000,000. VAT at the prevailing rate of 20% is added to buyer's premium and additional charges as defined below.

5. **VAT.** A theta symbol (Θ) indicates that the lot is a zero rated item and therefore not subject to VAT on the buyer's premium. This applies to bound books (manuscripts and printed), unframed maps and albums. A dagger symbol (†) indicates that VAT is payable by the purchaser at the standard rate (presently 20%) on the hammer price as well as being and element in the buyers' premium. This imposition of VAT is likely to be because the seller is registered for VAT within the European Union and is not operating the Dealers Margin Scheme or because VAT is due at 20% on import into the UK. A double dagger (‡) indicates that the lot has been imported from outside the European Union and the present position is that these lots are liable to a reduced rate of Import VAT currently 5% on the hammer price. (Ω) indicates that the lot has been imported from outside the European Union and these lots are liable to the standard rate of Import VAT currently 20% on the hammer price. Lots which appear without the above symbols indicate that no VAT is payable on the hammer price; this is because such lots are sold using the Auctioneers Margin Scheme and it should be noted that the VAT included within the buyers' premium is not recoverable as input tax.

6. **DESCRIPTION AND CONDITION.** Condition reports are provided on our website or upon request. The absence of a report does not imply that a lot is without imperfections. The detail in a report will reflect the estimated value of the lot. Large numbers of such requests received shortly before the sale may mean that reports cannot be provided for all lots. Members of staff are not trained restorers or conservators and, particularly for higher value lots, you should obtain an opinion from such a professional. Dreweatts is not liable for damage to gilded picture frames, plaster picture frames or picture frame glass; if a Lot is or becomes dangerous, we may dispose of it without notice to bidders in advance in any manner we see fit and will be under no liability for doing so. We recommend that you always view a lot in person.

We are dependent on information provided by the seller about a lot and whilst we may inspect lots and act reasonably in taking a general view about them we are normally unable to carry out a detailed examination

and frequently no examination of lots in order to ascertain their condition in the way in which it would be wise for a buyer to do. Intending buyers have ample opportunity for inspection of goods and, therefore, accept responsibility for inspecting and investigating lots in which they may be interested and the corresponding risk should they not do so. Please note carefully the exclusion of liability for the condition of lots contained in the Conditions of Sale. Neither the seller nor we, as the auctioneers, accept any responsibility for their condition. In particular, mechanical objects of any age are not guaranteed to be in working order. However, in so far as we have examined the goods and make a representation about their condition in the auction catalogue, we shall be liable for any defect which is not reflected in that representation and which that examination ought to have revealed to the auctioneer but which would not have been revealed to the buyer had the buyer examined the goods. Additionally, in specified circumstances lots misdescribed because they are 'deliberate forgeries' may be returned and repayment made. There is a 3 week time limit. (The expression 'deliberate forgery' is defined in our Conditions of Sale).

7. **ELECTRICAL GOODS.** These are sold as 'antiques' only and if bought for use must be checked over for compliance with safety regulations by a qualified electrician before use.

8. **EXPORT OF GOODS.** Buyers intending to export goods should ascertain (a) whether an export licence is required and (b) whether there is any specific prohibition on importing goods of that character because, e.g. they may contain prohibited materials such as ivory. Ask us if you need help.

9. **BIDDING.** Bidders will be required to register before the sale commences and lots will be invoiced to the name and address on the sale registration form. Bidders are required to provide a government issued identity document and a proof of address. Please enquire in advance about our arrangements for telephone bidding.

10. **COMMISSION BIDDING.** Commission bids may be left with the auctioneers indicating the maximum amount to be bid excluding buyers' premium. Dreweatts will add these bids to the auctioneers' sale book and they will be executed as cheaply as possible having regard to the reserve (if any) and competing bids. If two buyers submit identical commission bids the auctioneers may prefer the first bid received. Please enquire in advance about our arrangements for the leaving of commission bids by telephone or fax. Dreweatts does not accept liability for failing to execute commission bids, or for any errors or omissions.

11. **METHODS OF PAYMENT.** Payment will be accepted, if you are a successful bidder, by debit card issued in the name of the Buyer by a UK bank and registered to a UK billing address; by all major UK issued credit cards issued in the name of the Buyer and registered to a UK billing address with the exception of American Express and Diners Club; by bank transfer direct into our bank account, Bank Details: NatWest, 30 Market Place, Newbury, Berkshire RG14 5AG. Account Name: Dreweatts 1759 Ltd. A/C: 62412949, Sort Code: 60-15-07, BIC: NWBKGB2L, IBAN: GB21NWBK60150762412949. The name of the bank account holder should match the name of the buyer. First time buyers who are not present at the saleroom are requested to pay by bank transfer.

12. **COLLECTION AND STORAGE.** Please note what the Conditions of Sale state about collection and storage. It is important that goods are paid for and collected promptly. Any delay may involve the buyer in paying storage charges.

13. **À DROIT DE SUITE ROYALTY CHARGES.** From 1st January 2012 all UK art market professionals (which includes but is not limited to; auctioneers, dealers, galleries, agents and other intermediaries) are required to collect a royalty payment for all works of art that have been produced by qualifying artists each time a work is re-sold during the artist's lifetime and for a period up to 70 years following the artists death. This payment is only calculated on qualifying works of art which are sold for a hammer price more than the UK sterling equivalent of EURO 1,000 – the UK sterling equivalent will fluctuate in line with prevailing exchange rates. It is entirely the responsibility of the buyer to acquaint himself with the precise EURO to UK Sterling exchange rate on the day of the sale in this regard, and the auctioneer accepts no responsibility whatsoever if the

qualifying rate is different to the rate indicated. All items in this catalogue that are marked with λ are potentially qualifying items, and the royalty charge will be applied if the hammer price achieved is more than the UK sterling equivalent of EURO 1,000. The royalty charge will be added to all relevant buyers' invoices, and must be paid before items can be cleared. All royalty charges are passed on to the Design and Artists Copyright Society (DACS), no handling costs or additional fees with respect to these charges will be retained by the auctioneers. The royalty charge

Terms of Consignment for Sellers in Public Auctions

The sale of goods at our public auctions and a seller's relationship with us are governed by our Auction Terms and Conditions including these Terms of Consignment for Sellers in Public Auctions and our Conditions of Sale for Public Auctions. Any particular auction and/or any particular lot in an auction may be subject to different or additional terms which will be published in our auction catalogue or separately announced prior to the auction. All auctions and sales of wines and spirits, jewellery, watches and clocks are subject to the special terms set out in the relevant Notices in relation to those items published in our auction catalogue and, in the event of any conflict or inconsistency, those special terms prevail over any other terms in our Auction Terms and Conditions. Please note that our Auction Terms and Conditions including these Terms of Consignment for Sellers in Public Auctions and our Conditions of Sale for Public Auctions relate to auctions held in our salerooms and we have separate terms and conditions for our online auctions.

If you, or another person acting on your behalf, provide goods to us to sell on your behalf at one of our auctions this signifies that you agree to and will comply with our Auction Terms and Conditions including these Terms of Consignment for Sellers in Public Auctions and our Conditions of Sale for Public Auctions.

1. **INTERPRETATION.** In these Terms the words 'you', 'yours', etc. refer to the Seller and if the consignment of goods to us is made by an agent or otherwise on the Seller's behalf we assume that the Seller has authorised the consignment and that the consignor has the Seller's authority to contract. All obligations that apply to the Seller under these Terms of Consignment for Sellers in Public Auctions shall apply to the owner of the goods and their agent jointly and separately. Similarly the words 'we', 'us', etc. refer to the Auctioneers.

2. **WARRANTY.** The Seller warrants that possession in the lots can be transferred to the Buyer with good and marketable title, free from any third party right and encumbrances, claims or potential claims. The Seller has provided all information concerning the item's ownership, condition and provenance, attribution, authenticity, import or export history and of any concerns expressed by third parties concerning the same.

3. **ALL COMMISSIONS** and fees are subject to VAT at the prevailing rate.

4. **COMMISSION** is charged to sellers and all selling terms are available from our salerooms.

5. **REMOVAL COSTS.** Items for sale must be consigned to the saleroom by any stated deadline and at your expense. We may be able to assist you with this process but any liability incurred to a carrier for haulage charges is solely your responsibility.

6. LOSS AND DAMAGE OF GOODS

(a) Loss and Damage Warranty - Dreweatts is not authorised by the FCA to provide insurance to its clients, and does not do so. However Dreweatts for its own protection assumes liability for property consigned to it at the lower pre-sale estimate until the hammer falls. To justify accepting liability, Dreweatts makes a charge of 15% of the hammer price plus VAT, subject to a minimum charge of £150, or if unsold 15% of our lower estimate. The liability assumed by Dreweatts shall be limited to the lower pre-sale estimate or the hammer price if the lot is sold. Dreweatts is not liable for damage to gilded picture frames, plaster picture frames or picture frame glass; if the Lot is or becomes dangerous, we may dispose of it without notice to you in advance in any manner we see fit and will be under no liability for doing so.

(b) If the owner of the goods consigned instructs us in writing not to take such action, the goods then remain entirely at the owner's risk unless and until the property in them passes to the Buyer or they are collected by or on behalf of the owner, and clause 6 (a) is inapplicable.

that will be applied to qualifying items which achieve a hammer price of more than the UK sterling equivalent of EURO 1,000, but less than the UK sterling equivalent of EURO 50,000 is 4%. For qualifying items that sell for more than the UK sterling equivalent of EURO 50,000 a sliding scale of royalty charges will apply – for a complete list of the royalty charges and threshold levels, please see www.dacs.org.uk. There is no VAT payable on this royalty charge.

7. **ILLUSTRATIONS AND PHOTOGRAPHS.** The cost of any illustrations or photographs is borne by you. The copyright in respect of such illustrations and photographs shall be the property of us, the auctioneers, as is the text of the catalogue.

8. **MINIMUM BIDS AND OUR DISCRETION.** Goods will normally be offered subject to a reserve agreed between us before the sale in accordance with clause 9. We may sell Lots below the reserve provided we account to you for the same sale proceeds as you would have received had the reserve been the hammer price. If you specifically give us a "discretion" we may accept a bid of up to 10% below the formal reserve.

9. RESERVES

(a) You are entitled to place prior to the auction a reserve on any lot consigned, being the minimum hammer price at which that lot may be sold. Reserves must be reasonable and we may decline to offer goods which in our opinion would be subject to an unreasonably high reserve (in which case goods carry the storage and loss and damage warranty charges stipulated in these Terms of Consignment).

(b) A reserve once set cannot be changed except with our consent.

(c) Where a reserve has been set which we consider unreasonably high, an unsold charge will be payable in the event that the lots fails to sell, being the agreed selling terms calculated on the reserve, LDW at 15% and any photographic charges.

(d) Where a reserve has been placed only we may bid on your behalf and only up to the reserve (if any) and you may in no circumstances bid personally.

(e) Reserves are not usually accepted for lots expected to realise below £100.

10. **ELECTRICAL ITEMS.** These are subject to detailed statutory safety controls. Where such items are accepted for sale you accept responsibility for the cost of testing by external contractors. Goods not certified as safe by an electrician (unless antiques) will not be accepted for sale. They must be removed at your expense on your being notified. We reserve the right to dispose of unsafe goods as refuse, at your expense.

11. **SOFT FURNISHINGS.** The sale of soft furnishings is strictly regulated by statute law in the interests of fire safety. Goods found to infringe safety regulations will not be offered and must be removed at your expense. We reserve the right to dispose of unsafe goods as refuse, at your expense. The rights of disposal referred to in clause 10 and 11 are subject to the provisions of The Torts (Interference with Goods) Act 1977.

12. **DESCRIPTION.** Please assist us with accurate information as to the provenance, lawful import etc. of goods where this is relevant. There is strict liability for the accuracy of descriptions under modern consumer legislation and in some circumstances responsibility lies with sellers if inaccuracies occur. We will assume that you have approved the catalogue description of your lots and that your lots match those descriptions unless informed to the contrary. Where we are obliged to return the price to the buyer when the lot is a deliberate forgery under Condition 15 of the Conditions of Sale and we have accounted to you for the proceeds of sale you agree to reimburse us the sale proceeds and in any event within 7 days of our written notice to do so.

13. **UNSOLD.** If an item is unsold it may at our discretion be re-offered at a future sale. Where in our opinion an item is unsaleable you must collect such items from the saleroom promptly on being so informed. Otherwise, storage charges may be incurred. We reserve the right to charge for storage in these circumstances at a reasonable daily rate.

14. **WITHDRAWN AND BOUGHT IN ITEMS.** These are liable to incur a charge of 15% commission, 15 % Loss and Damage Warranty and

any other costs incurred including but not limited to illustration and restoration fees all of these charges being subject to VAT on being bought in or withdrawn after being catalogued.

15. **CONDITIONS OF SALE.** You agree that all goods will be sold on our Conditions of Sale for Public Auctions. In particular you undertake that you have the right to sell the goods either as owner or agent for the owner with good and marketable title and free and clear of any third party rights or claims. You undertake to compensate us and any buyer or third party for all losses liabilities, costs and expenses suffered or incurred arising out of or in connection with any breach of this undertaking. We will also, at our discretion, and as far as practicable, confirm that an item consigned for sale does not appear on the Art Loss register, which is administered by an independent third party.

16. DUE DILIGENCE CHECKS AND ANTI-MONEY LAUNDERING PROCEDURES

Under the money laundering regulations in force we are required to carry out relevant due diligence checks. This includes verifying the identity of all customers we transact with as well as any beneficial owners on behalf of whom they may transact. Vendors who are unable to or refuse to supply required identification documents and proof of address will not be able to consign to Dreweatts auctions. Copies of customer due diligence checks will be stored for as long as it is necessary to satisfy legal requirements in an appropriate storage facility, which for the avoidance of doubt may include storage solely in electronic form.

17. AUTHORITY TO DEDUCT COMMISSION AND EXPENSES AND RETAIN PREMIUM AND INTEREST

(a) You authorise us to deduct commission at the stated rate and all

Conditions of Sale for Public Auctions

Dreweatts carries on business with bidders, buyers and all those present in the auction room prior to or in connection with a sale by auction at our salerooms on our Auction Terms and Conditions or Public Auctions including these Conditions of Sale for Public Auctions and all bidders, buyers and others participating in a public auction accept that these terms apply to the exclusion of any terms and conditions contained in any of those person's own documents even if the same purport to provide that that person's own or some other terms prevail. Any particular public auction and/or any particular lot in an auction may be subject to different or additional terms which will be published in our online auction catalogue. Please note that our Auction Terms and Conditions including these Conditions of Sale for Public Auctions relate to auctions held in one of our salerooms and we have separate terms and conditions for our online auctions.

1. DEFINITIONS

In these Conditions:

(a) "auctioneer" means the firm of Dreweatts or its authorised auctioneer, as appropriate;

(b) "deliberate forgery" means an imitation made with the intention of deceiving as to authorship, origin, date, age, period, culture or source but which is unequivocally described in the catalogue as being the work of a particular creator and which at the date of the sale had a value materially less than it would have had if it had been in accordance with the description;

(c) "hammer price" means the level of bidding reached (at or above any reserve) when the auctioneer brings down the hammer;

(d) "terms of consignment" means the stipulated terms and rates of commission on which Dreweatts accepts instructions from sellers or their agents;

(e) "total amount due" means the hammer price in respect of the lot sold together with any premium, Value Added Tax chargeable and any additional charges payable by a defaulting buyer under these Conditions;

(f) "sale proceeds" means the net amount due to the seller, being the hammer price of the lot sold less commission at the stated rate, Value Added Tax chargeable and any other amounts due to us by the seller in whatever capacity and however arising;

(g) "You", "Your", etc. refer to the buyer as identified in Condition 2.

(h) The singular includes the plural and vice versa as appropriate.

expenses incurred for your account from the hammer price and consent to our right to retain beneficially the premium paid by the buyer in accordance with our Conditions of Sale for Public Auctions and any interest earned on the sale proceeds until the date of settlement.

(b) In case of lots unsold at auction you authorise us at our discretion to reoffer such lots and negotiate a sale within seven days of the auction date, in which case the same charges will be payable as if such lots had been sold at auction and so far as appropriate these Terms apply.

18. **WAREHOUSING.** We disclaim all liability for goods delivered to our saleroom without sufficient sale instructions and reserve the right to make minimum warehousing charge of £10 per lot per day. Unsold lots are subject to the same charges if you do not remove them within a reasonable time of notification. If not removed within three weeks we reserve the right to sell them and defray charges from any net proceeds of sale or at your expense to consign them to the local authority for disposal.

19. **SETTLEMENT.** After sale settlement of the net sum due to you normally takes place within 28 days of the sale unless the buyer has not paid for the goods. In this case no settlement will then be made but we will take your instructions in the light of our Conditions of Sale for Public Auctions. You authorise any sums owed by you to us on other transactions to be deducted from the sale proceeds. You must note the liability to reimburse the proceeds of sale to us as under the circumstances provided for in Condition 12 above. You should therefore bear this potential liability in mind before parting with the proceeds of sale until the expiry of 28 days from the date of sale.

2. BIDDING PROCEDURES AND THE BUYER

(a) Bidders are required to register their particulars before bidding by completing a sale registration form and to satisfy any security arrangements before entering the auction room to view or bid;

(b) Under the money laundering regulations in force we are required to verify the identity of all customers we transact with as well as any beneficiaries on behalf of whom they may transact. Customers who are unable to or refuse to supply required identification documents and proof of address will not be able to bid in Dreweatts auctions. Copies of customer due diligence checks will be stored for as long as it is necessary to satisfy legal requirements in an appropriate storage facility which for the avoidance of doubt may include storage solely in electronic form;

(c) the maker of the highest bid accepted by the auctioneer conducting the sale shall be the buyer at the hammer price and any dispute about a bid shall be settled at the auctioneer's absolute discretion by reoffering the Lot during the course of the auction or otherwise. The auctioneer shall act reasonably in exercising this discretion.

(d) Bidders shall be deemed to act as principals;

(e) Our right to bid on behalf of the seller is expressly reserved up to the amount of any reserve and the right to refuse any bid is also reserved.

3. **INCREMENTS.** Bidding increments shall be at the auctioneer's sole discretion.

4. **THE PURCHASE PRICE.** The buyer shall pay the purchase price together with a premium thereon of 30% which shall include VAT on the premium at the rate imposed by law. The buyer will also be liable for any royalties payable under Droit de Suite as set out under Information for Buyers.

5. **VALUE ADDED TAX.** Value Added Tax on the hammer price is imposed by law on all items affixed with a dagger (†) or double dagger (‡). Value Added Tax is charged at the appropriate rate prevailing by law at the date of sale and is payable by buyers of relevant Lots. (Please refer to "Information for Buyers" for a brief explanation of the VAT position).

6. PAYMENT

(a) Immediately a Lot is sold you will:

(i) give to us, if requested, proof of identity, and

(ii) pay to us the total amount due or in such other way as is agreed by us.

(b) Any payments by you to us may be applied by us towards any sums owing from you to us on any account whatever without regard to any directions of you or your agent, whether expressed or implied.

(c) In order to comply with money laundering regulations we reserve the right to require proof of source of funds and/or confirmation of the nature and source of wealth for all receipts of monies from clients directly or from third parties for payments on behalf of clients.

7. TITLE AND COLLECTION OF PURCHASES

(a) The ownership of any Lots purchased shall not pass to you until you have made payment in full to us of the total amount due.

(b) You shall at your own risk and expense take away any lots that you have purchased and paid for not later than 3 working days following the day of the auction after which you shall be responsible for any removal, storage and insurance charges.

(c) No purchase can be claimed or removed until it has been paid for.

8. REMEDIES FOR NON-PAYMENT OR FAILURE TO COLLECT PURCHASES

(a) If any Lot is not paid for in full and taken away in accordance with these Conditions or if there is any other breach of these Conditions, we, as agent for the seller and on our own behalf, shall at our absolute discretion and without prejudice to any other rights we may have, be entitled to exercise one or more of the following rights and remedies:

(i) to proceed against you for damages for breach of contract;

(ii) to rescind the sale of that Lot and/or any other Lots sold by us to you;

(iii) to resell the Lot (by auction or private treaty) in which case you shall be responsible for any resulting deficiency in the total amount due (after crediting any part payment and adding any resale costs). Any surplus so arising shall belong to the seller;

(iv) to remove, store and insure the Lot at your expense and, in the case of storage, either at our premises or elsewhere;

(v) to charge interest at a rate not exceeding 15% per month on the total amount due to the extent it remains unpaid for more than 3 working days after the sale;

(vi) to retain that or any other Lot sold to you until you pay the total amount due;

(vii) to reject or ignore bids from you or your agent at future auctions or to impose conditions before any such bids shall be accepted;

(viii) to apply any proceeds of sale of other Lots due or in future becoming due to you towards the settlement of the total amount due and to exercise a lien (that is a right to retain possession of) any of your property in our possession for any purpose until the debt due is satisfied.

(b) We shall, as agent for the seller and on our own behalf pursue these rights and remedies only so far as is reasonable to make appropriate recovery in respect of breach of these conditions.

9. **THIRD PARTY LIABILITY.** All bidders, buyers and other members of the public on our premises are there at their own risk and must note the lay-out of the accommodation and security arrangements. Accordingly neither the auctioneer nor our employees or agents shall incur liability for death or personal injury or for the safety of the property of persons visiting prior to or at a sale (except in each case as may be required by law by reason of our negligence)

10. **COMMISSION BIDS.** Whilst prospective buyers are strongly advised to attend the auction and are always responsible for any decision to bid for a particular Lot and shall be assumed to have carefully inspected and satisfied themselves as to its condition, we will if so instructed clearly and in writing execute bids on their behalf. Neither the auctioneer nor our employees or agents shall be responsible for any failure to do so.

Where two or more commission bids at the same level are recorded we reserve the right in our absolute discretion to prefer the first bid so made.

11. **WARRANTY OF TITLE AND AVAILABILITY.** The seller warrants to the auctioneer and you that the seller is the true owner of the property consigned or is properly authorised by the true owner to consign for sale and is able to transfer good and marketable title to the property free from any third party claims.

Save as expressly set out above, all other warranties, conditions or other terms which might have effect between the Seller and you, or us and you, or be implied or incorporated by statute, common law or otherwise are excluded to the fullest extent permitted by law.

12. **AGENCY.** The auctioneer normally acts as agent only and disclaims any responsibility for default by sellers or buyers.

13. **TERMS OF SALE.** The seller acknowledges that Lots are sold subject to the stipulations of these Conditions in their entirety and on the Terms of Consignment for Public Auctions as notified to the consignor at the time of the entry of the Lot.

14. DESCRIPTIONS AND CONDITION

(a) Whilst we seek to describe lots accurately, it may be impractical for us to carry out exhaustive due diligence on each lot. Prospective buyers are given ample opportunities to view and inspect before any sale and they (and any independent experts on their behalf) must satisfy themselves as to the accuracy of any description applied to a lot. Prospective buyers also bid on the understanding that, inevitably, representations or statements by us as to authorship, genuineness, origin, date, age, provenance, condition or estimated selling price involve matters of opinion. We undertake that any such opinion shall be honestly and reasonably held and accept liability for opinions given negligently or fraudulently. Subject to the foregoing neither we the auctioneer nor our employees or agents nor the seller accept liability for the correctness of such opinions and all conditions and warranties, whether relating to description, condition or quality of lots, express, implied or statutory, are hereby excluded. Dreweatts is not liable for damage to gilded picture frames, plaster picture frames or picture frame glass; if the Lot is or becomes dangerous, we may dispose of it without notice to you in advance in any manner we see fit and will be under no liability for doing so. This Condition is subject to the next following Condition concerning deliberate forgeries and applies save as provided for in paragraph 6 “information to buyers”.

(b) Private treaty sales made under these Conditions are deemed to be sales by auction for purposes of consumer legislation.

15. **FORGERIES.** Notwithstanding the preceding Condition, any Lot which proves to be a deliberate forgery (as defined) may be returned to us by you within 21 days of the auction provided it is in the same condition as when bought, and is accompanied by particulars identifying it from the relevant catalogue description and a written statement of defects. If we are satisfied from the evidence presented that the Lot is a deliberate forgery we shall refund the money paid by you for the Lot including any buyer’s premium provided that (1) if the catalogue description reflected the accepted view of scholars and experts as at the date of sale or

(2) you personally are not able to transfer a good and marketable title to us, you shall have no rights under this condition.

The right of return provided by this Condition is additional to any right or remedy provided by law or by these Conditions of Sale.

16. **PRIVACY NOTICE.** We will hold and process any personal data in relation to you in accordance with our current privacy policy, a copy of which is available on our website www.dreweatts.com/privacy-policy/.

GENERAL

17. We shall have the right at our discretion, to refuse admission to our premises or attendance at our auctions by any person.

18. (a) Any right to compensation for losses liabilities and expenses incurred in respect of and as a result of any breach of these Conditions and any exclusions provided by them shall be available to the seller and/or the auctioneer as appropriate.

(b) Such rights and exclusions shall extend to and be deemed to be for the benefit of employees and agents of the seller and/or the auctioneer who may themselves enforce them.

19. Any notice to any buyer, seller, bidder or viewer may be given by first class mail, email or Swiftmail in which case it shall be deemed to have been received by the addressee 48 hours after posting.

20. Special terms may be used in catalogue descriptions of particular classes of items in which case the descriptions must be interpreted in accordance with any glossary appearing at the commencement of the catalogue.

21. Any indulgence extended to bidders, buyers or sellers by us notwithstanding the strict terms of these Conditions or of the Terms of Consignment shall affect the position at the relevant time only and in respect of that particular concession only; in all other respects these Conditions shall be construed as having full force and effect.

22. These Conditions shall be governed by and construed in accordance with English law and the parties irrevocably submit to the exclusive jurisdiction of the English courts.

Dreweatts

NEWBURY

Dreweatts

Donnington Priory

Newbury

Berkshire RG14 2JE

+44 (0) 1635 553 553

info@dreweatts.com

MANAGING DIRECTOR

Jonathan Pratt

DEPUTY CHAIRMAN

Will Richards

James Nicholson

LONDON

Dreweatts / Bloomsbury Auctions

16-17 Pall Mall

St James's

London SW1Y 5LU

+44 (0) 20 7839 8880

info@bloomsburyauctions.com

info@dreweatts.com

HAMBRIDGE LANE

Dreweatts

1 Hambridge Lane

Newbury

Berkshire RG14 5TU

+44 (0) 1635 553 548

hambridgesales@dreweatts.com

Group Departments

ASIAN CERAMICS AND WORKS OF ART

Mark Newstead

Dr Yingwen Tao

asian@dreweatts.com

BLOOMSBURY AUCTIONS BOOKS

AND MANUSCRIPTS

Dr Timothy Bolton

Camilla Previté

Denise Kelly

info@bloomsburyauctions.com

BRITISH AND EUROPEAN CERAMICS

AND GLASS

Mark Newstead

Geoffrey Stafford Charles

interiors@dreweatts.com

CLOCKS AND SCIENTIFIC

INSTRUMENTS

Leighton Gillibrand

clocks@dreweatts.com

COUNTRY SPORTING

Geoffrey Stafford Charles

gscharles@dreweatts.com

DECORATIVE ARTS

Geoffrey Stafford Charles

Ashley Matthews

interiors@dreweatts.com

EUROPEAN SCULPTURE AND WORKS

OF ART

Charlotte Schelling

sculpture@dreweatts.com

FURNITURE AND CARPETS

Ben Brown

Ashley Matthews

William Turkington

furniture@dreweatts.com

HAMBRIDGE SALES

Silas Currie

Lucie Hobbs

hambridgesales@dreweatts.com

HOUSE SALES AND PRIVATE

COLLECTIONS

Joe Robinson

Lulu Randall

housesales@dreweatts.com

JEWELLERY, SILVER, WATCHES AND

OBJECTS OF VERTU

James Nicholson

Nick Mann

Tessa Parry

jsw@dreweatts.com

LIVE STEAM AND MODEL

ENGINEERING WORKS OF ART

Michael Matthews

transport@dreweatts.com

MODERN AND CONTEMPORARY ART

Jennie Fisher

Lucy Darlington

Francesca Whitham

Will Porter (Business Development)

pictures@dreweatts.com

OLD MASTERS, BRITISH AND

EUROPEAN ART

Brandon Lindberg

Lucy Darlington

Francesca Whitham

pictures@dreweatts.com

WINE

Mark Robertson

Dianne Wall

wine@dreweatts.com

BUSINESS DEVELOPMENT

Will Richards

Will Porter

Joe Robinson

Imogen Jones

ijones@dreweatts.com

VALUATIONS FOR PROBATE,

INSURANCE

AND CGT

Emma Terry

Eleanor Smith

valuations@dreweatts.com

