

DREWATTS

EST. 1759



JEWELLERY, SILVER, WATCHES, PENS AND
LUXURY ACCESSORIES (PART 1)

DONNINGTON PRIORY | WEDNESDAY 4 AUGUST 2021

Coming Up at Dreweatts

Auctions

14 July | Live Online

Fine and Rare Wine and Spirits

21 July | Live Online

A Lifetime's Passion: Property from the Fell Collection

4 August | Live Online

Jewellery, Silver, Watches, Pens and Luxury Accessories – Part 1

5 August | Timed Online

Jewellery, Silver, Watches, Pens and Luxury Accessories – Part 2

6 August | Timed Online

A Private Collection of Vintage and Modern Pens to be sold on behalf of a Charity

11 & 12 August | Live Online

The Summer Sale: To Include the selected contents of a Gloucestershire rectory

19 August | Timed Online

Hambridge Sale

8 September | Live Online

Fine Furniture, Sculpture, Carpets, Ceramics and Works of Art

16 September | Timed Online

Bruce Tippet Studio Sale

Valuation Days

Every Tuesday | London

Jewellery, Silver, Watches & Luxury Accessories

4 June & 2 July | Newbury

Fine Art, Antiques, Jewellery, Silver, Watches, Asian Works of Art & Wine

We hold regular auctions of fine art, antiques, jewellery and other collectibles. Our specialists carry out valuations nationwide so if you are unable to attend one of our valuation days, please request a valuation via our website or call us to discuss a home visit.



DREWEATTS

EST. 1759

NEWBURY
Dreweatts
Donnington Priory
Newbury
Berkshire RG14 2JE

LONDON
Dreweatts / Bloomsbury Auctions
16-17 Pall Mall
St James's
London SW1Y 5LU

HAMBRIDGE LANE
Dreweatts
1 Hambridge Lane
Newbury
Berkshire RG14 5TU

ENQUIRIES
For more information,
please contact
+44 (0) 1635 553 553
info@dreweatts.com

dreweatts.com



DREWEATTS

EST. 1759

**A PRIVATE COLLECTION OF VINTAGE AND MODERN PENS
TO BE SOLD ON BEHALF OF A CHARITY**
TIMED ONLINE AUCTION ENDING 6 AUGUST 2021 | 10.30AM

AUCTION LOCATION
Dreweatts
Donnington Priory
Newbury
Berkshire RG14 2JE

ENQUIRIES
+44 (0) 1635 553 553
jsw@dreweatts.com
Catalogue, viewing details and free
online bidding at: dreweatts.com





DREWEATTS

EST. 1759

JEWELLERY, SILVER, WATCHES, PENS AND LUXURY ACCESSORIES (PART 1)

DONNINGTON PRIORY | WEDNESDAY 4 AUGUST 2021 | 10.30AM

AUCTION FORMAT: LIVE ONLINE

This is a live online auction with an auctioneer. Bidding is available online, by telephone or commission (absentee) bids. If not bidding online, please contact Dreweatts to register all commission bids or telephone bids by 12 noon BST on Tuesday 3 August.

FREE ONLINE BIDDING IS AVAILABLE AT DREWEATTS.COM:

The Dreweatts' bidding platform allows you to watch, listen and bid with no additional online bidding fees applicable.

REGISTRATION:

We advise clients to register at least 48 hours in advance of the auction as you may be asked to provide documents to verify your identity. Registration for new clients will close at 12 noon BST on Tuesday 3 August.

BUYER'S PREMIUM:

Buyer's premium is charged per lot at 25% of the hammer price (30% including VAT) up to and including £500,000, 20% (24% including VAT) of the hammer price from £500,001 up to and including £1,000,000, and 12% of the hammer price (14.4% including VAT) in excess of £1,000,001.

PAYMENT:

Please note, we cannot accept payment by telephone for lots bought by first time bidders. For details on other payment methods, please see our website.

REMOTE VIEWING SERVICE:

Remote Viewing will also be available by appointment. Our Remote Viewing Service allows you to view specified Lots via your smartphone from the comfort of your own home at a time convenient to you. See our website for further details.

AUCTION NO. 14369

SPECIALISTS:

James Nicholson FGA, DGA
Nick Mann
Tessa Parry FGA, DGA
Ian Pickford (Consultant, Silver)
Terry Taylor MBHI (Consultant, Watches)

VIEWING:

Thursday 29 July: 10am – 5pm
Friday 30 July: 10am – 5pm
Monday 2 August: 10am – 5pm
Tuesday 3 August: 10am – 5pm

Please note there is no viewing on the day of the sale.

Visitors are encouraged to wear a face covering while in the building, use the hand sanitiser provided on entering and observe social distancing rules. We may need to restrict the numbers of visitors viewing at one time, so if you would prefer to book an appointment in advance, please contact us.

Please see our website for the latest information.

AUCTION:

Dreweatts
Donnington Priory
Newbury
Berkshire RG14 2JE

ENQUIRIES:

+44 (0) 1635 553 553
jsw@dreweatts.com
dreweatts.com

Front cover: Lot 195

Back cover: Lots 125, 342

DREWEATTS

EST. 1759

INTERIORS: THE SUMMER SALE

TO INCLUDE THE SELECTED CONTENTS OF A GLOUCESTERSHIRE RECTORY
11 & 12 AUGUST 2021 | 10.30AM

From antique furniture to decorative objects for the home, our Interiors sales include furniture, lighting, ceramics, works of art, pictures, clocks and garden furniture from a wide range of periods and across all price points.

AUCTION LOCATION
Dreweatts
Donnington Priory
Newbury
Berkshire RG14 2JE

ENQUIRIES
+44 (0) 1635 553 553
interiors@dreweatts.com
Catalogue, viewing details and free
online bidding at: [dreweatts.com](https://www.dreweatts.com)



British Silver

1
A Queen Anne silver caster by Pentecost Symonds, Exeter 1712, later chased with foliate and floral sprays, 19.5cm (7 1/2in) high, 289g (9.3 oz)
Made in Plymouth, hallmarked in Exeter

£100-150

2
A George III silver tapering coffee pot, maker's mark either I.E or I.F, London 1737, with a bell shaped finial to the ogee domed cover, a wood scroll handle and engraved with an armorial, 23cm (9in) high, 824g (26.5 oz) gross

£300-500



2

3
A George III cast silver candlestick by Ebenezer Coker, London 1761, with a shaped circular and shell sconce, waisted capital, knopped stem and on a conforming shaped circular foot, 23.5cm (9 1/4in) high, 477g (15.3 oz)

£400-600



3



1



5



4

4

A George III Irish silver shaped oval tea pot, Dublin circa 1769, with a pineapple finial to the domed cover, a wooden loop handle, engraved with foliate bands, two cartouches and a crest, 30.5cm (12in) long, 554g (17.8 oz) gross

£300-500

5
A George III cast silver candlestick by John Cafe, London 1777, with a shaped circular and shell sconce, waisted capital, knopped stem and on a conforming shaped circular foot, 22cm (8 1/2in) high, 558g (17.95 oz)

£400-600

6
A George III silver octagonal snuff box by Susannah Barker, London 1792, with engraved foliate borders, 4.5cm (1 3/4in) long; and a George III rectangular snuff box by Thomas Phipps & Edward Robinson, London 1802, engraved with lattice decoration, 4cm (1 1/2in) long, 48g (1.55 oz) gross

£80-120



6



7

7Y

A George III silver oval tea pot by Henry Chawner, London 1796, with an ivory finial to the domed cover and a wood loop handle, engraved with foliate bands and two vacant cartouches, 32cm (12 1/2in) long, 671g (21.55 oz) gross

£200-300



8

8

A George III silver oval tea pot, maker's mark TW, Newcastle circa 1800, with a wood oval finial and harp handle, engraved with a foliate band and AH within an oval reserve, on four ball feet, 25cm (9 3/4in) long, 434g (13.95 oz) gross

£150-250

9

A George III silver slightly tapered mug, maker's mark GB, possibly by George Burrows, London 1803, with a scroll handle and reeded bands, 11cm (4 1/4in) high, 289g (9.3 oz)

£150-250



9

10Y

A cased George III silver mounted oval six bottle decanter stand, possibly by Peter, Ann & William Bateman, London 1805, with a loop handle to a six bottle frame, on four ivory ball feet and a wood base, 36.5cm (14 1/4in) long, with six cut glass bottles and stoppers

£500-700

11

A George III Irish silver oblong baluster sugar bowl and cream jug, no maker's marks, Dublin 1809, sugar bowl with twin harp handles, a gadrooned border, engraved with decorative bands and a coronet above a crest, on four ball feet, 22.52cm (9in) long, 463g (14.9 oz)

The crest for Nathaniel CURZON (1751-1837) 2nd Baron Scarsdale. He inherited his title at the death of his father also Nathaniel CURZON (1726-1804) the 1st Baron. His mother was Lady Caroline COLYEAR daughter of Charles COLYEAR (1700-1785) 2nd Earl of Portmore. In 1777 he married Sophia-Susanna NOEL daughter of Edward NOEL (1715-1774) who was created Viscount Wentworth in 1762. Before inheriting the title of Baron he was MP for Derbyshire. The family seat was Kedleston Hall, Derbyshire.

£250-350



10



11

12

A George III silver oblong tea pot stand by Spooner Clowes & Co., Birmingham 1828, with a gadrooned border and on four circular spreading feet, 17cm (6 3/4in) long, 202g (6.45 oz)

£70-100



12



13

13Y

A William IV silver melon shaped tea pot by Paul Storr, London 1831, stamped Storr & Mortimer, no. 114, with a flambeau finial to the flush cover, the leaf-capped C-scroll handle with ivory spacers, a lobed spout and a moulded collet foot, 26.5cm (10 1/2in) long, 631g (20.3 oz) gross

Provenance: The Lord Hesketh, Easton Neston

£700-1,000



14

14Y

A William IV silver three piece lobed circular tea set by Charles Fox II, London 1835, the tea pot with a foliate finial to the domed cover, chased with a foliate swag and floral border, a leaf capped loop handle with ivory warming bands, on a shaped circular pedestal foot, 28cm (11in) long, 1581g (50.85 oz) gross

£600-800

15Y

An early Victorian silver baluster coffee pot and cream jug by Charles Fox II, London 1838, the coffee pot with a flower finial to the ogee domed cover, a leaf capped scroll handle with ivory warming bands and on four foliate scroll feet, 25.5cm (10in) high, 1114g (35.8 oz) gross

£400-600



15



16

16Y

A Victorian silver lobed circular tea pot and hot water pot by Benjamin Smith III, London 1840, the tea pot with a floral finial to the domed cover, a leaf capped loop handle with ivory warming bands, chased with floral sprays and on a shaped circular foot, 28cm (11in) long, the hot water pot 27cm (10 1/2in) high, 1605g (51.6 oz) gross

£500-700

17

A Victorian silver baluster mug by Samuel Hayne & Dudley Cater, London 1865, with a leaf capped double scroll handle, chased with floral sprays, engraved with a worn crest and a monogram within shaped reserves, on a circular foot, 13cm (5in) high, 321g (10.3 oz)

£100-150



17



18
A Victorian Scottish silver novelty sword letter opener by Hamilton & Inches, Edinburgh 1892, with a turned wood handle, 32.5cm (12 3/4in) long; and a Victorian silver spoon by James Fenton, Birmingham 1899, the handle inset with Scottish agate and engraved with a monogram to the reverse, a twisted stem and a shaped bowl chased with fruit, 18cm (7in) long, 129g (4.15 oz) gross

£100-150

19
A late Victorian silver three piece half gadrooned tea and coffee set by Atkin Brothers, Sheffield 1897, the tea pot with a wood finial and angular handle, 26cm (10in) long, 1476g (47.45 oz) gross

£400-600



20
A late Victorian silver half gadrooned coffee pot by Walker & Hall, Sheffield 1898, with a wood finial and angular handle, on an oval moulded spreading pedestal foot, 27cm (10 1/2in) high, 721g (23.15 oz) gross

£150-250

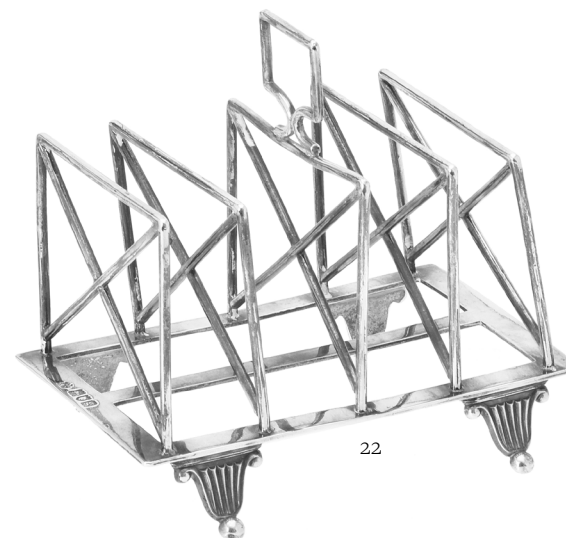
21

A late Victorian silver pedestal rose bowl, maker's mark obscured, London 1900, stamped beneath Hamilton & Co., Calcutta, the part lobed body chased with ribbons and husk swags, on a conforming circular pedestal foot, 20.5cm (8in) diameter, 597g (19.2 oz)

£150-250



21



22

22

An Edwardian silver four division toast rack by William Hutton & Sons, London 1902, with a loop handle and on four ball feet, 13cm (5in) long, 250g (8.05 oz)

£80-120

23

An Edwardian silver shaped circular salver by James Dixon & Son, Sheffield 1902, with a raised moulded border, engraved with a crest and a motto, on four claw and ball feet, 27cm (10 1/2in) diameter, 684g (22 oz)

The crest and motto of a descendant line of O'NEILL, Princes of Tyrone, Kings of Ulster and Monarchs of Ireland.

£250-350



23



24

24
An Edwardian silver pedestal rose bowl by Barker Brothers, Birmingham 1903, chased with C-scrolls, floral sprays and foliate swags, engraved Cork Croquet Championship 1904 won by Nora Dillon, in a conforming circular moulded spreading foot, 22cm (8 3/4in) diameter, 688g (22.1 oz), with an associated blue glass liner

£200-400

25
A silver mounted cigar box by Elkington & Co., London 1906, with engine turned decoration, 25.5cm (10in) long, with a cedar liner

£150-250



25



26

26
An Edwardian silver novelty pig pin cushion by Sydney & Co., Birmingham 1909, 5cm (2in) long

£80-120

27

A pair of Arts & Crafts silver candlesticks by Albert Edward Jones, Birmingham 1915, with hammered bodies, tapering stems and bead and reel borders to the bases, 13cm (5in) high, 210g (6.75 oz)

£500-800



27



28

28

A pair of silver candlesticks by Goldsmiths & Silversmiths Co. Ltd., London 1916, with reeded circular sconces, bell shaped capitals, waisted stems and on circular bases, 26.5cm (10 1/2in) high, loaded

£150-250

29

A silver shaped circular salver by Charles Stuart Harris, London 1918, with a raised moulded border and on four stepped pad feet, 27cm (10 1/2in) diameter, 651g (20.9 oz)

£80-120



29



30

30
A silver matched four piece octagonal tea set by Edward Barnard & Sons Ltd., London 1919, the sugar bowl by Pearce & Sons, London 1919, the kettle with a wood loop handle and octagonal finial to the domed cover, a shaped border and chased foliate band, on an octagonal stand above an electro-plated burner, on four foliate pad feet, 33cm (13in) high, 3041g (97.8 oz) gross

£1,000-1,500



31

31
A silver oval sauce boat by A. E. Jones, Birmingham 1919, the hammered body with a loop handle and on an oval pedestal foot, 17.5cm (7in) long, 147g (4.7 oz)

£80-120

32

A silver cylindrical box and cover by Sampson Mordan & Co., London 1927, 8.5cm (3 1/4in) high, 134g (4.3 oz)

£80-120



32



33

33

A silver communion cup and paten by Charles Godfrey Langdon, London 1927, the cup with a cable twist knopped stem and on a circular spreading pedestal foot, 16cm (6 1/4in) high, the paten 14cm (5 1/2in) diameter, 429g (13.8 oz)

£200-300



34

An Arts & Crafts silver mug by Albert Edward Jones, Birmingham 1936, the hammered body with a mask capped scroll handle and engraved S. M. L., 10cm (4in) long, 99g (3.2 oz)

£80-120



34



35
A silver twin handled bowl by Harrods Ltd., London 1934, with twin scroll handles and on a circular moulded spreading foot, 25cm (11in) long, 561g (18.05 oz)

£180-250



38
A silver shaped circular salver by Harrods Ltd., London 1957, with a raised and moulded border, on three stepped pad feet, 26cm (10 1/4in) diameter, 551g (17.7 oz)

£100-150



36

36
A pair of silver sundae dishes by Viner's Ltd., Sheffield 1936, with shaped borders, pierced decoration and on shaped circular pedestal foot, 12.5cm (5in) diameter, 308g (9.9 oz)

£80-120



37

37
A silver mug by Wakely & Wheeler, London 1948, with a loop handle, engraved Old King Cole and on a circular moulded spreading foot, 1cm (4in) long, 189g (6.1 oz)

£70-100



39

39
A silver mounted whiskey noggin by Barker Brothers Silver Ltd., Birmingham 1959, with a bifurcated thumb piece to the flat cover, engraved NCM and a scroll handle, 10cm (4in) high; and another silver mounted whiskey noggin by Hukin & Heath Ltd., Birmingham 1931, with a circular thumb piece to the flat cover, 10cm (4in) high

£80-120

40
A silver nine branch Menorah by Adie Bros. Ltd., Birmingham 1963, with a central Star of David, on a circular reeded base, 25cm (9 3/4in) long, 395g (12.7 oz)

£80-120



40



41



41

A silver shaped circular salver by Barker Ellis Silver Co., Birmingham 1969, with a raised moulded and beaded border, on four ball and claw feet, 30.5cm (12in) diameter; and a shaped oval twin handled sugar bowl by Josiah Williams & Co., London date letter obscured, with twin looped handles and on an oval moulded spreading pedestal foot, 17cm (6 3/4in) long, 1030g (33.15 oz) gross

£150-250



42

42

A silver armada dish by Garrard & Co., London 1988, with a reeded border, 17.5cm (7in) diameter, 269g (8.65 oz)

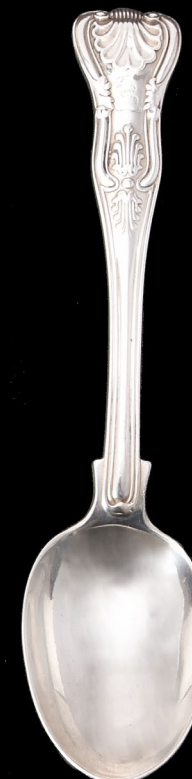
£80-120

43

A pair of silver candlesticks by W. I. Broadway & Co., Birmingham 2020, with circular capitals, slim cylindrical stems and circular bases, 30.5cm (12in) high, loaded

£80-120

43



44 (part lot)

44

A Victorian silver King's pattern part table service for six place settings by George Adams, London 1869, engraved with a crest, comprising:

Four table spoons (one London 1851)

Six table forks

Six dessert spoons

Six dessert forks

Six tea spoons

Two William IV table spoons by Mary Chawner, London 1836

2261g (72.7 oz) gross

£700-1,000



45 (part lot)

45
A collection of George III silver feather edge pattern flatware, various London makers and dates, comprising:
Eighteen table spoons
Twelve table forks
Twelve dessert spoons
Twelve dessert forks
Eighteen tea spoons
Four sauce ladles
A soup ladle
A basting spoon
3633g (116.8 oz) gross

£1,500-2,500



46 (part lot)

46
A collection of silver Hanoverian rat tail pattern flatware, comprising:
Twelve soup spoons by Roberts & Belk Ltd., Sheffield 1976
Twelve fish knives and forks by Robert Stewart, Sheffield 1935
Eight fish knives and forks by Carr's of Sheffield Ltd., Sheffield 1996
2775g (89.2 oz)

Together with the following silver handled knives by C. J. Vander Ltd., Sheffield 1972, with stainless steel blades:
Twelve table knives
Twelve table forks

£1,000-1,500



47 (part lot)

47
A collection of silver fiddle pattern flatware, various makers and dates, some engraved with crests, comprising:
Nine table spoons
Eleven table forks
Twelve dessert spoons
Nineteen dessert forks
2871g (92.3 oz) gross

£800-1,200



48 (part lot)

48
A collection of silver fiddle, shell and thread pattern flatware, various makers and dates, some engraved with a crest, comprising:
Eight table spoons
Eight table forks
Eight dessert spoons
Eight dessert forks
Eight tea spoons
A pair of fiddle pattern salad servers, engraved with a monogram
A King's pattern butter knife
3370g (108.35 oz) gross

Together with the following silver handled knives with stainless steel blades:
Eight table knives
Eight dessert knives
A cake slice
A cheese knife

£1,500-2,500



49

49
An electro-plated Hanoverian pattern table service for twelve place settings by Asprey, engraved DH, comprising:

- Twelve table forks
- Four table spoons
- Twelve dessert forks
- Twelve dessert spoons
- Twelve soup spoons
- Twelve fish forks
- Twelve fish knives
- Twelve tea spoons

Together with the following with stainless steel blades and fittings:
Twelve table knives, twelve dessert knives, three piece carving set, with a canteen

£300-500

50

A silver mounted rectangular photo frame by Kitney & Co., London 1993, with a reed and stitch border, 30cm (11 3/4in) high

£80-120



50



51

51

A silver mounted square photo frame, maker's mark PJP, Birmingham 1998, 24cm (9 1/2in) wide, with a card box

£50-70

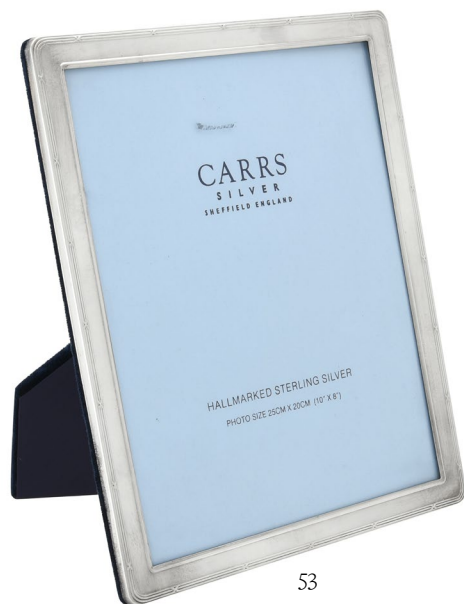
52

A silver mounted rectangular photo frame by Ray Hall, Birmingham circa 2000, chased with Art Nouveau flower decoration and an oval vacant reserve, 28.5cm (11 1/4in) high

£100-150



52



53

53
A silver mounted rectangular photo frame by Carr's of Sheffield Ltd., Sheffield 2003, with a reed and stitch border, 28.5cm (11 1/4in) high

£80-120



54

54
A silver mounted rectangular photo frame by Kitney & Co., London 2007, with a beaded border, 3cm (11 3/4in) high

£80-120

55
A pair of Scottish silver mounted rectangular photo frames, maker's mark PJP, Edinburgh 2008 and 2009, 30cm (11 3/4in) high

£150-250



55



56



57



58

56
Four silver mounted rectangular photo frames by Kitney & Co., London 2001, 2003, 2006 and 2009, with beaded borders, the tallest 18cm (7in) high, the shortest 15.5cm (6in) high

£70-100

57
Five silver mounted rectangular photo frames by Kitney & Co., London 2002 (1), 2008 (3) and 2009 (1), with beaded borders, 21cm (8 1/4in) high

£150-250

58
Five silver mounted rectangular photo frames by Kitney & Co., London 2004 (2), 2006 (1) and 2008 (2), with reed and stitch borders, 21.5cm (8 1/2in) high

£150-250



59

- 59 Four silver mounted square photo frames, maker's mark PJP, Birmingham 2006, 2007, 2008 and 2009, the largest 16.5cm (6 1/2in) wide, the smallest 11.5cm (4 1/2in) wide

£80-120

- 60 Two silver mounted folding double photo frames by Kitney & Co., London 2007 and 2009, 21.5cm (8 1/2in) high

£100-150



60



61

- 61 Three silver mounted oval photo frames by Carr's of Sheffield Ltd., Sheffield 2002, 2007 and 2009, 16.5cm (6 1/2in) high; and an electro-plated example

£60-80

- 62 Three silver mounted oval photo frames by Carr's of Sheffield Ltd., Sheffield 2004, 2007 and 2009, with cable twist borders, the tallest 22cm (8 1/2in) high, the smallest 16.5cm (6 1/2in) high

£80-120



62

Continental Silver and Allied Ware



63

63

A continental silver tankard, early 20th century, stamped K. Inceian 900, with a seated figure finial to the foliate chased domed cover, a leaf capped scroll handle, the body chased with foliate sprays, an oval vacant reserve and on a circular moulded spreading base, 28.5cm (11 1/4in) high, 844g (27.15 oz)

£200-300

64

An American silver oval cream jug and sugar basin by Alexander Gordon, New York City circa 1800, the sugar basin with an urn shaped finial to the domed cover, twin harp handles, engraved with decorative bands and B E*S within a wreath reserve, 20cm (8in) long, the cream jug 14cm (5 1/2in) long, 537g (17.25 oz)

£200-300



64



65

A Dutch silver circular box and cover, circa 1884, .833 standard, with cable twist bands, 12cm (4 3/4in) diameter, with a conforming plate, 17.5cm (7in) diameter, 536g (17.25 oz)

Provenance: Private Collection, Gloucestershire

£120-180



65

66Y

A German silver figure of a knight by B. Nereshiemer & Sohne, Hanau, sponsor's mark for Berhold Muller, import mark for Chester 1906, with an ivory face, to an octagonal base pierced with a foliate band, 23cm (9in) high, 546g (17.55) gross

£400-500



67

67

A German silver coloured mouse box, post 1886 .800 standard, with a hinged oval base, 6cm (2 1/4in) long, 47g (1.5 oz)

£100-150



68



66

68

A pair of German silver coloured candlesticks, post 1886 .800 standard, with circular sconces, baluster capitals, waisted stems and on circular spreading bases, 27.5cm (10 3/4in) high, 697g (22.45 oz)

£150-250



69

69
A cased set of four Danish silver coloured spoons by Georg Jensen, 1915 - 1927 mark, designer mark for Henning Koppel (1918 - 1981), each with an enamel playing card suit, 10cm (4in) long, 63g (2.05 oz)

£100-150



70

70
A pair of Danish silver coloured oval sauce boats by C. Holm, Copenhagen 1947, 830 standard, the hammered bodies with wooden loop handles and on oval feet, 24cm (9 1/2in) long, 623g (20.05 oz) gross

£200-300



71

71

A Danish silver coloured plate by Just Andersen, stamped Sterling 925S, engraved with a flower, 14cm (5 1/2in) diameter; a pair of silver salt and pepper shakers by Georg Jensen, import marks for London 1959, with ball finials and on four ball feet, 5.5cm (2 1/4in) high; a silver coloured fork by Georg Jensen, 10cm (4in) long; a Danish silver coloured salt spoon; and a silver oval dish by James Michael Harrison, London 1955, 15.5cm (6in) long, 344g (11.1 oz) gross

£100-150



72

72

An Italian silver coloured six piece rose water set, Alessandria post 1968 .800 standard, stamped Fitaihi, the two carafes with bird finials to the ogee domed covers, 43cm (17in) high, a pouring bottle on stand, 37cm (14 1/2in) long, two tapering beakers, 9.5cm (3 3/4in) long and a bowl 13cm (5in) diameter, 2651g (85.3 oz)

£700-1,000

Small Objects of Vertu

73

A 9 carat gold engine turned cigarette case by William Neale & Son Ltd., Birmingham 1913, with a chased thumbpiece, 8cm long, 81g

£800-1,200

74

A 9 carat gold cigarette case by E. Silver & Co., 1947, with engine turned decoration, London hallmark and stamped E. Silver & Co. London, with sprung clasp, etched inscription to polished interior, 218g gross

£2,200-2,800

75

A French gold pillbox, the octagonal box with a domed lid, stamped with French poincons, 3.7cm x 1.9cm x 1.4cm, 13.7g gross

£250-350

76

George III, Third-Guinea 1806 (S 3740). Very fine, uneven flan, obverse a little better but with minor marks

£80-120

77

Belgium, gold 50-Ecu 1987, for the 30th Anniversary of the Treaty of Rome, bust of Charles V right, rev. denomination and date within stars, 0.900 fine, 17.25g (KM 167; Fr 427). About as issued

£400-600

78 Y

A gold coloured thimble, stamped 15ct, 2.5cm high, 7.7g; and a silver coloured, gold coloured and tortoiseshell mounted thimble, engraved M. C., 3cm high

£150-250



Jewellery

79Y

A Victorian coral and gold bangle and brooch suite, the hinged bangle with a quatrefoil shaped panel with applied vine leaf and coral grape decoration, with glazed compartment verso, inner width 5.7cm, together with a matching brooch, with glazed compartment verso, 4cm wide, 27.5g gross, in original fitted case; together with a similar coral set brooch, with shell shaped terminals with applied vine leaf and coral decoration, 3.4cm wide; 3.2g gross

£400-600

80

A mid Victorian garnet and enamel oval brooch, circa 1870, the central oval cabochon garnet within a gold surround with white enamelled accents, with a glazed panel verso, 4.2cm wide, 15.3g gross

£150-250

81

Two early 19th century hardstone fob seals, the first with an oval cornelian panel carved with a central leaf with 'Je ne change qu'en mourant' around the outside, panel 1.8cm long, to a fluted gold mount; together with a further hardstone seal, carved with the profile of a Roman Emperor, possibly Tiberius, panel 2.3cm long, within a pierced and scrolled gold setting; 13.7g gross

£200-300

82

A late Victorian shell cameo bracelet, circa 1890, the graduated oval panels carved with Hebe and

the Eagle, Nyx with owl emblem, Psyche with butterfly emblem, and Eos with eagle emblem, in gilt metal settings, with later belcher link connectors, to a concealed clasp, 20cm long, 58.8g gross

£300-500

83

A late Victorian hand shaped stick pin, the hand shaped terminal holding a step cut green stone doublet, 2cm long; together with a hand shaped clasp, the textured hand with a stone set finger, 2.3cm long, 5.8g gross

£250-350

84

A 17th century band ring, the raised squared settings with rubover set banded agate panels, finger size N, 3.9g gross

£150-250

85

A George III mourning ring, the ring with a glazed locket containing a panel of woven hair, the polished tapered shank inscribed Joseph Jackson, died 9th Augt 1799 aged 62, finger size N 1/2, 3.2g gross, with a 19th century ring box

On a stone wall panel in St Bride's Church, Fleet Street, London, is the following inscription:

In the Vault of this Church are deposited the remains of JOSEPH JACKSON of Hatton Garden, Gent. who died on the 9th day of August 1799, Aged 62 years Also of SARAH JACKSON his wife, who died on the 23rd day of January 1832 Aged 77 years. Also of JOHN JACKSON, third son of the above Joseph and Sarah

who died on the 18th day of April 1801 Aged 19 years. Also of JOSEPH JACKSON Second Son of the above Joseph and Sarah who died on the 30th day of August 1817 Aged 37 years Also of LYDIA JACKSON who died on the 7th day of December 1810 Aged 23 years The Beloved wife of James Edward Jackson, M.A., Dean of Armagh, Eldest and only surviving child of the above Joseph and Sarah Jackson, who places this Tablet in memory of those whom he held most dear in this life Trusting, thro' Christ, to be re-united to them in that which is to come. In the same Vault also lieth the body of the above, *Very Reverend James Edward Jackson, M.A.*, Dean and Rector of Armagh, who died at Paris, August 19th 1841 in the 64th year of his age.

£100-200

86

A scarab dress ring, the carved stone scarab within a ropetwist swivel setting, to ropetwist accented shoulders, finger size approximately L, 6.5g gross

£250-350

87Y

A Victorian coral and turquoise stickpin, the coral terminal carved as the head and shoulders of a boy, the base with circular cabochon turquoise and a white stone accent, 1.3cm long, in original pin box; together with a further coral set stick pin, the circular terminal with a central circular cabochon coral, within a ropetwist border, 1.6cm diameter

£80-120



88

A mid 19th century micromosaic brooch of the Acropolis of Athens, the rectangular micromosaic panel of the Parthenon on top of the Acropolis, within a black glass surround, within a gold frame, 5cm long, 30.4g gross

£200-300

89

A mid Victorian Archaeological revival brooch, circa 1870, the central circular panel with a personification of the sun, with relief face within a bead and wire surround, to radiating bars with orb terminals, with glazed panel verso containing a plait of hair, 4.1cm diameter, 12.7g gross

£200-300

90

A late Victorian reverse painted intaglio brooch, circa 1880, the circular cabochon rock crystal carved with a white cuffed hand holding a golden coloured cinquefoil, within a gold ropetwist and polished gold border, closed back setting, 2.7cm diameter, 8.2g gross

The crest of HATFIELD of Thorp Arch, Yorkshire

£150-250

91

An Egyptian graduated belcher link chain, the reeded links measuring from 3mm to 6mm to a ring bolt clasp, stamped with partial Egyptian post 1916 marks, 42cm long, 20.1g gross

£400-600

92

An 18 carat gold Albert chain, the fancy belcher link chain to a ring blot clasp and a lobster claw clasp, stamped 18, 33cm long, 28.3g; together with an additional damaged lobster claw clasp, 1.8g gross

£600-800

93

A ropetwist chain necklace and bracelet, with textured interlocking links, the necklace to a pierced scrolled clasp, 41cm long, the bracelet with a lobed barrel clasp, 22cm long, 61g gross

£1,500-2,000

94

An early 20th century ruby and diamond giardinetti ring, the pierced panel with a rose cut diamond and cushion cut ruby flower, in a gold and silver setting, to a shaped shank, finger size L, 3.9g gross, in an antique H. Samuel ring box

£500-700

95

An early 20th century diamond giardinetti ring, the pierced scrolled panel with leaf and rose detail, to bifurcated shoulders, finger size P 1/2, 4.1g gross

£250-350

96

A late 19th century ruby hawk brooch, the gold coloured hawk with naturalistic textured feathers, and cabochon ruby eyes, standing on a polished bar, suspending a short chain, 2.5cm long, 11.3g gross

£200-300

97

A late 19th century banded agate brooch, the circular polished agate within a gold setting with scrolled detail at the cardinal points, glazed compartment verso with a knot of hair, stamped with an unidentified continental gold mark to the reverse, 4.3cm wide, 20g gross

£150-250

98

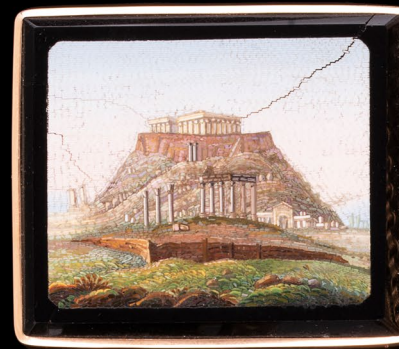
An early 20th century sprung serpent ring, the head with circular cabochon garnet eyes, with chased foliate decoration, to a sprung woven wire coiled body, with a polished tail tip, stamped 12, 4.2g gross

£200-300

99

A pair of 18 carat gold cufflinks, the oval panels with scrolled floral decoration, 1.7cm long, with belcher link connectors, hallmarked Birmingham 1945; together with a further pair of gold coloured cufflinks, the oval panels with initials and floral chased borders, with baton connectors; 13.3g gross

£100-150



88



89



90



91

92

93

98

97

94

95

96

99

37

100

A suite of six Late Victorian amethyst and seed pearl buttons, circa 1890, the circular facettled amethyst panels each centred with a half seed pearl in gold setting, 1.3cm diameter, 8.1g gross, with four button backs, in original fitted case with cream interior

£150-250

101

An early 20th century amethyst and rock crystal ropetwist long chain, the ropetwist chain with polished amethyst and facettled rock crystal spacers, to a ringbolt clasp, 138cm long, 27.3g gross

£500-700

102

A five stone diamond ring, the five graduated old cut diamonds in claw settings, approximately 1.00 carat total, finger size Q 1/2, 5.1g gross

£400-600

103

An emerald and diamond cluster ring, the step cut emerald with canted corners, within a surround of old cut diamonds, approximately 0.48 carats total, to bifurcated shoulders, finger size L 1/2, 3.9g gross

£300-500

104

A diamond heart pendant, the heart shaped panel set with old cut diamonds, approximately 1.78 carats total, suspended from a polished bale, 2.5cm long, 2.9g gross

£1,000-1,500

105

An amethyst and diamond pendant, the central oval cut amethyst within a rose cut diamond floral and foliate surround, with a later border of old cut diamonds, suspending an articulated diamond drop, approximately 0.90 carats total, 5.3cm long

£600-800

106

A late 18th century Iberian diamond and emerald brooch, circa 1790, the pierced floral panel set with lasque cut diamonds and mixed cut emeralds, suspending a similarly set navette shaped drop, later brooch fitting, 4cm wide, 6.5g gross, in a S. J. Phillips Ltd box

£250-350

107

A late Victorian rose cut diamond and pearl mistletoe and heart brooch, circa 1890, the branch of mistletoe with rose cut and old mine cut diamond set leaves, with a rose cut diamond set heart, with small pearl accents, 3.6cm long, 3.6g gross

The pearls are unwarranted and untested as natural pearl

£150-250

108

An 18 carat gold Victorian five stone diamond ring, the five graduated old cut diamonds in raised claw settings, approximately 0.51 carats total, hallmarked London 1888, finger size R 1/2, 2.8g gross; and a late Victorian diamond five stone ring, the graduated old cut diamonds in raised claw settings, approximately 0.19 carats total, partial Chester hallmarks, finger size N 1/2, 3.1g gross

£300-500

109

A late Victorian diamond and moonstone hinged bangle, circa 1890, the heart shaped cabochon moonstone claw set within a surround of old cut diamonds, 0.32 carats total, inner width 5.6cm, 6.8g gross, in a blue velvet bangle case

£300-500

110

An emerald and diamond double heart ring, the two hearts centred with a pear cut emerald and a rose cut diamond, within a surround of rose cut diamonds, with a rose cut diamond set bow surmount, finger size L, 4.4g gross

£500-700

111

A French crossover bangle, the curved crossover panel set with old cut and rose cut diamonds, approximately 1.34 carats total, the concealed clasp with French poinçon, inner width 5.7cm, 17g gross

£600-800



112

A two colour Albert chain, the chain of alternating baton and twisted links, with a lobster claw clasp and ring bolt clasp, with a T-bar attachment, 43.5cm long, 29.4g gross £300-500

113

A mid Victorian pearl and green stone ring, circa 1870, the central half pearl flanked by rectangular cut green stones, with green foiling behind, within a shaped scrolled panel to pierced shoulders, finger size M, 2.4g gross; together with a 19th century half pearl band ring, finger size K, 2.3g gross, in a 19th century ring case £200-300

114

A pearl necklace with a diamond cluster clasp, the graduated pearls and cultured pearls measuring 2.8mm to 5mm, to an old cut diamond set clasp, approximately 0.21 carats total, 105cm long, 16.2g gross, in an associated Mackay & Chisholm case

Please note the pearls are untested and unwarranted as natural pearl £700-1,000

115

A two colour Albert chain, the fancy link chain to lobster claw and ring bolt clasps, stamped 18ct, 34cm long, 11.4g £250-350

116

A pair of diamond and pearl ear pendants, the matched earrings, one set with old cut diamonds, the other with rose cut diamonds, in millegrained settings, with pearl below, shepherd's hook fittings,

approximately 1.3cm long, 1.7g gross

Please note the pearls are untested and unwarranted as natural pearl £200-300

117

A late 19th century French ruby and half pearl sword jabot pin, the gold hilt with a cushion cut ruby and half pearl accents, to a removable tip joined by a belcher link chain with simulated pearl accent, the pin stamped with French poinçon and maker's mark J Fres, in a navy blue shield shaped box with gold tooled Lorraine Cross and a trio of fleur-de-llys, separated with a bend dexter £70-100

118

A diamond and ruby panel ring, the oval panel with a circlet of calibre cut rubies, centred with an old cut diamond, with rose cut and old cut diamond set ends, to pierced triangular rose cut diamond set shoulders, approximately 0.26 carats total, the shank stamped 750, finger size N 1/2, 2.2g gross £200-300

119

A 1920s three stone diamond and cultured pearl ring, the old brilliant cut diamonds centred with a cultured pearl, approximately 0.24 carats total, the shank with a partial gold stamp, finger size P 1/2; together with a diamond and pearl stickpin, the ovoid pearl within an eight cut diamond setting, terminal 1cm long, in an associated stick pin case; 3.8g gross

Please note the pearl is untested and unwarranted as natural pearl £200-300

120

An early Victorian emerald and diamond ring, circa 1850, the three graduated step cut emeralds with canted corners interspaced with two pairs of rose cut diamonds, to floral chased shoulders and scrolled foliate band, finger size S, 2g gross £100-150

121

A mid Victorian pearl stickpin, circa 1870, the baroque pearl measuring approximately 8.5mm long with a green enamelled cap, suspended from a green enamelled leaf and branch surmount, 3.3g gross £150-250

122

A late 19th/early 20th century French pearl and diamond pendant, the pearl pediment suspending a diamond set lobed bow with black enamel detail and a central bouton pearl accents, suspending a chased gold swag with three articulated rose cut diamond drops with pearl terminals, 4.6cm long, 5.2g gross

Please note the pearls are untested and unwarranted as natural pearl £250-350

123 Y

An early 20th century diamond, pearl and coral dress ring, the three conjoined bands with oval half pearls and a central oval cabochon coral, with old cut diamond accents, approximately 0.50 carats total, finger size O, 7.3g gross

Please note the pearls are unwarranted and untested as natural pearl £300-500



124

A late Victorian opal and diamond cluster bar brooch, circa 1900, the opal and old mine cut flower head cluster with two further old cut diamond accents to a knife edge bar, approximately 0.30 carats total, 4.8cm long, 4.4g gross

£150-250

125

A Victorian diamond crescent pendant, the graduated old cut diamonds, approximately 1.65 carats total, later diamond set bale, 4.3cm long, 5.8g gross

£500-700

126

A jadeite jade dress ring, the oval jadeite jade panel within a gold coloured setting, with Chinese marks, finger size K 1/2, 7.6g gross

£200-300

127

A sapphire and diamond three stone ring, the central oval cabochon sapphire, flanked by a pair of rubover set old mine cut diamonds, approximately 0.30 carats total, finger size Q 1/2, 5.6g gross

£200-300

128

An early Edwardian sapphire and diamond five stone ring, the graduated sapphires interspaced with a pair of old mine cut diamonds, approximately 0.10 carats total, 18 carat gold Chester 1901 finger size O, 3.6g gross

£250-350

129

An 18 carat gold Victorian five stone ruby ring, the five graduated cushion cut rubies to a pierced gallery, hallmarked Birmingham 1867, finger size O, 2.7g gross

£300-500

130

A fancy link long chain, the interwoven links to a screw release clasp, stamped M & P, 132cm long, 39.3g

£800-1,200

131

A fancy link chain, the polished fancy links to a lobster claw clasp, 62cm long, 17g

£300-500

132

A late Victorian gold curb link long chain, the chain stamped 15 by the ring bolt clasp, 128cm long, 22.6g gross

£300-500

133

A late 19th century French diamond flower head brooch, the flower head with a central old cut diamond, approximately 0.60 carats total, within a surround of rose cut diamond set stamen, to rose cut diamond set petals, with removable brooch fitting, stamped with French poinçon, 3.4cm wide, 16.9g gross

£500-700

134

A diamond leaf brooch/pendant, the pierced leaves set throughout with graduated rose cut diamonds, with brooch fitting and two suspensory loops, 5.1cm long, 15.1g gross

£500-700

135

An Edwardian diamond clover leaf brooch, the three pierced leaves each centred with an old brilliant cut diamond, to graduated old mine cut diamond accented tips and stalk, approximately 1.34 carats total, with a belcher link safety chain, stamped 10, 2.8cm long, 6.8g gross

£600-800



124



125



126



129



128



127

130

131

132



133



134



135

136Y

A pair of early 20th century mother of pearl and pearl cufflinks and six cased buttons, the cufflinks with circular mother of pearl panels each centred with a small half pearl and a white enamelled border, 1.4cm diameter, stamped 15, with belcher ink connectors, in an associated Dibdin & Co. Ltd box; together with a suite of six matching buttons, stamped 15, in an associated Mappin & Webb Ltd box

£250-350

137

An Edwardian amethyst and diamond pendant, circa 1910, the circular cut amethyst drop suspended from a knife edge bar set with a trio of old cut diamonds, to a diamond and circular cut amethyst pediment, approximately 0.24 carats total, 3.9cm long, suspended from a belcher link chain, the ring bolt clasp stamped 15ct, 41cm long, 4.2g gross, in original fitted case; together with a fire opal bar brooch, the polished two colour bar set with a central circular cut fire opal, stamped 15ct, 5.2cm long, 3g gross, in original box

£300-500

138

An Edwardian peridot and seed pearl pendant necklace, the pierced trefoil panel with a central circular cut peridot within a surround of swirling leaves and seed pearl accents, with a pear cut peridot drop, suspended from a seed pearl set pierced flower panel, stamped 15ct, 5.6cm long, to belcher link necklace, 39cm long, 4.3g gross

£200-300

139

A late Victorian seed pearl and turquoise brooch and seed pearl star earrings, circa 1900, the brooch with pierced star panel set with graduated half seed pearls and circular cabochon turquoise accents, stamped 15ct, 2.5cm wide; together with a pair of half pearl set ear pendants, the panels stamped 15ct, the screw fastenings stamped 9ct, 2.8cm long; 10.3g gross, in an associated heart shaped green velvet case

£200-300

140

A snake link chain, the polished links to hoop terminals, stamped 18, with a later hook fitting, 69cm long, 22.7g gross

£400-600

141

An early 20th century gold Albert chain, the graduated curb link chain to a lobster claw clasp and ring bolt clasp, suspending a T-bar, stamped 9 375 with maker's mark M&M, 35cm long, 21.6g

£200-300

142

An early 20th century aquamarine and seed pearl pendant, the pierced panel centred with a circular cut aquamarine to radiating bars with a border of seed pearls and circular cut aquamarines to the cardinal points, suspended from a knife edge bar with a step cut aquamarine pediment, drop 4.6cm long, a belcher link chain necklace, 41cm long, in a red suede case stamped Jones 52 Beauchamp place S.W.3

£200-300

143

An Edwardian half pearl hinged bangle, circa 1910, the gold foliate crossover panel set with graduated half pearls, stamped 15, inner width 6.5cm, 8.6g gross

£100-150



144

A 9 carat gold crest pendant, the rectangular panel engraved with crest for The Earl of Westmeath, London 2015, 11g, on a rubber cord, 50cm long

£120-160

145

A French gold coloured rose necklace, the necklace with naturalistic textured rose flower head and leaf panels, to a baton link chain, the clasp stamped with French poinçons, 40cm long, 17g gross

£300-500

146

A late Victorian paste monkey brooch, circa 1900, the first monkey pavé set with circular cut white pastes, with green paste eyes, with unidentified mark verso, sitting on a gold coloured bar with simulated pearl terminals, suspending a further pavé set monkey from a belcher link chain, 6.5cm long, 9.3g gross

£80-120

147

A gold coloured bracelet, the brick link bracelet with polished links, to a block clasp, stamped 9ct MJK, 19cm long, 37.6g gross

£350-450

148

A serpent link necklace, the polished articulated links measuring 5mm diameter, 41cm long, 27.6g gross

£500-700

149

An early 20th century Arts and Crafts turquoise matrix and gold long chain, the fancy link chain with tumbled turquoise matrix bead spacers, to a fancy hook clasp, stamped Pat.2591, 132cm long, 14.7g gross

£200-300

150

A sapphire and diamond ring, the oval cabochon sapphire in a four claw setting, to shaped brilliant cut diamond set shoulders, 18 carat gold hallmark, finger size M 1/2, 5.9g gross

£600-800

151

A sapphire and diamond dress ring by Dankneri, the cushion shaped panel set with six circular cut sapphires to the centre, with brilliant cut diamond accented shoulders, approximately 0.12 carats total, to a reeded surround, signed Dankneri Copyright 14K, finger size M, 12.8g gross

£200-300

152

A ruby, sapphire and diamond bombé ring, the pavé set dome with a central brilliant cut diamond within a surround of circular cut sapphires to a circular cut ruby set dome, finger size L, 7.7g gross

Offered for sale with The Gem & Pearl Laboratory Ruby Report, No 19646, dated 5 March 2021, stating: Result: Samples NATURAL RUBIES Comments: NO EVIDENCE OF HEAT TREATMENT WAS OBSERVED ORIGIN OPINION: Samples BURMA

£800-1,200

153

A star sapphire and diamond ring, the collet set oval cabochon star sapphire, to stepped brilliant cut diamond set shoulders, approximately 0.51 carats total, finger size N, 17.8g gross

£500-700

154

An 18 carat gold broad band ring, the polished band with Birmingham 1915 hallmark, maker's mark M&M, finger size V, 18.6g

£350-450

155

A diamond and blue paste brooch, the central oval cabochon blue paste within a surround of graduated brilliant cut diamonds, with old mine cut diamond panels to the sides, approximately 3.70 carats total, 4.7cm wide, 13.4g gross

£800-1,200



156

A late Victorian moonstone, ruby and diamond double serpent ring, circa 1900, the crossover serpents each set with an oval moonstone cabochon, one with circular cut ruby eyes, the other with rose cut diamond eyes, finger size S, 11.6g gross

£250-350

157

A Victorian silver gilt Tara brooch by West & Sons, circa 1860, the reverse stamped West and Son College Green, Dublin registered Decb 17th 1849, 6.5cm wide, 15.8g gross

Queen Victoria was gifted two similar Tara brooches by her husband, Prince Albert after a visit to the College in Dublin

£150-250

158

A Victorian turquoise and diamond pendant, the central oval bombé panel pavé set with circular cabochon turquoise and centred with an old cut diamond, within a surround of circular cabochon turquoise, with beaded and rope twist detail, the reverse with a later oval cabochon turquoise, 3.2cm long, 10.9g gross

£200-300

159

An Edwardian 18 carat gold fancy link Albert chain, the baton and fancy link chain with T bar attachment, and lobster claw clasps, London 1901 hallmark, 53cm long, 61.5g

£1,200-1,800

160

A gold coloured blue enamel fancy link long chain, the chain composed of pierced decorative bars flanked by navette shaped panels, some with blue enamel accents, with chevron link connectors, 134cm long, 33.1cm long

£600-800

161

An early 20th century turquoise and half pearl mesh bracelet, circa 1910, the mesh link bracelet to a half pearl and turquoise set buckle clasp and slider, stamped 15ct, 22cm long, 28.5g

£300-500

162

An Edwardian 9 carat gold fancy link bracelet, the interlocking heart shaped links with oval cabochon turquoise accents, the heart shaped padlock clasp stamped 9ct, 17cm long, 15.4g gross, in an associated blue velvet case

£200-300

163

Two pairs of novelty ear pendants, comprising a pair of gold coloured cherub earrings, with shepherds hook fittings, 2.8cm long; and a pair of French basket earrings, the pediments with circular cabochon blue paste accents, with leaf detail, suspending woven wirework basket, the shepherds hook fitting stamped with French poinçon, 2.1cm long; 6.3g gross

£200-300

164

A mid 20th century turquoise and diamond three stone ring, the circular cabochon turquoise in a claw setting, flanked by two old cut diamonds in squared settings, approximately 0.28 carats total, finger size S, 5.2g gross

£250-350

165

A late 19th century turquoise panel ring, the oval panel carved with a seated muse wearing classical drapery and holding a lyre and laurel wreath, within a textured wire surround, to trefoil shoulders, finger size L 1/2, 4.2g gross

£250-350

166

A mid 19th century gold Etruscan style bangle, circa 1870, the front panel with beaded and ropetwist decoration, stamped 15ct, inner width 5.6cm, 12.1g

£250-350



167

An Edwardian diamond and sapphire brooch/pendant, circa 1910, the old mine cut diamond set pierced and scrolled quatrefoil panel, with a central open flower head and bud, step cut sapphire accents, with a removable graduated diamond bale, approximately 0.91 carats total, 3.9cm long, 7.7g gross

£400-600

168

A sapphire and diamond three stone ring, the central circular cut sapphire estimated to weigh 0.65 carats, flanked by two brilliant cut diamonds, approximately 0.20 carats total, finger size M 1/2, 1.8g gross, in an associated Mappin & Webb Ltd ring box

£250-350

169

A sapphire and diamond cross cluster ring, the old mine cut diamond cross approximately 1.05 carats total, with circular cut sapphire accents, the sapphires and ring setting worn, finger size M 1/2, 4.2g gross

£400-600

170

A sapphire and diamond cluster ring, the oval cut sapphire within a surround of brilliant cut diamonds, London 18 carat gold hallmark, finger size M 1/2, 3.5g gross

£300-500

171

A diamond and sapphire cluster ring, the central cushion cut sapphire within a surround of old cut diamonds, approximately 1.12 carats total, to pierced floral shoulders, O 1/2, 3.8g gross

£600-800

172

A sapphire necklace, the variously cut blue sapphires of varying tone in spectacle settings, with hooped links between, to hook clasp, 47cm long, 5.7g gross

£500-700

173

A diamond single stone ring, the brilliant cut diamond in a four claw setting, estimated to weigh 1.77 carats, with 18 carat gold common control mark, finger size L 1/2, 4.1g gross

£600-800

174

A sapphire and diamond dress ring, the central trio of step and triangular cut sapphires within a surround of brilliant diamonds, approximately 1.70 carats total, finger size O, 4.7g gross

£600-800

175

A five stone sapphire and diamond ring, the central step cut sapphire flanked by two pairs of baguette cut diamonds, approximately 0.50 carats total, stamped 18ct, finger size L, 6.3g gross

£700-1,000

176

A sapphire and diamond cluster dress ring, the oval cabochon sapphire within a pavé set brilliant cut diamond surround with tapered baguette cut diamond accents, approximately 1.30 carats total, panel 2.2cm long, stamped 750 18k, finger size O 1/2, 11g gross

£700-1,000

177

A late Victorian diamond bar brooch, circa 1900, the gold backed silver bar set with graduated old cut diamonds, approximately 1.48 carats total, 5.4cm long 5.1g gross, in a J.W. Benson Ltd. case

£500-700

178

A Bismillah brooch retailed by Mouawad Boutique, the brilliant cut diamond set script panel suspending four diamond accented charms, approximately 0.56 carats total, stamped Mouawad Boutique, 3cm long, 6.9g gross

£150-250

179

A pair of diamond ear studs, the brilliant cut diamonds in four claw settings, approximately 1.70 carats total, 2g gross

£500-700

180 (no lot)



181

A pair of 1960s diamond drop earrings, the brilliant cut and eight cut diamond set foliate pediments suspending graduated articulated brilliant cut diamond drops, approximately 1.70 carat total, with post and clip fittings, 4.1cm long, 6.7g gross

£600-800

182

A diamond pendant, the tinted pear cut diamond estimated to weigh 1.10 carats, below a brilliant cut diamond, approximately 0.07 carats, 1.3cm long, 1g gross

£600-800

183

A diamond and ruby cluster ring, the central cushion cut diamond, estimated to weigh 0.65 carats, within a surround of calibré cut rubies, stamped pt950, finger size N, 5.2g gross

£400-600

184

A diamond and yellow diamond cluster ring, the brilliant cut yellow diamond estimated to weigh 0.90 carats within a surround of brilliant cut diamonds, approximately 0.39 carats total, stamped G750, finger size N, 3.7g gross

Please note the yellow diamond is untested and unwarranted for treatments

£700-1,000

185

A diamond cluster ring, the yellow tinted cushion cut diamond estimated to weigh 1.00 carat, within a surround of brilliant cut diamonds, approximately 0.26 carats total, finger size J 1/2, 7.6g gross

Please note the yellow diamond is untested and unwarranted for treatments

£1,000-1,500

186

A diamond cluster dress ring, the circular panel pavé set with princess cut and brilliant cut diamonds, to diamond set shoulders, approximately 1.28 carats total, finger size N 1/2, 5.3g gross

£250-350

187

A ruby and diamond bracelet, shaped panels with channel set step cut rubies centred with four brilliant cut diamonds, approximately 0.24 carats total, with polished loop links between, 18 carat gold London hallmark, 19cm long, 27.1g gross

£600-800

188

A single stone diamond ring, the marquise cut diamond estimated to weigh 0.50 carats, in a four claw setting, 18 carat gold hallmark, finger size M, 3g gross

£200-300

189

A light yellow diamond single stone ring, the cushion cut diamond in a four claw setting, approximately 1.71cts, the shank stamped PT750, finger size M, 4.9g gross

Please note the diamond is untested and unwarranted for treatments

£1,600-2,000

190

A single stone diamond ring, the brilliant cut diamond estimated to weigh 3.94 carats total, in a four claw setting, finger size K 1/2,

£1,500-2,000

191

A heart shaped cluster ring, the heart shaped panel pavé set with old cut diamonds, approximately 0.59 carats total, to a pierced gallery with a glazed locket panel verso, finger size N 1/2, 4.3g gross

£250-350

192

A pair of diamond stud earrings, the brilliant cut diamonds in four claw settings, approximately 1.20 carats total, stamped 750, 1.8g gross

£700-1,000



193

A silver Arts and Crafts enamel and blister pearl pendant necklace, circa 1930, the drop composed of a circlet of forget-me-nots interspaced with green enamelled leaves, with a central blister pearl drop, suspended from forget-me-not links, and a swirling green enamel and turquoise pediment, 7.4cm long, to a belcher link chain with ring and bar clasp, 39.5cm long, 7.1g gross

£250-350

194

An Art Nouveau plique à jour, Mississippi pearl and purple paste pendant, circa 1910, the pierced and shaped panel with lilac plique à jour enamel and circular cut and pear cut purple paste accents, suspending two drops with Mississippi pearl terminals, stamped Déposé 900, 5.5cm long, suspended from a fancy belcher link chain with plique à jour spacers, with French export poinçon by the clasp, 5.5cm long, 13.4g gross

£150-250

195

An Arts and Crafts opal doublet and pink tourmaline dress ring in the manner of Bernard Instone, circa 1930, the oval cabochon opal doublet panel claw set within a leaf and flower head surround, with circular cut pink tourmalines at the cardinal points, with scrolled supports verso, the shank lightly stamped Sterling Silver, finger size O, 3.6g gross

£300-500



196

A silver lobed pendant by Regitze Overgaard for Georg Jensen, No 463A, the lobed pendant suspended from a black cord necklace, stamped Georg Jensen 925S 463A, with hallmark, 3.4cm long, 32.3g gross, in a Georg Jensen box; together with two silver coloured discs, one stamped Georg Jensen 925S, each with a single hole, 11mm diameter

£80-120

197

An oval Blossom brooch by Georg Jensen, No 226, the pierced oval panel with a magnolia blossom, the frame stamped with post 1945 Georg Jensen maker's mark and Sterling Denmark 226, with an additional unidentified mark to the reverse, 4.3cm long, 8.6g

£70-100

198

A Möbius brooch by Vivianna Torun for Georg Jensen, No 374, the polished circular looped panel stamped Torun 374 with Georg Jensen maker's mark, 925S Denmark, 6cm long, 42.7g, in a Georg Jensen card box

£150-250

199

A silver coloured collar by Ove Wendt for Georg Jensen, No A10A, the polished collar stamped with Georg Jensen maker's mark and A10A, 925S Denmark, inner width 12cm, 46.4g

£150-200

200

A silver coloured necklace designed by Nanna Ditzel for Georg Jensen, No 276, the curved and polished panels joined by hooped links, to a baton and loop clasp, stamped 276 with Georg Jensen maker's mark and London 1992 import marks, 48cm long, 47.2g, in a card Georg Jensen box

£250-350

201

A silver coloured charm bracelet by Henry Pilstrup for Georg Jensen, the bracelet with tonneau shaped bar links, numbered 43, stamped with post 1945 maker's marks with Sterling Denmark, suspending various Georg Jensen fobs, including a seahorse; an elephant; a scarab beetle; a frog; a fish; a pelican; a heart shaped anchor pendant; and a tortoise; each stamped with maker's mark, some stamped Sterling Denmark, 19cm long 42.6g

£300-500

202

A silver coloured abstract brooch designed by Henning Koppel for Georg Jensen, No 325, the pierced abstract panel stamped with post 1945 maker's mark and Made in Denmark 325, there is also a further unidentified stamp, 5.9cm long, 19.1g gross

£100-150

203

A silver oval brooch by Hans Hansen for Georg Jensen, the pierced polished oval brooch signed Hans Hansen with Georg Jensen post 1945 maker's mark, stamped 925S Danmark, with London 1998 import mark, 5.7cm wide, 20.9g gross

£80-120

204

A polished pendant by Bent Knudsen, the curved triangular pendant stamped Sterling Denmark with BENTK maker's mark, 4.3cm long, 21.9g

£80-120



205

A pair of silver ear clips by Nanna Ditzel for Georg Jensen, No. 131, the broad polished navette shaped ear clips, stamped with post 1945 Georg Jensen maker's mark, 925s Denmark 131, 2.9cm long, 17.5g gross

£80-120

206

A modernist brooch by Hans Hansen for Georg Jensen, the buffed undulating brooch stamped with Georg Jensen post 1945 maker's mark, and HaH 925S Denmark, 6.6cm long, 23.9g gross

£80-120

207

An abstract enamelled brooch by Henning Koppel for Georg Jensen, No. 314, the shaped triangular brooch with shaded brown enamel, stamped with Georg Jensen post 1945 maker's mark, Sterling Denmark 314 HK, with 1960 London import mark, 7cm long, 24g gross

£100-200

208

A silver coloured torque necklace by Ove Wendt for Georg Jensen, No. 16A, the polished shaped torque, stamped with Georg Jensen post 1945 mark, 925s Denmark 16 A, inner width 11.2cm, 60g, with original Georg Jensen card box

£200-300

209

A quartz necklace by Eileen Coyne, the multi strands of aventurine quartz to shaped cabochon hardstone spacers with gold coloured and silver coloured settings, signed Eileen Coyne and stamped 925, hook clasp, 54cm long, 316g gross

£250-350



210
A diamond lattice pendant, the articulated lattice set with brilliant cut diamonds, approximately 1.99 carats total, 4.9cm long, suspended from a belcher link chain, 42cm long, 16.5g gross

£800-1,200

211
An 18 carat gold diamond three stone ring, the trio of brilliant cut diamonds, approximately 0.66 carats total, in shaped rubover settings to polished shank, with London hallmark, finger size N, 6g gross

£200-300

212
A single stone diamond ring, the oval modified brilliant cut diamond in a polished collet setting, estimated to weigh 1.60 carats, to brilliant cut diamond set shoulders, 18 carat gold hallmark, finger size O, 4g gross

£400-600

213
A single stone diamond ring, the principal brilliant cut diamond estimated to weigh 0.75 carats, between bifurcated brilliant cut diamond set shoulders, approximately 0.40 carats total, stamped 750, finger size S, 3.2g gross

£250-350

214
A single stone diamond ring, the brilliant cut diamond estimated to weigh 1.81 carats, finger size L 1/2, 5.1g gross

£1,000-1,500

215
A pair of diamond ear hoops, the squared ear hoops set with brilliant cut diamonds, approximately 1.20 carats total, 18 carat gold hallmark, 5.8cm long, 15.6g gross

£500-700

216
A three row diamond bracelet, the polished rectangular panels with three rows of channel set princess cut diamonds, approximately 2.94 carats total, stamped 18k 750, 17.2cm long, 21.6g gross

£1,200-1,800

217
A pair of diamond hoop earrings, the panels set with baguette and princess cut diamonds, approximately 1.10 carats total, 2.1cm long, 8.7g gross

£400-600

218
A sapphire and diamond three stone ring, the oval cut sapphire flanked by two baguette cut diamonds, stamped 18k 750, finger size N 1/2, 3.6g gross

£200-300

219
A diamond and tanzanite cluster dress ring, the central circular cut tanzanite within a surround of brilliant cut diamonds, to brilliant cut diamond set shoulders, approximately 0.76 carats total, 18 carat gold hallmark, finger size N 1/2, 10.3g gross

£300-500

220
A tanzanite and diamond cluster ring, the oval cut tanzanite estimated to weigh 15.17 carats, within a surround of brilliant cut diamonds, approximately 0.77 carats total, to curved wire work shoulders, finger size O 1/2, 13.9g gross

£1,500-2,000

221
A diamond hinged bangle, the pierced crossover bands set with brilliant cut diamonds, approximately 0.90 carats total, with sprung section, stamped 18k 750, 19.6g gross

£300-500



222

A blue Crystal Haze and diamond pendant by Stephen Webster, the central faceted paste crystal within a surround of brilliant cut diamonds, approximately 0.27 carats total, with 18 carat gold London 2003 hallmark and maker's mark, 2.6cm long, suspended from a fancy link Stephen Webster necklace, with 18 carat gold hallmark and maker's mark, 40cm long

£300-500

223

Two diamond set Eye safety pin brooches, the pins both set with a row of brilliant cut diamonds with a paste eye accent, first approximately 0.23 carats, stamped 750, 4.1cm long; second 0.35 carats total, 3.6cm long; 8.5g gross

£250-350

224

A single stone diamond ring, the brilliant cut diamond within a six claw setting, estimated weight 2.18 carats, finger size M 1/2, 3.9g gross

£2,000-3,000

225

An early 20th century aquamarine pendant, the graduated oval cut aquamarines within six claw settings, 3.6cm long, on a later silver coloured snake link chain, 5.8g gross

£100-200

226

A pair of opal and ruby cluster earrings, each with a central oval cabochon ruby within a surround of circular cabochon opals, stamped 18k 750, with stud and clip fittings, 1.6cm long, 10.4g gross

£400-600

227

An aquamarine and diamond dress ring, the trio of step cut aquamarines with canted corners, with brilliant cut diamond accented bars between, set above two rows of brilliant cut diamonds, approximately 0.40 carats total, the shank stamped 750, finger size O, 12.7g gross

£400-600

228

An aquamarine and diamond dress ring, the three rows of step cut aquamarines in channel settings, to brilliant cut diamond borders, approximately 0.51 carats total, finger size P, 14.8g gross

£300-500

229

A gold coloured beaded bracelet, the tubular links with faceted and polished bead accents, including garnets, rubies and quartz, to a hooked clasp, 18.5cm long, 18.7g gross

£300-500

230

A diamond and pink tourmaline bracelet, with alternating step cut pink tourmaline and brilliant cut diamond set heart shaped panel links, approximately 0.23 carats total, stamped 18k, 18.5cm long, 18.4g gross

£300-500

231

A diamond and citrine cluster dress ring, the oval cut citrine within a surround of brilliant cut diamonds, approximately 1.00 carat total, stamped 750, finger size L 1/2, 10.4g gross

£400-600

232

A sapphire and diamond cluster dress ring, the oval cut pink sapphire within a surround of brilliant cut diamonds, approximately 0.52 carats total, finger size N 1/2, 6.6g gross

£500-700

233

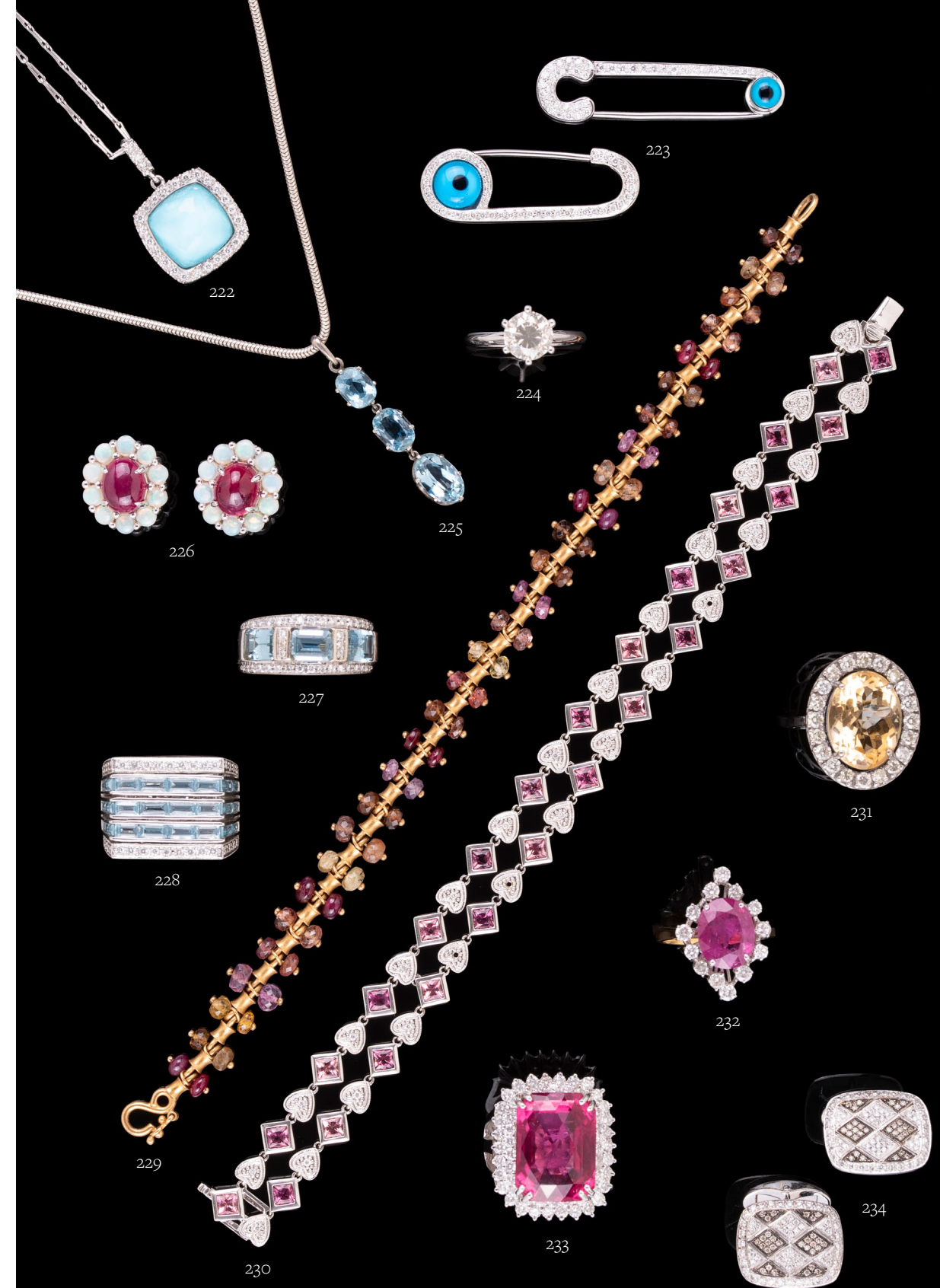
A diamond and pink tourmaline dress ring, the rectangular mixed cut pink tourmaline estimated to weigh 18.29 carats, within a surround of brilliant cut diamonds, approximately 1.33 carats total, finger size M 1/2, 17g gross

£1,000-1,500

234

A pair of diamond cufflinks by Mouawad, the cushion shaped panels pavé set with diamond and brown diamonds, approximately 1.36 carats total, the bars signed Mouawad, with swivel terminals, 15.1g gross, with original Mouawad box

£300-500



235

A pair of emerald and diamond earrings, the curved rectangular panels set with oval cut emeralds and brilliant cut diamonds, 0.54 carats total, with stud and clip fittings, 18 carat gold hallmark, 1.8cm long, 7.1g gross

£250-350

236

A pair of 1970s 18 carat gold diamond accented feather knotted ear studs, the old mine cut diamonds in claw settings, approximately 0.60 carats total, hallmarked London 1972, 1.9cm wide, 13.2g gross

£300-500

237

A diamond panel ring, the shaped rectangular pierced panel set with brilliant cut diamonds, approximately 0.92 carats total, stamped 18ct, finger size O, 4.9g gross

£250-350

238

A diamond dress ring, the graduated marquise cut diamonds interspaced by tapered baguette cut diamonds, approximately 0.85 carats total, stamped 14k, finger size L 1/2, 3.1g gross

£100-200

239

A single stone diamond ring, the greenish brown tinted brilliant cut diamond estimated to weigh 1.57 carats, in a four claw setting, finger size M 1/2, 5.4g gross

Please note the diamond is untested and unwarranted for treatments

£1,300-1,800

240

A single stone diamond ring, the brilliant cut diamond estimated to weigh 2.07 carats, in a six claw setting, finger size M 1/2, 3.8g gross

£1,500-2,000

241

A diamond line bracelet, the articulated links set with brilliant cut diamonds, approximately 2.02 carats total, with partial 18 carat gold hallmark, 18cm long, 7.5g gross

£500-700

242

A diamond and emerald dress ring, the spiralling flower head cluster ring with pear cut emeralds, and brilliant cut diamonds between, approximately 0.15 carats total, stamped 18k, finger size L 1/2, 3.7g gross

£150-250

243

An emerald and diamond five stone ring, the central step cut emerald with canted corners, flanked by two pairs of step cut diamonds, approximately 0.40 carats total, finger size L 1/2, 4.6g gross

£300-500

244

An emerald and diamond dress ring, the step cut emerald with canted corners, in a four claw setting, to brilliant cut diamond set foliate gallery, approximately 0.28 carats total, stamped 750, finger size N, 7.1g gross

£200-300

245

An emerald and diamond cluster dress ring, the step cut emerald with canted corners within a surround of brilliant cut diamonds, 0.88 carats total, the shank stamped 18ct, finger size M, 7.6g gross

£250-350

246

A pair of 1960s jadeite and diamond cufflinks, the polished jadeite discs with a central brilliant cut diamond and baguette cut diamond sides, approximately 0.52 carats total, 2.1cm wide, with swivel terminals, stamped with Chinese marks and 14k 585, 17.9g gross

£600-800



247

A Chinese silver coloured iris spray brooch, the striated leaves to a silver coloured bud and purple and yellow enamelled iris flower head, the stem stamped with Chinese silver marks, 9.4cm long, 29.4g gross

£80-120

248

A black diamond line bracelet, the articulated links set with step cut black diamonds, 17.6cm long, 6.6g gross

£200-300

249

A diamond bracelet, the brilliant cut diamond set squared links interspaced with reeded crossover links, approximately 1.14 carats total, to a concealed clasp, stamped 18k 750, 18cm long, 28g gross

£600-800

250

A South Sea cultured pearl necklace, the graduated South Sea cultured pearls measuring 11mm to 15mm diameter, to a pavé set eight cut diamond orb clasp, approximately 1 carat total, stamped 925, 52cm long, 111g gross

£300-500

251

A Tahitian cultured pearl necklace with diamond clasp, the graduated cultured pearls measuring 11.5mm to 15mm diameter, to a 14 carat gold diamond and black diamond cluster clasp, 43cm long, 92.3g gross

£500-700

252

A pair of diamond and cultured pearl earrings, the cultured pearls each suspended from a trio of brilliant cut diamonds, approximately 1.04 carats total, stud fittings, 2.8cm long, 5.1g gross

£400-600

253

A black diamond and diamond pendant, the pear cut black diamond in a collet setting, suspended from a triangular cut diamond, estimated to weigh 0.23 carats, 3.1cm long, suspended from a fancy link necklace, 44cm long, 10.8g gross

£300-500

254

A pair of diamond cluster earrings, the pear shaped panels pavé set with princess cut and brilliant cut diamonds, within a pierced surround of brilliant cut diamonds, approximately 1.07 carats total, with stud and clip fittings, 1.5cm long, 5.9g gross

£300-500

255

A sapphire dress ring, the oval panel pavé set with circular cut sapphires, to textured shank and shoulders, finger size T 1/2, 13.4g gross

£120-180



256

A diamond set heart pendant by Mouawad, the pavé set brilliant cut diamond fractured heart opening to reveal a further heart with diamond accent, approximately 0.60 carats total, signed Mouawad and stamped 750, 2cm long, suspended from a figaro link chain, 40cm long, 9.4g gross, in a black case

£200-300

257

A diamond treasure chest pendant, the pierced lattice chest with brilliant cut diamond set lid opened to reveal two diamond cluster hearts, approximately 1.14 carats total, 3.5cm long, suspended from a belcher link chain, stamped 750, 44cm long, 9.2g gross, in a green lacquered box

£300-500

258

A diamond line necklace, with brilliant cut diamonds in four claw settings, approximately 7.80 carats total, to an articulated polished circular link back chain, 44cm long, 27.8g gross

£800-1,200

259

A single stone emerald dress ring, the step cut emerald with canted corners, estimated to weigh 8.78 carats, in a four claw setting, partial 18 carat gold hallmark, finger size K 1/2, 12.2g gross

£300-500

260

An emerald and diamond cluster ring, the step cut emerald estimate to weigh 2.83 carats, within a border of old cut diamonds, approximately 1.58 carats total, finger size R, 5.7g gross

£1,000-1,500

261

A pair of diamond earrings, the curved polished bars channel set with brilliant cut diamonds, approximately 0.62 carats total, 2.7cm long, 7g gross

£300-500

262

A five stone diamond ring, the graduated brilliant cut diamonds, approximately 1.42 carats total, to a scrolled gallery, 18 carat gold hallmark, finger size Q, 8.2g gross

£600-800

263

An emerald and diamond five stone ring, the central step cut emerald flanked by a pair of brilliant cut diamonds, to circular cut emeralds, with diamond points between, approximately 0.54 carats total, 18 carat gold hallmark, finger size K, 5.3g gross

£300-500



264

An opal and diamond pendant, the pear shaped cabochon opal within a three claw setting, within a surround of brilliant cut diamonds, approximately 0.23 carats total, to a polished bale, 18 carat gold hallmark, 2.7cm long, suspended from a snake link chain, 41cm long, 8g gross

£300-500

265

A pair of single stone diamond ear studs, the old cut diamonds in six claw closed back settings, approximately 1.17 carats total, with partial 18 carat gold hallmark, 1.5g gross

£300-500

266

An opal and diamond cluster dress ring, the oval cabochon opal within a surround of brilliant cut diamonds, approximately 0.21 carats total, stamped 18k, finger size O, 4.8g gross

£200-300

267

A diamond lotus flower pendant, the pierced stylised lotus flower with a central brilliant cut diamond drop, approximately 0.83 carats total, with a polished bale, 2.9cm long, 7.2g gross

£300-500

268

A diamond line bracelet, the bracelet set with brilliant cut diamonds, approximately 2.40 carats total, the concealed clasp stamped 750, 17cm long, 8g gross

£600-800

269

A pair of diamond flower head cluster earrings, the earrings set with brilliant cut diamonds, approximately 1.98 carats total, stud fittings, 1.2mm diameter, 5.4g gross

£600-800

270

A three stone diamond ring, the slightly graduated brilliant cut diamonds in four claw settings, approximately 1.90 carats total, stamped 750, finger size M 1/2, 4.3g gross

£500-700

271

A diamond cluster ring, the central oval cut diamond estimated to weigh 0.93 carats, within a surround of brilliant cut diamonds, approximately 0.30 carats total, 18 carat gold hallmark, finger size N, 3.9g gross

£600-800

272

A diamond single stone diamond ring, the brilliant cut diamond in a four claw setting, estimated to weigh 1.40 carats, to polished shoulders, with partial 18 carat gold hallmark, finger size M, 3.6g gross

£600-800

273

A single stone diamond ring, the brilliant cut diamond estimated to weigh 1.56 carats, in a six claw setting, finger size P 1/2, 3.4g gross

£1,500-2,000

274

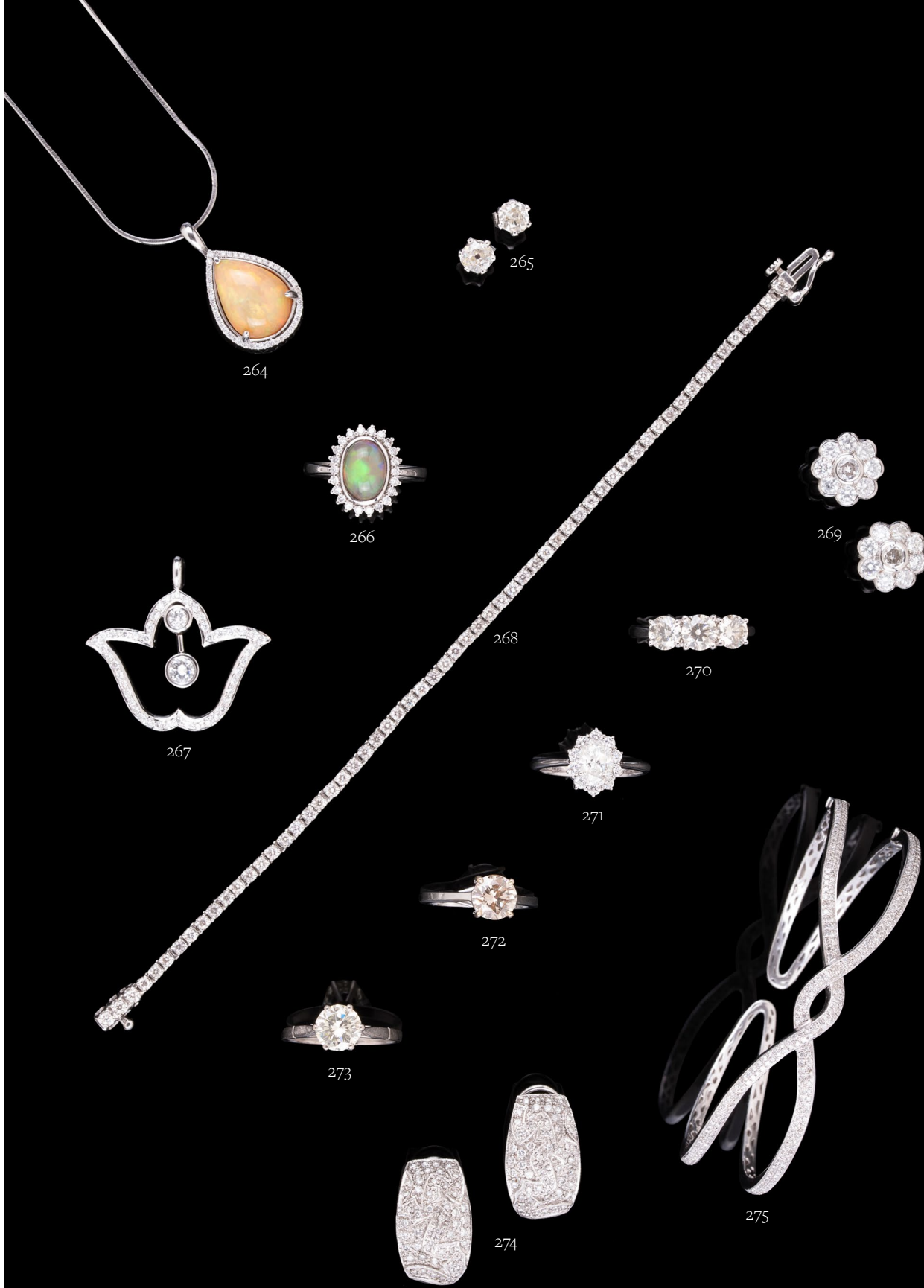
A pair of diamond set earrings, the shaped panels with raised geometric decoration, approximately 1 carat total, with stud and clip fittings, 18 carat gold hallmark, 2.1cm long, 9.7g gross

£200-300

275

A diamond set hinged bangle, the crossover bangle set with eight cut diamonds, approximately 1 carat total, to a polished back, with hinged section to one side, 18 carat gold hallmark, inner width 5.9cm, 20.6g gross

£300-500



276

A diamond heart locket, the polished panel with a surround of brilliant cut diamonds, approximately 0.30 carats total, 3.1cm long, stamped 750, suspended from a belcher link chain, stamped 750 with Italian control marks, 49cm long, 13.8g gross, with a green lacquered box

£250-350

277

A cultured pearl tie pin by Mikimoto, the pierced polished and textured bar with a single cultured pearl accent, stamped K18 with Mikimoto maker's mark, 5cm long; together with a cultured pearl crossover ring, the polished gold coloured setting with two cultured pearl accents, 8mm diameter, the shank stamped PacG 14k, finger size N; 16.4g gross

£250-350

278

A diamond Hand of Fatima pendant, the pierced hand set with brilliant cut diamonds, approximately 1.00 carat total, 5cm long, suspended from a ropetwist chain, the clasp stamped 750 with Italian control marks, 59cm long, 21.4g gross, in a green lacquered wood box

£400-600

279

A single stone diamond ring, the modified brilliant cut diamond within a four claw setting, estimated to weigh 1 carat, to brilliant cut diamond set shoulders, stamped 750, finger size M, 2.9g gross

£300-500

280

A diamond cluster ring, the circular panel set with princess cut and brilliant cut diamonds, to tapered brilliant cut diamond set shoulders, approximately 0.72 carats total, finger size N 1/2, 4g gross

£150-250

281

A diamond line bracelet, the brilliant cut diamonds in polished collet settings, approximately 1.08 carats total, 18cm long, 6.7g gross

£300-500

282

A rock crystal and smokey quartz necklace, the twisted links with faceted rock crystal bead spacers, suspending various briolette cut smokey quartz drops, to a sprung hook clasp, stamped 14k, 41cm long, 9.9g gross

£300-500

283

A diamond and catseye chrysoberyl cluster ring, the oval cabochon chrysoberyl in a four claw setting, within a surround of brilliant cut diamonds, approximately 0.40 carats total, 18 carat gold hallmark, finger size P 1/2, 5.3g gross

£200-300

284

A single stone diamond ring, the brilliant cut diamond estimated to weigh 0.50 carats in a collet setting, finger size O 1/2, 3.6g gross

£200-300

285

A single stone diamond ring, the brilliant cut diamond estimated to weigh 1.80 carats, in a six claw setting, finger size L 1/2, 3g gross

£600-800

286

A diamond dress ring, the broad pavé set brilliant cut diamond band, approximately 1.40 carats total, stamped 750 18K, finger size Q, 9.4g gross

£200-300

287

A pair of Koranic script diamond cufflinks, the circular panels with black enamelled script, within a surround of brilliant cut diamonds, approximately 0.70 carats total, 1.8cm diameter, with swivel terminals, stamped 750, 22g gross, in a Montega cufflink box

£400-600



288

A pair of 1960s synthetic ruby and diamond ear pendants, the round ruffled style pediments set with a swirl of eight cut diamonds and a curve of graduated circular cut synthetic rubies, suspending a white metal drop set with brilliant cut diamonds, and a gold coloured drop set with circular cut rubies, diamonds approximately 0.52 carats total, with stud and clip fittings, 4.2cm long, 12.4g gross, in an associated case

£250-350

289

A ruby and diamond eternity ring, the trios of step cut rubies interspaced by trios of brilliant cut diamonds, approximately 0.48 carat total, finger size O 1/2, 4.7g gross

£300-500

290

A 1940s synthetic ruby and diamond Odeonesque dress ring, the central domed panel with a row of brilliant cut diamonds between two rows of step cut synthetic rubies, to rose cut diamond panels, approximately 0.60 carats total, finger size M 1/2, 7g gross

£500-700

291

A ruby and diamond bow brooch, the crossover tapered panels pavé set with eight cut diamonds, approximately 1.00 carat total, with channel set ruby accents, engraved 18k, 4.3cm long, 8.2g gross

£250-350

292

A diamond, ruby and simulated pearl lovebirds brooch, the two birds with ruby eyes and pavé set with eight cut diamonds, sitting beside a woven wire nest holding a clutch of three simulated pearl eggs, with a cabochon ruby accent, 4.6cm wide, 15.6g gross

£300-500

293

A French mid 20th century Retro emerald and diamond dress ring, the raised wire settings to circular cut claw set emeralds with gold coloured bead accents, with an eight cut diamond set collar, approximately 0.06 carats total, the shank with French poinçon, finger size O 1/2, 7.8g gross

£120-180

294

A South Sea cultured pearl necklace, the graduated South Sea cultured pearls measuring 12mm to 14.5mm diameter, to a pavé set circular cut ruby and eight cut diamond orb clasp, approximately 0.70 carats total, stamped 925, 47.5cm long, 112g gross

£400-600

295

A 1960s broad mesh link bracelet, the broad mesh link bracelet with flattened scrolled decoration, with box link borders, the clasp stamped 750 with partial Italian control marks, concealed clasp, 19.8cm long, 59.9g gross

£1,000-1,500

296

A diamond and pink sapphire flower head cluster ring, the circular panel set with oval cut pink sapphires with a central brilliant cut diamond and further brilliant cut diamond accents to the border, approximately 0.20 carats total, stamped 18k, finger size N 1/2, 6g gross

£250-350

297

A ruby and diamond cluster dress ring, the quatrefoil cluster set with pear cut rubies, within a surround of brilliant cut diamonds, to channel set step cut ruby and brilliant cut diamond set shoulders, approximately 0.33 carats total, finger size O, 8.5g gross

£250-350

298

A ruby and diamond heart shaped cluster ring, the central heart cut ruby within a surround of brilliant cut diamonds, approximately 0.56 carats total, finger size O 1/2, 5.2g gross

£200-300

299

A 1970s synthetic ruby and diamond floral spray brooch, the circular cut synthetic ruby and brilliant cut diamond flower head clusters to pierced leaves, approximately 0.80 carats total, 7.7cm long, 16.3g gross

£150-250



300

A diamond elf pendant, the gold coloured elf shaped panel with articulated hands and feet, a brilliant cut diamond accented ruff, approximately 0.06 carats total, stamped 750 Parm, 4.2cm long, 4.7g gross; together a Mickey Mouse charm, stamped © Disney, 1.6cm long, 1.7g

£80-120

301

A 1960s Italian turquoise and gold coloured brooch by Carlo Weingrill, the mesh knot brooch centred with a circular cabochon turquoise, stamped 750 with Italian control marks 15VR, 2.7cm diameter, 14.6g gross; together with a vari colour tourmaline necklace, the faceted kite shaped beads to a lobster claw clasp, stamped 750, 47.5cm long, 27.4g gross

£300-500

302

A multi gem fringe necklace, the necklace with a fringe of oval cut stones, including garnets, peridot, amethyst, with hook fastening, stamped 14k, 43cm long, 10.4g gross

£450-550

303

A novelty rabbit pendant on chain, the polished two colour rabbit with brilliant cut diamond accented eyes, nose and feet, approximately 0.24 carats total, with articulated arms and legs, stamped 750 Parm, 5cm long, suspended from a ropetwist chain, 49cm long, 14.4g gross, in an associated Masis Joaillier case

£280-350

304

A pair of amethyst and blue topaz earrings, the circular cabochon amethyst within polished settings, to heart shaped blue topaz drops, 2.2cm long, 7.8g gross

£150-250

305

A French snake link chain, the polished articulated links to a ring bolt clasp, stamped with French poinçon, 34cm long, 7g

£100-150

306

An Italian three colour broad bracelet by Gino Marchiori, the polished shaped links interspaced with textured rose and white coloured panels, stamped with maker's mark MAR 750 and Italian control marks, Vincenza Pre-1968, 17.7cm long, 39.9g

£700-1,000

307

A diamond single stone ring, the brilliant cut diamond estimated to weigh 0.92 carats, in a four claw setting, finger size N 1/2, 4.1g gross

£600-800

308

A diamond single stone ring, the brilliant cut diamond weighing 1.68 carats in a four claw setting, to a polished shank stamped 750, finger size O, 4.2g gross

£1,500-2,000

309

A single stone diamond ring, the radiant cut diamond estimated to weigh 1.65 carats, in a four claw setting, partial 18 carat gold hallmark, finger size N, 4g gross

£1,200-1,800

310

A three stone diamond ring, the slightly graduated brilliant cut diamonds in claw settings, approximately 0.80 carats total, finger size K 1/2, 2.7g gross

£150-250

311

A single stone diamond ring, the marquise cut diamond estimated to weigh 1 carat, in a six claw setting, 18 carat gold partial hallmark, finger size N 1/2, 3.7g gross

£250-350



312

A moonstone necklace and earrings, the necklace with graduated oval cabochon stones in spectacle settings, with gold coloured link connectors, the hook clasp stamped 585, 49cm long, together with a pair of similarly set moonstone drop earrings, shepherds hook attachments, 4.8cm long; 8.8g gross

£550-650

313

A diamond, amethyst and cultured pearl necklace, the clasp with a central oval cabochon amethyst within a textured surround with brilliant cut diamond accents, approximately 0.30 carats total, stamped 750 with Italian control marks, to a five row cultured pearl necklace, pearls measuring approximately 4.9mm, shortest length 35.5cm long, 80g gross

£600-800

314

An amethyst necklace, the circular cabochon amethysts within polished spectacle settings, with two graduated amethyst drops, with hook and chain attachments, 53cm long, 26.5g gross

£1,200-1,800

315

A pair of diamond and amethyst ear pendants, the oval cabochon amethyst drops in collet settings, with a trefoil of brilliant cut diamonds, approximately 0.30 carats total, 2.1cm long, 6.1g gross

£150-250

316

A smokey quartz dress ring, the step cut smokey quartz with canted corners, to a pierced scrolled gallery, stamped 10k, finger size Q, 14.1g gross

£80-120

317

A gold coloured puzzle ring, the ring with eight interlocking shaped sections, with a Lebanon post 1953 marks, finger size S 1/2, 15.5g

£250-350

318

A novelty moonstone ring, the circular moonstone carved as the moons face, to a matt finish tapered shank, finger size M, 3.7g gross; together with a pair of moonstone drop ear pendants, the oval cut moonstone pediments suspending a pear cut moonstone with a trio of pear cut moonstones below, stamped 14k, with shepherds hook fittings, 3.3cm long, 5.3g gross

£200-300

319Y

A coral and diamond dress ring, the oval cabochon coral within a textured surround, with brilliant cut diamond accents, approximately 0.09 carats total, stamped 750, panel 2.5cm long, finger size Q 1/2, 9g gross

£200-300

320Y

A pair of coral ear pendants, the oval cabochon coral pediments suspending a polished coral drop, stamped 750 with Italian control marks, 2.2cm long, 4.2cm long

£150-250

321Y

An 18 carat gold coral pendant, the oval panel carved with the profile of Flora, with flowers in her hair, within a coiled wire setting, 4.8cm long, 13.9g gross

£150-250

322Y

A coral koi carp brooch, the fish with carved scales and fins, with a black and brown paste eyes, with a gold coloured setting, 6cm long, 9.3g gross

£80-120

323

A pair of enamelled ladybird cufflinks, the oval ladybird panels with red and black enamelled decoration, 1.4cm long, belcher link connectors, 9 carat gold Birmingham 1994 hallmark and PL maker's mark, 8.1g gross

£80-120



324

A suite of reconstituted turquoise jewellery, the bombé dress ring with two curved rows of circular cabochon turquoise and floral detail, the shank stamped with Lebanese control marks, finger size O 1/2; together with a polished interlocking link necklace with reconstituted turquoise accents, with tassel drop, 45cm long; and a pair of matching drop ear pendants, 5.5cm long; 51.6g gross

£1,000-1,500

325

A Bismillah brooch retailed by Mouawad Boutique, the gold coloured brilliant cut diamond set script panel suspending four diamond accented charms, approximately 0.56 carats total, stamped Mouawad Boutique, 3cm long, 7.1g gross

£150-250

326

A diamond set cross pendant, the brilliant cut diamonds in four claw settings to a polished bale, approximately 1.31 carats total, 3.9cm long, 5.5g gross

£300-500

327

A pair of blue topaz earrings, the curved rectangular panels set with circular cut blue topaz, with stud and clip fittings, 18 carat gold hallmark to the studs, 1.7cm long, 8.3g gross

£200-300

328

An opal and diamond cluster pendant, the cabochon opal within a surround of brilliant cut diamonds, approximately 0.68 carats total, stamped 585, 3.5cm long, suspended from an 18 carat gold curb link chain, 50cm long, 13.4g gross

£400-600

329

A gold coloured long chain, the ropetwist long chain to a lobster claw clasp, stamped 18, 172cm long, 65.2g gross

£1,400-1,800

330

An aquamarine necklace, the graduated spectacle set aquamarines with double links between, to a hook clasp, 48cm long, 6.4g gross

£600-800

331

A single stone opal ring, the oval cabochon opal within a four claw setting, opal approximately 13mm long, with partial 9 carat gold hallmark, finger size N 1/2, 3.4g gross

£60-80

332

An opal and diamond cluster ring, the polished oval opal panel within a surround of eight cut diamonds, approximately 0.28 carats total, the shank stamped 18ct, finger size N, 7.5g gross

£200-300

333

An opal and diamond cluster ring, the oval cabochon opal claw set within a surround of brilliant cut diamonds, approximately 0.72 carats total, finger size R 1/2, 7.1g gross

£400-600

334

A mid 20th century blue zircon, cultured pearl and rose cut diamond floral spray brooch and matching ear clips, the two colour brooch with three circular cut blue zircon and cultured pearl cluster flower heads, with a rose cut diamond set tie, stamped 9ct, 4.8cm long, together with a pair of blue zircon and cultured pearl spray ear clips, with rose cut diamond set ties, the clips stamped 9ct, 2.3cm long, 20.3g gross

£200-300



335

A scrolled diamond pendant, the principal old cut diamonds to a scrolled foliate old cut diamond setting, approximately 6.00 carats total, 5.7cm long, on a box link chain, together with a similarly set pair of scrolled diamond ear studs, approximately 3.04 carats total, 34.8g gross

£2,500-3,000

336

A pair of diamond ear pendants, the central old cut diamonds suspended within a surround of old mine cut diamonds, approximately 2.03 carats total, with shepherds hook fittings, 2.5cm long

£600-800

337

A diamond eternity ring, the band set with brilliant cut diamonds, approximately 1 carat total, finger size N, 5.5g gross

£300-500

338

A diamond eternity ring, the brilliant cut diamonds in pinched collet settings, approximately 1.71 carats total, finger size N, 5.4g gross

£400-600

339

A diamond two row ring, the two rows of brilliant cut diamonds, approximately 1.28 carats total, finger size L 1/2, 5.9g gross

£300-500

340

A single stone diamond ring, the brilliant cut diamond weighing 2.13 carats in a raised claw setting, to polished leaf accented shoulders, the shank stamped W. Gold with Chinese marks, finger size P, 6.7g gross

£2,000-3,000

341

A diamond and mabé pearl dress ring, the pierced lattice setting set with old cut diamonds, approximately 0.86 carats total, centred with a circular mabé pearl in a millegrained setting, finger size J 1/2, 13.2g gross

£500-700

342

A late Victorian diamond star brooch/pendant, the six pointed star set with old cut and rose cut diamonds, with knife edge bar set old cut diamond accents between, approximately 2.36 carats total, with fold out suspensory loop and later brooch fitting, 3.5cm wide, 7.7g gross

£700-1,000



Luxury Accessories



343

343

Chanel, a blue lambskin quilted flap bag, with a chain and leather shoulder strap, a twist lock clasp, the flap opening to a blue leather interior with an open pocket, 28 x 19 x 4cm

£200-300

344

Gucci, a leather and canvas handbag, with twin loop handles and pin buckle clasps, the flap opening to a brown satin interior with a zipped pocket, 42 x 32 x 15cm

£150-250



344



345

345Y

Lanvin, a black lizard skin briefcase, with a loop handle, combination lock and two flip lock clasps, opening to a tan leather interior with four card slots, two pen slots and two slip pockets, 42 x 30 x 6cm

£100-200

346

Mulberry, a claret leather handbag, with twin brown leather loop handles, with a sliding lock clasp front pocket and a zipped rear pocket, magnetic fasters opening to a brown monogrammed interior with a zipped pocket and an open pocket, 40 x 32 x 13cm, with a guarantee card

£80-120



346



347

347

Prada, a black nylon backpack, with a black leather shoulder strap, exterior zipped pocket and pin buckle clasp, the flap opening to two zipped pockets and a satin interior with a zipped pocket, 26 x 28 x 8cm

£80-120

348

Saint Laurent, a green leather sac de jour, with twin leather loop handles, opening to a green suede triple gusset interior, with two open and a single zipped compartment, 40 x 32 x 19cm, with a Saint Laurent dust bag, card and booklet

£200-300



348



349

349
Hermes, a brown leather satchel bag, with a leather shoulder strap and a pin buckle clasp, opening to a brown leather double gusset interior with three open pockets, 34 x 25 x 6cm

£300-500

350
Hermes, a yellow leather clutch bag, with a flip lock clasp, the flap opening to a yellow leather interior with an open pocket, 20.5 x 15 x 2.5cm, with a Hermes dust bag

£80-120



350



351
Hermes, a brown crocodile wallet, opening to a brown leather interior with an open pocket and eight card slots, 11 x 9cm, with a Hermes dust bag; Gucci, a brown leather wallet, opening to two open pockets, a pop button fastened pocket and four card slots, 11 x 10cm; and a Louis Vuitton epi leather wallet, pop button fastener, the flap opening to a brown suede interior, 18 x 13cm

£80-120



351

352
Hermes, a gilt metal padlock perfume holder, 8.5cm high, with a Hermes box, refill and dust bag

£100-150



352



353

353
Louis Vuitton, a tan leather suitcase, with a leather loop handle and pin buckle clasps, the zip opening to a red suede interior with a large open pocket and two clothes straps, 60 x 45 x 15cm

£300-500

354
Louis Vuitton, a Monogrammed brown vernis leather shoulder case, with a canvas and leather shoulder strap and two leather loop handles, the zip opening to a black suede interior, a detachable zipped pocket, clothes straps and four coat hangers, 47 x 38 x 17cm

£80-120



354



355

Louis Vuitton, a Monogrammed coated canvas and leather suitcase, with leather trim and loop handle, brass fittings, key lock flip clasp, opening to a leather interior with dividers and straps, 60 x 49 x 18cm

£400-600

356

Louis Vuitton, a demier canvas hard travel case, with leather trim and loop handle, brass fittings and a key lock flip clasp, opening to a red suede interior, 36 x 22 x 26 cm

£300-500



356



357

357

Louis Vuitton, a Monogram coated canvas bag, with twin leather loop handles and trim, three zips each opening to a canvas compartment, one with a clothes strap, 50 x 27 x 20cm

£250-350



358

358

Montblanc, Meisterstück, 146, a black fountain pen, the cap with a gilt clip and triple cap band, the medium two tone nib stamped 14K, ink viewing window, piston filling system, inked, with a Montblanc box and international warranty card

£100-150

359

Montblanc, Meisterstück, 149, a black fountain pen, the cap with a gilt clip and triple cap band, the two tone nib stamped 14K, ink viewing window, piston filling system, inked

£150-250

360

Montblanc, Writers Edition, William Faulkner, a limited edition ballpoint pen, no. 10925/18000, circa 2007, with a brown marbled lacquer and white metal body, with a Montblanc box, booklet and outer card packaging

£200-300



359



360



361

361

Must de Cartier, Santos, Ref. 7508,
Bi-colour travel alarm clock, no. 01877

Movement: Quartz alarm movement

Case: Stainless steel case, gold plated screwed bezel, easel back

Size: 72mm

Signed: Case, dial, movement

Accessories: Cartier case, international service

£150-250

362

Cartier, five red leather
boxes, to include: four ring
boxes, one with outer card
box; and a lighter box (5)

£250-350



362



363

363

Cartier, a red leather watch
box, opening to black suede
interior, lifting out to four tray
compartment, with a Cartier
Loupe, a leather and denim strap
with a stainless steel deployant
clasp, cloth and outer card
packaging; three other Cartier
red leather; and a Cartier black
leather travel watch case

£250-350

Watches

364

Unsigned,

Gold open face keyless wind pocket watch, no. 17647

Movement: Cylinder escapement, three armed domed
balance, flat balance spring

Case: Gold four piece hinged case, back cover with
chequered and foliate decoration, a vacant cartouche,
stamped with a French 1838-1919 little guarantee mark

Size: 39mm

Signed: Unsigned

Accessories: None

£300-500



364



365

365

J. W. Benson, London,

9 carat gold keyless wind full hunter pocket watch,
no. 638072, circa 1937

Movement: Bimetallic split balance, overcoil balance
spring, lever escapement

Case: 9 carat gold five piece hinged case, hallmarked
London 1937

Size: 49mm

Signed: Case, dial, movement

Accessories: J. W. Benson box

£250-350

366

Jack Watch Factory, Chaux-de-fonds,
18 carat gold full hunter quarter repeater pocket
watch, no. 2453, circa 1900

Movement: Quarter repeater movement, bimetallic
split balance, flat balance spring, lever escapement

Case: Five piece hinged case, engine turned covers,
the front cover with a vacant cartouche, stamped
18K with a poinçon

Size: 48mm

Signed: Case, dial

Accessories: None

£700-1,000



366



367

367

Vacheron Constantin, Ref. 4348,

Fine and rare aluminium open face keyless wind pocket watch, no. 347748, circa 1956

Movement: Cal. 439/7, lever escapement, 17 jewels

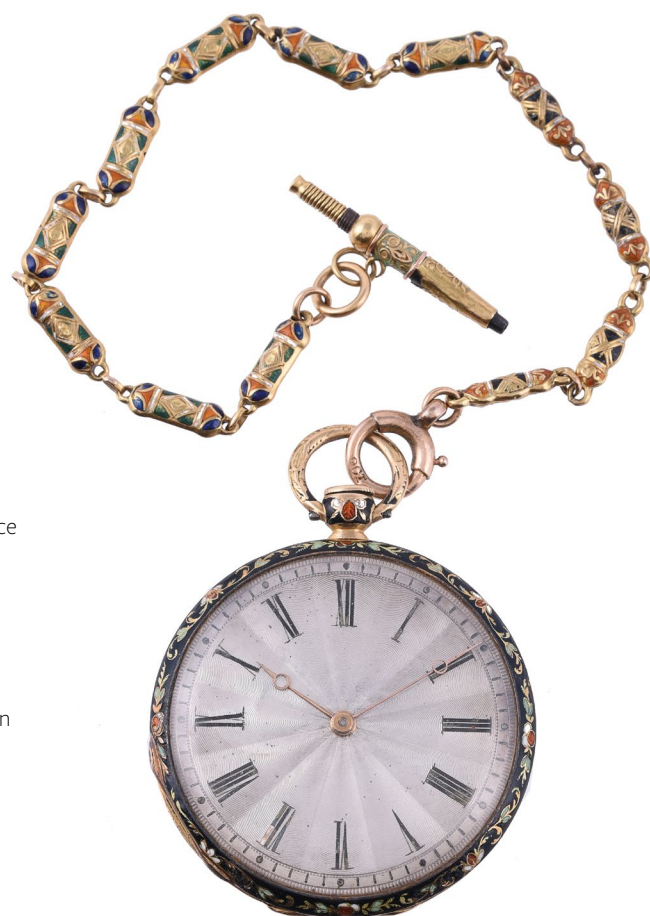
Case: Aluminium three piece snap case, back cover engraved Presented to C. W. Hensley by Northern Aluminium Company Ltd. in recognition of long and loyal service 1956

Size: 44mm

Signed: Case back, dial, movement

Accessories: Vacheron Constantin leather case
It is believed that less than 300 of these pocket watches were produced. This was at the request of the Northern Aluminium Company, who later went to become the Aluminium Company of Canada. These were presented as gifts to employees on retirement.

£1,500-2,500



368

368

Unsigned,

Gold coloured and enamelled slimline pocket watch, no. 3213

Movement: Three armed flat balance, flat balance spring, cylinder escapement

Case: Gold coloured four piece hinged case, engraved and enamelled with floral decoration

Size: 36mm

Signed: Unsigned

Accessories: Gold coloured and enamelled chain and key, stamped 9ct

£500-700

369

Unsigned,

18 carat gold keyless wind open face pocket watch, no. 125915, circa 1909

Movement: Bimetallic split balance, flat balance spring, lever escapement

Case: 18 carat gold four piece hinged case, the back cover engraved with a monogram, import mark for London 1909

Size: 44mm

Signed: Unsigned

Accessories: None

£500-700



369



370

370

Unsigned,

Lady's 18 carat gold and diamond cocktail watch, circa 1919

Movement: Swiss manual wind, 17 jewels

Case: 18 carat gold case, diamond set bezel and lugs, snap case back, import mark for London 1919

Bracelet/Strap: Black leather strap with pin buckle

Size: 23mm

Signed: Unsigned

Accessories: None

£200-300

371

Jaeger LeCoultre,

Lady's white gold coloured and diamond cocktail watch, no. 187945, circa 1930

Movement: Manual wind

Case: White gold coloured case, diamond set bezel and lugs, screwed down case back with two screws, back wind and set, stamped 18K 750 with a poinçon

Bracelet/Strap: Unsigned velvet strap with white metal snap clasp

Size: 13mm

Signed: Dial, movement

Accessories: None

£300-500



371



372

372

Josarn,

Lady's white gold, diamond and sapphire cocktail watch

Movement: Swiss manual wind, 17 jewels

Case: 18 carat white gold case, diamond set bezel, sapphire set lugs, snap case back, hallmarked London 1961

Bracelet/Strap: 9 carat white gold woven bracelet with ladder snap clasp, hallmarked London 1961

Size: 15mm, bracelet 16.5cm

Signed: Dial

Accessories: None

£300-500



373

373

Rolex, Precision,

Lady's 9 carat gold bracelet watch, no. 400536, circa 1965

Movement: Cal. 1401, manual wind

Case: 9 carat gold case, snap case back, hallmarked Birmingham 1965

Bracelet/Strap: Integral 9 carat gold bracelet with snap clasp

Size: 19mm, bracelet 16cm

Signed: Case, dial, movement, crown, clasp

Accessories: Tudor box

£300-500



374

374

Longines, Ref. 6577,

9 carat gold wrist watch, circa 1956

Movement: Cal. 23ZS, manual wind, 17 jewels

Case: 9 carat gold case, snap case back, London import marks

Bracelet/Strap: Unsigned brown leather strap

Size: 34mm

Signed: Case, dial, movement

Accessories: Longines box, guarantee and purchase receipt dated 20th April 1956

£250-350

375 Y

Longines,

Lady's gold coloured wrist watch, circa 1950

Movement: Cal. 15.18, manual wind, 17 jewels

Case: Gold coloured case, snap case back, stamped with a poinçon

Bracelet/Strap: Unsigned black lizard strap with a gold plated pin buckle

Size: 17mm

Signed: Case, dial, movement

Accessories: Longines box

£150-200



375



376

376

Omega,

Lady's gold coloured wrist watch, no. 7278 21 002, circa 1975

Movement: Cal. 1 661, automatic, 24 jewels

Case: Gold coloured case, snap case back, stamped 18K 750 with a poinçon

Bracelet/Strap: Non original brown leather lizard grain strap with gold plated pin buckle

Size: 22mm

Signed: Case, dial, movement, crown

Accessories: None

£250-350



377

377

Baume & Mercier for Asprey, Classic,

Lady's 18 carat gold coloured wrist watch, no. 508282 38259, circa 1973

Movement: Cal. BM 550, manual wind, 17 jewels

Case: 18 carat gold case, snap case back engraved BRL, import mark for London 1973

Bracelet/Strap: Hirsch black leather strap with gold plated pin buckle

Size: 23mm

Signed: Case, dial, movement

Accessories: Asprey box and pouch

£250-350



378

378

Bulgari, Bulgari, Ref. BB.26.GL,

Lady's gold coloured wrist watch, circa 1990

Movement: Cal. ETA 956 031, quartz, 7 jewels

Case: Gold coloured case, snap case back, stamped 18K 750 with a poinçon

Bracelet/Strap: Bulgari brown leather strap with a gold coloured pin buckle, stamped 750

Size: 26mm

Signed: Case, dial, strap, crown

Accessories: Bulgari box

£300-500



379

379

Chronograph Suisse,

Gold coloured wrist watch, no. 1004, circa 1950

Movement: Swiss manual wind chronograph, 17 jewels

Case: Gold coloured case, metal cuvette, snap case back, stamped 18K 750 with a poinçon

Bracelet/Strap: Unsigned brown leather strap with pin buckle

Size: 36mm

Signed: Dial

Accessories: None

£200-300



380

380

Girard Perregaux,

Lady's gold coloured bracelet watch

Movement: Cal. F 1422, manual wind, 15 jewels

Case: Gold coloured case, snap case back, stamped with a poinçon

Bracelet/Strap: Integral brick link bracelet with ladder snap clasp, stamped 18K 0.750

Size: 23mm, bracelet 18cm

Signed: Dial, clasp

Accessories: None

£400-600

Important Notices to Watch Buyers

DAMAGE, RESTORATION, ALTERATION

Although every effort is made to note any damage, restoration or alterations, the absence of any such information in catalogue descriptions does not imply the lot is in perfect condition and free from any such defects. Prospective buyers should satisfy themselves as to the condition of any lot prior to bidding. All watches are serviced from time to time, and Dreweatts are unable to guarantee that the working parts of any watch movement, glass or crystal, winding crowns, watch bracelet, strap or buckle are the manufacturers' original parts, unless otherwise stated in the catalogue description. We are unable to make any representation in our catalogue descriptions or condition reports as to the authenticity of such parts. Dreweatts are unable to make any representation, nor make any comment on, the authenticity of diamonds, or other gemstones, set into watch dials, bezels, cases and bracelets.

AUTHENTICATION

All watch movements have been inspected by Dreweatts watchmaker and specialists, and we have verified all inventory and movement numbers. For the information of potential bidders, all inventory and movement numbers are listed in the catalogue description for the relevant lot.

IMPORT/EXPORT RESTRICTIONS

There may be Import Restrictions into some territories outside

the United Kingdom placed on certain watch brands, or on the importation of watches with straps composed of animal skins which may fall under CITES Regulations. It is the sole responsibility of the buyer to comply with all Export/Import regulations and potential bidders are strongly recommended to check with their shipping agent as to any such regulations that may apply to any lot. Dreweatts are not shippers and are unable to offer any advice regarding such regulations.

CONDITION REPORTS

Dreweatts condition reports will identify whether a watch functions at the time of cataloguing, and suggest possible, but not comprehensive, restoration work that may need to be carried out for the watch to function properly. Dreweatts are unable to test watches for accuracy or running to time, and we cannot guarantee that any watch will function when purchased from us.

As we have examined all watch movements by removing the case backs, we cannot guarantee that water resistant watches will remain water resistant following purchase from us. Dreweatts recommend that any watch purchased from us is subsequently overhauled by a competent watchmaker to ensure proper functioning.

Important Notices to Jewellery Buyers

DAMAGE, RESTORATION, ALTERATION

Although every effort is made to note any damage, restoration or alterations, the absence of any such information in catalogue descriptions does not imply the lot is in perfect condition and free for any such defects. Prospective buyers should satisfy themselves as to the condition of any lot prior to bidding.

ENHANCEMENT

Prospective bidders should be aware that many coloured gems have been historically treated by a variety of methods to improve their appearance, both in terms of colour and transparency. Rubies and sapphires are routinely heat treated, emeralds are enhanced through the use of coloured and transparent oils and resins, and jadeite is routinely stained. These treatments, and others including irradiation and coating, are generally accepted by the jewellery trade as standard practice. Although most treatments are considered to be permanent, those gemstones which have been oiled may need to be re-treated to maintain their appearance. Any such treatments affect the market value of coloured gemstones, and Dreweatts pre-sale estimates published in the catalogue assume that all gemstones, unless otherwise stated in the catalogue, may have been enhanced. Dreweatts may obtain Gemmological Reports from a recognised laboratory where appropriate detailing any enhancements, or lack of, for certain gemstones, and such reports may be obtained for prospective bidders prior to the sale, provided such requests are made at least three weeks before the sale, and that the requesting party has pre-paid for such a report. However it is not possible for Dreweatts to obtain reports for every stone offered in the sale.

In the absence of a gemmological laboratory report, it is not possible for Dreweatts to make any comment on the possibility that any gemstone in any lot may have been subject to enhancement.

Dreweatts catalogue descriptions and condition reports adhere to the guidelines laid out in the 'Blue Book' of CIBJO,

the International Jewellery Confederation.

WEIGHTS

All gram weights have been obtained using an electronic balance, but weights stated in the catalogue are approximate and for guidance only, and potential bidders should satisfy themselves as to their accuracy.

'...approximately 1.20 carats total,...' all such stone weights are estimated using standard equipment and formulae, and are subject to the limitations imposed by the mount.

'...weighing 1.20 carats,...' where the description reads as such, the stones in question have been removed from the mount and weighted using an electronic balance.

SIGNATURES

'...by Lacloche,...' in our opinion is a piece made by or for the jeweller, bearing relevant signatures, maker's marks, and where appropriate, the maker's inventory number/s.

'...signed Lacloche,...' in our opinion is a piece retained by the jeweller, but not necessarily made by them. This may also mean that the piece has been mounted by the jeweller using stones supplied by the client; a special commission from a client's design; or has been altered or later added to.

COLOURED STONES OF BURMA (MYANMAR) ORIGIN

Buyers should be aware that certain territories (notably the United States of America) have import restrictions on certain coloured gemstones. All gemstones that maybe of Burma (Myanmar) origin, notably rubies and jadeite, may require a certificate of origin before they can be imported. Prospective bidders for such gemstones should check with their shipper, and relevant Government authorities regarding any necessary certification prior to bidding. Whilst Dreweatts are able to suggest a number of Gemmological Laboratories for such certification, we are unable to carry out any such certification for potential bidders or buyers.

Detailed condition reports for all lots are available from our website www.dreweatts.com, and upon direct request to the Saleroom.

Please note that Dreweatts are unable to give verbal condition reports for any lot, and all condition reports will be given in writing via our website www.dreweatts.com. Dreweatts jewellery specialists and qualified gemmologists are available during the view to answer any queries.

Dreweatts are unable to offer any form of packing, dispatch or shipping services, and clients should make their own collection arrangements for purchased lots. Dreweatts are happy to suggest the services of a number of dispatch and shipping carriers.

Please see Conditions of Business and Conditions of Sale on the following pages.

Dreweatts & Dreweatts 1759 are trading names of Dreweatts 1759 Ltd. Dreweatts 1759 Ltd is registered in England, company number: 10758982, registered office: Minerva House | Lower Bristol Road | Bath BA2 9ER.

Important Notices

BUYING AT DREWEATTS

There are several ways you can bid at a Dreweatts auction; in person, by leaving a commission or absentee bid, on the telephone where available and live via the internet – please make arrangements before the sale. THIS NOTICE APPLIES ONLY TO A PERSON WHO WISHES TO BID IN PERSON, OR BY LEAVING A COMMISSION OR ABSENTEE BID, AT A DREWEATTS PUBLIC AUCTION. For bidding at an online auction or for online bidding at a public auction please see our Online Auction Terms published on our website at www.dreweatts.com.

BIDDING IN PERSON

If intending to buy you are required to register your name and details at reception prior to the commencement of the auction. You will be required to provide a proof of identity and address to register for bidding. You will then be allocated a bidding number, which you use when bidding for an item.

COMMISSION BIDS

Dreweatts will execute bids on your behalf if you are unable to attend the sale. Commission or absentee bids are accepted either directly at reception, or can be sent by post, fax, email, telephone or via the website: www.dreweatts.com.

Dreweatts will add these bids to the auctioneers' sale book and will undertake to purchase the lots on your behalf as cheaply as allowed by other bids and reserves. If two buyers submit identical commission bids Dreweatts may prefer the first bid received.

Dreweatts does not accept liability for failing to execute commission bids, or for any errors or omissions.

CONDITION

Bidders must satisfy themselves as to the condition of each lot. Condition reports are available on request – see the Conditions of Business at the back of this catalogue forming part of these Auction Terms and Conditions for more information regarding condition reports. Requests for condition reports must be submitted by 4pm on the day prior to the auction; condition reports may be available alongside the lot description on the online catalogue at: www.dreweatts.com.

COMMISSION CHARGES

All purchases are subject to a buyer's premium, which is charged per lot at 25% of the hammer price (30% including VAT) up to and including £500,000, 20% (24% including VAT) of the hammer price from £500,001 up to and including £1,000,000 and 12% of the hammer price (14.4% including VAT) in excess of £1,000,000. A theta symbol (Θ) indicates that the lot is a zero rated item and therefore not subject to VAT on the buyer's premium. This applies to bound books (manuscripts and printed), unframed maps and albums. In the event the lot has a dagger (†) beside the lot number in the catalogue, this indicates that the lot is owned by an entity or company required to pay VAT (generally not an Antique Dealer, as they operate under a dealers margin scheme). VAT is payable at 20% on the Hammer Price. Lots marked with a double dagger (‡) (presently a reduced rate of 5%) or Ω (presently at standard rate of 20%) have been imported from outside the European Union to be sold at auction and therefore the buyer must pay the import VAT at the appropriate rate on the hammer price.

PAYMENT

Payment will be accepted, if you are a successful bidder, by debit card issued in the name of the Buyer by a UK bank and registered

to a UK billing address; by all major UK issued credit cards issued in the name of the Buyer and registered to a UK billing address with the exception of American Express and Diners Club; by bank transfer direct into our bank account, Bank Details: NatWest, 30 Market Place, Newbury, Berkshire RG14 5AG. Account Name: Dreweatts 1759 Ltd. A/C: 62412949, Sort Code: 60-15-07, BIC: NWBKGB2L, IBAN: GB21NWBK60150762412949. The name of the bank account holder should match the name of the buyer. First time buyers who are not present at the saleroom are requested to pay by bank transfer.

Y CITES REGULATIONS

Please note that lots marked with the symbol (Y) in this catalogue may be subject to CITES Regulations when exported. Relevant CITES Regulations may be found at www.gov.uk/guidance/cites-imports-and-exports.

COLLECTION OR DELIVERY

Before being able to collect your purchases you are required to pay the hammer price, plus the applicable commissions, and obtain a receipt acknowledging payment. Collection of the purchased lots is at the purchaser's risk and expense and whilst Dreweatts do not provide packing and despatch service we can suggest some carriers.

Dreweatts also require that all purchased items are collected within four working days of the sale to avoid a storage charge being applied.

STORAGE CHARGES

All items not collected by 4pm, within four working days of the sale, will be automatically removed to commercial storage and subject to a minimum storage charge of £20 (plus VAT) per lot and to a further storage charge of £2 (plus VAT) per lot per part or full day thereafter. These charges will be the sole liability of the purchaser and will be billed directly to them by Vangaroo Ltd (Andover); Vangaroo may be willing to adjust their charges if they are instructed by the purchaser to deliver to them. On payment of all sales and storage costs, items will be available for collection by appointment from Vangaroo Ltd (Andover), tel: 01264 586566, mobile: 07528 291180, email: info@vangaroo.co.uk. These charges are set by Vangaroo Ltd (Andover); we recommend that you contact them directly regarding queries relating to these charges and other questions relating to storage. Staff at the saleroom will be unable to answer questions relating to items that have been removed from the saleroom.

FURTHER INFORMATION

The colours printed in this catalogue are not necessarily a true reflection of the actual item. All weights and measures given in the catalogue should be regarded as approximate.

VALUATION SERVICES

Dreweatts provides a range of confidential and professional valuation services to private clients, solicitors, executors, estate managers, trustees and other professional partners. These services include auction valuations, insurance valuations, probate valuations, private treaty valuations, valuations for family division or for tax purposes. For more information, please see our website: www.dreweatts.com.

For directions to Donnington Priory, please see our website: www.dreweatts.com.

Parking is available at Donnington Priory in two car parks on either side of the saleroom.

Information for Buyers at Public Auctions

1. **INTRODUCTION.** The following notes are intended to assist Bidders and Buyers, particularly those inexperienced or new to our salerooms. All of our auctions and sales are conducted on our printed Auction Terms and Conditions, including these Conditions of Sale and Business, which are readily available for inspection and normally accompany catalogues. Our staff will be happy to help you if there is anything you do not fully understand.

Any particular auction and/or any particular lot in an auction may be subject to different or additional terms which will be published in our auction catalogue. All auctions and sales of wines and spirits, jewellery, watches and clocks are subject to the special terms set out in the relevant Notices in relation to those items published in our auction catalogue and, in the event of any conflict or inconsistency, those special terms prevail over any other terms in our Auction Terms and Conditions. By bidding at the auction, you agree to be bound by these terms.

2. **AGENCY.** As auctioneers we usually act as agents for the seller whose identity, for reasons of confidentiality, is not normally disclosed. Accordingly if you buy at auction your contract for the item or items purchased is with the seller and not with us as the auctioneer.

3. **ESTIMATES.** Estimates are designed to help buyers gauge what sort of sum might be involved for the purchase of a particular lot. Estimates may change and should not be thought of as the sale price. The lower estimate may represent the reserve price and certainly will not be below it. Estimates do not include the Buyer's Premium or VAT (where chargeable). Estimates are prepared some time before the sale and may be altered by announcement before the sale. They are in no sense definitive.

4. **BUYER'S PREMIUM.** The Conditions of Sale forming part of our Auction Terms and Conditions require the buyer to pay a buyer's premium on the hammer price of each lot purchased. The buyer's premium is 25% of the hammer price up to and including £500,000, 20% of the hammer price from £500,001 up to and including £1,000,000, and 12% of the hammer price in excess of £1,000,000. VAT at the prevailing rate of 20% is added to buyer's premium and additional charges as defined below.

5. **VAT.** A theta symbol (Θ) indicates that the lot is a zero rated item and therefore not subject to VAT on the buyer's premium. This applies to bound books (manuscripts and printed), unframed maps and albums. A dagger symbol (†) indicates that VAT is payable by the purchaser at the standard rate (presently 20%) on the hammer price as well as being and element in the buyers' premium. This imposition of VAT is likely to be because the seller is registered for VAT within the European Union and is not operating the Dealers Margin Scheme or because VAT is due at 20% on import into the UK. A double dagger (‡) indicates that the lot has been imported from outside the European Union and the present position is that these lots are liable to a reduced rate of Import VAT currently 5% on the hammer price. (Ω) indicates that the lot has been imported from outside the European Union and these lots are liable to the standard rate of Import VAT currently 20% on the hammer price. Lots which appear without the above symbols indicate that no VAT is payable on the hammer price; this is because such lots are sold using the Auctioneers Margin Scheme and it should be noted that the VAT included within the buyers' premium is not recoverable as input tax.

6. **DESCRIPTION AND CONDITION.** Condition reports are provided on our website or upon request. The absence of a report does not imply that a lot is without imperfections. The detail in a report will reflect the estimated value of the lot. Large numbers of such requests received shortly before the sale may mean that reports cannot be provided for all lots. Members of staff are not trained restorers or conservators and, particularly for higher value lots, you should obtain an opinion from such a professional. Dreweatts is not liable for damage to gilded picture frames, plaster picture frames or picture frame glass; if a Lot is or becomes dangerous, we may dispose of it without notice to bidders in advance in any manner we see fit and will be under no liability for doing so. We recommend that you always view a lot in person.

We are dependent on information provided by the seller about a lot and whilst we may inspect lots and act reasonably in taking a general view about them we are normally unable to carry out a detailed examination

and frequently no examination of lots in order to ascertain their condition in the way in which it would be wise for a buyer to do. Intending buyers have ample opportunity for inspection of goods and, therefore, accept responsibility for inspecting and investigating lots in which they may be interested and the corresponding risk should they not do so. Please note carefully the exclusion of liability for the condition of lots contained in the Conditions of Sale. Neither the seller nor we, as the auctioneers, accept any responsibility for their condition. In particular, mechanical objects of any age are not guaranteed to be in working order. However, in so far as we have examined the goods and make a representation about their condition in the auction catalogue, we shall be liable for any defect which is not reflected in that representation and which that examination ought to have revealed to the auctioneer but which would not have been revealed to the buyer had the buyer examined the goods. Additionally, in specified circumstances lots misdescribed because they are 'deliberate forgeries' may be returned and repayment made. There is a 3 week time limit. (The expression 'deliberate forgery' is defined in our Conditions of Sale).

7. **ELECTRICAL GOODS.** These are sold as 'antiques' only and if bought for use must be checked over for compliance with safety regulations by a qualified electrician before use.

8. **EXPORT OF GOODS.** Buyers intending to export goods should ascertain (a) whether an export licence is required and (b) whether there is any specific prohibition on importing goods of that character because, e.g. they may contain prohibited materials such as ivory. Ask us if you need help.

9. **BIDDING.** Bidders will be required to register before the sale commences and lots will be invoiced to the name and address on the sale registration form. Bidders are required to provide a government issued identity document and a proof of address. Please enquire in advance about our arrangements for telephone bidding.

10. **COMMISSION BIDDING.** Commission bids may be left with the auctioneers indicating the maximum amount to be bid excluding buyers' premium. Dreweatts will add these bids to the auctioneers' sale book and they will be executed as cheaply as possible having regard to the reserve (if any) and competing bids. If two buyers submit identical commission bids the auctioneers may prefer the first bid received. Please enquire in advance about our arrangements for the leaving of commission bids by telephone or fax. Dreweatts does not accept liability for failing to execute commission bids, or for any errors or omissions.

11. **METHODS OF PAYMENT.** Payment will be accepted, if you are a successful bidder, by debit card issued in the name of the Buyer by a UK bank and registered to a UK billing address; by all major UK issued credit cards issued in the name of the Buyer and registered to a UK billing address with the exception of American Express and Diners Club; by bank transfer direct into our bank account, Bank Details: NatWest, 30 Market Place, Newbury, Berkshire RG14 5AG. Account Name: Dreweatts 1759 Ltd. A/C: 62412949, Sort Code: 60-15-07, BIC: NWBKGB2L, IBAN: GB21NWBK60150762412949. The name of the bank account holder should match the name of the buyer. First time buyers who are not present at the saleroom are requested to pay by bank transfer.

12. **COLLECTION AND STORAGE.** Please note what the Conditions of Sale state about collection and storage. It is important that goods are paid for and collected promptly. Any delay may involve the buyer in paying storage charges.

13. **À DROIT DE SUITE ROYALTY CHARGES.** From 1st January 2012 all UK art market professionals (which includes but is not limited to; auctioneers, dealers, galleries, agents and other intermediaries) are required to collect a royalty payment for all works of art that have been produced by qualifying artists each time a work is re-sold during the artist's lifetime and for a period up to 70 years following the artists death. This payment is only calculated on qualifying works of art which are sold for a hammer price more than the UK sterling equivalent of EURO 1,000 – the UK sterling equivalent will fluctuate in line with prevailing exchange rates. It is entirely the responsibility of the buyer to acquaint himself with the precise EURO to UK Sterling exchange rate on the day of the sale in this regard, and the auctioneer accepts no responsibility whatsoever if the

qualifying rate is different to the rate indicated. All items in this catalogue that are marked with λ are potentially qualifying items, and the royalty charge will be applied if the hammer price achieved is more than the UK sterling equivalent of EURO 1,000. The royalty charge will be added to all relevant buyers' invoices, and must be paid before items can be cleared. All royalty charges are passed on to the Design and Artists Copyright Society (DACS), no handling costs or additional fees with respect to these charges will be retained by the auctioneers. The royalty charge

Terms of Consignment for Sellers in Public Auctions

The sale of goods at our public auctions and a seller's relationship with us are governed by our Auction Terms and Conditions including these Terms of Consignment for Sellers in Public Auctions and our Conditions of Sale for Public Auctions. Any particular auction and/or any particular lot in an auction may be subject to different or additional terms which will be published in our auction catalogue or separately announced prior to the auction. All auctions and sales of wines and spirits, jewellery, watches and clocks are subject to the special terms set out in the relevant Notices in relation to those items published in our auction catalogue and, in the event of any conflict or inconsistency, those special terms prevail over any other terms in our Auction Terms and Conditions. Please note that our Auction Terms and Conditions including these Terms of Consignment for Sellers in Public Auctions and our Conditions of Sale for Public Auctions relate to auctions held in our salerooms and we have separate terms and conditions for our online auctions.

If you, or another person acting on your behalf, provide goods to us to sell on your behalf at one of our auctions this signifies that you agree to and will comply with our Auction Terms and Conditions including these Terms of Consignment for Sellers in Public Auctions and our Conditions of Sale for Public Auctions.

1. **INTERPRETATION.** In these Terms the words 'you', 'yours', etc. refer to the Seller and if the consignment of goods to us is made by an agent or otherwise on the Seller's behalf we assume that the Seller has authorised the consignment and that the consignor has the Seller's authority to contract. All obligations that apply to the Seller under these Terms of Consignment for Sellers in Public Auctions shall apply to the owner of the goods and their agent jointly and separately. Similarly the words 'we', 'us', etc. refer to the Auctioneers.

2. **WARRANTY.** The Seller warrants that possession in the lots can be transferred to the Buyer with good and marketable title, free from any third party right and encumbrances, claims or potential claims. The Seller has provided all information concerning the item's ownership, condition and provenance, attribution, authenticity, import or export history and of any concerns expressed by third parties concerning the same.

3. **ALL COMMISSIONS** and fees are subject to VAT at the prevailing rate.

4. **COMMISSION** is charged to sellers and all selling terms are available from our salerooms.

5. **REMOVAL COSTS.** Items for sale must be consigned to the saleroom by any stated deadline and at your expense. We may be able to assist you with this process but any liability incurred to a carrier for haulage charges is solely your responsibility.

6. LOSS AND DAMAGE OF GOODS

(a) Loss and Damage Warranty - Dreweatts is not authorised by the FCA to provide insurance to its clients, and does not do so. However Dreweatts for its own protection assumes liability for property consigned to it at the lower pre-sale estimate until the hammer falls. To justify accepting liability, Dreweatts makes a charge of 15% of the hammer price plus VAT, subject to a minimum charge of £150, or if unsold 15% of our lower estimate. The liability assumed by Dreweatts shall be limited to the lower pre-sale estimate or the hammer price if the lot is sold. Dreweatts is not liable for damage to gilded picture frames, plaster picture frames or picture frame glass; if the Lot is or becomes dangerous, we may dispose of it without notice to you in advance in any manner we see fit and will be under no liability for doing so.

(b) If the owner of the goods consigned instructs us in writing not to take such action, the goods then remain entirely at the owner's risk unless and until the property in them passes to the Buyer or they are collected by or on behalf of the owner, and clause 6 (a) is inapplicable.

that will be applied to qualifying items which achieve a hammer price of more than the UK sterling equivalent of EURO 1,000, but less than the UK sterling equivalent of EURO 50,000 is 4%. For qualifying items that sell for more than the UK sterling equivalent of EURO 50,000 a sliding scale of royalty charges will apply – for a complete list of the royalty charges and threshold levels, please see www.dacs.org.uk. There is no VAT payable on this royalty charge.

7. **ILLUSTRATIONS AND PHOTOGRAPHS.** The cost of any illustrations or photographs is borne by you. The copyright in respect of such illustrations and photographs shall be the property of us, the auctioneers, as is the text of the catalogue.

8. **MINIMUM BIDS AND OUR DISCRETION.** Goods will normally be offered subject to a reserve agreed between us before the sale in accordance with clause 9. We may sell Lots below the reserve provided we account to you for the same sale proceeds as you would have received had the reserve been the hammer price. If you specifically give us a "discretion" we may accept a bid of up to 10% below the formal reserve.

9. RESERVES

(a) You are entitled to place prior to the auction a reserve on any lot consigned, being the minimum hammer price at which that lot may be sold. Reserves must be reasonable and we may decline to offer goods which in our opinion would be subject to an unreasonably high reserve (in which case goods carry the storage and loss and damage warranty charges stipulated in these Terms of Consignment).

(b) A reserve once set cannot be changed except with our consent.

(c) Where a reserve has been set which we consider unreasonably high, an unsold charge will be payable in the event that the lots fails to sell, being the agreed selling terms calculated on the reserve, LDW at 15% and any photographic charges.

(d) Where a reserve has been placed only we may bid on your behalf and only up to the reserve (if any) and you may in no circumstances bid personally.

(e) Reserves are not usually accepted for lots expected to realise below £100.

10. **ELECTRICAL ITEMS.** These are subject to detailed statutory safety controls. Where such items are accepted for sale you accept responsibility for the cost of testing by external contractors. Goods not certified as safe by an electrician (unless antiques) will not be accepted for sale. They must be removed at your expense on your being notified. We reserve the right to dispose of unsafe goods as refuse, at your expense.

11. **SOFT FURNISHINGS.** The sale of soft furnishings is strictly regulated by statute law in the interests of fire safety. Goods found to infringe safety regulations will not be offered and must be removed at your expense. We reserve the right to dispose of unsafe goods as refuse, at your expense. The rights of disposal referred to in clause 10 and 11 are subject to the provisions of The Torts (Interference with Goods) Act 1977.

12. **DESCRIPTION.** Please assist us with accurate information as to the provenance, lawful import etc. of goods where this is relevant. There is strict liability for the accuracy of descriptions under modern consumer legislation and in some circumstances responsibility lies with sellers if inaccuracies occur. We will assume that you have approved the catalogue description of your lots and that your lots match those descriptions unless informed to the contrary. Where we are obliged to return the price to the buyer when the lot is a deliberate forgery under Condition 15 of the Conditions of Sale and we have accounted to you for the proceeds of sale you agree to reimburse us the sale proceeds and in any event within 7 days of our written notice to do so.

13. **UNSOLD.** If an item is unsold it may at our discretion be re-offered at a future sale. Where in our opinion an item is unsaleable you must collect such items from the saleroom promptly on being so informed. Otherwise, storage charges may be incurred. We reserve the right to charge for storage in these circumstances at a reasonable daily rate.

14. **WITHDRAWN AND BOUGHT IN ITEMS.** These are liable to incur a charge of 15% commission, 15 % Loss and Damage Warranty and

any other costs incurred including but not limited to illustration and restoration fees all of these charges being subject to VAT on being bought in or withdrawn after being catalogued.

15. **CONDITIONS OF SALE.** You agree that all goods will be sold on our Conditions of Sale for Public Auctions. In particular you undertake that you have the right to sell the goods either as owner or agent for the owner with good and marketable title and free and clear of any third party rights or claims. You undertake to compensate us and any buyer or third party for all losses liabilities, costs and expenses suffered or incurred arising out of or in connection with any breach of this undertaking. We will also, at our discretion, and as far as practicable, confirm that an item consigned for sale does not appear on the Art Loss register, which is administered by an independent third party.

16. DUE DILIGENCE CHECKS AND ANTI-MONEY LAUNDERING PROCEDURES

Under the money laundering regulations in force we are required to carry out relevant due diligence checks. This includes verifying the identity of all customers we transact with as well as any beneficial owners on behalf of whom they may transact. Vendors who are unable to or refuse to supply required identification documents and proof of address will not be able to consign to Dreweatts auctions. Copies of customer due diligence checks will be stored for as long as it is necessary to satisfy legal requirements in an appropriate storage facility, which for the avoidance of doubt may include storage solely in electronic form.

17. AUTHORITY TO DEDUCT COMMISSION AND EXPENSES AND RETAIN PREMIUM AND INTEREST

(a) You authorise us to deduct commission at the stated rate and all

Conditions of Sale for Public Auctions

Dreweatts carries on business with bidders, buyers and all those present in the auction room prior to or in connection with a sale by auction at our salerooms on our Auction Terms and Conditions or Public Auctions including these Conditions of Sale for Public Auctions and all bidders, buyers and others participating in a public auction accept that these terms apply to the exclusion of any terms and conditions contained in any of those person's own documents even if the same purport to provide that that person's own or some other terms prevail. Any particular public auction and/or any particular lot in an auction may be subject to different or additional terms which will be published in our online auction catalogue. Please note that our Auction Terms and Conditions including these Conditions of Sale for Public Auctions relate to auctions held in one of our salerooms and we have separate terms and conditions for our online auctions.

1. DEFINITIONS

In these Conditions:

(a) "auctioneer" means the firm of Dreweatts or its authorised auctioneer, as appropriate;

(b) "deliberate forgery" means an imitation made with the intention of deceiving as to authorship, origin, date, age, period, culture or source but which is unequivocally described in the catalogue as being the work of a particular creator and which at the date of the sale had a value materially less than it would have had if it had been in accordance with the description;

(c) "hammer price" means the level of bidding reached (at or above any reserve) when the auctioneer brings down the hammer;

(d) "terms of consignment" means the stipulated terms and rates of commission on which Dreweatts accepts instructions from sellers or their agents;

(e) "total amount due" means the hammer price in respect of the lot sold together with any premium, Value Added Tax chargeable and any additional charges payable by a defaulting buyer under these Conditions;

(f) "sale proceeds" means the net amount due to the seller, being the hammer price of the lot sold less commission at the stated rate, Value Added Tax chargeable and any other amounts due to us by the seller in whatever capacity and however arising;

(g) "You", "Your", etc. refer to the buyer as identified in Condition 2.

(h) The singular includes the plural and vice versa as appropriate.

expenses incurred for your account from the hammer price and consent to our right to retain beneficially the premium paid by the buyer in accordance with our Conditions of Sale for Public Auctions and any interest earned on the sale proceeds until the date of settlement.

(b) In case of lots unsold at auction you authorise us at our discretion to reoffer such lots and negotiate a sale within seven days of the auction date, in which case the same charges will be payable as if such lots had been sold at auction and so far as appropriate these Terms apply.

18. **WAREHOUSING.** We disclaim all liability for goods delivered to our saleroom without sufficient sale instructions and reserve the right to make minimum warehousing charge of £10 per lot per day. Unsold lots are subject to the same charges if you do not remove them within a reasonable time of notification. If not removed within three weeks we reserve the right to sell them and defray charges from any net proceeds of sale or at your expense to consign them to the local authority for disposal.

19. **SETTLEMENT.** After sale settlement of the net sum due to you normally takes place within 28 days of the sale unless the buyer has not paid for the goods. In this case no settlement will then be made but we will take your instructions in the light of our Conditions of Sale for Public Auctions. You authorise any sums owed by you to us on other transactions to be deducted from the sale proceeds. You must note the liability to reimburse the proceeds of sale to us as under the circumstances provided for in Condition 12 above. You should therefore bear this potential liability in mind before parting with the proceeds of sale until the expiry of 28 days from the date of sale.

2. BIDDING PROCEDURES AND THE BUYER

(a) Bidders are required to register their particulars before bidding by completing a sale registration form and to satisfy any security arrangements before entering the auction room to view or bid;

(b) Under the money laundering regulations in force we are required to verify the identity of all customers we transact with as well as any beneficiaries on behalf of whom they may transact. Customers who are unable to or refuse to supply required identification documents and proof of address will not be able to bid in Dreweatts auctions. Copies of customer due diligence checks will be stored for as long as it is necessary to satisfy legal requirements in an appropriate storage facility which for the avoidance of doubt may include storage solely in electronic form;

(c) the maker of the highest bid accepted by the auctioneer conducting the sale shall be the buyer at the hammer price and any dispute about a bid shall be settled at the auctioneer's absolute discretion by reoffering the Lot during the course of the auction or otherwise. The auctioneer shall act reasonably in exercising this discretion.

(d) Bidders shall be deemed to act as principals;

(e) Our right to bid on behalf of the seller is expressly reserved up to the amount of any reserve and the right to refuse any bid is also reserved.

3. **INCREMENTS.** Bidding increments shall be at the auctioneer's sole discretion.

4. **THE PURCHASE PRICE.** The buyer shall pay the purchase price together with a premium thereon of 30% which shall include VAT on the premium at the rate imposed by law. The buyer will also be liable for any royalties payable under Droit de Suite as set out under Information for Buyers.

5. **VALUE ADDED TAX.** Value Added Tax on the hammer price is imposed by law on all items affixed with a dagger (†) or double dagger (‡). Value Added Tax is charged at the appropriate rate prevailing by law at the date of sale and is payable by buyers of relevant Lots. (Please refer to "Information for Buyers" for a brief explanation of the VAT position).

6. PAYMENT

(a) Immediately a Lot is sold you will:

(i) give to us, if requested, proof of identity, and

(ii) pay to us the total amount due or in such other way as is agreed by us.

(b) Any payments by you to us may be applied by us towards any sums owing from you to us on any account whatever without regard to any directions of you or your agent, whether expressed or implied.

(c) In order to comply with money laundering regulations we reserve the right to require proof of source of funds and/or confirmation of the nature and source of wealth for all receipts of monies from clients directly or from third parties for payments on behalf of clients.

7. TITLE AND COLLECTION OF PURCHASES

(a) The ownership of any Lots purchased shall not pass to you until you have made payment in full to us of the total amount due.

(b) You shall at your own risk and expense take away any lots that you have purchased and paid for not later than 3 working days following the day of the auction after which you shall be responsible for any removal, storage and insurance charges.

(c) No purchase can be claimed or removed until it has been paid for.

8. REMEDIES FOR NON-PAYMENT OR FAILURE TO COLLECT PURCHASES

(a) If any Lot is not paid for in full and taken away in accordance with these Conditions or if there is any other breach of these Conditions, we, as agent for the seller and on our own behalf, shall at our absolute discretion and without prejudice to any other rights we may have, be entitled to exercise one or more of the following rights and remedies:

(i) to proceed against you for damages for breach of contract;

(ii) to rescind the sale of that Lot and/or any other Lots sold by us to you;

(iii) to resell the Lot (by auction or private treaty) in which case you shall be responsible for any resulting deficiency in the total amount due (after crediting any part payment and adding any resale costs). Any surplus so arising shall belong to the seller;

(iv) to remove, store and insure the Lot at your expense and, in the case of storage, either at our premises or elsewhere;

(v) to charge interest at a rate not exceeding 15% per month on the total amount due to the extent it remains unpaid for more than 3 working days after the sale;

(vi) to retain that or any other Lot sold to you until you pay the total amount due;

(vii) to reject or ignore bids from you or your agent at future auctions or to impose conditions before any such bids shall be accepted;

(viii) to apply any proceeds of sale of other Lots due or in future becoming due to you towards the settlement of the total amount due and to exercise a lien (that is a right to retain possession of) any of your property in our possession for any purpose until the debt due is satisfied.

(b) We shall, as agent for the seller and on our own behalf pursue these rights and remedies only so far as is reasonable to make appropriate recovery in respect of breach of these conditions.

9. **THIRD PARTY LIABILITY.** All bidders, buyers and other members of the public on our premises are there at their own risk and must note the lay-out of the accommodation and security arrangements. Accordingly neither the auctioneer nor our employees or agents shall incur liability for death or personal injury or for the safety of the property of persons visiting prior to or at a sale (except in each case as may be required by law by reason of our negligence)

10. **COMMISSION BIDS.** Whilst prospective buyers are strongly advised to attend the auction and are always responsible for any decision to bid for a particular Lot and shall be assumed to have carefully inspected and satisfied themselves as to its condition, we will if so instructed clearly and in writing execute bids on their behalf. Neither the auctioneer nor our employees or agents shall be responsible for any failure to do so.

Where two or more commission bids at the same level are recorded we reserve the right in our absolute discretion to prefer the first bid so made.

11. **WARRANTY OF TITLE AND AVAILABILITY.** The seller warrants to the auctioneer and you that the seller is the true owner of the property consigned or is properly authorised by the true owner to consign for sale and is able to transfer good and marketable title to the property free from any third party claims.

Save as expressly set out above, all other warranties, conditions or other terms which might have effect between the Seller and you, or us and you, or be implied or incorporated by statute, common law or otherwise are excluded to the fullest extent permitted by law.

12. **AGENCY.** The auctioneer normally acts as agent only and disclaims any responsibility for default by sellers or buyers.

13. **TERMS OF SALE.** The seller acknowledges that Lots are sold subject to the stipulations of these Conditions in their entirety and on the Terms of Consignment for Public Auctions as notified to the consignor at the time of the entry of the Lot.

14. DESCRIPTIONS AND CONDITION

(a) Whilst we seek to describe lots accurately, it may be impractical for us to carry out exhaustive due diligence on each lot. Prospective buyers are given ample opportunities to view and inspect before any sale and they (and any independent experts on their behalf) must satisfy themselves as to the accuracy of any description applied to a lot. Prospective buyers also bid on the understanding that, inevitably, representations or statements by us as to authorship, genuineness, origin, date, age, provenance, condition or estimated selling price involve matters of opinion. We undertake that any such opinion shall be honestly and reasonably held and accept liability for opinions given negligently or fraudulently. Subject to the foregoing neither we the auctioneer nor our employees or agents nor the seller accept liability for the correctness of such opinions and all conditions and warranties, whether relating to description, condition or quality of lots, express, implied or statutory, are hereby excluded. Dreweatts is not liable for damage to gilded picture frames, plaster picture frames or picture frame glass; if the Lot is or becomes dangerous, we may dispose of it without notice to you in advance in any manner we see fit and will be under no liability for doing so. This Condition is subject to the next following Condition concerning deliberate forgeries and applies save as provided for in paragraph 6 “information to buyers”.

(b) Private treaty sales made under these Conditions are deemed to be sales by auction for purposes of consumer legislation.

15. **FORGERIES.** Notwithstanding the preceding Condition, any Lot which proves to be a deliberate forgery (as defined) may be returned to us by you within 21 days of the auction provided it is in the same condition as when bought, and is accompanied by particulars identifying it from the relevant catalogue description and a written statement of defects. If we are satisfied from the evidence presented that the Lot is a deliberate forgery we shall refund the money paid by you for the Lot including any buyer’s premium provided that (1) if the catalogue description reflected the accepted view of scholars and experts as at the date of sale or

(2) you personally are not able to transfer a good and marketable title to us, you shall have no rights under this condition.

The right of return provided by this Condition is additional to any right or remedy provided by law or by these Conditions of Sale.

16. **PRIVACY NOTICE.** We will hold and process any personal data in relation to you in accordance with our current privacy policy, a copy of which is available on our website www.dreweatts.com/privacy-policy/.

GENERAL

17. We shall have the right at our discretion, to refuse admission to our premises or attendance at our auctions by any person.

18. (a) Any right to compensation for losses liabilities and expenses incurred in respect of and as a result of any breach of these Conditions and any exclusions provided by them shall be available to the seller and/or the auctioneer as appropriate.

(b) Such rights and exclusions shall extend to and be deemed to be for the benefit of employees and agents of the seller and/or the auctioneer who may themselves enforce them.

19. Any notice to any buyer, seller, bidder or viewer may be given by first class mail, email or Swiftmail in which case it shall be deemed to have been received by the addressee 48 hours after posting.

20. Special terms may be used in catalogue descriptions of particular classes of items in which case the descriptions must be interpreted in accordance with any glossary appearing at the commencement of the catalogue.

21. Any indulgence extended to bidders, buyers or sellers by us notwithstanding the strict terms of these Conditions or of the Terms of Consignment shall affect the position at the relevant time only and in respect of that particular concession only; in all other respects these Conditions shall be construed as having full force and effect.

22. These Conditions shall be governed by and construed in accordance with English law and the parties irrevocably submit to the exclusive jurisdiction of the English courts.

Dreweatts

NEWBURY

Dreweatts

Donnington Priory

Newbury

Berkshire RG14 2JE

+44 (0) 1635 553 553

info@dreweatts.com

LONDON

Dreweatts / Bloomsbury Auctions

16-17 Pall Mall

St James's

London SW1Y 5LU

+44 (0) 20 7839 8880

info@bloomsburyauctions.com

info@dreweatts.com

HAMBRIDGE LANE

Dreweatts

1 Hambridge Lane

Newbury

Berkshire RG14 5TU

+44 (0) 1635 553 548

hambridgesales@dreweatts.com

MANAGING DIRECTOR

Jonathan Pratt

DEPUTY CHAIRMAN

Will Richards

James Nicholson

Group Departments

ASIAN CERAMICS AND WORKS OF ART

Mark Newstead

Dr Yingwen Tao

asian@dreweatts.com

EUROPEAN SCULPTURE AND WORKS OF ART

Silas Currie

sculpture@dreweatts.com

MODERN AND CONTEMPORARY ART

Jennie Fisher

Lucy Darlington

Francesca Whitham

Will Porter (Business Development)

pictures@dreweatts.com

BLOOMSBURY AUCTIONS BOOKS

AND MANUSCRIPTS

Dr Timothy Bolton

Camilla Previté

Denise Kelly

info@bloomsburyauctions.com

FURNITURE AND CARPETS

Ben Brown

Elaine Binning

Ashley Matthews

William Turkington

furniture@dreweatts.com

OLD MASTERS, BRITISH AND

EUROPEAN ART

Brandon Lindberg

Lucy Darlington

Francesca Whitham

pictures@dreweatts.com

BRITISH AND EUROPEAN CERAMICS

AND GLASS

Mark Newstead

Geoffrey Stafford Charles

interiors@dreweatts.com

HAMBRIDGE SALES

Silas Currie

Lucie Hobbs

hambridgesales@dreweatts.com

WINE

Mark Robertson

Dianne Wall

wine@dreweatts.com

CLOCKS AND SCIENTIFIC

INSTRUMENTS

Leighton Gillibrand

clocks@dreweatts.com

HOUSE SALES AND PRIVATE

COLLECTIONS

Joe Robinson

Lulu Randall

housesales@dreweatts.com

BUSINESS DEVELOPMENT

Will Richards

Will Porter

Joe Robinson

Imogen Jones

ijones@dreweatts.com

COUNTRY SPORTING

Geoffrey Stafford Charles

gscharles@dreweatts.com

JEWELLERY, SILVER, WATCHES AND

OBJECTS OF VERTU

James Nicholson

Nick Mann

Tessa Parry

jsw@dreweatts.com

DECORATIVE ARTS

Geoffrey Stafford Charles

Ashley Matthews

interiors@dreweatts.com

LIVE STEAM AND MODEL

ENGINEERING WORKS OF ART

Michael Matthews

transport@dreweatts.com

VALUATIONS FOR PROBATE,

INSURANCE

AND CGT

Emma Terry

Eleanor Smith

valuations@dreweatts.com

