

DREWATTS

EST. 1759

INTERIORS

TO INCLUDE DECORATIVE ARTS AND MODERN DESIGN AND
THE SELECTED CONTENTS OF A CHESHIRE COUNTRY HOUSE

DONNINGTON PRIORY | TUESDAY 26 & WEDNESDAY 27 OCTOBER 2021





DREWEATTS
EST. 1759

Mary Fedden (British 1915-2012)
In the Luberon
Oil on canvas
Est. £20,000-£30,000 (+ fees)

MODERN AND CONTEMPORARY ART
12 OCTOBER 2021 | 10.30AM

AUCTION LOCATION
Dreweatts
Donnington Priory
Newbury
Berkshire RG14 2JE

ENQUIRIES
+44 (0) 1635 553 553
pictures@dreweatts.com
Catalogue and free online
bidding at: dreweatts.com



WESTON HALL AND THE SITWELLS A FAMILY LEGACY

AUCTION DATE
TUESDAY 16 & WEDNESDAY 17
NOVEMBER 2021

AUCTION LOCATION
Dreweatts, Donnington Priory,
Newbury, Berkshire RG14 2JE

VIEWING IN LONDON (HIGHLIGHTS)
28 September – 1 October 2021

VIEWING IN NEWBURY (FULL SALE)
10 – 15 November 2021

ENQUIRIES
+44 (0) 1635 553 553
housesales@dreweatts.com

**Catalogue, further details
and free online bidding:**
dreweatts.com

Coming Up at Dreweatts

Auctions

3 October | Timed Online

Australian Wine

6 October | Live Online

Fine Clocks, Barometers and Scientific Instruments

12 October | Live Online

Modern and Contemporary Art

13 October | Timed Online

Jewellery, Silver, Watches, Pens and Luxury Accessories

20 October | Timed Online

Travel including a Single Owner Collection of Books on Mountaineering

21 October | Timed Online

Hambridge Sale

26 & 27 October | Live Online

Interiors | To include Decorative Arts & Modern Design

10 & 11 November | Live Online

Chinese and Japanese Works of Art

16 & 17 November | Live Online

Weston Hall and The Sitwells: A Family Legacy

23 November | Live Online

Fine Silver

24 November | Live Online

Single Owner Collection of Watches – Part 1

24 November | Live Online

Fine Jewellery and Pens

25 November | Timed Online

Single Owner Collection of Watches – Part 2

25 November | Live Online

Fine and Rare Wine and Spirits

Valuation Days

Every Tuesday | London

Jewellery, Silver, Watches & Luxury Accessories

5 November & 3 December | Newbury

Fine Art, Antiques, Jewellery, Silver, Watches, Asian Works of Art & Wine



We hold regular auctions of fine art, antiques, jewellery and other collectibles. Our specialists carry out valuations nationwide so if you are unable to attend one of our valuation days, please request a valuation via our website or call us to discuss a home visit.

DREWEATTS

EST. 1759

NEWBURY
Dreweatts
Donnington Priory
Newbury
Berkshire RG14 2JE

LONDON
Dreweatts / Bloomsbury Auctions
16-17 Pall Mall
St James's
London SW1Y 5LU

HAMBRIDGE LANE
Dreweatts
1 Hambridge Lane
Newbury
Berkshire RG14 5TU

ENQUIRIES
For more information,
please contact
+44 (0) 1635 553 553
info@dreweatts.com

dreweatts.com



INTERIORS

TO INCLUDE DECORATIVE ARTS AND MODERN DESIGN AND
THE SELECTED CONTENTS OF A CHESHIRE COUNTRY HOUSE

DONNINGTON PRIORY | TUESDAY 26 & WEDNESDAY 27 OCTOBER 2021 | 10.30AM

AUCTION FORMAT: LIVE ONLINE

This is a live online auction with an auctioneer. Bidding is available online, by telephone or commission (absentee) bids. If not bidding online, please contact Dreweatts to register all commission bids or telephone bids by 12 noon BST on Monday 25 October.

FREE ONLINE BIDDING IS AVAILABLE AT DREWEATTS.COM:

The Dreweatts' bidding platform allows you to watch, listen and bid with no additional online bidding fees applicable.

REGISTRATION:

We advise clients to register at least 48 hours in advance of the auction as you may be asked to provide documents to verify your identity. Registration for new clients will close at 12 noon BST on Monday 25 October.

BUYER'S PREMIUM:

Buyer's premium is charged per lot at 25% of the hammer price (30% including VAT) up to and including £500,000, 20% (24% including VAT) of the hammer price from £500,001 up to and including £1,000,000, and 12% of the hammer price (14.4% including VAT) in excess of £1,000,001.

PAYMENT:

Please note, we cannot accept payment by telephone for lots bought by first time bidders. For details on other payment methods, please see our website.

CUSTOMER DUE DILIGENCE CHECKS:

In order to comply with current Money Laundering Regulations, it is our policy to conduct appropriate Know Your Client checks on any buyers who transact at the threshold of £8,000 or more. Buyers will be required to provide the following information:

For individuals, official photo identification (a government issued ID document such as passport or driver's licence) and a proof of address (utility bill, bank statement or driver's licence).

For legal entities, a certificate of incorporation (or equivalent), a register of shareholders/directors and ID documentation from the directors and beneficial owners of the business.

We reserve the right to withhold the purchased lots until such checks have been completed.

DREWEATTS

EST. 1759

DAY 1: AUCTION NO. 14382

To include Decorative Arts and Modern Design and the selected contents of a Cheshire country house

DAY 2: AUCTION NO. 14383

To include furniture, works of art, rugs, clocks, and lighting

SPECIALISTS:

Ashley Matthews MRICS (Furniture, Clocks, & Decorative Arts)

Ben Brown MRICS (Furniture & Carpets)

Francesca Whitham (Pictures)

Geoffrey Stafford Charles MRICS

(Ceramics, Glass & Country Sporting)

Mark Newstead (Asian Ceramics & Works of Art)

Will Turkington (Furniture)

VIEWING:

Viewing will be available by appointment only and in strict accordance with government Covid-19 regulations.

Sunday 24 October: 10am – 4pm

Monday 25 October: 10am – 5pm

Day of sales: from 8.30am

Visitors are encouraged to wear a face covering while in the building, use the hand sanitiser provided on entering and observe social distancing rules. We may need to restrict the numbers of visitors viewing at one time, so if you would prefer to book an appointment in advance, please contact us.

Please see our website for the latest information.

CONDITIONS OF SALE:

This auction is subject to our Auction Terms and Conditions (see back of catalogue or our website for further details).

AUCTION:

Dreweatts

Donnington Priory

Newbury

Berkshire RG14 2JE

ENQUIRIES:

+44 (0) 1635 553 553

interiors@dreweatts.com

dreweatts.com

Front cover: Lot 89

Back cover: Lot 144



INTERIORS | DAY 1

To include Decorative Arts
and Modern Design and
the selected contents of a
Cheshire country house



10

A collection of ceramic reference books relating to English delftware and early pottery, comprising: Michael Archer, Delftware, the Tin-Glazed Earthenware of the British Isles, London, 1997, Lipski & Archer, Dated English Delftware, London, 1984, John C. Austin, British Delft at Williamsburg, Williamsburg, 1994, Michael Archer & Brian Morgan, 'Fair as China Dishes English Delftware', exhibition catalogue, 1977, Bernard Rackham, Herbert Read & Dr J. W. L. Glaisher, English Pottery Its Development from Early Times to the end of the Eighteenth Century, London, 1924, Griselda Lewis, A Collector's History of English Pottery, London, 1985, Peter Walton, Creamware and other English Pottery at Temple Newsam House Leeds, London, 1976, Ross E. Taggart, The Frank P. And Harriet C. Burnap Collection of English Pottery in the William Rockhill Nelson Gallery, Kansas City, 1967, Sit Harold Mackintosh, Bt, Early English Figure Pottery A Collection of Ralph Wood and Contemporary Pottery, London, 1938, Herbert Read, Staffordshire Pottery Figures, London, 1929, Pat Halfpenny, English Earthenware Figures 1740-1840, Woodbridge, 1991, Pat Halfpenny and Stella Beddoe, Circus & Sport English Earthenware Figures English 1740-1840, Louisville, 1990.

Please see illustration on our website.

£200-300



2

A Bristol delft polychrome charger, mid-18th century, painted with panels of stylised flowers, 31cm diameter; a blue and white English delft chinoiserie charger, third quarter 18th century, 29.5cm diameter; and a Dutch Delft blue and white charger, late 18th century, 35cm diameter

£200-300

3

An English delft blue and white punch bowl, circa 1730, Bristol, painted with stylised flowers in fan-shaped panels divided by roundels reserved with three overlapping fish motifs, the blue ground reserved with scrolling foliage, 30.5cm diameter

Note: The rare motif of overlapping fish is found on a salt in the Longridge Collection, see Leslie B. Grigsby, The Longridge collection of English slipware and delftware, 2000, Vol. II, p. 239, no. D214, where the author discusses similar ornament on a boss in Bristol Cathedral also used on a punch bowl dated 1724 in the Bristol Collection.

£200-300



3



4

4
An English salt-glazed stoneware sauceboat, circa 1760, modelled with three legs, loop handle and decorated in relief with stylised leaves and shells, 14.5cm in length

£150-250

5
An English brown salt-glazed stoneware bottle-shaped commemorative money box, mid-19th century, inscribed *E. PARKER*, sprigged with mostly classical ornament, 25cm high

£150-250

5



6

Ten various Staffordshire pottery printed children's plates, various dates first half 19th century; and another pearlware plate

£200-300



7

7
A miscellaneous selection of Staffordshire blue and white printed pottery, various dates, early to mid-19th century, including a Roger's 'Zebra' pattern pedestal dish, another similar, 23cm wide; a Wedgwood Chinoiserie pattern pot-pourri urn, 29cm high; a Davenport 'Chinoiserie Ruins' pattern sauce boat, cover and integral stand with associated later 'Willow' pattern sauce ladle; a Ralph Clews cheese stand from the 'Indian Sporting' series, 29.5cm diameter and other items

£300-500



8
A pair of Staffordshire pottery models of cats of William Kent Ltd., Burslem type, first half 20th century, modelled recumbent, 23cm in length

£300-500



8



9
A pair of Staffordshire pottery models of cats of William Kent Ltd., Burslem type, first half 20th century, modelled seated on their haunches, circa 27cm high

£300-500

9

10

A British porcelain plate, first quarter 19th century, possibly decorated by Thomas Pardoe, 22cm diameter

£60-80



10

11

A Worcester (Barr, Flight, and Barr) Japan pattern part tea service, circa 1810, comprising a prow-fronted teapot, cover, and stand, two slop bowls, a sugar bowl, a milk jug, four assorted saucers, and four coffee cups, impressed BFB marks

£300-500



11



12

12

A mixed assortment of English porcelain, various dates mostly 19th century, including Barr, Flight & Barr Worcester, Davenport and Coalport

£300-500



13

A Royal Worcester crested part dinner service, possibly Masonic, comprising: twenty-four soup plates; twenty-eight breakfast plates; thirty-seven dinner plates; two large oval serving dishes in sizes; a pair of oval plates; a pair of sauce tureens, covers and a stand; and four vegetable tureens and two covers, impressed marks

£400-600

13

14

A miscellaneous selection of English porcelain, various dates mostly last quarter 18th century, comprising: two various New Hall type commode shaped teapots and covers decorated in the Chinese Export manner; a Worcester blue and white teapot and cover painted with the 'Prunus Root' pattern; a Caughley butter boat gilt with floral sprays and a Bow blue and white sauceboat, a Worcester coffee can printed with the fence pattern

£200-300



14

15

An English porcelain plaque painted with a portrait of a seated woman, circa 1835, 21.5cm x 18cm; in a modern gilt wood frame, 23.5cm x 20.5cm

£200-300

16

A George Jones majolica two-handled game-pie tureen, cover and pie-liner, circa 1875, the grass modelled cover with partridge finial, the tureen frieze modelled in relief with rabbits, ferns, oak leaves and acorns, impressed crescent mark, indistinct registration lozenge for December 1873, 34cm in length

Cf. Karmason & Stacke, *Majolica* (1989), p. 100; and Cluett, *George Jones Ceramics* (1998), p. 56, Fig. 83.

£300-500



15



16



17

17
A Wedgwood black basalt bust of Sir Isaac Newton (1643-1727), early 19th century, on socle base, both bust and socle impressed WEDGWOOD, 23.5cm high

£200-300



18

18
A pair of Wedgwood lilac-dip Jasper two handled urns and covers, late 19th century, typically sprigged in white with Neo-Classical ornament, 20cm high

Provenance:
Charles Lumb, Harrogate, November 1972 (£375)

£300-500



19

19
A Wedgwood black-dip Jasper two handled urn and cover, circa 1900, impressed marks, 22cm high

£150-200



20



20

Two similar Dutch Delft blue and white shaped oval wall-plaques, probably Makkum, 19th century; one with a fisherman in a river landscape, the other with a farmyard scene, 61cm x 52.5cm

Provenance:
From a deceased Surrey estate and thence by decent

£150-250



21

21
A Dutch Delft blue and white horizontal wall-plaque, probably Makkum, 19th century, painted with shipping on the Meuse near Oostendam, inscribed *Het Dorp Oostendam aan de Maas*, overglaze painted *N.1* verso, within frame-moulded border, 45cm x 55cm

Provenance:
From a deceased Surrey estate and thence by decent

£150-250

22

An Italian maiolica wall tile moulded in relief with The Crucifixion, circa 1900, painted in colours, spurious date verso *M 1764*, 45cm x 37cm

£200-300



22



23

23

A Meissen Kakiemon two-handled miniature baluster vase, circa 1735, with moulded scroll handles painted with The Yellow Tiger pattern, the reverse with prunus, Guest and Gray paper label to base, 6.5cm high

Provenance:

By repute purchased by the current owner from Guest and Gray in circa 1999

£100-180



24

24

A Dresden pale-blue ground and gilt two-handled porcelain vase and cover, circa 1900, painted with panels of Watteauesques, 'AR' marks, 59cm high

Provenance:

Berwick House, Shropshire

£300-500



25

25

A pair of Meissen pot pourri urns and pierced covers, late 19th century, each with mask handles and tripod feet, the covers surmounted with flowers, one with blue crossed swords mark to the foot, 26cm high

£400-600

26

A Dresden oil and vinegar set on stand, circa 1900, painted with flowers within gilt borders, crowned D marks, the stand 28cm long

£300-500



26



27

27
A Meissen flower encrusted and gilt metal mounted oval strut looking glass, surmounted with putti, late 19th century, blue crossed swords mark, 36cm high

£300-500



28

28
A Meissen flower encrusted and gilt metal mounted oval strut looking glass, surmounted with putti, late 19th century, blue crossed swords mark, 34cm high

£300-500

29

A modern Meissen monkey band drummer, after the original model by J. J. Kaendler (1706-1775), with blue cross swords mark, incised 60015, 15,5cm high

£200-300



29

30

A pair of Meissen-style figures of Golden Orioles, circa 1900, naturalistically modelled perched on tree stumps after 18th century models, blue crossed swords marks to back edge of trunks, 30cm high

£200-300



30





31

A pair of modern Meissen cockatoos, modelled perched on tree trunks, sparsely decorated, with blue cross sword mark, incised 77034 and 77035, 25cm high, 26cm high

£1,000-1,500



32

32

A modern Lindner Bavaria and associated pieces blue and gilt porcelain composite part tea and coffee service, comprising: a coffee pot and cover; a teapot and cover; two various sugar boxes and covers; a milk jug; a cream jug; four preserve dishes; twelve sandwich plates; a serving dish; twelve various teacups and saucers; five coffee cups and six saucers; a Rosenthal coffee cup and saucer and a Menau blue and gilt bowl

£300-500



33

A group of Hungarian coffee and tea wares comprising Herend and Hollóháza, modern, with Rothschild birds and similar patterns

£800-1,200



33



34

A modern Herend (blue fishscale) Elephant, 25cm high, 35cm long, printed and impressed factory marks; with a retailer's box for Mappin & Webb

£500-700

35

A group of modern Herend (Blue fishscale) animals, comprising; a lion and lioness group, 17cm high, and an elephant, 15cm high, with printed and impressed factory marks and with retailer's boxes for Mappin & Webb

£350-450



35



36

A group of modern Herend (Blue fishscale) animals, comprising; a group of kangaroos, 14cm high, a group of lion cubs, 14cm high, a panda bear, 12.5cm high, and a gorilla, 10cm high, all with printed and impressed factory marks and with retailer's boxes for Mappin & Webb

£350-450



37

37

A selection of modern Herend porcelain birds, comprising; a pair of parrots, 25.5cm high; a pair of kingfishers, 22.5cm high; and a pair of swan groups, 19cm high, all with blue printed factory marks

£300-500



38

38

A group of modern Herend (Blue and green fishscale) animals, comprising; a group of koalas on a log, 13.5cm high, a hippo, 11.5cm long, a rhino, 13cm long, a bear cub, 9.5cm long, a cat, 11.5cm high, and a unicorn, 11.5cm high, all with printed and impressed factory marks

£250-350



39

39

A group of modern Herend (Blue, red, and green fishscale) rabbits, 15cm high, and smaller, all with printed and impressed factory marks

£200-300



40

An English cruciform clear-glass decanter or serving bottle, circa 1730, the tall slender neck applied with a neck-ring, 28cm high

£200-300

40

41

A Dutch stipple engraved opaque-twist wine glass decorated with a portrait of *Johann Wolfgang von Goethe* (1749-1832) after *Johann Heinrich Lips* (1758-1817), the engraving circa 1790, the glass perhaps earlier and an English import, the funnel bowl engraved in the manner of the Dutch glass engraver David Wolff or one of his contemporaries such as 'Alius' and inscribed *GOETHE*, supported on a double-series stem and a conical foot, 17cm high

Johann Wolfgang von Goethe, German writer, politician, humanist, scientist, and philosopher 28 August 1749 - 22 March 1832. The portrait source taken from the engraving by Johann Heinrich Lips, 1791.

Of the four major Dutch stipple engravers working in the last quarter of the 18th century, the identity of only two are known, namely David Wolff (1732-98) and Jacobus van den Blijk (1736-1814) because they signed a sufficient amount of their work. A third has been termed 'Alius' (the other) because there are a quantity of unsigned pieces by the same unidentified hand.

£250-350



41

42

A Continental facet-stemmed wine glass, circa 1800, possibly Spanish, La Granja, the round funnel bowl decorated with swag bands, 13cm high

£70-90



42

43

A pair of Continental cut-glass pedestal urns and covers with faceted ball stoppers, first quarter 20th century, 46cm high

£250-350



43



44

44
A group of nine Bohemian coloured glass beakers, a ruby flashed mug and a clear and gilt glass goblet, third quarter 19th century and later, 16.5cm high and smaller

£700-900



45



45
A pair of Bohemian green glass and white overlay vases, circa 1860, each painted with a panel of a couple in regional dress, verso each with a panel of flowers, reserved on a gilt foliate scroll ground, 36cm high

£300-500



46

46
A selection of Bohemian and Czech coloured glass, various dates 19th and 20th centuries, comprising: two similar ruby flashed and gilt scrolled ground flasks, each cut with white overlaid glass portrait medallions, circa 17 and 18cm high, and a selection of later Czech glass comprising six ruby and green flashed cut glass goblets, 22.5cm high, an engraved ruby flashed goblet by Eggerman, 16cm high, and an Eggerman slender oval section ruby flashed and engraved vase on four scroll feet, 17.5cm high

£200-400

47
A Czech clear glass and engraved topographical charger with prominent Prague landmarks, mid 20th century, the centre with a view of Prague castle, within a border of other Prague prominent civic and ecclesiastical buildings including Prague Bridge, 35cm diameter, in green leather case impressed *HERMES PARIS* and with the Royal Arms of Cambodia

Provenance:
By repute presented to Iskander Ali Mirza, the first President of Pakistan in circa 1956-1957 and by family descent

£400-500



47



48 (part lot)

48
A set of ten Chinese silk paintings, circa 1900-1920, brightly painted with figures in gardens, 12.5cm x 23cm to mount, unframed but in mounts (10)

£200-300



50

49
A Chinese wood 'Lotus' bush washer, 20th century, 8cm diameter

£150-200

50
A Chinese carved hardwood and marble inset jardinière stand, 95cm high

£300-400



49

51
Eight various Chinese School paintings, 19th century, ink and colours on pith paper, comprising: a pair of baskets of flowers, approximately 25cm x 16cm to edge of mounts, and two smaller of flowers, 24.5cm x 17cm and 18cm x 15.5cm and four various pictures of birds, 16.5cm x 25cm and smaller (8)

£200-300



51 (part lot)



52

52
A Chinese Export porcelain blue and white tureen and cover, 34cm wide

£300-500

53
A Chinese mottled celadon jade boulder, the front well carved with one scholar crossing a bridge, the other scholar sitting in a pavilion reading a scroll, the reverse deeply carved with a boy riding on a water buffalo in a landscaped scene, 12cm high, 12cm long, on a carved wood stand

青玉松山隱士圖山子

£1,000-2,000



53



54

54

A pair of Chinese 'Shipwreck' blue and white trumpet vases, painted with pendant ribbons and brocade balls, 25.5cm high (2)

青花花卉纹觚两件

£300-400

55

A Chinese 'Peachbloom' vase, mottled strawberry-red glaze, the neck and with a swath of beige and green speckles, with apocryphal Kangxi six-character mark, 20th century, 19cm high

£400-500



55



56

56

A 'Yoazhou' celadon tripod incense burner, in Song Style, the exterior incised with scrolling foliage, Qing Dynasty or later, 15cm diameter

£500-700



57

57

A Chinese celadon glazed 'Trigram' vase, cong, with underglaze blue six-character mark to base, 20th century, 28cm high

£1,000-1,500



58

58

A Chinese 'Guan'-type hexagonal vase, *Hu*, of archaic baluster form set with ring handles, applied with an even pale greyish-blue glaze suffused with a network of dark grey and russet crackles, save for the foot ring left unglazed and dressed in a brown wash in imitation of the Song dynasty ware, Qing Dynasty or later, 23cm high

£600-800



59

59

A Chinese enamel yellow-ground dish, post 1949, People's Republic of China, 31.5cm diameter

£80-120

60

A bronze female bust, Thailand, 20th century, in *Ayuthia* style, wearing crown and tiered headdress, partly gold painted, 52cm high

£250-350



60



61

61

A bronze figure of the crowned Buddha, Burma, 20th century, seated in padmasana with hands in bhumisparsa and dhyana mudra, wearing elaborate crown and headdress, 41cm high, with circular unmatched Chinese wood stand

£200-300

62

A Sukotai style bronze figure of the walking Buddha, Thailand, 20th century, on drum shaped base, his left hand raised in abhaya mudra, his right by his side, with tightly curled hair and flame usnisa, wood base, the figure 61cm high and with the wood stand 66cm high

£300-400



62



63

63

A sandstone figure of a Buddhist devotee, Burma, kneeling on a plinth, his hands in anjali mudra, possibly 19th century, 36cm high

£200-300

64

Two Khmer style sandstone heads of male deities, Cambodia or Thailand, 20th century, each wearing tall multi-leaf crown, the heads 40cm and 45cm, both mounted (2)

£300-500



64



65

Two Khmer style sandstone figures, Cambodia or Thailand, 20th century, comprising a kneeling ascetic and Buddha sheltered under Mucalinda, mounted, 36 and 37cm high (2)

£300-500



65

66

Two parcel gilt wood standing figures of Buddha, Thailand, 20th century, each wearing robes, with elongated earlobes and tightly curled hair, mounted on stands, 124cm and 100cm high (2)

£300-400



66



67

67

A monumental carved wood figure of Ganesha, South India, 20th century, the elephant headed deity seated in lalitasana on the coils of a five-headed cobra, holding his broken tusk in his primary right hand and sweets in his left, 207cm high, 207cm high, 73cm wide, 18cm deep

£400-600



68

68
A pair of Arita vases, first quarter 20th century, six-character mark to base, 28cm high

£200-300

69
An Arita vase and cover with lion finial, circa 1700, 42cm high, together with a pair of later Japanese porcelain examples, 40cm high

£300-500



69



70

70
A pair of Imari pierced beaker vases, painted with figures, horses and flowers within elongated cartouches on a ground of densely-packed foliage, the upper part pierced with rounders and lozenge-shaped panels, each 30.5cm high

£400-600

71
A pair of Japanese cloisonné slender baluster vases, Meiji period, the shoulders with dragons above a band of alternating panels of tigers and phoenix on a buff ground 46.5cm

£300-500



71



72

72
A Japanese bronze figure of warrior, 102cm high

£1,000-1,500

Decorative Arts and Modern Design



73

A sculpted alabaster figure of Laura, late 19th century, portrayed descending steps, her head tilted down and holding a book in her right hand to her hip, her collar inscribed LAURA twice, the rear of the stepped base bearing signature for P. Bazzanti, Florence, 64cm high

£300-500



73



74

74

A cast iron and leather upholstered rocking armchair in Victorian style, 20th century, probably by RW Winfield, the upholstered seat above the metal frame with gilt brass screwcaps, 107cm high

Similar models of cast iron rocking chairs are shown in Georg Himmelheber's Cast Iron Furniture, Philip Wilson, London, plates 352-357, the most similar example, albeit without armrests, is shown in plate 353, dated circa 1850 by Sotheby's in 1988. The present example appears to be a later copy of these designs

£200-300

75

A Reformed Gothic oak and inlaid washstand, circa 1880, in the manner of Charles Bevan, the tiled upstand above the marble top and carved square section supports, 102cm high, 126cm wide, 64cm deep, **together with a similar Reformed Gothic oak and inlaid dressing mirror**, the rectangular surround with lancet plate above carved supports and bipedal feet, 87cm high

Provenance:
Berwick House, Shropshire

£300-500



75



76



76
A William de Morgan 'Leaf and Berries' type Tile, 1882-1888, of 'Small B' type, with sixteen squares and coloured in green, blue and turquoise, impressed Merton Abbey mark, 15.7cm square and a German ceramic 'Leaf and Berries' vase by Christian Neureuther, circa 1910-1920, decorated with blue and turquoise flowers on a mottled tan ground, factory mark 'K.A.W.' [Kunstabteilung Wackersbach] and 'C.N' and numbered '5985' and '6100', 14.3cm high (2)

Provenance:
From the Mohamed Makiya Collection
Compare with an earlier Chelsea period version of this tile painted on a Poole pottery blank, Jon Catleugh, *William de Morgan Tiles*, p. 50, pl. 22

£150-250



77 (part lot)

77
A William de Morgan 'Iznik' part tile panel, circa 1888-1898, Sand's End Pottery, composed of four tiles, in Islamic style with a repeating pattern of flowers and foliage, glazed in blue, turquoise, green and deep purple, impressed Sand's End Pottery marks, 23cm square, framed (4)

Provenance:
From the Mohamed Makiya Collection
Compare with a similar vertical tile panel illustrated Jon Catleugh, *William de Morgan Tiles*, p. 03, pl. 141

£600-800



78

78
A William de Morgan 'Iznik' Charger, circa 1888-1897, decorated by Charles Passenger, the shape after an Iznik metalwork original, with a central floral boss with a bird, surrounded by a band of tulips and the outer rim with five panels of leaves, the reverse with concentric circles in blue and turquoise, painted mark 'W.D.E.MORGAN & CO' and 'CP' monogram, early Fulham period, 40.5cm diameter

Chief assistant Charles Passenger painted at Fulham in London, where De Morgan moved his works in 1889 to avoid the long daily commute to Merton Abbey.

Provenance:
From the Mohamed Makiya Collection

£600-800



79

79

A Royal Doulton Harry Simeon decorated stoneware vase, early 20th century, wide central band with stylized flowers and foliage to a dark blue ground bordered with green bands, artist monogram and impressed mark, 31cm wide x 21.5cm high

Provenance:

From the Mohamed Makiya Collection

£80-120



79A

79A

A pair of Doulton Lambeth stoneware shouldered ovoid vases by George Tinworth, 1878, incised with a band of stylised foliage and applied with flower-head bosses, GT monogram, impressed marks and date for 1878, 34cm high

£300-400

80

An Aesthetic Movement walnut hall stand, circa 1890, the blind drawer stamped JAS. SHOOLBRED & CO, 203cm high, 129cm wide, 43cm deep overall

£300-500



80



81

81

A Minton's Art Pottery Studio ceramic tile, circa 1873, depicting the Zodiac, with Minton's Studio Pottery Kensington Gore stamp verso, and hand inscribed numbers, mounted in a later silvered frame, 30cm high, 90cm wide overall

£600-800

82

A pair of Aesthetic Movement sycamore bedside tables, circa 1890, each with a mirrored back, 81cm high, 38cm wide, 33cm deep

£700-1,000



82





83

83
A Thomas Webb & Sons 'Ivory' glass shouldered ovoid vase, carved in relief with flowering shrubs and moths and reserved on a *faux bois* ground, impressed factory mark, 12cm high

See Charles R. Hajdamach, *British Glass 1800-1914* (1995), p. 230 for a discussion on Webb's Ivory glass. The author notes that there are 735 individual patterns with detailed descriptions with attendant information about the carvers, prices etc. in the Webb records. George Woodall was responsible for many of these designs.

£400-600



83A

83A
A Stourbridge pale-red and opaque-white cameo glass bottle vase, circa 1885, carved in relief with ferns and grasses beneath a lappet band bordered neck, 38cm high

Cf. R. & L. Grover, *English Cameo Glass* (1980), plate C332, p. 380 marked 'WN' (William Northwood [1858-1937], nephew of John Northwood I, carver of the Portland vase replica. of J. & J. Northwood Workshop.)

£4,000-6,000



84

84
Attributed to Lucy Faulkner, a needlework panel, late 19th century, woven with a scene depicting the hunt with woman with falcon, sitting side saddle, attendant dogs and wildlife, signed with initials 'LF', 27 by 39cm, framed and glazed 33.5 by 46cm overall

Lucy Jane Faulkner Orrinsmith (1839-1910), was a sister of Charles, a co-founder of Morris, Marshall, Faulkner & Co..

Together with her sister Kate she worked for the company producing embroideries and going on to paint tiles and produce woodcuts. Changing her name when she married the engraver Harvey Orrinsmith in 1870- she also stepped down from her position as manager for the company. The William Morris Museum in London holds a selection of her work for Morris including painted tiles mostly depicting tales nursery rhymes after designs by Burne-Jones and various embroidered coverlets, dress cases and curtain straps. As well as continuing to produce embroidered panels and small paintings she is primarily known for her published work in 1877 "The Drawing Room: its decoration and furniture" part of the Macmillan & Co. 'Art at Home' series. For further information about her life and work please see Emma Ferry's article "The other Miss Faulkner" in The Journal of William Morris Studies, Summer 2011.

£200-300



85

85
A turned beech armchair, of Sussex type, the design attributed to William Morris, with rush seat, 82cm high

See Charlotte and Peter Fiell, 1000 Chairs, Taschen, 1997, p55 for illustrations and description of this model of chair

£250-400



87



86

86
A Thebes mahogany stool, designed by Leonard Wyburd, manufactured by William Birch and retailed by Liberty Co. Ltd, circa 1884-1900, with square seat on ring-turned supports joined by upper stretchers, with original leather upholstery, original label to the underside 'LIBERTY & CO.', 25.5cm high, 42cm square

Provenance:
From the Mohamed Makiya Collection

£250-350

87
W.A.S. Benson (1854-1924) an Arts and Crafts silvered standard lamp, late 19th century, the iron base stamped with serial number L 43384, 137cm high excluding fitment and shade, the modern shade 42cm diameter

£600-800



88

88
A Martin Brothers stoneware vase, with black glaze, inscribed '12-1903, Martin Bros London & Southall' to the base, 23cm

Provenance:
From the Mohamed Makiya Collection

£150-250



89 (maker's stamp)

89
Robert Wallace Martin (1843-1923) for Martin Brothers, a rare stoneware grotesque tobacco jar and cover, dated March 1900, the seated grotesque grasping its protruding chest with its long bony fingers and pointed nails, eyes narrowed above a grimace, with shaved monk's pate, the rim of the lid with incised marks R W Martin & Bros, London & Southall 3-1900, the underside of the base similarly marked 13.5cm high

Literature: A version of this design of jar and cover can be seen in Malcolm Haslam; The Martin Brothers Potters, Richard Dennis Publications, page 150 fig. 240

£30,000-50,000



89 (detail)



89



89 (view of the back)



90

90
A large Wemyss (R. Heron & Son) model of a pig, early 20th century, sponged with black patches, impressed *WEMYSS WARE R.H. & S.* and with pink printed retailer's stamp for Thomas Goode London, 44cm in length

£1,200-1,800



91

91
A Wemyss (Robert Heron & Sons) Pottery ewer and basin painted with daffodils, late 19th/early 20th century, impressed mark, the ewer 24cm high, the basin 39cm diameter

£300-400

92

A Wemyss 'Brown Cockerel and Hens' egg basket, first quarter 20th century, painted with fowl, impressed *WEMYSS WARE R.H. & S.* and with retailer's stamp for Thomas Goode London, 31cm in length

Provenance:
The property of a lady and gentleman, removed from a Cheshire country house

£150-250



93

93A
Six various Wemyss pottery preserve jars and covers, first quarter 20th century, one un-marked, two with green script marks and three impressed *WEMYSS*, circa 12cm high

Provenance:
The property of a lady and gentleman, removed from a Cheshire country house

£250-350



94

93

A Wemyss pottery honey box, cover and stand, first quarter 20th century, typically painted with bees and a skep, green script *WEMYSS*, 9.5cm high, 19cm square

Provenance:
The property of a lady and gentleman, removed from a Cheshire country house

£150-250



92



93A

94

Four items of Wemyss pottery, first quarter 20th century, comprising: two tapered cylindrical 'Grosvenor' vases, circa 14.5cm high; two teapots, one painted with strawberries and the other with cockerels and two later Griselda Hill pieces, comprising: an oval tray, 34cm in length; and a jar and cover, 12cm high (6)

Provenance:
The property of a lady and gentleman, removed from a Cheshire country house

£150-250



95

95

A Clement Massier Golfe Juan small vase with pinched sides, circa 1900, painted with iridescent metallic coloured glazes with pink and gilt commas reserves on a green ground, *CM Golfe Juan* mark, 6cm high

£200-300

96

A Pilkington's Royal Lancastrian vase and bowl, with an orange mottled glaze, impressed factory back stamps and numbers 2228 and 3271, vase 17.5cm high and bowl 21.5cm diameter and a Linthorpe pottery dish designed by Christopher Dresser, the centre with bird and flowers with coloured glazes on a mottled green and orange ground, impressed marks, 19.5cm diameter (2)

£60-80



96

97

A Bernard Moore Flambé large bowl, circa 1909, by Reginald Robert Tomlinson, the interior with a dragon, the base inscribed 'BERNARD MOORE' and with artist's monogram and '09', 34.5cm diameter

Provenance:
From the Mohamed Makiya
Collection

£150-250



97

98

A Lemonosov porcelain (State Porcelain Factory, Leningrad) model of the great Russian opera singer Feodor Chaliapin (1873-1938) in the role of Boris Godunov, Tsar of Russia, mid 20th century, modelled after the original created for the factory by Yakov A. Trupiansky in 1922, impressed 51, painted puce 18, other indistinct marks, 28.5cm high

Cf. Nina Lobanov-Rostovsky, *Revolutionary Ceramics Soviet Porcelain 1917-1927* (1990), no. 110, p. 103.

£1,000-1,500



98



99

99
A group of cold painted bronze figures of birds, comprising: a model of a Parakeet, after the model by Bergmann, mounted in a chromed socle as a car mascot, 11cm high overall, a model of a goose, naturalistically modelled with neck outstretched, 13cm long, and a model of a standing eagle, 8.5cm high (3)

£220-280



100

100
A group of cold painted bronze figures of animals, comprising: a model of a mouse, naturalistically modelled, stamped 1064, GESCHUTZT DEPOSE to the underside, 8cm long. A Bergmann model of a robin, impressed marks and numbered 1833 to tail, 4cm high, a model of a kingfisher, 4cm high, and a model of a coiled lizard, 7cm diameter (4)

£250-350



101

101
A group of bronze figures of dogs, comprising: a model of a seated poodle, on its haunches, the underside impressed with a lozenge above M S, 9cm high, a further smaller model of a poodle, 3.5cm high, a cold painted model of a gun dog, probably a spaniel holding a snipe, 8cm long, and a model of a terrier chewing on a hat, stamped M S to the underside, 6cm long (4)

£150-200

102

A cold painted bronze group of an Arab on a camel, by Franz Xavier Bergmann (1861-1936), the rider portrayed side saddle with gun in one hand and the reins in his other, with various impressed marks to all elements, 13cm high

£200-300



102

103

A cold painted bronze figure of a dancing Arab, 20th century after the manner of Franz Bergmann, portrayed with arms aloft and wearing a fez above his robes, impressed 11 to underside of base, 20cm high, together with a cold painted bronze figure of a seated Arab child, portrayed wearing a fez and nude save for his loin cloth, impressed GESCHUTZT to underside, 8.5cm high

£300-500



103



104

104

A group of cold painted bronze miniature figures, comprising: a group of two kittens sat on a trestle stool, 2cm high, a naturalistic mouse, 4cm long, a parakeet, 2cm high, and a seated baby, 1.5cm high (4)

£80-120



105

105

An Art Nouveau brass framed wall mirror, circa 1905, the shaped frame with swags and bell flowers, 47cm high, 42cm wide

£120-180

106

Three items of Art Nouveau metalware, comprising: W Haseler for Solkets, a pewter candlestick, in the manner of designs for Liberty, with Celtic knots, 16cm high, a Kayserzinn dish, 35cm wide, and a further dish with fish, 63cm wide (3)

£100-150



106



107

107

A set of Art Nouveau mahogany and inlaid quartetto tables, manner of the Glasgow school, the rectangular tops each inset with crossing roses, the largest table 66cm high, 56cm wide, 36cm deep

£400-600



108

108

A large art nouveau chandelier, early 20th century, approximately 180cm high, 110cm diameter

£1,000-1,500



109

A William Moorcroft for James MacIntyre Florian Ware slender vase, early 20th century, decorated with tube lined flowers, printed and script marks, 23cm high; and a small Ruskin pottery iridescent orange bowl, impressed mark and date 1913, 6cm diameter (2)

£120-180

110

'Pomegranate' three Moorcroft pottery vases, 1920's, designed by William Moorcroft, painted in colours on a mottled green ground, impressed marks, painted green signatures, 15cm, 21.7cm and 22cm high (3)

Provenance:

From the Mohamed Makiya Collection

£300-500



109



110



111

111

'Orchid and Spring Flowers' a large Walter Moorcroft vase, circa 1950's, decorated with a band of large flower heads, on a blue ground, with impressed factory marks and signed in blue 'WM', 25.5cm high; 'Hibiscus' a Walter Moorcroft Pottery jardinière, circa 1975, painted in colours on a blue ground, printed and painted marks, 22.5cm high and a 'Pansy' Moorcroft bowl, 1920's, impressed mark and signed in green 'W. Moorcroft', 25.5cm diameter (3)

Provenance:

From the Mohamed Makiya Collection

£300-500

112

A Walter Moorcroft Orchid pattern bowl, on a green ground, with signature and impressed marks MOORCROFT and MADE IN ENGLAND to underside, 8.5cm high, 18cm diameter

Provenance: Little Wolford Manor

£80-120



112



113



114

113

Dominique Alonzo (French, active 1910-1930), Dawn, an Art Deco gilt bronze figure of a female nude, portrayed standing with her right arm up to her head, her left out to her side, on an octagonal green onyx base, inscribed Alonzo, 30cm high

See Bryan Catley, *ART DECO and other FIGURES*, (1995), page 29 for a version of this model

£300-500

114

Ferdinand David (French 1872-1927), an Art Deco bronze of a female nude, on a variegated black marble base, inscribed *David* and the base applied with a brass plaque inscribed *Le Reveil par David*, 37cm high

£300-500

115

Amadeo Gennarelli (Italian, 1881-1943); an Art Deco bronze seated female figure, inscribed A. Gennarelli, on a black slate base, 44cm x 54cm

Provenance:

The property of a lady and gentleman, removed from a Cheshire country house

£1,000-1,500



115



116

116

Emilio Monti (1901-1981), a bronze group of Diana the Huntress, in art deco style, inscribed 'E MONTI 1960', 20cms high

£250-400



117

After Joseph Lorenzl, an Art Deco cast gilt metal model of a dancer, circa 1925, modelled mid-movement on a circular base signed Lorenzl, above a trefoil column and square base, 67cm high overall

£600-800

118 Y

Bruno Zach, an Art Deco cold painted bronze and ivory (*chryselephantine*) model of a child in costume, possibly jester, portrayed dancing, above an octagonal onyx base, signed B. ZACH to interior of drape, 19.5cm high

£1,200-1,800



118



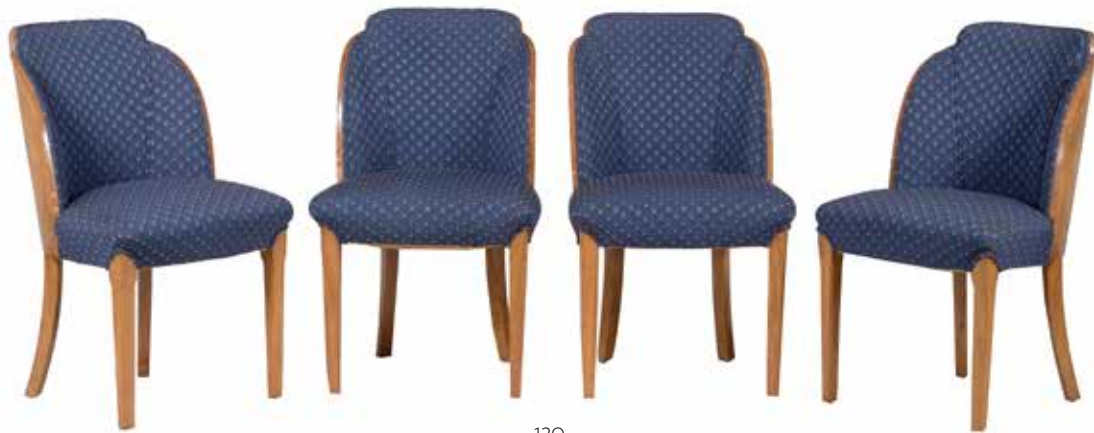
119

Bruno Zach, Pair of Dancers, an Art Deco cold painted bronze group of dancers, portrayed in a light grasp each on one leg and with extremities outstretched, inscribed ZACH to rear of base, atop a green onyx columnar base with spread foot, 40cm high

See Bryan Catley, p 307 for a version of this model, it is noted the cost price in 1936 was £9

£2,500-3,500

119



120



120

120
Epstein: a Cloud series walnut suite of seat furniture, comprising a sofa, a pair of tub shaped armchairs and four side chairs, the sofa, approximately 86cm high, 146cm wide, 95cm deep, each armchair approximately 75cm high, 74cm wide, 80cm deep

£800-1,200



120

121
A French Art Deco alabaster and spelter mantel clock, circa 1930, with French eight-day bell striking movement with outside countwheel, the case with seated woman and doves, 29cm high, 64cm wide, 21cm deep

£150-250



121



122

122
An Art Deco walnut low centre table, circa 1930, with Waring & Gillow paper label to the underside, 42cm high, 64cm wide overall

Provenance:
From a private collection, London

£250-350

123
A set of twelve burr walnut and upholstered dining chairs in Art Deco style, late 20th century, to include a pair of armchairs, each with an oval back above the seat and sabre legs

£1,000-1,500



123 (set of 12)



124



124

124

An Art Deco maple dining suite, comprising: a dining table, 77cm high, 215cm long, 101cm wide, a set of six chairs, a pair of armchairs, a sideboard 98cm high, 185cm wide, 67cm deep, and a further sideboard 93cm high, 143cm wide, 59cm deep

£800-1,200



124



124



125

125
Joseph Descomps (1872-1948 French), A bronze model of a lion rampant, circa 1930, the rocky base inscribed *J. B. Descomps*

Joseph Descomps renowned for his Art Deco bronzes and other media such as terracotta and marble. Salon Class winner in 1928. He was also known for his designs with the Sevres factory and fine jewellery.

£700-1,000

126
A patinated bronze model of an Oriental 'fancy' pheasant, probably continental, circa 1935, portrayed strutting, stamped bronze, on an oval plinth, 55cm wide overall

£600-800



126



127

127
A bronze model of a tiger on a stone base, second quarter 20th century, inscribed 'K RACOWSKI', 32cm high, 48cm in length overall

Provenance:
From the collection of the late Selwyn Demmy

£600-800

128
A bronze model of a lion on a stone base, second quarter 20th century, inscribed 'ANDREY' to the stone base, with presentation plaque to Henri Laufer, 1931, 41.5cm high, 55cm in length overall

Provenance:
From the collection of the late Selwyn Demmy

£600-800



128



129



129 (detail)

129

A German silver-plated smoker's compendium, designed by J. A. Henckels circa 1930, in the form of a monoplane, the fuselage with hinged cover for cigars or tobacco, and flanked by a pair of cigarette-box wings, with three ashtrays, the propeller concealing a cigar cutter and the ribbed top cap vesta, stamped DRGM Germany to the wheel carriage, 24.5cm long

£1,500-2,000



130

130

A German cocktail set or 'portable bar', designed by J. A. Henckels circa 1930, in the form of a monoplane, with a fuselage flanked by a pair of hip-flask wings, the whole fully disassembling to reveal full complement of accessories including the fuselage cocktail shaker with strainer/lemon squeezer and lid, further cylindrical drinks flask and a set of four gilt-lined stacking shot cups, marked Made in Germany to the rim of the fuselage, 24.5cm long

£2,000-3,000



130 (detail)



131

131

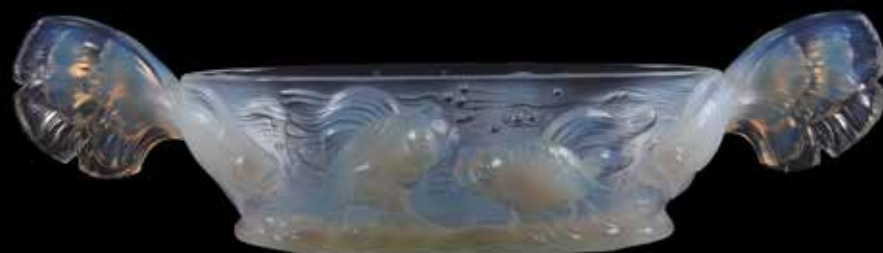
Lalique, Chene, a frosted glass candlestick, the electric fitting above a band of oak leaves, a further band to the lower portion, etched marks, 17cm high excluding fitment

£300-500

132

Verlys, France, 'Les Poisson' an opalescent moulded glass centrepiece, of navette form, the body decorated with 'telescope-eye' goldfish, the flanking handles formed as the projecting tails, moulded marks to centre, 13cm high, 50cm wide overall

£500-700



132



133

133

Riedel, Mesa, Italy, a clear moulded glass ice bucket, in Art Deco taste, with flanking chromed metal handles and a separate chromed metal bottle holder insert, the bucket inscribed RIEDEL, the bottle insert stamped for the maker, 21.5cm high

£100-150

134

A 'Vitascope' dioramic electric timepiece, Vitascope Industries Limited, Isle of Man, circa 1941-44, The interior with mains powered isochronous timepiece movement with take-off a gear fitted with a large cam for the automaton and worm drive for the horizontal rotating cylindrical lamp shade/filter positioned within a second compartment at the rear, the creamy light blue Bakelite case of Art-Deco rounded form, the rear with green painted aluminium cover applied with transfer trade label *Vitascope, INDUSTRIES LTD.* over another inscribed *U.K. PATENTS, 550361, 580886, OTHER UK AND, FOREIGN PATENTS PENDING*, 32cm high

Provenance:

The property of a private collector, Hertfordshire

Please see our website for full description and footnote of this lot

£400-600



134

135

A pair of Continental orange overlay glass vases, decorated with butterflies on an acid etched ground, both inscribed *Le Verre Français* to the foot rim, 50cm high

£400-600

136 (no lot)



135



137

A tubular metal hall stand, mid-20th century, with central mirror back and disk shaped hooks, 179cm high, 99cm wide, 20cm deep

£250-350

138

A woven carpet, of recent manufacture, after a design by Christopher Farr, approximately 284 x 368cm

Provenance:

Purchased from Alton Brooke. Chelsea Design Centre, London

£600-800



139



139

139

A Giovanni Cenedese Murano Glass coloured glass chandelier, 51cm high, 61cm diameter, together with a pair of wall lights 51cm wide, 21cm protuberance

£800-1,200



140

141

140

George Nelson for Herman Miller, a painted wood and metal side cabinet, with single drawer above sliding cupboard doors, 76cm high, 88cm wide, 43cm deep

£600-800

141

George Nelson for Herman Miller, a painted wood and metal chest of drawers, with arrangement of three drawers, 76cm high, 86cm wide, 43cm deep

£700-1,000





142

142

A distressed white painted hall lantern chandelier, recently manufactured by Chelini, approximately 91cm high, 71cm diameter overall

£400-700



143

143

A pair of floor standing black lacquered and silver painted vases, mid 20th century, 151cm high, 51cm wide, 34cm deep

£1,000-1,500

144

Musicale (guitar), a lithographed plywood 'lyre' side chair by Atelier Fornasetti, designed by Piero Fornasetti (1913-1988) in circa 1951, this chair late 20th century, with printed and coloured stringed instrument on the back and seat, above tapering tubular metal supports, with circular label to the underside, 93cm high

See Charlotte and Peter Fiell, 1000 Chairs, Taschen, 1997, pp. 366-367 for illustrations and description of this model of chair

£1,000-1,500



144

145

An Italian painted side cabinet, 20th century, by Ditta Pieri & Son, in the manner of Fornasetti, decorated as an Italian neo-classical villa, with stencilled maker's details to the backboards, 85cm high

£700-1,000



145



146

146 λ

Betty Blandino (British 1927-2011), a large gourd-shaped stoneware vessel, white slip with blue, green, and brown oxide decoration, impressed mark to unglazed base, approximately 36cm high, 31cm wide

£100-200

147 λ

Nancy Angus (b. 1958), a group of five coiled ceramic vases, each approximately 40cm high, and on a polished metal column, 100cm high.

Provenance:

Previously British Rail Property Board, Hamilton House, Appold Street, London

Nancy Angus lives and works in Brighton, UK, and makes individually ceramic hand-built pots and vessels. The surfaces of her pots are painted with slips to create a dry quality, which is reminiscent of frescoes or tomb paintings. She has completed a number of public and private commissions and regularly exhibits in the UK.

£600-800



147



148

148

A stainless steel architectural 'Amico' table, Prospero Rasulo (Italian B. 1953), comprising different geometrical movable elements, 134cm high, 386cm wide, 65cm deep

Provenance:

Tajan, Paris sale, XXth Century Decorative Arts & Design, 19th March 2013, lot 307

£2,000-3,000

149

149

A Kashan carpet with contemporary geometric design, modern, approximately 330 x 235cm

£800-1,200





150

150

Three items of Monart glass, second quarter 20th century, comprising a large blue through green vase with aventurine inclusions, 22cm high; another smaller, amethyst through green with aventurine inclusions, 20cm high; and a small bowl, 10cm diameter; together with a book, *YSART GLASS, Blench, Turner, et al.* (1990)

£300-500



151

151

A group of four Belgian L'an Vert art glass vases, second half 20th century, of tall bottle form, comprising; a lime green and white cased glass vase, 97cm high, an amethyst vase, 104cm high, a green glass vase, 100cm high, and a clear glass example with crazed basal section, 116cm high, three with clear signatures

£800-1,200

152

Mario Barbaglia and Marco Colombo for PAF Studio, Dove pattern, modern, in matt red and black colourway, 93cm high erect, the bases impressed with maker's and designer's details

Provenance:

The property of a lady and gentleman, removed from a Cheshire country house

The pattern of this lamp was originally designed in the 1980s by Barbaglia and Colombo for PAF studios, Milan

£250-350



152



153

153

Norman Foster for Tecno Spa, a rectangular 'Nomos' dining table, 1980s, the tempered glass top above a chromium plated steel base, moulded marks, 75cm high, 280cm wide, 105cm deep

Provenance:

Ex Renault Building

£500-700



154 (part lot)

154

Lalique, Cristal Lalique, Treves, a clear glass table service of wine glasses, 1952-2006, comprising: nine wine goblets, 18.5cm high; six red wine glasses, 16.5cm high, and twelve white wine glasses, 14.5cm high, incised Lalique, France

£500-700

155

Lalique, Crystal Lalique, femmes, a set of ten frosted and clear glass tumblers, second half 20th century, 10cm high, inscribed Lalique France, together a two boxed pairs of Roxanne champagne cups, clear and frosted glass, 17cm high, and nine swizzle sticks en-suite



155 (part lot)

£400-600



156

156

Lalique, Crystal Lalique, Igor, a clear and frosted glass caviar dish, modern, with chromed metal insert, inscribed Lalique, France, 26cm high

£500-700

157

Lalique, Crystal Lalique, Barsac, a set of fourteen small clear and frosted, champagne cups, 12.5cm high, and six white wine glasses en-suite, 14.5cm high, all with script mark Lalique, France

£200-300



157 (part lot)



158

158

Lalique, Crystal Lalique, a set of six clear and frosted glass tumblers, of tapered cylindrical form, second half 20th century, the basal section with frosted leaf moulded band, inscribed Lalique, France, 10cm high, in original white cardboard box

£200-300

159

Lalique, Cristal Lalique, Reverie, a pair of clear and frosted glass figural bookends, modelled opposing, each 22cm high, engraved marks to the rear of the plinths and plastic labels, in original fitted box

£800-1,200



159



160

160
Baccarat, Diva, a modern clear glass horizontal vase, script and acid etched mark, 40cm long

£200-300



161

161
John Armleder for Hospitality Savoy 'ABOUT NOTHING 2007' and 'NOTHING ABOUT 2007'; limited edition plates by Royal Doulton of 225, designed by the artist for Outset's 5th anniversary in support of the South London Gallery, six with gilt and white design borders, six reversed, 30cm diameter

John Armleder (b. 1948) is a performance artist, painter, and sculptor. His inspiration and ideas resonate with the Fluxus movement (1960s-70s), emphasising the creative process over the final product. As co-founder of Group Ecart, Armleders's works have been widely influential and exhibited across Europe.

£600-800



162

162
An oak dining table, late 20th century, purchased from Heals, the shaped rectangular top above substantial square section legs, 75cm high, 181cm long, 91cm wide

£500-800

163
A set of four faux leather clad dining chairs, late 20th century, each 94cm high

£500-800



163



164

A Murano and Baccarat crystal candle chandelier, modern, the iron frame clad in black beadwork and drops, and with six sconces for candles, 85cm high, 55cm diameter

Provenance:

Originally commissioned by Dolce and Gabbana's Head Office and purchased from the designer, Brigitte Israel

£800-1,200

164

165

A modern Murano cased glass free-form vase, Jean Luc Gambier, red with aventurine and clear glass case, engraved Gambier 04 to lower edge, 43cm high

£300-500

166

Three items of modern Murano glass, comprising; a pale turquoise tint oil ewer and stopper, applied with blue and gilt pincer ornament, 22cm high, another similar two handled flask and cover, 16.5cm high, and a clear glass aquarium block, containing a jellyfish shaped inclusion, 10.5cm high, 12cm wide, 12cm deep

£150-250



166



165



167

A turquoise ground Vaughan lamp, modern, 44cm high including gilt base but excluding lamp fitting and a blue octagonal vase adapted as a lamp, modern, the vase 44cm high (2)

£150-250

168

A suite of lacquered Christopher Guy seat furniture in caramel upholstery, comprising a pair of armchairs, 107cm high, and footstools

£400-600



167



168

169

A Christopher Guy sofa in beige upholstery, modern, 101cm high, together with a Christopher Guy lacquered and giltwood low centre table, modern, 47cm high, 121cm square overall

£300-500



169 (part lot)



170

170
A geometric specimen marble mirror, of recent manufacture, 102cm high, 74cm wide

£300-500

171
A chrome and glass dining table, of recent manufacture by Naos, the two-section glass top above the shaped supports and rectangular base, 70cm high, 180cm wide, 110cm deep overall, together with a set of chrome and laminate swivel dining chairs, to include a pair of armchairs, each 85cm high

£400-600



172



171 (part lot)



172 (set of eight chairs)

172

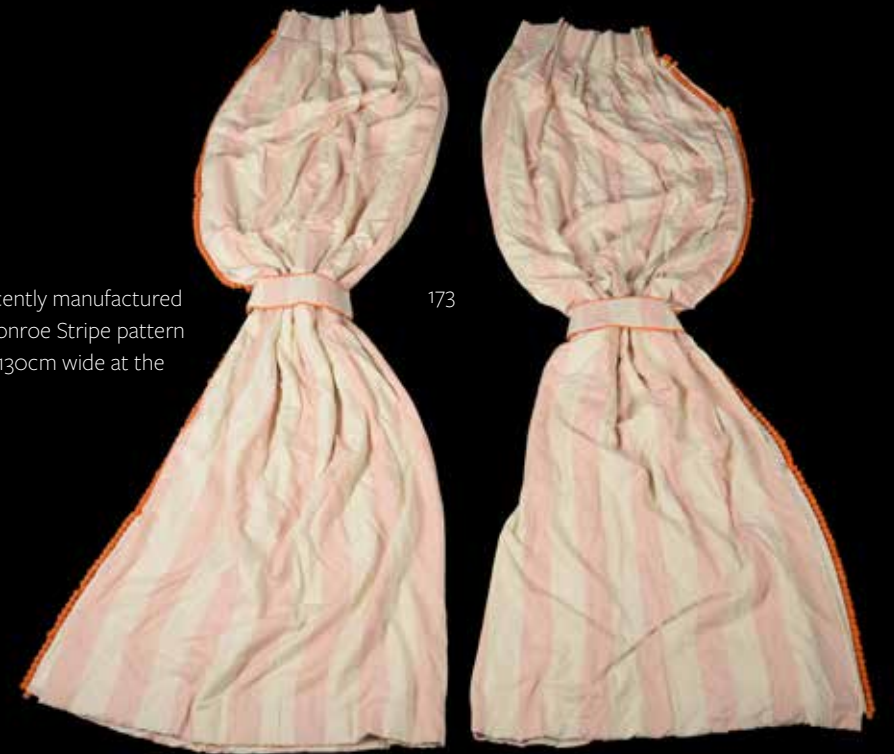
A lacquered Christopher Guy dining suite, comprising a set of eight of dining chairs, each with a stylised shell back, and an extending dining table

£1,200-1,800

173

A pair of curtains, recently manufactured from Ralph Lauren Monroe Stripe pattern fabric, approximately 130cm wide at the top, 380cm long

£200-300



173

174 λ

Anthony McCue, a group of three plaster figures, comprising a companion pair of a draped nude woman, with attendant devil, 95cm high and a similar draped nude man, resting on a pillar inscribed with verse, 89cm high, both incised A05 to rear, and an anatomical model, incised Anthony McCue 94, 66cm high

£600-800



174



175

175

A distressed white painted six light chandelier, recently manufactured by Chelini, approximately 70cm high, 73cm diameter overall

£200-300



176

176

David Linley, an American walnut and inlaid wall cabinet, late 20th century, surmounted by PAC monogram, above the two gothic-glazed doors enclosing purple velvet-covered trays, 114cm high, 70cm wide, 25cm deep

Provenance:
Purchased, David Linley, November 1989 (£5,000)

£700-900



177

177

David Linley, a pair of walnut and inlaid cabinets, late 20th century, each comprising a shaped cornice above dual retracting doors enclosing shelves, over a lower cupboard section, to one enclosing drawers, the other fitted for hi-fi equipment, stamped THE DAVID LINLEY CO, 1997 in a roundel, each 230cm high, 150cm wide, 74cm deep, and a pair of similar floor standing plinths

Provenance:
Purchased in these rooms, previously removed from a Holland Park House 5th June 2019

£4,000-6,000





178

178 λ

Benson Landes (1927-2013), *Clown*, a bronze figure of, a seated Harlequin holding a mask and a rose, inscribed to the rear of the cushion 'Benson 83? 10/45', 27cm high overall

Provenance:

From the collection of the late Selwyn Demmy

£300-500

179

Donald Greig (South African b. 1959), a bronze model of a bull elephant, naturalistically modelled walking and with trunk outstretched, 12cm high, impressed marks

£150-250

180

A pair of bronze models of seated lions, 20th century, on stepped and canted marble style bases, each 34.5cm high

£250-400



179



180



181

Gautier, Geneva, a gilt metal mounted specimen hardstone globe, in a lizard effect blue pyramidal case, 39cm high, 36cm wide, 36cm deep

£100-200



181

182

Gucci, Italy, two pairs of steel companion sets, each comprising poker, tongs, and shovel on a stand, 80cm high overall, the tongs stamped for the maker

£500-800



182

183

Gucci, a gentleman's valet stand, wood, leather, and metal mounted, 116cm high, 46cm wide, 46cm deep overall

£500-800



183



184

184
A glazed pottery group of
Chairman Mao and attendants,
20th century, 38cm high, traces
of two stamped marks to base,
40cm wide

£200-300



185

185
Wu Jing Hua (Chinese 20th/21st century)
Jeux Olympique, 2007 (Pink & Blue/ Minnie Mouse & Mickey Mouse)
Oil on canvas
Both signed, titled, inscribed and dated 2007 (verso)
Each 165 x 185cm (64¾ x 72¾ in.) including frame

£300-500

COUNTRY SPORTING





186

186
Follower of Jean Baptiste-Oudry
Spaniel on the hunt
Oil on canvas
89 x 72cm (35 x 28¼ in.)

£400-600

187 Y
A Swaine & Isaac yellow coloured metal mounted riding crop, second quarter 19th century, the cap inscribed for the maker and with leather thong terminal, 90cm long, together with a Victorian 15ct gold mounted schooling or dressage whip, circa 1880, the ivory handle modelled as bamboo above the shaft impressed for Callow & Sons, Park Lane, 116cm long (2)

£300-400



187

188
Follower of John Frederick Herring Snr.
A pair of hunting scenes
Oil on canvas
52 x 52cm (20¼ x 20¼ in.) (2)

£800-1,200



188



189 (part lot)

189

A set of six shooting prints after R B Davis, comprising: Grouse Shooting, August, Partridge Shooting, September, Pheasant Shooting, October, Snipe Shooting, November, Woodcock Shooting, December, Water Fowl Shooting, January, all oak framed and glazed 61cm x 70cm overall

£300-500



191

191

Charles Johnson Payne (Snaffles) (British 1884-1967)

That Far Far-Away Echo; Pass Friend

A set of two prints, one with acknowledgements to Punch

Each signed (lower left)

39 x 50.5cm (15¼ x 19¾ in.) (2)

£400-600



190

A pair of spelter models of stags, early 20th century, each portrayed bolting, one with head down and outstretched the other inclined skywards, both above naturalistic rocky base and plinth, the taller 51cm high

£400-600

192 λ

Sally Arnup FRBS, ARCA (1930-2015), *Foxhound Leaping Fence*, patinated bronze, the hound modelled momentarily resting his hind legs on the three bar fence before landing on the turf, numbered III/X and inscribed ARNUP to the base, 32cm high, 22cm wide, 25cm deep

£1,200-1,800



192



193

A bronze fragment of a racehorse, late 20th century, the whip and horse's mane, on a stone plinth and hardwood base, the bronze inscribed 'Benson 01' and the stone 'Benson 83', 41.5cm high overall

£700-1,000

193

194

A modern bronze group of racehorses, one with jockey up, on an associated black marble base with shaped mahogany plinth, 38.5cm high overall

Provenance:

From the collection of the late Selwyn Demmy

£300-500



194

195

After Pierre Lenordez (1815-92), a patinated metal model of the racehorse 'Saucebox', probably early 20th century, inscribed 'P Lenordez' to the base and 'Saucebox, Par St. Lawrence et, Priscilla, Tomboy' to the stylised plaque, also bearing Duplan et Salles foundry mark, 37cm high, 36cm wide

Provenance:

From the collection of the late Selwyn Demmy

Saucebox was the winner of the St. Leger, 1855

£600-800



195

196

After Jules Moigniez (1835-94), a bronze model of a horse with side saddle, late 19th century/early 20th century, inscribed to the base 'J Moigniez', stamped '638' the underside and inscribed 'H R', 32cm high, 36cm wide overall

£600-800



196



197

197 λ

John Mulvey (British b.1939), Horse, a bronze model of a stylised horse, dated '72, modelled standing above a portoro marble base, with applied artist's plaque, 41cm high, 35.5cm long, 15.5cm wide

£400-600



198

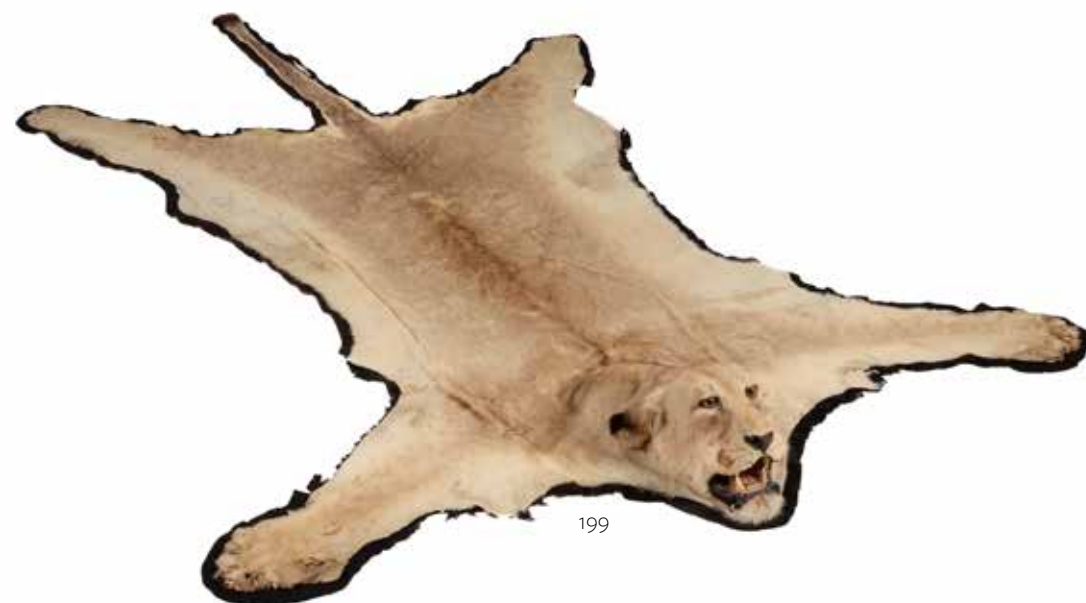
198

A collection of seven various ceramic equestrian models, second half 20th century, comprising: a Royal Doulton model of Desert Orchid, on a wood and flock oval stand, 23cm high, a similar Royal Doulton model of Red Rum, 23cm high, a Royal Worcester model of The Winner, modelled by Doris Lindner as a horse and jockey wearing the Queen's colours, raised on a naturalistic oval base, 29cm high, a Beswick Connoisseur model of Morgan Horse, Tarryall Maestro, 29cm high, a Beswick Hunter, model of a dapple grey, 33cm high, a Lorna McKeown for Albany model of Desert Orchid, 34cm high, and a Capo di Monte model of a horse, 27cm high

£600-800



199 (detail)



199

199 Y

A lioness skin rug, *Panthera leo*, first half 20th century, full head mount, mounted on a brown felt backing, 262cm (nose to tail), 206cm wide (front paws)

£400-600



200

200 Y

A white painted cased diorama of exotic birds, insects, and other invertebrates, early 20th century, with central parakeet, 72cm high, 58cm wide, 14cm deep

£200-300

201 Y

A group of four glazed and cased examples of British taxidermy, late 19th/early 20th century, all in naturalistic settings, including a badger, various pheasants, and a gull, the largest 64cm x 82cm x 23cm

Provenance:

By repute, two of the cases from Bonhams, Walter Potter, The Sale of the Contents of Mr Potter's Museum of Curiosities, 23rd - 24th September 2003

£200-300



201 (part lot)

202 Y

A preserved model of an owl, probably a long-eared owl *Asio otus*, third quarter 20th century, in a glazed case and naturalistic setting, with pencil legend and date 1954, 49cm high, 28cm wide, 15cm deep; **together with another similar**, 42cm high 31cm wide, 15.5cm deep (2)

Please Note: Dreweatts have applied for an Article 10 (CITES) licence in order to offer the specimens in this lot for sale - the licence numbers are 603425/01 & 603425/02

£400-600

203 Y

A late Victorian case of two preserved otters, *Lutra*, circa 1890, modelled in a naturalistic setting and posed with fish, in an oak and glazed case, 92cm high, 140cm wide, 57cm deep

Provenance:

Berwick House, Shropshire

£400-600



202



203



204

204

An iron barrelled percussion lock blunderbuss with spring bayonet, late 18th and 19th centuries, with brass butt-plate and trigger guard, the lock converted to percussion, the stock inscribed 'N ASHE', 76cm in length

£200-300



205

205

A pair Ketland and Co. flintlock cannon-barrelled box lock pocket pistols, late 18th century, 21.5cm in length

£300-500



206

206

A flintlock 'cannon' barrelled pocket pistol by Brazier of London, circa 1770, walnut stock with wire filigree ornament and green man butt plate, steel lock and twist-off barrel with London proof marks, 19.5cm in length

£300-500

ROSE ACRE | CHESHIRE



The property of a lady and gentleman, removed from a Cheshire country house | lots 208-291



208

A cast iron stick stand, second half 19th century, with nautical motifs and twin removable drip pans, the underside with indistinct registration diamond, 82cm high, together with a green painted wood bathroom rail, 83cm high, 77cm wide

£100-150



208



209

209

A pair of George IV carved oak shell-back hall chairs, circa 1830, in the manner of Gillows, on turned and faceted front legs, each 83cm high

Shell-back hall chairs are known to have been made by the firm of Gillows of Lancaster in the first quarter of the 19th century, Susan E. Stuart illustrates and describes such chairs in her book, Gillows of Lancaster and London 1730-1840, Antique Collectors' Club, 2008, pages 203-204, plate 177

£700-1,000

210

A Hamadan runner, approximately 500cm x 77cm

Provenance:

Purchased Eastern Kayam OCM Ltd 25th April 1991 (£770)

£150-250



210



211

An oak and brass reading standard lamp, with spread base, 118cm high at its lowest, together with another similar without the oak 'table', 104cm high, and another with a picture light fitting, 125cm high (3)

£600-800

212

An upholstered sofa in late 19th century style, late 20th century, by Kingcome Sofas and upholstered in Colefax & Fowler 'Tree Poppy' fabric, 68cm high, 230cm wide, 100cm deep together with an armchair, late 20th century, by Kingcome Sofas, upholstered in Colefax & Fowler 'Pink Hydrangea' fabric, 87cm high

£600-800



212



213

213

A pair of Victorian silhouettes each depicting a young boy holding a cane, 24 x 19cm (9 1/2 x 7 1/2in.) together with another depicting a young lady seated on a chair 22 x 17cm (8 5/8 x 6 5/8in.) (3)

£150-250



214

214

A Victorian burr hardwood and ebonised box, mid-19th century, of Barbados type, the lid lifting to a vacant interior, 25cm high, 35cm wide, 20cm deep

£300-500

215

An early Victorian mahogany occasional table, circa 1840, 71cm high, 61cm diameter. Please see image on our website

£500-700



216 (set of eight)

216
A set of eight Regency mahogany dining chairs, circa 1820, to include a pair of armchairs, each with a cream upholstered drop in seat

£400-600



217

217
A Regency mahogany centre table, circa 1820, almost certainly Scottish, with bead moulding to the edge, above a turned pillar and quadripartite base, 72cm high, 125cm diameter

Provenance:
Purchased Sotheby's, Chester, 23rd January 1991, lot 35 (£3,800)

£1,000-1,500

218
A Regency mahogany Canterbury, circa 1815, with swept top above the slatted dividers and single frieze drawer, 45cm high, 49cm wide, 34cm deep

£300-500

219 Y
A George IV rosewood card table, circa 1830, the folding top enclosing a circular inset playing surface, above a turned pillar and quadripartite base with out scrolling feet, 73cm high, 92cm wide, 18cm deep

£150-250



219



218

220
A George IV mahogany stool, circa 1830, the cut velvet upholstery above the X-frame ends united by a turned stretcher, 38cm high, 93cm long, 48cm wide

Provenance:
Purchased from Charles Saunders, Fulham Road, London 29th November 1994 (£4800)

£700-1,000



220



221

221

A George III mahogany urn stand, circa 1780, with gallery above the slide, the chamfered supports united by spandrels, 67cm high, 30cm wide, 30cm deep

£600-800



222

222

A George III mahogany chest on chest, circa 1770, 178cm high, 102cm wide, 56cm deep

Provenance:
Purchased Sotheby's, Chester, 17th October 1990, lot 35 (£3000)

£1,000-1,500

223

A George III mahogany tripod table, circa 1780, the book-matched top above the turned stem and outswept feet, 72cm high, 60cm diameter

£250-350



223

224

A George III mahogany armchair, late 18th century and later upholstered, 108cm high, together with a footstool in George III style and upholstered to match, modern, 40cm high

£800-1,200



224



225

225

A pair of bronzed metal urns in Empire style, of recent manufacture, with stiff leaf basal pattern and floriform upper section, on simulated porphyry bases, each 33.5cm high

£600-800

226 Y

A Regency rosewood centre or library table, circa 1820, the rectangular top with rounded corners above a pair of frieze drawers, fluted supports and platform base, 74cm high, 137cm wide, 65cm deep

£600-1,000



226

227

After David Dietrich, A set of 8 bookplates of 'Rosa' from 'Flora Universalis', each overall 55 x 39.5cm (21½ x 15½ in.) (8)

Provenance:
O'Shea Gallery, London

Exhibited:
London, The O' Shea Gallery, The Grosvenor House Antiques Fair, 1991

£300-500



227 (part lot)

228

A Regency green painted cheverette, circa 1815, with carry handle above the pair of drawers and stand base, 120cm high, 59cm wide, 33cm deep

Provenance:
Purchased Ulla Stafford, Eton, Windsor, 7th June 1997 (£1650)

£300-500



228

229 0

A Group of decorative book bindings, to include various Waverly novels, Pearson's Magazine, Home Notes, and others. Please see illustration on our website

£200-400



230

230
William Papas
(South African 1927-2000)
Market Hall, Manchester
Pen
Signed and titled (lower right)
49 x 77cm (19¼ x 30¼ in.)

Provenance:
The Tib Lane Gallery, Manchester

Exhibited:
Manchester, The Tib Lane Gallery,
June-July 1968

£500-700



231

231
A white upholstered corner sofa, of recent manufacture, upholstered by Crowson Fabrics (West Sussex), 82cm high, 294cm wide, 157cm deep overall, together with a modern armchair in matching upholstery, 92cm high

Provenance: The property of a lady and gentleman, removed from a Cheshire country house

£400-600



231



232 (part lot)

232
A suite of four gilt brass and glass topped tables, modern, comprising: one large centre table, 41cm high, 123cm wide, 93cm deep, a pair of square tables, 41cm high, 69cm square, and a further table, 41cm high, 69cm wide, 46cm deep

£300-500

233
A modern carpet, attributed to Madeline Weinrib Amagansett, approximately 312 x 250cm

£150-250

233





234 (set of nine)

234

A set of nine George III mahogany and upholstered dining chairs, late 18th century, to include two armchairs

Provenance:
Purchased Cheestergate Antiques, Stockport, 1 April 1983 (£1,650)

£1,000-1,500



235

235

A mahogany dining table in George III style, late 19th century, with two leaf insertions, 73cm high, 137cm wide, 238cm long overall

£300-500

236

A George III mahogany card table, late 18th century, of semi-elliptical outline, 74cm high, 91cm wide, 45cm deep

£300-500



236



237

237

A George III mahogany and brass bound wine cooler, late 18th century, of octagonal section, the lid enclosing a lead lined interior, 72cm high, 47cm wide, 46cm deep

Provenance:
Purchased Sotheby's, Chester, 5th July 1984 (£1050)

£700-1,000

238

A group of various brass fire furniture, comprising: a pair of fire dogs, each with a ball finial, the billet bars indistinctly stamped, 47cm high, a set of three fire tools, the tongs 70cm long, and a pierced fender, 20th century, 124cm wide, 40cm deep

£300-400



238



239

239

A French red *tole-peinte* octagonal sedan wall clock, , late 19th century, with French eight-day bell striking movement with outside countwheel, the case with hanging loop 46cm high overall, and another green and parcel gilt example, the enamel dial inscribed Paul Garnier, Paris, now fitted with a quartz movement, the case with hanging loop 48cm high overall (2)

£600-800

240

A green upholstered sofa in late 19th century taste by Kingcome sofas, late 20th century, 83cm high, 175cm wide, 100cm deep together with a chequer upholstered armchair, 73cm high

£300-500



240



240

241

William Cannon (British 19th century)

Ships at sea with port beyond

Watercolour with scratching out

Signed and dated 1900 (lower left)

18.5 x 47cm (7¼ x 18½ in.)

Provenance:

The property of a lady and gentleman, removed from a Cheshire country house



241

£150-200

242

A Victorian mahogany and upholstered armchair, second half 19th century, 105cm high, together with a Victorian walnut and upholstered show frame armchair, circa 1870, in French taste and with spoon back, 99cm high (2)

Provenance:

The property of a lady and gentleman, removed from a Cheshire country house

£350-450



242

243

A studded leather trunk, 19th century, the domed lid enclosing a compartment and with further studwork to the interior of the lid, 61cm high, 98cm wide, 58cm deep

Provenance:

The property of a lady and gentleman, removed from a Cheshire country house

£100-200



243



244
Robert Stone (British 1820-1870)
A pair of hunting scenes
Oil on panel
Each signed (lower right)
17 x 33.5cm (6½ x 13 in.) (2)

£800-1,200



245
A harlequin set of eight kitchen or dining chairs, 19th century, in various timbers, to include two armchairs

Provenance:
Purchased from I & JL Brown Ltd,
17th April 1996 (£3,500)

£500-800

244



245 (set of eight)



246
Johannes Frederik Hulk
(Dutch 1829-1911)
*A Dutch canal scene, possibly with
Sint Bavokerk Church, Haarlem in
the background*
Oil on panel
Signed (lower right)
30 x 38cm (11¾ x 14¾ in.)

£400-600

246



247

247
An oak refectory table, 19th century, with a frieze drawer to each long side, on faceted supports joined by stretchers, 77cm high, 198cm long, 90cm wide

Provenance:
Purchased from I & JL Brown Ltd, 17th April 1996 (£2,900)

£800-1,200



248 (part lot)

248
An Edwardian mahogany and satinwood banded dressing mirror, circa 1905, with oval plate above the concave platform with drawers, 53cm high. 58cm wide, 26cm deep together with a quantity of boxes

£250-350

249
A George III mahogany chest of drawers, circa 1800, with arrangement of four long drawers, 83cm high, 89cm wide, 47cm deep

Provenance:
Purchased Sotheby's, Chester, 5th July 1984 (£980)

£800-1,200

250
A Nain carpet, approximately 320 x 212cm

£400-600



249



250

251
William Watt Milne
(British 1865-1949)
Haystacks by the Farm House at Houghton near St. Ives, Huntingdonshire
Oil on canvas board
Signed (lower left)
15.5 x 21.5cm (6 x 8¼ in.)

£150-250

252 (no lot)



251



253

253
A George III mahogany and inlaid card table, circa 1790, the top with shaped corners above the frieze with central tablet and square tapering legs, 72cm high, 91cm wide, 45cm deep

£400-600



254
James H. Morton (British 1881-1918)
A set of eleven views
Coloured pastel and pencil
Each variously signed and dated
Various sizes, the majority approx. 17 x 24cm (6½ x 9¼ in.) (11)

Provenance:
Geoffrey Taylor & Co., Blackburn
Purchased from the above in 1971
Thence by descent to the present owner

Exhibited:
Blackburn, Geoffrey Taylor & Co., 4 - 8 September 1971

£200-400

255
A pair of alabaster models of spaniels, third quarter 19th century, the hounds modelled with baskets of flowers in their mouths, both with glass domes and ebonised wood base, 15cm high 16.5cm long overall

Provenance:
By repute, supplied to the vendor by Nina Campbell

£150-250



255

256
An Edwardian mahogany, banded and inlaid shoe cabinet, early 20th century, 133cm high, 60cm wide, 58cm deep

Provenance:
Purchased Sotheby's, Chester, 17th October 1990, lot 57 (£800)

£200-300



256

257
English School (20th century)
Portrait of a lady wearing a red hat
Oil on canvas laid to board
41 x 33cm (16 x 12 in.)

£300-500



257



258 Y
A Regency rosewood and gilt metal mounted occasional table, circa 1820, in the manner of Gillows, 74cm high, 43cm wide, 43cm deep

£700-1,000

258



259

259
Leon Bureau (French 1866- 1906), A bronze model of a tethered horse, inscribed L. BUREAU, 42cm x 44cm

Leon Bureau studied at the Ecole des Beaux Arts and was a pupil of Alexandre Joseph Falguière, romantic French sculptor. Bureau's works were exhibited at the Salon from 1884.

£1,200-1,800

260
British School (20th century)
A pair of landscapes
Oil on board
Each 32 x 40cm (12½ x 15½ in.) (2)

Purchased as by J. H. Morton.

£100-150



260 (part lot)



261

261
A George II 'red walnut' kneehole desk, circa 1740, with caddy top above the arrangement of drawers, 82cm high, 90cm wide, 50cm deep

Provenance:
Purchased Sotheby's, Chester, 16th January 1986, lot 2053 (£2,050)

£800-1,200



262

262
A pair of mahogany and tapestry upholstered open armchairs in George III style, second half 20th century, of Gainsborough type, each 109cm high

£400-600



263
 Franz Edmund Weirotter
 (Austrian 1730-1771)
River landscape with two figures
 Etching
 6.2 x 13cm (2¼ x 5 in.)
 Together with a group of seven
 various prints (8)

£200-300

263 (part lot)

264
 A pair of pink upholstered
 armchairs in late 19th century
 style, late 20th century, by
 Kingcombe Sofas Ltd, on walnut
 legs terminating in castors, each
 99cm high

Provenance:
 Believed to have been supplied by
 Colefax & Fowler

£500-700



264



265 (part lot)

265
 Various artists, A collection of twenty two prints, to include a large quantity of *Musee de Louvre chalcographies*
 some after Francois Boucher, Watteau and Raphael, various sizes (22)

£400-600



266
 A pair of stained beech and
 upholstered side chairs in
 Victorian taste, late 20th
 century, each 85cm high

£300-500

266



267

A pair of brass wall sconces, in early 18th century Dutch style, of possible recent manufacture, the reflector back die stamped with scrolling foliage and an urn, supported by two putti figures, 38cm long, 30cm wide

£300-400

267



268



268

A pair of walnut and red velvet upholstered armchairs, in the manner of Cathedra chairs, mid-20th century, each 102cm high

£300-500

269

Alexander Jamieson

(British 1873-1937)

The Flower Market, St. Sulpice, Paris

Oil on board

Signed and dated 1906 (lower right)

further signed, inscribed and dated (verso)

21.5 x 27cm (8¼ x 10½ in.)

£800-1,200



269

270

Alexander Jamieson

(British 1873-1937)

Reflections St. Valery

Signed, inscribed and dated 1903

(on the reverse)

Oil on board

13.9 x 17.7cm (5½ x 7in.)

Provenance:

With The Fine Art Society, London,

1984

£400-600



270



271

271
Circle of Julius Caesar Ibbetson
Clappersgate, with horses watering
Oil on canvas
31 x 44cm (12 x 17¼ in.)

£500-700



272

272
A set of three mahogany and upholstered
armchairs in George III style, late 20th century,
each 103cm high

£400-600



273

273
A George III elm bureau, circa 1770, the fall
enclosing a fitted interior with pigeonholes,
drawers, and a well, 102cm high, 90cm wide,
55cm deep

£200-300

274 (one of a pair)

274
A pair of Tabriz rugs, each approximately
223 x 142cm

Provenance:
Purchased C. John, South Audley Street, 2nd
October 1998.

£800-1,200





275

A carved and stripped softwood easel in Rococo taste, 20th century, with height adjustable rest, 168cm high

£200-300



276

276

A pair of stained beech armchairs, in French taste, 20th century, with ivory coloured upholstery, each 91cm high, together with a mahogany armchair in Louis XVI style, late 20th century, with removable seat cushion, with label to the underside of William L Maclean LTD, Sussex 87cm high

£400-600

277

Rudolf Muller (1802-1865) & Friedrich Horner (1800-1864)

A mountainous Italianate Landscape, with a villa

Watercolour and pencil

Signed (lower right)

25 x 36.5cm (9¾ x 14¼ in.)

Provenance:

Believed to have been purchased by Peter Langford Brooke during his stay in Naples in 1828-1831

Sale, Christie's, London, Mere Hall House Sale, 23 May 1994, lot 294

£600-1,000



277

278

Rudolf Muller (1802-1865) & Friedrich Horner (1800-1864)

The Forum at Pompeii

Watercolour and pencil

Signed (lower left)

26.5 x 37cm (10¼ x 14½ in.)

Together with another watercolour of Italian ruins by another hand, 23.5 x 32cm (9 1/4 x 12 1/2 in.) (2)

Provenance:

Sale, Christie's, Mere Hall House Sale, 23 May 1994, lot 295

£600-1,000



278



279

279

An Austrian painted terracotta model of a pug, first half 20th century, naturalistically modelled lying with head raised and turned slightly to dexter, with inset glass eyes, 19cm high, 34cm long overall

Provenance:

The property of a lady and gentleman, removed from a Cheshire country house

£250-350

280

A pair of modern reverse-glass printed botanical baluster lamp bases, decorated with flower sprays reserved on a white ground in the decalcomania manner, the baluster vases, 64cm high overall

Provenance: believed to have been supplied by Colefax & Fowler

£300-500



280



281

281

A pair of ebonised low side chairs, circa 1860 and later upholstered, each with silk and velvet upholstery, 81cm high, together with two further, smaller, side chairs in Victorian taste, 86cm high

Provenance:

The property of a lady and gentleman, removed from a Cheshire country house, supplied by Colefax & Fowler

£500-700



282

William Shayer Snr.
(British 1787-1879)

A Gypsy Camp

Oil on canvas

With strengthened signature
(lower right)

51 x 61cm (20 x 24 in.)

The property of a lady and gentleman, removed from a Cheshire country house

Provenance:

Frost and Reed, London, no. 56759S

Purchased from the above by on 19 November 1987 (£17,000)

Thence by descent to the present owner

£1,500-2,500



282

283

Circle of William Shayer Snr.
(British 1787-1879)

Cockle Gatherers, Devon

Oil on canvas

Bears signature, inscribed and dated 1833 (lower right)

64 x 104cm (25 x 40¾ in.)

£800-1,200



283



284

284

A pair of modern Chinese blue and white floor vases, painted with panels of pea-fowl and pheasants, on carved hardwood stands, 83.5cm high overall

£200-300



285

285

A Chinese black and coromandel lacquer four fold screen, 20th century, each panel 213cm high, 40cm wide

Provenance:

Purchased Paravent, Wadhurst, Sussex, 4th March 1992 (£2,200)

£600-800



286

286

A Chinese export black lacquer trunk, early 20th century, 47cm high, 85cm wide, 47cm deep

Provenance:

By repute purchased from Colefax & Fowler.

£500-700

287

A composition stone sundial, 20th century, the bronze gnomon above an octagonal platform, baluster stem and stepped base, 86cm high (excluding dial)

£300-400



287

288

A pair of terracotta baluster garden vases, with ribbed bodies, each 78cm high, together with a similar vase with rope work to the body, 97cm high and a four handled amphora, 68cm high (4)

£500-700



288



289 (part lot)

289

A composition stone fountain or bird bath, late 20th century, with circular basin above the cherub support, together with a pair of composition stone planters, late 20th century, each applied with a Tudor rose to the body and a composition stone strawberry planter

£150-250

290

A pair of composition stone garden urns, mid-20th century, each with an everted rim above a lappet moulded underside and socle base, 56cm high, together with another pair of composition stone garden urns, each with everted rim above a leaf moulded body and inverted lappet underside above socle base and octagonal foot, 70cm high overall, and two further square section stands

Provenance:

The property of a lady and gentleman, removed from a Cheshire country house

£700-1,000



290 (part lot)



291

291

A group of various hardwood garden furniture, 20th century, to include: a garden suite comprising a table 68cm high, 80cm long, 90cm wide; a pair of armchairs, each 89cm high and a bench; two similar benches, 93cm high, 85.5cm high; a pair of garden loungers, each with an adjustable drinks rest, 197cm long; a garden recliner, approximately 155cm long and a side table

£800-1,200



291

Other properties



292

292
A pair of stone composite cast garden tub chairs, 20th century, in 18th century style, 84cm high, 56cm wide

£300-500

293
A set of three composition stone planters, 20th century, after the manner of Robert Adam, each with a central urn to the front flanked by swags, each 39cm high, 40cm wide, 40cm deep

£400-600



293



294

294
A pair of composition stone urns, late 20th century, each with an everted leaf moulded rim above the body, decorated with with fruiting vines and lobed undersides, above a socle and square section base, 44cm high

£200-300



295

295
A pair of composition stone urns, last quarter 20th century, each with an everted rim above the body with lobed undersides, above a socle and square section base, 40cm high

£200-300



296

296
A pair of composition stone urns, second half 20th century, each with an egg and dart everted rim above the body with lobed undersides, above a fluted socle and square section base, 45cm high

£300-500



297
A pair of carved stone table ends, 20th century, each formed as a winged horse or Pegasus, each 85cm high, 61.5cm deep

£400-600

298
A set of four Portland stone driveway markers, 19th century, possibly saddle stone bases, each of typical conical tapering form, approximately 61cm high, 20cm diameter at the top

£400-600



298



299
A Victorian terracotta herb planter, circa 1875, by John Matthews, Royal Pottery, Weston Super-Mare, 51cm high, 59cm diameter

£300-500

300
A large pair of terracotta twin handled garden urns, 20th century, each 77cm high, approximately 80cm wide overall

£400-600



300



301

301

A pair of white painted cast iron jardinière or torchere stands, late 19th century, of open strapwork design, each 80cm high, 36cm wide overall

£200-300



302

302

A pair of black painted iron gates, 19th century, each gate 108cm high, 132cm wide, giving an overall span approximately 265cm overall

£600-900

303 λ

Hannah Stewart, Iguana, early 21st century, a patinated bronze model of an iguana, naturalistically modelled and sat atop a stone sphere, approximately 62cm high overall

Hannah Stewart completed a foundation course in conservation and restoration and later undertook a three year course at the City & Guilds of London Art School graduating in July 1998. Hannah has gone on to win a succession of awards for her work.

£1,000-2,000

304

A large wrought iron and wood garden table, second half 20th century, the octagonal top above the scrollwork base, with a central and four outer supports, 80cm high, the top 185cm x 184cm

£400-600



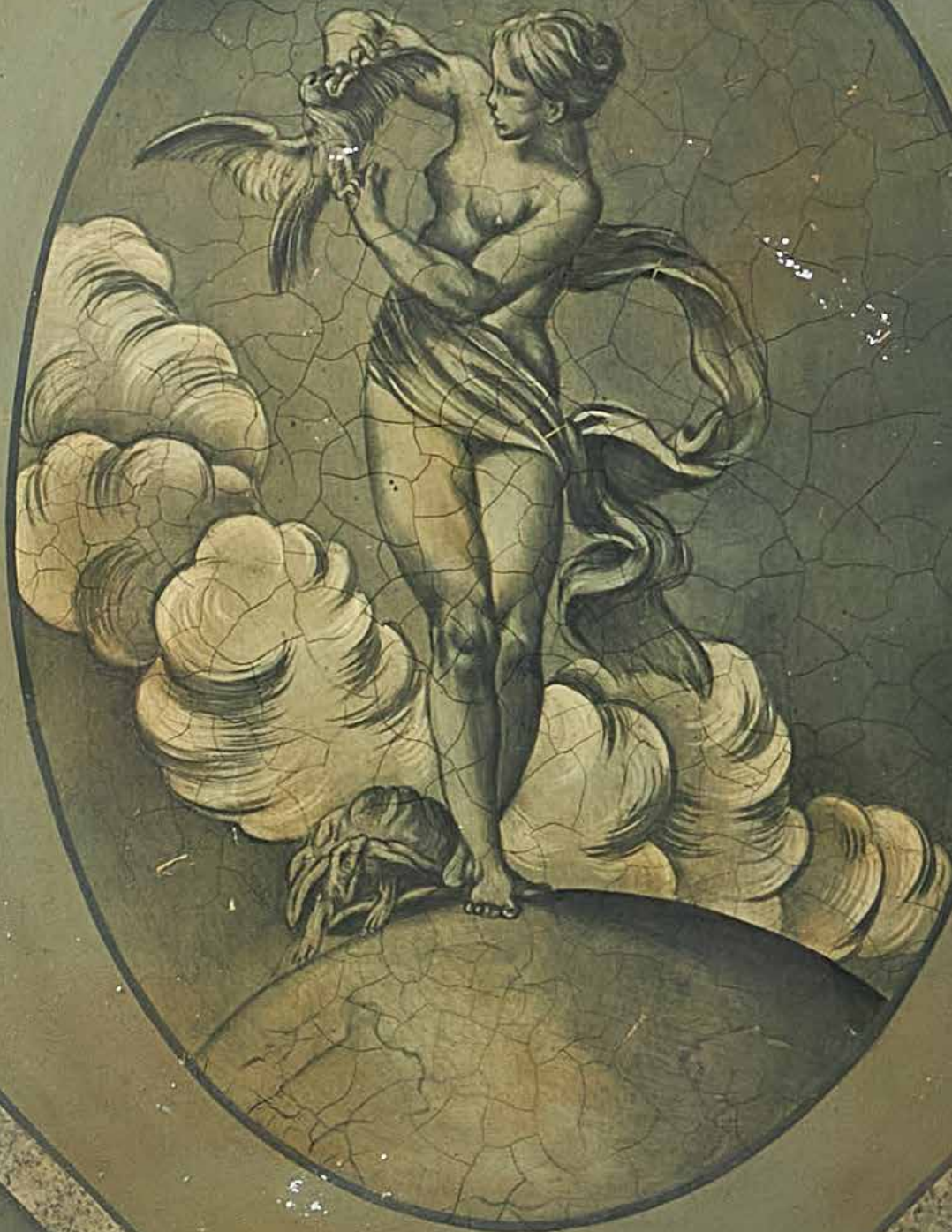
303



304

INTERIORS | DAY 2

To include furniture, works of art, rugs, clocks, and lighting



311

A late Victorian brass mounted stick or umbrella stand, circa 1900, in the form of a coopered barrel, with planished everted rim, 57cm high, 33cm diameter

£200-300



311

312

A pair of Victorian mahogany hall chairs, circa 1850, the oval backs with central moulded cartouche, each with indistinct chair makers stamp, 89cm high

£200-300



312

313

313

A Kazak or North Caucasian runner, approximately 320 x 95cm

£400-600





314

314

A George III mahogany tripod occasional table, circa 1810, 73cm high, 61cm diameter

£300-500



315

315

A late George III mahogany Pembroke work table, circa 1810, 71cm high, 78cm wide, 46cm deep

£200-300



316

316

A George III mahogany Canterbury, circa 1810, with a frieze drawer and on ring-turned legs, 56cm high, 46cm wide, 31cm deep

£300-500



317

317

A late George III giltwood and composition overmantel wall mirror, circa 1810, the frieze with figural scene flanking a small convex plate above the triptych plates, 93cm high, 143cm wide

£400-600

318

A George III bowfront chest of drawers, circa 1810, probably Scottish, of tall proportion, 158cm high, 117cm wide, 58cm deep

£600-800



318



319
British School (19th century)
Landscape with wheat sheaves
Oil on canvas
Indistinctly signed and dated 1883 (lower right)
72 x 91.5cm (28¼ x 36 in.)

£400-600

320

An early Victorian mahogany side table, circa 1840, with two drawers, each stamped Waterer & Son Chertsey, 75cm high, 107cm wide, 56cm deep

Waterer, James & Son, Chertsey, Surrey, upholsterer and furniture broker (1826-39). A small table with two drawers is recorded with an impressed mark on the drawer edges 'J Waterer & Son, Chertsey'. In style the table is c. 1840. [D; V&A archives]

£400-600



320



321

321
A Victorian walnut X framed stool, circa 1850, 45cm high, the seat 48cm wide, 45cm deep

£200-300



322

322

A set of six William IV padouk dining chairs, circa 1835, attributed to Gillows, each with a central anthemion to the cresting rail, 87cm high, 47cm wide, 50cm deep

Several similar, but not identical chairs, are illustrated in Susan E. Stuart, *Gillows of Lancaster and London, 1730-1740*, Vol 1.

£600-800

323

An early Victorian mahogany extending dining table, circa 1850, with one additional leaf insertion, 74cm high, 254cm long (fully extended), 125cm wide

Provenance:
Property from a Private Collection

£300-500



323



324

324
Vienna, Seutter (Mattaeus), Vienna, a hand coloured city plan with title panel and inset text-box, above a panoramic view of the city, [1730 or later], mounted, framed and glazed, with presentation plaque affixed, 67cm x 75cm overall

£200-300



325

325
A Dutch walnut side table in early 18th century style, probably incorporating some period elements, 69cm high, 74cm wide, 56cm deep

£300-500



326

326
Two similar James II oak chairs, circa 1685, each with typical high back above the solid seat, 117cm and 120cm high respectively

£400-600

327
A Continental, probably German, carved stone corbel head, probably 16th century, approximately cm high, cm wide

£300-500



327



328

328
A Charles II carved oak court cupboard, circa 1665, possibly North England, 170cm high, 158cm wide, 63cm deep

£500-800

329
A Mashad carpet, signed, approximately 430 x 320cm

£700-1,000



329



330

330

A gilt brass and moulded glass table lamp, 20th century, wired for electricity, 57cm high including electrical fitment

£300-500

331

A mahogany and parcel gilt sofa table, circa 1825 and later, with two frieze drawers and opposing false drawers, 73cm high, 124cm wide, 65cm deep

£300-500



331

332

A William IV mahogany chaise longue or day bed, circa 1835, 76cm high, 73cm wide, 181cm long

£500-800



332

333

Attributed to Valentine Delawarr (Australian 1852-1918)

Sunrise over the [?] mountains as seen from Ambleside, Tasmania
Oil on canvas

Signed (lower right) inscribed with title to label (verso)

30.5 x 61cm (12 x 24 in.)

£500-700



333

334 Y

A William IV rosewood and upholstered armchair, circa 1835, on white porcelain castors, 78cm high

£500-700



334

335 Y

A George IV rosewood side cabinet, circa 1825, with four grille doors, 92cm high, 168cm wide, 43cm deep

£300-500



335



336

336

A George III mahogany wall mirror, circa 1760, surmounted by a pierced anthemion and scroll cresting, 88cm high, 51cm wide

£700-1,000



337 (set of eight)



337

A set of eight carved hardwood dining chairs in George III style, 20th century, after the designs of Thomas Chippendale, to include a pair of armchairs

£500-700

338

A two handled gilt brass pedestal cup and cover, late 19th century, moulded in relief with Greek mythological figures, probably Hylas and Naiads, the cover surmounted with a Bacchic Putto, on a red marble base, 51cm high

Provenance:

From the collection of the late Selwyn Demmy

£500-700



338



339

339

A mahogany sideboard in George III style, 19th century, of semi-elliptical outline, 91cm high, 122cm wide, 52cm deep

£500-800

340

A North West Persian carpet, approximately 382 x 303cm

£600-800

340





341

341
A pair of curtains, recently manufactured from Jean Monro rhododendron sprig pattern fabric, approximately 144cm wide at the top, 280cm long, together with two green twist tiebacks

£300-500

342
A Victorian walnut and cream linen upholstered sofa, circa 1890, of Chesterfield type, 69cm high, 190cm wide, 90cm deep

£600-800



342

343



343
A modern Persian carpet, part silk, approximately 438 x 310cm

£600-1,000

344
A pair of curtains, recently manufactured from Jean Monro rhododendron sprig pattern fabric, approximately 83cm wide at the top, 270cm long

£300-500

345
A Victorian cream painted dresser, late 19th century, 197cm high, 235cm wide, 44cm deep

£400-600



344



345



346

346
Continental School (19th century)
Figure crossing a bridge
Oil on canvas
45.5 x 62cm (17¾ x 24¼ in.)

£500-700

347
A Victorian mahogany three tier whatnot, circa 1870, 81cm high, 66cm wide, 36cm deep

£200-300

348 Y
A pair of Victorian rosewood stools, circa 1850, each rectangular top above four angled supports with finials and applied spheres, united by conforming X-stretcher, 43cm high, 46cm wide, 46cm deep 19th C book?

£600-800



348



347



349
A Victorian mahogany dressing mirror, mid 19th century, the arched plate on turned supports, 71cm high, 69cm wide, 29cm deep

£300-500



349



350



350
A pair of Victorian giltwood and needlework inset pole screens, mid 19th century, each 130cm high

£300-500

351
A Victorian figured walnut pedestal cupboard, circa 1870, 80cm high, 40cm wide, 40cm deep

£300-500



351



352

A carved oak longcase clock, with eight-day bell striking movement, the 12inch arched brass dial with applied spandrels to the angles and with moon phase automaton to the arch, the Roman numeral chapter ring bearing inscription for Arthur Downes and with subsidiary seconds dial, the case heavily carved, 225cm high

Provenance:

From the collection of the late Selwyn Demmy

£400-600



353



354



353

A pair of George II oak sgabello hall chairs, circa 1740, each with a stamped 'B' to the rear, each 96cm high

£300-500

354

A North West Persian runner, probably Hamadan, approximately 514 x 101cm

£400-600

355

A George II walnut and parcel gilt composition wall mirror, mid 18th century, 94cm high, 54cm wide

£1,200-1,800



355

356

An Irish George II mahogany tea table, circa 1750, the rounded rectangular top above a shaped apron, on cabriole legs with shell-carved knees and webbed pad feet, 75cm high, 88cm wide, 41cm deep

£800-1,200



356



357



357Y

Two giltwood framed fans, one with an ivory handle, late 18th century, decorated with 'miniatures' to the leaves, the other with ebonised and parcel gilt handle, probably early 19th century, with exterior scene to the leaves, overall 40cm high, 62cm wide

£700-1,000



358

358Y

A French kingwood and tulipwood marquetry jardinière, circa 1870, with Sevres style porcelain plaques and gilt metal mounted through out, and with removable liner, 18cm high, 41cm wide overall, 27cm deep

£300-500

359

A pair of French walnut and parquetry side tables, late 19th century, 78cm high, 75cm wide, 43cm deep

£400-600



359



360

A pair of French patinated and gilt bronze five light candelabra in Neoclassical style, circa 1870, each with avine finial above squat and waisted urn sockets on arms around a central boss, the tapered and reeded shafts descending through fircone and foliate cast circlets to triform bases, each with three panther headed monopodia interspersed with stylised acanthus, 93cm high

£1,500-2,000

361Y

A kingwood, burr walnut, and gilt metal mounted side cabinet in Napoleon III style, 20th century, with striated stone top, the doors with applied roundels with classically draped maidens, 100cm high, 127cm wide, 42cm deep

Provenance:

From the collection of the late Selwyn Demmy

£1,200-1,800



360



361



362

362 Y

A George III mahogany, inlaid, and tulipwood crossbanded card table, circa 1800, of semi-elliptical outline, the hinged top opening to a green baize inset playing surface, 73.5cm high, 92.5cm wide, 44cm deep

£300-500



363

363

A pair of George III mahogany armchairs, circa 1810, each with a bar back inset with burr yew

£600-800

364

A George III mahogany and marquetry banded clothes press, circa 1800, 178cm high, 133cm wide, 68cm deep

£500-800



364

365

A George III mahogany dressing table, circa 1790, the hinged top enclosing a fitted interior with an adjustable mirror, 86cm high, 61cm wide (when closed), 51cm deep

£300-500



365



366

366

A mahogany and inlaid chest of drawers, circa 1790 and later, with brushing slide above four long graduated drawers, 92cm high, 85cm wide, 46cm deep

£300-500

367

A pair of painted wood tripod tables, in George III style, early 20th century, each decorated *en-grisaille* with neo-classical designs, the tilt-tops with ovals of figures with birds, a fox and a tortoise amongst clouds, each bearing the number 'No 137d' to the blocks, 73cm high, 42cm wide, 33cm deep

£300-500



367



368

368

A Continental gilt metal and glazed hall lantern, late 19th century and refitted, the ovoid frame cast with recessed foliage and inset with moulded cabochons and bowed oval panes, 65cm high excluding chain

Provenance:
Purchased in these rooms, Property from the Ballyedmond Collection, 30th July 2020, Lot 185

£400-600



369

369

A pair of Victorian mahogany and glazed hanging display cabinets, circa 1885, the interiors with mirrored backs and adjustable glass shelves each 78cm high, 72cm wide, 24cm deep

£500-800



370

370

A pine hall bench or seat, late 19th/early 20th century, of long proportion, possibly from waiting room or station platform, 85cm high, 284cm long, 43cm deep

£250-350

371

After Rosa Bonheur (1822-99), a bronze Ewe, early 20th century, inscribed to the edge 'Rosa B' and to the base 'IVI(?)', 10cm high, 22cm wide

Provenance:
From the collection of the late Selwyn Demmy

£300-500



371



372

372

A Victorian mahogany games table, circa 1860, in the manner of Gillows, the hinged top enclosing inlaid board, 72cm high, 70cm wide, 41cm deep

£300-500

373

A pair of Victorian oak hall chairs, mid 19th century, the shaped backs with central star, stencilled to the underside FROM FREEMANS / MANUFACTORY / ST ANDREWS NORWICH, each 88cm high

£200-300



373



374

374

A pair of Continental grey painted and parcel gilt wall mirrors, 19th century, in trumeau manner, each 183cm high, 61cm wide

£600-800

375

A pair of French giltwood armchairs, circa 1860, with later checked upholstery, 88cm high

£600-800



375



376

376

A cut glass six arm chandelier, 20th century, approximately 101cm high, 83cm diameter

£300-500

377

A sculpted white marble bust of a lady, 19th century, 34cm high, now on an associated alabaster column, 99cm high

£400-600



377

378

An oval Aubusson carpet, approximately 455 x 293cm

£300-500



378



379 (set of eight)

379
A set of eight Regency mahogany and brass inlaid dining chairs, circa 1820, each with bar-back and X-splats

£600-800

380
A Regency mahogany dining table, circa 1815, in the manner of Gillows, with two additional leaf insertions, on reeded legs, 72cm high, 253cm long (extended), 112cm wide

£1,200-1,800



380

381
A George III polychrome floral painted tea caddy, early 19th century, the hinged lid enclosing two lidded canisters and central mixing bowl well containing an associated bowl, 15cm high, 31cm wide, 14cm deep

£400-600



381



382

382
A mahogany plate and cutlery stand in Regency style, late 19th century, stamped GILLOWS 2853 to the underside, 68cm high, 33cm wide, 58cm deep

£400-600

383
Regency mahogany wine cooler, early 19th century, the lid enclosing a lead lined and divided interior, 50cm high, 68cm wide, 45cm deep

£400-600



383



384

384
Attributed to Mark William Fisher
(American/British 1841-1923)
Cattle in a meadow before a windmill
Oil on board
Indistinctly signed (lower right)
31 x 40cm (12 x 15½ in.)

£300-500

385
A Victorian walnut cabinet bookcase, circa 1870,
165cm high, 117cm wide, 42cm deep

£400-600



385



386

386
A Victorian walnut and marquetry library table,
circa 1860, on pierced lyre supports, 17cm high,
124cm wide, 58cm deep

£400-600



387

387
After Albert Marionnet (1852-1910), a desk stand
mounted with an eagle, early 20th century, the eagle
with wings outstretched on a rocky ledge, the base with
two inkwells and inscribed 'A. Marionnet' to the front
edge, 22.5cm high, 37cm wide

Provenance:
From the collection of the late Selwyn Demmy

£300-500

388
A walnut pedestal desk, late 19th/ early 20th century,
77cm high, 147.5cm wide, 73cm deep

£2,000-3,000



388



389

389

A Victorian mahogany desk armchair, circa 1860, the upholstered bar back above the spindle uprights, the solid seat on turned tapering supports united by a crinoline stretcher, 95cm high

£200-300



390

390

A late Victorian mahogany collectors cabinet, circa 1890, the moulded panel doors enclosing an arrangement of 26 drawers, 90cm high, 78cm wide, 41cm deep

£300-500

391

An early Victorian mahogany whatnot, circa 1840, the top tier with moulded gallery, the third tier with a frieze drawer, 132cm high, 55cm wide, 42cm deep

£500-700



391

392Y

A Swiss walnut and tulipwood banded musical box, unsigned, late 19th century, playing a choice of six airs via a 13.5 inch cylinder and combs, on a gilt brass bed, with winding lever to the left and selection levers to the right, the lid with applied tune-sheet, 23cm high, 64cm wide, 30cm deep

£800-1,200



392

393Y

A Victorian rosewood library table, by Gillows of Lancaster, circa 1850, with two blind frieze drawers, one stamped for the maker, 73cm high, 108cm wide, 61cm deep

£700-1,000



393



394

394

A pair of carved wood and polychrome decorated centrepieces or comports, late 19th century, each with dished top decorated with fruit above a naturalistic stem and spread foot ornamented with perching birds, one with an old paper label to the underside for A BOISSELIER / SCULPTEUR FAB / FONTAINEBLEAU, 27cm high, 31cm wide

£300-500

395 Y

A Sheraton Revival satinwood, tulipwood banded, and polychrome painted side table, circa 1905, 70cm high, 56cm wide, 37cm deep

£300-500



395



396

396

A Sheraton Revival satinwood and polychrome painted sofa table, second half 20th century, 74cm high, 127cm wide (open), 51cm deep

£250-350

397

A pair of carved, pierced, painted and gilt soft wood wall panels, late 19th/early 20th century, decorated with a spear and stylised foliage, 143cm x 22cm

£200-400

398

A pair of cream painted pine two tier plant stands, in Sheraton taste, 19th century, of semi-elliptical outline, 77cm high, 77cm wide, 38cm deep

£600-900



398



397

399

A Sheraton Revival satin walnut and polychrome painted window seat, first quarter 20th century, with rattan panels throughout, 71cm high, 97cm wide, 35cm deep

£250-350



399



400

400

A coco de mer nut, *Lodoicea maldivica*, naturalistically presented 31cm x 32cm

£600-800



401

401

A Chinese vase painted with an air dragon, later fitted as a lamp, 65cm high excluding fittings

£200-300

402

A red lacquer and gilt chinoiserie decorated open bookcase, in George III style, early 20th century, with three height adjustable shelves, 133.5cm high, 72cm wide, 38.5cm deep

£300-500

402



403

403

After Alfred Barye (1839-1882), a bronze model of a golden pheasant, first half 20th century, on a gilt metal base, bearing foundry mark inscribed, 'PH. GOELZER / PALLE', 22.5cm high overall

Provenance:
From the collection of the late Selwyn Demmy

£500-800



404

404

An Anglo-Indian parquetry panel, 19th century, now set in a black lacquered table base, 69cm high, 52cm wide, 52cm deep

£300-500

405

A Victorian painted and embossed leather four fold screen in 17th century style, 19th century, 186cm high, each panel 56cm wide,

£800-1,200



405



406 (part lot)

406
Italian School (18th century)
A set of four classical urns
 Engraving
 Plate: 26 x 15.2cm (10 x 5 in.) Overall 48.5 x 44.5cm (19 x 17 1/2in.) (4)

Provenance:
 Sale, Christie's, *British and Continental Pictures*, 19 July 2006, lot 2167

£300-500

407

A green patinated bronze figure of The Dancing Faun of Pompeii, After the antique, early 20th century, on a pale yellow marble base, 35cm high

Provenance:
 From the collection of the late Selwyn Demmy

£400-600



407

408

A small bronze model of the 'Warwick' vase, first quarter 19th century, with applied roundel 'Réduction Mécanique A. Collas Brevete', 13.5cm high

The Warwick Vase is an ancient Roman (2nd century and partially restored) marble vase with Bacchic ornament that was discovered at Hadrian's Villa, Tivoli circa 1771 by Gavin Hamilton. Hamilton, a Scottish painter-antiquarian and art dealer in Rome sold it to Sir William Hamilton from whom it passed to his nephew the 2nd Earl of Warwick from where it takes its name. It is now held in the Burrell Collection near Glasgow, Scotland.

£250-350



408



409

409

After Antonio Canova (Venetian 1757-1822), A bronze model of a recumbent lion, 19th century, modelled resting on an integral bronze plinth, 36cm long, 18cm wide (approximately)

On his death in 1769 Pope Clement XIII was laid to rest in the Vatican, but Senator Abbondio Rezzonico (the nephew of the late pontiff) commissioned Canova to create a more fitting tomb for him in St Peter's. The work which includes Canova's lions in marble was completed in 1792, when the late pope's remains were removed to the new tomb.

£300-500

410

A George III mahogany drum library table, circa 1800, the tooled leather inset top above an arrangement of four drawers interspersed with false drawer fronts, on a turned stem and out swept legs, 77cm high, 99cm diameter

Provenance:
 Philip Duncan Ltd, 1968 (£795)

£800-1,200



410



411 Y

A Louis XV tulipwood and kingwood crossbanded secretaire a abattant, by Jean Lapie, circa 1770, the fall opening to an arrangement of pigeon holes and drawers above a leather inset writing surface, the underside of the marble stamped 'J.LAPIE' twice and 'JME' once

139cm high, 95,5cm wide, 38,5cm deep

£1,000-1,500



412

A Louis XVI cream painted fauteuil, by Jean-Baptiste-Claude Sene, late 18th century, with stamps to underside of front seat rail 'J. B. SENE' and 'JME', 93cm high, 60cm wide, 51cm deep overall

£600-800

413

A Continental giltwood wall mirror, circa 1870, 170cm high, 98cm wide

£400-600

414

A pair of blue porcelain and gilt metal mounted table lamps, with flanking ram's heads, 73,5 cm high overall

£300-500



413



415Y

A French kingwood and gilt-metal mounted bureau plat, in Louis XV style, late 19th/early 20th century, of serpentine outline, with a tooled leather inset above three frieze drawers and opposing false drawers, on cabriole legs, 76cm high, 115cm wide, 66cm deep

£500-800



416

416
A Regency mahogany side table or dressing table, circa 1820, 83cm high, 92cm wide, 55cm deep

£400-600



417

417
A Regency mahogany and upholstered stool, circa 1815, in the manner of Gillows, 44cm high 74cm wide, 42cm deep

£200-300



418

418
An Afshar rug, approximately 184 x 159cm

£250-350

419

A Regency penwork tea caddy, circa 1820, the exterior decorated in Chinoiserie taste, the lid enclosing a pair of canisters and aperture for a mixing bowl, 20cm high, 31cm wide, 17cm deep

£400-600



419



420

420

A Regency mahogany four tier whatnot, circa 1820, the lowest tier with a drawer, 165cm high, 46cm wide, 46cm deep

£300-500



421

421

A mahogany bedside cupboard, circa 1825 and later, 73cm high, 69cm wide, 51cm deep

£400-600



422

422
A late Victorian walnut breakfront open bookcase, late 19th century, 121cm high, 129cm wide, 39cm deep

£400-600

423
A walnut and upholstered armchair, late 19th/early 20th century, in the manner of Howard and Sons, with later upholstery and loose cover, 88cm high

£300-500



423

424
A set of Victorian brass and steel fire irons, second half 19th century, each brass handle above a spiral twist stem, the shovel 78cm long

£500-700



424

425
An oak and brass mounted mechanical bellows, late 19th century, with large hand drive wheel, 78cm long

£300-500



425

426
Two copper log buckets, late 19th century, both with rivetted seam around the lower section, the larger 33cm high, 50cm diameter, the other 32cm high, 43.5cm diameter

£300-500



426

427
A oak and leather upholstered club fender, early 20th century, 48cm high, 168cm wide, 42cm deep, internal measurements: 142cm wide, 30cm deep

£400-600



427



428

428 Y

A group of three walking sticks, various dates 18th/19th century, each with a malacca shaft, one with an ivory and studwork knob-shaped handle, 88cm another with a bulbous ivory shaped handle with rosette decoration, 98cm long, the third with a bone and studwork 'Opera' style handle, 91cm long

£500-800

429

A George II walnut chest of drawers, circa 1740, with arrangement of two short and three long drawers, on bracket feet, 85cm high, 92cm wide, 56cm deep

£500-700



429



430

430

A mahogany and damask style upholstered armchair, mid 18th century and later, the back and wings above the outscrolled arms and removable seat cushion, on cabriole front legs terminating in claw and ball feet, 112cm high, 91cm wide, 82cm deep

£700-1,000

431

A Mahogany and giltwood wall mirror in George II style, after the manner of William Kent, 155cm high, 82cm wide

£700-1,000



431

432

A George II triple folding combined tea and card table, circa 1750, of semi-elliptical outline, 76cm high, 77cm wide, 37cm deep

£600-800



432



433

433 Y

A rosewood desk tidy, first quarter 19th century, of rectangular form, with slatted sides and shaped divider incorporating a carry handle, the ends with further compartments, 11cm high, 31cm wide, 12.5cm deep

£400-600

434 Y

A William IV rosewood pedestal occasional table, circa 1835, 73cm high, the top 43cm diameter

£500-800

435 Y

A William IV rosewood folding card table, circa 1835, the hinged and revolving top opening to a baize inset interior, 73cm high, 102cm wide, 50cm deep

£600-800



435



434

436

A woolwork picture of the Royal Navy ship HMS Ruby, mid 19th century, depicted on a calm sea with lighthouse in distance and titled in red, maple framed and glazed, 68cm high, 79cm wide overall

There have been nine ships of the name HMS Ruby, this is most likely to be the *Gleaner* class gunboat built in Deptford launched 7th October 1854 and broken up in 1868.

£300-500



436



437

437

A collection of twelve pieces of turned wood fruit, including pears, plums, apples, and cherries, in specimen timbers, contained within a rough hewn walnut bowl, approximately 31cm diameter (shaped)

£140-180

438 Y

A William IV rosewood side cabinet, circa 1835, with three quarter gallery above the four doors interspersed with carved pilasters, 97cm high, 182cm wide, 40cm deep

£400-600



438



439

439

A resinous bronze group of a fawn and lady modelled in *flagrante delicto*, late 20th century, inscribed *E FOUBERT*, 17cm high

£250-350



440

440

After Antonio Canova (Venetian 1757-1822), A sculpted serpentine model of a recumbent lion, modelled resting on an integral plinth, 20cm high, 40cm long, 15cm wide

£200-300



441

441

An Austrian bronze model of a Greek archer, second quarter 20th century, inscribed *Effamberger*, with indistinct foundry mark, probably, *Bronze Garantie RBH Werkstätten Bronzeguss*, on a polished black marble base, 38cm high overall

£400-600

442

A bronze bust of Achilles with winged helmet, early 20th century, on a later waisted socle and square base, 36.5cm high

Provenance:

From the collection of the late Selwyn Demmy

£300-500



442



443

443

A modern patinated resinous bust of winged Mercury, indistinctly signed and dated 1973 verso, 60cm high

Provenance:

From the collection of the late Selwyn Demmy

£400-600



444

444
A giltwood and composition oval wall mirror, 20th century, after the manner of Robert Adam, with flanking winged sphinxes, 113cm high, 115cm wide

£1,000-1,500



446 (set of eight)



447

446

A set of eight mahogany dining chairs in George III style, early 20th century, each with four vertical splats to the backs

£400-600

447Y

A George III satinwood, tulipwood and mahogany crossbanded folding card table, circa 1790, 72cm high, 92cm wide, 45cm deep

£400-600



445

445

A George III mahogany and marquetry serving table, circa 1790, of bowfront outline, 110cm high, 218cm wide, 70cm deep

£1,000-1,500

448

448

An Isfahan carpet, approximately 434 x 310cm

£700-1,000





449 (part lot)

449
Hilda Mary Sides (British 1871-?)
Views of a country estate and the grounds
Watercolour
Each signed and four dated 1924
Various sizes, the largest 40 x 56cm (15½ x 22 in.) (5)

£500-700



450

450
A mahogany artist's easel, 19th century, 194cm high,
84cm wide

£300-500

451
A pine side cabinet, 20th century and incorporating
some earlier timbers, the top doors retracting into
the cabinet top, 235cm high, 127cm wide, 66cm
deep

£1,000-1,500

451

452
A polychrome painted metal hall lantern in 17th century Italian style, 19th
century, with etched glass plates, approximately 102cm high

£400-800

453
A Victorian pine and sycamore dresser base, late 19th century, of
'farmhouse' proportion 91cm high, 220cm wide, 47cm deep

£1,000-1,500



452



453

454

454
A Bidjar carpet, approximately
396 x 275cm

£600-800



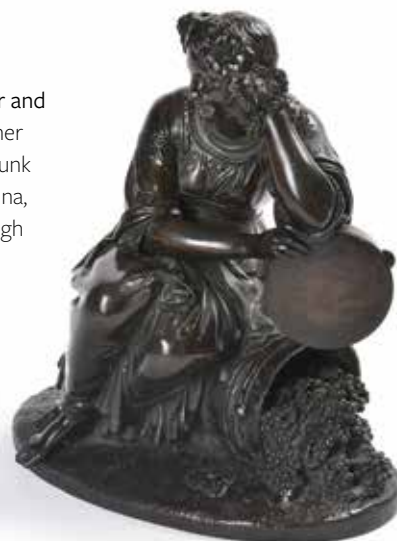


455

455

A bronze group of a mother and child, 19th century, the mother modelled sitting on a tree trunk decorated with flora and fauna, inscribed *Salmoson*, 28cm high

£250-350



456

456

A seated bronze of a female Bacchante, in the manner of Clodion (1738-1814), mid 19th century, 26.5cm high overall

Provenance:

From the collection of the late Selwyn Demmy

£400-600

457Y

A Napoleon III ebonised, gilt metal mounted, mother of pearl and brass inlaid side cabinet, mid 19th century, with a shaped Carrara marble above the moulded door opening to a shelved interior, 111cm high, 84cm wide, 41cm deep

Provenance:

From the collection of the late Selwyn Demmy

£700-1,000



457



458

458

A pair of French gilt and patinated bronze candelabra, 19th century, in rococo taste, with triple branches and putti supports, on dolphin decorated bases, 46cm high, 24cm wide

£400-600

459Y

Two similar Napoleon III 'Boule' card tables, circa 1870, typically decorated with tortoiseshell and gilt brass, one in premier-partie, 79cm high, 92cm wide, 46cm deep, the other in contra-partie, 77cm high, 98cm wide, 45cm deep

£1,200-1,800



459



460

460 Y

A specimen timber and inlaid dome top box, 19th century, in Italian taste and with bands of Tunbridgeware type decoration, 16cm high, 27cm wide, 15cm deep, containing a collection of ivory, treen and similar items; including a pepper box and cover, 5cm high, a marrow scoop, 10cm long, four various snuff 'shoes', a further shoe, a George III mahogany and inlaid tea caddy, 11cm high, and a lacquer pot lid, 9.5cm diameter

£300-400



461

461

An early Victorian mahogany library table, circa 1840, with leather inset top and three drawers to each long side, on lobed tapering legs, 79cm high, 228cm wide, 136cm deep

£600-800

462

An Isfahan carpet approximately 420 x 271cm

£1,000-1,500



462



463

463

A Victorian woolwork and beadwork wall panel, circa 1880, with riverscape vignettes viewed through ruins, all within floral and geometric borders, 102cm high, 181cm wide

£300-500

464

A short flight of stained pine library steps in Victorian style, 20th century, 111cm high

£200-300



464

465

A Victorian mahogany and black leather upholstered library armchair, circa 1860, 93cm high

£300-500



465



466

466

Three pairs of curtains, recently manufactured from Claremont Semis Montrichard fabric, comprising a pair approximately 110cm wide at the top, 225cm long, and two pairs approximately 100cm wide at the top 230cm long

£300-500

467

A cast composition bust of a classical gentleman, late 20th century, with tousled hair and face inclined, 71cm high

£400-600



467

468

A limed oak and upholstered Duchess Brise, in Louis XVI style, 20th century, comprising: an armchair, a shaped stool and a low armchair, 162cm overall

£400-600



468

469

A pair of cut glass chandeliers, 20th century, each approximately 84cm high, 76cm diameter

£700-1,000



469 (one of a pair)

470

A pair of beech salon chairs, in the French Louis XV style, mid 20th century, each 98cm high

Provenance:
From the collection of the late Selwyn Demmy

£400-600



470



471

471

A walnut charger stand, second quarter 19th century, with high shaped back above the recess and weighted plinths, 52cm high, 42cm wide, 14cm deep

£300-500

473

A Regency mahogany wine cooler, circa 1820, with vacant interior, flanking fleur-de-lis handles and on lion paw feet, 46cm high, 66cm wide, 50cm deep

£300-500



472

472

A Scottish William IV mahogany sideboard, circa 1835, with pedimented raised superstructure above the arrangement of drawers, 135cm high, 181cm wide, 63cm deep

£400-600



473

474

A late Regency mahogany occasional table, circa 1820, the rectangular tilt top above a turned stem and hipped outswept legs, 74cm high, 75cm wide, 45cm deep

£300-500

475

A Regency mahogany dining table, circa 1820 and later, with one additional leaf insertion, 72cm high, 122cm wide, 204cm long (extended)

£500-700



475



474

476

476

A Persian carpet, probably Qum, signed to the border at one shorter end, approximately 300 x 251cm

£400-600





477

A George III mahogany clothes press, circa 1770, the panel doors enclosing four slides, the base with two short and two long drawers, 177cm high, 129cm wide, 63cm deep

£600-800



477A

478

A Kashan carpet, the pale field decorated with stylised flowerheads and vines, within a similarly decorated border, approximately 384 x 305cm

£800-1,000



478

479

A pair of modern Chinese polychrome porcelain table lamps, in Kakiemon palette and with reeded baluster bodies, 46cm high excluding fitment

£300-500



479



480

480

A walnut and mahogany piecrust tripod table, in George III style, 20th century, the radial figured top above a turned stem, 67cm high, 68cm wide

£250-350

481

A George III mahogany chest of drawers, circa 1780, with two short and four long drawers, 107cm high, 107cm wide, 58cm deep

£300-500



481



482

An Empire oil lamp base, circa 1810, of columnar form the base with label for Carcel / inventeurBrevetti / rue de carbe sec no. 18 A Paris, now converted to electricity, 36cm high overall

£500-800

483

A Continental mahogany and inlaid decanter box, early 19th century, the domed lid enclosing a lined interior with a set of gilt decorated decanters, and a pair of liquor glasses, 23cm high, 28.5cm wide, 19.5cm deep

£400-600



483



484

484

A French mahogany and gilt metal mounted card table, late 18th century, 78cm high, 113cm wide, 58cm deep

£800-1,200

485

A picture clock, mid-19th century, with oil on canvas of a continental estuary and buildings, the townhall with inserted enamel dial, with three-train gong striking movement, 84cm high, 100cm wide

£300-500



485



486

486

An ebonised chest of drawers in Directoire style, 19th century, the grey marble top above the arrangement of three drawers, 82cm high, 120cm wide, 52cm deep

£400-600



487

487

A pair of French gilt metal chenets, each with swagged square section urn shaped finial above a platform, , 44cm high and associated fender bar, together with a further pair of French chenets, last quarter 19th century, the urn finial above a mask, 54cm high, and a fender bar

£200-400



487



488
English School (19th century)
Portrait of a gentleman, seated, holding a book, said to be Thomas Allestree (1817-1861)
Oil on canvas
91 x 74cm (35¾ x 29 in.)

£300-500

488



489

489
A pair of George III mahogany armchairs, early 19th century, each with vertical splats to the back with acanthus capitals

£600-800



490

490
A George III mahogany and pine bachelor's chest of drawers, circa 1780, with brushing slide above the arrangement of drawers, 84cm high, 82.5cm wide, 47cm deep

£600-800



491

491
A pair of early George III mahogany side tables, circa 1760, each of semi-elliptical outline, 75cm high, 111cm wide, 56cm deep

£400-600

492
A mahogany and upholstered sofa, circa 1780 and later, the yoke shaped back above a pair of scroll arms fronted by carved terminals incorporating pierced elements, the rectangular seat above moulded square section legs, 101cm high, 250cm wide, 93cm deep

£1,000-1,500



492



493

493

A carved giltwood wall mirror in Rococo taste, of recent manufacture, 105cm high, 132cm wide

£500-800

494

A pair of giltwood and marble topped console tables, late 19th century and later, of narrow 'bedside' proportion, almost certainly a side table that has been converted to a pair of consoles, each 77cm high, 52cm wide, 44cm deep

£500-800



494



495

495

A pair of giltwood and upholstered bergère armchairs, in Louis XV style, 20th century, 88cm high

£400-600

496

A French cast iron fire back, 18th century, decorated in relief with three cherubs and a wolf in the centre, beneath two perched birds, within a C - scroll cartouche and foliate swages, 94.5cm high, 78cm wide (overall)

£600-800



496

497

A steel bronze fire grate Louis XV style, 53cm high, 88cm wide, 47cm deep, together with a pair of associated chenets in similar style, 45cm high

£600-800



497



498

498

A pair of ormolu chenets in Rococo taste, 19th century, composed of foliate scrolls, 34cm high, 39cm wide, together with another pair of chenets, with patinated bronze models of children in 18th century dress above gilt scrolls, 27cm high

£300-500



499

499

A Victorian giltwood and composition overmantel wall mirror, third quarter 19th century, 201cm high, 191cm wide

£500-700

500

A Victorian mahogany compactum, second half 19th century, with central arrangement of two short and six long drawers, flanked by hanging cupboards, above a plinth base, 175cm high, 275cm wide, 59cm deep

£300-500



500



501

501 Y

A Victorian rosewood and parquetry occasional table, circa 1850, the circular top above a faceted stem and tripartite base, 72cm high, the top 76cm diameter

£300-500



502

502

A Victorian mahogany writing table, circa 1880, with tooled leather inset top above the arrangement of drawers and opposing false drawers, on faceted bulbous feet, 75cm high, 147cm wide, 90cm deep

£400-600

503

503

A Bessarabian kilim, approximately 275 x 184cm

£600-900





504

504
A pair of scumbled soft wood and cane work chair commodes, 20th century, 101cm high, together with another pair of similar mahogany commodes in George III style, 20th century, 93cm high

Provenance:
Cowdray Sale

£300-500

505

After Sylvain Kinsburger (French 1855 - 1935) A bronzed model of a Putto astride a dolphin, 20th century, inscribed verso KINSBURGER, on a grey and white marble base, 53cm high

Provenance:
From the collection of the late Selwyn Demmy

£400-600



505

506

A part silk Persian rug, modern, with floral beige and salmon colours, approximately 302 x 205cm

£300-500



507

507

Serge Marshennikov (Russian b. 1971)

The bath of Aphrodite

Oil on canvas

Signed in Cyrillic (lower right) signed and dated 2006 (verso)

97 x 162cm (38 x 63¾ in.)

£3,000-5,000

508

A pair of painted console tables with simulated marble tops, modern, 82cm high, 136cm wide, 58cm deep

£800-1,200



508 (one of a pair)



509

509

A George III brass hexagonal hanging hall lantern, circa 1790, 29cm wide, 62cm high overall including ceiling hook

£400-600

510

A mahogany and inlaid longcase clock case in George III style, incorporating various elements, the 13inch arched dial, with boss signed TIME / Stayeth not, the Roman numeral dial with Arabic 5 minutes to the outside track, with subsidiary moonphase and date wheel, the chapter ring signed for Jo Batty / Halifax, now with an eight-day gong striking movement, the case 222cm high overall

£300-500



511

511 Y

A George III rosewood and satinwood banded tea table, circa 1790, 77 94 44cm deep

£400-600



510



512

512

A set of polished steel fire irons in George III style, 19th century, each with an urn pattern handle, the square ended shovel 75cm long

£400-600

513

A brass and steel firegrate, in George III style, 19th century, 87cm high, 100cm wide, 38cm deep

£400-600

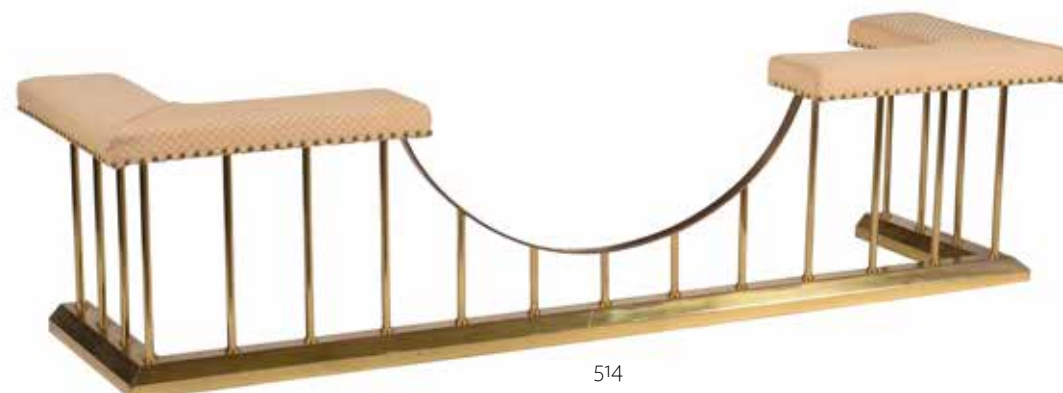


513

514

A gilt brass club fender, 20th century, the upholstered rests above the U-shaped front and cylindrical uprights, external measurements: 52cm high, 208cm wide, 57cm deep, internal: 176cm wide, 41cm deep

£400-600



514



515

515
Continental School
(late 18th/early 19th century)
A fort scene with a ship at anchor
Gouache on paper
220 x 140cm (86½ x 55 in.)

£500-800

516
A Continental walnut commode,
circa 1790, 96cm high, 125cm wide,
63cm deep

£600-800



516

517
A carved walnut day bed, in Louis XVI
style, 19th century, the double caned
back and arms above an upholstered
mattress and back seat cushion, with
Rijks Museum entry label to underside
of the seat rails, 99cm high, 166cm
long, 70cm wide

£400-600



517

518
A continental, probably Italian, giltwood
wall mirror, late 18th century,
with verre eglomise marginal plates,
72cm high, 56cm wide

£400-600

519
A continental painted three fold screen,
19th century, painted with a coastal
scene to the front, the rear with panels
with various ewers, each panel 155cm
high, 55cm wide

£400-600



519



518

520
A Continental walnut and upholstered
sofa, early 19th century, the high arched
back leading to outswept arms, above the
shaped seat, 111cm high, 207cm wide,
66cm deep

£600-1,000



520



521

521

An oak and mahogany longcase clock, second quarter 19th century, with eight-day bell striking movement, the 13.5inch painted dial with gilt pagodas to the angles, the white enamel dial with subsidiary seconds and date dials and signed R Dennet Ormskirk, the hood with swan neck pediment and outset columns above the short trunk door flanked by reeded pilasters, 222cm high overall

Provenance:

From the collection of the late Selwyn Demmy

£200-300



522

522

A Regency mahogany tripod table, circa 1820, 70cm high, 64cm wide, 48cm deep

£300-500

523



523

A Kayseri carpet, approximately 338 x 232cm

Provenance:

Private collection, previously purchased from The Rug Store, London

£500-700

524

A gilt metal chandelier in Regency taste, last quarter 19th century, the ceiling mount holding the suspension chains and the corona with the arms, each with a baluster shade, and with a similar glass terminal, approximately 85cm high, 65cm diameter

£800-1,200



525

525

A scarlet lacquered papier-mache tray, second quarter 19th century, of gothic shape, decorated with insects and foliage, stamped 'JENNENS & BETTRIDGE', later mounted as a table, 59cm high, 75cm wide, 56cm deep

Provenance:

Lady Juliet (1881-1965), who married Sir Robert Duff, 2nd Bt., Norman Adams, April 1971 (£292.50).

£300-500

526Y

A Regency rosewood and gilt metal mounted side cabinet, circa 1820, the mirror back superstructure above a pair of pleated silk panel doors, 135cm high, 109cm wide, 36cm deep

£600-800



524



526



527
Italian School (c. 1800)
The Annunciation
Oil on panel
44.5 x 32.7cm (17½ x 12¾ in.)

£300-500

528
A Continental wax figure of a monk, 19th century, under a glass dome and on an ebonised base, approximately 67cm high overall

£300-500



528

529
A Welsh oak lambing chair, of child's proportion, 61cm high

£300-500



529

530
Follower of Doménikos Theotokópoulos, known as El Greco
Christ appearing before Mary Magdelene
Oil on canvas
26.5 x 53cm (10¼ x 20¾ in.)

£200-400



530



531

531
A Flemish carved oak buffet, of 19th century construction incorporating 17th century elements, 152cm high, 150cm wide, 68cm deep

Provenance:
Sold at Christie's, London, 8th November 2007, Important Early European Furniture, Sculpture and Tapestries, Lot 143 (£3,750).

£500-800

532
A pair of wrought iron andirons in late 17th century taste, late 19th century, each with a basket top and marked 'AC', 88cm high, 31cm wide, 48cm deep

£300-500



532



533
Continental School (19th century)
Saint Catherine
Oil on cradled panel
62 x 28cm (24¼ x 11 in.)

£300-500

534 Y
An early Victorian rosewood three tier whatnot, circa 1840, 75cm high, 34cm wide, 33cm deep

£200-300



534

535
A mahogany, marquetry, and parquetry inlaid wine table, circa 1850, the top with band of fruiting vines, 73cm high, 46cm diameter

Provenance:
Formerly from a private collection, County Durham

£600-800



535

536
A small group of scientific instruments, comprising I W Herbert's London, a pocket microscope in mahogany case, a Tupman's pocket barometer, Old Bond Street London, brass case, a boxed set of hydrostatic balls for proofing spirits, and a boxwood pocket compass

£300-500



536



537

537
A Victorian walnut and upholstered conversation seat, circa 1870, 85cm high, approximately 165cm diameter

£1,000-1,500

538
A Victorian mahogany clerk's desk, the hinged fall opening to small drawers, pigeon holes, veneered and finished on all sides, 111cm high, 110cm wide, 62cm deep

£700-1,000



538



539

539
A set of six mahogany chairs in George III style, in the manner of Stratton's of Dublin, to include a pair of armchairs

£800-1,200

540
A late Victorian mahogany dining table, circa 1900, with Joseph Fitter Patent winding action and two additional leaf insertions, 76cm high, 138cm diameter (unextended), the leaves 250cm long (extended)

£300-500



540

541



541
A Tabriz carpet, approximately 191 x 298cm

£400-600

542

A large walnut 'cat', circa 1800, of traditional triform and with revolving action 57cm high

Provenance:
From a private collection Scotland

£200-400



543

544
A mahogany tilt top occasional table, circa 1760 and later, with piecrust edge and birdcage action above the lappet carved baluster and tripod base, 66cm high, 56cm diameter

£400-600



542

543
A George III mahogany two tier dumb waiter, the ribbed cone finial above hinged octagonal sections, 128cm high

£1,000-1,500



544



545

545

A pair of yellow and red silk panels, giltwood and glazed, 203cm high, 75cm wide

£300-500

546

A painted chest, probably Swedish, 20th century, 81cm high, 128cm wide, 61cm deep

£400-600



546

547

A Scandinavian, probably Swedish, polychrome painted small coffer or box, early 19th century, the domed lid enclosing a red painted interior with internal box, drawer, and large compartment, 18cm high, 34cm wide, 23cm deep

Provenance:
From a private collection, London

£300-500



547



548

548

A Scandinavian, probably Swedish, polychrome painted writing slope, early 19th century, with hinged and sloped writing surface above a frieze drawer, 21cm high, 34cm wide, 29cm deep

£300-500

549

549

A Qum rug, part silk, approximately 150 x 222cm

£300-500





550

A George II mahogany and crossbanded bureau cabinet, circa 1750, the mirrored panel doors opening to an arrangement of pigeon holes, shelves and small drawers, the fall front opening to an arrangement of pigeon holes and drawers, centred an arcaded cupboard door, above a tooled inset writing surface, 214cm high, 99cm wide, 57cm deep

For a similar example of bureau cabinet, see Christie's, London, Interiors - Style and Spirit, 26th February 2008, Lot 43 (£6,875).

£1,000-1,500



552

551

551

A George III mahogany side chair, circa 1765, in the manner of Thomas Chippendale, the serpentine top-rail above a pierced vase-shaped splat, the blue damask upholstered seat above square section front legs

£400-600

552

A Persian carpet, possibly Qum, approximately 150 x 191cm

£200-300



553

A walnut and inlaid fretwork wall mirror in 18th century style, probably incorporating period elements, 88cm high, 47cm wide

£300-500



554

554

A George III mahogany tripod table, circa 1760, 68cm high, 66cm diameter

£600-800

555

A mahogany chest of drawers in George III style, 19th century, with brushing slide above four long drawers, 74, 69, 44cm deep

£300-500



553



555



556
A Regency mahogany Pembroke table, circa 1820, 70cm high, 114cm wide (open), 98cm deep

£300-500

557
A mahogany and upholstered sofa in Regency taste, 20th century, 86cm high, 195cm wide, 80cm deep

£600-800



557



558

558
A Persian carpet, part silk, approximately 284 x 170cm

£500-700

559
A Regency mahogany three tier whatnot, circa 1820, 138cm high, 43cm wide, 43cm deep

£300-500

560
A mahogany tripod table, circa 1815 and later, 65cm high, 51cm diameter

£300-500



560



559

561
A Regency satinwood and inlaid sofa table, circa 1820, 78cm high, 134cm wide, 82cm deep

£300-500



561



562

562

A Continental, probably Italian, gilt composition and scrolling ironwork framed lobed lantern in mid-18th century style, 19th century, approximately 99cm high, 42cm square overall

£300-500

563 Y

A French satinwood, tulipwood banded, and gilt metal mounted compactum wardrobe, circa 1900, bird's-eye maple lined throughout, 220cm high, 222cm wide, 68cm deep

£500-700



563

564

A pair of carved beech and blue upholstered fauteuil in Louis XV style, 19th century

£300-500



564



565

565

A French walnut and upholstered window seat, 70cm high, 139cm wide, 38cm deep

£600-800

566

A Tabriz carpet, approximately 355 x 267cm

£1,200-1,800

566





567

A George III mahogany armchair, circa 1780, with paisley pattern upholstery, 93cm high

£500-700

568

A George III mahogany chest on chest, circa 1780, 188cm high, 119cm wide, 56cm deep

£600-800



568

569

A Kazak rug, approximately 300 x 180cm

£800-1,200



570

Attributed to William Frederick Hulk
(British 1852-1906)

A study of a cow in a landscape

Oil on canvas

Inscribed to canvas (verso)

18 x 16.5cm (7 x 6¼ in.)

£400-600



570



571

571

A George III mahogany and crossbanded folding demi-lune card table, circa 1790, in the manner of Ince & Mayhew, the hinged top opening to a green baize playing surface, 72cm high, 92cm wide, 46cm deep (when closed)

£400-600

572

A pair of George III mahogany and upholstered side chairs, late 18th century

£200-400



572



573

573 Y

A pair of ivory hand fans, mid 19th century, the circular head with ivory embroidery on a blue ground, each 38cm long, 21cm wide

£300-500

574

A Victorian mahogany cheval mirror, circa 1870, 154cm high, 91cm wide, 54cm deep

£300-500

575

Two mahogany and brass bound bedside cabinets, in 19th century campaign style, one 64cm high, the other 52cm high

£300-500



575



574

576

A Victorian mahogany dressing mirror, circa 1870, the arched plate above the stand base with flanking blind drawer compartments and central lift top box, 82cm high, 61cm wide

£200-300



576



577

577

A Victorian mahogany dressing table, circa 1860, in the manner of Gillows, with three quarter gallery above the arrangement of drawers, 81cm high, 120cm wide, 54cm deep

£400-600

578

A mahogany luggage rack, second half 19th century, 46cm high, 69cm wide, 41cm deep

£200-300



578



579

A red lacquer and parcel gilt framed wall mirror, late 18th century, the arched plate with central engraved decoration, 67cm high, 48cm wide

Provenance:

Previously from Mallett, London

£300-500

579

580Y

A George III mahogany and satinwood banded pedestal centre or breakfast table, circa 1790, the satinwood and tulipwood banded octagonal top above a tripod base, 72cm high, the top 92cm diameter

Provenance:

M. Harris, January 1968 (£390)

£600-800



580

581



581

A Tabriz carpet, approximately 426 x 320cm

£600-800



582 (set of eight)

582

A set of eight mahogany and upholstered dining chairs in George III style, 20th century

£600-800

583

A George III mahogany sideboard, circa 1790, 95cm high, 167cm wide, 71cm deep

£400-600



583

584

A pair of walnut and red and gold striped sofas, in late 19th century style, last quarter 20th century, with removable back, seat and scatter cushions, 79cm high, 185cm wide, 99cm deep

£800-1,200



584



585

A mahogany four-fold screen, late 19th/early 20th century, the panels painted with romantic Medieval style figures, 149cm high, each panel 48cm wide

£700-1,000



585

586

A Scottish satinwood bedroom suite, Alexander MacKenzie & Co. comprising: a wardrobe, 237cm high, 197cm wide, 61cm deep, stamped to the leading edge of one door ALEXANDER MACKENZIE & CO. GLASGOW, and numbered 561; a dressing table with mirrored superstructure above the inverted bow front base, on columnar supports, 159cm high, 122cm wide, 59cm deep and a set of three side chairs

£1,000-1,500



586 (part lot)

587

A Tabriz carpet, approximately 383 x 305cm

£1,000-1,500



587



588

588
A pair of mahogany and upholstered stools, in George III style, early 20th century, 53cm high, 56cm wide, 40cm deep overall

£200-300

589
A George III mahogany kneehole desk, circa 1760, 81cm high, 85cm wide, 51cm deep

£500-700



589

590
An Heriz rug, approximately 190 x 150cm

£500-700



591

A George II walnut fret-framed wall mirror, circa 1750, 70cm high, 40cm wide, together with a George III giltwood wall mirror, late 18th century, 71cm high, 46cm wide (2)

£300-500



591 (part lot)



592

592
A walnut and cross banded chest of drawers, circa 1730 and later, 93cm high, 102cm wide, 55cm deep

£300-500

593

A pair of mahogany side chairs in George III style, after the manner of Thomas Chippendale

Provenance:
West Wycombe Park Sale

£800-1,200



593



594

594 Y

A satinwood, mahogany, and rosewood banded centre table, late 18th century, 70cm high, 91cm wide, 60cm deep

£300-500

595

A pair of satin walnut side tables in George III style, last quarter 20th century, of semi-elliptical outlines and with banding and inlay to the tops, 83cm high, 115cm wide, 48cm deep

£400-600



595



596

596

A George III mahogany sideboard, circa 1790, with arrangement of drawers and tambour fronted compartment, 90cm high, 131cm wide, 55cm deep

£300-500



597 (set of eight)

597

A set of eight mahogany dining chairs in George III style, early 20th century, after the manner of Thomas Chippendale, to include a pair of armchairs

£600-800

598

A mahogany extending circular dining table, late 20th century, in the manner of William Tillman, the top with five additional leaf insertions to the circumference, above the cylinder base and outswept legs, elements serial numbered '49', 73cm high, 154cm diameter (un-extended) 215cm diameter (extended)

£800-1,200



598



599

599
A pair of Regency carved stone lion paw supports, early 19th century, 18cm high, 22cm wide

£300-500



600
An Anglo Indian carved hardwood easel, 20th century, 158cm high

£200-400



600

602

A pair of Chinese bronze lamps, 20th century, of baluster form and on turned wooden stand supports, 57cm high

£300-500



602



603

603

A black laquered and gilt decorated low centre table, circa 1920, the top decorated with exterior scenes, 36cm high, 74cm wide, 52cm wide

£250-350

604

A Japanese carved exotic hardwood cabinet with tryptic mirrored top, the chest, 114cm high, 122cm wide, 61cm deep

£800-1,200



604



601



601

A pair of hardwood folding steamer chairs, late 20th century, each 106cm high

£400-600



605

605

A George III specimen hardwood polescreen, in Hepplewhite taste, circa 1800, the inlaid column entwined with husk festoons and ribands, the turned base similarly inlaid with radiating motifs, 146cm high

Provenance:

Spink & Son, January 1971 (£325).

Literature: R. Edwards, Shorter Dictionary of English Furniture, p. 440, pl. 24.

£300-500



606

606

A George III green painted open armchair, circa 1810, the vertical splat back with canework panel, leading to the open arms, above a conforming seat and squab cushion and on tapering legs, 95cm high

£300-500

607

A George III mahogany bowfront chest of drawers, circa 1800, 104cm high, 106cm wide, 59cm deep

£400-600



607

608

A George III mahogany lady's writing table, circa 1800, with rising screen to the rear, the shaped top above a slide and one drawer, the slender cabriole legs united by an undertier, 72cm high, 51cm wide, 36cm deep

£500-800



609

609

A mahogany centre table in George III style, 20th century, 72cm high, 107cm diameter

£400-600



608

610

A five fold room screen, 20th century, covered in cotton Damask style upholstery in turquoise and beige, each panel 220cm high, 49cm wide

£400-600



610



611

611
A pair of Italian gilt metal wall appliques, 20th century, with floral and foliate scroll back above the urn terminal issuing the three arms, 105cm high, 59cm wide, 23cm protuberance overall

£300-500



612

612
A Louis Phillipe walnut and marble mounted circular centre table, mid 19th century, the marble incorporating fossilised elements, 84cm high, the top 99.5cm diameter

£600-800



613

613
A set of four pricket candlesticks in Continental Baroque taste, with leaf decoration and cherub heads to the shafts on triform scrolling legs, 48cm high to top of drip pan

£200-300

614
A Continental walnut, birch and marquetry bureau, late 18th century, almost certainly North Italian, the fall-front enclosing pigeon holes and three drawers, profusely inlaid overall with floral panels and cartouches of rustic figural scenes

Provenance:
Major-General Sir George Burns, North Mymms Park; Christie's House Sale, 24 September 1979, lot 153 (£4,683).

Cf. a bureau by Ignaz Arnd Fulda illustrated in H. Kreisel, Die Kunst des deutschen Möbels, 1970, III, fig.117.

Literature:
Another bureau, similar, was sold from the collection of Lady Phipps, Christie's, London, 31 October 1968, lot 82.

£1,500-2,500



614



615



615

George Richmond (British 1809 - 1896)

Edward Hugh Leycester-Penrhyn; Vere Leycester-Penrhyn;

Pencil and watercolour heightened with white, a pair

The first signed and dated 1859 (lower left)

39.5 x 31cm (15½ x 12 in.) (2)

Provenance:

The collection of Sir Philip & Lady Harris, No. 340ii

Sale, Christie's South Kensington, *Interiors*, 19 May 2009,

lot 423

Literature:

R. Lister, *George Richmond*, London, 1981, p.168, no.52

£800-1,200



616



616

A pair of gilt and patinated metal candlesticks, second half 19th century, later converted to electricity, with two light grey pleated shades, 35.5cm high (excluding shades)

£400-600

617

A Regency mahogany sofa table, circa 1820, 72cm high, 154cm wide (open), 68cm deep

£300-500



617

618

A pair of giltwood wall mirrors in Regency style, 20th century, each with floral verre eglomise cresting, 109cm high, 41cm wide overall

For a single mirror of related form, see Christie's, London, *European Furniture, Works of Art, Tapestries and Carpets*, 7th June 2005, Lot 378 (£1,920).

£800-1,200



618



619

619

A Regency mahogany and satinwood banded chest of drawers, circa 1815, 104cm high, 105cm wide, 54cm deep

£300-500



620

A carved oak longcase clock, with eight-day bell striking movement, the 12inch brass dial with applied spandrels to the angles, the Roman numeral chapter ring bearing inscription for Anth Hebert in Morefields, London, and with subsidiary seconds dial and date aperture, the case heavily carved, 206cm high

Provenance:

From the collection of the late Selwyn Demmy

£400-600



621

622



621

An unusual cast iron firegrate, of serpentine outline, the flaming torch ends enclosing relief panels of stylised butterflies, 45cm high, 89cm wide, 33cm deep

£200-400

622

An Heriz carpet, approximately 323 x 227cm

£500-800



623

623

A French bronze animalier group depicting a wild boar hunt, apparently unsigned, approximately 43cm wide overall

Provenance:

From the collection of the late Selwyn Demmy

£1,200-1,800

624

A George III dresser base, circa 1770, 89cm high, 211cm high, 51cm wide

£400-600



624



625

625

Three pairs of curtains, recently manufactured from Turnell & Gigon turquoise fabric, each approximately 110cm wide at the top, 350cm long

£300-500

626

An Italian cut velvet panel, in a later giltwood frame, 151cm high, 88cm wide

£600-800



626



627

627

A giltwood wall mirror in George III style, 20th century, after the manner of Thomas Chippendale style, with pagoda top and base ornamented with adorsed dolphins and scroll work, 206cm high, 91cm wide

Provenance:

From the collection of the late Selwyn Demmy

£400-600

628

An Italian white painted and pressed metal chandelier, late 19th century, approximately 113cm high, 95cm diameter

£800-1,200



628



629



629

A pair verdigris patinated metal lamp bases, second half 20th century, converted to electricity, with two pleated white shade, 58cm high (excluding shades)

£600-800

630

A stripped oak table in 16th century style, 20th century, 80cm high, 168cm wide, 89cm deep

£1,200-1,800



630



631 Y

A George IV rosewood side table or silver table, circa 1825, in the manner of Gillows, the waved gallery above reeded legs, 77cm high, 69cm wide, 44cm deep

£400-600

631

632

Two similar mahogany waterfall bookcases, first half 19th century, one 133cm high, 85cm wide, 31cm deep, the other 122cm high, 87cm wide, 28cm deep

£600-800



632



633

A Tabriz carpet approximately 296 x 213cm

£1,000-1,500



634

A mahogany collector's box, early 19th century and later, the hinged lid and front opening to an arrangement of shelves and baize linings, the lid surmounted by a bronze finial, 33cm high overall 29cm wide, 18cm deep

£250-400



634



635

635

A George IV mahogany dressing table, circa 1825, in the manner of Gillows, 83cm high, 89cm wide, 57cm deep

£400-600



636

636

A Regency mahogany sofa table, circa 1820, 75cm high, 169cm wide (open), 72cm deep

£300-500



637

637

An Italian carved giltwood wall mirror, late 19th century, the rectangular plate within a pierced scrolling foliate frame, 115cm high, 115cm wide

£300-500

638

A French green painted and upholstered armchair, in Louis XV style, early 20th century, with removable cushion, 105cm high

Wooden Chair with Stripped Red Fabric with Cushion

£200-400



638



639

639Y

A French kingwood, rosewood gilt-metal mounted inlaid cylinder bureau, late 19th century, 101cm high, 112cm wide, 60cm deep

£1,200-1,800

640

French School (18th century)

Still life of flowers

Oil on canvas

80 x 60cm (31¼ x 23½ in.)

£400-600

641

A Continental, probably Italian, chestnut, walnut, and inlaid commode, early 19th century, with tapered square section legs, 96cm high, 120cm wide, 55cm deep

£600-800



640



641



642

642

A satinwood, bronze and gilt bronze mounted table mirror in the Gothic manner, early 19th century and later, the front mounts marked 'SCH', 44cm high, 28cm wide

£400-800



643

643

A green and polychrome lacquered papier mache tray on stand, the Gothic shaped tray mid 19th century, the stand later, as a table 50cm high, 82cm wide, 63cm deep

£300-500



644

644

A black lacquer and gilt painted two tier etagere, 20th century, with gilt metal binding and supports, 56cm high, 63cm wide, 47cm wide

£500-800

645

A pair of gilt and patinated metal table lamps in Regency Gothic revival taste, 20th century, the hexagonal section shafts rising through coronet knobs to spreading bosses with arches of blind tracery and foliate crocketing, with electrical fittings rising above, the triform bases each with further Gothic arches with blind tracery and flying buttresses, on three foliate cast feet, 100cm high including pleated shades

£600-900

646

A Regency mahogany, crossbanded, and line inlaid hall or side table, circa 1815, 73cm high, 115cm wide, 46cm deep

£300-500



645



646



647

647
Follower of Dirk Maas
The Thirsty Traveller
Oil on panel
39 x 30cm (15¼ x 11¾ in.)

Provenance:
Hallidays, no. 1689

£500-700

648 Y
A Victorian tulipwood and gilt
metal mounted bureau plat, circa
1870, 74cm high, 136cm wide, 71cm
deep

£400-600



648



649

649
After Edouard Dubufe
The Prodigal Son
Triptych print
Overall 89,5 x 167cm (35 x 65½ in.)

£200-300



650

650 Y
A William IV rosewood centre or
library table, circa 1835, the top with
moulded edge and rounded corners
above tapering column supports
and raised on short bun feet, 73cm
high, 155cm wide, 75cm deep

£400-600

651
Two similar yellow upholstered
knole sofas, one with tapestry inset
back, the example with the tapestry
panel, 106cm high, 144cm wide,
86cm deep, the other, 99cm high,
155cm wide, 81cm deep

£400-600



651



652

652 Y

A rosewood and inlaid breakfast table, circa 1820 and later, with brass inlay and a zebrawood banding, 74cm high, the rectangular top 166 x 112cm

£800-1,200

653

A mahogany and marquetry inlaid chest of drawers, late 18th century, 102cm high, 110cm wide, 53cm deep

£800-1,200



653

654

A Regency mahogany side table, circa 1820, with two drawers flanked by reeded angles above conforming tapering legs, 76cm high, 53cm wide, 47cm deep

£200-300



654

655

A George IV mahogany serving table, circa 1830, in the manner of Gillows, 90cm high, 172cm wide, 64cm deep

£400-600



655

656

656

An Ersari carpet, approximately 300 x 198cm

£600-900





657
A pair of painted wood panels in the Etruscan style, late 19th century, each with an amphora with opposing female figure, 74cm high, 26cm wide

£300-500

657

658
A patinated metal and marble topped console table, 20th century, 101cm high, 71cm wide, 37cm deep

£500-700



658



659 (set of five)

659
After David Roberts (Scottish 1796-1864)
A set of five prints to include *The Entrance to the Citadel of Cairo*; *Edfou* and *Interior of the Temple of Aboo Simbel*
Lithographs printed in colours
Published by F. G. Moon, variously dated 1846 to 1849 and one by Day & Haghe
Overall 59 x 73cm (23 x 28½ in.) and one 73 x 59cm (23 x 28 1/2 in.) (5)

£800-1,200

660
A specimen marble topped occasional table, late 19th century, the cast iron base marked THE ROTHERHAM, 73cm high, 53cm diameter

Provenance:
From the collection of the late Selwyn Demmy

£800-1,200



660



661

661
A mahogany chest of drawers in George III style, 20th century, of bowfront outline and with blind fretwork angles, 85cm high, 128cm wide, 67cm deep

£300-500



662

662
A mahogany twin pedestal dining table in George III style, 20th century, by William Tillman, with two additional leaf insertions, on turned pillars and tripod bases, with label for the maker to support

£600-900



663

663
A Persian carpet, approximately 500 x 340cm

£600-1,000



Please see Conditions of Business and Conditions of Sale on the following pages.

Dreweatts & Dreweatts 1759 are trading names of Dreweatts 1759 Ltd. Dreweatts 1759 Ltd is registered in England, company number: 10758982, registered office: Minerva House | Lower Bristol Road | Bath BA2 9ER.

Important Notices

BUYING AT DREWEATTS

There are several ways you can bid at a Dreweatts auction; in person, by leaving a commission or absentee bid, on the telephone where available and live via the internet – please make arrangements before the sale. THIS NOTICE APPLIES ONLY TO A PERSON WHO WISHES TO BID IN PERSON, OR BY LEAVING A COMMISSION OR ABSENTEE BID, AT A DREWEATTS PUBLIC AUCTION. For bidding at an online auction or for online bidding at a public auction please see our Online Auction Terms published on our website at www.dreweatts.com.

BIDDING IN PERSON

If intending to buy you are required to register your name and details at reception prior to the commencement of the auction. You will be required to provide a proof of identity and address to register for bidding. You will then be allocated a bidding number, which you use when bidding for an item.

COMMISSION BIDS

Dreweatts will execute bids on your behalf if you are unable to attend the sale. Commission or absentee bids are accepted either directly at reception, or can be sent by post, fax, email, telephone or via the website: www.dreweatts.com.

Dreweatts will add these bids to the auctioneers' sale book and will undertake to purchase the lots on your behalf as cheaply as allowed by other bids and reserves. If two buyers submit identical commission bids Dreweatts may prefer the first bid received.

Dreweatts does not accept liability for failing to execute commission bids, or for any errors or omissions.

CONDITION

Bidders must satisfy themselves as to the condition of each lot. Condition reports are available on request – see the Conditions of Business at the back of this catalogue forming part of these Auction Terms and Conditions for more information regarding condition reports. Requests for condition reports must be submitted by 4pm on the day prior to the auction; condition reports may be available alongside the lot description on the online catalogue at: www.dreweatts.com.

COMMISSION CHARGES

All purchases are subject to a buyer's premium, which is charged per lot at 25% of the hammer price (30% including VAT) up to and including £500,000, 20% (24% including VAT) of the hammer price from £500,001 up to and including £1,000,000 and 12% of the hammer price (14.4% including VAT) in excess of £1,000,000. A theta symbol (Θ) indicates that the lot is a zero rated item and therefore not subject to VAT on the buyer's premium. This applies to bound books (manuscripts and printed), unframed maps and albums. In the event the lot has a dagger (†) beside the lot number in the catalogue, this indicates that the lot is owned by an entity or company required to pay VAT (generally not an Antique Dealer, as they operate under a dealers margin scheme). VAT is payable at 20% on the Hammer Price. Lots marked with a double dagger (‡) (presently a reduced rate of 5%) or Ω (presently at standard rate of 20%) have been imported from outside the European Union to be sold at auction and therefore the buyer must pay the import VAT at the appropriate rate on the hammer price.

PAYMENT

Payment will be accepted, if you are a successful bidder, by debit card issued in the name of the Buyer by a UK bank and registered

to a UK billing address; by all major UK issued credit cards issued in the name of the Buyer and registered to a UK billing address with the exception of American Express and Diners Club; by bank transfer direct into our bank account, Bank Details: NatWest, 30 Market Place, Newbury, Berkshire RG14 5AG. Account Name: Dreweatts 1759 Ltd. A/C: 62412949, Sort Code: 60-15-07, BIC: NWBKGB2L, IBAN: GB21NWBK60150762412949. The name of the bank account holder should match the name of the buyer. First time buyers who are not present at the saleroom are requested to pay by bank transfer.

Y CITES REGULATIONS

Please note that lots marked with the symbol (Y) in this catalogue may be subject to CITES Regulations when exported. Relevant CITES Regulations may be found at www.gov.uk/guidance/cites-imports-and-exports.

COLLECTION OR DELIVERY

Before being able to collect your purchases you are required to pay the hammer price, plus the applicable commissions, and obtain a receipt acknowledging payment. Collection of the purchased lots is at the purchaser's risk and expense and whilst Dreweatts do not provide packing and despatch service we can suggest some carriers.

Dreweatts also require that all purchased items are collected within four working days of the sale to avoid a storage charge being applied.

STORAGE CHARGES

All items not collected by 4pm, within four working days of the sale, will be automatically removed to commercial storage and subject to a minimum storage charge of £20 (plus VAT) per lot and to a further storage charge of £2 (plus VAT) per lot per part or full day thereafter. These charges will be the sole liability of the purchaser and will be billed directly to them by Vangaroo Ltd (Andover); Vangaroo may be willing to adjust their charges if they are instructed by the purchaser to deliver to them. On payment of all sales and storage costs, items will be available for collection by appointment from Vangaroo Ltd (Andover), tel: 01264 586566, mobile: 07528 291180, email: info@vangaroo.co.uk. These charges are set by Vangaroo Ltd (Andover); we recommend that you contact them directly regarding queries relating to these charges and other questions relating to storage. Staff at the saleroom will be unable to answer questions relating to items that have been removed from the saleroom.

FURTHER INFORMATION

The colours printed in this catalogue are not necessarily a true reflection of the actual item. All weights and measures given in the catalogue should be regarded as approximate.

VALUATION SERVICES

Dreweatts provides a range of confidential and professional valuation services to private clients, solicitors, executors, estate managers, trustees and other professional partners. These services include auction valuations, insurance valuations, probate valuations, private treaty valuations, valuations for family division or for tax purposes. For more information, please see our website: www.dreweatts.com.

For directions to Donnington Priory, please see our website: www.dreweatts.com.

Parking is available at Donnington Priory in two car parks on either side of the saleroom.

Information for Buyers at Public Auctions

1. **INTRODUCTION.** The following notes are intended to assist Bidders and Buyers, particularly those inexperienced or new to our salerooms. All of our auctions and sales are conducted on our printed Auction Terms and Conditions, including these Conditions of Sale and Business, which are readily available for inspection and normally accompany catalogues. Our staff will be happy to help you if there is anything you do not fully understand.

Any particular auction and/or any particular lot in an auction may be subject to different or additional terms which will be published in our auction catalogue. All auctions and sales of wines and spirits, jewellery, watches and clocks are subject to the special terms set out in the relevant Notices in relation to those items published in our auction catalogue and, in the event of any conflict or inconsistency, those special terms prevail over any other terms in our Auction Terms and Conditions. By bidding at the auction, you agree to be bound by these terms.

2. **AGENCY.** As auctioneers we usually act as agents for the seller whose identity, for reasons of confidentiality, is not normally disclosed. Accordingly if you buy at auction your contract for the item or items purchased is with the seller and not with us as the auctioneer.

3. **ESTIMATES.** Estimates are designed to help buyers gauge what sort of sum might be involved for the purchase of a particular lot. Estimates may change and should not be thought of as the sale price. The lower estimate may represent the reserve price and certainly will not be below it. Estimates do not include the Buyer's Premium or VAT (where chargeable). Estimates are prepared some time before the sale and may be altered by announcement before the sale. They are in no sense definitive.

4. **BUYER'S PREMIUM.** The Conditions of Sale forming part of our Auction Terms and Conditions require the buyer to pay a buyer's premium on the hammer price of each lot purchased. The buyer's premium is 25% of the hammer price up to and including £500,000, 20% of the hammer price from £500,001 up to and including £1,000,000, and 12% of the hammer price in excess of £1,000,000. VAT at the prevailing rate of 20% is added to buyer's premium and additional charges as defined below.

5. **VAT.** A theta symbol (Θ) indicates that the lot is a zero rated item and therefore not subject to VAT on the buyer's premium. This applies to bound books (manuscripts and printed), unframed maps and albums. A dagger symbol (†) indicates that VAT is payable by the purchaser at the standard rate (presently 20%) on the hammer price as well as being and element in the buyers' premium. This imposition of VAT is likely to be because the seller is registered for VAT within the European Union and is not operating the Dealers Margin Scheme or because VAT is due at 20% on import into the UK. A double dagger (‡) indicates that the lot has been imported from outside the European Union and the present position is that these lots are liable to a reduced rate of Import VAT currently 5% on the hammer price. (Ω) indicates that the lot has been imported from outside the European Union and these lots are liable to the standard rate of Import VAT currently 20% on the hammer price. Lots which appear without the above symbols indicate that no VAT is payable on the hammer price; this is because such lots are sold using the Auctioneers Margin Scheme and it should be noted that the VAT included within the buyers' premium is not recoverable as input tax.

6. **DESCRIPTION AND CONDITION.** Condition reports are provided on our website or upon request. The absence of a report does not imply that a lot is without imperfections. The detail in a report will reflect the estimated value of the lot. Large numbers of such requests received shortly before the sale may mean that reports cannot be provided for all lots. Members of staff are not trained restorers or conservators and, particularly for higher value lots, you should obtain an opinion from such a professional. Dreweatts is not liable for damage to gilded picture frames, plaster picture frames or picture frame glass; if a Lot is or becomes dangerous, we may dispose of it without notice to bidders in advance in any manner we see fit and will be under no liability for doing so. We recommend that you always view a lot in person.

We are dependent on information provided by the seller about a lot and whilst we may inspect lots and act reasonably in taking a general view about them we are normally unable to carry out a detailed examination and frequently no examination of lots in order to ascertain their condition in the way in which it would be wise for a buyer to do. Intending buyers have ample opportunity for inspection of goods and, therefore, accept responsibility for inspecting and investigating lots in which they may be interested and the corresponding risk should they not do so. Please note

carefully the exclusion of liability for the condition of lots contained in the Conditions of Sale. Neither the seller nor we, as the auctioneers, accept any responsibility for their condition. In particular, mechanical objects of any age are not guaranteed to be in working order. However, in so far as we have examined the goods and make a representation about their condition in the auction catalogue, we shall be liable for any defect which is not reflected in that representation and which that examination ought to have revealed to the auctioneer but which would not have been revealed to the buyer had the buyer examined the goods. Additionally, in specified circumstances lots misdescribed because they are 'deliberate forgeries' may be returned and repayment made. There is a 3 week time limit. (The expression 'deliberate forgery' is defined in our Conditions of Sale).

7. **ELECTRICAL GOODS.** These are sold as 'antiques' only and if bought for use must be checked over for compliance with safety regulations by a qualified electrician before use.

8. **EXPORT OF GOODS.** Buyers intending to export goods should ascertain (a) whether an export licence is required and (b) whether there is any specific prohibition on importing goods of that character because, e.g. they may contain prohibited materials such as ivory. Ask us if you need help.

Following the UK's exit from the European Union, private overseas buyers can only receive goods free of VAT/have the VAT amount refunded if Dreweatts acts as exporter in relation to the sale and arranges for the transport of the goods. If you would like us to arrange for the export and delivery of the goods there will be an admin fee of £100 plus the shipping cost. If you arrange for the goods to be picked up/delivered to you directly we will charge UK VAT at the appropriate rate and no refund will be available. Please note that if we export the goods to you, you will be responsible for completing the importation procedures as well the payment of any relevant duty/VAT payable on importation into your country.

9. **BIDDING.** Bidders will be required to register before the sale commences and lots will be invoiced to the name and address on the sale registration form. Bidders are required to provide a government issued identity document and a proof of address. Please enquire in advance about our arrangements for telephone bidding.

10. **COMMISSION BIDDING.** Commission bids may be left with the auctioneers indicating the maximum amount to be bid excluding buyers' premium. Dreweatts will add these bids to the auctioneers' sale book and they will be executed as cheaply as possible having regard to the reserve (if any) and competing bids. If two buyers submit identical commission bids the auctioneers may prefer the first bid received. Please enquire in advance about our arrangements for the leaving of commission bids by telephone or fax. Dreweatts does not accept liability for failing to execute commission bids, or for any errors or omissions.

11. **METHODS OF PAYMENT.** Payment will be accepted, if you are a successful bidder, by debit card issued in the name of the Buyer by a UK bank and registered to a UK billing address; by all major UK issued credit cards issued in the name of the Buyer and registered to a UK billing address with the exception of American Express and Diners Club; by bank transfer direct into our bank account, Bank Details: NatWest, 30 Market Place, Newbury, Berkshire RG14 5AG. Account Name: Dreweatts 1759 Ltd. A/C: 62412949, Sort Code: 60-15-07, BIC: NWBKGB2L, IBAN: GB21NWBK60150762412949. The name of the bank account holder should match the name of the buyer. First time buyers who are not present at the saleroom are requested to pay by bank transfer.

12. **COLLECTION AND STORAGE.** Please note what the Conditions of Sale state about collection and storage. It is important that goods are paid for and collected promptly. Any delay may involve the buyer in paying storage charges.

13. **À DROIT DE SUITE ROYALTY CHARGES.** From 1st January 2012 all UK art market professionals (which includes but is not limited to; auctioneers, dealers, galleries, agents and other intermediaries) are required to collect a royalty payment for all works of art that have been produced by qualifying artists each time a work is re-sold during the artist's lifetime and for a period up to 70 years following the artists death. This payment is only calculated on qualifying works of art which are sold for a hammer price more than the UK sterling equivalent of EURO 1,000 – the UK sterling equivalent will fluctuate in line with prevailing exchange rates. It is entirely the responsibility of the buyer to acquaint himself with the precise EURO to UK Sterling exchange rate on the day of the sale in this regard, and the auctioneer accepts no responsibility whatsoever if the

qualifying rate is different to the rate indicated. All items in this catalogue that are marked with λ are potentially qualifying items, and the royalty charge will be applied if the hammer price achieved is more than the UK sterling equivalent of EURO 1,000. The royalty charge will be added to all relevant buyers' invoices, and must be paid before items can be cleared. All royalty charges are passed on to the Design and Artists Copyright Society (DACS), no handling costs or additional fees with respect to these charges will be retained by the auctioneers. The royalty charge

Terms of Consignment for Sellers in Public Auctions

The sale of goods at our public auctions and a seller's relationship with us are governed by our Auction Terms and Conditions including these Terms of Consignment for Sellers in Public Auctions and our Conditions of Sale for Public Auctions. Any particular auction and/or any particular lot in an auction may be subject to different or additional terms which will be published in our auction catalogue or separately announced prior to the auction. All auctions and sales of wines and spirits, jewellery, watches and clocks are subject to the special terms set out in the relevant Notices in relation to those items published in our auction catalogue and, in the event of any conflict or inconsistency, those special terms prevail over any other terms in our Auction Terms and Conditions. Please note that our Auction Terms and Conditions including these Terms of Consignment for Sellers in Public Auctions and our Conditions of Sale for Public Auctions relate to auctions held in our salerooms and we have separate terms and conditions for our online auctions.

If you, or another person acting on your behalf, provide goods to us to sell on your behalf at one of our auctions this signifies that you agree to and will comply with our Auction Terms and Conditions including these Terms of Consignment for Sellers in Public Auctions and our Conditions of Sale for Public Auctions.

1. **INTERPRETATION.** In these Terms the words 'you', 'yours', etc. refer to the Seller and if the consignment of goods to us is made by an agent or otherwise on the Seller's behalf we assume that the Seller has authorised the consignment and that the consignor has the Seller's authority to contract. All obligations that apply to the Seller under these Terms of Consignment for Sellers in Public Auctions shall apply to the owner of the goods and their agent jointly and separately. Similarly the words 'we', 'us', etc. refer to the Auctioneers.

2. **WARRANTY.** The Seller warrants that possession in the lots can be transferred to the Buyer with good and marketable title, free from any third party right and encumbrances, claims or potential claims. The Seller has provided all information concerning the item's ownership, condition and provenance, attribution, authenticity, import or export history and of any concerns expressed by third parties concerning the same.

3. **ALL COMMISSIONS** and fees are subject to VAT at the prevailing rate.

4. **COMMISSION** is charged to sellers and all selling terms are available from our salerooms.

5. **REMOVAL COSTS.** Items for sale must be consigned to the saleroom by any stated deadline and at your expense. We may be able to assist you with this process but any liability incurred to a carrier for haulage charges is solely your responsibility.

6. **LOSS AND DAMAGE OF GOODS**

(a) Loss and Damage Warranty - Dreweatts is not authorised by the FCA to provide insurance to its clients, and does not do so. However Dreweatts for its own protection assumes liability for property consigned to it at the lower pre-sale estimate until the hammer falls. To justify accepting liability, Dreweatts makes a charge of 15% of the hammer price plus VAT, subject to a minimum charge of £150, or if unsold 15% of our lower estimate. The liability assumed by Dreweatts shall be limited to the lower pre-sale estimate or the hammer price if the lot is sold. Dreweatts is not liable for damage to gilded picture frames, plaster picture frames or picture frame glass; if the Lot is or becomes dangerous, we may dispose of it without notice to you in advance in any manner we see fit and will be under no liability for doing so.

(b) If the owner of the goods consigned instructs us in writing not to take such action, the goods then remain entirely at the owner's risk unless and until the property in them passes to the Buyer or they are collected by or on behalf of the owner, and clause 6 (a) is inapplicable.

7. **ILLUSTRATIONS AND PHOTOGRAPHS.** The cost of any illustrations

that will be applied to qualifying items which achieve a hammer price of more than the UK sterling equivalent of EURO 1,000, but less than the UK sterling equivalent of EURO 50,000 is 4%. For qualifying items that sell for more than the UK sterling equivalent of EURO 50,000 a sliding scale of royalty charges will apply – for a complete list of the royalty charges and threshold levels, please see www.dacs.org.uk. There is no VAT payable on this royalty charge.

or photographs is borne by you. The copyright in respect of such illustrations and photographs shall be the property of us, the auctioneers, as is the text of the catalogue.

8. **MINIMUM BIDS AND OUR DISCRETION.** Goods will normally be offered subject to a reserve agreed between us before the sale in accordance with clause 9. We may sell Lots below the reserve provided we account to you for the same sale proceeds as you would have received had the reserve been the hammer price. If you specifically give us a "discretion" we may accept a bid of up to 10% below the formal reserve.

9. **RESERVES**

(a) You are entitled to place prior to the auction a reserve on any lot consigned, being the minimum hammer price at which that lot may be sold. Reserves must be reasonable and we may decline to offer goods which in our opinion would be subject to an unreasonably high reserve (in which case goods carry the storage and loss and damage warranty charges stipulated in these Terms of Consignment).

(b) A reserve once set cannot be changed except with our consent.

(c) Where a reserve has been set which we consider unreasonably high, an unsold charge will be payable in the event that the lots fail to sell, being the agreed selling terms calculated on the reserve, LDW at 15% and any photographic charges.

(d) Where a reserve has been placed only we may bid on your behalf and only up to the reserve (if any) and you may in no circumstances bid personally.

(e) Reserves are not usually accepted for lots expected to realise below £100.

10. **ELECTRICAL ITEMS.** These are subject to detailed statutory safety controls. Where such items are accepted for sale you accept responsibility for the cost of testing by external contractors. Goods not certified as safe by an electrician (unless antiques) will not be accepted for sale. They must be removed at your expense on your being notified. We reserve the right to dispose of unsafe goods as refuse, at your expense.

11. **SOFT FURNISHINGS.** The sale of soft furnishings is strictly regulated by statute law in the interests of fire safety. Goods found to infringe safety regulations will not be offered and must be removed at your expense. We reserve the right to dispose of unsafe goods as refuse, at your expense. The rights of disposal referred to in clause 10 and 11 are subject to the provisions of The Torts (Interference with Goods) Act 1977.

12. **DESCRIPTION.** Please assist us with accurate information as to the provenance, lawful import etc. of goods where this is relevant. There is strict liability for the accuracy of descriptions under modern consumer legislation and in some circumstances responsibility lies with sellers if inaccuracies occur. We will assume that you have approved the catalogue description of your lots and that your lots match those descriptions unless informed to the contrary. Where we are obliged to return the price to the buyer when the lot is a deliberate forgery under Condition 15 of the Conditions of Sale and we have accounted to you for the proceeds of sale you agree to reimburse us the sale proceeds and in any event within 7 days of our written notice to do so.

13. **UNSOLD.** If an item is unsold it may at our discretion be re-offered at a future sale. Where in our opinion an item is unsaleable you must collect such items from the saleroom promptly on being so informed. Otherwise, storage charges may be incurred. We reserve the right to charge for storage in these circumstances at a reasonable daily rate.

14. **WITHDRAWN AND BOUGHT IN ITEMS.** These are liable to incur a charge of 15% commission, 15 % Loss and Damage Warranty and any other costs incurred including but not limited to illustration and restoration fees all of these charges being subject to VAT on being

bought in or withdrawn after being catalogued.

15. **CONDITIONS OF SALE.** You agree that all goods will be sold on our Conditions of Sale for Public Auctions. In particular you undertake that you have the right to sell the goods either as owner or agent for the owner with good and marketable title and free and clear of any third party rights or claims. You undertake to compensate us and any buyer or third party for all losses liabilities, costs and expenses suffered or incurred arising out of or in connection with any breach of this undertaking. We will also, at our discretion, and as far as practicable, confirm that an item consigned for sale does not appear on the Art Loss register, which is administered by an independent third party.

16. **DUE DILIGENCE CHECKS AND ANTI-MONEY LAUNDERING PROCEDURES.** Under the money laundering regulations in force we are required to carry out relevant due diligence checks. This includes verifying the identity of all customers we transact with as well as any beneficial owners on behalf of whom they may transact. Vendors who are unable to or refuse to supply required identification documents and proof of address will not be able to consign to Dreweatts auctions. Copies of customer due diligence checks will be stored for as long as it is necessary to satisfy legal requirements in an appropriate storage facility, which for the avoidance of doubt may include storage solely in electronic form. We reserve the right to withhold the monies owed until the vendor provides the information necessary to complete the anti-money laundering checks.

17. **AUTHORITY TO DEDUCT COMMISSION AND EXPENSES AND RETAIN PREMIUM AND INTEREST**

(a) You authorise us to deduct commission at the stated rate and all expenses incurred for your account from the hammer price and consent

Conditions of Sale for Public Auctions

Dreweatts carries on business with bidders, buyers and all those present in the auction room prior to or in connection with a sale by auction at our salerooms on our Auction Terms and Conditions or Public Auctions including these Conditions of Sale for Public Auctions and all bidders, buyers and others participating in a public auction accept that these terms apply to the exclusion of any terms and conditions contained in any of those person's own documents even if the same purport to provide that that person's own or some other terms prevail. Any particular public auction and/or any particular lot in an auction may be subject to different or additional terms which will be published in our online auction catalogue. Please note that our Auction Terms and Conditions including these Conditions of Sale for Public Auctions relate to auctions held in one of our salerooms and we have separate terms and conditions for our online auctions.

1. **DEFINITIONS**

In these Conditions:

(a) "auctioneer" means the firm of Dreweatts or its authorised auctioneer, as appropriate;

(b) "deliberate forgery" means an imitation made with the intention of deceiving as to authorship, origin, date, age, period, culture or source but which is unequivocally described in the catalogue as being the work of a particular creator and which at the date of the sale had a value materially less than it would have had if it had been in accordance with the description;

(c) "hammer price" means the level of bidding reached (at or above any reserve) when the auctioneer brings down the hammer;

(d) "terms of consignment" means the stipulated terms and rates of commission on which Dreweatts accepts instructions from sellers or their agents;

(e) "total amount due" means the hammer price in respect of the lot sold together with any premium, Value Added Tax chargeable and any additional charges payable by a defaulting buyer under these Conditions;

(f) "sale proceeds" means the net amount due to the seller, being the hammer price of the lot sold less commission at the stated rate, Value Added Tax chargeable and any other amounts due to us by the seller in whatever capacity and however arising;

(g) "You", "Your", etc. refer to the buyer as identified in Condition 2.

(h) The singular includes the plural and vice versa as appropriate.

to our right to retain beneficially the premium paid by the buyer in accordance with our Conditions of Sale for Public Auctions and any interest earned on the sale proceeds until the date of settlement.

(b) In case of lots unsold at auction you authorise us at our discretion to reoffer such lots and negotiate a sale within seven days of the auction date, in which case the same charges will be payable as if such lots had been sold at auction and so far as appropriate these Terms apply.

18. **WAREHOUSING.** We disclaim all liability for goods delivered to our saleroom without sufficient sale instructions and reserve the right to make minimum warehousing charge of £10 per lot per day. Unsold lots are subject to the same charges if you do not remove them within a reasonable time of notification. If not removed within three weeks we reserve the right to sell them and defray charges from any net proceeds of sale or at your expense to consign them to the local authority for disposal.

19. **SETTLEMENT.** After sale settlement of the net sum due to you normally takes place within 28 days of the sale unless the buyer has not paid for the goods or the checks necessary under the current Money Laundering Regulations have not been completed. In this case no settlement will then be made but we will take your instructions in the light of our Conditions of Sale for Public Auctions. You authorise any sums owed by you to us on other transactions to be deducted from the sale proceeds. You must note the liability to reimburse the proceeds of sale to us as under the circumstances provided for in Condition 12 above. You should therefore bear this potential liability in mind before parting with the proceeds of sale until the expiry of 28 days from the date of sale.

2. **BIDDING PROCEDURES AND THE BUYER**

(a) Bidders are required to register their particulars before bidding by completing a sale registration form and to satisfy any security arrangements before entering the auction room to view or bid;

(b) Under the money laundering regulations in force we are required to verify the identity of all customers we transact with as well as any beneficiaries on behalf of whom they may transact. Customers who are unable to or refuse to supply required identification documents and proof of address will not be able to bid in Dreweatts auctions. Copies of customer due diligence checks will be stored for as long as it is necessary to satisfy legal requirements in an appropriate storage facility which for the avoidance of doubt may include storage solely in electronic form;

(c) the maker of the highest bid accepted by the auctioneer conducting the sale shall be the buyer at the hammer price and any dispute about a bid shall be settled at the auctioneer's absolute discretion by reoffering the Lot during the course of the auction or otherwise. The auctioneer shall act reasonably in exercising this discretion.

(d) Bidders shall be deemed to act as principals;

(e) Our right to bid on behalf of the seller is expressly reserved up to the amount of any reserve and the right to refuse any bid is also reserved.

3. **INCREMENTS.** Bidding increments shall be at the auctioneer's sole discretion.

4. **THE PURCHASE PRICE.** The buyer shall pay the purchase price together with a premium thereon of 30% which shall include VAT on the premium at the rate imposed by law. The buyer will also be liable for any royalties payable under Droit de Suite as set out under Information for Buyers.

5. **VALUE ADDED TAX.** Value Added Tax on the hammer price is imposed by law on all items affixed with a dagger (†) or double dagger (‡). Value Added Tax is charged at the appropriate rate prevailing by law at the date of sale and is payable by buyers of relevant Lots. (Please refer to "Information for Buyers" for a brief explanation of the VAT position).

6. **PAYMENT**

(a) Immediately a Lot is sold you will:

(i) give to us, if requested, proof of identity, and

(ii) pay to us the total amount due or in such other way as is agreed by us.

(b) Any payments by you to us may be applied by us towards any sums owing from you to us on any account whatever without regard to any directions of you or your agent, whether expressed or implied.

(c) In order to comply with money laundering regulations we reserve the right to require proof of source of funds and/or confirmation of the nature and source of wealth for all receipts of monies from clients directly or from third parties for payments on behalf of clients. Lots will only be released once we have completed necessary checks under the current Money Laundering Regulations.

7. TITLE AND COLLECTION OF PURCHASES

(a) The ownership of any Lots purchased shall not pass to you until you have made payment in full to us of the total amount due.

(b) You shall at your own risk and expense take away any lots that you have purchased and paid for not later than 3 working days following the day of the auction after which you shall be responsible for any removal, storage and insurance charges.

(c) No purchase can be claimed or removed until it has been paid for and we have completed necessary checks under the current Money Laundering Regulations.

8. REMEDIES FOR NON-PAYMENT OR FAILURE TO COLLECT PURCHASES

(a) If any Lot is not paid for in full and taken away in accordance with these Conditions or if there is any other breach of these Conditions, we, as agent for the seller and on our own behalf, shall at our absolute discretion and without prejudice to any other rights we may have, be entitled to exercise one or more of the following rights and remedies:

(i) to proceed against you for damages for breach of contract;

(ii) to rescind the sale of that Lot and/or any other Lots sold by us to you;

(iii) to resell the Lot (by auction or private treaty) in which case you shall be responsible for any resulting deficiency in the total amount due (after crediting any part payment and adding any resale costs). Any surplus so arising shall belong to the seller;

(iv) to remove, store and insure the Lot at your expense and, in the case of storage, either at our premises or elsewhere;

(v) to charge interest at a rate not exceeding 15% per month on the total amount due to the extent it remains unpaid for more than 3 working days after the sale;

(vi) to retain that or any other Lot sold to you until you pay the total amount due;

(vii) to reject or ignore bids from you or your agent at future auctions or to impose conditions before any such bids shall be accepted;

(viii) to apply any proceeds of sale of other Lots due or in future becoming due to you towards the settlement of the total amount due and to exercise a lien (that is a right to retain possession of) any of your property in our possession for any purpose until the debt due is satisfied.

(b) We shall, as agent for the seller and on our own behalf pursue these rights and remedies only so far as is reasonable to make appropriate recovery in respect of breach of these conditions.

9. **THIRD PARTY LIABILITY.** All bidders, buyers and other members of the public on our premises are there at their own risk and must note the lay-out of the accommodation and security arrangements. Accordingly neither the auctioneer nor our employees or agents shall incur liability for death or personal injury or for the safety of the property of persons visiting prior to or at a sale (except in each case as may be required by law by reason of our negligence)

10. **COMMISSION BIDS.** Whilst prospective buyers are strongly advised to attend the auction and are always responsible for any decision to bid for a particular Lot and shall be assumed to have carefully inspected and satisfied themselves as to its condition, we will if so instructed clearly and in writing execute bids on their behalf. Neither the auctioneer nor our employees or agents shall be responsible for any failure to do so.

Where two or more commission bids at the same level are recorded we reserve the right in our absolute discretion to prefer the first bid so made.

11. **WARRANTY OF TITLE AND AVAILABILITY.** The seller warrants to the auctioneer and you that the seller is the true owner of the property consigned or is properly authorised by the true owner to consign for sale and is able to transfer good and marketable title to the property free from any third party claims.

Save as expressly set out above, all other warranties, conditions or other terms which might have effect between the Seller and you, or us and you, or be implied or incorporated by statute, common law or otherwise are excluded to the fullest extent permitted by law.

12. **AGENCY.** The auctioneer normally acts as agent only and disclaims any responsibility for default by sellers or buyers.

13. **TERMS OF SALE.** The seller acknowledges that Lots are sold subject to the stipulations of these Conditions in their entirety and on the Terms of Consignment for Public Auctions as notified to the consignor at the time of the entry of the Lot.

14. DESCRIPTIONS AND CONDITION

(a) Whilst we seek to describe lots accurately, it may be impractical for us to carry out exhaustive due diligence on each lot. Prospective buyers are given ample opportunities to view and inspect before any sale and they (and any independent experts on their behalf) must satisfy themselves as to the accuracy of any description applied to a lot. Prospective buyers also bid on the understanding that, inevitably, representations or statements by us as to authorship, genuineness, origin, date, age, provenance, condition or estimated selling price involve matters of opinion. We undertake that any such opinion shall be honestly and reasonably held and accept liability for opinions given negligently or fraudulently. Subject to the foregoing neither we the auctioneer nor our employees or agents nor the seller accept liability for the correctness of such opinions and all conditions and warranties, whether relating to description, condition or quality of lots, express, implied or statutory, are hereby excluded. Dreweatts is not liable for damage to gilded picture frames, plaster picture frames or picture frame glass; if the Lot is or becomes dangerous, we may dispose of it without notice to you in advance in any manner we see fit and will be under no liability for doing so. This Condition is subject to the next following Condition concerning deliberate forgeries and applies save as provided for in paragraph 6 “information to buyers”.

(b) Private treaty sales made under these Conditions are deemed to be sales by auction for purposes of consumer legislation.

15. **FORGERIES.** Notwithstanding the preceding Condition, any Lot which proves to be a deliberate forgery (as defined) may be returned to us by you within 21 days of the auction provided it is in the same condition as when bought, and is accompanied by particulars identifying it from the relevant catalogue description and a written statement of defects. If we are satisfied from the evidence presented that the Lot is a deliberate forgery we shall refund the money paid by you for the Lot including any buyer's premium provided that (1) if the catalogue description reflected the accepted view of scholars and experts as at the date of sale or

(2) you personally are not able to transfer a good and marketable title to us, you shall have no rights under this condition.

The right of return provided by this Condition is additional to any right or remedy provided by law or by these Conditions of Sale.

16. **PRIVACY NOTICE.** We will hold and process any personal data in relation to you in accordance with our current privacy policy, a copy of which is available on our website www.dreweatts.com/privacy-policy/.

GENERAL

17. We shall have the right at our discretion, to refuse admission to our premises or attendance at our auctions by any person.

18. (a) Any right to compensation for losses liabilities and expenses incurred in respect of and as a result of any breach of these Conditions and any exclusions provided by them shall be available to the seller and/or the auctioneer as appropriate.

(b) Such rights and exclusions shall extend to and be deemed to be for the benefit of employees and agents of the seller and/or the auctioneer who may themselves enforce them.

19. Any notice to any buyer, seller, bidder or viewer may be given by first class mail, email or Swiftmail in which case it shall be deemed to have been received by the addressee 48 hours after posting.

20. Special terms may be used in catalogue descriptions of particular classes of items in which case the descriptions must be interpreted in accordance with any glossary appearing at the commencement of the catalogue.

21. Any indulgence extended to bidders, buyers or sellers by us notwithstanding the strict terms of these Conditions or of the Terms of Consignment shall affect the position at the relevant time only and in respect of that particular concession only; in all other respects these Conditions shall be construed as having full force and effect.

22. These Conditions shall be governed by and construed in accordance with English law and the parties irrevocably submit to the exclusive jurisdiction of the English courts.

Dreweatts

NEWBURY

Dreweatts

Donnington Priory

Newbury

Berkshire RG14 2JE

+44 (0) 1635 553 553

info@dreweatts.com

MANAGING DIRECTOR

Jonathan Pratt

DEPUTY CHAIRMAN

Will Richards

James Nicholson

LONDON

Dreweatts / Bloomsbury Auctions

16-17 Pall Mall

St James's

London SW1Y 5LU

+44 (0) 20 7839 8880

info@bloomsburyauctions.com

info@dreweatts.com

HAMBRIDGE LANE

Dreweatts

1 Hambridge Lane

Newbury

Berkshire RG14 5TU

+44 (0) 1635 553 548

hambridgesales@dreweatts.com

Group Departments

AUTOGRAPHS AND EPHEMERA

Ania Hanrahan

ahanrahan@dreweatts.com

ASIAN CERAMICS AND WORKS OF ART

Mark Newstead

Dr Yingwen Tao

asian@dreweatts.com

BLOOMSBURY AUCTIONS BOOKS

AND MANUSCRIPTS

Dr Timothy Bolton

Camilla Previt 

Denise Kelly

info@bloomsburyauctions.com

BRITISH AND EUROPEAN CERAMICS

AND GLASS

Mark Newstead

Geoffrey Stafford Charles

interiors@dreweatts.com

CLOCKS AND SCIENTIFIC

INSTRUMENTS

Leighton Gillibrand

clocks@dreweatts.com

COUNTRY SPORTING

Geoffrey Stafford Charles

gscharles@dreweatts.com

DECORATIVE ARTS AND

MODERN DESIGN

Geoffrey Stafford Charles

Ashley Matthews

interiors@dreweatts.com

EUROPEAN SCULPTURE AND WORKS

OF ART

Silas Currie

sculpture@dreweatts.com

FURNITURE AND CARPETS

Ben Brown

Elaine Binning

Ashley Matthews

William Turkington

furniture@dreweatts.com

HAMBRIDGE SALES

Silas Currie

Lucie Hobbs

hambridgesales@dreweatts.com

HOUSE SALES AND PRIVATE

COLLECTIONS

Joe Robinson

Lulu Randall

housesales@dreweatts.com

JEWELLERY, SILVER, WATCHES AND

OBJECTS OF VERTU

James Nicholson

Nick Mann

Tessa Parry

jsw@dreweatts.com

LIVE STEAM AND MODEL

ENGINEERING WORKS OF ART

Michael Matthews

Martyn Pring

transport@dreweatts.com

MODERN AND CONTEMPORARY ART

Jennie Fisher

Lucy Darlington

Francesca Whitham

Will Porter (Business Development)

pictures@dreweatts.com

OLD MASTERS, BRITISH AND

EUROPEAN ART

Brandon Lindberg

Lucy Darlington

Francesca Whitham

pictures@dreweatts.com

WINE

Mark Robertson

Dianne Wall

wine@dreweatts.com

BUSINESS DEVELOPMENT

Will Richards

Will Porter

Joe Robinson

Imogen Jones

ijones@dreweatts.com

VALUATIONS FOR PROBATE,

INSURANCE AND CGT

Emma Terry

Eleanor Smith

valuations@dreweatts.com

