



# PREVIEW CATALOGUE

PRE AUCTION  
OFFERS CONSIDERED

**FOOD PROCESSING/PACKING MACHINERY  
AUCTION - THURSDAY 23 SEPTEMBER 21**

**DUE TO THE CLOSURE OF A  
MAJOR UK FOOD PROCESSOR**



**PRIOR TO DECOMMISSIONING ALL EQUIPMENT WAS WORKING & WELL MAINTAINED**



**AUCTION CLOSES**  
FROM 12 NOON ON  
**THURSDAY, 23 SEPTEMBER**  
VIEW CATALOGUE ONLINE HERE

**VIEWING BY ARRANGEMENT**

***BidSpotter.co.uk***



Auction Hotline  
**01225 44 44 66**

Email: [Sue@foodmachinery2000.com](mailto:Sue@foodmachinery2000.com)  
Website: [www.foodmachinery2000.com](http://www.foodmachinery2000.com)

Food Machinery 2000 Ltd | Monkspool House | The Stable | Wolverton | BA2 7QT | UK

Auctioneers & Valuers to the Food Industry for over 25 years



### HYGIENOX BOOT SCRUBBER.

#### Lot 1

1 x Hygienox all s/s boot scrubber. Dims approx. 600 mm deep x 350 mm wide. Lift out: £15

Click on the link below to view more info/images and see current bid price  
<https://www.bidspotter.co.uk/en-gb/auction-catalogues/food-machinery-2000/catalogue-id-fo10087/lot-8552709a-680a-4c84-b6cb-ad8900c3aca4>

Lot 1



### FLOODGUARD WATER DISPENSER.

#### Lot 2

1 x Floodguard water dispenser. Dims approx. 350 mm deep x 350 mm wide x 1.1 m high. Lift out: £15

Click on the link below to view more info/images and see current bid price  
<https://www.bidspotter.co.uk/en-gb/auction-catalogues/food-machinery-2000/catalogue-id-fo10087/lot-10b8eef9-0a59-44c7-ae32-ad8900c3aca4>

Lot 2



### 2-STATION SINK.

#### Lot 3

1 x 2-station sink. With water activation sensor.† With towel and soap dispensers. Sink dims approx. 1 m wide x 400 mm deep. Lift out: £30

Click on the link below to view more info/images and see current bid price  
<https://www.bidspotter.co.uk/en-gb/auction-catalogues/food-machinery-2000/catalogue-id-fo10087/lot-460be09c-0595-4aa5-813e-ad8900c3aca4>

Lot 3



### WALL MOUNTED FIRE EXTINGUISHER HOLDER.

#### Lot 4

1 x Wall mounted fire extinguisher holder. Approx. 600 mm wide x 300 mm deep x 700 mm high. Lift out: £15

Click on the link below to view more info/images and see current bid price  
<https://www.bidspotter.co.uk/en-gb/auction-catalogues/food-machinery-2000/catalogue-id-fo10087/lot-3fcb066f-d57f-4ab5-ad8e-ad8900c3aca4>

Lot 4



### SINK WITH DRAINER.

#### Lot 5

1 x All s/s sink with drainer . Dims approx. 950 wide x 500 mm deep x 950 high.  
Lift out: £20

Click on the link below to view more info/images and see current bid price  
<https://www.bidspotter.co.uk/en-gb/auction-catalogues/food-machinery-2000/catalogue-id-fo10087/lot-d4028f17-4aae-4311-bd9b-ad8900c3aca4>

Lot 5



### CHILLER DOOR.

#### Lot 6

1 x Insulated chiller door. Approx. dims including frame 1.6 m wide x 2.1 m high. Lift out: £80

Click on the link below to view more info/images and see current bid price  
<https://www.bidspotter.co.uk/en-gb/auction-catalogues/food-machinery-2000/catalogue-id-fo10087/lot-0995ed43-8054-4d40-82df-ad8900c3aca4>

Lot 6



### IRINOX BLAST FREEZER.

#### Lot 7

1 x Irinox blast freezer with refrigeration, fully programmable. Capable of freezing down - 18 deg. Totally s/s inside. External dims approx. 2.4 m deep x 1.55 m wide x 2.1 m high. Internal dims approx. 2.3 m deep x 800 mm wide x 1.95 m high. Lift out: £400

Click on the link below to view more info/images and see current bid price  
<https://www.bidspotter.co.uk/en-gb/auction-catalogues/food-machinery-2000/catalogue-id-fo10087/lot-3b15052c-adb4-477a-90ad-ad8900c3aca4>

Lot 7



### KRONEN SALAD SPINNER.

#### Lot 8

1 x Kronen salad spinner. Model K50-100S. All s/s. With basket. Overall dims approx. 600 mm wide x 800 mm deep x 1 m high. Lift out: £40

Click on the link below to view more info/images and see current bid price  
<https://www.bidspotter.co.uk/en-gb/auction-catalogues/food-machinery-2000/catalogue-id-fo10087/lot-a8bffa42-b44c-447e-a09a-ad8900c3aca4>

Lot 8



Lot 9

### 300 LITRE COOKING BRATT PAN.

#### Lot 9

1 x 2019 Jugema K-50 E-W 300 litre cooking bratt pan. BRAND NEW & UNUSED. Lift Out: £30. (Location Somerset) † Visit Jugema website. UK agents are RED-MONDS. †[https://jugema.com.pl/Kotly\\_warzelne\\_z\\_hydraulicznym\\_wyladunkiem.html](https://jugema.com.pl/Kotly_warzelne_z_hydraulicznym_wyladunkiem.html)

Click on the link below to view more info/images and see current bid price  
<https://www.bidspotter.co.uk/en-gb/auction-catalogues/food-machinery-2000/catalogue-id-fo10087/lot-43a073e6-10a3-4f69-b581-ad9b00e43b84>



Lot 10

### TALSA K50 BOWL CUTTER.

#### Lot 10

1 x Talsa K50 all s/s bowl cutter. 2-speed knife, 2-speed bowl. With forward and reverse mixing. With safety system. Dims approx. 1.3 m wide x 1 m deep x 1.3 m high. Lift out: £80

Click on the link below to view more info/images and see current bid price  
<https://www.bidspotter.co.uk/en-gb/auction-catalogues/food-machinery-2000/catalogue-id-fo10087/lot-d3e4cfb8-a1d7-49e4-b433-ad8900c3aca4>



Lot 11

### GLASS VERTICAL MIXER.

#### Lot 11

1 x Glass all s/s vertical mixer, with tilting, with side wall scrape. Mobile on wheels. Internal dims approx. 640 mm wide x 550 mm deep. Lift out: £40

Click on the link below to view more info/images and see current bid price  
<https://www.bidspotter.co.uk/en-gb/auction-catalogues/food-machinery-2000/catalogue-id-fo10087/lot-c4fd5a6b-4790-4d05-8b7e-ad8900c3aca4>



Lot 12

### CONICAL TYPE TOTE BIN.

#### Lot 12

1 x Tote bin. Conical type. Lift out: £15

Click on the link below to view more info/images and see current bid price  
<https://www.bidspotter.co.uk/en-gb/auction-catalogues/food-machinery-2000/catalogue-id-fo10087/lot-2a24f486-9d78-4e0c-a2ce-ad8900c3aca4>



Lot 13

### MOBILE STEPS.

#### Lot 13

1 x S/s mobile steps. Last step approx. 800 mm high. Overall dims 700 mm deep x 500 mm wide x 1.4 m high. Lift out: £15

Click on the link below to view more info/images and see current bid price  
<https://www.bidspotter.co.uk/en-gb/auction-catalogues/food-machinery-2000/catalogue-id-fo10087/lot-58d31d7d-3b66-4e26-b529-ad8900c3aca4>



Lot 14

### ARMAGARD COMPUTER HOUSING.

#### Lot 14

1 x Armagard s/s computer housing. Dims approx 600 mm deep x 500 mm wide x 500 mm high. Lift out: £15

Click on the link below to view more info/images and see current bid price  
<https://www.bidspotter.co.uk/en-gb/auction-catalogues/food-machinery-2000/catalogue-id-fo10087/lot-09fc5bf6-3adb-4042-8f22-ad8900c3aca4>



Lot 15

### S/S TABLE.

#### Lot 15

1 x S/s table. Dims approx. 840 mm wide x 800 mm x 850 mm. Lift out: £15

Click on the link below to view more info/images and see current bid price  
<https://www.bidspotter.co.uk/en-gb/auction-catalogues/food-machinery-2000/catalogue-id-fo10087/lot-e5796c3a-c7c4-44dd-99ab-ad8900c3aca4>



Lot 16

### WALL MOUNTED FIRE EXTINGUISHER HOLDER.

#### Lot 16

1 x Wall mounted fire extinguisher holder. Approx. 600 mm wide x 300 mm deep x 700 mm high. Lift out: †£15

Click on the link below to view more info/images and see current bid price  
<https://www.bidspotter.co.uk/en-gb/auction-catalogues/food-machinery-2000/catalogue-id-fo10087/lot-248ef536-204e-4c02-99e5-ad8900c3aca4>



Lot 17

**S/S TABLE.**

**Lot 17**

1 x S/s table approx. 2.3 m wide x 600 mm deep x 800 mm high. Lift out: £15

Click on the link below to view more info/images and see current bid price  
<https://www.bidspotter.co.uk/en-gb/auction-catalogues/food-machinery-2000/catalogue-id-fo10087/lot-5d094ed8-5365-456e-b14a-ad8900c3aca4>



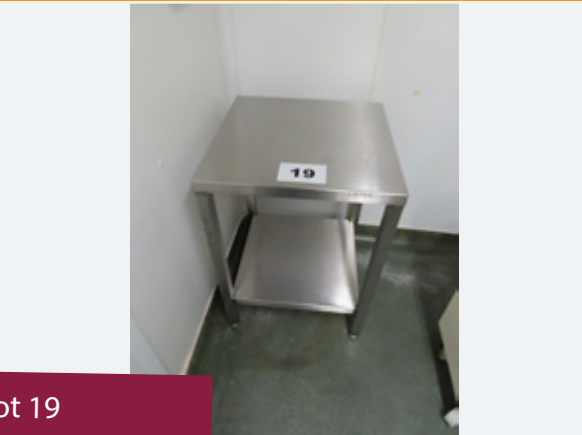
Lot 18

**S/S TABLE.**

**Lot 18**

1 x S/s table. Mobile on wheels. Approx. 1.5 m wide x 600 mm deep x 850 mm high. Lift out: £15

Click on the link below to view more info/images and see current bid price  
<https://www.bidspotter.co.uk/en-gb/auction-catalogues/food-machinery-2000/catalogue-id-fo10087/lot-7303bacd-0dfa-4e3f-9c49-ad8900c3aca4>



Lot 19

**S/S TABLE WITH SHELF.**

**Lot 19**

1 x S/s table with bottom shelf. Approx. 600mm deep x 600 mm wide x 850 mm high. Lift out: £15.

Click on the link below to view more info/images and see current bid price  
<https://www.bidspotter.co.uk/en-gb/auction-catalogues/food-machinery-2000/catalogue-id-fo10087/lot-7e009778-aa6d-4d44-b111-ad8900c3aca4>



Lot 20

**QTY INGREDIENT BINS.**

**Lot 20**

6 x Mobile ingredient bins, 1 x Round ingredients bin with lid on plastic dolly. Lift out: £15

Click on the link below to view more info/images and see current bid price  
<https://www.bidspotter.co.uk/en-gb/auction-catalogues/food-machinery-2000/catalogue-id-fo10087/lot-f209ac24-b6d5-4352-b108-ad8900c3aca4>



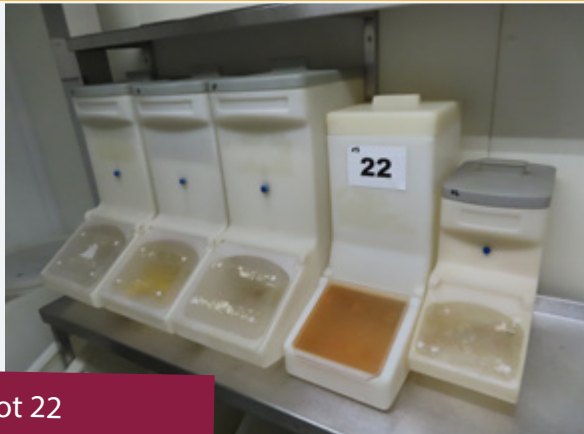
Lot 21

### INSECTOCUTOR.

#### Lot 21

1 x Insectocutor. Lift out: £15

Click on the link below to view more info/images and see current bid price  
<https://www.bidspotter.co.uk/en-gb/auction-catalogues/food-machinery-2000/catalogue-id-fo10087/lot-403c1afc-6d45-4c9b-b83d-ad8900c3aca4>



Lot 22

### QTY INGREDIENT DISPENSERS.

#### Lot 22

5 x Table top ingredient dispensers. Lift out: £15

Click on the link below to view more info/images and see current bid price  
<https://www.bidspotter.co.uk/en-gb/auction-catalogues/food-machinery-2000/catalogue-id-fo10087/lot-957036f3-afeb-430b-9c42-ad8900c3aca4>



Lot 23

### UNITECH SHELF.

#### Lot 23

1 x Unitech wall mounted shelf. Approx. 1.8 m wide x 310 m deep. Lift out: £15

Click on the link below to view more info/images and see current bid price  
<https://www.bidspotter.co.uk/en-gb/auction-catalogues/food-machinery-2000/catalogue-id-fo10087/lot-0b1a50bd-62ce-4dbd-bfdc-ad8900c3aca9>



Lot 24

### DOC HOLDER /COAT HOOKS/ DISPENSER.

#### Lot 24

1 x Wall mounted all s/s document holder with 6 compartments each being 85 mm wide. Overall dims approx. 650 mm wide x 300 mm deep x 370 mm high. 5 x Wall mounted s/s coat hooks. 1 x Wall mounted s/s container. 1 x Plastic paper towel dispenser. Lift out: £15

Click on the link below to view more info/images and see current bid price  
<https://www.bidspotter.co.uk/en-gb/auction-catalogues/food-machinery-2000/catalogue-id-fo10087/lot-40d3296d-21af-45df-9ede-ad8900c3aca9>



### FORMATIC FORMER WITH DIES.

#### Lot 25

1 x Formatic forming machine with 7 dies. All s/s. With cut-off. With out-feed. Mobile on s/s table. Table approx. 800 wide x 600 mm x 600 mm. Machine dims 830 mm deep x 900 mm high with Outfeed 950 mm. (This unit has been feeding a coating machine - see lot 26). Lift out: £40

Click on the link below to view more info/images and see current bid price  
<https://www.bidspotter.co.uk/en-gb/auction-catalogues/food-machinery-2000/catalogue-id-fo10087/lot-1872f778-3c0a-4ef9-b91d-ad8900c3aca9>

Lot 25



### DEIGHTON ENROBER/BATTER/ BREADING LINE.

#### Lot 26

1 x Deighton enrobing/battering machine. 200 mm wide belt. Overall length 1.8 m x 600 mm wide x 1.3 m and Breading machine. Approx. 200 mm wide belt x 2.2 m long x 900 mm wide x 1.7 m high. Lift out: £30

Click on the link below to view more info/images and see current bid price  
<https://www.bidspotter.co.uk/en-gb/auction-catalogues/food-machinery-2000/catalogue-id-fo10087/lot-d2757400-b95d-4fa1-8080-ad8900c3aca9>

Lot 26



### EUROFLOW BATTER MIXER.

#### Lot 27

1 x Euroflow mobile batter mixer all s/s with lobe pump and water inlet. With 2 x contra rotating mixing actions plus auto pump pump-out. Lift out: £30

Click on the link below to view more info/images and see current bid price  
<https://www.bidspotter.co.uk/en-gb/auction-catalogues/food-machinery-2000/catalogue-id-fo10087/lot-ec6c3a8-b1f9-469c-93fb-ad830090c17b>

Lot 27



### TURBO DEPOSITOR.

#### Lot 29

1 x Turbo depositor. All s/s. With adjustable shot size. Mobile on wheels. Magic eye for spot depositing. Rise and fall head. Dims approx. 950 mm deep x 650 mm wide x 1.8 m high. Lift out: £40

Click on the link below to view more info/images and see current bid price  
<https://www.bidspotter.co.uk/en-gb/auction-catalogues/food-machinery-2000/catalogue-id-fo10087/lot-ac83000a-3ed4-4c0e-8245-ad8900c3aca9>

Lot 29





### LOW LEVEL DEPOSITOR MODEL D150P.

Lot 30

1 x Low level depositor. Model D150P. Overall dims approx. 1.7 m deep x 650 mm wide x 1.7 m high. Lift out: £40

Click on the link below to view more info/images and see current bid price  
<https://www.bidspotter.co.uk/en-gb/auction-catalogues/food-machinery-2000/catalogue-id-fo10087/lot-7bce5a42-a538-413b-b975-ad8900c3aca9>



### BRAND NEW DOUBLE CHAMBER VACUUM PACKER.

Lot 31

1 x BRAND NEW all s/s double chamber vacuum packer. 500mm sealing bars. Machine dimensions approx. 1250x950x750. With tool kit, spares and manual. †Lift out: £20

Click on the link below to view more info/images and see current bid price  
<https://www.bidspotter.co.uk/en-gb/auction-catalogues/food-machinery-2000/catalogue-id-fo10087/lot-ddf6f2d5-4d7a-4296-8897-ad9700a768c4>



### REFRIGERATED SWING-DOOR.

Lot 32

1 x Refrigerated swing-door with frame. Approx. 1.5 m wide x 2.17 high. Lift out: £80

Click on the link below to view more info/images and see current bid price  
<https://www.bidspotter.co.uk/en-gb/auction-catalogues/food-machinery-2000/catalogue-id-fo10087/lot-61deb182-4b9b-4a9c-a750-ad8900c3aca9>



### MOBILE TABLE.

Lot 33

1 x S/s table on wheels. Approx. 600 mm deep x 900 mm wide x 900 high. Lift out: £15

Click on the link below to view more info/images and see current bid price  
<https://www.bidspotter.co.uk/en-gb/auction-catalogues/food-machinery-2000/catalogue-id-fo10087/lot-d416ef34-9a4b-4e5e-a91f-ad8900c3aca9>



### ARMAGARD COMPUTER HOUSING.

Lot 34

1 x Armagard s/s computer housing. Dims approx. 470 mm width x 620 mm deep x 500 mm high. Lift out £15

Click on the link below to view more info/images and see current bid price  
<https://www.bidspotter.co.uk/en-gb/auction-catalogues/food-machinery-2000/catalogue-id-fo10087/lot-562114a4-5fc8-4304-85d1-ad8900c3aca9>

Lot 34



### BRAND NEW CONTINUOUS BAG SEALER.

Lot 35

1 x BRAND NEW continuous bag sealer. With date stamp. Adjustable height. Machine size approx. 1200x520x1280. Mobile on wheels. With manual/spares and tool kit. Lift out: £20

Click on the link below to view more info/images and see current bid price  
<https://www.bidspotter.co.uk/en-gb/auction-catalogues/food-machinery-2000/catalogue-id-fo10087/lot-def01ea-ef7b-41ba-8838-ad9700a8d3af>

Lot 35



### PARTS WASHER.

Lot 36

1 x Mobile parts washer. Approx. 900 mm wide x 900 mm high. Internal depth 600 mm x 300 mm. Lift out: £15

Click on the link below to view more info/images and see current bid price  
<https://www.bidspotter.co.uk/en-gb/auction-catalogues/food-machinery-2000/catalogue-id-fo10087/lot-775122a6-1ad7-4a19-a9f2-ad8900c3aca9>

Lot 36



### MOBILE CAGE.

Lot 37

1 x S/s mobile cage with two shelves. Approx. 800 mm deep x 800 mm wide x 1.6 m height. Lift out: £15

Click on the link below to view more info/images and see current bid price  
<https://www.bidspotter.co.uk/en-gb/auction-catalogues/food-machinery-2000/catalogue-id-fo10087/lot-2545a461-d751-428e-8293-ad8900c3aca9>

Lot 37



Lot 38

### PARTS WASHER.

#### Lot 38

1 x Mobile parts washer. Approx. 900 mm wide x 900 mm high. Internal depth 600 mm x 300 mm. Lift out: £15

Click on the link below to view more info/images and see current bid price  
<https://www.bidspotter.co.uk/en-gb/auction-catalogues/food-machinery-2000/catalogue-id-fo10087/lot-2d6daf1b-2a39-4062-92fb-ad8900c3aca9>



Lot 39

### S/S TABLE.

#### Lot 39

1 x S/s table approx. 850 mm wide x 700 mm deep x 800 mm high. Lift out: £15

Click on the link below to view more info/images and see current bid price  
<https://www.bidspotter.co.uk/en-gb/auction-catalogues/food-machinery-2000/catalogue-id-fo10087/lot-eb5e896-fdbb-4f5e-b560-ad8900c3aca9>



Lot 40

### 16 X GASTRO TRAYS.

#### Lot 40

16 x Gastro trays approx. dims 430 mm wide x 630 long x 140 mm deep. Lift out: £15

Click on the link below to view more info/images and see current bid price  
<https://www.bidspotter.co.uk/en-gb/auction-catalogues/food-machinery-2000/catalogue-id-fo10087/lot-54f06292-20fe-4afc-9443-ad8900c3aca9>



Lot 41

### WALL MOUNTED FIRE EXTINGUISHER HOLDER.

#### Lot 41

1 x Wall mounted plastic single fire extinguisher case approx. 350 mm wide x 270 mm deep x 700 mm high. Lift out: £15.

Click on the link below to view more info/images and see current bid price  
<https://www.bidspotter.co.uk/en-gb/auction-catalogues/food-machinery-2000/catalogue-id-fo10087/lot-7073b3b5-5a84-4266-9b88-ad8900c3aca9>



Lot 42

### CHARTS, NOBO BOARD, EYEWASH STATION, ETC

Lot 42

Various items comprising: 2 x Wall mounted daily chart. 1 x Nobo board. 1 x Eyewash station. 1 x hand sanitising unit. 1 x Towel dispensers. Lift Out: £15

Click on the link below to view more info/images and see current bid price  
<https://www.bidspotter.co.uk/en-gb/auction-catalogues/food-machinery-2000/catalogue-id-fo10087/lot-18d5e203-7fee-44d7-bb7d-ad8900c3aca9>



Lot 43

### S/S TABLE.

Lot 43

1 x S/s table approx. 440 mm wide x 440 mm deep x 700 mm high. Lift out: £15.

Click on the link below to view more info/images and see current bid price  
<https://www.bidspotter.co.uk/en-gb/auction-catalogues/food-machinery-2000/catalogue-id-fo10087/lot-e5dba7ba-781e-4138-be00-ad8900c3aca9>



Lot 44

### WALL MOUNTED HOSE REEL.

Lot 44

1 x Wall mounted hose reel. Lift out: £15

Click on the link below to view more info/images and see current bid price  
<https://www.bidspotter.co.uk/en-gb/auction-catalogues/food-machinery-2000/catalogue-id-fo10087/lot-9a6ce365-688c-42d8-8219-ad8900c3aca9>



Lot 45

### ELECTRIC DOOR.

Lot 45

1 x Bull electric door with running gear. Dims approx. 4.2 m wide x 3.4 m high. Lift out: £240

Click on the link below to view more info/images and see current bid price  
<https://www.bidspotter.co.uk/en-gb/auction-catalogues/food-machinery-2000/catalogue-id-fo10087/lot-9b5a87c5-b5ef-47bf-8f5c-ad8900c3aca9>



### S/S TOPPED TABLE.

#### Lot 46

1 x S/s topped table. Mobile on wheels. Approx. 1.2 m wide x 600 mm x 700 mm high. Lift out: £15

Click on the link below to view more info/images and see current bid price  
<https://www.bidspotter.co.uk/en-gb/auction-catalogues/food-machinery-2000/catalogue-id-fo10087/lot-bba53d8e-a280-4591-afef-ad8900c3aca9>

Lot 46



### CHEMICAL DOSING UNIT.

#### Lot 47

1 x Chemical dosing unit with hose reel and holder. Lift out: £20

Click on the link below to view more info/images and see current bid price  
<https://www.bidspotter.co.uk/en-gb/auction-catalogues/food-machinery-2000/catalogue-id-fo10087/lot-ce5e1805-94a5-4cc5-ad8e-ad8900c3aca9>

Lot 47



### INSECTOCUTOR.

#### Lot 48

1 x Rentokil insectocutor. Lift out: £15

Click on the link below to view more info/images and see current bid price  
<https://www.bidspotter.co.uk/en-gb/auction-catalogues/food-machinery-2000/catalogue-id-fo10087/lot-2a3a99ae-ae6f-4ae4-9a51-ad8900c3aca9>

Lot 48



### REFRIGERATED SLIDING-DOOR.

#### Lot 49

1 x Refrigerated insulated sliding door with running gear approx. 1.6 m wide x 2.5 m high. Lift out: £80

Click on the link below to view more info/images and see current bid price  
<https://www.bidspotter.co.uk/en-gb/auction-catalogues/food-machinery-2000/catalogue-id-fo10087/lot-ef731a28-df1c-4749-a75c-ad8900c3aca9>

Lot 49



### BRAND NEW L BAR SEALER.

Lot 50

1 x BRAND NEW L bar sealer with conveyor outfeed. 450mm seal bars. Mobile on wheels. Lift out: £20

Click on the link below to view more info/images and see current bid price  
<https://www.bidspotter.co.uk/en-gb/auction-catalogues/food-machinery-2000/catalogue-id-fo10087/lot-4a79d6b5-0b10-4ea1-801b-ad9700aa4bff>



### UNIFILLER.

Lot 51

1 x Unifiller.† Mobile. Fully adjustable. Complete with foot switch. Automatic height adjustment. Dims approx. 1.1 m x 700 mm x 1.9 m high. Lift out: £20. (Located Somerset).

Click on the link below to view more info/images and see current bid price  
<https://www.bidspotter.co.uk/en-gb/auction-catalogues/food-machinery-2000/catalogue-id-fo10087/lot-6ff414e6-2946-46c1-b419-ad83009ff9b4>



### DUAL HEAD UNIFILLER DEPOSITOR.

Lot 52

1 x Dual head Unifiller depositor. Lift out: £30. (Located Somerset).

Click on the link below to view more info/images and see current bid price  
<https://www.bidspotter.co.uk/en-gb/auction-catalogues/food-machinery-2000/catalogue-id-fo10087/lot-304aa334-a7a8-4b3f-9d45-ad83009250a6>



### MULTIVAC C370 VACUUM PACKER.

Lot 53

1 x Multivac C370 twin sealing vacuum packer. 950 mm between sealing bars. 450 mm wide bar. Lift out: £20 (Located Somerset).

Click on the link below to view more info/images and see current bid price  
<https://www.bidspotter.co.uk/en-gb/auction-catalogues/food-machinery-2000/catalogue-id-fo10087/lot-7f3eb505-3438-44e6-8a3e-ad830094ba3a>



Lot 54

### RIBBON BLENDER (WINKWORTH TYPE).

#### Lot 54

1 x Ribbon blender (Winkworth type). Approx. 750 litre capacity. With bottom centre discharge. Dims approx. 1.6 m x 900 mm x 1.7 m high. Lift out: £30 (Located Somerset).

Click on the link below to view more info/images and see current bid price  
<https://www.bidspotter.co.uk/en-gb/auction-catalogues/food-machinery-2000/catalogue-id-fo10087/lot-cebfd1af-d284-42db-81b3-ad8300a099dd>



Lot 55

### FRAMPTON BAR MARKER.

#### Lot 55

1 x Frampton bar marker. All s/s. Electrically heated. Variable speed. 300 mm wide belts. Dims approx. 1.7 m long x 800 mm wide x 1.2 m high. Lift out: £30 (Located Somerset)

Click on the link below to view more info/images and see current bid price  
<https://www.bidspotter.co.uk/en-gb/auction-catalogues/food-machinery-2000/catalogue-id-fo10087/lot-b81f4945-dd50-43fb-8fb1-ad8a00e8f27a>



Lot 56

### EUROMIXERS MOBILE MIXER.

#### Lot 56

1 x Euromixers mobile mixer. Model LBC 150. With magnetic level switch and audible alarm system. †Lift out: £10.†(Located Somerset).

Click on the link below to view more info/images and see current bid price  
<https://www.bidspotter.co.uk/en-gb/auction-catalogues/food-machinery-2000/catalogue-id-fo10087/lot-1ae7540d-e41e-49b1-9975-ad8300918f9a>



Lot 57

### WEILER 1107 GRINDER.

#### Lot 57

1 x Weiler 1107 grinder. Dims approx. 2.2 m x 1 m x 1.6 m high. Lift out: £30.† (Located Somerset).

Click on the link below to view more info/images and see current bid price  
<https://www.bidspotter.co.uk/en-gb/auction-catalogues/food-machinery-2000/catalogue-id-fo10087/lot-752088d0-517a-43a5-8eb1-ad8300a2146e>



Lot 58

### GROTE 25/30-E SLICER.

#### Lot 58

1 x Grote 25/30-E slicer with large quantity of slicing turrets. Includes £20k of spare parts including new servo motors and safety parts (on pallet). †Lift out: £30.†(Located Somerset).

Click on the link below to view more info/images and see current bid price  
<https://www.bidspotter.co.uk/en-gb/auction-catalogues/food-machinery-2000/catalogue-id-fo10087/lot-62fdd7-600d-441d-93ff-ad83009f164e>



Lot 59

### ELECTROLUX VARIMIX 100 LITRE VESSEL.

#### Lot 59

1 x Electrolux Varimix 100 litre electrically heated vessel. With water jacket, side scrape mixer and electric tilting. Complete with 1 x brand new paddle mixing and scraping attachments. Lift out: £30 (Located Somerset)

Click on the link below to view more info/images and see current bid price  
<https://www.bidspotter.co.uk/en-gb/auction-catalogues/food-machinery-2000/catalogue-id-fo10087/lot-70cdf3e5-c3af-4538-88b0-ad8300a14a4b>



Lot 60

### CINTEX CHECKWEIGHER.

#### Lot 60

1 x Cintex check weigher with reject. Weigh platform 550 mm long x 250 mm wide. Push arm reject into lockable bin. Fully supermarket compliant. Overall dims approx. 1.9 m long x 1 m wide. Lift out: £20. (Located Somerset).

Click on the link below to view more info/images and see current bid price  
<https://www.bidspotter.co.uk/en-gb/auction-catalogues/food-machinery-2000/catalogue-id-fo10087/lot-99748d87-cd48-4e51-b9a1-ad830097f4af>



Lot 61

### TIMENET CLOCKING IN SYSTEM.

#### Lot 61

1 x Timenet clocking-in system and reader in s/s cabinets. Lift out: £60

Click on the link below to view more info/images and see current bid price  
<https://www.bidspotter.co.uk/en-gb/auction-catalogues/food-machinery-2000/catalogue-id-fo10087/lot-60c9f10e-e679-4888-817f-ad8900c3aca9>





Lot 62

### BOOT SCRUBBER.

#### Lot 62

1 x Boot scrubber. Approx. 400 mm wide x 500 mm deep x 900 mm high. Lift out: £15

Click on the link below to view more info/images and see current bid price  
<https://www.bidspotter.co.uk/en-gb/auction-catalogues/food-machinery-2000/catalogue-id-fo10087/lot-8e418ea2-98d3-4f70-9af3-ad8900c3aca9>



Lot 63

### 2-STATION KNEE OPERATED SINK.

#### Lot 63

1 x All s/s 2-station knee operated sink. 1 m wide x 640 mm deep. Lift out: £20

Click on the link below to view more info/images and see current bid price  
<https://www.bidspotter.co.uk/en-gb/auction-catalogues/food-machinery-2000/catalogue-id-fo10087/lot-71a1d39e-78a5-4745-978e-ad8900c3aca9>



Lot 64

### S/S TABLE.

#### Lot 64

1 x S/s table. Approx. 850 mm wide x 700 mm deep x 900 mm high. Lift out: £15

Click on the link below to view more info/images and see current bid price  
<https://www.bidspotter.co.uk/en-gb/auction-catalogues/food-machinery-2000/catalogue-id-fo10087/lot-c06a2f98-1a4a-43cc-ab73-ad8900c3aca9>



Lot 65

### DISPENSER, HAND WASH, HAND SANITISER ETC

#### Lot 65

Various items comprising: 2 x Towel dispensers. 1 x Hand wash. 1 x Hand sanitiser and 2 x Glove/hairnet dispenser. Lift out: £15

Click on the link below to view more info/images and see current bid price  
<https://www.bidspotter.co.uk/en-gb/auction-catalogues/food-machinery-2000/catalogue-id-fo10087/lot-e001340c-a03e-46ec-aa33-ad8900c3aca9>



Lot 66

**VARIOUS ITEMS: EYEWASH, FIRST AID KIT.**

**Lot 66**

Various items comprising: Wall mounted. 1 x Eyewash. 1 x First Aid kit. Lift out: £15

Click on the link below to view more info/images and see current bid price  
<https://www.bidspotter.co.uk/en-gb/auction-catalogues/food-machinery-2000/catalogue-id-fo10087/lot-a0b81e27-7051-437e-a038-ad8900c3aca9>



Lot 67

**IRINOX BLAST FREEZER.**

**Lot 67**

1 x Irinox blast freezer through-door with refrigeration, fully programmable. Capable of freezing down - 18 deg. Totally s/s inside. Dims externally approx. 1.5 m wide x 2.1 m high x 2.7 m long. Internally approx. 800 mm wide x 2 m high x 2.2 m long x. Lift out: £400

Click on the link below to view more info/images and see current bid price  
<https://www.bidspotter.co.uk/en-gb/auction-catalogues/food-machinery-2000/catalogue-id-fo10087/lot-69108f45-1866-4ad6-b8b9-ad8900c3aca9>



Lot 68

**IRINOX BLAST FREEZER.**

**Lot 68**

1 x Irinox blast freezer through-door with refrigeration, fully programmable. Capable of freezing down - 18 deg. Totally s/s inside. Dims externally approx. 1.5 m wide x 2.1 m high x 2.7 m long. Internally approx. 2.2 m long x 800 mm wide x 2 m high. Lift out: £400

Click on the link below to view more info/images and see current bid price  
<https://www.bidspotter.co.uk/en-gb/auction-catalogues/food-machinery-2000/catalogue-id-fo10087/lot-d7dd42f6-13d6-4660-9d92-ad8900c3aca9>



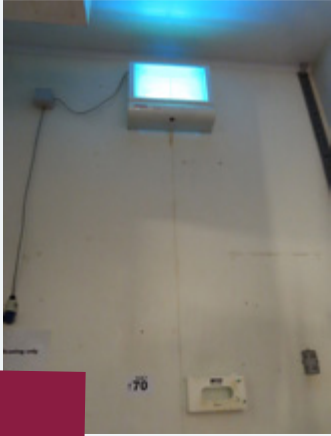
Lot 69

**S/S TOPPED TABLE WITH UPSTAND.**

**Lot 69**

1 x S/s topped table with upstand. Approx. 1.5 m wide x 600 mm deep x 1 m high. Height including upstand is 2 m. Lift out: £15

Click on the link below to view more info/images and see current bid price  
<https://www.bidspotter.co.uk/en-gb/auction-catalogues/food-machinery-2000/catalogue-id-fo10087/lot-0dd0aa17-75c6-4c92-83c8-ad8900c3aca9>



### RENTOKIL INSECTOCUTOR.

Lot 70

1 x Rentokil insectocutor. Lift out: £15

Click on the link below to view more info/images and see current bid price  
<https://www.bidspotter.co.uk/en-gb/auction-catalogues/food-machinery-2000/catalogue-id-fo10087/lot-8158a9b5-bd96-4612-a89c-ad8900c3aca9>

Lot 70



### CHILLER SLIDING-DOOR.

Lot 71

1 x Chiller sliding door with running gear. Approx. 1.25 m wide x 2.1 m high.  
Lift out: £80

Click on the link below to view more info/images and see current bid price  
<https://www.bidspotter.co.uk/en-gb/auction-catalogues/food-machinery-2000/catalogue-id-fo10087/lot-fdedd82e-78aa-4dd3-9c11-ad8900c3aca9>

Lot 71



### TEKNOMEK LECTERN AND CABINET.

Lot 72

1 x Teknomek lectern with cabinet. Approx 600 mm deep x 1.1 m high x 700 mm wide. Lift out: £15

Click on the link below to view more info/images and see current bid price  
<https://www.bidspotter.co.uk/en-gb/auction-catalogues/food-machinery-2000/catalogue-id-fo10087/lot-50335059-578c-40ed-a568-ad8900c3aca9>

Lot 72



### PARTITION SCREENS.

Lot 73

2 x S/s mobile partitioning screens. Overall dims approx. 2 m wide x 1.9 m high. Lift out: £15

Click on the link below to view more info/images and see current bid price  
<https://www.bidspotter.co.uk/en-gb/auction-catalogues/food-machinery-2000/catalogue-id-fo10087/lot-8880cf88-939e-42e4-b530-ad8900c3aca9>

Lot 73



Lot 74

### BELL PERKINS BAIN MARIE.

#### Lot 74

1x Bell Perkins electrically heated bain Marie. Lift Out £10. (Located Somerset)

Click on the link below to view more info/images and see current bid price  
<https://www.bidspotter.co.uk/en-gb/auction-catalogues/food-machinery-2000/catalogue-id-fo10087/lot-d28eb28a-cffe-4cf4-b112-ad9b00bc2c31>



Lot 75

### LYCO VOLUMETRIC FILLER.

#### Lot 75

1 x LYCO Volumetric filler. Was set up for doing a 200gram shot. †Lift out: £80

Click on the link below to view more info/images and see current bid price  
<https://www.bidspotter.co.uk/en-gb/auction-catalogues/food-machinery-2000/catalogue-id-fo10087/lot-2ce3e4e5-35d2-42e6-b64d-ad950101aa80>



Lot 76

### ISHIDA MULTI HEAD WEIGHING SYSTEM.

#### Lot 76

1 x Ishida 16 head multihead weighing system. With twin incline conveyors and 2 x vibratory feeders. Capable of doing 2 different types of products or 1 single product. Lift out: £1000

Click on the link below to view more info/images and see current bid price  
<https://www.bidspotter.co.uk/en-gb/auction-catalogues/food-machinery-2000/catalogue-id-fo10087/lot-0b2a8d87-aba6-4e96-8114-ad9d010101f1>



Lot 77

### RACKS WITH TRAYS.

#### Lot 77

2 x 18-tray racks. One rack measuring approx. 1725 mm high. Tray size being 560 mm x 760 mm. and one rack measuring approx. 1660 mm high. Tray size being 450 mm x 760 mm. Lift out: £20

Click on the link below to view more info/images and see current bid price  
<https://www.bidspotter.co.uk/en-gb/auction-catalogues/food-machinery-2000/catalogue-id-fo10087/lot-6b108940-e73f-4454-96e0-ad9e00c4a431>



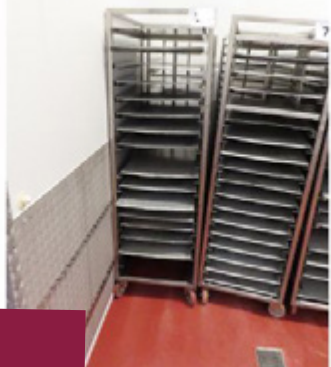
Lot 78

### RACKS WITH TRAYS.

#### Lot 78

2 x 18-tray racks. Mobile on wheels. Capable of taking a tray size approx. 480 mm wide x 800 mm deep. With qty of trays. Lift out: £20

Click on the link below to view more info/images and see current bid price  
<https://www.bidspotter.co.uk/en-gb/auction-catalogues/food-machinery-2000/catalogue-id-fo10087/lot-dc251732-5428-451c-8952-ad8900c3aca9>



Lot 79

### RACKS WITH TRAYS.

#### Lot 79

2 x 18-tray racks. Mobile on wheels. Capable of taking a tray size approx. 480 mm wide x 800 mm deep. With qty of trays. Lift out: £20

Click on the link below to view more info/images and see current bid price  
<https://www.bidspotter.co.uk/en-gb/auction-catalogues/food-machinery-2000/catalogue-id-fo10087/lot-8c0aa5e5-ace9-49b0-ad8d-ad8900c3aca9>



Lot 80

### RACKS WITH TRAYS.

#### Lot 80

2 x 18-tray racks. Mobile on wheels. Capable of taking a tray size approx. 480 mm wide x 800 mm deep. With qty of trays. Lift out: £20

Click on the link below to view more info/images and see current bid price  
<https://www.bidspotter.co.uk/en-gb/auction-catalogues/food-machinery-2000/catalogue-id-fo10087/lot-bd08d8dc-4279-48ed-9009-ad8900c3aca9>



Lot 81

### S/S TABLE WITH 2-SHELVES.

#### Lot 81

1 x S/s table with 2 shelves. Approx. 1.3 m x 650 mm. Lift out: £15

Click on the link below to view more info/images and see current bid price  
<https://www.bidspotter.co.uk/en-gb/auction-catalogues/food-machinery-2000/catalogue-id-fo10087/lot-301c2403-11f5-40c8-bc4d-ad8900c3aca9>



**INSECTOCUTOR.**

**Lot 82**

1 x Insectocutor. Lift out: £15

Click on the link below to view more info/images and see current bid price  
<https://www.bidspotter.co.uk/en-gb/auction-catalogues/food-machinery-2000/catalogue-id-fo10087/lot-dae3a3f1-2c51-471b-8483-ad8900c3aca9>

**Lot 82**



**S/S TABLE.**

**Lot 83**

1 x S/s table approx. 600 mm deep x 600 mm wide. Lift out: £15

Click on the link below to view more info/images and see current bid price  
<https://www.bidspotter.co.uk/en-gb/auction-catalogues/food-machinery-2000/catalogue-id-fo10087/lot-ebb91e4-0c78-4ad8-b4fe-ad8900c3aca9>

**Lot 83**



**S/S STOOL.**

**Lot 84**

1 x S/s stool. Approx. 350 mm wide x 350 mm deep x 750 mm high. Lift out: £15

Click on the link below to view more info/images and see current bid price  
<https://www.bidspotter.co.uk/en-gb/auction-catalogues/food-machinery-2000/catalogue-id-fo10087/lot-6fd67671-a5e7-4d0e-95a7-ad8900c3aca9>

**Lot 84**



**CHEMICAL BUND.**

**Lot 85**

1 x Chemical bund. With plastic tray and bags. Approx. 600 mm high x 1 m wide x 200 mm deep. Lift out: £15

Click on the link below to view more info/images and see current bid price  
<https://www.bidspotter.co.uk/en-gb/auction-catalogues/food-machinery-2000/catalogue-id-fo10087/lot-f842f018-7439-48ea-bcfa-ad8900c3aca9>

**Lot 85**



**ARMAGARD COMPUTER HOUSING.**

**Lot 86**

1 x Armagard s/s computer housing. Dims approx. 470 mm wide x 600 mm deep x 500 mm. Lift out: £15

Click on the link below to view more info/images and see current bid price  
<https://www.bidspotter.co.uk/en-gb/auction-catalogues/food-machinery-2000/catalogue-id-fo10087/lot-abc4b631-05cf-453f-9c7e-ad8900c3aca9>

**Lot 86**



**S/S TABLE.**

**Lot 87**

1 x S/s table approx. 800 mm wide x 700 mm x 750 mm. Lift out: £15

Click on the link below to view more info/images and see current bid price  
<https://www.bidspotter.co.uk/en-gb/auction-catalogues/food-machinery-2000/catalogue-id-fo10087/lot-35f58dbc-00b1-4969-a9c6-ad8900c3aca9>

**Lot 87**



**MOBILE BIN HOLDER.**

**Lot 88**

1 x Mobile bin holder with lid and dispensing slot. Approx. 1 m high x 360 mm wide x 400 mm deep. Lift out: £15

Click on the link below to view more info/images and see current bid price  
<https://www.bidspotter.co.uk/en-gb/auction-catalogues/food-machinery-2000/catalogue-id-fo10087/lot-45c08d33-17e8-476d-86d5-ad8900c3aca9>

**Lot 88**



**WALL MOUNTED FIRE EXTINGUISHER HOLDER.**

**Lot 89**

1 x Wall mounted fire extinguisher holder. Approx. 600 mm wide x 300 mm deep x 700 mm high. Lift out: £15

Click on the link below to view more info/images and see current bid price  
<https://www.bidspotter.co.uk/en-gb/auction-catalogues/food-machinery-2000/catalogue-id-fo10087/lot-87e41c10-8599-4120-89bc-ad8900c3aca9>

**Lot 89**



Lot 90

### S/S RACK WITH TRAYS.

#### Lot 90

1 x S/s rack approx. 1.4 m wide x 460 mm deep x 2 m high. Includes contents (8 x Gastro trays approx. 430 mm wide x 630 mm long x 140 mm deep and approx. 28 trays approx. 450 mm wide x 750 mm x 250 mm high). Lift Out: £20

Click on the link below to view more info/images and see current bid price  
<https://www.bidspotter.co.uk/en-gb/auction-catalogues/food-machinery-2000/catalogue-id-fo10087/lot-14f40fe0-9b41-4b57-b4e7-ad8900c3aca9>



Lot 91

### 90 DEGREE CONVEYOR.

#### Lot 91

1 x 90 degree bend conveyor. Approx. 1500 x 1500 x 850 wide. Intralox belt conveyor. Lift out: £40.

Click on the link below to view more info/images and see current bid price  
<https://www.bidspotter.co.uk/en-gb/auction-catalogues/food-machinery-2000/catalogue-id-fo10087/lot-5bfbcbe7-a6a8-44a2-8138-ad8900c3aca9>



Lot 92

### TEKNOMEK WALL MOUNTED LECTERN.

#### Lot 92

1 x Teknomek wall mounted lectern. Approx. 700 mm wide x 450 mm deep. Lift out: £15

Click on the link below to view more info/images and see current bid price  
<https://www.bidspotter.co.uk/en-gb/auction-catalogues/food-machinery-2000/catalogue-id-fo10087/lot-6476c59a-0398-4f91-815b-ad8900c3aca9>



Lot 93

### BRAND NEW S/S TOP AND BOTTOM CASE TAPER.

#### Lot 93

1 x BRAND NEW tall s/s semi automatic top and bottom case taper. Overall dimensions approx. 1740x 680x 1330mm. Box size: †Min width 100mm Max 500mm. Min height 100mm Max 580mm. Comes with tool kit. Lift out: £20

Click on the link below to view more info/images and see current bid price  
<https://www.bidspotter.co.uk/en-gb/auction-catalogues/food-machinery-2000/catalogue-id-fo10087/lot-4fc92718-c8b1-49fe-88c8-ad9700abe8d4>



**BRAND NEW**



Lot 94

**BRAND NEW EXPANDABLE ROLLER CONVEYOR.**

Lot 94

1 x BRAND NEW expandable roller conveyor. Approx. 3m long x 300mm wide. Mobile on wheels. Lift out: £20

Click on the link below to view more info/images and see current bid price  
<https://www.bidspotter.co.uk/en-gb/auction-catalogues/food-machinery-2000/catalogue-id-fo10087/lot-8ea91bf-7362-4788-beee-ad9700ac911a>

**BRAND NEW**



Lot 95

**BRAND NEW L BAR SEAL/ SHRINK PACKAGING M/C.**

Lot 95

1 x BRAND NEW L bar seal and shrink packaging machine. Approx. dims L bar size 550 x 400. Max pack size L 550mm W 400mm H 300mm. Machine size 1360 x 670 x 1080mm. Lift out: £20

Click on the link below to view more info/images and see current bid price  
<https://www.bidspotter.co.uk/en-gb/auction-catalogues/food-machinery-2000/catalogue-id-fo10087/lot-603a17cc-cb7b-4359-938e-ad9700af11c5>

**BRAND NEW**



Lot 96

**BRAND NEW SINGLE CHAMBER VACUUM PACKER.**

Lot 96

1 x BRAND NEW single chamber vac packer. †500mm seal bars. Chamber size 520x 525 x 100. With spares, manual and tools. Lift out: £20

Click on the link below to view more info/images and see current bid price  
<https://www.bidspotter.co.uk/en-gb/auction-catalogues/food-machinery-2000/catalogue-id-fo10087/lot-c3dc5214-54c9-4d98-a427-ad9700b35ca9>

**BRAND NEW**



Lot 97

**BRAND NEW TABLE TOP VACUUM PACKER.**

Lot 97

1 x BRAND NEW table top vac packer. 2 x 400mm seal bars. Chamber size 440 x 420 x 75mm. Machine dimensions approx. 560x 600x 460. With spares, manual and tools. Lift out: £20

Click on the link below to view more info/images and see current bid price  
<https://www.bidspotter.co.uk/en-gb/auction-catalogues/food-machinery-2000/catalogue-id-fo10087/lot-24843b41-d621-4eeb-8cec-ad9700b5c985>



**BRAND NEW AUTOMATIC STRAPPING MACHINE.**

**Lot 98**

1 x BRAND NEW automatic box strapping machine. Arch size 800 x 600mm. Adjustable tension. Machine size 1100 x 600 x 1540mm. Lift out: £20

Click on the link below to view more info/images and see current bid price  
<https://www.bidspotter.co.uk/en-gb/auction-catalogues/food-machinery-2000/catalogue-id-fo10087/lot-edd1a0d1-44b6-4ed2-9d0a-ad9700b6c183>



**VOLUMETIC FILLER.**

**Lot 99**

1 X Volumetric filler. Lift out: £30

Click on the link below to view more info/images and see current bid price  
<https://www.bidspotter.co.uk/en-gb/auction-catalogues/food-machinery-2000/catalogue-id-fo10087/lot-fb9273ae-dea5-4127-bf72-ad9e00fe1a08>



**VENDING MACHINES.**

**Lot 100**

3 x Vending machines. complete with keys. Lift out: £30 (Located Somerset)

Click on the link below to view more info/images and see current bid price  
<https://www.bidspotter.co.uk/en-gb/auction-catalogues/food-machinery-2000/catalogue-id-fo10087/lot-d8f435a4-aafe-4f4c-a97c-ad9e00ff469f>



**WEBOMATIC COMPLETE AUTO VAC PACKING LINE.**

**Lot 101**

1 x Webomatic complete auto vacuum packing line, comprising PNE20 auto swing lid vacuum packer, auto discharge, transfer conveyor to Webomatic electric STR W60/80 hot water cascade shrink tunnel and drain off conveyor with intralox belt. New belt to be fitted to in conveyor. Lift out: £120. (Location Somerset).

Click on the link below to view more info/images and see current bid price  
<https://www.bidspotter.co.uk/en-gb/auction-catalogues/food-machinery-2000/catalogue-id-fo10087/lot-23a139b7-833a-48e0-88d5-ad9f00ad3477>



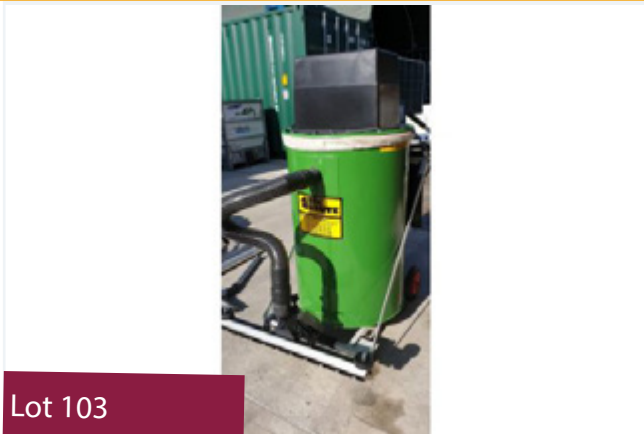
Lot 102

**OLIVER DOUGLAS TRAY/UTENSIL WASHER.**

Lot 102

1 x Oliver Douglas Panamatic 700 tray/utensil washer. Lift out: £40

Click on the link below to view more info/images and see current bid price  
<https://www.bidspotter.co.uk/en-gb/auction-catalogues/food-machinery-2000/catalogue-id-fo10087/lot-754fba63-c393-414d-893f-ada200f968c9>



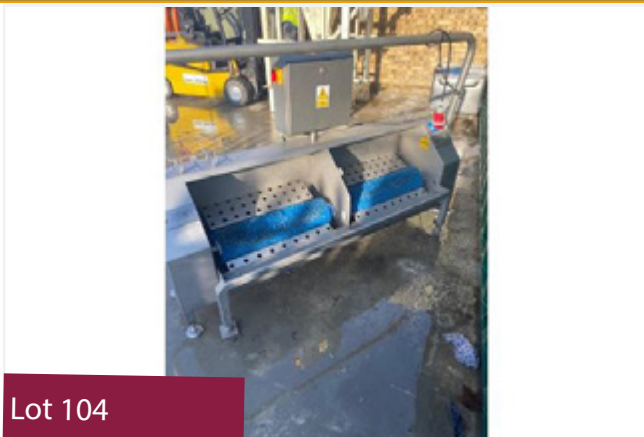
Lot 103

**BIG BRUTE VACUUM CLEANER.**

Lot 103

1 x Big Brute Vacuum Cleaner. Lift Out: £5

Click on the link below to view more info/images and see current bid price  
<https://www.bidspotter.co.uk/en-gb/auction-catalogues/food-machinery-2000/catalogue-id-fo10087/lot-598bc3cb-0dd4-4166-8051-ada300933d4d>



Lot 104

**BOOT WASHER.**

Lot 104

1 x 2-Person IWM Boot Washer. Lift Out: £50

Click on the link below to view more info/images and see current bid price  
<https://www.bidspotter.co.uk/en-gb/auction-catalogues/food-machinery-2000/catalogue-id-fo10087/lot-598bc3cb-0dd4-4166-8051-ada300933d4d>



Lot 105

**WALL MOUNTED FIRE EXTINGUISHER HOLDER.**

Lot 105

1 x Wall mounted fire extinguisher holder. Approx. 600 mm wide x 300 mm deep x 700 mm high. Lift out: £15

Click on the link below to view more info/images and see current bid price  
<https://www.bidspotter.co.uk/en-gb/auction-catalogues/food-machinery-2000/catalogue-id-fo10087/lot-5c90cbfd-5aa0-45ed-bd36-ad8900c3acae>



Lot 106

### LARGE TWO TIERED PACKING CONVEYOR.

#### Lot 106

1 x Large packing conveyor with control panel. Approx. 7 m long. Double tiered: bottom tier is Neoprene belt approx. 400 mm wide. The top tier is In-tralox belt approx. 400 mm wide. Followed by S shape which is approx. 3.2 m long. The end section is approx. 1.4 m. Lift out: £150

Click on the link below to view more info/images and see current bid price  
<https://www.bidspotter.co.uk/en-gb/auction-catalogues/food-machinery-2000/catalogue-id-fo10087/lot-0d74c7de-1eb0-488d-bb92-ad8900c3acae>



Lot 107

### S/S STOOL.

#### Lot 107

1 x S/s stool. Approx. 350 mm wide x 350 mm deep x 750 mm high. Lift out: £15

Click on the link below to view more info/images and see current bid price  
<https://www.bidspotter.co.uk/en-gb/auction-catalogues/food-machinery-2000/catalogue-id-fo10087/lot-fb7f3c3b-7d80-43aa-85a0-ad8900c3acae>



Lot 108

### CONVEYOR.

#### Lot 108

1 x Conveyor. Belt width approx. 250 mm. Overall length 2.1 m. Lift out: £30

Click on the link below to view more info/images and see current bid price  
<https://www.bidspotter.co.uk/en-gb/auction-catalogues/food-machinery-2000/catalogue-id-fo10087/lot-3f952e1a-9da7-45fc-ba50-ad8900c3acae>



Lot 109

### DAMCO BAR CODE SCANNER.

#### Lot 109

1 x Damco bar code scanning system with camera. Lift out: £30

Click on the link below to view more info/images and see current bid price  
<https://www.bidspotter.co.uk/en-gb/auction-catalogues/food-machinery-2000/catalogue-id-fo10087/lot-4e04ac6b-de7a-45e8-8051-ad8900c3acae>



### SAFELINE METAL DETECTOR.

#### Lot 110

1 x Safeline metal detector with aperture size 350 mm x 130 mm useable. With push arm reject into s/s lockable bin. With alarm bell. Overall dims approx. 1.8 m x 1.5 m width. Lift out: £80

Click on the link below to view more info/images and see current bid price

<https://www.bidspotter.co.uk/en-gb/auction-catalogues/food-machinery-2000/catalogue-id-fo10087/lot-ac327ff0-Beca-4339-8b32-ad8900c3acae>

Lot 110



### S/S TABLE.

#### Lot 111

1 x S/s table approx. 850 mm wide x 700 mm deep x 800 mm high. Lift out: £15

Click on the link below to view more info/images and see current bid price

<https://www.bidspotter.co.uk/en-gb/auction-catalogues/food-machinery-2000/catalogue-id-fo10087/lot-fe5a0c52-e4a4-4eef-b7c1-ad8900c3acae>

Lot 111



### S/S TOPPED TABLE.

#### Lot 112

1 x S/s topped table. Approx. 1.2 m wide x 600 mm x 800 mm high. Lift out: £15

Click on the link below to view more info/images and see current bid price

<https://www.bidspotter.co.uk/en-gb/auction-catalogues/food-machinery-2000/catalogue-id-fo10087/lot-a695dd18-638a-4241-88aa-ad8900c3acae>

Lot 112



### SIAT TOP & BOTTOM CASE TAPER /SIDE LABELLING.

#### Lot 113

1 x Siat top and bottom case taper with side labelling system manufactured by Combina and printer. Overall dims approx. 1.8 m x 1.1 m x 2 m high. Lift out: £40

Click on the link below to view more info/images and see current bid price

<https://www.bidspotter.co.uk/en-gb/auction-catalogues/food-machinery-2000/catalogue-id-fo10087/lot-608bcf23-2bc0-4dc2-a751-ad8900c3acae>

Lot 113



Lot 114

**S/S TOPPED TABLE.**

**Lot 114**

1 x S/s topped table approx. 1.8 m long x 600 mm deep. Lift out: £15

Click on the link below to view more info/images and see current bid price  
<https://www.bidspotter.co.uk/en-gb/auction-catalogues/food-machinery-2000/catalogue-id-fo10087/lot-7c99d236-1a81-463a-826f-ad8900c3acae>



Lot 115

**MATCO PALLET WRAPPER.**

**Lot 115**

1 x Matco pallet wrapper. Overall dims approx. 3 m wide x 1.6 m deep x 2.7 m high. Lift out: £80

Click on the link below to view more info/images and see current bid price  
<https://www.bidspotter.co.uk/en-gb/auction-catalogues/food-machinery-2000/catalogue-id-fo10087/lot-5a5b823c-8357-4335-b3d6-ad8900c3acae>



Lot 116

**SLIDING FREEZER DOOR.**

**Lot 116**

1 x Sliding refrigerated freezer door approx. 1.9 m wide x 2.6 m high c/w all running gear. Lift out: £80

Click on the link below to view more info/images and see current bid price  
<https://www.bidspotter.co.uk/en-gb/auction-catalogues/food-machinery-2000/catalogue-id-fo10087/lot-e5fa7152-ff3b-4fe8-a095-ad8900c3acae>



Lot 117

**S/S MOBILE TABLE.**

**Lot 117**

1 x S/s mobile table with lip and shelf. Approx.. 1.9 m wide x 800 mm deep x 870 mm. Lift out: £15

Click on the link below to view more info/images and see current bid price  
<https://www.bidspotter.co.uk/en-gb/auction-catalogues/food-machinery-2000/catalogue-id-fo10087/lot-a61fa711-1ec2-4aad-870e-ad8900c3acae>



Lot 118

### SIAT TOP & BOTTOM CASE TAPER/SIDE LABELLING.

#### Lot 118

1 x Siat top and bottom case taper with side labelling system manufactured by Combinda and printer. Overall dims approx. 1.8 m x 1.1 m x 2 m high. Lift out: £40

Click on the link below to view more info/images and see current bid price  
<https://www.bidspotter.co.uk/en-gb/auction-catalogues/food-machinery-2000/catalogue-id-fo10087/lot-c7375d27-3031-49d1-89f9-ad8900c3acae>



Lot 119

### S/S TABLE.

#### Lot 119

1 x S/s table approx. 150 mm wide x 770 mm deep x 800 mm high. Lift out: £15

Click on the link below to view more info/images and see current bid price  
<https://www.bidspotter.co.uk/en-gb/auction-catalogues/food-machinery-2000/catalogue-id-fo10087/lot-06f00898-858a-4068-90c6-ad8900c3acae>



Lot 120

### SAFELINE METAL DETECTOR.

#### Lot 120

1 x Safeline twin head metal detector. Aperture size 400 mm wide x 170 mm. Push arm reject into lockable bin. Lift out: £80

Click on the link below to view more info/images and see current bid price  
<https://www.bidspotter.co.uk/en-gb/auction-catalogues/food-machinery-2000/catalogue-id-fo10087/lot-ed01cfe1-0079-4998-8348-ad8900c3acae>



Lot 121

### INSECTOCUTOR.

#### Lot 121

1 x Insectocutor. Lift out: £15

Click on the link below to view more info/images and see current bid price  
<https://www.bidspotter.co.uk/en-gb/auction-catalogues/food-machinery-2000/catalogue-id-fo10087/lot-d9eaeed3-b682-4669-8d2b-ad8900c3acae>



Lot 122

**SET OF STEPS.**

**Lot 122**

1 x Set of steps. Approx. 4 m high. Lift out: £15

Click on the link below to view more info/images and see current bid price  
<https://www.bidspotter.co.uk/en-gb/auction-catalogues/food-machinery-2000/catalogue-id-fo10087/lot-b6c57bfa-565d-4894-a98f-ad8900c3acae>



Lot 123

**APRON DISPENSER & PLASTIC SCOOPS.**

**Lot 123**

Various items comprising: 1 x S/s apron dispenser. 1 x Plastic box containing plastic scoops. Lift out: £15

Click on the link below to view more info/images and see current bid price  
<https://www.bidspotter.co.uk/en-gb/auction-catalogues/food-machinery-2000/catalogue-id-fo10087/lot-64c20206-70ef-4e30-bf98-ad8900c3acae>



Lot 124

**S/S TABLE.**

**Lot 124**

1 x S/s table with shelf. Approx. 115 mm wide x 850 mm deep x 850 high. Lift out: £15

Click on the link below to view more info/images and see current bid price  
<https://www.bidspotter.co.uk/en-gb/auction-catalogues/food-machinery-2000/catalogue-id-fo10087/lot-09e0e550-9a2f-4916-9edf-ad8900c3acae>



Lot 125

**REFRIGERATED SLIDING DOOR.**

**Lot 125**

1 x Sliding refrigerated door with running gear. Approx. 1.9 m wide 2.6 m high. Lift out: £80

Click on the link below to view more info/images and see current bid price  
<https://www.bidspotter.co.uk/en-gb/auction-catalogues/food-machinery-2000/catalogue-id-fo10087/lot-b6ca5e7f-cb7c-4f9f-9eda-ad8900c3acae>





### SLIDING FREEZER DOOR.

Lot 126

1 x Sliding refrigerated door. Approx. 1.9 m wide x 2.6 m high. Lift out: £80

Click on the link below to view more info/images and see current bid price  
<https://www.bidspotter.co.uk/en-gb/auction-catalogues/food-machinery-2000/catalogue-id-fo10087/lot-0887c8ef-a262-44d9-8c82-ad8900c3acae>

Lot 126



### INSECTOCUTOR.

Lot 127

1 x Insectocutor. Lift out: £15

Click on the link below to view more info/images and see current bid price  
<https://www.bidspotter.co.uk/en-gb/auction-catalogues/food-machinery-2000/catalogue-id-fo10087/lot-6137508a-3a0a-47ca-ae00-ad8900c3acae>

Lot 127



### 200 LITRE TOTE BIN.

Lot 128

1 x 200 litre tote bin with hood. Lift out: £15

Click on the link below to view more info/images and see current bid price  
<https://www.bidspotter.co.uk/en-gb/auction-catalogues/food-machinery-2000/catalogue-id-fo10087/lot-80ce4a41-5462-4911-ae08-ad8900c3acae>

Lot 128



### THERMOSCREEN HOT AIR CURTAIN.

Lot 129

1 x Thermoscreen hot air curtain. Lift out: £80

Click on the link below to view more info/images and see current bid price  
<https://www.bidspotter.co.uk/en-gb/auction-catalogues/food-machinery-2000/catalogue-id-fo10087/lot-081ab95f-1b6b-4d9d-a167-ad8900c3acae>

Lot 129



**3-BANKS OF 2 x LOCKERS.**

**Lot 130**

1 x 3-banks of 2 x lockers, each bank being approx.300 mm wide x 400 mm deep x 1.8 m high. Lift out: £15

Click on the link below to view more info/images and see current bid price  
<https://www.bidspotter.co.uk/en-gb/auction-catalogues/food-machinery-2000/catalogue-id-fo10087/lot-2a7d7084-9045-47e6-bcb3-ad8900c3acae>

Lot 130



**PLASTIC DOLAV.**

**Lot 131**

1 x Plastic dolav. Mobile on wheels. Approx. 1.2 m wide x 1 m deep x 900 mm high.Lift Out: £15

Click on the link below to view more info/images and see current bid price  
<https://www.bidspotter.co.uk/en-gb/auction-catalogues/food-machinery-2000/catalogue-id-fo10087/lot-5eb3f625-13d2-4973-9ca5-ad8900c3acae>

Lot 131



**S/S TOPPED TABLE.**

**Lot 132**

1 x S/s topped table approx. 2.3 m wide x 800 mm deep x 860 mm high. Lift out: £15

Click on the link below to view more info/images and see current bid price  
<https://www.bidspotter.co.uk/en-gb/auction-catalogues/food-machinery-2000/catalogue-id-fo10087/lot-cd66fc3b-5615-4b6f-a83b-ad8900c3acae>

Lot 132



**7 X GREEN MOBILE BINS.**

**Lot 133**

7 x Green mobile bins. 5 being approx. 750 mm wide x 550 mm deep x 600 mm high and 2 x approx. 400 mm x 400 mm x 650 mm high. Lift out: £20

Click on the link below to view more info/images and see current bid price  
<https://www.bidspotter.co.uk/en-gb/auction-catalogues/food-machinery-2000/catalogue-id-fo10087/lot-914287e-b60f-41fd-9d66-ad8900c3acae>

Lot 133



### MOBILE TROLLEY.

#### Lot 134

1 x S/s mobile trolley with lip approx 700 mm wide x 470 mm deep x 900 mm. (Excludes contents). Lift out: £15

Lot 134

Click on the link below to view more info/images and see current bid price  
<https://www.bidspotter.co.uk/en-gb/auction-catalogues/food-machinery-2000/catalogue-id-fo10087/lot-5547c632-9b59-4fb2-a852-ad8900c3acae>



### INSECTOCUTOR.

#### Lot 135

1 x Insectocutor. Lift out: £15

Lot 135

Click on the link below to view more info/images and see current bid price  
<https://www.bidspotter.co.uk/en-gb/auction-catalogues/food-machinery-2000/catalogue-id-fo10087/lot-95b0cba4-9f5b-4ea7-8f43-ad8900c3acae>



### CHILLER DOOR.

#### Lot 136

1 x Chiller door. With running gear. Approx. 2.1 m wide x 2.2 m high. Lift out: £80

Lot 136

Click on the link below to view more info/images and see current bid price  
<https://www.bidspotter.co.uk/en-gb/auction-catalogues/food-machinery-2000/catalogue-id-fo10087/lot-eb9e0ea4-011f-4bea-9a83-ad8900c3acae>



### COMPLETE AIR COMPRESSOR SYSTEM.

#### Lot 137

1 x Complete air compressor system comprising of : Air compressor - Drier - Air receiver - Control panel. Lift out: £300

Lot 137

Click on the link below to view more info/images and see current bid price  
<https://www.bidspotter.co.uk/en-gb/auction-catalogues/food-machinery-2000/catalogue-id-fo10087/lot-17dbf0c9-ab5c-40aa-ab02-ad8900c3acae>



### INSECTOCUTOR.

Lot 138

1 x Insectocutor. Lift out: £15

Click on the link below to view more info/images and see current bid price  
<https://www.bidspotter.co.uk/en-gb/auction-catalogues/food-machinery-2000/catalogue-id-fo10087/lot-79e7f9c6-9f1e-4abd-a178-ad8900c3acae>

Lot 138



### CHEMICAL BUND.

Lot 139

1 x Chemical bund. Lift out: £15

Click on the link below to view more info/images and see current bid price  
<https://www.bidspotter.co.uk/en-gb/auction-catalogues/food-machinery-2000/catalogue-id-fo10087/lot-32328890-4a05-4e24-8f88-ad8900c3acae>

Lot 139



### 3 X 200 LITRE S/S TOTE BINS.

Lot 140

3 x 200 litre s/s tote bins. Lift out: £20

Click on the link below to view more info/images and see current bid price  
<https://www.bidspotter.co.uk/en-gb/auction-catalogues/food-machinery-2000/catalogue-id-fo10087/lot-f69f8ed0-f224-4e59-98fc-ad8900c3acae>

Lot 140



### WATER PRESSURISATION UNIT.

Lot 141

1 x Water pressurisation unit with water tank. Approx. 2000 litres. Dims approx. 2 m long x 1.3 m wide x 1.1 m high. Lift out: £40

Click on the link below to view more info/images and see current bid price  
<https://www.bidspotter.co.uk/en-gb/auction-catalogues/food-machinery-2000/catalogue-id-fo10087/lot-3dfbd49d-a5f8-48be-9610-ad8900c3acae>

Lot 141



Lot 142

**6 X S/S CAGES.**

**Lot 142**

6 x S/s cages. Approx. 800 mm x 800 mm x 1.7 m. Lift out: £30

Click on the link below to view more info/images and see current bid price  
<https://www.bidspotter.co.uk/en-gb/auction-catalogues/food-machinery-2000/catalogue-id-fo10087/lot-b21bc566-73ec-4b81-b8e6-ad8900c3acae>



Lot 143

**2 X RACKS CAPABLE OF TAKING 18 TRAYS.**

**Lot 143**

2 x 18-tray racks. Mobile on wheels. Capable of taking a tray size approx. 480 mm wide x 800 mm deep.† Lift out: £20

Click on the link below to view more info/images and see current bid price  
<https://www.bidspotter.co.uk/en-gb/auction-catalogues/food-machinery-2000/catalogue-id-fo10087/lot-9f258514-b552-4b35-9436-ad8900c3acae>



Lot 144

**2 X RACKS CAPABLE OF TAKING 10 TRAYS.**

**Lot 144**

2 x 10-tray racks. Approx. tray size 420 mm x 650 mm deep x 150 mm between each slot. Lift out: £20

Click on the link below to view more info/images and see current bid price  
<https://www.bidspotter.co.uk/en-gb/auction-catalogues/food-machinery-2000/catalogue-id-fo10087/lot-57a1a0c1-8826-4a52-bf76-ad8900c3acae>



Lot 145

**2 X RACKS CAPABLE OF TAKING 10 TRAYS.**

**Lot 145**

2 x 10-tray racks capable of taking 10 gastro trays. Tray size approx. 1.5 m high - Height between trays is 100 mm. Width 420 mm. 650 mm deep. Mobile on wheels. Overall height approx. 1.8 m. Lift out: £20

Click on the link below to view more info/images and see current bid price  
<https://www.bidspotter.co.uk/en-gb/auction-catalogues/food-machinery-2000/catalogue-id-fo10087/lot-cbf12f9a-6969-4f9e-9ed3-ad8900c3acae>



**4 X RACKS CAPABLE OF TAKING 18 TRAYS.**

**Lot 146**

4 x 18-tray racks. Mobile on wheels. Capable of taking a tray size approx. 480 mm wide x 800 mm deep. With qty of trays. Lift out: £30

Click on the link below to view more info/images and see current bid price  
<https://www.bidspotter.co.uk/en-gb/auction-catalogues/food-machinery-2000/catalogue-id-fo10087/lot-2447cc3c-576c-4fa6-bdd9-ad8900c3acae>

**Lot 146**



**2 x 18-TRAY RACKS.**

**Lot 147**

2 x 18 Tray racks. Mobile on wheels. Capable of taking tray size approx. 480 mm wide x 800 mm deep. Lift out: £20

Click on the link below to view more info/images and see current bid price  
<https://www.bidspotter.co.uk/en-gb/auction-catalogues/food-machinery-2000/catalogue-id-fo10087/lot-61c73634-fd6a-4bb1-a7a2-ad8900c3acae>

**Lot 147**



**2 X SYSPAL TROLLEYS WITH TRAYS.**

**Lot 148**

2 x Syspal trolleys with s/s Gastro trays. 2 trays fit on each shelf. 10 shelves on each rack. Comes with 2 trays on each level. Lift out: £15

Click on the link below to view more info/images and see current bid price  
<https://www.bidspotter.co.uk/en-gb/auction-catalogues/food-machinery-2000/catalogue-id-fo10087/lot-92beb0e2-e613-46e9-8492-ad8900c3acae>

**Lot 148**



**2 X SYSPAL TROLLEYS WITH TRAYS.**

**Lot 149**

2 x Syspal trolleys with s/s Gastro trays. 2 trays fit on each shelf. 10 shelves on each rack. Comes with 2 trays on each level. Lift out: £15

Click on the link below to view more info/images and see current bid price  
<https://www.bidspotter.co.uk/en-gb/auction-catalogues/food-machinery-2000/catalogue-id-fo10087/lot-2bebaacc-5a12-4658-8e8e-ad8900c3acae>

**Lot 149**



Lot 150

**31 X GASTRO TRAYS.**

Lot 150

1 x Approx. 31 Gastro trays. Lift out: £15

Click on the link below to view more info/images and see current bid price  
<https://www.bidspotter.co.uk/en-gb/auction-catalogues/food-machinery-2000/catalogue-id-fo10087/lot-fdc9779b-4817-4b6b-b110-ad8900c3acae>



Lot 151

**300 LITRE TOTE BIN.**

Lot 151

1 x 300 litre tote bin. Internal dims approx. 620 mm wide x 620 mm x 750 mm deep. Lift out: £15

Click on the link below to view more info/images and see current bid price  
<https://www.bidspotter.co.uk/en-gb/auction-catalogues/food-machinery-2000/catalogue-id-fo10087/lot-42eb19da-8860-43d4-b1e7-ad8900c3acae>



Lot 152

**2 x PLASTIC RED MOBILE BINS.**

Lot 152

2 x Plastic red mobile bins. One is 1.3 m long x 750 mm x 650 mm deep. The other is 900 mm long x 570 mm x 600 mm deep. Lift out: £15

Click on the link below to view more info/images and see current bid price  
<https://www.bidspotter.co.uk/en-gb/auction-catalogues/food-machinery-2000/catalogue-id-fo10087/lot-2972ba32-b457-49b5-90ac-ad8900c3acae>



Lot 153

**LOMA IQ3+ METAL DETECTOR.**

Lot 153

1 x Loma IQ3+ metal detector. Aperture sie 350 mm x 200 mm. Push arm reject. Overall dims approx. 1.5 m x 1 m wide. Lift out: £80.

Click on the link below to view more info/images and see current bid price  
<https://www.bidspotter.co.uk/en-gb/auction-catalogues/food-machinery-2000/catalogue-id-fo10087/lot-e5fce046-21fb-4817-89cd-adaa00ad7a33>



**GROTE 713 SLICER.**

**Lot 154**

1 x Grote 713 slicer. Lift out: £30 (Located Somerset).

Click on the link below to view more info/images and see current bid price  
<https://www.bidspotter.co.uk/en-gb/auction-catalogues/food-machinery-2000/catalogue-id-fo10087/lot-760a6413-0e65-4361-9169-ad8a00ced65b>

Lot 154



**2 X PRO SEAL SLIPSTREAM.**

**Lot 155**

2 x Pro seal slipstream convergers. 1 complete 1 for spares. Lift Out: £100

Click on the link below to view more info/images and see current bid price  
<https://www.bidspotter.co.uk/en-gb/auction-catalogues/food-machinery-2000/catalogue-id-fo10087/lot-fa410193-3a9e-47dc-b759-ad9c00f921f5>

Lot 155



**VAC LINE 4010-S VACUUM PACKER.**

**Lot 155a**

1 x Vac Line 4010-S single chamber vacuum packer. Gas flushing Lift out: £30

Click on the link below to view more info/images and see current bid price  
<https://www.bidspotter.co.uk/en-gb/auction-catalogues/food-machinery-2000/catalogue-id-fo10087/lot-84ce2a24-f395-402c-978c-ad8a00cf5763>

Lot 155a



**BOBET WALKTHROUGH BOOT/WELLIE WASHER.**

**Lot 156**

1 x Bobet Materiel Compact Corridor walk through boot/wellie washer fully automatic. Type C.C. 2016. Dims approx. 2.1 m long x 1 m wide x 1.3 m high. Lift out: £20. (Located Somerset).

Click on the link below to view more info/images and see current bid price  
<https://www.bidspotter.co.uk/en-gb/auction-catalogues/food-machinery-2000/catalogue-id-fo10087/lot-9ad12143-a295-4d35-9b3e-ad8a00e4258e>

Lot 156





Lot 156a

**PALLET OF INGREDIENT BINS.**

**Lot 156a**

1 x Pallet of ingredient bins. Lift out: £15

Click on the link below to view more info/images and see current bid price  
<https://www.bidspotter.co.uk/en-gb/auction-catalogues/food-machinery-2000/catalogue-id-fo10087/lot-4b54d62b-c6e0-419c-8750-ad9c00fa2504>



Lot 157

**BOGE SF 24-2 COMPRESSOR.**

**Lot 157**

1 x Boge SF 24-2 compressor. Lift out: £50

Click on the link below to view more info/images and see current bid price  
<https://www.bidspotter.co.uk/en-gb/auction-catalogues/food-machinery-2000/catalogue-id-fo10087/lot-34e8ad35-2d35-4fb2-bfe6-ad8d00ed9a26>



Lot 158

**BOGE SF 24-2 COMPRESSOR.**

**Lot 158**

1 x Boge SF 24-2 compressor. Lift out: £50

Click on the link below to view more info/images and see current bid price  
<https://www.bidspotter.co.uk/en-gb/auction-catalogues/food-machinery-2000/catalogue-id-fo10087/lot-da39fa91-dd6a-4501-b019-ad8d00efc639>



Lot 159

**2 X 200 LITRE TOTE BINS.**

**Lot 159**

2 x S/s 200 litre tote bins.† Lift out: £20

Click on the link below to view more info/images and see current bid price  
<https://www.bidspotter.co.uk/en-gb/auction-catalogues/food-machinery-2000/catalogue-id-fo10087/lot-adee796e-95ae-4af6-b8aa-ad8a00a3eafe>



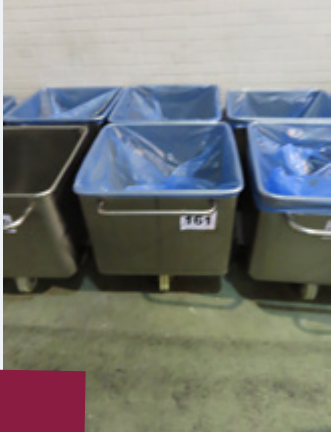
Lot 160

2 X 200 LITRE TOTE BINS.

Lot 160

2 x S/s 200 litre tote bins.††Lift out: £20

Click on the link below to view more info/images and see current bid price  
<https://www.bidspotter.co.uk/en-gb/auction-catalogues/food-machinery-2000/catalogue-id-fo10087/lot-3e1d94a9-0c30-4e32-8da1-ad8a00a4761b>



Lot 161

2 X 200 LITRE TOTE BINS.

Lot 161

2 x S/s 200 litre tote bins.††Lift out: £20

Click on the link below to view more info/images and see current bid price  
<https://www.bidspotter.co.uk/en-gb/auction-catalogues/food-machinery-2000/catalogue-id-fo10087/lot-c8875a65-625c-4316-9b42-ad8a00a4b098>



Lot 162

2 X 200 LITRE TOTE BINS.

Lot 162

2 x S/s 200 litre tote bins.††Lift out: £20

Click on the link below to view more info/images and see current bid price  
<https://www.bidspotter.co.uk/en-gb/auction-catalogues/food-machinery-2000/catalogue-id-fo10087/lot-05916c7c-67e4-484c-a306-ad8a00a4d8c0>



Lot 163

2 X 200 LITRE TOTE BINS.

Lot 163

2 x S/s 200 litre tote bins.††Lift out: £20

Click on the link below to view more info/images and see current bid price  
<https://www.bidspotter.co.uk/en-gb/auction-catalogues/food-machinery-2000/catalogue-id-fo10087/lot-d3cd1eec-60a9-4787-9ec9-ad8a00a50fb5>



**2 X 200 LITRE TOTE BINS.**

**Lot 164**

2 x S/s 200 litre tote bins.††Lift out: £20

Click on the link below to view more info/images and see current bid price  
<https://www.bidspotter.co.uk/en-gb/auction-catalogues/food-machinery-2000/catalogue-id-fo10087/lot-1f7e78ea-1ba2-431a-8ff4-ad8a00a53bf5>

Lot 164



**BIN LIFTER.**

**Lot 165**

1 x Bin lifter. Lift out: £15

Click on the link below to view more info/images and see current bid price  
<https://www.bidspotter.co.uk/en-gb/auction-catalogues/food-machinery-2000/catalogue-id-fo10087/lot-9994602c-b640-4a26-8d1f-ad8d00f0bcae>

Lot 165



**DOLAV WITH LID.**

**Lot 166**

1 x Dolav with lid. Lift out: £15

Click on the link below to view more info/images and see current bid price  
<https://www.bidspotter.co.uk/en-gb/auction-catalogues/food-machinery-2000/catalogue-id-fo10087/lot-7b381f2d-b934-4253-be72-ad8d00f0f503>

Lot 166



**PALLET WRAPPER.**

**Lot 167**

1 x Pallet wrapper. Lift out: £80

Click on the link below to view more info/images and see current bid price  
<https://www.bidspotter.co.uk/en-gb/auction-catalogues/food-machinery-2000/catalogue-id-fo10087/lot-3ccb27da-4ea8-4b15-9fb0-ad8d00f134d3>

Lot 167



Lot 168

**TURBO DEPOSITOR.**

Lot 168

1 x Turbo depositor. Lift out: £40

Click on the link below to view more info/images and see current bid price  
<https://www.bidspotter.co.uk/en-gb/auction-catalogues/food-machinery-2000/catalogue-id-fo10087/lot-8cb619b5-183b-4012-83b6-ad8d00f1c37f>



Lot 169

**CHEMICAL BUND.**

Lot 169

1 x Chemical bund. Lift out: £15

Click on the link below to view more info/images and see current bid price  
<https://www.bidspotter.co.uk/en-gb/auction-catalogues/food-machinery-2000/catalogue-id-fo10087/lot-eb225978-3607-44bf-a1d2-ad8d00f22467>



Lot 170

**CHEMICAL BUND.**

Lot 170

1 x Chemical bund. Lift out: £15

Click on the link below to view more info/images and see current bid price  
<https://www.bidspotter.co.uk/en-gb/auction-catalogues/food-machinery-2000/catalogue-id-fo10087/lot-0e872d91-8231-4175-98d9-ad8d00f265ad>



Lot 171

**SAFETY CAGE,**

Lot 171

1 x Safety cage. Lift out: £15

Click on the link below to view more info/images and see current bid price  
<https://www.bidspotter.co.uk/en-gb/auction-catalogues/food-machinery-2000/catalogue-id-fo10087/lot-efc3f8d4-b990-43a7-b41c-ad8d00f3ea1e>



Lot 172

### SMIPACK FP6000 AUTO L SEALER.

#### Lot 172

1 x Smipack FP6000 automatic L-sealer. Sealing bar 640 x 510 mm. Maximum pack height 150 mm. With conveyor closing system. Capable of 2400 packs/hour. Can be used with lot 173 (T450). Lift out: £30.

Click on the link below to view more info/images and see current bid price  
<https://www.bidspotter.co.uk/en-gb/auction-catalogues/food-machinery-2000/catalogue-id-fo10087/lot-292d7fb7-9b2c-41fa-8b08-ad8d00dd303b>



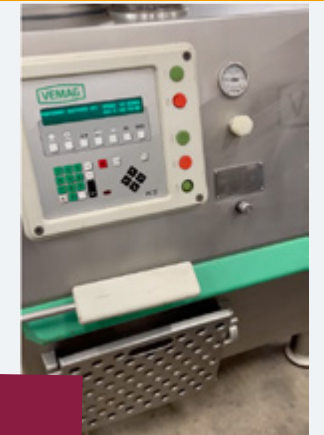
Lot 173

### SMIPACK T450 SHRINK TUNNEL.

#### Lot 173

1 x Smipack T45 shrink tunnel. Can be used with lot 172 (FP6000). Lift out: £30  
This lot is being offered individually and as part of a combination with lot 172.  
†See lot 196.

Click on the link below to view more info/images and see current bid price  
<https://www.bidspotter.co.uk/en-gb/auction-catalogues/food-machinery-2000/catalogue-id-fo10087/lot-849b2410-b9d2-4ac6-9273-ad8d00dc64f2>



Lot 174

### VEMAG ROBOT HP10C VACUUM FILLER

#### Lot 174

1 x Vemag Robot HP10C vacuum filler. With loader.† Dims approx. 2.2 m x 1.2 m x 2 m high. Lift out: £30.† (Located Somerset).

Click on the link below to view more info/images and see current bid price  
<https://www.bidspotter.co.uk/en-gb/auction-catalogues/food-machinery-2000/catalogue-id-fo10087/lot-6b5a680e-a645-4bd5-848d-ad8300a292cf>



Lot 175

### LOMA IQ3 METAL DETECTOR.

#### Lot 175

1 x Loma IQ3 metal detector. Aperture size 440 mm x 150 mm. † Reject by retractable band. Dims approx. 2 m x 900 mm wide.†Lift out: £30 (Located Somerset)

Click on the link below to view more info/images and see current bid price  
<https://www.bidspotter.co.uk/en-gb/auction-catalogues/food-machinery-2000/catalogue-id-fo10087/lot-f5feb4f6-1b0f-4d53-a036-ad8e00b45b8a>



### MONO MX ROTARY OVEN

#### Lot 181

1x Mono MX Rotary oven. Electric. Complete with 8 trolleys. Lift Out: £30 (Location Cornwall)

Click on the link below to view more info/images and see current bid price  
<https://www.bidspotter.co.uk/en-gb/auction-catalogues/food-machinery-2000/catalogue-id-fo10087/lot-b8ffedd5-3166-46b2-bb32-ad83008adf62>

Lot 181



### SANITISING TUNNEL

#### Lot 182

1 x Sanitising tunnel with Intralox belt. Approx. 600 mm aperture x 400 mm high. Belt width 500 mm. Overall dimensions 1.2 m x 1.1 wide x 2 m high including control panel. Lift out: £25.(Located Somerset)

Click on the link below to view more info/images and see current bid price  
<https://www.bidspotter.co.uk/en-gb/auction-catalogues/food-machinery-2000/catalogue-id-fo10087/lot-e9365b66-f420-45f2-8ae7-ad83008f0f27>

Lot 182



### WALDYSSA ELIXA PLUS XS SHRINK M/C.

#### Lot 183

1 x Waldyssa Elixa Plus XS model B.228XS auto shrink film packing machine with outfeed conveyor. Takes 280 mm reel width. 18 packs per minute. Tray size Minimum 120 mm long x 100 mm wide x 10 mm high. Maximum 350 mm long x 230 mm wide x 130 mm high. Lift out: £25. (Located Somerset).

Click on the link below to view more info/images and see current bid price  
<https://www.bidspotter.co.uk/en-gb/auction-catalogues/food-machinery-2000/catalogue-id-fo10087/lot-92cd39af-a8f8-4efc-bef1-ad8300936ae5>

Lot 183



### S/S TABLE WITH SHELF (APPROX 1300 x 900mm)

#### Lot 185

1 x S/s table with shelf and work holding station. Approx. 1300 x 900 mm. Lift out: £5.†(Located Somerset).

Click on the link below to view more info/images and see current bid price  
<https://www.bidspotter.co.uk/en-gb/auction-catalogues/food-machinery-2000/catalogue-id-fo10087/lot-7fba47fb-de2f-4ec9-ba9d-ad83009a8269>

Lot 185



**S/S TABLE WITH SHELF (APPROX 1300 x 900 mm)**

**Lot 186**

1 x S/s table with shelf and work holding station. Approx. 1300 x 900 mm. Lift out: £5.†(Located Somerset).

Click on the link below to view more info/images and see current bid price  
<https://www.bidspotter.co.uk/en-gb/auction-catalogues/food-machinery-2000/catalogue-id-fo10087/lot-ab07de35-acbb-48cc-9522-ad83009b311f>

**Lot 186**



**S/S TABLE (APPROX 950 x 800mm)**

**Lot 187**

1 x S/s table approx. 950 mm 800 mm. (Right angle). Lift out: £5.†(Located Somerset).

Click on the link below to view more info/images and see current bid price  
<https://www.bidspotter.co.uk/en-gb/auction-catalogues/food-machinery-2000/catalogue-id-fo10087/lot-1e9cb3cf-0eccc-436d-bae3-ad83009bd9fd>

**Lot 187**



**S/S TABLE WITH LIP (APPROX 850 x 630mm)**

**Lot 188**

1 x S/s table with lip. Approx. 850 mm x 630 mm. Lift out: £5.†(Located Somerset).

Click on the link below to view more info/images and see current bid price  
<https://www.bidspotter.co.uk/en-gb/auction-catalogues/food-machinery-2000/catalogue-id-fo10087/lot-299bc1d1-c712-4faa-a018-ad83009c9e70>

**Lot 188**



**S/S TABLE WITH SHELF (APPROX 1300 x 900mm)**

**Lot 189**

1 x S/s table with shelf and work holding station. Approx. 1300 x 900 mm. Lift out: £5.†(Located Somerset).

Click on the link below to view more info/images and see current bid price  
<https://www.bidspotter.co.uk/en-gb/auction-catalogues/food-machinery-2000/catalogue-id-fo10087/lot-fb3a204e-550d-434b-882e-ad830099ac57>

**Lot 189**



Lot 190

**RACKING.**

**Lot 190**

1 x Racking. Approx 5.2 m high x 900mm deep x 8 m wide. Lift out: £60

Click on the link below to view more info/images and see current bid price  
<https://www.bidspotter.co.uk/en-gb/auction-catalogues/food-machinery-2000/catalogue-id-fo10087/lot-916dea0f-484b-4e9d-a77c-ad950099e838>



Lot 191

**RACKING.**

**Lot 191**

1 x Racking. Approx 5.2m H x 900m D x 8m W. Lift out: £60

Click on the link below to view more info/images and see current bid price  
<https://www.bidspotter.co.uk/en-gb/auction-catalogues/food-machinery-2000/catalogue-id-fo10087/lot-0b9b7658-a6c3-4b6a-8dc8-ad95009c49b0>



Lot 192

**69 X PALLET RACKING BEAMS.**

**Lot 192**

69 x Pallet racking beams. Approx 2700mm L. Lift out: £60

Click on the link below to view more info/images and see current bid price  
<https://www.bidspotter.co.uk/en-gb/auction-catalogues/food-machinery-2000/catalogue-id-fo10087/lot-53812fa0-f75b-497b-9f11-ad95009d3853>



Lot 193

**3 X POLE STAR AXIAL FAN MOTORS.**

**Lot 193**

3 x Pole star Axial fan Motors. Various Models. Lift out: £15

Click on the link below to view more info/images and see current bid price  
<https://www.bidspotter.co.uk/en-gb/auction-catalogues/food-machinery-2000/catalogue-id-fo10087/lot-e04f7c32-9fe1-4af7-b48f-ad95009e40ba>





**VARIOUS MOTORS ON PALLET.**

**Lot 194**

1 x Various motors on pallet. Lift out: £15

**Lot 194**

Click on the link below to view more info/images and see current bid price  
<https://www.bidspotter.co.uk/en-gb/auction-catalogues/food-machinery-2000/catalogue-id-fo10087/lot-5109c25f-0d12-4559-873b-ad95009fff52>



**HYSTER REACH TRUCK. MODEL R1.4**

**Lot 195**

1 x Hyster Reach Truck model R1.4. With charger. Lift out: BUYER TO REMOVE.

**Lot 195**

Click on the link below to view more info/images and see current bid price  
<https://www.bidspotter.co.uk/en-gb/auction-catalogues/food-machinery-2000/catalogue-id-fo10087/lot-e877ab36-4b33-447c-a5cf-ad9500a1b785>

**Combination  
173&173**



**SMIPACK SHRINK TUNNEL & L SEALER COMBINATION.**

**Lot 196**

1 x COMBINATION LOT - Lots 172 and 173. Smipack FP6000 automatic L-sealer and Smipack T450 shrink tunnel. Lift out: £30 (Located Somerset).

**Lot 196**

Click on the link below to view more info/images and see current bid price  
<https://www.bidspotter.co.uk/en-gb/auction-catalogues/food-machinery-2000/catalogue-id-fo10087/lot-61676e97-7b3e-484f-88a6-ad8e00bc99bf>

# PRE AUCTION OFFERS CONSIDERED Everything Must Go!

Our online auctions are conducted in conjunction with Bidspotter. Using their bespoke online auction platforms. Bidders will be required to REGISTER PRIOR TO BIDDING.

**BidSpotter.co.uk**

**BidSpotter.com™**  
Live Interactive Auction Webcasts!



## IMPORTANT NOTE TO OVERSEAS BUYERS

Let us assist with your consignment.

We can arrange your transport and organise your paperwork.

### VIEWING

Let us know if you would like to arrange to visit the site to view the equipment ...  
As soon as dates/slots are available we will send you early notification.

Please check the online catalogue for the most up to date information on individual lots.

**FOOD  
MACHINERY 2000**



**FOOD MACHINERY 2000 LTD  
BUYERS | SELLERS | AUCTIONEERS**

Serving the Food Industry for over 25 years



**Monkspool House | The Stable | Woolverton |  
BA2 7QT | UK**

**TEL: + 44 UK (0) 1373 831 373**

**EMAIL: [sue@foodmachinery2000.com](mailto:sue@foodmachinery2000.com)**

**WEBSITE: [www.foodmachinery2000.com](http://www.foodmachinery2000.com)**