

ONLINE/LIVE WEBCAST AUCTION

FORMER 250,000 SQ. FT. EXPANDED POLYSTYRENE FOAM EXTRUSION & LAMINATING FACILITY

COMPLETE WITH: (6) Production Lines and a Full Warehouse of
Distribution and Plant Support Equipment

Tuesday, July 20, Beginning at 10:00am ET

LOCATION: 2020 W Front St., Statesville, NC 28677

INSPECTION: Friday, July 16 and Monday, July 19, 9:00am to 4:00 pm ET or by Appointment Only



Glouster Engineering Tandem Foam Line

For Calls Relating to Equipment/Auction Please Call our Office **305-638-5838** and ask for **Chris Fernandez**
For Onsite Questions During Inspection Period and Removal, Please Call **Jeff Brock 954-675-9183**

Sale Conducted by

HOLLAND
INDUSTRIAL GROUP

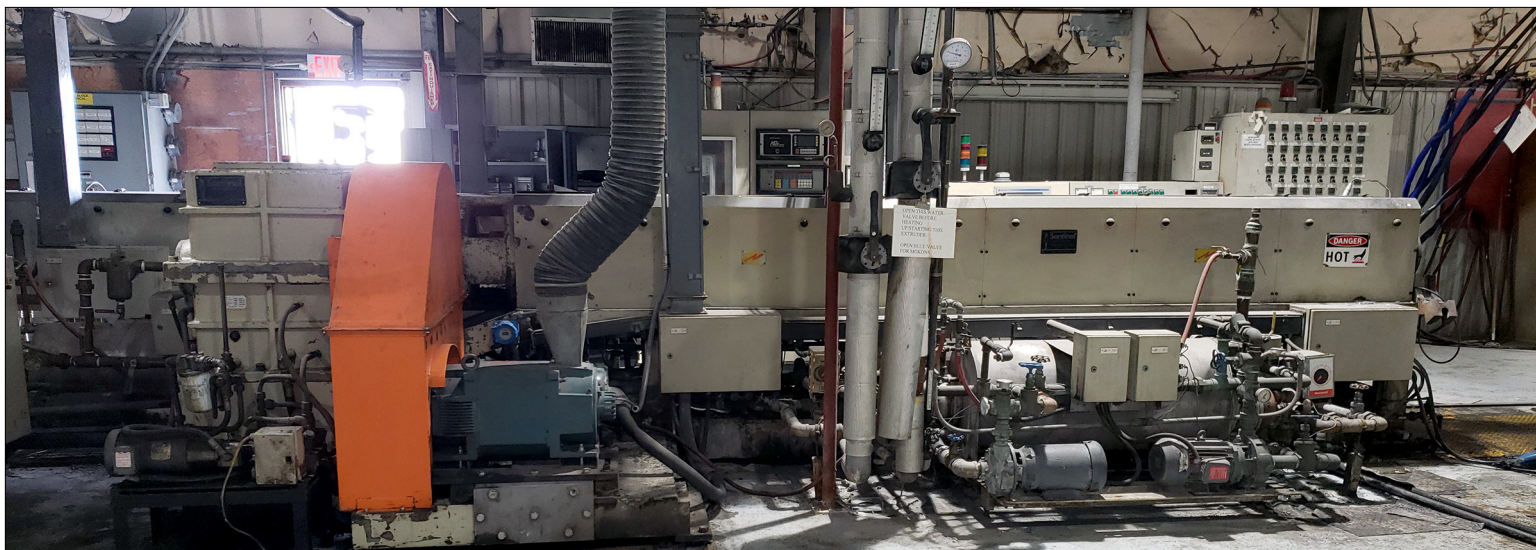
PLANT DISPOSITIONS | SURPLUS EQUIPMENT | REAL ESTATE

305.638.5838
contact@hollandindustrialgroup.com
hollandindustrialgroup.com

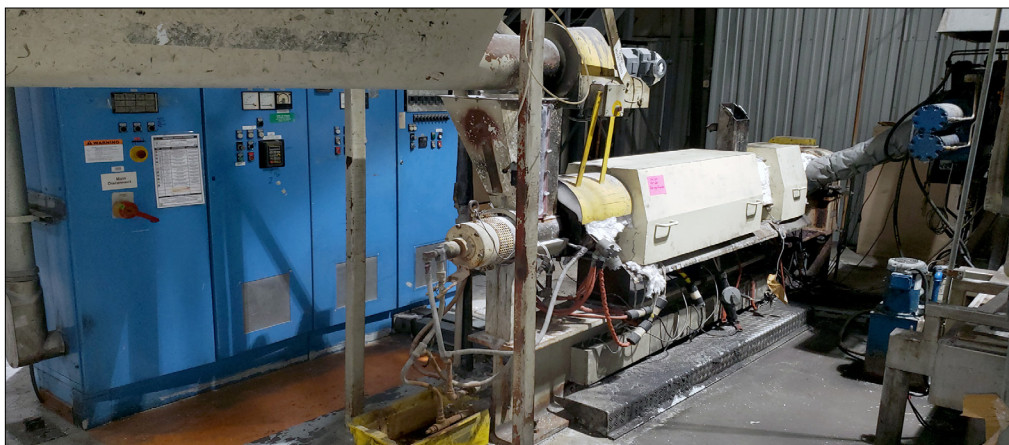
Federal
Equipment 
Company

EXTRUSION, GRANULATION/SHREDDER & PROCESS EQUIPMENT

- **GLOUCESTER ENGINEERING 6"/8" TANDEM FOAM LINE** w/6" Electrically Heated, Water Cooled, Single Screw Extruder. 200 HP, Feeding Gloucester Engineering 8" Electrically Heated, Water Cooled, Single Screw Extruder. 200 HP, Line Equipped w/4 Mokon Temp. Controllers, 4 Acrison Feeders, 1 Ktron Feeder and Controls. S/N's 266-22655-01 & 288-22655-11
- **SENTINEL 120/150MM TANDEM FOAM LINE W/120MM SINGLE SCREW EXTRUDER**, 38 to 1 L/D, 9 Zone Electrically Heated Barrel, Water Cooled, 150 HP AC motor, Feeds a 150mm Single Screw Extruder 32 to 1 L/D, 8 Zone Electrically Heated, Water Cooled, 150HP AC Motor, and 5 Station Acrison Feed System and Controls, Sentinel Challenger 4 Roll Nip Roll Machine
- **WEIMA MODEL WLK18/75 V** Rotor Quiet and Slow Speed Single Rotor Granulator
- **WEIMA TYPE WRR800 VIBRATING CONVEYOR**
- **BATTENFIELD GLOENCO MODEL 1456 GRANULATOR**
- **ROSS MODEL A-32CS 32** 2 Cubic Foot Stainless Steel Nauta Mixer
- **BERSTORFF MODEL KE90/120 X 32D TAPERED SINGLE SCREW RECLAIM EXTRUSION LINE**, 1986, 125 HP, 6 Zone Electrically Heated Water-Cooled Barrel, Equipped w/Hydraulic Screen Changer, Beringer Water-Ring Pelletizer and Spin Dryer



Sentinel 120/150mm Tandem Foam line



Bertorff Reclaim Extrusion Line

**POLYSTYRENE
FOAM EXTRUSION
& LAMINATING
FACILITY
AUCTION**

Tuesday, July 20
Beginning at
10:00am ET

Online Bidding at:

BidSpotter.com



Weima Granulator



32 Cu Ft Ross Nauta Blender

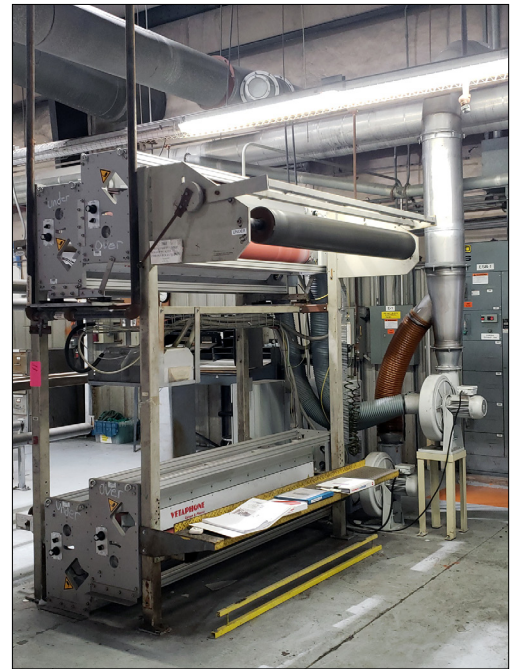
FORMER 250,000 SQ. FT. EXPANDED POLYSTYRENE FOAM EXTRUSION AND LAMINATING FACILITY

LAMINATING EQUIPMENT

- **VETAPHONE ICORONA MODEL 2UL CORONA TREATER**, Sentinel Challenger Dual Station Dual Turret Winder w/ Control Panel
- **TANTEC CORONA TREATER** w/ 2 HV2000 Series Power Generators
- **LAMINATING LINE 1: (2) SHOP BUILT CUSTOM MADE FOAM UNWIND STANDS**, Fairview Machine 24" X 70" Hot Oil Heated Two Roll Calender, Steam Heated Laminating Oven, (2) Single Turret Paper Unwinders, Finished Product Slitter and Chopper, w/Controls
- **LAMINATING LINE 2: (2) SHOP BUILT CUSTOM MADE FOAM UNWIND STANDS**, Fairview Machine 24" X 70" Hot Oil Heated Two Roll Calender, Steam Heated Laminating Oven, (2) Single Turret Paper Unwinders, Finished Product Slitter and Chopper, w/Controls
- **LAMINATING LINE 3: (1) SHOP BUILT CUSTOM MADE FOAM UNWIND STAND**, Fairview Machine 24" X 70" Hot Oil Heated Two Roll Calender, Air Cooling Table, (2) Single Turret Paper Unwinders, Barry Wheelmiller Marquip Ward United Precision Sheeter w/Automatic Knife Sharpening, End Trimmer and Slitter, w/Controls
- **LAMINATING LINE 4: (2) SHOP BUILT CUSTOM MADE FOAM UNWIND STANDS**, Fairview Machine 24" X 70" Hot Oil Heated Two Roll Calender, Steam Heated Laminating Oven, (2) Single Turret Paper Unwinders, Finished Product Slitter and Chopper, w/Controls
- **LAMINATING LINE 5: 3 UNROLL STANDS**, Fairview 32" X 48" Hot Oil Heated 2 Roll Calender, Shop Built Custom Made Finished Product Slitter and Cutter
- **COMPLETE DISTRIBUTION WAREHOUSE** w/(11) Toyota Electric Powered Fork Trucks w/Battery Chargers, (3) Tuggers, Shrink Wrapping and Laminating Machines, A TSS 80 Floor Sweeper, (2) Skyjacks Over 100 Pallets of Assorted Spare Parts, Bearings, Motors, (15+) 1,000Lb Stand-Up Forklifts and Other Misc. Items



Lamination Line 5



Vetaphone iCorona Treater



Tantec Corona Treater



Sentinel Challenger - Four Roll Nip Machine

COMPLETE DISTRIBUTION WAREHOUSE & SUPPORT EQUIPMENT

- SUPERIOR MODEL 6-5-400 NATURAL GAS FIRED PACKAGED BOILER
- 4 MILLION BTU HEATEC HOT OIL HEATER
- (2) TRANE OUTDOOR SERIES CHILLERS
- TORIT MODEL DFT3-6 DUST COLLECTOR

- CATERPILLAR 400 KW TANK MOUNTED EMERGENCY BACKUP DIESEL GENERATOR, Diesel Engine Model 3406, 500 KVA, 60 Hz., 480 Volts, 601 Amps, Reported To Have Very Low Hours, 480 Volt Transformer



(11) Forklifts & Batteries

Toyota Forklifts 3,500 lbs



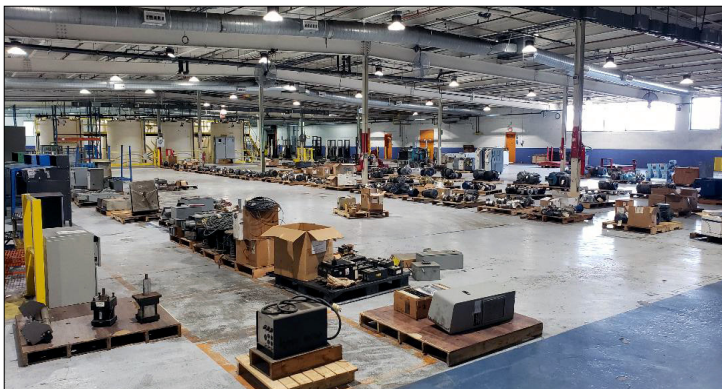
Superior Natural Gas Boiler



Heatec Horizontal Oil Heater



Saber Sear



Overview of 100+ Pallets of Assorted Spare Parts, Tooling, Etc.



Trane Chiller



Caterpillar Generator

PREFERRED RIGGERS Gorham Industrial, LLC Phone: **803-617-8434**

ggorhamindustrial@hotmail.com www.gorhamindustrial.com 200 Jasmine LN. Windsor, SC 29856