

馬 *Ma San Auction*

In Bath

马生拍卖



ASIAN WORKS OF ART

To include The Collection of Sir Mark Heath KCVO CMG

Wednesday 21st April 2021



We are an auction house in Bath specialising in the valuation and sale of Chinese antiques and works of art.

If you need advice on best price or a valuation on items such as ceramics, jades, furniture, bronzes, sculptures, paintings, clocks and more please don't hesitate to contact us.

01225 318 587
enquiries@masanauction.com
masanauction.com



Cover illustrations:
Front & back: lot 58 Inside back: lot 217 detail



ASIAN WORKS OF ART

To include The Collection of Sir Mark Heath KCVO CMG

Wednesday 21st April 2021

Starts 11am at Princes Buildings BA1 2ED

VIEWING

2 Princes Buildings, George Street, Bath, BA1 2ED
(from April 12th – 20th excluding Sundays)

ORDER OF SALE

Lots 1-73	Sir Mark Heath Collection
Lots 116-149	Private English collection in Buckinghamshire since the 1980s
Lots 170-198	The late Brian Page (1938-2018), the well-known Oriental art and antiques dealer from Brighton

ENQUIRIES

enquiries@masanauction.com +44 (0)1225 318 587

LIVE ONLINE BIDDING VIA:

[The-Saleroom.com](https://www.TheSaleroom.com), [Invaluable.com](https://www.Invaluable.com), [LiveAuctioneers.com](https://www.LiveAuctioneers.com)



Instagram: @masanauction



Facebook: @masanauction

Buyer's Premium: Each lot is subject to a Buyer's Premium of 20% + VAT

Condition of lots: The condition of lots is not stated in the catalogue descriptions.

Condition reports are available on request. Extra images and videos are viewable via the various online platforms.

Telephone bidding: Please contact us at least a day before the sale to book a telephone line.

Each lot has limited lines available.

[masanauction.com](https://www.masanauction.com)



SIR MARK HEATH KCVO CMG



Mark Evelyn Heath was born at Emsworth, Hampshire on 22nd May 1927 into a naval family and was educated at Marlborough and Queens' College, Cambridge, where he read History. After National Service in the Royal Naval Volunteer Reserve, he joined the Diplomatic Service in 1950 and in 1982 became the first Ambassador to the Holy See. He was appointed CMG on his appointment as Minister to the Holy See in 1980 and then KCVO on the occasion of the Queen's visit the same year.

After leaving the Vatican in 1985, Heath's final posting was as head of protocol in the Hong Kong Government. In 1986 the popular Governor of Hong Kong, Sir Edward Youde, suffered a fatal heart attack on a visit to Beijing, becoming the first Hong Kong Governor to die in office. Heath was in charge of arrangements for the funeral on December 9th, 1986.

During Heath's time in Hong Kong, he developed a passion for Chinese ceramics. He frequented Christie's and Sotheby's and enjoyed strolling down Hollywood Road browsing the antique shops. Some of the items show a 'C.Y.Tse Antiques & Collectibles' sticker from where some of his collection was purchased.

The collection was brought back to his home in Bath in 1988 where he retired with his wife. Sir Mark died in 2005.

马克·伊夫林·希思 (Mark Evelyn Heath) 于1927年5月22日出生于汉普郡的埃姆斯沃思 (Emsworth) 一个海军家庭，并在剑桥的马尔伯勒大学和皇后学院接受教育，在那里他读了《历史》。在皇家海军志愿人员保护区担任国家服务后，他于1950年加入外交部门，并于1982年成为第一位罗马教廷大使。1980年，他被任命为CMG，当时他被任命为罗马教廷大臣，然后在同年女王访问之际被任命为KCVO。

马克爵士 (Sir Mark) 于1985年离开梵蒂冈后，最后的职位是担任香港政府的礼宾负责人。1986年，广受欢迎的香港总督尤德爵士在访问北京时遭受致命的心脏病发作，成为首位在职遇害的香港总督。希思负责1986年12月9日的葬礼安排。

马克爵士 (Sir Mark) 在香港期间，他对中国陶瓷产生了浓厚的兴趣。他经常光顾佳士得拍卖行和苏富比拍卖行，并喜欢沿着荷李活道逛逛古董店。有些物品上贴有“C.Y.Tse Antiques & Collectibles”的标签，从那里购买了他的一些收藏品。

1988年，这些藏品被带回他在巴斯的家中，在那里他与妻子退休。马克爵士于2005年去世。





SIR MARK HEATH COLLECTION



1

TWELVE CHINESE FAMILLE ROSE PORCELAIN TEACUPS 18th CENTURY

Each decorated with floral designs.
Approx. 7.5cm diam. (12)

Provenance: Private English collection of Sir Mark Heath KCVO CMG (1927-2005), and thence by descent.

Estimate £100-200



2

GROUP OF ELEVEN CHINESE FAMILLE ROSE EXPORT PORCELAIN 18th CENTURY

Comprising three serving dishes, six coffee cups with handles, a sugar bowl and small dish. Larger dishes 22.5-23cm diam. (11)

Provenance: Private English collection of Sir Mark Heath KCVO CMG (1927-2005), and thence by descent.

Estimate £200-300



3

TWO CHINESE PORCELAIN TEA CADDIES & TEAPOT 18/19th CENTURY

Famille Rose porcelain tea caddy decorated with a floral design, with a blue and white tea caddy painted with a coastal village scene. Together with a 19th Century Canton teapot and cover. Tea caddies 11cm tall. (3)

Provenance: Private English collection of Sir Mark Heath KCVO CMG (1927-2005), and thence by descent.

Estimate £100-150



4

**CHINESE FAMILLE ROSE PORCELAIN
WINE POT WITH WARMER
19th CENTURY**

The pot and warmer finely painted with various figures mounted with metal handles. Tongzhi Period (1861-75). 13cm tall.

Provenance: Private English collection of Sir Mark Heath KCVO CMG (1927-2005), and thence by descent.

Estimate £200-300



5

**CHINESE FAMILLE ROSE PORCELAIN DISH
18th CENTURY**

Decorated with various flowers and stylised border. Old staple repair to body. 24.6cm diam.

Provenance: Private English collection of Sir Mark Heath KCVO CMG (1927-2005), and thence by descent.

Estimate £80-100



6

**THREE CHINESE BLUE AND WHITE PORCELAIN DISHES
18th CENTURY**

A pair of blue and white porcelain dishes together with a larger blue and white porcelain dish. Kangxi period (1662-1722) 21.5cm to 28.4cm diam. (3)

Provenance: Private English collection of Sir Mark Heath KCVO CMG (1927-2005), and thence by descent.

Estimate £150-200



7

**FOUR CHINESE BLUE AND WHITE PORCELAIN BOWLS & DISHES
18th/19th CENTURY**

A pair of blue and white porcelain dishes with seal marks. Together with a blue and white porcelain bowl with two-character mark to base and one other blue and white porcelain bowl. Dishes 14.5cm diam. Larger bowl 17cm diam. (4)

Provenance: Private English collection of Sir Mark Heath KCVO CMG (1927-2005), and thence by descent.

Estimate £100-150



8

**GROUP OF VARIOUS CHINESE PORCELAIN ITEMS
18th/19th CENTURY**

Comprising a blue and white porcelain ink box and cover with four-character mark of Chenghua, an 18th Century famille Rose porcelain saucer, a single famille rose teacup, a Yixing pottery teacup with white enamel painted characters with turquoise-glazed interior and a blue and white rectangular tray painted with mountain scene. Tray 21cm length. (5)

Provenance: Private English collection of Sir Mark Heath KCVO CMG (1927-2005), and thence by descent.

Estimate £100-150



9

**PAIR OF CHINESE BLUE AND WHITE PORCELAIN TEA CADDIES,
JIAQING PERIOD
EARLY 19th CENTURY**

Each decorated with central flower and scrolling stems. Jiaqing period (1796-1820). Each 15cm tall x 10cm width. (2)

Provenance: Private English collection of Sir Mark Heath KCVO CMG (1927-2005), and thence by descent.

Estimate £200-300



10

**CHINESE BLUE AND WHITE
PORCELAIN INK BOX AND COVER,
JIAQING PERIOD
EARLY 19th CENTURY**

Of rectangular form decorated with stylised butterfly and floral scrolls. Jiaqing period (1796-1820). 12cm x 8.5cm.

Provenance: Private English collection of Sir Mark Heath KCVO CMG (1927-2005), and thence by descent.

Estimate £80-120

11

**TWO CHINESE BLUE AND WHITE
PORCELAIN TEA CADDIES,
JIAQING PERIOD
EARLY 19th CENTURY**

Each decorated with central flower and scrolling stems. Jiaqing period (1796-1820). 15cm x 10cm and 13cm x 9.5. (2)

Provenance: Private English collection of Sir Mark Heath KCVO CMG (1927-2005), and thence by descent.

Estimate 200-300



12

**FINE PAIR OF CHINESE NAKING CARGO BLUE AND WHITE PORCELAIN CUPS & SAUCERS
18th CENTURY**

Each decorated with pine trees.

Each saucer with Christie's 'The Nanking Cargo' lot stickers, Lot 5577. Saucers 10cm diam. (4)

Provenance: Private English collection of Sir Mark Heath KCVO CMG (1927-2005), and thence by descent.

Estimate £80-100



13

PAIR OF CHINESE BLUE AND WHITE PORCELAIN KLAPMUTS BOWLS, LATE MING DYNASTY 17th CENTURY

Each interior decorated with a rabbit with floral borders. Single character marks to base. On wooden display stands. 17.5cm diam. (2)

Provenance: Private English collection of Sir Mark Heath KCVO CMG (1927-2005), and thence by descent.

Estimate £200-300



15

CHINESE BLUE AND WHITE PORCELAIN SWEETMEAT DISH, QIANLONG PERIOD 18th CENTURY

With seven compartments each decorated with various floral branches. Qianlong period (1735-1796). 14.5cm diam.

Provenance: C.Y.TSE ANTIQUES & COLLECTIBLES, Hong Kong.

Private English collection of Sir Mark Heath KCVO CMG (1927-2005), and thence by descent.

Estimate £200-300



14

CHINESE BLUE AND WHITE PORCELAIN SWEETMEAT DISH AND ONE OTHER, DAOGUANG PERIOD 19th CENTURY

A porcelain sweetmeat dish with six compartments decorated with scrolling lotus design, six-character seal mark of Daoguang (1820-1850) and of the period. Together with one other sweetmeat dish, Daoguang period. 14.5cm and 20cm diam. (2)

Provenance: C.Y.TSE ANTIQUES & COLLECTIBLES, Hong Kong.

Private English collection of Sir Mark Heath KCVO CMG (1927-2005), and thence by descent.

Estimate £300-500



16

CHINESE FAMILLE ROSE PORCELAIN NARCISSUS BOWL, XIANFENG / TONGZHI PERIOD MID 19th CENTURY

Of rectangular form on four feet, each side painted in enamels with various birds and floral scenes. Xianfeng / Tongzhi period (1850-1875). 16.5cm x 30cm

Provenance: C.Y.TSE ANTIQUES & COLLECTIBLES, Hong Kong.

Private English collection of Sir Mark Heath KCVO CMG (1927-2005), and thence by descent.

Estimate £300-500



17

**CHINESE BLUE AND WHITE PORCELAIN
'DRAGON & PHOENIX' KLAPMUTS BOWL,
KANGXI PERIOD
18TH CENTURY**

The exterior painted with dragon and phoenix with flaming pearl and ruyi clouds. Three ruyi clouds to the interior in a double ring, decorated blue border with burnished rim. On hardwood display stand. Kangxi period (1662-1722). 16.5cm diam.

Provenance: C.Y.TSE ANTIQUES & COLLECTIBLES, Hong Kong.

Private English collection of Sir Mark Heath KCVO CMG (1927-2005), and thence by descent.

Estimate £300-500



19

**CHINESE BLUE AND WHITE PORCELAIN
DRAGON CENSER, KANGXI PERIOD
18TH CENTURY**

Of globular form with extended s-shaped handles and three rounded feet decorated with two four-clawed dragons chasing pearl. On fitted wooden stand. Kangxi period (1662-1722). Censer 13.5cm x 9cm

Provenance: C.Y.TSE ANTIQUES & COLLECTIBLES, Hong Kong.

Private English collection of Sir Mark Heath KCVO CMG (1927-2005), and thence by descent.

Estimate £300-500



18

**PAIR OF CHINESE BLUE AND WHITE
PORCELAIN NARCISSUS BOWLS,
DAOGUANG PERIOD
MID 19TH CENTURY**

Of lobed form each supported on four feet decorated with peonies and leaf stems. Daoguang period (1820-1850). 20.5cm x 16cm. (2)

Provenance: Private English collection of Sir Mark Heath KCVO CMG (1927-2005), and thence by descent.

Estimate £300-500



20

**CHINESE FAMILLE ROSE PORCELAIN TEAPOT
18TH CENTURY**

Finely painted with various flowers. On wooden display stand. Teapot 19cm x 12.5cm

Provenance: Private English collection of Sir Mark Heath KCVO CMG (1927-2005), and thence by descent.

Estimate £200-300



21
CHINESE BLUE AND WHITE PORCELAIN
TEAPOT, YONGZHENG PERIOD
18th CENTURY

Finely painted with floral design. Yongzheng period (1723-1735). On wooden display stand. 19cm x 14cm

Provenance: Private English collection of Sir Mark Heath KCVO CMG (1927-2005), and thence by descent.

Estimate £200-300



23
FINE CHINESE BLUE AND WHITE LOBED
PORCELAIN DISH, KANGXI PERIOD
18th CENTURY

With lobed rim decorated with floral design. Vibrant conch shell mark to base. Kangxi period (1662-1722). 20.5cm diam.

Provenance: Private English collection of Sir Mark Heath KCVO CMG (1927-2005), and thence by descent.

Estimate £300-500



22
CHINESE BLUE AND WHITE PORCELAIN
TIERED SWEET BOX, QIANLONG PERIOD
18th CENTURY

Of cylindrical form with three separate compartments and cover decorated with scrolling lotus design. Qianlong period (1735-1796). 10cm x 12cm

Provenance: Private English collection of Sir Mark Heath KCVO CMG (1927-2005), and thence by descent.

Estimate £300-500



24
CHINESE BLUE AND WHITE 'THREE
ABUNDENCES' PORCELAIN DISH,
YONGZHENG PERIOD
18th CENTURY

Decorated with 'Sanduo', fruit sprays of pomegranate, finger citron and peach wishing many children, good luck and longevity. Yongzheng period (1723-1735). 19.5cm diam.

Provenance: Private English collection of Sir Mark Heath KCVO CMG (1927-2005), and thence by descent.

Estimate £400-600

25

**CHINESE BLUE AND WHITE PORCELAIN
PHOENIX JAR AND COVER, KANGXI PERIOD
18th CENTURY**

Covered in scale pattern with peony medallion between two flying phoenixes. Kangxi period (1662-1722). 29cm tall

Provenance: Private English collection of Sir Mark Heath KCVO CMG (1927-2005), and thence by descent.

Estimate £200-300



26

**CHINESE BLUE AND WHITE PORCELAIN VASE,
QIANLONG PERIOD
18th CENTURY**

Of cylindrical form and tapered neck decorated with floral scrolls. Qianlong period (1735-1796). 27cm tall

Provenance: Private English collection of Sir Mark Heath KCVO CMG (1927-2005), and thence by descent.

Estimate £300-500

27

**CHINESE BLUE AND WHITE LOBED
PORCELAIN DISH
18th CENTURY**

With bracket-lobed rim decorated with five chrysanthemum heads and scrolling stems. 25.5cm diam.

Provenance: Private English collection of Sir Mark Heath KCVO CMG (1927-2005), and thence by descent.

Estimate £200-400





28

**CHINESE BLUE AND WHITE PORCELAIN
SPITTOON 'ZHADOU', JIAQING PERIOD
EARLY 19th CENTURY**

With compressed globular body decorated with chrysanthemum scrolls, Jiaqing period (1796-1820). 8.7cm tall

Provenance: C.Y.TSE ANTIQUES & COLLECTIBLES, Hong Kong.

Private English collection of Sir Mark Heath KCVO CMG (1927-2005), and thence by descent.

Estimate £200-300



29

**CHINESE BLUE AND WHITE PORCELAIN
SPITTOON 'ZHADOU', TONGZHI PERIOD OR
EARLIER
19th CENTURY**

With compressed globular body, decorated with scrolling floral design. Six-character seal mark of Qianlong to base. Possibly Tongzhi period (1861-1875). 8cm x 8cm

Provenance: Private English collection of Sir Mark Heath KCVO CMG (1927-2005), and thence by descent.

Estimate £300-500



30

**CHINESE BLUE AND WHITE PORCELAIN INK STONE, LATE MING DYNASTY
17th CENTURY**

Of cylindrical form decorated with two dragons amongst clouds chasing flaming pearls. 12.5cm diam.

Provenance: C.Y.TSE ANTIQUES & COLLECTIBLES, Hong Kong.

Private English collection of Sir Mark Heath KCVO CMG (1927-2005), and thence by descent.

Estimate £300-500

**CHINESE UNDERGLAZE BLUE AND COPPER-RED PORCELAIN WATER DROPPER,
KANGXI PERIOD
17th CENTURY**

Modelled as an open lotus bowl in underglaze blue attached to a lotus pod with copper-red detailing, the interior of the bowl affixed a moulded shell. Originally thought to be Qianlong period but similar water droppers have been dated to the Kangxi period. 12cm length.

Reference: A similar example dated 17th century, see The Baur Collection, J. Ayers, the catalogue, illustrated vol. II, no. A226 and also, The Collection of the Rijksmuseum, Amsterdam, object number AK-RAK-1972-3.

Provenance: C.Y.TSE ANTIQUES & COLLECTIBLES, Hong Kong.

Private English collection of Sir Mark Heath KCVO CMG (1927-2005), and thence by descent.

Estimate £800-1200



32

**PAIR OF CHINESE UNDERGLAZE BLUE AND COPPER-RED PORCELAIN LOTUS BOWLS,
KANGXI MARK**

The interiors well-painted in underglaze blue and copper-red with crane in a lotus pond. The exterior decorated with vertical lines in copper-red within blue borders. Six-character Kangxi marks to base in underglaze blue, possibly of the period. 12.5cm diam. x 6.5cm tall (2)

Provenance: C.Y.TSE ANTIQUES & COLLECTIBLES, Hong Kong.

Private English collection of Sir Mark Heath KCVO CMG (1927-2005), and thence by descent.

Estimate £1000-1500





33

**CHINESE BLUE AND WHITE PORCELAIN INGOT FORM CUP STAND, QIANLONG MARK AND PERIOD
18th CENTURY**

Of ingot shape decorated with a central 'Shou' character and scrolling floral design. Four-character Qianlong mark to base and of the period (1735-1796). 16cm length

Provenance: Private English collection of Sir Mark Heath KCVO CMG (1927-2005), and thence by descent.

Estimate £300-500

34

**CHINESE BLUE AND WHITE
PORCELAIN BOWL, KANGXI PERIOD
18th CENTURY**

With fluted rim and body decorated with floral design. Six-character mark of Chenghua to base but Kangxi period (1662-1722). On wooden display stand. Bowl 15.5cm diam. x 7cm

Provenance: Private English collection of Sir Mark Heath KCVO CMG (1927-2005), and thence by descent.

Estimate £400-600





35

**CHINESE BLUE AND WHITE PORCELAIN
BOWL, MING DYNASTY
16th CENTURY**

Decorated with pots of flowers. Four-character mark to base reading 'Yong bao chang chun' translating to 'Eternal life and everlasting Spring'. Ming Dynasty (1368-1644). On wooden display stand. 12cm diam. x 6.5cm

Provenance: Private English collection of Sir Mark Heath KCVO CMG (1927-2005), and thence by descent.

Estimate £200-300



37

**CHINESE BLUE AND WHITE PORCELAIN
BOWL, JIAQING MARK AND PERIOD
EARLY 19th CENTURY**

Decorated with four stylised dragon roundels. Six-character mark of Jiaqing to base and of the period (1796-1820). On wooden display stand. 18.5cm diam. x 9cm.

Provenance: Private English collection of Sir Mark Heath KCVO CMG (1927-2005), and thence by descent.

Estimate £300-500



36

**PAIR OF CHINESE BLUE AND WHITE PORCELAIN DISHES
18/19th CENTURY**

The exteriors decorated with scrolling lotus design with scrolling lingzhi fungi. Four-character marks of Xuande to base but later. Each on wooden display stand. 10.1cm diam. (2)

Provenance: Private English collection of Sir Mark Heath KCVO CMG (1927-2005), and thence by descent.

Estimate £200-300



38

**CHINESE BLUE AND WHITE PORCELAIN
DRAGON DISH, YONGZHENG PERIOD
18th CENTURY**

Decorated with three stylised dragons and spays of lingzhi. Yongzheng period (1722-1735). 15.6cm diam.

Provenance: Private English collection of Sir Mark Heath KCVO CMG (1927-2005), and thence by descent.

Estimate £300-500



39

**FINE CHINESE BLUE AND WHITE PORCELAIN
DISH, KANGXI PERIOD
18th CENTURY**

Decorated with three butterflies amongst flowers. Six-character mark of Xuande mark to base but Kangxi period (1662-1722). On wooden display stand. 8.5cm diam.

Provenance: C.Y.TSE ANTIQUES & COLLECTIBLES, Hong Kong.

Private English collection of Sir Mark Heath KCVO CMG (1927-2005), and thence by descent.

Estimate £200-400



40

**TWO CHINESE BLUE AND WHITE PORCELAIN DISHES, JIAQING PERIOD
18th/19th CENTURY**

Each decorated with scrolling lotus design. Each with six-character seal marks of Jiaqing to bases and of the period (1796-1820). On wooden display stands. (2)

Provenance: C.Y.TSE ANTIQUES & COLLECTIBLES, Hong Kong.

Private English collection of Sir Mark Heath KCVO CMG (1927-2005), and thence by descent.

Estimate £300-500

41

**FINE CHINESE BLUE AND WHITE PORCELAIN BRUSH POT, TRANSITIONAL PERIOD
MID 17th CENTURY**

Of cylindrical form decorated with birds and flying insects amongst flowering prunus trees. Bands of incised decoration around the rim and base, the flat base left unglazed. 13.5cm tall

Provenance: C.Y.TSE ANTIQUES & COLLECTIBLES, Hong Kong.

Private English collection of Sir Mark Heath KCVO CMG (1927-2005), and thence by descent.

Estimate £2000-3000



**RARE CHINESE UNDERGLAZE BLUE AND RED 'BAJIXIANG' PORCELAIN LOBED STEM CUP
QIANLONG / JIAQING PERIOD (1735-1820)**

Decorated with the eight Buddhist emblems (*Bajixiang*). Conch shell, lotus flower, wheel of Dharma, parasol, endless knot, double fish, victory banner and treasured vase. Further decorated to the interior with scrolling lingzhi and lobed rim. Six-character mark of Qianlong in underglaze blue to inside of stem base. 16cm diam. x 11cm tall

Provenance: Private English collection of Sir Mark Heath KCVO CMG (1927-2005), and thence by descent.

Estimate £3000-5000





43

**CHINESE BLUE AND WHITE PORCELAIN DISH,
JIAQING / DAOGUANG PERIOD
EARLY TO MID 19th CENTURY**

Decorated with floral scrolls to the interior. Exterior painted with scrolling lingzhi. Four-character mark of Xuande in double ring to base. Jiaqing/Daoguang period circa. 1800-1850. 15.2cm diam.

Provenance: C.Y.TSE ANTIQUES & COLLECTIBLES, Hong Kong.

Private English collection of Sir Mark Heath KCVO CMG (1927-2005), and thence by descent.

Estimate £300-500



44

**CHINESE BLUE AND WHITE PORCELAIN DISH,
JIAQING PERIOD
EARLY 19th CENTURY**

Decorated with floral scrolls to the interior. Exterior painted with scrolling lingzhi. Four-character mark of Xuande in double ring to base. Jiaqing period (1796-1820). 15cm diam.

Provenance: Private English collection of Sir Mark Heath KCVO CMG (1927-2005), and thence by descent.

Estimate £300-500



45

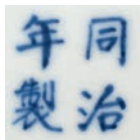
**PAIR OF CHINESE BLUE AND WHITE PORCELAIN BOWLS, DAOGUANG MARK AND PERIOD
19th CENTURY**

Of square form, decorated with a coastal village scene in underglaze blue with gilt rims. Each with gilt four-character seal marks of Daoguang to base and of the period (1820-1850). 11cm width x 7cm tall. (2)

Provenance: C.Y.TSE ANTIQUES & COLLECTIBLES, Hong Kong.

Private English collection of Sir Mark Heath KCVO CMG (1927-2005), and thence by descent.

Estimate £300-500



46

**CHINESE BLUE AND WHITE LOBED PORCELAIN BOWL, TONGZHI MARK AND PERIOD
19th CENTURY**

Of oval lobed form on splayed foot decorated with lotus pond scene and scrolling border. Four-character mark of Tongzhi to base in underglaze blue and of the period (1861-1875). 26cm length x 8cm tall

Provenance: Private English collection of Sir Mark Heath KCVO CMG (1927-2005), and thence by descent.

Estimate £600-800



47

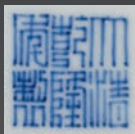
**RARE CHINESE PORCELAIN OIL LAMP DISH, QIANLONG MARK AND PERIOD
18th CENTURY**

With traces of gilt, doucai and enamel decoration. The exterior painted with three bats. Six-character seal mark of Qianlong to base and of the period (1735-1796). On wooden display stand. 15cm diam. x 5.5cm tall

Provenance: C.Y.TSE ANTIQUES & COLLECTIBLES, Hong Kong.

Private English collection of Sir Mark Heath KCVO CMG (1927-2005), and thence by descent.

Estimate £400-600



48

**FINE CHINESE SANG DE BOEUF MONOCHROME PORCELAIN DISH, QIANLONG MARK AND PERIOD
18th CENTURY**

Covered in a deep red glaze stopping short of the rim and foot. Qianlong seal mark in underglaze blue to base and of the period (1735-1796). 20.3cm diam.

Provenance: Private English collection of Sir Mark Heath KCVO CMG (1927-2005), and thence by descent.

Estimate £2000-3000





49

**RARE CHINESE PORCELAIN 'PHOENIX & BATS' TEA CADDY, QIANLONG MARK AND PERIOD
18th CENTURY**

Of square form covered in a pale celadon glaze with underglaze blue decoration to each face with central front facing phoenix and four bats to each corner. Qianlong seal mark in underglaze blue to base and of the period (1735-1796). 18.5cm tall x 15cm

Provenance: C.Y.TSE ANTIQUES & COLLECTIBLES, Hong Kong.

Private English collection of Sir Mark Heath KCVO CMG (1927-2005), and thence by descent.

Estimate £2000-3000





50

CHINESE TIANBAI-GLAZED PORCELAIN INCISED 'DRAGON' BOWL, YONGLE MARK

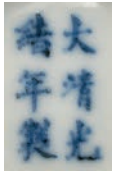
Of conical form, thinly-potted with incised decoration to the interior of two dragons chasing flaming pearls amongst ruyi clouds. The base with four-character mark of Yongle (1403-1424). Together with a wooden display stand. Ming dynasty or later. 16.3cm diam.

Sticker to the exterior reading 'Yongle Imperial tianbai-glazed thin body dragon bowl'

Provenance: Private English collection of Sir Mark Heath KCVO CMG (1927-2005), and thence by descent.

Estimate £1000-1500





51

**PAIR OF CHINESE PORCELAIN WINE CUPS, GUANGXU MARK AND PERIOD
19th CENTURY**

Decorated with various treasured items in underglaze blue with pale orange and gilt. Six character marks of Guangxu to base and of the period (1875-1908). On wooden display stands. 5.2cm diam. x 3cm tall (2)

Provenance: Private English collection of Sir Mark Heath KCVO CMG (1927-2005), and thence by descent.

Estimate £200-400



52

**PAIR OF CHINESE PORCELAIN JARLETS, KANGXI PERIOD
18th CENTURY**

Underglaze blue and wucai decoration with flying phoenix. On wooden display stands. Kangxi period (1662-1722). 4.8cm tall (2)

Provenance: Private English collection of Sir Mark Heath KCVO CMG (1927-2005), and thence by descent.

Estimate £200-400



53

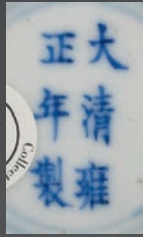
**PAIR OF CHINESE DOUCAI PORCELAIN 'CHICKEN' CUPS, KANGXI PERIOD
18th CENTURY**

Finely potted with a countersunk base and gently flared rim. Seal mark to base in underglaze blue with wooden display stands. Kangxi period (1662-1722). 7cm diam. x 3.5cm tall (2)

Provenance: Private English collection of Sir Mark Heath KCVO CMG (1927-2005), and thence by descent.

Estimate £400-600





54

**FINE PAIR OF CHINESE DOUCAI PORCELAIN WINE CUPS, YONGZHENG MARK AND PERIOD
18th CENTURY**

Thinly- potted and bell-shaped with gently flared rim decorated with floral bouquets in doucai enamels. Six-character marks of Yongzheng to base and of the period (1722-1735). On wooden display stands. 9.8cm diam. x 7cm tall (2)

Provenance: Private English collection of Sir Mark Heath KCVO CMG (1927-2005), and thence by descent.

Estimate £3000-5000





55

**FINE PAIR OF DOUCAI PORCELAIN DISHES, JIAQING MARK AND PERIOD
EARLY 19th CENTURY**

The interior finely decorated with gilt and doucai enamels of scrolling lingzhi, lotus and peach each surrounded by seven bats. The exteriors decorated with peaches and lingzhi. Six-character seal marks of Jiaqing to bases and of the period (1796-1820). On wooden display stands. 14.4cm diam. (2)

Provenance: C.Y.TSE ANTIQUES & COLLECTIBLES, Hong Kong.

Private English collection of Sir Mark Heath KCVO CMG (1927-2005), and thence by descent.

Estimate £2000-3000





56

**FINE CHINESE DOUCAI PORCELAIN BOWL, JIAQING MARK AND PERIOD
EARLY 19th CENTURY**

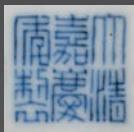
Finely decorated with gilt and doucai enamels of scrolling lingzhi, lotus and peach each surrounded by seven bats. Six-character seal mark of Jiaqing to base and of the period (1796-1820). On wooden display stand. 13.7cm diam. x 6cm tall

Provenance: C.Y.TSE ANTIQUES & COLLECTIBLES, Hong Kong.

Private English collection of Sir Mark Heath KCVO CMG (1927-2005), and thence by descent.

Estimate £1500-2000





57

**FINE CHINESE WUCAI 'DRAGON & PHOENIX' PORCELAIN BOWL, JIAQING MARK AND PERIOD
EARLY 19th CENTURY**

Decorated with two descending phoenixes between green and iron-red dragons chasing flaming pearls below a band of the eight Buddhist emblems and ruyi heads around the rim. The interior decorated with another iron-red dragon. Six-character seal mark of Jiaqing to base and of the period (1796-1820). On wooden display stand. 14.7cm diam. x 6.5cm tall

Provenance: Private English collection of Sir Mark Heath KCVO CMG (1927-2005), and thence by descent.

Estimate £3000-5000





58

CHINESE BLUE AND WHITE PORCELAIN 'BAJIXIANG' EWER,
MARK AND PERIOD OF QIANLONG
18th CENTURY

The pouring vessel modelled on the archaic bronze 'He', a ritual wine vessel. The globular body and diagonally set spout supported by four legs with a squat neck leading into a curved handle. Decorated with 'Bajixiang', the eight Buddhist emblems in order; flaming wheel, conch shell, umbrella, canopy, lotus, vase, double fish and endless knot above lotus sprays. All between lingzhi scrolls and a band of key fret decoration around the shoulder. The interior base of the spout has a single large opening which is typical of period ewers. The base with six-character mark of Qianlong in underglaze blue. Mark and period of Qianlong (1735-1796). Together with a hardwood cover and stand with carved Yin-Yang emblem. Ewer size without stand and cover, 24cm length x 17.7cm tall

Provenance: Private English collection of Sir Mark Heath KCV O CMG (1927-2005), and thence by descent.

Reference: National Palace Museum, Catalogue, Blue and White Wares of the Ch'ing Dynasty, vol. II, pl. 21.

Similar covered ewers were sold at Sotheby's Hong Kong on 3rd April 1919, Lot 3635 and more recently in Christie's London on 3rd November 2020, Lot. 174.

Estimate £30,000-50,000





59

CHINESE BLUE AND WHITE PORCELAIN 'BAJIXIANG' EWER AND COVER, 20th CENTURY

The pouring vessel modelled on the archaic bronze 'He', a ritual wine vessel. The globular body and diagonally set spout supported by four legs with a squat neck leading into a curved handle and cover. Decorated with 'Bajixiang', the eight Buddhist emblems. The interior base of the spout has seven separate holes. Qianlong seal mark to base but later. Together with a hardwood stand with carved Yin-Yang emblem. 23.5cm length 22cm tall without stand.

Heath had an attraction to this form. During his time in Hong Kong, he attended a Christie's sale of 'Fine Chinese Ceramics, Jade and Works of Art' at the Mandarin Hotel on 13th January 1987. Lot 524 a similar ewer without cover he marked down in his catalogue (Catalogue part of lot 71).

Provenance: Private English collection of Sir Mark Heath KCVO CMG (1927-2005), and thence by descent.

Estimate £300-500

**CHINESE JUNYAO PURPLE SPLASHED DISH, SONG DYNASTY
SONG DYNASTY (960-1279)**

Thickly-potted with shallow rounded sides covered in a pale blue glaze with splashes of purple fading into a rich dark blue leaving the foot rim unglazed. 19.5cm diam.

Provenance: Private English collection of Sir Mark Heath KCVO CMG (1927-2005), and thence by descent.

Estimate £2000-3000



61

**VERY RARE CHINESE 'BAITIAN' SOAPSTONE CARVING
QING DYNASTY**

Carved in shallow relief with two figures on a boat amongst trees under clouds. Weight 249.4 grams.
Approx. 7cm tall x 6cm

'Baitian' literally translating to 'white field' is the white stone variety of the Shoushan soapstone. The baitian soapstone can be characterised by its mutton fat colour and faint pattern in the stone resembling that of a cut turnip or radish, which is known as 'lobo wen' radish pattern.

Provenance: Private English collection of Sir Mark Heath KCVO CMG (1927-2005), and thence by descent.

Estimate £2000-3000





62

**SIMILAR PAIR OF CHINESE SHUFU DISHES, YUAN DYNASTY
YUAN DYNASTY (1279-1368)**

Finely moulded covered in a thick pale blueish-grey glaze. The centres with moulded stylised lotus blooms circled by a band of lotus scrolls. 12.8cm diam. (2)

Provenance: Private English collection of Sir Mark Heath KCVO CMG (1927-2005), and thence by descent.

Estimate £1500-2000



63

**FOUR SONG AND YUAN DYNASTY BOWL
AND DISHES
(1279-1368)**

Song Dynasty Qingbai porcelain dishes together with a Yuan Dynasty white glazed conical dish and a larger Yuan Dynasty conical bowl in a light straw glaze. Large bowl 7cm diam. (4)

Provenance: Private English collection of Sir Mark Heath KCVO CMG (1927-2005), and thence by descent.

Estimate £200-300



64

**CHINESE QINGBAI PORCELAIN DISH,
SONG DYNASTY
SONG DYNASTY (969-1279)**

The interior with carved decoration of a lotus, the exterior glazed with unglazed rim and base. 18.5cm diam.

Provenance: Private English collection of Sir Mark Heath KCVO CMG (1927-2005), and thence by descent.

Estimate £300-500



65

CHINESE TANG POTTERY HORSE AND FIGURE WITH HAN DYNASTY EAR CUP

Tang Dynasty (618-907) moulded pottery figure of a horse and a pottery figure of a standing female attendant. Together with a single Han Dynasty (206BC-220AD) green lead glazed pottery ear cup. Horse 32cm length x 31cm tall. Figure 25cm tall (3)

Provenance: Private English collection of Sir Mark Heath KCVO CMG (1927-2005), and thence by descent.

Estimate £300-500



66

PAIR OF CHINESE CARVED SOAPSTONE FIGURES OF SHOU LAO EARLY 20th CENTURY

Holding staff and peach together with a Japanese bronze seated figure. Soapstone figures 17.5cm tall (3)

Provenance: Private English collection of Sir Mark Heath KCVO CMG (1927-2005), and thence by descent.

Estimate £60-80



67

PAIR OF CHINESE CARVED SOAPSTONE SEALS

Carved in relief with lion dogs amongst clouds. Each with carved seal marks to base. 13.5cm tall (2)

Provenance: Private English collection of Sir Mark Heath KCVO CMG (1927-2005), and thence by descent.

Estimate £60-80



68

68

SEVEN REFERENCE BOOKS ON CHINESE ART AND CULTURE

Plus, one exhibition catalogue to include:

- 1 Trésors d'art Chinois (Archaeological discoveries in China exhibited in the Petite Palais Art museum, Paris September 1973)
- 2 Travels of a photographer in China 1933-1946, Hedda Morrison.
- 3 Gateways to China, Trading ports of the 18th and 19th Centuries.
- 4 Monochrome Ceramics of Ming and Ch'ing Dynasties.
- 5 Imperial Chinese Art, Lin Yutang.
- 6 The Heart of the Dragon, Alasdair Clayre.
- 7 Treasure of China, Annette Juliano.
- 8 The Nanking Cargo, A private Collection.

Provenance: Private English collection of Sir Mark Heath KCVO CMG (1927-2005)

Estimate £20-50

69

FOUR REFERENCE BOOKS ON CHINESE ART AND CULTURE

To include:

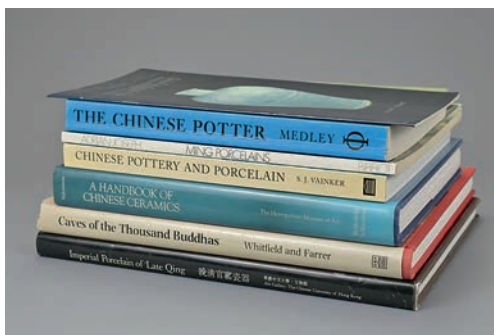
- 1 A Chronological Table of Chinese and World Cultures, National Palace Museum of Taipei
- 2 Masterpieces of Chinese painting in the National Palace Museum.
- 3 Masterpieces of Chinese painting in the National Palace Museum, *Supplement*.
- 4 Masterworks of Chinese porcelain in the National Palace Museum, *Supplement*.

Provenance: Private English collection of Sir Mark Heath KCVO CMG (1927-2005)

Estimate £20-50



69



70

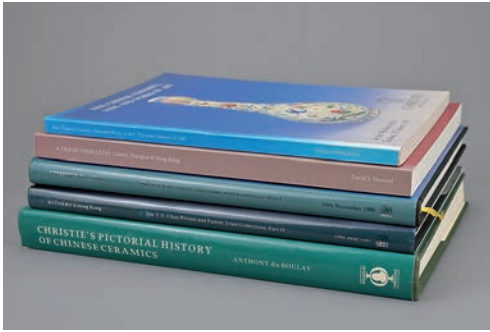
SIX REFERENCE BOOKS ON CHINESE ART AND CERAMICS

Plus, one exhibition catalogue to include:

- 1 Caves of the Thousand Buddhas, Chinese Art from the Silk Route. Roderick Whitfield & Anne Farrer.
- 2 Imperial Porcelain of late Qing.
- 3 A Handbook of Chinese Ceramics, Suzanna G. Valenstein.
- 4 Ming Porcelains, Their Origins and Development. Adrian M. Joseph.
- 5 Chinese Pottery and Porcelain, from prehistoric to present. S. J. Vainker.
- 6 A Practical Potter, A Practical History of Chinese Ceramics. Margaret Medley.
- 7 Chinese Antiquities from the Brian S. McElney Collection.

Provenance: Private English collection of Sir Mark Heath KCVO CMG (1927-2005)

Estimate £20-50



71

REFERENCE BOOKS AND CATALOGUES ON CHINESE WORKS OF ART, SOTHEBY'S & CHRISTIE'S

To include:

- 1 Christie's Pictorial History of Chinese Ceramics, Anthony du Boulay.
- 2 Fine Chinese Ceramics, Jade and Works of Art, Christie's Hong Kong 1987 - Catalogue.
- 3 Sotheby's, A Tale of Three Cities, Canton, Shanghai and Hong Kong, David S. Howard.
- 4 Sotheby's, The T.Y. Chao, Private and Family Trust Collections of important Chinese Ceramics and Jade Carvings - Part I, Hong Kong 1986 - Catalogue.
- 5 Sotheby's, The T.Y. Chao, Private and Family Trust Collections of important Chinese Ceramics and Jade Carvings - Part II, Hong Kong 1987 - Catalogue.

Provenance: Private English collection of Sir Mark Heath KCVO CMG (1927-2005)

Estimate £20-50



72

REFERENCE BOOKS AND CATALOGUE ON CHINESE WORKS OF ART

To include:

- 1 Chinese Antiquities from the Brian S. McElney Collection.
- 2 An Anthology of Chinese Ceramics.
- 3 The Art of the Song Potter - Catalogue.
- 4 The Arts of China, Michael Sullivan.
- 5 Chinese Cultural Art Treasures, National Palace Museum Handbook.
- 6 Chinese Bronzes, Art and Ritual, Jessica Rawson.

Provenance: Private English collection of Sir Mark Heath KCVO CMG (1927-2005)

Estimate £20-50



73

QUANTITY OF VARIOUS WOODEN DISPLAY STANDS

To include twenty-three folding plate/dish stands and twenty other stands in various sizes. Forty-three in total. (43)

Estimate £50-80



74

**CHINESE YINGQING PORCELAIN VASE WITH
RICE MEASURE, YUAN DYNASTY
YUAN DYNASTY (1279-1368)**

Decorated with two rows of studs around the body below a band of floral scrolls. Together with a rice measure glazed to the interior and exterior decorated with a row of studs to the body. Vase 17.5cm tall, rice measure 6cm tall x 8.5cm (2)

Provenance: Ex-collection of Josette Schulman, Paris.

Alexander E Grace collection sticker, item 191

Estimate £150-250

75

**CHINESE YINGQING PORCELAIN VASE,
YUAN DYNASTY
YUAN DYNASTY (1279-1368)**

The globular body decorated with an overlapping leaf decoration around the body. The tapered neck leading into an everted lobed rim. 15cm tall.

Provenance: Ex-collection of Josette Schulman, Paris.

Alexander E Grace collection sticker, item 190

Estimate £100-200



75



76

**CHINESE YINGQING DRAGON AND TIGER
PORCELAIN VASE, YUAN DYNASTY
YUAN DYNASTY (1279-1368)**

The pear-shaped body on a splayed foot and twin handles applied to the neck with moulded decoration of a dragon and tiger above a band of cross-hatched triangles. With visible areas of pale whitish-blue glaze pooling around parts of the moulded decoration. 22.5cm tall

Provenance: Alexander E Grace collection, item 80

Estimate £250-350



77

**CHINESE QINGBAI PORCELAIN BOWL,
SOUTHERN SONG DYNASTY
SONG DYNASTY (1127-1279)**

Incised decoration to the interior of stylised 'twin fish' covered in a pale bluish glaze leaving the rim and base unglazed. 18.5cm diam.

Provenance: Alexander E Grace collection, item 13

Estimate £300-500



79

**CHINESE DINGYAO PORCELAIN LOTUS DISH,
NORTHERN SONG DYNASTY
NORTHERN SONG DYNASTY (960-1127)**

The slightly warped body thinly-potted with lobed rim and carved stylised lotus decoration to the interior, covered in an ivory tone glaze, 19cm diam.

Provenance: Purchased from Galerie Zacke, Vienna, Austria.

Estimate £300-500



78

**CHINESE FOLIATE SHAPED QINGBAI
PORCELAIN DISH, SONG DYNASTY
SONG DYNASTY (960-1279)**

Divided into six lobes covered in a pale greenish glaze with incised floral decoration. A painted Chinese character 'Seven' to base. 14.5cm diam.

Provenance: Alexander E Grace collection, item 125

Estimate £100-200



80

**CHINESE QINGBAI PORCELAIN DISH, SONG
DYNASTY
SONG DYNASTY (960-1279)**

Covered In a pale blue glaze with incised decoration of stylised floral sprays. 20.5cm diam.

Estimate £300-500



81

**CHINESE CELADON BOWL AND LOTUS DISH, SONG DYNASTY
SONG DYNASTY (960-1279)**

The bowl with incised floral spray decoration together with a Northern Song Dynasty (960-1127) shallow dish with a carved lotus design to exterior. 19cm and 14.5cm diam. (2)

Estimate £150-250

82

**CHINESE YUAN / EARLY MING
DYNASTY LONGQUAN
CELADON STEM CUP
14/15th CENTURY**

The heavily-potted cup with lobed rim and carved decoration to the interior. The stem foot is encircled by a single band covered in a green glaze stopping short of the foot rim. 11.7 diam. x 8.5cm tall.

Estimate £200-300



83

**TWO CHINESE QINGBAI PORCELAIN COSMETIC BOX AND COVERS, SONG DYNASTY
SONG DYNASTY (960-1279)**

Each moulded with impressed floral sprays to covers. 9cm and 10cm diam. (2)

Provenance: Alexander E Grace collection items 177 and 178

Estimate £150-200



84

**FINE CHINESE QINGBAI PORCELAIN PETAL
LOBED BOX AND COVER, SONG DYNASTY
SONG DYNASTY (960-1279)**

The box and cover moulded with chrysanthemum petals and flower head medallion to the cover, covered in a pale bluish-white glaze. 6.5cm diam. x 5cm tall

Estimate £150-250

85

**CHINESE QINGBAI PORCELAIN WATER
DROPPER, SONG DYNASTY
SONG DYNASTY (960-1279)**

In the form of a fruit topped with stem and petals with a shallow protruding spout. covered in a pale bluish glaze. 6cm x 5cm

Provenance: From the estate of Father Kirill Hartman (1929-2010), Berkeley, California

Estimate £150-250



86

**CHINESE BLUE GLAZED PORCELAIN WATER DROPPER
MING DYNASTY OR LATER**

Surmounted by a squirrel holding a nut. The body with a row of shallow studs and a protruding spout. 7cm x 8cm

Estimate £100-200



88

**CHINESE CIZHOU SGARFFITO POTTERY JAR,
SHANXI PROVINCE
JIN DYNASTY (960-1234)**

Carved through the creamy-white slip decorated with a leafy design. With twin looped handles. 17.5cm tall

Estimate £300-500



87

**LARGE CHINESE BLANC DE CHINE PORCELAIN DISH
LATE MING DYNASTY, 17th CENTURY**

The interior with incised peony scrolls decoration with a bi disc base covered in a creamy-white glaze. 31.5cm diam.

Estimate £400-600



89

**CHINESE CIZHOU-TYPE PAINTED POTTERY DISH, MING DYNASTY
15/16th CENTURY**

Covered in a creamy white slip decorated with painted stylised prunus branches and painted bands to the rim and exterior. 23.5cm diam.

Provenance: Vallin Galleries Oriental Art

Estimate £200-300



90

**TWO CHINESE SONG / YUAN DYNASTY
POTTERY ITEMS**

Song Dynasty (960-1279) black glazed Henan pottery jar with looped handles together with a Song / Yuan Dynasty (1279-1368) Jizhou pottery bowl with phoenix painted to the interior. Jar 10cm tall. Bowl 11cm diam. (2)

Estimate £150-250



92

**CHINESE JUN WARE BOWL, YUAN DYNASTY
YUAN DYNASTY (1279-1368)**

Of wide conical form leading into a straightened rim covered in a pale blue glaze with purple splash to interior. 16.5cm diam.

Estimate £200-300



91

**CHINESE CIZHOU BLACK-GLAZED TEA BOWL,
SONG DYNASTY
SONG DYNASTY (960-1279)**

Of conical form leading into a straightened white glazed rim. 10.1cm diam.

Estimate £200-300



93

**CHINESE CIZHOU BLACK-GLAZED WINE JAR,
JIN DYNASTY
JIN DYNASTY (960-1234)**

Of globular form painted with floral sprays, covered in a blackish-brown glaze to the foot rim. 21cm tall x 19cm diam.

Estimate £300-500



94

PAIR OF CHINESE FAMILLE ROSE PORCELAIN DISHES, DAOGUANG MARK AND PERIOD

Each decorated with a central floral medallion surrounded by various flower branches. The exteriors with four bats and six-character seal mark of Daoguang in iron-red and of the period (1820-1850). 18cm diam. (2)

Estimate £150-200

95

VIETNAMESE BLUE AND WHITE PORCELAIN DISH

15/16th CENTURY

The interior decorated with floral sprays. The base covered in a purplish-brown wash. 23.5cm diam.

Estimate £80-120



96

**CHINESE COPPER-GREEN GLAZED PORCELAIN BOWL, QING DYNASTY
18/19th CENTURY**

Of rounded form with gently flared rim and slightly splayed foot. 12cm diam. x 6cm tall

Estimate £200-300



97

**CHINESE TURQUOISE-GLAZED PORCELAIN BOWL, LATE MING DYNASTY
17th CENTURY**

Thickly-potted covered in a thin turquoise wash with rounded body, gently flared rim and slightly splayed foot. 11cm diam. x 7cm tall

Estimate £200-300



98

98

**CHINESE LONGQUAN CELADON 'TWIN FISH'
DISH, SOUTHERN SONG / YUAN DYNASTY
SOUTHERN SONG / YUAN DYNASTY (1127-
1368)**

Covered in a thick celadon glaze with thickly potted sides leading to an everted rim. Decorated to the interior with two moulded fish, the exterior with band of lotus petals. 27.5cm diam.

Estimate £200-300



99

99

**CHINESE LONGQUAN CELADON DISH, YUAN
DYNASTY
YUAN DYNASTY (1279-1368)**

Thickly-potted with ribbed decoration to the interior with an impressed lotus design to centre. The base with an unglazed ring leaving a patch of glaze to the centre. 28.5cm diam.

Estimate £200-300



100

100

**CHINESE LONGQUAN CELADON 'TWIN FISH'
DISH, SONG DYNASTY
SONG DYNASTY (960-1279)**

Covered in a thick celadon glaze with thickly potted sides leading to an everted rim. Decorated to the interior with two moulded fish, the exterior with band of lotus petals. 19cm diam.

Estimate £150-250



101

**CHINESE IMARI PORCELAIN VASE, KANGXI PERIOD
18th CENTURY**

Decorated with three panels of flowering chrysanthemum, peonies and prunus. 30.5cm tall.

Estimate £100-200



102

102

**CHINESE FAMILLE VERTE PORCELAIN DISH, KANGXI PERIOD
18th CENTURY**

Decorated with male figure chasing a dog and a courting couple in a window. The base with a stylised chop mark in underglaze blue in double ring. Kangxi period (1662-1722). Old two staple repair to exterior. 29cm diam.

Provenance: By repute, acquired from Frank Caro Gallery, the successor to C.T. Loo & Co.

Alexander E Grace collection, item 77

Estimate £300-500



103

CHINESE BLUE AND WHITE PORCELAIN DRAGON DISH, GUANGXU MARK

Decorated with central medallion depicting five-clawed dragon chasing flaming pearl amongst flaming clouds. The exterior similarly decorated with two further dragons. Six-character mark of Guangxu (1820-1850) in underglaze blue, possibly of the period. 16.5cm diam.

Estimate £300-500



104

**CHINESE YELLOW GROUND PORCELAIN
MEDALLION BOWL, TONGZHI MARK**

With four roundels with Chinese characters 'Fok, Luk, Sau, Hei' attracting health, wealth, luck and prosperity. Slightly faded four-character mark of Tongzhi (1862-1874) to base but later. 14.7cm diam.

Estimate £100-150

105

**LARGE CHINESE BLUE GLAZED
MONOCHROME PORCELAIN DISH,
QIANLONG PERIOD
18th CENTURY**

Thickly-potted, covered in a blue glaze stopping short of the rim and foot with a white glazed base. Qianlong period (1735-1796). 36.5cm diam.

Estimate £200-300

106

**CHINESE LANGYAO MONOCHROME
PORCELAIN VASE, QIANLONG PERIOD
18th CENTURY**

Of baluster form covered in a crackle suffused glaze thinning to a pale-greenish glaze to the middle and around the rim, Qianlong period (1735-1796). 39.6cm tall (af)

Estimate £200-300



105



106



107

**CHINESE YELLOW GLAZED PORCELAIN
BOTTLE VASE, QING DYNASTY
18th CENTURY OF LATER**

With compressed globular body and slightly fluted rim covered in a yellow glaze, Qing Dynasty (1644-1908). 35.5cm tall

Estimate £250-350



108

**CHINESE CARVED BOXWOOD FIGURE OF
LI TIEGUAI
19th CENTURY**

The Daoist figure holding a bat standing on a gourd with one leg up against his crutch, with a rolled-up mat and hat in the form of a lotus pad on his back. Together with a fitted wooden box with sliding cover. Figure 25.5cm tall

Estimate £250-350



109

**CHINESE BLANC DE CHINE PORCELAIN
MODEL OF BUDHAI
QING DYNASTY**

Dressed in robes holding a peach with the other hand resting on his knee. Possibly Kangxi period (1662-1722). 14.5cm tall x 16.8cm

Estimate £200-300



110

110

**CHINESE BLANC DE CHINE PORCELAIN
FIGURE OF DAMO
QING DYNASTY**

The figure standing on a reed, holding a shoe dressed in robes and hood. Possibly Kangxi period (1662-1722). 36cm tall

Reference: See a matching figure also 36cm tall in The British Museum described as 18th Century (Museum number 1980,0728.92), donated to the museum by Patrick J Donnelly in 1980 - The author of 'Blanc de Chine, The porcelain of Têhua in Fukien'.

Estimate £600-800

111

**CHINESE BLANC DE CHINE PORCELAIN
FIGURE OF GUANDI
17/18th CENTURY**

The God of War seated dressed in belted robe with pierced holes under the ears, nose and chin for the attachment of a beard and moustache. Covered in an ivory tone glaze. Kangxi Period (1662-1722) or earlier. 28cm tall

Provenance: Alexander E Grace Collection, item 217

Estimate £600-800



111



112

**CHINESE BLANC DE CHINE PORCELAIN
FIGURE OF GUANYIN
QING DYNASTY**

Dressed in robes open at the chest revealing a jewelled necklace and a cowl covering her hair. 18th or 19th Century. 12cm tall

Estimate £150-250



114

**CHINESE BLANC DE CHINE PORCELAIN
FIGURE OF GUANYIN
QING DYNASTY**

Standing on reeds, dressed in robes holding a ruyi sceptre and bottle. 19th Century. 25cm tall

Provenance: Alexander E Grace Collection, item 215

Estimate £100-200



113

**CHINESE BLANC DE CHINE PORCELAIN
FIGURE OF GUANYIN
QING DYNASTY**

Leaning on an arm rest dressed in robes open at the chest revealing jewelled necklace with hair tied up with a hair pin, holding a ruyi sceptre in her left hand and right hand resting on her knee. 18th Century. 20.5cm tall

Provenance: Purchased from Galerie Zacke, Vienna, Austria.

Estimate £400-500



115

**CHINESE BLANC DE CHINE PORCELAIN JUE
QING DYNASTY**

Of archaic tripod vessel form with moulded panels, tapering legs and a single looped handle, covered in a creamy white translucent glaze. 18th Century. 8cm tall x 10cm

Estimate £100-200

PRIVATE ENGLISH COLLECTION IN BUCKINGHAMSHIRE SINCE THE 1980s



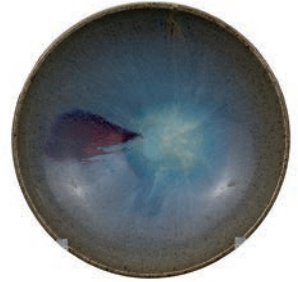
116

CHINESE TURQUOISE AND AUBERGINE GLAZED PORCELAIN CENSER, KANGXI PERIOD 17/18th CENTURY

The body covered in a bright turquoise glaze falling over the rim, with aubergine-glazed handles in the form of mythical beats. Kangxi period (1662-1722). 8cm tall x 15cm width

Provenance: Private English collection in Buckinghamshire since the 1980s

Estimate £300-500



118

CHINESE JUNYAO BOWL, JIN / YUAN DYNASTY 12/13th CENTURY

With slightly rounded body leading into a straightened rim covered in a thick glaze of bluish colour with a purple splash to the interior. The rim with a slight gold 'Kintsugi' repair. 16cm diam.

Provenance: Private English collection in Buckinghamshire since the 1980s

Estimate £300-500



117

PAIR OF CHINESE AUBERGINE GLAZED PORCELAIN BRUSH WASHERS WITH BLANC DE CHINE DISH, 18/19th CENTURY QING DYNASTY

The leaf form dishes covered in aubergine-glazed with blue glazed stems and interior decoration. Together with an 18th Century Blanc de Chine porcelain dish with added floral decoration. Brush washers 17cm length, dish 13.5cm diam. (3)

Provenance: Private English collection in Buckinghamshire since the 1980s

Estimate £300-500



119

**CHINESE HENAN CIZHOU-TYPE BOWL, JIN /
YUAN DYNASTY
12/13TH CENTURY**

Covered in a black glaze with russet decoration of stylised leaves. 17cm diam.

Provenance: Private English collection in Buckinghamshire since the 1980s

Estimate £300-500



121

**CHINESE JIZHOU TEA BOWL, SOUTHERN
SONG DYNASTY
SOUTHERN SONG DYNASTY (1127-1279)**

Earthenware russet-splashed, black-glazed tea bowl decorated to the interior with an abstract design. 11.5cm

Provenance: Private English collection in Buckinghamshire since the 1980s

Estimate £300-500



120

**CHINESE JIZHOU TEA BOWL, SOUTHERN
SONG DYNASTY
SOUTHERN SONG DYNASTY (1127-1279)**

The interior decorated with an iridescent like glaze and a dark-brown glazed exterior stopping short of the foot exposing the light grey stoneware. 12cm diam.

Provenance: Private English collection in Buckinghamshire since the 1980s

Estimate £300-500



122

**CHINESE CIZHOU TEA BOWL, SONG DYNASTY
SONG DYNASTY (960-1279)**

With white rim covered in a thick brown glaze covering the interior and half of the exterior revealing the light grey stoneware. 10cm diam.

Provenance: Private English collection in Buckinghamshire since the 1980s

Estimate £300-500



123

CHINESE SONG-STYLE WHITE GLAZED POTTERY PILLOW - OXFORD TL TESTED

Of waisted rectangular form with moulded floral and geometric decoration, each end with four characters reading 'Xuanhe first year' (1119AD).

Oxford TL Tested, Sample No: P100n90, 8th June 2000 – Result mentions the last estimated date of firing was between 150 and 300 years old making the pillow 18/19th Century.

Provenance: Private English collection in Buckinghamshire since the 1980s

Estimate £600-800



124

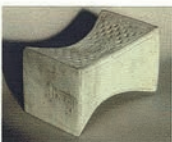
CHINESE LIAO DYNASTY SANCAI GLAZED POTTERY PILLOW - OXFORD TL TESTED LIAO DYNASTY (907-1125)

Of waisted rectangular form.

Oxford TL Tested, Sample No: C101g13, 29th March 2001 – Result consistent with the suggested period of manufacture. 18cm and 17.5cm length.

Provenance: Private English collection in Buckinghamshire since the 1980s

Estimate £800-1200



Oxford Authentication
OXFORD AUTHENTICATION LTD
Station House
Green, Westbury-on-Trym
Worcestershire CV35 9EF
England
Tel: +44 (0)1203 770088
Fax: +44 (0)1203 771021

Sample No: P100n90

THERMOLUMINESCENCE ANALYSIS REPORT

The object was presumed to be:
A white-glazed stoneware pillow (Song dynasty, 960-1279AD)

The following samples were taken in core form on: 11 May 2000
By: Doreen Stoneham of Oxford Authentication Ltd

Sample A: Into corner

Using standard methods and techniques it was estimated that the date of last firing was: Between 150 and 300 years ago


Note: It is not possible to be more precise. This object appears to be much younger than the Song dynasty.

Date: 8 June 2000 **Signed:** *Doreen Stoneham*

Doreen Stoneham for Oxford Authentication Ltd.

NOTES:
(1) The result is given in good faith, however Oxford Authentication takes no responsibility for financial loss incurred through an erroneous result being given.
(2) The result only refers to the part from which the samples were obtained. If the object has suffered extensive damage the result may be of differing accuracy.
(3) The result refers to the date of last firing. This may be different from the date of manufacture if the object has been refired.
(4) In making this report, it is assumed that the samples have not been exposed to ionising radiation.
(5) If an object has been re-fired, the date of the day will be that of the original firing and not the date of re-firing.
(6) Conditions of business may be obtained from Oxford Authentication Ltd.

Registered in England, No. 3311221 Registered Office: 18 Bridge End, Chesham-on-Thames, Chesham, Oxfordshire CV38 2LP



Oxford Authentication
OXFORD AUTHENTICATION LTD
Station House
Green, Westbury-on-Trym
Worcestershire CV35 9EF
England
Tel: +44 (0)1203 770088
Fax: +44 (0)1203 771021
Email: info@oxford-authentication.co.uk
Website: www.oxford-authentication.co.uk

Sample No: C101g13

THERMOLUMINESCENCE ANALYSIS REPORT

The object was presumed to be:
A sancai-glazed pottery pillow (Liao dynasty, 916-1125AD)

The following samples were taken in powder form on: 19 March 2001
By: Doreen Stoneham of Oxford Authentication Ltd

Sample A: Into flaw in glaze

Using standard methods and techniques it was estimated that the date of last firing was: Between 500 and 900 years ago

CONSISTENT with the suggested period of manufacture

Date: 29 March 2001 **Signed:** *Doreen Stoneham*

Doreen Stoneham for Oxford Authentication Ltd.

NOTES:
(1) The result is given in good faith, however Oxford Authentication takes no responsibility for financial loss incurred through an erroneous result being given.
(2) The result only refers to the part from which the samples were obtained. If the object has suffered extensive damage the result may be of differing accuracy.
(3) The result refers to the date of last firing. This may be different from the date of manufacture if the object has been refired.
(4) In making this report, it is assumed that the samples have not been exposed to ionising radiation.
(5) If an object has been re-fired, the date of the day will be that of the original firing and not the date of re-firing.
(6) Conditions of business may be obtained from Oxford Authentication Ltd.

Registered in England, No. 3311221 Registered Office: 18 Bridge End, Chesham-on-Thames, Chesham, Oxfordshire CV38 2LP



125

RARE CHINESE LIAO DYNASTY AMBER AND GREEN-GLAZED POTTERY EWER - OXFORD TL TESTED

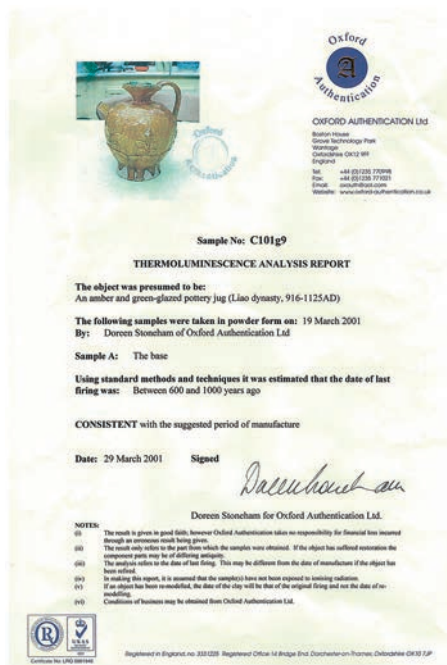
LIAO DYNASTY (907-1125)

Of melon shape with moulded flowering melon decoration around the body. The lobed rim in the form of leaves with green-glazed interior attached to a looped handle, with a short protruding spout and flat base. 16.5cm tall

Oxford TL Tested, Sample No: C101g9, 29th March 2001 – Result: Consistent with the suggested period of manufacture.

Provenance: Private English collection in Buckinghamshire since the 1980s

Estimate £600-800



126

CHINESE AMBER-GLAZED BOWL, LIAO DYNASTY

LIAO DYNASTY (907-1125)

The rounded body and slightly everted rim covered in a thin, amber-coloured glaze flowing over the rim revealing the half glazed exterior. The centre of the bowl with three visible spur marks. 20cm diam.

Provenance: Private English collection in Buckinghamshire since the 1980s

Estimate £300-500



127

127

**CHINESE AMBER-GLAZED POTTERY BOWL
AND DISH, LIAO DYNASTY
LIAO DYNASTY (907-1125)**

The bowl of conical form, moulded to the interior with chrysanthemum head and floral scrolls, with three visible irregular spur marks together with a shallow dish with three visible spur marks. Both covered in an amber-coloured glazed leaving half the exterior unglazed revealing the pinkish buff bodies. 12cm diam. Dish 15cm diam. (2)

Provenance: Private English collection in Buckinghamshire since the 1980s

Estimate £200-400



128

**CHINESE AMBER-GLAZED CUP AND STAND,
LIAO DYNASTY
LIAO DYNASTY (907-1125)**

Both cup and stand covered in an amber-coloured glaze. Three visible irregular spur marks to the interior of the cup. Cup-stand 13.5cm diam. Cup 9cm diam.

Provenance: Private English collection in Buckinghamshire since the 1980s

Estimate £300-500



129

**RARE CHINESE GREEN-GLAZED JAR, LIAO DYNASTY
LIAO DYNASTY (907-1125)**

Of globular form with six protruding spouts and a shallow neck and everted rim. The body with a brown slip stylised decoration. 16.5cm tall

Provenance: Private English collection in Buckinghamshire since the 1980s

Estimate £500-800

130

**CHINESE TANG / LIAO DYNASTY EWER AND
SANCAI GLAZED DISH
TANG – LIAO DYNASTY (618-1125)**

Ewer of pear-shape with a pinched 'Phoenix head' with a looped handle. Together with a Liao Dynasty (907-1125) sancai-glazed square dish with moulded decoration of flowering chrysanthemum. Ewer 20.5cm tall. Dish 12.5cm diam. (2)

Provenance: Private English collection in Buckinghamshire since the 1980s

Estimate 300-500

131

**CHINESE GREEN-GLAZED PILGRIM FLASK,
LIAO DYNASTY
LIAO DYNASTY (907-1125)**

Of saddle form with short cylindrical neck and two hanging holes for carrying. The body with incised scrolling decoration and visible iridescence. 19.5cm tall

Provenance: Private English collection in Buckinghamshire since the 1980s

Estimate £300-500



130



131



132

**CHINESE GREEN GLAZED SPITTOON 'TUO HU',
TANG DYNASTY
TANG DYNASTY (618-907)**

Of compressed globular form covered in a pale lime green glaze stopping short of the rim with banded decoration. 14.5cm tall

Provenance: Private English collection in Buckinghamshire since the 1980s

Estimate £200-300



133



133

**CHINESE GREEN GLAZED JAR, TANG DYNASTY
TANG DYNASTY (618-907)**

Of ovoid form curving into a flat shoulder with slightly splayed foot, modelled floral petal lappets and roundels with floral designs covered in a green glaze stopping short of the foot. 10.5cm tall x 13.5cm

Provenance: Private English collection in Buckinghamshire since the 1980s

Estimate £300-500

134

**CHINESE GREEN GLAZED JAR, TANG DYNASTY
TANG DYNASTY (618-907)**

Of ovoid form with everted rim, slightly splayed foot and flat base covered in a green glaze down to the foot rim with stamped pearl decoration around the body. 11.5cm tall x 12cm

Provenance: Private English collection in Buckinghamshire since the 1980s

Estimate £300-500



135

**CHINESE GREEN GLAZED JAR AND COVER,
TANG DYNASTY
TANG DYNASTY (618-907)**

Of ovoid form with cover, covered in a thin green glaze. 15cm tall x 13cm.

Provenance: Private English collection in Buckinghamshire since the 1980s

Estimate £300-500



137

**CHINESE GREEN GLAZED BOTTLE VASE,
TANG DYNASTY
TANG DYNASTY (618-907)**

With globular body and long thin neck leading into an everted rim on a splayed foot. Covered in a thin green glaze stopping short of the rim on a flat base. 19cm tall

Provenance: Private English collection in Buckinghamshire since the 1980s

Estimate £400-600



136

**CHINESE GREEN GLAZED CIRCULAR BOX AND
COVER, TANG DYNASTY
TANG DYNASTY (618-907)**

Of circular form slightly raised on a flat base. Base and interior of the box unglazed with a strip of white slip to the upper interior of the cover. The white slip in the cover was added for the owner of the box to write details of the contents. 11.2cm diam.

Provenance: Private English collection in Buckinghamshire since the 1980s

Estimate £300-500



138

**TWO CHINESE STAW GLAZED POTTERY
FIGURES OF LADIES, SUI DYNASTY
SUI DYNASTY (581-608)**

Each modelled with high piled hair and their hands covered by robes. With later purpose-built wooden display stand. Figures 26cm and 26.5cm tall (2)

Provenance: Private English collection in Buckinghamshire since the 1980s

Estimate £300-500



139

**RARE CHINESE STAW GLAZED FIGURE OF A
FOREIGN DANCER, TANG DYNASTY
TANG DYNASTY (618-907)**

The curly-haired figure leaning to his left side with right arm raised on rectangular base. 29.5cm tall

Provenance: Private English collection in Buckinghamshire since the 1980s

Estimate £400-600



140

**TWO CHINESE CARVED
WHITE MARBLE PANELS,
YUAN / MING DYNASTY
13/14th CENUTURY**

Each carved in relief with Horse's and Qilin. Both panels have later metals mounts previously mounted and displayed on a home wall. Approx. 81cm x 25cm and 87cm x 25cm (2)

Provenance: Private English collection in Buckinghamshire since the 1980s

Estimate £300-500

140



142

**CHINESE NEOLITHIC POTTERY AMPHORA -
QIJIA CULTURE - OXFORD TL TESTED
QIJIA CULTURE (2200-1500BC)**

Made in Gansu or Qinghai province. The lower part of the body decorated with carved lines with a single carved band to the bottom of the neck leading into a flaring lip. Two small, looped handles to each side of the waist.

Oxford TL Tested, Sample No: C200d92, 30th October 2000 – Result: Consistent with the suggested period of manufacture.

Provenance: Private English collection in Buckinghamshire since the 1980s

Estimate £300-500

141

**CHINESE NEOLITHIC POTTERY JAR -
MACHANG PHASE
MACHANG PHASE (C.2300-2000BC)**

The jar unpainted with two looped handles and conical base decorated with a twisted rope band around the shoulder, another indented band below the neck leading into a gently fluted mouth. 30cm tall x 33cm wide

Provenance: Private English collection in Buckinghamshire since the 1980s

Estimate £300-500



143

**CHINESE NEOLITHIC PERIOD POTTERY
POURING VESSEL - CAIYUAN CULTURE -
OXFORD TL TESTED
CAIYUAN CULTURE (2800-1900BC)**

The vessel of conical form with slightly inverted rim and pouring spout on a flat base. Each side with small 'handles' possibly used for carrying. The interior painted with roundels of geometric patterns and 'human-like' figures in black and red pigment. 21cm diam. x 14.3cm tall

Oxford TL Tested, Sample No: C200e25, 2nd November 2000 – Result consistent with suggested period of manufacture.

Provenance: Private English collection in Buckinghamshire since the 1980s

Estimate £300-500



142

144

**LARGE CHINESE NEOLITHIC
POTTERY JAR – POSSIBLY CAIYUAN
CULTURE (2800-1900BC)**

The wide body with flared mouth decorated from the shoulder with repeated cord impressions spiralling downwards to the foot. The upper part of the jar has been painted in black pigment with geometric patterns and two roundels with deer figures. 40cm tall x 36cm diam.

Provenance: Private English collection in Buckinghamshire since the 1980s

Estimate £400-500



144



145

145

**LARGE CHINESE SONG DYNASTY
STONEWARE STORAGE JAR –
OXFORD TL TESTED
SONG DYNASTY (960-1279)**

Of globular form with everted rim and two small lug handles, covered in a dark brown glaze stopping at the rim revealing the grey stoneware body. 27.5cm tall x 35cm diam.

Oxford TL Tested, Sample No: P100c81, 8th February – Result: Consistent with the suggested period of manufacture.

Provenance: Private English collection in Buckinghamshire since the 1980s

Estimate £600-800



146

146

**LARGE CHINESE HAN DYNASTY GREY
POTTERY AMPHORA
HAN DYNASTY (206BC-220AD)**

The body decorated with four moulded spirals extending to two flattened handles from the waist into the lozenge-shaped mouth. Each handle with a row of three dimple like grooves. 32cm tall x 34cm

Provenance: Private English collection in Buckinghamshire since the 1980s

Estimate £300-500

147

**LARGE CHINESE YINGQING GLAZED
CYLINDRICAL PHOENIX JAR
SONG DYNASTY (960-1279)**

Carved to the body with two large phoenix and scrolling leaves covered in a pale greenish-blue glaze. 23.5cm tall x 28cm

Provenance: Private English collection in Buckinghamshire since the 1980s

Estimate £500-600



147

148

**CHINESE YUAN DYNASTY CELDON
PORCELAIN BOWL
YUAN DYNASTY (1279-1368)**

The interior with 'Ji' character meaning 'luck' surrounded by swirling patterns. The exterior incised with rows of vertical lines. 23.5cm diam.

Provenance: Private English collection in Buckinghamshire since the 1980s

Estimate £300-500



148



149

**CHINESE CARVED CIZHOU BOWL, SONG DYNASTY
SONG DYNASTY (960-1279)**

Covered in a creamy-white slip with carved decoration to the interior of a large floral spray with combed lines within a single line border. The interior centre with six irregular spur marks. 21.7cm diam.

Provenance: Private English collection in Buckinghamshire since the 1980s

Estimate £600-800



150

**CHINESE HENAN RUSSET
SPLASHED BLACK GLAZED
JAR**

Of globular form decorated with twelve russet-splashed spots to the body. The interior covered in a thin brown glaze. Song dynasty or later. 9.5cm tall x 12cm

Estimate £300-500



151

**CHINESE MARBLED
GLOBULAR JAR**

The globular jar in two sections with a single line around the waist. The body covered inside and out with a brown and white marbled like slip. Firing crack to base. Song dynasty or later. Approx. 10cm x 10.5cm

Estimate £400-600



152

**CHINESE GUAN-TYPE
GLAZED CONG FORM VASE**

Covered in a pale greyish-green glaze throughout. The base with handwritten description. Song Dynasty style but later, possibly 18th or 19th Century. 18.5cm tall

Estimate £300-500



153

**CHINESE YUAN / MING DYNASTY CELADON VASE
14/15th CENTURY**

With mallet-shaped body and twin fish handles attached to a tall cylindrical neck. Covered in a celadon glaze with visible crackle throughout. Ming dynasty (1368-1644). 22cm tall

Estimate £400-600



154

**CHINESE CIZHOU CARVED VASE
SONG DYNASTY (960-1279)**

Deeply carved through the creamy white slip with a large band of blossoming peony stems between overlapping lappets to the shoulder and foot. Possibly of the period. 31.3cm tall.

Estimate £600-800



155

155

CHINESE CELADON GLAZED YUEYAO BRUSH WASHER

Covered in a soft-green glaze. The shoulder incised with scrolling decoration. Six-character mark to base reading 'Taiping Xingguo Nian Zhi' (Made in the year of Taiping Xingguo 976-984). Possibly Song Dynasty (960-1279) 12.3cm diam.

Estimate £300-500



156

**CHINESE JIANYAO HARE'S FUR TEA BOWL WITH STAND
SONG / JIN DYNASTY (960-1234)**

The body covered in a blackish-brown glaze with russet 'hare's fur' streaks. With a lacquered display stand.
11.6cm diam. x 6.4cm tall

Estimate £1000-2000



157

**CHINESE JIANYAO BLACK GLAZED HARE'S FUR TEA BOWL, INSCRIBED JIN ZHAN
SONG DYNASTY (960-1279)**

Covered in a lustrous crackled black glaze to the interior, the exterior with faint silverish 'hare's fur' streaks. The base inscribed with two characters 'Jin Zhan'. Song Dynasty (960-1279) or later. 12.7cm diam. x 7.3cm

Estimate £2000-3000



158

**CHINESE SONG DYNASTY YAOZHOU
CELADON BOWL**

Of conical form, the interior moulded with scrolling chrysanthemum on leafy vines around a single chrysanthemum flower head. The exterior decorated with vertical lines below an everted rim. Possibly Song Dynasty (960-1279). 17.6cm diam.

Estimate £300-500



160

**LARGE CHINESE MING DYNASTY CELADON
DISH
MING DYNASTY (1368-1644)**

Heavily-potted with rounded sides and everted rim, covered in a celadon glaze with crackle visible throughout. 37.5cm diam.

Estimate £350-450



159

**CHINESE SONG DYNASTY LONGQUAN
GUAN-TYPE CELADON JAR, ZHADOU**

Covered in a greyish-green glaze with even crackle throughout. 'Ming Dynasty 1368-1643' sticker to base but presumed Song Dynasty. 8.5cm tall

Estimate £300-500



161

**CHINESE YUAN DYNASTY JUNYAO DISH
YUAN DYNASTY (1279-1368)**

Thickly-potted, covered in a light blue glaze with purple splashes to the face. The glaze continuing to the exterior of the dish leaving the foot unglazed. 17.5cm diam.

Estimate £600-800



162

CHINESE SONG DYNASTY JIANYAO HARE'S FUR TEA BOWL

Covered in a thick, black lustrous glaze with russet-coloured hare's fur streaks to the interior and exterior revealing the brown stoneware body. Possibly Song Dynasty (960-1279). 10.5cm diam.

Estimate £300-500



163

CHINESE SONG DYNASTY JIANYAO HARE'S FUR TEA BOWL

Covered in a lustrous black glaze with russet-coloured streaks more noticeable to the interior. Glazed to the exterior revealing the grey stoneware body. Possibly Song Dynasty (960-1279). 10.3cm diam.

Estimate £300-500



164

**CHINESE SONG DYNASTY QINGBAI PORCELAIN FOLIATE CUP AND STAND
SONG DYNASTY (960-1279)**

The cup of lotus form with lobed sides on a splayed foot. The base with central stepped rim around a curved body on splayed foot with six pierced trefoil motifs. Both cup and stand covered in a pale bluish-white glaze with the bases unglazed. Cup 10.3cm diam. Stand 14cm diam.

Estimate £800-1000



165

**CHINESE YUAN / MING DYNASTY
LONGQUAN CELADON OIL LAMP
14/15th CENTURY**

With open work body on a splayed ribbed base. 8.5cm diam. x 10cm

Estimate £400-600

166

**CHINESE YUAN DYNASTY GUAN-TYPE
MELON VASE
YUAN DYNASTY (1279-1368)**

With a ribbed body on a lobbed foot with lobbed rim covered in a pale greyish-green glaze with visible, faint crackle. 16.5cm tall

Estimate £800-1000





167

**CHINESE MING DYNASTY LONGQUAN
CELADON GLAZED FIGURE OF BUDAI
MING DYNASTY (1368-1644)**

The deity seated, leaning against a tied sack with a plaque in his left-hand wearing robes open at the chest revealing long beads against his chest and belly. Faint traces of gilding left to his face, body, hands and feet. With a protective wooden box. 15.5cm tall

Estimate £600-800

168

**CHINESE SOUTHERN SONG DYNASTY
QINGBAI GLAZED PORCELAIN BOWL
SONG DYNASTY (1127-1279)**

The body well-potted, covered in a pale greenish-white glaze with incised scrolling decoration to the well and interior. 17.5cm diam.

Estimate £300-500



169

**GROUP OF FIVE SONG DYNASTY CIZHOU BLACK GLAZED TEA BOWLS
SONG DYNASTY (960-1279)**

Covered in a black glaze with purplish-brown glazed rims around the rims. Glazed to the exterior exposing the grey stoneware body, some with signs of encrustation around the foot. Approx. 10cm diam. (5)

Estimate £150-200

**THE LATE BRIAN PAGE (1938-2018),
THE WELL-KNOWN ORIENTAL ART & ANTIQUES DEALER
FROM BRIGHTON**



170

**CHINESE MING DYNASTY WANLI PERIOD
PORCELAIN BOTTLE VASE
WANLI PERIOD (1573-1620)**

On both sides of this pear-shaped bottle is an elaborate floral decoration painted in a thick white slip, the design standing out from the surface that is coated in a thick russet-brown glaze. As is so often the case with bottles of this age, the upper neck and mouth have been broken and lost; as such porcelain bottles were expensive and precious objects, it was often the practice for such losses to be replaced with a metal collar, typically silver in the case of blue & white porcelain, but this particular example has been fitted with a copper collar that suits the colour of the glaze very well. 20.75cm tall

Reference: two very similar bottles are in the British Museum collection and are illustrated and described in the fine book "Ming Ceramics in the British Museum".

Provenance: the late Brian Page (1938-2018), the well-known Oriental art and antiques dealer from Brighton.

Estimate £600-800



171

**FINE CHINESE SONG DYNASTY QINGBAI
PORCELAIN BOWL IN KILN SAGGAR
SONG DYNASTY (960-1279)**

Containing a fine quality porcelain bowl with incised decoration and foliate rim, coated in a translucent Qingbai glaze of a delicate pale blue. The glaze around the bowl fusing it to the inner wall of the saggar. Thick layers of ash glaze accumulated to the outer wall of the saggar from multiple firings. 19cm diam.

Provenance: the late Brian Page (1938-2018), the well-known Oriental art and antiques dealer from Brighton.

Estimate £300-400



172

**FINE CHINESE SONG DYNASTY QINGBAI
PORCELAIN BOWL IN KILN SAGGAR
SONG DYNASTY (960-1279)**

Containing a fine quality porcelain bowl with incised decoration and foliate rim, coated in a translucent Qingbai glaze of a delicate pale green. The glaze of the bowl fusing it to the saggar. Thick layers of ash glaze accumulated to the outer wall of the saggar from multiple firings. 16cm diam.

Provenance: the late Brian Page (1938-2018), the well-known Oriental art and antiques dealer from Brighton.

Estimate £200-300



174

**CHINESE YUAN DYNASTY GLAZED
STONEWARE BOWL
YUAN DYNASTY (1279-1368)**

Coated in a thick black glaze, although russet in colour in places where the glaze is thinner. The glaze stopping short of the foot. From a Northern kiln. 17cm diam.

Provenance: the late Brian Page (1938-2018), the well-known Oriental art and antiques dealer from Brighton.

Estimate £200-400



173

**THREE CHINESE GLAZED STONEWARE JARS
SONG DYNASTY OR LATER**

One jar coated in a russet-coloured glaze, the other two in chocolate brown glazes. The glaze falling short of the base on all three jars. These jars are possibly from a shipwreck. Song Dynasty or later. Each approx. 11.5cm diam. (3)

Provenance: the late Brian Page (1938-2018), the well-known Oriental art and antiques dealer from Brighton.

Estimate £100-200



175

**CHINESE SONG DYNASTY STONEWARE JAR
WITH DRAGON CHASING PEARL
SONG DYNASTY (960-1279)**

Heavily potted and coated in a dark brown glaze. Further decorated with an applied dragon chasing a pearl. 19cm tall

Provenance: the late Brian Page (1938-2018), the well-known Oriental art and antiques dealer from Brighton.

Estimate £200-400



176

**CHINESE SONG / MING DYNASTY
STONEWARE MOON FLASK**

Both sides with moulded decoration. Two pierced holes to the foot and two loops handles to the shoulder. Coated in a thick and streaky russet-brown glaze. 19.5cm tall

Provenance: the late Brian Page (1938-2018), the well-known Oriental art and antiques dealer from Brighton.

Estimate £300-500



177

**PAIR OF CHINESE MING DYNASTY PAINTED POTTERY PHOENIX TILES
MING DYNASTY (1368-1644)**

Made of a dense grey pottery and painted in black pigment. Each tile features, in high relief and in great detail, a phoenix with its wings outstretched and head looking upwards. The total length when both tiles are placed together is 53cm x 26.5cm tall (2)

Provenance: the late Brian Page (1938-2018), the well-known Oriental art and antiques dealer from Brighton.

Estimate £300-500



178

PAIR OF CHINESE MING DYNASTY PAINTED POTTERY HORSE TILES
MING DYNASTY (1368-1644)

Made of a dense grey pottery and painted in black pigment. Each tile features, in high relief and in great detail, a flying horse surrounded by clouds. The total length when both tiles are placed together is 53 cm x 26.5cm tall (2)

Provenance: the late Brian Page (1938-2018), the well-known Oriental art and antiques dealer from Brighton.

Estimate £300-500



179

TWO SMALL CHINESE SONG / YUAN DYNASTY
QINGBAI GLAZED PORCELAIN COVERED JARS
13/14th CENTURY

Each jar coated both inside and outside in a pale Qingbai type of glaze, the glaze falling short of the foot. The bodies with incised bands around the waist, the covers carved into the form of roofs: These jars represent small granaries for the storage of grain. Approx. 8cm tall. (2)

Provenance: the late Brian Page (1938-2018), the well-known Oriental art and antiques dealer from Brighton.

Estimate £150-250



180

180

PAIR OF TALL CHINESE SONG DYNASTY QINGBAI PORCELAIN DRAGON VASES
SONG DYNASTY (960-1279)

Each decorated with a dragon as well as phoenixes, cockerel, deer, turtle, clouds and human figures. Below the animals are rows of twelve immortals and one smaller prostrate figure. Coated in a finely-crackled, greenish-blue Qingbai glaze. Each 63.5cm tall (2)

Provenance: the late Brian Page (1938-2018), the well-known Oriental art and antiques dealer from Brighton.

Estimate £400-500



181

**RARE CHINESE SONG DYNASTY CAST IRON
'FENG SHUI' CIRCULAR PLATE
SONG DYNASTY (960-1279)**

Decorated with Chinese characters and symbols of the I Ching, this cast-iron feng shui plate would have been placed, presumably, in the home to help create balance with the natural world. 17cm diam.

Provenance: the late Brian Page (1938-2018), the well-known Oriental art and antiques dealer from Brighton.

Estimate £200-300



182

**CHINESE SONG DYNASTY CAST IRON 'FENG
SHUI' SQUARE PLATE
SONG DYNASTY (960-1279)**

Decorated with Chinese characters and symbols of the I Ching, this cast-iron feng shui plate would have been placed, presumably, in the home to help create balance with the natural world. 16.5cm length

Provenance: the late Brian Page (1938-2018), the well-known Oriental art and antiques dealer from Brighton.

Estimate £200-300



183

183

**CHINESE SONG DYNASTY STONE FIGURE
SONG DYNASTY (960-1279)**

Holding an offering in both hands. A spiral pattern carved to the back. 23cm tall

Provenance: the late Brian Page (1938-2018), the well-known Oriental art and antiques dealer from Brighton.

Estimate £150-250



184

184

**RARE CHINESE SONG / YUAN DYNASTY
POTTERY BUDDHIST ZODIAC JAR AND COVER
13TH/14TH CENTURY**

The wall of the jar has been decorated with six lotus leaf panels within which are moulded and applied human figures and zodiac animals. Equidistant around the shoulder are moulded and applied vajra (Buddhist sceptres). On the surface in places and under the cover are what appear to be traces of a pink pigment. If looking carefully at the inside minute specks of gold leaf can be seen, part of the original contents of this jar. 24.5cm tall.

Provenance: the late Brian Page (1938-2018), the well-known Oriental art and antiques dealer from Brighton.

Estimate £200-300



185

185

**CHINESE TANG DYNASTY PAINTED POTTERY
HORSE
TANG DYNASTY (618-906)**

Made from a relatively highly fired pinkish coloured pottery, cold painted with reddish-brown and black pigments. The mane sculpted to one side of its neck. 22cm length, 17cm tall.

Provenance: the late Brian Page (1938-2018), the well-known Oriental art and antiques dealer from Brighton.

Estimate £200-300



186

186

**CHINESE TANG PAINTED POTTERY SADDLED
HORSE**

Painted in a creamy-white pigment on top of which are black and red pigments. A groove down its neck and a hole in its rear where originally would have been placed real horsehair. Probably Tang Dynasty (618 – 906). 32cm tall.

Provenance: the late Brian Page (1938-2018), the well-known Oriental art and antiques dealer from Brighton.

Estimate £400-600



187

**LARGE CHINESE SONG / YUAN DYNASTY
GLAZED BUDDHIST JAR
13/14th CENTURY**

Coated in an attractive green glaze of varying shades that has been applied on top of a pale slip, to emphasize its colour. The inner surface is also glazed. Moulded Buddhist motifs have been applied to the surfaces of both the cover and jar. Various kilns scars to both the inner and outer surfaces of the cover and to the base of the jar show that little care was taken to prevent it from coming into contact with other vessels in the kiln during firing. 35cm tall, 24.5 cm diam.

Provenance: the late Brian Page (1938-2018), the well-known Oriental art and antiques dealer from Brighton.

Estimate £300-500



188

**LARGE CHINESE SONG / YUAN DYNASTY
GLAZED BUDDHIST JAR
13/14th CENTURY**

Coated in an attractive green glaze of varying shades that has been applied on top of a pale slip, to emphasize its colour. The inner surface is also glazed. In places the surface of the glaze has a silvery iridescence. Moulded Buddhist motifs have been applied to the surfaces of both the cover and jar. Various kilns scars to the surface show that little care was taken to prevent it from coming into contact with other vessels in the kiln during firing. 38.5cm tall, 25cm diam.

Provenance: the late Brian Page (1938-2018), the well-known Oriental art and antiques dealer from Brighton.

Estimate £300-500



189

**PAIR OF CHINESE HAN DYNASTY GLAZED POTTERY JARS WITH ANIMAL FRIEZES
HAN DYNASTY (206BC-220AD)**

Made from a reddish pottery, coated in a thick green glaze and decorated around the shoulder with a frieze of taotie mask handles and various animals including dragons and tigers. Drips of glaze and kiln scars to the rim, and the remains of kiln spacers to the base show these jars were fired upside down in the kiln, stacked on top of each other. Each approx. 15cm diam. (2)

Provenance: the late Brian Page (1938-2018), the well-known Oriental art and antiques dealer from Brighton.

Estimate £300-400



190

**CHINESE WESTERN HAN DYNASTY PAINTED
POTTERY COCOON JAR
WESTERN HAN DYNASTY 206BC-8AD**

A good and untouched example decorated with coloured pigments in a design featuring cloud patterns within vertical bands. Height 24.5cm.

Reference: similarly, decorated cocoon jars are described and illustrated in the 1991 Southeast Asian Ceramic Society book "Spirit of Han".

Provenance: the late Brian Page (1938-2018), the well-known Oriental art and antiques dealer from Brighton.

Estimate £300-400



191

**CHINESE WESTERN HAN DYNASTY
BURNISHED POTTERY COCOON JAR
HAN DYNASTY (206BC-8AD)**

The surface burnished smooth and decorated with ten triple-incised vertical bands that surround the body. The neck and foot decorated with raised bands. 24.5cm tall

Provenance: the late Brian Page (1938-2018), the well-known Oriental art and antiques dealer from Brighton.

Estimate £300-400



192

192

**CHINESE HAN SICHUAN POTTERY FIGURE OF
A LADY
PROBABLY HAN DYNASTY (206BC-220AD)**

Wearing a flowing robe and elaborate headgear, holding a bowl in one hand and a flask in the other. 32.5cm tall

Estimate £200-300



193

RARE CHINESE NEOLITHIC BLACK POTTERY JAR – SIWA CULTURE

Rare Chinese Neolithic Black Pottery Jar – Siwa Culture. The body heavily-potted and with a smooth burnished surface. A small flat base, wide body leading up to the narrow neck with flared mouth and two wide handles. 22cm tall. Neolithic, Siwa Culture (c. 1350 BC).

Reference: a similar but smaller example is illustrated and described in the 2000 China Institute book "Dawn of the Yellow Earth".

Provenance: the late Brian Page (1938-2018), the well-known Oriental art and antiques dealer from Brighton.

Estimate £300-500

194

**CHINESE NEOLITHIC POTTERY TRIPOD – QIJIA CULTURE
QIJIA CULTURE (2050 – 1700BC)**

A cooking vessel with three hollow bulbous legs. The surface coated with thin cord impressions with "piecrust" decoration around the rim and to the lower body. Two loop handles at opposing sides of the body. 14cm tall

Provenance: the late Brian Page (1938-2018), the well-known Oriental art and antiques dealer from Brighton.

Estimate £200-400





195

**FINE JAPANESE SHIJO BRUSH DRAWING
ATTRIBUTED TO ONISHI CHINNEN 1792-1851**

This superb unsigned drawing is unmistakably the work of the great Shijo master, Chinnen. Originally it would have formed part of a "gajo" folding album which would only have been signed on the last work in the album. It has been the fate of many such albums to be broken up and the drawings sold separately. Here we see the epitome of the Shijo style with its fluent and utterly confident brush strokes and its subtle colouring. The subject is a child in Chinese costume and hairstyle kneeling before a bunch of fruit. In Japan at the time, it was not unusual to dress children in Chinese style. 33cm x 29.5cm

Professionally backed in Japan and has some worm damage at the right and left vertical edges, which does not encroach upon the painting. The work was published in the 1991 catalogue, Japanese Brush Drawings, of the London dealer, Richard Kruml (plate 10).

Provenance: the late Brian Page (1938-2018), the well-known Oriental art and antiques dealer from Brighton.

Estimate £150-250



196

**FINE JAPANESE SHIJO SCHOOL DRAWING
BY DOZAN, LATE EDO PERIOD
19th CENTURY**

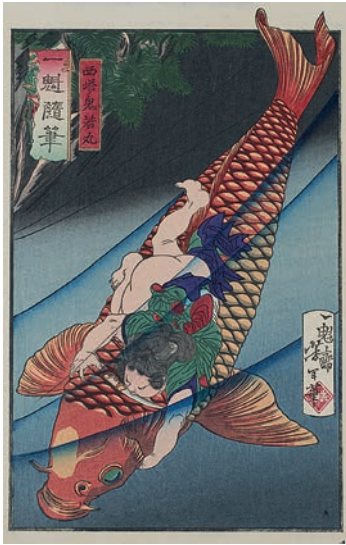
This superb Shijo drawing of a woman carrying a ladder and a stool on her head is sealed Dozan, a plainly very accomplished artist whose identity remains a mystery. Several drawings by the artist have come on to the market since the 1960s. 26.5cm x 23.5cm

At Christies London on 17th. June 1996 an album of 22 similar drawings by the artist were sold for GBP 3680. The brisk confident brushwork and sensitive colouring is at least as fine as the acknowledged masters of the Shijo style, Nanrei, Chinnen et al.

Condition: It has been backed, probably originally, and has minor pasted paper strips on three corners of the reverse.

Provenance: the late Brian Page (1938-2018), the well-known Oriental art and antiques dealer from Brighton.

Estimate £150-250



197

JAPANESE WOODBLOCK PRINT BY TSUKIOKA YOSHITOSHI

Kintoke with giant carp. 12.5cm x 19cm

Provenance: the late Brian Page (1938-2018), the well-known Oriental art and antiques dealer from Brighton.

Estimate £150-250

198

LARGE JAPANESE PYROGRAVURE SURIMONO PRINT BY RYOMIN. 1850S. EX. HENRI VEVER COLLECTION – SOTHEBY'S 1978

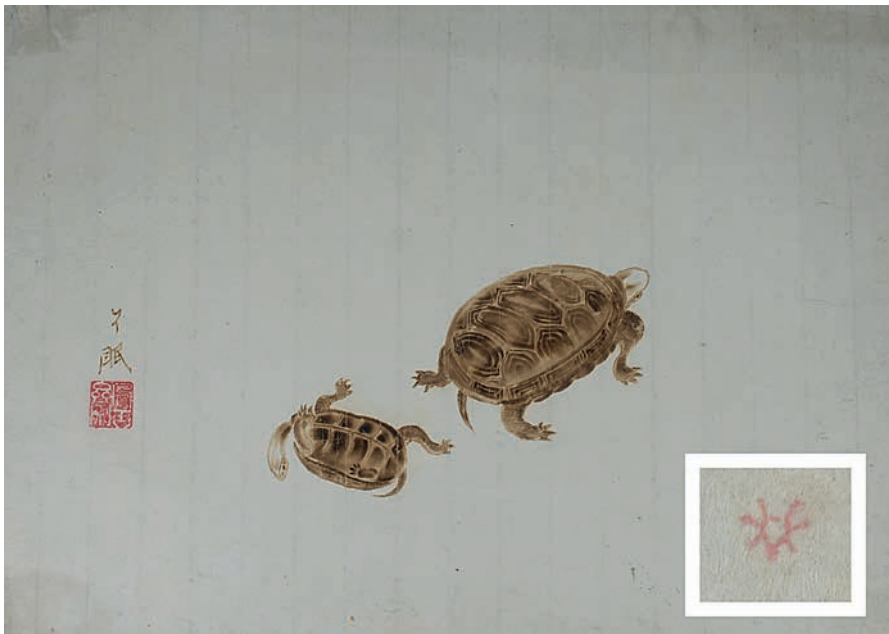
These types of rare prints are sometimes referred to as 'pyrogravures' as the designs are burnt on to the paper. How it was done is a question of speculation. Perhaps the design is printed from an un-inked block and the details burnt onto the paper with a hot metal tool. However, another possible explanation is that the whole thing was done freehand and the absence of burn marks on the reverse would tend to support this theory. If this was indeed the case, then only one example would be possible. As far as we are aware there is no mention of these curiosities in English language reference books.

The turtle is a potent symbol of longevity and good luck etc. and consequently a very popular motif in surimono design. The printing is on heavy quality surimono paper. 53cm x 40cm.

This large surimono print bears the seal of the 'Henri Vever Collection'.

Provenance: Purchased from the 4th Vever Sale at Sotheby's on 22nd March 1978, Lot 362 by the late Brian Page (1938-2018), the well-known Oriental art and antiques dealer from Brighton.

Estimate £200-400



198



199

**CHINESE NEOLITHIC PAINTED POTTERY JAR –
MACHANG PHASE
MACHANG PHASE (C.2300-2000BC)**

Of the Majiayao culture, also known as the Gansu-Yangshao culture, from present day Gansu or Qinghai province. The upper body painted with two roundels of geometric patterns above each handle, between hand like decoration. Approx. 30cm x 30cm

Estimate £200-300



200

200

**CHINESE HAN DYNASTY PAINTED POTTERY
FIGURE OF A KNEELING COURT LADY
HAN DYNASTY (206BC-220AD)**

Kneeling gracefully dressed in robes painted with red, blue and black pigment, the separate head moulded with soft facial features. 52cm tall

Provenance: Purchased in Hong Kong in the 1980s. From an English private collection.

Estimate £400-600



201

201

**CHINESE HAN DYNASTY PAINTED POTTERY
FIGURE OF A KNEELING COURT LADY
HAN DYNASTY (206BC-220AD)**

Kneeling gracefully dressed in robes painted with blue and black pigment, the separate head moulded with soft facial features. 50cm tall

Provenance: Purchased in Hong Kong in the 1980s. From an English private collection.

Estimate £400-600



202

VERY LARGE CHINESE LACQUER FIGURE OF BODHISATTVA GUANYIN, 125cm / 4.1ft TALL

A hollow lacquered figure of The God of Mercy dressed in robes open at the chest revealing a jewelled necklace seated with left hand resting on her knee gently clasping a scroll, the right leg hanging, resting on a lotus stall. 125cm / 4.1ft tall

Estimate £2000-3000



203

**THAI GILT WOOD FIGURE OF BUDDHA
19th CENTURY**

The figure seated attached to a stand carved in tiers and decorated with glass and areas of red paint. 47cm tall

Estimate £200-400



204

204

**CAMBODIAN KHMER CARVED STONE FIGURE
OF MALE DIVINITY**

The carved figure dressed in a 'sampot' loincloth, tied around the waist with a bare torso. Mounted on a display stand. 61.5cm tall including stand.

Provenance: Purchased in Thailand in the early 1980s. From an English private collection.

Estimate £600-800



205

**CHINESE BLUE AND WHITE PORCELAIN JAR
18th CENTURY**

Decorated with chrysanthemum flower heads. 36cm tall

Provenance: Purchased in Hong Kong in the 1980s. From an English private collection

Estimate £300-500



206

**CHINESE PALE CELADON AND UNDERGLAZE
BLUE PORCELAIN JAR
19th CENTURY**

Decorated with floral bouquets and peaches. 26.5cm tall

Provenance: Purchased in Hong Kong in the 1980s. From an English private collection

Estimate £60-80



209

209

**THREE CHINESE YELLOW GROUND GRISAILLE
DECORATED BOWLS
LATE QING DYNASTY / REPUBLIC PERIOD**

Each bowl decorated in grisaille with bird perched on a tree amongst rose blossoms. Inscribed in iron-red with three characters, 'Dayazhai', beside the 'Tian Di Yi Jia Chun' seal mark. Four-character Yong Qing Chang Chun mark in iron-red to base. 13.6cm diam. and 12cm diam. (3)

Estimate £300-500

207

CHINESE HARDWOOD BRUSHPOT

A Chinese hardwood brush pot with slightly tapered waist and single panel insert base. 13.8cm tall x 13cm diam.

Provenance: Purchased in Hong Kong in the 1980s. From an English private collection

Estimate 200-300



210

**CHINESE CANOTON PORCELAIN JOSS STICK
HOLDER
QING DYNASTY**

In the form of a recumbent dog with gilt detailing. 15cm length

Estimate £80-120

208

**CHINESE BLUE AND WHITE PORCELAIN JAR,
MING DYNASTY
MING DYNASTY (1368-1644)**

With globular body decorated with floral scrolls. 15.5cm tall

Estimate £40-60





211

**CHINESE BLUE AND WHITE PORCELAIN BOWL
19th CENTURY**

The exterior decorated with four windows of figures and birds in a garden. The interior with a front facing four-clawed dragon and flaming pearl. Six-character mark to base reading 'fang gu ruo shen zhen cang' translating to 'Imitating antique of precious collection'. 15cm diam.

Estimate £200-300



212

**CHINESE FAMILLE ROSE PORCELAIN BOWL,
TONGZHI PERIOD
TONGZHI PERIOD (1861-1875)**

With lobed body decorated with famille rose enamels of insects and flowers. Six-character Tongzhi seal mark to base and of the period. 19cm diam.

Estimate £200-300



213

**CHINESE GUAN-TYPE ARCHAISTIC
PORCELAIN VASE
QIANLONG SEAL MARK**

Covered in a pale greyish-green glaze with two looped handles. Six-character seal mark of Qianlong to base in underglaze blue, possibly 19th century. 33cm tall

Estimate £800-1000



214

**GROUP OF CHINESE PORCELAIN ITEMS
18th CENTURY**

Porcelain dish together with a white glazed porcelain bowl with painted dragon roundels and six-character mark of Kangxi to base, a heavily damaged and restored yellow-ground and green dragon dish with six-character mark of Kangxi to base and a libation cup. Plus, one wooden stand. Famille verte dish 20cm diam. (5) (af)

Estimate £100-200



216

GROUP OF SIX CHINESE PORCELAIN ITEMS

Blue and white porcelain bottle vase decorated with figures on a boat with poem together with a famille rose porcelain bowl, four-character mark of Tongzhi, two porcelain wall vases, a white glazed carved porcelain dish and water pot. Vase 17cm tall. (6)

Estimate £100-200



215

**GROUP OF FIVE CHINESE PORCELAIN TEAPOTS
18th CENTURY**

One without cover. 12 – 13cm tall. (5) (af)

Estimate £200-300



217

**LARGE CHINESE CANTON PORCELAIN VASE
19th CENTURY**

Celadon ground with famille rose decoration of court scene and ladies' figures. 62.5cm tall (af)

Estimate £100-200



218

**LARGE CHINESE CANTON PORCELAIN VASE
19th CENTURY**

With famille rose decoration of court scene, with wooden stand. 62cm tall

Estimate £200-300



219

**FOUR CHINESE CARVED IVORY BROOCHES
CANTONESE 19th CENTURY**

Three carved in deep relief with figures among buildings and trees, the other carved with floral bouquet. One mount marked 9ct, one with safety pin chain. 3-5cm diam. (4)

Estimate £100-200



221

**THREE CHINESE CARVED IVORY BROOCHES
CANTONESE 19th CENTURY**

Each carved in deep relief with scenes of figures among buildings and trees. Each mounted in elaborate yellow metal mounts, two with safety pin chains. 5cm – 6cm length (3)

Estimate £150-250



220

**THREE CHINESE CARVED IVORY BROOCHES
CANTONESE 19th CENTURY**

Each carved in deep relief with floral bouquets. One mount marked 9ct the other two with white metal mounts. 4.5cm – 5cm length (3)

Estimate £150-250



222

**THREE CHINESE CARVED IVORY BROOCHES
CANTONESE 19th CENTURY**

Two carved in deep relief with floral bouquet and the other with deer running through trees. Each mounted in elaborate white and yellow metal mounts. 5.5cm – 6.5cm length (3)

Estimate £150-250



223

TWO OIL ON BOARD PAINTINGS OF WHAMPOA, CANTON CHINA

Two oil on board paintings of Whampoa, modern day Pazhou. The first showing the nine-stage Pagoda at Whampoa Anchorage. The second showing boat and ships. Unframed. 51cm x 33cm (2)

Estimate £300-500



224

SET OF FOUR CHINESE FRAMED RICE PAPER PAINTINGS 19/20th CENTURY

Each depicting various exotic birds. Gilt wood frames and glazed. Frame size 42cm x 29.5cm (4)

Estimate £400-500



225

LARGE FRAMED TIBETAN THANGKA OF MANJUSHRI

Depicting the central seated deity surrounded by mythical creatures and columns of other deities with their worshippers. Below, numerous figures in boats crossing between land and temple. The Thangka has been professionally mounted in a protective acrylic, framed by 'Galerie du Monde' Hong Kong. Thangka approx. 84cm wide x 123cm tall. Frame size 104cm wide x 144cm tall.

Provenance: Purchased from Galerie du Monde, Hong Kong circa 1994. From an English private collection.

Estimate £2000-3000

226

**PAIR OF CHINESE HARDWOOD
DISPLAY CABINETS
19th CENTURY**

Each with brass handles to each side and single drawer, inlaid with mother of pearl decoration and sliding framed front glass panels which slide upwards. 33cm tall x 21 wide x 18cm deep (2)

Estimate £300-500



227

LARGE PAIR OF CHINESE FRAMED CARVED WOOD PANELS

Each of rectangular form with pierced geometric motifs below a row of floral scrolls. 144cm tall x 80cm wide (2)

Provenance: Purchased from Galerie du Monde, Hong Kong circa 1994. From an English private collection.

Estimate 400-600



228

**KOREAN ANTIQUE WOOD
'DUIJU' RICE CHEST
19th/20th CENTURY**

The hardwood chest set on four legs with an opening top panel with a carved iron metal medallion and latch for locking. The interior base and back wall lined with Korean newspaper. 85.5cm tall x 83cm wide x 59cm deep

Provenance: Purchased in Seoul, South Korea in the early 1980s. From an English private collection.

Estimate £200-400



229

**CHINESE ROSEWOOD SIDE
TABLE**

The tabletop of square form with narrow cylindrical frame and carved frieze. Top 48cm x 48cm, 64.5cm tall

Estimate £200-300



230

**CHINESE HORSESHOE-BACK
ARMCHAIR, QUANYI**

The rosewood armchair with narrow cylindrical supports under a curved top rail in the form of a horseshoe. 97cm tall, Seat 59.5cm wide x 45cm deep.

Provenance: Purchased in Hong Kong in the 1980s. From an English private collection.

Estimate £100-150



231

**ANGLO-INDIAN HARDWOOD
CONSOLE TABLE
19th CENTURY**

The table on four legs profusely carved throughout with scrolling foliage and carved pierce frieze. 120cm length x 100cm tall

Estimate £600-800



232

GROUP OF VARIOUS JAPANESE WOODBLOCK PRINTS

Comprising six prints to include Mitsuki by Utagawa Kuniyoshi circa 1849 - a woman on a balcony at night watching fireflies over the river. Possibly a later reprint - see copy held in the British Museum. Together with five other late Meiji period and earlier prints. Sizes approx. 33cm length x 23.5cm wide. (6)

Provenance: English private collection of Eve Walber (née MacMilan-Scott) former partner in Waterstones, and thence by descent.

Estimate £80-100



233

TWO JAPANESE WOODBLOCK DIPTYCH PRINTS, UTAGAWA KUNISADA LATE EDO PERIOD CIRCA 1860

A diptych from Kabuki titled 'Yowa Nasake Ukina no Yokogushi' or more popular 'Kirare Yozo' of Geisha Otomi being rescued by Tazaemon from the sea. Together with another diptych from Kirare Yozo which premiered in 1853. Both signed Utagawa Kunisada circa 1860. Sizes approx. 33cm length x 23.5cm wide. (4)

Provenance: English private collection of Eve Walber (née MacMilan-Scott) former partner in Waterstones, and thence by descent.

Estimate £100-200



234

TWO JAPANESE WOODBLOCK TRIPTYCH PRINTS, UTAGAWA KUNISADA & UTAGAWA KUNISADA II LATE EDO EARLY MEIJI PERIOD

A triptych of Genji surrounded by bijin, 1858 by Utagawa Kunisada - based on the scene from the 11th Century 'The Tale of Genji', possibly a later printing. Together with another triptych depicting women at court, many in 'zare'i' or formal bow, where the knees are placed on the floor before the Emperor or Empress. Against a backdrop of richly decorated folding screens - by Utagawa Kunisada II (1823-1880). Sizes approx. 33cm length x 23.5cm wide. (6)

Provenance: English private collection of Eve Walber (née MacMilan-Scott) former partner in Waterstones, and thence by descent.

Estimate £100-300



235

**TWO JAPANESE WOODBLOCK TRIPTYCH PRINTS, UTAGAWA KUNIYAKI, KUNIYOSHI, FUSATANA & KUNISADA
EDO PERIOD**

A triptych of figures under a cheer-blossom trees by Kuniaki, a copy of the left-hand work seen in at the Austrian Museum of Applied Arts – to the reverse of this triptych are two further prints attached. One first part of triptych from Otsu-e Paintings Coming Alive, a Yakusha-e, or actor picture by Kuniyoshi – copy held by the Minneapolis Institute of Art. Together with pictorial information about measles, or 'Hashika kokoroe no zue' by Utagawa Fusatana active 1854-1888, published by Kiya Sojiro in 1862 – a copy of the original held by the Museum of Fine Arts, Boston.

Together with one other triptych possibly by or in the style of Utagawa Kunisada. (6 pages)

Sizes approx. 33cm length x 23.5cm wide.

Provenance: English private collection of Eve Walber (née MacMilan-Scott) former partner in Waterstones, and thence by descent.

Estimate £100-300



236

**TWO JAPANESE WOODBLOCK DIPTYCH PRINTS, UTAGAWA KUNISADA
LATE EDO PERIOD**

A diptych of actor as Kansojo, with attendant, Image of figure on a bull, by Kunisada (Katsushiaka, Musashi 1786-1864). A copy of the left-hand print held by the Harvard Art Museum of Applied Arts. Together with one other diptych 'Yomoshichi Soto, Hikosaburo Bando' by Kunisada – part of a large rare flip sheet print of one of Japan's most famous host stories. Sizes approx. 33cm length x 23.5cm wide. (4)

Provenance: English private collection of Eve Walber (née MacMilan-Scott) former partner in Waterstones, and thence by descent.

Estimate £100-200

CHRONOLOGY OVERVIEW OF CHINA

NEOLITHIC PERIOD

C.6500 – 1600BC

夏 XIA DYNASTY

C. 2100 – 1600BC

商 SHANG DYNASTY

C. 1600 – 1100BC

周 ZHOU DYNASTY

C. 1100 – 221BC

秦 QIN DYNASTY

221 – 206BC

漢 HAN DYNASTY

206BC – 220AD

三國 THREE KINGDOMS

220 – 280

晉 JIN DYNASTY

265 – 420

北朝 NORTHERN DYNASTIES

386 – 581

南朝 SOUTHERN DYNASTIES

420 – 589

隋 SUI DYNASTY

581 – 618

唐 TANG DYNASTY

618 – 907

五代 FIVE DYNASTIES

907 – 690

遼 LIAO DYNASTY

907 – 1125

宋 SONG DYNASTY

960 – 1279

金 JIN DYNASTY

1115 - 1234

元 YUAN DYNASTY

1279 – 1368

明 MING DYNASTY

1368 - 1644

清 QING DYNASTY

1644 – 1908

REPUBLIC OF CHINA

中華民國

1912-1949

EMPERORS - MING THROUGH QING

MING DYNASTY 1368 - 1644

洪武 HONGWU 1368 – 1398

建文 JIANWEN 1399 – 1402

永樂 YONGLE 1403 – 1425

洪熙 HONGXI 1425

宣德 XUANDE 1426 – 1435

正統 ZHENGTONG 1436 – 1449

景泰 JINGTAI 1450 – 1456

天順 TIANSHUN 1457 – 1464

成化 CHENGHUA 1465 – 1487

弘治 HONGZHI 1488 – 1505

正德 ZHENGDE 1506 – 1521

嘉靖 JIAJING 1522 – 1566

隆慶 LONGQING 1567 – 1572

萬曆 WANLI 1573 – 1620

泰昌 TAICHANG 1620

天啓 TIANQI 1621 – 1627

崇禎 CHONGZHEN 1628 – 1644

QING DYNASTY 1644 – 1908

順治 SHUNZHI 1644 – 1661

康熙 KANGXI 1662 – 1722

雍正 YONGZHENG 1723 -1735

乾隆 QIANLONG 1736 - 1795

顥琰 JIAQING 1796 - 1820

道光 DAOGUANG 1821 – 1850

咸豐 XIANFENG 1851 – 1861

同治 TONGZHI 1862 – 1874

光緒 GUANGXU 1875 – 1908

MA SAN AUCTION ABSENTEE BID FORM

BUYER'S PREMIUM 20% + VAT (24% inclusive of VAT)

Please enter your maximum bid for any lot exclusive of buyer's premium

LOT NUMBER	DESCRIPTION	MAXIMUM BID excl. premium

Please pass all absentee bids to Ma San Auction by 5pm on April 20th.

Telephone lines are available for phone bidding at 20% + VAT (24% inclusive of VAT)

Live online bidding via The-Saleroom 29.94% Buyer's Premium (inclusive of VAT)

Live online bidding via Invaluable 29% Buyer's Premium (inclusive of VAT)

Live online bidding via LiveAuctioneers 29% Buyer's Premium (inclusive of VAT)

*All condition reports on request / International shipping available at extra cost, please contact us for details

Terms & Conditions

Ma San Auction Ltd General Conditions of Sale

We are Ma San Auction Ltd, registered in England with company number 10476556 whose registered office address is 2 Princes Buildings, George Street, Bath, BA1 2ED. These are our terms and conditions of sale.

1. Basis of Auction

1.1 If you purchase any products from our auctions, you are deemed to have accepted these auction conditions ("Conditions").
1.2 These Conditions apply to the exclusion of anything you are told verbally and may only be varied by written agreement signed by us and you.

1.3 We may cancel the auction or change its date, time or location, or change the items for sale.

1.4 To the extent permitted by law, we owe you no duty of care and have no liability to you.

1.5 We act only as the sellers' agent and we are not responsible for any defect in any item or for any breach of contract by the seller

2. Registration

2.1 In order to participate in any auction, you must first register with us by calling us on 01225 318587 or e-mailing us at enquiries@masanauction.com. We will require your contact and payment details, as well as copies of your photo and address identification documents (if required). We will notify you if and when your registration has been successful. We may reject any application without explanation.

2.2 Once your registration is completed, you will be given a buying number for use at the auction.

3. Lots

3.1 We determine what goes into each lot and reserve the right to change this during the auction. As an example, only, we may separate a lot out if it does not sell as a whole or withdraw a lot completely without explanation. We may also combine or divide lots or change their order of sale.

3.2 We may sell any lot prior to the auction.

4. Descriptions

4.1 We take reasonable care to prepare an accurate description of each item. However, we sell items as agent for the sellers and the information we provide, in any form including in the catalogue and at the auction is based on the information we have received, for which we cannot be liable. You cannot rely on this information (whether provided in writing or orally) and you need to verify the information for yourself.

4.2 If any documentation is provided with an item, this is on the basis that we have received it from another person and neither we nor the seller can be liable for its accuracy or completeness.

4.3 Whether you bid in person, by an agent or by electronic means and whether or not you inspect the item, you are deemed to bid with full knowledge of the item, its physical condition and any other information that could reasonably be discovered on inspection of that item.

4.4 We shall not be responsible in any respect for any fault, deficiency or error in any description, oral or printed, and we do not accept responsibility for the authenticity, genuineness, origin, age, condition or quality of any lot. You must take the item as it is at the auction and neither we nor the sellers are liable for the condition of any item nor for whether it is fit for purpose.

4.5 On request, we may (but are not obliged to) provide a condition report on an item. All measurements provided are approximate, and image colour and quality may not be accurate. Any report we provide is given as an opinion only and does not purport to be a statement or representation of fact.

5. Bidding process

5.1 All bids are to be made in pounds sterling, exclusive of any fees and applicable value added tax ("VAT").

5.2 Unless stated otherwise, each lot is subject to a reserve price. The lot will be withdrawn if the reserve price (or higher) is not bid.

5.3 The seller is entitled to bid up to (but no higher than) the reserve price. Our employees are entitled to bid for lots in their own personal capacity.

5.4 The highest bidder for each lot shall be the buyer. In the event of any dispute, we shall have absolute discretion to either settle such dispute in any form we see fit, withdraw the lot, or re-offer the lot, either at the same or a future auction.

5.6 You can only bid at the amounts named by us and you cannot retract a bid.

5.7 Any guide price is a guide only and not an estimate of value, and bids may far exceed this.

5.8 We reserve the right to refuse any bid without explanation. Our decision on the conduct of the auction is final.

6. Bidding methods

6.1 If you are unable to attend the auction in person, you may bid online via saleroom.com, as long as you are registered with us first. If you do so, you will be required to provide your credit card details and by doing so, you will be authorising the disclosure of your payment details to us and authorising us to charge the full payment due to us (for the item, fees, VAT and shipping) to that card for items successfully bid at an auction. You will also be authorising us to arrange shipping to the card holder's address at your expense and on your behalf. We charge an additional 4.95% plus VAT buyer's premium on online bids.

6.2 Online Bidding

Ma San Auction offers an online bidding service via the-saleroom.com for bidders who cannot attend the sale.

In completing the bidder registration on www.the-saleroom.com and providing your credit card details and unless alternative arrangements are agreed with Ma San Auction, you:

1. authorise Ma San Auction, if they so wish, to charge the credit card given in part or full payment, including all fees, for items successfully purchased in the auction via the-saleroom.com, and
2. confirm that you are authorised to provide these credit card details to Ma San Auction through www.the-saleroom.com and agree that Ma San Auction are entitled to ship the goods to the card holder name and card holder address provided in fulfilment of the sale.

Please note that any lots purchased via the-saleroom.com live auction service will be subject to an additional 4.95% commission charge + VAT at the rate imposed on the hammer price

6.3 If you are unable to attend the auction in person or online, you may leave a bid with us in advance, as long as you are registered with us first.

6.4 You may also bid by telephone during a live auction, as long as you are registered with us first and notify us at least four hours before the auction starts, that you would like to bid on that item.

6.5 We shall not be responsible if you are unavailable at the time of the relevant sale or if your telephone or internet connection is ????

7. Contract and payment

7.1 The successful bid is usually confirmed at the fall of the hammer, at which time you automatically become bound to pay us.

7.2 If you make the successful bid, you are obliged to buy the items at that price plus VAT if applicable, on and subject to these conditions, and before you leave the auction, you must provide us with all the information we reasonably need from you to enable us to release the item to you and pay the price to us in cleared funds.

7.3 If you fail to comply with clause 7.2, we may, at our discretion, re-auction the item or entitle the seller to make a claim against you for breach of contract. Either way, you will have to reimburse us and the seller for all losses caused by your breach, plus interest, costs, charges and expenses, which may include, amongst other things, the difference between your successful bid and any lower successful bid that we achieve on re-auctioning the item.

7.4 If you are acting as agent for another buyer, you will still be personally liable to us for the full payment due. If we are aware that you are acting as agent, you may be jointly and severally liable with your principal.

7.5 No damage to the item, or its destruction or deterioration, howsoever caused, will entitle you to any reduction in price or any refusal to pay.

7.6 All items are subject to a buyer's premium at 20% plus VAT, which will be charged on top of the successful bidding price. For bids over £500,000 the buyer's premium is 10% plus VAT.

7.7 Payment is due in full and cleared funds immediately after the auction, in pounds sterling. No items will be released to you without receipt of full payment in cleared funds. This means that there may be delay in releasing the item to you, depending on your method of payment. Our preferred payment methods are bank transfer, debit or credit card or cash (for amounts up to £10,000 only).

7.8 Some items may be subject to VAT, particularly in relation to buyers outside the European Union, in which case this will be charge on top of the bid price.

7.9 We charge an additional 4.95% plus VAT buyer's premium on online bids.

8. Risk

Regardless of when payment is made or the goods released to you, each lot shall be at your sole risk from the moment the hammer falls.

You will be responsible for its condition thereafter and for all removal and shipping arrangements.

9. Release of items to you

9.1 We do offer packing and shipping on majority of items, please contact us to arrange. However, you may wish to use the following service provider for this:

Mailboxes Etc Bath - 3 Edgar Buildings, George Street,

Bath BA1 2FJ t: 01225 483 777 f: 01225 483 666

email: info@mbebath.co.uk

9.2 Any use of this or any other service provider is entirely at your risk and done on your behalf. We do not accept any responsibility for their actions or omissions.

9.3 We will not accept any liability for the items, nor will our employees, if we agree to store them immediately after the sale until they are collected or shipped.

9.4 We will not pack any products ourselves for shipping or collection – this must be done by you or the service provider on your behalf.

9.5 It is your sole responsibility to comply with all export and import regulations relating to items you purchase.

10. Accidents

10.1 You attend the auction at your own risk and, subject to our negligence causing personal injury or death, we shall not be liable for any accidents that happen, or injuries sustained at the auction.

10.2 Any person who damages a lot will be held liable for the loss caused.

11. Our Liability

11.1 Nothing in these Conditions shall limit or exclude our liability for death or personal injury caused by our negligence, our fraud or any other liability which cannot be limited or excluded by law.

11.2 Subject to clause 11.1, we shall not be liable to you, whether in contract, tort (including negligence), for breach of statutory duty or otherwise, arising under or in connection with these Conditions for:

- a) loss of profit (whether direct or indirect);
- b) loss of sales or business;
- c) loss of savings;
- d) loss of or damage to goodwill; or
- e) any indirect or consequential loss.

11.3 Subject to clause 11.1, our total liability to you, whether in contract, tort (including negligence), for breach of statutory duty or otherwise, arising under or in connection with these Conditions shall be limited to the buyer's premium you have paid.

12. General Terms

12.1 Unless you notify us in writing to the contrary, you hereby consent to us using any contact details that we obtain from you in marketing issued directly from us.

12.2 You cannot assign your rights under the Conditions to anyone else without our written consent.

12.3 These Conditions, along with the successful bidding price, constitute the entire agreement between us and supersede any previous or concurrent agreements, conversations, assurances or understandings between us, whether written or oral.

12.4 In the event that any provision in these Conditions is or become invalid, illegal or unenforceable, it shall be deemed modified to the minimum extent necessary to make it valid, legal and enforceable. If this is not possible, the relevant provision shall be deleted. Any modification or deletion shall not affect the rest of these Conditions.

12.5 Our rights and remedies set out in these Conditions are in addition to, and not exclusive of, any rights or remedies provided at law.

12.6 If you are a joint bidder or share a buying number with another person, you will be joint and severally liable for your obligations under these Conditions.

12.7 You shall not have any claim against us, our employees or contractors, or the seller for innocent or negligent misrepresentation or negligent misstatement.

12.8 Only you and we can enforce these Conditions, and no other person can do so under the Contracts (Rights of Third Parties) Act 1999.

12.9 We reserve the right to amend these Conditions in any way at any time except during a live auction.

12.10 These Conditions and any dispute or claim (including non-contractual disputes or claims) arising out of or in connection with them or their subject matter or formation shall be governed by and construed in accordance with the law of England and Wales, and we and you irrevocably agree that the courts of England and Wales shall have exclusive jurisdiction to settle any such dispute or claim.





Ma San Auction
2 Princes Buildings George Street Bath BA1 2ED

01225 318 587
enquiries@masanauction.com
masanauction.com