



# PMI AUCTION

**FEATURING: (6) PRESSES UP TO KOMATSU 176 T.; FEED LINES; Q.C. EQUIP.; LATE MODEL AMADA LASER CUTTING & TURRET PRESSES; (13) CNC PRESSBRAKES; SPOT WELDING SYSTEMS; MACHINE TOOLS; PAINT LINES; PACKAGING EQUIP.; PLANT SUPPORT EQUIP.; RAW MATERIALS; BOX TRUCKS; MATERIAL STORAGE & HANDLING EQUIP. INCL. (21) FORKLIFTS; LARGE FINISHED GOODS INVENTORY; HUGE QTY. OFFICES; MORE**

**2000**



**2 DAYS  
SEPT. 29  
9:30 A.M.  
LIVE ONSITE  
SEPT. 30  
TIMED  
ONLINE**

KOMATSU 176 T.  
MDL. E2W160 STRAIGHT SIDE  
DOUBLE CRANK GAP PRESS



AMADA MDL. HDS1303NT CNC PRESSBRAKE

**2011**

Live Onsite w/Webcast – At the Premises of  
**BLOCK & COMPANY, INC.**  
1111 WHEELING RD., WHEELING, IL 60090  
BUYER'S PREMIUM: 15% ONSITE • 18% WEBCAST

Timed Online Only – Assets Located at  
**BLOCK & COMPANY, INC.**  
150 HASTINGS DR., BUFFALO GROVE, IL 60089  
BUYER'S PREMIUM: 18% TIMED ONLINE



**2011**

AMADA  
MDL. FOMII-3015NT  
CNC LASER CUTTING  
SYSTEM

**INSPECTION:**

Monday  
& Tuesday,  
September  
27 & 28,  
9:00 A.M.  
to 4:00 P.M.  
Each Day



**2004**

AMADA MDL. EM2510NT CNC TURRET PUNCH SYSTEM

**YOU MUST REGISTER IN ADVANCE FOR ONLINE BIDDING AT THIS AUCTION.**  
Go to [www.pmi-auction.com](http://www.pmi-auction.com) and click on [BidSpotter.com](http://BidSpotter.com) on our calendar page for this auction sale.

Read Partial Terms  
& Conditions on Page 11

Sale  
Conducted  
By: **PLANT & MACHINERY INC.**  
AUCTIONEERS • APPRAISERS • LIQUIDATORS • REAL ESTATE  
1304 Langham Creek Drive, Suite 454, Houston, Texas 77084  
PHONE: (713) 691-4401 FAX: (713) 672-7905  
E-MAIL: [pmi@pmi-auction.com](mailto:pmi@pmi-auction.com) • WEBSITE: [www.pmi-auction.com](http://www.pmi-auction.com)  
Ron Moore IL Lic. #441.000726, PMI Lic. #444.000219  
**HOUSTON • DALLAS • ST. LOUIS**

In Conjunction With:

**Gordon  
Brothers**  
1903

and With:

**Maynards**  
Industries (1991) Inc. SINCE 1902  
AUCTIONEERS | LIQUIDATORS | APPRAISERS





**KOMATSU 176 T.  
MDL. E2W160  
STRAIGHT SIDE  
DOUBLE CRANK  
GAP PRESS**



**KOMATSU 220 T.  
MDL. OBW200  
DOUBLE CRANK  
GAP PRESS**



**AIDA 121 T. DOUBLE CRANK GAP PRESS**

## STRAIGHT SIDE DOUBLE CRANK PRESS

**KOMATSU 176 T. CAP. MDL. E2W160**, new 9/2000, 35–65 SPM, 7.87" stroke, 18.11" die ht., 3.93" power slide adj., 62.99" x 22.83" T-slotted ram, 78.83" x 29.92" x 6.69" bolster, 30"W. windows, slab frame design, hyd. overload, air clutch and brake, S/N 10013.

## DOUBLE CRANK GAP PRESSES

**KOMATSU 220 T. CAP. MDL. OBW200**, new 3/1997, 30–50 SPM, 9.84" stroke, 19.6" die ht., 4.72" power slide adj., 72.8" x 25.6" T-slotted slide, 95.2" x 33.4" x 7.7" bolster, hyd. overload, micro level pads, S/N 10047.

**AIDA 121 U.S. TONS MDL. NC2-110(1)**, 4.33" slide stroke, 50–100 SPM, 13.7" die ht., 3.54" power ram adj., 53.5" x 20.4" slide area, 74.0" x 20.4" bolster area, 15 HP drive, light curtain safety device, hyd. overload, wet clutch and brake, S/N 10511-1094.

## SINGLE CRANK GAP PRESSES

**KOMATSU 121 T. CAP. MDL. OBS110-3**, new 1988, 32–65 SPM, 5.91" slide stroke, 14.96" die ht., 3.94" power slide adj., 23.62" x 21.65" T-slotted slide, 43.31" x 27.56" x 5.91" T-slotted bolster, Shadow light curtains, hyd. overload, wet clutch and brake, load monitor, S/N 11613.

**KOMATSU 88 T. CAP. MDL. OBS80-3**, new 1/1993, 37–75 SPM, 5.12" stroke, 13.78" die ht., 3.15" power slide adj., 21.65" x 17.72" T-slotted slide, 39.37" x 23.62" x 5.51" T-slotted bolster, Merlin light curtains, AC Tech inverter drive, hyd. overload, load monitor, S/N D0016.

**KOMATSU 66 T. CAP. MDL. OBS60-3**, new 2/1995, 42–85 SPM, 4.72" stroke, 11.81" die ht., 2.7" slide adj., 19.69" x 15.75" slide dims., 25.43" x 21.65" x 5.12" bolster, hyd. overload, power ram adj. w/indicator, control pedestal, light curtain safety device, Wintriss SmartPak load analyzer, air clutch and brake, Weg inverter drive, S/N 14223.

**INSPECTION:** Monday & Tuesday, September 27 & 28, 9:00 A.M. to 4:00 P.M. Each Day

## AUTOMATIC FEED LINE

**CWP 24"W.**, consisting of the following components: **CWP MDL. 4.5R-24 POWERED COIL REEL**, 60" max. O.D., 24" stock width, 10,000-lb. coil weight, integrated coil car, S/N 053830-SR; **CWP MDL. 24C INCLINED STRAIGHTENER**, .093" max. material thickness, hold-down peeler tbl., exit cascade rolls, S/N 05830STR; **CWP MDL. 24PTII THREADING TBL.**, S/N 053830PTT; **CWP MDL. SMX24 SERVO FEEDER**, .093" max. cap., 24" width, infed cascade rolls, S/N SMX24-13-01.

## COIL REELS

**CWP 10,000-LB. CAP. MDL. 4.5R-24 POWERED COIL REEL**, 60" coil I.D., 18"–22" mandrel expansion, 24" material width, hyd. mandrel expansion, integrated coil car w/lift, S/N C487-5.

**FEEDLEASE MDL. PR6123**, 6,000-lb. cap. coil reel, 24" material width, manual mandrel, S/N 3147.

**RAPID-AIR MDL. R4000-12 COIL REEL**, 12"W., 4,000-lb. cap., S/N 96054.

## DON'T MISS THIS SALE!



**KOMATSU 121 T. SINGLE CRANK  
GAP PRESS**



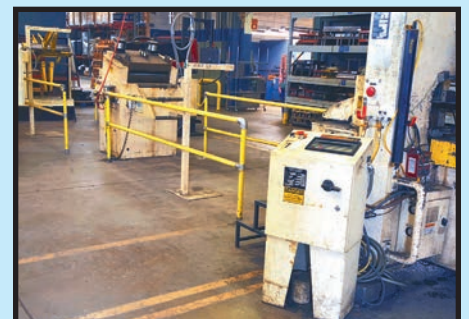
**KOMATSU 88 T. SINGLE CRANK  
GAP PRESS**



**KOMATSU 66 T. SINGLE CRANK  
GAP PRESS**



**PRESS ROOM ACCESSORIES**



**CWP 24" SERVO FEED LINE**





AMADA MDL. FOMII-3015NT CNC LASER CUTTING SYSTEM



AMADA MDL. AC2510NT CNC TURRET PUNCH

### INCLINED STRAIGHTENERS

**CWP MDL. SE24C INCLINED POWER STRAIGHTENER**, 24"W., .021"–1.87" material thickness, air pinch rolls, guide rolls, exit cascade roll, S/N 060608.

**CWP MDL. 24C INCLINED STRAIGHTENER**, 24"W., .093" max. cap., hold-down peeler tbl., exit cascade rolls, air pinch rolls, guide rolls, S/N C487-3.

**PRESSROOM EQUIPMENT MDL. PMS-1220-7DCA INCLINED STRAIGHTENER**, 7-roll, entry and exit air operated pinch rolls and guided rolls, S/N 0789-030.

### THREADING TABLE

**CWP MDL. 24PTTII**, 24" material width, S/N C487-2.

### SERVO FEEDERS

**CWP SERVOMAX II MDL. SMX24**, 24"W., .093" max. material thickness, cabinet mount w/ht. adj., S/N C487-1.

**RAPID-AIR MDL. 112B**, 12" max. width, entry guide rolls, bolster mtd., S/N 95922.

### LASER CUTTING SYSTEM

**AMADA MDL. FOMII3015NT**, new 10/2011, Amada Mdl. NT control system, 4 kW resonator, 60" x 120" sheet size, 60" Y, 120" X, 7.87" Z-axis travels, 4,724 IPM rapids, pallet changer, Precise Cooling Solutions chiller, light curtain safety device, Torit Mdl. ADF02-8 8-cartridge dust and fume collection unit, 20,618 resonator hours on meter, S/N 47512269.

### CNC TURRET PRESSES

**AMADA 22 T. CAP. MDL. AC2510NT**, new 3/2008, AMNC/Fanuc CNC control, 22 T. servo ram, 50" x 98.4" travels, .12" max. thickness, 1.654" stroke, 350 HPM on 1" CC., 3,150 IPM rapid spd., 51 turret stations, (4) auto. index stations, S/N 51020397.

**AMADA 22 T. CAP. MDL. EM2510NT**, new 5/2004, AMNC/Fanuc CNC control, 22 T. servo ram, 50" x 100" sheet size, 3,950 IPM rapids, .197" stroke, 500 HPM on 1" CC., 45-turret stations, (4) auto. index stations, Amada 6-level sheet tower, Amada load/unload system, S/N 25100343.

### TURRET PRESS ACCESSORIES

**AMADA TOGU III AUTOMATIC PUNCH GRINDER**, new 1/2012, S/N 30231164.

**FABRIVISION II 4' X 4' PRECISION PARTS SCANNER**, new 1997, (2) cameras, computer, S/N 2103 (See photo on page 5).

**HUNDREDS OF AMADA AND WILSON TOOL TURRET PRESS PUNCH AND DIE SETS**, sorted in racks.



AMADA MDL. EM2510NT CNC TURRET PUNCH SYSTEM



SHEET TOWER FOR AMADA MDL. EM2510NT SYSTEM



AMADA TOGU III AUTOMATIC PUNCH AND DIE GRINDER



HUGE QUANTITY OF AMADA AND WILSON PUNCH TOOLING

DAY 1: Live Onsite w/Webcast – At the Premises of  
**BLOCK & COMPANY, INC.**  
 1111 WHEELING ROAD, WHEELING, IL 60090





CINCINNATI 350 T. X 10' CNC PRESSBRAKE



CINCINNATI 230 T. X 12' CNC PRESSBRAKE

2011



AMADA MDL. HDS1303NT CNC PRESSBRAKE



AMADA MDL. RG80 CNC PRESSBRAKE



AMADA MDL. RG50 CNC PRESSBRAKES

## CNC PRESSBRAKES

**CINCINNATI AUTOFORM 350 T. CAP. MDL. 350AFX10**, adaptive Autoform control, 10'-6" dist. btwn. housings, 12' overall length of bed and ram, 10" stroke, 10" throat depth, hyd. bed crowning, light curtain safety device, S/N 46259.

**CINCINNATI AUTOFORM 230 T. CAP. MDL. 230AFX12**, Autoform CNC control, 12'-6" dist. btwn. housings, 14' overall length of bed and ram, 16" stroke, 8" throat depth, bed is machined for angles, hyd. bed crowning, Custom sliding die change arrangement, S/N 50214.

**AMADA 130 T. CAP. MDL. HDS1303NT**, new 8/2011, 126.8" tbl. length, 126.8" bending length, 106.3" dist. btwn. uprights, 17.7" throat depth, 7.9" stroke length, 19.7" open ht., Fiessler laser safety system, One-Touch punch holders, electronic foot pedal control, S/N 13304178.

**(2) AMADA 80 T. CAP. MDL. RG80**, NC9 CNC control, 4" stroke, 94" bed length, One-Touch punch holder, S/N 808272, S/N N/A.

**(4) AMADA 50 T. CAP. MDL. RG50**, Amada NC9-EXII CNC control, 4" stroke, 78.7" bed length, 400 mm throat depth, One-Touch punch holders, S/N 509617, S/N 509616, S/N 509615 (1998), S/N 507702 (1991).

**(3) AMADA 50 T. CAP. MDL. RG50**, as new as 1993, NC9EX CNC control, S/N 504771 (1993), S/N 505525 (1985), S/N 504790 (1984).

**AMADA 35 T. CAP. MDL. RG35**, new 1987, NC9EX CNC control, 48" bed, S/N 50353580.

## PRESS BRAKE TOOLING

**HUGE ASSORTMENT OF AMERICAN STYLE PRESSBRAKE DIES**, sorted in racks; **STANDARD AND GOOSENECK PUNCHES**; **HUGE QUANTITY OF HARDENED AND GROUND PRECISION PRESSBRAKE TOOLING**.

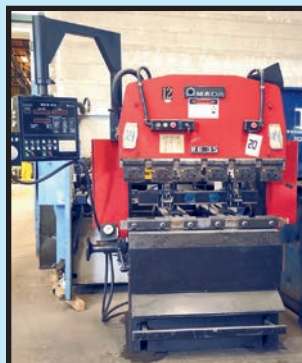
## HARDWARE INSERTION PRESSES

**HAEGER 8 T. CAP. MDL. 824**, new 1994, with bowl feeder, S/N 5440.

**(2) PEMSERTER SERIES 2000A**, new 1997, vibratory bowl feed, S/N 2013A-115, S/N 2002A-103.

**HAEGER 6 T. CAP. MDL. HP6-C-4**, 18" throat depth, bowl feed, foot pedal control, S/N 2867.

**HAEGER 6 T. CAP. MDL. 618-1L**, new 1998, bowl feed, S/N 06L00630.



AMADA MDL. RG35 CNC PRESSBRAKE



HAEGER MDL. 824  
HARDWARE PRESS

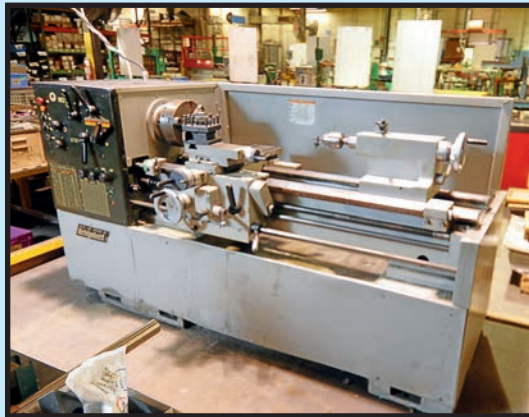


VIEW OF HARDWARE PRESSES





AMADA MDL. RG50 CNC PRESSBRAKE



BRIDGEPORT ROMI 6" X 40" ENGINE LATHE



CLAUSING KONDIA VERTICAL TURRET MILL



FARO EDGE MEASURING ARM AND TESA ELECTRONIC HEIGHT GAUGE



FABRIVISION FLAT PART SCANNER



**INSPECTION:**  
Mon. & Tues.,  
Sept. 27 & 28,  
9:00 A.M.  
to 4:00 P.M.  
Each Day

**DON'T  
MISS  
THIS  
SALE!**

ROLLER DRAWER  
CABINET AND  
DIE COMPONENTS

## QUALITY CONTROL EQUIPMENT

**FARO EDGE MEASURING ARM**, new 2016, vacuum cup base, laser scan head, standard stylus head w/stylus kit, Wi-Fi, S/N E9-05-16-14434.

**BROWN & SHARPE TESA MDL. 007-90042 ELECTRONIC HEIGHT GAUGE**, last calibrated 2019, 600 mm, Heightmaster, S/N 6F287-01.

**UTICA MDL. TA4-01B-1 TORQUE ANALYZER; PRECISION ANGLE PLATES; PLUG GAUGES SETS; VERSAGAGE 60" DIGIMATIC DIGITAL CALIPER; WILSON ROCKWELL HARDNESS TESTER.**

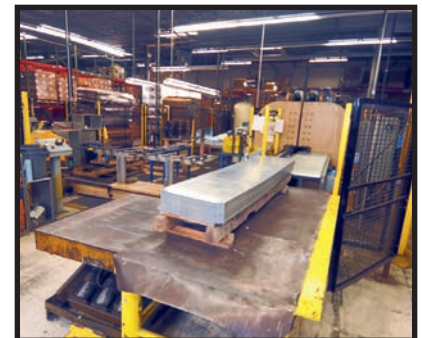
## TOOLROOM MACHINERY

**CLAUSING KONDIA MDL. FV300 VERTICAL TURRET MILL**, 11" x 58" t.b.l., variable spd. head: 60–4,000 RPM, long. pwr. feed, telescoping crossslide guards, 8" H.D. milling vise, Mitutoyo Quill readout, Sony 2-axis D.R.O., S/N Y-931.

**BRIDGEPORT ROMI 16" X 40" MDL. 16-8 ENGINE LATHE**, 10" chuck, spds.: 56–1,120 RPM, 2-1/2" spdl. hole, S/N 062794.

**PLUS: GROB MDL. NS24 VERTICAL BANDSAW**, blade welder and grinder, S/N 3184; **BOYAR SCHULTZ MDL. 612 DELUXE HAND FEED SURFACE GRINDER**, fine line electromagnetic chuck, cabinet base; **JOHANSSON SENSITIVE DRILL**, 16" throat depth, spds.: 60–1,200 RPM, adj. ht. production t.b.l., S/N 3127; **AERCOLOGY BAG STYLE CABINET DUST COLLECTOR**, on fabricated stand; **NUGIER 20 T. CAP. MDL. H20-6H HYDRAULIC H-FRAME PRESS**, S/N 2234; **DIACRO 24 HAND SHEAR**, on fabricated stand; **CLEERMAN DRILL; JET CUTOFF SAW; DELTA DRILL PRESS; LYON ROLLER DRAWER TOOL CABINET**, w/socket head gap screws, stripper bolts and assorted die parts; **DELTA 16-1/2" PEDESTAL DRILL PRESS.**

**DAY 1: LIVE ONSITE  
W/WEBCAST  
WEDNESDAY, SEPTEMBER 29  
9:30 A.M.**



## CUSTOM WRAPPER LINE

Consisting of the following components:  
**MZM DUAL HEAD WING FORMER**, adjustable head spacing, automated part handling, programmable controls; **MZM END SIDE WING FORMER**; **FANUC 6-AXIS ROBOT W/ TOX CRIMPER**; (2) **RAIL MOUNTED TOX CRIMPERS**; **SAFETY CAGE, CONVEYORS AND CONTROLS** (AUCTIONEER'S NOTE: This item is subject to prior sale, please contact auctioneer for availability).



ASSORTED PRESSBRAKE DIES



LARGE QUANTITY OF PRESSBRAKE TOOLING





(2 OF 3) TECHNHA 50 KVA SPOT WELDERS



SAMPLE VIEW OF SPOT WELDERS



KOYO GIKEN  
MYSPT-IV  
80 KVA  
TABLE WELDER

### TABLE SPOT WELDER

**KOYO GIKEN MYSPT-IV MDL. NK-21HEV810-M-D-FZ**, new 2012, Classic Mdl. GOT1000 control, dual gun stations, 80 KVA, integrated chiller unit, (2) welding guns, S/N 12-07-771-268EZ.

### ROCKER ARM SPOT WELDERS

**LORS MDL. 1150AR-1**, 150 KVA, 30" arms, Interlock Industries weld controller, S/N 1193-5691; **ACME MDL. 3-24-100 TYPE AR**, 100 KVA, 24" throat depth, Unitrol Solution weld controller, S/N 11637; **(3) TECHNHA MDL. 4662N**, new 2017, 50 KVA, 18" throat depth, S/N 08-23/17, S/N 08-24/17, S/N 08-22/17; **TAYLOR WINNFIELD MDL. ZDN-24**, 50 KVA, 24" throat depth, TE90 Mark II programmable control, S/N H040090; **CUSTOM**, approx. 50 KVA, 18" throat depth, Unitrol Solution weld controller; **ACME**, approx. 50 KVA, 24" throat depth, Unitrol Solution weld controller; **ACME MDL. 3-18-75**, 75 KVA, 18" throat depth, Unitrol Solution weld controller, S/N 10784; **PEER MDL. AR4-10**, 10 KVA, 18" throat depth, Unitrol Solution weld controller, S/N 11709; **ACME MDL. 2-24-30**, S/N 13908, S/N 13639; **(2) ACME MDL. 2-18-30**, S/N 10364, S/N 51795; **ACME MDL. 1-18-15**, 15 KVA, 18" throat depth, Unitrol Solution weld controller, S/N 14465; **PEER MDL. AR430**, 30 KVA, 18" arms, Unitrol Solution weld controller, S/N 14608; **ACME MDL. 3-36-50**, new 1999, 50 KVA, 36" arms, Unitrol Solution weld controller, S/N 9008; **FEDERAL MDL. RA-4-24**, 150 KVA, 24" throat depth, Entron weld controller, air operated, S/N 662410-1; **FEDERAL MDL. RA-4-18**, 100 KVA, Entron weld controller, air operated, S/N 662373.

### PROJECTION SPOT WELDERS

**(2) LORS MDL. 140AP-DV**, 40 KVA, 24" throat depth, Unitrol Solution weld controller, S/N 1097-6484, S/N 1295-6059; **DT INDUSTRIES PEER MDL. P-50**, 100 KVA, 30" throat depth, Entrol Mdl. EN1001 weld controller, S/N 3076; **BANNER MDL. 1BP50A12**, 50 KVA, 18" throat depth, Entron Mdl. EN1000 weld controller, S/N 6754; **BANNER MDL. SP0050A**, 50 KVA, 24" throat depth, Entron Mdl. EN1000 S/N 2466.

### MULTI-GUN SPOT WELDERS

**STANCO 9-GUN**, new 2001, 85 KVA, Entrol Mdl. EN1000 weld controller, S/N 0416130; **LORS 6-GUN**, Entrol EN1000 weld controller, fabricated frame; **LORS MDL. 705**, Station 1 w/(4) guns, Station 2 w/(1) gun, 85 KVA, fabricated steel frame, S/N 495-5896; **(2) LORS MDL. 857 5-GUN**, 85 KVA, Entrol 1000 weld controller, S/N 1205-7450, S/N 1205-7449.



MILLER TIG WELDERS

Live Onsite w/Webcast – At the Premises of  
**BLOCK & COMPANY, INC.**  
1111 WHEELING ROAD,  
WHEELING, ILLINOIS 60090

### TIG WELDERS

**MILLER MDL. SYNCROWAVE 350LX**, S/N LA253508; **MILLER MDL. SYNCROWAVE 250**, S/N KK115725; **MILLER MDL. SYNCROWAVE 250DX**, S/N MC390511U.

### INTEGRATED MIG WELDERS

**MILLER MDL. MILLERMATIC 350**, integrated wire feed, S/N LJ420773B; **MILLER MDL. MILLERMATIC 251**, S/N LF430673B; **MILLER MDL. MILLERMATIC 250**, S/N KF933566.



ASSORTED COIL STEEL STOCK



ASSORTED SHEET STOCK

**TWO DAYS  
TWO LOCATIONS**

**RAW MATERIAL**  
WIDE ARRAY OF MILD STEEL AND STAINLESS STEEL COIL STOCK, in various widths.  
MILD STEEL, ALUMINUM AND STAINLESS STEEL SHEETS, most are 5' x 10'.

**SEPT. 29 LIVE ONSITE  
SEPT. 30  
TIMED ONLINE**





AMIBERICA 5-STAGE STAINLESS STEEL WASHER

2002/  
2018



CONTINENTAL 3-STAGE WASHER



CONTINENTAL POWDER PAINT LINE DRY-OFF AND CURE OVENS



AMIBERICA DRY-OFF AND CURE OVENS

## POWDER COAT PAINT LINES

**AMIBERICA/GEMA**, new 2002, renovated and modified 2018; **APPROX. 500' OF 458 OVERHEAD CHAIN CONVEYOR** w/trolleys on 24" centers; **AMIBERICA 5-STAGE STAINLESS STEEL WASHER**, 54"W. x 60"H. opening, cartridge filtration, RO rinse; **AMIBERICA DRY-OFF OVEN**, gas fired, 38"W. x 48"H. openings, approx. 35'L. x 15'W., double loop; **ITW GEMA STAINLESS RECIRCULATING POWDER BOOTH** w/(2) portable reciprocators, (4) guns per reciprocator, (8) Gema Optitronic gun controllers, booth control system, slideout color module, (2) manual spray stations, 48"W. x 60"H. opening, fired detection system; **ITW GEMA RECIRCULATING BOOTH**, (2) double reciprocators w/(8) guns, Gema PCG1 gun amplifiers, powder containers, (2) slideout color modules, 48" x 60" opening, stainless steel booth construction, (2) manual spray systems w/Gema Optistar CG13 gun controllers; **AMIBERICA GAS FIRED CURE OVEN**, approx. 60'L., single loop, digital controls.

**CONTINENTAL EQUIPMENT CORP./GEMA**, new 1994, 3-stage washer, 36"W. x 48"H. opening, approx. 50' total length, 2-lane single loop dry-off oven, Gema powder coat booth, 62"W. x 54"H. opening, (2) reciprocators and (2) manual stations, 35' x 40' paint room enclosure, gas fired cure oven on steel structure over dry-off oven, 2-lane single loop, approx. 20' x 40" enclosed monorail track system w/trolleys on 12" centers, S/N PW94M353.

## E-COAT FINISHING SYSTEM

**CONSISTING OF:** Rapid Industries 458 overhead chain conveyor w/24" trolley spacing, Thermo-Tron-X 7-stage stainless steel U-shaped double pass washer, 48"W. x 62"H. gas fired dry-off oven approx. 75' length, E-coat tank w/rectifier and PLC controls, GE osmotics reverse osmosis water system, Sterlco chiller system.

## PAINT ROOM ACCESSORIES

**8' X 8' X 7' NORDSON "SPRAY TO WASTE" POWDER BOOTH.**

**GEMA EZ-TRONIC PORTABLE POWER SPRAY UNIT** w/gun, amplifier and powder hopper.

**HUGE SELECTION OF POWER PAINT**, by Akzonobel, in various colors, in 55-lb. boxes.

**CONTROLLED PYROLYSIS MDL. PTR-290-2722 RACK BURN-OFF OVEN**, 350,000 BTU's, gas fired, digital temp. controls.

**(2) BURR KING MDL. 960 BELT GRINDERS** w/V/S drive.

**DOWNDRAFT FINISHING TBL.** w/integrated dust collector.



THERMO-TRON-X E-COAT PAINT SYSTEM

**INSPECTION:** Monday & Tuesday,

September 27 & 28, 9:00 A.M. to 4:00 P.M. Each Day



## "DOCUMENT CARRIER" PRODUCT PRINTING SYSTEM

**PROPHETEER MDL. 1000 4-COLOR**, multi-component payoff stands, 10" width, w/ large lot of feedstock.





# AUCTION

**DAY 1: LIVE ONSITE  
WED. SEPT.29  
9:30 A.M.**



**KAESER MDL. DS171 ROTARY SCREW AIR COMPRESSOR**



**LANTECH  
16" TABLE  
PALLET  
WRAPPER**



**GENERAL  
HYDRAULICS  
HYDRAULIC  
BALER**

## COMPRESSED AIR SYSTEMS

**KAESER MDL. DS171 ROTARY SCREW AIR COMPRESSOR**, new 2001, 620 CFM, 125 HP, S/N 1029.

**QUINCY MDL. 350 ROTARY SCREW AIR COMPRESSOR**, air cooled, 75 HP drive motor, skid mtd., S/N S108ANA3LF.

**QUINCY MDL. Q235 ROTARY SCREW AIR COMPRESSOR**, approx. 50 HP, air cooled, skid mtd.

**KAESER MDL. SM11 ROTARY SCREW AIR COMPRESSOR**, S/N 1327, horiz. tank mtd. w/Kaeser TA-11 refrig. air dryer.

**KAESER MDL. KRD800 REFRIGERATED AIR DRYER**, 800 SCFM, S/N KPR800B460010702.

## PACKAGING & SHIPPING DEPARTMENT

**LANTECH MDL. Q-300 Q SERIES PALLET WRAPPER**, 60" dia. rotating platform, S/N QM019318.

**HOT MELT GLUE APPLICATORS: (4) NORDSON DURABLU 4; DYNATEC "DYNAMAL"; NORDSON 16TT; WELDOTRON SHRINK TUNNEL**, 20"W. x 6"H. shrink tunnel, electric pwr'd., digital heat controls; **3M-MATIC MDL. 8000A TYPE 11400 CASE SEALER**; **BEMIS COMPANY MDL. 2691022SA1292 CASE SEALER**, S/N 1022SA; **3-M "L" CLIP APPLICATORS**; **L-BAR SEALERS**; **SELECTION OF GRAVITY ROLLER CONVEYOR AND BALL CONVEYOR**; **NUMEROUS DIGITAL PLATFORM SCALES AND COUNTING SCALES**; **SEVERAL ZEBRA LABEL PRINTERS**.

## MATERIAL HANDLING EQUIPMENT

**APPROX. (215) SECTIONS OF TEARDROP PALLET RACK**, 8'W., 15'-18' uprights, various numbers of tiers.

**GENERAL HYDRAULICS HYDRAULIC BALER**, S/N 80681.

**(3) 24"W. X APPROX. 40'L. FABRIC BELT POWERED BELT CONVEYORS**; **DOZENS OF COLLAPSIBLE WIRE BASKETS**; **DOZENS OF PLASTIC BASKETS**; **HYDRAULIC SCISSOR LIFT TBLS.**; **PALLET JACKS, WORKTABLES; LADDERS; SHOP FANS; BIG JOE LIFT.**

## INSPECTION:

Monday & Tuesday,  
September 27 & 28,  
9:00 A.M. to  
4:00 P.M. Each Day



**3-M  
MDL. 8000A  
CASE SEALER**

**HUGE QUANTITY  
OF WIRE AND  
PLASTIC  
BASKETS**



**LARGE  
QUANTITY**



**NORDSON  
GLUE  
APPLICATION  
SYSTEMS**

**HUGE  
ASSORTMENT  
OF LATE  
MODEL  
TEARDROP  
PALLET RACK**



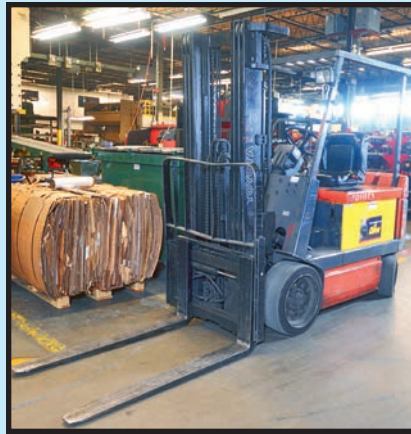
**LARGE  
QUANTITY**





**2010**

TOYOTA LPG FORKLIFT WITH CASCADE CLAMP



(1 OF 3) TOYOTA ELECTRIC FORKLIFTS



**2 AVAILABLE**

PRIME MOVER ORDER PICKER

Live Onsite w/Webcast – At the Premises of  
**BLOCK & COMPANY, INC.**  
 1111 WHEELING ROAD,  
 WHEELING, ILLINOIS 60090

**LP FORKLIFT**

**TOYOTA 4,500-LB. BASE CAP. MDL. 8FGCU25**, 2010, LPG pwr., 4,500-lb. cap. @ 24" L.C., 189" max. lift, currently eqpd. w/Cascade box clamp, Cascade Catalog No. R35D-CCS-6725, S/N 30744.

**ELECTRIC FORKLIFTS**

**TOYOTA 5,300-LB. BASE CAP. MDL. 5FBCU30**, 5,300-lb. cap. @ 24" L.C., 187" max. lift, 48" forks, 36 v., side shift, cushion tires, load grate, dock lights, charger, S/N 60787.

**TOYOTA 3,450-LB. BASE CAP. MDL. 5FBE20**, 3-wheel design, 3,450-lb. cap. @ 24" L.C., 189" max. lift, 42" forks, 36 v., side shift, dock lights, load grate, charger, S/N 10222.

**TOYOTA MDL. 7FBEU20**, 2013, 3-wheel design, S/N 22391.

**ELECTRIC REACH TRUCKS**

**(2) TOYOTA 3,500-LB. BASE CAP. MDL. 8RH8BRU18**, 240" lift ht., 36 v., S/N 8BRU18-36019, S/N 8BRU18-35329.

**RAYMOND 3,500-LB. BASE CAP. MDL. EASIR-R35TT**, 192" max. lift, 36 v., charger, S/N DSD-03-12800.

**RAYMOND 3,000-LB. BASE CAP. MDL. 20I-R30TT**, 3,000-lb. cap. @ 24" L.C., 186" lift, S/N 02D89-31121.

**ORDER PICKERS**

**(2) PRIME MOVER 3,000-LB. BASE CAP. MDL. OE35**, 3,000-lb. cap. @ 24" L.C., 198" max. lift, 24 v., S/N OE35026193001, S/N OE35026340001.

**SELF-PROPELLED SCISSOR LIFTS**

**SKYJACK MDL. SJIII3226**, 500-lb. platform cap., 24 v., extendable pulpit, S/N 27007770.

**SKYJACK MDL. SJIII4626**, 1,000-lb. platform cap., 26" platform ht., extendable pulpit, S/N 70000730.

**BOX TRUCKS**

**2004 INTERNATIONAL MDL. 4300SBA 4X2**, Detroit Diesel DT466 diesel engine, auto. trans., 24' box, ODO: 125,000 miles, IL License Plate No. 121873H, VIN 1HTMMAAL85H137591.

**2005 INTERNATIONAL MDL. 4300**, DT466 diesel engine, 24' box, IL License Plate No. 132371H, VIN 1HTMMAAL26H321720.

**UTILITY VAN**

**2015 NISSAN MDL. NV200**, IL License Plate No. E740879, VIN 3N6CM0KN2FK694571.

**ELECTRIC PALLET JACKS**

**(2) CROWN 6,000-LB. BASE CAP. MDL. 60PE-27-3**, 24 v., S/N 6A116209, S/N 6A116207.

**FLOOR SCRUBBERS**

**CLARK ONCORE L28**, battery pwr.; **TENNANT MDL. 5700XP WALK-BEHIND**, battery pwr.; **POWERBOSS FLOOR SWEEPER**.



(1 OF 2) TOYOTA ELECTRIC REACH TRUCKS



SKYJACK 4626 SELF-PROPELLED SCISSOR LIFT



**2015**

NISSAN UTILITY VAN

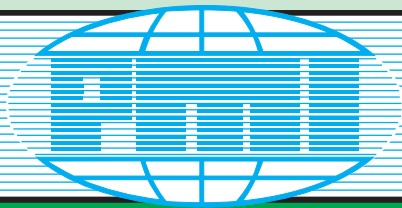


**24' BOX**

INTERNATIONAL DIESEL BOX TRUCK

**SEE PAGES 10 & 11: DAY TWO  
TIMED ONLINE AUCTION**





# AUCTION

Timed Online Only – Assets Located at  
**BLOCK & COMPANY, INC.**

**150 HASTINGS DRIVE,  
 BUFFALO GROVE, IL 60089**

**DAY 2: TIMED  
 ONLINE ONLY  
 THURSDAY,  
 SEPTEMBER 30  
 BIDS START  
 CLOSING  
 AT 10:00 A.M.**

**INSPECTION:** Monday & Tuesday,  
 September 27 & 28,  
 9:00 A.M. to 4:00 P.M. Each Day



**HUGE ASSORTMENT OF FINISHED GOODS**



**LANTECH Q-300 PALLET WRAPPER**

**3  
 AVAILABLE**

## FINISHED GOODS INVENTORY

**HUGE INVENTORY OF BLOCK & COMPANY CASH HANDLING AND BUSINESS SUPPLIES:** these are finished and packaged goods ready for resale, incl.: manual and electronic cash drawers, coin and currency transport bags, currency counters, coin trays and sorters, counterfeit pens, too much to list! To be offered in large lots.

## STRETCH WRAP MACHINES

**(3) LANTECH MDL. Q300**, load cell mtd., D.R.O., S/N QM022030, S/N QM018804, S/N QM018806.

## STORAGE RACKING

**(342) 8'W. X APPROX. 15'H. PALLET RACK SECTIONS**, most having 4–6 tiers.  
**(18) 8'W. X 7'D. X 6'H. X 5-TIER GRAVITY FLOW RACKS.**

## CONVEYOR SYSTEMS

**INCL.:** (3) HYTROL 20" X 29' POWER BELT CONVEYORS; (1) 30' (EST.) POWER ROLLER CONVEYOR; (1) WEIGH SCALE PLATFORM; (1) 10' POWER ROLLER CONVEYOR; (1) PORTABLE FLEXIBLE SKATE CONVEYOR.

## CUBING & WEIGHING SYSTEM

**QUANTRONIX MDL. CUBISCAN 100**, 100-lb. x 0.5-lb. weight cap.

## ELECTRIC LIFT TRUCKS

**CROWN 4,500-LB. BASE CAP. MDL. RR5225-45 STAND-UP RIDER TYPE**, S/N 1A304793.

**YALE 4,000-LB. BASE CAP. MDL. ESC040FAN36TE088 STAND-UP RIDER TYPE**, (est.) new 2006, S/N A883N02722D.

**TOYOTA 4,000-LB. BASE CAP. MDL. 7FBEU20**, new 2009, 3-wheel, S/N 17388.

**(2) CROWN 3,500-LB. BASE CAP. MDL. RR5725-35 STAND-UP RIDER TYPE**, S/N 1A361944, S/N 1A367668.

**YALE 3,500-LB. BASE CAP. MDL. ESC035FAN36TE094 STAND-UP RIDER TYPE**, S/N A883N03907H.

**YALE 3,000-LB. BASE CAP. MDL. ESC030ABN24SE083 STAND-UP RIDER TYPE**, (est.) new late 1990's, S/N A824N06293T.

**CROWN MDL. RR STAND-UP RIDER TYPE**, S/N 1A304797.

## LPG FORKLIFT

**NISSAN 5,000-LB. CAP. BASE MDL. MCP1F2A25CV**, S/N CP1F2-9W1159, w/box clamp.

## ORDER PICKERS

**BT/PRIME MOVER 3,000-LB. BASE CAP. MDL. OE35**, S/N OE350230605.

**CROWN 3,000-LB. BASE CAP.**, S/N 1A199876.



**SAMPLE VIEW OF PALLET RACKING**

10

**342  
 SECTIONS**



**CROWN 4,500-LB. CAP.  
 ELECTRIC REACH TRUCK**



**NISSAN 5,000-LB. CAP. LPG FORKLIFT W/BOX CLAMP**





YALE AND CROWN ELECTRIC REACH TRUCKS



BELT CONVEYORS



HIGH QUALITY OFFICE FURNITURE

**ELECTRIC LOW-LIFT WALKIE**  
CROWN 6,000-LB. BASE CAP. MDL. 60PE-27-3, new 1992, S/N 6A116208.

**MISCELLANEOUS SHOP SUPPORT EQUIPMENT**  
PALLET JACKS; DOCK LIGHTS; WALK-BEHIND FLOOR SWEEPER; DOLLIES; WORK-TABLES; (5) ZEBRA LABEL PRINTERS; (24) SCANNERS, ETC.

**OFFICE FURNITURE & EQUIP. AT BOTH LOCATIONS**  
(2) COMPLETE CONFERENCE ROOMS w/multi-executive chairs; EXECUTIVE SUITES w/ conference tbl., chairs, shelf units and accessories; EXECUTIVE CHAIRS; SECRETARIAL CHAIRS; WIDE ARRAY OF CUBICLE FURNITURE AND HIGH QUALITY CUBICLES; LG 60" DIAGONAL TELEVISIONS; WIDE ASSORTMENT OF PRINTERS incl. LaserJet M551 color printer, HP DesignJet 510 wide format printer, (2) HP LaserJet P3015 printers (some w/add'l. trays), HP OfficeJet Pro 8720 printer, HP LaserJet 4200TM printer, HP Color LaserJet CP5225 printer w/multiple trays, Copystar CS4501i document center, HP Laser 4250TN printer, Samsung Multi-Xpress Mdl. X4300LX document center; (APPROX. 12) ZEBRA PRINTERS; REFRIGERATORS; HASSLER N3300 FOLDER/INSERTER; PITNEY BOWES SENDPRO P1000 MAIL CENTER; MORE!

## TWO LOCATIONS IN CHICAGO AREA

**TWO DAYS:**  
**SEPT. 29 LIVE ONSITE**  
**SEPT. 30 TIMED**



HP LASER PRINTERS



SAMSUNG DOCUMENT CENTER



NEW CASH DRAWERS ON PALLETS

**DAY 1: LIVE ONSITE**  
**WED., SEPT. 29**  
**9:30 A.M.**

**DAY 2: TIMED ONLINE ONLY**  
**THURS., SEPT. 30 • BIDS START**  
**CLOSING AT 10:00 A.M.**

### LODGING

**HOLIDAY INN EXPRESS & SUITES**.....(847) 419-3600  
600 N. Milwaukee Avenue, Prospect Heights, IL 60070  
**BEST WESTERN**.....(847) 537-9100  
1090 S. Milwaukee Avenue, Wheeling, IL 60090

**PARTIAL TERMS & CONDITIONS:** A 15% Buyer's Premium Will Apply Onsite. An 18% Buyer's Premium Will Apply Online.

Everything will be sold to the highest bidder or bidders for cash in accordance with the auctioneer's Customary Terms of Sale, copies of which will be posted on the premises.

**ALL PAYMENTS MUST BE MADE BY CASH, CASHIER'S CHECK, WIRE TRANSFER OR COMPANY CHECK WITH BANK LETTER GUARANTEEING PAYMENT TO PLANT & MACHINERY INC.**

Here is an example of what your letter should be: Mr. "Customer Name" is a customer of this bank. This bank will guarantee unqualified payment to PMI on the account listed herein up to the amount of \$\_\_\_\_\_. This letter is good until November 1, 2021.

In default of payment of bills in full within the time therein specified, the Auctioneer in addition to all other remedies allowed by law, may retain all monies received as deposit or otherwise, as liquidated damages. All items must be removed by the time announced at the start of the sale.

Lots not paid for and/or removed within the time allowed may be resold at public or private sale without further notice, and any deficiency, together with all expenses and charge of resale, will be charged to the defaulting purchaser.

The buyer acknowledges that he or an agent has inspected all of the assets upon which he will be bidding and/or does purchase.

Buyer agrees to accept assets purchased "AS IS," WITH "ALL FAULTS" AND "WITH REMOVAL AT BUYER'S RISK AND EXPENSE." THE AUCTIONEER EXPRESSLY DISCLAIMS ON THE PART OF THE AUCTIONEER AS AGENT AND THE SELLER, ANY WARRANTY AS TO FITNESS OR USABILITY OF ALL THE ASSETS, AND THE BUYER EXPRESSLY WAIVES ANY CLAIM IN RESPECT TO ANY POSSIBLE FUTURE USE OF ANY ASSET PURCHASED FOR ANY PURPOSE WHATSOEVER.

The buyer does hereby assume and does agree to indemnify and hold the auctioneer harmless from any future claim which shall pertain to the fitness or use of that asset as being purchased. Riggers, movers, electricians and buyers performing work at the Auction Site must provide PMI with evidence of insurance. The insurance coverage must be at a level acceptable to PMI and to the seller. PMI reserves the right to withdraw items, alter the order of the sale, accept bids from the seller, and group lots as it may deem appropriate. This auction may include consignment items.

Although all information has been obtained from sources deemed reliable, the auctioneer and seller make no warranty or guarantee, expressed or implied, as to the accuracy of the information herein contained, or contained in our catalog. It is for this reason that buyers should avail themselves of the opportunity to make inspection prior to the auction. Although it is not likely, auction sales are subject to cancellation or postponement. Kindly contact auctioneer prior to attendance.

These terms and conditions may be modified or supplemented by language in the catalog available at the sale site or by announcement at the start of the sale. Bidders should be attentive to those announcements and to the catalog language.

### ONLINE REGISTRATION

Register to bid at

**BidSpotter.com**

1. Use the link to Bidspotter.com on PMI's website calendar. [www.pmi-auction.com](http://www.pmi-auction.com) DO IT NOW!

2. This auction may require a Cash, or credit card, or debit card, 100% refundable deposit. If by credit or debit card, it can be added through the Bidspotter.com fully secure and PCI compliant registration process and will be assessed a 100% refundable \$3,000 (US Bidder) or a \$10,000 (Foreign Bidder) deposit in order to be approved to bid online with this auction. Cash deposits can be made by wire transfer. **DON'T WAIT.** If you are unsuccessful in the auction, the refund of your credit/debit card deposit will occur shortly after the auction ends. Cash deposits will be expedited as well.

If you need assistance, don't hesitate to call (713) 691-4401.

**ALL BIDS ARE SUBJECT TO AN 18% BUYER'S PREMIUM.**



# PLANT & MACHINERY INC.

AUCTIONEERS • APPRAISERS • LIQUIDATORS • REAL ESTATE

P.O. Box 218568  
Houston, TX 77218-8568

**DATED MATERIAL - PLEASE DELIVER**

**FEATURING: (6) PRESSES UP TO  
KOMATSU 176 T.; FEED LINES;  
Q.C. EQUIP.; LATE MODEL AMADA  
LASER CUTTING & TURRET PRESSES;  
(13) CNC PRESSBRAKES;  
SPOT WELDING SYSTEMS; MACHINE  
TOOLS; PAINT LINES; PACKAGING  
EQUIP.; PLANT SUPPORT EQUIP.;  
RAW MATERIALS; BOX TRUCKS;  
MATERIAL STORAGE & HANDLING EQUIP.  
INCL. (21) FORKLIFTS; LARGE FINISHED  
GOODS INVENTORY;  
HUGE QTY. OFFICES; MORE**

**2-DAY AUCTION**  
**DAY ONE: LIVE ONSITE W/WEBCAST**  
**DAY TWO: TIMED ONLINE ONLY**

**DAY 1: LIVE ONSITE W/WEBCAST: WED., SEPT. 29 • 9:30 A.M.**

**DAY 2: TIMED ONLINE AUCTION: THURS., SEPT. 30 • 10:00 A.M.**

**PUBLIC AUCTION**



**ATTENTION: PLANT MANAGER  
OR EQUIPMENT BUYER**

Presorted  
First Class Mail  
U.S. Postage  
PAID  
Eugene, Oregon  
Permit No. 17



THERMO-TRON-X E-COAT PAINT SYSTEM



ASSORTED COIL STEEL STOCK



TOYOTA LPG  
FORKLIFT  
W/CASCADE  
CLAMP

TECHNA 50 KVA  
SPOT WELDERS



**2012**



AMADA MDL. AC2510NT CNC TURRET PUNCH



CINCINNATI 230 T. X 12' CNC PRESSBRAKE

**CROWNING**