

# Fine Art & Antiques Sale

Tuesday 28th September  
2021



# *Aldridges* of Bath Ltd.

*Fine Art & Chattel Auctioneers*



## **FINE ART & ANTIQUES SALE** **TUESDAY 28th SEPTEMBER**

Silver & Jewellery, Ceramics & Glass  
(including a Private Collection of Meissen porcelain, etc.),  
Paintings, Prints, & Works-of-Art, Clocks,  
Antique & later Furniture & Furnishings, etc.

**-ONLINE ONLY AUCTION-**

**-OPEN FOR PUBLIC VIEWING-**

**Saturday 25th September 9am-12pm**

**Monday 27th September 9am-5pm**

**-COLLECTIONS STRICTLY BY APPOINTMENT ONLY-**

**Sale No 1719**

[www.aldridgesofbath.com](http://www.aldridgesofbath.com)

01225 462 830

## Terms and conditions:

### BUYER'S PREMIUM: 20%

A Buyer's premium of 20% of the hammer price of each lot is payable on all lots at all sales, subject to the addition of VAT at the standard rate.

**ONLINE BIDDING:** An online bidding fee is payable at 3% of the hammer price on all lots (if bidding through our website) Please note that any lots purchased via the [the-saleroom.com](http://the-saleroom.com) live auction service will be subject to an online bidding fee of 4.95% + VAT at the rate imposed on the hammer price

**ARTIST'S RE-SALE RIGHT/DROIT DE SUITE:** Please be advised that any work of art by a living artist, or an artist that died within the last 70 years, which realises the Sterling equivalent (£/GBP) of €1000 (one thousand Euros) or more will be subject to an additional 'Artist's Re-sale Right' fee of 4% on the hammer price.

**PAYMENT BY DEBIT/CREDIT CARDS** will be accepted ONLY from the card details given when you register to bid with - we will not accept payment from any other card.

### CONDITIONS OF SALE

1. Every effort has been made to ensure the accuracy of the description of each lot but these whether made orally or in the catalogue are expressions of opinion and not representations of fact. No employee of the Auctioneers has any authority to make any representation of fact, and the Auctioneers disclaim on behalf of the Vendor and themselves responsibility for authenticity, age, origin and condition and for accuracy of measurement or weight of any lot or lots.

Purchasers purchase all lots as viewed with all faults, imperfections and errors of description.

2. The Auctioneers reserve the right to divide, add to or withdraw any lots and shall determine the advance of each bid.

3. The highest bidder is to be the purchaser; the Auctioneers reserve the right to accept or refuse any bidding.

4. At the fall of the hammer the lot shall be at the sole risk of the purchaser, who shall give to the Auctioneers his or her full name and address and such deposit as the Auctioneers may require, any payment so made shall apply to one or more lots bought by the same purchaser.

5. The Purchase money is to be paid immediately after the sale before any lot or lots are removed from the premises. Payment will not be accepted from any person other than the registered purchaser.

6. All lots must be removed by the purchasers at their own risk and expense before 4.30pm at the end of the week that the sale takes place. After this time, any lots remaining on our premises will be uninsured, and may attract storage charges. The Auctioneers will not be held responsible for any damages/losses incurred after this time.

7. The Auctioneers act as agents only and are not responsible for default by either Vendor or purchaser. They will execute commissions received in writing up to one hour before the sale on condition that the lots have been viewed by the intending purchaser. They will accept no responsibility relating to the commissioning of their staff, other than the Commission's Clerk, to bid on behalf of the purchasers.

8. Upon failure of compliance with the above conditions the money deposited in part payment shall be forfeited; the lot(s) remaining unclear after the time specified shall be resold by public or private sale without notice and the deficiency (if any) together with charges attending such second sale shall be made good by the defaulter or defaulters at the present sale but any surplus that may arise therefrom shall belong exclusively to the Vendor.

9. The Auctioneers will not be responsible for any loss or damage or injury occasioned to or sustained by any person during the period of public viewing and the auction sale howsoever the same may arise, unless arising from the negligence of any employee of the Auctioneers.

10. No lots may be transferred, and no lots may be removed during the sale.

All Sales are subject to the usual conditions of sale either printed in the auction catalogue or on display in the auction galleries.

## SILVER & PLATED WARE

1. A silver circular salver with raised beaded edge, engraved foliate scroll decoration & central crest depicting a lion fighting a dragon, on three angular paw feet, London 1787 by Elizabeth Jones, (26 oz approx.).

Estimate: £400-600.

2. A silver-mounted glass inkwell of compressed bombé form, quartered by green vertical stripes terminating at four stump feet, with plain round hinged cover, London 1900; 4" wide x 3½" high.

Estimate: £70-100.

3. A Victorian large cut glass scent bottle with silver lid, London 1890; 11½" long.

Estimate: £60-80.

4. A large heavy glass & silver-mounted square inkwell of pale amber colour, with canted corners & hobnail base, the hinged silver lid inset large gent's pocket watch in nickel case on a swivel mount, London 1910 by J. C. Vickery, 4" wide x 4½" high.

Estimate: £400-600.



Lot 4



Lot 10

5. A silver three-piece condiment set comprising two squat round salts with blue glass liners & a baluster-shaped pepper pot, Birmingham 1957 by Mappin & Webb; & two silver condiment spoons, Birmingham 1956 & 57 by Adie Bros., in fitted case, 3.84 oz total.

Estimate: £50-75.

6. A set of six Hanoverian silver teaspoons, Sheffield 1931, by Walker & Hall, in fitted case (1.67 oz); a silver plated butter knife; & a set of seven silver plated fruit spoons including a serving spoon, in fitted case.

Estimate: £30-40.

7. Two Irish silver Fiddle pattern teaspoons, Dublin 1816 by Samuel Neville; two ditto, London 1813, by T. F., three ditto, London 1826 by W. Bateman II; a ditto, London 1810 by T. B.; & another, London 1825 by W. S., (4.6 oz total); all with engraved initials to the terminals.

Estimate: £40-60.

8. A set of twelve silver teaspoons with embossed shell terminals, London 1908, by Carrington & co., (4.6 oz), in fitted case.

Estimate: £60-80.

9. A deer's foot mounted as a silver match holder, with striker to the rear, supported by two scroll legs, bears inscription: "Devon & Somerset, Found Tabor Hill, Killed Leigh Farm, Winsford, 25<sup>th</sup> July 1931, E. B. W", Birmingham 1931, by T. W. (Thomas White?).  
Estimate: £120-160.

10. A glass spirit flask in tan crocodile skin case with silver lid, the screw-cap concealing a telescopic cup, Birmingham 1931 by G & Co., 6¼" high x 3¼" wide. Estimate: £200-300.

11. A silver inkwell of round ovoid shape, inset timepiece to the lid interior, with glass liner & removable glass well, engraved initials to the top, London 1902 by John Collard Vickery, 4¾" wide x 2¾" high. Estimate: £200-300.

12. A silver & tortoiseshell inkwell of square tapered form, with hinged lid, Birmingham 1921 by Percy James Finch, 2¾" high; & a cut glass heart-shaped box with silver pull-off lid embossed with central cartouche & floral decoration, Chester 1902 by George, Nathan, & Ridley Hayes, 3½" wide.

Estimate: £120-180.

13. A square glass silver-mounted inkwell with canted corners & hobnail base, the hinged silver lid with removable glass well, Birmingham 1901 by Sanders & Aquilar, 3½" square x 3½" high. Estimate: £70-100.

14. A George III silver cream jug with reeded rim & angular handle, London 1804 by Stephen Adams ?,( 4.55 oz); a silver shell-shaped dish, Sheffield 1918 by Harrison Bros & Howson, ( 2.11 oz); a small glass receptacle with silver lid, Birmingham 1910 by A. Round; & a silver receipt spike with embossed decoration, Birmingham 1910 by Charles Penny Brown.  
Estimate: £80-120.

15. A set of ten George V parcel-gilt silver seal-top coffee spoons; Sheffield 1920-1, by Thos. Bradbury & Sons. ( oz).  
Estimate: £40-60.

16. Six Victorian Fiddle pattern teaspoons, London 1885 by George Maudsley Jackson; & a similar pair, London 1861 by Henry Holland. ( oz). Estimate: £60-80.



17. A George V silver cake basket with cut-card rim & shaped overhang handle, with engraved inscription: "T. T. A., August 20<sup>th</sup>, 1924", on pedestal foot, 10¼" wide x 3¼" high; Chester 1922 by Barker Bros. Estimate: £180-220.
18. A Victorian silver snuff box, of shaped rectangular form with engine-turned decoration, engraved inscription "J. W., 1851" to the hinged lid, 2⅞" wide; Birmingham 1848 by Edward Smith. Estimate: £80-120.
19. A Victorian silver card case, with all-over foliate scroll design & hinged lid, 2½" x 2¾"; Birmingham 1847 by Frederick mason; together with a small vesta case, 1¾" wide; Birmingham hallmarks for 1921.



Estimate: £50-75.

20. A George III Scottish silver tablespoon, with bright-cut decoration, Edinburgh 1794 by James Hewitt; 8" long. Estimate: £30-40.

21. A set of George V silver coffee spoons with fancy terminals, in fitted case; Sheffield 1923 by Harrison Bros. & Howden; a silver cigar cutter b Goldsmiths & Silversmiths Co., 1928; & a mother-o-pearl handled silver fruit knife by John Yeomans Cowlshaw (3). Estimate: £50-75.



22. A set of six early 19<sup>th</sup> century silver teaspoons with bright-cut decoration, London 1813 by Samuel Davenport (probably); four ditto plain teaspoons, London 1824 by Wm. Bateman; & two matching teaspoons. (12). Estimate: £50-70.

23. Seven various silver napkin rings; a silver cigarette case (w.a.f.); & a set of foreign coffee spoons & pair matching forks with pointed terminals (various dates & makers). (15). Estimate: £50-75.

24. A pair of Edwardian silver sauce boats of slender octagonal form, each with cut-card rims, scroll handles, & on reeded foot; 6" long; Birmingham 1905 by Williams Ltd., in fitted case.

Estimate: £50-75.



25. A late Victorian silver-mounted cut-glass spirit flask, London 1901, 5¾" high; a silver-plated hip flask inscribed "Major R. B. Goodden, June 1917", 5½" high; & a silver cigarette box inscribed "Major R. B. Goodden O. B. E....", London 1925, 3½" wide x 2" high. Estimate: £60-80.
26. A Gwendoline Whicker of Falmouth Arts & Crafts silver tea strainer with acorn & oak leaf decoration, on plain bowl with conical foot, 5½" long x 1¾" high; London hallmarks for 1955. (112gm total). Estimate: £40-60.
27. A pair of Gwendoline Whicker of Falmouth silver cuff links of oval shape, engraved with the Goodden family crest, 6gm total. Estimate: £20-40.
28. A William IV silver snuff box of rectangular form, with engine-turned decoration & foliate handle, the gilt interior with engraved inscription, Birmingham 1835 by Edward Smith, 3" wide (85 gm); together with two silver circular pill boxes (17 gm together). Estimate: £100-150.
29. A George II silver small porringer, the semi-fluted body with engraved foliate decoration, with scroll side handles, 1½" high x 3⅞" wide; London hallmarks for 1757 (makers mark I B ?), 0.9 oz. Estimate: £150-200 E
30. A George V silver mustard pot with blue glass liner, scroll handle, on shell-&-paw feet, 3" wide, Chester 1911 by Jay, Richard Attenborough Co., two matching condiment spoons by the same maker; a matching baluster pepper pot by the same maker, 3¼"; a late 19th century matching salt cellar, London hallmarks for 1875; & a matching salt spoon. (6.6 oz without glass). Estimate: £70-100.
31. A George II silver baluster pepper pot, the pierced cover with swag decoration & knob finial, on pedestal foot, 4½" high; London 1736 (2.5 oz). Estimate: £70-100.

32. A Wm. IV silver Fiddle pattern caddy spoon with shovel-shaped bowl, London 1833 by A. B. Savory & Sons, 3¾" long; a Victorian silver pencil holder inset glass cabochon, 4¼2; a novelty spoon in the form of a rowing oar, London 1964 by KB, 5"; a silver pickle fork, Sheffield 1934 by Viners; & a plated condiment spoon. (5). (1.6 oz all in).  
Estimate: £50-75.
33. A set of six George VI silver coffee spoons with coloured enamel stems, Birmingham 1938 by Wm. Hair Haseler; & a set of six coffee spoons with bean terminals, Birmingham 1929 by T.W. & S.  
Estimate: £60-80.
34. A set of six silver teaspoons with bright-cut decoration, Sheffield 1953 by H. H.; & a set of six silver coffee spoons with enamelled floral backs & knop finials, Birmingham 1956 by Henry Clifford Davies; each in fitted case. Estimate: £100-150.
35. A pair of silver-gilt coffee spoons of medieval design, Birmingham 1936 by Elkington & Co., in fitted case; together with five various 19<sup>th</sup> century silver spoons.  
Estimate: £40-60.
36. A silver bon-bon dish of shaped oval form on pedestal foot, Chester 1956 (?) by Deakin & Sons, 1¼" high; a silver heart-shaped ring box with embossed decoration, Birmingham 1904 by Wm. Aitken, 1" high; a silver oval pill box with hinged lid, London 1973 by JF, 1½" wide; & a silver vesta case, London 1903 (maker's mark rubbed).  
Estimate: £50-75.
37. A pair of silver small posy vases, 3½" high, Birmingham 1904 by Robert Pringle & Sons; & a circular bon-bon dish with pierced rim, Birmingham 1949 (maker's mark rubbed), 4" diam.  
Estimate: £40-60.
38. A late 19<sup>th</sup>/early 20<sup>th</sup> century Indian silver-backed hand mirror & matching hairbrush, with all-over embossed decoration of animals amongst foliage, each 9¾ long.  
Estimate: £50-75.
39. Four various 19<sup>th</sup> century Fiddle pattern table forks, one 1841 by Rbt. Williams & Sons, the other three London 1827, 1831, & 1813 (various makers).  
Estimate: £80-120.
40. A set of six Edwardian silver dessert knives & forks, with engraved & embossed decoration, & foliate ivory handles; Sheffield 1909 by Mappin & Webb (un-cased).  
Estimate: £60-80.
41. A silver circular sweetmeat dish with embossed shell & swag decoration to the shaped rim, on pedestal foot, 6½" wide x 3¼" high, Sheffield 1962 by Walker & Hall.  
Estimate: £50-75.
42. A set of six late Victorian Fiddle pattern dessert spoons; five matching dessert forks; & three matching table forks; all London 1893 by John Aldwinckle & Thos. Slater.  
Estimate: £220-280.

43. A late 19<sup>th</sup>/early 20<sup>th</sup> century Danish silver sifter spoon by V. Christensen, 7" long; a George Jensen .830 silver teaspoons; two silver baby's food pushers; a cased set of six silver coffee spoons; three silver napkin rings; a silver salt cellar, etc., (all items other than those mentioned are English). Estimate: £70-100.
44. Three 18<sup>th</sup> century silver bottom-marked Hanoverian pattern table spoons – Edinburgh 1739 by I. K. (assay Master Archibald Ure), Edinburgh 1776 (?) by John Welsh, & London 1747 by Marmaduke Daintey; & two Fiddle pattern table spoons – London 1815 by Solomon Hougham, & London 1823 by Thomas Streetin. Estimate: £80-120.
45. Three George III Hanoverian dessert spoons, London 1813 by Alice & George Burrows II; & eleven various 19<sup>th</sup> century silver teaspoons – various dates & makers. Estimate: £80-120.
46. A George V silver cigarette box of rectangular shape, with engine-turned border to the hinged lid, 6½" wide; London 1928, by Frederick Hewson (probably). Estimate: £50-75.
47. A Victorian silver-mounted magnifying glass with 2¼" lens, engraved & embossed terminal to the spiral-twist ivory handle, 7½" long; London 1887. Estimate: £50-100.
48. A pair of silver candlesticks in the early 18<sup>th</sup> century style, with round slender baluster columns & on wide circular bases, 6½" high; London 1968, b W. Comyns & Sons Ltd. (loaded). Estimate: £80-120.
49. A George III silver meat skewer with plain ring handle, 13" long; London 1817, by Wm. Eley & Wm. Fearn. (3oz). Estimate: £50-70.
50. A George III silver fish slice, the pierced spade-shaped blade with engraved family crest, plain ivory handle, 10½" long; London 1798, by John Emes. Estimate: £50-100.
51. A George II punch ladle with oval bowl & turned wood handle, 13¼" long; London 1750, by William Justus. Estimate: £100-150.
52. A George II silver waiter with "pie-crust" edge, engraved monogram, & on three pad feet, 6½" diam.; London 1744, by William Cripps. (8 oz). Estimate: £150-200.
53. An early George III silver brandy saucepan of squat round shape, with engraved monogram & turned wood handle; London 1761, by Thomas Whipham & Charles Wright. (7 oz). Estimate: £250-350.

54. A SILVER-MOUNTED TURNED MULBERRY WOOD GOBLET, the ovoid bowl with silver rim & circular tablet inscribed "Selina", on short waisted stem & round stepped foot with silver rim, 5¾" high; London hall marks for 1834, by Edward, Edward Jr., John & William Barnard. (A hand-written paper label to foot inscribed "Goblet Made From a Mulberry Tree, Leyton, Essex, 1794).

Estimate: £100-150.



Lot 54

55. A continental silver ladle (possibly Austro-Hungarian) with wooden & ivory handle, floral-twist hollow silver stem & shaped oval bowl with silver-gilt interior, 17½" long.  
Estimate: £70-100.
56. A silver toddy ladle with spiral-twist whalebone handle, inset George III half guinea to the oval silver bowl, 15" long.  
Estimate: £100-150.
57. A Victorian silver inkstand of serpentine shape, with pierced gallery, fitted two glass inkwells with silver mounts & removable taper stick with pen trough to the front, on pierced & shaped feet, London 1846 by C. F. Fox & G. Fox, 10" wide x 5¼" high x 7½" deep.  
Estimate: £200-300.
58. A VICTORIAN SILVER PUNCH BOWL with waved gadrooned rim, the sides embossed with swags, lion-mask & ring side handles, the lower part & spread foot with spiral fluting, 9¾" diam.; Sheffield 1884, by Frederick Elkington. (31 oz).  
Estimate: £400-600.
59. A part service of silver plated Fiddle, Thread, & Shell pattern flatware, comprising: twelve dessert forks; twelve table forks; twelve dessert spoons; twenty-two teaspoons; six egg spoons; twelve tablespoons; three sauce ladles; & eight soup spoons; together with various items of ivory-handled cutlery; & various other odd items; all contained in a burr-walnut & brass-mounted canteen, fitted four graduated drawers, enclosed by pair fielded panel doors; 20½" wide x 12" high x 17" deep.  
Estimate: £150-200.
60. A silver-plated four-piece tea & coffee service by Walker & Hall (coffee pot 7" high); & a ditto circular cake basket with pierced edge, 9¾" diam. x 3" high. Estimate: £40-60.
61. A large quantity of silver-plated items including three part-fitted canteens, various other cutlery, teaware, trays, etc.  
Estimate: £30-50.
62. An Edwardian cut glass heart shaped box with silver pull-off lid embossed with central catouche & floral decoration, 3.5" wide, Chester 1902 by George, Nathan & Ridley Hayes. Estimate: £30-50.
63. No Lot.

## JEWELLERY

Lot 95

64. A 22ct gold wedding band, size M, 4.1g; & another, 1.3g (split).  
Estimate: £120-180.
65. A pair of 9ct gold rectangular cufflinks with engine-turned decoration, 5.6g total.  
Estimate: £60-80.
66. A late Victorian 18ct gold ring set three small sapphires & two small diamonds, size N/O (2.1g total)  
Estimate: £80-120.
67. An 18ct. white gold ring set three sapphires with two diamonds in between; size P, 4.8g.  
Estimate: £150-200.
68. A late Victorian 18ct gold ring with buckle design, size I/J, 4.1g. Estimate: £80-120.
69. An 18ct gold ring, gypsy-set with a small diamond to the square matrix, a small sapphire either side; Size I/J, 3g.  
Estimate: £75-100.
70. A 9ct gold long watch chain of cable links, 140cm long, 23.9g. Estimate: £250-350.
71. A 9ct gold ring set cluster of four sapphires & three diamonds, size P, 1.8g; & a 9ct gold ring set cultured pearl, size P, 2.7g.  
Estimate: £100-150.
72. An 18ct. gold ring set row of three small diamonds; size: L, weight: 2.3 gm.  
Estimate: £80-120.
73. A 9ct gold rope-twist watch chain, 66cm long, 9.7g; & two yellow metal chains (one of snake-links, 44cm, 10g; one of rope-links, 62cm, 7.1g). Estimate: £150-200.
74. Two early 20<sup>th</sup> century ladies' wristwatches, each with circular dial, flexible bracelet, & in 9ct gold case.  
Estimate: £100-150.
75. An early/mid 20<sup>th</sup> century Rolex Oyster Royal shock-resistant wristwatch, the 1" dial with Arabic numerals & outer seconds, blue & white hands, in stainless steel case with eel-skin strap, 9" long over-all.  
Estimate: £200-300.



76. A 9ct gold crucifix pendant, 1¼"; a 9ct gold ring of openwork design, 6.2g (size N/O); two yellow-metal novelty fox brooches; an enamelled religious pendant in yellow-metal mount; a silver-backed peacock brooch; & a silver pendant. (7).  
Estimate: £100-150.
77. A Scottish silver & pale blue enamel Art Nouveau style openwork brooch by Pat Cheney, 1¼" wide; a modernist ring set agate; & a paste-set brooch.  
Estimate: £30-40.
78. A 9ct gold & metal-core stiff hinged bangle with engraved decoration to one half; a New Zealand green jadeite bar-brooch (mounts marked "9ct"); & a 9ct gold pendant charm depicting a sea god.  
Estimate: £70-100.
79. A blue-green zircon ring, the large oval-cut stone of approx. 8.5 carats, set within a border of small white stones, to a platinum shank; size P, 8.8g. Estimate: £200-300.
80. A 9ct gold cased gent's pocket watch, the 1¼" white enamel dial signed "H. Diamond, Lucern", with Roman numerals & subsidiary seconds, 2¼" high (w.a.f. – for repair/parts).  
Estimate: £70-100.
81. Two pairs of 9ct gold cufflinks, one of oval shape engraved with floral decoration, the other of lozenge shape engraved with the Goodden family crest, 8.6g total.  
Estimate: £80-120.
82. A 19<sup>th</sup> century Limoges enamel oval pendant painted with the bust of a noblewoman in the renaissance style, within a paste-set border of simulated diamonds, yellow metal rims, & white metal back; 1¼" high.  
Estimate: £150-200.
83. A late Victorian 9ct gold hollow-work brooch set small rose diamond to the centre, 4g; a 9ct gold bar brooch set amethyst, 2.5g; a 9ct gold tie pin, 1.6g; an oval pale amethyst brooch with seed pearl border set to 9ct gold mount; a coal chip necklace; various paste-set jewellery, etc.  
Estimate: £100-150.
84. An Austro-Hungarian enamelled white metal pendant depicting St George slaying the Dragon, in the renaissance style, modelled in the round, hung with small freshwater pearls above & below; 2¼" x 1¼" (w.a.f.).  
Estimate: £200-300.
85. An 18ct gold curb-link chain with elongated links at intervals, 15" long; the spring clasp un-marked (39.4g total).  
Estimate: £700-900.
86. A diamond & sapphire crescent brooch set alternating graduated stones to un-marked yellow & white metal mounts, 1½" wide, 6.7g. Estimate: £300-400.

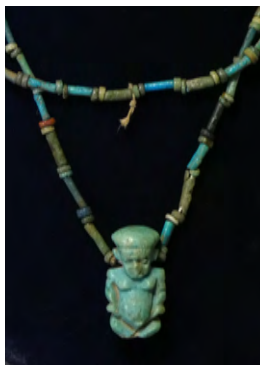
87. An 18ct gold ring set cultured pearl of approx. 5.5mm dia., flanked by a diamond either side, each approx. 0.2carat, size S, 4.2g. Estimate: £150-200.
88. A diamond half-hoop ring set twenty-two small stoned arranged in two rows, to an un-marked white metal mount, size S, 5.5g. Estimate: £150-200.
89. A yellow-metal 'dumb-bell' shaped bar brooch with canetile decoration, set coral cabochon either end, the pin marked "K18", 2¼" long, 7.5g. Estimate: £120-180.
90. A yellow metal circular canetile brooch set cornelian cabochon, 1" dia.; a yellow metal bar brooch set green jade centred by a Chinese symbol; an oval amethyst brooch with seed-pearl border & 9ct mount; a yellow metal & seed-pearl brooch pendant; & a yellow metal floral brooch. Estimate: £100-150.
91. A large agate oval brooch & various items of costume jewellery, etc., contained in a good quality late Victorian black morocco jewellery box. Estimate: £80-120.
92. A yellow metal ring set foil-backed spinel cabochon, size M, 2.1g; & a yellow metal scarf ring set circular micro-mosaic panel of a dove, 4g. Estimate: £100-150.
93. A mid-Victorian 18ct gold, split-pearl, & black enamel mourning ring, Birmingham hallmarked for 1868, size M, 2.4g. Estimate: £120-180.
94. A pair of diamond ear studs, each round-cut stone weighing approx. 0.2carat, set to 18ct white gold mounts. Estimate: £100-150.
95. A pair of diamond ear studs, each round-cut stone weighing approx. 0.5carat, set to un-marked white metal mounts, the yellow gold posts marked "750". Estimate: £300-500.
96. A white sapphire ring, the single round-cut stone weighing approx. 2carats, set to a white metal shank marked "750", size L/M, weight 8g. Estimate: £120-180.
97. A diamond ring set row of baguettes between two rows of small brilliants, to a white metal shank marked "18K", size J, 2.7g. Estimate: £150-200.
98. A 9ct gold ring set single diamond, size O, 1.4g. Estimate: £60-80.
99. A pair of 9ct gold gem-set earrings; two pairs of cultured pearl ditto; a Swatch ladies' wristwatch; a silver pendant; & a gilt-metal stiff hinged bangle. Estimate: £50-75.



100. AN AQUAMARINE RING, the emerald-cut stone weighing approx. 7carats, set to an un-marked white metal shank, size L, 4.5g. Estimate: £300-500.
101. AN ANCIENT EGYPTIAN FAIENCE BEAD NECKLACE, with pendant amulet of the God Pataikos, strung with a variety of turquoise-glazed cylinder & disc beads, & four other amulets depicting Sekhmet, Thoth, Wadjet Eye, etc.; 17" long (some losses). Estimate: £200-300.

102. No Lot.

103. No Lot.



Lot 101



## CERAMICS & GLASS

104. A Japanese Imari porcelain bottle vase painted with figure scenes, phoenix & flowers, 12½" high; & a ditto floral decorated charger, 14¾" diam. Estimate: £80-120.
105. A pair of late 19<sup>th</sup> century Japanese Kutani porcelain vases, each of baluster form with finely painted figure & landscape scenes in reserves on a floral iron-red & gilt ground, with painted seal mrks to the bases; 13½" high. Estimate: £80-120.
106. A Japanese blue & white porcelain teabowl, saucer, & cover, decorated with foliage & rock-work; together with a matching saucer, & eight matching covers (the saucers 5" diam, teabowl 4" diam.). Estimate: £30-50.
107. A 19<sup>th</sup> century Chinese blue & white porcelain ginger jar, decorated with boys & ladies in a formal garden setting, with foliate borders above & below, double circle to base, & with matched cover (cover broken & re-stuck); 8½" high. Estimate: £150-200.
108. An 18<sup>th</sup>/19<sup>th</sup> century Chinese blue & white porcelain 'garlic-neck' bottle vase, decorated with sprays of lotus, peony, & chrysanthemum between lappet borders,

raised on short foot with painted Artemesia leaf to base; 10¼" high (top of neck reduced in height). Estimate: £80-120.

109. Two 19<sup>th</sup> century Chinese blue & white porcelain baluster jars, each decorated with figures in a formal garden, 4¾" & 5" high (one with rim chips); together with three various covers (one w.a.f.). Estimate: £70-100.
110. A collection of Chinese blue & white Marine Salvage porcelain, comprising a "Diana Cargo" bowl, 7" diam.; a "Tek Sing" deep bowl, 6" diam.; two pairs of "Tek Sing" shallow bowls, 8½" & 7" diam., the latter with certificate of provenance. Estimate: £150-200.
111. A Chinese porcelain white-glazed brush pot, painted with bamboo stalks & calligraphy, & inscribed to the base; 8" diam. x 7½" high. Estimate: £400-600.
112. A Chinese blue & white porcelain 'three friends' jardiniere of squat round form, with painted decoration of pine, bamboo, & prunus in a landscape; 10" diam. x 6¾" high. Estimate: £400-600.
113. An 18<sup>th</sup> century Chinese export porcelain famille rose charger, the centre painted with a dove, musical instruments, agricultural implements, etc., within iron-red & gilt borders, 16" diam. (Two hairline cracks approx. 2¾" long). Estimate: £70-100.
114. A 19<sup>th</sup> century Chinese porcelain famille rose punch bowl, decorated in Canton enamels with figure scenes, birds & foliage in reserves, on a floral ground; 10¼" diam. x 3¾" high. Estimate: £80-120.
115. A Chinese porcelain box of lobed circular form, decorated in woven wucai enamels with dragons chasing the flaming pearl, apocryphal Wanli mark to base; 4½" wide x 2¾" high. Estimate: £200-300.
116. A late 19<sup>th</sup> century Chinese porcelain shallow dish of quatrelobe form with famille rose floral decoration, 10" x 7¼"; a pair of 20<sup>th</sup> century Japanese blue & white porcelain bowls, 5" diam.; & two other items of blue & white porcelain. (5). Estimate: £40-60.
117. A Chinese porcelain deep bowl of black ground, decorated with scrolling flowers in coloured enamels, on short foot; 8¾" diam. x 3½" high. Estimate: £500-600.
118. A Chinese porcelain Ge-type vase of rectangular stepped "beehive" form, covered in all-over crackle glaze; 3½" high. Estimate: £100-150.
119. A Chinese porcelain celadon-glazed vase of squat baluster form, with pink tied ribbon-bow around the neck, with underglaze blue Qianlong seal mark to base; 4¾" high. Estimate: £100-150.

120. A Chinese blue & white porcelain shallow bowl, painted to the centre with foliage & calligraphy, with café-au-lait rim, on short foot; 8" diam. Estimate: £200-300.
121. A Chinese blue & white porcelain fragrance box, of square form with pierced sides, decorated with scrolling foliage to the top; Estimate: £.
122. A Chinese porcelain small circular box decorated with a dragon in iron-red enamel, apocryphal Qianlong seal mark to base; 2½" diam. Estimate: £40-60.
123. A 20<sup>th</sup> century white-glazed figure of Guanyin, 15" high; a ditto woucai-decorated vase, 9½" high; & a turquoise-glazed cylindrical brush pot, 4½" high. Estimate: £40-60.
124. Two 20<sup>th</sup> century Chinese blue & white porcelain ginger jars; an armorial plate in the 18<sup>th</sup> century Chinese export style, 8¾"; & a vintage famille-rose decorated 8½" shallow dish. Estimate: £30-50.
125. A Chinese blue & white porcelain deep bowl, decorated with mountainous landscape, on short foot; 5¼" diam. x 3¾" high. Estimate: £150-200.
126. A Chinese porcelain shallow dish, with painted dragon decoration in famille verte enamels, apocryphal Qianlong seal mark to base; 7¾" diam. Estimate: £300-500.
127. A 19<sup>th</sup> century Chinese blue & white porcelain baluster vase, finely painted with an extensive coastal landscape, with bands of archaistic & floral borders, four-character Kangxi mark to base; 11" high. Estimate: £200-300.
128. A Baron of Barnstaple pottery tea & coffee service comprising fourteen items, the tea & coffee pots with twist handles to the lids, all with orange & green glaze, part w.a.f. (teapot 7" high), all incised "Baron Barnstaple". Estimate: £50-70.
129. A Doulton Lambeth pottery bowl with applied silver rim, stylised decoration & on short foot, 3" high; a Slater's patent tall slender vase, 10" high; & a Royal Doulton circular jardiniere with waved rim, 7½" diam. x 6½" high. (w.a.f.). Estimate: £40-60.
130. An early Royal Doulton porcelain figure titled: "Fairy" (HN 1378), circa 1930-38; 2½" high. (Chips to foliage & petals). Estimate: £80-120.
131. A Royal Doulton porcelain miniature tankard decorated with a village church in a winter landscape, 2" high; & a pair of small continental porcelain male & female standing costume figures, 3". Estimate: £10-20.
132. A Royal Copenhagen large ovoid vase No. 2629/2129, with painted apple bough & butterfly decoration on a pale blue ground, 11" high. Estimate: £30-50.

133. A Royal Copenhagen vase No. 790/430, of ovoid shape with tall narrow neck, decorated with morning glory flowers on a pale blue ground, 7½" high.  
Estimate: £30-50.
  
134. A Royal Copenhagen baluster-shaped vase with tall neck & flared rim, decorated with a butterfly amongst foliage, on white ground with gilt rim, 7⅝" high.  
Estimate: £30-50.
  
135. A Royal Copenhagen vase No. 279/137, (converted to a table lamp), of baluster shape painted with branches of apple blossom on a deep blue ground, 12½" high (vase only), 24½" high in total.  
Estimate: £40-60.
  
136. A Mettlach stoneware tankard with coloured & incised decoration of hunters, & hinged metal cover, 7¼" high; & a Dresden porcelain large advertising figure group for Yardleys; 12" high.  
Estimate: £70-100.
  
137. An unusually large clear glass floor-standing trumpet vase, on bell-shaped pedestal foot; 57" high.  
Estimate: £70-100.
  
138. An early 20<sup>th</sup> century sea-green glass & pewter-mounted jug of textured cylindrical form with applied handle, the pewter-mounted base with pierced stylised Art Nouveau decoration; 6¼" high.  
Estimate: £30-50.
  
139. A James Powell & Son blown glass bowl of pale green colour, with octagonal sides & rounded base, 10" wide; & a moulded glass flared bowl, the surface divided into seventy five small squares with yellow concave centres, on a grid of turquoise lines,  
Estimate: £40-60.
  
140. An art glass vase & matching bowl with all-over mottled blue, pale green, & rust-red pattern, the vase 10½" high, the bowl 13½" diam. x 6¾" high; signed indistinctly.  
Estimate: £40-60.
  
141. An Art Deco ceramic bust of a young woman, her head in profile turned to the left, signed "GUERO" to reverse; 15" high. (slight faults). Estimate: £60-80.
  
142. A large studio pottery coracle-shaped vessel with pointed ends & painted decoration in muted blues, white & ivory, 18½" wide x 22½" long. Stamped with monogram to the interior K. H. (?)  
Estimate: £50-70.
  
143. A LENCI ceramic figure of a young boy with out-stretched arm, dressed in black robes with matching mortar board, 10" high.  
Estimate: £200-300.
  
144. Two Halcyon Days caisse carrée modelled after a Sevres design in the National Rothchild Collection at Waddesdon Manor, each decorated with floral panels, with gilt finials, borders & feet, 4¼" high x 3⅞" wide x 3⅞" deep.  
Estimate: £80-120.

145. A good quality heavy cut glass table lamp with 9½" diam. domed shade, on slender column & circular foot; 17¼" high. Estimate: £50-75.
146. A heavy cut glass oval dish with serrated rim, 12" x 8"; five similar 5¼" diam. shallow dishes; & a pair of ditto squat round ashtrays, 5" diam. Estimate: £60-70.
147. A pair of Edinburgh Crystal Thistle pattern decanters of thistle shape, 32cm & 31cm high, each with stopper. Estimate: £100-150.
148. A pair of Edinburgh Crystal Thistle pattern liqueur decanters of thistle shape, 20cm high, each with stopper. Estimate: £60-80.



149. An Edinburgh Crystal Thistle pattern claret decanter of thistle shape, 31cm high, with stopper. Estimate: £80-120.
150. A pair of Edinburgh Crystal Thistle pattern spirit decanters of square form, 26.5cm & 27cm high, each with stopper. Estimate: £100-150.
151. Two Edinburgh Crystal Thistle pattern graduated water jugs, 14.75 cm & 18cm high. Estimate: £50-70.
152. An Edinburgh Crystal Thistle pattern large ewer, 7" diam. (18cm) x 4.5" high (11.5 cm). Estimate: £40-60.
153. An Edinburgh Crystal Thistle pattern large bowl of thistle shape, 8.5" diam. (21.5cm) x 5.25" high (13 cm). Estimate: £50-70.
154. A pair of Edinburgh Crystal Thistle pattern ovoid vases, 8.5" high (21.5cm). Estimate: £50-70.

155. A collection of Edinburgh Crystal "Thistle" pattern drinking glasses comprising: 4 x liqueur glasses, 8.5cm; 4 x sherry glasses, 11cm; 4 x wine glasses, 11.5cm; 4 x wine goblets, 16; 5cm; 4 x tall hock glasses, 17cm; 4 x highball tumblers, 14.5cm; 4 x champagne flutes, 17.5cm; 4 x tumblers 8cm; 4 x thistle-shaped tumblers 10cm; 4 x champagne saucers, 11.75cm/12.5cm; 4 x brandy balloons, 12cm; & two punch cups, 7.75cm; 46 items/pieces in total.  
Estimate: £300-500.
156. A Royal Doulton porcelain "Biltmore" pattern dinner, tea, coffee, & dessert service (H 5189), comprising: a circular two-handled soup tureen; ditto vegetable tureen; two large deep bowls, 10¼" diam.; a sauce boat & stand; an oval meat plate; four 10½" dinner plates; four 8" dessert plates; four soup plates; four 7" dessert bowls; four 5" bowls; four 6½" side plates; two napkin rings; an oval deep bowl 10¾" wide; an oval dish 8¼" wide; an 11" diam. bread stand (?); a 5½" diam deep bowl; a 4¼" ditto; a two-handled bread & butter plate; a large teapot; a milk jug; a cream jug; a two-handled sucriere; six teacups & saucers; four large coffee cups & saucers; three small coffee cups & four saucers.  
Estimate: £100-150.
157. A Capo-di-Monte style porcelain cylindrical vessel & cover decorated in relief & coloured enamels with a continuous mythological figure scene, an apple finial to the cover; 7½" high x 6½" diam.  
Estimate: £70-100.
158. A late 19<sup>th</sup> century French coloured bisque group by JEAN GILLES, of male & female standing figures in brightly-decorated 18<sup>th</sup> century costume, on oval mound base; 7¾" high.  
Estimate: £50-75.
159. A pair of late 19<sup>th</sup> century continental painted bisque large standing male & female figures dressed in early 19<sup>th</sup> century costume, with gild scroll decoration, each on circular mound base; 18½" high. (He with restoration to right hand).  
Estimate: £80-120.
160. A pair of continental porcelain baluster vases & covers in the Meissen style, yellow ground floral panels alternating with painted figure scenes, divided by gilt scroll borders, 9" high (finials restored, one with small repair to neck-rim); a porcelain toby jug (hat-rim restored); six Aynsley deep blue & gilt teacups & saucers & ditto sugar bowl; & a Royal Worcester teacup & saucer with pale blue printed floral decoration, date code for 1878.  
Estimate: £80-120.
161. A pair of 19<sup>th</sup> century continental white-glazed porcelain standing male & female figures in 18<sup>th</sup> century costume, each beside a vase in the form of a wicker pannier, on oval mound base with rococo scroll border; 10½" high. (She lacking part of item held in right hand, firing crack to pannier).  
Estimate: £50-75.
162. A set of six Lalique 'Pissenlit' pattern moulded frosted & clear glass crescent-shaped dishes, 8" wide; three with engraved signature: "R. Lalique, France, No. 3008), & three with engraved in capitals "R. Lalique, France". (One with small rim-chip, most with areas of polishing to rims).  
Estimate: £200-300.

163. A PAIR OF 19<sup>th</sup> century BOHEMIAN GREEN & WHITE-OVERLAID GLASS CANDLE LUSTRES, with alternating oval panels of painted female portraits & flower-sprays beneath the shaped rims, hung with clear prism drops, & on circular bases; 12½" high. Estimate: £600-800.



164. A 19<sup>th</sup> century Bohemian overlaid glass hookah base, of ruby ground with white opaque overlay & gilt decoration (worn); 6¾" high x 4½" diam. Estimate: £40-60.
165. A pair of 19<sup>th</sup> century white & pink-overlaid glass candle lustres with shaped top-rims, decorated with gilt bands, & hung with clear prism drops; 8½" high. Estimate: £70-100.
166. A 19<sup>th</sup> century BOHEMIAN GREEN & WHITE-OVERLAID GLASS VASE of goblet form on tall cylindrical foot, with painted oval portrait of a young woman to one side, flowers to the other, with chequered panels in between, the tall foot similarly decorated with floral panels, the ground with all-over gilt leaf-scroll decoration, 14¾" high. (Some very slight wear to the gilding). Estimate: £300-500.
167. Two 19<sup>th</sup> century Bohemian green glass slender ovoid vases with narrow necks & gilt leaf-scroll decoration, each with painted oval portrait of a young woman, on round pedestal foot, 12¼" & 11" high. (The taller with restoration); & a similar vase with opaque white overlaid panels painted with flowers, 10½" (repaired at narrowest point of stem). Estimate: £100-150.
168. A PAIR OF 19<sup>th</sup> century BOHEMIAN GREEN GLASS SLENDER OVOID EWERS with gilt-decorated wide borders, each with white-overlaid oval portrait panel of a young lady, gilt-metal neck-mounts & feet; 21½" high. Estimate: £300-500.
169. A 19<sup>th</sup> century BOHEMIAN GREEN & WHITE-OVERLAID GLASS LARGE OIL LAMP of cylindrical form, with finely-painted oval panel of a young bare-foot girl feeding a goat in a garden, & two similar floral panels, the vase-shaped reservoir with six floral roundels, the ground with all-over gilt leaf-scroll decoration, 18½" high. (Converted to electricity, base drilled, burner mechanism removed, slight fault to neck). Estimate: £300-500.

170. A PAIR OF 19<sup>th</sup> century CONTINENTAL PALE BLUE OPAQUE GLASS LARGE OVOID VASES with black glass side handles, the bodies with enamelled decoration of kingfishers & warblers amongst bulrushes & reeds, on separate black glass rectangular bases, 21¾" high over-all. (One with fault to base of body).  
Estimate: £400-600.
171. A Victorian Staffordshire pottery figure of Garibaldi, decorated in the round, untitled, 9" high x 7½" wide. (Some crazing, sword broken & re-stuck). Estimate: £40-60.
172. A pair of 19<sup>th</sup> century Copeland pottery vases of ovoid form, with blue & gilt "prunus & ice" decoration, printed "Copeland" mark to bases; each 4" high; a Spode Copeland tapered jug with Imari style decoration & plated cover, 6½"; a small porcelain globular vase, decorated with Chinese figures in blue & gilt, 2¼"; & an 18<sup>th</sup> cent. Caughley blue transfer decorated small circular strainer (broken & re-stuck).  
Estimate: £50-70.
173. No Lot.
174. A Belleek porcelain large two-handled ribbed vase & cover, with oval cartouche bordered by a laurel wreath, on circular foot, 11½" high; brown mark.  
Estimate: £40-60.
175. A pair of Belleek porcelain shell-pattern plates, 8" diam., second green mark; a "Tridanca" pale yellow lustre teacup on tray saucer, third black mark; an oak-leaf pattern 7" jug, red Collector's Society mark No. 616; & a recumbent pig money bank, first blue mark (boxed).  
Estimate: £60-80.
176. A Belleek porcelain "Snowflake" pattern 4½" vase, brown mark; a pair of Belleek pedestal bowls, 3¼" high, red Collector's Society mark (both boxed); & a ditto three-strand basket dish with ribbon & flower rim, 5" diam., brown mark (boxed).  
Estimate: £60-80.
177. A Belleek porcelain "Belleek Jardiniere" with applied pink rose, 4½" high; another without rose, 3½"; a "Fermanagh" cornucopia vase, 5", all with brown mark (all boxed); a Belleek fan-shaped advertising piece inscribed in gilt "Belleek parian China", 8¾" wide; & a ditto candle extinguisher in the form of a Leprechaun, 2¾" high, brown mark (boxed).  
Estimate: £70-100.
178. A Belleek porcelain 4½" diam. basket-weave & shamrock dish with side handle; a ditto 3½" diam. sugar bowl; a ditto squat round cram jug; ditto 2½" cylindrical mug; & another small bowl with moulded design, 3½" diam.  
Estimate: £40-60.

179. A Hammersley Bone China Queen Anne pattern tea & breakfast service, with brightly-coloured floral decoration & gilt borders, comprising: 1 oval teapot; 1 milk jug; 1 sucriere; 17 teacups (two cracked); 18 saucers (one with hairline crack); 1 spiral-fluted teacup; 13 side plates, 6¾" (two with hairline cracks); 1 covered bowl-on-foot, 6" dia.; 1 baluster jug 6½" (hairline crack); a 5¼" ditto; a 3" jug; a 7¼" sugar caster; a 3¾" beaker; a 4¾" diam. bowl (cracked); & 6 egg cups. (Pattern No. 13166) (65 items).  
Estimate: £200-300.



Lot 179



Lot 228

180. Five Aynsley porcelain coffee cans with pierced silver holders (Sheffield 1923, one saucer & two cans cracked); & four Royal Worcester "Vine Harvest" fluted coffee cans & saucers.  
Estimate: £50-70.
181. A Royal Worcester porcelain candle extinguisher in the form of a young woman holding a fan, wearing turquoise bonnet, yellow dress, & pink skirt, 5" high (restoration to lower parts of skirt); a ditto ivory & gilt "Kate Greenaway" type figure of a girl seated on a chair, 3¾" high; & a similar coloured figure of a boy asleep on a chair, 3¾".  
Estimate: £80-120.
182. A Royal Worcester candle snuffer in the form of a Monk reading a book, printed mark (date code for 1919), 4¾" high.  
Estimate: £40-60.
183. A pair of Royal Worcester porcelain ivory & gilt standing boy & girl figures, the faces & limbs painted in coloured enamels, each pair holding a large oval wicker basket, on oval rocky base, shape numbers 896 & 897, date code for 1884, one with relief-moulded mark; 7¾" high x 8" wide. (896 with restoration to girl's neck, right forearm, & hat; 897 with restoration to girl's ankles, skirt, & basket).  
Estimate: £80-120.
184. A pair of Royal Worcester porcelain ivory & gilt standing male & female figures, the faces & arms painted in coloured enamels, each holding a wicker basket, & with tree-stump spill vase to the rocky oval base, shape No. 880, date codes for 1883-4; 10½" & 9¾" high. (She with restoration to neck; he with restoration to left arm, basket, & base).  
Estimate: £60-80.
185. A Royal Worcester porcelain white & gilt 'fountain' group, the faces & limbs painted in coloured enamels, of a boy dressed as a Pierrot & playing a pipe to a girl in Kate Greenaway style dress, a large urn above, on circular rock base, shape No. 813, date code for 1882; 7" high.  
Estimate: £80-120.

186. "Against The Wind", a Royal Worcester porcelain standing figure of a young bare-foot woman dressed in flowing robes, on circular round base; 10¼" high.  
Estimate: £70-100.
187. A Royal Worcester porcelain ivory & gilt "Kate Greenaway" group of boy & girl figures, the faces & limbs painted in coloured enamels, seated between two large oval shallow baskets, on circular rocky base, impressed number R12 to base; 7¾" high x 10¾" wide.  
Estimate: £80-120.
188. A Royal Worcester porcelain "Kate Greenaway" sugar caster figure of a girl in yellow bonnet & long pink dress, 6¾" high, date code for 1883; a ditto ivory & gilt figure of a boy standing beside an urn, 6¾"; & a ditto candlestick figure of a boy standing beside a tree trunk (lacking candle sconce), 6" high. Estimate: £70-100.
189. A pair of Royal Worcester porcelain "Kate Greenaway" ivory & gilt standing boy & girl sugar caster figures; 7" high. (She with right foot restored at ankle).  
Estimate: £60-80.
190. A Royal Worcester porcelain "Countries of the World" standing figure of "John Bull", decorated in short enamels, date code for 1894, shape No. 851, 7" high; & a ditto figure of "Yankee", date code for 1905, shape No. 836.  
Estimate: £100-150.
191. A Worcester (Grainger & Co.) porcelain ivory & gilt hexafoil two-handled vase & cover, with all-over finely pierced scroll decoration, on round pedestal foot; 9¼" high.  
Estimate: £100-150.
192. A pair of Royal Worcester porcelain ivory & gilt standing boy & girl figures, the faces & hands painted in coloured enamels, each holding a wicker basket & on flat paved base, 8½" high; shape number 893, date code for 1883 (?), the girl with printed retailer's mark "Theodore B. Starr, New York". Estimate: £80-120.
193. A pair of Royal Worcester porcelain ivory & gilt standing boy & girl musician figures, the faces & limbs painted in coloured enamels, he playing a banjo, she a tambourine, each with tree-stump spill vase to the circular mound base, 8½" high; shape No. 1032, date code for 1884 (?). (He with restoration to collar, end of banjo, & spill vase).  
Estimate: £80-120.
194. An unusual Royal Worcester porcelain box & cover in the form of a bass drum, the lid formed as an infant falling through the broken drum-skin, painted in turquoise, gilt, & natural flesh tones, 2½" diam. x 3¾" high, date code for 1878 (restoration to lower right leg); & a similar slightly larger box in ivory, gilt & flesh tones, 2¾" diam. x 5¼" high; date code for 1878. (Flat part of lid restored, the infant un-damaged).  
Estimate: £80-120.

195. A pair of Royal Worcester porcelain standing male & female Japanese figures decorated in bronzed enamels with coloured highlights & gilt on an ivory ground, each on hexagonal plinth base; 7¼" high. (He with slight restoration to axe; she re-stuck at base). Estimate: £40-60.
196. A Royal Worcester porcelain standing figure titled: "Colleen", painted in coloured enamels & on flat base, shape No. 1874, date code for 1932; & another titled: "Hindoo", shape No. 838, date code for 1931, both inscribed "Modelled by James Hadley", & both 6½" high. Estimate: £80-120.
197. A Worcester (Kerr & Binns) porcelain cake stand of three graduated circular tiers, ivory ground with gilt borders & highlights, on foliate triforce base, 16¼" high, the lower tier 10¾" diam.; printed shield mark. (rim chip to lower tier). Estimate: £100-150.
198. A pair of Royal Worcester porcelain "Kate Greenaway" type standing boy & girl figures in ivory & gilt, the faces & hands painted in coloured enamels, each holding an oval wicker basket & on flat paved base, shape No. 893, date code for 1894; 8¾" high. Estimate: £80-120.
199. A pair of Royal Worcester porcelain "Kate Greenaway" type standing figures of children, ivory & gilt, the faces & hands painted in coloured enamels, each holding aloft a large wicker basket, on flat paved base, shape No. 826, date code for 1881, 7" high. Estimate: £80-120.
200. Two Royal Worcester porcelain "Men Menu Holder" standing figures, one fully coloured wearing long coat & orange wide-brimmed hat, the other in ivory & gilt, wearing battered hat & loose-fitting suit, 5½" x 6¼" respectively; & a "London Cries" figure of Queen Elizabeth I in ivory & gilt with coloured highlights, 6¼" high, date code for 1884 (the first with restoration to hat, the last with restoration to hem of cloak). Estimate: £70-100.
201. A Hadley's Worcester porcelain standing figure of S.J.P. Kruger in ivory, brown enamel & gilt, on circular mound base, 8¼" high (restored through lower legs); & a "Countries of the World" figure of an Irishman in pale coloured enamels & gilt, 7" high, date code for 1894 (restoration to front of base). Estimate: £50-75.
202. A pair of Royal Worcester porcelain 'Kate Greenaway' type figures of a boy & girl, each standing by an urn on a pedestal & on oval paved flat base, painted with coloured enamels in pastel shades, 6¾" high, shape No. 944, date code for 1884. Estimate: £80-120.
203. A Royal Worcester ovoid two-handled vase of basket-weave design, with raised decoration of flowering boughs issuing from the four tree-stump feet in bronze enamel & gilt, 8" high; date code for 1883, printed retailer's mark of Davis Collemore & Co., New York (restoration to base & feet). Estimate: £50-75.

204. A Royal Worcester porcelain shaped oval deep bowl, the foliate-moulded rim with ram's heads & shells, & hung with floral swags, all in ivory on a solid gilt ground, on four leag-scroll & rosette feet, 11¼" wide x 5¾" high; shape No. 1335, date code for 1913 (restoration to one end of upper rim). Estimate: £80-120.
205. A Royal Worcester porcelain nautilus vase of ivory ground, on coral & seaweed support & circular base highlighted in bronze enamel & gilt 8" high; shape No. 94, date code for 1897(?). Estimate: £80-120.
206. A Hadley's Worcester porcelain standing male "Italian Musician" figure playing a pipe, wearing peach tunic & green coat & stocks, on oval mound base, 12" high (restoration to lower legs). Estimate: £80-120.
207. A late Victorian English porcelain vase with squat round body & cylindrical neck, the two-tone raised gilt decoration of sing birds & insects amongst climbing roses attributed to James Callowhill, 7¾" high. Estimate: £70-100.
208. A Grainger's Worcester pot-pourri jar of round leaf-moulded form, pale green ground with gilt highlights, peach-ground short neck & finial to the pierced outer cover; 7¾" high (lacking inner cover). Estimate: £50-75.
209. A set of four Royal Worcester porcelain coffee cups & saucers with butterfly handles, & painted decoration of butterflies & other insects amongst flower-sprigs & foliage, date codes for 1875-6, one saucer 1933. Estimate: £40-60.
210. A pair of Royal Worcester porcelain vases with squat round bodies & tall narrow necks, apricot ground with turquoise & gilt borders, the bodies with floral decoration highlighted in shades of blue enamel, 8¾" high, shape No. 1620, date code for 1894. Estimate: £80-120.
211. A collection of fourteen Royal Worcester porcelain "Days of the Week" figures of boys & girls, modelled by Freda Doughty, Monday through to Sunday for each set, 8¼" to 5¼". (Condition: Girls – Saturday: head restored; Thursday: extensively restored; Wednesday: extensively restored; Tuesday: right hand & left ankle restored; Boys – Friday: head restored; Monday: head restored); together with a duplicate of Saturday (girl); another child group by Glenis Devereux "Boys & Girls Come Out To Play – See-Saw", 7" wide. Estimate: £100-150.
212. A set of twelve Royal Worcester porcelain "Months of the Year" figures of children modelled by Freda Doughty, January through to December; 7½" to 4½" high. (April's head re-stuck; October has restoration to tail & ears of squirrel on boy's knee). Estimate: £200-300.
213. THIRTEEN ROYAL WORCESTER PORCELAIN FIGURES "COUNTRIES OF THE WORLD", STANDING FIGURES, ivory ground with gilt highlights, the faces & hands painted in coloured enamels, comprising: No. 835-Irishman; 836-Yankee (restored); 837-Chinese (x2); 838-Hindoo; 839-Italian (x2, one with restored back-right corner

of base); 840-Negro; 851-John Bull (base restored); 913-Scotsman (x2, one restored to top half & base); & 914-Russian (x2); each approx. 6¾-7" high.

Estimate: £400-500.

# Lot 213



214. A pair of Royal Worcester porcelain ewers of inverted pear shape, with painted rose decoration by John Flexman & A. Watkins, 8¾" high, pattern No. 292(?), date code for 1912 (one with handle re-stuck, the other with crack to handle).

Estimate: £40-60.

215. A pair of Royal Worcester porcelain 'tusk' ice jugs with antler handles, blush-ivory ground with printed & hand-coloured floral sprays, 6½" high, shape No. 1116, date code for 1911 (one with slight wear to gilding).

Estimate: £50-75.

216. A pair of Royal Worcester porcelain standing male & female figures of Eastern Water Carriers (shape No. 594), decorated in soft green & peach enamels with gilt highlights, on flat oval rocky bases, the bowls with separate liners, 12¼" & 11½" high; date coders for 1913-14 (chip underneath rim of bowl to the female figure).

Estimate: £150-250.

217. A pair of Royal Worcester porcelain rustic twin-branch candelabra with Kate Greenaway style boy & girl figures seated between the branches, decorated in soft enamels & gilt, each on circular mound base, 8½" high x 7½" wide, shape Nos. 1124 & 1125, date code for 1895 (1125 with small chip to the rose stem climbing one branch, at rear).

Estimate: £150-250.

218. A pair of Royal Worcester porcelain male & female figures of Strephon the boy piper & his companion, decorated in soft enamels & gilt, each seated on a tree-stump & on circular rocky base, 5¾" high, shape No. 1803, date codes for 1925-1928.

Estimate: £50-75.

219. A Royal Worcester Vitrious 'Game Bird' part dinner service, each piece with printed scene of a different game bird in a landscape on a pale-yellow ground, within a sepia floral border with gilt rims, comprising a large oval dish with game-bird side handles, 17¾" x 13", an oval sauce tureen & stand with stag's head side handles, a gravy-boat & stand, two small serving dishes, & twelve 9¼" dia. plates.

Estimate: £

220. A mid-19<sup>th</sup> century English porcelain dessert service with brightly-coloured mixed flowers to the centres, gilt scrollwork to the wide borders, comprising: ten 8¾"

plates, two pairs of shaped serving dishes (one with small chip to underside of rim); & a two-handles comport (one handle restored). Estimate: £80-120.

- 220A. A Spode Copeland China small heart-shaped teacup & saucer painted with roses between turquoise & gilt line borders; an early 19<sup>th</sup> cent. Spode porcelain coffee cup & saucer, pattern No. 2757; & a Copeland & Garrett porcelain coffee cup & saucer, pattern No. 5783. Estimate: £40-60.
221. A garniture of three early/mid-19<sup>th</sup> century English porcelain two-handled vases of baluster form with wide waved necks, floral-encrusted decoration, & reserves of coloured printed scenes of exotic birds in landscapes, each on oblong foot; 8¾" & 7¼" high (two with faults to handles, faults to encrusted flowers). Estimate: £70-100.
- 221A. An early 19<sup>th</sup> century Spode New Stone oblong dish with polychrome family crest to the turquoise border, 9" wide; a Spode pearlware "Pagoda" pattern oval basket dish & stand, 7¾" wide (faults to basket dish); & a similar basket-edge oval plate; 10" wide. Estimate: £40-60.
222. A garniture of five early/mid-19<sup>th</sup> century English porcelain graduated vases of round tapered form & pale blue ground, with wide gilt scrolled necks, each with finely painted bouquet within a gilt-bordered reserve, on circular foot; 6¾", 5¾", & 4¾" high (pattern No. 3335). Estimate: £150-200.
223. A 19<sup>th</sup> century English porcelain large jug of hexagonal baluster form, with finely painted equestrian hunting scene to either side, 7¾" high (rivet repair); a ditto square tray with rounded corners & painted floral sprays on a pale peach ground, 11¼" wide; & a continental white bisque pastille burner in the form of a church, 7" high x 5¼" wide. Estimate: £70-100.
- 223A. A Copeland China cabinet plate painted with radiating panels of pink roses on a gilt ground, green & gilt 'jewelled' borders, 8¾" diam.; another with finely painted bouquet to centre, three similar reserves & raised gilding to the wide pink border, 9¼" diam.; & another with pale yellow centre & flowers to the border, 9" diam. Estimate: £60-80.
- 223B. A Spode porcelain 200<sup>th</sup> Anniversary 9" octagonal plate with painted landscape showing the bottle kilns, Limited Edition No. 137 of 200; & another with sepia view of the water mills, painted by Bill Hall, signed & dated 1999. Estimate: £60-80.
224. A pair of 18<sup>th</sup> century Caughley blue & white porcelain plates painted with Chinese river landscapes, the diaper & Greek key-pattern borders with shaped rims; 8½" diam. (one with three small chips to underside of rim). Estimate: £100-150.
- 224A. An early 19<sup>th</sup> century Spode creamware 9¾" diam. plate painted with exotic flowers in bright enamels, pattern No. 3422; a Copeland Ironstone 10½" plate with oriental garden scene; a Copeland & Garrett porcelain claret-ground dessert plate painted

with a coastal view of Southampton, 9½" diam.; & another with turquoise & gilt border & botanical subject titled: "Salvia Involucrata", 9¼" diam.

Estimate: £60-80.



225. A 19<sup>th</sup> century RUSSIAN PORCELAIN EGG, finely painted with a scene of Joseph with infant Christ after Guido Reni, the reverse of turquoise ground with tooled gilt border & foliate decoration centred by a Cross above a Crescent, & inscribed "Christ Is Risen", 4¼" high.

Estimate: £1000-1500.

226. A 17<sup>th</sup> century Dutch delft blue & white flower tile painted with a snake's head fritillary; 5¼" square.

Estimate: £50-100.

227. An 18<sup>th</sup> century Italian faience blue & white hexagonal vase on wide lobed base, painted with putti in landscapes, 17" wide x 10" high (restored); & three French faience oval serving dishes with painted polychrome decoration, 15½" x 10½" (w.a.f.) Estimate: £100-150.



228. A WORCESTER BARR, FLIGHT, & BARR PORCELAIN TEA SERVICE, decorated with bat-printed seashells & gilt leaf-sprays within gilt line borders, comprising: 1 oval teapot & stand; 2 oval two-handed sugar bowls; 1 milk jug; 1 slop-bowl, 6¾" dia.; 14 teacups; & coffee cans; 12 saucers; 1 bread-&-butter(?) plate with floral

centre, 10½"; 1 plate with floral centre, 9¼"; 3 plates, 8¼"; & 2 x saucer dishes, 7¾". (Circa 1807-13). Estimate: £500-700.

229. A set of six 19<sup>th</sup> century Minton porcelain dessert plates with painted decoration by Antonin Boullemier, of putto riding various exotic sea-shells, within narrow raised gilt borders; 9½" dia. (four restored). Estimate: £120-180.
230. A set of six late 19<sup>th</sup>/early 20<sup>th</sup> century Coalport porcelain dessert plates with raised gilt scroll-work to the wide deep blue borders, gadrooned rims, the centres with finely painted landscapes, loch, & river scenes; 9" dia. (one broken in two & re-stuck; one restored; all with some slight rubbing). Estimate: £80-120.
231. A 19<sup>th</sup> century Copeland porcelain 'Seasons' figure of a child kneeling before a fire, emblematic of Winter, beside a large pink-ground shell-shaped dish, with gilt rims & coloured highlights; 9¼" high x 11" wide (little finger of right hand missing). Estimate: £120-180.
232. A Copeland & Garrett porcelain part tea & coffee service with shaped gilt rims & decorated with coloured sprays of pansies on a pale yellow ground, comprising: 1 squat-round teapot & stand; 2 bread-&-butter plates; 1 sucriere; 1 milk jug; 1 large slop bowl; 11 teacups; 11 coffee cups; & 12 saucers. (Pattern No. 6529; circa 1838-47). Estimate: £200-300.
233. A late 19<sup>th</sup>/early 20<sup>th</sup> century Coalport porcelain cabinet plate with shaped rim, raised gilding to the turquoise & pale yellow grounds, the centre with finely painted roundel of a loch-side castle within a 'jewelled' border; 8¾" dia. (hairline-crack from outer rim to foot rim); together with a Coalport miniature quatre-lobe basket dish with deep blue exterior & solid gilt handle & interior, 3" high; & a ditto loving cup, 1½". Estimate: £80-120.
234. A Coalport porcelain 'Bat's-Wing' pattern part tea & breakfast service, the deep blue & gilt borders with reserves of coloured floral sprays, comprising: 1 bread-&-butter plate, 10¼"; 2 side plates, 6¾"; another ditto, 6"; 5 teacups & 6 saucers; 1 small teapot; 1 milk jug; 1 sugar bowl; & 4 egg cups (one egg cup & one teacup with hairline crack). Estimate: £100-150.
235. A pair of Coalport porcelain two-handled vases & covers, each with gilt-decorated & blue ground ovoid body centred by a roundel with painted Scottish landscape by Edward O. Ball titled "Loch Earn" & "Loch Ness", pale yellow ground slender neck & round pedestal foot, 8¾" high. (one with cover broken & re-stuck). Estimate: £100-150.
236. A pair of Coalport porcelain 'jewelled' two-handled vases of slender ovoid form, each with pink narrow neck & round foot, the cream sides with raised gilt floral sprays, 7½" high; pattern No. 2736 (one with hairline crack to base of neck). Estimate: £100-150.

237. A Royal Dux porcelain standing figure of a male water-carrier, in eastern style dress, 19½" high, with raised pink triangle mark to base & impressed numbers 650 29.

Estimate: £50-70.

238. A Royal Dux porcelain romantic standing figure group, 19" high, with raised pink triangle mark to base & impressed number 1559.

Estimate: £50-70.



Lot 241

239. A Royal Dux porcelain standing figure of a male goat Herder, 20¾" high, with raised pink triangle mark to base & impressed numbers 1115 4. (lacking original crook).

Estimate: £50-70.

240. A Royal Dux porcelain standing figure of a huntsman, 24¾" high, with raised pink triangle mark to base & impressed numbers 2272 12.

Estimate: £50-70.



Lot 242

241. A mid-19<sup>th</sup> century English porcelain & ormolu-mounted vase & cover of squat round form, with finely painted reserves of flowers & fruit, & exotic birds in landscapes within raised gilt borders on a ruby ground, with finely cast & pierced ormolu neck-rim, side handles, foot, & floral finial, 8¾" high x 9¼" wide, possibly Coalport. (cover with rim-chip).  
Estimate: £200-300.

242. A MID-19<sup>th</sup> century COALPORT PORCELAIN TWO-HANDLED TROPHY VASE, of pink ground with gilt grapevine borders, the inverted pear-shaped body with finely painted scene of a horse race passing the grandstand, the reverse inscribed in gilt "St. George's Races, Sept. 30<sup>th</sup>, 1861", with crabstock side handles & fruit-pod finial to the domed cover, on round pedestal foot; 11" high x 11" wide. (pod re-stuck; two chips to flange of lid).

Estimate: £300-400.

243. A PAIR OF MOORE Bros. PORCELAIN PILGRIM FLASKS with pate-sur-pate decoration of cupids leap-frogging toadstools by Henry Saunders, one signed with monogram, dark green ground, the gilt short cylindrical necks, narrow sides, & four short feet with Grecian-style decoration; 6¼" high, impressed mark: MOORE (one with short hairline crack to neck).  
Estimate: £400-600.

244. AN EXHIBITION-QUALITY COALPORT PORCELAIN LARGE PATE-SUR-PATE VASE, of flat-sided ovoid form & dark blue ground, the front with star-shaped reserve painted with a ring of cupids & fairies in a woodland scene, flying above a

pond, dragonflies & lily-pads below, signed: A. HANDLEY, vignettes of cupids to the borders & reverse, richly decorated all-over with raised gilding & 'jewelled' flowers, with solid gilt short waved neck & pierced foot, 17½" high, printed Crown mark, circa 1880-90. (restoration to foot). Estimate: £1500-2000.



245. Two 'Vienna' porcelain cabinet plates, one of deep blue ground, the other claret, each with raised gilt & 'jewelled' borders, a finely painted square panel to the centre depicting a mythological figure scene, the first signed: J. WERNER, the second: F.OH; 9½" dia., blue 'beehive' marks. Estimate: £200-300.
- 245A. A "Vienna" porcelain small campana-shaped urn with finely painted scene of a young woman seated in a coastal landscape, 5¼" high; & a small Dresden figure of a cherub playing a flute, 4½" high (wings restored). Estimate: £50-75.
246. A 'VIENNA' PORCELAIN VASE & COVER of waisted cylindrical form, with cone finial & on round pedestal foot, deep blue ground with raised gilt decoration, the body with finely painted continuous scene of a medieval King & his knights on a gilt ground, signed: F.WILDMANN; 14¾" high. Estimate: £300-400.
247. A PAIR OF 'VIENNA' PORCELAIN VASES & COVERS of waisted cylindrical form, each with cone finial to the lid & on round pedestal foot, claret ground, with pink borders & raised gilt decoration, the bodies with finely painted continuous scene of figures singing, playing musical instruments, & drinking wine, on a gilt ground, one signed: J.HENKE; 14½" high; blue 'beehive' marks (one with restoration to body, repair to both finials). Estimate: £400-600.



248. A pair of continental porcelain Bacchanalian figure groups, each depicting four putti pouring & drinking wine, on floral-encrusted rocky base, 8½" high x 8" wide; each with blue crossed swords mark with star and dot. (minor damage to extremities).  
Estimate: £200-300.
249. A pair of Berlin porcelain male & female figures of Achilles & Minerva, each seated on a fluted column, 9¾" high, each with blue sceptre mark to base.  
Estimate:
250. A Berlin porcelain figure group depicting Orpheus standing next to Minerva (seated), with cupid behind & an eagle at Orpheus' feet, 12¾" high; blue sceptre & KPM mark to base.  
Estimate:
251. A SET OF TWELVE DRESDEN (POTSCHAPPEL) PORCELAIN MONKEY-BAND FIGURES, each dressed in 18<sup>th</sup> century costume, comprising: the Conductor, 6½"; Clarinettist (lacking mouthpiece); Flautist; Oboist; French Horn player; Drummer (one drumstick re-stuck); Cellist (bow restored); Violinist; Trumpeter (right fore-arm re-stuck); Harpist; & two Female Singers; each on mound base with gilt scroll border.  
Estimate: £600-800.
252. A MEISSEN PORCELAIN FIGURE GROUP DEPICTING THE ELEMENT OF WATER after Schönheit, with double wheel-cut blue crossed swords mark, incised No. D81 & impressed mark 51; 9" high x 10½" wide x 9" deep (restoration to base & two dolphin's tails).  
Estimate: £400-600.
253. A MEISSEN PORCELAIN FIGURE GROUP 'CAPTURING THE TRITONS', depicting Venus, a female attendant & cupid hauling a net containing a boy Triton, on rocky base; blue crossed swords mark, incised No. C35 & impressed No. 30; 12¾" high x 10" wide x 7" deep. (minor loss of foliage to front). Estimate: £700-1000.



Lot 256

254. A Meissen porcelain figure group depicting Bacchantes (worshippers of Bacchus) and a faun, on rocky base; blue crossed swords mark, incised No. D.63 & impressed No. 35; 9" high x 8" wide x 5½" deep. Estimate: £300-500.
255. A Meissen porcelain figure group emblematic of astronomy, with two putti – one looking through a telescope, the other examining a globe, on oval gilt base; blue crossed swords mark, incised No. C46 & impressed No. 46 to base; 5¾" high x 5½" wide x 4" deep. Estimate: £300-400.
- 255A. A Meissen porcelain figure group emblematic of astronomy, with two putti – one gazing through a telescope, a book at his feet, the other examining a celestial globe, on mound base with gilt scrolls; blue crossed swords, incised No. 2460 & impressed No. 23 to base; 5½" high x 6" wide x 3½" deep. Estimate: £300-400.
256. A SET OF FOUR MEISSEN PORCELAIN FIGURES OF PUTTI REPRESENTING THE ELEMENTS OF FIRE, WATER, AIR, & EARTH, after Kandler, each on shaped oval mound base with gilt-decorated scroll border, the tallest 5" high; blue crossed swords marks & incised Nos. C97, C98, C99, C100, respectively. (Condition: Fire – kettle restored; Water – restoration to smaller fish, tip of trap, one leaf to rear; Air – damage to one wing-tip & one birds' tail; Earth – restoration to left arm & shaft of spade, one small branch of tree-stump, damage to teeth of rake). Estimate: £800-1200.
257. A Meissen porcelain figure of a putto, with birdcage & two birds, representing the element of Air, on oval mounted base with coloured & gilt scroll border; blue crossed swords mark & incised No. 99 to base; 5" high x 4¾" wide. (restoration to yellow bird). Estimate: £250-300.
258. A Meissen porcelain figure of Cupid pressing two hearts together in a clasp, on round simulated marble socle with gilt rims, 7¼" high; incised No. L107 & impressed No. 76 to base. (over-painted rim chips to base). Estimate: £250-300.



Lot 255

259. A Meissen porcelain standing figure of 'Cupid Blindfolded', on round simulated marble socle with gilt rims, 6¾" high; wheel-cut blue crossed swords mark, incised No. L119, & impressed No. 115 to base. (restoration to both hands above wrists). Estimate: £200-300.



Lot 262

260. A Meissen porcelain standing figure of Cupid, his right leg caught in a gin-trap, on round simulated marble socle with gilt rims, 7½" high; blue crossed swords mark & impressed Nos. L120 & 131 to base. (little finger of right hand missing; losses to bouquet in left hand). Estimate: £250-350.

261. A MEISSEN PORCELAIN FIGURE GROUP 'THE PARCAE' (The Fates), after Kandler; blue crossed swords marks, incised No. N33 & impressed No. 137 to the sectional base; 14¾" high x 15" wide x 6" deep. (some areas of restoration). Estimate: £2000-3000.

262. A MEISSEN PORCELAIN FIGURE GROUP 'CHRONOS, THE GOD OF TIME'. Modelled as a winged Chronos gazing into his hour glass, surrounded by three putti on a rocky base; blue crossed swords mark, incised No. D4 & impressed No. 51; 7½" high x 6½" wide x 4¾" deep. (restoration to one finger of Chronos' free hand). Estimate: £300-500.

263. A PAIR OF MEISSEN FIGURE GROUPS EMBLEMATIC OF WAR & WISDOM, the first with standing figure of Mars & instruments of war, & three attendant putti, one dressed as the infant Hercules, the other with figure of Minerva standing beside a globe, with three attendant cherubs, each on mound base with gilt scroll border, 8¼" & 7¾" high; blue crossed swords marks & incised D1 & D2, impressed Nos. 147 & 72 respectively. (Condition: He with restored left hand, blue plume of putto's helmet restored; She with restored right hand above wrist; cherubs with restoration to one wing, fingers of three hands, & toes of one foot). Estimate: £1000-1500.



Lot 270

264. A pair of Meissen porcelain figures of Mars and Minerva, each dressed in armour & seated on a tree stump; blue crossed swords marks; incised Nos. 1212 & 1213 respectively, both with impressed No. 69; 6¼" & 5½" high (Minerva lacking spear).  
Estimate: £
265. A Meissen porcelain figure group after Schönheit of 'Two putti playing with a cradle and a monkey examining a goat', on oval rocky base; blue crossed swords mark, incised No. H89 & impressed No. 26; 6¼" high x 5" wide x 4" deep. (slight faults/losses).  
Estimate: £
266. A SET OF THREE MEISSEN FIGURE OF CUPID, engaged in various pursuits, each on triangular base with title in French "Coup Sur Coup", "Je le Dompte", & "Je Prends Mon Essor" within a pink oval reserve, 5", 5¼" & 5¼"; blue crossed swords marks & incised Nos., F10, F81(?) & F16. (Condition: First – tip of arrow re-stuck, small chop to one toe; Second – restorations to upper part, losses to long ribbon; Third – restoration to heart).  
Estimate: £400-600.
267. A Meissen porcelain figure of a putto with birdcage & birds, representing the element of Air, on oval mound base with gilt scroll border; blue crossed swords mark & incised No. 99 to base; 5" high x 4¾" wide. (restoration to bird held in left hand, & to tree-stump & leaves).  
Estimate: £250-300.
268. A Meissen porcelain (outside decorated) large spherical two-handled vase, cover, & stand, of turquoise ground with gilt borders, & finely painted panels of 18<sup>th</sup> century figures in landscapes dining al-fresco; the vase 11" wide x 10" high, the stand 11" dia.; blue crossed swords mark with single wheel-cut, late 19<sup>th</sup>/early 20<sup>th</sup> century.  
Estimate: £300-400.
269. An 18<sup>th</sup> century Meissen porcelain figure of a reclining putto feeding grapes to a leopard, on scroll base, blue crossed swords mark & impressed No. 4, 3½" high x 4¾" wide (restoration to leopard's left paw, chips to foliage); & another of a putto riding on the back of a dolphin, blue crossed swords mark & impressed No. 205K; 4¼" high (coral in putto's right hand re-stuck)  
Estimate: £400-600.
270. A SET OF FOUR MEISSEN FIGURES OF CUPIDS REPRESENTING THE ARTS, comprising "SCULPTURE" (incised No. 4) 7¾" high; "PAINTING" (incised No. 5) 7¾"; "ARCHITECTURE" (incised No. 6) 8½"; & "ASTRONOMY" (no incised number) 8"; each on shaped base with Vitruvian scroll & ribbon-tied foliate border, all with blue crossed swords mark. (condition: Sculpture: one wing & one left hand restored; Painting: one wing & one right foot restored; Architecture: one wing & one left fore-arm holding scroll restored; Astronomy: no faults).  
Estimate: £2000-3000.

271. No Lot.

## **PAINTINGS & PRINTS**

### **~ GLOSSARY OF TERMS ~**

*\*Using an example of one artist's name, we illustrate below the manner of attributing pictures and drawings in the catalogue:*

**HENRY BERNARD CHALON:** In our opinion a work by the artist.

**H. B. CHALON:** Possibly or partly by the artist.

**AFTER CHALON:** In our opinion a copy of the work by the artist.

**CHALON; Manner of/**

**CHALON; Attr. to:** Painting in the manner of or style of the artist.

**SIGNED & DATED:** A work bearing the signature and/or date that is probably that of the artist, as qualified by the foregoing terms of attribution.

***\*In all cases, the attribution is our opinion after careful research and consideration, and is not a guarantee that the pictures are as catalogued.***

### **\*ARTIST'S RE-SALE RIGHT / DROIT DE SUITE\***

Please be advised that any work of art by a living artist, or an artist that died within the last 70 years, which realises the Sterling equivalent (£/GBP) of €1000 (one thousand Euros) or more will be subject to an additional 'Artist's Re-sale Right' fee of 4% on the hammer price.

***Any lots subject to the Artist's Re-Sale Right will be marked 'ARR' in the catalogue description.***



Lot 272

272. After JOHN CLAUDE NATTES (1765-1839). Three early 19<sup>th</sup> century coloured engravings – views of Bath “Bathwick Ferry”, “The Pump Room” & “South Parade”; the two former publ. by I.Hill 1805 & 1804 respectively, the latter publ. by F.C. Lewis 1804, in matching glazed frames, 19½” x 23” & 16” x 19½” (x2) over-all; with separate loose descriptive sheets. Estimate: £80-120.

273. J. B. ALLEN (1803-1876) after THOMAS H. SHEPHERD (1793-1864). “The Hot Baths And New Infirmary, Bath”, publ. 1829 by Jones & Co.; 4¾” x 6½”; together with six various other coloured engravings: “Part of Queen Square, Bath”,

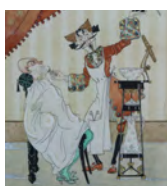
"Lansdown Crescent, Bath", "Bowood Park, Wiltshire", "View of Corn Street, Bristol", "Taking Home The Bride", & "The Christening Party", all framed & glazed. (7). Estimate: £40-60.

274. CHARLES JAMES RICHARDSON, F.S.A. (1806-1871), after WILLES MADDOX (1813-1853). "Objects of Vertu From The Collection of William Beckford Esq.". Coloured lithograph: 15¾" x 12", in glazed frame. (26¼" x 22¼" over-all). Estimate: £30-50.
275. CHARLES ALBERT WALTNER (1846-1925), after SIR FRANCIS DICKSEE (1853-1928). "Harmony", black & white etching, publ. 1880 by Thos. Agnew & Sons, London; 18½" x 10¾", in glazed modern painted frame, (29¼" x 21" over-all). Estimate: £100-200.
276. A pair of coloured prints after Marinus Johannes de Jongere Drulman (1912-1977), each in glazed frame, (14" x 17" over-all); a coloured print of a harbour scene after John E. Aitken (1881-1934), framed & glazed (17¾" x 21¾"); & a coloured print after Gilbert Mason (1913-1972), 7¼" x 11¼". (4). Estimate: £30-50.
277. J. HOUBRAKEN (1698-1780), after J. OLIVER. An 18<sup>th</sup> century coloured portrait of "Mary queen of Scots", publ. 1738 by J. & P. Knapton, London; 15" x 9¼", in glazed frame. (22½" x 16¼" over-all). Estimate: £30-50.
278. FRANK SHORT, RA, PPRE (1857-1945), after J.M.W. Turner. A classical landscape with ruins & figures to the fore. Sepia etching, dated 1893, signed "Frank Short" in pencil lower margin; 8" x 11", in glazed frame. Estimate: £40-60.
279. JOHN SELL COTMAN (1782-1842), by & after. A set of four black & white etchings – architectural studies of Norfolk church entrances, etc., in pair of matching glazed frames. (framed as two sets of two), each 38¾" x 17¾" over-all. Estimate: £60-80.
280. A 19<sup>th</sup> century sepia watercolour painting of figures beneath trees in parkland; dated 1874, 14½" x 10"; a pair of coloured prints after J. M. W. TURNER, 8½" x 12½"; & a re-printed map of Surrey, 15¾" x 19¾"; each framed & glazed. (4). Estimate: £50-75.
281. RICARDO WOLFSON (Argentinian, b. 1950). "Fez", coloured silkscreen print; signed, titled, & numbered 112/200 in pencil (framed & glazed: 29" x 22"); & another coloured print after ROGER-LUCIEN DUFOUR, framed & glazed, 23" x 25¼". Estimate: £40-60.
282. A. M. LAU (20<sup>th</sup> century). A set of three coloured lithographs on paper depicting Asian village scenes, one signed "E. M. Lau" in the print; in matching glazed frames, each 22½" x 15½". Estimate: £40-60.

283. TSUKIOKA YOSHITOSHI (1839-1892). "The Appearance of a Housewife in the Tenth Year of Meiji" from the series "Thirty-two aspects of Women". coloured wood block print, publ. 1888 by Tsunashima Kamekichi; 13¾" x 9", framed & glazed.  
Estimate: £50-100.
284. SHIBATA ZESHIN (1807-1891). Spring Meadow, a study of horsetails, violets, & dandelions. Coloured wood block print; 8¾" x 9", framed & glazed; & TANSAL (Fl. first half 20<sup>th</sup> century). A study of a crab in the Shigo/Nanga style. Ink on paper, signed with red seal. 8½" x 10¼"; framed & glazed. Estimate: £50-70.
285. BERNARD BUFFET (1928-1999, by & after). Bread & Wine on a table top; coloured lithograph; signed & dated '64 in the print, signed in pencil lower margin, in glazed frame: 29" x 21½" over-all. Estimate: £80-120.
286. SAMUEL PHILLIPS JACKSON (Bristol, 1830-1904). A copy of a 19<sup>th</sup> century photograph of S. P. Jackson & Francis Danby posing with a book, originally taken by Jackson circa 1855; 33" x 27½", in glazed frame.  
Estimate: £30-50.
287. JOHN OGILBY (1600-1676). "The Continuation of the Road from London To Land's End"; hand coloured engraved road map; 13" x 19", framed & glazed. (19½" x 25½" over-all).  
Estimate: £50-100.
288. JOHN OGILBY (1600-1676). "The Road From Exeter To Truroe". Hand coloured engraved road map; 13¼" x 17¾", in glazed frame. (20" x 24½" over-all).  
Estimate: £50-70.
289. JOHN OGILBY (1600-1676). "The Continuation of the Road from Barnstable to Truro"; hand coloured engraved road map, 14¼" x 18½", with separate legend & descriptive text. 14¼" x 9", framed as one. (20" x 34¼" over-all).  
Estimate £80-120.
290. JOSEPH KIRKPATRICK (1872-1936). "This England". Sepia etching, signed & titled in pencil lower margin; 9" x 15¾" (image); together with a coloured etching by MABEL CATHERINE ROBINSON (1875-1953), a Stratford-on-Avon street scene, signed in pencil lower margin; 8½" x 11" (image), (2).  
Estimate: £40-60.
291. JOHN BRANGWYN (20<sup>th</sup> century). A black & white etching of sailing vessels in calm waters, with figures on the bench; signed in pencil lower margin; 5¾" x 11½"; another etching "Sunset on the Broads", signed K. Vernon, 4" x 9¾"; & a watercolour sketch of trees, 8" x 12" (the etchings framed & glazed; watercolour unglazed).  
Estimate: £40-60.
292. ARTHUR J. F. BOND (1888-1959). A pair of black & white etchings "War, Ready to Slip" & "Peace, Waiting the Tide", each signed with monogram in the print, & signed

in pencil lower margin; 9" x 5½", in matching glazed frames; (20¼" x 13½" over-all) (2).  
Estimate: £40-60.

293. S. R. C. WALMSLEY (20<sup>th</sup> century). A black & white etching titled: "The Shingler"; signed in pencil lower margin, 9" x 7¼"; another by F. ROBSON (1880-1936) "The Gateway, St. Johns Hospital, Canterbury", 10" x 5"; & another by GEO. A. WESETON "Lincoln Cathedral", 6¼" x 8½"; each framed & glazed. (3).  
Estimate: £40-60.
294. TOM KEPPEL FARRAN (1890-1915). A coloured illustration "The Duke & The Beggar Maid", inscribed, signed with initials & dated '13, & signed in paint lower right, pen & watercolour; 12" x 14¾"; & another (possibly The Barber of Seville), signed "Keppel Farran" lower right, pen & watercolour: 11¼" x 9¾"; each framed & glazed.  
Estimate: £150-250.
295. A 19<sup>th</sup> century silhouette of JONATHAN SISSON COOPER (1777-1850) & his daughter Charlotte Louise, with monochrome watercolour detail, & with painted death notice verso, 13" x 10"; a head-&-shoulders pencil portrait of J. S. Cooper as a young man, inscribed verso "by Milo Rowland, Guernsey"; another of him as a boy, watercolour (both framed & glazed – 7½" x 7¼" & 6¼" x 5¼"); & a manuscript letter from J. S. Cooper to his mother written in his first days at school, dated 1786. (4).  
Estimate: £100-150.



Lots  
294  
&  
295



296. JOSEPH WILLIAM CARY, R. V. A. (Irish, 1859-1937). "Groomsport, County Down", signed & inscribed lower right; pencil & watercolour: 6¾" x 9" (un-glazed, but mounted, with original framer's label verso).  
Estimate: £200-300.
297. IRISH SCHOOL, 19<sup>th</sup> century. The entrance to Borris Rectory, County Carlow, Ireland, home of the Revd. J. S. Cooper (1851-96) who lived there from 1882-84. Oil on panel: 9" x 7", in glazed giltwood frame. (12½" x 10½" over-all).  
Estimate: £70-100.
298. Rev. SIR HUBERT JAMES MEDLYCOTT, 6<sup>th</sup> Bt. (1841-1920). A busy dock scene with sailing vessels; signed & dated 1896 lower left; watercolour: 8¼" x 17", framed & glazed (slight foxing upper centre).  
Estimate: £80-120.



Lot  
296



Lot  
332

299. GEORGE HENRY JENKINS (1843-1914). "On The Tamer", signed & dated 1905, watercolour: 9" x 15"; HUGH ENNION (20<sup>th</sup> century), watercolour of beached sailing vessels, signed & dated 1982, 14" x 10½"; & ENGLISH SCHOOL, 19<sup>th</sup> century "Combedown, Aug. 9, 1862", watercolour: 9¾" x 13¾"; all framed & glazed (3).  
Estimate: £50-100.
300. FREDERICK TAYLER (1802-1889). "Guarding His Master's Uniform". Signed in pencil lower right; watercolour: 4¾" x 5¾", framed & glazed. (12" x 14½" over-all).  
Estimate: £70-100.
301. THOMAS WALTER WILSON (1851-1912). A room interior with a child artist painting "The Lawn At Goodwood" by T. W. Wilson & Frank Walton, an infant & pet dog beside; signed & dated '86 lower right; pen & watercolour: 9¾" x 13¾", framed & glazed. (19¼" x 22¾" over-all).  
Estimate: £250-300.
302. JEAN WOODWARD (20<sup>th</sup> century). Bathtime With The Dog – A set of four humorous watercolour paintings; each signed & dated 1982 in pencil, 6½" x 9¼", in glazed frames fixed together as one. (21¾" x 26¾" over-all).  
Estimate: £80-120.
303. M. BAKER (early 20<sup>th</sup> century). A head-&-shoulders portrait of a lady wearing turquoise blouse. Signed & dated 1900 lower right; oil on canvas: 16" x 12". (Note: Possibly Mabel O. Baker, who is listed in A. C. C. Dictionary of British Artists 1880-1940 as a portrait painter, Exh. 1913-19, residing at Weybridge, Surrey).  
Estimate: £80-120.
304. EDITH ISABEL BARROW (early 20<sup>th</sup> century). Coombe Martin Parish Church, North Devon. Signed lower left; watercolour: 8¾" x 11", in glazed frame (14½" x 16½" overall).  
Estimate: £40-60.
305. THOMAS UWINS, R. A., R.W.S. (1782-1857). A pencil drawing of a French park scene titled "La Rochelle", 5½" x 8½", in glazed frame (10½" x 14" overall); & JAMES JACKSON CURNOCK (Bristol 1839-1891). Two pencil drawings, titled "Henbury" & "The Cottage Porch, Newton St. Lowe", 3½" x 6" & 3¼" x 2½" respectively; each in glazed frame.  
Estimate: £50-75.
306. ROBERT HURDLE, R. W. A. (b. 1918). "The Domino Player, Café Conte, Fitzroy St., London", signed "Hurdle" lower right; charcoal on paper: 9¼" x 6"; framed & glazed (18¼" x 14½" over-all).  
Estimate: £70-100.
307. JAMES BEATTIE MICHIE (Scottish, 1891-1960). An extensive Mediterranean coastal landscape, inscribed & dated "Michie to Jenner, 1955" lower left; charcoal on paper: 17" x 34¼", in glazed frame. (24¼" x 41½" over-all).  
Estimate: £100-150.
308. RICHARD EWEN (1928-2009). "Too Late (Warnford, Hampshire)"; oil on canvas: 24" x 35¾", in gilt composition frame.  
Estimate: £100-150.

309. MARION BROOM, R. W. S. (1878-1962). A still-life study of flowers. Signed lower right; watercolour: 16¼" x 21¾", framed & glazed. Estimate: £150-200.
310. MARION BROOM, R. W. S. (1878-1962). A still-life study of a bowl of flowers, signed, watercolour: 9½" x 11½"; two similar still life studies, 8½" (circular) & 6¼" x 9¾"; & a similar study of a toy rabbit, 9¼" x 6½" (4), all framed & glazed.  
Estimate: £100-150.
311. HARRY E. HIME (1863-1933). A mountainous rural landscape with figure on a path to the fore. Signed "H. E. Hime" lower right. Watercolour: 27" x 18 ¾", in glazed giltwood & gesso frame (35" x 27" overall).  
Estimate: £50-100.
312. HENRI TEBBITT (1854-1927). Sailing vessels in calm waters. Signed lower right; watercolour: 16¾" x 33¾", in glazed oak frame (21½" x 38½" overall).  
Estimate: £40-60.
313. JOHN MOGFORD (1821-1885). A rural mountainous landscape with female figure & her dog on a path to the fore. Signed "John Mogford R. I." lower left; watercolour: 12½" x 19½".  
Estimate: £100-150.
314. Monogram W. J. B./E. J. B.(?), late 19<sup>th</sup> century. A pair of still life studies, one of vegetables & kitchenware, the other of porcelain & glass, each signed & dated '75; oil on artist's board, 5¼" x 7"; & another still life of daffodils, 10" x 7" (all un-framed). (3).  
Estimate: £50-100.
315. HENRY E. HOBSON, R.A. (fl. 1857-1866). Portrait of a young lady wearing red skirt, standing outside a stone building. Signed lower left; pastels: 13½" x 8¼", framed & glazed.  
Estimate: £70-100.
316. WILL ANDERSON (exhib. 1879-1895). Figures beside a country cottage signed lower left; watercolour: 7¾" x 5¾", framed & glazed. Estimate: £40-60.
317. CHARLES SIM MOTTRAM, R.B.A. (exhib. 1880-1919). "The Broken Mist", fishing boats off the Cornish coast; watercolour: 6¾" x 10¼"; signed lower right; framed & glazed.  
Estimate: £80-120.
318. DAVID COX Snr., O.W.S. (1783-1859). An estuary scene with figures in a rowing boat to the fore, a port & hills beyond. Signed lower left (twice), 5¾" x 8½", framed & glazed (14¾" x 17¾" over-all).  
Estimate: £200-300.
319. Manner of PETER La CAVE (1769-1811). A rural landscape with figure in a horse-drawn cart. Pen & watercolour: 4½" x 5¼", framed & glazed. (9¼" x 10½" over-all).  
Estimate: £100-150.

320. ENGLISH SCHOOL, late 19<sup>th</sup>/early 20<sup>th</sup> century. An extensive wooded landscape with figure & horses on a path to the fore. Oil on canvas: 48" x 72¼" (unframed, w.a.f.). Estimate: £70-100.
321. FERDERICK JAMES KNOWLES (1874-1941). Autumn landscape at Llanrhaiadr, North Wales; signed lower left; watercolour: 13" x 19½"; framed & glazed. Estimate: £50-100.
322. JOHN HAMILTON GLASS (fl. 1890-1925). "Harvest Time on Burns Water, East Lothian"; signed lower right; watercolour: 13¼" x 19¼"; framed & glazed. Estimate: £70-100.
323. ARTHUR SUKER (1857-1902). "Borrowdale", signed & dated 1877 lower left; watercolour: 11¾" x 18¾"; framed & glazed; & another by the same artist "Broad Strand Beach, North Devon"; signed lower left; watercolour: 11" x 19"; framed & glazed. Estimate: £100-150.
324. THOMAS PYNE (1843-1935). A river landscape with cattle grazing in the distance; signed & dated 1910 lower left; watercolour: 6¼" x 9¼"; framed & glazed. Estimate: £70-100.
325. JOSIAH WOOD WHIMPER, R. I. (1813-1903). A ploughing scene near Hazelmere; watercolour: signed & dated 1885 lower right; 6" x 8½"; framed & glazed. Estimate: £70-100.
326. JAMES ORROCK, R. I. (1829-1913). Deer in Windsor Park; signed & dated 18756; watercolour: 12½" x 19¼"; framed & glazed. Estimate: £100-150.
327. PERCY LANCASTER (1878-1951). "A Flower Girl". Signed with monogram lower right; watercolour: 13¼" x 9"; in glazed gilt frame. (18" x 22" over-all). Estimate: £150-250.
328. ENGLISH SCHOOL, 19<sup>th</sup> century. A head-&-shoulders portrait of a young girl holding an apple; oil on canvas: 17" x 13", in wide gilt gesso frame (29" x 25" over-all). Estimate: £100-150.
329. ENGLISH SCHOOL, late 19<sup>th</sup>/early 20<sup>th</sup> century. A half-length portrait of a gentleman, seated, wearing black jacket, holding spectacles & a book; oil on canvas: 40" x 30", framed. (45¾" x 35½" over-all). Estimate: £100-150.
330. J. D. MORRIS (active 1830-1905). A harbour scene at low tide with numerous sailing vessels. Signed lower right; oil on canvas: 12" x 20£; in wide glazed gilt frame. (21½" x 30" over-all). Estimate £50-70.
331. ENGLISH SCHOOL, 20<sup>th</sup> century. A still life of flowers in an urn, in the 18<sup>th</sup> century Dutch style; unsigned: oil on canvas: 36" x 23¾". Estimate: £100-150.

332. ROBERT GALLON (1845-1925). A sketch in oil titled: "At Kingsbury" & dated 4<sup>th</sup> June 1918; panel: 8" x 12<sup>3</sup>/<sub>4</sub>"; inscribed verso; in carved & pierced giltwood frame (10<sup>1</sup>/<sub>2</sub>" x 15<sup>1</sup>/<sub>2</sub>" over-all). Estimate: £150-200.
333. ENGLISH SCHOOL, late 18<sup>th</sup>/early 19<sup>th</sup> century. An Italianate landscape with a traveller & shepherdess to the fore. Oil on canvas: 17<sup>3</sup>/<sub>4</sub>" x 24<sup>1</sup>/<sub>4</sub>", in giltwood frame. (23<sup>1</sup>/<sub>4</sub>" x 29<sup>3</sup>/<sub>4</sub>" over-all). Estimate: £300-500.



Lot  
333

334. ITALIAN SCHOOL (20<sup>th</sup> century). A coastal scene with moored vessels & buildings to the fore, cliffs beyond. Signed indistinctly; oil on board: 30<sup>1</sup>/<sub>2</sub>" x 23<sup>3</sup>/<sub>4</sub>", In painted wooden frame. Estimate: £70-100.
335. SPANISH SCHOOL (21<sup>st</sup> century). Fishing vessels off Toledo, with windmills in the distance. Inscribed & dated 2002; oil on canvas: 18<sup>1</sup>/<sub>4</sub>" x 24", in foliate cushion frame. (26<sup>1</sup>/<sub>4</sub>" x 31<sup>3</sup>/<sub>4</sub>" over-all). Estimate: £50-70.
336. T. LEWIS (British, early 20<sup>th</sup> century). A boy with fishing rod, sitting barefoot on the end of a jetty. Signed & dated 1914; oil on panel: 20<sup>1</sup>/<sub>4</sub>" x 16". Estimate: £80-120.

Lot 337

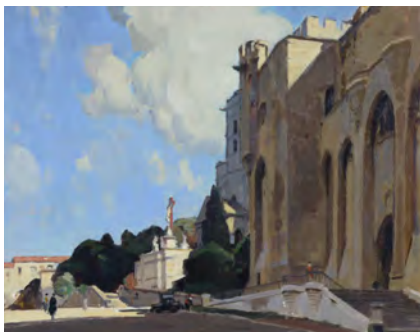
337. ROY FREER, NEAC, ROI, RI (b. 1938). Still life with flowers in a room interior. Signed lower right; oil on canvas: 16" x 13", in painted wooden frame. (22" x 19" over-all). Estimate: £200-300.
338. RICHARD PIKESLEY, PPNEAC, R. W. W. (b. 1951). "Still Life On Marble". Signed lower left & inscribed verso; oil on canvas: 16" x 24"; In painted wooden frame. (20" x 28" over-all). Estimate: £100-150.
339. PHILIP SUTTON, R.A. (b. 1928). An artist painting with nude model & flowers.



Signed & dated 2004 lower left; Pen & crayon on paper; 8" x 5½", in glazed frame. (16½" x 13½" over-all).

Estimate: £200-300.

340. ALEC WILES (1924-2020). a folio containing various sketches, monochrome watercolours, prints, etc. (approx. 20 in total), some mounted, mostly loose.  
Estimate: £50-100.
341. ANGELINA PRISCO (Italian. b. 1948). Two figures at a table in a room interior; signed "A. Prisco" lower right; black & coloured chalk on paper: 29¾" x 22¼", framed & glazed. (Ex: On The Wall Gallery, London).  
Estimate: £150-200.
342. SIMON POOLEY (Contemporary). "Raucous Rooks". Signed "S. Pooley" lower right; mixed media on panel: 24" x 24", in white painted wooden frame. (Ex. Adam Gallery, John Street, Bath).  
Estimate: £100-200.
343. COLIN KENT, R.I. (b. 1934). A mountainous landscape with forest & buildings to the fore. Signed lower right; mixed media on paper: 17¾" x 13¼"; framed, un-glazed. Estimate: £200-300.
344. After LOLÓ SOLDEVILLA (Cuban, 1901-1971). A 3-D wooden panel construction with abstract geometric designs, in white & black paint inscribed "LOLÓ '70", spray painted to reverse "Oppression"; 22" x 51¼" over-all.  
Estimate: £200-300.
345. Manner of BERNARDUS JOHANNES BLOMMERS (1845-1914). "Marken Islanders", full-length portrait of a female & infants with the sea beyond. Unsigned, oil on canvas: 52" x 35", in ornate ebonised & gold-painted frame. (61" x 43½" over-all).  
Estimate: £800-1200.
346. RICHARD JACK, RA, RI, RP, ARCA (1866-1952). "Chapelle de l'Oratoire, Avignon". Signed "Richard



Lot 346



Lot 347

Jack" lower left; oil on panel:  
18" x 22", in painted ornate  
frame 24" x 28¾" over-all).  
Estimate: £500-700.



Lot 349

347. JAMES WHITELOW  
HAMILTON, R. S. A., R. S. W.  
(1860-1932). "Sunshine and  
Shadow". Signed & dated  
1901 lower left; oil on canvas:  
16" x 20", in painted ornate  
frame. (22" x 26½" over-all).  
Estimate: £600-800.

348. JOSUE GABORIAUD (French  
1883-1955). "La Moisson"  
(The Harvest). Signed &  
dated 1936 lower right; oil on  
canvas: 18¼" x 24", in wide  
giltwood frame with inscribed  
plaque (24½" x 31" over-all).  
Estimate: £500-700.



Lot  
350

349. MARSHALL C. HUTSON, R. H. A. (1903-2001). "Stooking Corn" (County Kerry).  
Signed lower left; oil on boards: 22" x 19½". (Provenance: Acquired directly from  
the artist, thence by descent to the present owner. This lot includes various  
correspondence between the artist & the original owner.  
Estimate: £1000-1500.

350. THOMAS BLINKS (1853-1912). "The Chase". Signed & dated "T. Blinks 91" lower  
right; oil on canvas: 14" x 20", in giltwood frame (19" x 25" over-all). Ex: Richard  
Green, London.  
Estimate: £4000-6000.

351. No Lot.

352. No Lot.

### BOXES, METALWARE, WORKS-OF-ART, CLOCKS ETC.

353. A pair of 19<sup>th</sup> century Chinese silk embroidery panels, each decorated with birds  
amongst foliage, in matching ebonised frames; each 21¼" x 17" over-all.  
Estimate: £150-200.
354. A mid-20<sup>th</sup> century Chinese silk embroidery panel depicting an extensive river  
landscape with numerous cranes engaged in various activities, in glazed frame; 31" x  
50¼" over-all.  
Estimate: £70-100.

355. A pair of mid-20<sup>th</sup> century Chinese silk embroidery panels, depicting day & night scenes of cranes in a landscape, in matching glazed frames; each 23½" x 44¼" overall. Estimate: £70-100.
356. A group of five late 19<sup>th</sup>/early 20<sup>th</sup> century Chinese cloisonné shallow circular dishes, various decorated with flowers, birds, butterflies, etc., each of blue ground, 11¾"/12" diam.; two mounted for wall hanging. Estimate: £200-300.
357. A pair of late 19<sup>th</sup>/early 20<sup>th</sup> century Chinese bronze & cloisonné baluster vases, each with bands of archaistic decoration & zoomorphic side handles; 9¼" high. Estimate: £80-120.
358. A late 19<sup>th</sup>/early 20<sup>th</sup> century Chinese bronze & cloisonné enamel vase, the circular squat bowl on tapering stem, decorated with scrolling flowers & phoenix, with mask-&-ring side handles; 11¾" high. Estimate: £70-100.
359. A pair of late 19<sup>th</sup>/early 20<sup>th</sup> century Chinese bronze & cloisonné enamel vases, each with all-over archaistic decoration, cylindrical necks inset glass cabochon & with zoomorphic side handles, on pedestal foot; 12" high (each lacking one glass cabochon). Estimate: £80-120.
360. A late 19<sup>th</sup>/early 20<sup>th</sup> century Chinese cloisonné card case of rectangular form, with millefleur decoration & central divider, 4⅜" high; & two similar cloisonné bowls, 5" diam. & 4½" diam. (one with slight faults to rim). Estimate: £50-70.
361. A pair of 20<sup>th</sup> century bronzed figures of foo dogs, with gilt manes & tails, each 6¼" long x 5½" high. Estimate: £50-70.
362. A 19<sup>th</sup> century Japanese lacquer two-case inro with gilt & mother-o'-pearl floral decoration on a black ground, red interior with removable compartment, with cord & attached netsuke, 3" x 2¼"; & a leather purse decorated with a sparrowhawk & foliate metal mounts, 7" x 3". Estimate: £80-120.



363. A 19<sup>th</sup> century CHINESE SILK EMBROIDERED FAN, decorated with peacocks, cranes, butterflies, etc., in a tranquil landscape, with finely carved ivory guards, mother-of-pearl rivets, & engraved metal hinge with silk tassels, in original black & gilt lacquer case with painted interior; the fan 22½" wide (open) x 13¾" long; the box 15½" wide x 2¾" high x 3¼" deep.  
Estimate: £300-500.
364. ENGLISH SCHOOL, late 18<sup>th</sup> century. A portrait miniature of a gentleman wearing white neckerchief & blue coat, 2" x 1½" (oval), in ebonised rectangular frame; & another, early 19<sup>th</sup> century, of a gentleman wearing black coat, 3" x 2" (oval, w.a.f.).  
Estimate: £100-150.
365. ENGLISH SCHOOL, early 19<sup>th</sup> century A head & shoulders portrait miniature of a young lady wearing green jacket & lace collar. 2¾" x 1⅞" (oval), in rectangular black papier mâché frame.  
Estimate: £50-100.
366. DUTCH SCHOOL, early 19<sup>th</sup> century. A portrait miniature of a young man wearing blue coat & white stock, 2¼" x 1¾" (oval), in octagonal pearwood frame with moulded border.  
Estimate: £50-100.
367. Two 19<sup>th</sup> century Grand Tour bronze figures of Narcissus & Damoxenos, each on circular base; 5¼" & 4½" high.  
Estimate: £70-100.
368. A 19<sup>th</sup> century French ormolu figural candlestick with a classical figure seated on the dolphin support, on foliate scroll base, 11¼" high; & a French bronze figure titled: "Poesie", on rouge marble base, 11½" high. (w.a.f.).  
Estimate: £50-70.
369. An early-mid 20<sup>th</sup> century plaster model of a recumbent lion, on rectangular plinth base; 10½" x 5" x 5½" high.  
Estimate: £30-50.
370. A 19<sup>th</sup> century coconut cup, 3½" high, on calamarer socle base, 5¾" high x 4¾" diam. over-all.  
Estimate: £50-70.
371. An early carved wooden Corpus Christi, with polychrome decoration, 19" x 11½" over-all.  
Estimate: £80-120.
372. A 17<sup>th</sup>/18<sup>th</sup> century FLEMISH CARVED IVORY, EBONY, & TORTOISESHELL CRUCIFIX FIGURE, with Christ on the cross above an architectural niche with mosaic pavement, bordered by ripple-mouldings, & on plinth base with later claw feet; 28⅞" high x 9" wide x 3¼" deep.  
Estimate: £500-700.



373. A PAIR OF VICTORIAN GILT-BRASS LARGE ALTAR CANDLESTICKS, each with raised "fleur-de-lys" pierced gallery to the circular drip-pans, on reeded columns & stepped circular bases with lion-paw feet; 20½" high.

Estimate: £200-300.



Lot 374

374. A mid-19<sup>th</sup> century French rosewood, amboyna, & brass-inlaid liqueur cabinet, fitted removable tray with gilt brass handle & complete with four etched glass decanters & fourteen glasses, on bun feet; 13" wide x 10½" high x 9¾" deep.

Estimate: £150-250.

375. A late 19<sup>th</sup>/early 20<sup>th</sup> century Ox horn with silver-plated mount inset oval hardstone cabochon, on speltre bird's claw foot; 13½" wide x 10½" high.

Estimate: £70-100.

376. An early 19<sup>th</sup> century ram's horn snuff mull, with silver hinged & mounts (unmarked), engraved inscription "Thos. Inglis 1800" to the collar; 3" long.

Estimate: £150-200.

377. An 18<sup>th</sup> century white enamel rectangular snuff box, the hinged lid with monochrome decoration of an angler & his female companion in a parkland setting; 1" high x 2½" wide. (various areas of crazing, small losses of enamel).

Estimate: £150-200.

378. An 18<sup>th</sup> century turquoise enamel oval snuff box, with painted scene "Wrestling" to the hinged lid, 2" wide x 1" high. (various losses of enamel, hinge sound).

Estimate: £150-200.

379. A 19<sup>th</sup> century whale jaw-bone & ivory-handled walking stick, the

Lot 377



spiral-twist tapered shaft with octagonal upper part inset lozenge-shaped eyelets, terminating in a fist clutching a serpent; 32" long. (shaft broken & re-stuck approx. 2/3 down).

Estimate: £250-350.

380. A 19<sup>th</sup> century German leather dog collar, with white metal adjustable clasp fitted with brass padlock, with engraved inscription "Emil Höhner, Gafthop, Nieder Schlema", 17" long. (6" diam).  
Estimate: £150-200.



Lot 408

381. An early 20<sup>th</sup> century bronze figure of a young boxer, on plinth base; 10¼" high.  
Estimate: £50-70.

382. PAUL D'AIRE (French, fl. 1890-1910). A bronze sculpture of a laughing gentleman, standing on oval base signed "paul d'aire" & stamped 0627 to base; 9½" high.

Estimate: £150-250.



Lot 403

383. A late 19<sup>th</sup> century Staunton-type ivory chess set, of white & red stain, un-marked, the King 2¼" high, the pawn 1½" high; contained in a morocco leather rectangular box, 8" wide x 1½" high x 3½" deep; & a tooled crimson & tan leather board, 13¾" x 13½". (box w.a.f.).  
Estimate: £150-200.

384. A 19<sup>th</sup> century Boulle-type tortoiseshell & brass-inlaid needlework box, of rectangular form, the hinged lid with silk-lined interior, part-fitted with numerous implements, mother-o'-pearl bobbins, etc., 9½" wide x 2" high x 4¼" deep. (remnants of paper label to underside, slight faults).  
Estimate: £50-70.

385. An Art Deco ivory & tortoiseshell veneered cigarette box of rectangular form with rounded sides, 6¼" wide x 1¼" high x 3½" deep. Estimate: £60-80.

386. A late 19<sup>th</sup>/early 20<sup>th</sup> century tortoiseshell & mother-o'-pearl inlaid cigar case of rectangular form with floral decoration & hinged lid, 5½" high x 2½" wide x 1" deep.  
Estimate: £60-80.

387. A late 19<sup>th</sup>/early 20<sup>th</sup> century tortoiseshell veneered timepiece of baluster form with painted arched top, inset gilt-brass dial with Arabic numerals & eight-day movement,

on plinth base with ivory bracket feet; 6" high x 3½" wide.

Estimate: £120-150.

388. An early 20<sup>th</sup> century Art Nouveau brass & enamelled desk barometer, with 3½" paper dial, inset white enamel mercury thermometer below, in stylised pierced brass case; 9" wide x 15¼" high. Estimate: £70-100.
389. A late 19<sup>th</sup> century ebonised circular wall timepiece, the 12" dial with Roman numerals, single fusee movement stamped "W & H Sch" (Winterhalder & Hofmeier); 16" x 15½" over-all. (w.a.f., only one securing peg present). Estimate: £70-100.
390. A 19<sup>th</sup> century French mantel clock, the 3¼" diam. white enamel convex dial with blue roman numerals & Arabic five-minute divisions, eight-day movement striking on a bell, in cast gilt-metal ornate case; 15" high. Estimate: £80-120.
391. A 19<sup>th</sup> century French comtoise wall clock, the 9" diam. white enamel convex dial inscribed: "Cyprien Chaumeil à St. Julien-Lampon", with black roman numerals & Arabic calendar ring, eight day striking movement, in pressed brass decorative mount, the large pendulum similarly decorated. (w.a.f.). Estimate: £70-100.



392. A FINE GEORGE III LONGCASE CLOCK by (Thomas) "HELM, ORMSKIRK", the 13" brass & silvered dial with moon phase to the arch, minutes, hours, & days of the month, with subsidiary seconds dial, eight-day striking movement, engraved decoration & embossed spandrels, in figured mahogany case with swan-neck

pediment, quarter-round pilasters, boxwood inlay, & on bracket feet; 88½" high.  
Estimate: £300-500.

393. An early 19<sup>th</sup> century longcase clock with 12" painted dial with landscape decoration, in mahogany case with brass finials & turned pilasters to the hood; " high.  
Estimate: 70-100.

394. No Lot.



#### FURNITURE

395. A regency rosewood chiffonier with rectangular overhang top above a pair of velvet-lined glazed panel doors enclosing two shelves, flanked by turned full-round pilasters, & on plinth base; 40½" wide x 36" high x 18¾" deep.  
Estimate: £200-300.
396. A pair of 20<sup>th</sup> century Italian rectangular wall mirrors, each with arched top, in segmented mirror borders & gold-painted beaded wooden frame; 19¾" wide x 38½" high.  
Estimate: £80-120.
397. A 1960's MYGGE coffee table produced by CADO & designed by Poul Cadovius & Sussanne Fjeldsoe, the circular top with hand painted, ebonised & gilt decoration on an aluminium trumpet-shaped base, 38½" diam. x 15½" high. Estimate: £300-500.
398. A contemporary ceramic centre table with circular bevelled plate glass top, the base signed J. Mazioni (?), 50¾" diam. x 29¾" high. Estimate: £80-120.
399. A pair of 20<sup>th</sup> century Italian faux-giltwood twin-branch wall sconces, each with foliate carved & pierced husk-swag back, ribbon-bow crest, & scroll arms; 21½" high x 9½" wide.  
Estimate: £50-70.

400. A 20<sup>th</sup> century Italian faux-giltwood electrolier with six scroll arms, on foliate carved baluster centre column; 21" wide x 24" high. Estimate: £80-120.
401. A 20<sup>th</sup> century silvered metal dressing table mirror with rectangular plate in neo-classical style frame with foliate surmount, & on pierced scroll supports; 15½" wide x 25½" high x 13¼" deep. Estimate: £70-100.
402. A 20<sup>th</sup> century Louis XVI style window seat, upholstered striped silk damask, with scroll sides, in painted foliate-carved frame, & on fluted tapering legs; 37" wide x 27½" high x 19¼" deep. Estimate: £80-120.
403. A GOYARD of PARIS STEAMER TRUNK, the exterior with all-over printed design, wooden ribs, leather edges, brass mounts & side handles, the fabric-lined interior with removable tray, on ball bearing castors, 35½" wide x 13½" high x 21" deep. w.a.f. (lacking key). Estimate: £2000-3000
- 403A. A 20<sup>th</sup> century silvered-metal electrolier of foliate design, with five scroll arms; 36" wide. Estimate: £80-120.
404. A Venetian style cut-glass chandelier, with five scroll arms with applied flower heads, & hung with prism drops; " wide x " high. (wired for electricity). Estimate: £100-150.
405. A Victorian burr-walnut veneered card table, the rectangular fold-over top with rounded corners, moulded edge & inset green baize surface, on turned supports with carved cabriole legs & centre stretcher; 36~" wide x 28" high x 21" deep. (slight faults – some bubbling to top veneer, stretcher loose at one end). Estimate: £70-100.



406. A VICTORIAN OAK REFECTORY TABLE, with rectangular overhang top, fitted frieze drawer to one end, on turned supports with plain stretchers & bun feet; 65" long x 33½" wide x 29½" high. Estimate: £200-300.
407. A late Victorian large standing oak bookcase, with moulded cornice above three adjustable shelves, enclosed by pair of glazed panel doors, a cupboard below, & on square legs; " wide x " high. Estimate: £150-200.

408. Moorish hardwood three-fold screen with carved, moulded & pierced decoration & hinged central compartment, 67½" wide x 6' high. Estimate: £400-600.
409. A late 19<sup>th</sup> century Aesthetic movement ebonised cabinet in the oriental style, with engraved brass mounts, fitted adjustable long shelf enclosed by bevelled glass doors, on short turned feet, 45" wide x 36" high x 14" deep. Estimate: £200-300.
410. A circular wall mirror in oak frame with carved oriental decoration, bears label for "J. L. George, 805 Avenue Road, Shanghai, China" (Chinese Beaux Arts carving). 23" diam. Estimate: £50-70.
411. A Persian rug of crimson ground with central lozenge motif surrounded by multicoloured geometric floral designs within multiple narrow borders, 54" wide x 87" long. Estimate: £70-100.
412. A Persian runner of pink ground with multicoloured repeating geometric design within a narrow border, 27" wide x 100" long. Estimate: £70-100.
413. A Chinese hardwood square urn stand with carved & pierced frieze, on slender shaped supports, 12" wide x 30" high x 12" deep. Estimate: £100-150.
414. A Chinese carved hardwood altar table, inset plate glass to the scroll-ended top above a carved & pierced frieze, on long square legs, 50" wide x 34" high x 15¾" deep. Estimate: £200-300.
415. A Chinese part silk rug of pink ground with central floral medallion surrounded by different floral design, with wide green border, 37" wide x 67" long. Estimate: £60-80
416. A continental-style pale grey painted wooden frame easy chair with padded back & sprung seat upholstered pale blue geometric material, & on slender cabriole legs. Estimate: £50-100.
417. A Choli Kilim rug of bright multicoloured repeating geometric design within a narrow border, 33" wide x 51" long. Estimate: £50-70.
418. A Persian pattern rug, of rust red ground, with all over repeating geometric design & central lozenge motif with in multiple narrow borders in dark blue, orange, ochre, & ivory, 54" wide x 6'7" long, (worn). Estimate: £60-80.
419. A Georgian-style small chest of four long graduated drawers with brass swan-neck handles, on bracket feet; 25¼" wide x 30¾" high x 17½" deep. (converted from a chest-commode). Estimate: £50-100.

420. A late Victorian mahogany three-tier buffet or dumb waiter, with carved scroll pediment, fitted two frieze drawers, & on turned front supports; 42" wide x 45" high x 20" deep. Estimate: £150-200.
421. A Georgian mahogany large corner display cabinet with moulded dentil cornice, fitted three shaped shelves enclosed by pair of astragal glazed doors, on tapered legs with pad feet, 47½" wide x 75½" high. Estimate: £50-100.
422. A late 19<sup>th</sup>/early 20<sup>th</sup> century oak sectional bureau-bookcase by Lebus, with arched stage top above a fall-front enclosing fitted interior, with frieze drawer & glazed "up & over" door below, on plinth base with cabriole front supports; 34¾" wide x 53¾" high x 17½" deep. (w.a.f.). Estimate: £80-120.
423. A French cherrywood sleigh bed retailed by Liberty of London, with scrolled head & foot boards, flared side rails, & complete with base; 35½" wide x 75" long. Estimate: £80-120.
424. A late Victorian mahogany wall hanging display cabinet of rectangular form, with moulded cornice, glazed sides, enclosed by pair of astragal glazed panel doors; 38½" wide x 26¾" high x 10" deep. Estimate: £70-100.
425. A Baluchi rug of madder ground with central geometric design surrounded by multiple borders, 33" wide x 57" long. Estimate: £60-80.
426. A Choli kilim runner of ivory ground with central row of four lozenges within multiple geometric borders, 25" wide x 83" long. Estimate: £60-80.
427. A 19<sup>th</sup> century mahogany bureau, the fall-front enclosing a fitted interior above an arrangement of five drawers with later brass oval handles, on ogee bracket feet; 36" wide x 39" high x 18¾" deep. (w.a.f.). Estimate: £70-100.
428. A Victorian regency-style triple-panel overmantel inset later mirror plate, with reeded ebonised dividers, in foliate rope-twist borders with architectural cornice; 58¼" wide x 25¼" high. Estimate: £80-120.
429. A Georgian mahogany D-end dining table with plain top & frieze, on fluted square legs, with removable centre leaf, 75" wide x 52" deep x 29" high x 51" without centre leaf. Estimate: £80-120.
430. A set of eight late 19<sup>th</sup>/early 20<sup>th</sup> century Chippendale-style mahogany dining chairs (including pair of elbow chairs), with carved decoration to the pierced open splat backs, padded drop-in seats & on cabriole legs with claw-&-ball feet. Stamped "G. W.". Estimate: £150-200.
431. An early 19<sup>th</sup> century mahogany side table with plain rectangular top, fitted full length frieze drawer with later brass handles, on square tapered legs, 32" wide x 29½" high x 18" deep. Estimate: £60-80.

432. A Victorian mahogany large cylinder-front desk with moulded gallery to the top, above fully-fitted interior with retractable writing surface, supported by two pedestals, each fitted three graduated drawers with turned wooden handles, 60" wide x 49" high x 32" deep.  
Estimate: £300-500.

433. An oak rocking elbow chair, with cane back & rush seat on barley-twist & turned supports; & another ladder-back oak rocking chair with rush seat.  
Estimate: £50-70.



Lot 432

434. An Edwardian low armchair with rounded back, upholstered yellow floral silk, on bun feet with brass castors, 31½" wide (across arms) x 32¾" high x 37" deep. (14" from floor to seat).  
Estimate: £40-60.
435. A 19<sup>th</sup> century mahogany Pembroke table with rounded corners to the drop leaves, fitted drawer to one end & a mock-drawer to the other, each with later ceramic handles, on square tapered legs, 30½" wide x 28½" high x 18" deep. (37¾" when open).  
Estimate: £70-100.
436. An early 19<sup>th</sup> century chest, with plain rectangular top, fitted two short & four long graduated drawers with turned wooden handles, on splay bracket feet, 41¼" wide x 46" high x 19" deep.  
Estimate: £80-120.
437. An Edwardian inlaid mahogany small cylinder-front desk, with fitted interior & retractable writing surface above two frieze drawers with circular brass handles, on square tapered legs with ceramic castors, 29½" wide x 42½" high.  
Estimate: £70-100.
438. A reproduction mahogany torchere, with moulded edge to the circular top, on vase-turned & fluted tapering column & three cabriole legs, 42" high, the top 11¾" diam. (one leg repaired).  
Estimate: £30-50.
439. A William IV maple pole banner screed inset octagonal floral needlework panel, on turned centre column & triform base with lion-paw feet; with inscription verso; 60" high x 21" wide.  
Estimate: £30-50.

440. A George II-style rectangular wall mirror in fret-carved mahogany veneered frame with gilt ho-ho bird, marquetry oval shell & gilt inner slip, inset mirrored glass plate, 19¾" wide x 36" high. Estimate: £80-120.
441. A Meshwari runner of madder ground, with repeating geometric design to the centre within a wide border, 22" wide x 102" long. Estimate: £70-100.
442. A 19<sup>th</sup> century mahogany oval drop-leaf dining table in the mid-18<sup>th</sup> century style with carved cabriole legs & claw-&-ball feet, 47" wide x 26½" (71¼" open). Estimate: £100-150.
443. A Meshwari runner of madder ground, with central row of five lozenges with in multiple geometric borders, 24" wide x 103" long. Estimate: £70-100.
444. An oak draw-leaf dining table, on bulbous turned end supports joined by a centre stretcher, 84¼" long open, 48" long with leaves closed x 33" wide x 29½" high. Estimate: £80-120.
445. A set of five Cromwellian-style dining chairs (four single & one elbow) with brass-studded tan leather seats & backs, on bulbous turned legs with "H" stretchers. Estimate: £70-100.
446. A George III elm dresser, with open shelves above three frieze drawers with brass oval handles, on flat rectangular legs, 72½" wide x 72½" high x 18¾" deep. Estimate: £300-400.



Lot 446

447. An oak hall chair or back-stool, with panelled back, hard seat, & on turned supports (incorporating early elements). Estimate: £40-60.
448. An antique oak oval gate-leg dining table fitted end drawer, & on baluster-turned legs & turned feet with turned stretchers, 38½" wide x 27¾" high. Estimate: £60-80.

449. A late 18<sup>th</sup> century mahogany & oak large hanging corner cupboard, fitted four shaped shelves enclosed by arched fielded panel door, with moulded cornice & canted sides; 38½" wide x 53" high x 20" deep. Estimate: £30-40.
450. Two large 19<sup>th</sup> century copper preserve pans, 15" & 17" diam.; & a ditto "Quart" measure, 6¾" high. Estimate: £50-100.
451. A 19<sup>th</sup> century copper cylindrical log bucket with brass overhang handle; 12½" diam. x 11" high. Estimate: £50-100.
452. A 19<sup>th</sup> century copper & brass helmet-shaped coal scuttle; three various fire implements; two toasting forks; & two pierced brass hob-stands. Estimate: £40-60.
453. A pierced brass fender in the neo-classical style, on lion-paw feet; 46½" wide. Estimate: £70-100.
454. A 20<sup>th</sup> century wrought-iron & mesh firescreen of scroll design, with applied brass fleur-de-lys; 25" wide x 33" high. Estimate: £50-70.
455. A 19<sup>th</sup> century brass coal bucket with lion-mask & ring side handles, on three lion-paw feet; 11½" wide x 6¾" high. Estimate: £30-50.
456. An early 20<sup>th</sup> century Arts & Crafts carved oak firescreen, depicting two terriers looking towards a worried cat, on square supports; 40" wide x 29½" high (each panel 15" wide). Estimate: £50-70.
457. A late Victorian carved beech two-tier lamp table inset two humorous painted tiles, depicting foxes running to their den, & a lone hound inscribed "Joke", on oriental-style square supports; 14" wide x 30" high x 14" deep. (split to one edge of top). Estimate: £50-70.
458. An early 20<sup>th</sup> century inlaid mahogany kneehole writing desk, inset gilt-tooled green leather to the top, above an arrangement of five graduated drawers with brass ring handles, on square tapered legs with ceramic castors, 35¼" wide x 29½" high x 19" deep. Estimate: £70-100.
459. An early 19<sup>th</sup> century mahogany chest of two short & three long graduated drawers with turned wooden & mother-of-pearl inlaid handles, on tall bracket feet, 47" wide x 40¾" high x 19½" deep. Estimate: £70-100.
460. A late Victorian wing-back armchair in the George I style, the padded back, seat, & scroll arms upholstered floral fabric, on carved claw-&-ball front legs with Cope's patent recessed brass castors. Estimate: £150-200.

461. A wing-back armchair upholstered brass-studded tan leather, on wooden cabriole legs. Estimate: £100-150.



462. A Geo III inlaid mahogany tilt-top dining table with crossbanded & reeded edge to the circular top, on vase-turned centre column & four splay legs with brass toes & castors, 52" diam. x 29¼" high. (restored in places, new platform, re-polish, etc.) Estimate: £100-150.
463. A set of six Georgian mahogany ladder-back dining chairs with pierced & shaped backs, brass studded tan leather saddle-shaped seat, on square reeded legs with "H" stretchers. Estimate: £100-150.
464. A regency mahogany sofa table, fitted two frieze drawers to one end with brass foliate ring handles, on turned centre column & reeded sabre legs with brass lion-paw castors; 31½" wide x 29" high x 30¾" deep. (with later adapted supports; one leg repaired, 55½" wide with leaves open). Estimate: £80-120.
465. A Maimana kilim runner of ochre ground with multicoloured geometric design & central row of four lozenges with in a wide border, 25" wide x 79" long. Estimate: £40-60.
466. A Suzni kilim runner of madder ground, with brightly coloured repeating geometric design within a narrow border, 31" wide x 126" long. Estimate: £70-100.

467. A late 18<sup>th</sup>/early 19<sup>th</sup> century mahogany hanging corner cabinet with moulded dentil cornice, fitted three shaped shelves enclosed by an astragal glazed door, 30¼" wide x 42¼" high x 17½" deep. Estimate: £60-80.
468. A Victorian mahogany chest with rounded corners to the plain rectangular top, fitted two short & three long graduated drawers with later brass swan-neck handles, on short turned feet, 35½" wide x 45¼" high x 16½" deep. Estimate: £70-100.
469. A late 18<sup>th</sup>/early 19<sup>th</sup> century mahogany chest-on-chest with moulded dentil cornice, fitted with an arrangement of nine graduated drawers & brushing slide with brass handles & escutcheons, on ogee bracket feet, 43" wide x 68" high. Estimate: £150-200.
470. A FOUR POSTER BED, with Georgian carved mahogany end-posts, the rest of modern construction, " wide x " high " x " deep. Estimate: £150-200.
471. A Maimana kilim rug, of ochre ground with central repeating design & wide border, 32" wide x 62" long. Estimate: £40-60.
472. A small Maimana kilim rug, of ochre ground with central repeating design & narrow border, 24" wide x 35" long. Estimate: £20-30.
473. A Choli kilim rug, of ivory ground with repeating multicoloured geometric design surrounded by multiple narrow borders, 41" wide x 62" long. Estimate: £70-100.
474. An early Victorian walnut roll-top desk with tambour shutter, enclosing a fitted interior with retractable writing surface, above two frieze drawers with brass ring handles, on ring-turned legs with ceramic castors, 36" wide x 38¼" high x 21¾" deep. Estimate: £100-150.
475. An Edwardian inlaid mahogany circular extending dining table with one addition leaf, on square tapered legs with brass castors, 48" diam. x 68" with the leaf inserted x 29¼" high. Estimate: £80-120.
476. A Georgian-style mahogany wake table, with drop leaves to the plain oval top, on eight square reeded legs, 90" long x 18" wide (60" when open). Estimate: £150-200.
477. A set of eight mahogany Chippendale-style dining chairs (including a pair of elbow chairs) with pierced splat backs, saddle-shaped padded drop-in seats & on reeded square chamfered legs. Estimate: £200-300.
478. A set of four Sheraton-style mahogany dining chairs with carved decoration to the open splat backs, padded floral needlework seats & on square tapered legs. Estimate: £100-150.

479. An 18<sup>th</sup> century walnut side table, fitted three frieze drawers with shaped brass swan-neck handles & escutcheon, with shaped apron & on slender cabriole legs with pad feet, 48" wide x 33¼" high x 22½" deep. Estimate: £150-200.
480. An 18<sup>th</sup> century mahogany chest-on-chest, with moulded cornice above three short and six long graduated drawers with engraved brass swan-neck handles, on ogee bracket feet; wide x high x deep. Estimate: £300-500.
481. A regency mahogany & satinwood crossbanded demi-lune card table, inset green baize to the fold-over top, on slender square tapered legs, 35¼" wide x 28¼" high x 17½" deep. Estimate: £150-200.
482. A William IV mahogany frame library armchair with padded buttoned tall back & sprung seat upholstered in woven horse hair, having open scroll arms, on turned octagonal front legs with ceramic castors. (signs of wear commensurate with age/use; various old repairs to legs). Estimate: £200-300.



483. AN EARLY VICTORIAN MAHOGANY HALL BENCH, with turned bolsters to each end, on fluted baluster legs, 60" wide x 22" high x 14" deep. Estimate: £300-400.



484. A WILLIAM IV SATINWOOD DWARF OPEN BOOKCASE with crossbanded rectangular top above a moulded frieze & egg-&-dart border, fitted open shelves to the centre with a cupboard either side enclosed by fielded panel doors, on plinth base, 66¼" wide x 36" high x 17" deep. Estimate £300-400.
485. A SET OF FOUR VICTORIAN GILT BRASS WALL LIGHTS, each with "trident-fork" backs, & three scroll arms; " wide x " high. Estimate: £300-400.

486. A 19<sup>th</sup> century FRENCH FRUITWOOD BREAK-FRONT CABINET, possibly pearwood, fitted one long & two short drawers above adjustable shelves enclosed by four glazed arch doors with applied carved & moulded decoration, on plinth base, 71½" wide x 49½" high x 20" deep. Estimate: £400-600.
487. A LOUIS XIV-STYLE GILTWOOD RECTANGULAR SERVING TABLE with rouge marble top & carved & on tapered square legs, 55" wide x 31¼" high x 19¾" deep. Estimate: £300-400.
488. AN EARLY 20<sup>TH</sup> CENTURY LARGE MAHOGANY DISPLAY CABINET, fitted three adjustable glass shelves enclosed by pair of glazed doors above a cupboard with single adjustable shelf, enclosed by pair of fielded panel doors, on plinth base, 61½" wide x 85" high x 15" deep. Estimate: £300-500.



**END OF SALE**

\*\*\*\*\*

# **FORTHCOMING SALES**

## **Decorative & Household Sale**

Tuesday 12<sup>th</sup>  
October

## **Collectors Sale**

Tuesday 26<sup>th</sup>  
October

## **Decorative & Household Sale**

Tuesday 9<sup>th</sup>  
November

## **Fine Art & Antiques Sale**

Tuesday 30<sup>th</sup>  
November

## **Decorative & Household Sale**

Tuesday 14<sup>th</sup>  
December

## **Collectors Sale**

Tuesday 21<sup>st</sup>  
December



*Aldridges*  
of Bath Ltd.

*Fine Art & Chattel Auctioneers*

**WE ARE CURRENTLY ACCEPTING  
ENTRIES  
FOR ALL FUTURE AUCTIONS**

please visit our website for further information



**[www.aldridgesofbath.com](http://www.aldridgesofbath.com)**