

JEWELLERY, WATCHES & SILVER

14TH & 15TH SEPTEMBER 2021
LIVE ONLINE **EDINBURGH**





JEWELLERY, WATCHES & SILVER

TUESDAY 14 &
WEDNESDAY 15
SEPTEMBER 2021
AT 10AM

Sale Number **LT661**

CONTACT

EDINBURGH
+44 (0) 131 557 8844
info@lyonandturnbull.com

VIEWING BY APPOINTMENT

Viewing at 33 Broughton Place
Edinburgh EH1 3RR will be
available by appointment from
Saturday 11th until Tuesday
14th September 10am-4pm

BIDDING AT THIS SALE

ONLINE, TELEPHONE &
COMMISSION BIDDING

Please see the guide to
bidding on page 84

BOOK A VIEWING APPOINTMENT

To book a viewing time please either

CALL +44 (0) 131 557 8844

EMAIL info@lyonandturnbull.com

BOOK ONLINE www.lyonandturnbull.com/appointment-bookings

Front cover

Lot 20

Left

Various watches
by Rolex [detail]

BUYER'S GUIDE

This sale is subject to our Standard conditions of Sale (available at the back of every catalogue and on our website).
If you have not bought before we will be delighted to help you.

BUYER'S PREMIUM

The buyer shall pay the hammer price together with a premium, at the following rate, thereon.
25% up to £300,000 / 20% thereafter.
VAT will be charged on the premium at the rate imposed by law (see our Conditions of Sale at the back of this catalogue).

ADDITIONAL VAT

- † VAT at the standard rate payable on the hammer price
 - ‡ Reduced rate of 5% import VAT payable on the hammer price
 - Ω Standard rate of import VAT on the hammer price
- Lots affixed with ‡ or [Ω] symbols may be subject to further regulations upon export /import, please see Conditions of Sale for Buyers Section D.2.
- No VAT is payable on the hammer price or premium for books bought at auction.

DROIT DE SUITE

§ indicates works which may be subject to the Droit de Suite or Artist's Resale Right, a royalty payment for all qualifying works of art. Under new legislation which came into effect on 1st January 2012, this applies to living artists and artists who have died in the last 70 years. This royalty will be charged to the buyer on the hammer price and in addition to the buyer's premium. It will not apply to works where the hammer price is less than €1,000 (euros). The charge for works of art sold at and above €1,000 (euros) and below €50,000 (euros) is 4%. For items selling above €50,000 (euros), charges are calculated on a sliding scale. More information on Droit de Suite is available at www.dacs.org.uk

REGISTRATION

All potential buyers must register prior to placing a bid. Registration information may be submitted in person at our registration desk, by email, or on our website. Please note that first-time bidders, and those returning after an extended period, will be asked to supply the following documents in order to facilitate registration:

- 1 – Government issued photo ID (Passport/Driving licence)
- 2 – Proof of address (utility bill/bank statement).

We may, at our option, also ask you to provide a bank reference and/ or deposit.

By registering for the sale, the buyer acknowledges that he or she has read, understood and accepted our Conditions of Sale (available at the back of every catalogue and on our website).

BIDDING & PAYMENT

For information on bidding options see our Guide to Bidding & Payment at the back of the catalogue.

REMOVAL OF PURCHASES

Responsibility for packing, shipping and insurance shall be exclusively that of the purchaser. See Collections & Storage section for more info specific to this particular auction.

CATALOGUE DESCRIPTIONS

All item descriptions, dimensions and estimates are provided for guidance only. It is the buyer's responsibility to inspect all lots prior to bidding to ensure that the condition is to their satisfaction. There will be no public viewing for this auction, our specialists will be happy to prepare condition reports and additional images. These are for guidance only and all lots are sold 'as found', as per our Conditions of Sale.

IMPORT/EXPORT

Prospective buyers are advised that several countries prohibit the importation of property containing materials from endangered species, including but not limited to; rhino horn, ivory, coral and tortoiseshell. Accordingly, prospective buyers should familiarise themselves with all relevant customs regulations prior to bidding if they intend to import lots to another country. It is the buyer's sole responsibility to obtain any relevant export or import licence. The denial of any licence or any delay in obtaining licences shall neither justify the recession of any sale nor any delay in making full payment for the lot.

ENDANGERED SPECIES

Please be aware that lots marked with the symbol **Y** contain material which may be subject to CITES regulations when exporting outside the EU. For more information visit <http://www.defra.gov.uk/ahvla-en/imports-exports/cites>

COLLECTION OF PURCHASED LOTS

Due to social distancing requirements, all collections will be by appointment only (this applies to both carriers and personal collections).

BOOK ONLINE www.lyonandturnbull.com/appointment-bookings

CALL 0131 557 8844

Please ensure payment has been made prior to collection. This can be done by bank transfer, and debit/credit card online (powered by Opayo) - details will be shown on your invoice.

Please note we are unable to take payments over the phone.

MEET THE **SPECIALISTS**

At Lyon & Turnbull we want to make buying at auction as easy and enjoyable as possible. Our specialist team are on hand to assist you, whether you are looking for something in particular for your home or collection, require more detailed information about the history or current condition of a lot, or just want to find out more about the auction process.



Ruth Davis Head of Department
ruth.davis@lyonandturnbull.com



Kier Mulholland Jewellery & Silver
kier.mulholland@lyonandturnbull.com



Sarah Fergusson Head of Watches
sarah.fergusson@lyonandturnbull.com



Trevor Kyle Consultant
trevor.kyle@lyonandturnbull.com

COLOURED GEMSTONE & DIAMOND GUIDE

Historically many gemstones have been subjected to a variety of treatments to enhance their appearance. Certain enhancements, such as heating, are commonly used to improve colour or transparency in rubies and sapphires.

Emeralds are also frequently treated, usually with oils or resin, for the same purpose. Other methods, including staining, dyeing, coating or irradiation, may have been used on other gemstones including Jade and associated hardstone that may have been bleached (usually in acid), polymer/resin filled or dyed, or a combination of any of these treatments. The international jewellery trade has generally accepted these methods.

Heat enhancement of colour is usually permanent, however, in some cases; this may have an impact on the durability of the gemstone. Gemstones that have been oiled may require reoiling after a number of years in order to retain their optimum appearance.

It is, in suitable cases, Lyon & Turnbull's policy to obtain gemmological reports from internationally recognised gemmological laboratories describing certain gemstones sold

by Lyon & Turnbull. In the event that Lyon & Turnbull have been given, or have obtained, reports for any lot in the sale these reports will be mentioned in the catalogue description. However, it is not feasible for Lyon & Turnbull to obtain a gemmological report for each gemstone offered for sale by Lyon & Turnbull. If no report is published in the catalogue prospective buyers should assume that the gemstones may have been enhanced by some method. However, please note that there may not be consensus between different laboratories on the degrees or types of treatment for any particular gemstone. Prospective buyers should be aware that Lyon & Turnbull's pre-sale estimates assume that gemstones may have been subjected to such treatments.

ALL DIMENSIONS, WEIGHTS ARE APPROXIMATE.

DIAMOND GRADING TERMS

Where printed in the catalogue, estimated diamond grades for colour and clarity are intended as guides for prospective buyers. Lyon & Turnbull do not guarantee these estimated grades due to the limitations of mounts and settings.

DIAMOND COLOUR

GIA	CIBJO	EXPLANATION
D	Exceptional White + (EW+)	Face up colourless - Face down colourless
E	Exceptional White (EW)	-
F	Rare White + (RW+)	-
G	Rare White (RW)	-
H	White (W)	Face up colourless - Face down slightly tinted
I / J	Slightly Tinted White (STW)	-
K / L	Tinted White (TW)	Face up slightly tinted - Face down obviously tinted
M to Z	Tinted Colour (TC)	Face up obviously tinted - Face down obviously tinted
Fancy	Fancy Colour	Face up definite colour



DIAMOND CLARITY

GIA	CIBJO	EXPLANATION
Flawless (FL)	Loupe Clean (LC)	Shows no inclusions or blemishes under 10x magnification
Internally Flawless (IF)		Shows no inclusions and only insignificant blemishes under 10x magnification
Very Very Slightly Included (VVS) VVS1 / VVS2	Very Very Small Inclusions (VVS) VVS1 / VVS2	Minute inclusions, which are difficult, even for an experienced grader, to locate under 10x magnification
Very Slightly Included (VS) VS1 / VS2	Very Small Inclusions (VS) VS1 / VS2	Minor inclusions, observable with effort under 10x magnification
Slightly Included (SI) SI1 / SI2	Small Inclusions (SI) SI1 / SI2	Noticeable inclusions under 10x magnification
Included (I) I1 / I2 / I3	Pique (P) P1 / P2 / P3	Obvious inclusions, visible to the unaided eye, face up. These may affect the stone's beauty and durability.

ORDER OF SALE

Lot No. **TUESDAY 14TH SEPTEMBER AT 10AM**

- 1-223** Jewellery
- 224-232** Pens
- 233-301** Watches

Lot No. **WEDNESDAY 15TH SEPTEMBER AT 10AM**

- 302-336** Coins & Medals
- 337-361** Foreign Silver & Other Metalwares
- 362-406** Modern Silver
- 407-413** Scottish & Provincial Silver
- 414-479** Antique Silver



Above
Lot 54 [detail]



Above
Lot 199 [detail]

JEWELLERY



1

1

A VICTORIAN 15CT GOLD SAPPHIRE AND DIAMOND BANGLE

of hinged design, set with an oval-cut sapphire and two old round-cut diamonds, concealed clasp and safety chain

Internal diameter: 5.6cm

£400-600

2

AN EARLY 20TH CENTURY SEED PEARL AND AMETHYST NECKLACE

of open scrolling and foliate design, set throughout with seed pearls and a circular and pear-shaped amethyst, stamped 15ct

Length of central drop: 6.5cm

£300-500

3

A 9CT GOLD MULTI-GEM ACROSTIC RING

collet set with a graduated row of round-cut ruby, emerald, garnet, amethyst, ruby, diamond and sapphire, the shank with engraved detail

Ring size: N/O

£250-400



6

4

AN AMETHYST AND PEARL SET LONG-CHAIN

the belcher links set at intervals with round-cut amethysts and freshwater pearls, unmarked

Length: 150cm

£300-500

5

A 19TH CENTURY PORTRAIT MINIATURE BRACELET

composed of five panels with bi-coloured foliate detail, each with an oval glazed panel showing a handpainted portrait miniature of a lady or gentleman in profile, two additional engraved foliate links, concealed clasp, unmarked

Length: 19.5cm

£1,000-1,500

6

A HARDSTONE CAMEO BROOCH

depicting a woman in profile, in a plain unmarked border, to a belcher link chain

Cameo: 5cm x 4cm

£500-700

7

A SAPPHIRE AND DIAMOND CLUSTER RING

claw set with an oval blueish-green sapphire, in a border of round brilliant-cut diamonds, to a plain 18ct gold shank

Ring size: Q

£400-600



5

8



10

15

8

A PAIR OF SAPPHIRE AND DIAMOND CLUSTER EARRINGS

each claw set with a round-cut sapphire, in a single border of round brilliant-cut diamonds, to post and butterfly fittings, unmarked

£400-600

9

A SAPPHIRE AND DIAMOND CLUSTER RING

claw set with an oval-cut sapphire, in a single border of graduated round brilliant-cut diamonds, to a plain unmarked shank

Ring size: K

£800-1,200



9



14

10

A SAPPHIRE NECKLACE

composed of a single row of spectacle set oval and cushion-cut sapphires, to a hook clasp, unmarked

Length: 46cm

£600-800

11

A SAPPHIRE BRACELET

composed of a single row of spectacle set oval and cushion-cut sapphires, to a hook clasp, unmarked

Length: 15.5cm

£300-500

12

A DIAMOND PENDANT NECKLACE AND MATCHING EARRINGS

the pendant of stylised foliate design, claw set with a round brilliant-cut diamond, to an unmarked trace link chain; together with a pair of pendent earrings of matching design, to post and butterfly fittings (2)

Length of pendant: 3.3cm

£250-400

13

A THREE-STONE DIAMOND RING

claw set with three slightly graduated round brilliant-cut diamonds, to an 18ct gold shank; together with an 18ct gold diamond set eternity ring (2)

Ring size: J (both)

£350-400

14

A SINGLE STONE DIAMOND RING

claw set with a trilliant-cut diamond, to a plain 18ct gold shank

Ring size: I, estimated diamond weight: 0.60cts

£500-700

15

A LATE VICTORIAN PEARL AND DEMANTOID GARNET NECKLACE

of floral scrolling design, set throughout with seed pearls and small round-cut demantoid garnets, to an integral rope-twist chain, stamped 15ct, in a fitted tooled leather box for Hamilton & Inches ... Edinburgh

Overall length: 42cm

£500-700

16

A VICTORIAN MOURNING RING

set with a seed pearl, with black and gold enamel detail throughout, stamped WM 18

Ring size: L/M

£180-250

17

A BELLE ÉPOQUE DIAMOND PENDANT NECKLACE

of circular outline, millegrain set throughout with graduated old round-cut diamonds, rose-cut diamond detail, unmarked, to a trace link chain; in a fitted tooled leather box for Hamilton & Inches ... Edinburgh

Diameter of pendant: 2.7cm

£700-1,000

18

A SINGLE STONE DIAMOND RING

claw set with an old round-cut diamond, each shoulder collet set with two graduated baguette-cut diamonds, to a plain shank

Ring size: N, estimated principal diamond weight: 1.05cts

£1,500-2,500

19

A DIAMOND BRACELET

composed of forty-three clusters of round brilliant-cut diamonds, to a concealed clasp

Length: 18cm

£700-1,000



20

20

A MULTI-GEM THISTLE BROOCH

collet set with a cushion-cut diamond, in a border of channel set calibre-cut emeralds, rubies and graduated round brilliant-cut diamonds, unmarked

Length: 2.3cm

£700-1,000

21

A SINGLE STONE DIAMOND RING

claw set with an old round-cut diamond, each shoulder set with three eight-cut diamonds, to a plain shank, stamped 18CT PLAT

Ring size: O, estimated principal diamond weight: 0.70cts

£600-800

22

A NATURAL SALTWATER PEARL NECKLACE

composed of a single strand of natural saltwater pearls, to a box clasp set with nine half-pearls, unmarked; together with a single strand of graduated cultured pearls, to an eight-cut diamond clasp (2)

Length: 44cm & 50cm

£400-600



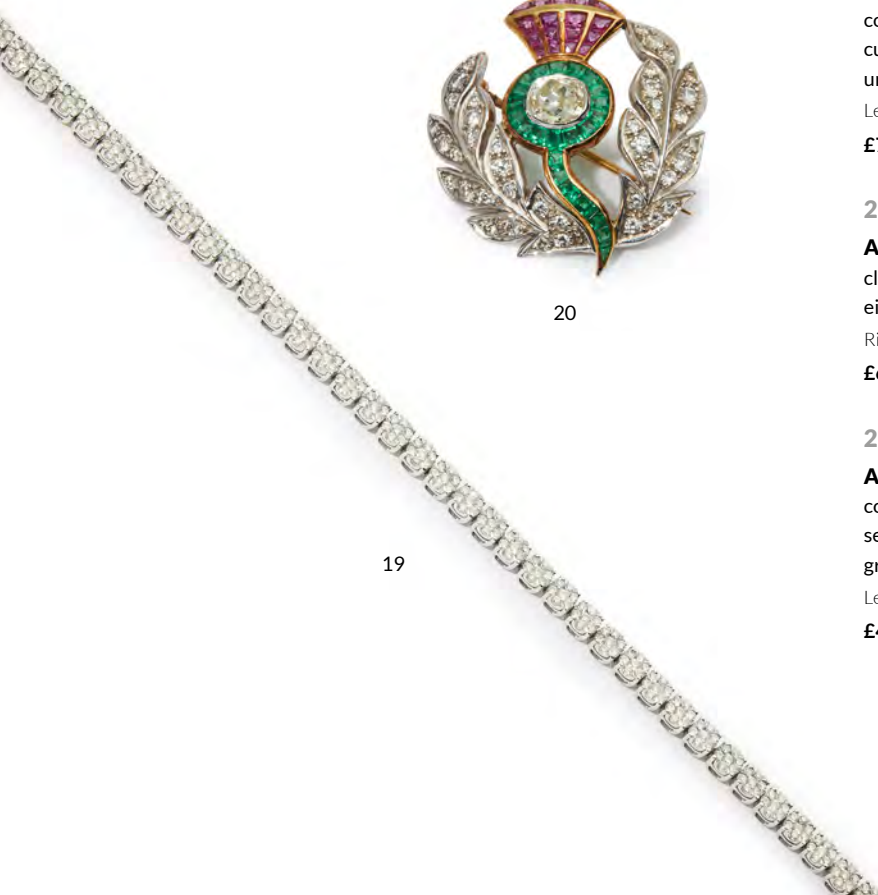
17



18



21



19



23

23

**A CULTURED PEARL AND
DIAMOND NECKLACE**

composed of two rows of cultured pearls,
the clasp of pierced scrolling design, set
throughout with old round, eight and
baguette-cut diamonds, unmarked

Length of shortest strand: 48cm

£2,000-3,000



24

24

**A MID-20TH CENTURY CORAL
AND DIAMOND COCKTAIL RING**

claw set with a tall cabochon coral, in a
scalloped border set at intervals with
small round brilliant-cut diamonds,
shank with ribbed detail, unmarked

Ring size: M

£1,000-1,500

25

**A PAIR OF CORAL AND
TURQUOISE EARRINGS**

each collet set with a
polished turquoise panel
and a cabochon coral, to
post and butterfly fittings

Length: 4cm

£500-700

26

A TURQUOISE AND DIAMOND BROOCH

modelled as a stylised flower, set with cabochon turquoise and graduated round brilliant-cut diamonds, unmarked

Length: 7.5cm

£600-800

27

A PAIR OF TURQUOISE AND DIAMOND EARRINGS, BY JULIUS COHEN

each modelled as a floral spray, set with graduated cabochon turquoise and round brilliant-cut diamonds, with textured 14ct gold 'leaf' motifs, to clip fittings, signed *Julius Cohen*

Length: 3.5cm

£600-800

28

A DIAMOND RING

claw set with an emerald-cut diamond in a raised surround with pavé-set eight-cut diamond clusters in a rope-twist border, the band of rope-twist detail, stamped 14K

Ring size: K, estimated principal diamond weight: 1.10cts

£2,000-3,000

29

A DIAMOND BRACELET

composed of interlocking links, set with twelve small cushion-cut diamonds, concealed clasp, unmarked

Length: 20cm, estimated total diamond weight: 1.00cts

£350-500



26

27



28



32

30

A PAIR OF MABÉ PEARL EARRINGS, BY TIFFANY & CO

each set with a mabé pearl in a ribbed surround, to clip fittings, stamped TIFFANY & CO 18K, in a black suede box for Tiffany & Co

Diameter: 2cm

£300-500

31

A PINK SAPPHIRE AND DIAMOND PENDANT NECKLACE

claw set with an oval-cut pink sapphire in a border of small round brilliant-cut diamonds, to a 9ct gold flattened trace link chain

Length of pendant (inc. bale): 1.6cm

£200-400

32

A PAIR OF MID-CENTURY DIAMOND AND RUBY EARRINGS AND MATCHING RING

each with a central cluster of round brilliant-cut diamonds, in a border of round-cut rubies and scrolling ribbed surround, earrings with clip fittings (2)

Ring size: L (approx)

£700-1,000

33

A MULTI-GEM BRACELET

claw set with eleven oval-cut coloured gemstones, including garnet, tourmaline, aquamarine, garnet etc., to a concealed clasp, stamped 750

Length: 18cm

£400-600

34

A PAIR OF GARNET AND TOURMALINE EARRINGS

each set with various faceted pink and orange garnet and tourmaline beads, to hook fittings, unmarked

Length: 6.5cm

£300-400

35

A PAIR OF 'HAPPY DIAMOND' EARRINGS, BY CHOPARD

each of square outline, the glazed panel with a single 'loose' diamond, to post and butterfly fittings, signed Chopard, 750 83/2938-20 978919 8; in original navy leather Chopard box

Width: 1cm

£400-600

36

A PAIR OF PRASIOLITE AND DIAMOND PENDENT EARRINGS

each set with a large pear-shaped mixed-cut prasiolite, suspending from curving links set with small round-cut diamonds and prasiolites, modelled in blackened gold, to post and butterfly fittings

Length: 7.7cm

£800-1,200

37

A TOURMALINE COCKTAIL RING

collet set with a fancy cushion-cut pinkish-purple tourmaline, to a plain 18ct gold shank

Ring size: L (approx.)

£600-800



42



39



37



36

38

A COLOURED SAPPHIRE NECKLACE

composed of a single row of spectacle set oval and pear-shaped coloured sapphires, to a hook clasp,

Length: 46cm

£600-800

39

A THREE-STONE DIAMOND RING

claw set with three graduated round brilliant-cut diamonds, to a plain yellow metal shank stamped 18k

Ring size: K, estimated total diamond weight: 1.45cts

£700-1,000

40

AN AQUAMARINE AND SAPPHIRE RING

collet set in a swivelling mount with a cabochon aquamarine, each shoulder set with a cabochon sapphire, to a plain 18ct yellow gold mount

Ring size: L/M

£300-500

43



41

A SINGLE STONE DIAMOND RING

collet set with a round brilliant-cut diamond, to a plain 18ct gold shank; together with a 9ct gold diamond set half eternity band, pavé set with round brilliant-cut brownish-orange diamonds (2)

Ring size: N & M

£300-500

42

A MODERN DIAMOND CLUSTER RING

the central round brilliant-cut diamond cluster in a double border of channel-set tapered baguette-cut diamonds and round brilliant-cut diamonds, to a plain 18ct gold shank

Ring size: P, estimated total diamond weight: 2.00cts

£600-800

43

A RUBY AND DIAMOND BRACELET

set with a row of alternating groups of five square step-cut rubies and a princess-cut diamond, stamped 750

Length: 17.5cm

£800-1,200

44

AN 18CT WHITE GOLD RUBY AND DIAMOND PENDANT, BY MAPPIN & WEBB

claw set with an oval and a pear-shaped ruby, each in a border of round brilliant-cut diamonds, joined by a small round brilliant-cut diamond set cluster; to an 18ct white gold trace link chain

Length of pendant: 2.6cm

£1,000-1,500



45

45

A RUBY AND DIAMOND DRESS RING

claw set with a cushion-cut ruby, the cross-over band set with baguette and round brilliant-cut diamonds, to a plain shank, stamped 18CT PLAT

Ring size: K, estimated ruby weight: 2.49cts

£3,000-5,000



47

46

A RUBY AND DIAMOND CLUSTER RING

claw set with an oval-cut ruby in a border of baguette-cut diamonds, to a plain 9ct gold shank

Ring size: P/Q

£400-600



46

47

AN OPAL AND AMETHYST PENDANT NECKLACE

composed of a polished cabochon amethyst, collet set with an oval cabochon opal in a border of small round-cut diamonds, suspended from a pavé set diamond bale, stamped 750, to a trace link chain, stamped 925

Length of pendant (inc. bale): 3.4mm

£600-800

48

AN OPAL AND DIAMOND CLUSTER RING

claw set with an oval cabochon opal, in a single border of fourteen eight-cut and two baguette-cut diamonds, plain 18ct gold shank

Ring size: R

£300-500

49

AN OPAL AND DIAMOND BANGLE

of hinged design, with scrolling detail throughout, set with seven oval cabochon opals between eight-cut diamond details, modelled in 9ct gold

Internal width: 5.5cm

£300-500

50

A BOULDER OPAL AND DIAMOND PENDANT

claw set with a pear-shaped boulder opal with three applied small round-cut diamonds, to a 9ct gold flattened link chain

Length of pendant (inc. bale): 3.6cm

£300-500

51

TWO OPAL RINGS

the first claw set with five oval cabochon opals, to a plain unmarked shank; the second set with three oval cabochon opals between two trio's of graduated cushion-cut diamonds, to an 18ct gold shank (2)

Ring sizes: R/S & R

£300-500

52

A COLLECTION OF LOOSE GEMSTONES AND AGATES

to include various smokey quartz and citrines, tourmalines, amethyst and zircons; turquoise and rhodonite cabochons, cameos, malachite cabochons; amazonite, chrysoprase, moonstones, banded and moss agates, tiger's eye etc (qty)

£300-500

53

AN UNHEATED BLUE SAPPHIRE AND VARIOUS LOOSE GEMSTONES

to include an heated cushion-cut Madagascan blue sapphire, five further blue sapphires, various cuts (not tested), ten various coloured star-sapphires; a selection of very small diamonds and a small diamond octahedral crystal; a pink Kunzite, four citrines, various garnet cabochons; a selection of zircons, various cuts and colours, a pink and a yellow topaz, three chrysoprase cabochons and various small jade carvings/cabochons (qty)

£500-700



55 [Detail]

53 [Detail]

54 [Detail]



53 [Detail]

54

AN UNHEATED PINK SAPPHIRE AND VARIOUS LOOSE GEMSTONES

including an unheated Madagascan octagonal step-cut pink sapphire; three further pink to violet-hued unmounted sapphires; two star-sapphires, a large octagonal step-cut chrysoberyl; six various coloured spinels, four cat's-eye chrysoberyls; six pink and green tourmalines and a selection of opal doublets (qty)

£500-700

55

AN UNHEATED YELLOW SAPPHIRE AND VARIOUS LOOSE GEMSTONES

to include a rectangular cushion-cut Madagascan unheated yellow sapphire, a larger greenish-yellow octagonal step-cut yellow sapphire and a smaller oval-cut example (both untested); five various-cut pink sapphires, two round-cut yellow topaz; three oval aquamarines, an emerald cabochon and a small square step-cut emerald; a selection of various coloured tourmalines, various opal cabochons and two fire-opals (qty)

£500-700



56

A FIVE-STONE DIAMOND RING

claw set with five graduated old round-cut diamonds, to a plain shank, unmarked

Ring size: N, estimated total diamond weight: 1.40cts

£400-600

57

A DIAMOND HALF ETERNITY RING

set with a row of alternating round brilliant and baguette-cut diamonds, unmarked; together with a plain platinum band (2)

Ring sizes: J (both)

£400-600

58

A SINGLE STONE DIAMOND RING

claw set with a round brilliant-cut diamond, stamped 750

Ring size: P, estimated diamond weight: 0.50cts

£400-600

59

A PAIR OF DIAMOND STUD EARRINGS

each claw set with a princess-cut diamond, to post and butterfly fittings, stamped 750 18K

Estimated total diamond weight: 1.00cts

£400-600

60

AN AQUAMARINE NECKLACE

spectacle set with a single row of oval and cushion-cut aquamarines, to a hook clasp, indistinctly marked

Length: 48.5cm

£600-800

61

A PAIR OF AQUAMARINE AND DIAMOND EARRINGS

set with a cushion-cut aquamarine, below a row of four cushion-cut diamonds, to post and screw back fittings, unmarked

Length: 1.9cm

£3,000-5,000

62

AN EDWARDIAN MULTI-GEM PENDANT

of open foliate design set throughout with seed pearls, the central drop set with a round-cut peridot, a seed pearl and a cushion-cut aquamarine, stamped 15, to a trace link chain

Length of pendant: 5cm

£300-500

63

AN EMERALD BRACELET

set with a single row of square step-cut emeralds, concealed clasp stamped 9k

Length: 20cm

£300-500

64

AN EMERALD AND DIAMOND CLUSTER RING

claw set with a marquise-cut emerald, in a border of graduated round brilliant-cut diamonds, to a plain platinum shank

Ring size: Q, estimated emerald weight: 3.60cts

£1,500-2,500

65

AN EMERALD AND DIAMOND RING

claw set with five oval-cut emeralds between two rows of round brilliant-cut cubic zirconia, stamped 925; together with an emerald bracelet set with pear-shaped emeralds, stamped 925 (2)

Ring size: P

£200-300



64



67



66

66

AN EMERALD AND DIAMOND RING

claw set with an oval-cut emerald, the split shank set with graduated round brilliant-cut diamonds, stamped 18k; with accompanying American International GemLab report, dated 16.07.21, numbered GEM2021031637536, stating that the emerald is 2.57cts, showing evidence of minor clarity enhancement

Ring size: M

£3,000-5,000

67

AN EMERALD AND DIAMOND CLUSTER RING

claw set with a square emerald-cut emerald, in a border of round brilliant-cut diamonds, to a plain platinum shank

Ring size: M/N, estimated gem total weights: emerald 11.30cts, diamonds 1.14cts

£1,500-2,500

68

A PAIR OF EMERALD AND DIAMOND PENDENT EARRINGS

each composed of foliate links set with small cushion-cut diamonds, suspending a polished emerald drop, to hook fittings, unmarked

Length: 4.5cm

£2,500-4,000

69

AN EMERALD AND DIAMOND THREE-STONE RING

claw set with an oval-cut emerald, flanked to either side by a princess-cut diamond, to a plain 18ct gold shank

Ring size: J/K

£300-500



68

70

A THREE-STONE DIAMOND RING

claw set with three graduated round brilliant-cut diamonds, to a plain platinum shank

Ring size: L, estimated total diamond weight: 0.75cts

£400-600

71

A DIAMOND HALF ETERNITY RING

claw set with a row of alternating princess and baguette-cut diamonds, in a border of round brilliant-cut diamonds, to a plain 18ct white gold shank

Ring size: R, estimated total diamond weight: 1.45cts

£600-800

72

A THREE-STONE DIAMOND RING

claw set with three round brilliant-cut diamonds, to a plain 18ct gold shank

Ring size: Q/R

£1,000-1,500

71



72



73



73

A SAPPHIRE AND DIAMOND THREE-STONE RING

claw set with a round-cut blue sapphire, flanked to either side by a round brilliant-cut diamond, to a plain shank, unmarked

Ring size: O/P

£3,000-3,500

74

A SAPPHIRE AND DIAMOND BANGLE

of hinged design, collet set with a oval-cut sapphire in a pierced surround set throughout with round brilliant-cut diamonds, the back with pierced circular detail, unmarked

Internal width: 6cm

£2,500-4,000



74



75

75

A PAIR OF SAPPHIRE AND DIAMOND PENDENT EARRINGS

each collet set with six graduated round brilliant-cut diamonds, terminating in a claw set pear-shaped sapphire drop, to post and butterfly fittings, stamped 750

Length: 2.8cm, estimated total gem weights: sapphires: 3.44cts, diamonds 0.57cts

£3,000-5,000



76

76

A SINGLE STONE DIAMOND RING

claw set with a single round brilliant-cut diamond, to a plain platinum shank

Ring size: J, estimated diamond weight: 2.00cts

£5,000-7,000



77

77

A SINGLE STONE DIAMOND RING

claw set with a round brilliant-cut diamond, the stepped shoulders each set with three rose-cut diamonds, to a plain unmarked shank

Ring size: P

£400-600

78

A MODERN DIAMOND CLUSTER RING

the central cluster of twelve princess-cut diamonds claw set above a double row of channel set round brilliant-cut diamonds, modelled in 9ct gold

Ring size: P/Q

£700-1,000



78

79

A DIAMOND DRESS RING

set with a central cluster of six princess-cut diamonds, each shoulder set with six graduated princess-cut diamonds and ten small round brilliant-cut diamonds, to a plain 14ct gold shank

Ring size: P

£400-600



87



88



94



89

80

A BLUE TOPAZ AND AMETHYST NECKLACE, BY DEAKIN & FRANCIS

composed of belcher links, set at intervals with alternating oval-cut amethyst and blue topaz, stamped 750

Length: 41cm

£400-600

81

AN 18CT GOLD DIAMOND MULTI-GEM BRACELET

claw set with three rows of oval-cut peridots, citrines, amethysts and aquamarines, in a beaded border, with small round brilliant-cut diamond detail, concealed clasp

Length: 18.5cm

£700-1,000

82

A TOPAZ AND DIAMOND PENDANT

claw set with an emerald-cut blue topaz, below a small round brilliant-cut diamond, to a plain bale, unmarked

Length (inc. bale): 2.2cm

£300-500

83

A PAIR OF EMERALD PENDANTS

each claw set with an emerald-cut emerald, in an unmarked mount (2)

Estimated emerald weights: 2.60cts & 3.60cts

£400-600

84

A PAIR OF ONYX AND EMERALD PENDENT EARRINGS

each set with an oval-shaped emerald, suspending a polished onyx drop, to post and butterfly fittings, stamped 750

Length: 5cm

£400-600

85

A DIAMOND HALF ETERNITY RING

channel set with baguette-cut diamonds, to a plain platinum shank

Ring size: P/Q, estimated total diamond weight: 1.00cts

£250-400

86

A DIAMOND ETERNITY RING

claw set with a single row of eight-cut diamonds, engraved detail to sides, stamped PLAT

Ring size: N, estimated total diamond weight: 0.75cts

£300-500

87

A THREE-STONE DIAMOND RING, BY VERA WANG

claw set with a princess-cut diamond, flanked to either side by a round brilliant-cut diamond, the shoulders and gallery pavé set with small round brilliant-cut diamonds, stamped 18k

Ring size: K, estimated total diamond weight: 1.30cts

£800-1,200

88

A DIAMOND CLUSTER RING

claw set with seven round brilliant-cut diamonds, to a plain shank, stamped 750

Ring size: Q/R

£700-1,000

89

A DIAMOND RING

claw set with a round brilliant-cut diamond, flanked by two tapered baguette-cut diamonds, in an eight-cut diamond set surround

Ring size: Q/R

£700-1,000

90

A DIAMOND HALF ETERNITY RING

claw set with eleven round brilliant-cut diamonds, to a plain shank stamped 14k

Ring size: N/O

£300-500

91

A PAIR OF DIAMOND STUD EARRINGS

each claw set with a small round brilliant-cut diamond, to post and butterfly fittings, unmarked

Estimated total diamond weight: 0.50cts

£300-500

92

AN EARLY 20TH CENTURY DIAMOND PENDANT/BROOCH

of floral design, set throughout with graduated old round-cut diamonds, unmarked, detachable brooch fitting, diamond set bale, to a trace link chain; in a fitted box for Hancock & Son ... Manchester

Estimated principal diamond weight: 0.50cts

£700-1,000

93

A VICTORIAN CORAL AND DIAMOND PENDANT

of circular outline, set with a central old round-cut diamond, in a border of rose-cut diamonds and pear-shaped cabochon corals, glazed panel to reverse, unmarked

Diameter: 3cm

£1,200-1,800

94

A DIAMOND CLUSTER RING

claw set with a round brilliant-cut diamond, in a border of eight smaller round brilliant-cut diamonds, shank stamped 18CT PLAT

Ring size: L/M, estimated total diamond weight: 4.00cts

£2,500-4,000

95

A DIAMOND BRACELET

composed of round brilliant-cut diamond clusters between two rows of round brilliant-cut diamonds, to a concealed clasp

Estimated total diamond weight: 7.35cts

£2,000-3,000

92



96



93



96

A PAIR OF PEARL AND DIAMOND CLUSTER EARRINGS

each set with a central pearl in a border of old round-cut diamonds, modelled in unmarked white metal, to post and butterfly fittings, in a tooled red leather box by Cartier

Overall diameter: 13mm

£1,500-2,500

97

A PEARL AND DIAMOND SET CLUSTER RING

set with a central bouton pearl in a single border of rose-cut diamonds, to a plain shank stamped 18ct

Ring size: R

£300-500

98

A PEARL AND EMERALD NECKLACE

composed of three rows of cultured pearls, each strand with four emerald bead spacers, to an 18ct gold pierced emerald and diamond set clasp

Length: 34.5cm

£400-600

99

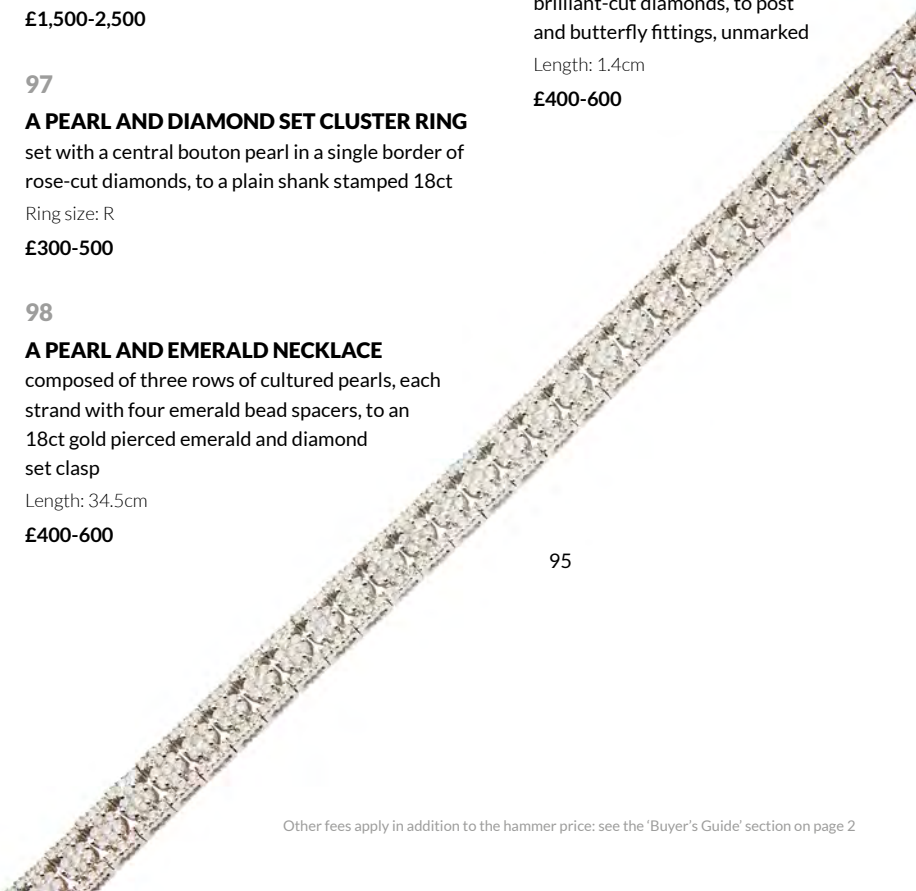
A PAIR OF DIAMOND AND PEARL CLUSTER EARRINGS

each set with two cultured pearls and two trios of small round brilliant-cut diamonds, to post and butterfly fittings, unmarked

Length: 1.4cm

£400-600

95





100

100**A THREE-STONE DIAMOND RING**

claw set with three round brilliant-cut diamonds, to an 18ct gold shank

Ring size: N, estimated total diamond weight: 1.60cts

£1,200-1,800**101****A DIAMOND CLUSTER RING**

claw set with an emerald-cut diamond in a border of round brilliant-cut diamonds, the shoulders each set with eight round brilliant-cut diamonds, to a plain shank; with accompanying E.G.L. report, dated 18th November 2014, numbered EGL3411169530, stating that the principal diamond is 0.71cts, D colour and VS2 clarity; together with a platinum half eternity ring, claw set with sixteen round brilliant-cut diamonds (2)

Ring size: N & N, principal diamond weight: 0.71cts

£1,800-2,500**102****A DIAMOND CROSS**

of traditional design, channel set with baguette-cut diamonds, set with a central round brilliant-cut diamond, stamped 18k; to a trace link chain, stamped 925

Estimated total diamond weight: 0.54cts

£400-600**103****A PAIR OF DIAMOND EARRINGS**

each set with five graduated old round-cut diamonds, to post and butterfly fittings, unmarked

Length: 2cm

£2,000-3,000

103

104**A SINGLE STONE DIAMOND RING**

claw set with a round brilliant-cut diamond, to a plain 18ct gold shank, with accompanying report by Gemmological Institute of America, dated 04.03.2019, numbered 2328136118, stating that the diamond is 0.70cts, G colour and VS2 clarity

Ring size: I, stated diamond weight: 0.70cts

£800-1,200**105****A DIAMOND BAR BROOCH**

with applied pavé set rose-cut diamond bird motif, stamped 9ct

Length: 4.5cm

£400-600**106****A DIAMOND AND PEARL BAR BROOCH**

with applied spider motif, set with three round-cut diamonds, a cultured pearl and cabochon ruby eyes, unmarked

Length: 4cm

£400-600**107****A MULTI-GEM NOVELTY BROOCH**

modelled as a fly, set with an oval-shaped sapphire, rose-cut diamonds, a small pearl and two ruby eyes, unmarked

Width: 2.7cm

£500-700

104

108**AN AUSTRIAN TURQUOISE AND PEARL NECKLACE**

the central motif of pierced scrolling design, with enamel detail and set throughout with cabochon turquoise, mabé pearls and four small pink gems, engraved detail to reverse, to a belcher link chain, unmarked

Length of centre front: 4cm

£250-400**109****A CARVED CARNELIAN RING**

the oval carnelian with engraved arabic script, collet set to a plain satin finish band

Ring size: L

£300-400**110****AN ONYX INTAGLIO RING**

collet set with a polished oval onyx intaglio with Arabic script, to a plain satin finish shank

Ring size: L/M

£300-400**111****AN AQUAMARINE AND SAPPHIRE SWIVEL RING**

collet set with an oval cabochon aquamarine in a swivel setting, each shoulder set with a small cabochon sapphire, to a plain satin finish shank

Ring size: L (approx.)

£500-700**112****A MULTI-GEM BRACELET AND EARRINGS**

the bracelet spectacle set with various oval-cut coloured gems including amethyst, aquamarine, garnet, citrine etc, to a hook clasp, stamped 585; the earrings of matching design, to hook fittings (2)

Length: 18cm & 4cm

£500-600



101

113

A MULTI-GEM BRACELET

the links set at intervals with an oval-cut ruby, sapphire and emerald and collet set round brilliant-cut diamonds, stamped 18k

Length: 19cm

£400-600

114

A RUBY PENDANT

channel set with seven rectangular step-cut rubies, to a flattened curb-link necklace, both stamped 750

Length of pendant (Inc. bale): 2.5cm

£300-600

115

A RUBY BROOCH

of scrolling design, set throughout with graduated round-cut rubies, unmarked

Length: 3.8cm

£500-700

116

A THREE-STONE DIAMOND RING

claw set with three graduated old round-cut diamonds, to a plain shank, stamped PLAT, together with a synthetic sapphire and diamond set ring, claw set with a round-cut synthetic sapphire, flanked to either side by an old round-cut diamond, to a plain shank, stamped 18CT & PT (2)

Ring size: N & N

£400-600

117

A SYNTHETIC SAPPHIRE AND DIAMOND CLUSTER RING

claw set with an oval mixed-cut synthetic sapphire, in a single border of eight-cut and old round-cut diamonds, to a plain 18ct gold shank

Ring size: M

£400-600

118

A SAPPHIRE AND DIAMOND CLUSTER RING

claw set with an oval-cut sapphire, in a border of round brilliant and baguette-cut diamonds, to a plain shank

Ring size: M

£600-800



111

112

119

TWO CASED GENTLEMAN'S DRESS SETS

the first comprising a pair of cufflinks, two collar studs and four buttons, all of circular outline set with an onyx panel and pearl detail to centre, in a fitted box for Harrods ... London; together with another cased mother of pearl and sapphire gentleman's dressing set, stamped 9ct, in a fitted box for Wilson & Sharp ... Edinburgh; and a pair of oval cufflinks with engine turned detail stamped 9ct SILVER (3)

£400-600

120

A GENTLEMAN'S ONYX AND DIAMOND DRESS SET

comprising a pair of cufflinks, a tie-clip and a pendant, each set with a rectangular polished onyx panel with applied collet set diamond detail, stamped 18k (3)

Cufflink terminals: 2.1 x 1.1cm

£400-600

121

A PAIR OF 9CT GOLD ENAMEL CUFFLINKS

each of terminal of oval outline with guilloche enamel detail of various game birds, in a fitted box for Garrard & Co ... London

Width of cufflink terminal: 2cm

£400-600

122

AN 18CT GOLD SYCAMORE BROOCH, BY HAMILTON & INCHES

modelled as an intertwined leaf and seed pod

Width: 6cm

£300-500

123

A 9CT GOLD CURB LINK BRACELET

to a 9ct gold padlock clasp

Gross weight: 33.4g

£400-600

124

A COLLECTION OF 9CT GOLD JEWELLERY, BY OLA GORIE

to include a St Magnus brooch, two stylised floral brooches, one with a matching pair of earrings; and a pair of pierced pendent earrings (5)

£350-500

125

A 9CT GOLD CURB LINK BRACELET

composed of two rows of graduated curb links

Length: 19cm, gross weight: 26.4g

£300-400

126

A 9CT GOLD CHARM BRACELET

composed of fancy links, suspending various charms including a driving licence, a kangaroo, a pair of fish etc.

Gross weight: 49.8g

£600-800

127

A VICTORIAN BANGLE

of broad hinged design, with ribbed detail, unmarked; together with a modern fancy link bracelet, stamped 9c, to a 9ct gold heart-shaped padlock clasp (2)

Internal width of bangle: 5.8cm

£450-600



132

128

A 14CT GOLD WATCH CHAIN

rope-twist, with a pearl set join, with a dog clip clasp

£500-800

129

A COLLECTION OF BRACELETS

to include a 9ct gold gate-link bracelet with padlock clasp; three further 9ct gold fancy link bracelets (4)

Gross weight: 28.6g

£300-500

130

A COLLECTION OF BRACELETS

to include a 9ct rose gold fancy link bracelet, a 9ct oval and circular link bracelet to a padlock clasp; and a gate link bracelet, set at intervals with ten oval cabochon opals, stamped 9ct (3)

Gross weight: 39g

£450-700

131

A 9CT GOLD CHARM BRACELET

composed of fancy links, suspending various charms including a cowboy boot, a racing car, a horse etc

Gross weight: 28.3g

£350-500

132

A 9CT GOLD CHARM BRACELET

composed of curb links, suspending various charms including a sombrero, a lobster, an Eiffel tower etc.

Gross weight: 75.6g

£800-1,200

133

THREE 9CT GOLD CHAINS

each composed of fancy links (3)

Gross weight: 32.8g

£350-500

134

A FANCY LINK LONGCHAIN

composed of fancy links, stamped 9ct

Gross weight: 32.9g

£400-600



126

135

A COLLECTION OF NECKLACES

to include a 9ct gold fancy link necklace, four further belcher or trace link necklaces, unmarked; and a Grosse gold plated multi-chain necklace (6)

£450-600

136

AN 18CT GOLD NECKLACE

composed of flattened fancy links, the clasp modelled as a bow

Length: 48cm, gross weight: 28.4g

£300-500

137

A 9CT GOLD NECKLACE AND BRACELET

each composed of fancy rope-twist and polished links, to lobster clasp (2)

Length: 41cm & 19.5cm, gross weight: 27.4g

£300-500

138

TWO 9CT GOLD FLATTENED CURB LINK CHAINS

each composed of plain polished links

Gross weight: 48.4g

£400-600

139

A 9CT GOLD DOUBLE ALBERT

composed of graduated curb links, with T-bar suspension, citrine swivel fob and coin pendant

Length: 63cm, gross weight: 54.8g

£400-500

140

A 9CT GOLD ID BRACELET

composed of flattened curb links, the plaque engraved 'Richard'

Length: 20cm, gross weight: 49.8g

£500-600

141

A SMALL 9CT GOLD AND DIAMOND COMPACT

of square online with engine turned detail, applied diamond-set double heart-motif, foliate thumb piece

5.7cm x 5.7cm

£600-800

142

TWO 9CT GOLD NECKLACES

to include a fitted and textured flattened link necklace, to a lobster-type clasp; together with a faceted bead necklace, to a bolt-ring clasp (2)

Gross weight: 53.7g

£500-700

143

A 9CT GOLD DOUBLE ALBERT

composed of graduated curb links, with T-bar suspension

Overall length: 39cm, gross weight: 37.9g

£400-600

144

A 9CT GOLD DOUBLE ALBERT

composed of graduated curb links, T-bar suspension

Overall length: 42cm, gross weight: 40g

£400-600

145

A 9CT GOLD ALBERT

composed of graduated curb links, T-bar suspension and locket

Overall length: 37cm, gross weight: 39.8g

£200-300



141

146

A LATE 19TH CENTURY ALBERT

formed of curb links, with a dog-clip clasp and a lobster clasp, marked 18

Length overall: 32cm, gross weight: 37g

£500-600

147

A 9CT GOLD ALBERT

formed of graduated curb links, each marked 9.375, with a dog-clip clasp also marked 9.375 and T-bar marked 9c

Gross weight 24.9g, overall length 32cm

£250-400

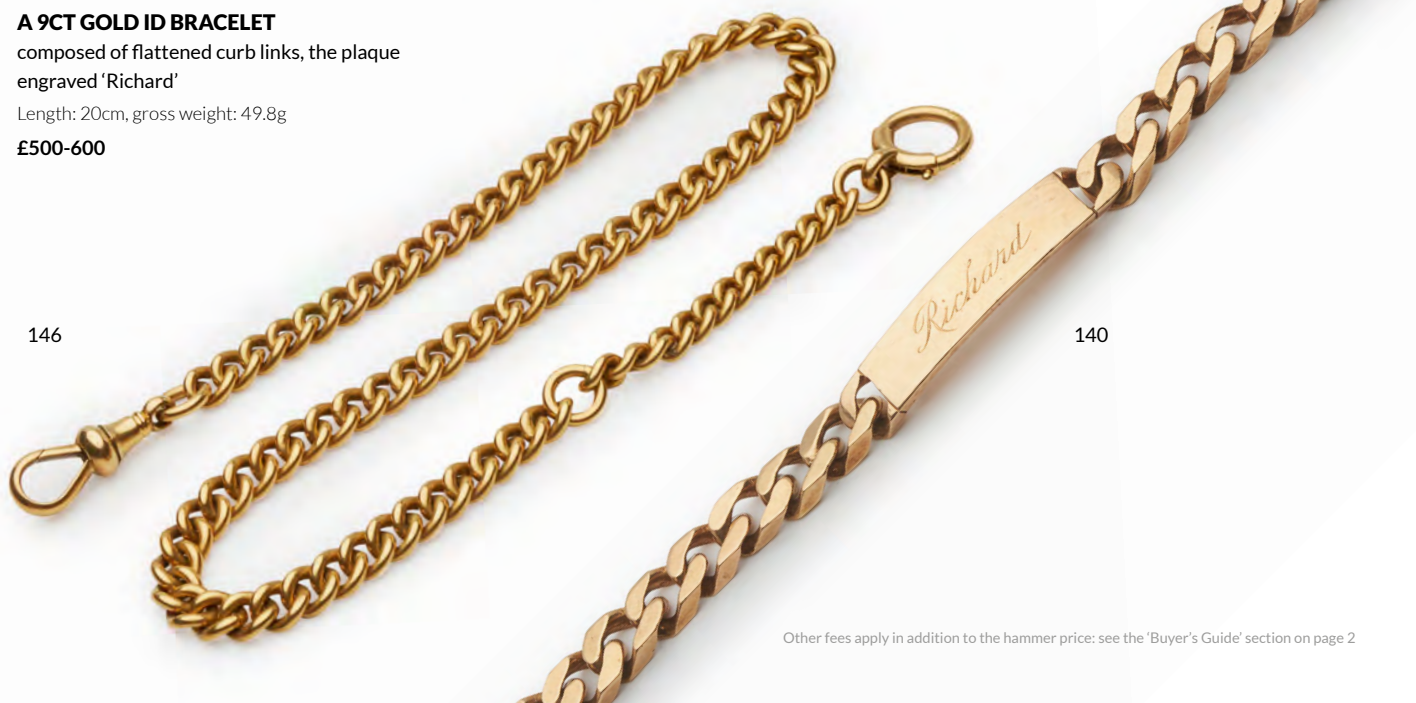
148

A 9CT GOLD ALBERT

composed of graduated curb links, with T-bar suspension

Overall length: 40cm, gross weight: 42.5g

£350-450



146

140

149

AN 18CT GOLD NECKLACE

composed of alternating curving and rope-twist links, to a bolt-ring clasp

Length: 40cm, gross weight: 21.5g

£400-600

150

A FANCY LINK NECKLACE

composed of angular interlocking links, unmarked

Length: 34cm, gross weight: 29g

£600-800

151

A 9CT GOLD LONG CHAIN

composed of alternating pierced and polished circular links

Length: 75cm, gross weight: 58g

£600-800

152

A CURB LINK BRACELET

composed of doubled-curb links, with engraved detail to one side, concealed clasp and safety chain, stamped 15ct

Length: 20cm, gross weight: 14.7g

£300-400

153

A PERUVIAN 1/5 DE LIBRE COIN SET BRACELET

set with six 1906 and 1907 1/5 de Libre coins, to a double belcher link chain, bolt-ring clasp

Length: 16.6cm, gross weight: 12g

£300-400

160



156

A 9CT GOLD FANCY LINK NECKLACE

composed of polished fancy links; together with a 9ct gold and haematite signet ring, and another signet ring stamped 18ct 750 (3)

Gross weight: 50g

£400-600

157

A 9CT GOLD BRACELET

composed of a double row of soldered Albert links, with T-bar suspension and agate set fob

Gross weight: 54.6g

£400-600

158

A COLLECTION OF 9CT GOLD MEDALS, SCOTTISH GUN CLUB

to include three 9ct gold medals, and another stamped 15ct, an unmarked Albert chain; together with a silver medallion with presentation engraving to reverse 'P. C. MACDONALD/ 50 years membership of the gun club (6)

£300-500

159

A PAIR OF 18CT GOLD CUFFLINKS

each terminal of oval form, engraved initials to one terminal; together with another similar 18ct gold pair and a 9ct gold open faced pocket watch (3)

£300-500

160

A TAURUS PENDANT, BY FRED

of rectangular outline with cast detail of a bull, signed 'Fred' to bale, to an unmarked fancy link neck chain

Length of pendant: 4cm

£500-700

154

A COLLECTION OF JEWELLERY

to include two 18ct gold wedding bands, and another 22ct gold wedding band; a curb link bracelet with heart-shaped padlock clasp, stamped 9c; and a muff chain, stamped 9c (5)

£600-800

155

A PAIR OF BANGLES

each of circular outline, with bright-cut detail, stamped 916 (2)

Internal diameter: 6.2cm, gross weight: 23.6g

£500-700



151

161

A PAIR OF PINK SAPPHIRE STUD EARRINGS

each set with a round brilliant-cut pink sapphire, to post and butterfly fittings, unmarked; together with a pink-sapphire and black pearl pendant, unmarked and a pair of peridot pendant earrings (3)

£250-400

162

THREE DIAMOND RINGS

to include a five-stone diamond ring, stamped 18ct PLAT; another smaller example; a three-stone diamond ring, stamped 18ct PLAT (3)

Ring sizes: S, P & T

£350-500

163

A SAPPHIRE AND DIAMOND THREE-STONE RING

claw set with an emerald-cut sapphire, flanked to either side by a small round brilliant-cut diamond, to a plain shank stamped 18ct; together with an 18ct gold sapphire and diamond set half eternity ring (2)

Ring size: N/O & I

£400-600

164

THREE GEM-SET RINGS

to include a large 9ct gold brownish-yellow diamond set cluster ring, to a plain shank; a 9ct gold sapphire and diamond set cluster ring, to a plain shank; and another larger example, to an unmarked yellow metal shank (3)

Ring size: L, K/ L & O

£350-500

165

AN EMERALD AND DIAMOND CLUSTER RING

claw set with an emerald-cut emerald, in a border of round brilliant-cut diamonds, to a plain 18ct gold shank; together with a 9ct gold ruby and diamond set ring (2)

Ring size: N (both)

£300-500

166

AN EMERALD AND DIAMOND RING AND EARRINGS

the ring claw set with a marquise-cut emerald and two small round brilliant-cut diamonds, plain shank stamped 18k; together with a pair of earrings each set with three round-cut emeralds, and pairs of small round-cut diamonds, suspending a single round-cut emerald, to post and clip fittings, stamped 18k (2)

Ring size: J/K

£400-600

167

A COLLECTION OF FOUR GEM-SET RINGS

to include a ruby and diamond set ring, stamped 18ct; a sapphire and diamond set ring, stamped 18ct; an 18ct gold sapphire and diamond cluster ring; an emerald and diamond set cluster ring, stamped PLAT (4)

Ring size: S, S, U & Q

£400-600

168

A COLLECTION OF GEM-SET JEWELLERY

to include a bar brooch with applied fox motif, stamped 15ct, a hinged opal and diamond set bangle, indistinctly marked; a 9ct gold enamel and diamond set regimental sweetheart brooch, a hardstone bead necklace; a sapphire and pearl locket, a seed pearl set brooch; a carved jade bracelet and two further regimental brooches (9)

£400-600

169

A COLLECTION OF ELEVEN GOLD AND GEM-SET RINGS

to include two 9ct gold diamond set cluster rings, a 9ct gold broad band set with small round-cut diamonds; a bi-coloured 9ct gold ring and three further 9ct gold gem-set rings; a pearl cluster ring and an emerald and diamond set cluster ring, both stamped 14k, a turquoise bombé ring, stamped 18k and a cabochon rose quartz ring, unmarked (11)

£400-600

170

A COLLECTION OF ELEVEN GOLD AND GEM-SET RINGS

to include an 18ct gold ruby and diamond three stone ring, a diamond set bombé ring, stamped 18k; a pearl ring, stamped 18k, a large pearl and emerald dress ring, stamped 14k; two large quartz dress rings, stamped 14k; six further 9ct gold and gem-set rings (11)

£400-600

171

A COLLECTION OF JEWELLERY

to include a single stone opal set ring, to an unmarked shank; a citrine set ring, stamped 15ct; a 9ct gold watch chain, a pair of cufflinks stamped 15ct; a diamond set cocktail watch; a propelling pencil and an unmarked chain (qty)

£500-700

172

AN 18CT GOLD TANZANITE AND DIAMOND RING

claw set with an oval-cut Tanzanite, each shoulder set with three round-cut diamonds, to a plain shank; together with an 18ct gold emerald and diamond set ring and an 18ct white gold tourmaline and diamond set cluster ring (3)

Ring size: N/O (all)

£400-600

173

A COLLECTION OF GEM-SET JEWELLERY

to include various gem-set rings, including black and colourless diamond, cubic zirconia and amethyst set examples; various gem set earrings, an apatite set bracelet and various gem-set pendants (qty)

£600-800

174

A COLLECTION OF JET JEWELLERY

to include various jet pieces, hair slides, brooches, pendants, earrings etc. (qty)

£250-400

175

A COLLECTION OF JET JEWELLERY

including various beaded necklaces, loose beads etc. (qty)

£250-400

176**A COLLECTION OF JEWELLERY**

to include various hardstone brooches, buckles, earrings, studs etc. (qty)

£200-300**177****THREE PEARL RINGS**

to include an 18ct gold ring set with five pearl halves; a single pearl set ring, stamped 18ct and a garnet and pearl double cluster ring (3)

Ring size: Q, P & P

£300-500**178****A COLLECTION OF GEM-SET AND OTHER JEWELLERY**

to include a ruby and colourless gem-set necklace and matching earrings, a quantity of silver-mounted gem set rings, various silver and other necklaces, various green hardstone beaded necklaces (qty)

£350-500**179****THREE GEM-SET RINGS**

to include an 18ct gold ruby and diamond set cluster ring, to a plain shank; a five stone diamond ring, to a plain unmarked shank; and a broad 9ct gold ring with faceted finish (3)

Ring sizes: N, O & O

£300-500**180****A RUBY AND DIAMOND CLUSTER RING**

claw set with a small round cut ruby, in a border of eight small round-cut sapphires, to a plain 18ct gold shank; together with a 9ct gold amethyst set cluster ring (2)

Ring size: M (both)

£250-400**181****A TAHITIAN PEARL AND DIAMOND PENDANT AND MATCHING EARRINGS**

the pendant suspending a Tahitian pearl, the bale collet set with a small round brilliant-cut diamond, to a snake link chain, both stamped 750; the earrings each set with a single Tahitian pearl, stamped 750; together with a 9ct gold cultured pearl twist ring (3)

Length of pendant (inc bale): 3.2cm

£350-500**182****A COLLECTION OF JEWELLERY**

to include a 9ct gold aquamarine and diamond set cluster ring, a pair of 9ct gold aquamarine pendent earrings, and a blue paste pendant necklace (3)

Ring size: O

£300-500**183****A COLLECTION OF JEWELLERY**

to include a pair of 9ct gold emerald set cufflinks, a Chinese jade set bracelet, with character mark links, stamped 18; a green hardstone set bracelet, stamped MEXICO; a silver gate link bracelet, a pair of silver 'bullet' cufflinks (5)

£450-600**184****TWO GEM-SET FRINGED NECKLACES**

the first claw set with eleven oval-cut citrines, to an integral trace link chain, stamped 9c; together with another set with fifteen round-cut amethysts, to an integral trace link chain, unmarked (2)

Lengths: 40cm & 44cm

£300-500**185****A COLLECTION OF JEWELLERY**

to include a moonstone bracelet, stamped 18ct; a seed pearl set brooch, modelled as three swallows, unmarked; a 15ct gold Victorian seed pearl set bar brooch, a Victorian enamel and seed pearl pendant and an unmarked ring of pierced design (5)

Length of bracelet: 17cm

£300-500**186****A COLLECTION OF JEWELLERY**

to include a pair of 9ct white gold amethyst and pearl circular brooches; a 9ct gold circular pearl brooch; a novelty bar brooch modelled as a squirrel on a branch, stamped 9ct; a seed pearl set crescent brooch, and another pearl bar brooch; a coral necklace, a pair of opal earrings and various cultured pearl pendants and earrings (qty)

£600-800**187****A COLLECTION OF EARRINGS**

to include a pair of 9ct gold Ola Gorrie pendent earrings, a pair of diamond-set foliate style pendent earrings, unmarked; a pair of 9ct gold pearl stud earrings, a pair of opal and diamond cluster earrings and two pairs of opal triplet earrings (6)

£300-500**188****A COLLECTION OF GEM-SET JEWELLERY**

to include a pair of ruby and diamond earrings, stamped 750; a pair of 9ct gold sapphire earrings, a 9ct gold wedding band; a single stone zircon ring, a 9ct gold citrine ring and three large gem-set pendants (qty)

£400-600**189****A COLLECTION OF JEWELLERY**

to include a 9ct gold locket and neck-chain, a pair of 18ct gold rope-twist earrings; a 9ct gold and amethyst Ola Gorie pendant necklace and chain, a pair of 9ct gold tri-coloured earrings, and another similar pair, unmarked; two pairs of faux-pearl pendent earrings; a silver and smokey quartz Celtic pendant, four cultured and faux pearl necklaces (qty)

£600-800

190

A COLLECTION OF JEWELLERY

to include two 9ct gold locket, a 9ct gold teddy bear pendant; a 9ct gold Pisces pendant, a pendant modelled as a fir cone, unmarked; a sapphire and diamond set pendant, stamped 750; an opal and diamond set pendant and a green tourmaline floral pendant, both indistinctly marked (8)

£500-700

191

TWO 9CT GOLD NECKLACES, BY OLA GORRIE

the first of tapering design, with pierced Celtic detail, to a 9ct gold snake link chain; the second of stylised design, set with two small round-cut diamonds, to a 9ct gold snake link chain; together with a faceted heart-shaped amethyst pendant, to a rope-twist neck chain (3)

£450-600

192

A COLLECTION OF GEM-SET JEWELLERY

to include a large 9ct gold mother-of-pearl and onyx set pendant, to a belcher link chain; a 9ct gold amethyst and diamond set ring, and 18ct gold opal and diamond set ring; a 9ct gold cultured pearl stud, a 9ct gold amethyst set ring; an unmarked puzzle ring, and a synthetic sapphire set ring (qty)

£500-800

193

A COLLECTION OF JEWELLERY AND WATCHES

to include a large silver belt-buckle, and engraved silver patch box; a pearl clasp, stamped 9ct; a 9ct gold majex wristwatch, a 9ct gold Vertex wristwatch; a 14ct gold Tissot wristwatch and an eight-cut diamond set cocktail watch (7)

£300-500

194

A COLLECTION OF JEWELLERY

to include an 18ct wedding band; a five stone diamond ring, to an unmarked yellow metal shank; a cultured pearl brooch stamped 375; a 9ct gold seed pearl star brooch; an amethyst and seed pearl brooch, stamped 9ct (5)

£300-500

195

A COLLECTION OF FOUR RINGS

to include an 18ct gold ruby and diamond half eternity ring, a 9ct gold sapphire and diamond ring; a five stone pink gem-set ring, and a plain unmarked wedding band (4)

Ring sizes: O, N, N & L/M

£350-500

196

A COLLECTION OF TEN RINGS

to include a 9ct gold five stone amethyst ring, a 9ct gold three stone opal ring; a 9ct gold ring modelled as a rose, a 9ct gold green gem signet ring; a diamond set cluster ring, stamped 18ct, a broad emerald set ring with emerald detail, stamped 18ct; various other examples (10)

£500-800

197

A COLLECTION OF GOLD AND GEM-SET JEWELLERY

to include three 18ct gold wedding bands, a 9ct gold wedding band and an indistinctly marked signet ring; a 9ct gold opal pendant, a Victorian pearl and gem set bar brooch, stamped 9ct; various pairs of 9ct gold and unmarked earrings, some gem-set (qty)

£400-600

198

A SMALL COLLECTION OF JEWELLERY

to include a 9ct gold smokey quartz pendant, to a flattened trace link chain, stamped 375; a 9ct gold stylised link bracelet; and a silver and haematite bracelet by Hamilton & Inches (3)

Length of pendant (inc. bale): 3cm

£200-300

199

A COLLECTION OF VICTORIAN JET AND LACQUERED STEEL JEWELLERY

to include a Tiara composed of graduated floral clusters, a necklace of similar design; seven various hairpins with floral clusters, five buttons of pierced design; a beaded necklace and various other clusters forming bracelets etc. (qty)

£300-400

200

A COLLECTION OF JEWELLERY

to include three 18ct gold wedding bands, two opal set rings; various 9ct gold and gem-set rings, various gem-set bar brooches; three open-faced pocket watches, various silver and gem set brooches, bracelets (qty)

£600-800

201

THREE GEM-SET RINGS

to include a 9ct gold blue zircon and diamond ring, a 9ct gold grandidierite and diamond cluster ring and a 9ct gold sapphire and diamond half eternity ring (3)

Ring size: O, P & P

£400-600

202

A COLLECTION OF JADE AND PEARL JEWELLERY

to include four cultured pearl necklaces, three pairs of gem-set pendant earrings; various jade and hardstone pendants, a charm bracelet etc. (qty)

£400-600

203

THREE GEM-SET RINGS

to include a 9ct gold turquoise and diamond cluster ring, a 15ct gold colourless gem-set snake ring, and an emerald and cubic zirconia ring, stamped 925 (3)

Ring sizes: P/Q, G & P

£300-500

204**A COLLECTION OF DIAMOND AND PINK SAPPHIRE JEWELLERY**

to include a 9ct white gold diamond and pink sapphire dress ring, a 9ct yellow gold pink sapphire half eternity ring; a pair of 9ct white gold heart-shaped pink sapphire cluster earrings, a pair of diamond cluster earrings, stamped 9k; a pair of diamond pendent earrings, stamped 925 and a pair of pink sapphire earrings, stamped 925 (6)

Ring sizes: P & O

£400-500

205**AN OPAL AND DIAMOND BRACELET**

the gate links set at intervals with two collet set oval cabochon opals and cushion-cut diamonds, clasp stamped 15; together with an opal and rose-cut diamond cluster ring, unmarked (2)

Length of bracelet: 20cm, Ring size: P

£300-500

206**A COLLECTION OF JEWELLERY**

to include various Scottish and Celtic style brooches, a hardstone set kilt-pin, stamped 9ct; two lady's wristwatches, various pendants, brooches, charms, cufflinks, chains etc. (qty)

£400-600

207**TWO GEM-SET BRACELETS**

to include a lapis lazuli bracelet, with textured ball spacers and T-bar clasp, unmarked; together with an amber link bracelet, stamped 585 (2)

Lengths: 20cm & 19cm

£250-400

208**A COLLECTION OF GENTLEMAN'S CUFFLINKS AND STUDS**

to include a pair of 1915 half sovereign cufflinks, two pairs of engine turned 9ct gold cufflinks; a cased set of three collar-studs, an amethyst and seed pearl set tie pin, and various other collar-studs, buttons etc. (qty)

£350-500

209**A COLLECTION OF GEM-SET PENDANTS**

to include a Victorian amethyst pendant brooch, to a modern fancy link chain; a green paste and seed pearl pendant, an aquamarine and seed pearl pendant, and a peridot and seed pearl pendant (4)

£300-500

210**TWO GEM-SET PENDANTS**

to include a 9ct gold drop-shaped pendant set with a small round-cut diamond, to a trace link chain; and a cultured pearl pendant, to a trace link chain, unmarked (2)

£200-300

211**A COLLECTION OF BROOCHES**

to include a 9ct gold opal and emerald cluster brooch, a 9ct gold Ola Gorie luckenbooth brooch; a 9ct gold opal and diamond bar brooch, a 9ct gold synthetic spinel bar brooch; an enamelled silver butterfly brooch and a marcasite bar brooch (6)

£450-700

212**A COLLECTION OF GEM-SET RINGS**

to include an 18ct yellow gold five stone diamond set ring, and another stamped 18ct, a two-stone diamond ring, unmarked; a blue and colourless sapphire cluster ring (4)

Ring sizes: O/P, P, L & N

£400-600

213**THREE GEM-SET RINGS**

to include a 9ct gold navette shaped amethyst and diamond cluster ring, a 9ct gold Tanzanite and diamond cluster ring, and a pearl and diamond set cluster ring, unmarked (3)

Ring sizes: K, Q & O/P

£350-500

214**A COLLECTION OF JEWELLERY**

to include an 18ct gold wedding band, a 15ct gold ruby and diamond ring; an 18ct gold three-stone diamond ring, two cameo brooches, one mounted in 9ct gold; a blue enamel and seed pearl pendant locket; various other rings, brooches, pendants etc. (qty)

£350-500

215**A COLLECTION OF ANTIQUE JEWELLERY**

to include a pearl floral spray brooch, unmarked; a five stone diamond ring, stamped 18ct; a three stone gypsy set diamond ring, stamped 18ct; a 9ct gold turquoise and seed pearl ring, a diamond collar stud; a ruby and diamond bar brooch, a garnet shamrock brooch (7)

£600-800

216**A 9CT GOLD AMETHYST NECKLACE**

claw set with three oval amethysts in a pierced surround, to an integral trace link chain; together with a cultured pearl and garnet pendant necklace (2)

£250-400

217**A WOVEN SILVER SHOULDER BAG**

stamped 925, composed of woven threads, pull-off cover, to a woven chain strap

Bag: 15cm x 14cm

£250-400



208

218**A COLLECTION OF JEWELLERY**

to include a two-strand cultured pearl necklace, to a diamond cluster and step-cut blue spinel clasp, unmarked; an aquamarine and diamond bar brooch, unmarked; a synthetic sapphire and diamond three-stone ring, a pair of sapphire and diamond set cluster earrings and a pair of cultured pearl set earrings (5)

Ring size: M

£600-800

219**A COLLECTION OF GEM-SET JEWELLERY**

to include two cameo brooches, an amber bead necklace and a carnelian bead necklace; two diamond rings, various amber and coral rings (qty)

£400-600

220**A COLLECTION OF JEWELLERY**

to include a 9ct gold ingot pendant, to a trace link chain; an Isle of Man one pound coin in a 9ct gold mount; a 9ct gold cultured pearl heart-shaped pendant, a 9ct gold snowflake pendant, a 9ct gold locket and two cultured pearl set chains (7)

£400-600

221**A COLLECTION OF CULTURED PEARL JEWELLERY**

to include a cultured pearl necklace, a green hardstone beaded necklace; various cultured pearl brooches, rings and pendants etc. (qty)

£300-500

222**A RUBY DRESS RING AND MATCHING EARRINGS**

the ring set with various round and marquise-cut rubies in a border of cubic zirconia, modelled in gilt silver; the earrings of matching design; together with large colourless gem-set dress ring (3)

Ring sizes: P & I/J

£300-500

223**A COLLECTION OF THREE RINGS**

to include an 18ct gold two-stone diamond twist ring, a 22ct gold wedding band, and another wedding band, unmarked (3)

£250-400

PENS



224



225



229

224

A CASED BALLPOINT PEN, BY CARTIER

plain black body, gilt fittings, in a
Cartier box

£250-400

225

A BALLPOINT PEN AND MATCHING PENCIL, BY CROSS

black polished case with white
metal fittings in a leather
pochette; together with a set of
fountain pen, ballpoint pen and
pencil black polished cases with
gilt fittings

£500-700

226

A GREEN LACQUERED CASED PROPELLING PENCIL, BY WATERMAN

Hemisphere, mottled green,
cased, together with a cased
Waterman fountain pen and pen,
ribbed silver colour case, gilt
fittings (2)

£400-600

227

A LEATHER CASED SET OF FOUNTAIN PEN AND TWO PENS, BY WATERMAN

plain black cases, gilt fittings, in
a brown leather case and sliding
cover, with two cardboard boxes

£400-600



226

228

228

A FOUNTAIN PEN, AND A MATCHING PEN, BY WATERMAN
boxed and similar to Man 100 but in gilt metal, a Waterman ballpoint pen in blue mottled case, gilt fittings, in a blue pochette.

£350-500

229

A GROUP OF PENS, BY MONT BLANC

a ballpoint pen in matt black case, white metal fittings; a fountain pen, Meisterstuck, black case, gilt fittings; a fountain pen Meisterstuck, red-lacquered case, gilt fittings, three leather MB pouches and a cloth bag

£400-600

230

A SET OF THREE PENS, BY MONT BLANC

Meisterstuck no. 146, a fountain pen, ballpoint pen, pencil, polished black case gilt fittings in a Mont Blanc black leather case

£400-600

231

A SET OF THREE PENS, BY PARKER

fountain pen, ballpoint pen, pencil, brushed stainless steel cases in leather pochette; together with a Parker propelling pencil and ballpoint pen, mottled blue casing with gilt fittings, in a leather pochette

£350-500

232

A FOUNTAIN PEN, PARKER

in a mottled blue case, gilt fittings in a green leather pochette; together with a Parker fountain pen and ballpoint pen in matt black cases, gilt fittings in a leather pochette; and a Parker ballpoint pen in a Sheaffer box

£300-500



WATCHES



233

ROLEX: A GENTLEMAN'S STEEL WRIST WATCH

Oyster Perpetual Explorer model 214270 from between lugs and on guarantee card, 2015 from guarantee card, stainless steel case, automatic movement, round black dial with applied stainless steel 3, 6 and 9 and stainless steel-edged baton hour markers, lume-filled Mercedes hands, centre seconds hands with lume plot, outer seconds track in white, screw-down crown with coronet, on a stainless steel Oyster bracelet strap with Oysterlock clasp with X8R, in box, with outer box, with guarantee card, with swing tags, bezel guard and booklets

Case: 39mm excluding crown

£3,000-5,000





234



235



236

234

ROLEX: A RARE STEEL WATCH

Oyster Perpetual Datejust model 16253 Turn-O-Graph 'Thunderbird', 1986 from serial number, stainless steel case with automatic movement, round black dial with gold baton hour markers with lume plots below the outer edge, date aperture at 3, gold tapered lume hands, gold centre seconds hand, railroad outer seconds track in gold with Roman numerals, textured gold bezel with count up scale, screw-down gold crown with coronet, on a stainless steel and gold President bracelet with 455B to the end links, signed Rolex foldover clasp with micro-adjustment facility, with R8, 62523 H 18 to the interior, in box, with outer box, with papers and booklets, with service card dated 2011

Case: 36mm excluding crown and bezel

£2,000-3,000

235

ROLEX: A GENTLEMAN'S 1940S WRIST WATCH

Oyster model 2081, cushion-shaped stainless steel case, signed Rolex Prima manual wind movement, 1947 from serial number, signed round white enamel dial with Arabic numerals in black, small seconds at 6, railroad outer seconds track in black, blued steel leaf hands, on a later generic expanding bracelet strap, no box and papers

Case: 32.5mm excluding crown

£500-700

236

MUST DE CARTIER: A LADY'S WRIST WATCH

Tank model 5057001, vermeil case, quartz movement, rectangular silver-coloured dial with Arabic numerals in black, railroad outer seconds track in black, blued steel sword hands, the caseback with 136629, cabochon gem set crown, on a later generic strap, accompanied by a strap with signed Cartier clasp, no box and papers

Case: 20.5mm excluding crown

£400-500

237

ROLEX: A GENTLEMAN'S STAINLESS STEEL WRIST WATCH

Oyster Perpetual Date Yacht-Master model 16622, 2006/7 from serial number, round silver dial with lume plots, wedge and baton hour markers, date aperture at 3, lume-filled Mercedes hands, red centre seconds hand with lume plot, 18ct white gold bezel with count-up scale, on a Rolex stainless steel Oyster bracelet strap with Oysterlock clasp numbered 78760 OP9, no box and papers

Case: 45mm including crown, approx. 41mm excluding crown

£5,000-7,000





238

238

ROLEX: A LADY'S GOLD WRIST WATCH

Oyster Perpetual Precision model 6522, 1957 from serial number, round white dial with applied bevelled wedge hour markers, small seconds at 6, gold bevelled sword hands, screw-down crown with coronet, on a generic black strap, no box and papers, with booklet

Case: 22mm excluding crown

£400-600

239

DELRIO CHRONOGRAPHE SUISSE: A GENTLEMAN'S GOLD WRIST WATCH

chronograph model, late 1940s, case marked 18K 750, unsigned 17 jewel manual wind movement, metal movement cover, signed round silvered dial with applied copper-coloured alternate Arabic numerals and wedge hour markers, lume plots, sunken 30 minute register and small seconds at 3 and 9 respectively, outer kilometre scale in red and outer tachymeter scale in black, sword hands with lume inserts, dropped lugs, snap-on caseback, crown at 3 and flanked by twin rectangular chronograph push-buttons, on a pierced black leather strap with clasp marked 750, no box and papers

Case: 37.5mm excluding crown

£300-500

240

ROLEX: A GENTLEMAN'S STEEL WRIST WATCH

Oyster Perpetual Deepsea Sea-Dweller model 16660, 2008/9 from serial number, stainless steel case, automatic movement, round black dial with lume filled plots, wedge and baton hour markers, date aperture at 3, outer seconds track, lume filled Mercedes hands, centre seconds hand with lume plot, stainless steel ceramic bezel with count-up scale, on a stainless steel Rolex Oyster bracelet strap with EO98210 and coronet to the interior of the end link, with an Oysterlock clasp marked PJ5, no box and papers

Case: 46mm including crown guard

£6,000-8,000

241

PARMIGIANI FLEURIER: A LADY'S DIAMOND SET WRIST WATCH

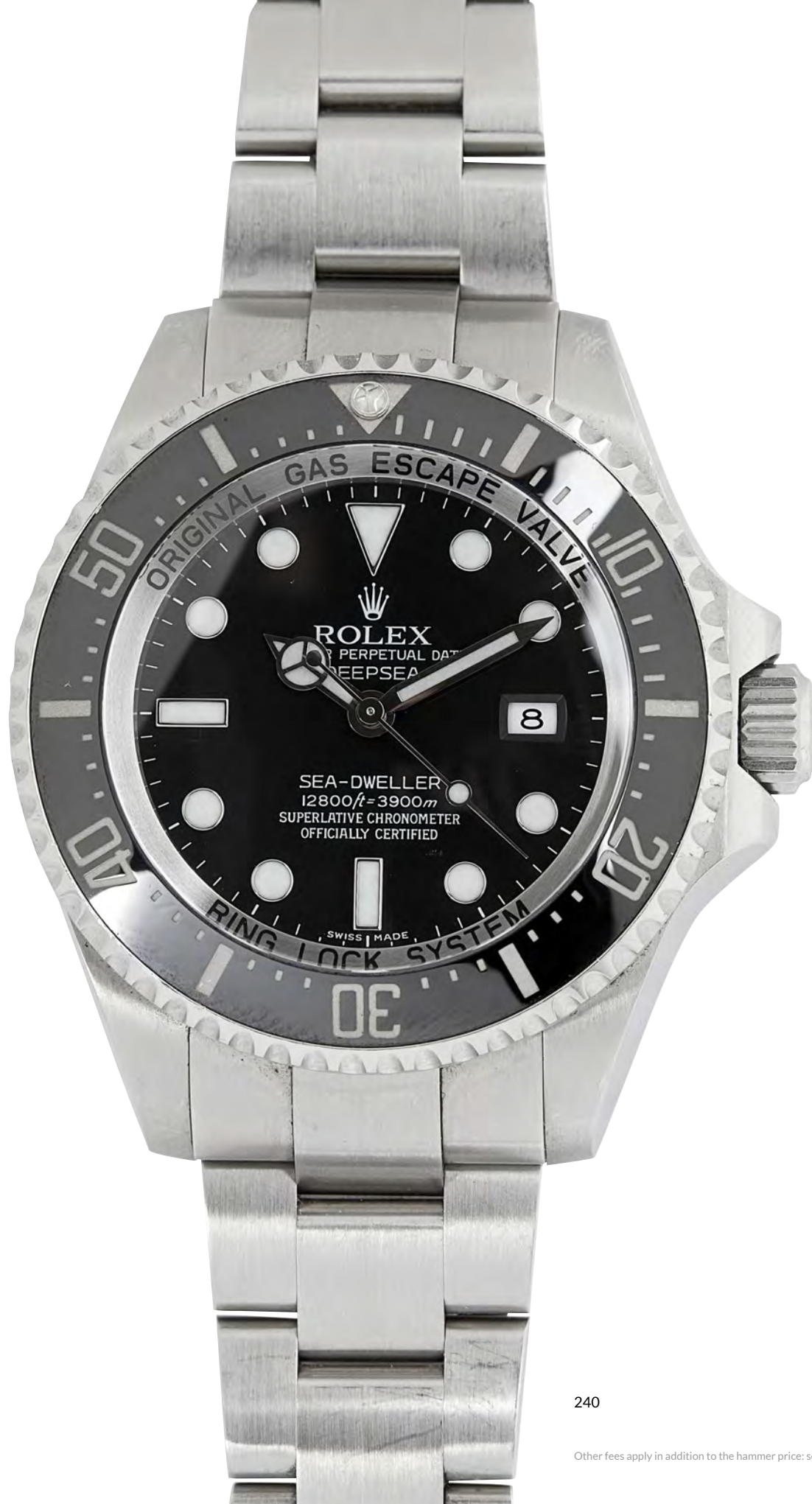
special edition Tonda Metropolitaine PFC273-0063300 model, stainless steel case, automatic PF310 calibre movement, round signed creme de menthe flinque dial with applied rhodium-plated Arabic numerals and rounded wedge hour makers, sunken small seconds at 6, with dot markers in white, broad lume-filled hands, pencil sweep seconds hand, cut out elongated date aperture at 6, diamond-set bezel with 72 round brilliant cut stones, crown with PF monogram, skeleton caseback revealing signed 28 jewel movement, with Edition Speciale and No. 67171 to the caseback edge, on a tapered stainless steel polished link bracelet strap, with a concealed clasp featuring PF monogram, personalised inscription to the clasp interior, in box, with outer box, no papers

Case: 33mm excluding crown

£2,000-3,000



239



242

LEONIDAS: A GENTLEMAN'S WRIST WATCH

chronograph model, chrome-plated case, unsigned manual wind movement, 1940s, signed round dial with lume Arabic numerals, sunken subsidiary 30 minute register at 3 and small seconds at 9, outer seconds track in black with Arabic numerals, lume-filled hands, stainless steel caseback, crown flanked by twin push-buttons, on a generic expanding stainless steel bracelet strap, no box and papers

Case: 35mm excluding crown

£300-400

243

AUDEMARS PIGUET: A GENTLEMAN'S WHITE GOLD WATCH

Millenary model 14908BC/O/0001CR/01 from papers, 2001, 18ct white gold case, automatic movement, signed oval silver-coloured dial with engraved concentric ovals and lines radiating from the centre, the applied arrowhead hour markers as terminals to these, date aperture at 3, outer seconds track, with MILLENARY and E47191 to the caseback, on a signed Audemars Piguet strap with signed 18ct white clasp in the form of two sets of pierced AP initials, in box, with Certificat d'Origine et de Garantie

Case: 39mm excluding crown

£2,800-4,000

244

AUDEMARS PIGUET: A LADY'S WHITE GOLD WATCH

Millenary model 77161BC/O/0001CR/04 from papers, 2001, 18ct white gold case, automatic movement, signed oval silver-coloured dial with engraved concentric ovals with engraved lines radiating from the centre, the applied arrowhead hour markers as terminals to these, date aperture at 3, outer seconds track, with MILLENARY and E26796 to the caseback, on a signed Audemars Piguet strap with signed 18ct white clasp in the form of two sets of pierced AP initials, in box, with Certificat d'Origine et de Garantie

Case: 28.5mm excluding crown

£1,500-2,500

245

BREITLING: A GENTLEMAN'S STEEL WRIST WATCH

Chronomat model A13352, stainless steel case, automatic movement, signed round blue dial with applied stainless steel Arabic numerals, subsidiary dials at 12, 6 and 9 for 30 minute register, 12 hour register and small seconds, date aperture at 3, outer seconds track in white, raised outer tachymeter scale to the stepped dial edge, stainless steel pencil hands with lume inserts, centre seconds hand with lume insert pointer terminal and skeletonised Breitling 'B' and anchor logo to the other terminal, stainless steel bezel with count-up scale with lume plot at 12 and baton lume markers, screw-down onion crown with twin push-buttons to either side, with A13352 and 509716 to the caseback, on a generic leather strap, no box and papers

Case: 39mm excluding crown

£300-500

246

ROLEX: A LADY'S BI-COLOUR WRIST WATCH

Oyster Perpetual Datejust model 179173 from between lugs, 2011-21 from serial number, stainless steel case, automatic movement, round gold dial with applied gold-edge lume-filled hour markers, date aperture at 3, outer seconds track, gold pencil hands with lume inserts, fluted gold bezel, gold screw-down crown with coronet, on a bi-colour stainless steel and gold Jubilee bracelet strap with Rolex signed concealed clasp numbered 155, in box, with warranty card and booklet

Case: 26.5mm excluding crown

£2,500-3,000

247

EBEL: A GENTLEMAN'S STEEL WRIST WATCH

stainless steel case, quartz movement, round black dial with Roman numerals in silver, date aperture at 3, stainless steel pencil hands, stainless steel bezel with screw motifs, with 9255F41 A068736 to the caseback, on a stainless steel bracelet strap with signed Ebel deployant clasp, in box, with outer box, with swing tag and additional bracelet links, guarantee card present, but blank

Case: 40mm including crown

£400-600

248

PIAGET: A GENTLEMAN'S GOLD WRIST WATCH

18ct gold case, signed Piaget 30 jewel automatic movement numbered 712552, 1970s, signed square tiger's eye dial 21.5mm wide within a larger case, lacking numerals, gold bevelled sword hands, rounded rectangular case with textured tile-effect, the caseback with 12461HR5, 197491, on an integrated 18ct gold bracelet strap formed by textured links, with a signed Piaget clasp numbered 95675 and marked 750, in a Piaget box, no papers

Case: 32.5mm excluding crown

£800-1,200

249

ROLEX: A GENTLEMAN'S BI-COLOUR WRIST WATCH

Oyster Perpetual Date model 15223 from between lugs, 1993 from serial number between lugs, stainless steel case, automatic movement, round blue dial with applied gold baton hour markers, coronet at 12, date aperture at 3, outer seconds track, 18ct gold fluted bezel, screw-down crown with coronet, on a stainless steel and gold Oyster bracelet with 457B to the end links, with 78353 19 to the first links, with a Rolex signed foldover clasp with 78353-18 and W2, in a Rolex box and outer box (both not original) with information booklet, no papers

Case: 34mm excluding crown

£3,000-5,000

250

CHRONOGRAPHE SUISSE: A GENTLEMAN'S WRIST WATCH

chronograph model, 1940s, caseback marked 18 750, unsigned manual wind movement, round white dial with alternating Arabic numerals and dot hour markers, outer seconds track with Arabic numerals, outer tachymeter scale, metal crown flanked by twin rectangular push-buttons, on a later expanding bracelet strap, no box and papers

Case 37.5mm excluding crown

£300-500



243



249



246



244



251



252



255

251

LONGINES: A GENTLEMAN'S WRIST WATCH

la Grande Classique model, purchased 2001, gold plated case, quartz movement, round champagne dial with baton hour markers in black, the caseback with la Grande Classique, L4.635.2, 26807166, on a signed burgundy strap, with signed buckle, in box, with outer box, with papers

Case: 32mm excluding crown

£300-500

252

TAG HEUER: A GENTLEMAN'S STEEL WRIST WATCH

Carrera Automatic model no. CV2013-0, originally purchased 2007, stainless steel case, signed calibre 16 automatic movement, round deep brown dial with applied stainless steel baton hour markers, date aperture at 3, subsidiary dials at 1, 6 and 9 for 30 minute register, 12 hour register and small seconds, tapered stainless steel hands with lume inserts, orange centre seconds hand, outer seconds track in white, brown bezel with tachymeter scale, crystal caseback with the movement visible beneath, with RRU5158 to the case edge, on a brown leather strap with signed foldover deployant TAG Heuer clasp with W7 to the interior, in box, with outer box, with guarantee card and booklets

Case: 41mm excluding crown

£1,200-1,600

253

BREITLING: A GENTLEMAN'S STEEL WATCH

Navitimer model 806, stainless steel case, signed Breitling calibre 178 manual wind movement, c.1966, round black dial with baton hour markers and Arabic 12, three sunken subsidiary dials for 30 minute register, 12 hour recording and small seconds, at 3, 6 and 9 respectively, outer scales, white outer border, stainless steel coin edge bezel, crown flanked by twin push-buttons, with 806 to the caseback, on an Omega bracelet strap, no box and papers

Case: 39.5mm excluding crown

£800-1,200

254

LONGINES: A LADY'S GOLD WATCH

18ct gold case, quartz movement, round champagne dial with applied gold baton hour markers, gold pencil hands, caseback with L7 498 6 and 28082963, on a signed black leather strap with monogrammed clasp (not marked for gold), no box and papers

Case: 23mm excluding crown

£300-500

255

OMEGA: A GENTLEMAN'S STEEL WRIST WATCH

Speedmaster Professional Automatic Schumacher edition model 38106141, 1998 from warranty card, round red dial with orange baton hour markers, subsidiary dials at 3, 6 and 9 for small seconds, 12 hour register and 30 minute register, domino-style outer seconds track in black to a white background, red and white pencil hands with lume inserts, black enamel bezel with tachymeter scale, the caseback with hippocampus, Omega logo and SPEEDMASTER along with serial number, on a stainless steel bracelet strap with central polished half-barrel links flanked by satin finish half-barrel links, with 813 to the end links, a signed clasp with Omega logo and 'Speedmaster,' also marked 32 and 1469, in presentation box taking the form of two tyres, with outer box, with warranty card

Case: 39mm excluding crown

£800-1,200



257



258



259

256

LONGINES: A GENTLEMAN'S TITANIUM WRIST WATCH

Conquest Titanium model, titanium and gold plated case, round grey dial with applied gold-coloured baton hour markers, date aperture at 3, outer seconds track in white with Arabic numerals, lume-filled gold-coloured pencil hand, centre seconds hand, the caseback with 25540804, 4026, on a titanium and gold plated bracelet strap, no box and papers

Case: 35mm including crown

£100-150

257

OMEGA: A GENTLEMAN'S GOLD WRIST WATCH

9ct gold case, manual wind movement, 1970s, textured dial with applied gold baton hour markers, date aperture at 3, gold pencil hands, centre sweep seconds hand, on a signed Omega black strap with gold plated clasp, no box, with papers dated 1974

Case 33mm excluding crown

£400-600

258

PIAGET: A LADY'S DIAMOND SET WATCH

18ct white gold case, manual wind movement, late 1970s, signed oval silvered dial with applied baton hour markers, diamond-set bezel, caseback numbered 9303 A22, 91790, on an integrated white gold bracelet strap with signed Piaget clasp, no box and papers

Case: 27.5mm excluding crown

£800-1,000

259

ROLEX: A GENTLEMAN'S GOLD WRIST WATCH

18ct gold case, manual wind movement, 1970s, gold dial signed Rolex Geneve, applied baton hour markers and coronet at 12, brass crown, on an integrated flat link bracelet with signed Rolex 18ct gold clasp, no box and papers

Case: 32mm excluding crown

£2,000-3,000

260

OMEGA: A GENTLEMAN'S BI-COLOUR WRIST WATCH

Seamaster 120m model, stainless steel case, signed Omega 1438 quartz movement numbered 1487 2272, round white dial with applied dot and baton hour markers, date aperture at 3, outer seconds track with Arabic numerals in black, raised track with Arabic numerals to the bevelled dial edge, gold hands with lume inserts, centre seconds hand, gold bezel, the caseback with SEAMASTER and hippocampus motif along with Omega logo within textured wave pattern circle, gold screw-down crown with Omega logo, on a stainless steel and gold bi-colour bracelet with signed Omega clasp numbered 1501/823, no box and papers

Case: 38mm including crown guards

£250-300

261

PIAGET: A GENTLEMAN'S GOLD WATCH

18ct gold case, automatic movement, late 1940s, round dial with applied gold arrow and wedge hour markers, gold dot inner seconds track, gold bevelled sword hands, centre seconds hand, on a generic black strap, no box and papers, with service box and bag, serviced 2017

Case: 35.5mm excluding crown

£700-1,000

262

ROLEX: A GENTLEMAN'S STEEL WRIST WATCH

Oysterdate Precision model no. 6494, 1959 from serial number, round white dial with applied wedge hour markers, date aperture at 3, black sword hands, black centre seconds hand, screwdown crown with coronet, caseback missing, on a later generic bracelet strap, no box and papers

Case: 34.5mm excluding crown

£500-1,000

263

ROLEX: A LADY'S EARLY 20TH CENTURY WRIST WATCH

9ct gold case, Rolex signed 15 jewel movement, round white enamel dial with Arabic numerals in black, small seconds at 6 with Arabic numerals and railroad border, gold and silver dot outer seconds track, fancy blued steel hands, the inside caseback with R.W.C.Ltd, 9.375, ROLEX WORLD'S RECORDS, GOLD MEDAL, GENEVA-SUISSE 4222, on a generic strap, no box and papers

Case: 26mm excluding crown

£300-400

264

ROTARY: A LADY'S GOLD WATCH

18ct case, quartz movement, round white dial with Roman numerals in black, inner railroad seconds track in black, black pencil hands, on a mesh bracelet strap with Omega clasp, unmarked

Case: 21mm excluding crown

£600-800

265

TAG HEUER: A GENTLEMAN'S STEEL WRIST WATCH

Aquaracer Automatic 300 Meters model no. CAF2010, stainless steel case, signed calibre 16 automatic movement, round black dial, applied wedge lume hour markers, day and date apertures at 3, subsidiary dials at 12, 6 and 9 for 30 minute register, 12 hours, and small seconds, lume pencil hands, centre seconds hands, stainless steel bezel with ceramic insert with count-up scale, further larger count-up scale with Arabic numerals in black, caseback with FM7430, on a stainless steel bracelet strap with signed TAG Heuer foldover clasp, no box and papers

Case: 40mm including crown

£400-600

266

TECHNOS: A GENTLEMAN'S WRIST WATCH

9ct gold case, unsigned 17 jewel manual wind movement, signed round silver-coloured dial with applied gold baton hour markers, black and gold pencil hands, centre seconds hand, on a generic bracelet strap with foldover clasp marked for 9ct gold

Case: 33mm excluding crown

£400-600

267

TUDOR: A LADY'S STEEL WRIST WATCH

Princess-Oysterdate model 7907, 1956/7 from serial number on caseback, stainless steel case, automatic movement, signed round white dial with applied stainless steel arrowhead hour markers, with lume plots to the outer terminals, date aperture at 3, sword hands with lume inserts, centre seconds hand in black, screw-down crown with coronet, caseback with 7907 178897, on a later generic expanding bracelet strap, no box and papers

Case: 25mm excluding crown

£300-500

268

TWO GENTLEMAN'S MID-CENTURY WRIST WATCHES

to include an Omega Geneve Megaquartz 32 KHz wrist watch, stainless steel case, quartz movement, round blue dial with logo at 12 and white baton hour markers, day and date apertures at 3, white hands with lume inserts, stainless steel tapered centre seconds hand, outer seconds track in white, large tonneau case, monogrammed crown, caseback with OMEGA and logo, on an expanding mesh bracelet strap, not original, no box and papers; along with a gentleman's Jaeger-leCoultre wrist watch, stainless steel case, signed Jaeger-leCoultre manual wind movement numbered 1430695, round white crosshair dial with applied stainless steel baton hour markers, stainless steel pencil hands, the caseback with 795648 to the exterior and 2285 to the interior, monogrammed crown, on a black strap with Jaeger-leCoultre monogrammed clasp, no box and papers

Omega: 39mm, JLC 33.5mm

£250-400

269

TWO GENTLEMAN'S CHRONOGRAPH WRIST WATCHES

both mid-century, to include a Chronographe Suisse, unsigned manual wind movement, rose-coloured dial with Arabic numerals in black, small 30 minute register at 3, small seconds at 9, outer telemetre and tachymeter scales in black, blued steel sword hands, centre seconds hand, metal crown at 3 flanked by twin rectangular push-buttons, on a later generic strap, no box and papers; along with another similar smaller watch, caseback exterior marked 18 750, unsigned manual wind movement, dark rose coloured dial, Arabic numerals in black, 30 minute register at 3 and small seconds at 9, outer telemetre and tachymeter scales, on a generic strap, no box and papers

Larger case: 38mm. Smaller case: 33.5mm, both excluding crown

£300-500

270

OMEGA: TWO 20TH CENTURY WRIST WATCHES

to include a gentleman's example and a lady's, the gentleman's an Omega Automatic, c.1950, 9ct gold case, signed Omega calibre 354 automatic bumper movement numbered 14006680, round dial with buff central section within a darker border, applied gold wedge hour markers, gold sword hands, centre seconds hand, no strap, no box and papers; the lady's an Omega Quartz, 9ct gold case, signed Omega quartz movement, rounded square dial with applied baton hour markers, black pencil hands, on an integrated Omega brick link bracelet, the clasp marked for 9ct gold and with Omega logo, no box and papers

Gent's case 34.5mm. Lady's: 20mm, both excluding crown

£500-800

271

TWO LADY'S 20TH CENTURY WATCHES

to include an International Watch Co. example, unmarked white metal case, manual wind movement, white dial with Arabic numerals in black, railroad outer seconds track in black, blued steel hands, diamond set bezel, on a bracelet strap, the clasp marked 18; along with an Audemars stainless steel manual wind wrist watch, both with no box

Cases: 19mm and 23.5mm respectively, both excluding crown

£300-500



263



265



269



272

OMEGA: TWO WRIST WATCHES

to include a gentleman's Seamaster Automatic model, octagonal gold plated case, signed Omega 1020 automatic movement, round gold-coloured dial with applied baton hour markers, day and date aperture at 3, gold-coloured hands with lume inserts, on a gold plated bracelet strap with signed Omega clasp numbered LD.1329.313, no box and papers; and a lady's example with 9ct gold case, signed Omega calibre 620 manual wind movement, signed dial with applied Arabic numerals in black, outer seconds track, pencil hands, on an integrated mesh bracelet strap, no box and papers

Gent's case: 35mm excluding crown, lady's case: 19mm excluding crown

£250-300

273

TWO GENTLEMAN'S MID-CENTURY WRIST WATCHES

to include Longines and Garrard examples, the Longines with 9ct gold case, signed Longines calibre 285 movement numbered 50650420, signed silvered dial with applied gold and black baton hour markers, date aperture at 3, outer seconds track, gold centre seconds hand, signed crown, snap-on caseback, on a generic expanding bracelet strap; the Garrard with 9ct gold Dennison case, unsigned 17 jewel manual wind movement, round silvered dial, applied baton hour markers with tapered terminals, crosshair small seconds at 6, bevelled gold sword hands, crown possibly later, snap-on caseback, later expanding bracelet strap, both watches with no box and papers

Longines case: 34mm, Garrard case: 30.5mm, both excluding crown

£300-400

274

THREE LADY'S WATCHES

to include a lady's Tudor Oyster Royal wrist watch, 1965 from papers, 9ct gold case, signed Tudor 17 jewel manual wind movement, on a generic 9ct gold mesh bracelet strap, in box, with outer box, with papers; along with a lady's early 20th century wrist watch, 9ct gold case, manual wind movement, white enamel dial and Roman numerals in black, on a later leather strap, no box and papers; and a lady's Ebel wrist watch, Sportwave model E6087621, stainless steel case, quartz movement, round white dial with Roman numerals in gold, date aperture at 3, gold bezel, with 92916010 to the caseback, on a stainless steel bracelet strap with signed Ebel clasp, no box and papers

Case: 28mm excluding crown

£350-450

275

THREE GENTLEMAN'S WRIST WATCHES

to include a gentleman's Omega Geneve Automatic, stainless steel case, signed Omega 1022 movement, silver-coloured dial with applied stainless steel and black baton hour markers, date and date apertures at 3, with OMEGA and logo to the caseback, on a generic bracelet strap, no box and papers; along with an Omega Geneve Automatic gold plated wrist watch, signed Omega 1022 movement, on a generic bracelet strap, no box and papers; and a gentleman's Majorex gold plated wrist watch, square case, unsigned manual wind movement, on a generic strap, no box and papers

First case: 36mm, second: 32mm, third: 28mm, all excluding crown

£250-350

276

FOUR GENTLEMAN'S WRIST WATCHES

to include an Omega Geneve example with gold plated case and bracelet, signed Omega calibre 1030 manual wind movement numbered 41 479808, with gold-coloured dial and date aperture, no box and papers; a Longines Automatic with gold plated case, signed Longines calibre L633.1 movement numbered 52591248, no box and papers; a Rytima stainless steel watch with unsigned manual wind movement, no box and papers; and a Longines Automatic Ultra-Chron with gold plated case, with box and papers

Omega Geneve: 36mm, Longines automatic: 35mm, Rytima: 34.5mm and Longines Ultra: 36.5mm, all excluding crown

£300-500

277



277

JOHN FORREST OF LONDON: AN 18CT GOLD POCKET WATCH

open face, keyless wind, movement signed John Forrest London, the round white enamel dial also signed John Forrest, London, Chronometer Maker to the Admiralty, Roman numerals in black, small seconds at 6, railroad outer seconds track in black, leaf hands, with partial London hallmarks for 1894

Case: 51mm

£500-700

278

THOMAS RUSSELL: A GOLD CHRONOGRAPH POCKET WATCH

open face, keyless wind, 18ct gold case, 3/4 plate movement signed Thos. Russell, Church St, LIVERPOOL and numbered 84625, signed round white enamel dial with Roman numerals in black, outer seconds track 0-300, leaf hands and centre seconds hand with arrowhead terminal, with full Chester hallmarks for 1892

Case: 55.5mm

£400-600

279

LEPIN OF PARIS: A GOLD POCKET WATCH

open face, keyless wind repeater, foreign marks to the yellow metal case, unsigned movement, round white enamel dial with Roman numerals in black, sunken small seconds at 6, railroad outer seconds track in black, blued steel Breguet style hands, the movement cover inscribed N. 020, Lepine...HORLOGER DU ROI A PARIS, the interior with two indistinct marks and one of a bull

Case: 50.5mm

£800-1,200

280

A GOLD ART DECO POCKET WATCH

open face, keyless wind, movement marked ASTER, the round dial with Arabic numerals in black, small seconds at 6, railroad outer seconds track in black, the caseback with engraved monogram, case marked for 9ct gold, with a short art deco bi-colour double-fetter link chain marked 18ct to the dog clip clasp, also with a round spring clasp, with partial marks

Case: 44.5mm

£400-600

281

A MID 19TH CENTURY GOLD POCKET WATCH

full hunter, key wind pocket watch, 3/4 plate movement signed Barraud Lund, Cornhill London, the round white enamel dial also signed Barraud Lund, Roman numerals in black, small seconds at 6, railroad outer seconds in black, blued steel leaf hands, partial hallmarks to the inside of the caseback, possibly for Sheffield

Case: 47mm

£400-600

282

AN 18TH CENTURY PAIR CASED POCKET WATCH

18ct gold inner and outer cases, fusee movement with cover inscribed 'Geo. Jeffreys. No. 7062 London,' round gold dial with central machined section, Roman numerals in black, Breguet style hands, the outer case with decorative engraving, both cases with full London hallmarks for 1796, makers mark SG

Outer case: 5.25mm, inner case: 45.5mm.

£700-800

283

J. HARGREAVES & CO.: A GOLD POCKET WATCH

open face, key wind, with stop/start seconds function, 3/4 plate movement signed J. Hargreaves, Liverpool, round white enamel dial also signed J. Hargreaves, Roman numerals in black, railroad outer seconds track, with full Sheffield hallmarks

Case: 55mm

£500-700



284

AN 18CT GOLD POCKET WATCH AND CHAIN

open face, key wind, full plate movement signed Goodhugh, London, no.697, round gold-coloured dial with Roman numerals also gold-coloured, central machined section, gold leaf hands, with partial hallmarks to the interior, possibly for Sheffield, in a fitted case; along with a plated single Albert chain formed by graduated curb links, with a 9ct fob appendage

Case: 44mm

£400-600

285

MURRAY OF LONDON: A GOLD POCKET WATCH

open face, key wind, 18ct gold case, 3/4 plate fusee movement signed Murray, Wood Str.t North Goswell Road London 14219, round white enamel dial also signed Murray London 14219, Roman numerals in black, sunken small seconds at 6, railroad outer seconds track in black, blued steel leaf hands, the caseback interior with full London hallmarks for 1866

Case: 49.5mm

£400-600

286

A 19TH CENTURY GOLD FOB WATCH

full hunter, keyless wind, 18ct gold case, 3/4 plate movement signed Ja. Ritchie & Son, Edinburgh, round white enamel dial with Roman numerals in black, railroad outer seconds track also in black, blued steel leaf hands, with partial hallmarks, possibly for Sheffield

Case: 38mm

£300-500

281



284





287

287**A 19TH CENTURY GOLD POCKET WATCH**

key wind, open face, 18ct gold case, unsigned fusee movement numbered 13716, movement cover with inscription dated 1886, round white enamel dial with Roman numerals in black, sunken small seconds at 6, railroad outer seconds track in black, blued steel leaf hands, caseback and edge with decorative engraving and central monogram, winder marked TC, with full London hallmarks for 1884

Case: 53.5mm

£500-800

290

288**A LATE 19TH CENTURY GOLD POCKET WATCH**

centre seconds model, open face, keyless wind, 18ct gold case, unsigned 3/4 plate movement numbered 53995, round white enamel dial with Roman numerals in black, outer seconds track in black with Arabic numerals, steel leaf hands, black centre seconds hand, the caseback with central engraved monogram, marked GH to crown, full London hallmarks for 1898

Case: 53.5mm

£500-800**289****A 19TH CENTURY GOLD POCKET WATCH**

open face, 18ct gold case, unsigned keyless wind 3/4 plate movement, round white enamel dial with Roman numerals in black, sunken small seconds at 6, railroad outer seconds track in black, blued steel fleur-de-lis hands, machined caseback with central monogram, with full London hallmarks for 1871

Case: 49.5mm

£400-600**290****A LATE 19TH CENTURY CONTINENTAL POCKET WATCH**

open face, key wind, unsigned 3/4 plate movement, round gold-coloured dial with central section featuring raised tri-colour floral motif decoration, Roman numerals in black, small seconds at 6, leaf hands, the caseback and edges with engraved decoration all over, the case marked 14k

Case: 50mm

£300-500

291

291**AN EARLY 20TH CENTURY GOLD POCKET WATCH**

open face, keyless wind, 18ct gold case, 3/4 plate movement signed Edward & Sons, 92 Buchanan Street Glasgow and with Royal Warrant badges, round white enamel dial with Roman numerals in black, sunken small seconds at 6, railroad outer seconds track in black with Arabic numerals, blued steel fleur-de-lis hands, with full London hallmarks for 1902

Case: 51mm

£500-700

294

292**AN 18CT GOLD POCKET WATCH**

open case, key wind, full plate movement signed John Forrest London 18144, movement cover and dial both with CHRONOMETER MAKER TO THE ADMIRALTY, dial also with Roman numerals in black, sunken small seconds at 6, railroad outer seconds track in black, blued steel leaf hands, with partial hallmarks, possibly for Chester 1894

Case: 51mm

£500-700**293****HOLLINS: A GOLD POCKET WATCH**

open face, keyless wind, 18ct gold case, fusee movement signed E. J. Hollins London and numbered 96478, round white enamel dial also signed E.J. Hollins, London, Roman numerals in black, sunken small seconds at 6, railroad outer seconds track in black, blued steel leaf hands, the caseback with foliate engraving and central blank shield motif, the case edges also engraved

Case: 53mm

£500-800**294****THE ANGUS: A GOLD POCKET WATCH**

full hunter, keyless wind, signed 15 jewel 3/4 plate movement, 9ct gold case, signed round white enamel dial with Arabic numerals in black, small seconds at 6, railroad outer seconds track in black, gold leaf hands, with full Birmingham hallmarks for 1930

Case: 49mm

£300-500

295

A LADY'S LATE 19TH CENTURY CONTINENTAL FOB WATCH

open face, keyless wind, case marked 18k, unsigned 3/4 plate movement, round white enamel dial with Arabic numerals in black, sunken small seconds at 6, gold dot outer seconds track, gold leaf hands, metal crown, the caseback with engraved decoration and central shield motif with monogram, suspended from an unmarked bar brooch

Case: 33mm

£300-400

296

A CONTINENTAL FOB WATCH

open face, keyless wind, unsigned movement, round white enamel dial with Roman numerals in black, railroad outer seconds track in black, with decoration in red and gold to the outer edge, marked 14k

Case: 36mm

£200-300

297

A LATE 19TH CENTURY POCKET WATCH

silver case, open face keyless wind, 3/4 plate movement marked MOERI'S PATENT, round white enamel dial with Roman numerals in black, sunken small seconds at 6, railroad outer seconds track in black, blued steel leaf hands, brass crown, the caseback with machined engraving and central monogram, the inside caseback with import marks for silver, in a fitted velvet and silk-lined leather case retailed by Carrington & Co. of Regent Street (1)

Case: 50mm

£50-80

298

TWO POCKET WATCHES, A STOP WATCH AND A POCKET BAROMETER

to include a pair cased watch, metal cases, the movement signed Grandhurst 1797; a metal pocket watch with faux pearls to the case; a gun metal stop watch, the dial signed Richardson Adie & Co. Edinburgh; and a case pocket barometer

Cases: 55mm, 53mm, 50mm and 47mm respectively.

£300-500

299

TWO 18CT GOLD POCKET WATCHES

to include an open face, key wind example, unsigned full plate movement, gold-coloured dial with central decorative section with floral motifs, with Roman numerals, small seconds in black at 6, blued steel leaf hands, with decorative engraving to the caseback and central shield motif, with full London hallmarks to the interior for 1870; the second also an open face, key wind example, 18ct gold case, movement signed D.F.&C., round gold-coloured dial, Roman numerals in black, blued steel leaf hands, with decorative engraving to the caseback and central shield motif with monogram, marked 18k

Cases: 45.4mm and 37mm

£300-400

298



300

THREE PAIR CASED POCKET WATCHES

to include a gilt metal example, the fusee movement signed Geo. Thatcher, Cranbrook; another gilt metal example with fusee movement signed B. Clay, London, with gilt outer case; the last lacking its outer case, the fusee movement signed A. Mico, London (3)

Cases: 50mm, 50mm, 40mm respectively

£350-450

301

THREE POCKET WATCHES

to include a metal example with white dial signed Fres. de Roches, with painted caseback depicting a courting couple; a silver pair case example lacking outer case, the movement signed Fred. Chenery Bungay, with full Birmingham hallmarks for 1847; and another pair case example with painted outer case, with full London hallmarks for 1815

Cases: 53mm, 50mm and 57mm respectively

£500-800

END OF DAY ONE



308

COINS & MEDALS

START OF DAY TWO

302

A COLLECTION OF MIXED WAR AND SERVICE MEDALS

all unnamed, to include, Kabul to Kandahar Star; Khedives 1882 Star; two QSA with bars - Cape Colony, Orange Free State, Transvaal; Two KSA with bars, 1901 and 1902; 1914-18 BWM; AVM; 1914 Star; General Service Medal Geo V with Bar N W Persia; two 1939-45 British War Medals; 1939-45 Star; Defence Medal; a dress mounted set of WW2 service medals, various loose ribbons etc. and a base metal Victoria Jubilee medal (qty)

£250-350

303

A SINGLE CREDIT SUISSE INGOT

half-ounce 999.9, with Fortuna to the obverse, plain gold mount as a pendant

Gross weight: 17.2g

£400-600

304

G.B - A CASED SET OF FIVE WORLD WAR I SOVEREIGNS

1914, 1915, 1916, 1917, 1918, Jubilee mint with a certificate

£1,200-1,500

305

G.B - A CASED SET OF THREE 2019 400TH ANNIVERSARY PLATINUM PROOF LAURELS

Double, single and half laurel, Jubilee mint, 999 platinum

Platinum weight: 28g

£400-600

306

G.B - TWO 2018 PROOF SOVEREIGNS AND TWO QUEEN AND PRINCE PHILIP PROOF SILVER COINS

the silver proofs £5 commemorating 90th and 95th birthdays, Jubilee mint, with certificates

£600-700

307

G.B - A CASED SET OF PLATINUM WEDDING ANNIVERSARY FOR HM QUEEN AND PRINCE PHILIP

two 2015 proof sovereigns, two silver proof coins, gilt and set with a small diamond, with certificates

£600-700

308

G.B - A CASED SET OF GOLD AND ENAMEL 2019 REMEMBRANCE DAY PROOF COINS

2019 £5, £2, £1 in the case with the certificate, Jubilee mint, with certificates

coin weights 8g, 16g, 40g

£1,900-2,200



311



316

309

G.B - A GROUP OF CASED PROOF GOLD AND SILVER COINS

2017 proof sovereign; 2019 anniversary sovereign for the birth of Prince Albert, matt finish, Royal Mint; two proof silver and enamel 'Father Christmas' 50np pieces, Pobjoy mint, all with certificates (4)

£550-650

310

G.B - TWO CASED PROOF SOVEREIGNS

2017 and 2020, with certificates (2)

As issued

£550-650

311

G.B - A SOVEREIGN

1915, and an 1896 half sovereign, fine and fair condition (2)

£420-480

312

G.B - FIVE CASED GOLD AND SILVER PROOF AND OTHER COIN SETS, JUBILEE MINT

1887 half-sovereign VF, 1900 half-sovereign veiled head, Fine; two of the Queen's coronation jubilee three coin set £5, £2, £1 2018; cased 200th anniversary of Queen Victoria proof silver £1 coin, all with certificates

£400-600

313

G.B - THREE LARGE SILVER PROOF COMMEMORATIVE COINS

50th Anniversary of the moon landing £25 with certificate 5oz; 2018 silver British 10oz valiant coin, with certificate; The Queen's Beasts £10 proof coin with certificate 10oz (3)

10oz, 10oz and 5oz

£400-600

314

G.B - A GOLD SOVEREIGN

1880, YH, with certificate stating originated from RMS Douro salvage operation

£300-400

315

G.B - TWO GOLD SOVEREIGNS

1852, 1853 YH with certificate stating originated from RMS Douro salvage operation (2)

£600-700

316

G.B - AN 1820 SOVEREIGN

together with an 1899 and a 1900 sovereign, a 1899 half-sovereign, and four three-pence coins (7)

£1,000-1,200

317

G.B - FOUR GOLD PROOF SOVEREIGNS

2000, 2002, 2003 & 2005 (4)

£1,100-1,300

318

G.B - THREE SOVEREIGNS AND TWO HALF SOVEREIGNS

sovereigns 1909, 1918 & 1989 VH, half sovereigns 1908 & 1913 (5)

£1,000-1,200

319

G.B - FOUR PROOF SOVEREIGNS

1979, 2001, 2003 & 2004 (4)

£1,000-1,200



320

320**G.B - FIVE PROOF SOVEREIGNS**

1976, 1976, 2001, 2006 & 2007 (5)

£1,300-1,500**321****G.B - FIVE PROOF HALF SOVEREIGNS**

2001, 2002, 2003, 2005 & 2006 (5)

£650-750**322****G.B - SIX HALF SOVEREIGNS**

1982, 2000, 2001, 2003, 2004 & 2007 (6)

£750-850**323****G.B - THREE HALF SOVEREIGNS**

1879, 1910 & 1914; together with a 1962 sovereign and a quantity of GB mixed coinage, some pre 47 (qty)

£600-800**324****HONG KONG - A YEAR OF THE MONKEY, 1992 PROOF GOLD MEDAL**

in case of issue from Royal Mint with, accompanying paperwork

Diameter: 27mm, 16.2g

£400-600**325****HONG KONG - A YEAR OF THE MONKEY, 1992 PROOF GOLD MEDAL**

in case of issue from Royal Mint with, accompanying paperwork

Diameter: 27mm, 16.2g

£400-600**326****HONG KONG - A YEAR OF THE GOAT, 1991 PROOF GOLD MEDAL**

in case of issue from Royal Mint with, accompanying paperwork

Diameter: 27mm, 16.2g

£400-600**327****HONG KONG - A YEAR OF THE GOAT, 1991 PROOF GOLD MEDAL**

in case of issue from Royal Mint with, accompanying paperwork

Diameter: 27mm, 16.2g

£400-600**328****HONG KONG - A YEAR OF THE HORSE, 1990 PROOF GOLD MEDAL**

in case of issue from Royal Mint with, accompanying paperwork

Diameter: 27mm, 16.2g

£400-600**329****HONG KONG - A YEAR OF THE HORSE, 1990 PROOF GOLD MEDAL**

in case of issue from Royal Mint with, accompanying paperwork

Diameter: 27mm, 16.2g

£400-600

329



336

335

330

HONG KONG - A YEAR OF THE SNAKE, 1989 PROOF GOLD MEDAL

in case of issue from Royal Mint with, accompanying paperwork

Diameter: 27mm, 16.2g

£400-600

331

HONG KONG - A YEAR OF THE SNAKE, 1988 PROOF GOLD MEDAL

in case of issue from Royal Mint with, accompanying paperwork

Diameter: 27mm, 16.2g

£400-600

332

HONG KONG - A YEAR OF THE DRAGON, 1988 PROOF GOLD MEDAL

in case of issue from Royal Mint with, accompanying paperwork

Diameter: 27mm, 16.2g

£400-600

333

HONG KONG - A YEAR OF THE DRAGON, 1988 PROOF GOLD MEDAL

in case of issue from Royal Mint with, accompanying paperwork

Diameter: 27mm, 16.2g

£400-600

334

A MASONIC JEWEL - THE GRAND MASTER MASON'S JEWEL

the main medallion with St Andrew on a blue enamel ground, surrounded by a border of brilliant-cut cubic zirconia, within a larger starburst border round-cut sapphires and cubic zirconia, with pendant two colour square and compass, the whole suspended from a cubic zirconia set starburst and belcher link chain, the reverse engraved 'Brigadier Sir Gregor McGregor of McGregor Bart, Grand Master Mason 1988-1993', in a fitted box

Length of pendant: 14.5cm

£500-700

335

A COLLECTION OF ITEMS RELATING TO THE RAISING OF THE ASWAN DAM IN 1912

cased Insignia of the Third Class of the Imperial Ottoman Order of the Osmanieh with the corresponding paperwork; a cased silver model of an Egyptian pillar, the top with four tiers, and Egyptian hieroglyphs to the front, the rear engraved "Isna Barrage, opened by HH The Khedive, Feb 9th 1909, G. S. Perry Souvenir from Ransomes and Rapier Ltd, Ipswich" in a fitted case for Lamberts of London; a cased presentation model of the standing Egyptian god Hapi, commemorating the heightening of the Assouan dam opened in 1912

Models heights: 10cm, 11cm

G S Perry, involved in the building works at Assouan

Note: An interesting group of items relating to the construction, and opening, of the Aswan (Assouan) Low Dam or Aswan Old Dam between 1899 and 1902 and of work to raise it in 1907-1912.

£600-900

336

AN 18CT GOLD PRESENTATION BOX

Garrard, London 1912, modelled as a scarab beetle seal, hinged cover, the flat side with Egyptian script, in a fitted Garrard case

Height: 5cm, weight: 26.9g

Given to G S Perry as a gift along with order and two silver presentation figures relating to the heightening of the Assuan dam

£1,500-2,500



**FOREIGN
SILVER**



338

337

A 20TH CENTURY POLISH GOLD SNUFF BOX

of rectangular outline with a bombé waist, the hinged lid, sides and base with panels of engine-turning, within slightly raised foliate borders, with a moulded thumbpiece, all in the French 18th century style

Width: 8cm

£1,500-2,500

338 ^Y**A CONTINENTAL TORTOISESHELL TABLE SNUFF BOX**

the head with gem-set eyes, legs and articulated tail all cast naturalistically with planished finish, the pull out snuffbox with maker's mark Paulus van der Beek and pseudo Dutch export marks, chased scroll decoration throughout

Length: 50cm

Sold in compliance with CITES regulations, with (non-transferable) Transaction Specific Certificate no. 602531/01.

£1,000-1,500



337

339

A 19TH CENTURY DUTCH BOWL

Berthold Muller, with import marks, Edinburgh 1983, of hemispherical form, engraved with Continental style armorials raised on three dolphinesque feet; together with a three-handled loving bowl, Goldsmiths & Silversmiths Co Ltd, London 1902, of planished finish with presentation engraving '..... on the occasion of her marriage....' and a twin-handled wine cooler, James Dixon & Sons Ltd Sheffield 1910 (3)

Diameter: 18cm, 18.5cm, weighable silver: 42oz

£250-400

340

A DUTCH OVAL SMALL TABLE BASKET

import marks for Sheffield 1898, undulating C scroll rim, pierced and cast decoration, scroll handles, together with an Edwardian circular table jewellery box and cover; a Dutch circular box and cover, embossed country scene, crimped rim; a pair of white metal wine coasters, circa 1830, scroll rim, reticulated sides, turned wood base (4)

Weighable silver: 11oz

£400-600

341

A CASED SET OF GERMAN COFFEE SPOONS

marked MH 830S, comprising twelve glaze spoons and two serving spoons, all of variant Fiddle pattern with engraved floral and bow detail to stems, presented in a fitted box; together with another cased set of enamel teaspoons and tongs, marked MH 900 and a collection of various plated items and miscellaneous items including a mesh purse and various coronation medals (qty)

£250-400



345

342

A COLLECTION OF 19TH CENTURY SILVER AND SILVER GILT DUTCH FANCY SPOONS

various dates and makers, a variety of cast stems and finials depicting figures, merchants, animals, sailing ships etc., the rear of a number of bowls have inscriptions (qty)

Average length: 21cm

£300-400

343

A FRENCH COROMANDEL DRESSING TABLE BOX

French control marks to lids, the lower pull-out tray with various tortoiseshell accoutrements, various glass bottles and boxes with silver-gilt lids, all contained in a fitted coromandel box with brass fittings and concealed handles

Width: 35cm, depth: 25cm, height: 16cm

£500-700

344 ^Y

A FRENCH TABLE BELL

apparently unmarked, circa early 19th century, of lobed shape, engraved decoration, turned ivory handle; together with a Christofle plated teapot stand, engraved with French silver marks; and a group of small Scandinavian beakers in white and base metal, inset to the base with coins (qty)

Bell height: 13.5cm

£120-180

345

A FRENCH SPICE BOX

Paris control marks to body with London Assay Office import marks for 1956, of shaped rectangular form, gadrooned border, lion masks to either side of body, two hinged lids to reveal four compartments with a central circular division with pull out cylindrical grater with domed finial in a chased scroll border, raised on four cast shell and floral feet

Width: 12cm

£300-500

346

A COLLECTION OF SNUFF AND PATCH STYLE BOXES

to include a small modern box, with cast foliate borders; together with an oval gilt-metal and enamel patch box; an Austrian table snuff box, the lid with miniature after Boucher, of a couple in a garden scene, with a pierced cover, the sides and base with engraved scrolling foliage; together with a small 19th-century box and cover of rounded oval form and another small snuff box (5)

Largest: 8.5cm

£350-450

347

A COLLECTION OF VARIOUS EUROPEAN FANCY SPOONS AND SIFTER SPOONS

to include; a King's pattern sifter spoon, Russia 1856; a Scandinavian sifter spoon; five large Dutch fancy spoons with sifter bowls, various marks; nine various Dutch and other smaller spoons, various cast and stamped decoration (qty)

£300-400

348

A COLLECTION OF ICELANDIC FLATWARE, GUÐLAUGUR A. MAGNÚSSON

stamped 925, comprising various cake servers, sauce ladle, two-pronged fork, serving spoon, six forks, two cake forks, a pickle fork, butter knife, twelve side knives, all of Reykjavik pattern with embossed interlaced decoration to stem; together with a comport, stamped 925; a Swedish sugar bowl; a collection of continental flatware including a pair of Norwegian pewter serving spoons (qty)

£300-500



343



351

349

A GROUP OF FOUR BOXES

to include a small Swedish gilt patch box, with import marks, the hinged cover with central oval cabochon, enamel and seed pearl set ground; a circular box, indistinctly marked, the hinged cover with a central motif of a longship with a filigree floral border; the third a small table snuff box, incuse mark SIAF, of rectangular form, the hinged cover with an applied gilt central panel and corner detail; a late Victorian tortoiseshell and mother of pearl inlaid card case (4)

Largest: 7.4cm, weighable silver: 4.5oz

£400-600

350

A LARGE SWEDISH SERVING SPOON

C. Lange, circa 1900 of plain form, slight threaded border; another plain soup ladle; a soup ladle, London circa 1800, of fiddle pattern; a meat skewer, Peter and Anne Bateman, London, of plain form, engraved initials at the ring (4)

£300-400

351

A LARGE REGIMENTAL RUSSIAN SILVER KOVSCH

Mikhail Ovchinnikov, of traditional form, with inscribed border, profusely decorated with foliate scrolls and mythical birds, the Cyrillic inscription to the border reads "The glory of carousing friends, The bosom-pal of fun and pleasure", the underside with a well engraved spiral of names, ranks and regiments

Length: 40cm (across handle) weight: 81.4oz

£2,500-4,000

352

A RUSSIAN SILVER GILT AND ENAMEL SUGAR SIFTER

Ovchinnikov, Moscow circa 1850, of Fiddle pattern, champlevé enamel to each side and the reverse of the pierced bowl, together with a cased set of twelve table forks, A Rasmussen, of Pointed End pattern, cast scrolling border, engraved monogram and dated 1914, in fitted box retailer of K Staudenmann, Trondheim

Sifter length: 16.5cm

£250-400

353

A GROUP OF TWO RUSSIAN SILVER SNUFF BOXES AND ANOTHER

the first circa 1880, maker J.L., of rounded rectangular form, the cover with niello work and inlaid in gold, the sides and base with swirling niello detail; the second, 1844, with views of a Russian square and a harbour; the third possibly Prague second half 19th century, allover diaper ground with onset gold shield, leaf decorated border (3)

Largest width: 9.5cm, weight: 5oz

£400-600

354

AN EASTERN TRAY

unmarked, likely Indian, of canted rectangular outline, raised border with embossed depictions of animals and figures; together with various Continental wares (qty)

Width: 60cm

£400-600



355

A LARGE MIXED COLLECTION OF TEASPOONS

including a matched set of Fiddle pattern, engraved stag crest; set five Hamilton and co. Calcutta; private die spoon for British Bulldog Club; other sets and part sets of teaspoons and others (qty)

Weight: 46oz

£300-400

356

A JAPANESE TABLE BOX AND COVER

signed, of rectangular form, the pull-off lid with the mixed metal view of Mount Fuji, the base also wood-lined and of plain rectangular form

Width: 14cm

£300-400

357

A GROUP OF FOUR TABLE BOXES

to include an Art Deco chalcedony and marcasite box, import marks circa 1930, of rectangular form, the hardstone panel secured by marcasite set corner bars, together with another, HSD Birmingham, the hinged cover with blue guilloché enamel panel, engine turned case, gilt interior; a small patch box of circular form, the hinged cover with enamel detail and another of rectangular form, allover engine turned decoration

Largest width: 8cm

£350-450

358

A PERSIAN WHITE METAL BOX AND COVER

marked to the underside, of round form, shallow relief engraved floral and leaf decoration, the border similar

Diameter: 9cm

Provenance: Private English collection

£200-300

356

359

A SILVER-MOUNTED KUKRI

of traditional form, curved steel blade with double fuller and simple wooden handle, the leather-covered scabbard with applied silver foliate scroll detail

Overall length: 42cm

£300-500

360

A LARGE AMERICAN SILVER LEMONADE PITCHER

Theodore B Starr, early 20th century, two-pint size, oval shape, demi ribbed lower half, angular handle, large pouring lip with threaded detail; together with a cased Victorian small cream jug, sugar basin and tongs, all over chased decoration in the Persian style, fitted case; with a group of five napkin rings; a capstan pepper mill and a small French 19th-century beaker

Height of jug: 21cm

£350-450

361

AN EARLY 19TH CENTURY GILT MUSTARD POT AND COVER

of square bombé form, in classical style, the hinged cover with Ducal coronet above a crest and motto and Garter belt, decorated body and with liner

Width: 8.5cm

£250-400



358

MODERN SILVER



363

362

A GEORGE III STYLE TUREEN AND COVER

London Assay Office, London 2021, of oval outline, the cover of bellied form with gadrooned border and knopped finial, later engraved with a crest, above ribbed cast handles and supports, with an armorial to the body, raised on four cast shell-moulded feet

Width: 41cm, weight: 117.7oz

£600-800

363

A 1970S FOUR-PIECE TEA AND COFFEE SERVICE

Cooper Brothers & Sons Ltd, Sheffield 1973, comprising teapot, water pot, twin-handled sugar basin and milk jug, all of panelled melon form, leaf clasped C scroll handles, the spouts modelled as mythical birds, with budding finials, each raised on four paw feet (4)

Height of waterpot: 23cm, combined weight: 80.5oz

£800-1,000

364

A 1970S KING'S PATTERN CANTEEN

Cooper Brothers & Sons Ltd, Sheffield 1973, comprising two serving spoons, six table forks, six dessert forks, six dessert spoons, six soup spoons, six teaspoons, six silver handled side knives and six silver handled table knives, all contained in a mahogany finish canteen

Weighable silver: 66.2oz

£700-900

365

A MODERN TABLE CIGARETTE BOX

Birmingham 1961, of rectangular outline, the hinged cover with all over engine turned decoration, cedar-lined; together with two modern silver mounted cut glass carafes, eight napkin rings and a hinged bangle (qty)

Width of box: 24cm, weighable silver: 5.5oz

£250-350

366

A 1950S TWIN HANDLED TEA TRAY

Cooper Brothers & Sons Ltd, Sheffield 1955, of oval outline with raised border with cast shell detail, the handles with similar detail

Diameter (across handles): 67cm, weight: 101oz

£700-900

367

A 1950S LOW TAZZA

Viner's Ltd, Sheffield 1952, of moulded circular outline, pierced scroll border, raised on a circular rim foot; together with a matched set of three smaller versions also by Viner's (4)

Diameter: 23cm, 16.5cm combined weight: 36oz

£250-400



375

368

A PRESENTATION SALVER

HA, Sheffield 1941, moulded lobed border, engraved inscription and on three volute feet, with two silver-plated salvers, moulded crimped edge (3)

Main salver diameter: 26cm, weight: 19oz

£300-500

369

A PAIR OF BALUSTER PINT MUGS

G Bryan & Co. Birmingham 1940, of plain baluster form, scroll handle; together with small George III mug, London 1789/1809 of can form threaded bands; a Victorian small mug, Martin Hall, London, engraved cartouches and florets (4)

main mugs height: 11.5cm weight (all in): 36oz

£500-700

370

A COLLECTION OF CASED SETS AND MISCELLANEOUS SILVER

to include a cased eight and six-piece condiment sets, 1940s; a bag of miscellaneous condiments including a set of boat-shaped salts, other salts, pepperpots, Georgian caddy spoon, two silver-mounted 'pig' pin cushions, tea caddy etc., a pair of Corinthian column candlesticks FEL, sauceboat, menu holders etc. (qty)

Weighable silver: 40oz (approximately)

£400-600

371

A GEORGE V INKSTAND

Mappin and Webb, London 1918, of shaped rectangular form, cast foliate corners to the border, two lidded cut glass inkwells together with a flaming ball grenade table lighter, Goldsmiths and Silversmiths 1900, with silver-plated stand

Width: 27cm

£250-350

372

A 1930S PRESENTATION SALVER

Atkin Brothers, Sheffield 1939 of circular form, facsimile signatures engraved to flat with an engraved motto for the 47th Battalion and presentation inscription dated 1940; together with another salver indistinctly marked with pierced raised border, a pair of dwarf table candlesticks, Birmingham 1901 with embossed vine borders and two wristwatches (Roamer and Rotary) (qty)

Diameter: 31cm, weighable silver: 24.9oz

£350-500

373

A MID 20TH CENTURY COMPOSITE THREE-PIECE TEA SERVICE

Walker and Hall, Sheffield, comprising a teapot, sugar and cream, all of oval form with a demi-fluted body (3)

Weight (all in): 26oz

£300-500

374

A 1930S SALVER

Barker Brothers Silver Ltd, Birmingham 1938, of moulded square outline with raised border, raised on four hoof feet

Diameter: 25.5cm, weight: 24.5oz

£300-500

375 Y

A MATCHED ART DECO FOUR-PIECE TEA SERVICE

Edward and Sons of Glasgow, London 1937/38, comprising, a waterpot, teapot, twin-handled sugar basin and milk jug, all of plain bulbous form with an engraved floral motif to centre, moulded handles and all raised on a stepped circular foot, with turned ivory finials (4)

Height of water pot: 19cm, weight (all in): 50oz

£400-600

376

A 1930S BEAKER - NATIONAL RIFLE CLUB

Elkington, Birmingham 1937, tapering form, embossed with an archer and a pikeman and motto 'It Perpetuum' for The National Rifle Club; together with two reproduction twin-handled porringers, each with cast handles and leaf clasped lower half, planished finish (3)

Beaker height: 10.5cm weight (3): 16.5oz

£350-450

377

A 1930S TEAPOT

S Blanckensee & Son Ltd Chester, 1934, of rounded rectangular form, with bellied waist, a gadrooned border to the lid, composite angular handle, raised on four ball feet; together with another teapot, Hamilton (of Edinburgh) London 1911, of squat form, engraved monogram to the body and another, Cooper Brothers & Sons Ltd, Sheffield 1915, of demi-fluted oval form (3)

Height: 15cm, 6cm, 4cm, weight (all in): 57.2oz

£400-600

378

A COLLECTION OF MISCELLANEOUS SILVER

to include an 18th-century style bullet teapot, Carrington London 1935 (no jubilee mark) of traditional form, mainly plain, engraved border, curved spout; a teapot stand; a demi-fluted milk-jug and sugar basin; together with a sparrow beak jug; reproduction silver spoons, an Indian table box; and a collection of silver and plated flatware (qty)

Teapot height: 13cm weighable silver: 37oz

£400-600

379

A 1930S REPRODUCTION SILVER TWIN-HANDLED BOWL AND COVER

Collingwood, London 1933, the bowl of squat form, pierced lug handles, the pull-off cover also acting as a plate, with three scroll feet, engraved crest and motto

Max width: 23.5cm, weight: 22oz

£300-500



379

380**A 1930S CASTER**

Ollivant & Botsford, Birmingham 1932, of octagonal form, the pierced pull-off lid with knopped finial; together with a teapot stand, cased sets of teaspoons, two toast racks; two rococo salts London 1972 and a christening cup, London 1918, inscribed I N D (qty)

Height: 21cm, weighable silver: 26.3oz

£400-600

381**A 1930S NOVELTY SUGAR BASIN**

Elkington and Co., Birmingham 1931, modelled as a cauldron, with swing-handle, raised on three legs with pull-off lid; together with a late Victorian waterpot, Thomas Bradbury & Son 1899; a cased set of bone-handled fruit knives and forks, 1875 and a plated toast rack (4)

Height of sugar basin: 13cm, weighable silver: 30.8oz

£450-750

382**A COLLECTION OF 20TH CENTURY SILVERWARE**

to include; an inkstand St Albans Club 1929 of rectangular form, with inkwells; a cake or fruit basket Sheffield 1903, of oval form, well-reticulated sides, swing-handle; a collection of dressing table items; a clock, a collection of flatware and other items (qty)

Width of basket: 28cm, weighable silver: 51oz

£400-600

383**A CASED SET OF FOUR MENU HOLDERS**

Sampson Mordan & Co, London 1919, retailed by Asprey, each of plain circular disc form, with another two Chester 1911 with bird depictions; together with a Hannau beaker, Berthold Muller with import marks, and a William IV mustard pot, Joseph Angell I & John Angell I 1835, of melon form with rose finial to the hinged lid

Width: 28cm, weighable silver: 28.3oz

£350-500

384 ^Y**A 1920S IVORY PEN KNIFE/ GAME COUNTER, ASPREY**

of oval outline, various knife and corkscrew fittings etc, the ivory case with butt-markers and various scoring dials for Pheasants, Partridges, Grouse etc. signed 'Asprey London'

Length: 12cm (including bale)

£300-500

385**A 1920S FOUR-PIECE TEA SERVICE**

Wilson & Sharp, London 1928, comprising waterpot, teapot, twin-handled sugar basin and milk jug, all of rounded rectangular form, with gadrooned and shell cast border, raised on cast bracket feet with scroll and floral detail (4)

Height of waterpot: 23cm, combined weight: 65oz

£400-600

386**A GEORGIAN STYLE COFFEE POT**

Thomas Bradbury & Sons Ltd, London 1928, of plain tapering form, the curved spout with panelled detail, the domed hinged lid with knopped finial, S scroll handle and raised on a stepped circular foot

Height: 16.5cm, weight: 19oz

£250-350

387**A 1920S TWIN-HANDLED PORRINGER**

D & J Wellby Ltd, London 1927, of baluster form, with planished finish, engraved cartouche to centre with monogram and date, the handles modelled as serpents; together with another smaller twin handled porringer, Birmingham 1921 with angular handles; a collection of quaichs and bonbon dishes; together with a milk jug and swing handled sugar basin (qty)

Diameter: 16.5cm, Combined weight: 35.2oz

£350-500

388**A 1920S TWIN HANDLED CASSEROLE FRAME**

Walker and Hall Sheffield, 1927, of circular form, pierced floral sides raised on four cast bracket feet; together with a twin-handled circular basket, R. Stewart of Glasgow, 1926 London, with gadrooned border, pierced sides, raised on four cast bracket feet (2)

Diameter: 31cm, 28cm, combined weight: 44oz

£400-600

389**A 1920S WAITER**

Henry Atkins, Sheffield 1927; together with a pair of card trays, William Hutton & Sons Ltd, London 1898 and another smaller pair of card trays, Goldsmiths and Silversmiths London 1949 (5)

Diameter of waiter: 24cm, combined weight: 33.4oz

£350-500

390**A 1920S FRUIT COMPORT**

Edward and Sons, Sheffield 1927, the dish of circular outline with a bold cast vine border and pierced vine detail to the dish with a vacant centre, raised on a short stepped foot

Diameter: 26cm, height: 5cm, weight: 22.7oz

£150-250

391**A 1920S TWIN-HANDLED TRAY**

Ollivant & Botsford, Sheffield 1926, of rectangular outline with gadrooned border and cast shell corners, the cast oval handles with similar decoration

Diameter across handles: 64.5cm, weight: 105oz

£700-900



380

392**A 1920S COMPORT**

Docker & Burn Ltd, Birmingham 1925, together with a collection of bonbon dishes, mainly 20th century, shaped and with pierced design (qty)

Weighable silver: 32oz

£350-500

393**A 1920S THREE-PIECE TEA SERVICE**

Walker and Hall, Birmingham 1925, comprising a teapot, sugar basin and cream jug, all of round squat form, lobed body, unusual pierced gallery, short spout and scroll handle (3)

Weight: 32oz

£300-500

394**A GEORGE III STYLE SILVER INKSTAND**

Carringtons, London 1923, of rectangular form, with two ink bottle containers, raised on gadrooned panel feet

Width: 22cm, weight: 23oz

£150-250

395**A 1920S SALVER**

Barker Brothers, Chester 1923, with a moulded serpentine border, raised on four hoof feet

Diameter: 36cm, weight: 37.9oz

£350-500

396**A 1920S THREE-PIECE TEA SERVICE**

Daniel George Collins, London 1920, comprising a teapot, twin-handled sugar basin and milk jug, all of plain spherical form, with applied cut-card border, the handles of S scroll form, bun finial to the teapot, each raised on a circular foot (3)

Height of teapot: 15cm, weight (all in): 41oz

£300-400



397

397**A LARGE SILVER CASED MANTLE CLOCK**

Charles and Richard Comyns, London 1919, the case with stepped top, small carry handle, with white enamel dial, bold Arabic numerals, French movement, the case with a stepped base to small block feet, striking on a gong, hour and half hour

Height: 21cm, width: 14cm

£300-500

398**A GEORGE V TWIN-HANDLED PUNCH BOWL**

London 1919, of round form with moulded waist, leaf clasped S scroll handles, raised on a stepped circular foot

Diameter across handles: 31cm, weight: 28.6oz

£400-600

399**A SMALL TWIN-HANDLED CUP AND COVER**

Carringtons, London, 1915, of George III plain design, the cover with shaped ball finial, moulded band to the body, stepped foot

Height: 16cm, weight: 21oz

£250-400

400**A TWIN-HANDLED WINE BOTTLE HOLDER**

William Aitken, Birmingham 1910, of cylindrical form with a banded waist, and a wooden circular base; together with a three-handled porringer, London 1932, of planished finish with engraving to border; a reproduction tot cup, Goldsmith and Silversmiths & Co. Ltd., London 1927, with applied cut-card foliate decoration, with 'Elisabeth' engraved to body; a half-pint tankard, Sheffield 1911 with presentation inscription; together with another cup, Chester of baluster form, engraved inscription to body (5)

Weighable silver: 24oz

£350-500

401**AN EARLY 20TH CENTURY REPRODUCTION OF THE HOLMS CUP**

Goldsmiths & Silversmiths Co Ltd, London 1910, of traditional design, the font-shaped cup with chased detail below a Latin inscription in Lombardic letters reading '*Benedictus Deus In Dona Suis Amé*', the pedestal foot with two tiers of ribbed detail; together with a matched pair of sauce boats, Sheffield/ Birmingham, 1937/ 1921; two cigarette table boxes with engine turned detail, a miniature unmarked model of a junk; together with various condiments, dwarf table candlesticks, napkin rings, an unmarked sculpture of a gun dog with prey in mouth and various other pieces of flatware etc. (qty)

Height: 11cm, weighable silver: 24.4oz

£300-500

402**AN EDWARDIAN REGENCY-STYLE COFFEE POT**

Elkington & Co Ltd, Birmingham 1908, of demi-fluted vase shape, angular handle, the hinged lid in a gadrooned and shell border, raised on a circular foot with fluted detail

Height: 26.5cm, weight (all in): 28.8oz

£300-400

403**AN EDWARDIAN THREE-PIECE TEA SERVICE**

SW Smith & Co, London 1907, comprising a teapot, sugar and cream, all of oval demi-fluted form with gadrooned border, C scroll handles, all raised on an oval foot

Height of teapot: 12cm, weight (all in): 29.5oz

£300-500

404

AN EDWARDIAN TEAPOT AND TWIN-HANDLED SUGAR BASIN

W G Keight & Co, Birmingham 1907, each of bulbous form, cast foliate border, foliate initials engraved to body, all raised on a cast foliate bracket foot; together with a modern mustard pot, Royal Irish Silver Ltd., 1967, of cylindrical form and moss agate set finial; with various condiments, toast racks, caster, ice pick etc. (qty)

Height of teapot: 13cm, weighable silver: 41.6oz

£400-600



400

405

A COLLECTION OF FLATWARE

various makers and marks, to include four teaspoons, eight dessert spoons, eight table forks, five tablespoons, all of Fiddle and Thread pattern, with crest to terminal; together with, three Old English table forks and a collection of silver-handled fruit knives and forks

Weighable silver: 65.6oz

£600-800



397



406

A COLLECTION OF VARIOUS ITEMS OF SILVER

to include a comport, Birmingham, modern, the pierced trellis work flared sides on a slender stem to a heavy stepped foot; a small basket, pierced border; a plain bowl, threaded border, flared foot with wave design; glass teapot stand, silver 'web' decoration; four various bonbon dishes; a calendar frame; a pair of simple oval pepperettes; cased pair of toast racks; with various items of silver-plated items to include, pair candlesticks, pair Asprey fruit corers; plated ice bucket and cover (qty)

Weighable silver: 62oz

£400-600



398

SCOTTISH & PROVINCIAL SILVER



407

407

A GROUP OF THREE QUAICHS

R W Forsyth of Edinburgh 1909, of traditional form, small lugs with Celtic bosses, plain body and collet foot; the other two modern, plain and with an engraved inscription to the smaller (3)

Width (Max): 20cm weight (all in): 15oz

£250-400

408

TWO EARLY 20TH CENTURY CASTERS

the first Hamilton & Inches, Edinburgh 1900, of baluster form, the pierced pull-off lid with flame finial; together with another, Holland, Aldwinckle & Slater, London 1901, of octagonal form, the pierced pull-off lid with octagonal finial (2)

Height: 23.5, 22cm, combined weight: 22.5oz

£250-350

409

A CASED SET OF FOUR SCOTTISH SILVER-GILT SERVING SPOONS

Marshall and Sons, Edinburgh 1895, in the Dutch style, various cast finials and stems, the gilt bowls with engraved detail, together with a cased set of silver-gilt sundae spoons, George Edward and Sons, Glasgow, 1866, double struck with moulded blank cartouche above a Bacchus mask, feathered border, the bowls with angled sides, in fitted case (18)

Length: 18cm, weight (all in): 17.8oz

£300-500



410

A VICTORIAN ZODIAC SUGAR BASIN AND MILK JUG

Sorley & Co, Glasgow 1883, each with embossed panels depicting each star sign; together with a reproduction twin-handle mug; a baluster mug and a christening mug (qty)

Weighable silver: 32oz

£300-400

411

A LATE WILLIAM IV SEVEN BAR TOAST RACK

Mackay & Chisholm, Edinburgh 1841, of rounded rectangular outline, with moulded bars, the cast loop handle with shell and acanthus detail, raised on four bracket feet; together with a George IV Warwick cruet set with associated cut glass bottles, crest to dish, raised on four cast bracket paw feet; a pair of spill vases, T H Hazlewood & Co, Birmingham 1917; a silver mounted wine coaster; another smaller example with pierced sides; a pair of sugar tongs with shell bowls (qty)

Width: 17.5cm, weighable silver: 28oz

£350-500

412

A PAIR OF SCOTTISH GEORGE III BASTING SPOONS

Robert Wilson, Edinburgh 1798, of Old English pattern, engraved crest; together with three Fiddle Pattern tablespoons, engraved crest

Basting spoons length: 30cm, weight (all in): 14oz

£250-350

413

A GEORGE III SILVER MOUNTED COCONUT CUP

struck once to the rim and three times to the underside WY, slightly angled letters possibly William Young, Dundee, plain coconut with silver rim, stylised leaf edge, the base similarly clasped to a plain stem, threaded band, stepped spreading foot

Height: 16cm

£400-600

ANTIQUE SILVER



414

414

AN EDWARDIAN TWIN-HANDLED TRAY

James Deakin & Sons, Sheffield 1905, of oval outline with a cast gadrooned border, the centre with bright-cut engraved floral designs to a central vacant oval cartouche, the handles with similar gadrooned decoration

Diameter across handles: 69cm, weight: 102oz

£700-1,000

415

AN EDWARDIAN COFFEE POT

Goldsmiths & Silversmiths Co, London, 1904, of baluster form, with threaded detail to waist and neck bold spout with knopped finial, the S scroll handle of open form, raised on a domed foot

Height: 25cm, weight: 28.7oz

£400-600

416

A WILLIAM AND MARY STYLE LIDDED TANKARD

Edward Barnard and Sons Ltd., London 1899, of cylindrical form, engraved crest and motto to centre, chased leaf clasped border to stepped foot, the hinged lid with chased spiralling floral decoration, cast scroll thumbpiece to an S scroll handle with heart terminal

Height: 15cm, weight: 21oz

Crest and motto probably for Campbell of Breadalbane

£500-700



416



417

417

A MATCHED PAIR OF VICTORIAN GEORGE II STYLE SILVER TWO BRANCH TABLE CANDELABRA

Lambert & Co, London 1899 / 1901, the octagonal knopped columns to an octagonal foot with curved corners, the scrolling branches with circular drip pans and sconces, with a flared octagonal finial to the centre (2)

Height: 30cm

£400-600

418

A LATE VICTORIAN FOUR-PIECE TEA SERVICE

Martin, Hall & Co, Sheffield 1898, comprising water pot, teapot, twin-handled sugar basin and milk jug, all of demi-fluted rounded rectangular form with bulbous bodies, chased floral and scroll design throughout, the handles of angular form, each raised on four ball feet (4)

Height of water pot: 20cm, weight (all in): 55.9oz

£500-700

419

A VICTORIAN DRESSING TABLE BOX

Pairpoint Brothers, London 1895' of moulded oval outline, with fluting detail to panels, two vacant cartouches to the body, the hinged lid with an embossed oval panel decorated with a pastoral scene in the Dutch fashion

Width: 15cm, weight: 11.9oz

£200-300

420

A VICTORIAN TWIN-HANDLED PORRINGER

Edward Brown, London 1891, of traditional form with chased foliate detail to the lower half of the body, the handles of S scroll form, coin insert to base; together with another, Charles Stuart Harris, London 1895, in the late 17th-century style with lower writhen body and vacant oval cartouche to centre (2)

Height: 9cm, combined weight: 15oz

£300-500

421

A LATE VICTORIAN SWING-HANDLED BASKET

Martin Hall, London 1890, of moulded oval form with a beaded border, pierced detail to each lobed panel, raised on an oval foot with similar pierced detail and gadrooned border

Width: 32.5cm, weight: 26.3oz

£400-600

422

A VICTORIAN DESK SET

Barnabas Blackburn, London 1880, of rectangular form with a threaded rim, the central taper stick with engraved presentation inscription, inkwell to each side and recessed pen trays, raised on volute feet

Width: 26cm, weight (all in): 40oz

£300-500



421

423 ^Y**A VICTORIAN COFFEE POT**

the Barnards, London 1873, of tapered oval form, bright-cut engraved decoration throughout, with circular cartouche to centre, one side with engraved crest, the hinged lid with similar decoration and knopped finial, the handles of C scroll form with ivory inserts, the straight spout with engraved floral decoration; together with a commemorative dish for Queen Elizabeth II and Prince Philip's silver wedding anniversary in a fitted box; and a modern twin-handled porringer; hip flask; various brushes and dressing table accoutrements and various condiments (qty)

Height of coffee pot: 21cm, weighable silver: 54oz

£450-600

424

A VICTORIAN CLARET JUG

EJ, London 1866, of slender baluster form, all over engraved floral design in a textured background, four oval cartouches with floral design, one with crest and motto, the circular foot engraved 'Royal Albert Yacht Club 1867'

Height: 35cm, weight: 22.7oz

£500-800

425

A GEORGE III STYLE COFFEE POT

Hutton of Sheffield, plain tapering form, stepped hinged cover and finial, side turned wood handle, together with a late Victorian preserve pot of unusual design, John Septimus Beresford, London 1880, loosely in the Dutch style, the hinged cover with figures in a garden, the body with a central band of scrolling foliage and fluted borders, turned wood side handle, blue glass liner (2)

Coffee pot height: 15cm, weight (all in): 17oz

£300-500

426 ^Y**A LARGE LIDDED VICTORIAN FLAGON AND COVER**

Robert Hennell, London 1864, of traditional cylindrical form, with stepped circular base and short spout, with large S scroll handle and hinged domed cover with knopped finial, the body and lid engraved throughout with floral design, the central cartouche with engraved presentation inscription '1866'

Height: 30cm, weight: 36.8oz

The inscription relates to Sir Daniel Macnee R.S.A. (1806-1882). President of the RSA 1876

£800-1,200

427

A MATCHED VICTORIAN FIVE-PIECE TEA SERVICE

Robert Hennell III, London, comprising, a teapot, sugar basin, milk jug, and water pot, each of baluster form all over engraved cartouches and scrolls (5)

Waterpot height: 21cm, weight all in: 71oz

£500-800

428

A COLLECTION OF SILVER ITEMS

to include a small Victorian teapot, Henry Holland London 1855, of squat plain polished form, hinged lid with stained finial, simple handle, curved spout, collet foot; a quaich of traditional plain form; a mid-18th century small cream jug, marks worn, of baluster form, leaf clasped handle; a sauceboat, modern, plain with wavy rim, scroll handle (4)

Quaich width: 16.5cm, weight (all in): 25oz

£300-500



426

429

A VICTORIAN CARD TRAY

William Hasler, London 1852, of moulded form, the flat engraved with a crest and scrolling foliate broad border, all raised on three bracket feet; together with a small Victorian basket, Martin Hall, London 1881, of oval form, beaded handle, the body decorated swags and anthemion border, spreading foot; a small Dutch-style two-handled bowl, London 1893, the lugs with chased C scroll work, the body with punch work decoration (3)

Diameter of tray: 18.5cm, weight (all in): 19.5oz

£250-350

430 ^Y**A VICTORIAN BRITANNIA STANDARD WATER POT**

Charles Thomas Fox & George Fox, London 1851, of baluster form with planished finish throughout, an engraved scroll border to the body, hinged lid and foot, the hinged lid with engraved presentation inscription '1852' and an entwined twin berry thumbpiece, ivory inserts to handle

Height: 28cm, weight: 43.5oz

£700-900



430

431 ^Y**A WILLIAM IV TEAPOT**

the Barnards, London 1837, of lobed melon form with chased floral decoration to each panel, the hinged lid with bud finial, a leaf clasped S scroll handle with ivory inserts, raised on four cast bracket feet with scroll detail; together with a modern water jug, Lee & Wigfull, Sheffield 1913, of squat bulbous form, threaded detail to neck and S scroll handle (2)

Height: 16cm, 13.5cm, weight (all in): 39oz

£300-500

432

A COLLECTION OF FLATWARE

various makers and marks, predominantly London, to include; one basting spoon, four tablespoons, seven teaspoons, all of Fiddle pattern, eight tablespoons of Old English pattern, eight table forks of Hanoverian pattern and a collection of teaspoons and sugar tongs most with engraved crest to terminals (qty)

Length of basting spoon: 31cm, combined weight: 60.7oz

£500-800

433

A WILLIAM IV SET OF FRUIT KNIVES AND FORKS

AH, Sheffield 1836, set of twelve fruit knives and forks, engraved decoration with a large knife and matching fork, all with mother-of-pearl handles, stylised anthemion terminals together with various other dessert and fruit knives and forks, and an Iona pickle fork (qty)

£250-400

434

A COLLECTION OF MISCELLANEOUS FLATWARE

to include, five George III tablespoons, of Fiddle pattern, with four similar dessert spoons and two sauce ladles; together with six dessert forks, 1830, of Fiddle pattern with upturned terminals; a collection of various pieces of flatware including condiment spoons, sauce lades with shell bowls, sugar tongs, and other miscellaneous flatware (qty)

Combined weight: 56oz

£500-800

435

A PAIR OF WILLIAM IV WINE COASTERS

Sheffield 1835, of conventional form, with turned wood bases and fluted sides; together with a collection of cruets, sauce boats, etc. (qty)

Weighable silver: 35oz

£400-600

436

A GROUP OF THREE SNUFF BOXES AND VINAIGRETTES

to include; a William IV small vinaigrette, Nathaniel Mills, Birmingham 1833, checkered engraved cover, engraved cartouche to the hinged lid; together with a George III snuff box, Samuel Pemberton Birmingham, line engraved case; and a William IV snuff box, Thomas Smith, Birmingham, with an engine-turned case

Largest width: 42mm, weight (all in): 5.1oz

£400-600



437

437**A GEORGE IV CREAM JUG**

Paul Storr, London 1828 of squat panelled form with engraved armorial to sides, undulating rim, with leaf clasped S scroll handle and moulded circular foot

Height: 7cm, weight: 8oz

£300-500

438**A COMPREHENSIVE COLLECTION OF FIDDLE PATTERN FLATWARE**

comprising, six tablespoons, 1827, seven table forks, 1829, nine dessert spoons, 1829/30 and thirteen teaspoons, all with engraved crest and motto to terminals

Combined weight: 55oz

£500-800

439**A WILLIAM IV BIGGIN**

Jonathan Hayne, London 1827, of cylindrical double skin form with an engraved crest of a cockerel and wheat sheaf to centre, the pull-off lid with wooden knopped finial, the handle of wooden C scroll form, slender curved spout

Height: 14cm, weight: 17.3oz

£600-900

440**A GEORGE IV SMALL SALVER**

S C Yonge, Sheffield 1826, with cast shell border, chased scroll and floral decoration to the flat with engraved crest and motto, raised on three cast bracket feet

Diameter: 20cm, weight: 11.6oz

£220-280

441**A GEORGE IV COFFEE POT**

WE, London 1822, of tapered form, double crest engraved to centre, with a leaf clasped spout and S scroll handle, the domed hinged lid with knopped finial

Height 24cm, weight: 20.5oz

£700-1,000

442**A LARGE GEORGE IV SUGAR BASKET**

London 1822, of vase shape, reticulated body, beaded border and handle, pierced foot and beaded border to the rim; together with a small Edwardian example, both with liners; two christening mugs, Sheffield 1912, loosely modelled on a Scottish tot cup, the other, the Barnards, 1837, plain form, bold acanthus leaf clasping to the base and foot, leaf clasped handle (4)

Basket height: 13.6cm weighable silver: 24oz

£350-450

443**A GEORGIAN STYLE COFFEE AND MILK POT**

Edwards of Sheffield, of plain tapering form, short spout, scroll handle; the larger Georgian style coffee pot, TB&S London, modern, of plain tapering form (2)

Heights: 23cm, 16.5oz, weight (all in): 24oz

£400-600

444 ^y**A MATCHED REGENCY THREE-PIECE TEA SERVICE**

Thomas Watson & Co, Sheffield 1821, and IB, London 1817, comprising teapot, twin-handled sugar basin and a milk jug, all of baluster form, heavily chased foliate decoration to the body with cast foliate border to rim, budding finial to teapot, each raised on cast feet with shell detail, ivory inserts to handle of teapot (3)

Height of teapot: 15cm, weight (all in): 53oz

£500-700



439

445

A GEORGE IV SUGAR BASKET

John Harrison & Co., Sheffield 1821, of vase form, pierced body, swing-handle, pierced foot; together with a Victorian twin-handled christening cup, Charles Reilly & George Storer, London 1849, leaf clasped handles, engraved panelled body, cast spreading base (2)

Height: 15.5cm, weighable silver: 14oz

£300-400

446

A GEORGE IV SWING-HANDLED CAKE BASKET

WE, London 1820, of rectangular outline, with gadrooned and shell cast border and fluting to bowl, the swing-handle with embossed decoration

Width: 34cm, weight: 38.8oz

£350-500

447

A GEORGE III SILVER GILT SNUFF BOX

Thomas Pemberton & Robert Mitchell, London 1818, good cast border, engine-turned decoration, small panel to the lid with well-engraved foxhound; together with a George IV snuff box, Thomas Smith, Birmingham 1824, all over engraved decoration (2)

Largest width: 8.2cm, weight: 7.1oz

£450-650

448

A LATE GEORGE III HIP FLASK

London 1816, of large size and plain form with pull-off cup, gilt detail to interior, the screw lid engraved with crest and motto

Height: 16cm, weight: 13oz

£250-400

449

A SET OF THIRTEEN TABLE FORKS

William Eley, William Fearn & William Chawner, London 1813, of Fiddle and Thread pattern, with crest engraved to reverse of the terminal; together with a set of matching seven dessert forks (20)

Length: 20.5cm, 17cm, combined weight: 45.5oz

£400-600

450

A MATCHED SET OF DESSERT SPOONS

various dates and makers, well-matched with a later monogram, Old English pattern (13)

Length: 17cm, weight: 15oz

£250-400



453



453

A PAIR OF MATCHED GEORGE III SILVER GILT SWAN FINIALS

Robert Hennell, London 1800, and Benjamin Smith, modelled as the crest of a Swan within a coronet on turned ebonised wooden plinths (2)

Height on plinth: 17cm weighable silver: 21.3oz

Presumably originally from entree dishes or large centre piece

Heraldry: ***

£800-1,200

451

A GEORGE III TEAPOT

Duncan Urquhart & Naphtali Hart, London 1803, of oval form, with bright-cut engraved floral border, engraved circular cartouche to either side; together with a continental waterpot, of baluster form, the hinged lid with flame finial (2)

Height of teapot: 17cm, weight of teapot: 14.3oz

Weight of waterpot: 10.2oz

£350-500

452

A SUITE OF GEORGE III OLD ENGLISH FLATWARE

William Eley & William Fearn, London circa 1801, comprising a soup ladle, eight tablespoons, and seven dessert spoons, all with crest to terminal; together with an Old English serving spoon (qty)

Combined weight: 35.5oz

£350-500

454

A GEORGE III CHAMBERSTICK

Richard Cooke, London 1800, of circular conventional form, beaded borders, with matching snuffer; together with a snuff box, Edward Smith, Birmingham 1827, of rectangular form, cast thumbpiece, engraved cartouche (2)

Chamberstick diameter: 12cm, weight: 10oz

£250-400

455

A GEORGE III TABLE SNUFF BOX

Thomas Smith, Birmingham, line engraved decoration, bold cast foliate border and thumbpiece; together with a central European table snuff box, indistinct marks, all over scrolling decoration (2)

Width of largest: 9.5cm, weight: 8.5oz

£350-450

456

A GROUP OF THREE GEORGE III SOUP LADLES

London, various makers, each of plain Old English pattern, with well-modelled shell-shaped bowls (3)

Weight: 16.4oz

£350-550

457

A COLLECTION OF LADLES AND SIFTERS

various dates and makers, George III and later, Scottish and English, with three pairs of sugar tongs (13)

Weight: 15.5oz

generally reasonable order, marks on the whole are clear
personal viewing advised

£250-400

458

A PAIR OF GEORGE III TABLE CANDLESTICKS

Nathaniel Smith and Co, Sheffield 1799, each of baluster form with fluted detail to stem, raised on a circular foot with threaded detail, crest engraved to foot with removable sconces with similar threaded detail (loaded)

Height: 30cm

£400-600

459

A GEORGE III PRESENTATION GOBLET

James Young, London 1789, of traditional form with contemporary engraved garland decoration, central cartouche with engraved presentation inscription, 'Jacobus Currey 1790' and 'C.C.C.C. Literarium Praemium' to a circular foot with similar decoration and applied beaded border

Height: 17.5cm, weight: 8oz

£200-300

460

A GEORGE III TWIN-HANDLED CUP

William Champion, London 1781, the deep bowl with threaded waist, engraved swags throughout, the circular cartouches to center with engraved foliate W to either side, the handles of S scroll form, the spreading stem to a circular foot with engraved border

Height: 16cm, weight: 15.4oz

£300-500

461

A GEORGE III SWING-HANDLED SUGAR BASKET

London, circa 1780, of vase form, beaded border, reticulated body, plain pedestal foot, blue glass liner; together with a Scottish christening mug, DC Rait, Glasgow, the baluster body decorated with figures, scroll handle; a plain baluster mug, Goldsmiths Company, London, of baluster form, applied cut card work to the lower part, gadrooned detail to foot (3)

Height: 13cm, weighable silver: 19oz

£300-400

462

A COLLECTION OF VARIOUS PIECES OF SILVER

to include a pair of George III small boat-shaped salts and liners, London 1783, lug handles, simple moulded band to the waist, stepped base; a large copy of the anointing spoon Elkington & Co. Birmingham; a small bombe tea caddy and cover; a pair of spill vases; a cased set of coffee spoons; and a christening mug (qty)

Weighable silver: 25oz

£300-500

463

A GEORGE III CASTER

Hester Bateman, London 1777, of baluster form, the lower body with wrythen detail and foliate border, the pull-off pierced lid with knopped finial; together with another Queen Anne style baluster caster, Mappin & Webb, London 1929 (2)

Height: 20cm, 18cm, combined weight: 18.5oz

£250-400

464

A SMALL GEORGE III COFFEE POT

London 1776, demi fluted, straight tapering spout, domed hinged lid with fluted detail and flame finial; together with a George IV lidded small jug and cover, Charles Fox, London 1829, of pear shape, bold leaf clasping, pedestal foot (2)

Coffee pot: 16cm weight (all in): 20oz

£350-450



465

465**A GEORGE III OVAL TEA CADDY**

Edward Cooper, London 1777, of oval form, with vacant oval cartouche to centre and all over bright-cut decoration, the hinged lid with an oval finial

Height: 11cm, weight: 11.6oz

£800-1,200

466**A GEORGE III GRAVY BOAT**

Fuller White, London 1761, of typical form, wavy rim, flying leaf clasped scroll handle, on shell feet

Width: 17cm, weight: 8oz

£150-250

467**A GROUP OF THREE GEORGIAN 'BERRY' SPOONS**

18th-century, various makers, well-engraved decoration, bowls crimped edges and fruit decorated bowls; together with a Scottish provincial butter knife, two marks, thistle and RG; various Dutch fancy spoons; a H&I tea strainer; and a cased Victorian silver spoon (qty)

Combined weight: 20oz

£200-300

468**A MATCHED PAIR OF CAST TAPER STICKS**

London, mid 18th century, of traditional small size and knopped stem, hexagonal stepped base

Height: 10.5cm, combined weight: 6.8oz

£700-900

469**A GEORGE III WAITER**

Richard Rugg, London 1774, of moulded circular outline with beaded border, engraved armorial to centre, raised on three hoof feet

Diameter: 17.5cm, weight: 9.3oz

£300-500

470**A GEORGE III SILVER INKSTAND**

Edward Aldridge II, London 1768, of oblong outline, with a gadrooned border, fitted with three glass bottles, two pen recesses, one engraved with full armorials and the other with a crest, raised on pierced bracket feet

Width: 26cm, weight 25oz

£500-700

471

A GEORGE II CARD TRAY

Ebenezer Coker, London, 1757 and another same maker, 1767, of similar design with a foliate engraved centre, cast border raised on three claw and ball feet, together with two modern card trays (4)

Diameters 17cm, 18cm, 2 x 15.5cm, combined weight: 29.5oz

£600-800

472

A GROUP OF FOUR GEORGIAN SOUP LADLES

all with shell-shaped bowls; Onslow pattern, London 1763; another bright-cut Old English, London 1776, engraved crest; another similar, London 1808; another, the Eleys, London 1808, all over bright-cut engraving, engraved crest to the terminal (4)

Weight: 20oz

£450-550

473

A GEORGE II TAPER STICK

James Morrison, London 1759, of traditional knopped form, square-shaped base with bobèche

Height: 14cm weight: 5.1oz

£400-600

474

A GEORGE II LIDDED TANKARD

TW, London 1759, the body with two bands of fluting, rocaillie scroll shield with later Victorian prize inscription and inscription to underside of foot, S scroll handle with heart terminal

Height: 19cm, weight: 23.5oz

£800-1,200



475

A MATCHED SET OF FOUR GEORGE II SALTS

makers marks worn, London 1756 and later, of cauldron form, shaped rim, raised on cabriole legs, web feet, with liners

Diameter: 7cm, weight 13oz

£250-400

476

A GEORGE II BRANDY PAN

David Hennell, London 1751, of conventional form with banded foot, engraved armorial to the body, plain socket with turned wood handle

Height: 7.5cm, weight: 8.5oz

£400-600

477

A GEORGE II TREFID SPOON

London 1750, with rat tail bowl; together with a George III marrow spoon/scoop, with crest engraved to reverse of bowl (2)

Length: 19.5cm, 23cm, combined weight: 3.5oz

£350-500



479

478

A GEORGE II SERVING SPOON

London circa 1730, Hanoverian pattern, engraved crest to the rear; with a pair of asparagus tongs, probably Mary Chawner, London 1835, King's pattern, engraved stag crest (2)

Spoon: 32cm, combined weight: 11.5oz

£300-500

479

A GEORGE III ENGLISH PROVINCIAL LIDDED TANKARD

Britannia standard, Isaac Cookson, Newcastle circa 1710, maker's mark rubbed, of cylindrical form, engraved to the body, 'Ex Dono JP ad Mr Jerem Cook' the hinged lid with scroll thumbpiece, the S scroll handle to a moulded terminal

Height: 18cm, weight: 18oz

£800-1,200

Elements

Festival of jewellery,
silver and gold
1 Sept — 30 Nov 2021



Elements returns for its seventh year in 2021, bringing together some of the UK's finest emerging and established Jewellers and Silversmiths for a blended Festival of online and in-person events. Launching in September 2021, the Elements online shop will bring a new dimension to this year's Festival, where you can learn more about this year's exhibitors and shop their work, all in one place on elementsfestival.co.uk

Over 300 items of stunning silver and jewellery by 37 designer-makers from across the UK are available to shop online from the comfort of your own home. From silver vases with flashes of gold, gemstone-studded rings to colourful Lucite brooches, each piece reveals its own unique story. Treat yourself to an exquisite, finely crafted piece, and be prepared this festive season with the gift of a handcrafted treasure for that special someone.

Discover and shop online at
elementsfestival.co.uk

Elements Pop-ups

Join a number of our exhibitors this year at a series of exciting in person pop-up selling and exhibition events around the UK.

Lyon & Turnbull Edinburgh 11–13 September 2021
33 Broughton Place, Edinburgh EH1 3RR

Hamilton & Inches Edinburgh 14–17 October 2021
87 George St, Edinburgh EH2 3EY

Mall Galleries London Exhibition 27–29 October 2021
The Mall, London SW1

Aberdeen Art Gallery 30–31 October 2021
Schoolhill, Aberdeen AB10 1FQ



LYON & TURNBULL
AUCTIONEERS SINCE 1826

Elements is a partnership project between Lyon & Turnbull Auctioneers and The Scottish Goldsmiths Trust.

Image: Corrinne Eira Evans

THE CONTENTS OF **LOWOOD HOUSE**

AUCTION 06 OCTOBER 2021
LIVE ONLINE | **EDINBURGH**



Above:

A RARE SCOTTISH
GEORGE II COFFEE URN
POSSIBLY JAMES KERR,
EDINBURGH
£8,000-10,000

Right:

The Dining Room,
Lowood House,
Melrose



CONDITIONS OF SALE 21.2

FOR BUYERS (UK)

These Conditions of Sale and the Saleroom Notices as well as specific Catalogue terms, set out the terms on which we offer the Lots listed in this Catalogue for sale. By registering to bid and/or by bidding at auction You agree to these terms, we recommend that You read them carefully before doing so. You will find a list of definitions and a glossary at the end providing explanations for the meanings of the words and expressions used. Special terms may be used in Catalogue descriptions of particular classes of items (Books, Jewellery, Paintings, Guns, Firearms, etc.) in which case the descriptions must be interpreted in accordance with any glossary appearing in the Catalogue. These notices and terms will also form part of our terms and conditions of sales.

In these Conditions the words "Us", "Our", "We" etc. refers to Lyon & Turnbull Ltd, the singular includes the plural and vice versa as appropriate. "You", "Your" means the Buyer.

Lyon & Turnbull Ltd. acts as agent for the Seller.

A. BEFORE THE SALE

1. DESCRIPTIONS OF LOTS

Whilst we seek to describe Lots accurately, it may be impractical for us to carry out exhaustive due diligence on each Lot. Prospective Buyers are given ample opportunities to view and inspect before any sale and they (and any independent experts on their behalf) must satisfy themselves as to the accuracy of any description applied to a Lot. Prospective Buyers also bid on the understanding that, inevitably, representations or statements by us as to authorship, genuineness, origin, date, age, Provenance, condition or Estimated selling price involve matters of opinion. We undertake that any such opinion shall be honestly and reasonably held and only accept liability for opinions given negligently or fraudulently. Subject to the foregoing neither we the Auctioneer or our employees or agents accept liability for the correctness of such opinions and no warranties, whether relating to description, condition or quality of Lots, express, implied or statutory, are given. Please note that photographs/images provided may not be fully representative of the condition of the Lot and should not be relied upon as indicative of the overall condition of the Lot. All dimensions and weights are approximate only.

2. OUR RESPONSIBILITY FOR OUR DESCRIPTION OF LOTS

We do not provide any guarantee in relation to the nature of a Lot apart from our authenticity warranty contained in paragraph E.2 and to the extent provided below.

(a) Condition Reports: Condition Reports are provided on our Website

or upon request. The absence of a report does not imply that a Lot is without imperfections. Large numbers of such requests are received shortly before each sale and department specialists and administration will endeavour to respond to all requests although we offer no guarantee. Any statement in relation to the Lot is merely an expression of opinion of the Seller or us and should not be relied upon as an inducement to bid on the Lot. Lots are available for inspection prior to the sale and You are strongly advised to examine any Lot in which You are interested prior to the sale. Our Condition Reports are not prepared by professional conservators, restorers or engineers. Our Condition Report does not form any contract between us and the Buyer. The Condition Reports do not affect the Buyer's obligations in any way.

(b) Estimates: Estimates are placed on each Lot to help Buyers gauge the sums involved for the purchase of a particular Lot. Estimates do not include the Buyer's Premium or VAT. Estimates are a matter of opinion and prepared in advance. Estimates may be subject to change and are for guidance only and should not be relied upon.

(c) Catalogue Alterations: Lot descriptions and Estimates are prepared in advance of the sale and may be subject to change. Any alterations will be announced on the Catalogue alteration sheet, made available prior to the sale. It is the responsibility of the Buyer to make themselves aware to any alterations which may have occurred.

3. WITHDRAWAL

Lyon & Turnbull may, at its discretion, withdraw any Lot at any time prior to or during the sale of the Lot. Lyon & Turnbull has no liability to You for any decision to withdraw.

4. JEWELLERY, CLOCKS & OTHER ITEMS

(a) Jewellery:

(i) Coloured gemstones (such as rubies, sapphires and emeralds) may have been treated to enhance their look, through methods such as heating and oiling. These methods are accepted practice but may make the gemstone less strong and/or require special care in future.

(ii) All types of gemstones may have been improved by some method. You may request a gemmological report for any Lot which does not have a report if the request is made to us at least three weeks before the date of the sale and You pay the fee for the report in advance of receiving said report.

(iii) We do not obtain a gemmological report for every gemstone sold in our sales. Where we do get gemmological reports from internationally accepted gemmological laboratories, such reports may be described in the Sale Particulars. Reports will describe any

improvement or treatment only if we request that they do so, but will confirm when no improvement or treatment has been made. Because of differences in approach and technology, laboratories may not agree whether a particular gemstone has been treated, the amount of treatment or whether treatment is permanent. The gemmological laboratories will only report on the improvements or treatments known to the laboratories at the date of the report.

(iv) For jewellery sales, all Estimates are based on the information in any gemmological report or, if no gemmological report is available, You should assume that the gemstones may have been treated or enhanced.

(b) Clocks & Watches: All Lots are sold "as seen", and the absence of any reference to the condition of a clock or watch does not imply the Lot is in good condition and without defects, repairs or restorations. Most clocks and watches will have been repaired during their normal lifetime and may now incorporate additional/newer parts. Furthermore, we make no representation or warranty that any clock or watch is in working order. As clocks and watches often contain fine and complex mechanisms, Buyers should be aware that a general service, change of battery or further repair work, for which the Buyer is solely responsible, may be necessary. Buyers should also be aware that we cannot guarantee a watch will remain waterproof if the back is removed. Buyers should be aware that the importing watches such as Rolex, Frank Muller and Corum into the United States is highly restricted. These watches cannot be shipped to the USA and only imported personally. Clocks may be sold without pendulums, weights or keys.

(c) Alcohol: may only be sold to persons aged of 18 years and over. By registering to bid, You affirm that You are at least that age. All collections must be signed for by a person over the age of 18. We Reserve the right to ask for ID from the person collecting. Buyers of alcohol must make appropriate allowances for natural variations of ullages, conditions of corks and wine. We can provide no guarantees as to how the alcohol may have been stored. There is always a risk of cork failure and allowance by the Buyer must be made. Alcohol is sold "as is" and quality of the alcohol is entirely at the risk of the Buyer and no warranties are given.

(d) Books- Collation: If on collation any named item in the sale Catalogue proves defective, in text or illustration the Buyer may reject the Lot provided he returns it within 21 days of the sale stating the defect in writing. This, however, shall not apply in the case of unnamed items, periodicals, autographed letters, music M.M.S., maps, drawings nor in respect of damage to bindings, stains, foxing, marginal worm holes or other defects

not affecting the completeness of the text nor in respect of Defects mentioned in the Catalogue, or at the time of sale, nor in respect of Lots sold for less than £300.

(e) Electrical Goods: are sold as "works of art" only and if bought for use must be checked over for compliance with safety regulations by a qualified electrician first. Use of such goods is entirely at the risk of the Buyer and no warranties as to safety of the goods are given.

(f) Upholstered items: are sold as "works of art" only and if bought for use must be checked over for compliance with safety regulations (items manufactured prior to 1950 are exempt from any regulations). Use of such goods is entirely at the risk of the Buyer and no warranties as to safety of the goods are given. We provide no guarantee as to the originality of any wood/material contained within the item.

B. REGISTERING TO BID

1. NEW BIDDERS

(a) If this is Your first time bidding at Lyon & Turnbull or You are a returning Bidder who has not bought anything from us within the last two years You must register at least 48 hours before an auction to give us enough time to process and approve Your registration. We may, at our discretion, decline to permit You to register as a Bidder. You will be asked for the following:

(i) Individuals: Photo identification (driving licence, national identity card or passport) and, if not shown on the ID document, proof of Your current address (for example, a current utility bill or bank statement)

(ii) Corporate clients: Your Certificate of Incorporation or equivalent document(s) showing Your name and registered address together with documentary proof of directors and beneficial owners, and;

(iii) Trusts, partnerships, offshore companies and other business structures please contact us directly in advance to discuss requirements.

(b) We may also ask You to provide a financial reference and/or a deposit to allow You to bid. For help, please contact our Finance Department on +44(0)131 557 8844.

2. RETURNING BIDDERS

We may at our discretion ask You for current identification as described in paragraph B.1.(a) above, a financial reference or a deposit as a condition of allowing You to bid. If You have not bought anything from us in the last two years, or if You want to spend more than on previous occasions, please contact our Finance Department on +44(0)131 557 8844.

3. FAILURE TO PROVIDE THE RIGHT DOCUMENTS

If in our opinion You do not satisfy our Bidder identification and registration procedures including, but not limited to, completing any anti-money laundering and/or anti-terrorism

financing checks we may require to our satisfaction, we may refuse to register You to bid, and if You make a successful bid, we may cancel the contract between You and the Seller.

4. BIDDING ON BEHALF OF ANOTHER PERSON

(a) As an authorised Bidder: If You are bidding on behalf of another person, that person will need to complete the registration requirements above before You can bid, and supply a signed letter authorising You to bid for him/ her.

(b) As agent for an undisclosed principal: If You are bidding as an agent for an undisclosed principle (the ultimate Buyer(s)) You accept personal liability to pay the Purchase Price and all other sums due, unless it has been agreed in writing with us before commencement of the auction that the Bidder is acting as an agent on behalf of a named third party acceptable to us and we will seek payment from the named third party.

5. BIDDING IN PERSON

If You wish to bid in the saleroom You must register for a numbered bidding paddle before You begin bidding. Please ensure You bring photo identification with You to allow us to verify Your registration.

6. BIDDING SERVICES

The bidding services described below are a free service offered as a convenience to our clients and we are not responsible for any error (human or otherwise), omission or breakdown in providing these services.

(a) Phone bids

Your request for this service must be made no later than 12 hours prior to the auction. We will accept bids by telephone for Lots only if our staff are available to take the bids. If You need to bid in a language other than English You should arrange this Well before the auction. We do not accept liability for failure to do so or for errors and omissions in connections.

(b) Internet Bids

For certain auctions we will accept bids over the internet. For more information please visit our Website. We will use reasonable efforts to carry out online bids and do not accept liability for equipment failure, inability to access the internet or software malfunctions related to execution of online bids/ live bidding.

(c) Written Bids

While prospective Buyers are zgly advised to attend the auction and are always responsible for any decision to bid for a particular Lot and shall be assumed to have carefully inspected and satisfied themselves as to its condition we shall, if so instructed, clearly and in writing execute bids on their behalf. Neither the Auctioneer nor our employees nor agents shall be responsible for any failure to do so. Where two or more commission bids at the same level are recorded we Reserve the right in our absolute discretion to prefer the first bid so

made. Bids must be expressed in the currency of the saleroom. The Auctioneer will take reasonable steps to carry out written bids at the lowest possible price, taking into account the Reserve. If You make a written bid on a Lot which does not have a Reserve and there is no higher bid than Yours, we will bid on Your behalf at around 50% of the lower Estimate or, if lower, the amount of Your bid.

C. DURING THE SALE

1. ADMISSION TO OUR AUCTIONS

We shall have the right at our discretion, to refuse admission to our premises or attendance at our auctions by any person. We may refuse admission at any time before, during or after the auction.

2. RESERVES

Unless indicated by an insert symbol (Δ), all Lots in this Catalogue are offered subject to a Reserve. A Reserve is the confidential Hammer Price established between us and the Seller. The Reserve is generally set at a percentage of the low Estimate and will not exceed the low Estimate for the Lot.

3. AUCTIONEER'S DISCRETION

The maker of the highest bid accepted by the Auctioneer conducting the sale shall be the Buyer and any dispute shall be settled at the Auctioneer's absolute discretion. The Auctioneer may move the bidding backwards of forwards in any way he or she may decide or change the order of the Lots. The Auctioneer may also; refuse any bid, withdraw any Lot, divide any Lot or combine any two or more Lots, reopen or continuing bidding even after the hammer has fallen.

4. BIDDING

The Auctioneer accepts bids from:

- (a) Bidders in the saleroom;
- (b) Telephone Bidders, and internet Bidders through Lyon & Turnbull Live or any other online bidding platform we have chosen to list on and;
- (c) Written bids (also known as absentee bids or commission bids) left with us by a Bidder before the auction.

5. BIDDING INCREMENTS

Bidding increments shall be at the Auctioneer's sole discretion.

6. CURRENCY CONVERTER

The saleroom video screens and bidding platforms may show bids in some other major currencies as Well as sterling. Any conversion is for guidance only and we cannot be bound by any rate of exchange used. We are not responsible for any error (human or otherwise) omission or breakdown in providing these services.

7. SUCCESSFUL BIDS

Unless the Auctioneer decides to use their discretion as set out above, when the Auctioneer's hammer falls, we have accepted the last bid. This means a contract for sale has been formed between the Seller and the successful Bidder. We will issue an invoice only to the registered Bidder who made the successful bid. While

we send out invoices by post/or email after the auction, we do not accept responsibility for telling You whether or not Your bid was successful. If You have bid by written bid, You should contact us by telephone or in person as soon as possible after the auction to get details of the outcome of our bid to avoid having to pay unnecessary storage charges.

8. RELEVANT LEGISLATION

You agree that when bidding in any of our sales that You will strictly comply with all relevant legislation including local laws and regulations in force at the time of the sale for the relevant saleroom location.

D. THE BUYER'S PREMIUM, TAXES AND ARTIST'S RESALE ROYALTY

1. THE PURCHASE PRICE

For each Lot purchased a Buyer's Premium of 25% of the Hammer Price of each Lot up to and including £300,000, plus 20% from £300,001 thereafter. VAT at the appropriate rate is charged on the Buyer's Premium. No VAT is payable on the Hammer Price or premium for printed books or unframed maps bought at auction. Live online bidding may be subject to an additional premium (level dependent on the live bidding service provider chosen). This additional premium is subject to VAT at the appropriate rate as above.

2. VALUE ADDED TAX

Value Added Tax is charged at the appropriate rate prevailing by law at the date of sale and is payable by Buyers of relevant Lots. Please see D.2(e) for the conditions to be fulfilled before the VAT charged on the Hammer Price may be cancelled or refunded upon exporting from the UK.

(a) **Lots affixed with (†):** Value Added Tax on the Hammer Price and Buyer's Premium is imposed by law on all items affixed with a dagger (†). This imposition of VAT maybe because the Seller is registered for VAT within the UK and is not operating under a Margin Scheme.

(b) **Lots affixed with (‡):** A reduced rate of Import Value Added Tax on the Hammer Price of 5% is payable. This indicates that a Lot has been imported from outwit the UK.

(c) **Lots affixed with [Ω]:** Standard rate of 20% of Import Value Added Tax on the Hammer Price and premium is payable. This applies to items that have been imported from outwit the UK and do not fall within the reduced rate category.

(d) **Lots affixed with [Ω] or ‡** when these lots are released to buyers in the UK, the buyer will become the importer and must pay us Lyon & Turnbull Ltd. the import VAT at the rates noted above on the hammer price. The buyer should also note that the appropriate rate will be that in force on the date of our release and not that in force at the date of auction or payment.

(e) Export from the UK: For lots

offered under the VAT Margin Scheme and lots with [Ω] or ‡ symbols attached; you may be eligible to have a VAT refund in certain circumstances if the lot is exported. Should you show us proof of export within three months of collection a VAT refund may be arranged. No VAT amounts will be refunded where the total refund is under £100. Bank/transfer charges relating to any refund will be borne by the buyer and will not be reimbursed. Please also note that all customs formalities of the destination country are the responsibility of the buyer.

3. ARTIST'S RESALE ROYALTY (DROIT DE SUITE)

This symbol § indicates works which may be subject to the Droit de Suite or Artist's Resale Right, which took effect in the United Kingdom on 14th February 2006. We are required to collect a royalty payment for all qualifying works of art. Under new legislation which came into effect on 1st January 2012 this applies to living artists and artists who have died in the last 70 years. This royalty will be charged to the Buyer on the Hammer Price and in addition to the Buyer's Premium. It will not apply to works where the Hammer Price is less than €1,000 (euros). The charge for works of art sold at and above €1,000 (euros) and below €50,000 (euros) is 4%. For items selling above €50,000 (euros), charges are calculated on a sliding scale. All royalty charges are paid to the Design and Artists Copyright Society ('DACS') and no handling costs or additional fees are retained by the Auctioneer. Resale royalties are not subject to VAT. Please note that the royalty payment is calculated on the rate of exchange at the European Central Bank on the date of the sale. More information on Droit de Suite is available at www.dacs.org.uk.

E. WARRANTIES

1. SELLER'S WARRANTIES

For each Lot, the Seller gives a warranty that the Seller;

- (a) Is the owner of the Lot or a joint owner of the Lot acting with the permission of the other co-owners, or if the Sellers is not the owner of or a joint owner of the Lot, has the permission of the owner to sell the Lot, or the right to do so in law, and;
- (b) Had the right to transfer ownership of the Lot to the Buyer without any restrictions or claims by anyone else. If either other above warranties are incorrect, the Seller shall not have to pay more than the Purchase Price (as defined in the glossary) paid by You to us. The Seller will not be responsible to You for any reason for loss of profits or business, expected savings, loss of opportunity or interest, costs, damages, other damages or expense. The Seller gives no warranty in relation to any Lot other than as set out above and, as far as the Seller is allowed by law, all warranties from the Seller to You, and all obligations upon the Seller which may be added to this agreement

by law, are excluded.

2. AUTHENTICITY GUARANTEE

We guarantee that the authorship, period, or origin (collectively, "Authorship") of each Lot in this Catalogue is as stated in the BOLD or CAPITALISED type heading in the Catalogue description of the Lot, as amended by oral or written saleroom notes or announcements. We make no warranties whatsoever, whether express or implied, with respect to any material in the Catalogue other than that appearing in the Bold or Capitalised heading and subject to the exclusions below.

In the event we, in our reasonable opinion, deem that the conditions of the authenticity guarantee have been satisfied, it shall refund to the original purchaser of the Lot the Hammer Price and applicable Buyer's Premium paid for the Lot by the original purchaser. This Guarantee does not apply if:

- (a) The Catalogue description was in accordance with the opinion(s) of generally accepted scholar(s) and expert(s) at the date of the sale, or the Catalogue description indicated that there was a conflict of such opinions; or
- (b) the only method of establishing that the Authorship was not as described in the Bold or Capitalised heading at the date of the sale would have been by means or processes not then generally available or accepted; unreasonably expensive or impractical to use; or likely (in our reasonable opinion) to have caused damage to the Lot or likely to have caused loss of value to the Lot; or
- (c) There has been no material loss in value of the Lot from its value had it been in accordance with its description in the Bold or Capitalised type heading. This Guarantee is provided for a period of one year from the date of the relevant auction, is solely for the benefit of the original purchaser of the Lot at the auction and may not be transferred to any third party. To be able to claim under this Authenticity Guarantee, the original purchaser of the Lot must:

- (a) notify us in writing within one month of receiving any information that causes the original purchaser of record to dispute the accuracy of the Bold or Capitalised type heading, specifying the Lot number, date of the auction at which it was purchased and the reasons for such dispute; and
- (b) return the Lot to our registered office in the same condition as at the date of sale to the original purchaser of record and be able to transfer good title to the Lot, free from any third party claims arising after the date of such sale.

We have discretion to waive any of the above requirements. We may require the original purchaser of the Lot to obtain, at the original purchaser of Lot's cost, the reports of two independent and recognised experts in the field. The reports must be mutually acceptable to us and the original purchaser of the Lot. We shall not be

bound by any reports produced by the original purchaser of the Lot, and Reserves the right to seek additional expert advice at its own expense. It is specifically understood and agreed that the rescission of a sale and the refund of the original Purchase Price paid (the successful Hammer Price, plus the Buyer's Premium) is exclusive and in lieu of any other remedy which might otherwise be available as a matter of law. Lyon & Turnbull and the Seller shall not be liable for any incidental or consequential damages incurred or claimed, including without limitation, loss of profits or interest.

3. YOUR WARRANTIES

- (a) You warrant that the funds used for settlement are not connected with any criminal activities, including tax evasion and You are neither; under investigation, have been charged with or convicted of money laundering, terrorist activities or other crimes.
- (b) Where You are bidding on behalf of another person You warrant that:
 - (i) You have conducted appropriate customer due diligence on the ultimate Buyer(s) of the Lot(s) in accordance with all relevant anti-money laundering legislation, consent to us relying on this due diligence, and You will retain for a period of not less than five years the documentation evidencing the due diligence. You will make such documentation promptly available for immediate inspection by a third party auditor upon our written request to do so;
 - (ii) The arrangements between You and the ultimate Buyer(s) in relation to the Lot or otherwise do not, in whole or in part, facilitate tax crimes, and;
 - (iii) You do not know, and have no reason to suspect that the funds used for settlement are connected with the proceeds of any criminal activity, including tax evasion, or that the ultimate Buyer(s) are under investigation or have been charged with or convicted of money-laundering, terrorist activities, or other crimes.

F. PAYMENT

1. MAKING PAYMENT

- (a) Within 7 days of a Lot being sold You will pay to us the Total Amount Due in cash or by such other method as is agreed by us. We accept cash, bank transfer (details on request), debit cards and Visa or MasterCard credit cards. Please note that we do not accept cash payments over £5,000 per Buyer per year.
- (b) Any payments by You to us can be applied by us towards any sums owing by You to us howsoever incurred and without agreement by You or Your agent, whether express or implied.
- (c) We will only accept payment from the registered Bidder. Once issued, we cannot change the Buyer's name on an invoice or re-issue the invoice in a different name.
- (d) The ownership of any Lots purchased shall not pass to You until You have made payment in full to us of the Total Amount Due. The risk in

and the responsibility for the Lot will transfer to You from whichever is the earlier of the following:

- (i) When You collect the Lot; or
- (ii) At the end of the 30th day following the date of the auction, or, if earlier, the date the Lot is taken into care by a third party unless we have agreed otherwise with You in writing.
- (e) You shall at Your own risk and expense take away any Lots that You have purchased and paid for not later than 7 working days following the day of the auction or upon the clearance of any cheque used for payment whichever is later. We can provide You with a list of shippers. However, we will not be responsible for the acts or omissions of carriers or packers whether or not recommended by us.
- (f) No purchase can be claimed or removed until it has been paid for.
- (g) It is the Buyer's responsibility to ascertain collection procedures, particularly if the sale is not being held at our main sale room and the potential storage charges for Lots not collected by the appropriate time.
- (h) If you agree to our pack and send service (if applicable) payment of shipping fees must be made prior to us posting. Any shipping fee will be inclusive of VAT.

2. IN THE EVENT OF NON-PAYMENT

If any Lot is not paid for in full and taken away in accordance with these Conditions or if there is any other breach of these Conditions, we, as agent for the Sellers and on their behalf, shall at our absolute discretion and without prejudice to any other rights we may have, be entitled to exercise one or more of the following rights and remedies:

- (a) To proceed against You for damages for breach of contract;
- (b) To rescind the contract for sale of that Lot and/or any other Lots sold by us to You;
- (c) To resell the Lot(s) (by auction or private treaty) in which case You shall be responsible for any resulting deficiency in the Total Amount Due (after crediting any part payment and adding any resale costs).
- (d) To remove, store and insure the Lot in the case of storage, either at our premises or elsewhere and to recover from You all costs incurred in respect thereof;
- (e) To charge interest at a rate of 5% a year above the Bank of Scotland base rate from time to time on all sums outstanding for more than 7 working days after the sale;
- (f) To retain that or any other Lot sold to You until You pay the Total Amount Due;
- (g) To reject or ignore bids from You or Your agent at future auctions or to impose conditions before any such bids shall be accepted;
- (h) To apply any proceeds of sale of other Lots due or which become due to You towards the settlement of the Total Amount Due by You and to exercise a lien over any of Your

property in our possession for any purpose until the debt due is satisfied. You will be deemed to have granted such security to us and we may retain such property as collateral security for Your obligations to us; we may decide to sell Your property in any way we think appropriate. We will use the proceeds of the sale against any amounts You owe us and we will pay any amount left from that sale to You. If there is a shortfall, You must pay us the balance; and

- (i) Take any other action we see necessary or appropriate.

G. COLLECTION & STORAGE

- (1) It is the Buyer's responsibility to ascertain collection procedures, particularly if the sale is not being held at our main sale room and the potential storage charges for Lots not collected by the appropriate time. Information on collection is set out in the Catalogue and our Website
- (2) Unless agreed otherwise, You must collect purchased Lots within seven days from the auction. Please note the Lots will only be released upon full payment being received.
- (3) If You do not collect any Lot within seven days following the auction we can, at our discretion;
 - (i) Charge You storage costs at the rates set out on our Website.
 - (ii) Move the Lot to another location or an affiliate or third party and charge You transport and administration costs for doing so and You will be subject to the third party storage terms and pay for their fees and costs.
 - (iii) Sell the Lot in any way we think reasonable.

H. TRANSPORT & SHIPPING

1. TRANSPORT AND SHIPPING

- (a) We will include transport and shipping information with each invoice sent to You as well as displayed on our Website. You must make all transport and shipping arrangements.
- (b) We offer a limited pack and send service using Royal Mail on small jewellery items. When items leave our premises and are in transit via postal service We are not responsible for any damage or loss incurred. We are also not responsible for making any claim regarding loss or damage to items. A tracking reference number will be issued which can be used to raise a claim with the relevant shipping provider.

2. EXPORT OF GOODS

Buyers intending to export goods should ascertain;

- (a) Whether an export licence is required; and
- (b) Whether there is any specific prohibition on importing goods of that character, e.g. items that may contain prohibited materials such as ivory or rhino horn. It is the Buyer's sole responsibility to obtain any relevant export or import licence. The denial of any licence or any delay in obtaining licences shall neither justify the recession of any sale nor any delay in making full payment for the Lot.

3. CITES: ENDANGERED PLANTS AND ANIMALS LEGISLATION

Please be aware that all Lots marked with the symbol Y may be subject to CITES regulations when exporting these items outside the EU. These regulations may be found at <http://www.defra.gov.uk/ahvla-en/imports-exports/cites>

We accept no liability for any Lots which may be subject to CITES but have not been identified as such.

1. OUR LIABILITY TO YOU

(a) We give no warranty in relation to any statement made, or information given, by us, our representatives or employees about any Lot other than as set out in the authenticity warranty and as far as we are allowed by law, all warranties and other terms which may be added to this agreement by law are excluded. The Seller's warranties contained in paragraph E.1 are their own and we do not have a liability in relation to those warranties.

(b) (i) We are not responsible to You for any reason whether for breaking this agreement or any other matter relating to Your purchase of, or bid for, any Lot other than in the event of fraud or fraudulent misrepresentation by us other than as expressly set out in these conditions of sale; or

(ii) We do not give any representation, warranty or guarantee or assume any liability for a kind in respect of any Lot with regard to merchantability, fitness for a particular purpose, description, size, quality, condition, attribution, authenticity, rarity, importance, medium, Provenance, exhibition history, literature or historical relevance, except as required by local law, any warranty of any kind is excluded by this paragraph.

(c) In particular, please be aware that our written and telephone bidding services, Lyon & Turnbull Live, Condition Reports, currency converter and saleroom video screens are free services and we are not responsible for any error (human or otherwise) omission or breakdown in these services.

(d) We have no responsibility to any person other than a Buyer in connection with the purchase of any Lot

(e) If in spite of the terms of this paragraph we are found to be liable to You for any reason, we shall not have to pay more than the Purchase Price paid by You to us. We will not be responsible for any reason for loss of profits, business, loss of opportunity or value, expected savings or interest, costs damages or expenses.

J. OTHER TERMS

1. OUR ABILITY TO CANCEL

In addition to the other rights of cancellation contained in this agreement, we can cancel the sale of a Lot if;

- (i) Any of our warranties are not correct, as set out in paragraph E3,
- (ii) We reasonably believe that completing the transaction is or may be

unlawful; or

(iii) We reasonably believe that the sale places us or the Seller under any liability to anyone else or may damage our reputation.

2. RECORDINGS

We may videotape and record proceedings at any auction. We will keep any personal information confidential, except to the extent disclosure is required by law if You do not wish to be videotaped, You may make arrangements to bid by telephone or a written bid or bid on Lyon & Turnbull Live instead. Unless we agree otherwise in writing, You may not videotape or record proceedings at any auction.

3. COPYRIGHT

We own the copyright in respect of all images, illustrations and written material produced by or for us relating to a Lot. (Including Catalogue entries unless otherwise noted in the Catalogue) You cannot use them without our prior written permission. We do not offer any guarantee that You will gain any copyright or other reproductions to the Lot.

4. ENFORCING THIS AGREEMENT

If a court finds that any part of this agreement is not valid or is illegal or impossible to enforce, that part of the agreement will be treated as deleted and the rest of this agreement will remain in force.

5. TRANSFERRING YOUR RIGHTS AND RESPONSIBILITIES

You may not grant a security over or transfer Your rights or responsibilities under these terms on the contract of sale with the Buyer unless we have given our written permission. This agreement will be binding on Your successors or estate and anyone who takes over Your rights and responsibilities.

6. REPORTING ON WWW.LYONANDTURNBULL.COM

Details of all Lots sold by us, including Catalogue disruptions and prices, may be reported on www.lyonandturnbull.com. Sales totals are Hammer Price plus Buyer's Premium and do not reflect any additional fees that may have been incurred. We regret we cannot agree to requests to remove these details from our Website.

7. SALE BY PRIVATE TREATY

(a) The same Conditions of Sale (Buyers) shall apply to sales by private treaty.

(b) Private treaty sales made under these Conditions are deemed to be sales by auction and subject to our agreed charges for Sellers and Buyers.

(c) We undertake to inform the Seller of any offers it receives in relation to an item prior to any Proposed Sale, excluding the normal method of commission bids.

(d) For the purposes of a private treaty sale, if a Lot is sold in any other currency than Sterling, the exchange rate is to be taken on the date of sale.

8. THIRD PARTY LIABILITY

All members of the public on our premises are there at their own risk and must note the lay-out of the premises, safety and security arrangements. Accordingly, neither the Auctioneer nor our employees or agents shall incur liability for death or personal injury or similarly for the safety of the property of persons visiting prior to, during or after a sale.

9. DATA PROTECTION

Where we obtain any personal information about You, we shall use it in accordance with the terms of our Privacy Policy (subject to any additional specific consent(s) You may have given at the time Your information was disclosed). A copy of our Privacy Policy can be found on our Website www.lyonandturnbull.com or requested from Client Services, 33 Broughton Place, Edinburgh, EH1 3RR or by email from data.enquiries@lyonandturnbull.com.

10. FORCE MAJEURE

We shall be under no liability if they shall be unable to carry out any provision of the Contract of Sale for any reason beyond their control including (without limiting the foregoing) an act of God, legislation, war, fire, flood, drought, failure of power supply, lock-out, strike or other action taken by employees in contemplation or furtherance of a dispute or owing to any inability to procure materials required for the performance of the contract.

11. LAW AND JURISDICTION

(a) Governing Law: These Conditions of Sale and all aspects of all matters, transactions or disputes to which they relate or apply shall be governed by, and interpreted in accordance with, Scots law

(b) Jurisdiction: The Buyer agrees that the Courts of Scotland are to have exclusive jurisdiction to settle all disputes arising in connection with all aspects of all matters or transactions to which these Conditions of Sale relate or apply.

K. DEFINITIONS & GLOSSARY

The following words and phrases used have (unless the context otherwise requires) the meaning to given to them below. The go Glossary is to assist You to understand words and phrases which have a specific legal meaning which You may not be familiar with.

1. DEFINITIONS

"**Auctioneer**" Lyon & Turnbull Ltd (Registered in Scotland No: 191166 | Registered address: 33 Broughton Place, Edinburgh, EH1 3RR) or it's authorised representative conducting the sale, as appropriate;

"**Bidder**" a person who has completed a Bidding Form

"**Bidding Form**" our Bidding Registration Form our Absentee Bidding Form or our Telephone Bidding Form.

"**Buyer**" the person to whom a Lot is knocked down by the Auctioneer. The Buyer is also referred to by the words

"You" and "Your"

"**Buyer's Premium**" the sum calculated on the Hammer Price at the rates stated in Catalogue.

"**Catalogue**" the Catalogue relating to the relevant Sale, including any representation on our Website

"**Condition Report**" the report on the physical condition of a Lot provided to a Bidder or potential Bidder by us on behalf of the Seller.

"**Estimate**" a statement of our opinion of the range within the hammer is likely to fall.

"**Hammer Price**" the level of bidding reached (at or above any Reserve) when the Auctioneer brings down the hammer;

"**High Cumulative Value of Lot**" several Lots with a total lower Estimate value of £30,000 or above;

"**High Value Lot**" a Lot with a lower Estimate of £30,000 or above;

"**Lot**" each Item offered for sale by Lyon & Turnbull;

"**Purchase Price**" is the aggregate of Hammer Price and any applicable Buyer's Premium, VAT on the Hammer Price (where applicable), VAT on the Buyer's Premium and any other applicable expenses;

"**Reserve**" the lowest price below which an item cannot be sold whether at auction or by private treaty;

"**Sale**" the auction sale at which a Lot is to be offered for sale by us.

"**Seller**" the person who offers the Lot for Sale. We act as agent for the Seller.

"**Total Amount Due**" the Hammer Price in respect of the Lot sold together with any premium, Value Added Tax or other taxes chargeable and any additional charges payable by a defaulting Buyer under these Conditions;

"**VAT**" value added tax at the prevailing rate at the date of the sale in the United Kingdom.

"**Website**" Lyon & Turnbull's Website at www.lyonandturnbull.com

2. GLOSSARY

The following have specific legal meaning which You may not be familiar with. The following glossary is intended to give You an understanding of those expressions but is not intended to restrict their legal meanings:

"**Artist's Resale Right**" the right of the creator of a work of art to receive a payment on Sales of that work subsequent to

"**Knocked Down**" when a Lot is sold to a Bidder, indicated by the fall of the hammer at the Sale.

"**Lien**" a right for the person who has possession of the Lot to retain possession of it.

"**Risk**" the possibility that a Lot may be lost, damaged, destroyed, stolen, or deteriorate in condition or value.

"**Title**" the legal and equitable right to the ownership of a Lot.

GUIDE TO **BIDDING** & **PAYMENT**

REGISTRATION

All potential buyers must register prior to placing a bid. Registration information may be submitted in person at our registration desk, by email, or on our website. Please note that first-time bidders, and those returning after an extended period, will be asked to supply the following documents in order to facilitate registration:

- 1 – Government issued photo ID (Passport/Driving licence)
- 2 – Proof of address (utility bill/bank statement).

We may, at our option, also ask you to provide a bank reference and/or deposit.

By registering for the sale, the buyer acknowledges that he or she has read, understood and accepted our Conditions of Sale.

BIDDING

Registered bidders will be assigned a non-transferable bidder number. Once the first bid has been placed, the auctioneer asks for higher bids in increments determined by the auctioneer. All lots will be invoiced to the name and address given during your registration.

HOW TO BID

BY PHONE

A limited number of telephone lines are available for bidding by phone through a Lyon & Turnbull representative. Phone lines must be reserved in advance. All bid requests must be received an hour before the sale. All telephone bids must be confirmed in writing, listing the relevant lots and appropriate number to be called. We recommend that a covering bid is also left in the event that we are unable to make the call. We cannot guarantee that lines will be available, or that we will be able to call you on the day, but will endeavour to undertake such bids to the best of our abilities. This service is available entirely at our discretion and at the bidder's risk.

ON THE INTERNET

- ABSENTEE BIDDING

Leave a bid online through our website, call us on 0131 557 8844 or email info@lyonandturnbull.com

- BID LIVE ONLINE

Bid live online, for free, with Lyon & Turnbull Live. Just click the button from the auction calendar, sale page or any lot page online to register.

PAYMENT

Our accounts teams will continue to be available to process payments and answer queries. We will be able to accept online payments through our website and bank transfer. There will be no on-site payment facilities and no cash accepted as all our venues are closed to the public.

Payment is due within seven (7) days of the sale. Lots purchased will not be released until full payment has been received. Payment may be made by the following methods:

BANK TRANSFER

Account details are included on any invoices we issue or upon request from our accounts department.

ONLINE CREDIT OR DEBIT CARD PAYMENTS

We no longer accept card payments by phone. Please use our online payment service (provided by Opayo).

You will find a link to this service in any email invoice issued or you can visit the payments section of our website.

CASH

No cash payments will be accepted for this auction.

COLLECTION OF PURCHASED LOTS

Please refer to page 2 of this catalogue.





LONDON | EDINBURGH | GLASGOW

LYONANDTURNBULL.COM