



The Pedestal

Specialist auctions | Private sales | Online selling

FINE INTERIORS Including Selected Property from a Berkshire Residence - Part Two

2pm Tuesday 9 February 2021

The Dairy, Stonor Park, Henley-on-Thames, RG9 6HF



The Pedestal

Specialist auctions | Private sales | Online selling

Fine Interiors

Including Selected Property from a Berkshire Residence - Part Two

2pm Tuesday 9 February 2021

Sale number: 090121

The Dairy,
Stonor Park
Henley-on-Thames,
Oxfordshire, RG9 6HF

020 7281 2790
info@thepedestal.com
www.thepedestal.com

Specialists:

Early Works of Art
Simon Green
simon@thepedestal.com
Furniture & Works of Art
Guy Savill
guy@thepedestal.com
Sally Stratton
sally@thepedestal.com

Silver

Michael Prevezer
michael@thepedestal.com

Client Manager:

Jackie Brown
info@thepedestal.com

This auction will operate on an Online only basis with no in-person viewing at The Dairy due to the current Government COVID guidelines and to protect the safety of our clients and staff. Changes to procedure may be necessary in accordance with any additional government guidelines.

We will be able to provide additional images, video or other mediums to assist with viewing items where requested.

Catalogue: £10

Front cover: Lots 189

Inside front cover: Lot 61

Inside back cover: Lot 222

Back cover: Lot 85

The
Pedestal
Live
invaluable

the saleroom
The home of art & antiques auctions

Company no. 10159639 Registered for VAT no. 244 7137 09

IMPORTANT INFORMATION

LIVE BIDDING

Please go to auctions.thepedestal.com to bid live on our website.

You will need to create a new account to use The Pedestal Live. Once created it will give you access to live bidding facilities both from your desktop and through our app. The Pedestal Live is powered by Auction Mobility and is available for both Apple and Android mobile devices. To browse catalogues, leave absentee bids and bid live in all auctions from your device download the free app from the App Store (for Apple devices) and Google Play (for Android devices).

There is a 3% plus VAT additional live bidding fee applied for this service.

Alternatively live bidding for this auction is also available through invaluable.com and thesaleroom.com where additional charges apply.

BUYER'S PREMIUM AND CHARGES

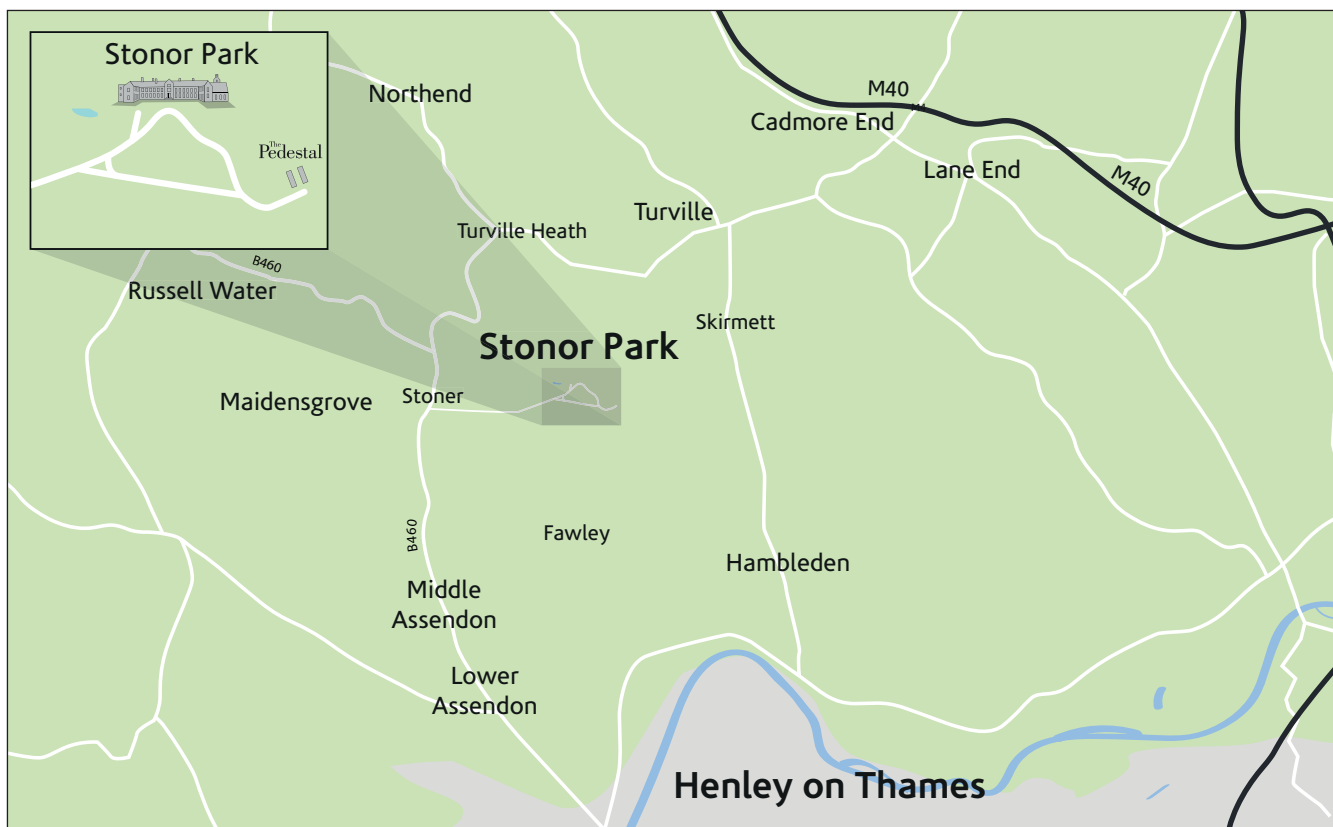
A successful bidder at this sale will be required to pay The Pedestal Ltd (The Pedestal) a premium calculated as follows:

25% on the first £50,000 of the hammer price

20% of any portion of such hammer price which is above £50,000 VAT at 20% will be payable on the amount of the premium

Additional charges for lots purchased online via live bidding platforms are applicable (see above)

PLEASE SEE POST SALE COLLECTIONS INFORMATION ON PAGE 2



Location

The Dairy is located between the M4 and the M40 (J6) on the B460 Henley-on-Thames - Watlington Road. On entering the Stonor Park Estate, through the main gates, keep to the right as the driveway divides, once you reach the parking area The Old Dairy is on the left. Stonor is a 10 minute drive North of Henley, only an hour from London, 40 minutes from Oxford and Heathrow and half an hour from Reading. If you are approaching Stonor on the M40 motorway from the East and are using a Satellite Navigation system please ignore any instructions to exit the motorway on either Junctions 4 or 5 as this will add up to an hour to your journey. Please only exit at Junction 6. The nearest railway station is Henley-on-Thames and taxis are available from the Station.

Symbols

¥ These lots are subject to CITES regulations.



MAIL BOXES ETC.

MAIL BOXES ETC. A service offering collection, specialist packing, postage, insurance and worldwide shipping of non-furniture items purchased in our auctions is available with Mail Boxes Etc. of Kilburn. Please contact Mailboxes Etc. directly on 0207 328 4161 or email info@mbekilburn.co.uk

Post Sale Collections and Storage Information

All auction purchases should be collected within 14 day of the auction from The Dairy, Stonor, Henley-on-Thames, Oxfordshire, RG9 6HF.

Due to Covid protocols and government guidelines, carriers sent to collect on your behalf must wear a mask and handle the goods independently.

Goods not collected within 14 days may be subject to an administration charge on £10 and then storage charged at:

£3 per day for pictures and small items

£6 per day for furniture, larger pictures and objects.

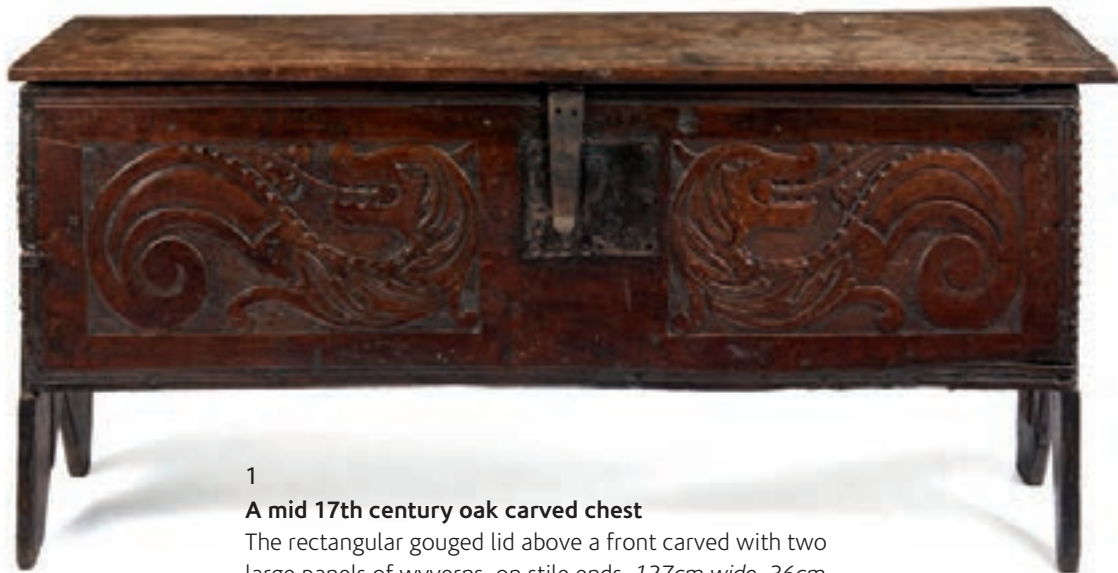
Please make contact with The Pedestal if you need assistance in arranging transport or are unable to make collection within the given time frame. We reserve the right to send Lots that are not collected in a timely manner to external storage, any resulting cost will be transferable to the purchaser.

Loss and Damage

Full value protection Cover for the value of the hammer price with be charged at 0.6% but will not exceed the total value of all other transfer and storage charges.

Value Added Tax

Will be applied at the current rate on any charges levied.



1

A mid 17th century oak carved chest

The rectangular gouged lid above a front carved with two large panels of wyverns, on stile ends, 127cm wide, 36cm deep, 58cm high.

£1300-£1800



2

A George II oak hanging cupboard

The rectangular top above a panelled door with pierced upper section enclosing two fitted shelves, 65cm wide, 26cm deep, 81cm high.

£1000-£1500

3

A pair of Dutch carved oak panels, 17th century

Depicting the same four figures on each panel, the central figure on horseback on one panel, *each 39cm high, 32cm wide.* (2)

£1200-£1800



4

A Charles II oak candlestand

With a circular top, screw-thread column and cruciform base, *36cm diameter, 68cm high.*

£1500-£2000



5

A Charles II carved oak and parquetry open armchair, Leeds, Yorkshire

The scrolling leaf and flowerhead carved top-rail above an chevron inlaid frieze and a lozenge and paterae carved back with 'S' scroll ears, above down-swept scrolling arms with a rope seat, on ring turned legs with stretchers and block feet, together with a loose squab cushion, *feet spliced, 57cm wide, 42cm deep, 118cm high, seat height 46cm.*

£1200-£1800

Provenance:

Hotham Hall, Yorkshire

Purchased by the current vendor from H.W.Keil, Worcestershire in 1988.





6

A George III chopping block, late 18th / early 19th century

With iron repairs, 49cm diameter, 55cm high.

£400-£600

7

A George III ash, elm and sycamore stick-back Windsor armchair, probably West Country; together with an elm footstool

64cm wide, 34cm deep, 86cm high, seat height 54cm, the stool 43cm wide, 30cm deep, 35cm high. (2)

£1500-£2000



8

A Henry VIII carved oak boarded chest

The rectangular moulded lid above a double lozenge and paterae carved front, with plank ends, 127cm wide, 44cm deep, 46cm high.

£800-£1200

Provenance:

Hotham Hall, Yorkshire

Purchased by the current vendor from B.I.Howard, Somerset in 1996.

9

A Charles I figured oak plank chest, possibly Welsh

Standing on high V-cut ends, 103cm wide, 36cm deep, 65cm high.

£600-£1000



10

A George II oak centre table

The rectangular top on slender turned legs joined by stretchers, 73cm wide, 50cm deep, 76cm high.

£600-£800

11

A James II carved oak and elm settle, dated 1688

The running leaf carved top-rail with turned finials and four strap-work carved panels, initialled in the centre P.W.C and dated 1688, above four further panels, with downswept scroll arms and rectangular seat, with leaf carved frieze and ring turned spindle supports with a front stretcher and panelled sides and back, 169cm wide, 51cm deep, 133cm high.

£1500-£2000

Provenance:

Hotham Hall, Yorkshire

Purchased by the current vendor from Reindeer Antiques, Towcester, Northamptonshire.





12

A group of 19th century pewter items

Including various pot-bellied pint or quart measures, a lidded measure with thumb-piece, possibly Scottish, a pair of glass-bottom tankards stamped JAMES DIXON & SONS OXFORD, a pair of European candlesticks, 19cm high and two cannisters, probably Swiss, 23cm and 12cm high. (11)
£200-£300

13

A French pewter charger of Royal interest, dated ANNO 1765

Centred with a Coat of Arms depicting three fleur de lys on a shield held by lion supporters, 43cm diameter.

£300-£500

1765 is the date that Louis, Dauphin of France, son and heir apparent to Louis XV, died. The triple fleur de lys is representative of the House of Bourbon.



14

A set of nine pewter plates, each with touch of John Tidmarsh, London

Early 18th century, each 24cm diameter. (9)
£120-£180

15

A copper figure of the archangel Gabriel, 18th century

Depicted in military dress, clouds beneath his feet, mounted on velvet and framed, 55cm wide, 57cm high.

£600-£800





16

A matched set of sixteen 19th century elm and ash spindle back dining chairs

Including an open armchair, with rush seats and turned legs joined by stretchers on pad feet, each *approximately 48cm wide, 36cm deep, 98cm high, seat height 46cm high.* (16)

£800-£1200



17

An ash spindle-back rocking chair, Lancashire, mid 19th century

With rush seat, *57cm wide, 68cm deep, 97cm high.*

£250-£350

18

A Charles I oak plank chest

The front carved with geometric leaf patterns on V-cut ends, with remains of paint, *98cm wide, 39cm deep, 44cm high.*

£500-£800



19

A cherry and pine tavern table, English, 19th century

With plank top and X-shaped end supports joined by an iron rail, 129cm wide, 58cm deep, 69cm high.

£1000-£1500



20

A Queen Anne oak panel-back open armchair, North Country

With scroll-carved top rail and uprights with pyramidal finials, the baluster front legs joined by a pierced stretcher, 53cm wide, 43cm deep, 116cm high, seat height 45cm.

£700-£1000

21

A Charles I carved oak press cupboard

Geometrically inlaid with holly and bog oak, the rectangular moulded cornice above a lunette carved frieze and a central inlaid panel flanked by two similarly inlaid doors, with leaf carved baluster supports, the lower part with lunette carved frieze and a pair of lunette carved and lozenge inlaid panelled doors enclosing a shelf, on stile feet, 155cm wide, 57cm deep, 169cm high.

£800-£1200

Provenance:

Hotham Hall, Yorkshire

Purchased by the current vendor from Cheriton Antiques, Cheltenham in 1992.





22

A matched set of six Charles II joined oak backstools, circa 1680

Comprising a pair, another pair and two singles, each with turned decoration throughout and solid plank seat, one seat indistinctly stamped with initials HT, each 51cm wide, 41cm deep, 96cm high, seat height 45cm. (6)

£2500-£3500



23

A George II oak octagonal occasional table

With moulded top and baluster column standing on triform base, 35cm diameter, 60cm high.

£800-£1200



24

A pair of European oak stools, early 18th century

Of particularly large size, each raised on turned legs joined by multiple stretchers, lacking upholstery, each 47cm square, 71cm high. (2)

£2000-£3000



25

A George III oak dresser

The plate rack with open shelves and plate-rest bars, each flanked by small arched niches, the base with an unusual arrangement of twin plain panels flanked by doors, all below three frieze drawers and standing on stile feet, 190cm wide, 49cm deep, 221cm high.

£1200-£1800



26

A William and Mary oak chest of drawers

With two short and two long drawers, raised unusually on sleigh feet, 91cm wide, 52cm deep, 82cm high.

£1500-£2500



27

A Karadja rug, North West Persia, circa 1900

189cm x 147cm

£400-£600

Provenance:

Property from a Berkshire Residence.

28

A Kirsehir rug, Anatolia, 19th century

restorations

121cm x 183cm

£500-£700

Provenance:

Property from a Berkshire Residence.



29

A Karacher prayer rug circa 1900

Illegibly signed possibly 1321

106cm x 195cm

£2500-£3500

30

A Fakhralo Kazab prayer rug, circa 1880

134cm x 171cm

£3000-£5000



31

A Caucasian Kelim circa 1900

168cm x 233cm

£500-£700



32

A Senneh rug, West Persia, circa 1940/50

189cm x 130cm

£600-£800



33

A Charles II oak joined stool

With a moulded top and baluster legs joined by square stretchers, one leg stamped with initials MB, 46cm wide, 27cm deep, 56cm high.

£600-£1000

34

A George I oak gate-leg dining table

The oval hinged top on slender baluster ring turned legs joined by rectangular moulded stretchers, on turned feet, 152cm wide, 130cm deep, 74cm high.

£600-£800

Provenance:

Hotham Hall, Yorkshire

Purchased by the current vendor from Douglas Bryan, Kent in 1994



35

A 17th century cast iron fire back

With a central coat of arms, surrounded by scrolling leaves and flowerheads, 70cm wide, 54cm high.

£300-£400



36

A set of ten framed engravings depicting Kings, early 20th century

Of James I, Edward I & III, Richard I, Charles I & II, Henry II & IV, Egbert The Great and Prince George of Denmark, each 48cm high, 32cm wide, framed and glazed, i/s each 38cm high, 21cm wide. (10)

£250-£350



37

A prisoner of war bone sculpture of the Pieta, a scene from the Passion of Christ, early 19th century

8cm high.

£300-£500



38

A weathered tin sculpture of a cockerel, mid 20th century

50cm high, 51cm wide.

£250-£350

39

A Victorian ash and elm Windsor rocking chair, Yorkshire

The spindle back with pierced vase-splat, with out scrolled arms above a shaped seat, on turned legs and stretchers, on rockers, with traces of red paint, 64cm wide, 47cm deep, 109cm high, seat height 43cm high.

£200-£300

Provenance:

Property from a Berkshire Residence.



40

A set of six 19th century mahogany stick back dining chairs

The curved top rails above spindle and baluster turned backs, above saddle seats and baluster turned legs joined by 'H' stretchers, *possibly American*, each 45cm wide, 41cm deep, 94cm high, seat height 49cm. (6)

£600-£800



41

A George III oak and pine farmhouse table

The rectangular four plank cleated top with a frieze drawer at one end, on pine legs and stretchers, *central stretcher replaced*, 217cm wide, 90cm deep, 80cm high.

£800-£1200

Provenance:

Hotham Hall, Yorkshire

Purchased by the current vendor from Hubbard Antiques, Leominster, Hereford in 1990.



42

A George III ash Windsor armchair

With shaped top rail and solid vase splat, 59cm wide, 40cm deep, 102cm high, seat height 43cm.

£1500-£2000



43

A George II oak and fruitwood lowboy

The top possibly plum, with frieze drawer and cabriole legs, 73cm wide, 48cm deep, 70cm high.

£500-£800



44

A French oak trestle table, mid 19th century

With a twin-plank top and shaped end supports, 229cm wide, 62cm deep, 76cm high.

£1500-£2000



45

A Charles II carved oak side table

The rectangular moulded top above a leaf carved drawer, on reel turned legs joined by stretchers, on turned feet, 87cm wide, 57cm deep, 72cm high.

£400-£600

Provenance:

Hotham Hall, Yorkshire

Purchased by the current vendor from Hubbard Antiques of Leominster in 1989.



46

A 17th century Dutch oak and purpleheart cabinet on stand

Enclosed by a pair of doors with raised moulded panels and projecting corners with bosses, the interior fitted with an arrangement of eighteen drawers around a large arched cupboard with small drawers within, all applied with purpleheart mouldings, iron carrying handles, *105cm wide, 53cm deep, 158cm high.*

£800-£1200



47

A late 18th/early 19th century Dutch oak carved six-leg table

The three-plank top with end cleats, above friezes with chamfered raised panels and pierced spandrels, on bulbous ring-turned legs headed with panels and joined by square stretchers, standing on bun feet, *240cm wide, 93cm deep, 80cm high.*

£1800-£2500



48

A North Italian walnut cabinet, early 18th century

The rectangular top above seven short drawers and two cupboard doors, all applied with split moulding arcades, with iron carrying handles to the sides, *75cm wide, 36cm deep, 51cm high.*

£700-£1000



49

A Queen Anne oak panelled chest dated 1702

The four panel moulded lid above a running foliate roundel carved frieze with the initials W.V and the date 1702 above a four panel front, on stile ends, *146cm wide, 54cm high, 78cm high.*

£300-£500



50

A pair of large freestanding giltwood and painted torcheres, Italian, 18th century

Each with a foliate corona dish above a baluster column with acanthus knop and leaf-carved detail, the triform base carved with bold scrolls and central cartouches, standing on lion's paw feet, each 49cm wide, 187cm high. (2)

£2000-£3000



51

A pair of Swiss stained pine corner armchairs, late 19th century

each 53cm wide, 33cm deep, 71cm high, seat height 45cm. (2)

£300-£500



52

A South German walnut chest, mid 18th century

With panels of cherry and marquetry, the lid enclosing a fitted interior, the plinth with sliding section concealing drawers, 113cm wide, 52cm deep, 88cm high.

£1000-£1500



53

An Agra or Amritsar carpet c.1890

465cm x 358cm

£4000-£6000

Provenance:

Property from a Berkshire Residence.



54

A Chinese Khotan carpet, circa 1920

204cm x 403cm

£1000-£1500

Provenance:

Property from a Berkshire Residence

55

A Transylvanian prayer rug, Anatolia, 18th or possibly 17th century

restorations

136cm x 154cm

£3000-£5000

Provenance:

Property from a Berkshire Residence.



56

An Afshar rug, Persia, late 19th century

some wear

124cm x 163cm

£500-£700

Provenance:

Property from a Berkshire Residence.



57

A Caucasian Sumak, circa 1880

186cm x 275cm

£1200-£1800



58

A William & Mary oak stool

The square padded seat upholstered in floral needlework, on baluster turned legs joined by a turned stretcher, on block feet, 49cm square, 44cm high.

£300-£500

59

A William & Mary black japanned chest on later stand

Heightened with gilt chinoiserie, the rectangular moulded top above two short and two long graduated drawers; above a frieze drawer, on a later stand with rectangular chamfered legs, 99cm wide, 56cm deep, 134cm high.

£800-£1200



60

A George II walnut stool

The rectangular padded seat on cabriole legs and pointed pad feet, 51cm wide, 41cm deep, 42cm high.

£300-£500



61

A George I burr walnut, featherbanded and crossbanded cabinet on chest

The brass bound upper part with rectangular top and quarter-veneered doors with gilt brass strap-work hinges, enclosing twelve short and one long drawer, the lower part with two short and three long graduated drawers on replaced bracket feet, 103cm wide, 55cm deep, 189cm high.

£5000-£7000



62

A Queen Anne walnut and chequerbanded toilet mirror

The *replaced* plate with a leaf carved slip and moulded swing frame, the rectangular base with concave drawer on later plinth and ogee bracket feet, 41cm wide, 22cm deep, 63cm high.

£100-£200

63

A small figured walnut and crossbanded chest

Inlaid with boxwood and ebonised lines, the rectangular quarter-veneered moulded top with re-entrant corners above a deep drawers and three long graduated drawers, on six bracket feet, with swing brass carrying handles to the sides, veneered on the reverse, 18th century and later, 84cm wide, 39cm deep, 71cm high.

£3000-£5000



64

A George I style oak carved wing armchair

Upholstered and close-nailed in brown leather, the serpentine padded back, curved side and outswept padded arms above a loose squab cushion, on cabriole shell carved legs and claw and ball feet, 73cm wide, 65cm deep, 112cm high, seat height 51cm high.

£700-£1000



65

A George I and later walnut chest on stand

The rectangular ogee moulded cornice above a cushion drawer above three short and three long graduated drawers, the stand with slide and three frieze drawers with a shaped knee-hole, on baluster turned legs with wavy stretcher and bun feet, 101cm wide, 54cm deep, 175cm high.

£600-£800

Provenance:

Property from a Berkshire Residence.



66

A pair of George I walnut dining chairs

The vase shaped splats above bowed drop-in seats on cabriole scroll legs and pointed pad feet, each 50cm wide, 43cm deep, 102cm high. (2)

£1800-£2200



67

A Queen Anne carved walnut wing armchair

The rectangular padded back, sides, scroll arms and seat, on cabriole leaf and trailing bellflower carved legs and pad feet, 91cm wide, 56cm deep, 111cm high, seat height 43cm.

£1500-£2000





68

A George III Irish carved mahogany gate-leg tea table

The rectangular moulded edge top opening on a central twin gate-leg action, above a frieze drawer, on foliate carved C-scroll legs and claw and ball feet, *91cm wide, 45.5cm deep, 74cm high.*

£2500-3000



69

A George II carved mahogany low linen press in the manner of Giles Grendey

The rectangular moulded top above a pair of shaped moulded panelled doors, with interior slide guides and enclosing five slides, with panelled sides on ogee bracket feet, *121cm wide, 63cm deep, 123cm high.*

£2000-£3000

70

A George III carved mahogany two-tier dumb-waiter

in the manner of Thomas Chippendale

The circular moulded tops above ring turned and wreathed shafts on cabriole moulded downswept tripod legs with scroll feet, 60cm diameter, 89cm high.

£1000-£1500



71

A George II mahogany stool

The rectangular close-nailed seat upholstered in red and green damask style fabric, on square chamfered legs, 60cm wide, 46cm deep, 47cm high.

£500-£700

72

A pair of George II mahogany side chairs

The rectangular padded and close-nailed backs and seats upholstered in red and blue floral fabric, on square tapering legs joined by stretchers. (2)

£500-£700





73

A George I walnut, crossbanded, featherbanded and parcel gilt bureau cabinet

In three parts, the swan-neck pediment with applied carved paterae above a pair of panelled doors enclosing an adjustable shelf, a divided interior and two further shelves above nine pigeonholes and four short drawers, above a pair of candlesticks; above a sloping fall enclosing a leather lined writing surface, a central cupboard door flanked by two 'secret drawers', six pigeonholes, eight short and four stepped drawers and two sliding wells; the lower part with three short, a further two short drawers and a long drawer, on later bracket feet, *119cm wide, 38cm deep, 141cm high.*

£3000-£5000



74

A George II walnut and crossbanded hanging corner cupboard

The swan-neck pediment with central urn finial above a panelled door enclosing three shaped shelves, flanked by stop-fluted angles, on moulded plinth base, *82cm wide, 44cm deep, 116cm high.*

£300-£500

Provenance:

Hotham Hall, Yorkshire

Purchased by the current vendor from John Barry, Gloucestershire in 1987.

75

A George II walnut crossbanded and featherbanded kneehole bureau cabinet

The arched moulded cornice above a pair of strap-work inlaid shaped doors enclosing twenty pigeon-holes, eleven drawers and a recess; the lower part with a sloping fall enclosing a sliding well, six pigeon-holes, three drawers and a further four shaped drawers, one with original pewter ink and pounce pot; above an arched knee-hole flanked by six drawers on turned bun feet, 103cm wide, 59cm deep, 223cm high.

£2000-£4000



76

A George II padouk concertina-action card table

The rounded rectangular top enclosing a replaced baize, on slender cabriole lapeted legs and pad feet, 91cm wide, 46cm deep, 72cm high.

£4000-£5000

Provenance:

Purchased Jeremy Ltd in the 1950's.



77

A George II walnut and parcel gilt carved fret mirror

The rectangular bevelled replaced plate within a leaf moulded slip surmounted by a scrolling cresting centred by a pierced leaf, with an undulating apron below, *97cm high, 59cm wide.*

£600-£800

Provenance:

Private Collection, London.



78

A George II style burr walnut pier mirror

The rectangular plate with egg and dart carved and gilded slip surmounted by a broken arch cresting, scrolling acanthus and a cherub mask, with a shaped apron below, *147cm high, 67cm wide.*

£600-£800

79

A George II mahogany 'Gainsborough' type library open armchair in the manner of Giles Grendey

The rectangular padded back, arms and seat upholstered and close-nailed in a striking red, yellow and blue patterned fabric, with downswept moulded arms, on cabriole legs and pad feet, 70cm wide, 64cm deep, 97cm high, seat height 38cm.

£3000-£5000



80

A George II carved mahogany drop flap dining table

The oval top with hinged leaves above shaped aprons, on lapet carved cabriole legs and claw and ball feet, 207cm wide, 147cm deep, 72.5cm high.

£2000-£3000



81

School of Utrecht, 17th century

Elijah fed by the raven

Oil on canvas

92cm high, 73cm wide (unframed)

£6000-£8000



82

Attributed to Philip Mercier (1689-1760)

Mascarade

Cinq figures à micorps un Sganarelle, in Cassandre, un Negre et deux femmes

Oil on canvas

92cm x 137cm

With frame 109cm x 156cm

£5000-£8000

Provenance:

Private Collection

After the painting 'Coquettes' by Watteau in the Hermitage, St.Petersburg. Philip Mercier was born in Berlin, the son of a Huguenot tapestry worker who came to London in 1716 at the recommendation of the Court of Hanover. Between 1720 and 1727, he was recorded as living at No.40 Leicester Square. His early successes in London were of Watteau inspired fêtes galantes with the tradition of Dutch 17th century portraiture.



83

**Polidoro Da Caravaggio
(c.1499-1543)**

Assembly of Gods

Brown ink drawing

28cm x 20cm

£1000-£1500

Provenance:

Private Collection, England



84

**Michel Corneille The
Younger (1642-1708)**

Nudes

Drawing

23cm x 24cm

£1000-£1500



85

Jean Honoré Fragonard (1732-1806)

L'Heureuse famille

Wash on paper

33cms x 43cms

£5000-£7000

Provenance:

Formerly in the collection of Y.A Ph.Bulloz

Illustrated:

A. Ananoff *Ce Qu'il Faut Connaitre De La Peinture et du Dessin Ancien*, F. De Nobele, Libraire, 35, rue Bonaparte, 75006, Paris, Fig.6A. Ananoff, *Fragonard, Quelques Dessin D'Une Collection*, L'Estampille, January 1984, p.10.



86

Attributed to Frans Floris

Head of a woman

Oil on panel

45.5cms x 30.5cms

£3000-£5000

Provenance:

Private Collection, England



87

Louis Galloche (1670-1761)

Two Women Seated

Pencil and gouache drawing

34.5cm x 48cm

£1000-£1500

Provenance:

Private Collection, London.

88

Jean Baptiste Le Prince (1734-1781)

Chaumière au bord d'une fleuve

29cm x 26.5cm

£5000-£7000

Provenance:

De Mesringny family, Troyes Comte de Parc, Chateau de Vilebertin, Troyes by descent.

Private Collection, England



89

Philippe Louis Parizeau (French 1740-1801)

'A Peasant family by a fireplace', 38cm x 28cm and a companion piece 'A Peasant family by a door' 38cm x 28cm.

Two Gouache Studies

£800-£1200

Provenance:

Heim, London, 1990

Private Collection, England.



90

A 19th century George III style Irish carved mahogany side table

The rectangular moulded edge top above a shaped pierced foliate and rosette decorated frieze, the sides similarly decorated, on acanthus carved legs terminating in lion's paw feet, 94cm wide, 51cm deep, 78cm high.

£2000-£3000

91

A George III Irish carved mahogany console table

The rectangular moulded edge top above a shaped frieze centred by a shell, on shell and foliate carved cabriole legs and lion paw feet, 76cm wide, 47cm deep, 74cm high.

£1500-£2000



92

A George III mahogany night commode

The rectangular moulded top above a fall front on square tapering legs, 39cm wide, 32cm deep, 75cm high.

£400-£600



93

A George III mahogany carved and crossbanded concertina-action serpentine card table in the French taste

The shaped rectangular hinged top with rounded projecting corners enclosing a replaced baize, on cabriole moulded legs headed by acanthus leaves on scroll knurl feet, 91cm wide, 45cm deep, 73cm high.

£4000-£6000



94

A George III mahogany tripod kettle stand

The circular galleried top above a baluster turned shaft on cabriole legs and pad feet, 29cm diameter, 58cm high.

£1000-£1500





95

A pair of George III carved mahogany dining chairs

The serpentine top rails with Greek key carved ears above vertical pierced plates, and stuffover, closenailed and buttoned flame stitch needlework seats, on square chamfered legs joined by stretchers, *each 54cm wide, 48cm deep, 92cm high, seat height 43cm.*

(2)

£800-£1200

Provenance:

Property from a Berkshire Residence.

Purchased James Graham-Stewart



96

A George III mahogany, satinwood crossbanded and sycamore marquetry tripod table

The circular tilt top inlaid with a fan roundel, above a wreathed baluster turned shaft, on cabriole acanthus carved legs and claw and ball feet, *78cm diameter, 71cm high.*

£500-£700



97

A George III mahogany serpentine chest

The rectangular top above four long graduated drawers on shaped bracket feet, with restorations, possibly reduced in depth, *100cm wide, 50cm deep, 96cm high.*

£1000-£1500

Provenance:

Property from a Berkshire Residence.

Purchased Sotheby's, London, Fine Furniture and Clocks, including Property from Two English Collections, 10 September 2007, lot 242.

98

A George III mahogany bureau cabinet

The broken arch Greek key carved pediment above a pair of panelled doors enclosing three adjustable shelves, the lower part with a sloping fall enclosing a central cupboard door, flanked by two pigeonholes, eight short and three blind fret carved drawers; above three long graduated drawers on ogee bracket feet, 109cm wide, 57cm deep, 235cm high.

£1500-£2000



99

A George III mahogany and crossbanded blind fret carved card table

in the Chippendale style

The later rectangular hinged top with carved edge enclosing a tan tooled leather, above blind fret frieze and square chamfered blind fret carved legs with pierced spandrels, 86cm wide, 42cm deep, 72cm high.

£1200-£1800

Provenance:

Private Collection London, purchased Florian Papp, New York, May 2001.



100

A George III mahogany double chair-back settee

The pierced ladder back with undulating foliate carved rails with moulded outswept arms, the upholstered seat on square section moulded legs joined by stretchers, *re-railed*, 121cm wide, 45cm deep, 92cm high.

£800-£1200



101

A large George III mahogany supper or occasional table

The circular tilt top on a turned shaft on cabriole legs and claw and ball feet, with recessed castors, 101cm diameter, 71cm high.

£2000-£3000



102

A George III mahogany side table

The rectangular top above two frieze drawers on square chamfered legs, 84cm wide, 47cm deep, 74cm high.

£400-£600

103

A George III Channel Islands mahogany wardrobe by Thomas Bishop

Inlaid with boxwood lines, the rectangular cavetto moulded cornice above triple panelled doors and sides, enclosing a hanging rail and three shelves, above a shaped apron on outswept bracket feet, signed under the base 'Thomas Bishop, Maker', 127cm wide, 56cm deep, 219cm high.

Provenance:

Property from a Berkshire Residence

Purchased: Sotheby's, London, Fine Furniture and Clocks, including Property from Two English Collections, 11 September 2007, lot 196.

Whilst no record has been found of this cabinet-maker, a William Henry Bishop is listed as a Cabinet Maker in Church Street, St Helier, in 1841.



104

A small late George III mahogany and sycamore marquetry sideboard

Inlaid with boxwood lines, the shaped top above a central frieze drawer and fan inlaid apron; flanked by two drawers and a deep celleret drawer, on square tapering gaitered legs, 132cm wide, 55cm deep, 93cm high.

£1200-£1800



105

A George III carved mahogany concertina-action card table

in the French Hepplewhite taste

The hinged rectangular moulded top enclosing a replaced baize lining, above a shaped frieze on slender cabriole legs headed by trailing bellflowers, on scroll feet, 90cm wide, 42cm deep, 73cm high.

£1500-£2000

Provenance:

Property from a Berkshire Residence

106

A George III carved mahogany armchair

in the French Hepplewhite taste

The cartouche shaped padded back, scroll arms and serpentine padded seat upholstered in gold silk damask, on ring turned tapering legs headed by paterae on spool feet, 63cm wide, 51cm deep, 91cm high, seat height 46cm.

£700-£1000



107

A George III mahogany gentleman's bedside commode

The rectangular tray top with undulating gallery, with pierced heart shaped handles; above a pair of cupboard doors and a deep drawers, on rectangular moulded legs, converted, 48cm wide, 50cm deep, 75cm high.

£500-£700

108

A George III mahogany galleried tripod table

The circular top with baluster turned gallery with four pierced handles, above a birdcage- action and a wreathed baluster turned shaft on cabriole legs and pad feet, *70cm diameter, 75cm high.*

£4000-£6000

Provenance:

Property from a Berkshire Residence

Purchased Christie's, London, Important English Furniture, 22

November 2007, lot 621, 'The Property of a Gentleman'.

Previously sold Christie's, London, 28 November 2002, lot 136.



109

A small George III mahogany chest

The rectangular top above four long graduated drawers, on shaped bracket feet, *79cm wide, 47cm deep, 81cm high.*

£600-£800

Provenance:

Property from a Berkshire Residence



110

A pair of George III mahogany demi-lune tea tables

Each with hinged moulded tops above plain friezes with ebony bands, on square tapering legs, *each 97cm wide, 44cm deep, 75cm high. (2)*

£3000-£4000



111

A George III walnut chest on chest

The cavetto moulded Greek key carved cornice above two short and two long graduated drawers, the lower part with three long graduated drawers, on shaped bracket feet, *105cm wide, 55cm deep, 184cm high.*

£1200-£1800

112 ¥

A George III mahogany and satinwood banded linen press

Inlaid with boxwood lines, the upper part with moulded cornice above a pair of oval panelled doors, enclosing slides, the lower part with four long graduated drawers, on slender outswept feet, with ivory escutcheons, 131cm wide, 53cm deep, 213cm high.

£800-£1200

Provenance:

Property from a Berkshire Residence.



113

A George III carved mahogany open armchair attributed to John Linnell

The oval medallion back within a moulded frame surmounted by a riband tied paterae and husks, the outswept acanthus clasped arms terminating in foliate covered ball terminals, on acanthus carved supports, the upholstered seat and fluted seat rail, on lotus carved fluted legs, headed by paterae and turned feet, *inscribed Pendle twice to the underside*, 60cm wide, 43cm deep, 96cm high

£1000-£1500.

The ball clasped finials are typical feature of Linnell seat furniture and appear on a set of armchairs supplied to Robert Child (d.1782) of Osterley Park (circa 1768) for either Osterley Park or for 38 Berkeley Square. The Child chairs also feature the same clasped lotus leaves where the arm joins the back and the same octagonal moulding under the ball terminal. Two armchairs from this suite were offered Christie's London, 14 June 2001, lot 80 (withdrawn from sale) and on a suite of seat furniture supplied to the Duke of Argyll for Inverary Castle circa 1775-78. See H.Hayward and P. Kirkham, *John Linnell*, Vol.II, figs 72,87,89.





114 ¥

A George III mahogany and chequerbanded linen press

The rectangular ogee moulded cornice above a pair of panelled doors inlaid with chequer banded ovals enclosing five slides, the lower part with two short and two long drawers, on ogee bracket feet, *with ivory escutcheons*, 120cm wide, 55cm deep, 199cm high.

£1500-£2000



115

A set of six George III mahogany shield back dining chairs in the Hepplewhite style with four additional chairs of similar design including three open armchairs

The shield shaped backs carved with wheat-sheaves and paterae above close-nailed stuff-over seats and square tapering legs and spade feet. (10)

£3000-£5000

116

William Nadauld, London. An early 19th century mahogany striking longcase clock

The 12" circular dial with deadbeat escapement and centre seconds indication, the hood with canted reeded front angles over a long trunk door of good figuring, framed by matching angles with inlaid brass flutes, on a base with applied moulding, 46cm wide, 24cm deep, 234cm high.

£2000-£3000

Provenance:

Property from a Berkshire Residence.

Purchased W R Harvey & Co., Witney

William Nadauld of Houndsditch, London, apprenticed 1788, Clockmakers Company 1801-20 .



117

A George III mahogany secretaire bookcase

The ogee moulded cornice above a blind fret carved frieze and a pair of astragal glazed doors enclosing two adjustable shelves and three short drawers; the lower part above a pair of panelled doors enclosing a central secretaire drawer enclosing a tooled leather writing surface, six pigeon-holes and seven short drawers; flanked by four short drawers and three long graduated drawers, on shaped bracket feet, 112cm wide, 51cm deep, 233cm high.

£3000-£5000

Provenance:

Purchased John Thompson Antiques, N.Yorkshire, February 2000 £24,500.



118
A Kordi runner, West Persia, circa 1900
outer border removed
 500cm x 84cm
 £700-£900



119
A Heriz runner, North West Persia, circa 1920
 430cm x 88cm
 £1200-£1800



120

A Caucasian runner

120cm x 342cm

£700-£1000

Provenance:

Property from a Berkshire Residence.

thepedestal.com



121

A Kordi runner, West Persia, late 19th century

445cm x 90cm

£2500-£3500



122

A Serapi carpet, mid 19th century

250cm x 468cm

£200-£300



123

A contemporary Trellis design carpet, probably Turkish

361cm x 226cm

£200-£300

Provenance:

Property from a Berkshire Residence

124

A Chinese Khotan rug (Chinese Turkestan)

147cm x 95cm

£700-£1000

Provenance:

Property from a Berkshire Residence.



125

A Kurdish rug, North West Persia, second half 19th century

221cm x 144cm

£800-£1200

Provenance:

Property from a Berkshire Residence.



126

A Bakhtiar rug, West Persia, circa 1920

324cm x 161cm

£1000-£1500



127

A George II silver lemon strainer by William Plummer, London, probably 1755

With shaped handles, centre pierced with intersecting leaf motifs to create a large petalled effect, 11.7cm diameter, 25.4cm wide handle to handle, 4oz (124gm).

£450-£550

128

Of Derbyshire Interest: A George II silver Communion cup, by Thomas Cooke and Richard Gurney (Grimwade No.2324), London 1732

Of plain form on trumpet foot, with a contemporary inscription 'A gift to the Presbyterian church in Wirksworth', Derbyshire' in flowing script, 294gm, 18.5cm high.

£200-£300



129

A pair of George III cast silver taper sticks by Ebenezer Coker, London, 1764

The shaped square bases with shell corners and unmarked detachable nozzles, 13cm high, 10oz (310gm). (2)

£1400-£1800

130

A George II silver coffee pot by Peter Taylor, London, 1742

Plain tapering form with leaf-decorated spout, a lady's coat of arms engraved to one side, three hounds passant, a chevron ermine between, 24cm high, 29.5oz (915gm).

£1000-£1500



131

A George III silver teapot and stand by Charles Aldridge, London, 1793

Shaped oval with engraved bands centred on each side by vacant cartouche within wreath, wood handle, ebonised finial and fluted spout, both pieces fully marked, teapot also with lion passant inside cover, 17.5cm high, 27.5cm long, 21oz (651 gm).

£700-£900



132 ¥

A pair of George III silver wine coasters, maker's mark I.W, all seriphed, the I and W conjoined by their upper seriphs, in oblong punch, unidentified, London, 1771

With narrow gadroon rims, the sides pierced with crosslets, small annulets and lozenges between two horizontal bands incorporating a crested panel to front, engraved with Scottish crest, an armoured arm embowed, holding a dagger and motto above 'Arma Tuentur Pacem' 'the wood bases centred by an ivory bead, 13.1cm diameter, 4.6cm high. (2)

£1800-£2200



133

A Regency mahogany tripod table attributed to Gillows

The rounded rectangular top above a turned shaft on downswept scrolled and reeded legs, with ball feet, 56cm wide, 43cm deep, 73cm high.

£200-£300

Provenance:

Property from a Berkshire Residence.

134 ¥

A small Regency rosewood three-tier what-not

The rectangular top with turned finials, on ring and baluster turned supports headed by brass collars, on turned tapering legs, with brass 'Cope's Patent' cappings and castors, 36cm wide, 33cm deep, 78cm high.

£400-£600

Provenance:

Property from a Berkshire Residence.

Purchased Christies, London, 24 January 2008 lot 172.



135

A Regency goncalo alves occasional table

The circular tilt top above a tapering shaft and leaf carved tripartite base, with scroll feet, 45cm diameter, 72cm high.

£300-£500

Provenance:

Property from a Berkshire Residence.

Purchased James Graham-Stewart.

136

A pair of Regency mahogany bedside or pot cupboards

The square tops with three-quarter galleries with pierced carrying handles above a pair of cupboard doors on turned tapering legs and spool feet, each 44cm wide, 43cm deep, 83cm high. (2)

£800-£1200

Provenance:

Property from a Berkshire Residence.



137

A Regency mahogany chamber table by Gillows of Lancaster

The rounded rectangular top with hinged stationery drawer, above a frieze drawer, on fluted tapering legs with brass cappings and castors, *stamped to the drawer GILLOWS.LANCASTER, inscribed in pencil to the underside, 'Red Bedroom'*, 71cm wide, 48cm deep, 73cm high.

£1000-£1500

Provenance:

Property from a Berkshire Residence.

138

A Regency mahogany bowfront side cabinet

in the manner of Gillows

The rounded rectangular moulded top with projecting corners above a pair of drawers and a pair of panelled doors enclosing a shelf flanked by reeded angles, on turned spool feet, 109cm wide, 47cm deep, 87cm high.

£1000-£1500





139 ¥

A set of eleven Regency rosewood carved dining chairs

The curved bar top rails with gadrooned edge above pierced crossbars with scrolls and foliage, the rectangular seats on reeded ring turned legs and feet, *each 45cm wide, 40cm deep, 89cm high. (11)*

£2000-£3000

140

An early Victorian Gout stool

Now covered in a kelim, raised on turned legs, with castors, *62cm wide, 36cm deep, 44cm high.*

£250-£350



141 ¥

A Regency rosewood games table

The rectangular top with a gadrooned edge, hinged to reveal a green baize-lined interior, containing a narrow drawer inlaid in fabric and two-tone leather for backgammon, with a slide below inlaid for backgammon, on dual end spiral legs with platform bases, ending in brass lion paw feet, joined by a spiral stretcher, *53cm wide, 38cm deep, 71cm high.*

£400-£600

142

A Regency mahogany half length cheval mirror

The rectangular bevelled plate within a swing frame, with ring turned supports on downswept legs and brass hairy paw cappings and castors, *139cm high, 61cm wide.*

£300-£500

Provenance:

Property from a Berkshire Residence



143 ¥

A set of Regency amboyna, thuya, maple and rosewood banded quartetto tables attributed to Gillows

With rectangular tops, the smallest with chequerboard, on baluster turned legs joined by stretchers, *the largest 58cm wide, 41cm deep, 74cm high. (4)*

£1500-£2000

Provenance:

Property of a Gentleman, sold Christie's London, 6 July 1995, lot 30. Private Collection, London.

A related set of quartetto tables form part of the collection at Leighton Hall, Lancashire and are thought to have been supplied by Gillows. A set of tables identical to those offered with the addition of a trough to the smallest table were part of a group of furnishings supplied to William Senhouse in the West Indies by Gillows, the Senhouse tables were sold Christie's London, 17 November 1983, lot 3.

144

A pair of Regency mahogany side chairs

The rectangular over-srolled caned backs on rectangular seats and turned tapering outswept legs, together with lilac velvet squab cushions, *each 47cm wide, 47cm deep, 83cm high, seat height 41cm. (2)*

£150-£200

Provenance:

Property from a Berkshire Residence.





145

A Regency fiddle-back mahogany, tulipwood banded and ebonised sofa table

by Wilkinson of Ludgate Hill

The rectangular hinged top with canted angles above a pair of frieze drawers with opposing simulated drawers, with turned roundels, on ring turned end supports with platform bases on ring turned legs with brass cappings and castors, *stamped to top right drawer WILKINSON.*

LUDGATE HILL 1786, 151cm wide extended, 66cm deep, 74cm high.

£1200-£1800

Provenance:

Private Collection, London.

William Wilkinson (d.1833) of 14 Ludgate Hill was trading from 1808. He used this stamp until circa 1820 when the business became Wilkinson & Sons. From 1833-34 the firm made furniture for the new Goldsmith's Hall in London, to the designs of the architect Philip Hardwick.



146

A matched pair of Regency mahogany library open armchairs

Upholstered, close-nailed and buttoned in 'ox-blood' leather, the rectangular reclined padded backs above scroll arms and padded seats on 'X' form legs with turned paterae and castors, *each 61cm wide, 64cm deep, 93cm high, seat height 36cm high. (2)*

£1000-£1200

147

A Regency satinwood two-tier buffet

Inlaid with ebony bands, the rectangular top with three-quarter gallery on ring turned supports, the lower tier with apron drawer, on turned legs with brass cappings and castors, *103cm wide, 48cm deep, 78cm high.*

£1000-£1500

Provenance :

Property from a Berkshire Residence.

Purchased Christie's, London, Turin London Corfu, The Collection of Giorgio Marsan and Umberta Nasi, 12-13 December 2007, lot 111.



148

A set of Regency satinwood quartetto tables

The rectangular tops on turned legs with curved stretchers and spool satinbirch feet, *the largest 51cm wide, 30cm deep, 71cm high.*

£1500-£2000

Provenance :

Property from a Berkshire Residence.

Purchased Christie's, London, Important English Furniture, 22 November 2007, lot 714.

149

A George III satinwood and crossbanded chest

Inlaid with ebonised lines, the rectangular moulded top above a slide and four long graduated drawers, on shaped bracket feet, *94cm wide, 52cm wide, 88cm high.*

£1000-£1500



150

**A George IV carved mahogany chiffonier side cabinet
by Gillows of Lancaster**

The rectangular top with spindle turned three-quarter gallery, on 'S' scroll supports, the mirrored back with shaped smaller shelf, on turned supports; above a rectangular top and a pair of moulded doors enclosing three adjustable shelves, flanked by moulded scrolling leaf and paterae carved uprights, on lobed feet, *stamped to the top of one door GILLOWS.LANCASTER*, 92cm wide, 40cm deep, 140cm high.

£3000-£3000

Gillows produced several variations of this form of chiffonier which can be seen in their Estimate Sketch Books of 1822 (e.g 3172 & 3140 in ref. 344/100). For an almost identical chiffonier in the collection at Preston Manor, Brighton, see C. Musgrave, *Regency Furniture*, London, 1961, pl.53. See also Bonhams, London, 21 November 2012, lot 225 for a closely related example attributed to Gillows.



151 ¥

**A Regency mahogany and rosewood crossbanded
sofa table**

Inlaid with ebony lozenge, line and dot marquetry, the rounded rectangular hinged top above two frieze drawers and two opposing simulated drawers, on standard end supports, joined by a flattened stretcher, on downswapped legs with square brass cappings and castors, 137cm wide, 66cm deep, 72cm high.

£600-£800

Provenance:

Property from a Berkshire Residence

152

**A mahogany two-tier square centre what-not labelled
J.Taylor of Colchester**

The square top with turned finials above a frieze drawer, the lower tier with an apron drawer, with simulated drawers to the sides and rear, on ring turned legs with brass cappings and castors, *reduced*, 51cm square, 79cm high.

£250-£350

Provenance:

Property from a Berkshire Residence

John Taylor is listed as a carpenter, cabinet-maker and upholster (1775-1845), see G.Beard & C. Gilbert, *Dictionary of English Furniture Makers 1660-1840*, p.877.





153

A rare Regency mahogany and ebony line inlaid metamorphic pembroke dining table

The rectangular top with stylised line inlay and two hinged flaps dividing to the centre with a concertina action to accommodate two additional leaves, on six ring turned tapering legs, brass cappings and castors, 91cm wide, 51cm deep, 72cm high, 191cm wide (extended).

£3000-£5000



154 ¥

A Regency mahogany and chequer banded bowfront dressing chest

The shaped rectangular moulded top above a slide with replaced green and gilt tooled leather, above a fitted drawer, with hinged side stationery drawer; above two long graduated drawers on slender bracket feet, with retailers stamp, 'H. MAWER & STEPHENSON LTD', 91cm wide, 51cm deep, 84cm high.

£300-£500

Provenance:

Property from a Berkshire Residence





156 ¥

A Regency rosewood and satinwood crossbanded sofa table

The rounded rectangular top above two frieze drawer with two opposing simulated drawers, on standard end supports, joined by a flattened stretcher, with square brass cappings and castors, 150cm wide, 71cm deep, 72cm high.

£800-£1200

Provenance:

Property from a Berkshire Residence.



155 ¥

A pair of 19th century rosewood and brass beaded card tables

Each with rounded rectangular hinged tops enclosing a replaced base, on square tapering legs, each 91cm wide, 42cm deep, 77cm high. (2)

£1500-£2000

Provenance:

Property from a Berkshire Residence.



157 ¥

A Regency rosewood and parcel gilt console table

The replaced rectangular top above a plain frieze, on acanthus leaf carved and lobed front supports, with mirrored back, on a rectangular plinth base, 95cm wide, 37cm deep, 91cm high.

£800-£1200

158

A Regency carved mahogany library bergère attributed to Gillows

Upholstered and close-nailed in green buttoned leather, the over-scrrolled top-rail above a buttoned seat and scrolled padded arms and paterae carved and scrolling arm supports, with loose squab seat, on fluted tapering legs, with brass cappings and castors, *65cm wide, 58cm deep, 99cm high, seat height 40cm.*

£1000-£1500

Provenance:

Property from a Berkshire Residence.

Purchased Christie's, London, Un hôtel particulier du Faubourg Saint-Germain, The Collection of The Marquis and Marquise de Ravenel, 21-22 November 2007, lot 243.



159

A Regency gonzalo alves carved open bookcase

in the manner of Gillows

The rectangular top above a bead and reel moulded frieze and two adjustable shelves flanked by scrolled moulded uprights on a bead and reel moulded plinth base, *122cm wide, 32cm deep, 91cm high.*

£1000-£1500

Provenance:

Private Collection, London

With characteristics indicative of the work of Gillows during this period, this bookcase relates to furniture supplied by the firm to the Library at Tatton Park, Cheshire and to work carried out for the neighbouring Mere Hall in 1815.



160

A pair of Regency mahogany hall chairs attributed to Banting & France & Co.

Each with a shaped scrolled splat with vacant oval cartouche, above dished seats on ring turned tapering legs, each 42cm wide, 41cm deep, 43cm high, seat height 44cm. (2)

£1200-£1500

A closely related set of six oak hall chairs were supplied by Banting, France & Co. to Lord Hervey, the 5th Earl of Bristol, circa 1817-1829 for Ickworth House, Suffolk (NT 853262).

Banting & France are listed at 27 St James's St, London (1813-40) and were Royal Warrant holders 1825-1836, see G.Beard & C.Gilbert, *Dictionary of English Furniture 1660-1840*, p.37-38

161

A pair of Regency mahogany and ebonised occasional tables

Inlaid with boxwood line and dot marquetry, the rounded rectangular tops above four simulated drawers, on ring turned tapering legs and spool feet, 50cm wide, 40cm deep, 75cm high. (2)

£500-£800

Provenance:

Property from a Berkshire Residence.



162

A Regency mahogany bowfront chest

The rectangular top above a slide and three long graduated drawers on slender outswept bracket feet, 98cm wide, 53cm deep, 87cm high.

£300-£500

Provenance:

Property from a Berkshire Residence



163

A set of ten Regency mahogany dining or side chairs attributed to Gillows

With reeded scrolling top-rails and rectangular padded backs with gilt brass moulded slips, the stuff-over close-nailed seats on ring turned tapering front legs with spool feet, the rear legs outswept, each 54cm wide, 53cm deep, 95cm high, seat height 46cm. (10)

£4000-£6000

Provenance:

The Blount family of Mawley Hall, Salop, Shropshire.

Mawley Hall, home of the Blounts, is now thought to have been built c.1730 by Francis Smith of Warwick (1672-1738) for Sir Edward Blount d. 1757). In 1771, when it was owned by his grandson Sir Walter Blount, it was clearly a lavishly and expensively furnished house; *'every room is carved in the most expensive taste Lady Blount Seems to have everything very clever, and a thousand knick-knacks from abroad, as one generally sees in these Catholic families'*.

The Blount family appear several times in the Gillow Estimate Sketch Books of 1784-1800, see L. Boynton, *Gillow Furniture Designs 1760-1800*, p. 199.



164

A Regency mahogany bowfront chest attributed to Gillows

The rectangular top with rounded projecting corners above three long graduated drawer flanked by reeded angles on ring turned tapering legs and spool feet, 103cm wide, 56cm deep, 89cm high.

£800-£1200

Provenance:

Property from a Berkshire Residence



165

A Regency mahogany and brass bound pail

Of navette shape with swing-handle and brass liner, 38cm wide, 28cm deep, 31cm high.

£250-£350

Provenance:

Property from a Berkshire Residence.



166

A George III mahogany and brass bound oval bucket

With brass swing handles and tapering coopered sides, with later copper liner, 35cm wide, 29cm high.

£300-£500



167

A Regency mahogany dressing mirror attributed to Gillows

The rectangular swing plate, with 'S' scroll moulded supports, on a rectangular lobed base, with lotus leaf carved scroll feet, *inscribed in pencil to the underside 'Red Bedroom'*, 71cm wide, 30cm deep, 62cm high.

£400-£600

Provenance:

Property from a Berkshire Residence.

Gillows supplied a closely related 'Mahogany Looking Glass frame for plate' to the 5th Duke of Rutland (1778-1857) in February 1821 for £4.7.10. (See Gillows Estimate Sketch Books no. 3086).

168

A pair of small early 19th century patinated bronze recumbent lions

On stiff leaf cast bases, each 10cm wide, 5cm deep, 7.5cm high. (2)

£80-£120



169

A set of four Regency gilt bronze curtain tie-backs

Each of curved form with four applied cast paterae, 38cm long when straight, 6cm high. (4)

£250-£350

170

A George III carved giltwood mirror

in the rococo taste

The replaced later plates within a 'C' scroll, acanthus and rocaille carved frame, with double 'C' scroll cresting with trailing flowers and fruits to the sides and double 'C' scroll apron below, *regilt*, 137cm high, 79cm wide.

£1000-£1500

Provenance:

Property from a Berkshire Residence.





171

A Regency fiddle-back mahogany and rosewood crossbanded card table

Inlaid with boxwood and ebonised lines, the rounded rectangular top enclosing a baize, on ring turned tapering legs, 94cm wide, 47cm deep, 75cm high.

£300-£500



172

A Regency mahogany occasional table attributed to Gillows

The rounded rectangular top above a fluted and lobed shaft, on quadripartite downswept moulded legs and turned feet, 62cm wide, 49cm deep, 73cm high.

£500-£700

Provenance:

Property from a Berkshire Residence.



173

A pair of Regency mahogany pot cupboards

Each with a rectangular top with a gallery above a cupboard door, on square tapering legs, each 29cm wide, 35cm deep, 76cm high. (2)

£1000-£1500

Provenance:

Property from a Berkshire Residence.

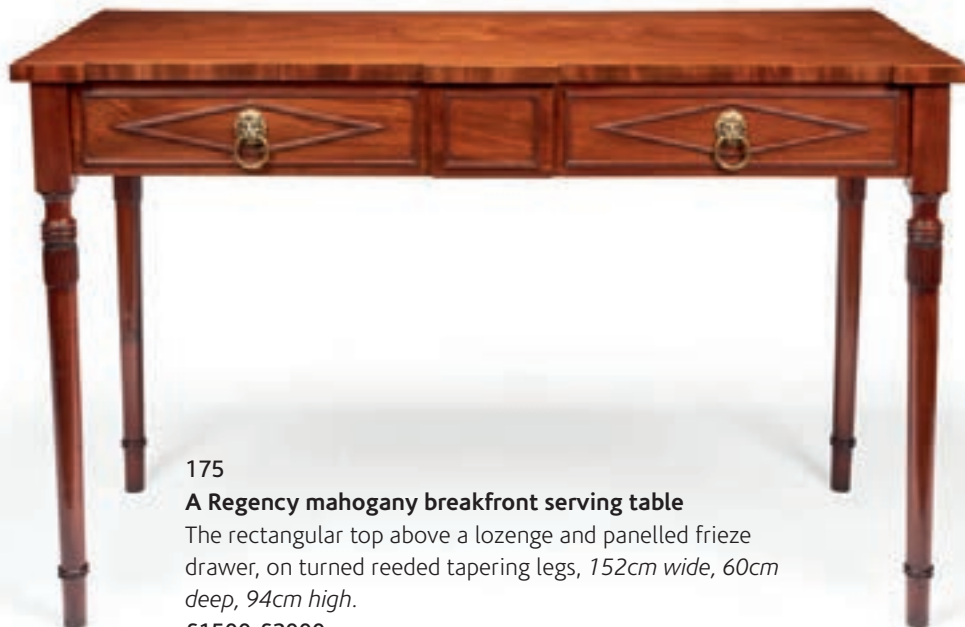


174 ¥

A Regency rosewood breakfront side cabinet

The rectangular shelved superstructure with three quarter gallery and panelled back above leaf carved supports and a paterae applied frieze, above a pair of arched central cupboard doors, each enclosing two adjustable shelves, flanked by two open ends each with two adjustable shelves, on a plinth base, 200cm wide, 42cm deep, 130cm high.

£600-£900



175

A Regency mahogany breakfront serving table

The rectangular top above a lozenge and panelled frieze drawer, on turned reeded tapering legs, 152cm wide, 60cm deep, 94cm high.

£1500-£2000



176

A Regency carved mahogany breakfront chiffonier side cabinet attributed to Gillows

The rectangular superstructure with two shelves and moulded scrolling uprights with panelled back, above a rectangular top with central frieze drawer flanked each side by simulated drawers above a large panelled door enclosing a shelf and two drawers, flanked by two cupboard doors each enclosing two shelves, between moulded and scrolled uprights on lobed feet, 135cm wide, 59cm deep, 144cm high.

£1000-£1500



177

A Regency mahogany centre table

The circular top with beaded edge above a fluted and acanthus leaf carved shaft, on quadripartite base and lobed feet, *possibly Scottish*, 128cm diameter, 72cm high.

£1000-£1500



178

A Regency mahogany concave bedside commode or pot cupboard

Inlaid with ebonised lines, the shaped top with three-quarter gallery above a tambour door and a pot drawer, on square legs, 57cm wide, 50cm deep, 75cm high.

£500-£800

179

A pair of Regency mahogany hall chairs

The shield shaped pierced scrolling splats above rectangular seats, on ring turned tapering legs and spool feet, *both stamped under the seat-rail, 'F'*, each 47cm wide, 38cm deep, 93cm high, seat height 47cm high. (2)

£1200-£1800



180

A Regency satinwood and tulipwood crossbanded drum top table

Inlaid with ebonised lines, the circular revolving top inset with replaced green and gilt tooled leather, above four drawers and four simulated drawers on a leaf carved and gilt shaft, on hipped downswept quadripartite legs with brass cappings and castors, 123cm diameter, 73cm high.

£2000-£3000

Provenance:

Property from a Berkshire Residence.

181

A small George III mahogany chest

The rectangular top above two short and two long drawers, on slender outswept feet, 82cm wide, 46cm deep, 85cm high. £600-£800





182 ¥

A set of six Regency simulated rosewood and brass inlaid dining chairs

The over- scrolled channelled top rails, pierced backs with inlaid roundels and cane seats on sabre legs, each 44cm wide, 42.5cm deep, 82.5cm high. (6)

£700-£1000

183

A Regency mahogany breakfast table

The circular figured mahogany top with a crossbanded edge, on a turned centre shaft and triform concave platform base with scroll feet and gadrooned spandrels, 123 cm diameter, 70cm high.

£500-£700



184 ¥

A Regency mahogany dressing table and a George III toilet mirror

The dressing table inlaid with boxwood and ebonised lines, the rectangular top above one short and two deep drawers, on square tapering gaitered legs, together with a George III mahogany and rosewood crossbanded serpentine toilet mirror, inlaid with boxwood lines, the shield shaped swing plate above three short drawer, on ogee bracket feet, 98cm wide, 45cm deep, 78cm high and 45cm wide, 40cm deep, 58cm high respectively. (2)

£350-£450

Provenance:

Property from a Berkshire Residence.



185

A pair of Regency mahogany side cabinets

Each with rectangular moulded top and reeded edge above a frieze drawer and a pleated silk panelled door enclosing a shelf, on turned tapering legs with brass cappings and castors, each 46cm wide, 30cm deep, 91cm high. (2)
£4000-£5000



186

A pair of Regency mahogany centre tables attributed to Gillows

The rectangular tops above two frieze drawers and two opposing simulated drawers on fluted turned tapering legs with spool feet and brass cappings and castors, both stamped twice with a 'W' below a coronet, slight difference in sizes, each approximately 91cm wide, 53cm deep, 74cm high. (2)

£1500-£2000

Provenance:

Property from a Berkshire Residence.
Scone Palace, Perthshire
Purchased Westenholz Antiques Ltd



187

Eight framed prints from Galerie des Modes et Costumes Français by François Louis Joseph Watteau (French, Valenciennes 1758-1823 Lille) circa 1760

Published by Esnaut & Rapilly

i/s 30cm high x 21cm wide

44cm high x 36cm wide framed and glazed. (8)

£500-£800

Provenance:

Property from a Berkshire Residence

Purchased Ramsay Prints, Pimlico Road, 2008.



188

James Gillray (British, 1747-1815)

'Delicious Weather', 'Fine Bracing Weather', 'Windy Weather' and 'Dreadful Hot Weather'

A set of four 'weather' etchings, 1808, published by H. Humphrey, London

with margins, 26cm x 21cm

42cm x 36cm, glazed and framed. (4)

£200-£300

Provenance:

Property from a Berkshire Residence.

Purchased Ramsay Prints, Pimlico Road, 2008.



189

Nine framed plates from *Marches et Evolutions de Cavalerie* by Comte de Melfort after Van Blarenberghe, circa 1760

Three large, 62cm high x 94cm high, (75cm high x 106cm wide, framed and glazed)

Two medium, 60cm high, 45cm wide, (73cm high x 57cm wide, framed and glazed)

Four small, 30cm high x 44cm wide, (42cm high x 57cm wide, framed and glazed)

(9)

£2000-£3000

Provenance:

Purchased Ramsay Prints, Pimlico Road, 2008.



190

A Regency four seater green painted wrought iron garden seat or bench
183cm wide, 43cm deep, 96cm high.
£1000-£1500



191

A pair of 18th century hand coloured botanical engravings after Maria Sibylla Merian, 1705

Plates 22 and 46 from *Metamorphosis insectorum Surinamensium*, (Metamorphosis of the Insects of Suriname), engraved by Pieter Sluyter (Sluiter), both signed P.Sluyter Sculp. and numbered i/s 38cm high, 28cm wide and 35cm high and 26 wide respectively, in modern glazed gilt frames 64cm high, 51cm wide. (2)

£700-£800

Maria Sibylla Merian (2 April 1647 - 13 January 1717) was a German-born naturalist and scientific illustrator. Merian was one of the first naturalists to observe insects directly.

Joseph Mulder, Pieter Sluyter, and D. Stopendael worked as engravers from the original drawings by Merian, who oversaw all aspects of the publication of her works during her lifetime. The *Metamorphosis* is Merian's most famous work, resulting from her journey with her daughter Dorothea to Surinam in 1699.



192

A pair of George IV Irish mahogany carved card tables

Each with rounded rectangular swivel top enclosing replaced baize, above wreathed shafts on quadripartite leaf carved and hipped downswept moulded legs with lion paw feet and recessed castors, *each 91cm wide, 45cm deep, 74cm high. (2)*

£2000-£3000

Provenance:

Property from a Berkshire Residence.

Purchased Sotheby's, London, Fine Furniture and Carpets including Property from Newton Surmaville, Somerset, 5 March 2008, lot 252.

193

A pair of George IV mahogany bedside steps, attributed to Gillows, circa 1825

Each with gallery above three replaced green and gilt tooled leather inset treads, one enclosing a white porcelain pot and lid, the other a white porcelain bordalou; on ring turned tapering legs, *each 39cm wide, 73cm deep, 82cm high. (2)*

£4000-£6000

Provenance:

With Mallett Antiques, Bond St, London. similar pair sold Anonymous sale, Christie's, London, 17 May 2017, lot 160 (£13,750). For a single example with a very similar gallery, attributed to Gillows see Christie's, London 7 May 2008, lot 200.





194

A Regency mahogany collector's cabinet on stand

The rectangular moulded top above a pair of doors enclosing six narrow divided drawers, the stand on square tapering legs joined by a shaped under-tier on brass square cappings and castors, 51cm wide, 34cm deep, 91cm high.

£1800-£2200



195

A George IV gonçalo alves three-tier what-not

The rectangular top with lobed moulded edge above two further tiers, all joined by ring turned supports and legs with brass cappings and castors, 42cm wide, 34cm deep, 74cm high.

£400-£600

Provenance:

Property from a Berkshire Residence.



196

A pair of Regency ebonised and parcel gilt open armchairs

The rectangular caned backs with downswept arms on floral needlework seats and turned tapering legs, each 54cm wide, 45cm deep, 82cm high, seat height 44cm. (2)

£400-£600

Provenance:

Property from a Berkshire Residence.



197

A set of six George IV gonzalo alves carved dining chairs in the manner of Gillows

The curved backs with fan cresting above triple spindle splats,, above drop-in seats, on lotus leaf carved and turned legs and spool feet, each 46cm wide, 43cm deep, 87cm high, seat height 47cm. (6)

£1800-£2200



198

A George IV mahogany side table

The rectangular top with three-quarter gallery above a frieze drawer on ring turned tapering legs and spool feet, 65cm wide, 53cm deep, 79cm high.

£200-£300

Provenance:

Property from a Berkshire Residence.

199

A George IV mahogany davenport attributed to Gillows

The rectangular beaded top with pierced brass gallery, above a sloping fall with green tooled leather and reading rest, enclosing two short and two simulated drawers and a side stationery drawer; above slides to each side and three drawers to one side and three simulated drawers to the other, on turned feet, 51cm wide, 56cm deep, 84cm high.

£1000-£1500

A closely related design for a sliding top davenport appears in the Gillows Estimate Sketch Books dated 1823. Another davenport of closely related form is illustrated in S.Stuart, *Gillows of Lancaster and London 1730-1840*, Volume II p.31, plate 565.





200

A matched set of four German silver twin cornucopia vases, Hanau, early 20th century

Chased with 17th and 18th century courting couples, on pierced 'C' scroll feet, each vase centred by a putto, three playing a lute, the fourth reading sheets of music, with fixed grip handles overhead, 19.5 and 20cm high, 27cm long, 75oz (2325 gm). (4)
£3500-£4500



201

A set of four George II silver cauldron salts by David Hennell (I), London, 1754

With shaped gadroon rims, on shell and hoof feet, each engraved with a crest of a horizontal armoured arm holding aloft a scimitar impaled with dragon's head, with modern blue glass liners, 6.5cm diameter, 4.8cm high, 13oz (403 gm). (4)
£600-£800



202

A large pair of Dutch silver fruit baskets in 18th century style, maker's mark RS over '2', also with pseudo marks and Dutch dolphin control mark, early 20th century

Diaperwork-pierced sides with foliate swags and 18th century portrait bust in oval cartouche on either side, on foliate feet, reed and ribbon rims, 38.4cm long, 16cm high, 102oz (3162gm). (2)

£3000-£4000



203

A set of four George III silver oval salts by Henry Chawner & John Emes, London, 1796

On conforming pedestal bases, reeded rims, each engraved with crest of a stag trippant above motto scroll 'Amo', probably for Scott, 10.1cm long, 6.8cm high, 11oz (341 gm). (4)

£400-£600



204

A Victorian silver table lighter in the form of a Roman lamp, by George Angell, London, 1872

With bifurcated twin serpent handle, the detachable match with cast triple bearded Classical head finial, a Pharaoh's mask applied on top of lighter directly below the handle, 10.1cm long, 6.8cm high, 11oz (341 gm).

£450-£550



205

A matching pair of George III silver wine coasters, maker's mark indistinct, T.?, London, 1773 and 1774

With bead borders and wood bases, sides pierced with stylised anthemions and a small vacant cartouche to front, 12.5cm diameter, 4.1cm high. (2)

£800-£1200

206

A Victorian silver wine ewer by E. & J. Barnard, London, 1862

Of slender ovoid form, the vine handle with applied fruiting vines curling around the body, 36.5cm high, 31oz (961gm).

£1500-£2000



207

A George IV silver vegetable dish and cover by Sebastian Crespel, London, 1822, on an Old Sheffield Plate warming base with maker's mark A.S. in rectangular serrated edge punch shaped circular with shell, leaf and gadroon rim, detachable foliate scroll handle, on conforming base with drop handles, on foliate claw feet, 19.5cm high, 25cm diameter, weighable silver 43.5oz (1565gm).

£1200-£1800

208

A good pair of naturalistic Victorian cast electroplated campana-form wine coolers by Elkington, Mason & Co., 1843

With detachable liners and flared textured rims, fruiting vine handles and decoration, 29cm high. (2)

£1800-£2200





209

A large Old Sheffield Plate meat dish and cover, circa 1810/1815

The domed lid with leaf cast handle, the dish with turned handles and feet, engraved possibly with the coat-of-arms of Conyngham family, 69cm wide, 45cm deep, 40cm high.

£250-£350

Provenance:

Property from a Berkshire Residence

Purchased Richard O. A. Jarvis 2008.

210

A William IV gilt bronze leaf cast table lamp

With glass receiver, with shade, converted from an 1840's Palmer lamp, 65cm high.

£300-£500

Provenance:

Property from a Berkshire Residence



211

A 19th century burr walnut and brass mounted box

The rectangular lid with carrying handle and strapwork hinges and clasped corners, above a pierced lock plate, 27cm wide, 18.5cm deep, 12.5cm high.

£150-£250



212

A pair of 19th century burr maple framed equestrian watercolours attributed to Henry Alken

Ipswich, 'Weighing In' and Newmarket, 'Training'

Each i/s 11.5cm high x 17.5cm wide

Framed and glazed 23.5cm high x 29.5cm wide. (2)

£300-£500

213

A Victorian Irish pierced brass and pietra dura desk-top frame

Enclosed by twin hinged doors, marked Austin & Co. Dublin to the reverse, 15cm high, 19cm wide.

£150-£250





214 ¥

A nest of three William IV rosewood occasional tables by William Constantine and Co.

The rectangular tops on shaped stile end supports joined by wavy stretchers, on short outswept scroll feet, the smallest table with a label for W. Constantine & Co, Leeds, the largest table 58cm wide, 35cm deep, 75cm high.

£800-£1200

Provenance:

Christie's South Kensington, 10 December 2013, lot 303. William Constantine & Co. are listed in G.Beard & C.Gilbert, Dictionary of English Furniture 1660-1840, p.192 as cabinet and upholsters working at 3 South Parade, Leeds, 1834-40. By the early 1840's the firm was employing about a hundred workers including fifteen carvers.

215 ¥

A pair of William IV rosewood carved 'X' frame stools

Upholstered and close-nailed in grey fabric, the 'C' scroll carved frames, joined by double turned stretchers, each 45cm wide, 39cm deep, 38cm high. (2)

£700-£1000



216 ¥

A William IV rosewood carved centre table

The circular moulded tilt top on an octagonal baluster turned shaft and a circular lobed base, with lion paw carved feet, with castors, 129cm diameter, 72cm high.

£600-£900

217

A William IV walnut 'Captain's' open armchair

The curved buttoned and close-nailed padded back and arms upholstered in brown leather, above a saddle seat on turned reeded tapering legs with large brass cappings and castors, 65cm wide, 58cm deep, 83cm high, seat height 48cm.

£700-£900



218 ¥

A William IV rosewood boldly carved stool attributed to Gillows

The rectangular green velvet upholstered and close-nailed seat above double 'C' scroll and acanthus carved frieze on cabriole scroll legs and scroll feet, 92cm wide, 65cm deep, 47cm high.

£800-£1200

219 ¥

A William IV rosewood carved library tub bergère

The curved buttoned back, padded arms and seat upholstered and close-nailed in tan leather, with 'S' scroll acanthus carved arms above a moulded seat-rail on turned tapering legs headed by paterae, with brass cappings and castors, 68cm wide, 57cm deep, 78cm high, seat height 42cm.

£600-£800





220

A George IV 'plum pudding' and 'fiddle-back' mahogany chest attributed to Gillows

The rectangular moulded top above three frieze drawers above two short and two long graduated drawers on turned bun feet, 118cm wide, 57cm deep, 108cm high.

£1500-£2000

The pattern for the above chest of drawers is recorded in Gillows Estimate Sketch books for 1821 where it was listed as being executed by the journeyman John Hanibal. A related chest with three short drawers but with a plinth base has also been recorded, see Christie's, London 12 September 2007, lot 1155. A further related chest was sold Bonhams, London, 11 March 2015, lot 156. A further example was sold Bonhams London, 2015, 4 November 2015, lot 267.



221 ¥

A William IV rosewood, satinwood and bird's-eye maple parquetry games table

The rectangular top with sliding chequerboard enclosing a backgammon board, in a ring turned shaft and quadripartite platform base, on turned feet, 61cm wide, 46cm deep, 70cm high.

£500-£700

Provenance:

Property from a Berkshire Residence.



222

A William IV Scottish yew wood occasional table

The rectangular top with inlaid serpentine plate, 'PLANTED 1706 CUTDOWN 1828', above an undulating frieze with lobed pendant drop finials on octagonal spreading shaft on quadripartite base, with scroll feet, 82cm wide, 43cm deep, 74cm high.

£600-£800

Provenance:

Property from a Berkshire Residence.

Purchased James Graham-Stewart.



223

An unusual large Victorian mahogany circular extending dining table with two sets of leaves in the manner of Johnstone, Jupe & Jeanes

The circular moulded top, quartered and extending to accommodate four large rectangular leaves of four segmented leaves, on five square tapering moulded legs and block feet with recessed castors, *closed 136cm diameter, 136cm deep, 76cm high, opened to full 368cm wide.*

£3000-£4000



224

A George IV mahogany and rosewood crossbanded occasional table

The circular top above a fluted and lotus leaf carved shaft, on a tripartite base and bun feet with recessed castors, *60cm diameter, 76cm high.*

£400-£600

225 ¥

A William IV rosewood carved 'X' frame stool

The square padded seat upholstered in red and grey damask style fabric, on scrolling lotus leaf carved legs joined by paterae and a baluster turned stretcher, *40cm wide, 40cm deep, 43cm high.*

£600-£800



226

A tall mahogany open bookcase

The rectangular moulded top above a fluted frieze and divided centre each side with three adjustable shelves, flanked by fluted uprights and headed by paterae, on a moulded plinth base, *basically 19th century and adapted, 150cm wide, 33cm deep, 141cm high.*

£700-£1000

227 ¥

A William IV Tunbridge ware rosewood and specimen marquetry centre table by John Talbot Ubsdell of Tunbridge Wells

The rectangular top inlaid with a central stellar, with coromandel bands and a chevron border, with fan inlaid corners, above a bead and reel moulded frieze on octagonal end supports, with recessed castors, *labelled to the underside, 'Manufactured by I.T.Ubsdell, late Fenner & Co, REPOSITORY, Tunbridge Wells', 66cm wide, 43cm deep, 72cm high.*

£1000-£1500

Provenance:

Property from a Berkshire Residence.

John Talbot Ubsdell (1797-1879) is listed at Mount Ephraim, Tunbridge Wells, Kent as a Tunbridge ware manufacturer (1829-34). See G.Beard & C.Gilbert, *Dictionary of English Furniture Makers 1660-1840*, p.916. See also B. Austen, *Tables by Tunbridge Ware Makers*, Furniture History 1997, p.266-7 figs 3 & 4 where Ubsdell is discussed and a work table with similar marquetry and label is illustrated. For another Ubsdell work table see Christie's, London 24 January 2008, lot 169

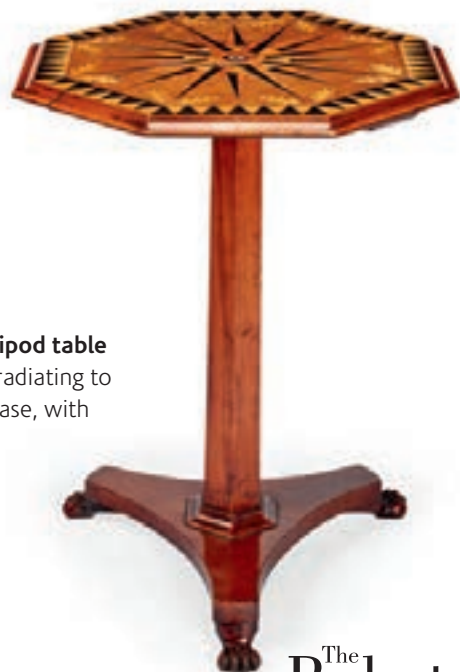


228

A William IV satinwood work table

The hinged rectangular swivel top enclosing a plain interior, above a baize and a divided silk lined drawer; above a pleated silk sliding work bag, on pierced lyre scrolling end supports joined by a shaped flattened stretcher, on turned feet, 53cm wide, 40cm deep, 77cm high.

£600-£800



229 ¥

A early Victorian Irish mahogany, satinwood, ebony and marquetry tripod table

The octagonal stellar inlaid moulded top, centred by a small ring of ivory, radiating to oak leaves, within a chevron border, on an octagonal shaft and tripartite base, with lion paw feet, 58cm diameter, 76cm high.

£400-£600

Provenance:

Property from a Berkshire Residence.

Purchased Westenholz Antiques Ltd



230 ¥

A William IV Irish yew, rosewood banded and sycamore marquetry centre table

The tilt top with radiating bands and a wide marquetry border inlaid with trailing oak leaves and acorns, on an octagonal baluster shaft and quadripartite base, with hairy hoof feet, 133cm diameter, 79cm high.

£3000-£5000

Provenance:

Property from a Berkshire Residence.

Purchased James Graham-Stewart.

231

A Victorian hungarian ash chest attributed to Holland and Sons

The rectangular top above two short and three long drawers on a plinth base with recessed castors, 112cm wide, 54cm deep, 112cm high.

£2000-£3000

Hungarian Ash is often identified with Holland and Sons as they appeared to use it more frequently than other cabinetmakers of the time. It appears in many of their documented commissions both as a principal timber and as a secondary timber on more decorative pieces. A bedroom suite in Hungarian ash was supplied by Holland and Sons to the Duke of Marlborough bearing the Duke's Gothic 'M' insignia on the handles.





232

A good mid Victorian satinwood and mahogany crossbanded Carlton House desk attributed to Gillows

Inlaid with ebonised lines, the curved superstructure with pierced gilt brass gallery, with two letter slots above two end drawers, two curved doors and six short drawers; above a tooled leather writing surface with ratchet, above three frieze drawers, on square tapering legs with brass cappings and castors, 140cm wide, 84cm deep, 103cm high.

£3000-£5000

The first published design of a desk of this type was one illustrated in Hepplewhite & Co., *The Cabinet Maker's London Book of Prices*, 2nd ed., 1793, pl. 21. The pattern became associated with Carlton House, the residence of the Prince Regent, later King George IV, after Rudolph Ackermann illustrated a writing-table of this design in 1814, claiming that it was called a Carlton House desk 'from having been first made for the august personage whose correct taste has so classically embellished that beautiful palace' (see H. Roberts, 'The First Carlton House Table?', *Furniture History*, XXXI, 1995, pp. 124-128).

Gillows produced a design for a 'Writing-table' of similar form from 1798 (see L. Boynton, *Gillows Furniture Designs 1760-1800*, Royston, 1995, fig. 50).

233

A fine Victorian satinwood ormolu mounted occasional table attributed to Holland & Sons

In the Louis XVI style

The circular top crossbanded in tulipwood with harewood parquetry and inlaid with boxwood and ebonised lines, above a reeded stop fluted shaft, on downswept tripod legs, applied with acanthus leaf cast mounts with trailing bellflowers, on Greek key inlaid feet, 33cm diameter, 75cm high.

£1500-£2000

Holland and Sons produced much high quality furniture in the revived Louis XVI style including pieces for one of their best known commissions - the furniture for R.N. Thornton at Knowle Cottage in Sidmouth, illustrated in R.W Symonds and B. Whineray, *Victorian Furniture*, London, 1962, pl.203-206





234

A set of early Victorian four-tier satinwood serpentine hanging shelves

With turned finials and ring turned baluster supports, on turned feet, *76cm wide, 18cm deep, 104cm high.*

£500-£700

Provenance:

Property from a Berkshire Residence.

235 ¥

A Victorian rosewood two-tier what-not

The rectangular moulded top with triangular pediment, on reeded lobed supports above an apron drawer, on reeded turned tapering legs with castors, *68cm wide, 47cm deep, 90cm high.*

£300-£400

Provenance:

Property from a Berkshire Residence

Purchased Sotheby's, London, Fine Furniture and Carpets including Property from Newton Surmaville, Somerset, 5 March 2008, lot 101.



236

A Victorian burr walnut low open bookcase

The rectangular moulded top above a central division with three adjustable shelves to each side, flanked by moulded uprights headed by carved leaves, on a plinth base, *141cm wide, 30cm deep, 110cm high.*

£1200-£1800



237 ¥

A small early Victorian walnut, rosewood crossbanded, ebony and sycamore marquetry centre table

in the manner of Edward Holmes Baldock

The circular tilt top inlaid with radiating veneers and a central floral spray, with scrolling floral border, on a tripartite spreading shaft on legs with trailing flowers, on scroll feet with recessed castors, *a small amount of flowers in ivory*, 98cm diameter, 77cm high.

£4500-£6000

Provenance:

Moigne Combe Estate, Dorchester

The form of the base of this table relates to tables supplied by Edward Holmes Baldock, one for The Duke of Buccleuch in 1840 and sold by The Duke of Buccleuch and Queensberry, removed from Dalkeith Palace, Christie's, London, 1 April 1971, lot 43, now at Temple Newsam House, Leeds (C. Gilbert, *Furniture at Temple Newsam House and Lotherton Hall*, vol. II, London, 1978, no. 395).

The marquetry decoration featured on this table is executed in the Dutch fashion first adopted in the 1820's by the Tottenham Court Road 'Cabinet inlayer and Buhl manufacturer' Robert Blake. The firm, which had been trading in the early 1840's as Blake, Geo. & Brothers, inlayers, etc' in Tottenham Court Road and Mount Street, Mayfair were renamed George Blake & Co. in the late 1840's (C. Gilbert, *Pictorial Dictionary of Marked London Furniture 1700-1840*, Leeds, 1996, p.18; and M.P. Levy, *Furniture History Society Newsletter*, no. 158, May 2005). A marquetry desk at Goodwood House displaying similar floral marquetry, labelled 'Messrs Blake's' [sic] features similar floral marquetry.

A related marquetry centre table was sold anonymously, Christie's, London, 23 November 2006, lot 123 (£28,000). A further related example was sold Christie's London, Important English Furniture, 7th June 2007, Lot 157 (£27,600).

A very similar table attributed to Baldock is in the collection at Ickworth House, Suffolk. (NT 850055)



238 ¥

A late Victorian walnut and sycamore marquetry music cabinet

The rectangular top with corners above a glazed door with shelves edged and labelled in leather, 'GENL MUSIC', 'SONGS' and 'SACRED', on a plinth base, *53cm wide, 32cm deep, 86cm high.*

£150-£200

Provenance:

Property from a Berkshire Residence.



239

A Victorian mahogany hall bench

The rectangular seat with paper scroll arms above an undulating frieze with turned applied roundels, on baluster turned legs, *107cm wide, 27cm deep, 40cm high.*

£600-£900



240

An Edwardian satinwood painted oval bijouterie table or vitrine

The hinged glazed lid decorated with ribbands and floral sprays, with glazed sides, on square tapering legs joined by an oval under-tier decorated with musical trophies, on square tapering feet, *71cm wide, 48cm deep, 71cm high.*

£1000-£1500

241

A late Victorian Aesthetic Movement mahogany carved hall stand

The broken arch leaf carved cresting with a turned finial above a bevelled mirror back flanked by six brass hat hooks, above a sunflower carved panel, flanked by a pair of Minton glazed tiles with snow drops, above a rectangular top with a drawer flanked by stick stands with tin drip pans in the under-tier, on turned legs, 100cm wide, 35cm deep, 218cm high.

£600-£800



242

A 19th century centre table incorporating an earlier papier-maché panel attributed to Henry Clay

The oval top containing a panel centred by an oval medallion of a shepherdess tending to her flock on a pale blue ground with decorated bandings, on slender square tapering legs joined by an undulating stretcher centred by a pierced gilt metal basket with a satinwood base, on spade feet, 69cm wide, 63cm deep, 75cm high.

£400-£600

Henry Clay (fl.1767-1812) of Birmingham patented his 'new improved paper-ware' in 1772, and the items he produced ranged from small caddies, trays, knife boxes and dressing cases to small pieces of japanned furniture. Clay established his workshop at 18 King Street in Covent Garden, where his array of clients included the Royal Family, becoming 'Japanner in Ordinary to His Majesty and His Royal Highness the Prince of Wales'. His other clients included numerous members of fashionable society notably Robert Child of Osterley, the Dukes of Bedford, Horace Walpole and Baron Scarsdale of Kedleston. A few of Clay's pieces of furniture bear his impressed stamp including some of those with a wooden carcass. Clay died a wealthy man in 1812 and the business continued to trade as W Clay & Co until 1860 with a showroom in Fenchurch Street, London. See Bonhams, London 19 October 2011, lot 158 for a pair of similarly decorated corner cabinets on stands, attributed to Clay and commissioned by William Brummell for Donnington Grove.



243

A set of twelve Victorian Gothic Revival carved oak dining chairs including a pair of open armchairs

The pierced backs with plain top-rails flanked by stylised quatrefoils, the shaped cross-rails centred by similar smaller quatrefoils, the upholstered seats on ring turned tapering legs and spool feet, the armchairs with padded armrests and scroll terminals, *nine of the chairs stamped by the chairmaker T. Wright, the armchairs 57cm wide, 50cm deep, 90cm high, seat height 48cm. (12)*

£1200-£1800

244

A Gothic style oak square planter or jardinière

With later turned finials above cluster column corner uprights, pierced quatrefoil arched sides, with pierced quatrefoil and lozenge carved aprons, *54cm square, 82cm high.*

£800-£1200



245

A matched pair of 19th century Gothic style oak carved throne open armchairs

With foliate scroll finials, quatrefoil and trefoil arched carved splats, on cluster column downswept arms, with rectangular seats, on panelled legs, *each 67cm wide, 52cm deep, 115cm high, seat height 47cm. (2)*

£1800-£2200



246

A set of eight Victorian oak carved dining chairs by Lamb of Manchester

Upholstered and close-nailed in green leather, the rectangular padded backs and seats on turned wreathed legs with front 'Copes Patent' castors, *stamped LAMB MANCHESTER under the seat-rail*, each 48cm wide, 49cm deep, 87cm high, seat height 45cm. (8)

£600-£800

Lamb of Manchester was founded by James Lamb (1816-1903), they were one of the leading cabinetmakers in Manchester of that period. Acclaimed for their high quality construction and artistic design, they used the finest quality materials and workmanship.

247

A late 19th century American aesthetic movement ebonised and sycamore marquetry cabinet by Herts Brothers

The trapezoidal top with reeded edge above a frieze of paterae and scrolling leaves and berries with central drawer, above a door inlaid with a twin-handled vase issuing a spray of flowers, flanked by a shelf and panelled door to each side, decorated with further leaves and flowerheads, on outswept bracket feet, *previously with a gallery or superstructure*, stamped to the reverse *HERTS BROTHERS, 806-808 BROADWAY. NY.*, 102cm wide, 36cm deep, 99cm high.

£1800-£2200

Cabinetmakers Isaac and Benjamin Herts were sons of a prominent English born antiques dealer and auctioneer and established Herts Brothers around 1876 on Broadway near Eighteenth Street, New York. During their time they furnished a number of important buildings including the New York Produce Exchange, the Columbia Bank, the Knickerbocker Hotel, the Criterion Club and the yachts of William Backhouse Astor Jr., and other clients. They also exhibited at the 1876 Centennial Exposition in Philadelphia and the World's Columbian Exposition in Chicago in 1893.





248

A Kirman carpet, South East Persia, late 19th century

360cm x 274cm

£2000-£3000



249

A Tabriz carpet, North West Persia, circa 1900

408cm x 310cm

£2000-£3000

Provenance:

Property from a Berkshire Residence

250

A Kashan carpet, Central Persia, circa 1930

304cm x 211cm.

£500-£800



251

A Karabag (Armenian) rug dated 1935

122cm x 183cm

£350-£450

252

A Kashan rug, Central Persia, circa 1900

200cm x 136cm

£1200-£1800



253

A Kashgai rug, circa 1900

280cm x 170cm

£700-£1000



254

A late 19th century French ebony and ebonised carved cabinet on stand

In the Renaissance Revival style, the rectangular top with pierced balustraded superstructure above a panelled door carved with winged amorini, mythological beasts and scrolling leaves, enclosing a sycamore interior of a shelf and two drawers, flanked by reeded columns; the stand with a drawer above similarly carved rear panel, on square bellflower chain carved legs with a platform undertier on turned feet, 63cm wide, 42cm deep, 145cm high.

£600-£800



255

A mid 19th century French Louis XIV style carved oak canapé

With flame stitch upholstery, the rectangular padded back and seat with downswept acanthus leaf and paterae carved arms, on 'S' scroll legs joined by wavy stretchers, 164cm wide, 71cm deep, 112cm high, seat height 42cm.

£400-£600

256

A late 19th century French Régence style beechwood and parcel gilt three-seater settee or canapé

Upholstered and close-nailed in yellow damask silk, the undulating padded back with scrolling acanthus carved arms and serpentine seat, with loose squab cushions, above a shell and acanthus carved seat-rail, on cabriole legs and scroll feet joined by inter-laced stretchers, 193cm wide, 61cm deep, 114cm high, seat height 49cm.

£1200-£1500



257

A 19th century French gilt bergère à oreilles

In the Louis XVI style, the rectangular padded back, sides, arms and seat upholstered in black diaper pattern fabric, with a loose squab cushion, on stop-fluted turned tapering legs, re-gilt, 72cm wide, 63cm deep, 117cm high.

£1000-£1500

258

A pair of Empire carved mahogany open armchairs

The reeded and turned top rails above lateral and leaf carved cross bars, with overswept arms, on caned seats with square tapering downswept legs, together with squab cushions, each 56cm wide, 47cm deep, 87cm high. (2)

£300-£500





259

After Zoé-Laure de Chatillon (1826-1908), L'esclave

Unframed oil on board

Monogrammed and dated '76, labelled on the reverse, probably late 19th century

56cm high, 31.5cm wide.

£250-£350

260

A late 19th French century gilt bronze sixteen-light chandelier

In the Louis XV style, the urn shaped central stem issuing double 'C' scroll arms with leaf cast drip pans, *42cm high, 83cm wide.*

£1000-£1500



261

A Napoleon III style oval giltwood mirror

With foliate and floral cresting and apron, *124cm high, 70cm wide.*

£400-£600

262

A 19th century LXV style ormolu furniture acanthus mount

Pierced and with scrolling leaves and flowerheads, *28cm high, 52cm wide.*

£200-£300



263

A pair of Louis Philippe ormolu four-light candelabra attributed to Pierre-Philippe Thomire, circa 1840

With scrolling arms and circular leaf cast drip pans with detachable nozzles, above triple cluster columns, on scrolling tripartite bases, on siena marble shaped plinths, *each 63cm high, 23cm wide. (2)*

£2000-£3000

With similarities to a pair of seven-light candelabra by Thomire sold Christie's, London, Robert de Balkany & the Côte d'Azur, 23 March 2017, lot 553, previously sold Christie's, Paris, 19 December 2007, lot 398.



264

An early 19th century Roman white marble bust of a smiling faun

With flowers in his hair and looking to sinister, on a turned socle base, *46cm high.*

£1000-£1500

265

A 19th century French terracotta group of The Triumph of Bacchus after Clodion

On a circular base, with a turned gilt wood plinth, *26cm diameter, 45cm high (including plinth).*

£600-£800

Provenance:

Private Collection, London





266

A pair of small 19th century French porcelain vases with silver gilt mounts

Decorated with en grisaille reserves of cherubs and base of fruit in green and white on a mustard yellow ground, the reserves signed 'Max' and the silver indistinctly marked with a French makers mark, each 14.5cm high, 7cm diameter. (2)

£200-£300



267

A pair of Louis XVI ormolu candlesticks

With circular beaded detachable nozzles and reeded swagged baluster stems, on leaf cast circular bases, each 27cm high, 14cm wide. (2)

£300-£400



268

A Chinese Qianlong period famille rose and gilt bronze mounted bowl on a later footed base

Decorated with flowers and leaves, on a pressed gilt metal stepped base, (detached), 22cm high, 24.5cm diameter.

£250-£350



269

A 19th century Sèvres style blue and gilt painted twin-handled vase

Applied with gilt bronze mounts, of classical form with scrolling leaf handles with painted reserves emblematic of Summer, 40cm high, 18cm wide.

£200-£300

270

A 19th century blue and white porcelain onion pattern lamp base

Decorated with chrysanthemums, insects and scrolling leaves, on a pierced patinated bronze base, possibly Meissen, 33cm high, 15cm diameter.

£300-£400



271

An early 18th century Chinese imari pattern and gilt bronze mounted coffee pot

With loop handle and gilt bronze spigot, lid missing, 21cm high, 14cm diameter.

£250-£350



272

A pair of Chinese white glazed crested cranes

On brown glazed trees stump bases, each 44cm high, 17cm wide. (2)

£400-£600



273

A 19th century Chinese bronze and gilt decorated hot water warmer

Of ovoid form, decorated with dragons, flowers, leaves, bamboo and ho-ho bird, with swing handle, signed, 20cm diameter, 10cm high.

£100-£150





274

A pair of late 19th century French steel wire work lamp bases

With dragon handles, converted from moderator oil lamps, circa 1875, with shades, each 39cm high. (2)

£200-£300

Provenance:

Property from a Berkshire Residence purchased from Christopher Butterworth Ltd, Pimlico Road, London

275

South African Interest: Christine M Stockdale (1881-1933)

Zulu Warrior An early 20th century patinated bronze figure of a standing warrior with shield and spear, mounted on a green marble square moulded base, signed, 40cm high.

£600-£1000

Christine M Stockdale (1881-1933)

Born in South Africa, Stockdale worked in both London and South Africa and was amongst the relatively small group of women working as sculptors in the Edwardian period particularly in South Africa. Her recorded dates are often confused with those of an aunt of the same name, who pre-deceased her by a year. William Kineton Parkes singled Stockdale out as one of the noteworthy sculptors in London who specialised in animal stone carving. Born in South Africa to an English father, she was the niece of the Sister Henrietta Stockdale (1847-1911), the British nursing pioneer and Anglican religious sister, an important and celebrated figure in the foundation of South African healthcare. Christine returned to England and studied in Birmingham although returned to South Africa during World War I where she worked for various patrons including the Friesland Breeders Association, working on two of their trophies depicting cattle. She returned to London establishing a studio in Hammersmith after the war and she travelled internationally. In London Stockdale sought primarily animal commissions relying on London Zoo for sketching the more exotic animals she had access to in South Africa.

Although little is known of her later career, it seems that she was dogged by fragile health and died in Salisbury in 1933.



275a

A pair of African hardwood and ivory stools, a pair of ebony and ivory elephant book ends and a plate on stand

The stools of differing sizes with circular seats and carved elephant head legs, *some tusks missing*, together with a pair of book ends in the form of elephants, *all early 20th century*, together with a French floral patterned circular white porcelain plate on a rustic tripod stand, *the stools both 36cm diameter, 25cm and 28cm high respectively, the book ends 20cm high, 34cm diameter, 72cm high, the plate 34cm diameter, 72cm high.* (5)

276

Tanjore School, South India (circa 1830-1840)

Yashoda with the baby Krishna flanked by attendants
Gouache and gilt gesso on paper within a period frame.

72cm x 53cm

£1000-£1500



277 ¥

A mid 19th century Anglo-Indian rosewood carved work table

Profusely carved with scrolling leaves and flowerhead, the hinged lid enclosing a lidded compartment to the base; above a spindle turned cage and leaf carved and turned shaft, on tripartite base, with lion paw feet, 37cm wide, 25cm deep, 80cm high.

£600-£800

278

An Indian silver water flask, surahi, with typical profuse Kashmiri foliate decoration, unmarked, probably 3rd or 4th quarter of 19th century

Long tapering spout with detachable cover secured by a thin chain, chain now unattached at base, lower body of compressed circular form, 32cm high, 20oz (620 gm).

£550-£750





279

A late 19th century mahogany carved 'X' frame 'curule' window seat

With scroll arms and curved seat with thyrus carved seat-rail, on downswept legs with lion paw feet, with castors, 76cm wide, 41cm deep, 64cm high.

£600-£800

280 ¥

A Napoleon III carved rosewood and gilt brass bound serpentine writing table

The shaped top inset with a black and gilt tooled leather writing surface above a foliate carved shaped apron, on cabriole shell and strapwork carved legs joined by acanthus carved serpentine 'X' stretcher on scrolling leaf carved feet, 122cm wide, 74cm deep, 77cm high.

£800-£1000



281

A pair of Napoleon III Louis XIV style ebonised and brass marquetry side cabinets

In the manner of A.C.Boulle, applied with gilt-bronze mounts, in *premiere* and *contre-partie*, each with a rectangular tops above an inlaid frieze and a pair of arched glazed doors enclosing a shelf; flanked by shell and floral chain mounts, on a plinth base, each 83cm wide, 32cm deep, 110cm high.(2)

£2000-£3000

282

A small 18th century German walnut, ash and marquetry commode

Of arc-en-arbelette form, inlaid with ebony bands, the quarter-veneered top above four long drawers, on bun feet, 95cm wide, 61cm deep, 77cm high.

£500-£800

Provenance:

Property from a Berkshire Residence.



283

An early 19th century Russian Empire mahogany and brass inlaid centre table

The circular top with radiating veneers and lobed underside, on a turned ebonised shaft, on a shaped platform base with turned feet, 109cm diameter, 80cm high.

£3000-£5000

Provenance:

Property from a Berkshire Residence.

Purchased Christopher Hodsoll Ltd.



284

A late 19th century Italian walnut corner chair

Carved overall with leaf and cabochon detail, figural scroll arm supports and shaped legs, 72cm wide, 50cm deep, 86cm high, seat height 44cm.

£400-£600



285

A late 19th century Italian walnut figural tripod candlestand

The top of serpentine outline, the carved male column with arm held aloft clutching grapes, 32cm diameter, 94cm high.

£400-£600



286

A large mid 19th century Italian walnut high-back armchair

With pierced scrolling cresting above a rectangular padded back and seat upholstered and close-nailed in gold and red fabric, with downswept arms and dolphin arm terminals, on turned legs with stretchers, 68cm wide, 59cm deep, 149cm high, seat height 48cm.

£1000-£1500

TERMS AND CONDITIONS FOR AUCTION PURCHASERS

1. These Terms and Conditions apply to all transactions relating to the purchase of items by a bidder (referred to as "you") at auction or as an auction after-sale by The Pedestal Limited, trading as The Pedestal (referred to as "we"), and may not be varied unless agreed in writing in advance by one of our directors. By registering to bid and/or bidding you accept these terms.
2. We act as agent for the seller whose identity we will not disclose, unless otherwise stated.
3. When we offer items for consignment at auction, we will usually include in the auction listing a description of the lot and an estimate of potential sale value. Upon request we may also supply a condition report, which will be based on a visual inspection of each lot without disassembly or further investigation of physical condition, and on information available to us at the time. All information is provided after due consideration and to the best of our knowledge and experience, but cannot be taken as a statement of fact, a guarantee or statement of value or a guarantee or statement that mechanical or electrical parts are functioning correctly or at all.
4. All measurements provided are approximate. Colours of any image depicted in any printed catalogue, on our website or otherwise may not appear the same as colours perceived on physical inspection.
5. Lots offered for sale will be available for viewing in person at such place and times as are advertised before the auction. We always recommend inspection in person.
6. A registration form will be available on our website, at the auction or upon request and must be completed in advance of the auction by anyone wishing to bid. You may also be required to provide proof of identity and proof of address unless you are already known to us. A separate fee may be levied and separate registration may be required for online bidding, whether on our own or a third party platform.
7. Commission bids may be refused unless they have been entered on our registration form and accepted in advance of the auction.
8. We may at our discretion accept bids from someone acting on behalf of a third party, subject to receiving a letter of authorisation which is satisfactory to us. In the event that such a bid is successful we reserve the right to treat either the bidder or the third party as the successful bidder for all purposes including as regards obtaining payment for the lot.
9. Auctions are conducted according to our discretion and that of our auctioneer. We may refuse to allow access to the auction, refuse or accept any bid, alter the order of lots and/or the bidding in such way as we think best, withdraw any lot, reopen bidding after the hammer has fallen, determine who is the successful bidder, cancel the sale of any lot or otherwise regulate the auction and all associated proceedings as we deem most appropriate. Our decision in relation to any dispute relating to bidding which may arise during or after the auction is final. We may (but are not obliged to) offer bidding in person, by commission bids left with us in advance of the auction, by telephone, or online via our own or a third party platform. We will not in any event be liable for any failure to take a bid whether caused by breakdown of communications technology or otherwise.
10. Both the auction as a whole and calls used for telephone bids may be recorded and such recordings may be retained by us and by participating in the same you consent to such recording and retention.
11. Most lots are offered subject to a reserve below which the lot will not be sold. The level of the reserve is confidential between ourselves and our seller but will not be higher than the lower estimate.
12. We may enter one or more bids consecutively or otherwise on behalf of the seller up to but not beyond the level of the reserve.
13. Subject only to the auctioneer's discretion set out in clause 9 above, when the auctioneer's hammer falls no further bids will be accepted and a contract for sale is formed between the successful bidder and ourselves as agent for the seller.
14. We will endeavour to send out invoices promptly by mail or email using the contact details supplied to us by the successful bidder. If you believe that you are the successful bidder for any lot but have not heard from us within three working days of the auction we recommend that you contact us to arrange collection and avoid potential storage charges.
15. We will charge a buyer's fee of 25% on the first £50,000 of the hammer price of each lot, and 20% of any portion of such hammer price which is above £50,000, plus VAT.
16. Payment for each lot which you have purchased including all associated fees, charges and taxes is due no later than 7 calendar days after the auction. Payment can be made only by the registered bidder. Payment instructions will be given on the relevant invoice or invoices. Please note that we do not accept payment by credit card.
17. No lot will be released and legal title will not pass to you until we have received due payment in full of all sums owed to us by you. Risk in any lot for which you are the successful bidder will pass to you on the earlier of collection of the lot by you or on your behalf, or the due date for payment for such lot.
18. If you fail to make due payment for any lot we may, at our discretion and without limitation to other available remedies, charge you interest at the rate of 12% per annum; bring legal proceedings against you for the unpaid sum and all associated fees and costs including professional fees ("Unpaid Sums"); retain and sell ourselves or otherwise any other lots held by us which are your property or any sums otherwise payable by us to you and use such proceeds or sums to defray the Unpaid Sums; cancel the sale, re-offer the lot and claim any shortfall and any associated costs from you; and/or pass your identity and contact details to the seller so that they can pursue legal remedies against you directly.
19. All lots must be collected from our shipper as notified to you in the auction catalogue and otherwise, within 14 days after the auction. Storage and handling fees will be charged in relation to lots left uncollected after that date at the shipper's standard rates from time to time. Any lots not collected within 90 days after the auction may be sold by us at our discretion, with the proceeds applied to cover all Unpaid Sums including storage and handling charges. In this event any surplus will be paid over to you, and we will claim any shortfall from you as an Unpaid Sum.
20. A lot which has been collected from our warehouse by you or a shipper acting on your behalf is deemed to have been delivered to you by us at the time of such collection.
21. Lots which we believe to be covered by the CITES regulations will be marked with Y in our catalogue, but we are not responsible for advising you on any import/export issues including without limitation CITES or the like, and customs and import fees and the like. We recommend that you acquaint yourself with any relevant issues before bidding, as we cannot accept liability for any information which we may provide you with. If you purchase a lot requiring an export license it is your responsibility to obtain it, and we cannot accept rescission of the sale or offer a refund if you are unable to so obtain a permit.
22. Each seller warrants that they are the legal owner of the lot and/or have the unencumbered right to sell the lot at auction and to pass title to the successful bidder. The seller shall not be liable in the event of breach of this warranty for any amount greater than the hammer price of the lot in question. We may be liable only to the successful bidder in the event of fraud or fraudulent misrepresentation by us and exclude all other liability to such bidder and all third parties to the fullest extent permitted by law. Nothing herein shall limit your rights if any under the Consumer Contracts Regulations, or exclude our liability for death or personal injury caused by our negligence.
23. General Terms:
 - a. These terms are made and must be construed under English law and any disputes arising from them or from the Contract will be subject to the exclusive jurisdiction of the courts of England and Wales.
 - b. All charges, fees, premiums and any other sums referred to herein or arising herefrom are stated net of Value Added Tax but are subject to VAT or the like at the rate or rates prevailing at the time of any transaction. VAT is not chargeable on the hammer price unless otherwise stated.
 - c. We will hold and process your personal data according to the conditions, for the reasons and on the bases set out in our Privacy Policy which you may access here, and as envisaged by these terms and conditions.
 - d. We retain copyright in all images and written and other materials prepared by us, which may not be used by you without our prior written consent.

Including Selected Property from a
Berkshire Residence - Part Two

2pm Tuesday 9 February 2021

Sale number: 090121

The Dairy,
Stonor Park
Henley-on-Thames,
Oxfordshire, RG9 6HF
Tel: 020 7281 2790

Bidding, purchasing and all matters relating to this sale will be governed by The Pedestal Limited's Terms and Conditions for Auction Purchasers, which can be found on our website and in the printed sale catalogue. We recommend that you read them before registering to bid.

If you have not previously registered with us, please provide photographic proof of your identity and proof of address such as a utility bill or bank statement.

If you are not attending the sale in person, please provide details of the Lots on which you wish to bid at least 24 hours prior to the sale. Bids will be rounded down to the nearest increment. The Pedestal will endeavour to execute these bids on your behalf but will not be liable for any errors or failing to execute bids.

All sales are subject to a buyer's premium of 25% plus VAT on the first £50,000 hammer price of each lot, and 20% of any portion of such hammer price which is above £50,000. Additional charges may apply for bidding online via a third party platform.

Bidding Increments

(subject always to the auctioneer's discretion)

Up to £500 – 20/50/80

£500-£1000 – 50

£1000-£2000 – 100

£2000-£5000 – 200/500/800

£5000-£10,000 – 500

£10,000-£20,000 – 1000

£20,000-£50,000 – 2000/5000/8000

£50,000-£100,000 – 5000

£100,000 and above – increments at the discretion of the auctioneer

Notes

Telephone calls may be recorded. Commission bids will be rounded down to the nearest increment where relevant.

This form should be completed, signed and delivered together with proof of identity and address as requested above by email to info@thepedestal.com, by mail to The Dairy, Stonor Park, Henley-on-Thames, Oxfordshire, RG9 6HF or in person at the sale viewing. It must be received by The Pedestal no later than close of business on the day before the sale date. Telephone bids are subject to availability. In any event The Pedestal will not be liable for any failure to register a bidder or bids, or to accept a telephone bid. By signing this form, you are confirming that you accept these terms.

Signature

Date

Please note that you may also register for this sale, request a telephone bid and/or leave a commission bid online at www.thepedestal.com

First Name	Last Name
Company Name (where applicable)	
Address	
Postcode	
Telephone (Landline including country code)	
Mobile (including country code)	
VAT registration number (where applicable)	
Email	



Bid in person



Leave commission bid



Request telephone bid

[illegible]

Please tick here if you would like to receive news and updates from The Pedestal





Enquiries:
The Pedestal
The Dairy, Stonor
Park, Henley-on-Thames,
Oxfordshire, RG9 6HF
Tel: 0207 281 2790