

The background of the entire page is a detailed silk embroidery. It features a central scene of a person in a pink and white outfit riding a brown horse. To the right, a dark-colored dog stands near a person in a blue and yellow outfit. The scene is surrounded by various plants, including a large, gnarled tree on the left and several flowering plants on the right. The embroidery is set against a light beige background with decorative floral borders at the top and bottom.

The Pedestal

Specialist auctions | Private sales | Online selling

FINE INTERIORS:
featuring A Bold Perspective -
a selection from Peacock's Finest

2pm Tuesday 20 July 2021
The Dairy, Stonor Park, Henley-on-Thames, RG9 6HF



The Pedestal

Specialist auctions | Private sales | Online selling

Fine Interiors:

featuring A Bold Perspective - a selection from Peacock's Finest

2pm Tuesday 20 July 2021

Sale number: 200721

The Dairy,
Stonor Park
Henley-on-Thames,
Oxfordshire, RG9 6HF

020 7281 2790
info@thepedestal.com
www.thepedestal.com

Specialists:

Early Works of Art

Simon Green
simon@thepedestal.com

Furniture & Works of Art

Guy Savill
guy@thepedestal.com
Sally Stratton
sally@thepedestal.com

Silver

Michael Prevezer
michael@thepedestal.com

Client Manager:

Jackie Brown
info@thepedestal.com

Viewing at The Dairy

Friday 16 July 10 - 5pm
Sunday 18 July 11 - 3pm
Monday 19 July 10 - 5pm
Tuesday 20 July - Restricted viewing from 10am

Public Viewing and Covid 19 Precautions

Hand sanitiser, face masks and gloves will be available for clients and social distancing will need to be observed for the safety of all clients and our staff. Viewing arrangements will be updated according to Government guidelines.

Catalogue: £10

Front cover: Lot 367
Inside front cover: An interior by Peacocks Finest including lots 3, 16, 23 and 24
Inside back cover: An interior by Peacocks Finest including lots 3, 13, 23, 37, 40, 43 and 14
Back cover: Lot 314

The Pedestal
Live

the saleroom

The home of art & antiques auctions

Company no. 10159639 Registered for VAT no. 244 7137 09

IMPORTANT INFORMATION

LIVE BIDDING

Please go to auctions.thepedestal.com to bid live on our website.

You will need to create a new account to use The Pedestal Live. Once created it will give you access to live bidding facilities both from your desktop and through our app. The Pedestal Live is powered by Auction Mobility and is available for both Apple and Android mobile devices. To browse catalogues, leave absentee bids and bid live in all auctions from your device download the free app from the App Store (for Apple devices) and Google Play (for Android devices).

There is a 3% plus VAT additional live bidding fee applied for this service.

Alternatively live bidding for this auction is also available through thesaleroom.com where additional charges apply.

BUYER'S PREMIUM AND CHARGES

A successful bidder at this sale will be required to pay The Pedestal Ltd (The Pedestal) a premium calculated as follows:

25% on the first £50,000 of the hammer price

20% of any portion of such hammer price which is above £50,000 VAT at 20% will be payable on the amount of the premium

Additional charges for lots purchased online via live bidding platforms are applicable (see above)

PLEASE SEE POST SALE COLLECTIONS INFORMATION ON PAGE 2



Location

The Dairy is located between the M4 and the M40 (J6) on the B480 Henley-on-Thames - Watlington Road. On entering the Stonor Park Estate, through the main gates, keep to the right as the driveway divides, once you reach the parking area The Old Dairy is on the left. Stonor is a 10 minute drive North of Henley, only an hour from London, 40 minutes from Oxford and Heathrow and half an hour from Reading. If you are approaching Stonor on the M40 motorway from the East and are using a Satellite Navigation system please ignore any instructions to exit the motorway on either Junctions 4 or 5 as this will add up to an hour to your journey. Please only exit at Junction 6. The nearest railway station is Henley-on-Thames and taxis are available from the Station.

Symbols

¥ These lots are subject to CITES regulations.

AR On certain Lots marked 'AR' in the catalogue an Additional Premium will be payable by the Buyer for royalties relating to the Artists Resale Right Regulations 2006 currently:

Hammer Price

From €0 to €50,000 Percentage 4%
 From €50,000.01 to €200,000 Percentage 3%
 From €200,000.01 to €350,000 Percentage 1%
 From €350,000.01 to €500,000 Percentage 0.5%
 Exceeding €500,000 Percentage 0.25%



MAIL BOXES ETC.

MAIL BOXES ETC. A service offering collection, specialist packing, postage, insurance and worldwide shipping of non-furniture items purchased in our auctions is available with Mail Boxes Etc. of Kilburn. Please contact Mailboxes Etc. directly on 0207 328 4161 or email info@mbekilburn.co.uk

Post Sale Collections and Storage Information

All auction purchases must be collected within 14 days of the auction from The Dairy, Stonor, Henley-on-Thames, Oxfordshire, RG9 6HF.

We open for collection Monday-Friday between 10.00am and 4.00pm during the week of the auction. After this date please telephone 0207 281 2790 to schedule an appointment for collection.

After the first 14 calendar days following the sale, i.e from Wednesday 25th November handling and storage charges will apply.

Storage charges include an administration charge of £10 and are then charged at:

£3 per day for pictures and small items
 £6 per day for furniture, larger pictures and objects.

If items remain uncollected after the free collection period we reserve the right to transfer them to external storage where a transfer charge and additional storage charges will apply.

Please Note:

Access to the Stonor Park Estate is weight restricted to vehicles under 7.5tonnes

Loss and Damage

Full value protection Cover for the value of the hammer price will be charged at 0.6% but will not exceed the total value of all other transfer and storage charges.

Value Added Tax

Will be applied at the current rate on any charges levied.

A Bold Perspective

A Selection from Peacock's Finest

Peacock's Finest was founded in 2014 by Alex and Paul after years of developing and honing their passion for fine design and excellence. They are both of Eastern European origin, and they abandoned careers in banking for a new life in London where they embarked on the pursuit of their dreams.

At the time the business was just one from a small group of new players seeking to challenge the established, traditional antiques market and bring a fresh perspective to the trade. Rather than specialising in specific periods and styles the duo's concept is underpinned by a simple idea: they only buy pieces they are happy to own and live with themselves, which makes their inventory rather more a collection - highly personal as well as eclectic.

Not having come from generations of antiques dealers as soon as they settled on their new vocations Alex and Paul set about refining and perfecting their combined collecting eye – through study and many visits to country houses at home and overseas. Starting a business totally from scratch and establishing their name and reputation demanded focus and dedication.

They are particularly drawn to the bold, the unusual and high quality, fusing these aesthetics with thorough research and restoration to uncover the beauty in an item. Their approach has garnered a large and expanding group of clients, comprising private collectors and British and international interior decorators.

They closed their cosy and sunny Pimlico gallery in early 2020 and moved Peacocks Finest entirely online. As a consequence of the move Alex and Paul reshaped their inventory to suit the new approach, and thus the idea of offering this selection at auction was born.

1

A neo-classical style cream, green and white painted dog kennel

Applied with carved lion masks, the rectangular arched pediment with acorn finials above a frieze applied with swagged urns, the central opening with silk lining and green velvet squab cushion, flanked by corinthian pilasters; on a plinth base, *104cm wide, 61cm deep, 112cm high.*

£2000-£2500.

Provenance:

Christie's London, Gordon Watson: The Collector, 13 October 2016, lot 194. Dog kennels or Chenils became popular among aristocratic pet owners in 18th century Europe. Considered a part of domestic furnishings, dog kennels were typically comprised of a small case or basket open on one or two sides to allow the dog to enter. More elaborate models resembled diminutive canopied beds or tabouret-shaped chairs with a recessed niche below, examples of the complexity and sophistication found on the above lots are unusual





2

A George IV mahogany console or serving table The flame figured top above a reeded frieze on downswept reeded legs headed by roundels, on square moulded feet, 139cm wide, 57cm deep, 99cm high. £1000-£1500



3

A pair of George IV mahogany boldly carved side chairs by Gillows

Upholstered and close-nailed in leopard print velvet, on heavy scrolled cabriole legs and scroll and block feet with recessed castors, *one chair stamped twice Gillows Lancaster*, each 63cm wide, 72cm deep, 96cm high, seat height 47cm. (2). £3000-£5000

An identical chair, by repute from Westport House, Co. Mayo, Ireland, was sold Christie's London, 25 October 2019, lot 65 (previously with Christopher Hodsoll). The chairs neo-Kentian design relates to the furniture supplied by Gillows to William, 2nd Baron Bolton for Hackwod Park, Hampshire, in 1813 and to Thomas John Wynn, 2nd Baron Newborough for Glynliffon, Caernarvonshire, Wales in 1824. Between 1813 to 1840 the main focus of Gillows business became the Oxford Street, London premises, where extravagant neo-baroque and neo-rococo decoration became the fashion and it was at this time that Gillows received such prestigious commissions as the magnificent twelve armchairs for Lord Fitzwilliam's Whistlejacket Room at Wentworth Woodhouse in Yorkshire and the giltwood suite of seat furniture for the Red Drawing Room at Tatton Park, Cheshire



4

A monumental Victorian Arts & Crafts lustre wall charger by Maw & Co, Broseley

Glazed in purple, pink and orange on a white ground with central circular Medusa mask surmounted by a flaming brazier, flanked by pomegranates, other seeded fruit and leaves, within a running wave border, *impressed marks to the underside 'MAW & Co' and 'BROSELEY'*, with stapled firing crack, 91cm diameter

£3000-£4000.

Maw & Co was established by George Maw and his brother Arthur in Worcester in 1850. In 1862 the company moved to Broseley, Shropshire to take advantage of the good-quality local clay and in 1883 they moved again to the Benthall Works in Jackfield, Shropshire. The company continued to prosper and by 1880 had grown to be the largest producer of ceramic tiles in the world. Maw & Co specialised on the earthenware floor tiles, mosaic tiles (from 1862), transfer printed tiles, hand painted picture tiles and relief tiles were also produced and included Art Nouveau and Art Deco geometric designs. In the 1890s Maw & Co started making high quality art pottery (the name they used for it) and employed artists, such as Lewis Foreman Day, William De Morgan and Walter Crane, to design both art pottery and tiles. The stamp underside indicates that the piece was manufactured between 1862 and 1883 while the factory was still located in Broseley. While the company's main output at the time was tiles, it also produced one-off pieces like this for various exhibitions as a showcase of their craftsmanship and techniques. Thus, one of the first examples was made for 1851 Great Exhibition, and a further similar charger was made for 1889 Exposition Universelle (now in the Ironbridge Gorge Museum). It seems likely that the present charger was made for one of such exhibitions, designed by a prominent artist of the era. William De Morgan or Walter Crane seem to be plausible candidates for such design. Crane realised a number of designs for Maw & Co. in 1870's-80's, including a set of lusterware decorated vessels in similar, antiquity-inspired style, for an Arts and Crafts exhibition (The Work of Walter Crane with Notes by the Artist. The Easter Art Annual for 1898: Extra Number of the "Art Journal". London: J. S. Virtue, 1898.). The De Morgan Foundation owns a large Maw & Co. charger similarly decorated with vitruvian scroll borders (<https://www.demorgan.org.uk/collection/ruby-lustre-charger-with-galleon-within-a-carnation-border/>). A vase by an anonymous artist is owned by the V&A Museum, London (<http://collections.vam.ac.uk/item/O150401/vase-maw-co/>).



5

A William IV mahogany tall chest

The rectangular cavetto moulded top above six graduated drawers, with gothic brass swing handles, on a moulded plinth base, *91cm wide, 63cm deep, 142cm high.*

£1200-£1500

6

A neo-classical style mahogany writing table

The rectangular top inset with a brown and gilt tooled leather above a frieze drawer on square reeded legs joined by a moulded platform stretcher, *19th century and later, 107cm wide, 58cm deep, 74cm high.*

£1000-£1500



7

A George III mahogany side cabinet

The rectangular moulded top above two frieze drawers and a pair of panelled doors enclosing an adjustable shelf on shaped bracket feet, *120cm wide, 57cm deep, 97cm high.*

£200-£300



8

A George IV mahogany green leather patent reclining library armchair by Robert Daws

Close-nailed and buttoned, the rectangular reclining padded back, padded arms and seat above a sliding ratcheted foot stool, on ring turned tapering legs and castors, stamped to sides of both rear legs R DAWS with Royal Warrant, 54cm wide, 72cm deep, 108cm high, seat height 45cm.

£1500-£2000.

Robert Daws is recorded as being active between 1820-39 at 17 Margaret Street, Cavendish Square, London, and patented his improved recumbent chair in 1827, see C. Gilbert and G. Beard, *Dictionary of English Furniture Makers 1660-1840*, Leeds, 1986, p.282



9

A George IV mahogany red leather patent reclining library armchair by Robert Daws

Close-nailed and buttoned, the rectangular reclining padded back, padded arms and seat above a sliding ratcheted foot stool, on stiff leaf carved turned tapering legs and castors, stamped to sides of both rear legs R DAWS with Royal Warrant, 55cm wide, 69cm deep, 100cm high, seat height 38cm.

£1500-£2000

Robert Daws is recorded as being active between 1820-39 at 17 Margaret Street, Cavendish Square, London, and patented his improved recumbent chair in 1827, see C. Gilbert and G. Beard, *Dictionary of English Furniture Makers 1660-1840*, Leeds, 1986, p.282.



10

A George II carved walnut side chair in the manner of Giles Grendey

The shaped back above a vase shaped splat and bowed drop-in seat upholstered in teal silk damask, on cabriole shell and trailing bellflower carved legs, on claw and ball feet, *stamped W.B to the back seat rail, 55cm wide, 50cm deep, 100cm high, seat height 48cm.*

£800-£1000

The chair offered here is virtually identical to a set of six sold Christie's London, 15 Nov 2017, lot 153 and a single example sold Christie's New York, 22 October 2010, lot 386. All these chairs are closely related to a set of six in the Carnegie Museum of Art, Pittsburgh, Pennsylvania by the celebrated Clerkenwell cabinet-maker and upholsterer Giles Grendey (d. 1780), two of which carry labels 'GILES GRENEY, In St. John's-Square, Clerkenwell, LONDON, Makes and Sells all Sorts of Cabinet- Goods, Chairs and Glasses' (illustrated C. Gilbert, *Pictorial Dictionary of Marked London Furniture 1700-1840*, Leeds, 1996, p. 242, fig. 434). A further labelled suite of similar seat-furniture by Grendey and formerly in the collection of the late J. S. Phipps, was sold at Sotheby's New York, 21 November 1981, lots 233-235. Another chair with identical back is illustrated in R. Edwards, *The Dictionary of English Furniture*, rev. edn., 1954, vol. I, p. 254, fig. 85. A number of chairs from Grendey's workshop bear the stamp of his journeymen, some of which are recorded in the archives preserved in the Public Records Office. A suite of chairs supplied by Grendey at Gunton Park, Norfolk (C. Gilbert, *Pictorial Dictionary of Marked London Furniture 1700-1840*, London, 1996, p. 243, fig. 437) is identically stamped 'WB' and this stamp probably relates to William House, employed at Grendey's Clerkenwell workshop from 14 April 1747 (G. Beard and C. Gilbert, eds., *Dictionary of English Furniture Makers*, Leeds, 1986, pp.371-2). Similar stamps 'WF' and 'WH' appear on numerous chairs of known Grendey models, including a set of dining-chairs with identical legs and scallop backs almost certainly supplied by Grendey to John, 1st Earl Poulett for Hinton House, Somerset, and the suite of chairs at Longford Castle, Wiltshire.



11

An 18th century and later walnut crossbanded and featherbanded kneehole desk

The rectangular quarter-veneered top above a baize lined slide and a frieze drawer; above an apron drawer and recessed cupboard door enclosing a shelf; flanked by three drawers to each side, on shaped bracket feet, *with restorations, 75cm wide, 47cm deep, 78cm high.*

£1000-£1800





12

A George III mahogany serpentine chest attributed to Thomas Chippendale The rectangular moulded top above three long graduated drawers, on shaped bracket feet, *114cm wide, 59cm deep, 94cm high.*

£5000-£7000

The form of this chest of drawers closely relates to a very similar three-drawer serpentine dressing chest supplied by Thomas Chippendale to Mersham-le-Hatch in 1768, rather unusually made in rosewood. It has similar proportions of the drawers, projecting serpentine top, and similar shape to the feet, which are laminated on the present example - another signature feature of the Chippendale's workshop. Among other distinctive features, related to documented or attributed to Chippendale pieces, are the panelled back, chamfered drawer-stops, profile of the bottom moulding, and the red wash applied to the underside and backboards. The drawers are oak-lined with cedar bottoms, the locks are brass, two-lever, and the handles are of the same pattern that was used by Chippendale on the desk that he supplied to Dumfries House. The same canted corners appears on a smaller chest of drawers, attributed to Thomas Chippendale, sold Christie's London, 22 May 2019, lot 31. Other similar serpentine chests were supplied by Thomas Chippendale for Ninian Home at Paxton House, Scotland; Henry, 10th Earl of Pembroke at Wilton House, Wiltshire and Sir Edward Knatchbull at Mersham le Hatch, Kent (see C.Gilbert, *The Life and Work of Thomas Chippendale*, London, 1978, vol. II, figs. 203, 205 and 206). Such simple and practical pieces intended for everyday use and 'done in a neat but not an expensive manner', to the same high quality standards as the more sophisticated examples, consisted a significant part of Thomas Chippendale's oeuvre.



13

A late 19th century George III rococo style mirror

The oval plate within a leafy frond frame surmounted by a pierced acanthus leaf scroll cresting and pierced shell carved apron below, *103cm high, 76cm wide.*

£1000-£1500

14

A pair of George IV cut-glass lustre twin-light candelabra

With gilt brass sconces and foliate drip-pans, with beaded drops and applied stiff leaf and flowerheads, on circular bases, *26cm high, 28cm wide.* (2)

£250-£300



15

An 18th century needlework in a later frame

The rectangular panel of a Chinese vase of flowers on a table with a floral sprig background, *65cm high, 52cm wide.*

£150-£200





16

A pair of George II mahogany side chairs

In the manner of George Grendey, the rectangular moulded backs with pierced vertical splats above stuff over close-nailed seats upholstered in sage green cut velvet on slender cabriole legs and pad feet, each 59cm wide, 50cm deep, 92cm high, seat height 45cm. (2)

£4000-£6000

The present chairs can be attributed to the Clerkenwell Cabinet maker Giles Grendey (d.1780) whose label appears on a closely related set of twelve chairs formerly with Christopher Gibbs Ltd and illustrated in C.Gilbert, *The Pictorial Dictionary of Marked London Furniture 1700-1840*, Leeds 1996, p.242, fig.435.

These chairs belong to a group of seat furniture with such stylistic consistencies that they must have been made by the same cabinet-maker. Closely related sets were supplied to Ditchley Park and Rousham House, Oxfordshire and Lyme Park, Cheshire around 1735-45. Nine of the Rousham House chairs were sold Christie's, New York, 20 May 2014, lot 127, and another, virtually identical set sold Christie's, London, 6 July 2000, lot 57; the Lyme Park armchairs (a pair) sold Christie's, London, 22 May 2014, lot 1092. Other comparable examples include a set sold Christie's, London, 21 April 1994, lot 256 and Christie's, New York, 17 November 1985, lot 65. A further related set of chairs, with backs identical to the present examples and plain square-cut legs, most likely from the same workshop, given their stylistic and constructional similarities, were sold from the collection of Robert Hatfield Ellsworth, Christie's London, 21 March 2015, lot 1156. An identical chair appears on a circa 1913 photograph taken in the library at Shardeloes, then the seat of the Tyrwhitt-Drake family (<https://amershammuseum.org/history/old-town/shardeloes/>). The chairs offered here can be considered essentially a more restrained version of the Ditchley and Rousham chairs. Although not stamped, features including the idiosyncratic curved back legs, typical of the Grendey output of the 1730's-1740's, featured on labelled examples, almost certainly indicate their link to the celebrated London maker. Notably, while most of the chairs from this group feature elaborately sculpted paw or claw feet, the Lyme Park armchairs have simple and elegant round pad feet seen on the lot offered here. This simple form also appears on a serving table, bearing a trade label of Giles Grendey, see Bonhams London, 19 October 2016, lot 188.



17

Circle of Maria Giovanna Clementi (Piedmontese 1692-1761)

Portrait of a noble woman

Oil on canvas

In a carved and gilt frame

95cm x 76cm.

£3000-£5000

Provenance:

Old Master and Early British Paintings, Sotheby's, Olympia, 16 April 2002, lot 373.



18

Circle of Maria Giovanna Clementi (Piedmontese 1692-1761)

Portrait of a noble woman

Oil on canvas

In a carved and gilt frame

95cm x 76cm.

£3000-£5000

Provenance:

Old Master and Early British Paintings, Sotheby's, Olympia, 16 April 2002, lot 372.



19

A George III carved mahogany side chair attributed to Thomas Chippendale

Buttoned and close-nailed in blue silk damask, the cartouche shaped back above a serpentine seat and anthemion carved seat-rail on cabriole moulded legs headed by double 'C' scrolls and scroll feet, 61cm wide, 45cm deep, 89cm high, seat height 45cm.

£4000-£6000

The chair shares similarities with other examples supplied by Thomas Chippendale. Among those are a set of 'Ten mahogany arm chairs' supplied to Sir Rowland Wynn, 5th Baronet, at Nostell Priory in 1767; a suite of seat furniture supplied to David Garrick in circa 1767 (a closely related open armchair is now at the Art Institute of Chicago); and a pair of bergere armchairs sold Christie's London, 'Thomas Chippendale: 300 Years', 5 July 2018, lot 4. Another closely related open armchair was sold Christie's London, 3 November 2011, lot 6. While there are no known documented examples of this particular model and no design for it as such in Chippendale's 'Director', the stylistic similarities link it closely to his workshop's oeuvre. It is known that Chippendale often worked on larger commissions with other cabinetmakers, such as Wright and Elwick, who supplied a number of pieces to Sir Rowland Wynn at Nostell Priory under the guidance of Thomas Chippendale.



20
A pair of figured mahogany and satinwood crossbanded revolving cutlery boxes

Inlaid with boxwood and ebonised lines, the rectangular tops above revolving doors concealing cutlery apertures, on ogee bracket feet, each 43cm wide, 29cm deep, 48cm high. (2)
£300-£500



21
A Scottish Regency mahogany stage back sideboard
 Inlaid with boxwood lines, the rectangular three-quarter superstructure with two sliding doors and two short drawers each enclosing cutlery trays; above a rectangular breakfront top above a bowed frieze drawer flanked by two deep drawers on turned fluted tapering legs and turned feet, 225cm wide, 79cm deep, 108cm high.

£400-£600



22 ¥
A Regency rosewood and sycamore marquetry tea table

The rounded rectangular swivel top with wide banding inlaid with scrolling leaves and flowerheads, above a tablet inlaid frieze, on a square spreading shaft and hipped acanthus carved quadripartite base and downswept legs with ram's head cappings and castors, 91cm wide, 45cm deep, 72cm high.

£500-£700



23

A pair of late 19th century/early 20th century Chinese-Export reverse glass mirror paintings

One of a lady with four children playing, the other of a noble man with his advisors receiving a messenger, in blue and gilt moulded later frames, each 42cm high, 57cm high. (2)

£1000-£1500

For a comparable pair of pictures possibly from the same workshop, see Christie's London, 9 June 2005, lot 203 (£12,000).



24 ¥

A Regency rosewood and brass inlaid writing desk

The stepped superstructure with pierced brass three-quarter gallery and eight short drawers; above a rectangular top with ratcheted red leather writing surface above three frieze drawers, on reeded turned tapering legs with brass cappings and castors, 107cm wide, 61cm deep, 94cm high. £4000-£6000



25

A Regency satinwood and tulipwood crossbanded pembroke table

In the manner of Gillows, inlaid with boxwood and ebonised lines, the hinged oval top above a frieze drawer and opposing simulated drawer, on square tapering legs with square brass cappings and castors, *113cm wide, 84cm deep, 70cm high.*
£2000-£2500

26

A George III mahogany and satinwood banded pot cupboard

Inlaid with boxwood lines, the rectangular top above an oval inlaid door and a shaped frieze on square tapering legs, *45cm wide, 40cm deep, 84cm high.*
£250-£300



27

A pair of George III mahogany demi-lune tea tables

Each with hinged moulded tops above plain friezes with ebony bands, on square tapering legs, *each 97cm wide, 44cm deep, 75cm high. (2)*
£2000-£3000



28 ¥

A Victorian walnut, sycamore and floral marquetry centre table

The circular tilt top with wide floral inlaid border and central circular floral spray; all in various woods including purplewood, rosewood, boxwood and harewood with ivory flowerheads, with a similarly inlaid spreading octagonal shaft and tripartite base with scroll feet and castors, 142cm diameter, 75cm high.

£3000-£4000

Tables of this type, veneered in richly figured walnut and decorated with exquisite floral marquetry, are traditionally associated with Edward Holmes Baldock (1777-1845). He designed furniture both in the 18th century style and in more contemporary styles, that may have been made at his Hanway Street London workshop or commissioned from other established cabinetmakers such as Holland and Sons. Rather than being a manufacturer or retailer in a traditional sense, Baldock's activities link him more closely with the 18th century marchands-merciers such as Daguerre and Poirier.



29

A set of six William IV mahogany side chairs Upholstered and close-nailed in ox blood leatherette, the curved scrolling top rails above buttoned down-swept backs and padded seats, on leaf carved turned tapering legs, each 49cm wide, 40cm deep, 84cm high, seat height 47cm. (6)

£2000-£3000

These comfortable chairs reflect the robust early 19th Century French/Grecian fashion with Ionic-scrolled tablet rails and acanthus-wrapped columnar legs. They typify the George IV fashion, driven by the Wyatt dynasty of architects through cabinet-makers and upholsters such as Messrs. Gillows of London and Lancaster. The back's Grecian-scrolled uprights feature on a pattern for an 'elegant antique' or 'Roman' chair pattern with accompanying 'Grecian footstool' in R. Ackermann's 1810 Repository of the Arts. They were considered appropriate for a variety of rooms and were intended to be executed in mahogany. A very similar set of chairs sold from the Collection of the Marquis and Marquise de Ravenel, Christie's London, 21 November 2007, lot 44 (£16,000). For a further related set see Christie's London, 6 March 2008, lot 43 (£22,100).



30

A George IV thuya wood tea caddy

Inlaid with sycamore lines, the caddy shaped lid above shaped sides with brass ring carrying handles to the sides and berry and fruit cast feet, 33cm wide, 16cm deep, 22cm high.

£150-£200

31

A George III mahogany and tulipwood crossbanded occasional table

Inlaid with boxwood and ebonised lines, the circular top with gallery on a slender turned shaft, on downswept tripod legs and spade feet, 49cm diameter, 67cm high.

£400-£600



32

A Regency carved mahogany sarcophagus shaped cellaret after a design by Charles Heathcote Tatham

Applied with gilt bronze mounts, the hinged lid with rope-twist handle enclosing a lead lining with six divisions and plug, the front with brass ring handles and applied roundels with fluted pilaster, on ebonised lion paw carved feet, 62cm wide, 45cm deep, 52cm high.

£1000-£1500

Conceived in the 'Antiquarian' manner, popularised in the late 18th -early 19th centuries by England's leading architects and designers, such as Henry Holland, Charles Heathcote Tatham, Thomas Hope and George Smith, this cellaret has the distinctive sarcophagus shape, modelled after an ancient Roman porphyry sarcophagus known as the "Tomb of Agrippa." Marcus Vipsanius Agrippa (c. 64/62 BC-12 BC). This design is derived from C. H. Tatham's *Etchings Representing the Best Examples of Ancient Ornamental Architecture Drawn from the Originals in Rome and other parts of Italy, during the years 1794, 1795 and 1796*, 179, pl. 77. A related faux-marble painted cellaret, by repute from Castle Howard, Yorkshire, formerly with Vernay & Jussel of New York, was sold Sotheby's New York, January 21, 1995.





33

A George II padouk concertina-action card table

The rounded rectangular top enclosing a replaced baize, on slender cabriole laped legs and pad feet, 91cm wide, 46cm deep, 72cm high.

£3000-£4000

Provenance:

Jeremy Ltd in the 1950's.

34

A pair of George III style carved gilt wood tables / torchere stands

In the manner of Thomas Johnson in the rococo taste, the rectangular tops with lobed edges on pierced leafy bough supports with perching ho-ho birds; on rockwork bases and tripod acanthus carved cabriole legs and scroll feet, each 32cm wide, 25cm deep, 83cm high. (2)

£800-£1000

Based on an original 18th century example, illustrated in *18th century English Furniture. The Norman Adams Collection*, Woodbridge, 1994, pp. 312-313 and exhibited at the Victoria & Albert Museum in 1962. This design relates to a pattern published in Thomas Johnson's *Collection of Designs*, 1758 (pl. 19) which in turn is derived from M. Lock & H. Copland's *Chinoiserie* design in their *New Book of Ornaments*, 1752, pl. 2.





35

A pair of ebonised and plated brass column table lamps

The turned reeded columns on square stepped bases applied with lion's masks, with shades, each 57cm high. (2)

£100-£150



36

A Regency mahogany sofa table in the manner of Gillows

Inlaid with boxwood lines, the hinged rounded rectangular top with reeded edge above two drawers and two opposing simulated drawers; on standard end supports and downswept legs with square brass cappings and castors, 159cm wide (extended), 69cm deep, 74cm high.

£400-£600

Provenance:

Ward Antiques LLC, probably in the 1970's

This form of leg, sometimes referred to as 'spider leg', was a common feature the Gillows tables in 1790's to early 1800's, as was the subtle, line-inlay decoration, as seen on a table supplied to Stephen Tempest of Broughton Hall, illustrated Susan E. Stuart, *Gillows of Lancaster and London 1730 - 1840*, Suffolk, 2008, p. 264, pl. 268. The use of cedarwood and the distinctive arch-shaped half-stretchers in construction are also characteristic features of the Gillows firm.



37 ¥

A George IV rosewood and parcel gilt carved armchair attributed to Gillows

Boldly carved throughout with acanthus leaves, the scrolling top-rail with central paterae above a shaped padded back, arms and rectangular seat upholstered and close-nailed in marine blue velvet, with 'S' scroll carved arm supports and shaped carved seat-rail on fluted lobed turned tapering front legs and lobed feet with recessed castors, the back legs outswept and carved with acanthus, with indistinct pencil marks under the seat-rails, 60cm wide, 55cm deep, 96cm high, seat height 45cm.

£5000-£7000

The design and craftsmanship of this chair closely relates to a pair of solid rosewood bergeres supplied by the Gillows firm in 1824 to Thomas John Wynn, 2nd Baron Newborough for Glynliffon, Caernarvonshire, Wales. Richly carved with florid Roman foliage in the George IV antique manner popularised by Thomas King's, *'The Modern Style of Cabinet Work Exemplified'*, 1829, its general form is in common with the furniture at both Glynliffon and at Hackwood, Hampshire, supplied by Gillows to William, 2nd Baron Bolton in 1813. This design also relates to the suite of drawing room furniture made for a 'G. Bamford', the plan for which was prepared by Gillows of Oxford Street, between 1815-1835. A drawing from the plan survives in the Lancaster City Museums, showing a sofa and stool with the same bold design as the chairs.

A pair of side chairs en-suite with the present armchair is known, one of them stamped 'H.LEE'. Henry Lee of Ogle Mews, London, (active circa 1827 - see G.Beard, *Dictionary of English Furniture Makers 1660 - 1840*, 1986, p.534), who was a journeyman chair maker for Gillows and was probably commissioned to make the whole suite. His stamp has been recorded on several related sets of chairs all of which owe a debt to the designs of Gillows, including a set of six sold Christie's, London, 27 November, 2007, lot 189.

Between 1813 to 1840 the main focus of Gillows' business became the Oxford Street, London premises, where designs for very richly carved seat furniture with extravagant neo-rococo decoration became the fashion and it was at this time that Oxford Street received such prestigious commissions as the magnificent twelve armchairs for Lord Fitzwilliam's Whistlejacket Room at Wentworth Woodhouse in Yorkshire and the giltwood suite of seat furniture for the Red Drawing Room at Tatton Park, Cheshire, plate 213, page 224 - S. Stuart, *Gillows of Lancaster and London 1730-1840*, vol I.



38

A pair of early 19th century Grand Tour gouache paintings over etchings attributed to Michelangelo Maestri (d. 1812, Rome)

Both of dancing semi-clad female dancers, in modern frames, *each 46cm high, 36cm wide. (2)*

£1000-£1500

Michelangelo Maestri is mainly known for his body colours that he based on the then only recently discovered wall frescos in Pompeii. The drawings, which were often made over etched outlines became very popular amongst travellers on their Grand Tour. These particular works are from the very popular series of The Hours of Day and Night, and are based on the frescoes 'Dancers of Herculaneum', found in the triclinium of the so-called Villa of Cicero in Pompeii which was excavated in 1748 - 1749 which are now in the Naples Archaeological Museum (inventory numbers 9295, 9297).

A set of six from the same series, including two identical gouaches, was sold Christie's London, 13 January 2016, lot 93 (£25,000).



39

A late 19th century Empire style ebonised and parcel gilt settee

In the manner of Chapuis, the curved top-rail painted with an urn flanked by winged sphinxes and scrolling acanthus, above outswept arms, shaped arm supports with gilt ball finials; above a rectangular caned seat, with 'X' form end supports with gilt brass stiff leaf cappings and ball feet, *120cm wide, 45cm deep, 95cm high, seat height 45cm.*

£2000-£3000



40

A late 18th century French Directoire carved mahogany day bed by Georges Jacob

The rectangular padded seat with loose squab cushion upholstered in green cut velvet, the sides with baluster turned top-rails above pierced vertical splats carved with radiating fans, on outswept sabre legs, *stamped under the seat rail G IACOB, 160cm wide, 60cm deep, 90cm high, seat height 56cm.*

£4000-£6000

Georges Jacob (1739-1814), maître in 1765.

With their delicate scrolled backs, this bench demonstrate the supremely elegant and refined 'Etruscan' style employed by Georges Jacob from the 1780s. Among the most celebrated seat-furniture executed in these years are the chairs he supplied to Marie Antoinette's dairy at Rambouillet in 1787.



41

**A pair of Empire mahogany
caved fauteuils**

The scrolling paterae and anthemion carved top-rails above rectangular padded backs and bowed seats with lotus leaf carved scrolled arms, on lotus leaf carved legs and scroll feet, 65cm wide, 52cm deep, 97cm high, seat height 42cm. (2)

£600-£800



42

**A set of six Empire carved mahogany
chaises**

The scrolling paterae and anthemion carved top-rails above rectangular padded backs and seats on lotus leaf carved legs and scroll feet, 47cm wide, 42cm deep, 93cm high, seat height 44cm high. (6)

£600-£800

43

A pair of Chinese- Export green and yellow glazed pottery parrots

Perched on branches, each 18cm high.
£100-£200



44

A pair of Chinese-Export white and red glazed cockerels

Perched on branches, 20cm high. (2)
£100-£200

45

A pair of Louis Phillipe carved mahogany fauteuils by Jeanselme & Fils

Upholstered and close-nailed in green leather, the curved rectangular moulded backs above scrolled padded arms and bowed seats on ring turned tapering legs, with castors, *stencilled inside seat-rail* JEANSELME & Fils, each 68cm wide, 58cm deep, 103cm high, seat height 39cm. (2)
£1000-£1500

The Parisian firm of Jeanselme, founded in the early 1820s and known as Jeanselme Frères from 1829, specialized in the design and manufacture of chairs and fulfilled many orders for the Imperial households with part of their output remaining in the Mobilier National (see G. Janneau, *Le Mobilier Français, les Sièges*, Paris, 1999, p. 198). The firm is perhaps however best known for having acquired the workshops of Jacob in 1847.





46

A Chinese-Export famille noir porcelain vase converted to a table lamp

Decorated with insects and flowers on a black ground, on a pierced ebonised base, with shade, 61cm high (including fitting).

£150-£200

47

A pair of Chinese-Export famille rose vases converted to table lamps

Of globular form, decorated with pink and blue flowers on a light blue ground, each 44cm high (including fitting). (2)

£250-£300



48

A late 19th century Chinese Export hongmu reeded occasional table

The circular top inset with a pink variegated marble top, above folding 'S' shaped supports, joined by a stretcher with knot finial, the separate base on short cabriole legs with wavy stretchers, numbered 73028, 83cm diameter, 81cm high

£2000-£3500

For a similar example see Christie's, South Kensington, 15 May 2012, lot 360.

49

A pair of 20th century Italian white glass and gilt metal mounted table lamps

Of slender lobed baluster form, on leaf cast bases, with shades, each 59cm high. (2)

£250-£300



50

A small mid 20th century Jansen style gilt brass low table

With inset glass top on turned legs joined by a shaped stretcher, 76cm wide, 44cm deep, 42cm high.

£400-£600

51

A pair of George III white and green painted open armchairs

In the manner of Gillows, the rectangular caned top-rails above reeded vertical pierced splats and outswept arms, on spirally turned arm supports, above bowed caned seats and fluted seat-rails, on turned reeded legs headed by paterae and spool feet, each 58cm wide, 49cm deep, 87cm high, seat height 37cm. (2)

£800-£1000





52

A Victorian carved walnut prie die

Upholstered in floral needlework, the carved scrolled cresting above a shaped padded back flanked by spiral turned uprights, above a rectangular padded seat on reeded turned tapering legs and castors, *42cm wide, 48cm deep, 93cm high.*

£100-£150



53

A Victorian carved mahogany wing back armchair

The rectangular padded raked back, ears and padded scrolling arms and seat with show wood frame on ring turned tapering legs and castors, *65cm wide, 60cm deep, 98cm high.*

£200-£250

54

**Pierre Joseph Antoine
(Belgium 1840-1913),
Orpheus and Eurydice**

Oil on canvas
Signed and dated 1908
In an ebonised moulded
frame
136cm x 116cm
£3000-£5000



55

A pair of unusual George IV gothic carved oak hall chairs

In the manner of Richard Bridgens, the turned top-rails above pierced double arched splats, flanked by blind fret quatrefoils above rectangular seats with further quatrefoils on the seat-rails, on ring turned tapering legs and spool feet, each 44cm wide, 41cm deep, 89cm high, seat height 45cm. (2)

£1000-£1500

The triumphal arched backs of these chairs are fretted in the romantic 'Elizabethan' fashion of medieval window tracery, as introduced in the mid-18th Century by the author Horace Walpole; but they are conceived in the more robust gothic fashion promoted in the early 19th Century at Windsor Castle by James Wyatt (d.1813) as Surveyor General of King George III's Office of Works. The Gothic manner was further promoted by George Smith's *The Cabinet-Maker and Upholsterer's Guide*, 1826. The chair's front legs are virtually identical to those of an armchair, attributed to George Smith, sold Christie's London, 22 May 2008, lot 47 while its back legs are chamfered in the manner, characteristic of both George Bullock and Richard Bridgens.





56

A pair of Victorian carved mahogany Windsor open armchairs attributed to William Birch of High Wycombe

With curved, reeded and scrolled top-rails above vase and spindle backs with outswept scrolling arms, above saddle seats on wreathed turned legs and crinoline stretchers, each 48cm wide, 44cm deep, 100cm high, seat height 46cm. (2)

£3000-£5000

William Birch established his chairmaking business in High Wycombe in the 1840's, and by 1895 additional premises had been established in Euston Road, London, with workshops in nearby Denmark Street. The firm were pioneers in creating high class Windsor chairs, using imported rather than native timbers and employing leading designers. They supplied furniture for leading London stores including Liberty. From the Liberty archive at Westminster and a collection of notes and sketches by Barbara Morris, several chairs made by William Birch are identifiable.

An identical chair sold Christie's London, 6 April 2000, lot 278 (£7,050)

Literature:

M.Harding-Hill, *Windsor Chairs: An Illustrated Celebration*, Woodbridge 2003, pp. 148-151.

OTHER PROPERTIES



57

A late Elizabethan or James I oak plank chest, circa 1600

The front carved with dragon-like creatures within stop-fluted uprights and flanking the central lock-plate which sits above rosettes within scrolling tendrils, standing on V-cut ends and with carved brackets, *110cm wide, 33cm deep, 55cm high.*

£1500-£2500

Provenance:

This chest has been in the same Essex family for at least 70 years and it is believed for many generations previously.



58

A small James I oak plank chest

The lid with applied frame, the interior with till, raised on V-cut ends, *one back foot split and re-attached, an old repair, 81cm wide, 35cm deep, 44cm high.*

£1000-£1500



59

A Charles II oak joined stool / table

The moulded top with later hinged flap but the original square section gate, on columnar legs joined by stretchers, 51cm extended, 45cm deep, 52cm high.

£800-£1200

60

A William and Mary oak box stool

The hinged lid with channelled sides on ring turned legs and stretchers, on turned feet, 44cm wide, 38cm deep, 44cm high.

£300-£500



61

A James I figured oak low table

With rectangular moulded top and channel-moulded friezes, standing on fluted tapered legs joined by stretchers, the legs with incised decoration, 55cm wide, 44cm deep, 52cm high.

£2500-£3500



62

A Charles II oak backstool

The panel back carved with foliate, fruiting and rosette detail, below a double-scroll and arched top-rail and between uprights with pyramidal finials, the seat raised tightly ring-turned legs joined by stretchers, *one upright stamped with initials IO, 100cm high, the seat 50cm wide, 49cm high.*

£600-£800



63

A Charles II oak backstool

The panel back carved with a foliate lozenge and incised whirls, below an arcaded and arched top-rail, the seat raised on block and turned legs joined by stretchers, alterations to top-rail, *99cm high, the seat 48cm wide, 48cm high.*

£500-£700



64

A Charles II oak panelled chest

With a three-panel lid and three-panel front below a foliate lunette carved frieze rail, standing on stile feet, *62cm wide, 43cm deep, 96cm high.*

£500-£700



65

A Charles II carved oak side table

The rectangular moulded top above a leaf carved drawer, on reel turned legs joined by stretchers, on turned feet, 87cm wide, 57cm deep, 72cm high.

£300-£500

Provenance:

Hotham Hall, Yorkshire

Purchased by the current vendor from Hubbard Antiques of Leominster in 1989.



66

A Charles II oak chest

The twin-plank lid above a four-panel front carved with rosette-centred, gouged lozenges, the uprights, top rail and lower rail with a deeply gouged repeating pattern, the twin-panel ends also with the repeating pattern, *a large sign attached to the underside of the lid with the wording, 'David Owen, Formerly Gamekeeper at Willey Park, bequeathed this chest in February 1891 to Lady Forester of Meaford'*, 153cm wide, 57cm deep, 67cm high.

£600-£800

Provenance:

Lady Forester, daughter of Edward Jervis Jervis, 2nd Viscount St Vincent, Meaford Hall, Staffordshire and removed in 1943 when the Hall was sold; thence by descent.

Willey Park, Shropshire was a Forester family seat.



67

A William and Mary oak, oyster-veneered and 'simulated mulberry' chest of drawers

Geometrically-moulded and with three frieze drawers, one long deep drawer and a further three long drawers, standing on stile feet, in two sections, the sides panelled, the original locks positioned off-centre, *110cm wide, 57cm deep, 108cm high.*

£3000-£5000

Provenance:

Sotheby's Billingshurst, The showroom contents from Mary Bellis, Hungerford, Berkshire, 24 November 1992, Lot 94.



68

A George IV oak high-back hall seat

The open back with horizontal splat, the solid seat between down-swept sides forming integral arms, *51cm wide, 31cm deep, 100cm high.*

£800-£1200



69

A Queen Anne oak half-round table

The figured top hinged and opening to reveal a compartment, raised on three later baluster legs with platform stretchers, *70cm wide, 45cm deep, 68cm high.*

£700-£1000



70

A George I oak gate-leg dining table

The oval hinged top on slender baluster ring turned legs joined by rectangular moulded stretchers, on turned feet, *152cm wide, 130cm deep, 74cm high.*

£400-£600

Provenance:

Hotham Hall, Yorkshire
Purchased by the current vendor from Douglas Bryan, Kent in 1994.



71

A Charles II elm bench

With moulded plank seat and end splayed baluster legs joined by an H-stretcher, 133cm wide, 28cm deep, 52cm high.

£1800-£2500



72

A Charles II oak chest, North Country

The lid formed of three thick planks, the front with three panels centred with foliate-filled lozenges and below a leafy scroll-carved frieze rail, standing particularly high on channelled stile feet, the back with single framed panel, 107cm wide, 45cm deep, 78cm high.

£1200-£1500



(one from a set of 5)

73

**Wenceslaus Hollar (Bohemian 1607-1677),
forty various engravings mounted in five
frames**

Each frame 85cm x 117cm. (5)

£800-£1200

74

A small carved oak plaque, German, circa 1700

*Carved with scrolls, fruit and a pair of winged cherubs,
26cm wide, 28cm high.*

£200-£400



75

**An oak panel depicting St George impaling the dragon,
circa 1900**

*Carved into a circular recess, indistinct inscription to reverse,
64cm wide, 78cm high.*

£500-£800

76

A carved head of a winged cherub, European, 18th / 19th century

Now mounted on a cherrywood block, *16cm wide, 49cm high.*
£700-£1000



77

A set of four 17th century carved oak plaques possibly of the four stoic virtues

Within rectangular carved later frames, *each 41cm high, 33cm wide.* (4)
£1500-£2000



78

An unusual Charles II oak candlebox

The sloping hinged lid below a double-scroll and leaf-carved back, the front of the box carved with leaf, scroll and whirls and fitted with a drawer, *32cm wide, 19cm deep, 52cm high*

£500-£800



79

A pair of Queen Anne oak side chairs, Welsh

Each with pierced top-rail centred with a heart, solid vase splat and solid seat with undulating frieze and drop finial, standing on block and turned legs with scroll feet, *each 47cm wide, 36cm deep, 98cm high. (2)*

£300-£500



80

A George III cherrywood occasional table

The octagonal top with raised edge, standing on baluster column with hipped splayed legs and pad feet, *48cm diameter, 73cm high.*

£600-£800



81

A George II oak dresser

The top surmounted with a row of five small drawers and with three larger drawers in the frieze, above an arched undulating apron centred with a further small drawer, standing on ring-turned baluster legs, *188cm wide, 56cm deep, 93cm high.*

£1200-£1800

82

A George III figured oak cricket table

With circular top and undulating frieze rails, standing on splayed ring-turned legs joined by a central finial with concave sides, 56cm wide, 54cm deep, 66cm high.

£2500-£3500



83

A George I burr-elm lowboy

The quarter-veneered top with walnut banding and feather-banding, above a frieze drawer and arched apron flanked by small drawers, standing on cabriole legs with pad feet, 78cm wide, 50cm deep, 72.5cm high.

£2000-£3000



84

A George III walnut, beech and sycamore comb-back Windsor chair, circa 1800

With shaped top-rail, incurved arm supports, circular seat and splayed legs joined by stretchers, 53cm wide, 40cm deep, 91cm high, seat height 40cm.

£400-£600

Thames Valley Windsor chairs of this distinctive form with the unusual feature of a circular seat are sometimes known as 'Goldsmith' chairs, after the example in the V&A Museum which was originally owned by the author Oliver Goldsmith (Accession No. 538-1872). That chair is also illustrated in B. Cotton, *The English Regional Chair*, 1990, Fig TV9 and M. Harding-Hill, *Windsor Chairs*, 2003, pg. 20.



85

A set of eight late 19th/early 20th century yew-wood Windsor open armchairs, Thames Valley

The hooped backs with pierced vase shaped splats and shaped seats, on turned tapering legs, each 51cm wide, 39cm deep, 107cm high, seat height 43cm high. (8)

£2000-£3000



86

A large early Victorian pine six-leg table, dated 1848

The six-plank top with cleated ends and raised on baluster-turned legs with block feet and square stretchers, *with cabinet-maker's pencil inscriptions to the underside, 'J Elliot Jany 13 1849 and Jeremiah Wraight 1848' to the underside of the top within the leg recesses, the base retaining much of the original ochre paint, 361cm long, 122cm wide, 74cm high.*

£2000-£3000

Provenance:

New Hall, Dymchurch, Kent.

New Hall housed the Governors of the Marsh and was used as a courtroom for the Romney Marsh area; it is here that meetings were held by the Lords of the Level, Jurats and Bailiffs to discuss and rule the Marshland which was their domain. In 1797 a Gaol was built which was in use until 1866 when the New Romney constables were superseded by the County Police. New Hall, Dymchurch was last used as a local court house in 1951 and is now a Museum.

Although a Jeremiah Wraight is not listed as a cabinet-maker in G.Beard & C.Gilbert, *Dictionary of English Furniture Makers 1660-1840*, there is a John Wraight listed as working at High St, Folkestone, Kent in 1789, who is likely to be a relation (see p.1003/4).

In her article 'More about Gillows' Windsor and Common chairs' written for the journal of Regional Furniture 2010, Susan Stuart discusses sub-contracted Windsor chair makers, including James Wilcock of Lower Bentham, just 15 miles from Lancaster. One such stick-back chair with a known Bentham provenance is illustrated (pg. 103) and shows a remarkable similarity to the chair offered here (Lot 87) with similar stretcher arrangement, substantial plain legs and small pegs driven through the rear of the armbow, an unusual feature also evident on the rocking chair (Lot 88). The seats are more idiosyncratic in their shaping, but it seems highly likely that both of these chairs form part of the substantial sub-contracted group following Gillows' design.



87

A George III ash hoop-back Windsor armchair, circa 1800

With angled front arm supports, the well-figured seat raised on turned legs joined by crinoline stretcher, remains of paint to underside surfaces, 53cm wide, 37cm deep, 87cm high, the seat 34cm high.

£1000-£1500

88

A George III ash hoop-back Windsor rocking chair, circa 1780

The outswept armbow with incurved front arm supports, the slab seat distinctively shaped and chamfered, raised on turned legs and rockers, remains of paint to underside surfaces, 54cm wide, 39cm deep, 89cm high.

£1500-£2000





89

A large 17th century Nuremberg iron strong box / chest

With traces of red paint, the rectangular lid enclosing an elaborate engraved lock and a coffre fort; with carrying handles to the sides, *93cm wide, 50cm deep, 46cm high.*

£1000-£1500



90

A George II oak dresser

Of slender depth and with twin-plank top, above three drawers and apron moulding rail, with a pair of cupboard doors below flanking a central panel, on stile feet, the sides with twin panels, all the panels are chamfered, *175cm wide, 47cm deep, 83cm high.*

£2000-£3000



91

An 18th century polychrome and parcel gilt figure of a standing bishop

Possibly German, 88cm high.

£1500-£2000

92

An 18th century polychrome and parcel gilt figure of a saint

With glass eyes and hooded black floral decorated habit, inscribed 'CARITAS' to his chest, knotted cincture, on a simulated marble moulded base, 23.5cm high.

£800-£1200



93

An 18th century polychrome and parcel gilt figure of a saint, probably St Anthony

Holding a book, 24cm high.

£600-£800

94

A polychrome and parcel gilt figure of Christ, probably 18th century

Wearing a red shroud around his waist, standing on a skull, on a green rockwork base, 89cm high.

£1500-£2000



95

Four Italian 18th / 19th century carved giltwood reliquaries

Including a pair and one closely matched, of turret form, with lids, on circular bases, *the tallest 46cm high.* (4)

£800-£1200



96

An 18th century gold thread embroidered black velvet altar cloth

With gold sequins and tasselled fringe, linen backed, *211cm wide, 100cm high.*

£400-£600

97

Two sections of 18th century red velvet silver embroidered altar cloth, with a cushion made from the same cloth

One section with the Lamb of God, the other with the Tablets of the Law, with a scalloped edge, the cushion with a flaming chalice, *two sections 185cm wide, 43cm deep, the cushion 53cm square.* (3)

£300-£400





98
A mid 19th century white marble plaque of two young naked boys

One wearing a clerical collar and glasses disrespecting the church, within a mahogany oval frame, 30cm high, 24cm wide.

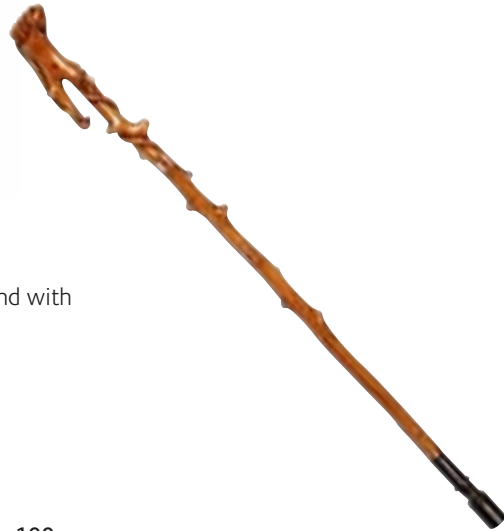
£400-£600

99

An Edwardian carved naturalistic walking stick

The upper end carved as a clenched fist, the lower end with metal foot and rubber tip, 83cm long.

£250-£350



100

R.A.S (19th century English naïve school), dated 1830

Big Tom, Mrs Swinbourne's Prize Ram

Oil on canvas

Signed and dated and inscribed on the reverse, 'Fanny Swinbourne's Favourite Tup' and 'Keep in Oak Room'

24cm x 37cm

£500-£700

101

A dug-out seat, 18th/19th century

Of naturalistic form, with plank seat, 49cm wide, 74cm high.

£800-£1200





102
A pair of Kashan rugs, Central Persia, circa 1920,
209cm x 141cm. (2)
£1000-£1500



103
A Zarijan runner, circa 1960
301cm x 105cm
£300-£500



104
A Bakhtiar runner, West Persia, circa 1920
503cm x 100cm
£1000-£1500



105
A Heriz Kandjar circa 1900
398cm x 299cm
£4000-£6000



106
A Rabat rug, Morocco, circa 1960
257cm x 136cm
£400-£600



107
A Karabagh rug, South West Caucasus, circa 1930
222cm x 131cm
£300-£500



108

A Mahal Carpet, North West Persia, circa 1930

304cm x 217cm

£1500-£2000



109

A William and Mary yew wood cushion frame mirror

The rectangular plate within a moulded frame, *58cm high, 46cm wide.*

£700-£1000

110

A 19th century William and Mary style gilt wood carved walnut and caned open armchair and a matching side chair

With arched pierced foliate and double scroll crest and out-swept arms, standing on block and turned legs joined by stretchers, *cane and gilding distressed, the armchair 58cm wide, 43cm deep, 137cm high, seat height 47cm.* (2)

£400-£600



111

A George I walnut, crossbanded and featherbanded toilet mirror

The arched plate within a gilt gesso slip and moulded frame flanked by uprights surmounted by brass urn finials, the stepped base with two short and a long drawer with axe head handles on small later turned bun feet, *43cm wide, 21cm deep, 70cm high.*

£400-£600





112

A George I burr walnut, featherbanded and crossbanded cabinet on chest

The brass bound upper part with rectangular top and quarter-veneered doors with gilt brass strap-work hinges, enclosing twelve short and one long drawer, the lower part with two short and three long graduated drawers on replaced bracket feet, *103cm wide, 55cm deep, 189cm high.*

£5000-£7000



113

A George I walnut, crossbanded and parcel gilt toilet mirror

The rectangular plate within a gilt carved slip and shaped moulded frame and uprights with turned brass finials; above a rectangular top with three cavetto moulded drawers and egg and dart gilt moulding, on scroll feet, 52cm wide, 23cm deep, 72cm high.

£600-£800

114

A late 19th century Queen Anne style carved walnut wing armchair

The rectangular padded back, sides, scroll arms and seat, on cabriole leaf and trailing bellflower carved legs and pad feet, 91cm wide, 56cm deep, 111cm high, seat height 43cm.

£1500-£2000



115

A small figured walnut and crossbanded chest

Inlaid with boxwood and ebonised lines, the rectangular quarter-veneered moulded top with re-entrant corners above a deep drawers and three long graduated drawers, on six bracket feet, with swing brass carrying handles to the sides, veneered on the reverse, 18th century and later, 84cm wide, 39cm deep, 71cm high.

£3000-£5000



116

A small George III triple fold card / tea table

The rounded rectangular tops above a plain and a baize lined interior, with four counter wells, on cabriole legs and pad feet, 76cm wide, 37cm deep, 75cm high.

£600-£800



117

A George II carved mahogany corner chair

The vase shaped splats, with out-scrolled arms, above a drop-in seat on cabriole legs, the front shell carved and on claw and ball foot, 67cm wide, 63cm deep, 81cm high.

£500-£800

118

A George II mahogany kneehole fitted dressing table

The rounded rectangular hinged moulded top with re-entrant corners enclosing a ratcheted mirror in the lid above a ratcheted baize lined slide, flanked by fitted compartments, above interior drawers; above an apron drawer and a recessed cupboard door flanked by three drawers to each sides, on shaped bracket feet, 74cm wide, 52cm deep, 76cm high.

£600-£800





119
A pair of 20th century Queen Anne style mahogany wing armchairs

The serpentine padded backs, sides, scroll arms and seats upholstered in light green patterned silk on cabriole legs and scroll feet, each 76cm wide, 58cm deep, 122cm high, seat height 54cm. (2)
£1200-£1800

120
A George II mahogany stool

The rectangular close-nailed seat upholstered in red and green damask style fabric, on square chamfered legs, 60cm wide, 46cm deep, 47cm high.

£500-£700



121
A George I style oak carved wing armchair

Upholstered and close-nailed in brown leather, the serpentine padded back, curved side and outswept padded arms above a loose squab cushion, on cabriole shell carved legs and claw and ball feet, 73cm wide, 65cm deep, 112cm high, seat height 51cm high.

£700-£1000

122

An unmarked silver wine taster

Of saucer form with sunken sides and domed centre, reverse with gilded sunken centre and engraved with an English crest of a beaver holding a fish in its mouth, *probably French or English, late 17th/early 18th century, the crest probably late 18th/early 19th century, 11.4cm diameter, 2.5 oz. (approx 78gm).*

£500-£600



123

A late 17th century silver scent flask of pilgrim bottle form, unmarked, probably English, circa 1690

One side engraved with a deer, his flank pierced by an arrow, flanked by buildings and trees with label inscribed '*Ma douleur cause ma fuite*', the other side depicting Cupid seated atop his quiver, rowing himself with his bow across the waters, with label inscribed '*Amour trowe moyen*', screw-on cap and chain handle, *oval collet foot inscribed underneath with contemporary initials 'RT', 6cm high.*

£1000-£1200

124

A pair of early George III silver chamber candlesticks by John Hyatt, London, 1762

Circular bases with engraved bee crest, the 'C' shaped handles with plain thumb-piece, *14.2cm diameter, 7cm high, 16oz (496 gm). (2)*

£1400-£1600





125

A George III oval silver tea caddy by William Vincent, London, 1774

Engraved with bands of Greek key decoration to sides and cover, front engraved with ribbon-tied neo-classical shield cartouche engraved with crest of upright arm, diagonally striped, holding aloft a mallet or gavel, all flanked by a foliate spray, hinged cover with leaf, bud and branch finial, 12cm long, 10cm high, 10oz (310 gm).

£2000-£2500

126

A George III silver urn-shaped coffee pot by John Emes, London, 1799

The waisted cover with acorn finial, on oval pedestal foot, engraved frieze of rosettes above a crest within wreath cartouche to either side, foot with ribbed rim, 33cm high, 25oz (775 gm).

£800-£900



127

A pair of very large George III silver oval entree dishes and covers by Peter & Ann Bateman, London, 1798

Elongated oval form with bright-engraved decoration to sides of covers and bases, reeded rims and handles, top of covers with scrolling foliage and swags centred by flowers around an oval cartouche engraved with crest of an upright cuffed arm clutching a dagger, 42.5cm long, 70oz (2170 gm).

(2)

£2000-£2500



128

A George III Scottish silver matching 3-piece teaset by Patrick Robertson, Edinburgh, 1765/1771

Comprising teapot, 1770, sugar bowl, 1771 and milk jug, 1765, plain bellied oval form on conforming pedestal foot, no crests or initials, 39oz (1209 gm). (3)

£2500-£3000



129

A pair of George III Irish silver sauceboats by Matthew West, Dublin, 1788

With beaded rims, shell and hoof feet, scroll handles and heavily chased floral sides around a rococo cartouche at front, one inscribed across base 'Given by C.T to N.LT March 1788', 18.6cm long, 20.5oz (636 gm). (2)

£1500-£1800



130 ¥

A pair of George III silver wine coasters by Richard Morton & Co., Sheffield, 1775

Circular with bead rims, the pierced sides of latticework with small crescent and lozenge motifs incorporating an escutcheon engraved with crest of a stag's head erased, wood bases centred by ivory bead, 12.7cm diameter, aperture 12cm across, 4.5cm high. (2)

£1200-£1400





131

A good George III silver tankard in anachronistic George II style by John Robins, London, 1805

Domed cover and tapering sides with applied girdle, engraved with contemporary coat of arms with motto '*Sola Virtus Reddit Nobilem*', richly gilt interior, chair-back thumb-piece, handle with ribbed triangular terminal, 19cm high, 34oz (1054 gm).

£2500-£3000

132

A pair of George III silver goblets by Duncan Urquhart and Naphtali Hart, London, 1796

Bright-engraved with band of chevron and demi-flower motifs on a linear ground above script initials within a wreath cartouche, trumpet bases with reeded rims and gilt interiors, 14.6cm high, 9.5oz (295 gm). (2)

£1500-£1800



133

A set of four George IV silver telescopic candlesticks by John & Thomas Settle, Sheffield, one pair 1827, the other pair 1828, three of the detachable nozzles 1827, the fourth unmarked

Cylindrical on circular filled bases, with leaf, shell and gadroon borders, each engraved with crest of a demi-lion rampant charged with a disc, supporting, in its fore paws, a shield tinctured gold and charged with a tau cross, 23.2cm high, 28cm high when fully extended. (4)

£1500-£2000



134

A George III silver soup tureen and cover by William Bennett, London, 1805

Plain oblong with gadroon borders and rounded corners, on tucked-in foot, leaf-capped handles centred by shells and with leafy junctions, cover with conforming fixed handle, 36.5cm long, 22cm wide, 24cm high, 110oz (3410 gm).

£3000-£4000



135

A William IV silver Military Thread pattern basting spoon by Paul Storr, London, 1835

Engraved with five feathers issuing from a crest coronet, 31.3cm long, 4.75oz (approx. 148 gm)

£400-£500

135A

A set of four George III silver oval salts by Henry Chawner & John Emes, London, 1796

On conforming pedestal bases, reeded rims, each engraved with crest of a stag trippant above motto scroll 'Amo', probably for Scott, 10.1cm long, 6.8cm high, 11oz (341 gm). (4)

£400-£600



136

A George III silver oval salver by William Bennett, London, 1802

Engraved to centre with large coat of arms with gryphon supporters and motto 'Sperabo', capped by a crest of a gryphon rampant atop a helm with closed visor, shield with inner escutcheon set upon a saltire, all within a border of interlocking lozenge motifs, reeded rim and bracket feet with ribbed borders, 30.4cm long, 23oz (713 gm).

£1000-£1200



137

A George III carved mahogany open armchair

In the French Hepplewhite taste, upholstered in deep pink watered silk, the cartouche shaped padded and moulded back with acanthus carved top-rail above outswept scrolled padded arms, on serpentine seat and cabriole moulded legs, with front castors, 64cm wide, 45cm deep, 88cm high, seat height 41cm.

£400-£600

138

A George III Irish carved mahogany gate-leg tea table

The rectangular moulded edge top opening on a central twin gate-leg action, above a frieze drawer, on foliate carved C-scroll legs and claw and ball feet, 91cm wide, 45.5cm deep, 74cm high.

£2500-£3000



139

A George III mahogany gentleman's bedside commode

The rectangular top with pierced three-quarter gallery with turned roundels, above a hinged up and over cupboard and a shaped deep drawer (converted), on square moulded legs, 59cm wide, 46cm deep, 82cm high.

£400-£600



140

A George III mahogany serpentine chest

Inlaid with boxwood and ebonised chequerbanding, the shaped rectangular top above a slide above four long graduated drawers, on shaped bracket feet, 95cm wide, 59cm deep, 81cm high.

£1000-£1500



141

A George III mahogany chest on chest

The rectangular cavetto dentil moulded cornice above two short and three long drawers, flanked by line inlaid canted angles; above three long graduated drawers on tall bracket feet, 112cm wide, 56cm deep, 212cm high.

£800-£1200



142

A George III mahogany corner cupboard

The dentil moulded cornice above a burr yew frieze and a pair of double panelled doors enclosing three shaped shelves, 88cm wide, 43cm deep, 116cm high.

£200-£300

143

A George III mahogany bidet

With mahogany lid and Wedgwood ceramic pot, on square tapering moulded legs, 59cm wide, 31cm deep, 46cm high.

£400-£600



144

A George III mahogany dressing chest

The rectangular moulded top above a frieze drawer enclosing a slide with a ratcheted centre enclosing a fitted interior with five lidded compartments, a letter rack and drawer, with a side stationery drawer, above three long graduated drawers on shaped bracket feet, with castors, 91cm wide, 58cm deep, 80cm high.

£1000-£1500





145

A George III mahogany gentleman's bedside commode

The rectangular top with three quarter gallery and pierced handles, above a pair of shaped panelled doors and a shaped deep drawer enclosing a circular pot aperture, on square moulded legs, *58cm wide, 45cm deep, 75cm high.*

£1000-£1500

146

A pair of small mahogany bureau cabinets

Each with three-quarter pierced gallery cresting with acorn finials, above a reeded frieze and single mirror glazed door enclosing three adjustable shelves and two short drawers, the lower part with a sloping fall enclosing four pigeonholes, two short drawers and an architectural mirrored interior with a chequered floor, enclosing a further three short drawers; above four long graduated drawers, on bracket feet, *18th century and later, each approximately 69cm wide, 59cm deep, 201cm high. (2)*

£3000-£5000





147

A George III mahogany gentleman's bedside commode

Inlaid with boxwood lines, the rectangular top with pierced three-quarter gallery above a cupboard door and a simulated deep drawer below (converted), on square moulded legs, 45cm wide, 43cm deep, 78cm high.

£400-£600

148

A George III mahogany reading table

The rectangular ratcheted top above a shelf and a platform base, (a.f), 46cm wide, 31cm deep, 82cm high.

£200-£400



149

A George III mahogany partner's writing table

The rectangular top with green tooled leather, above two frieze drawers and three opposing drawers, on square chamfered legs headed by pierced corner brackets; with square brass cappings and castors, 155cm wide, 98cm deep, 78cm high.

£500-£600

150

A George III mahogany and sycamore marquetry pembroke table

The rounded rectangular top inlaid with a central conch shell, above a frieze drawer on square tapering moulded lines with square brass cappings and castors, *99cm wide, 90cm deep, 71cm high.*

£500-£700



151

A George III mahogany chest on chest

The ogee moulded cornice above two short and three long drawers with fluted angles; above three long graduated drawers, on shaped bracket feet, *107cm wide, 55cm deep, 185cm high.*

£1000-£1500



152

A small George III mahogany chest

With original handles and an unusual arrangement of four short and two long drawers below a moulded top and standing on bracket feet, *83cm wide, 45cm deep, 82cm high.*
£500-£800

153

A George III carved mahogany serpentine concertina-action card table

in the French Hepplewhite taste

The hinged rectangular moulded top enclosing a replaced baize lining, above a shaped frieze on slender cabriole legs headed by trailing bellflowers, on scroll feet, *90cm wide, 42cm deep, 73cm high.*

£1000-£1500

Provenance:

Property from a Berkshire Residence



154

A George III mahogany occasional table

The dished circular tilt top above a baluster turned shaft on cabriole legs and pad feet, *51cm diameter, 71cm high.*

£300-£500



155

A Soho style Chinoiserie tapestry in the manner of John Vanderbank, late 20th century

Depicting figures in a landscape setting, with islands of flora and foliage and exotic birds, 248cm x 203cm.

£400-£600



156

A George III carved mahogany open armchair attributed to Gillows

The shaped moulded top-rail above a pierced vertical draped splat, on downswept moulded arms and stuff over seat, on square reeded tapering legs, joined by an 'H' stretcher, 59cm wide, 46cm deep, 95cm high.

£500-£700

A related set of chairs was supplied to Walter H Fawkes of Farnley Hall, North Yorkshire in 1792 and are illustrated by *S. Stuart, Gillows of Lancaster and London 1730-1840, Suffolk 2008, Vol, pl.159.*



157

A George III mahogany and parcel gilt fret carved mirror

The rectangular later plate within a gilt leaf carved slip surmounted by a scrolling pierced leaf cresting with shaped scrolled apron below, 111cm high, 56cm wide.

£500-£700

158

A George III mahogany night commode

The rectangular moulded top above a fall front on square tapering legs, 39cm wide, 32cm deep, 75cm high.

£400-£600



159

A 19th century George III style 'Master's' open armchair

The serpentine moulded top rail with anthemion cresting, with a gilt monogrammed roundel and a close-nailed padded back, above outswept scrolled arms, with drop-in seat on square chamfered legs, joined by an 'H' stretcher, with plaque on the reverse, 'Presented by HENRY T HOLLOWAY ESQ', 65cm wide, 51cm deep, 127cm high, seat height 50cm.

£600-£800



160

A George III mahogany occasional table

The octagonal top above a baluster turned shaft on downswept tripod legs and spade feet, 40cm wide, 75cm high.

£300-£500



161

A George III cream painted open armchair

In the manner of John Linnell, upholstered and braided in pink watered silk, the shield shaped back with riband tied frame above outswept padded arms with leaf arm terminals and bowed padded seats, on turned reeded legs headed by paterare and spool feet, 62cm wide, 51cm deep, 94cm high, seat height 45cm.

£400-£600



162

A pair of George III style carved giltwood armchairs in the style of Morel and Seddon Upholstered in beige suede, the rectangular padded backs with padded downswept arms and bowed padded seats on spirally turned legs and spool feet, 59cm wide, 51cm deep, 92cm high. (2)
£1000-£1500





163

A pair of late 19th century rococo style carved mirrors

Later white painted and of assymmetric form, with shaped plates within flowerheads, 'C' scrolls, acanthus, icicles and draped swags, each *117cm high, 43cm wide*. (2)

£400-£500



164

A neo-classical style grey and parcel gilt composition pedestal

The square top with scroll supports and tapering sides, decorated with urns issuing scrolling leaves, on a stepped base, *33cm square, 117cm high*.

£250-£400



165

A verde antico and siena faux marble pedestal

The rectangular top on square stop-fluted tapering sides, on a moulded plinth base, *36cm wide, 31cm deep, 119cm high*.

£500-£800

166

A George III pine carved landscape mirror

In the manner of John Linnell, the later rectangular plate within a moulded frame surmounted by a riband tied wheatsheaf cresting flanked by fruiting cornucopiae, with trailing bellflowers to the sides and scrolling crossed leafy frond carved apron below, 89cm high, 107cm wide.

£400-£600



167

A George III cream and parcel gilt carved serpentine settee

In the French Hepplewhite style, the moulded frame carved with foliate cresting and flourishes, above a padded back scroll padded arms and serpentine seat, on flowerhead carved seat-rail on shell carved cabriole legs, including four scatter cushions, 207cm wide, 76cm deep, 99cm high.

£2000-£3000

Provenance:

C. Fredericks, 1972



168

Two 18th century wax relief portraits, one of the Duke of York and one anonymous

The Duke in an oval moulded ebonised frame, *inscribed to the reverse*, 20cm wide, 23cm high, the other of an unknown gentleman in a rectangular moulded ebonised frame, 13cm wide, 16cm high. (2)

£250-£350

169

An 18th century coloured wax relief portrait of Lady Beauchamp, Countess of Warwick

Wearing a yellow and gold dress with a red shawl, in an ebonised circular frame, *inscribed to the reverse*, 16cm diameter.

£150-£250



170

A late 18th century blue cut-glass goblet and cover

The lid with finial; the goblet with faceted stem and circular base, 17cm wide, 42cm high.

£300-£500

171

A pair of late 19th century George III style cut-glass decanters and coasters

With oval stoppers and ring collars, with red japanned ribbed coasters, each 13cm diameter, 30cm high. (2)

£300-£500



172

A pair of George III Blue-John and gilt bronze urns

With pineapple finials and engine turned socles on square plinth bases, each 7cm wide, 28cm high. (2)

£3000-£5000



173

A pair of Regency cut glass lustre twin-light candelabra

With gilt brass nozzles with square and rectangular drops, with central acorn finials, on hob-nail cut stems and square bases, each 32cm high, 27cm wide. (2)

£1000-£1500



174

A late 19th century mahogany table-top book rest

The vertical sloping supports, on turned feet, 32cm wide, 32cm deep, 23cm high.

£80-£120

175

A pair of Regency gilt bronze and patinated bronze lustre candlesticks

With circular cut-glass sconces, pendant drops and on circular bases, each 24cm high. (2)

£500-£700



176

A pair of Regency cut glass bowls

Each with circular hob-nail cut rim with turned bowls and foot, 23cm diameter, 14cm high. (2)

£400-£600

177 ¥

A George III mahogany and rosewood crossbanded serpentine dressing mirror

The shield shaped swing plate with shaped uprights with applied ivory roundels, above three frieze drawers on shaped bracket feet, with ivory escutcheon, 45cm wide, 21cm deep, 59cm high.

£300-£400



178 ¥

A set of three George III mahogany serpentine knife boxes

The shaped lids with fitted interiors, with twenty four knives and forty eight forks with ivory and silver handles, with carrying handles to the sides, spoons lacking, the pair 22cm wide, 20cm deep, 35cm high and the smaller one 9cm wide, 17cm deep, 29cm high. (3)

£2000-£3000



179

A pair of late George III demi-lune lead planters

With lion masks to the front, each 86cm wide, 41cm deep, 30cm high. (2)

£2000-£3000



180

Thomas Rowlandson (1756-1827)

Watercolour from Characteristic Sketches of the Lower Orders

Signed

Framed and glazed

11cm x 7cm

£400-£600



181

Arthur Devis (British, 1712-1787)

Pair of pastoral scenes

Pen and wash

One monogrammed A.J.D and dated 1806

Framed and glazed

31cm high x 43cm wide

(2)

£600-£1000



182

After Joshua Reynolds (1773-1777)

The Strawberry Girl

Watercolour, 19th century

In a pierced gilt frame and glazed

74cm high x 61cm wide.

£500-£800



183

Circle of Sir Godfrey Kneller (1646-1723)

Portrait of Sir Edward Stanley

Oil on canvas, with a label for the Parker Gallery to the reverse.

100cm x 125cm

With frame 118cm x 145cm

£4000-£6000



184

Antonio Senape, (Rome 1788- Naples after 1842)

A set of three panoramas, Two Views of the Bay of Naples and a View of the Bay of Castellmare

Pen and black ink on paper

View of the Bay of Naples on four sheets and inscribed: '*Panorama di Napoli preso da S.Martino disegno dal vero da Antonio Senape*', 26cm x 152cm

View of the Bay of Naples on four sheets and inscribed: '*Panorama di Napoli dalla parte di Chiaia preso dalla Villa Muffo al Vomero disno dal vero da Antonio Senape*', 26cm x 152cm

View of the Bay of Castellmare on five sheets, 26cm x 190cm. (3)

£15,000-£20,000

Antonio Senape was renowned for his drawings of landscapes (*dal vero*) and his work generally depicts landscapes of Southern Italy which were popular amongst the wealthy tourists who came to Italy on the Grand Tour.







185

A set of eight Regency mahogany dining chairs including a pair of open armchairs

Inlaid with boxwood and ebonised lines, the rectangular bar backs above 'X' form splats, above drop-in seats on ring turned legs joined by ring stretchers, *possibly Scottish*, each 54cm wide, 46cm deep, 87cm high, seat height 46cm. (8) £800-£1200

186 ¥

A Regency rosewood carved sofa after a design by John Taylor

The anthemion, paterae and scrolling acanthus carved top-rail above a rectangular padded back, with padded arms with shell, lotus leaf and paterae carved ends, above rectangular padded seat and moulded seat-rail on anthemion carved legs and turned lobed feet, 192cm wide, 67cm deep, 87cm high. £1200-£1800





187

A pair of rare large Irish Regency mahogany and brass bound peat buckets

With swing brass handles and ribbed tapering sides, with later liners, one base replaced, the other inscribed in pencil 30/4/45, each 39cm diameter, 46cm high.

(2)

£15,000-£20,000



188

A Regency mahogany bergère chair attributed to Gillows

The rectangular caned back, padded arms and seat on ring turned tapering legs, together with a loose squab cushion, 62cm wide, 59cm deep, 92cm high, seat height 32cm. £400-£600

189

A Regency gonçalo alves octagonal occasional table

The top above a baluster turned shaft on tripartite base and scroll feet, 50cm diameter, 71cm high.

£500-£700



190

A Regency mahogany bowfront chest attributed to Gillows

The rectangular top with rounded projecting corners above three long graduated drawer flanked by reeded angles on ring turned tapering legs and spool feet, 103cm wide, 56cm deep, 89cm high.

£600-£800

Provenance:

Property from a Berkshire Residence





191

A pair of Regency mahogany carved shell back hall chairs attributed to Gillows

The shaped backs above bowed seats and moulded seat-rails, on fluted turned tapering legs and outswept feet, 37cm wide, 38cm deep, 84cm high, seat height 45cm. (2)

£1000-£1500

A pair of stamped hall chairs similar to this model by Gillows are in the collection of Abbott Hall Art Gallery & Museum, Kendal. Gillows also made a set of 'shell back' hall chairs for the Reverend Holland Edwards of Pennant, Conway, North Wales, in 1811 (see S.Stuart, *Gillows of Lancaster and London 1730-1840*, Vol I, Suffolk, 2008, pl.177). The pair offered here are a more unusual variant with their outswept front feet.

192

A Regency mahogany pembroke table by Henry Walker of Lancaster

The rounded rectangular hinged top with reeded edge above a frieze drawer, on ring turned tapering legs with brass cappings and castors, stamped to the drawer, 'HY WALKER LANCASTER', 108cm wide, 81cm deep, 73cm high.

£400-£600

Henry Walker was employed by Gillows as a cabinetmaker and carver from the early 1790's, becoming a Lancaster freeman in 1823-4. In 1831 Henry or his son (also Henry) was declared bankrupt and his household goods and stock sold. Henry Walker's name stamp has appeared on several pieces of furniture, including an early 19th century pembroke table sold Bonhams, Leeds in January 2003, lot 615. (See S.Stuart, *Gillows of Lancaster and London 1730-1840*, Vol II, p.293).



193

A Regency mahogany library bergère

in the manner of Gillows

The rectangular caned back, arms and seat, with fluted arm supports and turned tapering fluted legs, with brass cappings and castors, together with two loose squab cushions, 59cm wide, 61cm deep, 90cm high, seat height 33cm.

£400-£600



194

A pair of Regency mahogany hall chairs

The 'C' scroll and leaf carved splats with an oval painted crest (*rubbed*) on rectangular seat and ring turned tapering legs, each 39cm wide, 39cm deep, 82cm high. (2)

£400-£600

195

Two Regency mahogany 'Deception' tables

Both with rectangular tops, one with a fall front, the other with a fall side flap with hinged flap to the other side with two simulated drawers to each end, both on square tapering legs, 57cm wide, 61cm deep, 75cm high and 30cm wide, 46cm deep, 73cm high respectively. (2)

£500-£700



196

A Regency carved mahogany bergère library chair

Upholstered and close-nailed in tan leather, the scrolling top-rail carved with anthemion above downswept padded arms, on turned tapering fluted legs with brass cappings and castors, 66cm wide, 47cm deep, 90cm high, seat height 46cm.

£800-£1200



197 ¥

An unusual Regency rosewood and tulipwood banded games / writing / work table

Inlaid with boxwood lines, the square reversible top enclosing a sycamore and purplewood chequerboard and backgammon board; above candle-slides to the sides and a frieze drawer enclosing a baize lined hinged slide and stationery compartments, above a narrow side drawer, now fitted with a leather base lining; on square tapering legs and spade feet, *45cm wide, 46cm deep, 83cm high.*

£1200-£1800



198

A George IV mahogany chamber table attributed to Gillows

The rectangular top with reeded edge and hinged stationery compartment to the rear, above a frieze drawer on turned fluted tapering legs with brass cappings and castors, *66cm wide, 48cm deep, 72cm high.*

£1500-£2000

This form of table was popularised by Gillows, who included a sketch for a 'chamber writing-table' in their Estimate Sketch Book, dated 1810 (No. 344/144, p.11, Westminster City Archives). See Christie's, London, *Interiors - Style & Spirit*, 27 November 2007, lot 135 for an identical chamber table (realised £4750 including buyer's premium).

199

A George IV mahogany chest attributed to Gillows

The rectangular moulded top above three frieze drawers and three long graduated drawers, on turned feet, signed under the central drawer, 'Hannibal', *116cm wide, 57cm deep, 109cm high.*

£1500-£2000

Hannibal, John, Lancaster (1818-21). Named in the Gillow records in 1818 and 1821. [Westminster Ref. Lib.]





200

A matched pair of Regency mahogany library open armchairs

Upholstered, close-nailed and buttoned in tan leather, the rectangular reclined padded backs above scroll arms and padded seats on 'X' form legs, each 63cm wide, 69cm deep, 95cm high, seat height 38cm. (2)

£800-£1200

201

A William IV mahogany hall stand

The upper section with panelled and mirrored support issuing four scrolls with eight hat hooks; above a rounded rectangular white marble top and a frieze drawer, on octagonal turned legs joined by a platform under-tier with stick stands to each side; on turned feet, 108cm wide, 38cm deep, 193cm high.

£700-£900



202 ¥

A Regency mahogany and rosewood crossbanded sofa table

Inlaid with ebony lozenge, line and dot marquetry, the rounded rectangular hinged top above two frieze drawers and two opposing simulated drawers, on standard end supports, joined by a flattened stretcher, on downswept legs with square brass cappings and castors, 137cm wide, 66cm deep, 72cm high.

£400-£600

Provenance:

Property from a Berkshire Residence





203

A long oak wall coat rack with eight bronze lion mask hooks

210cm wide, 131cm high.

£300-£400



204

A 19th century mahogany leather upholstered ottoman long stool

Upholstered and close-nailed in chocolate brown buttoned leather, the padded seat on egg and dart and leaf carved turned legs, with brass cappings and castors, 129cm wide, 58cm deep, 35cm high.

£800-£1200

205 ¥

A William IV rosewood centre table by Holland & Sons

The circular tilt-top with bead and reel moulded edge, above a lobed shaft on circular platform base and lobed feet with recessed castors, stamped to the block 'FROM HOLLAND & SONS, upholsterers & c, Marylebone & St James's, LONDON', and numbered 93558, 129cm diameter, 73cm high.

£2000-£3000





206
Pierre Jules Mêne (French, 1810-1871): a 19th century bronze model of a goat standing
Brown patination, signed to the base, 25cm wide.
£400-£600

207
George Garrard RA (1760-1826): a small bronze bust of a gentleman
Dressed in Roman toga on a turned ebonised socle, signed *G. Garrard, F May 2, 1820, 23cm high.*
£200-£300
A bust by George Garrard of the Duke of Bedford, dated 27 July 1805 was destroyed in the fire at Uppark in 1989 and has now been replicated in plaster to simulate bronze.



208
A Regency sabicu clock wall bracket
With rectangular top, tapering sides and pendant finial, 25cm wide, 16cm deep, 26cm high.
£150-£200

209

A 19th century mahogany and brass-mounted table clock by Henry Pace, London

The gothic-style case with trefoil top applied with crossed foliate boughs flanked by pinnacles set on cluster columns to a moulded base on brass block feet, the arched one-piece silvered dial with strike/silent subsidiary over a Roman chapter ring framed by engraved scrolls centred by a signature cartouche, the twin gut (now wire) fusee movement with stepped and shouldered plates united by five knopped pillars, with anchor escapement and rack strike on a bell, with trip repeat facility, the pendulum with faceted rod, *the bell inscribed to the interior "Pace '39" "S.B.Gaze 1853" and others, second quarter 19th century, 27cm wide, 18cm deep, 41cm high.*

£700-£1000

Provenance:

Pace family collection

Henry Pace (active 1830-1861) was Thomas Junior's eldest son and inherited the Whitechapel business on his death. In this clock, the gothic style is becoming more prominent as the century progresses, and it displays a particularly fine attention to detail in the finessing of the angled sight ring along the lowermost section - the ordinarily straight edge has been curved to accommodate the shape of the chapter ring.

Literature:

Illustrated and discussed in *Antiquarian Horology*, Volume 34, Number 1, page 69, Figure 17.



210

A late 19th century French gorge cased brass repeating carriage clock

The white enamel dial with black Roman numerals and Breguet style steel moon hands, with silvered lever platform escapement and bevelled glass sides and top, in leather carrying case, with original numbered key, numbered '956', *13cm high, 13cm high.*

£300-£400



211
Two Regency thuya wood tea caddies

Of sarcophagus shape, with hinged rectangular lids, each enclosing two canisters, one with an associated cut glass mixing bowl, with rings handles to the side, on gilt brass lion paw feet, *both 31cm wide.*

(2)
 £300-£500

212 ¥
A Regency rosewood double-side book carrier attributed to Gillows of Lancaster and London

The rectangular top with spindle divider and ends with 'S' scroll supports and carrying handles, above a frieze drawer fitted with stationery compartments, with beaded mouldings and on lobed feet, 43cm wide, 31cm deep, 36cm high
 £1000-£1500

See Gillows of Lancaster Estimate Sketch Book, for a design of the same model supplied to the firm's London partners Ferguson and Co. on October 16th, 1830.



213
A pair of Regency gilt bronze and Wedgwood jasper ware twin-light candelabra

The circular urn shaped nozzles above scrolling branches with pine-apple finials, on Atlas caryatid supports and blue jasper ware stem, on square bases and ball feet, *the jasper ware with impressed mark 'WEDGWOOD', each 28cm wide, 41cm high.* (2)

£2000-£3000



214

A William IV mahogany circular extending dining table attributed to Gillows

In the manner of Gillows, the circular reeded top with five outer leaves and five larger later outer leaves, on a baluster column and tripod base with large paw feet and recessed castors, 135cm diameter, with small leaves 183cm diameter, with large leaves 213cm diameter, 75cm high.

£1500-£2500

Provenance:

C. Fredericks, 1972

The attribution to Gillows is based on a table sold Christies, London, *The Glory of Gillows & Fine English Furniture*, 16 September 2004, lot 63 which can also be seen illustrated in S.Stuart, *Gillows of Lancaster and London 1730-1840*, Vol I, p.338 (pl.392).

The table in brown oak and impressed GILLOWS was made about 1850 and has an identical base to the table offered here. Extending circular dining tables of this type were produced in the second half of the 19th century through to the early 20th century and were a simpler and cheaper alternative to the more complicated patent mechanism produced by the popular firm of Johnstone & Jupe. For an example of a late 19th century model with outer leaves attributed to Gillows see Christie's, London, *Interiors - Style & Spirit*, 10 June 2014, lot 327.



215 ¥

A pair of William IV rosewood carved 'X' frame stools

Upholstered and close-nailed in grey fabric, the 'C' scroll carved frames, joined by double turned stretchers, each 45cm wide, 39cm deep, 38cm high. (2)

£500-£700

216

A pair of Regency simulated rosewood bergère side chairs

The acanthus leaf carved top-rails above curved caned backs and seats, with loose squab cushions, on turned fluted legs, each 47cm wide, 42cm deep, 84cm high, seat height 40cm. (2)

£800-£1200



217 ¥

A nest of three William IV rosewood occasional tables by William Constantine and Co.

The rectangular tops on shaped stile end supports joined by wavy stretchers, on short outswept scroll feet, the smallest table with a label for W. Constantine & Co, Leeds, the largest table 58cm wide, 35cm deep, 75cm high.

£500-£700

Provenance:

Christie's South Kensington, 10 December 2013, lot 303. William Constantine & Co. are listed in G. Beard & C. Gilbert, *Dictionary of English Furniture 1660-1840*, p.192 as cabinet and upholsters working at 3 South Parade, Leeds, 1834-40. By the early 1840's the firm was employing about a hundred workers including fifteen carvers.





218

A set of twelve Regency mahogany carved dining chairs

The rope-twist top-rails and turned roundel crossbars above caned seats, on sabre legs, each 45cm wide, 41cm deep, 85cm high, seat height 43cm. (12)

£2000-£3000



219

A George IV mahogany drop-flap extending dining table

The rounded rectangular, extending with two leaves, on ring turned tapering legs, 100cm wide (183cm extended), 127cm deep, 72cm high

£1000-£1500



220

A Victorian Gothic oak button back 'chesterfield' sofa

In cream upholstery, the rectangular padded back, scroll arms and bowed seat on octagonal front legs, with castors, 203cm wide, 70cm deep, 70cm high

£2500-£3500

Provenance:

Burcott Manor, Somerset.

221

A set of Regency satinwood quartetto tables

The rectangular tops on turned legs with curved stretchers and spool satinbirch feet, the largest 51cm wide, 30cm deep, 71cm high.

£1000-£1500.

Provenance:

Property from a Berkshire Residence.

Purchased Christie's, London, Important English Furniture, 22 November 2007, lot 714



222

A Regency carved mahogany adjustable piano stool

With circular green upholstered padded seat above a lobed shaft on tripartite legs, 33cm diameter, 44cm high.

£80-£120

223

An early Victorian mahogany side table in the manner of Holland & Sons

The rectangular top with three-quarter gallery, above two frieze drawers, on turned legs with brass cappings and castors, 111cm wide, 61cm deep, 81cm high.

£800-£1200



224

A William IV pollard oak octagonal occasional table

The tilt top with radiating veneers above a shaped frieze with pendant drop finials, on octagonal shaft and stepped shaped base, on turned lobed feet, 61cm diameter, 71cm high.

£1500-£2000

225

A George IV mahogany whatnot reading table

The rectangular hinged ratcheted top with reading rest, above a shelf and two drawers, between ring turned uprights, on turned lobes feet, with cappings and castors, 56cm wide, 36cm deep, 121cm high.

£600-£800





226

A George IV oak occasional table

The oval top with gallery edge, standing on faceted column with arched splayed legs, *41cm wide, 65cm high.*

£600-£800

227

A set of early Victorian four-tier satinwood serpentine hanging shelves

With turned finials and ring turned baluster supports, on turned feet, *76cm wide, 18cm deep, 104cm high.*

£200-£300

Provenance:

Property from a Berkshire Residence.



228

A Regency mahogany occasional table

The rounded rectangular top on a baluster turned shaft on downswept legs and turned feet, *56cm wide, 46cm deep, 73cm high.*

£300-£500

229

An early Victorian mahogany writing table

The rounded, shaped and moulded top with tooled brown leather surface, the frieze fitted with a small drawer and a larger drawer with ratcheted book rest slope, raised on end column supports with arched lapped legs with scroll feet and joined by a central stretcher, *121cm wide, 55cm deep, 74cm high.*

£300-£500



230 ¥

An early Victorian rosewood carved needlework fire screen

The pierced scrolling leaf cresting above a glazed needlework of a fortune teller with two young ladies, flanked by spiral turned uprights, on downswept scrolled legs, joined by a pierced spiral stretcher, *111cm high, 71cm wide.*

£300-£500



231

A pair of large Victorian needlework-upholstered balloon-back chairs

The backs with mid 18th century, probably French, needlework depicting Europa and the Bull and probably Abraham and Issac, the seats with birds in scenic locations, within walnut frames and standing on cabriole legs with castors, *each 68cm wide, 52cm deep, 96cm high, each seat 36cm high. (2)*

£1000-£1500

232

A late Victorian mahogany campaign pedestal desk

The rectangular moulded top with red and gilt tooled leather inset writing surface above a long frieze map drawer simulated as three drawers; above a kneehole flanked by three short drawers to each side, on turned feet, with brass flush handles, *with pencil inscriptions, Pattern 45, No.513, 'Wardroom', 130cm wide, 61cm deep, 78cm high.*

£600-£800



233

A fine Victorian burr walnut, tulipwood crossbanded and purplewood breakfront wardrobe attributed to Holland & Sons

In the Louis XVI style and applied with gilt bronze mounts, the shaped moulded cornice with four turned finials and a riband tied swagged frieze; above a bevelled mirrored door enclosing three slides, three short and two long drawers; flanked by a pair of panelled cupboard doors each enclosing a rail and hooks, all flanked by reeded pilasters, on a moulded plinth base, *with paper depository label to one side for 'R.B.Petre 8/8/29', 254cm wide, 61cm deep, 277cm high.*

£5000-£6000

The wardrobe offered here undoubtedly formed part of a significant commission of bedroom furniture of high quality for a client who currently remains untraced. The presence of a 1929 storage label which bears the inscribed name R.B Petre would seem likely to indicate that it was handled by R.B Petre in his capacity as a prominent liquidator in early 20th century London. Petre's name has been recorded in contemporary news paper advertising as instructing various sales of property by auction.

The above lot is typical of the high quality work produced in the Louis XVI style that Holland and Sons produced in the 1860s and 1870s. The gilt metal mounts utilised on the above lot appear on documented pieces by the firm including the well known commission in the 1860s by Mr R N Thornton, illustrated in R.W Symonds, B.B Whineray Victorian Furniture, London 1962. Under William Holland the firm became cabinetmakers and upholsterers to the Queen, their first commission being for Osborne House in 1845, supplying furniture in the Queen's favoured Louis XVI style. Hollands participated in many of the important International Exhibitions including London in 1862, Vienna in 1873 and Paris in 1867 and 1872 again exhibiting pieces in the favoured Louis XVI style. The Holland's labelled day books are now housed in the National Archive of Art and Design in London and present a virtual 'who's who' of 19th century society.







234 ¥

A fine Victorian satinwood, ebony and amboyna card table

in the manner of Lamb of Manchester
Inlaid with ivory lines and applied with gilt metal beaded mounts, the rectangular swivel top enclosing a velvet lined interior above a frieze applied with blue jasperware Wedgwood roundels, on line inlaid supports, on outswept legs and castors, 92cm wide, 46cm deep, 73cm high.

£1200-£1800



235

A set of nine late Victorian carved mahogany salon chairs

The curved fan carved top-rails above shaped splats and rectangular padded seats, on turned tapering legs, each 50cm wide, 50cm deep, 86cm high, seat height 43cm. (9)

£500-£800

236

A 19th century New Zealand specimen wood parquetry dodecagonal table possibly by Winks and Hall of Auckland

In the manner of Anton Seuffert, inlaid with a central stellar of various indigenous woods including kauri, mangeao, towai and rimu on a rewarewa ground, the base in Australian cedar with spirally turned shaft and tripod legs carved with leaves and flowerheads on scroll feet, 45cm diameter, 70cm high. £800-£1200

Closely related examples by the celebrated cabinet-maker Anton Seuffert (1815-1887) of geometric inlaid tripod tables are illustrated in B. Peet, *The Seuffert Legacy*, pp. 111-114. Seuffert intended his similar tables as drawing or sitting room furniture and referred to them as card tables, probably for depositing business or postal cards on rather than for playing cards. Seuffert almost exclusively made circular tables and used concave rather than convex mouldings. The use of well-seasoned cedar as a carcass wood, as in this example, has meant that the top has survived in a better state due to its low moisture content, as opposed to those produced in the sapwood rimu or kauri.





237

A late 19th French gilt bronze mantel clock by Lays Cherfils Jouffroy

Of a young woman leaning on a tree trunk with birds, with Roman blue enamelled cartouche twelve-piece circular dial, with platform escapement and outside countwheel strike on a bell, *stamped on the movement LAY JOUFFROY, 633, 28, 28, 28, 32cm wide, 11cm deep, 26cm high.*

£300-£500

238

A late 19th century bronze and gilt bronze table barometer by Beesley of Lancaster

The barometer held aloft by a figure kneeling on a cushion, on a breccia marble base raised on gilt bronze lion's paw feet and with shell decoration, *the movement signed Beesley, Lancaster, 25cm high.*

£120-£180



239

A Victorian Minton's glazed pottery jardinière and tray

The square planter with white flowers on a scarlet red ground, with a matching red square tray, *with impressed marks, 'MINTON', 21cm square, 22cm high.*

£80-£120

240

A pair of late 19th century cut-glass sweetmeat dishes on gilt bronze stands

Of circular form, the stands as pierced baskets, on lion paw feet, *each 19cm diameter, 8cm high. (2)*

£250-£350



241

A late 19th / early 20th century Austrian cold painted composition model of a pug dog

Seated, with glass eyes, 30cm wide, 54cm high.

£400-£600



242

A pair of large 20th century bronze standing garden storks

The largest 138cm high, the smallest 122cm high. (2)

£600-£800



243

A very large early 19th century painted and silk-work framed picture of The Good Samaritan

The injured traveller on the roadside being aided by the Samaritan while the Levite and the Priest are seen in the distance, 103cm wide, 77cm high (not including frame).

£400-£600



(part illustrated)

244

Eight various small pictures of boats

Including a pair of watercolours of H.M Frigate Raleigh, 1845, and H.M Frigate Pomone, 1803, both signed J.Sullivan and one dated 1941, both 22.5cm x 17.5cm, A watercolour of a frigate by R.Craggs, four paintings of tall ships and a 19th century engraving entitled 'A Ship Launch'. (8)

£150-£200

245

After G Stubbs, Phaeton driving the Chariot of the Sun

Watercolour, mono-chrome, after a print by B. Green
Framed and glazed

41cm x 54cm.

£150-£200

Labelled in the mount, 'This Drawing is by the late Lieut. General Poole when 16 years of age and for which a prize was awarded in 1796. It is said to have been exhibited at Somerset House by his drawing master'.



(part illustrated)

246

Four French coloured stipple engravings, circa 1800

Comprising, L.L.Boilly, 'La Comparaison des Petits Pieds', 41cm x 32cm, L.L.Boilly, 'La Douce Resistance', 52cm x 42cm, J.F Schall, 'Les Espiegles', 52cm x 40cm and J.F Schall, 'L'Amant Surpris', 52cm x 41cm, all labelled to the reverse, 'EARL COWLEY'. (4)

£500-£800

247

A group of 19th century decorative pictures

including an engraving of Madame Lavalette in a moulded gilt gesso frame and nine other decorative pictures including watercolours and engravings, *the Madame Lavalette engraving 26cm high*. (10)

£100-£150



(part illustrated)



(part illustrated)

248

A group of various 20th century silhouettes

By various artists including P Arnold, C Fairfoull, L Prigum, E Marshall and Ray, with a pair of prints of silhouettes, *the largest 12.5 cm high*. (11)

£100-£150

249 ¥

A group of three portrait miniatures

A copy of an Andrew Plimmer self-portrait, a gentleman in military uniform and a naval officer, *the largest 10cm high, on ivory and card*. (3)

£150-£200



(part illustrated)



(part illustrated)

250 ¥

A group of six 19th century various portrait miniatures

All depicting male sitters, *the largest 7cm high, on ivory and card*. (6)

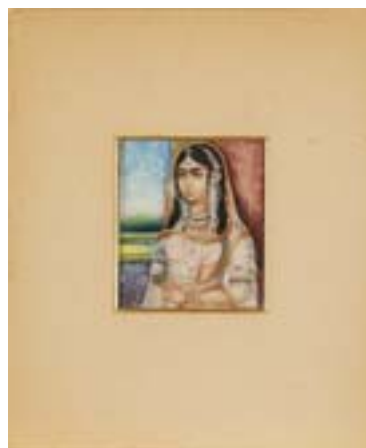
£300-£500

251 ¥

Four various portrait miniatures

Including a watercolour of Mary Queen of Scots, a gentleman in a Flemish hat an Indian lady, and an early 19th century watercolour ivory of a young woman, named as Eliza Lindin Atkinson, dated 1807, *on card and ivory*. (4)

£250-£350



(part illustrated)

252 ¥

A Victorian portrait miniature and an Edwardian portrait miniature of a young man.

The former on card, 11.5cm high, the other on ivory, 10cm high. (2)

£100-£150



(part illustrated)



(part illustrated)

253

A group of ten early 20th century Continental decorative portrait miniatures

Various subjects including, Mozart, Beethoven, two Madonnas and various figures in 18th century costume, the largest 10cm high. (10)

£300-£500

254 ¥

Seven various 19th century portrait miniatures in ebonised frames

Comprising of five male sitters and two female sitters including a pendant pair of a Regency couple, a clergyman and a young man in a blue frock coat, examples on ivory and card, the largest 8cm high. (7)

£300-£500



(part illustrated)

255 ¥

A group of early 20th century Continental decorative portrait miniatures

Comprising of a large late 19th century watercolour on ivory portrait miniature of an 18th century French courtier, and a group of seven various ivory framed Continental portrait miniatures of women in historical dress, mostly in bone veneered frames, the largest 14.5cm high. (8)

£250-£350



256

Unknown artist

Figures on a riverside tow path

Oil on canvas

Signed indistinctly

Framed

40cm x 59cm

£300-£500

257

Carl Brennir (British 1850-1920)

Figures on a country path

Oil on canvas

Signed

Framed

40cm x 58cm

£300-£500



258

Charles Branwhite
(British 1817-1880)

An overshot mill, Wales

Oil on canvas

Signed and dated 1854

Framed

56cm x 94cm

£1200-£1800



259

John White

Cromer Daybreak

Watercolour

Signed

Framed and glazed

51cm x 73cm

£150-£200



(part illustrated)

260

A group of 18th and 19th century transfer printed meat dishes and plates

Including, J Meir & Sons, Ornithology - A graduated set of three meat dishes, *the largest 49cm wide*, an early 19th century blue and white meat dish, seven various plates including Coalport and Copeland. (4)

£150-£200

261

A small group of 18th/19th century English porcelain teawares

An English porcelain cup and saucer, *the saucer 14cm diameter*, and a Spode Imari pattern saucer, two 18th century English blue and white tea cups (5)

£60-£80



(part illustrated)



(part illustrated)

262

A Group of 19th century blue and white transfer printed tableware, mostly Spode

Comprising four soup bowls, thirteen plates, patterns including 'Death of a Bear' from Spode's Indian sporting series, 'Bridge of Lucano', 'Girl at the Well', 'Sarcophagi and Sepulchres at the Head of the Harbour at Cacomo', two Light Blue Etruscan Series plates by Elkin, Knight and Bridgewood, *26cm diameter*, and a Mason's Ironstone plate. (17)

£250-£350

263

A large Crown Ducal jar and cover and a Prattware dish

The jar and cover decorated in Delhi chintz pattern, *32cm high*, the 19th century Prattware dish entitled, 'The Blind Fiddler'. (2)

£60-£80



(part illustrated)

264

Aynsley, England bone china cobalt blue and gold 'Simcoe' part dinner service #7410

Comprising nine soup bowls, two vegetable tureens, nine dinner plates, a sauce boat and stand and two meat trays. (24)
£400-£600



(part illustrated)

265

A group of eight 19th century blue and white transfer printed plates by Spode and Rogers

Including a pair of Rogers 'Zooological Series' plate and a 'Nuneham Courtney' pattern plate, 24cm diameter. (8)
£80-£120

266

An 18th century English delft dish

Decorated with flowering boughs, the rim decorated with landscape vignettes, 30cm diameter.
£100-£150





267

A Tabriz carpet, North West Persia, circa 1900

408cm x 310cm

£800-£1200

Provenance:

Property from a Berkshire Residence



268

A pair of Isfahan Tree of Life rugs, Central Persia, circa

1930

218cm x 132cm. (2)

£1000-£1500



269
A Turkish 'Dobag' runner of Caucasian design, second half
20th century
265cm x 115cm
£600-£800



270
A Heriz runner, North West Persia, circa 1900
455cm x 98cm
£1000-£1500



271
A Bidjar rug, North West Persia, circa 1920
194cm x 123cm
£700-£900



272
An Abadeh rug, Persia, circa 1930
204cm x 147cm
£300-£400



273
A Bakhtiar rug, West Persia, circa 1930,
190cm x 157cm
£200-£300



274
An Afshar rug, South West Persia, circa 1900
184cm x 133cm
£400-£600



275
An Enesai Rug circa 1900
164cm x 135cm
£500-£700



276
A Qoochan rug, North West Persia, circa 1950
240cm x 144cm
£500-£700



277

A pair of Tabriz carpets, North West Persia, 2nd quarter of
20th century

320cm x 203cm. (2)

£500-£800

278

Military interest:- a large Victorian silver regimental presentation table snuff box by Yapp & Woodward, Birmingham, 1854

With engine-turned sides, profusely chased high-relief floral and scroll border to cover, the latter inscribed 'Presented by Major H.L. Henning to Colonel R.H. Bingham and the officers of the Dorset Regiment of Militia, June 2nd., 1855', richly gilt interior, shaped rectangular with incurved sides and floral thumb-piece, 13cm long, 9.1cm wide, 5.2 cm high, 18oz. (558 gm).

£2200-£2500



279

Military interest/Royal presentation:- a Victorian silver-mounted glass claret jug by William Edwards, London, 1875

The tapering body finely etched with two groups of three children, one conducting the other two who play a flute and violin respectively, with scrolling foliage around them, the bead-edged scroll handle terminating at the base in a leaf, the chased silver mount with rocaille-decorated spout and inscribed on top 'Lt. Col. P.C Glyn, Rifle Brigade, from H.R.H. The Duke of Connaught, Oct. 1875', star-cut base, 26.5cm high.

£1500-£1800

Lt. Colonel John Plumtre Carr Glyn KCB (1837-1912), later Lieutenant General, joined the Rifle Brigade in 1854, served in the Crimean War and the Ashanti Campaign, also in the Zulu War, Major-General 1889, Lt.-General in 1898, Colonel-commandant of the Rifle Brigade in January 1903.

Arthur William Patrick Albert, Prince Arthur of Connaught and Strathearn (1850-1942), seventh child of Queen Victoria, transferred from the Royal Artillery to the Rifle Brigade in August 1869 and held honorary rank of Colonel from 1871-1876, he later became a General.



280

A Victorian silver-mounted glass claret jug by Henry Wilkinson & Co., Sheffield, 1870

Engraved mount and foliate scroll handle, the clear glass body very finely etched with a pair of Classical Greek warriors in a horse-drawn chariot, 28cm high.

£1000-£1200

281

An unusual pair of William IV parcel-gilt silver goblets by William Barrett (II), London, 1834

Thistle form with detachable frieze of fluted pumpkins, engraved to one side with a lion passant crest inside a buckle and strap cartouche inscribed with German motto 'In Gott Allein', and initialled 'J.E.E.S.', possibly for the Schuster family, the fluted column stem descending to a large knob above a flat circular detachable foot chased with a band of undulating ivy on a frosted ground, 12.7cm high, 10.5 oz (326 gm). (2)

£1000-£1200



282

A George IV silver vegetable dish and cover by Sebastian Crespel, London, 1822, on an Old Sheffield Plate warming base with maker's mark A.S, in rectangular serrated edge punch

Shaped circular with shell, leaf and gadroon rim, detachable foliate scroll handle, on conforming base with drop handles, on foliate claw feet, 19.5cm high, 25cm diameter, weighable silver 43.5oz (1565gm).

£1200-£1800





283

A good pair of George IV silver entree dishes and covers of unusual construction, by Thomas Burwash, London, 1821, numbered '3' and '4

Shaped oval with rococo borders chased with flowers and scrolls, covers engraved with cat rampant crest, the bases with feet modelled as eagles displayed, sitting above fluted cornucopia supports which terminate in a scroll, covers with large rose finials, the domed section of each cover dis-assembling for cleaning purposes by means of unscrewing the centre of the rose to remove the finial and then in turn the domed section of the cover which lifts off, 35.3cm long, 19cm high, 166oz (5146 gm). (2)

£5000-£6000



284

A pair of Old Sheffield Plate wine coolers of campana form, circa 1815

Gadroon borders, engraved gryphon's head erased crest to one side, leafy scroll handles with fruiting vine junctions, tinned interiors with detachable collars and cylindrical liners, 25cm high. (2)

£800-£1200



285

An unusual late Victorian silver-mounted cut-glass decanter by Heath & Middleton, Birmingham, 1892

With very long slender neck, ovoid stopper, the reeded body cut with foliage and flowers with dimpled centres, 42.8cm high.

£600-£700

286

A pair of George IV parcel-gilt silver small dishes, suitable for nuts or olives, by Rebecca Emes & Edward Barnard, London, 1823, together with a Victorian pair, matching the previous pair, by Messrs. Barnard, London, 1841

Circular with sunken gilded centres and chased flower, leaf, shell and scroll borders, each engraved to underside of rim with crest of an owl in front of a bush, 12.5cm diameter, 16oz (496 gm). (4)

£600-£700



287

A Victorian silver five-bottle cruet by E. & J. Barnard, London, 1864

Except one bottle 1862, also a later Victorian fiddle pattern long-stemmed mustard spoon by G.M. Jackson, London, 1888, the circular cruet on ball and claw feet, pierced scrollwork sides incorporating a crested escutcheon, wavy gadroon rim, detachable central handle and wood base, complete with five silver-mounted cut-glass bottles, the sides with lozenge facets and cut band of navette motifs, 25cm high, 15.5cm diameter.

£600-£700



288

A Victorian barrel mustard pot in the George III style, by Messrs. Barnard, London, 1874

With leaf-capped handle, coopered sides and cover, pierced shell thumb-piece, gilt interior, later blue glass liner, also a later Fiddle pattern mustard spoon, Birmingham, 1896, 7.6cm high, 2.25 oz (approx 70 gm).

£200-£250



289

A Victorian silver novelty combination scent bottle and vinaigrette in the form of an acorn by Sampson Mordan, London, 1873

Hinged cap and cover, chain handle with finger ring, gilt foliate-pierced grille, marked on side of body and under side of grille, 5cm high.

£800-£1000

290

A Victorian silver table lighter in the form of a Roman lamp, by George Angell, London, 1872

With bifurcated twin serpent handle, the detachable match with cast triple bearded Classical head finial, a Pharaoh's mask applied on top of lighter directly below the handle, 10.1cm long, 6.8cm high, 11 oz (341 gm).

£450-£550





291

A Victorian electroplated and cut-glass centre-piece

The circular bowl sitting within a frame applied with four female mask heads, on a circular base, 29cm diameter, 36cm high.

£200-£300

292

A good pair of Edwardian cast silver-gilt sweet dishes by Israel Sigmund Greenberg & Co., Birmingham, 1904

With heavy cut-glass liners decorated with alternate hobnail and diaper-work flutes, the oval openwork frames with vine sides embellished with clusters of different fruit and rose-decorated handles, on decorative bracket feet, 22cm long, 10cm high, weighable silver 22oz (682 gm). (2)

£1200-£1500



293

A modern designer silver five-piece matching tea and coffee set designed by Eric Clements for Mappin & Webb and Elkington & Co., Sheffield, 1964/66/67

Plain squat baluster form with domed covers, curved handles and melon-fluted wood finials, comprising:- hot water jug and sugar bowl 1964, teapot and milk jug 1966 and coffee pot 1967 (the 1964 pieces by Mappin & Webb, the 1966 and 1967 pieces by Elkington & Co.), Coffee and hot water pots 20cm high, 78oz (2418 gm). (5)

£2500-£3000



294

A large and elaborate pair of cast silver-plated-on-copper wall sconces, probably late 19th century

Of arched rococo form with winged cherub head surmounts beneath foliage and diaperwork, two pairs of detachable twin-branches at front flanking an oval panel depicting two children in a garden setting with drapery at either side, 66cm high, 34cm wide. (2)

£1200-£1500



295

A large pair of Dutch silver fruit baskets in 18th century style, maker's mark RS over '2', also with pseudo marks and Dutch dolphin control mark, early 20th century

Diaperwork-pierced sides with foliate swags and 18th century portrait bust in oval cartouche on either side, on foliate feet, reed and ribbon rims, 38.4cm long, 16cm high, 102oz (3162gm). (2)

£3000-£4000



296

A pair of 18th century Dutch silver toy candlesticks by Johannes Adrianus van Geffen, Amsterdam, 1783

Also bearing later Dutch axe control mark for antique objects and a later French control mark for small foreign objects, wavy-edged nozzles, faceted columns and stepped octagonal bases, *5cm high. (2)*

£800-£1200

297

A pair of French silver three-light candelabra by with 1st standard French export marks, by Cardeilhac, Paris, circa 1930

Cylindrical columns with 'S' shaped branches and fluted borders, on octagonal bases with cut-out alternate wood and ivorine triangular panels around base rims, these materials mirrored in the bases of the capitals, *28.5cm wide, 41cm high. (2)*

£900-£1100



298

A good German silver triple cornucopia vase centrepiece centred by a seated putto playing a lute, by Gebruder Glaser, Hanau, circa 1900

Each vase chased with courting couples in 17th and 18th century costumes in rural settings, raised on partially pierced 'C' scroll supports, each vase with a scroll decorated strap meeting at the centre to form a handle, *25cm wide, 23.5cm high, 25.5oz (791 gm).*

£1200-£1400



299

A Victorian silver salver in the late 18th century Dutch A Victorian silver salver in the late 18th century Dutch taste, by Frederick Elkington, London, 1883

Square with gallery sides pierced with continuous band of rings, beaded rim and fluted feet resting on rosette-embellished cubes, centre engraved with geometric and key-work decoration around a vacant reserve, *25.4cm square, 29oz (899 gm).*

£800-£900



300

A Louis XV grey painted bergere by Jean-Baptiste Lebas

Upholstered and close-nailed in cream fabric with red and green floral sprigs, the cartouche shaped moulded back surmounted by a foliate cresting, with outswept padded arms, sides and seat with loose squab and bolster cushion, above a foliate carved seat-rail on cabriole legs and scroll feet, *stamped on the seat-rail I LEBAS, 72cm wide, 64cm deep, 103cm high, seat height 53cm*

£3000-£5000

Jean-Baptiste Lebas, maître in 1756.



301

A Regence kingwood and tulipwood parquetry serpentine commode by Jean-Charles Saunier

Applied with gilt bronze mounts and applied gilt brass chutes, the shaped rectangular pink and grey breccia moulded marble top above three long drawers flanked by fluted angles, on shaped bracket feet with pierced sabots, *stamped twice to underside of the marble I C SAUNIER JME, 127cm wide, 65cm deep, 86cm high.*

£2500-£3500

Provenance:

La Roche Collection, Basel

Jean-Charles Saunier, maître in 1743.

Saunier was the father of the eminent ébéniste Claude-Charles Saunier, who through the marchand-mercier Daguerre supplied furniture to the French royal family at Versailles and Choisy.



302

A Louis XVI kingwood and tulipwood parquetry secrétaire à abattant

Inlaid with sycamore and boxwood lines, the rectangular rouge royal moulded marble top above a frieze drawer and a quarter-veneered fall enclosing a tooled gilt black leather writing surface and a divided interior, with four short and one deep drawer; above two cupboard doors enclosing a shelf, on square feet, *83cm wide, 41cm deep, 141cm high.*

£800-£1200



303

A Louis XVI style mahogany and parcel gilt sofa

Upholstered in oatmeal, the rectangular line and dot moulded back above scrolled padded arms, sides and seat, with spirally turned arm supports, above a thyrus moulded seat-rail, on reeded turned tapering legs headed by stiff leaves and paterae, on turned feet, *182cm wide, 77cm deep, 95cm high, seat height 45cm.*

£1200-£1800

304

A pair of Louis XV grey painted fauteuils à la reine by Louis Falconet

Upholstered and close-nailed in adapted mid-18th century needlework depicting Spring and Winter, with animals, birds and flowers, the cartouche shaped padded backs with moulded frames above outswept padded arms and serpentine padded seats, on cabriole legs and scroll feet, *stamped to the seat-rail L*

£4000-£6000

Louis Falconet, *maître* in 1743.



305

A Louis XVI grey painted canapé by Claude Leclerc

Upholstered and close-nailed in red patterned velvet, the moulded carved padded back and scroll padded arms and seat with loose squab cushion, on turned reeded tapering legs headed by paterae, on spool feet, *stamped twice to the seat-rail C LECLERC*, 196cm wide, 60cm deep, 48cm high.

£1000-£1500

Claude Leclerc, *maître* in 1785.



306

A pair of Louis XVI cream and gilt chaises by Jean-Baptiste Lelarge

Upholstered in cream and green diapered pattern cut velvet, the rectangular backs with moulded frames, on stuff-over seats and moulded seat-rails on turned tapering reeded legs headed by paterae on spool feet, *both stamped I B LELARGE under the seat-rails*, each 46cm wide, 38cm deep, 85cm high, seat height 40cm. (2)

£600-£800

Jean-Baptiste III Lelarge, *maître* in 1775

307

A Louis XV kingwood, tulipwood and sycamore marquetry petit commode

Applied with gilt bronze mounts the serpentine moulded pink and grey breccia moulded marble top above two frieze drawers on slender outswept legs with sabots, 74cm wide, 46cm deep, 82cm high.

£1200-£1500



308

A 19th century French pendant gilt-bronze hanging light

The turned rose, with triple rod supports and circular hooks above an anthemion and Greek key etched glass bowl with pierced gilt brass rim and pendant drop below, 36cm diameter, 100cm drop.

£1000-£1500



309

A Charles X six-light gilt bronze chandelier

In the manner of Thomire, with pierced scrolling leaf rose with acorn pendant drop above a central orb decorated with pendant drop; the branches as swans with turned drop pans and sconces, fitted for electricity, 58cm diameter, 72cm drop.

£2500-£3500



310

A late 19th / early 20th century French Louis XVI style marble mantel portico clock by Société Clusienne, S.C.A.P.H, Cluses

Applied with gilt metal mounts, the circular enamel swag painted dial with Arabic numerals, indistinctly signed, ?? CAEN, with quiver and bow cresting; on column supports and demi-lune base, with sun-burst pendulum, the twin-train movement with anchor escapement and outside countwheel strike on a bell, *inscribed on the movement SOCIÉTÉ CLUSIENNE S.C.A.P.H CLUSES, 42cm high.*

£300-£500

311

A 19th century French gilt bronze figure of a classical female figure

The figure deep in thought, possibly previously a mount, stamped 3840, 33cm high, 16cm wide.

£200-£300



312

A pair of Louis XVI gilt bronze candlesticks

The circular detachable nozzles with leaf cast drip pans, with reeded stems on circular leaf cast bases, each 21cm high. (2)

£300-£400



313

A pair of French Empire gilt bronze candlesticks / table lamps

With detachable nozzles and spiral stems, on leaf cast circular bases, with fittings to convert to tables lamps, with red silk shades, each 18cm high (excluding fittings). (2)

£700-£1000

314 ¥

A Louis XV tulipwood and rosewood crossbanded encrrier

Applied ormolu mounts, the shaped quarter-veneered tray with a fitted Chinese black and gilt lacquered bowl and a Chinese crackle glazed ink and pounce pot; on scroll feet, 32cm wide. £1000-£1500



315

A pair of late 19th century Louis XVI style br che violette and gilt bronze urns

With domed lids and pineapple finials, above ovoid bodies with swagged ram's head handles on socle and square bases, each 56cm high, 27cm wide. (2) £2000-£3000

316

A pair of 19th century French gilt bronze curtain tie backs

With lead cast ends, un-used and therefore still straight, 31cm long, 6cm wide. (2) £80-£120





317

Ferdinand Lugerth (Austrian 1885-1915): an early 20th century brown patinated bronze standing nude figure of a warrior

Wearing a helmet and untying his belt, his sword at his feet, on a square verde antico stepped marbled base, *signed and dated 1910, with Arthur Rubinstein foundry mark, 51cm high.*
£1200-£1800

318

A late 18th century French patinated bronze figural group of The Death of Procris

The figure of a satyr seated and holding Procris, on a circular base, brown patination, *23cm high.*
£1000-£1500



319

Antoine Gaudes (French, 1845-1902), Paix et Abondance

The dark brown patinated bronze figure depicting a young maiden holding a laurel leaf and with a garland of flowers in the folds of her apron, her upswept coiffure with a jewelled headdress raised on a titled swirling cloud and sphere base, *signed to base A.GAUDEZ, Paix et Abondance, Hors Concours, 75cm high.*
£2000-£3000



320

After Giambologna (Italian, 1521-1608): A large bronze figural group of the Abduction of a Sabine Woman

Probably late 19th century, green patination, 83cm high, 30cm wide

£8000-£10000

Giambologna's representation of 'Abduction of a Sabine Woman' (1574-1582) intended this work to demonstrate his ability in rendering a complex figural group. The title and subject was only assigned to the piece after Francesco I de' Medici, Grand Duke of Tuscany (1541-1587) decreed that it should be placed in a prominent public position in Loggia dei Lanzi in Piazza della Signoria in Florence. The sculpture is widely considered to be one of Giambologna's masterpieces and was carved from a single block of marble. 'The Abduction of a Sabine Woman' refers to the event in Roman mythology in which the men of Rome committed a mass abduction of young women from the region, a subject which was often depicted by artists during the Renaissance and post-Renaissance eras.



(part illustrated)

321

A late 19th century German gilt bronze easel clock

With a Bavarian theme, *32cm high*, a late 19th century German bronze panel of a tavern scene, *27cm high*, and a pair of late 19th century painted porcelain plates with pierced brass borders, *probably Austrian, 20cm diam.* (4)

£150-£200

322

A late 19th century German stained beech carved mantel clock

Applied with gilt metal mounts, the pagoda top and finials above a circular white painted dial with Arabic numerals, on a rectangular moulded base and turned feet, the twin-train movement striking on a gong, *labelled inside door, 'No. 3080', 39cm high.*

£80-£120



323 ¥

A late 19th century Louis XIV style scarlet-tortoiseshell and brass inlaid mantel clock

Applied with gilt metal mounts, of cartouche shape, with flame finials above a circular engraved dial with Roman numerals, on pierced bracket feet, the movement with Brocot escapement striking on a gong, *numbered 24697 and 411, 28cm high.*

£400-£600



324

A Parian bust of Clytie after the model by C. Delpech

The base impressed 'Crystal Palace Art Union, *28cm high*

£120-£180



325

Marcel Debut (French 1865-1933)

A patinated bronze Art Nouveau reclining semi-nude female figure, on a stepped black and white veined marble base, signed *DEBUT*, 39cm high, 30cm wide.

£800-£1200

Marcel was the son of Didier Debut, he studied under this father as well as Henri Chapu and at the Ecole des Beaux-Arts. He first exhibited at the Salon in 1883 and worked as a sculptor and as a painter.



326

A late 19th century French Art Nouveau art metal table lamp

In the form of a maiden holding aloft a shade shell, amongst green leaves, on a foliate green marble base, 48cm high.

£800-£1000



327

A 'New Sculpture' patinated bronze figure of a fisherboy, circa 1900

The boy emptying his net into a bucket on a rocky base with frogs and lizards, standing on a square bronze base for use as a lamp with shade, the figure 45cm high.

£800-£1200



328

A pair of 19th century Italian Renaissance Revival walnut chair splats

Pierced, with grotesque beasts, carved to both sides, *each 34cm high, 17cm wide. (2)*

£100-£200

329

A painted panel of a monk playing a bassoon

In a domestic setting, re-using an earlier carved panel, probably Italian, *36cm high, 53cm wide.*

£400-£600



329a

A group of four 19th century patinated bronze metalware

Comprising a candlesticks with entwined dolphin on the stem, *16cm high*, a candlestick as a twin-handled urn in the Renaissance style, *15cm high*, a Renaissance style bell with mythological beast, *12cm high* and a Roman style oil lamp, *17cm high. (4)*

£80-£120



330

A late 19th century Arts & Crafts hammered copper lantern

In the manner of Gustav Stickley, the cone shaped top above a conical uranium glass cylindrical shade, *19cm diameter, 43cm high.*

£800-£1200



331

An 18th century needlework in a later frame

The rectangular panel of a ho-ho bird in blue, on a red ground, 50cm high, 47cm wide.

£300-£500



332 ¥

A mid 18th century English painted folding fan in a later case

Decorated with a pastoral scene of a shepherd playing a flute to a young lady, with pierced Chinese ivory monture carved with figures, the frame labelled AGNEW & SONS, guard length 28cm, the frame 39cm high, 68cm wide.

£250-£350

333

A set of late 19th century walnut Dutch marquetry hanging shelves

The shaped glazed door enclosing two shelves and a mirrored back, flanked by small shaped shelves and long shelf below, all with mirror backing, 87.5cm wide, 15cm deep, 93cm high.

£250-£350





334

A late 19th century Florentine carved gilt wood mirror

The oval plate within a leaf moulding and an elaborately carved scrolling leaf pierced frame, *82cm high, 55cm wide.*

£1000-£1500

335

A late 19th century Florentine carved gilt wood mirror

The oval plate within a leaf moulding and an elaborately carved scrolling leaf pierced frame, *78cm high, 52cm wide.*

£700-£900



336

A pair of 20th century Italian elm and walnut figural tripod stands

Each with circular top, the male figures with arms held aloft, standing on naturalistic bases, each 25cm diameter, 99cm high. (2)

£1000-£1500



337

An unusual late 19th/early 20th century Italian painted close-nailed leather serpentine chest

In the neo-classical style, painted with 18th century style pastoral scenes, the hinged lid with engraved brass hinges enclosing a leather lined interior, above a scrolling leaf and flowerhead applied frieze with canted corners headed by ram's head with trailing husk chains; with reeded apron below on acanthus carved hoof feet, with carrying handles to the sides, 134cm wide, 61cm deep, 96cm high.

£2000-£3000

Provenance:

Sold Sotheby's New York 17 May 2006, lot 541 (realised \$11,809 including premium).





338
Mihali Erdelyi (Hungarian 1894-1972)
Fishing Boats at Chioggia, Venice, 1928
Oil on board
Signed and dated 1928
Framed
60cm x 70cm
£600-£800

339
Alexandre Kreutzer (Venezuelan 1860-1917)
Austrian Lakeside scene, 1896
Oil on canvas
Signed and dated '96
Framed
64cm x 92cm
£250-£350



340
Paul Nielson
Frederiksborg Castle, Hillerød, Denmark, 1946
Oil on canvas
Signed and dated
Framed
62cm x 88cm.
£100-£200

341

Louis Galloche (1670-1761)

Two Women Seated

Pencil and gouache drawing

Framed and glazed

34.5cm x 48cm

£1000-£1500

Provenance:

Private Collection, England.



342

**Philippe Louis Parizeau
(French 1740-1801)**

A peasant family by a
fireplace, and a companion
piece, A peasant family by a
door

Two Gouache Studies

Framed and glazed

Both 38cm x 28cm. (2)

£800-£1200

Provenance:

Heim, London, 1990

Private Collection, England.



343
Michel Corneille The Younger (1642-1708)
Nudes
Drawing
Framed and glazed
23cm x 24cm
£1000-£1500
Provenance:
Private Collection, England.



344
Attributed to Frans Floris
Head of a woman
Oil on panel
Framed
45.5cms x 30.5cms
£3000-£5000
Provenance:
Private Collection, England.



345

Jean Baptiste Le Prince (1734-1781)

Chaumière au bord d'une fleuve

Brown chalk

Framed and glazed

29cm x 26.5cm

£5000-£7000

Provenance:

De Mesringny family, Troyes Comte de Parc, Chateau de Vilebertin, Troyes by descent.

Private Collection, England



346

Attributed to Philip Mercier (1689-1760)

Mascarade

Oil on canvas

Framed

92cm x 137cm

With frame 109cm x 156cm

£5000-£8000

Provenance:

Private Collection

After the painting 'Coquettes' by Watteau in the Hermitage, St.Petersberg.

Philip Mercier was born in Berlin, the son of a Huguenot tapestry worker who came to London in 1716 at the recommendation of the Court of Hanover. Between 1720 and 1727, he was recorded as living at No.40 Leicester Square. His early successes in London were of Watteau inspired fêtes galantes with the tradition of Dutch 17th century portraiture.



347

An impressive large pair of early 20th century Japanese Fukagawa vases and covers

With domed lid and peacock finials, all over decorated with white and blue chrysanthemums on a red ground, marked to the underside of the bases and lids, *each 92cm high, 44cm wide. (2)*

£6000-£8000

Provenance:

Gifted to Lady Fry by J.von Waldhausen



348

A celadon jade figure of a deity and three other figures

The celadon jade figure of a deity holding a vase, an agate figure of a deity holding a flower, 22cm and 21cm high respectively, a green hardstone figure of a parrot with an ebonised base, 19cm high and a 20th century hardstone figure of a duck, 11cm wide (4)

£400-£600

349

A small group of small Chinese jade, hardstone and bronze objects

Comprising a russet jade seal in the form of a panther, 10cm high long, a celadon jade seal in the form of a rectangular block surmounted by a Dog of Fo, 5.5cm high, and a blank hardstone seal in the form of a Chinese elder on a shaped base, 9cm high, a russet jade figure of a dragon, 9cm wide, a russet jade figure of a lion, 9cm wide, a small bronze seal, 3.5cm high, and a small bronze of a horse and a monkey, 5cm long. (7)

£120-£180



350

A blanc de chine dog of Fo incense burner in the Kangxi style

Together with a Kangxi style soapstone dog of Fo incense burner, 12cm high, the blanc de chine example 14.5cm high, (2)

£100-£150

351

A group of 19th and 20th century Chinese enamel and cloisonné items

Comprising: a 19th century Cantonese enamel teapot, 14cm high, a pair of early 20th century Chinese cloisonné enamel vases, each 25cm high, a 19th century cloisonné enamel ginger jar, on hardwood base, 11cm high, and a Chinese celadon craquelure vase, decorated with a goldfish, 22cm high (5).

£200-£300



(part illustrated)



352

A late 19th century Chinese black and polychrome coromandel lacquer eight-fold screen

One side decorated with exotic birds perching in trees and a heron by a river, the other side heightened with gilt chinoiseries, decorated with figures in domestic settings, within borders of exotic birds, *each panel 213cm high, 40cm wide.*

£2000-£3000



353

A large mid 18th century Qianlong period blue decorated Chinese vase and cover

Of baluster form painted with reserves of insects and flowers on a cobalt blue ground, the dome dover with Dog of Fo finial, *69cm high.*

£3000-£4000



(part illustrated)

354

Ten various 19th century Imari dishes and a small charger

The dishes of various patterns and sizes, *the charger 31cm wide*. (10)

£300-£400

355

Three various Cantonese plates and a famille rose plate and a Cantonese brush pot,

Including a pair of Cantonese plates, a butterfly decorated plate and a brush pot, *11cm high*. (3)

£80-£120



(part illustrated)



356

A group of 18th century and later Imari wares

Comprising an 18th century Imari tea bowl and saucer, a square baluster jug and a beaker, *9cm high*. (4)

£100-£150

357

A group of 18th century and later Chinese ceramics

Including a late 18th century Chinese famille rose tankard, *12cm high*, a famille rose baluster vase, a lobed edge bowl, a Cantonese vase, a Chinese blue and white tea bowl, a famille rose teacup, an Imari tea bowl and a famille rose tea bowl. (8)

£200-£300



(part illustrated)

358

A group of Chinese blue and white porcelain vases

including a cylindrical vase, 15cm high, two flared lip vases, a baluster vase, a small baluster vase lizard handle, a rice bowl, flared neck vase and a ginger jar. (8)

£200-£300



(part illustrated)



(part illustrated)

359

A matched pair of Chinese-Export blue and white baluster vases and covers

Each 22cm high and a small Chinese blue and white baluster vase and cover, 13cm high (3)

£200-£300

360

A collection of five Chinese teapots and a feeding cup

Two famille rose, one Cantonese, one blue and white stoneware and one Imari, the largest 16cm high. (6)

£200-£300





(part illustrated)

361

A group of Chinese and Japanese tablewares, 18th century and later

Various patterns, *the largest 24cm diameter* (5)
£80-£120

362

Nine various 19th century Chinese and Japanese Imari coloured plates

Including a small Imari charger, *30cm diameter*. (9)
£200-£300



(part illustrated)



(part illustrated)

363

A group of 19th / 20th century decorative Satsuma and Imari wares

A small cup with a goldfish, a baluster vase, a rice bowl, two Satsuma bottle vases, one Imari bottle base, an Imari bowl and cover, two Imari baluster vases, one small baluster vase with a flared lip, a pair of baluster vases with flared necks, *the largest vase 17cm high*. (12)

£120-£180

364

A large early 20th century carved soapstone vase

Of baluster form, decorated with flowers in high relief, on a naturalistic carved base, *31cm high*.

£200-£300



365

A pair of late 19th century / early 20th century Japanese Meiji period paper scrolls

With wooden stave and dowel, painted with ladies in a domestic setting, both with seals, each 196cm long, 62cm wide. (2)

£300-£500



366 ¥

A pair of early 20th century Chinese ivory filigree carved brush pots

Decorated with figures and animals within foliage, each 10cm high. (2)

£300-£500

367

An early 19th century Chinoiserie watercolour

Of a traveller on camel back talking to an old man with a dog, in a rural setting, within a foliate border, framed and glazed, 48cm x 55cm.

£300-£500





368

A group of 19th century Japanese bronzes and a Chinese bronze censer

Comprising a pair of late 19th century Japanese bronze baluster vases, *each 21cm high*, a Meiji period bronze crab, *18cm wide*, and a late 19th century Chinese bronze censer, decorated with dogs of Fo and foliage mounted on an associated carved wood stand, *15cm high* (4).

£300-£500



369 ¥

An early 20th century Japanese ivory okimono figure of a sailor with an anchor

15cm high.

£100-£150



370 ¥

An early 20th century Japanese ivory okimono figure of a wood chopper

Signed, 18cm high.

£100-£150

371

A late 19th century Japanese Meiji period patinated bronze archer

Engraved and decorated in gilt, the archer preparing to shoot an arrow at his target, supporting himself on one knee as the other one is fully outstretched, wearing a *wakizashi* tucked into his belt, *the arrow missing, signed, 33cm wide, 28cm high.*

£2500-£3000



372 ¥

Two late 19th century Japanese Meiji period carved ivory tusk brush pots and lids

One carved with lions, the other with tigers and an elephant, both signed, *each 8cm diameter, 8cm diameter, 7cm high. (2)*

£400-£600



373

A group of four Japanese boxwood figures

Including a figure of a fisherman *26cm high* and a Chinese boxwood carving of a house, *18cm wide* (4)

£100-£150

374

A 19th century Chinese teak and brass bound box

The hinged lid enclosing six compartments; above a shaped apron on bracket feet, *42cm wide, 30cm deep, 25cm high.*

£300-£500



375

A pair of hardwood coopered well buckets, probably Chinese, early 20th century

Iron-bound and standing on later-painted stands, each *46cm diameter, 71cm high.*

£300-£500

376

An early 20th century Anglo-Indian octagonal occasional table

Profusely carved with scrolling leaves, flowerheads and figures, on twisted dragon carved legs, *56cm diameter, 60cm high.*

£400-£600



377

A pair of 19th century Anglo Indian padouk carved open armchairs

The acanthus and anthemion carved rectangular top-rails above lotus leaf and paterae carved cross bars, with leaf carved arms above caned drop in seats, carved seat-rails on turned fluted legs, each 54cm wide, 48cm deep, 82cm high, seat height 42cm. (2)

£600-£900



378 ¥

An Indian Colonial silver presentation biggin and stand by Cropley & Co., Calcutta, circa 1820

Tapering bellied form with shell, leaf and gadroon border, tucked-in circular foot, leaf-capped handle with ivory insulators, silver-mounted ivory finial, on spirit stand with three scroll and anthemion-embellished column supports terminating in claw feet, centred by a detachable spirit lamp, the latter with domed snuffer on chain attachment, inscribed to one side *'To Captain Allan commanding the ship Margaret, as a small, but affectionate token of gratitude, for his kindness and attention, which is duly appreciated, and will ever be remembered, with heartfelt pleasure, by his sincere friend and well wisher, Robert Terranean'*, 55.5oz (1721 gm).

£2000-£2500.

There are at least two ships named Margaret built in India, this probably refers to the Margaret launched at Calcutta in 1804, built by J. Gilmour & Co., that was captured in the Persian Gulf en route to Basra by the French in 1808 and sailed by their captors to Ile de France. Its subsequent history is hazy but may have later been sold into commerce.



379

A Chinese Export silver mug, base struck with an indistinct group of five marks including H.? twice and Chinese character marks, probably third quarter of 19th century

Tapering form with relief-chased sides of fruiting vines around a vacant applied escutcheon to front and a broad chased vine handle terminating at top in a leaf and grape cluster at either side, 13cm high, 9oz (279 gm).

£1000-£1200



380

A fine pair of Indian silver goblets, maker's mark V.K, attributed by Wilkinson to Cutch, late 19th century

Profusely chased with wild animals amidst foliage above stiff acanthus leaves and applied with vacant escutcheons, gilt interiors, 18.8cm high, 19oz (589 gm). (2)

£1000-£1200



381

A huge Burmese silver casket, unmarked, probably late 19th/early 20th century

Finely decorated in very high relief, the cover with seven warriors in traditional dress, the central figure standing on a stool, holding a bow, the sides with similar groups of figures, perhaps telling a story, featuring dancing girls, a royal couple, a woman reclining on a bed with attendants and an elephant, pierced bands of acanthus leaves and pierced foliate panels, 36.5cm long, 28cm wide, 24cm high, 117oz. (3627 gm).

£4500-£5500

The Pedestal

Specialist auctions | Private sales | Online selling

Buy and Sell Furniture & Objects in our Shop Online

For a free and confidential valuation consignments
and advice on buying and selling please contact
Guy Savill at guy@thepedestal.



thepedestal.com/shop

The Dairy | Stonor Park | Henley-on-Thames | Oxfordshire RG9 6HF | 020 7281 2790

The Pedestal



DESIGN FOR LIVING

At The Dairy, Stonor Park

Tuesday 19th October 2021

An Invitation to Consign

We are currently seeking suitable items for inclusion into this forthcoming sale

For a free and confidential valuation, consignments or for more information please contact:

Guy Savill or Sally Stratton MRICS on 0207 281 2790 or email:
info@thepedestal.com | www.thepedestal.com



The Pedestal

Specialist auctions | Private sales | Online selling

Presenting The Pedestal Bespoke

- beautiful, unique pieces designed and made by British craftspeople, selected by The Pedestal and available to buy online.

Visit www.thepedestal.com/shop/the-pedestal-bespoke



Margaret O'Rourke reforming and joining fine porcelain bands in her studio

For further information on The Pedestal Bespoke or to discuss listing works at The Pedestal please email:

bespoke@thepedestal.com

TERMS AND CONDITIONS FOR AUCTION PURCHASERS

1. These Terms and Conditions apply to all transactions relating to the purchase of items by a bidder (referred to as “you”) at auction or as an auction after-sale by The Pedestal Limited, trading as The Pedestal (referred to as “we”), and may not be varied unless agreed in writing in advance by one of our directors. By registering to bid and/or bidding you accept these terms.
2. We act as agent for the seller whose identity we will not disclose, unless otherwise stated.
3. When we offer items for consignment at auction, we will usually include in the auction listing a description of the lot and an estimate of potential sale value. Upon request we may also supply a condition report, which will be based on a visual inspection of each lot without disassembly or further investigation of physical condition, and on information available to us at the time. All information is provided after due consideration and to the best of our knowledge and experience, but cannot be taken as a statement of fact, a guarantee or statement of value or a guarantee or statement that mechanical or electrical parts are functioning correctly or at all.
4. All measurements provided are approximate. Colours of any image depicted in any printed catalogue, on our website or otherwise may not appear the same as colours perceived on physical inspection.
5. Lots offered for sale will be available for viewing in person at such place and times as are advertised before the auction. We always recommend inspection in person.
6. A registration form will be available on our website, at the auction or upon request and must be completed in advance of the auction by anyone wishing to bid. You may also be required to provide proof of identity and proof of address unless you are already known to us. A separate fee may be levied and separate registration may be required for online bidding, whether on our own or a third party platform.
7. Commission bids may be refused unless they have been entered on our registration form and accepted in advance of the auction.
8. We may at our discretion accept bids from someone acting on behalf of a third party, subject to receiving a letter of authorisation which is satisfactory to us. In the event that such a bid is successful we reserve the right to treat either the bidder or the third party as the successful bidder for all purposes including as regards obtaining payment for the lot.
9. Auctions are conducted according to our discretion and that of our auctioneer. We may refuse to allow access to the auction, refuse or accept any bid, alter the order of lots and/or the bidding in such way as we think best, withdraw any lot, reopen bidding after the hammer has fallen, determine who is the successful bidder, cancel the sale of any lot or otherwise regulate the auction and all associated proceedings as we deem most appropriate. Our decision in relation to any dispute relating to bidding which may arise during or after the auction is final. We may (but are not obliged to) offer bidding in person, by commission bids left with us in advance of the auction, by telephone, or online via our own or a third party platform. We will not in any event be liable for any failure to take a bid whether caused by breakdown of communications technology or otherwise.
10. Both the auction as a whole and calls used for telephone bids may be recorded and such recordings may be retained by us and by participating in the same you consent to such recording and retention.
11. Most lots are offered subject to a reserve below which the lot will not be sold. The level of the reserve is confidential between ourselves and our seller but will not be higher than the lower estimate.
12. We may enter one or more bids consecutively or otherwise on behalf of the seller up to but not beyond the level of the reserve.
13. Subject only to the auctioneer’s discretion set out in clause 9 above, when the auctioneer’s hammer falls no further bids will be accepted and a contract for sale is formed between the successful bidder and ourselves as agent for the seller.
14. We will endeavour to send out invoices promptly by mail or email using the contact details supplied to us by the successful bidder. If you believe that you are the successful bidder for any lot but have not heard from us within three working days of the auction we recommend that you contact us to arrange collection and avoid potential storage charges.
15. We will charge a buyer’s fee of 25% on the first £50,000 of the hammer price of each lot, and 20% of any portion of such hammer price which is above £50,000, plus VAT.
16. Payment for each lot which you have purchased including all associated fees, charges and taxes is due no later than 7 calendar days after the auction. Payment can be made only by the registered bidder. Payment instructions will be given on the relevant invoice or invoices. Please note that we do not accept payment by credit card.
17. No lot will be released and legal title will not pass to you until we have received due payment in full of all sums owed to us by you. Risk in any lot for which you are the successful bidder will pass to you on the earlier of collection of the lot by you or on your behalf, or the due date for payment for such lot.
18. If you fail to make due payment for any lot we may, at our discretion and without limitation to other available remedies, charge you interest at the rate of 12% per annum; bring legal proceedings against you for the unpaid sum and all associated fees and costs including professional fees (“Unpaid Sums”); retain and sell ourselves or otherwise any other lots held by us which are your property or any sums otherwise payable by us to you and use such proceeds or sums to defray the Unpaid Sums; cancel the sale, re-offer the lot and claim any shortfall and any associated costs from you; and/or pass your identity and contact details to the seller so that they can pursue legal remedies against you directly.
19. All lots must be collected from our shipper as notified to you in the auction catalogue and otherwise, within 14 days after the auction. Storage and handling fees will be charged in relation to lots left uncollected after that date at the shipper’s standard rates from time to time. Any lots not collected within 90 days after the auction may be sold by us at our discretion, with the proceeds applied to cover all Unpaid Sums including storage and handling charges. In this event any surplus will be paid over to you, and we will claim any shortfall from you as an Unpaid Sum.
20. A lot which has been collected from our warehouse by you or a shipper acting on your behalf is deemed to have been delivered to you by us at the time of such collection.
21. Lots which we believe to be covered by the CITES regulations will be marked with ¥ in our catalogue, but we are not responsible for advising you on any import/export issues including without limitation CITES or the like, and customs and import fees and the like. We recommend that you acquaint yourself with any relevant issues before bidding, as we cannot accept liability for any information which we may provide you with. If you purchase a lot requiring an export license it is your responsibility to obtain it, and we cannot accept rescission of the sale or offer a refund if you are unable to so obtain a permit.
22. Each seller warrants that they are the legal owner of the lot and/or have the unencumbered right to sell the lot at auction and to pass title to the successful bidder. The seller shall not be liable in the event of breach of this warranty for any amount greater than the hammer price of the lot in question. We may be liable only to the successful bidder in the event of fraud or fraudulent misrepresentation by us and exclude all other liability to such bidder and all third parties to the fullest extent permitted by law. Nothing herein shall limit your rights if any under the Consumer Contracts Regulations, or exclude our liability for death or personal injury caused by our negligence.
23. General Terms:
 - a. These terms are made and must be construed under English law and any disputes arising from them or from the Contract will be subject to the exclusive jurisdiction of the courts of England and Wales.
 - b. All charges, fees, premiums and any other sums referred to herein or arising herefrom are stated net of Value Added Tax but are subject to VAT or the like at the rate or rates prevailing at the time of any transaction. VAT is not chargeable on the hammer price unless otherwise stated.
 - c. We will hold and process your personal data according to the conditions, for the reasons and on the bases set out in our Privacy Policy which you may access here, and as envisaged by these terms and conditions.
 - d. We retain copyright in all images and written and other materials prepared by us, which may not be used by you without our prior written consent.





Enquiries:
The Pedestal
The Dairy,
Stonor Park,
Henley-on-Thames,
Oxfordshire, RG9 6HF
Tel: 0207 281 2790