



£6 incl VAT
when sold in paper format

Available free by email upon application to:
enquiries@transportauctionslondon.com



A sale of Transport Collectables: Underground, Railwayana, Bus, Tram & Trolleybus

Enamel signs & plates, maps, posters, badges, destination blinds, timetables, ticket machines, relics etc

Saturday 30th January 2021 at 10.00 am

to be held online with audio/visual link-up

Bidding either live online or by telephone, post or email

Remote viewing by video by appointment from 25th-29th January 2021

website: www.transportauctionslondon.com

email: enquiries@transportauctionslondon.com

TRANSPORT AUCTIONS OF LONDON LTD

TERMS AND CONDITIONS OF SALES

Transport Auctions of London Ltd is hereinafter referred to as the Auctioneer and includes any person acting upon the Auctioneer's authority.

1. General Conditions of Sale

- a. During COVID-19 restrictions, lots may be viewed remotely via video by appointment during the week before the sale and appointments can be booked on the Auctioneer's website.
- b. All persons on the premises of, or at a venue hired or borrowed by, the Auctioneer are there at their own risk.
- c. Such persons shall have no claim against the Auctioneer in respect of any accident, injury or damage howsoever caused nor in respect of cancellation or postponement of the sale.
- d. The Auctioneer reserves the right of admission.
- e. For security reasons, bags are not allowed in the viewing room.
- f. Persons handling lots do so at their own risk and shall make good all loss or damage howsoever sustained, such estimate of cost to be assessed by the Auctioneer whose decision shall be final.

2. Catalogue

- a. The Auctioneer acts as agent only and shall not be responsible for any default on the part of a vendor or buyer.
- b. Lots are sold as seen and The Sale of Goods Act (1979), The Consumer Rights Act (2015) and The Consumer Contracts Regulations (2013) do not apply.
- c. All descriptions of auction lots, including the condition and estimated value of items, whether printed or oral, are given in good faith and are statements of opinion not fact. Any comments on any lots must be made to the Auctioneer at least 24 hours before the start of the auction.
- d. Lots are sold with all imperfections and/or faults and neither the Auctioneer nor the vendor is responsible for any defects whatsoever.
- e. No warranty is given or implied by the Auctioneer or the vendor with regard to any lot other than that the Seller has the right to sell it and any express or implied conditions or warranties whether relating to condition or quality are hereby excluded.
- f. Intending purchasers should satisfy themselves as to the condition, age, provenance etc of all pieces and lots before they bid.

3. Conditions of Sale - vendors

- a. A commission charge of 18% (15% + VAT) of the hammer price or £12 (£10 + VAT), whichever is the greater, will be deducted from the selling prices and the vendor authorises the Auctioneer to deduct all monies due to the Auctioneer from the auction proceeds.
- b. Reserve prices may be set by the vendor (minimum £75). Unless otherwise instructed by the vendor, the Auctioneer may use discretion to sell a lot at up to 10% below vendor's reserve. If a lot does not sell, an administration charge of 18% (15% + VAT) of the reserve or £12 (£10 + VAT), whichever is the greater, will be incurred.
- c. Where a lot is entered without a vendor's reserve, the Auctioneer will set a suitable reserve. In the event of such a lot not selling, the administration charge for an unsold lot will not apply.
- d. All lots are sold at the Auctioneer's discretion unless written instructions to the contrary are received from the vendor at least 48 hours prior to the starting time of the sale (responsibility for receipt of such instructions rests with the vendor) and, in the event that a lot is so withdrawn, an administration charge of £12 (£10 + VAT) or 18% (15% + VAT) of the reserve, whichever is the greater, will be levied.
- e. The closing date for entries is six weeks before the sale date or when the full number of lots has been achieved, if earlier. The Auctioneer reserves the right to defer items to a later sale where either the maximum number of lots has already been reached or where, in the Auctioneer's opinion, earlier inclusion would result in an imbalance of lots on offer.
- f. The vendor warrants to the Auctioneer that he/she is the true owner of the items entered (or has written authorisation from the true owner to sell the items) and that he/she has given the Auctioneer full disclosure of the provenance & authenticity of the said items and the vendor indemnifies the Auctioneer together with his servants and agents against all and any claim made in connection with the sale of the said items.
- g. The vendor shall arrange to collect unsold or withdrawn lots within 28 days of the sale unless the Auctioneer has agreed to re-enter them in a subsequent sale and, unless otherwise agreed by prior arrangement, any unsold or withdrawn lots not collected within 28 days shall incur a storage charge of £2.40 inclusive per day. Lots not collected after 3 months will be sold for the Auctioneer's account without further notification to the vendor.
- h. Unsold or withdrawn lots will not be released until all outstanding charges have been settled in full.
- i. Any offers for lots after the sale are only to be negotiated through the Auctioneer and any sale thereafter of items which have been viewed through the Auctioneer's catalogues, viewing days, advertising or internet sites is deemed to be transacted by the Auctioneer and full vendor's and buyer's commissions are payable by the vendor.
- j. Payment of the proceeds of the sale less all applicable charges will be made to the vendor's bank account within 28 working days after the auction date, provided that the Auctioneer has received full payment from the purchaser. The Auctioneer shall not be liable for settlement of any lot for which he is not in possession of cleared funds.
- k. In the event of any disputes relating to a lot, the Auctioneer reserves the right to cancel the sale of said lot. The vendor will be responsible for collection of the lot.
- l. Goods entered into the auctions are so done at the vendor's own risk and, while every reasonable effort will be made by the Auctioneer to look after such goods, the vendor accepts that the Auctioneer is not liable for any damage or loss to the vendor's items while in the Auctioneer's possession.
- m. Vendors are not permitted to bid for their own lots.

4. Conditions of Sale - buyers

- a.** In making a bid for any lot, whether in person or otherwise, all persons acknowledge that they have read, understand and abide by these Terms and Conditions of Sale and the bidder acknowledges that he/she has satisfied him/herself fully before bidding, by inspection or otherwise, as to the condition of such lot.
- b.** Each bid is an offer to buy and a winning bid forms an irrevocable commitment to purchase the lot concerned.
- c.** Responsibility for a purchased lot shall pass to the buyer at the fall of the hammer; however, legal title shall not pass until the Auctioneer is in possession of cleared funds in payment for that lot.
- d.** The buyer will pay to the Auctioneer the hammer price together with a buyer's premium calculated at the rate of 18% inclusive for bids lodged directly with the Auctioneer on commission or by telephone, 20.4% inclusive for online bids from buyers registered to bid on the Auctioneer's website or 23.94% inclusive for online bids from buyers registered to bid on the-saleroom.com.
- e.** All lots must be paid for in full within 5 working days of the sale except where agreed otherwise by the Auctioneer in advance in writing. Overdue accounts will be charged interest at 6% pa inclusive.
- f.** All lots must be collected by or on behalf of the buyer by appointment from the Auctioneer's Edenbridge premises within 10 working days of the sale except where agreed otherwise by the Auctioneer in advance in writing.
- g.** No lot(s) may be removed until cleared funds are to hand except where agreed by the Auctioneer in writing.
- h.** Uncollected lots after 10 working days will incur a daily storage charge of £2.40 inclusive per lot thenceforth. Uncollected lots after 3 months, whether paid for or not, will be sold for the Auctioneer's account without further notification to the buyer.

5. The Auction Process

- a.** Bids may be made online by prior registration for the sale on the Auctioneer's website or by post or by email, using the Auctioneer's Commission Bid Form, or by telephone, using the Auctioneer's Telephone Bid Form, or online at www.the-saleroom.com (see 4 (d) for applicable fees).
- b.** The Auctioneer reserves the right:
 - (i) to accept or refuse any bid(s), (ii) to regulate the bidding and amounts of any bid(s) and (iii) to rearrange, consolidate or withdraw any lot(s) or part of any lot without reason or notice.
- c.** At the fall of the hammer, the highest bidder, acceptable to the Auctioneer, shall be the buyer of the lot.
- d.** In the event of a dispute, the Auctioneer has absolute discretion to settle such dispute.
- e.** While auctions are held online only, payment is only accepted by bank transfer or by debit-card or credit-card. Business credit-cards and debit-cards issued in the UK/EU/EEA will incur an additional charge of 2% + VAT of the total amount payable, non-EU/EEA consumer (personal) credit-cards and debit-cards an additional charge of 3.5% + VAT and non-EU/EEA business credit-cards and debit-cards an additional charge of 4.5% + VAT. Cheques are not accepted.
- f.** Commission bids may be left with the Auctioneer by lodging a completed Commission Bid form by the deadline stated on the form. Commission bids will be executed by the Auctioneer as cheaply as possible on a best-efforts basis and without obligation and the Auctioneer shall not be responsible for any neglect or default in executing or failing to execute any commission bid.
- g.** Bidding by telephone is available subject to a minimum bid of £100 per lot and by lodging a completed Telephone Bid form by the deadline stated on the form. Telephone bids will be accepted by the Auctioneer on a best-efforts basis and without obligation and the Auctioneer shall not be responsible for any neglect or default in executing or failing to execute any telephone bid.
- h.** The buyer of each lot shall be the person making the highest bid which is acceptable to the Auctioneer. In the event of an equal maximum bid for any lot between a commission bid and a live online bid, the commission bid will take preference. In the event of two or more commission bids being equal, the first one received takes preference.
- i.** Estimated values of lots are provided as a guide as to what price the lot may attain, based on previous auction results and the Auctioneer's knowledge of the prevailing market. These are indications provided in good faith but as statements of opinion rather than facts.
- j.** Lots will be sold in numerical order (unless otherwise stated) at a rate of between 80 and 100 lots per hour.
- k.** The Auctioneer does not pack or ship lots. Buyers should collect their purchases or arrange for their own courier to do so. Collection is by booked appointment from the Auctioneer's storage location in Edenbridge, Kent and appointments may be made on the Auctioneer's website up until close of business on the day before the requested date. Upon request, the Auctioneer can put buyers in touch with a shipping agent who will collect, pack and ship on the buyer's behalf. Such arrangements will form a separate contract between the buyer and the shipper and the buyer will pay the shipping costs directly to the shipper. Safe transit of purchases by personal collection, courier or shipper is at the sole risk of the purchaser.
- l.** All transactions associated with this auction sale shall be governed by English law.

TRANSPORT AUCTIONS OF LONDON LIMITED

Hamilton House, 87-89 Bell Street,

Reigate RH2 7AN

Tel: 01737 237500

enquiries@transportauctionslondon.com

www.transportauctionslondon.com

Registered in England & Wales. Company no. 09773357

Registered Address: Hamilton House, 87-89 Bell Street, Reigate RH2 7AN



Thinking of selling your transport items? We will do everything for you!

We are the South of England's Specialist Auction House for

TRANSPORT COLLECTABLES & RAILWAYANA



- A friendly, professional and reliable service
- 4 sales a year, best prices achieved
- 3,100 catalogues distributed
- Prompt payments to vendors
- Free valuations, advice and guidance
- Collections can be arranged



Call or email us to discuss. All enquiries welcome, prompt replies.

enquiries@transportauctionslondon.com Tel: 01737 237505

www.transportauctionslondon.com

Registered Office: Transport Auctions of London Ltd, Hamilton House, 87-89 Bell Street, Reigate RH2 7AN
Registered in England & Wales. Company No. 9773357

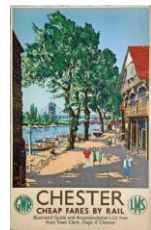
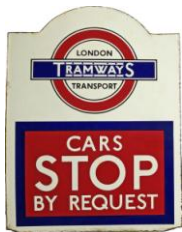


Dates of our next sales:

Saturday 8 May 2021

Saturday 31 July 2021

Saturday 30 October 2021



During the pandemic, sales are held online with audio-visual link-up
Live online bidding plus telephone bids and commission bids by email or post
Sales start at 10am, viewing available by appointment during week before sale
(If lockdown is in force, viewing is by video link)

To join our catalogue mailing list, email us or subscribe via our website

enquiries@transportauctionslondon.com Tel: 01737 237505

www.transportauctionslondon.com

Facebook: [transportauctionsoflondon](https://www.facebook.com/transportauctionsoflondon) Twitter: @TranspAuctions

Transport Auctions of London Ltd

Registered Office: Hamilton House, 87-89 Bell Street, Reigate RH2 7AN
Registered in England & Wales. Company No. 9773357

1

Selection (4) of London Transport coach stop enamel E-PLATES comprising 716A destined Stevenage (good condition, very good once cleaned), 716/716A (very good condition) plus two damaged examples: 716A destined Marble Arch, Kingston, Woking and 719 destined Hemel Hempstead via Garston. [4]

Estimate: £140 to £160



6

Quantity (23) of 1920s-1950 Underground Group Tramways and London Transport POCKET MAPS for Trams and Trams & Trolleybuses. Condition ranges from well-used to good/very good. [23]

Estimate: £120 to £140



2

Pair of WW2 London Underground diagrammatic, card POCKET MAPS by Henry Beck and comprising issues No 1 1943 and No 1 1945. In good to very good condition, lightly used. [2]

Estimate: £140 to £160



7

Quantity (42) of 1930s-2000s London Underground POCKET MAPS. Includes a 'Stingmore' (heavily used) and various Beck issues from 1936-1960. Condition ranges from heavily used to very good. [42]

Estimate: £140 to £180



3

Selection (13) of London Transport brass VEHICLE TAGS, mainly Routemaster, and comprising tags for RMs 154, 277, 523, 1188, 1614, 1809, and 2819 plus A-frame A1997, various sub-codes and a pair of Metrobus 2M2 tags. All in ex-use condition. [13]

Estimate: £90 to £110



8

Selection (4) of 1950s British Railways cast-iron WAGON PLATES comprising a larger type 'Fairfield S & E, 21T, 1958' and three smaller examples: 2 x Metro-Cammell 1956 and a BR Derby 1981. All in very good condition, appear to have been repainted. [4]

Estimate: £80 to £100



4

Large quantity (150+) of 1920s-1970s London Transport POCKET MAPS (mainly bus), LEAFLETS, TIMETABLE BOOKLETS, PANEL TIMETABLES etc. Huge variety, little, if any, duplication. Some early issues are well used, most are in good to very good condition. [150+]

Estimate: £140 to £180



9

London Transport Routemaster bonnet FLEETNUMBER PLATE from RM 374. RM 374 entered service at Highgate (HT) garage in 1960 on route 271, replacing trolleybuses on the 611, and, after several identity changes, was reunited with its original one in 1982. It finished service at Wood Green (WN) garage in 1985 and was scrapped that year. Comes with the backing plate and hinges and is in very good, ex-vehicle condition. [1]

Estimate: £120 to £140



5

Quantity (60+) of London Transport 1930s-1970s POCKET MAPS of Green Line Coaches and Country Area Buses. Some are in well-used condition but most are good to very good. No duplication noted. [60+]

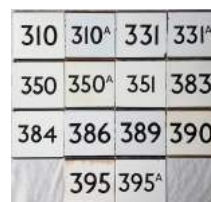
Estimate: £90 to £100



10

Selection (14) of London Transport bus stop enamel E-PLATES, all from the northern Country Area and comprising routes 310, 310A, 331, 331A, 350, 350A, 351, 383, 384, 386, 389, 390, 395 & 395A. Mostly in very good, ex-use condition. [14]

Estimate: £160 to £200



11

Large quantity (approx 1,800) of b&w, mainly postcard-size BUS, COACH, TRAM & TROLLEYBUS PHOTOGRAPHS (a handful of lorries, ships and commercial postcards included) from a wide range of operators across the UK, mainly non-London. Generally good quality photos, many by well-known transport photographers. The period appears to be mainly 1950s-1970s. [approx 1,800]



Estimate: £180 to £220

15

2 large albums of loose-mounted PHOTOGRAPHS/POSTCARDS compiled by the late Alan A Jackson, historian & transport author, portraying transport etc developments from the late 19th century onwards with captioned photos & commercial postcards. Depending on area, subjects include trains, stations, buses, trams, streets, buildings etc. These albums cover Acton and Brentford & Chiswick incl Acton Works. Albums contain 37 & 49 double-pages and very approx 340 pictures. [2]



Estimate: £180 to £220

12

Box of Great Western Railway (GWR) RELICS (some marked GWR, some not but said by vendor to be so) comprising a pressure paraffin hand-lamp, motor-vehicle horn (rubber bulb is perished), GWR Swindon Refreshments souvenir glass bottle with integral marble in neck, 2 wooden-handled axes, GWR Hotels flagon, saucepan & ladle, tie, 2012 QEII Jubilee souvenir pocket watch by Deacons & 2 small replica signs PLUS 2 replica enamel ADVERTISING SIGNS for Player's Navy Cut and Huntley & Palmers Ginger Nuts. All generally in good to very good condition. [14 items]



Estimate: £180 to £220

16

London Underground enamel PLATFORM SIGN from Bank Station on the Central & Northern lines. The name-bar from a roundel. Measures 23" x 3.5" (58cm x 9cm) and is in excellent, ex-use condition with just very minor blemishes. [1]

BANK

Estimate: £90 to £110

13

London Transport RT-bus BONNET FLEETNUMBER PLATE from RT 1072. The first bus to carry this number, a green 'Country Area' RT, entered service at Leatherhead (LH) garage in 1949. In 1965, the identity was given to a red RT, the last RT 1072, and this one finished service at Southall (HW) garage in 1970 and was scrapped that year. In ex-vehicle condition with some weathering to the varnish. [1]



Estimate: £90 to £110

17

Pair of Almex 'A' TICKET MACHINES, the first is casing no 2752, s/n 250047, prints ticket for 'Express Lines', comes with correct, metal box, back-plate with strap, spare ink-ribbon & rolls. The other is casing no 2152, s/n 103642, possibly ex-London Country, handle operates but ticket doesn't push through. [2]



Estimate: £120 to £140

14

2 large albums of loose-mounted PHOTOGRAPHS/POSTCARDS compiled by the late Alan A Jackson, historian & transport author, portraying transport etc developments from the late 19th century onwards with captioned photos & commercial postcards. Depending on area, subjects include trains, stations, buses, trams, streets, buildings etc. These albums cover Staines, Sunbury, Feltham etc and Twickenham, Teddington, Hampton Wick etc. Albums contain 67 & 54 double-pages and very approx 450 pictures. [2]



Estimate: £200 to £300

18

1923 London Underground MAP of the Electric Railways of London "What to see and how to travel". Designed by MacDonald Gill with his distinctive style of calligraphy and map border, this is the issue dated 1/1/23 and the version thereof which shows the British Empire Exhibition stations with red dots. Lightly-used with a little creasing, a small edge-loss and a couple of age-spots but overall a good example. [1]



Estimate: £120 to £140

19

Selection (4) of 1970s/80s BUS STOP FLAGS comprising London Country, Green Line, Essex CC (incl London Transport service) and Surrey CC. All are in very good condition. They measure 12-15" (30-38cm) across with varying heights. [4]

Estimate: £90 to £110



24

3 sections of Railway & London Tube SEAT MOQUETTE comprising c.1 metre of Bakerloo Line 72 Tube Stock, c.5 metres of Network South East 1st-class Brown Donkey Stripe and c.4 metres of South-West Trains Standard Class. All are unused sections, as new. [approx 10 metres]

Estimate: £90 to £110



20

London Transport coach stop enamel E-PLATE for Green Line route 716A destined Hyde Park Corner, Hatfield, Stevenage. Only one pair of these were recorded - at Hampton Court. A most uncommon plate. In very good ex-use condition. [1]

Estimate: £280 to £320



25

Approx 4.5 metres of London Transport SEAT MOQUETTE designed by Misha Black and used on the District Line D78 Stock, 1983 Tube Stock and Leyland Titan and MCW Metrobus buses. As new, unused. [approx 4.5 metres]

Estimate: £90 to £110



21

Very large quantity (250) of UNIFORM TIES from a wide variety of UK transport operators, mainly bus and mainly 1980s period. Many are in their original packaging, the rest appear unused though this is not guaranteed. Huge variety of operators, also considerable duplication, mainly of Alder Valley examples. [250]

Estimate: £150 to £200



26

1950s/60s London Transport enamel BUS STOP FLAG, the 'request' version. A double-sided, hollow, 'boat'-style flag measuring 18" x 16" (46cm x 41cm). In very good, ex-use condition with minor blemishes only. [1]

Estimate: £90 to £110



22

Pair of 1925 London Underground linen-card POCKET MAPS from the Stingemore-designed series of 1925-32, both are the first editions dated 11.5.25 and are well-used examples with wear, stains and a small annotation on one. [2]

Estimate: £90 to £110



27

1950s/60s London Transport enamel BUS STOP FLAG, the 'compulsory' version. A double-sided, hollow, 'boat'-style flag measuring 18" x 16" (46cm x 41cm). A few small chips in places but overall in good, ex-use condition. [1]

Estimate: £90 to £110



23

1921 London Underground MAP OF THE ELECTRIC RAILWAYS OF LONDON 'What to See & How to Travel' with issue date 9-3-21. Designed by MacDonald Gill with a blue decorative border and calligraphed station names, the map opens out to 13.5" x 10.5" (34 x 27cm). A reasonable example, a bit fragile at the folds with short partings, a little edge-wear, somewhat age-darkened. [1]

Estimate: £90 to £110



28

Bundle (32 items) of (mainly) 1930s-60s TIMETABLE & PUBLICITY BOOKLETS. Includes Country Bus Officials Timetables from 1939, 1941 & 1946 plus a wide variety of other publications incl Strolls & Rambles, Visitors' London, Country Walks, timetables for Green Line, Underground, London Country Buses. Some are well-used but most are good to very good. [32]

Estimate: £120 to £140



29

Bundle (41) of 1930s-60s London Transport LOCAL ROAD & RAIL TIMETABLE BOOKLETS. A wide variety of areas. A few are well-used but most are good to very good. [41]

Estimate: £100 to £120



34

1941 WW2 German MAP of the Railways of Great Britain and Ireland. Published in August 1941. Opens out to 35" x 47" (89 x 119cm), scale 1:1,000,000. A very detailed map with an index of stations on the reverse. Inset maps of greater London, Newcastle-Middlesborough region, Central Scotland, the conurbations of Lancashire and Yorkshire and the Midlands. Probably prepared for the use of Nazi spies in the UK. Some wear at the folds but generally in good condition. [1]



Estimate: £90 to £110

30

London Transport bus stop enamel E-PLATE for route 210, a double-vertical plate annotated 'Mon-Sat, Golders Green, Highgate, Finsbury Park'. This would have been one of a unique pair located at Brent Cross Shopping Centre. In very good, ex-use condition. [1]

Estimate: £140 to £160



35

1933 first edition of the H.C. Beck London Underground diagrammatic card POCKET MAP with the famous cover slogan "A new design for an old map....." A lightly-used example with slight signs of wear & age-spotting but overall in very good condition. [1]



Estimate: £1000 to £1200

31

c1920s/30s Metropolitan Railway LONG SERVICE MEDAL issued to H Perkins for 40 years' service. Enamel on gold-coloured base-metal, showing the company's coat of arms and the recipient's name on the reverse. Comes with its original box and the medal is in 'as new' condition. [1]

Estimate: £60 to £70



36

Pair of London Transport enamel BUS STOP FLAGS (One Request, one Compulsory). Mid-1990s type, E6-size, double-sided, hollow, 'boat'-type flags with space for 6 route numbers (E-stickers) on each side. A selection of 12 unused stickers is included. These are examples of the first of these new-style flags which, at the time, were still designed to take route stickers although they were quickly superseded by a re-design to take plastic tiles. They measure 18" x 26" (46cm x 66cm) and are in excellent condition, hardly a blemish. [2]



Estimate: £120 to £140

32

Bundle of 1870s onwards RAILWAY EPHEMERA comprising 1899 GWR/LSWR Royal Train timetables, 1870s/80s GWR letters re Severn Tunnel, 1885 GWR loco purchase agreement, 1889 Met Rlyw Chesham extension papers (incl 1989 centenary brochure), 1914 L&Y and NER Belgian advertising card for Zeebrugge to Hull service and 1933 first-day postal cover & stamp for GWR Air Mail service Birmingham to Torquay. [12 items]

Estimate: £120 to £140



37

Quantity (c50) of 1930-32 London General Omnibus Company TRAFFIC CIRCULARS. All appear to be different. Having been printed on low-quality paper, these are showing their age and are somewhat fragile with some loose pages etc. [c50]



Estimate: £80 to £100

33

Selection (5) of bus etc SIGNAGE comprising 2 different 1970s London Country Buses perspex double-sided BUS STOP FLAGS, a tin 'Buses to City Centre' BUS STOP FLAG, a tin BUS INTERIOR NOTICE re tickets, private hire, Royal Blue Coaches and a small enamel Borough of Swindon SIGN re dog-fouling and refuse/litter. Generally in good to very good, ex-use condition. [5]

Estimate: £90 to £110



38

Quantity (approx 150) of c1910-1930s London General Omnibus Company etc PUNCH TICKETS. A good variety of routes and values, includes a handful of early, horse-bus issues and a few examples from independents, LUT trams etc. Mostly in very good, ex-use condition. Part of the Peter Bloxam collection of 1920s-onwards tickets being offered in this and our previous sale. [c150]



Estimate: £90 to £110

42

Collection (43) of 1930s/40s fold-out BUS ROUTE MAPS from operators across the UK. Ex-the Aldershot & District Head Office archive and believed to have been part of a wartime initiative by the Ministry of War Transport to distribute a national database of such information to all bus operators in an effort to avoid duplication and fuel wastage. Generally in good to very good condition, filing punch-holes at the margins. [43]



Estimate: £120 to £140

39

Large quantity (500+) of 1920s-70s (mostly 1940s/50s) London Underground TICKETS. Various types such as Edmondson card (incl severed halves) and rapid printer plus a few season tickets. A handful of pre-LPTB examples are included. Mostly in very good, ex-use condition. Part of the Peter Bloxam collection of 1920s-onwards tickets being offered in this and our previous sale. [500+]



Estimate: £180 to £220

43

Large quantity (250+) of Aldershot & District/Alder Valley b&w NEGATIVES, PHOTOGRAPHS & SLIDES, all official views and ex-the Head Office archive. Approx 140 120-size negatives & glass slides of vehicles and properties, mainly appear to be 1950s, some earlier, plus approx 50 35mm colour slides (c1970s/80s publicity shots), approx 50 b&w photos, c1950s/60s plus a company album of publicity photos, c1970s/80s. All appear to be in very good condition. [250+]



Estimate: £120 to £140

40

London Transport coach stop enamel E-PLATE for Green Line route 716 destined Richmond, Kingston, Chertsey. Only one pair of these were recorded - at Marble Arch. A most uncommon plate. In very good ex-use condition. [1]



Estimate: £280 to £320

44

1932 London Underground linen-card POCKET MAP from the Stingemore-designed series of 1925-32. This is the last issue (the final pre-Beck Underground map) with mustard cover and showing all the line extensions completed with opening dates on the reverse. A little age-stained in places but overall a very decent example. [1]



Estimate: £110 to £130

41

Two bound double-volumes of the LONDON TRANSPORT MAGAZINE comprising volumes 6, 7, 8 & 9 from April 1952 - February 1956. These may have been 'officially' bound into hard covers, the spines read 'Pennyfare', the previous name of the LT Magazine. Slight wear to the hard covers, the contents are generally excellent. [2]



Estimate: £80 to £100

45

London Underground enamel O/P/Q-Stock CAB DESTINATION PLATE 'Aldgate / Edgware Rd' from the Hammersmith & City Line. A double-sided sign with brass ends. In ex-use condition. [1]



Estimate: £120 to £140

46

London Underground CO/CP Stock enamel DESTINATION PLATE for Harrow (Wealdstone)/Watford (LMS) on the Metropolitan Line. Double-sided, reversible, with brass ends. In very good, ex-use condition. [1]



Estimate: £160 to £200

50

London Transport bus stop enamel E-PLATE for route 298 Mon-Sat and destined Cockfosters, Potters Bar, South Mimms. This dates from the introduction of the route in 1968 until 1970 when it was withdrawn north of Cockfosters. It is likely to have been located at Turnpike Lane or Southgate Station. Small blemishes at the edges but generally in very good, ex-use condition. [1]



Estimate: £120 to £160

47

East Kent Road Car REAR REGISTRATION PLATE & STOP SIGNS UNIT from 1959 AEC Regent V PFN 877. The complete, glazed unit, designed to be back-lit. Withdrawn in 1971, the bus then worked for Ward, Epping and was finally scrapped in 1978. In very good, ex-vehicle condition. [1]



Estimate: £90 to £110

51

Selection (3) of Great Western Railway (GWR) items comprising 1885 Official Illustrated GUIDE to the Great Western Railway - 390pp with fold-out maps (well-used, wear & stains to covers, one map is loose), 1886 Great Western & Cornwall Railways SERVICE TIMETABLES, Exeter to Penzance - 91pp booklet (reinforced spine but generally very good) and an 1892 CARD of an extract from the GWR Board Meeting reporting the satisfactory completion of the broad gauge conversion and issued to employees with thanks (small tear, otherwise good). [3]



Estimate: £140 to £180

48

London Transport RT bus BONNET FLEETNUMBER PLATE plus matching REAR REGISTRATION PLATE LLU 660 (fibreglass) from RT 3861. The original RT 3861, a green 'Country' bus, entered service at Windsor (WR) garage in 1950. From 1960, the number was allocated to a red RT and the last bus to carry this number finished service at North Street, Romford (NS) garage in 1975 and was scrapped that year. Both items are in good, ex-vehicle condition. [2]



Estimate: £120 to £140

52

Selection (7) of Great Western Railway large TIMETABLE BOOKLETS comprising Jul-Sep 1925 (with fold-out map), 'National Emergency' issues of Sep 1939 and Feb 1940 plus Oct 1942, May 1943, Oct 1945 and Oct 1946. Some wear, mainly to the covers but generally good. [7]



Estimate: £140 to £180

49

Selection (4) of London Tramways ephemera comprising 3 POCKETS MAPS: LCC Trams Spring 1918 & 1919 editions (both in excellent condition) and Underground Group Tramways May to September (1921) (in good condition with a little foxing and age-darkening) plus a c1910-15 LCC Tramways LEAFLET for Cheap Return Fares (reasonable condition, some fold-parts). [4]



Estimate: £90 to £110

53

Large quantity (55+) of 1920s onwards RAILWAY EPHEMERA incl guidebooks (Rambles, Holidays, 'Through the Window' etc) from all the 'Big 4' companies, Coronation Scot & Royal Scot booklets, GWR fold-out maps plus a miscellany of other publicity items, working timetables, SR 'Over the Points' magazines, technical reports etc. Huge variety. Mostly in good to very good condition. [55+ items]



Estimate: £140 to £180

54

Selection (5) of 1950s-80s BUS STOP FLAGS, all double-sided and comprising 'Omnibuses stop by request' (enamel), 'Form queue this/other side' (alloy), Colchester Borough Transport (alloy), East Kent Buses (plastic) and East Yorkshire Motor Services (alloy). They measure 12-13" (31-33cm) across with varying depths. In good to very good, ex-use condition. [5]



Estimate: £120 to £140

58

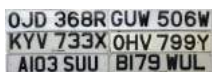
2 large albums of loose-mounted PHOTOGRAPHS/POSTCARDS compiled by the late Alan A Jackson, historian & transport author, portraying transport etc developments from the late 19th century onwards with captioned photos & commercial postcards. Depending on area, subjects include trains, stations, buses, trams, streets, buildings etc. These albums cover Hendon, Edgware, Mill Hill, Colindale etc and Finchley. Albums contain 41 & 58 double-pages and very approx 390 pictures. [2]



Estimate: £200 to £240

55

Selection (6) of London Bus FRONT REGISTRATION PLATES comprising OJD 368R (1977 DMS 2368), GUW 506W (1981 LS 506, later GLS 506), KYV 733X (1982 M 733), OHV 799Y (1983 T 799), A103 SUU (1984 V 3, plate is from its time with Black Prince) and B179 WUL (1985 M 1179). All are in very good, ex-use condition. [6]



Estimate: £90 to £110

59

Folder of 1990s CROYDON TRAMLINK MATERIAL - brochures, pamphlets, leaflets, newsletters etc, all to do with the consultation, construction and opening periods. A large quantity of items, all in very good condition.



Estimate: £80 to £90

56

c1930s/40s London Transport SIGN 'CHECK POINT', believed to have been used for special bus services at locations such as Epsom Downs Races and Ascot Races. A wooden sign, featuring the pre-WW2 LT 'bullseye', with metal spiked legs for insertion into the ground. The sign measures 17" x 10" (43cm x 25cm) and stands 22" (56cm) high. Well used but generally in good condition. [1]



Estimate: £70 to £90

60

Pair of London Transport/London Country coach stop enamel E-PLATES for Green Line route 715A, one in each direction, the first destined Saturday, Ripley, Guildford (these were recorded between Kingston and Cobham) and the second Saturday, Hertford (these were recorded between Palmers Green and Hoddesdon). Both are in very good, ex-use condition with minor blemishes. [2]



Estimate: £140 to £160

57

2 large albums of loose-mounted PHOTOGRAPHS/POSTCARDS compiled by the late Alan A Jackson, historian & transport author, portraying transport etc developments from the late 19th century onwards with captioned photos & commercial postcards. Depending on area, subjects include trains, stations, buses, trams, streets, buildings etc. These albums cover Hendon, Cricklewood, Golders Green etc and Edmonton. Albums contain 34 & 26 double-pages and very approx 240 pictures. [2]



Estimate: £180 to £220

61

Selection (9) of 1930s-60s London Underground card, diagrammatic POCKET MAPS comprising issues No 2 1935 (well-used, stains), No 1 1937 (age-spots, otherwise good), No 1 1941 (couple of age-spots, otherwise good), No 2 1941 (well-used, short splits), No 1 1945 (very good), No 1 1946 (very good), Jan 1950 (very good), Jan 1953 (very good) and 1961 - 561 (very good). [9]



Estimate: £140 to £160

62

Bell Punch TICKET MACHINE (s/n 81763) with backing plate plus a London Transport wooden TICKET RACK with part-used LT ticket packs. The Bell Punch machines were in common use from the 1890s-1950s. Both items in good, ex-use condition, the machine punches and rings. [2]



Estimate: £120 to £140

67

Selection (4) of London Transport Tramways FARECHARTS, all double-sided card issues and comprising routes 8-20, 22-24/10, 16-18 dated October 1950, routes 36-38/40 dated June 1948, routes 44 & 46/54 dated July 1948/January 1947 and routes 52, 54/72, 74 dated October 1950. In varying degrees of used condition but still very reasonable overall. [4]



Estimate: £120 to £140

63

Bundle (15) of 1920s-60s Bus etc TIMETABLE BOOKLETS etc incl c1925 Daily Express Motor Char-a-Banc Guide, 1935 Thackray's Way Time Tables, 1935 & 1952 Guildford & District ABC Guides, Aldershot & District 1941 Official Fare Tables & Oct 1943 Official Time Table and 8 x 1940s-60s Thames Valley Time Tables plus a 1950s Information Folder. Mostly in used to good condition. [15]



Estimate: £180 to £220

68

Large quantity (54) of Bristol Omnibus Company bus FLEETNUMBER PLATES etc. These would have been affixed to company buses and coaches such as Bristol RE, LH, FLF types etc. In varying states of ex-use condition. [54]



Estimate: £140 to £180

64

Pair of London Transport coach stop enamel E-PLATES for Green Line route 721, one in each direction, the first destined Aldgate and the second Romford, Brentwood. The latter has a couple of small chips to the face, otherwise both are in good, ex-use condition. [2]



Estimate: £180 to £220

69

London Transport bus bonnet FLEETNUMBER PLATE from STL 1076, a standard, AEC Regent STL. The original STL 1076 entered service at Hackney (H) garage in 1936 and the last bus to carry this number was withdrawn from Athol Street (C) garage in 1950 and scrapped that year. The plate is in ex-vehicle/ex-scrapyard condition and is suffering from some peeling of the paintwork. [1]



Estimate: £100 to £120

65

Trio of London Transport TROLLEYBUS FARECHARTS comprising a single-sided, paper issue for routes 517/617 dated January 1947 (marked 'proof' in the print-code, has extra margin) plus double-sided, card versions for routes 555/677 & 581, undated but carries 1958/59 'first & last' stickers, and routes 627 & 653 dated 8.5.60. Some marks of use and age but generally in good condition. [3]



Estimate: £100 to £120

70

London Transport bus stop enamel E-PLATE for route 165 destined Romford, Havering Park. Location unknown but possibly the Rainham terminus. In very good, ex-use condition. [1]



Estimate: £100 to £120

66

Trio of wartime London Transport TROLLEYBUS FARECHARTS, single-sided, paper issues comprising route 607 dated September 1940, route 609 dated March 1943 and routes 655/660 dated April 1943. Generally in very good condition. [3]



Estimate: £120 to £140

71

Bundle (24) of Green Line Coaches individual route TIMETABLE LEAFLETS etc including 7 x 1930 Green Line Coaches Limited single sheets, 14 x 1930s LT leaflets (incl Christmas issues), 1933 'Rambles' booklet plus a couple of later leaflets. Mostly in very good condition. [24]



Estimate: £120 to £140

72

Bundle (approx 90) of mainly 1930s-60s London Transport HOLIDAY TIMETABLES & mixed PUBLICITY LEAFLETS such as Rural Rides, Travel Guides, Museums, Village Life, 'A Day at...', Town & Country Houses etc. Nearly all are in very good condition. [approx 90]

Estimate: £90 to £110



77

Southern Railway enamel TARGET SIGN from Faygate (written by the SR as two words!) station on the former LB&SCR line between Littlehaven and Ifield, known as the Arun Valley or Mid-Sussex Line. Measures 28" x 13" (71cm x 33cm) and has some small areas of well-matched restoration, mainly at the edges, but presents very well overall. An uncommon sign. [1]



Estimate: £300 to £400

73

Selection (13 items) of London Transport BUS PLATES comprising 7 x enamel RT etc RADIATOR BADGES (the Green Line and TD/STD ones are after-market examples), 2 HUB/ROCKER COVER BADGES, one enamel, one perspex, a Park Royal Routemaster BODYBUILDER'S PLATE, a Weymann's RT BODYBUILDER'S PLATE and BRASS TAGS from RT 1621 and RM 164. Most items are in good to very good, ex-use condition. [13]



Estimate: £180 to £220

78

British Railways, Southern Region railwayana (2 items): a GROUND SHUNT SIGNAL 2-piece unit comprising a double-sided, aluminium signal plate and a cast-alloy backing boss (marked 'BTC SR') with coloured lenses plus a small screen-painted aluminium SIGN 'Warning not to trespass' with BR totem logo (sign measures 10" x 12" (26cm x 31cm). The latter is a rather uncommon sign. Items are in ex-use condition. [2]



Estimate: £90 to £110

74

Selection (6 items) of London Transport enamel BUS STOP SIGNAGE comprising a 1960s small Fare Stage plate, a 1970s double Fare Stage plate with bracket, a G-plate 'Special Journeys' and 3 E-plates: 439, 712 & 713. All in good to very good, ex-use condition. [6]



Estimate: £120 to £160

79

British Railways (Southern Region) enamel DOORPLATE 'Staff Only'. A flanged sign measuring 18" x 3.5" (46cm x 9cm). In very good, ex-use condition with just a few small chips at one screw-hole and on the flanges. [1]



Estimate: £120 to £140

75

Selection (4) of London Transport BUS SLIPBOARDS comprising 'Private', possibly ex-Aldenhams staff bus, an RF perspex 'Pay as you enter' sign and 2 x RT reversible examples, firstly 'Railway Emergency Service'/'Near....HMS Belfast' and 'To and from Regent Street'/'To and from the Tower of London'. All in very good, ex-use condition. [4]



Estimate: £90 to £110

80

Pair of London Transport bus stop enamel E-PLATES, the first for route 250 destined Grange Hill (perhaps from Loughton station?) and the second for route 258 Mon-Sat and destined Watford Junction (perhaps from Harrow-on-the-Hill station?). Both are in very good, ex-use condition. [2]



Estimate: £140 to £180

76

Pair of British Railways (Southern Region) enamel CAR STOP SIGNS, both are no 6. In good, ex-use condition, lightly weathered. [2]



Estimate: £80 to £90

81

Large quantity (69) of 1950s-70s London Transport BUS TIMETABLE LEAFLETS comprising 44 x Night Services, 19 x Service Alterations plus 6 miscellaneous leaflets. No obvious duplication. Mostly in good to very good condition. [69]



Estimate: £80 to £100

82

1907 "District" [Railway] MAP of Greater London & Environs, 2nd edition. Shows the Franco-British Exhibition (held in 1908). A large-scale, full-colour map (42" x 26", 107cm x 66cm), linen-backed and folded into hard covers. Bakerloo, Hampstead & Piccadilly tubes shown in bold, non-Group tubes, eg Central and C&SLR, not so prominently! Also shows LUT Trams and all other railways. Map is in very good condition, the covers have light wear but are unusually good. [1]



Estimate: £100 to £120

86

London Transport Tramways District Inspector's solid-silver and enamel CAP BADGE with 'gold'-plating from the first batch manufactured for the new LPTB in 1933. Badge is serial number 403, made by J R Gaunt and hallmarked for 1933. Upon the merger of the trolleybus/tram and central bus departments in 1950, these badges were then issued to Road Inspectors of the combined operation. In very good, ex-use condition with no material blemishes. An excellent example. [1]



Estimate: £90 to £110

83

Pair of 1950s/60s Thames Valley Traction Co Ltd enamel BUS STOP FLAGS with the company's traditional-style fleetname. Double-sided, flanged signs measuring 16" x 15" (41cm x 38cm). Generally in very good, ex-use condition. [2]



Estimate: £120 to £160

87

London Underground enamel PLATFORM ROUNDREL from Bank Station on the Central and Northern Lines. This is the smaller-size sign, from the track-side, measuring 24" (61cm) across by 19.5" (50cm) high, c1980s, in three parts plus alloy frame. In excellent, ex-use condition. [3 parts + frame]



Estimate: £800 to £1000

84

Pair of 1928 London Underground POCKET MAPS of the Electric Railways of London "What to see and how to travel", both designed by E G Perman with elaborate calligraphy of station names and border etc. The first is the Summer 1928 issue and is in well-used condition with wear and short tears, the second is the 12/28 issue and is generally in good condition, just a few short fold-partings. [1]



Estimate: £120 to £140

88

Selection [8] of bus and coach REGISTRATION PLATES comprising DGE 299C (1965 Glasgow Atlantean LA262), KOR 462 (1952 Gosport & Fareham Guy Arab IV no 20), JKE 342E (1967 Maidstone Corp Leyland Atlantean No 42), DJG 614C & 616C (1965 East Kent AEC Reliances), 455 EOT (1962 Aldershot & District Dennis Loline III No 455), A133 XNH (1984 Sussex International Coaches Scania K112CRS) and C406 LRP (1985 Sussex International Coaches Volvo B10M-61). In good to very good, ex-use, ex-scrapyard condition. [8]



Estimate: £90 to £110

85

London Transport RT bus BONNET FLEETNUMBER PLATE from RT 690. The original RT 690, a Park Royal 'roofbox' example, entered service at Willesden (AC) garage in 1948 and the last bus to carry this number, a Park Royal RT8 type, finished service as a trainer at Wood Green (WN) garage in 1978 and was scrapped that year. In fairly good, ex-vehicle condition with some wear. [1]



Estimate: £90 to £110

89

Pair of early 20th-century bus driver/conductor LICENCE BADGES, the first an enamel type for Canvey Island UDC driver no 23 and the second a cast-alloy example for Reigate Omnibus Conductor no 99. Both are double-sided and in good, ex-use condition. [2]



Estimate: £80 to £90

90

London Transport bus stop enamel E-PLATE for route 247C Mon-Fri Special Journeys. The 247C was planned to run between Romford and Toot Hill with a single BL-class bus but was cancelled owing to concerns about road widths. The e-plates had already been manufactured but were never used. In as-new condition. [1]



Estimate: £90 to £110

95

Large quantity (est 100++) of mainly 1930s-50s RAILWAY EPHEMERA, 'Big Four' & BR, including timetable booklets, publicity booklets, excursion leaflets, maps, staff magazines etc etc. Huge variety, a "delver's delight". Mostly in good to very good condition. [100++]



Estimate: £180 to £220

91

1980s London Transport enamel BUS STOP FLAG ('Request'), an E3 version with 3 e-stickers on each side. A 'boat'-style flag, (double-sided, hollow) measuring 18" x 20.5" (46cm x 52cm) of the type produced in the 1980s and designed to remove all wording from the bar of the roundel. Generally a very good example with just minor blemishes. [1]



Estimate: £90 to £110

96

Selection (8) of 1950s onwards COACH MANUFACTURERS' PLATES, all are for either Duple or Plaxton. Most are metal, a couple are plastic. In varying degrees of used condition. [8]



Estimate: £80 to £100

92

Bus DESTINATION BLIND from East London, South Africa, possibly from an ex-London Transport RT/RTL. A linen blind, complete and in very good, ex-use condition. [1]



Estimate: £80 to £100

97

Selection (11) of 1970s onwards COACH MANUFACTURERS' PLATES including Moseley Continental, Leyland (various brands), Willowbrook, Scania etc. A mixture of metal and plastic examples and generally in very good, ex-use condition. [11]



Estimate: £80 to £100

93

Very large quantity (approx 600) of 1940s-90s London Transport BUS STOP PANEL TIMETABLES and CONDUCTORS' FARECHARTS (mainly the former) covering Central, Buses, Country Buses and Green Line Coaches. The majority are 1960s onwards. Mostly in very good condition. [approx 600]



Estimate: £180 to £220

98

Selection (7) of 1960s onwards BUS & TRAM MANUFACTURERS' PLATES comprising East Lancs, Neepsend, Strachans, Bombardier, Leyland/Park Royal, Park Royal Vehicles and Metro-Cammell-Weymann. All are metal and are generally in good to very good, ex-use condition. [7]



Estimate: £80 to £100

94

Quantity (2) of 1880s-1970s local ROAD & RAIL TIMETABLE BOOKLETS from various towns, the earliest being editions for Bradford dated 1886 & 1901. Other towns/areas include Tunbridge Wells, Cardiff, Leighton Buzzard, Colchester, "Eastern Counties", Lancashire, Winchester, Southend, Newton Abbot, Skipton, Bolton etc. Most are in good to very good condition. [21]



Estimate: £120 to £140

99

Pair of London Transport 1980s enamel & vinyl BUS STOP FLAGS for the London Coaches subsidiary, the first is for the 'London Plus' Original London Transport Sightseeing Tour (note the 1930s-style bullseye) and the second for London Liner, the London to Birmingham express service operated jointly with WMPTE. The flags are double-sided, hollow, 'boat-style' and measure the standard 18" x 16" (46cm x 40cm). Both are in excellent condition with barely a blemish. [2]



Estimate: £140 to £180

100

Selection (3) of London Transport coach stop enamel E-PLATES for Green Line routes 704/705, 719 and 723B Weekday. Generally in very good, ex-use condition. [3]



Estimate: £140 to £180

105

Southern Railway CARRIAGE PRINT 'Battle Abbey' by Donald Maxwell from the original SR series issued in 1936. As originally mounted, framed and glazed. Prints from this series are seldom seen. Measures 15.5" x 10" (39cm x 26cm) overall and is in very good, ex-carriage condition with just a few very small stains and foxing marks. [1]



Estimate: £140 to £160

101

Selection (4) of CATALOGUES of London Transport Maps comprising 2 x 'Burwood & Brady' 1982 first edition, one has loose pages, the other some ticks inside, and 2 x 'Letch', the 2000 and 2004 editions, both with some ticks inside. Long out of print, these are highly sought-after reference works. The booklets are in very good condition other than as described. [4]



Estimate: £90 to £110

106

Southern Railway CARRIAGE PRINT 'St James's Park' by Donald Maxwell from the original SR series issued in 1936. In an original-style glazed frame. Prints from this series are seldom seen and this is one of the least common examples. Measures 15.5" x 10" (39cm x 26cm) overall and is in very good condition [1]



Estimate: £140 to £160

102

Pair of railway CARRIAGE PRINTS from the LNER post-war series comprising 'London, Tower Bridge' by John L Baker and 'Maldon, Essex' by Henry Denham. Both are in excellent condition, glazed in original-style wooden frames. [2]



Estimate: £90 to £110

107

Pair of 1950s/60s Aldershot & District Traction Co Ltd enamel BUS STOP FLAGS with the company's traditional-style fleetname. Double-sided, flanged signs measuring 12" x 12.5" (31cm x 32cm). The odd blemish but generally in very good, ex-use condition. [2]



Estimate: £120 to £160

103

Pair of railway CARRIAGE PRINTS from the LNER post-war series comprising 'London, Lambeth Bridge' and 'London, Kensington Palace' both by Kenneth Steel. Both are in excellent condition, glazed in original-style wooden frames. [2]



Estimate: £90 to £110

108

Collection (6) of 1905 LONDON TRAMWAY PLANS 'Suggested Surface Tramway Routes....showing nature of existing frontages' and prepared for the Royal Commission on London Traffic. The plans show each building on the proposed route incl houses, pubs, schools, chapels etc. Plans for Cambridge Avenue, York Road & Stamford St, Liverpool St, Harrow Rd and Edgware Rd (2). All are 13" (33cm) high and in various widths. Generally in good to very good condition. [6]



Estimate: £90 to £110

104

Very early wooden CARRIAGE DESTINATION BOARD lettered 'Swanley Junction'. We believe this to be either LC&DR or SECR due to the traces of those companies' livery on the board. Likely to have been used on 4-wheel carriages. Swanley Junction station was relocated and re-named Swanley in 1939. The board measures 41" x 5" (104cm x 13cm). In worn, ex-use condition with fading of the lettering. A most unusual item. [1]



Estimate: £120 to £140

109

Trio of 1904 fold-out MAPS produced for the Royal Commission on London Traffic and showing Principal Goods Depôts in the Metropolis & Neighbourhood. Maps show coal depôts, goods depôts etc with named railway lines in bold. Open out to approx 25" x 33" (64cm x 84cm) and generally in very good condition. [3]



Estimate: £80 to £100

113

Pair of 1960s/70s perspex COACH NAMEBOARDS, the first a reversible slipboard lettered Western National/Western Venturer measuring 42" x 5" (107cm x 12cm) and the second a single-sided nameboard with raised lettering 'Eastern National', probably from the side of a coach, measuring 47" x 4" (120cm x 12cm). Both are in very good, ex-use condition. [2]



Estimate: £90 to £110

110

Selection (14) of London Transport bus stop enamel E-PLATES comprising 27 Fare Stage, 33 Mon-Sat, 37, 55, 65 Fare Stage, 71 Mon-Sat, 88, 90, 90B, 91 Mon-Sat, 202 Mon-Fri, 265, 270 Mon-Sat and 290. Generally in very good condition, most have greased edges for insertion into bus-stop runners. [14]



Estimate: £240 to £280

114

Quantity (22) of 1950s-70s bus UNIFORM BADGES (driver, conductor, inspector etc) from a wide range of municipal UK operators - Rochdale, Sunderland, Manchester, Sheffield, Halifax and more. Mostly in very good condition. [22]



Estimate: £140 to £180

111

2 large albums of loose-mounted PHOTOGRAPHS/POSTCARDS compiled by the late Alan A Jackson, historian & transport author, portraying transport etc developments from the late 19th century onwards with captioned photos & commercial postcards. Depending on area, subjects include trains, stations, buses, trams, streets, buildings etc. These albums cover Leatherhead and Farnham, Haslemere, Godalming, Hambledon & surrounds. Albums contain 44 & 58 double-pages and very approx 400 pictures. [2]



Estimate: £180 to £220

115

Quantity (19) of 1950s-70s bus UNIFORM BADGES (driver, conductor, inspector etc) from a wide range of UK operators - Caledonian, East Midland, Maidstone & District, Aldershot & District, Southern National, Western National, Durham, Eastern Counties and more. Mostly in very good condition. [19]



Estimate: £140 to £180

112

2 large albums of loose-mounted PHOTOGRAPHS/POSTCARDS compiled by the late Alan A Jackson, historian & transport author, portraying transport etc developments from the late 19th century onwards with captioned photos & commercial postcards. Depending on area, subjects include trains, stations, buses, trams, streets, buildings etc. These albums cover Ilford, Seven Kings, Chadwell Heath etc and Kensington. Albums contain 48 & 49 double-pages and very approx 380 pictures. [2]



Estimate: £180 to £220

116

London Transport Gibson A14 TICKET MACHINE, serial no 23941. A decimal fares machine, 1 1/2p to 12p, in good working order and still prints 'London Transport' on the ticket. Comes with its original, correct box (serial no on the side, a bit battered) plus spare ticket rolls and an emergency ticket-pack. [1 set]



Estimate: £360 to £460

117

London Transport bus conductor's WEBBING HARNESS for a Gibson ticket machine. A complete item with all clips and the apron. A superb example in excellent condition, appears to be unused. [1]



Estimate: £100 to £120

118

London Transport bus conductor's leather CASH BAG & wooden, spring-loaded TICKET-RACK containing a selection of used LT punch tickets. The bag is in excellent condition, possibly unused, with just some storage marks, and the rack is in well-used but good condition. [2]

Estimate: £120 to £140



122

Quantity (50+) of 1940s/50s b&w STEAM RAILWAY NEGATIVES (120-size, 6cm x 6cm) taken by the railway photographer, the late Geoffrey Bloxam in the 10 years after WW2. These appear to be all from the 'Southern' in the period just before and after Nationalisation. A wide variety of loco types and locations incl branch and main line in this selection. Quality appears to be generally very good. A random selection is pictured. Copyright passes to buyer. No index or details. [50+]



Estimate: £120 to £140

119

Trio of bus wooden DESTINATION BOARDS, possibly ex-Maidstone & District and possibly pre-WW2. All are for services from Gravesend with that name on one side and Camer Corner, Strood Church and Thong Lane v Chalk on the other sides respectively. They have metal reinforcements at each end, measure 31.5" x 4" (80cm x 10cm) and are generally in very good, ex-use condition. [3]



Estimate: £120 to £140

123

Quantity (100+) of 1940s/50s b&w STEAM RAILWAY NEGATIVES (120-size, 6cm x 4.5cm & 9cm x 6cm) taken by the railway photographer, the late Geoffrey Bloxam in the 10 years after WW2. These appear to be all from the 'Southern' in the period just after Nationalisation. A wide variety of loco types and locations with a mixture of branch-line and main-line shots in this selection. Quality appears to be generally very good. A random selection is pictured. Copyright passes to buyer. No index or details. [100+]



Estimate: £240 to £280

120

Selection (4) of London Transport bus/coach stop enamel E-PLATES comprising Eastern Counties Express Services, 200 United Counties (both in the green lettering used for other operators) plus 2 x National Express Coach Stop in the company's colours and with the famous double 'N' logo. All are in very good, ex-use condition. [4]



Estimate: £140 to £180

124

1950s/60s London Transport enamel BUS STOP SIGN 'Beech Hill' from a 'Keston' wooden bus shelter at this location on the A111 Cockfosters Road in Hadley Wood between Cockfosters and Potters Bar. This point was served by RT-type buses on route 29 on their way to/from South Mimms to/from Victoria and Turnpike Lane. A flanged, single-sided sign measuring 18" (46cm) square. A few very small chips have been touched in, otherwise the sign is in excellent condition. [1]



Estimate: £180 to £220

121

Quantity (100+) of 1940s/50s b&w STEAM RAILWAY NEGATIVES (120-size, 6cm x 6cm) taken by the railway photographer, the late Geoffrey Bloxam in the 10 years after WW2. These appear to be all from the 'Southern' in the period just before and after Nationalisation. A wide variety of loco types and locations with a preponderance of branch-line shots in this selection. Quality appears to be generally very good. A random selection is pictured. Copyright passes to buyer. No index or details. [100+]



Estimate: £240 to £280

125

London Underground 1938-Tube Stock enamel CAB DESTINATION PLATE for Golders Green / Hampstead on the Northern Line. A double-sided plate with brass ends. In very good, ex-use condition, an excellent example. [1]



Estimate: £120 to £140

126

Large selection (16) of 1920s-1940 Underground Group & London Transport OFFICIAL DESK DIARIES. Each features a page for each week with accompanying photographs of London and London's transport. Includes issues for 1928 (Underground), 1928 (General), 1929 (Underground), 1930 (Underground), 1930 (General), 1931 (Underground), 1931 (General), 1932 (Underground), 1933 (General) plus LT issues for 1934, 1935, 1936, 1937, 1938, 1939 and 1940. All are unused, complete and in very good condition, some still have their original packaging. [16]



Estimate: £140 to £180

127

London Transport RT bus BONNET FLEETNUMBER PLATE from RT 1399. The original RT 1399, a Saunders 'roofbox' example, entered service at Victoria (GM) garage in 1950 and the last bus to carry this number, a Weymann RT, finished service at Brixton (BN) garage in 1970 and was scrapped the following year. In very good, ex-vehicle condition. [1]



Estimate: £110 to £130

128

Complete BUS SEAT UNIT comprising frame, cushion, squab and two pairs of legs. The cushion and squab have been upholstered in new London Transport Routemaster moquette with suitable leather finishing on the edges. NB: In the pictures, the squab and legs are just balanced for the photographs and not fully assembled in the correct positions. [1 unit]



Estimate: £300 to £400

129

c1920s GPO (General Post Office) 121L-type TELEPHONE in original wooden case designed for wall-mounting. Comes with its original mouthpiece, earpiece and double bell. Not tested but in very good cosmetic condition. Has various other reference nos on reverse indicating that it was modified from an earlier GPO no 55 type. [1]



Estimate: £90 to £110

130

An interesting selection (8) of London Transport bus stop enamel E-PLATES comprising 7 Weekday, 18A Mon-Fri, Peak Hours, 22A Sunday (red digits), 2 x 23 Mon-Sat, 23 Special Journeys Only, 25 After 20.30 Hours and 28 Sunday Afternoon (red digits). All are in very good, ex-use condition. [8]



Estimate: £180 to £220

131

Quantity (25) of 1911 onwards London Bus POCKET MAPS comprising LGOC issues dated from Oct 1911 to 1934 (the last was issued by LT) plus LT 1934 Revised Route Numbers leaflet and WW2 LT Bus, Trolleybus & Tram Routes, nos 1 & 2, 1945. Condition ranges from well used to very good, most are good. [25]



Estimate: £180 to £220

132

Quantity (27) of 1922-1950 Underground Group Tramways/London Transport POCKET MAPS for Tramways and Trolleybuses & Trams. Condition ranges from well-used to very good - most are good. [27]



Estimate: £180 to £220

133

Southdown Motors Services cast-alloy BUS RADIATOR BADGE 'Southdown' likely to be ex Leyland PD2. Measures 11" x 2.5" (28cm x 6.5cm). From the collection of Southdown enthusiast Robin Aldham. In good, ex-bus condition. [1]



Estimate: £120 to £140

134

Southdown Motor Services BOUND VOLUMES of TIMETABLES & FARETABLES for 1945, Jan-Aug 1946 and Jan 1947 - Mar 1948. Appear to have been officially bound as records. Covers are somewhat worn but contents are excellent. [3]



Estimate: £90 to £110

135

1950s/60s Southdown Motor Services EXCURSIONS BOARD of the type that used to be placed in front of coaches and booking offices. Advertises the 'West Sussex Lanes & Byways' tour to Amberley & Houghton Bridge and appears to have been last used in the early 70s, judging by the 60p fare chalked up. Hand-painted alloy with two legs. From the collection of Southdown enthusiast Robin Aldham. Measures 18" x 31" (46cm x 79cm) and is in good, ex-use condition with some wear. [1]

Estimate: £120 to £140



139

London Transport enamel BUS STOP FLAG (Compulsory) An early 1980s 'roundel'-style, E6-size, double-sided 'boat'-type flag complete with runners for 6 e-plates on each side. A short-lived variety as these flags were quickly re-configured to take route "E-stickers" after enamel E-plates were abandoned from 1981 onwards. Measures 18" x 26" (46cm x 66cm). An excellent example with barely a blemish. [1]

Estimate: £180 to £220



136

London Tram & Trolleybus Conductor's METROPOLITAN STAGE CARRIAGE BADGE T 17720. Equivalent to PSV licence badges, these were issued from 1935-1962 for electric traction in the capital. In good, ex-use condition. [1]

Estimate: £200 to £300



140

Selection (3) of London Transport bus stop enamel E-PLATES comprising 384 Special Journeys, 386 Fare Stage and 386 Tuesday and Saturday ('Saturday' in red). All in very good, ex-use condition. [3]

Estimate: £140 to £160



137

London Trolleybus rear REGISTRATION PLATE from 1940 L3 class 1473. 1473 was one of London's last trolleybuses in service and was scrapped in June 1962. The plate is as removed in Colindale scrapyards. [1]

Estimate: £90 to £110



141

Collection (23) of 1932 Green Line Coaches Ltd TIMETABLE LEAFLETS for Christmas Day services on each route. All different and possibly a full set. Most unusual items. In very good condition, a few have small pencil annotations on the covers. [23]

Estimate: £180 to £220



138

Bradford Corporation Trolleybus REAR REGISTRATION PLATE DKY 719 from 1945 Karrier W, originally bodied by Park Royal, rebodied by East Lancs in 1957 and withdrawn for scrap in 1971. An integral unit, glazed and designed to be back-lit. In very good, ex-vehicle condition. [1]

Estimate: £90 to £110



142

Large quantity (110+) of London Transport bus RUNNING NUMBER STENCILS. A wide spread of numbers, many are in pairs. All are in ex-use condition. [110+]

Estimate: £140 to £180



143

1940s/50s London Transport enamel BUS STOP FLAG, the 'compulsory' version. Double-sided with two enamel plates inside a bronze frame. Measures 18" x 16" (46cm x 40cm). An excellent example with just a few minor blemishes. [1]

Estimate: £120 to £140



144

1940s/50s London Transport enamel BUS STOP FLAG, the 'request' version. Double-sided with two enamel plates inside a bronze frame. Measures 18" x 16" (46cm x 40cm). An excellent example with just a few minor blemishes. [1]



Estimate: £120 to £140

148

Quantity (24) of 1930s-70s (mainly 1950s/60s) London Transport POCKET MAPS etc for Underground, Central Bus, Green Line, Country Bus, Tram & Trolleybus etc services incl 1951 Festival of Britain issue. A couple are well-used, otherwise they are all in good to very good condition. [24]



Estimate: £80 to £90

145

Large quantity (400+) of RAILWAY PHOTOGRAPHS comprising 250+ postcard-size and 90+ whole-plate/half-plate by Geoffrey Bloxam of SR/BR(s) in the late 1940s/early 1950s, c65 RP postcards by O J Morris of pre-WW2 LBSCR/SR plus a handful of early postcards of steam etc tramways eg Wantage, Wisbech, Wolverton-Stony Stratford. All are very good quality shots. [400+]



Estimate: £240 to £280

149

Selection (3) of main-line railway & London Underground ENAMEL SIGNS comprising a Southern Railway (current company) 'Station Closed' sign (19.5" x 13" - 50cm x 33cm) plus 2 smaller signs: 'Danger, High Voltage' and London Underground 'Limited Clearance'. All are in very good ex-use/unused condition. [4]



Estimate: £80 to £100

146

Large quantity (550+) of RAILWAY POSTCARDS & PHOTOS comprising 300+ postcards of UK railways and 250+ postcards/photos of foreign railways - Continental Europe, North & South America, South Africa, Australia (all postcards), Cuba (photos, mostly steam) noted. Era ranges from a few that are early 20th century to mostly relatively modern. Generally in very good condition, most are postally unused. [550+]



Estimate: £180 to £220

150

London Transport coach stop enamel E-PLATE for Green Line route 715 destined Roehampton, Esher, Guildford. Only two pairs of these were recorded - at Marble Arch and Lancaster Gate. A most uncommon plate, therefore. In very good ex-use condition. [1]



Estimate: £240 to £280

147

Very large quantity (approx 1,100) of 1930s-50s (mainly) Southdown Motors Services postcard-size B&W PHOTOGRAPHS. Very good quality shots, taken in service, of a wide variety of Southdown buses and coaches. Photos by well-known photographers and/or the Southdown Enthusiasts Club. From the collection of Southdown enthusiast Robin Aldham. [c1,100]



Estimate: £240 to £280

151

Considerable quantity (est. several hundred) of mostly 1940s/50s foreign TRANSPORT TICKETS incl rail, bus, air. Ticket types include Edmondson card, paper, folders issued by travel agents etc. Countries include many European plus a small number of tickets from North Africa, Asia, South Africa etc. A very wide variety and a delver's delight. Mostly in very good, ex-use condition. [several hundred]



Estimate: £90 to £110

152

Very large quantity (1,500+) of 1940s/50s London Transport Trolleybuses PUNCH TICKETS comprising geographical, part-geographical and route-numbered examples. A considerable variety of routes and fares and doubtless very considerable duplication as well. Mostly in very good, ex-use condition. Part of the Peter Bloxam collection of 1920s-onwards tickets being offered in this and our previous sale. [1,500+]



Estimate: £240 to £320

153

Selection of London tram, trolleybus, bus EPHEMERA comprising 11 x 1959/60 'Buses for Trolleybuses' PANEL POSTERS ('Yellow Perils'), all different, a 1923 Metropolitan Electric Tramways small POSTER for tram private hire charges and 2 x 1957 LT bus stop PANEL POSTERS 'Buses from this Stop', one for Edgware Road and one for Kingsway. All are in good to very good condition. [14]



Estimate: £90 to £110

158

Large quantity of Aldershot & District/Alder Valley Head Office archive material incl MASTER FARE TABLES, 1935 and 1960s-80s, 1921 Motor Charabanc POSTER, TIMETABLES 1930 & 1960s, Depot & Bus Stations PLANS, DRAWINGS & SPECIFICATIONS plus misc other items. Mostly in good to very good, ex-us condition. [50+ items]



Estimate: £180 to £220

154

London Underground O/P/Q-Stock enamel CAB DESTINATION PLATE 'Aldgate / Liverpool St' from the Hammersmith & City Line. A double-sided sign with brass ends. An unusual example. In ex-use condition with some areas of enamel loss. [1]



Estimate: £140 to £180

159

Large quantity of varied, mostly 1960s-80s BUS EPHEMERA incl VINYL STICKERS from various operators, KEYS & KEY FOBS, SAFE DRIVING BADGES, RIBBONS & CLASPS, misc other BADGES and VEHICLE PLATES & BADGES. Mostly in very good condition, vehicle plates ex-use. [large quantity]



Estimate: £90 to £110

155

London Underground CO/CP Stock enamel DESTINATION PLATE for Harrow/Wembley Park on the Metropolitan Line. A double-sided sign with brass ends. In good, ex-use condition with minor enamel losses. [1]



Estimate: £180 to £220

160

An interesting selection (6) of London Transport bus stop enamel E-PLATES comprising 71 Mon-Fri, Special Journeys, See Below, 78 Sunday (red digits), 80 Sunday, Beyond Belmont (red digits), 88, 94 Mon-Fri, Rush Hours, Fare Stage/229 Fare Stage and 109 Mon-Sat. All are in very good, ex-use condition. [6]



Estimate: £180 to £220

156

Selection (4) of London Transport Tramways FARECHARTS, all single-sided, and comprising card issues for route 40 undated but c1950, for route 40/66/7 Night Service undated but c1949 and for routes 48/78 dated October 1950 plus a paper issue for route 72 dated November 1949. Generally in good to very good condition. [4]



Estimate: £120 to £140

161

London Underground enamel PLATFORM SIGN from Totteridge station on the Northern Line. This ex-LNER station is officially named Totteridge & Whetstone and became part of the Underground in 1940 from when this sign is believed to date. It would originally have been the centre bar of a full bullseye sign. Measures 58.5" x 10.5" (149cm x 27cm). Generally in good, ex-use condition, just some small chips and a little edge-corrosion in places. [1]



Estimate: £140 to £180

157

Selection (4) of London Transport Tramways FARECHARTS, all double-sided card issues and comprising routes 2-4/22-24 dated January 1947, routes 3 (All-Night Service)/12 dated October 1947, routes 6/8-20 dated November 1948 and routes 8-20, 22-24/10, 16-18 dated October 1950. In varying degrees of used condition but still very reasonable overall. [4]



Estimate: £120 to £140

162

London Underground enamel PLATFORM SIGN from East Finchley station on the Northern Line. This ex-LNER station became part of the Underground in 1939 from when this sign is believed to date. It would originally have been the centre bar of a full bullseye sign. Measures 58.5" x 10.5" (149cm x 27cm). Some enamel losses in places at the edges. [1]

EAST FINCHLEY

Estimate: £120 to £140

166

The "District Railway MAP of London", 6th edition, circa 1903. The 3rd issue of this edition. An inset states that the 'New Route to Upminster, Shoeburyness etc is now open'. Some of the first tube lines are now included, either open, authorised or under construction. The proposed, but later abandoned, City & Brixton tube railway is still shown but now terminating south of the River. Opens out to 42" x 26" (107cm x 65cm). An unusually fine copy in very good order, even the covers evidence only light wear. [1]



Estimate: £160 to £200

163

Capital Transport BOOK 'THE LONDON LT' by Ken Blacker, the definitive history of this classic London bus class. Published in 2010 and quickly out of print, this book is now seldom seen. This copy is as new. [1]



Estimate: £120 to £140

167

Quantity (45) of 1930s-60s TIMETABLE LEAFLETS & PAMPHLETS from East Anglian independent bus & coach operators. Names noted include Premier Travel, Corona Coaches, B K Jennings. Mostly in good to very good condition. Plus a small Premier Travel POSTER, probably 1949 (damaged). [46]



Estimate: £90 to £110

164

1922 London Underground MAP OF THE ELECTRIC RAILWAYS OF LONDON 'What to See & How to Travel' with issue date 1-3-22. Designed by MacDonald Gill with calligraphed station names, the map opens out to 13.5" x 11" (34 x 28cm). A very good copy with just a couple of very small age-spots [1]



Estimate: £120 to £140

168

Large quantity (c170) of 1930s-60s BUS TIMETABLE LEAFLETS from a very wide range of UK operators incl Midland Red, Thames Valley, East Yorkshire, Crosville, Manchester Corp, Lincolnshire Road Car, Trent, East Kent, Southdown, Maidstone & District, Rotherham, Ribble, Barton, Birmingham Corp, United Automobile, Eastern National, West Yorkshire and many more. Most are in good to very good condition. [c170]



Estimate: £180 to £220

165

1927 London Underground linen-card POCKET MAP from the Stingemore-designed series of 1925-32. This is the fifth edition, dated June 1927, and is the last of the smaller size editions. This issue is not often seen. A very good example, just lightly-used. [1]



Estimate: £140 to £180

169

Bundle (46 items) of 1930s-60s Southdown Motor Services TOUR BROCHURES, ROUTE MAPS, EXCURSION BROCHURES & ITINERARIES (incl continental tours) (17) and TIMETABLE LEAFLETS (29). The latter include a small number from East Kent, M&D etc. From the collection of Southdown enthusiast Robin Aldham. Mostly in good to very good condition. [46]



Estimate: £90 to £110

170

London Transport coach stop enamel E-PLATE for Green Line route 719 destined Victoria, Swanley, Wrotham. These were recorded between Stanmore and Edgware Road. In good, ex-use condition. [1]

Estimate: £140 to £180



174

1971 London Underground Northern Line CAR DIAGRAM. Dated 4/71 and made of a formica-like material and designed to slot into the space above the seats in the Underground cars. Measures 55" x 6.5" (140cm x 16cm). In ex-car condition with some marks and small stains but generally very good. [1]



Estimate: £120 to £140

171

2 large albums of loose-mounted PHOTOGRAPHS/POSTCARDS compiled by the late Alan A Jackson, historian & transport author, portraying transport etc developments from the late 19th century onwards with captioned photos & commercial postcards. Depending on area, subjects include trains, stations, buses, trams, streets, buildings etc. These albums cover Barking, Dagenham, Brentwood, Purfleet, Grays, Tilbury etc and Harlow, Ongar, Epping, Chigwell, Chingford, Woodford etc. Albums contain 67 & 60 double-pages and very approx 500 pictures. [2]



Estimate: £240 to £300

175

Pair of London Transport buses staff association noticeboard enamel HEADER PLATES, the first reads 'LGOC Sports Assocn' and the second 'Aux Omnibus Cos Assocn'. Believed by vendor to be ex-Romford garage. They measure 16.5" x 2" (42cm x 5cm) and are in very good, ex-use condition. Plus an LCC/LT Tramways double-sided enamel RUNNING NUMBER PLATE '2X' for an extra journey on route 2. Measures 5" x 5.25" (12cm x 13cm) and is in good, ex-use condition. [3]



Estimate: £120 to £140

172

3 large albums of loose-mounted PHOTOGRAPHS/POSTCARDS compiled by the late Alan A Jackson, historian & transport author, portraying transport etc developments from the late 19th century onwards with captioned photos & commercial postcards. Depending on area, subjects include trains, stations, buses, trams, streets, buildings etc. These albums cover Hammersmith, Willesden Jc, East Acton, Shepherds Bush etc, Bow, Bromley-by-Bow, Old Ford etc and East Ham. Albums contain 49, 22 & 25 double-pages and very approx 380 pictures. [3]



Estimate: £240 to £300

176

London Transport enamel BUS STOP FLAG (Request). An early 1980s 'roundel'-style, E9-size, double-sided 'boat'-type flag complete with runners for 9 e-plates on each side. A short-lived variety as these flags were quickly re-configured to take route "E-stickers" after enamel E-plates were abandoned from 1981 onwards. Measures 18" x 31" (46cm x 79cm). An excellent example - other than some denting around one of the fixing-holes on the spine, barely another blemish. [1]



Estimate: £180 to £220

173

London Transport bus stop TIMETABLE PANEL, the complete unit - wood & metal, glazed. This the large type (37" or 94cm high) and comes with 1960s inserts 'Buses for Trolleybuses' and 'Rove Around with Rover Tickets'. In very good, ex-use condition. [1]



Estimate: £110 to £130

177

Complete run (14) of London Transport ANNUAL REPORTS for the period 1934-47. A full set of issues for the LPTB period, including the wartime abridged reports. Some of the early examples retain the pull-out maps. Some wear to covers but generally in good condition. [14]



Estimate: £80 to £100

178

Bundle of Birmingham, Bradford & Manchester TRAMWAY etc EPHEMERA incl. 14 x 1920s Birmingham Corporation Tramways FARECHARTS, c1900 fold-out Birmingham 'Street Corner Tramway Plan', c1900 Trafford Park Tramways TIMETABLE POSTER, c1905 Manchester District HANDBILL re Pioneer Motor Omnibus Service, 2 x 1927 Bradford Corporation POSTER NOTICES re application to Parliament for a new tramway etc. Some age wear and fragility but most are in good to very good condition. [20 items]



Estimate: £120 to £160

182

Large quantity (approx 200) of 35mm COLOUR SLIDES of London RT and RF buses/coaches taken in the 1970s. All are in service and locations noted include Kingston, Windsor, Croydon, Brixton, Lewisham, London Bridge, Leatherhead, Crystal Palace, Morden etc. Includes a handful of copy slides of London trolleybuses and trams. Copyright of the original slides passes to buyer. Quality appears generally to be good to very good. [approx 200]



Estimate: £240 to £280

179

Selection (9) of 1920s-60s Southdown Motor Services TIMETABLE BOOKLETS comprising August 1924, November 1929, Aug 1933, Jul-Sep 1938, Jan 1944 (East Sussex Area), Jan-May 1947, May-Sep 1951, Sep 1957-June 1958 and May-Sep 1960. From the collection of Southdown enthusiast Robin Aldham. Some are used but most are good to very good. [9]



Estimate: £180 to £220

183

Very large quantity (approx 500) of 35mm RAILWAY COLOUR SLIDES, nearly all from the 1950s/60s and by CCQ Colour Slides, Colour-Rail, ADC Slides, Ian Allen and KR Photographics. Predominantly steam from all regions, one box of diesel & electric noted plus a handful of London Underground. As would be expected from these providers, quality is generally very good. Rights remain with the copyright-holders. [approx 500]



Estimate: £240 to £280

180

London Transport bus stop enamel E-PLATE for Southdown service 163 destined Pease Pottage, Haywards Heath. Features the green lettering used by LT for other operators' services. We think this would have been located in Crawley. Other operators' e-plates with destinations are very uncommon. In very good, ex-use condition. [1]



Estimate: £180 to £220

184

Trio of 1923 London United Tramways (Underground Group) tram stop PANEL TIMETABLES comprising services 57, 67 and 71. Generally in very good condition. [3]



Estimate: £90 to £110

181

Selection (3) of 1905 London RAILWAY & TRAMWAY MAPS produced for the Royal Commission on London Traffic comprising 'Railways serving London' with a colour-coded key to surface railways and Underground/tubes, 'Railway and other goods stations and receiving offices in the central goods area of London and routes followed by railway goods vehicles' and 'Tramway Routes in the County of London and the Neighbourhood' with a key that includes information on routes, termini and frequency of the trams. Average size 33" x 26" (84 x 66cm). In very good condition. [3]



Estimate: £140 to £180

185

Trio of 1923/4 Metropolitan Electric Tramways (Underground Group) tram stop PANEL TIMETABLES comprising services 54/66, 40/42/46/60 (both 1923) and 40/46/60 (1924). Generally in very good condition. [3]



Estimate: £90 to £110

186

London Transport enamel BUS GARAGE SIGN 'No unauthorised person may enter.....Children under 16.....' etc with the LT bullseye. One of the once well-known signs fixed in the 1950s/60s to all LT bus garages to deter entry by bus-spotters (did they work?!). Measures 24" x 18" (61cm x 46cm) and in very good, ex-use condition with an excellent shine, one of the best examples we have seen. [1]



Estimate: £240 to £280

190

An interesting selection (6) of London Transport bus stop enamel E-PLATES comprising 177 Special Journeys Only, 181 Weekday, 181 Mon-Fri Fare Stage/220 Fare Stage, 188 Mon-Fri Peak Hours, Sat-Sun, 206 Alighting Point Only and 219. All are in very good, ex-use condition. [6]



Estimate: £180 to £220

187

Selection (7) of 1920s/30s Great Western Railway (GWR) TIMETABLES/PUBLICITY BROCHURES comprising Whitsuntide 1922, Season Day & Half-Day Cheap & Market Tickets July 1922, August Bank Holiday Excursions 1927, Ireland via Fishguard Jul-Sep 1927, Whitsun Excursions 1929, Bristol District Timetables Jul-Sep 1930 and Principal Train Services from/to London Jul-Sep 1938. Plus a card MENU for the Birmingham Parcels Dept Annual Dinner Jan 1935. Items are mostly in good to very good condition. [8]



Estimate: £100 to £120

191

Large quantity (41) of 1960s/70s BUS TIMETABLE BOOKLETS from Western National and Hants & Dorset. Mostly in very good condition, some have corroded staples. [41]



Estimate: £120 to £160

192

Large quantity (32) of 1950s-70s (mostly 1950s-early 1960s) Scottish BUS TIMETABLE BOOKLETS from Western SMT, Alexander's (Fife, Midland, Northern etc), Scottish, Highland, MacBrayne's etc. Generally in very good condition. [32]



Estimate: £120 to £140

188

Selection (3) of Great Western Railway (GWR) items comprising c1900 ILLUSTRATED GUIDE with views & descriptions of locations on the company's network, Jul-Oct 1901 BOOKLET 'Tourist Arrangements from London & Ealing' and March 1912 Service TIME TABLES during the Coal Strike. Some wear to covers, age-spotting etc but overall items are in good condition. [3]



Estimate: £90 to £110

193

Trio of London RT/RTL bus REGISTRATION PLATES + a CHASSIS TAG comprising the rear plate NLE 720, together with brass chassis tag, from RTL 1446 (new 1953, withdrawn 1968), rear plate NLE 804 from RT 3697 (new 1943, withdrawn 1978) and the front plate JXC 158 from RT 795 (new 1948, withdrawn 1974). The first is in very good condition, the other two are in well-used/ex-scrapyard condition. [4 items]



Estimate: £80 to £100

189

1877 (May ufn) Great Western Railway (and other railways in connection) TIME TABLES BOOKLET. 114pp containing main timetables, through communication tables, goods & parcels, details of coaches & omnibuses, cab fares, steamers, hunting tickets, return & season tickets, period advertisements etc. Includes maps (some fold out) of general network, London District, West of England District, Midland District and North Wales District. In very good condition with minor wear to the covers. [1]



Estimate: £120 to £140

194

Quantity (14) of 1913-1930s LCC Tramways POCKET MAPS & LEAFLETS comprising pocket maps dated Dec 1913, Feb 1914, Mar 1914 and April 1914 plus a variety of leaflets for theatres, football, midday fares, parks, cheap return tickets, transfer facilities, holidays in London. A couple are well-used but most, including the maps, are good to very good. [14]



Estimate: £140 to £180

195

Quantity (19) of 1919-1933 LCC Tramways POCKET MAPS (the last issued by LT). A couple are well-used but most are good to very good. [19]

Estimate: £180 to £220



199

Pair of 1930s/50s Western National & Southern National POSTER ROUTE MAPS, the first a 1930s Western National issue of services (incl Royal Blue) in the Gloucestershire & Wiltshire area with illustrations of Bristol G & H type buses and crests of the counties & major towns around the edge (some edge-scuffs & creases but generally very good) and the second a 1950s Western/Southern National issue for South Devon & East Cornwall, incl Royal Blue, with illustrations of towns in the margins (minor edge-scuffs, otherwise very good). Posters measure 29" x 20" (74cm x 51cm). [2]

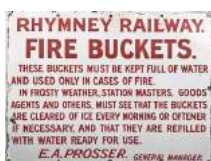


Estimate: £140 to £180

196

Rymney Railway ENAMEL SIGN 'FIRE BUCKETS'. Founded in 1858, the Rymney Railway was absorbed into the GR upon Grouping in 1922. Its former main line to Cardiff remains open today. The sign measures 15.75" x 12" (40cm x 30cm) and is generally in very good, ex-use condition with some small losses at the edges and small areas of restoration at the top edge. A scarce survivor rarely seen at auction. [1]

Estimate: £200 to £300



200

London Transport coach stop enamel E-PLATE for Green Line routes 714 destined Dorking and 718 destined Kingston. This must date from before 31.12.1966 when the routes were diverted away from Baker Street to run via Oxford Circus and could only have been on 3-4 stops at most between Baker Street Station and Marble Arch, Edgware Road. A most uncommon plate. In very good, ex-use condition. [1]



Estimate: £340 to £380

197

Cardiff Railway ENAMEL SIGN 'Smoking in or about this warehouse is prohibited - by order T.N. Rosser Dockmaster' with further text and signed again at the bottom 'C.S. Denniss General Manager, Cardiff Railway Company, Bute Docks, Cardiff'. The Cardiff Railway was absorbed into the GWR upon Grouping in 1922 and its line from Coryton to Cardiff retains a passenger service today. The sign measures 21" x 20" (53cm x 51cm) and is generally in very good, ex-use condition with small blemishes at the edges. Comes with its original wooden backing frame. [1]

Estimate: £280 to £320



201

1957 London Transport double-royal POSTER 'Christopher Wren' by Hans Unger (1915-1975) who designed posters for LT from 1950-74. The poster promotes an LT booklet on the great 17th-century architect. In excellent condition with no material blemishes. [1]



Estimate: £100 to £140

198

London Underground enamel PLATFORM SIGN from King's Cross St Pancras Station, the Underground's most-used station, served by 6 lines. The name-bar from a bullseye or roundel. Measures 49.5" x 9" (125cm x 23cm). Generally in very good ex-use condition, just a few small blemishes. [1]

Estimate: £110 to £150



202

c1910-15 POSTER MAP 'Great Central Railway and its Connections' with an inset enlarged-scale map of central England. Covers England and Scotland as far as Perth & Dundee. Shows ferry services to Ireland & the Continent as well as manufacturing & agricultural districts, upland, moorland & pasture. Strong, vibrant colours make this a very attractive map. Measures 26" x 39" (66cm x 100cm) and is generally in very good condition with very light wear. Folded. [1]



Estimate: £140 to £180

203

1926 London Underground quad royal POSTER 'A Pageant of London - for London's Children' by Elijah Albert Cox (1876-1955) who designed posters for the Underground Group from 1915-1926. Depicts London scenes from the first settlement to the 1920s. Comes with its original "Underground" envelope postmarked January 1927 in which it was posted to the buyer and in which it appears to have spent the last 93 years. In very good to excellent condition with just minor blemishes. Folded. [1]



Estimate: £200 to £300

207

c1925-30 London's Tramways (LCC Tramways) double-crown POSTER 'Epping Forest Tram Services' by Tony Castle (1891-1971). A colourful image of a deer drinking from a stream in a sunny glade in the forest. Lists below the tram routes which went closest to the forest (at Woodford, Napier Arms). A scarce survivor from this series. Generally in very good condition, small foxing marks in the margins and on the reverse, very small, light creases in places. [1]



Estimate: £300 to £400

204

1979 (March) London Underground quad-royal POSTER MAP designed by Paul E Garbutt. Shows the original Jubilee line to Charing Cross and the Piccadilly line to Heathrow Central. It also now incorporates BR's North London line. Some light creasing, particularly at the edges, from having previously been rolled rather tightly but generally a very good example. [1]



Estimate: £240 to £280

208

1936 London Transport double-royal POSTER 'Now on Sale, Green Line Coach Guide No 1' by "Beath" who was John M Fleming. Backed onto linen and generally in good condition, a few small creases in places and minor edge-scuffs and nicks. [1]



Estimate: £80 to £100

205

1962 London Transport double-royal POSTER 'Town and Country Houses' by Peter Roberson (1907-1989) who designed posters for LT from 1948-78. Depicts Chiswick Park, Osterley House and Kenwood, each with a historical description. In excellent condition with no material blemishes. [1]



Estimate: £90 to £110

209

Pair of 1958 London Transport double-royal POSTERS from the 'Hop on a Bus' series by Lobban. These examples depict a woman trudging in the snow and a shop window promoting evening opening. This famous and iconic series was produced after the disastrous 1958 bus strike and was a major campaign to woo back lost passengers. The posters, in typical LT fashion, turned the bullseye into a character, in this case a 'sandwich board man' with the slogan 'Hop on a Bus'. Posters are in excellent condition with only minor blemishes, light creasing. [2]



Estimate: £180 to £220

206

Selection (12) of 1980s/90s POSTERS incl London Transport/London Underground 'Great Bear' by Simon Patterson, 'Shopping by Tube and Bus' by Christopher Corr, 'Tate Gallery by Tube' by David Booth, 'Get your skates on' by Roslaw Szaybo, 'Paint the town' by Su Huntley & Donna Muir plus sundry original and repro examples incl National Bus Company, London Liner, Country Bus Services, Metropolitan Railway scene, the latter are mostly not pictured. Sizes include double-crown, double-royal etc. A few nicks, scuffs and small marks but generally good to very good. [12]



Estimate: £140 to £180

210

Pair of 1958 London Transport double-royal POSTERS from the 'Hop on a Bus' series by Lobban. These examples depict a man in the rain and two women in a gale. This famous and iconic series was produced after the disastrous 1958 bus strike and was a major campaign to woo back lost passengers. The posters, in typical LT fashion, turned the bullseye into a character, in this case a 'sandwich board man' with the slogan 'Hop on a Bus'. Posters are in excellent condition with only minor blemishes, light creasing. [2]



Estimate: £180 to £220

211

1950s Bristol Tramways & Carriage Company double-crown POSTER 'Autumn in Town' by Frederick Donald Blake (1908-1997). A colourful town-centre image showing a park-keeper burning fallen leaves on a sunny autumn day with buses and people going about their business. A little edge-scuffing but generally in very good condition. [1]

Estimate: £140 to £180



215

Quantity (10) of 1930s-50s London Transport safety & recruitment etc POSTERS. 7 double-crown examples comprising 1934 'Accidents to Garage Inside Staff', 1935 'Material Damaged', 1937 'Accidents to Garage Staff', 1938 'Radiator Caps', 1946 'Vacancies in Canteens' and 2 different 1950 'London Transport Magazine' (these have some edge nicks, scuffs etc but are generally good) plus 3 double-royals: 2 x 1950 'General Notice to Garage Employees (scuffed edges, short tears) & 1951 'Women Conductors Wanted' (rather fragile with edge losses and small tears). [10]



Estimate: £140 to £180

212

1952 British Railways (Western Region) double-royal POSTER 'Bristol - Travel by Train' by Claude Buckle and depicting Brunel's famous Clifton suspension bridge over the Avon Gorge with shipping traffic in the foreground. The poster has been suitably framed and glazed. Most areas of the poster evidence some creasing/crumple marks but overall it still displays well. Rarely seen at auction. [1]

Estimate: £200 to £300



216

Quantity (18) of 1980/90s London Transport double-royal POSTERS incl. 1996 'London's New Architecture' by Edwina Ellis, 1989 'Days on the water' by Sandra Fisher, 1989 'Highgate Ponds' by Howard Hodgkin (the last two are double-crown size), 1983 'The Heathrow Connection' by the agency Foote, Cone and Belding plus a varied selection incl Buses for Night Owls, Fly the Airbus to Heathrow, Shop on a Bus, Baker Street Restoration, Private Hire, Orpington's New Bus Network, Bus Passes etc. A few have small edge nicks & scuffs, most are in very good condition. [18]



Estimate: £120 to £140

213

Selection (13) of miscellaneous double-crown & double-royal TRANSPORT POSTERS, mainly 1960s/70s, incl London Transport & Green Line (eg 1965 new RC coaches), Bourne & Balmer Coaches plus various anniversaries eg Midland Red, Greater Manchester, Tyne & Wear. Some have creasing from previous tight rolling or folding but condition is mostly good to very good. [13]



Estimate: £90 to £110

217

Quantity (16) of 1970s London Country Bus Services double-royal POSTERS incl. pictorial examples for St Albans & Virginia Water, Green Line airport services, Superbus, network maps, Chartwell, Green Line Golden Jubilee (1980), recruitment etc. Two duplicates. A few have edge nicks and scuffs but mostly in very good condition. [16]



Estimate: £100 to £120

214

1970 (print-code 11/69) London Underground quad-royal POSTER MAP designed by Paul Garbutt and still with the traditional border of small bullseyes. Interchange stations are in upper case, the remainder in lower. Shows the Victoria Line extension to Brixton as 'under construction'. A couple of very small edge-losses and some general creasing and crumpling from having previously been rolled rather tightly but still presents well. [1]



Estimate: £200 to £240

218

1950s Bristol Tramways & Carriage Company double-crown POSTER 'Travel by Coach' by Frederick Donald Blake (1908-1997). A vividly colourful image showing a coach passing the King's Head and a horse-drawn cart in a typical English village on a beautiful summer's day. A very short tear at the bottom edge and some creasing on the r/h side near the bottom but, in other respects, in very good condition. [1]



Estimate: £140 to £180

219

Selection (5) of WW2 London Transport POSTERS comprising the 1944 set (3) of 'Train Delays' - Passengers off the car first, Pass down the car & Pass along the platform (18" x 24" - 46cm x 61cm) plus 1943 Royal-size (20" x 25", 51cm x 63cm) 'Staggering Results' and 'Women employees...don't wear high heels'. All are generally in very good condition, each has one or two very small filing holes'. [5]



Estimate: £240 to £280

223

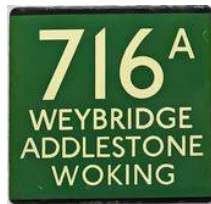
Selection (3) of Victorian road & rail MAPS comprising c1870s Bacon's New Tourist's Map of Kent 'with the name of every railway station' (fold-out paper map inside card covers), c1880s Cruchley's County Map of Surrey (fold-out, linen-backed map inside card covers) and c1880 single-sided sheet map 'New Railway Map of London & Suburbs' 27.5" x 21.5" (70cm x 54cm), folded once. All are generally in very good condition with minor age-related deterioration. [3]



Estimate: £80 to £100

220

London Transport coach stop enamel E-PLATE for Green Line route 716A destined Weybridge, Addlestone, Woking. Records show 4 pairs of these located between Ham & Kingston. In very good, ex-use condition. [1]



Estimate: £280 to £320

224

Pair of London Transport enamel BUS STOP FLAGS, both are unusually lettered 'Bus Stand' for locations where passengers are not permitted to board. The first is a 1950s/60s 'bullseye' type, the second is from the 1980s and features the 'roundel'. Both are traditional double-sided, hollow, 'boat-style flags and measure 18" x 16" (46cm x 41cm). The first has a few small chips which have been touched in and some denting on the spine around the screw-holes, the second is lightly weathered in places but both are good overall. Very uncommon signs. [2]



Estimate: £120 to £140

221

1940s/50s London Transport enamel BUS STOP FLAG (Request). An E3 type with runners for 3 e-plates on each side. Double-sided with two enamel plates inside a bronze frame. Measures 18" x 21.5" (46cm x 54cm). An excellent example with just a few small blemishes. [1]



Estimate: £140 to £160

225

Colchester Corporation Transport Leyland PD2/Massey RADIATOR GRILLE from 1966-built No 39. The complete fibreglass unit with registration plate and 'Leyland' script and measuring 41" x 42" (104cm x 107cm). The bus was withdrawn from Colchester service in 1976 and was subsequently used by the Earls Colne Majorettes and finally scrapped in 1990. In very good, ex-vehicle condition. [1]



Estimate: £120 to £140

222

c1910-15 Great Central Railway COLLIERY & INDUSTRIAL MAP. Shows agricultural land, manufacturing areas, proved & concealed coalfields and collieries to which the company's lines have access. Strong colours make this an attractive map. Paper, single-sided, measures 38" x 29" (97cm x 74cm) and is generally in very good condition. Folded. [1]



Estimate: £80 to £100

226

1930 Green Line Coaches Ltd driver's/conductor's CAP BADGE issued from the formation of the company until after absorption into LPTB. Enamel on brass. Part of the 'family' of cap badges based on the Underground Group bullseye. In very good, ex-use condition. [1]



Estimate: £90 to £110

227

London Underground enamel STOCKNUMBER PLATE '13231' from 1938 P Surface Stock driving motor car plus a small glass Underground DIRECTION SIGN 'Victoria', one of the back-lit, colour-coded signs that were mounted in the connecting tunnels between platforms at large interchange stations (measures 6" x 4" (13cm x 10cm). Both items are in very good, ex-use condition. [2]

Estimate: £120 to £140



231

London Underground 38-Tube Stock enamel CAB DESTINATION PLATE for Bushey Heath / Finchley Cen on the Northern Line. Bushey Heath would have been the new northern terminus of the line had the extension proposed before WW2 taken place but this was abandoned with the introduction of the Green Belt. A double-sided plate with brass ends. In ex-use condition, the latter side has some enamel losses to the lettering. [1]

Estimate: £140 to £180



228

Selection (5) of London Transport bus or coach stop enamel E-PLATES comprising bus route 27A Mon-Sat and Green Line routes 702, 703, 709 and 710. All are in very good, ex-use condition. [5]

Estimate: £100 to £140



232

London Underground Standard or 1938 Tube Stock enamel DESTINATION PLATE for Elephant & Castle/Queens Park on the Bakerloo Line. Double-sided with brass ends. In ex-use condition, some enamel losses to the lettering have been repaired with vinyl. [1]

Estimate: £180 to £220



229

Selection (8) of London Transport bus stop enamel E-PLATES comprising routes 305, 305A, 316, 335/336, 336, 348A, 353 and 362. A couple are a little weathered but mostly in very good, ex-use condition. [8]

Estimate: £140 to £160



233

Selection of Midland Red items comprising 2 FRONT REGISTRATION PLATES: VHA 433 (ex 1955 D7) and 921 KHA (ex 1961 D9), a CARRYING CASE marked 'Long Distance No 7, Leamington' and containing a handful of CAP BADGES, a company BRASS PLATE & a bundle of 1950s STAFF BULLETINS plus a bronze VEHICLE CHOCK marked 'Midland Red'. Items in good, ex-use condition. [Quantity]

Estimate: £140 to £180



230

Pair of London Transport coach stop enamel E-PLATES for Green Line route 704, one in each direction, the first destined Tunbridge Wells via Sevenoaks (just 3 pairs like this were recorded - Hyde Park Corner, New Cross Gate and near Bromley) and the second Windsor via Slough (the only known example of this plate was recorded on the Great West Road at Oxford Avenue). Both are in very good, ex-use condition with minor blemishes. [2]

Estimate: £280 to £320



234

Pair of 1960s/70s London Underground enamel PLATFORM FRIEZE PLATES for the Northern Line, each with the line name on the bar of a traditional LT bullseye. These are end-of-section examples, one l/h, one r/h and, with the addition of a station name panel in the centre, would make up a self-contained display. Both are 18" (46cm) long and 9" (23cm) high and are in excellent condition with minor blemishes only. [2]

Estimate: £140 to £180



235

1933 first edition of the H.C. Beck London Underground diagrammatic card POCKET MAP with the famous cover slogan "A new design for an old map....." A well-used but quite reasonable example with wear, scuffs and stains from use, nicks at the edges and folds. [1]



Estimate: £400 to £500

239

Large quantity (270) of 1980s British Railways PLATFORM TICKETS comprising 180 Edmondson card issues from a wide range of stations in London & the SE, many are issue-dated on the reverse, plus 90 paper issues from a wider range of English stations. All are in very good condition. [270]



Estimate: £180 to £220

236

London Transport Tramways 'A'-type TICKET PUNCH with double backplate with extra position for a canceller plus original leather apron. Punch is s/n A 8139, marked 'London Transport'. Plus an 8-position, wooden TICKET-RACK (spring-loaded) which includes a number of unused/part-used TICKET PACKS from Last Tram Week in July 1952. The punch is in working good order and the set comes with a non-original but suitable BOX. [1 set]



Estimate: £140 to £180

240

Pair of London Transport coach stop enamel E-PLATES for Grey Green Coaches and Orange Luxury Coaches, both with green lettering as used for other operators, in this case two very well-known, former London coach operators. There would not have been many e-plates for these names. Both in very good, ex-use condition. [2]



Estimate: £180 to £220

237

Very large quantity (c9,000) of mostly 1940s/50s bus & tram etc TICKETS from across the UK. Substantially punch type but also Willebrew, Automaticket, Edmondson, Setright, Ultimate, Gibson (early LT), TIM & paper issues. Operators include Tilling/BET, municipalities and independents. Examples also from cliff lifts, tunnels, ferries, car parks, bridge tolls, piers etc. Huge variety from a multitude of operators. Mostly in very good, ex-use condition. Part of the Peter Bloxam collection of 1920s-onwards tickets being offered in this and our previous sale. [c9,000]



Estimate: £400 to £500

241

1911 Cook's HANDBOOK TO LONDON with official LONDON UNDERGROUND MAP. 232pp hard-cover book with illustration of Vanguard motor-bus, taxi-cab & policeman on cover. The map is the classic 1911 Underground issue, showing 3 stations at Hammersmith, the LB&SCR lines to Crystal Palace, places of interest on the reverse. The book has a little wear and creasing to the cover-corners but the inside pages are very good and the Underground map is excellent. [1]



Estimate: £140 to £180

238

Huge quantity (c19,000) of London Transport Buses PUNCH TICKETS of the late 1940s/early 1950s 'deaf & dumb' type (fare stages only) plus very small numbers of other punch types, Ultimate, Setright, TIM & Gibson examples. Mostly in very good, ex-use condition. Part of the Peter Bloxam collection of 1920s-onwards tickets being offered in this and our previous sale. [c19,000]



Estimate: £200 to £300

242

Selection (4) of London Transport TRAM FARECHARTS comprising a single-sided, paper issue for routes 2-4 dated June 1939 plus double-sided, card issues for routes 10 & 16-18 dated November 1946, routes 16-18 & 42 dated March 1947 and for routes 36/38 & 44/46, undated but carries 'first & last' sticker dated January 1952. The third example is heavily used and stained, the others are in good to very good condition. [4]



Estimate: £120 to £140

243

Trio of London Transport TRAM FARECHARTS for Kingsway Subway routes, all single-sided, paper issues and comprising route 31 dated July 1938, route 33 dated November 1949 and route 35 dated March 1941. Some signs of age but generally in very good condition. [3]



Estimate: £120 to £140

247

Quantity (100+) of 1940s/50s b&w STEAM RAILWAY NEGATIVES (120-size, 6cm x 4.5cm) taken by the railway photographer, the late Geoffrey Bloxam in the 10 years after WW2. These appear to be all from the 'Southern' in the period just before and after Nationalisation. A wide variety of loco types and locations with a mixture of branch-line, main-line and withdrawn loco shots in this selection. Quality appears to be generally very good. A random selection is pictured. Copyright passes to buyer. No index or details. [100+]



Estimate: £240 to £280

244

Trio of London Transport TRAM FARECHARTS, all single-sided, paper issues and comprising route 2 dated January 1934 (larger-size to fit ex-Croydon car), route 28 dated October 1935 and route 58 dated November 1949. Generally in very good condition. [3]



Estimate: £120 to £140

248

Quantity (100+) of 1940s/50s b&w STEAM RAILWAY NEGATIVES (120-size, 6cm x 6cm) taken by the railway photographer, the late Geoffrey Bloxam in the 10 years after WW2. These appear to be all from the 'Southern' in the period just before and after Nationalisation. A wide variety of loco types and locations, incl Isle of Wight, with branch-line, main-line, on-shed and withdrawn loco shots in this selection. Quality appears to be generally very good. A random selection is pictured. Copyright passes to buyer. No index or details. [100+]



Estimate: £240 to £280

245

2 rolls (approx 50 metres) of brand-new London Transport SEAT MOQUETTE as used on DMS, MB, SM etc buses and 1972 Tube Stock. Commissioned by Misha Black in 1965 and designed by Marianne Straub, the blue/green moquette was originally intended for the Victoria Line 1967 Tube Stock was wasn't ready in time. The rolls are in original packaging as delivered by the manufacturer. [approx 50 metres]



Estimate: £900 to £1100

249

London Underground PLATFORM ROUND EL SIGN from Oxford Circus station on the Central, Bakerloo and Victoria Lines. Measures 25" (64cm) square and is generally in very good, ex-use condition with a couple of tiny chips and a few short surface scratches. [1]



Estimate: £400 to £500

246

Quantity (100+) of 1940s/50s b&w STEAM RAILWAY NEGATIVES (120-size, 6cm x 4.5cm) taken by the railway photographer, the late Geoffrey Bloxam in the 10 years after WW2. These appear to be all from the 'Southern' in the period just after Nationalisation. A wide variety of loco types and locations with a mixture of branch-line and main-line shots in this selection. Quality appears to be generally very good. A random selection is pictured. Copyright passes to buyer. No index or details. [100+]



Estimate: £240 to £280

250

Pair of London Transport bus stop enamel E-PLATES comprising route 113 Mon-Fri destined Brent Cross, most likely one of a unique pair located at Edgware Station, and route 122A destined Queen Elizabeth Hospital, was probably located in Woolwich. In good to very good, ex-use condition. [2]



Estimate: £140 to £160

251

c1909 London Underground STREET & RAILWAY MAP. A 54-page booklet featuring prominent use of the then recently-introduced Underground logo and incorporating a coloured system map, a monochrome illustration of the 'No need to ask a p'liceman' poster, sectional street plans with the Underground lines superimposed and a street index. An unusually good example - light staining and a crease to the cover but contents are very good. Spine has been reinforced. [1]



Estimate: £90 to £110

252

1899 District Railway illustrated GUIDE to the Greater Britain Exhibition at Earl's Court. 56pp booklet with fold-out District Railway Miniature Map of London - a special issue of the map overprinted with 'Greater Britain Exhibition & Gigantic Wheel' and a symbol of Britannia at the appropriate location. A little age-darkened, light stains to covers, staples have corroded but overall in very good condition. [1]



Estimate: £90 to £110

253

Quantity (85) of 1950s-1970s London Transport POCKET MAPS comprising 24 x Underground card diagrams (incl Beck, Hutchison & Garbutt issues), 5 Trolleybus & Tram issues and the remainder mainly Central Bus. Condition ranges from lightly used to very good. [85]



Estimate: £120 to £160

254

London Transport 1970s enamel COACH STOP FLAG for National Express. A double-sided, hollow, 'boat'-style flag measuring 18" x 16" (46cm x 40cm). There were just a very small number of these flags which were put up at the few stops in the LT area which were served exclusively by National Express. In excellent condition with just a few very small blemishes. [1]



Estimate: £180 to £220

255

London Transport Gibson ticket machine WEBBING HARNESS plus an LT bus conductors' leather CASH BAG with BUDGET KEY. Both items in very good, ex-use condition, the bag has the conductor's name and garage (Norwood) written on the LT bullseye. [2]



Estimate: £120 to £140

256

London & South Western Railway (LSWR) cast-iron DOORPLATE 'Private'. Measures 11.5" x 4" (30cm x 10cm) and is in excellent condition, painted in later SR colours. [1]



Estimate: £90 to £110

257

Southern Railway LAMP TABLET SIGN from Godstone station on the former SER line from Redhill to Tonbridge. An opaque glass sign with its original oak frame and in very good, ex-use condition. [1]



Estimate: £180 to £220

258

Southern Railway indicator board ENAMEL PLATE 'Sheffield Park' probably from the departures board at Victoria. Sheffield Park station, on the former LB&SCR line from East Grinstead to Lewes, was closed by BR in 1958 and re-opened by today's Bluebell Railway in 1960 and is now the southern terminus of that heritage railway. Measures 17" x 2.5" (43cm x 6cm) and is in good, ex-use condition with a little chipping at the top edge. [1]



Estimate: £240 to £280

259

Quantity (12) of railway cast-iron WAGON PLATES with examples from all the 'Big Four' companies pre-1948 nationalisation. All different. Faces and backs repainted and in very good condition. [12]



Estimate: £180 to £220

260

Pair of London Transport bus stop enamel E-PLATES, the first for route 40 Sat-Sun, via Camberwell (location unknown) and the second for route 51 Mon-Fri, Charlton, was probably located in Woolwich. The first has a small edge chip, otherwise they are both in very good, ex-use condition. [2]



Estimate: £140 to £160

265

London Transport Routemaster perspex GRILLE BADGE, Country Bus & Green Line Coach type and of the style fitted from 1965 onwards to the RMLs and RCLs and later to the RMCs at overhaul. It comes complete with original surround. A few blemishes and scratches from use but generally a very good example. Few have survived as they were removed or painted over by LCBS in 1970. [1]



Estimate: £140 to £180

261

Large quantity (100+) of mainly 1960s-80s bus & coach VEHICLE & PARTS MANUFACTURERS' MANUALS & INSTRUCTION SHEETS, MANUFACTURERS' BROCHURES etc plus GENERAL ARRANGEMENT DRAWINGS etc plus a small selection of OPERATOR HISTORIES etc. Huge variety. Mostly in good to very good condition. [100+]



Estimate: £180 to £220

266

Quantity (32) of 1950s/60s BUS & COACH MANUFACTURERS' BROCHURES & LEAFLETS by Leyland, AEC, Guy, Daimler, Scania. Very little duplication. Most are in good to very good condition. [32]



Estimate: £90 to £110

262

Bundle (approx 80) of mainly 1930s-60s Southdown Motor Services TIMETABLE & EXCURSION LEAFLETS. Huge variety, mostly in very good condition. [c80]



Estimate: £90 to £110

267

Large quantity (c120) of BUS & COACH MANUFACTURER'S BROCHURES & PAMPHLETS dating from the 1960s to fairly recently but the majority appear to be 1980s-early 2000s. Manufacturers include Daimler, Leyland, Optare, Plaxton, Neoplan, Bedford, MCV, Scania, Mercedes-Benz, Bova, Volvo and more. All in very good condition. [c120]



Estimate: £120 to £160

263

London Transport Routemaster RADIATOR GRILLE from RML 2673. The complete fibreglass unit (minus badge), measuring 48.5" x 29.5" (123cm x 75cm). The original RML 2673 entered service at Hanwell (HL) garage in 1967 and the last bus to carry this number was withdrawn from Putney (AF) garage in 2005 and subsequently exported to Canada. The non-standard position of the registration plate suggests that this grille was the one removed when the bus was refurbished in 1993. In very good, ex-vehicle condition. [1]



Estimate: £180 to £220

268

London Transport bus timetable noticeboard enamel HEADER PLATE manufactured in 1930s style with the lettering under/overlined with diamond cut-outs. Length 40" (102cm). A little well-executed restoration around the screw-holes but generally in very good condition. [1]



Estimate: £180 to £220

264

London Transport Routemaster perspex GRILLE BADGE, of the type fitted from 1965 onwards, complete with surround, plus a BRASS TAG from RM 2157. Both items in very good, ex-use condition. [2]



Estimate: £120 to £140

269

2 sections of famous London Transport SEAT MOQUETTE comprising approx 3.5 metres of the Routemaster Bus type, designed by Douglas Scott, and approx 3 metres of the type designed in the late 1930s and used on thousands of RT family, RF, GS, RLH and other post-war London buses. Unused, as new. [approx 6.5 metres]



Estimate: £140 to £180

270

Pair of London Transport/London Country coach stop enamel E-PLATES for Green Line routes 714 'Fare Stage' and 715A Saturday, Enfield, Hertford with an added 'fare stage' sticker (the only known pair of 715A plates with this wording and 'fare stage' were at Great Portland Street). Both plates are in very good, ex-use condition. [2]



Estimate: £120 to £140

274

Bundle (22 items) of 1900s-1930s railway & London Underground PUBLICITY ITEMS including Central London Railway 1909 Exhibition pamphlet & 1911 Coronation Souvenir booklet, 1914 North British Railway 'Beauties of Scotland' Official Guide, 1920s-30s LMS guidebooks, map, Clyde Coast steamer sailings, 1913 SECR 'Voila Londres' booklet, LB&SCR 'The South Downs', 5 x Met & Great Central 'Country Walks', Underground Group guide books, 1938 LMS 'London-Birmingham Centenary' etc etc. Mostly in good to very good condition. [22]



Estimate: £140 to £160

271

London Transport bus bonnet FLEETNUMBER PLATE from ST 387, a standard, AEC Regent ST. The original ST 387 entered service at Nunhead (AH) garage in 1930, later carried Overground livery at Potters Bar (PB) and was lent to Caledonian Omnibus, Dumfries during WW2. The last bus to carry this number was withdrawn from Norwood (N) garage in 1950 and scrapped that year. The plate is in good ex-vehicle condition and appears not to have been cleaned since removal. [1]



Estimate: £180 to £220

275

Large quantity (26) of 1950s-1970 Midland Red TIMETABLE BOOKLETS AND FARE TABLE BOOKLETS. Mostly in very good condition, a few have corroded staples. [26]



Estimate: £120 to £140

272

Selection (6) of London Transport bus items comprising 4 x bus stop enamel G-PLATES, a DM or Metrobus STENCIL HOLDER from Hanwell (HL) garage, complete with running number plate '5' and a perspex, translucent FARE BOARD showing Edgware/Harrow area pre-decimal fares and probably designed for an MB or SM vehicle. Items are in good to very good, ex-use condition. [6]



Estimate: £140 to £180

276

Large quantity (37) of 1930s-70s Ribble Motor Services TIMETABLE BOOKLETS. Mostly in good to very good condition. [37]



Estimate: £140 to £180

273

1950s/60s Eastern Counties Omnibus Company Ltd enamel BUS AND COACH STOP FLAG. A double-sided sign measuring 14" x 16" (36cm x 41cm) and in excellent condition with just a few minor blemishes. [1]



Estimate: £180 to £220

277

Pair of c1910 London General Omnibus Company CAP BADGES: the first is an Inspector's badge, brass with laurel leaves and enamelled scroll (small enamel loss to the scroll, otherwise good) and the second a brass 'winged wheel' badge as issued to drivers and conductors (good condition). [2]



Estimate: £140 to £180

278

Pair of c1890s London General Omnibus Company Limited CAP BADGES from the horse-bus era and designed to fit a bowler hat. One for an Inspector and the other for a Timekeeper. Made of brass with enamelled coat of arms in red and white. The inspector's badge has some small losses of enamel, in other respects both are in very good, ex-use condition. [2]



Estimate: £140 to £180

282

1839 (1889) Bradshaw's RAILWAY COMPANION "Railway Timetables and Assistant to Railway Travelling". This is the version dated '10th Mo 25th, 1839 (No 3)' and is almost certainly the 1889 facsimile reprint by Bradshaw to celebrate their half-century, though is not so marked. Pocket-sized, hard covers with gold-leaf title label. Contains timetables, a fold-out map of the railways of England & Wales, town plans, area maps, "hackney coach" fares etc. A little age-foxing in places but otherwise an excellent example. Very small stamp 'Selbourne Library' inside cover. [1]



Estimate: £140 to £180

279

1950s/60s London Transport enamel BUS STOP FLAG, the 'compulsory' version. A double-sided, hollow, 'boat'-style flag measuring 18" x 16" (46cm x 41cm). A very good example with just a few tiny blemishes to the faces. [1]



Estimate: £100 to £140

283

London Transport ENAMEL PLATE, a commemorative plaque marking the 1953 tour of Switzerland & Sweden by London buses RT 3710 and RTL 1459, to promote British Festivals. One of these signs remained on each deck of the buses (2nd picture shows one in position), along with a GB sign on the rear, throughout their subsequent service life in London. Measures 11" (28cm) square. Some damage around the screw-holes incurred when removed could be better restored. [1]



Estimate: £140 to £160

280

London Transport coach stop enamel E-PLATE for Green Line route 712 destined Leatherhead, Box Hill, Dorking. Most destined plates for the 712 were withdrawn in 1965, before private location records were made. This would most likely have been located in south London. In very good, ex-use condition. [1]



Estimate: £280 to £320

284

Western National enamel BUS STOP FLAG. A 1950s/60s double-sided sign in cream and green enamel. Measures 12.5" x 10.5" (32cm x 27cm). In very good, ex-use condition, just a few minor blemishes. [1]



Estimate: £90 to £110

281

Selection of London Transport & LGOC CROCKERY & CUTLERY as used in bus garage & Underground canteens. Comprises 7 cups & 5 saucers, 9 large, 1 medium & 1 small plates, 2 teaspoons and a wooden tray - all marked 'London Transport Catering' plus a mug marked 'General' and 5 tablespoons marked with 'London General Omnibus Co Ltd' with the winged-wheel motif. Generally in good, ex-use condition. [32 items]



Estimate: £120 to £160

285

1926 London Underground linen-card POCKET MAP from the Stingemore-designed series of 1925-32. This is the third edition, dated January 1926, and is in the smaller size of the first 5 editions. An exceptionally good example - crisp, firm and unmarked. [1]



Estimate: £160 to £200

286

1936 (No 1) London Underground diagrammatic card POCKET MAP designed by H C Beck. An excellent example, crisp and firm, with just very light signs of use. [1]

Estimate: £120 to £160



290

Pair of London Transport bus stop enamel E-PLATES for prefix routes, the first for S2 destined 'To Bow, Seven Stars', the original 1970-72 Bow terminus (very unusual use of the word 'to' on an e-plate), and the second for W8 'Special Journeys to Tramway Avenue' in respect of the in-service journeys that ran into Edmonton garage rather than to Picketts Lock. The plates are in good to very good, ex-use condition. [2]

Estimate: £140 to £180



287

1933 London Underground H C Beck diagrammatic, card POCKET MAP from the first-year series titled 'Underground Railways of London'. This is the edition with no print-code, issued c. August 1933 and has 'LPTB' inside the bullseye logos. Refers to re-naming of Dover St station to Green Park and the merger of Holborn and British Museum stations, all in September that year. A good example with some age-foxing marks, particularly at one fold. [1]

Estimate: £240 to £280



291

Selection (12) of 19th century BRASS WAGON-WHEEL HUBCAPS as fitted to the wooden wheels of carriages, wagons, carts etc. 7 of them carry a variety of coachbuilders' names. Generally in good, ex-use condition. [12]

Estimate: £120 to £140



288

Selection (4) of London Transport rear REGISTRATION PLATES from the 1966 XMS/XMB-class AEC 'Merlins' with Strachans bodies designed for the first Red Arrow service, route 500 and for Country Area flat-fare services (never used on the latter). The buses were later re-designated MB. These are the plates from XMS (MB) 2, XMB 4/XMS (MB) 9, XMB 7/XMS (MB) 12 and XMB 9/XMS (MB) 14. Made of perspex and designed to be back-lit (see extra picture of rear of another of the batch in service). In very good, ex-use condition. [4]

Estimate: £120 to £140



292

Selection (3) of London Transport bus stop enamel G-PLATES comprising 'Form Queue This Side', 'Form Queue Other Side' and 'Headstop'. All are in very good, ex-use condition. [3]

Estimate: £120 to £160



289

Selection (7) of London Transport bus stop enamel E-PLATES comprising routes 17 Sunday (in red), 36 Mon-Fri Peak Hours, 59 Sunday (in red), 105 Mon-Sat, 247 Sunday (in red), 243 Weekday and 802A PLUS a larger, aluminium version of the type fitted in bus stations, for route 460 destined Slough via Datchet and probably from Staines Central Station. All are generally in very good condition. [8]

Estimate: £180 to £220



293

The 'Improved "District Railway" MAP of London', 3rd edition, 1882. Shows a proposed link line between Westminster and Edgware Road, together with its catchment areas. Also shows as under construction the completion of the Inner Circle and Eastern Extension to Whitechapel as well as other proposed railways, eg part of the 'Metropolitan Outer Circle Railway'. Linen-backed inside cloth covers, opens out to 42" x 26" (107cm x 65cm). The map is in very good order, the covers are worn. A most uncommon issue. [1]

Estimate: £200 to £300



294

Edinburgh BUS STOP FLAG with a full set of original inserts of route numbers and operator names - Fife, Lothian, Midland Bluebird and SMT. This was located at Blackhall Library on Hillhouse Road in the north of the city and was for Buses to City Centre. A double-sided sign measuring 16" x 45" (41cm x 114cm) and in very good, ex-use condition. [1]

Estimate: £120 to £140



298

Trio of London Country (London Transport-manufactured) DESTINATION BLINDS comprising an 'NN' ultimate for RT, RML, AN vehicles at Garston (GR) garage dated 31.7.76, a 'VV' rear numbers for RML vehicles at Windsor (WR) garage dated 22.11.75 and a 'PP' canopy blind for RML vehicles at Windsor (WR) garage dated 21.5.73. All are Aldenham-manufactured and complete blinds except for the last which has a section missing at the end. [3]



Estimate: £120 to £140

295

Trio of 1960s/70s Birmingham City Transport/WMPTE BUS DESTINATION BLINDS comprising examples from Lea Hall garage dated Jan 1967, Yardley Wood garage dated Feb 1972 and Acocks Green garage dated Feb 1973. All are in good to very good, ex-use condition, the last has small paint splashes on the bottom few panels. [3]



Estimate: £140 to £180

299

Western Welsh coach REAR REGISTRATION PANEL from AEC Reliance/Plaxton Panorama no 160, new in 1966 and scrapped in 1978. A glazed panel with chrome surround, featuring the coach's later 'National' branding. Measures 43.5" x 11" (111cm x 28cm) and is in very good, ex-use condition. [1]



Estimate: £90 to £110

296

Pair of London Transport RT BUS DESTINATION BLINDS comprising a side/rear blind, coded S, from Sidcup (SP) garage dated 16.3.65 and a canopy blind, coded AA, from Bromley (TB) garage dated 30.9.71. Generally in very good, ex-use condition. [2]



Estimate: £100 to £120

300

London Transport coach stop enamel E-PLATE for Green Line route 712 destined Victoria, Epsom, Dorking and annotated 'Fare Stage'. Most destined plates for the 712 were withdrawn in 1965, before private location records were made. A very uncommon plate. In very good ex-use condition. [1]



Estimate: £340 to £380

297

Pair of c1910-15 Railless Electric Traction BROCHURES, the first is 28 pages and fully illustrated with pictures of the first trolleybuses in various locations, the second is 7 pages and comprises extracts from newspaper articles 1911-1914 on the new trolleybuses across the country. The first has damp staining and discolouration, otherwise OK, the second is in good condition. [2]



Estimate: £80 to £100

301

Aldershot & District Traction Company bus DESTINATION BLIND. A lengthy blind, complete and generally in very good, ex-use condition with a few well-used sections. [1]



Estimate: £90 to £110

302

Selection (9) of London Transport DESTINATION BLINDS, all are number blinds, mostly 1960s-70s, a couple are later, and mainly A & AA codes for RT-types, a couple of RM/DMS also noted. All are complete blinds and are generally in good to very good, ex-use condition. [9]



Estimate: £90 to £110

303

Thames Valley Traction Company bus DESTINATION BLIND. A lengthy blind, complete and generally in very good, ex-use condition. [1]

Estimate: £90 to £110



308

Southdown Motor Services DESTINATION BLIND marked 'CD/63'. From the collection of Southdown enthusiast Robin Aldham. A lengthy blind that is complete and generally in very good, ex-use condition. [1]

Estimate: £140 to £180



304

Pair of London Transport TROLLEYBUS DESTINATION BLINDS from Hammersmith (HB) dépôt, the first for the front & rear boxes, dated 24.9.57, (loss & damage at lower end, otherwise very good) and the other a side box blind dated 18.4.58 (a complete blind in very good, ex-use condition). Both are Aldenham-manufactured. [2]

Estimate: £180 to £220



309

Pair of London Transport RF coach/bus DESTINATION BLINDS comprising a Green Line blind from Staines (ST) garage dated 23.3.66 and coded 'M' plus a bus blind from St Albans (SA) garage dated 25.8.69 and coded 'L' (rear box). Both are complete blinds, Aldenham-produced, in generally good to very good condition - the former has been well used. [2]

Estimate: £120 to £140



305

London Transport BL-type bus DESTINATION BLIND (also fits RF) from Kingston (K) garage dated 17.7.78 and coded 'K' for the front box. A lengthy, complete blind, Aldenham-produced, with displays for all the shed's single-deck routes including yellow panels for anti-clockwise journeys on the 215. In excellent condition, barely used. [1]

Estimate: £90 to £110



310

Pair of London Transport/London Country RF coach/bus DESTINATION BLINDS comprising a Green Line blind from Reigate (RG) garage dated 6.4.72 and coded 'M' plus a bus blind from Dunton Green (DG) garage dated 6.9.69 and coded 'L' (rear box). Both are complete blinds, Aldenham-produced, in generally good to very good condition - the former has been well used. [2]

Estimate: £120 to £140



306

1960s London Underground DESTINATION BLIND from an R-Stock car on the District Line. Dated 26.8.68, this is a complete blind, made at Aldenham Bus Works and in good to very good, ex-use condition. [1]

Estimate: £90 to £110



311

London Country (London Transport-manufactured) Routemaster DESTINATION BLIND from Staines (ST) garage dated 25.11.75 and coded 'LL' for the side and rear destination boxes of an RML. A complete blind, Aldenham-produced, and in very good ex-use condition. [1]

Estimate: £90 to £110



307

London Transport Routemaster DESTINATION BLIND from Dalston (D) garage dated 11.12.79 and coded 'N' for the ultimate box, front or rear. Includes displays for two very famous London bus routes - the 9 and 11. A complete blind, Aldenham-produced. In very good, lightly-used condition. [1]

Estimate: £140 to £180



312

London Country (London Transport-manufactured) Routemaster DESTINATION BLIND from Leatherhead (LH) garage dated 18.9.75 and coded 'VV' for the ultimate boxes of an RMC. A complete blind, Aldenham-manufactured, and in very good, ex-use condition. [1]

Estimate: £90 to £110



313

London Transport Routemaster DESTINATION BLIND from Kingston (K) garage dated 3.11.83 and coded 'LL' for the side or rear box. Includes yellow displays for the 'Kingston Shoppers Express' routes K1 & K2. A complete blind, Aldenham-manufactured, in excellent, ex-use condition. [1]

Estimate: £80 to £100



318

London Transport DESTINATION BLIND for RM, DM & DMS vehicles at Croydon (TC) garage. Coded 'NN' for the ultimate box and dated 7.4.82. A lengthy, complete blind, Aldenham-manufactured, in very good, ex-use condition. [1]

Estimate: £110 to £130



314

London Transport DESTINATION BLIND for a DMS-class vehicle at New Cross (NX) garage dated 21.5.81 and coded 'NN' for the ultimate box. A complete blind, Aldenham-manufactured, in very good, ex-use condition. [1]

Estimate: £90 to £110



319

London Country (London Transport-manufactured) RT, RML Routemaster, AN vehicles DESTINATION BLIND from Garston (GR) garage. Coded 'NN' for the ultimate box and dated 30.9.74. Includes blue displays for the 803 Express. A complete blind, Aldenham-manufactured, in very good, ex-use condition. [1]

Estimate: £120 to £140



315

Pair of London Transport TROLLEYBUS DESTINATION BLINDS from Fulwell (FW) depot, the first for the front & rear boxes, dated 4.11.59, (in very good, ex-use condition) and the other a matching number box blind dated Sept 8, 1950 (in good, ex-use condition, a little damp staining at the top end). Both are complete blinds, the first is Aldenham-manufactured, the second at Charlton Works. [2]

Estimate: £140 to £180



320

Pair of London Transport coach stop enamel E-PLATES comprising 716 destined Hitchin (these were recorded between Portman Square and Stevenage) and 716A destined Stevenage via Hatfield (these were recorded between Barnes and Barnet). Both are in very good, ex-use condition. [2]

Estimate: £180 to £220



316

London Transport DESTINATION BLIND for a DMS-class vehicle at Sutton (A) garage dated 13.9.79 and coded 'NN' for the ultimate box. A complete blind, Aldenham-manufactured, in very good, ex-use condition. [1]

Estimate: £90 to £110



321

1950s/60s London Transport enamel BUS & COACH STOP FLAG (Compulsory). A double-sided, hollow 'boat'-style flag measuring 18" x 16" (46cm x 41cm). An superb example in excellent, ex-use condition with just minor blemishes. [1]

Estimate: £120 to £140



317

London Transport DESTINATION BLIND for an M-class Metrobus at Potters Bar (PB) garage. Coded 'NN' for the ultimate box and dated 31.3.82. A complete blind, Aldenham-manufactured, in very good, ex-use condition with some scribbles on the blank panels. [1]

Estimate: £90 to £110



322

1950s/60s London Transport enamel BUS & COACH STOP FLAG (Bus Compulsory, Coach Request). A double-sided, hollow 'boat'-style flag measuring 18" x 16" (46cm x 41cm). Some small chips in places but overall in very good, ex-use condition. [1]

Estimate: £90 to £110



323

2 large albums of loose-mounted PHOTOGRAPHS/POSTCARDS compiled by the late Alan A Jackson, historian & transport author, portraying transport etc developments from the late 19th century onwards with captioned photos & commercial postcards. Depending on area, subjects include trains, stations, buses, trams, streets, buildings etc. These albums cover Rickmansworth, Barnet, East Barnet, Elstree and Ruislip, Northwood, Uxbridge, Hillingdon etc. Albums contain 44 & 61 double-pages and very approx 400 pictures. [2]



Estimate: £200 to £240

327

Selection (3) of 1950s/60s cast-alloy BUS RADIATOR BADGES comprising Leyland, Daimler and Albion. All are in very good, ex-vehicle condition. [3]



Estimate: £140 to £180

328

Selection (5) of 1950s/60s cast-alloy BUS RADIATOR etc BADGES comprising 3 ECW (Eastern Coach Works) and 2 Bristol. All are in very good, ex-vehicle condition. [5]



Estimate: £140 to £180

324

2 large albums of loose-mounted PHOTOGRAPHS/POSTCARDS compiled by the late Alan A Jackson, historian & transport author, portraying transport etc developments from the late 19th century onwards with captioned photos & commercial postcards. Depending on area, subjects include trains, stations, buses, trams, streets, buildings etc. These albums cover Walthamstow, Higham's Park, Woodford and Leyton, Whipps Cross, Leytonstone. Albums contain 33 & 34 double-pages and very approx 270 pictures. [2]



Estimate: £150 to £180

329

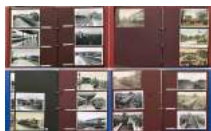
London Transport enamel BUS & RED ARROW STOP FLAG. These were used from the late 1960s until the early 1970s after which the Red Arrow services used standard bus stops. A double-sided, hollow, 'boat'-style flag measuring 18" x 16" (46cm x 40cm). In excellent condition with barely a blemish. [1]



Estimate: £180 to £220

325

2 large albums of loose-mounted PHOTOGRAPHS/POSTCARDS compiled by the late Alan A Jackson, historian & transport author, portraying transport etc developments from the late 19th century onwards with captioned photos & commercial postcards. Depending on area, subjects include trains, stations, buses, trams, streets, buildings etc. These albums cover St Albans & Hatfield and Watford, Bushey & Carpenders Park. Albums contain 33 & 35 double-pages and very approx 270 pictures. [2]



Estimate: £150 to £180

330

Selection (8) of London Transport bus stop enamel E-PLATES comprising 66 Mon-Sat, 247A Mon-Sat, 247A Weekday, 247B Mon-Sat, 250, Fare Stage (white on red), 151/251 Eastern National and 351 Eastern National. Mostly in very good, ex-use condition. [8]



Estimate: £140 to £180

326

Selection (3) of Midland Red & Birmingham Corporation BUS BADGES comprising a 'BMMO' cast-alloy radiator badge, a 1954 'B'ham & Midland Motor Omnibus Co Ltd' brass ENGINE PLATE for a KL/D7 type and a 'BCT' (Birmingham Corporation Transport) alloy winged badge. All are in very good, ex-use condition. [3]



Estimate: £140 to £180

331

Thames Valley Traction Company enamel BUS STOP FLAG with additional London Transport ENAMEL PLATE for Green Line route 701. From the western end of the Green Line route, Virginia Water towards Ascot, which was Thames Valley territory and where LT, no doubt to its chagrin, had to use TV bus stops. Double-sided, flanged bus stop flag with double-sided plate bolted on, the assembly measures 16" x 20" (41cm x 51cm). A most unusual item. In very good, ex-use condition with just minor blemishes. [1]



Estimate: £180 to £220

332

1934 London Underground 'Railways of London' POCKET MAP. An early H C Beck diagrammatic card map with print reference 34-1945 350M and showing the escalator connection between Bank and Monument stations. A very good example, just very lightly used and with a tiny nick at the foot of one fold. [1]



Estimate: £280 to £320

336

1960s London Transport Country Area Divisional Mechanical Inspector's CAP BADGE issued to the senior staff responsible for driving standards on LT's Country Buses & Coaches. A special design of badge, with white infills and 'gold' plating, for this group of only around 4 staff and thus a very uncommon issue. In excellent condition, the lugs on the reverse require straightening. [1]



Estimate: £180 to £220

333

Selection (12) of London Transport brass VEHICLE TAGS, mainly RT/RTL/RTW, and comprising tags for RTs 392, 949, 1187, 2152 and 3818, RTL 579 and RTW 64 (with body tag) plus various sub-codes, incl RF. All in ex-use condition. [12]



Estimate: £90 to £110

337

Large quantity (approx 150) of 1930s-70s London Transport POCKET MAPS, GREEN LINE ROUTE TIMETABLE LEAFLETS, CONDUCTORS' COIN BAGS etc. Pocket maps (c90) include Central Buses, Country Buses, Trams & Trolleybuses, Green Line Coaches, special issues etc. Approx 40 1950s Green Line timetable leaflets, 15 1960s coin bags plus misc items. A few maps are heavily used, most are good to very good. [approx 150]



Estimate: £120 to £160

334

Selection (5) of London Transport Tramways FARECHARTS, all single-sided, and comprising paper issues for route 6 dated November 1949 and for route 26 dated November 1949 plus card issues for routes 10, 16-18 dated October 1950, for route 33 dated November 1949 and for routes 40/66 undated but c1949 and carries 'first & last' sticker dated November 1951. In varying states of used condition but all are very reasonable. [5]



Estimate: £140 to £160

338

Selection (6) of bus alloy RADIATOR BADGES comprising AEC, Albion, Bristol, Leyland, Marshall and Regent. All are in ex-use condition, a couple have minor damage. [6]



Estimate: £120 to £140

335

Selection (4) of pre-war & wartime LCC Tramways/London Transport Tramways FARECHARTS, all single-sided paper issues and comprising LCC issues for route 28 dated November 1931 and for route 31 dated September 1931 and LT issues for routes 16-18 dated August 1942 and for route 42 dated March 1941. Some effects of ageing, small edge-losses but generally good to very good condition. [4]



Estimate: £140 to £160

339

London Transport bus bonnet FLEETNUMBER PLATE from ST 233, a standard, AEC Regent ST. The original ST 233 entered service at Seven Kings (AP) garage in 1930. An ST with this number was briefly lent to Red & White, Chepstow in 1940 and its body was subsequently destroyed by enemy action at Camberwell (Q) garage later that year, with the number then re-appearing on another bus. The last bus to carry this number finished as a trainer at Putney (AF) garage in 1950 and was scrapped that year. In ex-vehicle/ex-scrapyard condition. [1]



Estimate: £180 to £220

340

London Transport bus stop enamel E-PLATE for route 142, a double-vertical plate annotated 'Mon-Sat, Brent Cross Station. See Below'. We think that this would have been one of a unique pair located at Brent Cross Shopping Centre for a short period in 1976 when certain journeys went on to the station. In very good, ex-use condition. [1]

Estimate: £140 to £160



345

London Transport Routemaster bonnet FLEETNUMBER PLATE from RM 274. The original RM 274 entered service at West Ham (WH) garage in 1960, replacing trolleybuses, and the last bus to carry this number finished service at Camberwell (Q) garage in 1986 and was scrapped that year. Comes with the backing plate and hinges and is in very good, ex-vehicle condition. [1]

Estimate: £120 to £140



341

1930s CIGARETTE CASE with engraved London Underground map on the inside including pre-WW2 bullseye logo. Undated but map shows Underground service on the West London line which ceased during WW2. Manufactured by Tallent in silver and gold-coloured metal with two spring-loaded cigarette compartments. In good, used condition with some wear on the outside. [1]

Estimate: £120 to £160



346

Selection (5) of CATALOGUES of London Transport maps and timetables comprising 3 x 'Burwood & Brady', the 1982, 1983 & 1992 editions (some loose pages, one has small annotation on cover) plus the 2004 booklet by Letch and the 1998 LHRG booklet 'London Bus & Underground Timetables'. Long out of print, these are highly sought-after reference publications. The booklets are in very good condition except where described. [5]

Estimate: £120 to £140



342

Large bundle of 1930s onwards Ribble Motor Services ephemera comprising 20+ 1930s-50s WINDOW SLIP POSTERS (incl WW2 examples), 1950s-70s STAFF BULLETINS (large quantity), 5 x 'Silent Courier' TOUR BOOKLETS, large quantity of unused PARCEL, RETURN & EXCHANGE TICKETS, misc leaflets. Mostly in good to very good condition. [large quantity]

Estimate: £120 to £160



347

1960s London Underground PLATFORM BULLSEYE SIGN from Tower Hill Station on the District & Circle Lines, the station that serves the Tower of London. This is likely to date from the opening of the new station in 1967. A 3-part sign with flanges and designed to be hung without a frame, it measures 56" x 42" (142cm x 107cm). Two small chips on the upper circle and another on the bar, otherwise in very good condition. It comes loosely bolted together as one unit. [1 unit]

Estimate: £600 to £700



343

London Underground enamel PLATFORM SIGN from Bank Station on the Central & Northern lines. The name-bar from a roundel. Measures 23" x 3.5" (58cm x 9cm) and is in excellent, ex-use condition with just very minor blemishes. [1]

Estimate: £90 to £110



348

Bundle (51) of 1919/20-1960s LGOC/London Transport POCKET MAPS including Central Buses, Country Buses, Green Line Coaches, Coronations, Olympic Games, Festival of Britain, 'Hop on a Bus' etc. Minor duplication. A few are well-used but most are good to very good. [51]

Estimate: £120 to £140



344

London Underground enamel PLATFORM SIGN from Bayswater Station on the District & Circle lines. The name-bar from a roundel. Measures 32" x 4.5" (81cm x 12cm) and is in good ex-use condition with some light scratches. [1]

Estimate: £90 to £110



349

Quantity (23) of 1950s-70s (mainly) London Transport UNIFORM BADGES etc from the Underground, Central Buses, Country Buses, Trolleybuses and including 2 PSV badges. Nearly all in very good condition. [23]

Estimate: £140 to £180



354

Trio of 1923/24 Metropolitan Electric Tramways (Underground Group) tram stop PANEL TIMETABLES comprising service 21 (1924) and services 21/29/39/51 and 32 (the Alexandra Palace service) (both 1923). Generally in very good condition. [3]

Estimate: £90 to £110



350

An interesting selection (5) of London Transport bus stop enamel E-PLATES comprising 1 Mon-Sat, 1A Sunday Afternoon (red digits), 4 Mon-Fri/68 Fare Stage, 8 Mon-Fri, Special Journeys and 16/36 Sunday (36 in red digits). All are in very good, ex-use condition. [5]

Estimate: £200 to £240



355

Trio of 1923/24 Underground Group Tramways tram stop PANEL TIMETABLES comprising London United services 7 (1923) and 57/63/67/26 (1924) and South Metropolitan Electric service 7 (1923). Generally in very good condition. [3]

Estimate: £90 to £110



351

Large quantity (46) of 1950s-70s bus TIMETABLE BOOKLETS from a wide range of operators incl Bradford, CIE, Portsmouth, Brighton, Colchester, Gosport & Fareham, Maidstone & District, Southdown, Ulster, Oxford, Thames Valley, East Kent, Royal Blue, Eastern National, Eastern Counties, Sheffield, North Western, Bristol, Burwell & District, Trent & more. Mostly in good to very good condition. [46]

Estimate: £140 to £180



356

British Railways (Southern Region) ENAMEL SIGN 'Porters, Porteurs C'. We suggest that this dual-language sign may have been situated at one of the 'marine' stations in Dover, Folkestone or Newhaven. Measures 18" x 12" (46cm x 30cm) and is in very good, ex-use condition with a little touching-in around some screw-holes. A most unusual item that we have not seen before. [1]

Estimate: £180 to £220



352

Large quantity (41) of 1960s/70s Southdown and Brighton Area, Eastbourne TIMETABLE BOOKLETS etc. Mostly in very good condition, a few have corroded staples. [41]

Estimate: £120 to £140



357

Southern Railway enamel TARGET SIGN from Plumpton station on the former LB&SCR 'cut-off' line between Keymer Junction and Lewes. Measures 28" x 13" (71cm x 33cm), very lightly-weathered with some very small areas of restoration and a corroded reverse but generally very good. A most uncommon sign, very rarely seen at auction. [1]

Estimate: £700 to £900



353

Trio of 1923 Underground Group Tramways tram stop PANEL TIMETABLES comprising London United service 71 and Metropolitan Electric services 62 and 60-66. Generally in very good condition. [3]

Estimate: £90 to £110



358

British Railways (Southern Region) fully-flanged enamel TOTEM SIGN from Bramber station on the former LB&SCR Steyning Line (Adur Valley Line) between Horsham and Shoreham-by-Sea and which closed in 1966. In excellent condition with just two very small blemishes on the face although the flanges have further chips and weathering. Totems from Bramber are seldom seen. [1]

Estimate: £1500 to £2000



359

Great Western Railway (GWR) 8" dial CLOCK in mahogany case with side and bottom opening doors. Ivory plate attached 'G.W.R. 552'. Comes with pendulum and winding key. Mechanism runs when wound but not tested beyond that. [1]

Estimate: £700 to £900



363

1950s/60s London Transport enamel BUS STOP SIGN 'Chingford Station' from a 'Keston' wooden bus shelter at this location. The 'London Transport' wording was used when a separate bus stop sign on a pole was also present. This point was served by many routes including the 38, 102, 249 and 257. A flanged, single-sided sign measuring 18" (46cm) square. The location wording has been restored, having been partially removed by LT upon re-use of the sign at some stage, otherwise the sign is in excellent condition. [1]



Estimate: £180 to £220

360

Pair of London Transport coach stop enamel E-PLATES for Green Line routes 705 destined Sevenoaks (the only known pair of these were at Pimlico Station) and 719 destined Stanmore, Victoria, Wrotham (these were located between Hemel Hempstead and Watford). In good to very good, ex-use condition. [2]

Estimate: £220 to £260



364

Collection of London bus items comprising 3 x RT FRONT REGISTRATION PLATES (HLX 343/RT 526, KXW 204/RT 3095 & LYR 538/RT 3319), 2 x WW2 RADIATOR BADGES from Guy Utility buses (hand-painted aluminium as a wartime economy measure) and a pair of RT/RM etc BELL PUSHES with 3 spare ring covers. All are in good to very good, ex-use condition. [10 items]



Estimate: £180 to £220

361

1840 Bradshaw's RAILWAY COMPANION from the 2nd year of publication and the edition dated simply '1840'. Cloth-covered boards, size 3.5" x 4" (7.5 x 12 cm) with gold label title. 60 pages of timetables, train information and maps, some hand-coloured, folding map of the railways of England and Wales, 4 double-page city plans (Leeds, Birmingham, Liverpool and Manchester), folding map of London, folding chart of the gradients of the principal lines and an almanac for 1840. Some wear commensurate with age but generally good to very good. [1]

Estimate: £180 to £220



365

The 'Improved "District Railway" MAP of London', 2nd edition, 1880. Shows as under construction the completion of the Inner Circle, the Eastern Extension to Whitechapel and the extension to Brentford and Hounslow. Shows the proposed extension from Putney Bridge to Wimbledon, Kingston & Guildford. Also shows prominently the Omnibus running from Hammersmith to Barnes. Linen-backed inside plain board covers, opens out to 42" x 26" (107cm x 65cm). The map is in good order, the covers are worn. A most uncommon issue. [1]



Estimate: £200 to £300

362

April 1845 Bradshaw's RAILWAY AND STEAM NAVIGATION GUIDE. In paper covers size 4.75" x 6" (12 x 15.5 cm). 70 pages of timetables, information on routes, fares, railways in Europe, canals, sailings etc plus an initial section of 40 pages of advertising. Lacks the folding map. Some age-darkening and wear to pages, wear and small losses to covers, front cover partially detached. [1]

Estimate: £90 to £110



366

1932 London Underground linen-card POCKET MAP from the Stingemore-designed series of 1925-32. This is the last issue (the final pre-Beck Underground map) with mustard cover and showing all the line extensions completed with opening dates on the reverse. A very good copy, just a few light stains. [1]



Estimate: £110 to £130

367

Early 20th century Metropolitan District Railway (today's District Line) POCKET WATCH engraved 'M D R 804' as issued to guards, platform staff etc on London's second underground railway, today's District Line. Made by Limit, Swiss Made movement. For restoration & repair, the second hand and glass are missing. [1]



Estimate: £100 to £140

371

Great Western & London & North Western Joint Rlys cast-iron WEIGHBRIDGE NOTICE reading "Steam Rollers Traction Engines Motor Lorries and Similar Vehicles Are Strictly Prohibited From Passing Over The Plate Of This Weighbridge. Any Person Disregarding This Notice Will Be Held Responsible For Any Damage Which May Result. J. Williams, Joint Superintendent." A very uncommon sign indeed. Measures 10.5" x 9" (27cm x 23cm) and is in very good condition, face has been repainted in 'GWR brown'. [1]



Estimate: £240 to £280

368

Selection (6) of 1930s/40s London Underground POCKET MAPS comprising diagrammatic card maps: No 2, 1934 (lightly-used, very good), No 1, 1935 (well-used, marks & age-spotting), No 1, 1937 (small annotation on cover, otherwise very good) and No 1, 1940 (well-used, small stain on spine, creases, very short tear) plus 2 copies of Railway Map No 1, 1937, both in very good condition. [6]



Estimate: £180 to £220

372

Great Western & Great Central Railways Joint Committee cast-iron TRESPASS NOTICE. A most uncommon sign. Measures 27" x 20" (69cm x 51cm) and is in very good, ex-use condition, unrestored. [1]



Estimate: £200 to £240

369

1912 Central London Railway POCKET MAP titled 'Central London (Tube) Railway' with a brown border and in a very similar style to maps produced by the Underground Group (who took over the CLR the following year) but with considerable prominence given to its own line. The Ealing Broadway extension, not yet open, is shown in hatched form and that to Liverpool Street shown as operational (cover says "to be opened in June"). In very good, lightly-used condition, one short tear reinforced with archive tape. [1]



Estimate: £240 to £280

373

Early bus ephemera comprising MANUFACTURERS' BROCHURES: 1929 Sunbeam 6-Cylinder, 6-Wheel Chassis, 1931 Daimler Bus & Coach Chassis with Fluid Flywheel Transmission and 1946 Leyland Tiger & Titan Passenger Chassis (all in very good condition) plus a trio of c1920s/30s TIMETABLE FLYERS from Theobald's of Long Melford, Suffolk (a little wear & tear but generally good). [6]



Estimate: £120 to £140

370

London Transport coach stop enamel E-PLATE for Green Line route 708 destined Victoria, Croydon, East Grinstead. These plates were located from Hemel Hempstead to Maida Vale. In very good, ex-use condition. [1]



Estimate: £180 to £220

374

Selection (4) of London Transport bus stop enamel G-PLATES comprising Special Journeys Only, Sundays Only, "Notice to Drivers" Headstop and Monday - Friday Peak Hours. These are superb examples, generally in first-class condition. [4]



Estimate: £140 to £180

375

1950s/60s Southdown Motor Services enamel, combined BUS & COACH STOP FLAG consisting of a generic Tilling/BET-style bus stop to which has been bolted a Southdown-branded coach stop. The assembly is double-sided and measures 13" x 18" (33cm x 46cm) and is in good, ex-use condition with a few small chips to the enamel. A most unusual item. From the collection of Southdown enthusiast Robin Aldham. [1]



Estimate: £280 to £320

379

Large quantity (approx 2,400) of b&w, postcard-size BUS & COACH PHOTOGRAPHS including a considerable quantity of London Transport plus a wide range of operators across the UK. Good quality photos, many by well-known transport photographers. Some LT are pre-WW2 shots, otherwise the period appears to be approx 1950s-1980s. [approx 2,400]



Estimate: £200 to £260

376

Quantity (100+) of 1940s/50s b&w STEAM RAILWAY NEGATIVES (120-size, 6cm x 4.5cm) taken by the railway photographer, the late Geoffrey Bloxam in the 10 years after WW2. These appear to be all from the 'Southern' in the period just after Nationalisation. A wide variety of loco types and locations, this selection is largely main-line shots. Quality appears to be generally very good. A random selection is pictured. Copyright passes to buyer. No index or details. [100+]



Estimate: £240 to £280

380

Selection (4) of London Transport bus stop enamel E-PLATES, all with the blue-background for limited-stop services and comprising 296 Express, 409 Express and 2 x 503 Mon-Fri (Red Arrow service) in different styles. All are in very good, ex-use condition. [4]



Estimate: £140 to £160

377

Quantity (100+) of 1950s b&w STEAM RAILWAY NEGATIVES (120-size, 6cm x 4.5cm) taken by the railway photographer, the late Geoffrey Bloxam in the 10 years after WW2. These appear to be all from the 'Southern' in the early to mid-1950s. A wide variety of loco types and locations, this selection is largely main-line shots. Quality appears to be generally very good. A random selection is pictured. Copyright passes to buyer. No index or details. [100+]



Estimate: £240 to £280

381

London Transport enamel BUS & COACH STOP FLAG (compulsory). A 1950s/60s 'bullseye'-style, E9-size, double-sided 'boat'-type flag complete with runners for 9 e-plates on each side. Measures 18" x 31" (46cm x 79cm). An excellent example with just a few small, touched-in blemishes in the e-plate areas. [1]



Estimate: £160 to £200

382

London Underground enamel PLATFORM ROUNDEL from Bank Station on the Central and Northern Lines. This is the smaller-size sign, from the track-side, measuring 24" (61cm) across by 19.5" (50cm) high, c1980s, in three parts plus alloy frame. In excellent, ex-use condition. [3 parts + frame]



Estimate: £800 to £1000

378

Quantity (100) of 1950s b&w STEAM RAILWAY NEGATIVES (120-size, 6cm x 4.5cm) taken by the railway photographer, the late Geoffrey Bloxam in the 10 years after WW2. These appear to be nearly all from the 'Southern' in the early to mid-1950s. A wide variety of loco types and locations, a mixture of main-line and branch-line shots. Quality appears to be generally very good. A random selection is pictured. Copyright passes to buyer. No index or details. [100]



Estimate: £240 to £280

383

Quartet of bus wooden DESTINATION BOARDS, possibly ex-Maidstone & District and possibly pre-WW2. Three are for services from Gravesend with that name on one side and High View Estate, Harvel and Shorne Ridgeway on the other sides respectively and the other reads Dartford/Hastings. They have metal reinforcements at each end, measure 31.5" x 4" (80cm x 10cm) and are generally in good to very good, ex-use condition. [4]



Estimate: £140 to £180

384

Officially bound volume of the Underground Group TOT MAGAZINE for 1925 - volume 3, January-December 1925. 'TOT' stood for Train, Omnibus, Tram and was the staff magazine for the Combine. In very good condition. [1]

Estimate: £90 to £110



389

London Underground Metropolitan Line A-Stock DESTINATION BOX. A complete, free-standing unit with fully-working winding mechanism and including fitted BLIND with all Metropolitan and East London Line destinations. In very good, ex-car condition. [1 + blind]

Estimate: £200 to £300



385

Large quantity (c175) of London Transport PENNYFARE magazines and LONDON TRANSPORT MAGAZINES from the 1930s-50s including year-sets or near-complete year-sets for 1937, 1938, 1939, 1947, 1948, 1949, 1950, 1951, 1952, 1953, 1954, 1955 and 1959 plus a bundle of duplicate issues from that period. Condition is generally "well-read" with some corroded staples but overall very reasonable. [c175]

Estimate: £120 to £160



390

London Transport coach stop enamel E-PLATE for Green Line route 722 destined Upminster, Corbets Tey. This route was an early withdrawal in 1968 and this is the first e-plate for the 722 alone that we have ever seen. Our theory is that it could have been located in Ilford just before the 722 split from the 721. Some edge-damage from the runners on the stop flag but otherwise in very good, ex-use condition. [1]

Estimate: £300 to £400



386

Trio of London Transport TROLLEYBUS FARECHARTS, single-sided, paper issues comprising routes 513/613/517/617 dated May 1960, routes 543/643/649A undated but c1960 and route 611 dated March 1950. The first two are generally in very good condition, the last has signs of ageing with small corner-losses and a short tear. [3]

Estimate: £100 to £120



391

1940s/50s London Transport enamel BUS STOP FLAG (compulsory). A most unusual E6 type with runners for 6 e-plates on each side. Double-sided with two enamel plates inside a bronze frame. Measures 18" x 26" (46cm x 66cm). A superb example in excellent condition with barely a blemish. [1]

Estimate: £180 to £220



387

Selection (4) of London Transport TROLLEYBUS FARECHARTS comprising single-sided, paper issues for routes 517/617 dated March 1950, routes 645/660/666 undated but c1960 and routes 662/664 dated September 1949 plus a double-sided, card issue for routes 601/602/603 and 604/605 dated July 1961. Condition ranges from used to very good. [4]

Estimate: £120 to £140



392

1933 London Underground H C Beck diagrammatic, card POCKET MAP from the first-year series titled 'Underground Railways of London'. Issued c.December 1933 and has print reference 33-3636. Shows the escalator connection between Bank and Monument stations. Generally a very good copy, just lightly used with a little staining to the cover. [1]

Estimate: £280 to £320



388

London Underground Metropolitan Line A-Stock aluminium LUGGAGE RACK. Measures 16" x 12" (41cm x 31cm) (the smaller-size rack) and is in very good, ex-use condition. [1]

Estimate: £80 to £90



393

London Underground enamel CAB DESTINATION PLATE for Rayners Lane/Uxbridge on either the Piccadilly or Metropolitan Lines although we suspect that this example was from the latter as it has the small coded lugs at the top to assist with identification in the storage rack. Double-sided, reversible with brass ends. In generally very good, ex-use condition. [1]



Estimate: £180 to £220

397

London Transport enamel BUS & COACH STOP FLAG (Bus Request, Coach Compulsory). By far the least common flag, there were only a handful of these for use where Green Line coaches always halted but buses only on demand. This is one of a small batch produced in the 1980s when LT was taking back control of coach stops in the London area and those made at this time were the only coach stops to feature the roundel rather than the traditional bullseye. A double-sided, hollow, 'boat'-style flag measuring 18" x 16" (46cm x 40cm). In superb condition with barely a blemish. [1]



Estimate: £300 to £400

394

London Underground enamel Q-Stock CAB DESTINATION PLATE 'Hammersmith / Mansion House' from the District Line. A double-sided sign with brass ends. In very good, ex-use condition. [1]



Estimate: £180 to £220

398

London Underground enamel PLATFORM ROUNDEL from Earl's Court Station on the District and Piccadilly Lines. This is the smaller-size sign, from the track-side, measuring 24" (61cm) across by 20" (51cm) high, c1980s, in three parts plus bronze frame. In very good, ex-use condition with just minor blemishes. [3 parts + frame]



Estimate: £600 to £800

395

London Transport RTL bus BONNET FLEETNUMBER PLATE from Metro-Cammell RTL 811. The original RTL 811 entered service at Palmers Green (AD) garage in 1950 and the last bus to carry this number finished service at Camberwell (Q) garage in 1966. It then undertook a students' tour to the USSR in 1967 and was acquired for spares by Super Coaches, Upminster later that year. In very good, ex-use condition. [1]



Estimate: £140 to £160

399

London Transport coach stop enamel E-PLATE for Green Line route 720 destined Epping, Stratford, Aldgate. Just 3 pairs of these were recorded, all in Harlow. A most uncommon plate. In very good ex-use condition. [1]



Estimate: £340 to £380

396

1892 (April & May) Great Western Railway (GWR) TIMETABLES etc BOOKLET 'Great Western Railway & other Railways in Connection'. Contains a Notice about the 'Alteration of the Lines from Broad to Narrow Gauge in the West of England'. 152 pp + c40 pages of advertising, 6 maps, 4 are fold-out, incl map of the GWR network. Timetables, fare, parcel rates etc, also details of steamships, ferries, Irish railways etc. Some age wear & darkening, spine has been reinforced, but generally in good condition. [1]



Estimate: £110 to £130

400

Cast-brass locomotive CABSIDE PLATE 1144 from 1909 0-4-0ST built by Hawthorn Leslie for the Swansea Harbour Trust as their no 13. It became GWR no 974 in 1923 and BR(W) 1144 in 1948. The loco worked in the Swansea area all its life and was withdrawn from Swansea East Dock (87D) in Jan 1960 and scrapped that year. In very good, ex-loco condition, face has been repainted/polished, reverse is unrestored. Comes with a photo of the loco at Swansea East Dock in 1950. [1]



Estimate: £750 to £1000

FOR YOUR NOTES



Thinking of selling your transport items? We will do everything for you!

We are the South of England's Specialist Auction House for

TRANSPORT COLLECTABLES & RAILWAYANA



- A friendly, professional and reliable service
- 4 sales a year, best prices achieved
- 3,100 catalogues distributed
- Prompt payments to vendors
- Free valuations, advice and guidance
- Collections can be arranged



Call or email us to discuss. All enquiries welcome, prompt replies.

enquiries@transportauctionslondon.com Tel: 01737 237505

www.transportauctionslondon.com

Registered Office: Transport Auctions of London Ltd, Hamilton House, 87-89 Bell Street, Reigate RH2 7AN
Registered in England & Wales. Company No. 9773357

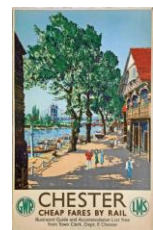
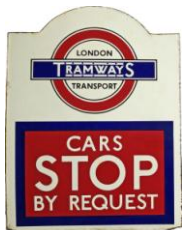


Dates of our next sales:

Saturday 8 May 2021

Saturday 31 July 2021

Saturday 30 October 2021



During the pandemic, sales are held online with audio-visual link-up
Live online bidding plus telephone bids and commission bids by email or post
Sales start at 10am, viewing available by appointment during week before sale
(If lockdown is in force, viewing is by video link)

To join our catalogue mailing list, email us or subscribe via our website

enquiries@transportauctionslondon.com Tel: 01737 237505

www.transportauctionslondon.com

Facebook: [transportauctionsoflondon](https://www.facebook.com/transportauctionsoflondon) Twitter: @TranspAuctions

Transport Auctions of London Ltd

Registered Office: Hamilton House, 87-89 Bell Street, Reigate RH2 7AN
Registered in England & Wales. Company No. 9773357