

PLANT
CLOSED

EVERYTHING
MUST SELL!

3-Day Webcast Auction

BOMMER INDUSTRIES, INC.

**WORLD CLASS HINGE MFG. STAMPING PRESSES, HINGE, DAVENPORT & SCREW
MACHINES, CNC'S MACHINING & METAL FINISHING EQUIPMENT**

19810 ASHEVILLE HWY. - LANDRUM, SC 29356

TUESDAY, SEPTEMBER 20TH * WEDNESDAY, SEPTEMBER 21ST *

**THURSDAY,
SEPTEMBER 22ND
@ 9:00 A.M. EDT**

Inspection: Monday,
September 19th
From 8:00 A.M. - 4:00 P.M. EDT



2000

< KOMATSU OBS200L-
VS-3
200 TON HYDRAULIC
GAP FRAME PRESS

> FANUC
ROBOCUT
ALPHA-1C CNC
WIRE EDM



2005

NAKAMURA-TOME WT-150 CNC TURNING CENTER



2
AVAIL.

(2) DAVENPORT SERVO DRIVE 5-SPINDLE CNC SCREW MACHINES



Asset Sales, Inc.

Corporate Headquarters

163 Associates Lane
Indian Trail, NC 28079

Toll Free 888.800.4442 704.821.4315 Fax 704.821.4325
www.asset-sales.com info@asset-sales.com

European Headquarters

6 Hill End Close, Norwood Green
Halifax, West Yorkshire, HX3 8RH
Tel / Fax 07836.347880
peteram@asset-sales.co.uk

BidSpotter



PRODUCT LINE FAMILIES AVAILABLE FOR PRIVATE SALE * CONTACT FACTORY (864)457-3301

BOMMER INDUSTRIES, INC. Specialty Product Lines, Specialty Dies & Blueprints to be Offered via Private Sale Including:

- BOMMER** Single Acting Spring Hinge Family, LB 4300 Series
- BOMMER** Contract Butt Hinge Family, 5000 & 8000 Series

- BOMMER** Legacy Products Family, 3029 DA Hinges, 7000 Series Pivots, Etc.
- Specialized Product Family Support Equipment to be Sold at Auction



BLISS 200 TON STRAIGHT SIDE PRESS



BLISS 150 TON STRAIGHT SIDE PRESS



BLISS 150 TON STRAIGHT SIDE PRESS

STRAIGHT SIDE PRESSES

BLISS SC2-20072X48 200-Ton Straight Side Press with 72" x 48" Bed, 8" Stroke, 10" Stroke Adjustment, 25-50 Strokes Per Minute, Approx. 21.5"(H) x 31.25"(W) Window, 34" Shut Height, Operator Control Console, **PRAB** Chip Conveyor, **HELM** Loadguard Tonnage Monitoring System, sn:H69874 with **COOPER WEYMOUTH** Model 24CCS 24" Straightener, sn:18163, **DALLAS INDUSTRIES** Model DECS-1818-RH Stock Feeder, sn:20888

BLISS HP2-150-60-36 150-Ton Straight Side Press with 36" x 60" Bed, 4" Stroke, 6" Stroke Adjustment, 100 Strokes Per Minute, Approx. 20"(H) x 20"(W) Window, 20" Shut Height, Operator Control Console, **HELM** Loadguard Tonnage Monitoring System, Electronic Safety Curtain, **WELDOTRON** Series 1992 Press-Set Programmable Limit Switch, sn:H64433 with **COOPER WEYMOUTH PETERSON** Model 12C 12" Straightener, sn:3557 & Model 4R18 8,000lb. Capacity Centering Reel, sn:M3555X, **JAYBIRD** Model J151212 Stock Feeder, sn:3450

BLISS HP2-15060X36 150-Ton Straight Side Press with 36" x 60" Bed, 4" Stroke, 4" Stroke Adjustment, 100 Strokes Per Minute, Approx. 20" x 21" Window, 24" Shut Height, Operator Control Console, **PRAB** Chip Conveyor, **HELM** Loadguard Tonnage Monitoring System, sn:H666801 with **COOPER WEYMOUTH** 18" Straightener, **DURANT TOOL** Model MLD-4816 Centering Reel, sn:1072-57, Stock Feeder

NIAGARA PN-60-60-36 60-Ton Straight Side Press with 36" x 60" Bed, 5" Stroke, 5" Stroke Adjustment, 40 Strokes Per Minute, Approx. 8" x 16" Window, 13" Shut Height, **TRIAD** Light Curtain Push Button Operator Controls, sn:52052



NIAGARA 60 TON STRAIGHT SIDE PRESS



BLISS C-75 & MINSTER 60 OBI PUNCH PRESSES

OBI PUNCH PRESSES

(4) **BLISS C-75** 75-Ton OBI Punch Press with 5" Stroke, 3-1/2" Stroke Adjustment, 90 Strokes Per Minute, 16" Shut Height, sn:H67635
• sn:H67635 • sn:H67851 • sn:H69873

(3) **BLISS C-75** 75-Ton OBI Punch Press with 4" Stroke, 3-1/2" Stroke Adjustment, 90 Strokes Per Minute, 15" Shut Height, sn:H67852
• sn:H67853 • sn:H67854

MINSTER 7 75-Ton OBI Punch Press with 4" Stroke, 4" Stroke Adjustment, 90 Strokes Per Minute, 36" x 24" Bolster, sn:7-17299

BLISS C-60 60-Ton OBI Punch Press with 4" Stroke, 3" Stroke Adjustment, 105 Strokes Per Minute, 14-1/4" Shut Height, **CARY** Noise Control Enclosure, sn:H68477 with **COOPER WEYMOUTH** Model CWP12CCS 12" Straightener, sn:16093, **RAPID AIR** Model FX6 Stock Feeder, sn:47320



BLISS C-75 & C-60 OBI PUNCH PRESSES



(3) MINSTER 5 45 TON OBI PUNCH PRESSES



KOMATSU OBS200L-VS-3 200 TON
HYDRAULIC GAP FRAME PRESS



KOMATSU OBS45-3 49.6 TON HYDRAULIC
GAP FRAME PRESS



(7) BLISS C75 75 TON OBI PUNCH
PRESSES

OBI PUNCH PRESSES (continued)

(2) **BLISS** C-60 60-Ton OBI Punch Press with 4" Stroke, 3" Stroke Adjustment, 90 Strokes Per Minute, 141/4" Shut Height, sn:H70655 • sn:H70733

(3) **MINSTER** 6 60-Ton OBI Punch Press with 4" Stroke, 3" Stroke Adjustment, 90 Strokes Per Minute, 21" x 32" Bolster, sn:18746 • sn:18747 • sn:6-17296

V&O 50-3 50-Ton OBI Punch Press with 5" Stroke, 9" Stroke Adjustment, 100 Strokes Per Minute, sn:50-S-33 with **DURANT** Tool Straightener, **US BAIRD** Multi-Station 8" Straightener

(3) **MINSTER** 5 45-Ton OBI Punch Press with 4" Stroke, 2.75" Stroke Adjustment, 90 Strokes Per Minute, 28" x 18" Bolster, sn:5F-19112 • sn:5F-19111 • sn:5F-19110

BLISS G-45 45-Ton OBI Press with 3" Stroke, 3" Stroke Adjustment, 105 Strokes Per Minute, sn:H67865

(4) Assorted **BENCHMASTER** OBI Presses as new as 1997

GAP, C-FRAME & HYDRAULIC PRESSES

KOMATSU OBS200L-VS-3 200 Ton Hydraulic Gap Frame Press with 11.8" Stroke, 4.72" Stroke Adjustment, 25-50 SPM, 57.01" x 35.04" Bolster, **KOMATSU** Operator Control, sn:D0091, mfg.2000

KOMATSU OBS45-3 49.6 Ton Hydraulic Gap Frame Press with 3.94" Stroke, 2.36" Stroke Adjustment, 50-100 Strokes Per Minute, **SIB MERLIN** Electronic Safety Curtain System, sn:D00008, mfg.1992 with **PA/INDUSTRIES** Model Tangent 3-Station Straightener, **PA/INDUSTRIES** Model PR4 Uncoiler, sn:201309-07688,

(2) **GREENERD** HCA-100-42R10 100 Ton Hydraulic Gap Frame Presses with 1"-18" Stroke Adjustment, 10-18 Strokes Per Minute, **ALLEN-BRADLEY** Panelview 100 Control (2004 Model), **ALLEN-BRADLEY** Panelview Plus 600 Control (1994 Model), sn:04T6407, mfg.2004 • sn:94T4876, mfg.1995

CONWAY B-50-BHD Hydraulic 50 Ton C-Frame Press with Pedestal, Electro-Hydraulic Automation, Dual Palm Buttons

ENERPAC C-Frame Hydraulic Gag Punch, Dual Palm Buttons, Benchtop



(2) GREENERD HCA-100-42R10 100 TON HYDRAULIC GAP FRAME PRESSES



HAAS VF-2 CNC VERTICAL MACHINING CENTER



HAAS DT-1 CNC VERTICAL DRILLING & TAPPING MACHINE



MAZAK QUICK TURN NEXUS 10 CNC TURNING CENTER

CNC VERTICAL MACHINING & TURNING

HAAS VF-2 CNC Vertical Machining Center with 36" x 14" Table, #40 Taper Spindle Speeds to 7,500 RPM, Approx. 30" X-Axis Travel, 16" Y-Axis, 20" Z-Axis, 24 Position ATC, Chip Conveyor, Remote Pulse Generator, **RENISHAW** Probing, **HAAS** CNC Control, sn:1091191, mfg.2011

HAAS DT-1 CNC Vertical Drilling & Tapping Machine with 26" x 15" Table, BT30 Spindle Speeds to 15,000 RPM, Approx. 20" X-Axis Travel, 16" Y-Axis, 15.5" Z-Axis, 20 Position ATC, Remote Pulse Generator, **HAAS** CNC Control, sn:1079907, mfg.2010

MAZAK Quick Turn Nexus 10 CNC Turning Center with Collet Chuck x 12.2" Center Distance, 12 Position Turret, **MAZATROL T Plus** CNC Control, sn:117224

NAKAMURA-TOME WT-150 CNC Turning Center with Collet Chuck (Main) & Collet Chuck (Sub), (2) 12 Station Turrets, Chip Conveyor, **IEMCA** Master 880MP Magazine Barfeed, Parts Catcher, Tool Presetter, Foot Pedal Actuators, **FANUC** 18i-TB CNC Control, sn:M154309, mfg.2005

(3) **NAKAMURA-TOME TW-10 CNC Turning Centers** with Collet Chuck (Main) & Collet Chuck (Sub), (2) 12 Station Turrets, Chip Conveyors, Parts Catchers, Foot Pedal Actuators, **IEMCA** Boss 542CNC/37 Magazine Barfeeds, **FANUC** 18-T CNC Controls

Download a lot book at www.asset-sales.com



NAKAMURA-TOME WT-150 CNC TURNING CENTER



(3) NAKAMURA-TOME TW-10 CNC TURNING CENTERS



9
MILLS



BRIDGEPORT EZ TRAK DX & SERIES II VERTICAL KNEE MILLS

VERTICAL KNEE MILLS, DRILL PRESSES

BRIDGEPORT EZ Trak DX CNC Vertical Knee Mill with 9" x 48" Powerfeed Table, Variable Speeds to 4,200 RPM, 2 HP Motor, Power Draw Bar, **BRIDGEPORT** EZ Trak DX CNC Control, sn:BR276022E

(2) **BRIDGEPORT** Series II Special Vertical Knee Mills with 11" x 58" Tables, Variable Speeds to 3,500RPM, 2 HP Motors, **ACCU-RITE** III 2-Axis DRO & **MAGNESCALE** LH10 3-Axis DRO, sn:7386

(6) **BRIDGEPORT** Vertical Knee Mills with 9" x 42" Tables (4 with Powerfeed), Variable Speeds to 4,200 RPM, 1-1/2 & 2 HP Motors, (2) with Power Drawbar, DRO's, sn:BR262302 • sn:BR262303 • sn:BR274756 • sn:12BR176131 • sn:173435 • J45974

TOPWELL 3VK Vertical Knee Mill with 10" x 50" Table, Variable Speeds to 4,200 RPM, 3-HP Motor, sn:781387

RMT TECHNOLOGY E-8625 4-Spindle Gun Drill with Rotary Positioning Table, sn:99-8081

(4) **CLAUSING** 2217 Variable Speed Pedestal Drill Presses • (2) **ETTCCO** DM-500 Drills • **ALLEN & DELTA** Gang & Multi-Station Drill Presses • Large Assortment of Other Pedestal & Gang Drill Presses

SCREW MACHINES

(2) **DAVENPORT** Servo Drive 5-Spindle CNC Screw Machines with **DAVENPORT** 5-Spindle Auto Bar Feeders, **MAGELIS** CNC Controls

(2) **NEW BRITAIN** 62 6-Spindle Automatic Screw Machines with Dedicated Barfeeds, sn:40150 • sn:40151

PARTS WASHERS

CIRCLE INDUSTRIAL 2-Section (Tumble Wash & Dry) Parts Washer with Exhaust System, sn:4842

CONTINENTAL EQUIPMENT CORP. 6-Stage Parts Washer with Continuous Pass Through & Rotary Drum Sections, sn:PW96-FBDM0463

HINGE CURLING MACHINES, RIVETERS, SPRING, BAGGING & ASSEMBLY

(6) **HINGE CURLING MACHINES**, Mechanical with Approximately 50HP Motors, Single Crank Multi-Position Curling, Semi-Automatic with Push Button Controls

(14) **NATIONAL RIVET RIVETERS** 500B's, 600, 616, & 800's

(3) **TAUMEL** 626, T401 & BK-120/NM Bench Type Spin Riveters with Palm Button Controls

TORIN W125-SA Spring Making Machine with Pallet Uncoiler & Wire Feed Stand, sn:155302-WL

SPRING HOOK Bending Machine

LARGE ASSORTMENT of Custom Assembly & Production Machines Including Stud Insertion Presses • Multi-Spindle Horizontal Production Drills • Tapping, Counterboring, Ream & Milling Machines • 5, 6 & 12 Position Rotary Transfer Machines • Numerous Vibratory Bowl Feeders • Etc.

PARTS MARKERS & BAGGING

HERMES IS7000 3-Axis Programmable Benchtop Gantry Style Parts Marker with Approx. 28" x 36" Table, sn:180374/0600

HERMES Vanguard 8000 2-Axis Programmable Benchtop Gantry Style Parts Marker with Approx. 22" x 29.5" Table, sn:V-8000 902 845/A1

AUTOBAG HS-100 Excel Bagging Machine with (2) Vibratory Bowl Feeders, with Variable Speeds and DRO, sn:AP00063661

(5) **AUTOBAG** Accu-Count 118 Bagging Machines with Vibratory Bowl Feeders

PAINT LINES

(2) **WET** Paint Spray Booths 6'W x 12'D x 6'H with Lighting, Parts Cleaning Tanks, Exhaust, 6'W x 30'L x 12'H Electric Drying Tunnel, (2) **GEHNRICH** 6'W x 8'D x 7'H Gas Fired Double Door Curing Ovens, 300' +/- Monorail Chain Conveyor



2
AVAIL.

(2) DAVENPORT SERVO DRIVE 5-SPINDLE CNC SCREW MACHINES



2
AVAIL.

(2) NEW BRITAIN 62 6-SPINDLE AUTOMATIC SCREW MACHINES



2
AVAIL.

HERMES IS700 3-AXIS PROGRAMMABLE BENCHTOP GANTRY STYLE PARTS MARKER

Asset Sales Does Not Pack, Ship, Crate, Transport or Rig Items. Buyers May Pick Up Their Items at the Auction Location or Can Arrange for a Third Party Logistics Firm to Manage the Removal Process for Them.



2
AVAIL.



(2) 5' W X 12' D X 6' H WET PAINT SPRAY BOOTHS



FANUC ROBOCUT ALPHA-1C CNC WIRE EDM



2004

TOP EDM HM-400CNC HOLE POPPER EDM



PACIFIC 55 TON HYDRAULIC PRESS BRAKE



NIAGARA 10' POWER SQUARING SHEAR



2
AVAIL.

(2) HANSFORD ELECTRIC PORTABLE DIE HANDLERS

Want to Sell Your Shop or Know Someone Who Does? Call Us Toll Free at (888) 800-4442! We Pay Great Finder's Fees!

CNC EDM MACHINES

FANUC Model Robocut Alpha-1C CNC Wire EDM with **FANUC** Series 16M CNC Control, Remote Positioning Control, Auto-Threading, Enclosure, sn:E98Y05449

TOP EDM HM-400 CNC Hole Popper EDM with 21" x 21" Work Area, **TOP EDM** H-36 CNC Control with Pendant Control, sn:0405CNC, mfg.2004

MISCELLANEOUS MACHINERY

PACIFIC J55-8 8' x 55 Ton Hydraulic Press Brake with 6.5' Between Housings, **TRIAD** Light Curtain, **ACRO** CNC Back Gauge System & Control, Pedestal Palm Button Controls, sn:A713

NIAGARA 1R10 10' x 10ga. Capacity Power Squaring Shear, sn:59890

ENERPAC Elec-Draulic 100 Ton H-Frame Shop Press with Adjustable Rail, sn:DI3C • Assorted other H-Frame Presses

OIL GEAR Model XD10x42 Vertical Hydraulic Broach, sn:54271

BARRETT Chip Spinner with Free Standing Jib Crane, sn:4021057-E

(2) Horizontal Slotting Mills with 9" T-Slot Tables

TAYLOR-WINFIELD MKII-5 Induction Heater with Chiller & Induction Heating Coils, sn:020123

(2) **HANSFORD** 1021 Electric Portable Die Handlers, 30" x 63" Tables, sn:483 • sn:637

(2) **DAREX** Drill Sharpeners, sn:534806C • sn:532597C

CRESS Model C-136TCZ Electric Furnace, sn:8902

(2) **SENTRY** Model Y Electric Furnace Model H & Y Size 2, 12"W x 24"D x 18"H

SHOT BLASTING Machine with Airblast, 24" Capacity & **ECONOLINE** Dust Collector

(4) **BROWN & SHARPE, CINCINNATI** Tool & Cutter Grinders

MILLER Millermatic 200 Welder with Wire Feeder, sn:JK540847 • **LINCOLN** TIG 300/300 Welder, sn:AC-653580 • **LINCOLN** Pro-Cut 60 Plasma Cutter, sn:U1940501500 • **AIRCO** 2A/DDR Welder

HUGE ASSORTMENT of **WILTON, ALLEN, DELTA** & Other Drill Presses • **DONALDSON** **TORIT** Dust Collectors • Belt Sanders • Vibratory Bowl Feeders • **DEWALT** & Other Chop Saws • **HUPPERTS** Benchtop Furnace • **CRAFTSMAN, DAYTON** & Other Bench and Pedestal Grinders • (2) **RIGID** 535 Pipe Threaders • **ROCKWELL** & **DELTA** Radial Arm Saws



HARRISON M400 16" X 60" TOOLROOM ENGINE LATHE



HARRISON 10-AA 11" X 19" TOOLROOM ENGINE LATHE



LEBLOND REGAL 15" X 48" TOOLROOM ENGINE LATHE



HARDINGE HLV-H PRECISION LATHE



OKAMOTO ACC-1224DX 12" X 24" HYDRAULIC SURFACE GRINDER



(2) OKAMOTO ACC-618DX3 6" X 18" HYDRAULIC SURFACE GRINDERS

TOOL ROOM MACHINERY, LATHES, SURFACE GRINDERS & SAWS

HARRISON M400 16" x 60" Toolroom Engine Lathe with 12" 3-Jaw Chuck, 2.5" Thru-Hole, Spindle Speeds to 2,000 RPM, Inch/Metric Threading, Rapids, Steady Rest, sn:400261214

HARRISON 10-AA 11" x 19" Toolroom Engine Lathe with 8" 3-Jaw Chuck, 2" Thru-Hole, Spindle Speeds to 1,000 RPM, sn:163129

LEBLOND REGAL 15" x 48" Toolroom Engine Lathe with 10" 3-Jaw Chuck, 1" Thru-Hole, Spindle Speeds to 1,800 RPM, Threading, sn:2C954

HARDINGE HSL-59 High Speed Lathe with Cut-Off Cross Slide & 5C Collet Closer, sn:HSL-5C-70117-T

HARDINGE HLV-H 11" x 18" Precision Tool Room Lathe with Threading, Variable Spindle Speeds & Carriage Feed, 5C Collet Closer, **ACURITE 2-Axis DRO**, sn:HLV-H-12695T

CLAUSING 1301 13" x 36" Engine Lathe with 6" 3-Jaw Chuck, 2" Thru-Hole, Spindle Speeds to 2,000RPM, sn:180624

CRAFTSMAN 12" x 24" Benchtop Lathe with 6" 3-Jaw Chuck, 1" Bore, Spindle Speeds to 1,725 RPM, sn:12L039549

IKEDA RM1000 3' x 11" Column Radial Arm Drill with Power elevation & Clamp, Box Table, sn:75130

OKAMOTO ACC-1224DX 12" x 24" Hydraulic Surface Grinder with Variable Electro-Magnetic Chuck, Wheel Dresser, Operators Control with DRO & Remote Pulse Generator, sn:64983

(2) OKAMOTO ACC-618DX3 6" x 18" Hydraulic Surface Grinders with Variable Electro-Magnetic Chucks, Wheel Dressers, Operators Controls with DRO's & Remote Pulse Generators, sn:45626, 45627

(2) REID 618P Surface Grinders with 6" x 18" Permanent Magnetic, sn:15225 • sn:13719

MOORE No. 3 Jig Grinder with 11" x 24" Table, sn:G1031

(2) JET HBS-916W 9" x 16" Horizontal Bandsaws, sn:509212 • sn:509212

GROB 4V-18 18" Vertical Bandsaw with Power Feed Table, Blade Welder & Grinder, sn:3116



IKEDA 3' X 11" COLUMN RADIAL ARM DRILL



GROB 4V-18 18" VERTICAL BANDSAW



CLAUSING 13" X 36" ENGINE LATHE



MOORE JIG GRINDER



15 +/-
AVAIL.

(15 +/-) CLARK, TOYOTA, YALE & MARIOTTI FORKLIFTS



MATERIAL HANDLING, RACKING & FORKLIFTS

CM LOADSTAR 3 Ton Electric Hoist with Approximately 30' Self Supported Monorail

LANTECH Q300 Stretch Wrapper, sn:QM009949

(4) **GENERAL ELECTRONIC SYSTEMS & WEIGH-TRONIX** 4' x 4' 5,000lb - 8,000lb Capacity Floor Scales with DROs

(13) **CLARK, TOYOTA & YALE** LP Forklifts with 2,200lb - 5,000lb Capacity

CLARK C500120LP 12,000lb Capacity Forklift, Approx. 1,272 Hours, sn:915-05-7006CB

CLARK & MARIOTTI Electric Forklifts & Narrow Isle, High Reach Forklifts with 2,200lb - 3,000lb Capacity

(2) **BIG JOE** 1,500lb Capacity & **PRESTO** B778-MOD 1,000lb Capacity Die Lift Carts • **TENNANT** 5700 Electric Floor Scrubber • **CONDOR** V1833XL Electric Scissor Lift • **ROL-LIFT** Electric Stacker • **CINCINNATI MILACRON** 100E Sump Sucker

QUALITY CONTROL & PLANT SUPPORT

ROMER 5124 Infinite 2.0 Portable CMM with 8' Arm, sn:5124-250

JONES & LAMSON PC-14A Optical Comparator with 14" Screen, sn:E-46039

NIKON 6C Optical Comparator with 12" Screen, sn:41310

COMPLETE QC Department Consisting of **MITUTOYO**, **STARRETT**, **BROWN & SHARPE** Digital Height Gauges, Digital & Vernier Calipers, Micrometers, Bore Gauges, Pin & Block Gauge Sets • Granite Plates • Go No Go Gauges • **FOWLER, INSTRON**, **VERSITRON**, & **SEIKI SEISAKUSHO** Hardness Testers • Etc.

HUGE ASSORTMENT of Metal Parts Bins & Dump Hoppers • 200+ Sections of 1, 2, 3, & 4-Tiered Pallet Racking • Assorted Cantilever Racks & Die Shelves • **CRAFTSMAN**, **US GENERAL** & Other Portable Toolboxes • Portable Carts • Shop Fans • 30+ **STANLEY VIDMAR** & Other **VIDMAR** Style Cabinets • **BISHAMAN**, **VIRGINIA EQUIPMENT** (Gaffney Location) & Other Scissor Lift Tables • **KURT, CHICK**, & Other Vises • Angle Plates • C-Clamps • **WALKER** Magnetic Chucks • Collets • Speed Chucks • Bench Vises • **DORIAN & ALORIS** Toolposts • Carbide & Perishable Tooling including End Mills, Lathe Tooling, Drills, Slitting Cutters, Taps, Broaches, Etc. • Tap & Die Sets • Air Tools • Hand Tools • Power Tools • #40 Tool Carts • #40 & BT30 Toolholders • Rotary Tables • Floor Scales • Roller & Expandable Roller Conveyors • **DONALDSON TORIT** Dust Collectors • **ATCO** & **THREADWELL** Wheel Dressers • Pallet Jacks • Portable Ladders • Jacks • Machine Skates • Rigging Equipment • Etc.

FINISHING, POLISHING & SUPPORT MACHINERY (GAFFNEY LOCATION)

(6) **ROTO FINISH** & Other Vibratory Finishing Machines, Models ST-20BCPT, sn:20B-82-F2 • ST-20MST • ST-20MSTS, sn:715618 • ST-8, sn:715759 • AB-7, sn:71684

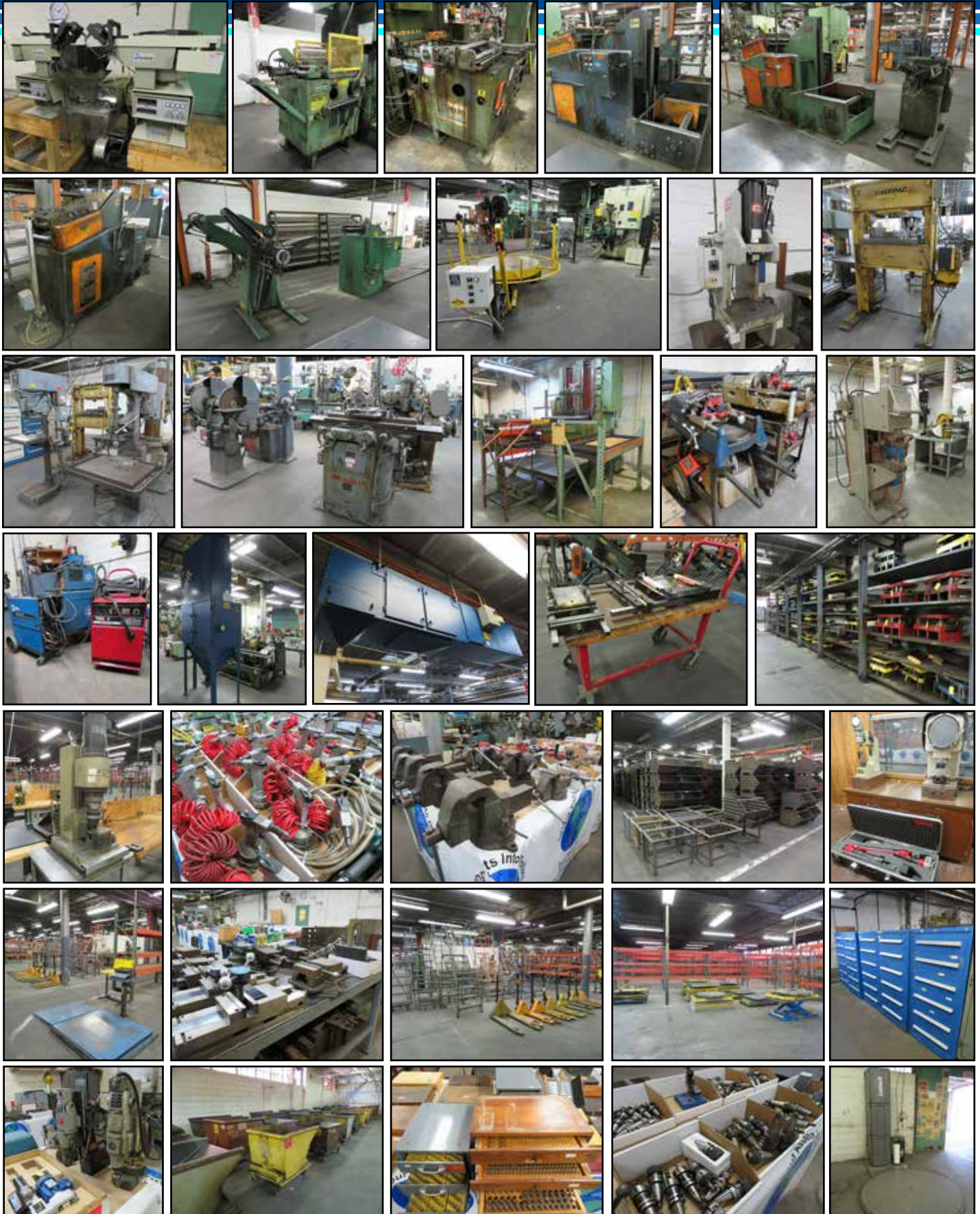
(3) **HAMMOND** UBG-132 Single Head Belt Sanders, sn:UBG 1323868 • sn:UBG 132384 • sn:n/a

PACKER MACHINE 4-S Racetrack Polisher with (4) Finishing Heads, Push Button Controls, sn:1108

GLASS MACHINERY CO. ABM640A Arbor-Matic Type Sanding Machine with Side Plate Sander, sn:39715

(2) **TORIT** 8 & 12 Canister Dust Collectors with Blower Motors, sn:K5642 • sn:IG397378

PACKAGING ASSOCIATES PA-321 Knuckle Polisher • (3) **GEDCO** Dual Head Polishers • **HAMMOND** 7VRO & (3) UBG8-65 Dual Head Polishers • 100-Position Bearing Wheel Type Sander • (4) **PACKER-MATIC** Straight Line & Over/Under Belt Sanding Machines • Etc.





Asset Sales, Inc.

Corporate Headquarters

163 Associates Lane

Indian Trail, North Carolina 28079

Toll Free: 888.800.4442 Direct: 704.821.4315

Fax: 704.821.4325 – www.asset-sales.com

Asset Sales Inc. • Lance Mannion – North Carolina License #6003 & 6625



NAKAMURA-TOME WT-150 CNC TURNING CENTER

ABBREVIATED TERMS & CONDITIONS OF AUCTION * COMPLETE DETAILS ON ASSET-SALES.COM

YOUR PARTICIPATION AND BIDDING ARE CONSIDERED A LEGALLY BINDING CONTRACT – IT IS PROHIBITED TO BID ON ANY ITEM THAT YOU CANNOT PAY FOR IN FULL BY THE SPECIFIED DATE OR REMOVE BY DESIGNATED DATE.

Subject to amendments and modifications announced by Asset Sales, Inc. and Bidspotter at the time of the auction, any person participating in the webcast auction will be bound by the following terms and conditions. Neither Asset Sales, Inc. nor Bidspotter warrant the accuracy, authenticity, description, weight, count or measure of any listings specified herein.

All articles will be sold to the highest webcast bidder conforming to the bid process in accordance to the AUCTION COMPANY'S TERMS & CONDITIONS – COMPLETE COPIES AVAILABLE AT WWW.ASSET-SALES.COM. No article shall be removed unless paid in full and all articles purchased shall be removed in the time allocated by Asset Sales, Inc.. No item, no matter how small or how far the purchaser has to travel, may be removed until after the online auction is completely closed.

All payments shall be by wire transfer, cashers check, cash or a company check with a bank letter of guarantee. All bidding and invoicing will be in US Dollars (\$).

All bidders are responsible for all applicable taxes, in addition a 18% Buyer's Premium is implemented for all online sales.

Rigging/ Removal of sold equipment is the sole responsibility of the buyer and must be completed by the posted date. Rigging/Removal may not begin until payment has been made in full and the auction sale is complete. All heavy rigging will require a certificate of insurance for \$1,000,000.00 naming Auction Location and Asset Sales, Inc. as the co-insured.

ALL ONLINE SALES ARE FINAL, ON AN "AS IS – WHERE IS," "IN PLACE," "WITH ALL FAULTS" BASIS.

REGISTRATION & BIDDING ONLINE:

When participating as a buyer via Bidspotter.com, you must be pre-approved by Asset Sales, Inc. The pre-approval process is easy, but necessary. Asset Sales, Inc. will verify telephone number and confirm agreement to the Terms and Conditions.

ANYONE OUTSIDE OF THE CONTINENTAL UNITED STATES WILL BE REQUIRED TO WIRE TRANSFER A MINIMUM DEPOSIT OF \$5000 TO BE APPROVED.

3-DAY WEBCAST AUCTION

BOMMER INDUSTRIES, INC.

WORLD CLASS HINGE MFG. STAMPING PRESSES, HINGE, DAVENPORT & SCREW MACHINES, CNC MACHINING & METAL FINISHING EQUIPMENT
LANDRUM, SC

TUESDAY, SEPTEMBER 20TH - THURSDAY, SEPTEMBER 22ND @ 9:00 A.M. EDT