

Surplus Asset Management Experts

Auctioneers: Jean A. Harris, Jr. Texas Lic. 18210
Joe Lundvick, Texas Lic. 17682

FORGE & MACHINING FACILITY CLOSURE Building Sold - Everything Must Go!

At the Facility of:



Auction: Tue., June 28, 10:00 am CT

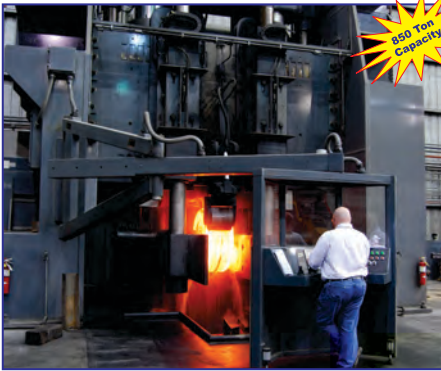
Inspection: Mon., June 27, 9 - 3 CT

NO ONSITE BIDDING BidSpotter.com

**All Assets Located in
Northwest Houston
Inspection by Appt.**

Call: 713-469-1811 for Details

Featured Machines: Forging Press Cells, including Presses from 1000 Tons to 6500 Tons, with all Pumps, Piping, etc. / Large Ring Rolling Machines / 1850 to 2500 Deg. Car Bottom Furnaces / 1850 to 2200 Deg. Box Furnaces / Forging Manipulators (Tracked, Trackless, and Rail Bound) / Bullard High Column VTLs / Bullard Cutmaster VTLs / Large Poreba Lathes / Gisholt and Warner & Swasey Turret Lathes / HEM and Hyd-Mech Horizontal Bandsaws / Vertical Bandsaws / Haas CNC VMCs / Quincy Air Compressors / Testing Equipment / Over 1 Million Lbs. of Open Die Tooling / Shop Equipment / and Much More!



850 Ton Vertical Ring Rolling Machine



Forging Cell with 6500 Ton and 3300 Ton Presses



1000 Ton to 2500 Ton Forging Presses



Car Bottom and Box Furnaces



Glama 50,000 Lb. Forging Manipulator



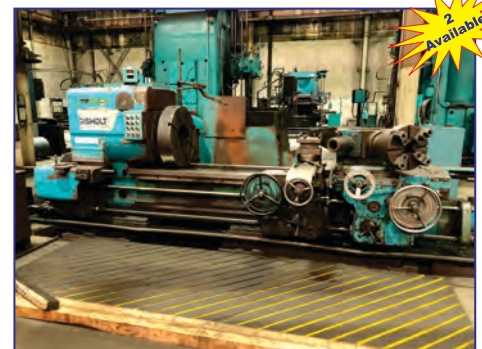
Ring Rolling and Expanding / Sizing Cell with Transfer Table



HEM H160M-DC Horizontal Bandsaw



2018 Haas VF3YT CNC Vertical Machining Center



5L Gisholt Turret Lathe

Forging Presses

6500 / 3300 Ton Open Die Forging Cell, Retrofit in 2014, only used for an estimated 500 hours, includes updated Central Power System to run the cell



6500 / 3300 Ton Open Die Forging Cell, Overall view (above) and partial view of Central Control System (below)



2014, Babcock & Wilcox 6500 Ton Open Die Forging Press, 90" x 290" Sliding Bed with 168" of Trvl, 136" x 300" Ram with 80" of Trvl, 240" Daylight, 120" Stroke, 144" Between Uprights, 160" Wide Windows, FSI PLC Controlled



2014, Babcock & Wilcox 3300 Ton Open Die Forging Press, 84" x 210" Sliding Bed with 116" of Trvl, 42" x 88" Ram, 240" Daylight, 120" Stroke, 54" Between Uprights, 112" Window Width

5000 Ton Farquhar Open Die Press, 84" x 74" Bed, 44" x 74" 2 Station Ram with 42" of Slide Trvl, 101" Daylight, 92" Between Housings, (2) Horizontal Rams



Forging Presses



HPM 1000 Ton Forging Press, 48" x 66" Bed, 48" x 67" Ram, 98" Daylight, 34" Stroke, 69" Between Uprights



1400 Ton Lake Erie Press, 40" x 135" Bed with 96" Stroke, 36" x 93" (2) Station Die with 48" of Travel, 120", Daylight, 62" Stroke, 58" Btwn Uprights, 57" Window Width



2500 Ton Babcock & Wilcox Preforming Press, 32" x 157" Bed with 57" Travel, 35" x 63" Sliding Ram with 8" Travel, 114" Daylight, 52" Stroke, 76" Btwn Uprights, 42" Window Width, FSI PLC Controlled



General Views of Press Pumps in Pump House

Ring Rolling Machines

1999, Dril-Quip Built 850 Ton Vertical Ring Rolling Machine, 850 Ton Cap., 108" Max. Ring Dia., 60" Max. Ring Width, 32" Dia. x 72" Wide King Roll, Power Load Station, 1000 HP Main Motor



1999, Wagner SMS Horizontal Ring Rolling Machine, Wagner SMS PAW 125/100E 25" x 159" Ring Roller System, 12"-158" Finish Ring Diameter Capacity, 1.2" - 23.6" Finish Ring Height, 2012 SMS CNC Controls Upgrade, Integrated Hydraulic Ring Expander, Ring Retriever



Surplus Asset Management Experts

CNC Machines



Haas VF-3YT CNC VMC, new 2018, 24" x 54" table, 50 taper, 10,000 rpm, 30 hp, 40" X / 26" Y / 25" Z, 7.9" - 32.9" spindle nose to table, 30 tool ATC, Midaco pallet changer



Haas VF-2 CNC VMC, new 2012, 14" x 36" table, 40 taper, 8,000 rpm, 30 hp, 30" X / 16" Y / 20" Z, 4.0" - 24.0" spindle nose to table, 20 tool ATC



Haas TL-1 CNC Lathe, new 2012, 20" swing over apron, 11" over slide, 30" max. cut length, 8" X / 30" Z, 1800 rpm, 10 hp, 6" 4-jaw chuck, 2.3" spindle bore, tailstock



Haas TL-1 CNC Lathe, new 2012, 20" swing over apron, 11" over slide, 30" max. cut length, 8" X / 30" Z, 1800 rpm, 10 hp, 6" 4-jaw chuck, 2.3" spindle bore, tailstock

Gisholt Turret Lathes (and more)



Gisholt 5L Turret Lathes, 28" to 32" 4-jaw chucks, 9.75" to 12.75" thru-holes, 84" to 96" bed lengths, hex tool turrets



Gisholt 5L Longbed Turret Lathes, 32" 4-jaw chucks, 9.75" to 12.75" thru-holes, 120" to 144" bed lengths, hex turrets



Gisholt 4L Turret Lathes, 24" to 28" 4-jaw chucks, 9.75" to 12.5" thru-holes, 60" to 96" bed lengths, hex tool turrets



Gisholt 3L Turret Lathe, 24" 4-jaw chuck, 6" thru-hole, 120" bed length, hex tool turret



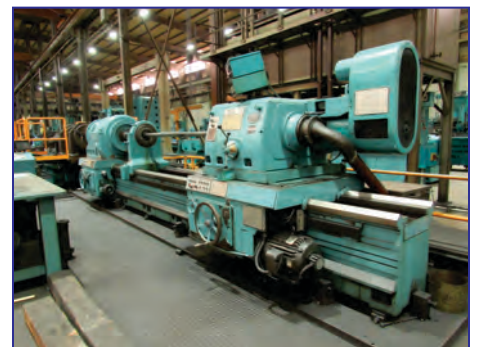
Gisholt 5L Trepan Turret Lathe



Warner & Swasey 5A Turret Lathe, 144" chuck to turret, 28" 4-jaw chuck, 12.5" hole, 75 hp, 4-pos. front toolpost, rear hex turret, rapids, coolant



VDF Wohlenberg Type E1120 Lathe, 46" swing, 32" over slide, 39" face plate w/ 4 jaws, 3" hole, 276" ctrs, 315 rpm, roller steady, chuck on tailstock, motorized tailstock



VDF Wohlenberg Model B10SP Deep Hole Gun Drill, 196" stroke, 8" hole, 60 hp, 895 rpm, 136" x 36" cross sliding table, DRO on drill and table, coolant system w/ chiller

Car Bottom Furnaces



W20, 1850 Deg. F Epcon Car Bottom Furnace, 193" W x 115" H x 481" D, natural gas fired, 20 burners, 5 zones, fiber lined, Honeywell controls with PLC



(above) East Side, 2500 Deg. F Custom Built Car Bottom Furnace, 216" W x 180" H x 300" D, natural gas fired, 10 burners, 2 zones, fiber lined, Honeywell controls with PLC



E6, 2400 Deg. F Custom Built Car Bottom Furnace, 135" W x 80" H x 320" D, natural gas fired, 14 burners, fiber lined, Honeywell controls

Box Type Furnaces



E1, 2100 Deg. F, 98" W x 62" H x 108" D, natural gas, 4 burners, fiber/brick lined, Honeywell controls



E2, 2100 Deg. F, 94" W x 65" H x 108" D, natural gas, 4 burners, fiber lined, Honeywell controls



E3, 2100 Deg. F, 170" W x 117" H x 140" D, natural gas, 6 burners, fiber lined, Honeywell controls



E4, 2100 Deg. F North American Mfg. Furnace, 170" W x 117" H x 140" D, natural gas, 6 burners, fiber lined, Honeywell controls



E5, 2100 Deg. F, 165" W x 118" H x 140" D, natural gas, 6 burners, fiber lined, Honeywell controls



E7, 2100 Deg. F, 165" W x 117" H x 138" D, natural gas, 6 burners, fiber lined, Honeywell controls



F1, 2200 Deg. F, 160" W x 80" H x 106" D, natural gas, 4 burners, fiber lined, Honeywell controls



F2, 2200 Deg. F, 160" W x 118" H x 106" D, natural gas, 4 burners, fiber lined, Honeywell controls



F3, 2200 Deg. F, 160" W x 118" H x 106" D, natural gas, 4 burners, fiber lined, Honeywell controls



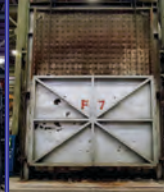
F4, 2200 Deg. F, 160" W x 80" H x 108" D, natural gas, 4 burners, fiber lined, Honeywell controls



F5, 2200 Deg. F, 160" W x 118" H x 106" D, natural gas, 4 burners, fiber lined, Honeywell controls



F6, 2200 Deg. F, 160" W x 118" H x 106" D, natural gas, 4 burners, fiber lined, Honeywell controls



F7, 2200 Deg. F, 160" W x 118" H x 106" D, natural gas, 4 burners, fiber lined, Honeywell controls



F8, 2200 Deg. F, 160" W x 118" H x 106" D, natural gas, 4 burners, fiber lined, Honeywell controls

Box Type Furnaces



S1, 2200 Deg. F Epcon Furnace, 151" W x 141" H x 132" D, natural gas, 4 burners, fiber lined, Honeywell controls



S2, 2200 Deg. F Epcon Furnace, 151" W x 141" H x 132" D, natural gas, 4 burners, fiber lined, Honeywell controls



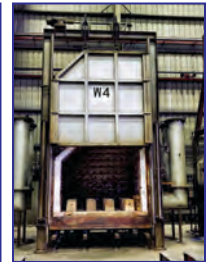
W1, 1850 Deg. F, 166" W x 76" H x 94" D, natural gas, 4 burners, fiber lined, Honeywell controls



W2, 1850 Deg. F, 166" W x 76" H x 94" D, natural gas, 4 burners, fiber lined, Honeywell controls



W3, 1850 Deg. F, 96" W x 61" H x 86" D, natural gas, 2 burners, fiber lined, Honeywell controls



W4, 1850 Deg. F, 96" W x 61" H x 86" D, natural gas, 2 burners, fiber lined, Honeywell controls



W5, 1850 Deg. F, 97" W x 58" H x 86" D, natural gas, 2 burners, fiber lined, Honeywell controls



W6, 1850 Deg. F, 97" W x 58" H x 86" D, natural gas, 2 burners, fiber lined, Honeywell controls



W7, 1850 Deg. F, 97" W x 58" H x 86" D, natural gas, 2 burners, fiber lined, Honeywell controls



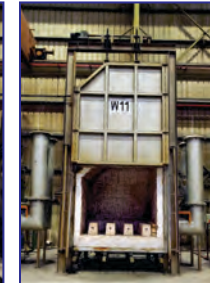
W8, 1850 Deg. F, 97" W x 58" H x 86" D, natural gas, 2 burners, fiber lined, Honeywell controls



W9, 1850 Deg. F, 98" W x 68" H x 82" D, natural gas, 2 burners, fiber lined, Honeywell controls



W10, 1850 Deg. F, 98" W x 68" H x 82" D, natural gas, 2 burners, fiber lined, Honeywell controls



W11, 1850 Deg. F, 98" W x 68" H x 82" D, natural gas, 2 burners, fiber lined, Honeywell controls



W12, 1850 Deg. F, 98" W x 68" H x 82" D, natural gas, 2 burners, fiber lined, Honeywell controls

Bandsaws, Horizontal and Vertical



HEM DC-6060 Horizontal Bandsaw, new 1997, 60" x 60" cap., 2-5/8" blade, coolant, power feed, new controls 2014



HEM DC-4040 Horizontal Bandsaw, new 1994, 40" x 40" cap., 2-5/8" blade, coolant, power feed



HEM F140HM-DC Horizontal Bandsaw, new 2000, 24" x 22" cap., 20 hp, chip auger, coolant, power infeed



HEM H160M-DC Horizontal Bandsaw, new 2003, 2004, & 2005, 25" x 25" cap., chip conv., coolant, power feed



Hyd-Mech H-22A Horizontal Bandsaw, 24" x 24" cap., bundle attach., power feed



W.F Wells Horizontal Bandsaw, 32" x 24" cap., 2" blade, chip conv.



HEM CT2000HA-DC-C Horizontal Bandsaw, 20" x 20" cap., 48" stroke shuttle vise, 20 hp, (2) 120" powered conveyors, bundling, chip auger, coolant



Hyd-Mech S-23P Horizontal Bandsaw, 16" x 20" cap., mitering, 75-350 fpm, 8.8 hp motor, coolant



Marvel Series 8 Mark II Vertical Bandsaw, 18" x 22" cap., 50-450 fpm, 5 hp motor, mitering, coolant

(right) Metal Mizer Model MS2018-2 Vertical Bandsaw, 18" x 18" cap., 99-275 fpm, 2 hp motor, mitering (2 Available)



Forging Manipulators

Trackless



2007, 50,000 Lb. Glama Trackless Manipulator



20,000 Lb. Dango Trackless Manipulator, 126" width, 144" whl base, 228" length, 108" reach, 60" max. tong ht., 60" max. tong opening, updated electronics



16,000 Lb. Salem Trackless Manipulator, 120" width, 120" whl base, 200" length (w/o tongs), 84" tong length, 96" reach, 78" max. tong ht., 62" max. tong opening



8,000 Lb. Glama Trackless Manipulator, 100" width, 98" whl base, 132" length (w/o tongs), 96" tong length, 96" reach, 72" max. tong ht., 62" max. tong opening



3,000 Lb. Glama Trackless Manipulator, 84" width, 96" whl base, 144" length (w/o tongs), 96" tong length, 96" reach, 72" lift ht.



3,000 Lb. Glama Trackless Manipulator, 84" width, 96" whl base, 144" length (w/o tongs), 96" tong length, 96" reach, 72" lift ht.

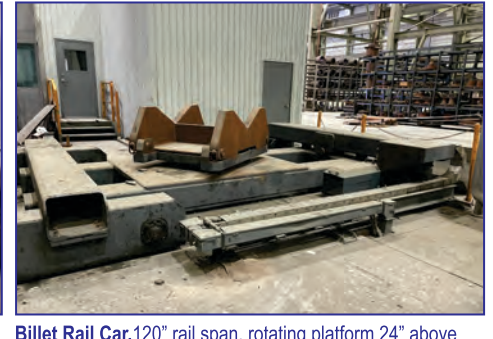
Track Bound



120,000 Lb. DEMAG MEER Track Bound Manipulator, TYP 600 KNM, 126" rail span, 228" width, 37 ft. overall length (w/ grip), 202" wheel base, 16 ft. overall ht. with piping



120,000 Lb. DEMAG MEER Track Bound Manipulator with hot forging billet



Billet Rail Car, 120" rail span, rotating platform 24" above floor, hyd. rotation and cart traverse, three speed selection, push button controls



8,000 Lb. Columbiana Rail Bound Manipulator, 216" rail span, 242" width, 120" btwn axles, 168" length, 17 ft. reach from rotation ctr, 12 ft. max. ext. reach, 108" trvl in/out, 72" max. tong ht., updated electronics



3,000 Lb. Columbiana Rail Bound Manipulator, 216" rail span, 242" width, 96" btwn axles, 120" length, 17 ft. reach from rotation ctr, 12 ft. max. ext. reach, 108" trvl in/out, 72" max. tong ht., updated electronics



3,000 Lb. Hopkins Kendall Rail Bound Manipulator, 216" rail span, 242" width, 96" btwn axles, 120" length, 17 ft. reach from rotation ctr, 12 ft. max. ext. reach, 108" trvl in/out, 72" max. tong ht., updated electronics

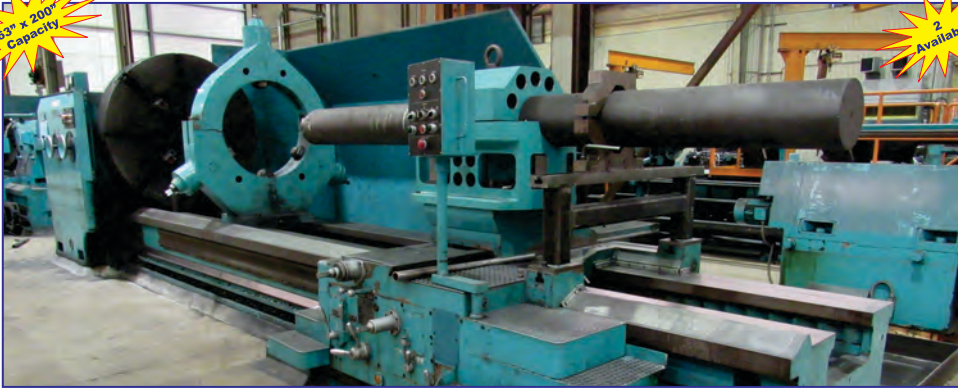


Loading hot billet into 1000 Ton HPM press

Engine Lathes and Mills

63" x 200" Capacity

2 Available



Poreba TCG160 HD Engine Lathe, 63" swing, 51" over slide, 200" ctrs, 63" 4-jaw chuck, 4" hole, 200 rpm, 75 hp, 24" chuck on tailstock, (note: one has a 10" x 145" boring bar mounted and the compound slide parts in a spares box)



Ingersoll Horizontal Milling Machine, 48" x 192" table, 144" cross trvl, 60" vert. trvl, 18" quill trvl, 60 taper, 100 hp (est.)



20" x 72" Monarch Engine Lathe, 20" swing, 72" ctrs, 15" 4-jaw chuck, 6" steady rest, tailstock, taper attach.



16" x 36" LeBlond Engine Lathe, 16" swing, 36" ctrs, 12" 3-jaw chuck Aloris tool holder, tailstock, taper attach., work light



18" x 66" Andrychow Gap Bed Engine Lathe, 18" swing, 11" over slide, 23" in gap, 66" ctrs, 2" hole, DRO, Aloris, 10" 3-jaw chuck, tailstock, taper attach., coolant



16" x 60" Summit Gap Bed Engine Lathe, 16" swing, 22" in gap, 60" ctrs, 3-jaw chuck, 1500 rpm, Aloris tool holder, tailstock, taper attach.,



Alliant Vertical Mill, 9" x 47" table, 60-4500 rpm, 2 hp, DRO, pwr cross feed, pwr in/out feed



Bridgeport Series I Vertical Mill, 9" x 49" table, 2 hp, pwr cross feed, var. speed head



Bridgeport Series I Vertical Mill, 9" x 42" table, 2 hp, pwr cross feed, lube

Cranes



2 Ton Pedestal Jib Cranes, approx. 20 available, most with 2 ton Coffing hoists



10 Ton Overhead Stacker Cranes, 2 available, operator cabins and forks for manipulating large work pieces to furnace and quench tanks

Vertical Turret Lathes and Boring Mills

Bullard



M4574-01
74" Bullard Cutmaster Hi-Column VTL, face plate w/4 jaws, 86" UR, L ram w/ tracer, R turret, side hd., 120 rpm, 125 hp, oper. platform



M4574-02
74" Bullard Cutmaster VTL, face plate w/4 jaws, 64" UR, L ram w/ turret, R ram, 90 rpm, 60 hp, oper. platform



M4574-03
74" Bullard Cutmaster VTL, face plate w/4 jaws, 64" UR, L ram w/ turret, R ram, side hd., 90 rpm, 60 hp, oper. platform



M4574-04
74" Bullard Cutmaster Hi-Column VTL, face plate w/4 jaws, 84" UR, L ram, R ram, side hd., 97 rpm, 50 hp, oper. platform



M4566-01
66" Bullard Cutmaster Model 75 VTL, 4-jaw chuck, 88" UR, 8" ram w/ tracer, R turret, side hd., oper. platform



M4564-01
64" Bullard VTL, 4-jaw chuck, 54" UR, L ram w/ turret, R turret, side hd., 100 rpm, 75 hp, oper. platform



M4564-02
64" Bullard Hi-Column VTL, face plate w/4 jaws, 78" UR, L ram w/ tracer, R turret, 133 rpm, 60 hp, oper. platform



M4564-03
64" Bullard Hi-Column VTL, 4-jaw chuck, 80" UR, L ram, R turret, side hd., 100 rpm, 75 hp, oper. platform



M4554-01
54" Bullard Cutmaster VTL, face plate w/4 jaws, L ram w/ tracer, R turret, side hd., 120 rpm, 50 hp, oper. platform



M4554-02
54" Bullard Cutmaster VTL, 4-jaw chuck, 44" UR, L ram w/ tracer, R turret, side hd., 160 rpm, 60 hp, oper. platform



M4554-03
54" Bullard Cutmaster Hi-Column VTL, face plate w/4 jaws, 68" UR (24" extra height), L ram w/ tracer, R turret, side hd., 160 rpm, 50 hp, oper. platform



M4554-04
54" Bullard Cutmaster VTL, face plate w/4 jaws, 44" UR, R turret, side hd., 160 rpm, 30 hp, oper. platform



M4554-05
54" Bullard Cutmaster Hi-Column VTL, 4-jaw chuck, 68" UR (24" extra height), L ram, R turret, side hd., 160 rpm, 50 hp, oper. platform



M4546-01
46" Bullard Cutmaster Model 75 VTL, 4-jaw chuck, 46" UR, L ram w/ tracer, R turret, side hd., 40 hp, oper. platform

Morando - Froriep



M4548-01
48" Morando VTL, 4-jaw chuck, 42" UR, ram w/ tracer, side hd., 300 rpm, 70 hp, oper. platform



M4539-01
39" Froriep VTL, 4-jaw chuck, 39" UR, 5 pos. turret, side hd., 330 rpm, 75 hp, retrofit electrics



Rafamet



M4599-01
144" Rafamet VBM, face plate w/4 jaws, 136" UR, L ram w/ tracer, R ram, side hd., 40 rpm, 60 hp, oper. platform, pendant control

Open Die Tooling



Over 1 Million Lbs. of Open Die Tooling Available

Test Equipment



Intron Type UTM-HYD Model 300DX-C3A-G1E Industrial Tension, Compression, and Shear Testing Machine, 67,500 lb.-ft. load cap., 6 IPM test speed, 6" actuator stroke, 36" tension opening, 96" max. oper. ht., 10.6" - 42" specimen lengths



MTS 370.50 Fatigue Tester, 500 kN force, 6" actuator stroke, 13" - 78" specimen length



Southwark-Emery Compression Tester, 120,000 lbs. comp. cap., 34" max. part length



Oxford Portable X-ray Machine



Bausch & Lomb Optical Comparator



Clark Hardness Tester



Rockwell Hardness Tester

Shop Equipment



Quincy QSI-120, QSI-370i, QSI-500 Air Compressors, up to 100 HP



Dayton Grinder



Wilton Drill Press



P.O. Box 272404
Houston, Texas 77277
www.harris-auctions.com

T: 713.462.5800
F: 713.462.8222

DATED MATERIAL - PLEASE DELIVER
Attention: Plant Manager
or Equipment Buyer

Live Webcast and Online Auction: Tue., June 28 - 10 am CT

Featured Machines & Equipment



**Over 1M Lbs.
of Open Die
Tooling Available**



T: 713.462.5800
F: 713.462.8222

P.O. Box 272404, Houston, TX 77277
www.harris-auctions.com

Refer to online auction catalog for all Terms & Conditions, Payment Terms, Removal Terms and Dates, Lot Descriptions, Condition and Use Disclaimers and all other Auction Information. Note: All specifications are true and correct to the best of Auctioneer's knowledge at time of publication, but are subject to verification by the bidder. Advertising and promotional photos may show tooling and accessories that are not necessarily offered with the machine. The online catalog description of the machine and any tooling / accessories is final.

