

# ONLINE ONLY AUCTION SALE

Thursday, December 8<sup>th</sup>, 2022 • 10:30 AM EST

Inspection: Wednesday, December 7<sup>th</sup> • 9 AM - 4 PM

**Excellent Offering – Late Model Haas CNC Machining  
& Large Screw Machine Facility!**



**J&S Precision Products Co.**

**16 Medford Evesboro Road • Medford, NJ 08055**

**Bid on this Auction at [www.BidSpotter.com](http://www.BidSpotter.com)**

## FEATURING:

- HAAS Mini-Mill 4-Axis Machining Centers (New 2011)
- HAAS ST-30 CNC Turning Center (New 2011)
- HAAS ST-20 CNC Turning Center (New 2011)
- HAAS SL-20 CNC Turning Centers (3 Available; New 2004)
- HAAS HL-4 CNC Turning Center
- STAR SA-16R Swiss Automatic Screw Machine (New 2002)
- STAR RNC-16 Swiss Automatic Screw Machines (2 Available)
- TORNOS-BECHLER ENC16T Swiss Automatic Screw Machines (2 Available)
- Wickman 6-Spindle Automatic Screw Machines (Sizes: 1" & 1-3/4" & 1-3/8" Excellent Condition)
- Davenport B 3/4" Sound-Enclosed 5-Spindle Automatic Screw Machines (6 Available)
- Brown & Sharpe R/S Ultramatic Screw Machines (Sizes: 1/2" – 1-5/8" Excellent Condition)
- Acme Gridley RA-6 Automatic Screw Machines (Sizes: 9/16" & 1")
- Miles MBLD10 -24-12R 5 Ton 24" Vertical Broach (New 2001)
- Miles MBLD10-24-120R Vertical Broach (New 1990)
- Wirth & Graffat C126 Rotary Transfer Machines (New 2002; 6 & 8-Station)
- Hartford 190MV Thread Rolling Machines (3 Available)
- New Holland Centrifugal Spin Dryers



NEW 2011

HAAS ST-30 CNC Turning Center



NEW 2011

HAAS ST-20 CNC Turning Center



NEW 2004

HAAS SL-20 CNC Turning Center with HAAS Bar300 Auto Barfeed



NEW 2004

HAAS SL-20 CNC Turning Center



NEW 2011

HAAS Mini-Mill 4-Axis Machining Center



NEW 2002

STAR SA-16R Swiss-Type CNC Screw Machine with LNS Express 220 Barfeed

**Register at  
Bidspotter.com!**

**Sale Date:  
Thursday,  
Dec. 8, 2022  
10:30 AM EST**

**Inspection:  
Wed. Dec. 7 • 9-4**

SALE UNDER MANAGEMENT OF

**INDUSTRIAL AUCTION SERVICES, LLC**

60 Liberty Street, Metuchen, NJ 08840 • Tel. 848-229-2500 • Fax 732-548-5251  
Web Address: [www.ind-auctions.com](http://www.ind-auctions.com) • E-mail: [sales@ind-auctions.com](mailto:sales@ind-auctions.com)





# ONLINE ONLY AUCTION SALE

Thursday, December 8<sup>th</sup>, 2022 • 10:30 AM EST

Inspection: Wednesday, December 7<sup>th</sup> • 9 AM - 4 PM

Bid on this Auction at [www.BidSpotter.com](http://www.BidSpotter.com)



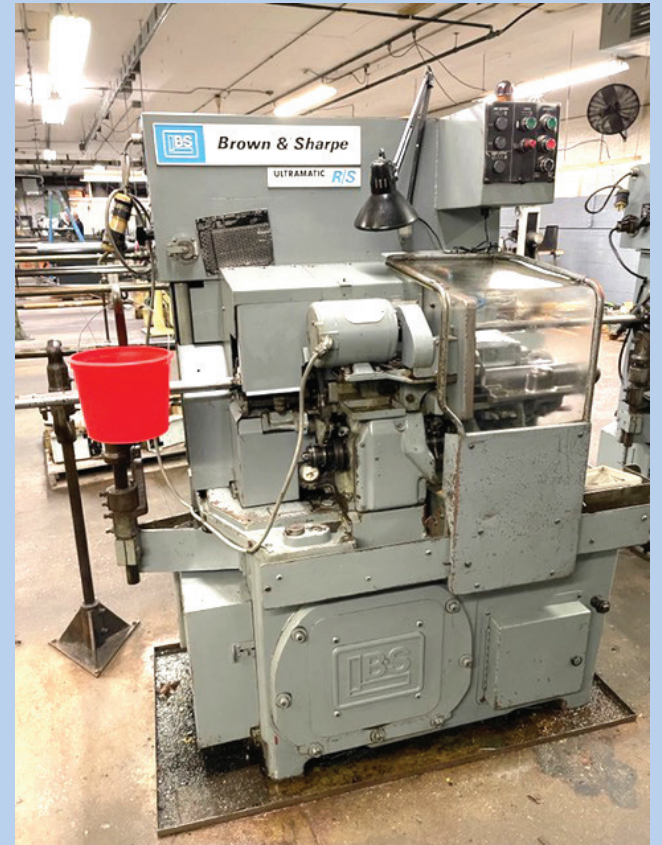
NEW 1990

MILES MBLD10-24-120R  
5-Ton Vertical Broach



NEW 2002

WIRTH & GRAFFAT C126  
Rotary Transfer Machine



BROWN & SHARPE Ultramatic  
R/S Screw Machines (17 Available)



TORNOS-BECHLER ENC16T Swiss-Type  
CNC Screw Machines with Fanuc OT Control



NEW 2001

MILES MBLD10-24-12R  
5-Ton 24" Vertical Broach



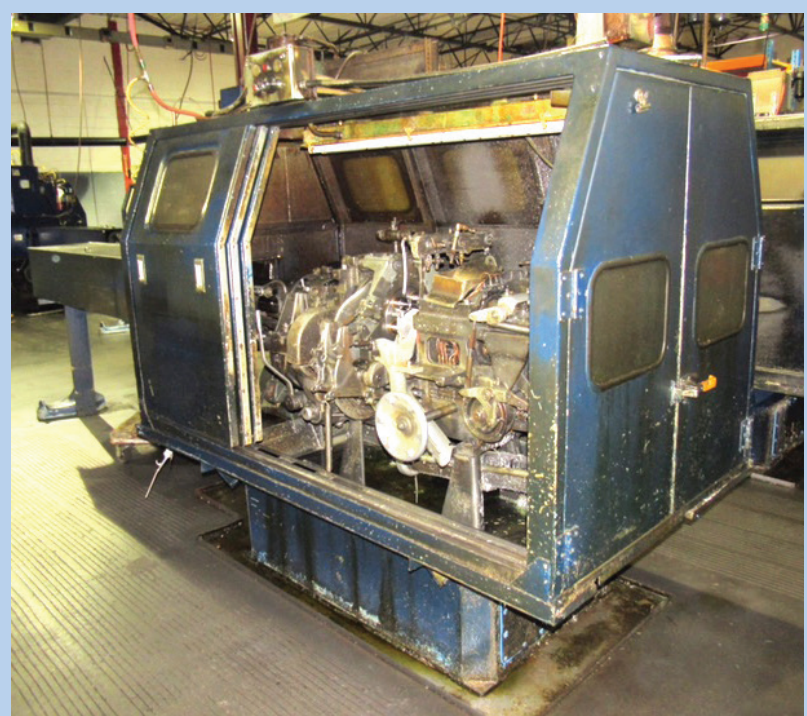
HARTFORD 190MV Thread Rolling Machine  
(3 Available)



HARDINGE "Super Precision"  
HLV-H Precision Toolroom Lathe



WICKMAN Automatic 6-Spindle  
Screw Machines (11 Available)



DAVENPORT Model B 3/4" 5-Spindle Sound-Enclosed  
Screw Machines (6 Available)

Register at [Bidspotter.com](http://Bidspotter.com)!

Sale Date: Thursday, December 8<sup>th</sup>, 2022 • 10:30 AM EST

Inspection: Wednesday, December 7<sup>th</sup> • 9-4



SALE UNDER MANAGEMENT OF

**INDUSTRIAL AUCTION SERVICES, LLC**

60 Liberty Street, Metuchen, NJ 08840 • Tel. 848-229-2500 • Fax 732-548-5251  
Web Address: [www.ind-auctions.com](http://www.ind-auctions.com) • E-mail: [sales@ind-auctions.com](mailto:sales@ind-auctions.com)

