

LIVE WEBCAST ONLINE ONLY AUCTION

FORE AERO

FORE MACHINE LLC – EXCEPTIONAL OFFERING OF LATE MODEL AEROSPACE MANUFACTURING MACHINERY & EQUIPMENT

DAY 1: Tuesday, June 21
at 10:00 AM CT

DAY 2: Wednesday, June 22
at 10:00 AM CT

SALE LOCATION:
5912 Eden Drive,
Haltom City, Texas 76117

INSPECTION: Monday,
June 20, by Appointment Only

FEATURING OVER 1,500 LOTS

Including MAZAK, YCM &
HAAS CNC Machine Tools: 5-Axis
Multitasking Turning Centers,
CNC Lathes, 5-Axis & 3-Axis
Vertical Machining Centers,
Horizontal Machining Center,
Tool Room Machinery, Composite
Forming & Clicker Presses, Finishing, Inspection
Equipment, Air Compressors, Rolling Stock,
Aerospace-Grade Raw Materials, Packaging,
Office Furniture & Manufacturing Support Equipment



HAAS ST-45L TURNING CENTER



MAZAK INTEGREX I-300S MULTITASKING TURNING CENTER



MAZAK INTEGREX J-300 MULTITASKING TURNING CENTER

Pre-Auction Offers Invited on Major Assets



**PERFECTION
Industrial Sales**

Perfection Industrial Sales

ph +1-847-545-6374 • fax +1-847-427-8884

www.perfectionindustrial.com

Joe Lundvick, TX Auctioneer Lic. #17682 and Steve Kleba, TX Auctioneer Lic. #17683

Complete Catalog & Information Available at
<https://perfection.global/fore>

Bidding Available
Through **BidSpotter**

5-AXIS MULTITASKING TURNING CENTERS, HORIZONTAL MACHINING CENTER

2011



MAZAK INTEGREX I-200S MULTITASKING TURNING CENTER

2010



MAZAK HC NEXUS 5000-II HORIZONTAL MACHINING CENTER

5-AXIS MULTITASKING TURNING CENTERS

2012 MAZAK INTEGREX J-300 5-AXIS TURNING CENTER, s/n 241312, MAZATROL MATRIX NEXUS 2 Control, 25.20" Max. Swing, 19.690" Max. Machining Dia., 3.1" Max. Bar Work Capacity, 24.76" Max. Machining Length, 4,000 RPM Main Spindle, 12,000 RPM Milling Spindle, 220 Deg. B-Axis Travel, 24.21"-X, 10.24"-Y, 27.36"-Z, 24.88"-W

2011 MAZAK INTEGREX I-200S 5-AXIS TURNING CENTER, s/n 225408, MAZATROL MATRIX NEXUS Control, 25.91" Max. Swing, 39.8" Max. Turning Length, 25.91" Max. Turning Dia., Sub Spindle, 24.21"-X, 10.24"-Y, 42.4"-Z, 41.97"-W, .0001 Deg. C-Axis

2011 MAZAK INTEGREX J-200 5-AXIS TURNING CENTER, s/n 228358, MAZATROL MATRIX NEXUS Control, 20.87" Max. Swing, 19.69" Max. Machining Dia., 2.6" Max. Bar Work Capacity, 19.690" Max. Machining Length, 5,000 RPM Main Spindle, 12,000 RPM Milling Spindle, 220 Deg. B-Axis Travel, 17.72"-X, 7.87"-Y, 21.65"-Z, 18.82"-W

HORIZONTAL MACHINING CENTER

2010 MAZAK HC NEXUS 5000-II HORIZONTAL MACHINING CENTER, s/n 223718, MAZATROL MATRIX NEXUS Control, (2) 19.7" x 19.7" Pallets, CAT 40 Spindle Taper, 28.74"-X, 28.74"-Y, 29.13"-Z, 18,000 RPM

5-AXIS VERTICAL MACHINING CENTERS



YCM NFX 500A VERTICAL MACHINING CENTER



YCM FX 380A VERTICAL MACHINING CENTER



MAZAK INTEGREX J-200 MULTITASKING TURNING CENTER

5-AXIS VERTICAL MACHINING CENTERS

2014 YCM NFX 500A 5-AXIS VERTICAL MACHINING CENTER, s/n 0001, FANUC 31i-Model B5 Control, 1,102 Lb Table Capacity, Trunnion Table, BBT40 Spindle Taper, 48 ATC, 12,000 RPM, 30 HP Main Motor, CHIP BLASTER High Pressure Coolant System

2015 YCM FX 380A 5-AXIS VERTICAL MACHINING CENTER, s/n 10044, FANUC 31i-Model B5 Control, 551 Lb Table Capacity, Trunnion Table, BBT40 Spindle Taper, 30 ATC, 12,000 RPM, 30 HP Main Motor, COOLJET High Pressure Coolant System

DAY 1 SALE DATE:

Tuesday, June 21
at 10:00 AM CT

INSPECTION:

Monday, June 20,
by Appointment Only

VERTICAL MACHINING CENTERS



YCM TV 158B VERTICAL MACHINING CENTER

2016

VERTICAL MACHINING CENTERS

2012 MAZAK VTC 250D VERTICAL MACHINING CENTER, s/n 238400, MAZATROL 640MN Control, 82.7" x 25" Table, 50 Taper, 24 ATC, 6,000 RPM, 30 HP Main Motor

2013 YCM TV 2110B VERTICAL MACHINING CENTER, s/n 0091, YCM FANUC MXP-200 FB Control, 90.55" x 40.16" Table, 15,432 Lb Table Capacity, BT50 Spindle Taper, 40 ATC, 6,000 RPM, COOLJET High Pressure Coolant System

2016 YCM TV 158B VERTICAL MACHINING CENTER, s/n 0723, YCM FANUC MXP-200 FB Control, 66.93" x 33.86" Table, 4,409 Lb Table Capacity, BT50 Spindle Taper, 24 ATC, 33.5 HP Motor, CHIP BLASTER High Pressure Coolant System

DAY 1 SALE DATE:

Tuesday, June 21 at 10:00 AM CT

INSPECTION: Monday, June 20,
by Appointment Only

YCM TV 158B VERTICAL MACHINING CENTER



2012

MAZAK VTC 250D VERTICAL MACHINING CENTER

2014 YCM NXV 1020A VERTICAL MACHINING CENTER, s/n 0161, YCM FANUC MXP-200FA Control, 44" x 20.47" Table, 1,102 Lb Table Capacity, BBT40 Spindle Taper, 24 ATC, 12,000 RPM, 25 HP Motor, 4th Axis, COOLJET High Pressure Coolant System

2014 YCM NMV 106A VERTICAL MACHINING CENTER, s/n 0121, YCM FANUC MXP-200FA Control, 44.09" x 23.62" Table, 1,764 Lb Table Capacity, BBT40 Spindle Taper, 24 ATC, 12,000 RPM, 25 HP Motor, COOLJET High Pressure Coolant System



**SALE
LOCATION:**
Haltom City,
Texas

**Pre-Auction
Offers
Invited on
Major
Assets**

YCM NMV 106A
VERTICAL
MACHINING CENTER



YCM NXV 1020A VERTICAL
MACHINING CENTER



YCM TV 2110B VERTICAL MACHINING CENTER

VERTICAL MACHINING CENTERS, CONTINUED



HAAS VF-3APC VERTICAL MACHINING CENTER



HAAS VF-4SS VERTICAL MACHINING CENTER



YCM NXV 560A-APC VERTICAL MACHINING CENTER



HAAS VF-3B VERTICAL MACHINING CENTER

2014 YCM NXV 560A-APC VERTICAL MACHINING CENTER, s/n 0005, YCM FANUC MXP-200 FB Control, (2) 22.05" x 16.14" Tables, 256 Lb Table Capacity, BBT40 Spindle Taper, 24 ATC, 12,000 RPM, 25 HP Main Motor, COOLJET High Pressure Coolant System

2012 HAAS VF-4SS VERTICAL MACHINING CENTER, s/n 1099461, HAAS CNC Control, 52" x 18" Table, 1,750 Lb Table Capacity, 40 Taper Spindle, 30 ATC, 12,000 RPM, 30 HP Motor

2004 HAAS VF-4B VERTICAL MACHINING CENTER, s/n 38316, HAAS CNC Control, 52" x 18" Table, 3,500 Lb Table Capacity, 40 Taper Spindle, 20 ATC, 7,500 RPM, 20 HP Motor

HAAS VF-4 VERTICAL MACHINING CENTER, s/n 17712, HAAS CNC Control, 52" x 18" Table, 3,500 Lb Table Capacity, 40 Taper, 20 ATC, 7,500 RPM, 20 HP Motor

2012 HAAS VF-3APC VERTICAL MACHINING CENTER, s/n 1093471, HAAS CNC Control, 48" x 18" Table, 3,500 Table Capacity, 40 Taper Spindle, 20 ATC, 4th Axis, Auto Pallet Changer

2005 HAAS VF-3B VERTICAL MACHINING CENTER, s/n 42712, HAAS CNC Control, 48" x 18" Table, 3,500 Table Capacity, 40 Taper Spindle, 20 ATC, 10,000 RPM, 30 HP Motor

(3) 2012, 2004 HAAS VF-2SS VERTICAL MACHINING CENTERS, s/n 1098666, 1096976, 38556, HAAS CNC Control, 36" x 14" Table, 1,500 Lb Table Capacity, 40 Taper Spindle, 24 ATC, 12,000 RPM, 30 HP Motor

(3) 2006-2001 HAAS VF-2B VERTICAL MACHINING CENTERS, s/n 45490, 25037, 48099, HAAS CNC Control, 36" x 14" Table, 3,000 Lb Table Capacity, 40 Taper Spindle, 24 ATC, 10,000 RPM, 20 HP Motor

(2) 2012 HAAS VF-2 VERTICAL MACHINING CENTERS, s/n 1093294 and 1093293, HAAS CNC Control, 36" x 14" Table, 3,000 Lb Table Capacity, 40 Taper Spindle, 24 ATC, 7,500 RPM, 30 HP Motor

HAAS VF-1 VERTICAL MACHINING CENTER, s/n 9961, HAAS CNC Control, 26" x 14" Table, 40 Taper Spindle, 20 ATC, 7,500 RPM, 15 HP Motor



(1 OF 3) HAAS VF-2B VERTICAL MACHINING CENTERS

DAY 1 SALE DATE:

Tuesday, June 21
at 10:00 AM CT

INSPECTION:

Monday, June 20,
by Appointment Only



(1 OF 3) HAAS VF-2SS VERTICAL MACHINING CENTERS



HAAS VF-4B VERTICAL MACHINING CENTER



(1 OF 2) HAAS VF-2 VERTICAL MACHINING CENTERS

2007



BROWN & SHARPE GLOBAL CLASSIC
7-10-7 CMM



MICRO VU 914 OPTICAL
COMPARATOR



VIEW OF HARDNESS TESTERS



VIEW OF PIN GAGES

INSPECTION

2014 HEXAGON SF 7.10.7 CMM, s/n 0814-8133

2007 BROWN & SHARPE GLOBAL CLASSIC 7-10-7 CMM,
s/n 0307-1416

MICRO VU 914 OPTICAL COMPARATOR, s/n 5299, w/MC-10
Controller and Q16 DRO

ROCKWELL PHASE 2 HARDNESS TESTER

FLIR VS70 HD VIDEO SCOPE

ALSO: LARGE VARIETY OF DIGITAL HEIGHT GAGES,
HEIGHT GAGES, PIN GAGE SETS, MICROMETER SETS,
BORE GAGES, LARGE ASSORTMENT OF GRANITE
SURFACE PLATES, AND MUCH MORE

ROLLING STOCK

HYSTER S120XLS LP FORKLIFT, s/n D004V06525P, 12,000
Lb Capacity, 3-Stage Mast, Side Shift,

CLARK CGP25 LP FORKLIFT, s/n P365LI-0457-9527FB, 5,000
Lb Capacity, 3-Stage Mast, Side Shift

MITSUBISHI FG15K LP FORKLIFT, s/n AF31B50108, 5,000 Lb
Capacity, 3-Stage Mast, Side Shift

YALE GC060 LP FORKLIFT, s/n N493534, 5,000 Lb Capacity,
3-Stage Mast, Side Shift

SKYJACK SJ 3226 SCISSOR LIFT, s/n 278972, 26' Max.
Platform Height, 500 Lb./2 Person Capacity

2017 NISSAN TITAN PICKUP TRUCK, VIN 1N6AA1R70HN,
V8, 8' Bed, 2-Door, 72,840 Miles



HYSTER S120XLS LP FORKLIFT



SKYJACK SJ 3226 SCISSOR LIFT

INSPECTION, ROLLING STOCK

2014



HEXAGON SF 7.10.7 CMM



HEIGHT GAGES AND GRANITE SURFACE PLATES

2017



NISSAN TITAN PICKUP TRUCK

72,840 MILES



VIEW OF FORKLIFTS

2014



ATLAS COPCO GA37FF
AIR COMPRESSOR

2018



(1 OF 2) ATLAS COPCO GA22P
AIR COMPRESSORS

2018



ATLAS COPCO FX10 AIR DRYER

2019



GREAT LAKES AIR ERF-150A-116
COMPRESSED AIR DRYER

DAY 1 SALE DATE:

Tuesday, June 21
at 10:00 AM CT

AIR COMPRESSORS, PLANT SUPPORT

AIR COMPRESSORS

2014 ATLAS COPCO GA37VSD+FF ROTARY SCREW AIR COMPRESSOR, s/n API123012, 50 HP

2014 ATLAS COPCO GA37FF ROTARY SCREW AIR COMPRESSOR, s/n API539877, 50 HP

2018 ATLAS COPCO GA22P ROTARY SCREW AIR COMPRESSOR, s/n ITJ159078, 30 HP, 132 PSIG Working Pressure

2014 ATLAS COPCO GA22P ROTARY SCREW AIR COMPRESSOR, s/n WUX565934, 30 HP

LEROI A30AA AIR COMPRESSOR, s/n 4030X330, 30 HP, Mounted on 120-Gallon Air Tank

2018 ATLAS COPCO FX10 AIR DRYER, s/n 8102226282

2016 ATLAS COPCO FX10 REFRIGERATED AIR DRYER, s/n ITJ000570

2019 GREAT LAKES AIR ERF-150A-116 COMPRESSED AIR DRYER, s/n 61869

CURTIS CA SERIES DUAL PISTON AIR COMPRESSOR, s/n NA, 10 HP, Mounted on 120-Gallon Air Tank

BEKO DRYPOINT DP RAX300-NA-EB REFRIGERATED AIR DRYER, s/n 4019952

QUALITY AIR SOLUTIONS OSC145 OIL AND WATER SEPARATOR



2014

ATLAS COPCO GA37VSD+FF
AIR COMPRESSOR

PLANT SUPPORT

KURT MACHINE VISES, (OVER 1,000) CAT 40, CAT 50 AND CAPTO C6 TOOL HOLDERS, HEAT SHRINK TOOLING, HEAT SHRINK MACHINES, CARBIDE INSERTS, DRILLS, END MILLS, REAMERS, COLLETS, TOOL CHESTS, POWER TOOLS, AIR TOOLS, CLAMPING, WORK BENCHES, PALLET JACKS, AND MUCH MORE



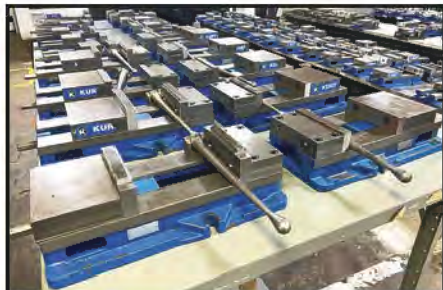
TOOL CARTS



VIEW OF TOOL CHESTS



WOOD-TOP WORKBENCHES



KURT MACHINE VISES



CAT 40 TOOL HOLDERS



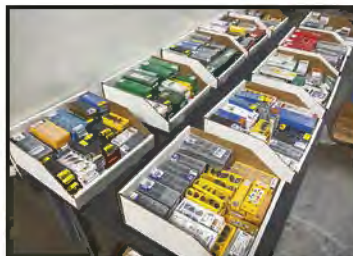
CAT 50 TOOL HOLDERS



CAPTO C6 TOOL HOLDERS



COLLETS



PERISHABLE TOOLING



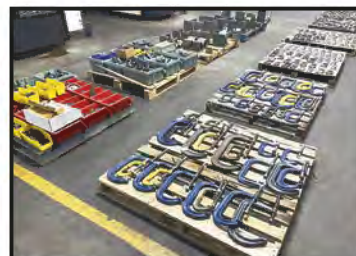
REGO-FIX POWRGRIP AND HEAT SHRINK
SYSTEMS



POWER TOOLS



PNEUMATIC TOOLS



ASSORTED CLAMPS AND FIXTURES

CNC TURNING CENTERS, COMPOSITE FORMING & CLICKER PRESSES



HAAS ST-40 TURNING CENTER

**DAY 2 SALE
DATE:**

Wednesday,
June 22
at 10:00 AM CT

INSPECTION:

Monday, June 20,
by Appointment
Only

SALE

LOCATION:

5912 Eden Dr.,
Haltom City,
Texas 76117



HAAS ST-30TB BIG BORE TURNING CENTER



HAAS ST-10 TURNING CENTER



HARDINGE QUEST GT 27 TURNING CENTER



HARDINGE GS 51 TURNING CENTER

To discuss your requirements for an auction, please call Perfection Industrial **+1-847-545-6374**



HAAS ST-30 TURNING CENTER

CNC TURNING CENTERS

2012 HAAS ST-40 TURNING CENTER, s/n 3094058, HAAS CNC Control, 15" 3-Jaw Chuck, 10-Position Turret, 34.5" Swing, 25.5" Max. Cutting Dia., 44" Max. Turning Length, 6.5" Bar Capacity, 17"-X, 44"-Z, Tailstock, Chip Conveyor

2013 HAAS ST-30 TURNING CENTER, s/n 3095356, HAAS CNC Control, 12" 3-Jaw Chuck, 12-Station Turret, 31.75" Swing, 26" Max. Machining Length, 21" Max. Turning Dia., 32.5" Distance Between Centers, 9.4"-X, 32.5"-Z, 3" Bar Capacity, Tailstock

2005 HAAS SL-30TB BIG BORE TURNING CENTER, s/n 71571, HAAS CNC Control, 15" 3-Jaw Chuck, 12-Position Turret, 30" Swing, 17" Max. Turning Dia., 34" Max. Turning Length, 4" Max. Bar Capacity, 39" Distance Between Centers, 11.3"-X, 34"-Y, Tailstock

(3) 2006-2000 HAAS SL-30T TURNING CENTERS, s/n 72993, 63957, 67018, 63160, HAAS CNC Control, 20.5" Max. Swing, 32" Max. Turning Length, 15" Max. Turning Dia., 3" Max. Bar Capacity, 9.4"-X, 32.5"-Z, Tailstock, 8-Position Turret

(2) 2005 HAAS SL-20T TURNING CENTERS, s/n 71580, 69965, HAAS CNC Control, 8" 3-Jaw Chuck, Tailstock, 12-Position Turret, HAAS Bar 300 Bar Feed

2013 HAAS ST-10 TURNING CENTER, s/n 3095538, Collet Chuck, 12-Position Turret, HAAS CNC Control, Tailstock

HAAS HL-2 TURNING CENTER, s/n 60217, Collet Chuck, 10-Position Turret, Tailstock, HAAS CNC Control



ACCUDYNE 150-TON UP-ACTING HYDRAULIC COMPOSITE FORMING PRESS



2012



(1 OF 3) HAAS SL-30T TURNING CENTER



(1 OF 2) HAAS SL-20T TURNING CENTERS

2012 HARDINGE QUEST GT 27 TURNING CENTER, s/n NA, FANUC 32i-Model A Control, 11.7" Swing, 11.2" Machining Length, 1.062" Bar Capacity, 5C Collet Chuck, 6,000 RPM, Mini RHINOBAR MRB12-1.62 Bar Feed

2012 HARDINGE GS 51 TURNING CENTER, s/n BLB2G0054, FANUC 0i-TD Control, Collet Chuck, 12-Position Turret, 2" Bar Capacity, 17.95" Machining Length, Tailstock, 5,000 RPM, RHINOBAR RB12-2.75 Bar Feed

COMPOSITE FORMING & CLICKER PRESSES

ACCUDYNE 150-TON UP-ACTING HYDRAULIC COMPOSITE FORMING PRESS, s/n 04031, 200 Amp, 72,000 W Total Heat, 5 HP Main Motor

2012 WABASH G75H-18-CLPX HYDRAULIC COMPOSITE FORMING PRESS, s/n 110514, 75-Ton Capacity, 8" x 16" Compression Cylinder 5 HP

FREEMAN SCHWABE FS25 CLICKER PRESS, s/n FS25073

FREEMAN
SCHWABE
FS25 CLICKER
PRESS



WABASH
G75H-18-CLPX
HYDRAULIC
COMPOSITE
FORMING
PRESS

Pre-Auction Offers Invited on Major Assets

DAY 2 SALE DATE:

Wednesday, June 22
at 10:00 AM CT

TOOL ROOM MACHINERY

TOOL ROOM MACHINERY

(5) **BRIDGEPORT VERTICAL MILLS**, (3) w/DRO, **HURCO SM1 VERTICAL MILL**, s/n SE8019105RE, 9" x 42" Table, **MITUTOYO DRO**, **DAKE 907003 H-FRAME PRESS**, s/n 13995661455, **DAKE 75H H-FRAME PRESS**, s/n 191539, **DAKE BENCHTOP H-FRAME SHOP PRESS**, **MARVEL SPARTAN PA 18/3 EPC HORIZONTAL BANDSAW**, s/n FPA180322EPC, 18" x 18" Capacity, **SCOTCHMAN SH-1419 HORIZONTAL BANDSAW**, s/n 556-04040022, 3 HP, 14" x 19" Capacity, 70-400 SFPM, (2) **PEERLESS VERTICAL BANDSAWS**, **MARVEL NO. 8 VERTICAL BANDSAW**, s/n NA, **HABERLE H350 COLD SAW**, s/n 112140585, **MSC 09514704 VERTICAL BANDSAW**, s/n 9770105, w/Blade Welder, **INDUMA SUPERMILL HORIZONTAL MILL**, s/n NA, 10.5" x 52" T-Slotted Table, 37-1,000 RPM, **THOMPSON MODEL B SURFACE GRINDER**, s/n NA, 12" x 24" Magnetic Chuck, 12" x 40" T-Slotted Table, **ELECTRO-MATIC 4RC6A Magnetic Chuck Control**, **DOALL 10" X 30" SURFACE GRINDER**, s/n NA, 12" Dia. Wheel, 10" x 30" **MAGNALOCK** Magnetic Chuck, Coolant, **POWERMATIC HOUDAILLE 1275GP SURFACE GRINDER**, s/n 8023, 6" x 12" Magnetic Chuck, **SUNNEN MBB-1660 PRECISION HONE**, s/n 81511, **POWERMATIC HOUDAILLE 33B 6" BELT SANDER**, s/n 7933132, **MILLER MILLERMATIC 212 WELDING POWER SOURCE**, s/n LJ261349B, **STANDARD MACHINERY NO. 3A SWAGER**, 1-3/4" Capacity, **STANDARD MACHINERY NO. 2A SWAGER**, **STRASBAUGH 6CR-1 PRECISION OPTICS 36" POLISHER**, s/n 54-4-79, (2) **GBG INDUSTRIES PUNCHES**, **BENCH GRINDERS**, **BELT SANDERS**, **ARBOR PRESS**, AND **DRILL PRESSES**



BRIDGEPORT VERTICAL MILL



DOALL 10" X 30" SURFACE GRINDER



HURCO VERTICAL MILL



DAKE 907003 H-FRAME PRESS



DAKE 75H H-FRAME PRESS



MARVEL SPARTAN PA 18/3 EPC HORIZONTAL BANDSAW



SCOTCHMAN SH-1419 HORIZONTAL BANDSAW



SUNNEN MBB-1660 PRECISION HONE



POWERMATIC HOUDAILLE 1275GP SURFACE GRINDER



BENCH GRINDERS AND SANDERS



DRILL AND ARBOR PRESSES



THOMPSON MODEL B SURFACE GRINDER



STANDARD NO. 3A SWAGER



STRASBAUGH 6CR-1 36" POLISHER

FINISHING



GLOBAL FINISHING SOLUTIONS DBG-1210322-S-SP PAINT BOOTH

FINISHING

2018 GLOBAL FINISHING SOLUTIONS DBG-1210322-S-SP PAINT BOOTH, s/n U91860-A, 10'W x 12'H x 22'D Booth Dimensions

2009 GLOBAL FINISHING SOLUTIONS IFPG-10810-S, s/n 92413, 10' x 8' x 10' Booth Dimensions

NORDSON ECONO-COAT EC2001 PAINT BOOTH, s/n NA, w/ NORDSON Encore LT Hopper and Encore Spray Gun

NORDSON ECONO-COAT PAINT BOOTH, s/n NA, w/NORDSON Encore LT Hopper and Encore Spray Gun

GRIEVE TBH-500 NATURAL GAS OVEN, s/n 641052, 175,000 BTU/Hr., 190 Deg. F. Max. Temp.

GRIEVE AB-500 UNIVERSAL OVEN, s/n 41159, 6.6 kW

STEELMAN 6710ESP CONVECTION OVEN, P050102, 88.2 kW, 500 Deg. F. Max. Temp., 6'W x 10'D x 7'6"H

STEELMAN 444 GPC CONVECTION OVEN, s/n 90159, 250,000 BTU/Hr., 450 Deg. F. Max. Temp.

DESPATCH RS-2 OVEN, s/n 75252, 500 Deg. F. Max. Temp., 13 kW Heater

DESPATCH RS-1HD OVEN, s/n 76958, 650 Deg. F. Max. Temp., 11 kW Heater

DESPATCH RS-1 OVEN, s/n 72894, 500 Deg. F. Max. Temp., 7 kW Heater

DESPATCH PSC3-43S OVEN, s/n 95214, 500 Deg. F. Max. Temp., DLG-500 Heater, 8'L x 5'W x 8'H

(2) 2010 AND 2007 CLEMCO ZERO PULSAR III BLAST CABINETS, s/n 54328 and 55796

CLEMCO BNP 65S BLAST CABINET, s/n Z58149, w/Collection System

(2) ICM BLAST CABINETS

RED DEVIL THE CLASSIC 01400A1 PAINT SHAKER, s/n 18K11477D



RED DEVIL PAINT SHAKER



GRIEVE AB-500 UNIVERSAL OVEN



DESPATCH RS-1HD OVEN



STEELMAN 6710ESP CONVECTION OVEN



GRIEVE TBH-500 NATURAL GAS OVEN



NORDSON ECONO-COAT PAINT BOOTH SYSTEM



NORDSON ECONO-COAT EC2001 PAINT BOOTH SYSTEM



STEELMAN 444 GPC CONVECTION OVEN



(3) CLEMCO BLAST CABINETS



DESPATCH PSC3-43S OVEN

INSPECTION, MATERIAL, PLANT SUPPORT

DAY 2 SALE DATE:

Wednesday, June 22 at 10:00 AM CT

SALE LOCATION:

5912 Eden Drive,
Haltom City, Texas 76117

INSPECTION: Monday, June 20,
by Appointment Only



HOFMANN PCH-13.1 BALANCER



MAGNAFLUX ST700 INSPECTION LED
UV LAMP



MAGNAFLUX D-2100L MAGNETIC PARTICLE
INSPECTION MACHINE

INSPECTION

HOFMANN PCH-13.1 BALANCER, s/n 20174049

MAGNAFLUX D-2100L MAGNETIC PARTICLE INSPECTION MACHINE, s/n 206027

INSPECTION LINE W/GOULD-BASS B-303TU BOOTH, w/MAGNAFLUX EV6000
Hand-Held LED UV Lamp, GOULD D-3060 Wash, GOULD-BASS DD-304TI BOOTH,
w/MAGNAFLUX ST700 Stationary Inspection LED UV Lamp



LARGE QUANTITY OF MATERIALS!



FINISHED GOODS

MATERIAL

LARGE QUANTITY OF NEW AEROSPACE-GRADE MATERIALS AND SCRAP
OPPORTUNITY: BAR STOCK, SQUARE STOCK, FLAT STOCK, SHEET STOCK,
BRASS, ALUMINUM, TITANIUM, AND LARGE SELECTION OF FINISHED GOODS,
ALUMINUM PARTS

PLANT SUPPORT

CANTILEVER AND PALLET RACKING, (3) VIDEO JET 1860 INKJET BARCODE LABEL
PRINTERS, s/n 18094004C49ZH, 18094005C49ZH, 18234003C49ZH, 2018 GRAVOTECH
IMPACT EZ P DOT PEEN IMPACT ENGRAVER, s/n 133057, w/Rotary Device 3-Jaw
Chuck, PROPEN P5000 DOT PEEN IMPACT ENGRAVER, s/n 14-03-9394, BETTER
PACKAGES TAPE DISPENSERS, PACK-RITE ROTARY SEALERS, FLOOR SCALES,
BENCH TOP SCALES, POWER TOOLS, TOOL BOXES, FLAMMABLE LIQUIDS CABINETS,
OFFICE FURNITURE, COMPUTERS, FLAT SCREEN MONITORS, PRINTERS, TV'S AND
MUCH MORE

View our current auction schedule at www.perfectionindustrial.com



PALLET RACKING



3 AVAILABLE
VIDEO JET 1860 INKJET BARCODE LABEL PRINTERS



2018
GRAVOTECH IMPACT EZ P DOT PEEN IMPACT ENGRAVER



FLAMMABLE LIQUIDS STORAGE CABINETS



LISTA TOOL CABINET



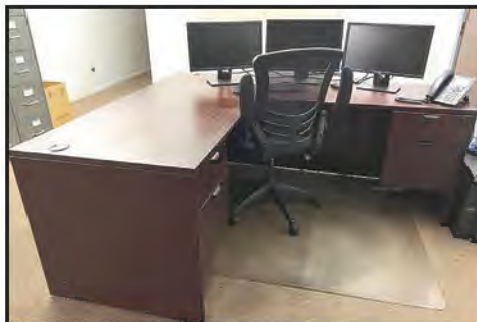
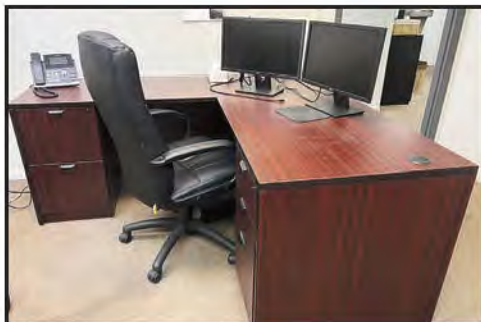
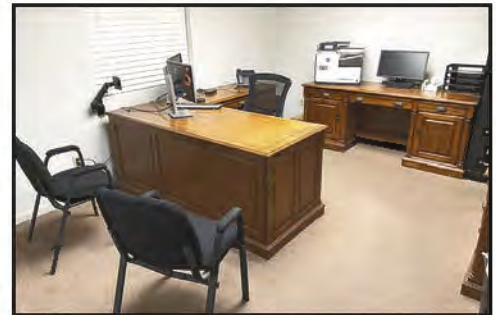
PROPEN P5000 DOT PEEN IMPACT ENGRAVER



POLY TANKS



WORKBENCHES



OFFICE FURNITURE



ASSORTED PRINTERS



ASSORTED TV'S AND MONITORS

Pre-Auction Offers Invited on Major Assets

**To discuss your requirements for an auction,
please call Perfection Industrial
+1-847-545-6374**



**PERFECTION
Industrial Sales**

Perfection Industrial Sales – 2550 Arthur Ave., Elk Grove Village, IL 60007

Phone: +1-847-545-6374 – Fax: +1-847-427-8884

www.perfectionindustrial.com

Joe Lundvick, TX Auctioneer Lic. #17682 and Steve Kleba, TX Auctioneer Lic. #17683



Presorted
First Class Mail
U.S. Postage
PAID
Eugene, Oregon
Permit No. 17

LIVE WEBCAST **ONLINE ONLY** AUCTION

DAY 1: Tuesday, June 21 at 10:00 AM CT **DAY 2:** Wednesday, June 22 at 10:00 AM CT **LOCATION:** Haltom City, Texas

FORE AERO

**FORE MACHINE LLC – EXCEPTIONAL OFFERING OF LATE MODEL
AEROSPACE MANUFACTURING MACHINERY & EQUIPMENT**



MAZAK INTEGREX J-300 MULTITASKING TURNING CENTER

LIVE WEBCAST **ONLINE ONLY** AUCTION

REMOVAL

All items must be removed no later than Friday, July 15, No Exceptions! All removal is strictly on an appointment only basis. Anyone removing purchased items with a lift truck or another powered vehicle must have a certificate of insurance with a \$2M General Liability policy, the policy must include a Worker's Compensation rider, and that certificate of insurance must be provided to the auctioneer for review and approval prior to the auction.

TERMS OF SALE

An 18% Buyer's Premium will be charged on all assets purchased by buyers providing full payment is made within 48 hours following the sale. Acceptable forms of payment are cashier's check, company check (with bank letter of guarantee) or wire transfer within 48 hours of the sale close. For any Buyers failing to pay within the 48 hour stated payment period, the Buyer's Premium will be increased to 20%. All invoices paid with a credit card are subject to a 20% Buyer's Premium. Everything will be sold to the highest bidder, in accordance with the Auctioneer's customary "Terms of Sale", copies of which will be posted on the Auctioneer's website and subject to additional terms announced the day of sale. All items are sold "As is, Where is" without any warranty, express or implied.

FURTHER INFORMATION

For auction inquiries, please contact Jennifer Reiner at 1+847-545-6374 or jennifer@perfectionindustrial.com.

FORE AERO

**FORE MACHINE LLC –
EXCEPTIONAL OFFERING
OF LATE MODEL
AEROSPACE
MANUFACTURING
MACHINERY & EQUIPMENT**

**Pre-Auction Offers Invited on
Major Assets**

DAY 1: Tuesday, June 21
at 10:00 AM CT

DAY 2: Wednesday, June 22
at 10:00 AM CT

SALE LOCATION:
5912 Eden Drive,
Haltom City, Texas 76117

INSPECTION: Monday,
June 20, by Appointment Only

Complete Catalog & Information Available at <https://perfection.global/fore>



**PERFECTION
Industrial Sales**

Perfection Industrial Sales

ph +1-847-545-6374 • fax +1-847-427-8884

www.perfectionindustrial.com

Joe Lundvick, TX Auctioneer Lic. #17682 and Steve Kleba, TX Auctioneer Lic. #17683

Bidding Available Through

BidSpotter