

LATE MODEL FABRICATING & CNC MACHINING ASSETS
SURPLUS TO CONTRACT MANUFACTURER



TUESDAY, DECEMBER 6TH @ 11:00AM ET
ROCHESTER, NEW YORK

COMING SOON ON BidSpotter

VIEW AUCTION DETAILS



2020

4 KW IPG ENGINE

BODOR P4020T CNC FIBER LASER,
157.48" X 78.74" TRAVEL, 4 KW IPG ENGINE
[VIEW LOT #6](#)



2013

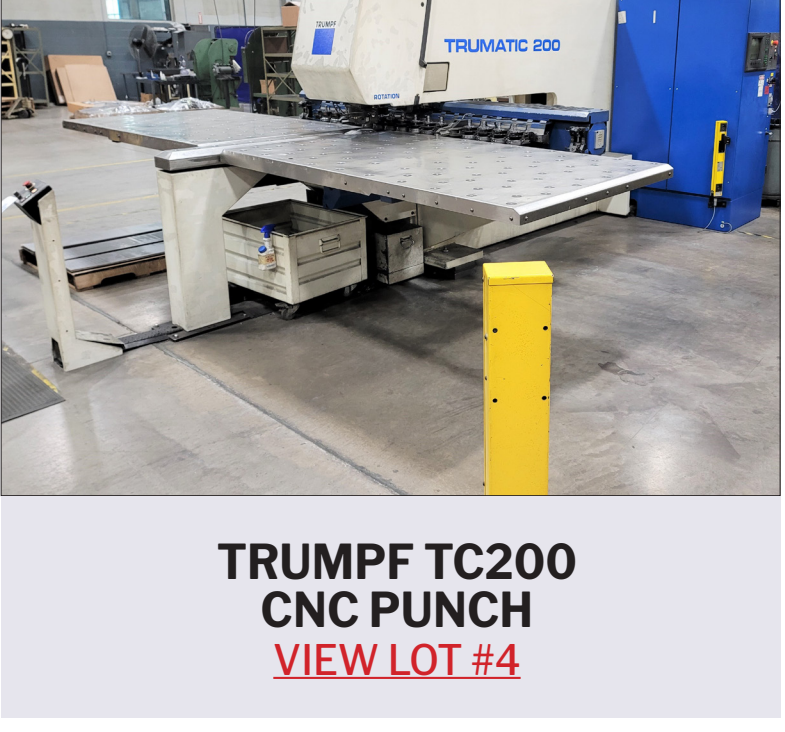
2-AVAILABLE

HAAS EC-300 CNC HORIZONTAL MACHINING CENTER
[VIEW LOT #24](#)



2013

HAAS EC-400 CNC HORIZONTAL MACHINING CENTER
[VIEW LOT #26](#)



TRUMPF TC200 CNC PUNCH
[VIEW LOT #4](#)



AMADA HFB-170-4 8-AXIS CNC HYDRAULIC PRESS BRAKE
[VIEW LOT #23](#)

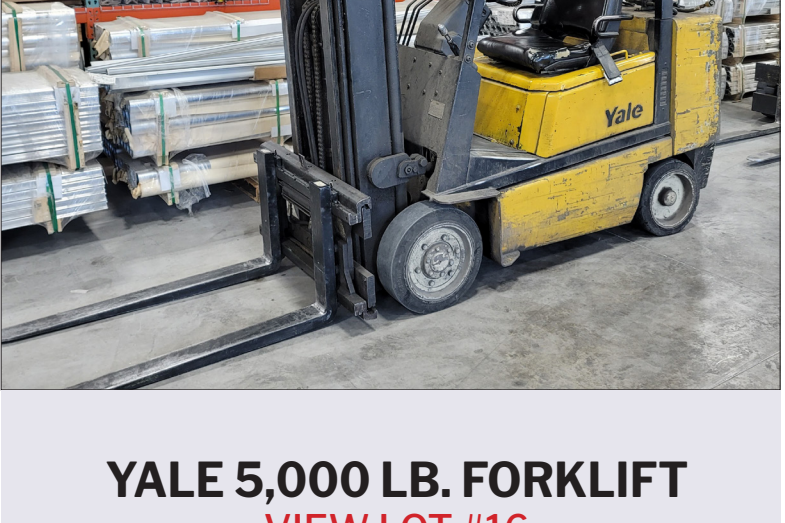


FANUC ROBODRILL ALPHA T21i CNC VERTICAL MACHINING CENTER
[VIEW LOT #7](#)



2-AVAILABLE

HAEGER 824 8-TON X 24" THROAT INSERTION PRESSES
[VIEW LOT #18](#)



YALE 5,000 LB. FORKLIFT
[VIEW LOT #16](#)



MAZAK NEW TURBO-X48 CHAMPION LASER
[VIEW LOT #5](#)



TOYODA FA-400 4-AXIS CNC HORIZONTAL MACHINING CENTER
[VIEW LOT #8](#)



TREE VMC-500 CNC VERTICAL MACHINING CENTER
[VIEW LOT #12](#)



NIAGARA HBM-135-8-10 CNC HYDRAULIC PRESS BRAKE
[VIEW LOT #3](#)



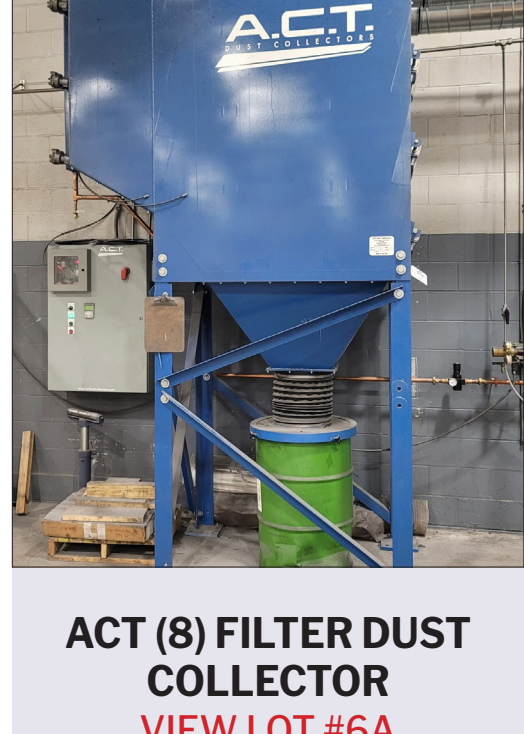
TRUMPF TRUMABEND V855 8-AXIS CNC HYDRAULIC PRESS BRAKE
[VIEW LOT #2](#)



CITIZEN L-16 CNC SWISS TYPE LATHE
[VIEW LOT #10](#)



MITUTOYO BRT710 COORDINATE MEASURING MACHINE
[VIEW LOT #20](#)



ACT (8) FILTER DUST COLLECTOR
[VIEW LOT #6A](#)

VIEW AUCTION DETAILS

DATE: TUESDAY, DECEMBER 6 @ 11:00AM ET

LOCATION: ROCHESTER, NEW YORK

INSPECTION: BY APPOINTMENT

ADD AUCTION TO CALENDAR:



IN CONJUNCTION WITH:



**** PRE-AUCTION OFFERS ARE INVITED ****

CONTACT FRANK DISALVO FOR MORE INFORMATION

frank@prestigeequipment.com | 631-249-5566



WE SPECIALIZE IN INDUSTRIAL AUCTIONS & LIQUIDATIONS WORLDWIDE
VIEW FULL CALENDAR