

**CORPORATE  
ASSETS INC**

# ONLINE AUCTION

Pending Court Approval

**ALLIED TRACK SERVICES INC.**



**Wednesday, November 16  
Thursday, November 17  
9:30 A.M. EST**

**2-DAY SALE!**

1891 Seymour Street,  
North Bay, Ontario, P1A 0C7



**ALLIED  
TRACK SERVICES**

**INSPECTION:** Monday, November 14 &  
Tuesday, November 15 from 9 AM To 4 PM. For  
an alternate inspection day, please email [info@corpassets.com](mailto:info@corpassets.com) to arrange a date & time.

**LIVE WEBCAST ONLY BidSpotter**

**UNPRECEDENTED MULTI-MILLION DOLLAR & LATE MODEL RAILROAD CONSTRUCTION EVENT!**



AUCTION CONDUCTED BY:

**CORPORATE ASSETS INC**

**"Let Our Experience Be Your #1 Asset"™**

373 Munster Avenue, Toronto, ON, Canada M8Z 3C8

[www.corpassets.com](http://www.corpassets.com) • 416.962.9600 • [info@corpassets.com](mailto:info@corpassets.com)

# (15+) LATE MODEL NORDCO HAMMER SPIKERS & PULLERS AVAILABLE

2015

2 AVAILABLE



3,384 HRS

**NORDCO MODEL SP2R C spike puller**

2012



3 AVAILABLE

**NORDCO MODEL SP2R-A spike puller**

2015



3 AVAILABLE

**NORDCO CX hammer spiker**

2011



8,802 HRS

**NORDCO CX hammer spiker**

2009



8,928 HRS

**NORDCO CX hammer spiker**

**INSPECTION: Monday, November 14 & Tuesday, November 15 from 9 AM To 4 PM.  
For an alternate inspection day, please email [info@corpassets.com](mailto:info@corpassets.com) to arrange a date & time.**

**CONTACT 416.962.9600 TO CONSIGN EQUIPMENT AT AN UPCOMING AUCTION**

## (5) LATE MODEL NORDCO TRIPP MACHINES AVAILABLE

2015



**NORDCO MODEL D** TRIPP tie remover/inserter

2007



**NORDCO MODEL C** TRIPP tie remover/inserter

2015



Interior cab view of **NORDCO MODEL D** TRIPP tie remover/inserter



**TAMPER TR10** tie remover/inserter



View of **NORDCO** TRIPP workhead

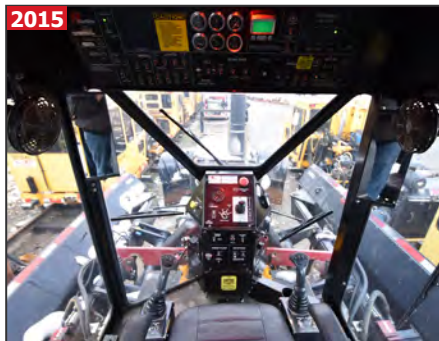
**TO SCHEDULE AN AUCTION CONTACT 416.962.9600**

## (8) LATE MODEL NORDCO & KERSHAW BALLAST REGULATORS AVAILABLE



8,550 HRS

**NORDCO MODEL B M7 ballast regulator**



Interior cab view of the **NORDCO MODEL B M7 ballast regulator**

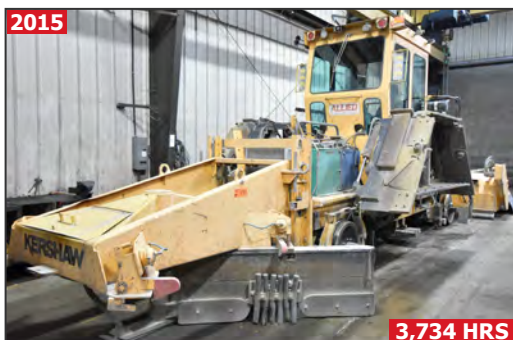


3,294 HRS

**NORDCO MODEL B M7 ballast regulator**

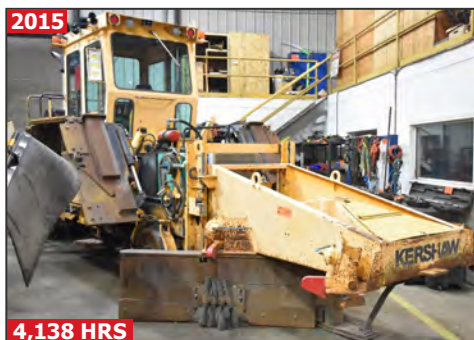


Interior cab view of the **NORDCO MODEL B M7 ballast regulator**



3,734 HRS

**KERSHAW MODEL 4600 ballast regulator**



4,138 HRS

**KERSHAW MODEL 4600 ballast regulator**



View of **NORDCO MODEL B M7 ballast regulator winter package**

**THIS BROCHURE IS ONLY A PARTIAL LISTING. PLEASE VISIT OUR WEBSITE**

# LATE MODEL KRIBBER ADZER & RECENTLY OVERHAULED TRACK STABILIZER

2015



**419 ADZER HEAD HRS | 3,195 ENGINE HRS**

**KERSHAW** MODEL 38-6 kribber adzer



View of **KERSHAW** table



View of **KERSHAW** track



**12,591 HRS**

**RECENTLY OVERHAULED**

**HARSCO** FAIRMONT TAMPER HTT T50-27 track stabilizer



View of **HARSCO** track

## KRIBBER ADZER

**KERSHAW** (2015) MODEL 38-6 KRIBBER ADZER with CATERPILLAR C6.6 diesel engine, 419 ADZER head HRS, 3,195 engine HRS (RECORDED ON METER AT TIME OF LISTING), S/N 38-214-15 (87-32-L) (LOCATED AT 1891 SEYMOUR ST, NORTH BAY, ON)

## TRACK STABILIZER

**HARSCO** FAIRMONT TAMPER (1997) HTT T50-27 track stabilizer with DETROIT DIESEL engine, full climate-controlled cab, 12,591 HRS (RECORDED ON METER AT TIME OF LISTING), S/N RM1090356 619 0356 (89-TS) (LOCATED AT 1891 SEYMOUR ST, NORTH BAY, ON)

## (8) LATE MODEL HARSCO & JACKSON TAMPERS AVAILABLE

AS NEW AS 2015



**HARSCO MODEL MK IV HD tamper**



Interior cab view of the **HARSCO MODEL MK IV HD tamper**



View of **HARSCO** tie bells



View of **HARSCO** sensor tower



View of **HARSCO** work heads



View of **HARSCO** sensors



Partial view of spare tamper work heads available

### TAMPERS

**HARSCO** (04/2015) MODEL MK IV HD tamper with CUMMINS diesel engine, JUPITER II controls, gaging system, full climate-controlled cab, 4,353 HRS (RECORDED ON METER AT TIME OF LISTING), S/N 7114095 (85-13T-L) (LOCATED AT 1891 SEYMOUR ST, NORTH BAY, ON)

**HARSCO** (12/2014) MODEL MK IV HD tamper with CUMMINS diesel engine, JUPITER II controls, gaging system, full climate-controlled cab, 1,346 HRS (RECORDED ON METER AT TIME OF LISTING), S/N 7114114 (85-10T) (LOCATED AT 1891 SEYMOUR ST, NORTH BAY, ON) **SOLD!**

**HARSCO** (12/2014) MODEL MK IV HD tamper with CUMMINS diesel engine, JUPITER II controls, gaging system, full climate-controlled cab, 5,579 HRS (RECORDED ON METER AT TIME OF LISTING), S/N 7114174 (85-11T-L) (LOCATED AT 1891 SEYMOUR ST, NORTH BAY, ON)

**NORDCO** (2013) HST tamper with JOHN DEERE diesel engine, full climate-controlled cab, 2,394 HRS (RECORDED ON METER AT TIME OF LISTING), S/N 61904013 (85-14T-L) (LOCATED AT 1891 SEYMOUR ST, NORTH BAY, ON) **SOLD!**

**CONTACT 416.962.9600 TO CONSIGN EQUIPMENT AT AN UPCOMING AUCTION**

## ASSETS HAVE BEEN EXCEPTIONALLY MAINTAINED BY THE CORPORATION



**JACKSON** 6700 tamper



**NORDCO** HST tamper



**HARSCO** HTT STM chase tamper



**JACKSON** 3300 tamper



**JACKSON** 6700 tamper

### TAMPERS

**HARSCO** (2002) HTT STM CHASE tamper with DETROIT DIESEL engine, full climate-controlled cab, 9,480 HRS (RECORDED ON METER AT TIME OF LISTING), S/N 153193 (85-16T) (LOCATED AT 1891 SEYMOUR ST, NORTH BAY, ON)

**JACKSON** 6700 tamper with DETROIT DIESEL engine, full climate-controlled cab, 5,679 HRS (RECORDED ON METER AT TIME OF LISTING), S/N 142414 (85-T3) (LOCATED AT 1891 SEYMOUR ST, NORTH BAY, ON)

**FAIRMOUNT JACKSON** 3300 tamper, diesel engine, cab, 2,394 HRS (RECORDED ON METER AT TIME OF LISTING) S/N 153193 (LOCATED AT HWY 17 YARD)

**JACKSON** tamper, S/N N/A (NOT IN SERVICE) (LOCATED AT HWY 17 YARD)

**TO SCHEDULE AN AUCTION CONTACT 416.962.9600**

## SPIKERS

**NORDCO** (2015) CX HAMMER spiker with JOHN DEERE diesel engine, full climate-controlled cab, gaging system, spike rails, 3,392 HRS (RECORDED ON METER AT TIME OF LISTING), S/N 410396RB-UG (82-14D-L) (LOCATED AT 1891 SEYMOUR ST, NORTH BAY, ON)

**NORDCO** (2015) CX HAMMER spiker with JOHN DEERE diesel engine, full climate-controlled cab, gaging system, spike rails, N/A HRS (RECORDED ON METER AT TIME OF LISTING), S/N 410395RB-UG (82-13D-L) (LOCATED IN HUDSON BAY, ON)(MORE INFO COMING SOON!)

**NORDCO** (2015) CX HAMMER spiker with JOHN DEERE diesel engine, full climate-controlled cab, gaging system, spike rails, N/A HRS (RECORDED ON METER AT TIME OF LISTING), S/N 410397RB-UG (82-15D-L) (LOCATED IN ON) (MORE INFO COMING SOON!)

**NORDCO** (2014) CX HAMMER spiker with JOHN DEERE diesel engine, full climate-controlled cab, gaging system, spike rails, 4,186 HRS (RECORDED ON METER AT TIME OF LISTING), S/N 410500ASF (82-5D) (LOCATED AT 1891 SEYMOUR ST, NORTH BAY, ON)

**NORDCO** (2011) CX HAMMER spiker with JOHN DEERE diesel engine, full climate-controlled cab, gaging system, spike rails, 8,802 HRS (RECORDED ON METER AT TIME OF LISTING), S/N 410116RB-UG (82-8D) (LOCATED AT 1891 SEYMOUR ST, NORTH BAY, ON)

**NORDCO** (2009) CX HAMMER spiker with JOHN DEERE diesel engine, full climate-controlled cab, gaging system, spike rails, 8,928 HRS (RECORDED ON METER AT TIME OF LISTING), S/N 410141RB-UG (82-6D) (LOCATED AT 1891 SEYMOUR ST, NORTH BAY, ON)

**NORDCO** (12/2006) CX HAMMER spiker with JOHN DEERE diesel engine, full climate-controlled cab, gaging system, spike rails, 13,118 HRS (RECORDED ON METER AT TIME OF LISTING), S/N 410728-06 (82-10D) (LOCATED AT 1891 SEYMOUR ST, NORTH BAY, ON)

**NORDBERG** MODEL B hydraulic spiker, N/A HRS (RECORDED ON METER AT TIME OF LISTING), S/N 552 (78-01) (LOCATED AT HWY 17 YARD)

## SPIKE PULLERS

**NORDCO** (2015) MODEL SP2R CX spike puller with CUMMINS diesel engine, full climate-controlled cab, 3,443 HRS (RECORDED ON METER AT TIME OF LISTING), S/N 310345 (65-16P-L) (LOCATED AT 1891 SEYMOUR ST, NORTH BAY, ON)

**NORDCO** (2015) MODEL SP2R C spike puller with CUMMINS DIESEL ENGINE, full climate-controlled cab, 3,384 HRS (RECORDED ON METER AT TIME OF LISTING), S/N 310349 (65-17P-L) (LOCATED AT 1891 SEYMOUR ST, NORTH BAY, ON)

**NORDCO** (2012) MODEL SP2R-A spike puller with JOHN DEERE diesel engine, full climate-controlled cab, 5,965 HRS (RECORDED ON METER AT TIME OF LISTING), S/N 310224-12 (65-13P) (LOCATED AT 1891 SEYMOUR ST, NORTH BAY, ON)

**NORDCO** (2012) MODEL SP2R-A spike puller with JOHN DEERE diesel engine, cab, N/A HRS (RECORDED ON METER AT TIME OF LISTING), S/N 310223-12 (65-12P) (LOCATED IN ON) (MORE INFO COMING SOON!)

**NORDCO** (2012) MODEL SP2R-A spike puller with JOHN DEERE diesel engine, cab, N/A HRS (RECORDED ON METER AT TIME OF LISTING), S/N 310254-12 (65-14P) (LOCATED IN MB) (MORE INFO COMING SOON!)

**NORDCO** (2005) MODEL D M3 spike puller with JOHN DEERE diesel engine, cab, 3,602 HRS (RECORDED ON METER AT TIME OF LISTING), S/N 150220-05 (65-6P) (LOCATED AT 1891 SEYMOUR ST, NORTH BAY, ON)

**NORDCO** MODEL LS SUPERCRAW spike puller, S/N 438 (65-5P) (LOCATED AT HWY 17 YARD)

**NORDCO** (2005) MODEL XX spike puller, S/N 45022005 (65-8P) (LOCATED IN ON) (MORE INFO COMING SOON!)

## MAGNETIC SPIKE PLUCKERS

**HOLLY ENGINEERING** M-86 self-propelled magnetic spike plucker with JOHN DEERE diesel engine, 4,292 HRS (RECORDED ON METER AT TIME OF LISTING), S/N 588 (50-4S) (LOCATED AT 1891 SEYMOUR ST, NORTH BAY, ON)

**HOLLY ENGINEERING** self-propelled magnetic spike plucker with JOHN DEERE diesel engine, approx. 1,450 HRS (RECORDED ON METER AT TIME OF LISTING), S/N N/A (50-2S) (LOCATED AT 1891 SEYMOUR ST, NORTH BAY, ON)

**HOLLY ENGINEERING** self-propelled magnetic spike plucker with JOHN DEERE diesel engine, N/A HRS (RECORDED ON METER AT TIME OF LISTING), S/N N/A (50-3S) (LOCATED AT HWY 17 YARD)

**HARSCO** FAIRMOUNT self-propelled magnetic spike plucker with JOHN DEERE diesel engine, 3,420 HRS (RECORDED ON METER AT TIME OF LISTING), S/N N/A (50-1S) (LOCATED AT 1891 SEYMOUR ST, NORTH BAY, ON)

## BALLAST REGULATORS

**NORDCO** (2015) MODEL B M7 ballast regulator with CUMMINS diesel engine, full climate-controlled cab, currently in summer package configuration with winter package available, 3,294 HRS (RECORDED ON METER AT TIME OF LISTING), S/N 800602 (80-14B-L) (LOCATED AT 1891 SEYMOUR ST, NORTH BAY, ON) **SOLD!**

**NORDCO** (2015) MODEL B M7 ballast regulator with CUMMINS DIESEL ENGINE, full climate-controlled cab, currently in winter package configuration with summer package available, 16,875 KM & 8,550 HRS (RECORDED ON METER AT TIME OF LISTING), S/N 800601 (80-13B-L) (LOCATED AT 1891 SEYMOUR ST, NORTH BAY, ON)

**NORDCO** (2009) MODEL M ballast regulator with CUMMINS diesel engine, full climate-controlled cab, n/a km n/a HRS (RECORDED ON METER AT TIME OF LISTING, S/N 8711RB-UG (80-5B) (LOCATED AT HWY 17 YARD)

**KERSHAW** (2015) MODEL 4600 ballast regulator with **CATERPILLAR** C-7 diesel engine, full climate-controlled cab, 7,800 MILES & 3,734 HRS (RECORDED ON METER AT TIME OF LISTING), S/N 4600-202-15 (80-12B-L) (LOCATED AT 1891 SEYMOUR ST, NORTH BAY, ON)

**KERSHAW** (2015) MODEL 4600 ballast regulator with **CATERPILLAR** C7 diesel engine, full climate-controlled cab, 7,840 MILES & 4,138 HRS (RECORDED ON METER AT TIME OF LISTING), S/N 4600-217-15 (80-17B) (LOCATED AT 1891 SEYMOUR ST, NORTH BAY, ON)

**KERSHAW** (2015) MODEL 4600 ballast regulator with **CATERPILLAR** C7 diesel engine, full climate-controlled cab, N/A MILES & N/A HRS (RECORDED ON METER AT TIME OF LISTING), S/N 4600-201-15 (80-11B-L) (LOCATED AT HWY 17 YARD)

**KERSHAW** (2012) 46-2 ballast regulator with DETROIT DIESEL engine, full climate-controlled cab, 2,565 HRS (RECORDED ON METER AT TIME OF LISTING), S/N 46-343-12RB-UG (80-16B-L) (LOCATED AT 1891 SEYMOUR ST, NORTH BAY, ON)

**KERSHAW** 4001 ballast regulator, N/A MILES & N/A HRS (RECORDED ON METER AT TIME OF LISTING), S/N 46-153-83 (3211-28) (NOT IN SERVICE) (LOCATED AT HWY 17 YARD)

## TRIPP

**NORDCO** (2015) MODEL D TRIPP tie remover/insertor with CUMMINS diesel engine, full climate-controlled cab, 1,332 KM & 3,815 HRS (RECORDED ON METER AT TIME OF LISTING), S/N 760612 (83-131-L) (LOCATED AT 1891 SEYMOUR ST, NORTH BAY, ON)

**NORDCO** (2015) MODEL D TRIPP tie remover/insertor with CUMMINS diesel engine, full climate-controlled cab, N/A HRS (RECORDED ON METER AT TIME OF LISTING), S/N 760613 (83-141-L) (LOCATED IN KAPUSKASING, ON) (MORE INFO COMING SOON!)

**NORDCO** (2014) MODEL D TRIPP tie remover/insertor with CUMMINS diesel engine, full climate-controlled cab, N/A KM & N/A HRS (RECORDED ON METER AT TIME OF LISTING), S/N 760589 (83-121-L) (LOCATED IN HUDSON BAY, ON) (MORE INFO COMING SOON!)

**NORDCO** (2007) MODEL C TRIPP tie remover/insertor with JOHN DEERE diesel engine, full climate-controlled cab, 23,131 MILES & 4,367 HRS (RECORDED ON METER AT TIME OF LISTING), S/N 760278-07 (83-71) (LOCATED AT 1891 SEYMOUR ST, NORTH BAY, ON)

TAMPER TR10 tie remover/insertor with diesel engine, cab, N/A MILES & N/A HRS (RECORDED ON METER AT TIME OF LISTING), S/N N/A (83-91) (LOCATED AT HWY 17 YARD)

## AUTO-LIFT SYSTEMS

**NORDCO** (2015) MODEL LS RAIL hydraulic self-propelled auto-lift system with HATZ air-cooled diesel engine, 1,525 HRS (RECORDED ON METER AT TIME OF LISTING), S/N 790684RB-UG (LOCATED AT 1891 SEYMOUR ST, NORTH BAY, ON)

**NORDCO** (2015) MODEL LS RAIL hydraulic self-propelled auto-lift system with HATZ air-cooled diesel engine, 3,406 HRS (RECORDED ON METER AT TIME OF LISTING), S/N 790683RB-UG (64-10J-L) (LOCATED AT 1891 SEYMOUR ST, NORTH BAY, ON)

**NORDCO** (2016) MODEL LS RAIL hydraulic self-propelled auto-lift system with HATZ air-cooled diesel engine, 1,793 HRS (RECORDED ON METER AT TIME OF LISTING), S/N 791084 (64-12J-L) (LOCATED AT 1891 SEYMOUR ST, NORTH BAY, ON)

**NORDCO** (2014) MODEL LS RAIL hydraulic self-propelled auto-lift system with HATZ air-cooled diesel engine, N/A HRS (RECORDED ON METER AT TIME OF LISTING), S/N 790677RB-UG (64-9J-L) (LOCATED IN MB) (MORE INFO COMING SOON!)

## HYDRAULIC WHEELED EXCAVATORS

**HITACHI** (2015) ZX230W ZAXIS hydraulic wheeled excavator with diesel engine, HI-RAIL kit, third valve, rotator attachment, hydraulic-driven generator, 5,460 HRS (RECORDED ON METER AT TIME OF LISTING), VIN HCMC60K00004003 (81-22) (LOCATED AT 1891 SEYMOUR ST, NORTH BAY, ON)

**HITACHI** (2015) ZX230W ZAXIS hydraulic wheeled excavator with diesel engine, HI-RAIL kit, third valve, rotator attachment, hydraulic-driven generator, 5,650 HRS (RECORDED ON METER AT TIME OF LISTING), VIN HCMC60A00004007 (81-23) (LOCATED AT 1891 SEYMOUR ST, NORTH BAY, ON)

**HITACHI** (2015) ZX220W ZAXIS hydraulic wheeled excavator with diesel engine, HI-RAIL kit, third valve, rotator attachment, hydraulic-driven generator, 5,950 HRS (RECORDED ON METER AT TIME OF LISTING), VIN HCMCKB00P00001137 (81-20) (LOCATED AT 1891 SEYMOUR ST, NORTH BAY, ON) **SOLD!**

**HITACHI** (2015) ZX220W ZAXIS hydraulic wheeled excavator with diesel engine, HI-RAIL kit, third valve, 5,530 HRS (RECORDED ON METER AT TIME OF LISTING), VIN HCMCKB00J00001130 (81-21) (LOCATED AT 1891 SEYMOUR ST, NORTH BAY, ON) **SOLD!**

**LIEBHERR** A902 high reach hydraulic wheeled excavator with diesel engine, third valve, rotator attachment, N/A HRS (S/N 5835634 (81-17C) (LOCATED HWY 17 YARD)

**LIEBHERR** hydraulic wheeled excavator with diesel engine, HI-RAIL kit, third valve, grapple attachment, N/A HRS (RECORDED ON METER AT TIME OF LISTING), S/N 3575465 (81-8C) (LOCATED AT 1891 SEYMOUR ST, NORTH BAY, ON)

**LIEBHERR** 904A hydraulic wheeled excavator with diesel engine, HI-RAIL kit, N/A HRS (RECORDED ON METER AT TIME OF LISTING), S/N N/A (81-12C) (LOCATED AT HWY 17 YARD)

**LIEBHERR** A902 HYDRAULIC WHEELED EXCAVATOR, S/N 6185471 (NOT IN SERVICE) (LOCATED AT HWY 17 YARD)

## OTM TRACKER SYSTEM

**BRANDT OTM TRACKER SYSTEM** consisting of: **PETERBILT** (2005) 357 tri-axle tracker truck with CATERPILLAR 3306 diesel engine, BRANDT HI-RAIL system, VIN 1NPAXBE85D833104 (81-24-L) (LOCATED IN FERONIA, ON) **SOLD!**

**JOHN DEERE** (2005) 120C hydraulic excavator with BRANDT OTM TRACKER conversion, diesel engine, approx. 8,600 HRS (RECORDED ON METER AT TIME OF LISTING), S/N FF120CX035557 (91-7X-L) (LOCATED IN FERONIA, ON) **SOLD!**

**MAJESTIK** (2006) 28' tri-axle equipment hauler trailer with BRANDT OTM TRACKER conversion, VIN 2M9GSA3W56R151135 (81-5TR-L) (LOCATED IN FERONIA, ON) **SOLD!**

## DIRECTIONAL DRILL

**VERMEER** (2018) D10X15 S3 horizontal directional drill, 336 HRS (RECORDED ON METER AT TIME OF LISTING), S/N 1VRA130V6H1000511 (DD-1) (LOCATED AT 1891 SEYMOUR ST, NORTH BAY, ON) (MORE INFO COMING SOON!)

## BACKHOES

**CATERPILLAR** (2021) 420XE HRC backhoe with diesel engine, automatic transmission, 4x4, ROTOTILT hydraulic rotator attachment, buckets & fork attachments, 772 HRS (RECORDED ON METER AT TIME OF LISTING), S/N CAT00420KH9X00662 (93-19B) (LOCATED IN GRIMSBY, ON)

**CATERPILLAR** (2018) 430 backhoe with diesel engine, automatic transmission, 4x4, N/A HRS (RECORDED ON METER AT TIME OF LISTING), S/N CAT0430FALYE00214 (93-18) (LOCATED IN BC) (MORE INFO COMING SOON!)

**JCB** (2008) 3CX backhoe with diesel engine, automatic transmission, 4x4, n/a HRS (RECORDED ON METER AT TIME OF LISTING), VIN SLP214TC8U0910797 (93-3B) (LOCATED AT 1891 SEYMOUR ST, NORTH BAY, ON)

**CASE** 580K backhoe with diesel engine, automatic transmission, 4x4, 8,485 HRS (RECORDED ON METER AT TIME OF LISTING), S/N JAB0004932 (93-1B) (LOCATED AT 1891 SEYMOUR ST, NORTH BAY, ON)

## HYDRAULIC TRACKED EXCAVATORS

**LINK BELT** (2010) 210X2 hydraulic tracked excavator with diesel engine, 11,075 HRS (RECORDED ON METER AT TIME OF LISTING), VIN LBX210Q5N7HEX1316 (91-4X) (LOCATED AT 1891 SEYMOUR ST, NORTH BAY, ON)

## EXCAVATOR ATTACHMENTS

**FAE** (2021) B14/EX-125VT hydraulic excavator mulcher attachment, S/N 21 3614 (LOCATED AT 1891 SEYMOUR ST, NORTH BAY, ON)

**(9) LATE MODEL HI-RAIL WHEELED & TRACKED EXCAVATORS AVAILABLE**



**2015**

**2 AVAILABLE**

**HITACHI ZX230W ZAXIS hydraulic wheeled excavator**



**2015**

**2 AVAILABLE**

**HITACHI ZX220W ZAXIS hydraulic wheeled excavator**



**2010**

**LINK BELT 210X2 hydraulic tracked excavator**



**View of HITACHI ZX230W rotator attachment**



**View of HITACHI ZX220W rotator attachment**



**3 AVAILABLE**

**LIEBHERR A902 high reach hydraulic wheeled excavator**



**View of HITACHI ZX230W rotator attachment**



**2021**

**LIKE NEW!**

**FAE B14/EX-125VT hydraulic excavator mulcher attachment**



**2018**

**VERMEER D10X15 S3 horizontal directional drill with attachments**

**ONLY 336 HRS**

**CONTACT 416.962.9600 TO CONSIGN EQUIPMENT AT AN UPCOMING AUCTION**

# LARGE OFFERING OF CONSTRUCTION EQUIPMENT NEW AS 2021

2021



ONLY 772 HRS!

**CATERPILLAR 420XE HRC backhoe**



View of **CAT** bucket and trench attachments



View of **CAT** bucket attachment

2018



2,650 HRS

**CATERPILLAR 430F backhoe**

2008



**JCB 3CX backhoe**



8,485 HRS

**CASE 580K backhoe**

2015



10,000 LBS MAX LOAD CAPACITY

**PETTIBONE (2015) 445-E SPEEDSWING loader**



**PETTIBONE 441B SPEEDSWING loader**

## LOADERS

**PETTIBONE (2015) 445-E SPEEDSWING loader** with CUMMINS diesel engine, rail kit, electro-magnet, hydraulic-driven generator, 10,000 lbs max load capacity, 180-degree boom rotation, N/A HRS (RECORDED ON METER AT TIME OF LISTING), S/N SS10236-15 (84-13S-L) (LOCATED AT 1891 SEYMOUR ST, NORTH BAY, ON)

**PETTIBONE 441B SPEEDSWING loader** with diesel engine, rail kit, n/a hrs (RECORDED ON METER AT TIME OF LISTING), S/N 811 (84-8S) (LOCATED AT 1891 SEYMOUR ST, NORTH BAY, ON)

**TO SCHEDULE AN AUCTION CONTACT 416.962.9600**

# MACK AND VOLVO HI-RAIL GRAPPLE TRUCKS NEW AS 2016

2016



144,010 MILES

**VOLVO** VHD tandem axle boom truck

2014



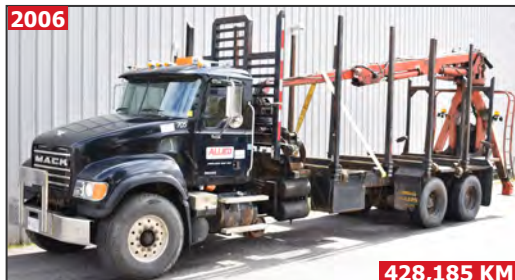
107,980 MILES

**VOLVO** VHD tandem axle boom truck



**FORD** LNT8000 tandem axle boom truck

2006



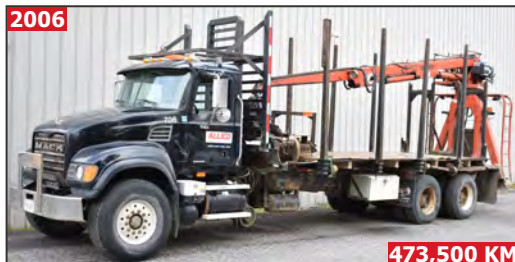
428,185 KM

**MACK** CV713 tandem axle boom truck



View of grapple attachment

2006



473,500 KM

**MACK** CV713 tandem axle boom truck

## VOLVO BOOM TRUCKS

**VOLVO** (2016) VHD tandem axle boom truck with VOLVO D11 diesel engine, EATON FULLER 9-speed manual transmission, 20,000 LBS front, 23,000 LBS rears, PRENTICE 2124 articulating boom crane, grapple attachment, HI-RAIL kit, 144,010 Mi (RECORDED ON METER AT TIME OF LISTING), VIN 4V5KC9DG5GN952999 (N4212D) (LOCATED IN GRIMSBY, ON)

**VOLVO** (2014) VHD tandem axle boom truck with VOLVO D11 diesel engine, EATON FULLER 8-speed manual transmission, 18,800 LBS front, 23,000 LBS rears, BUILT RITE 1010 articulating boom crane, generator, grapple attachment, HI-RAIL kit, 107,980 Mi (RECORDED ON METER AT TIME OF LISTING), VIN 4V5KC9DG9EN155944 (N4200D) (LOCATED IN GRIMSBY, ON)

**THIS BROCHURE IS ONLY A PARTIAL LISTING. PLEASE VISIT OUR WEBSITE**

# PARTIAL LISTING OF LATE MODEL SEMI & SERVICE TRUCKS AVAILABLE

2011



**PETERBUILT 367 TT/CV tandem axle semi tractor truck**

2007



**PETERBUILT 378 TT/CT tandem axle semi tractor truck**

2016



**313,046 MILES**

**WESTERN STAR W4900 SBA tri-axle heavy hauler semi tractor truck**

2014



**55,890 MILES**

**FORD F-750 field service truck**

2015



**102,000 KM**

**DODGE RAM 5500 heavy duty field service truck**

2015



**151,705 KM**

**DODGE RAM 5500 heavy duty field service truck**



**277,000 MILES**

**STERLING LT950 tandem axle rotary dump truck**

2002



**270,027 KM**

**FORD (2002) F-450 XL diesel dump truck**

# HUGE OFFERING OF LATE MODEL PICK-UP TRUCKS & VANS AVAILABLE



**FORD F-250 XLT crew cab pickup truck**



**FORD F-350 XLT FX4 crew cab pickup truck**



**CHEVROLET SILVERADO 2500 crew cab pickup truck**



**CHEVROLET SILVERADO 2500 crew cab pickup truck**



**FORD F-150 XTR crew cab pickup truck**



**FORD F-150 XTR crew cab pickup truck**



**FORD F-150 XLT crew cab pickup truck**



**FORD F-150 XLT crew cab pickup truck**



**CHEVROLET SILVERADO 1500 crew cab pickup truck**



**FORD F-150 XTR crew cab pickup truck**



**CHEVROLET SILVERADO LT 1500 crew cab pickup truck**



**FORD F-150 XLT crew cab pickup truck**



**FORD F-150 XL regular cab pickup truck**



**FORD TRANSIT 15-passenger van**



**FORD TRANSIT 15-passenger van**



**FORD E-350 passenger van**

**CONTACT 416.962.9600 TO CONSIGN EQUIPMENT AT AN UPCOMING AUCTION**

# LATE MODEL OFFERING OF HEAVY EQUIPMENT TRAILERS AVAILABLE



**7,000 LBS CAPACITY**

**FOREST RIVER** blazer tandem axle 20' enclosed utility trailer



**7,000 LBS CAPACITY**

**STEALTH** tandem axle 14' enclosed utility trailer



**UNITED TRAILERS** tandem axle 14' enclosed utility trailer



**FOREST RIVER** tandem axle 16' enclosed utility trailer



**CARGO MAX** enclosed utility trailer



**RAIL KIT**

**LANDOLL** 455B-53 tri axle tilt and load trailer



**HITCHMAN** tri axle flat deck trailer



**RAIL KIT**

**LANDOLL** 410B tri axle tilt and load trailer



**RAIL KIT**

**CHALLENGER** RJ-50 tri axle float trailer



**RAIL KIT**

**LOAD KING** tri-axle heavy hauler float trailer



**MAGNUM** booster axle

**TO SCHEDULE AN AUCTION CONTACT 416.962.9600**

# HUGE OFFERING OF RAILROAD CONSTRUCTION SUPPORT ASSETS AVAILABLE



**TRACKMOBILE** 9TM mobile railcar mover



**NORDCO** MODEL LS rail hydraulic self-propelled auto-lift system



**NORTH** self-propelled rail heater



**NORTHERN CHICAGO** blower self propelled blower



**MEADOWELD** RS-98NU-bear abrasive rail saw



Ballast hopper rail cart



**PETERBILT** (2005) 357 tri-axle tracker truck



**JOHN DEERE** 120C hydraulic excavator with BRANDT OTM tracker conversion



**MAJESTIK** 28' tri-axle equipment hauler trailer with BRANDT OTM tracker conversion

**THIS BROCHURE IS ONLY A PARTIAL LISTING. PLEASE VISIT OUR WEBSITE**

## BOOM TRUCKS

**MACK** (2006) CV713 tandem axle boom truck with day cab, DIESEL engine, EATON FULLER 18-speed transmission, SERCO 8000 hydraulic straight boom crane with grapple and magnet, magnet generator, HI-RAIL kit, 20,000 LBS front, 23,000 LBS rears, 428,185 KM (RECORDED ON METER AT TIME OF LISTING), VIN 1M2AG10C6M030420 (705) (LOCATED AT 1891 SEYMOUR ST, NORTH BAY, ON)

**MACK** (2006) CV713 tandem axle boom truck with day cab, DIESEL engine, EATON FULLER 18-speed transmission, SERCO 8000 hydraulic straight boom crane with grapple and magnet, magnet generator, HI-RAIL kit, 20,000 LBS front, 23,000 LBS rears, 473,500 KM (RECORDED ON METER AT TIME OF LISTING), VIN 1M2AG10C6M041763 (706) (LOCATED AT 1891 SEYMOUR ST, NORTH BAY, ON)

**FREIGHTLINER** (2000) FL80 tandem axle boom truck, HI-RAIL kit, N/A KM (RECORDED ON METER AT TIME OF LISTING), VIN 1FVXJ3BB7YHF87320 (930) (LOCATED IN BC)

**FORD** LNT8000 tandem axle boom truck with crew cab, CUMMINS FD-1460 diesel engine, NATIONAL SERIES 300 B straight boom crane, HI-RAIL kit, N/A KM (RECORDED ON METER AT TIME OF LISTING), VIN 1FDYW82E3SVA72742 (LOCATED AT HWY 17 YARD)

## SEMI TRACTOR TRUCKS

**WESTERN STAR** (2016) W4900 SBA tri axle heavy hauler semi tractor truck with sleeper cab, DETROIT DIESEL DD16 engine, EATON FULLER 18-speed transmission, wet kit, 16,000 LBS front, 18,000 LBS rears, 313,046 MILES (RECORDED ON METER AT TIME OF LISTING), VIN 5KJRALD12GPHN1133 (710) (LOCATED AT 1891 SEYMOUR ST, NORTH BAY, ON)

**PETERBUILT** (2011) 367 TT/CV tandem axle semi tractor truck with sleeper cab, CUMMINS ISX diesel engine, EATON FULLER 18-speed transmission, wet kit, 20,000 LBS FRONT, 20,000 LBS REARS, 1,530,500 KM (RECORDED ON METER AT TIME OF LISTING), VIN 1NPDT40X3BD110521 (711) (LOCATED AT 1891 SEYMOUR ST, NORTH BAY, ON)

**PETERBUILT** (2007) 378 TT/CT tandem axle semi tractor truck with sleeper cab, CATERPILLAR 3306 diesel engine, EATON FULLER 18-speed transmission, wet kit, 13,000 LBS front, 23,000 LBS rears, 1,175,000 KM (RECORDED ON METER AT TIME OF LISTING), VIN 1XPFD8ZX87N685397 (712) (LOCATED AT 1891 SEYMOUR ST, NORTH BAY, ON)

## SEMI-TRAILERS

**LANDOLL** (2019) 455B-53 tri axle tilt and load trailer with rail kit, VIN 1LH455WJ7K1B26256 (817) (LOCATED AT 1891 SEYMOUR ST, NORTH BAY, ON)

**LANDOLL** (2009) 410B tri axle tilt and load trailer with rail kit, VIN 1LH410VJ391817421 (804) (LOCATED AT 1891 SEYMOUR ST, NORTH BAY, ON)

**CHALLENGER** (2002) RJ-50 tri axle float trailer with rail kit, vin 1W8A11E392S000314 (822) (LOCATED AT HWY 17 YARD)

**LOAD KING** tri axle heavy hauler float trailer with rail kit, VIN N/A (801) (MORE INFO COMING SOON!) (LOCATED AT 1891 SEYMOUR ST, NORTH BAY, ON)

**MAGNUM** (2007) booster axle, VIN 2P9BD16697A015478 (814) (LOCATED AT 1891 SEYMOUR ST, NORTH BAY, ON)

## DUMP TRUCKS

**STERLING** LT950 tandem axle rotary dump truck with CUMMINS DIESEL ENGINE, ROAD RANGER 8-speed transmission, 20,000 LBS front, 23,000 LBS rears, 277,000 MILES (RECORDED ON METER AT TIME OF LISTING), VIN 1FDZS96P2WVA24110 (326) (LOCATED AT 1891 SEYMOUR ST, NORTH BAY, ON)

**FORD** (2002) F-450 XL diesel dump truck with regular cab, 7.3-liter V8 diesel engine, auto transmission, RWD, dually, hydraulic dump box, 270,027 KM (RECORDED ON METER AT TIME OF LISTING), VIN 1FDXF46F92EB99793 (325) (LOCATED AT 1891 SEYMOUR ST, NORTH BAY, ON)

## FIELD SERVICE TRUCKS

**DODGE** (2015) RAM 5500 HEAVY DUTY field service truck with CUMMINS diesel engine, 4X4, dually, BRUTUS (8) compartment service box, MAXLIFT COBRA 5500 3 ton capacity hydraulic straight boom crane, VANAIR AIR-N-ARC combination generator-air compressor with 7 kw/40 cfm capacity, 102,000 KM (RECORDED ON METER AT TIME OF LISTING), VIN 3C7WRNBL5FG588988 (501) (LOCATED AT 1891 SEYMOUR ST, NORTH BAY, ON)

**DODGE** (2015) RAM 5500 HEAVY DUTY field service truck with CUMMINS diesel engine, 4X4, dually, BRUTUS (8) compartment service box, MAXLIFT COBRA 5500 3 ton capacity hydraulic straight boom crane, VANAIR AIR-N-ARC combination generator-air compressor with 7 kw/40 cfm capacity, 151,705 KM (RECORDED ON METER AT TIME OF LISTING), VIN 33C7WRNBL3FG505882 (502) (LOCATED IN GRIMSBY, ON)

## PASSENGER VANS & SUV

**FORD** (2015) TRANSIT 15-passenger van with 3.7 L V6 gas engine, automatic transmission, RWD, 115,500 KM (RECORDED ON METER AT TIME OF LISTING), VIN 1FBAX2CM5FKA23706 (130) (LOCATED AT 1891 SEYMOUR ST, NORTH BAY, ON)

**FORD** (2015) TRANSIT 15-passenger van with 3.7 L V6 gas engine, automatic transmission, RWD, 153,500 KM (RECORDED ON METER AT TIME OF LISTING), VIN 1FBAX2CM3FKA25311 (129) (LOCATED AT 1891 SEYMOUR ST, NORTH BAY, ON)

**FORD** (2006) E-350 passenger van with 5.4 L V8 gas engine, automatic transmission, RWD, 402,043 KM (RECORDED ON METER AT TIME OF LISTING), VIN 1FBSS31L06DA80757 (126) (LOCATED AT HWY 17 YARD)

**FORD** (2016) EDGE SEL 4-door SUV with 2.0 L gas engine, auto transmission, AWD, N/A KM (RECORDED ON METER AT TIME OF LISTING), VIN 2FMPK4J95GBC47595 (174) (LOCATED IN AB) (MORE INFO COMING SOON!)

## UTILITY TRAILERS

**UNITED TRAILERS** (2018) ULH-714TA35-8.5-S tandem axle 14' enclosed utility trailer, VIN: 56JT1E423JA158486 (818) (LOCATED IN GRIMSBY, ON)

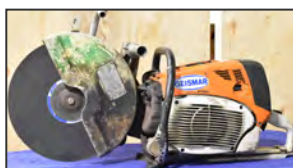
**STEALTH** (2016) 7,000 LB capacity tandem axle 14' enclosed utility trailer, VIN 52LBE1426GE046919 (823) (LOCATED AT 1891 SEYMOUR ST, NORTH BAY, ON)

**FOREST RIVER** (2015) BLAZER 7,000 LB capacity tandem axle 20' enclosed utility trailer, VIN 5NHUBLV23FB453126 (816) (LOCATED AT 1891 SEYMOUR ST, NORTH BAY, ON)

**HITCHMAN** (2012) tri axle flat deck trailer with wood deck, VIN 2G9E35KBXCH019429 (820) (LOCATED AT 1891 SEYMOUR ST, NORTH BAY, ON)

**FOREST RIVER** (2010) tandem axle 16' enclosed utility trailer, VIN 5HNULE625AN071193 (821) (LOCATED AT 1891 SEYMOUR ST, NORTH BAY, ON)

**JDJ** tandem axle flat deck trailer with wood deck and ramps, VIN 2J9UTE625M1022234 (813) (LOCATED AT 1891 SEYMOUR ST, NORTH BAY, ON)



**PARTIAL LISTING ONLY. VISIT [WWW.CORPASSETS.COM](http://WWW.CORPASSETS.COM) FOR MORE!**



**TO SCHEDULE AN AUCTION CONTACT 416.962.9600**

Pending Court Approval

**ALLIED TRACK SERVICES INC.**

**November 16 & 17**

**North Bay, Ontario, Canada**



**ALSO:** COMPLETE SPARE PARTS AND MRO INVENTORY including: HARSCO, NORCO, KERSHAW, CATERPILLAR, LIEBHERR, HITACHI & JOHN DEERE parts, spares, consumables & accessories; HUGE QTY of hardware inventory consisting of pigeonhole cabinets with tons of fastening hardware, pneumatic & hydraulic hose, fittings; new inventory of railroad ties, spikes and plates; hydraulic pallet jacks; (3) WESTEEL fuel tanks; LARGE QTY of rail grinding wheels; BOBCAT 6' hydraulic blade and (2) BOBCAT skid steer brush attachments; LARGE QTY of THERMITE rail welding supplies; (4+) 40' storage containers with hand tools and supplies; (2) TT MFG fuel tanks with lifting cradles; OTM carts; tie carts; water carts; (3) 3-STEP rolling shop platforms; RICOH IMC300 multi-function colour printer/copier, RICOH MP3554 multi-function printer/copier; HP DESIGNJET T730 colour printer/plotter; hydraulic profile grinders, tools & hydraulic jack hammers, power & hand tools, workbenches, PPE & MUCH MORE!

**THIS IS A PARTIAL LISTING ONLY! FOR FURTHER INFORMATION, PLEASE VISIT [WWW.CORPASSETS.COM](http://WWW.CORPASSETS.COM)**

## AUCTION DETAILS

**LIVE WEBCAST ONLY**

### INSPECTION

Monday, November 14 & Tuesday, November 15 from 9 AM To 4 PM. For an alternate inspection day, please email [info@corpassets.com](mailto:info@corpassets.com) to arrange a date & time.

### REMOVAL

All assets must be removed no later than Thursday, December 15 BY APPOINTMENT ONLY. Please email [info@corpassets.com](mailto:info@corpassets.com) to arrange.

### TERMS

Corporate Assets Inc. assumes no liability for errors or omissions in this brochure. Corporate Assets Inc. expressly reserves the right to determine the manner of conducting the auction as it may deem appropriate. All subject to prior sale.

### PAYMENT

A Buyer's Premium will apply at this sale. International & online bidders may need a refundable deposit to bid. **SALE WILL BE CONDUCTED IN USD.**

Please refer to our website at **[www.corpassets.com](http://www.corpassets.com)** or call 416.962.9600 for further information. Pour les services en français, composez le 1.855.583.5551

**We Accept**



Please visit our website as specific terms and conditions may apply.

**BID ONLINE AT: BidSpotter**

### AFFILIATIONS



©2022 CORPORATE ASSETS INC. ALL RIGHTS RESERVED.

## SURPLUS EQUIPMENT?

TURN IDLE ASSETS INTO CASH!

## WE BUY & SELL YOUR SURPLUS MACHINERY

ONE MACHINE OR ENTIRE PLANTS, WE HAVE OVER 60 YEARS EXPERIENCE TO SELL YOUR EQUIPMENT AT FAIR MARKET VALUE.

**CONTACT US TODAY TO LEARN MORE! 416.962.9600**



**SUBSCRIBE TO OUR NEWSLETTER AND GET THE LATEST AUCTION UPDATES**



**[corpassets.com/newsletter-signup](http://corpassets.com/newsletter-signup)**