



DREWEATTS

EST. 1759

INTERIORS

TO INCLUDE THE SELECTED CONTENTS OF
LITTLE WOLFORD MANOR, WARWICKSHIRE

DONNINGTON PRIORY
TUESDAY 25 & WEDNESDAY 26 JANUARY 2022

Coming Up at Dreweatts

Auctions

25 & 26 January | Live Online

Interiors | To include the selected contents of Little Wolford Manor, Warwickshire

15 & 16 February | Live Online

Interiors

23 February | Live Online

Space Exploration Photography and Ephemera

24 February | Live Online

Fine and Rare Wine and Spirits

25 February | Timed Online

Fine Art

1 March | Live Online

The Transport Sale

2 March | Live Online

Fine Clocks, Barometers and Scientific Instruments

9 March | Live Online

Fine Jewellery, Silver, Watches and Objects of Vertu

10 March | Timed Online

Hambridge Sale

15 March | Live Online

Modern and Contemporary Art

30 March | Live Online

Fine Furniture, Sculpture, Carpets, Ceramics and Works of Art

Valuation Days

Every Tuesday | London

Jewellery, Silver, Watches & Luxury Accessories

7 January & 4 February | Newbury

Fine Art, Antiques, Jewellery, Silver, Watches, Asian Works of Art & Wine

We hold regular auctions of fine art, antiques, jewellery and other collectibles. Our specialists carry out valuations nationwide so if you are unable to attend one of our valuation days, please request a valuation via our website or call us to discuss a home visit.



DREWEATTS

EST. 1759

NOW INVITING ENTRIES FOR OUR 2022 AUCTIONS

NEWBURY
Dreweatts
Donnington Priory
Newbury
Berkshire RG14 2JE

LONDON
Dreweatts / Bloomsbury Auctions
16-17 Pall Mall
St James's
London SW1Y 5LU

HAMBRIDGE LANE
Dreweatts
1 Hambridge Lane
Newbury
Berkshire RG14 5TU

ENQUIRIES
For more information,
please contact
+44 (0) 1635 553 553
info@dreweatts.com

dreweatts.com



DREWEATTS

EST. 1759

INTERIORS

TO INCLUDE THE SELECTED CONTENTS OF
LITTLE WOLFORD MANOR, WARWICKSHIRE

DONNINGTON PRIORY

TUESDAY 25 & WEDNESDAY 26 JANUARY 2022 | 10.30AM

AUCTION FORMAT: LIVE ONLINE

This is a live online auction with an auctioneer. Bidding is available in person at our salerooms, online, by telephone or you can leave commission (absentee) bids. Please contact Dreweatts to register all commission bids or telephone bids by 12 noon (GMT) on Monday 24 January.

FREE ONLINE BIDDING IS AVAILABLE AT DREWEATTS.COM:

The Dreweatts' bidding platform allows you to watch, listen and bid with no additional online bidding fees applicable.

REGISTRATION:

We advise clients to register at least 48 hours in advance of the auction as you may be asked to provide documents to verify your identity. Registration for new clients will close at 12 noon (GMT) on Monday 24 January.

BUYER'S PREMIUM:

Buyer's premium is charged per lot at 25% of the hammer price (30% including VAT) up to and including £500,000, 20% (24% including VAT) of the hammer price from £500,001 up to and including £1,000,000, and 12% of the hammer price (14.4% including VAT) in excess of £1,000,001.

PAYMENT:

Please note, we cannot accept payment by telephone for lots bought by first time bidders. For details on other payment methods, please see our website.

CUSTOMER DUE DILIGENCE CHECKS:

In order to comply with current Money Laundering Regulations, it is our policy to conduct appropriate Know Your Client checks on any buyers who transact at the threshold of £8,000 or more. Buyers will be required to provide the following information:

For individuals, official photo identification (a government issued ID document such as passport or driver's licence) and a proof of address (utility bill, bank statement or driver's licence).

For legal entities, a certificate of incorporation (or equivalent), a register of shareholders/directors and ID documentation from the directors and beneficial owners of the business.

We reserve the right to withhold the purchased lots until such checks have been completed.

AUCTION NO. 14396

DAY 1 | LOTS 1-302

DAY 2 | LOTS 311-558

SPECIALISTS:

Ashley Matthews MRICS (Furniture, Clocks, & Decorative Arts)

Ben Brown MRICS (Furniture & Carpets)

Francesca Whitham (Pictures)

Geoffrey Stafford Charles MRICS

(Ceramics, Glass & Country Sporting)

Mark Newstead (Asian Ceramics & Works of Art)

Will Turkington (Furniture)

VIEWING:

We ask that visitors wear a face covering when visiting our salerooms, use the hand sanitiser provided on entering and observe social distancing rules. We may need to restrict the numbers of visitors viewing at one time, so if you would prefer to book an appointment in advance, please contact us. Please see our website for the latest information.

Sunday 23 January: 10am – 2pm

Monday 24 January: 10am – 5pm

Day of sales: from 8.30am

CONDITIONS OF SALE:

This auction is subject to our Auction Terms and Conditions (see back of catalogue or our website for further details).

AUCTION:

Dreweatts

Donnington Priory

Newbury

Berkshire RG14 2JE

ENQUIRIES:

+44 (0) 1635 553 553

interiors@dreweatts.com

dreweatts.com

Front cover: Little Wolford Manor,
Warwickshire

Back cover: Lot 553



Day 1 | lots 1-302

Tuesday 25 January 2022



1

A Victorian mahogany wall timepiece, second half 19th century, with 30 hour single train movement and a painted Roman numeral dial, 37cm diameter

£200-300



1

2

A Victorian stained oak hall stand, late 19th century, with revolving upper section, 206cm high

£400-600



2

3

A Hamadan runner, approximately 406 x 100cm

Provenance:
Little Wolford Manor, Warwickshire

£250-350



3



4 (set of six)

4
A set of six George III mahogany chairs, late 18th century, with drop in seats

£300-500



5

5
A George III mahogany dining table, circa 1800, with central drop leaf section and a pair of D-ends, 73cm high, 280cm long overall, 129cm wide

£300-500



6

6
An Isfahan rug, approximately 199 x 137cm

£300-500

7

A Coalport (Anstice, Horton, & Rose) porcelain part tea service of fluted form, circa 1805, decorated in gilt, comprising: a tea pot, cover, and stand, milk jug, saucer-dish, slop bowl, sugar box, fourteen teacups, seven coffee cups, and twelve saucers

Provenance:
Little Wolford Manor, Warwickshire

£300-500



7



8

8Y

A George III mahogany sideboard, circa 1780, incorporating satinwood banding and fine chevron stringing, 90cm high, 163cm wide, 74cm deep

£600-800

9

A George III mahogany and brass bound wine cooler or jardinière, circa 1780, of coopered construction, the stand base with square section legs, 53cm high, 64cm wide

£600-800



9



10 (part lot)

10

A set of six engravings after Piranesi, to include Veduta dell'Isola Tiberina and Veduta del Tempio Ottangolare di Minerva Medica, each overall 57 x 77cm (22 1/2 x 30 1/4in.) two of which 77 x 57cm (30 1/4 x 22 1/2) (6)

£600-800

11

A George II walnut and feather banded bureau, circa 1730, the fall enclosing a fitted interior around a well, 98cm high, 91cm wide, 50cm deep

£300-500



11

12

A George II mahogany corner chair, mid 18th century, 81cm high, 72cm wide, 68cm deep

£300-500



12



13

13

A George II walnut and parcel gilt triptych wall mirror, mid 18th century, 41cm high, 139cm wide

Provenance:
Little Wolford Manor, Warwickshire

£300-500

14

A George II walnut and pine chest on chest, circa 1730, 176cm high, 102cm wide, 56cm deep

£500-700



14

15

A George II walnut side chair, circa 1740, with fiddle shaped splat above a later tapestry upholstered seat and cabriole legs, 100cm high

Provenance:
Little Wolford Manor, Warwickshire

£600-800



15



16

16
George William Mote
(British 1832-1909)
Sheep and dog in a heather landscape
Oil on canvas
Signed and dated 1877 (lower right)
59 x 90cm (23 x 35¼ in.)

£300-500



17

17
A Victorian mahogany and beadwork pole-screen, circa 1850, the height adjustable banner with beadwork Arcadian view, on tripod base, 135cm high

£300-500

18
A pair of upholstered armchairs in the manner of George Smith, of recent manufacture, with brass caps and castors, 89cm high, 89cm wide, 99cm deep

£600-800



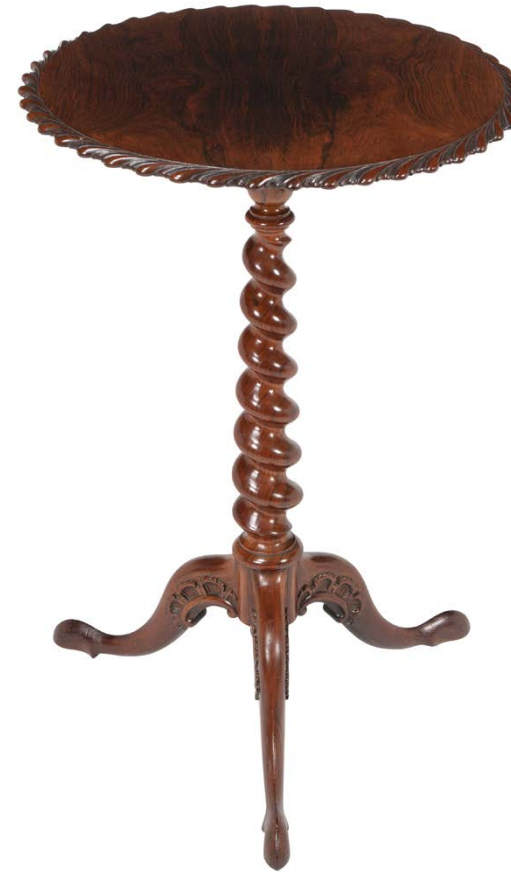
18

19
A Bohemian yellow cased and clear cut glass vase, probably 19th century and later fitted as a lamp, the vase element 35cm high, with giltwood base, electrical fitments, and shade, 68cm high overall

£300-400



19



20

20Y
An early Victorian rosewood tripod table, circa 1850, in the manner of Gillows of Lancaster, 77cm high, 51cm diameter

£300-500

21Y
An early Victorian rosewood Canterbury, circa 1840, 48cm high, 50cm wide, 37cm deep

Similar models of Canterbury are illustrated in the Pictorial Dictionary of British 19th Century Furniture Design, page 422 with illustrations taken from W. Smee & Sons, dated 1850

£300-500



21



22

22

An oak carved wall hanging of King Charles I, chip carved in profile, the rear with paper dated 1884, 28cm high, 24cm wide

£200-300

23

A Charles II oak bible box, circa 1670, 23cm high, 64cm wide, 46cm deep

£200-300



23

24

A carved oak three panelled coffer, late 17th century and later decorated, 76cm high, 144cm wide, 62cm deep

Provenance:
Little Wolford Manor, Warwickshire

£300-500



24



25

25

A carved wood panel, incorporating late 17th century and later elements, possibly used as a headboard, with four carved armorial panels interspersed by various carved pilasters, 47cm high, 172cm wide

£200-300



26

26

A Charles II oak chest of drawers, circa 1660, in two parts, the upper section with geometric mitred drawer fronts, 86cm high, 93cm wide, 51cm deep

Provenance:
Little Wolford Manor, Warwickshire

£300-500

27

An Isfahan rug, approximately 311 x 216cm

£500-800





28



29

29
A Chinese *Famille Rose* oval serving dish, Qianlong, painted to the centre with a bird perched on a rock, 38cm diameter and a Chinese Export circular dish, Qianlong, painted with two birds either side of a classical vase filled with flowers, 28cm high (2)

Provenance:
Little Wolford Manor, Warwickshire

£100-150



30

30
A black painted and parcel gilt low centre table in Chinoiserie taste, 20th century, possibly retailed by Mallett, 41cm high, 137cm long, 69cm wide overall

£300-500

31
A set of Four Chinese hardstone and lacquer panels, each with precious objects and vases of flowers on stands,

£400-600



31



32

32
A group of Chinese Export tea bowls and saucers, mostly Qianlong, comprising: a pair of tea bowls and saucers in iron-red and orange with script letters; three *Famille Rose* tea bowls and saucers and five various saucers and four various tea bowls

£100-150

33
A Chinese black lacquer and parcel gilt card table, late 19th century/early 20th century, the twin hinged top enclosing a chess board and counter wells, 76cm high, 98cm wide, 49cm deep

£500-700



33



34

34

A pair of black-and gilt lacquered occasional tables, early 19th century and later, previously pole screens, 66cm high, 50cm wide, 47cm deep

£200-300



35

35

A George IV Irish mahogany sofa table, circa 1825, by Gillingtons, Dublin, the twin drop-leaf top above a pair of frieze drawers and opposing false drawers to each long side, and on spiral turned legs terminating in foliate caps and castors, stamped and numbered GILLINGTONS 3068, 78cm high, 151cm wide, 76cm deep

Provenance:

Provenance: Purchased in these rooms, Ballyedmond Collection, lot 160, 30th July 2020

£700-1,000

36

A Regency mahogany Canterbury, circa 1820, the swept top above X-shaped dividers, 57cm high, 51cm wide, 46cm deep

£200-300



36



37

37

A set of three fire tools, 19th century, each with faceted handle above a twist and straight section shaft, the pierced shovel 73cm high

£400-600

38

A Regency gilt brass fender, circa 1820, with two tiers of pierced lancet window ornament, 27cm high, 140cm wide, 32cm deep

£400-600



38



39

39

A circular embossed brass log bin, 19th century, with flanking lion mask ring handles, embossed fruit, gadrooned body and lion paw feet, 28.5cm high, together with two oval jardinières, 44.5cm and 34.5 wide respectively

£200-300



40

40
A Victorian Diamond Jubilee crimson velvet fragment, dated 1897, framed and glazed, 46 x 48cm overall

£100-150



41

41Y
A mahogany collectors cabinet, containing a collection of British Butterflies and Moths (*Lepidoptera*), early 20th century, of Wellington form, the arrangement of eight slides containing a collection of British Lepidoptera, with a label for James Gardner, 52 High Holborn, W.C., 57cm high, 46cm wide, 30cm deep

£250-350



42



42
A pair of mahogany and partridge wood pier cabinets in 19th century style, of recent manufacture, each 116cm high, 62cm wide, 35cm deep

£600-800

43
A pair of scumble framed, ebonised and parcel gilt slipped oval wall mirrors, 19th century, to simulate burr-wood, each 101cm high, 74cm wide

£600-800



43



44

44
A Victorian mahogany bookcase cabinet, circa 1860, 222cm high, 121cm wide, 45cm deep

£300-400

45
A late Victorian walnut and upholstered armchair, circa 1900, in the manner of Howard & Sons

£300-500



45



46



46

A French brass mounted lamp in Empire style, 19th century, 87cm high overall, together with a gilt metal and green glass mounted table lamp, late 19th century, 57cm high excluding finitments

£200-300



47



48

47Y

A Regency solid rosewood and upholstered stool, circa 1820, with removable button upholstered cushion, 42cm high overall, 71cm wide, 46cm deep

£500-700

48

A Regency mahogany dressing or writing table, circa 1820, attributed to Gillows, 90cm high, 122cm wide, 54cm deep

£1,000-1,500

49

A Regency mahogany cheval mirror, circa 1820, 160cm high, 69cm wide, 53cm deep

£400-600



50



49

50

A Regency mahogany tripod table, circa 1815, with octagonal top, 72cm high, 61cm wide, 51cm deep

£200-300

51

A Regency mahogany and satinwood banded chest of drawers, circa 1815, in the manner of Gillows, 85cm high, 97cm wide, 49cm deep

£800-1,200



51



52

A twelve light brass and gilt chandelier in French taste, 20th century, 105cm high, 110cm wide

£500-800

53

A beech and upholstered suite of seat furniture in Louis XV style, 20th century, comprising a sofa and a pair of armchairs, each in gros and petit point wool and silkwork, the sofa 91cm high, 204cm wide, 77cm deep, the armchairs 86cm high, 77cm wide, 76cm deep (3)

£700-1,000

52



53



54

A giltwood and composition wall mirror in late 18th century style, second half 19th century, with painted panel of a lady in 18th century dress surmount, 174cm high, 94cm wide

£400-600



54



55

55 Y

A French Kingwood commode, late 18th century, with marble top above the arrangement of two drawers, 84cm high, 83cm wide, 46cm deep

£700-1,000

56

A pair of carved walnut armchairs in Louis XV style, 19th century, each with tapestry type upholstery

£400-600



56



57

57
A pair of English delft blue and white flower bricks, probably London, circa 1760, painted with flowers issuing from vases and insects, 9cm x 15cm x 6.5cm

Provenance:
Sotheby's, Ex-lot 189, 6th June 2002.

£300-500



58

58
A George III oak delft plate rack, circa 1790, with dentil cornice, fretwork edges and three shelves, 102cm high, 139cm wide, 14cm deep

£400-600

59
A harlequin set of ten wheel back side chairs, 19th century

£400-600



59 (set of ten)



60

60
A selection of mostly English blue and white polychrome delft, various dates mid 18th century, comprising: a Bristol delft polychrome charger painted with a bird in stylised garden, 34cm diameter (paper label for Christie's ex-lot 44, 14th Sept. 2006; three various blue and white plates, circa 22cm diameter (paper labels, three of four from Christie's ex-lot 320, 20th Jan. 2009) and a pair of Liverpool delft polychrome tiles painted with panels of birds, circa 1770, 12.5cm x 12.5cm

Cf. Michael Archer, *Delftware*, (1997), colour pl. 280. for similar tiles.

£300-500



61

61
A George III oak dresser base, mid 18th century, 105cm high, 158cm wide, 45cm deep

£400-600

62
A pair of ash and elm wheel back chairs, second half 19th century, each stamped Hazell Oxford to the rear of the seat

Stephen Hazell and later his son Stephen Charles Hazell were renowned chairmakers in the second half of the 19th century

£200-300



62



63
A George II walnut and parcel gilt wall mirror, circa 1750, 94cm high, 49.5cm wide

£300-500

64
A satinwood and crossbanded D-shaped console table, in George III style, late 19th century, 83cm high, 120cm wide, 59cm deep

£300-400



65
A set of four George III mahogany side chairs, late 18th century

£600-800



65 (set of four)

66
A George III mahogany tripod table, circa 1800, the crossbanded canted rectangular top above a frieze drawer, on a turned column and downswept tapering legs, 70cm high, 64cm wide, 48.5cm deep

£300-500



66

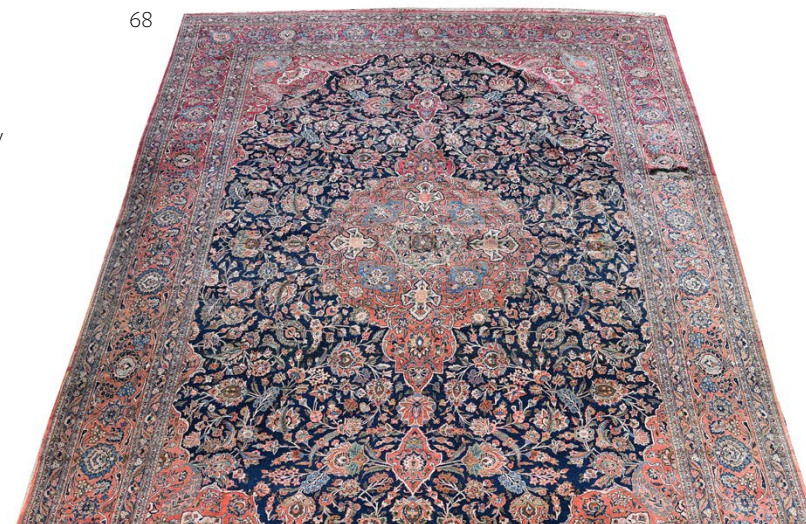


67
A George III mahogany and satinwood banded sideboard, circa 1790, with plum pudding top above an arrangement of drawers, approximately 93cm high, 124cm wide, 61cm deep

£300-500

68
A Tabriz carpet, approximately 464 x 322cm

£400-600





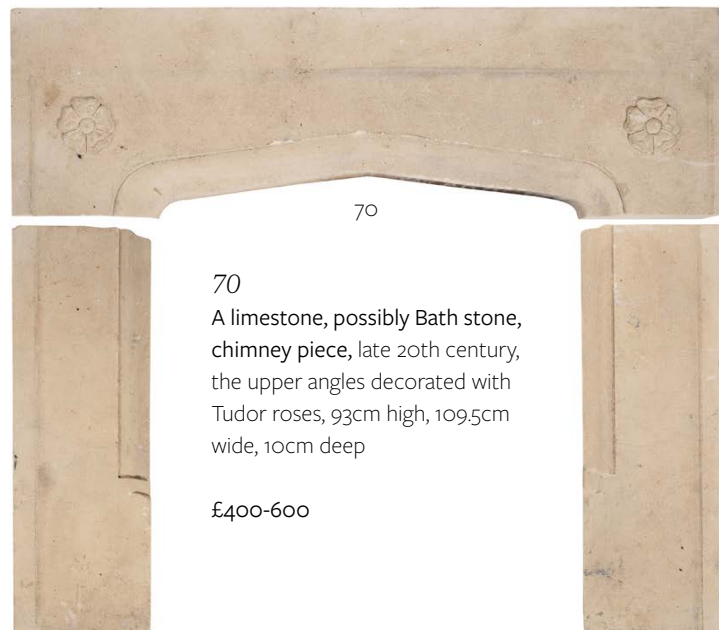
69

A Victorian giltwood and composition wall mirror, last quarter 19th century, in the manner of designs by Wyman, 159cm high, 130cm wide

A very similar model of mirror is illustrated in the Pictorial Dictionary of British 19th Century Furniture Design, page 381 267 with an illustration taken from Wyman, dated 1877

£1,000-1,500

69



70

70

A limestone, possibly Bath stone, chimney piece, late 20th century, the upper angles decorated with Tudor roses, 93cm high, 109.5cm wide, 10cm deep

£400-600

71

A set of three brass and steel fire irons, third quarter 19th century, with wreath handles, the shovel 76cm long

£500-700

72

A Victorian cast iron wood burning stove or Nautilus Grate, circa 1885, designed by James Bazeley Petter, of typical scroll form, with open grate and twin outlet pipes, the base indistinctly stamped, 51cm high, 65cm wide, 45cm deep

Please see our website for full note regarding the Petters of Barnstaple and Yeovil

£400-600



72



71

73

A brass club fender, 20th century, with canted angles and corduroy upholstered rests, 59cm high, 167cm wide, 51cm deep, internal 142cm wide, 42cm deep

£200-400



73



74
A cold painted model of a mastiff, by Franz Xavier Bergmann (1861-1936), modelled standing four-square, impressed with monogram, GESCHUTZT, and numbered 3693 to underside, 11cm high, 15cm long

£120-180



75
A group of bronze and cold painted bronze models of dogs, comprising: a mastiff, modelled laying down, 11cm long, a model of a standing greyhound, indistinctly signed to the underside, 9.5cm high, a French bulldog, modelled standing four-square, 6cm high, an English bulldog, 3cm high, a pug, 3cm high, a Manchester terrier, 4cm high, and a Schnauzer, 3.5cm high (7)

£250-300



76
A collection of various small cold painted bronze and lead models, to include a hunt comprising eleven models of riders and hounds, and seventeen miniature models of farmyard and other animals

£150-250

76



77
A group of bronze and cold painted bronze figures of animals, comprising: a model of a deer stag, stamped GESCHUTZT to the underside, 10cm high, a model of a standing poodle, 7.5cm high, a terrier, 5.5cm long, a Parakeet stamped GESCHUTZT to the underside, 6.5cm high, and a frog, 2.5cm high, together with a cast lead model of a dog (6)

£250-300

77

78
A pair of Austrian cold painted bronze models of African warriors, early 20th century, probably by Franz Bergman, each portrayed fighting animatedly, one with shield posed above his head, the other with shield held in front, each posed on a naturalistic base, one stamped GESCHUTZT to underside, the other to side of base, approximately 18cm high respectively

Cf. Bonham's San Francisco, lot 3670, 24th April 2005 for a single marked Bergman example, \$1057 (inc premium)

£300-500



78



79 (part lot)

79

Three pairs of curtains and a pelmet in Colefax & Fowler fabric forming a suite for a bay window, the curtains each 140cm wide at the top, 340cm long, the pelmet approximately 680cm wide (gathered) together with a Colefax and Fowler headboard en-suite 155cm high, 150cm wide, and a mattress cover and frill drapes, to fit a mattress approximately 150cm wide, x 200cm long

£400-600



80



80

A pair of painted and parcel gilt composition architectural wall brackets, 19th century, 45cm high, 50cm wide, 39cm deep

£400-600

81

A Continental biscuit porcelain group of Ariadne and the Panther after *Johann Heinrich von Dannecker*, late 19th century, un-marked, 26.5cm x 22cm x 10cm

This model is similar to, but differs from, the model by John Bell made for Minton's that copied the life-size marble by Dannecker formally in the Von Bethman Museum, Stuttgart. Ariadne, having been abandoned by Theseus on Naxos is seen here as the bride of Bacchus, the panther is from his train

£250-350



81



82

82

A group of pottery and porcelain swans, various dates late 19th and 20th centuries, comprising: two similar jardinières, 30cm and 34cm high; two similar cheese dishes and covers, the dishes circa 30cm in length; a small porcelain jardinière retailed by T. Goode and a Continental porcelain inkwell and cover

Provenance:

Property of the late Countess of Ranfurly and thence by decent.

£300-400

83

A large Continental white porcelain animal group, portraying a stag at bay, late 19th century, approximately 55cm wide

£200-300



83



84

84
An Edwardian satinwood and polychrome painted cabinet,
circa 1905, 164cm high, 71cm wide, 40cm deep

£200-300

85
A Sheraton Revival satinwood and polychrome painted
revolving bookcase, late 19th century, decorated with floral
swags, urns and musical medallions, 139cm high, 46cm
diameter overall

£400-600



85



86

86
A runner, approximately 394 x 100cm

£300-500

87
A pair of French bronze patinated cast iron urns,
19th century, of Campana form, later fitted for
electricity, 45cm high

£200-300



87



88



88Y
A pair of Victorian rosewood and
inlaid pedestal lamp tables, each with
canted rectangular top, inset with
floral inlaid panels, on four slender
tapering supports, 79cm high, 41cm
wide, 25cm deep

£200-300

89
A Sheraton Revival satinwood and
polychrome painted side cabinet,
late 19th century, 123cm high, 122cm
wide, 31cm deep

£600-800



89



90
A red lacquered and japanned table mirror, late 18th/early 19th century, with later easel back support, 48cm high, 43cm wide

Provenance:
Little Wolford Manor, Warwickshire

£300-400



91
A George III oak side table or lowboy, circa 1760, 70cm high, 81cm wide, 52cm deep

£300-500



92
A pair of George II oak side chairs, second quarter 18th century, each 97cm high

£300-500

93
A black lacquered and painted hanging corner cupboard, circa 1760, the panel doors with typical Chinoiserie decoration enclosing shelves, 122cm high

£300-500



93



94
A George II oak and mahogany banded chest on stand, circa 1735, 155cm high, 92cm wide, 51cm deep

Provenance:
Little Wolford Manor, Warwickshire

£500-700

94

95
An Heriz carpet, approximately 250 x 153cm

£300-500



95



96

96
A group of three gilt brass columnar oil lamp bases, late 19th century, each modelled as a Corinthian column, 53cm high and smaller

£200-300



97

97
A mahogany side cabinet, mid 19th century, with carved corbels to the angles, 87cm high, 95cm wide, 37cm deep

£400-600



98

98
A woven carpet, in Persian Qum style, approximately 357 x 274cm

£400-600



99 (set of nine)

99
A set of nine late Victorian oak dining chairs, late 19th century

£600-800



100

100
A Victorian oak extending dining table, circa 1870, with two additional leaf insertion, on reeded legs, 73cm high, 120cm wide, 151cm long (unextended) 244cm long (extended)

£600-800



101

101
A verdure tapestry, formed of 18th century and later elements and adaptations, featuring a partial façade, foliage, and attendant cherubs, approximately 317 x 246cm

£400-600



102

102
A William & Mary oak dresser base, circa 1690, 83cm high, 207cm wide, 58cm deep

£1,000-1,500

103

A Charles II walnut side chair, circa 1685, the top rail with central pierced crown, above a tapestry seat, 115cm high

Provenance:
Little Wolford Manor, Warwickshire

£250-350



104

104

A William III walnut side table, circa 1690, the top with gateleg action to the drop leaf above a frieze drawer to each short side, 71cm high, 58cm wide (open), 92cm deep

£400-600



103

105

Two similar carved walnut chairs, late 17th century, comprising an armchair, 121cm high, and a high back side chair, 130cm high

Provenance:
Little Wolford Manor, Warwickshire

£300-400



105



106

106Y

A group of four various dressing table mirrors, late 18th and 19th centuries, some with ivory handles, the largest 66cm high, 63cm wide, 25cm deep

Provenance:
Little Wolford Manor, Warwickshire

£300-400

107

A George III mahogany chest of drawers, circa 1780, of small proportions, 85.5cm high, 79cm wide, 45cm deep

£400-600



107

108

108

A Tabriz part silk rug, approximately 201 x 130cm

£300-500



109

George Arthur Fripp (British 1813-1896)

Pangbourne on the Thames

Watercolour

Signed (lower left)

24.5 x 35.5cm (9½ x 13¾ in.)

Provenance:
Grindley & Palmer, Liverpool

£300-500



109



110



110

A pair of mahogany night commodes in George III style, of recent manufacture, each with a tambour door above a drawer, 79cm high, 48cm wide, 44cm deep

£700-1,000

111

A pair of George III mahogany chairs, second half 18th century, each with a drop in seat

£200-300



111



112
An Anglo-Indian hardwood and bone inlaid cheese coaster, circa 1840, of typical cradle form, on four castors, 17cm high, 36cm wide, 24cm deep

£300-500

112

113
A William IV mahogany and marble topped centre table, circa 1835, attributed to T & G Seddon, 71cm high, 112cm wide, 70cm deep

A similar model of table, albeit without a marble top, is presented in Christopher Gilbert's Pictorial Dictionary of Marked London Furniture, p.418

£600-800



113



114

114Y
A William IV rosewood X-frame stool, circa 1835, with a damask upholstered seat, 42cm high, 46cm wide, 44cm deep

£200-300

115
A collection of approximately 36 specimen marble and hardstone models of eggs, including serpentine, onyx and fossilised examples, the largest 8.5cm long contained within a smoked glass bowl, after the manner of examples by Davidson, 39cm diameter

£180-220



115



116

116
An early Victorian mahogany three-tier buffet, circa 1840, 117cm high, each tier 92cm wide, 48cm deep

Similar models of 'shelves' are illustrated in the Pictorial Dictionary of British 19th Century Furniture Design, page 416, with illustrations taken from T. King (1835) and W. Smee (1850)

£600-800

117
A set of seven Victorian mahogany dining chairs, circa 1840, to include one armchair, each with a bar back and horizontal splat above a drop in seat and lobed legs

£200-300



117 (set of seven)



118

118

A pair of Chinese blue and white vases, probably 19th century and later adapted as table lamps, 71cm high overall including fitments

£300-500

119

A pair of Chinese hardwood three tier occasional tables or stands, early 20th century, each with a pierced frieze, 79cm high, 44cm wide, 28cm deep

£300-500



119



120

120

A Chinese exotic hardwood and bamboo parquetry side table, late 19th/early 20th century, 78cm high, 86cm wide, 39cm deep

£300-500



121



122

122

A pair of *fahuai* terracotta figures, Dynasty, modelled in the design of a horse standing foursquare and a stable man, 17cm high

£200-300

123

A nest of four Chinese hardwood tables, late 19th/early 20th century, the largest 70cm high, 49cm wide, 35cm deep

£300-500

121Y

A set of four lacquered and mother of pearl inset panels, early 20th century and later set in simulated tortoiseshell frames, each depicting birds, 111cm high, 51cm wide

£200-300



123



124

124
A group of three various Staffordshire pearlware Pratt type plaques, circa 1820, including a round medallion inscribed LADEY GO DIVER (sic), 12cm diameter, an oval example emblematic of autumn, 20.5cm high, and a rectangular example with saddled horse, 10 x 16.5cm

Provenance:
Little Wolford Manor, Warwickshire

£200-300



125

125
A pair of Staffordshire pearlware Pratt type classical plaques, circa 1820, moulded in relief and painted with coloured enamels, Gaia with cornucopia and another, 19.5 and 20cm wide respectively

Provenance:
Little Wolford Manor, Warwickshire

£250-250



126

126
A pair of Staffordshire pearlware Pratt type classical plaques, circa 1820, moulded in relief and painted with coloured enamels, Venus & Cupid and another, 19.5 and 20cm wide respectively

Provenance:
Little Wolford Manor, Warwickshire

£250-250

127
A Staffordshire pearlware Pratt type plaque, King Charles I and Oliver Cromwell, circa 1820, moulded in relief with assorted figures, painted in coloured glazes, 26.5 x 35.5cm

Provenance:
Little Wolford Manor, Warwickshire

£300-500



127



128

128
An oak low dresser, 18th century and later, 84cm high, 120cm wide, 46cm deep

£300-500

129
An elm cricket table, early 18th century, 68cm high, 49cm diameter

£300-500



129



130

130
Hertfordshire. Speed (John), *Hertfordshire Described, The Situations of Hartford and the most ancient Towne St. Albons with such memorable actions as have happened*, Thomas Basset & Richard Chiswell [1676], hand-coloured engraved map, inset town plans of Hartforde and Verolanium (St Albans), mounted, framed, and glazed, 53 x 63cm overall

£350-450



131



131
A pair of early George III mahogany side tables, circa 1760, each of semi-elliptical outline, 75cm high, 111cm wide, 56cm deep

£300-500



132

132
A George III mahogany armchair, circa 1780, with studded blue velvet seat, 91cm high

£300-500



133

133
A mahogany library bookcase in George III style, 20th century, the glazed doors above the cupboard base with central paterae to the doors 216cm high, 245cm wide, 46cm deep

£1,200-1,800

134

134
A Tabriz carpet, approximately 347 x 257cm

£600-800





135

135
Three items of Worcester polychrome porcelain, circa 1770, comprising: a bullet-shaped teapot and cover, 13cm high; and two outside decorated tea bowls and saucers, one painted in green and gilt with flower sprays; the other 'Queens' pattern, with fret square mark to the latter

Provenance:
Little Wolford Manor, Warwickshire

£250-350



136

136
A Plymouth porcelain (William Cookworthy) blue and white hexagonal section sauceboat, circa 1770, with bracket type handle, moulded in relief with C-scrolled bordered panels and painted sprays, blue painted To mark, 16cm long; and a Bristol (Richard Champion) polychrome coffee cup, circa 1775, painted X-mark, 6cm high

Provenance:
Little Wolford Manor, Warwickshire

£150-250



137

137
Three Worcester (Barr) spirally fluted trios, late 18th century, decorated with a gilt ribbon and star band reserved on a blue ground, with open crescent marks, together with a coffee cup and saucer en-suite, another Worcester blue ground and gilt spirally fluted coffee cup and saucer, decorated with gilt insects, and a Worcester Queen Charlotte pattern tea bowl, saucer, and sandwich plate

Provenance:
Little Wolford Manor, Warwickshire

£70-90



138

138
A pair of Worcester blue and white sauceboats painted with 'The Early Bird' pattern, circa 1753, unmarked, 19 and 20cm long respectively

Provenance:
Little Wolford Manor, Warwickshire

Cf. Branyan, French, and Sandon, *Worcester Blue and White porcelain 1751-1790*, (1990), page 145 l. C. 2

£300-500



139

139
A selection of Worcester mostly blue and white printed porcelain, various dates third quarter 18th century, including: two 'Three Flowers' pattern slop bowls, one with hatched crescent mark, 16cm diameter; a bell-shaped mug decorated with the 'Plantation' pattern, hatched crescent mark, 12cm high and various other items

Provenance:
Little Wolford Manor, Warwickshire

£100-200



140

140

A selection of Worcester blue and white printed 'Pinecone' pattern porcelain, circa 1780, all with hatched crescent marks, comprising: a junket dish, 24.5cm diameter; a pair of chestnut baskets, 16.5cm diameter; another basket of flared form, 21.5cm diameter and a guglet, 23cm high

Provenance:
Little Wolford Manor, Warwickshire

£300-500

141

Four Worcester blue and white 'Natural Sprays Group' pattern cabbage leaf-moulded mask jugs, circa 1770, all with hatched crescent marks, 14.5cm and 23cm high

Provenance:
Little Wolford Manor, Warwickshire

£100-200



141

142

A selection of mostly Worcester blue and white painted porcelain, circa 1770, including: a 'Fisherman and Billboard Island' pattern sauceboat, un-marked, 18cm in length; a 'Mansfield' pattern teapot and cover and a sugar bowl and cover; a miniature tea bowl and saucer and three other items, all with open crescent or script 'W' marks

Provenance:
Little Wolford Manor, Warwickshire, with a receipt from Steppes Hill Farm Antiques 2003 for the 'Fisherman and Billboard Island' sauceboat.

£200-300



142

143

Two similar Worcester blue and white mugs printed with the 'Natural Sprays Group' pattern, circa 1770, 11.5cm & 12cm high

Provenance:
Little Wolford Manor, Warwickshire

£150-250



143



144

144

A pair of Lowestoft blue and white sauceboats, circa 1775, printed with sprays of roses within relief moulded and a painted lappet band, crosshatched blue crescent marks in Worcester style, approx. 21cm long

Provenance:
Little Wolford Manor, Warwickshire

Cf. Geoffrey A. Godden, *Lowestoft Porcelains*, (1985), page 110 pl. 131

£400-600

145

A pair of Worcester blue and white 'Maltese Cross Flower' pattern rice spoons, circa 1775, each with blue crescent mark, 14cm long

Provenance:
Little Wolford Manor, Warwickshire

£300-500



145



146

A Worcester 'Queen's' pattern 'Rich Kakiemon' cylindrical armorial mug from the Fry Service, circa 1768-70, blue fret square mark, paper label for the Wallace Elliot Sale 1938, 12cm high

Provenance:
Little Wolford Manor, Warwickshire

The arms are those of FRY(E) and this may have been part of the service originally ordered by Rowland FRY(E) (1746-1801) who married Bliss Leigh SPENCER (1748-1827) in 1768 at Thorpe St Mary Surrey. That service passed through the Leigh Spencer family until 1849 when, by marriage it passed to the Fowke family who sold it at Phillips 13th May 1981.

See Worcester Porcelain 1751-1790, *Spero & Sandon* (1996), p. 253 no. 305 for a similar cup and saucer and Bonham's, ex-lot 222, 15th Nov. 2017 for a selection from the Fry Service.

£600-800



147



148

147

A late George III giltwood and composition overmantel wall mirror, circa 1810, the frieze with scrolling branches and central maiden and cherubs, 67cm high, 118cm wide

£400-600

148

A George III mahogany and ebonised sideboard, circa 1810, with lion mask handles, 92cm high, 184cm wide, 69cm deep

£300-500

149

A Tabriz carpet, approximately 400 x 292cm

£700-1,000

149





150

An Aesthetic Movement ebonised clock, circa 1880, in the manner of Lewis Foreman Day and attributed to Howell James & Co, London, with eight-day gong striking movement, the blue and white dial with Arabic numerals indistinctly signed, the ebonised case of stilted form, 56cm high

A very similar model of clock is illustrated and described on the website of the Victoria & Albert (V&A) Museum in London, CFirc. 662-1972(1999) with the design attributed to Day and the movement Howell James & Co.

£300-500



151

An Aesthetic Movement ebonised and inlaid card table, circa 1870, 74cm high, 97cm wide, 49cm deep

£300-500



152

152

A late Victorian mahogany and upholstered sofa, circa 1890, upholstered with blue palmettes on an ivory ground, 86cm high, 185cm wide, 75cm deep

£300-500

153

A Victorian simulated bamboo wall mirror, circa 1880, 128cm high, 91cm wide

£250-350

154

A Victorian coromandel games compendium, circa 1870, with trays and fittings, including dominoes, Bezique, and a combined chess and backgammon board, 21cm high, 38cm wide, 27cm deep

£250-350



154



153

155

An Aesthetic Movement ebonised and parcel gilt centre table, circa 1880, in the manner of Collinson & Lock, the drawer stamped MAPLE & CO. 73cm high, 144cm wide, 78cm deep

£500-700



155



156

A George III mahogany and boxwood strung dressing table mirror, circa 1800, with ogee bracket feet, 60cm high, 51cm wide, 22cm deep

£200-300

157

A George III mahogany Pembroke table, circa 1780, with single frieze drawer, 73cm high, 95cm wide, 89cm deep

£300-500

156



157



158

158

A George III mahogany tripod table or stand, late 18th century, the canted rectangular top on a ring turned tapering column and three outswept moulded legs, 73cm high, 46cm wide, 37.5cm deep

£200-300

159

Thomas Stothard (British 1755-1834)

Two maidens with a gathering of putti, a study

Watercolour, pencil and wash

Signed (lower right)

18 x 22.4cm (7 x 8¾ in.)

£200-300



159



160

160

A George III mahogany chest of drawers, circa 1780, the canted corners incorporating unusual alternating banding, 83cm high, 95cm wide, 52cm deep

£800-1,200

161

A pair of mahogany night commodes in George III style, of recent manufacture, each with a tambour door above a drawer, each 79cm high, 48cm wide, 44cm deep

£700-1,000



161





162
A pair of French bronze patinated spelter urns, 19th century, in Neo-Classical taste, later fitted for electricity, 47cm high

£300-500

163
A mahogany and inlaid commode in French late 18th century taste, late 20th century, the marble top above the arrangement of drawers, 85cm high, 116cm wide, 50cm deep

£300-500

164
A rug in Aubusson style, approximately 532 x 378cm

£300-500



163



164



165

165
Continental School (19th century)
Venus and cupid, a pair
Oil on canvas
39.5 x 31cm (15½ x 12 in.) (2)
In Swedish frames

£300-500



166



166
A pair of French walnut bedside cabinets, early 20th century, 85cm high, 47cm wide, 37cm deep

£400-600

167
A Louis XVI walnut stool, circa 1780, 46cm high, 52cm wide, 46cm deep

£300-500



167



168

168

A Continental carved wood figure of the Madonna and Child, late 16th/early 17th century, probably South German or Italian, portrayed standing with swept drapery above an integral base, the hem with simulated floral design, 38cm high, base 10cm wide

Provenance:

Christie's, London, Edward George Coles Sale, 25th November 1926, Lot 46 (£7)

£500-800



169

169

A Charles II panelled oak chest or coffer, circa 1660, 74cm high, 137cm wide, 59cm deep

£300-500

170

An oak and leather upholstered armchair, early 18th century and later, with bobbin turnings throughout, 85cm high

Provenance:

Little Wolford Manor, Warwickshire

£300-500



170

171

A Continental well carved oak group of Madonna and child, 63cm high

£400-600



171



172

172

An oak settle, early 18th century, the four panel back above locker seat, 103cm high, 136cm wide, 65cm deep

Provenance:

Little Wolford Manor, Warwickshire

£300-500

173

An Heriz carpet, approximately 322 x 242cm

£300-500

173





174

174
A group of Chinese export wares, 18th century, comprising: a famille rose punchbowl, a porter mug, three polychrome coffee cups, and a blue and white provincial saucer dish

Provenance:
Little Wolford Manor, Warwickshire

£100-200



175

175
A Continental yellow crackled glazed pottery and gilt metal mounted urn and cover in the Chinese style, first quarter 20th century, with flanking mask ring handles, 30cm high

£400-600

176
A Chinese carved wood stand with marble top, Qing dynasty, late 19th century, decorated with bamboo stems and leaves, with an inset circular marble top, 45cm high

£200-300



176

177

A pair of modern Chinese porcelain hexagonal section famille rose lamp bases, 42.5cm high excluding fitments

£500-800



177



178

178

A black lacquer and parcel gilt jappaned cabinet on stand, 19th century or earlier, with typical Chinoiserie decoration, 129cm high, 77cm wide, 44cm deep overall

£500-800

179

A Chinese hardwood, probably elm, upholstered stool, 19th century, with pierced frieze and cabriole legs, 48cm high, the 'seat' 61cm wide, 51cm deep

£600-800



179



180

180
A French giltwood and composition wall mirror, circa 1880, 172cm high, 97cm wide

£600-800

181
An early Victorian oak library or writing table, circa 1840, the leather inset top above false drawers to the sides and the back, the two drawers with locks stamped 'JOHN SHAW & SON WOLVERHAMPTON, (FOUR LEVER), SAFETY PATENT LEVER LOCK', the lock to the drawer with compartments stamped 'CHUBB'S PATENT, ST PAULS CH YD LONDON, CHUBB & SON MAKERS TO HER MAJESTY, 537086', 76cm high, 168cm wide, 102cm deep

£1,000-1,500



181

182
A flight of early Victorian mahogany serpentine hanging wall shelves, mid 19th century, with pierced fretwork, 72cm high, 67cm wide, the lower tier 19cm deep

£300-500



182



183 (part lot)

183
Louis van Staaten (Norris Fowler Willatt) (British 1859-1924)
A Windmill beside a Dutch canal; Haarlem
Watercolour
Both signed
38 x 60cm (14¾ x 23½ in.) (2)

Louis Van Staaten was a pseudonym used by the English artist Norris Fowler Willatt.

£300-500

184
An early Victorian mahogany library table, mid 19th century, with blind frieze drawer to one side, 76cm high, 136cm wide, 68cm deep

£300-500



184



185

185

A French gilt metal and Sevres style porcelain inset mantel clock, Japy Freres, second half 19th century, the eight-day bell striking movement with backplate stamped with maker's roundel and Medaille D'Honneur, also serial numbered, with porcelain Roman numeral dial, the case surmounted by an urn to the square body and with swags and festoons above the plinth base and feet, set on an associated giltwood plinth, 42cm high

£300-500



186

186

A French Directoire mahogany commode, early 19th century, with marble top, 88cm high, 130cm wide, 59cm deep

£800-1,200



187

187

A green painted and parcel gilt open armchair in Louis XVI style, early 19th century and later, 95cm high

£200-300

188

A Sevres style porcelain plaque, third quarter 19th century, blue ground and gilt decorated with central reserve of cherubs, incised 66 verso, in an ebonised and gilt frame, 36cm square overall

£300-500



188



189

189

A pair of gilt metal and Sevres style porcelain mounted table lamps, late 19th/early 20th century and later fitted for electricity, each modelled with a putto supporting a cornucopia, 51cm high excluding fitments

£300-500

190

A pair of French parquetry and gilt metal mounted side tables, early 20th century, each with a marble top above the arrangement of drawers, 79cm high, 35cm wide, 31cm deep

£1,000-1,500



190



191
A Victorian mahogany and tapestry fire screen, circa 1860,
111cm high, 72cm wide, 54cm deep

£300-400



192
A Victorian mahogany writing table, circa
1840, with a three quarter gallery above two
drawers, 82cm high, 104cm wide, 48cm deep

£300-500



193
A giltwood and upholstered stool,
circa 1870, on stylised X-frame supports,
47cm high, 51cm wide, 61cm deep

£600-800

194
A Victorian bird's-eye maple and parcel gilt bedside cabinet, circa 1860,
82cm high, 40cm wide, 37cm deep

£300-500



195
A Victorian walnut luggage stand, circa 1880, the slatted top above turned beech supports, 46cm high, 61cm wide,
46cm deep

£300-500



196
A Victorian mahogany
compactum wardrobe,
circa 1840, the central
linen press with slides,
flanked by hanging
cupboards, 216cm high,
251cm wide, 71cm deep

£400-600



196



197

197
A George III mahogany dressing mirror, circa 1760, 63cm high together with another similar example in George III style, 61cm high (2)

Provenance:
Little Wolford Manor, Warwickshire

£250-350

198
An early George III mahogany chest of drawers, circa 1765, of small proportions, with brushing slide, 87cm high, 84cm wide, 43cm deep

£500-700



198

199
A George III mahogany side chair, circa 1765, in the manner of Thomas Chippendale, the serpentine top-rail above a pierced vase-shaped splat, the blue damask upholstered seat above square section front legs

£250-350



199

200
A George II walnut and parcel gilt wall mirror, mid 18th century, 121cm high, 58cm wide

£300-500



200



201

201
A George III mahogany linen press, circa 1780, the panel doors enclosing a later hanging rail, 207cm high, 143cm wide, 61cm deep

£300-500

202
A George III mahogany night commode, circa 1780, 77cm high, 55cm wide, 43cm deep

£300-500



202



203

203 λ

Andrew Ingamells (1956-)
'Fishmongers' Hall, London',
Crayon, pencil and watercolour,
Signed and dated 1992
18 by 20cm

Provenance:
Grosvenor Gallery exhibition-
Andrew Ingamells 'In the minds eye',
London June-July 1994, No.2
(Inv. 1037)

£600-1,000



204

204 λ

Andrew Ingamells (1956-)
'Apsley Gate- After Decimus Burton',
Crayon, pencil and watercolour,
Signed and dated 1992
30.5 by 89cm

Provenance:
Grosvenor Gallery exhibition- Andrew Ingamells 'In the minds eye', London June-July 1994, No.9 (Inv. 1027)

£800-1,200

205

A bronze model of a male ballet dancer,
modern, modelled in dance pose with arms
outstretched, possibly after Tom Merrifield
(born 1932, British)

£200-300



205



206

206

A Victorian oak studio easel, last quarter 19th century, by John B.
Smith, Hampstead, with metal label to the reverse JOHN B. SMITH 117
HAMPSTEAD RD. LONDON, 233cm high, 71cm wide, 72cm deep

Provenance:
By repute previously the property of Sir Quentin Blake

£300-500

207

An Elizabeth II limed oak and velvet upholstered
coronation stool, mid 20th century, one rail stamped
ER CORONATION, 47cm high

Provenance:
Manufactured for the Coronation of HM Queen
Elizabeth II, 2 June 1953, Westminster Abbey, London.

£200-300



207



208



208

Two stained and leaded glass panels, one probably for Pembroke College, Cambridge, 22 x 18cm, the other probably for Viscount Sidmouth, 22 x 19cm

Please see our website for a technical description of these panels

£400-600

209

A Westerwald salt glazed stone baluster mug, mid 18th century, incised with a stylised flowerhead with GR cypher and stylised foliage, 15cm high

£250-350

210

Two similar Iberian walnut open armchairs, 18th century, each with remnants of velvet and silvered thread upholstery, 102 and 99cm high respectively

£300-500



210



209

211

An embroidery in 16th century South Netherlandish manner, second half 19th century, depicting a falconer, approximately 162 x 134cm

This embroidery is based on a 16th century South Netherlandish tapestry currently held in the Metropolitan Museum of Art, New York (1974.228.2).

Provenance:

By repute of the Vendor, from Dromoland Castle, Ireland.

£300-500



211



212

212

A Charles II oak chest of drawers, circa 1680, each drawer with a geometric drawer front, on bun feet, 98cm high, 92cm wide, 53cm deep

Provenance:

Little Wolford Manor, Warwickshire

£300-500

213

A carved oak coffer in late 17th century style, last quarter 20th century, 71cm high, 129cm wide, 49cm deep

£300-500



213



214Y

A satinwood and rosewood banded work box, circa 1790, of octagonal form, 6cm high, 24.5cm wide, together with a Victorian mahogany reading stand, circa 1890, with ivory label for the maker, 26cm high (erect) 34cm wide overall

£200-300

215

A George III mahogany and inlaid side table, 1790, 83cm high, 88cm wide, 44cm deep

£200-300



216

216

A George III mahogany chest of drawers, circa 1800, 83cm high, 84cm wide, 50cm deep

£300-500



214



215

217

A gilt metal hall lantern in late 18th century style, early 20th century, 81cm high, approximately 44cm wide

£300-500

218

A George III mahogany and crossbanded Pembroke table, circa 1790, 74cm high, 55cm wide (when closed), 82cm deep

£400-600



218



217

219Y

A George III mahogany and tulipwood banded secretaire clothes press, circa 1810, attributed to Gillows of Lancaster, the moulded cornice with slender parquetry cornice simulating dentil decoration, above a pair of panelled doors enclosing three slides, the fall front secretaire drawer opening to a leather inset writing surface and an arrangement of small drawers and pigeon holes, 200cm high, 128cm wide, 55cm deep

For an almost identical secretaire press stamped GILLOWS LANCASTER, see Susan E. Stuart, 'Gillows of Lancaster and London, 1730-1840' Vol. II, Antique Collectors Club, 2008, page 65 and Plate 610.

£500-700



219



220

220

A George III mahogany cheval mirror, circa 1810, 129cm high, 69cm wide, 47cm deep

Provenance:

Little Wolford Manor, Warwickshire

£400-600



221

221 Y

A Regency mahogany and kingwood crossbanded linen press, circa 1820, the doors opening to a hanging space, 219cm high, 121cm wide, 59cm deep

£400-600



222

222 Y

A Regency mahogany and ebony-strung Canterbury, circa 1815, with swept top and lattice sides, 51cm high, together with a similar luggage stand, 47cm high

£200-300



223

223

A gilt metal and coppered three branch ceiling light in Empire style, early 20th century, approximately 38cm high excluding the chains, 57cm diameter

£200-400

224

A pair of gilt and patinated metal candlesticks, in Empire style, second half 19th century, with reeded stems and circular bases, later converted to electricity, 38cm high overall

£800-1,200

225

A Regency mahogany chest of drawers, circa 1815, 110cm high, 102cm wide, 53cm deep

£600-800



224



225



226

226
A group of nine various Staffordshire equestrian figures, various dates mostly mid-19th century, including a Victor Emmanuel, sparsely coloured and gilt, of Kent & Parr type, 38cm high; a pair of The King of Prussia and Count Bismarck, each 37cm high, and six other various equestrian groups (smaller)

Provenance:
Property of Hermione, the late Countess of Ranfurly (1913-2001) and thence by descent.

The Countess of Ranfurly came to public attention with the publication of the first volume of her diaries *To War With Whitaker 1939-45* (Heinemann 1994) in which she details her trials and tribulations following her husband, a lieutenant in the yeomanry regiment, the Sherwood Rangers through the North African campaigns with his valet Whitaker. After the war and with a house to fill she assembled a notable collection of mid 19th century Staffordshire figures, many of which were photographed for Commander Gordon-Pugh's seminal work on the subject.

£300-400



227

227
A group of nine various Staffordshire equestrian groups and figures of mostly jockeys, mid 19th century, 29cm high and smaller.

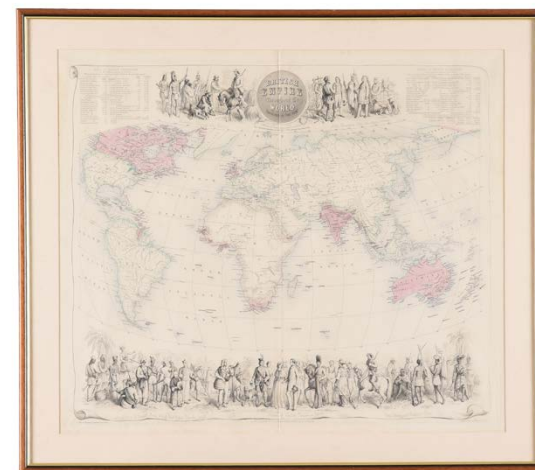
Provenance:
Property of Hermione, the late Countess of Ranfurly (1913-2001) and thence by descent.

Please see the lot before for the footnote regarding the Countess of Ranfurly.

£400-600

228
World. Fullarton (Archibald), *British Empire Throughout the World*, Exhibited in One View, map on a Mercator projection with panoramic vignettes of the peoples and costumes of the British Empire and two tables listing British possessions around the world, mounted, framed and glazed, 56 x 64cm overall

£300-500



228



229

229
A bronzed metal figure of a horse, naturalistically modelled, 108cm high, 120cm long, 36cm deep

£300-500

230
A Victorian mahogany and brass bound campaign chest, mid 19th century, 93cm high, 99cm wide, 48cm deep

£800-1,200



230



231

231

A gilt metal and glass eighteen light chandelier, early 20th century, with glass faceted beads and pendant lustres and drops, 115cm high, 85cm diameter

£400-600



232

232

A set of twenty-four hand-coloured botanical book plates for T. Curtis' Botanical Magazine, after drawings by Sydenham Edwards, engraved by F. Sansom, Overall inc. frame 28 x 20.5cm (11 x 8 1/8in.) (24)

£400-600



233

233

A Royal Worcester crested part dinner service, possibly Masonic, third quarter 19th century, comprising: twenty-four soup plates; twenty-eight breakfast plates; thirty-seven dinner plates; two large oval serving dishes in sizes; a pair of oval plates; a pair of sauce tureens, covers and a stand; and four vegetable tureens and two covers, impressed marks

£250-350

234

A Victorian giltwood and composition overmantel mirror, second half 19th century, with central tired rope twist decoration and tassels to the lower angles, 84cm high, 118cm wide

£250-350



234



235 (part lot)

235

A pair of curtains, recently manufactured from Colefax & Fowler Chinese Toile pattern fabric, approximately 215cm wide at the top, 270cm long, together with gathered pelmet approximately 410cm wide

£200-300



236

236

An English porcelain yellow ground and part gilt part breakfast service, retailed by John Mortlock, late 19th century, comprising: twelve shaped rectangular serving dishes, 24 egg cups, 41 breakfast plates, fourteen side plates, four muffin dishes and two covers, three slop bowls, a pair of jug, eleven coffee, 21 breakfast cups, and approximately 88 various saucers

Provenance:

Property of the late Countess of Ranfurly and thence by decent.

£400-600



237

237
A Meissen miniature oval gilt-metal-mounted plaque of Mary Magdalene reading in the wilderness, late 19th century, after Pompeo Girolamo Batoni (1708-1787), the porcelain 9cm in length, 9.5cm overall

£200-300

238

A pair of Meissen figures of a gardener and companion, late 19th century, blue crossed swords marks, circa 48cm & 49cm high

£400-600

239

An oak dresser base, mid 18th century, with an arrangement of three frieze drawers above the panel doors

£300-500



238



239



240

240

A giltwood six branch chandelier, early 20th century, carved with stylised husks, stiff leaf swags and acanthus, approximately 70cm high, 80cm diameter

£300-500

241

An elm farmhouse table, early 20th century and later, 77cm high, 230cm long, 111cm wide

£700-1,000



241



242

242

After the antique, a bronze figure of the seated Mercury, late 19th century, inscribed with foundry mark 'Fonderia Sommer Napoli, 30cm high

This model is based on the discovery of the 1758 Roman model at the Herculaneum, the Greek original is likely to have been made in the third or fourth centuries. Giorgio Sommer together with the Chiurazi firm held the exclusive rights to produce bronze copies of sculpture discovered at Herculaneum. The Roman model is said to have been one of the most celebrated works discovered at the site during the 19th century. The sculpture was flown to Palermo for protection from the Napoleonic depredations (1798), then returning to the Palace of Portici (1816).

For a similar model from Fonderia Sommer Napoli, see Christies Interiors, 23rd November, 2013

£200-300

243

A mahogany card table, circa 1740 and later, the top opening to baize plain surface and counter wells above a frieze drawer, 73cm high, 81cm wide, 40cm deep

Provenance:
Little Wolford Manor, Warwickshire

£400-600



243

244

A mahogany and damask style upholstered armchair, mid 18th century and later, the back and wings above the outscrolled arms and removable seat cushion, on cabriole front legs terminating in claw and ball feet, 112cm high, 91cm wide, 82cm deep

£700-1,000



244

245

A George II mahogany and parcel gilt wall mirror, mid 18th century, 68cm high, 41cm wide

£200-300



245

246

A George III mahogany occasional table, circa 1760, possibly Irish, the pie-crust top above a birdcage, turned stem and outswept legs, 72cm high, 79cm diameter

£800-1,200

247

A Kashan rug, approximately 208 x 135cm

£300-500



246

247





248
A Spode Stone China 'tobacco leaf' 3 part dinner service, circa 1820, decorated with pattern 2054, comprising: a large shaped octagonal serving dish and cover; two shaped octagonal soup tureens, covers and stands; two shaped octagonal serving plates in sizes; three shaped octagonal serving dishes in sizes; a pair of shaped square vegetable tureen bases; eight soup plates; two breakfast plates and fourteen dinner plates, printed and painted marks

£600-800

249
A George IV mahogany sideboard, circa 1825, of break-bowfront outline, 95cm high, 191cm wide, 69cm deep

Provenance:
Private Collection,
The Old Rectory,
Gloucestershire

Purchased from T.
G. Wilkinson Ltd,
Petworth, in 1999.



249

£300-500



250

250
An Isfahan rug, approximately
405 x 301cm

£500-800



251

251
A George IV giltwood overmantel wall mirror, circa 1830, 77cm high, 171cm wide

£400-600



252

252
A George IV mahogany extending dining table, circa 1830, in the manner of Gillows, with Pembroke action and two additional leaf insertions, on reeded tapering legs terminating in brass caps and castors

£800-1,200

253
A Regency mahogany tea table, circa 1815, in the manner of Gillows, 73cm high, 92cm wide, 45cm deep

£200-300



253



254

A copped sheet brass hexagonal lantern, second half 19th century, with cut scroll panels, 96cm high, 59cm diameter

£800-1,200



255

255

A decoupage decorated stoneware stick stand, late 19th century, of large vase form and with pierced lid, 80cm high

£300-500



256

256

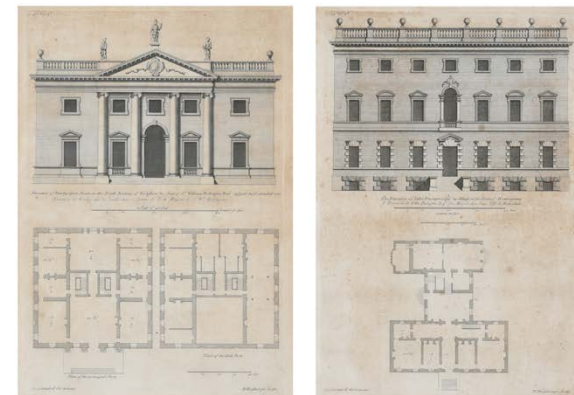
A cast iron bootscape in Regency taste, first half 19th century, the scrape blade supported on monopodia, 28cm high

£100-150

257

After Colin Campbell A set of six architectural designs, Amesbury Abbey in Wiltshire, and Atherton in the county of Lancaster, after engravings by H. Hulsbergh, designs for Vitruvius Britannicus, each plate 37 x 24.5cm (14½ x 9½ in.) Each overall inc. frame 58 x 45.5 cm (22 ¾ x 17 7/8 in.) (6)

£250-350



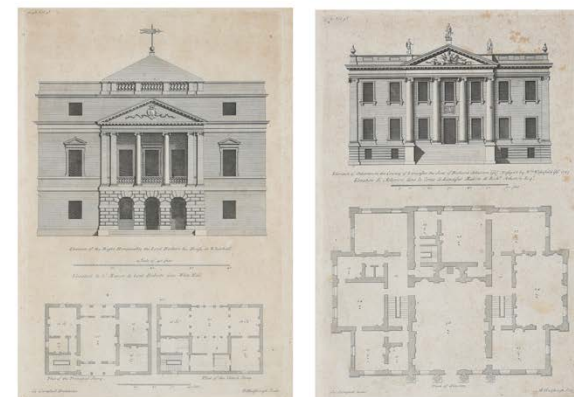
258

A pair of French gilt and patinated bronze models of the Borghese vase, late 19th century, of typical campana form cast with figural relief, each 32cm high

£400-600



258



257



259

259

A George IV mahogany serving or hall table, circa 1825, 97cm high, 180cm wide, 66cm deep

£700-1,000



260

260

A French porcelain Sevres-style gilt-metal mounted jardiniere, late 19th century, typically decorated with panels of flowers and Watteauesques, 20cm high

£150-250



261

261

A Louis XV walnut miniature commode, circa 1760, of bombe outline, 42cm high, 54cm wide, 37cm deep

Please note the bottles photographed are to illustrate scale of this commode only and are not included in the lot

£500-800



262

262

A Continental walnut octagonal table, 19th century and later, with an associated marble top, the four cabriole legs carved with female figures, shells, scrolling foliage, the four stretchers carved with dogs masks united by an octagonal platform carved with a stylised flowerhead, 71cm high, 72cm diameter

£400-600

263

A pair of silver plated brass wall mirrors in Rococo style, 19th century, each with embossed scrolled surrounds to the twin plates, 96cm high

£400-600



263

264

A Sevres-style turquoise-ground and gilt-metal mounted porcelain oval two-handled dish, late 19th century, typically painted with Watteauesques, blue interlaced 'L's' style mark, 58cm wide

£400-600



264

265

A French walnut commode, mid 18th century, 86cm high, 140cm wide, 48cm deep

£600-800



265



266
A Japanese porcelain vase, mounted and converted to a lamp, late 19th century, Meiji Period, 38cm high excluding fitments

£200-400



267
A walnut dressing mirror, incorporating 18th century and later elements, the fret mirror above an arrangement of drawers, 93cm high, 46cm wide, 23cm deep overall

£400-600



268
A mahogany chest of drawers, late 18th century and later satinwood crossbanded, of small proportion, with brushing slide above the arrangement of drawers, the top drawer with retailers stamp for HEALS & CO, LONDON, 80cm high, 71cm wide, 45cm deep

£400-600

269
A mahogany tripod table, incorporating 18th century and later elements, 64cm high, 45cm diameter

£300-500



269

270
A George III mahogany kneehole desk, circa 1780, 74cm high, 81cm wide, 42cm deep

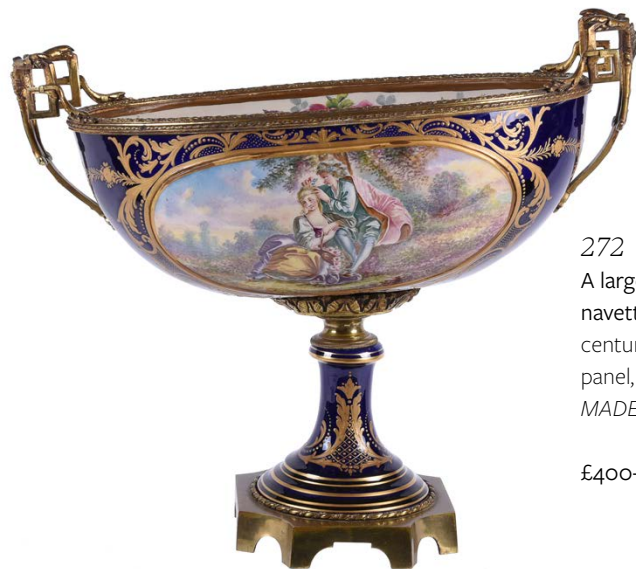
£300-500

271
A mahogany child's corner armchair in George III style, early 20th century, with drop in seat, 67cm high

£250-350



271



272

A large French pottery Sevres-style blue-ground navette-shaped centre bowl, first quarter 20th century, typically decorated with a Watteauesque panel, gilt Sevres-style mark, the mounted stamped *MADE IN FRANCE*, 46cm x 53cm

£400-600

272

273

A French mahogany and gilt metal mounted cylinder desk, in Empire style, late 19th/early 20th century, surmounted overall by a marble top, fragmentary remains of a makers label beneath, the fall opening to an arrangement of drawers, open shelves and a sliding leather inset writing surface, 126cm high, 145cm wide, 71cm deep

£1,000-1,500



273

274

A Louis XVI blue ground Paris porcelain, ormolu and marble mounted ewer, circa 1785, in the manner of Designs by Pierre Gouthiere (1732-1813), of baluster form, the berried and foliate scroll handle surmounted with a balancing putto leaning over an everted lip cast with goat and satyr masks, on three feline monopodia above a concaved triangular base with a central rosette, on a further *rouge* marble plinth, 42cm high

The design of the present lot relates to works Gouthiere completed for the Duc d'Aumont, which were recorded in the 1782 auction of the Duc's collection. The porcelain is possibly by the successful Parisian manufactory of Locre and Russinger, who specialised in fine porcelain in imitation of popular German designs such as Meissen. A similar example with marks for Locre was sold Christie's, London, 1st December 2003, Lot 89.

See also Sotheby's, New York, *Important English and European Decorative Arts*, 9th June 2014, Lot 75.

£500-800



274



275

275

A French mahogany and gilt metal mounted gueridon table in Louis XVI style, 19th century, with marble top, 74cm high, 61cm diameter

£500-800

276

A French giltwood and composition banquette or jardiniere, late 19th century, with upholstered top above interior with liner, the base with rounded ends, 47cm high, 155cm wide, 36cm deep

£500-800



276



277

277

A pair of wall lanterns in Regency taste, late 20th century, almost certainly by Colefax & Fowler, 30cm high, 23cm wide, 15cm deep

These appear to match Colefax & Fowler's Convex Wall Lanterns 'small' as available on their website

£300-400

278

A George IV mahogany occasional table, circa 1825, 71cm high, 56cm wide, 41cm deep

£400-600



279

279

A George IV mahogany side table, circa 1825, in the manner of Gillows, 78cm high, 108cm wide, 60cm deep

£800-1,200



278

280

A painted tinware (*toleware*) coffee pot in Regency style, 19th century, in the manner of J.W. Baker, Bilston, 27cm high

A coffee pot of this overall shape is illustrated in Yvonne Jones, *Japanned papier mache and tinware* c.1740-1940 p.218 pl. 233

£300-500



280

281

A Regency mahogany teapoy, circa 1820, in the manner of Gillows, the hinged lid enclosing a pair of canisters and central well, the edge serial numbered 1879, with internal action for a sprung secret drawer, the stand with tapering supports united by an undertier, 101cm high overall, 43cm wide, 29cm deep

Provenance:
Little Wolford Manor, Warwickshire

£400-600



281

282

A George IV mahogany tea table, circa 1825, attributed to Gillows, 76cm high, 92cm wide, 45cm deep

£400-600



282



283

A mahogany and gilt metal mounted pier or wall mirror, second quarter 19th century, 184cm high, 90cm wide, 12cm deep

£800-1,200

283

284

A mahogany, ebonised, and parcel gilt corner whatnot, in Regency style, late 19th century, with lion head capitals flanking the five tiers, 159cm high

£800-1,200



284

285

A pair of gilt and patinated metal candlesticks, second quarter 19th century, with tapering cylindrical shaft triform bases, later converted to electricity, 47.5cm high overall

£1,000-1,500



285

286

A mahogany, ebonised and parcel gilt Console table, in early 19th century style, early 20th century, with columnar supports to the front, 81cm high, 91cm wide, 47cm deep

£500-800



286



287

A George III mahogany bureau bookcase, circa 1775, the fall opening to an arrangement of pigeon holes and short drawers around a central fall fronted cupboard door, above a baize inset writing surface, 235cm high, 117cm wide, 56cm deep

£1,200-1,800

287

288

A Kashan rug, part silk, approximately 340 x 229cm

£500-800

288



289

A George III mahogany tripod table, circa 1780, the dished top above a baluster stem and wrythen vase, 72cm high, 66cm diameter

£300-500



289



290

290

A George III mahogany armchair, circa 1760, with a pierced interlaced gothic style splat, shepherd's crook arms, a drop in seat and straight chamfered legs with brackets, 99cm high, 65cm wide, 50cm deep

£200-300

291

A George III mahogany chest of drawers, circa 1780, of serpentine fronted outline, with two short and two long drawers, 85cm high, 111cm wide, 61cm deep

£700-1,000



291



292
A pair of gilt metal and stained bone floor standing lanterns, 20th century, of monumental proportion, each 177cm high

£400-600



294
A giltwood split plate mirror, late 18th century, probably Turkish or Ottoman, of arched form, 159cm high, 99cm wide

£500-700

293
A south central Anatolian Turkish flatweave *saph* (prayer rug), approximately 412 x 179cm

£200-300

293



295
A Kashan rug, approximately 211 x 128cm

£300-500

295





296
Italian School (16th century and later)
Thirteen portraits, comprising: eight portraits of gentlemen and five portraits of ladies
Oil on copper, one oil on card
Various sizes, the largest: 10cm (3¾ in.)
In later gilt frames, one unframed (13)

£1,000-1,500



297
After François Quesnel
Henri III of Poland and France
Oil on metal, oval
Engraved with armorial to reverse
6cm (2¼ in.) high

Together with two similar portrait miniatures depicting Catherine De Medici, and Louise De Lorraine (double-sided), all in gilt metal frames (3)

£500-700

298
Italian School (17th century)
Grand Duke Ferdinando II (1610-1670) wearing black doublet with red cross, white collar and cuffs; his wife Vittoria della Rovere (1622 - 1694) wearing black dress adorned with pearls, lace collar and cuffs, pear necklace, her hair styled and embellished with pearls
Oil on copper, oval
11.5cm (4½ in.) high

Together with a third portrait of Louis XIV, King of France, wearing armour and red mantle, oil on copper, 11cm high, all in later gilt wood frames (3)

£600-800



298



299

299

Italian School (17th century)
A young girl, wearing blue and gold lace trimmed dress with red beaded embellishment, gold choker and red beaded necklace, drop pearl earrings, her hair curled and adorned with blue beads
Oil on copper, oval
10.5cm (4in.)
In a later gilded wood frame

£2,000-3,000

300

Italian School (19th century)
A collection of five portraits after the Old Masters, including, amongst others: a portrait of Pope Paul III (1468-1549) after Raphael, and a portrait of Alfonso V, King of Aragon and Naples (1396-1458) after a 15th century Neapolitan School painting now in the Kunsthistorisches Museum, Vienna
Oil on panel, rectangular
The two aforementioned later inscribed (upper centre)
13.5 x 10.5cm (5¼ x 4 in.)
In later gilt wood frames (5)

£1,000-1,500



300

301 Y

Attributed to Richard Crosse (British 1742-1810)
A gentleman, wearing blue coat, blue waistcoat and white stock his powdered wig worn en queue and tied with a black ribbon
Watercolour on ivory, oval
3cm (1 in.) high
In a gilt metal mount

£300-500

302 Y

British School (20th century)
King Edward VII of Great Britain
Watercolour on ivory, oval
10cm (3¾ in.) high
In a gilt metal frame

Together with an 18th century French watercolour on paper of a lady in a landscape, tondo, 5.5cm diameter, in a wood turned frame (2)

£300-500



301



302

Day 2 | lots 311-558

Wednesday 26 January 2022



311 Y

A Victorian mahogany stick barometer, E.H. Robinson, Shrewsbury & London, circa 1860, the ivory dial with the usual observations with Ascending and Descending scales, 100cm high

Edward Henry Robinson & Co are recorded in Banfield, Edwin BAROMETER MAKERS & RETAILERS 1660-1900 as working in London in the latter part of the 19th century, the following entry is for a Henry Robinson with an address in Shrewsbury.

£300-500



311



312

312 Y

A group of three horn handled walking sticks, late 19th century, two probably Rhinoceros horn, all with silver coloured metal collars, 86cm long and shorter

NB. Please note that the buyer is unlikely to be able to export these sticks outside the UK due to current CITES restrictions (unless the hammer price of the estimated weight of the Rhino horn exceeds \$100 per gram.)

£300-500

313

A Victorian brass and cast iron stick stand, circa 1890, 61cm high, 50cm wide, 23cm deep

£200-300



313



314 (set of eight)

314

A set of eight Regency mahogany dining chairs, circa 1815, to include a pair of armchairs, each with a bar back with central reeded tablet and flanking stiff leaf decoration

£600-1,000



315

315

A Regency mahogany and crossbanded breakfast, circa 1820, 73cm high, 138cm wide, 90.5cm deep

£300-500

316

A Regency mahogany chest of drawers, circa 1820, with arrangement of three long drawers each with embossed brass handles, above turned feet, 87cm high, 94.5cm wide, 48cm deep

£300-500



316

317

A Continental giltwood and ebonised tea caddy, 19th century, of fluted urn form, the steel handle to the lid enclosing a lined compartment, 24cm high

£300-500

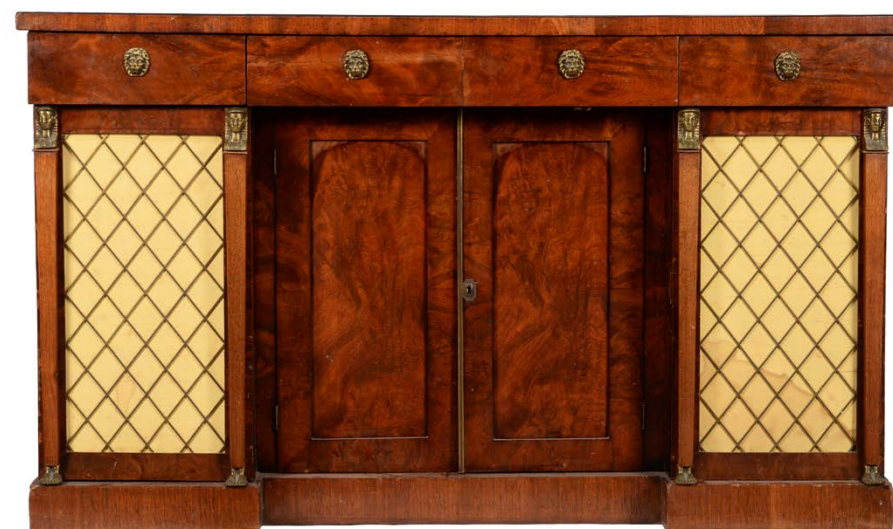
318

A mahogany side cabinet in Regency style, mid 19th century, with inverted breakfront arrangement of cupboards, 90cm high, 153cm wide, 35cm deep

£400-600



317



318

319

319

A Kirman carpet, approximately 391 x 302cm

£500-800





320

A group of three various county maps, comprising Hampshire, with legend for Harrison and dated 1788, mounted framed and glazed, 58 x 69cm, Cambridge after Saxon, framed 38cm x 42cm, Oxfordshire after Thomas Kitchin, 74cm x 54cm together with a further map of Empire En Francois En 1811, mounted, framed and glazed, 55cm x 63cm (4)

£250-350

321

A Continental softwood carved female figure, possibly fruitwood, 19th century, on a parcel gilt stepped rectangular base, 89cm high, 28cm wide, 25cm deep

£300-500

322

A walnut and crossbanded desk, in early 18th century style, 20th century, with tooled leather inset top, 77cm high, 171cm wide, 108cm deep

£800-1,200



320 (part lot)



321



322

323

A giltwood and composition wall mirror in George I style, early 20th century, in the manner of examples labelled for Charles Tozer, 121cm high, 48cm wide

Charles Tozer was a retailer of high quality revivalist furniture although he seems to have specialised in walnut pieces in the early 18th century style and was established at 25 Brook Street London from the early 20th century and traded into the 1960s.

£600-800



323



324

324

A George I figured walnut and feather banded cabinet, circa 1725, now on an associated walnut stand, probably circa 1725 and later, 194cm high, 112cm wide, 39cm deep overall

£800-1,200



325

325 λ
GUILIANO ACCORDI (20th century)
Still life of flowers and fruit
Oil on canvas
Signed (lower right)
80.5 x 161cm (31½ x 63¼ in.)

£400-600

326

A mahogany and parquetry kidney shaped desk, probably Baltic, with a frieze drawer on pierced end supports with a wavy stretcher, 74cm high, 107cm wide, 57cm deep

£400-600



326

327Y

A German silver and mother-of-pearl standing figure, Hanau type pseudo marks, import mark for Chester 1902, mark of M. Friedlander & Co., modelled as a housewife holding up a roasted bird, on a circular base, mounted with multicoloured pastes, loaded, 15cm high

£250-350



327



328

328

A mahogany and brass mounted side cabinet, probably Russian, 19th century, 177cm high, 101cm wide, 39cm deep

£700-1,000

329

A set of four Russian mahogany hall chairs, second quarter 19th century, each with black upholstery, 89cm high

£400-600



329



330

330
George William Mote (British 1832-1909)
Landscape with sheep grazing in the foreground
Oil on canvas
Signed and dated 1873 (lower right)
61 x 92cm (24 x 36 in.)

£200-300

331
A Regency mahogany linen press, circa 1820, in the manner of George Bullock, the doors opening to a hanging space, 218cm high, 122cm wide, 53cm deep

£500-700

332
A pair of Isfahan prayer rugs, each approximately 211 x 145cm

£600-800



332



331

333
A pair of Japanese Kutani porcelain vases, the fluted baluster bodies with long tapering necks with ring handles, painted with snow scenes of sparrows and bamboo and with building by a lake with mountains in the distance, 37cm high (2)

£100-150



333



334

334
A Regency mahogany and ebonised card table, circa 1815, the folding top with a baize inset, stylised stringing, on square tapering legs with spade feet, 74cm high, 91cm wide, 44cm deep

£400-600

335
A Regency mahogany and ebonised strung bowfront chest of drawers, circa 1815, 104cm high, 106cm wide, 52cm deep

£400-600



335



336 (set of four)

336

A set of four giltwood fauteuils in Louis XV style, 19th century, with flower and scroll woven tapestry upholstery, each 92.5cm high, 68cm wide, 60cm deep

£600-800

337

A French walnut and gilt bronze mounted side cabinet, early 20th century, of reverse breakfront form, with a pair of panelled doors flanking a pair of doors with grilles and cabriole legs with leaf cast mounts, 178.5cm high, 221cm wide, 61cm deep

£700-1,000



337



338

338

A set of four gilt metal wall appliques, in Louis XVI style, 20th century, each with a tied ribbon above the shaft holding the three arms, 82cm high

£500-800



339

339

A pair of French beech and upholstered sofas, 19th century, in Louis XV style

£800-1,200





340

340

A group of various items of treen, comprising; a George III mahogany candle box, late 18th century, 47cm high, a small tray with waved gallery, 31cm long, a lignum vitae goblet, 15.5cm high and a turned wood bowl, 35.5cm diameter

£150-250

341

An Irish George II mahogany tea table, circa 1750, the rounded rectangular top above a shaped apron, on cabriole legs with shell-carved knees and webbed pad feet, 75cm high, 88cm wide, 41cm deep

£600-800



341



342

342

A George III mahogany corner armchair, circa 1770, with drop in seat, 81cm high

Provenance:
Little Wolford Manor, Warwickshire

£300-500

343

A mahogany and parcel gilt wall mirror in early George III style, early 20th century, 167cm high, 47cm wide

Provenance:
Little Wolford Manor, Warwickshire

£200-300



344

344

After Massimiliano Soldani Benzi (Italian, 1656-1740), a 'Grand Tour' model of the Faun with the clappers, mid 19th century, on a Siena marble base, 31cm high overall

£400-600



343

345

A George II oak side table or lowboy, circa 1730, 84cm high, 84cm wide, 54cm deep

£600-800



345



346

346
A George IV mahogany Pembroke table, circa 1825, with a frieze drawer and an opposing false drawer, the top with rounded corners, 71cm high, 96cm wide, 76cm deep

£300-500

347
A set of three steel fire tools, 19th century, each with a ball finial to the handle, the shovel 71cm long

£300-500



347



348

348Y
A George IV rosewood side table, circa 1830, with a pair of frieze drawers with opposing false drawer fronts, 74cm high, 88cm wide, 50cm deep

£800-1,200



350

350Y
A George IV mahogany, rosewood and satinwood pedestal games table, circa 1830, the chessboard top above the stem with parquetry inlays, 76cm high, the top 56cm x 56cm

£400-600

351
A Regency mahogany and ebonised chest of drawers, circa 1820, almost certainly Scottish, 107cm high, 108cm wide, 50cm deep

£400-600



349

349
An English porcelain yellow-ground 'Bute' shaped trio of W(***) factory type, early 19th century, attributed to *William Billingsley* at Mansfield, painted with polychrome landscapes within gilt band borders

Provenance:
A private English Collection and by descent.

£300-500



351



352

352

A George III mahogany and satinwood banded Pembroke table, circa 1780, with a frieze drawer and opposing false drawer front to the shortest sides, 71cm high, 107cm wide, 82cm deep

£400-600



353

353

A George III mahogany side table, circa 1780, the top with rounded projecting front angles and of inverted bowfront outline, above three frieze drawers, 81cm high, 151cm wide, 71cm deep

Provenance:
Little Wolford Manor, Warwickshire

£300-500



354

354

A George III mahogany and upholstered stool in the manner of Thomas Chippendale, circa 1780, with upholstered seat, and H stretcher and chamfered straight moulded legs, 41cm high, 60cm wide, 50cm deep

£300-500

355

B. Chan (20th Century)

Birds in a woodland landscape

Oil on panel

Signed (lower left)

40 x 50cm (15½ x 19½ in.)

Provenance:
HSH Donatus Prince of Hohenzollern,
Henley Park Manor, Surrey

£400-600



355



356

356

A pair of George III semi elliptical side tables, circa 1800, each 71cm high, 122cm wide, 62cm deep

£400-600

357

A mahogany and pink upholstered sofa in George III style, mid 20th century, 86cm high, 156cm wide, 85cm deep

£500-800



357



358
Dunhill, France, a calamander and box strung humidor, 9cm high, 25cm wide, 21cm deep, together with a silver cigar cutter, marked with full hallmarks for Birmingham 1988, the thumb-press also marked FOREIGN, 15cm long

£300-400

358



359

359
A Victorian mahogany centre desk, mid 19th century, of square form, 77cm high, 99cm wide, 74cm deep

£1,000-1,500

360
A late Victorian walnut and bone inlaid open armchair, circa 1900, in Adam Revival taste, 89cm high, 63cm wide, 46cm deep overall

£200-300



360

361
A painted writing or side table, second quarter 19th century and later painted, with red leather inset top, 74cm high, 85cm wide, 56cm deep

£300-500

362
A Victorian walnut chaise longue, circa 1870, the upholstered shaped back and arm with a carved frame, 83cm high, 193cm wide, 73cm deep

£300-400



361



362

363
A group of various fire furniture, various dates second half 19th century, comprising a nursery fender, 62cm high, 84cm wide, a pair of andirons and retaining bar, 60cm high, 98cm wide overall, and a set of three fire tools, each element approximately 72cm long

£300-500



363



364
A William IV giltwood overmantel mirror, circa 1835,
193cm high, 138cm wide
£300-500

365
A George IV mahogany sideboard, circa 1825, with bead
mouldings throughout, the central blind frieze drawer
stamped 'GILLOWS.LANCASTER', 107cm high, 214cm
wide, 72cm deep
£400-600



365

366
A William IV mahogany tripod table, circa 1835, 75cm
high, 66cm diameter

£200-300



366

367
A set of six walnut dining chairs, possibly Russian, circa
1830, with carved backs, yellow pony skin upholstered
seats, on leaf carved legs with paw feet, 85cm high,
45cm wide, 43cm deep

£400-600



367 (set of six)

368
A William IV mahogany breakfast
table, circa 1830, the rectangular
tilt top with rounded corners, on a
lappet carved stem, the round
platform with four outswept legs
and paw feet, 71.5cm high, 138cm
wide, 105cm deep

£300-500



368



369

369

A large Japanese Imari vase, late 17th century, of baluster form painted with landscapes, 61cm high

£400-600

370

A large Japanese carved pine model of a Hokkaido Brown Bear, early 20th century, the animal standing four square with head turned to its left and mouth open as it roars, the texture of the fur is chip carved, the eyes inlaid in glass, incised inscription to the sole of one foot "Tomo....dzu", 49cm long

£200-300



370



371

371

A Japanese root wood carving of a Warty Toad, eyes inlaid in glass, later added horn lotus leaves beneath, 22cm long, unsigned, Meiji-Taisho Period

£300-400



372

372

A pair of French cloisonné and ormolu table candelabra, third quarter 19th century, by F. Barbedienne, each formed as a stylised mythical beast, an urn on its back issuing a pierced upright with two geometrically scrolled arms with pierced foliate nozzles and drip-pans, on galleried rectangular stepped base, signed F. BARBEDIENNE, 51cm high, the plinths 19 x 12cm

Provenance:
Trove Gallery, London

£2,000-3,000



373

373

A French porcelain Sevres-style solitaire part tea service, mid 19th century, typically painted in the eighteenth century manner with scattered flowers within thin blue-line and gilt dash borders, comprising: a teapot and cover; a sugar bowl and cover, an ogee cup and saucer and a milk jug, blue interlaced 'L's' marks

Provenance:
Property of the late Countess of Ranfurly and thence by decent.

£300-500



375

374

A mahogany and marble topped centre table in Empire style, late 19th century, 79cm high, 78cm diameter

£500-700

375

A French gilt metal mounted mahogany and leather mounted tall chest/ document cabinet or *semannier*, 19th century, 170cm high, 56cm wide, 38cm deep

£600-800



374

376

A pair of giltwood and brass girandoles, in French early 19th century taste, each with carved ebonised eagle figure above twin electric lights, 108cm high, 33cm wide

£500-800



376

377

A pair of mahogany and brass inlaid console tables, in French Directoire style, each 93cm high, 97cm wide, 35.5cm deep

£500-800





378

378
A giltwood marginal mirror, late 19th century,
121cm high, 155cm wide
£800-1,200

379Y
An Edwardian mahogany, satinwood,
tulipwood, sycamore and marquetry inlaid
centre or hall table, in George III style, circa
1905, 76.5cm high, 182cm wide, 73cm deep

£800-1,200



379



380 (set of twelve)

380
A set of twelve dining chairs in George III style, early
20th century, to include a pair of armchairs, each with a
shield back with central swagged urn

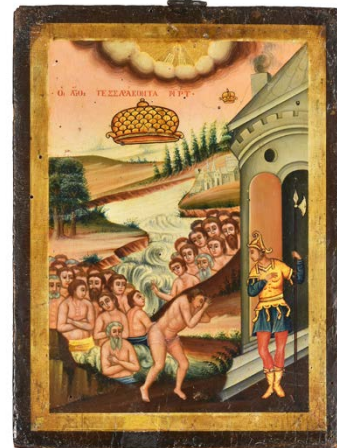
£600-800

381Y
A mahogany and satinwood crossbanded twin pedestal
dining table by Restall, Brown and Clennell, 20th
century, with two additional leaf insertions, the top yew
and tulipwood banded and painted in polychrome with
roses, brass labels 'RBC U63', 73cm high, 142cm wide,
366cm long fully extended

£600-800



381



382

382
A group of three 19th century Greek Icons, comprising; St Stephen The First Martyr, Nativity of St John The Forerunner, and Forty Martyrs of Sebaste, tempera on panels, 41cm x 31.5cm (16in x 12in), 37cm x 27.5cm (14 3/4in x 11in) and 25cm x 19cm (10in x 7 1/2in) respectively

£1,000-1,500



383

383
A Russian mahogany and brass inlaid desk, second quarter 19th century, the stepped tambour fronted raised section above a hinged writing surface and five drawers, on square tapering legs, 134cm high, 118cm wide, 77cm deep

£800-1,200

384
Continental School
(late 18th/early 19th century)
A fort scene with a ship at anchor
Gouache on paper
220 x 140cm (86½ x 55 in.)

£300-500



384



385

385
A Continental, probably Russian, mahogany and gilt brass mounted small press cupboard, 19th century, 149cm high, 84cm wide, 49cm deep

£400-600

386
A walnut oval table, possibly Baltic, mid 19th century, the angled frieze with a drawer, on tapering fluted end supports with an ovoid stretcher and outswept legs, 81cm high, the top approximately 122cm wide, 70cm deep

£400-600



386



387

387λ
Monique Journod (French b. 1935)
Le Chaise Blanche
Oil on canvas
Signed (lower right) further signed and titled (verso)
81.5 x 100cm (32 x 39¼ in.)

£300-500



388

388
A George III mahogany and line inlaid tea table, circa 1800, 74cm high, 93cm wide, 46cm deep (closed)

£300-500



390

390
A Regency giltwood overmantel mirror, circa 1815, with lattice frieze, 67cm high, 132cm wide

£400-600

391
A Regency mahogany side cabinet, circa 1815, the central pair of pleated silk doors opening to a shelved interior, flanked by a doors opening to a shelf and a fitted drawer to one side, and a door opening to three sliding trays to the other, 92cm high, 168cm wide, 48cm deep

£400-600



389 (set of six)

389
A set of six Regency beechwood dining chairs, circa 1815, in the manner of Gillows, the rope-twist top-rails above paterae and leaf-carved mid-rails, the caned seats on sabre legs

Provenance:
Purchased in these rooms from the Collection of Sir William Whitfield CBE

£500-700



391



394

393

An early 19th century elm and oak cricket table, with straight tapering legs, 67cm high, 52cm diameter

£300-500

394

A carved oak longcase clock, with eight-day bell striking movement, the 12inch arched brass dial with applied spandrels to the angles and with moon phase automaton to the arch, the Roman numeral chapter ring bearing inscription for Arthur Downes and with subsidiary seconds dial, the case heavily carved, 225cm high

Provenance:

From the collection of the late Selwyn Demmy

£250-350



392

392

A two handled gilt brass pedestal cup and cover, late 19th century, moulded in relief with Greek mythological figures, probably Hylas and Naiads, the cover surmounted with a Bacchic Putto, on a red marble base, 51cm high

Provenance:

From the collection of the late Selwyn Demmy

£300-500



393

395

An oak wainscot armchair, circa 1660 and later, of joined construction, 107cm high, 59cm wide, 61cm deep

Provenance:

Little Wolford Manor, Warwickshire

£1,000-1,500

396

A George III oak and walnut banded mule chest, circa 1770, 86cm high, 138cm wide, 55cm deep

£300-500



396



395

397

397

An Heriz carpet, approximately 366 x 238cm

£500-800





398

399

398

A gilt bronze six light chandelier in *Régence* taste, mid 20th century, the foliate and beaded sconces above scrolling conforming square section arms cast with bearded masks, issuing around central circular boss and multi-knopped stem, 64cm high including hanging loop, 68cm diameter

£500-800

399

A pair of carved walnut armchairs in Louis XV style, 19th century and later upholstered, 99cm high

£700-1,000

400

A pair of polychrome painted dummy boards, 19th century, modelled as French children in 18th century dress, 113cm and 104cm high respectively

£300-500



400

401

An Aubusson tapestry, 18th century, depicting a courting couple beneath a tree with attendant hound, approximately 250 x 170cm

£600-800



401



402 (set of four)

402

A set of four carved beech and needlework upholstered fauteuils in Louis XV style, 19th century, each 91cm high

£1,000-1,500



403 (part lot)

403

Italian School (19th Century)

Studies for architectural ornament

Pencil

40 x 24.5cm (15½ x 9½ in.) the other 32 x 33.5cm
(12½ x 13½ in.) incomplete sheet (2)

£150-250



404

404

A George II walnut and feather banded chest on chest,
circa 1735, 183.5cm high, 108cm wide, 52cm deep

£600-800



405

405

A walnut and leather buttoned wing back
armchair in George II style, late 19th century, on
cabriole legs to the front terminating in claw and
ball feet, 111cm high, 80cm wide

£300-500

406 λ

José Escofet (Spanish b. 1930)

Still life of brassicas in bloom

Gouache on paper

Signed (lower right)

70 x 86cm (27½ x 33¾ in.)

Provenance:

Stephanie Hoppen Gallery, London,
No.9012019

£600-900

407

A walnut and feather banded
kneehole desk, early 18th century,
78cm high, 79cm wide, 48cm deep

£800-1,200



406



407



408

A 'Black Forest' carved walnut model of a herd of cattle, late 19th/early 20th century, 41cm high

£700-1,000

409

A Victorian oak gothic revival rectangular table, second half 19th century, with tracery pierced end supports and a pegged stretcher, 79.5cm high, 89cm wide, 180cm long

£400-600



411

A giltwood and composition wall mirror, mid 19th century, 171cm high, 125cm wide

£1,000-1,500



412

A Victorian mahogany and upholstered conversation seat, circa 1870 and later upholstered, the castors stamped for HAMPTON & SONS PALL MALL, approximately 81cm high, 165cm wide overall

£400-600



408

409

411

410

410

A Kirman carpet, approximately 401 x 295cm

£700-1,000





413

413

A pair of Japanese Kaga type porcelain vases adapted as lamps, decorated in typical palette of overglaze enamels, rouge-de-fer and gilding with birds and flowers, the vases without the mounts approximately 31.5cm high

£400-600

414Y

A Regency rosewood and inlaid sofa table, circa 1820, with a baluster stem and outswept legs, 73cm high, 156cm wide, 66cm deep

£400-600



414



415

415

A Regency mahogany bowfront chest of drawers, circa 1815, 97cm high, 109cm wide, 59cm deep

£200-300



416

416

A walnut library table, second quarter 19th century, with a light brown and gilt tooled leather inset, above a pair of frieze drawers, on turned end supports, outswept legs terminating brass caps and castors, 72cm high, 103cm wide, 59cm deep

Provenance:
Carson Booth Antiques, London

£300-500

417

A Regency mahogany Canterbury, circa 1815, the central divider with incorporated carrying handle, 54cm high, 49cm wide, 36cm deep

£300-500



417



418
A flight of late George III mahogany hanging wall shelves, circa 1810, with lattice sides above the pair of drawers with bone escutcheons, 63cm high, 77cm wide, 20cm deep

£200-300



419Y
A satinwood and inlaid Pembroke table, circa 1790, with tulipwood banding and central floral inlaid panel, 74cm high, 95cm wide (open), 76cm deep

£400-600



420Y
A George III rosewood and satinwood card table, circa 1790, 75cm high, 92cm wide, 45cm deep

£400-600



421
A Derby pale-blue ground and gilt quatrefoil dish, circa 1820, attributed to *Richard Dobson*, painted with exotic birds, iron-red script mark, iron-red 18 for *John Moscrop*, 24.5cm in length; and two late 18th century Derby cups (3)

Provenance:
A private English Collection and by family descent.

£150-250

422
A George III mahogany bureau bookcase, circa 1800, the glazed section with moulded beadings above the bureau base with fall enclosing a fitted interior with drawers and pigeonholes above a baize writing surface, and with an arrangement of drawers, 214cm high, 108cm wide, 62cm deep

£500-800



423
A set of polished steel fire irons in George III style, 19th century, each with faceted handle, the shovel 78cm long

£500-700



424 (group of five)

424
A group of five various side chairs, late 17th century, of Derbyshire/Lancashire type, together with two further high back side chairs, circa 1700, with vertical splats (7)

Provenance:
Little Wolford Manor, Warwickshire

£800-1,200



425

425
An oak refectory table, circa 1670 and later, with lunette carved frieze, 75cm high, 249cm wide, 81cm deep

£500-800

426

A carved stone bust, probably sandstone, portraying a bearded gentleman in a coat, 39cm high, 39cm wide, 28cm deep

£400-600



426



427

427

An oak wainscot armchair, mid 17th century and later, the panel back with central flowerhead motif within a guilloche border, 119cm high

Provenance:
Little Wolford Manor, Warwickshire

£800-1,200

428

A William III oak child's cradle, circa 1695, of rectangular tapering form and of fielded panel construction throughout surmounted by turned finials and on bow shaped trestle feet, 75cm high, 95cm long, 52cm wide

Provenance:
Previously The Lygo Collection. Purchased from William H. Stokes, 8th May 1984 and Purchased Dreweatts 4th June 2014, lot 97.

£400-600



428



429 (part lot)

429

A large Japanese Imari charger, Meiji period, 47cm diameter and two Japanese Imari plates, Meiji Period, 21.5cm diameter and two Japanese Imari vases and covers, Meiji Period, 25cm hand 21cm high (5)

£150-250

430

A George III mahogany tripod table, circa 1770, with baluster stem, on roller castors, 74cm high, 76cm diameter

£200-300



430



431

431

A walnut and leather buttoned wing armchair in George II style, late 19th/early 20th century, on cabriole legs and pad feet, 113cm high, 80cm wide

£300-500



432

432

A red stained wood wall mirror in 18th century style, carved with flowers and scrolling foliage, 137cm high, 110cm wide

£400-600

433

A George II mahogany mule chest, circa 1760, 108cm wide, 127cm wide, 63cm deep

£500-800



433



434

434
A Victorian oak church pew, second half 19th century, with carved flowerhead roundels to the ends, 94cm high, 169cm wide, 46cm deep

£300-500



435

435
A green painted tinware (toleware) planter or small log bin, late 19th century, with floral decoration, 25cm high, 55cm wide, 35cm deep, and a stick stand in Regency taste, 19th century, with reserve of classical ruins and a painted harp, 50cm high, 26cm wide, 19cm deep

£250-350

436
A set of three Victorian nickel plated fire tools, second half 19th century, the shovel 76cm long

£200-300



436



437

437
James Salt (British 1850-1903)
Two Capriccios of Venice
Oil on canvas
One signed (lower right) the other (lower centre)
Each 35.5 x 46cm (13¾ x 18 in.) (2)

£600-800



438

438
A Victorian twin pedestal desk, circa 1870, 78cm high, 139cm wide, 76cm deep

£300-500

439
A pair of Victorian carved oak and leather upholstered armchairs, last quarter 19th century, each 116cm high, 69cm wide, 88cm deep overall

£400-600



439





440

440 λ
Jorge Aguilar-Agon (Spanish b.1936)
Another Day Another Dream
Oil on canvas
Signed (lower right) titled to stretcher (verso)
51 x 61cm (20 x 24 in.)

£300-500



441

441 λ
Jorge Aguilar-Agon (Spanish b.1936)
Périgord
Oil on canvas
Signed (lower right) titled to stretcher (verso)
46 x 56cm (18 x 22 in.)

£300-400



442

442
A mahogany, ebonised and gilt
metal mounted commode, in
Continental style, late 20th century,
96cm high, 120cm wide, 49cm deep

£300-500



444

443 λ
Jorge Aguilar-Agon (Spanish b.1936)
I Remember Paris
Oil on canvas
Signed (lower left) titled to stretcher (verso)
51 x 61cm (20 x 24 in.)

£300-500



443

444
A carved ebonised wood figure of a Blackamoor, early 20th
century, modelled carrying a birdcage, 39cm high

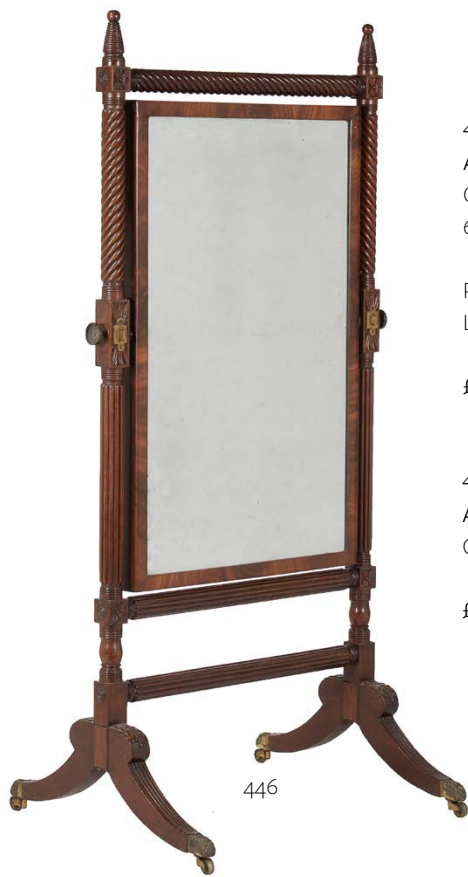
£200-300



445

445
A painted wood oval centre table,
with tilt top, in Venetian style,
approximately 73cm high, 123cm
wide, 88cm deep

£700-900



446

A George IV mahogany cheval mirror, circa 1825, in the manner of Gillows, with turned supports and paterae, 164cm high, 79cm wide, 64cm deep

Provenance:

Little Wolford Manor, Warwickshire

£500-800

447

A William IV mahogany dressing table, circa 1835, in the manner of Gillows, 81cm high, 106cm wide, 54cm deep

£400-600



447



448

448

A Regency mahogany and ebonised inlaid secretaire chest of drawers, circa 1815, the top drawer enclosing a fitted interior, 106cm high, 98cm wide, 43cm deep

£300-500



449

A Regency mahogany wardrobe or compactum, circa 1820, in the manner of Gillows, the central cupboard doors enclosing an arrangement of slides, 203cm high, 222cm wide, 59cm deep

£1,500-2,000

449

450

A Kashan style carpet, signed, approximately 367 x 461cm

Provenance:

Little Wolford Manor, Warwickshire

£600-800



450



451 (set of eight)

451

A set of eight George III dining chairs, late 18th century, to include a pair of armchairs, each with Gothic arches to the shield backs

£500-700

452

A George III mahogany serpentine serving table, circa 1780, on straight tapering legs, 79cm high, 168cm wide, 72.5cm deep

£500-800



452

453 Y

A George III mahogany and tulipwood banded oval urn stand, late 18th century, 76cm high

£300-500

454

A grained mahogany tray on stand, late 18th/early 19th century, 57cm high, 81cm wide, 57cm deep

£400-600



454



453



455

455

A George III mahogany and line inlaid side table, late 18th century, of semi-elliptical outline, 73cm high, 137cm wide, 64.5cm deep

£300-500

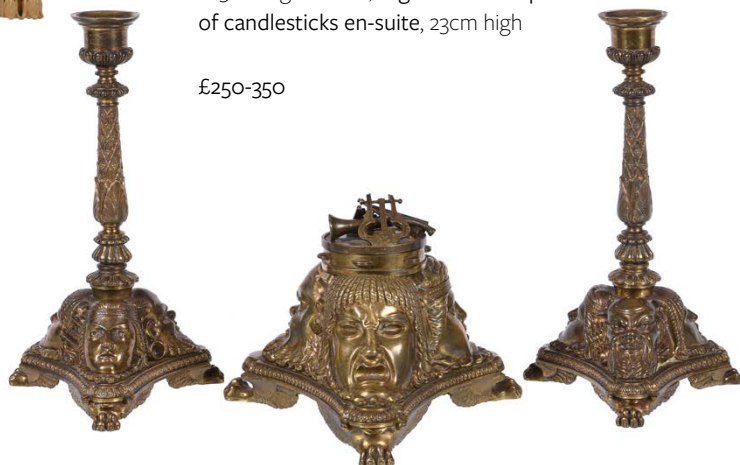


456

456

A gilt wood mirror, 19th century, the cresting with motifs of war, 145cm high, 86cm wide

£300-500



457

457

A French bronze inkwell, second half 19th century, of tripartite form, with three faces, possibly representing classical civilisation, with hinged lid surmounted with musical trophies and enclosing a well, on winged paw feet, 12.5cm high overall, together with a pair of candlesticks en-suite, 23cm high

£250-350



458

458

A grey painted wall-mounted console table, in French taste, 20th century, with marble top, 59.5cm high, 94cm wide, 35cm deep

£300-500



460

459

A pair of French patinated and gilt bronze five light candelabra in Neoclassical style, late 19th century, each with avine finial, 80cm high

£200-400



459

460

A French oak filing cabinet or cartonier, early 20th century, with three banks of leatherette filing drawers, each secured by a Wellington action, 207cm high, 141cm wide, 38cm deep

£1,000-1,500

461

A pair of white painted and blue upholstered stools, in French late 18th century taste, each 48cm high, 99cm wide, 49cm deep

£300-600



461



462

462 λ

Julian Novorol (British b.1949)

A High Cock

Oil on canvas

Signed and dated 1987 (lower right)

41 x 61cm (16 x 24 in.)

Provenance:

The Keyser Gallery at Farlow's, London, No.19

£200-300

463

A George III mahogany wardrobe, circa 1780, the interior later lined and with a hanging rail, 208cm high, 148cm wide, 57cm deep

Provenance:

Private Collection, The Old Rectory, Gloucestershire

£300-500



463

464

A mahogany butler's tray on stand, the tray circa 1800, the shaped sides pierced with handles, the stand later, 61cm high, 95cm wide, 62cm deep

£200-300



464

465

Follower of Richard Ansdell

Spaniel on the hunt

Oil on canvas

Bears signature and dated 1865 (lower right)

61 x 91.5cm (24 x 36 in.)

£300-500



465

466

A George II mahogany chest of drawers, circa 1755, of small proportions, with brushing slide, 81.5cm high, 83cm wide, 46cm deep

£600-800



466

467

A George III mahogany and line inlaid bedside commode, circa 1780, with tambour door above two drawers, 79cm high, 56cm wide, 51cm deep, together with another George III mahogany bedside commode, 78cm high, 52cm wide, 48cm deep (2)

Provenance:

Little Wolford Manor, Warwickshire

£600-800



467



468

468
A set of three walnut and mirrored wall ornaments, of architectural form, comprising a central larger piece, 34cm high, and a garniture of two smaller pieces, 19cm high

£200-300



469

469
A Dutch walnut and marquetry inlaid writing desk, early 18th century, the hinged top enclosing an arrangement of drawers, 87cm high, 121cm wide, 74cm deep

£1,000-1,500

470
A pair of giltwood and composition, blue velvet upholstered armchairs, in Louis XV style, 20th century, each 78cm high

£400-600



470

471
A Continental giltwood and composition marginal wall mirror, 19th century, with mermaid decoration to the surmount 115cm high, 75cm wide

£600-800



471

472
A Louis XV carved giltwood and painted sofa, third quarter 18th century, upholstered in orange silk damask and raised on cabriole legs. 191cm wide overall

Provenance:
Provenance: Purchased in these rooms, Ballyedmond Collection, lot 140, 30th July 2020

£800-1,200



472



473

473

A reverse painted glass portrait of a gentleman in Indian dress, portrayed wearing turban and robes, framed, 59cm high, 45cm wide overall

£150-250

474

A of green glazed figures in Tang style, each 27cm high

£150-250



474

475

An Asian polychrome painted wood figure on horse back, in the manner of Tang pottery examples, later mounted on an oak lamp base, 42cm high overall

£300-400



475

476

A reverse painted glass portrait of a gentleman on horseback, portrayed wearing turban and robes, and with text tablet, framed, 58cm high, 42cm wide overall

£250-350



476



477

477

A Thai polychrome and parcel gilt wood figure of a Buddha, on an ebonised and parcel gilt stepped circular base, 39cm high overall

£200-300

478

An Indian stucco head, South India, the head 16cm high x 15cm wide, mounted on wood stand

Provenance:

Purchased from Natesans in Mumbai in 2007, and with photographic original receipt.

£250-350



478



479 (set of six)

479

A set of six George III mahogany dining chairs, circa 1800, with bead mouldings throughout

£300-400



480

480

A pair of mahogany side cabinets in George III style, last quarter 20th century, each 86cm high, 101cm wide, 51cm deep

£700-1,000



481

A reverse painted glass portrait of a forlorn lady, portrayed before a tree, with sad expression and wilted blue flower, 60cm high, 44cm wide overall

£150-250



481



482

482Y

A George III mahogany, tulipwood banded and inlaid card table, circa 1790, 73cm high, 111cm wide, 55cm deep

£600-900

483

A George III mahogany sofa table, circa 1790, 70cm high, 152cm wide, 62cm deep

£700-1,000



483



484

A brass hexagonal hall lantern, late 19th/early 20th century, with a band cast with roses and thistles above six scroll supports suspending the lantern, 84cm high, 60cm diameter

£800-1,200

485

A white painted pier or overmantel wall mirror, first half 19th century, 169cm high, 73cm wide

£400-600



486Y

A George IV rosewood pedestal side table, circa 1825, with frieze drawers to the shortest sides and false drawer fronts to the longest sides, 73cm high, 72cm wide, 43cm deep

£400-600



485



487

487

A Derby green ground and gilt French Revolutionary Wars Naval action cabaret service, painted by George Robertson, circa 1800, each piece with a naval scene from the engagement between the French frigate *La Loire* and the brig-sloop *H.M.S. Kangaroo* on 18th October 1798, comprising: a shaped oval two-handled tray, 40cm in length; a sugar box and cover; an oval section teapot and cover; and two cans and saucers, blue scripts factory marks and titled scenes

Provenance:

A private English collection and by descent.

See John Twitchett, *Derby Porcelain*, (1980), p. 216, pl. 267 for a remarkably similar if not the identical service.

Please see our website for the footnote regarding H.M.S. Kangaroo.

£1,000-1,500

488Y

A George IV rosewood centre table, circa 1830, 73cm high, 124cm diameter

£500-800



488



489

489
An oak suite of dining furniture, manufactured by Brights of Nettlebed, comprising: an extending dining table, in refectory style, with rounded ends and two loose leaves, 75cm high, the top, 170cm long (unextended), 119cm wide, 270cm long (extended), and a set of eight ladder back dining chairs, in 18th century style, to include a pair of armchairs, all with a drop in seat

£300-500



489 (set of eight)



490

490
A Veramin carpet, approximately
387 x 296cm

£1,500-2,500

491 Y

An ebonised and tortoiseshell veneered table cabinet, late 17th century and later, in the form of a miniature chest of drawers, 22cm high, 27cm wide, 14cm deep

£400-600



491



492

492

A pair of oak and green leather upholstered side chairs, early 18th century and later, each 100cm high

Provenance:
Little Wolford Manor, Warwickshire

£400-600

493

A pair of polychrome painted dummy boards, 19th century, modelled wearing 17th century dress, 99cm and 98cm high respectively

£300-500



493



494 (set of 24)

494

A set of twenty-four decorative coloured prints of British birds' eggs, after drawings originally published for Reverend Canon Atkinson's book, *British Birds' Eggs and Nests*, overall inc. frame 22.5 x 17.2cm (8 7/8 x 6 3/4in.) (24)

£200-300

495

A three seat sofa, modern, supplied by Toni Facella, upholstered in crimson cut-velvet with gold and crimson piping and with bullion fringing, 91.5cm high, 241cm wide, 104cm deep

£1,500-2,000



495

496

A Venetian cut glass wallmirror, in 18th century style, early 20th century, 104cm high, 57cm wide

£200-300

497

A pair of painted console tables with simulated marble tops, modern, 82cm high, 136cm wide, 58cm deep

£500-800



496



497





498

498

A Limoges porcelain Sevre-style turquoise-ground quatrefoil section box and hinged cover, mid 20th century, the cover painted with a Watteauesque scene, painted Sevre-style mark and inscribed *MADE IN FRANCE*, 40cm in length

£300-500

499

A North Italian walnut, fruitwood and marquetry inlaid table, 18th century, the top inlaid with a musical trophy, 79.5cm high, 96cm wide, 71cm deep

£1,200-1,800



499



500

500

A Louis XVI cream painted fauteuil, by Jean-Baptiste-Claude Sene, late 18th century, with stamps to underside of front seat rail 'J. B. SENE' and 'JME', 93cm high, 60cm wide, 51cm deep overall

£300-500

501

A giltwood rectangular wall mirror in Louis XVI style, 19th century, 149cm high, 86.5cm wide

£700-1,000



501

502

A Continental walnut and inlaid bureau, dated 1752, the fall enclosing a fitted interior, 116cm high, 119cm wide, 61cm deep

Provenance:
Private Collection,
The Old Rectory,
Gloucestershire

£600-800



502



503

503

A group of silk appliqué fragments, first half 18th century, trailing flowers and foliage, in need of remounting, the longest element approximately 150cm long

Similar crewel-work fragments can be found mounted on the set of chairs and four-poster bed recently sold in these rooms removed from Weston Hall and worked by Susanna Jennens (1688-1760), probably in the 1730s-40s.

£150-250



504

504

A George III mahogany card table, circa 1770, of serpentine outline, 73cm high, 91cm wide, 44cm deep

£400-600



505

505

A George III mahogany chest of drawers, circa 1780, with slide above the arrangement of drawers, the top drawer with hinged front, and with flanking carrying handles, 83cm high, 77cm wide, 50cm deep

£400-600



506

506

A George III giltwood wall mirror, late 18th century, 84cm high, 64cm wide

£600-800

507

A pair of polychrome painted console tables in George III style, of recent manufacture, each with a painted satinwood top above the cream painted and parcel gilt legs, 82cm high, 99cm wide, 47cm deep

£1,000-1,500



507





508
A pair of mahogany whatnots in Regency style,
early 20th century, each with five tiers, 147cm high,
92cm wide, 37cm deep

£800-1,200



509
A Bidjar rug, approximately 360 x 268 cm

£500-800

509



510

Continental School
(20th/21st century)
Reclining nude with tambourine
Oil on canvas
Indistinctly signed ?T. Richard
(lower right)
60 x 120cm (23½ x 47 in.)

£300-500



510



511

511

A pair of mahogany oval two tier side or occasional
tables, recently manufactured by Nick Coryndon, 65cm
high, 153cm long, 51cm wide,

£250-350

512

A set of six Regency mahogany dining chairs, circa 1815,
to include two armchairs, each with ropetwist cresting
rails above oval horizontal splats and moulded frames

£500-800



512 (set of six)



513

513

A Victorian giltwood and composition wall mirror, mid 19th century, 134cm high, 105cm wide

£300-500

514

A pair of gilt metal wall appliques in louis XVI style, 20th century, each with twin arms, the backplate 32cm high, another similar example, 37cm high, and a red painted hanging ceiling light, with three candle arms and various drops, approximately 45cm high

£200-300



514



515

515

A calamander and ebonised card table in French taste, circa 1870, in the manner of Gillows, the hinged top enclosing a playing surface and counter wells, 75cm high, 81cm wide, 43cm deep

£600-800



516



516

Sidney Pike (British 1858-1923)
Highland cattle in a landscape, a pair
Oil on board
Each signed and dated 1905 (lower left)
31.5 x 25.5cm (12¼ x 10 in.) (2)

£300-500



517

517

A mahogany bow front chest of drawers, circa 1840, possibly Continental, 102cm high, 107cm wide, 52cm deep

£300-500

518

An oak and red leather 'Burgomeister' armchair, 73cm high, 71cm wide, 65cm deep

£400-600



518



519

519

Italian School (19th Century)

Four Italian views, to include: Padua sept. '82; Verona Piazza S. Anastasia sept. 28. '82; Venice San Marco sept. 23. '82.

Watercolour, pencil and bodycolour
Three views variously inscribed and each dated '82

Each 20 x 15cm (7¾ x 5¾ in.) (4)

£250-350



521

521

A mahogany kidney shaped writing table, mid 19th century, the top with ratcheted writing surface, 81cm high, 118cm wide, 63cm deep

Provenance:
Little Wolford Manor, Warwickshire

£300-500



520

520

After Leon Pilet, (French, 1836-1916), A bronze figure of Minnehaha, early 20th century, the cast stamped 'PILET et BACON', 45.5cm high

Provenance:
From the collection of the late Selwyn Demmy
Minnehaha is a fictional Native American woman documented in *The Song of Hiawatha*, the 1855 epic poem by Henry Wadsworth Longfellow

£400-600

522

A mahogany library drum table, mid 19th century, with leather inset top above an arrangement of frieze drawers and false drawer fronts, 73cm high, 88cm diameter

£600-800

523

A Tabriz carpet, approximately 382 x 276cm

£700-1,000



522

523





524
A pair of French second Empire gilt metal and bronze four light candelabra, circa 1860, each with central stem above three scrolling branches, scrolling foliate bases, six later glass candle fitments, each 57.5cm high overall

£400-600

525
A carved walnut desk, late 19th century, the top with three frieze drawers above two banks of drawers and central cupboard to the knee-hole, 79cm high, 115cm wide, 67cm deep

£600-800



526
A William IV oak cheval mirror, circa 1835, the arched rectangular frame with lappet carved and spirally fluted supports, the base with porcelain castors, 163cm high, 90cm wide, 65cm deep

£500-800

527
A gilt brass and moulded glass table lamp, 20th century, wired for electricity, 57cm high including electrical fitment

£200-300



527

528
A William IV oak console table, circa 1835, carved with stylised flowerheads, the lappet carved front scrolling legs with roundels, 106.5cm high, 129cm wide, 54cm deep

£400-600



526



528



529

A group of three giltwood wall mirrors, late 20th century, the largest mirror with foliate cresting, 132cm high, 83cm wide, one mirror with mirrored frame, 96cm high, 69cm wide, the smallest mirror, 89cm high, 69cm wide

£300-500

529 (part lot)

530 Y

A mahogany and ebony strung side cabinet or secretaire, probably Russian, circa 1820, the superstructure with arrangement of drawers and central cupboard doors above the base with slide and arrangement of three further drawers, 118cm high, 73cm wide, 54cm deep

£500-800



531

531

A mahogany, ebonised, and inlaid commode, probably Russian, early 19th century, 87cm high, 107cm wide, 63cm deep

£800-1,200



530



532 (set of seven)

532

A set of seven Korean woven pictures of birds, late 20th century, depicting; a Kestrel, three wagtails, a pair of three pigeons and doves, Robin and dunnoek, magpie, a moorhen and mallard, all unframed approximately 41 x 32

£300-500



533

533

A Chinese boxwood model of Shou Lao, late Qing Dynasty, carved standing holding a staff and peach, bone inlaid eyes, 45cm high

Provenance: Private English collection by direct family descent to the current owner.

晚清 黄杨木雕寿老

拍品来源：英国私人家族收藏

£150-250

534

An Italian walnut and parquetry refectory table, second half 20th century, in late 18th/early 19th century style, the drawers to each end enclosing a folding additional leaf extensions, 78cm high, 214cm wide (without extensions) 90cm deep

£400-600



534



535

535
Grigori Gordon
(Russian, 1909-1995)
Place For Sand, Near Red Square
Oil on canvas
Signed (lower right) signed in Cyrillic
to canvas (verso) further inscribed
and dated 1948 to stretcher (verso)
26 x 36cm (10 x 14 in.)

Provenance:
Cooling Gallery, London.
Exhibited:
Fracture Gallery, London, 1989, No.7

£200-300



536

536
A Russian mahogany and gilt brass
secretaire a abattant, 19th century,
the stepped top above a drawer, the
hinged front and three long drawers,
on fluted tapering feet, 152cm high,
92cm wide, 45cm deep

£700-1,000



537

537
Grigori Gordon (Russian 1909-1995)
In The Beach, In Hosta
Oil on board
Signed (lower right) signed in Cyrillic
and dated 1953 (verso)
29 x 45cm (11¼ x 17½ in.)

Provenance:
Cooling Gallery, London.
Exhibited:
London, Fracture Gallery, 1989, No. 42

£200-300



538

538
A burr birch oval table,
possibly Baltic, on four
angular cabriole legs, two
indistinct ink round stamps
to the underside, 77cm high,
83cm wide, 41cm deep

£200-300



539

Hilda Mary Sides (British 1871-?)

Views of a country estate and the grounds

Watercolour

Each signed and four dated 1924

Various sizes, the largest 40 x 56cm (15½ x 22 in.) (5)

£300-500

540

A mahogany and line inlaid cheveret writing table, early 19th century, with lift-off book-trough superstructure, the frieze drawer enclosing a writing slide and stationary compartments, 111cm high, 51cm wide, 40cm deep

£200-400



540



541

541

A mahogany pedestal desk, in Regency style, late 19th/early 20th century, 72cm high, 121cm wide, 79cm deep

£300-500

542

A Regency mahogany clothes press, circa 1815, the panel doors enclosing five slides, 206cm high, 128cm wide, 56cm deep

£800-1,200



542

543

A late George III mahogany chest of drawers, circa 1810, with brushing slide, 92cm high, 109cm wide, 61cm deep

£500-800



543



544 λ
Jean-Louis Corby, (French, born 1951), a bronze model of a futuristic warrior, modelled on a small circular base with Greek key border, inscribed *Corby E A II/IV* and *FBL* and other indistinct foundry marks, 35cm high

£150-250

544



545 λ
Ella Goulden (20th century), a bronze sculpture of a female figure, modelled reclining on a day bed, on a variegated green marble base, with an applied plaque, named for the artist, the base 23cm long

£150-250

545



546
David Linley, a simulated rosewood quarter veneered and parcel gilt veneered desk, of recent manufacture, 79cm high, 76cm wide, 75cm deep

£400-600

546



547
A large cold painted terracotta figure of a lady 'Fee aux Eaux', late 19th/early 20th century, titled and indistinctly signed to the base, 64cm high

£300-500

547



548
After Ferdinando de Luca (Italian, 20th century), Champagne Girl, a patinated bronze model of a seated flapper with her champagne coup, seated upon an Art Nouveau style stool, bearing F de Luca signature to her rear, 78cm high overall

£1,000-1,500

548



549
A pair of wrought Iron panels, possibly Spanish, each with open scrollwork and fleur-de-lys, each 150 x 76cm overall

£300-500

550
A Victorian painted iron, wood and wicker child's pram, mid 19th century, with 'Penny Farthing' wheels, 79cm high, 121cm long

£300-500



550



551

551
A French gilt bronze fender, early 19th century, with classical male profiles in roundels, the front pierced and applied with cast lyres and anthemion, 23cm high, 110cm wide, 7.5cm deep

£400-600

552
Two stained glass and leaded window panels, early 20th century, of Masonic interest, one dated 1912 and inscribed for George Traill, mounted in a window frame 77cm high, 57cm wide, the other with the Traill family motto 'Discriminae Salus', mounted in a window frame 109cm high, 57cm wide

Please see our website for the full footnote regarding this lot.

£200-300



552

553
A group of twelve stained glass and leaded window panels, early 20th century, each incorporating a central motif with a sign of the Zodiac, various sizes, some mounted in window frames, the largest 110cm high, 57cm wide, the smallest 71cm high, 51cm wide

£500-800



553 (group of 12 lot)



554

554

An Aristocrat 'Nevada' poker machine, designed by Len Ainsworth in 1960 this machine later, to take 5ps, and fitted with INCA GOLD game, in an Aristocrat simulated rosewood laminate cabinet, numbered FA 1595 to one side, 145cm high overall

£500-800



555

555

A 'Deci-Bell' (Jennings) one armed bandit, on first 5 new pence play, coin escalator, illuminated coin head, win line with mask and Tic Toe totalisator, bronze Red Indian head above jackpot window, in chrome case, with US Patent numbers to rear, on a simulated rosewood veneered stand base, 153cm high overall

£400-600

556

A large wrought iron and wood garden table, second half 20th century, the octagonal top above the scrollwork base, with a central and four outer supports, 80cm high, the top 185cm x 184cm

£250-350



556

557

A large pair of terracotta twin handled garden urns, 20th century, each 77cm high, approximately 80cm wide overall

£250-350



557

558

A pair of stone composite cast garden tub chairs, 20th century, in 18th century style, 84cm high, 56cm wide

£200-300



558

Please see Conditions of Business and Conditions of Sale on the following pages.

Dreweatts & Dreweatts 1759 are trading names of Dreweatts 1759 Ltd. Dreweatts 1759 Ltd is registered in England, company number: 10758982, registered office: Minerva House | Lower Bristol Road | Bath BA2 9ER.

Important Notices

BUYING AT DREWEATTS

There are several ways you can bid at a Dreweatts auction; in person, by leaving a commission or absentee bid, on the telephone where available and live via the internet – please make arrangements before the sale. THIS NOTICE APPLIES ONLY TO A PERSON WHO WISHES TO BID IN PERSON, OR BY LEAVING A COMMISSION OR ABSENTEE BID, AT A DREWEATTS PUBLIC AUCTION. For bidding at an online auction or for online bidding at a public auction please see our Online Auction Terms published on our website at www.dreweatts.com.

BIDDING IN PERSON

If intending to buy you are required to register your name and details at reception prior to the commencement of the auction. You will be required to provide a proof of identity and address to register for bidding. You will then be allocated a bidding number, which you use when bidding for an item.

COMMISSION BIDS

Dreweatts will execute bids on your behalf if you are unable to attend the sale. Commission or absentee bids are accepted either directly at reception, or can be sent by post, fax, email, telephone or via the website: www.dreweatts.com.

Dreweatts will add these bids to the auctioneers' sale book and will undertake to purchase the lots on your behalf as cheaply as allowed by other bids and reserves. If two buyers submit identical commission bids Dreweatts may prefer the first bid received.

Dreweatts does not accept liability for failing to execute commission bids, or for any errors or omissions.

CONDITION

Bidders must satisfy themselves as to the condition of each lot. Condition reports are available on request – see the Conditions of Business at the back of this catalogue forming part of these Auction Terms and Conditions for more information regarding condition reports. Requests for condition reports must be submitted by 4pm on the day prior to the auction; condition reports may be available alongside the lot description on the online catalogue at: www.dreweatts.com.

COMMISSION CHARGES

All purchases are subject to a buyer's premium, which is charged per lot at 25% of the hammer price (30% including VAT) up to and including £500,000, 20% (24% including VAT) of the hammer price from £500,001 up to and including £1,000,000 and 12% of the hammer price (14.4% including VAT) in excess of £1,000,000. A theta symbol (Θ) indicates that the lot is a zero rated item and therefore not subject to VAT on the buyer's premium. This applies to bound books (manuscripts and printed), unframed maps and albums. In the event the lot has a dagger (†) beside the lot number in the catalogue, this indicates that the lot is owned by an entity or company required to pay VAT (generally not an Antique Dealer, as they operate under a dealers margin scheme). VAT is payable at 20% on the Hammer Price. Lots marked with a double dagger (§) (presently a reduced rate of 5%) or Ω (presently at standard rate of 20%) have been imported from outside the UK to be sold at auction and therefore the buyer must pay the import VAT at the appropriate rate on the hammer price.

PAYMENT

Payment will be accepted, if you are a successful bidder, by debit card issued in the name of the Buyer by a UK bank and registered

to a UK billing address; by all major UK issued credit cards issued in the name of the Buyer and registered to a UK billing address with the exception of American Express and Diners Club; by bank transfer direct into our bank account, Bank Details: NatWest, 30 Market Place, Newbury, Berkshire RG14 5AG. Account Name: Dreweatts 1759 Ltd. A/C: 62412949, Sort Code: 60-15-07, BIC: NWBKGB2L, IBAN: GB21NWBK60150762412949. The name of the bank account holder should match the name of the buyer. First time buyers who are not present at the saleroom are requested to pay by bank transfer.

Y CITES REGULATIONS

Please note that lots marked with the symbol (Y) in this catalogue may be subject to CITES Regulations when exported. Relevant CITES Regulations may be found at www.gov.uk/guidance/cites-imports-and-exports.

COLLECTION OR DELIVERY

Before being able to collect your purchases you are required to pay the hammer price, plus the applicable commissions, and obtain a receipt acknowledging payment. Collection of the purchased lots is at the purchaser's risk and expense and whilst Dreweatts do not provide packing and despatch service we can suggest some carriers.

Dreweatts also require that all purchased items are collected within four working days of the sale to avoid a storage charge being applied.

STORAGE CHARGES

All items not collected by 4pm, within four working days of the sale, will be automatically removed to commercial storage and subject to a minimum storage charge of £20 (plus VAT) per lot and to a further storage charge of £2 (plus VAT) per lot per part or full day thereafter. These charges will be the sole liability of the purchaser and will be billed directly to them by Vangaroo Ltd (Andover); Vangaroo may be willing to adjust their charges if they are instructed by the purchaser to deliver to them. On payment of all sales and storage costs, items will be available for collection by appointment from Vangaroo Ltd (Andover), tel: 01264 586566, mobile: 07528 291180, email: office@vangaroo.co.uk. These charges are set by Vangaroo Ltd (Andover); we recommend that you contact them directly regarding queries relating to these charges and other questions relating to storage. Staff at the saleroom will be unable to answer questions relating to items that have been removed from the saleroom.

FURTHER INFORMATION

The colours printed in this catalogue are not necessarily a true reflection of the actual item. All weights and measures given in the catalogue should be regarded as approximate.

VALUATION SERVICES

Dreweatts provides a range of confidential and professional valuation services to private clients, solicitors, executors, estate managers, trustees and other professional partners. These services include auction valuations, insurance valuations, probate valuations, private treaty valuations, valuations for family division or for tax purposes. For more information, please see our website: www.dreweatts.com.

For directions to Donnington Priory, please see our website: www.dreweatts.com.

Parking is available at Donnington Priory in two car parks on either side of the saleroom.

Information for Buyers at Public Auctions

1. **INTRODUCTION.** The following notes are intended to assist Bidders and Buyers, particularly those inexperienced or new to our salerooms. All of our auctions and sales are conducted on our printed Auction Terms and Conditions, including these Conditions of Sale and Business, which are readily available for inspection and normally accompany catalogues. Our staff will be happy to help you if there is anything you do not fully understand.

Any particular auction and/or any particular lot in an auction may be subject to different or additional terms which will be published in our auction catalogue. All auctions and sales of wines and spirits, jewellery, watches and clocks are subject to the special terms set out in the relevant Notices in relation to those items published in our auction catalogue and, in the event of any conflict or inconsistency, those special terms prevail over any other terms in our Auction Terms and Conditions. By bidding at the auction, you agree to be bound by these terms.

2. **AGENCY.** As auctioneers we usually act as agents for the seller whose identity, for reasons of confidentiality, is not normally disclosed. Accordingly if you buy at auction your contract for the item or items purchased is with the seller and not with us as the auctioneer.

3. **ESTIMATES.** Estimates are designed to help buyers gauge what sort of sum might be involved for the purchase of a particular lot. Estimates may change and should not be thought of as the sale price. The lower estimate may represent the reserve price and certainly will not be below it. Estimates do not include the Buyer's Premium or VAT (where chargeable). Estimates are prepared some time before the sale and may be altered by announcement before the sale. They are in no sense definitive.

4. **BUYER'S PREMIUM.** The Conditions of Sale forming part of our Auction Terms and Conditions require the buyer to pay a buyer's premium on the hammer price of each lot purchased. The buyer's premium is 25% of the hammer price up to and including £500,000, 20% of the hammer price from £500,001 up to and including £1,000,000, and 12% of the hammer price in excess of £1,000,000. VAT at the prevailing rate of 20% is added to buyer's premium and additional charges as defined below.

5. **VAT.** A theta symbol (Θ) indicates that the lot is a zero rated item and therefore not subject to VAT on the buyer's premium. This applies to bound books (manuscripts and printed), unframed maps and albums. A dagger symbol (†) indicates that VAT is payable by the purchaser at the standard rate (presently 20%) on the hammer price as well as being and element in the buyers' premium. This imposition of VAT is likely to be because the seller is registered for VAT within the European Union and is not operating the Dealers Margin Scheme or because VAT is due at 20% on import into the UK. A double dagger (§) indicates that the lot has been imported from outside the UK and these lots are liable to the standard rate of Import VAT currently 20% on the hammer price. Lots which appear without the above symbols indicate that no VAT is payable on the hammer price; this is because such lots are sold using the Auctioneers Margin Scheme and it should be noted that the VAT included within the buyers' premium is not recoverable as input tax.

6. **DESCRIPTION AND CONDITION.** Condition reports are provided on our website or upon request. The absence of a report does not imply that a lot is without imperfections. The detail in a report will reflect the estimated value of the lot. Large numbers of such requests received shortly before the sale may mean that reports cannot be provided for all lots. Members of staff are not trained restorers or conservators and, particularly for higher value lots, you should obtain an opinion from such a professional. Dreweatts is not liable for damage to gilded picture frames, plaster picture frames or picture frame glass; if a Lot is or becomes dangerous, we may dispose of it without notice to bidders in advance in any manner we see fit and will be under no liability for doing so. We recommend that you always view a lot in person.

We are dependent on information provided by the seller about a lot and whilst we may inspect lots and act reasonably in taking a general view about them we are normally unable to carry out a detailed examination and frequently no examination of lots in order to ascertain their condition in the way in which it would be wise for a buyer to do. Intending buyers have ample opportunity for inspection of goods and, therefore, accept responsibility for inspecting and investigating lots in which they may be interested and the corresponding risk should they not do so. Please note carefully the exclusion of liability for the condition of lots contained in the

Conditions of Sale. Neither the seller nor we, as the auctioneers, accept any responsibility for their condition. In particular, mechanical objects of any age are not guaranteed to be in working order. However, in so far as we have examined the goods and make a representation about their condition in the auction catalogue, we shall be liable for any defect which is not reflected in that representation and which that examination ought to have revealed to the auctioneer but which would not have been revealed to the buyer had the buyer examined the goods. Additionally, in specified circumstances lots misdescribed because they are 'deliberate forgeries' may be returned and repayment made. There is a 3 week time limit. (The expression 'deliberate forgery' is defined in our Conditions of Sale).

7. **ELECTRICAL GOODS.** These are sold as 'antiques' only and if bought for use must be checked over for compliance with safety regulations by a qualified electrician before use.

8. **EXPORT OF GOODS.** Buyers intending to export goods should ascertain (a) whether an export licence is required and (b) whether there is any specific prohibition on importing goods of that character because, e.g. they may contain prohibited materials such as ivory. Ask us if you need help.

Following the UK's exit from the European Union, private overseas buyers can only receive goods free of VAT/have the VAT amount refunded if Dreweatts acts as exporter in relation to the sale and arranges for the transport of the goods. If you would like us to arrange for the export and delivery of the goods there will be an admin fee of £100 plus the shipping cost. If you arrange for the goods to be picked up/delivered to you directly we will charge UK VAT at the appropriate rate and no refund will be available. Please note that if we export the goods to you, you will be responsible for completing the importation procedures as well the payment of any relevant duty/VAT payable on importation into your country. Business buyers are not affected by this change where the purchase has been made in the business or trading name and a VAT refund will be available on proof of export.

9. **BIDDING.** Bidders will be required to register before the sale commences and lots will be invoiced to the name and address on the sale registration form. Bidders are required to provide a government issued identity document and a proof of address. Please enquire in advance about our arrangements for telephone bidding.

10. **COMMISSION BIDDING.** Commission bids may be left with the auctioneers indicating the maximum amount to be bid excluding buyers' premium. Dreweatts will add these bids to the auctioneers' sale book and they will be executed as cheaply as possible having regard to the reserve (if any) and competing bids. If two buyers submit identical commission bids the auctioneers may prefer the first bid received. Please enquire in advance about our arrangements for the leaving of commission bids by telephone or fax. Dreweatts does not accept liability for failing to execute commission bids, or for any errors or omissions.

11. **METHODS OF PAYMENT.** Payment will be accepted, if you are a successful bidder, by debit card issued in the name of the Buyer by a UK bank and registered to a UK billing address; by all major UK issued credit cards issued in the name of the Buyer and registered to a UK billing address with the exception of American Express and Diners Club; by bank transfer direct into our bank account, Bank Details: NatWest, 30 Market Place, Newbury, Berkshire RG14 5AG. Account Name: Dreweatts 1759 Ltd. A/C: 62412949, Sort Code: 60-15-07, BIC: NWBKGB2L, IBAN: GB21NWBK60150762412949. The name of the bank account holder should match the name of the buyer. First time buyers who are not present at the saleroom are requested to pay by bank transfer.

12. **COLLECTION AND STORAGE.** Please note what the Conditions of Sale state about collection and storage. It is important that goods are paid for and collected promptly. Any delay may involve the buyer in paying storage charges.

13. **À DROIT DE SUITE ROYALTY CHARGES.** From 1st January 2012 all UK art market professionals (which includes but is not limited to; auctioneers, dealers, galleries, agents and other intermediaries) are required to collect a royalty payment for all works of art that have been produced by qualifying artists each time a work is re-sold during the artist's lifetime and for a period up to 70 years following the artists death. This payment is only calculated on qualifying works of art which are sold for a hammer price more than the UK sterling equivalent of EURO 1,000 – the UK sterling equivalent will fluctuate in line with prevailing exchange rates. It is entirely the responsibility of the buyer to acquaint himself with the precise EURO to UK Sterling exchange rate on the day of the sale in this regard, and the auctioneer accepts no responsibility whatsoever if the

qualifying rate is different to the rate indicated. All items in this catalogue that are marked with λ are potentially qualifying items, and the royalty charge will be applied if the hammer price achieved is more than the UK sterling equivalent of EURO 1,000. The royalty charge will be added to all relevant buyers' invoices, and must be paid before items can be cleared. All royalty charges are passed on to the Design and Artists Copyright Society (DACS), no handling costs or additional fees with respect to these charges will be retained by the auctioneers. The royalty charge

Terms of Consignment for Sellers in Public Auctions

The sale of goods at our public auctions and a seller's relationship with us are governed by our Auction Terms and Conditions including these Terms of Consignment for Sellers in Public Auctions and our Conditions of Sale for Public Auctions. Any particular auction and/or any particular lot in an auction may be subject to different or additional terms which will be published in our auction catalogue or separately announced prior to the auction. All auctions and sales of wines and spirits, jewellery, watches and clocks are subject to the special terms set out in the relevant Notices in relation to those items published in our auction catalogue and, in the event of any conflict or inconsistency, those special terms prevail over any other terms in our Auction Terms and Conditions. Please note that our Auction Terms and Conditions including these Terms of Consignment for Sellers in Public Auctions and our Conditions of Sale for Public Auctions relate to auctions held in our salerooms and we have separate terms and conditions for our online auctions.

If you, or another person acting on your behalf, provide goods to us to sell on your behalf at one of our auctions this signifies that you agree to and will comply with our Auction Terms and Conditions including these Terms of Consignment for Sellers in Public Auctions and our Conditions of Sale for Public Auctions.

1. **INTERPRETATION.** In these Terms the words 'you', 'yours', etc. refer to the Seller and if the consignment of goods to us is made by an agent or otherwise on the Seller's behalf we assume that the Seller has authorised the consignment and that the consignor has the Seller's authority to contract. All obligations that apply to the Seller under these Terms of Consignment for Sellers in Public Auctions shall apply to the owner of the goods and their agent jointly and separately. Similarly the words 'we', 'us', etc. refer to the Auctioneers.

2. **WARRANTY.** The Seller warrants that possession in the lots can be transferred to the Buyer with good and marketable title, free from any third party right and encumbrances, claims or potential claims. The Seller has provided all information concerning the item's ownership, condition and provenance, attribution, authenticity, import or export history and of any concerns expressed by third parties concerning the same.

3. **ALL COMMISSIONS** and fees are subject to VAT at the prevailing rate.

4. **COMMISSION** is charged to sellers and all selling terms are available from our salerooms.

5. **REMOVAL COSTS.** Items for sale must be consigned to the saleroom by any stated deadline and at your expense. We may be able to assist you with this process but any liability incurred to a carrier for haulage charges is solely your responsibility.

6. **LOSS AND DAMAGE OF GOODS**

(a) Loss and Damage Warranty - Dreweatts is not authorised by the FCA to provide insurance to its clients, and does not do so. However Dreweatts for its own protection assumes liability for property consigned to it at the lower pre-sale estimate until the hammer falls. To justify accepting liability, Dreweatts makes a charge of 15% of the hammer price plus VAT, subject to a minimum charge of £150, or if unsold 15% of our lower estimate. The liability assumed by Dreweatts shall be limited to the lower pre-sale estimate or the hammer price if the lot is sold. Dreweatts is not liable for damage to gilded picture frames, plaster picture frames or picture frame glass; if the Lot is or becomes dangerous, we may dispose of it without notice to you in advance in any manner we see fit and will be under no liability for doing so.

(b) If the owner of the goods consigned instructs us in writing not to take such action, the goods then remain entirely at the owner's risk unless and until the property in them passes to the Buyer or they are collected by or on behalf of the owner, and clause 6 (a) is inapplicable.

7. **ILLUSTRATIONS AND PHOTOGRAPHS.** The cost of any illustrations

that will be applied to qualifying items which achieve a hammer price of more than the UK sterling equivalent of EURO 1,000, but less than the UK sterling equivalent of EURO 50,000 is 4%. For qualifying items that sell for more than the UK sterling equivalent of EURO 50,000 a sliding scale of royalty charges will apply – for a complete list of the royalty charges and threshold levels, please see www.dacs.org.uk. There is no VAT payable on this royalty charge.

or photographs is borne by you. The copyright in respect of such illustrations and photographs shall be the property of us, the auctioneers, as is the text of the catalogue.

8. **MINIMUM BIDS AND OUR DISCRETION.** Goods will normally be offered subject to a reserve agreed between us before the sale in accordance with clause 9. We may sell Lots below the reserve provided we account to you for the same sale proceeds as you would have received had the reserve been the hammer price. If you specifically give us a "discretion" we may accept a bid of up to 10% below the formal reserve.

9. **RESERVES**

(a) You are entitled to place prior to the auction a reserve on any lot consigned, being the minimum hammer price at which that lot may be sold. Reserves must be reasonable and we may decline to offer goods which in our opinion would be subject to an unreasonably high reserve (in which case goods carry the storage and loss and damage warranty charges stipulated in these Terms of Consignment).

(b) A reserve once set cannot be changed except with our consent.

(c) Where a reserve has been set which we consider unreasonably high, an unsold charge will be payable in the event that the lots fail to sell, being the agreed selling terms calculated on the reserve, LDW at 15% and any photographic charges.

(d) Where a reserve has been placed only we may bid on your behalf and only up to the reserve (if any) and you may in no circumstances bid personally.

(e) Reserves are not usually accepted for lots expected to realise below £100.

10. **ELECTRICAL ITEMS.** These are subject to detailed statutory safety controls. Where such items are accepted for sale you accept responsibility for the cost of testing by external contractors. Goods not certified as safe by an electrician (unless antiques) will not be accepted for sale. They must be removed at your expense on your being notified. We reserve the right to dispose of unsafe goods as refuse, at your expense.

11. **SOFT FURNISHINGS.** The sale of soft furnishings is strictly regulated by statute law in the interests of fire safety. Goods found to infringe safety regulations will not be offered and must be removed at your expense. We reserve the right to dispose of unsafe goods as refuse, at your expense. The rights of disposal referred to in clause 10 and 11 are subject to the provisions of The Torts (Interference with Goods) Act 1977.

12. **DESCRIPTION.** Please assist us with accurate information as to the provenance, lawful import etc. of goods where this is relevant. There is strict liability for the accuracy of descriptions under modern consumer legislation and in some circumstances responsibility lies with sellers if inaccuracies occur. We will assume that you have approved the catalogue description of your lots and that your lots match those descriptions unless informed to the contrary. Where we are obliged to return the price to the buyer when the lot is a deliberate forgery under Condition 15 of the Conditions of Sale and we have accounted to you for the proceeds of sale you agree to reimburse us the sale proceeds and in any event within 7 days of our written notice to do so.

13. **UNSOLD.** If an item is unsold it may at our discretion be re-offered at a future sale. Where in our opinion an item is unsaleable you must collect such items from the saleroom promptly on being so informed. Otherwise, storage charges may be incurred. We reserve the right to charge for storage in these circumstances at a reasonable daily rate.

14. **WITHDRAWN AND BOUGHT IN ITEMS.** These are liable to incur a charge of 15% commission, 15 % Loss and Damage Warranty and any other costs incurred including but not limited to illustration and restoration fees all of these charges being subject to VAT on being

bought in or withdrawn after being catalogued.

15. **CONDITIONS OF SALE.** You agree that all goods will be sold on our Conditions of Sale for Public Auctions. In particular you undertake that you have the right to sell the goods either as owner or agent for the owner with good and marketable title and free and clear of any third party rights or claims. You undertake to compensate us and any buyer or third party for all losses liabilities, costs and expenses suffered or incurred arising out of or in connection with any breach of this undertaking. We will also, at our discretion, and as far as practicable, confirm that an item consigned for sale does not appear on the Art Loss register, which is administered by an independent third party.

16. **DUE DILIGENCE CHECKS AND ANTI-MONEY LAUNDERING PROCEDURES.** Under the money laundering regulations in force we are required to carry out relevant due diligence checks. This includes verifying the identity of all customers we transact with as well as any beneficial owners on behalf of whom they may transact. Vendors who are unable to or refuse to supply required identification documents and proof of address will not be able to consign to Dreweatts auctions. Copies of customer due diligence checks will be stored for as long as it is necessary to satisfy legal requirements in an appropriate storage facility, which for the avoidance of doubt may include storage solely in electronic form. We reserve the right to withhold the monies owed until the vendor provides the information necessary to complete the anti-money laundering checks.

17. **AUTHORITY TO DEDUCT COMMISSION AND EXPENSES AND RETAIN PREMIUM AND INTEREST**

(a) You authorise us to deduct commission at the stated rate and all expenses incurred for your account from the hammer price and consent

Conditions of Sale for Public Auctions

Dreweatts carries on business with bidders, buyers and all those present in the auction room prior to or in connection with a sale by auction at our salerooms on our Auction Terms and Conditions or Public Auctions including these Conditions of Sale for Public Auctions and all bidders, buyers and others participating in a public auction accept that these terms apply to the exclusion of any terms and conditions contained in any of those person's own documents even if the same purport to provide that that person's own or some other terms prevail. Any particular public auction and/or any particular lot in an auction may be subject to different or additional terms which will be published in our online auction catalogue. Please note that our Auction Terms and Conditions including these Conditions of Sale for Public Auctions relate to auctions held in one of our salerooms and we have separate terms and conditions for our online auctions.

1. **DEFINITIONS**

In these Conditions:

(a) "auctioneer" means the firm of Dreweatts or its authorised auctioneer, as appropriate;

(b) "deliberate forgery" means an imitation made with the intention of deceiving as to authorship, origin, date, age, period, culture or source but which is unequivocally described in the catalogue as being the work of a particular creator and which at the date of the sale had a value materially less than it would have had if it had been in accordance with the description;

(c) "hammer price" means the level of bidding reached (at or above any reserve) when the auctioneer brings down the hammer;

(d) "terms of consignment" means the stipulated terms and rates of commission on which Dreweatts accepts instructions from sellers or their agents;

(e) "total amount due" means the hammer price in respect of the lot sold together with any premium, Value Added Tax chargeable and any additional charges payable by a defaulting buyer under these Conditions;

(f) "sale proceeds" means the net amount due to the seller, being the hammer price of the lot sold less commission at the stated rate, Value Added Tax chargeable and any other amounts due to us by the seller in whatever capacity and however arising;

(g) "You", "Your", etc. refer to the buyer as identified in Condition 2.

(h) The singular includes the plural and vice versa as appropriate.

to our right to retain beneficially the premium paid by the buyer in accordance with our Conditions of Sale for Public Auctions and any interest earned on the sale proceeds until the date of settlement.

(b) In case of lots unsold at auction you authorise us at our discretion to reoffer such lots and negotiate a sale within seven days of the auction date, in which case the same charges will be payable as if such lots had been sold at auction and so far as appropriate these Terms apply.

18. **WAREHOUSING.** We disclaim all liability for goods delivered to our saleroom without sufficient sale instructions and reserve the right to make minimum warehousing charge of £10 per lot per day. Unsold lots are subject to the same charges if you do not remove them within a reasonable time of notification. If not removed within three weeks we reserve the right to sell them and defray charges from any net proceeds of sale or at your expense to consign them to the local authority for disposal.

19. **SETTLEMENT.** After sale settlement of the net sum due to you normally takes place within 28 days of the sale unless the buyer has not paid for the goods or the checks necessary under the current Money Laundering Regulations have not been completed. In this case no settlement will then be made but we will take your instructions in the light of our Conditions of Sale for Public Auctions. You authorise any sums owed by you to us on other transactions to be deducted from the sale proceeds. You must note the liability to reimburse the proceeds of sale to us as under the circumstances provided for in Condition 12 above. You should therefore bear this potential liability in mind before parting with the proceeds of sale until the expiry of 28 days from the date of sale.

2. **BIDDING PROCEDURES AND THE BUYER**

(a) Bidders are required to register their particulars before bidding by completing a sale registration form and to satisfy any security arrangements before entering the auction room to view or bid;

(b) Under the money laundering regulations in force we are required to verify the identity of all customers we transact with as well as any beneficiaries on behalf of whom they may transact. Customers who are unable to or refuse to supply required identification documents and proof of address will not be able to bid in Dreweatts auctions. Copies of customer due diligence checks will be stored for as long as it is necessary to satisfy legal requirements in an appropriate storage facility which for the avoidance of doubt may include storage solely in electronic form;

(c) the maker of the highest bid accepted by the auctioneer conducting the sale shall be the buyer at the hammer price and any dispute about a bid shall be settled at the auctioneer's absolute discretion by reoffering the Lot during the course of the auction or otherwise. The auctioneer shall act reasonably in exercising this discretion.

(d) Bidders shall be deemed to act as principals;

(e) Our right to bid on behalf of the seller is expressly reserved up to the amount of any reserve and the right to refuse any bid is also reserved.

3. **INCREMENTS.** Bidding increments shall be at the auctioneer's sole discretion.

4. **THE PURCHASE PRICE.** The buyer shall pay the purchase price together with a premium thereon of 30% which shall include VAT on the premium at the rate imposed by law. The buyer will also be liable for any royalties payable under Droit de Suite as set out under Information for Buyers.

5. **VALUE ADDED TAX.** Value Added Tax on the hammer price is imposed by law on all items affixed with a dagger (†) or double dagger (‡). Value Added Tax is charged at the appropriate rate prevailing by law at the date of sale and is payable by buyers of relevant Lots. (Please refer to "Information for Buyers" for a brief explanation of the VAT position).

6. **PAYMENT**

(a) Immediately a Lot is sold you will:

(i) give to us, if requested, proof of identity, and

(ii) pay to us the total amount due or in such other way as is agreed by us.

(b) Any payments by you to us may be applied by us towards any sums owing from you to us on any account whatever without regard to any directions of you or your agent, whether expressed or implied.

(c) In order to comply with money laundering regulations we reserve the right to require proof of source of funds and/or confirmation of the nature and source of wealth for all receipts of monies from clients directly or from third parties for payments on behalf of clients. Lots will only be released once we have completed necessary checks under the current Money Laundering Regulations.

7. TITLE AND COLLECTION OF PURCHASES

(a) The ownership of any Lots purchased shall not pass to you until you have made payment in full to us of the total amount due.

(b) You shall at your own risk and expense take away any lots that you have purchased and paid for not later than 3 working days following the day of the auction after which you shall be responsible for any removal, storage and insurance charges.

(c) No purchase can be claimed or removed until it has been paid for and we have completed necessary checks under the current Money Laundering Regulations.

8. REMEDIES FOR NON-PAYMENT OR FAILURE TO COLLECT PURCHASES

(a) If any Lot is not paid for in full and taken away in accordance with these Conditions or if there is any other breach of these Conditions, we, as agent for the seller and on our own behalf, shall at our absolute discretion and without prejudice to any other rights we may have, be entitled to exercise one or more of the following rights and remedies:

(i) to proceed against you for damages for breach of contract;

(ii) to rescind the sale of that Lot and/or any other Lots sold by us to you;

(iii) to resell the Lot (by auction or private treaty) in which case you shall be responsible for any resulting deficiency in the total amount due (after crediting any part payment and adding any resale costs). Any surplus so arising shall belong to the seller;

(iv) to remove, store and insure the Lot at your expense and, in the case of storage, either at our premises or elsewhere;

(v) to charge interest at a rate not exceeding 15% per month on the total amount due to the extent it remains unpaid for more than 3 working days after the sale;

(vi) to retain that or any other Lot sold to you until you pay the total amount due;

(vii) to reject or ignore bids from you or your agent at future auctions or to impose conditions before any such bids shall be accepted;

(viii) to apply any proceeds of sale of other Lots due or in future becoming due to you towards the settlement of the total amount due and to exercise a lien (that is a right to retain possession of) any of your property in our possession for any purpose until the debt due is satisfied.

(b) We shall, as agent for the seller and on our own behalf pursue these rights and remedies only so far as is reasonable to make appropriate recovery in respect of breach of these conditions.

9. **THIRD PARTY LIABILITY.** All bidders, buyers and other members of the public on our premises are there at their own risk and must note the lay-out of the accommodation and security arrangements. Accordingly neither the auctioneer nor our employees or agents shall incur liability for death or personal injury or for the safety of the property of persons visiting prior to or at a sale (except in each case as may be required by law by reason of our negligence)

10. **COMMISSION BIDS.** Whilst prospective buyers are strongly advised to attend the auction and are always responsible for any decision to bid for a particular Lot and shall be assumed to have carefully inspected and satisfied themselves as to its condition, we will if so instructed clearly and in writing execute bids on their behalf. Neither the auctioneer nor our employees or agents shall be responsible for any failure to do so.

Where two or more commission bids at the same level are recorded we reserve the right in our absolute discretion to prefer the first bid so made.

11. **WARRANTY OF TITLE AND AVAILABILITY.** The seller warrants to the auctioneer and you that the seller is the true owner of the property consigned or is properly authorised by the true owner to consign for sale and is able to transfer good and marketable title to the property free from any third party claims.

Save as expressly set out above, all other warranties, conditions or other terms which might have effect between the Seller and you, or us and you, or be implied or incorporated by statute, common law or otherwise are excluded to the fullest extent permitted by law.

12. **AGENCY.** The auctioneer normally acts as agent only and disclaims any responsibility for default by sellers or buyers.

13. **TERMS OF SALE.** The seller acknowledges that Lots are sold subject to the stipulations of these Conditions in their entirety and on the Terms of Consignment for Public Auctions as notified to the consignor at the time of the entry of the Lot.

14. DESCRIPTIONS AND CONDITION

(a) Whilst we seek to describe lots accurately, it may be impractical for us to carry out exhaustive due diligence on each lot. Prospective buyers are given ample opportunities to view and inspect before any sale and they (and any independent experts on their behalf) must satisfy themselves as to the accuracy of any description applied to a lot. Prospective buyers also bid on the understanding that, inevitably, representations or statements by us as to authorship, genuineness, origin, date, age, provenance, condition or estimated selling price involve matters of opinion. We undertake that any such opinion shall be honestly and reasonably held and accept liability for opinions given negligently or fraudulently. Subject to the foregoing neither we the auctioneer nor our employees or agents nor the seller accept liability for the correctness of such opinions and all conditions and warranties, whether relating to description, condition or quality of lots, express, implied or statutory, are hereby excluded. Dreweatts is not liable for damage to gilded picture frames, plaster picture frames or picture frame glass; if the Lot is or becomes dangerous, we may dispose of it without notice to you in advance in any manner we see fit and will be under no liability for doing so. This Condition is subject to the next following Condition concerning deliberate forgeries and applies save as provided for in paragraph 6 “information to buyers”.

(b) Private treaty sales made under these Conditions are deemed to be sales by auction for purposes of consumer legislation.

15. **FORGERIES.** Notwithstanding the preceding Condition, any Lot which proves to be a deliberate forgery (as defined) may be returned to us by you within 21 days of the auction provided it is in the same condition as when bought, and is accompanied by particulars identifying it from the relevant catalogue description and a written statement of defects. If we are satisfied from the evidence presented that the Lot is a deliberate forgery we shall refund the money paid by you for the Lot including any buyer's premium provided that (1) if the catalogue description reflected the accepted view of scholars and experts as at the date of sale or

(2) you personally are not able to transfer a good and marketable title to us, you shall have no rights under this condition.

The right of return provided by this Condition is additional to any right or remedy provided by law or by these Conditions of Sale.

16. **PRIVACY NOTICE.** We will hold and process any personal data in relation to you in accordance with our current privacy policy, a copy of which is available on our website www.dreweatts.com/privacy-policy/.

GENERAL

17. We shall have the right at our discretion, to refuse admission to our premises or attendance at our auctions by any person.

18. (a) Any right to compensation for losses liabilities and expenses incurred in respect of and as a result of any breach of these Conditions and any exclusions provided by them shall be available to the seller and/or the auctioneer as appropriate.

(b) Such rights and exclusions shall extend to and be deemed to be for the benefit of employees and agents of the seller and/or the auctioneer who may themselves enforce them.

19. Any notice to any buyer, seller, bidder or viewer may be given by first class mail, email or Swiftmail in which case it shall be deemed to have been received by the addressee 48 hours after posting.

20. Special terms may be used in catalogue descriptions of particular classes of items in which case the descriptions must be interpreted in accordance with any glossary appearing at the commencement of the catalogue.

21. Any indulgence extended to bidders, buyers or sellers by us notwithstanding the strict terms of these Conditions or of the Terms of Consignment shall affect the position at the relevant time only and in respect of that particular concession only; in all other respects these Conditions shall be construed as having full force and effect.

22. These Conditions shall be governed by and construed in accordance with English law and the parties irrevocably submit to the exclusive jurisdiction of the English courts.

Dreweatts

NEWBURY

Dreweatts

Donnington Priory

Newbury

Berkshire RG14 2JE

+44 (0) 1635 553 553

info@dreweatts.com

MANAGING DIRECTOR

Jonathan Pratt

DEPUTY CHAIRMAN

Will Richards

James Nicholson

LONDON

Dreweatts / Bloomsbury Auctions

16-17 Pall Mall

St James's

London SW1Y 5LU

+44 (0) 20 7839 8880

info@bloomsburyauctions.com

info@dreweatts.com

HAMBRIDGE LANE

Dreweatts

1 Hambridge Lane

Newbury

Berkshire RG14 5TU

+44 (0) 1635 553 548

hambridgesales@dreweatts.com

Group Departments

AUTOGRAPHS AND EPHEMERA

Ania Hanrahan

ahanrahan@dreweatts.com

ASIAN CERAMICS AND WORKS OF ART

Mark Newstead

Dr Yingwen Tao

asian@dreweatts.com

BLOOMSBURY AUCTIONS BOOKS

AND MANUSCRIPTS

Dr Timothy Bolton

Camilla Previt 

Denise Kelly

info@bloomsburyauctions.com

BRITISH AND EUROPEAN CERAMICS

AND GLASS

Mark Newstead

Geoffrey Stafford Charles

interiors@dreweatts.com

CLOCKS AND SCIENTIFIC

INSTRUMENTS

Leighton Gillibrand

clocks@dreweatts.com

COUNTRY SPORTING

Geoffrey Stafford Charles

gscarles@dreweatts.com

DECORATIVE ARTS AND

MODERN DESIGN

Geoffrey Stafford Charles

Ashley Matthews

interiors@dreweatts.com

EUROPEAN SCULPTURE AND WORKS

OF ART

Silas Currie

sculpture@dreweatts.com

FURNITURE AND CARPETS

Ben Brown

Elaine Binning

Ashley Matthews

William Turkington

furniture@dreweatts.com

HAMBRIDGE SALES

Silas Currie

Lucie Hobbs

hambridgesales@dreweatts.com

HOUSE SALES AND PRIVATE

COLLECTIONS

Joe Robinson

Lulu Randall

housesales@dreweatts.com

JEWELLERY, SILVER, WATCHES AND

OBJECTS OF VERTU

James Nicholson

Nick Mann

Tessa Parry

jsw@dreweatts.com

LIVE STEAM AND MODEL

ENGINEERING WORKS OF ART

Michael Matthews

Martyn Pring

transport@dreweatts.com

MODERN AND CONTEMPORARY ART

Jennie Fisher

Lucy Darlington

Francesca Whitham

Will Porter (Business Development)

pictures@dreweatts.com

OLD MASTERS, BRITISH AND

EUROPEAN ART

Brandon Lindberg

Lucy Darlington

Francesca Whitham

pictures@dreweatts.com

WINE

Mark Robertson

Dianne Wall

wine@dreweatts.com

BUSINESS DEVELOPMENT

Will Richards

Will Porter

Joe Robinson

Imogen Jones

ijones@dreweatts.com

VALUATIONS FOR PROBATE,

INSURANCE AND CGT

Emma Terry

Megan Coote

valuations@dreweatts.com

