

DREWEATTS

EST. 1759



FINE JEWELLERY, SILVER AND LUXURY ACCESSORIES

TO INCLUDE PRIVATE COLLECTIONS OF MODERN BRITISH
SILVER, PRECIOUS BOXES AND ANGLO-INDIAN SILVER

DONNINGTON PRIORY | THURSDAY 7 JULY 2022





DREWEATTS

EST. 1759

FINE JEWELLERY, SILVER AND LUXURY ACCESSORIES

TO INCLUDE PRIVATE COLLECTIONS OF MODERN BRITISH SILVER, PRECIOUS BOXES AND ANGLO-INDIAN SILVER

DONNINGTON PRIORY | THURSDAY 7 JULY 2022 | 10.30AM

AUCTION FORMAT: LIVE ONLINE

This is a live online auction with an auctioneer. Bidding is available in person at Dreweatts Donnington Priory, online, by telephone or commission (absentee) bids. If not bidding in person or online, please contact Dreweatts to register all commission bids or telephone bids by 12 noon BST on Wednesday 6 July.

FREE ONLINE BIDDING IS AVAILABLE AT DREWEATTS.COM:

The Dreweatts' bidding platform allows you to watch, listen and bid with no additional online bidding fees applicable.

REGISTRATION:

We advise clients to register at least 48 hours in advance of the auction as you may be asked to provide documents to verify your identity. Registration for new clients will close at 12 noon (BST) on Wednesday 6 July.

BUYER'S PREMIUM:

Buyer's premium is charged per lot at 25% of the hammer price (30% including VAT) up to and including £500,000, 20% (24% including VAT) of the hammer price from £500,001 up to and including £1,000,000, and 12% of the hammer price (14.4% including VAT) in excess of £1,000,001.

CUSTOMER DUE DILIGENCE CHECKS:

In order to comply with current Money Laundering Regulations, it is our policy to conduct appropriate Know Your Client checks on any buyers who transact at the threshold of £8,000 or more. Buyers will be required to provide the following information:

For individuals, official photo identification (a government issued ID document such as passport or driver's licence) and a proof of address (utility bill, bank statement or driver's licence).

For legal entities, a certificate of incorporation (or equivalent), a register of shareholders/directors and ID documentation from the directors and beneficial owners of the business.

We reserve the right to withhold the purchased lots until such checks have been completed.

AUCTION NO. 14448

SPECIALISTS:

James Nicholson FGA, DGA
Nick Mann
Tessa Parry FGA, DGA
Ian Pickford (Consultant, Silver)
Terry Taylor MBHI (Consultant, Watches)

VIEWING IN LONDON (selected highlights):

Dreweatts London, 16-17 Pall Mall, St James's, London SW1Y 5LU
Monday 20 June: 10am – 5pm
Tuesday 21 June: 10am – 5pm

VIEWING AT DONNINGTON PRIORY (full sale):

Sunday 3 July: 10am – 2pm
Monday 4 July: 10am – 5pm
Tuesday 5 July: 10am – 5pm
Wednesday 6 July: 10am – 5pm
Day of sale: no viewing

CONDITIONS OF SALE:

This auction is subject to our Auction Terms and Conditions (see back of catalogue or our website for further details).

AUCTION:

Dreweatts
Donnington Priory
Newbury
Berkshire RG14 2JE

ENQUIRIES:

+44 (0) 1635 553 553
jsw@dreweatts.com
dreweatts.com

Catalogues £15 (£18 by post)

Front cover: Lot 224
Inside front cover: Lots 187, 188
Page 1: Lots 168, 135, 136, 111, 112, 172, 171, 165, 134, 170, 167
Page 2: Lot 109
Back cover: Lots 338, 339





Fine British Silver,
Continental Silver
and Allied Wares and
Objects of Vertu



1

1
A PAIR OF QUEEN ANNE BRITANNIA STANDARD SILVER SHAPED CIRCULAR SALTS

DAVID WILLAUME, LONDON 1709
Engraved with an armorial
6.5cm (2 1/2in) diameter
187g (6 oz)

A PAIR OF GEORGE II SILVER SHAPED CIRCULAR SALTS

PETER ARCAMBO I, LONDON 1729
Engraved with an armorial
7cm (3in) diameter
286g (9.2 oz)

Provenance:
The Property of the Trustees of the Davenport Estate

£600-800



3



2

2
A GERMAN SILVER TAPERING BEAKER

PHILIPP STENGLIN, AUGSBURG CIRCA 1720
With two engraved strapwork bands
8cm (3in) high
73g (2.35 oz)

£500-700

3
A GERMAN SILVER OVAL PLATTER
JOHANN I MITTNACHT, AUGSBURG,
POSSIBLY LATE 17TH CENTURY

The crimped border chased with fruit and four busts of Roman emperors in circular reserves, the centre with Apollo and his bow in hand and a companion, and the slain dragon Python at their feet
46cm (18in) long
757g (24.35 oz)

A similar composition of Apollo slaying the Python can be seen in engraving by Virgil Solis in the 1563 publication of Ovid's Metamorphoses, Book I, a copy of which can be seen at the Norris Museum, St Ives, Cambridgeshire, UK. Catalogue Numbers 90 and 200.

£1,000-1,500

4
A GEORGE II SILVER SUGAR BOWL AND COVER

SAMUEL TAYLOR, LONDON 1753
The cover with a beaded border and circular foot, the ogee body engraved with a crest and on a circular moulded spreading foot
10cm (4in) high
229g (7.35 oz)

The crest for MacDERMOTT

This is the crest that is uniquely associated with the arms of a branch of the MacDERMOTT family, descended from MacDERMOTT of Carrig, Co. Roscommon, Ireland

£500-700



4



5

5
A SET OF THREE GEORGE II SILVER BALUSTER CASTERS

SAMUEL WOOD, LONDON 1753
With bell shaped finials to the pierced domed covers, engraved with a crest and on circular moulded spreading pedestal feet
One 18cm (7in) high, two 14.5cm (5 3/4in) high
513g (16.5 oz)

The crest is unrecorded

£700-1,000

6
A GEORGE III SILVER SHAPED OVAL MEAT DISH

JOHN PARKER I & EDWARD WAKELIN, LONDON 1765
With a gadrooned border and engraved with an armorial
46cm (18in) long
1476g (47.45 oz)

The armorial for William MURRAY (1705-1799) created 1776 1st Earl Mansfield, late of Kenwood House and his wife Elizabeth nee FINCH (1647-1730)

£800-1,200



6

7
A GEORGE III SILVER OBLONG PEDESTAL TEA POT

PETER & WILLIAM BATEMAN, LONDON 1789
With a wood finial to the domed cover and harp handle, the body engraved with a foliate swag band, on a gadrooned oblong pedestal base with four ball feet
27cm (10 1/2in)
775g (24.9 oz)

£500-700



9
A PAIR OF GEORGE III SILVER SHAPED OVAL PLATTERS

JOHN FOUNTAIN, LONDON 1792
With gadrooned borders and engraved with an armorial
34cm (13 1/2in) long
2111g (67.9 oz)

Provenance:
The Property of the Trustees of the Davenport Estate

The arms for LEICESTER of Westbury

£700-1,000



10
A GEORGE III SILVER OVAL PEDESTAL COFFEE POT

ROBERT & DAVID HENNELL II, LONDON 1795
With an urn shaped finial to the domed cover, a wood scroll handle, the fluted body engraved with a crest, on a shaped oval pedestal foot
30cm (11 3/4in) high
747g (24 oz) gross

Provenance:
The Property of the Trustees of the Davenport Estate

£600-800



12
A PAIR OF GEORGE III SILVER SHAPED CIRCULAR SALVERS

PHILIP RUNDELL, LONDON 1819
With a chased shell and foliate border, engraved with rocaille, a later armorial and motto 'Touts jours prest', on four shell and grape vine feet
24cm (9 1/2in) diameter
1536g (49.4 oz)

This is a full armorial achievement for Sir Richard SUTTON (1798-1855) 2nd Baronet of Norwood Park, Nottinghamshire

£800-1,200



11
A GEORGE IV SILVER TWIN HANDLED TROPHY CUP AND COVER

J. E. TERREY & CO., LONDON 1822
With an orb finial to the ogee domed cover, twin leaf capped loop handles, reeded border, engraved with The Prince of Wales crest and HH 1822 within a wreath, on a circular moulded spreading pedestal foot
32cm (12 1/2in) high
1135g (36.5 oz)

£500-700





13

A JAMES II SILVER MONTEITH

POSSIBLY ISAAC DIGHTON (DEIGHTON), LONDON 1688

With a shaped border, later engraved with an armorial and scrollwork and on a circular foot

26cm (10 1/4in) diameter

878g (28.25 oz)

The armorial believed to be for STEWART of Appin

See David M. Mitchell, *Silversmiths in Elizabethan and Stuart London*, page 165 for reference to the maker's mark

£4,000-6,000



14

A SET OF TWELVE GEORGE III SILVER SHAPED CIRCULAR DINNER PLATES

WILLIAM FOUNTAIN, LONDON 1802

With gadrooned borders and engraved with a coronet above a crest

25cm (9 3/4in) diameter

6492g (208.7 oz)

The crest for the ELPHINSTON(E) sometime ELPHENSTON family.

£4,000-6,000



15

15

A WILLIAM IV SILVER SHELL SHAPED SALT

PAUL STORR, LONDON 1833

The shell shaped bowl supported by a coral stem to a shaped oval foliate base, stamped 268 beneath

11.5cm (4 1/2in) long

362g (11.65 oz)

£700-1,000



16

16

A PAIR OF GEORGE II SILVER SHAPED OVAL PLATTERS

WILLIAM GRUNDY, LONDON 1750

With gadrooned borders and engraved with an armorial

34cm (13 1/2in) long

1837g (59.05 oz)

Provenance:

The Property of the Trustees of the Davenport Estate

The arms for LEICESTER of Westbury

£700-1,000



17

A PAIR OF GEORGE IV SILVER CANDLESTICKS

MATTHEW BOULTON, BIRMINGHAM 1821

The circular sconces gadrooned and chased with foliage, tapering and reeded stems issuing from acanthus leaves, to conforming circular bases

30cm (11 3/4in) high

Loaded

£800-1,200



17



18

A PAIR OF GEORGE III SILVER GILT TABLE SPICE BOXES

PAULL STORR, LONDON 1797

With twin hinged covers, engraved with an armorial, gadrooned borders and on four scroll feet

12cm (4 3/4in) long

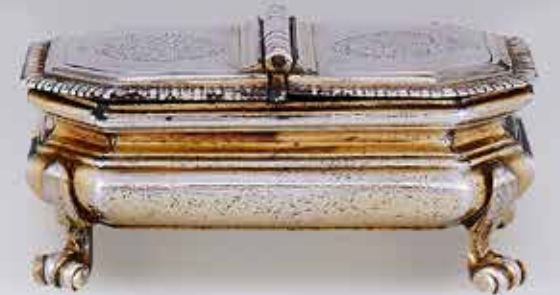
716g (23 oz)

Provenance:

The Property of the Trustees of the Davenport Estate

These are the arms of Sir John Fleming LEICESTER (1762-1827)

£3,000-5,000



18



19

19 Y
A CASED VICTORIAN SILVER FOUR
PIECE BALUSTER TEA AND COFFEE
SERVICE

JOHN SAMUEL HUNT, LONDON 1851
The tea and coffee pots with pierced
and chased foliate domed finials to the
domed covers, the scroll handles with
ivory warming bands, chased overall
with strapwork and floral sprays, on
circular pedestal feet
The tea pot 23cm (9in) high, the
coffee pot 29cm (11 1/2in) high
2633g (84.65 oz) gross

Please note Dreweatts have applied
for a **de minimis exemption** licence
for the ivory in this lot
Ref: KJP5CP14

£1,000-1,500



20

20 Y
A GEORGE IV SILVER FOUR PIECE BALUSTER TEA AND COFFEE SET

JOSEPH ANGELL I, LONDON 1824
The tea and coffee pots with seated figure finials to the domed covers, leaf capped double scroll handles with ivory warming bands, chased with
C-scrolls, floral sprays and putti overall, vacant reserves and on conforming shaped circular pedestal feet
The tea pot 28cm (11in) long, the coffee pot 27cm (10 1/2in) high
3155g (101.4 oz) gross

Please note Dreweatts have applied for a **de minimis exemption** licence for the ivory in this lot
Ref: 1JRNWH6S

£800-1,200



21
AN EARLY VICTORIAN SILVER LOBED OVAL SOUP TUREEN AND COVER

WILLIAM KER REID, LONDON 1838
With a foliate loop handle to the domed cover and cast leaf entwined branch handles to the body, a chased foliate swag border and on four
foliate scroll feet
41cm (16in) long
5002g (160.8 oz)

£2,000-3,000



22

22

A GEORGE IV SILVER BRANDY PAN AND COVER

WILLIAM BATEMAN I, LONDON 1824

With a wood domed finial to the domed cover and a turned wood handle, the cover and baluster body engraved with a coronet above a crest

23cm (9in) long

334g (10.75 oz) gross

Provenance:

The Property of the Trustees of the Davenport Estate

This is the crest and coronet of George Fleming WARREN (1811-1887) 2nd Baron Tabley of Tabley Cheshire

£400-600

23

A VICTORIAN SILVER RECTANGULAR INKSTAND

EDWARD & JOHN BARNARD, LONDON 1853

The shaped rectangular body with a tongue and dart border, two pen trays, on four foliate and lion paw feet, with a oil lamp to the centre with a serpent scroll handle, mounted on a rectangular plinth, flanked by two cylindrical inkwells with flame finials, chased with ram masks and husk swags

34cm (13 1/2in) long

1781g (57.25 oz)

With two glass liners

£600-800



23

24

A VICTORIAN SILVER TWIN HANDLED TROPHY CUP AND COVER

EDWARD BARNARD & SONS LTD., LONDON 1898

With a bell shaped finial to the ogee domed cover, the body with twin leaf capped double scroll handles, a girdle, engraved with an armorial and 'Presented to Cuthbert Leicester Warren Esquire upon his attaining his majority. By the tenants on the Tabley Estate 6 November 1838', on a circular moulded spreading pedestal foot

47cm (18 1/2in) high

3939g (126.65 oz)

Provenance:

The Property of the Trustees of the Davenport Estate

The armorial for Cuthbert Leicester WARREN (1877-1954) of Tabley, Cheshire

£2,000-3,000



24



25

A VICTORIAN SILVER AND SILVER GILT TAZZA

GEORGE FOX, LONDON 1869

The shaped circular bowl embossed with stylised masks, held aloft by Neptune standing on a sea monster, to a foliate embossed domed base

34.5cm (13 1/2in) high

1105g (35.5 oz)

£2,500-3,500



26

26

A FRENCH SILVER PART TABLE SERVICE

MAISON CARDEILHAC, PARIS CIRCA 1880

Engraved with a crest, comprising:

Eighteen dessert spoons

Twelve dessert forks

Twelve dessert knives

Twelve tea spoons

2337g (75.1 oz)

£800-1,200



26A

26A

A PAIR OF DANISH SILVER MOUNTED GLASS 974B CARAFES

HENNING KOPPEL FOR GEORG JENSEN, .999 STANDARD

Import marked for Birmingham no date letter, the necks mounted with flat silver coiled wire

26.5cm (10 1/2in) high

Loaded, in Georg Jensen boxes

Since 1st January 1999 the traditional fineness mark and the date letter have both been optional.

Provenance:

From the collection of Victoria, Lady de Rothschild

£800-1,200



27

27

A PAIR OF RUSSIAN SILVER SABBATH CANDLESTICKS

ST. PETERSBURG 1893, 84 ZOLOTNIKI

With a shaped circular scone and urn shaped capital, the baluster stem chased with grape vine decoration, the domed base chased with flowers and a grape vine border, on four pad feet

40.5cm (16in) high

1185g (38.1 oz)

£700-1,000



28

28

A PAIR OF LATE VICTORIAN SILVER GILT CASTORS

CHARLES STUART HARRIS, LONDON 1900

With foliate bud finials to the ogee domed and pierced covers, gadrooned borders, chased with husk swags, ribbons and two oval vacant reserves, on circular moulded spreading bases

20cm (8in) high

486g (15.6 oz)

Provenance:

The Property of the Trustees of the Davenport Estate

£250-350



29

29

A FRENCH SILVER GILT DESSERT SERVICE

RISLER & CARRÉ, PARIS CIRCA 1900

Engraved with an armorial within an oval roundel, comprising:

Eighteen dessert spoons

Seventeen dessert forks

2079g (66.85 oz)

Together with eighteen dessert knives with filled handles

£1,000-1,500



30

30

A VICTORIAN CASED SILVER RICH FIGURE DESSERT SERVICE FOR TWELVE PLACE SETTINGS

FRANCIS HIGGINS III, LONDON 1882

Engraved with a crest, comprising:

Twelve dessert forks

Twelve dessert spoons

1650g (53.05 oz)

Together with twelve dessert knives with filled handles

£600-800



31

**31
A SILVER KING'S PATTERN TABLE SERVICE
FOR TWELVE PLACE SETTINGS**

COOPER BROTHERS & SONS LTD.,
SHEFFIELD 1959 AND 1960

Comprising:
Twelve table spoons
Twelve table forks
Twelve dessert spoons
Twelve dessert forks
Twelve soup spoons
Eleven tea spoons
Four sauce ladles
5449g (175.2 oz)
In a fitted canteen

£1,500-2,000



32

**32
A SILVER CANTED RECTANGULAR TWIN
HANDLED TRAY**

JOSEPH RODGERS & SONS, SHEFFIELD 1960
With a reeded border and twin loop handles,
engraved S

65.5cm (25 3/4in) long
3131g (100.65 oz)

£1,000-1,500



33

A SILVER TWIN HANDLED CUP AND COVER

JONES & SON, LONDON 1934

With an acanthus leaf chased ball finial to acanthus leaf chased domed cover, twin leaf capped scroll handles, the half chased body with a girdle,
engraved with a coat of arms, and on a circular moulded spreading foot

43cm (17in) diameter
4888g (157.14 oz)

The armorial of the VILLIERS family, Earls of Clarendon

£1,500-2,500



34

34
AN ITALIAN SILVER COLOURED LOBED OVAL TUREEN WITH AN ASSOCIATED COVER

THE BODY STAMPED LAVORAZIONE MANO 800, THE COVER UNMARKED
 With two reclined nude female figures to the cover, the body with a chased rose border, twin foliate scroll handles, embossed with two floral sprays and on a conforming oval pedestal foot
 45cm (17 3/4in) long
 2478g (79.7 oz)

£700-1,000



35

35 Y
A CASED SILVER FIVE PIECE CIRCULAR FLUTED TEA AND COFFEE SET

ROBERT EDGAR STONE, LONDON 1947
 The tea, coffee and hot water pots with ivory finials and angular handles, on shaped circular feet
 The tea pot 24cm (9 1/2in) long, the hot water pot 17cm (6 3/4in) high
 2554g (82.15 oz) gross

Accompanied by an Article 10 Exemption Certificate, No. 613667/01, dated 24th March 2022.

£800-1,200



36

36
A SILVER TWIN HANDLED OVAL TRAY

CHARLES & RICHARD COMYNS, LONDON 1924
 With twin bifurcated foliate loop handles, a reeded border and engraved with an armorial
 65cm (25 1/2in) long
 3085g (99.2 oz)

The armorial is in the ownership of the CONSTANTINE family

£1,000-1,500



37

37
AN EDWARDIAN SILVER TWO HANDLED PEDESTAL CUP

GUILD OF HANDICRAFTS LTD., LONDON 1901
 With twin wirework scroll loop handles, on a waisted stem and circular slightly domed foot with pellet punched border
 21cm (8 1/4in) wide
 280g (9 oz)

£500-700



38

38
AN EDWARDIAN SILVER MOUNTED AND SHAGREEN RECTANGULAR BOX

OMAR RAMSDEN, LONDON 1909
 The pierced entwined scroll border with flowers to the corners
 13.5cm (5 1/4in) long
 With a cedar liner

£1,000-1,500



39

39
AN EDWARDIAN SCOTTISH SILVER PRESENTATION CASKET

JOHN HALL & CO., GLASGOW 1904
 The domed cover with a tongue and dart border, the centre chased with CLW within a roundel and 'Presented to Cuthbert Leicester Warren Esquire JP on the occasion of his marriage by the tenantry of the Tabley Estate', the body chased with pillars to the corners, on four bracket feet, opening to a monogrammed red leather presentation book, addressed to Cuthbert Leicester Warren to congratulate him on his marriage
 38cm (15in) long

Provenance:
 The Property of the Trustees of the Davenport Estate

£1,000-1,500

A Private Collection of Small Silver | lots 40-45



40
AN EDWARDIAN SILVER COMBINATION VESTA, CIGAR CUTTER AND DOUBLE SOVEREIGN CASE
GEORGE UNITE & SONS, BIRMINGHAM 1905
The rectangular body with two hinged covers, steel cutter and a suspension loop
6cm (2 1/4in) long
76g (2.45 oz) gross

£300-500



41
A VICTORIAN SILVER RECTANGULAR NUTMEG GRATER
NATHANIEL MILLS, BIRMINGHAM 1838
The engine turned cover with a rectangular vacant reserve, reeded sides, opening to a steel grater
4cm (1/2in) long
37g (1.2 oz) gross

£300-500



42
A WILLIAM IV SILVER RECTANGULAR SNUFF BOX
NATHANIEL MILLS, BIRMINGHAM 1834
Chased with floral borders and engine turned sides, the cover engraved 'Presented to Doctor Armstrong as mark of the esteem and regard to his friend Doctor Tedlie', the base engraved 'For his professional attention to the sick of the 25th Regt. King's own borderers while stationed in Armargh 1835'
8.5cm (3 1/4in) long
155g (5 oz)

£300-500



43
AN EDWARDIAN SILVER COW CREAMER
SPONSOR'S MARK FOR BERTHOLD MULLER, IMPORT MARK FOR CHESTER 1901
The hinged cover chased with a fly
15cm (6in) long
158g (5.1 oz)

£600-800

44
A PAIR OF VICTORIAN SILVER NOVELTY PEPPER POTS MODELLED AS KNIGHT'S HELMETS
GEORGE UNITE & SONS, BIRMINGHAM 1876
With a hinged visor and circular base
7cm (2 3/4in) high
125g (4 oz)

£600-800



Other Properties

45
AN AMERICAN SILVER COLOURED HIP FLASK
R. BLACKINGTON & CO., RETAILED BY CARTIER, EARLY 20TH CENTURY
With a screw down cover
9cm (3 1/2in) high
AN AMERICAN SILVER COLOURED CANDLE SNUFFER
CARTIER, STAMPED STERLING
With a pineapple finial and wood handle
27.5cm (10 3/4in) long
102g (3.3 oz) gross

£300-500



46
A SILVER COLOURED HOUNDS HEAD STIRRUP CUP
UNMARKED
15cm (6in) long
851gg (27.35 oz)

£800-1,200



47

AN ITALIAN SILVER COLOURED TORCHON PATTERN TABLE SERVICE

BUCCELLATI, MILANO 1944 - 1968 .925 STANDARD

Comprising:

Twelve table forks

Twelve dessert forks

Twelve fish forks

Twelve fish knives

Twelve cake forks

Twelve soup spoons

Twelve tea spoons

A serving fork

Two serving spoons

A cake slice

A butter knife

A sauce ladle

6166g (198.25 oz)

Together with the following knives with filled handles:

Twelve table knives

Twelve dessert knives

£8,000-12,000



47

48

A GERMAN SILVER OBLONG CIGAR BOX

POST 1886 .800 STANDARD
With a ring handle to the cover
32cm (12 1/2in) long
2662g (85.6 oz)

£600-800



48



49



49

A PAIR OF SILVER COLOURED CANDLESTICKS

STAMPED 925S
With a baluster capital and stem, a shaped square
base, two oval vacant reserves and on four foliate
scroll feet, pierced and chased with floral sprays and
foliate swags overall
43.5cm (17in) high
3429g (110.25 oz)

£1,000-1,500

A Private Collection of Anglo-Indian Silver | lots 50-93

50

AN INDIAN COLONIAL SILVER LARGE MILK PAN

HIPPOLITUS POIGNAND, CIRCA 1800
With a turned wood finial to the ogee domed
cover and handle
28cm (11in) long
553g (17.8 oz) gross

Provenance:

Sale, Christies, 28th November 2006, Lot 552

£400-600



50



51

51

AN INDIAN COLONIAL SILVER SAUCEPAN

HIPPOLITUS POIGNAND, CIRCA 1800
With a wood finial to the flat pull off cover
and a horn handle
26cm (10 1/4in) long
483g (15.55 oz) gross

£200-300

52

AN INDIAN COLONIAL SILVER SAUCEPAN

HIPPOLITUS POIGNAND, CIRCA 1800
With a wood finial to the flat cover and
handle, the cover and body engraved
with a coronet and garter collar
32cm (12 1/2in) long
626g (20.15 oz) gross

£300-500



52

53 Y

AN INDIAN COLONIAL SILVER OVAL SALT CELLAR

JOSEPH RONDO, CALCUTTA CIRCA 1805

With reeded borders and on an oval pedestal foot

9.5cm (3 3/4in) long

INDIAN COLONIAL SILVER BUTTER KNIFE

JOHN HUNT, CALCUTTA CIRCA 1810

With a rosewood handle and engraved with a crest

21cm (8 1/4in) long

156g (5 oz) gross

£80-120



53



54

54

AN INDIAN COLONIAL SILVER CHILD'S MUG

FRANCIS DORMIEUX, CALCUTTA CIRCA 1816

With a scroll handle, two reeded bands, engraved RPW and with an

ozier-work band to the base

7.5cm (3in) high

199g (6.4 oz)

£250-350

55

AN INDIAN COLONIAL SILVER SAUCEPAN AND LID

JOHN HUNT, CIRCA 1810

With a horn finial and two detachable handles, together with

another serving handle, the cover engraved with a crest

32cm (12 3/4in) long

808g (26 oz) gross

The crest and motto belong to the family of STUART

£400-600



55

56

AN INDIAN COLONIAL SILVER OVAL PEDESTAL MILK JUG

PATRICK MORAN & CO., CIRCA 1830

With a reeded border and a leaf capped scroll handle, the body chased

with a leaf and reeded swag band, on an oval pedestal foot chased with

acanthus leaves

20cm (8in) long

580g (18.65 oz)

£300-500



56

57

A PAIR OF INDIAN COLONIAL SILVER CAULDRON SALTS

MATHIES & BARRON, BOMBAY CIRCA 1830

With chased foliate border, lobed bodies on three foliate and lion paw feet

9cm (3 1/2in) diameter

£300-500



57



58

AN INDIAN COLONIAL SILVER MILK PAN

JOHN MAIR, CALCUTTA CIRCA 1800

With a wood domed finial to the cover and turned

handle, the cover and body engraved with a crest

28cm (11in) long

495g (15.9 oz) gross

Provenance:

Sale, Christies Glasgow, 30th January 1990, Lot 135

The crest can be attributed to the JOHNSON family of Stamford Lincolnshire |

£200-300



58

59
AN INDIAN SILVER TWIN HANDLED BUTTER COOLER BOWL AND COVER WITH LINER
LATTEY BROTHERS & CO., CALCUTTA 1835 - 1840
With a flower finial to the lobed domed cover, the lobed body with twin foliate scroll handles, on four foliate scroll feet, the liner with a swing handle
24cm (9 1/2in) long
1369g (44 oz)

The body will have been filled with a mixture of saltpeter and water to keep the butter in the liner cool. These are now often used as caviar dishes.

£700-1,000



61
AN INDIAN COLONIAL SILVER BALUSTER MILK PAN
LOWE & CO., MADRAS CIRCA 1855
With a wood domed finial to the domed cover and turned handle
29cm (11 1/2in) long
401g (12.9 oz) gross

£200-300



60
AN INDIAN COLONIAL SILVER CAMPANA CUP AND COVER
PITTAR & CO., CIRCA 1838
With a pigeon finial to the domed shaped circular cover, the body with twin branch loop handles, half chased with a band of foliage, engraved with a crest and 'Delhi Pigeon Club, 1838 won by P. C. Trench', on a conforming circular pedestal foot
27.5cm (10 3/4in) high
1400g (45 oz)

The crest belongs to the Irish noble family of TRENCH

£700-1,000

62
AN INDIAN COLONIAL SILVER TWIN HANDLED BOWL AND COVER
ROBERT GORDON, CIRCA 1810
With a foliate and reeded loop handle to the domed cover, twin lion mask and loop handles, engraved with a crest and on a circular moulded spreading foot
22cm (8 1/2in) long
813g (26.15 oz)

The crest for the family of SKINNER

£400-600



63
AN INDIAN COLONIAL SILVER SMALL TAPERED TANKARD
GEORGE GORDON, MADRAS CIRCA 1820
With a pierced thumb piece to the lobed domed cover, a scroll handle and reeded bands
15.5cm (6in) high
453g (14.6 oz)

£300-500

64
A PAIR OF INDIAN COLONIAL SILVER TUREENS AND COVERS
GEORGE GORDON, MADRAS CIRCA 1825
With foliate loop handles, nulled borders and engraved with a crest
28cm (11in) long
2777g (89.3 oz)

The crest is likely to be that of the STONE family, lines of which can be identified in Blackmore Essex, London and Brightwell Oxfordshire.

£1,500-2,000



65
AN INDIAN COLONIAL SILVER MILK STRAINER
GEORGE GORDON & CO., MADRAS CIRCA 1830
With a swing and turned wood handle, on three ball feet
16cm (6 1/4in) diameter
284g (9.15 oz)



65

£100-150



66

66
AN INDIAN COLONIAL SILVER WARMING DISH AND COVER
GEORGE GORDON & CO., CIRCA 1840
With a bud finial to the lobed domed cover, the body chased with a foliate swag and shell border and conforming twin loop handles
28cm (11in) long
1452g (46.7 oz)

£600-800

67
AN INDIAN COLONIAL SILVER WARMING DISH WITH ASSOCIATED COVER
GEORGE GORDON, MADRAS CIRCA 1825
With a reeded loop handle issuing from foliage to the ogee domed cover, a gadrooned border, twin turned wood handles and on four bun feet
25cm (9 3/4in) long
849g (27.3 oz)

£500-700



67

68
AN INDIAN COLONIAL SILVER RICE BOWL AND COVER
GEORGE GORDON, CIRCA 1840
With a loop handle to the lobed domed cover, the half lobed body with twin lion mask and loop handles and on a circular pedestal foot
16cm (6 1/4in) long
597g (19.2 oz)

£400-600



68

69
AN INDIAN COLONIAL SILVER BALUSTER SHAPED MILK PAN
TWENTYMAN & CO., CIRCA 1830
With a wood finial to the domed cover and handle
21cm (8 1/4in) long
410g (13.2 oz)

£200-300



69

70
AN INDIAN COLONIAL SILVER BALUSTER LIDDED TANKARD
TWENTYMAN & CO., CIRCA 1835
With a domed and gadrooned finial to the floral chased domed cover and a floral tongue capped scroll handle, the baluster body half chased with a floral spray band and engraved 'To Captain John Herring from his friend Major J. C. B. Parke as a small token of his regard and esteem, for his cordial ready support and assistance, ever afforded while associated together on the General Staff under Lt. Gen. Sir G. Martindell K. C. B.', on a circular moulded spreading base
21cm (8 1/4in) high
992g (31.9 oz)

John Herring arrived in India on the 10th Sept 1805. He rose to the rank of Lieutenant during the Nepal War in 1814 - 1815. His Indian military adventures took him to Afghanistan during the First Afghan War of 1838-42 as a Lieutenant-Colonel in the 37th Regiment of the Bengal Native Infantry. He was murdered by tribesmen at Haidar Khel in Afghanistan on 3rd December 1839, and was buried in Kabul two days later.

£600-800



70



71

71

AN INDIAN COLONIAL SILVER SAUCEPAN

WILLIAM HENRY TWENTYMAN, CALCUTTA CIRCA 1810

With a hexagonal foliate chased finial to the flat cover, a detachable turned wood handle and engraved with a crest and a motto Semper Paratus

17cm (10 1/2in) long

652g (20.95 oz) gross

The crest and motto belong to the family of STUART

£300-500

72

AN INDIAN COLONIAL SILVER MILK PAN

COOKE & KELVEY, CALCUTTA CIRCA 1860

With a horn domed finial and handle

23cm (9in) long

479g (15.4 oz) gross

£250-350



72

73

AN INDIAN COLONIAL TROPHY CUP AND COVER

TWENTYMAN & CO., CALCUTTA CIRCA 1835

With a foliate finial to the ogee domed cover, chased with a floral band and a tongue and foliate border, the body half chased with a conforming floral band, twin floral chased loop handles, engraved 'To Captain J. Herring 37th Regiment as a mark of esteem from the undermentioned member of the Mess....' and on a circular moulded spreading pedestal foot

34cm (13 1/2in) high

1685g (54.15 oz)

John Herring arrived in India on the 10th Sept 1805. He rose to the rank of Lieutenant during the Nepal War in 1814 - 1815. His Indian military adventures took him to Afghanistan during the First Afghan War of 1838-42 as a Lieutenant-Colonel in the 37th Regiment of the Bengal Native Infantry. He was murdered by tribesmen at Haidar Khel in Afghanistan on 3rd December 1839, and was buried in Kabul two days later.

£1,000-1,500



73

74

AN INDIAN COLONIAL SILVER SMALL CIRCULAR TEA POT STAND

HAMILTON & CO., CIRCA 1820

With a gadrooned border and on four lion paw feet

17cm (6 3/4in) diameter

251g (8.1 oz)

£150-250



74



75

75

AN INDIAN COLONIAL SILVER BALUSTER CUP AND COVER

HAMILTON & CO., CIRCA 1820

With an acorn finial to the foliate chased domed cover, a leaf capped double scroll handle, chased with three foliate bands, engraved 'To Captain Mounsey for his attention during the voyage from England 1820', on a circular pedestal foot

21cm (8 1/4in)

907g (29.2 oz)

Captain Mounsey had a distinguished naval career. He joined the navy at the tender age of 13 in February 1780. During his service he captured 31 of the enemy's ships including the frigate La Furieuse for which he received the thanks of the admiralty and later was nominated for the Order of the Bath in June 1815.

£400-600

76

AN INDIAN COLONIAL SILVER CIRCULAR SERVING DISH AND COVER

HAMILTON & CO., CIRCA 1825

The cover with a floral finial to the lobed ogee domed cover, the body chased with a floral and shell border

23cm (9in) diameter

1133g (36.45 oz)

£700-1,000



76

77

AN INDIAN COLONIAL SILVER PAP BOAT

HAMILTON & CO., CIRCA 1825

With a gadrooned border, swag terminal and loop handle

16.5cm (6 1/2in) long

142g (4.6 oz)

£80-120



77

78

AN INDIAN COLONIAL SILVER CAMPANA SHAPED VASE AND COVER

HAMILTON & CO., CIRCA 1825

With a flower domed finial to the lobed domed cover, the body chased with a grape vine band and a leaf and tongue band, engraved GJAW 12th January 1829, on a circular pedestal foot

27cm (10 1/2in) high

1264g (40.65 oz)

£800-1,200



78

79

AN INDIAN COLONIAL SILVER SAUCEPAN

HAMILTON & CO., CIRCA 1820

With a turned wood finial and detachable handle

26cm (10in) long

493g (15.85 oz) gross

Provenance:

Sale, Christies, 27th October 2005, Lot 400

£300-500



79

80

AN INDIAN COLONIAL SILVER BALUSTER MILK PAN

HAMILTON & CO., CIRCA 1830

With a turned wood finial and handle, the cover and body engraved with a crest and a motto

23cm (9in) long

496g (16 oz) gross

£250-350



80

81

AN INDIAN COLONIAL TANKARD WITH ASSOCIATED PULL OFF COVER

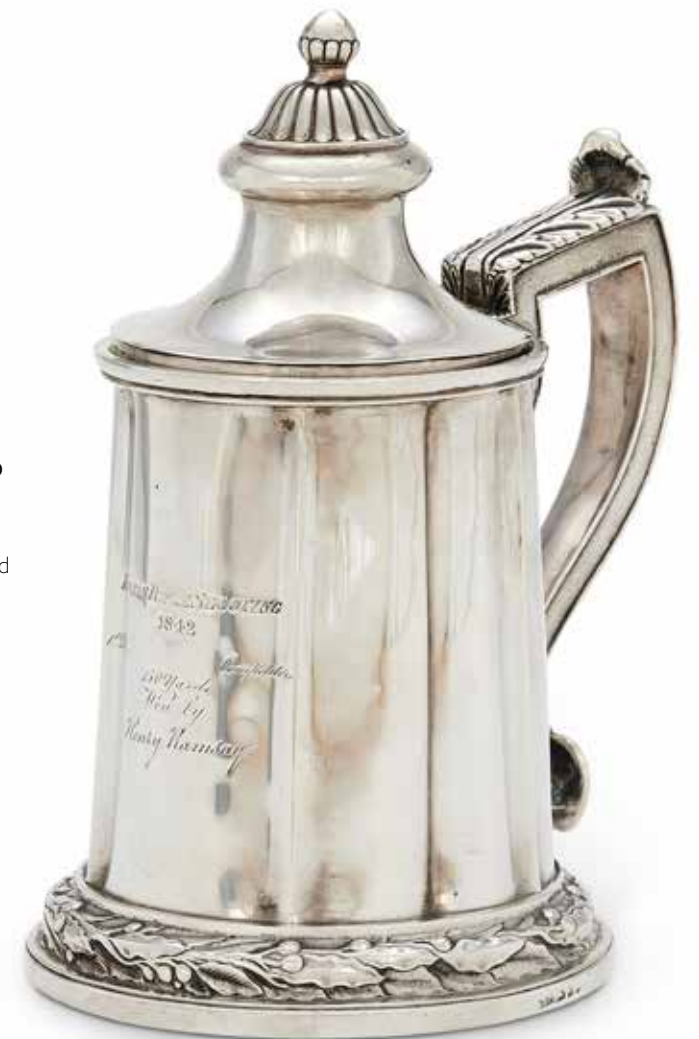
HAMILTON & CO., CIRCA 1840

With lobed finial to the lobed domed cover, a leaf capped scroll handle, the lobed body engraved 'Kumaon Rifle Shooting 1842, 1st prize competitors 150 yards, won by Henry Ramsay', the base chased with a bay leaf band

22.5cm (9in) high

935g (30.05 oz)

£600-800



81

82

AN INDIAN COLONIAL SILVER BALUSTER MILK PAN

HAMILTON & CO., CALCUTTA CIRCA 1840

With a horn finial and turned handle

16.5cm (10 1/2in) long

608g (19.55 oz) gross

£300-500



82

83

AN INDIAN COLONIAL SILVER LIDDED TANKARD

HAMILTON & CO., CIRCA 1860

With a ball final to the domed cover and a scroll handle,

engraved with two reeded bands and 'J.B Allen Esquire from

his grateful friends K.B.P and Captn. J.P November 1862', on a

circular moulded spreading base

21cm (8 1/4in) high

880g (28.3 oz)

£600-800



84

84

AN INDIAN COLONIAL SILVER HINGED TANKARD

HAMILTON & CO., CIRCA 1900

With a bifurcated thumb piece to the domed cover and

engraved with a crest and a motto Vivat Veritas, a scroll

handle and reeded base

18cm (7in) high

1148g (36.9 oz)

The crest for the DUNCAN family, Lairds of Ardownie,

Tayside, Scotland

£700-1,000

85

AN INDIAN COLONIAL SILVER GOBLET

HAMILTON & CO., CIRCA 1898

Engraved 'Cachar Races 1898 International polo match won by The English Team, E.C

Showers, R. St. j. Hickman, D. D. Marshall, C. E. Bigge, R. G. Warner Captain' with a knopped

stem and circular base

15cm (6in) high

193g (6.2 oz)

£100-150



85

86

AN INDIAN COLONIAL SILVER BEAKER AND LID

HAMILTON & CO., CALCUTTA CIRCA 1880

With a flower finial to the floral engraved domed cover, the body engraved

with C-scrolls and floral sprays, the two shaped reserves engraved 'pony Hurdle

Race, Four Entries won by A. Floyd Clay on Tommy 30th January 1880' and

'Purulia 1880 Tom Thumb Cup'

17.5cm (7in) high

327g (10.55 oz)

£200-300



87

87

AN INDIAN COLONIAL SILVER BALUSTER SAUCEPAN

HAMILTON & CO., CIRCA 1860

With a turned wood finial to the domed cover and handle

25.5cm (10in) long

743g (23.9 oz) gross

£400-600



86



88

88
AN INDIAN SILVER COLOURED SHAPED SQUARE SALVER

HAMILTON & CO., CIRCA 1938
With a raised moulded border and on four pad feet
20cm (8in) wide
457g (14.7 oz)

£300-500



89

89
AN INDIAN COLONIAL SILVER MILK JUG

HAMILTON & CO., CIRCA 1949
With a scroll handle and on a circular moulded spreading foot
11.5cm (4 1/2in) long
202g (6.5 oz)

£100-150



90

90
AN INDIAN SILVER GILT CHASED AND CAST CHEROOT CASE

PROBABLY ASAM 1870
With a flower terminal and four snake charmers to the corners of the cover, the body with birds of paradise, snakes and figures on horseback among foliage
15.5cm (6in) high
457g (14.7 oz)

£300-500



91

91
AN INDIAN SILVER CUP AND COVER

CUTCH, CIRCA 1880
With a flower finial to the domed cover and a scroll handle, chased overall with dogs chasing animals among flowers and foliate, a shield shaped vacant reserve and on a circular pedestal foot
13.5cm (5 1/4in) high
250g (8.05 oz)

£80-120



92

92
A CHINESE EXPORT SILVER SERVING PAN, MADE FOR THE INDIAN MARKET

KHE CHONG, CANTON CIRCA 1850
With a compressed circular finial to the ogee domed cover and a wood handle
34cm (13 1/2in) long
826g (26.55 oz) gross

£400-600



93

93
A CHINESE EXPORT SILVER BASKET

TUCK CHANG & CO., SHANGHA CIRCA 1900
The shaped loop handle chased and pierced with flowers, half the body pieced and engraved with flowers on and circular moulded spreading foot
35cm (13 3/4in) high
528g (16.95 oz)

£200-300



94

94
AN INDIAN COLONIAL SILVER SUGAR BOWL AND COVER
GEORGE GORDON & CO., CIRCA 1840
With a ball finial to the gadrooned domed cover, the half lobed body with a scallop border, twin lion mask and loop handles, on four lion paw and foliate scroll feet
23cm (9in) long
1032g (33.2 oz)

£600-800



96

96
A SET OF SIX SILVER AND SILVER GILT GOBLETS
JUSSUF HUSSEIN ABBO, LONDON 1970
With alternating silver and silver gilt bands, turned stems and on conical bases
14cm (5 1/2in) high
1584g (50.95 oz)

The Extel stakes at Goodwood was a handicap race over 11 furlongs for 3 year olds. The race ran from 1970 - 1990. The initial prize for winning the race was £10,000, rising to £30,000. The winner was also presented with a trophy, in the form of an ewer and two goblets designed by Jussuf Huessein Abbo. The ewer was handed back each year, but the goblets were retained by the winner. This lot is accompanied by race cards from the 1979 and 1981 races, which shows identical trophy cups on the front covers.

£600-800



95

95
AN INDIAN COLONIAL SILVER TUREEN, LINER AND COVER
HAMILTON & CO., CALCUTTA CIRCA 1825
With a bud finial to the lobed domed cover, a gadrooned rim, the liner with a gadrooned rim, shells and foliage to the quarters, the base with twin turned wood handles, on four bold scroll and paw feet
30.5cm (12in) across handles
2791g (87.4 oz) gross

£800-1,200

97
A PAIR OF SILVER DECANTERS
GRANT MACDONALD, LONDON 1982
The cylindrical stoppers and necks with a reeded textured finish, to a domed body
23cm (9in) high
1488g (47.85 oz)

£3,000-5,000



97

A Collection of Modern British Silver from a Deceased Estate



98

98
TWO SILVER GILT BEAKERS
MICHAEL KEITH LLOYD, LONDON 1979 AND 1984
Chased with foliate and floral decoration
6.5cm (2 1/2in) and 7.5cm (3in) diameter
190g (6.1 oz) gross

Literature:
Andrew J. and Styles D. 'Designer British Silver from Studios Established 1930 -1985',
Antique Collector's Club 2015, p 296 for an illustration of two silver tumblers of the
same design. Michael Lloyd commented about these tumblers 'These are from my
Rousseau period'.

£100-150

99
A SILVER OVAL SAUCE BOAT
PAYNE & SONS, LONDON 1966
With a loop handle, reeded border and on
an oval moulded spreading pedestal foot
21cm (8 1/4in) long
423g (13.6 oz)

£250-350



99



100
A SET OF FOUR SILVER AND SILVER GILT CANDLESTICKS
ROBERT WELCH, BIRMINGHAM 1971
With circular sconces, beaded gilt stems and on circular spreading bases
24.5cm (9 3/4in) high
2062g (66.3 oz)

Literature:
Andrew J. and Styles D. 'Designer British Silver from Studios Established
1930 -1985', Antique Collector's Club 2015, p 484 for an illustration of a pair
of identical candlesticks. Only five or six pairs of this design of candlestick
were made.

£1,500-2,000

101
A PAIR OF SILVER HAMMERED BALUSTER JUGS
GUILD OF HANDICRAFT, LONDON 2002
With scroll handles and on circular moulded spreading feet
25cm (9 3/4in) high
1966g (63.2 oz)

£1,500-2,000



102

102 λ

A SILVER AND ENAMEL BOWL

JANE SHORT, LONDON 2009

Enamelled and engraved with a band of purple clematis to a textured ground

17cm (6 3/4in) diameter

750g (24.1 oz)

Accompanied by a hand drawn and painted preparation illustration, and a colour photocopy of an additional sketch

Jane Short studied jewellery at the Central School of Art and Design in London from 1972 to 1975. She then went on to study silversmithing at The Royal College of Art under the guidance of Gerald Benney and his master enamellers from Beenham House, Alan Evans and Robert Winter, who were visiting tutors at the RCA. Her works have been exhibited in galleries and museums throughout Britain and in Europe and North America. Jane's most famous commission was her enamel work on the Millenium Charger, commissioned by the Goldsmiths' Company to celebrate the Millenium.

£800-1,200

103 λ

A SILVER AND SILVER GILT CYLINDRICAL CIGARETTE CANISTER AND ASHTRAY

STUART DEVLIN, LONDON 1972

The cigarette canister cover with a silver gilt pebble texture and a band of standing male and female figures, the ashtray conforming

The cigarette canister 9.5cm (3 3/4in) high, the ashtray 9cm (3 1/2in) diameter

435g (14 oz) gross

£600-800



103



104

104 λ

A SET OF FOUR SILVER AND SILVER GILT SALT AND PEPPER SHAKERS

STUART DEVLIN, 1968 (2) AND 1969 (2)

With half pebble textured bodies

12cm (4 3/4in) high

527g (16.95 oz)

£700-1,000



105

105 λ

A PAIR OF SILVER CANDLESTICKS

STUART DEVLIN, LONDON 1968

With cylindrical textured cage work shades, cylindrical stems and on circular spreading bases

26cm (10 1/4in) high

633g (20.35 oz)

£700-1,000

Gerald Benney CBE (1930 - 2008) was perhaps the most important designer in the revival in the art of British silversmithing in post World War II Britain. Born in Hull in 1930, his parents were both part of pre-war British artistic life. His father, E.A. Silas Benney, was a painter and Principal of Brighton Art College, and his mother was an accomplished silversmith. Gerald studied silversmithing at Brighton College of Art, and later at the Royal College of Art in London, and opened his first silver workshop just off Tottenham Court Road in the early 1950s. During the 1950s Gerald built up his reputation and obtained many important commissions from both private and corporate clients, as well as being a design consultant for Viners cutlers and silversmiths in Sheffield.

During the 1960s, a workshop accident of using a damaged hammer head whilst hand raising a cup bowl enabled Gerald to discover one of his most distinctive decorative features. The damaged hammer head had created a textured bark finish on the pieces, rather than a plain polished surface, and Gerald incorporated this finish into many of his objects, and ultimately became known as the ‘Benney Bark Finish’. In 1964 Gerald and his family moved to Beenham House near Reading, enabling him to create an additional studio workshop in the house. It was at Beenham House that Gerald began to produce his signature boxes, and by the 1970s enamels were added to Benney’s boxes and objects. Enamelling had almost become a lost art by the 1970s, but Gerald persuaded Norwegian enameller, Berger Bergersen, to come to Beenham to teach Gerald and his craftsmen the art of enamelling. Bergersen had learned his enamel craft at Bolin in Stockholm from some of Fabergé’s enamellers after they had fled to Sweden following the Russian Revolution. Through trial and error, Gerald and is team undertook enamelling of the most complicated kind on technically the most demanding surfaces with stupendous results.

The British Royal Family have been major patrons of Gerald Benney, and he held four Royal Warrants in the 1970s and 1980s as Goldsmith and Silversmith to HRH The Duke of Edinburgh, HM The Queen, HM Queen Elizabeth the Queen Mother and HRH the Prince of Wales. His other achievements include: Freeman of the Goldsmith’s Company; Liveryman of the Worshipful Company of Goldsmiths; Royal Designer for Industry and a Professorship at the Royal College of Art. Gerald’s pieces can be found in many important collections including at the Victoria and Albert Museum, The Crafts Council and the Goldsmiths’ Company.



106

106 λ
A SET OF FOUR SILVER SALT AND PEPPER SHAKERS
GERALD BENNEY, LONDON 1958
With cork stoppers
9.5cm (3 3/4in) high
313g (10.05 oz) gross

Literature:
Andrew J. and Styles D. ‘Designer British Silver from Studios Established 1930 -1985’, Antique Collector’s Club 2015, p 88 for an illustration of a cruet set with an identical salt and pepper, dated 1958-9, ordered by Arthur Liberty to sell at the Liberty store. The design was never sold at Liberty as the Liberty buyer rejected them on delivery.

£600-800



107

107 λ
A PAIR OF SILVER CYLINDRICAL SALT AND PEPPER CELLARS
GERALD BENNEY, LONDON 1969 AND 1972
With polished rims and textured bodies
5.5cm (2 1/4in) high
164g (5.3 oz)

£300-500



108

108 λ
A SET OF SIX SILVER GOBLETS
GERALD BENNEY, LONDON 1968 (3) AND 1969 (3)
With polished rims and textured bark decoration, on circular bases
11cm (4 1/4in) high
1464g (47.1 oz)

£3,000-5,000

109 λ

A SILVER CIRCULAR TABLE CENTREPIECE WITH A REMOVABLE UNMARKED GOLD COLOURED AND AQUAMARINE BROOCH

GERALD BENNEY, LONDON 1965

With a plain polished border, to an openwork centre with silver gilt stacked batons at intervals, textured arrow and ribbed panels, the centre with a REMOVABLE gold coloured and aquamarine brooch, centrally claw set with a circular cut aquamarine within a birds nest border of textured batons set with corner step cut aquamarines, unmarked, 4.9cm diameter, 61.6g gross

The bowl 34.5cm (13 1/2in) diameter

3018g (97.05 oz) gross

During the 1950s Gerald Benney began to receive both private and commercial commissions for large and small one off pieces. By the early 1960s he had developed his own unique centrepiece bowl design, which was much shallower than the 20-30cm high centrepieces of previous generations. He produced these centrepieces in varying designs his career. The flat open work covers of Gerald's centrepieces are highly sculpted with a variety of abstract flowers and insects, or set with gemstones such as the lot being offered here.

Literature:

Andrew J. and Styles D. 'Designer British Silver from Studios Established 1930 -1985', Antique Collector's Club 2015, p 90-93 for other examples of Gerald Benney centrepieces dating from 1962 and 1974.

£4,000-6,000



109 (detail – actual size)



109

110 λ

A PAIR OF SILVER GILT AND ENAMEL GOBLETS

GERALD BENNEY, MASTER ENAMELLER'S MARK FOR ROBERT VIDAL WINTER, LONDON 1971

With green and red translucent enamel over a bark effect textured ground, ivory coloured stems and on circular feet

13.5cm (5 1/4in) high

769g (24.7 oz) gross

Literature:

Andrew J. and Styles D. 'Designer British Silver from Studios Established 1930 -1985', Antique Collector's Club 2015, p 104 for an identical green and ivory enamelled goblet dated 1970. The authors note that this 1970 goblet was an early example of Benney's enamel work, and would have been extremely difficult to execute as the surface is both large and curved. Gerald Benney commented himself during their early enamel experiments that 'For two years great crates full of rubbish. The least speck of dust, or a tiny air bubble, can ruin enamel'.

£2,500-3,500



111

111 λ

AN 18 CARAT GOLD, ENAMEL AND OPAL OVAL BOX

GERALD BENNEY, LONDON 1975

With green translucent enamel over a diamond pattern ground and the cover set with an oval opal

6.5cm (2 1/2in) long

110g gross

With a Gerald Benney green leather case

£5,000-8,000



112

112 λ

AN 18 CARAT GOLD AND ENAMEL CIRCULAR BOX

GERALD BENNEY, MASTER ENAMELLER'S MARK FOR ALAN ALFRED EVANS, LONDON 1975

With red translucent enamel over a sunburst ground

5cm (2in) diameter

111g gross

With a Gerald Benney leather case

£4,000-6,000

113

AN 18TH CENTURY FRENCH SILVER MOUNTED AND ENAMEL BOX

MARKS INDISTINCT, MID 18TH CENTURY

In the form of a recumbent rustic maiden, the base with a butterfly, the interior painted with flowers

75cm (3in) long

£300-500

114

A GERMAN 18TH CENTURY GOLD MOUNTED AND PORCELAIN BOX

SECOND HALF 18TH CENTURY

Modelled as a female figure wearing a tiara set with diamonds, an emerald and a ruby, the gold mount chased with a band of flower heads and C-scrolls, the base painted with a floral spray

6.5cm (2 1/2in) high

59g gross

Face patches were a popular make up adornment in the 18th century. They were worn to cover scars and pock marks, but also had specific meanings depending on where the patch was placed on the face. A patch on the forehead indicated a mystic disposition. Patches came in many shapes such as stars and crescent moons, as can be seen on the subject this box.

£800-1,200

115

A LATE 19TH CENTURY GERMAN PORCELAIN BODKIN CASE

UNMARKED

Painted with panels of figures in river scenes to a white ground, within borders of gilt and purple swags, with gilt metal mounts

16cm (6 1/4in) long

£500-700

116

A 19TH CENTURY STAFFORDSHIRE ENAMEL RABBIT BOX

UNMARKED

The base painted with floral sprays to a white ground

6.5cm (2 1/2in) long

Provenance:

Sale, Sotheby's, 14th October 2004, Part lot 151

£250-350

117

A STAFFORDSHIRE ENAMEL OVAL BOX

EARLY 19TH CENTURY

The cover painted a 'Lawyer and his agent'

5.5cm (2 1/4in) long

Provenance:

Sale, Sotheby's, 14th October 2004, Part lot 151

£200-300



113



114



116



115

117



118



119



120



121



123



122



124

118
A CONTINENTAL PORCELAIN
RECTANGULAR BOX AND HINGED COVER
Decorated with scenes from the Battle of
Trafalgar
8.5cm (3 1/4in) long

£300-500

119
A STAFFORDSHIRE ENAMEL
RECTANGULAR BOX AND HINGED COVER
18TH CENTURY
Decorated with courting couples, the interior
with archways next to riverscapes
8.5cm (3 1/4in) long

£600-800

120
TWO 19TH CENTURY CONTINENTAL
SEVRES STYLE BOXES
A Limoges porcelain Sevres style oval box and
hinged cover and another pottery example,
second half 20th century, each of the covers
painted with a courting couple, with gilt foliate
and floral decoration and gilt metal mounts
The oval box 10cm (4in) long
The rectangular box 7cm (2 3/4in) long

£150-250

121
AN 18TH CENTURY STAFFORDSHIRE ENAMEL RECTANGULAR BOX
CIRCA 1780
The cover painted with a couple holding a rifle and two dogs, within a gilt
foliate scroll border, the sides painted with architecture and a riverscape,
with gilt metal mounts
9cm (3 1/2in) long

£400-600

122
A LATE 18TH CENTURY STAFFORDSHIRE ENAMEL OVAL BOX
UNMARKED
Painted with scenes of ships within gilt foliate swag borders, with gilt
metal mounts
9cm (3 1/2in) long

£200-300

123
A LIMOGES ENAMEL AND SILVER MOUNTED QUATREFOIL
SECTION BOX AND HINGED COVER
LATE 19TH CENTURY
Decorated with panels in the Renaissance manner of classical subjects
7cm (2 3/4in) long

£200-300

124
A LATE 19TH CENTURY DRESDEN PORCELAIN OVAL BOX AND
HINGED COVER
LATE 19TH CENTURY
Decorated in the 18th century Meissen style with figures on horseback
in rural scenes within foliate swag borders, with gilt metal mounts
8cm (3in) long

£200-300



125

125
AN 18TH CENTURY GILT MOUNTED GLASS
BOX

The cover with applied resin classical architectural structures and a band to the body, with gilt metal mounts
9cm (3 1/2in) long

£400-600



126



127

126
A GOLD MOUNTED AND BLUE GLASS
HINGED BOX

PROBABLY DECORATED IN THE ATELIER OF JAMES GILES, CIRCA 1770
The cover painted with a flower and butterflies within a gilt scroll border, the body with lattice decoration
5cm (2in) diameter

£400-600

127
A CONTINENTAL GOLD MOUNTED AND
WHITE PORCELAIN CIRCULAR BOX AND
HINGED COVER

19TH CENTURY
With gilt and enamel chinoiserie decoration of figures and shrubs
6.5cm (2 1/2in) diameter

£300-500



128



129



130

128 Y
AN 18TH CENTURY GOLD AND
TORTOISESHELL BOOK FORM BOX
UNMARKED

Inlaid with Selene and Endymion among foliage
9cm (3 1/2in) high
155g gross

£1,000-1,500

129 Y
AN 18TH CENTURY TORTOISESHELL AND
GOLD PIQUE INLAID BOX

The cover inlaid with dancing figures within in a scroll, mask and shell border
8.5cm (3 1/4in) long

Provenance:
Sale, Sotheby's, 18th July 1988, lot 139

£800-1,200

130 Y
AN 18TH CENTURY GOLD MOUNTED AND
TORTOISESHELL BOX

UNMARKED
The tortoiseshell cover inlaid with birds, foliate swags, bows, arrows, quivers and panels of mother of pearl, the base inlaid with a dog chasing birds and pagodas
8cm (3 1/4in) long
85g gross

£1,000-1,500



131
AN 18TH CENTURY GOLD CANTED RECTANGULAR BOX
ANDRÉ MAGNIN, 1798 -1809 SMALL CENSUS MARK
With a chased foliate borders, engine turned decoration and an oval vacant reserve
9cm (3 1/2in) long
83g

Provenance:
Sale, Christies, 28th May 2002, lot 275

£1,800-2,200

132
A FRENCH 18TH CENTURY GOLD AND ENAMEL CANTED RECTANGULAR BOX
STAMPED PG, OTHER MARKS OBSCURED
With chased foliate borders, engine turned decoration and monogramed CL within a blue enamelled oval reserve
9cm (3 1/2in) long
102g gross

Provenance:
Sale, Christies, 7th December 2004, lot 58

£2,500-3,500

133
A LATE 19TH CENTURY CONTINENTAL GOLD AND ENAMEL BOX
MARKS OBSCURED
With engine turned decoration, blue enamelled foliate borders and a band of half seed pearls, stamped H.M with further rubbed marks, sides of the box are stamped gct
6.5cm (2 1/2in) long
44g gross

Provenance:
Sale, Christie’s, unknown date, lot 282

£800-1,200

134
A LATE 19TH CENTURY GOLD AND LAPIS LAZULI NOTEBOOK
UNMARKED
With polished lapis lazuli covers, the spine chased with flowers, opening to red velvet interior with a notebook, the cover inscribed ‘Apology 1876. Ascot.’
6.5cm (2 1/2in) high

£800-1,200



135
A 19TH CENTURY GERMAN GOLD AND ENAMEL BOX
PROBABLY HANAU
The cover with an enamelled bead and foliate border, red translucent enamel over floral sprays and with a central oval panel painted with Bacchus and Ariadne, the body and base with red and green translucent enamel over floral sprays and oval panels of burning columns with lutes and phoenix
7cm (2 3/4in) long
85g gross

£1,800-2,000

136
AN 18TH CENTURY GOLD AND ENAMEL OVAL BOX
POSSIBLY SWISS OR GERMAN
The cover with enamelled borders of foliage, translucent aubergine enamel over engine turning and a chased oval panel of a seated woman with a basket and birds, the body with rectangular panels of translucent aubergine enamel over engine turning, enamelled urns at intervals and a enamelled bead and reel border
7cm (2 3/4in) long
87g gross

£2,000-3,000

137
A 19TH CENTURY FRENCH GOLD AND ENAMEL BOX
1838 - 1919 .750 MARK
The cover inset with an enamel interior scene, chased with foliate swag borders, the body chased a man playing a flute and a bird, the cover interior with a mirror
6cm (2 1/4in) long
62g gross

£800-1,200



138
A GOLD AND ABALONE SHELL MOUNTED BOX
STAMPED 750
With a band of foliage and animals
7cm (2 3/4in) long

£500-700

139
A MID 20TH CENTURY GOLD COLOURED MOUNTED CARVED SHELL BOX
FRENCH OWL IMPORT MARK, STAMPED 750
The cover chased with animals and foliage, inset with a central carved shell panel
7.5cm (3in) long
57g gross

£700-1,000

140 Y
AN 18TH CENTURY GOLD AND CARVED SHELL CAMEO BOX
UNMARKED
The cover chased with hunting scenes and inlaid shell, carved with a seated figure, the mount to the chased with dogs hunting other animals, the shell base carved with classical figures
8cm (3in) long

£500-700

141
A 19TH CENTURY GOLD MOUNTED SHELL CAMEO BOX
UNMARKED
The hinged lid with a central domed carved cameo depicting the sinistral profile of a lady and gentleman, within a border of shells and scrolls, rub over set in a chased gold mount of foliate scrolls and birds of paradise, the base shell cameo carved with the dextral profiles of a lady and gentleman, within a border of scrolls and shells
7.5cm (3in) long

£800-1,200

142
A SILVER AND ENAMEL RECTANGULAR BOX
SPONSORS MARK FOR P. H. VOGEL & CO., IMPORT MARK FOR LONDON 1928
The cover painted with a Pekinese dog, the body with orange guilloche enamel over engine turning and a set with a blue cabochon to the thumb piece
8cm (3 1/4in) long
113g (3.65 oz) gross

£150-250



143



142



144



145



146

143
A SILVER AND ENAMEL RECTANGULAR BOX
SPONSORS MARK FOR P. H. VOGEL & CO., IMPORT MARK FOR LONDON 1928
The cover painted with two snipe, the body with orange guilloche enamel over engine turning
8cm (3 1/4in) long
116g (3.7 oz) gross

Provenance:
Sale, Olympia, 14th October 2004, lot 159

£150-250

144
A SILVER AND ENAMEL RECTANGULAR BOX
P. H. VOGEL & CO., IMPORT MARK FOR LONDON 1928
The cover painted with two red grouse, the body with green guilloche enamel over engine turning
8cm (3 1/4in) long
118g (3.8 oz) gross

£150-250

145
A SILVER AND ENAMEL RECTANGULAR BOX
SPONSOR'S MARK FOR H. C. FREEMAN LTD., IMPORT MARK FOR LONDON 1930
The cover painted with a country scene, the body with engine turned decoration
8cm (3 1/4in) long
101g (3.25 oz) gross

Provenance:
Sale, Olympia, 14th October 2004, lot 159

£100-150

146
AN AUSTRIAN SILVER AND ENAMEL BOX
1872 - 1922 .800 STANDARD
The cover painted with a seated Japanese lady by a river, the body with yellow guilloche enamel
8cm (3 1/4in) long
134g (4.32 oz) gross

Provenance:
Sale, Olympia, 14th October 2004, lot 159

£150-250



147
A SILVER AND ENAMEL SQUARE COMPACT
 ADIE BROTHERS LTD., BIRMINGHAM 1940
 The cover with green guilloche enamel, the base with engine turned decoration and applied with a coronet
 7cm (2 3/4in) long
A SILVER OBLONG CIGARETTE CASE
 SPONSORS MARK FOR MARKS & CHOEN, IMPORT MARK FOR BIRMINGHAM 1905
 The catch button inset with a sapphire
 9.5cm (3 3/4in) long
 262g (8.4 oz) gross

£100-150

148
A GERMAN SILVER COLOURED AND ENAMEL STRIKER LIGHTER
 STAMPED 935
 Enamelled with a seated female nude and engraved with a foliate border
 5cm (2in) high

£80-120

149
AN AUSTRO-HUNGARIAN SILVER AND ENAMEL CIGARETTE CASE
 1872 - 1922, 900 STANDARD
 The enamelled cover with a reclining nude female
 10.5cm (4 1/4in) long
AN EARLY 20TH CENTURY CONTINENTAL SILVER COLOURED AND ENAMEL CIGARETTE CASE
 UNMARKED
 The enamelled cover with Leda and the swan
 8.5cm (3 1/4in) high
 298g (9.6 oz) gross

£300-500

150
AN EGYPTIAN SILVER CIGARETTE CASE
 .800 STANDARD, CIRCA 1926
 Later enamelled with a bathing lady
 10cm (4in) long
 148g (4.75 oz) gross

£100-150



151
A GERMAN SILVER RECTANGULAR BOX
 HANAU PSEUDO MARKS, .930 STANDARD, CIRCA 1900
 The cover chased with musicians within a scroll border, the body chased with musical instruments and foliage
 8.5cm (3 1/4in) long
 142g (4.6 oz)

£200-300

152
A FRENCH SILVER AND ENAMEL DRESSING TABLE BOX
 BOAR'S HEAD MARK 1838 - 1961
 The cover with a chased husk border and purple enamel centre, the sides of the body chased with a band of putti, opening to a velvet interior
 13.5cm (5 1/4in) long

£300-500

153
A VICTORIAN SILVER RECTANGULAR SNUFF BOX
 EDWARD EDWARDS II, LONDON 1846
 With chased floral borders and engine turned sides, the cover engraved 'Presented to Sergeant Major Humphries Central London Rangers, by Major R. T. Higgins, the King's own borderers as a token of respect & esteem. 1847'
 9.5cm (3 3/4in) long
 234g (7.55 oz)

£400-600



154



154

A 19TH CENTURY FRENCH SILVER AND RED ENAMEL CIRCULAR BOX

POST 1838 BOAR MARK

With translucent red enamel over engine turning the cover inset with a portrait of a lady

5cm (2in) diameter

Together with a Limoges enamel oval box, decorated with floral sprays and stars to a blue ground, 5cm (2in) long

£300-500



155



155

AN ITALIAN SILVER COLOURED AND ENAMEL SHAPED OVAL COMPACT

FIRENZE 1944 - 1968, .800 STANDARD

The cover with two reclining figures within a blue border enamel border, engraved with flowers

10cm (4in) long

The cover enamelled with a lady

5cm (2in) high

AN EGYPTIAN SILVER AND ENAMEL CIRCULAR BOX

IMPORT MARK FOR LONDON 1907

The cover enamelled with a lady admiring a champagne flute, the engine turned base engraved 'Champagne dry Monople' within a rectangular reserve

AND A SILVER GILT COLOURED AND ENAMEL OVAL LOCKET

UNMARKED

£250-350



156

156

A GROUP OF FOUR 19TH CENTURY LIMOGES AND VIENNA STYLE BOXES

To include: a Vienna style porcelain circular box and cover, circa 1900, the cover with a woman and a crying cherub within a circular panel, 7.5cm (3in) diameter; another similar example, with a woman at a fountain; a late 19th century lappet shaped box and hinged cover, 9.5cm (3 3/4in) long; and a modern Limoges porcelain circular box, in the Sevres style printed with a courting couple, 10cm (4in) diameter

£250-350



157

157

A STAFFORDSHIRE PORCELAIN RECTANGULAR BOX AND HINGED COVER

18TH CENTURY

Decorated with hunting scenes, together with another Staffordshire enamel and Old Sheffield plate circular box, decorated with architecture

9cm (3 1/2in) long and 4.5cm (1 3/4in) diameter

£250-350



158

158

A GROUP OF FIVE BOXES

To include: a Vienna style porcelain rectangular box, circa 1900, the cover decorated with a faun, cherub and woman, with gilt metal mounts, 8cm (3in) long; an early 20th century Sevres style box, the cover with a courting couple and gilt foliate swags to a blue ground, 6cm (2 1/4in) long; a modern Limoges Sevres style shaped oval porcelain box with 18th century style mark, painted with flowers to a white ground, 6cm (2 1/4in) long; a circular box and hinged cover, the cover with a courting couple in a garden setting, 5cm (2in) diameter; and a gilt metal piano box, inset with enamel panels with courting couples, 8cm (3in) long

£500-700



159
A RUSSIAN SILVER CIGARETTE CASE
MOSCOW, 84 ZOLOTNIKI, 1908 - 1926 KOKOSHNIK MARK
The cover chased with an eagle and a child, the thumb piece inset with a red stone, the cover engraved with a presentation inscription
11cm (4 1/4in) high
194g (6.2 oz)

Provenance:
Sale, Christies, 2th November 2019, Part lot 267

£250-350

160
A RUSSIAN SILVER RECTANGULAR CIGARETTE BOX
MOSCOW, 84 ZOLOTNIKI, 1908 - 1926 KOKOSHNIK MARK
The cover chased with deer in a woodland setting, the thumb piece inset with an orange paste, the interior engraved with a presentation inscription
12cm (4 3/4in) long
139g (4.5 oz) gross
Provenance:
Sale, Christies, 2th November 2019, Part lot 267

£250-350



160
A RUSSIAN SILVER AND NIELLO RECTANGULAR BOX
ASSAY MASTER I. AVDYEYEV, MOSCOW 1859, 84 ZOLOTNIKI
Engraved with foliate swags
7cm (2 3/4in) long
62g (2 oz)

£80-120

162
A RUSSIAN SILVER CIGARETTE BOX
84 ZOLOTNIKI, 1908 - 1926 KOKOSHNIK MARK
The cover chased with an owl hunting another bird and the base with a samorodok textured finish
11cm (4 1/4in) long
200g (6.45 oz)

Provenance:
Sale, Christies, 2th November 2019, Part lot 267

£250-350



163
AN EARLY 20TH CENTURY RUSSIAN GOLD CIGARETTE BOX
1908 - 1917 MARK AND 1927 - 1958 MARK
With reeded decoration, the thumb piece inset with a sapphire, stamped with a spurious Faberge mark
9.5cm (3 3/4in) long
162g gross

£3,000-5,000

164
AN EARLY 20TH CENTURY RUSSIAN SILVER CIGARETTE CASE
MOSCOW, 84 ZOLOTNIKI, 1908 - 1926 KOKOSHNIK MARK
With reeded decoration, the silver gilt thumb piece inset with a sapphire
10cm (4in) long
197g (6.35 oz) gross

Provenance:
Sale, Sotheby's, 23rd May 2002, lot 88

£300-500



165
AN 18 CARAT GOLD RECTANGULAR COMPACT
CARTIER LTD., RETAILED BY BOUCHERON LONDON, LONDON 1937
With engine turned decoration and a diamond set thumb piece, opening to two hinged compartments and a mirror
7cm (2 3/4in) long
148g gross
Accompanied by a Boucheron leather case

£2,500-3,500

166
BOUCHERON, A 1940S RUBY, SILVER AND SILVER GILT POWDER COMPACT
The pierced gold coloured grille with butterflies amongst flowers the flower heads each set with a circular cut ruby, within a textured silver coloured surround, opening to reveal two slide release compartments, one with a mirror, the other with a compartment originally used for powder, signed Boucheron Paris, numbered BtNd 875012, stamped with French poinçons
7.5cm x 5.6cm
174g gross

Provenance:
Sale, Christie's, 23rd April 2002, lot 44

£500-800

167
BOUCHERON, A 1940S RUBY, GOLD AND SILVER COLOURED LIPSTICK HOLDER
The barrel with a pair of budgerigars amongst pierced foliate and flower heads, the flower heads centred with a circular cabochon ruby, with a pierced domed flower head compressor, the base signed Boucheron Paris, numbered Bt No 875012, stamped with French poinçons
5.8cm (2 1/4in) high
45.2g gross

Provenance:
Sale, Christie's, 23rd April 2002, lot 45

£800-1,200



168
A FRENCH ART DECO ONYX, GOLD COLOURED AND JADEITE MOUNTED MINAUDIÈRE
CIRCA 1930
The onyx cover with engraved styled rose border and an applied jadeite and diamond set basket of flowers and rectangular panel engraved with SN, triangular facettted jadeite and rose cut diamond accents to the corners, rose cut diamond set thumb piece, opening to a mirror, hinged compartment and lipstick holder, the case and lipstick holder numbered 10532, with French poinçons
6.5cm (2 1/2in) long
115g gross

£2,000-3,000

169
LACLOCHE FRÈRES, AN ART DECO FRENCH SILVER, BLACK ENAMEL AND DIAMOND COMPACT
CIRCA 1930
With a diamond set button clasp, opening to a mirror and powder compartment
8cm (3 1/4in) long
137g gross

Provenance:
Sale, Sotheby's, unknown date, lot 7

£300-500

170
MARIO BUCCELLATI, AN ITALIAN GOLD COLOURED RECTANGULAR BOX
CIRCA 1940
Engraved and chased with foliate swags
7.5cm (3in) long
71g gross

£2,500-3,500

171

CARTIER LTD., AN ART DECO SILVER GILT, BLACK ENAMEL AND DIAMOND CIGARETTE CASE

LONDON 1934

The thumb piece pave set with eight cut and step cut diamonds, approximately 1.144 carats total

8.5cm (3 1/4in) long

84g (2.7 oz) gross

Provenance:

Sale, Christie's, 18th June 2003, lot 18

£2,000-3,000

172

CARTIER PARIS, AN ART DECO GOLD COLOURED MINAUDIÈRE

CIRCA 1930

The cover engraved C.J. and with a diamond set thumb piece, opening to a mirror, a powder compartment and a lipstick holder

8.5cm (3 1/4in) long

184g gross

In a fitted gilt tooled red leather bound Cartier case

Provenance:

Sale, Sotheby's, unknown date, lot 134

£6,000-8,000



173

A GOLD COLOURED CITRINE AND DIAMOND SCENT BOTTLE

The cylindrical bottle with citrine end piece and diamond accented lid, the glass lined base with a diamond accented detail and engraved with the initials S.N., unmarked

8.5cm (3 1/3in) high

181g gross

£1,500-2,000

174

A GOLD COLOURED ‘DEAREST’ GEM SET SCENT BOTTLE

The gold coloured cylindrical bottle with a star set rhodolite garnet and old European cut diamond cluster top, the sides of the lid set with various gem stones spelling out DEAREST and engraved M.M.B, the collar engraved Dec 25th 1893, the glass lined base with a diamond accented detail and engraved with the initials S.N., unmarked

8cm (3in) high

85.7g gross

£1,200-1,800

175

FOUR GOLD COLOURED LIDDED DRESSING TABLE POTS

The first pair with pink floral enamelled decoration, scrolled foliate bases, the REMOVABLE lids with diamond set F and applied coronet, sapphire and diamond flower head clusters, each with a brilliant cut diamond and cultured pearl set flower head finial, the base stamped 18k; together with a similar example enamelled with a lady and gentleman in a pastoral scene, the lids set with sapphires and white stones, the base stamped 18k

6 1/2cm (2 1/2in) high

212.4g gross

£1,000-1,500

176

A SILVER GILT AND ENAMEL PAPER KNIFE

THOMAS EDWARD SCOTT, LONDON 1979

With a silver gilt blade, white enamel, chased husk bands and a citrine terminal

17.5cm (7in) long

£150-250





Fine Jewellery and
Luxury Accessories

177

A DEMI PARURE OF LATE GEORGIAN MOSS AGATE JEWELLERY

CIRCA 1810

The ear pendants with REMOVABLE articulated shaped moss agate panels with beaded surrounds, hinged hook fittings, together with a shaped moss agate panel with a shaped moss agate drop, and two additional drops, in period silk lined leather case

Size/dimensions: ear pendants 8.2cm long; brooch 7.7cm long

Gross weight: 28.8 grams

£1,000-1,500

178

A ROSE CUT DIAMOND AND ENAMEL BRACELET

The rectangular panel clasp centred with rose cut diamond flowerheads between pierced scrolled foliate borders, with blue enamel decoration, to ten rows of beaded quatrefoil shaped flower head links, slide bar clasp

Size/dimensions: 17.5cm x 7.1cm

Gross weight: 87.7 grams

£1,500-2,000

179 Y

A VICTORIAN GOLD AND CORAL LOCKET PENDANT

CIRCA 1880

The domed oval panel set with polished coral beads and beaded and rope twist lattice detail, with coral accented bale, glazed panel verso

Size/dimensions: 3.6cm long

Gross weight: 7.3 grams

£300-500

180

JULES EGGERT, ATLIN, BRITISH COLOMBIA, CANADA, A PROSPECTORS CONCH SHELL CAMEO BROOCH AND BRACELET

CIRCA 1910

The oval shell cameo carved with the profile of Flora, wearing a diadem and flowers in her hair, within a radiating gold nugget style surround, stamped to the reverse J. Eggert Atlin; the bracelet with squared links with triangular pierced sections, with applied gold nugget decoration, the clasp with an oval shell cameo carved with the profile of a lady within a gold nugget style border, signed J. Eggert Atlin, with belcher link safety chain

Size/dimensions: brooch 4.6cm long; bracelet 18cm long

Gross weight: 49.9 grams

Jules Eggert (1855-1922) was born in Switzerland and moved to Atlin, British Colombia in 1899, a year after the start of the gold rush which began after gold deposits were discovered in the region. His jewellery store, built in 1902, was burnt down in the catastrophic fires that took place in the area in 1914.

The brooch and bracelet were given to the vendors great aunt in 1913 by a close friend that had travelled to Atlin.

£1,000-1,500



181
A 19TH CENTURY HALF PEARL LOCKET PENDANT

The circular pendant with blue enamel ground and white enamelled border, with a glazed compartment within a circle of graduated half pearls, with a possibly later added pearl set bale, with glazed compartment verso and later inscription ‘28th March 1914’
Size/dimensions: 3.3cm long
Gross weight: 6.5 grams

£200-300

182
AN 19TH CENTURY GOLD BRACELET WITH HALF PEARL AND HAIRWORK CLASP SECOND QUARTER OF THE 19TH CENTURY

The pressed textured fancy link bracelet with applied floral and beaded style panel decoration, to an oval clasp with half pearl border and central hair panel with seed pearl set scrolling initials beneath a domed glazed panel, inscribed to the reverse Les cheveux des Maman & les cheveux de son Amie 30 Avril 1825
Size/dimensions: clasp 4.2cm long, bracelet 15cm long, with two rows of additional links 1.6cm long
Gross weight: 38.5cm long

£1,000-1,500

183
A VICTORIAN HALF PEARL AND BLACK ENAMEL MOURNING RING

LONDON 1845
The central panel shaped like a Maltese cross with a central half pearl upon black ground to tapered half pearl shoulders, with oval glazed panel verso, full hallmark and maker’s mark JW, inscribed M. Brierly Obt. Mar. 22 1858.
Size/dimensions: finger size M
Gross weight: 2.4 grams

Margaret BRIERLY, who died 22 Mar 1858 and was buried 29 Mar 1858 at the church of St Peter, Church Lawford, Warwickshire, age 58 years. She was of Kings Newnham a hamlet in the parish of Church Lawford. The BRIERLY family of Kings Newnham were millers.

£150-250

184
A VICTORIAN SAPPHIRE SIGNET RING

The oval sapphire panel carved with an oak tree out of a ducal coronet, the trunk penetrated with a saw, within a gold setting, unmarked
Size/dimensions: finger size O
Gross weight: 5.3 grams

Crest of the HAMILTON family, an extensive Scottish noble family of great antiquity at every level: Dukes, Marquesess, Earls, Viscounts, Barons, Chief of Clans, Lairds. A crest used extensively by most HAMILTON families.

£300-500

185
A GEORGE II MEMENTO MORI MOURNING RING

CIRCA 1756
The oval facettted rock crystal panel above an enamelled skull within a gold coloured wire surround, in a reeded closed back setting, to a black enamelled scrolled shank inscribed GULS CARPENTER OB; 3 JULIJ 1756 AE:76, the shank with makers mark CD
Size/dimensions: finger size approximately O
Gross weight: 4.1 grams

William CARPENTER (1680-1756) a maltster, the son of William CARPENTER (1661-1729) by Elizabeth KNIGHT (1664-1726). In 1706 he married Susanna PRIME (1682-1777). He had seven children: Susanna (1707-); William (1708-1782) a yeoman; Mary (1711-); Elizabeth (1713-1806); Philip (1715-1790); Margaret (1718-1796); John (1721-). At his death he is referred to as William CARPENTER senior and his burial 6th July 1756 at the church of St Mary the Virgin Adeby, Norfolk is marked by a memorial that still exists today. His will gained probate at the Court of the Diocese of Norwich, where he is referred to as William Denny CARPENTER.

£600-800

186
A LATE 18TH CENTURY/EARLY 19TH CENTURY ENAMEL AND SEED PEARL SENTIMENTAL LOCKET RING

The octagonal panel with blue and white enamel and the sentiment Toujours Chere, with a seed pearl border, the panel hinged to reveal an open reserve, to wire work shoulders
Size/dimensions: panel 1.6cm long, finger size R
Gross weight: 4.8 grams

£400-600



187

A MID 19TH CENTURY CARVED AGATE, DIAMOND AND TURQUOISE NECKLACE/TRIO OF BRACELETS

CIRCA 1850

The graduated panels carved with various grotesque masks after the antique, with collet set rose cut diamond eyes, in rose gold settings, to circular cabochon turquoise and mine cut diamond quatrefoil links, with concealed clasps

Size/dimensions: necklace 50.5cm long, bracelets approximately 17cm long

Gross weight: 59 grams

£3,000-5,000

188

A MID VICTORIAN SERPENT NECKLACE

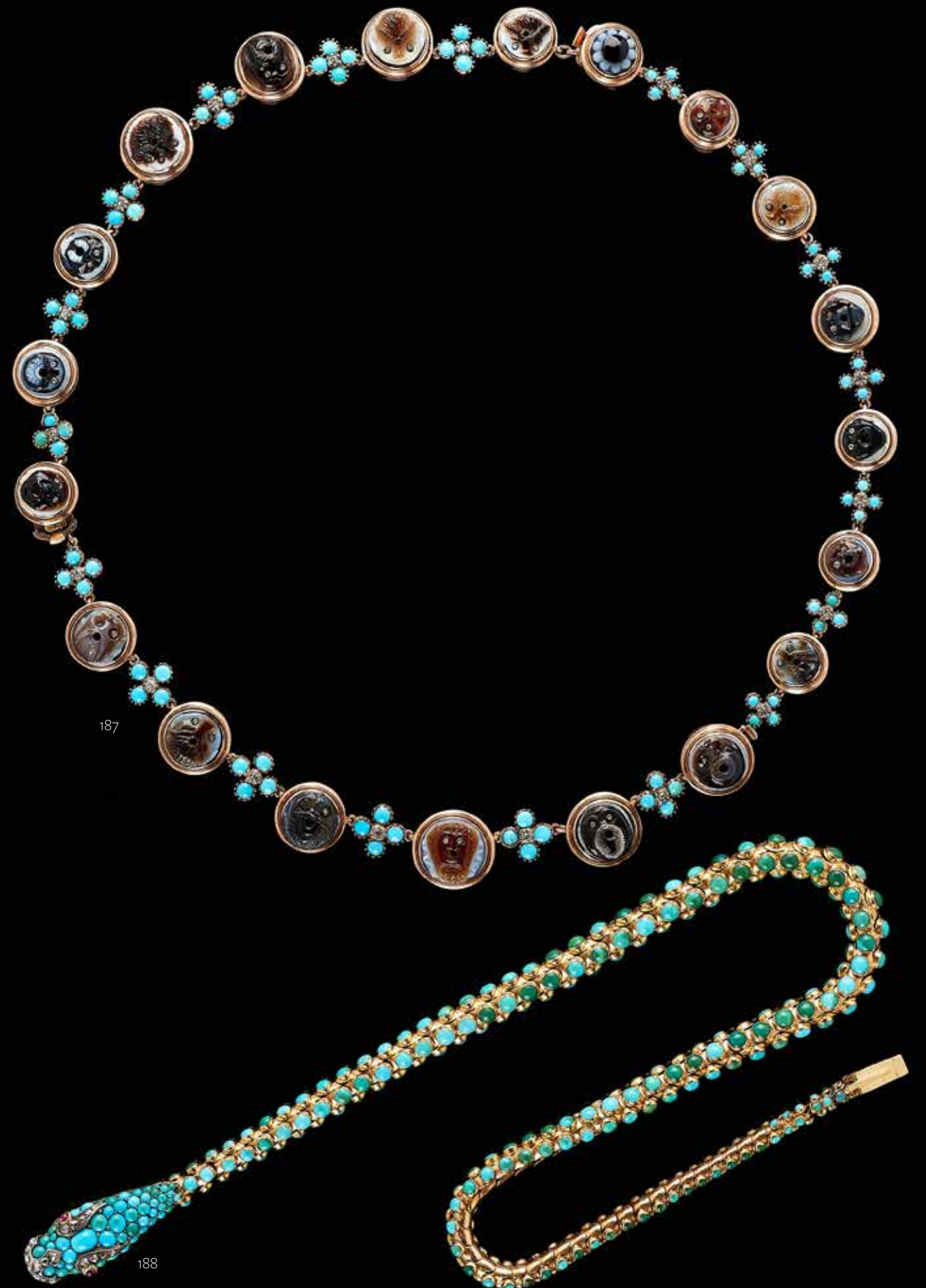
CIRCA 1870

The graduated articulated serpent link necklace set with circular cabochon turquoise, to a pavé set turquoise head with cabochon ruby eyes and rose cut diamond eyebrows and nose

Size/dimensions: 40.5cm long

Gross weight: 473 grams

£3,000-5,000



189
A PAIR OF SAPPHIRE AND DIAMOND CLUSTER EAR STUDS
The cluster studs centred with an oval cut and cushion cut diamond within a surround of old mine cut diamonds, approximately 0.60 carats total
Size/dimensions: 1cm long
Gross weight: 2.7 grams

£600-800

190
A 19TH CENTURY GOLD FANCY LINK CHAIN
The textured pierced shaped links interspaced with polished circular discs, to a barrel clasp
Size/dimensions: 129cm long
Gross weight: 40 grams

Provenance:
From the collection of Victoria, Lady de Rothschild

£500-700

191
A GRADUATED FOUR STRAND PEARL NECKLACE TO A DIAMOND CLASP
The graduated pearls to a rectangular gold clasp, with an applied old cut diamond panel, approximately 0.11 carats total
Size/dimensions: pearls measuring 2.7mm to 3.5mm, 36cm long
Gross weight: 22.4 grams

Please note the pearls are untested and unwarranted as natural pearls.

£500-700

192 Y
A MID VICTORIAN PEARL AND SEED PEARL EN TREMBLANT BROOCH
CIRCA 1860
The mother of pearl, pearl and seed pearl morning glory flower head set en tremblant, with a cluster of mine cut diamonds to the centre, approximately 0.27 carats total, with mother of pearl, pearl and seed pearl leaves set on wire stalks
Size/dimensions: 8cm long
Gross weight: 23.2 grams

£700-1,000

193
FIVE EARLY 20TH CENTURY PEARL HAIR PINS
CIRCA 1910
The gold coloured pins each with five graduated pearls
Size/dimensions: one pin 6.7cm long, four 5.3cm long
Gross weight: 3.3 grams

Please note the pearls are untested and unwarranted as natural pearl.

£100-150

194
A PAIR OF LATE 19TH CENTURY JAIPUR ENAMEL BAZUBAND
The foil backed central octagonal panels with traces of green colour, to pierced foliate shoulders set with white stones, the reverse with red and green floral decoration against a white enamel ground, to later woven link bracelet with green paste clasp
Central panels approximately 5.3cm long
38g gross

A similar example can be seen in Stronge, S; Smith N; and Harle, J.C., A Golden Treasury, Jewellery from the Indian Subcontinent, Victoria and Albert Museum Indian Art Series, 1988, page 88

£600-800

195
A 19TH CENTURY GOLD FILIGREE OVERLAID SCENT BOTTLE
The domed cover enamelled with a blue dot and swag band, and green foliage, the glass body overlaid with gold filigree, with foliate chased seams, unmarked
13cm (5in) high

Provenance:
From the collection of Victoria, Lady de Rothschild

£500-700



196

**A LATE VICTORIAN DIAMOND SINGLE
STONE BAR BROOCH**

The old European cut diamond weighing 1.23 carats, in a ten claw setting to a knife edge bar engraved 'Father and Mother To Jean Dorothy Evans Queen Victoria's Diamond Jubilee June 22: 1897'

Size/dimensions: 4.4cm long
Gross weight: 3.7 grams

£1,500-2,000

197

**A VICTORIAN AND LATER NAVETTE
SHAPED DIAMOND PANEL RING**

The navette shaped panel set with old cut diamonds, approximately 1.29 carats total, to trifurcated shoulders, the later shank with 18 carat gold London 1903 hallmark

Size/dimensions: Finger size M
Gross weight: 4.2 grams

£500-800

198

A DIAMOND PENDANT

The pear cut diamond weighing 1.98 carats, in a cut down collet setting, with an old brilliant cut diamond below, estimated to weigh 0.10 carats, and a polished gold coloured bale

Size/dimensions: 2.7cm long
Gross weight: 1.8 grams

£2,500-3,500

199

**A LATE VICTORIAN SINGLE STONE
DIAMOND RING**

CIRCA 1900

The cushion cut diamond weighing 3.71 carats in a claw setting, to a reeded shank

Size/dimensions: finger size I 1/2
Gross weight: 4.1 grams

£7,000-10,000

200

A FIVE STONE DIAMOND RING

The European cut diamonds in claw settings, approximately 2.25 carats total, to a tapered gold coloured shank

Size/dimensions: finger size N 1/2
Gross weight: 3.2 grams

£1,000-1,500

201

**A LATE 19TH CENTURY FRENCH DIAMOND
AND BLACK ENAMEL HINGED BANGLE**

CIRCA 1890

The hinged bangle with a REMOVABLE open flower head cluster of old mine cut diamonds, approximately 2.15 carats total, with black enamelled borders, to pierced scrolled shoulders with rose cut and old cut diamond accents, to a pierced hinged back, numbered 50008, the clasp stamped with French poinçons

Size/dimensions: cluster 2.5cm diameter, inner width 5.7cm

Gross weight: 33.6 grams

Provenance:

Sale, Sotheby's, Fine Jewels, 19th March 1998, lot 27

£2,000-3,000



202
AN EMERALD AND DIAMOND FIVE STONE RING

The graduated circular cut emeralds interspaced by brilliant cut diamonds, approximately 0.30 carats total, to a scrolled gallery
Size/dimensions: finger size M 1/2
Gross weight: 4 grams

£300-500

203
A DIAMOND GRAPE BUNCH PENDANT ON CHAIN

The grapes and vine leaf pendant set throughout with various circular cut diamonds, approximately 2.20 carats total, suspended from a facettted belcher link chain
Size/dimensions: pendant 3.5cm long, chain 37cm long
Gross weight: 12.1 grams

£700-1,000

204
AN EARLY 20TH CENTURY RUBY, SAPPHIRE AND DIAMOND THREE LEAF CLOVER RING

The clover composed of a cushion cut ruby and sapphire with an old European cut diamond, with a central old cut diamond and an old cut diamond accented stalk, approximately 0.35 carats total, to a polished shank
Size/dimensions: finger size O 1/2
Gross weight: 2.9 grams

£600-800

205
AN EARLY 20TH CENTURY 18 CARAT GOLD AND EMERALD FIVE STONE RING

The five graduated step cut emeralds with canted corners to a scrolled pierced gallery, partial gold hallmark
Size/dimensions: finger size O
Gross weight: 3.5 grams

£500-700

206
AN EARLY 20TH CENTURY SAPPHIRE AND DIAMOND FIVE STONE RING

The graduated circular cut sapphires with old European cut diamonds between, approximately 0.50 carats total, to a scrolled gallery
Size/dimensions: finger size M 1/2
Gross weight: 3.2 grams

£300-500

207
A LATE VICTORIAN EMERALD AND DIAMOND SEVEN STONE RING

CIRCA 1900
The central step cut emerald with canted corners between two trios of old European cut and old brilliant cut diamonds, to a scrolled gallery, the shank stamped 18ct and numbered 4606
Size/dimensions: finger size O 1/2
Gross weight: 4 grams

£700-1,000

208
A RUBY AND DIAMOND SEVEN STONE RING

The graduated oval cut rubies interspaced by two pairs of eight cut diamonds, approximately 0.20 carats total, to a scrolled gallery, the setting with a partial 18 carat gold hallmark
Size/dimensions: finger size N
Gross weight: 4.9 grams

£300-500

209
A VICTORIAN DIAMOND AND RUBY SEVEN STONE RING, BURMA, NO HEAT

DATED 1869
The oval cut ruby estimated to weigh 2.20 carats total, flanked by two pairs of old mine cut diamonds, approximately 1 carat total, to scrolled shoulders with rose cut diamonds, the shank inscribed ‘Where I give my heart I live 19 Dec 1869 L.E J.’, in a late Victorian ring box
Size/dimensions: finger size N
Gross weight: 3.8 grams

Offered for sale with a Gemmological Certification Services Ruby Report, 5782-1563, Date 25.04.2022, stating:

Origin Myanmar (Burma)
Comment No indications of heating

£4,000-6,000

210
A LATE VICTORIAN DIAMOND FIVE STONE RING

CIRCA 1900
The graduated old mine cut diamonds in a pierced scrolled gallery, approximately 0.33 carats total
Size/dimensions: finger size L 1/2
Gross weight: 2.7 grams

£300-500

211
AN 18 CARAT GOLD AND DIAMOND THREE STONE RING

LONDON 1987
The old European cut diamonds in four claw settings, approximately 1.00 carat total, maker’s mark JAB
Size/dimensions: finger size N 1/2
Gross weight: 4.8 grams

£700-1,000

212
A LATE VICTORIAN DIAMOND AND SAPPHIRE HINGED BANGLE

CIRCA 1890
The old European cut diamonds interspaced with cushion cut sapphires, with diamond points between, approximately 1.80 carats total, to a pierced scrolled gallery, in a late Victorian bangle box
Size/dimensions: inner width 5.7cm
Gross weight: 15.6 grams

£800-1,200

213
A LATE VICTORIAN FIVE STONE DIAMOND RING

CIRCA 1900
The ring with five graduated old European cut diamonds, with eight cut diamond points between, approximately 1.48 carats total, to a scrolled gallery, the shank engraved ‘J.D.E from S.E: 12. Octr 1899’, stamped 18c, in an associated Hancocks & Co. box
Size/dimensions: finger size P 1/2
Gross weight:4.6 grams

£1,500-2,000

214
A FOUR STONE DIAMOND RING

The brilliant cut diamonds in four claw settings, the shank is stamped 22k and with Chinese gold marks
Size/dimensions: finger size N 1/2
Gross weight: 2.9 grams

£500-700

215
TIFFANY & CO., A PAIR OF DIAMOND CUFFLINKS

The oval panels each set with an old brilliant cut diamond, approximately 0.80 carats total, with bar connectors, signed Tiffany & Co. 18k
Size/dimensions: panels 1.9cm long
Gross weight: 11.3 grams

£800-1,200



216

A 1930S/1940S DIAMOND SINGLE STONE RING

The central diamond weighing 1.58 carats in an eight cut diamond millegrained foliate surround, to pierced diamond set shoulders with scrolled foliate shank

Size/dimensions: finger size approximately K

Gross weight: 5.9 grams

The ring was bought during WWII from a Jewish refugee jeweller, who had originally made the ring for his wife, but needed to sell it in order to raise funds to start a new life in the UK.

£2,500-3,500

217

A VICTORIAN DIAMOND BOW BROOCH WITH ASSOCIATED NATURAL PEARL DROP

The gold backed silver bow set throughout with graduated mine cut diamonds, approximately 1.94 carats total, suspending a pear shaped natural pearl with a polished reeded cap

Size/dimensions: 3cm wide

Gross weight: 7.1 grams

Offered for sale with a Gemmological Certification Services Pearl Report, 5782-1172, Date 14.03.2022, stating:

Measurements 9.0-9.6 x 12.7mm approx.

Colour Cream

Lustre Good

Species Natural pearl

Variety Saltwater

£5,000-7,000

218

A LATE VICTORIAN NATURALISTIC DIAMOND AND NATURAL PEARL TASSEL BROOCH

CIRCA 1890

The convex gold backed silver top with curving rows of graduated pearls with old mine cut diamond set curving thorn branches between, old mine cut diamonds approximately 1.70 carats total, to pearl and rose cut diamond set graduated articulated tassels, with rose cut diamond set pointed drop terminals

Size/dimensions: pearls measuring approximately 3.2mm to 6mm diameter, 14.5cm long

Gross weight: 49.3 grams

Offered for sale with a Gemmological Certification Services Pearl Report, 5782-1809, Date 30.05.2022, stating:

Species Natural Pearl

Variety Saltwater

£10,000-15,000



216



217



218

219

AN 18TH CENTURY IBERIAN DIAMOND CROSS PENDANT

The table cut diamonds in silver cut down collet settings, approximately 1.00 carat total, with scrolled terminals and detailing, with foiled closed backed settings

Size/dimensions: 5.1cm long

Gross weight: 8.7 grams

£500-700

220

A VICTORIAN SWALLOW BROOCH

The swooping swallow set throughout with old mine cut diamonds, approximately 4.58 carats total, with cabochon ruby eyes

Size/dimensions: 5.9cm long

Gross weight: 14.7 grams

£2,500-3,500

221

A SINGLE STONE DIAMOND RING

The brilliant cut diamond weighing 2.78 carats, in an eight claw setting

Size/dimensions: finger size N

Gross weight: 2.8 grams

£10,000-15,000

222

A VICTORIAN DIAMOND IVY BROOCH

CIRCA 1880

The ivy leaves pavé set with old mine cut diamonds, with cut down collet old mine cut diamonds on bars between, approximately 2.85 carats, numbered 756, with a later brooch fitting, in a fitted blue case

Size/dimensions: 5.2cm long

Gross weight: 12.8 grams

In Victorian floriography ivy is symbolic of fidelity.

£1,000-1,500

223

A 19TH CENTURY DIAMOND FLORAL BROOCH

The rose cut diamond set pierced floral and foliate panel with a cushion cut diamond accent, estimated to weigh 0.40 carats, with later brooch fitting

Size/dimensions: 3.2cm diameter

Gross weight: 8.1 grams

£800-1,200



219



220



221



222



223



224

224

AN EARLY 20TH CENTURY CONVERTIBLE DIAMOND FLORAL TIARA/NECKLACE

CIRCA 1910

With seven graduated old mine cut diamond set gold backed silver flower heads, with screw fittings verso, one later, with rose cut and mine cut diamond set foliate links, with a diamond set foliate band below, approximately 12 carats total, with removable tiara frame, the bottom band with a clasp so the two sections can be made into a necklace, with additional brooch and earring fittings, with a fitted Carrington & Co. case

Size/dimensions: the rise of the tiara is 4.7cm high, necklace is 37cm long

Gross weight: tiara 573 grams

Provenance

The tiara was made by Carrington in London for Phyllis Elinor Turner (1893-1958) for her presentation at court, possibly at Holyrood Palace in Edinburgh, before her marriage to Gilbert Maxwell Adair Graham on the 19th June 1913. Phyllis and her brother Arthur Turner were born, brought up, and lived their lives in Porto, amongst the 1000 strong Anglo-Portuguese community. She worked tirelessly for poor relief charities in the Douro Valley and was made a Dame of the Order of Christ of Portugal for her charitable work.

During World War I Gilbert Maxwell Adair Graham was on the Staff of the Quartermaster General Department at the War Office and received an OBE 1918 and a CBE in 1919. Gilbert's Scottish family had long trading links with Portugal starting in the late 18th century. Their introduction to the port business came in 1820 when John Graham exported 27 barrels of port to Glasgow in lieu of an unpaid debt. By the 1880s the Graham family's port trading was so successful they launched the W. & J. Graham port business. The Graham family purchased their own Portuguese estates in 1890, the Quinta dos Malvados vineyards in the Douro Valley, in order to produce their own port grapes. After many successful years in the port trade, the Graham family sold their remaining share of the W. & J. Graham business in 1970. In subsequent decades decedents of the Graham family have brought other vineyards Douro Valley and have set up a new successful port business with their brand, Churchill's Port.

Thence by family descent

£15,000-20,000



Lot 224 as a necklace

225

A 1920S DIAMOND AND PEARL DRESS RING

The pierced marquise shaped panel set with eight cut diamonds, approximately 0.34 carats, with two central pearls, the shank stamped 18ct
Size/dimensions: finger size M
Gross weight: 5.2 grams

The pearls are untested and unwarranted as natural pearl.

£300-500

226

A THREE STRAND CULTURED PEARL NECKLACE WITH A DIAMOND CLUSTER CLASP

The three rows of uniform cultured pearls to a pierced flower head cluster clasp set with old mine cut diamonds, the principal diamond weighing 1.82 carats, approximately 3.40 carats total, the cluster is removeable to the clasp, with screw fitting verso
Size/dimensions: cultured pearls 7mm diameter, clasp 2.8cm diameter, 36.5cm long
Gross weight: 89.4 grams

£3,000-5,000

227

A LATE VICTORIAN DIAMOND AND HALF PEARL PENDANT WITH EARLY 20TH CENTURY PEARL CHAIN

The hexagonal pierced pendant with half pearls and old mine cut diamonds, approximately 1.18 carats total, in cut down collet gold backed silver settings, suspended from a belcher link chain with pearl spacers, with two colour ring bolt clasp
Size/dimensions: pendant 3.8cm long, chain 136cm long
Gross weight: 12.7 grams

Please note the pearls are untested and unwarranted as natural pearl.

£800-1,200

228

AN EARLY 20TH CENTURY DIAMOND AND PEARL BRACELET

CIRCA 1920
The pierced panels each set with a trio of old mine cut diamonds with rose cut diamond set shaped borders, approximately 4 carats total, with small pearl set batons between, the clasp tongue with French poinçons
Size/dimensions: 18.1cm long
Gross weight: 35.7 grams

Provenance:

Sale, Sotheby's, Fine Jewels, 19th March 1998, lot 69

Please note the pearls are untested and unwarranted as natural pearl.

£1,500-2,000

229 Y

A PAIR OF FRENCH EARLY 20TH CENTURY DIAMOND AND MOTHER OF PEARL CUFFLINKS

CIRCA 1910
The circular mother of pearl panels with a border of rose cut diamoond, and a central cross rose cut diamond thread accent, with figure of eight attachments stamped Breveté S.G.D.G. with French eagles head poinçon
Size/dimensions: 1.2cm diameter
Gross weight: 10 grams

£600-800

230

A DIAMOND AND BOUTON PEARL STICK PIN

The old European cut diamond in a millegrained setting, estimated to weigh 0.51 carats, beside a bouton pearl
Size/dimensions: 1.2cm wide
Gross weight: 2.1 grams

Please note the pearl is untested and unwarranted as natural pearl.

£400-600



231
AN EDWARDIAN DIAMOND AND HALF PEARL CRESCENT BROOCH
CIRCA 1910
The circular gold crescent set with graduated half pearls and old mine cut diamonds, approximately 0.42 carats total, to a pierced gallery
Size/dimensions: 2.9cm diameter
Gross weight: 6.3 grams
Please note the pearls are untested and unwarranted as natural pearl.
£400-600

232
AN EDWARDIAN PERIDOT, AMETHYST AND RUBY SPIDER BROOCH
CIRCA 1910
The spider with circular cut ruby eyes, a circular cut peridot thorax and circular cut amethyst set abdomen in millegrained settings, to textured naturalistic legs, stamped 15ct
Size/dimensions: 2.8cm long
Gross weight: 4.7 grams
£200-300

233
AN EDWARDIAN PERIDOT AND SEED PEARL PENDANT NECKLACE
CIRCA 1910
The scrolled foliate whiplash pendant set with half seed pearls, to a circular cut peridot bud, and pear cut peridot drop, suspended from a scrolled seed pearl spacer, to a fancy belcher link chain necklace, with ring bolt clasp
Size/dimensions: panel 4cm long, 2.5cm wide, chain 46cm long
Gross weight: 7.2 grams
£300-500

234
AN ART NOUVEAU GOLD PENDANT
CIRCA 1910
The pierced whiplash panel set with graduated half pearls with an old cut diamond accent, suspended from diamond accented belcher link chains from a pierced diamond and half pearl panel, stamped 15ct, with belcher link chain to a hoop and bar clasp
Size/dimensions: 3.85cm long
Gross weight: 12 grams
£300-500

235
AN EDWARDIAN PEARL AND TURQUOISE GIARDINETTO PENDANT ON CHAIN
CIRCA 1910
The woven wirework basket with half pearl and seed pearl flower heads with turquoise bud accents, suspended from a ring bolt clasp to a belcher link chain with pearl and turquoise disc spacers, in original brown leather and gold tooled case
Size/dimensions: basket 2.2cm wide, chain 3.8cm long
Gross weight: 7.5 grams
£400-600

236
A VICTORIAN TWO ROW HALF PEARL RING
BIRMINGHAM 1867
The two rows of half pearls with beaded gold accents, to pierced crossover shoulders
Size/dimensions: finger size P
Gross weight: 2.7 grams
Please note the pearls are untested and unwarranted as natural pearl.
£150-250

237
A VICTORIAN EMERALD, HALF PEARL AND CULTURED PEARL RING
CIRCA 1890
The three graduated step cut emeralds with canted corners, with a half pearl and half cultured pearl between, to a shaped and engraved shank
Size/dimensions: finger size Q
Gross weight: 2.7 grams
£150-250

238
A 15 CARAT GOLD VICTORIAN RUBY, EMERALD AND HALF PEARL CLUSTER RING
BIRMINGHAM 1893
The cluster with a central step cut emerald within a surround of half pearls with cushion cut rubies, to pierced scrolled shoulders and foliate engraved shank, with makers mark C.N
Size/dimensions: finger size R 1/2
Gross weight: 2.9 grams
Please note the pearls are untested and unwarranted as natural pearl.
£200-300

239
AN EARLY 20TH CENTURY DIAMOND AND PEARL DRESS RING
The four rows set with rose cut diamonds and pearl and old cut diamond accents, approximately 0.50 carats total
Size/dimensions: finger size R 1/2
Gross weight: 7.5 grams
Please note the pearls are untested and unwarranted as natural pearl.
£500-700

240
AN EDWARDIAN HALF SEED PEARL AND ENAMELLED MINIATURE LOCKET PENDANT AND AN EDWARDIAN SEED PEARL STAR PENDANT
CIRCA 1910
The locket with a central glazed locket containing a miniature of a young girl, within a green enamelled border with a radiating seed pearl surround, glazed compartment verso, stamped 15ct, in a later fitted case; together with a seed pearl set star pendant, stamped 15ct, with polished bale, in an associated case
Size/dimensions: locket 4.3cm long; star 2.9cm long
Gross weight: 11.5 grams; 3 grams
£300-500

241
AN EDWARDIAN PERIDOT, SEED PEARL AND ENAMEL PENDANT
CIRCA 1910
The pierced quatrefoil pendant with four pear cut peridots within a white enamelled surround with black dot accents, with seed pearl accents, suspended from a polished bale stamped 15c, in a later fitted case
Size/dimensions: 3.4cm long
Gross weight: 4 grams
£250-350

242
AN ART NOUVEAU DEMANTOID GARNET BROOCH
CIRCA 1910
The foliate spray with three circular cut demantoid garnets and beaded accents, within a shaped reeded border with crossover band detail, unmarked, in an associated red leather covered case
Size/dimensions: 3.3cm wide
Gross weight: 4.2 grams
£100-150

243
AN EDWARDIAN AQUAMARINE, DIAMOND AND HALF PEARL PENDANT
CIRCA 1910
The gold flower head with a central aquamarine within a surround of rose cut diamond set petals, and an outer surround of half pearl petals, suspended from a half pearl set foliate bale
Size/dimensions: 4.3cm long
Gross weight: 13.7 grams
£700-1,000

244
A PAIR OF HALF PEARL AND DIAMOND CUFFLINKS
The twisted batons each with an old cut diamond and half pearl, approximately 0.60 carats total, with baton link connectors
Size/dimensions: batons 2.2cm long
Gross weight: 11 grams
£500-700

245
A PAIR OF EARLY 20TH CENTURY BOUTON PEARL CUFFLINKS
The gold cufflinks with polished oval panels with a single bouton pearl, to figure of eight connectors
Size/dimensions: panels 1.9cm long
Gross weight: 16.6 grams
Please note the pearls are untested and unwarranted as natural pearl.
£400-600



246
AN EARLY 20TH CENTURY PASTE DOUBLE
PARROT BROOCH
CIRCA 1900

The silver parrots set with red, white and
green circular white pastes, one on a bar
perch with simulated pearl terminals, the
other upon a hoop perch suspended from a
belcher link chain, with unidentified makers
mark to the reverse
Size/dimensions: parrots approximately 4cm
long
Gross weight: 17.9 grams

£300-500

247
TWO LATE VICTORIAN BROOCHES
The first an insect bar brooch, with rose cut
diamond wings, and ruby set abdomen and
eyes, to a polished bar with a pearl terminal;
together with a diamond set swallow brooch,
the bird set with old cut and rose cut
diamonds
Size/dimensions: bar 5cm long; 2.5cm wide
Gross weight: 5.1 grams; 1.7 grams

£300-500

248
AN EDWARDIAN GOLD AND SAPPHIRE
BRACELET
CIRCA 1910
The pierced curved and baton links
interspaced with circular cut sapphires, to a
concealed clasp stamped 15
Size/dimensions: 19cm long
Gross weight: 13.1 grams

£500-700

249
A DIAMOND LINE BRACELET
The millegrained squared links each set with
a brilliant cut diamond, approximately 4.18
carats total, the sides with scrolled decoration,
to a concealed clasp
Size/dimensions: 17.8cm long
Gross weight: 14 grams

£2,000-3,000

250
A LATE VICTORIAN DIAMOND HEART
BROOCH
CIRCA 1900

The gold backed silver pierced heart shaped
panel with a central floral spray, with bow
surmount, set though out with old brilliant
cut and mine cut diamonds, approximately
0.86 carats total, with REMOVABLE screw in
brooch fitting
Size/dimensions: 2.8cm long
Gross weight: 5.1 grams

£700-1,000

251
A THREE STONE DIAMOND BAR BROOCH
The old brilliant cut diamonds in eight claw
settings, approximately 1.65 carats total, to a
knife edge bar, to a double pin brooch fitting
Size/dimensions: 4.9cm long
Gross weight: 4.1 grams

£800-1,200

252
A PAIR OF ART DECO DIAMOND
CUFFLINKS
CIRCA 1920
The squared panels set with a row of baguette
cut diamonds with black enamelled borders,
approximately 0.50 carats total, stamped Plat
& Gold, with baton connectors
Size/dimensions: 1.2cm wide
Gross weight: 12 grams

£700-1,000

253
AN ART NOUVEAU DIAMOND, ENAMEL
AND PEARL PENDANT
CIRCA 1910

The pearl set bale with two colour fancy
belcher link chains suspending a scrolling
whiplash pendant with eight cut and old cut
diamond accents, approximately 0.40 carats
total, with red, yellow and green enamelled
decoration, with a trio of pearl drops
Size/dimensions: 7.2cm long
Gross weight: 6.6 grams

Please note the pearls are untested and
unwarranted as natural pearl.

£800-1,200

254
AN ANTIQUE AND LATER SAPPHIRE,
PEARL AND DIAMOND FLOWER HEAD
STICK PIN
The petals set with cushion cut sapphires, with
rose cut diamond set stamen and a central
pearl, to a later stick pin
Size/dimensions: flower head 1.6cm diameter
Gross weight: 4.5 grams

£300-500



255
GEORGES PIERRE, AN ART NOUVEAU
SUNFLOWER HORN AND PASTE POPPY
PENDANT
CIRCA 1910

The pierced shaped poppy flower head and seed head horn panel, with painted accents and an applied claw set orange coloured oval cabochon paste, the reverse initialled GIP, with a polished horn drop, suspended from a beige silk ribbon with yellow and orange paste bead accents
Size/dimensions: horn panel 6.9cm wide x 13cm long
Gross weight: 29.9 grams

The poppy was a popular motif used in the Art Nouveau period, it has long been used as an emblem of peace, rest, sleep and death. Georges Pierre and Madame Bonté were two of the leading Parisian jewellers making jewels from horn and glass in the Art Nouveau tradition. They began their careers in competition with one another, but they joined forces and continued to produce horn jewels together until 1936. Literature: Becker V., ‘Art Nouveau Jewellery’, London 1985 Becker V., ‘Rough Diamonds’, London 1990

£400-600

256 Y
CORALLIUM JAPONICUM, A CORAL BEAD
NECKLACE
The graduated polished coral beads on a knotted strand to a plaited cord necklace
Size/dimensions: beads measuring 1.1cm to 2cm, bead section 50cm long
Gross weight: 144.3 grams
Offered for sale with a Gemmological Certification services Identification Report, 5782-1774, Date 30.05.2022, stating:

Colour Medium dark reddish orange
Species Natural precious coral
Variety Corallium Japonicum

£800-1,200

257 Y
CORALLIUM JAPONICUM, A CORAL BEAD
NECKLACE
The graduated polished coral beads on a knotted strand to a plaited cord necklace
Size/dimensions: beads measuring 1cm to 2.2cm, bead section 51.5cm long
Gross weight: 212.8 grams
Offered for sale with a Gemmological Certification services Identification Report, 5782-1772, Date 30.05.2022, stating:

Colour Medium dark reddish orange
Species Natural precious coral
Variety Corallium Japonicum

£1,000-1,500

258
MURRLE BENNETT & CO., A TURQUOISE AND
FRESHWATER PEARL BROOCH
CIRCA 1910
The curving whiplash panel set with a trio of oval cabochon turquoise, suspending a baroque freshwater pearl, stamped 15ct with Murrle Bennett maker’s mark, in an associated box
Size/dimensions: 3.9cm long
Gross weight: 4.1 grams

£300-400

259
WILLIAM THOMAS PAVITT, AN ARTS AND
CRAFTS TALISMAN DRESS RING WITH
INTERCHANGEABLE STONE ACCENTS
CIRCA 1910
The front panel with a radiating sun within a horse shoe shaped frame, with three interchangeable circular cut gems, comprising a green tourmaline, almandine garnet and citrine, within rope twist settings, the shank with applied two colour talismanic symbols, including the Swastika, the Seal of Solomon and the Wheel of Life, the shank stamped 15c with W.T.P maker’s mark, in original ring box
Size/dimensions: finger size M 1/2
Gross weight: 6.1 grams

William Thomas Pavitt (1870-1937) was a designer and maker of Talismanic Jewellery. He was co-author of The Book of Talismans Amulets and Zodiacal Gems (1914) with his wife Kate. The book is a study of ancient symbols and the symbolism of precious stones and their use as magical objects throughout the ages. He had premises at 17 Hanover Square, W. London

According to his book the symbols on this ring would provide the wearer protection against evil, happiness, longevity amongst other things. The interchangeable stones also have their own specific properties, for example tourmaline to attract inspiration, favour and to secure friends.

£400-600

260
BARNET HENRY JOSEPH, A PERIDOT ARTS
AND CRAFTS BROOCH
CIRCA 1905
The scrolled whiplash brooch set with a mixed cut peridot, suspending an oval peridot drop, stamped BHJ 9Ct
Size/dimensions: 4cm wide
Gross weight: 2.7 grams

£80-120

261
HARALD NIELSEN FOR GEORG JENSEN, No
62, A SILVER COLOURED BRACELET
CIRCA 1940
The curved polished links with pierced woven knotted links between, to a box clasp with initials MG, stamped with Georg Jensen maker’s mark and Sterling Denmark 925 62
Size/dimensions: 18.5cm long
Gross weight: 34.7 grams

£300-500



262

A PAIR OF DIAMOND EARRINGS

The scrolled cluster earrings set with old cut and pear cut diamonds, in collet and claw settings, approximately 5.10 carats total, with stud and clip fittings, in an associated S. J. Phillips Ltd. case

Size/dimensions: 2.4cm long
Gross weight: 11.1 grams

£2,500-3,500

263

AN AQUAMARINE AND DIAMOND CLUSTER RING

The oval cut aquamarine within a surround of brilliant cut diamonds, approximately 0.42 carats total, to bifurcated shoulders, the shank stamped 18ct

Size/dimensions: finger size I
Gross weight: 4.5 grams

£300-500

264

A PLATINUM, AQUAMARINE AND DIAMOND DRESS RING

LONDON 1980

The step cut aquamarine with canted corners estimated to weigh 4.75 carats, flanked by a trio of brilliant cut and pear cut diamonds, approximately 0.40 carats, to bifurcated shoulders

Size/dimensions: finger size I
Gross weight: 6.9 grams

£700-1,000

265

A 1950S DIAMOND FOLIATE SPRAY BROOCH

With two curved pierced leaves pavé set with brilliant cut diamonds, to a spray of collet set diamonds with curved diamond set bars between, approximately 5.36 carats total, to a later brooch fitting

Size/dimensions: 6.5cm long
Gross weight: 19.7 grams

£2,000-3,000

266

A BLACK OPAL AND DIAMOND CLUSTER RING

LONDON 1975

The oval cabochon black opal within a surround of brilliant cut diamonds, approximately 0.48 carats total, the 18 carat gold shank stamped with sponsor's mark H.B & Co for H A Byworth & Co.

Size/dimensions: panel 1.7cm long, finger size I
Gross weight: 4.4 grams

£400-600

267

AN EMERALD AND DIAMOND CLUSTER RING

The step cut emerald with canted corners in a four claw setting, within a surround of brilliant cut diamonds, approximately 1.20 carats total, the shank stamped 18ct Plat

Size/dimensions: finger size K
Gross weight: 5.5 grams

£800-1,200

268

A PAIR OF DIAMOND CLUSTER EAR STUDS

The European cut diamonds in claw settings, approximately 1.14 carats total, to later stud fittings

Size/dimensions: 9mm diameter
Gross weight: 2.4 grams

£700-1,000



262



263



265



264



266



267



268

269
ROLEX, OYSTER PERPETUAL DATE, REF. 1500
A GOLD COLOURED BRACELET WATCH WITH DATE, NO. 1006214, CIRCA 1963

Movement: Cal. 1560, automatic
Case: Gold coloured case, screw down crown, screw down case back, stamped 18K 0.750 with a poinçon
Dial: Champagne
Bracelet: Unsigned gold coloured president style bracelet with fold over clasp, stamped 18K 750
Size: 33mm, bracelet 17cm
Signed: Case, dial, movement, crown
Accessories: Rolex box

£4,000-6,000

270
PATEK PHILIPPE, ELLIPSE, REF. 3848/8
AN 18 CARAT GOLD BRACELET WATCH, NO. 2871535, CIRCA 1980

Movement: Cal. 215, manual wind, 18 jewels
Case: 18 carat gold case, snap case back, stamped with 750 common control mark
Dial: Cream
Bracelet: Integral 18 carat gold woven bracelet with snap clasp
Size: 27mm, bracelet 15.5cm
Signed: Case, dial, movement, crown, clasp
Accessories: Patek Philippe box, outer card packaging

£3,000-5,000

271
THOMAS WHITE, LEICESTER
AN 18 CARAT GOLD OPEN FACE POCKET WATCH, NO. 1015, CIRCA 1801

Movement: Lever fusee escapement, bimetallic split balance, flat balance spring, dust cover
Case: MATERIAL, BEZEL, CASE BACK TYPE
Dial: Gilt
Size: 49mm
Signed: Movement
Accessories: None

£700-1,000

272
FRIDLANDER
AN 18 CARAT GOLD KEYLESS WIND FULL HUNTER POCKET WATCH, NO. 51965, CIRCA 1881

Movement: Three quarter plate movement, bimetallic split balance, overcoil balance spring, lever escapement
Case: 18 carat gold five piece hinged case, the front cover engraved PNM, hallmarked London 1881
Dial: White
Size: 48mm
Signed: Movement
Accessories: None

£600-800

273
JAEGER LECOULTRE
A LADY'S 18 CARAT GOLD BRACELET WATCH, NO. 1123222

Movement: Manual wind
Case: 18 carat gold case, screwed down case back with two screws and back wind and set
Dial: Champagne
Bracelet: Integral 18 carat gold texted circular link bracelet with snap clasp
Size: 14mm, bracelet 15.5cm
Signed: Dial
Accessories: None

£800-1,200

274
CHOPARD FOR KUTCHINSKY
A LADY'S 18 CARAT GOLD BRACELET WATCH, NO. 76124, CIRCA 1968

Movement: Cal. Felsa 4122, manual wind
Case: 18 carat gold case, snap case back, stamped with import mark for London 1968
Dial: White
Bracelet: Integral 18 carat gold loop link bracelet with snap clasp
Size: 23mm, bracelet 16cm
Signed: Case back and movement signed Chopard, dial, bracelet and crown signed Kutchinsky
Accessories: None

£1,200-1,800



269



270



273



271



272



274

275

A GOLD COLOURED COLLAR NECKLACE AND RING

The textured gold coloured collar with lion head terminals, each set with a trio of circular cut sapphires, with circular cut ruby eyes, stamped 750 B38; together with a matching crossover ring

Size/dimensions: collar 34cm long; finger size approximately L

Gross weight: 36.6 grams

£800-1,200

276

AN EMERALD AND DIAMOND BRACELET

The shaped broad bracelet pavé set with brilliant cut diamonds, approximately 4.04 carats total, with a central row of graduated oval cut emeralds in collet settings, to channel set emerald bands and borders, the concealed clasp stamped 18c, in an associated case

Size/dimensions: 19.7cm long

Gross weight: 78.4 grams

£4,000-6,000

277

A FRENCH 1940S DIAMOND, SAPPHIRE AND CHRYSOPRASE DOUBLE CLIP BROOCH

The scrolled and geometric clips each with an old mine cut diamond and graduated channel set sapphire crescent, a cluster of old cut diamonds and circular cabochon chrysoprase, approximately 3.36 carats total, to channel set step cut sapphire tapered panels, the settings with French poinçons, with a REMOVABLE brooch fitting stamped with French poinçons and Bte S.G.D.G.

Size/dimensions: 5.6cm wide

Gross weight: 35.5 grams

£2,000-3,000

278

A MID 20TH CENTURY SAPPHIRE, EMERALD AND DIAMOND CORNFLOWER BROOCH

The flower head with illusion set calibré cut sapphire petals, with central channel set step cut emerald fronds and rose cut diamond stamen, in a fitted Goldsmiths & Silversmiths case

Size/dimensions: 12.7cm wide

Gross weight: 7.9 grams

£800-1,200



279
A PAIR OF SAPPHIRE AND DIAMOND EAR PENDANTS

The oval cut sapphires between two trios of brilliant cut diamonds, to brilliant cut and baguette cut diamond pediments, approximately 1.72 carats total, with stud fittings
Size/dimensions: 2.7cm long
Gross weight: 7 grams

£800-1,200

280
A MID 20TH CENTURY SAPPHIRE AND DIAMOND OVAL CLUSTER PANEL RING

The oval cut sapphire within a surround of old European cut diamonds, approximately 0.48 carats total, to a pierced geometric gallery
Size/dimensions: panel 1.4cm long, finger size L 1/2
Gross weight: 3.3 grams

£500-700

281
A SAPPHIRE AND DIAMOND CLUSTER RING

LONDON 1981
The oval cut sapphire within a surround of brilliant cut diamonds, to trifurcated diamond accented shoulders, approximately 0.82 carats total
Size/dimensions: panel 1.8cm long, finger size N
Gross weight: 4.8 grams

£400-600

282
A SINGLE STONE DIAMOND RING

The step cut diamond with canted corners weighing 3.11 carats, in a four claw setting, set above two baguette cut diamond set shoulders, the shank stamped 18ct
Size/dimensions: finger size M 1/2
Gross weight: 4.7 grams

£6,000-8,000

283
A DIAMOND ETERNITY RING

Channel set with baguette cut diamonds, approximately 3.20 carats total, with scrolled foliate borders, stamped Plat
Size/dimensions: finger size P
Gross weight: 8.7 grams

£800-1,200

284
A SAPPHIRE AND DIAMOND DOUBLE CLIP BROOCH

The shaped pierced circular cut and step cut sapphire and brilliant cut diamond clips, approximately 0.90 carats total, on a REMOVABLE brooch frame
Size/dimensions: 5.6cm long
Gross weight: 11.6 grams

£800-1,200

285
A SAPPHIRE AND DIAMOND CLUSTER BROOCH

The central oval cut sapphire and old cut, baguette cut and eight cut diamond cluster, approximately 0.66 carats total, within an oval hooped surround
Size/dimensions: cluster 1.5cm wide, brooch 3.7cm wide
Gross weight: 8.2 grams

Offered for sale with a Gemmological Certification Services Sapphire Report, 5782-1564, Date 25.04.2022, stating:

Origin Basaltic deposit
Comment No indications of heating

£800-1,200

286
A SAPPHIRE AND AQUAMARINE NECKLACE

The graduated circular cabochon sapphire and oval cut aquamarines in spectacle settings with gold coloured fancy link chain connectors between, to a hook clasp stamped 585
Size/dimensions: 70cm long
Gross weight: 13.7 grams

£1,000-1,500

287
A MID 20TH CENTURY AQUAMARINE AND RUBY COCKTAIL RING

The step cut aquamarine with canted corners in a four claw setting, estimated to weigh 19.43 carats, to a scrolled gallery, flanked by two collet set baguette cut rubies, the shank stamped Plat
Size/dimensions: H 1/2
Gross weight: 12.9 grams

£2,000-3,000

288
AN AQUAMARINE AND DIAMOND DRESS RING

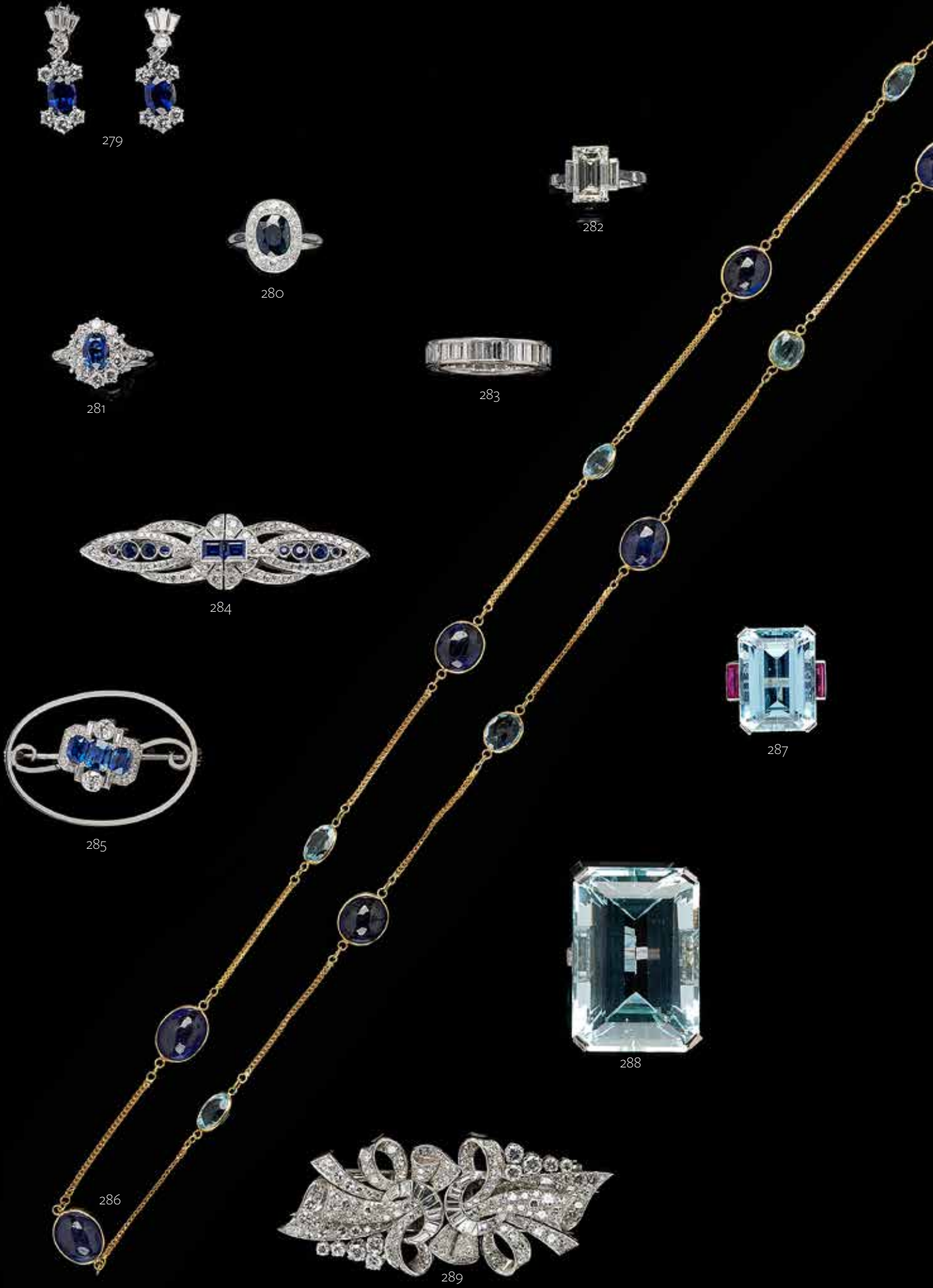
The step cut aquamarine with canted corners in a four claw setting, estimated to weigh 91 carats, to stepped princess cut diamond set shoulders, approximately 2.40 carats total, to a polished shank
Size/dimensions: the aquamarine measures approximately 34mm x 23mm x 16.4mm, finger size W
Gross weight: 32.4 grams

£5,000-7,000

289
A DIAMOND DOUBLE CLIP BROOCH

The scrolled panels set with brilliant cut, baguette cut and eight cut diamonds, approximately 3.78 carats total, to a REMOVABLE brooch fitting
Size/dimensions: 6.7cm wide
Gross weight: 23.7 grams

£1,200-1,800



290
P A F WORKROOMS (PATRICIA ANN FRUTTAURO), A PAIR OF DIAMOND EAR PENDANTS
LONDON 2008
The drop ear pendants with a brilliant cut diamond hoop and baton surmount, with clip fittings, suspending REMOVABLE drops comprising a brilliant cut diamond set hoop and butterfly, approximately 3.02 carats total, stamped with PAF makers mark
Size/dimensions: 5.7cm long
Gross weight: 18.1 grams

£800-1,200

291
A PAIR OF GOLD COLOURED HOOPED EAR CLIPS
The shaped interlocking panels to clip fittings, stamped Italy 750
Size/dimensions: 2.8cm long
Gross weight: 24.6 grams

£500-700

292
A PAIR OF DIAMOND EAR CLIPS
LONDON 1979 IMPORT MARK
The pierced quatrefoil panels each rub over set with a brilliant cut diamond, approximately 0.32 carats total, clip fittings
Size/dimensions: 1.6cm long
Gross weight: 9.5 grams

£300-500

293
A MULTI GEM NECKLACE
The chain with variously cut semi precious stones including amethyst, citrine, blue topaz and green quartz, in spectacle settings to a hook clasp
Size/dimensions: 58.5cm long
Gross weight: 34.5 grams

£1,500-2,000

294
A GOLD COLOURED SAPPHIRE AND DIAMOND BRACELET
The polished brick link bracelet with three brilliant cut diamond and step cut sapphire shaped links, approximately 0.54 carats total, the concealed clasp stamped 750
Size/dimensions: 18cm long
Gross weight: 41.1 grams

£800-1,200

295
A DIAMOND DRESS RING
The pear shaped rose cut diamond in a collet setting to a graduated hammered shank
Size/dimensions: the diamond measures 12.5mm x 8mm, finger size K
Gross weight: 6 grams

£500-700

296 Y
A CORAL AND DIAMOND CLUSTER RING
The oval coral cabochon within a surround of brilliant cut diamonds, approximately 0.90 carats, to tapering shoulders, the shank stamped 750 with Italian control marks
Size/dimensions: coral measures 1.4cm x 2cm, finger size E
Gross weight: 13.1 grams

£600-800

297
ROY KING, A PAIR OF 18 CARAT GOLD CUFFLINKS
LONDON 1965
The squared terminals with two colour woven effect panel, to baton shaped terminals, one stamped with RCK maker's mark
Size/dimensions: 1.5cm wide
Gross weight: 16 grams

£400-600



290



291



292



293



294



295



296 Y



297

298

A SINGLE STRAND OF TAHITIAN CULTURED PEARLS

The graduated Tahitian cultured pearls, to a pierced flower head clasp, stamped 758o 18k with makers mark CH

Size/dimensions: cultured pearls measuring 1.1cm to 1.4cm, 46cm long

Gross weight: 87 grams

£800-1,200

299 Y

A CORAL, DIAMOND AND CULTURED PEARL RING AND EAR CLIP SUITE

The ring with a cultured pearl beside a spray of baguette cut diamonds and a pair of polished coral drop, together with a pair of baguette cut diamond and coral ear clips, approximately 0.98 carats total, unmarked

Size/dimensions: finger size G 1/2, ear clips 2cm long

Gross weight: 12.7 grams

£600-800

300

ASPREY, A PLATINUM, CULTURED PEARL AND DIAMOND CLUSTER RING

LONDON 1984

The central cultured pearl within a surround of marquise cut diamonds, approximately 1.00 carat total, stamped with makers mark A & Co. Plc.

Size/dimensions: cluster diameter 1.5cm, finger size I

Gross weight: 5 grams

£700-1,000

301

A PAIR OF CULTURED PEARL AND DIAMOND EAR CLIPS

The central cultured pearls within a surround of old European cut diamonds, approximately 0.96 carats total, with clip fittings

Size/dimensions: 1.4cm diameter

Gross weight: 8.8 grams

£1,000-1,500

302

A TAHITIAN CULTURED PEARL BANGLE

The latticework bangle set with an undulation of graduated Tahitian cultured pearls, unmarked

Size/dimensions: 4.7cm wide, inner width 5.5cm

Gross weight: 84 grams

Provenance:

From the collection of Victoria, Lady de Rothschild

£800-1,200



303
TIFFANY & CO., A DIAMOND AND CULTURED PEARL FLOWER BROOCH
The flower head with textured petals and centred with a diamond and cultured pearl cluster, to a polished stalk with two textured leaves, stamped Tiffany & Co. 18Kt Italy
Size/dimensions: 6.3cm long
Gross weight: 14.5 grams
£300-500

304
TIFFANY & CO., ELSA PERRETTI, STARFISH, A GOLD COLOURED PENDANT NECKLACE
The gold coloured starfish pendant suspended from an open fancy belcher link chain, the oval hooked clasp stamped Tiffany & Co. 750 Elsa Peretti Spain, in a Tiffany & Co. pouch
Size/dimensions: Starfish length 4cm, chain 47cm long
Gross weight: 24.6 grams
£700-1,000

305
TIFFANY & CO., A PAIR OF IOLITE CUFFLINKS
The circular polished gold coloured panels with circular cut iolites, to pierced baton connectors with oval swivel terminals, stamped Tiffany & Co. 18k Italy, with Italian control marks
Size/dimensions: peridot panels 1.3cm diameter
Gross weight: 11.1 grams
£300-500

306
CARTIER, TRINITY, A PAIR OF EAR HOOPS
The three colour hoops to stud and clip fittings, signed Cartier, numbered B552.61, and stamped 750 with French poinçon, in a fitted gilt tooled red leather bound cartier case
Size/dimensions: 2.3cm long
Gross weight: 14.4 grams
£600-800

307
TIFFANY & CO., A PAIR OF PERIDOT CUFFLINKS
The squared polished gold coloured panels with step cut peridots with canted corners, to pierced baton connectors with oval swivel terminals, stamped Tiffany & Co. 18k Italy, with Italian control marks
Size/dimensions: peridot panels 1.1cm wide
Gross weight: 12.7 grams
£500-700

308
CARTIER, A 9 CARAT GOLD CIRCULAR BOX LONDON 1942
With reeded decoration and a D shaped folding loop handle, with JC maker's mark and numbered 7772, in original Cartier box
Size/dimensions: 3.1cm diameter
Gross weight: 23.5 grams
£400-600

309
A YELLOW DIAMOND AND SAPPHIRE BRACELET AND YELLOW DIAMOND EAR STUDS, RETAILED BY GARRARD
The bracelet with circular rope twist panels each centred with a circular cut sapphire or a brilliant cut yellow diamond in four claw settings, approximately 0.36 carats total, to a concealed clasp with partial 18 carat gold hallmark, together with a matching pair of yellow diamond ear studs, approximately 0.30 carats total, the studs with London 1978 hallmark, in associated Garrard boxes
Size/dimensions: bracelet 18cm long, ear studs 8mm diameter
Gross weight: 19.1 grams
Please note the diamonds are untested and warranted as natural colour
£1,000-1,500

310
BOUCHERON
A LADY'S 18 CARAT GOLD AND SAPPHIRE COCKTAIL WATCH, CIRCA 1966
Movement: Manual wind
Case: Gold coloured case, rope twist bezel, claw set circular cut sapphire accents, snap case back
Dial: Champagne
Bracelet: 18 carat gold oval rope twist link bracelet with circular cut sapphire accents and tongue and box clasp, import mark for London 1966
Size: 20mm diameter, bracelet 17cm
Signed: Case, clasp
Accessories: None
Provenance: From the collection of Victoria, Lady de Rothschild
£1,500-2,000

311
CARTIER, MAILLON PANTHÈRE, A DIAMOND SET BRACELET
The polished curved brick links with brilliant cut diamond accented links, approximately 2.08 carats total, the concealed clasp signed Cartier 750 and numbered 751472
Size/dimensions: 1.3cm wide, 18.5cm long
Gross weight: 38.5 grams
£3,000-5,000

312
GORI & ZUCCHI S.P.A., A MID 20TH CENTURY ITALIAN GOLD COLOURED BROAD BRACELET
The broad bracelet with textured track links, with a concealed clasp, stamped 750 with Italian control marks 1AR and UNO AR, with Birmingham 1962 import marks
Size/dimensions: 2.4cm wide, 19.4cm long
Gross weight: 51.8 grams
£1,000-1,500

313
BUCCELLATI, A DIAMOND RING
The broad pieced band with foliate lattice set with rose cut diamonds, signed Gianmaria Buccellati 18k with indistinct instinct inventory number, Italian control marks
Size/dimensions: band 1.3cm wide, finger size J 1/2
Gross weight: 6.4 grams
£800-1,200

314
ELIZABETH GAGE, ZODIAC, ARIES, AN 18 CARAT GOLD BROAD BAND RING LONDON 1975
The broad ring with applied ram masks and beaded detail, rope twist borders
Size/dimensions: finger size U 1/2
Gross weight: 18.2 grams
£700-1,000

315
TIFFANY & CO., A GOLD COLOURED CUFF BANGLE
The polished hinged bangle with swirling undulating decoration, concealed clasp, stamped Tiffany & Co. Italy, 750 18k with Italian control marks
Size/dimensions: 4.5cm wide, inner width 6cm
Gross weight: 125.8 grams
£3,000-4,000





316

316
HERMÈS, KELLY
A BROWN LEATHER HANDBAG, CIRCA 1991
With a leather loop handle, two fastening straps and twist lock fastener, detachable shoulder strap and padlock, the flap opening to a brown leather interior with a zipped pocket and two open pockets
Dimensions: 36 x 14 x 38cm
With a Hermès dust bag and box

£1,500-2,000

317
HERMÈS, DESTRIER, A GOLD COLLAR NECKLACE
LONDON 1990 IMPORT MARK
The double curb link necklace composed of polished and reeded links, signed Hermès Paris 9013, the concealed clasp with French poinçons, London import mark and HGB sponsor's mark, in a black suede Hermès case
Size/dimensions: 41cm long
Gross weight: 113.4 grams

Provenance:
Purchased from Hermès, July 1993

£5,000-8,000



317

318
HERMÈS, FORTUNA, YOUR HOROSCOPE IN THREE DICE
The three gilt metal dice with varying weather symbols, in a red leather pouch, with instructions and an orange cylindrical box
Size/dimensions: dice 1.4cm high

£150-250



318

319
FRED, FORCE 10, A STEEL AND GOLD COLOURED NECKLACE, BANGLE AND RING SUITE

The necklace composed of three rope twist steel strands with reeded gold coloured panel spacers, signed Force 10 Fred Paris and stamped 750 Or Acier, to a hook clasp stamped Fred; together with a matching bangle, signed Fred Force 10 with French maker's poinçon; and a matching ring, in a navy blue Fred Joaillier pouch
Size/dimensions: necklace 37cm long; bangle approximately 5.9cm diameter; finger size L 1/2
Gross weight: 45.2 grams

£800-1,200

320
GRAFF, A BLACK DIAMOND AND DIAMOND HEART PENDANT

The heart pavé set with brilliant cut black diamonds, approximately 2.59 carats total, suspended from a collet set brilliant cut diamond bale, estimated to weigh 0.16 carats, suspended from a rope twist chain, the lobster claw clasp signed Graff and stamped 750, in a Graff case with a card outer box
Size/dimensions: heart pendant 2.1cm long, chain 41cm long
Gross weight: 9.6 grams

Offered for sale with a copy of an insurance valuation from Graff dated March 12, 2001

£800-1,200

321
FRED PARIS, AN ONYX AND DIAMOND DRESS RING

The central diagonal row of brilliant cut diamonds between shaped polished onyx panels, approximately 0.20 carats total, the shank signed Fred Paris, with French poinçons to the shank
Size/dimensions: finger size N
Gross weight: 6.6 grams

£300-500

322
GRAFF, A DIAMOND ETERNITY RING

The ring channel set with step cut diamonds, the sides with calibré step cut diamonds, approximately 6.83 carats total, signed Graff, in a Graff box with card outer box
Size /dimensions: finger size R
Gross weight: 5.1 grams

Offered for sale with a copy of an insurance valuation from Graff dated March 12, 2001

£3,000-5,000

323
A DIAMOND DRESS RING

The oval shaped panel to tapering shoulders pavé set brilliant cut diamonds, approximately 3.00 carat total, the shank stamped ct 3.0, with an internal sprung finger sizer
Size/dimensions: finger size G
Gross weight: 10.5 grams

£800-1,200

324
STEPHEN WEBSTER, A GREEN TOURMALINE AND DIAMOND DRESS RING

The oval cut green tourmaline within a surround of brilliant cut and baguette cut diamonds, approximately 1.18 carats total, to a shaped shank stamped SW and 18ct
Size/dimensions: finger size E
Gross weight: 15.9 grams

£700-1,000

325
AN AQUAMARINE AND DIAMOND CLUSTER RING

The step cut aquamarine with canted corners, within a surround of brilliant cut diamonds, the gallery pavé set with brilliant cut diamonds, approximately 1.44 carats total, stamped 18ct with W makers mark
Size/dimensions: finger size G
Gross weight: 17.5 grams

£700-1,000

326
STEPHEN WEBSTER, A BLUE CRYSTAL HAZE AND DIAMOND DRESS RING

LONDON 1997
The facettèd blue Crystal Haze panel within a surround of brilliant cut diamonds, approximately 0.52 carats total, in an 18 carat yellow gold setting, with SW maker's mark
Size/dimensions: finger size M
Gross weight: 23.6 grams

£600-800

327
STEPHEN WEBSTER, A CITRINE AND CINNAMON DIAMOND DRESS RING

LONDON 2002
The facettèd citrine between raised shaped shoulders pavé set with graduated cinnamon diamonds, approximately 1.85 carats total, with SW maker's mark
Size/dimensions: finger size N
Gross weight: 10.5 grams

£500-700

328
WENDY RAMSHAW CBE, AN 18 CARAT GOLD, GARNET AND FIRE OPAL ELEVEN RING STACK

LONDON 1987
The eleven stackable rings one a polished band, the others with various shaped cabochon fire opals and garnets in collet settings, stamped with WR maker's mark, on an associated perspex ring stand
Size/dimensions: finger size O to O 1/2
Gross weight: 18.2 grams

£3,000-5,000

329
KIM BUCK FOR GEORG JENSEN, NORDIC SUMMER, A CITRINE DRESS RING

The polished oval citrine panel with a fancy cut to the pavilion, in a diagonal collet setting to a polished shank, with Georg Jensen maker's mark, 18 carat gold common control mark
Size/dimensions: finger size approximately L
Gross weight: 12.8 grams

£500-700



330

AN EARLY 1980S 18 CARAT GOLD, RUBY AND DIAMOND NECKLACE, BRACELET AND EAR PENDANT SUITE

The necklace with graduated links set with pairs of marquise cut rubies and a brilliant cut diamond, approximately 4.12 carats total, to a concealed clasp with London 1981 import marks and partial sponsor's mark; together with a matching ruby and diamond bracelet, approximately 1.24 carats total, London 1981, with partial sponsors mark; and a pair of similarly set ruby and diamond comet ear pendants, the abstract ruby and diamond cluster pediments with removable spray drops, stud fittings, London 1980, sponsor's mark EJCo for Eton Jewellery Co. Ltd. Size/dimensions: necklace 40cm long; bracelet 17.8cm long; earrings 2.7cm long Gross weight: 68 grams

£3,000-5,000

331

A SINGLE STONE DIAMOND RING

LONDON 1982
The step cut diamond with canted corners weighing 5.99 carats, in four claw settings, AJR Studio Ltd maker's mark and later signed Boucheron
Size/dimensions: finger size approximately I-J
Gross weight: 5.6g grams

Offered for sale with a GIA Diamond Grading Report, dated April 23, 2008, numbered 17192986, stating:

Colour Grade.. J
Clarity.. SI2

£15,000-20,000



332

AUDEMARS PIGUET, A 1980S DIAMOND NECKLACE, BRACELET AND EAR PENDANT SUITE

The necklace with three graduated pierced octagonal panels, each set with brilliant cut diamonds, approximately 1.14 carats total, to polished interlinked chain necklace, the clasp signed Audemars Piguet & Co. Swiss, and stamped 750 with maker's mark; together with a matching diamond bracelet, approximately 0.84 carats total; and a pair of diamond ear pendants, the brilliant cut diamond pediments with twisted link connectors to octagonal diamond panel drops, approximately 0.40 carats total, in a beige leather Audemars Piguet pouch

Size/dimensions: necklace 42.5cm long; bracelet 18.5cm long; ear pendants 2.8cm long

Gross weight: 169.4 grams

£5,000-7,000

333

AUDEMARS PIGUET

A LADY'S GOLD COLOURED AND DIAMOND BRACELET WATCH, NO. B 89164

Movement: Cal. 2080, manual wind, 20 jewels

Case: Gold coloured case, diamond set bezel, snap case back, stamped 18K 0.750 with a poinçon

Dial: White

Bracelet: Integral gold coloured woven bracelet with diamond set links and snap clasp, stamped 750

Size: 22mm, bracelet 16.5cm

Signed: Case, dial, movement, clasp

Accessories: Audemars Piguet pouch and card box

£2,500-3,500





334

334
YVES SAINT LAURENT, SAC DE JOUR

The brown calf leather tote bag, with two inner zip pockets, and two further slip pockets, with keys and padlock, with an Yves Saint Laurent information card and dust bag
Dimensions: 29cm x 40cm x 19cm

£500-800

335 Y
HARRY WINSTON, PREMIER, REF. 200UCQ32R 022079
A LADY'S 18 CARAT GOLD AND DIAMOND CHRONOGRAPH WRIST WATCH, NO. 225, CIRCA 2010

Movement: Cal. 1270, quartz chronograph, 22 jewels
Case: 18 carat gold case, diamond set bezel, lugs and crown, snap case back, stamped with 18 carat gold common control mark
Dial: Black with diamond set sub dials
Strap: Harry Winston black crocodile strap with an 18 carat gold deployant clasp
Size: 32mm
Signed: Case, dial, movement, strap, clasp
Accessories: Harry Winston box, instruction booklet, outer card packaging

£5,000-7,000

336 Y
CARTIER, QUADRANT
A LADY'S GOLD COLOURED WRIST WATCH, NO. A101247, CIRCA 1995

Movement: Cal. 157, quartz, 4 jewels
Case: Gold coloured case, screwed case back, stamped 750 with a poinçon
Dial: Silvered
Strap: Cartier black crocodile strap with pin buckle
Size: 19mm
Signed: Case, dial, movement, strap
Accessories: Cartier pouch

£700-1,000

337
PIAGET, ALTIPLANO ULTRA THIN, REF. P10522
AN 18 CARAT GOLD WRIST WATCH, NO. 1030094, CIRCA 2010

Movement: Cal. 838P, manual wind, 19 jewels
Case: 18 carat gold screwed case, screwed down display case back with six screws, stamped with 18 carat gold common control mark
Dial: Silvered
Strap: Piaget brown leather strap with 18 carat gold pin buckle
Size: 40mm
Signed: Case, dial, movement, crown, strap, clasp
Accessories: Piaget box, warranty card, instruction book, outer card packaging

£4,000-6,000



335



336



337



338

A COLOUR CHANGE SAPPHIRE AND DIAMOND CLUSTER RING, SRI LANKA (CEYLON), NO HEAT

The cushion cut sapphire with blue to purple colour change estimated to weigh 9.30 carats, within a surround of old mine cut diamonds, approximately 3.50 carats total, to a tapered later 18 carat gold shank

Size/dimensions: the cluster 2cm x 1.7cm, finger size P 1/2

Gross weight: 11.1 grams

Offered for sale with a Gemmological Certification services Sapphire Report, 5782-1839, Date 30.05.2022, stating:

Colour Blue, in daylight, Purple, in incandescent light

Variety Colour-change sapphire

Origin Sri Lanka (Ceylon)

£10,000-15,000



339

TIFFANY & CO., JEAN SCHLUMBERGER, A STAR SAPPHIRE AND DIAMOND DRESS RING

The oval cabochon star sapphire estimated to weigh between 55 to 60 carats, to crossover pavé set diamond leaf shoulders, approximately 2.96 carats total, to lattice wire work shank, stamped Tiffany Schlumberger 18k

Size/dimensions: finger size J

Gross weight: 34.2 grams

Born in 1907, Jean Schlumberger has become recognised as one of the master jewellery designers of the 20th century. He began designing costume jewellery for Elsa Schiaparelli in Paris in the late 1930's, and gathered around him such leading socialites and style icons as the Duchess of Kent, Daisy Fellowes and Diana Vreeland, from whom he received his first jewellery design commissions. After the end of the Second World War, Schlumberger opened a workshop in New York, followed by a boutique in Paris in 1950. In 1956 he was invited to become the Vice President of jewellery design at Tiffany & Co., making his name synonymous with Tiffany's jewellery design.

Provenance:

From the collection of Victoria, Lady de Rothschild

£20,000-30,000

340

HARRY WINSTON, A SAPPHIRE AND DIAMOND SUITE

The suite comprising of a cabochon sapphire and brilliant cut diamond necklace, numbered 9605, with oval hooped and quatrefoil links, to a REMOVABLE lozenge shaped cabochon sapphire and brilliant cut diamond drop pendant/brooch, a pair of oval cabochon sapphire and brilliant cut diamond cluster ear clips, and a similarly set quatrefoil link bracelet, numbered A9200, total diamond weight approximately 25.80 carats total, all pieces signed Winston and stamped 750 Or, with a Harry Winston case and bracelet box

Size/dimensions: necklace 41cm long, brooch/pendant 4.5cm long, ear clips 2.5cm long, bracelet 15.7cm long

Gross weight: 114 grams

£12,000-18,000



Fine Montblanc Pens



341

341
MONTBLANC, MEISTERSTÜCK 145, HOMMAGE À FRÉDÉRIC CHOPIN, 1518
A FOUNTAIN PEN AND CD, KZ2010828

Cap and Barrel: black resin cap with gilt cap band and clip, black resin barrel

Nib and Filling System: medium two tone gold coloured nib stamped 18K and 750, piston filling system, uninked

Accessories: original Montblanc box, Hommage À Frédéric Chopin CD, Service Guide and outer white card sleeve

£100-150



342

342
MONTBLANC, MEISTERSTÜCK, 146
A SPECIAL EDITION FOUNTAIN PEN, BH1033873

Cap and Barrel: black lacquer with gold plated bands and clip

Nib and Filling System: medium gold coloured nib stamped 18K and 750, piston filling system, uninked

Accessories: original Montblanc box, Service Guide, outer card box

£80-120



343

343
MONTBLANC, MEISTERSTÜCK 116, SPECIAL ANNIVERSARY EDITION, PLÁCIDO DOMINGO’S OPERALIA ‘98
A LIMITED EDITION SMALL SIZE BALLPOINT PEN, MV1020606, CIRCA 1999

Cap and Barrel: black resin with gold plated bands and clip, with brilliant cut diamond accent to end piece

Accessories: original Montblanc box, Plácido Domingo’s Operalia ‘98 CD, Service guide and outer white card sleeve

£150-250



344

344
MONTBLANC, MEISTERSTÜCK, SPECIAL ANNIVERSARY EDITION, PLÁCIDO DOMINGO’S OPERALIA ‘98
A SPECIAL EDITION BALLPOINT PEN, PV1025547, CIRCA 1999

Cap and Barrel: black resin with gold plated bands and clip, with brilliant cut diamond accent to end piece

Accessories: original Montblanc box, Plácido Domingo’s Operalia ‘98 CD, Service guide and outer white card sleeve

£100-200



345



346

346
MONTBLANC, MEISTERSTÜCK, RAMSES II, 20164
A SPECIAL EDITION BALLPOINT PEN, EK101204, CIRCA 1995

Cap and Barrel: lapis lazuli and lacquer cap with gold plated cap bands and clip, with silver gilt straited barrel, stamped 925 with common control mark

Nib and Filling System: medium yellow and white gold coloured nib stamped 18K and 750, piston filling system, uninked

Accessories: original Montblanc box, Personal Montblanc Guide, Ramses II booklet, and outer card Ramses II box

£150-250



347

347
MONTBLANC, MEISTERSTÜCK, RAMSES II, 20164
A SPECIAL EDITION BALLPOINT PEN, EK101190, CIRCA 1995

Cap and Barrel: lapis lazuli and lacquer cap with gold plated cap bands and clip, with silver gilt straited barrel

Accessories: original Montblanc box, Personal Montblanc Guide, Ramses II booklet, and outer card Ramses II box

£150-250



348

348
MONTBLANC, GRETA GARBO, 36121
A SPECIAL EDITION BALLPOINT PEN, VL1362936, CIRCA 1997

Cap and Barrel: tapering white resin cap with facsimile signature to the platinum plated band, the clip with cultured Akoya pearl accent, black resin barrel

Accessories: original Montblanc case, Greta Garbo International Service Certificate booklet, outer card box and outer white card sleeve

£200-300



349

349
MONTBLANC, WRITERS EDITION, MARCEL PROUST
A LIMITED EDITION BALLPOINT PEN, NO. 13236/20000, CIRCA 1999

Cap and Barrel: silver coloured barrel with foliate decoration, facsimile signature

Accessories: original Montblanc Marcel Proust box, Marcel Proust International service certificate, outer card box and white card sleeve

£150-250



350

349
MONTBLANC, WRITERS EDITION, FRANZ KAFKA
A LIMITED EDITION BALLPOINT PEN, NO. 15564/16500, CIRCA 2004

Cap and Barrel: tapering red resin barrel and cap, facsimile signature, silver coloured clip

Accessories: original Montblanc Franz Kafka box, Franz Kafka International Service Certificate, polishing cloth, outer card box and white card sleeve

£150-250



351
MONTBLANC, WRITERS EDITION,
FRIEDRICH SCHILLER
A LIMITED EDITION FOUNTAIN PEN, NO.
11880/18000, CIRCA 2000

Cap and Barrel: the black resin barrel with an amber coloured cap, facsimile signature, gilt clip and cap bands
Nib and Filling System: medium yellow gold coloured nib stamped 18K and 750, piston filling system, inked
Accessories: original Montblanc Friedrich Schiller box, Friedrich Schiller International Service Certificate, outer card box and white card sleeve

£300-500

352
MONTBLANC, WRITERS EDITION, F.
SCOTT FITZGERALD
A LIMITED EDITION BALLPOINT PEN, NO.
06612/16500, CIRCA 2002

Cap and Barrel: black resin and cream marbled resin, facsimile signature, with chromed clip and graduated cap bands
Accessories: original Montblanc F. Scott Fitzgerald box, F. Scott Fitzgerald International Service Certificate, outer card box and white card sleeve

£150-250

353
MONTBLANC, WRITERS EDITION, MIGUEL
DE CERVANTES
A LIMITED EDITION BALLPOINT PEN, NO.
15147/17000, CIRCA 2005

Cap and Barrel: stepped mottled brown enamelled barrel and cap, facsimile signature, gilt clip and bands
Accessories: original Montblanc Miguel de Cervantes box, Miguel de Cervantes International Service Certificate, outer card box and white card sleeve

£150-250



354 Y
MONTBLANC, PATRON OF THE ARTS SERIES 4810, NICOLAUS
COPERNICUS
A LIMITED EDITION FOUNTAIN PEN, NO. 4728/4810, CIRCA 2003

Cap and Barrel: black lacquer with silver coloured overlay rings and silver coloured clip stamped Ag 925, and mother of pearl star in the cap
Nib and Filling System: medium white and yellow gold coloured nib stamped 18K and 750, piston filling system, uninked
Accessories: original Montblanc box, International service certificate, outer card box and outer plain white card sleeve

£800-1,200

355
MONTBLANC, PATRON OF THE ARTS SERIES 4810, ANDREW
CARNEGIE
A LIMITED EDITION FOUNTAIN PEN, NO. 1310/4810, CIRCA 2002

Cap and Barrel: black lacquer and silver coloured overlay silver coloured female figure clip stamped 925
Nib and Filling System: fine white and yellow gold coloured nib stamped 18K and 750, piston filling system, uninked
Accessories: original Montblanc box, International service certificate, outer card box and outer plain white card sleeve

£800-1,200



356

356
MONTBLANC, PATRON OF THE ARTS SERIES 4810, LUDOVICO SFORZA,
DUKE OF MILAN
A LIMITED EDITION FOUNTAIN PEN, NO. 1072/4810, CIRCA 2013

Cap and Barrel: black lacquer cap and barrel, inlaid with decoration inspired by the ceiling frescos at Sala delle Assse, with silver cap band, clip and fittings
Nib and Filling System: medium white gold coloured nib stamped 18K and 750, piston filling system, uninked
Accessories: original Montblanc Ludovico Sforza box, Ludovico Sforza International Reply Card, Ludovico Sforza outer card box and outer plain white card sleeve

£600-800



357

357
MONTBLANC, PATRON OF THE ARTS SERIES 888,
SEMIRAMIS
A LIMITED EDITION FOUNTAIN PEN, NO. 814/888, CIRCA 1996

Cap and Barrel: the cap and barrel with 18 carat gold and red lacquer overlay, the cap with a diamond set clip
Nib and Filling System: medium yellow gold coloured nib stamped 18K 750, piston filling system, uninked
Accessories: original Montblanc Semiramis box, Semiramis International Service Certificate, Semiramis outer card box and white card sleeve

£2,000-3,000



358

358 Y
MONTBLANC, 88, HAN WU-TI
A LIMITED EDITION FOUNTAIN PEN, NO. 76/88, CIRCA 2002

Cap and Barrel: gold coloured cap and barrel with black lacquer overlay, mother of pearl emblem to the cap and the barrel with Han Wu-Ti's name, the cap with a clip and inset with two diamonds, marked 750
Nib and Filling System: gold coloured nib stamped 18K 750, piston filling system, uninked
Accessories: original Montblanc Han Wu-Ti box, service guide, Han Wu-Ti card box and outer white card box

£5,000-7,000

Important Notices to Watch Buyers

DAMAGE, RESTORATION, ALTERATION

Although every effort is made to note any damage, restoration or alterations, the absence of any such information in catalogue descriptions does not imply the lot is in perfect condition and free from any such defects. Prospective buyers should satisfy themselves as to the condition of any lot prior to bidding. All watches are serviced from time to time, and Dreweatts are unable to guarantee that the working parts of any watch movement, glass or crystal, winding crowns, watch bracelet, strap or buckle are the manufacturers’ original parts, unless otherwise stated in the catalogue description. We are unable to make any representation in our catalogue descriptions or condition reports as to the authenticity of such parts. Dreweatts are unable to make any representation, nor make any comment on, the authenticity of diamonds, or other gemstones, set into watch dials, bezels, cases and bracelets.

AUTHENTICATION

All watch movements have been inspected by Dreweatts watchmaker and specialists, and we have verified all inventory and movement numbers. For the information of potential bidders, all inventory and movement numbers are listed in the catalogue description for the relevant lot.

IMPORT/EXPORT RESTRICTIONS

There may be Import Restrictions into some territories outside the

United Kingdom placed on certain watch brands, or on the importation of watches with straps composed of animal skins which may fall under CITES Regulations. It is the sole responsibility of the buyer to comply with all Export/Import regulations and potential bidders are strongly recommended to check with their shipping agent as to any such regulations that may apply to any lot. Dreweatts are not shippers and are unable to offer any advice regarding such regulations.

CONDITION REPORTS

Dreweatts condition reports will identify whether a watch functions at the time of cataloguing, and suggest possible, but not comprehensive, restoration work that may need to be carried out for the watch to function properly. Dreweatts are unable to test watches for accuracy or running to time, and we cannot guarantee that any watch will function when purchased from us.

As we have examined all watch movements by removing the case backs, we cannot guarantee that water resistant watches will remain water resistant following purchase from us. Dreweatts recommend that any watch purchased from us is subsequently overhauled by a competent watchmaker to ensure proper functioning.

Important Notices to Jewellery Buyers

DAMAGE, RESTORATION, ALTERATION

Although every effort is made to note any damage, restoration or alterations, the absence of any such information in catalogue descriptions does not imply the lot is in perfect condition and free for any such defects. Prospective buyers should satisfy themselves as to the condition of any lot prior to bidding.

ENHANCEMENT

Prospective bidders should be aware that many coloured gems have been historically treated by a variety of methods to improve their appearance, both in terms of colour and transparency. Rubies and sapphires are routinely heat treated, emeralds are enhanced through the use of coloured and transparent oils and resins, and jadeite is routinely stained. These treatments, and others including irradiation and coating, are generally accepted by the jewellery trade as standard practice. Although most treatments are considered to be permanent, those gemstones which have been oiled may need to be re-treated to maintain their appearance. Any such treatments affect the market value of coloured gemstones, and Dreweatts pre-sale estimates published in the catalogue assume that all gemstones, unless otherwise stated in the catalogue, may have been enhanced. Dreweatts may obtain Gemmological Reports from a recognised laboratory where appropriate detailing any enhancements, or lack of, for certain gemstones, and such reports may be obtained for prospective bidders prior to the sale, provided such requests are made at least three weeks before the sale, and that the requesting party has pre-paid for such a report. However it is not possible for Dreweatts to obtain reports for every stone offered in the sale.

In the absence of a gemmological laboratory report, it is not possible for Dreweatts to make any comment on the possibility that any gemstone in any lot may have been subject to enhancement.

Dreweatts catalogue descriptions and condition reports adhere to the guidelines laid out in the ‘Blue Book’ of CIBJO, the International Jewellery Confederation.

WEIGHTS

All gram weights have been obtained using an electronic balance, but weights stated in the catalogue are approximate and for guidance only, and potential bidders should satisfy themselves as to their accuracy.

‘...approximately 1.20 carats total,...’ all such stone weights are estimated using standard equipment and formulae, and are subject to the limitations imposed by the mount.

‘...weighing 1.20 carats,...’ where the description reads as such, the stones in question have been removed from the mount and weighted using an electronic balance.

SIGNATURES

‘...by Lacluche,...’ in our opinion is a piece made by or for the jeweller, bearing relevant signatures, maker’s marks, and where appropriate, the maker’s inventory number/s.

‘...signed Lacluche,...’ in our opinion is a piece retained by the jeweller, but not necessarily made by them. This may also mean that the piece has been mounted by the jeweller using stones supplied by the client; a special commission from a client’s design; or has been altered or later added to.

COLOURED STONES OF BURMA (MYANMAR) ORIGIN

Buyers should be aware that certain territories (notably the United States of America) have import restrictions on certain coloured gemstones. All gemstones that maybe of Burma (Myanmar) origin, notably rubies and jadeite, may require a certificate of origin before they can be imported. Prospective bidders for such gemstones should check with their shipper, and relevant Government authorities regarding any necessary certification prior to bidding. Whilst Dreweatts are able to suggest a number of Gemmological Laboratories for such certification, we are unable to carry out any such certification for potential bidders or buyers.

Please see **Conditions of Business** and **Conditions of Sale** on the following pages.

Dreweatts & Dreweatts 1759 are trading names of Dreweatts 1759 Ltd. Dreweatts 1759 Ltd is registered in England, company number: 10758982, registered office: C/O Bishop Fleming LLP, 10 Temple Back, Bristol, BS1 6FL.

Important Notices

BUYING AT DREWEATTS

There are several ways you can bid at a Dreweatts auction; in person, by leaving a commission or absentee bid, on the telephone where available and live via the internet – please make arrangements before the sale. THIS NOTICE APPLIES ONLY TO A PERSON WHO WISHES TO BID IN PERSON, OR BY LEAVING A COMMISSION OR ABSENTEE BID, AT A DREWEATTS PUBLIC AUCTION. For bidding at an online auction or for online bidding at a public auction please see our Online Auction Terms published on our website at www.dreweatts.com.

BIDDING IN PERSON

If intending to buy you are required to register your name and details at reception prior to the commencement of the auction. You will be required to provide a proof of identity and address to register for bidding. You will then be allocated a bidding number, which you use when bidding for an item.

COMMISSION BIDS

Dreweatts will execute bids on your behalf if you are unable to attend the sale. Commission or absentee bids are accepted either directly at reception, or can be sent by post, fax, email, telephone or via the website: www.dreweatts.com.

Dreweatts will add these bids to the auctioneers’ sale book and will undertake to purchase the lots on your behalf as cheaply as allowed by other bids and reserves. If two buyers submit identical commission bids Dreweatts may prefer the first bid received.

Dreweatts does not accept liability for failing to execute commission bids, or for any errors or omissions.

CONDITION

Bidders must satisfy themselves as to the condition of each lot. Condition reports are available on request – see the Conditions of Business at the back of this catalogue forming part of these Auction Terms and Conditions for more information regarding condition reports. Requests for condition reports must be submitted by 4pm on the day prior to the auction; condition reports may be available alongside the lot description on the online catalogue at: www.dreweatts.com.

COMMISSION CHARGES

All purchases are subject to a buyer’s premium, which is charged per lot at 25% of the hammer price (30% including VAT) up to and including £500,000, 20% (24% including VAT) of the hammer price from £500,001 up to and including £1,000,000 and 12% of the hammer price (14.4% including VAT) in excess of £1,000,000. A theta symbol (θ) indicates that the lot is a zero rated item and therefore not subject to VAT on the buyer’s premium. This applies to bound books (manuscripts and printed), unframed maps and albums. In the event the lot has a dagger (†) beside the lot number in the catalogue, this indicates that the lot is owned by an entity or company required to pay VAT (generally not an Antique Dealer, as they operate under a dealers margin scheme). VAT is payable at 20% on the Hammer Price. Lots marked with a double dagger (‡) (presently a reduced rate of 5%) or Ω (presently at standard rate of 20%) have been imported from outside the UK to be sold at auction and therefore the buyer must pay the import VAT at the appropriate rate on the hammer price.

PAYMENT

Payment will be accepted, if you are a successful bidder, by debit card

issued in the name of the Buyer by a UK bank and registered to a UK billing address; by all major UK issued credit cards issued in the name of the Buyer and registered to a UK billing address with the exception of American Express and Diners Club; by bank transfer direct into our bank account, Bank Details: NatWest, 30 Market Place, Newbury, Berkshire RG14 5AG. Account Name: Dreweatts 1759 Ltd. A/C: 62412949, Sort Code: 60-15-07, BIC: NWBKGB2L, IBAN: GB21NWBK60150762412949. The name of the bank account holder should match the name of the buyer. First time buyers who are not present at the saleroom are requested to pay by bank transfer.

Y CITES REGULATIONS

Please note that lots marked with the symbol (Y) in this catalogue may be subject to CITES Regulations when exported. Relevant CITES Regulations may be found at www.gov.uk/guidance/cites-imports-and-exports.

COLLECTION OR DELIVERY

Before being able to collect your purchases you are required to pay the hammer price, plus the applicable commissions, and obtain a receipt acknowledging payment. Collection of the purchased lots is at the purchaser’s risk and expense and whilst Dreweatts do not provide packing and despatch service we can suggest some carriers.

Dreweatts also require that all purchased items are collected within four working days of the sale to avoid a storage charge being applied.

STORAGE CHARGES

All items not collected by 4pm, within four working days of the sale, will be automatically removed to commercial storage and subject to a minimum storage charge of £20 (plus VAT) per lot and to a further storage charge of £2 (plus VAT) per lot per part or full day thereafter. These charges will be the sole liability of the purchaser and will be billed directly to them by Vangaroo Ltd (Andover); Vangaroo may be willing to adjust their charges if they are instructed by the purchaser to deliver to them. On payment of all sales and storage costs, items will be available for collection by appointment from Vangaroo Ltd (Andover), tel: 01264 586566, email: office@vangaroo.co.uk. These charges are set by Vangaroo Ltd (Andover); we recommend that you contact them directly regarding queries relating to these charges and other questions relating to storage. Staff at the saleroom will be unable to answer questions relating to items that have been removed from the saleroom.

FURTHER INFORMATION

The colours printed in this catalogue are not necessarily a true reflection of the actual item. All weights and measures given in the catalogue should be regarded as approximate.

VALUATION SERVICES

Dreweatts provides a range of confidential and professional valuation services to private clients, solicitors, executors, estate managers, trustees and other professional partners. These services include auction valuations, insurance valuations, probate valuations, private treaty valuations, valuations for family division or for tax purposes. For more information, please see our website: www.dreweatts.com.

For directions to Donnington Priory, please see our website: www.dreweatts.com.

Parking is available at Donnington Priory in two car parks on either side of the saleroom.

Information for Buyers at Public Auctions

1. **INTRODUCTION.** The following notes are intended to assist Bidders and Buyers, particularly those inexperienced or new to our salerooms. All of our auctions and sales are conducted on our printed Auction Terms and Conditions, including these Conditions of Sale and Business, which are readily available for inspection and normally accompany catalogues. Our staff will be happy to help you if there is anything you do not fully understand.

Any particular auction and/or any particular lot in an auction may be subject to different or additional terms which will be published in our auction catalogue. All auctions and sales of wines and spirits, jewellery, watches and clocks are subject to the special terms set out in the relevant Notices in relation to those items published in our auction catalogue and, in the event of any conflict or inconsistency, those special terms prevail over any other terms in our Auction Terms and Conditions. By bidding at the auction, you agree to be bound by these terms.

2. **AGENCY.** As auctioneers we usually act as agents for the seller whose identity, for reasons of confidentiality, is not normally disclosed. Accordingly if you buy at auction your contract for the item or items purchased is with the seller and not with us as the auctioneer.

3. **ESTIMATES.** Estimates are designed to help buyers gauge what sort of sum might be involved for the purchase of a particular lot. Estimates may change and should not be thought of as the sale price. The lower estimate may represent the reserve price and certainly will not be below it. Estimates do not include the Buyer's Premium or VAT (where chargeable). Estimates are prepared some time before the sale and may be altered by announcement before the sale. They are in no sense definitive.

4. **BUYER'S PREMIUM.** The Conditions of Sale forming part of our Auction Terms and Conditions require the buyer to pay a buyer's premium on the hammer price of each lot purchased. The buyer's premium is 25% of the hammer price up to and including £500,000, 20% of the hammer price from £500,001 up to and including £1,000,000, and 12% of the hammer price in excess of £1,000,000. VAT at the prevailing rate of 20% is added to buyer's premium and additional charges as defined below.

5. **VAT.** A theta symbol (θ) indicates that the lot is a zero rated item and therefore not subject to VAT on the buyer's premium. This applies to bound books (manuscripts and printed), unframed maps and albums. A dagger symbol (†) indicates that VAT is payable by the purchaser at the standard rate (presently 20%) on the hammer price as well as being and element in the buyers' premium. This imposition of VAT is likely to be because the seller is registered for VAT within the European Union and is not operating the Dealers Margin Scheme or because VAT is due at 20% on import into the UK. A double dagger (‡) indicates that the lot has been imported from outside the UK and the present position is that these lots are liable to a reduced rate of Import VAT currently 5% on the hammer price. (Ω) indicates that the lot has been imported from outside the UK and these lots are liable to the standard rate of Import VAT currently 20% on the hammer price. Lots which appear without the above symbols indicate that no VAT is payable on the hammer price; this is because such lots are sold using the Auctioneers Margin Scheme and it should be noted that the VAT included within the buyers' premium is not recoverable as input tax.

6. **DESCRIPTION AND CONDITION.** Condition reports are provided on our website or upon request. The absence of a report does not imply that a lot is without imperfections. The detail in a report will reflect the estimated value of the lot. Large numbers of such requests received shortly before the sale may mean that reports cannot be provided for all lots. Members of staff are not trained restorers or conservators and, particularly for higher value lots, you should obtain an opinion from such a professional. Dreweatts is not liable for damage to gilded picture frames, plaster picture frames or picture frame glass; if a Lot is or becomes dangerous, we may dispose of it without notice to bidders in advance in any manner we see fit and will be under no liability for doing so. We recommend that you always view a lot in person.

We are dependent on information provided by the seller about a lot and whilst we may inspect lots and act reasonably in taking a general view about them we are normally unable to carry out a detailed examination and frequently no examination of lots in order to ascertain their condition in the way in which it would be wise for a buyer to do. Intending buyers have ample opportunity for inspection of goods and, therefore, accept responsibility for inspecting and investigating lots in which they may be interested and the corresponding risk should they not do so. Please note carefully the exclusion of liability for the condition of lots contained in the Conditions of Sale. Neither the seller nor we, as the auctioneers, accept any responsibility for their condition. In particular, mechanical objects of any age are not guaranteed to be in working order. However, in so far as we have examined the goods and make a representation about their condition in the auction catalogue, we shall be liable for any defect which is not reflected in that representation

and which that examination ought to have revealed to the auctioneer but which would not have been revealed to the buyer had the buyer examined the goods. Additionally, in specified circumstances lots misdescribed because they are 'deliberate forgeries' may be returned and repayment made. There is a 3 week time limit. (The expression 'deliberate forgery' is defined in our Conditions of Sale).

7. **ELECTRICAL GOODS.** These are sold as 'antiques' only and if bought for use must be checked over for compliance with safety regulations by a qualified electrician before use.

8. **EXPORT OF GOODS.** Buyers intending to export goods should ascertain (a) whether an export licence is required and (b) whether there is any specific prohibition on importing goods of that character because, e.g. they may contain prohibited materials such as ivory. Ask us if you need help.

Following the UK's exit from the European Union, private overseas buyers can only receive goods free of VAT/have the VAT amount refunded if Dreweatts acts as exporter in relation to the sale and arranges for the transport of the goods. If you would like us to arrange for the export and delivery of the goods there will be an admin fee of £100 plus the shipping cost. If you arrange for the goods to be picked up/delivered to you directly we will charge UK VAT at the appropriate rate and no refund will be available. Please note that if we export the goods to you, you will be responsible for completing the importation procedures as well the payment of any relevant duty/VAT payable on importation into your country. Business buyers are not affected by this change where the purchase has been made in the business or trading name and a VAT refund will be available on proof of export.

9. **BIDDING.** Bidders will be required to register before the sale commences and lots will be invoiced to the name and address on the sale registration form. Bidders are required to provide a government issued identity document and a proof of address. Please enquire in advance about our arrangements for telephone bidding.

10. **COMMISSION BIDDING.** Commission bids may be left with the auctioneers indicating the maximum amount to be bid excluding buyers' premium. Dreweatts will add these bids to the auctioneers' sale book and they will be executed as cheaply as possible having regard to the reserve (if any) and competing bids. If two buyers submit identical commission bids the auctioneers may prefer the first bid received. Please enquire in advance about our arrangements for the leaving of commission bids by telephone or fax. Dreweatts does not accept liability for failing to execute commission bids, or for any errors or omissions.

11. **METHODS OF PAYMENT.** Payment will be accepted, if you are a successful bidder, by debit card issued in the name of the Buyer by a UK bank and registered to a UK billing address; by all major UK issued credit cards issued in the name of the Buyer and registered to a UK billing address with the exception of American Express and Diners Club; by bank transfer direct into our bank account, Bank Details: NatWest, 30 Market Place, Newbury, Berkshire RG14 5AG. Account Name: Dreweatts 1759 Ltd. A/C: 62412949, Sort Code: 60-15-07, BIC: NWBKGB2L, IBAN: GB21NWBK60150762412949. The name of the bank account holder should match the name of the buyer. First time buyers who are not present at the saleroom are requested to pay by bank transfer.

12. **COLLECTION AND STORAGE.** Please note what the Conditions of Sale state about collection and storage. It is important that goods are paid for and collected promptly. Any delay may involve the buyer in paying storage charges.

13. **À DROIT DE SUITE ROYALTY CHARGES.** From 1st January 2012 all UK art market professionals (which includes but is not limited to; auctioneers, dealers, galleries, agents and other intermediaries) are required to collect a royalty payment for all works of art that have been produced by qualifying artists each time a work is re-sold during the artist's lifetime and for a period up to 70 years following the artists death. This payment is only calculated on qualifying works of art which are sold for a hammer price more than the UK sterling equivalent of EURO 1,000 – the UK sterling equivalent will fluctuate in line with prevailing exchange rates. It is entirely the responsibility of the buyer to acquaint himself with the precise EURO to UK Sterling exchange rate on the day of the sale in this regard, and the auctioneer accepts no responsibility whatsoever if the qualifying rate is different to the rate indicated. All items in this catalogue that are marked with λ are potentially qualifying items, and the royalty charge will be applied if the hammer price achieved is more than the UK sterling equivalent of EURO 1,000. The royalty charge will be added to all relevant buyers' invoices, and must be paid before items can be cleared. All royalty charges are passed on to the Design and Artists Copyright Society ('DACS'), no handling costs or additional fees with respect to these charges will be retained by the auctioneers. The royalty charge that will be applied to qualifying items which achieve a hammer price of more than the UK sterling equivalent of EURO 1,000, but less than the UK sterling equivalent of EURO 50,000 is 4%. For qualifying items that sell for more than the UK sterling equivalent of EURO 50,000 a sliding scale of royalty charges will apply – for a complete list of the royalty charges and threshold levels, please see www.dacs.org.uk. There is no VAT payable on this royalty charge.

Terms of Consignment for Sellers in Public Auctions

The sale of goods at our public auctions and a seller's relationship with us are governed by our Auction Terms and Conditions including these Terms of Consignment for Sellers in Public Auctions and our Conditions of Sale for Public Auctions. Any particular auction and/or any particular lot in an auction may be subject to different or additional terms which will be published in our auction catalogue or separately announced prior to the auction. All auctions and sales of wines and spirits, jewellery, watches and clocks are subject to the special terms set out in the relevant Notices in relation to those items published in our auction catalogue and, in the event of any conflict or inconsistency, those special terms prevail over any other terms in our Auction Terms and Conditions. Please note that our Auction Terms and Conditions including these Terms of Consignment for Sellers in Public Auctions and our Conditions of Sale for Public Auctions relate to auctions held in our salerooms and we have separate terms and conditions for our online auctions.

If you, or another person acting on your behalf, provide goods to us to sell on your behalf at one of our auctions this signifies that you agree to and will comply with our Auction Terms and Conditions including these Terms of Consignment for Sellers in Public Auctions and our Conditions of Sale for Public Auctions.

1. **INTERPRETATION.** In these Terms the words 'you', 'yours', etc. refer to the Seller and if the consignment of goods to us is made by an agent or otherwise on the Seller's behalf we assume that the Seller has authorised the consignment and that the consignor has the Seller's authority to contract. All obligations that apply to the Seller under these Terms of Consignment for Sellers in Public Auctions shall apply to the owner of the goods and their agent jointly and separately. Similarly the words 'we', 'us', etc. refer to the Auctioneers.

2. **WARRANTY.** The Seller warrants that possession in the lots can be transferred to the Buyer with good and marketable title, free from any third party right and encumbrances, claims or potential claims. The Seller has provided all information concerning the item's ownership, condition and provenance, attribution, authenticity, import or export history and of any concerns expressed by third parties concerning the same.

3. **ALL COMMISSIONS.** and fees are subject to VAT at the prevailing rate.

4. **COMMISSION.** is charged to sellers and all selling terms are available from our salerooms.

5. **REMOVAL COSTS.** Items for sale must be consigned to the saleroom by any stated deadline and at your expense. We may be able to assist you with this process but any liability incurred to a carrier for haulage charges is solely your responsibility.

6. **LOSS AND DAMAGE OF GOODS**

(a) Loss and Damage Warranty - Dreweatts is not authorised by the FCA to provide insurance to its clients, and does not do so. However Dreweatts for its own protection assumes liability for property consigned to it at the lower pre-sale estimate until the hammer falls. To justify accepting liability, Dreweatts makes a charge of 15% of the hammer price plus VAT, subject to a minimum charge of £150, or if unsold 15% of our lower estimate. The liability assumed by Dreweatts shall be limited to the lower pre-sale estimate or the hammer price if the lot is sold. Dreweatts is not liable for damage to gilded picture frames, plaster picture frames or picture frame glass; if the Lot is or becomes dangerous, we may dispose of it without notice to you in advance in any manner we see fit and will be under no liability for doing so.

(b) If the owner of the goods consigned instructs us in writing not to take such action, the goods then remain entirely at the owner's risk unless and until the property in them passes to the Buyer or they are collected by or on behalf of the owner, and clause 6 (a) is inapplicable.

7. **ILLUSTRATIONS AND PHOTOGRAPHS.** The cost of any illustrations or photographs is borne by you. The copyright in respect of such illustrations and photographs shall be the property of us, the auctioneers, as is the text of the catalogue.

8. **MINIMUM BIDS AND OUR DISCRETION.** Goods will normally be offered subject to a reserve agreed between us before the sale in accordance with clause 9. We may sell Lots below the reserve provided we account to you for the same sale proceeds as you would have received had the reserve been the hammer price. If you specifically give us a "discretion" we may accept a bid of up to 10% below the formal reserve.

9. **RESERVES**

(a) You are entitled to place prior to the auction a reserve on any lot consigned, being the minimum hammer price at which that lot may be sold. Reserves must be reasonable and we may decline to offer goods which in our opinion would be subject to an unreasonably high reserve (in which case goods carry the storage and loss and damage warranty charges stipulated in these Terms of Consignment).

(b) A reserve once set cannot be changed except with our consent.

(c) Where a reserve has been set which we consider unreasonably high, an unsold charge will be payable in the event that the lots fails to sell, being the agreed selling terms calculated on the reserve, LDW at 15% and any photographic charges.

(d) Where a reserve has been placed only we may bid on your behalf and only up to the reserve (if any) and you may in no circumstances bid personally.

(e) Reserves are not usually accepted for lots expected to realise below £100.

10. **ELECTRICAL ITEMS.** These are subject to detailed statutory safety controls. Where such items are accepted for sale you accept responsibility for the cost of testing by external contractors. Goods not certified as safe by an electrician (unless

antiques) will not be accepted for sale. They must be removed at your expense on your being notified. We reserve the right to dispose of unsafe goods as refuse, at your expense.

11. **SOFT FURNISHINGS.** The sale of soft furnishings is strictly regulated by statute law in the interests of fire safety. Goods found to infringe safety regulations will not be offered and must be removed at your expense. We reserve the right to dispose of unsafe goods as refuse, at your expense. The rights of disposal referred to in clause 10 and 11 are subject to the provisions of The Torts (Interference with Goods) Act 1977.

12. **DESCRIPTION.** Please assist us with accurate information as to the provenance, lawful import etc. of goods where this is relevant. There is strict liability for the accuracy of descriptions under modern consumer legislation and in some circumstances responsibility lies with sellers if inaccuracies occur. We will assume that you have approved the catalogue description of your lots and that your lots match those descriptions unless informed to the contrary. Where we are obliged to return the price to the buyer when the lot is a deliberate forgery under Condition 15 of the Conditions of Sale and we have accounted to you for the proceeds of sale you agree to reimburse us the sale proceeds and in any event within 7 days of our written notice to do so.

13. **UNSOLD.** If an item is unsold it may at our discretion be re-offered at a future sale. Where in our opinion an item is unsaleable you must collect such items from the saleroom promptly on being so informed. Otherwise, storage charges may be incurred. We reserve the right to charge for storage in these circumstances at a reasonable daily rate.

14. **WITHDRAWN AND BOUGHT IN ITEMS.** These are liable to incur a charge of 15% commission, 15 % Loss and Damage Warranty and any other costs incurred including but not limited to illustration and restoration fees all of these charges being subject to VAT on being bought in or withdrawn after being catalogued.

15. **CONDITIONS OF SALE.** You agree that all goods will be sold on our Conditions of Sale for Public Auctions. In particular you undertake that you have the right to sell the goods either as owner or agent for the owner with good and marketable title and free and clear of any third party rights or claims. You undertake to compensate us and any buyer or third party for all losses liabilities, costs and expenses suffered or incurred arising out of or in connection with any breach of this undertaking. We will also, at our discretion, and as far as practicable, confirm that an item consigned for sale does not appear on the Art Loss register, which is administered by an independent third party.

16. **DUE DILIGENCE CHECKS AND ANTI-MONEY LAUNDERING PROCEDURES.** Under the money laundering regulations in force we are required to carry out relevant due diligence checks. This includes verifying the identity of all customers we transact with as well as any beneficial owners on behalf of whom they may transact. Vendors who are unable to or refuse to supply required identification documents and proof of address will not be able to consign to Dreweatts auctions. Copies of customer due diligence checks will be stored for as long as it is necessary to satisfy legal requirements in an appropriate storage facility, which for the avoidance of doubt may include storage solely in electronic form. We reserve the right to withhold the monies owed until the vendor provides the information necessary to complete the anti-money laundering checks.

17. **AUTHORITY TO DEDUCT COMMISSION AND EXPENSES AND RETAIN PREMIUM AND INTEREST**

(a) You authorise us to deduct commission at the stated rate and all expenses incurred for your account from the hammer price and consent to our right to retain beneficially the premium paid by the buyer in accordance with our Conditions of Sale for Public Auctions and any interest earned on the sale proceeds until the date of settlement.

(b) In case of lots unsold at auction you authorise us at our discretion to reoffer such lots and negotiate a sale within seven days of the auction date, in which case the same charges will be payable as if such lots had been sold at auction and so far as appropriate these Terms apply.

18. **WAREHOUSING.** We disclaim all liability for goods delivered to our saleroom without sufficient sale instructions and reserve the right to make minimum warehousing charge of £10 per lot per day. Unsold lots are subject to the same charges if you do not remove them within a reasonable time of notification. If not removed within three weeks we reserve the right to sell them and defray charges from any net proceeds of sale or at your expense to consign them to the local authority for disposal.

19. **SETTLEMENT.** After sale settlement of the net sum due to you normally takes place within 28 days of the sale unless the buyer has not paid for the goods or the checks necessary under the current Money Laundering Regulations have not been completed. In this case no settlement will then be made but we will take your instructions in the light of our Conditions of Sale for Public Auctions. You authorise any sums owed by you to us on other transactions to be deducted from the sale proceeds. You must note the liability to reimburse the proceeds of sale to us as under the circumstances provided for in Condition 12 above. You should therefore bear this potential liability in mind before parting with the proceeds of sale until the expiry of 28 days from the date of sale.

Conditions of Sale for Public Auctions

Dreweatts carries on business with bidders, buyers and all those present in the auction room prior to or in connection with a sale by auction at our salerooms on our Auction Terms and Conditions or Public Auctions including these Conditions of Sale for Public Auctions and all bidders, buyers and others participating in a public auction accept that these terms apply to the exclusion of any terms and conditions contained in any of those person's own documents even if the same purport to provide that that person's own or some other terms prevail. Any particular public auction and/or any particular lot in an auction may be subject to different or additional terms which will be published in our online auction catalogue. Please note that our Auction Terms and Conditions including these Conditions of Sale for Public Auctions relate to auctions held in one of our salerooms and we have separate terms and conditions for our online auctions.

1. DEFINITIONS

In these Conditions:

- (a) "auctioneer" means the firm of Dreweatts or its authorised auctioneer, as appropriate;
- (b) "deliberate forgery" means an imitation made with the intention of deceiving as to authorship, origin, date, age, period, culture or source but which is unequivocally described in the catalogue as being the work of a particular creator and which at the date of the sale had a value materially less than it would have had if it had been in accordance with the description;
- (c) "hammer price" means the level of bidding reached (at or above any reserve) when the auctioneer brings down the hammer;
- (d) "terms of consignment" means the stipulated terms and rates of commission on which Dreweatts accepts instructions from sellers or their agents;
- (e) "total amount due" means the hammer price in respect of the lot sold together with any premium, Value Added Tax chargeable and any additional charges payable by a defaulting buyer under these Conditions;
- (f) "sale proceeds" means the net amount due to the seller, being the hammer price of the lot sold less commission at the stated rate, Value Added Tax chargeable and any other amounts due to us by the seller in whatever capacity and however arising;
- (g) "You", "Your", etc. refer to the buyer as identified in Condition 2.
- (h) The singular includes the plural and vice versa as appropriate.

2. BIDDING PROCEDURES AND THE BUYER

- (a) Bidders are required to register their particulars before bidding by completing a sale registration form and to satisfy any security arrangements before entering the auction room to view or bid;
- (b) Under the money laundering regulations in force we are required to verify the identity of all customers we transact with as well as any beneficiaries on behalf of whom they may transact. Customers who are unable to or refuse to supply required identification documents and proof of address will not be able to bid in Dreweatts auctions. Copies of customer due diligence checks will be stored for as long as it is necessary to satisfy legal requirements in an appropriate storage facility which for the avoidance of doubt may include storage solely in electronic form;
- (c) the maker of the highest bid accepted by the auctioneer conducting the sale shall be the buyer at the hammer price and any dispute about a bid shall be settled at the auctioneer's absolute discretion by reoffering the Lot during the course of the auction or otherwise. The auctioneer shall act reasonably in exercising this discretion.
- (d) Bidders shall be deemed to act as principals;
- (e) Our right to bid on behalf of the seller is expressly reserved up to the amount of any reserve and the right to refuse any bid is also reserved.
- 3. **INCREMENTS.** Bidding increments shall be at the auctioneer's sole discretion.
- 4. **THE PURCHASE PRICE.** The buyer shall pay the purchase price together with a premium thereon of 30% which shall include VAT on the premium at the rate imposed by law. The buyer will also be liable for any royalties payable under Droit de Suite as set out under Information for Buyers.
- 5. **VALUE ADDED TAX.** Value Added Tax on the hammer price is imposed by law on all items affixed with a dagger (†) or double dagger (‡). Value Added Tax is charged at the appropriate rate prevailing by law at the date of sale and is payable by buyers of relevant Lots. (Please refer to "Information for Buyers" for a brief explanation of the VAT position).
- 6. **PAYMENT**
 - (a) Immediately a Lot is sold you will:
 - (i) give to us, if requested, proof of identity, and

- (ii) pay to us the total amount due or in such other way as is agreed by us.
- (b) Any payments by you to us may be applied by us towards any sums owing from you to us on any account whatever without regard to any directions of you or your agent, whether expressed or implied.
- (c) In order to comply with money laundering regulations we reserve the right to require proof of source of funds and/ or confirmation of the nature and source of wealth for all receipts of monies from clients directly or from third parties for payments on behalf of clients. Lots will only be released once we have completed necessary checks under the current Money Laundering Regulations.
- 7. **TITLE AND COLLECTION OF PURCHASES**
 - (a) The ownership of any Lots purchased shall not pass to you until you have made payment in full to us of the total amount due.
 - (b) You shall at your own risk and expense take away any lots that you have purchased and paid for not later than 3 working days following the day of the auction after which you shall be responsible for any removal, storage and insurance charges.
 - (c) No purchase can be claimed or removed until it has been paid for and we have completed necessary checks under the current Money Laundering Regulations.
- 8. **REMEDIES FOR NON-PAYMENT OR FAILURE TO COLLECT PURCHASES**
 - (a) If any Lot is not paid for in full and taken away in accordance with these Conditions or if there is any other breach of these Conditions, we, as agent for the seller and on our own behalf, shall at our absolute discretion and without prejudice to any other rights we may have, be entitled to exercise one or more of the following rights and remedies:
 - (i) to proceed against you for damages for breach of contract;
 - (ii) to rescind the sale of that Lot and/or any other Lots sold by us to you;
 - (iii) to resell the Lot (by auction or private treaty) in which case you shall be responsible for any resulting deficiency in the total amount due (after crediting any part payment and adding any resale costs). Any surplus so arising shall belong to the seller;
 - (iv) to remove, store and insure the Lot at your expense and, in the case of storage, either at our premises or elsewhere;
 - (v) to charge interest at a rate not exceeding 15% per month on the total amount due to the extent it remains unpaid for more than 3 working days after the sale;
 - (vi) to retain that or any other Lot sold to you until you pay the total amount due;
 - (vii) to reject or ignore bids from you or your agent at future auctions or to impose conditions before any such bids shall be accepted;
 - (viii) to apply any proceeds of sale of other Lots due or in future becoming due to you towards the settlement of the total amount due and to exercise a lien (that is a right to retain possession of) any of your property in our possession for any purpose until the debt due is satisfied.
 - (b) We shall, as agent for the seller and on our own behalf pursue these rights and remedies only so far as is reasonable to make appropriate recovery in respect of breach of these conditions.
- 9. **THIRD PARTY LIABILITY.** All bidders, buyers and other members of the public on our premises are there at their own risk and must note the lay-out of the accommodation and security arrangements. Accordingly neither the auctioneer nor our employees or agents shall incur liability for death or personal injury or for the safety of the property of persons visiting prior to or at a sale (except in each case as may be required by law by reason of our negligence)
- 10. **COMMISSION BIDS.** Whilst prospective buyers are strongly advised to attend the auction and are always responsible for any decision to bid for a particular Lot and shall be assumed to have carefully inspected and satisfied themselves as to its condition, we will if so instructed clearly and in writing execute bids on their behalf. Neither the auctioneer nor our employees or agents shall be responsible for any failure to do so.
- 11. **WARRANTY OF TITLE AND AVAILABILITY.** The seller warrants to the auctioneer and you that the seller is the true owner of the property consigned or is properly authorised by the true owner to consign for sale and is able to transfer good and marketable title to the property free from any third party claims.

Save as expressly set out above, all other warranties, conditions or other terms which might have effect between the Seller and you, or us and you, or be implied or incorporated by

- statute, common law or otherwise are excluded to the fullest extent permitted by law.
- 12. **AGENCY.** The auctioneer normally acts as agent only and disclaims any responsibility for default by sellers or buyers.
- 13. **TERMS OF SALE.** The seller acknowledges that Lots are sold subject to the stipulations of these Conditions in their entirety and on the Terms of Consignment for Public Auctions as notified to the consignor at the time of the entry of the Lot.
- 14. **DESCRIPTIONS AND CONDITION**
 - (a) Whilst we seek to describe lots accurately, it may be impractical for us to carry out exhaustive due diligence on each lot. Prospective buyers are given ample opportunities to view and inspect before any sale and they (and any independent experts on their behalf) must satisfy themselves as to the accuracy of any description applied to a lot. Prospective buyers also bid on the understanding that, inevitably, representations or statements by us as to authorship, genuineness, origin, date, age, provenance, condition or estimated selling price involve matters of opinion. We undertake that any such opinion shall be honestly and reasonably held and accept liability for opinions given negligently or fraudulently. Subject to the foregoing neither we the auctioneer nor our employees or agents nor the seller accept liability for the correctness of such opinions and all conditions and warranties, whether relating to description, condition or quality of lots, express, implied or statutory, are hereby excluded. Dreweatts is not liable for damage to gilded picture frames, plaster picture frames or picture frame glass; if the Lot is or becomes dangerous, we may dispose of it without notice to you in advance in any manner we see fit and will be under no liability for doing so. This Condition is subject to the next following Condition concerning deliberate forgeries and applies save as provided for in paragraph 6 "information to buyers".
 - (b) Private treaty sales made under these Conditions are deemed to be sales by auction for purposes of consumer legislation.
- 15. **FORGERIES.** Notwithstanding the preceding Condition, any Lot which proves to be a deliberate forgery (as defined) may be returned to us by you within 21 days of the auction provided it is in the same condition as when bought, and is accompanied by particulars identifying it from the relevant catalogue description and a written statement of defects. If we are satisfied from the evidence presented that the Lot is a deliberate forgery we shall refund the money paid by you for the Lot including any buyer's premium provided that (1) if the catalogue description reflected the accepted view of scholars and experts as at the date of sale or
- (2) you personally are not able to transfer a good and marketable title to us, you shall have no rights under this condition.
- The right of return provided by this Condition is additional to any right or remedy provided by law or by these Conditions of Sale.
- 16. **PRIVACY NOTICE.** We will hold and process any personal data in relation to you in accordance with our current privacy policy, a copy of which is available on our website www.dreweatts.com/privacy-policy/.
- GENERAL**
- 17. We shall have the right at our discretion, to refuse admission to our premises or attendance at our auctions by any person.
- 18. (a) Any right to compensation for losses liabilities and expenses incurred in respect of and as a result of any breach of these Conditions and any exclusions provided by them shall be available to the seller and/or the auctioneer as appropriate.
- (b) Such rights and exclusions shall extend to and be deemed to be for the benefit of employees and agents of the seller and/or the auctioneer who may themselves enforce them.
- 19. Any notice to any buyer, seller, bidder or viewer may be given by first class mail, email or Swiftmail in which case it shall be deemed to have been received by the addressee 48 hours after posting.
- 20. Special terms may be used in catalogue descriptions of particular classes of items in which case the descriptions must be interpreted in accordance with any glossary appearing at the commencement of the catalogue.
- 21. Any indulgence extended to bidders, buyers or sellers by us notwithstanding the strict terms of these Conditions or of the Terms of Consignment shall affect the position at the relevant time only and in respect of that particular concession only; in all other respects these Conditions shall be construed as having full force and effect.
- 22. These Conditions shall be governed by and construed in accordance with English law and the parties irrevocably submit to the exclusive jurisdiction of the English courts.

Dreweatts

NEWBURY

Dreweatts

Donnington Priory

Newbury

Berkshire RG14 2JE

+44 (0) 1635 553 553

info@dreweatts.com

MANAGING DIRECTOR

Jonathan Pratt

DEPUTY CHAIRMAN

Will Richards

James Nicholson

LONDON

Dreweatts / Bloomsbury Auctions

16-17 Pall Mall

St James's

London SW1Y 5LU

+44 (0) 20 7839 8880

info@bloomsburyauctions.com

info@dreweatts.com

HAMBRIDGE LANE

Dreweatts

1 Hambridge Lane

Newbury

Berkshire RG14 5TU

+44 (0) 1635 553 548

hambridgesales@dreweatts.com

Group Departments

AUTOGRAPHS AND EPHEMERA

Ania Hanrahan

ahanrahan@dreweatts.com

ASIAN CERAMICS AND WORKS OF ART

Mark Newstead

Dr Yingwen Tao

asian@dreweatts.com

BLOOMSBURY AUCTIONS BOOKS AND MANUSCRIPTS

Dr Timothy Bolton

Camilla Previté

Denise Kelly

info@bloomsburyauctions.com

BRITISH AND EUROPEAN CERAMICS AND GLASS

Mark Newstead

Geoffrey Stafford Charles

interiors@dreweatts.com

CLOCKS AND SCIENTIFIC INSTRUMENTS

Leighton Gillibrand

clocks@dreweatts.com

COUNTRY SPORTING

Geoffrey Stafford Charles

gscharles@dreweatts.com

DECORATIVE ARTS AND MODERN DESIGN

Geoffrey Stafford Charles

Ashley Matthews

interiors@dreweatts.com

EUROPEAN SCULPTURE AND WORKS OF ART

Silas Currie

sculpture@dreweatts.com

FURNITURE AND CARPETS

Ben Brown

Elaine Binning

Ashley Matthews

William Turkington

Mitchell Tompkins

furniture@dreweatts.com

HOUSE SALES AND PRIVATE COLLECTIONS

Joe Robinson

Eloise Kerr-Smiley

housesales@dreweatts.com

JEWELLERY, SILVER, WATCHES AND OBJECTS OF VERTU

James Nicholson

Nick Mann

Tessa Parry

jsw@dreweatts.com

LIVE STEAM AND MODEL ENGINEERING WORKS OF ART

Michael Matthews

Lucie Hobbs

transport@dreweatts.com

MODERN AND CONTEMPORARY ART

Jennie Fisher

Francesca Whitham

Will Porter (Business Development)

pictures@dreweatts.com

OLD MASTERS, BRITISH AND EUROPEAN ART

Brandon Lindberg

Anne Gerritsen

pictures@dreweatts.com

WINE

Mark Robertson

Dianne Wall

wine@dreweatts.com

BUSINESS DEVELOPMENT

Will Richards

Will Porter

Joe Robinson

Imogen Jones

ijones@dreweatts.com

VALUATIONS FOR PROBATE, INSURANCE AND CGT

Emma Terry

Janice Clift

valuations@dreweatts.com

