

BYRNE'S

Auctioneers & Valuers

THE FINE SALE

Wednesday 25th May

Thursday 26th May 2022





440



384



Cover illustrations:
A selection of items from the sale

Catalogue: £8 (inc. p&p)



BYRNE'S

Auctioneers & Valuers

TWO-DAY FINE SALE

To be sold by public auction on

**Wednesday 25th May and
Thursday 26th May 2022
at 10am each day**

at Pullman House, The Sidings, Boundary Lane, Saltney, Chester CH4 8RD

Viewing

Sunday 22nd May	10:30am – 2pm
Monday 23rd May	10am – 5pm
Tuesday 24th May	10am – 4pm
Wednesday 25th May	9am – 9.45am
Thursday 26th May	9am – 9.45am

Sale Day

The auction is being conducted using commission, telephone and online bidding only. It is not possible to attend the sale in person.

Payment and Collection

We are open for payment and collection of bought lots on both sale days. No appointment is necessary.

Enquiries

Adrian Byrne ASFAV or Jo Boucher ASFAV

Tel: (01244) 681311

email: auctions@byrnesauctioneers.co.uk

Buyer's Premium

25% (inc VAT)

ORDER OF SALE

Wednesday 25th May at 10am

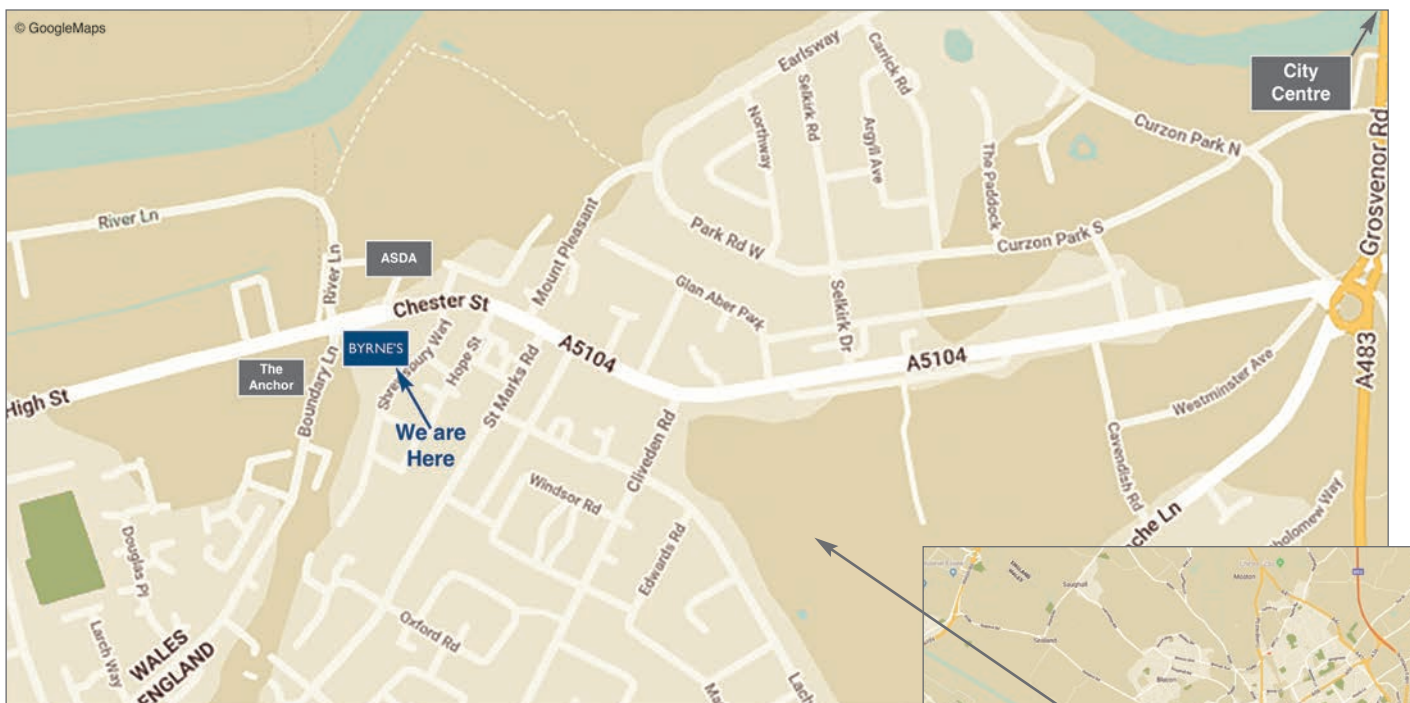
A collection of Royal Crown Derby china	1 – 63
Ceramics & Glass	65 – 206
Silver & Plate	210 – 262
Jewellery, Coins & Watches	270 – 339

Thursday 26th May at 10am

Pictures	350 – 432
Objets d'Art	440 – 586
Furniture & Rugs	590 – 710

Live bidding is available for this sale on two platforms. Additional fees apply as follows:

Lots purchased online with easyliveauction.com attract an additional charge for this service of 3% of the hammer price plus VAT, or you can pay a flat fee of £3 or £3.95 respectively (inclusive of VAT) to register with no additional internet bidding surcharge. Lots purchased online with the-saleroom.com will attract an additional charge for this service in the sum of 4.95% of the hammer price plus VAT.



BYRNE'S

Auctioneers & Valuers

Pullman House, The Sidings
Boundary Lane, Saltney
Chester CH4 8RD
01244 681311
auctions@byrnesauctioneers.co.uk

Selling Rate & Spare Lots

It is anticipated that the selling rate will be in the region of 70 – 100 lots per hour.

E-mail sale notification

If you would like to receive e-mail notification of our forthcoming sales please let us have your contact details including an e-mail address. We will add you to our database and you will be informed prior to general sales and antique sales with our unique 'e-flier'.

Notice for purchasers of smaller items

Byrne's will pack smaller purchases within reason for which we make a packing charge. Items are normally despatched via Special Delivery. Items are packed and the cost of postage is obtained.

This will need to be paid in full before the items are despatched. We send a note to this effect to successful purchasers with the auction invoice.

If you wish to take advantage of this service we require a disclaimer to be signed prior to despatch. If you would like any information in the meantime then please do not hesitate to contact us.

Pictures, Drawings, Prints, Miniatures etc

An explanation of cataloguing terms

- The first name, or names and surname of the artist – in our opinion a work by the artist
- The initials of the first name(s) and surname of the artist – in our opinion a work of the period of the artist and which may be in whole or part a work of the artist
- Attributed to – in our opinion 'probably' a work by the artist
- Follower of – in our opinion a work by a painter working in the artist's style, contemporary or near contemporary but not necessarily his pupil
- In the manner of – in our opinion a work in the style related to the artist but of a later date
- School – accompanied by the name of a place or country and date – in our opinion the picture was executed at that time and in that location e.g. English School, 18th Century
- The surname of the artist preceded by 'after' – in our opinion a copy of the work of the artist
- Signed and dated – in our opinion has a signature which is recognised as that of the artist and was executed at that date
- Bears signature and/or date – in our opinion the artist's name, date or inscription may have been added by another hand

Please note that lots marked ▲ may be subject to Artist's Resale Rights regulations. Please see page 78 for details.

DAY ONE

Wednesday 25th May at 10am

A COLLECTION OF ROYAL CROWN DERBY CHINA





Lot 1

1 Crown Derby Porcelain Persian style imari vase, circa 1878, baluster form with twin mask handles, decorated in pattern 198, with a panel featuring two birds within branches, in gilded colours against a blossom ground, printed mark, height 16cm
£100 - £150 plus 25% BP*

2 Crown Derby Porcelain Persian style imari jar and cover, circa 1878, squat baluster form with twin mask handles and a domed cover, decorated in pattern 198, with two birds within branches, gilded in colours against a blossom ground, printed marks, height 14cm
£150 - £250 plus 25% BP*

3 Matched pair of Crown Derby Porcelain imari lidded vases, circa 1878-1887, ovoid form with domed covers, painted with pattern 198, printed marks, height 13.5cm
£100 - £150 plus 25% BP*

4 Crown Derby Porcelain Persian style small vase, circa 1884, bottle form with twin mask handles, decorated with pattern 198, the body colour having a blue tint, printed mark with date code, height 11.5cm
£80 - £120 plus 25% BP*

5 Royal Crown Derby imari sweetmeat dish, circa 1890, pattern 6299, of lobed form, raised on a pierced oval base, printed marks, 27cm x 20.5cm

£100 - £150 plus 25% BP*

6 Matched pair of Royal Crown Derby imari teaspoon warmers (miniature coal scuttles), pattern 6299, date code for 1904 and 1911, printed marks, height 8.5cm

£70 - £100 plus 25% BP*

7 Royal Crown Derby miniature kettle, circa 1909, pattern 6299, height 7.5cm

£60 - £80 plus 25% BP*

8 Royal Crown Derby miniature imari watering can, circa 1907, pattern 6299, 8cm; also a modern Royal Crown Derby imari flat iron on stand, date code LIX, height 5.5cm (2)

£60 - £80 plus 25% BP*

9 Royal Crown Derby miniature teapot, circa 1906, pattern 6299, decorated in imari colours, printed marks, height 5cm

£60 - £80 plus 25% BP*

10 Royal Crown Derby miniature tea service, circa 1907, decorated in imari style, pattern 6299, comprising lidded teapot, 3.5cm, lidded sucrier and milk jug, printed marks (3)

£100 - £150 plus 25% BP*

11 Stevenson & Hancock Derby imari miniature pot pourri jar and cover, circa 1900-20, twin handled squat baluster form with pierced cover, decorated in old imari colours, painted mark, height 5.5cm

£50 - £70 plus 25% BP*

12 Stevenson & Hancock Derby cauldron, decorated in old imari colours, painted mark, 8cm; also a Stevenson & Hancock Derby inverted baluster vase, decorated in imari colours, painted marks, height 9cm (2)

£80 - £120 plus 25% BP*

13 Royal Crown Derby three piece tea service, in traditional imari colours, pattern 2451, circa 1906/07, comprising lidded teapot, height 12.5cm, lidded sucrier and milk jug, printed marks

£150 - £200 plus 25% BP*

14 Royal Crown Derby cabaret set, circa 1891-95, decorated in imari colours, pattern 2712, comprising a shaped tray, 45cm x 35cm, lidded teapot, lidded sucrier, milk jug, four cups and saucers (12)

£300 - £500 plus 25% BP*



Lot 3



Lot 14



Lot 19



Lot 28

15 Pair of Royal Crown Derby small ovoid vases, circa 1910/12, each decorated in imari colours, pattern 6299, height 8.5cm
£60 - £80 plus 25% BP*

16 Pair of Royal Crown Derby ovoid vases, circa 1906/07, shouldered ovoid form with short neck, decorated in imari colours, pattern 6299, printed marks, height 7.5cm
£40 - £60 plus 25% BP*

17 Royal Crown Derby shouldered vase, circa 1909, decorated in imari colours, pattern 6299, printed marks, height 18cm
£70 - £100 plus 25% BP*

18 Three Royal Crown Derby miniature vases, comprising a Persian inspired miniature bottle vase, pattern 6299, circa 1890-1921, 6cm; a baluster vase with short neck, pattern 6299, circa 1909, 4cm; and a miniature baluster vase, circa 1939, pattern 6299, 4cm (3)
£60 - £80 plus 25% BP*

19 Royal Crown Derby imari spills vase, circa 1929, pattern 1128, straight sided form with beaded horizontal bands, raised on paw feet, printed marks, 11cm
£70 - £100 plus 25% BP*

20 Royal Crown Derby miniature watering can, circa 1920, decorated in imari colours, pattern 6299, printed marks, height 8cm; also a modern Royal Crown Derby miniature watering can in the rock and fence pattern in imari colours, printed marks, numbered MMI, 7.5cm (2)
£70 - £100 plus 25% BP*

21 Royal Crown Derby miniature lidded milk churn, circa 1913, printed marks, height 7cm; also a Royal Crown Derby miniature coal scuttle, circa 1912, pattern 6299, 6cm (2)
£70 - £100 plus 25% BP*

22 Stevenson & Hancock Derby, six imari coffee cups and saucers, circa 1870-1900, pattern akin to 6299, painted red baton marks
£60 - £100 plus 25% BP*

23 Royal Crown Derby miniature tea cup and saucer, circa 1912, pattern 2451, printed marks, height 3cm; also Royal Crown Derby miniature tea caddy and cover, hexagonal form, pattern 6299, circa 1909, height 4cm; and a miniature tankard, pattern 2451, circa 1906, 4cm (3)
£60 - £80 plus 25% BP*

24 Royal Crown Derby miniature tureen and cover, circa 1912, pattern 6299, 5cm; also a Royal Crown Derby miniature watering can, pattern 6299, circa 1911, height 8cm (2)
£80 - £120 plus 25% BP*

25 Royal Crown Derby small twin handled vase in Etruscan shape, decorated in imari colours, pattern 6299, circa 1890-1921, 7.5cm; also a Royal Crown Derby small ovoid vase, circa 1910, decorated in imari colours, 7cm (printed pattern no. 81457/1450) (2)
£80 - £120 plus 25% BP*

26 Royal Crown Derby miniature spills vase, circa 1906, decorated with pattern 6299, printed marks, 8.5cm; also a Royal Crown Derby miniature tankard, ovoid form, pattern 6299, circa 1909, 3.5cm (2)
£60 - £80 plus 25% BP*

27 Royal Crown Derby imari ewer, circa 1882, decorated in pattern 6299, baluster form with batwing upper rim, height 11.5cm; also a Royal Crown Derby baluster vase, circa 1907, pattern 6299, height 10cm (2)
£80 - £120 plus 25% BP*

28 Royal Crown Derby imari tea service, circa 1912/13/14, pattern 2451, comprising oval lidded teapot, height 11.5cm, lidded sucrier, milk jug, six teacups and saucers, all with printed marks (15)
£300 - £500 plus 25% BP*

29 Royal Crown Derby imari bottle vase, circa 1913, pattern 6299, Persian shape, printed marks, height 10cm; also a pair of Royal Crown Derby small ovoid vases, circa 1914, pattern 6299, height 7cm (3)
£80 - £120 plus 25% BP*

30 Derby imari small vase, circa 1820, baluster form, painted red baton mark, 11cm; also a Crown Derby Porcelain inkwell, circa 1878-90, square form decorated in imari colours, printed mark, width 9cm (2)
£30 - £40 plus 25% BP*

31 Six Derby old imari cups and saucers, circa 1800-25, the pattern akin to 6299, painted red baton marks (12)
£50 - £80 plus 25% BP*



Lot 32

32 Royal Crown Derby imari specimen vase, circa 1906, trumpet form decorated with pattern 6299, printed marks, height 13cm; also a Royal Crown Derby imari specimen vase, of rectangular section, circa 1910, pattern 6299, height 13cm (2)
£80 - £120 plus 25% BP*

33 Royal Crown Derby old imari composite tea service, pattern 2451, date codes for circa 1901-39, comprising lidded teapot, sugar bowl, milk jug, six cups, six saucers, five side plates and a bread and butter plate (21)
£300 - £500 plus 25% BP*

34 Royal Crown Derby imari bottle vase, circa 1917, decorated with pattern 6299, printed marks, height 10cm; also a further Royal Crown Derby bottle vase, circa 1914, pattern 6299, 9.5cm (2)
£80 - £120 plus 25% BP*

35 Royal Crown Derby imari moulded bottle vase, circa 1899, pattern 920/919, printed marks, 9.5cm; also a Royal Crown Derby imari small twin handled vase, circa 1901, pattern 6299, 8.5cm; and a Royal Crown Derby small bottle vase, circa 1914, pattern 6299, 8cm (3)
£80 - £120 plus 25% BP*

36 Royal Crown Derby china tea set, in imari colours, circa 1900-10, pattern 2451, comprising lidded teapot, milk jug, sugar basin, six cups and saucers (15)

£200 - £300 plus 25% BP*

37 Royal Crown Derby set of six coffee cups and saucers, circa 1895, in Imari palette, pattern 2451, printed marks

£80 - £120 plus 25% BP*



Lot 38

38 Royal Crown Derby imari tea service, circa 1901/09, pattern 2451, comprising lidded teapot, lidded sucrier and milk jug, printed marks (3)

£150 - £200 plus 25% BP*

39 Crown Derby Porcelain imari part tea service, circa 1878-1916, decorated with pattern 198, comprising lidded teapot, lidded sucrier, milk jug, six cups, six saucers, four side plates, two bread and butter plates, 23cm, all with printed marks in blue and terracotta (21)

£400 - £600 plus 25% BP*

40 Two Royal Crown Derby imari meat plates, pattern 2451, date code MM1, 41.5cm x 31.5cm and 35cm x 27cm, printed marks

£80 - £120 plus 25% BP*



Lot 39



Lot 41

41 Crown Derby Porcelain imari oval meat plate, circa 1878, pattern 198, blue printed and impressed mark, 41cm x 48.5cm
£100 - £150 plus 25% BP*

42 Crown Derby Porcelain imari part dessert service, circa 1878-1884, decorated in pattern 198, comprising three short comports and 14 dessert plates, 23.5cm diameter, printed marks (17)
£200 - £400 plus 25% BP*

43 Six Royal Crown Derby teacups and saucers, circa 1909-13, pattern 2451
£80 - £120 plus 25% BP*

44 Royal Crown Derby imari tea service, circa 1890-1915, comprising teapot, lidded sucrier and milk jug, the teapot 12.5cm, printed marks
£100 - £150 plus 25% BP*



Lot 45

45 Pair of Royal Crown Derby china candlesticks, pattern no. 1128, in old imari colours, height 27cm
£300 - £500 plus 25% BP*

46 Derby imari dish, circa 1800-25, lappet shape, painted red baton mark, 25cm; also a Derby imari tea cup and saucer of similar date; Crown Derby Porcelain yellow ground milk jug, pattern 198, circa 1878, height 8.5cm; Royal Crown Derby milk jug, circa 1903; and a Royal Crown Derby cream jug, pattern 2451, circa 1901, 6.5cm (6)
£100 - £150 plus 25% BP*



Lot 47

47 Royal Crown Derby imari cabaret tray, circa 1912, pattern 2451, shaped form, printed and impressed marks, 35.5cm x 27cm
£80 - £120 plus 25% BP*



Lot 48

48 Royal Crown Derby imari tea cups, coffee cups and saucers, pattern 2451, various dates, mostly 1903-15, also 1925 and 1939 (29)
£80 - £120 plus 25% BP*

49 Royal Crown Derby imari tea service, circa 1901 and 1929, pattern 2451, comprising lidded teapot, lidded sucrier, and milk jug, all with printed marks, the teapot 12.5cm (3)
£120 - £180 plus 25% BP*



Lot 50



Lot 53

50 Crown Derby Porcelain imari part cabaret set, circa 1878-90, pattern 198, comprising canted rectangular tray, 35.5cm x 28cm, cream jug, sugar basin, two coffee cans and saucers (7)
£100 - £150 plus 25% BP*

51 Ten Crown Derby Porcelain imari dinner plates, pattern 198, circa 1878-90, printed marks, 26.5cm diameter
£120 - £180 plus 25% BP*

52 Royal Crown Derby imari tea service, the teapot circa 1894, the sucrier and milk jug 1939, pattern 2451, printed marks, the teapot 12.5cm (3)
£150 - £200 plus 25% BP*

53 Royal Crown Derby imari composite cabaret set, circa 1900-39, pattern 2451, comprising a canted rectangular serving tray, 48.5cm x 32cm, lidded teapot, lidded sucrier, cream jug, small sugar bowl, four cups and saucers (13)
£200 - £300 plus 25% BP*

54 Eight Royal Crown Derby imari plates, circa 1902/03/09, pattern 2451, printed marks, 20.5cm diameter
£80 - £120 plus 25% BP*

55 Five Royal Crown Derby imari composite trios, all pattern 2451, various dates circa 1910-25
£80 - £120 plus 25% BP*

56 Royal Crown Derby tea and coffee wares, various shapes and dates, all pattern 2451, comprising a 23.5cm diameter plate, seven side plates, 18cm, three sandwich plates, 16cm, nineteen various saucers for both tea and demi-tasse cups, and seventeen tea and coffee cups (47)
£200 - £300 plus 25% BP*

57 Four Crown Derby Porcelain imari plates, circa 1884, 23.5cm diameter
£50 - £70 plus 25% BP*

58 Crown Derby Porcelain imari plates and bowl, circa 1878-1902, comprising bowl, 26.5cm diameter; pair of plates, 24.5cm; four plates, 22.5cm; and a plate, 20.5cm (8)
£80 - £120 plus 25% BP*

59 Crown Derby Porcelain imari coffee wares, circa 1878-1900, all pattern 198, comprising seven coffee cups and saucers; oversize coffee cup and saucer; milk jug; sugar basin; small cream jug; one side plate, printed marks (20)
£80 - £120 plus 25% BP*

60 Royal Crown Derby imari wares, pattern 2451, various dates, mostly circa 1890-1910, comprising two plates, 23cm diameter; flower pot, 8cm; cream jug, 10cm; two small sugar bowls and a larger sugar bowl; butter dish stand (no cover), 20.5cm; gadrooned edged plate, 22.5cm; and a plate, 26cm (10)
£80 - £120 plus 25% BP*

61 Pair of Royal Crown Derby imari pattern plates, each centred with a leaf, printed marks, 23.5cm diameter; also three Royal Crown Derby imari patterned side plates, circa 1906, 18cm; a further plate (second), 21cm diameter; three saucers, pattern 2451; two tea cups and a coffee can; a Derby pot with associated cover, height 4.5cm; restored Royal Crown Derby baluster vase, pattern 6299, 7.5cm; three imari patterned tea cups and saucers in Derby style, printed Crown mark; two matching side plates; bread and butter plate; and an unrelated continental porcelain cup (25)
£60 - £80 plus 25% BP*

62 Royal Crown Derby Imari tea wares, circa 1894, pattern number 2451, comprising nine cups, nine saucers, twelve side plates, two cake plates and a sugar bowl (33)
£180 - £240 plus 25% BP*

63 Royal Crown Derby tea service, circa 1891/92, pattern 3343, comprising lidded teapot, lidded sucrier, milk jug, six cups, six saucers, printed marks, the teapot 15cm (15)
£100 - £150 plus 25% BP*



CERAMICS & GLASS



Lot 65

65 Shelley Queen Anne part tea service, decorated in a morning 'Sunrise and tall trees' pattern, no. G11698, comprising five cups, six saucers, six side plates, milk jug, sugar basin and bread and butter plate, printed marks (20)
£200 - £300 plus 25% BP*

66 Pair of Dresden porcelain cabinet plates, 20th Century, each decorated to the centre with Deutsche Blumen, within pierced wavy borders, printed marks 'Dresden Germany', 22cm diameter
£40 - £60 plus 25% BP*

67 Quantity of Hammersley Dresden Sprays china tea and other wares, comprising six place tea service, other part tea service, baluster milk jugs, pair of gravy boats, circular dish and cover, tea bowls, pin dishes etc (53)
£100 - £200 plus 25% BP*



Lot 68

68 Pair of Sitzendorf coloured bisque porcelain busts of courtiers, circa 1880, each on a waisted square socle, painted crossed mark to the base, height 31cm
£80 - £120 plus 25% BP*

69 Large Capodimonte porcelain model 'The Old Pharmacist' by R Guidolin, limited edition numbered 213, signed, width 33.5cm, height 33cm
£100 - £150 plus 25% BP*

70 Chinese famille verte vase, 19th Century, ovoid form with trumpet neck, decorated with panels of birds and peony, the base drilled, height 30cm
£150 - £200 plus 25% BP*

71 Chinese famille rose vase, 20th Century, square section decorated with floral panels against a yellow honeysuckle and lotus flower scrolling ground in colours, Qianlong four character mark, height 26cm
£200 - £300 plus 25% BP*

72 Chinese Clair-de-Lune vase, of simplified double fish form, with Yongzheng mark in Zhuanshu script, overprinted with 'Made in China', height 26.5cm, on a carved wooden stand
£200 - £400 plus 25% BP*

73 Chinese ochre bottle vase, incised with dragons chasing flaming pearls, underglaze blue Chenghua mark within a double circle, height 23.5cm
£100 - £150 plus 25% BP*

74 Four Japanese blue and white printware plates, painted character marks, 18.5cm
£40 - £60 plus 25% BP*

75 Chinese blue and white prunus blossom lozenge shaped dish, 19th Century, 26.5cm
£40 - £60 plus 25% BP*

76 Troika moon vase, relief moulded with geometric forms, finished in browns and burnt orange, painted marks, 16.5cm
£60 - £80 plus 25% BP*

77 Four Minton tiles designed by J Moyr-Smith, from the Shakespeare Series, circa 1880, 15.5cm square
£40 - £60 plus 25% BP*

78 Chinese celadon vase, 20th Century, shouldered form carved beneath the glaze with peony, 17cm
£60 - £80 plus 25% BP*



Lots 70 - 73



Lots 76 & 77

79 Chinese blue and white prunus pattern porcelains including two lidded ginger jars, 15.5cm and 14.5cm; pair of small bottle vases, 15cm; sleeve vase, 20cm (5)
£100 - £150 plus 25% BP*

80 Chinese blue and white sleeve vase, 19.5cm; also a provincial Chinese blue and white saucer dish, 19cm; blue and white tea bowl; and a later gilded blue and white saucer, 13cm (4)
£60 - £80 plus 25% BP*

81 Chinese blue and white small bowl (Dou), decorated with boys playing in a landscape, double blue circle mark to the base, height 5.5cm
£100 - £150 plus 25% BP*

82 Two Teksing Cargo blue and white bowls, 17 and 12.5cm diameter
£60 - £80 plus 25% BP*



Lots 83 - 87

83 Chinese blue and white export meat dish, late 18th Century, 33.5cm x 27cm

£80 - £120 plus 25% BP*

84 Pair of Chinese blue and white prunus pattern lidded jars, late 19th Century, of inverted baluster form, the base marked with a double blue circle, height 27cm

£200 - £400 plus 25% BP*

85 Pair of Chinese blue and white bottle vases, late 19th Century, decorated with butterflies and flowers, painted Kangxi mark, height 25.5cm

£300 - £500 plus 25% BP*

86 Chinese blue and white export plate, Kangxi (1662-1722), richly decorated with flowers and foliage, 25cm diameter

£80 - £120 plus 25% BP*

87 Chinese blue and white export plate, Kangxi (1662-1722), 22cm diameter

£60 - £80 plus 25% BP*

88 Korean celadon vase, fluted and flared neck and panel moulded body with mask lug handles, height 25cm

£100 - £150 plus 25% BP*

89 Chinese glazed terracotta figure of a bearded man holding a fan, 20th Century, height 25cm

£30 - £50 plus 25% BP*

90 Chinese blue and white prunus pattern ginger jar and cover, double blue circle mark, height 15cm; also a similar prunus pattern ginger jar (no cover), 13.5cm; and two smaller prunus pattern ginger jars with covers, 12.5cm and 12cm, all late 19th Century (4)

£100 - £150 plus 25% BP*

91 Chinese blue and white export teapot and cover, early 19th Century, height 16cm

£40 - £60 plus 25% BP*

92 Chinese famille rose tankard, Qianlong (1736-95), decorated with floral sprays (handle restored), height 13cm

£100 - £150 plus 25% BP*

93 Lalique Gui bowl, moulded with mistletoe and berries and tinted with blue opalescence acid etched mark, 24cm diameter

£200 - £300 plus 25% BP*



Lot 94

94 Lalique Gui de Boule vase, shape no. 948, moulded with mistletoe, frosted and tinted with blue opalescence, moulded mark, height 16.5cm

£500 - £700 plus 25% BP*

95 Chinese blue and white export plate, Kangxi (1662-1722), decorated with peony and bamboo, 23cm; also a Chinese blue and white saucer dish, 16cm diameter; and a Chinese blue and white landscape cup, 6cm (3)

£100 - £150 plus 25% BP*

96 Japanese blue and white large porcelain jar, late Meiji (1868-1912), shouldered ovoid form decorated with quail and kingfisher, height 29cm

£200 - £400 plus 25% BP*



Lot 93



Lot 103



Lots 97 - 99



Lots 107 - 109

97 George II wine glass, circa 1740, drawn trumpet bowl with a tiered stem and conical foot, height 17cm
£100 - £150 plus 25% BP*

98 Early George III cordial glass, circa 1770, moulded ogee bowl with a band of foliate engraving to the rim, over an opaque twist stem with two spiral tapes entwining with a gauze twist, over a conical foot, height 15cm
£120 - £180 plus 25% BP*

99 Early George III wine glass, circa 1760, ogee bowl engraved with a bird and floral spray over a solid stem and folded foot, height 14cm
£70 - £100 plus 25% BP*

100 Chinese porcelain stem cup, late 19th/early 20th Century, decorated with dragon medallions in terracotta, over a base with green wave decoration, height 10cm
£40 - £60 plus 25% BP*

101 Chinese famille verte vase, converted to a table lamp, with metal mounts, the porcelain 18th or 19th Century, decorated with figures in a garden, overall height with mounts 31cm
£80 - £120 plus 25% BP*

102 Three Chinese blue and white export dishes, late 18th/early 19th Century, 23cm diameter; also a larger blue and white dish, similarly decorated, 27cm diameter (4)
£80 - £120 plus 25% BP*

103 Lalique Actina shallow bowl, reverse moulded with swirling serrated leaves and tinted with blue opalescence, stencilled mark 'R Lalique France', 26.5cm diameter
£200 - £300 plus 25% BP*

104 Italian glazed terracotta niche plaque in bas-relief, featuring the Madonna and Child in an arch, 63cm x 44cm
£50 - £80 plus 25% BP*

105 Murano millefiori multi-caned table lamp, height 46cm
£150 - £250 plus 25% BP*

106 Chinese blue and white small baluster vase, 20th Century, decorated in the Kangxi style with Kangxi six character mark, height 18.5cm
£60 - £80 plus 25% BP*

107 Pair of air twist wine glasses, each with round funnel bowl over double knot spiral air twist stem and conical foot, height 18.5cm
£120 - £180 plus 25% BP*

108 Late George II wine glass, circa 1750, drawn trumpet bowl with air twist stem over a conical foot, height 17cm
£120 - £180 plus 25% BP*

109 Late George II wine glass, circa 1750, drawn trumpet bowl over seven ply spiral band encasing a single corkscrew, height 18.5cm
£100 - £150 plus 25% BP*



Lots 114 - 116

110 Arts & Crafts style decorative galleon tile, finished in a light green glaze, 15.5cm square; also a further smaller tile, similarly decorated, this time in an orange glaze, 7.5cm square (2)
£50 - £80 plus 25% BP*

111 Vicke Lindstrand, for Orrefors, an engraved clear glass vase of tri-form section, decorated with standing figure of a female nude, engraved mark 'Orrefors. Lindstrand. 2048.88.A5.', height 28cm
£300 - £500 plus 25% BP*

112 Chinese blue and white bowl, late 19th/early 20th Century, tapered straight sided form decorated with two bands of figures walking within a fenced garden, base with double blue circle mark, height 11cm; also a Chinese blue and white ink pot, 19th Century, decorated with a stylised landscape, height 7.5cm; and a Chinese blue and white vase decorated with birds, butterflies and flowers, Kangxi mark, height 13.5cm (3)
£150 - £200 plus 25% BP*

113 Cantonese famille rose vase, 19th Century, with mask ring handles, decorated in typical palette (restored), height 22cm; also a small Cantonese famille rose vase, height 15cm (2)
£70 - £100 plus 25% BP*

114 Theodore Deck plate, circa 1880, in the Aesthetic taste, centred with herons and sparrows against a yellow ground, within a blue coloured floral border, painted marks, 24cm diameter
£400 - £600 plus 25% BP*

115 Japanese Satsuma small vase by Kinkozan, Meiji (1868-1912), bottle form with trumpet neck, decorated with two panels depicting figures within a garden against a deep blue and gilt detailed ground, signed, height 12cm
£150 - £250 plus 25% BP*

116 Continental porcelain model of a mythical beast, decorated in colours and gilt against a white ground, height 27.5cm
£100 - £150 plus 25% BP*

117 Chinese famille rose octagonal jar, late 19th Century, decorated with figures within a garden, height 12cm
£60 - £100 plus 25% BP*

118 Chinese blue and white jar and cover, 19th Century, painted in Kangxi style with figures at a table, painted double circle mark to the base, height 26.5cm
£120 - £180 plus 25% BP*

119 Japanese Fukugawa scalloped dish, the centre decorated with dragons within panelled formal border, painted mark, 24.5cm
£80 - £120 plus 25% BP*

120 Japanese Imari small dish, late Meiji (1868-1912), centre decorated with a scrolling dragon within a panelled reserve border, six character mark, 18.5cm
£60 - £80 plus 25% BP*

121 Chinese famille rose dish, late 19th/early 20th Century, decorated with mythical beasts in colours, painted Qianlong mark, 14.5cm diameter
£50 - £80 plus 25% BP*

122 John Hudson slipware owl jug, impressed marks, height 21cm; also a modern polychrome glazed china model of an Amazonian parrot, height 24.5cm (2)
£70 - £100 plus 25% BP*

123 Japanese blue and white boat shaped dish, 18cm; also three Japanese blue and white scalloped dishes, 15.5cm (4)
£80 - £120 plus 25% BP*

124 Pierre D'Avesn, bird of paradise, large moulded glass dish, circa 1930s, tinted with blue opalescence, moulded mark, 38cm
£300 - £400 plus 25% BP*



Lot 122

125 Aynsley China limited edition model of an American bald eagle, commemorating the bicentenary of the USA, modelled by Fred Wright, numbered 292/750, on original wooden base with plaque, original certificate, overall height 45cm
£50 - £80 plus 25% BP*

126 Aynsley China limited edition model of a snowy owl, on original wooden base (no certificate), overall height 39cm
£30 - £50 plus 25% BP*

127 Etling glass thistle bowl, circa 1930s, relief moulded tinted with blue opalescence, marked 'Etling 214 France', 23cm diameter
£100 - £150 plus 25% BP*



Lot 128

128 Cantonese famille rose large bowl, early 19th Century, decorated in typical fashion with panels and vignettes of figures, birds and butterflies, against a gilt and green scrolled ground, 37.5cm diameter, on a conforming but later wooden stand
£400 - £600 plus 25% BP*

129 Moulded glass small bowl, probably 1930s, decorated with stylised flower heads and tinted with blue opalescence, 16.5cm diameter
£40 - £60 plus 25% BP*

130 Wallace & Sanders, studio glass vase, shouldered form decorated with white latticino swags, signed, height 14.5cm
£100 - £150 plus 25% BP*



Lots 125 and 126

131 Robert Eickholt, iridescent glass vase, dated 1992, finished in an orange textured iridescence, signed, height 11cm
£50 - £80 plus 25% BP*

132 Lalique vase, moulded and frosted with ears of wheat in clear glass, engraved mark 'Lalique France', 12.5cm
£100 - £150 plus 25% BP*

133 Barr, Flight & Barr, Worcester, inkwell, circa 1807-13, decorated throughout with gilt lozenge band against a terracotta ground with candle scone inkwell and partial lid, painted mark 'Makers to Their Majesties', 14cm
£120 - £180 plus 25% BP*



Lots 134 and 135

134 Japanese Imari vase, Meiji (1868-1912), ribbed ovoid form decorated with dragon roundels in underglaze blue, terracotta and parcel gilt, height 32cm
£40 - £60 plus 25% BP*

135 Pair of Fukugawa porcelain globular vases, decorated in the cloisonné style with chrysanthemums against a deep blue and parcel gilt ground, painted marks, height 17.5cm and 18cm respectively
£200 - £250 plus 25% BP*

136 English porcelain inkwell, circa 1815, decorated with a band of bold flowers in colours, edged with gilt, with inkwell and cover, 15.5cm
£100 - £150 plus 25% BP*



Lots 140 and 141

137 Chinese Yixing enamelled terracotta teapot, 19th Century, decorated with butterflies and flowers in the Canton style, incised character marks, height 10cm

£30 - £50 plus 25% BP*

138 George III wine glass, circa 1785, round funnel bowl engraved with initials 'IW', dispersed with forget-me-not, over a faceted stem, flat foot, height 12.5cm; also a Regency thistle form wine glass with blade knop stem, 11.5cm (2)

£80 - £120 plus 25% BP*

139 George III cut glass mallet decanter, circa 1780 - 1800, with later mushroom stopper, height 23.5cm

£50 - £80 plus 25% BP*

140 Pair of Japanese porcelain vases, Taisho (1912-26), baluster form decorated with village scenes with Mount Fuji in the background, signed to the base, height 30cm

£80 - £120 plus 25% BP*

141 Fine quality Japanese Kutani porcelain vase, late Meiji (1868-1912), twin handled form decorated with Bijin strolling amidst blossoms, painted seal type mark, height 30cm

£400 - £600 plus 25% BP*

142 Chinese blue and white Rouleau vase, late 19th Century, decorated with dragon scrolling amidst peony and foliage, painted Kangxi four character mark, height 30.5cm

£80 - £100 plus 25% BP*



Lot 143

143 Laliq poissan flared bowl, relief moulded with fish and tinted with blue opalescence, acid etched mark, 30cm diameter

£300 - £500 plus 25% BP*

144 Chinese blue and white tea bowl, late 18th Century; also a Chinese blue and white chocolate cup and a further Chinese blue and white cup, early 19th Century, Japanese saucer dish and two English blue and white tea bowls (6)

£40 - £60 plus 25% BP*



Lots 145 - 147



Lot 149

145 Della Robbia Persian bottle vase, shape no. 546, painted by Tom Hall and assisted by monogrammist 'CL', circa 1904-06, decorated throughout with stylised berry clusters in red against a yellow leaf and green ground, incised and painted marks (restored), height 40.5cm
£400 - £600 plus 25% BP*

146 Della Robbia plaque, circa 1894-1906, no. 952, incised with stylised tulip reserves in yellow and green, within an Art Nouveau inspired border, impressed marks (restored), 34.5cm diameter
£300 - £500 plus 25% BP*

147 Della Robbia vase, by Liz Wilkins and Arthur Bells, circa 1894-1906, shape no. 367, decorated with green incised leaves flanking a blue band of scrolling tendrils, impressed marks (restored), height 18cm
£200 - £300 plus 25% BP*

148 Della Robbia plate, circa 1894-96, simply decorated with a green ground centred with a rose and bordered with stylised flowerheads and leaves, incised and painted marks, 20cm diameter
£120 - £180 plus 25% BP*

149 Jewish Interest: Austrian terracotta figure group, 'Auch Ein Geheimus' translated as 'Another secret', painted terracotta, impressed marks, height 30cm

NB A similar figure is illustrated in Weinstein's 'Judaica', plate 235
£400 - £600 plus 25% BP*

150 Pair of French metal mounted porcelain pot pourri urns, circa 1900, each decorated in the Sevres style with panels of young courtiers in colours within gilt borders, domed covers with metal lions mask and ring handles raised on canted square bases, height 48cm
£400 - £600 plus 25% BP*

151 Chinese 'Blanc de Chine' figure of Guanyin (restored), height 20.5cm
£50 - £80 plus 25% BP*

152 Korean crackle glazed small vase, height 9.5cm
£50 - £80 plus 25% BP*

153 Meissen night watchman figural candelabrum, late 19th Century, under glazed blue cross swords mark, height 30cm; also a further Meissen figure of a bird catcher, under glazed blue cross swords mark, height 13cm, both af
£200 - £300 plus 25% BP*

154 Rare small blue and white print ware meat dish, in an Orientalist temple pattern, circa 1830, 19cm x 13.5cm

Provenance: ex-D&S Howlett Collection
£30 - £50 plus 25% BP*



Lots 155 and 156

155 Chinese famille verte baluster jar and cover, Qianlong (1736-95), decorated with birds and foliate panels within a diaper and green cracked ice ground, height 46cm
£400 - £600 plus 25% BP*

156 Pair of Chinese famille rose rouleau vases, 18th or 19th Century, decorated with birds seated amidst prunus blossom over peony rock in colours, blue double circle mark to the base (one restuck at the neck, the other with a body crack), height 46cm
£300 - £500 plus 25% BP*

157 Chinese blue and white Prunus pattern covered ginger jar, late 19th Century, with Kangxi four character mark, height 17cm; also a further Chinese Prunus pattern jar, height 12cm (2)

£50 - £70 plus 25% BP*

158 Victorian or Edwardian oversized ale glass, circa 1900, decorated with a band of hops and barley above a faceted lower U-shaped bowl, waisted stem, height 22cm; also a traditional moulded glass rummer, 15cm; Edwardian triple ring neck hobnail cut mallet decanter with stopper, 16.5cm; and a Victorian clear glass celery vase, 22cm (4)

£60 - £80 plus 25% BP*

159 Bretby pottery model of a barn owl, impressed marks, height 30cm

£50 - £80 plus 25% BP*

160 Part suite of Waterford Colleen pattern glassware comprising six pedestal hock glasses, height 19cm; also six white wine, 15.5cm; six red wines, 13.5cm; six port, 11cm; six tumblers, 8cm; two brandy balloons; two scotch glasses; and a decanter and stopper (35)

£500 - £700 plus 25% BP*

161 Pair of late Victorian engraved glass tazze, in Etruscan style, circa 1870, each of shallow form with lug handles, engraved with floral garlands and anthemion, over a hollow knob and domed folded foot, 17cm diameter, height 11cm

£40 - £60 plus 25% BP*

162 French cut pink glass scent bottle, in the style of Baccarat, with heavy cut glass base and intaglio stopper, height 22.5cm; also a similar French cut glass scent bottle with intaglio stopper, height 16cm (2)

£40 - £60 plus 25% BP*



Lots 163 - 165

163 Galle style cameo glass vase, acid etched and wheel engraved with flowers in red against a lime green ground, bearing a Galle signature mark, height 17.5cm

£80 - £120 plus 25% BP*

164 Galle style cameo glass vase, acid etched and wheel engraved decoration of orchids in pinks, purples and reds against a matt light green ground, bearing a Galle signature mark, height 8cm

£150 - £250 plus 25% BP*

165 Galle style cameo glass vase, baluster form, acid etched and wheel engraved with purple violets against a matt light pink ground, bearing a Galle signature mark, height 13cm

£80 - £120 plus 25% BP*

166 Eastern European glass hookah base, baluster form with ruby flash and gilt decoration, on a square base, height 28.5cm

£50 - £80 plus 25% BP*

167 Davenport porcelain part tea and coffee service, circa 1820-40, decorated with pattern 1886, being fluted panels of gilt dispersed with vertilinear cobalt blue strands heightened with gilt, red printed ribbon mark, comprising nine tea cups, six coffee cups, six saucers, sugar basin and two bread and butter plates (24)

£40 - £60 plus 25% BP*

168 Paris porcelain cabinet cup and saucer, late 19th Century, decorated with a memorial garden scene bordered with gilt, inscribed to the base 'Offre Il Conte Cav. Strozzi Per Sua Memoria', the cup 10cm; also a French Sevres style porcelain jar and cover, decorated with classical vignettes in colours, against a gilded and bleu de roi ground, raised on gilt scroll feet, height 18cm (2)

£80 - £120 plus 25% BP*

169 Pair of Samson of Paris armorial famille rose plates, late 19th Century, 23cm diameter

£30 - £50 plus 25% BP*

170 Chinese famille rose large tankard, late 18th Century, decorated with panels of sailing boats in colours, against an underglaze blue and terracotta diaper ground, height 15cm

£80 - £120 plus 25% BP*

171 Chinese blue and white prunus pattern ginger jar and cover, late 19th Century, the base marked with a double circle, height 19cm

£60 - £80 plus 25% BP*



Lots 172 and 173

172 Royal Worcester fruit decorated plate, date code for 1921, the centre decorated with apples and wild strawberries within an underglaze blue and gilded, 'jewelled' border, printed marks, 22.5cm diameter

£200 - £300 plus 25% BP*

173 Royal Worcester fruit decorated large plate, circa 1928, the central roundel decorated with pears and damsons, signed W. Bee (?), within a blue powdered gilded with laurel leaf swags and with white 'jewelling' within a tooled gilt border, gilt footrim and gilt printed mark, 27cm diameter

£200 - £300 plus 25% BP*

174 Perthshire Glass tropical fish paperweight, limited edition, numbered 34/400, 7.5cm diameter, original box and certificate

£30 - £50 plus 25% BP*

175 Whitefriars (Caithness Glass) paperweight, 'Dragonfly', from the Summer Meadows Series, limited edition, numbered 48/150, 8cm diameter, original box and certificate

£30 - £50 plus 25% BP*

176 Perthshire Glass paperweight, 'Dahlia', limited edition, numbered 164/300, 8cm diameter, original box and certificate

£30 - £50 plus 25% BP*



Lot 177

177 Laliq Poisson bowl, moulded with fishes and tinted with blue opalescence, moulded mark 'R Laliq', 21cm diameter
£150 - £200 plus 25% BP*

178 Perthshire Glass paperweight, 'Apple', limited edition, numbered 89/200, 7cm diameter, original box and certificate
£30 - £50 plus 25% BP*

179 Whitefriars (Caithness Glass) paperweight, 'Orchid Spray', limited edition, numbered 3/50, 8cm diameter, original box and certificate
£40 - £60 plus 25% BP*

180 Two Caithness Glass limited edition paperweights, 'Flight' numbered 248/750, and 'Adagio', numbered 68/750, both 7.5cm diameter, boxed and with certificates,
£40 - £60 plus 25% BP*

181 Caithness Glass paperweight, 'Manta ray and coral', limited edition, numbered 55/100, 8cm diameter, original box and certificate
£40 - £60 plus 25% BP*

182 Chinese export blue and white tureen and cover, Qianlong (1736-95), the domed cover surmounted with a crown and with mask lug handles surmounted with feather plumes, decorated throughout with peony rock garden, height 29cm, length 33cm
£400 - £600 plus 25% BP*

183 Chinese blue and white vase and cover, 19th Century, decorated with panels of precious objects, against a prunus blossom and cracked ice ground, Kangxi four character mark, height 37cm
£300 - £500 plus 25% BP*

184 Chinese powder blue ground vase, 19th Century, decorated with panels of figures in a famille verte palette, traces of gilded details, 23.5cm
£100 - £150 plus 25% BP*

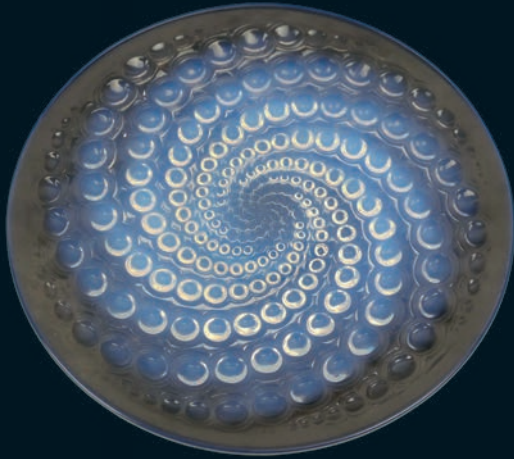
185 Chinese blue and white jar, 18th or 19th Century, decorated with phoenix and palms with scrolling karakusa, double circle mark to the base, height 19.5cm
£120 - £180 plus 25% BP*

186 Pair of Victorian cut glass triple ring neck mallet decanters, with stoppers, 28cm
£20 - £40 plus 25% BP*

187 Derby botanical table basket, circa 1800-25, decorated throughout with floral sprays, titled to the base, and with red baton mark, 28cm x 22cm
£30 - £50 plus 25% BP*



Lots 182 - 185



Lot 188



Lots 191 - 194



Lots 196 - 198

188 Lalique Volutes plate, reverse moulded with a swirl of graduating bubbles, tinted with blue opalescence, stencilled mark 'R Lalique France', 27.5cm diameter
£200 - £300 plus 25% BP*

189 Barr Worcester porcelain cup and saucer, circa 1792-1807, decorated with allegorical printed vignettes against a gilded orange ground, incised 'B' mark
£30 - £50 plus 25% BP*

190 Three Chinese blue and white Prunus pattern ginger jars, late 19th/early 20th Century, the largest 17cm
£60 - £80 plus 25% BP*

191 Early George III wine glass, circa 1760, round funnel bowl over an opaque twist stem, with lace outline and gauze twist, conical foot, height 15.5cm; also an engraved wine glass with short air twist stem and conical foot, height 15cm (2)
£100 - £150 plus 25% BP*

192 Early George III wine glass, circa 1760, ogee bowl engraved with trailing berries and foliage over an opaque twist stem with a pair of spiral gauzes, height 14.5cm
£100 - £150 plus 25% BP*

193 Early George III wine glass, circa 1770, ogee bowl, slightly moulded over an opaque outlined lace twist, 15cm
£100 - £150 plus 25% BP*

194 Early George III wine glass, circa 1760, ogee bowl over an opaque twist stem with four thread spiral around a gauze spiral, height 14cm
£80 - £120 plus 25% BP*

195 Crown Staffordshire China pair of hawk owls, modelled by M Doubell Miller for Stair & Co., New York, height 19cm, boxed and with papers
£30 - £50 plus 25% BP*

196 Sabino moulded glass bird, tinted throughout with blue opalescence, signed 'Sabino France', height 10.5cm
£100 - £150 plus 25% BP*

197 Lalique glass owl paperweight, frosted and moulded in clear glass, engraved mark and original label, height 8cm; also a Lalique cendrier, centred with a bird, in frosted and moulded glass, engraved mark and original label, height 8cm (2)
£100 - £150 plus 25% BP*

198 Lalique Perche car mascot, moulded clear and frosted glass, engraved mark 'Lalique France', modern, height 10.5cm
£100 - £150 plus 25% BP*

199 Pair of hand decorated ceramic plaques, circa 1890, decorated with exotic birds in colours, over a printed ground, both signed 'B Stuart', 31cm diameter
£40 - £60 plus 25% BP*

200 Japanese Kutani porcelain plaque, Meiji (1868-1912), centred with Bijin on a shoreline in typical palette, painted marks (restored), 37cm diameter
£20 - £40 plus 25% BP*

201 Imari patterned china cabaret tray, circa 1885, shaped oval form decorated with chinoiserie figures within a walled garden (restored), 47cm x 39.5cm
£40 - £60 plus 25% BP*

202 Masons ironstone vase and cover, decorated in chinoiserie style with a peony, rock and fence pattern in colours, printed mark, height 40cm
£30 - £50 plus 25% BP*

203 Italian pottery sculpture of a cockerel and hen, finished in bright glazes, modern, height 52cm
£80 - £120 plus 25% BP*



Lot 204

204 KPM porcelain plaque, featuring a young traveller, oval, 18cm x 13cm, impressed KPM and sceptre mark
£150 - £200 plus 25% BP*

205 Peggy Davies trial piece, modelled as children seated on a grassy mound, inscribed to the base 'Peggy Davies', height 10cm
£40 - £60 plus 25% BP*

206 William Moorcroft frilled and slipper orchid large lamp base, ovoid form with a shaded blue green ground, painted initials, incised facsimile signature and applied paper label, height 29cm
£400 - £600 plus 25% BP*



Lots 201 and 202

Commission Bidding Form

The auctioneers are pleased to execute commissions for purchasers who are unable to attend the sale.
This form should be completed and returned to the auctioneer's office prior to the day of the sale.

Please ensure that bids are received into the office no later than 5pm on Tuesday 24th May 2022.
Bids received later than this cannot be guaranteed to be executed. Please ensure that you have written the correct lot number for your bid.

Sale Date: 25th & 26th May 2022

Lot No.	Description	Bid in £

As this service is without charge, the auctioneers cannot be held responsible for bids being lost or misunderstood,
or for bids being missed for any reason whatsoever. The bid price does not include the buyers premium or any VAT chargeable on any lot.

The auctioneer reserves the right to exceed the maximum amount by one bid in order to secure the lot on your behalf.

Name: _____

Full Address: _____

Postcode: _____

Tel No: _____ E-mail: _____

Signature: _____ Date: _____

By signing I confirm that I have read and agree to be bound by the Conditions of Sale

If you provide us with your email address we will notify you of all future sales. If you do not wish to be notified please tick the box ☐

BYRNE'S
Auctioneers & Valuers

Pullman House, The Sidings, Boundary Lane, Saltney, Chester CH4 8RD

Tel: 01244 681311 • e-mail: auctions@byrnesauctioneers.co.uk

www.byrnesauctioneers.co.uk



SILVER & PLATE



Lots 210 and 211

210 Horse racing interest: Robert Donaldson (1947-2011), Nijinsky with Lester Piggott up (?), modern sterling silver sculpture (filled), by Chantry Silversmiths Ltd, Sheffield, 1999, mounted on a mahogany plinth, stamped 925, length 33cm, height 31cm
£400 - £600 plus 25% BP*

211 Sterling silver model of a horse, by Chantry Silversmiths Ltd, Sheffield 2000, finely modelled, indistinctly signed, marked 925 (filled), mounted on a mahogany plinth, width 28cm, height 20.5cm
£200 - £300 plus 25% BP*

212 Modern silver four piece tea service, Birmingham 1966, in the early Georgian style comprising pear shaped teapot with wooden handle, 19.5cm, matching hot water jug with wooden handle, 24.5cm, milk jug and sugar basin, all with chased foliate and sea scroll decoration, gross weight 1.645kg
£300 - £500 plus 25% BP*

213 Chinese silver comprising a dragon cup, with gilt interior, unidentified maker, late 19th Century, 6cm, weight approx. 75g; also a Shanghai silver dragon beaker, 6cm, and a smaller beaker, probably Tuck Chang, 4.5cm, weight approx. 87g; a plain Chinese silver cup, 4cm, pair of hammered finish ovoid beakers by Hung Chong, 5cm, 49g; and a pair of carved nut cups with white metal liners (loose), 4cm (8)
£100 - £150 plus 25% BP*

214 Burmese white metal bowl, with filled rim, worked with jungle animals, 18cm, gross weight approx. 260g; also a white metal cricket cage, probably Persian, octagonal form with a pierced, hinged cover centred with a finial, 11.5cm, weight approx. 147g; and a white metal filigree cricket basket, 9cm, weight approx. 51g (3)
£80 - £120 plus 25% BP*

215 Sri Lankan silver jewellery box, retailed by Hemachandra Bros, Colombo, having a domed hinged cover, chased throughout with beasts, birds and foliate scrollwork, velvet lined interior with pull out tray, 24cm, gross weight approx. 740g
£300 - £500 plus 25% BP*

216 Modern silver sugar sifting spoon, by Viners, Sheffield 1957, weight approx. 48g; also silver repoussé decorated cream jug, Birmingham 1900, 7cm, weight approx. 37g and a further silver cream jug, Birmingham 1896, 6cm, weight approx. 43g (3)
£50 - £80 plus 25% BP*

217 White metal chain mail purse, probably French, circa 1900-10, apparently unmarked, weight approx. 118g
£40 - £60 plus 25% BP*

218 Sterling silver ingot set, commemorating 1000 years of British Monarchy, London 1973, comprising 50 ingots, each weighing 66g, contained within original walnut presentation case
£1800 - £2400 plus 25% BP*

219 Walker & Hall silver and antler mounted carving set, Sheffield 1903, presented in a walnut case
£50 - £80 plus 25% BP*



Lots 214 and 215



Lot 218

220 Victorian silver wet mustard pot, by Martin Hall & Co., Sheffield 1885, cylinder form with hinged cover, blue glass liner, height 7.5cm
£80 - £120 plus 25% BP*

221 George V silver four piece tea service, by Adie Bros., Birmingham 1928/29, comprising teapot, hot water jug, sugar basin and milk jug, all of plain ovoid form, the teapot and hot water jug with bakelite handles and finials, the coffee pot 21.5cm, gross weight approx. 1.688kg
£600 - £800 plus 25% BP*

222 Edwardian silver wet mustard pot, maker 'CH', Birmingham 1902, of reeded baluster form with hinged cover, blue glass liner, raised on three paw feet, height 8cm
£50 - £60 plus 25% BP*

223 Pair of modern silver taper stick candelabra, Birmingham 1972, modernist in style, with loaded bases, height 6.5cm
£100 - £150 plus 25% BP*



Lot 221



Lots 227 - 230

230 Irish silver footed bowl, by T Weir & Sons, Dublin 1950, repoussé decorated with garlands of flowers and four vacant cartouches, over a domed circular foot, 13.5cm, weight approx. 230g
£120 - £180 plus 25% BP*

231 Victorian silver mounted cut glass pepper mill, by John Grinsell & Sons, London 1893, with an ebony turning handle on top, the mill of inverted thistle shape, height 9.5cm
£40 - £60 plus 25% BP*



Lot 224

224 Edwardian silver bowl, by Walker & Hall, Sheffield 1903, shaped anthemion and scroll pierced flared border over a baluster body, raised on four leaf and shell form feet, width 25.5cm, weight approx. 855g
£300 - £500 plus 25% BP*

225 George V silver christening set, Birmingham 1939, comprising eggcup, napkin ring and spoon, cased
£40 - £50 plus 25% BP*

226 George III silver snuff box, maker 'WP', London 1802, 8cm x 4.5cm
£200 - £250 plus 25% BP*

227 Edwardian silver fern pot, by Elkington & Co., Birmingham 1902, with a wavy edge, ovoid body repoussé decorated with floral garlands, over three paw feet, height 12.5cm, weight approx. 201g
£100 - £150 plus 25% BP*

228 Edwardian silver porringer Herbert Charles Lambert, London 1902, hammered baluster form with twin serpent handles, engraved with initials 'HEM' and a date '1906', 12.5cm diameter, weight approx. 363g
£250 - £350 plus 25% BP*

229 Dutch silver oval photograph frame, with scrolling pierced border, aperture size 14cm x 10.5cm; also a Dutch silver rectangular photograph frame, 15cm x 11.5cm (2)
£100 - £150 plus 25% BP*



Lots 232 and 233

232 George III silver sauceboat, by George Burrows I, London 1781, acanthus capped handle, gadrooned edge and reeded baluster body, raised on ball feet, height 10cm, weight approx. 164g
£80 - £120 plus 25% BP*

233 Late Victorian silver cream jug, by Thomas Bradbury & Sons, London 1893, helmet shaped with reeded handle and reeded oval foot, height 13.5cm, weight approx. 115g
£40 - £60 plus 25% BP*

234 Edwardian silver christening tankard, Mappin & Webb, London 1902, the shield shaped cartouche inscribed 'Betty', half reeded and fluted, height 8cm, weight approx. 118g
£50 - £70 plus 25% BP*

235 George V silver tankard, by Deakin & Francis, Birmingham 1923, plain form, uninscribed, height 6.5cm, weight approx. 80g
£40 - £60 plus 25% BP*

236 French silver mounted claret jug, circa 1900, over a domed, hinged cover, wrythen fluted collar and handle, wrythen clear glass moulded body, height 23.5cm

£250 - £300 plus 25% BP*

237 Pair of silver mounted clear glass kluk-kluk decanters, with stoppers, hallmarked Birmingham 1936, one having an inscribed collar, height 28cm

£40 - £60 plus 25% BP*

238 Horse racing interest: 'Date Tote Systems Steeplechase' silver bowl, Aintree 1978, by Camelot Silverware Ltd, Sheffield 1975, plain form, the foot with foliate garlands, inscribed, 21cm diameter, weight approx. 629g

£250 - £300 plus 25% BP*

239 Edwardian silver christening tankard, by William Hutton & Sons, Birmingham 1908, tapered form engraved with a monogram 'HCH', height 8.5cm, weight approx. 103g

£40 - £60 plus 25% BP*

240 Edwardian silver beaker, marks rubbed, possibly Birmingham 1906, baluster form decorated with a band of scrolling leaves and a vacant cartouche, height 8cm, weight approx. 57g

£30 - £50 plus 25% BP*

241 Victorian silver teapot and matching milk jug, by Martin Hall & Co., London 1888, bun form with a floral engraved band to the centre, with initialled cartouche, reeded upper and lower, with acanthus capped handles, the teapot 13.5cm, gross weight approx. 830g

£300 - £500 plus 25% BP*

242 Pair of continental brown glass claret jugs, with silver plated mounts and covers, flattened globular form with drawn handle, height 24cm

£30 - £50 plus 25% BP*

243 Victorian silver christening tankard, by Nathan & Hayes, Birmingham 1891, half reeded form with circular foot, height 8.5cm, weight approx. 81g

£40 - £60 plus 25% BP*

244 George V silver cigarette case, by J Collyer Ltd, Birmingham 1929, curvex form with engine turned decoration, width 8cm, weight approx. 118g; also another George V silver cigarette case, by Thomas William Lack, London 1935, square form with engine turned decoration and initialled cartouche, with inside presentation inscription dated 1938, 8cm, weight approx. 104g (2)

£80 - £120 plus 25% BP*

245 French gilt metal card case, late 19th Century, formed as a purse with bas-relief panel on one side depicting an encampment, the reverse with foliate and Rococo Revival scrollwork, 9.5cm x 6.5cm

£100 - £150 plus 25% BP*

246 Victorian silver gilt bonbon dish, by William Comyns & Sons, London 1890, pierced oval form with repoussé scrolls, bordered with flowers and with a cast rocaille foot, 16.5cm, weight approx. 151g

£120 - £180 plus 25% BP*

247 French Aesthetic period metal card case, worked with herons and bamboo in gilt against a matted ground, the interior with divisions, 10cm x 7cm

£50 - £70 plus 25% BP*



Lots 236 - 238



Lots 241 and 242



Lots 245 - 248

248 William IV silver and agate 'castle top' snuff box, by Taylor & Perry, Birmingham 1835, rectangular form, the hinged cover worked with a view of an abbey, the base inset with moss agate, 8cm x 4.5cm
£200 - £300 plus 25% BP*

249 French silver wet mustard pot, circa 1900, pierced throughout with scrolling foliage, centred with cherubs and a torchere, original blue glass liner, reeded and fluted hinged cover, raised on small ball feet, height 8cm, weight of silver approx. 58g
£40 - £60 plus 25% BP*



Lot 250

250 Judaica interest: Sterling silver etrog box, oval form with hinged cover and flower finial, inscribed in Hebrew, and repoussé decorated throughout with fruiting vines, 15.5cm, weight approx. 301g
£200 - £300 plus 25% BP*

251 Two continental white metal beakers, each repoussé decorated with flowers and acanthus leaves to the lower half, unmarked, height 10cm and 8.5cm, weight approx. 283g
£80 - £120 plus 25% BP*

252 Set of six enamelled silver gilt coffee spoons, by Adie Bros., Birmingham 1956, the spoon backs detailed with a flower and the handles finished in pearlescent enamel, cased; also seven further enamelled sterling silver coffee spoons, various colours
£80 - £120 plus 25% BP*

253 George V silver stem vase, by William Adams Ltd, Birmingham 1917, pierced flared rim and tapered column over a loaded circular base, height 26cm; also another George V silver stem vase, Birmingham 1922, with a faceted tapered body on a loaded circular foot, height 20cm (2)
£50 - £80 plus 25% BP*



254 George VI silver presentation cigarette box, by Goldsmiths & Silversmiths Company, London 1947, the hinged cover with inscription and date, wood lined interior, plain sides around a reeded, stepped base, width 22cm, depth 10.5cm, gross weight approx. 1.071kg
£150 - £250 plus 25% BP*

255 George V silver and blue enamelled cigarette box, by H Matthews, Birmingham 1924, blue guilloché enamelled cover over a plain base, cedar lined, 8.5cm, gross weight approx. 203g
£40 - £60 plus 25% BP*

256 Horse racing interest: A novelty silver and cut glass inkwell, Birmingham 2000, having a hinged jockey cap cover over a hobnail cut glass well and a weighted circular stand, 10cm diameter
£60 - £80 plus 25% BP*

257 Pair of silver dwarf candlesticks, by William Hutton & Sons, London 1900/01 (loaded), height 13.5cm
£100 - £150 plus 25% BP*

258 Chinese silver miniature tray, late 19th Century, chased with a dragon chasing a flaming pearl within a pierced flowerhead and bamboo border, 10.5cm, weight approx. 26g
£80 - £120 plus 25% BP*

259 Modern silver bowl by Mappin & Webb, Sheffield 1993, circular form with three lion's mask lug supports, with pad feet, 11cm diameter, weight approx. 176g
£60 - £80 plus 25% BP*

260 Victorian silver inkwell, London 1894, canted square form with domed cover, hinging over a flared body with star cut glass base, later inscribed, 11cm
£30 - £50 plus 25% BP*

261 Edwardian silver small twin handled cup, Birmingham 1904, half reeded, 9cm diameter, weight approx. 130g
£40 - £60 plus 25% BP*

262 Edwardian silver sugar bowl, Birmingham 1903, shaped oval form with half reeding, height 12cm; also a matching milk jug, gross weight approx. 409g (2)
£120 - £180 plus 25% BP*



Lots 254 - 257



JEWELLERY & WATCHES



Lots 270 - 278

270 Johnson Matthey .999 fine silver 100g ingot, serial no. 503866
£100 - £150 plus 25% BP*

271 Queen Elizabeth II sovereign, 1980 (UNC), 8g
£300 - £350 plus 25% BP*

272 Queen Elizabeth II sovereign, 1958 (EF), 8g
£300 - £350 plus 25% BP*

273 Austrian 100 Corona gold coin, 1915 re-strike, in a 9ct gold fixed mount, with ring for suspension, gross weight approx. 42.2g
£1350 - £1500 plus 25% BP*

274 George V sovereign, 1912, in a loose pendant mount with 14ct gold suspension loop, gross weight approx. 9.7g
£300 - £350 plus 25% BP*

275 Russian 5 Rouble gold coin, set into an unmarked yellow gold gent's signet ring, gross weight approx. 16.6g
£400 - £600 plus 25% BP*

276 Russian 5 Rouble gold coin, 1899, in a fixed pendant mount, marked '14', and with suspension loop, suspended from a yellow metal flattened fancy curb link necklace, length 60cm, gross weight approx. 10.1g
£200 - £300 plus 25% BP*

277 George V half sovereign, 1915 (VF), 4g
£130 - £150 plus 25% BP*

278 George V sovereign, 1912 (VF), 8g
£270 - £300 plus 25% BP*

279 Heavy 9ct gold flattened curb link identity bracelet, length 23cm, weight approx. 79.2g
£800 - £1200 plus 25% BP*

280 Cartier gold plated lighter, no. A57121, in original box
£80 - £120 plus 25% BP*

281 Must de Cartier gold plated cartridge ink pen, with 18ct gold nib
£60 - £80 plus 25% BP*

282 Heavy 9ct gold curb link bracelet, with heart shaped locket (broken safety chain), length 20cm, weight approx. 62.1g
£500 - £700 plus 25% BP*

283 9ct gold wide curb link bracelet, with heart shaped locket and safety chain, length 18cm, weight approx. 30.7g
£350 - £500 plus 25% BP*

284 Tag Heuer Professional lady's wristwatch, circa 1997, blue dial with baton numerals, date aperture, quartz movement (replacement battery 2014), on a later blue leather strap, original papers, zipped case and outer card box

Please note our special conditions of sale regarding clocks and watches
£80 - £120 plus 25% BP*

285 Diamond two stone ring, each round brilliant stone of approximately 0.7ct and estimated as J/K in colour and I2 clarity, set in platinum claw mounts on an 18ct yellow gold ring, size M, gross weight approx. 5g
£1000 - £1500 plus 25% BP*



Lots 279 - 283

286 Tissot automatic lady's stainless steel wristwatch, circa 2007, white dial with baton numerals and date aperture, 25 jewel movement, with original stainless steel strap and original box

Please note our special conditions of sale regarding clocks and watches
£80 - £120 plus 25% BP*

287 Diamond solitaire ring, the old round brilliant stone of approximately 1.1cts and estimated as K/L in colour and I2 clarity, all set in platinum, size K, gross weight approx. 5.1g
£600 - £800 plus 25% BP*

288 Late Victorian 15ct gold and diamond brooch, elliptical form set with three small diamonds, within a rope twist, ball and scroll border, with glass locket back, 5cm, gross weight approx. 8.1g; also a 9ct gold garnet and seed pearl bar brooch, with safety chain, 5cm, gross weight approx. 2.5g (2)
£100 - £150 plus 25% BP*

289 Diamond three stone ring, set with a central old round brilliant stone of approximately 0.4ct, flanked by two smaller stones of approximately 0.25ct each, and estimated as J/K in colour and I2 clarity, claw set in platinum, on an 18ct yellow gold ring, size M, gross weight approx. 3.1g
£600 - £800 plus 25% BP*



Lots 285, 289 and 287



Lots 291, 293 and 295

290 15ct gold cravat pin in the form of a golf club, set with a seed pearl 'golf ball', length 5cm, weight approx. 2.5g
£40 - £60 plus 25% BP*

291 Continental heavy yellow metal fancy belcher necklace, testing as 8ct, with chased links, non-gold spring clip, broken safety chain, length 63cm, gross weight approx. 59g
£600 - £800 plus 25% BP*

292 18ct gold equine cameo bangle, the hinged bangle having an oval equine portrait cameo, collet set and flanked by two tiny diamonds, interior size approx. 5cm x 6cm, gross weight approx. 15g
£300 - £500 plus 25% BP*

293 9ct rose gold belcher link guard chain, with spring clip, length 140cm, weight approx. 27g
£300 - £500 plus 25% BP*

294 Italian 18ct white gold and diamond horseshoe pendant necklace, the pendant comprising 14 channel set brilliant cut diamonds, suspended from a box link necklace, length 43.5cm, gross weight approx. 4.8g
£200 - £400 plus 25% BP*

295 18ct gold fancy chain link necklace, with ring clasp, length 82cm, weight approx. 76.8g
£1800 - £2200 plus 25% BP*

296 Triple strand cultured pearl choker necklace, with 9ct gold basket clasp, length 38cm
£60 - £80 plus 25% BP*



Lots 297 and 299

297 Gent's 18ct gold and diamond ring, set with 32 tiny brilliants in a serpentine channel and on a wide band, size L/M, gross weight approx. 10.9g
£500 - £700 plus 25% BP*

298 Sculpture to Wear silver equine pendant necklace, designed by Rosemary Hetherington, the 22mm stylised horse's head pendant suspended from a knotted rope necklace, length 38cm
£40 - £60 plus 25% BP*

299 Pink sapphire and diamond cluster ring, set with 18 small pink sapphires flanked by rows of tiny diamonds on a split 18ct white gold band, size O, gross weight approx. 9.3g
£500 - £700 plus 25% BP*

300 Gent's 14ct gold and diamond ring, set with 48 tiny brilliants in four rows on a wide gold band, size T, gross weight approx. 14.3g
£300 - £500 plus 25% BP*



Lots 301, 303 and 305

301 Omega De Ville gent's 18ct gold wristwatch, circa 1974, gold coloured 30mm dial with baton numerals and date aperture, housed within a square case with presentation inscription verso, on an integral gold Milanese link bracelet, gross weight approx. 101.3g

Please note our special conditions of sale regarding clocks and watches
£4000 - £6000 plus 25% BP*

302 18ct white gold, sapphire and diamond bracelet, set with three emerald cut sapphires, the largest measuring approx. 7mm x 5mm, and four small illusion set round brilliants, on an 11mm wide satin finish flat link articulated bracelet, marked 750, length 19cm, gross weight approx. 36.3g
£800 - £1200 plus 25% BP*

303 Tudor Oyster gent's stainless wristwatch, champagne coloured 30mm dial with Arabic and baton numerals, on a later Montal stainless steel bracelet, no box or papers

Please note our special conditions of sale regarding clocks and watches
£200 - £400 plus 25% BP*

304 Late 20th Century cameo brooch, featuring a portrait of a young lady, within a 9ct gold frame, 6.5cm x 5cm
£60 - £80 plus 25% BP*

305 Rolex Oyster Perpetual gent's stainless steel wristwatch, 1963, serial no. 863***, ref. 1003 champagne coloured 28mm dial with baton numerals, original stainless steel bracelet, with original case, outer card box, guarantee and Bureaux Suisses watch rate certificate no. 1404670

Please note our special conditions of sale regarding clocks and watches
£1200 - £1800 plus 25% BP*

306 Mixed lot of 9ct gold jewellery comprising: pair of hoop earrings, pair of St. Christopher pendant earrings, another pair with non-matching wire loops, a St Christopher pendant, a plain stick pin, and five pairs of stone set pendant earrings, gross weight approx. 16.9g (10)
£120 - £180 plus 25% BP*



Lots 307 and 309

307 Opal and diamond cluster ring, the central oval opal measuring approximately 16mm x 8mm, surrounded by 20 tiny brilliant cut diamonds, the whole claw set in 18ct white gold on a yellow gold ring, size S/T, gross weight approx. 7.9g
£1000 - £1500 plus 25% BP*

308 Omega Ladymatic 9ct gold wristwatch, signed champagne coloured dial with baton numerals and date aperture, 20mm diameter, signed 24 jewel movement, on a 9ct gold integral mesh bracelet, gross weight approx. 28.9g

Please note our special conditions of sale regarding clocks and watches
£300 - £500 plus 25% BP*

309 Black opal doublet ring, the large doublet measuring approx. 18mm x 14mm, claw set in 18ct white gold and with three tiny diamonds to each shoulder, on an 18ct yellow gold ring, size X, gross weight approx. 10.6g
£800 - £1200 plus 25% BP*

310 String of graduating butterscotch amber beads, the largest approx. 25mm x 17mm, with ring clasp, weight approx. 40.6g, length 64cm
£100 - £200 plus 25% BP*

311 18ct gold lady's half hunter fob watch, the cover with foliate engraving and black enamelled Roman numerals, opening to a white enamel dial with Roman numerals, 27mm diameter, crownwind movement, gross weight approx. 29.1g

Please note our special conditions of sale regarding clocks and watches
£300 - £500 plus 25% BP*

312 Long string of graduating amber beads, the largest approx. 31mm x 22mm, with bead screw fastener, weight approx. 77g, length 76cm
£60 - £80 plus 25% BP*

313 Waltham 18ct gold open faced pocket watch, white enamel dial, signed and with Roman numerals and subsidiary seconds dial, crownwind movement, signed and numbered 6651226, 5cm diameter, gross weight approx. 92.6g

Please note our special conditions of sale regarding clocks and watches
£800 - £1200 plus 25% BP*

314 9ct gold bar link watch albert, with T-bar and spring clip, length 42cm, weight approx. 38.5g
£400 - £600 plus 25% BP*

315 9ct rose gold fancy chain and bar link short watch chain, with spring clip, length 19cm, weight approx. 16.3g
£150 - £200 plus 25% BP*



Lots 311, 313, 314, 316 and 317

316 Zenith gold plated open face pocket watch, white enamelled dial with Roman numerals and subsidiary seconds dial, crownwind movement, in a Dennison 'Moon' case, numbered 198150, 5cm diameter
Please note our special conditions of sale regarding clocks and watches
£60 - £80 plus 25% BP*

317 9ct rose gold curb link watch albert, with T-bar and two spring clips, length 45cm, weight approx. 33.1g
£400 - £600 plus 25% BP*

318 9ct rose gold guard chain, length 82cm, weight approx. 24.7g
£200 - £300 plus 25% BP*



Lot 319

319 Sapphire and diamond cluster ring, set with a central cornflower blue cushion cut oval sapphire, approx. 10mm x 8mm, surrounded by 16 small cushion cut diamonds, estimated as totalling approx. 1ct, all set in 18ct yellow gold, size K, gross weight approx. 8g
£1000 - £1500 plus 25% BP*



Lots 321 - 326

320 Victorian gold, enamelled and seed pearl brooch, shaped lozenge form with scroll border surrounding a blue enamelled background with seed pearl forget-me-not, with hair locket back, all in unmarked yellow gold, 3.5cm x 4.2cm
£60 - £80 plus 25% BP*

321 Peruvian silver and 18ct gold bracelet, graduating articulated cuff form comprising five convex panels, each embellished with a Peruvian symbol in 18ct gold, impressed marks, length 17.5cm
£100 - £150 plus 25% BP*

322 Peruvian silver and 18ct gold bracelet, graduating articulated cuff form comprising five convex panels, each embellished with a Peruvian symbol in 18ct gold, impressed marks, length 17.5cm
£100 - £150 plus 25% BP*

323 Graziella Laffi (Peru, 1923-2009), a silver and enamelled brooch in the form of two stylised lizards, impressed marks, 6.5cm x 5cm
£60 - £80 plus 25% BP*

324 Peruvian silver brooch, circular form with applied silver lama bordered with Inca symbols, impressed marks, 4cm diameter
£40 - £60 plus 25% BP*

325 Peruvian silver and 18ct gold pendant necklace, in the form of a wide necked flask, with applied 18ct gold lama, impressed marks (with broken brooch attachment), 6cm x 5cm, suspended from a silver rope twist necklace, length 61cm
£60 - £80 plus 25% BP*

326 Georg Jensen silver 'Robin in Fern' brooch, designed by Arno Malinowski, no. 309, impressed marks, 4.5cm diameter
£150 - £180 plus 25% BP*

327 9ct gold graduated curb link watch chain, with spring clip, length 38cm, weight approx. 16.6g
£180 - £220 plus 25% BP*

328 Diamond four stone ring, set with four evenly sized brilliant cut stones of approx. 0.35ct each, estimated as L-M in colour and SI2 clarity, all claw set in white metal, size M/N, gross weight approx. 3.1g
£900 - £1200 plus 25% BP*

329 9ct gold picture locket, rectangular form, the front chased with a landscape scene in yellow and white gold, opening to a double picture locket interior, 24mm x 19mm, suspended from a 9ct gold necklace, length 44cm, gross weight approx. 9.4g
£120 - £180 plus 25% BP*

330 Diamond solitaire ring, the brilliant cut stone of approx. 1.5cts, estimated as K/L in colour and SI2 clarity, in a platinum claw mount and diamond set shoulders on an 18ct yellow gold ring, size L, gross weight approx. 3.1g
£600 - £800 plus 25% BP*



Lots 328, 330 and 331



Lots 332, 334 and 336

331 Emerald and diamond half eternity ring, channel set in 18ct white gold with nine alternating round emeralds and diamonds, size N/O, gross weight approx. 6g
£500 - £800 plus 25% BP*

332 9ct two colour gold fancy link short watch chain, having white gold chain links interspersed with four yellow gold fancy barrel links, with lobster claw clasp, length 19cm, weight approx. 24.3g
£220 - £280 plus 25% BP*

333 Diamond solitaire ring, the central stone of approx. 0.35ct and flanked by a tiny brilliant on either side, set in a platinum and 18ct white gold ring, size M, gross weight approx. 3.6g
£220 - £280 plus 25% BP*

334 9ct gold fancy chain and bar link necklace, with lobster claw clasp, length 46cm, weight approx. 33.2g
£350 - £500 plus 25% BP*

335 9ct gold fancy chain and bar link bracelet, en-suite to the previous lot, length 19cm, weight approx. 14g
£150 - £200 plus 25% BP*

336 9ct rose gold watch open curb link watch chain, with spring clip, length 40cm, weight approx. 36.8g
£400 - £600 plus 25% BP*

337 Sapphire and diamond cluster bar brooch, set with a central cushion cut sapphire of approx. 0.5ct surrounded by ten tiny diamonds, all set in platinum, on a platinum and 15ct gold blade bar, with safety chain, length 6cm, weight approx. 5.6g
£500 - £700 plus 25% BP*

338 Victorian diamond set 'love hearts' brooch, set with approx. 38 old cushion cut stones, the largest estimated as 0.3ct, in unmarked white and yellow metal claw mounts, 2.5cm x 3cm, weight approx. 5.7g
£600 - £800 plus 25% BP*

339 Sapphire and diamond cluster ring, by Boodle & Dunthorne, the central, slightly oval sapphire of approx. 0.6ct bordered with ten tiny brilliant cut diamonds, all claw set in 18ct white gold on an 18ct yellow gold ring, size P, gross weight approx. 4.1g
£180 - £240 plus 25% BP*

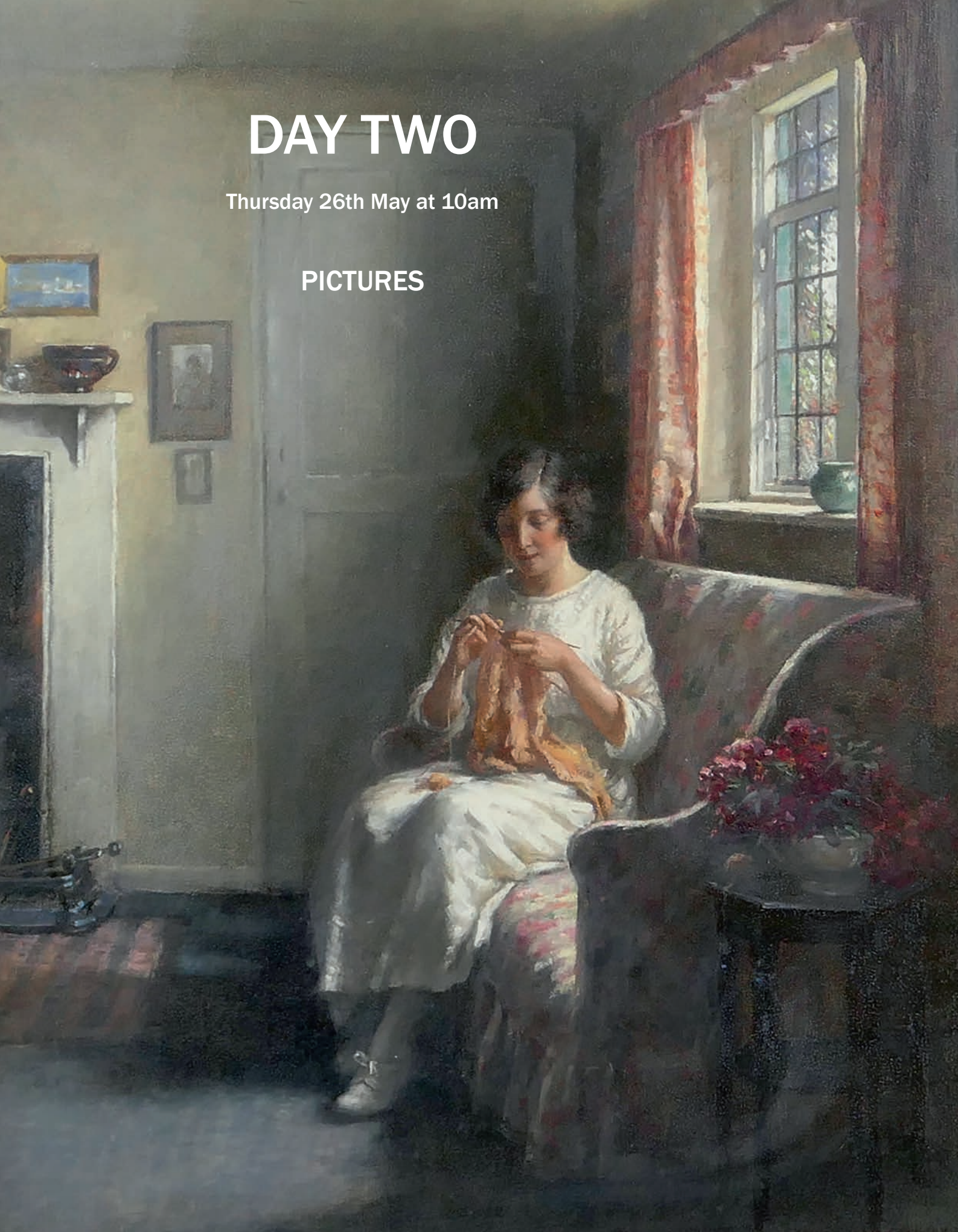


Lots 337 - 339

DAY TWO

Thursday 26th May at 10am

PICTURES





Lot 350

▲ 350 Madeline Daly (active 1970s), Heralds of Spring, oil on canvas board, signed, dated 1974, 50cm x 40cm
£80 - £120 plus 25% BP*

▲ 351 Madeline Daly (active 1970s), Summer flowers, oil on canvas board, signed and dated 1974, 50cm x 40cm
£40 - £60 plus 25% BP*



Lot 352

▲ 352 Elia Josza (Hungarian, b. 1932), Still life of flowers in a vase on a ledge, oil on panel, inscribed to a label verso, 39cm x 29cm
£100 - £150 plus 25% BP*



Lot 353

▲ 353 Magdalena Knapp (Hungarian, b. 1944), Pair of still life floral displays, oils on panel, signed, 29cm x 23cm
£70 - £100 plus 25% BP*



Lot 354

▲ 354 Magdalena Knapp (Hungarian, b. 1944), Pair of floral displays, oils on panel, signed, 29cm x 23cm
£70 - £100 plus 25% BP*

355 Dutch School (19th Century), Figures in conversation at a cottage door with a church in the background, oil on panel, with Thomas Agnew paper label verso, 23.5cm x 18cm
£80 - £120 plus 25% BP*

356 Dutch School (Mid 19th Century), Interior scene with figures at a table, oil on zinc panel, 18cm x 15.5cm
£50 - £70 plus 25% BP*

357 Harry Phelan Gibb (1870-1948), Summer flowers, oil on canvas, signed, 60cm x 45cm
£50 - £80 plus 25% BP*



Lot 358

358 William Kay Blacklock (1872-1922), 'Summer', by the light of the window, signed oil on canvas, 60cm x 50cm
£600 - £800 plus 25% BP*



Lot 359

▲ 359 Edward Bawden (1903-89), Kew Palace, limited edition linocut print, numbered 98/160, signed in pencil, 49cm x 63cm
£400 - £600 plus 25% BP*



Lot 361

▲ 360 George Thompson (1934-2019), Portrait of a girl in a wide brimmed hat adorned with flowers, signed oil on board, 50cm x 40cm

£40 - £60 plus 25% BP*

361 Willem Jacobus Alberts (1912-90), A heavy load at the end of the day, oil on canvas, signed, 50cm x 60cm

£100 - £150 plus 25% BP*

▲ 362 James Longueville (b. 1942), Burford Church, near Oxford, with the river Windrush in the foreground, oil on board, signed, 40cm x 60cm
£300 - £500 plus 25% BP*



Lot 363

363 Manner of William Huggins (1820-84), Study of a tabby cat, oil on board en rotunde, 16cm diameter

£40 - £60 plus 25% BP*

364 Robert Loudon (20th Century), Study of a fox, watercolour over pencil, signed, 21.5cm x 20cm

£40 - £60 plus 25% BP*

365 Margaret Rayner (1837-1920), Children picking flowers among the abbey ruins, watercolour and bodycolour, signed, 23.5cm x 20.5cm
£100 - £150 plus 25% BP*



Lot 362



Lot 370

366 Pablo Picasso print 'Sala Gaspar', from an original of 1968, offset lithographic poster, 69cm x 50cm
£120 - £180 plus 25% BP*

367 Inoa (Peruvian, 20th Century), Study of a peasant farmer, signed oil on canvas, 80cm x 64cm
£50 - £80 plus 25% BP*

▲ **368 Melanie Germaine M Tailleur (1881-1964),** Vianden Grand Duche Du Luxembourg, watercolour, signed, titled verso, 37cm x 54cm
£60 - £80 plus 25% BP*

369 M E Adams (c. 1900), Sail and steam, busy shipping off the coast, watercolour, 46cm x 69cm, probably signed underneath the mount
£100 - £150 plus 25% BP*

▲ **370 Charles Wyatt Warren (1908-93),** Rocks at Rhosneigr, oil on board, signed, 24cm x 54cm
£600 - £800 plus 25% BP*

371 Utagawa Kunisada (1786-1865), 'Kabuki Actors', woodblock print, late 19th Century, 35cm x 24cm; also Utagawa Kunisada, 'Three Bijin Women', woodblock print, late 19th Century, 33cm x 24cm; also unknown Japanese artist 'Traveller with Man Servant', woodblock print, probably late 19th Century, 34cm x 24cm (3)
£40 - £60 plus 25% BP*



Lot 372

▲ **372 Robert Leslie Howey (1900-1981),** Ullswater, watercolour over pencil, signed, 17cm x 23cm
£150 - £250 plus 25% BP*

▲ **373 Sir William Russell Flint (1880-1969),** Group of idlers, print, signed in pencil, with blind stamp, 51cm x 68cm
£100 - £150 plus 25% BP*

374 Ernest E Hall (active early 20th Century), Shepherd and his flock before a summer cottage, watercolour, signed and dated 1922, 9.5cm x 14cm
£30 - £50 plus 25% BP*



Lot 375

375 S. Gip (Chinese School), Portrait of an eastern woman in formal robe, signed oil on canvas, 60cm x 45cm
£80 - £120 plus 25% BP*

▲ **376 Steven Townsend (b. 1955),** Sentinels of the hills, Border Collies at rest, signed limited edition print, numbered 154/660, 49cm x 69cm
£30 - £50 plus 25% BP*



Lot 377

377 Bessie Bamber (late 19th Century), The card sharps, kittens at play, oil on opaque glass panel, signed with a monogram, 15cm x 20cm
£400 - £600 plus 25% BP*



Lot 378

**378 Bessie Bamber (late 19th Century), Green fingered, kittens at play, oil on opaque glass panel, signed with a monogram, 15cm x 20cm
£400 - £600 plus 25% BP***

**379 Contemporary English School, Portrait of Nelly, oil on board, titled and inscribed with the date '98, 39cm x 28cm
£40 - £60 plus 25% BP***

**380 James Charles Playfair (active late 19th Century), Portrait of an elegant lady in a richly embroidered dress, watercolour and bodycolour, dated 1868, 34.5cm x 22cm
£60 - £80 plus 25% BP***

**381 James Hall Cranstoun (1821-1907), Loch Awe, signed oil on canvas laid on board, 23cm x 38cm
£40 - £60 plus 25% BP***



Lot 384

**▲ 382 Vernon Southwood (1911-81), Sunset sailing, oil on canvas, signed and dated 1946, 38cm x 48cm
£60 - £80 plus 25% BP***

**383 J Anderson (?) (19th Century), La Pieta, oil on canvas, signed, 92cm x 78cm
£200 - £300 plus 25% BP***

**384 Italian School, Portrait of an elderly gentleman in a red skull cap, thought to be Pope Julius II, oil on canvas, 46cm x 37.5cm, presented within a 19th Century moulded gesso Baroque style frame, with stencilled auction house mark verso 'S39MA'
£100 - £150 plus 25% BP***

**385 Cyril Cole (active 1920s), Christ and Mary Magdalene in the house of Simon the pharisee, oil on canvas, inscribed to a label verso, unframed, 75cm x 108cm
£100 - £150 plus 25% BP***

**386 Edith Bullock (late 19th Century), Rosthern, Knutsford, oil on canvas, signed, dated 1901, 78cm x 133cm
£200 - £400 plus 25% BP***



Lot 387

**387 Frank Henry Mason (1876-1965), Pair, Dutch maritime scenes 'Volendam' and 'Holland', signed and dated 1899, 16.5cm x 44cm
£200 - £400 plus 25% BP***

**388 C St. John Crawley (early 19th Century), The old Custom House and Castle, Liverpool, after William Gawin Herdman, watercolour and pencil, signed, 25cm x 34cm
£20 - £30 plus 25% BP***

**389 Johannes Stoll (German, late 19th Century), Pair, Old Friends, oils on canvas, signed, 42cm x 52cm
£1500 - £2500 plus 25% BP***

**390 G Delaigey (?), Portrait of a Spanish soldier, oil on canvas, 104cm x 42cm
£100 - £200 plus 25% BP***



Lot 389



Lot 395



Lot 396

391 Frederick Judd Waugh (1861-1940), Childwall Abbey, watercolour, signed and dated 1900, 34cm x 49cm
£80 - £120 plus 25% BP*

392 English School (20th Century), RMS Campania in the Mersey, 1893, watercolour, 24cm x 39cm
£20 - £40 plus 25% BP*

▲ 393 Leonard Russell Squirrell (1893-1979), Morning in Durham, aquatint, signed and titled, 26cm x 34cm
 Provenance: Abbott & Holder Galleries, London
£50 - £70 plus 25% BP*

▲ 394 David Cartwright (b. 1944), Chester's Eastgate Street, oil on board, signed with a monogram, labelled verso, 44cm x 34cm
£40 - £60 plus 25% BP*

395 Peter Ghent (1856-1911), coastal sunset, oil on board, signed, 38cm x 51cm
£50 - £70 plus 25% BP*

396 Continental School (late 20th Century), Reading to mother, impressionist style oil on board, 30cm x 40cm
£50 - £70 plus 25% BP*



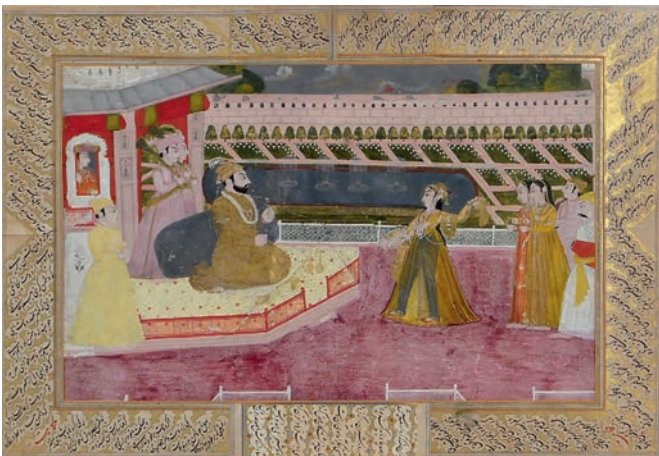
Lot 397

▲ 397 Sir William Russell Flint (1880-1969), A bastion by Vauban Concarneau, watercolour, signed and dated September 1922, 24cm x 33cm

Provenance: Alexander Gallery, Bristol and thence by descent to the vendor.
£3000 - £4000 plus 25% BP*

▲ 399 Laurence Stephen Lowry (1887-1976), Man walking, smoking a cigarette, passing a boy and a dog, felt pen on card, signed and dated 1971, 20.5cm x 13cm

Provenance: Entered from a local deceased collector's estate
£800 - £1200 plus 25% BP*



Lot 398

398 Indian Miniaturist painting, probably Bengal, late 18th Century, featuring a prince seated with attendees, bordered with fragmentary script, 26cm x 37cm
£150 - £250 plus 25% BP*



Lot 400

400 Keith Alistair Griffin (b. 1927), Hurunui of the New Zealand Shipping Co., battling in heavy seas, signed watercolour, 39cm x 56cm
£200 - £300 plus 25% BP*

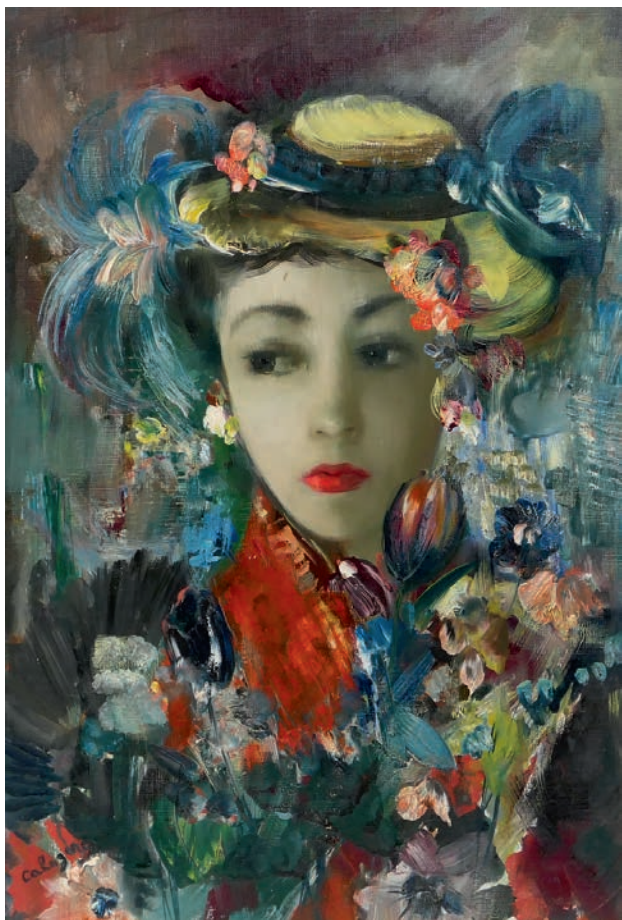


Lot 402

**401 Keith Alistair Griffin (b. 1927), The Invercargill, signed watercolour, 38cm x 51cm
£200 - £300 plus 25% BP***

**402 Keith Alistair Griffin (b. 1927), Waitangi of the New Zealand Shipping Co., signed watercolour, 59cm x 56cm
£200 - £300 plus 25% BP***

**403 In the manner of Thomas Sidney Cooper, Cattle at the water's edge, oil on panel, bearing a signature and date, 24cm x 42cm
£100 - £150 plus 25% BP***



Lot 404



Lot 403

**▲ 404 Jean Calogero (Italian 1922-2001), Portrait of a young girl in a straw boater adorned with flowers, signed oil on canvas, 54cm x 37cm
£150 - £250 plus 25% BP***

405 Archibald Knox (1864-1933), Heathland landscape, watercolour on paper, unsigned, 43cm x 56cm

Provenance: The Manx Museum and Art Gallery 1959 label stating 'This picture is a work of Archibald Knox and was one of the paintings handed over to the Manx Museum by the family of the artist for sale, the proceeds of which will form the Archibald Knox Endowment Fund at the museum. A M Cubbon, Director'
£200 - £400 plus 25% BP*



Lot 406

406 Archibald Knox (1864-1933), Upland landscape, watercolour, unsigned, 43cm x 56cm

Provenance: The Manx Museum and Art Gallery, 1959 label verso which reads 'This picture is the work of Archibald Knox and is one of the paintings handed over to the Manx Museum by the family of the artist for sale, the proceeds of which will form the Archibald Knox Endowment Fund at the Museum. A M Cubbon, Director'
£200 - £400 plus 25% BP*

**407 Continental School, Bridge to a fortified town, oil on panel, 36cm x 50cm
£70 - £100 plus 25% BP***



Lot 408



Lot 412



Lot 416

▲ **408 George Thompson (1934-2019)**, Portrait of a girl holding a poppy, oil on canvas, signed, 50cm x 40cm
£40 - £60 plus 25% BP*

409 Francis Nicholson (1753-1844), Nant Mill, Caernarfon, watercolour over pencil, 26.5cm x 41cm
£50 - £80 plus 25% BP*

▲ **410 Diane Breeze (Contemporary)**, Two ornithological studies 'Chaffinches', 21cm x 25cm, and 'Robins', 25.5cm x 21.5cm, gouache on paper, both signed and dated 1983
£60 - £80 plus 25% BP*

▲ **411 Diane Breeze (Contemporary)**, Rabbit in a hedgerow, gouache, 32cm x 27.5cm
£40 - £60 plus 25% BP*

▲ **412 Diane Breeze (Contemporary)**, Golden Eagle, watercolour, signed, 48cm x 34cm
£120 - £180 plus 25% BP*

▲ **413 Guglielmo Walters (Italian, 1913-2003)**, View of the Norwegian Fjords, oil on board, signed, 48cm x 68cm
£60 - £80 plus 25% BP*

414 English School (late 19th Century), An impromptu history lesson, figures within an interior, pencil drawing, signed and dated 1876, 30cm x 49cm
£40 - £60 plus 25% BP*

415 Bonomi Edward Warren (19th Century), Shepherd's return, watercolour, signed and dated 1869, 34.5cm x 51cm
£100 - £150 plus 25% BP*

416 Anglo-Indian School (early 20th Century), The old soldier, oil on paper, indistinctly signed, 69cm x 49cm
£60 - £80 plus 25% BP*

▲ **417 Bryan Booth (Contemporary)**, River Thames, Greenwich Reach, gouache, signed and inscribed verso, 32cm x 42cm
£30 - £50 plus 25% BP*



Lot 415



Lot 418

▲ **418 Bryan Booth (Contemporary)**, Weaver Flats at Toxteth, watercolour and gouache, signed, inscribed verso, 28cm x 37cm
NB: The Weaver Flats were flat bottomed barges which could navigate the shallows of the river as it joined the Mersey
£30 - £50 plus 25% BP*

419 Augustus Osborne Lamplough (1877-1930), Merchant vessel moored on the banks of the Nile, watercolour, signed and indistinctly dated 1905 (?), 71cm x 48cm
£80 - £120 plus 25% BP*



Lot 420

420 Edwin Alfred Pettitt (1840-1912), Glen Coe from Kingshouse, oil on canvas, signed and inscribed verso, 49cm x 75cm
£200 - £300 plus 25% BP*

421 Monogrammist R M C, Pair still life floral displays on a ledge, oils on board, signed with initials, dated 1984, 20cm x 14cm, presented within Victorian mahogany frames, 35cm x 30cm
£80 - £120 plus 25% BP*

422 Charles 'Sheep' Jones (1836-92), Steadfast, study of a highland ram, signed with a monogram and dated 1864, counter signed and dated verso, 35cm x 45cm
£800 - £1200 plus 25% BP*

▲ **423 R W Ellis (active 1960-75)**, Shifting berth, River Mersey, oil on board, inscribed to a label verso, dated 1963, 25cm x 32cm
£20 - £30 plus 25% BP*

424 Follower of Thomas Luny (1759-1837), The prison ship, oil on canvas, 27cm x 37.5cm
£100 - £150 plus 25% BP*

▲ **425 Pollyanna Pickering (1942-2018)**, Study of Siamese cats, pencil and bodycolour, signed, oval, 22.5cm x 32cm
£100 - £150 plus 25% BP*

426 Frank Thomas Copnall (1870-1949), Portrait of James Thompson Esq, JP, signed oil on canvas, 'Presented by the Conservative and Unionist Members of Liverpool City Council in 1907', 163cm x 120cm
£200 - £400 plus 25% BP*

427 Manner of Sampson Towgood Roch (1759-1847), Portrait of a lady in a white dress with blue ribbon, oval, 6cm x 5cm, inscribed verso and within an ebonised frame, 12cm x 10.5cm
£60 - £80 plus 25% BP*

428 French portrait miniature, circa 1900, featuring a young lady in a green dress with white scarf, oval, 7.5cm x 6cm
£60 - £80 plus 25% BP*

429 Georgian portrait miniature, probably early to mid 18th Century, featuring a young lady in a blue dress, oil on copper, oval, 14cm x 10cm
£100 - £150 plus 25% BP*

430 In the manner of 'Inigo' Wright, portrait miniature of a lady in a plumed hat and brown shawl, after Hoppner, bearing a signature and a spurious date, 10cm x 7.5cm
£80 - £120 plus 25% BP*



Lot 422



Lot 429

431 A number of Japanese scroll paintings, comprising a Japanese landscape in the manner of Chikusui, 20th Century, watercolour on paper with silk borders, height 68cm, width 130cm; another Japanese watercolour scroll painting of pink and yellow peonies, watercolour on paper bordered with silk, 134cm x 48cm; Japanese calligraphic scroll print with silk border, 134cm x 33cm; Japanese scroll print featuring bamboo, 100cm x 33cm; Japanese watercolour scroll painting of a young woman 'Bijin', within silk borders, 131cm x 59cm; scroll print, 69cm x 42cm (6)
£80 - £120 plus 25% BP*

432 **Utamaro Kitagawa (1753-1806)**, 'Deeply Hidden Love', woodblock print, 1980s, 38cm x 25cm; also Utagawa Kuniyoshi (1798-1861) 'Women Walking in Snow', woodblock print, early 20th Century, 20cm x 14cm; Utamaro Kitagawa, 'Beauty with a Fan', woodblock print, late 20th Century, 23cm x 17cm; Torii Kiyonaga (1752-1815), 'Cutting the Toenails, the Toilet after the Bath'; woodblock print, mid 20th Century, 37cm x 25cm; also Utagawa Kuniyoshi, 'An Actor in the role of Narutonomae', 20th Century, 34cm x 23cm; also 3 other glazed and framed paper prints of Japanese scenes of domesticity, 17cm x 12cm, 29cm x 19cm and 12cm x 7cm (8)
£80 - £120 plus 25% BP*

433 **Attributed to Samuel Walters (1811-1882)**, Pilot sloop navigating the River Mersey before the Port of Liverpool, oil on canvas, 49cm x 86cm, unsigned, but with traces of a pencil inscription on the stretcher verso, together with the artist's address, 105 Leadenhall Street, London and an indistinct date

Provenance: Purchased from the Boydell Galleries, Liverpool
£2000 - £3000 plus 25% BP*



Lot 432



Lot 433



OBJETS D'ART



Lot 440

440 Chinese cloisonné bronze 'lucky' boy and girl, late 19th Century, sealed lotus flowers bases, height 16cm
£400 - £600 plus 25% BP*

441 Rare Henry VI indenture, dated 1434, the script being in Latin and pertaining to one John Stansfeld, son of Ranolph Stansfeld, relating to land at Oldeton (sic), within the township of Saddleworth; and a further Elizabethan Inquisition post-mortem of John Robertshaye, dated 1575, held at Hallefax (sic) York, both hand written on vellum, the latter with a fixed seal, and both translated by Jean Ayton, Archivist at Manchester Public Libraries, 1973, presented within a glazed frame, 42cm x 44cm
£200 - £300 plus 25% BP*

442 French ebonised and mother of pearl inlaid chiming wall clock, by Rouzeau Fils aux Herbiers, circa 1900, painted 23cm dial with Roman numerals, set within a case decorated with mother of pearl chips and wire wrigglework, spring movement striking on a gong, 68cm x 44cm
 Please note our special conditions of sale regarding clocks and watches
£60 - £80 plus 25% BP*



Lots 443 - 445

443 Finely carved Chinese wooden figure of Lohan, height 19cm, mounted on a carved wooden stand, total height 23cm
£100 - £150 plus 25% BP*

444 Bronze and gilt splashed censer, 20th Century, small proportions, pierced domed cover, the body cast with dragons chasing flaming pearls, on three masked feet, Xuande mark, height 14cm
£60 - £80 plus 25% BP*

445 Japanese bronze pricket candle stand, Meiji (1868 - 1912), baluster form, with lotus flower handles over tri-form base with masked supports on a circular stand, height 23.5cm
£100 - £150 plus 25% BP*

446 French cast brass mirror, rectangular bevelled glass plate surmounted with cherubs and a guilloche border, 71cm x 39cm
£100 - £150 plus 25% BP*

447 Sewill of Liverpool, brass bulkhead clock, 13.5cm dial with Roman numerals, subsidiary seconds, 17cm diameter
 Please note our special conditions of sale regarding clocks and watches
£100 - £150 plus 25% BP*

448 Taxidermy fallow deer stag sporting trophy, by Peter A O'Connor, Luton, height 86cm, width 57cm
£60 - £100 plus 25% BP*



Lots 449 - 451

449 Two Regency copper samovars, one having ring handles over a square base, height 34cm, the other having twin handles over a square base, height 32cm
£100 - £150 plus 25% BP*

450 Pair of brass altar candlesticks, hexagonal knopped columns over a hexagonal base, height 53cm
£80 - £120 plus 25% BP*

451 Victorian copper fish kettle, with lid, 46.5cm, handle to handle the vessel 36cm; also a twin handled copper braising pan, 32cm diameter (2)
£50 - £70 plus 25% BP*

452 Dutch style copper finish eight branch chandelier, surmounted with a double headed eagle, 77cm diameter, the drop approx. 64cm
£50 - £80 plus 25% BP*



Lots 456 - 459



Lots 453 and 454

453 Pair of cold painted bronze camel bookends, probably Austrian, circa 1900, height 15.5cm
£70 - £100 plus 25% BP*

454 Austrian cold painted bronze pot bellied pig, circa 1900, height 7cm; also two similar, smaller pigs, height 5cm (3)
£200 - £300 plus 25% BP*

455 A number of copper pans, and three copper saucepan lids, both English and Continental, the largest by T Beckett, Preston, 30cm (11)
£100 - £200 plus 25% BP*

456 Pair of Japanese cloisonné vases, late Meiji (1868 - 1912), ovoid form decorated with panels of dragons in colours against a dark blue ground, height 18cm
£100 - £150 plus 25% BP*

457 Pair of Japanese cloisonné bottle vases, Meiji (1868-1912), decorated with butterflies and floral panels against a black ground, height 19cm
£40 - £60 plus 25% BP*

458 Pair of Japanese cloisonné vases, late Meiji (1868 - 1912), faceted ovoid form with trumpet neck, decorated with panels of phoenix and dragons in multi-colours against a powdered gold coloured ground, height 30cm
£120 - £180 plus 25% BP*

459 Japanese cloisonné vase by Ando Jubei (1876-1953), shouldered hexagonal form, decorated with birds amidst branches in silver wirework against a reverse tooled red lacquered ground, the base with signature mark and 'Made in Japan', height 12.5cm
£200 - £250 plus 25% BP*

460 The Pratt's Club, a Victorian heavy copper hot water urn, with cover, inscribed to both the lid and the body 'Pratt's Club', with carrying handles and tap, height 36cm, 36cm diameter
£100 - £200 plus 25% BP*

461 GPO mahogany cased fusee wall clock, painted 29cm dial with Roman numerals, initialled 'GPO' to the centre, single fusee movement, with pendulum (a/f) and key, 37cm diameter
Please note our special conditions of sale regarding clocks and watches
£100 - £150 plus 25% BP*

462 Two Indian brass figures of dogs, stylised form with simplistic decoration, height 9cm
£30 - £50 plus 25% BP*



Lots 463 and 464

463 Victorian tooled brass pen stand, centred with a hand painted porcelain plaque of siblings, 17cm x 15cm
£70 - £100 plus 25% BP*

464 Victorian brass jewellery casket, in Gothic Revival style, canted rectangular form, the hinged cover inset with an oval malachite within a tooled gothic inspired reserve, flange base, 25cm x 15cm x 11cm high
£80 - £120 plus 25% BP*

465 Japanese bronze articulated crab, late Meiji (1868-1912, mid brown patina, 18cm
£150 - £250 plus 25% BP*

466 Chinese blue, white and copper red, metal mounted snuff bottle, Yongzheng (1723 - 35), six character mark, possibly of the period (restored), height 8.5cm
£100 - £150 plus 25% BP*

467 Anglo-Chinese carved sandalwood box, circa 1900, 24.5cm x 13.5cm x 9cm
£60 - £80 plus 25% BP*



Lots 468 and 469

468 Japanese bronze rat, late Meiji (1868-1912), finely detailed, dark brown patina, height 12cm
£400 - £600 plus 25% BP*

469 Japanese bronze rat by Gyokuni, late Meiji (1868-1912), dark brown patina, height 8cm
£200 - £300 plus 25% BP*

470 Japanese lacquered square tray, decorated with a hidden pavilion in Hiramaki-e and Kimpun on a black lacquered ground, 30cm square; also an Oriental hardwood serving tray, with fretwork gallery, 49.5cm x 29cm (2)
£40 - £60 plus 25% BP*

471 Pair of French ormolu mounted cut glass scent bottles, circa 1900-10, square section with tear shaped stoppers, embellished with cameo miniature portraits of ladies, flanked with pink guilloche enamelled cameos, all bordered with ormolu mounts, height 20cm
£200 - £300 plus 25% BP*



Lots 471 and 162



Lots 473 - 476



Lot 479

472 Oriental plique-à-jour bowl, flared form, worked with orchids in colours against pink fish scale enamelled ground with blue border, 12.5cm diameter
£80 - £120 plus 25% BP*

473 Pair of mahogany and brass bound octagonal wine coolers, each with metal liner, 25.5cm, height 14cm
£80 - £120 plus 25% BP*

474 French cast brass Rococo Revival fire screen, late 19th Century, width 56cm, height 75cm
£200 - £250 plus 25% BP*

475 Provincial brass mounted burr elm mazer covered bowl, late 18th or early 19th Century, 34cm diameter
£80 - £120 plus 25% BP*

476 Dutch brass liturgical alter bell, centred with a handle and with four tonal bells suspended within a circular cage, 24cm diameter
£60 - £80 plus 25% BP*

477 Chinese soapstone carving of Shoulao, late 19th or early 20th Century, 10.5cm, mounted on a wooden base
£30 - £50 plus 25% BP*

478 South Indian gilt bronze figure, of the infant Ganesha, 7.5cm
£30 - £50 plus 25% BP*

479 Sextant by Crichton, London, in lacquered brass, with filters and eye pieces, in original mahogany carrying case
£200 - £300 plus 25% BP*

480 Swatow pewter tobacco jar, decorated with scrolling dragons, the base marked 'Kuthing Swatow', height 10cm
£30 - £50 plus 25% BP*

481 Oriental hardwood and mother-of-pearl inlaid box, late 19th Century, worked with figures crossing a bridge, 18cm x 9.5cm
£40 - £60 plus 25% BP*



Lots 482 and 483

482 French bronze of a water nymph, circa 1900, indistinctly signed, mounted on a black marble circular base, height 31cm
£250 - £300 plus 25% BP*

483 Pair of French bronzed spelter busts of fashionable ladies, signed 'P Rigual', circa 1890, height 40cm
£100 - £150 plus 25% BP*



Lots 487 and 488

484 Chinese carved bamboo brush pot, late 19th Century, height 16cm

£80 - £120 plus 25% BP*

485 Tibetan silvered copper ghao/prayer box pendant, worked with Buddhist symbols, suspended from coloured sash, 11cm diameter

£60 - £80 plus 25% BP*

486 Tibetan silvered copper Buddhist ewer, of traditional form, height 35cm

£60 - £80 plus 25% BP*

487 Pair of Chinese cloisonné vases, late 19th or early 20th Century, decorated with chrysanthemum and prunus blossom against a yellow trellis ground, with lotus flower to the neck, four character mark to the base, height 13.5cm

£100 - £150 plus 25% BP*

488 Pair of Chinese cloisonné vases, 20th Century, twin handled baluster form decorated with flowers and scrolling karakusa, height 22cm

£50 - £80 plus 25% BP*

489 Pair of Chinese brass Gu vases, in archaic style, cast marks to the base, height 28cm

£60 - £80 plus 25% BP*

490 Randolph Caldecott, illustrator, (b. Chester 1846 d. 1886), illustrated books including 'Lob Lie-by-the-Fire' by J. Horatia Ewing; also 'Jackanapes' by the same author and Henry Blackburn's 'Randolph Caldecott, his early art career' (5 volumes)

£100 - £150 plus 25% BP*

491 Art Deco style triptych dressing table mirror, the outer plates tinted copper and bevelled glass throughout, backed with mahogany, height 68cm, width 90cm

£250 - £300 plus 25% BP*

492 Improved Sympiesometer by J Graham, Liverpool, mahogany cased with brass vernier scales, 48cm x 7.5cm

£200 - £300 plus 25% BP*

493 French gilt ormolu clock garniture, circa 1870, the clock in Rococo Revival style surmounted with a winged cherub over white enamelled dial with Roman numerals, the movement striking on a bell, with pendulum, all set within a case of rococo scrolls, height 38.5cm and a pair of twin branch candelabra, height 23cm

Please note our special conditions of sale regarding clocks and watches

£600 - £800 plus 25% BP*



Lot 492



Lots 495 - 497

494 Austrian champlevé enamel casket, early 20th Century, the hinged cover worked with a central roundel depicting a crowned, doubled headed eagle, elsewhere panels of trailing vines, 13.5cm x 9.5cm x 7cm high
£100 - £150 plus 25% BP*

495 Continental bronze figure of a knight on horseback, circa 1900, height 35cm, mid-brown patination
£250 - £300 plus 25% BP*

496 After the Antique, Grand Tour souvenir bronze 'Venus de Milo', circa 1900, height 24.5cm
£80 - £100 plus 25% BP*

497 Bronze and abalone seafood tazza, possibly Italian, late 19th Century, the shell supported aloft by a axe wielding warrior, height 20cm
£50 - £60 plus 25% BP*

498 Japanese style brass carp, 20th Century, 20cm
£50 - £70 plus 25% BP*



Lots 499 and 500

499 Dutch brass log bin, having lion mask ring handles, embossed with hunting scenes and foliate scrolls, on paw feet, with liner, 49cm diameter
£50 - £80 plus 25% BP*

500 Dutch brass log bin, having lion mask ring handles, decorated with bowls of fruit, on a stepped base, 41cm diameter
£30 - £50 plus 25% BP*

501 Pair of Victorian brass andirons, in the Gothic Revival style, height 41.5cm
£100 - £150 plus 25% BP*



Lots 502-507

502 Krug vintage champagne, 1979, one bottle, original box
£200 - £300 plus 25% BP*

503 Chateau d'Angludet, Margaux, 1988, one bottle, level lower neck; also Chateau Meyney, St. Estephe, 1996, one bottle, level lower neck; and a Penfolds St. Henri, Shiraz, 1996, one bottle, level lower neck (3)
£80 - £120 plus 25% BP*

504 Chateau d'Yquem, Sauternes, 1989, three half bottles, levels lower neck
£100 - £150 plus 25% BP*

505 Taylor's vintage port, 1994, two bottles
£50 - £70 plus 25% BP*

506 Taylor's vintage port, 1985, one bottle
£40 - £60 plus 25% BP*

507 Graham's vintage port, 1984, one bottle; also Sandeman vintage port, 1994, one bottle (2)
£50 - £80 plus 25% BP*

508 Pair of Chinese carved bamboo brush pots, late 19th Century, worked with figures amidst wooded river landscape, height 48cm
£100 - £150 plus 25% BP*



Lot 509

509 Swiss rosewood and inlaid cylinder musical box, having a 13" cylinder, with five spare cylinders housed in a pullout drawer to the base, width 70.5cm, depth 57.5cm
£500 - £700 plus 25% BP*

510 Enamelled river landscape panel, 'The Falls of Tummel, Perthshire', mounted on a brass mount with brass frame, the panel oval, 15cm x 10cm
£80 - £100 plus 25% BP*

511 German bronzed spelter inkwell, formed as a hunting dog holding a pen rest in its mouth, original glass eyes, height 11cm
£100 - £150 plus 25% BP*



Lot 512

512 Congolese carved wooden ancestral vessel, carved as a large head supporting conjoined figures forming an ancestral 'coiffure', height 82cm, width 40cm
£40 - £60 plus 25% BP*

513 Pair of Victorian brass heavy horse door porters, height 23cm
£40 - £60 plus 25% BP*

514 French brass and enamelled double photograph frame, circa 1890, pierced and engraved outer frame surrounding two oval frames with hinged covers enamelled with butterflies, width 19cm, height 14.5cm
£200 - £250 plus 25% BP*



Lot 515

515 Symphonion walnut cased penny-in-the-slot music box, retailed by Herbert Ellis, Foregate Street, Chester, playing 19" discs, width 63cm, height 89cm
£800 - £1200 plus 25% BP*

516 Arts & Crafts period painted brass and copper jardinière, height 33cm
£50 - £60 plus 25% BP*

517 Chinese polished brass censer, seal marked to the base, 7cm, raised on carved wooden stand
£300 - £400 plus 25% BP*

518 French bronze bowl and cover, by Alphonse Giroux, with a leaf cast cover surmounted with a ball finial detailed with a climbing lizard, the base entwined with a snake and wine leaves over a leaf cast base, inscribed to the underside 'A Giroux', dark patination, height 20cm
£200 - £300 plus 25% BP*



Lots 518 - 521

519 Russian bronze of a troika, drawn by a single horse, signed and inscribed, 23cm, height 9cm
£100 - £150 plus 25% BP*

520 French boule mantel clock, dial with enamelled blue Roman numerals, cast brass mounts, movement striking on a bell, height 31.5cm
 Please note our special conditions of sale regarding clocks and watches
£250 - £300 plus 25% BP*

521 Victorian papier mache tea caddy, circa 1850, decorated with flowers, the leaves picked out in faux malachite, edged throughout with gilt, opening to reveal two caddy covers, width 22cm, height 15cm
£80 - £120 plus 25% BP*

522 George III silk needlework sampler, by Elizabeth Sharples aged 11 years, 1819, with verse, figures, birds and shepherdesses, mounted within a bird's eye maple frame, 41cm x 43cm
£100 - £150 plus 25% BP*

523 Victorian brass door porter, height 50.5cm
£40 - £60 plus 25% BP*

524 Staffordshire enamelled circular box, circa 1790, waisted form, the hinged cover decorated with a central cameo of a bird suspended from a winged mask, the sides with foliate sprays, 6.5cm diameter
£50 - £80 plus 25% BP*



Lot 525

525 Henry Loveridge & Co. toleware coal scuttle, painted with floral panels against a black japanned ground, with a Victorian brass shovel, height 40cm
£50 - £80 plus 25% BP*

526 French cut glass and ormolu mounted pedestal bowl, the oval cut glass dish suspended from a pair of intertwined dolphins over an oval ormolu base, width 18cm, height 15.5cm
£40 - £60 plus 25% BP*

527 French cast brass mirror, rectangular bevelled glass plated surmounted with a mask and cherubs and bordered with a scrolled frame, height 60cm, width 39cm
£60 - £80 plus 25% BP*

528 French polished slate mantel clock, circa 1880, the case with malachite inlays, enamelled dial with Roman numerals, visible brocot escapement, the movement striking on a bell, height 35.5cm, width 37cm
 Please note our special conditions of sale regarding clocks and watches
£50 - £80 plus 25% BP*



Lot 529

529 Stephen Broadbent (b. 1962) bronze sculpture 'There is a tide in the affairs of men', height 37.5cm
£400 - £600 plus 25% BP*

530 After E Villiani, 'Saida', a filled bronze bust mounted on a later socle and black marble base (repairs), height 39cm
£100 - £200 plus 25% BP*

531 Pair of George III brass bi-sectional candlesticks, height 20cm; also a pair of Victorian cast brass candlesticks, the bases cast with cherubs, height 21cm (4)
£40 - £60 plus 25% BP*

532 Two pairs of 19th Century brass candlesticks, one pair marked 'WT&S', 28cm and 27cm
£40 - £60 plus 25% BP*

533 Taxidermy little owl, cased, DOE No. 096796, height 47cm
£40 - £60 plus 25% BP*



Lots 534 and 535

534 Pair of decorative polychrome carved wooden shi-shi lions, height 38cm
£60 - £80 plus 25% BP*

535 Chinese carved wooden figure of Guanyin, seated, height 41cm
£80 - £120 plus 25% BP*

536 Brass cased holosteric barometer, supported on a base of brass cast as Don Quixote, polished slate plinth, height 32cm
£80 - £120 plus 25% BP*

537 Dutch brass embossed jardinière, with lion's mask ring handles and paw feet, 21cm diameter; also a further brass jardinière worked with floral decoration, 19.5cm diameter (2)
£30 - £50 plus 25% BP*

538 Victorian polished slate mantel clock, retailed by William Roskell, Liverpool, white enamelled dial with Roman numerals, French movement striking on a bell, with pendulum and key, the case with gilt line details, height 28cm, width 24.5cm

Please note our special conditions of sale regarding clocks and watches
£40 - £60 plus 25% BP*

539 Pair of French gilt ormolu figural candelabra, circa 1880, each with a classical maiden holding aloft a cornucopia of flowers and with four candle sconces, all raised on a white onyx baluster plinth and octagonal base, height 59cm
£400 - £600 plus 25% BP*

540 Good French gilt ormolu mantel clock, by Jean-Francois Deniere, Paris, second quarter 19th Century, in Rococo style surmounted with a cherub on a floral garland, the gilt dial with enamelled Roman numerals, signed 'Deniere ft de bzes a Paris', the movement signed and numbered 977, striking on a bell supplied by Gailleaux, flanked with flowering acanthus scrolls, over a base adorned with two cherubs, all raised on acanthus scroll supports, height 40.5cm, width 29cm

Please note our special conditions of sale regarding clocks and watches
£500 - £700 plus 25% BP*

541 Chinese rosewood corner shelf, 20th Century, carved with lotus flower, 28cm
£40 - £60 plus 25% BP*

542 Chinese brass jardinière, with leaf form handles, raised on spur feet, four character mark to the base, 27cm
£20 - £40 plus 25% BP*

543 Chinese carved wooden figure, depicting an Immortal riding a shi-shi, late 19th Century, height 34cm
£80 - £120 plus 25% BP*

544 Modern cast gilt brass fountainhead, formed as a lion's mask, 26cm
£20 - £40 plus 25% BP*



Lots 539 and 540



Lot 549



Lot 545

545 Taxidermy East African oryx, height 117cm
£100 - £200 plus 25% BP*

546 Chinese paktong baitong white copper wash basin, 19th Century, detailed with script and butterflies and centred with phoenix amidst clouds, 33.5cm diameter
£70 - £100 plus 25% BP*

547 Pair of Chinese cast brass warriors on horseback, each adorned with glass cabochon 'jewels', late 19th/early 20th Century, 24.5cm
£70 - £100 plus 25% BP*

548 Victorian cast brass girandole, surmounted with an urn and griffons, bevelled glass rectangular plate with three candle sconces, 50cm x 25cm
£100 - £150 plus 25% BP*

549 Pair of Renaissance Revival bronze Cellini ewers, late 19th Century, mid brown patina, height 57cm
£300 - £500 plus 25% BP*

550 Chinese cast brass vase, early 20th Century, decorated with dragons, cast Ming mark to the base, height 41cm
£20 - £40 plus 25% BP*

551 French brass stationery casket, late 19th Century, sloping hinged cover inset with a Sevres style panel featuring a view of Buckingham Palace, the sides inset with carved shell cameos and with acanthus scroll engraved details and beading to the edges, width 25cm, height 17.5cm
£400 - £600 plus 25% BP*

552 Chinese soapstone carving, featuring three Immortals, on a base, height 18cm; also two carved soapstone figures of Shoulao, 12cm; and a terracotta model of a baby playing with its feet, unmarked, 10cm (4)
£20 - £30 plus 25% BP*

553 Chinese spinach jade Buddhist toad, 20th Century (repaired), 17cm
£20 - £30 plus 25% BP*



Lots 554 - 556

554 Patchwork quilt, 'Great balls of fire', circa 2002, traditional pineapple design, cotton, signed by Anna Holleron, 190cm square
£200 - £300 plus 25% BP*

555 Patchwork summer quilt, 'Diamonds are forever', circa 2002, signed by Anna Holleron, 212cm x 202cm
£120 - £150 plus 25% BP*

556 Patchwork quilt, 'Fluffy Circles', circa 1999, a raw edged 'scrappy' quilt, on a light blue ground, signed by Anna Holleron, 223cm x 220cm
£120 - £150 plus 25% BP*

557 Irish linen apricot whole cloth quilt, with cotton wadding, circa 2002-04, all hand quilted, two years in the making, signed by Anna Holleron, 220cm x 180cm
£150 - £250 plus 25% BP*

558 Small selection of West African metalwares, including mask pendants, amulet pendant, square plaque pendant, two bronze opium weights in the form of birds, the largest being the plaque pendant, 9cm square
£40 - £60 plus 25% BP*

559 Taxidermy female kestrel with meadow pipit prey, cased, 36cm x 38cm
£60 - £100 plus 25% BP*

560 Taxidermy ring necked pheasant, cased, 82.5cm x 63cm
£100 - £150 plus 25% BP*

561 Taxidermy red fox, cased, 60.5cm x 43cm
£70 - £100 plus 25% BP*

562 Taxidermy red fox with hen pheasant, cased, 102cm x 71cm
£100 - £150 plus 25% BP*



Lots 559 - 562

563 Kuba style figural wooden male vessel, 32cm; also a further Kuba style figural female cup, mounted on a perspex stand, the cup 19.5cm (2)

£50 - £80 plus 25% BP*

564 African Toma style wooden female figure, 41cm; also a Cameroon carved wooden female figure, 72cm (2)

£60 - £80 plus 25% BP*

565 A A Milne 'The House at Pooh Corner', 1st edition, published 1928 by Methuen & Co., with dust jacket

£300 - £400 plus 25% BP*

566 Michael Bond 'A bear called Paddington', with drawings by Peggy Fortnum, 1st edition, published Collins, St James's Place, London, 1958 (no dust jacket)

£200 - £300 plus 25% BP*

567 Tibetan filled bronze head of Buddha, with Chinese character seal to the base, height 15cm

£40 - £60 plus 25% BP*

568 Fred Kormis (1897-1986), Two resin sculptures, one of a couple embracing, 24cm, the other featuring multiple figures surmounted with a lioness, signed, 27cm (2)

£80 - £120 plus 25% BP*

569 French filled bronze figure of a Bedouin, late 19th Century, indistinctly signed, height 66cm

£400 - £500 plus 25% BP*

570 Tibetan lacquered bronze figure of a seated Buddha, on a lotus base, height 41cm

£100 - £150 plus 25% BP*

571 African Songye style carved wooden figure, 52cm; also a further African carved wooden female figure, 41cm (2)

£30 - £50 plus 25% BP*

572 African carved hardwood figure of Christ crucified, probably Mozambique, together with a carved wooden stand topped with a mask, 105cm

£100 - £150 plus 25% BP*

573 Victorian copper coal bin, engraved with initials and dated 1844, 32cm diameter

£30 - £50 plus 25% BP*

574 Victorian copper cool box, by Jones Bros., circa 1870, with central handle and two hinged covers, zinc lined, 37cm x 20.5cm

£40 - £60 plus 25% BP*

575 French red Morocco leather and mother of pearl purse, circa 1900, decorated with a gilt floral basket on a mother of pearl roundel, 8cm x 7cm

£80 - £120 plus 25% BP*

576 French green leather aide-memoire, centred with a locket of hair and detailed with gold coloured leaves, 8.5cm x 6cm; also an Elkington & Co. silver plated George V Jubilee commemorative tablet, 5.5cm x 4cm (2)

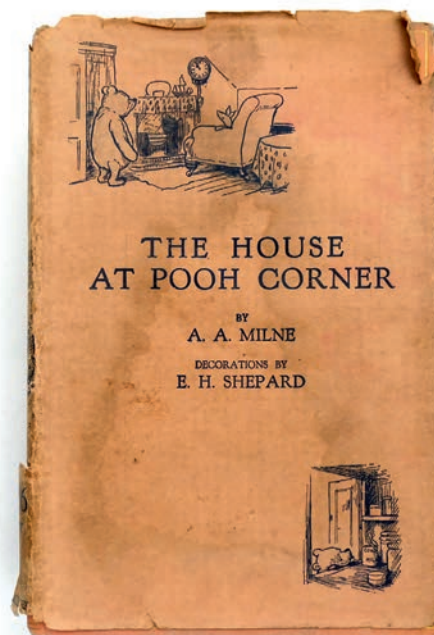
£80 - £120 plus 25% BP*

577 Pair of Victorian brass miniature tilt top tripod tables, height 10.5cm

£40 - £60 plus 25% BP*

578 Painted terracotta model of a seated ape, French or Austrian, circa 1900, height 21.5cm

£50 - £70 plus 25% BP*



Lot 565



Lot 569



Lots 579 and 580



Lot 583

579 American Fender Stratocaster electric guitar, circa 1993-94, No. N380816, with Fender hard case and owner's manual
£800 - £1200 plus 25% BP*

580 Vintage Antoria electric guitar, probably late 1950s, with red body and silver coloured scratch board, hard carrying case
£200 - £300 plus 25% BP*

581 Fender Champion 40 amplifier, type PR2433, with manual
£40 - £60 plus 25% BP*

582 Two Axl guitar pedals
£20 - £30 plus 25% BP*

583 Chinese School, late 19th Century, three rice paper paintings, each depicting birds, sizes 20cm x 32cm, framed
£100 - £150 plus 25% BP*

584 Carved giltwood laurel wreath wall mirror, with later plate, 50cm x 33cm
£60 - £80 plus 25% BP*

585 Two late Georgian warming pans, one with brass pan stipple engraved with a stylised shamrock, original fruitwood handle, 108cm, the other with copper pan stipple engraved with a cockerel, with later mahogany handle, 113cm
£30 - £50 plus 25% BP*

586 Taxidermy Greater Kudu sporting trophy, length 140cm
£200 - £400 plus 25% BP*



Lot 586



FURNITURE & RUGS



Lot 590

590 Late George III mahogany and inlaid bow front corner washstand, with a folding splash back top opening to receptacles and with two oval inlaid panel doors, over a single small drawer flanked by faux drawers, raised on square section legs united by a platform stretcher, height with top down 84cm, width 59cm
£70 - £100 plus 25% BP*



Lot 593

593 George III mahogany Pembroke table, circa 1790, with later painted decoration featuring Cupid being led by doves within beaded and foliate garlands, the oval top with drop leaves, over a single drawer, raised on tapered square section legs painted with bellflower trails, brass castors, width 76cm, depth 48cm, height 71cm
£600 - £800 plus 25% BP*



Lot 591

591 Late Regency mahogany revolving music stool, upholstered pad seat raised on turned and ringed splayed supports, width 32cm, minimum height 53cm
£120 - £180 plus 25% BP*

592 Mahogany tray top night table, square top with pullout candle slide, raised on square section legs with platform shelf, 33cm square, height 71cm; also a reproduction mahogany wig stand in the Georgian style, height 79cm, width at the feet 50cm (2)
£100 - £150 plus 25% BP*



Lot 594

594 George III mahogany and rosewood banded Pembroke table, circa 1780, the top with two drop leaves over a single frieze drawer with brass oval ring handles, the legs with foliate inlaid panels over tapered square sections with string inlay, raised on brass castors, width 76.5cm, height 71cm., depth 51.5cm
£500 - £600 plus 25% BP*



Lot 595

595 George III oak and mahogany inlaid dresser, circa 1800, having a plate rack with three central shelves flanked by cupboard doors with shell inlay and two small spice drawers, over a base fitted with three crossbanded drawers beneath an inlaid frieze, raised on tapered square section legs, width 189cm, height 199cm
£800 - £1200 plus 25% BP*

596 T Moreland of Chester, oak eight day longcase clock the hood with swan neck pediment surmounted with an eagle and ball finial, over a 14" dial with Roman numerals and floral spandrels, eight day movement striking on a bell, the trunk with shell inlays and crossbanded with mahogany, over a box base with canted corners and bracket feet, height 222cm

Please note our special conditions of sale regarding clocks and watches
£300 - £400 plus 25% BP*

597 Indian carved wood throne back, with elements that are 18th Century, with later additions, the back carved with bejewelled pomegranates and scrolling foliage over a panel with figures in relief, each arm of a differing design, all raised on modern bench supports, width 102cm, height 113cm
£500 - £700 plus 25% BP*



Lot 598

598 Southern Indian rustic metal bound ox-cart panel repurposed as a coffee table, 19th Century and later, 135cm square, height 39cm
£400 - £600 plus 25% BP*

599 Pine enclosed dresser, early 19th Century, fitted with three long frieze drawers with turned wood knobs, centred with two recessed panel cupboard doors flanked on either side with two short drawers, all raised on squat bun feet, width 212cm, height 79cm, depth 57cm
£400 - £600 plus 25% BP*

600 Mahogany small étagère, the hexagonal shelves (reduced) supported on fine columns over an octagonal base with ebonised ball feet, width 31cm, depth 31cm, height 82.5cm
£70 - £100 plus 25% BP*

601 William IV mahogany teapoy, circa 1835, fitted interior with twin wooden caddies with hinged covers and two wells, raised on a slender octagonal baluster quatreform base, with paper scroll feet and brass castors, width 39cm, depth 33.5cm, height 78cm
£300 - £400 plus 25% BP*



Lots 599, 455 (part) and 460



Lot 601



Lot 603

602 Regency rosewood work table, circa 1820-30, the top with drop leaves and tramline inlays, over two small drawers opposing faux drawers, raised on turned and ringed legs with brass castors, width 46cm, depth 37cm, height 72.5cm

£200 - £300 plus 25% BP*

603 Early Victorian mahogany canterbury, circa 1840, having four moulded divisions over a single drawer with carved wooden knobs, raised on turned legs with brass castors, width 54cm, depth 40cm, height 45cm

£80 - £120 plus 25% BP*

604 Rosewood kettle stand, shaped galleried top over a carved tulip column and three double C-scroll supports, height 62cm, depth 31.5cm, width 42cm

£100 - £150 plus 25% BP*

605 Atkinson, Ormskirk, oak and mahogany inlaid eight day longcase clock, the hood with swan neck pediment centred with a scalloped shell, over turned columns flanking a 13" brass arched dial with rolling moon to the arch, signed silvered chapter ring, matted and engraved centre with subsidiary seconds and date aperture, the movement striking on a bell, over a trunk with quarter pilasters flanking a long, shaped door with blind fretwork details, over a chamfered box base with bracket feet, 227cm

Please note our special conditions of sale regarding clocks and watches

£600 - £800 plus 25% BP*

606 French walnut Vernis-Martin display cabinet, ormolu mounted with a serpentine glazed door opening to plate glass shelves, shaped sides and with three hand painted panels, signed 'Montreuil', raised on short splayed feet, height 188cm, width 60cm, depth 43cm

£400 - £600 plus 25% BP*

607 French giltwood salon suite, in Baroque style, comprising canapé with a moulded foliate cresting rail, striped silk upholstery, raised on inverted tulip and fluted legs, width 172cm, depth 76cm; and two matching armchairs, width 66cm (3)

£400 - £600 plus 25% BP*



Lot 606



Lot 607



Lot 608

608 Oak joined chair, late 17th Century and later, tapestry fabric upholstered back and seat, open arms with turned baluster forearms and forelegs, united by a stretcher base, width 60cm, height 93cm, depth 50cm
£400 - £600 plus 25% BP*

609 George III oak and mahogany chest of drawers, late 18th Century, having two short and three long drawers, with brass handles, raised on bracket feet, width 102cm, height 91cm, depth 53cm
£120 - £180 plus 25% BP*

610 Aubusson style flatweave rug, fawn field detailed with pink roses and floral garlands, size approx. 253cm x 153cm
£150 - £250 plus 25% BP*

611 Aubusson style flatweave carpet, centred with a floral oval reserve against a fawn ground, bordered with salmon pink floral trails and garlands, size approx. 362cm x 256cm
£150 - £250 plus 25% BP*

612 Aubusson style flatweave carpet, centred with an oval floral reserve bordered with acanthus leaves and floral garlands, against a straw ground within a floral trail border with floral wreath corners, size approx. 367cm x 269cm
£150 - £250 plus 25% BP*



Lot 613

613 Aubusson style flatweave carpet, centred with a flowerhead and laurel wreath reserve within a floral garland against an ivory field dispersed with acanthus scrolls within a running floral and wave border, size approx. 370cm x 270cm
£150 - £250 plus 25% BP*

614 Victorian ebonised and inlaid jardinière table, in the French style, circa 1890, having a metal liner, inlaid with anthemion and Etruscan style details, over brass capped fluted legs united by an acanthus carved and turned stretcher, width 61cm, depth 39cm, height 77cm
£80 - £120 plus 25% BP*

615 Mahogany tilt top tripod table, early 19th Century, circular top over a turned and ringed urn column and three splayed supports, 80cm diameter, height 73cm
£100 - £150 plus 25% BP*



Lot 616

616 Traditional elm dough bin, 18th Century, the cover with decorative chip carved edge, raised on turned legs united by stretchers, width 116.5cm, height 79cm, depth 47cm
£80 - £120 plus 25% BP*

617 French Directoire style mahogany three drawer chest, with grey marble top with brass gallery and brass handles, raised on tapered legs, width 60cm, height 80cm, depth 36cm
£100 - £150 plus 25% BP*



Lot 618

618 French Empire style walnut and kingwood writing table, the parquetry top with brass gallery over a single frieze drawer with faux three drawer front, raised on tapered square section legs with brass appliques and sabots, width 75cm, height 80cm, depth 47cm
£120 - £180 plus 25% BP*

619 F Bayley, Uttoxeter, oak thirty hour oak longcase clock, later moulded cornice pierced with tulips, over a brass 10 1/2" dial with Roman numerals, silvered date aperture, plain trunk with a domed top door, and stepped box base (no pendulum), height 204cm

Please note our special conditions of sale regarding clocks and watches
£200 - £300 plus 25% BP*

620 Chinese rosewood jardinière stand, early 20th Century, rectangular top with carved simulated bamboo apron and legs, width 43cm, depth 32cm, height 46.5cm
£80 - £120 plus 25% BP*

621 George III walnut dressing table mirror, rectangular plate with moulded edge over a base fitted with three small drawers, raised on bracket feet, width 44.5cm, depth 21cm, height 65cm
£70 - £100 plus 25% BP*

622 Chinese carved rosewood quartetto nest of tables, late 19th Century, each carved with prunus blossom to the edge, apron and legs, the largest 52cm x 36cm x 72cm high
£150 - £250 plus 25% BP*



Lot 623

623 Quality late Victorian mahogany wall cabinet, circa 1890, the bow fronted flame mahogany door with carved mouldings edged with fiddle back veneers, flanked by concave panels enclosing a single shelf supported on the underside with acanthus carved brackets, width 58cm, height 55cm, depth 21cm
£100 - £200 plus 25% BP*

624 Regency mahogany dressing table mirror, the oval plate over a serpentine fronted base fitted with three drawers, each with pressed brass knobs, raised on bracket feet, width 44cm, height 62cm, depth 20.5cm
£60 - £80 plus 25% BP*

625 Traditional oak cradle, 19th Century, 92cm, height 72cm
£100 - £150 plus 25% BP*

626 Provincial fruitwood armchair, early 19th Century, having a reeded stick back, shaped open arms, rush seat, ogee moulded forelegs, height 99cm
£70 - £100 plus 25% BP*

627 19th Century mahogany and inlaid bookcase cabinet, moulded cornice over two astragal glazed doors opening to three adjustable shelves, over a base fitted with two drawers, raised on splayed bracket feet, width 126cm, height 168cm, depth 35cm
£150 - £250 plus 25% BP*

628 Traditional Cantonese teak and camphorwood carved chest, profusely detailed throughout with birds, peony and prunus blossom, the interior lined with camphorwood (Purchased in Hong Kong circa 1951), width 105cm, height 60cm, depth 52cm
£100 - £150 plus 25% BP*



Lot 629

629 French giltwood and tapestry canapé, mid 19th Century, original upholstery, the back featuring a vignette of children with cockerels, the seat featuring hunting dogs, with floral garlands throughout, open arms carved with overlapping flowerheads, acanthus carved forearms raised on fluted and reeded supports, width 147cm, height 94cm, depth 68cm
£400 - £600 plus 25% BP*

630 George IV mahogany folding tea table, circa 1815-25, the swivel folding top with brass tramline inlays and crossbanded with rosewood, opening to a polished surface, the frieze embellished with brass appliques over wrythen reeded columns and quatreform base with sabre legs, brass toes and castors, width 89cm, depth 43cm, height 77cm
£300 - £500 plus 25% BP*

631 Mahogany and parcel gilt dressing table mirror in Georgian style, having a rectangular bevelled glass plate over a base fitted with three small drawers with brass knobs, raised on bracket feet, width 42cm, height 59cm
£30 - £50 plus 25% BP*

632 Regency mahogany work table, circa 1820, crossbanded with rosewood, the top with two canted drop leaves over a single deep drawer with a faux two drawer front with pressed brass knobs and similar opposing faux drawers, raised on turned and ringed legs with brass castors, width 53cm, depth 39cm, height 73cm
£300 - £500 plus 25% BP*



Lot 633 (closed and open)

633 Regency coromandel lady's vanity table, circa 1810, edged throughout with boxwood and opening to reveal a bevelled glass mirror to the inside lid and birch lined interior, containing four silver mounted cut glass jars, maker C J F, London 1911, with a pullout drawer beneath, turned bone knobs, and with a side pullout candle slide, raised on tapered square section legs with splayed feet, width at the feet 38.5cm, depth 29cm, height 73cm
£400 - £600 plus 25% BP*

634 Fine Regency rosewood quartetto nest of tables, circa 1810-25, each rectangular with a beaded edge, the larger with demi-lune gaming piece wells with lift up covers, the second table inlaid with birds eye maple chess board, raised on fine turned, very slightly baluster supports with turned stretchers, the largest including the wells 69cm, depth 32cm, height 70cm
£600 - £800 plus 25% BP*

635 Regency style giltwood cavetto convex wall mirror, of small size, 42cm diameter
£60 - £80 plus 25% BP*



Lot 636

636 Traditional carved camphor wood chest, early 20th Century, carved with the Eight Immortals to the hinged cover, width 104cm, depth 51cm, height 56cm
£100 - £150 plus 25% BP*



Lot 634

637 Persian woollen rug, centred with a pole medallion against a red ground with blue flowerhead spandrels within a blue running palmette border, size approx. 200cm x 131cm
£120 - £180 plus 25% BP*

638 Victorian carved oak and upholstered armchair, circa 1890, the back carved with griffons and centred with fruiting vines, pad upholstered arms carved to the fore with lion's masks, red velvet upholstered seat, turned stretchers, width 56cm, height 127cm
£100 - £150 plus 25% BP*



Lot 639

639 George II oak inverted breakfront dresser, circa 1730-50, two plank top over a central short drawer with shaped fielded panel cupboard door beneath, opening to a single shelf, flanked with quarter pilasters and three deep drawers on either side, all with brass batwing plate handles, raised on bracket feet with later hidden castors, width 87.5cm, depth 57cm, height to the bottom of the bracket feet 79cm
£500 - £700 plus 25% BP*



Lot 640



Lot 643



Lot 645

640 George IV rosewood teapoy, circa 1825, canted rectangular top with beaded edge, opening to reveal a fitted interior with three lidded caddies and two original fan cut glass mixing bowls (one repaired), supported on a reeded and turned baluster column over a quatreform base with scrolled and reeded bun feet with concealed brass castors, width 41cm, depth 31cm, height 75cm
£400 - £600 plus 25% BP*

641 Unusual early Victorian mahogany and inlaid gaming table, circa 1840, octagonal top crossbanded with rosewood and centred with a chessboard inlay over a mahogany and brass fluted column, raised on three brass capped umbrella supports, width 50cm, height 71.5cm
£150 - £250 plus 25% BP*

642 Victorian patent rise and fall music stool, foliate needlework seat on a walnut veneered base with ratchet rise and fall mechanism, raised on mahogany turned and ringed legs united by a cross stretcher, minimum height 53cm, width 47cm
£100 - £150 plus 25% BP*

643 Regency mahogany cellarette, of small proportions, the front with ebony line inlays and crossbanded, opening to reveal a sectional interior with spaces for bottles and decanters, brass carrying handles to the sides, raised on tapered square section legs with brass castors, width 38cm, depth 34cm, height 51.5cm
£200 - £300 plus 25% BP*

644 George III carved giltwood dressing stool, circa 1780, the coloured needlework fabric top on foliate carved French cabriole legs, width 60cm, depth 56cm, height 44cm
£100 - £200 plus 25% BP*

645 Oak joined book press chest, early 18th Century, with a rise and fall top (lacking handle), over a base fitted with two drawers with brass fretwork and swan neck handles, over an arcaded apron, raised on baluster turned legs, width 83cm, height 142cm, depth 42cm
£200 - £300 plus 25% BP*

646 Early George III mahogany small chest of drawers, circa 1760, fitted with four graduating drawers with brass swan neck handles, raised on straight bracket feet, width 70cm, height 78cm, depth 42cm
£200 - £400 plus 25% BP*

647 George III oak and mahogany mule chest, circa 1780-1800, hinged top over a four shaped panel front and with three drawers to the base, all crossbanded and with later brass Chinese fretwork handles, raised on ogee bracket feet, width 147cm, height 87cm, depth 55cm
£200 - £400 plus 25% BP*



Lot 648

648 Chinese cinnabar lacquer opium table, circa 1900, the top bordered with carved peony over two carved mask fronted drawers, the reverse with carved Buddhist lions, raised on spurred feet detailed with key and trellis, width 92cm, depth 44cm, height 49cm
£100 - £200 plus 25% BP*

649 Oak and inlaid joined chair, circa 1700, the back simply inlaid with tulips in holly, with turned uprights, solid seat, turned legs and stretcher, height 120cm; also a further joined oak chair, height 126cm (2)
£80 - £120 plus 25% BP*

650 Regency mahogany and inlaid work table, circa 1815-25, fitted with two opposing drawers, each cedar lined and with opposing faux drawers, all with brass knobs, ebony and boxwood stringing throughout, raised on finely reeded turned legs united by a cross stretcher, width 50cm, depth 38cm, height 74cm
£400 - £600 plus 25% BP*

651 George III mahogany tilt top tripod table, later carved with a dished piecrust top over a wrythen baluster column and acanthus carved cabriole legs with claw and ball feet, 75.5cm diameter, height 72cm
£80 - £120 plus 25% BP*

652 Victorian carved mahogany dressing stool, with salmon pink satin seat, raised on French cabriole legs, width 54cm, depth 46cm, height 46.5cm
£80 - £120 plus 25% BP*



Lot 653

653 George IV mahogany dressing stool, worn needlework seat raised on turned and reeded legs, width 42cm, depth 35cm, height 49cm
£80 - £120 plus 25% BP*

654 Chinese rosewood jardinière stand, rectangular top over a carved frieze detailed with fruits, raised on square section legs, width 48cm, depth 34.5cm, height 27.5cm
£40 - £60 plus 25% BP*

655 Joined oak wainscot chair, early 18th Century, the panelled back carved with a lozenge, over a solid seat with red velvet cushion, raised on gunbarrel turned forelegs united by stretchers, width 61cm, height 99cm; also an oak joined side chair, with a recessed panel back, carved with a flowerhead and leaf motif, solid seat, turned forelegs united by stretchers, height 88cm (2)
£200 - £300 plus 25% BP*

656 William IV mahogany armchair, with a reeded bar back, scroll open arms, green fabric upholstered drop in seat, raised on turned and ringed forelegs, width 56cm, height 85cm
£40 - £60 plus 25% BP*

657 Set of four Arts and Crafts period stained beech ladder back chairs, circa 1900, with rush seats, height 109cm
£80 - £120 plus 25% BP*

658 Mahogany kneehole desk in the Georgian style, 19th Century, moulded top over a brushing slide and upper long drawer, with three short drawers to either side flanking a central cupboard door, all within reeded pilasters, raised on ogee bracket feet, width 76cm, height 78cm, depth 50.5cm
£150 - £250 plus 25% BP*



Lot 658



Lot 659

659 George I walnut bureau bookcase, circa 1710-20, the top with cavetto cornice over moulded glazed bookcase doors, opening to two shelves, pullout candle slides beneath, slope front, featherbanded and opening to a stepped interior with drawers and pigeonholes around a central cupboard door, sliding well, the base fitted with two short and two long graduating drawers, later brass handles, all raised on straight bracket feet, width 105cm, height 208cm, depth 55cm
£400 - £600 plus 25% BP*

660 French gilt brass stumpwork banner polescreen, height 150cm
£60 - £80 plus 25% BP*

661 George III mahogany metamorphic architect's table, circa 1770, double folding top, fully adjustable, over a frieze drawer with bass fretwork and swan neck handles, all raised on chamfered square section legs, width 86cm, depth 42.5cm, minimum height 71.5cm
£400 - £600 plus 25% BP*



Lot 661 (closed and open)



Lot 663

662 Victorian mahogany folding bridge table, circa 1900, inscribed 'Best London Make', unfolding to reveal green baize playing surface, with a counter drawer and folding cross form base, width 77cm
£200 - £300 plus 25% BP*

663 Chinese rosewood altar table, late 19th/early 20th Century, the frieze carved with fruiting vines over simulated bamboo supports, width 94cm, depth 43cm, height 85.5cm
£200 - £300 plus 25% BP*

664 Mahogany flat front hanging corner cupboard, 19th Century, having moulded double panel doors opening to shaped shelves, height 105cm, width 78cm
£50 - £80 plus 25% BP*

665 Late Victorian Sheraton Revival painted satinwood tapestry fire screen, circa 1885, finely worked in metal thread with a monogram 'M D', flanked by the motto 'Honor Gratus', the frame painted with floral garlands, raised on cabriole legs, width 61cm, height 95cm
£80 - £120 plus 25% BP*

666 Late Regency rosewood sofa table, circa 1820, the top with drop leaves crossbanded, with two frieze drawers over splat supports united by a turned and inlaid block stretcher, splayed legs with brass toes and castors, width 102cm, height 72cm, depth 67cm
£300 - £500 plus 25% BP*

667 Queen Anne mirror, with a moulded walnut mount and later walnut and parcel gilt fretwork surround, the plate 67cm x 39.5cm, the whole 98cm x 55cm
£70 - £100 plus 25% BP*

668 Oak joined coffer, early 18th Century, hinged lid over three fielded panel front, later incised with initials 'M P', over a faux two drawer base, all outlined with channel moulding, raised on stile supports, width 122cm, height 77cm, depth 53cm
£100 - £150 plus 25% BP*

669 Late 17th Century brass studded chest, probably Dutch, the stud work detailed with a tulip to the hinged lid and stylised flowers at the front, pine carcass, carrying handles at the side, brass strapwork, some later, width 100cm, depth 55cm, height 50cm, raised on a William and Mary style walnut stand with barleytwist supports and bun feet, overall width 107cm, overall height 93cm
£400 - £600 plus 25% BP*



Lot 669

670 George III flame mahogany and inlaid bowfront hanging corner cupboard, circa 1800, with moulded cornice over well figured doors with boxwood line inlay, opening to an interior with three shelves, height 103.5cm, width 70.5cm
£40 - £60 plus 25% BP*



Lot 671

671 Oriental hardwood simulated bamboo drinks cabinet, 20th Century, circular pillar form with tambour style sliding doors, opening to two shelves, 49.5cm diameter, height 105cm
£200 - £300 plus 25% BP*

672 George III mahogany tilt top tripod table, circular top over a birdcage action and turned baluster column with three splayed legs, 87cm diameter, height 72cm
£300 - £400 plus 25% BP*

673 Mahogany and green marble console table, fronted with scrolled supports, on a platform base, width 69.5cm, depth 37.5cm, height 81cm
£150 - £250 plus 25% BP*

674 Molton, Norwich, late George III mahogany and inlaid wheel barometer, height 99cm
£70 - £100 plus 25% BP*



Lot 675

675 Walnut chest of drawers, 18th Century and later, the top with broad crossbanding, over two short and three long graduated drawers with later brass handles, raised on bracket feet, width 93cm, height 92cm, depth 52cm
£100 - £150 plus 25% BP*



Lot 676

676 J Cott & Son, Silsden, mahogany eight day longcase clock, painted 14" arched dial, signed and with subsidiary seconds and calendar dial, eight day movement striking on a bell, the hood with swan neck pediment and turned pilasters, over a well patinated mahogany trunk with a short door and recessed panel base, height 246cm, width 75cm

Please note our special conditions of sale regarding clocks and watches
£200 - £300 plus 25% BP*

677 Late Victorian Sheraton Revival mahogany and inlaid tub chair, circa 1880, the bow back inlaid with panels of arabesques, upholstered pad back and seat, raised on square section forelegs, width 58cm, height 76cm
£100 - £200 plus 25% BP*

678 Arts & Crafts oak sideboard, attributed to Liberty & Co., circa 1900-05, the tongue and groove panelled back with two shelves supported on open brackets carved with fruit, the base fitted with two drawers centred with a fruit carved panel, over an open central space flanked on either side with two recessed panel cupboard doors, all with brass and copper handles and hinges, raised on a stand with chamfered square supports united by stretchers, width 183cm, depth 60cm, height 176cm
£500 - £700 plus 25% BP*

679 Colonial goncalo alves Pembroke table, 19th Century, crossbanded and with a single drawer, raised on reeded supports and gates, width 75.5cm

£100 - £150 plus 25% BP*

680 Painted and parcel gilt pier glass, replacement bevelled glass plate bordered with acanthus moulded columns, the frieze centred with a flowerhead, and with cavetto moulded cornice, the frame early 19th Century, 117cm x 70cm

£200 - £400 plus 25% BP*



Lot 681

681 Regency rosewood lady's vanity cabinet, the top with brass inlay supporting two later brass candle brackets and fitted to the front with an upper jewellery drawer and with a further drawer beneath, all with pressed brass knobs, and two cupboard doors below with brass grille and pleated satin insets, all raised on brass mounted cabriole legs with ball feet, width 47cm, height 75cm

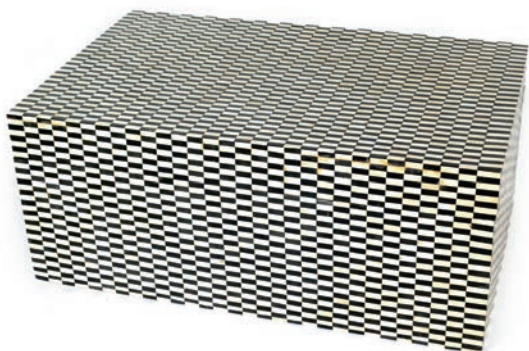
£200 - £300 plus 25% BP*

682 G Vassalli & Co., mahogany and inlaid wheel barometer, height 96.5cm

£40 - £60 plus 25% BP*

683 Victorian triptych of reverse etched and engraved pub mirrors, each bevelled glass plate approx. 31cm x 52cm, mounted within a single mahogany frame, 121.5cm x 71cm

£50 - £70 plus 25% BP*



Lot 684

684 Unusual ebony and bone parquetry box, 20th Century, possibly Indian, 122cm x 76.5cm x 51cm

£400 - £600 plus 25% BP*

685 Set of four mahogany dining chairs, in Hepplewhite style, late 19th Century, the backs carved with Prince of Wales feathers, within fluted uprights, green drop-in satin seats, tapered square legs, height 93cm

£200 - £300 plus 25% BP*

686 R Hampson, Warrington, oak and mahogany eight day longcase clock, the hood with caddy top and brass capped reeded columns flanking a 13" square dial with signed silvered chapter ring and engraved matted centre with subsidiary seconds and date aperture, the movement striking on a bell, the trunk with crossbanded door within reeded quarter pilasters, on a raised box base and bracket feet, height 215cm

Please note our special conditions of sale regarding clocks and watches
£300 - £500 plus 25% BP*



Lot 687

687 Late George III oak housekeeper's dresser, circa 1800-20, having a cavetto cornice over a back with four recessed double panel cupboard doors, crossbanded with mahogany and opening to shelves and with two small drawers, the base centred with two recessed panel cupboard doors beneath a central drawer, flanked on either side with a further three short drawers, all with turned wooden knobs, raised on bracket feet, width 198cm, depth 60cm, height 220cm

£400 - £600 plus 25% BP*

688 Victorian pub mirror, reverse etched and engraved with a border of trailing flowers, mounted within a walnut architectural frame flanked with pilasters, width 115cm, height 137cm

£70 - £100 plus 25% BP*

689 Italian scagliola marble torchere, the top 33cm diameter, height 102cm

£200 - £300 plus 25% BP*

690 George III mahogany cheval mirror, circa 1800, the rectangular plate supported on turned and ringed columns with acorn finials, over a base united by double stretchers, with sabre legs with brass toes and castors, width 64cm, height 60cm

£150 - £250 plus 25% BP*



Lot 691

691 George III mahogany chest on chest, circa 1770, having a dentil and cavetto cornice over two short and six long graduated drawers, each with gilt bronze handles and escutcheons, within blind fretwork and fluted canted corners, raised on ogee bracket feet, width 124cm, height 172cm, depth 58.5cm
£700 - £1000 plus 25% BP*

692 Mark Salla, George III fiddle mahogany and shell inlaid wheel barometer, with brass 21cm main dial, height 99cm
£70 - £100 plus 25% BP*

693 George III mahogany linen press, in the manner of Gillows, circa 1800, dentil and blind fretwork cornice over two flame mahogany panel doors opening to an interior with five sliding trays, and a later hanging rail, over a base fitted with two short and two long graduated drawers with original brass swan neck handles, raised on ogee bracket feet, width 127cm, depth 58cm, height 201cm
£800 - £1200 plus 25% BP*



Lot 694

694 Yewwood country farmhouse table, solid wood well patinated top over gunbarrel supports united by a central stretcher, length 183cm, width 83cm, height 76cm
£300 - £500 plus 25% BP*



Lot 693



Lot 695

695 Late Victorian satinwood book porter, in the manner of Gillows, circa 1880, having two troughs and a shelf, crossbanded with rosewood, raised on pot castors, width 55cm, height 75cm
£100 - £150 plus 25% BP*

696 Edwardian mahogany display cabinet, having a central oval glazed door flanked with glazed panels and glazed sides, opening to fabric covered shelves, on turned and carved legs with a platform shelf, width 106cm, height 165cm, depth 45cm
£100 - £200 plus 25% BP*



Lot 697

697 Chinoiserie black lacquered bureau bookcase, by Luks & Co., China, following English examples of the Queen Anne and early Georgian period, having a back with two recessed panel doors decorated with figures and trellis in gilt, opening to a fully fitted interior, the bureau base also fully fitted, and with four short and two long drawers, decorated throughout with figures and landscapes, width 104cm, height 214cm
£600 - £800 plus 25% BP*



Lot 698

698 Pair of yewwood and elm high back Windsor chairs, shaped seats and cabriole front legs with crinoline stretchers and pad feet, height 100cm
£200 - £300 plus 25% BP*

699 Late Georgian mahogany drop leaf dining table, circa 1820, fitted with a single frieze drawer with turned ebonised knobs, raised on turned and ringed legs and gates, width 107cm, depth when closed 51cm, height 74cm, length when open 148cm
£80 - £120 plus 25% BP*

700 Oak joined coffer, late 17th Century, two plank hinged top over a frieze carved with guilloche scrolling leaves, over a three recessed panel front with channel moulded outlines, raised on stile supports, width 130cm, height 84cm, depth 53cm
£150 - £250 plus 25% BP*

701 Four French provincial beech dining chairs, late 19th Century, each with a triple bar back, rush seat and cabriole forelegs, height 93cm
£50 - £80 plus 25% BP*



Lot 702

702 Mahogany collector's chest on stand, 19th Century, having two moulded panel doors, carrying handles at the sides, and fitted with a configuration of eleven drawers with brass ring handles, the stand with chamfered square section legs and fretwork brackets, width 63cm, height 113cm, depth 48cm
£100 - £150 plus 25% BP*

703 Edwardian mahogany and inlaid breakfront side table, fitted with three frieze drawers with boxwood stringing, raised on tapered square section legs, width 108cm, height 78cm, depth 50cm
£100 - £200 plus 25% BP*

704 French brass and mahogany adjustable toilet stand, circa 1910, having a circular adjustable mirror over a mahogany platform with brass gallery and brass triform base, height up to 137cm, width 34cm
£120 - £180 plus 25% BP*

705 French walnut and marquetry drop leaf triform table, 20th Century, inlaid throughout with floral scrolls, on slender cabriole legs with brass mounts and sabots, width 54cm, height 75cm

£100 - £150 plus 25% BP*

706 Victorian walnut footstool, by Hewetson & Milner, Tottenham Court Road, in the French style, carved with flowerheads and with an upholstered pad seat, 32cm; also a quality early Victorian rosewood footstool, circa 1840, with green fabric upholstered pad seat, 29cm square (2)

£80 - £120 plus 25% BP*



Lot 707

707 French Empire Revival mahogany and ormolu gueridon, circa 1900, the red scagliola marble top with brass gallery over an ormolu mounted frieze and circular platform with brass galleried shelf beneath, raised on fluted brass capped column legs with triform stretcher and wrythen feet, maximum width 40cm, height 85cm

£300 - £500 plus 25% BP*



Lot 708

708 Hunt & Roskell, late Storr & Mortimer, Victorian oak silver trunk, slightly domed form with metal strap reinforcements throughout and heavy iron carrying handles, labelled to a plaque on the front 'C A Hay Esqr.', with maker's label for New Bond Street, London, width 76cm, depth 53.5cm, height 60cm

£150 - £250 plus 25% BP*



Lot 709

709 Pair of cast iron twin handled campagna pedestal garden urns, width 56cm, height 140cm

£600 - £800 plus 25% BP*



Lot 710

710 Pair of cast iron campagna garden urns, early 19th Century, 65cm diameter, height 77cm

£300 - £500 plus 25% BP*

Information for Buyers at Auctions

- 1. Introduction.** The following notes are intended to assist bidders and buyers, particularly those that are inexperienced or new to our salerooms. All of our auctions are governed by our Conditions of Business incorporating the Terms of Consignment (primarily applicable to sellers), the Terms of Sale (primarily applicable to bidders and buyers) and any notices that are displayed in our salerooms or announced by the auctioneer at the auction. Our Conditions of Business are available for inspection at our salerooms and the Terms of Sale are printed in the back of our auction catalogues. Our staff will be happy to help you if there is anything in our Conditions of Business that you do not fully understand.
Please make sure that you read our Terms of Sale set out in this catalogue or on our website carefully before bidding in the auction. If your bid is successful, you will be obliged to comply with our Terms of Sale.
- 2. Agency.** As auctioneers we usually act on behalf of the seller whose identity, for reasons of confidentiality, is not normally disclosed. If you buy at auction your contract for the goods is with the seller, not with us as auctioneer.
- 3. Estimates.** Estimates are designed to help you gauge what sort of sum might be involved for the purchase of a particular lot. Estimates may change and should not be thought of as the sale price. The lower estimate may represent the reserve price (the minimum price for which a lot may be sold) and will not be below the reserve price. Estimates do not include the buyer's premium or VAT (where chargeable). Estimates are prepared some time before the auction and may be altered by a saleroom notice or announcement by the auctioneer before the auction of the lot. They are not definitive.
- 4. Buyer's Premium.** The Terms of Sale oblige you to pay a buyer's premium at 25% on the hammer price of each lot purchased. In addition, VAT is included in this premium (see below).
- 5. VAT.** Items in our catalogue may be marked in the following ways:
 - a. (*) indicates that VAT is payable by the buyer on the hammer price as well as being an element in the buyer's premium. VAT will be chargeable at the standard rate (presently 20%). This imposition of VAT is likely to be because the seller is registered for VAT within the European Union and is not operating the Dealers Margin Scheme or because VAT is due at 20% on importation into the UK.
 - b. (**) indicates that the lot has been imported from outside the European Union. These lots are liable to a reduced rate of VAT (5%) on the hammer price and buyer's premium).
 - c. Lots which do not have either of the above symbols have no VAT payable on the hammer price. This is because such lots are sold using the Auctioneers' Margin Scheme. The VAT included within the premium is not recoverable as input tax.
- 6. Inspection of goods by the buyer.** As we act on behalf of the seller, we are dependent on information provided by the seller about their goods. We may inspect lots and will act reasonably in taking a general view about them. However, we are normally unable to carry out detailed examinations of lots to check their condition in the way a buyer would do. You will have ample opportunity to inspect the goods. You must inspect and investigate lots that you might wish to bid for. Please note carefully the exclusion of liability for the condition of lots set out in the Terms of Sale at clause 12.4.
- 7. Export of goods.** If you intend to export goods you must find out:
 - a. whether an export licence is needed; and
 - b. if there is a prohibition on importing goods of that character e.g. because the goods contain prohibited materials such as ivory.
- 8. Bidding.** Bidders will be required to register with us before the auction starts. We reserve the right to impose a deadline prior to the auction by which you must register or by which we must receive a commission bid. If you wish to bid on high value lots this deadline may be several days before the auction in order to allow us sufficient time to carry out the necessary checks. Lots will be invoiced to the name and address on the registration form. You will need to provide us with proof of your identity in a form acceptable to us and such other information as we may require. Please enquire in advance about our arrangements for telephone or online bidding. Please note that we may refuse to register you if you do not provide us with all the information and documentation that we ask for or at our discretion.
- 9. Absentee Bidding:** If you are unable to attend the auction there are a number of options available to enable you to participate. When placing any absentee bids, please check and double check the lot numbers as this is the only definitive piece of information which guarantees your bid is executed on the lot you want.
 - a. **Commission bidding:** It is possible to leave commission bids with the auctioneers indicating the maximum amount to be bid excluding buyers' premium. They will be executed as cheaply as possible having regard to the reserve (if any) and competing bids. If two buyers submit identical commission bids the auctioneers may prefer the first bid received. In some instances the auctioneer may also exceed a bid in order to secure the lot on the buyer's behalf. Commission bids are accepted by fax, e-mail and phone, and in all these instances, commission bidders are deemed to have read, understood and agreed to be bound by our conditions of business. All commission bids should be received by close of business on the day prior to the auction. Any bids received later than this time cannot be guaranteed to be executed accurately. To ensure that bids are placed on the right lots please check all your lot numbers as this is the only piece of information which guarantees you buy the lot you want.
 - b. **Telephone bidding:** We reserve the right for this service to be available on higher value lots only. The number of telephone lines is limited so we would urge serious telephone bidding only and ask that you be prepared to bid at least to the low sale estimate. It is also advisable to leave a maximum covering bid in case we cannot contact you by telephone. All telephone bids must be received by close of business on the day prior to the auction and prospective purchasers booking lines are deemed to have read, understood and agreed to be bound by our conditions of business.
 - c. **Internet bidding:** Online bidding services are available through third party service providers, who have their own registration procedures and charge a fee for using their facility, which we collect on their behalf. Online bidders are deemed to have read, understood and agreed to be bound by our conditions of business.
- 10. Methods of Payment.** Acceptable payment methods are debit card, credit card (which attracts a 2% + VAT surcharge) and bank transfer. Usually any cheques will need to be cleared before you can take the goods away. Cash payments are subject to an upper limit of 15,000 euros equivalent). We reserve the right to refuse to accept card payments over the telephone in order to minimise fraudulent transactions being attempted. Separate arrangements exist for accepting payment from online bidders.
- 11. Collection and storage.** Please note what the Terms of Sale say about collection and storage. It is important that you pay for and collect goods promptly. Any delay may involve you having to pay storage charges. We offer a domestic and international dispatch service at our discretion for which we will provide a quote if requested. Cleared payment is required prior to dispatch. For urgent dispatch, awkward, very fragile or bulky items we may suggest an alternative to this service, but please feel free to enquire as we will oblige wherever possible. Please note that there is a special notice applied to coins, medallions and tokens, which is printed at the end of this information.

ARTISTS RESALE RIGHTS

In accordance with Artists Resale Rights Regulations 2006, all lots which sell for €1,000 or more are subject to a resale royalty charge ("Royalty"). This Royalty is payable by the Bidder. The Royalty will be charged at a rate of 4% of the total hammer price (exclusive of Bidder's premium) for lots selling for amounts up to €50,000. For lots selling in excess of €50,001, the Royalty shall be calculated at a reduced rate (details available on request). The Royalty is not subject to VAT and is payable in sterling calculated on the day of sale at the prevailing rate of exchange. Payment shall be passed directly to the Design and Artists Copyright Society (DACS), 33 Great Sutton Street, London EC1V 0DX. For further information please contact the Auctioneers or DACS on 0845 4103410 or visit their website at www.dacs.org.uk

IMPORTANT NOTICES

Electrical goods: These are sold as 'antiques' only and if bought for use must be checked for compliance with safety regulations by a qualified electrician first.

Post 1950s Furniture: All items of furniture included in this sale are offered as works of art. The items may not comply with the Furniture and Furnishings (Fire) Safety Regulations 1988 and for this reason they should not be used in a private dwelling.

Coloured gemstones: It is accepted practice that many coloured gemstones are routinely treated to enhance their colour and possibly clarity, and unless otherwise stated in a individual written condition reports, it must be assumed that those offered for sale in this saleroom have possibly been subjected to such treatments:

Clocks & Watches: Please note that with clock and watch lots we do not offer any opinion as to the originality of component parts, accompanying documentation, boxes or any other additional material. In the case that a watch has its factory seal intact it will not have been, and cannot be, opened by us. If a potential purchaser wishes to make an internal inspection of a watch which necessitates breaking a factory seal, this will only be possible on the understanding that the watch will be reinstated at the interested party's expense, regardless of whether they are the purchaser. If a condition report is requested it will not include any opinion as to the originality, completeness or working condition of the movement. Potential buyers are strongly advised to make a physical inspection in person prior to bidding as we will not accept returns on such lots. By bidding you are deemed to have satisfied yourself with regard to the originality and working order, or otherwise, of all components of a lot.

Coins, Tokens and Medallions: Please note that while we are happy to post such items, in doing so we will not accept any returns under Section 13 of our Terms of Sale due to the possibility of lots being substituted once they have left Byrne's premises.

E&OE 1st November 2015

Byrne's (Chester) Ltd.

A Private Limited Company. Registered in England and Wales No. 7794090

Conditions of Sale

Both the sale of goods at our auctions and your relationship with us are governed by the Terms of Consignment (primarily applicable to sellers) the Terms of Sale (primarily applicable to bidders and buyers) and any notices displayed in the saleroom or announced by us at the auction (collectively, the "Conditions of Business"). The Terms of Consignment and Terms of Sale are available at our saleroom on request.

Please read these Terms of Sale carefully. Please note that if you register to bid and/or bid at auction this signifies that you agree to and will comply with these Terms of Sale.

Please note that these Terms of Sale relate to auctions held at our premises only. We have separate terms for online only auctions.

1. Definitions and interpretation

1.1 To make these Terms of Sale easier to read, we have given the following words a specific meaning:

"Auctioneer"	means Byrne's (Chester) Ltd, a company registered in England and Wales with registration number 7794090 and whose registered office is located at Pullman House, The Sidings, Boundary Lane, Saltney, Chester, CH4 8RD, or its authorised auctioneer, as appropriate;
"Bidder"	means a person participating in bidding at the auction;
"Buyer"	means the person who makes the highest bid for a Lot accepted by the Auctioneer;
"Deliberate Forgery"	means: (a) an imitation made with the intention of deceiving as to authorship, origin, date, age, period, culture or source; (b) which is described in the catalogue as being the work of a particular creator without qualification; and (c) which at the date of the auction had a value materially less than it would have had if it had been as described;
"Hammer Price"	means the level of the highest bid for a Lot accepted by the Auctioneer by the fall of the hammer;
"Lot(s)"	means the goods that we offer for sale at our auctions;
"Premium"	means the premium that we will charge you on your purchase of a Lot to be calculated as set out in Clause 4;
"Reserve"	means the minimum hammer price at which a Lot may be sold;
"Sale Proceeds"	means the net amount due to the Seller;
"Seller"	means the persons who consign Lots for sale at our auctions;
"Terms of Consignment"	means the terms on which we agree to offer Lots for sale in our auctions as agent on behalf of Sellers;
"Terms of Sale"	means these terms of sale, as amended or updated from time to time;
"Total Amount Due"	means the Hammer Price for a Lot, the Premium, any applicable artist's resale right royalty, any VAT due and any additional charges payable by a defaulting buyer under these Terms of Sale;
"Trader"	means a Seller who is acting for purposes relating to that Seller's trade, business, craft or profession, whether acting personally or through another person acting in the trader's name or on the trader's behalf;
"VAT"	means Value Added Tax or any equivalent sales tax; and
"Website"	means our website available at www.byrnesauctioneers.co.uk .

In these Terms of Sale the words 'you', 'yours', etc. refer to you as the Buyer. The words "we", "us", etc. refer to the Auctioneer. Any reference to a 'Clause' is to a clause of these Terms of Sale unless stated otherwise.

2 Information that we are required to give to Consumers

- 2.1 A description of the main characteristics of each Lot as contained in the auction catalogue.
- 2.2 Our name, address and contact details as set out herein, in our auction catalogues and/or on our Website.
- 2.3 The price of the Goods and arrangements for payment as described in Clauses 4, 5, 7 and 8.
- 2.4 The arrangements for collection of the Goods as set out in Clauses 8 and 9.
- 2.5 Your right to return a Lot and receive a refund if the Lot is a Deliberate Forgery as set out in Clause 13.
- 2.6 We and Trader Sellers have a legal duty to supply any Lots to you in accordance with these Terms of Sale.
- 2.7 If you have any complaints, please send them to us directly at the address set out on our Website.

3 Bidding procedures and the Buyer

- 3.1 You must register your details with us before bidding and provide us with any requested proof of identity and billing information, in a form acceptable to us. You must also satisfy any security arrangements we have in place before entering the auction room to view or bid.
- 3.3 We strongly recommend that you attend the auction in person. You are responsible for your decision to bid for a particular Lot. If you bid on a Lot, including by telephone and online bidding, or by placing a commission bid, we assume that you have carefully inspected the Lot and satisfied yourself regarding its condition.
- 3.3 If you instruct us in writing, we may execute commission bids on your behalf. Neither we nor our employees or agents will be responsible for any failure to execute your commission bid, unless our failure to do so is unreasonable. Where two or more commission bids at the same level are recorded we have the right to prefer the first bid made (where this can be reasonably ascertained).
- 3.4 The Bidder placing the highest bid for a Lot accepted by the Auctioneer will be the Buyer at the Hammer Price. Any dispute about a bid will be settled at our discretion. We may reoffer the Lot during the auction or may settle the dispute in another way. We will act reasonably when deciding how to settle the dispute.

- 3.5 Bidders will be deemed to act as principals, even if the Bidder is acting as an agent for a third party.
- 3.6 We may bid on Lots on behalf of the Seller up to one bid below the Reserve.
- 3.7 We may refuse to accept any bid if it is reasonable for us to do so.
- 3.8 Bidding increments will be at our sole discretion (but will be in line with standard auction practice).
- 4 **The purchase price**
As Buyer, you will pay:
 - a. the Hammer Price;
 - b. a premium of 20.83% plus VAT of the Hammer Price;
 - c. any artist's resale right royalty payable on the sale of the Lot; and
 - d. any VAT due.
- 5 **VAT**
 - 5.1 You shall be liable for the payment of any VAT applicable on the Hammer Price and premium due for a Lot. Please see the symbols used in the auction catalogue for that Lot and the "Information for Buyers" in our auction catalogue for further information.
 - 5.2 We will charge VAT at the current rate at the date of the auction.
- 6 **The contract between you and the Seller**
 - 6.1 The contract for the purchase of the Lot between you and the Seller will be formed when the hammer falls accepting the highest bid for the Lot at the auction.
 - 6.2 You may directly enforce any terms in the Terms of Consignment against a Seller to the extent that you suffer damages and/or loss as a result of the Seller's breach of the Terms of Consignment.
 - 6.3 If you breach these Terms of Sale, you may be responsible for damages and/or losses suffered by a Seller or us. If we are contacted by a Seller who wishes to bring a claim against you, we may in our discretion provide the Seller with information or assistance in relation to that claim.
 - 6.4 We normally act as an agent only and will not have any responsibility for default by you or the Seller (unless we are the Seller of the Lot).
- 7 **Payment**
 - 7.1 Immediately following your successful bid on a Lot you will:
 - 7.1.1 give to us, if not already provided to our satisfaction, proof of identity in a form acceptable to us (and any other information that we require in order to comply with our anti-money laundering obligations); and
 - 7.1.2 pay to us the Total Amount Due in cash (for which there is an upper limit of 15,000 euros equivalent) or in any other way that we agree to accept payment.
 - 7.2 If you owe us any money, we may use any payment made by you to repay these debts.
- 8 **Title and collection of purchases**
 - 8.1 Once you have paid us in full the Total Amount Due for any Lot, ownership of that Lot will transfer to you. You may not claim or collect a Lot until you have paid for it.
 - 8.2 You will (at your own expense) collect any Lots that you have purchased and paid for either:
 - 8.2.1 not later than seven business days following the day of the auction; or
 - 8.2.2 not later than seven business days following the date that we have received payment of the Total Amount Due in cleared funds, if later.
 - 8.3 If you do not collect the Lot within this time period, you will be responsible for any reasonable removal, storage and insurance charges in relation to that Lot.
 - 8.4 Risk of loss or damage to the Lot will pass to you when you (or your agents) take physical possession of the Lot.
 - 8.5 If you do not collect the Lot that you have paid for within ninety days after the auction, we may sell the Lot. We will pay the proceeds of any such sale to you, but will deduct any storage charges or other sums that we have incurred in the storage and sale of the Lot. We reserve the right to charge you a selling commission at our standard rates on any such resale of the Lot.
- 9 **Remedies for non-payment or failure to collect purchases**
 - 9.1 Please do not bid on a Lot if you do not intend to buy it. If your bid is successful, these Terms of Sale will apply to you. This means that you will have to carry out your obligations set out in these Terms of Sale. If you do not comply with these Terms of Sale we may (acting on behalf of the Seller and ourselves) pursue one or more of the following measures:
 - 9.1.1 take action against you for damages for breach of contract;
 - 9.1.2 reverse the sale of the Lot to you and/or any other Lots sold by us to you;
 - 9.1.3 resell the Lot by auction or private treaty (in which case you will have to pay any difference between the price you should have paid for the Lot and the price we sell it for as well as the charges outlined in Clause 8.5). Please note that if we sell the Lot for a higher amount than your winning bid, the extra money will belong to the Seller;
 - 9.1.4 remove, store and insure the Lot at your expense;
 - 9.1.5 if you do not pay us within five business days of your successful bid, we may charge interest at a rate not exceeding 1.5% per month on the total amount due;
 - 9.1.6 keep that Lot or any other Lot sold to you until you pay the Total Amount Due;
 - 9.1.7 reject or ignore bids from you or your agent at future auctions or impose conditions before we accept bids from you; and/or
 - 9.1.8 if we sell any Lots for you, use the money made on these Lots to repay any amount you owe us.
 - 9.2 We will act reasonably when exercising our rights under Clause 9.1. We will contact you before exercising these rights and try to work with you to correct any non-compliance by you with these Terms of Sale.

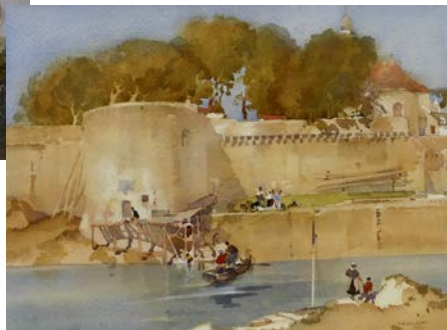
- 10 Health and safety**
Although we take reasonable precautions regarding health and safety, you are on our premises at your own risk. Please note the lay-out of the premises and security arrangements. Neither we nor our employees or agents are responsible for the safety of you or your property when you visit our premises, unless you suffer any injury to your person or damage to your property as a result of our, our employees' or our agents' negligence.
- 11 Warranties**
11.1 The Seller warrants to us and to you that:
11.1.1 the Seller is the true owner of the Lot for sale or is authorised by the true owner to offer and sell the lot at auction;
11.1.2 the Seller is able to transfer good and marketable title to the Lot to you free from any third party rights or claims; and
11.1.3 as far as the Seller is aware, the main characteristics of the Lot set out in the auction catalogue (as amended by any notice displayed in the saleroom or announced by the Auctioneer at the auction) are correct.
- 11.2** If, after you have placed a successful bid and paid for a Lot, any of the warranties above are found not to be true, please notify us in writing. Neither we nor the Seller will be liable to pay you any sums over and above the Total Amount Due and we will not be responsible for any inaccuracies in the information provided by the Seller except as set out below.
- 11.3** Please note that many of the Lots that you may bid on at our auction are second-hand.
- 11.4** If a Lot is not second-hand and you purchase the Lot as a Consumer from a Seller that is a Trader, a number of additional terms may be implied by law in addition to the Seller's warranties set out at Clause 11.1 (in particular under the Consumer Rights Act 2015). These Terms of Sale do not seek to exclude your rights under law as they relate to the sale of these Lots.
- 11.5** As expressly set out above, all other warranties, conditions or other terms which might have effect between the Seller and you, or us and you, or be implied or incorporated by statute, common law or otherwise are excluded.
- 12 Descriptions and condition**
12.1 Our descriptions of the Lot will be based on: (a) information provided to us by the Seller of the Lot (for which we are not liable); and (ii) our opinion (although it is likely that we will not be able to carry out a detailed inspection of each Lot).
- 12.2** We will give you a number of opportunities to view and inspect the Lots before the auction. You (and any independent consultants acting on your behalf) must satisfy yourself about the accuracy of any description of a Lot. We shall not be responsible for any failure by you or your consultants to properly inspect a Lot.
- 12.3** Representations or statements by us as to authorship, genuineness, origin, date, age, provenance, condition or estimated selling price involve matters of opinion. We undertake that any such opinion will be honestly and reasonably held and accept liability for opinions given negligently or fraudulently.
- 12.4** Please note that Lots (in particular second-hand Lots) are unlikely to be in perfect condition. Lots are sold "as is" (i.e. as you see them at the time of the auction). Neither we nor the Seller accept any liability for the condition of second-hand Lots or for any condition issues affecting a Lot if such issues are included in the description of a Lot in the auction catalogue (or in any saleroom notice) and/ or which the inspection of a Lot by the Buyer ought to have revealed.
- 13 Deliberate Forgeries**
13.1 You may return any Lot which is found to be a Deliberate Forgery to us within one month of the auction provided that you return the Lot to us in the same condition as when it was released to you, accompanied by a written statement identifying the Lot from the relevant catalogue description and a written statement of defects.
- 13.2** If we are reasonably satisfied that the Lot is a Deliberate Forgery we will refund the money paid by you for the Lot (including any Premium and applicable VAT) provided that if:
13.2.1 the catalogue description reflected the accepted view of experts as at the date of the auction; or
13.2.2 you personally are not able to transfer good and marketable title in the Lot to us, you will have no right to a refund under this Clause 13.2.
- 13.3** If you have sold the Lot to another person, we will only be liable to refund the price that you paid for the Lot. We will not be responsible for repaying any additional money you may have made from selling the Lot.
- 13.4** Our right to return a Lot that is a Deliberate Forgery does not affect your legal rights and is in addition to any other right or remedy provided by law or by these Terms of Sale.
- 14 Our liability to you**
14.1 We will not be liable for any loss of opportunity or disappointment suffered as a result of participating in our auction.
- 14.2** In addition to the above, neither we nor the Seller shall be responsible to you and you shall not be responsible to the Seller or us for any other loss or damage that any of us suffer that is not a foreseeable result of any of us not complying with the Conditions of Business. Loss or damage is foreseeable if it is obvious that it will happen or if at the time of the sale of the Lot, we, you and the Seller knew it might happen.
- 14.3** Subject to Clause 14.4, if we are found to be liable to you for any reason (including, amongst others, if we are found to be negligent, in breach of contract or to have made a misrepresentation), our liability will be limited to the total purchase price paid by you to us for any Lot.
- 14.4** Notwithstanding the above, nothing in these Terms of Sale shall limit our liability (or that of our employees or agents) for:
14.4.1 death or personal injury resulting from negligence (as defined in the Unfair Contract Terms Act 1977);
14.4.2 fraudulent misrepresentation; or
14.4.3 any liability which cannot be excluded by law.
- 15 Notices**
15.1 All notices between you and us regarding these Terms of Sale must be in writing and signed by or on behalf of the party giving it.
- 15.2** Any notice referred in Clause 15.1 may be given:
15.2.1 by delivering it by hand;
15.2.2 by first class pre-paid post or Recorded Delivery; or
15.2.3 by email, provided that a copy is also sent by pre-paid post or Recorded Delivery.
- 15.3** Notices must be sent:
15.3.1 by hand or registered post:
a. to us, at our address set out in these Terms of Sale or at our registered office address appearing on our Website; and
b. to you, at the last postal address that you have given to us as your contact address in writing; or
15.3.2 by email:
a. to us, by sending the notice to both the following email addresses:
joboucher@byrnesauctioneers.co.uk
auctions@byrnesauctioneers.co.uk
b. to you, by sending the notice to any email address that you have given to us as your contact email address in writing.
- 15.4** Notices will be deemed to have been received:
15.4.1 if delivered by hand, on the day of delivery;
15.4.2 if sent by first class pre-paid post or Recorded Delivery, two business days after posting, exclusive of the day of posting; or
15.4.3 if sent by email, at the time of transmission unless sent after 17.00 in the place of receipt in which case they will be deemed to have been received on the next business day in the place of receipt (provided that a copy has also been sent by pre-paid post or Recorded Delivery as set out in Clause 15.2.3).
- 15.5** Any notice or communication given under these Terms of Sale will not be validly given if sent by fax, email, any form of messaging via social media or text message.
- 16 Data Protection**
We will hold and process any personal data in relation to you in accordance with our current privacy policy, a copy of which is available on request.
- 17 General**
17.1 We may, acting reasonably, refuse admission to our premises or attendance at our auctions by any person.
- 17.2** We act as an agent for our Sellers. The rights we have to claim against you for breach of these Terms of Sale may be used by either us, our employees or agents, or the Seller, its employees or agents, as appropriate. Other than as set out in this Clause, these Terms of Sale are between you and us and no other person will have any rights to enforce any of these Terms of Sale.
- 17.3** We may use special terms in the catalogue descriptions of particular Lots. You must read these terms carefully along with any glossary provided in our auction catalogues.
- 17.4** Each of the clauses of these Terms of Sale operates separately. If any court or relevant authority decides that any of them are unlawful, the remaining clauses will remain in full force and effect.
- 17.5** We may change these Terms of Sale from time to time, without notice to you. Please read these Terms of Sale carefully, as they may be different from the last time you read them.
- 17.6** Except as otherwise stated in these Terms of Sale, each of our rights and remedies are: (a) in addition to and not exclusive of any other rights or remedies under these Terms of Sale or general law; and (b) may be waived only in writing and specifically. Delay in exercising or non-exercise of any right under these Terms of Sale is not a waiver of that or any other right. Partial exercise of any right under these Terms of Sale will not preclude any further or other exercise of that right or any other right under these Terms of Sale. Waiver of a breach of any term of these Terms of Sale will not operate as a waiver of breach of any other term or any subsequent breach of that term.
- These Terms of Sale and any dispute or claim arising out of or in connection with them (including any non-contractual claims or disputes) shall be governed by and construed in accordance with the laws of England and the parties irrevocably submit to the exclusive jurisdiction of the English courts.



599



634



BYRNE'S

Auctioneers & Valuers

Pullman House
The Sidings
Boundary Lane
Saltney
Chester
CH4 8RD

Tel: 01244 681311
auctions@byrnesauctioneers.co.uk
www.byrnesauctioneers.co.uk