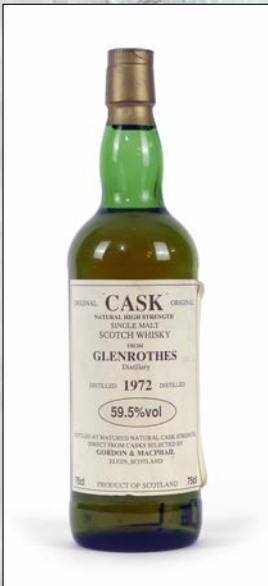


BYRNE'S

Auctioneers & Valuers

WINTER FINE SALE

Wednesday 14th December 2022





51 (part)



80



171 & 172



BYRNE'S

Auctioneers & Valuers

WINTER FINE SALE

To be sold by public auction on

Wednesday 14th December 2022
at 10am

at Pullman House, The Sidings, Boundary Lane, Saltney, Chester CH4 8RD

Viewing

Sunday 11th December	10am – 2pm
Monday 12th December	10am – 5pm
Tuesday 13th December	10am – 4pm

Sale Day

The auction is being conducted using commission, telephone and online bidding only. It is not possible to attend the sale in person.

Payment and Collection

We are open for payment and collection of bought lots on both sale days. No appointment is necessary.

Enquiries

Adrian Byrne ASFAV or Jo Boucher ASFAV

Tel: (01244) 681311

email: auctions@byrnesauctioneers.co.uk

Buyer's Premium

25% (inc VAT)

ORDER OF SALE

Ceramics	1 – 100
Silver & Plate	110 – 183
Coins, Jewellery & Watches	190 – 293
Pictures	300 – 360
A collection of snuff boxes	370 – 396
Objets d'Art	397 – 485
Wines & Spirits	486 – 503
Furniture & Rugs	510 – 641



Cover illustrations:

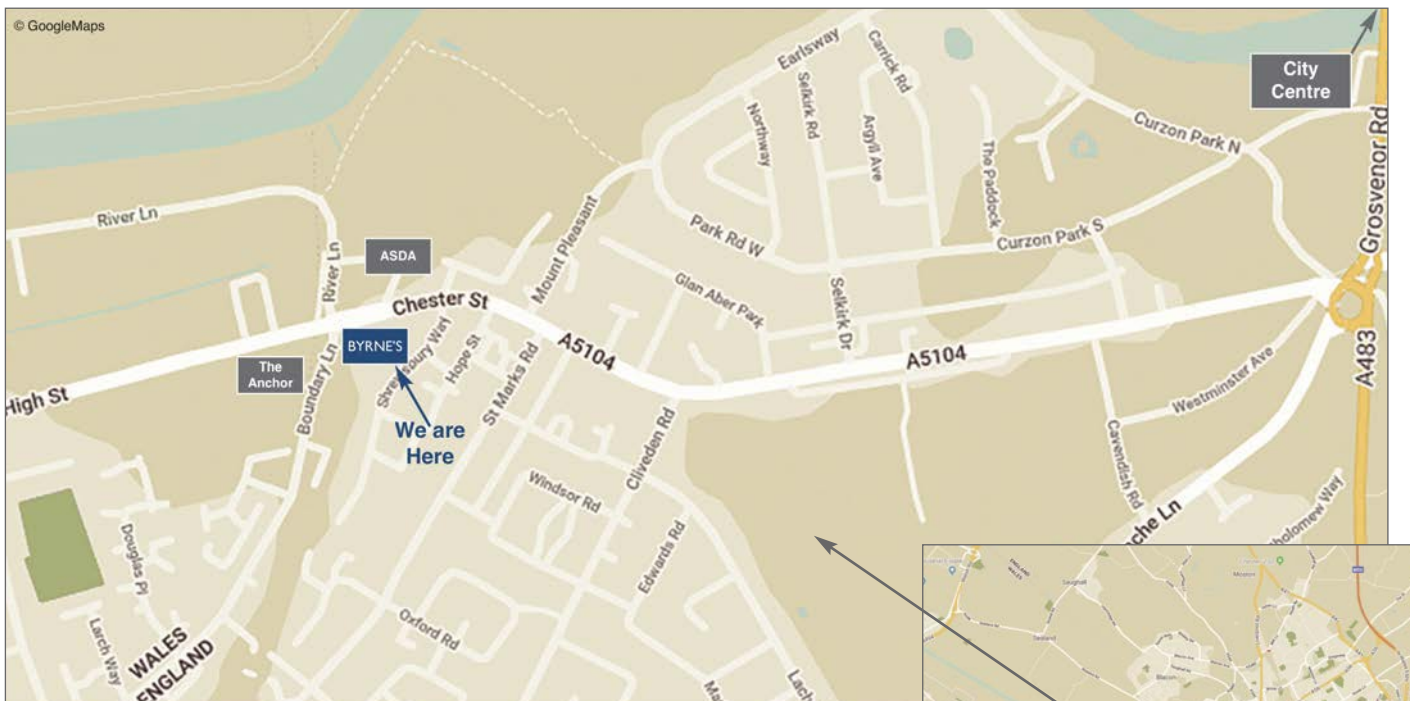
A selection of items from the sale

Catalogue: £8 (inc. p&p)



Live bidding is available for this sale on two platforms. Additional fees apply as follows:

Lots purchased online with [easyliveauction.com](https://www.easyliveauction.com) attract an additional charge for this service of 3% of the hammer price plus VAT, or you can pay a flat fee of £3 (inclusive of VAT) to register with no additional internet bidding surcharge. Lots purchased online with [the-saleroom.com](https://www.the-saleroom.com) will attract an additional charge for this service in the sum of 4.95% of the hammer price plus VAT.



BYRNE'S

Auctioneers & Valuers

Pullman House, The Sidings
Boundary Lane, Saltney
Chester CH4 8RD
01244 681311
auctions@byrnesauctioneers.co.uk

Selling Rate & Spare Lots

It is anticipated that the selling rate will be in the region of 70 – 100 lots per hour.

E-mail sale notification

If you would like to receive e-mail notification of our forthcoming sales please let us have your contact details including an e-mail address. We will add you to our database and you will be informed prior to general sales and antique sales with our unique 'e-flier'.

Notice for purchasers of smaller items

Byrne's will pack smaller purchases within reason for which we make a packing charge. Items are normally despatched via Special Delivery. Items are packed and the cost of postage is obtained.

This will need to be paid in full before the items are despatched. We send a note to this effect to successful purchasers with the auction invoice.

If you wish to take advantage of this service we require a disclaimer to be signed prior to despatch. If you would like any information in the meantime then please do not hesitate to contact us.

Pictures, Drawings, Prints, Miniatures etc

An explanation of cataloguing terms

- The first name, or names and surname of the artist – in our opinion a work by the artist
- The initials of the first name(s) and surname of the artist – in our opinion a work of the period of the artist and which may be in whole or part a work of the artist
- Attributed to – in our opinion 'probably' a work by the artist
- Follower of – in our opinion a work by a painter working in the artist's style, contemporary or near contemporary but not necessarily his pupil
- In the manner of – in our opinion a work in the style related to the artist but of a later date
- School – accompanied by the name of a place or country and date – in our opinion the picture was executed at that time and in that location e.g. English School, 18th Century
- The surname of the artist preceded by 'after' – in our opinion a copy of the work of the artist
- Signed and dated – in our opinion has a signature which is recognised as that of the artist and was executed at that date
- Bears signature and/or date – in our opinion the artist's name, date or inscription may have been added by another hand

Please note that lots marked ▲ may be subject to Artist's Resale Rights regulations. Please see page 73 for details.

CERAMICS & GLASS





Lot 1

1 Two Portuguese majolica lizard wall ornaments, one finished in speckled green and ochre, indistinctly marked, 42cm; the other in yellow and green glazes, length 38cm

£100 - £150 plus 25% BP*

2 Royal Worcester fruit decorated composite coffee service, comprising baluster coffee pot by A Shuck, height 17cm; baluster cream jug by R Austin; sugar bowl by H Ayrton; footed cream jug by N H Price (repaired); coffee can and saucer by W H Austin; another by W Hale; three saucers by S Stanley; a repaired saucer by Powell; two coffee cans by A G Moseley; coffee can by H Ayrton; coffee can by Shuck (16)

£700 - £900 plus 25% BP*

3 Chinese blue and white conical bowl, 19th Century, 10.5cm diameter; also a Chinese blue and white tea bowl and saucer and a further Chinese tea bowl (4)

£80 - £120 plus 25% BP*



Lots 4 - 6

4 Pair of Chinese blue and white gourd vases, late 19th Century, decorated with lotus flower scrolls around a lappet base, four character Xuantong mark (1909-11), height 15.5cm

£80 - £120 plus 25% BP*

5 Three Chinese blue and white plates, late 18th Century, decorated with a pagoda landscape design with figures on a bridge, within a wavy moulded border, 24.5cm; also a Chinese blue and white saucer dish, decorated with a figure beside a peony rock, late 18th Century, 20.5cm (4)

£80 - £120 plus 25% BP*

6 Chinese blue and white meat dish, Qianlong (1736-95), centred with a tall pagoda landscape, 25.5cm x 33cm

£80 - £120 plus 25% BP*

7 Victorian engraved glass rummer, bucket bowl initialled 'H E W', engraved with hops and barley, 14.5cm; also an engraved initialled and dated wine glass, circa 1881; two named engraved glass beakers, one dated 1891; two further engraved ale beakers; and a Victorian strawberry cut rummer (8)

£50 - £100 plus 25% BP*

8 Villeroy & Boch Trio pattern porcelain dinner, tea and breakfast service, including fourteen dinner plates, nine tea cups, twelve saucers, teapot, two vegetable dishes, two sauceboats on stands, twelve breakfast/dessert bowls, seven soup bowls with eight stands etc, 101 pieces in total

£200 - £400 plus 25% BP*



Lot 9

9 Two Chinese clobbered porcelain jars, 18th or 19th Century, one finished in yellow with butterflies, peaches and peony, the other in blue with similar decoration, both with pierced wooden covers and stands, overall height 31cm and 30cm respectively

£300 - £500 plus 25% BP*

10 Three Nailsea glass dumps, each of elongated form, with stretched air bubbles, 15cm, 13.5cm and 13cm

£60 - £100 plus 25% BP*

11 Three Japanese kutani saucer dishes, late Meiji (1868-1912), each decorated with figures at a quayside in terracotta and gilt, painted marks, 22.5cm

£100 - £150 plus 25% BP*

12 Terracotta bust of a young woman in the Victorian Romantic style, height 58cm

£60 - £100 plus 25% BP*

13 Italian painted terracotta bust by Dolfi Otello, modelled as a Medieval woman decorated in colours, signed, height 49cm

£100 - £200 plus 25% BP*

14 Pair of Irish cut glass lidded jars, 19th Century, strawberry and fan cut throughout with mushroom finial, supported over a square base, height 29cm

£200 - £300 plus 25% BP*



Lots 12 and 13



Lots 20 and 21

15 Wedgwood Florentine (W2714) china dinner and coffee service, comprising eight dinner plates, three 23cm plates, six side plates, eight soup bowls, nine stands, two circular lidded tureens, gravy boat on stand, 39cm oval meat plate, 35cm meat plate, eight coffee cans with saucers, eight sandwich plates, lidded coffee pot, lidded sucrier and cream jug, and two straight sided saucer dishes, 13cm (69) printed Portland Vase marks
£400 - £600 plus 25% BP*

16 Chinese famille jaune ovoid jar and cover, early 20th Century, decorated with figural panels against a blue and green scrolled ground, painted blue double circle, height 16.5cm; also a Chinese famille rose small jar and cover, decorated with figures and calligraphy, height 5.5cm (2)
£60 - £80 plus 25% BP*

17 Chinese yellow ground saucer dish, 20th Century, decorated with calligraphic medallions against a yellow ground decorated with ribbons above green foaming waves, painted Guangxu mark, 16.5cm diameter
£30 - £50 plus 25% BP*

18 Japanese satsuma koro, Meiji/Taisho (1868-1926), the cover surmounted with a shi-shi dog, the body decorated with immortals, raised on three spur feet, signed, height 15cm
£30 - £50 plus 25% BP*

19 Royal Worcester gilded foliate jug, circa 1889, the cover with a ring handle, tapered body relief moulded with prunus blossom at the rim and further decorated with flowers and foliage in colours and gilt, printed mark, height 21cm
£40 - £60 plus 25% BP*

20 Qajar decorated hexagonal tile, centred with a bird amidst foliage within a blue wavy floral border, 28.5cm
£70 - £100 plus 25% BP*

21 Chinese Yixing teapot, late 19th/early 20th Century, straight sided form, the handle with two loose rings, seal mark to the base, height 11.5cm
£50 - £100 plus 25% BP*

22 William Moorcroft Pomegranate plate, with everted rim, painted signature and impressed marks, 23cm diameter
£60 - £100 plus 25% BP*

23 Chinese clobbered blue and white vase, late 19th Century, decorated with prunus blossom, and later painted in terracotta against a blue scale ground (restored), height 46cm
£50 - £70 plus 25% BP*

24 Chinese garniture of three vases, late 18th Century, comprising a lidded baluster vase and two sleeve vases, each decorated with a pheasant on a peony rock design, the covered vase 28cm, the sleeve vases 23.5cm, all with damages; also a Chinese blue and white baluster vase decorated with a pagoda landscape pattern (badly damaged), height 26cm (4)
£80 - £120 plus 25% BP*



Lots 25 and 26

25 Japanese imari octagonal bowl, Meiji (1868-1912), centred with a basket of flowers within a decorated panelled border, 31cm; also a Japanese imari bowl, decorated with formalised panels of prunus blossom and trellis, 25cm diameter (2)
£80 - £120 plus 25% BP*

26 Pair of Japanese imari vases, late Meiji (1868-1912), ovoid form with trumpet neck, decorated with panels featuring floral vases and pine, in typical palette, height 30.5cm
£100 - £150 plus 25% BP*



Lots 29 and 30

27 Chinese blue and white porcelains in the fisherman and cormorant pattern, late 18th Century, comprising four coffee cups, tea bowl, five saucers, lidded cream jug and a teapot stand or spoon dish (12)
£50 - £100 plus 25% BP*

28 Chinese blue and white teapot and cover, early 19th Century (with damages), height 16.5cm; also a Chinese blue and white rice bowl and cover, 12cm; a blue and white peony rock bowl, 14.5cm; lotus flower patterned saucer dish, 16cm; and a zigzag fence pattern coffee cup (5)
£50 - £80 plus 25% BP*

29 Chinese famille verte moulded biscuit porcelain bottle vase, late 19th Century, pierced and relief moulded with dragons and immortals against clouds, moulded Qianlong mark, height 21cm
£100 - £150 plus 25% BP*

30 Five Chinese famille rose plates, all 18th Century, including an armorial plate, 22.5cm; Mandarin style gilded plate, 23cm; a plate decorated with seated figures in a sopra bianco border, 23cm diameter; and two peony patterned plates, 23.5cm and 23cm
£100 - £150 plus 25% BP*

31 Famille rose palette flute moulded bowl, second half 18th Century, decorated with a peony rock and fence pattern, 14cm diameter
£30 - £50 plus 25% BP*

32 Chinese famille rose bowl, late 18th Century, decorated with floral bouquets, 17.5cm; also a similarly decorated tea bowl and two saucers; eight further tea bowls; two further saucers; and a Cantonese famille rose small teapot, height 9.5cm (16)
£40 - £60 plus 25% BP*



Lot 33

33 Pair of Royal Doulton stoneware bottle vases, Persian inspired shape decorated with bold stylised flowers against a Slater's Patent textured ground, impressed marks, height 39.5cm
£100 - £150 plus 25% BP*

34 Two Meissen small cabinet cups, late 19th Century, decorated with Deutsche Blumen, underglaze blue crossed swords mark, 5.5cm diameter; also a further puce decorated cup, underglaze blue crossed swords mark, 7.5cm (3)
£50 - £70 plus 25% BP*



Lots 36 - 39 (part)

35 Chinese famille rose bowl, late 18th Century, 11.5cm; also a similar saucer (af); baluster cream jug (cracked); tea bowl and saucer (cracked); and a famille rose teapot and cover (with damages), height 14.5cm (6)
£30 - £50 plus 25% BP*

36 Brussels faience pewter lidded tankard, 18th Century, decorated with a panel depicting a prancing horse against a puce sponged ground, height 21.5cm
£80 - £120 plus 25% BP*

37 Continental delft blue and white octagonal dish, circa 1650-1700, centred with a hawk and bordered with a hunting dog and running hare, 30cm x 23cm
£70 - £100 plus 25% BP*

38 Delft blue and white dish, circa 1740-60, centred with a bird standing atop a vase in chinoiserie style (repaired), 34.5cm diameter
£40 - £60 plus 25% BP*

39 Dutch delft plate, circa 1760, formal peony rock decoration in blue and white, 23.5cm diameter; also a delft baluster vase decorated with a formal floral design in blue and yellow against a white ground, height 16.5cm (2)
£40 - £60 plus 25% BP*

40 Large Daum or Murano style heavy freeform clear glass bowl, 47cm diameter
£40 - £60 plus 25% BP*

41 Chinese clobbered blue and white dish, 19th Century, with gilt ormolu mounts converting it to a basket, 27cm; also a further Chinese clobbered plate, 27.5cm; and a pair of Chinese famille rose plates, decorated with boys playing in a garden, bordered with dragons, 25cm diameter (4)
£80 - £120 plus 25% BP*



Lot 42

42 Chinese kraak blue and white porcelain dish, Transitional, circa 1630-50, the centre decorated with birds with informal panel borders, 31cm diameter
£100 - £200 plus 25% BP*

43 Meissen porcelain covered bowl, with a gilded bud finial, decorated with pendant flowers falling from a gilded rim, the interior with floral sprigs, underglaze blue crossed swords mark, height 12.5cm; also a German porcelain circular box and cover, decorated with Deutsche Blumen, printed crossed swords mark, 13.5cm diameter (2)
£100 - £150 plus 25% BP*

44 Large clear glass door porter, internally punctuated with evenly spaced bubbles, 17cm diameter
£30 - £50 plus 25% BP*



Lots 45 and 46

45 Pair of Chinese famille verte chargers, 19th Century, similarly decorated with figures and a traveller with elephant companion, in predominantly green enamels (one professionally restored), 38cm diameter
£200 - £400 plus 25% BP*

46 Chinese apple green vase, late 19th Century, cylinder form with a wide flared neck, crackle glazed throughout, height 24cm
£80 - £120 plus 25% BP*

47 Pair of Japanese porcelain hexagonal vases, Taisho (1912-26), decorated with geese alighting on a pond, height 30.5cm
£50 - £80 plus 25% BP*

48 Leeds Pottery pearlware leaf pickle dish, circa 1800, 12.5cm; also a pair of transfer printed leaf pickle dishes, 13.5cm; and a pearlware transfer printed sauceboat, height 7cm (4)
£20 - £40 plus 25% BP*



Lot 49

49 A large Goldscheider (Wien) figure, 'A pause for a smoke', a young itinerant traveller, painted and gilded terracotta, signed to the base, height 96cm
£300 - £500 plus 25% BP*

50 Chinese blue and white bullet shaped teapot and cover, late 18th Century, decorated with a pagoda landscape and later decorated with a gilt border, height 14.5cm; also a Chinese famille rose bowl, decorated with figures, 14.5cm; and a further Chinese famille rose bowl decorated with flowers (cracked), 15cm (3)

£70 - £100 plus 25% BP*



Lot 51 (part)

51 Chinese Canton famille rose dessert service, early 19th Century, typically decorated with panels of figures, birds and flowers against a blue and green scroll ground, comprising three lappet shaped serving dishes, 27.5cm; oval serving dish, 28cm; small rectangular serving dish, 23cm; and twelve plates, 20.5cm (17)
£200 - £300 plus 25% BP*

52 Japanese imari plaque, late Meiji (1868-1912), traditionally decorated, 41cm diameter; also a further Japanese imari plate, having a scalloped edge, 31cm diameter (2)
£80 - £120 plus 25% BP*



Lot 53

53 Zsolnay iridescent green glazed figural table salt, modelled as a child with a basket, gilt Zsolnay Pecs mark 'Made in Hungary', 8.5cm
£60 - £80 plus 25% BP*

54 Japanese imari plaque, Meiji (1868-1912), traditionally decorated, 40cm diameter; also a further Japanese imari plaque, 37cm diameter (2)
£60 - £100 plus 25% BP*

55 Six Chinese blue and white plates, Kangxi (1662-1722), each centred with a floral basket within a near solid blue border, double blue circle and faux seal mark, 21.5cm diameter
£100 - £150 plus 25% BP*



Lot 56

56 Unusual blue and white transfer printed surprise jug, circa 1820, printed with bush turkeys, bordered with briar rose and with an unusual figural handle peering into the jug to reveal a frog at the bottom, height 22cm

£100 - £150 plus 25% BP*

57 Pair of Chinese blue and white plates, late 18th/early 19th Century, decorated with phoenix within a walled garden, 23.5cm diameter; also a further Chinese plate, of octagonal form and similarly decorated, 22.5cm (3)

£60 - £80 plus 25% BP*

58 Provincial Chinese famille rose bowl, 19th Century, sparsely decorated with a border of flowers and floral sprays, 27cm; also three Cantonese small plates with pierced borders, 15cm diameter (4)

£40 - £60 plus 25% BP*



Lot 59

59 Two Chinese crackle glazed famille rose vases, late 19th Century, each similarly decorated with warriors in procession, the necks moulded with salamanders and temple lion handles, height 47cm and 44.5cm

£150 - £250 plus 25% BP*

60 Two pearlware blue and white plates, circa 1800, both in Chinoiserie style, decorated with pavilions, within a feather moulded cobalt blue border, 25cm and 25.5cm diameter

£20 - £30 plus 25% BP*

61 Haviland Limoges part dinner service, early 20th Century, decorated in the rock and fence pattern in colours against a white ground, printed marks, with H G Stephenson & Son, Manchester, retailer's mark, comprising six 26cm dinner plates, six soup dishes, six 23.5cm breakfast plates, six side plates, three graduated meat plates, the largest 46cm, gravy boat on stand, and an oval lidded tureen, with gilt ribbon handles (29)

£120 - £180 plus 25% BP*

62 Villeroy and Boch bone porcelain dragon platter, square form, decorated in colours and gilt, 34.5cm, original box

£20 - £40 plus 25% BP*

63 Cypriot style terracotta floor vase or olive oil jar, ribbed construction with old riveted repairs, height 71cm

£40 - £60 plus 25% BP*



Lots 64 - 66

64 Worcester china inkstand, circa 1852-62, decorated throughout with indigenous butterflies, the stand supporting two lidded inkwells centred with a taper stick, 23.5cm

£80 - £120 plus 25% BP*

65 Royal Worcester plate by James Stinton, dated 1926, decorated with highland cattle, within a deep cobalt blue border with gilded jewelled garlands, 24cm diameter

£80 - £120 plus 25% BP*

66 Pair of Wedgwood creamware figures 'Cupid' and 'Psyche', circa 1900, impressed and incised marks, height 23cm

£60 - £80 plus 25% BP*

67 Walter Awlson (20th Century), The young virtuoso violinist, limited edition bronze finish ceramic sculpture, numbered 35/50, signed, height 68cm

£60 - £100 plus 25% BP*

68 Pair of opaque twist wine glasses, bell shaped bowl over a double helix twist stem and conical foot, 15.5cm

£100 - £150 plus 25% BP*



Lots 69 and 70

69 Pair of Austrian porcelain figural table salts, circa 1900, modelled as a boy and girl, each supporting a basket, decorated in buff colours, heightened with gilt, mark 'W&R, made in Austria', height 26cm
£70 - £100 plus 25% BP*

70 Sitzendorf porcelain pedestal fruit bowl, heavily moulded with Art Nouveau inspired flowers and foliage, the pedestal with two reclining figures, height 38cm, width 30cm
£80 - £120 plus 25% BP*

71 Opaque twist wine glass, bell shaped bowl over multiple strand helix stem, 15.5cm; also a small ale glass with solid stem, height 13cm (2)
£50 - £80 plus 25% BP*

72 Large ale glass, the trumpet bowl engraved with hops and barley over a solid stem with a single tear, raised on a folded foot, height 20cm
£80 - £120 plus 25% BP*



Lot 73

73 Set of four pearlware plates, circa 1800, each decorated with a chinoiserie design featuring a lady with a parasol, pointing to a pagoda, in cobalt blue within feather moulded borders, impressed circle mark, 24.5cm diameter
£80 - £120 plus 25% BP*

74 Victorian engraved fox hunting goblet, height 17cm
£50 - £70 plus 25% BP*

75 Unusual engraved glass vase, of bucket shape and engraved with birds amidst the branches of oak trees, over an illusion base appearing as two horizontal bands of silver, height 12.5cm
£40 - £60 plus 25% BP*



Lot 76

76 Six Chinese imari porcelain plates, Qianlong (1736-95), decorated with peony rock and bamboo, 23cm diameter
£80 - £120 plus 25% BP*

77 Chinese armorial spoon tray, Qianlong (1736-95), of lozenge form decorated en-grisaille with a gilded baronial crest, 14.5cm
£80 - £120 plus 25% BP*

78 Chinese miniature tea bowl and saucer, Qianlong (1736-95), decorated with a grasshopper standing on a peony, in gilt and colours, the saucer 10cm
£60 - £80 plus 25% BP*



Lot 79

79 Three Cantigalli heart shaped dishes, each decorated in the 18th Century style with cherubs, in blue against a grey ground, painted cockerel marks, 23cm x 16.5cm
£50 - £100 plus 25% BP*



Lots 85 and 86



Lot 80

80 Chinese blanc de chine porcelain figure of Guanyin, serenely modelled standing on a base of waves, seal mark in Zhuanshu script, which possibly reads 'The shop of Xu Xingde' (see Chinese Ceramic Marks Handbook, Joel Davison, pub. 1994, ref 1753) (chips and losses), height 38.5cm; also a further blanc de chine figure of Guanyin holding a lotus flower, standing on a lotus flower base (damaged), height 35cm (2)
£200 - £300 plus 25% BP*

81 Minton glazed parian table centrepiece, circa 1874, with an oval basket supported by reclining cherubs, on a Renaissance style base, glazed and tinted with sage green, impressed marks, height 23.5cm
£80 - £120 plus 25% BP*

82 Minton glazed parian figural table salt, circa 1873, in Renaissance style, shell form supported on a winged putti riding a dolphin, glazed and tinted with sage green, impressed marks, 16cm; also a similar Minton table salt (extensively damaged); a Minton figural table basket (repaired), 23cm diameter; and two Minton parian plates with ribbon borders (5)
£100 - £150 plus 25% BP*

83 Pair of Minton glazed parian figural comports, circa 1874, having a circular lattice bordered dish supported on cherubs emblematic of Summer and Autumn, glazed and tinted with sage green, impressed marks, height 13cm
£70 - £100 plus 25% BP*

84 Pair of Burmantofts faience vases, turquoise glazed and with impressed banded decoration, height 12cm
£80 - £120 plus 25% BP*

85 Studio Glashyttan Ahus art glass sculpture, Sweden, circa 2007, geode form finished in black and red, inscribed to the base, height 20.5cm
£100 - £150 plus 25% BP*

86 Large iridescent glass bowl in the manner of John Ditchfield, inscribed to the base 'As a gift from Glasdon', circa 1991, 28cm diameter
£100 - £150 plus 25% BP*

87 Bohemian ruby and white overlay bottle carafe and beaker, the carafe 19cm (2)
£100 - £150 plus 25% BP*

88 Unusual frog form match holder and striker, glazed colours on a bisque base, height 8cm
£40 - £60 plus 25% BP*

89 Pair of Sitzendorf porcelain figures of aristocratic courtiers, decorated in colours heightened with gilt, height 22.5cm
£100 - £150 plus 25% BP*

90 Delft blue and white heart shaped inkwell, 18th Century, 10.5cm
£50 - £80 plus 25% BP*



Lots 93 - 96

91 Pair of French blue and enamel jewelled cylinder vases, marked 'BFK', height 12.5cm
£50 - £80 plus 25% BP*

92 Joseph Heath & Co. blue and white wash basin, circa 1830, decorated with a rural scenes pattern, 35cm diameter
£60 - £80 plus 25% BP*

93 Worcester blue and white sparrow beak cream jug, circa 1770, in the rock strata island pattern, open crescent mark, height 9.5cm
£50 - £80 plus 25% BP*

94 Worcester Mansfield pattern blue and white bullet shaped teapot and cover, circa 1770, open crescent mark, height 12.5cm
£100 - £150 plus 25% BP*

95 Worcester blue and white moulded butter boat, circa 1760, decorated in the Mansfield pattern, the exterior relief moulded with overlapping leaves, painted workman's mark, 8cm
£80 - £120 plus 25% BP*

96 Philip Christian, Liverpool, blue and white sparrow beak cream jug, circa 1765-75, decorated in the long bridge pattern, height 9.5cm
£60 - £80 plus 25% BP*

97 Five pieces of Worcester blue and white printed porcelain, comprising two mother and child pattern saucers, circa 1780, both with hatched crescent mark, 12cm; a milkmaid pattern saucer, circa 1775, workman's mark, 12.5cm; birds in branches saucer, circa 1780, hatched crescent mark, 12.5cm; and a zigzag fence pattern tea bowl, circa 1780, hatched crescent mark, 6.5cm diameter (5)
£60 - £100 plus 25% BP*

98 Philip Christian, Liverpool, blue and white tea bowl and saucer, circa 1765-75, decorated in the profile bud pattern, the saucer 13cm; also a Caughley tea bowl, coffee cup and saucer in a formal gilded blue border and gilt sprig design, 'S' mark; and a Caughley fisherman and cormorant pattern coffee cup, all circa 1780 (6)
£60 - £80 plus 25% BP*

99 Pennington, Liverpool, 'Chinese Lady' tea bowl and saucer, circa 1780 (saucer cracked); also a blue and white printed tea bowl (cracked); a moulded hand decorated blue and white tea bowl (chipped); and a gillyflower pattern saucer (5)
£20 - £40 plus 25% BP*



Lot 100

100 Worcester blue and white large bowl, in the prunus fence pattern, circa 1755, painted workman's mark, 21cm diameter

A similar bowl was exhibited at Albert Amor Ltd, 'The Mark Richmond Collection', 1996, No. 64 and subsequently as part of The Clifton Collection, March 2018. A saucer in this uncommon pattern can be seen in Branyon, French and Sandon 'Worcester Blue and White Porcelain 1751-1790'
£500 - £700 plus 25% BP*



SILVER & PLATE



Lots 110 - 114

110 Pair of modern silver and slate candlesticks, maker HF, London 1998, with conical nozzle on a silver blade and supported on an angular slate support, height 18.5cm
£100 - £150 plus 25% BP*

111 Art Deco silver dressing table clock, marks rubbed but probably Birmingham 1924, silver coloured dial with Arabic numerals, circular case, raised on a lozenge form base with four feet (clock currently not working), height 12cm

Please note our special conditions of sale regarding clocks and watches
£70 - £100 plus 25% BP*

112 Art Deco style silver dressing table clock, maker B&Co., Birmingham 1922, having a white enamelled dial with subsidiary seconds and Arabic numerals, lancet shaped case, height 11.5cm

Please see our special conditions of sale regarding clocks and watches
£70 - £100 plus 25% BP*

113 Pair of modern silver candlesticks, slender form on a trumpet base, marked '925' (loaded), height 21cm
£100 - £200 plus 25% BP*

114 Modern silver photograph frame, Sheffield 2000, rectangular form with wooden back, aperture size 17.5cm x 12.5cm; also a smaller modern silver photograph frame, Sheffield 1986, with blue velvet backing, aperture size 12.5cm x 8.5cm (2)
£70 - £100 plus 25% BP*

115 George V silver card case, marks rubbed, Chester 1922, rectangular form with engine turned decoration, engraved with a monogram and a date, fine leather interior, 9.5cm x 8.5cm; also a silver calling card case, Birmingham 1910, curved form with engine turned vertilinear decoration and engraved monogram, 8cm x 4.5cm, gross weight approx. 139g (2)
£80 - £120 plus 25% BP*

116 Late Victorian silver plated bacon dish, decorated with fern leaf and ivy and with domed cover, raised on paw feet, 28cm
£20 - £40 plus 25% BP*

117 Good Victorian silver twin handled serving tray, by William Gibson & John Langman, London 1889, oval form with reeded edge, twin reeded handles, vacant cartouche with radiating fan lines, width 70.5cm x 44.5cm, weight approx. 3355g
£1500 - £2500 plus 25% BP*

118 Pair of modern silver mounted cut glass mallet decanters, the collars hallmarked Birmingham 1978, height 29.5cm
£100 - £150 plus 25% BP*

119 Japanese silver and clear glass ice pail by Asahi (Asahi Shoten), 20th Century, bucket form worked with bamboo, clear glass liner, marked 'Asahi Sterling 950', height 13cm, 12.5cm diameter
£200 - £250 plus 25% BP*

120 Victorian silver plated table centre, by James Dixon & Sons, centred with a cut glass bud vase over a similar cut glass petalled dish, supported over a triform base with peacock supports, height 50cm
£100 - £150 plus 25% BP*

121 Edwardian silver plated pedestal oil lamp, by Walker & Hall, having a cut glass tank over an Adam style column base, height to the burner 65cm
£80 - £120 plus 25% BP*

122 Edwardian silver christening tankard, by William Hutton & Sons, Birmingham 1908, slightly tapered straight sided form engraved with a monogram 'HCH', over a circular foot, height 9cm, weight approx. 101g
£40 - £60 plus 25% BP*



Lots 117 - 120



Lots 123 - 126

123 George V silver specimen vase, Birmingham 1912, twin handled ovoid form with trumpet neck and foot, height 20cm, weight approx. 183g
£70 - £100 plus 25% BP*

124 Pair of silver mounted clear glass kluk-kluk decanters, the collars hallmarked Birmingham 1912, with faceted ball stoppers, height 23.5cm
£300 - £400 plus 25% BP*

125 Late Victorian silver plated presentation inkstand, circa 1895, shaped rectangular stand supporting two heavy hobnail cut glass inkwells around a central casket surmounted with sphinx, and inscribed and dated, all raised on paw feet, 31cm x 21cm
£80 - £120 plus 25% BP*

126 George V silver presentation rose bowl, Birmingham 1922, with a crenellated rim and an inscription dated 1923, over a flared crenellated base, 21cm diameter, weight approx. 606g, raised on an ebony socle
£250 - £350 plus 25% BP*

127 Victorian silver coffee pot, maker Robert Harper, London 1871, tapered and fluted oval form engraved with the crest of a stag and with foliate garlands and engraved horizontal bands (handle and finial removed), height 23cm, weight approx. 697g
£250 - £350 plus 25% BP*



Lots 129 - 134

128 Modern silver hand mirror, Birmingham 1995, with engine turned vertilinear and scroll decoration, 34.5cm
£60 - £80 plus 25% BP*

129 George III silver salver, maker possibly Thomas Howell, London 1791, circular form with raised scroll border, engraved throughout with foliate decoration and raised on three cast scroll feet, 31cm, weight approx. 1.196kg
£400 - £600 plus 25% BP*

130 George III silver sugar basket, by Solomon Houghton, London 1797, oval form with swing handle, engraved with a vacant cartouche and floral swags, over an oval foot, width 16.5cm, height 11cm, weight approx. 223g
£150 - £250 plus 25% BP*

131 Pair of George III silver table salts, by Abraham Peterson, London 1798, of boat shape, fluted and with gilt interior, raised on an oval foot, 11cm, weight approx. 170g
£100 - £150 plus 25% BP*

132 George III silver cream jug, maker's mark indistinct, London 1794, helmet shape with a monogrammed shield shaped cartouche and vertilinear decoration, over a square foot, height 14cm, weight approx. 102g
£60 - £80 plus 25% BP*

133 George III silver teapot by John Mewburn, London 1800, oval form with monogrammed cartouche, and bordered with a band of foliate trails and wrigglework, ebony finial and handle, height 17cm, gross weight approx. 559g
£300 - £500 plus 25% BP*

134 George III silver teapot stand, possibly by Henry Nutting, London 1800, oval form engraved with a central vacant cartouche within wrigglework borders, raised on four spur feet, 14.5cm x 10cm
£70 - £100 plus 25% BP*



Lot 135

135 Edwardian silver dressing table mirror, bevelled glass plate within a plain polished frame with corner foliate decoration and engraved with a monogram, Morocco leather backing and bracket intact, marks rubbed, 40.5cm x 27cm
£100 - £150 plus 25% BP*

136 George V silver folding button hook by Deakin & Francis, Birmingham 1927, weight approx. 23g; also a cornelian handled gilt glove button hook, unmarked, 7cm (2)
£60 - £80 plus 25% BP*



Lot 141



Lots 137 - 140

137 Victorian silver presentation sifting spoon, Sheffield 1888, foliate engraved and pierced with vine leaves, with a gilded bowl, length 18cm, in a Mappin & Webb fitted case, weight approx. 54g
£60 - £80 plus 25% BP*

138 George V pair of silver brandy ladles, Sheffield 1927, weight approx. 50g, presented in a fitted case
£60 - £80 plus 25% BP*

139 Victorian engraved silver presentation spoon and fork, London 1898, cased, weight approx. 52g; also a cased silver christening set comprising spoon and pusher, Birmingham 1930, weight approx. 36g; also a set of six George V silver teaspoons, Sheffield 1926, cased, weight approx. 71g (3)
£80 - £120 plus 25% BP*

140 Queen Victoria interest: a late Victorian silver mounted crocodile skin note wallet by Drew & Sons, Piccadilly, hallmarked London 1899, and with VR crowned cypher, fine leather interior complete with Mordan & Co. propelling pencil, 15.5cm x 10cm
Provenance: Queen Victoria visited Dublin in April 1900 and this wallet was presented as a memento to John Richard Morgan who performed a solo at the Sunday morning service in St Patrick's Cathedral which Her Majesty attended. Thence by descent.
£100 - £150 plus 25% BP*

141 Masonic interest: a number of Masonic jewels and related items including Orpheus Lodge (426) enamelled silver gilt founder's medal; silver gilt medallion by Kenning & Son, inscribed and dated 1920, hallmarked London 1913/14; silver Earl of Donoughmore Bicentenary medal; two translucent hardstone keystone jewels; two paste set jewels, both silver backed; a Dublin Corinthian Club enamelled brass badges; other enamelled badges

Provenance: These medals belonged to John Richard Morgan (1872-1947). Originally from Bangor, North Wales, Mr Morgan moved to Dublin in 1898. He became Vicar Choral at St Patrick's Cathedral, which is where he was presented with the memento of Queen Victoria's visit in 1900 which also appears in this auction. He was well known in Masonic circles in Dublin, being a Past Master of the Corinthian Lodge and the founder of the Orpheus Lodge in 1917.
£600 - £800 plus 25% BP*



Lots 144 - 147

142 William IV silver decanter label, pressed with grapes and a satyr, pierced 'Madeira', on a silver chain, 7cm, weight approx. 26g
£60 - £80 plus 25% BP*

143 Victorian silver pepper pot, London 1837, fluted baluster form, 10cm, weight approx. 65g
£60 - £80 plus 25% BP*

144 Edwardian silver specimen vase, by Nathan & Hayes, Chester 1905, pierced trumpet form worked in Art Nouveau style with blue glass liner over a loaded base, height 20cm
£60 - £80 plus 25% BP*

145 Edwardian silver rose bowl, by Goldsmiths & Silversmiths Company, London 1903, repoussé decorated with flutes and foliage and an inscription dated 1922, over a foliate engraved domed foot, 17.5cm diameter, weight approx. 365g, raised on an ebonised socle
£100 - £150 plus 25% BP*

146 George V silver table basket, Birmingham 1913, shaped rectangular form with pierced foliate decoration and swing handle, raised on ball feet, 28.5cm x 22cm, weight approx. 595g
£100 - £200 plus 25% BP*

147 Modern silver photograph frame, in Victorian style, London 1969, repoussé decorated with rosebuds and foliage, the heart shaped aperture 16cm x 13.5cm, velvet backed
£100 - £150 plus 25% BP*

148 Modern silver strainer on stand, Birmingham 1995, with shell form cast handles, on a conforming stand, 12cm, weight approx. 54g
£60 - £80 plus 25% BP*

149 George III silver pounce pot, London 1808, spherical pedestal form raised on a square base, height 8cm, weight approx. 63g
£60 - £80 plus 25% BP*



Lots 151 - 155

150 George V silver three piece condiment on stand, Birmingham 1927, comprising pepper pot, salt pot and wet mustard jar with spoon, blue glass liners throughout, raised on a canted rectangular base, gross silver weight approx. 101g
£100 - £150 plus 25% BP*

151 Victorian silver small bowl, by Edward Kerr Reid, London 1864, circular form worked with laurel leaf garlands suspended from rams heads, and with engraved monogram, over a circular foot, traces of gilt to the interior, 13cm diameter, weight approx. 229g
£100 - £150 plus 25% BP*

152 Victorian silver beaker, maker Robert Hennell, London 1873, plain slightly tapered cylindrical form with gilt interior, 8.5cm, weight approx. 131g
£70 - £100 plus 25% BP*

153 George V silver tea caddy, Birmingham 1923, cylinder form decorated with two reeded bands, height 10cm, weight approx. 153g
£60 - £100 plus 25% BP*

154 George V silver bachelor's teapot, by S J Levi, Birmingham 1927, of apple shape with a ball finial, and engraved with vacant cartouches, on a circular foot, height 12cm, weight approx. 368g
£200 - £300 plus 25% BP*

155 Edwardian silver sugar castor, by Edward Barnard and Sons, London 1907, plain ovoid form engraved with a monogram, raised on a circular foot, height 17.5cm, weight approx. 166g
£60 - £80 plus 25% BP*

156 William IV silver fish slice, London 1836, fiddle pattern with pierced blade, 30.5cm, weight approx. 140g
£60 - £80 plus 25% BP*

157 Pair of modern silver candlesticks, London 1963, in the Adam style with urn shaped sconce, tapered oval beaded columns, over a reeded oval and bead bordered base (loaded), height 29cm
£200 - £300 plus 25% BP*

158 Victorian silver calling card case, by Nathaniel Mills, Birmingham 1849, shaped rectangular form engraved with the Scott Memorial and on the obverse a presentation cartouche dated 1853, 10cm x 7cm, weight approx. 67g
£140 - £180 plus 25% BP*

159 Set of twelve Victorian silver teaspoons, maker RM/EH, Sheffield 1886, each with ball terminal, weight approx. 227g, cased, and with a pair of silver sugar tongs (poorly repaired), Sheffield 1959
£60 - £80 plus 25% BP*



Lots 160 and 161

160 Pair of George V silver sauceboats, by Goldsmiths and Silversmiths Company, London 1929, plain baluster form raised on stepped hoof feet, 17cm, weight approx. 475g, boxed
£180 - £240 plus 25% BP*

161 George V silver sauceboat, Birmingham 1930, plain form, weight approx. 104g
£40 - £60 plus 25% BP*

162 George V silver table lamp, marks rubbed, probably Birmingham 1933, with banded engine turned decoration over a weighted base (requires re-wiring), height to the bulb fitment 26cm
£60 - £80 plus 25% BP*

163 Victorian silver plated table basket, fluted circular form with swing handle, raised on a trumpet base, 28cm diameter
£20 - £40 plus 25% BP*



Lots 164 - 168

164 Late Victorian silver mounted glass decanter, by Walker & Hall, Sheffield 1900, the vessel of bell shape with tear shaped stopper, four spout silver collar, pierced with foliage, height 30.5cm
£80 - £120 plus 25% BP*

165 Attributed to WMF, a Jugendstil silver plated bowl, boat shape, 33cm x 19cm
£60 - £80 plus 25% BP*

166 Continental pewter mounted claret jug, late 19th Century, the vessel of finely reeded clear glass with a Rococo style metal mount with counter-balanced cover, height 38cm
£40 - £60 plus 25% BP*

167 Edwardian silver rose bowl, by Henry Adams, Sheffield 1901, repoussé decorated with foliate scrolls, vacant cartouches, raised over a domed foot, 19cm diameter, weight approx. 504g
£200 - £300 plus 25% BP*

168 Mappin & Webb silver muffin dish and cover, Sheffield 1927, plain domed form with liner, 18.5cm diameter, weight approx. 538g
£120 - £180 plus 25% BP*

169 George V silver butter dish, by Haseler & Bill, Birmingham 1924, pierced oval form with original glass liner, 12.5cm, weight of silver approx. 53g
£20 - £40 plus 25% BP*



Lots 171 and 172

170 Pair of Edwardian silver pepperettes, by Henry Matthews, Birmingham 1905, each of ovoid form worked with floral swags (loaded), height 7cm

£30 - £40 plus 25% BP*

171 Continental silver plated nef, traditionally worked as a three masted galleon in full sail, raised on dolphin form supports, unmarked, height 47cm, length 55cm

£100 - £150 plus 25% BP*

172 George V silver mirrored table stand, for Edward Viners, Sheffield 1936, circular form with twin carrying handles, 28cm diameter

£100 - £150 plus 25% BP*

173 George V silver small trophy cup, by Walker & Hall, Sheffield 1936, twin handled with U-shaped bowl, height 7.5cm, weight approx. 63g, on an ebonised socle

£20 - £40 plus 25% BP*

174 Edwardian silver mounted shoehorn and button hook, Birmingham 1905; also silver handled glove stretchers, Birmingham 1910 (3)

£20 - £40 plus 25% BP*

175 Sterling silver wine funnel, marked '925', 12cm, weight approx. 95g

£40 - £60 plus 25% BP*

176 Matched pair of silver pepper pots, one Charles Stuart Harris, London 1897, the other Birmingham 1921, each of baluster form with a single horizontal band, raised on a circular foot, height 11cm, weight approx. 164g

£80 - £120 plus 25% BP*

177 Edwardian silver Aladdin oil lamp table cigar lighter, Chester 1906 (no wick), 13cm, weight approx. 140g

£50 - £80 plus 25% BP*

178 Edwardian silver mounted cut glass pin jar, by Henry Moreton, Birmingham 1905, rectangular form, the silver cover worked with angels, raised on a cut glass base with four glass feet, 10cm; also a further silver mounted glass pin jar by Lawrence Emmanuel, Birmingham 1916, 8.5cm; and a silver mounted cut glass hair tidy, Birmingham 1908, 8cm, gross weight of silver approx. 57g (3)

£70 - £100 plus 25% BP*



Lots 175 - 179

179 Edwardian silver pin box, by Walker & Hall, Sheffield 1901, rectangular form with Rococo style repoussé hinged lid, scroll engraved base cast with acanthus leaves, 10cm, weight approx. 88g

£100 - £150 plus 25% BP*

180 Tibetan wood and white metal lined butter tea bowl, the foot edged with white metal, 9.5cm diameter; also a Tibetan white metal figure of Buddha, 16.5cm (2)

£40 - £60 plus 25% BP*



Lot 181

181 Indian thewa gold glass and gilt snuff box, Pratapgargh, Rajasthan, 19th Century, octagonal form, the hinged cover worked with three figures walking in procession with birds amidst trees, against a green glass ground, gilt interior, the sides worked with flowerheads and foliage, 4cm x 3.5cm x 1.5cm

£100 - £150 plus 25% BP*

182 Set of six George V silver teaspoons, Birmingham 1927, cased, weight approx. 47g

£30 - £50 plus 25% BP*

183 Set of twelve George V silver hobnail teaspoons, Sheffield 1921, and a pair of sugar tongs, gross weight approx. 122g

£60 - £80 plus 25% BP*



COINS, JEWELLERY & WATCHES

190 Album of mixed world coins including cupro nickel crowns, picture 50p pieces, old pennies including George V 1936, decimal coins, tokens etc
£30 - £50 plus 25% BP*

191 George V sovereign pendant fob, 1913, mounted in 9ct gold, gross weight approx. 8.3g
£260 - £300 plus 25% BP*

192 Edward VII half sovereign, 1905, in a 9ct gold pendant mount, suspended from a 9ct gold chain necklace, gross weight approx. 6.8g
£180 - £240 plus 25% BP*

193 Mixed British coins including some silver and WRL Roman replicas
£20 - £40 plus 25% BP*

194 Maria Theresa silver thaler (EF), weight approx. 28g
£20 - £30 plus 25% BP*

195 Victorian double florin, 1888 (VF), also a Victorian Jubilee shilling, 1887 (EF) (2)
£40 - £60 plus 25% BP*

196 George III crown, 1819 (P), also a Victorian crown, 1900 (P/F), two George V Jubilee crowns, 1935 (VF), and a George VI crown, 1937 (EF) (5)
£50 - £100 plus 25% BP*

197 Nineteen George V and VI half crowns, all pre-1947, weight approx. 250g
£70 - £100 plus 25% BP*

198 Anglesey token, 1787, issued by the Paris Mining Company (VF)
£20 - £30 plus 25% BP*

199 Victorian gothic florin, 1858 (F/VF), also two further gothic florins, 1886 (F/VF) and 1883 (F) (3)
£20 - £40 plus 25% BP*

200 Edward VII 1902 silver coronation medal, also two 1935 Silver Jubilee medallions and a Victorian Golden Jubilee medal (drilled and mounted) (4)
£20 - £30 plus 25% BP*

201 Victorian double florin, 1889 (VF), also a Victorian half crown, 1887 (EF), another (F), and a Victorian half crown, 1889 (F) (4)
£60 - £80 plus 25% BP*

202 Two USA Liberty dollars, 1846 (F) and 1847 (F); a trade dollar, 1878 (VF); two Morgan dollars, 1886 and 1898 (both VF); and a 1924 Liberty dollar (VF) (6)
£60 - £100 plus 25% BP*

203 George V half crown, 1923 (EF); also a florin, 1936 (VF); Victorian florin, 1887; George IV shilling, 1826; 1925 shilling, and a Victorian fourpence, 1838 (all F) (6)
£20 - £40 plus 25% BP*

204 Charles II crown, 1676, fourth bust OCTAVO (F)
£40 - £60 plus 25% BP*

205 Chinese Republic commemorative tokens, featuring Chinese Imperial emperors (12); also five counterfeit Chinese coins (17)
£20 - £40 plus 25% BP*

206 Assorted modern cupro-nickel crowns, and a small number of other commemorative tokens
£15 - £20 plus 25% BP*

207 Mixed world coins, mostly 20th Century
£10 - £30 plus 25% BP*

208 The Lusitania medallion; also Second World War medals including 39-45 Star and Italy Star; two Birkenhead 1937 coronation medals; silver shield fob etc (11)
£20 - £30 plus 25% BP*

209 Canadian \$200 gold proof coin, 1996, weighing 17.1355g of 22ct gold, boxed and with certificate
£500 - £600 plus 25% BP*

210 Two UK Royal Mint £100 fine silver coins, 2015, 'Big Ben' and 'Buckingham Palace'; also a Royal Mint Britannia £50 coin, 2015 (all brilliant uncirculated), in original packs, gross weight 156.72g (3)
£60 - £80 plus 25% BP*

211 Canadian gold maple leaf dollar, 1996, weight 1/20th oz. (1.7g), boxed and with certificate
£30 - £50 plus 25% BP*

212 25 Canadian silver dollars, 1965 (800 standard silver), gross weight approx. 583g
£200 - £300 plus 25% BP*

213 Collection of Canadian 1976 Montreal Olympics silver coins comprising 22 \$10 dollar and 22 \$5 dollar coins, gross weight of sterling silver, 1603.8g
£800 - £1200 plus 25% BP*

214 Two Britannia £2 fine silver coins, 1998 and 1999, gross weight approx. 66g; also a USA Morgan dollar, 1897 (F); and two Canadian 50 cents, 1941 and 1943 (F/VF), gross weight approx. 49g (5)
£50 - £70 plus 25% BP*

215 Four UK 2013 £20 fine silver coins, issued by The Royal Mint; also two Longest Reigning Monarch UK 2015 £20 silver coins; First World War outbreak commemorative UK £20 silver coin, 2014; Sir Winston Churchill 2015 UK £20 silver coin; and a Second World War Seafarer's commemorative £20 silver coin, 2016, gross weight approx. 141g (9)
£60 - £80 plus 25% BP*

216 Fifteen Canadian maple leaf \$5 fine silver coins (brilliant uncirculated), gross weight approx. 477g
£200 - £300 plus 25% BP*

217 Fifteen Canadian commemorative silver dollars; also a Bailiwick of Jersey 2009 Henry VIII commemorative £5 coin; and a Guernsey 2000 silver proof £1 coin (17)
£100 - £150 plus 25% BP*

218 Queen Elizabeth the Queen Mother 80th Birthday commemorative silver crowns, gross weight approx. 198g, original presentation case with certificate
£100 - £150 plus 25% BP*

219 Collection of Victorian and later silver thrupennies, approx. 180
£70 - £100 plus 25% BP*

220 Yellow sapphire and diamond pendant necklace, the openwork pendant set with three tear shaped yellow sapphires on stalks of round brilliant diamonds, within an outer circle set with further round brilliant diamonds, in 18ct yellow gold, 35mm, suspended from an 18ct yellow gold chain necklace, length 44.5cm, gross weight approx. 12.9g
£600 - £800 plus 25% BP*



Lots 220, 222 and 224

221 Edwardian opal and diamond memoriam ring, in 15ct gold, centred with an opal approx. 7mm x 4mm, bordered with small round cut diamonds, the shoulders chased with scrolls, inscribed on the underside 'In memory of Father' and dated 1903, size O, gross weight approx. 4.1g
£400 - £600 plus 25% BP*

222 Diamond pendant necklace, set with six round brilliant cut diamonds, the largest approx. 1ct, and with two further graduating diamonds dispersed with three small collet set diamonds, totalling approx. 1.9cts, all set in 14ct gold, 40mm drop, suspended from an Italian 14ct gold snake link necklace, length 40.5cm, gross weight approx. 7.7g
£2000 - £4000 plus 25% BP*

223 Carved shell cameo bracelet, comprising nine cameos set in base metal; also two similar cameo brooches (3)
£30 - £50 plus 25% BP*

224 Diamond line bracelet, in 18ct white gold, comprising 77 small brilliant cut diamonds totalling approx. 0.75ct, each collet set, length 17.5cm, gross weight approx. 5.4g
£300 - £500 plus 25% BP*

225 Lady's vintage 9ct gold cased wristwatch, inscribed and dated 1917, white dial with Arabic numerals, 27mm diameter, on a 9ct gold expandable bracelet, gross weight approx. 19g

Please note our special conditions of sale regarding clocks and watches
£60 - £80 plus 25% BP*



Lots 226 and 228

226 9ct gold star ruby pendant necklace, the oval ruby of approx. 20mm x 12mm, in an unmarked yellow gold mount, suspended from a 9ct gold chain necklace, the pendant drop 35mm, the chain 55cm, gross weight approx. 17.8g
£200 - £400 plus 25% BP*

227 Diamond solitaire ring, the brilliant cut stone of approx. 0.25ct, in an 18ct white gold claw mount, on an 18ct gold ring, size J, gross weight approx. 2.5g
£120 - £180 plus 25% BP*

228 Rare Tiffany & Co. 14ct gold whistle, chased with foliate scrolls, with ring for suspension, marked 'Tiffany & Co. 14k', 5cm, suspended from a 9ct gold chain link necklace, with ring clip, length 67cm, gross weight approx. 30.2g
£4000 - £6000 plus 25% BP*

229 Mappin & Webb pearl necklace, uniform 5mm cultured pearls, with M&W 18ct gold clasp set with a single small round cut diamond, length 42cm
£80 - £120 plus 25% BP*

230 Edwardian 15ct gold and diamond bar brooch, set with three tiny round cut diamonds in a cannetille bar with ball terminals, full Birmingham hallmark, with safety chain, length 48mm, gross weight approx. 5.4g
£60 - £80 plus 25% BP*

231 Pair of white and blue sapphire cluster earrings, centred with a cushion cut sapphire bordered with tiny round cut sapphires, all set in 18ct white gold, gross weight approx. 2.8g
£50 - £80 plus 25% BP*



Lots 230 and 232

232 9ct gold peridot and ruby clover leaf bar brooch, by HG&SL Ltd, beaded collet mounted tear shaped peridots with round cut rubies in an openwork setting, 35mm, gross weight approx. 3.5g
£50 - £70 plus 25% BP*

233 9ct gold graduated curb link bracelet, with padlock clasp united by a safety chain, weight approx. 19.4g
£200 - £300 plus 25% BP*



Lots 234, 236, 238, 240 and 242

234 Victorian diamond five stone ring, maker L&D, set with five oval and round cut old diamonds, inset in panels, partially worn hallmark, size N, gross weight approx. 2.9g
£150 - £200 plus 25% BP*

235 Freshwater pearl necklace, the pearls approx. 7mm, united by a metal clasp, length 57cm; also a freshwater pearl and coral choker necklace, length 39.5cm (2)
£80 - £120 plus 25% BP*

236 Diamond three stone ring, three well matched round brilliant cut diamonds totalling approx. 0.75ct, set in 950 standard platinum, size N, gross weight approx. 8.7g
£500 - £700 plus 25% BP*



Lots 244, 246, 248, 250 and 252

237 Longines gent's 18ct gold Ultra-chron automatic wristwatch, the dial with baton and Roman numerals, centre sweep seconds and date window, 17 jewelled signed movement adjusted to three positions, the case 36mm, no strap, gross weight approx. 40.4g

Please note our special conditions of sale regarding clocks and watches
£700 - £900 plus 25% BP*

238 Ruby and diamond cluster ring, in 18ct yellow gold, centred with four marquise cut rubies and four marquise diamonds, chevron set within an open channel, bordered with lines of channel set small round cut diamonds, size L, gross weight approx. 4.2g
£300 - £500 plus 25% BP*

239 9ct gold textured bricklink necklace, length 42cm, weight approx. 14.8g; also a 9ct white gold fine chain necklace, with lobster claw clasp, length 45cm, weight approx. 2.4g (2)
£150 - £250 plus 25% BP*

240 Boodles five stone diamond ring, the brilliant cut stones each with De Beers marque, the centre stone with Anchorcert report stating the weight to be 0.31ct, colour F and VVS clarity, all stones are well matched and totalling approx. 1.57ct, set in collet mounts on an 18ct gold ring, size M/N, gross weight approx. 4.48g

(Anchorcert report no. 20060332. With De Beers registered diamond certificate dated 1998)
£2000 - £3000 plus 25% BP*

241 Longines 9ct gold gent's Flagship automatic wristwatch, circa 1962, champagne coloured dial with baton and Arabic numerals, centre sweep seconds, the back cover with presentation inscription, the case 36mm, on a later stainless steel bracelet

Please note our special conditions of sale regarding clocks and watches
£200 - £300 plus 25% BP*

242 Diamond and cultured pearl cluster ring, set with ten old round cut diamonds totalling approx. 1ct, centred with a line of five pearls, on a split shank and white metal ring, unmarked, size R, gross weight approx. 6.2g
£400 - £600 plus 25% BP*

243 18ct white gold vacant ring, suitable for a pear shaped stone, weight approx. 3.3g; also an 18ct gold diamond crossover ring (one stone deficient), weight approx. 2.6g; and a gold vacant ring suitable for two round cut stones, unmarked, weight approx. 1g (3)
£100 - £200 plus 25% BP*

244 Waltham 9ct gold cased hunter pocket watch, the outer case engraved with a monogram, white dial with Arabic numerals, subsidiary seconds, engraved inner dust cover dated 1924, the crownwind movement signed 'Waltham Traveller', 38mm

Please note our special conditions of sale regarding clocks and watches
£300 - £500 plus 25% BP*

245 Victorian mourning brooch, centred with a pearl set ivy leaf against a navette cut black onyx, in a beaded yellow gold mount with locket back, unmarked, 45mm x 19mm, gross weight approx. 9.7g
£60 - £80 plus 25% BP*

246 9ct gold curb link double watch Albert with T-bar and two spring clips, length 44cm, gross weight including a non-gold ring link 40.9g

£600 - £800 plus 25% BP*

247 9ct gold eternity ring, set with rectangular cut rubies and round cut white stones, probably sapphires, size M, gross weight approx. 3.4g

£40 - £60 plus 25% BP*

248 Omega 800 standard silver cased pocket watch, white dial with Arabic numerals, inner 24 hour numerals in red, subsidiary seconds, signed crownwind movement, the inner dust cover inscribed 'Omega Grand Prix, Paris 1900', 50mm diameter

Please see our special conditions of sale regarding clocks and watches

£80 - £120 plus 25% BP*

249 Pair of 9ct gold double leaf form ear clips, 17mm, weight approx. 7.4g; also a pair of similar gold coloured ear clips (unmarked) (4)

£60 - £80 plus 25% BP*

250 Elgin 18ct gold half hunter pocket watch, the outer case with enamelled Roman numerals, the back cover engraved with a monogram, white dial with Roman numerals, subsidiary seconds, gold inner dust cover, the movement signed 'Elgin Watch Company', 17 jewels and adjusted, 48mm diameter

Please see our special conditions of sale regarding clocks and watches

£700 - £1000 plus 25% BP*

251 9ct gold carved shell cameo ring, size K, gross weight approx. 3.1g

£20 - £40 plus 25% BP*

252 Victorian silver hunter pocket watch, with watch albert, the watch with engine turned outer case, London 1861, white enamelled dial with Roman numerals, subsidiary seconds, the lever movement signed 'R Griffith, Llanfyllin', 49mm diameter, the graduated curb link albert with T-bar and two spring clips, and centred with a silver fob on short chain and a silver vesta case, length 41cm

Please note our special conditions of sale regarding clocks and watches

£120 - £180 plus 25% BP*

253 9ct three colour gold bricklink bracelet, having alternate polished and textured links, 17.5cm, weight approx. 9.2g

£120 - £180 plus 25% BP*



Lots 254, 256 and 258

254 Diamond cluster ring, the central round brilliant diamond of approx. 0.35ct bordered with eight smaller round brilliant diamonds, all set in 18ct white gold, size S, gross weight approx. 3.8g

£400 - £600 plus 25% BP*

255 Pair of 9ct gold knot earrings, gross weight approx. 2.2g

£30 - £50 plus 25% BP*

256 Diamond solitaire ring, the round brilliant cut stone of approx. 2.29cts, G in colour, I2 clarity, with laser drilling enhancement, claw mounted in white metal on an 18ct yellow gold ring, size S/T, gross weight approx. 4.2g

(Anchorcert report No. 20059862)

£1000 - £2000 plus 25% BP*

257 Ruby and diamond 'triplet' ring, having a central ring of channel set square cut rubies and two swinging half hoops channel set with small round cut diamonds, in unmarked white metal, probably platinum, size N, gross weight approx. 6.3g

£100 - £150 plus 25% BP*

258 Diamond cluster ring, set with four princess cut diamonds in a square setting, totalling approx. 1ct, on an 18ct yellow gold ring, size M, gross weight approx. 3.6g

£250 - £350 plus 25% BP*

259 Baume & Mercier lady's 18ct yellow gold wristwatch, cushion shaped case, the dial with Roman numerals, signed 17 jewel manual wind movement, the case 24mm, in working order, No. 462186/38264, on a red leather strap

Please note our special conditions of sale regarding clocks and watches

£600 - £800 plus 25% BP*



Lots 260, 262 and 264

260 9ct gold dragonfly bar brooch, centred with a round cut peridot, 6mm diameter, and with ruby eyes, mounted on a polished bar, 75mm x 45mm, gross weight approx. 8.8g

£180 - £240 plus 25% BP*

261 Omega lady's 18ct gold and diamond cocktail watch, the circular champagne coloured dial with baton numerals, the bezel set with small round cut diamonds, manual wind movement, on the original Omega finely textured integral mesh bracelet (repaired), gross weight approx. 32g

Please see our special conditions of sale regarding clocks and watches

£800 - £1200 plus 25% BP*

262 Diamond pavé running fox brooch, set with small round cut diamonds and a single ruby eye, set in unmarked 18ct yellow gold, length 49mm, gross weight approx. 6.2g

£120 - £180 plus 25% BP*



Lots 266, 268, 270 and 272

263 Diamond three stone ring, round brilliant cut diamonds illusion set in platinum in a crossover mount on an 18ct gold ring, size O/P, gross weight approx. 2.8g
£60 - £100 plus 25% BP*

264 Diamond and ruby openwork brooch, formed as a square intertwined with a ribbon of diamonds, the square of rubies, set in white and yellow gold, 25mm, gross weight approx. 3.7g
£150 - £200 plus 25% BP*

265 Diamond and ruby three stone ring, the central round cut ruby of approx. 0.5ct, in a claw mount bordered with small round cut diamonds illusion set in platinum, on an 18ct yellow gold ring, size Q, gross weight approx. 3.6g
£80 - £120 plus 25% BP*

266 Attractive Edwardian 15ct gold peridot and pearl parure, comprising an articulated openwork pendant centred with an oval cut peridot and a pear cut peridot suspended beneath, worked in leaf forms and fronds in 15ct yellow gold, marked '15ct', 37mm x 28mm, gross weight approx. 5.3g, suspended from an unmarked yellow gold chain necklace with barrel clasp, length 39cm, weight approx. 2.8g; and a pair of pear cut peridot earrings in unmarked yellow gold, the stones suspended on a blade bar beneath wire loops set with a split pearl, 28mm drop, the peridot approx. 9mm x 5mm, gross weight approx. 2g (4)
£300 - £500 plus 25% BP*

267 Gucci lady's stainless steel quartz wristwatch, 6700L, currently working, with a recent replacement battery
 Please note our special conditions of sale regarding clocks and watches
£40 - £60 plus 25% BP*

268 Edwardian 15ct gold pearl pendant brooch, worked as a flowerhead, 27mm diameter, suspended from an unmarked yellow coloured herringbone necklace with barrel clasp, length 39cm
£70 - £100 plus 25% BP*

269 Modern silver leaping dolphin link necklace, length 46cm
£40 - £60 plus 25% BP*

270 9ct gold aquamarine and pearl pendant necklace, set with two round cut aquamarines, the largest 7mm diameter, in a cross form with split pearls, suspended from a bar centred with a further pearl and with a slightly smaller round aquamarine above, all suspended from a 9ct chain necklace with barrel clasp, the pendant drop 42mm, the necklace 33.5cm, gross weight approx. 3.5g
£100 - £150 plus 25% BP*

271 Diamond half eternity ring, set with six marquise cut diamonds in a heavy 950 standard platinum ring, size M/N, gross weight approx. 12.6g
£300 - £400 plus 25% BP*

272 Victorian turquoise and gilt coloured bracelet, the target form boss with cannetille decoration and locket back, on a fine mesh bracelet, with safety chain, unmarked, also a pair of turquoise cluster pendant earrings (3)
£200 - £400 plus 25% BP*

273 Two semi-precious gem set pendants, being a pear cut peridot and a blue topaz, both set in unmarked yellow gold, 20mm and 18cmm respectively, gross weight approx. 3.5g
£50 - £80 plus 25% BP*



Lots 274, 276 and 278

274 Diamond bangle, set with small baguette cut diamonds, channel set in two graduating rows, on an unmarked gold hinged bangle, cuff size 58mm, gross weight approx. 22.2g
£300 - £400 plus 25% BP*

275 Assortment of amethyst jewellery comprising 18ct gold and amethyst dress ring, size O/P, gross weight approx. 9.3g; a pendant in unmarked gold, 30mm, gross weight approx. 7.1g; pair of pendant earrings; and a pair of amethyst and peridot pendant earrings (6)
£300 - £400 plus 25% BP*

276 Sapphire and diamond three stone ring, the oval cut sapphire 8mm x 6mm, flanked by two old round cut diamonds, in platinum claw mounts, on an 18ct yellow gold ring, size O/P, gross weight approx. 3.8g
£400 - £600 plus 25% BP*

277 Tudor Oyster stainless steel gent's wristwatch, 27mm champagne coloured dial with dot and Arabic numerals, centre sweep seconds, Rolex Oyster winder, polished bezel and lugs, the back plate numbered 468335, the case 33mm, on a later associated stainless steel bracelet, no box or papers

Please note our special conditions of sale regarding clocks and watches
£200 - £300 plus 25% BP*

278 Modernist aquamarine dress ring in 18ct yellow gold ring, rectangular cut stone measuring approx. 12mm x 7mm, in a polished V-shaped setting with four claw mounts, marked '18ct', size J/K, gross weight approx. 6.8g
£150 - £250 plus 25% BP*



Lots 280, 282, 284 and 286

279 Two decorative stone set dress rings in silver and a pair of paste set silver earrings (4)
£50 - £80 plus 25% BP*

280 9ct gold polished brick link bracelet, 18.5cm, 15mm wide, with extra links, weight approx. 35.8g
£400 - £600 plus 25% BP*

281 9ct gold and enamelled Northern Motoring Club 1920 medal, gross weight 8.5g; also a 9ct gold and enamelled Long Service badge, gross weight approx. 10.5g, boxed (2)
£150 - £200 plus 25% BP*

282 Diamond line bracelet in 18ct two colour gold, set with 32 brilliant cut diamonds totalling approx. 4cts, colour estimated as M and clarity SI1/2, length 17.5cm, gross weight approx. 24.5g
£1500 - £2000 plus 25% BP*

283 Matched blue topaz and diamond parure, comprising a pendant necklace set with four round cut topaz and three small brilliant cut diamonds, in a 14ct gold openwork setting, 16mm, gross weight approx. 2.3g, suspended from an 18ct gold boxlink necklace, length 40cm, weight approx. 2.6g, and a pair of ear studs, each set with an oval cut topaz and three small brilliant cut diamonds, set in 18ct yellow gold, gross weight approx. 3.4g
£250 - £350 plus 25% BP*

284 9ct gold bead and herringbone chain bracelet, length 19cm, weight approx. 25.6g
£300 - £500 plus 25% BP*

285 Gucci lady's gold plated quartz wristwatch, 5100L, battery replaced April 2022, gold coloured dial with Roman numerals, on a brown leather strap

Please note our special conditions of sale regarding clocks and watches
£40 - £60 plus 25% BP*

286 Gold and sapphire herringbone bracelet, set with seven round cut blue and white stones, unmarked, 18.5cm, gross weight approx. 5.3g
£120 - £180 plus 25% BP*

287 Coral beaded necklace, length approx. 132cm
£30 - £50 plus 25% BP*

288 Diamond and orange gem set cluster ring, 18ct gold set with an oval cut central orange stone, possibly spessartite garnet, of approx. 6mm x 5mm, flanked by four small round cut diamonds and two further tear cut orange stone, size I, gross weight approx. 3.5g
£100 - £150 plus 25% BP*

289 Baltic cherry amber beaded necklace, the beads of mixed shapes and colours, some transparent, others solid, the largest 2.5cm, gross weight approx. 102g, length 89cm
£70 - £100 plus 25% BP*

290 Diamond and garnet cluster ring, the oval garnet of approx. 7mm x 5mm bordered with small round cut diamonds, illusion set in 18ct white gold on an 18ct yellow gold ring, size K, gross weight approx. 3.7g
£180 - £240 plus 25% BP*

291 Single strand of non-beaded freshwater cultured pearls, comprising 37 uniformly sized pearls, each of approx. 10mm diameter, with an amethyst set metal clasp, length 49cm
£200 - £300 plus 25% BP*

292 Sapphire and diamond cluster ring, set with three round cut sapphires of good colour, dispersed with four small round cut diamonds, all in 18ct scroll engraved mounts and ring, full Chester hallmark, size L, gross weight approx. 3.7g
£150 - £200 plus 25% BP*

293 Diamond necklace and matching bracelet, in 18ct white gold, the necklace having flowerheads set with small brilliants, articulated with bar links centred with double brilliants, all in beaded mounts, total diamond weight approx. 1.55cts, length 40.5cm, gross weight approx. 16.5g; the matching bracelet 18cm, approx. 9.3g
£2000 - £3000 plus 25% BP*



Lots 288, 290 and 292

BYRNE'S

Auctioneers & Valuers

Pullman House
The Sidings
Boundary Lane
Saltney
Chester
CH4 8RD

Tel: 01244 681311
auctions@byrnesauctioneers.co.uk
www.byrnesauctioneers.co.uk

We are an independent partnership of valuers and auctioneers. We provide a complete valuation and auction service for solicitors, estate agents, insolvency practitioners and private individuals who call us through recommendation and require a swift response and a professional service.



You may be surprised how wide an area we cover conducting valuations and clearances. We have even cleared a crofter's cottage on Orkney!

Our Services Include:

- Formal valuations for sale, insurance & inheritance tax conducted in North and Mid Wales, Shropshire, Cheshire, Merseyside, Cumbria, Lancashire and Staffordshire
- Removal & clearance service from single items to complete house contents and commercial premises
- A professional, friendly service tailored to your needs with impartial and confidential advice at all times
- A ring fenced clients' deposit account
- A comfortable, modern saleroom with ample parking and easy access for a relaxed buying experience
- A full calendar of specialist & general auctions
- Short and long term storage solutions prior to auction



When you're dealing with a deceased estate you need to act quickly to ensure the security of the premises and contents. We can provide a valuation and clearance service quickly and sensitively at a difficult time.

For further information about these services please call
01244 681311



We hold free valuations every week by appointment.

YOUR INDEPENDENT LOCAL AUCTION ROOM WITH THE INTERNATIONAL OUTLOOK



PICTURES

P. Baeseblin



Lot 300

▲ 300 Neville Fleetwood (b. 1932), *Flowers in a blue vase*, oil on board, signed, 60cm x 50cm
£200 - £400 plus 25% BP*



Lot 301

▲ 301 Neville Fleetwood (b. 1932), *Still life of narcissus in a green vase*, oil on board, signed, 60cm x 50cm
£200 - £400 plus 25% BP*

302 English School, early 20th Century, *Don Quixote before the walls of a fortress*, indistinctly signed oil on canvas, 61cm x 85cm, unframed
£50 - £100 plus 25% BP*

303 William Lionel Wyllie (1851-1931), *HMS President anchored on the Thames, with St. Paul's beyond*, etching, 32cm x 22cm, signed in pencil by the artist within the margin
£100 - £150 plus 25% BP*



Lot 304

304 Attributed to Charles Baxter (1809-79), *A Tyrol boy*, oil on board, oval, 21cm x 17cm
£80 - £120 plus 25% BP*

305 After Francesco Bartolozzi (1728-1815), *Pair, Woman in her chamber, and Woman seated in a garden*, sepia stipple engravings, within oval mourning mounts and gilt frames, total size 48.5cm x 43cm
£50 - £80 plus 25% BP*

306 Six early 19th Century aquatint engravings by or attributed Laurie & Whittle, Publishers (fl. 1794-1858), featuring French and London landmarks including a view of the Royal Hospital, Chelsea; Govenor Pitt's house at Twickenham; and Fontainebleau, all hand coloured and titled verso, in gilt and ebonised frames, the largest 30cm x 46cm, the smallest 25.5cm x 46cm
£80 - £120 plus 25% BP*



Lot 307

307 Modern School, *Still life of fruits in a basket on a ledge*, after the Dutch Old Masters, oil on board, 40cm x 30cm, presented in a moulded gilt frame
£50 - £80 plus 25% BP*



Lot 311



Lot 308

▲ 308 Charles Wyatt Warren (1908-93), The Glaslyn, near Nant Gwynant, signed oil on board, 24cm x 54cm
£400 - £600 plus 25% BP*

309 Illingworth Varley (active late 19th/early 20th Century), Apple Orchard, Worcestershire, watercolour, signed and dated 1909, titled verso, 28cm x 35cm
£40 - £60 plus 25% BP*

310 O'Meara (active 1930s), View of a farmstead, watercolour, indistinctly dated, 29cm x 38cm
£20 - £40 plus 25% BP*

▲ 311 Alfred Fontville II de Breanski (1877-1957), Evening on a Welsh river, oil on canvas, signed and titled verso, 52cm x 76cm
£1500 - £2500 plus 25% BP*



Lot 312

312 David Cox Jnr (1809-1885), Raglan Castle, watercolour, signed, inscribed in pencil verso, 18.5cm x 26cm
£200 - £300 plus 25% BP*

313 William Stephen Tomkin (1861-1940), Outward bound, fishing boats off Folkestone, watercolour, signed and dated 1896, and titled, 14cm x 27.5cm
£50 - £80 plus 25% BP*



Lot 314

▲ **314 James Longueville (b.1942)**, Seathwaite, watercolour, signed and inscribed to a label verso, 25.5cm x 35cm

Provenance: Sarah Samuels Fine Paintings
£80 - £120 plus 25% BP*

▲ **315 James Longueville (b.1942)**, Rotherhithe, watercolour, signed, titled to a label verso, 25.5cm x 36cm

Provenance: Sarah Samuels Fine Paintings
£80 - £120 plus 25% BP*

▲ **316 Colin Ratcliffe (Contemporary)**, Cottage at Ashford on the Water, watercolour, signed, titled to a label verso, 27cm x 37cm

Provenance: Sarah Samuels Fine Paintings
£30 - £50 plus 25% BP*

▲ **317 Ken Littler (b. 1925)**, Slope towards the meadow, pastel drawing, signed, titled to a label verso, 36cm x 53cm

Provenance: Sarah Samuels Fine Paintings
£40 - £60 plus 25% BP*



Lot 318

▲ **318 George Thompson (1934-2009)**, St. Peter's Church, The Cross, Chester, signed oil on canvas, dated 1978, titled verso, 40cm x 55cm
£100 - £150 plus 25% BP*

319 O'Meara (active 1930s), Abbeville, Somme, France, watercolour, initialled, titled and dated 1930, 37cm x 23cm
£30 - £50 plus 25% BP*

320 Will Crebbin (active late 19th/early 20th Century), Welsh cottage, watercolour and bodycolour, signed, 25cm x 38cm
£80 - £120 plus 25% BP*



Lot 321

321 William Leighton Leitch (1804-1883), Three studies from life, pencil and ink, studio stamp lower right, signed and titled to an artist's label verso, 12cm x 16cm
£100 - £150 plus 25% BP*



Lot 322

322 Marian V Wheelhouse (Exh. 1895-1933), Illustration for Gaskell's Cousin Phillis, watercolour, pen and ink, signed, labelled verso, 25.5cm x 15cm

Cousin Phillis, published by Bell 1908.
£180 - £240 plus 25% BP*



Lot 323

323 Camille Jean-Baptiste Corot (1796-1875), St. Germain, figures amidst winter trees, tempera, signed, 19.5cm x 16cm

Provenance: Inscribed with a title and artist's notes on the reverse in French and the collector's mark 'CP' within an oval, possibly that of his friend and admirer Camille Pissarro. This sketch was one of several exhibited at the Alpine Club Gallery in London, May 1928, founded by Sir William Cuthbert Quilter, where it was also illustrated in the 31 page exhibition catalogue including 4 pages of illustrations entitled 'Paintings, Drawings and Watercolours by C J B Corot from the artist's private collection'. Original label attached verso. The Alpine Club was founded as a gentleman's club in London in 1857 and still exists today at 55/56 Charlotte Road, London.

Purchased from Phoenix Fine Art, Alderley Edge, Cheshire.

£600 - £800 plus 25% BP*

324 Henry-Eugene Delacroix (1845-1930), A gentleman and a lady in a box at the theatre, watercolour, pen and ink, signed with initials, on paper, 17cm x 14cm

Provenance: Purported to have been formerly in the possession of Henri de Toulouse-Lautrec, by whom the drawing was presented to a Monsieur Brocard, according to a label verso, and information supplied by Mr R D Peck, who was in possession of this drawing in 1938.

Purchased from Phoenix Fine Art, Alderley Edge, Cheshire

£300 - £500 plus 25% BP*

325 Henry Charles Fox (1860-1925), At Eddington, Kent, watercolour, signed and dated 1927, titled verso, 18.5cm x 26.5cm

Provenance: Baron Fine Art, Chester

£50 - £80 plus 25% BP*



Lot 324



Lot 326

326 Charles Auty (Exh. 1881-1919), Summer harvesting, Isle of Man, watercolour, signed, 32.5cm x 50cm

Charles Auty lived and worked in London and the Isle of Man and exhibited in Liverpool, his place of birth.

£50 - £80 plus 25% BP*



Lot 327

327 William Mellor (1851-1931), On the Keswick Hills, oil on canvas, signed, titled verso, 72cm x 128cm
£1000 - £1500 plus 25% BP*

328 Pair of aquatint engravings, Windermere and Snowdon, late 18th/early 19th Century, presented in mourning mounts and gilt frames, 35cm x 44cm; also a further aquatint engraving of sailing vessels heading out to sea, similarly mounted and framed, 39.5cm x 50cm; and another engraving 'The Illicit Note', in a gilt style mourning mount and gilt frame, 39cm x 45cm (4)
£80 - £120 plus 25% BP*



Lot 329

▲ 329 Thomas (Tom) Carr (1912-77), Seven limited edition hunting scenes, each signed in pencil, titled and numbered, tinted etchings, six limited to 75 and one to 25, various sizes, the largest 48cm x 59cm including frames
£300 - £500 plus 25% BP*

330 Manner of Harold Gilman, Portrait of a lady seated, unsigned, oil on canvas, 61cm x 48cm
£50 - £70 plus 25% BP*



Lot 331

331 Follower of T B Hardy, Fishing smacks in squally seas, oil on board, 53cm x 48cm
£40 - £60 plus 25% BP*



Lot 332

332 Nicholas Visscher (Dutch, 1618-79), Totius Italiae Tabula Per Nicolaum Visscher cum Privilegia Ordinum Holland et West-Fris, published circa 1690, hand coloured engraved map, 47cm x 57cm
£200 - £300 plus 25% BP*

▲ **333 Ken Littler (b. 1925), Bird bath, pastel drawing, signed, titled to a label verso, 25.5cm x 40cm**

Provenance: Sarah Samuels Fine Paintings

£50 - £70 plus 25% BP*



Lot 334

334 Frederick Lange (Danish, 1870-1941), Geese, Salthalm, Ang, oil on canvas, signed and dated 1923, 42cm x 54cm
£80 - £120 plus 25% BP*

335 Irish School (20th Century), Boglands, heavy impasto oil on board, unsigned, 31cm x 38cm
£60 - £80 plus 25% BP*



Lot 336

▲ **336 James Longueville (b. 1942), The sand pit, Delamere Forest, oil on canvas, signed, titled and dated verso 1976, 30cm x 45cm**
£80 - £120 plus 25% BP*



Lot 337

▲ **337 Robert Egginton (b. 1943), The old Spey bridge, Grantown, watercolour, signed, titled verso, 25.5cm x 35.5cm**
£50 - £70 plus 25% BP*

338 Karl August Bielchowski (1826-83), Pair, Children of Naples, watercolours and pastel, signed, 28cm x 21.5cm
£80 - £120 plus 25% BP*

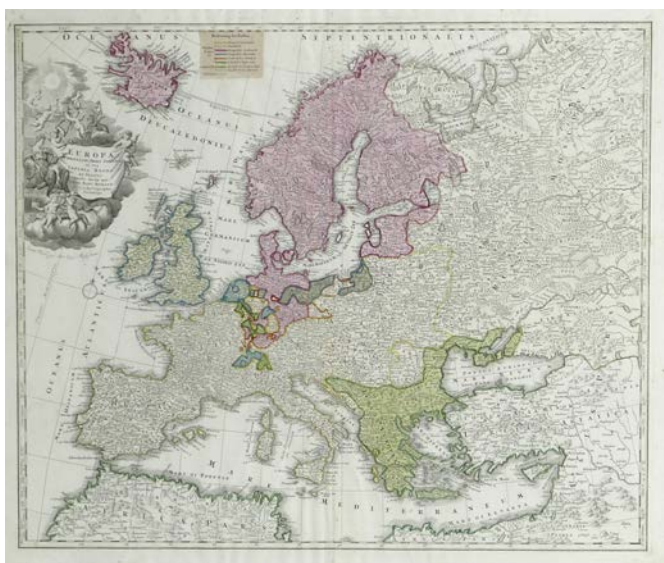


Lot 339

▲ **339 Simon Turvey (b. 1957)**, Badger emerging from a sett, watercolour, signed and dated 1981, 32.5cm x 24cm
£40 - £60 plus 25% BP*

340 H Allen, early 20th Century, Shotwick Village, watercolour, signed, titled and dated 1929, 24.5cm x 34.5cm
£30 - £50 plus 25% BP*

▲ **341 Alan McPherson (b. 1943)**, Freeby Pastures, acrylic on paper, dated 1984, with artist's label verso, 35.5cm x 46cm
£80 - £120 plus 25% BP*



Lot 342

342 Johann Baptist Homann, Europa Christiani Orbis Domina in Sua Imperia Regna et Startus, published Nuremberg, circa 1720, hand coloured map, 54cm x 63cm, framed and glazed front and back; also a small framed map of Worcestershire, 27cm x 21cm
£200 - £300 plus 25% BP*

343 New map of the Counties of Cumberland and Westmoreland, Improved and printed for Bowles, St Paul's Churchyard, and Sayer in Fleet Street, circa 1760, hand coloured map, 70cm x 64cm
£40 - £80 plus 25% BP*



Lot 344

344 Sam Garratt (1864-1946), Girl fording a river with her canine companion, large format watercolour, signed, 53cm x 79cm
£60 - £80 plus 25% BP*



Lot 345

345 Danish School, late 19th/early 20th Century, Impressionist seascape 'Hostdag', oil on canvas, indistinctly signed, 42cm x 62cm
£100 - £150 plus 25% BP*

346 Eastern European School (early 20th Century), Woman at a spinning wheel, indistinctly signed oil on canvas, 69cm x 61cm
£80 - £120 plus 25% BP*

347 After Frank Reynolds (1876-1953), The Waterloo Cup, 1871, lithographic engraving (autotype), from an original painting of 1872, mounted in a contemporary birds eye maple frame, overall size 71.5cm x 94cm, and with a framed keyplate
£40 - £60 plus 25% BP*



Lot 348

348 V Adam (active late 19th/early 20th Century), Portrait of SS Hazel Branch, oil on canvas, signed and dated 1927, 60cm x 91cm

The 4734 ton cargo ship SS Hazel Branch was built by Napier & Miller in 1906. The owners were The Belgrano Steamship Company of Glasgow (Bell Bros. and McLelland). She collided with the SS Lake Eyrie off Cardiff in January 1919. The Lake Eyrie sank but was later refloated and repaired. It is recorded that she was broken up at Blyth on January 3rd 1936.

£600 - £800 plus 25% BP*

▲ 349 Alfred Grenfell Haigh (1870-1963), Portrait of Siki (pet dog), watercolour, signed and dated 1936, 28cm x 21cm

£50 - £70 plus 25% BP*

350 French Breton School (19th Century), Portrait of a woman in traditional dress, oil on millboard, 15cm x 12cm

£30 - £50 plus 25% BP*

351 Late Victorian School, Portrait of a gentleman in a blue cravat, oil on milk glass panel, oval, signed with initials 'BB' and dated '94, 17.5cm x 13.5cm, in original gilt moulded frame and rosewood outer frame, 37.5cm x 33.5cm

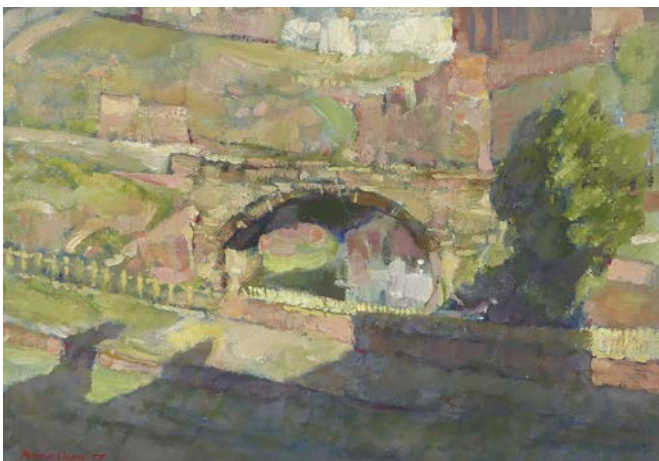
£80 - £120 plus 25% BP*

352 Jean Antoine Simeon Fort (French 1793-1861), Paysage anime d'une chute d'eau, oil on canvas laid on panel, signed lower right, 18cm x 23cm

£50 - £70 plus 25% BP*

353 E Bland (19th Century), Fishing boat struggling back to harbour in stormy seas, signed oil on board, 15cm x 22.5cm

£50 - £70 plus 25% BP*



Lot 354

▲ 354 Peter Shaw (1926-82), The Walls, Chester, an impressionist view, oil on canvas, signed and dated 1973, 24.5cm x 34.5cm

£30 - £50 plus 25% BP*

355 Edwardian School, Portrait of a lady seated in a wide brimmed hat, watercolour, oval, 26cm x 21cm

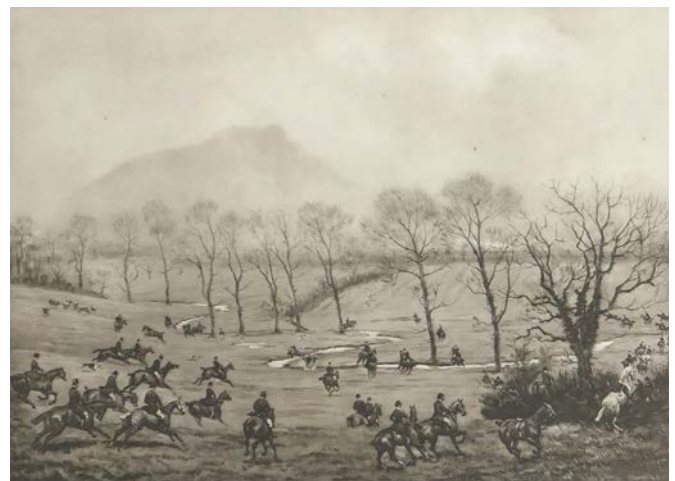
£30 - £50 plus 25% BP*



Lot 356

356 French School (late 19th Century), Portrait of a young girl seated in a garden, pastel drawing, 40cm x 32cm

£80 - £120 plus 25% BP*



Lot 357

357 Geoffrey Douglas Giles (1857-1941), The Cheshire Hunt, four monochrome hunting prints, each signed, titled and dated 1904 including The meet at Oulton, and In Combermere Park, all similarly framed, overall size 68cm x 79cm

£50 - £100 plus 25% BP*



Lot 358

▲ 358 Pierre Laurent Baeschlin (French, 1886-1958), Le Jardin, signed oil on board, labelled verso, 60cm 48cm

Provenance: Sotheby's Olympia Lot 504, 21st January 2004, hammer price £1,100

£400 - £600 plus 25% BP*



Lot 360

360 Utagawa Kunisada (1786-1865), Preparing the evening meal, woodblock print, 19th Century, 34.5cm x 23.5cm; also by the same artist, At the water tub, woodblock, 19th Century; and two further Japanese woodblock prints, probably 19th Century, Escaping the rain, 34cm x 22cm, and an archer drawing an arrow, 36cm x 24.5cm (4)
£60 - £80 plus 25% BP*



Lot 359

359 William Lee Hankey (1869-1952), Sur le Terrain, drypoint etching, signed by the artist to the margin

£80 - £120 plus 25% BP*



A COLLECTION OF SNUFF BOXES



Lots 370 - 372

370 Named and dated brass snuff box, of oval form inscribed 'James McGrath' dated 1922, 7.5cm x 4cm
£20 - £40 plus 25% BP*

371 Brass named snuff box, late 19th Century, inscribed 'Forget me not, J Read', in stipple engraved details, 6.5cm x 5cm
£30 - £50 plus 25% BP*

372 George III horn snuff box, dated 1798, oval form inscribed 'Ed Humphreys', 9cm x 5cm
£70 - £100 plus 25% BP*

373 Three Victorian black lacquered papier mâché snuff boxes, one of gourd shape with gilt floral decoration, 8.5cm; another of fluted oval form, 6cm; the third with mother of pearl chip inlay, 5cm; also a tortoiseshell and horn snuff box, 4.5cm (4)
£50 - £80 plus 25% BP*

374 Small selection of Victorian lacquered papier mâché snuff boxes, the largest 8.5cm x 5cm, including pewter inlaid and simulated tortoiseshell examples, the smallest 5cm (7)
£50 - £70 plus 25% BP*

375 Tortoiseshell and gold studded snuff box, early 19th Century, curved rectangular form, the hinged cover decorated in a chequerboard fashion around a gold vacant cartouche, 6cm x 4cm
£50 - £80 plus 25% BP*

376 Piquet tortoiseshell and horn snuff box, early 19th Century, worked with floral sprays in silver wirework, 7.5cm x 3cm; also a tortoiseshell ring box, early 19th Century, with silver initialled escutcheon and pewter line inlay, 6.5cm x 3cm (2)
£60 - £80 plus 25% BP*

377 George III pressed horn snuff box, circular form decorated with an indistinguishable group of figures opposing a cartouche featuring a baying donkey, 8cm diameter; also a novelty papier mâché snuff box formed as excrement, 7cm (2)
£40 - £60 plus 25% BP*

378 Victorian burr wood snuff box, cushion form inset with mother of pearl cartouche, 10cm x 6cm; also a blond burr wood snuff box, 8cm x 6.5cm (2)
£30 - £50 plus 25% BP*



Lots 375 and 376



Lots 379 - 381

379 Georgian pressed horn snuff box, circa 1760, circular form, the cover with a profile of George III and the motto 'Georgivs Tertivs Rex', 9.5cm diameter

The profile of George III closely resembles that on the accession medal by T Pingo

£80 - £120 plus 25% BP*

380 Tortoiseshell snuff box, early 19th Century, rectangular form, the cover pressed with chequerboard and horizontal linear decoration, 8.5cm x 4.5cm

£50 - £70 plus 25% BP*

381 Deer cloven toe snuff box, 19th Century, hinged cover with silver cartouche, 9cm; also a horn snuff box of cushion box, 7.5cm x 4cm (2)

£50 - £70 plus 25% BP*

382 Tortoiseshell and horn snuff box, early 19th Century, 7cm x 4cm; also two Victorian papier mâché snuff boxes with white metal inlay, 5.5cm and 3cm (3)

£30 - £50 plus 25% BP*

383 Tartanware snuff box, 8.5cm x 4cm; also a Victorian papier mâché and pewter inlaid snuff box, 8cm x 3.5cm; a Regency reeded oval form snuff box, 6cm; and a beech wood cushion form snuff box, 6.5cm (4)

£30 - £50 plus 25% BP*

384 Unusual burr wood snuff box, octagonal cylinder form inset with ebony line detail, 8.5cm; also a burr wood snuff box with flush fitting cover activated by a push panel at the front, 7cm x 4.5cm (2)

£60 - £80 plus 25% BP*

385 Two turned ebony circular snuff boxes, 8cm and 5cm diameter

£40 - £60 plus 25% BP*

386 Two tortoiseshell and horn snuff boxes, 19th Century, the largest 8cm x 3.5cm, also a Victorian black lacquered papier mâché and mother of pearl inlaid snuff box, 7.5cm x 4cm (3)

£40 - £60 plus 25% BP*

387 Horn cushion form snuff box, 19th Century, 8cm x 4.5cm; also a burr wood circular snuff box, of small size, 5cm diameter; a Victorian papier mâché circular snuff box decorated with a print of a woman spinning wool, 6cm diameter; a turned fruitwood snuff box, 8cm diameter and a boxwood cylinder box, height 4.5cm (5)

£40 - £60 plus 25% BP*

388 Burr wood cushion form snuff box, inset with a mother of pearl eye and carved with initial 'H' on the underside, 8cm x 4.5cm; also a further burr wood cushion form snuff box with traces of inked decoration, 8cm x 4.5cm; and a Maucheline style snuff box decorated with a print of game shooting, 7cm x 4.5cm (3)

£50 - £70 plus 25% BP*



Lots 384 - 386



Lots 389 - 391

389 Two print decorated papier mâché snuff boxes, each of circular form, one with a print of 'Mrs Trimmer administering a birch', 8.5cm diameter, the other with an 18th Century stipple engraved print of an ostrich hunt, 9cm

£40 - £60 plus 25% BP*

390 Pressed burr wood circular snuff box, 19th Century, the cover decorated with a scene of revellers, titled 'Fete Flamande', tortoiseshell lined, 8.5cm diameter

£70 - £100 plus 25% BP*

391 Burr wood circular snuff box, inset with a gilt floral basket disc and lined with tortoiseshell, 7cm diameter, also a further burr wood snuff box, circular form, the lid with a print of a church, 9cm diameter (2)

£40 - £60 plus 25% BP*

392 Nicely patinated lacquered papier mâché and pewter inlaid snuff box, early 19th Century, 7cm x 3.5cm; also a further pewter inlaid papier mâché snuff box, 5.5cm; and a smaller simulated tortoiseshell papier mâché snuff box, 4.5cm (3)

£30 - £40 plus 25% BP*

393 Nine metal snuff boxes, including a brass canted rectangular box inscribed 'March 1819', 7.5cm x 4.5cm; painted tole example, 4.5cm; and others in zinc, brass, copper and steel, the largest 10.5cm x 7cm

£40 - £60 plus 25% BP*

394 Two papier mâché circular snuff boxes, each with printed cover decoration, 9cm and 8.5cm diameter

£30 - £50 plus 25% BP*

395 Two papier mâché portrait snuff boxes, early 19th Century, one decorated with the bust of a young Naval officer, 9cm, the other decorated with the bust of a Middle Eastern gentleman, 10.5cm

£50 - £80 plus 25% BP*

396 Painted papier mâché snuff box, circular form detailed with a tranquil farmyard scene, 9.5cm diameter; also a damaged circular papier mâché circular snuff box, detailed with a hand coloured print of 'The Laughing Congregation', 9.5cm diameter (2)

£40 - £60 plus 25% BP*



Lots 394 - 396



OBJETS D'ART



Lots 397 and 398

397 Nautical interest: Late Victorian oak cased ship's wheel barometer and clock, signed F. Darton & Co., London, 11cm aneroid barometer, with thermometer, above an 8.5cm white dial clock, the case further carved with flags at the base, height 42cm, width 35cm

Please note our special conditions of sale regarding clocks and watches
£200 - £300 plus 25% BP*

398 Nautical interest: Victorian brass clock and barometer set, by James Aitchison, Edinburgh, formed as an anchor and ropes supporting an 8cm dial barometer and clock, all raised on a red scagliola marble base, height 26.5cm

Please note our special conditions of sale regarding clocks and watches
£200 - £300 plus 25% BP*

399 Vienna walnut regulator timepiece, with ebonised finial over a white enamelled dial with Roman numerals, subsidiary seconds, single weight driven movement, 115cm

Please note our special conditions of sale regarding clocks and watches
£100 - £150 plus 25% BP*

400 Samuel John Leah, London, mahogany bracket fusee timepiece, with turret top, brass carrying handles and finials, over a painted arched 7" dial with Roman numerals, signed four pillar movement (with key and pendulum), the whole raised on ball feet, height 50cm, width 28cm; together with a conforming mahogany wall bracket, height 22cm

Please note our special conditions of sale regarding clocks and watches
£600 - £800 plus 25% BP*



Lots 401 and 402

401 Taxidermy Hoopoe, perched on a branch, presented beneath a glass dome on a wooden base, height 41cm
£50 - £80 plus 25% BP*

402 Victorian brass skeleton timepiece, silvered chapter ring with Roman numerals, single fusee movement with five spoke wheels, mounted on a marble base with later feet and matched glass dome, height 48cm, width 30cm; also a French white marble and ormolu mantel clock, circa 1890, white enamelled dial with Arabic numerals and painted floral garlands, in a barrel case, the movement with sunburst mask pendulum, chiming on a bell, raised on four torch finial column supports, over an ormolu mounted base, height 45cm, width 26cm (2)

Please note our special conditions of sale regarding clocks and watches
£250 - £300 plus 25% BP*

403 Elie Bleu rosewood cigar humidor, 25.5cm x 22.5cm x 10.5cm
£30 - £50 plus 25% BP*

404 Pair of ox horns, 120cm spread
£40 - £60 plus 25% BP*



Lot 405

405 Large weathered marble mortar, 53cm diameter, height 28cm
£80 - £120 plus 25% BP*

406 Early Victorian tooled Morocco leather box, of book form with finely engraved flush fitting carrying handle, with key, opening to reveal a compartmented interior, 27cm square
£60 - £80 plus 25% BP*

407 Victorian copper fish kettle, twin handled oval form, 63cm; also a copper riveted coal bucket, 33cm; and a copper helmet shaped coal scuttle, with copper shovel (4)
£70 - £100 plus 25% BP*



Lot 408

408 Painted metal and terracotta weather vane, probably of American origin, surmounted with an eagle and ball over a terracotta ridge tile, height 97cm
£80 - £120 plus 25% BP*

409 Second World War interest: Pair of Binoprism No. 5 Mk II x 7 binoculars, dated 1940, with leather carrying case
£30 - £50 plus 25% BP*

410 Edwardian mahogany and inlaid kidney shaped serving tray, with brass carrying handles, 63cm
£40 - £60 plus 25% BP*



Lot 411

411 Lister coopered oak pail, with brass swing handle and brass bands, Lister label, 31.5cm diameter, height 28cm
£60 - £80 plus 25% BP*

412 French ormolu and grey glass table lamp, having two light sockets over an ormolu capped wrythen glass moulded baluster column and elaborately cast ormolu base, total height 82cm
£200 - £300 plus 25% BP*



Lot 413

413 Elizabeth I indenture, being the conveyance of the Friars, Chester, dated the 'Thirde Daie of October in the Five and Thirtieth Year of the Raigne of Our Soveigne Ladie Elizabeth' (sic), complete with seal, on vellum, framed, 34cm x 47cm
£100 - £150 plus 25% BP*

414 A number of indentures on vellum, closely related to the previous lot, circa 1598-1700, many with attached seals
£80 - £120 plus 25% BP*



Lots 415 - 417

415 Pair of George III brass square column candlesticks, circa 1780-1800, height 26.5cm; also a further pair of Georgian brass candlesticks with wax ejectors, height 19cm; and a pewter baluster lidded flagon, the base marked London, height 19cm (5)
£80 - £120 plus 25% BP*

416 Georgian pewter lidded baluster tankard, by Ash & Hutton, Bristol, circa 1741-68, domed cover over a body with a single horizontal line over a stepped base, height 19cm
£200 - £300 plus 25% BP*

417 Late Victorian carved oak model of a church font, height 31cm, width 20.5cm
£40 - £60 plus 25% BP*

418 Chester & North Wales Incorporated Law Society cast iron desk seal, with faux marble painted decorated, height 33cm, housed within original pine carrying case with key
£80 - £120 plus 25% BP*

419 Pair of late George III silkwork tapestries, featuring a boy and a girl in a rural idyll, oval, 23cm x 17.5cm, mounted within later gilt frames
£40 - £60 plus 25% BP*

420 Mouseman (Robert Thompson of Kilburn), carved oak ashtray, 10cm; also a carved oak ashtray carved with heads and a recumbent dog, 16cm (2)
£40 - £60 plus 25% BP*

421 Chinese cinnabar lacquer and enamelled box, late 19th/early 20th Century, the hinged cover detailed with figures seated beneath a tree, 10cm x 7.5cm; also a polished brass lozenge shaped censer, 9.5cm (2)
£30 - £50 plus 25% BP*

422 Secessionist style copper and brass mounted footed bowl, hand hammered U-shaped bowl embellished with tulips, over a circular foot, 20.5cm diameter, height 17cm
£40 - £60 plus 25% BP*

423 Southern Indian bronze oil lamp, traditional circular form with chevron decoration, over a domed foot, 10cm; also a bronze triform censer or lamp, 9.5cm (2)
£50 - £80 plus 25% BP*



Lots 424 - 426

424 Italian Grand Tour souvenir Marmo Giallo Antico tazza, late 19th Century, shallow form raised on a plinth of black marble, height 20cm, width 19.5cm
£100 - £200 plus 25% BP*

425 Italian Grand Tour souvenir bronze tazza, the circular dish with egg and dart border, supported on three classical figures over a triform base, height 25.5cm
£100 - £150 plus 25% BP*

426 Grand Tour souvenir inkwell, after a Renaissance original, late 19th Century, mounted with a figural bell, raised on three oxen heads with monopod supports, over a Sienna marble base, height 21.5cm
£80 - £120 plus 25% BP*

427 Pair of French ormolu figural dwarf candlesticks, converted to lamps, height to the nozzle 15cm
£40 - £60 plus 25% BP*

428 Pair of Renaissance style silvered bronze candlesticks, cast as griffons riding on the back of a dolphin, height 13cm
£100 - £150 plus 25% BP*

429 Philately interest: Penny Black, plate 5, Maltese Cross cancellation
£40 - £60 plus 25% BP*

430 French gilt ormolu clock garniture, late 19th Century, the clock with Rococo cast base, white enamel dial with blue Roman numerals, signed G Bornand, Marseilles, the movement chiming on a bell, height 30cm; together with a pair of conforming three branch candlesticks, height 21cm

Please note our special conditions of sale regarding clocks and watches
£300 - £500 plus 25% BP*

431 French ormolu jewellery casket, marked 'Tahan Fr De Lempereur', oval form, the cover surmounted with a girl tending to a lamb, blue enamelled decoration throughout, raised on scrolled bracket supports, width 18cm, height 13.5cm
£200 - £300 plus 25% BP*

432 French tortoiseshell and ormolu mantel clock, circa 1910, surmounted with a figure of Cupid, cream enamelled dial with Roman numerals and outer seconds, with a glazed panel beneath revealing a pendulum, the movement signed Marti et Cie, chiming on a gong, with keys and with figural mounts and raised on paw feet, height 38cm, width 19cm

Please note our special conditions of sale regarding clocks and watches
£200 - £300 plus 25% BP*

433 Philatelic interest: Penny Black, red Maltese Cross cancellation, within a mahogany presentation box
£30 - £50 plus 25% BP*

434 Mahogany cased dial wall clock, 13" dial with Roman numerals, brass bezel, single fusee movement, 47cm diameter

Please note our special conditions of sale regarding clocks and watches
£100 - £150 plus 25% BP*



Lots 430 - 432



Lot 435

435 Late Regency black lacquered papier mâché serving tray, circa 1820-30, decorated throughout with floral sprays dispersed with butterflies and other flying insects, 63cm x 51cm
£100 - £150 plus 25% BP*

436 German walnut bracket mantel clock, circa 1900, architectural style case with turned finials, over a brass 15cm dial with silvered chapter ring and matted centre, the movement with RSM rose logo (R.M. Schneckenburger, Muhlheim), chiming on two gongs, with pendulum and key, height 46cm, width 31cm

Please note our special conditions of sale regarding clocks and watches
£80 - £120 plus 25% BP*

437 Pair of French bronzed spelter niche figures of knights, circa 1900, each with a stained wooden backboard, 60cm x 25.5cm
£100 - £150 plus 25% BP*



Lot 438

438 Greek Orthodox painted panel featuring St. George slaying the dragon, painted in colours heightened with gilt, on a stained pine panel, inscribed verso, probably first half 19th Century, 25cm x 18.5cm
£100 - £150 plus 25% BP*

439 French slate mantel clock, the case inset with malachite panels, the dial with Roman numeral and visible brocot escapement, the movement striking on a bell, with pendulum, height 42cm, width 48cm

Please note our special conditions of sale regarding clocks and watches
£100 - £150 plus 25% BP*



Lots 440 - 442

440 George III satinwood and inlaid tea caddy, circa 1790-1800, with shell inlays in boxwood and harewood, and further foliate inlays, within crossbanded outlines in boxwood and ebony, bone escutcheon, two caddy covers to the interior, width 18.5cm, height 12cm, depth 11cm
£60 - £100 plus 25% BP*

441 George III mahogany tea caddy, sarcophagus form with brass handle and escutcheon, opening to reveal three open compartments, width 26.5cm, height 15.5cm, depth 15cm
£40 - £60 plus 25% BP*

442 Regency tortoiseshell tea caddy, circa 1815-25, shaped sarcophagus form with caddy lids intact, silver escutcheon, raised on ball feet, 20cm x 12.5cm x 15.5cm

De minimus ivory exemption applied for (Ref:N2YW3ZQZ)
£200 - £300 plus 25% BP*

443 French gilded slate mantel clock, white enamelled dial with Roman numerals and visible brocot escapement, the movement signed Vincenti et Cie, striking on a gong, with pendulum, flanked with mask ring faux handles, raised on a base further embellished with a mask and with gilded decoration, height 47cm, width 50cm

Please note our special conditions of sale regarding clocks and watches
£70 - £100 plus 25% BP*

444 Victorian set of three steel and brass fire irons, 72cm
£50 - £70 plus 25% BP*



Lot 445

445 Sunburst wall clock, retailed by Phillips, Lime Street, Liverpool, the silvered dial with Arabic numerals within gilt coloured carved wooden radiating rays, 76cm diameter

Please note our special conditions of sale regarding clocks and watches
£100 - £200 plus 25% BP*

446 French boule inkstand, late 19th Century, rectangular form supporting two heavy glass inkwells with wooden covers, raised on squat bun feet, 39cm x 22.5cm
£200 - £300 plus 25% BP*

447 Unusual miniature, early 19th Century, featuring a cherub holding a torch aloft against an attacking tiger, unsigned, 9cm x 7cm
 De minimus ivory exemption applied for (Ref: 7QRXT3V3)
£80 - £120 plus 25% BP*

448 Italian walnut, brass and ivory mounted jewellery cabinet, fitted with four silk lined drawers behind a glazed panel door, with a further drawer to the base, all with brass strap and metal stud decoration, raised on bun feet, height 25.5cm, depth 16cm, width 20cm
 De minimus ivory exemption applied for (Ref: GFBP7JFJ)
£300 - £500 plus 25% BP*



Lots 448 and 449

449 Apprentice piece chest of drawers, finished in oak with mahogany banding, with three false drawers to the top, over two short and two long drawers, width 38cm, height 39cm, depth 16.5cm
 De minimus ivory exemption applied for (Ref: 56XMGMJJ)
£60 - £100 plus 25% BP*

450 French 800 standard silver gilt mounted card wallet, worked with winged cherub and birds supporting an initialled cartouche, and with floral garlands, painted leather and green silk interior, 9.5cm x 6.5cm; also a French mother of pearl and metal inlaid card case, late 19th Century, inscribed 'Souvenir' and detailed with classical urns and foliate trails, 7.5cm x 5cm (2)
£100 - £150 plus 25% BP*

451 French silver gilt aide-memoire, circa 1860-80, engraved throughout in a delicate Rococo style with scrolls and flowers, with propelling pencil, 8.5cm x 5.5cm; also a further French mother of pearl and brass aide-memoire, circa 1880, inscribed to the front 'Souvenir' with winged figures supporting a garland of flowers (cracked), 9.5cm x 7cm (2)
£100 - £150 plus 25% BP*

452 French carved mother of pearl aide-memoire, circa 1900, 9.5cm x 6.5cm; also a French silver mounted and woven silk card case/aide-memoire, with a propelling pencil, 9.5cm x 7cm (2)
£80 - £120 plus 25% BP*

453 Viennese brass mounted and enamelled ornamental three fold screen, 20th Century, decorated throughout with courtiers, 14.5cm x 12.5cm
£120 - £180 plus 25% BP*

454 French faience book box, circa 1900-20, decorated with figures in 18th Century Romantic style, with brass fleurs de lys mounts and clasp, 17cm x 11cm x 3.5cm
£250 - £350 plus 25% BP*

455 French gold painted metal and porcelain panelled jewellery casket, circa 1900-10, the hinged cover with an oval porcelain panel depicting mothers and children, elsewhere the panels depicting landscapes, 15.5cm x 10.5cm x 8.5cm high
£100 - £150 plus 25% BP*



Lots 456 and 457

456 George V mahogany cased dial wall clock, painted 11 1/2" dial with Roman numerals, inscribed 'GVR', with crown cypher, single fusee movement, with pendulum, brass bezel, 39cm diameter

Please note our special conditions of sale regarding clocks and watches
£100 - £150 plus 25% BP*

457 George V dial wall clock, 12" dial with Roman numerals, inscribed 'GVR' 'Ingram Bros., Wood Green, London', brass bezel and mahogany case, single fusee movement, with key and pendulum, 39cm diameter

Please note our special conditions of sale regarding clocks and watches
£100 - £150 plus 25% BP*

458 Mother of pearl and brass etui, with some original and some later implements, 9.5cm
£60 - £80 plus 25% BP*

459 Red agate and brass snuff box, probably French, circa 1900, canted rectangular form on ball feet, 8cm x 5.5cm
£100 - £150 plus 25% BP*

460 Windsor & Newton mahogany artist's paintbox, 23.5cm x 18.5cm
£40 - £60 plus 25% BP*

461 Vienna cold painted bronze figure of a boy serenading a girl, both seated on a bench; also a small bronze figure of a crawling baby; and a further bronze of a baby caught in a giant clam shell, the largest 5.5cm (3)

£60 - £80 plus 25% BP*

462 Modern bronze figure of Mercury, after Giambologna, cast standing on one foot on a puff of wind, over a grey marble base, height 29cm

£50 - £80 plus 25% BP*

463 After the Antique, modern bronze sculpture of the Farnese Hercules, after the Roman original, brown painted patination, height 30cm

£80 - £120 plus 25% BP*

464 French bronze miniature Marly horse sculpture, after Coustou, mounted on a Belgian slate plinth, height 14cm

£60 - £80 plus 25% BP*

465 Pair of Chinese carved wooden figures of boys on the back of an elephant, with a calf in attendance, early to mid 20th Century, mounted on wooden stands, height 19cm

£80 - £120 plus 25% BP*

466 Small assortment of 19th Century pewter items including three baluster pepperettes, a pair of London table salts and a Continental baluster wet mustard pot, 16.5cm (6)

£80 - £120 plus 25% BP*

467 French double gourd ruby glass scent bottle, mounted in brass, circa 1900, height 17cm; also a French brass mounted ruby glass ring box, of egg shape, raised on a trumpet foot with alabaster base, height 9cm (2)

£60 - £80 plus 25% BP*

468 French slate and scagliola marble clock garniture, the dial signed Arvieux, Marseilles, with visible brocot escapement, double mercury tube pendulum behind a bevelled glass panel flanked by reeded columns, the movement signed Mougin, Paris, striking on a bell, all raised on a plinth base with further marble insets, height 49cm, width 38.5cm; together with a pair of conforming stands with dished tops, height 26.5cm (3)

Please note our special conditions of sale regarding clocks and watches

£80 - £120 plus 25% BP*

469 Continental 1950s Osnabruck souvenir musical compact, finished in pink with enamelled Osnabruck Round Table badge, original box, 10cm

£50 - £60 plus 25% BP*

470 Three decorative Continental beadwork evening bags, one featuring a gunship (damages throughout)

£60 - £80 plus 25% BP*

471 Jaques staunton pattern ebony and boxwood chess set, weighted pieces (with damages)

£100 - £150 plus 25% BP*

472 Medieval carved sandstone head of a man, his face carved serenely, English 13th/14th Century, 14cm, mounted on a modern wooden base

Provenance: recovered from the grounds of the Friars (White Friars, Chester)

£200 - £300 plus 25% BP*



Lots 462 - 464



Lot 468



Lot 472



Lots 476 and 477



Lot 480

473 Wicker bottle porter, 44cm x 26cm; and a grey painted wicker bottle porter, 26cm square (2)

£30 - £50 plus 25% BP*

474 Railway interest: LMS leather and brass mounted working pony saddle, 47cm

£50 - £80 plus 25% BP*

475 Victorian brass and leather working pony saddle, with C&W monogrammed brass bosses, 46cm

£30 - £50 plus 25% BP*

476 German mahogany cased Westminster chiming mantel clock, by Junghans, Wurttemberg, chiming on four gongs, silvered dial, with carved panels to the case, 61cm x 33.5cm

Please note our special conditions of sale regarding clocks and watches

£40 - £60 plus 25% BP*

477 Pulsynthetic electric dial wall clock, by Gent & Co., Leicester, 8 1/2" dial with Roman numerals, brass bezel, mahogany moulded border, 30.5cm diameter

Please note our special conditions of sale regarding clocks and watches

£60 - £80 plus 25% BP*

478 Continental carved oak shaped panel, 19th Century, centred with a coronet held aloft by putti, with acanthus scrolls, 104cm x 34cm

£100 - £150 plus 25% BP*

479 Dutch style wrought iron and brass fire side companion, with a metal bracket supporting a candle holder, over a pierced brass arm supporting brass fireirons, over a wrythen wrought iron triform base, height 145cm

£80 - £120 plus 25% BP*

480 Rare French brass 400 day clock and barometer, gorge style brass case enclosing an aneroid barometer above a dual stage clock dial with Roman numerals, subsidiary seconds and concentric power reserve, the back plate stamped Brevette, height 38.5cm, width 22.5cm the year going governor style brass ball pendulum is missing.

Please note our special conditions of sale regarding clocks and watches

£400 - £600 plus 25% BP*

481 Onias Mupumha (African), carved soapstone sculpture in humanistic form, signed, height 84cm, width 33cm

£120 - £180 plus 25% BP*

482 Eight decoupage pictorial panels, mostly actors including Mr O Smith as the 'Skimmer of the Sea', framed 32cm x 26.5cm; two Hopes characters, naval subjects; a pair of rosewood framed smaller panels comprising Mr C Kean as Othello and Mrs West as Desdemona, 20.5cm x 17.5cm (7)

£80 - £120 plus 25% BP*

483 Pair of Victorian gross point needlework tapestries, featuring Queen Victoria's children and their pets, mounted within ebonised frames, 44cm x 38cm

£40 - £60 plus 25% BP*

484 Victorian gross point needlework tapestry depicting a girl feeding a goat, 33cm square, mounted within a contemporary rosewood frame

£30 - £50 plus 25% BP*

485 Late George III silk work embroidery, late 18th/early 19th Century, featuring an exotic pheasant on a branch in chinoiserie style, 34cm x 26cm, mounted within a moulded gilt frame, 45.5cm x 37cm

£30 - £50 plus 25% BP*



WINES & SPIRITS



Lot 486

486 Quinta do Vesuvio vintage port, 1990, 6bts, in a presentation wooden case with ceramic bin label
£150 - £250 plus 25% BP*

487 Chateau Les Maurins, 1998, levels lower neck, also Chateau Les Cedres, 1998, levels lower neck, in wooden presentation box (2)
£20 - £40 plus 25% BP*

488 Chateau Batailley, 2001, Pauillac, Grand Cru Classe, levels lower neck; also Chateau Giscours, 1975, Margaux, levels mid shoulder, 2 bts, one without a label; also Chateau La Rose de France, 1987, St. Julien, levels lower neck, some label loss; and a Cordier Claret (no label), levels lower neck (7 bottles)
£50 - £80 plus 25% BP*

489 Chateau Bel Air Reserve, 2016, level lower neck; Domaine La Condamine L'Eveque, 1995 (1 bt), Vins de Pays Cote de Thongue (2 bts); Bulgarian Vintner's Cabernet Sauvignon, 1991 (4 bts); Wine Society Chilean Cabernet Sauvignon (2 bts); and a Harrods label Haute Medoc (1 bt) (10 bottles total)
£40 - £60 plus 25% BP*

490 Pierre Laforest tawny port, 19% vol, level lower neck; also Wine Society's Exhibition crusted port, bottled 2004, level lower neck (2 bottles)
£20 - £40 plus 25% BP*

491 Rive Gauche Chablis, 2013, Premier Cru, Samuel Billaud, 3 bts, levels mid neck; also Chablis, Domaine de Chantemerle, 2010, level mid neck; Chablis Premier Cru, Cotes de Lechet, level lower neck; Chablis Rene Clement, 2010, level mid neck; Chablis Maurice et Fil, 2012, level mid neck; and a Marlborough Hawklund Bay Sauvignon Blanc, level mid neck (8 bottles total)
£60 - £100 plus 25% BP*

492 Mixed white and red wines comprising: Wine Society's Exhibition Chablis Premier Cru, 2015, Montmains, level mid neck; also Wine Society's Chablis, 2004 (2 bts), 2010; and the Society's Pinot Grigio, 2010, levels all good; a Crozes-Hermitage, level mid neck; a Domaine de Cray Pinot Noir, Touraine, 2009, level mid neck; Vina Ardanza, Rioja Reserva, 2008, level mid neck; Vina Arana, Rioja, level mid neck; and La Croix de Bordeaux, 2012, level mid neck (10 bottles in total)
£40 - £60 plus 25% BP*

493 Chateaneuf-du-Pape, Blanc, 2005, Domaine du Vieux Telegraph, 6 bts OWC
£80 - £120 plus 25% BP*

494 Remy Martin Louis XIII Grande Champagne Cognac, presented in a Baccarat crystal decanter, with certification, Carafe No. AD9219, 40% Vol, 70cl, with original presentation box, certificate and booklet 'Seven Secrets of a Legend', carrying case and outer card box, and original Remy Martin receipt dated 1993
£1200 - £1800 plus 25% BP*

495 Cardhu 12yo single malt Scotch whisky, 40% Vol; also a Bells Royal Reserve 21yo Scotch whisky; Bells Christmas 1988 commemorative Scotch whisky in a Wade flask; and a Famous Grouse Scotch whisky in a Wade Highland decanter (4)
£50 - £80 plus 25% BP*

496 Glen Marnoch 12yo single Speyside malt whisky, 40% vol; also Penderyn 'Madeira' single malt Welsh whisky, 46% vol (2)
£50 - £70 plus 25% BP*



Lot 497

497 Glen Mhor, 1979, rare old Highland malt Scotch whisky, bottled by Gordon & Macphail, 2000, 40% vol; also Glendronach 15yo single Highland malt Scotch whisky, 40% vol (2)
£100 - £150 plus 25% BP*



Lot 494

498 Glen Ord 12yo single malt Scotch whisky, 40% vol; also a Bunnahabhain 12yo single Islay malt Scotch whisky, 40% vol (2)
£70 - £100 plus 25% BP*

499 The Macallan 10yo single malt Highland Scotch whisky, 40% vol; also The Dalwhinnie 15yo single Highland malt Scotch whisky, 43% vol (2)
£60 - £80 plus 25% BP*

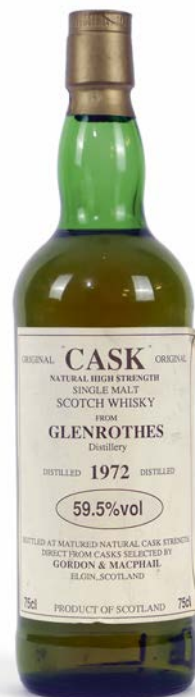


Lot 500

500 Glenmorangie port wood finish single Highland malt Scotch whisky, 43% vol; also Glenkinchie 10yo Lowland single malt Scotch whisky, 43% vol (2)
£70 - £100 plus 25% BP*

501 Dimple 12yo deluxe Scotch whisky, in the famous Dimple flask, 40% vol; also Grand Old Parr 12yo deluxe Scotch whisky, 43% vol; and a Cardhu 12yo single malt Scotch whisky, 40% vol (3)
£60 - £100 plus 25% BP*

502 Johnnie Walker Swing Scotch whisky, 40% vol; also Seagrams' Crown Royal Deluxe Canadian whisky, bottled 1961, Pradlow Distillery (Czech Republic), 25yo; and a Harvey's Light Smooth sherry (4)
£60 - £100 plus 25% BP*



Lot 503

503 Glenrothes, 1972, original cask single malt Scotch whisky, 59.5%, level lower neck (1bt)
£400 - £600 plus 25% BP*



FURNITURE & RUGS



Lot 519



Lot 522

510 Montgomery oak enclosed dresser, circa 1820-40, with later plate rack, having three shelves over a breakfront base with four central short drawers, flanked on either side with a further short drawer and a recessed panel cupboard door, all with ebonised knobs, the whole flanked with turned pillars, all raised on ogee moulded bracket feet, width 186cm, height 221cm
£400 - £600 plus 25% BP*

511 Victorian carved walnut and inlaid pedestal games table, circa 1875, the circular top with chequerboard inlays in sycamore and rosewood, over a carved petalled column and three acanthus carved cabriole legs, 52cm diameter, height 72cm
£60 - £100 plus 25% BP*

512 Victorian oak coopered barrel, converted to a stick stand, metal bound, height 62cm; also a further oak coopered stick stand, height 62cm (2)
£60 - £100 plus 25% BP*

513 William IV mahogany secretaire chest, circa 1835, the crossbanded top over two 'secret' frieze drawers, a secretaire drawer with fall down front and fitted interior, and three further long drawers, all flanked with writhen moulded columns, and raised on turned bun style feet, width 136cm, depth 55cm, height 125cm
£100 - £200 plus 25% BP*

514 Edwardian mahogany concave fronted display cabinet, circa 1900-10, with ebony line inlays, the single glazed door flanked by barrel fronted glass panels, the interior with three fabric covered shelves, all raised on short square section legs, with 114cm, depth 43cm, height 146cm
£100 - £150 plus 25% BP*

515 Mahogany bowfront chest of drawers, 19th Century, fitted with two short and four long graduating drawers with turned wooden knobs, raised on bracket feet, width 117cm, depth 56cm, height 125.5cm
£100 - £150 plus 25% BP*

516 Late Regency mahogany sofa table, circa 1820, the top crossbanded with rosewood and having two frieze drawers with brass ring handles, opposing similar blind drawers, raised on sabre legs with ebony line inlays united by a turned stretcher, brass toes and castors, 91cm x 61cm, height 72cm
£150 - £200 plus 25% BP*

517 Victorian mahogany dish seated stool, three turned legs with turned stretcher, the seat 27.5cm diameter, height 46cm
£30 - £50 plus 25% BP*

518 Simulated walnut dressing stool, in the early Georgian style, upholstered pad seat, shell carved knees to swan neck legs, width 47cm
£40 - £60 plus 25% BP*

519 Italian walnut, ebony and ivory chip inlaid hall chair, circa 1900-20, the back worked with a knight in metal inlays, within an ebony arch, marquetry inlaid throughout with further ebony and metal inlays, on a cross support base, height 96cm, width 43.5cm
 De minimus ivory exemption applied for (Ref: WU3HXQDV)
£60 - £100 plus 25% BP*

520 Peking blue ground woollen rug, blue field dispersed with trellis and peony, within a geometric keyed border in blue, green and salmon pink, 182cm x 91cm
£150 - £250 plus 25% BP*

521 Brass and marble standard/wine table lamp, raised on triform supports on paw feet, height 144cm, table 46cm diameter
£80 - £120 plus 25% BP*

522 Late Victorian rosewood and inlaid dressing table in Sheraton Revival style by Maple & Co., breakfront and fitted with a single kneehole drawer, flanked on either side with three short drawers, boxwood frond inlays, raised on tapered square section legs and brass castors, width 137cm, depth 64.5cm, height 79cm
£300 - £400 plus 25% BP*



Lot 523

523 Oak and mahogany dresser and plate rack, of small proportions, the boarded back with four shelves, flanked with two cupboard doors and two small drawers over a base with three further drawers, with shaped apron, raised on swan neck legs with pointed pad feet, width 120cm, depth 46cm, height 192cm

£300 - £500 plus 25% BP*

524 Late George III coopered mahogany cellarette, oval form with brass banding, metal liner, raised on four splayed supports, at the top 66cm x 43cm, height 53cm

£80 - £120 plus 25% BP*

525 Victorian papier mâché chair, circa 1850, having a shaped back decorated with floral bouquets and inlaid with mother of pearl, with gilt fern decoration, cane seat raised on cabriole forelegs, height 82cm

£70 - £100 plus 25% BP*

526 Late Victorian ebonised mahogany pillar display cabinet, circa 1890, with bevelled glazing on all sides, blind fretwork door opening to three fabric covered shelves, raised on tapered square legs with metal castors, 35.5cm square, height 97cm

£40 - £60 plus 25% BP*

527 Small specimen marble table, the top with radiating specimens set into slate, 35cm diameter, presented on a matched mahogany dish topped stand with four splayed legs, height 74cm

£50 - £80 plus 25% BP*



Lot 528

528 George III mahogany and satinwood banded knife box, circa 1780, traditional slope form with serpentine front, silver ring handle engraved with initials and silver escutcheon, opening to reveal a replaced compartmented interior for stationery, height 44.5cm, supported on a later custom made mahogany stand by Oliver & Sons, Torquay, height of stand 65cm

£100 - £200 plus 25% BP*



Lot 529

529 Balouch dark blue ground woollen rug, the field dispersed with planted urns within a reserved red border (holed and repaired), 100cm x 200cm

£40 - £60 plus 25% BP*

530 Victorian mahogany Sutherland table, circa 1870, the top with demi-lune drop leaves supported on two turned pull out gates and double turned baluster supports united by a baluster stretcher, all raised on metal castors, width 90cm, depth 17.5cm, the leaves 43cm, height 69cm

£50 - £80 plus 25% BP*

531 Harlequin set of Lancashire ash spindle back dining chairs, comprising carver and four similar side chairs; and a further similar carver, each with spindle backs, rush seats, pad and ball feet

£100 - £200 plus 25% BP*



Lot 532

532 Fruitwood and elm comb back Windsor chair, probably Thames Valley, 19th Century, shaped seat and swan neck legs with pad feet (old woodworm and repairs), height 92cm
£150 - £250 plus 25% BP*

533 Oak chest on stand, in William and Mary style, fitted with two short and two long drawers, with brass swan neck and fretwork handles, on a stand with a shaped apron and turned legs, width 76cm, depth 50cm, height 87cm
£80 - £120 plus 25% BP*

534 Victorian walnut and upholstered settee, circa 1860-90, finished in deep buttoned sage green fabric, raised on guilloche carved and fluted forelegs with white pot castors, width 184cm, depth 83cm, height 78cm
£100 - £200 plus 25% BP*

535 Edwardian mahogany side table, rectangular top over two frieze drawers with tramline inlays in boxwood, raised on tapered square section legs, width 112cm, depth 50cm, height 77cm
£70 - £100 plus 25% BP*

536 Walnut chest of drawers, 18th Century and later, having an oak two plank top over two short and three long drawers with later brass fretwork handles, within a split carcass, raised on later straight bracket feet, width 97cm, width 54cm, height 106cm
£120 - £180 plus 25% BP*

537 Late George III mahogany chest of drawers, circa 1820, fitted with two short and three long graduating drawers with turned wooden knobs, flanked with reeded cluster columns and raised on ogee bracket feet, width 117cm, depth 54cm, height 111cm
£100 - £150 plus 25% BP*

538 Modern Kazak woollen rug, the dusky pink ground dispersed with animals and with two dark blue medallions centred with a sky blue medallion, within a blue and pink guardstripe border, 200cm, x 116cm
£70 - £100 plus 25% BP*

539 William and Mary style walnut table, early 20th Century, rectangular top with wavy moulded edge over barleytwist and turned legs united by a cross stretcher, on ball feet, 61cm x 45cm x 68cm
£50 - £80 plus 25% BP*



Lot 540

540 Early Victorian mahogany eight day drop trunk wall clock, painted circular 14" dial with subsidiary seconds, the movement striking on a bell, with pendulum and two brass covered weights, glazed door within canted corners, quarter barrel base, height 165cm
£150 - £200 plus 25% BP*

541 Quality reproduction oak large gateleg table, with two drop leaves, double gates and with a drawer at either end, length 145cm, when closed 53cm and open 147cm, raised on turned supports and stretchers throughout, height 75cm
£100 - £200 plus 25% BP*

542 Mahogany metamorphic dumb waiter, the rising top with carved acanthus scroll back over two rectangular shelves, raised on reeded bun feet with concealed castors, width 125cm, depth 52cm, maximum height 132cm
£150 - £250 plus 25% BP*



Lot 543

543 Iranian Tabriz woollen carpet, the red field with a central blue and fawn medallion dispersed with palmettes and with sky blue and fawn spandrels and a deep blue palmette border, 398cm x 305cm
£200 - £400 plus 25% BP*

544 Victorian walnut and inlaid lady's nursing chair, green fabric deep buttoned pad back and seat, raised on turned forelegs with white pot castors, height 85cm

£50 - £80 plus 25% BP*

545 Chinese carved rosewood jardinière stand, late 19th Century, the octagonal beaded top with marble inset, over an apron carved with prunus flowers and gourds, raised on carved slender cabriole legs with claw feet and cross stretcher, the top 34cm diameter, height 92cm

£100 - £150 plus 25% BP*



Lot 548



Lot 546

546 Small oak dresser and plate rack, in the Georgian style, the boarded back with three shelves flanked by further small shelves and cupboard doors, all crossbanded with mahogany, over a base fitted with three drawers, with brass swan neck handles, raised on cabriole legs, width 153cm, height 205cm

£100 - £150 plus 25% BP*

547 Old kilim flatweave prayer rug, circa 1900, pink and green central mihrab within geometrically patterned abrashed border (worn and holed), 166cm x 110cm

£50 - £80 plus 25% BP*

548 Edwardian mahogany and inlaid serpentine sideboard, in the Georgian style, the crossbanded top over three frieze drawers, and a central kneehole flanked with two cupboard doors, all with brass ring handles, raised on tapered square section legs with spade toes, width 143cm, depth 54cm, height 96cm

£100 - £150 plus 25% BP*

549 George V oak musical chiming eight day longcase clock, by Russells Ltd, Liverpool, the hood with barleytwist columns flanking a brass arched dial with silvered chapter ring with subsidiary seconds, three train movement chiming on nine gongs, with three brass cased cylinder weights and pendulum, the trunk having a moulded panel door and similar panel base, raised on bun feet, height 240cm

Please note our special conditions of sale regarding clocks and watches

£200 - £300 plus 25% BP*



Lot 549



Lot 550

550 William IV mahogany bookcase chest, the top with glazed doors opening to three shelves, over a bow fronted base fitted with two long drawers, raised on short bun feet, width 125cm, depth 54cm, height 204cm
£100 - £200 plus 25% BP*

551 Victorian burr walnut banjo barometer, silvered main dial and thermometer, 92cm
£30 - £50 plus 25% BP*

552 Four Edwardian mahogany dining chairs, in Chippendale style, each with pierced splat backs, needlework upholstered seat, raised on cabriole legs
£70 - £100 plus 25% BP*

553 Victorian walnut revolving bookstand, traditional square form with turned divisions and supports throughout, revolving over a square base with pot castors, 43cm square, height 93.5cm
£80 - £120 plus 25% BP*



Lot 554

554 George III mahogany folding tea table, circa 1780, the top with kick-out corners, supported on a single pull out gate to the rear, fitted with a frieze drawer, and raised on tapered legs with pad feet, width 76cm, depth 38cm, height 70cm
£100 - £200 plus 25% BP*



Lot 555

555 Victorian burr walnut and inlaid folding card table, circa 1860, the top with boxwood and ebony tramline inlays, moulded edge folding open to a green baize playing surface, raised on turned and fluted columns, over splayed carved legs with pot castors, width 98cm, depth 48cm, height 73cm
£150 - £200 plus 25% BP*

556 Turkish small woollen rug, green field with two lozenge medallions within a fawn and terracotta border, 140cm x 87cm
£40 - £60 plus 25% BP*

557 Late George III oak and mahogany banded chest of drawers, fitted with two short and three long graduating drawers, with later pressed brass oval plate handles, raised on bracket feet, width 110cm, depth 51cm, height 100cm
£100 - £150 plus 25% BP*

558 Colonial style mahogany and inlaid kidney shaped dressing table, of small proportions, with three-quarter galleried top, over a single frieze drawer inlaid with mother of pearl fronds, raised on turned and ringed legs with brass castors, width 80cm, depth 37cm, height 70cm
£60 - £80 plus 25% BP*

559 Late Victorian Sheraton Revival rosewood and inlaid torchère, circa 1885, tapered square form inlaid with classical urns in boxwood and harewood, over a stepped plinth base, height 107.5cm
£100 - £150 plus 25% BP*



Lot 560

560 Late Victorian Sheraton Revival double bow fronted display cabinet, circa 1890, having a frieze inlaid with bellflower garlands, over two barrel fronted glazed doors centred with a glazed and inlaid panel, opening to two fabric covered shelves, over an open base with undershelf, raised on tapered square section legs inlaid with bellflower trails, width 131cm, depth 43cm, height 185cm
£300 - £500 plus 25% BP*

561 Hamadan woollen rug, red ground with three rows of blue and fawn reserves, within a fawn border (worn), 196cm x 140cm
£50 - £80 plus 25% BP*

562 Edwardian mahogany and inlaid bow front dressing table, in Georgian style, fitted with three drawers around a central kneehole inlaid with fan shaped spandrels, raised on tapered square section legs with boxwood line inlays, width 99cm, depth 52cm, height 76cm
£80 - £120 plus 25% BP*



Lot 563

563 George III mahogany and inlaid bow front sideboard, circa 1790-1810, crossbanded throughout with walnut, fitted with a long central drawer over a kneehole with sunburst spandrel inlays in boxwood and harewood, flanked on either side with a deep drawer with further inlays and pressed brass ring handles, raised on tapered square section legs with spade toes, width 184cm, depth 75.5cm, height 91cm
£400 - £600 plus 25% BP*



Lot 564

564 Walnut inlaid kneehole desk, 18th Century, quarter veneered top crossbanded and with ebony and boxwood feathered inlays, fitted with a long frieze drawer over a kneehole with a recessed sliding cupboard, with an arched door, flanked on either side with three short drawers with brass swan neck handles, raised on swan neck feet, width 88cm, depth 43cm, height 74cm
£300 - £500 plus 25% BP*

565 Balouch woollen rug, central blue field with deep red honeycomb trellis and deep red border, 88cm x 170cm
£40 - £60 plus 25% BP*

566 Regency rosewood work table, circa 1820, the top with an egg and dart moulded border, and two drop leaves, over a single drawer and false drawer at either side, with pressed brass knobs and a pullout slide beneath, raised on turned baluster supports, united by a turned stretcher, raised on sabre legs with brass paw feet and castors, width 46cm, depth 38cm, height 74cm
£400 - £600 plus 25% BP*



Lot 567

567 Oyster laburnum and walnut chest on chest, early 18th Century and later, having an ogee cornice over a secret frieze drawer, the upper part with a configuration of four drawers with short drawers, flanking a central cupboard door, all feather banded, the cupboard opening to three concealed shelves, and with a full length long drawer beneath, all with later brass engraved plate handles, the base fitted with two short and two long drawers, similarly furnished, raised on later bracket feet, width 105cm, depth 47cm, height 161.5cm
£800 - £1200 plus 25% BP*

568 Mahogany small pier glass, 19th Century, geometrically inlaid frieze in boxwood, slender turned columns flanking a rectangular plate, 41cm x 65cm
£40 - £80 plus 25% BP*

569 Victorian carved oak cricket table, with a swivelling drop leaf circular top, carved with leaves, over turned slender baluster supports united by stretchers, 60cm diameter, height 70cm
£40 - £60 plus 25% BP*

570 Pakistani red ground woollen rug, centred with a blue medallion within a fawn border, 160cm x 96cm
£20 - £40 plus 25% BP*

571 Victorian walnut cased lepidopterist's display, featuring a display of exotic butterflies in a glazed, domed case, raised on fluted and turned supports on cabriole legs with brass castors, width 66cm, height 102.5cm
£100 - £150 plus 25% BP*

572 Victorian walnut and inlaid bookcase cabinet, circa 1870, having two glazed upper doors opening to three shelves, all flanked with ormolu mounts, over a base with two recessed panel cupboard doors, opening to a single shelf, all raised on a plinth base, width 117cm, depth 41cm, height 203cm
£300 - £500 plus 25% BP*

573 Late Victorian mahogany and inlaid breakfront display cabinet, circa 1890, having an upper frieze inlaid with acanthus scrolls, over a central astragal glazed door flanked by concave panel sides, opening to two fabric covered shelves, raised on tapered square section legs with platform shelf beneath, width 107cm, height 172cm, depth 37cm
£250 - £350 plus 25% BP*

574 Kilim flat weave woollen rug, allover bold geometric design in ochre, madder and black, 105cm x 206cm
£50 - £80 plus 25% BP*

575 Mahogany chest of drawers, probably mid 20th Century, fitted with five graduating drawers with brass fretwork handles, raised on short cabriole legs with pad feet, width 78cm, depth 47cm, height 110cm
£50 - £80 plus 25% BP*

576 Edwardian mahogany and inlaid sewing cabinet, the sliding top opening to reveal a compartment tray over a well, raised on tapered square section legs with a platform shelf beneath, width 54cm, depth 35.5cm, height 76cm
£80 - £120 plus 25% BP*



Lot 577

577 Good Regency rosewood and brass inlaid sofa table, circa 1810-20, well figured top with two drop leaves and bordered with trailing foliage and brass inlays, over a similarly decorated frieze, fitted with a single drawer, over a shaped pillar further inlaid and with a platform and four sabre legs with brass paw feet and castors, width 95cm, extending to 152cm, depth 73cm, height 73cm
£800 - £1200 plus 25% BP*

578 Victorian mahogany corner whatnot, with four graduating shelves supported on barleytwist columns and turned feet, height 124cm, width 58cm
£70 - £100 plus 25% BP*

579 George V mahogany serpentine front display cabinet, circa 1910-20, having two glazed doors opening to a plate glass shelf, with glazed panel sides, over a base fitted with two cupboard doors within canted corners, opening to a single shelf, raised on short cabriole legs with hairy paw feet, width 114cm, depth 39cm, height 159cm
£200 - £300 plus 25% BP*

580 Late Victorian rosewood and inlaid Sutherland table, the top with drop leaves and canted corners, over a trestle style base with swing out gates, width 60cm, depth when closed 15cm

£60 - £100 plus 25% BP*

581 Late Victorian mahogany wine table, hexagonal galleried top on a fluted and writhen moulded column, three fine cabriole legs, width 33cm, height 61cm

£60 - £80 plus 25% BP*

582 Late Victorian walnut swivel top occasional table, triangular form with demi-lune drop leaves, over three simulated bamboo supports united by a stretcher, width 40cm, height 63.5cm

£50 - £80 plus 25% BP*



Lot 583

583 Shirvan woollen rug, abrashed blue ground centred with a hooked medallion in terracotta, blue and pink, the field having figures and birds, cornered with spandrels, within a fawn, terracotta and blue border, 208cm x 125cm

£150 - £200 plus 25% BP*

584 Mahogany and brass revolving magazine stand, shaped square form with brass columns/divisions, over four splayed legs, width 30cm, height 60cm

£50 - £80 plus 25% BP*

585 Stained beech turned two fold towel rail, each section 56cm x 78cm

£40 - £60 plus 25% BP*

586 Late Victorian mahogany wall shelf, in Chippendale Revival style, having three shelves with fretwork gallery and sides, width 78cm, height 79cm

£60 - £100 plus 25% BP*

587 Victorian walnut small open wall display shelf, with serpentine fronted shelves, within scrolling fretwork sides, width 53cm, height 56cm

£30 - £50 plus 25% BP*

588 North West Persian woollen runner, early 20th Century, the red field centred with a pole medallion within a blue and fawn border (worn in places), 284cm x 82cm

£50 - £70 plus 25% BP*



Lot 589

589 Italian moulded gilt wall mirror, in Baroque style, shaped plate bordered with 'C' and rocaille scrolls, 120cm x 67cm

£80 - £120 plus 25% BP*

590 Provincial oak open armchair, early 19th Century, with splat back pierced with a heart, of joined construction, solid seat, height 91cm; also another provincial joined oak side chair, height 92cm (2)

£40 - £60 plus 25% BP*

591 Welsh carved oak side chair, circa 1900, with carved back, the seat carved with a leek, height 102cm

£40 - £60 plus 25% BP*



Lot 592

592 Hamadan woollen rug, having a deep blue ground centred with a star medallion and two lozenge medallions, within a fawn ground star border, 200cm x 135cm

£100 - £150 plus 25% BP*



Lot 593

593 Two French gilt bergère tub chairs, early 20th Century, the larger with a single caned back, double caned arms, pad cushion, raised on French cabriole legs, height 85cm, width 73cm; the smaller chair with double caned back and arms, pad seat and French cabriole legs, height 80cm, width 59cm (both seats require re-caning)
£100 - £150 plus 25% BP*

594 Pair of French painted and parcel gilt side chairs, early 20th Century, with green striped silk fabric, pad backs and seat, raised on cabriole forelegs, height 98cm
£60 - £80 plus 25% BP*



Lot 595

595 Good set of eight Regency mahogany simulated rosewood Trafalgar dining chairs, circa 1805-15, each with a brass inlaid top rail with carved fan details, carved brass inlaid centre bar, caned seat raised on sabre legs, height 86cm, chair width 45cm
£700 - £1000 plus 25% BP*

596 Set of six Edwardian mahogany dining chairs (5 + 1), in the Georgian style, each with an anthemion carved splat back, faux leather upholstered pad seat, raised on ogee moulded square section legs, the carver 110cm
£80 - £120 plus 25% BP*



Lot 597

597 Set of eight traditional Lancashire spindle back ash dining chairs, comprising two carvers and six singles, each with rush seats, turned legs, stretchers and ball feet, the carvers 107cm high, width 59cm
£100 - £200 plus 25% BP*



Lot 598

598 George III oak mule chest, circa 1760-80, of small proportions, the top with Victorian gothic inspired brass adornments and hinges, two fielded panel front with two short drawers, pegged construction, width 107cm, depth 53cm, height 79cm
£300 - £500 plus 25% BP*



Lot 599

599 Arts and Crafts period oak writing table, circa 1900, having a three-quarter stained glass panel back and rexine writing surface, over two frieze drawers, raised on tapered square section legs, width 97cm, depth 55.5cm, height 94cm

£150 - £250 plus 25% BP*

600 Unusual pair of handcrafted oak hall chairs, circa 1920-30, each having a foliate carved sloping back and solid seat with triform supports, width 39cm, height 63cm

£80 - £120 plus 25% BP*

601 Pakistani woollen rug, in Bokhara style, the faded aubergine and fawn coloured field dispersed with a trellis of lozenge medallions, within a multi guardstripe faded madder border (worn), 96cm x 122cm; also a Turkish silk garden rug, with a pictorial grid field and panelled border in faded colours, 185cm x 115cm (2)

£50 - £70 plus 25% BP*

602 Arts and Crafts period oak bookstand, the square top with canted corners, over a single sectional shelf, raised on four splat supports, 54cm square, height 57cm

£60 - £80 plus 25% BP*

603 Regency rosewood and brass inlaid folding pedestal card table, circa 1810-20, the swivelling folding top with brass line inlay over a rectangular section column and quatreform base further inlaid with brass, raised on four acanthus carved sabre legs with brass toes and castors, width 91.5cm, depth 45.5cm, height 74.5cm

£100 - £200 plus 25% BP*



Lot 604

604 Oak boarded chest, late 17th Century, single plank top with later iron strap hinges, over a chip carved panel front bordered with simple lunette decoration, iron lock plate, width 114cm, depth 39cm, height 50cm

£200 - £300 plus 25% BP*

605 Waring & Gillow mahogany serpentine front sideboard, circa 1910, fitted with two central drawers flanked on either side with two cupboard doors, all with brass ring handles, and flanked with carved bellflower trails, raised on ogee tapered square section legs with spade toes, width 213cm, depth 71.5cm, height 93cm

£100 - £200 plus 25% BP*



Lot 606

606 Bespoke burr walnut triple pedestal boardroom table, circa 2000, finely figured throughout, with two additional leaves, raised on fluted and turned columns, each with four splayed feet, width 136cm, height 77cm, length without leaves 495cm, and with the leaves in 536cm

£400 - £600 plus 25% BP*



Lot 607

607 Arts and Crafts oak mirror back sideboard, circa 1900-10, the bevelled glass mirrored back flanked by a single leaded glass fronted cupboard door, with copper strap hinges, over a decorative beaten copper panel worked with stylised tulips, and with a single shelf, over a base fitted with two barrel fronted frieze drawers, an open shelf with two recessed panel cupboard doors beneath with further copper strap hinges and a single carved panel cupboard door to the right, all raised on turned feet, width 140cm, height 200cm

£200 - £300 plus 25% BP*



Lot 608

608 Arts and Crafts period oak display cabinet, labelled 'Bowman Brothers, Camden Town, London', the top with a three-quarter gallery centred with a green glazed boss, over two tulip leaded glass doors opening to shelves, and with two recessed panel cupboard doors beneath, all flanked with further open shelves, all raised on bracket feet, width 130cm, depth 35cm, height 167cm
£200 - £300 plus 25% BP*

609 Arts and Crafts period oak open bureau, circa 1900-10, centred with a slope front with copper strap hinges opening to a compartmented interior, over a single bookshelf with an open shelf beneath and flanked by adjustable open shelves, width 109cm, depth 25.5cm, height 114cm
£80 - £120 plus 25% BP*



Lot 610

610 Ziegler style woollen carpet, the abraded blue field with an allover floral design within a broad terracotta border punctuated with palmettes and leaves in blue, 284cm x 191cm
£150 - £250 plus 25% BP*

611 Mahogany eight day longcase clock, by Owen of Oswestry, having a painted 13 1/2" arched dial with rolling moon, Roman numerals, subsidiary seconds and date aperture, flanked with wrythen turned columns, the movement striking on a bell, with pendulum and two weights, the trunk with further wrythen columns flanking an oval panelled door, with a circular panelled box base within canted corners, height 224cm

Please note our special conditions of sale regarding clocks and watches
£200 - £400 plus 25% BP*



Lot 612

612 Regency mahogany and inlaid secretaire bookcase, circa 1820, having an inlaid dentil cornice over two oval panelled doors with boxwood and ebony stringing, opening to adjustable shelves, over a base fitted with a secretaire pull down top drawers opening to satinwood faced drawers and pigeonholes, and with a further two long drawers beneath, all with pressed brass ring handles, raised on bracket feet, width 123cm, depth 57cm, height 215cm
£400 - £600 plus 25% BP*

613 Late Regency mahogany and rosewood banded breakfast table, circa 1825, rectangular top with rounded corners, tilting over a turned column with four reeded umbrella splayed legs with brass castors, 129.5cm x 107cm, height 69.5cm
£200 - £300 plus 25% BP*



Lot 614

614 George III mahogany lowboy, circa 1780, having three small drawers with brass swan neck handles, over a shaped apron, raised on fluted square section legs, width 76cm, depth 41cm, height 76cm
£200 - £300 plus 25% BP*

615 Set of six George III mahogany dining chairs, circa 1800, each with a boxwood inlaid top rail with reeded uprights and fan reeded sticks, over green upholstered stuffover seats raised on tapered square section legs with spade toes, height 86cm, height to the top of the seat 45cm
£100 - £200 plus 25% BP*

616 Regency mahogany corner washstand, traditional form with splash back, recesses for wash basin and vases, over an under-shelf with a single drawer and two blind drawers, each with pressed brass knobs, raised on square section legs united by a platform stretcher, width 61cm, height 112.5cm
£60 - £100 plus 25% BP*



Lot 617

617 Victorian walnut and upholstered chaise longue, the serpentine shaped spoon back with deep button upholstery in figured cream fabric, carved forearms, raised on cabriole legs with pot castors, width 191cm, depth 80cm, height 91cm
£150 - £200 plus 25% BP*

618 Victorian mahogany dumb waiter, circa 1880, the back carved with leaves centred with a flowerhead and with a single shelf over turned and ringed columns, and two door cupboard base, raised on short turned legs with pot castors, width 118cm, depth 46cm, height 115.5cm
£100 - £150 plus 25% BP*



Lot 619

619 Iranian Mahi Tabriz woollen rug (modern), having a dark blue and fawn reserved field, within a fawn and dark blue palmette border, 200cm x 150cm, supplied by G H Frith Ltd; also a small Iranian Tabriz woollen rug, with a cream field, 137cm x 68cm (2)
£80 - £120 plus 25% BP*

620 Late Victorian satinwood and inlaid bonheur de jour, having a lift up top over two doors inlaid with satinwood and harewood and opening to reveal an interior with fitted drawers, three pigeonholes and three concealed drawers, over a pullout writing slide with a drawer beneath, all raised on tapered square section legs, width 54cm, depth 37cm, height 128cm
£150 - £250 plus 25% BP*

621 Regency mahogany folding pedestal tea table, circa 1825, the top swivelling and folding over a plain apron, over a turned and ringed column and four reeded sabre legs with anthemion cast brass toes, width 91cm, depth 45cm, height 75cm
£80 - £120 plus 25% BP*



Lots 622, 624 and 623

622 Brass corinthian column extendable standard lamp, have a gold damask and tasselled silk umbrella shade over a reeded column and stepped square base with claw and ball feet, minimum height 135cm
£150 - £200 plus 25% BP*

623 Brass corinthian column extendable standard lamp, having a gold damask and tasselled silk umbrella shade over a reeded column and stepped square base with laurel wreath adornment, raised on paw feet, minimum height 136cm
£150 - £200 plus 25% BP*

624 Edwardian brass extending standard lamp, in Art Nouveau style, having a purple silk damask fringed umbrella shade over a plain column and triform base, minimum height 135cm
£120 - £180 plus 25% BP*



Lot 625

625 Austrian bentwood jardinière stand, attributed to Thonet, the dished top over three bentwood bracket style supports, united by a ring stretcher, height 95.5cm
£60 - £80 plus 25% BP*



Lot 626

626 Set of five George IV mahogany dining chairs, circa 1825-30, each with curved top rail and carved centre bar, red rexine stuffover seats raised on turned and reeded forelegs; also a similar George IV mahogany carver chair, with a curved bar top rail, acanthus carved mid rail, open arms, needlework seat and reeded forelegs (6)
£120 - £180 plus 25% BP*

627 Late 19th Century mahogany and inlaid breakfront library bookcase, in Georgian style, having a moulded cornice over four bevelled glass doors opening to adjustable shelves throughout and with small drawers beneath, the base fitted with four recessed oval flame mahogany panel doors, crossbanded with rosewood and opening to central trays and flanked by drawers and shelves to the outside, width 234cm, depth 50cm, height 241cm
£800 - £1200 plus 25% BP*

628 Pakistani small red ground woollen rug, centred with a blue and fawn lozenge medallion, 147cm x 80cm
£30 - £50 plus 25% BP*



Lot 629

629 Mouseman (Robert Thompson of Kilburn), oak kidney shaped stool, on tapered octagonal legs, width 37cm, height 46cm
£300 - £500 plus 25% BP*

630 Sheraton Revival mahogany and marquetry kettle stand, octagonal top centred with a flowerhead and seed pod inlay in a variety of woods, bordered with satinwood and harewood, pullout drip slide, the side panels inlaid with swags, raised on tapered square section legs united by a cross form stretcher, brass ball feet, 33.5cm, height 68cm
£80 - £120 plus 25% BP*

631 Walnut framed overmantel mirror, rectangular plate bordered with a geometrically moulded frame with kick out corners, 115cm x 78cm
£50 - £80 plus 25% BP*

632 Alabaster torchère, square top over a column with an octagonal base, height 97cm, width 26cm
£50 - £70 plus 25% BP*



Lot 627

633 Pair of Tyrolean carved walnut and inlaid hall chairs, late 19th Century, shaped carved backs centred with a panel featuring a shepherd and hunter in woods against an ebony ground, the seats inlaid throughout with leaf fronds and centred with ibex and an eagle, one seat lifting (originally to accommodate a musical box), all raised on carved legs, height 98cm
£100 - £150 plus 25% BP*



Lot 633



Lot 634

634 Three yewwood and ash low back Windsor armchairs, early 19th Century, each with crinoline stretcher
£200 - £300 plus 25% BP*

635 Persian Bidjar rug, the red ground with a Herati design of interlocking flowers in colours, within a blue and ochre border (worn and holed), 290cm x 195cm
£100 - £200 plus 25% BP*



Lot 636

636 Victorian burr walnut kneehole writing table, with tooled leather inset top, over a fretwork kneehole flanked on either side with two short drawers, raised on wythen turned supports and stretchers, brass castors, width 110cm, width 55cm
£150 - £250 plus 25% BP*

637 Dutch brass six branch chandelier, 73cm drop, 81cm diameter
£200 - £300 plus 25% BP*

638 French cast brass eight branch chandelier, cast with three terms suspended beneath a chain, the drop 59cm, chain length and rose 60cm, 74cm diameter
£200 - £300 plus 25% BP*



Lot 639

639 Walnut chest on stand, early 18th Century and later, the top with moulded cornice over three short and three long graduating drawers, all featherbanded and with later shaped brass handles and escutcheons, over a stand fitted with one long deep drawer and three small drawers, similarly furnished, raised on later shell carved cabriole legs with claw and ball feet, width 109cm, height 172cm
£800 - £1200 plus 25% BP*

640 Arts and Crafts copper and stained beech overmantel mirror, surmounted with a hawk holding an arrow, the bottom rail panel inscribed 'Welcome', width 112cm, height 48.5cm
£40 - £60 plus 25% BP*



Lot 641

641 Arts and Crafts period mirrored oak wall mounted hall stand, fitted with an upper shelf over an oval bevelled glass mirror, flanked by copper panels worked with sailing boats and with six brass coat hooks, width 95cm, height 43cm
£50 - £80 plus 25% BP*

Information for Buyers at Auctions

- 1. Introduction.** The following notes are intended to assist bidders and buyers, particularly those that are inexperienced or new to our salerooms. All of our auctions are governed by our Conditions of Business incorporating the Terms of Consignment (primarily applicable to sellers), the Terms of Sale (primarily applicable to bidders and buyers) and any notices that are displayed in our salerooms or announced by the auctioneer at the auction. Our Conditions of Business are available for inspection at our salerooms and the Terms of Sale are printed in the back of our auction catalogues. Our staff will be happy to help you if there is anything in our Conditions of Business that you do not fully understand.
- Please make sure that you read our Terms of Sale set out in this catalogue or on our website carefully before bidding in the auction. If your bid is successful, you will be obliged to comply with our Terms of Sale.**
- 2. Agency.** As auctioneers we usually act on behalf of the seller whose identity, for reasons of confidentiality, is not normally disclosed. If you buy at auction your contract for the goods is with the seller, not with us as auctioneer.
- 3. Estimates.** Estimates are designed to help you gauge what sort of sum might be involved for the purchase of a particular lot. Estimates may change and should not be thought of as the sale price. The lower estimate may represent the reserve price (the minimum price for which a lot may be sold) and will not be below the reserve price. Estimates do not include the buyer's premium or VAT (where chargeable). Estimates are prepared some time before the auction and may be altered by a saleroom notice or announcement by the auctioneer before the auction of the lot. They are not definitive.
- 4. Buyer's Premium.** The Terms of Sale oblige you to pay a buyer's premium at 25% on the hammer price of each lot purchased. In addition, VAT is included in this premium (see below).
- 5. VAT.** Items in our catalogue may be marked in the following ways:
- (*) indicates that VAT is payable by the buyer on the hammer price as well as being an element in the buyer's premium. VAT will be chargeable at the standard rate (presently 20%). This imposition of VAT is likely to be because the seller is registered for VAT within the European Union and is not operating the Dealers Margin Scheme or because VAT is due at 20% on importation into the UK.
 - (**) indicates that the lot has been imported from outside the European Union. These lots are liable to a reduced rate of VAT (5%) on the hammer price and buyer's premium).
 - Lots which do not have either of the above symbols have no VAT payable on the hammer price. This is because such lots are sold using the Auctioneers' Margin Scheme. The VAT included within the premium is not recoverable as input tax.
- 6. Inspection of goods by the buyer.** As we act on behalf of the seller, we are dependent on information provided by the seller about their goods. We may inspect lots and will act reasonably in taking a general view about them. However, we are normally unable to carry out detailed examinations of lots to check their condition in the way a buyer would do. You will have ample opportunity to inspect the goods. You must inspect and investigate lots that you might wish to bid for. Please note carefully the exclusion of liability for the condition of lots set out in the Terms of Sale at clause 12.4.
- 7. Export of goods.** If you intend to export goods you must find out:
- whether an export licence is needed; and
 - if there is a prohibition on importing goods of that character e.g. because the goods contain prohibited materials such as ivory.
- 8. Bidding.** Bidders will be required to register with us before the auction starts. We reserve the right to impose a deadline prior to the auction by which you must register or by which we must receive a commission bid. If you wish to bid on high value lots this deadline may be several days before the auction in order to allow us sufficient time to carry out the necessary checks. Lots will be invoiced to the name and address on the registration form. You will need to provide us with proof of your identity in a form acceptable to us and such other information as we may require. Please enquire in advance about our arrangements for telephone or online bidding. Please note that we may refuse to register you if you do not provide us with all the information and documentation that we ask for or at our discretion.
- 9. Absentee Bidding:** If you are unable to attend the auction there are a number of options available to enable you to participate. When placing any absentee bids, please check and double check the lot numbers as this is the only definitive piece of information which guarantees your bid is executed on the lot you want.
- Commission bidding:** It is possible to leave commission bids with the auctioneers indicating the maximum amount to be bid excluding buyers' premium. They will be executed as cheaply as possible having regard to the reserve (if any) and competing bids. If two buyers submit identical commission bids the auctioneers may prefer the first bid received. In some instances the auctioneer may also exceed a bid in order to secure the lot on the buyer's behalf. Commission bids are accepted by fax, e-mail and phone, and in all these instances, commission bidders are deemed to have read, understood and agreed to be bound by our conditions of business. All commission bids should be received by close of business on the day prior to the auction. Any bids received later than this time cannot be guaranteed to be executed accurately. To ensure that bids are placed on the right lots please check all your lot numbers as this is the only piece of information which guarantees you buy the lot you want.
 - Telephone bidding:** We reserve the right for this service to be available on higher value lots only. The number of telephone lines is limited so we would urge serious telephone bidding only and ask that you be prepared to bid at least to the low sale estimate. It is also advisable to leave a maximum covering bid in case we cannot contact you by telephone. All telephone bids must be received by close of business on the day prior to the auction and prospective purchasers booking lines are deemed to have read, understood and agreed to be bound by our conditions of business.
 - Internet bidding:** Online bidding services are available through third party service providers, who have their own registration procedures and charge a fee for using their facility, which we collect on their behalf. Online bidders are deemed to have read, understood and agreed to be bound by our conditions of business.
- 10. Methods of Payment.** Acceptable payment methods are debit card, credit card and bank transfer. We reserve the right to refuse to accept card payments over the telephone in order to minimise fraudulent transactions being attempted. Separate arrangements exist for accepting payment from online bidders.
- 11. Collection and storage.** Please note what the Terms of Sale say about collection and storage. It is important that you pay for and collect goods promptly. Any delay may involve you having to pay storage charges. We offer a domestic and international dispatch service at our discretion for which we will provide a quote if requested. Cleared payment is required prior to dispatch. For urgent dispatch, awkward, very fragile or bulky items we may suggest an alternative to this service, but please feel free to enquire as we will oblige wherever possible. Please note that there is a special notice applied to coins, medallions and tokens, which is printed at the end of this information.

ARTISTS RESALE RIGHTS

In accordance with Artists Resale Rights Regulations 2006, all lots which sell for €1,000 or more are subject to a resale royalty charge ("Royalty"). This Royalty is payable by the Bidder. The Royalty will be charged at a rate of 4% of the total hammer price (exclusive of Bidder's premium) for lots selling for amounts up to €50,000. For lots selling in excess of €50,001, the Royalty shall be calculated at a reduced rate (details available on request). The Royalty is not subject to VAT and is payable in sterling calculated on the day of sale at the prevailing rate of exchange. Payment shall be passed directly to the Design and Artists Copyright Society (DACS), 33 Great Sutton Street, London EC1V 0DX. For further information please contact the Auctioneers or DACS on 0845 4103410 or visit their website at www.dacs.org.uk

IMPORTANT NOTICES

Electrical goods: These are sold as 'antiques' only and if bought for use must be checked for compliance with safety regulations by a qualified electrician first.

Post 1950s Furniture: All items of furniture included in this sale are offered as works of art. The items may not comply with the Furniture and Furnishings (Fire) Safety Regulations 1988 and for this reason they should not be used in a private dwelling.

Coloured gemstones: It is accepted practice that many coloured gemstones are routinely treated to enhance their colour and possibly clarity, and unless otherwise stated in a individual written condition reports, it must be assumed that those offered for sale in this saleroom have possibly been subjected to such treatments:

Clocks & Watches: Please note that with clock and watch lots we do not offer any opinion as to the originality of component parts, accompanying documentation, boxes or any other additional material. In the case that a watch has its factory seal intact it will not have been, and cannot be, opened by us. If a potential purchaser wishes to make an internal inspection of a watch which necessitates breaking a factory seal, this will only be possible on the understanding that the watch will be reinstated at the interested party's expense, regardless of whether they are the purchaser. If a condition report is requested it will not include any opinion as to the originality, completeness or working condition of the movement. Potential buyers are strongly advised to make a physical inspection in person prior to bidding as we will not accept returns on such lots. By bidding you are deemed to have satisfied yourself with regard to the originality and working order, or otherwise, of all components of a lot.

Coins, Tokens and Medallions: Please note that while we are happy to post such items, in doing so we will not accept any returns under Section 13 of our Terms of Sale due to the possibility of lots being substituted once they have left Byrne's premises.

E&OE 1st November 2015

Byrne's (Chester) Ltd.

A Private Limited Company. Registered in England and Wales No. 7794090

Conditions of Sale

Both the sale of goods at our auctions and your relationship with us are governed by the Terms of Consignment (primarily applicable to sellers) the Terms of Sale (primarily applicable to bidders and buyers) and any notices displayed in the saleroom or announced by us at the auction (collectively, the "Conditions of Business"). The Terms of Consignment and Terms of Sale are available at our saleroom on request.

Please read these Terms of Sale carefully. Please note that if you register to bid and/or bid at auction this signifies that you agree to and will comply with these Terms of Sale.

Please note that these Terms of Sale relate to auctions held at our premises only. We have separate terms for online only auctions.

1. Definitions and interpretation

1.1 To make these Terms of Sale easier to read, we have given the following words a specific meaning:

"Auctioneer"	means Byrne's (Chester) Ltd, a company registered in England and Wales with registration number 7794090 and whose registered office is located at Pullman House, The Sidings, Boundary Lane, Saltney, Chester, CH4 8RD, or its authorised auctioneer, as appropriate;
"Bidder"	means a person participating in bidding at the auction;
"Buyer"	means the person who makes the highest bid for a Lot accepted by the Auctioneer;
"Deliberate Forgery"	means: (a) an imitation made with the intention of deceiving as to authorship, origin, date, age, period, culture or source; (b) which is described in the catalogue as being the work of a particular creator without qualification; and (c) which at the date of the auction had a value materially less than it would have had if it had been as described;
"Hammer Price"	means the level of the highest bid for a Lot accepted by the Auctioneer by the fall of the hammer;
"Lot(s)"	means the goods that we offer for sale at our auctions;
"Premium"	means the premium that we will charge you on your purchase of a Lot to be calculated as set out in Clause 4;
"Reserve"	means the minimum hammer price at which a Lot may be sold;
"Sale Proceeds"	means the net amount due to the Seller;
"Seller"	means the persons who consign Lots for sale at our auctions;
"Terms of Consignment"	means the terms on which we agree to offer Lots for sale in our auctions as agent on behalf of Sellers;
"Terms of Sale"	means these terms of sale, as amended or updated from time to time;
"Total Amount Due"	means the Hammer Price for a Lot, the Premium, any applicable artist's resale right royalty, any VAT due and any additional charges payable by a defaulting buyer under these Terms of Sale;
"Trader"	means a Seller who is acting for purposes relating to that Seller's trade, business, craft or profession, whether acting personally or through another person acting in the trader's name or on the trader's behalf;
"VAT"	means Value Added Tax or any equivalent sales tax; and
"Website"	means our website available at www.byrnesauctioneers.co.uk .

In these Terms of Sale the words 'you', 'yours', etc. refer to you as the Buyer. The words "we", "us", etc. refer to the Auctioneer. Any reference to a 'Clause' is to a clause of these Terms of Sale unless stated otherwise.

2 Information that we are required to give to Consumers

- 2.1 A description of the main characteristics of each Lot as contained in the auction catalogue.
- 2.2 Our name, address and contact details as set out herein, in our auction catalogues and/or on our Website.
- 2.3 The price of the Goods and arrangements for payment as described in Clauses 4, 5, 7 and 8.
- 2.4 The arrangements for collection of the Goods as set out in Clauses 8 and 9.
- 2.5 Your right to return a Lot and receive a refund if the Lot is a Deliberate Forgery as set out in Clause 13.
- 2.6 We and Trader Sellers have a legal duty to supply any Lots to you in accordance with these Terms of Sale.
- 2.7 If you have any complaints, please send them to us directly at the address set out on our Website.

3 Bidding procedures and the Buyer

- 3.1 You must register your details with us before bidding and provide us with any requested proof of identity and billing information, in a form acceptable to us. You must also satisfy any security arrangements we have in place before entering the auction room to view or bid.
- 3.2 We strongly recommend that you attend the auction viewing in person. You are responsible for your decision to bid for a particular Lot. If you bid on a Lot, including by telephone and online bidding, or by placing a commission bid, we assume that you have carefully inspected the Lot and satisfied yourself regarding its condition.
- 3.3 If you instruct us in writing, we may execute commission bids on your behalf. Neither we nor our employees or agents will be responsible for any failure to execute your commission bid, unless our failure to do so is unreasonable. Where two or more commission bids at the same level are recorded we have the right to prefer the first bid made (where this can be reasonably ascertained).
- 3.4 The Bidder placing the highest bid for a Lot accepted by the Auctioneer will be the Buyer at the Hammer Price. Any dispute about a bid will be settled at our discretion. We may reoffer the Lot during the auction or may settle the dispute in another way. We will act reasonably when deciding how to settle the dispute.

- 3.5 Bidders will be deemed to act as principals, even if the Bidder is acting as an agent for a third party.
- 3.6 We may bid on Lots on behalf of the Seller up to one bid below the Reserve.
- 3.7 We may refuse to accept any bid if it is reasonable for us to do so.
- 3.8 Bidding increments will be at our sole discretion (but will be in line with standard auction practice).
- 4 **The purchase price**
As Buyer, you will pay:
 - a. the Hammer Price;
 - b. a premium of 20.83% plus VAT of the Hammer Price;
 - c. any artist's resale right royalty payable on the sale of the Lot; and
 - d. any VAT due.
- 5 **VAT**
5.1 You shall be liable for the payment of any VAT applicable on the Hammer Price and premium due for a Lot. Please see the symbols used in the auction catalogue for that Lot and the "Information for Buyers" in our auction catalogue for further information. We will charge VAT at the current rate at the date of the auction.
- 5.2 **The contract between you and the Seller**
6.1 The contract for the purchase of the Lot between you and the Seller will be formed when the hammer falls accepting the highest bid for the Lot at the auction.
6.2 You may directly enforce any terms in the Terms of Consignment against a Seller to the extent that you suffer damages and/or loss as a result of the Seller's breach of the Terms of Consignment.
6.3 If you breach these Terms of Sale, you may be responsible for damages and/or losses suffered by a Seller or us. If we are contacted by a Seller who wishes to bring a claim against you, we may in our discretion provide the Seller with information or assistance in relation to that claim.
6.4 We normally act as an agent only and will not have any responsibility for default by you or the Seller (unless we are the Seller of the Lot).
- 7 **Payment**
7.1 Immediately following your successful bid on a Lot you will:
 - 7.1.1 give to us, if not already provided to our satisfaction, proof of identity in a form acceptable to us (and any other information that we require in order to comply with our anti-money laundering obligations); and
 - 7.1.2 pay to us the Total Amount Due in cash (for which there is an upper limit of 15,000 euros equivalent) or in any other way that we agree to accept payment.
- 7.2 If you owe us any money, we may use any payment made by you to repay these debts.
- 8 **Title and collection of purchases**
8.1 Once you have paid us in full the Total Amount Due for any Lot, ownership of that Lot will transfer to you. You may not claim or collect a Lot until you have paid for it.
8.2 You will (at your own expense) collect any Lots that you have purchased and paid for either:
 - 8.2.1 not later than seven business days following the day of the auction; or
 - 8.2.2 not later than seven business following the date that we have received payment of the Total Amount Due in cleared funds, if later.
- 8.3 If you do not collect the Lot within this time period, you will be responsible for any reasonable removal, storage and insurance charges in relation to that Lot.
- 8.4 Risk of loss or damage to the Lot will pass to you when you (or your agents) take physical possession of the Lot.
- 8.5 If you do not collect the Lot that you have paid for within ninety days after the auction, we may sell the Lot. We will pay the proceeds of any such sale to you, but will deduct any storage charges or other sums that we have incurred in the storage and sale of the Lot. We reserve the right to charge you a selling commission at our standard rates on any such resale of the Lot.
- 9 **Remedies for non-payment or failure to collect purchases**
9.1 Please do not bid on a Lot if you do not intend to buy it. If your bid is successful, these Terms of Sale will apply to you. This means that you will have to carry out your obligations set out in these Terms of Sale. If you do not comply with these Terms of Sale we may (acting on behalf of the Seller and ourselves) pursue one or more of the following measures:
 - 9.1.1 take action against you for damages for breach of contract;
 - 9.1.2 reverse the sale of the Lot to you and/or any other Lots sold by us to you;
 - 9.1.3 resell the Lot by auction or private treaty (in which case you will have to pay any difference between the price you should have paid for the Lot and the price we sell it for as well as the charges outlined in Clause 8.5). Please note that if we sell the Lot for a higher amount than your winning bid, the extra money will belong to the Seller;
 - 9.1.4 remove, store and insure the Lot at your expense;
 - 9.1.5 if you do not pay us within five business days of your successful bid, we may charge interest at a rate not exceeding 1.5% per month on the total amount due;
 - 9.1.6 keep that Lot or any other Lot sold to you until you pay the Total Amount Due;
 - 9.1.7 reject or ignore bids from you or your agent at future auctions or impose conditions before we accept bids from you; and/or
 - 9.1.8 if we sell any Lots for you, use the money made on these Lots to repay any amount you owe us.
- 9.2 We will act reasonably when exercising our rights under Clause 9.1. We will contact you before exercising these rights and try to work with you to correct any non-compliance by you with these Terms of Sale.

- 10 Health and safety**
Although we take reasonable precautions regarding health and safety, you are on our premises at your own risk. Please note the lay-out of the premises and security arrangements. Neither we nor our employees or agents are responsible for the safety of you or your property when you visit our premises, unless you suffer any injury to your person or damage to your property as a result of our, our employees' or our agents' negligence.
- 11 Warranties**
11.1 The Seller warrants to us and to you that:
11.1.1 the Seller is the true owner of the Lot for sale or is authorised by the true owner to offer and sell the lot at auction;
11.1.2 the Seller is able to transfer good and marketable title to the Lot to you free from any third party rights or claims; and
11.1.3 as far as the Seller is aware, the main characteristics of the Lot set out in the auction catalogue (as amended by any notice displayed in the saleroom or announced by the Auctioneer at the auction) are correct.
- 11.2 If, after you have placed a successful bid and paid for a Lot, any of the warranties above are found not to be true, please notify us in writing. Neither we nor the Seller will be liable to pay you any sums over and above the Total Amount Due and we will not be responsible for any inaccuracies in the information provided by the Seller except as set out below.
- 11.3 Please note that many of the Lots that you may bid on at our auction are second-hand.
- 11.4 If a Lot is not second-hand and you purchase the Lot as a Consumer from a Seller that is a Trader, a number of additional terms may be implied by law in addition to the Seller's warranties set out at Clause 11.1 (in particular under the Consumer Rights Act 2015). These Terms of Sale do not seek to exclude your rights under law as they relate to the sale of these Lots.
- 11.5 We as expressly set out above, all other warranties, conditions or other terms which might have effect between the Seller and you, or us and you, or be implied or incorporated by statute, common law or otherwise are excluded.
- 12 Descriptions and condition**
12.1 Our descriptions of the Lot will be based on: (a) information provided to us by the Seller of the Lot (for which we are not liable); and (ii) our opinion (although it is likely that we will not be able to carry out a detailed inspection of each Lot).
- 12.2 We will give you a number of opportunities to view and inspect the Lots before the auction. You (and any independent consultants acting on your behalf) must satisfy yourself about the accuracy of any description of a Lot. We shall not be responsible for any failure by you or your consultants to properly inspect a Lot.
- 12.3 Representations or statements by us as to authorship, genuineness, origin, date, age, provenance, condition or estimated selling price involve matters of opinion. We undertake that any such opinion will be honestly and reasonably held and accept liability for opinions given negligently or fraudulently.
- 12.4 Please note that Lots (in particular second-hand Lots) are unlikely to be in perfect condition. Lots are sold "as is" (i.e. as you see them at the time of the auction). Neither we nor the Seller accept any liability for the condition of second-hand Lots or for any condition issues affecting a Lot if such issues are included in the description of a Lot in the auction catalogue (or in any saleroom notice) and/or which the inspection of a Lot by the Buyer ought to have revealed.
- 13 Deliberate Forgeries**
13.1 You may return any Lot which is found to be a Deliberate Forgery to us within one month of the auction provided that you return the Lot to us in the same condition as when it was released to you, accompanied by a written statement identifying the Lot from the relevant catalogue description and a written statement of defects.
- 13.2 If we are reasonably satisfied that the Lot is a Deliberate Forgery we will refund the money paid by you for the Lot (including any Premium and applicable VAT) provided that if:
13.2.1 the catalogue description reflected the accepted view of experts as at the date of the auction; or
13.2.2 you personally are not able to transfer good and marketable title in the Lot to us, you will have no right to a refund under this Clause 13.2.
- 13.3 If you have sold the Lot to another person, we will only be liable to refund the price that you paid for the Lot. We will not be responsible for repaying any additional money you may have made from selling the Lot.
- 13.4 our right to return a Lot that is a Deliberate Forgery does not affect your legal rights and is in addition to any other right or remedy provided by law or by these Terms of Sale.
- 14 Our liability to you**
14.1 We will not be liable for any loss of opportunity or disappointment suffered as a result of participating in our auction.
- 14.2 In addition to the above, neither we nor the Seller shall be responsible to you and you shall not be responsible to the Seller or us for any other loss or damage that any of us suffer that is not a foreseeable result of any of us not complying with the Conditions of Business. Loss or damage is foreseeable if it is obvious that it will happen or if at the time of the sale of the Lot, we, you and the Seller knew it might happen.
- 14.3 Subject to Clause 14.4, if we are found to be liable to you for any reason (including amongst others, if we are found to be negligent, in breach of contract or to have made a misrepresentation), our liability will be limited to the total purchase price paid by you to us for any Lot.
- 14.4 Notwithstanding the above, nothing in these Terms of Sale shall limit our liability (or that of our employees or agents) for:
14.4.1 death or personal injury resulting from negligence (as defined in the Unfair Contract Terms Act 1977);
14.4.2 fraudulent misrepresentation; or
14.4.3 any liability which cannot be excluded by law.
- 15 Notices**
15.1 All notices between you and us regarding these Terms of Sale must be in writing and signed by or on behalf of the party giving it.
- 15.2 Any notice referred in Clause 15.1 may be given:
15.2.1 by delivering it by hand;
15.2.2 by first class pre-paid post or Recorded Delivery; or
15.2.3 by email, provided that a copy is also sent by pre-paid post or Recorded Delivery.
- 15.3 Notices must be sent:
15.3.1 by hand or registered post:
a. to us, at our address set out in these Terms of Sale or at our registered office address appearing on our Website; and
b. to you, at the last postal address that you have given to us as your contact address in writing; or
15.3.2 by email:
a. to us, by sending the notice to both the following email addresses:
joboucher@byrnesauctioneers.co.uk
auctions@byrnesauctioneers.co.uk
b. to you, by sending the notice to any email address that you have given to us as your contact email address in writing.
- 15.4 Notices will be deemed to have been received:
15.4.1 if delivered by hand, on the day of delivery;
15.4.2 if sent by first class pre-paid post or Recorded Delivery, two business days after posting, exclusive of the day of posting; or
15.4.3 if sent by email, at the time of transmission unless sent after 17.00 in the place of receipt in which case they will be deemed to have been received on the next business day in the place of receipt (provided that a copy has also been sent by pre-paid post or Recorded Delivery as set out in Clause 15.2.3).
- 15.5 Any notice or communication given under these Terms of Sale will not be validly given if sent by fax, email, any form of messaging via social media or text message.
- 16 Data Protection**
We will hold and process any personal data in relation to you in accordance with our current privacy policy, a copy of which is available on request.
- 17 General**
17.1 We may, acting reasonably, refuse admission to our premises or attendance at our auctions by any person.
- 17.2 We act as an agent for our Sellers. The rights we have to claim against you for breach of these Terms of Sale may be used by either us, our employees or agents, or the Seller, its employees or agents, as appropriate. Other than as set out in this Clause, these Terms of Sale are between you and us and no other person will have any rights to enforce any of these Terms of Sale.
- 17.3 We may use special terms in the catalogue descriptions of particular Lots. You must read these terms carefully along with any glossary provided in our auction catalogues.
- 17.4 Each of the clauses of these Terms of Sale operates separately. If any court or relevant authority decides that any of them are unlawful, the remaining clauses will remain in full force and effect.
- 17.5 We may change these Terms of Sale from time to time, without notice to you. Please read these Terms of Sale carefully, as they may be different from the last time you read them.
- 17.6 Except as otherwise stated in these Terms of Sale, each of our rights and remedies are: (a) in addition to and not exclusive of any other rights or remedies under these Terms of Sale or general law; and (b) may be waived only in writing and specifically. Delay in exercising or non-exercise of any right under these Terms of Sale is not a waiver of that or any other right. Partial exercise of any right under these Terms of Sale will not preclude any further or other exercise of that right or any other right under these Terms of Sale. Waiver of a breach of any term of these Terms of Sale will not operate as a waiver of breach of any other term or any subsequent breach of that term.
- These Terms of Sale and any dispute or claim arising out of or in connection with them (including any non-contractual claims or disputes) shall be governed by and construed in accordance with the laws of England and the parties irrevocably submit to the exclusive jurisdiction of the English courts.

Commission Bidding Form

The auctioneers are pleased to execute commissions for purchasers who are unable to attend the sale.
This form should be completed and returned to the auctioneer's office prior to the day of the sale.

Please ensure that bids are received into the office no later than 5pm on Tuesday 13th December 2022.
Bids received later than this cannot be guaranteed to be executed. Please ensure that you have written the correct lot number for your bid.

Sale Date: Wednesday 14th December 2022

Lot No.	Description	Bid in £

As this service is without charge, the auctioneers cannot be held responsible for bids being lost or misunderstood,
or for bids being missed for any reason whatsoever. The bid price does not include the buyers premium or any VAT chargeable on any lot.

The auctioneer reserves the right to exceed the maximum amount by one bid in order to secure the lot on your behalf.

Name: _____

Full Address: _____

Postcode: _____

Tel No: _____ E-mail: _____

Signature: _____ Date: _____

By signing I confirm that I have read and agree to be bound by the Conditions of Sale

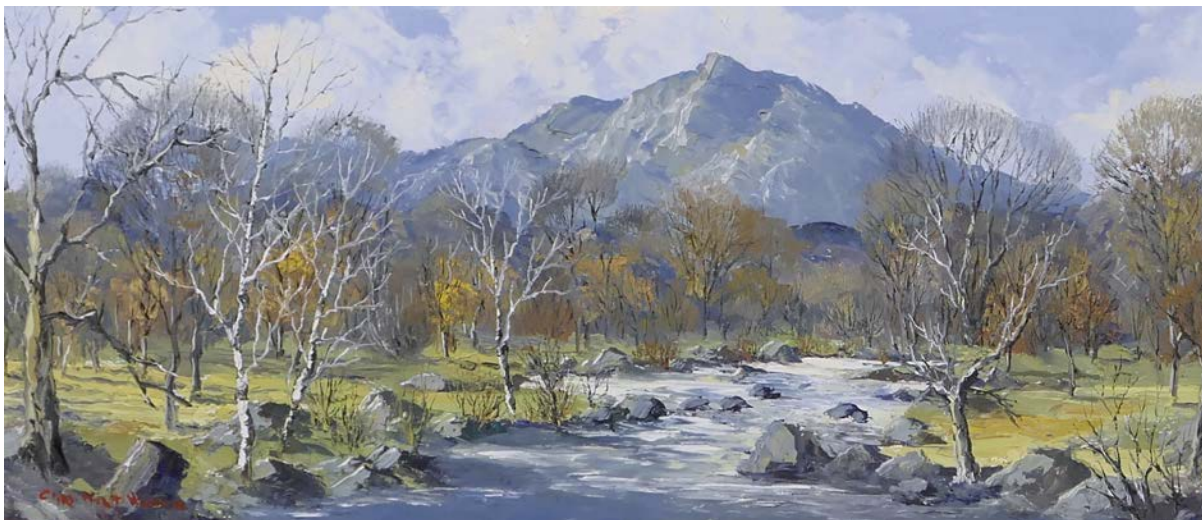
If you provide us with your email address we will notify you of all future sales. If you do not wish to be notified please tick the box ☐

BYRNE'S
Auctioneers & Valuers

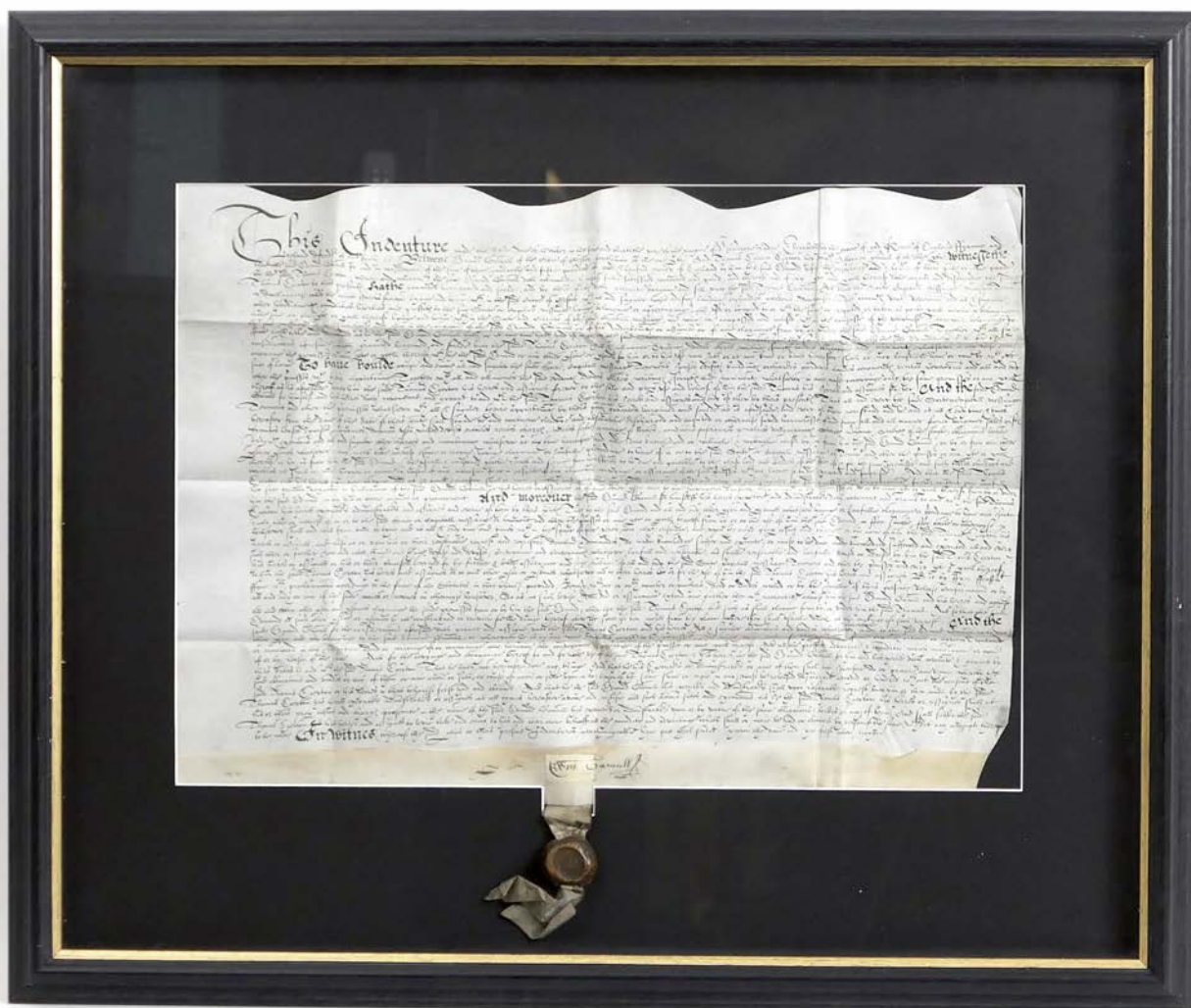
Pullman House, The Sidings, Boundary Lane, Saltney, Chester CH4 8RD

Tel: 01244 681311 • e-mail: auctions@byrnesauctioneers.co.uk

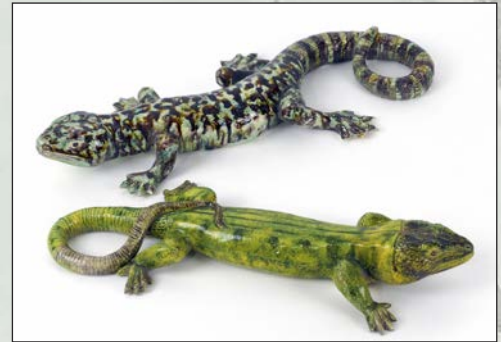
www.byrnesauctioneers.co.uk



308



413



BYRNE'S

Auctioneers & Valuers

Pullman House
The Sidings
Boundary Lane
Saltney
Chester
CH4 8RD

Tel: 01244 681311
auctions@byrnesauctioneers.co.uk
www.byrnesauctioneers.co.uk