

BEARNES &
HAMPTON
LITTLEWOOD

Auctioneers and Valuers

20th CENTURY & CONTEMPORARY



Tuesday 12th September 2023

SALEROOM

St Edmund's Court, Okehampton Street, Exeter EX4 1DU
Telephone 01392 413100
enquiries@bhandl.co.uk | www.bhandl.co.uk

CHAIRMAN

C. Beadman M.A. MRICS

MANAGING DIRECTOR

R.E. Littlewood B.A. (Hons)

DIRECTORS

N.J. Saintey A.S.F.A.V., B. Goodison-Blanks B.A. (Hons).

VALUATIONS

Inheritance Tax Assessment and Probate: Bearnes Hampton & Littlewood Probate Valuation Department offer a complete and comprehensive service to Executors, Solicitors and Bank Trustees administering an Estate containing all forms of art and antiques including Books, Ceramics, Clocks, Furniture, Jewellery, Pictures, Silver, Works of Art including collections of coins and stamps.

Insurance: Bearnes Hampton & Littlewood are specialists with over sixty five years experience in preparing insurance valuations and inventories for the purpose of substantiating claims in the event of losses resulting from accident, fire or theft.

Bearnes Hampton & Littlewood will be pleased to give preliminary advice, without charge or obligation to clients considering a valuation for Insurance, Capital Gains Tax, Family Division or other purposes.

For further information please contact: Cristian Beadman

ADMINISTRATION

Company Secretary: Susan Tharby
Head of Client Accounts: Laura Hayward

SPECIALIST DEPARTMENTS

Books, Manuscripts and Photographs	Rachel Littlewood, Roger Collicott (Consultant) Nicholas Saintey, Andrew Thomas (Consultant)
Ceramics and Glass	Leigh Extence
Clocks	Cristian Beadman
Furniture	Alexandra Francis
Jewellery	Brian Goodison-Blanks
Maritime, Sporting and Collectors Items	David Vyvyan-Robinson
Pictures	Sam Tuke
Silver	Cristian Beadman
Works of Art	Cristian Beadman
Valuations for Probate and Insurance	Ian Jackson
Head Photographer	Natalia Boczar, Daisy Copping
Photographers	

SALE ADVICE

Bearnes Hampton & Littlewood make no charge for giving verbal advice on items brought to their offices which are open: Monday to Friday 9.00am to 5.15pm and Saturdays when on view 9.00am to 12 noon. Alternatively a representative will be pleased to call by appointment without charge or obligation.

Dorset Ambassador: Sally Bartlett - 01308 456208
Cornwall Representative: Richard Hamm - 01208 813593
Isle of Wight Representative: Tim Smith - 07966 989356

20th Century & Contemporary

Tuesday 12th September 2023

Auction commences at 10.00am

ON VIEW:

Friday 8th September 9.00am to 5.15pm

Saturday 9th September 9.00am to 12.00 noon

Monday 11th September 9.00am to 5.15pm

Tuesday 12th September from 9.00am



SALE ENQUIRIES:

Nic Saintey (Ceramics): nsaintey@bhandl.co.uk

David Vyvyan-Robinson (Paintings): dvr@bhandl.co.uk

Cristian Beadman (Furniture): cbeadman@bhandl.co.uk

Illustrated Catalogue £8 (£10 by post)



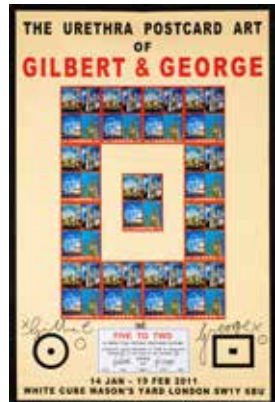
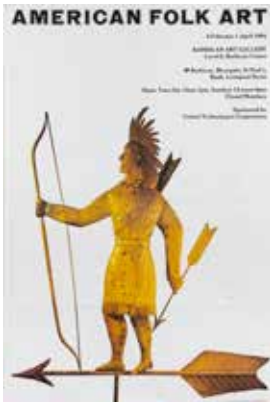
Members of the Society of Fine Art Auctioneers
Front cover Lot 414, back cover lot 220.

When leaving commission bids this sale may be
referred to as CC09

BID ONLINE

thesaleroom.com
The home of art & antiques auctions





1 (Part)

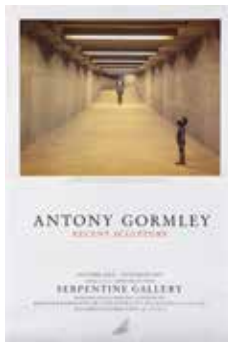
2

1
Four Sculpture Exhibition Posters
 Phillip King, Hayward Gallery, 1981, 51 x 76cm
 American Folk Art, Barbican Art Gallery, 1984, 51 x 76cm
 Festival Sculpture, Liverpool International Garden Festival, 1984, 51 x 76cm
 Anthony Caro, Northern Centre for Contemporary Art, 42 x 60cm

2
 'The urethra of postcard art of Gilbert and George'
 Two exhibition posters from 2009
 Each 90 x 59.5cm

*£40 - 60

*£80 - 120



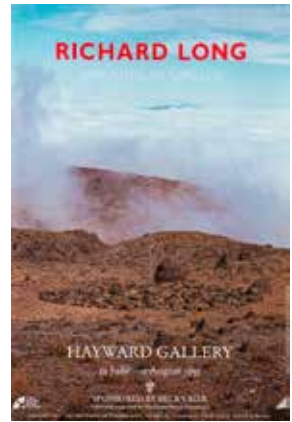
3
Three Exhibition posters advertising Sculpture artists
 Barbara Hepworth Museum and Sculpture Garden 1980
 Anthony Gormley, Serpentine Gallery 1987
 F. E McWilliam, Tate Gallery 1989
 Each measuring 50 x 67cm.

4
 • **Allen Jones**
 (British, b. 1937)
Red Feet (1976)
 unsigned, possibly an artist's or printer's proof lithograph on wove paper sheet 105 x 75cm (unframed)

*£100 - 200

*£80 - 120

• denotes lots affected by Artist's resale rights - refer to conditions of sale.



5

5

Three Exhibition posters advertising Sculpture Artists
 Hamish Fulton, Whitechapel Art Gallery, 1979
 Richard Long, Hayward Gallery, 1991
 Richard Long, Tate Gallery, 1991
 Each measuring 51 x 76cm

*£80 - 120

6 No Lot



7

7

• Sir Peter Blake (British, b. 1932)
Red Power (1972)/ *Penny Black* (1972)/ *Costume Life Study*
 unsigned, possibly proofs
 screenprints on wove paper
 the largest 77 x 58cm sheet size (3, unframed)

*£200 - 300

* All lots subject to a buyers premium of 25% plus vat @ 20%



8

8
 • Liz Elmhirst (British, Contemporary School)
Trees at Kew
 signed and inscribed to lower margin
 limited edition colour etching
 20.5 x 29.5 (plate); together with a 20th-century
 lithograph of a horse and musician, signed Otto
 Gesler, on laid paper, 29 x 39cm (sight)



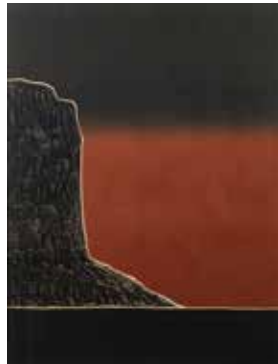
9
 Contemporary School
 An abstract mountain
 landscape, grey and blue;
 a triptych
 indistinctly signed *Lytton*
 (?) and inscribed to top
 limited edition prints
 each 62 x 47cm (3)

*£60 - 80

*£40 - 60



9



10

10
 Contemporary School
 An abstract canyon
 landscape, red and black;
 a triptych
 indistinctly signed *Lytton*
 (?) and inscribed to top
 limited edition prints
 each 62 x 47cm (3)

*£40 - 60



11
 Tove Joansson (1914-
 2001) for Stockman
 Department Store and
 NK Stockholm. A set of
 four Moomin lithograph
 labels, printed by
 Kromipanio, Helsinki,
 1956, 6x6cm each in
 blackcard mounts with
 COA stamp (4)

*£150 - 200

11 (Part)

• denotes lots affected by Artist's resale rights - refer to conditions of sale.



12

- 12
- Raoul Dufy (French, 1877-1953)
House and Gardens with Sea Behind
Print
32 x 48cm
Signed lower right, Inscribed 163/250
*£150 - 250



13

- 13
- Patrick Caulfield (British, 1936-2005)
Jug / Jar (1974); a pair
unsigned, possibly a printer's or artist's proof
screenprints in colours
each sheet 87 x 72cm (unframed)
*£300 - 500



- 14
- Julian Trevelyan (British, 1910-1988)
Sahara (1973)
hand-signed and marked *Artist's Proof*
to the lower margin
colour etching
the sheet 59 x 78cm (unframed)
*£200 - 300



14

- 15
- Julian Trevelyan (British, 1910-1988)
Camels (1972)
hand-signed and edition numbered to
the lower margin
colour etching
the sheet 59 x 78cm (unframed)
*£300 - 500



15

* All lots subject to a buyers premium of 25% plus vat @ 20%



16

16

Jenny Pery (British, Contemporary School)

Three Chinese views

each signed and inscribed

woodcuts

the largest 14 x 16cm (sight); together with another

woodcut, the Great Wall, indistinctly signed M...

Meller; and a signed etching by Laurie Rudling, Brixham Trawlers (5)

*£60 - 80



17

17

• Alexander McNeish [1932-2000]

Four Pears,

collage, 62 x 53cm.

*£50 - 80

18

• Julian Trevelyan (British, 1910-1988)

Durham Wharf

hand-signed and marked *Artist's Proof* to the lower margin

colour etching

sheet 59 x 78cm (unframed)

*£150 - 250



18

19

Boris O'Klein (French, 1893-1985)

Two Dirty Dogs of Paris Prints

'Eau forte' Etchings

Each 44 x 16cm

Both signed lower right, inscribed lower right

*£100 - 150



19

• denotes lots affected by Artist's resale rights - refer to conditions of sale.



20

20

• **Nicholas Monro (British, b. 1936)**
Colony (1972); Balloon Race (1970)
 The former hand-signed in pencil and with Kelpra Studios stamp to reverse, the later hand-signed and numbered AP Screenprints on wove paper sheets 70 x 92cm and 70 x 100cm respectively (unframed, 2)

*£100 - 200



21

• **Patrick Caulfield (British, 1936-2005)**
Spider Plant (1973)
 unsigned, possibly a printer's or artist's proof

screenprint

sheet 73 x 95cm (unframed)

*£200 - 400

21

22

• **Patrick Caulfield (British, 1936-2005)**
Banana with Leaves (1977)
 unsigned, possibly a printer's or artist's proof, printed by Kelpra Studios, bearing publisher's ink stamp to reverse
 screenprint in colours
 sheet 91 x 74 cm (unframed)

*£200 - 400



22

23

• **Julian Trevelyan (British, 1910-1988)**
Sahara (1973)
 hand-signed and marked Artist's Proof to the lower margin
 colour etching
 the sheet 58 x 79cm (unframed)

*£200 - 300



23

* All lots subject to a buyers premium of 25% plus vat @ 20%



24

• C J Archer [British, contemporary school]

Flora Abundii

signed and inscribed lower border
watercolour and ink on laid paper
40cm square

*£60 - 80

Provenance:

Private Collection

Formerly with the Mall Galleries, London (label
verso)



25

• C J Archer [British, contemporary school]

Maritime Muses

signed and inscribed lower border
watercolour and ink on laid paper
50 x 50.5cm

*£60 - 80

Provenance:

Private Collection

With the Mall Galleries, London, 1997 (label to
reverse)



26

• Frederick Gore (British 1913-2009)

Sunflowers, A field of Poppies, Lacoste and
Bonnieux, Mount Ventoux in the distance

Three Lithographs

64 x 82cm, 65 x 75cm and 83 x 66cm

All signed lower right and numbered 7/250 lower
left

*£100 - 200



27

• J. Richard Plincke [British, 1928-2018]

Florentine Echo

bearing inscribed artist's label to reverse
watercolour and enamel on paper
54 x 48cm

*£100 - 150

28-9 No Lots

• denotes lots affected by Artist's resale rights - refer to conditions of sale.



30

• Julian Trevelyan (British, 1910-1988)

Chiswick Eyot (1971)/*Spinnakers* (1972)

the first hand-signed and marked *Artist's Proof* to the lower margin, the second unsigned

colour etchings

the sheets 59 x 78cm (unframed).

*£150 - 250

31 No Lot



32

• L.S. Lowry (British, 1887-1976)

Group of Children Print

Offset Lithograph

21 x 19cm

Signed lower right

Together with prints of Lowry's *Sketches of Mothers with Prams*

*£600 - 800

33

• Arthur Homeshaw (British, 1933-2011)

Creedy House from the West

signed, inscribed and numbered 6/40 in pencil

limited edition linocut

40 x 53cm.

*£150 - 250

* All lots subject to a buyers premium of 25% plus vat @ 20%



34
 Patricia Johns (British, 20th Century)
 City on a Hill
 Woolen Tapestry
 162 x 117cm

*£300 - 500



36
 Patricia Johns (British, 20th Century)
 Spring Song
 Woolen Tapestry
 66 x 100 cm
 Signed on verso

*£100 - 200



35
 • Elaine M. Goodwin [Contemporary]
 'Rainbow' a mixed media mosaic
 formed from glass and stone tesserae,
 36 x 60cm.

*£100 - 150

Purchased directly from the artist 17th
 June 1993.



37
 • Bobbie Cox (British, 1930-2018)
 Carrara Relief 2, in Onyx
 bearing inscribed label to reverse
 wool tapestry mounted to hessian-
 covered support
 59 x 69cm

*£150 - 250

38
 • Bobbie Cox (British, 1930-2018)
 Sampler, Woven World, Red Square Blue
 bearing inscribed label to reverse
 wool tapestry
 51 x 48cm; together with a second tapestry
 by the same hand, Untitled, mounted to a
 perspex frame, 45.5 x 42cm overall (2)

*£150 - 250



38 (Part)

• denotes lots affected by Artist's resale rights - refer to conditions of sale.



39

• L.S. Lowry (British, 1887- 1976)

Print of Street Crossing

Offset Lithograph

58 x 44cm

Signed lower right

*£600 - 800



40

• L.S. Lowry (British, 1887- 1976)

Harbour Print

Offset Lithograph

57 x 44 cm

Printed signature and dated 1957 lower left; printed in 1972.

*£800 - 900

* All lots subject to a buyers premium of 25% plus vat @ 20%



41
Shimon Okshteyn
 (Ukrainian, 1951- 2020)
Belle Fish, 64/150
 Lithograph
 55 x 50cm
 Signed lower right

*£80 - 120



42
Jean- Paul Griffouliere (French, b. 1946)
 Two Limited Edition Lithographs of
 Animalistic Subject Matters
 Lithographs
 64 x 47 cm, and 30 x 42cm
 Both signed lower right.

*£50 - 80



43
 • **John Hoyland** (British, 1937-2011)
Untitled II/Untitled III (1974)
 each titled and one inscribed *John Hoyland* to reverse
 lithographs on paper
 each sheet 77 x 59.5cm (unframed);
 together with three further colour
 prints, mid-20th century, abstracts (5)

*£300 - 500



44
 • **Tom Phillips** (British, 1937-1922)
A Grammar of Ornament (1976)
 pencil-inscribed *Tom Phillips AP* to reverse
 Screenprint on wove paper
 sheet 101 x 72cm (unframed);
 together with a second British School
 Pop Art colour print, circa 1960s

*£80 - 120



45

45
 Two Volumes R O Lenkiewicz.

*£40 - 60

• denotes lots affected by Artist's resale rights - refer to conditions of sale.

46

Mark Tobey

(American, 1890-1976)

An ox and cart on a Mediterranean country lane, a hilly landscape beyond

signed and indistinctly dated lower left, the reverse of the frame further inscribed and with a further sketch
gouache
36 x 48cm

*£2000 - 3000



47

Mark Tobey

(American, 1890-1976)

A table scene, with a still life of fruits and a ewer, a partial figure visible with forearms resting on the table

the reverse of the frame indistinctly inscribed
gouache
50 x 72cm

*£2500 - 3500



48

Mark Tobey

(American, 1890-1976)

Village Street Scene, with Horse-drawn Carriage

Gouache

28 x 38 cm

Signed and Dated Tobey

'32 lower right

*£2000 - 3000





49
Karina Gill silver caddy spoon, hallmarked K E G, Birmingham 1917, in the form of a snail, 25grams, 5cm high.

***£300 - 400**

Karina Gill, is an award winning silversmith she finished her Bachelor's degree in 3 Dimensional Design from the Surrey Institute of Art and Design, in 1996. Her workshop is based in Dorset and she regularly exhibits in London, Devon and Dorset. Her work captures the transformation of hard metal into brilliant organic forms that mirror the geometry of nature.



52
A set of six silver and enamel miniature birds, Saturno Italy, late 20th century, four Ducks and two Pelicans, stamped 925, 115grams.

***£220 - 280**



50
• Tim Cotterill (Frogman) bronze model 'Purple Rain', an enamelled bronze frog stalking two ladybirds over a water lily, signed, limited edition 32/100, 15.5cm wide, with COA.

***£200 - 300**



51
• Tim Cotterill (Frogman), an enamelled bronze model of a frog climbing through a heart shaped loop, signed, dated 2000, limited edition 19/50, 13cm high, with COA,

***£200 - 300**



53
An Art Deco mantel timepiece with white enamel dial, in plated 'sunburst' case, 1930s. 17cm wide.

***£30 - 50**



54
Kerry & David Whittle, a novelty metal clock together with a raku slab built stoneware clock case, indistinct seal mark verso, 26cm high. [2]

***£50 - 80**

55-56 No Lots

• denotes lots affected by Artist's resale rights - refer to conditions of sale.



57

• Tom Bowers (1936-2021), reflection of a nude female and turtle, signed to the bronze Tom Bowers and dated 1995, 65cm high.

*£150 - 250



58

A pair of Continental cold painted spelter models of a Bacchic youth and a Bacchante, circa 1930; both portrayed as lightly draped and in dance, he with pipes held to his lips, on square section polished black stone socles; 46cm high

*£200 - 300



59

An articulated metal and carved wood mounted model of a man, in the manner of a lay figure, 20th century; on a conforming metal stand to a rectangular fossil marble base; 36cm high

*£100 - 150



60

A black painted plaster bust of Abbot Anscar Vonier of Buckfast Abbey, modern, after a 20th century model, 32cm high, 28cm wide

*£40 - 60



61

• Arthur Fleischmann (1896-1990) Bust of a Katherine McClure-Smith, aged 3, terracotta, incised signature A Fleischmann, 1942, mounted on a polished wood base, overall height 30cm high.

*£80 - 120



62

After H Désiré Grisard, (French, b.1872), a patinated bronze model of a footballer, in Art Deco style, circa 1935; the youth portrayed leaning back to kick the ball, cast as in mid-flight before him, the rectangular base signed in the maquette, atop a *marmo Portoro* socle; 52cm high, 49cm long

*£800 - 1200



63
Two pieces of Modernist Finnish gemset silver jewellery, including a spectrolite neckring with hallmarks for Olavi Wehmersuo, Helsinki, 1980 and a tiger's eye brooch with hallmarks for Kupittaaan Kulta Oy, Turku, 1961, total length of neckring ca. 16.3cm, total length of brooch ca. 5.2cms, total weight ca. 23.8gms.

*£80 - 120



64
Georg Jensen, a pair of drop earrings, stamped with 'GJ' monogram and '925', with hook fittings, length ca. 10.8cm, total weight ca. 13.1gms.

*£80 - 120



65
A five-strand silver torque necklace, with import marks for Sheffield, 1996, inner diameter ca. 12cm, total weight ca. 46.4gms.

*£80 - 120



66
David Yurman, a cabochon-cut onyx ring, the shoulders set with round, brilliant-cut diamonds, total estimated diamond weight ca. 0.30ct, marked 'D.Yurman' and '925 750', length of ring head ca. 2cm, ring size N, total weight ca. 8.4gms.

*£100 - 200



67
David Andersen, Oslo, Norway, a light green enamel brooch, stamped '925', with maker's mark for 1888-1925, diameter ca. 2.8cm, total weight ca. 4gms.

*£40 - 60



68
Vivianna Torun Bülow-Hübe (1927-2004) for Georg Jensen, a silver "Serenity" ring, design nr 187, with post 1945 maker's mark, length of ring head ca. 3.3cm, ring size M1/2, total weight ca. 17.7gms.

*£100 - 200

• denotes lots affected by Artist's resale rights - refer to conditions of sale.



69
 Georg Jensen for Georg Jensen, a bracelet of foliate links, design nr 57B, stamped '925', with a post 1945 maker's mark, total length ca. 18.5cm, total weight ca. 29.2gms.

*£100 - 200



70
 David Yurman, a hinged cuff bangle, of twisted cable design, the terminals set with cabochon-cut onyx, with round, brilliant-cut diamond surround, total estimated diamond weight ca. 0.45ct, marked 'D.Y. 925 750', inner diameter ca. 5.3cm, total weight ca. 46.6gms.

*£300 - 500



71
 Willy Winneass for David Andersen, Oslo, Norway, a 1950's silver and blue enamel bracelet, each link of quatrefoil design with imitation pearl to centre, total length ca. 37cm, total weight 29gms.

*£80 - 120



72
 Bjørn Sigurd Østern for David Andersen, Oslo, Norway, a Modernist, silver and purple guilloche enamel pendant, post 1925 marks, total length ca. 6.5cm, total weight ca. 17.7gms.

*£80 - 120

73-4 No Lots

* All lots subject to a buyers premium of 25% plus vat @ 20%

75

A painted resin model of an ape, by Les Jewell, modern; portrayed as seated on its haunches, atop an integrally cast rockwork base with inscribed signature; 52cm high

*£100 - 150

Les Jewell worked as an ecclesiastical wood carver for Herbert Read Ltd of Exeter and was employed in the repairs to Exeter Cathedral after the WWII Baedeker bombing. Subsequently he undertook carving work in the interior of the National Cathedral in Washington, D.C, and also conservation work at Windsor Castle.

76

A carved beechwood group of a bird of prey with a fish, by Les Jewell, modern; the bird with wings outstretched, the fish held in its left talon, above stylised waves and shaped base; inscribed signature to one side; 53cm high, 52cm wide

*£300 - 500

Note: See lot 75, above, for further detail regarding Jewell.

77

A sectional cut of hollow hardwood, mounted on twin metal rods on a stepped rectangular ebonised wood base; 73cm high overall.

*£100 - 200

78

An aluminium model of an aircraft, 20th century; the four engines with spinning propellers on a curved stem to an oval base; 20cm high, 23cm long

*£50 - 80

79

A pair of patinated metal models of hounds, second half 20th century; naturalistically portrayed, on shaped pine bases; 25 and 23cm high overall respectively.

*£100 - 150

80

A pair of Continental spelter and **marmo nero Belgio** mounted bookends modelled as squirrels, in Art Deco taste, early 20th century; each portrayed on its haunches with raised tail, the rectangular bases with chamfered edges; 16cm high

*£100 - 150

• denotes lots affected by Artist's resale rights - refer to conditions of sale.



75



76



77



78



79



80

* All lots subject to a buyers premium of 25% plus vat @ 20%

81

A group of ten various French bronze and copper alloy medallions and commemorative desk weights, 20th century; including one for *Jouve & Associés*; another for the *Festival d'Automne a Paris, 1972*; another for the *Cabinet des Medailles de Marseille, 12 Decembre 2007*; and others; the largest example cast with Europa and the Bull above a map of Europe in relief, uninscribed, 9.5cm diameter

*£80 - 120

82

A carved beechwood and oak mounted group of an animal and its cub, by Les Jewell, modern; the rockwork modelled base signed by the sculptor, above the shaped oak socle; 20cm high, 66cm long

*£200 - 300

Note: See lot 75, above, for further detail regarding Jewell.

83

An Austrian cold painted spelter table lighter modelled as a pheasant beside a tree stump, 20th century; the striker housed in the top of the stump; on a naturalistically cast rectangular base, atop a stained hardwood socle; 21cm high, 32cm wide

*£100 - 150

84

A group of nine painted plaster figural wall mounts, by W.H.Bossons Ltd., third quarter 20th century; the heads including an Arab with a Saluki, Sikhs, Pashtuns and others; the largest 27cm high

*£80 - 120

85

20th century South African school, a sculpted stone abstract group of two figures enclosed within a natural stone arch, 62cm high.

*£100 - 200

86

An embroidered and silk circular cushion, probably French, second quarter 20th century; depicting the head and shoulders of Pierrot the Clown beneath a crescent Moon and stars, with pleated sides; 43cm diameter

*£30 - 50

• denotes lots affected by Artist's resale rights - refer to conditions of sale.



81



82



83



84



85



86

* All lots subject to a buyers premium of 25% plus vat @ 20%



87

87
 • Austin Hleza [1949 - 1997] Swaziland, a group of pottery, comprising four jars and covers, a hinged jar and cover and two squat vases all sgraffito decorated with multiple figures and cattle, each signed and dated 1990 - 97, tallest jar 14cm high. [7]
 *£120 - 180



88

88
 • Austin Hleza [1949 - 1997] Swaziland, a slab built pottery vase, of rectangular form with raised ribbed neck, sgraffito decorated and glazed front and verso with a procession of water carriers and cattle within a village compound, signed and dated 1993, 19cm high.
 *£80 - 120



89

89
 • Austin Hleza [1949 - 1997] Swaziland, a slab built pottery model of a taxi, 32cm long together with a pottery model of an earth moving tractor, 33cm long [damages], both signed the former dated 1992 together with a wire and mixed media model of a motorcycle by the same hand. [3]
 *£80 - 120



90

90
 • Jeremy Leach [b. 1941] two stoneware jugs, one of tapering form with grooved strap handle the body applied with raised studs under green glazes, 29cm high, another of ribbed and bellied form with grooved strap handle under pale celadon glazes, impressed personal and Lowerdown seals to both, together with a similar jug. [3]
 *£100 - 150



91

91
 A large Ewenny pottery bowl, the interior and exterior decorated with splashes of cream and blue on a clear ground, incised Ewenny Pottery to base, 31cm diameter.
 *£80 - 120



92

92
 • Jeremy Leach [b. 1941] a group of stoneware, comprising a jar and cover of swelling cylindrical form with fluted decoration, 22cm high together with six tankards of waisted form with ribbed strap handle and scroll terminal, 11cm high, all under tenmoku glazes, impressed personal and Lowerdown seals. [6]
 *£80 - 120

• denotes lots affected by Artist's resale rights - refer to conditions of sale.



93

• Blandine Anderson [Contemporary] six stoneware animal sculptures comprising two foxes, a hare, Canada goose, plover and barn owl, applied personal seals, tallest 9cm.

*£200 - 300



94

• Jeremy Leach [b. 1941] a large stoneware pitcher of tapering form with ribbed strap handle the body applied with raised studs under tenmoku glazes, impressed personal and Lowerdown seals, 34.5cm high.

*£80 - 120



95

• Jeremy Leach [b. 1941] a large stoneware pitcher of tapering form with ribbed strap handle the body applied with raised studs under tenmoku glazes, impressed personal and Lowerdown seals, 34.5cm high.

*£80 - 120



96

• Jeremy Leach [b. 1941] a large stoneware vase of shouldered cylindrical form incised with two bands of linear decoration under a tenmoku glaze, impressed personal and Lowerdown seals, 44.5cm high.

*£120 - 180

97

A Walter Moorcroft pottery vase, of globular form tube lined in colours in the Orchid pattern on a graduated blue green ground, impressed Made in England and Potter to H.M. the Queen with impressed and painted signature and paper royal warrant label, 15cm high.

*£120 - 180

98

A Walter Moorcroft pottery vase, of two handled baluster form, tube lined in colours in the Spring Flowers pattern on a pale flambé ground, impressed Made in England and Potter to H.M. the Queen with impressed and painted signature, circa 1945-50, 18cm high.

*£150 - 250

99

A Troika pottery mask, of double faced spade form the textured ground with ivory, brown and green staining, painted Troika mark with monogram for Avril Bennet, 26cm high.

*£300 - 500

100

A Moorcroft pottery vase, of baluster form tube lined in colours with the Redds at Sundet pattern after the original by Philip Richardson, impressed Moorcroft Made in England with painted monogram, 24cm high.

*£100 - 150

101

A Walter Moorcroft pottery vase, of tapering oviform tube lined in colours in the Fuchsia pattern on a graduating green lemon ground, impressed Moorcroft Made in England with painted green signature, circa 1950-60, 30.5cm high.

*£150 - 200

102

A Moorcroft pottery limited edition vase, of oviform tube lined in colours in the Swans pattern after the original by Sally Tuffin, impressed Moorcroft Made in England with painted monogram and date cypher for 1991, numbered 140/350, 16.5cm high.

*£100 - 150

• denotes lots affected by Artist's resale rights - refer to conditions of sale.



97



98



99



100



101



102

** All lots subject to a buyers premium of 25% plus vat @ 20%*

103

A Clarice Cliff Lynton shape part dinner service, decorated with russet and orange banding and comprising six 25cm plates, five 22cm plates, six 19cm plates, four two handled soup bowls, covers and six stands, two vegetable dishes and covers, a gravy boat and cover and two serving plates, Bizarre backstamps, [minor wear and damage].

***£100 - 150**

104

Two Moorcroft Collectors Club pottery vases, both designed by Sally Tuffin, one of slender baluster form tube lined in colours with the Sweet Pea pattern, impressed Moorcroft Made in England, with painted monogram, backstamp and date cypher for 1991, 27cm high, the companion in the Grapes pattern and impressed Moorcroft Made in England with painted monogram, backstamp and dated '87, 18.5cm high.

***£100 - 150**

105

Two Moorcroft pottery table lamps, the first tube lined in the Lamia pattern after a design by Rachel Bishop, the companion in the Frangipani Plumeria pattern after a design by Emma Bossuns, both with wooden bases, 36 and 25cm high respectively.

***£120 - 180**

106

Eric Ravilious for Wedgwood, a Queen Elizabeth II Coronation mug together with a similar example by Richard Guyatt, printed backstamps to both, 10cm high, with four further royal commemorative mugs and cups. [6]

***£80 - 120**

107

Three pieces of Moorcroft Pottery, including a Moorcroft Collectors Club jug tube lined in colours in the Rose pattern after the original by Sally Tuffin, impressed Moorcroft Made in England, with painted monogram and backstamp, 14cm high, together with a small vase in the Magnolia pattern on an ivory ground, 9.5cm high and a shallow bowl in the Anemone pattern on a blue ground, 16cm diameter, both impressed Moorcroft Made in England.

***£80 - 120**

108

A William Moorcroft pottery vase of tapering cylinder form, tube lined in colours in the Claremont pattern on a green ground, impressed Moorcroft Burslem with painted signature, circa 1913-16, 8cm high.

***£150 - 250**

• denotes lots affected by Artist's resale rights - refer to conditions of sale.



103



104



105



106 (Part)



107



108

* All lots subject to a buyers premium of 25% plus vat @ 20%



109
A gilt bronze figural table lamp in Art Deco style, circa 1930s; the electrical fitment in a broad drip pan held aloft by a standing maiden, nude but for a skirt; the pyramidal plinth with a switch to the back, on a square base with projecting lugs with screw holes at the corners; the spherical opaque glass shade possibly associated; 49cm high overall.

*£100 - 150



110
A Pinclock Model No. CK30 in silver, together with a black angle poise lamp (2)

*£40 - 60



111
A bronze standard lamp in Reformed Gothic taste, circa 1900; the writhen shaft descending to three writhen splayed legs with finials above a trefoil collar and with Gothic leaf feet; 140cm high

*£150 - 250



112 (Part)

112
An ebonised ash low table, late 20th century; the rectangular top with a drawer on one long side, on a metal frame with straight legs, 50cm high, 160cm long, 80cm wide; and an associated ebonised hardwood drop leaf tea trolley, 66cm high, 68cm long

*£80 - 120



113
A set of three stained wood framed circular wall mirrors, later 20th century; 64cm overall diameter

*£60 - 100



114
An Edwardian and later repainted hall stand, early 20th century; the turned hanging shaft with two pairs of arms rising from the rectangular shaft, with inset mirror plate; above a table with hinged cover; 197cm high, 74cm wide, 28cm deep.

*£50 - 80

• denotes lots affected by Artist's resale rights - refer to conditions of sale.



115
Rachel Sumner
[Contemporary] fish and
bridge, a framed textile,
10 x 13cm.

*£40 - 60



116
Robert Wilcox [b.1944]
mixed media, reclaimed
materials and acrylic, an
abstract collage of twelve
small tiles framed as one,
signed verso and dated
2004, 37 x 12cm.

*£50 - 80



117
Jude Freeman
[Contemporary] 'Symbol'
a mosaic formed from
glass, ceramic and
stone tesserae, framed,
inscribed verso and
dated 2009, 25 x 25cm

*£100 - 150



118
Colin Kellam
[1942 - 2020] two similar
stoneware lamp bases,
of shouldered cylindrical
form each painted in
blue, green and grey
with flowers, impressed
personal seals, 46 and
44cm high.

*£80 - 120



119
A David Leach
[1918-2005] stoneware
lamp, of tapering ribbed
oviform with speckled
brown decoration over
ivory, impressed personal
seal, 54cm high.

*£80 - 120



120
Colin Kellam
[1942 - 2020] a
stoneware lamp base, of
oviform decorated with
flowers with coloured
wash and wax resist,
impressed personal seal,
31cm high.

*£50 - 70



121

• Marianne de Trey [1913-2016] a porcelain bowl, of footed circular form, the exterior incised with diagonal flutes, the interior with a flower head motif, under a pale celadon glaze, impressed personal seal, 19cm diameter, together with two small porcelain celadon glazed vases and a stoneware bowl with incised decoration all by the same hand. [4]

*£120 - 180



122

A mid 20th Century Picquot Ware teapot, another of a slightly different design and a hotwater pot,(3).

*£20 - 40



123

Bullers Pottery a small group of stoneware, comprising a jug, four vases, two dishes and two animal figures, variously decorated, jug 18.5cm high. [9]

*£80 - 120



124

Johann Haviland and Raymond Loewy for Rosenthal, a porcelain part coffee service, in the Papageno pattern, comprising eight cups decorated with a caged bird on a charcoal ground and six white saucers with charcoal trim, printed marks, circa 1955.

*£50 - 80



125

A stainless steel **Oriana** pattern five piece tea set, by Robert Welch for Old Hall, circa 1960; comprising teapot, hot water jug, milk jug, sugar basin and strainer with stand; the teapot 14cm high

*£40 - 60



126

A collection of Tremar stoneware, comprising eight food storage or preserve jars, two jars, five vases, cheese dome and cover, vinegar bottle, two flasks, goblet, two pot pourri, three money boxes, a night light and figure, impressed marks.

*£50 - 80

• denotes lots affected by Artist's resale rights - refer to conditions of sale.



127
Wenford Bridge - a stoneware bowl, attributed to Seth Cardew the interior and exterior painted in ochre with stylised foliage, impressed seal to base, 25cm diameter.
 *£50 - 80



128
 • Rachel May nee Forrester [b. 1989] a stoneware bowl decorated to the exterior and interior with blue, turquoise and gold decoration on an oatmeal ground, painted marks to the base, 31cm diameter.
 *£50 - 80



129
 • Bernard Forrester [1908-1990] a stoneware bowl of shallow circular form painted with abstract decoration in bright colours within gold borders, painted mark to base, 30cm diameter.
 *£120 - 180



130
 A French pottery bowl, of circular form the centre and rim with incised florets with painted green and black foliage on a blue ground, signed 'Etais' verso, 41cm diameter.
 *£50 - 80



131
 A grogged stoneware charger, with deeply textured border under ivory glazes and a flown russet band, unmarked, 47.5cm diameter.
 *£80 - 120



132
 • Bernard Leech [1887 - 1979] a stoneware shallow dish, of circular form with linear decoration on a russet ground, painted initials and impressed St Ives seal, 28cm diameter.
 *£200 - 250

* All lots subject to a buyers premium of 25% plus vat @ 20%



133

133

• **Andrew Palin** [b. 1969] two stoneware vases, one of lobed oviform under pale green volcanic glazes, the other of oviform under pink and ivory volcanic glazes, impressed personal seals, 19 and 14cm high.

*£100 - 150



134

134

Eric Ravillious for **Wedgwood**, a Queen Elizabeth II coronation mug, black backstamps, 10cm high.

*£100 - 150

135

Robert Tinnyunt [b. 1940] a stoneware slab built vase of rectangular form on four short feet decorated with brushwork on an incised ground, impressed personal seal to underside, 25cm high together with two similar vases. [3]

*£50 - 80



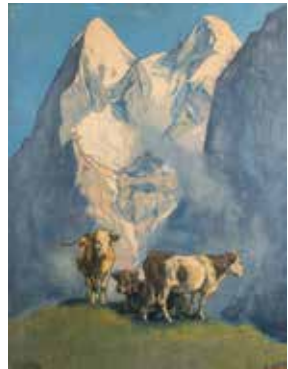
135

136

Ernst II Hodel (Swiss, 1881-1955) Mürren (1925)

colour print
79 x 58cm
Inscribed and signed in the plate

*£100 - 200



136

137

Leonard Brooks (British, 20th century school) *Somerton Mill, Oxfordshire*

signed *Len Brooks* lower right and bearing further label verso
oil on canvas
48 x 64cm

*£40 - 60



137

138

Diane Nevitt (British, 1955-)

Heatwave
Print
92 x 83cm.
Inscribed lower centre and signed lower right.

*£40 - 60



138

• denotes lots affected by Artist's resale rights - refer to conditions of sale.

139

Noel Throup (British, b. 1936)

Viewport

Mixed Media Sculpture on Board

85 x 63 cm

Unsigned

*£60 - 80



140

Neil Williams (20th/ 21st Century)

Grace Kelly

Mixed Media including Pencil and Acrylic

74 x 49 cm

Signed and dated '2015' lower right

*£100 - 200



141

• **Jon Nicholson**

Jason Maddox, Tulsa, Land of the Cowboy series

signed in pencil to lower margin

Photographic print in black and white

15.5 x 22cm (sight)

*£100 - 150



142

Carlo Gavazzeni [Italian, b. 1965]

Teatri d'Invenzione 07 (Gates of Rome VI)

signed verso

ink jet print

50 x 100cm (unframed)

*£80 - 120



Provenance:

Bearing gallery label for Valentina

Moncada, Rome

This lot is sold on behalf of the

Spectrum charity

143

• **Valentine Hugo (French, 1887-1968)**

Lithograph addressed to Bernard Grasset

Lithograph

29 x 13 cm

Signed and dated 1/1/54 top right:

inscribed below well wishes from Hugo,

1954

*£120 - 180



* All lots subject to a buyers premium of 25% plus vat @ 20%



144



145

Ania Shreeve (British contemporary school)

Portrait of a recumbent whippet

signed lower right

pastel on paper

21.5 x 34cm; together with a print of
greyhounds and lurchers, modern, with
printed signature *H. L. Wood*

*£40 - 60

145

Hyman Segal (1914-2004)

Terrier sleeping

signed lower right and inscribed verso

pastel drawing

21 x 27.5cm.

*£60 - 80



146

146

Ditz (Contemporary)

'Rain' - Cats and Dogs

Oil on board

12.5 x 17cm

Signed lower right and dated 1990

*£200 - 300

Provenance: Royal Academy Summer
Exhibition, 1990

147

• **Roland Batchelor (British, 1889-1990)**

The Day Out

Watercolour on Card

33 x 25 cm

Signed lower left

*£100 - 150



147



148

148

Doreen Lee (British, 20th Century)

Swanning around in the Willow

Oil on Canvas

59 x 50 cm

Signed lower right

*£30 - 50

• denotes lots affected by Artist's resale rights - refer to conditions of sale.



149
Emma Gibbons [British, contemporary]
Finders Keepers
 Signed and titled verso
 mixed media
 54cm square overall

***£100 - 200**

Provenance: reverse bearing exhibition label for Fleek Gallery, Ilfracombe



150
Le Thiet Cuong (Vietnamese, b.1962)
 'Daily Life'
 Acrylic on Canvas
 100 x 80 cm
 Signed and dated '02 lower left

***£300 - 500**



151
Paul Jones (British, 20th Century)
Breakaway
 Acrylic and Mixed Media on Board
 38 x 25 cm
 Signed and Dated 2013 lower right

***£80 - 120**



152
 • **John Hubbard (American, 1931- 2017)**
Spanish Courtyard
 Oil on Paper
 43 x 43 cm
 Signed lower left

***£250 - 350**



153
Carl Scanes [British, b. 1964]
Sunflower, 2003
 signed lower right and inscribed verso
 oil on canvas
 38 x 102cm (unframed)

***£80 - 120**



154
Carl Scanes [British, b. 1964]
California Poppy, 2003
 signed lower right and inscribed to reverse
 oil on canvas
 50 x 152cm (unframed)

***£150 - 250**

* All lots subject to a buyers premium of 25% plus vat @ 20%



155

• **Michael Morgan**
(British, b.1928)

Two Limited Edition Prints
of Morgan's Landscape
with Houses

Giclee Prints

The first numbered
8/94 and measuring 31
x 31 cm; the second
numbered 41/94 and
measuring 21 x 31 cm

Both signed lower left

*£150 - 250



156

Jenny Pery (British,
Contemporary School)

Abstracts

each signed and edition
numbered

limited edition monotype
prints

the largest example 48 x
63cm (sight)

*£80 - 120



157 (Part)

157

Guillermo Bestard I Canaves (Spanish,
1881-1969)

A village street; a coastal landscape
each signed

oils on board

26 x 34.5cm and 29 x 36cm
respectively;

together with an ink drawing,

'Dartington', by the same hand (3)

*£100 - 150

• denotes lots affected by Artist's resale rights - refer to conditions of sale.



158
Julian Dyson [British, 1936-2003]
Jimmy White
 signed and dated 05 01
 mixed media
 22 x 25cm



159
 • **Tom Wood [British, b. 1955]**
Frank Bruno, Boxer Study 1, 1983
 Aquatec (acrylic) on paper
 25cm square

*£200 - 300

*£60 - 80

Provenance:
 Private Collection
 Reverse bearing label for Bradford Art
 Galleries and Museums
 To be sold with an accompanying note
 from the artist.



160
Marjana Wjasnova
 (Contemporary School)
Empowerment
 monogrammed lower
 right and bearing further
 written title label
 oil on linen
 121 x 90cm.

*£200 - 300

Provenance: With label
 for the Royal Academy
 Summer Exhibition, 2003



161
Marjana Wjasnova
 (Contemporary School)
Aenigma
 monogrammed lower
 right and bearing further
 written title label
 oil on linen
 120 x 89cm

*£200 - 300



162
Marjana Wjasnova
 (Contemporary School)
Agape
 monogrammed lower
 right and bearing further
 written title label
 oil on linen
 100.5 x 75cm

*£200 - 300

* All lots subject to a buyers premium of 25% plus vat @ 20%



163
 Carl Scanes [British, b. 1964]
Purple Tulips 2, 2004/ Delphiniums 3, 2003
 each signed and inscribed to reverse
 oils on canvas
 61 x 51cm and 51 x 41cm respectively,
 (2, unframed)

*£80 - 120



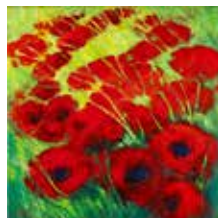
164
 Carl Scanes [British, b. 1964]
With Honeysuckle, 2002
 signed lower left and inscribed to
 reverse
 oil on canvas
 78 x 101cm (unframed)

*£100 - 150



165
 Carl Scanes [British, b. 1964]
Sunflowers, 2003
 signed lower left and inscribed to
 reverse
 oil on canvas
 91.5 x 91cm (unframed)

*£100 - 150



166
 Carl Scanes [British, b. 1964]
Wild Poppies, 2003/ Landscape, 2002
 signed lower left and inscribed to
 reverse
 oils on canvas
 each 51cm square (unframed) (2)

*£60 - 80



167
 Carl Scanes [British, b. 1964]
In the Border, 2003
 signed lower left and inscribed to
 reverse
 oil on canvas
 50 x 152cm (unframed)

*£150 - 250



168
 Carl Scanes [British, b. 1964]
Twilight Delphiniums, 2004
 signed lower left and inscribed to
 reverse
 oil on canvas
 50 x 152cm (unframed)

*£150 - 250

• denotes lots affected by Artist's resale rights - refer to conditions of sale.



169
 • William Gear
 (Scottish, 1915-1997)
 Abstract Landscape with Red and Green
 Acrylic on Canvas
 63 x 52 cm
 Signed and Dated '49 lower right

*£3000 - 4000

170
 Hein Heckroth (German, 1901-1970)
 Devonshire landscape
 inscribed *Devonshire for Elsa, 14 Sept 1938*
Hein Heckroth
 watercolour on buff paper
 48 x 74cm.



*£250 - 350

After being 'blacklisted' by the Nazis in 1935, stage designer and artist Hein Heckroth settled in Devon, taking up the post of Director at Dartington Art Studio, Dartington Hall, which had become a refuge for artists fleeing occupied Europe. The present watercolour dates from his time in Britain.

171-2 No Lots

* All lots subject to a buyers premium of 25% plus vat @ 20%



173

173
Guillermo Bestard i Canaves
(Spanish, 1881-1969)
View to a harbour town,
moored boats in the
foreground
signed lower right
oil on canvas
34 x 45cm

*£100 - 150



174

174
E. Burrows (20th Century British School)
Landscape with Cottages
Acrylic on Board
60 x 49 cm
Signed lower right

*£100 - 150

175
John Hewitt
(Cornish, 1922-2006)
Haymakers in a field
signed with the artist's
nickname 'Jackson'
Hewitt lower left
oil on board
39 x 49.5cm

*£100 - 150



175

176
Richard James Gerry
[British, contemporary school]
St Tropez, 2006
initialled, titled and dated
verso
oil on canvas
30.5 x 41cm

*£100 - 150

177
• **John Pillow**
(20th century)
Scottish Coastline
signed lower right and
with inscribed label to
reverse
watercolour
27 x 43cm; together
with a large 20th-century
school India ink drawing
of a harbour view, 49.5
x 75cm

*£80 - 120



176



177

• denotes lots affected by Artist's resale rights - refer to conditions of sale.

178

• Frank Dobson (British, 1886-1963)

A wooded hillside
signed and dated 31 lower left
watercolour and chalk
13 x 20cm

*£300 - 500



179

Michael Blooman [20/21st Century]

Hythe Quay, Maldon,
linocut print,
signed, inscribed and numbered
1/50 in the margin,
sheet size 67 x 89cm.

*£40 - 60



180

Laurence George

(British, 20th Century)

Brixham the Fishmarket

Oil on board

43.5 x 80.5cm

Signed lower left

*£20 - 40



181

William Lyons Wilson

(British, 1892-1982)

Fowey

signed and inscribed lower right

watercolour

29 x 36.5cm (sight)

*£100 - 120



* All lots subject to a buyers premium of 25% plus vat @ 20%



182



183



184

182

Jacques Valbrun

[Haitian, fl. late 20th century]

Caribbean Harbour Scene

signed and dated 95 lower left

oil on canvas laid to board

24.5 x 101cm

*£200 - 400

183

Elizabeth Rooney (1929-2016)

From Obelisk, 1979

signed and dated

etching

14 x 30cm

*£30 - 50

184

Oleksiy Turkot (Ukrainian, b. 1969)

A London street scene with black cabs

and a double decker bus

signed lower right

oil on canvas

83cm square (unframed)

*£200 - 300



185

185

• John Hewitt (Cornish, 1922-2006)

A wartime scene with propeller planes

and soldiers

signed and dated 1988 lower left

oil on board

35 x 44cm

*£80 - 120



186

186

• John Hewitt (Cornish, 1922-2006)

A propeller plane flying over a field with

haymakers

signed lower right

oil on canvas

49.5 x 60cm

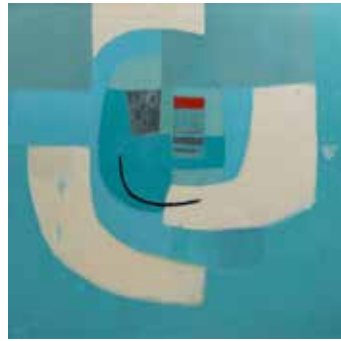
*£100 - 150

• denotes lots affected by Artist's resale rights - refer to conditions of sale.



187
• Kerry Darlington (British, b.1974)
Faerie Hollow
Hand Embellished Giclee
75 x 75cm
Signed lower right and numbered
71/100 lower left

*£200 - 300



188
Sally McGill (British 20th/ 21st Century)
Safe Harbour
Oil on canvas
151 x 151 cm
Signed and dated '2002' verso

*£100 - 150



189
Contemporary School, in the manner of
Mandy Wilkinson [b. 1970]
Untitled
bearing inscription *Wilkinson* lower right
acrylic on canvas
51 x 61cm

*£40 - 60



190
Annie Hudson (British, 20th Century)
Descending Cloud
Oil on card
31 x 26 cm
Signed and Dated 2010 lower right

*£40 - 60

191
Nigel Waters (British, Contemporary)
Abstract Landscape
signed lower right and further inscribed
to the stretcher
acrylic on canvas
40 x 60cm (unframed)

*£120 - 180





192
A Sofono Spacemaster electric reflector heater, circa early 1960s: model PC402ST, of 'flying saucer' form, grey colourway on tapering metal legs, 68cm high.

*£50 - 80

The Spacemaster range was designed by Ralph Cameron Ormiston (1921-2000) for the Sofono Electrical Division of Federated Foundries Ltd, Falkirk, and launched in 1959



195
A brass and painted metal figural table lamp, third quarter 20th century; the conical shade and electrical fitment on a shaft flanked by two partially clad dancers, on a circular base, on three spherical brass feet; 70cm high

*£60 - 90



193
A chromium plated metal twin light standard lamp, modern; each domed shade housing an electrical fitment, angle adjustable on laminate wood brackets, height adjustable on a shaft, on a circular hardwood base; 145cm high

*£80 - 120



196
A moulded glass five light electrolier, probably Murano, circa 1960s; the ceiling fitment above a spherical moulding and slender stem, the five electrical fitments with glass shades on scrolled branches issuing from lower boss; 74cm high, 48cm wide, (damage to glass sphere)

*£100 - 150



194
A chromed metal and opaque glass table lamp in Art Deco style, 20th century; the electrical fitment within a spherical shade, suspended beneath a 'C' form stem, on a square, stepped and weighted base; 32cm high

*£150 - 250



197
A metal and oatmeal fabric standard lamp, circa 1970s; the stitched shade spiralling down around the straight shaft, housing a light fitment; to a domed beech base; 171cm high

*£40 - 60



198
A metal adjustable desk lamp, circa 1960s; the rectangular perforated shade housing three electrical fittings, height adjustable on a chromium plated shaft, on a weighted circular base; 60cm high, 54cm wide
*£60 - 100



199
A pair of brushed metal standard lamps, modern; with pleated cylindrical shades around electrical fittings, on knopped shafts to circular bases, 151cm high overall; (one lamp with damages)
*£40 - 60



200
Two chromium plated metal table lamps, for RoR Ltd., circa early 1970s; both of cylindrical form, the smaller example formed of seven bowed vertical louvres, opening to shed light; each cylindrical base with an inset wheel switch; 41 and 34cm high respectively
*£400 - 600



201
A chromium plated angle poise table or desk lamp, late 20th century; the domed shade with electrical fitting within, on an angle adjustable shaft, on a further shaft descending to a domed circular base; approximately 78cm high
*£60 - 100



202
A pair of 1970's style globe shaped table lamps with opaque glass shades on chrome stems with spreading circular foot, 50cm high.
*£100 - 150

203
A scumble painted metal 'anglepoise' table lamp, probably by Herbert Terry & Sons Ltd of Redditch, mid 20th century; with square, stepped base; approximately 70cm high.
*£80 - 120

RoR (Ringo or Robin) Ltd was founded in 1969 by ex-Beatle Ringo Starr and Robin Cruickshank, whose design company had worked for Apple Records. The two had originally collaborated on furniture and fittings designs for Ringo's Hampstead house



204-5 No Lots



206
Nanny Still for Riihmaki a Harlekiini twin bodied blue glass spirit decanter, in two parts the upper annular section with clear stopper fitting into the neck of the lower globular section set on a straight stem and spreading foot, 24cm high.

*£150 - 200



207
A pair of hand blown studio glass vases, of globular form with slender swelling neck, the speckled orange body with bands of black, ground pontil marks to base, 45cm high.

*£150 - 200



208
Otto Brauer for Holmegaard, a dark green Gulv vase of large size, paper label near base, designed 1962, 51.5cm high.

*£120 - 180



209
Kaj Franck for Nuutajarvi a Rustica jug and six beakers, in smoke glass, jug 16cm high.

*£50 - 80



210
Will Shakespeare [Contemporary] a glass vase from the 'boulder series' the clear and mottled green body with lustrous blue veining and a band of purple and white bordered marks, 23cm high.

*£50 - 80

• denotes lots affected by Artist's resale rights - refer to conditions of sale.



211

Toni Zuccheri for Venini 'Ninfee', a large mould blown bowl, the clear and green striated body in the form of a shell, with fold over rim, diamond point etched to the base, Venini Italia, 52cm wide.

*£800 - 1200



212

A Lalique crystal scent bottle Deux Fleurs, together with four Lalique crystal butterflies in yellow, green, amber and blue, all with diamond point etched to bases.

*£150 - 200



213

A Royal Brierley studio glass table casket, of oval form the red body with iridescent gold decoration, with embossed white metal lid, acid etched to underside Royal Brierley Studio, 16.5cm long.

*£40 - 60



214

• Malcom Sutcliffe [b. 1954] a cased glass bowl, of circular form with everted rim the frosted clear body overlaid with blue and white and stencilled and cut with dolphins on the interior, diamond point signature to the base, 31cm diameter.

*£80 - 120



215
 Tapio Wirkkala for Iitala six Ultima Thule shot glasses and matching jug, together with a matching goblet and three Niva glasses all after a design by Tapio Wirkkala, together with a pair of Kalinka high ball glasses after a design by Timo Sarpeneva, [13]

*£100 - 150



216
 Two Iitala glass vases comprising an Avena vase after a design by Tapio Wirkkala and a curved Savoy vase after a design by Alvar Aalto, 17 and 12cm high.

*£60 - 90



217
 A clear glass and white metal mounted anthropomorphic decanter, in the form of a bird, 26cm high.

*£50 - 80



218
 • William Walker [Contemporary] a glass bowl, the pale blue and grey veined body of footed flaring form, diamond point etched William Walker 1984, 21cm diameter.

*£40 - 60



219
 Timo Sarpeneva for Iitala an Orkidea glass vase, of heavy drawn form with central aperture, diamond point signature to base, circa 1954, 28cm high.

*£100 - 200



220

• Luigi Benzoni [b. 1956] for the Berengo Studio 'Beatus Vir' a Murano cased glass sculpture enclosing a golden visage, 32cm high, together with a copy of Luigi Benzoni, The man and the mask. Purchased direct from the studio in 2008.

*£1000 - 1500



* All lots subject to a buyers premium of 25% plus vat @ 20%



221

Nanny Still for Riihimäen Lasi a Meriphika amber vase, diamond point etched to base, 16.5cm high, together with a mixed quantity of Finnish and other glass including a small Nuutarjarvi flower head vase.

*£80 - 120



222

Three Orrefors heavy glass bowls, of externally ribbed flower head form, diamond point etched to base, largest 12cm diameter.

*£30 - 50



223

Six littala glass 'dewdrop plates' after a design by Oiva Toikka each moulded on the underside with concentric rings of 'dewdrops', 25cm diameter.

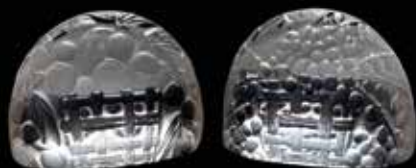
*£20 - 40



224

Twelve contemporary 'cross swirl' champagne flutes, with cut decoration to the bowl and stem, 27cm high.

*£50 - 70



225

Two Lalique menu holders, Peches and Groseilles each of domed form embossed with berries, diamond point etched R. Lalique, France, No. 3504 and 9511 respectively 4cm high.

*£50 - 70

• denotes lots affected by Artist's resale rights - refer to conditions of sale.



226

A Lalique bowl 'Volubilis', the pale amber body moulded to the exterior with three large blooms extending to form the feet, diamond point etched to the exterior R. Lalique, France No. 383, 22cm diameter.

*£250 - 350



227

A Lalique bowl 'Ondines' of mildly opalescent form the exterior moulded with six encircling nude female swimmers amongst waves, diamond point etched to the exterior of the foot, R. Lalique, France, 20.5cm diameter.

*£400 - 600



228

A Lalique glass bowl 'Campanules', the exterior moulded with bands of diminishing flower heads, acid etched R. Lalique, France, 24cm diameter.

*£150 - 200



229

A Lalique Bowl 'Gui', of mildly opalescent colour the exterior moulded with Mistletoe, the interior embossed R. Lalique, 23.5cm diameter.

*£250 - 350

* All lots subject to a buyers premium of 25% plus vat @ 20%



230
Henry Wykes
 (Anglo-Australian,
 1874-1964)
 Portrait of a clergyman,
 circa 1950s
 signed lower right
 oil on artist's board
 46 x 36cm;
 together with a portrait
 sketch of a gentleman by
 the same hand
 *£20 - 30



231
Alessandro Bottasini
 [Italian, late 20th century
 school]
 Portrait of a Clown
 signed lower right and
 further inscribed verso
 oil on canvas
 59 x 48cm
 *£100 - 150



232
Unknown Artist
 Portrait of a Lady in a Hat
 Watercolour on Card
 25 x 29 cm
 Unsigned
 *£40 - 60



233 (Part)

233
Peter Campbell
 [1931-1989]
 Harlequin figure reclining,
 signed, watercolour, 37 x
 55cm,
 together with Girl in
 Meadow, Girl with Dove
 & A Midsummer Night's
 Dream by the same hand.
 [4]
 *£60 - 90



234
 • **Roland Batchelor**
 (British, 1889-1990)
 Man Reading a
 Newspaper
 Watercolour and Print on
 Card
 11 x 19 cm
 Signed with initials lower
 right
 *£60 - 80



235
 • **Nicholas St John Rosse**
 (b.1945)
 A young woman paddling
 signed lower left
 oil on board
 29 x 24cm
 *£100 - 150

236

Dullah

(Indonesian, 1919-1996)

Portrait of a young girl
signed lower right
oil on canvas

34 x 29cm.

*£2000 - 3000

Dullah was born in Java, Indonesia, and studied with the influential painters Sudjojono and Affandi. In the late 1940s he was a supporter of the Indonesian Revolution and painted many scenes depicting the Indonesian struggle against the Dutch. One such scene was offered at Christie's Hong Kong 30 May 2010, lot 1229. During the 1950s Dullah was appointed official palace painter for Soekarno, Indonesia's first president.



237

Wumi "Wumzum" Olaosebikan

(British/Nigerian, Contemporary)

Camden Lock Gates Mural 2014

Aerosol Paint

210 x 196cm

*£800 - 1000



A renowned graffiti artist, illustrator, muralist and animator, Wumzum specialises in character & world design and takes inspiration from a range of sources: the visual language of comics; the interactivity of video games; the dynamism of graffiti; and the fluidity of the London Jazz scene.

This work has been described in his own words; 'I'd say this piece was at the beginning of my street art journey. I was finally painting with the big boys'

238-9 No Lots

* All lots subject to a buyers premium of 25% plus vat @ 20%



240

240
 • **Steve Petrucci Fox**
 (British, 1953-2014)
 Empress, Temperature and The Star
 Giclee Print
 102 x 62 cm
 Signed lower right

*£80 - 120



241

241
 • **Stanislaw Frenkiel** (Polish, 1918-2001)
 Women on a See Saw
 Oil on Canvas
 102 x 76 cm
 Signed and Dated '85 lower left

*£200 - 300



242

242
 Contemporary Chinese School
Mountain Spring
 gouache on paper
 bearing seal upper right and further
 inscribed verso
 52 x 73cm (sight)

*£80 - 120



243

243
 William Genge (British, fl. 20th century)
Mykonos - Little Venice
 Signed lower right
 Oil on board
 41 x 120cm.

*£60 - 80



244

244
 George Richard Deakins (1911-1982)
 A jungle lagoon scene, possibly Ceylon
 Signed lower right
 Oil on board
 35 x 49.5cm; together with a second,
 smaller oil on board by the same hand

*£60 - 80

• denotes lots affected by Artist's resale rights - refer to conditions of sale.



245
Barbara Rae (British, b.1943)
 The Night Window
 Mixed Media on Board
 38 x 35 cm
 Signed lower left

*£800 - 1000



246
 • **Robert Tavener** (British, 1920- 2004)
 Artist's Proof of 'Cat on the Table'
 Lithograph
 58 x 43 cm
 Signed and dated '63 lower left,
 inscribed lower right

*£150 - 250



247
Antonio Frasconi
 (Uruguayan, 1919-2013)
 Still Life with Pomegranate
 Woodcut Print
 44 x 35 cm
 Unsigned

*£80 - 120



248
 • **Angela von Neumann**
 [German-American, 1928-2010]
 Still Life of a cauliflower, artichoke, peas
 and daisies on a kitchen table
 Signed lower right
 Oil on canvas
 73 x 65cm

*£200 - 400



249



250



251



252

249
• Rowland Suddaby
(British, 1912-1972)
Flowers in a Vase
Acrylic on Canvas
48 x 59 cm
With a painting of a
village pond scene on the
reverse

*£300 - 400

250
• Anne Cotterill (British,
20th century school)
Poppies
Signed lower right
Oil on board
65 x 48cm

*£400 - 600



253

251
Graham Evernden
(British b. 1947)
Lillies II
Mixed Media on Board
20 x 25.5 cm
Initialed lower left

*£80 - 120

252
Penelope 'Penny'
Silverthorne
(British, 20th Century)
Lillies in a Vase
Watercolour on Card
43 x 50 cm
Signed and dated '88
lower right

*£40 - 60



254

253
Anne Hawkins
(late 20th century school)
*Summer Flowers, a still
life*
Monogrammed lower
right and further
inscribed on the reverse
Watercolour and
bodycolour
72 x 53cm

*£100 - 15

254
• Brian Irving
(British, b. 1931)
Wetlands Landscape
Watercolour
16.5 x 50 cm
Signed lower left

*£40 - 60

• denotes lots affected by Artist's resale rights - refer to conditions of sale.



255
Elias Zayat (Syrian, 1935 - 2022)
Abstract Birds with Female Figures
Watercolour and Ink on Paper
50 x 35.5 cm
Signed and inscribed lower left

*£1200 - 1500

256-7 No Lots

* All lots subject to a buyers premium of 25% plus vat @ 20%



258
Contemporary British School
 Sunlit street scene
 Limited edition screen print
 Numbered 84/195 lower left and bearing indistinct signature
 67 x 46cm

*£100 - 200



259
Colin Drew (British, 20th Century)
 Sea Caves, St Agnes, Cornwall
 Acrylic on Canvas
 40 x 51 cm
 Signed and dated '16 lower right

*£80 - 120



260
André Couchet (French, 20th Century)
 Rocks at Cancale, Golfe de Saint Malo
 Oil on canvas
 33 x 23cm
 Signed lower left and inscribed to the stretcher

*£40 - 60



261
Colegrave, S. and Sullivan, C. 'Punk. A Life Apart', 2001, Cassel & Co , London, with dust wrapper.

*£30 - 50



262
William Douglas Macleod (Scottish, 1892-1963)
The Scurr of Eigg from Loch Moidart
 Signed lower right and with inscribed label verso
 Pastel on paper
 44.5 x 62.5cm

*£200 - 300

Provenance: The gallery label on the reverse is for T. & R. Annan and Sons of Glasgow



263
 • **John Hewitt (Cornish, 1922-2006)**
 A Cornish harbour scene
 Signed lower right
 Oil on board
 29 x 70cm

*£60 - 80



264

264
David Clarvis (British, contemporary school)
Soho stereotypes; a set of three
Each hand-initialled by the artist, and with further printed signature
Colour prints
Each 76 x 59cm
(unframed) (3)
*£50 - 80



265

265
British School
(20th Century)
Moonlight Jungle Folly
Silk Screen Print
44 x 59 cm
Signed C.L.S, inscribed, and dated 1978 on the reverse
*£60 - 80



266

266
Brenda Lambert
[Contemporary]
Dreams of Power
Signed and dated 2005, lower right,
Oil on canvas and mixed media
51 x 41cm
*£80 - 120

267
• Lionel Aggett
(British, 1938-2009)
Vaison La Domaine,
Provence
Pastel
39 x 49cm
Signed lower left
*£150 - 250



267

268
Jacquie Denby
(British, b. 1939)
Landscape with Cottage
Watercolour and Ink on Card
58 x 49 cm
Signed lower right
*£100 - 200

Provenance:
W.H.Patterson, London
Exhibited: The Pastel Society, The Mall Galleries, London. 1995



268

269
• Donald M. Shearer
(Scottish, 1925-2017)
Winter Evening
Signed lower right and bearing title label verso
Oil on canvas
50 x 74cm
*£200 - 300



269

* All lots subject to a buyers premium of 25% plus vat @ 20%



270
Peter M. Smith
(British, 20th Century)
View from Tresco Channel
Oil on Canvas
49 x 76 cm
Signed lower left

*£100 - 150



271
Circle of William Ralph
Turner
(British, 1920-2013)
Industrial cityscape
Oil on unstretched,
mounted canvas
52 x 21cm.

*£40 - 60



272
• Peter Randall-Page RA
(British, b. 1954)
Entomology II, 2010
Signed, dated and titled
in pencil
Aquatint
29 x 20cm (sight)

*£200 - 300



273
Harley Crossley [b.1936]
Lynmouth Harbour
A pair, both signed
Oils on canvas, each 38 x 28cm. [2]

273

*£80 - 120



275
Hugo Lines [British, contemporary]
Morning Light, Room 6, 2012
Oil on board
Bearing artist's label to reverse
81 x 64cm.

275



274 No Lot

*£150 - 250



276

• **Graham Vivian Sutherland**
(British, 1903-1980)

Insect (1963)

Signed and edition numbered 16/65 in pencil

Lithograph in colours

65 x 49.5cm (plate)

*£300 - 500

Provenance: Phillips London, 12 April 1995, lot 35



278

• **Kitty North** (British, b. 1963)

A farmhouse, full moon

Signed and dated 94 (?) lower right

Oil on canvas

34.5 x 44cm.

*£250 - 350

Provenance: The frame bearing a label for the Rebecca Hossack Gallery, London



277

• **Derrick Sayer** (1917-1992)

Untitled, Abstract

Initialed lower right

Mixed media

62 x 50cm.

*£200 - 300



279

Ellie Ling (British, 20th Century)

Christmas Presence

Watercolour on Paper

24 x 24 cm

Signed lower right

*£100 - 200

* All lots subject to a buyers premium of 25% plus vat @ 20%



280
A Danish leather and rosewood Modus armchair designed by Kristian Solmer Vedel for Soren Willadsens, model introduced 1963, 77cm high, 62cm wide Rosewood CITES license applied for.

*£150 - 250



281
A pair of chromed metal counter stools, designed by Harry Bertoia (1915-1978) for Knoll, circa 2000; the cage form backs and seats with original blue upholstered cushions; the straight splayed legs with peripheral stretchers; 99cm high, 54cm wide.

*£100 - 150



282
A pair of 'Superleggera' type chairs, probably designed by Gio Ponti for Cassina, No. 699, circa 1960s/ 1970s; with woven rush seats on ebonised wood frames; 83cm high, 40cm wide

*£100 - 150



283
A wicker 'peacock' chair, second half 20th century; of typical form, with broad oval backrest above a circular seat; 130cm high, 92cm wide.

*£80 - 120



284
A pair of Swedish red faux leather upholstered swivel tub chairs, by Stefa, circa late 1960s; with detachable cushions; the undersides of the cruciform metal bases stamped STEFA SWEDEN 2447; 90cm high, 75cm wide

*£200 - 400



285
A pair of oak side chairs, in Arts & Crafts style, by A.J.Allen of High Wycombe, early 20th century; with tapered ladder backs and slatted seats, on straight chamfered legs with 'H' stretchers; ivoring maker's plaques to undersides; 91cm high, 46cm wide.

*£100 - 150

• denotes lots affected by Artist's resale rights - refer to conditions of sale.



286

A stained hardwood extending dining table, by Heal & Son Ltd., circa 1960s; the rectangular top with shallow bowed and cleated sides and ends, the extra leaf housed beneath the top, inset with a circular maker's plaque; on straight tapered legs, 74cm high, 150cm long closed, 92cm wide; and a set of six stained hardwood and upholstered dining chairs, 86cm high, 48cm wide

*£200 - 300



287

A teak extending dining table and four chairs en suite, by G Plan, circa 1960s; the rectangular top with bowed ends and banded border, the extra leaf sliding out at one end; on straight, tapering circular section legs, 74cm high, 147cm long closed, 89cm wide; the chairs with black *faux* leather seats, 76cm high, 47cm wide

*£100 - 150



288

A light oak dining table, and six beech wood chairs, by Ercol, circa 1960s; the table 71cm high, 152cm long, 76cm wide; and an associated oak and beech wood chair, also by Ercol

*£100 - 150

* All lots subject to a buyers premium of 25% plus vat @ 20%



289

A set of four Italian metal, beechwood and canework 'Cesca' side chairs, after Marcel Breuer, probably for Habitat, circa 1980s; with curved rectangular backrests and seats; 82cm high, 47cm wide

*£100 - 150



290

A set of nine mahogany and faux leather upholstered elbow chairs, circa 1960s/ 1970s; the rectangular backs and seats with green coverings, the shaped arms above straight legs with side stretchers; 88cm high, 58cm wide

*£200 - 300



291

A set of five clear plastic chairs, by Ikea, modern; on metal frames integral to the bases; 84cm high, 54cm wide

*£80 - 120



292

A set of four blonde beech armchairs, by Ercol, circa 1960s; each with hoop back and spindle supports with shaped arms; 87cm high, 70cm wide

*£100 - 200



293

A teak and metal dining suite, circa 1960s; the rectangular table on simple straight legs, 69cm high, 168cm long, 77cm wide; the six chairs with rectangular faux leather covered backs and seats, 76cm high, 48cm wide

*£200 - 300

• denotes lots affected by Artist's resale rights - refer to conditions of sale.



294

A pair of German leather upholstered 'Swing' lounge chairs with foot stools, designed by Reinhold Adolph for COR Germany, 1960's; with padded rectangular backs and straight arms, each on twin cantilever legs; the chairs 91cm high, 76cm wide

*£1000 - 1500

295-6 No Lots

* All lots subject to a buyers premium of 25% plus vat @ 20%

297

A black leather upholstered swivel armchair, circa 1960s; with rectangular back and shaped arms on a metal five legged stand; 99cm high, 86cm wide

*£150 - 250



297



298

298

A leather upholstered lounge swivel chair, 1960s/1970s; with padded rectangular back and seat and padded armrests, on a five legged metal stand; 82cm high, 83cm wide

*£50 - 80

299

A pair of Tomotom black painted chipboard and card bedside stands, designed by Bernard Holdaway for Hull Traders Furniture Ltd, circa 1966; of cylindrical form, with original paper labels verso; 74cm high, 36cm diameter



*£100 - 150

299

The Tomotom cardboard collection was launched to great acclaim at the Ideal Home Exhibition of 1966. The range comprised of circular chairs, tables and lamps coated with eye-catching colours and a high gloss finish. The collection was made from chipboard, steel pins and cardboard tubes - which were originally designed for concrete pouring in motorway construction. Notes Literature Leslie Jackson, Modern British Furniture Design since 1945, V & A Publishing, 2013, p. 185



300

300

A chromium plated metal and leather elbow chair, **MR20**, after Ludwig Mies Van Der Rohe, last quarter 20th century; with rectangular backrest and seat on the openwork frame; 83cm high, 54cm wide

*£100 - 200



301

301

A beech and blue upholstered lounge suite, probably Parker Knoll, circa late 1980s; comprising sofa and two armchairs -one with winged back; the sofa 88cm high, 124cm wide

*£100 - 150

• denotes lots affected by Artist's resale rights - refer to conditions of sale.

302

A suite of rosewood dining room furniture, by Archie Shine for Merrow of Surrey, circa 1970s; comprising an oval extending dining table, 70cm high, 138cm long extended; six faux leather upholstered dining chairs, 97cm high, 50cm wide; a two-door side cabinet, 76cm high, 100 cm wide, 56cm deep; and a low table, 39cm high, 137cm long, 91cm wide
Rosewood CITES license applied for.

*£500 - 800



303 No Lot



304

An afrormosia bedroom suite, circa 1960s; the dressing table with electric light fitment above an angled rectangular mirror; the moulded edges above three drawers with turned knob handles; above straight, splayed legs, 124cm high, 115cm wide, 52cm deep overall; a conforming three drawer chest, 86cm high, 79cm wide, 49cm deep; a conforming low table, possibly the dressing table stool, 44cm high, 59cm long, 42cm wide; and an associated afrormosia coffee table, circa 1960s, similar; 34cm high, 138cm long, 40cm wide

*£200 - 300



305

A teak dressing table with mirrors, G Plan Fresco range, circa 1960s; the three angle adjustable rectangular plates on twin supports; above six drawers; on twin supports to trestle bases; 122cm high, 154cm wide, 46cm deep; and an associated teak stool, with blue upholstered seat, 45cm high.

*£80 - 120



306
John Carlyon
 (British 1917 - 1982),
 a sculpted Cornish
 serpentine model of
 a serpent, portrayed
 loosely coiled around a
 rock, inscribed JC, 13cm
 high, 20cm wide
 *£150 - 250



307
 • **Lesley Clarke**
 [Contemporary] a 'blue
 sea' glass vase, of
 flattened form with raised
 arbitrary rim the blue,
 white and clear body
 mimicking foaming seas,
 diamond point signature
 to base, 29cm high.
 *£50 - 80



308
 A Kahler HAK pottery
 figure of a bird under
 chocolate and cream slip
 decoration, impressed
 Danmark and incised
 HAK, 18cm high,
 together with a Swedish
 pottery foal and a
 Sargadelos porcelain
 bird. [3]
 *£70 - 90



309
 • **Michael Leach**
 [1913-18] a stoneware
 coffee service comprising
 a coffee pot and cover,
 twelve cans, twelve
 saucers, sugar bowl and
 milk jug, decorated with
 liners designs, impressed
 Yelland pottery seals.
 *£100 - 200



310
 • **Paul Jackson**
 [Contemporary] a
 pottery jardiniere
 and stand incised and
 decorated with coloured
 washes with kingfishers,
 fish and flowers, signed
 and dated 1987, 92cm
 high.
 *£150 - 250



311
 • **Rosa Nguyen-Duc-Quy**
 [b. 1960], two life size
 stoneware figures, of a
 goat and Dachshund, the
 latter raku fired, 62 and
 55cm long, [damages].
 *£80 - 120

• denotes lots affected by Artist's resale rights - refer to conditions of sale.



312
 • Jeremy Leach [b. 1941] two stoneware vases one of lobed oviform with raised flaring neck the other of ribbed and waisted form, both under tenmoku glazes, impressed personal and Lowerdown seals, 32 and 35cm high.

*£100 - 150



313
 • Joe & Trudi Finch [Contemporary] a stoneware jug, decorated with brushwork flowers and foliage on an oatmeal ground, impressed seal under handle, 19.5cm high.

*£40 - 60



314
 • Marianne de Trey [1913-2016] a porcelain vase, of oviform with raised and flaring neck with 'knitted' decoration on a lilac and turquoise banded ground, incised dTe, 20cm high.

*£100 - 150



315
 • Marianne de Trey [1913-2016] a group of ceramics, comprising a footed porcelain bowl with blue, white and blush decoration, 17cm diameter, a stoneware plate painted with flowers and foliage on a blue ground, 26cm diameter, a stoneware shallow rectangular planter under pale celadon, 29cm long and a terracotta lamp base with wax resist decoration, 19.5cm high, impressed personal seals to all. [4]

*£100 - 150



316
 • Jeremy Leach [b. 1941] two stoneware vases both of waisted cylindrical form and decorated with brushwork foliage on an oatmeal ground, impressed personal and Lowerdown seals, 27 and 26.5cm high.

*£100 - 150



317
 • Laurel Keeley [b. 1952] a stoneware slab built vase the black body with applied white slip and arbitrary incised decoration, signed under base, 31cm high.

*£100 - 150



318

• Agnete Hoy for Buller Pottery four white stoneware vases and a dish, of various forms and decoration, incised and impressed marks to bases, tallest vase 15cm high. [5]

*£80 - 120

319

Dartington Pottery four stoneware planters and two matching bowls, two vase and jug each brightly decorated with stylised blooms on an ivory ground, impressed and painted marks, tallest planter 15cm high. [9]

*£100 - 150



320

• David Leach [1911-205] a porcelain jar and cover with exterior ribbed decoration on a mustard ground, impressed personal and Lowerdown seals, 10cm high; together with a similar porcelain jar and cover, a stoneware cylinder vase with incised decoration under a celadon glaze and a stoneware jug with brushwork foliage, all with Lowerdown seals. [4]

*£100 - 200



321

• Robert Goldsmith [b. 1962] six pieces of stoneware, comprising two jugs, a vase and a tea pot and two mugs, decorated various in gold and silver lustre on vivid blue grounds with fish, peacock feather or abstract designs, impressed either R. Goldsmith, Selborne Pottery or both, tallest jug 20cm.

*£120 - 180



322

• Laurel Keeley [b. 1952] three stoneware bowls and a dish the largest bowl applied with cream and blue slips and incised decoration the remaining pieces decorated variously with fish, all signed to bases, largest bowl 18cm diameter. [4]

*£120 - 180



323

• Andrew Hague [b. 1948] a stoneware jug and matching small bowl both decorated with vertical groves under ash glazes together with a small cut sided bowl by the same hand, impressed Askrigg Pottery seals, jug 19.5cm high.

*£60 - 90



• denotes lots affected by Artist's resale rights - refer to conditions of sale.



324

• Salvador Dali [1904 - 1989] Suite Catalana, a set of six limited edition tiles, El beso fuego', 'Las guitarras', 'El sol vegetal', 'La estrella de mar', 'Palomas' and 'Flechas', 20 x 20cm, in original box, numbered 171/750 and dated 1954.

*£300 - 400

325 No Lot



326

Thorkild Olsen for Royal Copenhagen a crackle glazed vase, of footed cylindrical form with flaring rim, the orange body flanked by gold bands, green backstamp and painted blue wave mark, circa 1960, 18cm high.

*£40 - 60



327

• Laurel Keeley [b. 1952] two stoneware vases of slab built form the tallest applied with cream slips, some gold and incised landscape decoration, the shorter with cream slips, some gold and blue matt glaze incised with linear decoration and a row of fish, both signed to the base, 25 and 10.5cm high.

*£120 - 180



328

• Mary Rich [1940-2022] three pieces of porcelain, comprising a slender cylindrical vase with narrow flaring neck, a shouldered oviform tea pot and a miniature vase, the two former with blue and gold decoration the latter with a simple landscape in green, impressed personal seals, tallest vase 18.5cm high.

*£120 - 180

* All lots subject to a buyers premium of 25% plus vat @ 20%

329

A stoneware bowl, of compressed circular form the exterior incised with a peacock feather design, under green brown glaze, impressed rabbits head mark and incised NJS/ monogram, 40cm high.

*£150 - 200

330

• Tim Andrews [b. 1960] a raku fired bowl, of circular form with broad rim the central well with speckled blue, green glazes, impressed personal seal near foot, 29.5cm diameter.

*£100 - 150

331

• Bernard Forrester [1908-1990] a terracotta bowl the exterior decorated with black wash and incised with birds and snakes on an ivory ground, painted mark to base, 21cm diameter.

*£80 - 120

332

• Bernard Forrester [1908-1990] five stoneware dishes of shallow circular form, one painted with a head in profile, three others with stylised flowers and foliage, one with a star motif, painted marks to bases, largest 17cm diameter.

*£250 - 350

333

• Bernard Forrester [1908-1990] three stoneware bowls of circular form two decorated to the interior with painted and incised decoration, the latter with painted decoration to the exterior, painted marks to base, largest 13cm diameter.

*£120 - 180

334

• Rachel May nee Forrester [b. 1989] two stoneware bowls one decorated with flowers and foliage the companion painted and incised with a narrow band of fish above stylised waves, painted marks to both, 18 and 16cm diameter.

*£80 - 120

• denotes lots affected by Artist's resale rights - refer to conditions of sale.



329



330



331



332



333



334

335

• Nic Harrison [b. 1949] five pieces of stoneware, comprising a shallow circular bowl, another vessel of pinched circular form the rim with four inverted lug handles together with a unomi, the former under tenmoku glazes the latter under pale celadon, all with impressed personal seals, tallest piece 9.5cm high **together with** a shallow bowl, the bold rim with three raised 'notches', a small vase the ribbed rim with two small handles, both under dark tenmoku glazes, the former with impressed personal and Trelowarren Pottery seals the latter with pottery seal only, bowl 23cm diameter.

*£50 - 100

337

• Rachel May nee Forrester [b. 1989] two stoneware bowls one decorated to the interior with a female portrait, the companion with foliate decoration to the exterior, painted marks to the bases, 20 and 15cm diameter.

*£80 - 120

339

• Bernard Forrester [1908-1990] two stoneware vases one an early example of bellied oviform applied with four pierced wings and with incised decoration under green glazes, the companion of beaker form, the exterior brightly painted with four stylised blooms, painted marks to both, 13.5 and 12.5cm high.

*£120 - 180

336

• Barbara Cass [1921-1992] six stoneware dishes and bowls, decorated variously, incised 'B.C. Arden', largest 33cm diameter.

*£150 - 250

338

• Barbara Cass [1921-1992] two stoneware vases each with speckled decoration, incised 'B.C. Arden', tallest 11.5cm.

*£70 - 90

340

Dartington Pottery four stoneware pieces comprising a plate, dish and jug with peacock decoration together with a limited edition millennium party plate, largest dish 34cm long, impressed marks.

*£80 - 120

• denotes lots affected by Artist's resale rights - refer to conditions of sale.



335



336



337



338



339



340

* All lots subject to a buyers premium of 25% plus vat @ 20%



341

Two Mexican bracelets and a pair of ear clips, including a bracelet of concave links, length ca. 17cm; a bracelet of geometric design, inlaid with green and blue stone, length ca. 19cm, and a pair of malachite ear clips, length ca. 4.5cm, all stamped '925', total weight ca. 236gms.

*£80 - 120



342

Two Modernist, Scandinavian items, including a circular amber pendant by Nils Erik From, Denmark, stamped '925S', length ca. 4cm, weight ca. 10.8gms, together with a brutalist pewter leaf brooch by Runne Tennesmed, Sweden, length 4.9cm.

*£60 - 80



343

Bent Knudsen (1924-1997), Denmark, a mid-20th century, silver bracelet, of rounded rectangular links, stamped 'BENT K', model 20, length ca. 17.5cm, total weight ca. 58.6gms.

*£150 - 250



344

Georg Jensen, a silver 'Aria' sautoir necklace, with multiple bars joined at random intervals by anchor-link chain, with Jensen maker's mark for after 1945, total length ca. 90cm, total weight ca. 28.9gms.

*£200 - 300



345

Valon Kulta & Hopea, a round, mixed-cut rock crystal and silver bangle, with control marks for Turku, Finland, 1975, inner diameter ca. 6cm, total weight ca. 31.9gms.

*£80 - 120



346

Two pairs of Modernist cufflinks, including a pair of trefoil, concave form, stamped 'DENMARK', with maker's mark 'PJ' and a second with maker's mark 'WKR', length of cufflink head ca. 2-2.4cm total weight ca. 29.3gms.

*£80 - 120

• denotes lots affected by Artist's resale rights - refer to conditions of sale.



347

A Modernist, 18ct gold, round, brilliant-cut diamond and round, mixed-cut sapphire necklace, designed as a series of textured gorget-shaped links, total estimated diamond weight ca. 0.30ct, with partial hallmarks for Sheffield, total length ca. 45cm, total weight ca. 40.5gms.

*£500 - 700



348

Erik Dennung, Denmark, a silver bangle, inner diameter ca. 6.5cm, total weight ca. 51.8gms.

*£80 - 120



349

Flemming Eskildsen for Georg Jensen, a triangular silver brooch with open centre, design nr 341, with Georg Jensen maker's mark for after 1945, length ca. 3.8cm, total weight ca. 14.9gms.

*£80 - 120



350

Nanna Ditzel for Georg Jensen, silver ring, model number 91, with import marks for London, 1961, length of ring head ca. 3cm, ring size Q, total weight ca. 17.6gms.

*£80 - 120



351
Reinold Mattner (British, 20th Century)
View of Garden and Outbuildings from
Mattner's House
Acrylic on Board
48 x 38 cm
Signed and dated '44 lower left
*£80 - 120



352
Viktor Shvaiko [Russian, b. 1965]
A cobble city street
Signed lower right
Oil on canvas
59 x 74cm
*£300 - 500



353
• John Hewitt (Cornish, 1922-2006)
A river landscape with a bridge and
cattle watering
Signed lower left
Oil on board
23.5 x 33.5cm; together with a second
oil on board landscape by John Hewitt,
a moorland scene, signed Jackson, 24.5
x 34cm; and a watercolour by the same
hand
*£80 - 120



354
Joachim Hierschl-Minerbi
(Austrian, 1834-1905)
Fishing Boats in a calm
Oil on canvas
59.5 x 90cm
Signed lower right
*£150 - 250



355
• David Birtwhistle [b.1947]
Window's Light, nude in an interior
Signed bottom left
Watercolour and pastel drawing,
24 x 39cm.
*£30 - 50

356

• Winifred Nicholson
(British, 1893-1981)

Leda and the Swan

Oil pastel on Ingres

paper,

32.5 x 48.5cm.

Circa 1970.

*£600 - 800



357

• Pablo Picasso [Spanish, 1881-1973]

Portrait of Jacqueline (1956)

bearing a possibly later signature and spurious edition number 17/75 to the lower margin, dated 4.12.56 in the plate lithograph in colours on wove paper sight size 52 x 40cm.

*£600 - 800

Provenance:

Private Collection, Devon

Formerly the collection of the art

collector Sibyl Horsfall (1917-2016)

The present portrait represents Picasso's

muse Jacqueline Roque. An edition of this lithograph is in the collection

of the MoMa, New York, another was

recently sold at Sotheby's New York, 16

December 2022, lot 547.





358 (Part)

358

Michael Bramman (mid-20th century school)
A quantity of illustrations, designs and sketches,
probably designs for advertisements
watercolour and gouache on paper and board
various sizes

*£40 - 60



359 (Part)

359

Sally Porch
(British, 20th Century)
The Ballet
Pair of pastels
Each 77 x 52cm
Both signed lower left
and dated '89

*£50 - 100



360

360

• Wilfred R E Fairclough (1907-1996)
Torcello, umbrellas
hand-signed and dated 1980 and 1983 respectively
etchings
plate sizes 17.5 x 22cm and 16 x 19.5cm (2)

*£120 - 180



361

361

British School,
20th Century
Caricature of Man
smoking a Pipe
Pastel
20 x 44 cm
Indistinctly signed lower
left

*£40 - 60

• denotes lots affected by Artist's resale rights - refer to conditions of sale.

362

• Robert O Lenkiewicz

(British, 1941-2002)

Gentleman with Child, 17th Century

Costume Piece,-

Pen, ink and wash

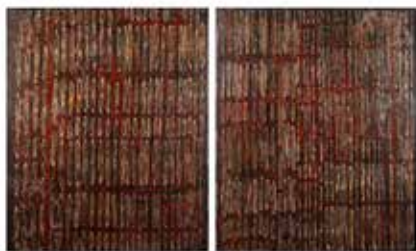
37.5 x 30cm

Signed lower right

*£80 - 120



363 No Lot



364

• Camilla Nock (British, b. 1944)

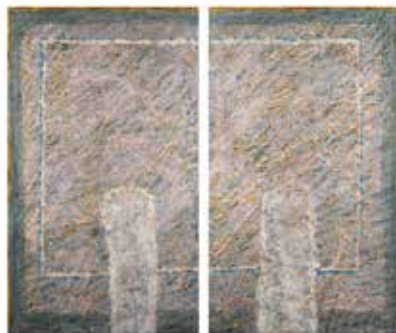
Diptych

Mixed Media on Board

122 x 102cm

Unsigned

*£400 - 600



365

• Camilla Nock (British, b. 1944)

Diptych

Mixed Media on Board

122 x 102 cm

Unsigned

Together with a pair of Mixed Media on Board

*£400 - 600

366

• Peter Curling (British, b. 1955)

Looking towards San Giorgio, Venice

Limited edition print

32 x 55.5cm

Signed lower left and numbered

459/695

*£50 - 100





367



369

367

Mary Langhorne (British, 1909-1984)

Harbour Scene

Oil on canvas

35 x 26 cm

Signed lower right

Together with a Winter Landscape, Oil on Board, 59 x 45 cm, also signed by Langhorne lower right

*£80 - 120



370

368 No Lot

369

Gerard Mutsaers (Australian, b.1947)

Afternoon Light,

Oil on board,

58 x 88cm

Signed lower left

*£100 - 200



371

370

John A. Simson (British, 20th century school)

Children at Abergeiddy

Signed lower right and bearing inscribed title label to stretcher

Oil on canvas

59 x 75cm; the reverse also painted with a coastal landscape

*£150 - 250

371

• **G. de Luca (Italian, 20th century)**

Fishing boats in a bay, possibly the bay of Naples

Signed lower right

Oil on canvas

39 x 49cm

*£250 - 350

• denotes lots affected by Artist's resale rights - refer to conditions of sale.

372

• Danny Markey
(British, b.1965)

Street Scene
Oil on canvas
102 x 126 cm
Not signed

*£600 - 800



373

• Brian Pollard
(British, b. 1946)

The Harbour
Acrylic on board
40 x 50 cm
Signed lower right

*£500 - 600





374
Anthony Klitz (British, 1917-2000)
 London Street
 Oil on canvas
 60 x 49 cm
 Signed lower right

*£300 - 400



375
Denise Henry (British, 20th Century School)
Mersey Way, Stockport
 Signed and dated lower right
 Oil on board
 49 x 75cm

*£150 - 250



376
Jenny Warwick (British, contemporary school)
 Moorland landscape
 Signed lower left
 Watercolour
 36 x 53cm

*£30 - 50



377
 • **Gerald Kelly (British, 1879-1972)**
 Family in a Room
 Colourprint
 62 x 48 cm
 Signed lower right

*£100 - 150



378
 • **Rowland Suddaby (British, 1912-1972)**
 Yorkshire Landscape
 Watercolour
 38 x 27 cm
 Signed lower right

*£200 - 300



379
 379 (Part)
Julia Hall [b. 1974]
 Sea views; a set of four
 Oil on paper
 22 x 18.5cm and smaller
 Each signed with initials and dated

*£60 - 80



380

380
Peter S. Forster [1934-2021]
 Gloucester Cathedral,
 Signed with initials and dated '62
 Mixed media, 12 x 17cm.

*£80 - 120

381
Hughes Domond (Haitian, 20th Century)
 Village Scene in Haiti
 Oil on canvas
 125 x 75 cm
 Signed lower left

*£100 - 150

382
Anthony Orme (British, b. 1945)
 Rendel at Le Printanier, Paris
 Pastel
 64 x 49 cm
 Signed lower left

*£180 - 220

383
 • **David Bradley [British, 20th century]**
The Old Slipway, Maryport
 Signed lower right
 Oil on board
 37.5 x 47cm

*£40 - 60

384
British School (20th century)
 A harbour scene with fishing boats
 Oil on canvas laid to board
 45 x 50.5cm

*£60 - 80

385
Alice Kiddier (20th century school)
Waiting
 Signed lower left, further inscribed verso
 Oil on canvas
 58.5 x 70cm

*£200 - 400



381



382



383



384



385

* All lots subject to a buyers premium of 25% plus vat @ 20%



386



387



388

386
Frank Ferrante
[American,
Contemporary School]
Harbour at full moon
Signed centre right
Oil on canvas
122 x 151cm

*£200 - 300

387
Contemporary Artist
Landscape of Sienna
Oil on canvas
160 x 120 cm
Signed JEL and dated '03
lower right

*£150 - 250



389

388
• **Sydney Foley**
(British, 1916-2001)
December Sunset,
Westminster
Signed lower right
Oil on board
23.5 x 28.5cm

*£100 - 150

389
Roy Hammond (b. 1934)
St Pauls and Blackfriars
from King's Reach
Signed, inscribed and
dated on the reverse
Watercolour
24 x 35cm

*£60 - 80

Provenance: with label
for the Mall Galleries,
Armed Forces Art Society
Exhibition, 1979

Provenance: Formerly
with Chris Beetles,
bearing label to the
reverse



390

390
Hulme Chadwick
(British, 1910-1977)
San Giorgio, Maggiore
Venice
Lithograph
39 x 16 cm
Inscribed lower left,
Signed and Dated 'May
1970' lower right

*£60 - 80

391
Harley Crossley
(1936-2013)
Lynmouth Harbour, and
another harbour scene; a
near pair
Each signed and with
artist's label to the
reverse
Oil on board
28.5 x 69 and 29.5 x
74cm respectively

*£150 - 250



391

• denotes lots affected by Artist's resale rights - refer to conditions of sale.



392

• Julian Trevelyan (British, 1910-1988)

Two oxen pulling a cart or plough in a hilly landscape,
probably Spain,

Oil on canvas

59 x 74cm

Signed and dated lower left

*£9000 - 12000



393

393

Shida Xue (Chinese, 20th Century)

Three Paintings portraying Women; subject matters include Musical Instruments and Interiors

Mixed Media including Oil paint and Gesso on Canvas

All 98 x 98 cm

All signed either lower left or lower right

*£400 - 600



394

394

Lucianne Lasalle (b. 1960)

Sensing the Space

Signed and dated lower right, inscribed verso

Sgraffito oil on canvas

50.5 x 77cm (unframed)

*£120 - 180



395

395

Attributed to Bahktiar Umataliev

(British, 20th Century)

Reclining Female Nude

Crayon on Paper

67 x 40 cm

Signed and dated 1987 lower right

*£80 - 120



396

396

Keith Clements (British, b. 1931)

Seated nude

Signed and dated lower left, and bearing

inscribed artist's label with dedication verso

Pastel

48 x 30cm

*£40 - 60

• denotes lots affected by Artist's resale rights - refer to conditions of sale.

397

• David Hockney
(British, b.1937)

Artist Proof, 'Byron on
Hand'

Charcoal on Paper

29 x 34 cm

Signed and dated '74

lower centre

*£2000 - 3000



398

• David Hockney (British, b. 1937)

My Mother (Bridlington), (1988)

Signed to lower margin

Limited edition poster (edition of 250)

77 x 51.5 cm

*£800 - 1200

To be sold with its original certificate
of authenticity, issued by the Mail on
Sunday, 1988.



* All lots subject to a buyers premium of 25% plus vat @ 20%

399

• Mary Newcomb [British, 1922-2008]

Study for the cage bird show

initialled lower right and further signed
and inscribed verso

pencil and wash drawing

20 x 29cm

*£300 - 500



399

Provenance: Private Collection

Formerly with Crane Kalman Gallery, London (bearing label to reverse)

Another, similar drawing of a 'caged bird show', this one featuring canaries, was

published in C. Andreae, *Mary Newcomb* (London: Lund Humphries, 1996), p. 148

This catalogue is offered with the lot.



400

400

• Oskar Kokoschka

(Austrian, 1886-1980)

*Apulia - Ciccio the Donkey (Der Esel
Ciccio)*, 1963

Signed and edition numbered 44/50 in
pencil

Limited edition lithograph

49 x 64.5cm.

*£120 - 180



402

402

• Oskar Kokoschka (Austrian, 1886-1980)

*Apulia - Boat shaped like a dolphin (Schiff
wie ein Delphin)*, 1963

Signed and edition numbered 44/50 in
pencil

Limited edition lithograph

49 x 64.5

*£120 - 180



401

401

Paul Jones (British, 20th Century)

Landmark II

Acrylic and Mixed Media on Board

36 x 36 cm

Unsigned

*£80 - 120



403

403

After André Masson (French, 1896-
1987)

Fauteuil pour Pauline Borghese

With printed title inscription and
signature

Lithograph

44.5 x 33.5cm

*£80 - 120

• denotes lots affected by Artist's resale rights - refer to conditions of sale.



404

Oswald Moser (British, 1874-1953)

An old woman walking through the Churchyard

Oil on board,

62 x 68.5cm

Signed lower left.

*£600 - 800



405

Mabel Juli (Australian, b. 1932)

Painting for Warmun Art Centre

Acrylic on canvas

140 x 100 cm

Unsigned

*£500 - 700

406-7 No Lots

* All lots subject to a buyers premium of 25% plus vat @ 20%



408



409



410



411

408
Kate Corder [British, contemporary school]
Mad March
Bearing label verso
Oil on canvas
144 x 122cm
*£150 - 250

409
Artist G Novas (?)
French Mountain Landscape
Oil on Canvas
53 x 64 cm
Signed lower left
*£40 - 60

410
Dariusz Orszulik
(Polish, contemporary)
Mnich Mountain, Poland
Signed lower right and inscribed to stretcher
Oil on canvas
23 x 17cm
*£40 - 60

411
Adrian de Menasce
(Egyptian/British, 1925-1995)
Figure drawing, 1976.
Pencil and coloured crayon on paper.
29 x 22.5cm
Signed lower left.
*£200 - 300



412

Provenance: The Mayor Gallery, Cork Street, London. 1996. To be sold with a catalogue 'Adrian de Menasce - Late Oil Paintings'
The Mayor Gallery. 1996

412
• Peter Currington (British, contemporary school)
Silkie chickens outside a barn
Signed and dated lower left
Watercolour
27 x 35.5cm
*£40 - 60



413

413
British School (second half 20th century)
Still life of daisies, pears and crockery on a table
Initialed *JHW* lower right
Watercolour
34 x 53cm
*£80 - 120

414

Breon O'Casey (British, 1928- 2011)

Purple Triangle 13/20

Aquatint and Linocut

45 x 45 cm

Signed and Dated 2001 lower right

*£400 - 600



415

French School, 20th Century

A sunlit park scene with figures and a pavilion beyond, probably a sketch

Oil on canvas

39.5 x 49.5 cm

*£100 - 150



416

• Anthony Stones [b. 1933]

Southern Comfort Passing Phyllis Court

Signed and dated 86

Oil on canvas

50 x 76cm

*£200 - 300

Offered with an accompanying note from the artist

417

Jo Talbot Bowen

(British, Contemporary)

Out of the Woods

Double sided watercolour

30 x 38cm

*£40 - 60

together with two others

by the same hand (3)



418 No Lot

417 (Part)

* All lots subject to a buyers premium of 25% plus vat @ 20%



419
A white plastic tub chair, by Robin Day for Hille, circa 1970s; raised on four chrome plated outswept legs, impressed marks to base; 76cm high, 60cm wide

*£20 - 30



420
An Ercol elm and beech 'Quaker' rocking chair, early 1980s; with arched spindle back and open arms; with original fabric cushion covering and Dingles sales docket dated for 1984; 86cm high, 63cm wide

*£70 - 100



421
A set of four aluminium and faux leather covered chairs, model BA23, designed by Ernest Race for Race Furniture, circa 1946; each with a cast aluminium frame, pad seat and back, and cast 'BA23 Regd Design No.848794' to the undersides, 78cm high, 44cm wide

*£200 - 300



422
A white laminate and metal breakfast table and four matching "Ant" chairs, in the manner of Arne Jacobsen, circa 1970s; the table 76cm high, 97cm diameter; the chairs 87cm high, 43cm wide

*£100 - 150



423
A pair of yellow vinyl covered side chairs, possibly by Willy van der Meer, circa 1950s; the circular backs and seats on metal frames; 83cm high, 44cm wide

*£80 - 120



424
A set of three contemporary Miura green plastic bar stools, designed by Konstantin Grcic for Plank; raised marks verso *MADE IN ITALY*; 80cm high.

*£100 - 150

• denotes lots affected by Artist's resale rights - refer to conditions of sale.



425

An oak refectory table and two matching benches, by Robert Parker; constructed from Devon oaks felled during the storm of 1987; the rectangular table 81cm high, 187cm long, 99cm wide; the benches 45cm high, 181cm long

*£500 - 800



426

A teak and beechwood extending dining table and four chairs, probably by Parker Knoll, late 20th century; the oval top with banded border and housing a hinged extra leaf within; on straight channeled legs; 76cm high, 152cm long closed; the chairs with Utah Raspberry upholstered seats, 102cm high, 48cm wide

*£80 - 120



427

A teak extending dining table and six chairs, by Nathan Furniture, in 1970s style, 1980s make; the oval table top with crossbanded border and opening to a hinged leaf housed beneath, on straight, channeled legs; 75cm high, 154cm long closed; the six chairs with Utah Salmon upholstered seats, 97cm high, 49cm wide

*£100 - 150

* All lots subject to a buyers premium of 25% plus vat @ 20%



428
An oak and ceramic tile topped coffee table, thought to be by Robin Nance of St Ives, circa 1960s; the rectangular top with cleated sides, above outswept legs; 38cm high, 97cm long, 38cm wide
*£150 - 250



429
A Continental marble topped teak coffee table, circa 1970s; the trapezoidal Italian green serpentine top on straight tapered legs; 42cm high, 130cm long, 94cm wide
*£150 - 250



430
An oak and oak laminate coffee table, circa 1960s; with upcurved ends above an undershelf, with splayed legs; 39cm high, 112cm long, 38cm wide
*£60 - 90



431
Two German pine and metal folding tables, with three similar benches en suite, 20th century; the tables 77cm high, 219cm long, 50cm wide
*£40 - 60



432
A wenge wood and glass dining table, modern; the rectangular top on a base formed of two groups of radiating batons within a rectangular frame; 75cm high, 210cm long, 120cm wide overall
*£600 - 900



433
A pair of Danish teak veneered low chests of drawers, by Steens, circa 1960s; each with three drawers and short tapered legs; 62cm high, 75cm wide, 47cm deep; and another example, similar; 74cm high
*£100 - 150

• denotes lots affected by Artist's resale rights - refer to conditions of sale.

434

A pair of Danish rosewood and upholstered open armchairs, by Arne Vodder for Sibast Furniture, circa 1960s; the rectangular backs and seats with faux leather coverings, with shaped arms; the straight legs with 'H' form stretcher; 88cm high, 68cm wide

*£250 - 350



435

A teak sideboard, by Sibast Furniture, circa 1960s; with maker's plaque; the top with raised back, above two ebonised sliding doors, on short tapered oak legs; 79cm high, 137cm wide, 50cm deep

*£200 - 300



436

A teak sideboard, circa 1960s; the top with raised back edge and moulded front, above an arrangement of three drawers and three cupboard doors; on straight oval section legs; 76cm high, 208cm wide, 46cm deep

*£200 - 300



437

A Danish rosewood console table, by Finn Juhl for Niels Vodder, circa 1950; the rectangular top with raised and cleated ends, on twin rectangular supports, the straight legs with two shaped stretchers; 69cm high overall, 152cm long, 48cm wide
Rosewood CITES license applied for.

*£700 - 1000



438

A teak and tile topped coffee table, retailed by Heals, mid-20th century; the oblong top inset with sixteen Malkin Johnson black glazed tiles with sgraffito design and gilt detailing; 39cm high, 115cm long, 39 cm wide

*£150 - 250



439

A teak double bed headboard with integral side tables, by Kofod Larsen for G Plan, circa 1960s; the rectangular board with a single drawer to each side, each with legs to one side; 93cm high, 254cm wide, 48cm deep overall

*£50 - 80



* All lots subject to a buyers premium of 25% plus vat @ 20%



440
A red, white and blue painted fibreboard 'Target' coffee table, last quarter 20th century; on four straight metal legs; 43cm high, 74cm diameter
*£80 - 120



441
A Danish rosewood extending dining table, by Gudme Mobilfabrik, circa 1970s; with circular top and twin leaf inserts on a cruciform base; 70cm high, 123cm diameter, each leaf adding 49cm to the length
Rosewood CITES license applied for.
*£300 - 400



442
A painted wood and metal mounted smokers' table, mid-twentieth century; the ashtray and matchbox holder on an oval platform above an oval table top, on twin shafts to a stepped base, 91cm high; and a painted wood and metal mounted circular occasional table, 47cm high
*£50 - 80



443
A nest of three G-Plan teak occasional tables, circa 1960; of rectangular form, all with straight, tapered legs and three-quarter peripheral stretchers; with gilt transfer stamps to undersides; the largest 49cm high, 56cm wide, 40cm deep
*£80 - 120



444
A pair of rectangular teak music speakers, circa 1960s; the fronts with two tiers of pierced fluting; 68cm high, 26cm wide, 38cm deep
*£50 - 80



445
A stained beech and green painted four tier etagere, modern; the top shelf with open corner gallery above three supports; 160cm high, 55cm in diameter
*£50 - 80



446
A dark elm 'Giraffe' room divider, by Ercol, circa 1960s; the upper gallery above height-adjustable shelves; the base section with twin panel doors; on short splayed legs; 191cm high, 91cm wide, 41cm deep

*£400 - 700



447
A teak modular wall shelving and cupboard unit, probably by Ladderax, circa 1960s; with a drop leaf cupboard, another with sliding glass doors and three shelves; 201cm high, 94cm wide, 38cm deep

*£150 - 250



448
A teak modular wall shelving unit, probably by Ladderax, circa 1960s; with five adjustable shelves, the sides without back legs by design for installation against a wall; 162cm high, 92cm wide, 38cm deep

*£100 - 150



449
An embossed and painted leather and oak fire screen, circa 1930; the rectangular screen depicting a galleon under sail; the frame with stepped top rail pierced for a handle; on twin stepped trestles; 99cm high, 50cm wide

*£60 - 90



450
An oak library book table in Art Deco style, probably for Heal & Son Ltd., circa 1930; of octagonal section, the canted uprights with prominent medullary rays and fluted lower sections; on gilt brass castors; 56cm high, 47cm wide

*£150 - 250



451
An oak 'Medina' bureau in Arts and Crafts style, designed by Leonard F. Wyburd for Liberty and Co, early 20th century; in Moorish taste, the raised spindle galleried shelf above a fall front enclosing a fitted interior of pigeonholes and a drawer; above further drawers arranged around three cusped arches, on short turned legs; 140cm high, 77cm wide, 38cm deep

*£200 - 300

* All lots subject to a buyers premium of 25% plus vat @ 20%

452

A teak dressing table with mirror, by Heal's, circa 1960s; the angle adjustable tripartite mirrors above three drawers, the right drawer with retail plaque, all with inlaid brass *stop fluting*, on straight legs with simple stretchers, 132cm high, 121cm wide, 46cm deep; and a similar bedside cupboard, by Loughborough Furniture, 57cm high, 41cm wide, 41cm deep

*£100 - 150

455

Two teak bedside cabinets, G Plan Fresco range, circa 1960s; one with three drawers, 53cm high, 48cm wide, 45cm deep; the other with open front above a drawer; 53cm high, 45.5cm wide, 40.5cm deep

*£80 - 120

458

A chromium plated metal and melamine veneered 'rocket' tea trolley, circa late 1950s/early 1960s; with two tiers, the castors with streamlined hoods; 69cm high overall, 87cm long

*£200 - 300

461

A 'San Luca' faux leather upholstered armchair, designed by Achille and Pier Giacomo Castiglioni, probably by Bernini, 1960s/1970s; with outscrolled back and straight arms; 95cm high, 86cm wide

*£400 - 600

453

A nest of three teak occasional tables, by G Plan, circa 1960s; with twin subsidiary tables beneath the rectangular coffee table, all with cleated tops and curved supports; the coffee table 51cm high, 99cm long, 50cm wide

*£60 - 90

456

A rattan worked settee, second half 20th century; the backrest with curved ends, the oval seat on straight legs with openwork supports; 72cm high, 140cm wide

*£50 - 80

459

A mahogany occasional table and twin chairs *en suite*, in Art Deco style, circa 1930; the circular top with radiating ray veneers to a crossbanded border, on four serpentine legs with a quatreform undershelf, 66cm high, 80cm diameter; the chairs with later leopard print coverings, 90cm high, 47cm wide

*£150 - 250

454

A teak sideboard, by Gordon Russell 'Helix' pattern, circa 1960s; the twin doors with metal ring handles and routed interlaced decoration, on square tapering supports, with *Russell of Broadway* label to reverse; 84cm high, 122cm wide, 47cm deep

*£300 - 600

457

An American bleached oak sideboard, by Raymond K. Sobota for Century Furniture, ca 1970s; in Chinese taste; the cleated top with raised ends, above three short drawers, with brass swing handles, flanked by fret cut scrollwork at each side; above twin articulated doors with further brasswork, on straight feet; brass maker's plaque in one drawer; 88cm high overall, 171cm wide, 46cm deep

*£400 - 600

460

A teak side table, circa 1960s; with two frieze drawers, the straight legs with three quarter peripheral stretchers; 74cm high, 102cm wide, 48cm deep

*£60 - 90

462

A pair of Danish teak open armchairs, by Svend Aage Eriksen for Glostrup, circa 1960s; the backs with bowed top rails above shaped arms, with padded backs and seats, to straight legs; 78cm high overall, 73cm wide

*£800 - 1200

463-5 No Lots

• denotes lots affected by Artist's resale rights - refer to conditions of sale.



452



453



454



455



456



457



458



459



460



461



462

* All lots subject to a buyers premium of 25% plus vat @ 20%



466
A mahogany dressing table stand with mirror in Art Deco style, circa 1930; the arched plate with a low bow front cupboard to left and a higher cupboard with radiating ray veneers to the door on the right and two lidded compartments above; 169cm high, 126cm wide, 34cm deep
*£150 - 250



467
A burr walnut dining table and pedestal sideboard en suite, in Art Deco style, circa 1935; the former with rectangular top with rounded corners, on twin pillar supports, with crossbanded borders, 78cm high, 184cm long, 92cm wide; the latter with raised central section with doors opening to drawers, flanked by a further door to each side, with conforming borders throughout, 102cm high, 154cm wide, 59cm deep
468 No Lot *£100 - 200



469
A mahogany triple front wardrobe in Art Deco style, circa 1930; the shallow arched pediment and twin doors flanking the central glazed door, all with radiating ray veneers, above three drawers with turned handles; the moulded base on block feet; 209cm high, 204cm wide, 60cm deep
*£250 - 350



470
A mahogany double bed in Art Deco style, circa 1930; the high arched headboard and lower footboard with radiating ray veneers to rounded corners; with shaped sides and two support bars; 134cm high, 192cm wide, 200cm long
*£100 - 150



471
A pair of mahogany bedside cupboards in Art Deco style, circa 1930; the three quarter gallery superstructures with outscrolled front edges, the opposing doors with radiating ray veneers; 66cm high, 51cm wide, 33cm deep
*£150 - 250



471A
 Franz Hermle a contemporary longcase clock the light case standing on an ebonised base, the chrome weight-driven timepiece movement stamped *Franz Hermle, Made in Germany*, height 195cm.
 *£400 - 600



472
 A rosewood sideboard, by Archie Shine to a design by Robert Heritage, circa 1960s; the two doors and four short drawers with recessed white metal ring handles, with bevelled glass top; on rounded trestle supports; 77cm high, 213cm wide, 46cm deep
 Rosewood CITES license applied for.
 *£600 - 900

Note: Previously sold in these rooms, 21st October 2009, lot 498



473
 A teak lounge unit, by Nathan Furniture, circa 1970s; with open gallery above twin pairs of glass doors flanking a fall front; above further drawers and panel doors; 193cm high, 191cm wide, 46cm deep
 *£70 - 100



474
 A teak and metal mounted floor standing shelving unit, almost certainly Robert Heal, Ladderax for Staples, London, circa 1970s; with height adjustable modular fall front bureau, three drawer section and glass door fronted section; in openwork side frames; 201cm high, 94cm wide, 40cm deep
 *£200 - 400



475
 A teak modular wall shelving and cupboard unit, probably by Ladderax, circa 1960s; comprising two bays, with two cupboards with sliding doors, two with fall fronts, and six shelves; 201cm high, 185cm wide, 38cm deep
 *£250 - 350

* All lots subject to a buyers premium of 25% plus vat @ 20%



476

• Simon Palmer (British, b.1956)

'Stepping into the future'

Watercolour

70 x 49 cm

Signed twice lower right, inscribed with the title lower left and inscribed ' To Dear Nancy and Keith fondest love Simon' on the reverse

*£2000 - 3000



477

• Gill Watkiss (British, b.1938)

Bather on Marizion Beach

Oil on board

33 x 37 cm

Signed lower right

Signed on the reverse, dated January
2000 and inscribed with the title

*£1000 - 1500

478

British School, 20th Century

Landscape with Safeway wrapper

Watercolour

33 x 40.5 cm.

Monogrammed lower right and dated
'89'.

*£40 - 60

Provenance; Dawn Frost



* All lots subject to a buyers premium of 25% plus vat @ 20%



Not everything is
shut away in glass cases.

Lycetts

Insurance Brokers and Financial Services

Contact

Simon Hay

simon.hay@lycetts.co.uk

Mob: 07813 890622 Tel: 01392 479111

Lycetts is a trading name of Lycett, Browne-Swinburne & Douglass Ltd which is authorised and regulated by the Financial Conduct Authority. Lycetts is a trading name of Lycetts Financial Services Ltd which is authorised and regulated by the Financial Conduct Authority.

Information for Buyers at Auctions

1. Introduction. The following notes are intended to assist bidders and buyers, particularly those that are inexperienced or new to our salerooms. All of our auctions are governed by our Conditions of Business incorporating the Terms of Consignment (primarily applicable to sellers), the Terms of Sale (primarily applicable to bidders and buyers) and any notices that are displayed in our salerooms or announced by the auctioneer at the auction. Our Conditions of Business are available for inspection at our salerooms and the Terms of Sale are printed in the back of our auction catalogues. Our staff will be happy to help you if there is anything in our Conditions of Business that you do not fully understand.

Please make sure that you read our Terms of Sale set out in this catalogue or on our website carefully before bidding in the auction. If your bid is successful, you will be obliged to comply with our Terms of Sale.

2. Agency. As auctioneers we usually act on behalf of the seller whose identity, for reasons of confidentiality, is not normally disclosed. If you buy at auction your contract for the goods is with the seller, not with us as auctioneer.

3. Estimates. Estimates are designed to help you gauge what sort of sum might be involved for the purchase of a particular lot. Estimates may change and should not be thought of as the sale price. The lower estimate may represent the reserve price (the minimum price for which a lot may be sold) and will not be below the reserve price. Estimates do not include the buyer's premium or VAT (where chargeable). Estimates are prepared some time before the auction and may be altered by a saleroom notice or announcement by the auctioneer before the auction of the lot. They are not definitive.

4. Buyer's Premium. The Conditions of Sale oblige buyers to pay a buyer's premium at 25% + VAT (30%) which shall include VAT on the premium at the rate imposed by law (see below). There is a surcharge for bidding on the internet.

5. VAT. Items in our catalogue may be marked in the following ways:

a. A 'dagger' symbol indicates that VAT is payable by the buyer on the hammer price as well as being an element in the buyer's premium. VAT will be chargeable at the standard rate (presently 20%). This imposition of VAT is likely to be because the seller is registered for VAT within the European Union and is not operating the Dealers Margin Scheme or because VAT is due at 20% on importation into the UK.

b. The double 'dagger' indicates that the lot has been imported from outside the European Union. [These lots are liable to a reduced rate of VAT (5%) on the hammer price and buyer's premium].

c. Lots which do not have either of the above symbols have no VAT payable on the hammer price. This is because such lots are sold using the Auctioneers' Margin Scheme. The VAT included within the premium is not recoverable as input tax.

6. Inspection of goods by the buyer. As we act on behalf of the seller, we are dependent on information provided by the seller about their goods. We may inspect lots and will act reasonably in taking a general view about them. However, we are normally unable to carry out detailed examinations of lots to check their condition in the way a buyer would do. You will have ample opportunity to inspect the goods. You must inspect and investigate lots that you might wish to bid for. **Please note carefully the exclusion of liability for the condition of lots set out in the Terms of Sale at clause 12.4.**

7. Electrical goods. These are sold as "antiques" and for collection and display only. If you buy electrical goods for use you must ask a qualified electrician to check them for compliance with safety regulations before you use them.

8. Export of goods. If you intend to export goods you must find out:

- whether an export licence is needed; and
- if there is a prohibition on importing goods of that character e.g. because the goods contain prohibited materials such as ivory.

9. Bidding. Bidders will be required to register with us before the auction starts. We reserve the right to impose a deadline prior to the auction by which you must register or by which we must receive a commission bid. If you wish to bid on high value lots this deadline may be several days before the auction in order to allow us sufficient time to carry out the necessary checks. Lots will

be invoiced to the name and address on the registration form. Please enquire in advance about our arrangements for telephone or online bidding. Please note that we may refuse to register you if you do not provide us with all the information and documentation that we ask for or at our discretion.

10. Financial Checks. As auctioneers we may have to conduct various checks into our customers under the Money Laundering, Terrorist Financing and Transfer of Funds (Information on the Payer) Regulations 2017 and related legislation. Unless we confirm we already have this information, on registration you will be required to provide the following:

- For individuals, official photo identification (driving licence, passport or equivalent) and proof of address (if this is not included in your ID document);
- For corporate entities, the certificate of incorporation (or equivalent) with your official name, registered number (if any) and registered address, as well as details and ID documentation for directors and beneficial owners of the entity;
- For trusts and estates, details and ID documentation for executors/trustees and details of beneficiaries; please contact us for further information.

You may be asked for further information if we deem this necessary. If you are bidding for another person (your "Principal") you will be required to provide the above information for yourself and your Principal, along with a signed letter from your Principal authorising you to bid.

Further information about ID requirements is available on 01392 413100 or enquiries@bhandl.co.uk If we deem that you have not provided sufficient information for us to complete our anti-money laundering and terrorist financing checks to our satisfaction, we may refuse to register you to bid and we may postpone completion of or cancel any contract made by you and the Seller in the event you have made a successful bid.

11. Commission bidding. Commission bids may be left with the auctioneers indicating the maximum amount to be bid against a lot (excluding the buyers' premium and/or any applicable VAT). We will execute commission bids as cheaply as possible having regard to the reserve (if any) and competing bids. If two buyers submit identical commission bids we may prefer the first bid received (where this can be reasonably ascertained). Please enquire in advance about our arrangements for the leaving of commission bids by telephone or email or online bidding platform.

12. Methods of Payment

All payments must be made in sterling. The following methods of payment are available:

CHEQUE; STERLING BANK DRAFT; ELECTRONIC BANK TRANSFER IN STERLING; CREDIT CARD (VISA AND ACCESS-MASTERCARD ISSUED IN THE UK ONLY); DEBIT CARDS; CASH (up to a maximum of £1,000); WEBSITE SAGEPAY PAYMENT LINK

If a purchaser is unknown to the auctioneers and is intending to pay by credit or debit card we will require the card holder to attend in person with suitable photographic identification, otherwise payment is required by BACS/CHAPS or electronic bank transfer. As a general rule any cheques tendered will need to be cleared before removal of the goods is permitted.

Cheques and drafts should be made payable to Bearnas Hampton & Littlewood.

Card payments where the card holder is not present will only be accepted for transactions up to £1,000

Clearance Times

All other sterling cheques drawn on UK banks will generally clear on the fifth working day after receipt.

Sterling bank drafts drawn on UK banks can generally be cleared immediately.

Bank transfers clear as soon as our bank receives funds (which does not happen instantaneously after payment instructions are given).

Credit and debit card payments can be cleared immediately, subject to paragraph above.

13. Collection and storage. Please note what the Terms of Sale say about collection and storage. It is important that you pay for and collect goods promptly. Any delay may involve you having to pay storage charges.

Conditions of Sale

Bearnes, Hampton & Littlewood carries on business with bidders, buyers and all those present in the auction room prior to or in connection with a sale on the following General Conditions and on such other terms, conditions and notices as may be referred to herein.

1 DEFINITIONS AND INTERPRETATION

1.6 To make these Terms of Sale easier to read, we have given the following words a specific meaning:

“Auctioneer”	means Bearnes Hampton & Littlewood LTD, a partnership or company registered in England and Wales with registration number 3857887 and whose registered office is located at St Edmund’s Court, Okehampton Street, Exeter EX4 1DU or its authorised auctioneer, as appropriate;
“Bidder”	means a person participating in bidding at the auction;
“Buyer”	means the person who makes the highest bid for a Lot accepted by the Auctioneer;
“Deliberate Forgery”	means: (a) an imitation made with the intention of deceiving as to authorship, origin, date, age, period, culture or source; (b) which is described in the catalogue as being the work of a particular creator without qualification; and (c) which at the date of the auction had a value materially less than it would have had if it had been as described;
“Hammer Price”	means the level of the highest bid for a Lot accepted by the Auctioneer by the fall of the hammer;
“Lot(s)”	means the goods that we offer for sale at our auctions;
“Money Laundering Regulations”	means the Money Laundering, Terrorist Financing and Transfer of Funds (Information on the Payer) Regulations 2017, as amended;
“Premium”	means the premium that we will charge you on your purchase of a Lot to be calculated as set out in Clause 4;
“Reserve”	means the minimum hammer price at which a Lot may be sold;
“Sale Proceeds”	means the net amount due to the Seller;
“Seller”	means the persons who consign Lots for sale at our auctions;
“Terms of Consignment”	means the terms on which we agree to offer Lots for sale in our auctions as agent on behalf of Seller;
“Terms of Sale”	means these terms of sale, as amended or updated from time to time;
“Total Amount Due”	means the Hammer Price for a Lot, the Premium, any applicable artist’s resale right royalty, any VAT due and any additional charges payable by a defaulting buyer under these Terms of Sale;
“Trader”	means a Seller who is acting for purposes relating to that Seller’s trade, business, craft or profession, whether acting personally or through another person acting in the trader’s name or on the trader’s behalf;
“VAT”	means Value Added Tax or any equivalent sales tax; and
“Website”	means our website available at www.bhandl.co.uk .

In these Terms of Sale the words ‘you’, ‘yours’, etc. refer to you as the Buyer. The words ‘we’, ‘us’, etc. refer to the Auctioneer. Any reference to a ‘Clause’ is to a clause of these Terms of Sale unless stated otherwise.

2 INFORMATION THAT WE ARE REQUIRED TO GIVE TO CONSUMERS

- 2.1 A description of the main characteristics of each Lot as contained in the auction catalogue.
- 2.2 Our name, address and contact details as set out herein, in our auction catalogues and/or on our Website.
- 2.3 The price of the Goods and arrangements for payment as described in Clauses 4, 6, 8 and 9.
- 2.4 The arrangements for collection of the Goods as set out in Clauses 9 and 10.
- 2.5 Your right to return a Lot and receive a refund if the Lot is a Deliberate Forgery as set out in Clause 14.
- 2.6 We and Trader Sellers have a legal duty to supply any Lots to you in accordance with these Terms of Sale.
- 2.7 If you have any complaints, please send them to us directly at the address set out on our Website.
- 2.8 We also refer you to your warranties as a Bidder and Buyer as set out in clause 6.

3 BIDDING PROCEDURES AND THE BUYER

- 3.1 You must register your details with us before bidding and provide us with any requested proof of identity and billing information, in a form acceptable to us (Paragraph [10] of the Information for Buyers in the Sale Catalogue refers). You must also satisfy any security arrangements we have in place before entering the auction room to view or bid.
- 3.2 We strongly recommend that you attend the auction in person if possible. You are responsible for your decision to bid for a particular Lot. If you bid on a Lot, including by telephone and online bidding, or by placing a commission bid, we assume that you have carefully inspected the Lot and satisfied yourself regarding its condition.
- 3.3 If you instruct us in writing, we may execute commission bids on your behalf. Neither we nor our employees or agents will be responsible for any failure to execute your commission bid, unless our failure to do so is unreasonable. Where two or more commission bids at the same level are recorded we have the right to prefer the first bid made (where this can be reasonably ascertained).
- 3.4 The Bidder placing the highest bid for a Lot accepted by the Auctioneer will be the Buyer at the Hammer Price. Any dispute about a bid will be settled at our discretion. We may reoffer the Lot during the auction or may settle the dispute in another way. We will act reasonably when deciding how to settle the dispute.
- 3.5 Bidders will be deemed to act as principals, even if the Bidder is acting as an agent for a third party.
- 3.6 We may bid on Lots on behalf of the Seller up to one bid below the Reserve.
- 3.7 We may refuse to accept any bid if it is reasonable for us to do so.
- 3.8 Bidding increments will be at our sole discretion (but will be in line with standard auction practice).

4 THE PURCHASE PRICE

As a buyer you will pay :-

Buyer’s Premium. A buyer’s premium at 25% + VAT (30%) which shall include VAT on the premium at the rate imposed by law (see below) with the exception of Books and unframed maps on which no VAT is payable, any artist’s resale right royalty payable on the sale of the Lot; and any VAT due.

5 VAT

5.1 You shall be liable for the payment of any VAT applicable on the Hammer Price and premium due for a Lot. Please see the symbols used in the auction catalogue for that Lot and the "Information for Buyers" in our auction catalogue for further information.

5.2 We will charge VAT at the current rate at the date of the auction.

6 BUYER WARRANTIES

6.1 You warrant that the funds used for settlement are not connected with any criminal activity including tax evasion, and that you are neither under investigation, nor have you been charged with or convicted of money laundering, terrorist activities or other crimes.

6.2 Where you are bidding on behalf of another person, you warrant that:

6.2.1 You have conducted appropriate customer due diligence on the ultimate buyer(s) of the Lot(s) in accordance with all applicable anti-money laundering and sanctions laws, you consent to us relying on this due diligence, and you will retain for a period of not less than 5 years the documentation evidencing the due diligence;

6.2.2 You will make such documentation promptly available for immediate inspection by an independent third party auditor upon our written request to do so;

6.2.3 The arrangements between you and the ultimate buyer(s) in relation to the Lot or otherwise do not, in whole or in part, facilitate tax crimes;

6.2.4 You do not know, and have no reason to suspect, that the funds used for settlement are connected with, the proceeds of any criminal activity, including tax evasion, or that the ultimate buyer(s) are under investigation, or have been charged with or convicted of money laundering, terrorist activities or other crimes.

7 THE CONTRACT BETWEEN YOU AND THE SELLER

7.1 The Contract for the purchase of the Lot between you and the Seller will be formed when the hammer falls accepting the highest bid for the Lot at the auction.

7.2 You may directly enforce any terms in the Terms of Consignment against a Seller to the extent that you suffer damages and/or loss as a result of the Seller's breach of the Terms of Consignment.

7.3 If you breach these Terms of Sale, you may be responsible for damages and/or losses suffered by a Seller or us. If we are contacted by a Seller who wishes to bring a claim against you, we may at our discretion and within GDPR Guidelines provide the Seller with information or assistance in relation to that claim.

7.4 We normally act as an agent only and will not have any responsibility for default by you or the Seller (unless we are the Seller of the Lot).

7.5 In addition to any other rights we may have to cancel a contract for sale under these Terms of Sale, in the event:

7.5.1 you are in breach of your warranties in clause 6; or

7.5.2 we have not completed our enquiries pursuant to the Money Laundering Regulations and related legislation to our satisfaction; or

7.5.3 we have reason to believe that the transaction might be unlawful for any reason, or that the sale might put us under any civil or criminal liability,

we may delay completion of a sale, delay release of a Lot or cancel the sale of a Lot.

8 PAYMENT

8.1 Immediately following your successful bid on a Lot you will:

8.1.1 give to us, if not already provided to our satisfaction, proof of identity in a form acceptable to us (and any other information that we require in order to comply with our anti-money laundering obligations – please refer to Paragraph [10] of the Information for Buyers in the Sale Catalogue); and

8.1.2 pay to us the Total Amount Due by one of our payment methods.

8.2 If you owe us any money, we may use any payment made by you to repay these debts.

9 TITLE AND COLLECTION OF PURCHASES

9.1 While you are bound by the contract for the purchase of the Lot from the fall of the hammer on your successful bid, ownership in the Lot will not pass to you until:

9.1.1 you have paid us in full the Total Amount Due in cleared funds for that Lot;

9.1.2 you have provided us with the information set out in clause 8.1.1; and

9.1.3 we have completed our enquiries pursuant to the Money Laundering Regulations and related legislation.

You may not claim or collect a Lot until you have paid for it and ownership has passed to you.

9.2 Unless notified otherwise, you will (at your own expense) collect any Lots that you have purchased and paid for no later than 5 working days following the day of the auction or upon the clearance of any cheque used for payment.

9.3 If you do not collect the Lot within this time period, you will be responsible for any reasonable removal, storage and insurance charges in relation to that Lot, unless the delay was caused by our continuing investigations under Clause 7.5.2.

9.4 Risk of loss or damage to the Lot will pass to you when you (or your agents) take physical possession of the Lot.

9.5 If you do not collect the Lot that you have paid for within 21 days after the auction, we may sell the Lot. We will pay the proceeds of any such sale to you, but (unless the delay was caused by our continuing investigations under Clause 7.5.2) will deduct any storage charges or other sums that we have incurred in the storage and sale of the Lot. We reserve the right to charge you a selling commission at our standard rates on any such resale of the Lot.

10 REMEDIES FOR NON-PAYMENT OR FAILURE TO COLLECT PURCHASES

10.1 Please do not bid on a Lot if you do not intend to buy it. If your bid is successful, these Terms of Sale will apply to you. This means that you will have to carry out your obligations set out in these Terms of Sale. If you do not comply with these Terms of Sale we may (acting on behalf of the Seller and ourselves) pursue one or more of the following measures:

10.1.1 take action against you for damages for breach of contract;

10.1.2 reverse the sale of the Lot to you and/or any other Lots sold by us to you;

10.1.3 resell the Lot by auction or private treaty (in which case you will have to pay any difference between the price you should have paid for the Lot and the price we sell it for as well as the charges outlined in Clause 8.5). Please note that if we sell the Lot for a higher amount than your winning bid, the extra money will belong to the Seller;

10.1.4 remove, store and insure the Lot at your expense;

10.1.5 if you do not pay us within five business days of your successful bid, we may charge interest at a rate not exceeding 1.5% per month on the total amount due; to the extent it remains unpaid for more than 28 days a late payment penalty of £40 will be charged.

10.1.6 keep that Lot or any other Lot sold to you until you pay the Total Amount Due;

10.1.7 reject or ignore bids from you or your agent at future auctions or impose conditions before we accept bids from you; and/or

10.1.8 if we sell any Lots for you, use the money made on these Lots to repay any amount you owe us.

10.2 We will act reasonably when exercising our rights under Clause 9.1. We will contact you before exercising these rights and try to work with you to correct any non-compliance by you with these Terms of Sale.

11 HEALTH AND SAFETY

Although we take reasonable precautions regarding health and safety, you are on our premises at your own risk. Please note the lay-out of the premises and security arrangements. Neither we nor our employees or agents are responsible for the safety of you or your property when you visit our premises, unless you suffer any injury to your person or damage to your property as a result of our, our employees' or our agents' negligence.

12 SELLER'S WARRANTIES

12.1 The Seller warrants to us and to you that:

12.1.1 the Seller is the true owner of the Lot for sale or is authorised by the true owner to offer and sell the lot at auction;

12.1.2 the Seller is able to transfer good and marketable title to the Lot to you free from any third party rights or claims; and

12.1.3 as far as the Seller is aware, the main characteristics of the Lot set out in the auction catalogue (as amended by any notice displayed in the saleroom or announced by the Auctioneer at the auction) are correct.

12.2 If, after you have placed a successful bid and paid for a Lot, any of the warranties above are found not to be true, please notify us in writing. Neither we nor the Seller will be liable to pay you any sums over and above the Total Amount Due and we will not be responsible for any inaccuracies in the information provided by the Seller except as set out below.

12.3 Please note that many of the Lots that you may bid on at our auction are second-hand.

12.4 If a Lot is not second-hand and you purchase the Lot as a Consumer from a Seller that is a Trader, a number of additional terms may be implied by law in addition to the Seller's warranties set out at Clause 12.1 (in particular under the Consumer Rights Act 2015). These Terms of Sale do not seek to exclude your rights under law as they relate to the sale of these Lots.

12.5 Save as expressly set out above, all other warranties, conditions or other terms which might have effect between the Seller and you, or us and you, or be implied or incorporated by statute, common law or otherwise are excluded.

13 DESCRIPTIONS AND CONDITION

13.1 Our descriptions of the Lot will be based on: (a) information provided to us by the Seller of the Lot (for which we are not liable); and (ii) our opinion (although it is likely that we will not be able to carry out a detailed inspection of each Lot).

13.2 We will give you a number of opportunities to view and inspect the Lots before the auction. You (and any independent consultants acting on your behalf) must satisfy yourself about the accuracy of any description of a Lot. We shall not be responsible for any failure by you or your consultants to properly inspect a Lot.

13.3 Representations or statements by us as to authorship, genuineness, origin, date, age, provenance, condition or estimated selling price involve matters of opinion. We undertake that any such opinion will be honestly and reasonably held and accept liability for opinions given negligently or fraudulently.

13.4 Please note that Lots (in particular second-hand Lots) are unlikely to be in perfect condition. Lots are sold "as is" (i.e. as you see them at the time of the auction). Neither we nor the Seller accept any liability for the condition of second-hand Lots or for any condition issues affecting a Lot if such issues are included in the description of a Lot in the auction catalogue (or in any saleroom notice) and/ or which the inspection of a Lot by the Buyer ought to have revealed.

14 DELIBERATE FORGERIES

14.1 You may return any Lot which is found to be a Deliberate Forgery to us within 21 days of the auction provided that

you return the Lot to us in the same condition as when it was released to you, accompanied by a written statement identifying the Lot from the relevant catalogue description and a written statement of defects.

14.2 If we are reasonably satisfied that the Lot is a Deliberate Forgery we will refund the money paid by you for the Lot (including any Premium and applicable VAT) PROVIDED that if:

14.2.1 the catalogue description reflected the accepted view of experts as at the date of the auction; or

14.2.2 you personally are not able to transfer good and marketable title in the Lot to us;

you will have no right to a refund under this Clause 13.2.

14.3 If you have sold the Lot to another person, we will only be liable to refund the price that you paid for the Lot. We will not be responsible for repaying any additional money you may have made from selling the Lot.

14.4 Your right to return a Lot that is a Deliberate Forgery does not affect your legal rights and is in addition to any other right or remedy provided by law or by these Terms of Sale.

15 OUR LIABILITY TO YOU

15.1 We will not be liable for any loss of opportunity or disappointment suffered as a result of participating in our auction.

15.2 In addition to the above, neither we nor the Seller shall be responsible to you and you shall not be responsible to the Seller or us for any other loss or damage that any of us suffer that is not a foreseeable result of any of us not complying with the Conditions of Business. Loss or damage is foreseeable if it is obvious that it will happen or if at the time of the sale of the Lot, we, you and the Seller knew it might happen.

15.3 Subject to Clause 14.4, if we are found to be liable to you for any reason (including, amongst others, if we are found to be negligent, in breach of contract or to have made a misrepresentation), our liability will be limited to the total purchase price paid by you to us for any Lot.

15.4 Notwithstanding the above, nothing in these Terms of Sale shall limit our liability (or that of our employees or agents) for:

15.4.1 death or personal injury resulting from negligence (as defined in the Unfair Contract Terms Act 1977);

15.4.2 fraudulent misrepresentation; or

15.4.3 any liability which cannot be excluded by law.

16 NOTICES

16.1 All notices between you and us regarding these Terms of Sale must be in writing and signed by or on behalf of the party giving it.

16.2 Any notice referred in Clause 15.1 may be given:

16.2.1 by delivering it by hand;

16.2.2 by first class pre-paid post or Recorded Delivery; or

16.2.3 by email, provided that a copy is also sent by pre-paid post or Recorded Delivery.

16.3 Notices must be sent:

16.3.1 by hand or registered post:

a. to us, at our address set out in these Terms of Sale or at our registered office address appearing on our Website; and

b. to you, at the last postal address that you have given to us as your contact address in writing; or

16.3.2 by email:

a. to us, by sending the notice to the following email address: enquiries@bhandl.co.uk

b. to you, by sending the notice to any email address that you have given to us as your contact email address in writing.

16.4 Notices will be deemed to have been received:

16.4.1 if delivered by hand, on the day of delivery;

16.4.2 if sent by first class pre-paid post or Recorded Delivery, two business days after posting, exclusive of the day of posting; or

16.4.3 if sent by email, at the time of transmission unless sent after 17.00 in the place of receipt in which case they will be deemed to have been received on the next business day in the place of receipt (provided that a copy has also been sent by pre-paid post or Recorded Delivery as set out in Clause 15.2.3.

16.5 Any notice or communication given under these Terms of Sale will not be validly given if sent by email, any form of messaging via social media or text message.

17 DATA PROTECTION

We will hold and process any personal data in relation to you in accordance with our current privacy policy, a copy of which is available on www.bhandl.co.uk/privacy.

18 GENERAL

18.1 We may, acting reasonably, refuse admission to our premises or attendance at our auctions by any person.

18.2 We act as an agent for our Sellers. The rights we have to claim against you for breach of these Terms of Sale may be used by either us, our employees or agents, or the Seller, its employees or agents, as appropriate. Other than as set out in this Clause, these Terms of Sale are between you and us and no other person will have any rights to enforce any of these Terms of Sale.

18.3 We may use special terms in the catalogue descriptions of particular Lots. You must read these terms carefully along with any glossary provided in our auction catalogues.

18.4 Each of the clauses of these Terms of Sale operates separately. If any court or relevant authority decides that any of them are unlawful, the remaining clauses will remain in full force and effect.

18.5 We may change these Terms of Sale from time to time, without notice to you. Please read these Terms of Sale carefully, as they may be different from the last time you read them.

18.6 Except as otherwise stated in these Terms of Sale, each of our rights and remedies are: (a) are in addition to and not exclusive of any other rights or remedies under these Terms of Sale or general law; and (b) may be waived only in writing and specifically. Delay in exercising or non-exercise of any right under these Terms of Sale is not a waiver of that or any other right. Partial exercise of any right under these Terms of Sale will not preclude any further or other exercise of that right or any other right under these Terms of Sale. Waiver of a breach of any term of these Terms of Sale will not operate as a waiver of breach of any other term or any subsequent breach of that term.

18.7 These Terms of Sale and any dispute or claim arising out of or in connection with them (including any non-contractual claims or disputes) shall be governed by and construed in accordance with the laws of England and the parties irrevocably submit to the exclusive jurisdiction of the English courts.

Based on recommended terms of sale by the Society of Fine Art Auctioneers & Valuers.

Glossary of cataloguing terms

Any statement as to authorship, origin, date, age, provenance and condition is a statement of opinion and is not to be taken as a statement of representation of fact.

- 1. SIDNEY RICHARD PERCY** – In our opinion a work by the artist. (When the artist's forename(s) is not known, a series of asterisks, followed by the surname of the artist, whether preceded by an initial or not, indicates that in our opinion the work is by the artist named.)
- 2. ATTRIBUTED TO SIDNEY RICHARD PERCY** – In our opinion probably a work by the artist but less certainty as to authorship is expressed than in the preceding category.
- 3. STUDIO OF SIDNEY RICHARD PERCY** – In our opinion a work by an unknown hand in the studio of the artist which may or may not have been executed by under the artist's direction.
- 4. CIRCLE OF SIDNEY RICHARD PERCY** – In our opinion a work by an as yet unidentified but distinct hand – closely associated with the named artist but not necessarily his pupil.
- 5. STYLE OF . . . ; FOLLOWER OF SIDNEY RICHARD PERCY** – In our opinion a work by a painter working in the artist's style, contemporary or nearly contemporary, but not necessarily his pupil.
- 6. MANNER OF SIDNEY RICHARD PERCY** – In our opinion a work in the style of the artist and of a later date.
- 7. AFTER SIDNEY RICHARD PERCY** – In our opinion a copy of a known work of the artist.
- The term signed and/or dated and/or inscribed means that in our opinion the signature and/or date and/or inscription are from the hand of the artist.
- The term bears a signature and/or date and/or inscription means that in our opinion the signature and/or date and/or inscription have been added by another hand.
- Dimensions are given height before width.

Artist's resale right ("droit de suite")

If a lot is affected by this right it will be identified by the symbol "•" next to the lot number. The buyer agrees to pay Bearnese Hampton & Littlewood an amount equal to the resale royalty and we will pay such amount to the artist's collecting agent. Resale royalty applies where the hammer price is 1,000 Euro or more and the amount cannot be more than 12,500 Euro per lot. The amount is calculated as follows: Royalty for the portion of the Hammer Price (in Euro)

4.00%	up to 50,000
3.00%	between 50,000.1 and 200,000
1.00%	between 200,000.01 and 350,000
0.50%	between 350,000.01 and 500,000
00.25%	in excess of 500,000

Invoices will, as usual, be issued in Pounds Sterling. For the purposes of calculating the resale royalty the Pounds Sterling/Euro ratio rate of exchange will be European Central Bank reference rate on the day of the sale.

Post 1950 Upholstered Furniture

All items of furniture included in this sale are offered for sale as works of art. The items may not comply with the Furniture and Furnishings (Fire) Safety Regulations 1988 and for this reason, they should not be used in a private dwelling.

CITES Regulations

Furniture made of Brazilian Rosewood (Dalbergia Negra). To comply with CITES Regulations on Post-1947 furniture made of Brazilian Rosewood, all post-war rosewood furniture items have Article 10 certificates.

If you are purchasing rosewood furniture for commercial purposes and not solely for your own use, CITES regulations require you to obtain your own certificate. You would need to contact the Animal Health and Veterinary Laboratories Agency ('AHVLA') and, as part of the process of obtaining your document, it is a requirement that you have seen sight of the Bearnese Hampton & Littlewood certificate or are aware of its reference number.

It is therefore the responsibility of commercial buyers to ensure that they obtain a copy of the appropriate certificate, or the certificate reference number, after purchase from Bearnese Hampton & Littlewood Fine Art Auctioneers. Items are clearly marked with their certificate number where appropriate.

Wrapping, Packing and Despatch

We do not undertake postage and packing or recommend anyone who may undertake this on your behalf. However, here are some useful numbers of companies that will be able to assist.

Mailboxes etc	info@mbeplymouth.co.uk	01752 257224
Auction Postal Services (excluding furniture)	sales@apservices.info	07736 544362
Postit4 me	enquiries@postit4me.com	01258 920180

Or

Martin Bros. Removals Ltd.	orders@martinbrosLtd.com	01985 844144
----------------------------	--------------------------	--------------

(Carriers for larger items, furniture etc)

The Old Sawmills,
The Street, Kilmington,
Warminster,
Wiltshire, BA12 6RG

Alban Shipping	info@albanshipping.co.uk	01582 493099
----------------	--------------------------	--------------

Unit 4,
Premier Business Park,
Dencora Way,
Luton LU3 3HP.
www.albanshipping.co.uk

FORTHCOMING SALE DATES 2023

10th & 11th October
The Autumn Sale

31st October
Silver, Jewellery & Luxury Goods Sale

21st November
Sporting & Collectors Sale

5th December
Antiquarian Book Sale

IMPORTANT:

Please note this list is printed only as a guide and clients are requested to contact Bearnes, Hampton & Littlewood for confirmation of sale dates and special advisory days.

Catalogue production by
Acanthus Press Ltd
www.acanthuspress.ltd.uk
01823 663339

© Bearnes Hampton &
Littlewood 2023 Ref CC09

