

WEBCAST AUCTION OF CUSTOM INJECTION MOLDER, ELECTRIC AND HYDRAULIC MOLDING MACHINES FROM 90 TON TO 1,100 TON AND WELLIH ROBOTS AS NEW AS 2019, PLASTIC AUXILIARY, FLOCKING MACHINERY, TOOLROOM AND SUPPORT EQUIPMENT – FOR SALE NOW IN ENTIRETY

BidSpotter.com
See Instructions on Page 6
To Become a Qualified Bidder on the Internet

WEBCAST AUCTION

CUSTOM INJECTION MOLDER

125 Thomas Dr. – Gadsden, Alabama 35904
60 Miles Northeast of Birmingham, Alabama

SALE DATE: WEDNESDAY, JANUARY 18TH STARTING AT 10:00 AM LOCAL

INSPECTION: Day prior to auction from 10:00 AM to 4:00 PM or by appointment with jeffjr@cia-auction.com

AVAILABLE NOW IN ENTIRETY



(11) Injection Molding Machines and Robots from 1,100 to 100 Ton as new as 2020
35,000 Sq. Ft. Modern Building, Heavy Electric, Cranes, QC and Office Areas



1,124 Ton x 155 Oz. Haitian Model JU10000II/H Plastic Injection Molding Machine



(2) 550 Ton x 54 Oz. Cincinnati Milacron Magna-T Servo MTS-500 Plastic Injection Molding Machines



(10) Well-Lih Robots to 2020



Brown & Sharpe Global Advantage 9.12.8 CMM



40-HP Ingersoll Rand Model RS30i-A125 Air Compressor



CINCINNATI INDUSTRIAL AUCTIONEERS

auctioneers | appraisers | since 1961 | cia-auction.com | info@cia-auction.com
2020 Dunlap St., Cincinnati, Ohio 45214 Phone 513-241-9701 Fax 513-241-6760

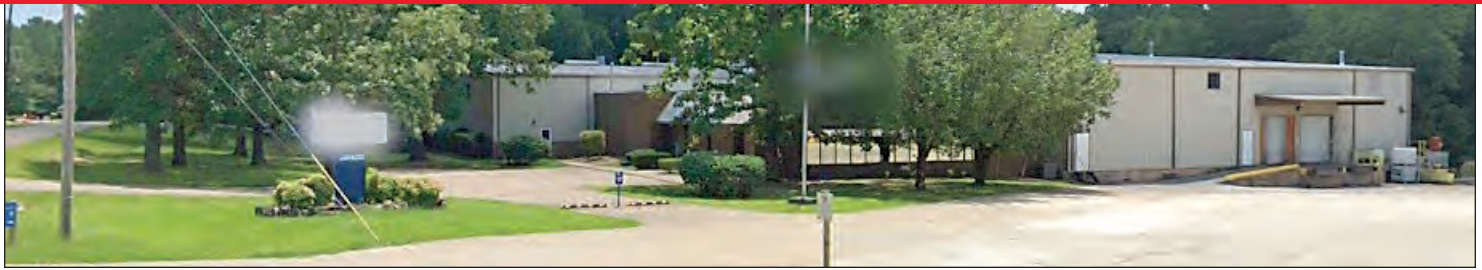
In conjunction with



StopolES®

Phone: (440) 499-0030 | Web: stopoles.com

AVAILABLE NOW IN ENTIRETY



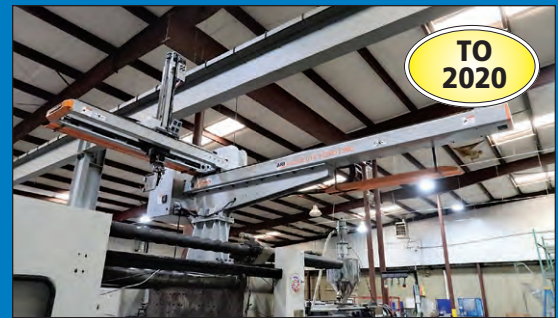
- (11) Plastic Injection Molding Machines from 90 Ton to 1,100 Ton by Haitian and Cincinnati Milacron (As New As 2019)
- (10) Well-Lih Robots Models MaxBW15, 10, 8 and 5 (to 2020)
- Plastic Auxiliary, QA Department, Facility, Toolroom Warehouse and Support Equipment
- **Asking Price: \$1,600,000 for machinery and equipment in entirety**
- Approx. 35,000 Sq. Ft. Modern Manufacturing Building on 4 Acres, FOR SALE OR LEASE
- For more information visit our website at www.cia-auction.com or email jeffjr@cia-auction.com
- *If no entirety buyer found machinery and equipment will be sold at auction*



WEDNESDAY, JANUARY 18TH – 10:00 AM



1,124 Ton x 155 Oz. Haitian Model JU10000II/H Plastic Injection Molding Machine



(10) Well-Lih Robots to 2020

ROBOTS

(10) Well-Lih Robots to 2020; Models MaxBW15-1700P, MaxBW10-1500P, MaxBW08-1300P, MaxA05-1000P, MaxBW10P and MaxCW10P (New As 2020)

INJECTION MOLDING MACHINES

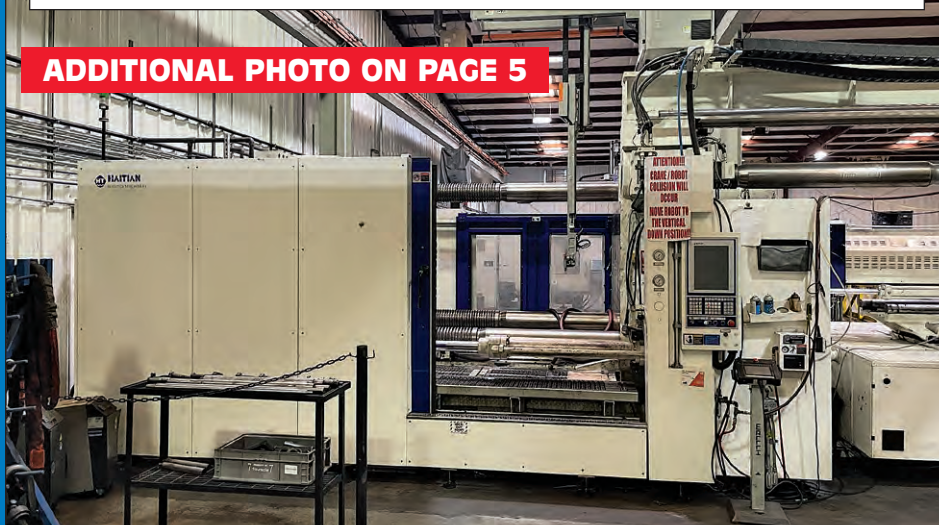
1,124 Ton x 155 Oz. Haitian Model JU10000II/H Plastic Injection Molding Machine; s/n 20172100031506, 75.59" x 65.75" Platens, 56.29" Wide x 46.45" High Distance Between Tie Bars, 51.18" Clamp Stroke, 98.43" Max Daylight, 25.59" Min Mold Height (New 2017)

730 Ton JSW Model Jenius JE6500-3350 Plastic Injection Molding Machine; s/n 201712065033675, 53" x 55" Platens, 40.9" x 35.8" Distance Between Tie Bars, 53" Clamp Stroke, 68.8" Max Daylight, 15.74" Min Mold Height (New 2018)

(2) 550 Ton x 54 Oz. Cincinnati Milacron Magna-T Servo MTS-500 Plastic Injection Molding Machines; s/n TB501DB010036 and 37, 47.2" x 47.2" Platens, 32.7" x 32.7" Distance Between Tie Bars, 32.3" Clamp Stroke, 72.64" Max Daylight, 13.8" Min Mold Height (New 2014)

550 Ton x 36 Oz. Cincinnati Milacron Model Powerline 550-36 Plastic Injection Molding Machine; s/n W26A020006, 47.2" x 47.2" Platens, 32.7" x 32.7" Distance Between Tie Bars, 32.3" Clamp Stroke, 72.64" Max Daylight, 13.8" Min Mold Height (2001)

ADDITIONAL PHOTO ON PAGE 5



CUSTOM INJECTION MOLDER



280 Ton x 18.3 Oz. Haitian MA2500-IIS Plastic Injection Molding Machine



360 Ton x 34.6 Oz. Haitian MA3200-IIS Plastic Injection Molding Machine



225 Ton x 15.8 Oz. Cincinnati Milacron Magna-T Servo MTS-225 Plastic Injection Molding Machine

360 Ton x 34.6 Oz. Haitian MA3200-IIS Plastic Injection Molding Machine; s/n 201907035055219, 38.98" x 38.98" Platens, 26.77" x 26.77" Distance Between Tie Bars, 25.2" Clamp Stroke, 51.97" Max Daylight, 9.84" Min Mold Height (**New 2020**)

310 Ton x 26 Oz. Cincinnati Milacron Magna-T Servo MTS-310 Plastic Injection Molding Machine; s/n TB80108010048, 37.0" x 37.0" Platens, 26.0" x 26.0" Distance Between Tie Bars, 24.0" Clamp Stroke, 53.5" Max Daylight, 7.9" Min Mold Height (**New 2013**)

280 Ton x 18.3 Oz. Haitian MA2500-IIS Plastic Injection Molding Machine; s/n 201907025051600, 33.46" x 33.46" Platens, 22.83" x 22.83" Distance Between Tie Bars, 21.26" Clamp Stroke, 44.09" Max Daylight, 8.66" Min Mold Height (**New 2019**)

225 Ton x 15.8 Oz. Cincinnati Milacron Magna-T Servo MTS-225 Plastic Injection Molding Machine; s/n TB701DB010029, 31.9" x 31.9" Platens, 22.4" x 22.4" Distance Between Tie Bars, 20.1" Clamp Stroke, 48" Max Daylight, 7.9" Min Mold Height (**New 2013**)

100 Ton x 4.9 Oz. Haitian / Zhafir Model ZE900-210 Plastic Injection Molding Machine; s/n 201815009051313, 24.21" x 22.44" Platens, 16.54" x 14.57" Distance Between Tie Bars, 12.2" Clamp Stroke, 28.74" Max Daylight, 5.91" Min Mold Height (**New 2018**)

90 Ton x 7.5 Oz. Cincinnati Milacron Magna-T Servo MTS-90 Plastic Injection Molding Machine; s/n TB301DB010012, 24.02" x 22.24" Platens, 15.94" x 14.17" Distance Between Tie Bars, 12.2" Clamp Stroke, 28" Max Daylight, 5.91" Min Mold Height (**New 2013**)



730 Ton JSW Model Jenius JE6500-3350 Plastic Injection Molding Machine



90 Ton x 7.5 Oz. Cincinnati Milacron Magna-T Servo MTS-90 Plastic Injection Molding Machine



100 Ton x 4.9 Oz. Haitian / Zhafir Model ZE900-210 Plastic Injection Molding Machine



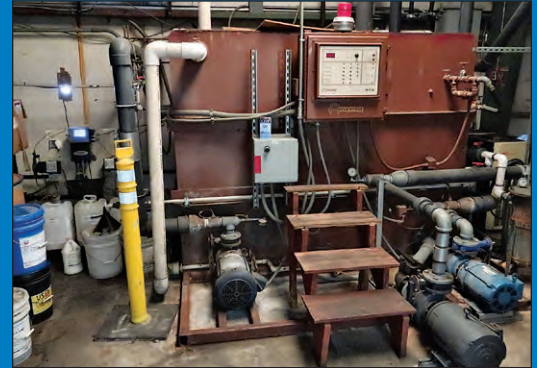
310 Ton x 26 Oz. Cincinnati Milacron Magna-T Servo MTS-310 Plastic Injection Molding Machine



48" Cusi Oven, Modular Panel, Approx. 40' Tunnel



(2) AEC Model GPWC-70 Portable Chillers



Advantage Chilled Water Tank w/ Pumps

PLASTIC AUXILIARY EQUIPMENT

(2) AEC Model GPWC-70 Portable Chillers; s/n 44K0544 and 42K0024

(6) AEC Model TC110 Thermolators

Various Hot Runner Controllers, Dryers, Mold Hold Downs and Related

Advantage Chilled Water Tank w/ Pumps

FLOCKING MACHINERY

36" CCI Thermal Tech Infrared Oven, 30' Length, entry & Exit Downdraft Booths

48" Cusi Oven, Modular Panel, Approx. 40' Tunnel

(6) Spray Booths, Mask Washers and Related

(3) 30 HP Aget Dustkop Model FH58-2DE-SP 2-Barrel Dust Collectors

CMM AND QUALITY ASSURANCE

Brown & Sharpe Global Advantage 9.12.8 CMM; s/n 1207-6144, 35.43" X-Axis, 47.24" Y-Axis, 31.49" Z-Axis (2007)

Easson EV3020 Visual Measurement System; 300 x 200 x 200 Measuring Range, 339 x 239 x 10 Worktable Glass Area, Optical Magnification 0.7-4.5X, Image Magnification 20-125X



Various Hot Runner Controllers, Dryers, Mold Hold Downs and Related



(6) AEC Model TC110 Thermolators



Easson EV3020 Visual Measurement System



Brown & Sharpe Global Advantage 9.12.8 CMM



(6) Spray Booths, Mask Washers and Related



(3) 30 HP Aget Dustkop Model FH58-2DE-SP 2-Barrel Dust Collectors



WEDNESDAY, JANUARY 18TH – 10:00 AM



730 Ton JSW Model Jenius JE6500-3350 Plastic Injection Molding Machine



Boyar 618 Surface Grinder, DRO



2-HP Bridgeport Mill



Predator XS Stretch Wrapper w/ Built in scale

AIR COMPRESSORS AND RELATED

40-HP Ingersoll Rand Model RS30i-A125 Air Compressor (Late Model) –

Located at Flocking Building

30-HP Schulz Model SRP-3030 Air Compressor –

Located at Flocking Building

30-HP Ingersoll Rand Model SSR-EP30U Air Compressor; s/n

J8542U92321

30-HP Leroi Model CL30CUB Horizontal Tank Air Compressor

Dryers, Receiving Tanks and Related

TOOLROOM MACHINERY

16" x 60" Romi Model 16-8 Engine Lathe, DRO, Tooling

2-HP Bridgeport Mill

Boyar 618 Surface Grinder, DRO

Saws, Drills, Welders, Plasma Cutter, Grinders

TRUCKS AND SUPPORT EQUIPMENT

2004 International 4300

Diesel 24' Box Truck; Vin # 1htmmaam84h596720, 7.6 Liter Diesel 6-Cylinder Engine, Automatic Transmission, 24' Supreme Corp Box. 487,815 Miles

2013 Dodge Grand Caravan; Vin #

2c4rdgbg2dr619628, 3.6 Lvt Gasoline Engine, Automatic Transmission, 194,120 Miles

Predator XS Stretch Wrapper w/ Built in scale

Skyjack SJIII-3219 Electric Scissor Lift



40-HP Ingersoll Rand Model RS30i-A125 Air Compressor (Late Model)



Sayjack SJIII-3219 Electric Scissor Lift



16" x 60" Romi Model 16-8 Engine Lathe, DRO, Tooling



2013 Dodge Grand Caravan



Miller Syncrowave Welder



Lincoln Welder



Fireproof Cabinets



2004 International 4300 Diesel 24' Box Truck

WEBCAST AUCTION

CUSTOM INJECTION MOLDER

125 Thomas Dr.
Gadsden, Alabama 35904

60 Miles Northeast of Birmingham, Alabama

SALE DATE:
Wednesday, January 18th
STARTING: 10:00 AM Local

INSPECTION:
Day prior to auction from 10:00 AM to 4:00 PM or
by appointment with jeffjr@cia-auction.com



CINCINNATI
INDUSTRIAL
AUCTIONEERS
auctioneers | appraisers | since 1961

Contact Information
2020 Dunlap St.
Cincinnati, Ohio 45214
Phone 513-241-9701
Fax 513-241-6760
www.cia-auction.com



(11) Injection Molders



(10) Well-Lih Robots



Brown & Sharpe CMM



Air Compressors

FIRST CLASS MAIL!

PRE-SORT
FIRST CLASS
U.S. POSTAGE
PAID
CINCINNATI, OHIO
PERMIT NO. 3593

Important Mail

TO BE DIRECTED TO THE ATTENTION
OF EXECUTIVE PERSONNEL



WEDNESDAY, JANUARY 18TH

WEBCAST AUCTION

CUSTOM INJECTION MOLDER

125 Thomas Dr.
Gadsden, Alabama 35904
60 Miles Northeast of Birmingham, Alabama

IMPORTANT NOTICE:

Although information has been obtained from sources deemed reliable, the auctioneer makes no warranty or guarantee, expressed or implied, as to the accuracy of the information herein contained. It is for this reason that buyers should avail themselves of the opportunity to make inspection prior to the sale. This brochure is intended to provide general information of the equipment being offered and is subject to errors, omissions, additions or deletions. Please check with the Auctioneer's Office for a final listing. Items offered may or may not necessarily be sold as described and/or photographed in this brochure.

ONLINE BIDDER INSTRUCTIONS

- All bidders must register for this auction at www.bidspotter.com. Please register 24-hours in advance to get through approval process.

BidSpotter.com

AUCTIONEERS

Cincinnati Industrial Auctioneers Alabama
License No. 25

Joseph M. Luggen Alabama License No. 5248



TERMS OF SALE

All equipment described herein will be sold "as is", "where is" to the highest bidder or bidders for cash in accordance with our regular terms and conditions of sale. Unless other satisfactory arrangements are made, a **25% deposit** in cash, certified or cashier's check payable to Cincinnati Industrial Auctioneers, Inc., is **required on all purchases**. Firm and personal checks accepted only if accompanied by a letter from your bank guaranteeing your funds. All sales are subject to state and/or local taxes unless a signed exemption form is presented at the time of purchase. **All balances are due at the conclusion of the sale.** No merchandise may be removed while the sale is in progress. **All bidders must comply with our Standard Terms of Sale**, copies of which will be available at the sale site or can be obtained from our website.

18% BUYERS PREMIUM IN EFFECT FOR ALL PURCHASES



CINCINNATI **INDUSTRIAL AUCTIONEERS**
auctioneers | appraisers | since 1961 | cia-auction.com | info@cia-auction.com
2020 Dunlap St., Cincinnati, Ohio 45214 Phone 513-241-9701 Fax 513-241-6760

In conjunction with



Stopol ES®

Phone: (440) 499-0030 | Web: stopoles.com