

# ONLINE AUCTION



**Forklifts, Packaging, & Plant Support Equipment- Surplus to a Major Health Technology Manufacturer**

## **SALE CLOSING**

Tuesday, June 6, at 10:00 AM ET

## **SALE LOCATION**

569 Halls Mill Road  
Freehold, NJ 07728

## **INSPECTION**

Monday, June 5,  
from 9 AM to 4 PM ET

**PRE-AUCTION  
OFFERS INVITED  
ON MAJOR ASSETS**

**COMPLETE CATALOG & INFORMATION:**

<https://perfection.global/6054>



ID TECHNOLOGY LSI 1300 TOP PANEL LABEL SYSTEM



CROWN SC 5200 SERIES 3-WHEEL FORKLIFT



CROWN RR 5200 SERIES REACH TRUCK

**FEATURING:** (10) CROWN Order Picker and Sit Down Forklifts, (5) CROWN Ride on Pallet Jacks, JLG 2646 Scissor Lift, (2) 2017 ID TECHNOLOGY LSI 1300 Top Panel Label System, (2) KAESER ASD 40 Air Compressors, Air Dryers, INTERTEK & MARATHON Cardboard Balers & Compactor, Large Selection of Plant Support Including HD Tables, Pallet Jacks, Shop Carts and More



**PERFECTION  
Industrial Sales**

**Perfection Industrial Sales**  
ph +1-847-545-6374 • fax +1-847-427-8884  
[www.perfectionindustrial.com](http://www.perfectionindustrial.com)

Bidding Available Through  
**BidSpotter**



# LABEL SYSTEMS, SCISSOR LIFT, FORKLIFTS, REACH TRUCKS & MATERIAL HANDLING

## LABEL SYSTEMS

**2017 ID TECHNOLOGY LSI 1300 TOP PANEL LABEL SYSTEM**, s/n C000207670-1, w/ Red-Type Tabletop Continuous Motion Conveyor, PLC Control

**2017 ID TECHNOLOGY LSI 1300 TOP PANEL LABEL SYSTEM**, s/n C000207670-2, w/ Red-Type Tabletop Continuous Motion Conveyor, PLC Control

## SCISSOR LIFT

**2007 JLG 2646 ES SCISSOR LIFT**, s/n 0200173348, w/ 26' Max Platform Height, 1000 Lb. Rated Workload

## FORKLIFTS, REACH TRUCKS & MATERIAL HANDLING

**CROWN SC 5200 SERIES** 4,000 Lb. Electric 3-Wheel Forklift, s/n 10041864, CROWN ACCESS 123 Comprehensive System Control, Side Shift, 36" Fork Length, 36V, 555 Hours at time of Printing

**CROWN SC 4000 SERIES** 3,000 Lb. Electric 3-Wheel Forklift, s/n 9A130001, w/ Side Shift, Cushion Tires, 36" Fork Length, 36V, 11,653 Hours at time of Printing

**(6) CROWN RR 5200 SERIES** 4,000 Lb. Electric Reach Trucks, w/ Side Shift, 24V, As Low As 1,388 Hours

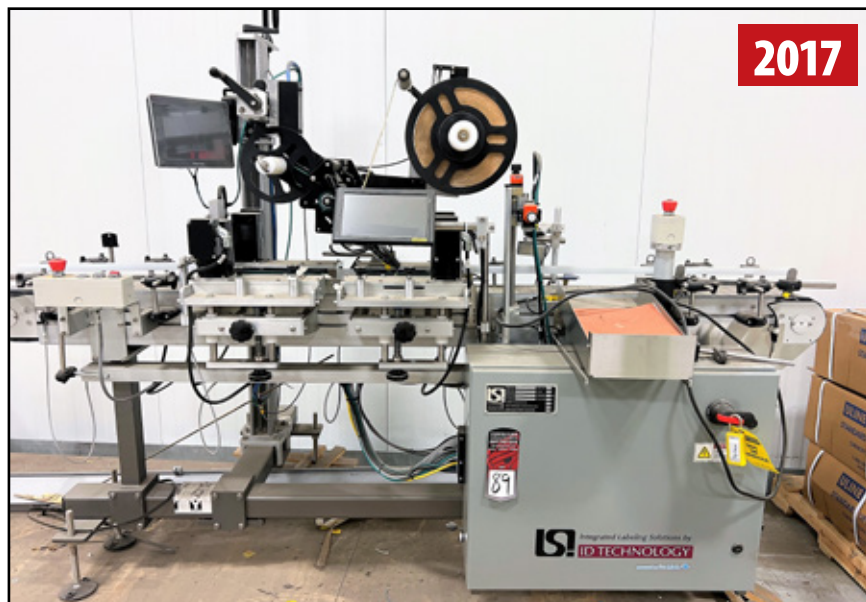
**(2) CROWN RD 5000 SERIES** 3,000 Lb. Double Reach Electric Reach Trucks, s/n 1A236389, 1A236243, w/ Side Shift, 36V, As Low As 1,524 Hours

**(5) CROWN PE4000 SERIES** 6,000 Lb. Electric Rider Pallet Jacks, w/ 24V, 8' Fork Length

**YALE MPB040ACN24C2748** 4,000 Lb. Electric Pallet Jack, s/n A827N17598V, w/ 24V

**YALE OS030EAN24TE095** 3,000 Lb. Electric Order Picker, s/n A801N07294V, w/ 24V

**(10) APPLIED ENERGY, BATTERY MATE, HOBART 24V AND 36V BATTERY CHARGERS**



2017

ID TECHNOLOGY LSI 1300 TOP PANEL LABEL SYSTEM



4,000 LB

CROWN SC 5200 SERIES 3-WHEEL FORKLIFT



3,000 LB

CROWN SC 4000 SERIES 3-WHEEL FORKLIFT

**PRE-AUCTION  
OFFERS INVITED  
ON MAJOR ASSETS**



2007

JLG 2646 ES SCISSOR LIFT



4,000 LB

1 OF 6 CROWN RR 5200 SERIES REACH TRUCK



6 AVAILABLE

CROWN RR 5200 SERIES REACH TRUCK



6 AVAILABLE

CROWN RR 5200 SERIES REACH TRUCK



# FORKLIFTS, REACH TRUCKS & MATERIAL HANDLING, BALERS & COMPACTOR



1 OF 6 CROWN RR 5200 SERIES REACH TRUCK



1 OF 6 CROWN RR 5200 SERIES REACH TRUCK



1 OF 2 CROWN RD 5000 SERIES DOUBLE REACH TRUCK



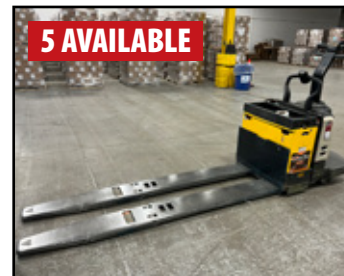
CROWN RD 5000 SERIES DOUBLE REACH TRUCK



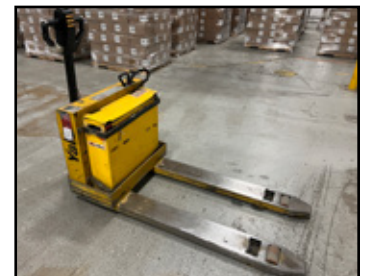
CROWN PE4000 SERIES RIDER PALLET JACK



CROWN PE4000 SERIES RIDER PALLET JACK



CROWN PE4000 SERIES RIDER PALLET JACK



YALE MPB040ACN24C2748 4,000 LB. PALLET JACK



YALE 05030EAN24TE095 ORDER PICKER



BATTERY MATE 36V BATTERY CHARGER



HOBART 24V BATTERY CHARGER



APPLIED ENERGY 24V BATTERY CHARGER

## BALERS & COMPACTOR

MARATHON RU-225-VL ROLL-OFF COMPACTOR, s/n 301793, w/ 52,300 Max Lb. Force Rating

2017 INTERTEK V73HD CARDBOARD BALER, s/n V73HD100796

MARATHON 6030 HD CARDBOARD BALER, s/n 65754



MARATHON 6030 HD CARDBOARD BALER



MARATHON RU-225-VL ROLL-OFF COMPACTOR



INTERTEK V73HD CARDBOARD BALER

Bidding Available Through  
**BidSpotter**



# AIR COMPRESSORS, PLANT SUPPORT

## AIR COMPRESSORS

(2) KAESER ASD 40 ROTARY SCREW AIR COMPRESSORS, s/n 1051, 1023, w/ 40 HP, 125 PSIG, 191 CFM

KAESER KAD-260 COMPRESSED AIR DRYER, s/n 1217022-7-2, w/ 260 SCFM @ 100 PSIG, 60-150 PSI Working Pressure

KAESER AQUAMAT 4 OIL/WATER SEPARATOR  
400 GALLON AIR TANK



KARCHER 80/120W ELECTRIC POWER SCRUBBER



1 OF 2 KAESER ASD 40 ROTARY SCREW AIR COMPRESSORS



KAESER KAD-260 COMPRESSED AIR DRYER

## PLANT SUPPORT

GLOBAL Wood Top Work Benches, ULINE Packaging Tables, Heavy Duty Steel Tables, Shop Carts, Lift Tables, Pallet Jacks, Shop Carts, BOSCH Breaker Hammer, Generator, KARCHER 80/120W Floor Scrubber, Flammable Liquids Storage Cabinets, Wire Baskets, Packaging Materials, Break Room Appliances, and More



BRIGGS & STRATTON GENERATOR



BOSCH BREAKER HAMMER



VIEW OF SHOP TABLES



ABS DOOR MED REFRIGERATOR

For auction inquiries, please contact Jennifer Reiner at  
(847) 545-6374 or [jennifer@perfectionindustrial.com](mailto:jennifer@perfectionindustrial.com)

Bidding Available Through  
**BidSpotter**

View our current auction schedule at [www.perfectionindustrial.com](http://www.perfectionindustrial.com)

### SALE DATE

Tuesday, June 6, at 10:00 AM ET

### SALE LOCATION

569 Halls Mill Road, Freehold, NJ 07728

### INSPECTION

Monday, June 5,  
from 9:00 AM to 4:00 PM ET

### REMOVAL

All items must be removed no later than Friday, June 16, except when otherwise stated on a lot description. All removal is strictly on an appointment only basis. Anyone removing purchased items with a lift truck or another powered vehicle must have a certificate of insurance with a \$2M General Liability policy, the policy must include a Worker's Compensation rider, and that certificate of insurance must be provided to the auctioneer for review and approval prior to the auction.

### TERMS OF SALE

An 18% Buyer's Premium will be charged on all assets purchased by buyers providing full payment is made within 48 hours following the sale. Acceptable forms of payment are cashier's check, company check (with bank letter of guarantee) or wire transfer within 48 hours of the sale close. For any Buyers failing to pay within the 48 hour stated payment period, the Buyer's Premium will be increased to 20%. All invoices paid with a credit card are subject to a 20% Buyer's Premium. Everything will be sold to the highest bidder, in accordance with the Auctioneer's customary "Terms of Sale", copies of which will be posted on the Auctioneer's website and subject to additional terms announced the day of sale. All items are sold "As is, Where is" without any warranty, express or implied.

### FURTHER INFORMATION

For auction inquiries, please contact Jennifer Reiner at (847) 545-6374 or [jennifer@perfectionindustrial.com](mailto:jennifer@perfectionindustrial.com).

To discuss your requirements for an auction, please call Perfection Industrial +1-847-545-6374