

LIVE WEBCAST

**ONLINE ONLY
AUCTION**

Assets Surplus to the Ongoing Operations of

Prescient®

**STATE OF THE ART
PRE-FABRICATED
BUILDING COMPONENT
MANUFACTURER**

SALE DATE

Thursday, November 9, at 10:00 AM MT

LOCATION

14401 W 65th Way, Unit B,
Arvada, Colorado 80004

INSPECTION

Tuesday, November 7 & Wednesday,
November 8, By Appointment Only



SAMCO ROLL FORMING LINES

2016



MAZAK 3D FABRIGEAR 220 II (4K GEN 2) TUBE LASER

COMPLETE CATALOG & INFORMATION AVAILABLE:
<https://perfection.global/prescient>

**PRE-AUCTION
OFFERS INVITED
ON MAJOR ASSETS**

FEATURING: 2016 MAZAK 3D FABRIGEAR 220 II Tube Laser, 2015 PEDDINGHAUS OCEAN AVENGER PLUS 1250/1C Beam Drill Line, (8) NEW as 2020 SAMCO Roll Forming Lines (Various Profiles), (2) 2016-15 ABB FlexArc (3) Robot x 18' Trunnion Robotic Welding Cells, (35+) MILLER Welders, Free Standing Crane Systems, Paint Booth & Oven, TEREX TR230 30-Ton RT Crane, Factory Support Equipment, Large Quantity of Assorted Coil Steel, Large Quantity of Assorted IT Equipment & (3) FORD Trucks

In Conjunction With:



**PERFECTION
Industrial Sales**

ph +1-847-545-6374 • fax +1-847-427-8884
www.perfectionindustrial.com



**PRESTIGE
AUCTIONS**

ph +1-631-249-5566
www.prestigeequipment.com

Bidding Available Through

BidSpotter

TUBE LASER, BEAM & PROFILE DRILL LINE, SAMCO ROOF DECK ROLLFORM LINE



2016

MAZAK TUBE LASER-LEFT VIEW



4,000-WATT

MAZAK TUBE LASER-RIGHT VIEW

TUBE LASER

2016 MAZAK 3D FABRIGEAR 220 II (4K GEN 2) TUBE LASER, s/n 275751, w/ MAZAK FX Control, 8.66" Max. Round, 6" Max. Square, .875" Max. Material Thickness Mild Steel, 320" Max. Work Piece Length, 4,000-Watt CO2 Laser, 3-D Bevel Head, Tapping Unit, Chip Conveyor

BEAM & PROFILE DRILL LINE

2015 PEDDINGHAUS OCEAN AVENGER PLUS 1250/1C BEAM DRILL LINE, s/n B1456, w/ SIEMENS CNC Control, 48" x 60' Beam Processing Size, Precision Ball Screw Spindle Feed, High Speed Carbide Milling and Drilling, 8-Station Tool Changer, 25 HP Spindle Motor, 0-3,000 RPM Spindle Speeds, MQL Minimum Quality Lubrication, 66'9" Fixed Table w/ Ball Transfers, Note: Very Low Production Hours

PEDDINGHAUS SPARE PARTS, Including New Drill Head, 7.5 HP HPU, Spare Control, Electrical Control Cabinet, Filters, Drives, Cylinders



MAZAK FX CNC CONTROL



MAZAK WORK ENVELOPE, BEVEL HEAD, TAPPING UNIT

SAMCO ROOF DECK ROLLFORM LINE

2018 SAMCO 30-STAND X 48" ROLL FORMING LINE w/ SAMCO FLATTENER FEEDER, s/n 9627, w/ AMS PLC Controls, SAMCO 20,000 Lb Uncoiler w/ Coil Car, Threading Table, (2) Punch Stations, (2) Notch-Stations, Cut-Off Press, REXROTH Hyd. Unit, UNIST Auto Lube, VIDEO JET 1520DH Ink Jet Printer, (Metal Deck Roof Line 39.75" x 18 Ga Material Entry, Output Speed 32 FPM Based on 95" Long Parts, End Notching Every 2' w/ 4" Notch)

NOTE: THE ROOF DECK LINE WAS DECOMMISSIONED BY SAMCO TECHNICIANS, Professionally Disassembled, Packed and Shrink Wrapped and is in Storage in Wilson, North Carolina.



2015

PEDDINGHAUS OCEAN AVENGER PLUS 1250/1C BEAM DRILL LINE



VERY LOW HOURS



2018 SAMCO ROOF DECK 30-STAND ROLL FORMING LINE

(7) ROLL FORMING LINES



2020

SAMCO 14-STAND ROLL FORMING LINE (ENLARGED STUD 3.5"-6" LINE)

(7) ROLL FORMING LINES

2020 SAMCO 14-STAND ROLL FORMING LINE W/ SAMCO FL 2-1/2-9-16 FLATTENER, s/n 9791, w/ AMS PLC Controls, 2" Shafts, 4.5"-9.5" Vertical Centers, 13.5" Horizontal Centers, 11" Max. Strip Width, 14-Gauge, 20 HP Drive, Dual Side Uncoiler, (1) 27.5-Ton Punch/Notching Stations, HYDREX 40-Ton Cut-Off, UNIST SPR-2000 SPROLLER Auto Lube, VIDEO JET 1520DH Ink Jet Printer, Adjustable Tooling, **NOTE: Enlarged Stud 3.5"-6" Line**

2016 SAMCO 12-STAND ROLL FORMING LINE, s/n 9501-1, w/ AMS PLC Control, 2" Shafts, 4.5"-9.5" Vertical Centers, 13.5" Horizontal Centers, 11" Max. Strip Width, 14-Gauge, 20 HP Drive, Dual Side Uncoiler, (3) 27.5-Ton Punch/Notching Stations, HYDREX 30-Ton Cut-Off, UNIST SPR-2000 SPROLLER Auto Lube, VIDEO JET 1610DH Ink Jet Printer, **NOTE: Stud 2-B Line**

2015 SAMCO 12-STAND ROLL FORMING LINE, s/n 9395, w/ AMS PLC Control, 2" Shafts, 4.5"-9.5" Vertical Centers, 13.5" Horizontal Centers, 11" Max. Strip Width, 14-Gauge, 20 HP Drive, Dual Side 6,000 Lb Uncoiler, (1) 27.5-Ton Punch/Notching Stations, HYDREX 30-Ton Cut-Off, UNIST SPR-2000 SPROLLER Auto Lube, VIDEO JET 1610DH Ink Jet Printer, **NOTE: Stud 1-A Line**



2016

SAMCO 12-STAND ROLL FORMING LINE (STUD 2-B LINE)

2016 SAMCO 10-STAND ROLL FORMING LINE, s/n 9462, w/ AMS PLC Control, 2" Shafts, 4.5"-9.5" Vertical Centers, 13.5" Horizontal Centers, 11" Max. Strip Width, 14-Gauge, 20 HP Drive, (3) 27.5-Ton Punch/Notching Stations, Dual Side 6,000 Lb Uncoiler, HYDREX 30-Ton Cut-Off, UNIST SPR-2000 SPROLLER Auto Lube, VIDEO JET 1610DH Ink Jet Printer, **NOTE: Track Mill**

2016 SAMCO 8-STAND ROLL FORMING LINE, s/n 9505, w/ AMS PLC Control, 2" Shafts, 4.5"-9.5" Vertical Centers, 13.5" Horizontal Centers, 11" Max. Strip Width, 14-Gauge, 20 HP Drive, Dual Side 6,000 Lb Uncoiler, HYDREX 30-Ton Cut-Off, UNIST SPR-2000 SPROLLER Auto Lube, VIDEO JET 1610DH Ink Jet Printer, **NOTE: Brace Line**

2016 SAMCO 6-STAND ROLL FORMING LINE, s/n 9461, w/ 2" Shafts, 4.5"-9.5" Vertical Centers, 13.5" Horizontal Centers, 11" Max. Strip Width, 14-Gauge, 20 HP Drive, **NOTE: Shrinker Line**



2015

SAMCO 12-STAND ROLL FORMING LINE (CHORD)



2016

SAMCO 10-STAND ROLL FORMING LINE (TRACK MILL)

SALE DATE

Thursday,
November 9,
at 10:00 AM MT

LOCATION

14401 W65th Way,
Unit B, Arvada,
Colorado 80004

INSPECTION

Tuesday,
November 7
& Wednesday,
November 8,
By Appointment
Only



2016

SAMCO 8-STAND ROLL FORMING LINE, S/N 9505 (BRACE LINE)



2016

SAMCO 6-SAMCO STAND ROLL FORMING LINE, S/N 9461 (SHRINKER LINE)

COMPLETE CATALOG & INFORMATION AVAILABLE:

<https://perfection.global/prescient>

PRE-AUCTION OFFERS INVITED ON MAJOR ASSETS

LARGE QUANTITY OF STEEL STOCK, (2) ROBOTIC WELDING CELLS, WELDING DEPARTMENT



(130+) COILS OF 9.6" X 18 GA/16 GA GALVANIZED STEEL



ASSORTED COIL AND SHEET STOCK



(18) COILS OF 39.375" X 18 GA GALVANIZED STEEL



HUGE QUANTITY OF ASSORTED TUBE AND CHANNEL STOCK



LARGE QUANTITY OF STEEL STOCK

(104) COILS OF ASTM A653 SS GRADE 50 MIN. G60, 9.6" x 18 Ga x Approx. 2,000 Lb per Coil

(32) COILS OF ASTM A653 SS GRADE 50 MIN. G60, 9.6" x 16 Ga x Approx. 2,600 Lb per Coil

(5) COILS OF ASTM A653 SS GRADE 50 MIN. G60, 9.6" x 16 Ga x Approx. 3,400 Lb per Coil

(18) COILS OF ASTM A653 SS GRADE 50 MIN. G60, 39.375" x 18 Ga - Approx. 300,000 Lb Total

(1.5) COILS OF ASTM A653 SS GRADE 50 MIN. G60, 40" x 20 Ga x Approx. 17,000 Lb per Coil

HUGE QUANTITY OF ASSORTED STEEL, Flat Sheet, Square Tube and Channel Stock



ABB FLEXARC (3) ROBOT X 18' TRUNNION ROBOTIC WELDING CELL

2 AVAILABLE



ABB WELD CELL-REAR VIEW



WELDING BOOMS

(2) ROBOTIC WELDING CELLS

(2) 2016 AND 2015 ABB FLEXARC (3) ROBOT X 18' TRUNNION ROBOTIC WELDING CELLS, w/ (3) ABB IRB-1520 Robots, (3) FRONIUS Trans Pulse Synergic 5000 Weld Power Supplies, (3) IRC5 M2004 Robotic Controls and Teach Pendant, 18' Dual Side Trunnion Positioning Table, Dust Collector, **NOTE: Two Identical Systems Available**



ABB WELD CELL-INTERIOR VIEW

2016 & 2015

WELDING DEPARTMENT

MILLER XMT456 CC/CV MIG WELDER, (13) MILLER XMT450 MIG BOOM FEED WELDERS, (6) MILLER INVISION 352 MPA MIG WELDERS, (3) MILLER MILLERMATIC 350P MIG WELDERS, (2) LINCOLN 256 MIG WELDERS, (9) ROBOVENT AND FILTER 1 FUME EXTRACTOR/FILTERS, TECHNIA 50 KVA SPOT WELDER, (60) MILLER AIR PURIFIER MASKS, WELDING SUPPLIES, AND CONSUMABLES



ASSORTED WELDING POWER SUPPLIES



FILTER 1 FLOWTRON FUME EXTRACTOR

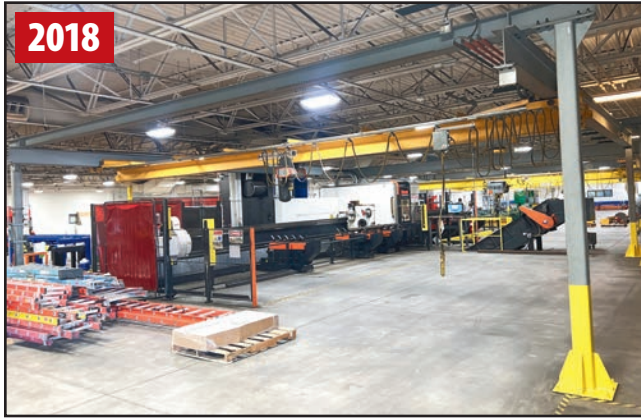


ROBOVENT FUME EXTRACTOR

COMPLETE CATALOG & INFORMATION AVAILABLE:
<https://perfection.global/prescient>

PRE-AUCTION OFFERS INVITED ON MAJOR ASSETS

FREE STANDING BRIDGE CRANE SYSTEMS, MOBILE CRANE, FORKLIFT & SCISSOR LIFT, TRUCKS & TRAILER



HS 1.5-TON CRANE SYSTEM



ACE GAFFEY 3-TON FREE STANDING CRANE SYSTEM

2 BRIDGES



YALE GLC070VXNVSF0088 LP FORKLIFT

6,700 LB CAP.



SKYJACK SJIII 4626 SCISSOR LIFT

FREE STANDING BRIDGE CRANE SYSTEMS

2018 ACE GAFFEY 3-TON FREE STANDING CRANE SYSTEM, s/n 4370780A, 4370780B, w/ (2) 3-Ton x 32' Span Under Hung Bridge Cranes, (2) Shaw-Box 6,000 Lb Hoists, 20 FPM, 55 FPM Trolley, 120' Free Standing Runway, Radio and Pendant Control

2018 HS 1.5-TON CRANE SYSTEM, s/n 161329, w/ 1.5-Ton x 32' Span Under Hung Bridge Crane, 1.5-Ton Kone Hoist and Trolley, 40' Long Free-Standing Runway, Radio and Pendant Control

MOBILE CRANE, FORKLIFT & SCISSOR LIFT

TEREX TR230-1 30-TON MOBILE CRANE

YALE GLC070VXNVSF0088 6,700 LB LP FORKLIFT, 18.7" Max. Load Height, Cushion Tires, Side Shift, 3-Stage Mast (Requires Repair)

SKYJACK SJIII 4626 SCISSOR LIFT



FORD F-350 POWER STROKE 4WD TRUCK

58,000 MI.



FORD F-150 XLT 4WD TRUCK

78,000 MI.



TEREX TR230-1 30-TON MOBILE CRANE

30-TON CAP.



PJ TRAILERS T/A GOOSENECK TRAILER

2015



FORD F-150 XLT 4WD TRUCK

2014



PJ TRAILERS T/A UTILITY TRAILER

2015

TRUCKS & TRAILER

2015 FORD F-350 SUPER DUTY KINGRANCH 4WD TRUCK, VIN 1FT8W3BT4FEC97375, Approx. 58,000 Miles, Diesel, 6.7L V8, Crew Cab

2017 FORD F-150 XLT 4WD TRUCK, VIN 1FTEW1E83HFA64860, Approx. 78,000 Miles, Gas, 3.5L V6, Crew Cab

2014 FORD F-150 XLT 4WD TRUCK, VIN 1FTFW1EF2EKE32080, Approx. 209,000 Miles, Gas, 5.0L V8, Crew Cab

2015 PJ TRAILERS T/A GOOSENECK TRAILER, VIN 4P5LD3028F1220743, 25,000 Lb GVWR

2015 PJ TRAILERS T/A UTILITY TRAILER, VIN 3CVU81623F2533885, 7,000 Lb GVWR

INSPECTION Tuesday, November 7 & Wednesday, November 8, By Appointment Only

PAINT SYSTEM, PLANT SUPPORT, IT EQUIPMENT



FACTORY CAT XR 40-C
FLOOR SCRUBBER



ROHNER 20' L X 15' W CURE OVEN



STAR 1496 HB-TK FORKLIFT BUCKET



ELLIS 1800 MITERING BANDSAW



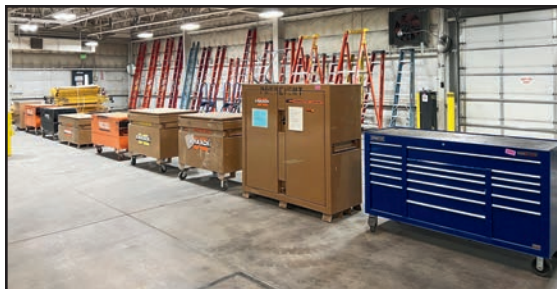
BOSCARO AND JCRANE
SELF DUMPING BINS



EVAPORATIVE COOLER AND SHOP FANS



BOSCARO MATERIAL HANDLING BINS



ASSORTED JOB BOXES, TOOL CHESTS AND LADDERS



84" FORKLIFT PLOW



COL-MET 15' L X 12' W PAINT BOOTH

PAINT SYSTEM

COL-MET 15' LONG X 12' WIDE PAINT BOOTH, 142"H x 88"W Door, EZ Heat and Cure System, Graco E16A Airless Spray System

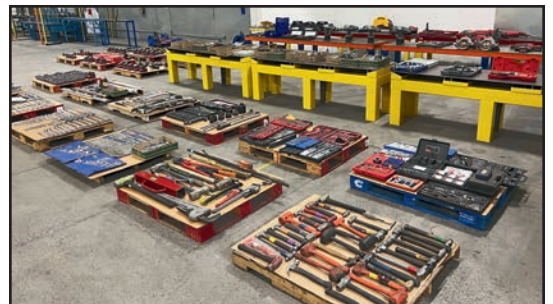
ROHNER 20' LONG X 15' WIDE CURE OVEN, Double Door 179"W x 115"H Door, Side Door 88"W

PLANT SUPPORT

ELLIS 1800 MITERING BANDSAW, JET BANDSAW, JET J-2550 20" FLOOR DRILL PRESS, *NEW* FLEX ARM TAPPER, FLOOR SCRUBBERS, LARGE QUANTITY OF PALLET RACKING, CANTILEVER RACKING, ROLLER CONVEYORS, FIREPROOF CABINETS, HOSE REELS, HOISTS, ENGINE HOIST, ROLLER STANDS, DOCK BARRIER, SAFETY RAIL, MISCELLANEOUS LIGHTING, BIG ASS SHOP FANS, CABINETS, WORKTABLES, POWER AND HAND TOOLS, LARGE LOTS OF TIMBER DUNNAGE, AND MORE

IT EQUIPMENT

LARGE QUANTITY OF IT EQUIPMENT, 85" AND 75" SMART SCREENS, ACER AND DELL MONITORS, COMPUTERS, FLAT SCREEN MONITORS, PRINTERS, SCANNERS, HP T630 THIN CLIENT COMPUTERS, AND MORE



POWER AND HAND TOOLS

REMOVAL

All items must be removed no later than Friday, December 8. All removal is strictly on an appointment only basis. Anyone removing purchased items with a lift truck or another powered vehicle must have a certificate of insurance with a \$2M General Liability policy, the policy must include a Worker's Compensation rider, and that certificate of insurance must be provided to the auctioneer for review and approval prior to the auction.

FURTHER INFORMATION

For auction inquiries, please contact Jennifer Reiner at +1-847-545-6374 or email jennifer@perfectionindustrial.com.

View our current auction schedule at
www.perfectionindustrial.com

SALE DATE Thursday,
November 9, at 10:00 AM MT

LOCATION 14401 W 65th Way,
Unit B, Arvada, Colorado 8000

INSPECTION Tuesday,
November 7 & Wednesday,
November 8, By Appointment Only

TERMS OF SALE

An 18% Buyer's Premium will be charged on all assets purchased by buyers providing full payment is made within 48 hours following the sale. Acceptable forms of payment are cashier's check, company check (with bank letter of guarantee) or wire transfer within 48 hours of the sale close. For any Buyers failing to pay within the 48 hour stated payment period, the Buyer's Premium will be increased to 20%. All invoices paid with a credit card are subject to a 20% Buyer's Premium. Everything will be sold to the highest bidder, in accordance with the Auctioneer's customary "Terms of Sale", copies of which will be posted on the Auctioneer's website and subject to additional terms announced the day of sale. All items are sold "As is, Where is" without any warranty, express or implied.