

ONLINE AUCTION

SURPLUS TO THE ONGOING OPERATIONS OF

JAGEMANN

PRECISION PLASTICS - PRISTINE PLASTIC INJECTION MOLDING AND METAL STAMPING FACILITY

SALE CLOSING

Thursday, December 14, at 10 AM CT

SALE LOCATION

951 Esther Lane
Murfreesboro, TN 37129

INSPECTION

Wednesday, December 13, from 9 AM
to 4 PM CT, by appointment only

**PRE-AUCTION
OFFERS INVITED
ON MAJOR ASSETS**

COMPLETE CATALOG & INFORMATION:

<https://perfection.global/jagemann>

Bidding Available Through

BidSpotter

FEATURING: (14) WITTMANN BATTENFELD Horz. & Vert. Injection Molders - Up to 300 Ton - New as 2018, WITTMANN Robots, Plastics Support, 2020 STAMTEC G2-250 Gap Press, 2015 IPG YLS-1200-SM Fiber Laser, (2) OPG SmartScope FLASH Measuring Systems, Cranes, Forklifts, Support Equipment



WITTMANN-BATTENFELD SMARTPOWER 300/1330 INJECTION MOLDER



STAMTEC G2-250 250 TON GAP FRAME PRESS



BATTENFELD VERTICAL R 2000/400 200 TON INJECTION MOLDER



**PERFECTION
Industrial Sales**

Perfection Industrial Sales

ph +1-847-545-6374 • fax +1-847-427-8884

www.perfectionindustrial.com

In
conjunction
with:

WOLF
INDUSTRIAL ADVISORS

(7) HORIZONTAL INJECTION MOLDERS

(7) HORIZONTAL INJECTION MOLDERS

2019 WITTMANN BATTENFELD SMARTPOWER 300/1330 SERVO HYDRAULIC 300 TON INJECTION MOLDER, s/n 140405-100, w/ UNILOG B8 Control, 21 Oz Injection Unit Size, 55 mm Screw Diameter, 653 Cu/ Cm Shot Volume, 2500 bar Max Injection Pressure, 380 cm³ Per Second Max Injection Rate, 3000kn Clamp Force, 770mm x 720mm Tie Bar Spacing, 600mm Clamp Stroke, 1250mm Max Platen Distance, 400-650mm Mold Height, 200mm Ejector Stroke ***SOLD***

2006 BATTENFELD HM 270/2200 270 TON INJECTION MOLDER, s/n 129515-100, w/ UNILOG B4 Control, 26 oz Injection Unit Size, 65mm Screw Dia, 1075 Cu.Cm Shot Volume, 2070 Bar Max Injection Pressure, 338 Cu. Cm. Max Injection Rate, 102mm/sec Max Injection Speed, 2700 kn Clamp Force, 710mm x 630mm Tie Bar Spacing, 800mm Clamp Stroke 1150mm Max Platen Distance, 350mm-650mm Mold Height, 200mm Ejector Stroke

2006 BATTENFELD HM 160/750 160 TON INJECTION MOLDER, s/n 129999-100, w/ UNILOG B4 Control, 12 oz Injection Unit Size, 45mm Screw Dia, 358 Cu. Cm. Shot Volume, 2116 Bar Max Injection Pressure, 281 Cu. Cm./Sec Max Injection Rate, 300mm/Sec Max Injection Speed, 800 kn Clamp Force, 570mm x 520mm Tie Bar Spacing, 480mm Clamp Stroke, 700mm Max Platen Distance, 300-550mm Mold Height, 150mm Ejector Stroke

2013 WITTMANN BATTENFELD ECOPOWER 110/350 ALL ELECTRIC 110 TON INJECTION MOLDER, s/n 134808-100, w/ UNILOG B6 Control, 7.57 oz Injector Unit Size, 30mm Screw Dia., 41 Cu. Cm./Sec Max Injection Rate, 124 Cu. Cm. Shot Volume, 2835 Max Injection Pressure, 470mm x 420 mm Tie Bar Spacing, 1100kn Clamp Force, 380mm Clamp Stroke, 830 mm Max Platen Distance, 200-450mm Mold Height, 140mm Ejector Stroke

2018 WITTMANN BATTENFELD ECOPOWER 90/350 ALL ELECTRIC 90 TON INJECTION MOLDER, s/n 139575-100, w/ UNILOG B8 Control, 3.98 oz Injection Unit Size, 30mm Screw Dia, 124 Cu.Cm. Shot Volume, 2835 Bar Max Injection Pressure, 141Cu. Cm./Sec Max Injection Rate, 900kn Clamp Force, 470mm x 420mm Tie Bar Spacing, 380 mm Clamp Stroke, 830mm Max Platen Distance, 200-450mm Mold Height, 140mm Ejector Stroke

2016 WITTMANN BATTENFELD ECOPOWER 90/350 ALL ELECTRIC 90 TON INJECTION MOLDER, s/n 136900-100, w/ UNILOG B6P Control, 2.76 oz Max Injection Unit Size, 25mm Screw Dia, 85.86 Cu. Cm. Shot Volume, 3000 Bar Max Injection Pressure, 98.2 Cu. Cm./ Sec Max Injection Rate, 900 Kn Clamp Force, 470mm x 420mm Tie Bar Spacing, 380mm Clamp Stroke, 830mm Max Platen Distance, 200-450mm Mold Height, 140mm Ejector Stroke

2015 WITTMANN BATTENFELD ECOPOWER 90/350 ALL ELECTRIC 90 TON INJECTION MOLDER, s/n 136523-100, w/ UNILOG B6P Control, 2.76 oz Max Injection Unit Size, 25mm Screw Dia, 85.86 Cu. Cm. Shot Volume, 3000 Bar Max Injection Pressure, 98.2 Cu. Cm./ Sec Max Injection Rate, 900 Kn Clamp Force, 470mm x 420mm Tie Bar Spacing, 380mm Clamp Stroke, 830mm Max Platen Distance, 200-450mm Mold Height, 140mm Ejector Stroke



WITTMANN-BATTENFELD SMARTPOWER 300/1330 INJECTION MOLDER



WITTMANN BATTENFELD ECOPOWER 110/350 INJECTION MOLDER



WITTMANN BATTENFELD ECOPOWER 90/350 INJECTION MOLDER



BATTENFELD HM 270/2200 270 TON INJECTION MOLDER



BATTENFELD HM 160/750 160 TON INJECTION MOLDER

(7) VERTICAL INJECTION MOLDERS, ROBOTS

(7) VERTICAL INJECTION MOLDERS

2004 BATTENFELD VERTICAL/VERTICAL R 2000/400 200 TON INJECTION MOLDER, s/n 27859, w/ UNILOG B4 Control, Rotary Platen, 40mm Screw Dia., 201 Cu.Cm. Shot Volume, 1575 Max Injection Pressure, 246.8 Cu. Cm./Sec Max Injection Rate, 400 kn Clamp Force, 935mm Horizontal Tie Bar Spacing, 250mm Clamp Stroke, 1030 Max Platen Distance, 752mm Max Mold Height

2017 WITTMANN BATTENFELD VERTICAL/VERTICAL VM 150/350 R1520 150 TON INJECTION MOLDER, s/n 138074-100, w/ UNILOG B8 Control, Rotary Platen ***SOLD***

2014 WITTMANN BATTENFELD VERTICAL/VERTICAL VM 150/350 R1520 150 TON INJECTION MOLDER, s/n 135918-100, w/ UNILOG B6P Control, Rotary Platen, 35 mm Screw Dia, 168 Cu.Cm. Shot Volume, 2083 bar Max Injection Pressure, 160 Cu.Cm./Sec Max Injection Rate, 227mm/Sec Max Injection Speed, 1500kn Clamp Force, 950mm Horizontal Tie Bar Spacing, 300mm Clamp Stroke, 600m Max Platen Distance, 300mm Max Mold Height, 150mm Ejector Stroke ***SOLD***

2007 BATTENFELD VERTICAL/VERTICAL R 110/210 110 TON INJECTION MOLDER, s/n 130829-100, w/ UNILOG Control, Rotary Platen ***SOLD***

2004 BATTENFELD VERTICAL/VERTICAL R 1100/125 110 TON INJECTION MOLDER, s/n 28432, w/ UNILOG B4 Control, Rotary Platen, 22mm Screw Dia, 58 Cu.Cm. Shot Volume, 2149 Bar Max Injection Pressure, 90.58 Cu.Cm./Sec Max Injection Rate, 1100 kn Clamp Force 620mm Horizontal Tie Bar Spacing, 250mm Clamp Stroke, 475mm Max Platen Distance, 250mm Max Mold Height, 150mm Ejector Stroke

2003 BATTENFELD VERTICAL/VERTICAL R 1100/125 110 TON INJECTION MOLDER, s/n 27339, w/ UNILOG B4 Control, Rotary Platen, 22mm Screw Dia, 45 Cu.Cm. Shot Volume, 2776 Max Injection Pressure, 90.58 Cu. Cm./Sec Max Injection Rate, 1100 kn Clamp Force, 620mm Horizontal Tie Bar Spacing, 250mm Clamp Stroke, 475 Max Platen Distance, 250mm Max Mold Height, 150mm Ejector Stroke

2002 BATTENFELD VERTICAL/VERTICAL R 750/125 75 TON INJECTION MOLDER, s/n 26105, w/ UNILOG B4 Control, w/ Rotary Platen, 22mm Screw Dia, 45 Cu.Cm. Shot Volume, 2776 Bar Max Injection Pressure, 74.12 Cu.Cm./Sec Max Injection Rate, 750 kn Clamp Force, 635mm Horizontal Tie Bar Spacing, 250mm Clamp Stroke, 450mm Max Platen Distance, 250mm Max Mold Height, 150 mm Ejector Stroke



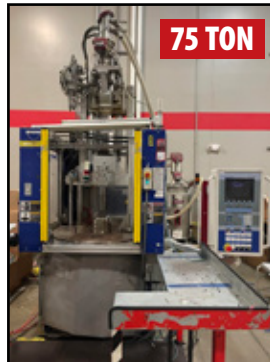
2014
WITTMANN BATTENFELD VERTICAL VM 150/350 R1520 150 TON INJECTION MOLDER



2004
BATTENFELD VERTICAL R 2000/400 200 TON INJECTION MOLDER



2 AVAILABLE
BATTENFELD VERTICAL R 1100/125 110 TON INJECTION MOLDER



75 TON
BATTENFELD VERTICAL/VERTICAL R 750/125 INJECTION MOLDER



2020
WITTMANN W818S 3-AXIS ROBOT



2 AVAILABLE
BATTENFELD R10S 3-AXIS ROBOT

ROBOTS

2020 WITTMANN W823 3-AXIS ROBOT, w/ Telescopic Vertical Axis ***SOLD***

(4) **2020-2016 WITTMANN W818 & W818S 3-AXIS SERVO ROBOTS**

(2) **2007-2006 BATTENFELD R10S 3-AXIS SERVO ROBOTS**

For auction inquiries, please contact Jennifer Reiner at (847) 545-6374 or jennifer@perfectionindustrial.com

(13) DRYERS

(13) DRYERS

2020 WITTMANN DRYMAX ATON PLUS H120-300-VS AIR DRYER, s/n 486550, w/ FEEDMAX Loader

2019 WITTMANN DRYMAX E60-100-PDC AIR DRYER, s/n 439662, w/ FEEDMAX Loader

2017 WITTMANN DRYMAX E60-70-PDC AIR DRYER, s/n 390186, w/ FEEDMAX Loader

WITTMANN DRYMAX E60-50-PDC AIR DRYER, s/n 319446, w/ FEEDMAX Loader

2015 WITTMANN DRYMAX E30-70-PDC AIR DRYER, s/n 335861, w/ FEEDMAX Loader

(2) 2019-2017 WITTMANN DRYMAX E30-50-PDC AIR DRYERS, s/n 490693, 309200, w/ FEEDMAX Loader

2018 WITTMANN DRYMAX E30-50-M AIR DRYER, s/n 431899, w/ FEEDMAX Loader

CONAIR MDCW100 AIR DRYER, s/n 208567

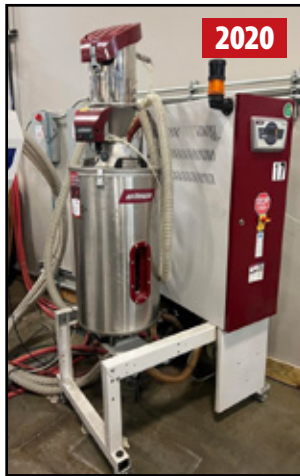
CONAIR MDCW75 AIR DRYER, s/n 229869

(2) CONAIR MDCW50 AIR DRYERS, s/n 213674, 229868

SOMOS 79-81-021-049 AIR DRYER, s/n 7603



WITTMANN E60-100-PDC AIR DRYER



WITTMANN DRYMAX E60-50-PDC AIR DRYER



WITTMANN DRYMAX E30-70-PDC AIR DRYER



WITTMANN ATON PLUS H120-300-VS AIR DRYER



WITTMANN DRYMAX E30-50-PDC AIR DRYERS



WITTMANN DRYMAX E30-50-M AIR DRYER



CONAIR MDCW100 AIR DRYER



CONAIR MDCW50 AIR DRYER

PRE-AUCTION OFFERS INVITED ON MAJOR ASSETS

(3) GRANULATORS & (12) TEMP CONTROLLERS, STAMPING, FABRICATION & TOOLROOM EQUIP.

(3) GRANULATORS & (12) TEMP CONTROLLERS

(3) 2020-2016 WITTMANN JTU GRANULATORS, s/n SJM2-W253, SJM2-WTM7945, NA

(8) WITTMANN TEMPRO PLUS D 320F TEMPERATURE CONTROL UNITS

(4) WITTMANN TEMPRO PLUS D 200F TEMPERATURE CONTROL UNITS

AEC TC120 TEMPERATURE CONTROL UNIT, s/n 52H0592

MILACRON TEMPMASTER TEMPERATURE CONTROL UNIT, s/n NA

STAMPING

2020 STAMTEC G2-250 250 TON GAP FRAME PRESS, s/n C00154 S002327, w/ 11" Stroke, 20-35 SPM, 21.65" Bolster to Slide, 4.72" Slide Adjust, 6.03" Bolster Thickness, 106.3" X 35.43" Bolster Area ***SOLD***

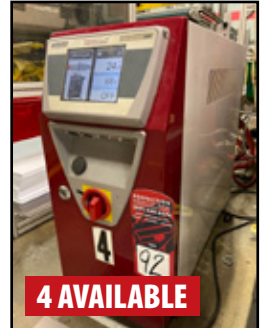
2019 STAMTEC / SHUNG DAR INDUSTRIAL LUH-400 UNCOILER & STRAIGHTENER, s/n LUH-419002, w/ 0.4-3.2mm Thickness, 400mm Max. Width ***SOLD***



WITTMANN JTU GRANULATOR



WITTMANN TEMPRO PLUS D 320F TCU



WITTMANN TEMPRO PLUS D 200F TCU



STAMTEC G2-250 250 TON GAP FRAME PRESS



STAMTEC/SHUNG DAR LUH-400 UNCOILER & STRAIGHTENER



IPG PHOTONICS YLS-1200-SM 1200W FIBER LASER

FABRICATION & TOOLROOM EQUIPMENT

2015 IPG PHOTONICS YLS-1200-SM 1200W FIBER LASER, s/n PL1520569

ALSO: SUMMIT MACHINE TOOL 14X40T ENGINE LATHE, ROLL-IN-SAW EF1459 Vertical Bandsaw, DAKE JH10 Horizontal Bandsaw, PARKER MAJESTIC 1418-6 Surface Grinder, TIMESAVERS MINI-BELT 648 Sander, TRINCO 36BP Sandblast Cabinet, LINCOLN ELECTRIC PRO MIG 180 Mig Welder, s/n M3070804223



SAE 1050 STEEL COILS, .030" X 6.5"W



STEEL COILS

INSPECTION EQUIPMENT, MATERIAL HANDLING & ROLLING STOCK

INSPECTION EQUIPMENT

2018 QUALITY VISION INTERNATIONAL SMARTSCOPE FLASH 302 MEASUREMENT SYSTEM, s/n SVL3025387, 2012 QUALITY VISION INTERNATIONAL SMARTSCOPE FLASH 200 Measurement System, s/n SVW2004170, CLARK CR SERIES Hardness Tester, s/n CR 12292, BARNSTEAD INTERNATIONAL 3515M High Temperature Curing Oven, s/n 1483070664399



QUALITY VISION INTL SMARTSCOPE FLASH 200 MEASUREMENT SYSTEM



CLARK CR SERIES HARDNESS TESTER



BARNSTEAD CURING OVEN



QUALITY VISION INTL SMARTSCOPE FLASH 302 MEASUREMENT SYSTEM

MATERIAL HANDLING & ROLLING STOCK

TOYOTA 8FGCU25 4,500 LBS. LP FORKLIFT, s/n 43158, w/ 189" Tri-Mast, Side Shift
TOYOTA 8BNCU20 4,000 LBS. ELECTRIC FORKLIFT, s/n 8BNCU20-59630, w/ Tri-Mast
2021 JLG TOUCAN 32E MAST BOOM LIFT, s/n A300060137



JLG TOUCAN 32E MAST BOOM LIFT



4,500 LB CAP.

TOYOTA 8FGCU25 ELECTRIC FORKLIFT



4,000 LB CAP.

TOYOTA 8BNCU20 ELECTRIC FORKLIFT

PLANT SUPPORT & MISCELLANEOUS EQUIPMENT

PLANT SUPPORT & MISCELLANEOUS EQUIPMENT

2015 QUINCY QSI-4401 100 HP ROTARY SCREW AIR COMPRESSOR, s/n UTY302054

2015 QUINCY QPNC0500 REFRIGERATED AIR DRYER, s/n CAI835263

INGERSOLL RAND IRN40H-CC 40 HP ROTARY SCREW AIR COMPRESSOR, s/n CBV201222

INGERSOLL RAND D360IN REFRIGERATED AIR DRYER

2022 SPANCO 5 TON ROLLING GANTRY CRANE, s/n 61223

CRANE AMERICA 3 TON BRIDGE CRANE, Approx. 28'W x 66' Run

2015 CONAIR PTS450 PROCESS WATER SYSTEM, s/n TC18050011208

2020 ULTRASONIC 2400FA ULTRASONIC CLEANER, s/n 240092

VIBETECH VTG-2810 VIBRATORY FINISHER, s/n 1118M832

2017 NILFISK T63 INDUSTRIAL VACUUM SYSTEM, s/n 3820171300255 ***SOLD***

ALSO: Misc Hand & Power Tools, H-Frame Presses, Pedestal Grinders, Hot Runners, Bench Top Vises, Wood Top Benches, Lista Cabinets, Die Racks, Die Carts, Rolling Tool Chests, Tool Carts, Pallet Jacks, Pallet Racking, Rolling Safety Ladders, LED Work Stations, and more



QUINCY QSI-4401 100 HP ROTARY SCREW AIR COMPRESSOR



INGERSOLL RAND IRN40H-CC AIR COMPRESSOR



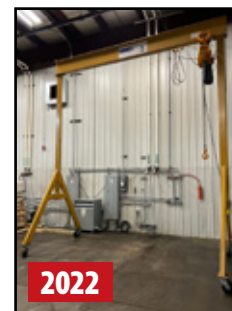
CONAIR PTS450 PROCESS WATER SYSTEM



CRANE AMERICA BRIDGE CRANE



ULTRASONIC 2400FA ULTRASONIC CLEANER



SPANCO 5 TON ROLLING GANTRY CRANE

For auction inquiries, please contact Jennifer Reiner at
(847) 545-6374 or jennifer@perfectionindustrial.com

Bidding Available Through
BidSpotter

View our current auction schedule at www.perfectionindustrial.com

SALE CLOSING

Thursday, December 14, at 10 AM CT

SALE LOCATION

951 Esther Lane
Murfreesboro, TN 37129

INSPECTION

Wednesday, December 13, from 9 AM
to 4 PM CT, by appointment only

REMOVAL

All items must be removed no later than Friday, January 12. All removal is strictly on an appointment only basis. Anyone removing purchased items with a lift truck or another powered vehicle must have a certificate of insurance with a \$2M General Liability policy, the policy must include a Worker's Compensation rider, and that certificate of insurance must be provided to the auctioneer for review and approval prior to the auction.

TERMS OF SALE

An 18% Buyer's Premium will be charged on all assets purchased by buyers providing full payment is made within 48 hours following the sale. Acceptable forms of payment are cashier's check, company check (with bank letter of guarantee) or wire transfer within 48 hours of the sale close. For any Buyers failing to pay within the 48 hour stated payment period, the Buyer's Premium will be increased to 20%. All invoices paid with a credit card are subject to a 20% Buyer's Premium. Everything will be sold to the highest bidder, in accordance with the Auctioneer's customary "Terms of Sale", copies of which will be posted on the Auctioneer's website and subject to additional terms announced the day of sale. All items are sold "As is, Where is" without any warranty, express or implied.

FURTHER INFORMATION

For auction inquiries, please contact Jennifer Reiner at (847) 545-6374 or jennifer@perfectionindustrial.com.

AUCTION LICENSE

Tennessee Auction License #7446

To discuss your requirements for an auction, please call Perfection Industrial +1-847-545-6374