

DREWEATTS

EST. 1759

FINE JEWELLERY, SILVER, WATCHES AND OBJECTS OF VERTU

DONNINGTON PRIORY | WEDNESDAY 22 MARCH 2023







DREWEATTS

EST. 1759

FINE JEWELLERY, SILVER, WATCHES
AND OBJECTS OF VERTU

DONNINGTON PRIORY | WEDNESDAY 22 MARCH 2023 | 10.30AM

AUCTION FORMAT: LIVE ONLINE

This is a live online auction with an auctioneer. Bidding is available in person at Dreweatts Donnington Priory, online, by telephone or commission (absentee) bids. If not bidding in person or online, please contact Dreweatts to register all commission bids or telephone bids by 12 noon (GMT) on Tuesday 21 March.

FREE ONLINE BIDDING IS AVAILABLE AT DREWEATTS.COM:

The Dreweatts' bidding platform allows you to watch, listen and bid with no additional online bidding fees applicable.

REGISTRATION:

We advise clients to register at least 48 hours in advance of the auction as you may be asked to provide documents to verify your identity. Registration for new clients will close at 12 noon (GMT) on Tuesday 21 March.

BUYER'S PREMIUM:

Buyer's premium is charged per lot at 26% of the hammer price (31.2% including VAT) up to and including £20,000, 25% (30% including VAT) of the hammer price from £20,001 up to and including £500,000, 20% (24% including VAT) of the hammer price from £500,001 up to and including £1,000,000, and 12% of the hammer price (14.4% including VAT) in excess of £1,000,001.

CUSTOMER DUE DILIGENCE CHECKS:

In order to comply with current Money Laundering Regulations, it is our policy to conduct appropriate Know Your Client checks on any buyers who transact at the threshold of £8,000 or more. Buyers will be required to provide the following information:

For individuals, official photo identification (a government issued ID document such as passport or driver's licence) and a proof of address (utility bill, bank statement or driver's licence).

For legal entities, a certificate of incorporation (or equivalent), a register of shareholders/directors and ID documentation from the directors and beneficial owners of the business.

We reserve the right to withhold the purchased lots until such checks have been completed.

AUCTION NO. 14482

SPECIALISTS:

James Nicholson FGA, DGA
Nick Mann
Tessa Parry FGA, DGA
Ian Pickford (Consultant, Silver)

VIEWING IN LONDON (selected highlights):

Dreweatts London, 16-17 Pall Mall, St James's, London SW1Y 5LU

Tuesday 14 March: 10am – 4pm

Wednesday 15 March: 10am – 4pm

VIEWING AT DONNINGTON PRIORY (full sale):

Friday 17 March: 10am – 4pm

Sunday 19 March: 10am – 3pm

Monday 20 March: 10am – 4pm

Tuesday 21 March: 10am – 4pm

CONDITIONS OF SALE:

This auction is subject to our Auction Terms and Conditions (see back of catalogue or our website for further details).

AUCTION:

Dreweatts
Donnington Priory
Newbury
Berkshire RG14 2JE

ENQUIRIES:

+44 (0) 1635 553 553
jsw@dreweatts.com
dreweatts.com

Front cover: Lot 133

Inside front cover: Lots 188, 190, 191, 192, 193 & 194

Page 1: Lot 218

Page 2: Lot 19

Back cover: Lot 196

Catalogues £15 (£18 by post)





Fine British Silver,
Continental Silver
and Allied Wares and
Objects of Vertu



1

1
**A SET OF SIX PROBABLY SCOTTISH
 PROVINCIAL SILVER TABLE SPOONS**
 STAMPED NG, EARLY 19TH CENTURY
 Engraved L
 24cm (9 1/2in) long
 344g (11.05 oz) gross

£200-300

2
**A GERMAN SILVER GILT TREFID PATTERN
 FORK AND SPOON**
 POSSIBLY JOHAN MARTIN SCHMIDT,
 AUGSBURG, CIRCA 1705
 Engraved with foliate decoration
 The fork 15.5cm (6in) long, the spoon 16cm
 (6 1/4in) long
 61g (2 oz)

£250-350



2

3
**A BRITANNIA STANDARD SILVER
 TAPERING MUG**
 MAKER'S MARK SP, EARLY 18TH CENTURY
 With a tongue capped scroll handle and a
 moulded base
 13cm (5in) high
 334g (10.75 oz)

£300-500



3

4
**A QUEEN ANNE BRITANNIA STANDARD
 SILVER TANKARD**
 SETH LOFTHOUSE, LONDON 1705
 With an ogee domed cover and bifurcated
 thumb piece, the scroll handle engraved A*W
 18.5cm (7 1/4in) high
 776g (24.95 oz)

£1,000-1,500



4

5
A GEORGE II SILVER TANKARD
 RICHARD BAYLEY, LONDON 1745
 With an ogee domed cover, a bifurcated
 thumb piece, the scroll handle engraved R*C
 1746 and with a heart terminal
 18cm (7in) high
 763g (24.5 oz)

£1,000-1,500



5



6

6

A PAIR OF GEORGE II SILVER OVAL SAUCE BOATS

NO APPARENT MAKER'S MARKS, LONDON 1751

With gadrooned borders, double scroll handles, engraved with a coronet above a crest and a motto above a crest above EN, on three foliate pad feet

20cm (8in) long

893g (28.7 oz)

£600-800



7

7

A GEORGE II SILVER BALUSTER TANKARD

JOHN PAYNE, LONDON 1753

With an ogee domed cover and a pierced thumb piece, a double scroll handle engraved I*B and on a circular moulded spreading base

20cm (8in) high

907g (29.15 oz)

£1,000-1,500



8

8 Y

A GEORGE III SILVER BRANDY PAN WITH ASSOCIATED COVER

MAKER'S MARK OBSCURED, LONDON 1764

With a turned ebony handle, the unmarked associated domed cover with a loop handle and engraved with a crest

29cm (11 1/2in) long

738g (23.75 oz) gross

The crest is part of the heraldic arms of John MONSON (1727-1774) 2nd Baron Monson, a lawyer, who from 1765 was Warden and Chief Justice in Eyre for Forest South of the Trent. He was the eldest son and heir of John MONSON (1693-1748) 1st Baron Monson, created 1728, by Margaret WATSON (1695-1751) younger daughter of Lewis WALKER (1655-1724), 1st Earl of Rockingham. In 1752 he married Theodosia MADDISON (1727-1821) daughter of John MADDISON of Harpwell, Lincolnshire. They had issue five sons and two daughters. The eldest son John MONSON (1753-1809) succeeded his father as 3rd Baron.

£300-500



9

9

A MATCHED PAIR OF GEORGE II CAST SILVER CANDLESTICKS

POSSIBLY JOHN LUFF, LONDON 1750 AND WILLIAM GOULD, LONDON 1750

With shaped square sconces, turned stems, engraved with a crest and on moulded shaped square bases

19cm (7 1/2in) high

1096g (35.25 oz)

£700-1,000



10

10

A PAIR OF GEORGE II CAST SILVER CANDLESTICKS

WILLIAM CAFE, LONDON 1759

With shaped circular sconces, knopped stems and on shaped circular bases with shell decoration

25cm (9 3/4in) high

1231g (39.6 oz)

£1,000-1,500



11

11
A CASED GEORGE II SILVER RECTANGULAR BALUSTER TEA CADDY AND A SWING HANDLED BASKET

THE TEA CADDY BY J. COLLINS, THE BASKET BY EDWARD ALDRIDGE & JOHN STAMPER, BOTH LONDON 1755
The tea caddy with a bird and boy finial to the domed cover, the body chased with figures seated in pillared buildings, foliage and scrolls, engraved with a crest and coat of arms, on four foliate pad feet
The basket with a scroll and floral swing handle, a chased C-scroll and floral border, a pierced body, engraved with a matching coat of arms, on a C-scroll and floral base
The tea caddy 12cm (4 3/4in) high, the basket 15cm (6in) long
542g (17.45 oz) gross
In a fitted shagreen box with silver mounts

The arms of Richard ASTELL (1717-1777), timber merchant of London and gentleman of Everton House Bedfordshire and his wife Sarah BAGNALL (1717-1767) formerly of London. They were first cousins who married in London in 1740.

Richard ASTELL was the son of William ASTELL (1672-1741), a London timber merchant by Mary BAGNALL (1686-1753). Sarah BAGNALL was the daughter of John BAGNALL (1678-1742) gentleman of London by Hannah KENNET (1737-1807) formerly of Bradford Yorkshire.

£1,000-1,500



12

12
A CASED SET OF THREE GEORGE III RECTANGULAR BALUSTER SILVER TEA CADDIES

PIERRE GILLOIS, LONDON 1768
The pull off covers with bud finials and engraved with a crest, the bodies engraved with an armorial, a monogram beneath, a gadrooned and foliate border, on four scroll feet
15cm (6in) high, two 8cm (3in) wide, one 9cm (3 1/2in) wide
930g (29.9 oz)

The arms for Thomas MASTER (1744-1823) of Abbey House, Cirencester Gloucestershire and his wife Mary Napper DUTTON (1748-1819) of Sherburne Gloucester. They were married in 1769 and the date of assay of 1768 would suggest that the tea caddies were marriage pieces. The MASTER family were originally of Kent and many of the earlier generations in Gloucestershire were MPs for Cirencester. Thomas MASTER was the MP for Cirencester 1784-1796.

Thomas MASTER was the eldest son and heir of Thomas MASTER (1717-1749) MP of Abbey House, Cirencester Gloucestershire by Elizabeth Chester CANN (1721-1781) the daughter of William CANN 3rd Baronet Cann of Compton Greenfield, Gloucestershire.

Mary Naper DUTTON was the daughter of James Lenox DUTTON formerly NAPER by his second wife Jane BOND, whom he married in 1746, and he in turn was the son of James NAPER and Ann DUTTON. Notably Mary was the sister of James Naper DUTTON (1744-1820) who was later in 1784 created 1st Baron Sherborne.

£3,000-5,000

13

A PAIR OF GEORGE IV SILVER CHAMBERSTICKS

JOSEPH ANGELL I, LONDON 1781
With foliate baluster capitals, a lead capped scroll handle, shaped circular moulded borders with shells and foliage at intervals, engraved with a crest and on three pad feet, the snuffers conforming
16cm (6 1/4in) long
744g (23.9 oz)

This is the crest associated with the arms of the THOROTON family of Thoroton, Great Crophill and Car Colston, Nottinghamshire. The family are well known in Nottinghamshire as a result of the multi-volume publication the *Antiquities of Nottinghamshire* (1677) of the work of the antiquarian Dr Robert THOROTON (1623-1678) of Cars Colton. Today a learned society (The Thoroton Society) still exists that promotes antiquarian research in Nottinghamshire.

The owner of these chambersticks were likely to be Thomas THOROTON (1723-1794) of Screveton, Nottinghamshire. He married Roosila DRAKE illegitimate daughter of John MANNERS (1696-1779) 3rd Duke of Rutland by his mistress Elizabeth DRAKE. The couple and their family lived at Belvoir Castle or Rutland Gate. He later purchased Flintham Hall. Thomas was an MP, 1751-1761 for Boroughbridge, 1761-1768 for Newark and 1768-1780 for Bramber. There is also the possibility that the object could belong to his eldest son Col. Thomas THOROTON (1753-1813) born at Belvoir Castle, of Screveton and Flintham Nottinghamshire, who married later in 1784 Anne BOWES (died 1827) eldest daughter of George Wanley BOWES of Thornton Hall, Co. Durham.

£400-600



13



14

14

A GEORGE III SILVER TANKARD

THOMAS WALLIS I, LONDON 1769
With an ogee domed cover and bifurcated thumb piece, a girdle, the scroll handle engraved S W*A and with a heart terminal
20cm (8in) high
756g (24.3 oz)

£800-1,200



15

15

A SET OF FOUR GEORGE III SILVER CANDLESTICKS

JOHN PARSONS & CO., SHEFFIELD 1786
The circular sconces with reeded borders and engraved with a crest, urn shaped capitals and tapering stems, the circular, reeded and moulded bases engraved with a crest
28.5cm (11 1/4in) high
Loaded

The crest is that of the many variations of arms of the SAVILE family. Branches of the family in existence at the time of assay (1786) include: Earl of Mexborough, SAVILE of Lincolnshire and Darton Grange Nottinghamshire, SAVILE of Thirbergh Yorkshire, SAVILE of Humby Lincolnshire. Most are descended from the earlier family of Methley Yorkshire.

£1,000-1,500

16 Y
A CASED SET OF SIX SILVER AND
TORTOISESHELL MENU HOLDERS
WILLIAM COMYNS, BIRMINGHAM 1912
With reed, stitch and foliate borders, the
rectangular tortoiseshell panels inlaid with
birds, fish and a hare
4cm (1 2in) long

£400-600



16



17

17
A FRENCH SILVER SOUP TUREEN AND COVER
FRANCOIS PASSERON, LYON, 1819 - 1838
The cover with a cone finial and tongue and dart
border, the body with twin foliate loop handles and on
a circular pedestal foot
33cm (13in) long
1626g (52.25 oz)

£1,000-1,500



18

18
A PAIR OF WILLIAM IV SILVER CANDLESTICKS
HENRY WILKINSON & CO., SHEFFIELD 1835
The shaped square scones with shells to the corners, waisted capitals,
turned stems to conforming shaped square bases
29cm (11 12in) high
1492g (48 oz)

£400-600



19

19
A GEORGE III SILVER CIRCULAR SOUP TUREEN AND COVER
THOMAS ROBINS, LONDON 1809
The domed cover with a foliate loop handle, a nulled band and engraved with a crest, the body with a nulled border, twin foliate and shell loop
handles, engraved with an armorial, on four foliate, shell and lion paw feet
36cm (14in) long
4058g (130.5 oz)

The crest and shield for the BOND family of London and Surrey. The arms of the shield are usually accompanied by the motto: NON SUFFICIT
ORBIS (the world is not enough). These are the arms and motto that occur in the James BOND film: *On Her Majesty's Secret Service*. The same
arms are used with the motto: DEUS PROVIDEBIT by the BOND family of Carrownure, Lecarrow co. Roscommon, who are expected to be a cadet
branch of the original family who settled originally in co. Longford as Presbyterian priests in the mid eighteenth century.

Despite extensive searches the maternal arms contained in the escutcheon have not been identified. Possible owners are: POLLARD, SPENEY,
WETHERS, WHITHERS.

£2,000-3,000



20

20

A GEORGE IV SILVER OBLONG INKSTAND

JOSEPH ANGELL I, LONDON 1825

With gadrooned borders, engraved '*In memory of W. H. B. and J.B. May 27. 1818 and June 2. 1825*', on four shell and foliate bracket feet, with two cut glass bottles, the centre with a chamber stick and two pen trays

30cm (12in) long

1596g (51.3 oz) weighable

£500-700



21

21

A PAIR OF RUSSIAN SILVER CANDLESTICKS

ST. PETERSBURG, 1871

With circular sconces, baluster capitals and stems, on shaped circular bases, chased with foliage, scrolls and flowers

24cm (9 1/2in) high

675g (21.7 oz)

£300-500



22

22

A FRENCH SILVER OVAL ENTREE DISH AND COVER

PUIFORCAT, PARIS, LATE 19TH CENTURY

With an artichoke final to the domed cover and twin loop handles

35cm (13 3/4in) long

1934g (62.2oz)

£600-800

23

A VICTORIAN LARGE SILVER GREEK AMPHORA STYLE VASE

ROBERT HENNEL, LONDON 1869

With twin loop handles, engraved with anthemion motifs, Vitruvian scroll and Greek key bands, on a circular foot

46cm (18in) high

1530g (49.2 oz)

Provenance:

Ex lot 234, Sotheby's Noseley Hall sale, 28th and 29th September 1998.

Ex lot 45, Christie's, Selected Silver and Plate, 19th February 2002. This lot is accompanied by the Christie's catalogue from this sale.

£700-1,000



24



23

24 Y

A CASED VICTORIAN SILVER EWER

MARTIN, HALL & CO., LONDON 1877

With a Greek helmet finial, the high clip handle with ivory warming bands, engraved overall with Greek decoration including figures, masks and foliate swags, on a circular pedestal foot

33.5cm (13 1/4in) high

914g (29.4 oz) gross

Provenance:

Sotheby's Noseley Hall sale, 28th and 29th September 1998, ex. lot 234

Please note Dreweatts have applied for a de minimis exemption licence for the ivory in this lot

Ref: 7FDB1C7V

£700-1,000



25

**25
A SET OF THREE VICTORIAN SILVER SHAPED OVAL
PIERCED BASKETS**

CHARLES STUART HARRIS, LONDON 1893
With a chased scroll and floral border, the pierced body
embossed with swags of flowers and on a conforming
shaped oval pedestal foot
Two 29cm (11 1/2in) long, one 39cm (15 1/4in) long
2904g (93.4 oz)

£1,000-1,500



26

**26
A FRENCH SILVER GILT SHAPED CIRCULAR SALVER**

PUIFORCAT, PARIS
With a chased foliate and grape vine border, engraved
with a wreath, on three foliate scroll feet
31cm (12 1/4in) diameter
1810g (58.2 oz)

£500-700



27

**27
A FRENCH SILVER ENTREE DISH, LINER AND COVER**

MINERVA MARKS ONLY
The domed cover with a bean pod finial and a shaped
circular scroll and leaf border, the body with twin loop
handles
28cm (11in) long
1797g (57.8 oz)

£600-800

28

A SILVER AND ENAMEL MATCHBOX COVER

OMAR RAMSDEN, LONDON 1934
Th cover chased and pierced with St. George slaying the dragon
to a blue enamel reserve
7.5cm (3in) long
120g (3.9 oz) gross

£400-600



28



30

29

A SILVER COLOURED DIP PEN AND SILVER OBLONG TRAY

OMAR RAMSDEN, LONDON 1937
The silver coloured dip pen with wirework decoration, the
terminal inset with a moonstone, stamped Omar Ramsden Me
Fecit, the tray on six compressed feet, hallmarked London 1937
The pen 16cm (6 1/4in) long, the tray 19.5cm (7 3/4in) long
106g (3.4 oz) gross

£250-350



29



30

A CASED PAIR OF VICTORIAN SILVER FIVE LIGHT CANDELABRA

GEORGE EDWARD & SONS, SHEFFIELD 1895
With beaded circular sconces, urn shaped capitals, four scroll
branches, tapering stems, canted corner square bases, chased with
bows, husk swags, acanthus leaves and rams masks
52cm (20 1/2in) high
2280g (73.3 oz) weighable

£2,500-3,500



31

31
A FRENCH SILVER COLOURED SHAPED CIRCULAR SERVING DISH
 MAKER'S MARK OBSCURED, MINERVA MARK
 With a chased foliate and scroll border
 33,5cm (13 1/4in) diameter
 1099g (35.35 oz)

£600-800



32

32
AN AMERICAN SILVER COLOURED SHAPED OVAL SERVING DISH
 GORHAM, .925 STANDARD, 20TH CENTURY
 With a chased foliate and shell border, embossed with swags of fruit and two vacant reserves
 65cm (25 1/2in) long
 2584g (83.1 oz)

£800-1,200



33

33
A GERMAN SILVER COLOURED TWIN HANDLED OVAL TRAY
 STAMPED 800, MEISTER
 With a tongue and dart border, and twin ebonised handles
 58cm (22 3/4in) long
 1438g (46.25 oz) gross

£500-700



34

34
A FRENCH SILVER COLOURED FOUR PIECE BALUSTER TEA AND COFFEE SET
 PIUFORCAT, 20TH CENTURY
 The tea and coffee pots with shell thumb pieces to the domed covers, wood scroll handles and on circular moulded spreading bases
 The tea pot 25cm (9 3/4in long), the coffee pot 19cm (7 1/2in) high
 2427g (78 oz) gross

£800-1,200



35

35
AN ELECTRO-PLATED DECANTER CARRIAGE
 UNMARKED
 The wirework bodies with cast grape vine borders, wooden bases, a grape vine loop handle and on four wheels, with two glass decanters
 46cm (18in) long

£300-500



36

36
A PAIR OF SILVER OVAL TUREENS AND COVERS
 JAMES DIXON & SON, SHEFFIELD 1964
 With nulled borders and twin loop handles
 28.5cm (11 1/4in) long
 2725g (87.6 oz)

£1,000-1,500



37

37
A CASED FRENCH SILVER GILT PART TABLE SERVICE FOR EIGHTEEN PLACE SETTINGS
 MAISON ODIOT, PARIS, .925 STANDARD, CIRCA 1920
 Engraved with an armorial, comprising:

- Eighteen table spoons
- Eighteen table forks
- Eighteen tea spoons
- A pair of serving spoons
- A straining spoon
- 3129g (100.6 oz)

Together with the following knives with filled handles:

- Eighteen table knives with steel blades
- Eighteen dessert knives with silver gilt blades

£2,000-3,000

38
A SILVER PART TABLE SERVICE FOR TWELVE PLACE SETTINGS
 MAPPIN & WEBB, SHEFFIELD 1946-1947
 Comprising:

- Six table spoons
- Twelve table forks
- Twelve dessert spoons
- Twelve dessert forks
- Twelve fish forks
- Twelve fish knives
- Twelve soup spoons
- Six tea spoons
- Four butter knives
- A soup ladle
- Two sauce ladles
- 5226g (168.15 oz)

Together with the following with silver handles and stainless steel blades:

- Twelve table knives
- Twelve dessert knives
- A knife sharpener

In a fitted canteen

£2,000-3,000



38



39

39
A CASED SILVER HANOVERIAN PATTERN TABLE SERVICE FOR EIGHT PLACE SETTINGS

ROBERTS & BELKS, SHEFFIELD 1973
 Comprising:

- | | |
|----------------------|---|
| Four table spoons | Together with the following knives with stainless steel blades: |
| Eight table forks | |
| Eight dessert spoons | Eight table knives |
| Eight dessert forks | Eight dessert knives |
| Eight soup spoons | Three piece carving set |
| Eight tea spoons | |
| 2159g (69.4 oz) | £700-1,000 |



40

40
A SILVER FIDDLE, SHELL AND THREAD PATTERN TABLE SERVICE FOR TWELVE PLACE SETTINGS

JOHN BIGGIN, SHEFFIELD 1972
 Comprising:

- | | |
|-----------------------|---|
| Two table spoons | Together with the following with silver handles and stainless steel blades: |
| Twelve table forks | |
| Twelve dessert spoons | Twelve table knives |
| Twelve dessert forks | Twelve dessert knives |
| Twelve soup spoons | A carving knife and fork |
| Twelve fish forks | |
| Twelve fish knives | In a fitted Christofle Regency canteen |
| Twelve tea spoons | |
| Twelve coffee spoons | £2,500-3,500 |
| 6751g (217.05 oz) | |

41
HARDY BROS., LONDON & SYDNEY
18 CARAT GOLD KEYLESS WIND
RATTRAPANTE CHRONOGRAPH FULL
HUNTER POCKET WATCH, NO. 10067, CIRCA
1888

Movement: Three quarter plate, bimetallic
split balance, overcoil balance spring. English
lever escapement, polished steel chronograph
work
Case: 18 carat gold five piece hinged case, the
cuvette engraved ‘Dr. S. M. Morton, a tribute
of remembrance and esteem, Springfield 10th.
December 1889’, hallmarked London 1888
Dial: White
Size: 52mm
Signed: Dial, movement, case stamped EN for
Emil Nielson
Accessories: None

£3,000-5,000

42 Y
**A GOLD MOUNTED AND TORTOISESHELL
CYLINDRICAL BOX**
VILLEFRANCHE EN BEAUJOLAIS 1768-1774
IMPORT MARK AND PARIS 1768 - 1774 MARK
Engraved with a guilloche band border and
striated decoration
Size/dimensions: 8.5cm diameter, 3.5cm high
Gross weight: 145g

£800-1,200

43
A GILT METAL AND SHAGREEN ETUI
18TH CENTURY
With pique decoration and push button catch,
opening to a pair of scissors, a knife and three
other tools
Size/dimensions: 10cm high

£600-800



41

44
**J.F. BAUTTE & CIE, GENEVA, A
POLYCHROME ENAMEL SNUFF BOX**
CIRCA 1826-1850

The box with polychrome enamelled flowers,
birds and figures in a scrolling foliate ground,
the lid lip signed J. F. BAUTTE & CIE A
GENEVE with unidentified control mark
Size/dimensions: 6.4cm x 3.4cm 1.3cm
Gross weight: 43.5 grams

J.F. Bautte & Cie. was a celebrated Swiss
jeweller and watchmaker, particularly known
for its fine enamel work. The company found
fame under Jean François Bautte (1772-1837),
who was apprenticed into the enamel and
jewellery trade from the age of 12, and by the
age of 20 was making his own pieces under
the apprenticeship of watch case makers
Jacques-Dauphin Moulinié and Jean François
Blanchot in Geneva. Between 1804 and 1808
Bautte worked in partnership with Moulinié,
after which Jean-Gabriel Moynier joined the
partnership, and the company traded as
Moulinié, Bautte & Moynier until 1821 when
Moulinié retired. Between 1821 and 1826 the
company traded as Bautte & Moynier. In the
1830's Bautte traded under his sole name
J.F. Bautte until his death in 1837, when the
company continued to trade under the
direction of Bautte's son Jacques. Queen
Victoria was amongst the many high profile
royal and noble customers of J.F. Bautte in the
mid 19th century who admired the excellence
of Bautte's pieces.

£800-1,200

45
**J. F. BAUTTE & CIE, GENEVA, A SWISS GOLD
AND ENAMEL OCTAGONAL HINGED BOX**
CIRCA 1826-1850

The elongated octagonal snuff box with
rounded ends decorated with red, green white
and blue enamel flower heads and foliage in the
Ottoman taste, with a later mirror to the lid,
stamped with BC with a star above and an oval
shape below within a lozenge shaped punch
Size/dimensions: 9cm long
Gross weight: 100 grams

£2,000-3,000



43



42



44



45

46
J. CHAUMET, A FRENCH GOLD, DIAMOND
AND PINK ENAMEL OPEN FACE FOB
WATCH, NO. 52867

EARLY 20TH CENTURY
The circular champagne dial with black Arabic numerals, signed J. Chaumet Paris Londres, within an opalescent enamel and rose cut diamond bezel, and red enamel border, the reverse with pink opalescent guilloche enamel and red and white enamelled centre with an applied rose cut diamond rosette, the bow set with rose cut diamonds, and a cabochon ruby set winder, stamped with a French poinçon, Swiss lever movement with bimetallic split balance and overcoil balance spring
Size/dimensions: case diameter 2.9cm
Gross weight: 24.4 grams

£1,000-1,500

47 Y
AN EARLY 20TH CENTURY GOLD,
DIAMOND, ONYX, RED ENAMEL AND
TORTOISESHELL COMB AND CASE

CIRCA 1910
The gold case with red enamel and a rose cut diamond and polished onyx thumb piece, with a tortoiseshell comb
Size/dimensions: 10.3 cm long
Gross weight: 38.5 grams

£600-800

48 Y
A ROSE QUARTZ AND DEMANTOID
GARNET PARASOL HANDLE
CIRCA 1910

The polished handle with engraved lattice decoration, with gold collet set circular cut demantoid garnets at the intersections, with a green enamelled engine turned collar with applied gold coloured foliate swags, to a hardwood cane, with silver coloured screw tip stamped A and A.W; together with an additional polished rock crystal handle, with engine turned blue enamel collar and silver coloured foliate swag detail, to a tortoiseshell cane, with silver coloured screw tip with a rubbed A.W stamp
Size/dimensions: rose quartz handle 3cm diameter, 29cm long
Gross weight: 230.5 grams

£800-1,200

49 Y
A RUSSIAN GOLD, IVORY AND RED
ENAMEL SMALL PIPE

ERIK AUGUST KOLLIN, EARLY 20TH CENTURY
The gold bands engraved with foliate swags, the body with translucent red enamel and ivory screw fitting
Size/dimension: 5.5cm long
Gross weight: 15g

Please note Dreweatts have applied for a de minimis exemption licence for the ivory in this lot
Ref: 3GETT4K4

£1,000-1,500

50
FABERGÉ, A RUSSIAN SILVER GILT, BLUE
ENAMEL AND DIAMOND BELT BUCKLE
HENRIK WIGSTROM, 88 ZOLOTNIKI,
CIRCA 1900

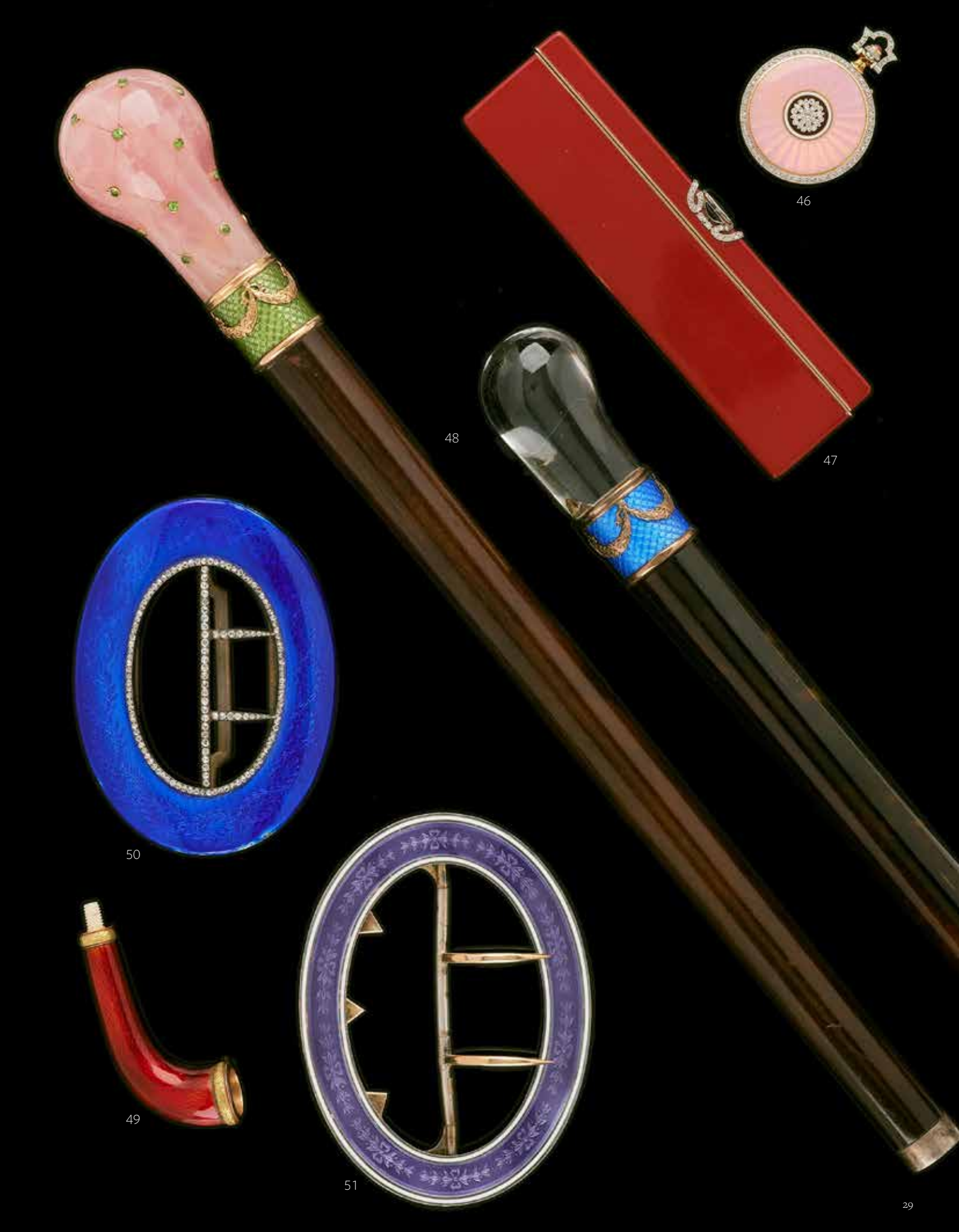
With blue enamel over a foliate swag band ground, with a rose cut diamond set border and clasp
Size/dimensions: 8cm long
Gross weight: 43 grams

£2,500-3,500

51
A FRENCH SILVER, GOLD AND ENAMEL
BUCKLE

EARLY 20TH CENTURY
With translucent purple enamel over a foliate and bow swag band, with white enamelled borders, stamped with French poinçons
Size/dimensions: 8.5cm long
Gross weight: 59 grams

£80-120



52 Y

A FRENCH SILVER, ENAMEL, DIAMOND AND IVORY INKSTAND

MARKS OBSCURED, CIRCA 1910

With blue guilloche enamel, white enamel borders, twin square inkwells with cone finials to the domed covers, green and white enamel bands, green enamel and diamond set husk swags, a pen rest, the ivory base signed Cartier, on four bun feet

21.5cm (8 1/2in) long

1072g (34.5 oz) weighable

Please note Dreweatts have applied for a de minimis exemption licence for the ivory in this lot
Ref: 495ZJZFL

£1,500-2,000

53 Y

CARTIER

AN ENAMELLED, MOONSTONE AND IVORY DESK CALENDAR, CIRCA 1908

With blue guilloche enamel, white enamel borders, the bezel with a green and white enamel reel and dot band, a moonstone set winder, a silver gilt easel stand, stamped with a poinçon, an ivory back panel, the ivory stamped Cartier

8.5cm (3 1/4in) diameter

Please note Dreweatts have applied for a de minimis exemption licence for the ivory in this lot
Ref: 6Q7832LD

£6,000-8,000



54 Y

AN EARLY 20TH CENTURY FRENCH ENAMEL, DIAMOND AND TORTOISESHELL HAIR COMB

The pale blue guilloche enamel with a white enamelled border, with applied rose cut diamond set garlands interspaced by two pairs of rose cut diamond and white enamelled tulip shaped motifs between, stamped with French poinçons and numbered 1547, to blonde tortoiseshell teeth, and an associated Cartier Paris comb case

Size/dimensions: 10.3cm wide

Gross weight: 45 grams

£1,000-1,500

55

CARTIER, AN ART DECO GOLD AND BLACK ENAMEL CIGARETTE CASE

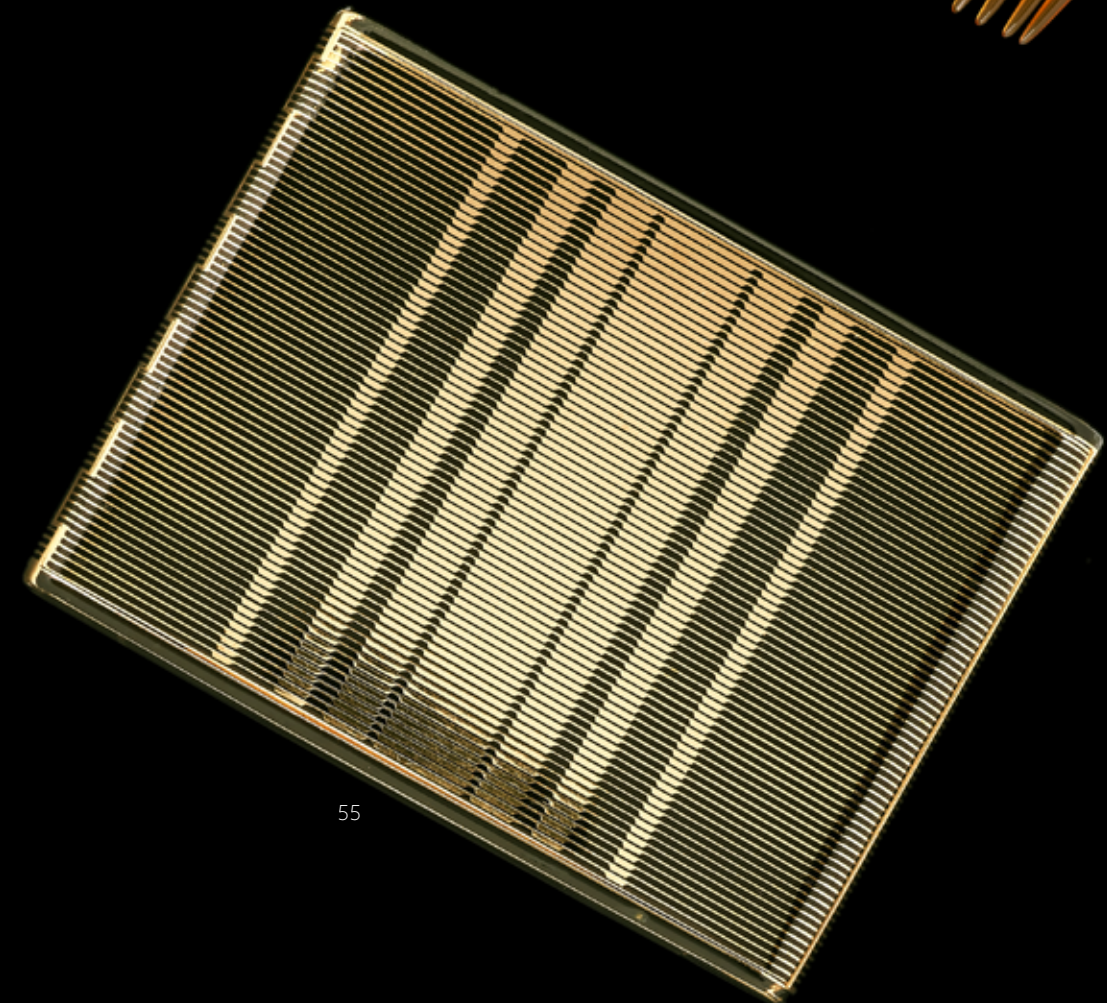
CIRCA 1930

With striated decoration, stamped with a poinçon and Cartier Paris, Londres, New York, with a Cartier tooled red leather case

Size/dimensions: 11.5cm long

Gross weight: 206g

£4,000-6,000





Fine Jewellery and
Wristwatches

56
A LATE GEORGE III AND LATER
SENTIMENTAL LOCKET NECKLACE

The belcher link chain necklace with lobster claw clasp suspending nine lockets containing a lock of hair, the reverse with the following inscriptions *Eliz.b Anne West, born the 7 June 1804; James Shuttleworth West, born 10 Aug 1805; James Banks West, born the 15. of March 1807; Rob.t Shuttleworth West, born 1st Jan 1809; Sophia Jane West, born 26 March 1810; Miriam Caroline West 19. June 1811; Helen Agnes West, Born dec 10. 1812; Charles Edward West Born 27 July 1815; Anna Maria West Born 20th July 1822*
Size/dimensions: lockets 1.1cm diameter, 42.5cm long
Gross weight: 19.6 grams

These pendant lockets have the names of the West family, the 11 children of James WEST Esq. (1750-1829) and his wife Emma Shuttleworth (1778 -1834), although there are no lockets for two of their children, Mary Emma and Desagulius, on the chain. Some of the children have the middle name Shuttleworth after their mother Emma, whose family originate from Gawthorpe Hall, Lancashire.

£800-1,200

57
A PAIR OF MID VICTORIAN BALLOON
HAIRWORK EAR PENDANTS

CIRCA 1860
The engraved gold leaf pediments each suspending four balloon hairwork nuts with polished gold caps and bases, and leaf detail, hook fittings
Size/dimensions: 4.1cm long
Gross weight: 6 grams

£400-600

58
A 19TH CENTURY ENAMEL AND
HAIRWORK PANEL BROOCH

The central oval panel, circa 1780, with a hairwork giardinetto with bow and swag detail, upon a white ground, within a red and white enamelled border, with woven hair beneath a glazed panel verso, inset in a later pierced lattice two colour gold setting, with scrolled detail, later brooch fitting
Size/dimensions: 4cm wide
Gross weight: 11.3 grams

£250-350

59
A LATE 19TH CENTURY FRENCH, GOLD,
PEARL AND ENAMEL BROOCH

CIRCA 1880
The central pearl raised claw set with similarly set pearls at the cardinal points, within a blue enamelled quatrefoil border to blue enamelled hooped surround, the brooch clasp stamped with a French poinçon
Size/dimensions: 4.1cm wide
Gross weight: 17.4 grams

Please note the pearls are untested and unwarranted as natural pearl.

£300-500

60
A GEORGE III ENAMELLED PANEL
MOURNING RING

CIRCA 1792
The oval panel with opalescent enamelled ground with an applied blue and white enamelled urn beneath a domed glazed panel, with black enamelled coronet above the initials EG, the reverse engraved with *Elizabeth Viscountess Galloway Ob 2nd Jan.y 1792 aet 65*, to a tapered polished shank
Size/dimensions: finger size T
Gross weight: 8.5 grams

Elizabeth da COSTA VILLA-REAL (died 1792) was the daughter of Joseph da COSTA VILLA-REAL, and married William MONCKTON-ARUNDELL in 1747. William Monckton Arundel became 2nd Viscount GALWAY (died 1772) in 1751. William was the son of John MONCKTON-ARUNDELL (1695-1751) who was in 1727 created 1st Viscount GALWAY. Elizabeth and William Monkton-Arundel had three sons and two daughters, and their two sons succeeded as 3rd and 4th Viscount. Galway

£1,000-1,500

61 Y
A GEORGE III LOCKET PENDANT

CIRCA 1790
The circular panel with a graduated border of blue enamel and white enamelled borders, with half seed pearl accents, glazed panel to the centre front and verso, containing an associated miniature of a gentleman, signed with the initials S.C. 1757, with triangular bale
Size/dimensions: 4.3cm diameter
Gross weight: 17.1 grams

Please note Dreweatts have applied for a de minimis exemption licence for the ivory in this lot
Ref: RXULYS34

£300-500



62

**AN 1820S PASTE AND AGATE CAMEO
PENDANT OF GEORGE III**

The white paste cameo of George III upon
an oval polished banded agate panel, within a
beaded gold cannetille border, with polished
loop bale, to a rope twist chain necklace, with
ring bolt clasp
Size/dimensions: 4.9cm long, chain 39cm long
Gross weight: 18 grams

£500-700

63

**GEORGE III AND QUEEN CHARLOTTE,
A PASTE AND BLOODSTONE
COMMEMORATIVE PENDANT**

CIRCA 1770
With polished bloodstone ground with
applied white paste cameos of King George III
to one side and his wife and consort Queen
Charlotte to the other, within a rope twist wire
and polished surround, polished circular bale,
on a later associated serpent link chain, the
lobster claw clasp stamped 750
Size/dimensions: 4.8cm long
Gross weight: 16.6 grams

A near identical bloodstone and paste cameo
pendant is in the collection of the V & A
museum.

£700-1,000

64

**A ROSE CUT DIAMOND AND BANDED
AGATE INTAGLIO PENDANT**

The oval banded agate panel carved with
Judith holding the head of Holofernes, with
closed foiled back, within a rose cut diamond
surround and bow surmount, and rose cut
diamond set bale, gold backed silver setting,
with later curb link chain
Size/dimensions: 4.9cm long
Gross weight: 11.5 grams

£500-700

65

A REGENCY GOLD LONG CHAIN

CIRCA 1820
The belcher links with textured target
decorated surfaces, to an applied cannetille
and beaded barrel clasp with turquoise
accents
Size/dimensions: 104cm long
Gross weight: 54.9 grams

£1,500-2,000

66

**A LATE 19TH CENTURY HARDSTONE
CAMEO IN ASSOCIATED HALF PEARL
SETTING**

The hardstone panel carved with Eros
(Cupid) aiming his bow and arrow at a
reclining deity, possibly Daphne, within an
associated gold coloured and half pearl
border, with brooch fitting
Size/dimensions: 3.2cm wide
Gross weight: 12.4 grams

Please note the pearls are untested and
unwarranted as natural pearl.

£300-500

67

**A MID VICTORIAN SHELL CAMEO
BROOCH**

CIRCA 1860
The oval shell cameo carved with a trio of
cherubs in flight after Thorvaldsen, within a
gold rope twist border
Size/dimensions: 4.4cm wide
Gross weight: 11.8 grams

£200-300



68
A 19TH CENTURY AND LATER GARNET AND DIAMOND CLOVER BROOCH
The trio of oval cabochon garnets in polished gold collet settings, to a rose cut diamond accented centre and stalk, on a later bar brooch, stamped 585
Size/dimensions: 5cm long
Gross weight: 10.8 grams

£300-500

69
A GEORGIAN TOPAZ CROSS PENDANT
CIRCA 1810
The facetted topaz arms in gold cut down collet settings, with a polished loop bale, on a belcher link chain to a barrel clasp
Size/dimensions: cross 3.8cm long including bale, chain 44cm long
Gross weight: 8.4 grams

£400-600

70
AN 1830S GOLD CANNETILLE, EMERALD AND RUBY ST ESPRIT BROOCH
The beaded cannetille dove in flight set with oval, cushion and pear cut rubies and emeralds, suspending a ruby accented heart from its beak, with a glazed locket verso
Size/dimensions: 3.5cm wide
Gross weight: 5.7 grams

£600-800

71
A FRENCH MID 19TH CENTURY GOLD, GARNET AND DIAMOND BRACELET
CIRCA 1860
The pierced central quatrefoil panel with engraved scrolled decoration centred with an octagonal step cut rhodolite garnet with old mine cut diamonds at the cardinal points, to curved track links, with engraved scrolled decoration, to concealed clasp, stamped with Paris post 1847 poinçons, and unidentified maker's mark
Size/dimensions: 18cm long
Gross weight: 27.2 grams

£800-1,200

72
AN EARLY 20TH CENTURY GOLD, ENAMEL AND PEARL LONG CHAIN
The belcher link chain with red and green enamelled barrel shaped spacers with a pearl between, to a ring bolt clasp
Size/dimensions: 170cm long
Gross weight: 22.3 grams

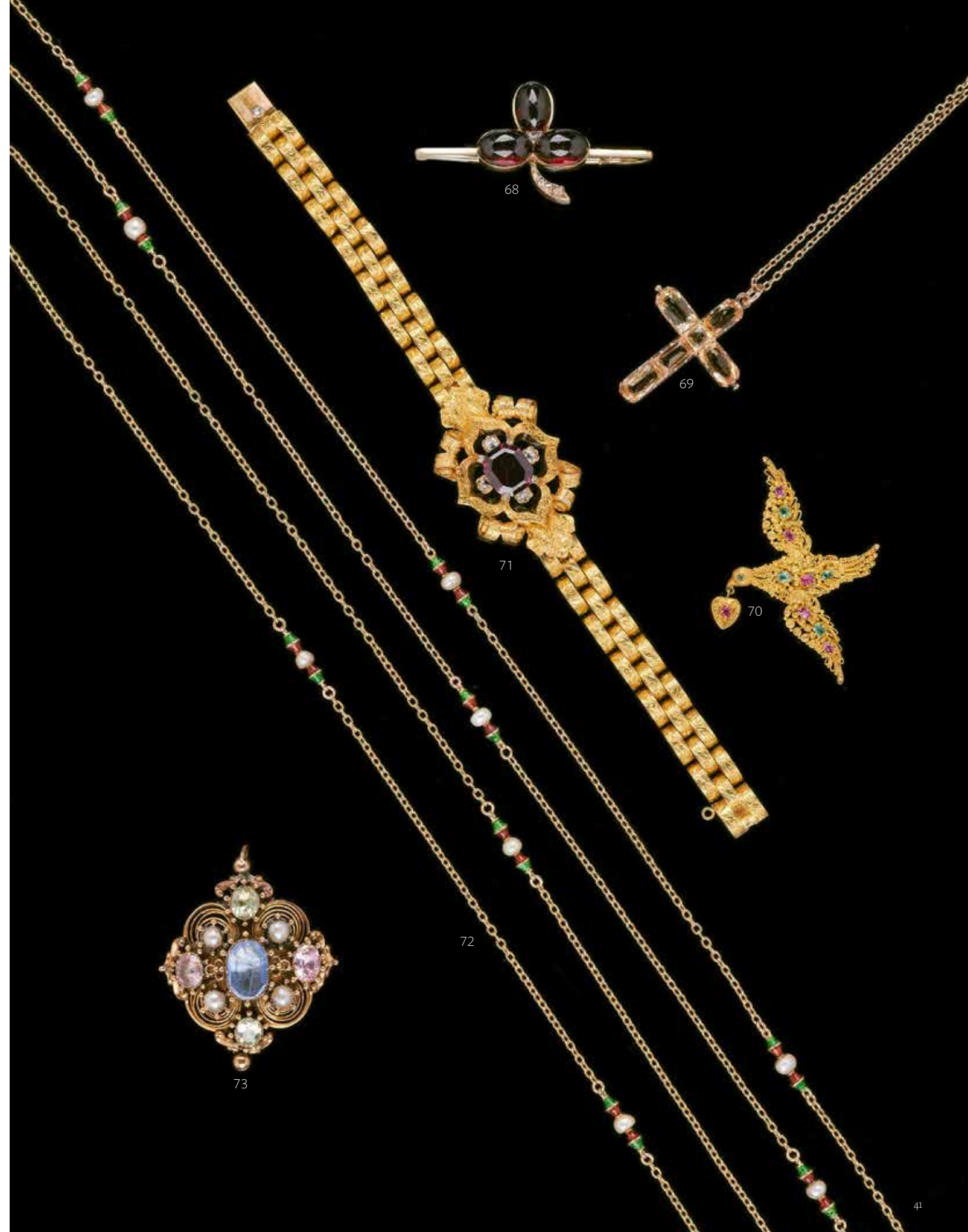
Please note the pearls are untested and unwarranted as natural pearl.

£600-800

73
AN EARLY VICTORIAN MULTI GEM BROOCH
CIRCA 1850
The lozenge shaped panel with a central octagonal cut sapphire in a claw setting with beaded surround, to alternating pink foiled back oval cut stones and oval cut chrysoberyl's at the cardinal points, with half pearls set above radiating hooped wired settings between, later brooch fitting
Size/dimensions: 4.7cm long
Gross weight: 12.9 grams

Please note the pearls are untested and unwarranted as natural pearl.

£300-500



74
A DIAMOND AND SAPPHIRE TOI ET MOI RING

The cushion cut diamond estimated to weigh 0.80 carats, in a claw setting beside a similarly cut sapphire, to polished crossover shoulders
Size/dimensions: finger size Q
Gross weight: 3.5 grams

£700-1,000

75
A CONTINENTAL EARLY 20TH CENTURY SAPPHIRE, DIAMOND, PEARL AND RUBY PENDANT

CIRCA 1910
The central pierced lozenge shaped panel centred with a step cut ruby within a rose cut diamond set foliate surround, and step cut sapphires at the cardinal points, to a swagged rose cut diamond base and with pierced rose cut diamond and circular cut floral borders, with pearl accents, suspending a pearl drop, etched and pressed floral decoration verso, unmarked, suspended from a belcher link chain necklace, to a barrel shaped clasp, in a fitted The Antique Art Galleries Ltd box
Size/dimensions: pendant 6.9cm long, chain 43cm long
Gross weight: 20.4 grams

Please note the pearls are untested and unwarranted as natural pearl.

£600-800

76
A LATE VICTORIAN DIAMOND AND EMERALD FIVE STONE RING

CIRCA 1900
The three old mine cut diamonds, approximately 0.80 carats total, interspaced by two step cut emeralds with canted corners, with a pierced scrolled gallery
Size/dimensions: finger size O
Gross weight: 3.3 grams

£500-800

77
A RUSSIAN EARLY 20TH CENTURY SAPPHIRE AND DIAMOND RING

CIRCA 1910
The Art Nouveau style panel with a vertical row of two old cut diamonds and a central squared cushion cut sapphire, in claw settings, to scrolled crossover shoulders set with old European cut diamonds, approximately 1 carat total, the shank stamped with 56 Zolotnik mark and St Petersburg mark, and two further unidentified marks
Size/dimensions: finger size M 1/2
Gross weight: 4.2 grams

£1,000-1,500

78
A DUTCH EARLY 20TH CENTURY ROSE CUT DIAMOND GIARDINETTO RING

The urn comprised of two foil backed shaped rose cut diamonds, to graduated rose cut diamond set scrolled handles, flower heads and leaves, gold backed silver closed back settings, to a floral shank stamped with Netherlands 1906-1953 revenue mark for domestic products
Size/dimensions: panel 2.2cm long, finger size R
Gross weight: 4.5 grams

£2,000-3,000

79
A MID 19TH CENTURY DIAMOND AND WOVEN HAIR PANEL BROOCH

CIRCA 1850
The oval panel of woven brown hair with rose cut diamond set scrolled initials JRB, within a scrolled and radiating gold surround, glazed panel verso, with brooch fitting
Size/dimensions: 7.9cm wide
Gross weight: 41.1 grams

£800-1,200

80
A LATE 19TH/EARLY 20TH CENTURY DIAMOND FLOWER BROOCH

The flower head with rose cut diamond set petals, with a central cushion cut diamond estimated to weigh 0.40 carats, in a raised claw setting, the gold backed silver setting and removable brooch fitting both stamped ET
Size/dimensions: 3.7cm wide
Gross weight: 17.7 grams

£800-1,200

81
A 19TH CENTURY MULTI GEM SET GIARDINETTO BROOCH

The pierced gold basket with etched decoration holding an array of gold backed silver rose cut and old mine cut diamond set flower heads, with cabochon ruby and emerald accents, verso with engraved floral decoration and brooch fitting
Size/dimensions: 4cm wide
Gross weight: 16.8 grams

£2,000-3,000

82
NATHANIEL MILLS, A VICTORIAN 18 CARAT GOLD SHAPED OBLONG VINAIGRETTE

BIRMINGHAM 1855
The engine turned cover with a chased foliate border and an oval vacant reserve, opening to a pierced and engraved foliate grill
Size/dimensions: 4cm long
Gross weight: 20 grams

£400-600



83
AN 18 CARAT GOLD AND 19TH CENTURY
FOB BRACELET

The curb link bracelet with partial hallmarks, to an associated ring bolt clasp with French poinçon, suspending various 19th century fobs, comprising: a seated spaniel fob, the cornelian base inscribed *Anna*; a three colour Triumph of Love fob, with crossed torch and quiver of arrows surmounted by a pair of hearts, the base with turquoise and seed pearl accents, the bloodstone panel engraved with initials *HK*; a three colour chased floral fob, with polished cornelian base; a three colour floral fob, the middle section with ducks and rabbit verso, the agate panel inscribed *Sarah*; a scrolled filigree heart two colour fob, the bloodstone panel with initials *SS*; a two colour coiled snake fob, the base with an carved antique style lion; and a tulip mounted fob, the agate seal carved with a crest

Size/dimensions: fobs approximately 2.8cm to 2cm high, bracelet 20.5cm long

Gross weight: 74.6 grams

£1,000-1,500

84
A MID 20TH CENTURY FRENCH BRACELET
SUSPENDING VARIOUS 19TH CENTURY
FOBS

The French bracelet with alternating rope twist and polished belcher links, the clasp stamped with French poinçons, suspending various early 19th century hardstone fobs, comprising: a floral decorated two colour fob with bloodstone monogram; a two colour lion fob with amethyst panel carved with two trees and inscription *Le destin nous separe le penchant nous unit*; a two colour seal in the form of a pair of doves with cornelian panel carved with a snowdrop and *Il faut me chereher*; a two colour turquoise set fob with agate base inscribed *Emma*; a figural harp fob, with applied clover, English rose and thistle to the base, the amethyst panel carved with Eros *l'amitie est l'amour sans ailez*; a micro mosaic fob, the two oval micro mosaic panels with a seated bird and a ruin, to a two colour vine and grape decorated base, the agate panel inscribed *Per mare per terras*; a three colour giardinetto shaped fob, with thistle, clover and rose decorated base, bloodstone panel with an engraved flower and *Vous la meritez*; a seated rabbit shaped fob, with ruby eyes, the bloodstone base inscribed *Ellen*; a seated cat fob with emerald eyes, the base carved with a coronet above the initials *CDF*

Size/dimensions: fobs approximately 2.6cm high to 2.1cm high, bracelet 21cm long

Gross weight: 86.3 grams

£1,500-2,000

85
FOUR LATE 18TH CENTURY FOBS ON A
LATER FANCY LINK BRACELET

Each fob with an oval cornelian panel, one carved with the profile of Zeus; another with the profile of Apollo with lyre behind; the third with a classically robed maiden standing beside a fouled anchor, with the motto *Never Despair*; and a further fob carved with a crest with lion supports above the motto *Est Encore Tempe*; suspended from a fancy double link bracelet with an unidentified mark to the clasp

Size/dimensions: the fob panels 3.2cm long to 2.8cm long, bracelet 19.4cm long

Gross weight: 98.9 grams

The armorial is that used by the von ROSEN family and the family was identified in French indexes as being of L'evonie. However more extensive European indexes provided by *Reistap* also identifies the arms to be of the same family of Stockholm, Sweden. Further research shows that family from Silesse Pom Dam, Bonn, Germany and that family established themselves as seal makers in Stockholm in the 18th century. Which is particularly interesting, in the case of this seal. This identifies His. Exe. Greve Fredrik Ulruk von ROSEN (1731-1793) who was created Comte de Bollwiller as a possible owner of the armorial.

£1,200-1,800



86

A FRENCH GOLD, STAR SAPPHIRE, DIAMOND AND GLASS SCENT BOTTLE
19TH CENTURY

The hinged cover set with a sugarloaf cabochon star sapphire, a rose cut diamond border, engraved with a monogram and two rose cut diamond set bay leaf bands, stamped with a French poinçon, the glass body etched with two bay leaf bands, with a glass stopper
Size/dimension: 9cm high
Gross weight: 88 grams

£1,500-2,000

87

A FRENCH LATE 19TH CENTURY GOLD AND STAR SAPPHIRE PENDANT

The oval cabochon star sapphire within a polished gold border with crossover detail at the cardinal points and a bow surmount, stamped with French poinçon, suspended from a rope twist chain with barrel clasp
Size/dimensions: 4.5cm long, chain 41cm long
Gross weight: 30.9 grams

£1,000-1,500

88

A MID VICTORIAN STAR SAPPHIRE BRACELET

CIRCA 1860
The circular cabochon sapphire in a cut down collet setting, between lion paw shaped shoulders, to a fancy link bracelet with beaded detail, the clasp with floral decoration and small oval glazed locket panel verso
Size/dimensions: sapphire 14.1mm x 12.8mm x 9.38mm, bracelet 17.4cm long
Gross weight: 18.1 grams

£1,000-1,500

89

A GOLD COLOURED LOCKET ON LONG CHAIN

The circular polished locket opening to reveal two internal frames, stamped 18ct, suspended from a serpentine link long chain, with lobster claw clasp, stamped 18ct
Size/dimensions: locket 3.2cm diameter, chain 152cm long
Gross weight: 47.9 grams

£800-1,200



90
AN EARLY 20TH CENTURY DIAMOND AND
TURQUOISE MARQUISE PANEL RING
CIRCA 1920
The shaped marquise panel set with
graduated old mine cut diamonds,
approximately 1.14 carats total, centred with a
circular cabochon turquoise in a millegrained
setting, the shank stamped 18ct & Pt
Size/dimensions: finger size K
Gross weight: 3.8 grams

£800-1,200

91
AN EDWARDIAN LOZENGE SHAPED
DIAMOND AND PEARL BROOCH
CIRCA 1910
The pierced lobed lozenge shaped panel
set with a lattice of pearls and diamonds,
approximately 1.68 carats total, unmarked
Size/dimensions: 3.7cm wide
Gross weight: 10 grams

Please note the pearls are untested an
unwarranted as natural pearl.

£1,200-1,800

92
AN ART DECO DIAMOND AND HEART
SHAPED OPAL CLIP
SECOND QUARTER OF THE 20TH CENTURY
The pierced shield shaped panel set with
graduated old cut and eight cut diamonds,
approximately 1.02 carats total, centred with a
polished cabochon opal heart, with clip fitting
with double pins, unmarked
Size/dimensions: 3.2cm long
Gross weight: 10.3 grams

£1,500-2,000

93
A RUBY AND DIAMOND OVAL HOOP BROOCH
The old cut diamond hoop with calibr   cut
ruby partial borders, approximately 0.96 carats
total, unmarked
Size/dimensions: 2.8cm long
Gross weight: 6.5 grams

£800-1,200

94
SPAULDING AND CO., CHICAGO, AN ART
DECO DIAMOND LINE BRACELET
CIRCA 1925
The graduated old European cut diamonds
in articulated squared millegrained settings,
approximately 4.74 carats total, with scrolled
foliate engraved gallery, to a concealed box
clasp signed SPAULDING & CO. CHICAGO, in an
associated Mappin & Webb Ltd bracelet box
Size/dimensions: 17.2cm long
Gross weight: 21.6 grams

Spaulding & Co was established in Chicago
in 1888 by Henry Abriam Spalding. Henry had
been Tiffany & Co's general representative in
Europe during the 1870s and 1880s, responsible
for introducing Tiffany & Co to Royalty and
European nobility, and obtaining appointments
for Tiffany to numerous royal households. In
the late 1880s Henry decided to move back to
Chicago, and where he wanted Tiffany & co to
open a boutique. When Tiffany rejected the
idea, Henry opened his own jewellery boutique
in Chicago, with a showroom beneath the
American Consulate in Paris. Spaulding & Co
soon became acknowledged as Chicago's rival to
New York's Tiffany & Co, and was renowned for
the style and quality of its jewellery.

£2,500-3,500

95
AN EDWARDIAN DIAMOND BRACELET
CIRCA 1910
The pierced foliate panel set with graduated
old cut diamonds in millegrained settings,
approximately 4.24 carats total, to an
associated sprung bracelet, stamped English
Made 18Ct, with an associated brooch frame
Size/dimensions: diamond set panel 6.2cm
long, the bracelet 15.5cm long
Gross weight: bracelet only 14.6 grams

£3,000-5,000

96
A 1940S AQUAMARINE AND DIAMOND
RING
The step cut aquamarine with canted corners
estimated to weigh 1.71 carats, between
pierced eight cut diamond set shoulders,
approximately 0.16 carats, the shank
numbered 8437 PLAT and inscribed with the
date 9.9.41
Size/dimensions: finger size Q
Gross weight: 4.1 grams

£600-800

97
A SAPPHIRE AND DIAMOND FOUR STONE
RING
The circular cut sapphires interspaced by a
pair of brilliant cut diamonds, approximately
0.09 carats total, the shank stamped 18k
Size/dimensions: finger size F
Gross weight: 6.9 grams

£600-800

98
AN ART DECO DIAMOND PANEL BROOCH
CIRCA 1930
The pierced shaped panel set with old cut
diamonds, approximately 4.36 carat total,
stamped with a partial French import mark
Size/dimensions: 4.9cm long
Gross weight: 12.3 grams

£1,500-2,000

99
A DIAMOND ART DECO BROOCH
CIRCA 1930
The pierced shaped rectangular panel set with
baguette cut, old European cut, old brilliant
cut, and eight cut diamonds, approximately
8.40 carats total, stamped with a partial
unidentified shield shaped stamp to the
setting and pin
Size/dimensions: 5.2cm wide
Gross weight: 20.1 grams

£2,500-3,500



100

A MID 20TH CENTURY CARVED NATURAL JADEITE JADE ENDLESS KNOT DRESS RING

The carved polished and pierced knot panel claw set to a polished gallery with looped supports, to a polished shank, stamped 18CT
Size/dimensions: panel 3.4cm x 2.2cm, finger size Q 1/2
Gross weight: 11.2 grams

Offered for sale with a Gemmological Certification Services Gemmological Report, Report No: 5783-1510, dated 15.02.2023, stating:

Species Natural Jadeite
Comment No indication of impregnation

£600-800

101

A LAVENDER JADEITE JADE AND DIAMOND RING

The rectangular panel carved with a coiled dragon, between two rows of brilliant cut diamonds, approximately 0.80 carats total, the shank stamped 18CT
Size/dimensions: finger size Q 1/2
Gross weight: 9.1 grams

The jadeite is untested and unwarranted for treatments.

£700-1,000

102

A NATURAL JADEITE JADE DRESS RING

The polished oval cabochon jadeite jade within a gold coloured surround, with polished gold coloured back to a polished shank
Size/dimensions: finger size R
Gross weight: 10.7 grams

Offered for sale with a Gemmological Certification Services Gemmological Report, Report No: 5783-1511, dated 15.02.2023, stating:

Species Natural Jadeite
Comment No indication of impregnation

£300-500

103

A SINGLE STRAND JADEITE JADE NECKLACE

The graduated jadeite jade beads on a knotted strand, to a pierced lozenge shaped clasp set with two eight cut diamonds and an old mine cut diamond, approximately 0.10 carats total
Size/dimensions: 4.6mm to 9.3mm diameter, Gross weight: 47.1 grams

Please note the jadeite is untested and unwarranted for treatments.

£400-600

104

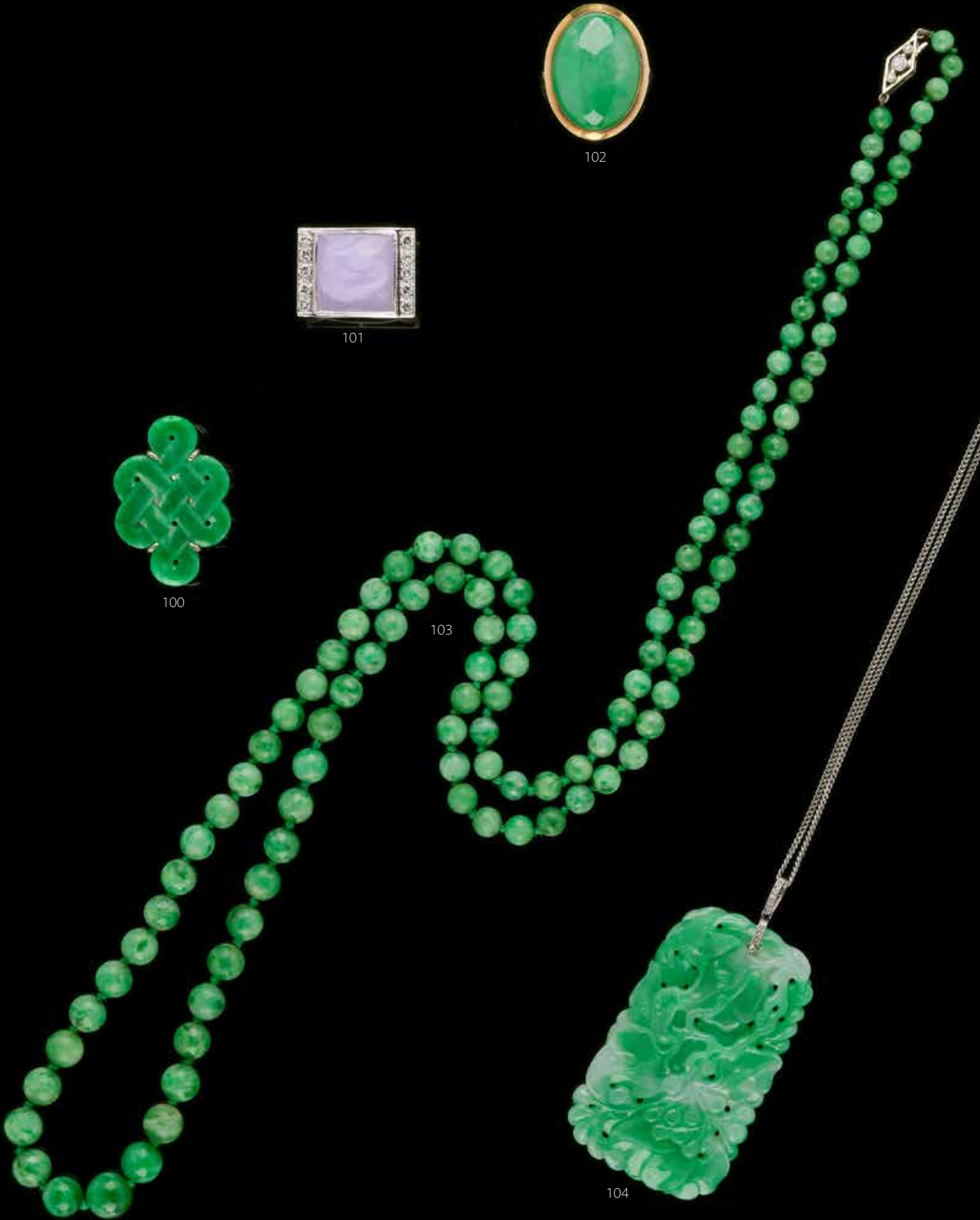
A NATURAL JADEITE JADE AND DIAMOND PENDANT

SECOND QUARTER OF THE 20TH CENTURY#
The pierced and carved rectangular shaped jadeite jade panel carved with a bird amongst berries and coiling foliage, suspended by a rose cut diamond set bale, on a French curb link chain
Size/dimensions: panel 5.8cm long, chain 50cm long
Gross weight: 37.6 grams

Offered for sale with a Gemmological Certification Services Gemmological Report, Report No: 5783-1509, dated 15.02.2023, stating:

Species Natural Jadeite
Comment No indication of impregnation

£700-1,000



105
MILITARY INTEREST, SOMERSET LIGHT
INFANTRY REGIMENT SWEETHEART
BROOCH
FIRST HALF OF THE 20TH CENTURY
The pierced brooch with a pavé set circular
cut sapphire set horn, with diamond accented
XIII, suspended from a rose cut diamond
set crown, below a green enamelled banner
inscribed JELLABAD, unmarked
Size/dimensions: 3cm long
Gross weight: 5.2 grams

The Somerset Light Infantry was formed in
1685, and has taken part in many overseas
campaigns and battles. The regiment has
had a number of name changes including
becoming the 13th Regiment of foot in 1751,
hence the XIII on the current lot. In 1781 the
Regiment became the 13th (Somersetshire)
Regiment of Foot, and in 1842 the regiment
became 13th (1st Somersetshire) (Prince
Albert's Light Infantry) Regiment of Foot,
when Pince Albert became the regiments
patron. In 1920 the regiment title was changed
to The Somerset Light Infantry (Prince
Albert's).

£250-350

106
ATTRIBUTED TO DORRIE NOSSITER, A
HALF CULTURED PEARL AND EMERALD
HOOPED BROOCH
CIRCA 1930
The asymmetrical hoop set to one side with
half cultured pearls interspaced with step cut
emeralds, with leaf and beaded details, brooch
fitting verso
Size/dimensions: 3.5cm diameter
Gross weight: 8.5 grams

£300-500

107
A 1930S DIAMOND HORSESHOE BROOCH
The pierced horseshoe set with old European
cut diamonds, approximately 0.56 carats total,
the brooch pin with a partial stamp
Size/dimensions: 3.4cm long
Gross weight: 8 grams

£400-600

108
A TWO ROW CULTURED PEARL NECKLACE
WITH DIAMOND CLASP
The two rows of graduated cultured pearls
on knotted strands, to a mid 20th century old
cut, brilliant cut and eight cut diamond set
clasp, approximately 1.14 carats total, stamped
18ct
Size/dimensions: cultured pearls measuring
5.4mm to8.8mm, clasp 2.7cm long, 51cm long
Gross weight: 65.3 grams

£800-1,200

109
A 1950S DIAMOND SPRAY BROOCH
The intersecting diamond crescent and spray,
with a scattering of brilliant cut diamond
accents, approximately 2.82 carats total,
unmarked
Size/dimensions: 5.8cm wide
Gross weight: 9.4 grams

£800-1,200

110
A FRENCH EMERALD AND DIAMOND
CLUSTER RING
The step cut emerald with canted corners
estimated to weigh 2.73 carats, within a
surround of brilliant cut diamonds, to pierced
brilliant cut diamond accented shoulders,
approximately 0.32 carats total, with a pierced
scrolled setting verso, the shank with French
poinçons, 18k, common control mark and
S.BROS sponsor's mark
Size/dimensions: finger size M
Gross weight: 4.6 grams

£1,000-1,500

111 Y
A CONCH PEARL, DIAMOND AND
PLATINUM CLUSTER RING
LONDON 2001
The oval conch pearl six claw set within
a surround of brilliant cut diamonds,
approximately 0.50 carats total, the shank with
NYA makers mark
Size/dimensions: finger size O
Gross weight: 9.3 grams

Offered for sale with a Gemmological
Certification Services Pearl Report, numbered
5783-605, Date 21.11.2022, stating:

Colour Pink
Overtone Flame structure
Luster Very good
Species Natural non-nacreous pearl
Mollusk Lobatus gigas (queen conch)
Comment No indications of treatment

£1,500-2,000

112
A MID 20TH CENTURY DIAMOND DOUBLE
CLIP BROOCH
The two hooped spray brooches set
throughout with brilliant cut, baguette cut and
eight cut diamonds, approximately 6.02 carats
total, double clip fittings, and a removable
brooch fitting, unmarked
Size/dimensions: 4.4cm long
Gross weight: 26.2 grams

£2,000-3,000

113
A SIX ROW SEED PEARL NECKLACE
The six rows of uniform seed pearls to an old
cut diamond set box clasp, approximately 0.35
carats total
Size/dimensions: pearls approximately 2.5mm
diameter, 32.5cm long
Gross weight: 22.9 grams

Please note the pearls are untested and
unwarranted as natural pearl.

£800-1,200



114

**AN INDIAN DIAMOND, CARVED STONE
AND JAIPUR ENAMEL KAIRI PENDANT**

The pendant with a central green foil backed carved stone, within a surround of polki diamonds, the reverse with red, green and blue floral enamelling with two birds, on a white ground, suspending a cultured pearl drop, on a cord necklace, with an additional cord necklace

Size/dimensions: pendant 4.4 cm long
Gross weight: 24.8 grams

£800-1,200

115

**AN EARLY 20TH CENTURY INDIAN TIGER
PENDANT**

The oval shaped pendant with an embossed tiger mask and arms, with etched decoration, circular cabochon garnet eyes, and beaded and scrolled border, and flower head accents, vacant interior, suspended from a triangular red stone set bale, with French gold coloured fancy link chain, stamped with French poinçon, ring bolt clasp

Size/dimensions: pendant 5.1cm long
Gross weight: 43.9 grams

£1,000-1,500

116

**AN INDIAN GOLD COLOURED DISC
PENDANT**

The circular pendant of coiled polished and rope twist wire, centred with a chased bird amongst foliage, to a scrolled rope twist wire tubular bale, suspended from a black velvet ribbon, with additional woven cord necklace attachment

Size/dimensions: 3.6cm diameter
Gross weight: 15.4 grams

£300-500

117

**AN INDIAN DIAMOND AND JAIPUR
ENAMEL NIYAM PENDANT**

The oval pendant with radiating polki and rose cut diamonds, the reverse with a domed back panel with an enamelled red flower with green foliage and blue and white enamelled accents, suspending a freshwater cultured pearl drop, with a curb link chain necklace with varying additional lengths with lobster claw clasps, stamped 750, and an additional cord necklace

Size/dimensions: pendant 7.3cm long
Gross weight: 57.7 grams

£2,000-3,000

118

**A LATE 19TH CENTURY SRIPADA INDIAN
ENAMELLED PENDANT, NATHDWARA,
RAJASTAN**

The lobed arrow shaped panel with polychrome enamel to one side with the Sripada with thirteen symbols, verso with Devanagari script in a squared panel with two supporting enamelled peacocks, suspended from a later twisted wire mount

Size/dimensions: 4.2cm long
Gross weight: 10 grams

£200-300



119
ATTRIBUTED TO ANDREW GRIMA, A
SAPPHIRE, DIAMOND AND EMERALD
DRESS RING

The central oval cabochon sapphire within an undulating surround of textured gold coloured rectangular batons, with step cut emerald and diamond accents, to a textured band, stamped 18ct, together with a textured band ring, stamped 18ct, with a leather Grima pouch
Size/dimensions: first finger size approximately L 1/2; second N 1/2
Gross weight: 30 grams

£2,000-3,000

120 Y
ANDREW GRIMA, A WHITE MUSHROOM
CORAL AND BOULDER OPAL PENDANT

The oval white mushroom coral (fungiidae) centred with a polished pear shaped boulder opal, with a gold coloured three claw setting, stamped GRIMA 0.750, with loop fitting, suspended from an associated rope twist chain signed Uno-A-Erre and stamped 750, in a Grima London case
Size/dimensions: pendant 7.2cm long
Gross weight: 38.3 grams

Andrew Grima was a British society jeweller of the 1960s and 70s, and his early clients included Queen Elizabeth II, Princess Margaret and Jackie Kennedy Onassis. The entirely self taught Andrew Grima joined his father-in-law's jewellery manufacturing business, H.J. Company, in 1946, and introduced new designs and techniques to the company, away from the more traditional and figural jewellery designs, to organic and abstract jewel forms. Through his unique jewellery design, Grima has subsequently become known as the father of post war jewellery design. His pieces have won numerous awards including the DeBeers Diamonds International Awards a record breaking 11 times, and can be found in many of the most important museums in the world, and private collections. One of Andrew Grima's favourite stones to use was opal, and they featured in a number of his pieces during his career.

£1,500-2,000

121
PARKER, DUOFOLD CENTENNIAL
PRESIDENTIAL
A UNIQUE 18 CARAT GOLD FOUNTAIN PEN
AND BALL POINT PEN
CIRCA 1993

Cap and Barrel: With striated decoration and arrow clips
Nib and Filling System: Medium two tone nib stamped 18K 750, cartridge filling system, uninked
Accessories: Parker box stamped 'Presented to Jacques G. Margry September 1993', cartridge convertor

Jacques G. Margry was the company director of Parker pens from 12th April 1991 until 7th September 1993.

£3,000-5,000

122
VICTOR MAYER FOR FABERGÉ, AN 18
CARAT GOLD AND ENAMELLED DIAMOND
SET CROSS PENDANT
LONDON 1999
The yellow enamelled Orthodox cross with a central brilliant cut diamond accent, weighing 0.02 carats, with a polished bale, stamped FABERGÉ 273/300 with Victor Mayer maker's mark, with original box and warranty card
Size/dimensions: 4.2cm long
Gross weight: 4 grams

£500-700

123
A GOLD PENDANT WATCH
CIRCA 1912
The silvered oval dial signed Cartier Paris with Bté S.G.D.G. with Roman numerals, blued steel hands, beneath a domed glazed cover, engraved verso 'Marie from Jimmy Xmas 1912', with a later replacement quartz movement
Size/dimensions: the dial 1.2cm x 2.3cm
Gross weight: 8.5 grams

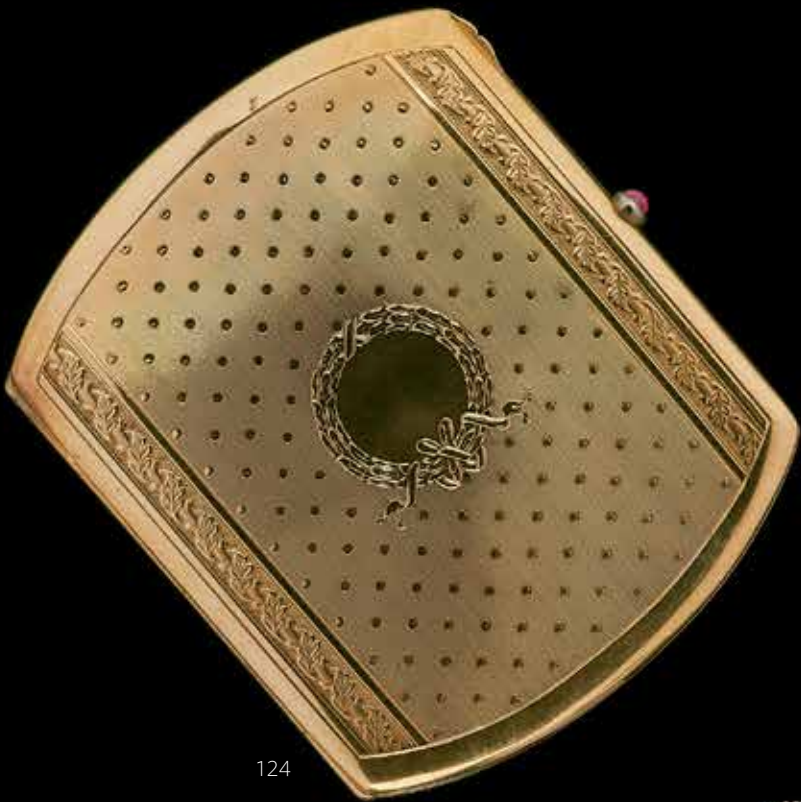
Provenance:
By family descent and sold by order of a member of the de Rothschild Family

Renée Louise Marie de Rothschild (1927-2015) was the daughter of Anthony Gustav de Rothschild and Yvonne Lydia Louise de Rothschild (née Cahen d'Anvers). In 1955 Renée married the British equestrian and Olympic show jumping medallist Peter Robeson. Together Peter and Renée became hugely successful racehorse trainers from their stud at Tyringham in Buckinghamshire

Marie would have been Marie De Rothschild (Nee Perugia) (1862-1937), wife of Leopold de Rothschild, who were Renee Robeson's paternal grandparents

£800-1,200





124

124
A GOLD OBLONG CIGARETTE CASE
STAMPED 585 ONLY, LATE 19TH CENTURY
With engine turned decoration, engraved foliate bands, a circular vacant reserve within a wreath, with a cabochon ruby thumb piece
Size/dimensions: 9.5cm long
Gross weight: 98 grams

£1,500-2,000

125
A DIAMOND AND RUBY CLUSTER RING
The cushion shaped modified brilliant cut diamond weighing 2.12 carats within a surround of circular cut rubies, the shank stamped 18ct
Size/dimensions: finger size P
Gross weight: 5.5 grams

£6,000-8,000

126
A PAIR OF 1970S ABSTRACT RUBY AND DIAMOND EAR PENDANTS
The hooped gold coloured wire orbs with claw set circular cut ruby accents, with oval lattice panels between with brilliant cut diamond accents, approximately 0.38 carats total, with post fittings
Size/dimensions: 4.1cm long
Gross weight: 10 grams

£600-800



125



126

127
A SINGLE STONE DIAMOND RING
The old European cut diamond weighing 3.55 carats, within a pierced scrolled heart gallery, to bifurcated eight cut diamond set shoulders and scroll engraved shank
Size/dimensions: finger size M
Gross weight: 3.6 grams

£10,000-15,000

129
ROSE, A LADY'S 18 CARAT WHITE GOLD DIAMOND SET COCKTAIL WATCH
LONDON 1967 IMPORT MARK
The signed circular dial with Arabic numerals at the cardinal points, with baton hour markers between, to a brilliant cut diamond set bezel, approximately 0.62 carats total, with 17 jewel manual wind movement, to an integral matt 18 carat white gold tapered strap with a box and tongue clasp
Size/dimensions: dial 1.1cm diameter, strap 16cm to 18cm long
Gross weight: 27.8 grams

£600-800

130
A DIAMOND, EMERALD AND SAPPHIRE CIRCLE BROOCH
The hooped floral brooch with a spiral of alternating marquise cut sapphires and emeralds, with a step cut diamond set spiral stem to an abstract pear cut sapphire and brilliant cut diamond cluster flower head, approximately 2.00 carats total, unmarked
Size/dimensions: 4.2cm wide
Gross weight: 18.2 grams

£1,000-1,500

128
AN EDWARDIAN DIAMOND NÉGLIGÉE NECKLACE
CIRCA 1910
The two old European cut diamonds in collet settings, estimated to weigh 1.26 carats and 1.61 carats, suspended from an old cut diamond set oval hoop, with fancy link chain necklace to a ring bolt clasp
Size/dimensions: 42cm long
Gross weight: 6 grams

£5,000-7,000



127

128

129

130



131

A SINGLE STONE DIAMOND RING

The marquise cut diamond weighing 3.99 carats, in a claw setting, the polished shank stamped 18ct

Size/dimensions: finger size P 1/2

Gross weight: 4.2 grams

£15,000-20,000



132

**A DIAMOND LEAF SHAPED BROOCH/
PENDANT WITH PEAR CUT DIAMOND
CLUSTER DROP**

The open leaf shaped pediment set with brilliant cut, marquise cut, and pear cut diamonds, with a step cut diamond accent, suspending a graduated brilliant cut and pear cut diamond drop, the pear cut diamond weighing 3.56 carats, the remaining diamonds approximately 6.30 carats total, with double loop pendant fitting and brooch fitting verso, unmarked

Size/dimensions: 5.8cm long

Gross weight: 15.8 grams

Offered for sale with a Gemmological Certification Services Diamond Report, numbered 5788-1117, Date 26.01.2023, stating:

Colour H
Clarity VVS1

£20,000-30,000

133

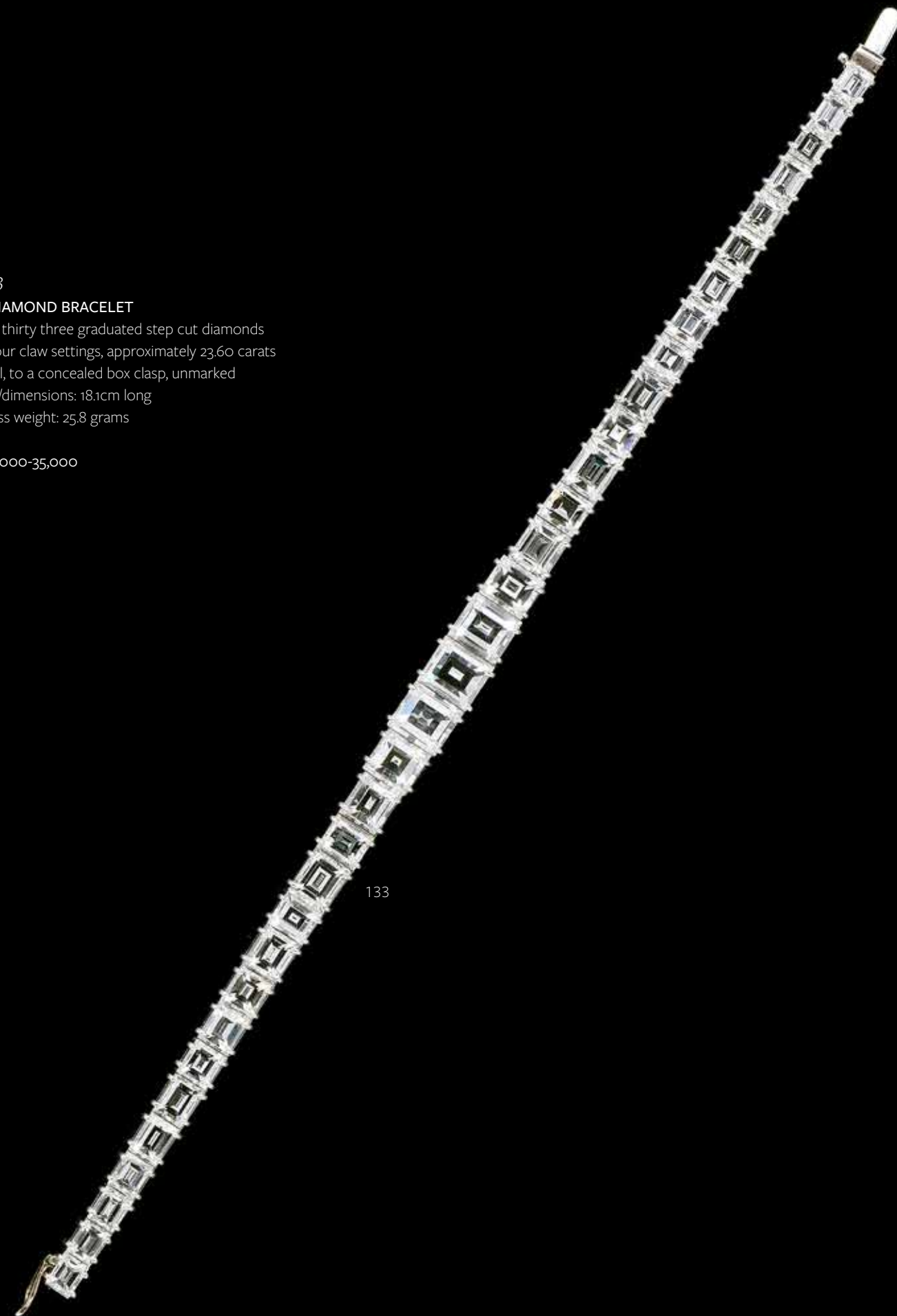
A DIAMOND BRACELET

The thirty three graduated step cut diamonds in four claw settings, approximately 23.60 carats total, to a concealed box clasp, unmarked

Size/dimensions: 18.1cm long

Gross weight: 25.8 grams

£25,000-35,000



133

Other Properties

134
A 1940S NOVELTY SAFECRACKER WATCH
BROOCH

The polished gold coloured thief with bulbous swag bag, white precious metal accents, beside a matt two colour rectangular safe, with step cut ruby and eight cut diamond accents, above a baguette cut diamond and step cut sapphire set base, with tools beside, the safe opening to reveal a rectangular dial with alternating Arabic numerals and baton hour markers beneath a glazed panel, 17 jewel manual wind movement, double pin fitting, unmarked

Size/dimensions: 4.5cm wide, dial 1.3cm long

Gross weight: 29.3 grams

£1,500-2,000

135
A MID 20TH CENTURY DIAMOND AND
OXIDISED METAL SHOU PENDANT

The pierced circular pendant in the form of the character shou, inset with a central oval cut and graduated old cut diamonds, approximately 0.29 carats total, with a gold coloured back, suspended from a polished gold coloured bale and a belcher link chain, with ring bolt clasp stamped 9ct

Size/dimensions: 2.9cm diameter, chain 40cm long

Gross weight: 12.6 grams

Shou is the Chinese character that symbolises longevity

£400-600

136
A 1960S WOVEN LINK BRACELET

The tapered woven link bracelet with a raised decorative design, with a reeded clasp stamped 18K 0.750 with unidentified maker's mark

Size/dimensions: 19.7cm long

Gross weight: 71.7 grams

£1,400-1,800

137
A ROPE TWIST CHAIN

The polished rope twist chain to an associated ring bolt clasp, with an additional unattached lobster claw clasp stamped 750 with makers mark CB

Size/dimensions: chain 65cm long, lobster claw fitting 2cm long

Gross weight: 43.4 grams

£800-1,200

138
A FANCY LINK LONG CHAIN

The pierced oval panels with scrolled centres, belcher link connectors between, with a lobster claw clasp

Size/dimensions: 144cm long

Gross weight: 43.2 grams

£600-800

139
BOUCHERON, A LADY'S GOLD COLOURED
BRACELET WATCH, NO. 6450 4616 73.048

CIRCA 1950

The signed squared dial with Arabic numerals at the cardinal points and baton markers between, to a rope twist hinged cover, and plaited rope twist bracelet strap, and sliding bar and clip cover clasp, the case signed Boucheron Paris and numbered 73. 048, stamped with French poinçons, with Omega 17 jewel manual wind movement, cal. 481

Size/dimensions: 18.5cm long

Gross weight: 80.3 grams

£2,000-3,000

140
A GOLD COLOURED SPRUNG BANGLE

The polished oval track links to a concealed clasp

Size/dimensions: 21cm long

Gross weight: 122.2 grams

£2,500-3,500



141
A 1930S ROSE GOLD COLOURED
CIGARETTE CASE
Applied MHW 32 to the polished cover, with a
cabochon sapphire thumb piece, unmarked
Size/dimensions: 12cm long
Gross weight: 93 grams

£1,000-1,500

142
ATTRIBUTED TO LISA SOTILIS, A 1970S
QUATREFOIL PENDANT
The textured quatrefoil panel with a central
cultured pearl accent, loop fitting verso, in a
Sotilis lozenge shaped box
Size/dimensions: 5.1cm long
Gross weight: 9.3 grams

Together with a jewellery exhibition catalogue
titled Sotilis, for the Alexandre Iolas Gallery,
with a forward by Salvatore Quasimodo, 1970;
and an exhibition catalogue for artwork, 1963

£200-300

143
LISA SOTILIS, A PAIR OF ANCIENT STYLE
BEAD AND GOLD COLOURED EAR CLIPS
The tapered reeded panels with a circular
glass antique style bead bases, the reverse
of one with an applied panel embossed with
Sotilis, clip fittings
Size/dimensions: 4.7cm long
Gross weight: 31.5 grams

£600-800

144 Y
LISA SOTILIS, A PAIR OF ABSTRACT EAR
CLIPS
The ear clips each with two shaped panels
with textured borders, with gold coloured
disc sides, and a trio of mother of pearl discs
above, with ancient style bead accents, the
bottom panels signed Sotilis, with clip fittings
Size/dimensions: 5.1cm long
Gross weight: 36.1 grams

£800-1,200

145
LISA SOTILIS, A PAIR OF ABSTRACT
CUFFLINKS
The two colour panels with textured finish and
applied spots, the backs of the pierced shaped
panels with an applied customary signature
panel, one with an embossed S
Size/dimensions: principal panels
approximately 2.5cm x 3cm
Gross weight: 17.5 grams

Known in artistic circles as the Golden Greek,
Lisa Sotilis was born in Athens, Greece in
1939. She studied in Athens and then at the
Academy of Arts in Milan. Sotilis was initially
an artist and sculptor, but embarked on
designing and making her own jewellery,
having decided she didn't like the existing
contemporary jewellery design. Her first solo
exhibition was at the age of 16 in Milan, and
her first international exhibition was held
in Berlin two years later. The world leading
art dealer and gallery owner Alexander Iolas
noticed her work, and allowed Sotilis to exhibit
her work at international galleries alongside
many of the 20th century greats such as
René Magritte, Andy Warhol, and her great
mentor Giorgio de Chirico. Her pieces have
been collected by many in the contemporary
artworld including Salvador Dali. In 1970 she
entered an exclusive contract with Cartier to
design watch dials and bezels. Her home Via
Dante in Milan was known as a cultural space
where Andy Warhol and Rudolph Nureyev
were frequent guests.

She has exhibited in many of the best
international galleries, and examples of her
work can be found in some of the finest
museums and private collections in the world.

She has said of her artistry: 'I sleep three
hours a day because my creativity never ends.
When I get tired of making jewellery, which I
call micro-sculptures, I paint, I design furniture.
I don't make traditional jewels; they are
different, my way, because I have to recreate
what I see in my dreams'.

£500-700

146
AN EDWARDIAN 9 CARAT GOLD
BOOKMARK
POSSIBLY BY STUART CLIFFORD,
LONDON 1902
The circular terminal inset with an
Edward VII five-pound coin, to a tapered
polished gold blade
Size/dimensions: 17.5cm long
Gross weight: 69 grams

£2,200-2,800

147
A PAIR OF SHAKUDŌ AND GOLD
COLOURED PANEL CUFFLINKS
The polished octagonal gold coloured panels
with applied shakudō panels cast with samurai
warriors taking part in Kenjutsu, stamped with
partial 18 carat gold hallmark and maker's
mark H.G &S, with belcher link connectors and
smaller octagonal back panels, in a softwood
box
Size/dimensions: shakudō panels 3.4cm long
Gross weight: 22 grams

£500-700



148

MISSIAGLIA, A DIAMOND AND LAPIS LAZULI NECKLACE

The uniform polished lapis lazuli beads to a reeded oval lapis lazuli and brilliant cut diamond cluster clasp, approximately 0.72 carats total, the clasp signed Missiaglia
Size/dimensions: beads 1.2cm diameter, clasp 2.2cm long, 50.5cm long
Gross weight: 113 grams

Missaglia was founded in Venice in 1846, and is now one of the oldest established jewellers in Venice. The company is still family owned and employs its own designers and skilled craftsmen to make exceptional hand made 'Gioielli Alta' (High Jewellery)

£600-800

149

A FRENCH DIAMOND AND ENAMEL STRAWBERRY BROOCH

The suspended red enameled strawberry with green enameled leaf, with two diamond set strawberry flowers, approximately 1.10 carats total, the brooch fitting stamped FRANCE, and stamped with French export poinçons and a partial maker's stamp to the stalk
Size/dimensions: 4.5cm wide
Gross weight: 27.2 grams

£800-1,200

150

A 1960S TURQUOISE, DIAMOND AND SAPPHIRE FLORAL CLUSTER BROOCH

The central eight cut diamond and circular cabochon turquoise cluster within a surround of textured leaves, to a surround of further similarly set flower head clusters, approximately 0.07 total, with circular cut sapphire borders, stamped 750 FP
Size/dimensions: 3.8cm diameter
Gross weight: 16 grams

£300-500

151

FRASCAROLO AND C., A PAIR OF 1970S DIAMOND, RUBY AND ENAMEL TIGER CUFFLINKS

The striped enamel roaring tiger masks with brilliant cut diamond set muzzle and ruff, approximately 0.92 carats total, with circular cut ruby eyes, inside the heads stamped with oval panels with Modele Deposse 750 and the initials FC Made in Italy, with Italian control marks 347 AL, with reeded baton swivel terminals
Size/dimensions: heads 1.9cm wide
Gross weight: 21.3 grams

Pierino 'Rino' Frascarolo (1928-1976), came from a wealthy Milanese family and set up Frascarolo & Cie with two colleagues, Aldo Lenti (1910-1982) and Daniele Valiera (1912-1978). In the 1960s the company became well known for fanciful enamelled animal jewellery, and from 1966 his 'Bestiario' collection gained world acclaim, particularly in North America, when the company opened in New York in 1970, under the name Franscarolo & Co. Inc. Franscarolo subsequently became known in many circles as the 'David Webb of Italy'.

£1,200-1,800

152

A FRENCH 1960S SAPPHIRE, RUBY, TURQUOISE AND GOLD COLOURED BIRDHOUSE BROOCH

The two seated birds with circular cut ruby heads and circular cabochon turquoise bodies within a textured gold coloured bird house with circular cut sapphire and ruby accented branch, stamped with French eagles head poinçon
Size/dimensions: 3.8cm long
Gross weight: 11.9 grams

£400-600



153
A PAIR OF SAPPHIRE AND DIAMOND
CLUSTER EAR STUDS, RETAILED BY ASPREY

The ear studs centred with a circular cut sapphire, within a surround of brilliant cut diamonds, approximately 1.26 carats, in a Asprey & Company Limited ear stud box
Size/dimensions: 1.1cm diameter
Gross weight: 4.5 grams

£700-1,000

154
ASPREY & CO., A SAPPHIRE AND DIAMOND
RING, MADAGASCAR, NO HEAT
LONDON 1998

The sugarloaf cabochon sapphire estimated to weigh 7.70 carats in a four claw setting, to pavé set old cut diamond set shoulders, approximately 0.12 carats total, the shank stamped A&Co Ltd, with later sprung sizing band, in Asprey & Garrard ring box
Size/dimensions: finger size approximately L 1/2
Gross weight: 6.3 grams

Offered for sale with the original Asprey & Co painted designs. The sapphire was taken from an earlier piece and reset into the current ring, and the designs show the two options Asprey & Co. proposed for the updated ring design.

Offered with a Gemmological Certification Services Sapphire Report, numbered 5783-1210, Date 24.01.2023, stating:

Origin Madagascar
Comment No indications of heating
Medium, Strong, violetish Blue

£1,500-2,000

155
A DIAMOND HORSE AND JOCKEY BROOCH

The galloping horse pavé set with brilliant cut diamonds, approximately 1.00 carat total, ridden by a jockey wearing white and blue silks with coloured diagonal band, stamped 750 with Italian control mark
Size/dimensions: 3.8cm long
Gross weight: 9.7 grams

£600-800

156
A GRADUATED NATURAL PEARL NECKLACE

The eighty three graduated natural pearls with seed pearl spacers, to a cultured pearl and diamond accented 18 carat gold clasp, London 1990 import mark
Size/dimensions: pearls measuring 4.3mm to 7.7mm, 57cm long
Gross weight: 32.8 grams

Offered for sale with a Gemmological Certification Services Pearl Report, numbered 5783-281, Date 24.11.2022, stating:

Species Natural pearl
Variety Saltwater

£1,500-2,000

157
A SAPPHIRE AND DIAMOND CLUSTER RING

The oval cut sapphire estimated to weigh 5.74 carats, in a cut down collet setting, within a surround of old mine cut diamonds, approximately 1.26 carats, to scrolled trifurcated shoulders
Size/dimensions: the cluster 2.1cm long, finger size L
Gross weight: 9.9 grams

£1,000-1,500

158
A DIAMOND AND SMOKY QUARTZ THREE
STONE RING

LONDON 1979
The old European cut diamond estimated to weigh 0.89 carats, claw set between two triangular cut smoky quartz, to a polished shank
Size/dimensions: finger size M 1/2
Gross weight: 3.9 grams

£500-700

159
A TRIPLE CLUSTER TINTED DIAMOND HAND
ORNAMENT

The slightly graduated principal brilliant cut diamonds within a surround of brilliant cut diamonds, approximately 3.40 carats total, the finger settings stamped 750
Size/dimensions: finger size approximately L
Gross weight: 5.5 grams

£1,000-1,500

160
LISCETTI di LISCETTI SILVIO & C. - S.a.s.,
A DIAMOND, CULTURED PEARL, RUBY AND
GOLD COLOURED FLY BROOCH

The brooch with a cultured pearl set thorax, diamond set head, wings and stinger, approximately 0.41 carats total, with cabochon ruby eyes, with 587 MI control mark and stamped 750
Size/dimensions: 3.5cm long
Gross weight: 8.4 grams

£500-700

Lots 161 and 162, The Property of
the Late Sir Christoher Mallaby
GCMG GCVO (1936-2022)

Sir Christopher Mallaby was a senior British diplomat, who held numerous high-ranking posts with the British Foreign Office. He was British Ambassador to West Germany between 1988 and 1992 during German Re-Unification, of which he was a key proponent in the British establishment. His final diplomatic posting was as ambassador to France between 1993 and 1996.

161
GERALD BENNEY, A PAIR OF ENAMELLED
SILVER CUFFLINKS WITH THE ROYAL
MONOGRAM OF DIANA, HER ROYAL
HIGHNESS PRINCESS OF WALES

LONDON 1992
The oval panel with the initial D beneath a Royal Coronet on an engine turned blue enamel ground, with belcher link connectors, to a marquise shaped back panel, in original Gerald Benny cufflink box with Royal monogram on the lid
Size/dimensions: oval panels 2cm long
Gross weight: 10.9 grams

£300-500

162
LONGMIRE, A PAIR OF 9 CARAT GOLD
CUFFLINKS WITH THE CYPHER QUEEN
ELIZABETH II

The oval panels with the Royal cypher for Queen Elizabeth II, with belcher link connectors to oval panels engraved with the initials CM, the backs signed LONGMIRE, with rubbed 9 carat gold hallmark, in an associated Stuart Devlin box, the lid with gilt tooled Royal cypher
Size/dimensions: 1.9cm long
Gross weight: 12.9 grams

£400-600



163
MIKIMOTO, AN AKOYA CULTURED PEARL
NECKLACE AND EAR STUDS

CIRCA 2012
The two rows of uniform cultured pearls on knotted strands to a rectangular cushion shaped box clasp, with cultured pearl accent, stamped with Mikimoto maker's mark and 750, the clasp tongue with common convention mark, together with a pair of matching ear studs, the post fittings stamped with Mikimoto maker's mark and 750 stamp, in original Mikimoto case, with travel pouches and cleaning cloths, outer card box
Size/dimensions: necklace cultured pearls approximately 65mm to 69mm, necklace 42cm long, ear studs 63mm diameter
Gross weight: 566 grams

Offered for sale with original Mikimoto receipt dated 01/02/12.

£600-800

164
DE BEERS, SIGNATURE, A SINGLE STONE
DIAMOND RING, AND DE BEERS, CLASSIC, A
DIAMOND HALF ETERNITY RING

The princess cut diamond in a four claw platinum setting, weighing 0.58 carats, the inside of the shank inset with a small brilliant cut diamond, stamped DE BEERS with serial number A11826; the platinum half eternity ring set with brilliant cut diamonds, 0.23 carats total, the shank signed DE BEERS with serial number B88239; together with a polished platinum band ring, the inside of the band inset with a small brilliant cut diamond, signed De Beers with serial number B01457; all with original ring boxes
Size/dimensions: finger size K 1/2
Gross weight: 10.3 grams

Offered for sale with De Beers Diamond Passports, stating:

DB Signature Solitaire Diamond Engagement Ring
Colour F
Clarity VS1

DB Classic Half Diamond Band with Diamond Pave
Colour G+
Clarity VS+

£1,500-2,000

165
PICCHIOTTI, A DIAMOND LINE BRACELET

The bracelet with alternating step cut diamonds with canted corners and brilliant cut diamonds, approximately 7.80 carats total, each diamond in a four claw setting, the clasp signed PICCHIOTTI 950 Pt and Italian control mark 1852 AL
Size/dimensions: 18.9cm long
Gross weight: 20 grams

£3,000-5,000

166
BUCCELLATI, A DIAMOND DRESS RING

The tapered ring with a pierced lattice of graduated brilliant cut diamonds, approximately 0.69 carats total, within a radiating textured border and matt band, signed M.BUCCELLATI-ITALY, stamped with Italian control mark 15 MI and 750
Size/dimensions: finger size N 1/2
Gross weight: 9.9 grams

£1,500-2,000

167
STEPHEN WEBSTER, AN 18 CARAT GOLD
DIAMOND RING

LONDON 2013
The pierced broad band set with graduated brilliant cut diamonds, approximately 2.58 carats total, the shank stamped with Stephen Webster maker's mark and numbered SW264
Size/dimensions: finger size G
Gross weight: 7.8 grams

£600-800

168
BOODLES, A PAIR OF 18 CARAT GOLD
HOOPED DIAMOND EAR PENDANTS

LONDON 2008
The brilliant cut diamond set hooped drop panels, approximately 0.38 carats total, suspended from a polished white gold curved bar, signed BOODLES with maker's mark, numbered 0927J1129B AEEX, in original Boodles box with outer card box
Size/dimensions: 2.2cm long
Gross weight: 6.7 grams

£700-1,000

169
STEPHEN WEBSTER, A PAIR OF
AQUAMARINE AND DIAMOND CLUSTER
EARRINGS

LONDON 1997
The central oval cut aquamarines within pavé set brilliant cut diamond surrounds with a princess cut diamond accent, approximately 1.36 carats total, the backs with Stephen Webster maker's mark, post fittings
Size/dimensions: 2.1cm long
Gross weight: 17.2 grams

£800-1,200



170 Y

THEODOROS, A DIAMOND, SMOKY QUARTZ AND EBONY PENDANT

The shaped ebony pediment set with a trio of brown heart cut diamonds and a central brilliant cut diamond, approximately 2.30 carats total, the ebony drop with a central oval cut smoky quartz within a surround of circular cut smoky quartz and a brown rose cut diamond accent, signed THEODOROS and stamped 750, with bale and hinged stud fitting
Size/dimensions: 7.8cm long
Gross weight: 67.8 grams

Missaglia was founded in Venice in 1846, and is now one of the oldest established jewellers n Venice. The company is still family owned and employs its own designers and skilled craftsmen to make exceptional hand made ‘Gioielli Alta’ (High Jewellery)

£2,000-3,000

171

AN ONYX BEAD AND CITRINE NECKLACE AND A SIMILAR PAIR OF CITRINE AND GARNET EAR CLIPS

The necklace with four rows of uniform onyx beads to an oval pierced panel set with oval cut citrines with an onyx bead fringe, the concealed clasp stamped 750 with a D shaped maker’s mark to the tongue; the shaped earrings with graduated oval cut citrines and a trio of step cut garnet accents, stamped 750 with a partial mark 137
Size/dimensions: necklace 83cm long, earrings 3.6cm long
Gross weight: 372 grams

Purchased by the vendor from Bernard Delletrez

£800-1,200

172 Y

A CORAL, SAPPHIRE AND DIAMOND DRESS RING

The oval cabochon coral between circular cut sapphire and brilliant cut and pear cut diamond curved bands, approximately 0.30 carats total
Size/dimensions: the panel 3.6cm wide, finger size L 1/2
Gross weight: 7.3 grams

£700-1,000

173 Y

A CORAL AND DIAMOND EAR CLIP AND PENDANT SUITE

The pear shaped cabochon coral drops with eight cut and brilliant cut diamond accented caps, the pediments with a central cabochon coral panel and a floral diamond and textured gold coloured surround, with clip fittings, approximately 0.64 carats total, the pendant with a central cabochon coral with engraved floral detail, within an eight cut and brilliant cut diamond surround, approximately 0.45 carats total, unmarked
Size/dimensions: earrings 5.9cm long, pendant 6.9cm long
Gross weight: 52.7 grams

£2,000-3,000

174 Y

A CORAL AND DIAMOND CHERUB BROOCH

The polished and carved cherub holding a sheaf of corn, with an applied diamond accented star to his forehead and two colour old cut diamond set wings, approximately 0.98 carats total, unmarked
Size/dimensions: 6.9cm wide
Gross weight: 45.4 grams

£700-1,000



175

A DIAMOND AND CULTURED PEARL NECKLACE

The shaped curving drop panel set throughout with brilliant cut diamonds, approximately 3.18 carats total, to a cultured pearl drop, with rope twist link back chain, to an old cut diamond and brilliant cut diamond set box clasp
Size/dimensions: 36cm long
Gross weight: 12.4 grams

£1,200-1,800

176

A DIAMOND CLUSTER DRESS RING

The central diamond estimated to weigh 0.85 carats, within a swirling surround of baguette cut diamonds, approximately 2.00 carats total, the shank stamped 18ct & Plat, sizing beads
Size/dimensions: finger size approximately L
Gross weight: 13.5 grams

£800-1,200

177

A 1950S DIAMOND PANEL BROOCH

The brooch with pierced fan motifs, set with old European cut, brilliant cut, eight cut and baguette cut diamonds, approximately 3.30 carats total, with barrel clasp brooch fitting
Size/dimensions: 4.1cm long
Gross weight: 11.1 grams

£1,000-1,500

178

A 1970S DIAMOND DRESS RING

The principal old European cut diamond weighing 1.32 carats, with crossover graduated baguette cut shoulders and a spray of baguette cut diamonds either side, approximately 1.20 carats total, to polished shank
Size/dimensions: finger size L
Gross weight: 7 grams

£1,200-1,800

179

A TAHITIAN CULTURED PEARL NECKLACE AND A PAIR OF CULTURED PEARL EAR STUDS

The graduated cultured pearls on a knotted strand, to an orb clasp, with rub over brilliant cut diamond accents, approximately 0.08 carats total, the tongue stamped Jka 750, with a belcher link safety chain; together with a matching pair of Tahitian cultured pearl ear studs, the post fittings stamped 750
Size/dimensions: cultured pearl diameter 10.7mm to 14.2mm, 49.5cm long; studs 10mm diameter
Gross weight: 94.6 grams

£700-1,000

180

ELSA PERETTI FOR TIFFANY & CO., MESH SCARF, A SILVER COLOURED NECKLACE

The silver coloured interlocking mesh links to tapering ends, with an oval panel stamped T & Co. 925 PERETTI, in original Tiffany & Co. suedette pouch
Size/dimensions: 94.5cm long
Gross weight: 66 grams

£600-800

181

ELSA PERETTI FOR TIFFANY & CO., FEATHER CUFF, A GREEN NEPHRITE JADE AND SILVER HINGED BANGLE

LONDON 2011
The hinged bangle with a polished and shaped nephrite jade and a matching polished silver arm, signed TIFFANY & CO. with facsimile Elsa Peretti signature, stamped 925 HONG KONG, and laser hallmark, in original Tiffany & Co. box and outer card case
Size/dimensions: inner width 5.8cm
Gross weight: 116.5 grams

Offered for sale with original Tiffany & Co. receipt, dated 09/09/2011.

£600-800



182
TIFFANY & CO., FLORET FLOURISHES, A DIAMOND AND CULTURED PEARL NECKLACE AND BRACELET
LONDON 2000 and 2001
The knotted necklace with uniform cultured pearls with a central brilliant cut diamond set platinum quatrefoil floret panel, and similar floret clasp, approximately 0.60 carats total, the clasp signed TIFFANY & CO., PT950 with maker's mark and 2000 hallmark, together with a matching Tiffany & Co. pearl and diamond bracelet, the two rows of uniform cultured pearls with diamond set quatrefoil floret spacers, approximately 0.95 carat total, signed TIFFANY & CO., PT950 with maker's mark and 2001 hallmark, both with original Tiffany & Co. pouches and cases
Size/dimensions: necklace 42.5cm long, bracelet 17.3cm long
Gross weight: 42.5 grams

£1,500-2,000

183
TIFFANY & CO., FLORET FLOURISHES, A PAIR OF DIAMOND AND CULTURED PEARL EAR CLIPS
LONDON 2001
The brilliant cut diamond set quatrefoil florets each centred with a cultured pearl, approximately 1.28 carats total, the backs signed TIFFANY & CO., PT950, the clips with hallmark and maker's mark, with original Tiffany & Co. pouch and case
Size/dimensions: 1.9cm wide
Gross weight: 10.9 grams

£1,000-1,500

184
A PAIR OF DIAMOND AND CULTURED PEARL GRAPE BUNCH EARRINGS
The pavé set brilliant cut diamond leaves above an abstract cluster of graduated cultured pearls, approximately 1.54 carats total, with stud fittings, unmarked
Size/dimensions: 3cm long
Gross weight: 17.4 grams

£700-1,000

185
CARTIER, A DIAMOND ETERNITY RING
CIRCA 1975
The ring channel set with step cut diamonds, approximately 2.04 carats total, signed S. Cartier and numbered P502 P8207, in a Cartier ring box
Size/dimensions: finger size N 1/2
Gross weight: 3.8 grams

£700-1,000

186
A DIAMOND BAND RING
The squared band with rubover channel set baguette cut diamonds, approximately 1.28 carats total, with W maker's mark
Size/dimensions: finger size H 1/2
Gross weight: 9.7 grams

£700-1,000



187

CARTIER, TRINITY, AN 18 CARAT GOLD THREE COLOUR BAND RING

LONDON 1974

The three coloured polished interlocking bands with maker's mark JC, in a Cartier ring box

Size/dimensions: finger size N

Gross weight: 8 grams

£300-500

188

CARTIER, AN 18 CARAT GOLD NECKLACE AND BRACELET

CIRCA 1989

The necklace with interlocking C and baton shaped links to a concealed box clasp, signed Cartier

and stamped Cartier 1989 with 18 carat gold common convention mark, numbered 948895,

the matching bracelet signed Cartier and stamped Cartier 1989 with 18 carat gold common

convention mark, numbered 948748, both with original boxes

Size/dimensions: necklace 41.2cm long, bracelet 19.8cm long

Gross weight: 63 grams

Offered for sale with a Cartier Certificate dated 14th Oct. 89, serial number 948895

£2,500-3,500

189

CARTIER, DOUBLE C BAND RING

The pierced ring with polished interlocking double C's, the interior signed Cartier and stamped

53 750, numbered 738648, stamped with French poinçons, in original Cartier box with outer card

case

Size/dimensions: finger size N 1/2

Gross weight: 9.4 grams

£600-800



190

CARTIER, A DIAMOND PENDANT

CIRCA 1976

The pierced scrolling pendant with brilliant cut diamond accents, approximately 0.78 carats, signed Cartier London, numbered P3843, suspended from a flattened fancy link chain, stamped with London 1976 18 carat gold hallmark and SS maker's mark, in a Cartier box
Size/dimensions: pendant 3.4cm long, 41.5cm long
Gross weight: 25 grams

£1,500-2,000

191

CARTIER, AN 18 CARAT GOLD CHAIN NECKLACE

BIRMINGHAM 1977

The stylised anchor link long chain to a concealed clasp, signed Cartier with JC&S maker's mark, numbered 0333, in an oval Cartier box
Size/dimensions: 82cm long
Gross weight: 118.3 grams

£3,000-5,000

192

CARTIER, AN 18 CARAT GOLD CHAIN NECKLACE

LONDON 1974 IMPORT MARK

The flattened elongated curb link long chain to a concealed box clasp, signed Cartier FRANCE with JC mark, numbered P5794, with additional maker's mark RC 750 to the clasp tongue, in an oval Cartier box
Size/dimensions: 100cm long
Gross weight: 65.6 grams

£2,000-3,000

193

CARTIER, AN 18 CARAT GOLD BRACELET

LONDON 1973

The circular link bracelet to a concealed hook and clip clasp, signed Cartier London with JC mark, numbered P5519, in a Cartier bracelet box
Size/dimensions: 21.5cm long
Gross weight: 39 grams

£800-1,200

194

CARTIER, AN 18 CARAT GOLD BRACELET

LONDON 1977 IMPORT MARK

The flattened belcher link bracelet to a concealed box clasp, signed Cartier and stamped JC, numbered 03268, with additional maker's mark RC 750, in a rectangular Cartier bracelet box
Size/dimensions: 19cm long
Gross weight: 52.3 grams

£1,500-2,000



195

AN OPAL, DIAMOND AND EMERALD SERPENT NECKLACE

The pavé set old mine cut diamond head with graduated circular cabochon opal accents and emerald set eyes, to graduated curved square panel links with diamond set corners and centred with a circular cabochon opal, to a pavé set old mine cut diamond tail tip, approximately 5.80 carats total, with tongue clasp fitting to the tip of the tail and four concealed clasps along different lengths of the snake, stamped with French owl import poinçons, in an associated S. J. Phillips Ltd case with outer card box
Size/dimensions: 47.5cm long
Gross weight: 101 grams

This necklace was lent to Sarah Jessica Parker to wear at the Gala Premiere of the film 'Did You Hear About The Morgans?'. Sarah Jessica Parker played lead actor alongside Hugh Grant in this romantic comedy thriller. The Gala Premiere took place on 8th December 2009 at the Odeon, Leicester Square in London. Sarah Jessica Parker was photographed at this event wearing this necklace with a pink strapless cocktail frock from L'Wren Scott.

£15,000-20,00



A MID 20TH CENTURY DIAMOND, OPAL, AND RUBY TIARA

The scrolled gold coloured tiara with graduated old cut diamond and polished cabochon opal clusters, with further rose cut and old mine cut diamond accented settings, approximately 10.32 carats total, with circular cabochon, circular cut and step cut ruby accents, the principal oval cluster removes from the setting, with additional screw in brooch fitting, the two smaller diamond and opal clusters unscrew, with fold out stud fittings verso, unmarked, in a partial box, with sticker verso stating Marquis Jean P. De Chambrun, Vernon Manor Hotel, Cincinnati, Ohio 45219
Size/dimensions: the front section 7.8cm high, principal opal, diamond and ruby cluster 3.8cm long
Gross weight: 211.4 grams

Provenance:

The Late Jean Pierre François Joseph Pineton de Chambrun, Marquis de Chambrun, Marquis d'Amefreville (1903 - 2004) and Muriel, Marquise de Chambrun.
Thence by family descent

Jean Pierre Pineton was the eldest son of French politician and diplomat Charles Louis Antoine Pierre Gilbert Pineton de Chambrun (1865-1954) and his American wife, Margaret Rives Nichols (1872-1949). The de Chambrun family had a distinguished history as important French politicians in the French Senate and French Chamber of Deputies and were direct descendants of Gilbert du Motier, Marquis de Lafayette. Margaret Rives Nichols was born into the 19th century millionaire Longworth Storer family in Cincinnati.

Although profoundly deaf, Jean Pierre studied biochemistry at the Institut Pasteur and art at the Horace Vernet school. As a member of at the Cercle de l'Union Artistique in France, Jean Pierre became an acclaimed painter and designer of jewellery, wrought iron and crystal for Baccarat. He married his first wife the French heiress, Gisèle Hugot-Gratry (1909-2005), in the late 1920s and they had three sons together. The family left France during World War II as Jean Pierre was a staunch opponent of the wartime Vichy Government in France, and they settled in Cincinnati for the duration of the war. After the war Gisèle returned to France with their sons and their marriage ended in divorce. Jean Pierre lived in Lucca in Northern Italy with his sister Marthe de Chambrun, Principessa Ruspoli-Poggio Suasa, in the 1950s although they subsequently moved to Tangier.

Whilst living in Tangier Jean Pierre was introduced to Muriel McIntosh Villar. Muriel had moved to Tangier after the war, having lost her first husband during the Malayan Emergency, to live with her retired Sergeant Major father. Muriel and Jean Pierre married in 1963 and would spend their 40 year marriage between France, the United States and the Algarve in Portugal. When they stayed in America between the late 1960s and early 1970s, they would always stay at Vernon Manor Hotel in Clifton, Cincinnati. Interestingly the base of the tiara box offered with the tiara has a label stating the Marquis of Chambrun's name and confirming the address as the Vernon Manor Hotel. Jean Pierre and Muriel toured America lecturing about his ancestor the Marquis de Lafayette, and Lafayette's role in defeating the British during the American Revolution and War of independence. Muriel also became a celebrated poetess and won several awards including Ohio Poet of the year in 1976 for her Book Of Poems "Sudden Spring", and an award from Cincinnati University in 1970 for her first book "Salisbury Cathedral". Jean Pierre and Muriel were fêted by American society at large, and were known to several American President's including Ronald Reagan, Bill Clinton and George Bush Junior for their work in promoting Franco-American relations.

Opal tiaras are extremely rare, and only one other tiara set with opals is known. The Princess Marie of Denmark opal tiara was an exuberant Art Nouveau creation of large, towering opal set floral sprays. The tiara was re-set by Princess Marie's daughter-in-law Princess Viggo, into a simpler diadem. This opal diadem was passed down to the Count and Countess Flemming of Rosenborg, and has not been seen being worn in public since it was last worn at the wedding of King Harald V and Queen Sonja of Norway in 1968.

£12,000-18,000



Muriel, Marquise de Chambrun
wearing the tiara at a formal event



Fine Wristwatches

197
CARTIER
A LADY'S GOLD COLOURED WRIST WATCH,
NO. 104779, CIRCA 1930

Movement: European Watch and Clock Co.
Inc., manual wind, 15 jewels
Case: Gold coloured case, back wind and set,
screwed down case back with two screws,
stamped with a poinçon
Dial: Silvered
Strap: Unsigned brown suede strap with gold
pin buckle, stamped with a poinçon
Size: 16mm
Signed: Dial
Accessories: None

£800-1,200

198 Y
CARTIER, TANK
A LADY'S 18 CARAT GOLD WRIST WATCH,
NO. 9060, CIRCA 1969

Movement: Jaeger LeCoultre manual wind
Case: 18 carat gold case, screwed down case
back with four screws, hallmarked London
1969
Dial: Cream
Strap: Cartier brown crocodile strap with gold
coloured clasp
Size: 21mm
Signed: Case, dial, movement
Accessories: None

£1,000-1,500

199
CARTIER, PANTHÈRE
A LADY'S 18 CARAT GOLD BRACELET
WATCH, NO. 8057917 04412, CIRCA 1991

Movement: Cal. 057, quartz, 4 jewels
Case: 18 carat gold case, screwed down case
back with eight screws, stamped with 18 carat
gold common control mark
Dial: Champagne
Bracelet: Cartier 18 carat gold brick link
bracelet with concealed clasp
Size: 22mm, bracelet 15cm
Signed: Case, dial, movement, clasp
Accessories: Cartier box, guarantee
certificate, instruction booklet, swing tag,
outer card packaging

£2,000-3,000

200
PATEK PHILIPPE, ELLIPSE, REF. 4698/001
A LADY'S 18 CARAT GOLD AND DIAMOND
BRACELET WATCH, CIRCA 1996

Movement: Cal. E15, quartz
Case: 18 carat gold case, diamond set bezel,
snap case back
Dial: Blue
Bracelet: Integral 18 carat gold bracelet
with snap clasp, stamped with 18 carat gold
common control mark
Size: 20mm, bracelet 16cm
Signed: Case, dial, movement, crown, clasp
Accessories: Patek Philippe card box,
guarantee certificate, pouch

£3,000-5,000

201 Y
CARTIER, TANK
A LADY'S 18 CARAT GOLD COLOURED WRIST
WATCH, NO. 780873317, CIRCA 1975

Movement: Cal. 78-1, manual wind, 17 jewels
Case: 18 carat gold case, screwed down
case back with four screws, import mark for
London 1975
Dial: White
Strap: Cartier beige lizard strap with 18 carat
gold deployant clasp
Size: 20mm
Signed: Case, dial, movement, crown, strap,
buckle
Accessories: Cartier box

£1,000-1,500

202 Y
JAEGER LECOULTRE, REVERSO DUETTO,
REF. 266.544
A LADY'S BI-METAL AND DIAMOND
REVERSIBLE WRIST WATCH, NO, 1967797,
CIRCA 2000

Movement: Manual wind
Case: Stainless steel and gold coloured sliding
case, one side set with two rows of diamonds
Dials: Silvered and mother of pearl
Strap: Hirsch brown lizard strap with Jaeger
LeCoultre stainless steel deployant clasp
Size: 20mm
Signed: Case, dial, clasp
Accessories: Jaeger LeCoultre box, guarantee,
instruction booklet, pouch

£2,500-3,500



203 Y

CARTIER, TANK BASCULANTE, REF. 2506

A LADY'S 18 CARAT GOLD AND DIAMOND REVERSIBLE WRIST WATCH, NO. 345722MG, CIRCA 2003

Movement: Quartz

Case: 18 carat gold reversible case, diamond set thumb piece and lugs, screwed case back with four screws, stamped with 18 carat gold common control mark

Dial: White

Strap: Cartier red crocodile strap with 18 carat gold deployant clasp

Size: 24mm

Signed: Case, dial, movement, strap, clasp

Accessories: Cartier box, guarantee booklet, instruction booklet, outer card packaging

£4,000-6,000



204

CARTIER, BALLON BLEU, REF. 3000

AN 18 CARAT WHITE GOLD BRACELET WATCH WITH DATE, NO. 121869LX, CIRCA 2008

Movement: Cal. 049 ETA 2892A, automatic, 21 jewels

Case: 18 carat white gold case, screwed down case back with eight screws, stamped with 18 carat gold common control mark

Dial: Silvered

Bracelet: Cartier 18 carat white gold bracelet with concealed clasp

Size: 42mm, bracelet 19cm

Signed: Case, dial, movement, crown, clasp

Accessories: Cartier box, guarantee booklet, information booklet, DVD, outer card packaging

When most people think of Cartier watches, the first watch that comes to mind is the Tank with its square case. Cartier introduced the Ballon Bleu to the world in 2007 with its circular case. The Ballon Bleu is set with the unmistakable Cartier blue cabochon crown, which is protected by the crown guard at 3 o'clock. This is a versatile model that can be worn on any occasion by men and women. The Princess of Wales is often spotted wearing a 33mm stainless steel example.

£5,000-7,000



205



205
CARTIER, SANTOS RONDE, REF. 187903
A LADY'S BI-METAL BRACELET WATCH WITH DATE, NO. 06479, CIRCA 1989

Movement: Cal. 87, quartz, 7 jewels
Case: Stainless steel case, screwed gold coloured bezel, screwed down case back with four screws
Dial: Champagne
Bracelet: Cartier bi-metal bracelet with fold over clasp
Size: 24mm, bracelet 15.5cm
Signed: Case, dial, movement, clasp
Accessories: Cartier box, guarantee certificate, instruction booklet, outer card packaging

£600-800

206
CARTIER, TANK FRANÇAISE, REF. 2384
A LADY'S BI-METAL BRACELET WATCH, NO. 393761CD

Movement: Cal. 057, quartz, 4 jewels
Case: Stainless steel case, screwed down case back with four screws
Dial: Silvered
Bracelet: Cartier bi-metal bracelet with concealed clasp
Size: 20mm, bracelet 15cm
Signed: Case, dial, movement, clasp
Accessories: Cartier box, associated outer card packaging

£800-1,200

207
CARTIER, TANK FRANÇAISE, REF. 2465
A MIDSIZE STAINLESS STEEL BRACELET WATCH WITH DATE, NO. 370215CD, CIRCA 2000

Movement: Cal. 175A, quartz, 8 jewels
Case: Stainless steel case, screwed down case back with four screws
Dial: Silvered
Bracelet: Cartier stainless steel bracelet with concealed clasp
Size: 25mm, bracelet 16cm
Signed: Case, dial, movement, clasp
Accessories: Cartier box, guarantee booklet, instruction booklet, three spare links

£800-1,200

207



206



208
CARTIER, ROADSTER, REF. 2675
A STAINLESS STEEL BRACELET WATCH WITH DATE, NO. 254670BB, CIRCA 2010

Movement: Quartz
Case: Stainless steel case, screwed down case back with four screws
Dial: Silvered
Bracelet: Cartier stainless steel bracelet with concealed clasp
Size: 33mm
Signed: Case, dial, movement, clasp
Accessories: None

£800-1,200

209



209
FRANCK MÜLLER, MASTER BANKER, REF. 5850MB
A STAINLESS STEEL BRACELET WATCH WITH THREE TIME ZONES AND DATE, NO. 233, CIRCA 2000

Movement: Cal. 2800, automatic
Case: Stainless steel case, screwed down case back with four screws
Dial: Silvered
Bracelet: Franck Müller stainless steel bracelet with concealed clasp
Size: 32mm, bracelet 17cm
Signed: Case, dial, movement, crown, clasp
Accessories: Frank Müller box, outer card packaging

£1,500-2,000

210
ROLEX, OYSTER PERPETUAL DATEJUST, REF. 179160
A LADY'S STAINLESS STEEL BRACELET WATCH WITH DATE, NO. Z924890, CIRCA 2006

Movement: Cal. 2235, automatic, 31 jewels
Case: Stainless steel case, screw down crown, screw down case back
Dial: Dark blue
Bracelet: Rolex Jubilee stainless steel bracelet with concealed clasp
Size: 25mm, bracelet 16.5cm
Signed: Case, dial, movement, crown, clasp
Accessories: Rolex box, guarantee card, booklet, outer card packaging

£1,500-2,000

208



210



211 Y

IWC, PORTUGIESER PERPETUAL CALENDAR, REF. IW5022

A LIMITED EDITION 18 CARAT GOLD CALENDAR WRIST WATCH WITH MOONPHASE AND POWER RESERVE, NO. 3661779, CIRCA 2010

Movement: Cal. 51614, automatic, 62 jewels, adjusted to 5 positions

Case: 18 carat gold case, screw down display case back, stamped with 18 carat gold common control mark

Dial: Black

Strap: IWC black alligator strap with 18 carat gold deployant clasp

Size: 42mm

Signed: Case, dial, movement, crown, strap, clasp

Accessories: IWC box, guarantee card and booklet, instruction book, service explanation invoices dated 18th October 2019 and 6th July 2020

The Portugieser is one of the oldest models produced by IWC. In 1939 two Portuguese merchants made the request for a large time only wristwatch with the precision of a pocket watch. The reference 325 was born and housed the pocket watch calibres 75 and 98. Available with a variety of dials, the classic dial was very simple and features Arabic numerals, feuille hands and a 'railroad track' chapter ring. These features can be found on this example being offered. Fast-forward to 2003 and IWC released the ref. IW5021, which was the first Portugieser to feature a perpetual calendar. In 2006 the IW5022 was introduced to the range and featured a subsidiary moonphase dial, adding another complication to an already cutting edge movement. The 42mm case is certainly a presence on the wrist.

£8,000-12,000



212
JAEGER LECOULTRE
A MILITARY STYLE WRIST WATCH, NO. B 203421, CIRCA 1940

Movement: Cal. 463A, manual wind, no. 254171
Case: Chromed case, steel snap case back
Dial: Black
Strap: Links of London black leather strap with stainless steel pin buckle
Size: 31mm
Signed: Dial, movement
Accessories: None

£400-600



213

213
OMEGA, 'THE DIRTY DOZEN'
A STAINLESS STEEL MILITARY WRIST
WATCH, NO. 10674878, CIRCA 1945

Movement: Cal. 30T2, manual wind, 15 jewels
Case: Stainless steel case, fixed bars, screw down case back, engraved W.W.W above broad arrow mark, above Y10679, above 106748678
Dial: Black
Strap: Green NATO strap
Size: 35mm
Signed: Case, dial, movement
Accessories: None

£800-1,200

214
TIMOR, 'THE DIRTY DOZEN'
A STAINLESS STEEL MILITARY WRIST
WATCH, CIRCA 1945

Movement: Manual wind
Case: Stainless steel case, fixed bars, screw down case back, engraved with broad arrow mark above W.W.W, above K 3980 above 33880
Dial: Black
Strap: Blue and yellow NATO strap
Size: 36mm
Signed: Case, dial, movement
Accessories: None

£600-800

212



214



215
BREITLING, AEROSPACE EVO, REF. E79363
A TITANIUM BRACELET WATCH, NO. 1469312, CIRCA 2014

Movement: Cal. ETA E10.451, quartz, 7 jewels
Case: Titanium case, rotating bezel, screwed down case back with six screws
Dial: Grey with two digital displays
Bracelet: Breitling titanium bracelet with fold over clasp
Size: 42mm, bracelet 17.5cm
Signed: Case, dial, crown, clasp
Accessories: Breitling box, guarantee card, chronometer certificate, instruction booklet, three spare links, outer card packaging

£600-800



216

216
OMEGA, SEAMASTER, REF. 168.1622
A STAINLESS STEEL BRACELET WATCH
WITH DATE

Movement: Cal. 1120, automatic, 23 jewels
Case: Stainless steel case, rotating bezel, screw down crown, screw down case back
Dial: Blue
Bracelet: Omega stainless steel bracelet with fold over clasp
Size: 36mm, bracelet 17cm
Signed: Case, dial, movement, crown, clasp
Accessories: Two spare links

£800-1,200



215

217
ROLEX, OYSTER QUARTZ DATEJUST, REF. 17013
A BI-METAL BRACELET WATCH WITH DATE, NO. 4495099, CIRCA 1976

Movement: Cal. 5035, quartz, 11 jewels
Case: Stainless steel case, gold coloured bezel, screw down crown, screw down case back
Dial: Silvered
Strap: Rolex bi-metal bracelet with fold over clasp
Size: 36mm, bracelet 18cm
Signed: Case, dial, movement, crown, strap, buckle
Accessories: None

£1,500-2,000

217



218

ROLEX, OYSTER PERPETUAL MILGAUSS, REF. 116400

A STAINLESS STEEL BRACELET WATCH, NO. M136644, CIRCA 2007

Movement: Cal. 3131, automatic, 31 jewels

Case: Stainless steel case, screw down crown, screw down case back

Dial: Black

Bracelet: Rolex Oyster stainless steel bracelet with fold over clasp

Size: 39mm, bracelet 19cm

Signed: Case, dial, movement, crown, clasp

Accessories: Rolex box, guarantee card, booklet, outer card packaging

£4,000-6,000



219

ROLEX, OYSTER PERPETUAL DATE EXPLORER II, REF. 1655

A STAINLESS STEEL BRACELET WATCH WITH DATE AND 24 HOUR INDICATION, NO. 3823679, CIRCA 1974

Movement: Cal. 1570, automatic, 26 jewels

Case: Stainless steel case, screw down crown, screw down case back

Dial: Black

Bracelet: Rolex Oyster stainless steel bracelet with fold over clasp

Size: 38mm, bracelet 20cm

Signed: Case, dial, movement, crown, clasp

Accessories: Rolex box, guarantee certificate, Rolex Jubilee bracelet, part outer card box

Introduced in the early 1970's, the Explorer II came with additional features over the Explorer I. A fourth hand was added for 24 hour indication, a 24 hour index to the bezel and a date window. It was basically a GMT-Master with a fixed 24 hour bezel. The Explorer II was targeted at speleologists (cave explorers) who could lose all track of time and sense of day or night

£10,000-15,000



220

ROLEX, OYSTER PERPETUAL COSMOGRAPH DAYTONA, REF. 116505

AN 18 CARAT GOLD CHRONOGRAPH BRACELET WATCH, NO. 8T9V371, CIRCA 2017

Movement: Cal. 1430, automatic chronograph, 44 jewels

Case: 18 carat gold case, screwed down crown and pushers, screwed down case back, stamped with 18 carat gold common control mark

Dial: Ivory coloured

Bracelet: Rolex Oyster 18 carat gold bracelet with fold over clasp

Size: 40mm, bracelet 18cm

Signed: Case, dial, movement, crown, clasp

Accessories: Rolex box, guarantee card, instruction booklet, swing tag, outer card packaging

The Daytona is one of the most iconic models in the Rolex range. When the Daytona was first introduced in 1963, it was not well received, and initial sales were poor. Now, it is one of the most sought after models. There are many different variations of the Daytona available, with different case materials, dials and precious stone set examples. The example being offered here is in 18 carat rose gold, the ivory coloured dial with matching luminous baton markers and subsidiary dials. This adds a layer of luxury to this iconic sports watch.

£22,000-28,000



221

ROLEX, OYSTER PERPETUAL 'ZENITH' DAYTONA, REF. 16520

A STAINLESS STEEL CHRONOGRAPH BRACELET WATCH, NO. A766039, CIRCA 1999

Movement: Cal. 4030, automatic chronograph, 31 jewels

Case: Stainless steel case, screwed down crown and pushers, screw down case back

Dial: White

Bracelet: Rolex Oyster stainless steel bracelet with fold over clasp

Size: 38mm, bracelet 20cm

Signed: Case, dial, movement, crown, clasp

Accessories: Rolex box, guarantee certificate, booklet, outer card packaging

This year marks the 60th anniversary of one of Rolex's most sought after models, the Daytona. This was not always the case, as when it was initially released in 1963, sales were disappointing. This was to change however with the release of the reference 16520. Originally the Daytona was powered by a manual wind chronograph movement, but this new model came with an automatic chronograph. The reference 16520 was equipped with the calibre 4030, the first Rolex automatic chronograph movement. This is based on the Zenith El Primero movement, which Rolex replaced 60% of the parts. The 16520 was in production from 1988 until 2000, when Rolex introduced its own in house movement, the calibre 4130. This has made the 16520 sought after among collectors.

£15,000-20,000



222

ROLEX, SUBMARINER SEA-DWELLER 'DOUBLE RED', REF. 1665

A STAINLESS STEEL BRACELET WATCH WITH DATE, NO. 3745762, CIRCA 1974

Movement: Cal. 1570, automatic, 26 jewels

Case: Stainless steel case, rotating bezel, screw down crown, screw down case back

Dial: Black

Bracelet: Rolex Oyster stainless steel bracelet with fold over clasp

Size: 39mm, bracelet 20cm

Signed: Case, dial, movement, crown, clasp

Accessories: Rolex box, guarantee certificate, information booklet, service guarantee dated 20th Feb. 07, swings tags, outer card packaging

The Sea-Dweller was based on the iconic Submariner model. The Submariner had a depth rating of 660ft, whereas the Sea-Dweller had an increased rating of 2000ft. To be able to withstand the issues of compression found at deeper lives of diving, an escape valve was fitted to the watch to allow helium and other gasses to escape, but not allow water into the watch. Initially these were issued to deep sea explorers before being made available to the public in 1967. The Sea-Dweller and Submariner 2000 text can be found on the dial in red, earning the nickname among collectors 'Double red'.

£20,000-30,000



Chinese Ceramics and Works of Art

To include Japanese, Indian and Islamic Art

17 & 18 MAY 2023



**A FINE PAIR OF CHINESE GILT-METAL MOUNTED
BISCUIT PORCELAIN PARROT CANDELABRA**

Provenance: From the collection of
Anthony de Rothschild (1887-1961)
and sold by order of a member of
the de Rothschild Family

Sold £90,000

INVITING ENTRIES

CONSIGNMENT DEADLINE | 22 MARCH 2023

Newbury (Donnington Priory) | London (Pall Mall)
Auction and valuation enquiries | Mark Newstead | Dr Yingwen Tao
asian@dreweatts.com | 01635 553 553

[dreweatts.com](https://www.dreweatts.com)

DREWEATTS

EST. 1759

Fine Clocks, Barometers & Scientific Instruments

7 MARCH 2023



**A VERY FINE PAIR OF REGENCY TWENTY-ONE INCH
TERRESTRIAL AND CELESTIAL FLOOR-STANDING
LIBRARY GLOBES**

J. & W. CARY, LONDON, THE CELESTIAL DATED 1799,
THE TERRESTRIAL DATED 1815/1823

Est. £20,000-30,000 (+ fees)

On view Newbury | 3 and 5-7 March

Auction | Donnington Priory, Newbury, Berkshire RG14 2JE
Auction and valuation enquiries | Leighton Gilliband
clocks@dreweatts.com | 01635 553 553

[dreweatts.com](https://www.dreweatts.com)

DREWEATTS

EST. 1759



Modern & CONTEMPORARY ART

15 MARCH 2023

DAME ELISABETH FRINK (BRITISH 1930-1993)

DOG (CHILDHOOD SCULPTURE) [FCR 401]

Est. £60,000-80,000 (+ fees)

On view London (highlights) | 6-8 March
On view Newbury (full sale) | 12-15 March

Auction | Donnington Priory, Newbury, Berkshire RG14 2JE
Auction and valuation enquiries | Jennie Fisher
pictures@dreweatts.com | 01635 553 553

dreweatts.com

DREWEATTS

EST. 1759

Coming Up at Dreweatts

Auctions

7 March | Live Online

Fine Clocks, Barometers and Scientific Instruments

15 March | Live Online

Modern and Contemporary Art

22 March | Live Online

Fine Jewellery, Silver, Watches and Objects of Vertu

29 & 30 March | Live Online

Fine Furniture, Sculpture, Carpets, Ceramics and Works of Art

14 April | Timed Online

Art Online

18 April | Live Online

Interiors

25 & 26 April | Live Online

Single Owner Sale

10 May | Timed Online

Jewellery, Silver, Watches, Pens and Luxury Accessories

16 May | Live Online

Interiors

Valuation Days

Every Tuesday | London

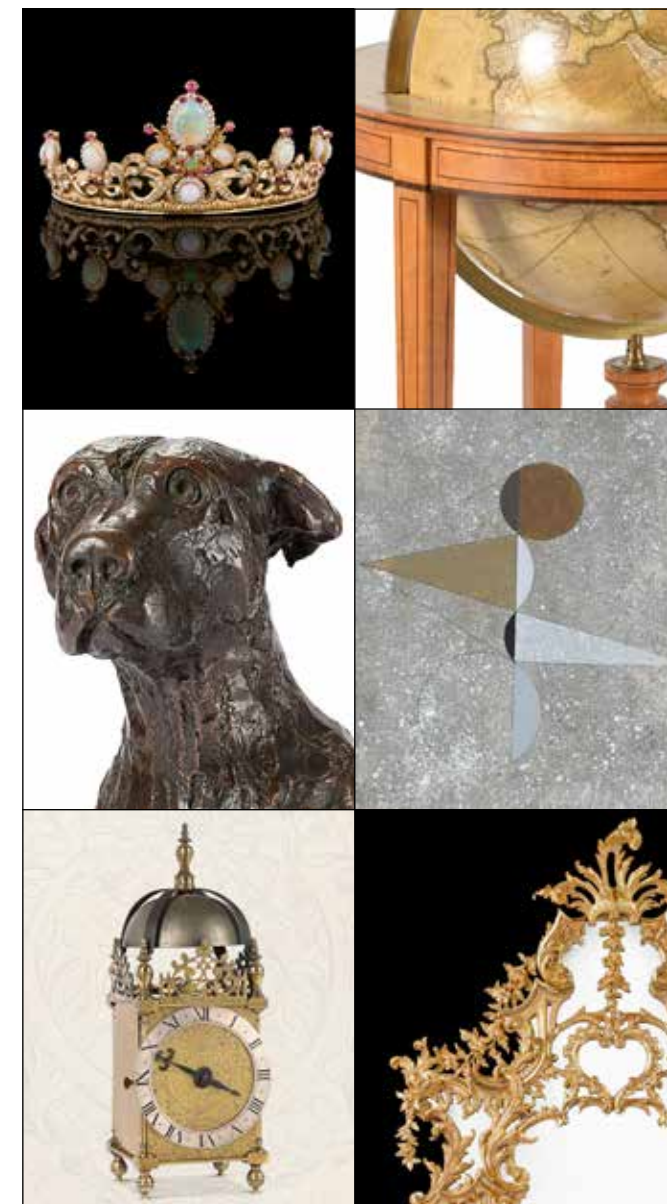
Jewellery, Silver, Watches & Luxury Accessories

3 March, 14 April & 5 May | Newbury

Fine Art, Antiques, Jewellery, Silver, Watches, Asian Works of Art & Wine

14 April & 5 May | Newbury

Fine Art, Antiques, Jewellery, Silver, Watches, Asian Works of Art & Wine



We hold regular auctions of fine art, antiques, jewellery and other collectibles. Our specialists carry out valuations nationwide so if you are unable to attend one of our valuation days, please request a valuation via our website or call us to discuss a home visit.

DREWEATTS

EST. 1759

NOW INVITING ENTRIES FOR OUR 2023 AUCTIONS

NEWBURY
Dreweatts
Donnington Priory
Newbury
Berkshire RG14 2JE

LONDON
Dreweatts / Bloomsbury Auctions
16-17 Pall Mall
St James's
London SW1Y 5LU

HAMBRIDGE LANE
Dreweatts
1 Hambridge Lane
Newbury
Berkshire RG14 5TU

ENQUIRIES
For more information,
please contact
+44 (0) 1635 553 553
info@dreweatts.com

dreweatts.com



Important Notices to Watch Buyers

DAMAGE, RESTORATION, ALTERATION

Although every effort is made to note any damage, restoration or alterations, the absence of any such information in catalogue descriptions does not imply the lot is in perfect condition and free from any such defects. Prospective buyers should satisfy themselves as to the condition of any lot prior to bidding. All watches are serviced from time to time, and Dreweatts are unable to guarantee that the working parts of any watch movement, glass or crystal, winding crowns, watch bracelet, strap or buckle are the manufacturers’ original parts, unless otherwise stated in the catalogue description. We are unable to make any representation in our catalogue descriptions or condition reports as to the authenticity of such parts. Dreweatts are unable to make any representation, nor make any comment on, the authenticity of diamonds, or other gemstones, set into watch dials, bezels, cases and bracelets.

AUTHENTICATION

All watch movements have been inspected by Dreweatts watchmaker and specialists, and we have verified all inventory and movement numbers. For the information of potential bidders, all inventory and movement numbers are listed in the catalogue description for the relevant lot.

IMPORT/EXPORT RESTRICTIONS

There may be Import Restrictions into some territories outside the

United Kingdom placed on certain watch brands, or on the importation of watches with straps composed of animal skins which may fall under CITES Regulations. It is the sole responsibility of the buyer to comply with all Export/Import regulations and potential bidders are strongly recommended to check with their shipping agent as to any such regulations that may apply to any lot. Dreweatts are not shippers and are unable to offer any advice regarding such regulations.

CONDITION REPORTS

Dreweatts condition reports will identify whether a watch functions at the time of cataloguing, and suggest possible, but not comprehensive, restoration work that may need to be carried out for the watch to function properly. Dreweatts are unable to test watches for accuracy or running to time, and we cannot guarantee that any watch will function when purchased from us.

As we have examined all watch movements by removing the case backs, we cannot guarantee that water resistant watches will remain water resistant following purchase from us. Dreweatts recommend that any watch purchased from us is subsequently overhauled by a competent watchmaker to ensure proper functioning.

Important Notices to Jewellery Buyers

DAMAGE, RESTORATION, ALTERATION

Although every effort is made to note any damage, restoration or alterations, the absence of any such information in catalogue descriptions does not imply the lot is in perfect condition and free for any such defects. Prospective buyers should satisfy themselves as to the condition of any lot prior to bidding.

ENHANCEMENT

Prospective bidders should be aware that many coloured gems have been historically treated by a variety of methods to improve their appearance, both in terms of colour and transparency. Rubies and sapphires are routinely heat treated, emeralds are enhanced through the use of coloured and transparent oils and resins, and jadeite is routinely stained. These treatments, and others including irradiation and coating, are generally accepted by the jewellery trade as standard practice. Although most treatments are considered to be permanent, those gemstones which have been oiled may need to be re-treated to maintain their appearance. Any such treatments affect the market value of coloured gemstones, and Dreweatts pre-sale estimates published in the catalogue assume that all gemstones, unless otherwise stated in the catalogue, may have been enhanced. Dreweatts may obtain Gemmological Reports from a recognised laboratory where appropriate detailing any enhancements, or lack of, for certain gemstones, and such reports may be obtained for prospective bidders prior to the sale, provided such requests are made at least three weeks before the sale, and that the requesting party has pre-paid for such a report. However it is not possible for Dreweatts to obtain reports for every stone offered in the sale.

In the absence of a gemmological laboratory report, it is not possible for Dreweatts to make any comment on the possibility that any gemstone in any lot may have been subject to enhancement.

Dreweatts catalogue descriptions and condition reports adhere to the guidelines laid out in the ‘Blue Book’ of CIBJO, the International Jewellery Confederation.

WEIGHTS

All gram weights have been obtained using an electronic balance, but weights stated in the catalogue are approximate and for guidance only, and potential bidders should satisfy themselves as to their accuracy.

‘...approximately 1.20 carats total,...’ all such stone weights are estimated using standard equipment and formulae, and are subject to the limitations imposed by the mount.

‘...weighing 1.20 carats,...’ where the description reads as such, the stones in question have been removed from the mount and weighted using an electronic balance.

SIGNATURES

‘...by Lacroche,...’ in our opinion is a piece made by or for the jeweller, bearing relevant signatures, maker’s marks, and where appropriate, the maker’s inventory number/s.

‘...signed Lacroche,...’ in our opinion is a piece retained by the jeweller, but not necessarily made by them. This may also mean that the piece has been mounted by the jeweller using stones supplied by the client; a special commission from a client’s design; or has been altered or later added to.

COLOURED STONES OF BURMA (MYANMAR) ORIGIN

Buyers should be aware that certain territories (notably the United States of America) have import restrictions on certain coloured gemstones. All gemstones that maybe of Burma (Myanmar) origin, notably rubies and jadeite, may require a certificate of origin before they can be imported. Prospective bidders for such gemstones should check with their shipper, and relevant Government authorities regarding any necessary certification prior to bidding. Whilst Dreweatts are able to suggest a number of Gemmological Laboratories for such certification, we are unable to carry out any such certification for potential bidders or buyers.

Please see **Conditions of Business** and **Conditions of Sale** on the following pages.

Dreweatts & Dreweatts 1759 are trading names of Dreweatts 1759 Ltd. Dreweatts 1759 Ltd is registered in England, company number: 10758982, registered office: C/O Bishop Fleming LLP, 10 Temple Back, Bristol, BS1 6FL.

Important Notices

BUYING AT DREWEATTS

There are several ways you can bid at a Dreweatts auction; in person, by leaving a commission or absentee bid, on the telephone where available and live via the internet – please make arrangements before the sale. THIS NOTICE APPLIES ONLY TO A PERSON WHO WISHES TO BID IN PERSON, OR BY LEAVING A COMMISSION OR ABSENTEE BID, AT A DREWEATTS PUBLIC AUCTION. For bidding at an online auction or for online bidding at a public auction please see our Online Auction Terms published on our website at www.dreweatts.com.

BIDDING IN PERSON

If intending to buy you are required to register your name and details at reception prior to the commencement of the auction. You will be required to provide a proof of identity and address to register for bidding. You will then be allocated a bidding number, which you use when bidding for an item.

COMMISSION BIDS

Dreweatts will execute bids on your behalf if you are unable to attend the sale. Commission or absentee bids are accepted either directly at reception, or can be sent by post, fax, email, telephone or via the website: www.dreweatts.com.

Dreweatts will add these bids to the auctioneers’ sale book and will undertake to purchase the lots on your behalf as cheaply as allowed by other bids and reserves. If two buyers submit identical commission bids Dreweatts may prefer the first bid received.

Dreweatts does not accept liability for failing to execute commission bids, or for any errors or omissions.

CONDITION

Bidders must satisfy themselves as to the condition of each lot. Condition reports are available on request – see the Conditions of Business at the back of this catalogue forming part of these Auction Terms and Conditions for more information regarding condition reports. Requests for condition reports must be submitted by 4pm on the day prior to the auction; condition reports may be available alongside the lot description on the online catalogue at: www.dreweatts.com.

COMMISSION CHARGES

All purchases are subject to a buyer’s premium, which is charged per lot at 26% of the hammer price (31.2% including VAT) up to and including £20,000, 25% (30% including VAT) of the hammer price from £20,001 up to and including £500,000, 20% (24% including VAT) of the hammer price from £500,001 up to and including £1,000,000 and 12% of the hammer price (14.4% including VAT) in excess of £1,000,000. A theta symbol (Θ) indicates that the lot is a zero rated item and therefore not subject to VAT on the buyer’s premium. This applies to bound books (manuscripts and printed), unframed maps and albums. In the event the lot has a dagger (†) beside the lot number in the catalogue, this indicates that the lot is owned by an entity or company required to pay VAT (generally not an Antique Dealer, as they operate under a dealers margin scheme). VAT is payable at 20% on the Hammer Price. Lots marked with a double dagger (‡) (presently a reduced rate of 5%) or Ω (presently at standard rate of 20%) have been imported from outside the UK to be sold at auction and therefore the buyer must pay the import VAT at the appropriate rate on the hammer price.

PAYMENT

Payment will be accepted, if you are a successful bidder, by debit card

issued in the name of the Buyer by a UK bank and registered to a UK billing address; by all major UK issued credit cards issued in the name of the Buyer and registered to a UK billing address with the exception of American Express and Diners Club; by bank transfer direct into our bank account, Bank Details: NatWest, 30 Market Place, Newbury, Berkshire RG14 5AG. Account Name: Dreweatts 1759 Ltd. A/C: 62412949, Sort Code: 60-15-07, BIC: NWBKGB2L, IBAN: GB21NWBK60150762412949. The name of the bank account holder should match the name of the buyer. First time buyers who are not present at the saleroom are requested to pay by bank transfer.

Y CITES REGULATIONS

Please note that lots marked with the symbol (Y) in this catalogue may be subject to CITES Regulations when exported. Relevant CITES Regulations may be found at www.gov.uk/guidance/cites-imports-and-exports.

COLLECTION OR DELIVERY

Before being able to collect your purchases you are required to pay the hammer price, plus the applicable commissions, and obtain a receipt acknowledging payment. Collection of the purchased lots is at the purchaser’s risk and expense and whilst Dreweatts do not provide packing and despatch service we can suggest some carriers.

Dreweatts also require that all purchased items are collected within four working days of the sale to avoid a storage charge being applied.

STORAGE CHARGES

All items not collected by 4pm, within four working days of the sale, will be automatically removed to commercial storage and subject to a minimum storage charge of £20 (plus VAT) per lot and to a further storage charge of £3 (plus VAT) per lot per part or full day thereafter. These charges will be the sole liability of the purchaser and will be billed directly to them by Sackville-West Moving & Storing; Sackville-West Moving & Storing may be willing to adjust their charges if they are instructed by the purchaser to deliver to them. On payment of all sales and storage costs, items will be available for collection by appointment from Sackville-West Moving & Storing (Andover), tel: + 44 (0) 2080 909988, email: office@sackvillewest.co.uk. These charges are set by Sackville-West Moving & Storing; we recommend that you contact them directly regarding queries relating to these charges and other questions relating to storage. Staff at the saleroom will be unable to answer questions relating to items that have been removed from the saleroom.

FURTHER INFORMATION

The colours printed in this catalogue are not necessarily a true reflection of the actual item. All weights and measures given in the catalogue should be regarded as approximate.

VALUATION SERVICES

Dreweatts provides a range of confidential and professional valuation services to private clients, solicitors, executors, estate managers, trustees and other professional partners. These services include auction valuations, insurance valuations, probate valuations, private treaty valuations, valuations for family division or for tax purposes. For more information, please see our website: www.dreweatts.com.

For directions to Donnington Priory, please see our website: www.dreweatts.com.

Parking is available at Donnington Priory in two car parks on either side of the saleroom.

Information for Buyers at Public Auctions

1. **INTRODUCTION.** The following notes are intended to assist Bidders and Buyers, particularly those inexperienced or new to our salerooms. All of our auctions and sales are conducted on our printed Auction Terms and Conditions, including these Conditions of Sale and Business, which are readily available for inspection and normally accompany catalogues. Our staff will be happy to help you if there is anything you do not fully understand.

Any particular auction and/or any particular lot in an auction may be subject to different or additional terms which will be published in our auction catalogue. All auctions and sales of wines and spirits, jewellery, watches and clocks are subject to the special terms set out in the relevant Notices in relation to those items published in our auction catalogue and, in the event of any conflict or inconsistency, those special terms prevail over any other terms in our Auction Terms and Conditions. By bidding at the auction, you agree to be bound by these terms.

2. **AGENCY.** As auctioneers we usually act as agents for the seller whose identity, for reasons of confidentiality, is not normally disclosed. Accordingly if you buy at auction your contract for the item or items purchased is with the seller and not with us as the auctioneer.

3. **ESTIMATES.** Estimates are designed to help buyers gauge what sort of sum might be involved for the purchase of a particular lot. Estimates may change and should not be thought of as the sale price. The lower estimate may represent the reserve price and certainly will not be below it. Estimates do not include the Buyer's Premium or VAT (where chargeable). Estimates are prepared some time before the sale and may be altered by announcement before the sale. They are in no sense definitive.

4. **BUYER'S PREMIUM.** The Conditions of Sale forming part of our Auction Terms and Conditions require the buyer to pay a buyer's premium on the hammer price of each lot purchased. The buyer's premium is 26% of the hammer price up to and including £20,000, 25% of the hammer price from £20,001 up to and including £500,000, 20% of the hammer price from £500,001 up to and including £1,000,000, and 12% of the hammer price in excess of £1,000,000. VAT at the prevailing rate of 20% is added to buyer's premium and additional charges as defined below.

5. **VAT.** A theta symbol (θ) indicates that the lot is a zero rated item and therefore not subject to VAT on the buyer's premium. This applies to bound books (manuscripts and printed), unframed maps and albums. A dagger symbol (†) indicates that VAT is payable by the purchaser at the standard rate (presently 20%) on the hammer price as well as being and element in the buyers' premium. This imposition of VAT is likely to be because the seller is registered for VAT within the European Union and is not operating the Dealers Margin Scheme or because VAT is due at 20% on import into the UK. A double dagger (‡) indicates that the lot has been imported from outside the UK and the present position is that these lots are liable to a reduced rate of Import VAT currently 5% on the hammer price. (Ω) indicates that the lot has been imported from outside the UK and these lots are liable to the standard rate of Import VAT currently 20% on the hammer price. Lots which appear without the above symbols indicate that no VAT is payable on the hammer price; this is because such lots are sold using the Auctioneers Margin Scheme and it should be noted that the VAT included within the buyers' premium is not recoverable as input tax.

6. **DESCRIPTION AND CONDITION.** Condition reports are provided on our website or upon request. The absence of a report does not imply that a lot is without imperfections. The detail in a report will reflect the estimated value of the lot. Large numbers of such requests received shortly before the sale may mean that reports cannot be provided for all lots. Members of staff are not trained restorers or conservators and, particularly for higher value lots, you should obtain an opinion from such a professional. Dreweatts is not liable for damage to gilded picture frames, plaster picture frames or picture frame glass; if a Lot is or becomes dangerous, we may dispose of it without notice to bidders in advance in any manner we see fit and will be under no liability for doing so. We recommend that you always view a lot in person.

We are dependent on information provided by the seller about a lot and whilst we may inspect lots and act reasonably in taking a general view about them we are normally unable to carry out a detailed examination and frequently no examination of lots in order to ascertain their condition in the way in which it would be wise for a buyer to do. Intending buyers have ample opportunity for inspection of goods and, therefore, accept responsibility for inspecting and investigating lots in which they may be interested and the corresponding risk should they not do so. Please note carefully the exclusion of liability for the condition of lots contained in the Conditions of Sale. Neither the seller nor we, as the auctioneers, accept any responsibility for their condition. In particular, mechanical objects of any age are not guaranteed to be in working order. However, in so far as we have examined the goods and make a representation about their condition in the auction catalogue, we shall be liable for any defect which is not reflected in that representation

and which that examination ought to have revealed to the auctioneer but which would not have been revealed to the buyer had the buyer examined the goods. Additionally, in specified circumstances lots misdescribed because they are 'deliberate forgeries' may be returned and repayment made. There is a 3 week time limit. (The expression 'deliberate forgery' is defined in our Conditions of Sale).

7. **ELECTRICAL GOODS.** These are sold as 'antiques' only and if bought for use must be checked over for compliance with safety regulations by a qualified electrician before use.

8. **EXPORT OF GOODS.** Buyers intending to export goods should ascertain (a) whether an export licence is required and (b) whether there is any specific prohibition on importing goods of that character because, e.g. they may contain prohibited materials such as ivory. Ask us if you need help.

Following the UK's exit from the European Union, private overseas buyers can only receive goods free of VAT/have the VAT amount refunded if Dreweatts acts as exporter in relation to the sale and arranges for the transport of the goods. If you would like us to arrange for the export and delivery of the goods there will be an admin fee of £100 plus the shipping cost. If you arrange for the goods to be picked up/delivered to you directly we will charge UK VAT at the appropriate rate and no refund will be available. Please note that if we export the goods to you, you will be responsible for completing the importation procedures as well the payment of any relevant duty/VAT payable on importation into your country. Business buyers are not affected by this change where the purchase has been made in the business or trading name and a VAT refund will be available on proof of export.

9. **BIDDING.** Bidders will be required to register before the sale commences and lots will be invoiced to the name and address on the sale registration form. Bidders are required to provide a government issued identity document and a proof of address. Please enquire in advance about our arrangements for telephone bidding.

10. **COMMISSION BIDDING.** Commission bids may be left with the auctioneers indicating the maximum amount to be bid excluding buyers' premium. Dreweatts will add these bids to the auctioneers' sale book and they will be executed as cheaply as possible having regard to the reserve (if any) and competing bids. If two buyers submit identical commission bids the auctioneers may prefer the first bid received. Please enquire in advance about our arrangements for the leaving of commission bids by telephone or fax. Dreweatts does not accept liability for failing to execute commission bids, or for any errors or omissions.

11. **METHODS OF PAYMENT.** Payment will be accepted, if you are a successful bidder, by debit card issued in the name of the Buyer by a UK bank and registered to a UK billing address; by all major UK issued credit cards issued in the name of the Buyer and registered to a UK billing address with the exception of American Express and Diners Club; by bank transfer direct into our bank account, Bank Details: NatWest, 30 Market Place, Newbury, Berkshire RG14 5AG. Account Name: Dreweatts 1759 Ltd. A/C: 62412949, Sort Code: 60-15-07, BIC: NWBKGB2L, IBAN: GB21NWBK60150762412949. The name of the bank account holder should match the name of the buyer. First time buyers who are not present at the saleroom are requested to pay by bank transfer.

12. **COLLECTION AND STORAGE.** Please note what the Conditions of Sale state about collection and storage. It is important that goods are paid for and collected promptly. Any delay may involve the buyer in paying storage charges.

13. **À DROIT DE SUITE ROYALTY CHARGES.** From 1st January 2012 all UK art market professionals (which includes but is not limited to; auctioneers, dealers, galleries, agents and other intermediaries) are required to collect a royalty payment for all works of art that have been produced by qualifying artists each time a work is re-sold during the artist's lifetime and for a period up to 70 years following the artists death. This payment is only calculated on qualifying works of art which are sold for a hammer price more than the UK sterling equivalent of EURO 1,000 – the UK sterling equivalent will fluctuate in line with prevailing exchange rates. It is entirely the responsibility of the buyer to acquaint himself with the precise EURO to UK Sterling exchange rate on the day of the sale in this regard, and the auctioneer accepts no responsibility whatsoever if the qualifying rate is different to the rate indicated. All items in this catalogue that are marked with λ are potentially qualifying items, and the royalty charge will be applied if the hammer price achieved is more than the UK sterling equivalent of EURO 1,000. The royalty charge will be added to all relevant buyers' invoices, and must be paid before items can be cleared. All royalty charges are passed on to the Design and Artists Copyright Society ('DACS'), no handling costs or additional fees with respect to these charges will be retained by the auctioneers. The royalty charge that will be applied to qualifying items which achieve a hammer price of more than the UK sterling equivalent of EURO 1,000, but less than the UK sterling equivalent of EURO 50,000 is 4%. For qualifying items that sell for more than the UK sterling equivalent of EURO 50,000 a sliding scale of royalty charges will apply – for a complete list of the royalty charges and threshold levels, please see www.dacs.org.uk. There is no VAT payable on this royalty charge.

Terms of Consignment for Sellers in Public Auctions

The sale of goods at our public auctions and a seller's relationship with us are governed by our Auction Terms and Conditions including these Terms of Consignment for Sellers in Public Auctions and our Conditions of Sale for Public Auctions. Any particular auction and/or any particular lot in an auction may be subject to different or additional terms which will be published in our auction catalogue or separately announced prior to the auction. All auctions and sales of wines and spirits, jewellery, watches and clocks are subject to the special terms set out in the relevant Notices in relation to those items published in our auction catalogue and, in the event of any conflict or inconsistency, those special terms prevail over any other terms in our Auction Terms and Conditions. Please note that our Auction Terms and Conditions including these Terms of Consignment for Sellers in Public Auctions and our Conditions of Sale for Public Auctions relate to auctions held in our salerooms and we have separate terms and conditions for our online auctions.

If you, or another person acting on your behalf, provide goods to us to sell on your behalf at one of our auctions this signifies that you agree to and will comply with our Auction Terms and Conditions including these Terms of Consignment for Sellers in Public Auctions and our Conditions of Sale for Public Auctions.

1. **INTERPRETATION.** In these Terms the words 'you', 'yours', etc. refer to the Seller and if the consignment of goods to us is made by an agent or otherwise on the Seller's behalf we assume that the Seller has authorised the consignment and that the consignor has the Seller's authority to contract. All obligations that apply to the Seller under these Terms of Consignment for Sellers in Public Auctions shall apply to the owner of the goods and their agent jointly and separately. Similarly the words 'we', 'us', etc. refer to the Auctioneers.

2. **WARRANTY.** The Seller warrants that possession in the lots can be transferred to the Buyer with good and marketable title, free from any third party right and encumbrances, claims or potential claims. The Seller has provided all information concerning the item's ownership, condition and provenance, attribution, authenticity, import or export history and of any concerns expressed by third parties concerning the same.

3. **ALL COMMISSIONS.** and fees are subject to VAT at the prevailing rate.

4. **COMMISSION.** is charged to sellers and all selling terms are available from our salerooms.

5. **REMOVAL COSTS.** Items for sale must be consigned to the saleroom by any stated deadline and at your expense. We may be able to assist you with this process but any liability incurred to a carrier for haulage charges is solely your responsibility.

6. **LOSS AND DAMAGE OF GOODS**

(a) Loss and Damage Warranty - Dreweatts is not authorised by the FCA to provide insurance to its clients, and does not do so. However Dreweatts for its own protection assumes liability for property consigned to it at the lower pre-sale estimate until the hammer falls. To justify accepting liability, Dreweatts makes a charge of 1.5% of the hammer price plus VAT, subject to a minimum charge of £1.50, or if unsold 1.5% of our lower estimate. The liability assumed by Dreweatts shall be limited to the lower pre-sale estimate or the hammer price if the lot is sold. Dreweatts is not liable for damage to gilded picture frames, plaster picture frames or picture frame glass; if the Lot is or becomes dangerous, we may dispose of it without notice to you in advance in any manner we see fit and will be under no liability for doing so.

(b) If the owner of the goods consigned instructs us in writing not to take such action, the goods then remain entirely at the owner's risk unless and until the property in them passes to the Buyer or they are collected by or on behalf of the owner, and clause 6 (a) is inapplicable.

7. **ILLUSTRATIONS AND PHOTOGRAPHS.** The cost of any illustrations or photographs is borne by you. The copyright in respect of such illustrations and photographs shall be the property of us, the auctioneers, as is the text of the catalogue.

8. **MINIMUM BIDS AND OUR DISCRETION.** Goods will normally be offered subject to a reserve agreed between us before the sale in accordance with clause 9. We may sell Lots below the reserve provided we account to you for the same sale proceeds as you would have received had the reserve been the hammer price. If you specifically give us a "discretion" we may accept a bid of up to 10% below the formal reserve.

9. **RESERVES**

(a) You are entitled to place prior to the auction a reserve on any lot consigned, being the minimum hammer price at which that lot may be sold. Reserves must be reasonable and we may decline to offer goods which in our opinion would be subject to an unreasonably high reserve (in which case goods carry the storage and loss and damage warranty charges stipulated in these Terms of Consignment).

(b) A reserve once set cannot be changed except with our consent.

(c) Where a reserve has been set which we consider unreasonably high, an unsold charge will be payable in the event that the lots fails to sell, being the agreed selling terms calculated on the reserve, LDW at 1.5% and any photographic charges.

(d) Where a reserve has been placed only we may bid on your behalf and only up to the reserve (if any) and you may in no circumstances bid personally.

(e) Reserves are not usually accepted for lots expected to realise below £100.

10. **ELECTRICAL ITEMS.** These are subject to detailed statutory safety controls. Where such items are accepted for sale you accept responsibility for the cost of testing by external contractors. Goods not certified as safe by an electrician (unless

antiques) will not be accepted for sale. They must be removed at your expense on your being notified. We reserve the right to dispose of unsafe goods as refuse, at your expense.

11. **SOFT FURNISHINGS.** The sale of soft furnishings is strictly regulated by statute law in the interests of fire safety. Goods found to infringe safety regulations will not be offered and must be removed at your expense. We reserve the right to dispose of unsafe goods as refuse, at your expense. The rights of disposal referred to in clause 10 and 11 are subject to the provisions of The Torts (Interference with Goods) Act 1977.

12. **DESCRIPTION.** Please assist us with accurate information as to the provenance, lawful import etc. of goods where this is relevant. There is strict liability for the accuracy of descriptions under modern consumer legislation and in some circumstances responsibility lies with sellers if inaccuracies occur. We will assume that you have approved the catalogue description of your lots and that your lots match those descriptions unless informed to the contrary. Where we are obliged to return the price to the buyer when the lot is a deliberate forgery under Condition 15 of the Conditions of Sale and we have accounted to you for the proceeds of sale you agree to reimburse us the sale proceeds and in any event within 7 days of our written notice to do so.

13. **UNSOLD.** If an item is unsold it may at our discretion be re-offered at a future sale. Where in our opinion an item is unsaleable you must collect such items from the saleroom promptly on being so informed. Otherwise, storage charges may be incurred. We reserve the right to charge for storage in these circumstances at a reasonable daily rate.

14. **WITHDRAWN AND BOUGHT IN ITEMS.** These are liable to incur a charge of 15% commission, 1.5 % Loss and Damage Warranty and any other costs incurred including but not limited to illustration and restoration fees all of these charges being subject to VAT on being bought in or withdrawn after being catalogued.

15. **CONDITIONS OF SALE.** You agree that all goods will be sold on our Conditions of Sale for Public Auctions. In particular you undertake that you have the right to sell the goods either as owner or agent for the owner with good and marketable title and free and clear of any third party rights or claims. You undertake to compensate us and any buyer or third party for all losses liabilities, costs and expenses suffered or incurred arising out of or in connection with any breach of this undertaking. We will also, at our discretion, and as far as practicable, confirm that an item consigned for sale does not appear on the Art Loss register, which is administered by an independent third party.

16. **DUE DILIGENCE CHECKS AND ANTI-MONEY LAUNDERING PROCEDURES.** Under the money laundering regulations in force we are required to carry out relevant due diligence checks. This includes verifying the identity of all customers we transact with as well as any beneficial owners on behalf of whom they may transact. Vendors who are unable to or refuse to supply required identification documents and proof of address will not be able to consign to Dreweatts auctions. Copies of customer due diligence checks will be stored for as long as it is necessary to satisfy legal requirements in an appropriate storage facility, which for the avoidance of doubt may include storage solely in electronic form. We reserve the right to withhold the monies owed until the vendor provides the information necessary to complete the anti-money laundering checks.

17. **AUTHORITY TO DEDUCT COMMISSION AND EXPENSES AND RETAIN PREMIUM AND INTEREST**

(a) You authorise us to deduct commission at the stated rate and all expenses incurred for your account from the hammer price and consent to our right to retain beneficially the premium paid by the buyer in accordance with our Conditions of Sale for Public Auctions and any interest earned on the sale proceeds until the date of settlement.

(b) In case of lots unsold at auction you authorise us at our discretion to reoffer such lots and negotiate a sale within seven days of the auction date, in which case the same charges will be payable as if such lots had been sold at auction and so far as appropriate these Terms apply.

18. **WAREHOUSING.** We disclaim all liability for goods delivered to our saleroom without sufficient sale instructions and reserve the right to make minimum warehousing charge of £10 per lot per day. Unsold lots are subject to the same charges if you do not remove them within a reasonable time of notification. If not removed within three weeks we reserve the right to sell them and defray charges from any net proceeds of sale or at your expense to consign them to the local authority for disposal.

19. **SETTLEMENT.** After sale settlement of the net sum due to you normally takes place within 28 days of the sale unless the buyer has not paid for the goods or the checks necessary under the current Money Laundering Regulations have not been completed. In this case no settlement will then be made but we will take your instructions in the light of our Conditions of Sale for Public Auctions. You authorise any sums owed by you to us on other transactions to be deducted from the sale proceeds. You must note the liability to reimburse the proceeds of sale to us as under the circumstances provided for in Condition 12 above. You should therefore bear this potential liability in mind before parting with the proceeds of sale until the expiry of 28 days from the date of sale.

Conditions of Sale for Public Auctions

Dreweatts carries on business with bidders, buyers and all those present in the auction room prior to or in connection with a sale by auction at our salerooms on our Auction Terms and Conditions or Public Auctions including these Conditions of Sale for Public Auctions and all bidders, buyers and others participating in a public auction accept that these terms apply to the exclusion of any terms and conditions contained in any of those person's own documents even if the same purport to provide that that person's own or some other terms prevail. Any particular public auction and/or any particular lot in an auction may be subject to different or additional terms which will be published in our online auction catalogue. Please note that our Auction Terms and Conditions including these Conditions of Sale for Public Auctions relate to auctions held in one of our salerooms and we have separate terms and conditions for our online auctions.

1. DEFINITIONS

In these Conditions:

- (a) "auctioneer" means the firm of Dreweatts or its authorised auctioneer, as appropriate;
- (b) "deliberate forgery" means an imitation made with the intention of deceiving as to authorship, origin, date, age, period, culture or source but which is unequivocally described in the catalogue as being the work of a particular creator and which at the date of the sale had a value materially less than it would have had if it had been in accordance with the description;
- (c) "hammer price" means the level of bidding reached (at or above any reserve) when the auctioneer brings down the hammer;
- (d) "terms of consignment" means the stipulated terms and rates of commission on which Dreweatts accepts instructions from sellers or their agents;
- (e) "total amount due" means the hammer price in respect of the lot sold together with any premium, Value Added Tax chargeable and any additional charges payable by a defaulting buyer under these Conditions;
- (f) "sale proceeds" means the net amount due to the seller, being the hammer price of the lot sold less commission at the stated rate, Value Added Tax chargeable and any other amounts due to us by the seller in whatever capacity and however arising;
- (g) "You", "Your", etc. refer to the buyer as identified in Condition 2.
- (h) The singular includes the plural and vice versa as appropriate.

2. BIDDING PROCEDURES AND THE BUYER

- (a) Bidders are required to register their particulars before bidding by completing a sale registration form and to satisfy any security arrangements before entering the auction room to view or bid;
- (b) Under the money laundering regulations in force we are required to verify the identity of all customers we transact with as well as any beneficiaries on behalf of whom they may transact. Customers who are unable to or refuse to supply required identification documents and proof of address will not be able to bid in Dreweatts auctions. Copies of customer due diligence checks will be stored for as long as it is necessary to satisfy legal requirements in an appropriate storage facility which for the avoidance of doubt may include storage solely in electronic form;
- (c) the maker of the highest bid accepted by the auctioneer conducting the sale shall be the buyer at the hammer price and any dispute about a bid shall be settled at the auctioneer's absolute discretion by reoffering the Lot during the course of the auction or otherwise. The auctioneer shall act reasonably in exercising this discretion.
- (d) Bidders shall be deemed to act as principals;
- (e) Our right to bid on behalf of the seller is expressly reserved up to the amount of any reserve and the right to refuse any bid is also reserved.

3. **INCREMENTS.** Bidding increments shall be at the auctioneer's sole discretion.

4. **THE PURCHASE PRICE.** The buyer shall pay the purchase price together with a premium thereon of 30% which shall include VAT on the premium at the rate imposed by law. The buyer will also be liable for any royalties payable under Droit de Suite as set out under Information for Buyers.

5. **VALUE ADDED TAX.** Value Added Tax on the hammer price is imposed by law on all items affixed with a dagger (†) or double dagger (‡). Value Added Tax is charged at the appropriate rate prevailing by law at the date of sale and is payable by buyers of relevant Lots. (Please refer to "Information for Buyers" for a brief explanation of the VAT position).

6. PAYMENT

(a) Immediately a Lot is sold you will:

- (i) give to us, if requested, proof of identity, and

(ii) pay to us the total amount due or in such other way as is agreed by us.

(b) Any payments by you to us may be applied by us towards any sums owing from you to us on any account whatever without regard to any directions of you or your agent, whether expressed or implied.

(c) In order to comply with money laundering regulations we reserve the right to require proof of source of funds and/ or confirmation of the nature and source of wealth for all receipts of monies from clients directly or from third parties for payments on behalf of clients. Lots will only be released once we have completed necessary checks under the current Money Laundering Regulations.

7. TITLE AND COLLECTION OF PURCHASES

(a) The ownership of any Lots purchased shall not pass to you until you have made payment in full to us of the total amount due.

(b) You shall at your own risk and expense take away any lots that you have purchased and paid for not later than 3 working days following the day of the auction after which you shall be responsible for any removal, storage and insurance charges.

(c) No purchase can be claimed or removed until it has been paid for and we have completed necessary checks under the current Money Laundering Regulations.

8. REMEDIES FOR NON-PAYMENT OR FAILURE TO COLLECT PURCHASES

(a) If any Lot is not paid for in full and taken away in accordance with these Conditions or if there is any other breach of these Conditions, we, as agent for the seller and on our own behalf, shall at our absolute discretion and without prejudice to any other rights we may have, be entitled to exercise one or more of the following rights and remedies:

- (i) to proceed against you for damages for breach of contract;
- (ii) to rescind the sale of that Lot and/or any other Lots sold by us to you;
- (iii) to resell the Lot (by auction or private treaty) in which case you shall be responsible for any resulting deficiency in the total amount due (after crediting any part payment and adding any resale costs). Any surplus so arising shall belong to the seller;
- (iv) to remove, store and insure the Lot at your expense and, in the case of storage, either at our premises or elsewhere;
- (v) to charge interest at a rate not exceeding 15% per month on the total amount due to the extent it remains unpaid for more than 3 working days after the sale;
- (vi) to retain that or any other Lot sold to you until you pay the total amount due;
- (vii) to reject or ignore bids from you or your agent at future auctions or to impose conditions before any such bids shall be accepted;
- (viii) to apply any proceeds of sale of other Lots due or in future becoming due to you towards the settlement of the total amount due and to exercise a lien (that is a right to retain possession of) any of your property in our possession for any purpose until the debt due is satisfied.

(b) We shall, as agent for the seller and on our own behalf pursue these rights and remedies only so far as is reasonable to make appropriate recovery in respect of breach of these conditions.

9. **THIRD PARTY LIABILITY.** All bidders, buyers and other members of the public on our premises are there at their own risk and must note the lay-out of the accommodation and security arrangements. Accordingly neither the auctioneer nor our employees or agents shall incur liability for death or personal injury or for the safety of the property of persons visiting prior to or at a sale (except in each case as may be required by law by reason of our negligence)

10. **COMMISSION BIDS.** Whilst prospective buyers are strongly advised to attend the auction and are always responsible for any decision to bid for a particular Lot and shall be assumed to have carefully inspected and satisfied themselves as to its condition, we will if so instructed clearly and in writing execute bids on their behalf. Neither the auctioneer nor our employees or agents shall be responsible for any failure to do so.

Where two or more commission bids at the same level are recorded we reserve the right in our absolute discretion to prefer the first bid so made.

11. **WARRANTY OF TITLE AND AVAILABILITY.** The seller warrants to the auctioneer and you that the seller is the true owner of the property consigned or is properly authorised by the true owner to consign for sale and is able to transfer good and marketable title to the property free from any third party claims.

Save as expressly set out above, all other warranties, conditions or other terms which might have effect between the Seller and you, or us and you, or be implied or incorporated by

statute, common law or otherwise are excluded to the fullest extent permitted by law.

12. **AGENCY.** The auctioneer normally acts as agent only and disclaims any responsibility for default by sellers or buyers.

13. **TERMS OF SALE.** The seller acknowledges that Lots are sold subject to the stipulations of these Conditions in their entirety and on the Terms of Consignment for Public Auctions as notified to the consignor at the time of the entry of the Lot.

14. DESCRIPTIONS AND CONDITION

(a) Whilst we seek to describe lots accurately, it may be impractical for us to carry out exhaustive due diligence on each lot. Prospective buyers are given ample opportunities to view and inspect before any sale and they (and any independent experts on their behalf) must satisfy themselves as to the accuracy of any description applied to a lot. Prospective buyers also bid on the understanding that, inevitably, representations or statements by us as to authorship, genuineness, origin, date, age, provenance, condition or estimated selling price involve matters of opinion. We undertake that any such opinion shall be honestly and reasonably held and accept liability for opinions given negligently or fraudulently. Subject to the foregoing neither we the auctioneer nor our employees or agents nor the seller accept liability for the correctness of such opinions and all conditions and warranties, whether relating to description, condition or quality of lots, express, implied or statutory, are hereby excluded. Dreweatts is not liable for damage to gilded picture frames, plaster picture frames or picture frame glass; if the Lot is or becomes dangerous, we may dispose of it without notice to you in advance in any manner we see fit and will be under no liability for doing so. This Condition is subject to the next following Condition concerning deliberate forgeries and applies save as provided for in paragraph 6 "information to buyers".

(b) Private treaty sales made under these Conditions are deemed to be sales by auction for purposes of consumer legislation.

15. **FORGERIES.** Notwithstanding the preceding Condition, any Lot which proves to be a deliberate forgery (as defined) may be returned to us by you within 21 days of the auction provided it is in the same condition as when bought, and is accompanied by particulars identifying it from the relevant catalogue description and a written statement of defects. If we are satisfied from the evidence presented that the Lot is a deliberate forgery we shall refund the money paid by you for the Lot including any buyer's premium provided that (i) if the catalogue description reflected the accepted view of scholars and experts as at the date of sale or

(2) you personally are not able to transfer a good and marketable title to us, you shall have no rights under this condition.

The right of return provided by this Condition is additional to any right or remedy provided by law or by these Conditions of Sale.

16. **PRIVACY NOTICE.** We will hold and process any personal data in relation to you in accordance with our current privacy policy, a copy of which is available on our website www.dreweatts.com/privacy-policy/.

GENERAL

17. We shall have the right at our discretion, to refuse admission to our premises or attendance at our auctions by any person.

18. (a) Any right to compensation for losses liabilities and expenses incurred in respect of and as a result of any breach of these Conditions and any exclusions provided by them shall be available to the seller and/or the auctioneer as appropriate. (b) Such rights and exclusions shall extend to and be deemed to be for the benefit of employees and agents of the seller and/or the auctioneer who may themselves enforce them.

19. Any notice to any buyer, seller, bidder or viewer may be given by first class mail, email or Swiftmail in which case it shall be deemed to have been received by the addressee 48 hours after posting.

20. Special terms may be used in catalogue descriptions of particular classes of items in which case the descriptions must be interpreted in accordance with any glossary appearing at the commencement of the catalogue.

21. Any indulgence extended to bidders, buyers or sellers by us notwithstanding the strict terms of these Conditions or of the Terms of Consignment shall affect the position at the relevant time only and in respect of that particular concession only; in all other respects these Conditions shall be construed as having full force and effect.

22. These Conditions shall be governed by and construed in accordance with English law and the parties irrevocably submit to the exclusive jurisdiction of the English courts.

Dreweatts

NEWBURY

Dreweatts

Donnington Priory

Newbury

Berkshire RG14 2JE

+44 (0) 1635 553 553

info@dreweatts.com

MANAGING DIRECTOR

Jonathan Pratt

DEPUTY CHAIRMAN

Will Richards

James Nicholson

LONDON

Dreweatts / Bloomsbury Auctions

16-17 Pall Mall

St James's

London SW1Y 5LU

+44 (0) 20 7839 8880

info@bloomsburyauctions.com

info@dreweatts.com

HAMBRIDGE LANE

Dreweatts

1 Hambridge Lane

Newbury

Berkshire RG14 5TU

+44 (0) 1635 553 553

info@dreweatts.com

Group Departments

AUTOGRAPHS AND EPHEMERA

Ania Hanrahan

ahanrahan@dreweatts.com

ASIAN CERAMICS AND WORKS OF ART

Mark Newstead

Dr Yingwen Tao

asian@dreweatts.com

BLOOMSBURY AUCTIONS BOOKS AND MANUSCRIPTS

Rupert Powell

Dido Arthur

Justin Phillips

Max Hasler

Richard Caroll

info@bloomsburyauctions.com

BRITISH AND EUROPEAN CERAMICS AND GLASS

Mark Newstead

Geoffrey Stafford Charles

interiors@dreweatts.com

BRITISH AND EUROPEAN SCULPTURE AND WORKS OF ART

Silas Currie Leigh-Wood

sculpture@dreweatts.com

CLOCKS AND SCIENTIFIC INSTRUMENTS

Leighton Gillibrand

clocks@dreweatts.com

COUNTRY SPORTING

Geoffrey Stafford Charles

gscharles@dreweatts.com

DECORATIVE ARTS AND MODERN DESIGN

Geoffrey Stafford Charles

Ashley Matthews

interiors@dreweatts.com

FURNITURE AND CARPETS

Ben Brown

Elaine Binning

Ashley Matthews

William Turkington

Mitchell Tompkins

furniture@dreweatts.com

HOUSE SALES AND PRIVATE COLLECTIONS

Joe Robinson

Eloise Kerr-Smiley

housesales@dreweatts.com

JEWELLERY, SILVER, WATCHES AND OBJECTS OF VERTU

James Nicholson

Nick Mann

Tessa Parry

jsw@dreweatts.com

LIVE STEAM AND MODEL ENGINEERING WORKS OF ART

Michael Matthews

Lucie Hobbs

transport@dreweatts.com

MODERN AND CONTEMPORARY ART

Jennie Fisher

Francesca Whitham

Will Porter (Business Development)

pictures@dreweatts.com

OLD MASTERS, BRITISH AND EUROPEAN ART

Brandon Lindberg

Anne Gerritsen

pictures@dreweatts.com

WINE

Mark Robertson

Caroline Shepherd

Violette Jongbloed

Dianne Wall

wine@dreweatts.com

BUSINESS DEVELOPMENT

Will Richards

Will Porter

Joe Robinson

Imogen Jones

ijones@dreweatts.com

VALUATIONS FOR PROBATE, INSURANCE AND CGT

Emma Terry

Janice Clift

valuations@dreweatts.com

