

FINE JEWELLERY, SILVER, WATCHES & HANDBAGS

THURSDAY 16 NOVEMBER 2023 | NEWBURY



DREWEATTS

EST. 1759



FINE JEWELLERY, SILVER, WATCHES & HANDBAGS

THURSDAY 16 NOVEMBER 2023 | NEWBURY

LOTS 1-304 | 10.30AM

VIEWING IN LONDON (HIGHLIGHTS)

Tuesday 7 November: 10am–4pm

Wednesday 8 November: 10am–4pm

VIEWING IN NEWBURY (FULL SALE)

Sunday 12 November: 10am–3pm

Monday 13 November: 10am–4pm

Tuesday 14 November: 10am–4pm

Wednesday 15 November: 10am–4pm

SPECIALISTS

James Nicholson FGA, DGA

Nick Mann

Tessa Parry FGA, DGA

Ian Pickford (Consultant, Silver)

Terry Taylor MBHI (Consultant, Watches)

ENQUIRIES & CONDITION REPORTS

jsw@dreweatts.com

Front cover: Lot 262

Opposite page: Lot 227

Page 2: Lot 106

Back cover: Lot 136

Catalogues £15 (£20 by post)

NEWBURY

Donnington Priory, RG14 2JE

+44 (0) 1635 553 553

LONDON

16 Pall Mall, SW1Y 5LU

+44 (0) 20 7839 8880

info@dreweatts.com

dreweatts.com

DREWEATTS

EST. 1759



REGISTRATION AND BIDDING

We advise bidders to register at least 48 hours in advance of the auction as we will need to complete Know Your Client checks on all registrants. We allow commission (or absentee bids), telephone bids, live online bidding, and in person bidding. More information is available in our Terms of Sale at the back of this catalogue, and on our website.

BUYER'S PREMIUM

26% of hammer price up to £20,000 (31.2% including VAT), plus

25% of hammer price from £20,001 up to £500,000 (30% including VAT), plus

20% of hammer price from £500,001 up to £1,000,000 (24% including VAT), plus

12.5% of hammer price in excess of £1,000,000 (15% including VAT)

ADDITIONAL CHARGES AND SYMBOLS

λ - Indicates that this lot may be subject to Droit de Suite (Artist Resale Right) royalty charges.

Y - Indicates that this lot may be subject to CITES regulations when exported.

† - Indicates that VAT is payable by the purchaser at the standard rate of 20% on the hammer price as well as being charged on the buyers' premium.

θ - Indicates that the lot is a zero rated item and therefore subject to buyer's premium of 26% exclusive of VAT (0% VAT).

‡ - Indicates that the lot is being sold whilst subject to temporary importation and that VAT is due at the reduced rate (5%).

Ω - Indicates that the lot has been imported from outside the UK and is liable to the standard rate of Import VAT currently 20% on the hammer price.

β - Indicates that the lot is offered in Bond. This applies to wine. Bidding will be at duty paid prices other than for those lots marked 'IN BOND/β'.

PAYMENT

If you are successful, you will receive an invoice to your registered email address, which will include detailed payment and collection information. If you wish to see this in advance, please visit our website. Items must be paid for in full and Know Your Client checks must be complete before we can release any purchases; first time buyers may also be subject to restrictions on the methods of payment we can accept. Please confirm this with the saleroom prior to collection.

COLLECTIONS, SHIPPING AND STORAGE

Unless otherwise stated below, purchases are available for collection from Dreweatts Donnington Priory salerooms from Monday to Friday (9am-5pm) by appointment only. If you wish to have the item shipped to you, please see the list of suggested shippers on our website.

Due to a busy schedule of sales, we are unable to store sold items at the salerooms; any items not collected after 4 working days of the sale (by 4pm) are removed to commercial storage and subject to a storage charge of £20 (plus VAT) per lot as well as a further storage charge of £3 (plus VAT) per lot per day thereafter. Please note for large consignments there may be additional charges. These charges will be the sole liability of the purchaser and will be billed directly to them by Sackville-West Moving & Storing. On payment of all sales and storage costs, items will be available for collection by appointment from Sackville-West Moving & Storing (Andover SP10 3SA).

CONDITIONS OF SALE

Any registration to bid is subject to acceptance of our Auction Terms and Conditions and Privacy Policy. Both are available on our website.

CONDITIONS OF ITEMS

Buyers must satisfy themselves to the condition of any item prior to bidding. Detailed condition reports and additional images are available upon request.

EXPORT OF ITEMS

If you intend to export goods out of the UK, we ask you to satisfy yourselves as to whether there is prohibition on exporting goods of that character e.g. if the goods contain prohibited materials such as ivory or they require an Export Licence on the grounds of exceeding a specific age and/or monetary value threshold as set by the Export Licensing unit. We are happy to make the submission of necessary applications on behalf of our buyers, but we will charge for this service only to cover the costs of our time.

GLOSSARY OF TERMS

Where relevant, for example Picture auctions or Clocks auctions, a glossary of cataloguing terms will be available at the back of our printed catalogues as well as via our website.



1

1
A CHARLES II SMALL SILVER TWIN HANDLED PORRINGER
MAKER'S MARK OBSCURED, LONDON 1669
With twin scroll handles, engraved L over R.E, chased with stylised flowers
13cm (5in) long
93g (3 oz)

£700-900

2

A JAMES II SILVER BOUGIE BOX
MAKER'S MARK OBSCURED, CIRCA 1665
With a pull off domed cover, engraved with an armorial
7.5cm (3in)
108g (3.5 oz)

The arms are for the MICKLETHWAITE family of Yorkshire.

£800-1,200



2

3

A WILLIAM III SILVER TWIN HANDLED PORRINGER
JOHN WARD, LONDON 1699
The half fluted and lobed body with twin beaded scroll handles, engraved with a scroll reserve and on a circular pedestal foot
22cm (8 3/4in) long
438g (14.1 oz)

£800-1,200



3



4

4
A CHARLES II SILVER PORRINGER AND COVER
POSSIBLY BY JOHN RUSLEN, LONDON 1677
With a bud finial to the foliate chased domed cover, the body with twin scroll handles, chased with band of acanthus leaves and on a circular foot
22cm (8 1/2in) long
733g (23.6 oz)

£2,000-3,000



5

5 Y
PORT ROYAL, JAMAICA, A LATE 17TH CENTURY TORTOISESHELL WIG COMB CASE AND DOUBLE SIDED COMB
 ATTRIBUTED TO PAUL BENNETT, CIRCA 1690

The rectangular case engraved with PORT: ROYAL IN IAMICA: 1690 above the coat of arms of Jamaica with banner inscribed IND VS SERVIET UNI UTERQUE below, the reverse with native fruit trees, the corners with silver panels engraved with flowers, with internal double sided tortoiseshell comb, engraved with floral motifs

Size/dimensions: case 10 x 16cm
 Gross weight: 121.5 grams

Paul Bennett is the only registered comb maker at this time in Jamaica, he had purchased a tenement house in Port Royal, and remained in the city until an earthquake raised it to the ground in 1692.

£8,000-12,000



6

6
A SILVER MOUNTED EXOTIC HARDWOOD DIPPER CUP
 LATE 17TH CENTURY

The silver mount engraved with a crest and JP, the body with engine turned decoration and rosacea beneath
 9.5cm (3 3/4in) diameter

Provenance:

A. T. Isher Collection
 Their sale, Bruton, Knowles & Co., 28th April 1976, Lot 31
 Anonymous Sale Sotheby's (Date Unknown), Lot 668

£800-1,200



7

7
A PAIR OF QUEEN ANNE SCOTTISH SILVER
LIGHTHOUSE CASTERS

ROBERT BRUCE, EDINBURGH 1702

With domed finials to the pierced domed covers, gadrooned borders, engraved with a crest, a girdle and on a gadrooned circular foot

15cm (6in) high

318g (10.2 oz)

This is the crest of the ERSKINE family of Alva co. Stirling. They were created in 1666 Baronets of Alva in the Baronetage of Nova Scotia. In 1702 the incumbent was Sir John ERSKINE (1672-1739) 3rd Baronet, who was the son of Sir Charles ERSKINE (1643-1690) 1st Baronet and MP by Christian DUNDAS daughter of Sir James DUNDAS of Arniston. He had succeeded to the Baronetcy after the death of his elder brother, Sir James ERSKINE (1760-1693) 2nd Baronet, who was killed at the battle of Landon. He married Catherine SINCLAIR daughter of Lord SINCLAIR.

£3,000-5,000



8

8
A MATCHED SET OF FOUR QUEEN ANNE
AND GEORGE I SILVER OCTAGONAL
CANDLESTICKS

ANTHONY NELME, LONDON 1713 (2)
 AND 1714 (2)

With waisted octagonal capitals, baluster stems, engraved with an armorial and on octagonal moulded spreading bases

18cm (7in) high

1606g (51.6 oz)

The paternal arms are for the family of PALMER of Marston Staffordshire, descended from the same family of York. The maternal arms of the family NEWDEGATE or NEWDIGATE of Arbury and Astley Warwickshire.

The impaled arms are likely for Charles PALMER (1692-1764), then of Warwickshire, and his wife Mary NEWDIGATE (1711-1744) daughter of Richard NEWDIGATE (1668-1727) 3rd Baronet of Arbury by Elizabeth TWISDEN (1681-1765). They were married in 1733, a short time (20 years) after the assay dates, suggesting a later engraving and/or earlier family ownership. Charles PALMER was the son of William PALMER (died 1722) of Ladbroke, Warwickshire by Mary SKRYMASTER (1656-1729).

£8,000-12,000



9



10



11

9
A LATE 15TH/EARLY 16TH CENTURY SPOON

UNASCRIBED, PROVINCIAL
With altered wrythen finial
19.5cm (7 3/4in) long
39g (1.25 oz)

Offered for sale with a letter from Goldsmiths Company dated 9th March 2022, case number 9504, stating the spoon has been examined by the Antique Plate Committee, but is outside of the Committee's jurisdiction.

Offered for sale with the Goldsmiths Company Assay Office Results of Impurity Analysis of Antique Silver, dated 25th August 2023, case no. 9504, stating the bowl and handle are 99% dated 1500 - 1600.

£500-700

10
A LATE 16TH/EARLY 17TH CENTURY SPOON

INDISTINCT MARKS
With a later woodwose top, the back of the bowl engraved with an armorial and 1566
18cm (7in) long
42g (1.35 oz)

Offered for sale with a letter from Goldsmiths Company dated 9th March 2022, case number 9501, stating the spoon has been examined by the Antique Plate Committee, but is outside of the Committee's jurisdiction.

Offered for sale with the Goldsmiths Company Assay Office Results of Impurity Analysis of Antique Silver, dated 25th August 2023, case no. 9501, stating the bowl and handle are 96% dated 1500 - 1600 and 3% dated 1600 - 1697.

£300-500

11
A LATE 16TH/EARLY 17TH CENTURY SEAL TOP SPOON

UNASCRIBED, PROVINCIAL
The back of the bowl engraved MB
18.5cm (7 1/4in) long
53g (1.7 oz)

Offered for sale with a letter from Goldsmiths Company dated 9th March 2022, case number 9497, stating the spoon has been examined by the Antique Plate Committee, but is outside of the Committee's jurisdiction.

Offered for sale with the Goldsmiths Company Assay Office Results of Impurity Analysis of Antique Silver, dated 25th August 2023, case no. 9497, stating the bowl and handle are 97% dated 1500 - 1600 and 2% dated 1600 - 1697.

£500-700

12
A SWEDISH SILVER AND SILVER GILT LIDDED TANKARD

MOLLENBORG, STOCKHOLM, CIRCA 1894
With a ball thumb piece to the domed cover and engraved with scrollwork, the body with a scroll handle, engraved with a presentation inscription and on three ball feet
19.5cm (7 3/4in) high
783g (25.2 oz)

£600-800



12



13

13
A SWEDISH SILVER AND SILVER GILT LIDDED TANKARD

NATIONAL CONTROL MARK, CIRCA 1945
The ogee domed cover with a ball thumb piece, inset with a coin and with chased foliate and scroll bands, the body with a scroll handle and on three ball feet
19cm (7 1/2in) high
807g (25.95 oz)

£600-800

14
A SWEDISH SILVER OVAL DISH

MOLLENBORG, STOCKHOLM, CIRCA 1827
With a moulded border, engraved with a coronet over CB
41cm (16in) long
878g (28.2 oz)

£300-500



14



15

15
A PAIR OF GEORGE II SILVER OVAL SAUCE BOATS
 MAKER'S MARKS OBSCURED, LONDON 1750
 With leaf capped flying scroll handles, shaped borders, engraved with a crest and on three shell and pad feet
 19.5cm (7 3/4in) long
 689g (22.15 oz)

The crest and motto of the BURGES(S) family who originate from Beauport, Sussex.

£500-700



16

16
A PAIR OF GEORGE II SILVER SAUCE BOATS
 MAKER'S MARK W ..., LONDON 1756
 With gadrooned borders, double scroll handles, engraved with an armorial and on three shell feet
 21cm (8 1/4in) long
 727g (23.4 oz)

The impaled arms of Arthur HOLDSWORTH (1733-1777) of Dartmouth, Devon and his wife Rebecca TAYLOR (1730-1757).

£700-1,000

17
A NORWEGIAN SILVER PEG TANKARD
 PROBABLY HANS PETTERSEN BLYTT, 18TH CENTURY
 The cover inset with a Danish 1700 One Krone coin, a foliate thumb piece and chased with foliate swags and a mask, the body with a scroll handle, chased with foliage and flowers, on three lion and ball feet
 18cm (7in) high
 700g (22.5 oz)

£1,000-1,500



18

18
A PAIR OF GEORGE III SILVER OVAL PEDESTAL SAUCE TUREENS AND COVERS
 HENRY CHAWNER, LONDON 1787
 With urn shaped finials to the domed covers, reeded borders, twin loop handles and on oval reeded pedestal bases
 24cm (9 1/2in) long
 1131g (36.35 oz)

£1,000-1,500



19

19
A MATCHED PAIR OF SWEDISH SILVER OVAL SAUCE TUREENS AND COVERS
 A. FLOBERG, STOCKHOLM, CIRCA 1784 AND C. G. HALLBERG, STOCKHOLM, CIRCA 1922
 With flame finials to the domed covers, twin loop handles and on oval pedestal feet
 22cm (8 3/4in) long
 1338g (43 oz)

£600-800



20

20
A PAIR OF GEORGE III SILVER CIRCULAR SALVERS
 JOHN CROUCH I & THOMAS HANNAM, LONDON 1780
 With beaded borders, engraved with a crest and on three beaded feet
 19cm (7 1/2in) diameter
 646g (20.8 oz)

£400-600

17



21
A PAIR OF GEORGE II CAST SILVER CANDLESTICKS
 JOHN CAFE, LONDON 1751
 With shaped circular sconces, reel capitals, knopped baluster stems and shaped circular moulded spreading bases with leaves at intervals
 22.5cm (9in) high
 1196g (38.45 oz)

£1,000-1,500



22
A PAIR OF GEORGE II SILVER CANDLESTICKS
 WILLIAM SKEEN, LONDON 1755
 The sconces with shells to the corners, baluster capitals, knopped stems and on shaped circular moulded spreading bases with foliage
 25cm (9 3/4in) high
 1694g (54.45 oz)

£1,000-1,500



23
A PAIR OF GEORGE III CAST SILVER CANDLESTICKS
 EBENEZER COKER, LONDON 1760
 With shaped square sconces with foliage to the corners, reel capitals, foliate knopped stems and on shaped moulded square bases with foliage and shells
 25.5cm (10in) high
 1151g (37 oz)

£1,000-1,500



24

24
A GEORGE III SILVER EPERGNE
 JOHN ROBINS, LONDON 1792
 The bowls and body with reeded borders and pierced circular link bands, four scroll arms and on four hoof feet
 32cm (12 1/2in) high
 1347g (43.3 oz)

£3,000-5,000



25

25
A GEORGE III SILVER EPERGNE WITH LATER SILVER COLOURED BRANCHES AND DISHES
 MAKER'S MARK R ..., LONDON 1770, THE ARMS UNMARKED, THE DISHES BY GARRARD & CO. LTD., LONDON 1990
 The central shaped oval basket with a chased foliate border and pierced body, the oval stand with a beaded border, conforming pierced decoration, an applied foliate and C-scroll apron, on four scroll legs with shell and scroll feet, with four silver coloured scroll branches with beaded rims and four shaped circular dishes
 34.5cm (13 1/2in) high
 3689g (118.6 oz) gross

Provenance:
 From the Private Collection of a titled family

£1,500-2,000



26

26
A GEORGE II SILVER WAX JACK
 BENJAMIN GODFREY, CIRCA 1740
 The scroll scissor-action holder with a divided circular pan, a part screw-threaded column, a loop handle and a circular base engraved with an armorial
 14cm (5 1/2in) high
 301g (9.7 oz)

£1,500-2,500



27

27
A GEORGE II SILVER TWIN HANDLED CUP
 RICHARD RICHARDSON II, CHESTER 1744
 With twin scroll handles, a girdle and on a circular foot
 23cm (9in) long
 447g (14.4 oz)

£800-1,200

28
A GEORGE II SILVER SHAPED CIRCULAR SALVER
 THOMAS ENGLAND, LONDON 1731
 With a raised moulded border, engraved with an armorial and on four shaped oval pad feet
 39cm (15 1/4in) diameter
 1685g (54.15 oz)

The arms of the BARLOW family of Sheffield

£800-1,200



28

29
A SWEDISH SILVER SUGAR BOWL AND COVER
 CIRCA 1789

With a squirrel finial to the domed cover, the half lobed body with a tongue and dart border and engraved with a foliate band, on three scroll bird mask and paw supports
 28cm (11in) high
 651g (20.95 oz)

£300-400



29



30

30
A GEORGE III BALUSTER COFFEE POT
 CHARLES WRIGHT, LONDON 1771
 With a wrythen cone finial to the domed cover, a wooden double scroll handle, engraved MAN and on a circular foot
 26cm (10 1/4in) high
 845g (27.15 oz) gross

£500-700

31
A GEORGE III SILVER SHAPED CIRCULAR SALVER
 J. E. TERRY & CO., LONDON 1817
 With a raised gadrooned and foliate border, chased with floral sprays and C-scrolls, engraved with an armorial and on three shell and scroll bracket feet
 31cm (12 1/4in) diameter
 1272g (40.9 oz)

These are the arms of the BERTIE family

£800-1,200



31



32
A PAIR OF GEORGE III SILVER TEA CADDIES
 EDWARD ALDRIDGE II, LONDON 1764
 The domed covers with gadrooned borders, the bodies chased with floral sprays and on four scroll feet
 15cm (6in) high
 510g (16.4 oz)
 £1,000-1,500

33
A GEORGE IV SILVER GILT TWIN HANDLED SUGAR BOWL
 MAKER'S MARK J ..., LONDON 1825
 With a gadrooned, shell and foliate border, twin loop handles, chased with vining fruit and on four lion paw feet
 19cm (7 1/2in) long



Together with a George III silver gilt Old English pattern sifting spoon by Solomon Hougham, Solomon Royes & John East Dix, London 1817, with a vacant reserve, the shaped circular bowl pierced and chased with foliage and flowers, 19cm (7 1/2in) long
 897g (28.85 oz) gross
 In a fitted box

Provenance:
 From the estate of Lionel Alfred Martin, Ingram Avenue, London (1855-1933). Chairman of Tate & Lyle.

£300-500

34 Y
A SILVER MATCHED FOUR PIECE BALUSTER TEA AND COFFEE SET
 THE TEA POT AND CREAM JUG BY JONATHAN HAYNE, LONDON 1824, THE COFFEE POT AND SUGAR BOWL BY HENRY HOLLAND, LONDON 1871

The tea and coffee pots with bud finials to the floral chased domed covers, leaf capped scroll handles with ivory warming bands, the bodies chased with panels of floral sprays, engraved with a monogram and on circular feet
 The tea pot 27cm (10 1/2in) long, the coffee pot 24cm (9 1/2in) high
 2578g (82.9 oz) gross

Please note Dreweatts have applied for a de minimis exemption licence for the ivory in this lot Ref: AXDTC5PQ

£800-1,200



35
A CASED PAIR OF GEORGE II SILVER TEA CADDIES AND A SUGAR BOWL AND COVER
 SAMUEL TAYLOR, LONDON 1749
 The oval tea caddies with foliate cone finials to the floral chased domed pull off covers, the bodies chased with foliate and floral swags, two vacant reserves and sliding bases, the ogee baluster sugar bowl and cover conforming and on a circular pedestal foot
 The tea caddies 14cm (5 1/2in) high, the sugar bowl and cover 15cm (6in) high
 1022g (32.85 oz)

£4,000-6,000



36

36
A GEORGE III IRISH SILVER WAX JACK
 MAKER'S MARK BS, CIRCA 1790
 The scroll scissor-action holder with a divided circular pan and engraved with a crest, a part screw-threaded column and a circular base engraved with a crest and a chased foliate swag and C-scroll band
 14cm (5 1/2in) high
 248g (7.95 oz)

This is the crest associated with the arms of the COCKBURN family who were Baronets of Langton, Berwickshire.

£1,500-2,500



37

38
A GEORGE III SILVER SHAPED OBLONG INKSTAND
 JOSEPH CRADDOCK & WILLIAM KER REID,
 LONDON 1813 AND 1814
 With a gadrooned, foliate, shell and C-scroll border, engraved with a crest and an armorial, two pen trays, a chamberstick, two silver mounted cut glass bottles and on four claw and ball feet
 33cm (13in) long
 1540g (49.5 oz)

These are the suspected arms of the PALMER family, initially of Devon but later a military family in India.

£600-800



38

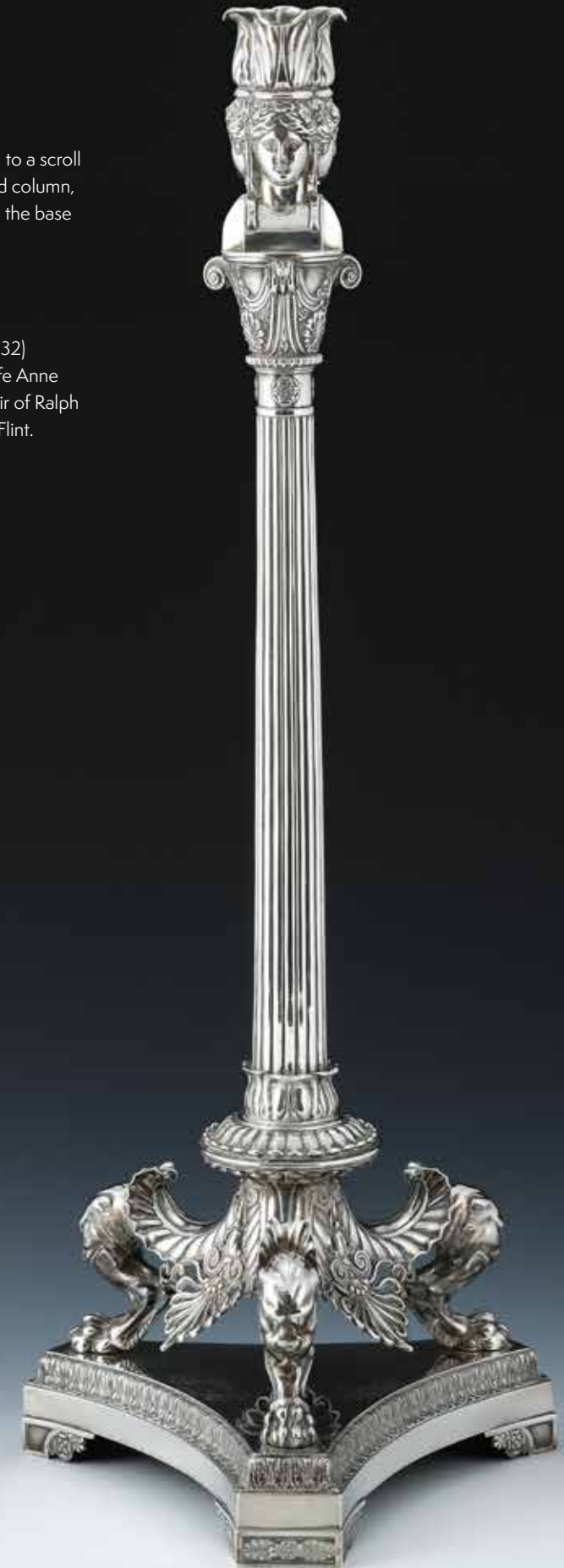
37
A GEORGE III SILVER WIREWORK WAX JACK
 HENRY GREEN, LONDON 1797
 The spherical wirework body with a reeded band, tapering snuffer, a loop handle and on a gadrooned circular foot
 13.5cm (5 1/4in) high
 252g (8.1 oz)

£800-1,200

39
A GEORGE III SILVER CENTREPIECE
 PAUL STORR, LONDON 1811
 With an acanthus leaf and mask capital to a scroll and shell pedestal, to a tapering reeded column, to three scrolled lion leg and claw feet, the base engraved with a crest
 73.5cm (29in) high
 4045g (130.05 oz)

The arms of Charles DUNDAS (1751-1832) Esquire of Barton Court and his first wife Anne WHITLEY (1760-1812) daughter and heir of Ralph WHITLEY (died 1761) of Aston Hall co. Flint.

£4,000-6,000



39



40

40
A VICTORIAN SILVER RECTANGULAR SNUFF BOX
 JOSEPH WILLMORE, BIRMINGHAM 1838
 The cover chased with two dogs chasing a bird, a chased foliate border, reeded sides, the base engraved with C-scrolls and floral sprays
 8cm (3 1/4in) long
 112g (3.6 oz)

£200-300

41
A PAIR OF GEORGE IV SILVER COASTERS
 S. C. YOUNGE & CO., SHEFFIELD 1825
 With scalloped and beaded borders
 15cm (6in) diameter
 With turned wood bases

£300-500



41



42

42
A PAIR OF OLD SHEFFIELD PLATE CAMPANA WINE COOLERS
 UNMARKED
 With gadrooned borders, the half lobed bodies with twin loop handles issuing from masks, engraved with a coronet above a crest within chased foliate and C-scroll reserves, on circular spreading pedestal feet, with liners
 23.5cm (9 1/4in) high

The crest for the GORDON family, Earls of Aboyne who were later (from 1836) the Marquesses of Huntley for the second time, both in the peerage of Scotland.

£800-1,200



43

43
A GEORGE III SILVER EPERGNE
 MATTHEW BOULTON, BIRMINGHAM 1817
 With a beaded and ovolo rim, on four acanthus and sweeping supports to a concaved and canted corner square base, embossed with foliage and on four foliate scroll and paw feet, with four scroll arms issuing from foliage and terminating in conforming supports
 29.5cm (11 1/2in) high, 58cm (22 3/4in) long
 2677g (86.05 oz)
 With a large cut glass central bowl and three smaller bowls

£2,000-3,000



44
A PAIR OF EDWARDIAN SILVER GILT FIGURAL SALTS
 MAKER'S MARKS OBSCURED,
 LONDON 1902
 Formed as a girl and a boy in 18th century dress, holding a rose, grapes and baskets, each on a shaped circular base chased with foliage
 17.5cm (7in) high
 985g (31.7 oz)

£400-600

45
A GERMAN SILVER SHAPED OBLONG CASKET
 B. NERESHEIMER & SOHNE, HANAU, SPONSOR'S MARK FOR JOHN GEORGE PIDDINGTON, IMPORT MARK FOR LONDON 1901
 With a pair of putti finial and scrolled corners to the domed cover, the body chased with masks and foliate scrolls to the corners, with reclined female nudes and peacocks within oval panels and on four scroll feet
 15.5cm (6in) long
 1051g (33.8 oz)

£400-600



45

46
A SET OF FOUR 19TH CENTURY FRENCH SILVER GILT SALT CELLARS
 JULES WIESE, PARIS 1858 - 1890, .950 MINERVA MARK
 With knurled borders and on three cherub feet
 8.5cm (3 1/4in) diameter
 808g (26 oz)

£300-500



46



47

47
A PAIR OF VICTORIAN SILVER TWO HANDLED BOWLS
 ROBERT GARRARD II, LONDON 1846
 Of clipped rectangular outline, the handles modelled as mythical beasts
 15cm long
 952.5g (30.6 oz)

Provenance:
 Barnwell Manor, Northamptonshire
 Windsor House Antiques

£1,000-1,500



48

48
A GEORGE IV SILVER LEAF SHAPED CHAMBERSTICK
 JOSEPH WILLMORE,
 BIRMINGHAM 1829
 With a leaf capped scroll handle
 9cm (3 1/2in) long

Together with another George IV leaf shaped chamberstick by Taylor & Perry, Birmingham 1829, with a scroll handle, 8.5cm (3 1/4in) long
 68g (2.2 oz) gross

£250-350

49
AN EDWARDIAN IRISH SILVER DISH RING
 SHARMAN DERMOTT NEILL, DUBLIN 1904

Pierced and embossed with birds, dogs, foxes, C-scrolls and foliage, engraved with a crest within a reserve
 21.5cm (8 1/2in) diameter
 396g (12.75 oz)
 With a blue glass liner

The crest appears to be that used in the armorial of the AFFLECK family, Baronets of Daltham Hall, Suffolk.

£400-600



49

50 Y
A CHINESE SILVER THREE PIECE TEA SET
 MARKS FOR LUEN WO AND CHI CHANG, EARLY 20TH CENTURY

The tea pot with a bamboo finial to the domed cover, ivory warming bands to the bamboo loop handle, the body with stylised flowers
 26cm (10 1/4in) long
 1275g (41 oz) gross

Please note Dreweatts have applied for a de minimis exemption licence for the ivory in this lot Ref: NVK3PXZM

£800-1,200



50



51

51
A VICTORIAN SILVER PEDESTAL CUP
 ROBERT HENNELL, LONDON 1860

With a beaded band, engraved with heart shaped panels of foliate swags, the knopped stem with cast bird masks and oval medallions, to a circular domed foot chased with foliage
 39.5cm (11 1/2in) high
 2473g (79.5 oz)

£1,500-2,500



52
A VICTORIAN SILVER LOVING CUP AND COVER
JOHN HUNT & ROBERT ROSKELL, LONDON 1881
 With an armorial finial to the domed cover and a corn band, the body with four square chased panels including soldiers with a cannon, a sailing ship, horses pulling a sleigh and figures collecting bread, to a sheaf of corn stem to a shaped square base, chased with a portrait of a gentleman within an oval reserve, two floral engraved panels and 'To Louise Angela Eunice De Winton This loving cup in future remembrance from her godmother Angela Baroness Burdett Coutts 1881. May childhood's early grace develop to womanhood's full perfection and may she grasp the Christian Cross with a hand as gentle as her mother's and fearless as her father's.'
 39cm (15 1/4in) high
 2014g (64.75 oz)

The armorial for BURDETT COUTTS

£1,500-2,500



53
A PAIR OF MATCHED VICTORIAN SCOTTISH SILVER GILT FOUR LIGHT CANDELABRA
WILLIAM MARSHALL, EDINBURGH 1885, THE OTHER N. C, POSSIBLY JOHN CRICHTON, EDINBURGH 1879
 The shaped circular sconces embossed with a band of flowers and each applied with three seated figures, the capitals with four male figures, to three beaded scroll arms with fauns, the stem pierced and chased with foliate scrolls and applied with figures and animals, to conforming circular domed bases
 51.5cm (20 1/4in) high
 5283g (169.85 oz)

£5,000-8,000



54 (part lot)

54
A VICTORIAN SILVER QUEEN'S PATTERN TABLE SERVICE

FRANCIS HIGGINS III, LONDON 1897

Engraved with a crest

Comprising:

Thirty six table forks, eighteen table spoons (six by Joseph & Albert Savory, London 1840), eighteen dessert forks (six by Joseph & Albert Savory, London 1840), eighteen dessert spoons (six by Joseph & Albert Savory, London 1840 and six by Spink & Son, London 1959), twelve tea spoons (four by Spink & Son, London 1916 (1) and 1959 (3)), six coffee spoons, twelve egg spoons (two by Spink & Son, London 1928 and 1959), eight salt spoons, a jam spoon, a pickle fork, a pair of grape scissors, a pair of sugar tongs, a caddy spoon, a butter knife, a soup ladle, a gravy spoon, three cream ladles, two sauce ladles by Joseph & Albert Savory, London 1841

9804g (315.25 oz)

In a fitted canteen, the cover with a plaque engraved Capt. Frank Burges

£3,500-4,500



55 (part lot)

55
A SWEDISH SILVER FIDDLE AND SHELL PATTERN TABLE SERVICE

G. G. HALLBERG, CIRCA 1924

Comprising:

Forty eight table forks, twenty four table spoons, twenty four dessert forks, twenty four dessert spoons, twenty four tea spoons, twenty four coffee spoons, eleven butter knives, a serving spoon, a soup ladle

9681g (311.3 oz)

Together with the following knives with stainless steel blades:

Twenty four table knives, twenty two dessert knives

Within a fitted carved and stained beech canteen chest, with variegated marble top
 84 x 42 x 92cm

£2,500-3,500



56

56
A SILVER SIX PIECE REGIMENTAL DRUM CRUET SET
CARRINGTON & CO., LONDON 1937

The mustards with shell shaped thumb pieces to the flat covers and scroll handles
8cm (3in) long
587g (18.9 oz)
With four blue glass liners

£600-800



57

57
A SILVER MODEL OF A 21ST LANCER
ON HORSEBACK
GOLDSMITHS & SILVERSMITHS CO. LTD.,
LONDON 1910

25cm (9 3/4in) long
Loaded

With a silver plaque engraved 'Royal Naval & Military Tournament 1910. Navy & Army Championships, 1st Prize, Sword V. Lance & 1st Prize, Sword V. Sword won by Lieutenant H. Boyd-Rochfort, 21st (Empress of India's) Lancers.'

£800-1,200



58

58
A SET OF SIX VICTORIAN SILVER CANDLESTICKS
FAVELL, ELLIOTT & CO., LONDON 1888

The sconces with beaded borders, the scrolled capitals with husk swags, tapering fluted stems, to square bases with beaded bands, husk swags, ribbons and oval medallions
32cm (12 1/2in) high
Loaded

£1,500-2,000



59

59
A PAIR OF SILVER ALTAR PRICKET
CANDLESTICKS
OMAR RAMSDEN, CIRCA 1925
With circular drip pans, the tapering
stems with a girdle, on stepped
circular bases
40cm (15 3/4in) high
Loaded

£3,000-5,000



60

60
A SILVER CIRCULAR BOWL
OMAR RAMSDEN, LONDON 1935
With four female nude supports
48cm (19in) long
2768g (89 oz)

£2,000-3,000



61

61
A SET OF TWELVE SHAPED CIRCULAR PLATES
THOMAS BRADBURY & SONS, SHEFFIELD 1930
With a gadrooned border and engraved with a crest
26cm (10 1/4in) diameter
7441g (239.2 oz)

The crest and motto of the BURGES(S) family who originate from Beauport, Sussex.

£2,500-3,500



62

62
A SET OF TWELVE SHAPED CIRCULAR PLATES
THOMAS BRADBURY & SONS, SHEFFIELD 1930
With a gadrooned border and engraved with a crest
25cm (9 3/4in) diameter
6589g (211.85 oz)

The crest and motto of the BURGES(S) family who originate from Beauport, Sussex.

£2,200-2,800



63

63
A GERMAN SILVER MODEL OF A HEN PHEASANT
HANAU PSEUDO MARKS, IMPORT MARK FOR
CHESTER 1910
With hinged wings
23cm (9in) long
Mounted on a wooden base

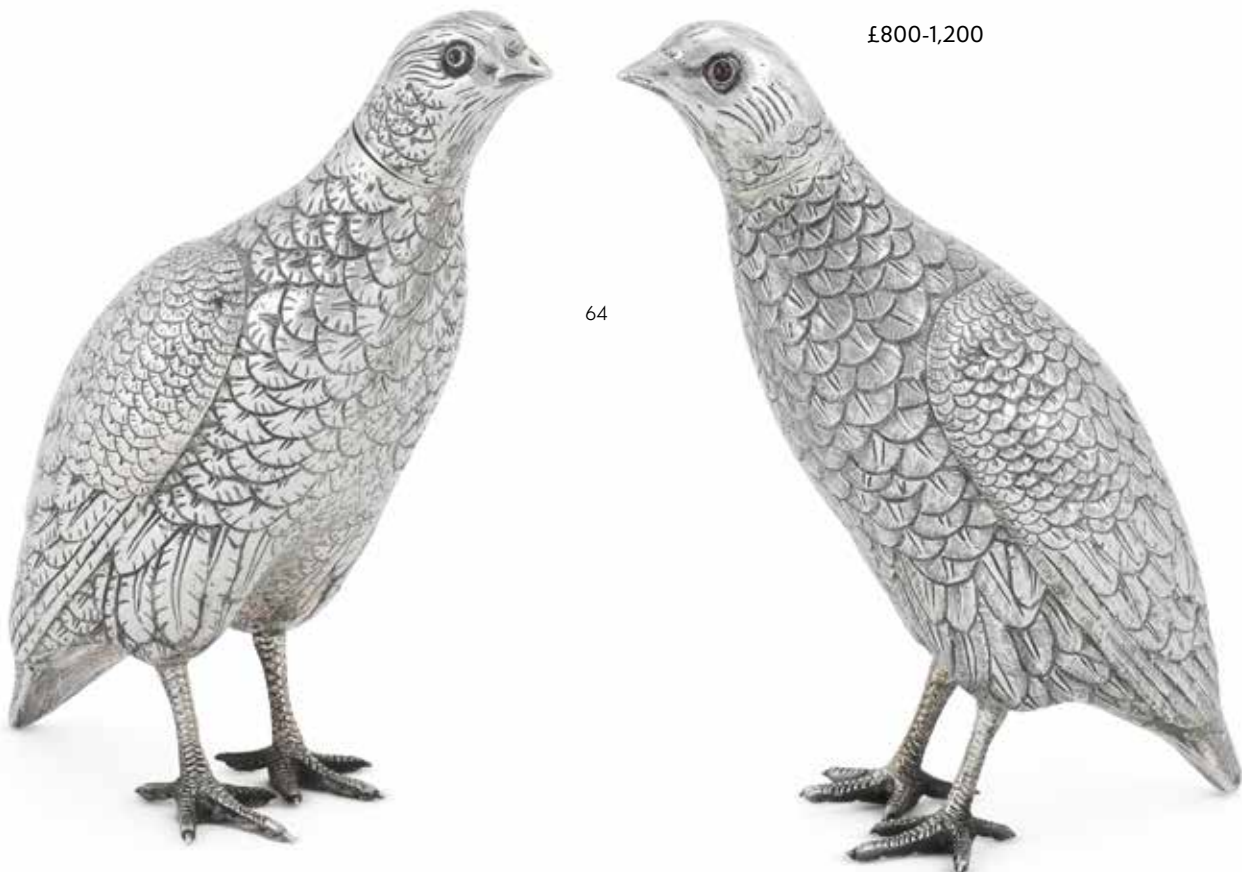
Provenance:
Frome Whitfield House, Dorchester, Dorset, home of
the Henning family since the early 1700's. The original
house was Tudor origin, but was rebuilt in the Regency
period, together with East and West Wings.

£500-700

64
A MATCHED PAIR OF DUTCH SILVER PARTRIDGE
DECANTERS
930 STANDARD, CIRCA 1891
With red glass eyes
23cm (9in) high
787g (25.3 oz) gross

Provenance:
Frome Whitfield House, Dorchester, Dorset, home of
the Henning family since the early 1700's. The original
house was Tudor origin, but was rebuilt in the Regency
period, together with East and West Wings.

£800-1,200



64



66

65
A SILVER MOUNTED GLASS PENGUIN DECANTER
ASPREY & CO. LTD., LONDON 1957
With glass eyes
27cm (10 1/2in) high

£600-800

66
A PORTUGUESE SILVER COLOURED MOUNTED SALMON BOARD
LUIZ FERREIRA, PORTO .833 STANDARD, SECOND HALF OF THE
20TH CENTURY
With an amethyst eye and a shell thumb piece to the hinged doors
93.5cm (36 1/2in) long
With a wood base

£3,000-5,000



65



67

67
A PAIR OF SILVER DISHES
 OMAR RAMSDEN, LONDON 1937
 Embossed with roses, engraved beneath Me
 Fecit Omar Ramsden
 15cm (6in) diameter
 354g (11.4 oz)

£1,000-1,500

68
A PAIR OF EGYPTIAN SILVER COLOURED VASES
 POST 1946 .900 STANDARD
 Engraved with scrollwork and Arabic script, on a circular foot
 32.5cm (12 3/4in) high
 1751g (56.3 oz)

£600-800

69
A SILVER SHAPED CIRCULAR SALVER
 MARTIN HALL & CO. LTD., SHEFFIELD 1920
 With a raised moulded border and on three scroll feet
 37cm (14 1/2in) diameter
 1277g (41.05 oz)

£400-600



68



70

70
A PAIR OF SILVER TAPERING CAFÉ AU LAIT POTS
 WILLIAM COMYNS & SONS LTD., LONDON 1962 AND 1963
 With bell shaped finials to the domed covers and wooden loop handles
 24.5cm (9 3/4in) high
 1165g (37.45 oz) gross

£300-500

71
A SILVER SCALLOPED BOWL
 ASPREY & CO. LTD., LONDON 1973
 41cm (16in) diameter
 2370g (76.2 oz)

£600-800



69



71



72

72
TWO SILVER GILT SURPRISE EGG STANDS
 STUART DEVLIN, LONDON 1976 AND 1979
 With pierced and textured decoration
 4.5cm (1 3/4in) diameter and 4cm (1 1/2in)
 long
 26g (0.85 oz) gross
 With a Stuart Devlin card box

£80-120



75

75
A SILVER GILT SURPRISE EGG
 STUART DEVLIN, LONDON 1968
 The textured and bark effect body opening
 to an amethyst quartz
 7.5cm (3in) long
 196g (6.3 oz) gross
 With a Stuart Devlin box

£250-350

76
A SILVER GILT SURPRISE EGG
 STUART DEVLIN, LONDON 1982
 The textured body opening to a silver gilt
 squirrel and a band of enamelled flowers
 6.5cm (2 1/2in) high
 92g (2.95 oz) gross
 With a Stuart Devlin box

£200-300

73
A SILVER GILT SURPRISE EGG
 STUART DEVLIN, LONDON 1968
 The textured body opening to two enamel eggs in a nest
 7.5cm (3in) high
 146g (4.7 oz) gross
 With a Stuart Devlin box

£250-350



73

74
A SILVER GILT SURPRISE EGG
 STUART DEVLIN, LONDON 1981
 Commemorating the wedding of Prince Charles and Lady Diana,
 the textured body opening to silver gilt Prince of Wales feathers
 and enamel flowers
 6.5cm (2 1/2in) high
 90g (2.9 oz) gross
 With a Stuart Devlin box

£200-300



74



76



77

77
AN AFRICAN SILVER MODEL OF A GORILLA MOTHER AND HER BABY
 PATRICK MAVROS, ZIMBABWE, CIRCA 2002
 23cm (9in) long
 2548g (81.9 oz)

£800-1,200

78
A PAIR OF AFRICAN SILVER MODELS OF ADOLESCENT GORILLAS AT PLAY
 PATRICK MAVROS, ZIMBABWE, CIRCA 2002
 24cm (9 1/2in) and 21cm (8 1/4in) long
 2342g (75.3 oz)

£800-1,200



78



79

79
SIX AFRICAN SILVER NAPKIN RINGS
 PATRICK MAVROS, ZIMBABWE, CIRCA 2000 (2) AND 2001 (4)
 Each chased with different animals, including crocodiles, birds, elephants, rhinos, hippos and turtles
 4.5cm (1 3/4in) diameter
 380g (12.2 oz)

£500-700



80

80
AN AFRICAN SILVER PAPERKNIFE
 PATRICK MAVROS, ZIMBABWE, CIRCA 2002
 With an elephant finial and hammered finish
 22.5cm (9in) long

Together with an African silver oval pen pot by Patrick Mavros, circa 2002, chased with a herd of elephants, 9cm (3 1/2in) high, loaded
 111g (3.6 oz) weighable

£300-500

81
AN AFRICAN SILVER MODEL OF A PANGOLIN AND A ROLLED PANGOLIN
 PATRICK MAVROS, ZIMBABWE, CIRCA 2000 AND 2002
 12.5cm (5in) long and 33cm (13in) long
 4062g (130.6 oz)

£1,500-2,000



81



82

82
A SILVER VARIANT KING'S PATTERN TABLE SERVICE FOR EIGHT PLACE SETTINGS
JAMES DIXON & SONS, SHEFFIELD 1968

Comprising:
 Eight table forks, eight dessert spoons, eight dessert forks, eight soup spoons, eight fish forks, eight fish knives, eight tea spoons, four serving spoons
 4043g (130 oz)

Together with the following with stainless steel blades and fittings:
 Eight table knives, eight dessert knives, a carving knife and fork, a knife sharpener, a dessert slice

In a fitted canteen

£1,500-2,500



83 (part lot)

83
A SILVER MATCHED CRECIAN PATTERN PART TABLE SERVICE
JAMES DEAKIN & SONS, SHEFFIELD 1902 AND 1930
 Engraved with a monogram

Comprising:
 Thirty five table forks, Sheffield 1902 (21) and 1930 (14), twelve table spoons, Sheffield 1930, twenty one dessert forks, Sheffield 1902 (7) and 1930 (14), twenty one dessert spoons, Sheffield 1902 (11) and 1930 (10), six tea spoons, Sheffield 1902, three coffee spoons, Sheffield 1902 (2) and 1930 (1), two sauce ladles, Sheffield 1902
 6777g (217.9 oz)

£2,200-2,800



84
A PAIR OF MIDDLE EASTERN SILVER COLOURED NINETEEN LIGHT CANDELABRA
MARKS INDISTINCT
With a central trumpet shaped capital and six smaller to the top six scroll arms, above twelve
urn shaped capitals on scroll arms, applied with birds, cherubs and foliate swags, to a urn and
octagonal tapering stem, on an octagonal foot, chased and engraved with flowers and foliage
91cm (35 3/4in) high
13067g (420.2 oz)

Provenance:
From the Private Collection of a titled family

£1,500-2,000



85
A PAIR OF ITALIAN SILVER COLOURED LEAF SHAPED DISHES
GIANMARIA BUCCELLATI, BOLOGNA POST 1968 .925 STANDARD
24cm (9 1/2in) long
731g (23.5 oz)
Each with a Buccellati card box

£1,500-2,000

86 Y

A CASED SILVER GILT TOILET SET

GARRARD & CO. LTD., LONDON 1982

Engraved with Asian figures, birds and buildings, comprising:

Four brushes

Two octagonal glass silver gilt mounted scent bottles

Two twin handled circular bowls and covers

Two octagonal pots and covers

An octagonal casket

An octagonal tray

A silver gilt mounted mirror

A silver gilt mounted hand mirror

A silver gilt mounted and tortoiseshell comb by C. J. Vander Ltd., London 1979

4218g (135.6 oz) weighable

Provenance:

From the Private Collection of a titled family

£8,000-12,000



86

87

A FRENCH GOLD RECTANGULAR BOX
PARIS 1809 - 1819, 2ND STANDARD

With engraved foliate swag borders and engine turned decoration
8.5cm (3 1/4in) long
105g

£2,000-3,000

88

AN 18TH CENTURY GOLD MOUNTED AGATE BOX
LATER STAMPED 585

The base and cover inset with agate, the body with an applied chased vine and mask band
7.5cm (3in) long
106g gross

£700-1,000

89

A 9 CARAT GOLD SHAPED RECTANGULAR BOX
DEAKIN & FRANCIS, BIRMINGHAM 1923

The engine turned cover applied with marcasite set initials
6.5cm (2 1/2in) long
54g gross

£600-800

90

A SWEDISH THREE COLOUR GOLD BOX IN CASE
STOCKHOLM, 1786

The three colour box with foliate borders, with a central plaque dedicated to music, with trumpet, lyre and dove detail, the bottom of the box with an allegory of love with a pair of burning hearts atop a column base, the interior base stamped with Swedish control marks, date letter D2, with indistinct maker's mark, with original velvet lined leather case
Dimensions: 6.3cm x 3.7cm x 1.6cm

£1,200-1,800



91

**A VICTORIAN DIAMOND AND PEARL CORONETED BROOCH
CIRCA 1880**

The arrow shaped panel with a half pearl set V motif, centred with a bombé oval panel with a blue enamelled star and central old mine cut diamond, estimated to weigh 0.25 carats, beneath a rose cut diamond and pearl set coronet, the panel with beaded border, glazed compartment verso
Size/dimensions: 3.4cm long
gross weight: 10.9 grams

£600-800

92

**A MID 19TH CENTURY OVAL CUT TOPAZ CROSS PENDANT
CIRCA 1840 AND LATER**

The oval cut topaz within open backed cut down collet settings, to beaded terminals, with polished looped wire bale
Size/dimensions: 3.9cm long
Gross weight: 3.5 grams

£500-700

93

AN EARLY 18TH CENTURY CORNELIAN INTAGLIO RING

The oval cornelian panel carved with the profile of a youth, possibly Adonis or Antinous, within a polished gold setting to a tapering gold shoulders and shank
Size/dimensions: finger size approximately K 1/2
Gross weight: grams

£300-500

94

A VICTORIAN SAPPHIRE AND DIAMOND THREE STONE RING

The central circular sugarloaf cabochon sapphire, estimated to weigh 1.52 carats, between two old mine cut diamonds, approximately 0.20 carats total, rubover set in a tapering band
Size/dimensions: finger size P 1/2
Gross weight: 5.7 grams

Offered for sale with a Gemmological Certification Services Gemmological Report, Report No: 5784-0242 , dated 20.10.2023, stating:

Species Natural Corundum
Origin Basaltic
Comment No indication of heating

£600-800

95

**AN EARLY 19TH CENTURY GOLD AND TURQUOISE CAMEO RING, CARVED WITH THE PROFILE OF CUPID
CIRCA 1800**

The oval panel carved with the profile of cupid showing his upper torso and wings, within a polished gold collet to bifurcated shoulders and reeded shank
Size/dimensions: finger size Q
Gross weight: 1.9 grams

The ring was tied to a partial evening card invitation dated 1872 with green silk cord, the other side of the card had the following inscription with earlier provenance pasted to the card:

This paper was written by Col. Masters' Mother & pasted on this card and the 2 rings attached by me
given me by the Empress Joséphine as I was sitting by her bedside 3 days before her death, I desire this may always remain at Knole.

£300-500

96

**A MID VICTORIAN DIAMOND AND BLUE ENAMEL FLORAL SPRAY LOCKET PENDANT ON CHAIN
CIRCA 1870**

The circular lobed blue enamel pendant with applied old mine cut diamond set viola's, to an old cut diamond leaf shaped bale, approximately 0.95 carats total, with a glazed panel verso containing a scroll of hair with wire detail, suspended from a rope twist chain with ring bolt clasp
Size/dimensions: pendant 3.6cm long
Gross weight: 15.7 grams

£1,200-1,800

97

**AN EARLY VICTORIAN GOLD LONG CHAIN
CIRCA 1840**

The rope twist chain composed of hooped links with pressed decoration, to a cannetille decorated and circular cabochon turquoise accented barrel clasp, unmarked
Size/dimensions: 96cm long
Gross weight: 36.6 grams

£1,200-1,800

98

A RUBY AND DIAMOND BANGLE

The front section with nine graduated cushion cut rubies interspaced with pairs of old mine cut diamonds, approximately 0.72 carats total, to a polished hinged bangle with concealed clasp
Size/dimensions: inner width 6.7cm
Gross weight: 13.8 grams

£800-1,200

99

**A VICTORIAN DIAMOND, HALF PEARL AND ENAMEL HINGED GOLD BANGLE
CIRCA 1870**

The tapering broad bangle with rope twist borders, the front with a cross bottony, with half pearl set arms and a trefoil of diamonds to the terminals, centred with an old cut diamond with rose cut diamond accents, on a blue enamelled ground, with a glazed locket compartment verso, concealed clasp
Size/dimensions: inner width 5.8cm
Gross weight: 38.7 grams

£800-1,200



91



94



95



93



92



96



97



98



99

100 Y

AN 1830S PEARL AND SEED PEARL PARURE

The necklace with five graduating pierced mother of pearl, pearl and seed pearl flower head panels, joined by three decorative woven strands of seed pearls, to a gold barrel clasp; together with two matching bracelets with three flower head panels with seed pearl connectors, to rectangular seed pearl and glazed panel cluster clasps; an en tremblant floral spray brooch; four pierced flowerhead brooches; and a pair of flower head cluster drop earrings, with screw back fittings stamped Sil; in a period fitted red leather bound case, with blue and white silk interior
Size/dimensions: necklace 42cm long, bracelets 15.5cm long, spray brooch 11cm long
Gross weight: 79.1 grams

£1,500-2,000





101



101 Y
A PAIR OF MID 18TH CENTURY IBERIAN EMERALD EAR PENDANTS AND A BERYL PENDANT
CIRCA 1760

The ear pendants made in the traditional form with emerald cluster pediments with pierced scrolled surmount, to a pierced bow panel, and pear shaped emerald cluster drop with scrolled detail, the closed back settings with evidence of a punch mark to the reverse, with hinged hook fittings; together with a similar Iberian pendant with green and blue tinted beryl pierced bow with foliate connector to a pierced and scrolled cross shaped panel drop, the reverse with stitching bars, later bale
Size/dimensions: earrings 5.4cm long, pendant excluding bale 7.3cm long
Gross weight: 22.8 grams

A similar pair of earrings are illustrated in *Georgian Jewellery 1714-1830*, by Ginny Redington Dawes with Olivia Collings, page 109

£2,000-3,000



102

102
A MID VICTORIAN SHELL CAMEO BROOCH IN ENTWINED SERPENT SETTING
CIRCA 1870

The oval shell cameo carved with a trio of horses being held by a winged figure, springing from an array or armour and a fallen flaming torch, the base of the cameo carved with armour and an array of spears, within a textured gold border in the form of two snakes, with rose cut diamond set eyes, brooch fitting verso
Size/dimensions: 8.3cm x 7.3cm
Gross weight: 43.6 grams

A variant of this cameo by Luigi Saulini can be seen at the Birmingham Museum and art Gallery, the subject is noted as Phaeton.

£800-1,200

103

103
A REGENCY GOLD, SHELL CAMEO, TURQUOISE AND HALF PEARL NECKLACE
CIRCA 1820

The graduated oval shell cameos carved with Cupid in a chariot lead by goats, Venus upon a shell with two sea horses, Cupid in a chariot lead by three horses, Diana in a chariot with two horses, and Cupid in a chariot lead by stags, to a concealed clasp with Cupid amongst clouds with an owl in flight, the cameos within gold foliate surrounds with beaded detail, half pearl and circular cabochon turquoise quatrefoil spacers between, to a four row belcher link back chain
Size/dimensions: 49cm long
Gross weight: 57.8 grams

£1,500-2,000

104

A VICTORIAN AND LATER DIAMOND SCROLLED BROOCH

The curved pierced scrolled foliate settings set throughout with old mine cut diamonds, to a central oval diamond set drop panel, between two pear shaped diamond drops, approximately 5.46 carats total, gold backed silver setting, with later brooch fitting

Size/dimensions: 4.4cm wide

Gross weight: 11.7 grams

£2,000-3,000

105

AN ANTIQUE AND LATER DIAMOND PANEL BROOCH

The bowed rectangular pierced floral panel set with graduated old mine cut, old European cut and rose cut diamonds, mostly in cut down collet settings, approximately 4.96 carats total, on later gold coloured frame and brooch fitting

Size/dimensions: 4.1cm x 3cm

Gross weight: 16 grams

Provenance:

From the estate of Lionel Alfred Martin, Ingram Avenue, London (1855-1933). Chairman of Tate & Lyle.

£2,500-3,500

106

A GEORGE III DIAMOND LYRE BROOCH

CIRCA 1810

The gold backed silver frame set with old mine cut diamonds, with a diamond target cluster to the base, approximately 1.56 carats total, with decorative gold strings, numbered to the reverse 1271, in a later fitted case stamped Lambert Jewellers, Coventry St, London.

Size/dimensions: 3.5cm long

Gross weight: 10.6 grams

£2,000-3,000

107

A GEORGE III DIAMOND AND TOPAZ CLUSTER RING

The central cushion cut golden topaz within a surround of old mine cut diamonds, approximately 0.75 carats, in a gold closed back setting on a polished tapering broad band

Size/dimensions: finger size O

Gross weight: 5.8 grams

£700-1,000

108

A GEORGE III DIAMOND FLOWER HEAD CLUSTER RING

CIRCA 1800

The pierced gold backed silver panel with a central old mine cut diamond flower head cluster, between two diamond set crescents, approximately 1.36 carats total, to pierced gold trifurcated shoulders and reeded shank

Size/dimensions: finger size K

Gross weight: 7.2 grams

£1,500-2,000

109

A GEORGE III AND LATER DIAMOND FLORAL BROOCH

With two central old mine cut diamond target clusters between two six petalled flower heads, approximately 6.40 carats total, the diamonds in closed back silver settings, with a later gold coloured frame and brooch fitting

Size/dimensions: 5.5cm x 3cm

Gross weight: 15.3 grams

£4,000-6,000



104



105



106



107



108



109

110

A LATE VICTORIAN DIAMOND CRESCENT BROOCH

The crescent with central graduated old mine cut diamonds to rose cut diamond tips, the old mine cut diamonds approximately 1.70 carats total, the reverse with brooch fitting and a bar support

Size/dimensions: 6.1cm wide
Gross weight: 6.8 grams

£1,000-1,500

111

**A LATE 19TH CENTURY DIAMOND FLORAL CRESCENT BROOCH
CIRCA 1890**

The crescent set with graduated mine cut and rose cut diamonds, the old mine cut diamonds in cut down collet settings, with quatrefoil diamond flower heads between, approximately 1.40 carats total, with brooch fitting verso, in a fitted box stamped Gustaf Mollenborg Stockholm

Size/dimensions: 3.5cm wide
Gross weight: 8.6 grams

£1,000-1,500

112

A DIAMOND STAR BROOCH

The six point star set with old European cut diamonds, with diamond accents on knife edge bars between, approximately 2.72 carats total, with a screw in brooch fitting and hook verso

Size/dimensions: 4.2cm wide
Gross weight: 8.8 grams

£1,000-1,500

113

**A LATE 19TH/EARLY 20TH CENTURY DIAMOND STAR BROOCH/
PENDANT**

CIRCA 1900

The central old cut diamond estimated to weigh 2 carats, within gold backed silver radiating old European cut diamond set star surround, approximately 3.48 carats total, the reverse with a screw in brooch fitting, and hinged pendant loop

Size/dimensions: 4.3cm x 4.9cm
Gross weight: 18.2 grams

Provenance:

From the estate of Lionel Alfred Martin, Ingram Avenue, London (1855-1933). Chairman of Tate & Lyle.

£3,000-5,000

114

**A VICTORIAN PINK TOPAZ AND DIAMOND NECKLACE
CIRCA 1880**

The old European cut diamond set trefoil leaf shaped links with two diamond and pink topaz clusters, to a central diamond set bow, suspending a removeable diamond and pink topaz cluster brooch/pendant, the topaz estimated to weigh 5.58 carats, removeable fittings, gold backed silver settings, to an associated gold curb link back chain with diamond and pink topaz cluster clasp, diamonds approximately 4.66 carats total, in an associated blue velvet case

Size/dimensions: necklace 39cm long, principal topaz and diamond cluster 2.4cm long
Gross weight: 31 grams

Provenance:

By repute: the property of Lady Eleanor Catherine (Micklem) Wilberforce (1870 - 1956), wife of Sir Herbert William Wilberforce KBE CB CMG (1866-1950). Thence by family decent.

£2,000-3,000





115

115
A VICTORIAN SAPPHIRE, DIAMOND, RUBY AND CATS EYE
CHRYSOBERYL BEE BROOCH
 CIRCA 1880

The outstretched wings set with old mine cut diamonds and sapphires, with a banded old mine cut diamond and sapphire set abdomen, a cats eye chrysoberyl and diamond cluster thorax, and cabochon ruby eyes, diamonds approximately 3.24 carats total, gold backed silver setting, with screw in brooch fitting, in a blue velvet case
 Size/dimensions: wingspan 5.9cm
 Gross weight: 16.7 grams

£2,500-3,500

116
A LATE VICTORIAN DIAMOND SAINT ESPRIT BROOCH

The dove in flight pavé set with rose cut diamonds, with five principal old European cut diamond accents, principal diamonds approximately 1.75 carats total, with cabochon ruby eyes, gold backed silver setting, with later brooch fitting
 Size/dimensions: 3cm wide
 Gross weight: 8.5 grams

£1,500-2,000

117
A VICTORIAN AND LATER SWALLOW AIGRETTE BROOCH

The gold backed silver swallow in flight set throughout with rose cut diamonds, with cabochon ruby eyes and a rose cut ruby set collar, to a removeable old mine cut and trefoil tail, screw in fitting, the associated detachable brooch frame with French poinçon, and a further removeable cut down collet set old European cut diamond aigrette spray, with screw in fitting, old European cut diamonds approximately 2.10 carats total
 Size/dimensions: wingspan 6.5cm, total length 11.6cm
 Gross weight: 30.5 grams

£3,000-5,000

118
AN EARLY 20TH CENTURY DIAMOND SET SWALLOW BROOCH

The gold backed silver swallow in flight set throughout with rose cut diamonds, with a circular cut ruby eye, with screw in brooch fitting
 Size/dimensions: 4.9cm long
 Gross weight: 7.8 grams

£500-700

119
A SINGLE STONE DIAMOND RING

The old mine cut diamond weighing 3.56 carats in a two colour claw setting, to tapering polished shoulders, the shank stamped 18
 Size/dimensions: finger size O 1/2
 Gross weight: 4.8 grams

£4,000-6,000

120
A MID 20TH CENTURY DIAMOND FLORAL SPRAY BROOCH

The spray with four flower heads with leaf and ribbon detail, set throughout with brilliant cut and eight cut diamonds, approximately 4.70 carats total, stamped 935 with a tulip shaped maker's mark
 Size/dimensions: 6.9cm long
 Gross weight: 29.2 grams

£1,000-1,500



116



117



119



118



120

121

A VICTORIAN GARNET, ENAMEL AND CHRYSOPRASE HOLBEINESQUE LOCKET PENDANT
CIRCA 1870

The pendant centred with an oval cabochon garnet within a raised gold collet setting with red and green enamelled cross detailing with an undulating blue enamel ribbon, to a red, blue and green floral enamel border with cushion cut chrysoprase accents, enamelled hoop bale, the reverse with an oval glazed locket back within an engraved scrolling foliate surround with flower head detail, to a squared drop set with four cushion cut chrysoprase, and floral engraved to the reverse

Size/dimensions: 7cm long

Gross weight: 18.9 grams

£2,000-3,000



121



122

122
A LATE 19TH CENTURY GARNET AND
TURQUOISE SERPENT BANGLE
CIRCA 1880

The gold serpent's head with an oval and a pear shaped cabochon garnet, with cabochon garnet eyes, with circular cabochon turquoise accents, the serpent's mouth open with forked tongue and teeth visible, with a floral engraved neck and tail, hinged in three sections, unmarked

Size/dimensions: inner width 4.8cm unexpanded

Gross weight: 25 grams

£800-1,200



123

123
A MID 19TH CENTURY GOLD AND
EMERALD MAKARA HEAD BANGLE,
MADRAS, TAMIL NADU

The gold bangle with graduated chased makara heads, each with graduated circular cut emerald eyes, to a stylised rudraksha bead clasp decorated with an animal mask, with screw in fitting, in original fitted case

Size/dimensions: inner width 6cm, the heads measuring from approximately 1.4cm to 2.4cm, the clasp section 3.4cm high x 2.2cm

Gross weight: 92.5 grams

Provenance:

By Repute, formerly the property of Jane Sandys, wife of Lieutenant General George Sandys (1796- 1864) was Commander in Chief of Madras and Colonel of the 6th Madras Light Cavalry

Literature

S. Stronge, N. Smith & J.C. Hale *A Golden Treasury: Jewellery From The Indian Subcontinent (Victorian And Albert Museum Indian Art Series)*, London 1988 p. 93 for an image of a similar pair of bangles. The noted 19th century art historian and Indian art scholar Ernest Binfield Havell, who was principal of the Madras School of Industrial Arts from 1884 to 1892; the Principal of the Calcutta School of Art; Keeper of the Government Art Gallery from 1896 to 1906, and a founder of the Indian Society, describes how bangles such as these were the preserve of Indian Royalty and Nobility, and were worn by Princes and Rajas, and also often gifted by them to other high ranking recipients.

£8,000-12,000



124



125



128



126



127



129

124
AN EARLY 20TH CENTURY AND LATER GREEK KEY DIAMOND BRACELET
 The two rows of scrolling pierced Greek key panels set with rose cut diamonds, with circular old cut diamond connectors and accents, to a concealed box clasp
 Size/dimensions: 16.1cm long
 Gross weight: 28.2 grams

£3,000-5,000

125
AN EDWARDIAN DIAMOND AND SAPPHIRE GARLAND BROOCH
 CIRCA 1910
 The marquise shaped garland with millegrain set cushion cut sapphires interspaced with rose cut diamond set leaves, with a central knife edge bar with a cushion cut sapphire flanked by two old cut diamonds, suspending an articulated knife edge bars with old cut connectors, to a sapphire and rose cut diamond leaf drop, old cuts diamonds approximately 0.40 carats total, with later brooch fitting, and swivel loop for a now absent bale fitting
 Size/dimensions: 4.3cm wide
 Gross weight: 7.4 grams

£800-1,200

126
TWO ART DECO DIAMOND AND ONYX BAR BROOCHES
 CIRCA 1920
 The first signed POLAK.AINE PARIS, with a central millegrain set old European cut diamond, estimated to weigh 0.33 carats, to two channel set calibré cut onyx bars, and old European cut and eight cut diamond accents, with partial French dogs head poinçon, numbered 8556; together with a further onyx and diamond bar brooch, the central old European cut diamond upon a polished onyx panel, to old cut diamond and calibré cut onyx arms, in a gold backed platinum setting, unmarked
 Size/dimensions: first 7.4cm long; second 5.9cm long
 Gross weight: 9.6 grams

£1,000-1,500

127
A 1920S/1930S SAPPHIRE AND DIAMOND DRESS RING
 The octagonal cut sapphire estimated to weigh 7.50 carats within a surround of eight cut diamonds, to a pierced scrolled gallery, to calibre cut sapphire set shoulders with pierced clover leaf supports, to a polished shank
 Size/dimensions: cluster 1.6cm long x 1.4cm, finger size Q
 Gross weight: 5.2 grams

Offered for sale with a Gemmological Certification Services Gemmological Report, Report No: 5783-3652, dated 04.08.2023, stating:
 Species Natural Corundum
 Origin Sri Lanka (Ceylon)
 Comment No indication of heating

Provenance:
 From the estate of Lionel Alfred Martin, Ingram Avenue, London (1855-1933). Chairman of Tate & Lyle. Belonged to Edith Mary Martin

£4,000-6,000

128
A MID 20TH CENTURY MULTI GEM GIARDINETTO BROOCH
 The urn shaped base with a pear cut sapphire within a circular cut diamond surround with a baguette cut diamond base, containing a floral spray with pavé set brilliant cut and eight cut diamond leaves, with a bouquet of brilliant cut diamonds, cushion cut and circular cut rubies and sapphires, and step cut emeralds with canted corners, diamonds approximately 3.95 carats total, with an associated Collingwood of Conduit Street box
 Size/dimensions: 4.8cm long
 Gross weight: 21.1 grams

£4,000-6,000

129
AN ART DECO SAPPHIRE AND DIAMOND CLUSTER RING
 CIRCA 1925
 The octagonal cut sapphire estimated to weigh 5.19 carats, within a surround of brilliant cut diamonds, and diamond accented shoulders, approximately 0.38 carats total, to a pierced scalloped gallery, with a polished shank
 Size/dimensions: cluster length 1.6cm long, finger size Q
 Gross weight: 4.8 grams

Offered for sale with a Gemmological Certification Services Gemmological Report, Report No: 5784-0241, dated 20.10.2023, stating:
 Species Natural Corundum
 Origin Sri Lanka (Ceylon)
 Comment No indication of heating

£5,000-7,000

130

A CULTURED PEARL BRACELET WITH A DIAMOND AND CULTURED PEARL CLASP

The three row graduated cultured pearl bracelet to an old cut and brilliant cut diamond and cultured pearl target cluster clasp, approximately 1.09 carats total

Size/dimensions: cultured pearls approximately 7mm to 5mm, clasp 2.5cm wide, 18.5cm long

Gross weight: 30 grams

£700-1,000

131

AN EARLY 20TH CENTURY PEARL AND DIAMOND TOI ET MOI RING

The old European cut diamond estimated to weigh 0.75 carats, flanked by a pearl, to crossover eight cut diamond shoulders

Size/dimensions: finger size M 1/2

Gross weight: 3.9 grams

Please note the pearl is untested and unwarranted as natural pearl.

£1,000-1,500

132

A LATE 19TH CENTURY BOUTON PEARL AND DIAMOND ARROW BROOCH

CIRCA 1890

The gold backed silver arrow set throughout with rose cut diamonds, with a central bouton pearl, in a fitted burgundy velvet case stamped Lamarche Vinit, Succr 1 Bard. de la Madeleine, Paris, the lid of the box with inlaid monogram IS

Size/dimensions: pearl 8.6mm diameter, 6.5cm long

Gross weight: 7.7 grams

Offered for sale with a Gemmological Certification Services Gemmological Report, No 5784-0243, dated 20.10.2023, stating: Variety Natural Nacreous Pearl Environment Saltwater

£1,500-2,000

133

A NATURAL PEARL AND DIAMOND NECKLACE

The one hundred and six uniform pearls on a knotted strand, to an old mine cut diamond in raised claw setting to an old cut diamond flower head with a pearl drop, the principal old mine cut diamond estimated to weigh 0.79 carats, to a similarly set old mine cut diamond clasp, estimated to weigh 0.71 carats

Size/dimensions: necklace approximately 57cm long

Gross weight: 12.8 grams

Offered for sale with a Gemmological Certification Services Gemmological Report, No 5783-4059, dated 14.09.2023, stating: Variety Natural Nacreous Pearl Environment Saltwater

£1,500-2,000

134

A DIAMOND AND CULTURED PEARL COLLAR NECKLACE

The five rows of uniform cultured pearls with two eight cut diamond set bars, to a Victorian and later pierced floral old cut diamond set clasp, approximately 1.84 carats total

Size/dimensions: cultured pearls approximately 4mm to 5mm diameter, 35cm long

Gross weight: 65.6 grams

£1,500-2,000

135

REGIMENTAL INTEREST, THE KING'S ROYAL RIFLES CORPS, A MID 20TH CENTURY DIAMOND AND ENAMEL BROOCH

The arms of the Maltese cross set with rose cut diamonds, with a central red and green enamelled badge stating The King's Royal Rifle Corps with an applied bugle, with a red enamelled crown surmount above a red enamelled banner with the motto Celer Et Audax, unmarked

Size/dimensions: 1.9cm x 3.2cm

Gross weight: 6.4 grams

£300-500



136

A BELLE EPOQUE AND LATER DIAMOND AND AQUAMARINE DROP PENDANT

The pierced floral fan shaped pediment set with rose cut diamonds and old European cut diamond accents, the principal diamond estimated to weigh 0.65 carats, suspending an articulated diamond and flower head connector to a pear cut aquamarine drop, estimated to weigh 17.68 carats, with a fancy belcher link neck chain, in a later fitted case

Size/dimensions: pendant section 6.6cm x 5.1cm, the chain 40cm long
Gross weight: 13.6 grams

Offered for sale with a certificate dated 5 July 1957

£3,000-5,000

137

A 1920'S DIAMOND COCKTAIL WATCH

The silvered circular dial with black Arabic numerals, and blued steel hands, the bezel and lugs set with graduated old European cut diamonds, approximately 3.30 carats total, the case stamped Platinum and numbered 519 0037 Vertex, the 17 Jewel Swiss movement signed Vertex, to a black cord strap with diamond accents

Size/dimensions: dial 1.6cm diameter, case 3.7cm long from lug to lug
Gross weight: 21 grams

£1,000-1,500

138

A FRENCH ART DECO DIAMOND BRACELET
CIRCA 1930

The alternating pierced anchor link and scrolled links set with old European cut and eight cut diamonds, to a concealed clasp, approximately 4.11 carats total, a link stamped with French dog's head platinum poinçon, the clasp tongue stamped with French eagle's head poinçon and maker's stamp, and numbered 3415

Size/dimensions: 17cm long
Gross weight: 17.2 grams

£3,000-5,000

139

A LATE VICTORIAN DIAMOND FOX BROOCH
CIRCA 1890

The silver galloping fox set with old European cut, eight cut and rose cut diamonds, approximately 0.41 carats total, with a circular cabochon ruby eye, textured fur detail, with brooch fitting to the reverse

Size/dimensions: 3.7cm long
Gross weight: 5.6 grams

£600-800

140

AN ENAMEL AND DIAMOND HORSE AND JOCKEY BROOCH

The cantering horse pavé set with brilliant cut diamonds, approximately 1.00 carat total, with a circular cabochon sapphire eye, the jockey wearing yellow and black enamelled silks with red and black striped cap, unmarked

Size/dimensions: 4.1cm long
Gross weight: 10.7 grams

£800-1,200

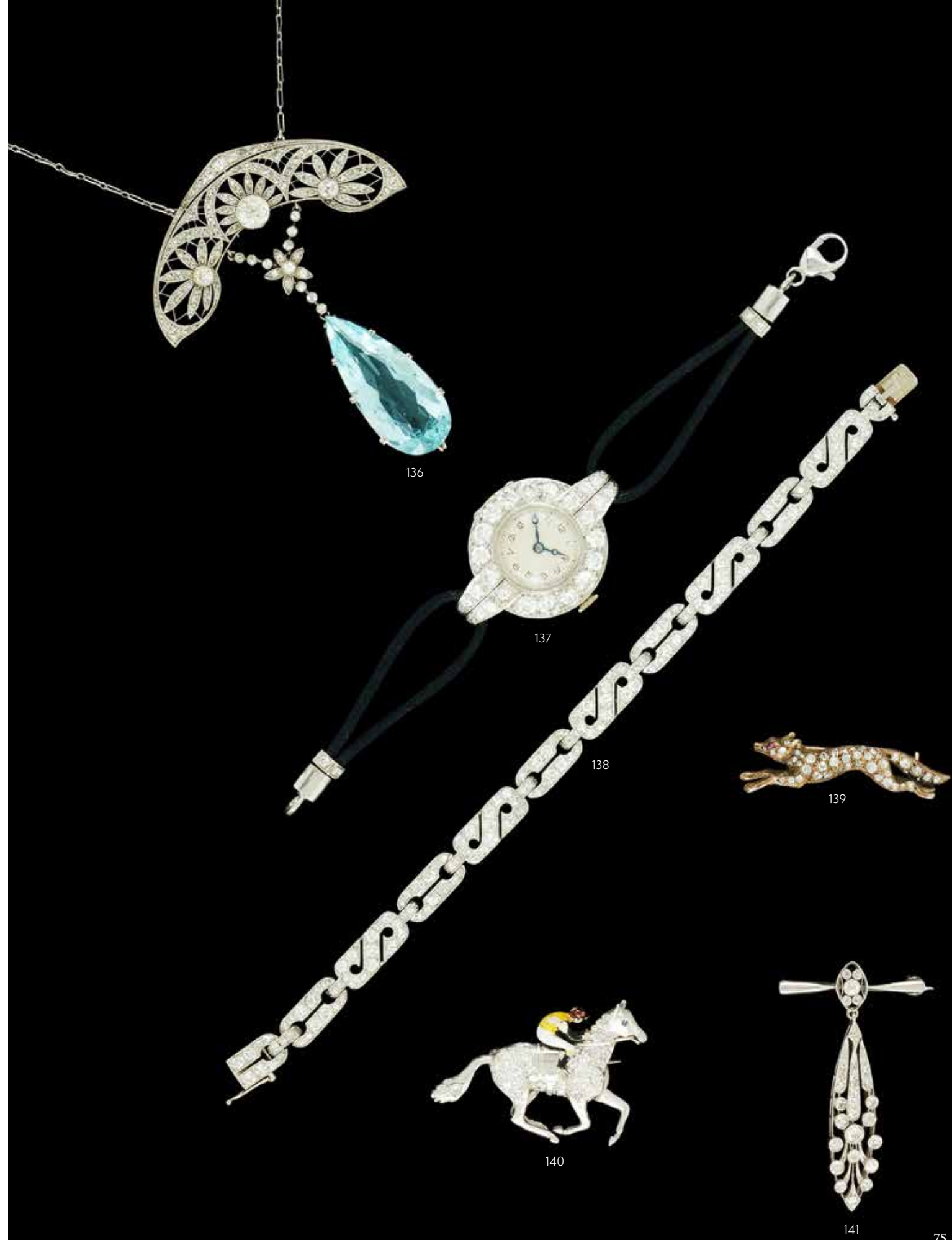
141

AN EARLY 20TH CENTURY DIAMOND DROP BAR BROOCH

The tapering bar with a pierced marquise panel set with diamonds, suspending a further old European cut and eight cut diamond panel, approximately 0.72 carats total, unmarked

Size/dimensions: 4.6cm long
Gross weight: 4.8 grams

£300-500



142

A MULTI GEM SET CUFF BANGLE

The tapering broad gold coloured bangle set with variously shaped cabochon and faceted sapphires, emeralds and rubies, with trios of brilliant cut diamonds, approximately 0.70 carats total, unmarked
Size/dimensions: 3.1cm wide, bangle inner width 5.7cm to 6.3cm
Gross weight: 45.1 grams

£1,000-1,500

143

A DIAMOND AND CATS EYE CHRYSOBERYL OWL DRESS RING

The tapering band formed as an owl mask with diamond set eye brows and circular cabochon chrysoberyl eyes, to textured feather like ground, stamped K18 Pt900 and numbered 83 09
Size/dimensions: finger size M 1/2
Gross weight: 11.4 grams

£250-350

144

AN ITALIAN GOLD COLOURED TUBOGAS NECKLACE WITH SAPPHIRE AND DIAMOND CLUSTER CENTRE

The graduated flattened tubogas necklace to a central oval cut sapphire and brilliant cut diamond cluster, approximately 0.72 carats total, to a concealed clasp, stamped 750 with Italian control marks
Size/dimensions: 38.5cm long
Gross weight: 70 grams

£1,500-2,000

145

A THREE STONE DIAMOND RING

The ring set with three old cut diamonds, approximately 1.25 carats total, in a modern 18 carat gold mount, partial Birmingham hallmark
Size/dimensions: finger size Q
Gross weight: 5.3 grams

£1,000-1,500

146

A THREE STONE DIAMOND RING

The ring set with three graduated old European cut diamonds, approximately 1.20 carats total, within polished rubover settings, the shank stamped 18ct
Size/dimensions: finger size N 1/2
Gross weight: 10.8 grams

£700-1,000

147

A DIAMOND DRESS RING

The brilliant cut diamond within a polished white setting, estimated to weigh 0.70 carat total, to channel set graduated step cut diamond shoulders, with gold coloured borders, unmarked
Size/dimensions: finger size R 1/2
Gross weight: 12 grams

£1,000-1,500

148

A DIAMOND BOMBÉ DRESS RING

The curved oval panel pavé set with brilliant cut diamonds, approximately 0.60 carat total, to reeded gold coloured sides and shank, stamped with intersecting AW maker's mark and 750
Size/dimensions: finger size K 1/2
Gross weight: 13.7 grams

£400-600

149

A 1940S SAPPHIRE AND DIAMOND DRESS RING

The cushion cut sapphire estimated to weigh 2.78 carats between a pair of old cut diamonds, with undulating diamond borders and diamond accented shoulders, approximately 0.96 carats total, to a polished shank
Size/dimensions: finger size I
Gross weight: 11.7 grams

£1,000-1,500



142



143



144



145



146



147



148



149

150

A THREE STRAND CULTURED PEARL NECKLACE TO AN EMERALD AND DIAMOND CLASP

The three rows of graduated cultured pearls to a geometric cluster clasp set with a central oval cabochon emerald within an eight and brilliant cut diamond surround, circa 1950, approximately 0.54 carats total, unmarked

Size/dimensions: clasp 1.7cm long, shortest total length 38.5cm long

Gross weight: 70.7 grams

£1,500-2,000

151

AN EARLY 20TH CENTURY EMERALD AND DIAMOND GOLF CLUB BROOCH

CIRCA 1920

The two colour gold club with a calibre cut emerald handle, with safety chain, unmarked

Size/dimensions: 5.2cm long

Gross weight: 3.1 grams

£150-250

152

A MID 20TH CENTURY CARVED JADEITE ENDLESS KNOT DRESS RING

The carved polished and pierced knot panel claw set to a polished gallery with looped supports, to a polished shank, stamped 18CT

Size/dimensions: panel 3.4cm x 2.2cm, finger size Q 1/2

Gross weight: 11.2 grams

Offered for sale with a Gemmological Certification Services Gemmological Report, Report No: 5783-1510, dated 15.02.2023, stating:

Species Natural Jadeite

Comment No indication of impregnation

£600-800

153

CARTIER, A PAIR OF MID 20TH CENTURY GOLD AND AMETHYST CLIPS

The oval clips each with two channel set step cut amethysts, the settings signed Cartier Paris, both numbered 3158, with French poinçons, with a press release, in a green leather covered Cartier case

Size/dimensions: 1.7cm long

Gross weight: 3.1 grams

£700-1,000

154

AN EMERALD AND DIAMOND DRESS RING

SECOND QUARTER OF THE 20TH CENTURY

The oval cabochon emerald estimated to weigh 27.26 within a scrolling and floral old brilliant cut diamond accented setting, approximately 0.80 carats total, to a scrolled gallery, the shank stamped MCC

Size/dimensions: finger size K 1/2 to L 1/2

Gross weight: 12.5 grams

£3,000-5,000



151

150



152



153



154



155

155
KIKI MCDONOUGH, A PAIR OF 18 CARAT GOLD DOUBLE ORB EARRINGS
BIRMINGHAM POSSIBLY 1990
The polished graduated orbs with reeded centres, stamped with KMCD maker's mark and hallmark, stud fittings
Size/dimensions: 3.2cm long
Gross weight: 22.5 grams

£600-800



156

156
ASPREY, A SAPPHIRE AND DIAMOND SCROLLED BRACELET
The textured scroll links with a central row of four claw set circular cut sapphires with brilliant cut diamond accents, to a concealed clasp, signed Asprey and stamped A&Co Ltd, with partial London 18 carat gold hallmark
Size/dimensions: 16.5cm long
Gross weight: 56.5 grams

£1,500-2,000



157

157
A PAIR OF BLUE ENAMELLED ORB CUFFLINKS
CIRCA 1970
The reeded orb terminals with alternating polished gold coloured and blue enameled sections, to swivel terminals, stamped 0750 with unidentified mark and numbered P110 2
Size/dimensions: orbs 1.5cm diameter
Gross weight: 18.6 grams

£600-800



158

158
BEN ROSENFELD LIMITED, A RUBY, DIAMOND AND 18 CARAT GOLD BIRD BROOCH
LONDON 1960
The gold lesser redpoll with textured naturalistic feathers and sitting on a branch, with a diamond set eye and claw set circular cut ruby crest, stamped with hallmark and BR Ld maker's mark
Size/dimensions: 4.4cm long
Gross weight: 16.4 grams

£800-1,200



159

159
A 1960S RUBY AND 18 CARAT GOLD BERRY RING
The pavé set circular cut ruby bombé berry within two colour textured trefoil leaf setting, to a wire shank, with a partial 18 carat gold Birmingham import mark with maker's mark RHB
Size/dimensions: finger size K 1/2
Gross weight: 14.1 grams

£300-500



160

160
CROPP & FARR, AN 18 CARAT GOLD, RUBY AND DIAMOND FLOWER BROOCH
LONDON 1987
The pierced scrolled flower head set with brilliant cut diamonds, to a central circular cut ruby and brilliant cut diamond cluster, approximately 1.25 carats total, with C&F maker's mark, in an associated Asprey box
Size/dimensions: 2.8cm
Gross weight: 7.6 grams

£500-700



161



161
A PAIR OF MID 20TH CENTURY RUBY AND DIAMOND CLUSTER EAR PENDANTS
The pear cut rubies estimated to weigh 1.02 carats and 1.17 carats, within a graduated surround of old European cut diamonds, suspended from a diamond stud, approximately 1 carat total, in an associated Collingwood of Conduit Street case
Size/dimensions: 1.7cm long
Gross weight: 6.8 grams

£1,500-2,000

162 Y

LOFFREDO, A PAIR OF CORAL, ONYX AND DIAMOND LADYBIRD EAR PENDANTS

The carved and polished coral ladybirds with brilliant cut diamond set spots, polished onyx heads, suspended from diamond set hoops, approximately 0.72 carats total, signed Loffredo and stamped 750 with Italian control marks

Size/dimensions: 3.1cm long

Gross weight: 14.7 grams

£700-1,000

163 Y

A GRADUATED CORAL BEAD NECKLACE

The fifty three polished beads on a knotted strand, to a polished orb clasp, stamped 750 with Italian control marks

Size/dimensions: largest bead approximately 1.7cm diameter, smallest 1cm diameter, 73cm long

Gross weight: 204.9 grams

£400-600

164 Y

A PAIR OF ITALIAN CORAL FLOWER HEAD EAR CLIPS

The polished coral petals centred with a trio of brilliant cut diamonds, approximately 0.18 carats total, stamped 750 with Italian control marks

Size/dimensions: 2.8cm diameter

Gross weight: 19.4 grams

£600-800



165

AN ITALIAN DIAMOND ACCENTED FROSTED CRYSTAL STAR PENDANT

The frosted white star with collet set brilliant cut diamond accents, approximately 0.09 carats total, the gold coloured cap with reeded bale stamped 750 with Italian control marks, suspended from a two colour woven chain, with lobster claw clasp, stamped Italy 18k

Size/dimensions: star 7cm long, chain 45cm long

Gross weight: 38.1 grams

£300-500

166

AN ITALIAN TWO COLOUR ROPE TWIST NECKLACE CIRCA 1960

The two colour rope twist necklace with textured gold coloured links and white coloured rope twist detail, to a concealed clasp stamped 750 with Italian control marks

Size/dimensions: 43cm long

Gross weight: 71.8 grams

£1,500-2,000

167

LEO DE VROOMEN, A PAIR OF TWO COLOUR GOLD EAR CLIPS LONDON 1995

The cushion shaped clips with a hammered white gold centre with a reeded gold coloured border, stamped with L.D.V maker's mark and hallmark, the clip fittings signed De Vroomen

Size/dimensions: 2.5cm long

Gross weight: 30 grams

£500-800

168

AN ITALIAN TWO COLOUR ROPE TWIST BRACELET CIRCA 1960

The two colour rope twist bracelet with textured gold coloured links and white coloured rope twist detail, to a concealed clasp stamped 750 with Italian control marks

Size/dimensions: 21.5cm long

Gross weight: 55.4 grams

£1,000-1,500

169

THEO FENNEL, AN 18 CARAT GOLD SKULL PALMIER NECKLACE LONDON 2017

The palmier link necklace to a skull slider, signed FENNEL, to a polished arrow shaped sliding drop

Size/dimensions: approximately 76cm long

Gross weight: 82.7 grams

With a copy of the original Theo Fennell receipt, dated 19/12/2018

£2,000-3,000

170

A GOLD COLOURED QUATREFOIL PANEL NECKLACE AND BRACELET

The necklace with radiating reeded panels with beaded style surrounds to belcher link connectors, with ring bolt clasp stamped 750, together with a matching bracelet

Size/dimensions: 43.5cm long, bracelet 18.5cm long

Gross weight: 38.7 grams

£800-1,200

171

AN EMERALD BEAD AND DIAMOND BRACELET

The ten rows of faceted emerald beads with rose cut diamond set bars, to a rose cut diamond and circular cut emerald set rectangular clasp, the tongue stamped 740, in a suedette case stamped Kothari's Fine Jewels

Size/dimensions: 18.3 cm long

Gross weight: 57.6 grams

£1,500-2,000

172

A CULTURED PEARL AND DIAMOND ACCENTED DRESS RING, WITH SIMILAR EAR CLIPS AND PENDANT

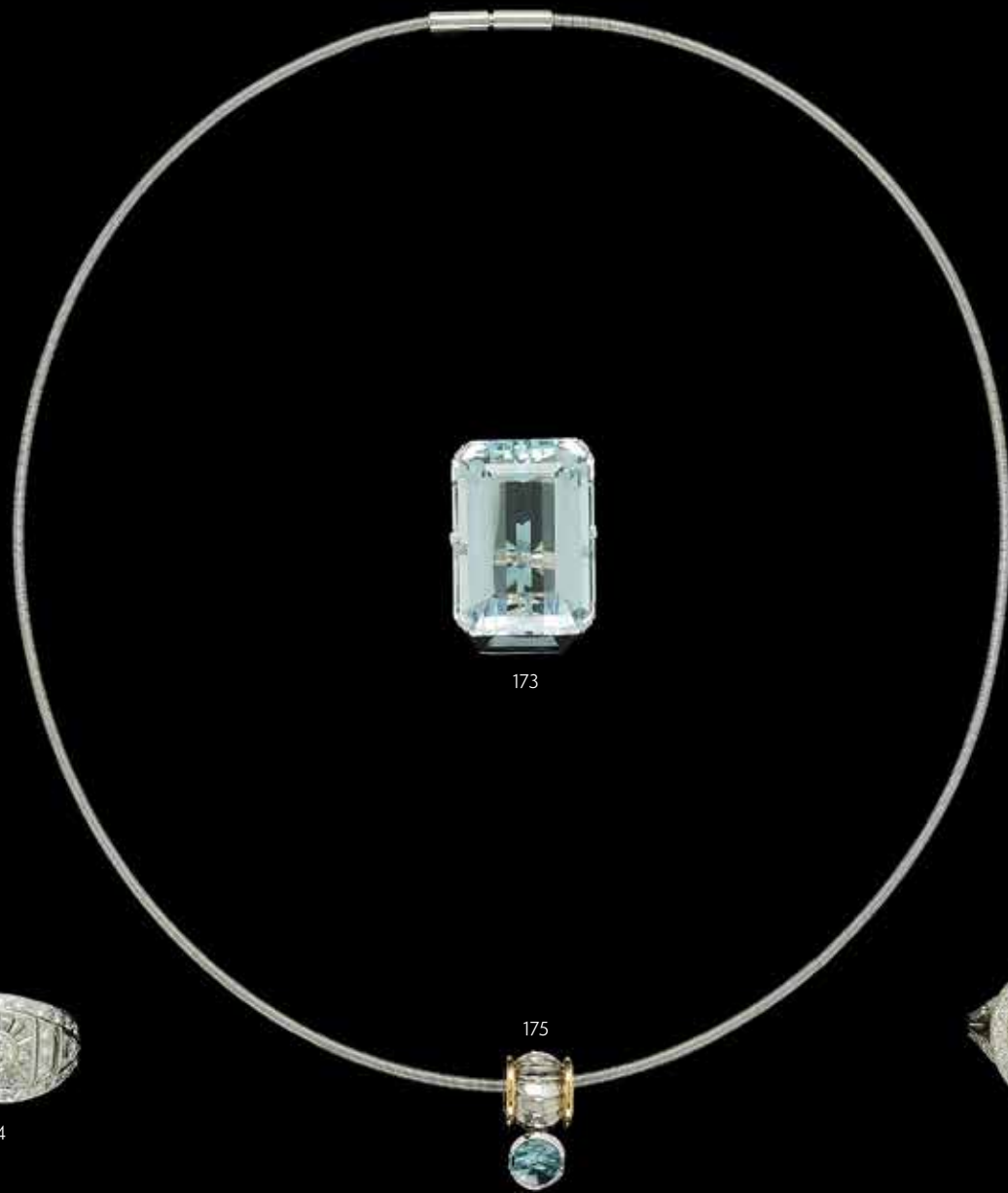
The dress ring with five baroque cultured pearls with eight cut diamond accents, within a textured undulating setting, stamped 18ct; together with a similar pair of baroque cultured pearl earrings, the clips stamped 18ct; and a similar baroque cultured pearl pendant, stamped 18ct, with a polished triangular bale

Size/dimensions: finger size N; earrings 2.1cm long; pendant 3.3cm long

Gross weight: 29.5 grams

£600-800





173
AN AQUAMARINE DRESS RING
 The step cut aquamarine with canted corners in a six claw setting, approximately 34.07 carats total, to a polished shank with sizing beads
 Size/dimensions: finger size approximately L 1/2
 Gross weight: 16.7 grams

£1,000-1,500

174
A DIAMOND DRESS RING
 The tapering panel with a central brilliant cut diamond and calibr  cut diamond cluster, to brilliant cut diamond borders with calibr  cut diamond accents, approximately 2.83 carats total, the shank stamped 750
 Size/dimensions: finger size N 1/2
 Gross weight: 5.5 grams

£800-1,200

175
GEORG JENSEN, AN 18 CARAT GOLD AQUAMARINE PENDANT ON A WHITE GOLD COLLAR
 LONDON 2000
 The two colour barrel shaped pendant with fancy cut polished aquamarine drop, stamped 750 with maker's mark and hallmark, to a sprung collar necklace, with polished interlocking clasp, stamped with maker's mark and hallmark
 Size/dimensions: pendant 1.9cm long, necklace 42.5cm long
 Gross weight: 15.9 grams

£800-1,200

176
A MARQUISE SHAPED DIAMOND CLUSTER RING
 LONDON 2012
 The panel with a central marquise cut diamond in a four claw setting, within a double surround of brilliant cut diamonds, to diamond set bifurcated shoulders and shank, approximately 2.36 carats total, maker's mark DB
 Size/dimensions: finger size J
 Gross weight: 12.4 grams

£1,500-2,000

177
A RUBY AND DIAMOND CLUSTER RING
 The central brilliant cut diamond within a surround of circular cut rubies, to a brilliant cut diamond gallery and shaped shank, approximately 0.96 carats total, the shank stamped GR 18K
 Size/dimensions: finger size M 1/2
 Gross weight: 5.9 grams

£700-1,000

178
STEPHEN WEBSTER, A PINK TOURMALINE AND DIAMOND DRESS RING
 The squared mixed cut pink tourmaline within a polished collet setting, with brilliant cut diamond borders, to diamond and black diamond shoulders, stamped with SW maker's mark and 18ct
 Size/dimensions: finger size F
 Gross weight: 28.1 grams

£1,500-2,000

179
JACOB & CO, PAPILLION, A BLUE TOPAZ, DIAMOND AND PINK TOURMALINE PENDANT
 The butterfly shaped pendant with carved blue topaz wings and briolette drop, stated to weigh 16.83 carats total, within a surround of graduated brilliant cut diamonds, stated to weigh 1.85 carats total, and a pear cut pink tourmaline, stated to weigh 1.60 carats total, the pendant signed JACOB & CO AU750, and numbered 91431569, suspended from an associated belcher link chain, with lobster hook clasp, stamped 18k Italy, with original Certificate of Authenticity, a document pocket, and a black case
 Size/dimensions: pendant 5.2cm long including bale, chain 40cm long
 Gross weight: 16.4 grams

£1,500-2,000

180
A DIAMOND FROG BROOCH
 The frog pav  set with eight cut diamonds, approximately 1.05 carats total, with circular cut ruby eyes, gold coloured backed silver coloured setting, unmarked
 Size/dimensions: 2.7cm long
 Gross weight: 9.9 grams

£800-1,200

181

CHOPARD, A DIAMOND AND BLACK DIAMOND PANEL PENDANT ON A BLACK LEATHER COLLAR

The panel clasp with a pavé set chequer board of brilliant cut diamonds, approximately 0.72 carats, and black diamonds, signed Chopard 750 and numbered 2712642 79/ 3696/ 50, to a black leather collar
Size/dimensions: panel 2cm wide, collar 40cm long
Gross weight: 21.4 grams

£800-1,200

182

A TAHITIAN CULTURED PEARL NECKLACE

The graduated Tahitian cultured pearls to an orb clasp
Size/dimensions: cultured pearls measuring 10.5mm to 12.8mm diameter, 47cm long
Gross weight: 90 grams

£800-1,200

183

BARAKA, AN ITALIAN WHITE COLOURED AND RUBBER BRACELET

The curving white panels beside a similar black rubber connector, to an oval clip clasp stamped Baraka, set with a brilliant cut diamond accent, stamped Italy 750 with Italian control marks
Size/dimensions: 20cm long
Gross weight: 31.8 grams

£600-800

184

A SOUTH SEA CULTURED PEARL, TAHITIAN CULTURED PEARL AND DIAMOND CROSSOVER RING AND A PAIR OF SIMILAR EAR CLIPS

The South Sea cultured pearl and Tahitian cultured pearl set between pavé set eight cut and brilliant cut diamond stars, to step cut diamond and brilliant cut diamond crossover shoulders, with star detail, approximately 1.54 carats total, to a polished shank, unmarked; together with a pair of South Sea and Tahitian cultured pearl ear clips, unmarked
Size/dimensions: finger size M 1/2, earrings 2.2cm long
Gross weight: 40.3 grams

£2,500-3,500

185

THEO FENNEL, TWO DIAMOND AND BLACK DIAMOND SKULL DESIGN AND BLACK CORD BRACELETS

The first bracelet with a trio of pavé set brilliant cut diamond and black diamond skulls, each with Theo Fennell monogram to the back, on a knotted black cord bracelet, with Theo Fennell London panel stamped 750; together with a similar cord bracelet with a circular panel pavé set with brilliant cut diamonds and black diamonds in the shape of a skull, the back panel stamped Theo Fennell London, London 2011 hallmark
Size/dimensions: expandable
Gross weight: 36.3 grams

£700-1,000



186

A PAIR OF DIAMOND SCROLLED EAR CLIPS

The bow and foliate shaped panels set throughout with eight cut diamonds, approximately 0.70 carats total, with clip fittings, unmarked
Size/dimensions: 2.5cm long
Gross weight: 12.6 grams

£500-800

187

A DIAMOND ETERNITY RING

With channel set baguette cut diamonds, approximately 4.80 carats total
Size/dimensions: finger size M 1/2
Gross weight: 4.1 grams

£800-1,200

188

**RITZ FINE JEWELLERY, AN AQUAMARINE, PERIDOT AND DIAMOND NECKLACE
LONDON 2006**

The 18 carat white gold necklace with a briolette aquamarine drop and a briolette peridot drop suspended from two belcher link chains with collet set brilliant cut diamond accents, to a diamond accented belcher link chain, approximately 1.35 carats total, to a lobster claw clasp, with a panel stamped RITZ LONDON and numbered 3.33.1-5, with RL maker's mark, in a Ritz Fine Jewellery London box
Size/dimensions: 45cm long
Gross weight: 10.6 grams

£1,000-1,500

189

**A DIAMOND, BLACK DIAMOND AND CULTURED PEARL DRESS RING
LONDON 2012**

The cultured pearl within a pierced trumpet like 18 carat gold setting above an open scrolled panel, set throughout with brilliant cut diamonds and black diamond borders, approximately 1.50 carats total, stamped with DB maker's mark
Size/dimensions: panel 4.6cm long, finger size P 1/2
Gross weight: 28.9 grams

£1,500-2,000

190

A BROAD DIAMOND DRESS RING

The slightly tapered broad band pavé set with brilliant cut diamonds, with diamond set gallery, approximately 4.01 carats total, unmarked
Size/dimensions: finger size K
Gross weight: 20.9 grams

£1,000-1,500

90

191

A SOUTH SEA CULTURED PEARL AND DIAMOND NECKLACE

The belcher link necklace with graduated South Sea cultured pearl spacers, to a cultured pearl drop with rose cut diamond accents, with a hoop and clip fitting, stamped 750, Made In Italy, with makers mark DCP, with Italian control marks
Size/dimensions: 43cm long
Gross weight: 104 grams

£2,000-3,000

192

A SOUTH SEA CULTURED PEARL AND DIAMOND BRACELET

The belcher link bracelet with South Sea cultured pearl spacers, to a cultured pearl drop with rose cut diamond accents, with a hoop and clip fitting, stamped 750, Made In Italy, with makers mark DCP, with Italian control marks
Size/dimensions: 19cm long
Gross weight: 49.5 grams

£1,000-1,500

193

CHOPARD, A HAPPY DIAMOND BRACELET

With circular panel links, three containing diamonds in collet settings, the central panel signed Chopard, to a later lobster claw clasp, unmarked
Size/dimensions: 19.5cm long
Gross weight: 33.9 grams

£1,000-1,500

194

**AN 18 CARAT WHITE GOLD ROPE TWIST CHAIN NECKLACE
LONDON 1976 IMPORT MARK**

To a reeded barrel clasp
Size/dimensions: 84cm long
Gross weight: 50.1 grams

£1,000-1,500

195

AN ITALIAN DIAMOND BRACELET

The tapering tubogas bracelet with a pavé set brilliant cut diamond square panel, approximately 0.40 carats total, stamped 750 with Italian control marks
Size/dimensions: inner width 5.4cm
Gross weight: 20.9 grams

£500-700



91



196

196
VAN CLEEF & ARPELS, A MID 20TH CENTURY GOLD COLOURED SPRAY BROOCH

With a spray of gold coloured textured leaves, the reverse with a two pin brooch fitting, signed VAN CLEEF & ARPELS and numbered B4454, and stamped 750 with French poinçons

Size/dimensions: 4.1cm long
 Gross weight: 23.1 grams

£1,000-1,500



197

197
BOUCHERON, SERPENT BOHÈME, A DIAMOND AND GOLD COLOURED RING AND EAR CLIPS

The textured coiled ring with a pear shaped panel pavé set with brilliant cut diamonds, approximately 0.48 carats total, with beaded border, the shank signed BOUCHERON, stamped with French poinçons and OR 750, and a matching pair of scrolled diamond ear clips, approximately 0.64 carats total, signed BOUCHERON and stamped with French poinçons, numbered 38667

Size/dimensions: finger size K 1/2, ear clips 2.5cm long
 Gross weight: 29.5 grams

£4,000-6,000



198

198
POMELLATO, NUDO, A BLUE TOPAZ DRESS RING

The faceted cushion shaped blue topaz in a gold coloured closed back setting, the shoulder signed Pomellato, to a polished shank, numbered C110066472, stamped 750 with Italian control marks

Size/dimensions: finger size approximately M
 Gross weight: 10 grams

£500-700



199

199
POMELLATO, NUDO, A LEMON QUARTZ DRESS RING

The faceted cushion shaped lemon quartz in a gold closed back setting, the shoulder signed Pomellato, to a polished shank, numbered P120002285, stamped 750 with Italian control marks

Size/dimensions: finger size approximately O
 Gross weight: 8.3 grams

£500-700



201

201
POMELLATO, NUDO, A CITRINE DRESS RING

The faceted cushion shaped citrine in a gold coloured closed back setting, the shoulder signed Pomellato, to a polished shank, numbered C130026120, stamped 750 with Italian control marks

Size/dimensions: finger size approximately O 1/2
 Gross weight: 8.2 grams

£500-700



200

200
POMELLATO, NUDO, A BLUE TOPAZ PENDANT ON CHAIN

The faceted cushion shaped blue topaz in a gold coloured closed back setting, signed Pomellato numbered C160008362, stamped 750 with Italian control marks, to a belcher link chain with lobster claw clasp

Size/dimensions: 43cm long
 Gross weight: 12.8 grams

£600-800



202

202
POMELLATO, NUDO, AN 18 CARAT GOLD AND PALE GREEN QUARTZ DRESS RING

The faceted cushion shaped pale green quartz in a gold closed back setting, the shoulder signed Pomellato, to a polished shank, numbered C110067097, with partial Sheffield hallmark, stamped 750 with Italian control marks

Size/dimensions: finger size approximately N 1/2
 Gross weight: 9.5 grams

£500-700

203
BULGARI, BULGARI BULGARI, AN ONYX AND GOLD COLOURED PANEL NECKLACE

The circular polished onyx panel within a gold coloured border stamped BVLGARI BVLGARI, stamped 750 with Italian control marks and Made in Italy, suspended from a belcher link chain, with lobster claw clasp

Size/dimensions: panel 1.7cm diameter, 40.4cm long
Gross weight: 19.6 grams

£700-1,000

204
BULGARI, BULGARI BULGARI, A DIAMOND AND GOLD COLOURED PANEL NECKLACE

The circular pavé set brilliant cut diamond panel within a gold coloured border stamped BVLGARI BVLGARI, approximately 0.62 carats total, stamped 750 with Italian control marks and Made in Italy, suspended from a belcher link chain with four clasp hoops at differing lengths, with lobster claw clasp

Size/dimensions: panel 2cm diameter, 49.5cm long
Gross weight: 28.3 grams

£1,000-1,500

205
BULGARI, A DISC PENDANT ON CHAIN

The polished hooped disc suspended from alternating polished conical and squared panels to a belcher link chain, with lobster claw and conical bead clasp, stamped BVLGARI with Italian control marks and 750 Made in Italy

Size/dimensions: the disc 2.5cm diameter, chain 44cm long
Gross weight: 14.9 grams

£600-800

206 Y
BULGARI, A YIN YANG MOTHER OF PEARL AND GOLD COLOURED SPINNING PENDANT

The circular pendant with a rotating mother of pearl panel with stylised yin yang design, the border stamped BVLGARI.BVLGARI., the setting stamped with Italian control marks Made in Italy, a disc to the reverse stamped Bulgari Steel, the belcher link chain stamped BULGARI 750 Made In Italy

Size/dimensions: 3cm diameter, chain 50cm long
Gross weight: 53.7 grams

£1,200-1,800

207
TIFFANY & CO., ELSA PERETTI, A DISC PENDANT

The circular domed disc, signed Elsa Peretti, and stamped 750 Spain
Size/dimensions: 3.5cm diameter
Gross weight: 11.3 grams

£250-350

208
CHOPARD, IMPERIALE, A GOLD COLOURED LONG CHAIN

The belcher link chain with pierced diamond shaped panels and ballooned pierced flower shaped links, with a scrolled C shaped panel, unmarked

Size/dimensions: 120cm long
Gross weight: 25 grams

£600-800



209

CARTIER, LOVE, A WHITE GOLD CUFF BANGLE

The polished bangle with screw detail, stamped Cartier 20 IBD821 Au 750 with Swiss gold mark and common convention mark, with Cartier Certificate dated 30.07.2019

Size/dimensions: inner width 6.8cm

Gross weight: 28.6 grams

£1,500-2,000

210

SCHREINER, MUNICH, MYSTIQUE, A WHITE GOLD COLOURED AND DIAMOND BANGLE

The polished bifurcated sprung arms each with a baguette cut and brilliant cut diamond cluster terminal, approximately 2.24 carats total, stamped SCHREINER HAUTE JOAILLERIE 750 3, in a Schreiner jewellery box with outer card case

Size/dimensions: inner width 5.9cm

Gross weight: 20.8 grams

Offered for sale with a Schreiner Haute Joaillerie Certificate/warranty

£1,000-1,500

211

BULGARI, B.ZERO1, A STAINLESS STEEL AND 18 CARAT GOLD BANGLE

The hinged bangle with stainless steel borders, the sides imprinted with BVLGARI, stamped Bulgari Made in Italy Steel, to an 18 carat gold centre, stamped with SB maker's mark, Sheffield hallmark and common control mark, also stamped Au750 with Italian control marks, in a Bulgari case, with pouch and outer card box

Size/dimensions: inner width 6.6cm

Gross weight: 30.6 grams

£500-700

212

A 1980S SAPPHIRE AND DIAMOND BALLPOINT PEN

The textured barrel to a graduated circular cut sapphire pavé set tip, with a brilliant cut diamond end piece, the polished clip with indistinct control stamps

Size/dimensions: 13.4cm long

Gross weight: 31.4 grams

£500-800

213

THEO FENNEL, AN 18 CARAT WHITE GOLD SKULL RING LONDON 2019

The cast skull lifting to reveal a small oval mirror, to a tapering shank, signed Fennell

Size/dimensions: finger size R

Gross weight: 28.1 grams

With a copy of the original receipt from Theo Fennell, dated 4/12/2019.

£600-800

214

MUST DE CARTIER, A MONEY CLIP

The brushed steel circular clip with three colour detail, signed Must de Cartier, Swiss Made and numbered 100079 with control mark

Size/dimensions: 5cm wide

Gross weight: 18.8 grams

£150-250

215

BULGARI, A STEEL AND GOLD COLOURED PENDANT

The central gold coloured pierced sun panel within a steel circular surround stamped BVLGARI, the sun stamped BULGARI, 750 Made in Italy, Italian control marks the surround stamped Gold And Steel; suspended from an associated two colour rope twist necklace, the lobster claw clasp stamped 750

Size/dimensions: 5.7cm long, chain 59.5cm long

Gross weight: 53.2 grams

£800-1,200



216

CARTIER, LOVE, A 18 CARAT GOLD BANGLE

The polished bangle with screw head detail, signed Cartier 18 FLG661 Au750 with maker's mark and common control mark, with original screw driver, fitted case, with outer card case and instruction booklet
Size/dimensions: 3.8mm wide, inner width 5.7cm
Gross weight: 20.3 grams

£1,500-2,000

217

CARTIER, A FRENCH GOLD COLOURED BRACELET

The block link bracelet to a hoop and hinged loop clasp, signed Cartier and numbered 920566MCE, stamped with French poinçons and 750
Size/dimensions: 19cm long
Gross weight: 33.9 grams

£1,500-2,000

218

**CARTIER, FOUR GEM AND BLACK ENAMEL SCATTER BEE PINS
CIRCA 1990**

The bees with black enamelled stripes and polished gold coloured wings, each bee with a gem set head, comprising a circular cabochon sapphire, ruby and emerald, and a brilliant cut diamond, each signed Cartier and stamped 750© Cartier 1990 with French poinçons, each with an individual number 915775, 915860, 916054, 915640, with associated clip fittings stamped with French poinçons
Size/dimensions: 1.4cm long
Gross weight: 12.7 grams

£2,000-3,000

219

CARTIER, A POLISHED TIGERS EYE DRESS RING

The front section with partial polished tapering tigers eye panel and part polished gold coloured section, the integrated shank signed CARTIER PARIS 35193, and stamped with French poinçons to the outer shank, in a Cartier ring case
Size/dimensions: finger size M
Gross weight: 11.1 grams

£700-1,000

220

**CARTIER, AN ENAMELLED LADYBIRD STUD
CIRCA 1990**

The ladybird with red enamelled body and gold coloured spots, black enamel head, signed Cartier 997603 and stamped 750 © Cartier 1990, with associated clip fitting stamped with French poinçons
Size/dimensions: 1.6cm long
Gross weight: 4.1 grams

£700-1,000

221

CARTIER, DOUBLE C, AN 18 CARAT GOLD BANGLE

The reeded three colour bangle with polished C terminals, signed Cartier 750G21577 17 © Cartier 1997, and stamped with common control mark and French poinçons
Size/dimensions: inner width 5.9cm
Gross weight: 30.3 grams

£1,000-1,500



222

GEORG JENSEN, AN 18 CARAT GOLD AND DIAMOND SET LONG CHAIN

Designed by Lina Falkesgaard, the front section with polished pierced oval shaped panels, with collet set brilliant cut diamond accents, approximately 0.38 carats total, with belcher link chain to a diamond accented end piece stamped with maker's mark and 750, the loop clasp stamped with common control mark and Denmark gold stamp

Size/dimensions: 112cm long

Gross weight: 28 grams

£1,000-1,500

223

GEORG JENSEN, OFFSPRING, AN 18 CARAT GOLD AND DIAMOND NECKLACE

The polished undulating links joined by pavé set brilliant cut diamond links, approximately 2.80 carats total, stamped GJ 750 with a partial Birmingham hallmark, with a hook clasp, in a Georg Jensen case

Size/dimensions: 44.5cm long

Gross weight: 61 grams

£1,000-1,500

224

GEORG JENSEN, DUNE, AN 18 CARAT GOLD AND DIAMOND CHAIN NECKLACE AND BRACELET, NO. 1571A

LONDON 2016

The polished curved interlocking links with brilliant cut diamond set edges, the necklace with approximately 14.40 carats total, the bracelet with 6.30 carats total, with lobster claw clasps stamped GJ 750 1571B, the bracelet with full hallmark, in a Georg Jensen box

Size/dimensions: necklace 46cm long, necklace 19.5cm long

Gross weight: 97.2 grams

£5,000-7,000





225

225
GEORG JENSEN, AN 18 CARAT GOLD AND DIAMOND
BANGLE

SHEFFIELD 2015
The polished curved tubular bangle with a central pavé set yellow tinted brilliant cut diamond section, approximately 8.40 carats total, stamped with Georg Jensen maker's mark and 750, with full hallmark, in a Georg Jensen box
Size/dimensions: inner width 5.7cm
Gross weight: 60.1 grams

£2,000-3,000



226

226
GEORG JENSEN, AN 18 CARAT GOLD AND DIAMOND BIB NECKLACE
LONDON 2012

Designed by Regitze Overgaard, the necklace composed of hoops with polished gold disc connectors and similar pavé set brilliant cut diamond circular connectors, approximately 0.90 carats total, the circular concealed clasp stamped GJ 750, with full hallmark, in a Georg Jensen box
Size/dimensions: 39.5cm long
Gross weight: 78.9 grams

£3,000-5,000



227

227
GEORG JENSEN, SYCAMORE POD, AN 18 CARAT GOLD NECKLACE, NO.1115
LONDON 2014

Designed by Bent Gabrielsen, the polished shaped links to a concealed clasp, stamped with hallmarked stamped 750 with pattern number 1115 and maker's mark, in a Georg Jensen case
Size/dimensions: 45.5cm long
Gross weight: 196 .8 grams

£8,000-12,000

228
A GOLD COLOURED ANCHOR LINK CHAIN AND MATCHING PAIR OF EAR CLIPS

The polished anchor links with looped connectors, the lobster claw clasp stamped 585, together with a pair of anchor link ear clips, stamped 14k

Size/dimensions: necklace 57.5, earrings 1.7cm long

Gross weight: 55.8 grams

£1,200-1,800

229
A GOLD COLOURED COLLAR NECKLACE

The three rows of textured brick links to a rectangular box clasp, the clasp stamped K18

Size/dimensions: 44cm long

Gross weight: 46.1 grams

£800-1,200

230
AN ITALIAN 1970S THREE COLOUR FRINGE NECKLACE

The three colour textured tapering panels to a concealed clasp, stamped 750 with Italian control mark

Size/dimensions: 43cm long

Gross weight: 37.8 grams

£800-1,200

231
LALAOUNIS, A GOLD COLOURED AND SAPPHIRE TAPERED CROSS PENDANT

The polished conical arms with circular cabochon sapphire accent to the centre, stamped with maker's mark, Greece 750 with an indistinct number, suspended from an associated belcher link chain, the lobster claw clasp stamped 585 Italy

Size/dimensions: 4.4cm long, chain 44cm long

Gross weight: 17 grams

£300-500

232
MAPAMENOS NATEPAS, A GREEK GOLD COLOURED RING AND EARRING SUITE

The ring with an oval domed front panel, to tapered shank, stamped X.1 750 with maker's mark, with similar circular ear clips, signed and stamped 750 2.25 with maker's mark

Size/dimensions: finger size N, earrings 2.5cm diameter

Gross weight: 26.4 grams

£600-800

233
A MULTI GEM LONG CHAIN

The chain spectacle set with oval cut amethysts, citrines, peridot, garnet and aquamarine, with double links between, to a hook clasp, stamped 585

Size/dimensions: 81cm long

Gross weight: 12.3 grams

£1,000-1,500

234
A GOLD COLOURED NECKLACE SET WITH VARIOUS COLOURED GEMS

The chevron link necklace to a polished panel, to orb drops each with a collar set with circular cut amethysts, citrines and pink tourmalines, with lobster claw clasp with circular cut amethyst and pink tourmaline accents, stamped with R de V maker's mark

Size/dimensions: 45.5cm long

Gross weight: 58.9 grams

£1,200-1,800

235
PIETRA LINO, AN ITALIAN GOLD MULTI STRAND BRACELET CIRCA 1960

The gold coloured chevron link strands to a concealed knot clasp, stamped DEPOSSE 750 with Italian control marks 359 MI

Size/dimensions: 19cm long

Gross weight: 83 grams

£1,500-2,000

236
LALAOUNIS, A PAIR OF FLOWER HEAD EARRINGS

The circular panels each with an embossed flower head, with a pierced hammered reverse, stamped 750 A21 Greece, with maker's mark

Size/dimensions: 3cm diameter

Gross weight: 20.3 grams

£600-800

237
A HAMMERED GOLD COLOURED HINGED BANGLE

The tapering bangle to a concealed clasp, stamped 750 N.22. with unidentified maker's mark

Size/dimensions: inner width 6.2cm

Gross weight: 36.6 grams

£700-1,000



238

H STERN, AN AQUAMARINE RIVIÈRE NECKLACE AND EAR STUDS

The oval cut aquamarines in four claw white settings, with pierced stars verso, the clasp with a brilliant cut diamond in a star shaped setting, stamped with star maker's mark, 750 and partial Israel control mark, together with a matching pair of oval cut aquamarine and brilliant cut diamond earrings, with pierced stars verso, stamped 750 MG 830, with H Stern pouch
Size/dimensions: necklace 40cm long, earrings 1.1cm long
Gross weight: 44.3 grams

£3,000-4,000

239

AN ONYX BEAD AND AQUAMARINE NECKLACE

The four rows of uniform onyx beads to an oval pierced panel set with oval cut aquamarines, to an onyx bead fringe, the concealed clasp stamped 750 with a D shaped maker's mark to the tongue, with a Delettres' pouch
Size/dimensions: necklace 85cm long
Gross weight: 340 grams

By repute purchased by the vendor from Bernard Delettres

£700-1,000

240

A MID 20TH CENTURY DIAMOND, SAPPHIRE AND TURQUOISE DRESS RING

The central oval cabochon turquoise in an eight claw setting, within a crossover brilliant cut diamond and circular cut sapphire surround, approximately 1.76 carats total, to wirework shoulders and a reeded shank, unmarked, in a Collingwood of Conduit Street Ltd case
Size/dimensions: finger size approximately L
Gross weight: 12.1 grams

£2,000-3,000

241

ASPREY, A 1960S DIAMOND, SAPPHIRE AND TURQUOISE SCROLL BROOCH

The scrolled brooch set with graduated circular cabochon turquoise, with circular cut sapphires and brilliant cut diamonds, approximately 3.20 carats total, the double pin clip signed Asprey, and Depose stamp, in an Asprey & Co. Ltd case
Size/dimensions: 5cm long
Gross weight: 42.4 grams

£3,000-5,000



242

JANE WATLING, A PAIR OF 18 CARAT GOLD MABÉ PEARL EAR CLIPS

LONDON 1991

The abstract shaped panels with circular looped wire detail and centred with a circular mabé pearl, clip fittings, JDW maker's mark

Size/dimensions: 3cm long

Gross weight: 15.1 grams

£300-500

243

ATTRIBUTED TO JANE WATLING, A CULTURED PEARL AND GOLD COLOURED COLLARETTE NECKLACE

The gold coloured barrel links with applied beaded wire detail, unmarked, with cultured pearl spacers, to an associated gold coloured orb clasp, stamped 750

Size/dimensions: 39cm long

Gross weight: 69 grams

£600-800

244

JANE WATLING, CULTURED FRESHWATER BLACK PEARL EAR CLIPS AND DRESS RING

LONDON 1997

The circular gold coloured discs with swirling wire and textured detail, the clips with JMW maker's mark and hallmark, together with a similar oval dress ring

Size/dimensions: ear clips 2.9cm diameter, ring panel 2.7cm long, finger size P 1/2

Gross weight: 50.9 grams

£700-1,000

245

JANE WATLING, A PAIR OF 18 CARAT GOLD DIAMOND AND EMERALD EARRINGS

LONDON 1996

The abstract pierced circular panel with applied detail, with rubover set brilliant cut diamond accents, approximately 0.18 carats total, with claw set marquise cut emeralds, JMW maker's mark, with clip fittings

Size/dimensions: 3.1cm diameter

Gross weight: 29.4 grams

£600-800



246

A DIAMOND SINGLE STONE RING

The brilliant cut diamond stated to weigh 1.09 carats in a four claw setting, to a polished platinum shank, partial Birmingham hallmark
Size/dimensions: finger size approximately L
Gross weight: 4.7 grams

Offered for sale with a European Gemmological Laboratory (E.G.L) Diamond Certificate, Certificate No AC 1000059, Date: October 20, 2011, stating:
Purity (Clarity grade): VS2
Colour grade: F

£2,000-3,000

247

A SINGLE STONE DIAMOND RING

The brilliant cut diamond weighing 1.02 carats, between tapered baguette cut diamond shoulders, the polished shank with partial platinum hallmark and stamped PT950
Size/dimensions: finger size M
gross weight: 4.2 grams

£1,200-1,800

248

A DIAMOND THREE STONE RING

The modified rectangular brilliant cut diamond weighing 1.66 carats in a four claw setting, between two triangular cut diamonds, the shank stamped Irid.Plat
Size/dimensions: finger size approximately I 1/2
Gross weight: 4.4 grams

Offered for sale with a Gemmological Certification Services Diamond Report, Report No: 5783-3283, dated 07.07.2023, stating:
Colour D
Clarity VVS2

£7,000-10,000

249

A SINGLE STONE DIAMOND RING

The brilliant cut diamond in an eight claw setting, weighing 2.05 carats, to a polished shank stamped 18ct
Size/dimensions: finger size L
Gross weight: 3 grams

£3,000-5,000

250

A DIAMOND LINE BRACELET

With brilliant cut diamonds in articulated four claw settings, approximately 5.80 carats total, to a concealed clasp, stamped with Italian control marks
Size/dimensions: 18.5cm long
Gross weight: 13 grams

£3,000-5,000

251

A PAIR OF MID 20TH CENTURY FLORAL SPRAY EAR CLIPS

The ear clips each composed of four graduated pavé set diamond five petaled flower heads, with a border of pointed leaves, approximately 2.96 carats total, with polished clip fittings, in a Rood case
Size/dimensions: approximately 2.7cm x 2.5cm
Gross weight: 18.5 grams

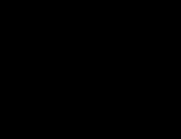
£2,000-3,000

252

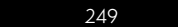
A DIAMOND BROAD RING

The broad panel pave set with brilliant cut diamonds, approximately 3.42 carats total, stamped 750 with common convention marks, and maker's mark S.B Ltd
Size/dimensions: finger size N 1/2
Gross weight: 15.6 grams

£1,000-1,500



250



251



252

253

A MULTI COLOURED HARDSTONE AND GOLD COLOURED PANEL NECKLACE

The textured hardstone panels including rhodolite, lapis lazuli, rock crystal, and chrysoprase, with shaped gold coloured batons between, the textured clasp stamped 750

Size/dimensions: approximately 41cm long
Gross weight: 139 grams

£800-1,200

254

PRETEL, A PAIR OF CABOCHON AMETHYST CUFFLINKS

CIRCA 1980

The oval cabochon amethyst cufflinks within a gold coloured collet setting, above an intersecting matt finish rectangular panel, with swivel terminal, stamped 750, in original Pretelt box

Size/dimensions: panels 2cm long
Gross weight: 30.8 grams

With original receipt from Pretelt of Panama, dated Marzo 24.80

£600-800

255

A FRENCH AMETHYST AND DIAMOND DRESS RING

The octagonal cut amethyst estimated to weigh 57.28 carats, in a gold coloured claw setting, to graduated brilliant cut and eight cut diamond shoulders, approximately 0.32 carats, to pierced scrolled foliate gallery with etched decoration, stamped with French poinçons

Size/dimensions: finger size Q 1/2
Gross weight: 31.5 grams

£600-800

256

A LARGE CUSHION CUT PERIDOT

Weighing 127 carats, within a polished gold coloured setting
Size/dimensions: peridot 2.9cm x 2.2cm x 2.25cm

Offered for sale with a Gemmological Certification Services Report, No 5783-3122, dated 14.06.2023, stating:
Species: Natural Olivine
Variety: Peridot
Comment: No indications of treatment

£3,000-5,000

257

A PAIR OF PERIDOT EARRINGS

The curved two colour panel with coral branch style decoration, centred with oval cut peridots in gold coloured collet settings, with stud and clip fittings, stamped 18k 750

Size/dimensions: 2.2cm long
Gross weight: 17.4 grams

£800-1,200

258

NARDI, VENICE, A PAIR OF PERIDOT AND DIAMOND DROP EAR CLIPS

With geometric faceted peridot and brilliant cut diamond pediments, signed NARDI, suspending a removable faceted drop shaped peridot with diamond set caps, approximately 0.30 carats total, clip fittings

Size/dimensions: 4.5cm long
Gross weight: 11.8 grams

£700-1,000



254



255



256



258



257

259 Y

VAN CLEEF & ARPELS, MAGIC ALHAMBRA, A MOTHER OF PEARL AND CHALCEDONY NECKLACE

The graduating quatrefoil panels set with polished chalcedony and white and grey mother of pearl, with beaded borders, linked by faceted belcher link chains, to a concealed clasp, stamped VCA 750 and numbered BL280242, the tongue stamped with French poinçons, in a Van Cleef & Arpels green suede box
Size/dimensions: quatrefoils approximately 1cm to 2.6cm wide, 123.5cm long
Gross weight: 66 grams

£10,000-15,000



259



260

260

A DIAMOND AND CABOCHON SAPPHIRE CLUSTER RING

The oval double cabochon sapphire weighing 42.50 carats in a four claw setting, within a surround of brilliant cut diamonds, approximately 2.60 carats total, the setting stamped Pt.

Size/dimensions: finger size I 1/2

Gross weight: 18.7 grams

Offered for sale with The Gem & Pearl Laboratory Sapphire Report, number 23133 and dated 12 May 2023, stating:

Result: Natural Sapphire

Comments: No evidence of heat treatment was observed

Origin opinion: Sri Lanka

£20,000-30,000



261

261

AN EMERALD AND DIAMOND RING

The octagonal step cut emerald estimated to weigh 9.60 carats in an eight claw setting, to step cut diamond shoulders, approximately 0.90 carats total, to a polished gold coloured shank

Size/dimensions: finger size approximately L 1/2

Gross weight: 7.7 grams

Offered for sale with a Gemmological Certification Services Gemmological Report, Report No: 5783-3695, dated 10.08.2023, stating:

Origin Colombia

Comment Indications of moderate clarity enhancement

£10,000-15,000



262

262
A LATE VICTORIAN DIAMOND CONVERTIBLE TIARA/NECKLACE
 CIRCA 1890

With seven graduated fleur-de-lys panels with scrolled crossover foliate panels between, set throughout with old mine cut, old European cut and eight cut diamonds, approximately 25 carats total, with a scrolling articulated row with rose cut diamond accents below, on tiara frame, the diamond sections converting into a necklace, the fleur-de-lys each with a screw in fitting to the reverse, with three additional screw in brooch fittings, and two screw in clip fittings, in a fitted later Collingwood Of Conduit Street case; together with a pair of similar diamond floral ear pendants, set with brilliant cut diamonds, approximately 0.68 carats total, on shepherds hook fittings

Size/dimensions: tiara diamond front section approximately 7.5cm high 34cm long; earrings 5.4cm long including hooks
 Gross weight: tiara on frame 146.8 grams

£15,000-20,000



262





263

263 Y
CARTIER, MARCELLO DE CARTIER,
A BLACK CROCODILE NILOTICUS
HANDBAG
 CIRCA 2010
 With twin loop handles, the main zipped compartment opening to a leopard print interior, with panel stamped Cartier Paris and leather tag stamped N ELNE MADE IN FRANCE, internal zipper pocket and a smaller open pocket, on five stud feet, with chromed oval pierced Double C de Cartier bag charm,
 black Cartier dust bag
 Dimensions: 39cm x 19cm x 13cm

Offered for sale with original Cartier sales receipt dated 26 Juin 2010

£3,000-5,000



264

264 Y
A CONTEMPORARY INDIAN ROSEWOOD, GILT METAL, DIAMOND AND CULTURED PEARL DRESSING TABLE SET
 Comprising a rectangular tray with bark effect gilt metal handles and bun feet, scrolled wire detail to the corners with diamond accents, together with three gilt metal pearl finials and diamond accents, and three similar scent bottles
 Tray 56cm

With a white leather box and outer card packaging

£1,000-1,500



265

265 Y
GUCCI, BAMBOO, A SEA GREEN ALLIGATOR HANDBAG
 CIRCA 2006
 With curved bamboo handle and swivel clasp, with gilt hardware, opening to two leather lined main pockets and an internal zipper pocket with fabric lining, stamped GUCCI Made in Italy and numbered 137367 000926
 Dimensions: 32.5cm x 23.5cm x 11cm

£1,500-2,000



266

266
HERMÈS, CHAINE D'ANCRE, A BROAD SILVER COLOURED BRACELET
 CIRCA 2009
 The woven style anchor link panel with woven link baton and hoop connectors, the concealed clasp signed HERMÈS and stamped Aq925 with French poinçons
 Size/dimensions: 4cm wide, approximately 18cm long
 Gross weight: 198.7 grams

£600-800

267
HERMÈS, KELLY, A BROWN BOX CALF LEATHER HANDBAG
 CIRCA 1970
 With single handle, gold tone hardware, opening to a large internal pocket with two side slip pockets and zipper pocket, with gold tone stamp HERMÈS PARIS, stamped U with Z date letter, with padlock and key, beige fabric Hermès dust bag
 Dimensions: 36cm x 25cm x 13cm

£2,000-3,000



267



268

268
HERMÈS, BIRKIN 30, A BLUE JEAN TOGO LEATHER HANDBAG
 CIRCA 2006
 With twin rolled handles, palladium hardware, opening to a large internal pocket with slip pocket and zipper pocket, with silver tooled stamp HERMÈS PARIS MADE IN FRANCE, stamped 48A with J date letter, with padlock and key, orange Hermès dust bag and raincoat
 Dimensions: 30cm x 22cm x 16cm

£5,000-7,000



269

269
HERMÈS, BIRKIN 30, A CREAM TOGO LEATHER HANDBAG
 CIRCA 2008
 With twin rolled handles, palladium hardware, opening to a large internal pocket with slip pocket and zipper pocket, with silver tooled stamp HERMÈS PARIS MADE IN FRANCE, stamped 59E with L date letter, with beige Hermès dust bag and raincoat
 Dimensions: 30cm x 23cm x 16cm

£3,000-5,000



270

270
HERMÈS, BIRKIN 40, A BLACK CLEMENCE LEATHER HANDBAG
 CIRCA 2008
 With twin rolled handles, gold tone hardware, opening to a large internal pocket with side slip pocket and zipper pocket, with gold tooled stamp HERMÈS PARIS MADE IN FRANCE, stamped 3MA with L date letter, with padlock and key, beige fabric Hermès dust bag and raincoat
 Dimensions: 40cm x 30cm 21cm

£7,000-10,000



271

271
HERMÈS, BIRKIN 40, A GREY TOGO
LEATHER HANDBAG
CIRCA 2008

With twin rolled handles, palladium hardware, opening to a large internal pocket with side slip pocket and zipper pocket, with silver tone stamp HERMÈS PARIS MADE IN FRANCE, stamped 25S with L date letter, with padlock and key, orange fabric Hermès dust bag and raincoat

Dimensions: 40cm x 30cm x 21cm

£6,000-8,000



272

272
HERMÈS, BIRKIN 40, A TAN TOGO
LEATHER HANDBAG
CIRCA 2015

With twin rolled handles, gold tone hardware, opening to a large internal pocket with side slip pocket and zipper pocket, with gold tooled stamp HERMÈS PARIS MADE IN FRANCE, stamped XST926 with L date letter, with padlock and key, beige fabric Hermès dust bag and raincoat

Dimensions: 40cm x 30cm x 21cm

£4,000-6,000



273

273 Y
HERMÈS, BIRKIN 35, A MATTE AMETHYST
ALLIGATOR HANDBAG
CIRCA 2012

With twin rolled handles, palladium hardware, opening to a large internal pocket with side slip pocket and zipper pocket, with silver tooled stamp HERMÈS PARIS MADE IN FRANCE with small square, stamped 83+PK with P date letter, with padlock and key, beige fabric Hermès dust bag and orange card box, and care card

Dimensions: 35cm x 25cm x 18cm

£25,000-35,000

274

UNSIGNED

A GOLD AND ENAMEL OPEN FACE POCKET WATCH, NO. 982, CIRCA 1898

Movement: Cylinder escapement, three armed flat balance, flat balance spring

Case: Gold four piece hinged case, the back cover enamelled with foliate swags and flowers, inside the cover engraved 'In memory of General Henning C. B. 1898 from Mrs Henning to J. B. C., unmarked

Dial: Silvered

Size: 47mm

Signed: Unsigned

Accessories: Chain and key

Provenance:

Frome Whitfield House, Dorchester, Dorset, home of the Henning family since the early 1700's. The original house was Tudor origin, but was rebuilt in the Regency period, together with East and West Wings. The pocket watch presented to the butler in his retirement. It was returned to the family after his death

£700-1,000

276

BEUCHE-GIROD

A CONCEALED TEN DOLLAR COIN WATCH

Movement: Cal. 88, manual wind, 17 jewels

Case: Gold coloured case, stamped 18K 0.750 with a poinçon, concealed in a Ten Dollar coin

Dial: Champagne

Size: 22mm

Signed: Dial, movement

Accessories: None

£700-1,000

275

UNSIGNED

A SWISS 18 CARAT GOLD KEYLESS WIND OPEN FACE POCKET WATCH, NO. 164741, CIRCA 1920

Movement: Swiss lever escapement, bimetallic split balance, overcoil balance spring, 17 jewels

Case: 18 carat gold four piece hinged case, the cuvette engraved with an armorial, import mark for Glasgow 1920

Dial: Silvered

Size: 44mm

Signed: Unsigned

Accessories: Gold coloured propelling pencil, stamped 14ct and engraved H. B. A. over DE, and a platinum coloured and pearl fancy belcher link chain

£600-800

277

VACHERON & CONSTANTIN

A GOLD KEYLESS WIND OPEN FACE POCKET WATCH, NO. 244714

Movement: Lever escapement, bimetallic split balance, overcoil balance spring

Case: Gold four piece hinged case, the back cover engraved WAMCS, stamped 18K with a poinçon

Dial: Silvered

Size: 46mm

Signed: Case, dial, movement

Accessories: Vacheron & Constantin box

£1,000-1,500



274



275



276



277

278

VOLTA

A GOLD KEYLESS WIND QUARTER REPEATER FULL HUNTER POCKET WATCH WITH CALENDAR, CHRONOGRAPH AND MOONPHASE, NO. 31979, CIRCA 1930

Movement: Lever escapement, compensated balance, overcoil balance spring, repeater work

Case: Gold six piece hinged case, stamped K18

Dial: White enamel

Size: 57mm

Signed: Case

Accessories: None

£2,500-3,500

280

KILPATRICK & CO., LONDON

AN 18 CARAT GOLD FULL HUNTER POCKET WATCH, NO. 3624, CIRCA 1862

Movement: Three quarter plate movement, bimetallic split balance, flat balance spring

Case: 18 carat gold five piece hinged case, with engine turned covers, the front cover engraved HS within a cartouche, the cuvette engraved 'Presented by M. Campbell to Mr H. Smith as a token of esteem'

Dial: White enamel

Size: 51mm

Signed: Dial, movement

Accessories: None

£1,000-1,500

279

UNSIGNED

A GOLD KEYLESS WIND OPEN FACE POCKET WATCH

Movement: Lever escapement, bimetallic split balance, overcoil balance spring

Case: Gold three piece hinged case, the back cover with engine turned decoration and a vacant shield shaped cartouche, obscured marks

Dial: Champagne

Size: 55mm

Signed: Unsigned

Accessories: None

£800-1,200

281

JAMES HODDELL & CO., LONDON

AN 18 CARAT GOLD FULL HUNTER POCKET WATCH, NO. 11160, CIRCA 1854

Movement: Three quarter plate movement, bimetallic split balance, flat balance spring

Case: 18 carat gold four piece hinged case, engine turned cover, the front cover engraved with a monogram, hallmarked for London 1854

Dial: White enamel

Size: 50mm

Signed: Dial, movement

Accessories: None

£700-1,000



278



279



280



281



282

282
CARTIER, MUST DE CARTIER, TANK, REF. 21032
 A SILVER GILT WRIST WATCH, NO. 590005, CIRCA 1980
Movement: Cal. 690, quartz, 8 jewels
Case: Silver gilt case, screwed down case back with four screws, stamped with 925 common control mark
Dial: White and champagne
Strap: Non-original black crocodile grain strap with gold plated pin buckle
Size: 24mm
Signed: Case, dial, movement
Accessories: Must de Cartier box, guarantee

£500-700



283

283 Y
CARTIER, TANK
 A LADY'S 18 CARAT WHITE GOLD AND DIAMOND WRIST WATCH, NO. 780931603
Movement: Cal. 78/1, manual wind, 17 jewels
Case: 18 carat white gold case, diamond set bezel and lugs, screwed down case back with four screws, stamped with 750 common control mark
Dial: White
Strap: Black crocodile strap with Cartier 18 carat white gold deployant clasp
Size: 20mm
Signed: Case, dial, movement, crown, strap, buckle
Accessories: None

£4,000-6,000



284

284
CARTIER, SANTOS, REF. 2423
 A LADY'S BI-METAL BRACELET WATCH WITH DATE, NO. 614941CE, CIRCA 2005
Movement: Automatic
Case: Stainless steel case, screwed down gold coloured bezel, screwed down case back with eight screws
Dial: Silvered
Bracelet: Cartier bi-metal bracelet watch with concealed clasp
Size: 24mm, bracelet 15.5cm
Signed: Case, dial, clasp
Accessories: Cartier box, guarantee book, instruction book, four spare links

£700-1,000

285
ROLEX, PRECISION, REF. 2604
 A LADY'S GOLD COLOURED BRACELET WATCH, NO. 1119502, CIRCA 1970
Movement: Cal. 1401, manual wind, 18 jewels
Case: Gold coloured case, snap case back, stamped 18K 0.750 with a poinçon
Dial: Champagne
Bracelet: Integral gold coloured bracelet with ladder snap clasp and safety chain, stamped 750
Size: 15mm, bracelet 15cm
Signed: Case, dial, movement, crown
Accessories: None

£700-1,000



285

286
ROLEX, PRECISION, REF. 2621
 A LADY'S GOLD COLOURED BRACELET WATCH, NO. 1260333, CIRCA 1970
Movement: Cal. 1401, manual wind, 18 jewels
Case: Gold coloured case, snap case back, stamped 18K 0.750 with a poinçon
Dial: Champagne
Bracelet: Integral gold coloured textured brick link bracelet with snap clasp, stamped 18K
Size: 15mm, bracelet 15cm
Signed: Case, dial, movement, crown
Accessories: None

£700-1,000



286

287
ROLEX, OYSTER PERPETUAL, REF. 6719
 A LADY'S 18 CARAT GOLD WRIST WATCH, NO. 6574230, CIRCA 1981
Movement: Cal. 2030, automatic, 28 jewels
Case: 18 carat gold case, screw down, screw down case back, stamped with a 750 common control mark
Dial: Champagne
Bracelet: Non-original gold coloured bracelet with fold over clasp, stamped 18K 750
Size: 24mm, bracelet 15cm
Signed: Case, dial, movement, crown
Accessories: Rolex box

£2,000-3,000



287



288

288 Y
VACHERON & CONSTANTIN, ULTRA-THIN, REF. 6115 A
 A GOLD COLOURED WRIST WATCH, NO. 481360, CIRCA 1974
Movement: Cal.1003, manual wind, 17 jewels
Case: Gold coloured case, snap case back, stamped 18K 0.750 with a poinçon
Dial: Black
Strap: Vacheron & Constantin black alligator strap with pin buckle
Size: 33mm
Signed: Case, dial, movement, crown, strap
Accessories: Guarantee certificate

£2,000-3,000



289

289 Y
JAEGER LECOULTRE, REVERSO, REF. 250.1.86
 AN 18 CARAT GOLD REVERSIBLE WRIST WATCH, NO. 1886909, CIRCA 1990
Movement: Manual wind
Case: 18 carat gold reversible case, stamped with 750 common control mark
Dial: Silvered
Strap: Jaeger LeCoultre black crocodile strap with gold coloured pin buckle, stamped 18K
Size: 23mm
Signed: Case, dial, crown, strap, buckle
Accessories: None

£3,000-5,000



290

290
OMEGA, ST. CHRISTOPHER, REF. CK2041
 A STAINLESS STEEL WRIST WATCH, NO. 9757523, CIRCA 1939
Movement: Cal. 23.4SC, manual wind, 15 jewels
Case: Stainless steel case, snap case back
Dial: Silvered dial with central medallion depicting St Christopher and Christ
Strap: Omega brown leather strap with a stainless steel pin buckle
Size: 28mm
Signed: Case, dial, movement, strap, buckle
Accessories: None

As the patron saint of traveller's, these Saint Christopher watches were often given as gifts to racing drivers, hence the use of the rotating bezel as a primitive chronograph. The diminutive calibre 23.4SC is notable in its own right as Omega's first centre-second wrist watch movement.

£1,000-1,500

291
BULGARI, BULGARI BULGARI, REF. BB 33 GGD
 A GOLD COLOURED BRACELET WATCH WITH DATE, NO. P.51061, CIRCA 1990
Movement: Cal. 732-82, quartz, 8 jewels
Case: Gold coloured case, snap case back, stamped 750 with a poinçon
Dial: Black
Bracelet: Gold coloured bracelet with fold over clasp
Size: 33mm, bracelet 18.5cm
Signed: Case, dial, movement, clasp
Accessories: Bulgari box

Provenance:
 From the Private Collection of a titled family

£2,200-3,000



291

292
PATEK PHILIPPE, CALATRAVA, REF. 2581
 A GOLD COLOURED BRACELET WATCH, NO. 2614028, CIRCA 1958
Movement: Cal. 10-2000, manual wind, 18 jewels
Case: Gold coloured case, snap case back engraved A. W 1958, stamped 18K 0.750 with a poinçon
Dial: Silvered
Bracelet: Integral gold coloured woven bracelet with snap clasp, stamped 750 with a poinçon
Size: 33mm, bracelet 17cm
Signed: Case, dial, movement, crown, clasp
Accessories: None

£5,000-7,000



292

293
PIAGET, REF. 9675 A 6
 A WHITE GOLD COLOURED AND DIAMOND BRACELET WATCH, NO. 110176
Movement: Cal. 9P, manual wind, 18 jewels
Case: White gold coloured case, diamond set bezel, snap case back, stamped 18K 0.750 with a poinçon
Dial: Silvered
Bracelet: Integral white gold coloured bracelet with snap clasp, stamped 750
Size: 25mm, bracelet 16cm
Signed: Case, dial, movement, clasp
Accessories: None

£1,500-2,000



293

294 Y

BLANCPAIN, VILLERET

AN 18 CARAT WHITE GOLD TRIPLE CALENDAR WRIST WATCH WITH
MOON PHASE, NO. 102, CIRCA 2000

Movement: Cal. 6763, automatic, 31 jewels

Case: 18 carat white gold case, screw down crown, screw down case back,
stamped with 750 common control mark

Dial: Black

Strap: Non original black alligator strap with Blancpain white gold pin buckle

Size: 38mm

Signed: Case, dial, movement, crown, buckle

Accessories: None

£3,000-5,000



294



295
KORLOFF, REF. AVQ/A
 A STAINLESS STEEL REVERSIBLE WRIST WATCH WITH CHRONOGRAPH AND DATE, AND DUAL TIME ZONES, CIRCA 2022
Movement: Automatic and quartz chronograph
Case: Stainless steel
Dials: Black and grey with mother of pearl
Strap: Black leather and rubber strap with stainless steel pin buckle
Size: 45mm
Signed: Dials, crown, strap, buckle
Accessories: Korloff box, guarantee card, outer card packaging

£1,000-1,500

295

296
BALL, ENGINEER HYDROCARBON NEDU, REF. DC3026A-S3C-BE
 A TITANIUM CHRONOGRAPH BRACELET WATCH WITH DAY AND DATE, NO. 3900259
Movement: Automatic chronograph
Case: Titanium case, rotating bezel, screw down crown and pushers, screw down case back
Dial: Blue
Bracelet: Ball titanium bracelet with double deployant clasp
Size: 44mm, bracelet 18.5cm
Signed: Case, dial, crown, clasp
Accessories: Ball box, guarantee card, chronometer certificate, swing tags

£1,000-1,500



296

297
BUBEN & ZORWEG, TIME MOVER, EVOLUTION 8
 A BROWN LACQUERED WATCH WINDER
 With polished fittings, eight winding cushions, two sliding drawers for six watches, mains and battery operated
 48.5 x 24 x 24cm
 With card box and instruction booklet

£800-1,200



297

298
BREITLING, SUPEROCEAN, REF. A13320
 A STAINLESS STEEL BRACELET WATCH WITH DATE, NO.2388733
Movement: Automatic chronograph
Case: Stainless steel case, rotating bezel, screw down case back
Dial: Blue
Bracelet: Non-original stainless steel mesh bracelet with fold over clasp
Size: 46mm, bracelet 20cm
Signed: Case, dial, movement, crown
Accessories: None

£1,500-2,500



298

299
GIRARD-PERREGAUX, GYROMATIC
 A BI-METAL BRACELET WATCH WITH DATE
Movement: Automatic, 39 jewels
Case: Gold plated case, stainless steel screw down case back
Dial: Champagne
Bracelet: Non-original gold coloured mesh bracelet with fold over clasp, stamped 14K
Size: 34mm, bracelet 17.5cm
Signed: Case, dial, movement, crown
Accessories: None

£800-1,200



299

300
ROLEX, OYSTER PERPETUAL DATE, REF. 15223
 A BI-METAL BRACELET WATCH WITH DATE, NO. X744795, CIRCA 1991
Movement: Cal. 3135, automatic, 31 jewels
Case: Stainless steel case, gold coloured fluted bezel, screw down crown, screw down case back
Dial: White
Bracelet: Rolex Oyster bi-metal bracelet with fold over clasp
Size: 33mm, bracelet 17.5cm
Signed: Case, dial, movement, crown, clasp
Accessories: Rolex box, swing tag, international service guarantee dated 2nd December 2022, service pouch and card box

£2,500-3,500



300

301 Ω

ROLEX, OYSTER PERPETUAL DATEJUST, REF. 126334

A STAINLESS STEEL BRACELET WATCH WITH DATE, NO. H57499H1, CIRCA 2022

Movement: Cal. 3235, automatic, 31 jewels

Case: Stainless steel case, white gold coloured fluted bezel, screw down crown, screw down case back

Dial: Blue

Bracelet: Rolex Jubilee stainless steel bracelet with fold over clasp

Size: 41mm, bracelet 20.5cm

Signed: Case, dial, movement, crown, clasp

Accessories: Rolex box, guarantee card, instruction booklet, swing tag, outer card packaging, small Rolex box

£8,000-12,000



301

302 Ω

ROLEX, OYSTER PERPETUAL DATEJUST WIMBLEDON, REF. 126334

A STAINLESS STEEL BRACELET WATCH WITH DATE, NO. M9229800, CIRCA 2022

Movement: Cal. 3235, automatic, 31 jewels

Case: Stainless steel case, white gold coloured fluted bezel, screw down crown, screw down case back

Dial: Grey

Bracelet: Rolex Jubilee stainless steel bracelet with fold over clasp

Size: 41mm, bracelet 20cm

Signed: Case, dial, movement, crown, clasp

Accessories: Rolex box, guarantee card, instruction booklet, swing tag, outer card packaging, small Rolex box

£7,000-10,000



302

303 Ω

ROLEX, OYSTER PERPETUAL SEA-DWELLER, REF. 126600

A STAINLESS STEEL BRACELET WATCH WITH DATE, NO. H64F9054, CIRCA 2021

Movement: Cal. 3235, automatic, 31 jewels

Case: Stainless steel case, rotating bezel with black ceramic insert, screw down crown, screw down case back

Dial: Black

Bracelet: Rolex Oyster stainless steel bracelet with Oysterlock clasp

Size: 43mm, bracelet 20cm

Signed: Case, dial, movement, crown, clasp

Accessories: Rolex box, guarantee card, instruction booklet, swing tag, outer card packaging

£8,000-12,000



303

304

ROLEX, OYSTER PERPETUAL COSMOGRAPH DAYTONA, REF. 116520
A STAINLESS STEEL CHRONOGRAPH BRACELET WATCH, NO.
M821938, CIRCA 2007

Movement: Cal. 4130, automatic chronograph, 44 jewels

Case: Stainless steel case, screw down crown and pushes, screw down
case back engraved Nivarna Formentera

Dial: Black

Bracelet: Rolex Oyster stainless steel bracelet with fold over clasp

Size: 39mm, bracelet 18cm

Signed: Case, dial, movement, crown, clasp

Accessories: Rolex box, guarantee card, information booklet, swing tag

Provenance:

This watch was gifted to yacht designer Ed Dubois for his exterior designs
of the sailing superyacht Nirvana Formentera, a 53-metre Ketch launched
in 2009.

Edward George Dubois (18 April 1952 – 24 March 2016) trained as a
naval architect in Southampton and became one of the leading British
yacht designers, founding his practice, Dubois Naval Architects, in
1977. He designed his first yacht the *Borsalino Trois* in 1974, before he'd
left college. He went on to design yachts for The Admiral's Cup, which
included *Vanguard* in 1977, and *Police Car*, which won the regatta in 1979.
During the 1980s and 1990s Dubois applied the design and technology
behind sailing yachts to his designs for ocean going superyachts of which
he designed more than 70. His ground-breaking designs for superyachts
included *Aquel II*, *Imagine II*, *Esprit* and *Espada*.

£10,000-15,000



Ed Dubois wearing Lot 304 the Rolex Daytona presented
to him for designing the Nirvana Formentera



304

IMPORTANT NOTICES TO WATCH BUYERS

DAMAGE, RESTORATION, ALTERATION

Although every effort is made to note any damage, restoration or alterations, the absence of any such information in catalogue descriptions does not imply the lot is in perfect condition and free from any such defects. Prospective buyers should satisfy themselves as to the condition of any lot prior to bidding. All watches are serviced from time to time, and Dreweatts are unable to guarantee that the working parts of any watch movement, glass or crystal, winding crowns, watch bracelet, strap or buckle are the manufacturers' original parts, unless otherwise stated in the catalogue description. We are unable to make any representation in our catalogue descriptions or condition reports as to the authenticity of such parts. Dreweatts are unable to make any representation, nor make any comment on, the authenticity of diamonds, or other gemstones, set into watch dials, bezels, cases and bracelets.

AUTHENTICATION

All watch movements have been inspected by Dreweatts watchmaker and specialists, and we have verified all inventory and movement numbers. For the information of potential bidders, all inventory and movement numbers are listed in the catalogue description for the relevant lot.

IMPORTANT NOTICES TO JEWELLERY BUYERS

DAMAGE, RESTORATION, ALTERATION

Although every effort is made to note any damage, restoration or alterations, the absence of any such information in catalogue descriptions does not imply the lot is in perfect condition and free for any such defects. Prospective buyers should satisfy themselves as to the condition of any lot prior to bidding.

ENHANCEMENT

Prospective bidders should be aware that many coloured gems have been historically treated by a variety of methods to improve their appearance, both in terms of colour and transparency. Rubies and sapphires are routinely heat treated, emeralds are enhanced through the use of coloured and transparent oils and resins, and jadeite is routinely stained. These treatments, and others including irradiation and coating, are generally accepted by the jewellery trade as standard practice. Although most treatments are considered to be permanent, those gemstones which have been oiled may need to be re-treated to maintain their appearance. Any such treatments affect the market value of coloured gemstones, and Dreweatts pre-sale estimates published in the catalogue assume that all gemstones, unless otherwise stated in the catalogue, may have been enhanced. Dreweatts may obtain Gemmological Reports from a recognised laboratory where appropriate detailing any enhancements, or lack of, for certain gemstones, and such reports may be obtained for prospective bidders prior to the sale, provided such requests are made at least three weeks before the sale, and that the requesting party has pre-paid for such a report. However it is not possible for Dreweatts to obtain reports for every stone offered in the sale.

In the absence of a gemmological laboratory report, it is not possible for Dreweatts to make any comment on the possibility that any gemstone in any lot may have been subject to enhancement.

Dreweatts catalogue descriptions and condition reports adhere to the guidelines laid out in the 'Blue Book' of CIBJO, the International Jewellery Confederation.

IMPORT/EXPORT RESTRICTIONS

There may be Import Restrictions into some territories outside the United Kingdom placed on certain watch brands, or on the importation of watches with straps composed of animal skins which may fall under CITES Regulations. It is the sole responsibility of the buyer to comply with all Export/Import regulations and potential bidders are strongly recommended to check with their shipping agent as to any such regulations that may apply to any lot. Dreweatts are not shippers and are unable to offer any advice regarding such regulations.

CONDITION REPORTS

Dreweatts condition reports will identify whether a watch functions at the time of cataloguing, and suggest possible, but not comprehensive, restoration work that may need to be carried out for the watch to function properly. Dreweatts are unable to test watches for accuracy or running to time, and we cannot guarantee that any watch will function when purchased from us.

As we have examined all watch movements by removing the case backs, we cannot guarantee that water resistant watches will remain water resistant following purchase from us. Dreweatts recommend that any watch purchased from us is subsequently overhauled by a competent watchmaker to ensure proper functioning.

WEIGHTS

All gram weights have been obtained using an electronic balance, but weights stated in the catalogue are approximate and for guidance only, and potential bidders should satisfy themselves as to their accuracy. '...approximately 1.20 carats total,...' all such stone weights are estimated using standard equipment and formulae, and are subject to the limitations imposed by the mount.

'...weighing 1.20 carats,...' where the description reads as such, the stones in question have been removed from the mount and weighted using an electronic balance.

SIGNATURES

'...by Lacluche,...' in our opinion is a piece made by or for the jeweller, bearing relevant signatures, maker's marks, and where appropriate, the maker's inventory number/s.

'...signed Lacluche,...' in our opinion is a piece retained by the jeweller, but not necessarily made by them. This may also mean that the piece has been mounted by the jeweller using stones supplied by the client; a special commission from a client's design; or has been altered or later added to.

COLOURED STONES OF BURMA (MYANMAR) ORIGIN

Buyers should be aware that certain territories (notably the United States of America) have import restrictions on certain coloured gemstones. All gemstones that maybe of Burma (Myanmar) origin, notably rubies and jadeite, may require a certificate of origin before they can be imported. Prospective bidders for such gemstones should check with their shipper, and relevant Government authorities regarding any necessary certification prior to bidding. Whilst Dreweatts are able to suggest a number of Gemmological Laboratories for such certification, we are unable to carry out any such certification for potential bidders or buyers.

Please see **Conditions of Business and Conditions of Sale** on the following pages.

Dreweatts & Dreweatts 1759 are trading names of Dreweatts 1759 Ltd. Dreweatts 1759 Ltd is registered in England, company number: 10758982, registered office: C/O Bishop Fleming LLP, 10 Temple Back, Bristol, BS1 6FL.

IMPORTANT NOTICES

BUYING AT DREWEATTS

There are several ways you can bid at a Dreweatts auction; in person, by leaving a commission or absentee bid, on the telephone where available and live via the internet – please make arrangements before the sale. THIS NOTICE APPLIES ONLY TO A PERSON WHO WISHES TO BID IN PERSON, OR BY LEAVING A COMMISSION OR ABSENTEE BID, AT A DREWEATTS PUBLIC AUCTION. For bidding at an online auction or for online bidding at a public auction please see our Online Auction Terms published on our website at www.dreweatts.com.

BIDDING IN PERSON

If intending to buy you are required to register your name and details at reception prior to the commencement of the auction. You will be required to provide a proof of identity and address to register for bidding. You will then be allocated a bidding number, which you use when bidding for an item.

COMMISSION BIDS

Dreweatts will execute bids on your behalf if you are unable to attend the sale. Commission or absentee bids are accepted either directly at reception, or can be sent by post, fax, email, telephone or via the website: www.dreweatts.com.

Dreweatts will add these bids to the auctioneers' sale book and will undertake to purchase the lots on your behalf as cheaply as allowed by other bids and reserves. If two buyers submit identical commission bids Dreweatts may prefer the first bid received.

Dreweatts does not accept liability for failing to execute commission bids, or for any errors or omissions.

CONDITION

Bidders must satisfy themselves as to the condition of each lot. Condition reports are available on request – see the Conditions of Business at the back of this catalogue forming part of these Auction Terms and Conditions for more information regarding condition reports. Requests for condition reports must be submitted by 4pm on the day prior to the auction; condition reports may be available alongside the lot description on the online catalogue at: www.dreweatts.com.

COMMISSION CHARGES

All purchases are subject to a buyer's premium, which is charged per lot at 26% of the hammer price (31.2% including VAT) up to and including £20,000, 25% (30% including VAT) of the hammer price from £20,001 up to and including £500,000, 20% (24% including VAT) of the hammer price from £500,001 up to and including £1,000,000 and 12.5% of the hammer price (15% including VAT) in excess of £1,000,000. A theta symbol (θ) indicates that the lot is a zero rated item and therefore not subject to VAT on the buyer's premium. This applies to bound books (manuscripts and printed), unframed maps and albums. In the event the lot has a dagger (†) beside the lot number in the catalogue, this indicates that the lot is owned by an entity or company required to pay VAT (generally not an Antique Dealer, as they operate under a dealers margin scheme). VAT is payable at 20% on the Hammer Price. Lots marked with a double dagger (‡) (presently a reduced rate of 5%) or Ω (presently at standard rate of 20%) have been imported from outside the UK to be sold at auction and therefore the buyer must pay the import VAT at the appropriate rate on the hammer price.

PAYMENT

Payment will be accepted, if you are a successful bidder, by debit card

issued in the name of the Buyer by a UK bank and registered to a UK billing address; by all major UK issued credit cards issued in the name of the Buyer and registered to a UK billing address with the exception of Diners Club; by bank transfer direct into our bank account, Bank Details: NatWest, 30 Market Place, Newbury, Berkshire RG14 5AG. Account Name: Dreweatts 1759 Ltd. A/C: 62412949, Sort Code: 60-15-07, BIC: NWBKGB2L, IBAN: GB21NWBK60150762412949. The name of the bank account holder should match the name of the buyer. First time buyers who are not present at the saleroom are requested to pay by bank transfer.

Υ CITES REGULATIONS

Please note that lots marked with the symbol (Υ) in this catalogue may be subject to CITES Regulations when exported. Relevant CITES Regulations may be found at www.gov.uk/guidance/cites-imports-and-exports.

COLLECTION OR DELIVERY

Before being able to collect your purchases you are required to pay the hammer price, plus the applicable commissions, and obtain a receipt acknowledging payment. Collection of the purchased lots is at the purchaser's risk and expense and whilst Dreweatts do not provide packing and despatch service we can suggest some carriers.

Dreweatts also require that all purchased items are collected within four working days of the sale to avoid a storage charge being applied.

STORAGE CHARGES

All items not collected by 4pm, within four working days of the sale, will be automatically removed to commercial storage and subject to a minimum storage charge of £20 (plus VAT) per lot and to a further storage charge of £3 (plus VAT) per lot per part or full day thereafter. These charges will be the sole liability of the purchaser and will be billed directly to them by Sackville-West Moving & Storing; Sackville-West Moving & Storing may be willing to adjust their charges if they are instructed by the purchaser to deliver to them. On payment of all sales and storage costs, items will be available for collection by appointment from Sackville-West Moving & Storing (Andover), tel: + 44 (0) 2080 909988, email: office@sackvillewest.co.uk. These charges are set by Sackville-West Moving & Storing; we recommend that you contact them directly regarding queries relating to these charges and other questions relating to storage. Staff at the saleroom will be unable to answer questions relating to items that have been removed from the saleroom.

FURTHER INFORMATION

The colours printed in this catalogue are not necessarily a true reflection of the actual item. All weights and measures given in the catalogue should be regarded as approximate.

VALUATION SERVICES

Dreweatts provides a range of confidential and professional valuation services to private clients, solicitors, executors, estate managers, trustees and other professional partners. These services include auction valuations, insurance valuations, probate valuations, private treaty valuations, valuations for family division or for tax purposes. For more information, please see our website: www.dreweatts.com.

For directions to Donnington Priory, please see our website: www.dreweatts.com.

Parking is available at Donnington Priory in two car parks on either side of the saleroom.

Detailed condition reports for all lots are available from our website www.dreweatts.com, and upon direct request to the Saleroom.

Please note that Dreweatts are unable to give verbal condition reports for any lot, and all condition reports will be given in writing via our website www.dreweatts.com. Dreweatts jewellery specialists and qualified gemmologists are available during the view to answer any queries.

Dreweatts are unable to offer any form of packing, dispatch or shipping services, and clients should make their own collection arrangements for purchased lots. Dreweatts are happy to suggest the services of a number of dispatch and shipping carriers.

INFORMATION FOR BUYERS AT PUBLIC AUCTIONS

1. **INTRODUCTION.** The following notes are intended to assist Bidders and Buyers, particularly those inexperienced or new to our salerooms. All of our auctions and sales are conducted on our printed Auction Terms and Conditions, including these Conditions of Sale and Business, which are readily available for inspection and normally accompany catalogues. Our staff will be happy to help you if there is anything you do not fully understand.

Any particular auction and/or any particular lot in an auction may be subject to different or additional terms which will be published in our auction catalogue. All auctions and sales of wines and spirits, jewellery, watches and clocks are subject to the special terms set out in the relevant Notices in relation to those items published in our auction catalogue and, in the event of any conflict or inconsistency, those special terms prevail over any other terms in our Auction Terms and Conditions. By bidding at the auction, you agree to be bound by these terms.

2. **AGENCY.** As auctioneers we usually act as agents for the seller whose identity, for reasons of confidentiality, is not normally disclosed. Accordingly if you buy at auction your contract for the item or items purchased is with the seller and not with us as the auctioneer.

3. **ESTIMATES.** Estimates are designed to help buyers gauge what sort of sum might be involved for the purchase of a particular lot. Estimates may change and should not be thought of as the sale price. The lower estimate may represent the reserve price and certainly will not be below it. Estimates do not include the Buyer's Premium or VAT (where chargeable). Estimates are prepared some time before the sale and may be altered by announcement before the sale. They are in no sense definitive.

4. **BUYER'S PREMIUM.** The Conditions of Sale forming part of our Auction Terms and Conditions require the buyer to pay a buyer's premium on the hammer price of each lot purchased. The buyer's premium is 26% of the hammer price up to and including £20,000, 25% of the hammer price from £20,001 up to and including £500,000, 20% of the hammer price from £500,001 up to and including £1,000,000, and 12.5% of the hammer price in excess of £1,000,000. VAT at the prevailing rate of 20% is added to buyer's premium and additional charges as defined below.

5. **VAT.** A theta symbol (θ) indicates that the lot is a zero rated item and therefore not subject to VAT on the buyer's premium. This applies to bound books (manuscripts and printed), unframed maps and albums. A dagger symbol (\dagger) indicates that VAT is payable by the purchaser at the standard rate (presently 20%) on the hammer price as well as being an element in the buyers' premium. This imposition of VAT is likely to be because the seller is registered for VAT within the European Union and is not operating the Dealers Margin Scheme or because VAT is due at 20% on import into the UK. A double dagger (\ddagger) indicates that the lot has been imported from outside the UK and the present position is that these lots are liable to a reduced rate of Import VAT currently 5% on the hammer price. (Ω) indicates that the lot has been imported from outside the UK and these lots are liable to the standard rate of Import VAT currently 20% on the hammer price. Lots which appear without the above symbols indicate that no VAT is payable on the hammer price; this is because such lots are sold using the Auctioneers Margin Scheme and it should be noted that the VAT included within the buyers' premium is not recoverable as input tax.

6. **DESCRIPTION AND CONDITION.** Condition reports are provided on our website or upon request. The absence of a report does not imply that a lot is without imperfections. The detail in a report will reflect the estimated value of the lot. Large numbers of such requests received shortly before the sale may mean that reports cannot be provided for all lots. Members of staff are not trained restorers or conservators and, particularly for higher value lots, you should obtain an opinion from such a professional. Dreweatts is not liable for damage to gilded picture frames, plaster picture frames or picture frame glass; if a Lot is or becomes dangerous, we may dispose of it without notice to bidders in advance in any manner we see fit and will be under no liability for doing so. We recommend that you always view a lot in person.

We are dependent on information provided by the seller about a lot and whilst we may inspect lots and act reasonably in taking a general view about them we are normally unable to carry out a detailed examination and frequently no examination of lots in order to ascertain their condition in the way in which it would be wise for a buyer to do. Intending buyers have ample opportunity for inspection of goods and, therefore, accept responsibility for inspecting and investigating lots in which they may be interested and the corresponding risk should they not do so. Please note carefully the exclusion of liability for the condition of lots contained in the Conditions of Sale. Neither the seller nor we, as the auctioneers, accept any responsibility for their condition. In particular, mechanical objects of any age are not guaranteed to be in working order. However, in so far as we have examined the goods and make a representation about their condition in the auction catalogue, we shall be liable for any defect which is not reflected in that representation and which

that examination ought to have revealed to the auctioneer but which would not have been revealed to the buyer had the buyer examined the goods. Additionally, in specified circumstances lots misdescribed because they are 'deliberate forgeries' may be returned and repayment made. There is a 3 week time limit. (The expression 'deliberate forgery' is defined in our Conditions of Sale).

7. **ELECTRICAL GOODS.** These are sold as 'antiques' only and if bought for use must be checked over for compliance with safety regulations by a qualified electrician before use.

8. **EXPORT OF GOODS.** Buyers intending to export goods should ascertain (a) whether an export licence is required and (b) whether there is any specific prohibition on importing goods of that character because, e.g. they may contain prohibited materials such as ivory. Ask us if you need help.

Private overseas buyers can only receive goods free of VAT or have the VAT amount refunded if Dreweatts acts as exporter in relation to the sale, the goods are exported within 3 months of the sale and Dreweatts is in possession of adequate export documents. The VAT refunds are available for transactions exceeding £2,500. If you arrange for the goods to be picked up/delivered to you directly we will charge UK VAT at the appropriate rate and no refund will be available. Please note, buyers are responsible for completing the importation procedures as well as the payment of any relevant duty/VAT payable on importation into the destination country.

Where the purchase has been made in the business or trading name, VAT refund will be available on proof of export provided within 3 months of the sale.

9. **BIDDING.** Bidders will be required to register before the sale commences and lots will be invoiced to the name and address on the sale registration form. Bidders are required to provide a government issued identity document and a proof of address. Please enquire in advance about our arrangements for telephone bidding.

10. **COMMISSION BIDDING.** Commission bids may be left with the auctioneers indicating the maximum amount to be bid excluding buyers' premium. Dreweatts will add these bids to the auctioneers' sale book and they will be executed as cheaply as possible having regard to the reserve (if any) and competing bids. If two buyers submit identical commission bids the auctioneers may prefer the first bid received. Please enquire in advance about our arrangements for the leaving of commission bids by telephone or fax. Dreweatts does not accept liability for failing to execute commission bids, or for any errors or omissions.

11. **METHODS OF PAYMENT.** Payment will be accepted, if you are a successful bidder, by debit card issued in the name of the Buyer by a UK bank and registered to a UK billing address; by all major UK issued credit cards issued in the name of the Buyer and registered to a UK billing address with the exception of Diners Club; by bank transfer direct into our bank account, Bank Details: NatWest, 30 Market Place, Newbury, Berkshire RG14 5AG. Account Name: Dreweatts 1759 Ltd. A/C: 62412949, Sort Code: 60-15-07, BIC: NWBKGB2L, IBAN: GB21NWBK60150762412949. The name of the bank account holder should match the name of the buyer. First time buyers who are not present at the saleroom are requested to pay by bank transfer.

12. **COLLECTION AND STORAGE.** Please note what the Conditions of Sale state about collection and storage. It is important that goods are paid for and collected promptly. Any delay may involve the buyer in paying storage charges.

13. **λ DROIT DE SUITE ROYALTY CHARGES.** From 1st January 2012 all UK art market professionals (which includes but is not limited to; auctioneers, dealers, galleries, agents and other intermediaries) are required to collect a royalty payment for all works of art that have been produced by qualifying artists each time a work is re-sold during the artist's lifetime and for a period up to 70 years following the artists death. This payment is only calculated on qualifying works of art which are sold for a hammer price more than the UK sterling equivalent of EURO 1,000 – the UK sterling equivalent will fluctuate in line with prevailing exchange rates. It is entirely the responsibility of the buyer to acquaint himself with the precise EURO to UK Sterling exchange rate on the day of the sale in this regard, and the auctioneer accepts no responsibility whatsoever if the qualifying rate is different to the rate indicated. All items in this catalogue that are marked with λ are potentially qualifying items, and the royalty charge will be applied if the hammer price achieved is more than the UK sterling equivalent of EURO 1,000. The royalty charge will be added to all relevant buyers' invoices, and must be paid before items can be cleared. All royalty charges are passed on to the Design and Artists Copyright Society ('DACS'), no handling costs or additional fees with respect to these charges will be retained by the auctioneers. The royalty charge that will be applied to qualifying items which achieve a hammer price of more than the UK sterling equivalent of EURO 1,000, but less than the UK sterling equivalent of EURO 50,000 is 4%. For qualifying items that sell for more than the UK sterling equivalent of EURO 50,000 a sliding scale of royalty charges will apply – for a complete list of the royalty charges and threshold levels, please see www.dacs.org.uk. There is no VAT payable on this royalty charge.

TERMS OF CONSIGNMENT FOR SELLERS IN PUBLIC AUCTIONS

The sale of goods at our public auctions and a seller's relationship with us are governed by our Auction Terms and Conditions including these Terms of Consignment for Sellers in Public Auctions and our Conditions of Sale for Public Auctions. Any particular auction and/or any particular lot in an auction may be subject to different or additional terms which will be published in our auction catalogue or separately announced prior to the auction. All auctions and sales of wines and spirits, jewellery, watches and clocks are subject to the special terms set out in the relevant Notices in relation to those items published in our auction catalogue and, in the event of any conflict or inconsistency, those special terms prevail over any other terms in our Auction Terms and Conditions. Please note that our Auction Terms and Conditions including these Terms of Consignment for Sellers in Public Auctions and our Conditions of Sale for Public Auctions relate to auctions held in our salerooms and we have separate terms and conditions for our online auctions.

If you, or another person acting on your behalf, provide goods to us to sell on your behalf at one of our auctions this signifies that you agree to and will comply with our Auction Terms and Conditions including these Terms of Consignment for Sellers in Public Auctions and our Conditions of Sale for Public Auctions.

1. **INTERPRETATION.** In these Terms the words 'you', 'yours', etc. refer to the Seller and if the consignment of goods to us is made by an agent or otherwise on the Seller's behalf we assume that the Seller has authorised the consignment and that the consignor has the Seller's authority to contract. All obligations that apply to the Seller under these Terms of Consignment for Sellers in Public Auctions shall apply to the owner of the goods and their agent jointly and separately. Similarly the words 'we', 'us', etc. refer to the Auctioneers.

2. **WARRANTY.** The Seller warrants that possession in the lots can be transferred to the Buyer with good and marketable title, free from any third party right and encumbrances, claims or potential claims. The Seller has provided all information concerning the item's ownership, condition and provenance, attribution, authenticity, import or export history and of any concerns expressed by third parties concerning the same.

3. **ALL COMMISSIONS.** and fees are subject to VAT at the prevailing rate.

4. **COMMISSION.** is charged to sellers and all selling terms are available from our salerooms.

5. **REMOVAL COSTS.** Items for sale must be consigned to the saleroom by any stated deadline and at your expense. We may be able to assist you with this process but any liability incurred to a carrier for haulage charges is solely your responsibility.

6. LOSS AND DAMAGE OF GOODS

(a) Loss and Damage Warranty - Dreweatts is not authorised by the FCA to provide insurance to its clients, and does not do so. However Dreweatts for its own protection assumes liability for property consigned to it at the lower pre-sale estimate until the hammer falls. To justify accepting liability, Dreweatts makes a charge of 1.5% of the hammer price plus VAT, subject to a minimum charge of £1.50, or if unsold 1.5% of our lower estimate. The liability assumed by Dreweatts shall be limited to the lower pre-sale estimate or the hammer price if the lot is sold. Dreweatts is not liable for damage to gilded picture frames, plaster picture frames or picture frame glass; if the Lot is or becomes dangerous, we may dispose of it without notice to you in advance in any manner we see fit and will be under no liability for doing so.

(b) If the owner of the goods consigned instructs us in writing not to take such action, the goods then remain entirely at the owner's risk unless and until the property in them passes to the Buyer or they are collected by or on behalf of the owner, and clause 6 (a) is inapplicable.

7. **ILLUSTRATIONS AND PHOTOGRAPHS.** The cost of any illustrations or photographs is borne by you. The copyright in respect of such illustrations and photographs shall be the property of us, the auctioneers, as is the text of the catalogue.

8. **MINIMUM BIDS AND OUR DISCRETION.** Goods will normally be offered subject to a reserve agreed between us before the sale in accordance with clause 9. We may sell Lots below the reserve provided we account to you for the same sale proceeds as you would have received had the reserve been the hammer price. If you specifically give us a "discretion" we may accept a bid of up to 10% below the formal reserve.

9. RESERVES

(a) You are entitled to place prior to the auction a reserve on any lot consigned, being the minimum hammer price at which that lot may be sold. Reserves must be reasonable and we may decline to offer goods which in our opinion would be subject to an unreasonably high reserve (in which case goods carry the storage and loss and damage warranty charges stipulated in these Terms of Consignment).

(b) A reserve once set cannot be changed except with our consent.

(c) Where a reserve has been set which we consider unreasonably high, an unsold charge will be payable in the event that the lots fails to sell, being the agreed selling terms calculated on the reserve, LDW at 1.5% and any photographic charges.

(d) Where a reserve has been placed only we may bid on your behalf and only up to the reserve (if any) and you may in no circumstances bid personally.

(e) Reserves are not usually accepted for lots expected to realise below £100.

10. **ELECTRICAL ITEMS.** These are subject to detailed statutory safety controls. Where such items are accepted for sale you accept responsibility for the cost of

testing by external contractors. Goods not certified as safe by an electrician (unless antiques) will not be accepted for sale. They must be removed at your expense on your being notified. We reserve the right to dispose of unsafe goods as refuse, at your expense.

11. **SOFT FURNISHINGS.** The sale of soft furnishings is strictly regulated by statute law in the interests of fire safety. Goods found to infringe safety regulations will not be offered and must be removed at your expense. We reserve the right to dispose of unsafe goods as refuse, at your expense. The rights of disposal referred to in clause 10 and 11 are subject to the provisions of The Torts (Interference with Goods) Act 1977.

12. **DESCRIPTION.** Please assist us with accurate information as to the provenance, lawful import etc. of goods where this is relevant. There is strict liability for the accuracy of descriptions under modern consumer legislation and in some circumstances responsibility lies with sellers if inaccuracies occur. We will assume that you have approved the catalogue description of your lots and that your lots match those descriptions unless informed to the contrary. Where we are obliged to return the price to the buyer when the lot is a deliberate forgery under Condition 15 of the Conditions of Sale and we have accounted to you for the proceeds of sale you agree to reimburse us the sale proceeds and in any event within 7 days of our written notice to do so.

13. **UNSOLD.** If an item is unsold it may at our discretion be re-offered at a future sale. Where in our opinion an item is unsaleable you must collect such items from the saleroom promptly on being so informed. Otherwise, storage charges may be incurred. We reserve the right to charge for storage in these circumstances at a reasonable daily rate.

14. **WITHDRAWN AND BOUGHT IN ITEMS.** These are liable to incur a charge of 15% commission, 1.5 % Loss and Damage Warranty and any other costs incurred including but not limited to illustration and restoration fees all of these charges being subject to VAT on being bought in or withdrawn after being catalogued.

15. **CONDITIONS OF SALE.** You agree that all goods will be sold on our Conditions of Sale for Public Auctions. In particular you undertake that you have the right to sell the goods either as owner or agent for the owner with good and marketable title and free and clear of any third party rights or claims. You undertake to compensate us and any buyer or third party for all losses liabilities, costs and expenses suffered or incurred arising out of or in connection with any breach of this undertaking. We will also, at our discretion, and as far as practicable, confirm that an item consigned for sale does not appear on the Art Loss register, which is administered by an independent third party.

16. **DUE DILIGENCE CHECKS AND ANTI-MONEY LAUNDERING PROCEDURES.** Under the money laundering regulations in force we are required to carry out relevant due diligence checks. This includes verifying the identity of all customers we transact with as well as any beneficial owners on behalf of whom they may transact. Vendors who are unable to or refuse to supply required identification documents and proof of address will not be able to consign to Dreweatts auctions. Copies of customer due diligence checks will be stored for as long as it is necessary to satisfy legal requirements in an appropriate storage facility, which for the avoidance of doubt may include storage solely in electronic form. We reserve the right to withhold the monies owed until the vendor provides the information necessary to complete the anti-money laundering checks.

17. AUTHORITY TO DEDUCT COMMISSION AND EXPENSES AND RETAIN PREMIUM AND INTEREST

(a) You authorise us to deduct commission at the stated rate and all expenses incurred for your account from the hammer price and consent to our right to retain beneficially the premium paid by the buyer in accordance with our Conditions of Sale for Public Auctions and any interest earned on the sale proceeds until the date of settlement.

(b) In case of lots unsold at auction you authorise us at our discretion to reoffer such lots and negotiate a sale within seven days of the auction date, in which case the same charges will be payable as if such lots had been sold at auction and so far as appropriate these Terms apply.

18. **WAREHOUSING.** We disclaim all liability for goods delivered to our saleroom without sufficient sale instructions and reserve the right to make minimum warehousing charge of £10 per lot per day. Unsold lots are subject to the same charges if you do not remove them within a reasonable time of notification. If not removed within three weeks we reserve the right to sell them and defray charges from any net proceeds of sale or at your expense to consign them to the local authority for disposal.

19. **SETTLEMENT.** After sale settlement of the net sum due to you normally takes place within 28 days of the sale unless the buyer has not paid for the goods or the checks necessary under the current Money Laundering Regulations have not been completed. In this case no settlement will then be made but we will take your instructions in the light of our Conditions of Sale for Public Auctions. You authorise any sums owed by you to us on other transactions to be deducted from the sale proceeds. You must note the liability to reimburse the proceeds of sale to us as under the circumstances provided for in Condition 12 above. You should therefore bear this potential liability in mind before parting with the proceeds of sale until the expiry of 28 days from the date of sale.

CONDITIONS OF SALE FOR PUBLIC AUCTIONS

Dreweatts carries on business with bidders, buyers and all those present in the auction room prior to or in connection with a sale by auction at our salerooms on our Auction Terms and Conditions or Public Auctions including these Conditions of Sale for Public Auctions and all bidders, buyers and others participating in a public auction accept that these terms apply to the exclusion of any terms and conditions contained in any of those person's own documents even if the same purport to provide that that person's own or some other terms prevail. Any particular public auction and/or any particular lot in an auction may be subject to different or additional terms which will be published in our online auction catalogue. Please note that our Auction Terms and Conditions including these Conditions of Sale for Public Auctions relate to auctions held in one of our salerooms and we have separate terms and conditions for our online auctions.

1. DEFINITIONS

In these Conditions:

- (a) "auctioneer" means the firm of Dreweatts or its authorised auctioneer, as appropriate;
- (b) "deliberate forgery" means an imitation made with the intention of deceiving as to authorship, origin, date, age, period, culture or source but which is unequivocally described in the catalogue as being the work of a particular creator and which at the date of the sale had a value materially less than it would have had if it had been in accordance with the description;
- (c) "hammer price" means the level of bidding reached (at or above any reserve) when the auctioneer brings down the hammer;
- (d) "terms of consignment" means the stipulated terms and rates of commission on which Dreweatts accepts instructions from sellers or their agents;
- (e) "total amount due" means the hammer price in respect of the lot sold together with any premium, Value Added Tax chargeable and any additional charges payable by a defaulting buyer under these Conditions;
- (f) "sale proceeds" means the net amount due to the seller, being the hammer price of the lot sold less commission at the stated rate, Value Added Tax chargeable and any other amounts due to us by the seller in whatever capacity and however arising;
- (g) "You", "Your", etc. refer to the buyer as identified in Condition 2.
- (h) The singular includes the plural and vice versa as appropriate.

2. BIDDING PROCEDURES AND THE BUYER

- (a) Bidders are required to register their particulars before bidding by completing a sale registration form and to satisfy any security arrangements before entering the auction room to view or bid;
- (b) Under the money laundering regulations in force we are required to verify the identity of all customers we transact with as well as any beneficiaries on behalf of whom they may transact. Customers who are unable to or refuse to supply required identification documents and proof of address will not be able to bid in Dreweatts auctions. Copies of customer due diligence checks will be stored for as long as it is necessary to satisfy legal requirements in an appropriate storage facility which for the avoidance of doubt may include storage solely in electronic form;
- (c) the maker of the highest bid accepted by the auctioneer conducting the sale shall be the buyer at the hammer price and any dispute about a bid shall be settled at the auctioneer's absolute discretion by reoffering the Lot during the course of the auction or otherwise. The auctioneer shall act reasonably in exercising this discretion.
- (d) Bidders shall be deemed to act as principals;
- (e) Our right to bid on behalf of the seller is expressly reserved up to the amount of any reserve and the right to refuse any bid is also reserved.

3. **INCREMENTS.** Bidding increments shall be at the auctioneer's sole discretion.

4. **THE PURCHASE PRICE.** The buyer shall pay the purchase price together with a premium thereon of 30% which shall include VAT on the premium at the rate imposed by law. The buyer will also be liable for any royalties payable under Droit de Suite as set out under Information for Buyers.

5. **VALUE ADDED TAX.** Value Added Tax on the hammer price is imposed by law on all items affixed with a dagger (†) or double dagger (‡). Value Added Tax is charged at the appropriate rate prevailing by law at the date of sale and is payable by buyers of relevant Lots. (Please refer to "Information for Buyers" for a brief explanation of the VAT position).

6. PAYMENT

(a) Immediately a Lot is sold you will:

- (i) give to us, if requested, proof of identity, and
- (ii) pay to us the total amount due or in such other way as is agreed by us.

(b) Any payments by you to us may be applied by us towards any sums owing from you to us on any account whatever without regard to any directions of you or your agent, whether expressed or implied.

(c) In order to comply with money laundering regulations we reserve the right to require proof of source of funds and/ or confirmation of the nature and source of wealth for all receipts of monies from clients directly or from third parties for payments on behalf of clients. Lots will only be released once we have completed necessary checks under the current Money Laundering Regulations.

7. TITLE AND COLLECTION OF PURCHASES

(a) The ownership of any Lots purchased shall not pass to you until you have made payment in full to us of the total amount due.

(b) You shall at your own risk and expense take away any lots that you have purchased and paid for not later than 3 working days following the day of the auction after which you shall be responsible for any removal, storage and insurance charges.

(c) No purchase can be claimed or removed until it has been paid for and we have completed necessary checks under the current Money Laundering Regulations.

8. REMEDIES FOR NON-PAYMENT OR FAILURE TO COLLECT PURCHASES

(a) If any Lot is not paid for in full and taken away in accordance with these Conditions or if there is any other breach of these Conditions, we, as agent for the seller and on our own behalf, shall at our absolute discretion and without prejudice to any other rights we may have, be entitled to exercise one or more of the following rights and remedies:

- (i) to proceed against you for damages for breach of contract;
- (ii) to rescind the sale of that Lot and/or any other Lots sold by you to you;
- (iii) to resell the Lot (by auction or private treaty) in which case you shall be responsible for any resulting deficiency in the total amount due (after crediting any part payment and adding any resale costs). Any surplus so arising shall belong to the seller;
- (iv) to remove, store and insure the Lot at your expense and, in the case of storage, either at our premises or elsewhere;
- (v) to charge interest at a rate not exceeding 1.5% per month on the total amount due to the extent it remains unpaid for more than 3 working days after the sale;
- (vi) to retain that or any other Lot sold to you until you pay the total amount due;
- (vii) to reject or ignore bids from you or your agent at future auctions or to impose conditions before any such bids shall be accepted;
- (viii) to apply any proceeds of sale of other Lots due or in future becoming due to you towards the settlement of the total amount due and to exercise a lien (that is a right to retain possession of) any of your property in our possession for any purpose until the debt due is satisfied.

(b) We shall, as agent for the seller and on our own behalf pursue these rights and remedies only so far as is reasonable to make appropriate recovery in respect of breach of these conditions.

9. **THIRD PARTY LIABILITY.** All bidders, buyers and other members of the public on our premises are there at their own risk and must note the lay-out of the accommodation and security arrangements. Accordingly neither the auctioneer nor our employees or agents shall incur liability for death or personal injury or for the safety of the property of persons visiting prior to or at a sale (except in each case as may be required by law by reason of our negligence)

10. **COMMISSION BIDS.** Whilst prospective buyers are strongly advised to attend the auction and are always responsible for any decision to bid for a particular Lot and shall be assumed to have carefully inspected and satisfied themselves as to its condition, we will if so instructed clearly and in writing execute bids on their behalf. Neither the auctioneer nor our employees or agents shall be responsible for any failure to do so.

Where two or more commission bids at the same level are recorded we reserve the right in our absolute discretion to prefer the first bid so made.

11. **WARRANTY OF TITLE AND AVAILABILITY.** The seller warrants to the auctioneer and you that the seller is the true owner of the property consigned or is properly authorised by the true owner to consign for sale and is able to transfer good and marketable title to the property free from any third party claims.

Save as expressly set out above, all other warranties, conditions or other terms which might have effect between the Seller and you, or us and you, or be implied or incorporated by statute, common law or otherwise are excluded to the fullest extent permitted by law.

12. **AGENCY.** The auctioneer normally acts as agent only and disclaims any responsibility for default by sellers or buyers.

13. **TERMS OF SALE.** The seller acknowledges that Lots are sold subject to the stipulations of these Conditions in their entirety and on the Terms of Consignment for Public Auctions as notified to the consignor at the time of the entry of the Lot.

14. DESCRIPTIONS AND CONDITION

(a) Whilst we seek to describe lots accurately, it may be impractical for us to carry out exhaustive due diligence on each lot. Prospective buyers are given ample opportunities to view and inspect before any sale and they (and any independent experts on their behalf) must satisfy themselves as to the accuracy of any description applied to a lot. Prospective buyers also bid on the understanding that, inevitably, representations or statements by us as to authorship, genuineness, origin, date, age, provenance, condition or estimated selling price involve matters of opinion. We undertake that any such opinion shall be honestly and reasonably held and accept liability for opinions given negligently or fraudulently. Subject to the foregoing neither we the auctioneer nor our employees or agents nor the seller accept liability for the correctness of such opinions and all conditions and warranties, whether relating to description, condition or quality of lots, express, implied or statutory, are hereby excluded. Dreweatts is not liable for damage to gilded picture frames, plaster picture frames or picture frame glass; if the Lot is or becomes dangerous, we may dispose of it without notice to you in advance in any manner we see fit and will be under no liability for doing so. This Condition is subject to the next following Condition concerning deliberate forgeries and applies save as provided for in paragraph 6 "information to buyers".

(b) Private treaty sales made under these Conditions are deemed to be sales by auction for purposes of consumer legislation.

15. **FORGERIES.** Notwithstanding the preceding Condition, any Lot which proves to be a deliberate forgery (as defined) may be returned to us by you within 21 days of the auction provided it is in the same condition as when bought, and is accompanied by particulars identifying it from the relevant catalogue description and a written statement of defects. If we are satisfied from the evidence presented that the Lot is a deliberate forgery we shall refund the money paid by you for the Lot including any buyer's premium provided that (1) if the catalogue description reflected the accepted view of scholars and experts as at the date of sale or (2) you personally are not able to transfer a good and marketable title to us, you shall have no rights under this condition.

The right of return provided by this Condition is additional to any right or remedy provided by law or by these Conditions of Sale.

16. **PRIVACY NOTICE.** We will hold and process any personal data in relation to you in accordance with our current privacy policy, a copy of which is available on our website www.dreweatts.com/privacy-policy/.

GENERAL

17. We shall have the right at our discretion, to refuse admission to our premises or attendance at our auctions by any person.

18. (a) Any right to compensation for losses liabilities and expenses incurred in respect of and as a result of any breach of these Conditions and any exclusions provided by them shall be available to the seller and/or the auctioneer as appropriate.

(b) Such rights and exclusions shall extend to and be deemed to be for the benefit of employees and agents of the seller and/or the auctioneer who may themselves enforce them.

19. Any notice to any buyer, seller, bidder or viewer may be given by first class mail, email or Swiftmail in which case it shall be deemed to have been received by the addressee 48 hours after posting.

20. Special terms may be used in catalogue descriptions of particular classes of items in which case the descriptions must be interpreted in accordance with any glossary appearing at the commencement of the catalogue.

21. Any indulgence extended to bidders, buyers or sellers by us notwithstanding the strict terms of these Conditions or of the Terms of Consignment shall affect the position at the relevant time only and in respect of that particular concession only; in all other respects these Conditions shall be construed as having full force and effect.

22. These Conditions shall be governed by and construed in accordance with English law and the parties irrevocably submit to the exclusive jurisdiction of the English courts.

DREWEATTS

NEWBURY

Dreweatts
Donnington Priory
Newbury
Berkshire RG14 2JE
+44 (0) 1635 553 553
info@dreweatts.com

MANAGING DIRECTOR

Jonathan Pratt

DEPUTY CHAIRMAN

Will Richards
James Nicholson

GROUP DEPARTMENTS

AUTOGRAPHS AND EPHEMERA

Ania Hanrahan
ahanrahan@dreweatts.com

ASIAN CERAMICS AND WORKS OF ART

Mark Newstead
Dr Yingwen Tao
Zhenlei Chen
asian@dreweatts.com

BLOOMSBURY AUCTIONS BOOKS

AND MANUSCRIPTS

Rupert Powell
Dido Arthur
Justin Phillips
Max Hasler
Richard Caroll
info@bloomsburyauctions.com

BRITISH AND EUROPEAN CERAMICS

AND GLASS

Mark Newstead
Geoffrey Stafford Charles
interiors@dreweatts.com

BRITISH AND EUROPEAN SCULPTURE

AND WORKS OF ART

Silas Currie Leigh-Wood
sculpture@dreweatts.com

CLOCKS AND SCIENTIFIC INSTRUMENTS

Leighton Gillibrand
clocks@dreweatts.com

LONDON

Dreweatts / Bloomsbury Auctions
16-17 Pall Mall
St James's
London SW1Y 5LU
+44 (0) 20 7839 8880
info@bloomsburyauctions.com
info@dreweatts.com

COUNTRY SPORTING

Geoffrey Stafford Charles
gscharles@dreweatts.com

DECORATIVE ARTS AND MODERN DESIGN

Geoffrey Stafford Charles
Ashley Matthews
interiors@dreweatts.com

FURNITURE AND CARPETS

Ben Brown
Elaine Binning
Ashley Matthews
William Turkington
Mitchell Tompkins
furniture@dreweatts.com

HOUSE SALES AND PRIVATE COLLECTIONS

Joe Robinson
Eloïse Kerr-Smiley
housesales@dreweatts.com

JEWELLERY, SILVER, WATCHES AND OBJECTS OF

VERTU

James Nicholson
Nick Mann
Tessa Parry
jsw@dreweatts.com

LIVE STEAM AND MODEL ENGINEERING

WORKS OF ART

Michael Matthews
Lucie Hobbs
transport@dreweatts.com

HAMBRIDGE LANE

Dreweatts
1 Hambridge Lane
Newbury
Berkshire RG14 5TU
+44 (0) 1635 553 553
info@dreweatts.com

MODERN AND CONTEMPORARY ART

Jennie Fisher
Francesca Whitham
Will Porter (Business Development)
pictures@dreweatts.com

OLD MASTERS, BRITISH AND

EUROPEAN ART

Brandon Lindberg
Lucy Darlington
pictures@dreweatts.com

WINE

Mark Robertson
Caroline Shepherd
Violette Jongbloed
Dianne Wall
wine@dreweatts.com

BUSINESS DEVELOPMENT

Will Richards
Will Porter
Joe Robinson
Ana Moas
Isabelle Rietkerk
irietkerk@dreweatts.com

CONSIGNMENT MANAGEMENT

Lucie Hobbs
Christy Chambers
consignments@dreweatts.com

VALUATIONS FOR PROBATE,

INSURANCE AND CGT

Emma Terry
Janice Cliff
valuations@dreweatts.com



DREWEATTS

EST. 1759