



AUCTION CATALOGUE

**ONLINE AUCTION
WEDS
20 SEPT**

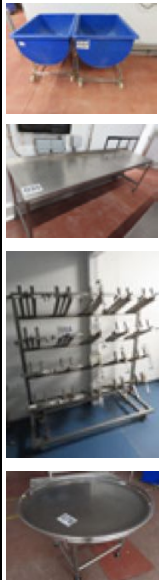
**Due to the closure of one of the UK's
LARGEST DESSERT MANUFACTURING FACILITIES. OVER 300 LOTS**



ANCILLARIES, PRODUCTION & PACKAGING EQUIPMENT TO SUIT MANY APPLICATIONS



Spend £50 for Free Delivery to UK Mainland



REGISTER NOW!

PRE AUCTION OFFERS CONSIDERED.



Tel: + 44 UK (0)1373 831373 | Email: sue@fm2000.co.uk

Food Machinery 2000 Ltd | Monkspool House | The Stable | Woolverton | BA2 7QT | UK

BUYERS | SELLERS | AUCTIONEERS

Online auction closing WEDS 20 SEPTEMBER 2023 - DESSERT PRODUCTION FACILITY



SYSPAL BENCH WITH SHOE COMPARTMENTS UNDERNEATH.

Lot No. 1

1 x Syspal s/s bench with 2 rows of shoe compartments. Dimensions approx. 3.5 m long x 400 mm deep. Lift out: £40.

Click on the link below to view more info/images and see current bid price
<https://www.bidspotter.co.uk/en-gb/auction-catalogues/food-machinery-2000/catalogue-id-fo10122/lot-38be5f1d-73cc-4a85-90d2-b049009d7299>

Online auction closing WEDS 20 SEPTEMBER 2023 - DESSERT PRODUCTION FACILITY



LOCKABLE BOOT RACK.

Lot No. 2

1 x S/s lockable boot rack. Mobile. Takes 20 pairs of boots. Dimensions approx. 1.6 m x 500 mm x 1.6 m high. Lift out: £40.

Click on the link below to view more info/images and see current bid price
<https://www.bidspotter.co.uk/en-gb/auction-catalogues/food-machinery-2000/catalogue-id-fo10122/lot-597842a-c383-49ae-a8ab-b049009d52b>

Online auction closing WEDS 20 SEPTEMBER 2023 - DESSERT PRODUCTION FACILITY



BOOT RACK.

Lot No. 3

1 x S/s boot rack. Mobile. Takes 16 pairs of boots. Dimensions approx. 1 m x 500 mm x 1.6 m high. Lift out: £40.

Click on the link below to view more info/images and see current bid price
<https://www.bidspotter.co.uk/en-gb/auction-catalogues/food-machinery-2000/catalogue-id-fo10122/lot-a41bbd9c-5f54-46ff-a2c5-b049009edfc8>

Online auction closing WEDS 20 SEPTEMBER 2023 - DESSERT PRODUCTION FACILITY



LOCKABLE BOOT RACK.

Lot No. 4

1 x S/s lockable boot rack. Takes 20 pairs. Dimensions approx. 1.6 m x 500 mm x 1.6 m high. Lift out: £40.

Click on the link below to view more info/images and see current bid price
<https://www.bidspotter.co.uk/en-gb/auction-catalogues/food-machinery-2000/catalogue-id-fo10122/lot-daac872b-1da3-4578-9a6b-b049009f47c1>

Online auction closing WEDS 20 SEPTEMBER 2023 - DESSERT PRODUCTION FACILITY



DOUBLE SIDED S/S BOOT RACKS.

Lot No. **5**

1 x Double sided S/s lockable book rack. Mobile. Takes 20 pairs each side. Dimensions approx. 1.6 m x 500 mm x 1.6 m high. Lift out: £40.

Click on the link below to view more info/images and see current bid price
<https://www.bidspotter.co.uk/en-gb/auction-catalogues/food-machinery-2000/catalogue-id-fo10122/lot-5ff73b3f-e6ee-40a8-be18-b04900a024d4>

Online auction closing WEDS 20 SEPTEMBER 2023 - DESSERT PRODUCTION FACILITY



LOCKABLE BOOT RACK.

Lot No. **6**

1 x Double sided s/s lockable book rack. Mobile. Takes 20 pairs. Dimensions approx. 1.6 m x 500 mm x 1.6 m high. Lift out: £40.

Click on the link below to view more info/images and see current bid price
<https://www.bidspotter.co.uk/en-gb/auction-catalogues/food-machinery-2000/catalogue-id-fo10122/lot-609f4839-b098-b04900a036e4>

Online auction closing WEDS 20 SEPTEMBER 2023 - DESSERT PRODUCTION FACILITY



NIEROS BOOT WASHER.

Lot No. **7**

1 x Nieros boot washer. Lift out: £150.

Click on the link below to view more info/images and see current bid price
<https://www.bidspotter.co.uk/en-gb/auction-catalogues/food-machinery-2000/catalogue-id-fo10122/lot-61dec1f1-c6ae-4754-9293-b07b01063f12>

Online auction closing WEDS 20 SEPTEMBER 2023 - DESSERT PRODUCTION FACILITY



SANCASSIANO MIXER PLT-200.

Lot No. **8**

1 x Sancassiano PLT-200 mixer with 2 s/s bowls and 3 tools. (Twin tool planetary type mixer, capable of taking 2 x beaters and side scrape/2 x whisks and side scrape). Fully guarded, with electrical control panel. Dimensions approx. 1.5 m x 1.3 m x 2 m high. Lift out: £150.*See Lots 52 & 53 for extra bowls if required*

Click on the link below to view more info/images and see current bid price
<https://www.bidspotter.co.uk/en-gb/auction-catalogues/food-machinery-2000/catalogue-id-fo10122/lot-da2d41ea-89ad-4693-a345-b04900a1e97d>



SANCASSIANO MIXER PLT-200 .

Lot No. **9**

1 x Sancassiano PLT-200 mixer with 2 s/s bowls and 3 tools.(Twin tool planetary type mixer, capable of taking 2 x beaters and side scrape/2 x whisks and side scrape). Fully guarded, with electrical control panel. Dimensions approx. 1.5 m x 1.3 m x 2 m high. Lift out: £150.*See Lots 52 & 53 for extra bowls if required*

Click on the link below to view more info/images and see current bid price
<https://www.bidspotter.co.uk/en-gb/auction-catalogues/food-machinery-2000/catalogue-id-fo10122/lot-c3038499-3ce6-4fb8-a623-b04900a22934>



CHOCOLATE MELTING TANK.

Lot No. **10**

1 x All s/s electrically heated chocolate melting tank with stirrer, with temperature control. Overall dimensions approx. 1 m x 1 m x 1.8 m. Physical dimensions of tank diameter 750 mm x 560 mm high. Lift out: £60.

Click on the link below to view more info/images and see current bid price
<https://www.bidspotter.co.uk/en-gb/auction-catalogues/food-machinery-2000/catalogue-id-fo10122/lot-ff477885-7454-45fc-8515-b04900a29c7b>



CHOCOLATE MELTING TANK.

Lot No. **11**

1 x All s/s electrically heated chocolate melting tank with stirrer, with temperature control. Overall dimensions approx. 1 m x 1 m x 1.8 m. Physical dimensions of tank diameter 700 mm x 500 mm high. Lift out: £50.

Click on the link below to view more info/images and see current bid price
<https://www.bidspotter.co.uk/en-gb/auction-catalogues/food-machinery-2000/catalogue-id-fo10122/lot-c8880545-47b4-45b3-9d51-b04900a2cfc9>



STAINLESS STEEL TABLE.

Lot No. **12**

1 x S/s mobile table approx. 1.9 m x 600 mm. Lift out: £25.

Click on the link below to view more info/images and see current bid price
<https://www.bidspotter.co.uk/en-gb/auction-catalogues/food-machinery-2000/catalogue-id-fo10122/lot-635c02f2-952e-4b75-be2e-b04900a30db8>

Online auction closing WEDS 20 SEPTEMBER 2023 - DESSERT PRODUCTION FACILITY



STAINLESS STEEL TABLE.

Lot No. 13

1 x S/s mobile table approx. 2.45 m x 600 mm. Lift out: £25.

Click on the link below to view more info/images and see current bid price
<https://www.bidspotter.co.uk/en-gb/auction-catalogues/food-machinery-2000/catalogue-id-fo10122/lot-3b420272-5595-46b8-8cae-b04900a35af5>

Online auction closing WEDS 20 SEPTEMBER 2023 - DESSERT PRODUCTION FACILITY



SOTTORIVA SPIRAL MIXER YEAR 2019

Lot No. 14

1 x Sottoriva model evo 250. 2-speed spiral mixer with 2-timers forward and reverse. Totally s/s. Complete with 2-removable bowls. Lift out: £100.

Click on the link below to view more info/images and see current bid price
<https://www.bidspotter.co.uk/en-gb/auction-catalogues/food-machinery-2000/catalogue-id-fo10122/lot-f15427c0a1-13f4-45dd-85ae-b06000cb2563>

Online auction closing WEDS 20 SEPTEMBER 2023 - DESSERT PRODUCTION FACILITY



POLIN ELECTRIC 5-DECK OVEN. NEVER USED.

Lot No. 15

1 x Polin 5-deck electric oven. High crown. NEVER USED. Lift out: £60.

Click on the link below to view more info/images and see current bid price
<https://www.bidspotter.co.uk/en-gb/auction-catalogues/food-machinery-2000/catalogue-id-fo10122/lot-f15427c0a1-13f4-45dd-85ae-b06000cb2563>

Online auction closing WEDS 20 SEPTEMBER 2023 - DESSERT PRODUCTION FACILITY



KRUGER & SALECKER BALL MOULDING MACHINE.

Lot No. 16

1 x Kruger & Salecker ball moulding machine model GFT. Lift out: £100.

Click on the link below to view more info/images and see current bid price
<https://www.bidspotter.co.uk/en-gb/auction-catalogues/food-machinery-2000/catalogue-id-fo10122/lot-be69ff43-5610-4901-a935-b06000f256d3>

Online auction closing WEDS 20 SEPTEMBER 2023 - DESSERT PRODUCTION FACILITY



HOBART MIXER.

Lot No. **17**
1 x Hobart planetary mixer 60 Quart. Lift out: £50.

Click on the link below to view more info/images and see current bid price
<https://www.bidspotter.co.uk/en-gb/auction-catalogues/food-machinery-2000/catalogue-id-fo10122/lot-08e1e17b-f0a3-42e6-85d6-b06500c91b85>

Online auction closing WEDS 20 SEPTEMBER 2023 - DESSERT PRODUCTION FACILITY



VAEMAG 500 WITH GUILLOTINE.

Lot No. **18**
1 x Vemag 500 with 878 controls and guillotine. With outfeed conveyor and s/s turn table. Lift out: £100.

Click on the link below to view more info/images and see current bid price
<https://www.bidspotter.co.uk/en-gb/auction-catalogues/food-machinery-2000/catalogue-id-fo10122/lot-50685963-00b0-4bde-b881-b06500caa0b5>

Online auction closing WEDS 20 SEPTEMBER 2023 - DESSERT PRODUCTION FACILITY



UNIFILL DEPOSITOR.

Lot No. **19**
1 x Unifill 1000 twin head depositor. Mobile. Fully working. Lift out: £80.

Click on the link below to view more info/images and see current bid price
<https://www.bidspotter.co.uk/en-gb/auction-catalogues/food-machinery-2000/catalogue-id-fo10122/lot-d32e6798-ced4-4a02-97e7-b06500cb1493>

Online auction closing WEDS 20 SEPTEMBER 2023 - DESSERT PRODUCTION FACILITY



LOMA CW3 CHECKWEIGHER.

Lot No. **20**
1 x Loma CW3 checkweigher 300mm weigh platform size. Air blast reject into lockable bin. Lift out: £100.

Click on the link below to view more info/images and see current bid price
<https://www.bidspotter.co.uk/en-gb/auction-catalogues/food-machinery-2000/catalogue-id-fo10122/lot-9423b2ee-59aa-4e6c-afaa-b06500cd1877>

Online auction closing WEDS 20 SEPTEMBER 2023 - DESSERT PRODUCTION FACILITY



FORTRESS STEALTH TWIN HEAD METAL DETECTOR.

Lot No. **21**

1 x Fortress Stealth twin head metal detector. Fully working. Retracting band reject into lockable bin. Bin full & reject confirmation. Full S/s guarding with safety alarmed hatched doors. Lift out: £120.

Click on the link below to view more info/images and see current bid price
<https://www.bidspotter.co.uk/en-gb/auction-catalogues/food-machinery-2000/catalogue-id-fo10122/lot-5f9fa0f2-5172-4795-80d9-b06500ef77bb>

Online auction closing WEDS 20 SEPTEMBER 2023 - DESSERT PRODUCTION FACILITY



CONVEYOR.

Lot No. **22**

1 x Flighted belt straight conveyor approx. 4m long x 600 wide belt. 800mm Between the flights. Lift out: £150.

Click on the link below to view more info/images and see current bid price
<https://www.bidspotter.co.uk/en-gb/auction-catalogues/food-machinery-2000/catalogue-id-fo10122/lot-e9fa0bf2-cd74-4e3e-9e39-b06500d555f3>

Online auction closing WEDS 20 SEPTEMBER 2023 - DESSERT PRODUCTION FACILITY



HEATED MIXING TANK

Lot No. **23**

1 x S/s jacketed heating tank with mixing. bottom discharge. 175 litre. Lift out: £70.

Click on the link below to view more info/images and see current bid price
<https://www.bidspotter.co.uk/en-gb/auction-catalogues/food-machinery-2000/catalogue-id-fo10122/lot-351c545f-30ea-4a3e-82b0-b06800a51a25>

Online auction closing WEDS 20 SEPTEMBER 2023 - DESSERT PRODUCTION FACILITY



AIR COMPRESSOR YEAR 2020.

Lot No. **24**

1 x ABAC air compressor model Pro 200. Fully working banded to a pallet ready to be shipped. Lift out: £60.

Click on the link below to view more info/images and see current bid price
<https://www.bidspotter.co.uk/en-gb/auction-catalogues/food-machinery-2000/catalogue-id-fo10122/lot-7fdaed6b-2aef-46f1-8bf7-b06700f2be7a>



SOLLICH TURBOTEMPER MACHINE.

Lot No. **25**
1 x Sollich Turbotemper model TT 110B. Lift out: £100.

Click on the link below to view more info/images and see current bid price
<https://www.bidspotter.co.uk/en-gb/auction-catalogues/food-machinery-2000/catalogue-id-fo10122/lot-d755985a-158b-499a-a98b-b06700c03913>



KRUGER & SALECKER BAR FORMER.

Lot No. **26**
1 x Kruger & Salecker fully automatic bar former. Model MFW. Currently set up to do 6 across. With grease spray bars for sticky products. Comes with various dies and tool trolley. Lift out: £150.

Click on the link below to view more info/images and see current bid price
<https://www.bidspotter.co.uk/en-gb/auction-catalogues/food-machinery-2000/catalogue-id-fo10122/lot-8e3b98c3-4c96-4697-a257-b06800a75388>



ULMA ATLANTA E FLOW WRAPPER. YEAR 2018

Lot No. **27**
1 x Ulma Atlanta E flow wrapper. With triple rotating jaw system. Jaw size 130 mm long. With 6 m long phase infeed. With reject on the infeed for any products that are deformed. With twin film reels. With Smartdate 5 encoder. PEC for pre printed film. With another reject on outfeed for any incorrectly formed packs. Lift out: £500.

Click on the link below to view more info/images and see current bid price
<https://www.bidspotter.co.uk/en-gb/auction-catalogues/food-machinery-2000/catalogue-id-fo10122/lot-6ace0566-67e3-49f5-a8ed-b06800a96e45>



LOMA CW3 YEAR 2019

Lot No. **28**
1 x Loma CW3 checkweigher. With airblast reject into locakbel bin. S/S guarding. 300mm long weigh platform. 1.2m overall dimensions. Lift Out £100

Click on the link below to view more info/images and see current bid price
<https://www.bidspotter.co.uk/en-gb/auction-catalogues/food-machinery-2000/catalogue-id-fo10122/lot-c7a72d83-102b-4346-9e2f-b07300a2f20d>

Online auction closing WEDS 20 SEPTEMBER 2023 - DESSERT PRODUCTION FACILITY



HEAT SEALER

Lot No. **29**
1 x Heat sealer. Foot operated. 450mm seal bars £50

Click on the link below to view more info/images and see current bid price
<https://www.bidspotter.co.uk/en-gb/auction-catalogues/food-machinery-2000/catalogue-id-fo10122/lot-5a95c6a6-ea53-417a-b576-b07300b7ddd8>

Online auction closing WEDS 20 SEPTEMBER 2023 - DESSERT PRODUCTION FACILITY



COLSEAL TRAY SEALER

Lot No. **30**
1 x Colseal PG INOX tray sealer. with compressor. Lift out £100

Click on the link below to view more info/images and see current bid price
<https://www.bidspotter.co.uk/en-gb/auction-catalogues/food-machinery-2000/catalogue-id-fo10122/lot-f6e86e5d-ac6b-44d7-8ab0-b07300b96741>

Online auction closing WEDS 20 SEPTEMBER 2023 - DESSERT PRODUCTION FACILITY



SOTTORIVA SPIRAL MIXER.

Lot No. **31**
1 x Sottoriva model evo plus 250 DD 2-speed spiral mixer with 2-timers forward and reverse. Complete with 1-removable bowls. Lift out: £100.

Click on the link below to view more info/images and see current bid price
<https://www.bidspotter.co.uk/en-gb/auction-catalogues/food-machinery-2000/catalogue-id-fo10122/lot-bdb087bd-5c40-4828-acfc-b07300f48604>

Online auction closing WEDS 20 SEPTEMBER 2023 - DESSERT PRODUCTION FACILITY



1200 KVA GENERATOR

Lot No. **32**
1 x 1200 kva F.G wilson generator on a 40ft skid/container. Very little running hours 1300 and has been well maintained with fuel tank. LOCATION EAST YORK-SHIRE. *** THIS LOT IS BUYER TO REMOVE***

Click on the link below to view more info/images and see current bid price
<https://www.bidspotter.co.uk/en-gb/auction-catalogues/food-machinery-2000/catalogue-id-fo10122/lot-660a2e8d-65ea-4eeb-bc13-b07400fc9818>



CHOCOLATE MELTING TANK.

Lot No. **33**

1 x All s/s electrically heated chocolate melting tank with stirrer, with temperature control. Overall dimensions approx. 1 m x 1 m x 1.8 m. Physical dimensions of tank diameter 750 mm x 560 mm high. Lift out: £60.

Click on the link below to view more info/images and see current bid price

<https://www.bidspotter.co.uk/en-gb/auction-catalogues/food-machinery-2000/catalogue-id-fo10122/lot-82807b73-9c9e-42f6-8386-b04900a3bad2>



STAINLESS STEEL TABLE.

Lot No. **34**

1 x S/s mobile table approx. 2.45 m x 600 mm. Lift out: £25.

Click on the link below to view more info/images and see current bid price

<https://www.bidspotter.co.uk/en-gb/auction-catalogues/food-machinery-2000/catalogue-id-fo10122/lot-10ff57ce-55cf-458f-bc59-b04900a40898>



STAINLESS STEEL TABLE.

Lot No. **35**

1 x S/s mobile table approx. 2.45 m x 600 mm. Lift out: £25.

Click on the link below to view more info/images and see current bid price

<https://www.bidspotter.co.uk/en-gb/auction-catalogues/food-machinery-2000/catalogue-id-fo10122/lot-ecce27186-747a-4a18-be07-b04900a434e8>



2 X HALF MOON BATH ON MOBILE STAND.

Lot No. **36**

2 x Blue plastic half moon bath on s/s mobile frame. Approx. 970 mm x 720 mm x 620 mm high. Internal height approx. 440 mm. Lift out: £30.

Click on the link below to view more info/images and see current bid price

<https://www.bidspotter.co.uk/en-gb/auction-catalogues/food-machinery-2000/catalogue-id-fo10122/lot-5e8d6fe8-c1df-4023-ba48-b04900a4d0a6>

Online auction closing WEDS 20 SEPTEMBER 2023 - DESSERT PRODUCTION FACILITY



2 X HALF MOON BATH ON MOBILE STAND.

Lot No. 37

2 x Blue plastic half moon bath on s/s mobile frame. Approx. 970 mm x 720 mm x 620 mm high. Internal height approx. 440 mm. Lift out: £30.

Click on the link below to view more info/images and see current bid price
<https://www.bidspotter.co.uk/en-gb/auction-catalogues/food-machinery-2000/catalogue-id-fo10122/lot-13ee3c28-39d7-4c2c-b9cf-b04900a4fd6b>

Online auction closing WEDS 20 SEPTEMBER 2023 - DESSERT PRODUCTION FACILITY



HALF MOON BATH ON MOBILE STAND.

Lot No. 38

1 x Blue plastic half moon bath on s/s mobile frame. Approx. 540 mm x 1 m x 840 mm high. Internal height approx. 360 mm. Lift out: £15.

Click on the link below to view more info/images and see current bid price
<https://www.bidspotter.co.uk/en-gb/auction-catalogues/food-machinery-2000/catalogue-id-fo10122/lot-9fcfb087-c01b-4d0d-84db-b04900a5561b>

Online auction closing WEDS 20 SEPTEMBER 2023 - DESSERT PRODUCTION FACILITY



2 X S/S TROLLEYS WITH TRAYS.

Lot No. 39

2 x S/s trolleys capable of taking 14 trays per trolley. With trays. Approx. 520 mm x 770 mm x 1.8 m high. Lift out: £25.

Click on the link below to view more info/images and see current bid price
<https://www.bidspotter.co.uk/en-gb/auction-catalogues/food-machinery-2000/catalogue-id-fo10122/lot-e7fdb2381-78c1-4dde-8843-b04900c6397d>

Online auction closing WEDS 20 SEPTEMBER 2023 - DESSERT PRODUCTION FACILITY



2 X S/S TROLLEYS WITH TRAYS.

Lot No. 40

2 x S/s trolleys capable of taking 14 trays per trolley. With trays. Approx. 520 mm x 770 mm x 1.8 m high. Lift out: £25.

Click on the link below to view more info/images and see current bid price
<https://www.bidspotter.co.uk/en-gb/auction-catalogues/food-machinery-2000/catalogue-id-fo10122/lot-e770535a-a32d-41d7-aa01-b04a0096986c>

Online auction closing WEDS 20 SEPTEMBER 2023 - DESSERT PRODUCTION FACILITY



2 X S/S TROLLEYS WITH TRAYS.

Lot No. **41**

2 x S/s trolleys capable of taking 14 trays per trolley. With trays. Approx. 520 mm x 770 mm x 1.8 m high. Lift out: £25.

Click on the link below to view more info/images and see current bid price
<https://www.bidspotter.co.uk/en-gb/auction-catalogues/food-machinery-2000/catalogue-id-fo10122/lot-6615fcc6-56ae-42b8-8539-b04a0096b7d2>

Online auction closing WEDS 20 SEPTEMBER 2023 - DESSERT PRODUCTION FACILITY



2 X CABINETS FOR COMPUTER/MONITOR.

Lot No. **42**

2 x Cabinets. One is suitable for keyboard and monitor with cupboard underneath approx. 650 mm x 700 mm x 1.65 m high. The other cabinet is approx. 1.5 m x 550 mm x 1.2 m high. Lift out: £30.

Click on the link below to view more info/images and see current bid price
<https://www.bidspotter.co.uk/en-gb/auction-catalogues/food-machinery-2000/catalogue-id-fo10122/lot-18e8a66b-4e32-4054-ac9d-b04a0097c347>

Online auction closing WEDS 20 SEPTEMBER 2023 - DESSERT PRODUCTION FACILITY



SANCASSIANO MIXER PLT200.

Lot No. **43**

1 x Sancassiano PLT-200 mixer with 2 s/s bowls and 3 tools. (Twin tool planetary type mixer, capable of taking 2 x beaters and side scrape/2 x whisks and side scrape). Fully guarded, with electrical control panel. Dimensions approx. 1.5 m x 1.3 m x 2 m high. Lift out: £150. *See lots 52 & 53 extra bowls if required*

Click on the link below to view more info/images and see current bid price
<https://www.bidspotter.co.uk/en-gb/auction-catalogues/food-machinery-2000/catalogue-id-fo10122/lot-5e91609b-04f3-466e-9cce-b04a0097c347>

Online auction closing WEDS 20 SEPTEMBER 2023 - DESSERT PRODUCTION FACILITY



SHELVING UNIT. 4-SHELF.

Lot No. **44**

1 x S/s shelving unit. 4-shelf. Approx. 1.5 m x 500 mm x 1.7 m high. Lift out: £25.

Click on the link below to view more info/images and see current bid price
<https://www.bidspotter.co.uk/en-gb/auction-catalogues/food-machinery-2000/catalogue-id-fo10122/lot-706050ab-a914-4d94-87c3-b04a009a9a91>

Online auction closing WEDS 20 SEPTEMBER 2023 - DESSERT PRODUCTION FACILITY



UNITECH SANITISING TUNNEL.

Lot No. **45**

1 x Unitech sanitising tunnel. Aperture size approx. 770 mm. With plastic Intralox belt. With pumps etc. 3-phase. Overall dimensions approx. 2 m x 1.5 m x 1.7 m high. Lift out: £180.

Click on the link below to view more info/images and see current bid price
<https://www.bidspotter.co.uk/en-gb/auction-catalogues/food-machinery-2000/catalogue-id-fo10122/lot-f50f0bf9-bc21-480d-9990-b04a009b11fb>

Online auction closing WEDS 20 SEPTEMBER 2023 - DESSERT PRODUCTION FACILITY



SYSPAL DRAINING TABLE.

Lot No. **46**

1 x Syspal draining table. Approx. 1.5 m x 600 mm x 1.4 m high. Lift out: £20.

Click on the link below to view more info/images and see current bid price
<https://www.bidspotter.co.uk/en-gb/auction-catalogues/food-machinery-2000/catalogue-id-fo10122/lot-5d1d7136-e664-44fc-8f7e-b04a009b42f7>

Online auction closing WEDS 20 SEPTEMBER 2023 - DESSERT PRODUCTION FACILITY



SYSPAL DRAINING TABLE.

Lot No. **47**

1 x Syspal draining table. Approx. 1.5 m x 600 mm x 1.4 m high. Lift out: £20.

Click on the link below to view more info/images and see current bid price
<https://www.bidspotter.co.uk/en-gb/auction-catalogues/food-machinery-2000/catalogue-id-fo10122/lot-a6e998ee-1728-4eb8-a32b-b04a009b638f>

Online auction closing WEDS 20 SEPTEMBER 2023 - DESSERT PRODUCTION FACILITY



S/S TROLLEY.

Lot No. **48**

1 x S/s trolley. Lift out: £25.

Click on the link below to view more info/images and see current bid price
<https://www.bidspotter.co.uk/en-gb/auction-catalogues/food-machinery-2000/catalogue-id-fo10122/lot-8517366f-9d10-44d8-bf5a-b04a009b9747>



MOBILE TROLLEY.

Lot No. **49**
1 x Mobile trolley. Lift out: £20.

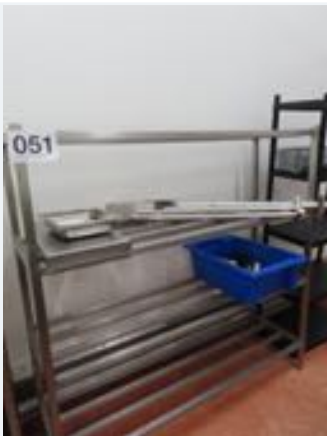
Click on the link below to view more info/images and see current bid price
<https://www.bidspotter.co.uk/en-gb/auction-catalogues/food-machinery-2000/catalogue-id-fo10122/lot-271f4ea8-6d30-440f-aaee-b04a009bd6c8>



SHELVING UNIT.

Lot No. **50**
1 x Shelving unit. Excludes contents. Lift out: £25.

Click on the link below to view more info/images and see current bid price
<https://www.bidspotter.co.uk/en-gb/auction-catalogues/food-machinery-2000/catalogue-id-fo10122/lot-95168396-daa6-44c0-9a36-b04a009c099b>



SHELVING UNIT.

Lot No. **51**
1 x Shelving unit. Excludes contents. Lift out: £25.

Click on the link below to view more info/images and see current bid price
<https://www.bidspotter.co.uk/en-gb/auction-catalogues/food-machinery-2000/catalogue-id-fo10122/lot-ed654328-584c-40c7-8a36-b04a009c278d>



STAINLESS STEEL BOWL FOR SANCASSIANO MIXER.

Lot No. **52**
1 x S/s bowl for Sancassiano PLT200 mixer. On mobile stand. Approx. 750 mm x 1.17 m high. Lift out: £25.

Click on the link below to view more info/images and see current bid price
<https://www.bidspotter.co.uk/en-gb/auction-catalogues/food-machinery-2000/catalogue-id-fo10122/lot-ab912041-bf22-4a74-9946-b04a009c942c>



STAINLESS STEEL BOWL FOR SANCASSIANO PLT200 MIXER.

Lot No. **53**

1 x S/s bowl for Sancassiano PLT200 mixer. On mobile stand. Approx. 750 mm x 1.17 m high. Lift out: £25.

Click on the link below to view more info/images and see current bid price
<https://www.bidspotter.co.uk/en-gb/auction-catalogues/food-machinery-2000/catalogue-id-fo10122/lot-2e5fc6fd-3401-4035-83df-b04a009cdb99>



NEWTEC ULTRASONIC CUTTER.

Lot No. **54**

1 x Newtec Ultrasonic cutter. Fully guarded. Model R/D/UCN600. Belt width 700 mm. Overall length 9.2 m. Distance between flights 230 mm. Overall width 1.4 m. Lift out: £350.

Click on the link below to view more info/images and see current bid price
<https://www.bidspotter.co.uk/en-gb/auction-catalogues/food-machinery-2000/catalogue-id-fo10122/lot-7881458c-4172-4b55-93e1-b04a009d48d0>



STAINLESS STEEL TABLE.

Lot No. **55**

1 x S/s table. Lift out: £20.

Click on the link below to view more info/images and see current bid price
<https://www.bidspotter.co.uk/en-gb/auction-catalogues/food-machinery-2000/catalogue-id-fo10122/lot-40bbc58c-f52c-477e-bb2b-b04a009d618d>



STAINLESS STEEL SHELF UNIT.

Lot No. **56**

1 x S/s shelf unit. 4-shelf. Approx. 2.4 m x 600 mm x 1.6 m high. Lift out: £30.

Click on the link below to view more info/images and see current bid price
<https://www.bidspotter.co.uk/en-gb/auction-catalogues/food-machinery-2000/catalogue-id-fo10122/lot-f3a545b3-b6e2-48d2-a089-b04a009d6c67>



S/S ELECTRICALLY HEATED CHOCOLATE TANK.

Lot No. **57**

1 x S/s electrically heated chocolate tank. Overall dimensions approx. 1 m x 1 m. Tank size 850 mm x 650 mm diameter. Lift out: £65.

Click on the link below to view more info/images and see current bid price
<https://www.bidspotter.co.uk/en-gb/auction-catalogues/food-machinery-2000/catalogue-id-fo10122/lot-b4b8fc77-7bec-4b52-80f1-b04a009dc6ae>



FORTRESS VENTURA COMBI UNIT YEAR 2019

Lot No. **58**

Fortress ventura Year 2019 combi unit aperture 350mm x 200mm weigh platform 350mm, touch screen control with 2 reject bins, reject confirmation, bin full, low air, light stack and USB port for data analysis. lift out £180

Click on the link below to view more info/images and see current bid price
<https://www.bidspotter.co.uk/en-gb/auction-catalogues/food-machinery-2000/catalogue-id-fo10122/lot-5a4d54eb-7775-41c9-be30-b07a009b9d49>



STAINLESS STEEL TABLE.

Lot No. **59**

1 x S/s table approx. 1.9 m x 700 mm. Lift out: £25.

Click on the link below to view more info/images and see current bid price
<https://www.bidspotter.co.uk/en-gb/auction-catalogues/food-machinery-2000/catalogue-id-fo10122/lot-92d02b91-3ca8-4920-b412-b04a009e6f65>



CONVEYOR.

Lot No. **60**

1 x S/s conveyor. Approx. 650 mm wide belt. Overall length approx. 3.85 m. Lift out: £100.

Click on the link below to view more info/images and see current bid price
<https://www.bidspotter.co.uk/en-gb/auction-catalogues/food-machinery-2000/catalogue-id-fo10122/lot-7475d3a0-80c0-4683-a583-b04a009ebd2d>

Online auction closing WEDS 20 SEPTEMBER 2023 - DESSERT PRODUCTION FACILITY



METTLER TOLEDO TOTE BIN SCALE.

Lot No. **61**

1 x Mettler Toledo tote bin floor scale with ramp approx. 1.4 m x 1.2 m. Lift out: £65.

Click on the link below to view more info/images and see current bid price
<https://www.bidspotter.co.uk/en-gb/auction-catalogues/food-machinery-2000/catalogue-id-fo10122/lot-25ddf9f2-b12c-4d23-8b73-b04a00a1b732>

Online auction closing WEDS 20 SEPTEMBER 2023 - DESSERT PRODUCTION FACILITY



SANCASSIANO MIXER. PLT120.

Lot No. **62**

1 x Sancassiano mixer. PLT120. (Twin tool planetary type mixer, capable of taking 2 x beaters and side scrape/2 x whisks and side scrape). With 2 x S/S bowls. 3 tooling scraper/beater/whisk. 1.3 m x 1.5 m x 1.8 m high. Lift out: £150.

Click on the link below to view more info/images and see current bid price
<https://www.bidspotter.co.uk/en-gb/auction-catalogues/food-machinery-2000/catalogue-id-fo10122/lot-09165907-67ef-4b7f-b043-b04a00a2204f>

Online auction closing WEDS 20 SEPTEMBER 2023 - DESSERT PRODUCTION FACILITY



SANCASSIANO MIXER. PLT120.

Lot No. **63**

1 x Sancassiano mixer. PLT120. (Twin tool planetary type mixer, capable of taking 2 x beaters and side scrape/2 x whisks and side scrape). With 2 x S/S bowls. 3 tooling scraper/beater/whisk. 1.3 m x 1.5 m x 1.8 m high. Lift out: £85.

Click on the link below to view more info/images and see current bid price
<https://www.bidspotter.co.uk/en-gb/auction-catalogues/food-machinery-2000/catalogue-id-fo10122/lot-e4e91507-116a-4f34-80d7-b04a00a24bbe>

Online auction closing WEDS 20 SEPTEMBER 2023 - DESSERT PRODUCTION FACILITY



STAINLESS STEEL TABLE.

Lot No. **64**

1 x S/s table approx. 1.9 m x 700 mm. Lift out: £25.

Click on the link below to view more info/images and see current bid price
<https://www.bidspotter.co.uk/en-gb/auction-catalogues/food-machinery-2000/catalogue-id-fo10122/lot-fca22fae-d056-48b0-b9f4-b04a00a28f53>



SHELVING UNIT.

Lot No. **65**
1 x S/s shelving unit. 4-shelf approx. 1.9 m x 460 mm. Lift out: £30.

Click on the link below to view more info/images and see current bid price
<https://www.bidspotter.co.uk/en-gb/auction-catalogues/food-machinery-2000/catalogue-id-fo10122/lot-a3068ec8-96fd-4fdf-a9b0-b04a00a2f92a>



CONVEYOR.

Lot No. **66**
1 x Conveyor approx. 650 mm wide belt. Overall length approx. 4 m. Lift out: £150.

Click on the link below to view more info/images and see current bid price
<https://www.bidspotter.co.uk/en-gb/auction-catalogues/food-machinery-2000/catalogue-id-fo10122/lot-0e821939-6d8e-4d2f-85d3-b04a00a32d93>



CONVEYOR.

Lot No. **67**
1 x Conveyor approx. 6.4 m long x 660 mm wide belt. Overall width 830 mm. Lift out: £150.

Click on the link below to view more info/images and see current bid price
<https://www.bidspotter.co.uk/en-gb/auction-catalogues/food-machinery-2000/catalogue-id-fo10122/lot-c06c6d11-63f2-49b8-a21e-b04a00a36303>



JACOB WHITE CARTON ERECTOR.

Lot No. **68**
1 x Jacob White carton erector with Nordsen glue box. Dimensions approx. 1.1 m wide. Overall length 5 m. Lift out: £200.

Click on the link below to view more info/images and see current bid price
<https://www.bidspotter.co.uk/en-gb/auction-catalogues/food-machinery-2000/catalogue-id-fo10122/lot-4ddc374f-1bbb-40ca-8a06-b04a00a508b2>



SMALL CONVEYOR.

Lot No. **69**

1 x Small conveyor approx. 280 mm wide belt x 1 m long overall width 500mm .
Lift out: £60.

Click on the link below to view more info/images and see current bid price
<https://www.bidspotter.co.uk/en-gb/auction-catalogues/food-machinery-2000/catalogue-id-fo10122/lot-ba214569-79bc-4308-abb4-b04a00a92d34>



COMBI METAL DETECTOR/CHECKWEIGHER. YEAR 2018

Lot No. **70**

1 x Thermo Scientific combi unit with Apex 500 metal detector with twin reject into lockable bin. Aperture size approx. 350 mm x 170 mm. With Versaweigher weigher. Weigh platform size approx. 270 mm long. Overall dimensions approx. 2.4 m. Lift out: £120.

Click on the link below to view more info/images and see current bid price
<https://www.bidspotter.co.uk/en-gb/auction-catalogues/food-machinery-2000/catalogue-id-fo10122/lot-3d3bd14b-61c5-4a05-ada6-b04a00aa5739>



CONVEYOR.

Lot No. **71**

1 x Conveyor approx. 2 m long x 300 mm wide belt. Lift out: £60.

Click on the link below to view more info/images and see current bid price
<https://www.bidspotter.co.uk/en-gb/auction-catalogues/food-machinery-2000/catalogue-id-fo10122/lot-ecd625fc-5023-434e-9946-b04a00aaa12a>



CONVEYOR.

Lot No. **72**

1 x Conveyor approx. 520 mm belt width x 2.8 m long. Lift out: £100.

Click on the link below to view more info/images and see current bid price
<https://www.bidspotter.co.uk/en-gb/auction-catalogues/food-machinery-2000/catalogue-id-fo10122/lot-b9e995e2-03ce-4e17-b5c1-b04a00aae6a8>



CONVEYOR.

Lot No. **73**
1 x Conveyor approx. 330 mm wide belt. Variable speed. Approx. 3.8 m long. Lift out: £100.

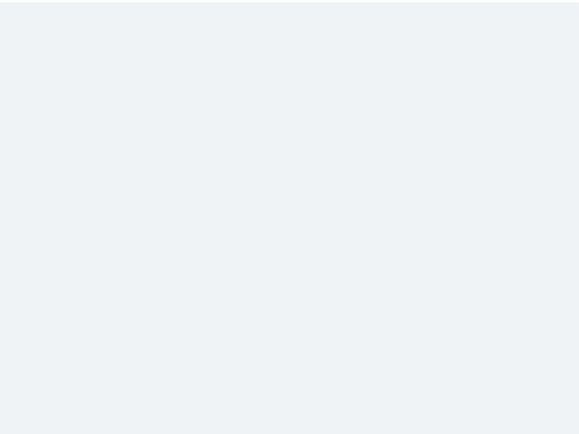
Click on the link below to view more info/images and see current bid price
<https://www.bidspotter.co.uk/en-gb/auction-catalogues/food-machinery-2000/catalogue-id-fo10122/lot-1fcd8a68-6df9-4866-9879-b04a00ab19d3>



LAZY SUSAN.

Lot No. **74**
1 x Lazy Susan with Neoprene top. Approx. 1.2 diameter. Lift out: £60.

Click on the link below to view more info/images and see current bid price
<https://www.bidspotter.co.uk/en-gb/auction-catalogues/food-machinery-2000/catalogue-id-fo10122/lot-ac5fa0a3-2945-4eb0-8200-b04a00aba1ed>



STAINLESS STEEL TABLE.

Lot No. **75**
1 x S/s table approx. 1.2 m x 550 mm. Lift out: £15.

Click on the link below to view more info/images and see current bid price
<https://www.bidspotter.co.uk/en-gb/auction-catalogues/food-machinery-2000/catalogue-id-fo10122/lot-31548e71-2945-4eb0-8200-b04a00abc0d1>



LAZY SUSAN.

Lot No. **76**
1 x Lazy Susan approx. 1.2 m diameter. Lift out: £60.

Click on the link below to view more info/images and see current bid price
<https://www.bidspotter.co.uk/en-gb/auction-catalogues/food-machinery-2000/catalogue-id-fo10122/lot-efa93950-eb83-4af8-b17d-b04a00abedbc>



STEAM CLEANER/FOGGER.

Lot No. **77**
1 x Steam cleaner/fogger. Lift out: £10.

Click on the link below to view more info/images and see current bid price
<https://www.bidspotter.co.uk/en-gb/auction-catalogues/food-machinery-2000/catalogue-id-fo10122/lot-41b6b5f5-2859-4032-857e-b04a00ac2b58>



TECHNISAN40 CLEANER.

Lot No. **78**
1 x TehniSan40. 2021 cleaner. Model 9240. Lift out: £10.

Click on the link below to view more info/images and see current bid price
<https://www.bidspotter.co.uk/en-gb/auction-catalogues/food-machinery-2000/catalogue-id-fo10122/lot-442d49b6-644a-4a29-86df-b04a00acc8fc>



TECHNIFOAMER.

Lot No. **79**
1 x Technifoamer. 2022. Model 9604. Lift out: £10.

Click on the link below to view more info/images and see current bid price
<https://www.bidspotter.co.uk/en-gb/auction-catalogues/food-machinery-2000/catalogue-id-fo10122/lot-9c72097e-65c5-45c5-8575-b04a00acfa72>



TECHNIFOAMER CLEANER.

Lot No. **80**
1 x Technifoamer cleaner. Lift out: £10.

Click on the link below to view more info/images and see current bid price
<https://www.bidspotter.co.uk/en-gb/auction-catalogues/food-machinery-2000/catalogue-id-fo10122/lot-aae49404-3339-4bd0-94da-b04a00ad256b>



FOGGER/CLEANER.

Lot No. **81**
1 x Fogger/cleaner. Lift out: £10.

Click on the link below to view more info/images and see current bid price
<https://www.bidspotter.co.uk/en-gb/auction-catalogues/food-machinery-2000/catalogue-id-fo10122/lot-92bd7846-90e9-4da3-ab00-b04a00ad8a4a>



NITA MOBILE HOSE REEL.

Lot No. **82**
1 x S/s Nita mobile hose reel. Approx. 600 mm x 900 mm x 950 mm high. Lift out: £10.

Click on the link below to view more info/images and see current bid price
<https://www.bidspotter.co.uk/en-gb/auction-catalogues/food-machinery-2000/catalogue-id-fo10122/lot-e798028d-5737-427f-889d-b04a00af0462>



NITA MOBILE HOSE REEL.

Lot No. **83**
1 x S/s Nita mobile hose reel. Approx. 600 mm x 900 mm x 950 mm high. Lift out: £10.

Click on the link below to view more info/images and see current bid price
<https://www.bidspotter.co.uk/en-gb/auction-catalogues/food-machinery-2000/catalogue-id-fo10122/lot-4e798d970-3950-4e03-899d-b04a00af28ee>



NITA MOBILE HOSE REEL.

Lot No. **84**
1 x Nita mobile hose reel. Lift out: £10.

Click on the link below to view more info/images and see current bid price
<https://www.bidspotter.co.uk/en-gb/auction-catalogues/food-machinery-2000/catalogue-id-fo10122/lot-3e88ac6a-6f88-43eb-b218-b04a00af8506>

Online auction closing WEDS 20 SEPTEMBER 2023 - DESSERT PRODUCTION FACILITY



NITA MOBILE HOSE REEL.

Lot No. **85**
1 x Nita mobile hose reel. Lift out: £10.

Click on the link below to view more info/images and see current bid price
<https://www.bidspotter.co.uk/en-gb/auction-catalogues/food-machinery-2000/catalogue-id-fo10122/lot-b56b7b11-2c50-49ac-83bb-b04a00afa5e1>

Online auction closing WEDS 20 SEPTEMBER 2023 - DESSERT PRODUCTION FACILITY



NITA MOBILE HOSE REEL.

Lot No. **86**
1 x Nita mobile hose reel. Lift out: £10.

Click on the link below to view more info/images and see current bid price
<https://www.bidspotter.co.uk/en-gb/auction-catalogues/food-machinery-2000/catalogue-id-fo10122/lot-d7329894-d9ff-41da-9ab5-b04a00affe08>

Online auction closing WEDS 20 SEPTEMBER 2023 - DESSERT PRODUCTION FACILITY



NITA MOBILE HOSE REEL.

Lot No. **87**
1 x Nita mobile hose reel. Lift out: £10.

Click on the link below to view more info/images and see current bid price
<https://www.bidspotter.co.uk/en-gb/auction-catalogues/food-machinery-2000/catalogue-id-fo10122/lot-65b86cd5-be68-4616-9b6e-b04a00affc77>

Online auction closing WEDS 20 SEPTEMBER 2023 - DESSERT PRODUCTION FACILITY



NITA MOBILE HOSE REEL.

Lot No. **88**
1 x Nita mobile hose reel. Lift out: £10.

Click on the link below to view more info/images and see current bid price
<https://www.bidspotter.co.uk/en-gb/auction-catalogues/food-machinery-2000/catalogue-id-fo10122/lot-3b181ba5-42b7-4cf5-9284-b04a00b01ed7>



NITA MOBILE HOSE REEL.

Lot No. **89**
1 x Nita mobile hose reel. Lift out: £10.

Click on the link below to view more info/images and see current bid price
<https://www.bidspotter.co.uk/en-gb/auction-catalogues/food-machinery-2000/catalogue-id-fo10122/lot-e1f98525-7ddb-4b06-b8be-b04a00b04499>



STAINLESS STEEL TABLE.

Lot No. **90**
1 x S/s table approx. 570 mm x 400 mm. Lift out: £25.

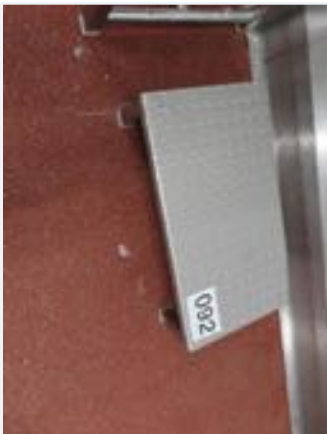
Click on the link below to view more info/images and see current bid price
<https://www.bidspotter.co.uk/en-gb/auction-catalogues/food-machinery-2000/catalogue-id-fo10122/lot-6e5f9939-50b8-47e8-9a67-b04a00b08a86>



STAINLESS STEEL TABLE.

Lot No. **91**
1 x S/s table approx. 900 mm x 600 mm. Lift out: £25.

Click on the link below to view more info/images and see current bid price
<https://www.bidspotter.co.uk/en-gb/auction-catalogues/food-machinery-2000/catalogue-id-fo10122/lot-dcd27bf8-8db0-4256-8030-b04a00b0c345>



STAINLESS STEEL STEP.

Lot No. **92**
1 x S/s step. Lift out: £15.

Click on the link below to view more info/images and see current bid price
<https://www.bidspotter.co.uk/en-gb/auction-catalogues/food-machinery-2000/catalogue-id-fo10122/lot-21ba8651-6cdb-488a-ae74-b04a00b0eb60>



STAINLESS STEEL TABLE.

Lot No. **93**
1 x S/s table approx. 600 mm x 600 mm. Lift out: £25.

Click on the link below to view more info/images and see current bid price
<https://www.bidspotter.co.uk/en-gb/auction-catalogues/food-machinery-2000/catalogue-id-fo10122/lot-e0ae0d64-be51-46ce-8220-b04a00b14155>



STAINLESS STEEL TROLLEY.

Lot No. **94**
1 x S/s mobile tool trolley. Approx. 870 mm x 400 mm x 1.9 m. Lift out: £25.

Click on the link below to view more info/images and see current bid price
<https://www.bidspotter.co.uk/en-gb/auction-catalogues/food-machinery-2000/catalogue-id-fo10122/lot-33759ef3-31da-45be-ac92-b04a00b17c78>



STAINLESS STEEL TABLE.

Lot No. **95**
1 x S/s table approx. 600 mm x 600 mm. Lift out: £25.

Click on the link below to view more info/images and see current bid price
<https://www.bidspotter.co.uk/en-gb/auction-catalogues/food-machinery-2000/catalogue-id-fo10122/lot-8e6acc0a-168b-418f-a147-b04a00b1afca>



PLATFORM STEPS.

Lot No. **96**
1 x Platform step. Approx. 780 mm x 900 mm x 1.4 m. Height to top step 500 mm.
Lift out: £25.

Click on the link below to view more info/images and see current bid price
<https://www.bidspotter.co.uk/en-gb/auction-catalogues/food-machinery-2000/catalogue-id-fo10122/lot-2faf2bf9-3026-4b00-909e-b04a00b21a24>



STAINLESS STEEL TABLE.

Lot No. **97**
1 x S/s table approx. 600 mm x 600 mm. Lift out: £25.

Click on the link below to view more info/images and see current bid price
<https://www.bidspotter.co.uk/en-gb/auction-catalogues/food-machinery-2000/catalogue-id-fo10122/lot-cf30b64e-a7bd-4f7a-8622-b04a00b2435e>



STAINLESS STEEL TABLE.

Lot No. **98**
1 x S/s table approx. 600 mm x 600 mm. Lift out: £25.

Click on the link below to view more info/images and see current bid price
<https://www.bidspotter.co.uk/en-gb/auction-catalogues/food-machinery-2000/catalogue-id-fo10122/lot-5d6e618e-3674-4041-b29b-b04a00b26700>



STAINLESS STEEL TABLE.

Lot No. **99**
1 x S/s table approx. 600 mm x 600 mm. Lift out: £25.

Click on the link below to view more info/images and see current bid price
<https://www.bidspotter.co.uk/en-gb/auction-catalogues/food-machinery-2000/catalogue-id-fo10122/lot-70f919e5-515b-4ef3-af57-b04a00b292a0>



SANCASSIANO MIXER. PLT120.

Lot No. **100**
1 x Sancassiano mixer. PLT120.(Twin tool planetary type mixer, capable of taking 2 x beaters and side scrape/2 x whisks and side scrape). With 2 x S/S bowls. 3 tooling scraper/beater/whisk. 1.3 m x 1.5 m x 1.8 m high. Lift out: £150.

Click on the link below to view more info/images and see current bid price
<https://www.bidspotter.co.uk/en-gb/auction-catalogues/food-machinery-2000/catalogue-id-fo10122/lot-9099896a-866e-4833-94c7-b04a00b2ff76>



ATTWELL LABELLING SYSTEM.

Lot No. **101**

1 x Attwell labelling system. 2 x top labelling. Diameter 340 mm x 1.2 m x 2 m. Belt width approx. 110 mm. Lift out: £120.

Click on the link below to view more info/images and see current bid price

<https://www.bidspotter.co.uk/en-gb/auction-catalogues/food-machinery-2000/catalogue-id-fo10122/lot-a38d6a0d-d74e-48d7-933c-b04a00b455ee>



STAINLESS STEEL SHELVING UNIT.

Lot No. **102**

1 x S/s shelving unit. 5-shelf. Approx. 1.5 m x 500 mm x 1.89 m high. Lift out: £30.

Click on the link below to view more info/images and see current bid price

<https://www.bidspotter.co.uk/en-gb/auction-catalogues/food-machinery-2000/catalogue-id-fo10122/lot-97bcaa3a-0069-47ca-a534-b04a00b492a0>



SANCASSIANO MIXER. PLT120.

Lot No. **103**

1 x Sancassiano mixer. PLT120. (Twin tool planetary type mixer, capable of taking 2 x beaters and side scrape/2 x whisks and side scrape). With 2 x S/S bowls. 3 tooling scraper/beater/whisk. 1.3 m x 1.5 m x 1.8 m high. Lift out: £150

Click on the link below to view more info/images and see current bid price

<https://www.bidspotter.co.uk/en-gb/auction-catalogues/food-machinery-2000/catalogue-id-fo10122/lot-97baeb5a7-ca5e-49ac-ab78-b04a00b4a6c0>



STAINLESS STEEL TABLE.

Lot No. **104**

1 x S/s table with upright fittings. Approx. 1.1 m x 600 mm. Lift out: £25.

Click on the link below to view more info/images and see current bid price

<https://www.bidspotter.co.uk/en-gb/auction-catalogues/food-machinery-2000/catalogue-id-fo10122/lot-181db4cc-6547-4b71-b07b-b04a00b4d0f7>



3 X S/S TABLE TOP FRAMES.

Lot No. **105**

3 x S/s table top frames. Dimensions approx. 500 mm x 300 mm, 780 mm x 480 mm and 790 mm x 480 mm. Lift out: £15.

Click on the link below to view more info/images and see current bid price
<https://www.bidspotter.co.uk/en-gb/auction-catalogues/food-machinery-2000/catalogue-id-fo10122/lot-1ddb0ece-532e-4326-afc2-b04a00b70cf8>



2 X DRAINING TABLES.

Lot No. **106**

2 x S/s draining tables. Each being approx. 480 mm x 800 mm. Lift out: £25.

Click on the link below to view more info/images and see current bid price
<https://www.bidspotter.co.uk/en-gb/auction-catalogues/food-machinery-2000/catalogue-id-fo10122/lot-8e3588d3-b7e6-4cfb-9671-b04a00ea4162>



STAINLESS STEEL TABLE.

Lot No. **107**

1 x S/s table approx. 1.2 m x 570 mm. Lift out: £25.

Click on the link below to view more info/images and see current bid price
<https://www.bidspotter.co.uk/en-gb/auction-catalogues/food-machinery-2000/catalogue-id-fo10122/lot-9e35aa4b0-9c56-46b2-b762-b04a00ea6931>



SHELVING UNIT.

Lot No. **108**

1 x S/s shelving unit. 3-shelf. Approx. 1 m x 500 mm x 1.9 m high. Lift out: £25.

Click on the link below to view more info/images and see current bid price
<https://www.bidspotter.co.uk/en-gb/auction-catalogues/food-machinery-2000/catalogue-id-fo10122/lot-08335011-a9a0-4df0-88f9-b04a00ea9b23>



SHELVING UNIT.

Lot No. **109**
1 x S/s shelving unit. 3-shelf. Approx. 1 m x 500 mm x 1.9 m high. Lift out: £25.

Click on the link below to view more info/images and see current bid price
<https://www.bidspotter.co.uk/en-gb/auction-catalogues/food-machinery-2000/catalogue-id-fo10122/lot-ea776340-c5e0-4476-89e7-b04a00f07fd9>



SHELVING UNIT.

Lot No. **110**
1 x S/s shelving unit. 3-shelf. Approx. 1 m x 500 mm x 1.9 m high. Lift out: £25.

Click on the link below to view more info/images and see current bid price
<https://www.bidspotter.co.uk/en-gb/auction-catalogues/food-machinery-2000/catalogue-id-fo10122/lot-48333c1d-0d7c-4476-89e7-b04a00f0c0b4>



STAINLESS STEEL TABLE.

Lot No. **111**
1 x S/s table approx. 900 mm x 650 mm. Lift out: £25.

Click on the link below to view more info/images and see current bid price
<https://www.bidspotter.co.uk/en-gb/auction-catalogues/food-machinery-2000/catalogue-id-fo10122/lot-3b4d84d4-83f8-4f80-96c1-b04a00f0e14a>



STAINLESS STEEL TABLE.

Lot No. **112**
1 x S/s table with shelf approx. 600 mm x 445 mm. Lift out: £25.

Click on the link below to view more info/images and see current bid price
<https://www.bidspotter.co.uk/en-gb/auction-catalogues/food-machinery-2000/catalogue-id-fo10122/lot-37fdca89-5162-47a4-9c84-b04a00f12f7b>



2 X S/S TABLE TOP FRAMES.

Lot No. **113**

2 x S/s table top frames. Approx. 330 mm x 540 mm and 480 mm x 790 mm. Lift out: £15.

Click on the link below to view more info/images and see current bid price
<https://www.bidspotter.co.uk/en-gb/auction-catalogues/food-machinery-2000/catalogue-id-fo10122/lot-7572b379-efb0-4f58-90c9-b04a00f16f17>



STAINLESS STEEL TABLE.

Lot No. **114**

1 x S/s table approx. 1.5 m x 600 mm. Lift out: £25.

Click on the link below to view more info/images and see current bid price
<https://www.bidspotter.co.uk/en-gb/auction-catalogues/food-machinery-2000/catalogue-id-fo10122/lot-121f2a98-a565-4bb4-bffe-b04a00f1d310>



STAINLESS STEEL TABLE.

Lot No. **115**

1 x S/s table approx. 600 mm x 600 mm. Lift out: £25.

Click on the link below to view more info/images and see current bid price
<https://www.bidspotter.co.uk/en-gb/auction-catalogues/food-machinery-2000/catalogue-id-fo10122/lot-8b525314-27dc-4374-a3ad-b04a00f1f529>



STAINLESS STEEL TABLE.

Lot No. **116**

1 x S/s table approx. 600 mm x 600 mm. Lift out: £25.

Click on the link below to view more info/images and see current bid price
<https://www.bidspotter.co.uk/en-gb/auction-catalogues/food-machinery-2000/catalogue-id-fo10122/lot-f2742ad4-a066-4ffd-82b2-b04a00f27813>



STAINLESS STEEL TABLE.

Lot No. **117**
1 x S/s table approx. 600 mm x 600 mm. Lift out: £25.

Click on the link below to view more info/images and see current bid price
<https://www.bidspotter.co.uk/en-gb/auction-catalogues/food-machinery-2000/catalogue-id-fo10122/lot-f2cb14da-a77e-4530-9bfb-b04a00f29ffb>



STAINLESS STEEL DESK WITH DRAWERS.

Lot No. **118**
1 x S/s desk with 2 drawers approx. 1.5 m x 750 mm. Lift out: £40.

Click on the link below to view more info/images and see current bid price
<https://www.bidspotter.co.uk/en-gb/auction-catalogues/food-machinery-2000/catalogue-id-fo10122/lot-4babb64b-b9ce-49a8-bc0f-b04a00f2d6b4>



STAINLESS STEEL DESK WITH DRAWERS.

Lot No. **119**
1 x S/s desk with drawers approx. 1.5 m x 750 mm. Lift out: £40.

Click on the link below to view more info/images and see current bid price
<https://www.bidspotter.co.uk/en-gb/auction-catalogues/food-machinery-2000/catalogue-id-fo10122/lot-66187443-762a-4ecc-a640-b04a00f30fd6>



QTY OF LOCKERS.

Lot No. **120**
8 x Banks of 9 lockers Each bank being approx. 900 mm x 450 mm x 1.9 m high.
Lift out: £100.

Click on the link below to view more info/images and see current bid price
<https://www.bidspotter.co.uk/en-gb/auction-catalogues/food-machinery-2000/catalogue-id-fo10122/lot-a01f56e6-75c1-4b1c-8b58-b04a00f3fb98>

Online auction closing WEDS 20 SEPTEMBER 2023 - DESSERT PRODUCTION FACILITY



SYSPAL STAINLESS STEEL LOCKERS

Lot No. **121**
1 x Bank of stainless steel Syspal lockers. 12 lockers in total Lift out: £30.

Click on the link below to view more info/images and see current bid price
<https://www.bidspotter.co.uk/en-gb/auction-catalogues/food-machinery-2000/catalogue-id-fo10122/lot-a429cb8a-595c-44a7-961a-b04a00f837f3>

Online auction closing WEDS 20 SEPTEMBER 2023 - DESSERT PRODUCTION FACILITY



STAINLESS STEEL LOCKERS.

Lot No. **122**
1 x S/S 10 banks for lockers. Lift out: £45.

Click on the link below to view more info/images and see current bid price
<https://www.bidspotter.co.uk/en-gb/auction-catalogues/food-machinery-2000/catalogue-id-fo10122/lot-1ae15825-26ca-44ad-9366-b04a00f85661>

Online auction closing WEDS 20 SEPTEMBER 2023 - DESSERT PRODUCTION FACILITY



S/S TABLE.

Lot No. **123**
1 x S/s table dimensions approx. 2.9 m x 600 mm. Lift out: £30.

Click on the link below to view more info/images and see current bid price
<https://www.bidspotter.co.uk/en-gb/auction-catalogues/food-machinery-2000/catalogue-id-fo10122/lot-a9de12bb-6c24-4c2e-816b-b04a00f85c46>

Online auction closing WEDS 20 SEPTEMBER 2023 - DESSERT PRODUCTION FACILITY



UNITECH STAINLESS STEEL LECTERN/CABINET.

Lot No. **124**
1 x Unitech stainless steel lectern/cabinet approx. 600 mm x 600 mm. Mobile. Lift out: £25.

Click on the link below to view more info/images and see current bid price
<https://www.bidspotter.co.uk/en-gb/auction-catalogues/food-machinery-2000/catalogue-id-fo10122/lot-c97cba91-d293-4181-8174-b04a00f86a64>



STAINLESS STEEL LOCKERS.

Lot No. **125**

1 x Stainless steel bank of lockable lockers. 18 lockers approx. 1m wide x 400 mm deep x 2.2 m high. Lift out: £35.

Click on the link below to view more info/images and see current bid price
<https://www.bidspotter.co.uk/en-gb/auction-catalogues/food-machinery-2000/catalogue-id-fo10122/lot-da406010-bc25-470e-b003-b04a00f87d87>



3 X BANKS OF LOCKERS.

Lot No. **127**

3 x Banks of lockers. 2 x approx. 300 mm x 300 mm with 3 compartments each. one is 4 compartment. Lift out: £25.

Click on the link below to view more info/images and see current bid price
<https://www.bidspotter.co.uk/en-gb/auction-catalogues/food-machinery-2000/catalogue-id-fo10122/lot-c31eb224-a43e-4864-ae4-b04a00f89a9f>



90 DEGREE CONVEYOR.

Lot No. **128**

1 x 90 degree turn with Intralox belt. Approx. 500 mm wide. 1.9 m bending t 1.9 m. Lift out: £100.

Click on the link below to view more info/images and see current bid price
<https://www.bidspotter.co.uk/en-gb/auction-catalogues/food-machinery-2000/catalogue-id-fo10122/lot-50c5502c-8f32-4760-b500-b04a00f9173f>



BANK OF 9 LOCKERS.

Lot No. **129**

1 x Bank of 9 Probe lockers. Approx. 900 mm x 450 mm x 1.9 m high. Lift out: £40.

Click on the link below to view more info/images and see current bid price
<https://www.bidspotter.co.uk/en-gb/auction-catalogues/food-machinery-2000/catalogue-id-fo10122/lot-b7cfff60-22c5-471a-ac78-b04a00f97898>



BANK OF 9 LOCKERS.

Lot No. **131**

1 x Bank of 9 Probe lockers. Approx. 900 mm x 450 mm x 1.9 m high. Lift out: £40.

Click on the link below to view more info/images and see current bid price
<https://www.bidspotter.co.uk/en-gb/auction-catalogues/food-machinery-2000/catalogue-id-fo10122/lot-e39e7557-628d-43ce-a2c2-b04a00f9e87e>



METAL CUPBOARD.

Lot No. **132**

1 x Metal cupboard used for contractors toolboxes. 3-shelf. Dimensions approx. 800 mm x 450 mm x 1.4 m high. Lift out: £20.

Click on the link below to view more info/images and see current bid price
<https://www.bidspotter.co.uk/en-gb/auction-catalogues/food-machinery-2000/catalogue-id-fo10122/lot-f759cd5ff-0828-4549-9c04-b04a00fa6675>



MOBILE RACK.

Lot No. **133**

1 x S/s mobile rack. 3-shelf. Approx. 600 mm x 370 mm x 1.5 m high. Lift out: £25.

Click on the link below to view more info/images and see current bid price
<https://www.bidspotter.co.uk/en-gb/auction-catalogues/food-machinery-2000/catalogue-id-fo10122/lot-f75906b9-54d7-4215-8b71-b04a00fab453>



LOCKABLE BOOT HOLDER.

Lot No. **134**

1 x Lockable boot holder. Capable of holding 40 pairs. Dimensions approx. 1.3 m x 1 m x 1.7 m high. Lift out: £30.

Click on the link below to view more info/images and see current bid price
<https://www.bidspotter.co.uk/en-gb/auction-catalogues/food-machinery-2000/catalogue-id-fo10122/lot-ebedf925-6ec1-459e-852b-b04a010320ea>



LOCKABLE BOOT HOLDER.

Lot No. **135**

1 x Lockable boot holder. Capable of holding 40 pairs. Dimensions approx. 1.3 m x 1 m x 1.7 m high. Lift out: £30.

Click on the link below to view more info/images and see current bid price
<https://www.bidspotter.co.uk/en-gb/auction-catalogues/food-machinery-2000/catalogue-id-fo10122/lot-89d58350-a48a-467b-a5aa-b04a01037bb8>



MOBILE BOOT HOLDER.

Lot No. **136**

1 x Mobile boot holder. Holding 72 pairs. Dimensions approx. 1.8 m x 1 m x 2 m high. Lift out: £30.

Click on the link below to view more info/images and see current bid price
<https://www.bidspotter.co.uk/en-gb/auction-catalogues/food-machinery-2000/catalogue-id-fo10122/lot-0b61d515-8656-4a15-bae3-b04a0103dc0b>



MOBILE BOOT HOLDER.

Lot No. **137**

1 x Mobile boot holder. Holding 72 pairs. Dimensions approx. 1.8 m x 1 m x 2 m high. Lift out: £30.

Click on the link below to view more info/images and see current bid price
<https://www.bidspotter.co.uk/en-gb/auction-catalogues/food-machinery-2000/catalogue-id-fo10122/lot-6185b757-f29d-42f3-81ae-b04a010430e2>



BOOT HOLDER.

Lot No. **138**

1 x S/s floor standing boot holder. Holds 24 pairs. Approx. 1 m x 500 mm x 1.9 m high. Lift out: £20.

Click on the link below to view more info/images and see current bid price
<https://www.bidspotter.co.uk/en-gb/auction-catalogues/food-machinery-2000/catalogue-id-fo10122/lot-d75dca6b-b2f6-43ca-9194-b04a0104d7c5>



PLASRACK CUBBIE HOLE UNIT.

Lot No. **139**

1 x Plasrack cubbie hole unit. 5 rows of 8. Total 40 cubicles. Dimensions approx. 1.4 m x 430 mm x 1.8 m high. Lift out: £15.

Click on the link below to view more info/images and see current bid price
<https://www.bidspotter.co.uk/en-gb/auction-catalogues/food-machinery-2000/catalogue-id-fo10122/lot-81a616c5-f9d7-4f8e-ba63-b04a0105718f>



PLASRACK CUBBIE HOLE UNIT.

Lot No. **140**

1 x Plasrack cubbie hole unit. 5 rows of 8. Total 40 cubicles. Dimensions approx. 1.4 m x 430 mm x 1.8 m high. Lift out: £20.

Click on the link below to view more info/images and see current bid price
<https://www.bidspotter.co.uk/en-gb/auction-catalogues/food-machinery-2000/catalogue-id-fo10122/lot-3671092c-f2e0-4397-a1a1-b04a010596fc>



PLASRACK SHELVING UNIT.

Lot No. **141**

1 x Plasrack shelving unit. 4-shelf. Dimensions approx. 1 m x 500 mm x 1.7 m high. Lift out: £15.

Click on the link below to view more info/images and see current bid price
<https://www.bidspotter.co.uk/en-gb/auction-catalogues/food-machinery-2000/catalogue-id-fo10122/lot-e386cfdaf68b-4353-991e-b04a0105ef00>



STAINLESS STEEL LOCKER FOR DIRTY GARMENT COLLEC-

Lot No. **142**

1 x S/s locker for dirty garment collection. Dimensions approx. 400 mm x 500 mm x 1.9 m high. Lift out: £25.

Click on the link below to view more info/images and see current bid price
<https://www.bidspotter.co.uk/en-gb/auction-catalogues/food-machinery-2000/catalogue-id-fo10122/lot-a8f284a9-cf19-4c89-b25b-b04a01072aeb>



CONVEYOR.

Lot No. **143**

1 x Conveyor. Intralox belt. 200 mm wide. Overall length approx. 5 m. Lift out: £100.

Click on the link below to view more info/images and see current bid price

<https://www.bidspotter.co.uk/en-gb/auction-catalogues/food-machinery-2000/catalogue-id-fo10122/lot-0b8c6475-86e3-473e-b7ef-b04a0107541c>



2 X METAL CAGED STORAGE UNITS.

Lot No. **144**

2 x Metal caged storage units each comprising 20 compartments with doors. Dimensions approx. 1.5 m x 300 mm x 1.37 m high. Lift out: £25.

Click on the link below to view more info/images and see current bid price

<https://www.bidspotter.co.uk/en-gb/auction-catalogues/food-machinery-2000/catalogue-id-fo10122/lot-dff071b5-7cd4-4063-87c7-b04a0109ed3b>



METAL CAGED STORAGE UNITS.

Lot No. **145**

2 x Metal caged storage units each comprising 20 compartments with doors. Dimensions approx. 1.5 m x 300 mm x 1.37 m high. Lift out: £25.

Click on the link below to view more info/images and see current bid price

<https://www.bidspotter.co.uk/en-gb/auction-catalogues/food-machinery-2000/catalogue-id-fo10122/lot-6a233e5-c95f-4da4-891e-b04a010a24cc>



2 X METAL CAGED STORAGE UNITS.

Lot No. **146**

2 x Metal caged storage units each comprising 20 compartments with doors. Dimensions approx. 1.5 m x 300 mm x 1.37 m high. Lift out: £25.

Click on the link below to view more info/images and see current bid price

<https://www.bidspotter.co.uk/en-gb/auction-catalogues/food-machinery-2000/catalogue-id-fo10122/lot-2cc4ccac-dcfb-4e66-b03f-b04a010a68d8>

Online auction closing WEDS 20 SEPTEMBER 2023 - DESSERT PRODUCTION FACILITY



3 X METAL CAGED STORAGE UNITS.

Lot No. **147**

3 x Metal caged storage units each comprising 20 compartments with doors. Dimensions approx. 1.5 m x 300 mm x 1.37 m high. Lift out: £35.

Click on the link below to view more info/images and see current bid price
<https://www.bidspotter.co.uk/en-gb/auction-catalogues/food-machinery-2000/catalogue-id-fo10122/lot-a5a4b84b-f0cc-4e01-84fb-b04a010afa56>

Online auction closing WEDS 20 SEPTEMBER 2023 - DESSERT PRODUCTION FACILITY



4 X SECTION SOF MESH OPEN LOCKERS.

Lot No. **148**

4 x Sections of mesh open lockers. Each section has 10 cubicles. Overall dimensions approx. 600 mm x 450 mm x 1.65 m. Lift out: £40.

Click on the link below to view more info/images and see current bid price
<https://www.bidspotter.co.uk/en-gb/auction-catalogues/food-machinery-2000/catalogue-id-fo10122/lot-a2197cb2-191e-4b46-b6d6-b04a010b8143>

Online auction closing WEDS 20 SEPTEMBER 2023 - DESSERT PRODUCTION FACILITY

COMBI METAL DETECTOR/CHECKWEIGHER.

Lot No. **150**

1 x Thermo Scientific combi unit with Apex 500 metal detector with twin reject into lockable bin. Aperture size approx. 350 mm x 170 mm. With Versaweigher, platform size approx. 270 mm long. Overall dimensions approx. 2.4 m. Lift out: £90.

Click on the link below to view more info/images and see current bid price
<https://www.bidspotter.co.uk/en-gb/auction-catalogues/food-machinery-2000/catalogue-id-fo10122/lot-a662547a-372d-48c4-ba68-b04a010ddf87>

Online auction closing WEDS 20 SEPTEMBER 2023 - DESSERT PRODUCTION FACILITY



STAINLESS STEEL TABLE.

Lot No. **151**

1 x S/s table approx. 800 mm x 460 mm. Lift out: £20.

Click on the link below to view more info/images and see current bid price
<https://www.bidspotter.co.uk/en-gb/auction-catalogues/food-machinery-2000/catalogue-id-fo10122/lot-a429f7a8-6faa-4bc7-acdb-b04a010d9bb7>



SHELVING UNIT.

Lot No. **152**
1 x S/s shelving unit. 4-shelf. Dimensions approx. 1 m x 500 mm x 2.1 m high. Lift out: £25.

Click on the link below to view more info/images and see current bid price
<https://www.bidspotter.co.uk/en-gb/auction-catalogues/food-machinery-2000/catalogue-id-fo10122/lot-86a066f8-2f24-4800-9d11-b04b00b73cc6>



STAINLESS STEEL TABLE.

Lot No. **153**
1 x S/s table approx. 600 mm x 600 mm. Lift out: £25.

Click on the link below to view more info/images and see current bid price
<https://www.bidspotter.co.uk/en-gb/auction-catalogues/food-machinery-2000/catalogue-id-fo10122/lot-3380f61e-c875-4ea0-b911-b04b00b79406>



STAINLESS STEEL TABLE.

Lot No. **154**
1 x S/s table approx. 600 mm x 600 mm. Lift out: £25.

Click on the link below to view more info/images and see current bid price
<https://www.bidspotter.co.uk/en-gb/auction-catalogues/food-machinery-2000/catalogue-id-fo10122/lot-27865100-f1d7-4388-aa8c-b04b00b7c28c>



STAINLESS STEEL TABLE.

Lot No. **155**
1 x S/s table approx. 900 mm x 600 mm. Lift out: £25.

Click on the link below to view more info/images and see current bid price
<https://www.bidspotter.co.uk/en-gb/auction-catalogues/food-machinery-2000/catalogue-id-fo10122/lot-0bbe87c1-d533-4fc9-8aa3-b04b00b8144f>



STAINLESS STEEL TABLE.

Lot No. **156**
1 x S/s table approx. 460 mm x 570 mm. Lift out: £20.

Click on the link below to view more info/images and see current bid price
<https://www.bidspotter.co.uk/en-gb/auction-catalogues/food-machinery-2000/catalogue-id-fo10122/lot-77af2f06-f2e5-4b53-a9f1-b04b00b8367a>



STAINLESS STEEL TABLE.

Lot No. **157**
1 x S/s table approx. 600 mm x 600 mm. Lift out: £20.

Click on the link below to view more info/images and see current bid price
<https://www.bidspotter.co.uk/en-gb/auction-catalogues/food-machinery-2000/catalogue-id-fo10122/lot-7c9401d6-79e3-4598-bfe7-b04b00b8623e>



STAINLESS STEEL TABLE.

Lot No. **158**
1 x S/s table approx. 700 mm x 500 mm. Lift out: £25.

Click on the link below to view more info/images and see current bid price
<https://www.bidspotter.co.uk/en-gb/auction-catalogues/food-machinery-2000/catalogue-id-fo10122/lot-07b6da828-94f3-4ab9-a208-b04b00b88f41>



STAINLESS STEEL TABLE.

Lot No. **159**
1 x S/s table approx. 1.5 m x 600 mm. Lift out: £25.

Click on the link below to view more info/images and see current bid price
<https://www.bidspotter.co.uk/en-gb/auction-catalogues/food-machinery-2000/catalogue-id-fo10122/lot-a7b6cd36-30a9-46ed-ab59-b04b00b8bb18>



STAINLESS STEEL TABLE.

Lot No. **160**
1 x Syspal s/s table approx. 1.5 m x 600 mm. Lift out: £25.

Click on the link below to view more info/images and see current bid price
<https://www.bidspotter.co.uk/en-gb/auction-catalogues/food-machinery-2000/catalogue-id-fo10122/lot-93f68168-0bb2-422d-8243-b04b00b8eb40>



STAINLESS STEEL TABLE.

Lot No. **161**
1 x S/s table approx. 1.2 m x 600 mm. Lift out: £25.

Click on the link below to view more info/images and see current bid price
<https://www.bidspotter.co.uk/en-gb/auction-catalogues/food-machinery-2000/catalogue-id-fo10122/lot-b31db7c3-989e-4190-8779-b04b00b91085>



STAINLESS STEEL TABLE.

Lot No. **162**
1 x S/s table approx. 600 mm x 600 mm. Lift out: £20.

Click on the link below to view more info/images and see current bid price
<https://www.bidspotter.co.uk/en-gb/auction-catalogues/food-machinery-2000/catalogue-id-fo10122/lot-a8b07b1d-e4e7-4c02-9217-b04b00b93aff>



STAINLESS STEEL TABLE.

Lot No. **163**
1 x S/s table approx. 600 mm x 600 mm. Lift out: £20.

Click on the link below to view more info/images and see current bid price
<https://www.bidspotter.co.uk/en-gb/auction-catalogues/food-machinery-2000/catalogue-id-fo10122/lot-2fab6e10-b27d-49c3-b342-b04b00b97326>



UNITECH SHELVING UNIT.

Lot No. **164**

1 x Unitech shelving unit. 4-shelf approx. 1.6 m x 460 mm x 1.2 m high. Lift out: £30.

Click on the link below to view more info/images and see current bid price

<https://www.bidspotter.co.uk/en-gb/auction-catalogues/food-machinery-2000/catalogue-id-fo10122/lot-7b91da45-8884-4048-92ee-b04b00b9cbe8>



4 X STAINLESS STEEL TABLES.

Lot No. **165**

4 x S/s tables approx. 600 mm x 600 mm. Lift out: £35.

Click on the link below to view more info/images and see current bid price

<https://www.bidspotter.co.uk/en-gb/auction-catalogues/food-machinery-2000/catalogue-id-fo10122/lot-3363c494-bae1-44ba-8554-b04b00ba17c5>



STAINLESS STEEL TABLE.

Lot No. **166**

1 x S/s Syspal table approx. 1.5 m x 600 mm. Lift out: £25.

Click on the link below to view more info/images and see current bid price

<https://www.bidspotter.co.uk/en-gb/auction-catalogues/food-machinery-2000/catalogue-id-fo10122/lot-62bc70f8-7408-4e16-b47a-b04b00ba6506>



STAINLESS STEEL TABLE.

Lot No. **167**

1 x Syspal s/s table approx. 1.5 m x 600 mm. Lift out: £25.

Click on the link below to view more info/images and see current bid price

<https://www.bidspotter.co.uk/en-gb/auction-catalogues/food-machinery-2000/catalogue-id-fo10122/lot-7a5c88dd-a2c0-4c77-9d3c-b04b00ba9076>



STAINLESS STEEL TABLE.

Lot No. **168**
1 x S/s table approx. 1.2 m x 400 mm. Lift out: £25.

Click on the link below to view more info/images and see current bid price
<https://www.bidspotter.co.uk/en-gb/auction-catalogues/food-machinery-2000/catalogue-id-fo10122/lot-2fc2a668-cacf-491c-9628-b04b00bac931>



STAINLESS STEEL TABLE.

Lot No. **169**
1 x S/s table approx. 900 mm x 650 mm. Lift out: £25.

Click on the link below to view more info/images and see current bid price
<https://www.bidspotter.co.uk/en-gb/auction-catalogues/food-machinery-2000/catalogue-id-fo10122/lot-1bc4b4df-9dd2-4cb6-99dc-b04b00bafdf5>



STAINLESS STEEL TABLE.

Lot No. **170**
1 x S/s table approx. 800 mm x 450 mm. Lift out: £25.

Click on the link below to view more info/images and see current bid price
<https://www.bidspotter.co.uk/en-gb/auction-catalogues/food-machinery-2000/catalogue-id-fo10122/lot-5066a5cd-0724-4dd7-9875-b04b00bb29bd>



STAINLESS STEEL TABLE.

Lot No. **171**
1 x S/s Syspal table with shelf approx. 900 mm x 1.8 m. Lift out: £35.

Click on the link below to view more info/images and see current bid price
<https://www.bidspotter.co.uk/en-gb/auction-catalogues/food-machinery-2000/catalogue-id-fo10122/lot-982b3acc-1c31-4321-a9e7-b04b00bb9934>



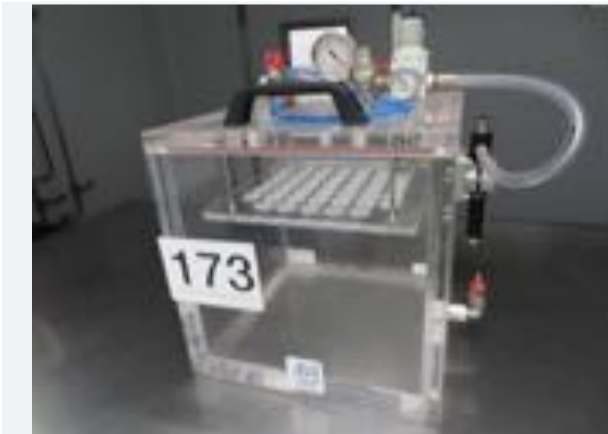
STAINLESS STEEL DESK WITH DRAWERS.

Lot No. **172**

1 x S/s desk with 2-drawers. Dimensions approx. 1.5 m x 800 mm. Lift out: £35.

Click on the link below to view more info/images and see current bid price

<https://www.bidspotter.co.uk/en-gb/auction-catalogues/food-machinery-2000/catalogue-id-fo10122/lot-bdaa4e95-5208-4497-973a-b04b00bbd75e>



STAINLESS STEEL TABLE.

Lot No. **173**

1 x Gas Test Pack analyser by Applied Vacuum Engineering. Dimensions approx. 350 mm x 350 mm x 450 mm high. Lift out: £25.

Click on the link below to view more info/images and see current bid price

<https://www.bidspotter.co.uk/en-gb/auction-catalogues/food-machinery-2000/catalogue-id-fo10122/lot-d646c68-3409-49b4-8e90-b04b00bc275b>



UNITECH PARTS SINK.

Lot No. **174**

1 x Unitech large parts sink. Overall dimensions 1.4 m x 700 mm x 900 mm high. Sink dimensions approx. 650 mm deep x 560 mm x 1.2 m wide. Lift out: £40.

Click on the link below to view more info/images and see current bid price

<https://www.bidspotter.co.uk/en-gb/auction-catalogues/food-machinery-2000/catalogue-id-fo10122/lot-4851b6ba-c426-484f-bafe-b04b00bd4879>



UNITECH LARGE SINK.

Lot No. **175**

1 x Unitech large sink. Overall dimensions approx. 1.3 m x 700 mm x 1 m high. Sink dimensions 650 mm deep x 560 mm high x 1.2 m wide. Lift out: £40.

Click on the link below to view more info/images and see current bid price

<https://www.bidspotter.co.uk/en-gb/auction-catalogues/food-machinery-2000/catalogue-id-fo10122/lot-4851b6ba-8ca8-439f-9558-b04b00bd33a>



STAINLESS STEEL TABLE.

Lot No. **176**
1 x S/s table with two sides approx. 1.6 m x 700 mm. Lift out: £25.

Click on the link below to view more info/images and see current bid price
<https://www.bidspotter.co.uk/en-gb/auction-catalogues/food-machinery-2000/catalogue-id-fo10122/lot-9e018d59-fb7c-4aa6-8ebe-b04b00be12c2>



STAINLESS STEEL SINK.

Lot No. **177**
1 x S/s sink. Dimensions approx. 1.4 m x 750 mm x 1 m high. Sink 650 mm deep x 560 mm x 1.3 m wide. Lift out: £40.

Click on the link below to view more info/images and see current bid price
<https://www.bidspotter.co.uk/en-gb/auction-catalogues/food-machinery-2000/catalogue-id-fo10122/lot-dc401ce8-01b9-425f-a7a1-b04b00bfedec>



STAINLESS STEEL TABLE.

Lot No. **178**
1 x S/s table approx. 1.8 m x 700 mm. Lift out: £25.

Click on the link below to view more info/images and see current bid price
<https://www.bidspotter.co.uk/en-gb/auction-catalogues/food-machinery-2000/catalogue-id-fo10122/lot-53497971-c88f-462a-a887-b04b00c02208>



STAINLESS STEEL TABLE.

Lot No. **179**
1 x S/s table approx. 1.8 m x 700 mm. Lift out: £25.

Click on the link below to view more info/images and see current bid price
<https://www.bidspotter.co.uk/en-gb/auction-catalogues/food-machinery-2000/catalogue-id-fo10122/lot-7f13b24-7ef8-4124-aa0c-b04b00c0615b>



STAINLESS STEEL TRAY HOLDER.

Lot No. **180**

1 x S/tray holder. Capable of holding 6 plastic trays. Overall dimensions 90 mm x 500 mm. Tray size 260 mm deep x 500 mm x 400 mm. Lift out: £25.

Click on the link below to view more info/images and see current bid price
<https://www.bidspotter.co.uk/en-gb/auction-catalogues/food-machinery-2000/catalogue-id-fo10122/lot-62434162-792f-4261-b6b1-b04b00c17fcc>



METTLER TOLEDO PLATFORM SCALE.

Lot No. **181**

1 x Mettler Toledo platform sale. Platform size 500 mm x 400 mm. Lift out: £25.

Click on the link below to view more info/images and see current bid price
<https://www.bidspotter.co.uk/en-gb/auction-catalogues/food-machinery-2000/catalogue-id-fo10122/lot-33ad3a70-e5bf-4a9b-bdb5-b04b00c1c275>



STAINLESS STEEL CHEMICAL TROLLEY.

Lot No. **182**

1 x S/s chemical trolley. Lift out: £20.

Click on the link below to view more info/images and see current bid price
<https://www.bidspotter.co.uk/en-gb/auction-catalogues/food-machinery-2000/catalogue-id-fo10122/lot-ecbd547a-4041-46e5-ab3d-b04b00c1f363>



8 X PLASTIC BINS HOLDERS, 6 WITH PLASTIC BINS.

Lot No. **183**

8 x Plastic bin holders 6 with plastic bins with lids. Dimensions approx. 1 m x 680 mm x 740 mm high. Lift out: £80.

Click on the link below to view more info/images and see current bid price
<https://www.bidspotter.co.uk/en-gb/auction-catalogues/food-machinery-2000/catalogue-id-fo10122/lot-8d2917b5-da9b-445f-9fc4-b04b00c3e813>

Online auction closing WEDS 20 SEPTEMBER 2023 - DESSERT PRODUCTION FACILITY



19 X ROUND DOLLIES PLUS QTY RED PLASTIC TUBS.

Lot No. **184**

19 x Round dollies holding various red plastic tubs. Lift out: £120.

Click on the link below to view more info/images and see current bid price
<https://www.bidspotter.co.uk/en-gb/auction-catalogues/food-machinery-2000/catalogue-id-fo10122/lot-3c21b9b7-a479-42a1-b8e3-b04b00c74f00>

Online auction closing WEDS 20 SEPTEMBER 2023 - DESSERT PRODUCTION FACILITY



QTY RED PLASTIC CRATES/BINS AND DOLLIES.

Lot No. **185**

1 x Qty red self stacking plastic crates on dollies. 3 x large red mobile bins, plus dollies holding red bins and red bin on s/s frame. Lift out: £120.

Click on the link below to view more info/images and see current bid price
<https://www.bidspotter.co.uk/en-gb/auction-catalogues/food-machinery-2000/catalogue-id-fo10122/lot-3a938255-92c5-42c0-a664-b04b00cb3f78>

Online auction closing WEDS 20 SEPTEMBER 2023 - DESSERT PRODUCTION FACILITY



APPROX. 37 STACKABLE BLACK BINS.

Lot No. **186**

1 x Qty approx. 37 Stackable black bins approx 620 mm x 500 mm high. Lift out: £50.

Click on the link below to view more info/images and see current bid price
<https://www.bidspotter.co.uk/en-gb/auction-catalogues/food-machinery-2000/catalogue-id-fo10122/lot-3a947059-d5b3-4df9-b033-b04b00cbd158>

Online auction closing WEDS 20 SEPTEMBER 2023 - DESSERT PRODUCTION FACILITY



4 x PALLETS OF VARIOUS BLUE INGREDIENT BINS.

Lot No. **187**

4 x Pallets of blue ingredient bins. Some mobile. Various types. Lift out: £120.

Click on the link below to view more info/images and see current bid price
<https://www.bidspotter.co.uk/en-gb/auction-catalogues/food-machinery-2000/catalogue-id-fo10122/lot-463f2d59-41ff-4e3b-8ed8-b04b00ce24a5>

Online auction closing WEDS 20 SEPTEMBER 2023 - DESSERT PRODUCTION FACILITY



QTY BLUE ROUND PLASTIC BINS AND DOLLIES.

Lot No. **188**

1 x Qty of blue round plastic bins and round dollies. Lift out: £120.

Click on the link below to view more info/images and see current bid price
<https://www.bidspotter.co.uk/en-gb/auction-catalogues/food-machinery-2000/catalogue-id-fo10122/lot-6d951a00-4012-40c5-beaf-b04b00d03d95>

Online auction closing WEDS 20 SEPTEMBER 2023 - DESSERT PRODUCTION FACILITY



QTY BLUE SQUARE DOLLIES AND CRATES.

Lot No. **189**

1 x Qty blue square dollies and interlocking stacking crates. Lift out: £80.

Click on the link below to view more info/images and see current bid price
<https://www.bidspotter.co.uk/en-gb/auction-catalogues/food-machinery-2000/catalogue-id-fo10122/lot-8b7b504e-8657-4104-862c-b04b00d0e5be>

Online auction closing WEDS 20 SEPTEMBER 2023 - DESSERT PRODUCTION FACILITY



3 X BANKS of SYSPAL STAINLESS STEEL LOCKERS.

Lot No. **190**

3 x Banks of stainless steel syspal lockers. Each bank holds 12 lockers. (36 lockers in total) Lift out: £85.

Click on the link below to view more info/images and see current bid price
<https://www.bidspotter.co.uk/en-gb/auction-catalogues/food-machinery-2000/catalogue-id-fo10122/lot-a5fdbcd-e6e6-49f9-9e4b-b04b00d0f6a4>

Online auction closing WEDS 20 SEPTEMBER 2023 - DESSERT PRODUCTION FACILITY



QTY VARIOUS COLOUR PLASTIC CONTAINERS.

Lot No. **191**

1 x Qty yellow, white, green, cream, purple, grey plastic bins. Pedal bins, interlocking trays and "Caution" floor signs. Lift out: £50.

Click on the link below to view more info/images and see current bid price
<https://www.bidspotter.co.uk/en-gb/auction-catalogues/food-machinery-2000/catalogue-id-fo10122/lot-960c3ace-9b7e-4381-8fed-b04b00d19a7d>



SHELVING UNIT.

Lot No. **192**
2 x S/s shelving unit. 3-shelf. Dimensions approx. 1 m x 440 mm x 1.8 m high. Lift out: £35.

Click on the link below to view more info/images and see current bid price
<https://www.bidspotter.co.uk/en-gb/auction-catalogues/food-machinery-2000/catalogue-id-fo10122/lot-280b2230-3602-4e6d-9667-b04b00d32a3b>



STAINLESS STEEL LOCKER FOR DIRTY GARMENT COLLEC-

Lot No. **193**
1 x S/s lockable dirty garment locker. Approx. 370 mm x 450 mm x 2 m high. Lift out: £25.

Click on the link below to view more info/images and see current bid price
<https://www.bidspotter.co.uk/en-gb/auction-catalogues/food-machinery-2000/catalogue-id-fo10122/lot-dd498f59-f950-4e93-8fdb-b04b00d43ef5>



STAINLESS STEEL CHEMICAL CAGE.

Lot No. **194**
1 x S/s lockable chemical cage. 2-compartment. Dimensions approx. 700 mm x 400 mm x 1.2 m high. Lift out: £25.

Click on the link below to view more info/images and see current bid price
<https://www.bidspotter.co.uk/en-gb/auction-catalogues/food-machinery-2000/catalogue-id-fo10122/lot-da24e8db-9616-479a-a9c9-b04b00d4b755>



STAINLESS STEEL IBC STAND.

Lot No. **195**
1 x S/s IBC stand. Heavy duty. Overall dimensions approx. 1.5 m x 1.24 m x 1.75 m. Internal dimensions approx 1.3 m x 1.3 m x 650 mm high. Lift out: £35.

Click on the link below to view more info/images and see current bid price
<https://www.bidspotter.co.uk/en-gb/auction-catalogues/food-machinery-2000/catalogue-id-fo10122/lot-31470074-1625-4ae0-9df6-b04b00d5300a>

Online auction closing WEDS 20 SEPTEMBER 2023 - DESSERT PRODUCTION FACILITY



SYSPAL FREE STANDING DEEP SINK.

Lot No. **196**

1 x Syspal free standing deep sink. Dimensions approx 980 mm x 900 mm x 950 mm. 360 mm deep. Lift out: £35.

Click on the link below to view more info/images and see current bid price
<https://www.bidspotter.co.uk/en-gb/auction-catalogues/food-machinery-2000/catalogue-id-fo10122/lot-f820a4c4-7391-4946-93f6-b04b00d579c7>

Online auction closing WEDS 20 SEPTEMBER 2023 - DESSERT PRODUCTION FACILITY



SYSPAL FREE STANDING DEEP SINK.

Lot No. **197**

1 x Syspal free standing deep sink. Dimensions approx 980 mm x 900 mm x 950 mm. 360 mm deep. Lift out: £35.

Click on the link below to view more info/images and see current bid price
<https://www.bidspotter.co.uk/en-gb/auction-catalogues/food-machinery-2000/catalogue-id-fo10122/lot-898c2e52-5540-4cdb-9f38-b04b00d58d19>

Online auction closing WEDS 20 SEPTEMBER 2023 - DESSERT PRODUCTION FACILITY



SYSPAL FREE STANDING DEEP SINK.

Lot No. **198**

1 x Syspal free standing deep sink. Dimensions approx 980 mm x 900 mm x 950 mm. 360 mm deep. Lift out: £35.

Click on the link below to view more info/images and see current bid price
<https://www.bidspotter.co.uk/en-gb/auction-catalogues/food-machinery-2000/catalogue-id-fo10122/lot-f15f0e89-8769-4aa9-a170-b04b00d5a430>

Online auction closing WEDS 20 SEPTEMBER 2023 - DESSERT PRODUCTION FACILITY



MOBILE PERSONNEL STEPS.

Lot No. **199**

1 x Mobile personnel steps. Approx. 1.9 m x 700 mm x 2.4 m. 1.3 m to top step. Lift out: £60.

Click on the link below to view more info/images and see current bid price
<https://www.bidspotter.co.uk/en-gb/auction-catalogues/food-machinery-2000/catalogue-id-fo10122/lot-7ff00e86-da8a-42c8-a454-b04b00d61f43>

Online auction closing WEDS 20 SEPTEMBER 2023 - DESSERT PRODUCTION FACILITY



PALLET INVERTER.

Lot No. **200**

1 x Pallet inverter with ramp. Model DD 1.25. Dimensions approx. 1.5 m x 1.6 m x 2.2 m high. Working area 1.5 m x 1.5 m. Lift out: £250.

Click on the link below to view more info/images and see current bid price

<https://www.bidspotter.co.uk/en-gb/auction-catalogues/food-machinery-2000/catalogue-id-fo10122/lot-50b60d05-9b6c-46f3-ac94-b04b00d66278>

Online auction closing WEDS 20 SEPTEMBER 2023 - DESSERT PRODUCTION FACILITY



PARTS TROLLEY.

Lot No. **201**

1 x Parts trolley with drawers. Approx 700 mm x 500 mm x 1.1 m high. Lift out: £25.

Click on the link below to view more info/images and see current bid price

<https://www.bidspotter.co.uk/en-gb/auction-catalogues/food-machinery-2000/catalogue-id-fo10122/lot-37dc4c0f-5856-45c3-a4ca-b04b00d66de1c>

Online auction closing WEDS 20 SEPTEMBER 2023 - DESSERT PRODUCTION FACILITY



PARTS TROLLEY.

Lot No. **202**

1 x Parts trolley with drawers. Approx 700 mm x 500 mm x 1.1 m high. Lift out: £25.

Click on the link below to view more info/images and see current bid price

<https://www.bidspotter.co.uk/en-gb/auction-catalogues/food-machinery-2000/catalogue-id-fo10122/lot-488429f6-9f03-43b5-801f-b04b00d66ec0f>

Online auction closing WEDS 20 SEPTEMBER 2023 - DESSERT PRODUCTION FACILITY



UNITECH STAINLESS STEEL TABLE.

Lot No. **203**

1 x Unitech s/s table approx. 1.5 m x 600 mm. Lift out: £25.

Click on the link below to view more info/images and see current bid price

<https://www.bidspotter.co.uk/en-gb/auction-catalogues/food-machinery-2000/catalogue-id-fo10122/lot-eeb4c4e4-7257-4c61-a03e-b05a00f246f0>



STAINLESS STEEL TABLE.

Lot No. **204**
1 x S/s table approx. 600 mm x 600 mm. With 2-shelves underneath. Lift out: £25.

Click on the link below to view more info/images and see current bid price
<https://www.bidspotter.co.uk/en-gb/auction-catalogues/food-machinery-2000/catalogue-id-fo10122/lot-4dd94935-6f91-4b3c-8f68-b05a00f26f74>



STAINLESS STEEL TABLE.

Lot No. **205**
1 x S/s table with shelf underneath. Approx. 500 mm x 500 mm. Lift out: £25.

Click on the link below to view more info/images and see current bid price
<https://www.bidspotter.co.uk/en-gb/auction-catalogues/food-machinery-2000/catalogue-id-fo10122/lot-36ac9a64-3941-4127-9e8e-b05a00f2d659>



STAINLESS STEEL TABLE.

Lot No. **206**
1 x S/s table approx. 850 mm x 750 mm. Lift out: £25.

Click on the link below to view more info/images and see current bid price
<https://www.bidspotter.co.uk/en-gb/auction-catalogues/food-machinery-2000/catalogue-id-fo10122/lot-a829383e-7733-407c-bde2-b05a00f31e28>



STAINLESS STEEL TABLE.

Lot No. **207**
1 x S/s table approx. 900 mm x 650 mm. Lift out: £25.

Click on the link below to view more info/images and see current bid price
<https://www.bidspotter.co.uk/en-gb/auction-catalogues/food-machinery-2000/catalogue-id-fo10122/lot-a829383e-a0f6-46b6-9e4c-b05a00f34825>



STAINLESS STEEL TABLE.

Lot No. **208**
1 x S/s table with shelf. Approx. 2 m x 1 m. Lift out: £25.

Click on the link below to view more info/images and see current bid price
<https://www.bidspotter.co.uk/en-gb/auction-catalogues/food-machinery-2000/catalogue-id-fo10122/lot-f7034780-ffad-4b11-9f8d-b05a00f38cf0>



STAINLESS STEEL TABLE.

Lot No. **209**
1 x S/s table. Approx. 900 mm x 600 mm. Lift out: £25.

Click on the link below to view more info/images and see current bid price
<https://www.bidspotter.co.uk/en-gb/auction-catalogues/food-machinery-2000/catalogue-id-fo10122/lot-c124271-b28c-428c-9832-b05a00f3f2bc>



STAINLESS STEEL TABLE.

Lot No. **210**
1 x S/s table approx. 900 mm x 600 mm. Lift out: £25.

Click on the link below to view more info/images and see current bid price
<https://www.bidspotter.co.uk/en-gb/auction-catalogues/food-machinery-2000/catalogue-id-fo10122/lot-bf82471-9fe7-4c9e-8b5c-b05a00f434d7>



STAINLESS STEEL TABLE.

Lot No. **211**
1 x S/s table approx. 900 mm x 650 mm. Lift out: £25.

Click on the link below to view more info/images and see current bid price
<https://www.bidspotter.co.uk/en-gb/auction-catalogues/food-machinery-2000/catalogue-id-fo10122/lot-b3828718-9802-4161-8f20-b05a00f49047>



STAINLESS STEEL TABLE.

Lot No. **212**

1 x S/s table approx. 1.2 m x 480 mm. With lip on long side. Lift out: £25.

Click on the link below to view more info/images and see current bid price
<https://www.bidspotter.co.uk/en-gb/auction-catalogues/food-machinery-2000/catalogue-id-fo10122/lot-e1a31231-3965-422f-ac08-b05a00f4c6f5>



STAINLESS STEEL TABLE.

Lot No. **213**

1 x S/s table approx. 600 mm x 600 mm. Lift out: £25.

Click on the link below to view more info/images and see current bid price
<https://www.bidspotter.co.uk/en-gb/auction-catalogues/food-machinery-2000/catalogue-id-fo10122/lot-bb292bd6-2932-4c05-b7dd-b05a00f57a4f>



STAINLESS STEEL TABLE.

Lot No. **214**

1 x S/s table approx. 600 mm x 600 mm. With shelf underneath. Lift out: £25.

Click on the link below to view more info/images and see current bid price
<https://www.bidspotter.co.uk/en-gb/auction-catalogues/food-machinery-2000/catalogue-id-fo10122/lot-af6da725-29df-4f28-89fb-b05a00f5af41>



5 X CHEQUER PLATE SINGLE STEPS.

Lot No. **215**

5 x Chequer plate single low steps. Various sizes. Approx. 400 mm x 700 mm x 200 mm high. the highest is 250 mm high. Lift out: £15.

Click on the link below to view more info/images and see current bid price
<https://www.bidspotter.co.uk/en-gb/auction-catalogues/food-machinery-2000/catalogue-id-fo10122/lot-c92adf25-50ac-46cc-a311-b05a00f87d75>

Online auction closing WEDS 20 SEPTEMBER 2023 - DESSERT PRODUCTION FACILITY



POLAR TWIN DOOR S/S FRIDGE.

Lot No. **216**

1 x Polar twin door all s/s mobile fridge approx. 1.3 m x 800 mm x 2.1 m high. Lift out: £40

Click on the link below to view more info/images and see current bid price
<https://www.bidspotter.co.uk/en-gb/auction-catalogues/food-machinery-2000/catalogue-id-fo10122/lot-a387c870-48ab-4a78-a0b0-b05a00f5ff39>

Online auction closing WEDS 20 SEPTEMBER 2023 - DESSERT PRODUCTION FACILITY



REFRIGERATED DISPLAY CABINET.

Lot No. **217**

1 x Refrigerated display cabinet approx. 1.3 m x 700 mm x 1.8 m high. Lift out: £40

Click on the link below to view more info/images and see current bid price
<https://www.bidspotter.co.uk/en-gb/auction-catalogues/food-machinery-2000/catalogue-id-fo10122/lot-ed6d4efe-c2ff-4071-bada-b05a00f638e9>

Online auction closing WEDS 20 SEPTEMBER 2023 - DESSERT PRODUCTION FACILITY



TRUE SINGLE DOOR FRIDGE.

Lot No. **218**

1 x S/s True s/s single door mobile fridge. Approx. 700 mm x 630 mm x 2.1 m high. Lift out: £35

Click on the link below to view more info/images and see current bid price
<https://www.bidspotter.co.uk/en-gb/auction-catalogues/food-machinery-2000/catalogue-id-fo10122/lot-770e9464-21dd-4380-b72b-b05a00f6e735>

Online auction closing WEDS 20 SEPTEMBER 2023 - DESSERT PRODUCTION FACILITY



DISPLAY FRIDGE.

Lot No. **219**

1 x Display fridge approx. 950 mm x 600 mm x 2.1 m. Lift out: £35

Click on the link below to view more info/images and see current bid price
<https://www.bidspotter.co.uk/en-gb/auction-catalogues/food-machinery-2000/catalogue-id-fo10122/lot-cd8b0635-ad62-43b8-8670-b05a00f6f909>



DISPLAY FRIDGE.

Lot No. **220**

1 x Display fridge s/s. Approx. 1.2 m x 750 mm x 1.2 m high. Lift out: £35

Click on the link below to view more info/images and see current bid price
<https://www.bidspotter.co.uk/en-gb/auction-catalogues/food-machinery-2000/catalogue-id-fo10122/lot-8f22e690-fc04-4944-8692-b05a00f72466>

ICE CREAM DISPLAY FREEZER.

Lot No. **221**

1 x Ice cream display freezer approx. 800 mm x 600 mm x 850 mm high. Lift out: £65

Click on the link below to view more info/images and see current bid price
<https://www.bidspotter.co.uk/en-gb/auction-catalogues/food-machinery-2000/catalogue-id-fo10122/lot-c2c19d98-072c-4e2d-850f-b05a010a5cf1>



PIETROBERTO MIXER.

Lot No. **222**

1 x Pietroberto mixer. IBT160. With 2 removable s/s bowls. Fully s/s guarded. Dims approx. 1.2 m x 850 mm x 1.9 m. Diameter of bowls 830 mm x 500 mm deep. Lift out: £200

Click on the link below to view more info/images and see current bid price
<https://www.bidspotter.co.uk/en-gb/auction-catalogues/food-machinery-2000/catalogue-id-fo10122/lot-cc2878e6-c965-4069-8a81-b06700962788>



SINMAG EUROPE MIXER.

Lot No. **223**

1 x Sinmag Europe 80 quart mixer. Approx. 1.1 m x 800 mm x 1.6 m high. With 2 bowls. Bowl dimensions approx. 500 mm diameter x 530 mm deep. With bowl trolley. With whisk, hook and beater. Lift out: £150

Click on the link below to view more info/images and see current bid price
<https://www.bidspotter.co.uk/en-gb/auction-catalogues/food-machinery-2000/catalogue-id-fo10122/lot-428401fd-585c-4409-9edb-b067009721e5>



KIBBLE MACHINE.

Lot No. **224**

1 x Noone Engineering kibble machine. Foot operated. Overall dimensions approx. 1.7 m x 1 m. Lift out: £150

Click on the link below to view more info/images and see current bid price
<https://www.bidspotter.co.uk/en-gb/auction-catalogues/food-machinery-2000/catalogue-id-fo10122/lot-6bbf6476-7762-4e79-9595-b06700979991>



FLIGHTED BELT CONVEYOR.

Lot No. **225**

1 x All s/s mobile Incline flighted belt conveyor. Blue neoprene belt, With 200 mm pitch flights. Overall belt width 400 mm. Infeed 300 mm. Outfeed 1.8 m. Lift out: £150

Click on the link below to view more info/images and see current bid price
<https://www.bidspotter.co.uk/en-gb/auction-catalogues/food-machinery-2000/catalogue-id-fo10122/lot-0ec70376-6f6b-41b7-9f2d-b06700984405>



S/S STORAGE BIN HOPPER.

Lot No. **226**

1 x S/s storage bin hopper. Approx. 1.1 m x 1.1 m x 1.45 m. Inside 1 m x 1 m x 800 mm high. Forkliftable. Lift out: £80

Click on the link below to view more info/images and see current bid price
<https://www.bidspotter.co.uk/en-gb/auction-catalogues/food-machinery-2000/catalogue-id-fo10122/lot-bcc4758c-919c-4799-8691-b0670098e380>



STORAGE HOPPER.

Lot No. **226a**

1 x S/s storage bin hopper. Approx. 1.1 m x 1.1 m x 1.45 m. Inside 1 m x 1 m x 800 mm high. Forkliftable. Lift out: £80

Click on the link below to view more info/images and see current bid price
<https://www.bidspotter.co.uk/en-gb/auction-catalogues/food-machinery-2000/catalogue-id-fo10122/lot-18d9d558-3542-4479-992c-b06700998e8f>



STORAGE HOPPER.

Lot No. **226b**

1 x S/s storage bin hopper. Approx. 1.1 m x 1.1 m x 1.45 m. Inside 1 m x 1 m x 800 mm high. Forkliftable. Lift out: £80

Click on the link below to view more info/images and see current bid price

<https://www.bidspotter.co.uk/en-gb/auction-catalogues/food-machinery-2000/catalogue-id-fo10122/lot-b648bcd-2f07-4357-ab26-b0670099b1af>



STORAGE HOPPER.

Lot No. **226c**

1 x S/s storage bin hopper. Approx. 1.1 m x 1.1 m x 1.45 m. Inside 1 m x 1 m x 800 mm high. Forkliftable. Lift out: £80

Click on the link below to view more info/images and see current bid price

<https://www.bidspotter.co.uk/en-gb/auction-catalogues/food-machinery-2000/catalogue-id-fo10122/lot-d0c6d0f9-67e4-438c-8524-b0670099b33a>



BUTCHER BOY PADDLE MIXER.

Lot No. **227**

1 x Butcher Boy 250N single shaft paddle mixer. Mobile. Dimensions approx. 1.3 m x 700 mm x 950 mm. Hopper is 800 mm x 500 mm x 600 mm deep. Lift out: £100

Click on the link below to view more info/images and see current bid price

<https://www.bidspotter.co.uk/en-gb/auction-catalogues/food-machinery-2000/catalogue-id-fo10122/lot-d0c6d0f9-67e4-438c-8524-b0670099b33a>



RUSSELL FINEX SIEVE.

Lot No. **228**

1 x Russell Finex sieve model SM602-1S. Diameter approx. 600 mm. Overall dims approx. 900 mm x 700 mm. Lift out: £150

Click on the link below to view more info/images and see current bid price

<https://www.bidspotter.co.uk/en-gb/auction-catalogues/food-machinery-2000/catalogue-id-fo10122/lot-bfb6fd19-382d-435a-8c9d-b067009c3d00>

Online auction closing WEDS 20 SEPTEMBER 2023 - DESSERT PRODUCTION FACILITY



PASTA MIXER.

Lot No. **229**

1 x Single shaft s/s pasta mixer. With forward and reverse mixing. Overall dims approx. 1m x 700 mm. Mixer size approx. 450 mm x 740 mm x 550 mm deep. Lift out: £100

Click on the link below to view more info/images and see current bid price
[https://www.bidspotter.co.uk/en-gb/auction-catalogues/food-machinery-2000/catalogue-id-fo10122/lot-2faa0cec-
ea21-46ce-8fc3-b067009cee0a](https://www.bidspotter.co.uk/en-gb/auction-catalogues/food-machinery-2000/catalogue-id-fo10122/lot-2faa0cec-
ea21-46ce-8fc3-b067009cee0a)

Online auction closing WEDS 20 SEPTEMBER 2023 - DESSERT PRODUCTION FACILITY



FRICREMA PASTEURISER. BRAND NEW YEAR 2020.

Lot No. **230**

1 x Fricrema PC110 Pasteuriser for cooking sauces like custards etc. Year 2020. Electrically heated. Dimensions approx. 800 mm x 1 m. Front end discharge. Diameter of pan is 550 mm x 500 mm deep. Lift out: £150 see spec [https://www.maincomiranda.com/es/Ficha/pasteurizadores/Fricrema_PC110/Pasteurizador%20\(Cream%20Cooker%20-%20Cuece%20Cremas\)-Fricrema-PC110](https://www.maincomiranda.com/es/Ficha/pasteurizadores/Fricrema_PC110/Pasteurizador%20(Cream%20Cooker%20-%20Cuece%20Cremas)-Fricrema-PC110)

Click on the link below to view more info/images and see current bid price
[https://www.bidspotter.co.uk/en-gb/auction-catalogues/food-machinery-2000/catalogue-id-fo10122/lot-6d330a86-
0e8-45c3-a93c-b067009d9ba](https://www.bidspotter.co.uk/en-gb/auction-catalogues/food-machinery-2000/catalogue-id-fo10122/lot-6d330a86-
0e8-45c3-a93c-b067009d9ba)

Online auction closing WEDS 20 SEPTEMBER 2023 - DESSERT PRODUCTION FACILITY



URSCHEL COMITROL 3600.

Lot No. **231**

1 x Urschel Comitrol. Model 3600. Approx. 700 mm x 800 mm x 1.4 m high. Lift out: £150

Click on the link below to view more info/images and see current bid price
[https://www.bidspotter.co.uk/en-gb/auction-catalogues/food-machinery-2000/catalogue-id-fo10122/lot-29096a24-
0b28-4463-bf7a-b06700a209ed](https://www.bidspotter.co.uk/en-gb/auction-catalogues/food-machinery-2000/catalogue-id-fo10122/lot-29096a24-
0b28-4463-bf7a-b06700a209ed)

Online auction closing WEDS 20 SEPTEMBER 2023 - DESSERT PRODUCTION FACILITY



KRUGER & SALECKER GFT FORMING MACHINE.

Lot No. **232**

1 x Kruger & Salecker GFT forming machine. 2015. With 3 sets of dies. Currently set up with 14 across doing a round ball. Overall dimensions approx. 1.7 m x 1.4 x 1.9 m high. Outfeed belt 430 mm. Lift out: £200

Click on the link below to view more info/images and see current bid price
[https://www.bidspotter.co.uk/en-gb/auction-catalogues/food-machinery-2000/catalogue-id-fo10122/lot-29096a24-
0b28-4463-bf7a-b06700a209ed](https://www.bidspotter.co.uk/en-gb/auction-catalogues/food-machinery-2000/catalogue-id-fo10122/lot-29096a24-
0b28-4463-bf7a-b06700a209ed)

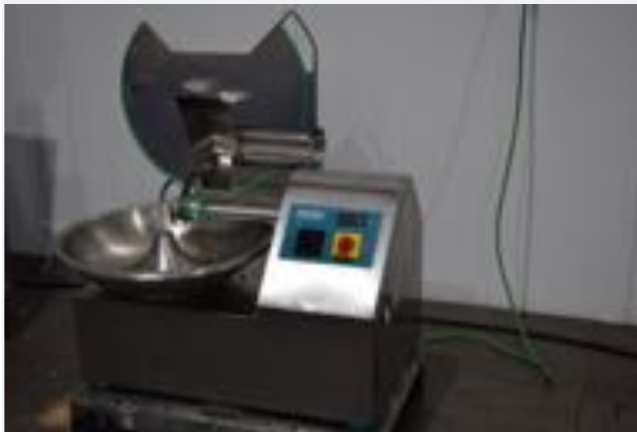


CHOCOLAND MACHINE.

Lot No. **233**

1 x Chocoland machine Model MMC 400. Belt width 400mm wide. With a non-stick hopper for sticky products. Lift out: £200

Click on the link below to view more info/images and see current bid price
<https://www.bidspotter.co.uk/en-gb/auction-catalogues/food-machinery-2000/catalogue-id-fo10122/lot-f551131b-67d9-4a41-af5a-b06700a45ce7>



TALSA 15 LITRE BOWL CHOPPER.

Lot No. **234**

1 x Talsa 15 litre bowl chopper. All s/s. 3-knife assembly. All s/s with s/s bowl. Approx. 900 x 500 mm x 550 mm. Lift out: £100

Click on the link below to view more info/images and see current bid price
<https://www.bidspotter.co.uk/en-gb/auction-catalogues/food-machinery-2000/catalogue-id-fo10122/lot-39c33809-4c6a-4594-a02a-b06700a272b1>



WINKWORTH MIXER MODEL UT1000.

Lot No. **235**

1 x Winkworth mixer model UT1000. Previously sat on a gantry but can be floor standing. Dimensions approx. 1.1 m x 2.5 m x 1.8 m high. Lift out: £300

Click on the link below to view more info/images and see current bid price
<https://www.bidspotter.co.uk/en-gb/auction-catalogues/food-machinery-2000/catalogue-id-fo10122/lot-49c33809-be66-4b55-b910-b06700a3cf49>

SVEBA DAHLEN MODEL V52 3-RACK OVEN.

Lot No. **236**

1 x Sveba Dahlen 3-rack oven. Model V52. With steam injection, gas fired, with ramp. Dimensions approx. 2.5 m wide x 2 m deep x 2.4 m high. Lift out: £500 Click on the Manufacture website to get more spec <https://sveba.com/en/products/ovens/rotating-rack-oven-v-series>

Click on the link below to view more info/images and see current bid price
<https://www.bidspotter.co.uk/en-gb/auction-catalogues/food-machinery-2000/catalogue-id-fo10122/lot-400b4e9f-2583-49da-8bea-b06700a550ee>

Online auction closing WEDS 20 SEPTEMBER 2023 - DESSERT PRODUCTION FACILITY



2 X S/S TROLLEYS.

Lot No. **236a**
2 x S/s trolleys. Capable of holding 18 perforated trays. Lift out: £50

Click on the link below to view more info/images and see current bid price
<https://www.bidspotter.co.uk/en-gb/auction-catalogues/food-machinery-2000/catalogue-id-fo10122/lot-b7fef718-53e0-47f0-8ddd-b06700a5ffa3>

Online auction closing WEDS 20 SEPTEMBER 2023 - DESSERT PRODUCTION FACILITY



2 X S/S TROLLEYS.

Lot No. **236b**
2 x S/s trolleys. Capable of holding 18 perforated trays. Lift out: £50

Click on the link below to view more info/images and see current bid price
<https://www.bidspotter.co.uk/en-gb/auction-catalogues/food-machinery-2000/catalogue-id-fo10122/lot-258bcd992-6998-45d2-b963-b06700a62f04>

Online auction closing WEDS 20 SEPTEMBER 2023 - DESSERT PRODUCTION FACILITY



2 X S/S TROLLEYS.

Lot No. **236c**
2 x S/s trolleys capable of taking 35 trays. Lift out: £50

Click on the link below to view more info/images and see current bid price
<https://www.bidspotter.co.uk/en-gb/auction-catalogues/food-machinery-2000/catalogue-id-fo10122/lot-80426d992-3069-48f7-8ffa-b06700a6951a>

Online auction closing WEDS 20 SEPTEMBER 2023 - DESSERT PRODUCTION FACILITY



2 X S/S TROLLEYS.

Lot No. **236d**
2 x S/s trolleys capable of taking 35 trays. Lift out: £50

Click on the link below to view more info/images and see current bid price
<https://www.bidspotter.co.uk/en-gb/auction-catalogues/food-machinery-2000/catalogue-id-fo10122/lot-7a177066-6ade-4b96-98f4-b06700a6afb8>



2 X S/S TROLLEYS.

Lot No. **236e**
2 x S/s trolleys capable of taking 35 trays. Lift out: £50

Click on the link below to view more info/images and see current bid price
<https://www.bidspotter.co.uk/en-gb/auction-catalogues/food-machinery-2000/catalogue-id-fo10122/lot-b03e502b-166d-4c56-b2b8-b06700a6c8f4>



2 X S/S TROLLEYS.

Lot No. **236f**
2 x S/s trolleys capable of taking 35 trays. Lift out: £50

Click on the link below to view more info/images and see current bid price
<https://www.bidspotter.co.uk/en-gb/auction-catalogues/food-machinery-2000/catalogue-id-fo10122/lot-d8cf5a6a-9c9e-475e-a11a-b06700a6e5f3>



INGERSOLL RAND AIR COMPRESSOR.

Lot No. **237**
1 x Ingersoll Rand air compressor. Model R5 5I UD-SD. Overall dims approx. 1.4 m x 550 mm x 1.2 m. Lift out: £80

Click on the link below to view more info/images and see current bid price
<https://www.bidspotter.co.uk/en-gb/auction-catalogues/food-machinery-2000/catalogue-id-fo10122/lot-d0403783-e2e6-4d17-a3ab-b06700a75165>



NUT CUTTER.

Lot No. **238**
1 x Nut cutter. Particle size is fully adjustable. On s/s frame. Approx. 600 mm x 700 mm x 1.5 m high. Lift out: £80

Click on the link below to view more info/images and see current bid price
<https://www.bidspotter.co.uk/en-gb/auction-catalogues/food-machinery-2000/catalogue-id-fo10122/lot-e90b3d31-ac80-4209-8e64-b06700a8886a>

Online auction closing WEDS 20 SEPTEMBER 2023 - DESSERT PRODUCTION FACILITY



2 X S/S 200 LITRE TOTE BINS.

Lot No. **239**
2 x S/s 200 litre tote bins.Lift out: £50

Click on the link below to view more info/images and see current bid price
<https://www.bidspotter.co.uk/en-gb/auction-catalogues/food-machinery-2000/catalogue-id-fo10122/lot-19a3d90f-5c46-4b69-9e37-b06700a9a6b0>

Online auction closing WEDS 20 SEPTEMBER 2023 - DESSERT PRODUCTION FACILITY



KIBBLE UNIT.

Lot No. **240**
1 x Kibble unit mounted on s/s frame. Overall dimensions approx. 1.2 m x 700 mm. Grate size 800 mm x 450 mm. Lift out: £50

Click on the link below to view more info/images and see current bid price
<https://www.bidspotter.co.uk/en-gb/auction-catalogues/food-machinery-2000/catalogue-id-fo10122/lot-ef2fb21c-29c6-41fb-ba35-b06700a9ec4b>

Online auction closing WEDS 20 SEPTEMBER 2023 - DESSERT PRODUCTION FACILITY



STAR UNIVERSAL MKV1 SEALER.

Lot No. **241**
1 x Star Universal model MKV1 sealer. Sealing bars 700 mm. Overall dimensions 700 mm x 700 mm x 1.5 m high. Lift out: £80

Click on the link below to view more info/images and see current bid price
<https://www.bidspotter.co.uk/en-gb/auction-catalogues/food-machinery-2000/catalogue-id-fo10122/lot-6a25ec64-d68f-42c1-946d-b06700a93d35>

Online auction closing WEDS 20 SEPTEMBER 2023 - DESSERT PRODUCTION FACILITY



S/S TABLE.

Lot No. **242**
1 x S/s table approx. 1.8 m x 600 mm.Lift out: £50

Click on the link below to view more info/images and see current bid price
<https://www.bidspotter.co.uk/en-gb/auction-catalogues/food-machinery-2000/catalogue-id-fo10122/lot-a29af144-8a74-4259-9e05-b06700aa3886>



CITIZEN LABEL PRINTER.

Lot No. **243**
1 x Citizen label printer. Lift out: £40

Click on the link below to view more info/images and see current bid price
<https://www.bidspotter.co.uk/en-gb/auction-catalogues/food-machinery-2000/catalogue-id-fo10122/lot-35185989-dbfa-47e3-aaec-b06700c9cbcd>



SCALE.

Lot No. **244**
1 x Howard instruments scale. Lift out: £40

Click on the link below to view more info/images and see current bid price
<https://www.bidspotter.co.uk/en-gb/auction-catalogues/food-machinery-2000/catalogue-id-fo10122/lot-11846c6e-324e-4039-b737-b06700ca2918>



CELY SCALE.

Lot No. **245**
1 x Cely scale. Max weight 3kg min 20g. Lift out: £40

Click on the link below to view more info/images and see current bid price
<https://www.bidspotter.co.uk/en-gb/auction-catalogues/food-machinery-2000/catalogue-id-fo10122/lot-37ae0d01-a68e-4afa-8b8d-b06700ca5e24>



JADEVER SCALE.

Lot No. **246**
1 x Jadever scale model JWP. Lift out: £40

Click on the link below to view more info/images and see current bid price
<https://www.bidspotter.co.uk/en-gb/auction-catalogues/food-machinery-2000/catalogue-id-fo10122/lot-f32f2484-5e24-4daa-becd-b06700ca91d5>



STICK BLENDER.

Lot No. **247**
1 x Stick blender. Lift out: £40

Click on the link below to view more info/images and see current bid price
<https://www.bidspotter.co.uk/en-gb/auction-catalogues/food-machinery-2000/catalogue-id-fo10122/lot-7d8b9c30-c4fd-4ef7-aeb3-b06700cad255>



FLEXICON TRANSFER SYSTEM.

Lot No. **248**
1 x Flexicon transfer system. Lift out: £50

Click on the link below to view more info/images and see current bid price
<https://www.bidspotter.co.uk/en-gb/auction-catalogues/food-machinery-2000/catalogue-id-fo10122/lot-5710301c-f6e5-4419-a853-b06700cb8cc7>



STEAM CLEANER.

Lot No. **249**
1 x Steam cleaner model comby 3500. Mobile. Lift out: £50

Click on the link below to view more info/images and see current bid price
<https://www.bidspotter.co.uk/en-gb/auction-catalogues/food-machinery-2000/catalogue-id-fo10122/lot-a4014d8c-b65c-49e0-ba49-b06800aa4a94>



FLOOR SCRUBBER.

Lot No. **250**
1 x Ghibli Floor scrubber model round touch 45. Lift out: £50

Click on the link below to view more info/images and see current bid price
<https://www.bidspotter.co.uk/en-gb/auction-catalogues/food-machinery-2000/catalogue-id-fo10122/lot-b132f7c9-eb96-46bb-9615-b06800abcc79>

Online auction closing WEDS 20 SEPTEMBER 2023 - DESSERT PRODUCTION FACILITY



4 X BAKING TROLLEYS.

Lot No. **274**

4 x S/s baking trolleys holds 40 x baking trays which are 18" x 30" trays. Lift out:£55

Click on the link below to view more info/images and see current bid price
<https://www.bidspotter.co.uk/en-gb/auction-catalogues/food-machinery-2000/catalogue-id-fo10122/lot-9d1484e4-90ea-4d0e-a171-b06700e44a03>

Online auction closing WEDS 20 SEPTEMBER 2023 - DESSERT PRODUCTION FACILITY



4 X BAKING TROLLEYS.

Lot No. **275**

4 x S/s baking trolleys holds 40 x baking trays which are 18" x 30" trays. Lift out:£55

Click on the link below to view more info/images and see current bid price
<https://www.bidspotter.co.uk/en-gb/auction-catalogues/food-machinery-2000/catalogue-id-fo10122/lot-863651e6-04e7-4062-8fe9-b06700e477b7>

Online auction closing WEDS 20 SEPTEMBER 2023 - DESSERT PRODUCTION FACILITY



4 X BAKING TROLLEYS.

Lot No. **276**

4 x S/s baking trolleys holds 40 x baking trays which are 18" x 30" trays. Lift out:£55

Click on the link below to view more info/images and see current bid price
<https://www.bidspotter.co.uk/en-gb/auction-catalogues/food-machinery-2000/catalogue-id-fo10122/lot-2530e859-5c91-452f-ba57-b06700e4a8e8>

Online auction closing WEDS 20 SEPTEMBER 2023 - DESSERT PRODUCTION FACILITY



4 X BAKING TROLLEYS.

Lot No. **277**

4 x S/s baking trolleys holds 40 x baking trays which are 18" x 30" trays. Lift out:£55

Click on the link below to view more info/images and see current bid price
<https://www.bidspotter.co.uk/en-gb/auction-catalogues/food-machinery-2000/catalogue-id-fo10122/lot-0af58bae-47e4-4b93-a570-b06700e4d50b>

Online auction closing WEDS 20 SEPTEMBER 2023 - DESSERT PRODUCTION FACILITY



4 X BAKING TROLLEYS.

Lot No. **278**

4 x S/s baking trolleys holds 40 x baking trays which are 18" x 30" trays. Lift out:£55

Click on the link below to view more info/images and see current bid price
<https://www.bidspotter.co.uk/en-gb/auction-catalogues/food-machinery-2000/catalogue-id-fo10122/lot-fc863348-7e9a-47d5-9f5f-b06700e3d339>

Online auction closing WEDS 20 SEPTEMBER 2023 - DESSERT PRODUCTION FACILITY



4 X BAKING TROLLEYS.

Lot No. **279**

4 x S/s baking trolleys holds 40 x baking trays which are 18" x 30" trays. Lift out:£55

Click on the link below to view more info/images and see current bid price
<https://www.bidspotter.co.uk/en-gb/auction-catalogues/food-machinery-2000/catalogue-id-fo10122/lot-2e6f76d9-352f-4362-af93-b06700e3fb17>

Online auction closing WEDS 20 SEPTEMBER 2023 - DESSERT PRODUCTION FACILITY



4 X BAKING TROLLEYS.

Lot No. **280**

4 x S/s baking trolleys holds 40 x baking trays which are 18" x 30" trays. Lift out:£55

Click on the link below to view more info/images and see current bid price
<https://www.bidspotter.co.uk/en-gb/auction-catalogues/food-machinery-2000/catalogue-id-fo10122/lot-1a1f165d-fb44-442b-809f-b06700e4237c>

Online auction closing WEDS 20 SEPTEMBER 2023 - DESSERT PRODUCTION FACILITY



COMPLETE BOTTLING LINE.

Lot No. **290**

1 x Complete Pack Leader bottling line. Line consists RT-1000 1 metre rotary in-feed table, FL-12 twin head filling machine with 150ml cylinders, CP-10 semi auto capping machine, PL-501 wraparound labelling machine, ELF-11 top mounted labeller for applying a top label. Lift out: £500

Click on the link below to view more info/images and see current bid price
<https://www.bidspotter.co.uk/en-gb/auction-catalogues/food-machinery-2000/catalogue-id-fo10122/lot-282b50d5-5633-44ab-b41a-b06d00a20eb1>



PALLET OF HAND SANITISERS.

Lot No. **291**
1 x Pallet of GB CBG sanitiser 50mls bottles = 12720 units. Lift out: £75

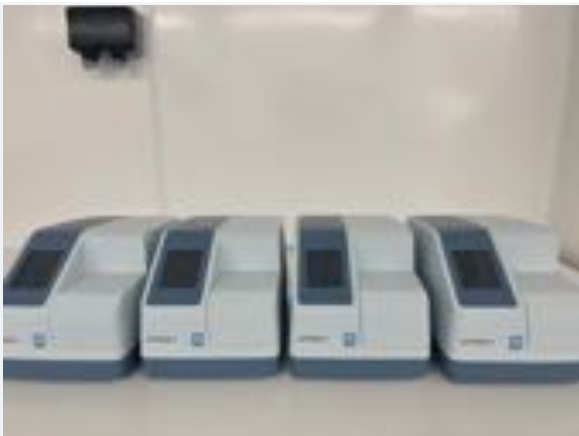
Click on the link below to view more info/images and see current bid price
<https://www.bidspotter.co.uk/en-gb/auction-catalogues/food-machinery-2000/catalogue-id-fo10122/lot-dd2b6545-eb51-496f-ad90-b06d010e1684>



4 X ABBOTT AFINION ANALYSER.

Lot No. **292**
4 x Abbott Afinion Analyser 2 - Point of Care Analyser.HbA1c, Lipid Panel, ACR, and CRP testing device. Lift out: £45

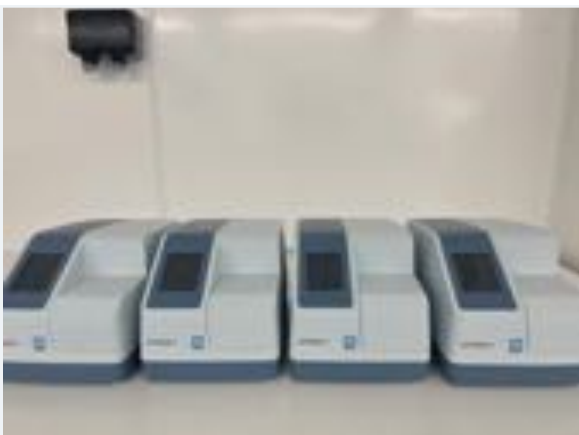
Click on the link below to view more info/images and see current bid price
<https://www.bidspotter.co.uk/en-gb/auction-catalogues/food-machinery-2000/catalogue-id-fo10122/lot-19419783-79b7-45c0-98d4-b06d010f73be>



4 X ABBOTT AFINION ANALYSER 2.

Lot No. **293**
4 x Abbott Afinion Analyser 2 - Point of Care Analyser.HbA1c, Lipid Panel, ACR, and CRP testing device. Lift out: £45

Click on the link below to view more info/images and see current bid price
<https://www.bidspotter.co.uk/en-gb/auction-catalogues/food-machinery-2000/catalogue-id-fo10122/lot-3ea52a18-f7e3-45bb-83bd-b06d010fcd65>



4 X ABBOTT AFINION ANALYSER 2.

Lot No. **294**
4 x Abbott Afinion Analyser 2 - Point of Care Analyser.HbA1c, Lipid Panel, ACR, and CRP testing device. Lift out: £45

Click on the link below to view more info/images and see current bid price
<https://www.bidspotter.co.uk/en-gb/auction-catalogues/food-machinery-2000/catalogue-id-fo10122/lot-eafbf195-d1ca-428e-b7d1-b06d011012fd>



4 X ABBOTT AFINION ANALYSER 2.

Lot No. **295**

4 x Abbott Afinion Analyser 2 - Point of Care Analyser.HbA1c, Lipid Panel, ACR, and CRP testing device. Lift out: £45

Click on the link below to view more info/images and see current bid price

<https://www.bidspotter.co.uk/en-gb/auction-catalogues/food-machinery-2000/catalogue-id-fo10122/lot-671a7818-7276-47a8-bace-b06d01105ae7>



INDUSTRIAL WASHING MACHINE.

Lot No. **295a**

1 x Industrial washing machine for trays and crates. Approx.4000mm long x1400mm wide x 1900mm high year 2021made by Lynmoore engineering. Lift out: £600

Click on the link below to view more info/images and see current bid price

<https://www.bidspotter.co.uk/en-gb/auction-catalogues/food-machinery-2000/catalogue-id-fo10122/lot-35d42988-d69b-4c36-ad44-b07400bebb9a>



FONDANT DEPOSITOR.

Lot No. **295b**

1 x Fondant depositor. Deposits 6 across and 9 across.The fondant depositor can sit above an indexing conveyor or you can deposit by hand using a foot pedal to activate the deposit strokes it can deposit up to 30 strokes per minute.Deposit configuration is as follows:1) 6-across large Bakewell tarts weight from 10g to 150g and 2) 9-across small bakewell tarts or cakes weight from 10g to 90g. Dimensions approx. 208 cm l x 80 cm wide x 180 cm high. Lift out: £200

Click on the link below to view more info/images and see current bid price

<https://www.bidspotter.co.uk/en-gb/auction-catalogues/food-machinery-2000/catalogue-id-fo10122/lot-c35d3d66-e4ba-4466-9efa-b07a0082b080>



JACOB WHITE BOX PACKING MACHINE.

Lot No. **296**

1 x Jacob White box packing machine. Model RSB3. Approx. 4500mm long x 1400mm wide x. 1400 mm high. Liftout: £450

Click on the link below to view more info/images and see current bid price

<https://www.bidspotter.co.uk/en-gb/auction-catalogues/food-machinery-2000/catalogue-id-fo10122/lot-296819a5-fb61-49d1-92af-b06f00d058fb>

Online auction closing WEDS 20 SEPTEMBER 2023 - DESSERT PRODUCTION FACILITY



RECORD PANDA 2000 FLOWWRAPPER.

Lot No. **297**

1 x Record Panda 2000 flowrapper. Approx.510mm long x 1200mm wide x 1400mm high.Lift out: £450 video of the machine running https://youtube.com/shorts/rvXG4R_6FeQ

Click on the link below to view more info/images and see current bid price
<https://www.bidspotter.co.uk/en-gb/auction-catalogues/food-machinery-2000/catalogue-id-fo10122/lot-cbd34bc9-6cd3-42f1-9367-b06f00d0f43c>

Online auction closing WEDS 20 SEPTEMBER 2023 - DESSERT PRODUCTION FACILITY



FARLEY GREEN SIEVE.

Lot No. **298**

1 x Farley Green sieve. Lift out: £120

Click on the link below to view more info/images and see current bid price
<https://www.bidspotter.co.uk/en-gb/auction-catalogues/food-machinery-2000/catalogue-id-fo10122/lot-cbd34bc9-6cd3-42f1-9367-b06f00d0f43c>

Online auction closing WEDS 20 SEPTEMBER 2023 - DESSERT PRODUCTION FACILITY



200 LITRE MIXER.

Lot No. **299**

1 x 200 litre mixer. Lift out: £180

Click on the link below to view more info/images and see current bid price
<https://www.bidspotter.co.uk/en-gb/auction-catalogues/food-machinery-2000/catalogue-id-fo10122/lot-b2132459-7477-47de-abdd-b06f010557c9>

Online auction closing WEDS 20 SEPTEMBER 2023 - DESSERT PRODUCTION FACILITY



2 X RACKS.

Lot No. **300**

2 x Racks. Full details to follow. Lift out: £60

Click on the link below to view more info/images and see current bid price
<https://www.bidspotter.co.uk/en-gb/auction-catalogues/food-machinery-2000/catalogue-id-fo10122/lot-b2132459-7477-47de-abdd-b06f010557c9>



MAIDAID DISHWASHER.

Lot No. **301**
1 x Maidaid dishwasher. Model C2035WS. Lift out: £50.

Click on the link below to view more info/images and see current bid price
<https://www.bidspotter.co.uk/en-gb/auction-catalogues/food-machinery-2000/catalogue-id-fo10122/lot-51a26441-5a77-49e3-90c9-b07000f79a0f>



HEAT TUNNEL.

Lot No. **302**
1 x Heat tunnel. Mobile. Lift out: £50.

Click on the link below to view more info/images and see current bid price
<https://www.bidspotter.co.uk/en-gb/auction-catalogues/food-machinery-2000/catalogue-id-fo10122/lot-4f3d166e-c9a9-4563-a12a-b07300a3ccf3>



RATIONAL COMBI MASTER OVEN.

Lot No. **303**
1 x Rational combi master steam oven. Model CM 101. Can take 10 gastro trays
Lift out £80.

Click on the link below to view more info/images and see current bid price
<https://www.bidspotter.co.uk/en-gb/auction-catalogues/food-machinery-2000/catalogue-id-fo10122/lot-49032579-a8e3-4811-88d6-b07300a4cfb2>



2 X UNITECH TROLLEYS WITH GASTRO TRAYS.

Lot No. **304**
2 x Unitech trolleys with gastro trays. Lift out £60.

Click on the link below to view more info/images and see current bid price
<https://www.bidspotter.co.uk/en-gb/auction-catalogues/food-machinery-2000/catalogue-id-fo10122/lot-4907da99-2494-44cd-ac98-b07300abd00e>

Online auction closing WEDS 20 SEPTEMBER 2023 - DESSERT PRODUCTION FACILITY



2 X UNITECH TROLLEYS WITH GASTRO TRAYS.

Lot No. **305**
2 x Unitech trolleys with gastro trays. Lift out £60.

Click on the link below to view more info/images and see current bid price
<https://www.bidspotter.co.uk/en-gb/auction-catalogues/food-machinery-2000/catalogue-id-fo10122/lot-e4b1c3f3-56a5-4480-9e98-b07300ac1523>

Online auction closing WEDS 20 SEPTEMBER 2023 - DESSERT PRODUCTION FACILITY



BLUE SEAL GIRDDLE.

Lot No. **306**
1 x Blue Seal electric grill. Lift out: £60.

Click on the link below to view more info/images and see current bid price
<https://www.bidspotter.co.uk/en-gb/auction-catalogues/food-machinery-2000/catalogue-id-fo10122/lot-f46f08583-3f59-4da4-8f64-b07300a71578>

Online auction closing WEDS 20 SEPTEMBER 2023 - DESSERT PRODUCTION FACILITY



LINCAT GRIDDLE.

Lot No. **307**
1 x Lincat griddle. Lift out £60.

Click on the link below to view more info/images and see current bid price
<https://www.bidspotter.co.uk/en-gb/auction-catalogues/food-machinery-2000/catalogue-id-fo10122/lot-f15236c9-1d10-412d-bba5-b07300a7724c>

Online auction closing WEDS 20 SEPTEMBER 2023 - DESSERT PRODUCTION FACILITY



FIREX BRATT PAN.

Lot No. **308**
1 x Firex electric bratt pan. Model BR8E0801. Apporx 60 litre. Lift out £80.

Click on the link below to view more info/images and see current bid price
<https://www.bidspotter.co.uk/en-gb/auction-catalogues/food-machinery-2000/catalogue-id-fo10122/lot-dbb11eba-d5e0-4bb3-a2cd-b07300a5dcb0>



HENKELMAN VACUUM PACKER YEAR 2022.

Lot No. **309**

1 x Henkelman vacuum packer. Model Falcon 52. Year 2022. 520 mm heat seal bars. Lift out £100.

Click on the link below to view more info/images and see current bid price

<https://www.bidspotter.co.uk/en-gb/auction-catalogues/food-machinery-2000/catalogue-id-fo10122/lot-6442755d-6dca-4b3f-81d1-b07300a6c43f>



DOUBLE SINK.

Lot No. **310**

1 x Double all s/s sink. Approx. 1.6 m x 750 mm. Each bowl is 600 mm x 450 x 300 mm. Lift out £70.

Click on the link below to view more info/images and see current bid price

<https://www.bidspotter.co.uk/en-gb/auction-catalogues/food-machinery-2000/catalogue-id-fo10122/lot-1c28b5ca-db40-46cc-9c65-b07300acab2e>



S/S SINK.

Lot No. **311**

1 x Sink. Lift out £35.

Click on the link below to view more info/images and see current bid price

<https://www.bidspotter.co.uk/en-gb/auction-catalogues/food-machinery-2000/catalogue-id-fo10122/lot-f493250f-4b89-4b8c-a898-b07300acd1fe>



LINCAT FRYER.

Lot No. **312**

1 x Lincat double fryer with storage cupboard. Lift out £60.

Click on the link below to view more info/images and see current bid price

<https://www.bidspotter.co.uk/en-gb/auction-catalogues/food-machinery-2000/catalogue-id-fo10122/lot-dac9eb8f-0d39-41f3-b009-b07300ad3b59>

Online auction closing WEDS 20 SEPTEMBER 2023 - DESSERT PRODUCTION FACILITY



LINCAT HOT CHIP HOLDER.

Lot No. **313**
1 x Lincat hot chip holder with heat lamp. Lift out £50.

Click on the link below to view more info/images and see current bid price
<https://www.bidspotter.co.uk/en-gb/auction-catalogues/food-machinery-2000/catalogue-id-fo10122/lot-3208a9b3-66f2-4b30-b7cd-b07300ad87f0>

Online auction closing WEDS 20 SEPTEMBER 2023 - DESSERT PRODUCTION FACILITY



RATIONAL OVEN.

Lot No. **314**
1 x Rational self cooking centre XS oven. Model SCC XS 6 2/3 E. Lift out £80.

Click on the link below to view more info/images and see current bid price
<https://www.bidspotter.co.uk/en-gb/auction-catalogues/food-machinery-2000/catalogue-id-fo10122/lot-e958ff1f-c058-45de-8e6d-b07300ae30ac>

Online auction closing WEDS 20 SEPTEMBER 2023 - DESSERT PRODUCTION FACILITY



BOSCH OVEN.

Lot No. **315**
1 x Bosch oven. Lift out £50.

Click on the link below to view more info/images and see current bid price
<https://www.bidspotter.co.uk/en-gb/auction-catalogues/food-machinery-2000/catalogue-id-fo10122/lot-fe26d0a1-09c6-440d-844b-b07300afe7a>

Online auction closing WEDS 20 SEPTEMBER 2023 - DESSERT PRODUCTION FACILITY



ROBOT COUPE CL52.

Lot No. **316**
1 x Robot Coupe CL52. With S shape blade and grating head. Lift out £50.

Click on the link below to view more info/images and see current bid price
<https://www.bidspotter.co.uk/en-gb/auction-catalogues/food-machinery-2000/catalogue-id-fo10122/lot-fe26d0a1-09c6-440d-844b-b07300afe7a>



S/S TABLE.

Lot No. **317**
1 x S/stable approx. 1.5 m x 700 mm. Lift out £50.

Click on the link below to view more info/images and see current bid price
<https://www.bidspotter.co.uk/en-gb/auction-catalogues/food-machinery-2000/catalogue-id-fo10122/lot-d4c57422-5c31-458e-83f5-b07300b0d215>



LINCAT FRYER.

Lot No. **318**
1 x Lincat double fryer with stroage cupboard. Lift out £60.

Click on the link below to view more info/images and see current bid price
<https://www.bidspotter.co.uk/en-gb/auction-catalogues/food-machinery-2000/catalogue-id-fo10122/lot-5716c1c1-f68a-44c2-adf5-b07300b11e24>



2 X PRODIS FRIDGES.

Lot No. **319**
2 x S/s Prodis fridges. Lift out £60.

Click on the link below to view more info/images and see current bid price
<https://www.bidspotter.co.uk/en-gb/auction-catalogues/food-machinery-2000/catalogue-id-fo10122/lot-53ccddf6-fe74-452d-a7f9-b07300b63197>



2 X PRODIS FRIDGES.

Lot No. **320**
2 x Prodis fridges. Lift out £80.

Click on the link below to view more info/images and see current bid price
<https://www.bidspotter.co.uk/en-gb/auction-catalogues/food-machinery-2000/catalogue-id-fo10122/lot-b9508eea-ea0e-4e60-91e0-b07300b67718>

PRE AUCTION OFFERS CONSIDERED Everything Must Go!

Our online auctions are conducted in conjunction with Bidspotter. Using their bespoke online auction platforms. Bidders will be required to register with bidspotter prior to bidding.



IMPORTANT NOTE TO OVERSEAS BUYERS

We can arrange your shipment and complete export documentation.

BidSpotter
.co.uk

Please check the online catalogue for the most up to date information on individual lots.

£££££ WE CAN DISPOSE OF YOUR SURPLUS FOOD MACHINERY

**FOOD
MACHINERY 2000**



**FOOD MACHINERY 2000 LTD
BUYERS | SELLERS | AUCTIONEERS**

Serving the Food Industry for over



FOOD MACHINERY 2000 LIMITED
Monkspool House | The Stable |
Woolverton | BA2 7QT | UNITED KINGDOM
TEL: + 44 UK (0)1373 831 373
EMAIL: sue@foodmachinery2000.com
WEBSITE: www.foodmachinery2000.com