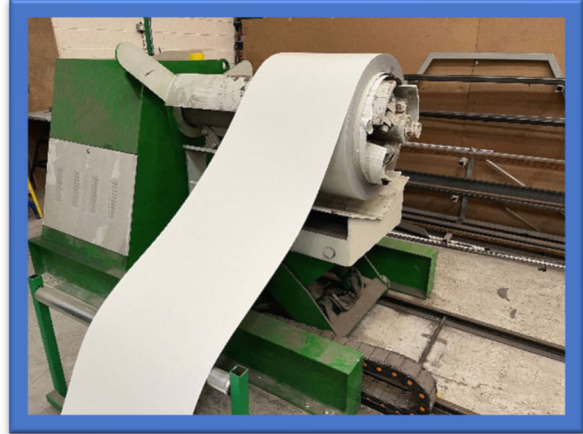


OP10

1: **BRADBURY / PUMA** Automatic Electro-Mechanical Mild Steel Sheet Roll/ Web De-coiling machine, Serial No. DUS-011-6-1, maximum roll width 1250mm, max 5 tons capacity roll. Hydraulic mandrel and lifting 0jig for loading rolls of steel. Been used to process 0.2-0.7mm painted and plastic-coated roll stock in the production of garage door sectional and fence panels.



OP20

1: **BRADBURY / PUMA** Automatic Electro-Mechanical Web Fed “Wood Grain” Embossing / “Water Ripple” Embossing Sheet Top Face Rolling Press, Serial No. DUS-011-6-2,





OP30

1: **HENNECKE OMS** Automatic Electro-Mechanical Web Fed Vertical Downstroking Cut-to-Length Coil Guillotine Head, Serial No. DUS-011-6-3, With Digital Control Panel, Side Trimming Slitting Rolls, and 3: **DOORHAN** Steel Framed Mobile cut sheet transfer tables with Stretch Wrap Plastic Film top face application infeed head



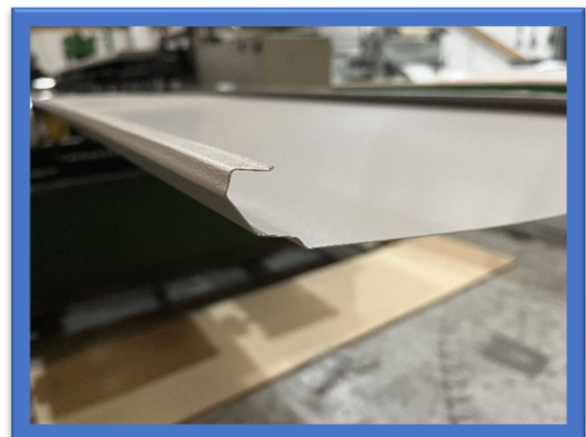
OP40

1: **BRADBURY / PUMA 'EPCO'** Automatic Hydraulic Vertical Downstroking Mild Steel Sheet Fed "Georgian effect" Indentation Press, Serial No, DUS-011-6-4, With Digital Control Panel, Hydraulic Power Pack and One Pair of Formers, 9.8 Tonnes Pressure / 1000KN, 870mm x 790mm Platen size, 500mm Maximum Opening Height (NOTE not currently operated regularly)



OP50

1: **BRADBURY / PUMA** 'Fingersafe' Automatic Electro-Mechanical Chain Driven 2-Sided Edge Roll Forming Machine, Serial No. DUS-011-6-5, with 4: Pairs of 10mm width Small Rib Forming Rolls and 3: Pairs of 20mm width Large Rib Forming Rolls, 15: Pairs of Edge Forming Rolls and 5 Pairs of Return Edge Forming Rolls for each side, Maximum Sheet Thickness 0.5mm Alloy / Mild Steel, Maximum Sheet Width 650mm



4: Fabricated Steel Framed Mobile Panel Pre-Press Setting Up Table/Trolley – used for transfer of material from Op 30/40 to Op 50 and to prep/load profiles into the Foam injection presses.

OP60

3: **HENNECKE** OMS '100 Process' Automatic Hydraulic Polyurethane (PU) Foam Panel Injection/ Fabrication Downstroking Presses, Serial Numbers DUS-011-6-7, DUS-011-6-8 and DUS-0110609, Each with 1: Hydraulic Power Pack and 3 Vertical Hydraulic Rams, 1: Control Cabinet, 6100mm x 750mm Platen Size x 550mm Maximum Opening Height, with Electric Heated Top & Bottom Platens to Approximately 35°C, approximately 14 minutes PU curing dwell time. Comes with tooling to manufacture 6m x 40 or 50mm panels.



OP60

1: HENNECKE OMS '100' Automatic Polyurethane (PU) Foam Mixing & Injecting Machine, Serial No. DUS-011-6-10, (alternately serving each of the 3 Foam Panel Fabrication Presses), with 1: Heated and Chilled Mixing Head with delivery hose and nozzle, 1: "Poly" and 1: "Iso Resin" Dosing Heads, Water Purging Station with 1: ICS COOL ENERGY 'DD0MA00789 i-Chiller Compact' Water Chilling Unit, Serial No. 2200346809 (2019), 1: FINI S.A. 'RD6A/AC' Refrigerated Air Dryer, Serial No. 170001555 (2017) and 1: TOOL-TEMP 'TT-181' Tool Heater, Serial No. 318-6159-11 (2018)



Current location layout

