

the blossom
charity

SUPPORTING...



WOULD YOU LIKE YOUR OWN BENCH?



Clarke & Simpson

Please visit www.eyesculpturetrail.co.uk to purchase tickets, and for more information.

Please do join us at this prestigious reception to view all the sculptures in one place and to meet the artists and sponsors. Online bidding will also be available.

September
Oaksmere, Eye from 6.30pm on Wednesday 20th
will be sold in auction, by Clarke & Simpson, at The Oaksmere, Eye from 6.30pm on Wednesday 20th

THE CHARITY AUCTION

THE BLOSSOM CHARITY

WHO ARE WE AND WHAT DO WE DO...

The blossom charity has helped over 1,700 people since it was launched in 2013. We support people going through personal difficulties and challenges, or those facing hardship for many reasons. We run a variety of programmes to help people to live their best lives.

We achieve this by focusing on topics such as improving confidence and problem solving, developing communication skills as well as stress and body management, and helping people to get a sense of purpose while learning new skills.

We help by offering free workshops, 1:1 coaching and style days as part of a specific programme or as a standalone. We work with people to understand their goals and tailor our support so that they are able to make long lasting changes. Our approach works!

Also, in partnership with The John Le Vay Cancer Centre in Ipswich and other organisations, we hold makeover days for deserving women undergoing or recovering from cancer treatment which helps boost their confidence and gives them a treat.

If you or someone you know would benefit from what we offer, please find out more on our website at theblossomcharity.co.uk. Then just complete an application form if you would like to explore how you can take steps forward to live your best life.

CONTACT US

WEBSITES:
WWW.EYESCULPTURETRAIL.CO.UK
WWW.THEBLOSSOMCHARITY.CO.UK
PHONE: 01379 678483
EMAIL: INFO@THEBLOSSOMCHARITY.CO.UK

ADDRESS:
COMPTON HOUSE / 13 CASTLE STREET
EYE / SUFFOLK / IP23 7AN

OPENING TIMES:
TUES - FRI 10:00 - 5:00
SAT 10:00 - 4:00

#EYESCULPTURETRAIL
UPLOAD YOUR PHOTOS TO SOCIAL MEDIA WITH

FOLLOW THE TRAIL FROM 8TH JULY TO THE 10TH SEPTEMBER 2023

+8 CUSHIONS!

24 BEAUTIFULLY DECORATED BENCHES!

+5 SUFFOLK TABLES!

FOR KIDS! SEE THE WEBSITE FOR DETAILS
COLOURING COMPETITION

2023

SIT WITH US
EYE ART TRAIL
FOLLOW THE TRAIL FROM 8/7/23 - 10/9/23

FREE MAP INSIDE! SUGGESTED DONATION £1

'SIT WITH US' TRAIL

Now in its fifth year, the art sculpture trail in Eye, Suffolk, features 24 beautifully decorated benches, 5 Suffolk-shaped mini tables and 8 charming cushions.

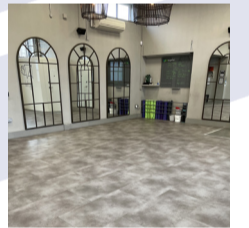
Visitors can walk with purpose to see them placed in locations on a route around this picturesque town. One of the benches can be seen at Frogs Farm and another is in Harleston so do take a trip there too.

Whether you like beach scenes, flowers and nature, fairy stories, bright colours, animals or music, there is something for everyone - our artists and makers have been wonderfully creative!

We are delighted to bring the 'Sit with Us' trail to Eye and hope you enjoy it. Please share your photos sitting on the benches on social media with #eyesculpturetrail. A massive thank you to everyone who made it happen!

THE HEXAGON

The Hexagon is a Health and Wellbeing centre in Eye. As well as being the venue for the programmes, workshops and coaching run by the blossom charity, an exciting array of classes are also on offer throughout the week.



These include,

- Ageing Well Class in conjunction with Communities Together East Anglia
- Pilates with Emma - Pilates Body Harmony
- Clubbercise with Fitness with Eileen,
- Susan Whymark's Bereavement &
- Friendship Support Group
- Blossom Folk Choir.

We're always looking for new classes, so please get in touch if you would like to host a class or hire a meeting room.

THE PINK TROLLEY



The Pink Trolley is a charity shop with a difference based in the pretty town of Harleston. We offer a variety of handpicked clothing and homeware kindly donated by our supporters and all profits go to the blossom charity. Please do come and visit us - there will always be a friendly face and welcome.

If you have free time and would like to volunteer, there are many ways in which you could help - from serving and chatting to customers to steaming and helping sort stock and many more activities. Please contact us to find out more, info@theblossomcharity.co.uk.

CHARITY AUCTION AT THE OAKSMERE FROM 6.30PM 20/09/2022

FOR MORE INFORMATION ABOUT OUR SPONSORS & ARTISTS PLEASE VISIT WWW.EYESCULPTURETRAIL.CO.UK



THE MAP

MAP KEY

- PARKING
- THE BENCHES
- CUSHIONS & TABLES
- DREAM ON
- FOOTPATHS
- PICNIC AREAS



FOLLOW THE TRAIL FROM 8TH JULY TO THE 2ND SEPTEMBER



*You will be able to see the sculpture at Frogs Farm on the A140 from 10am to 4pm every day during the school holidays and on the weekends from 28th July (Subject to the weather).

THE SPONSORS & ARTISTS

- | | | |
|---|--|--|
| <p>1 ARCHIBALD
A. DAVID PRINGLE
S. EYE TOWN COUNCIL
L. MARKET PLACE</p> <p>2 WAVES & WATERFALLS
A. LEE READ
S. MANNING & WOODS LTD
L. SIDE OF TOWN HALL</p> <p>3 NOTTY
A. JENNE FOULGAR
S. NOTCUTTS
L. FRONT OF TOWN HALL</p> <p>4 BRIGHT HOPE & LUCK
A. CAITLYN SIMON-HART
S. HARRISON EDGE ESTATE AGENT
L. BUS STOP RED HOUSE</p> <p>5 INTO THE JUNGLE
A. ANNA PARTINGTON
S. WHEATLEY SOLUTIONS
L. BUS STOP LINDEN HOUSE</p> <p>6 THE HOT SEAT
A. ALISON COUCHMAN
S. EXEMPLIFIRE
L. FIRESTATION</p> <p>7 A WHILE IN THE WOODS
A. JO & TOM MAUGHAN
S. THORNHAM WALKS
L. REC FOOTPATH</p> <p>8 THE PAISLEY PERCH
A. JEANNIE GARDNER
S. CLARKE & SIMPSON
L. CASTLETON WAY / HAYGATE</p> <p>9 SUNFLOWERS
A. SHELAGH SEALES
S. DREAM ON BEAUTY
L. HIGHFIELD</p> <p>10 MOMENTS & MEMORIES
A. WENDY AIKEN
S. ROSEDALE FUNERAL HOME
L. BELLANDS WAY</p> | <p>11 BLOSSOMING SKIES
A. BEYOND THE WALL
S. SUSAN WHYMARK FUNERAL SERVICE
L. OAK CRESCENT</p> <p>12 FARMING, GROW A LOVE OF LIFE
A. BINX
S. THE PINK TROLLEY
L. OAK CRESCENT</p> <p>13 THE CRYSTAL MAZE
A. SHARON TEAGUE
S. CRYSTAL CLEAN SERVICES
L. WELLINGTON RD OPP SCOUT HUT</p> <p>14 BEACH HUTS
A. LEAPING HARE DESIGN
S. FAMILIES TOGETHER SUFFOLK
L. VINE CHURCH COURTYARD</p> <p>15 THE MAGIC OF BOOKS
A. HARRIET TITLOW
S. MALTHOUSE SECURITY
L. CHILDRENS CENTRE</p> <p>16 POSITIVE MOMENTS
A. DEE Diana Cosford
S. DREAM ON
L. CHURCH</p> <p>17 FORGET ME NOT
A. BRIDGET MCINTYRE
S. HARTISMERE LODGE
L. CHURCH</p> <p>18 COUNTY OF SUFFOLK
A. DAISY HEPZIBAH
S. SUFFOLK CHILD COUNSELLING
L. CASTLE</p> <p>19 SAKURA
A. IAN LAST
S. ADNAMS
L. CASTLE</p> <p>20 WE ARE WHAT WE ARE
A. DEREK JOHNSON
S. EASTERN COLLEGES GROUP
L. COMMUNITY CENTRE / SKATE PARK</p> | <p>21 PRETTY IN PINK
A. FIONA SUTHERLAND
S. ALITUS
L. COMMUNITY CENTRE / OUTSIDE HALL</p> <p>22 FLOWER POWER
A. ELLIE HIGNETT
S. BLOOMERS
L. COMMUNITY CENTRE / PLAY AREA FOOTPATH</p> <p>23 AIN'T GOT THE FROGGIEST
A. AMANDA CHURCH
S. FROGS FARM
L. SUNFLOWER MAZE (FROGS FARM)</p> <p>24 BRIGHT & BEAUTIFUL
A. PAUL RACKHAM
S. ROSEDALE FUNERAL HOME LTD
L. HARLESTON / OUTSIDE CHURCH</p> |
|---|--|--|

KEY

- ARTIST **A**
- SPONSOR **S**
- LOCATION **L**
- BENCH NUMBER **1**
- TICK THE CIRCLE WHEN YOU'VE SEEN IT!

THANK YOU TO ALL OUR TALENTED ARTISTS & SPONSORS!

- | | | |
|--|--|---|
| <p>TABLE NAME</p> <ul style="list-style-type: none"> A JUNGLE OF ANIMALS HARE SALON SHAPING UP SUFFOLK SUFFOLK PINK THE TREES HAVE EYES <p>CUSHION NAME</p> <ul style="list-style-type: none"> BEE HAPPY BIRDS EYE VIEW BOTANIC BLISS BUTTERFLY FLIGHT OF FANTASY FLOURISHING HOME HENRIETTA THE HEDGEHOG HYDRANGEA SHANGRI-LA | <p>ARTIST</p> <ul style="list-style-type: none"> THEONIE SIMON-HART MARIA ESPOSITO ART CLAIRE CHAMBERS & DANIEL RALPH DAISY MORRIS CORA STUDIOS SUE SUTHERLAND ELLIE HIGNETT JULIE WARD CATHERINE REDFORD YVONNE CONNOLLY KATE TANSLEY CYNTHIA HILL THE SEWING ROOM JENNY SAVILLE | <p>SPONSOR</p> <ul style="list-style-type: none"> EYE FLOORING EYE SALON THE HANDYMAN BLOOMERS PENLAW & CO LTD ORSOM INTERIORS LEAD THE WAY THE FABRIC SHOP EJ BARKER & SONS CDO DIGITAL WENDY AIKEN PHOTOGRAPHY CORA STUDIOS CAFE EYE THE SEWING ROOM |
|--|--|---|