



Killens

Mendip Auction Rooms

The Jewellery, Silver, Watches & Antiques Sale

Mendip Auction Rooms | 7 October 2023



Rookery Farm Binegar Somerset BA3 4UL

44 0 1749 840770

www.mendipauctionrooms.co.uk



RICS

Sporting, Fine Wines & Spirits Sale

Thursday 26th October

At 5pm



The Jewellery, Silver, Watches & Antiques Sale

Mendip Auction Rooms | Saturday 7 October 2023 at 10am

Killens

Mendip Auction Rooms
Rookery Farm
Binegar
Somerset BA3 4UL
mendipauctionrooms.co.uk

Viewing

Thursday 5 October
10:00 - 18:00
Friday 6 October
10:00 - 19:00

Sale

Saturday 7 October
From 10:00

Enquiries

+44 (0) 1749 840770
enquiries@mendipauctionrooms.co.uk

Your contacts for this sale

John Dickins
enquiries@mendipauctionrooms.co.uk

Bidding

Bidders are required to register before the sale commences dependent upon method of bidding.

Bid online

By visiting the-saleroom.com and visiting the Mendip Auction Rooms auction or the Killens website, www.mendipauctionrooms.co.uk

Bid in person

Attendance at auctions is now allowed. You can register at reception at the auction rooms.

Bid by Absentee/Commission Bid

We require a completed Bidder Registration Form returned by email to

enquiries@mendipauctionrooms.co.uk.

The form can be found at the back of this catalogue. Absentee or Commission bids can be emailed, submitted by telephone or in person.

Bids should indicate the maximum amount to be bid excluding buyer's premium. They will be executed as cheaply as possible having regard to the reserve (if any) and competing bids. If two buyers submit identical bids the auctioneers will prefer the first bid received.

Telephone bid

All bidders need to be registered by completing and submitting a Bidder Registration Form. You can arrange a telephone bid by contacting the auction rooms.

New bidders

We reserve the right to make online enquiries to verify your identity and we may require proof of identity when registering to bid.

Buyers Premium

Buyers are obliged to pay a buyer's premium at 20% (plus VAT) on the hammer price of each lot purchased.

General Information

Methods of Payment

It is important you are aware of the following regarding registration and payment:

The name and address in which you register will be the name and address on your invoice, if successful.

We cannot amend the details on your invoice, once issued.

Purchases can only be released when full settlement (inclusive of all charges) of all invoices issued to the buyer is received in cleared funds.

Before bidding, you should ensure that you have the necessary funds available and be able to pay according to one of the methods set out below.

• **Bank Transfer:** You may electronically transfer funds to our Auction Rooms Client Account.

Please quote your surname and Invoice number as the reference.

Our Client Account details are as follows.

Bank: National Westminster Bank Plc

Address: 7 High Street, Wells, Somerset BA5 2AD

Sort Code: 60-23-06

Account Name: Killens Auction Rooms Client Account

Account Number: 75152916

IBAN Number: GB 26 NWBK 602306 75152916

If paying by bank transfer, the amount received after the deduction of any bank fees and/or conversion of the currency of payment to pounds sterling must not be less than the sterling amount payable, as set out on the invoice.

Payment may also be made by one of the following methods:

• **Card:** Debit issued by Visa and MasterCard only. There is no limit on payment value if payment is made in person using Chip & Pin verification.

• **Credit cards** issued by Visa and MasterCard only.

• **Cheque:** You may pay by sterling cheque drawn on a UK bank or building society but all cheques must be cleared before you can collect your purchases.

Collection and Storage

Please note what the 'Conditions of Sale for Buyers' as found at the rear of this catalogue state about collection and storage. It is important that goods are paid for and collected promptly. Any delay may involve the buyer paying storage charges.

We offer a limited packing and dispatch service and quotes can be provided on request. We are unable to send:

Glass, Guns, Ammunition, Swords, Knives, Daggers
Ceramics that we deem to be of a fragile delicate nature,
Pictures with glass in frame, over 45cm x 30cm or of a fragile nature, Barometers, Clocks, Items weighing over 10kg (including packaging)

We also recommend the following couriers:

Mailboxes of Bath, 01225-483777

shipping@mbebath.co.uk OR

Jentel Packaging, 01268-776777

enquiries@jentelpacking.co.uk OR

Westbrook Packing & Despatch of Chippenham, 01380 859486,

Info@westbrookpacking.uk

All who visit regularly to assist clients.

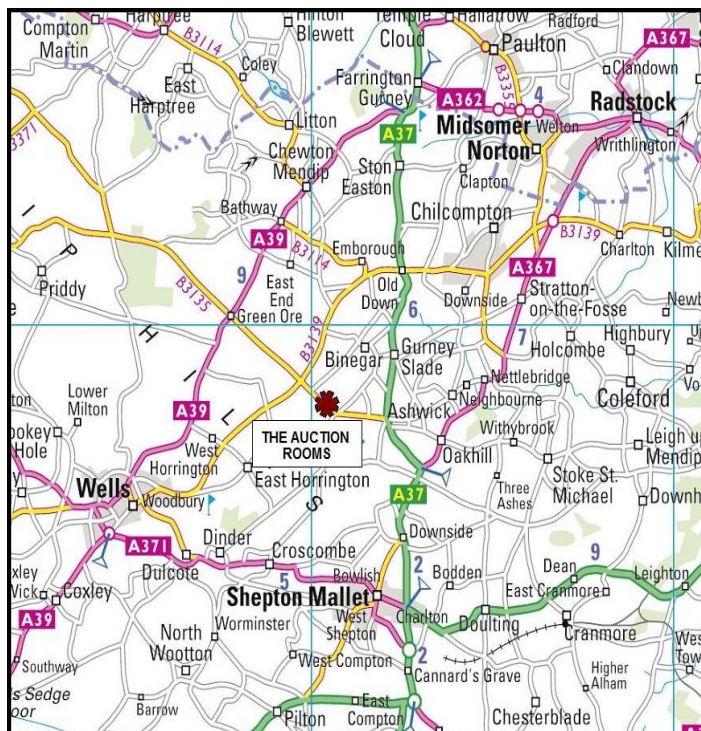
For larger items locally:

ARK Solutions on 07904 431741,

info@arksolutionsgroup.co.uk OR

Andie's on 07739 903068

If items are not collected within five working days, then Lots not collected will be subject to a storage charge of £1 per lot per day. After ten days, we may sell the Lot on your behalf subject to our 'Conditions of Sale for Buyers'.



HOW TO FIND US

1 A silver baluster shaped tea kettle on stand in George II style. With a turned-wood and S and C-scroll swing handle, a domed and moulded hinged lid with cut-card decoration and a wood finial, faceted spout, on a stand with scrolling legs and bun feet, and with a lamp, mark of Lionel Alfred Crichton, London 1935, 37cm high overall with handle up (14 1/2 inches), 2216g gross (approx. 71 1/4 ozs gross)
£700 - 1000

1A A silver baluster-shaped teapot. With a composition double-scroll handle and finial, and engraved with script initials, mark of Henry Clifford Davis, Birmingham 1929, 19cm high overall, 14cm diameter (7 1/2 x 5 1/2 inches) 745g gross (a little under 24 ozs gross including the handle and finial)
£250 - 300

2 A pair of silver two branch/three light candelabra. Each with beaded nozzles, floral embossed capitals, knoped stems and round bases, maker's mark of W I Broadway & Co, Birmingham 1975, 23.5cm high overall, 26cm wide (9 1/4 x 10 1/4 inches), loaded
£200 - 300

2A A silver mounted bottle coaster with a turned-wood base. The silver foliate pierced sides with an oblong bead and reel border, mark of Mappin & Webb, Sheffield 1923, approx. 18cm overall (7 inches)
£50 - 70

3 An Art Deco silver tazza. The shallow angular bowl with two incised bands, on a straight tapering stem and domed round foot, mark of Cooper Brothers & Sons Ltd, Sheffield 1936, 13cm high, 24cm diameter (5 1/8th x 9 1/2 inches), 727g (a little over 23 1/4 ozs)
£250 - 350

3A A matched pair of silver sauce boats. Each with a leaf-capped double-scroll handle, a nulled border and three scroll and petal-shaped feet, mark of Bravingtons Ltd, Birmingham 1934 & 1937, approx. 17.25cm long (6 3/4 inches), 423g (a little over 13 1/2 ozs)
£150 - 200

4 A Victorian silver three piece tea service. Each of round baluster form with a beaded rim, a double-scroll handle and a moulded foot, engraved bands and two cartouches (one with a crest), and engraved beneath with foliate script initials 'EH', mark of Hawkesworth Eyre & Co Ltd, Sheffield 1865, 1,328g (a little under 42 3/4 ozs gross)
£500 - 700

4A An Edwardian silver shaped-square pedestal sweet dish. With a scroll and foliate pierced border with open heart-shaped corners, on a melon-fluted & domed foot with foliage and volute-scroll feet, mark of Albert Henry Thompson, Sheffield 1908, 5.5cm high, 12.75cm wide (2 1/4 x 5 inches), 120g (a little over 3 3/4 ozs)
£50 - 80

5 A William III silver porringer. With two double-scroll handles, a slightly exerted rim, an embossed band flanked by engraved leaves, and part hit and miss spiral flutes, engraved with initials 'RN', Britania standard marks for Joseph Stokes, London 1700, 10cm high, 11.5cm diameter (4 x 4 1/2 inches), 241g (7 3/4 ozs)
£500 - 700

5A A silver christening mug. With a C-scroll handle and a stepped foot and engraved with a floral and diaper cartouche with script initials, mark of Joseph Gloster Ltd, Birmingham 1914, 8.75cm high (3 3/8th inches), 105g (a little over 3 1/2 ozs)
£40 - 60

6 A George III silver oval cruet stand and five silver mounted bottles. The stand with a wood base, a central silver handle, floral engraved and shallow-bombe sides with reeded borders on four pad feet, the maker's mark mis-struck, London 1802, 17cm wide (6 1/2 inches); the five faceted clear cut-glass bottles each with a conforming silver mount with a reeded band, and with a later plated fiddle pattern mustard spoon
£150 - 200

6A An Edwardian silver round pedestal sweet dish. With bead and harebell borders, mark of the Goldsmiths and Silversmiths Co. Ltd., London 1909, 5cm high, 10.5cm diameter (2 x 4 1/4 inches), 87g (a little under 3 ozs)
£30 - 50

7 A pair of silver round candlesticks with three light candelabra. The candlesticks with spool shaped capitals, knopped stems and stepped bases, mark of William Comyns & Sons Ltd (Richard Comyns), London 1965, the bases loaded (421g gross & 425g gross respectively), the three branch candelabra with balustrer finials, C-scroll arms and conforming nozzles and plain drip pans, conforming maker's marks, London 1964, approx. 28cm wide overall (11 inches), 937g of weighable silver (a little over 30 ozs)
£500 - 700

7A Regimental Interest, a silver model of a paratrooper and a RMAS inscribed sweet dish. The paratrooper modelled standing on a tapering-round plinth, mark of Garrard & Co. Ltd., London 1957, 9cm high overall (3 inches), loaded base; the octagonal sweet dish with a floral-pierced border and later engraved in the bowl 'R.L. RMAS 1958-1974', mark of Hawkesworth Eyre & Co. Sheffield 1910, 12cm wide overall (4 3/4 inches), 120g gross (a little over 3 3/4 ozs) The RMAS, Royal Military Academy Sandhurst, is where all officers in the British Army are trained.
£50 - 80

8 A silver round capstan shaped inkwell. With a hinged cover and inscribed 'Llangibby Puppy Show 1933, 1st Bitch', mark of William Neale & Son Ltd, Birmingham 1932, 11.5cm high, 16.5cm diameter (6 1/2 inches), the base loaded
£30 - 50

8A A 19th century French silver cow creamer. The tail forming the loop handle and with a floral hinged cover applied with a fly, French lozenge-shaped maker's mark slightly mis-struck, post 1838 .950 standard Minerva head mark, 9.5cm high, 14cm long overall (3 3/4 x 5 1/2 inches), 135g (a little over 3 1/4 ozs)
£300 - 500

9 A Victorian silver pint mug. Uninscribed and with a C-scroll handle, straight slightly-tapering sides with two laurel leaf bands, on a tucked-under base and foot, mark of Frederick Elkington (Elkington & Co), London 1878, 12.5cm high (4 7/8ths inches), 343g (11 ozs)
£300 - 400

9A **A silver model of a labrador.** Modelled in an alert pose standing four square, mark of A E Jones, Birmingham 1987, approx. 10.25 cm high, 14.25cm long,(4 1/4 x 5 1/2 inches); on a mahogany rectangular plinth
£300 - 500

10 **A Victorian silver goblet shaped trophy cup.** The part fluted bowl on a beaded knopped stem and round base, uninscribed, mark of John Newton Mappin (Mappin & Webb), Sheffield 1881, 23cm high (9 inches), 249g (8 ozs)
£120 - 150

10A **A William IV silver fiddle pattern fish slice.** The blade pierced with a floral design, mark of William Eaton, London 1833, 32cm long overall (12 1/2 inches), 187g (6 ozs)
£70 - 90

11 **A pair of Swedish lobed candlesticks.** With shaped-round octofoil capitals, knopped leaf chased stems and lobed shaped-square bases, mark of C G Hallbergs Guldsmeds, Stockholm 1934, 17cm high (6 3/4 inches), the stems partially wax(?) filled, 522g gross
£200 - 300

11A **A silver small can-shaped christening mug.** With a loop handle and an embossed band depicting neo-classical female figures emblematic of the Arts and Music within foliate scrolls and with a central vacant cartouche mark of Crisford and Norris, Birmingham 1907, 6cm high (2 3/8ths inches), 33g (1 oz)
£30 - 50

12 **A silver oval part-fluted teapot.** With a fluted domed cover, inscribed 'Llandigby Hunt Puppy Show 1926', mark of Barker Brothers, Chester 1911, 14.5cm high, 27cm wide (5 1/2 x 10 1/2 inches), 384g gross (a little over 12 1/4 ozs)
£120 - 180

12A **A George III silver pocket snuff box.** The hinged cover embossed with a scene of putti cavorting in a woodland within scrolling borders, the slightly bombe sides embossed with flowers and rocaille, the base engraved with script initials 'GJ(?)', mark of William Lestourgeon, London 1746, 2.5cm high, 6.25cm wide, (1 x 2 1/2 x 1 7/8ths inches), 69g gross (a little under 2 1/4 ozs); together with a hand-written note giving details of the hallmarks
£100 - 200

13 **A near pair of vintage silver round bottle coasters.** With gadrooned rims and turned mahogany bases with central roundels, both with the mark of Barker Brothers Silver Ltd, Birmingham 1993 & 1994, 14.75cm diameter (5 3/4 inches)
£40 - 60

13A **A silver and yellow guilloche enamelled square cigarette case.** The front cover guilloche enamelled in a sunburst design, the back plain and engine turned, mark of John Henry Wynn, Birmingham 1932, 8.25cm (3 1/4 inches), approx. 120g gross (a little over 3 3/4 ozs gross)
£50 - 80

14 **An Edwardian silver lobed round bowl.** The hexalobed border with a flat rim, mark of H Mathews, Birmingham 1906, 4.5cm high, 16cm wide overall (1 7/8th x 6 1/4 inches), 146g (a little over 4 1/2 ozs)
£50 - 70

14A **A set of four silver lobster picks,** Each with a central oval panel engraved with a lobster, mark of Cooper Brothers and Sons Ltd, Sheffield 1966 each 19cm long overall (7 1/2 inches), 126g
£50 - 80

15 **A silver square capstan-shaped inkwell.** With a raised border and a hinged cover inscribed 'Llandigby Hunt 1929', mark of A & J Zimmerman, Birmingham 1927, 5.5cm high, 12.75cm wide (2 1/4 x 5 inches), the base loaded
£50 - 80

15A **A silver and enamel letter opener.** Of tapering design decorated with a blue enamelled scroll, mark of Erica Sharpe, London millennium mark for 2000, 19cm long (7 1/2 inches), 41g; in a blue leatherette covered box
£25 - 50

16 **An Edwardian silver shaped-square pedestal sweet dish.** With a scroll and foliate pierced border with open heart-shaped corners, on a melon-fluted & domed foot with foliate and volute-scroll feet, mark of Elkington & Co., Sheffield 1908, 5.5cm high, 12.75cm wide (2 1/4 x 5 inches), 126g (a little over 4 ozs)
£50 - 80

16A **A group of four Victorian and later silver mounted clear cut-glass globular scent bottles.** The largest with a screw-off cap embossed with figures within C-scrolls, hallmarks for London 1887, 10cm diameter (4 inches); a smaller example with a floral embossed mount with a cartouche engraved with foliate-script initials and screw-off cap, hallmarks for London 1910, 7.5cm diameter (3 inches); another with an embossed silver screw-off cap, Birmingham 1905; and another with a hinged cover, Birmingham 1901
£40 - 60

17 **A pair of silver short candlesticks in neo-classical style.** With beaded nozzles, ovoid capitals decorated with rams masks, beaded bands and harebell swags, on an out-swept square base with bead and leaf bands, mark of Walker & Hall, Sheffield 1904, loaded bases, 12cm high (4 3/4 inches)
£60 - 80

17A **Three Victorian and later silver-mounted easel-back photograph frames.** Comprising; a heart-shaped frame with a border profusely embossed with flower-heads and leaf scrolls, mark of H Mathews, Birmingham 1894, 14.5cm high overall (5 3/4 inches) the easel back damaged; a small rectangular frame with a flower and leaf scroll embossed border, mark of William Devenport, Birmingham 1900, 10.75cm high (4 1/4 inches); and a silver hammered round frame, the marks rubbed probably Birmingham 1904, 7.75cm diameter (3 inches)
£50 - 80

18 **A silver trophy bowl.** With an everted rim, moulded band and stepped foot, inscribed 'Raglan Ploughing Association, First Prize... 1926', mark of Robert Pringle & Sons, London 1926, 11.5cm high, 16.25cm diameter (4 1/2 x 6 3/8ths inches), 172g (5 1/2 ozs); on an ebonised plinth
£60 - 80

18A **A Victorian silver-mounted double-hearts photograph frame.** With a broad spiral-lobed 'hit and miss' surround and two vacant oval cartouches, mark of William Comyns, London 1895, 19cm high overall (7 1/2 inches), 26cm wide (10 1/4 inches)
£30 - 50

19 **A late Victorian silver campana shaped three piece cruet set.** Each with two leaf-capped flying scroll handles, a moulded band and stepped foot, the mustard in the form of a small trophy-cup with a domed cover, mark of Elkington & Co, Birmingham 1898-1900, the three 185g gross; together with two associated silver small spoons, various dates and makers and another plated; in a brown leather cartouche shaped fitted case with velvet and blue silk lining marked 'Elkington & Co.'
£80 - 120

Please note: Buyers Premium at 20% plus VAT is payable on each item in addition to the hammer price



Lot 8A



Lot 51



Lot 72



Lot 88



Lot 78



Lot 58

Please note: Buyers Premium at 20% plus VAT is payable on each item in addition to the hammer price

19A Three early 20th century silver mounted clear glass scent bottles and a pair of heart-shaped dressing table jars. Comprising; a German floral etched glass oblong scent bottle with a stopper in the form of a putto, and a .930 standard neck-rim and base pierced and embossed with cavorting putti, with German marks and import hallmarks for John George Piddington, London 1906, approx. 15cm high overall (6 inches); a tapering clear-cut glass scent bottle with a foliate embossed neck-rim, the London marks rubbed; a boat-shaped glass scent bottle with plain silver neck-rim and mount, London 1928; and a pair of heart-shaped dressing table jars, the scroll embossed silver mounts with the mark of Thomas Hayes, Birmingham 1903, each approx. 6.5cm overall
£50 - 80

20 A pair of silver oval pedestal salts in George III style. Each with a reeded rim and a stepped oval foot (retailer's mark of 'Wilson & Gill, London' beneath), mark of E S Barnsley & Co., Birmingham 1913, 8.75cm wide overall, 6.25cm high overall (3 3/8th x 2 1/2 inches), 117g; in a 'Wilson & Gill fitted case
£50 - 80

21 A silver shaped round salver. Engraved with a Regimental marriage presentation inscription to Lieutenant Colonel R Leyland by The officers of the East Surrey Regiment...1955, mark of E Viner, Sheffield 1953, 25.75cm diameter overall (10 inches), 508g (a little over 16 1/4 ozs)
£300 - 400

22 A vintage silver oval three piece coffee service. Each with a gadrooned rim, The coffee pot and hot milk jug with ebonised scroll handles and finials, mark of Barker Brothers Silver Ltd, Birmingham 1954-55, the coffee pot 22.5cm high overall (8 7/8ths inches), 1,613g gross (approx. 51 3/4 ozs)
£500 - 700

23 A George III silver oblong mustard pot. With a floral border, a leaf chased scroll handle, an applied band and four ball feet, the unmarked domed cover with a ball finial, (blue glass liner), mark of Alice and George Burrows, London 1811, approx. 7.5cm wide (3 inches), 118g (a little over 3 3/4 ozs)
£50 - 70

24 A late Victorian silver cigar case. Of hammered concave design with a vacant round reserve, mark of A & J Zimmerman, Birmingham 1898, 13cm long (5 inches), 180g (5 3/4 ozs)
£80 - 120

25 A George III English provincial silver oblong milk jug. With a reeded rim, scroll handle and bracket foot, mark of George Murray, Newcastle circa 1812, 14.5cm long overall (5 3/4 inches), 122g (a little under 4 ozs)
£60 - 80

26 A George III silver old English pattern serving spoon. Engraved with foliate script initials 'SMB(?)', mark of Solomon Hougham, London 1800, 114g
£50 - 80

26A Four sets of six silver coffee spoons, in cases; Comprising; a set of late 19th century Continental blue-enamelled spoons with shovel-shaped bowls, import hallmarks for London 1896, 82g; a set of Chinese export spoons with figural terminals, maker's mark 'SM' and with a Chinese two-character mark, probably that of Woshing or Wahshing, Shanghai circa 1900, 81g; a set of Art Deco design spoons with tapering reeded handles, mark of Thomas Bradbury & Sons Ltd, Sheffield 1937, 53g; and a set with pointed oral-bordered terminals and embossed with bullets marked either 'Nobel' or 'ICI', the maker's mark 'T&Co' not

traced, Birmingham 1931(3) & 1932(3), 82g; the four sets weigh 298g gross
£80 - 120

27 A William IV silver old English pattern serving spoon. Engraved with a Gothic initial 'T', mark of Charles Boyton, London 1836: 126g
£50 - 80

28 A set of six early Victorian silver fiddle pattern table forks. Mark of Joseph and Albert Savory, London 1838, 446g
£180 - 220

29 A set of six George III old English pattern dessert spoons, each engraved with script initials, mark of Eley & Fearn, London 1803, 207g
£80 - 120

30 A set of six silver old English pattern table forks. Mark of Joseph Rodgers & Sons, Sheffield 1908, 462g
£180 - 220

31 A set of six George III silver old English pattern table spoons. Mark of Eley & Fearn, London 1804, 340g
£120 - 150

32 Six various George III and later silver fiddle pattern table forks. Various London dates and maker's including two 1808 by Robert Rutland; and four 1835, probably by William Eaton, 386g
£150 - 180

33 A set of six William IV silver fiddle pattern table spoons. Mark of William Eaton London 1833, 461g
£180 - 220

34 Eight various George III and later silver old English pattern table forks. Various London dates and makers, 535g
£200 - 250

35 A set of six Victorian silver fiddle pattern dessert spoons. Mark of H J Lias Son (Lias & Lias), London 1874, 309g
£120 - 150

36 No Lot

37 A set of four George III Old English pattern table spoons. Each engraved with a crest and bottom marked with the mark of Thomas Chawner, London 1778, 284g
£100 - 150

38 Two sets of six silver old English pattern dessert forks and spoons. Each engraved with Gothic initials 'HL (?)', mark of Goldsmiths and Silversmiths Compay Ltd, London 1917-1918, 1235g
£400 - 600

39 A collection miscellaneous flatware to include Irish, Scottish and Exeter. Comprising; a George III Irish fiddle pattern sugar tongs, mark of Tudor & Whitford, Dublin circa 1808 and with the mark of Mathew West; a pair of Grecian pattern tea spoons, mark of Alexander McDonald. Glasgow 1851; three fiddle pattern teaspoons with conforming initials, mark probably of John Todd, Glasgow 1844; another mark probably of John Asherheim, Edinburgh 1837 (William IV duty mark); three fiddle pattern teaspoons with various initials, mark of Josiah Williams & Co., Exeter 1866; and an old English pattern tea spoon with script initial 'W', mark of William Woodman (of Bristol), Exeter 1823; the eleven items weigh 205g
£70 - 100

40 **A George III mote spoon or mote skimmer.** The shell back bowl pierced with scrolls and crosses, the lion passant and maker's marks both compressed, 14cm long overall, 9g £50 - 80

41 **A matched set of twelve William IV and later silver fiddle, thread and shell table spoons.** Each engraved with conforming foliate script initials, comprising; six with the mark mark of William Eaton, London 1834; three with the mark of Elizabeth Eaton, London 1846; two with the mark of Mary Chawner, London 1836 and one with the mark of Benoni Stephens, London 1845, the 12 weigh 1238g (a little over 39 3/4 ozs) £400 - 500

42 **A set of twelve William IV silver fiddle, thread and shell table forks.** Each engraved with conforming foliate script initials, mark of William Eaton, London 1834, 1207g (a little over 38 3/4 ozs) £400 - 600

43 **A matched set of twelve William IV and later silver fiddle, thread and shell dessert spoons.** Each engraved with conforming foliate script initials, comprising; six with the mark mark of William Eaton, London 1834; five with the mark of William Chawner II, London 1832; and one with the same maker's, London 1831, the 12 weigh 752g (a little over 12 ozs) £250 - 350

44 **A matched set of twelve William IV and later silver fiddle, thread and shell dessert forks.** Each engraved with conforming foliate script initials, comprising; six with the mark mark of William Eaton, London 1834; another with the same maker's mark, London 1838; and five with the mark of Elizabeth Eaton, London 1846; the 12 weigh 740g (a little over 23 3/4 ozs) £250 - 350

45 **A matched pair of George IV and later silver fiddle, thread and shell fish servers and a single fish knife.** The fish servers each engraved with conforming script initials, the fish slice with the mark of Eley and Fearn, London 1823, the fork with the mark of Elizabeth Eaton, London 1845; the fish knife with the conforming initials, and the mark of Hayne and Cater, London 1854; the three weigh 413g (a little over 13 1/4 ozs) £150 - 250

46 **A pair of George IV silver fiddle, thread and shell serving spoons.** Each engraved with conforming script initials mark of William Eaton, London 1834; 400g (a little over 12 3/4 ozs) £100 - 150

47 **A collection of George III and later silver flatware.** Comprising; two old George III old English pattern table spoons, engraved with initials 'W' over W*A', mark of Hester Bateman, London 1784-85; two other old English table spoons; a bright-cut dessert spoon; a dessert fork; four tea spoons and a sugar tongs; together with two fiddle pattern tea spoons and two egg spoons; and a 'regimental' silver tea spoon with a crossed-rifles handle; and a silver bladed butter knife with a filled-silver handle (this 35 g gross); all various dates and makers, 491g of weighable silver (a little over 15 3/4 ozs) £200 - 300

48 **Two George III silver sugar tongs.** Comprising; a fiddle, thread and shell example, engraved with a crest, maker's mark of Paul Storr, London circa 1809(?), (the marks rubbed and the handle repaired at the end), 53g; together with an Irish tongs with shaped handles, maker's nmark of James England, and with the alderman's mark of Jacob West, Dublin 1818, 42g £50 - 70

49 **A set of six Victorian silver fiddle pattern table spoons.** Each engraved with a crest, mark of Benoni Stevens, London 1847, 377g (ozs) £150 - 180

50 **A collection of 19th century and later silver fiddle pattern flatware.** Comprising; two Irish table forks each engraved with n initial 'D', mark of Samuel Neville, Dublin 1828; together with ten tea spoons and two mustard spoons, various dates, makers and assay offices, 388g £150 - 180

51 **An Art Nouveau mounted clear glass scent bottle.** The stopper and body overlaid with trailing leaves and flower-heads, the stopper also engraved with script initials 'LEB(?)', apparently unmarked, approx. 13cm high overall, 9cm diameter (5 x 3 1/2 inches) £80 - 120

52 **A Vintage silver mounted mottled-red glass dressing table jar and cover.** The cover with a spherical knob within an open Celtic entwined surround, the base with a similar band near the rim, Britannia standard hallmarks for Sheffield 1994, 11cm high, 11cm diameter (4 1/4 x 4/14 inches) £20 - 40

53 **An early 20th centuy Arts and Crafts silver milk jug by the Guild of Handicrafts.** The hammered round body with a reeded flat-scroll handle and rope-twist wirework decorated neck (a small and four larger dents), mark of Guild of Handicraft, London 1922, approx. 7.5cm high over-all, 8.5cm diameter (3 x 3 3/8ths inches), 158g (approx. 5ozs).

Note; An Important Arts and Crafts maker under Charles Robert Ashbee, originally based in the East End of London and moved to Chipping Campden in Gloucestershire in 1902. £100 - 150

54 **A pair of late Victorian silver pierced-oblong sweet dishes.** Each with a flower-head, leaf scroll and diaper-pierced border of shaped outline and with the retailers mark beneath for 'Goldsmiths and Silversmiths Company, 112 Regent Street', mark of Gibson & Langman London 1895, approx. 2.75cm high, 14cm long, 10.75cm wide (1 1/8th x 5 1/2 x 4 1/4 inches), 159g £60 - 80

55 **Two early 20th century silver sweet dishes.** Comprising one in the form of a shaped-oval scroll-pierced basket with a bead and scroll chased swing handle, and a C-scroll and mask border, mark of Charles Westwood & Sons, Birmingham 1905. 14cm long (5 1/2 inches); together with a small pierced oval basket with a wavy rim, mark of Levi & Salaman, 9.5cm long (3 3/4 inches); the two weigh 83g gross £50 - 80

56 **A late Victorian silver desk lighter in the form of a 'flaming heart'.** With a removable round wick holder and 'pierced with an arrow-shaped cleaning rod(requires attention), the body embossed with angels after Reynolds within foliate scrolls and with two 'winged caryatid' handles, on a loaded, beaded and floral embossed domed base, mark of William Comyns, London 1897, 12.5cm high, 9.5cm wide overall (5 x 3 3/4 inches) £150 - 250

57 **A William IV silver small shaped-round taper stick from an ink stand.** With a small dragon's head flying-scroll handle, the nozzle with a shaped border and the 'base' with a flower-head and leaf border, the maker's mark mis-struck probably that of Joseph Angel I & John Angel I, London 1837 (William IV duty mark), 5.75cm diameter (2 1/4 inches), 70g (2 1/4 ozs) £60 - 80

Please note: Buyers Premium at 20% plus VAT is payable on each item in addition to the hammer price

58 **A silver 'elephant' pin cushion.** Modelled in a standing pose mark of James Deakin & Sons, Birmingham 1908, 7cm long, 5.5cm high overall
£150 - 200

59 **A silver paper knife/calendar.** With a plated blade and a silver engine-turned septagonal handle with rotating panels enamelled to indicate days of the week and days of the month, import hallmarks for London 1967, 23.5cm long overall (9 1/4 inches)
£50 - 80

60 **Four similar George IV/William IV silver vine leaf decanter labels 'Port' & 'Sherry', 'Lisbon' & 'Madeira'.** Each pierced and engraved with vine leaves and stems, three with belcher-link chains (one chain missing), comprising; 'Port' & 'Sherry' both with the mark of Ledsam, Vale & Wheeler, Birmingham 1829 & 1830 respectively, 'Lisbon', the maker's mark obliterated by the piercing '(?)W' but probably Gervase Wheeler, Birmingham 1834; 'Madeira', mark of Gervase Wheeler, the Birmingham date letter rubbed circa 1834; each approx 7.5cm-8.25cm wide (3 - 3 3/8ths inches), the four weigh approx 72g gross
£80 - 120

60A **An early 20th century 18ct gold cased spinning fob.** With an anchor-link surmount and set with a bloodstone and a compass, hallmarks for Chester 1918, 6.8g gross; together with a small bloodstone and sard-onyx spinning fob stamped '10c'. 3.7g gross
£80 - 120

61 **A vintage miniature silver oval part spiral-fluted four piece tea and coffee service on a rectangular tray.** All with the maker's mark 'B.P.Co', London 1969, the tray approx. 15cm long overall (6 inches), 67g gross; together with a small charm in the form of the Vaphio cup, stamped '900'
£50 - 80

62 **Three late Victorian small silver vesta/match cases.** Comprising; two engraved all-over with foliate scrolls and each with a central cartouche, Birmingham 1888 & Chester 1901; the other engraved with ivy leaves and with a vacant corner, mark of Samuel M Levi, Birmingham 1900, 4.25cm high
£50 - 80

63 **A Victorian silver sovereign case and a pin cushion.** The round sovereign case unengraved, mark of Joseph Walton, London 1890, 3cm diameter; the pin cushion in the form of a flower embossed basket (lacking the swing handle), apparently unmarked, 3.5cm wide overall
£60 - 80

64 **A silver hare-shaped place holder and a vesta/match case.** The hare modelled in a running position on an oval base, the maker's mark 'G & C.H' not traced, Birmingham 1920, approx. 1.5cm high overall, 4cm long (1/2 x 1 3/4 inches), 15g; together with a late Victorian vesta/match case, all-over engraved with leaves on a matt ground and with a plain round reserve with script initials 'CC', mark of Deakin & Francis, Birmingham 1896
£50 - 70

65 **A 19th century Imperial Russian silver and niello rectangular snuff box.** The hinged cover and base depicting scenes of the Kremlin, the sides with a lozenge-diaper pattern, Moscow 1854, the maker's mark 'ABIN(?)' not traced, assay master Andrei Antonovich Kovalbskii, 1.5cm high, 7.5cm wide, 4.5cm deep, 80g gross
£100 - 150

65A **Two fob seals and a small desk seal.** Comprising a 19th century gold and carnelian oblong fob seal. The matrix carved with a ribbon 'Tally Ho', a fox and foliate-script

initials 'GM(?)'; together with an 18th century steel octagonal fob seal engraved with foliate-script initials 'TM(?)'; and a 19th century silver (?) and blood stone small desk seal, carved with gothic-script initials 'NB(?)'; a broken oval hardstone seal matrix, and a related wax impression in a round card box
£80 - 120

66 **A William IV silver vinaigrette.** Engine turned with a floral chased border, a vacant rectangular reserve and reeded sides, the gilt grille pierced with foliate scrolls and partial flower-heads mark of Nathaniel Mills, Birmingham 1833, 3.75cm wide (1 5/8ths inches)
£120 - 180

67 **A William IV silver vinaigrette.** The hinged cover with a raised and chased flower and leaf border enclosing floral engraving and a vacant shield-shaped reserve, the sides reeded and the base engraved with a floral motif within two wriggle-work borders, the silver-gilt grille pierced and engraved with a central flower-head within leaf scrolls, mark of William Simpson, Birmingham 1835, 3.5cm wide (1 3/4 inches), 13g
£80 - 120

68 **A mid 19th century Russian silver-gilt and niello kovsch.** With an oblong bowl engraved inside with a scrolling cartouche, the outside with a band of niello cyrillic writing and leaf scrolls, the handle with niello panels, the maker's mark not traced, Moscow 1861, assayer's mark of Ivan Vasilyevich Avdeyev, the bowl 3.75cm high, 11cm wide, 16.75cm long overall (1 5/8 x 4 1/4 x 6 1/2 inches) 187g (6 ozs)
£300 - 500

69 **An early 20th century 9ct gold engine-turned vesta/match case.** Mark of W Neale Ltd, Birmingham 1919, 22g gross
£300 - 400

70 **A 9ct gold engine-turned vesta/match case.** With a vacant rectangular reserve, Birmingham 1925, approx. 5cm high (2 inches), 27.4g gross
£350 - 450

70A **Two late 19th/early 20th century tape measures.** One in the form of an owl with a composition body and silver-plated mounts, approx. 5cm high overall (2 inches); the other a filigree drum shaped measure resembling a pepper grinder, 2.5cm diameter (1 inch)
£30 - 50

71 **A set of six early 20th century Russian parcel gilt and cloisonne enamelled coffee spoons.** Each bowl back polychrome decorated with flowers, leaves and scrolls within a turquoise-enamel dot border on a matt ground, the knopped terminals similarly enamelled, 1908-17 marks, each approx. 11cm long overall, approx. 87.5g gross
£50 - 80

72 **A set of six silver and polychrome guilloche enamelled bean-end coffee spoons.** Mark of William Suckling Ltd, Birmingham 1930; in a fitted case
£40 - 60

73 **A Mont Blanc fountain pen.** With a red barrel, '14K' nib, gold-plated mounts inscribed 'MeisterStuck-Montblanc', the cover with the white star emblem; together with three spare ink cartridges in a box
£60 - 80

74 **A 9ct gold mounted brass cigar cutter.** The engine-turned gold panels with hallmarks for Birmingham 1972 by S J Rose, 6.5cm long overall (2 1/2 inches)
£30 - 50



Lot 98



Lot 109



Lot 125



Lot 133



Lot 102



Lot 139



Lot 116



Lot 145

Please note: Buyers Premium at 20% plus VAT is payable on each item in addition to the hammer price

75 A vintage Dunhill 'Cartier-Licence' rectangular pocket cigarette lighter. With a petrol mechanism, and a hinged cover, 6.5cm long (2 1/2 inches); together with a Vulcan D.R.P. pocket lighter in the form of two cylinders, 5cm long (2 inches)
£100 - 200

76 A late Victorian silver pin tray. Concave-rectangular embossed with trailing flowers and leaves on a matt ground and with a central vacant cartouche, mark of William Comyns, London 1901, 11cm long (4 1/4 inches), 45g (a little under 1 1/2 ozs)
£30 - 50

77 An Edwardian small silver Roman or Aladdin's lamp table lighter. With a flying double-scroll handle, a flame finial, and on an oval foot, the maker's mark obscured, Chester 1909, 11.5cm wide overall (4 1/2 inches), 49g (a little over 1 1/2ozs)
£40 - 60

78 Minerva, a 9ct rose gold hunter-cased keyless pocket watch, circa 1924. No.280669, the white enamel dial with black painted Roman numerals and a subsidiary seconds at 6, A. L. Dennison 49.5mm diameter four-piece hinged case, then outer case uninscribed, the curvette with a Long Services inscription dated 1924, hallmarks for Birmingham 1924, Minerva Swiss 17 jewel keyless lever movement No. 1257155 with 4 adjustments, the watch weighs 90.7g gross
£300 - 500

79 E Robinson & Co, The Square, Shrewsbury, a Victorian 18ct gold cased open face pocket watch. circa 1876. No.94682, the gilt floral dial with a gilt Roman chapter ring and a bloomed-gold floral border, the 40mm diameter three-piece hinged case with a floral engraved back, hallmarks for London 1876; the fusee lever movement with turned pillars, a three-arm mono-metallic balance and Bosley type regulation, the watch weighs 50g gross; together with a gold and steel key
£600 - 800

80 An early 20th century 15ct rose gold cased open-face keyless fob watch, circa 1912. No.133331, the gilt dial with a floral centre, black Roman numeral chapter, blued-steel spade hands and a subsidiary seconds dial at 6, the 31.5mm diameter four-piece hinged case with import hallmarks for London 1912, Swiss frost-gilded bar cylinder movement, the watch weighs 23.5g gross
£120 - 180

80A A swiss silver cased open face keyless pocket watch, circa 1910. The white enamel dial with black Roman numerals and a subsidiary seconds dial at 6, the 49mm diameter four-piece hinged case with an engine turned back and import hallmarks for London 1910, Swiss 15 jewel movement
£40 - 60

81 N Preston, London, a George III silver pair cased open face pocket watch, circa 1807. No.5276, the white enamel dial with black Arabic numerals, fusee verge movement with turned pillars, the balance foliate engraved and pieced with concentric circles, silvered regulation dial, the inner case approx. 51mm diameter, the outer case 59mm diameter, both hallmarks for Birmingham 1807; together with several watch-papers and a short length of steel chain
£80 - 120

82 Wm Caney, Market Rasen, a Victorian silver pair-case pocket watch, circa 1872. No. 16595, the fusee lever movement with turned pillars, a steel mono-metallic balance and Bosley type regulation, the white enamel dial with black Roman numerals and subsidiary seconds at 6, 48.5mm inner case, 55mm outer pair case, both with hallmarks for

London 1872; together with a silver curb link 'double Albert' watch chain with swivel/dog-clip terminals and a central T-bar and hung with a pierced silver fob medallion, the chain approx. 39cm long overall (15 1/4 inches), approx. 38g
£100 - 150

83 W Bryer & Sons, 53 & 54 Barbican, London, an early 20th century gold-plated open-face keyless pocket watch. The white enamel dial with black Roman numerals, subsidiary seconds at 6 and blued-steel spade hands, unengraved A. L. Dennison 51mm diameter three-piece hinged case with a snap-on bezel, keyless three-quarter plate lever movement no. 19950
£70 - 90

84 An early 20th century 9ct gold half-hunter cased keyless pocket watch. The white enamel dial with black Roman numerals, blued-steel spade hands, subsidiary seconds at 6 and signed 'John Rossiter & Sons', the uninscribed 50mm four-piece hinged case with hallmarks for Chester 1926, Swiss 15 jewel keyless lever movement, the watch weighs 93.3g gross
£500 - 700

85 A Swiss '14K' open face fob watch, with a 9ct gold bar. The 33mm diameter fob watch with a floral centre and engine-turned chapter with black Roman numerals, four-piece case with a base metal curvette, frost-gilded bar cylinder movement; together with a later 9ct gold fob-bar with hallmarks for Birmingham 1913, hung with an unmarked short length of curb chain with a swivel clasp and a fluted 'T' bar; this 4.8g gross; together with a brass and steel watch key
£70 - 100

86 Three silver cased watches. Including Omega, a silver cased wristwatch, circa 1919, the light-yellow dial with skeleton Arabic numerals, a subsidiary seconds at 6 (lacking the seconds hand) and spade hands, 34mm diameter three-piece hinged case with a snap on bezel, the Omega movement numbered 4797292 (lacking the winding crown; a Victorian open face pocket watch, circa 1878. The white dial with black Roman numerals and a subsidiary seconds dial at 6, fusee lever movement; and a Swiss .935 standard silver open face keyless cylinder fob watch, with a short length of chain
£70 - 90

87 J W Benson, London, an early 20th century 9ct gold cased open face keyless pocket watch. The signed white dial with black Roman numerals, a subsidiary seconds at 6 and gilt 'spade' hands, the uninscribed 48.5mm diameter three-piece hinged case with hallmarks for London 1937, Swiss 15 jewel movement also signed 'J W Benson, 73.2g gross
£250 - 300

88 Birch & Gaydon, 172 Fenchurch Street, London, a late Victorian 18ct gold half-hunter cased keyless pocket watch. circa 1900. No. 2457, the signed white dial with black Roman numerals, a subsidiary seconds at 6 and gilt 'spade' hands, the 48.5mm diameter four-piece hinged case with a snap-on bezel, the curvette engraved with a shallow inscription 'From L.H.S. 26. June. 1900.', the case back with a monogram, hallmarks for London 1900, signed and numbered three-quarter plate keyless lever movement with a diamond end-stone, the watch weighs 120.2g gross
£1000 - 1500

89 Two open face pocket watches, comprising; John Williams Carmarthen, a Victorian silver cased open face pocket watch. No. 13617, the signed white enamelled dial with black Roman numerals and subsidiary seconds at 6, the

Please note: Buyers Premium at 20% plus VAT is payable on each item in addition to the hammer price

50mm diameter silver three-piece hinged case with hallmarks for London 1886, key-wind fusee lever movement signed 'John Williams Carmarthen' & 'No. 13617'; together with an early 20th century gold-plated open-face keyless pocket watch, the white enamel dial with black Roman numerals and subsidiary seconds at 6, the unengraved 50mm diameter Dennison four piece hinged case, Swiss 15 jewel movement
£50 - 80

90 **Two gentleman's bracelet watches**, comprising Bulova and Junghans. The Bulova, Ambassador stainless steel automatic date with a brushed-silvered dial with raised baton indicators and hands, a sweep centre seconds and a date aperture at 3, 35.5mm wide two-piece tonneau-shaped screw case, on a block bracelet with deployant clasp, the automatic movement not examined; The Junghans Mega Solar Ceramic with a black dial with golden-dot indicators and gilt hands, 39mm diameter round case on an mesh bracelet, the back marked '018/1721 805 No.9094217', the movement not examined
£40 - 60

91 **Omega, a gentleman's gold-plated and stainless steel round wrist watch**. The brushed silvered dial with raised gilt baton indicators, Arabic quarters and baton hands, 34.5mm round two-piece screw case, the back inscribed 'G.H.G.J' over '1917-1969', on an associated brown leather strap, the movement not examined
£80 - 120

92 **Tissot, Seastar, a gentleman's stainless steel bracelet watch**. The brushed silvered dial with raised baton indicators and hands, sweep centre seconds and a date aperture at 3, 34mm diameter two-piece screw case, ref. 44521-5, on an associated stainless steel tapering block bracelet with a deployant clasp, Tissot automatic movement, Cal.2481, numbered 15420193
£50 - 80

93 **Bulova, Accutron, a gentleman's stainless steel bracelet watch**, circa 1974. Ref. 7280-2, No. 3-879087, the dial with a silvered baton chapter enclosing a blue 'Television' dial with a day/date aperture at 3, the 36.5mm wide tonneau-shaped screw case, on a tapering block bracelet with deployant clasp, Bulova Accutron movement ref, 'N4' & '2182G'
£60 - 80

94 **Rotary, Super-Sports, a gentleman's 9ct gold cushion-shaped wrist watch**, circa 1941. The silvered dial with luminous skeleton Arabic numerals and hands and a subsidiary seconds at 6, 30mm wide A.L. Dennison two-piece hinged case with hallmarks for Birmingham 1941, on a leather strap, inner chrome snap-on dust-cover, Swiss 15 jewel movement, marked 1/440
£70 - 100

95 **Corona, a gentleman's 9ct gold round wrist watch**, circa 1960(?). No.1291, the light cream dial with raised gilt baton indicators, dauphin hands, a red sweep centre seconds and a date aperture at 3, 34mm diameter two piece case, the Corona 25 jewel movement not examined; together with Roamer, a gold-plated and stainless steel round wrist watch, ref. 1248, the cream dial with raised gilt baton numerals, dauphin hands and a subsidiary seconds at 6, 34mm diameter screw case, Roamer 15 jewel movement, Cal.MST401
£70 - 100

96 **Avia, a gentleman's 9ct gold cushion-shaped bracelet watch**, circa 1953. The light cream dial with alternate raised arrow-head and Arabic numerals, dauphin hands and a sweep centre seconds with a red terminal, 27.5mm wide A. L. Dennison 'Meteor' two-piece case with hallmarks for Birmingham 1953, on a 9ct gold two-row block bracelet, hallmarks for London 1954, (the case, glass and bracelet weigh 24g gross), Swiss 15 jewel movement, Cal.AS1187/94
£300 - 400

97 **Buren, Grand Prix, a gentleman's 9ct gold mid-size round wrist watch**, circa 1956. The cream dial with raised gilt Arabic numerals and subsidiary seconds at 6, the 30mm diameter round three-piece case engraved on the back with a presentation inscription dated 1957, Buren 17 jewel movement; together with Wates, a lady's 9ct gold octagonal wristwatch circa 1936, the cream dial with baton and fancy Arabic numerals, the 22mm wide three-piece case hallmarked Glasgow 1936, on a leather strap, Swiss movement
£100 - 150

98 **Tag Heuer, Professional 200 Meters, a lady's stainless steel and gilt bracelet watch**. the golden dial with luminous baton indicators, 'Mercedes' hands and a date aperture at 3, 28.5mm diameter (32mm including winding crown) tonneau-shaped case with a gilt bezel on a stainless steel and gilt block bracelet with a deployant clasp, the movement not examined
£200 - 250

99 **Zenith, a lady's 9ct gold round bracelet watch**, circa 1973. The white enamelled dial with black Arabic numerals and a subsidiary seconds at 6, two piece case with hallmarks for London 1973, the associated 9ct gold cable-link bracelet Birmingham 1966, Zenith 17 jewel unadjusted movement, Cal/1740,, the watch weighs 17g gross (the case, bracelet and glass weigh 13.2g gross)
£150 - 180

100 **Calvin Klein, a lady's stainless steel and diamond bracelet watch**, circa 2004. ref. K21233 00, signed mother of pearl dial with baton hands, 20mm diameter two-piece case with diamond dot indicator bezel, on an open circular link bracelet, Swiss quartz movement; together with the original box, instruction booklet and Maldives Islands retailers receipt
£50 - 70

101 **Omega, a lady's 18ct gold round bracelet watch**, circa 1980. The cream dial with raised gilt baton indicators and hands, 15.5mm wide two piece case on an integral mesh bracelet with import hallmarks for London 1980, Omega 17 jewel oblong movement, Cal. 484, No.27311216, the case, glass and bracelet weigh 27.1g gross.
£600 - 800

102 **Omega, a mid-size, stainless steel wrist watch**, circa 1944. No.10721622, the brushed and tarnished silvered dial with Arabic numerals and a subsidiary seconds dial at 6, the 32mm diameter two-piece screw case, reference 2050 3, on a later leather strap, the Omega 15 jewel movement not ticking the balance staff broken
£200 - 300

103 **Rotary, Elite, a modern gentleman's 9ct gold cased round wrist watch**. The light yellow dial with raised gilt baton indicators and hands and a date aperture at 3, 33.5mm diameter two-piece screwed case with post 2000 London laser hallmarks, on a black crocodile strap, the movement not examined
£80 - 120



Lot 169



Lot 181



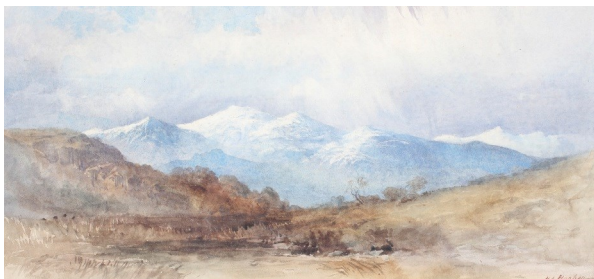
Lot 210



Lot 324



Lot 327



Lot 338



Lot 354



Lot 349

Please note: Buyers Premium at 20% plus VAT is payable on each item in addition to the hammer price

104 **Hanhart, a WWII German pilot's wrist watch**, No. 111794. The black dial with luminous skeleton Arabic numerals, and two subsidiary dials for running seconds and 30 minutes, the 40mm three piece screw case with a serrated bezel, the back marked 'Bodenedelstahl', 'Wassergeschutzt' and 'Stossfest' ('Stainless steel base', 'Water protected/proof' and 'Shock Proof') and numbered '111794', unnamed three-quarter plate lever movement with conforming number '111794'
£400 - 500

105 **An early 20th century lady's 9ct rose gold round bracelet watch**, circa 1914. The white enamel dial with a red 12 and black Arabic numerals,, 27mm diameter three-piece hinged case with import hallmarks for London 1914, on a rose-gold three-row block expanding bracelet stamped '9ct', Swiss jewelled lever movement, the watch weighs 24.6g gross
£120 - 180

106 **A Italian white gold, cultured-pearl and diamond pendant and necklace**. The pendant designed as a single 11.2mm diameter white cultured-pearl on a round brilliant diamond 12 stone pendant loop, approx. 0.24cts total, stamped '750'; this hung from an 18ct white gold two-row fine oval-belcher chain on a trigger clasp, post 2000 London convention hallmarks, approx. 42cm long overall (16 1/2 inches), approx. 4.3g; in a Mallory Bath box
£150 - 250

107 **A vintage cultured-pearl single row necklace**. The 50 cultured-pearls approx. 8.2-8.6mm diameter, strung on a 9ct gold and cultured-pearl 11 bead cluster clasp with hallmarks for London 1992, approx. 43cm long overall (17 inches); in a 'Boodles', Boodle and Dunthorne green-leatherette covered box
£100 - 150

108 **A Mikimoto cultured-pearl single row necklace**. The 72 uniform 5.5-5.75mm diameter round beads, knotted on a yellow metal and half-cultured-pearl single bead open-lobed round clasp stamped '9Kt', approx. 50cm long overall (19 3/4 inches); in a Mikimoto blue-leather bound box
£30 - 50

109 **A Mikimoto 18ct white gold, grey cultured-pearl and diamond necklace**. The front designed as a single 10.3mm diameter grey cultured-pearl between round brilliant diamond 19 stone pave-set barrels, the 38 diamonds approx. 0.76cts total, on a white gold cable link back-chain to a Mikimoto trigger clasp stamped '750' and with post 20000 London convention hallmarks, approx. 42cm long overall (16 1/2 inches), 22.8g gross; in a Mikimoto blue-suede covered case and outer blue-card box
£500 - 800

110 **A vintage Mikimoto cultured-pearl single row necklace**. The 57 very slightly graduated beads graduated approx. 7.0-7.5mm diameter, knotted on a Mikimoto 18ct gold and small cultured-pearl single bead stylised ribbon bow clasp stamped '750' and with import hallmarks for London 1997, the necklace approx. 45cm long overall (17 3/4 inches); in a Mikimoto red-leather bound case and an outer card box
£80 - 120

111 **A ruby and diamond abstract leaf and scroll ring by Erica Sharpe**. The three graduated oval mixed-cut rubies rib-over set in yellow gold beside two white leaf-scrolls set with an old-cut and two small round brilliant diamonds, on a D-section shank with the maker's mark 'EJS' for Erica Sharpe and mixed-metal marks for 18ct gold and silver, sizing beads prevent accurate size but approx. Q-R(?), 7.6g gross; in an Erica Sharp ring box
£200 - 300

112 **A late Victorian 18ct gold and diamond five stone ring**. The graduated single and old-cut stones grain set within a tapering channel on a shallow D-section shank with hallmarks for London probably 1891, size L, 3.9g gross
£120 - 180

113 **A late Victorian gold and gem set gypsy-type ring**. The tapering band with a central seed-pearl diagonal band (one missing) between a ruby and a later replacement red paste, partial hallmarks for Birmingham 1890, size N+, 3g gross
£80 - 120

114 **A modern 9ct gold, emerald and diamond cluster ring**. The five round mixed-cut emeralds with tiny eight-cut diamond points in a quatrefoil head, on a D-section shank with post 2000 Birmingham import convention hallmarks, size R, 2.9g gross
£40 - 60

115 **A mid-20th century 18ct gold and diamond cluster ring**. The nine single and eight-cut stones claw set in white on a yellow D-section shank with split knife shoulders, indistinct hallmarks for London circa 1960, probably by S J Rose, size Q, 3.3g gross
£100 - 150

116 **A vintage 18ct gold and diamond dress ring**. The three baguette diamond spaced by pairs of small round brilliant diamonds, all claw set on a tapering flat-section shank with hallmarks for Charles Green & Son, Birmingham 1989, size P, 3.6g gross; in a small blue-leather bound heart-shaped ring box
£250 - 350

117 **A vintage gold and diamond solitaire ring** with diamond shoulders. The central round brilliant approx. 0.55cts, between emerald-cut diamonds all claw set to a flat-section shank, apparently unmarked, size L, 3.4g gross
£350 - 500

118 **An early 20th century gold, sapphire and diamond five stone ring**. The three graduated round mixed-cut sapphires spaced by old-cut diamonds, all claw set in white on a yellow D-section shank stamped 'R.N', '18ct' & 'Plat', size L+, 2.6g gross
£150 - 250

119 **A vintage 9ct gold and cultured-pearl single stone ring**. The 6mm diameter cultured-pearl in a broad-claw setting on a D-section shank with knife-edge shoulders, hallmarks for London 1964, size K, 2.1g gross
£30 - 50

120 **A modern 14ct gold, opal and sapphire cluster ring**. Centred with a small round mixed-cut sapphire within an oval-cabochon white-opal six stone surround with smaller sapphire points, all claw set on a D-section shank with post 2000 Birmingham convention hallmarks, size R, 3.7g gross
£80 - 120

121 **A late Victorian 18ct gold and half-pearl entwined twin-hearts ring**. The open hearts later applied to a D-section shank with hallmarks for Birmingham 1892, K+, 2.4g gross
£100 - 150

122 **An early 20th century 9ct rose gold and small oval garnet single stone ring**. Hallmarks for Chester 1919, size J, 1.3g gross
£30 - 50

123 **A vintage German tourmaline single stone ring**. The oval cabochon pink tourmaline rub-over set in yellow to a tapering shank stamped '585', size N, 4.8g gross
£100 - 150

Please note: Buyers Premium at 20% plus VAT is payable on each item in addition to the hammer price

124 A mid-20th century gold, garnet and diamond oval cluster ring. Centred with an oval mixed-cut almandine garnet, claw set within a small eight-cut diamond 15 stone illusion set border, on a D-section shank with split knife shoulders with chenirs, stamped '18ct', size L, 4.7g gross £150 - 250

125 A 1920's platinum, sapphire and diamond ring. Centred with a pale pastel-blue round mixed-cut sapphire approx. 0.73cts, in a four claw setting between tapered baguette diamond shoulders, on a D-section shank stamped '10% Irid Plat', size L+, 3.5g gross £800 - 1200

126 A vintage 18ct gold, opal and diamond oval cluster ring. Centred with an oval cabochon white opal displaying a pleasing play of mostly green and orange colour, within a round brilliant diamond 12 stone border, approx. 0.72cts total, all claw set in white on a yellow D-section shank with split knife shoulders with chenirs, hallmarks for London 1980, size N, 4.8g gross £300 - 500

127 A vintage 9ct gold and diamond seven stone half-eternity ring. The round brilliant stones approx. 0.50cts total, channel set on a flat-section shank, Birmingham hallmarks the date letter obscured, size L+, 2g gross £100 - 150

128 An early 20th century platinum wedding band. Formerly engraved with leaf-chevron(?), stamped 'Plat', size M+, 3.5g £50 - 70

129 An early 20th century gold, sapphire and diamond hexafoil ring. Centred with a small old-cut diamond within a French-cut sapphire six stone surround and a further old-cut diamond border, all grain set to a D-section shank, stamped with an indistinct reference number '8147(?)', size R+, 4.1g gross £300 - 500

130 A vintage 9ct rose gold, garnet and half-pearl ring in Victorian style. With a central garnet cluster between half-pearl trefoils and open scroll shoulders on a reeded shank with hallmarks for London 1971, size N, 4.6g gross £70 - 90

131 A vintage sapphire and diamond spiral cluster ring, circa 1970. Centred with a round mixed-cut sapphire within two eight-cut diamond nine stone cross-over spirals, all claw set in white on a D-section shank with split knife shoulders, unmarked, size Q+, 5.3g gross £200 - 300

132 A modern 18ct gold, sapphire and diamond three stone ring. Centred with a oval mixed-cut sapphire between round brilliant diamonds, all claw set in white on a yellow D-section shank with post 2000 London Convention hallmarks, size Q, 4.4g gross £250 - 350

133 An early to mid-20th century gold, opal and ruby oval cluster ring. Centred with an oval cabochon white opal displaying a good play of mostly orange and green play of colour, within a small round ruby 15 stone border, all claw set on a D-section shank, stamped '9ct', size M+, 4g gross £200 - 300

134 A modern 9ct gold and diamond cluster ring. The 23 round brilliant cut stones circa 0.25cts total, post 2000 Sheffield convention hallmarks, size N, 2.6g gross £60 - 80

135 A vintage 18ct gold and multi-gem interchangeable beads ring. The two-row shank and head open to accommodate the beads, hallmarks for London 1970, size about V, 9.2g; the 'semi-precious' stone and glass beads approx. 14.8mm-15.2mm diameter comprising; amethyst; tigers eye; snowflake obsidian; rose quartz; goldstone; blue chalcedony; and mottled green glass imitating jade £250 - 350

136 A 1950's gold and diamond solitaire ring, The transition-cut stone approx. 0.52cts, claw set in white on a yellow gold D-section shank stamped '18ct & Plat', size O, 2.0g gross £300 - 500

137 A mid-20th century gold, emerald and diamond five stone ring. The three small emeralds (one probably a replacement green paste), spaced by round brilliant diamonds (one damaged), all set in white on a worn yellow D-section shank stamped '750', size Q, 3.5g gross £80 - 120

138 A Victorian sovereign, 1892, loosely mounted in a vintage 9ct gold 'pocket watch' type pendant mount. Hallmarks for Birmingham 1983, approx 3cm diameter overall; and hung from an Italian rope-twist necklace on a bolt-ring clasp, hallmarks for Sheffield 1982, 41cm long overall (16 inches), the mount and necklace weigh 20.7g gross £600 - 700

139 A late Victorian gold, half-pearl and diamond hinged bangle. The pierced front in the form of five graduated half-pearl lozenges with old-cut diamond accents and with a beaded border, on a three row back hoop stamped with a maker's mark 'AG' and '18ct', internal width approx. 56mm, internal height approx. 46mm, 31.2g gross £2000 - 2500

140 A vintage German tourmaline two stone hinged torque bangle. The terminals each rub-over set in yellow with either an oval cabochon pink or green tourmaline, stamped '585', 26.9g gross (including the internal spring) £500 - 800

141 A late Victorian 9ct rose gold hollow hinged bangle and a vintage signet ring. The bangle in the form of three rows of embossed cross-hatched beads, hallmarks for Birmingham 1891, 7.5mm wide, the internal dimensions approx 59.5mm wide, 51mm high, 11.8g; together with a vintage child's 9ct gold square signet ring, hallmarks for Birmingham 1903, size E, 2.7g £200 - 300

142 An early 20th century gold and garnet necklace in 18th century style. The 39 oval flat-cut garnets each claw set within a closed-back collet, on a similar garnet two-stone clasp, unmarked, the necklace in two pieces and requires a repair, approx. 38cm long overall (15 inches), 12.3g gross £100 - 150

143 A modern Italian 9ct gold fringe necklace. In the form of rows of shaped batons, post 2000 Sheffield convention hallmarks, 40cm long overall (16 inches), 19.2g £300 - 400

144 A vintage emerald abstract scrolling leaf brooch. The six vari-cut stones claw & rub-over set throughout the pair of abstract scrolling leaves, stamped '18K', approx. 57mm long overall, 12.6g gross £150 - 250

145 **A Victorian gold, turquoise enamel and half-pearl bow brooch.** The ribbon tied bow with half-pearl details, diaper engraved terminals and a central small swing drop (lacking three half-pearls and substantial chips to the enamel), approx. 43mm wide, 25mm high overall, 12.8g gross
£150 - 250

146 **A pair of 18ct white gold and cultured-pearl clip earrings.** Each set with an 8.2mm cultured pearl, the clip fittings stamped '750' and with lasered post 2000 London convention hallmarks, 2.7g gross
£50 - 80

147 **A pair of vintage 18ct gold and small diamond stud earrings.** Each round brilliant approx. 0.08cts, claw set with in a rope-twist border, hallmarks for London 1978, each approx. 6.5mm diameter, the pair 1.6g gross
£50 - 80

148 No Lot

149 **Five Victorian and later brooches.** Including a black-enamelled shaped-oval brooch with a central glazed woven hair oval panel, later steel pin and catch, approx. 51mm wide overall; an early 20th century rose gold graduated cabochon turquoise and half-pearl five stone open scroll brooch, later base-metal pin and clasp, 37mm wide overall, 3.6g gross; a small gold and half-pearl 'lilly of the valley' brooch, stamped '15ct', steel pin, 41mm overall, 2.5g gross; a bloomed-gold and nephrite jade marquise-shaped floral brooch, later steel pin. 43mm wide overall, 5.5g gross; and a Vintage 9ct gold and oval shell cameo brooch depicting an unknown female profile, hallmarks for Birmingham 1968, approx. 40mm high overall, 9.7g gross
£120 - 180

150 **A vintage silver broad hinged bangle.** The front engraved with flowers and leaves and gold highlights, hallmarks for Birmingham 1971, 19mm wide, 59g gross
£50 - 70

151 No Lot

152 **A Norwegian 'Sterling' and pale-blue guilloche enamel twin leaf and stem brooch.** Marked '925S Sterling' & 'Made in Norway' with an anchor between, approx. 57mm wide overall
£50 - 80

153 **A Continental gold and rose diamond fox mask stock pin.** The pin applied at one end with fox mask with rose diamond eyes, indistinct marks, approx. 46cm long overall, 4.1g
£80 - 120

154 **Rasmussen & Lassen, a Danish modernist 'Sterling' brooch of abstract bird design.** Stamped verso 'Ra & La' over 'Sterling' over 'Denmark' over '925', approx. 70mm wide overall, 12.6g
£30 - 50

155 **A Victorian turquoise three-stone heart-shaped panel and two later brooches.** Comprising; a rectangular pale-blue paste single stone open-scroll bar brooch, marks rubbed, 5.9g gross; and an Edwardian rose gold, garnet and seed pearl open-oval brooch, stamped '9ct', steel pin, 2.6g gross
£100 - 150

156 **A Victorian gold, chalcedony and turquoise cross pendant.** With a central small cabochon turquoise forget-me-not motif and tapering chalcedony arms with shaped terminals, approx. 30mm high overall
£50 - 80

157 **A late Victorian gold 'Prince of Wales' or rope work guard length chain.** With an applied oval panel stamped '10', on a bolt-ring clasp also stamped '10', approx 148cm long overall (58 1/4 inches), 10g
£150 - 250

158 **Two gold rings.** Comprising; an early 20th century 18ct gold, turquoise and diamond gypsy ring (lacking a centre stone), hallmarks for London 1912, size Q+, 2.9g gross; and a vintage solitaire ring mount, lacking a stone, the shank stamped '18ct' size T, 1.7g
£70 - 100

159 **A modern 9ct gold oblong signet ring.** The head part floral engraved, on a tapering D-section shank, post 2000 London convention hallmarks, size W+, 13.4g
£150 - 250

160 **Two 22ct gold wedding bands.** Comprising; a broad band with hallmarks for Birmingham 1921, 5mm wide, size U, 3.3g; the other with hallmarks for London 1964, 4mm wide, size P+, 4g
£250 - 300

161 **An early/mid 20th century gold oval signet ring.** Engraved with script initials, on a D-section shank stamped '18ct', size K, 8.2g
£200 - 300

162 **A vintage 9ct gold D-section wedding band.** Hallmarks for London 1979, 5.8mm wide, size leading-edge W+, 3.8g
£50 - 80

163 **An early 20th century 22ct gold D-section wedding band.** Hallmarks for Birmingham 1922, 3.7mm wide, size K, 3.9g
£140 - 160

164 **A vintage 9ct gold oblong signet ring.** The square head indistinctly engraved with initials 'GR(?)', on a tapering shank with hallmarks for Birmingham 1987, size P, 3.4g
£50 - 80

165 **Two gold and gem set rings.** Comprising a Victorian 22ct gold, round mixed-cut very-dark-blue sapphire (probably a later replacement) and half-pearl three stone panel ring, hallmarks for London 1851, size M+, 1.7g gross; and a mid-20th century gold, sapphire and rose diamond three stone ring, indistinctly stamped '18ct' & 'Pt(?)', size N. 1.7g gross
£50 - 80

166 **An early 20th century gold and diamond square cluster ring,** circa 1925. The five graduated eight-cut stones all grain set in a platinum flashed mount on a D-section shank stamped '18ct', size T, 2.5g gross; in a box
£150 - 200

167 **An early 20th century gold and small diamond three stone ring.** The graduated eight-cut stones grain set in a shaped platinum head on a D-section shank stamped '18ct & 'Plat', size N, 1.6g gross
£50 - 80

168 **A late Victorian 18ct gold, sapphire and diamond stone ring.** The three graduated oval French-cut sapphires spaced by pairs of small old-cut diamonds, all claw set on a D-section shank, with indistinct hallmarks probably Birmingham 1892, size R, 2.2g gross
£60 - 80

Please note: Buyers Premium at 20% plus VAT is payable on each item in addition to the hammer price



Lot 362



Lot 368



Lot 372



Lot 406



Lot 386



Lot 377

Please note: Buyers Premium at 20% plus VAT is payable on each item in addition to the hammer price

169 **A modern 9ct gold, kunzite and diamond dress ring.** Centred with an oval mixed-cut kunzite, approx. 20mm x 15mm x 11mm, claw set between tiny eight-cut diamond triangular panel shoulders, on a D-section shank with post 2000 Birmingham marks, size L, 8g gross
£100 - 150

170 **An early 20th century 22ct gold D-section wedding band.** Hallmarks for Birmingham 1917, 4.9mm wide, size leading-edge K, 4.7g
£160 - 180

171 **A Sovereign, 1910,** loosely mounted in a plain 9ct gold pendant mount. Hallmarks for Birmingham 1975; this hung from a gold-plated rope chain on a bolt-ring clasp
£300 - 400

172 No Lot

173 **A sovereign 1903,** mounted in a vintage abstract leaf and branch pendant. Apparently unmarked, 12.8g gross
£350 - 400

174 **A half-sovereign, 1912.**
£180 - 220

175 **An early 20th century gold and turquoise open quatrefoil pendant and chain.** The central open lattice centred with a small cabochon turquoise within and open lattice and a reeded border and with a small turquoise drop, applied panel indistinctly stamped '9ct(?)', approx. 36mm high overall including the bale and drop, 0.9g gross; together with a vintage Italian 9ct gold fetter-and-three filed-curb chain on a lobster-claw clasp, the Birmingham import hallmarks obscured, approx. 48cm long overall (19 inches), approx. 3.1g
£70 - 90

176 **A vintage 9ct gold belcher link necklace.** On a bolt ring clasp, hallmarks for London 1978, approx. 77cm long overall (30 inches), 14.7g
£180 - 220

177 **An early 20th century rose gold graduated faceted -belcher link 'Albert' or watch chain.** With swivel/dog-clip and bolt ring terminals and hung with a T-bar, stamped '9c', with an applied panel '9c' and with the makers mark 'CDB' probably for Charles Daniel Broughton, 48cm long overall (18 3/4 inches), 25g gross
£300 - 500

178 **A 9ct gold curb link 'charm' bracelet.** On a bolt-ring clasp and hung with approx. 23 various charms. Including a pair of scissors; a gem set artist's pallet; a church; a horse-shoe; a teddy bear; and a well, various hallmarks and stamps, 37.1g gross; together with a loose Continental clam-shell shaped charm, this 0.5g
£500 - 700

179 **An early 20th century rose gold hollow half-hoop bangle.** Stamped '9ct', maker's mark probably that of S Blanckensee & Son Ltd, 19.4g
£200 - 300

180 **A pair of vintage 9ct gold rectangular twin-panel cufflinks.** Each link comprising two rectangular panels of which one is engine-turned with other engraved with initials 'ESB' with chain inter-links, hallmarks for Birmingham 1952, 8.5g
£120 - 150

181 **A Scottish pebble oblong brooch.** The black slate oblong panel inset with Scottish pebbles in a geometric cross-hatched design, 46mm x 55mm overall
£30 - 50

182 **A pair of early 20th century rose gold cufflinks.** Each in the form of a hollow oval and a round panel with chain inter-links, stamped '10c', 4.1g gross; in a red-Morocco case
£60 - 80

183 **Four 9ct gold rings.** Comprising; an oblong signet ring engraved with script initials, hallmarks for Birmingham 1971, size Q, 4.9g; another signet ring the head part engraved, the Birmingham date letter rubbed, size V, 7.4g; and two D-section wedding bands, one hallmarked London 1989, 3.6mm wide, size O, 2g; the other Birmingham 1951, 1.9mm wide, size O+, 1.3g; the four rings weigh 15.6g gross
£200 - 300

184 No Lot

185 **A late 19th/early 20th century gold Masonic sphere.** With a pierced tapering suspension, the interior with a pentagonal-star stamped 'Reg. No. 691741', and with the maker's mark of Synyer and Beddoes and stamped '9ct', and an extending panel with various devices and terminating with a skull and crossed bones motif, stamped '9ct', 18mm diameter, 28.5mm high overall, 7.9g gross
£150 - 200

186 **A late Victorian gilt-metal and Essex crystal stick pin depicting a fox mask.** the cabochon approx. 10.8mm diameter set within a bead and rope-work border; a gold horse shoe stick pin on a steel pin; together with a leather stick-pin box
£100 - 150

187 **A modern 9ct white gold aquamarine pendant and chain and a pair of matching stud earrings.** Each set with a round mixed-cut pale blue aquamarine, hallmarks for London 2007; the four weigh approx. 7g gross
£100 - 150

188 **A Victorian gold and round cabochon banded-agate stick pin** with an entwined snake border. The cabochon approx. 10.8mm diameter, the back with a glazed woven-hair panel, 7.2g gross; together with a gold-bead stick pin; and a stick pin box
£50 - 80

189 **A Victorian gold, half-pearl and black onyx mourning brooch.** Centred with a woven-hair glazed panel within a half-pearl border on a black onyx ground with a bead and engraved scroll border, metal pin, approx. 27mm x 23mm overall, 5.6g gross
£100 - 150

190 **Four Victorian and later brooches and an Edwardian gold double-sided locket pendant.** With a floral trailing-leaf border; marks obscured; approx. 38mm diameter; two Victorian agate oval brooches; a gilt-metal oval brooch with a central glazed woven-hair panel; and a floral embossed brooch lacking a stone and the pin
£60 - 80

191 **A Scottish silver and Aberdeen granite 'dirk' brooch.** 8.5cm long overall (3 1/4 inches); an Irish silver and Connemara marble shamrock gypsy ring, size J; and a Victorian silver mounted lantern-shaped compass fob, hallmarks for Chester 1881, 37mm high overall
£50 - 80

192 **A vintage 9ct gold curb link 'charm' bracelet.** On a heart-shaped padlock clasp with hallmarks for London 1972, and hung with four charms comprising, a ship's lamp; a life belt; a horse shoe; and a shield enamelled with the arms of Weston-super-Mare, all hallmarked, circa 1970-73, 40g gross; together with two loose 9ct gold charms in the form of a spinning wheel and a well, these two 2.2g; and two gold-plated charms in the form of a boot and an articulated-fish
£500 - 700

193 **Three Victorian and later items of jewellery.** Including a gold knot and bar stick pin, unmarked; an Egyptian silver, enamel and green faience 'winged scarab beetle' stick pin; and a gold-plated and turquoise-coloured faience scarab beetle oval brooch with open scroll and panel borders, approx. 28mm x 22mm overall
£120 - 180

194 **A collection of 9ct gold necklaces, chains and pendants.** Including various Italian curb chains; a St Christopher pendant; a small oval pale-blue stone pendant; a textured Latin cross; a small oval locket and other items, 23.5g gross; together with a gold-plated embossed round locket
£300 - 400

195 **A small collection of jewellery** including a Victorian gold and foil-backed quartz heart-shaped pendant. With a glazed woven-hair back-panel, approx. 21.5mm high overall, 5.7g gross; two 18th century cut steel brooches in the form of a salamander and a star; together with a floret-textured-silver marquise-shaped ring, size I; and a pair of gold and small round cabochon white-opal stud earrings, stamped '375, 1.4g gross
£100 - 200

196 **A collection of Victorian and later jewellery.** Comprising a curb-link brooch, two collar studs stamped or hallmarked '18ct'; 2.5g; two clasps and various gold chains, 6.8g gross; another hallmarked 9ct, 0.6g; a small blue-paste stick pin; a flower-carved jet pin brooch; and a yellow-paste thistle shaped motif
£60 - 80

197 **A Wedgwood creamware gathered caneware bamboo moulded teapot and lid.** Stamped to base Wedgwood and 156. H10.3cm x L17.8cm
£200 - 300

198 **A pair of 20th century blue and white hexagonal reticulated 'cricket' pots or lanterns.** H9cm
£60 - 80

199 **A Chinese white glazed stem cup shaped funnel.** The interior unglazed and with pierced hole. H7cm
Provenance: Andrew Dando Antiques, Bath, purchased 16.3.1995; Christie's Diana Cargo, March 1995, lot 1146/8.
£80 - 120

200 **A sovereign 1908,** later mounted in a vintage 9ct gold ring. With basket-weave design gallery and shoulders, on a plain tapering shank, the hallmarks obscured, probably Sheffield 1976(?), leading-edge size U, 16.6g gross
£400 - 500

201 **Three vintage gold and gemset rings** including a paste eternity ring, stamped 9ct, size N+, 3.3g gross; a paste single stone ring, the hallmarks rubbed, size R, 2.2g gross; and an oval-cabochon imitation-bloodstone single stone ring, stamped '9ct' size P, 2.3g gross; the three rings weigh 8g gross
£80 - 120

202 **A vintage diamond cluster ring.** The 21 graduated round brilliant diamonds approx. 0.90cts total, all claw set as a target cluster on a flat-section shank indistinctly stamped '750', size O, 3.1g gross
£100 - 150

203 **A modern 18ct white and yellow gold, emerald and diamond spiral triple-cluster ring.** The three slightly-graduated oval mixed-cut pale green emeralds, within a round brilliant diamond 34 stone white spiral surround, on a yellow gold D-section shank with hallmarks for London 2007, size M, 6.4g gross
£200 - 300

204 **A modern 18ct white and yellow gold and diamond three stone ring.** The three round brilliants approx. 0.54cts total, in white 'bead-topped' four claw settings on a yellow D-section shank with hallmarks for Birmingham 2004, size L+, 6.7g gross
£200 - 300

205 **A 9ct gold broad wedding band.** Chased with a meandering textured and inter-locking arched pattern, hallmarks for London 1972, 9mm wide, leading edge size Q+, 4.6g
£60 - 80

206 **An early Victorian 22ct gold, ruby and half-pearl cluster ring.** Centred with a small half-pearl within a round mixed-cut ruby six stone surround, on a D-section shank with full hallmarks for Chester 1841, size N+, 6.9g gross
£150 - 200

207 **Two 9ct gold signet rings,** comprising; one with an uninscribed oblong head on a tapering shank with hallmarks for London 1972, size U, 5.1g; the other heart-shaped also with hallmarks for London 1972, size O, 1.9g; the two rings weigh 7g gross
£100 - 150

208 **A vintage gold and black onyx oval signet ring.** The plain oval black-onyx panel rub-over set on a tapering shank stamped '9ct', size Q, 6.4g gross
£60 - 80

209 **A vintage 9ct gold broad wedding band.** Diamond-cut with flower-heads, hallmarks for London 1970, 7.8mm wide, leading-edge size P, 5.3g
£70 - 90

210 **A modern 18ct white and yellow gold, sapphire and diamond three stone ring.** Centred with an oval native-cut sapphire approx. 0.94cts, between round brilliant diamonds each approx. 0.18cts, all claw set in white on a yellow gold square-section shank with hallmarks for Birmingham 2003, size N, 5.1g gross
£200 - 300

211 **A vintage 9ct gold, emerald and diamond pear-shaped cluster ring.** The central pear-shaped emerald rub-over set in yellow within a tiny eight-cut diamond 12 stone white illusion surround, on a yellow gold D-section shank with hallmarks for London 1990, size , 2.7g gross
£60 - 80

212 **A modern platinum, tanzanite and diamond oval cluster pendant and chain.** The pendant centred with an oval mixed-cut tanzanite measuring approx. 8mm x 6mm, claw-set within a small round brilliant diamond 20 stone border approx. 0.20cts total, hallmarks for Birmingham 2013; hung from an Italian platinum fine trace-link chain on a bolt-ring clasp, post 2000 Sheffield import convention hallmarks, approx. 46cm long overall (18 inches); the two weigh 4.4g gross
£300 - 400

213 **A pair of vintage gold and 6mm diameter golden-cultured-pearl single bead pendent earrings.** Each on a shepherds-crook fitting, each approx. 25mm high overall
£20 - 30

214 **A vintage diamond open-heart pendant.** The 18 round brilliants all claw set in white stamped '14K', 1.6g gross
£60 - 80

215 **A modern Italian 9ct gold necklace.** On a lobster-claw clasp, post 2000 Sheffield convention hallmarks, 41cm long (16 inches), 7.6g
£100 - 150

Please note: Buyers Premium at 20% plus VAT is payable on each item in addition to the hammer price



Lot 412



Lot 425



Lot 426



Lot 458



Lot 459



Lot 493

Please note: Buyers Premium at 20% plus VAT is payable on each item in addition to the hammer price

216 **An early 20th century rose gold belcher link necklace.** With an applied panel stamped 'ACC 9c', on a modern bolt-ring clasp stamped '9K', 46.5cm long overall (18 1/4 inches), 7.5g
£100 - 150

217 **A vintage Italian gold textured spiral-twist hollow tubular hinged bangle.** Italian marks and stamped '375', 9.3g
£120 - 180

218 **A pair of early 20th century rose gold cufflinks.** Each link in the form of an oval and a hollow torpedo-shaped panel with fetter-inter-links, stamped '9ct', 3.9g; and a pair of matching round studs, 1.2g, in a fitted case
£80 - 120

219 **A pair of vintage 9ct gold oval twin-panel cufflinks and other items.** The cufflinks with chain inter-links and hallmarks for Birmingham 1961, 6.5g; together with an early 20th century gold and tiny amethyst single stone bar brooch, stamped '9ct' (base metal pin and repairs), 1.2g gross; an early 20th century child's rolled-gold signet ring; and a modern gold-plated, blue-paste and imitation-pearl cluster ring
£80 - 120

220 **A pair of vintage 9ct gold cufflinks.** Each with an un-inscribed oval panel with a floral border and a faceted torpedo back-link and chain inter-links, hallmarks for Birmingham 1963, 7g
£100 - 150

221 **A vintage 22ct gold D-section wedding band.** Hallmarks for Birmingham 1939, 2.1mm wide, size M+, 1.2g
£40 - 60

222 **A mid-Victorian 18ct gold and nicolo flower ring.** The oval sard-onyx panel depicting a white forget-me-not on a black ground, rub-over set between formerly enamelled open scroll shoulders, to a D-section shank with hallmarks for Birmingham 1857, size N+, 2.3g gross
£70 - 100

223 **A vintage gold and pear-shaped amethyst pendant.** The scissors-cut stone spectacle-set in gold, unmarked, approx. 43mm high overall
£80 - 120

224 **A late Victorian diamond closed-crescent brooch.** The 19 graduated old-cut diamonds approx. 2.50cts total, all claw set in silver collets on a gold frame, approx. 30mm wide overall, 5g gross; in a later blue-velvet covered fitted case
£1000 - 1500

225 **An early 20th century gold, half-pearl and reverse crystal intaglio oval pendant** with a Royal monogram GR. The mother-of-pearl backed rock-crystal intaglio with a Crown above the monogram 'GR', rub-over set within a single row half-pearl surround and a plain broad border with a pierced foliate scroll surmount, the back stamped '9ct' and formerly with a glazed-locket back, later base-metal pin and safety chain, the locket approx. 47mm high overall, 32mm wide, 15.7g gross
£150 - 250

226 **A small collection of early 19th century and later jewellery** including a late George III gold and half-pearl oblong mourning brooch. With a central woven-hair glazed panel within a half-pearl 20 stone border, approx. 33mm wide overall; a 9ct gold framed round double-sided locket, hallmarks for Birmingham 1911; a gold mounted round compass with a carnelian back panel; and an oval carved bone 'miricle' brooch depicting a stag in a woodland glade;
£70 - 90

227 **A Victorian gold, black-onyx, gold and half pearl brooch and two other brooches.** The concave marquise-shaped black-onyx panel with an applied gold and half-pearl floral motif, a gold pin-mount verso stamped '15ct' and a base metal pin, 60mm long overall; together with a sard-onyx oval panel with a botonnee cross intaglio, set to gold twin knife-edge bars with bead decoration and a later steel pin, 40mm wide overall, 2.5g gross; and a gilt-metal mounted oval shell cameo brooch depicting a nea-classical female profile, 28mm high overall
£50 - 70

228 **A vintage gold and diamond solitaire ring,** circa 1960. The round brilliant approx. 0.30cts, grain set within a 'shaped' white surround and rex collet, on a yellow D-section shank with split knife-edge shoulders with chenirs, stamped '18ct & Plat', size N, 2.3g gross
£150 - 250

229 **A mid-Victorian 9ct gold floral chased wedding band.** Chased with flower-heads and leaves, hallmarks for Birmingham 1863, 5.4mm wide, leading edge size P+, 2.7g
£40 - 60

230 **An Art Deco sapphire and diamond shaped-oval cluster ring** with diamond shoulders. The central cluster with a central calibre sapphire three stone band within an eight-cut diamond eight stone shaped surround and single stone open shoulders, on a D-section shank with knife-edge shoulders, stamped '18ct' & 'Plat', size M, 3.4g gross
£80 - 120

231 **A vintage 18ct gold opal and diamond and oval cluster ring.** Centred with an oval cabochon white opal, claw set within a tiny eight-cut diamond eight stone illusion surround, on a yellow gold D-section shank with hallmarks for Birmingham 1985, size L; 3.3g gross
£100 - 150

232 **Three gold rings and a necklace.** Comprising; a 9ct rose gold floral engraved broad wedding band, hallmarks for Birmingham 1936, size R+, 1.6g; a vintage rose gold and garnet dress ring claw set with two (of three) oval mixed-cut garnets, stamped '9 .375', size N, 0.9g gross; a cultured -pearl single bead ring, the 7mm round bead in a cross-over claw setting on a square-section shank stamped '9ct', size L, 2.7g gross; and vintage rose gold fine trace chain on a bolt-ring clasp, stamped '375', 44cm long overall (17 1/4 inches), 1.9g gross
£100 - 150

233 **Seven vintage 9ct gold and gem-set rings.** To include an oval amethyst single stone, size P; a white opal and dark -blue sapphire oval cluster, size O+; a tiny eight-cut diamond and black-sapphire flower-head cluster, size P; an oval garnet single stone, size O+; a small sapphire and tiny diamond nine stone half-eternity, size Q, a green and near-colourless paste nine stone cluster, size N+; and a blue and near-colourless paste seven stone cluster, size M+; various dates and makers circa 1971-1985; the seven rings weigh 16.9g gross
£250 - 350

234 **A vintage gold and diamond three stone cross-over ring.** The graduated old-cut stones approx. 0.20cts total, rub-over set in white on a yellow D-section shank, apparently unmarked, size O+, 2.5g gross.
£60 - 80

235 **A small collection of jewellery** to include a gilt 'Back & Front' heart-shaped locket. A '9ct metal core' part-foilate engraved bangle; a silver foliate engraved hinged bangle, approx 18mm wide; a 19th century gilt-meetal curb link long guard chain on a bolt-ring clasp, 136cm long overall (54 inches); a curb bracelet on a heart-shaped clasp marked 'Silver', 32g; an open abstract cinquefoil brooch set with three imitation turquoise cabochons; and other items £20 - 30

236 **A vintage 9ct gold hollow-rope necklace and three bracelets.** The rope chain on a bolt-ring clasp, import hallmarks for Birmingham 1986, 42.5cm long overall (16 3/4 inches), 10.4g; a 9ct gold five-row gate bracelet, lacking a clasp, 5g; a twin-curb bracelet on a heart-shaped padlock clasp with hallmarks for London 1989, 5.4g; and a silver four-bar gate bracelet on a padlock clasp, London 1985, 6.4g £400 - 500

237 **A vintage gold necklace and carnelian pendant.** The curb-link chain on a bolt-ring clasp stamped '9ct' and hung with a shallow-dome oval cabochon carnelian pendant stamped '9ct', the pendant approx. 24mm high overall, the chain approx. 46cm long overall (18 inches); the two weigh approx. 6.4g gross £100 - 120

238 **A vintage 9ct gold and small cultured-pearl ribbon-tied spray brooch.** In the form of three twin-leaf stems set with a total of eight cultured pearls approx 3.2-3.5mm diameter, hallmarks for Birmingham 1962, approx. 46mm high overall, 5.1g gross £80 - 120

239 **A cultured-freshwater-pearl single row necklace.** The compressed-round beads knotted on a chrome-plated bow-shaped clasp. 51cm long overall (20 inches) £30 - 50

240 **A vintage 9ct gold and cubic zirconia cluster ring.** In the form of a three-tier cluster, on a D-section shank with hallmarks for Birmingham 1982, size S, 3.2g gross £30 - 50

241 **An early 20th century lady's Swiss .800 standard silver cased octagonal bracelet watch** and a small quantity of silver and white metal jewellery. Including ten various rings; seven pendants; and an identity bracelet; variously stamped and hallmarked £40 - 60

242 - 310 No Lots

311 **A collection of military and other books and journals.** To include 'Bristol Helicopters, A Tribute to Raoul Hafner' by Jack Hobbs (signed by the author Aug. 1984), 'You Have Been Warned' by Fougasse and McCullough, Picture Post 1938-50, two blank copies GR SO Book 122 notebooks, etc. £20 - 30

312 **Will's Cut Golden Bar Gold Flake tobacco advertising canvas.** H90cm x 360cm. £80 - 120

313 **Will's Golden Virginia Gold Flake tobacco advertising canvas.** 90cm x 250cm £80 - 120

314 No Lot

315 **Costas Mikellides (1938-2019) MSIA, FCSD. Three acetates,** foliate pattern and two bird designs, From Studio', the largest 30cm x 19.5 cm

Costas Mikellides grew up in Nicosia, Cyprus, enjoying a private grammar school education leading to a six-year scholarship, in Business Studies, Design and Planning. In the early 1960's Costas studied Art & Design at Nottingham College & Design, achieving Prize Winner for 1965 and again in 1966, finally qualifying in 1967 as an Interior Designer.

He went on to become Senior Designer for John Player and Sons, Nottingham, working on various promotions and presentation including Formula 1 which was then sponsored by the company. He also won large commissions for major international organisations and UK companies such for Rolls Royce, Compass Hotels and BUPA Hospitals Ltd, on interior design projects designing hotel foyers, restaurants and offices in the UK, Europe, and the Middle East. Costas later became Chairman of the British Institute of Interior Design and Fellow Member of the Royal Chartered Society of Designers.

In the late 1980's his design skills lead him into theatre stage and television set design, and further consultancy work for the Royal Saudi Family.

By 2000 his interest had turned to expressing his artistic flair and ideas with his own works of art, some of which were influenced by his 'interiors design' skills learned over the years. He also became fascinated by the raw beauty of Aboriginal art which influenced some of his work. His great passion was to provoke thinking from those viewing and studying his artwork. He enjoyed experimenting with colours, varied textures, and all forms of art medium, including water colours, acrylics, oil paints, pen & ink, and even charcoal, presented on various materials for maximum effect.

The latter years of his life concentrated on more abstract paintings, working with local art groups such as The Combe Down Art Group and The Bathampton Art Group in Bath. A selection of some of his talented pieces of work are now here for sale.

£40 - 60

316 **Costas Mikellides (1938-2019) MSIA, FCSD, A collection of pictures on acetate:** repeated design,, Grill design, Lace design,(x4), crusade figures, impressed Art Nouveau, and black geometric,, all from studio, the largest 25.5cm x 17 cm (9) £40 - 60

317 **Costas Mikellides (1938-2019) MSIA, FCSD. Pen ink and watercolour,** 'Through the Park' signed lower left and inscribed with title etc. verso, 15cm x 15 cm £50 - 80

318 **Costas Mikellides (1938-2019) MSIA, FCSD. Pastels,** 'The Feather', bears label verso, 'From Studio', 22cm x 28 cm £30 - 50

319 **Costas Mikellides (1938-2019) MSIA, FCSD. Pen & watercolour wash,** 'The Fire Tree', bears label verso and named 'From Studio', 15cm x 15 cm £30 - 40

320 **Costas Mikellides (1938-2019) MSIA, FCSD, Pencil,** 'Australian Tree', from artist's studio, 35.5 x 53.5 cm £50 - 80

Please note: Buyers Premium at 20% plus VAT is payable on each item in addition to the hammer price

321 **Costas Mikellides (1938-2019) MSIA, FCSD, Pastel,** 'Hinton Priory, old Kitchen ' (near Bath), titled verso and named ' From Studio ', 36.5 x 36.5 cm
A Fellow Member of the British Institute of Chartered Society of Designers. He has worked in in the UK, Europe, Middle East and USA for Rolls Royce, John Player & Sons, The Royal Saudi Family , United States Air force,etc. He has also been the Chairman of the British Interior Design and lists his influences as Victor Vasarely (1908-1997),Bridget Riley (1931) , Anoka Faruqee , Carlos Cruz-Diez (1923), etc.
£50 - 100

322 **Costas Mikellides (1938-2019) MSIA, FCSD, Watercolour,** 'Rainbow woods, Bath', Signed lower left and titled verso and named ' From Studio ', 27.7 x 37.5 cm
A Fellow Member of the British Institute of Chartered Society of Designers. He has worked in in the UK, Europe, Middle East and USA for Rolls Royce, John Player & Sons, The Royal Saudi Family , United States Air force,etc. He has also been the Chairman of the British Interior Design and lists his influences as Victor Vasarely (1908-1997),Bridget Riley (1931) , Anoka Faruqee , Carlos Cruz-Diez (1923), etc.
£50 - 100

323 **Costas Andrew Mikellides (1938-2019) MSIA, FCSD. Watercolour,** 'Just Purple' named, from the space series, signed and 'From Studio' verso. 15cm x 15cm
A Fellow Member of the British Institute of Chartered Society of Designers. He has worked in in the UK, Europe, Middle East and USA for Rolls Royce, John Player & Sons, The Royal Saudi Family , United States Air force,etc. He has also been the Chairman of the British Interior Design and lists his influences as Victor Vasarely (1908-1997),Bridget Riley (1931) , Anoka Faruqee , Carlos Cruz-Diez (1923), etc.
£80 - 120

324 **Costas Mikellides (1938-2019) MSIA , FCSD. Watercolour,** 'Tree near Bilabong ' Australia, bears name, medium, 'From Studio' and title verso, 17 x 25 cm
A Fellow Member of the British Institute of Chartered Society of Designers. He has worked in in the UK, Europe, Middle East and USA for Rolls Royce, John Player & Sons, The Royal Saudi Family , United States Air force,etc. He has also been the Chairman of the British Interior Design and lists his influences as Victor Vasarely (1908-1997),Bridget Riley (1931) , Anoka Faruqee , Carlos Cruz-Diez (1923), etc.
£80 - 120

325 **Costas Mikellides (1938-2019) MSIA , FCSD. A pair,** silver foil on black, investigating designs, from studio of artist, each 15 x 15 cm,
£50 - 80

326 **Costas Mikellides (1938-2019) MSIA , FCSD. Mixed media,** Triptych still life sketch shell, pine cones and teazel (Teazle) thistle, from studio, 49cm x 29cm
£40 - 60

327 **Costas Mikellides (1938-2019) MSIA , FCSD. Oil pastel on paper,** Australian 'Tree of Life'. Signed lower left. Framed and glazed 39cm x 29cm
£60 - 100

328 **Costas Mikellides (1938-2019) MSIA , FCSD. Mixed media,** 'Santorini'. bears artist label verso from studio, 45.5 x 34cm
£80 - 100

329 **Costas Mikellides (1938-2019) MSIA , FCSD. Mixed media on tissue paper.** from studio 36cm x 25cm
£40 - 60

330 **Costas Andrew Mikellides (1938-2019) MSIA , FCSD. Giclee print** of a silver gel ink on black card, 'Perception' bears artist, title , medium and labels verso, 55.5 x 69.5 cm
A Fellow Member of the British Institute of Chartered Society of Designers. He has worked in in the UK, Europe, Middle East and USA for Rolls Royce, John Player & Sons, The Royal Saudi Family , United States Air force,etc. He has also been the Chairman of the British Interior Design and lists his influences as Victor Vasarely (1908-1997),Bridget Riley (1931) , Anoka Faruqee , Carlos Cruz-Diez (1923), etc.
£150 - 250

331 **Costas Andrew Mikellides (1938-2019) MSIA , FCSD. Giclee print,** gold on purple, 'Perception' gold on purple, bears artist's label and 'From Studio' verso, 55.5 x 69.5 cm.
A Fellow Member of the British Institute of Chartered Society of Designers. He has worked in in the UK, Europe, Middle East and USA for Rolls Royce, John Player & Sons, The Royal Saudi Family , United States Air force,etc. He has also been the Chairman of the British Interior Design and lists his influences as Victor Vasarely (1908-1997),Bridget Riley (1931) , Anoka Faruqee , Carlos Cruz-Diez (1923), etc.
£150 - 250

332 **Costas Mikellides (1938-2019) MSIA , FCSD. Ink Drawing,** 'Perception' black on white, bears label verso From Studio ', 56 x 70 cm
£120 - 150

333 **Costas Mikellides (1938-2019) MSIA , FCSD, watercolour,** Horsecombe House, Combe Down, bears label verso, from studio. 52cm x 42cm
£100 - 150

334 **Costas Mikellides (1938-2019) MSIA , FCSD. Pastels and mixed media,** ' The Eagle's Nest ' Australia, Signed lower left and titled verso and named 'From Studio', 46cm x 46cm
£150 - 250

335 **Costas Mikellides (1938-2019) MSIA , FCSD. Mixed media,** 'Goolagong Heights' Australia, bears artist's label verso, from studio, 46cm x 46cm
£150 - 250

336 **Costas Andrew Mikellides (1938-2019) MSIA, FCSD. pastels,** 'Comet', bears artist, title & ' From Studio' verso, 35.4cm x 34.8cm
A Fellow Member of the British Institute of Chartered Society of Designers. He has worked in in the UK, Europe, Middle East and USA for Rolls Royce, John Player & Sons, The Royal Saudi Family , United States Air force,etc. He has also been the Chairman of the British Interior Design and lists his influences as Victor Vasarely (1908-1997),Bridget Riley (1931) , Anoka Faruqee , Carlos Cruz-Diez (1923), etc.
£100 - 150

337 No Lot

338 **Henry Andrew Harper (1835-1900), watercolour.** The Highlands to the Scottish Mountain range, signed lower right, 21.5cm x 46cm
£100 - 200

339 **After William Martin Larkins (1901-1974). Signed etching,** 'Le Quai de Rosaine Bruges', signed and titled under, aperture 21.5 x 26.2 cm
£50 - 100

340 **East Anglian School c. 1800, watercolour.** 'Peterborough Minster from Brick lake windmill sheep and figures, signature partially obscured by mount, 20.8cm x 29cm
£40 - 60

341 No Lot



Lot 98



Lot 507



Lot 523



Lot 527



Lot 547



Lot 553



Lot 557

- 342 **After Rembrandt Van Rijn (1606-1669). A 1904 Photogravure**, 'The Three Crosses' Rembrandt; 'De Drie Kruizen', on water marked VAN GELDER ZONEN paper from the book by Jan Veth, Image 28cm x 33cm
£100 - 200
- 343 **Harry Ross XX Scottish, oil on board**. Pond yacht in the sea shallows, Signed lower left, 49.5cm x 59.5cm
£100 - 200
- 344 **A Chinese 19th century table screen**. The porcelain square panel with famille rose decoration of Li Tieguai over waves and a bat, with a two line inscription. The panel mounted in a pierced hardwood stand. Panel 13cm x 13cm, total height of stand 25.6cm.
£250 - 350
- 345 No Lot
- 346 **A contemporary patented bronze bust of a woman**. On squared base, H36cm
£100 - 200
- 347 **A collection of Spode blue and white ceramics**. 37 items in total
£150 - 250
- 348 **Studio Pottery: Phillip Wood, a collection of lunch items**. To include three jugs, four plates, four dishes, two bowls, bowls, three lidded pots and a strainer, all decorated with animals
£150 - 250
- 349 **Studio Pottery : Phillip Wood, a collection of breakfast items**. To include 4 cups and saucers, 3 egg cups, cruet pot, jam and marmalade pots, a lidded butter dish and another butter dish
£150 - 250
- 350 **A pair of early 20th century cast aluminium oblong broad-lobed cake baskets**. The bottom of each bowl cast with a Continental rustic three-storey building in a pastoral scene, with a floral border and two handles, marked beneath 'With Seasons compliments 1911, Robert W. Coan, Aluminium Foundry, 219 Goswell Road, London E.C.', 32.75cm wide overall (12 3/4 inches)
Note; Robert W. Coan's Aluminium Foundry was based in Clerkenwell in the first half of the 20th century. During WWI they manufactured aluminium casting for the War Department supplying both the air force and navy. Similar examples of the shape of dish are to be found in the Victorian and Albert Museum
£40 - 60
- 351 **E Villanis, a patented spelter figure of a North African nude tethered to a stone**. 41cm high, 30cm wide and 18cm deep
£40 - 60
- 352 **A carved wooden maternal figure group**. Depicting a mother holding a baby with a child at her feet, marked HN under, 37.5cm high, approximately 20cm wide, 15cm deep
£40 - 60
- 353 **A 20th century Art Deco figure**. Standing with arms outstretched standing on tiptoe on a shaped base, 34cm high
£70 - 100
- 354 **Lladro: a figure group depicting seated male and female** in military orchestral uniforms. 29.5cm high, 30cm wide, 14cm deep, marked under
£60 - 80
- 355 **A 19th century carved wooden elephant**. approximately 32.7cm high, 31cm wide, 17cm deep
£40 - 60
- 356 **Lalique, Paris: a clear embossed frosted glass image of a boar**. Marked under and standing 7cm high, 9cm long, 5cm deep
£80 - 120
- 357 **A pair of rouge stone seals with Dogs of Fo finials**. Unmarked under, 8cm high, 2.6cm square
£30 - 50
- 358 **A 19th century Japanese patented bronze of a seated geisha** leaning on an upholstered stool. Mounted on a shaped square wooden base, approximately 10cm high, 17cm wide, 11.3cm deep
£50 - 80
- 359 **Cold painted bronze - A late 19th century figure group** depicting a frog sitting on the tail of a rearing snake, indistinctly marked under, 4.2cm high, 13.3cm wide, 5.5cm deep
£100 - 200
- 360 **Cold painted bronze - A 19th century figure group** depicting various birds sitting on a branch. Bears marks under, 5.5cm high, 22.7cm wide, 7.5cm deep
£300 - 500
- 361 **A Chinese carved soapstone carving**. Depicting a monkey, dog and a bird standing by three open vases. 15.5cm high, 15.5cm wide, 5.5cm deep
£80 - 120
- 362 **A 19th century Indian Benares pipe**. In the form of a peacock tail with polychrome enamelled decoration to the body, approximately 9.5cm long
£50 - 80
- 363 **Three pipes**. Comprising a Boer War 1899 - 1900 silver collared LFB wooden pipe, a Victorian cased Meershum galloping horse and a briar wood by LH Fraser
£100 - 200
- 364 **Corkscrew** - A 'Edwin Cotterill's patent self-adjusting'. Approximately 21.5cm high, handle 11cm
£100 - 200
- 365 **Newlyn School- an unusual embossed cylindrical tea caddy**. Marked 'Tea' to top with rivet and fish decoration, tin lined within, 14.5cm high, 12.1cm diameter
£80 - 120
- 366 **Newlyn - a copper embossed and punchwork decorated dish**. With fish, signed, 12.4cm long x 6.5cm
£30 - 50
- 367 **A late 19th century hand painted watercolour book**. Depicting approximately 20 assorted watercolours to include landscapes, boating scenes etc, each image approximately 14cm x 22.5cm
£50 - 100
- 368 **A Chinese mottled green hardstone lidded censor**. Carved with a lion to the lid, the body with two dragon head and ring handles and raised on three lion mask and paw feet. One ring broken. H16.2cm x L18.7cm. The silver inlaid wood base with pierced decoration and silver plaque inscribed 'Lt CDR & Mrs C.T Aisbitt Base Supply Officer H.M.S. Tamar June 1976 - November 1978 from CKS & STD.'
£120 - 150
- 369 **East India Company: a hard paste porcelain armorial decorated plate**. Polychrome decoration to middle, 30.5cm wide, 21.5cm deep
£30 - 50
- 370 **Clarice Cliff, Newport Pottery - a shaped oval dish**. With hand painted decoration marked to verso, 22.5cm wide, 11.8cm deep
£80 - 120

Please note: Buyers Premium at 20% plus VAT is payable on each item in addition to the hammer price

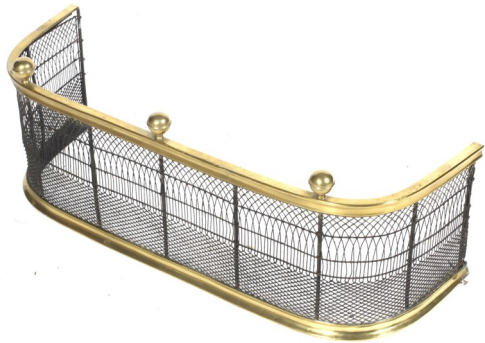
- 371 **A Royal Worcester puce marked hand painted side dish.** signed by M Ayrton, 15.5cm
£150 - 250
- 372 **An Art Deco bowl with hand painted decoration.** Marked, 'Fantastique by Clarice Cliff, Wilkinson Ltd', 21.1cm diameter, 9.4cm high
£250 - 350
- 373 **Moorcroft - a baluster shaped vase.** Marked in green WM and a smaller magnolia, bird and peach vase, larger 90.5cm high, smaller 11.1cm high
£80 - 120
- 374 **A pair of Royal Doulton glazed jugs.** Comprising a Royal Doulton salt glazed lidded jug and a Victorian soft paste porcelain lidded jug with kite mark under, the tallest 22cm high
£50 - 100
- 375 **Arts and Crafts, A pair of patinated bronze and silver inlay vases.** Marked under 'Pat.Ap.d.For.3515', 23.7cm high
£120 - 150
- 376 **Liberty, London: A 1967 Masons ironstone lanthe designed decorated baluster vase.** Marked under, 24.8cm high
£40 - 60
- 377 **Two Masons Ironstone blue and rust red decorated dishes.** largest 24cm diameter
£50 - 80
- 378 **An assortment of Royal Worcester.** Comprising a hand painted dessert service with tazza and eight plates together with a miniature marked blush ware tankard with birds in flight, largest 24.4cm diameter
£50 - 80
- 379 **A pair of Derby Chandos pattern English plates.** With kite marks and gilt rims, 23cm diameter
£40 - 60
- 380 **Shelly - a pair of Art Deco ceramic duos.** In green and brown, the saucers approximately 14.8cm in diameter
£30 - 50
- 381 **A pair of 18th/19th century polychrome majolica plates.** Depicting birds and a flower in a dish, 24.5cm diameter
£50 - 80
- 382 **An assortment of ceramics.** Comprising a Locke & Co Worcester hexagonal relief vase, a Coalport dish, a Locke & Co ceramic tankard, a Belleek black jug, a Worcester (green) fernware jug, a Locke & Co pair of short vases etc (11), tallest 15cm high
£40 - 60
- 383 **Vaseline glass - a silver plate and cranberry glass table centrepiece.** With flared rim, 14cm high, 27cm diameter
£30 - 50
- 384 **A late 19th century silver plate and oak three bottle Tantalus.** Marked 'The Tantalus' and D&A, number 67205, 30.5cm high, 38.5cm wide and 15cm deep
£70 - 100
- 385 **A contemporary carved wooden sculpture** of a barn owl. 28cm high
£60 - 80
- 386 **Rebecca Au Puits, a cast bronze sculpture of a bust of a woman on a square socle.** 37cm high
£100 - 150
- 387 **An early 20th century oak standish.** With frieze drawer, two square inkwells etc approximately 12.5cm high, 29cm wide, 18cm deep
£40 - 60
- 388 **A large Arts and Crafts circular copper wall plaque.** Depicting a hammered ship under sail. Diameter 60cm
£50 - 80
- 389 **A Doulton/Bristolware? 1837 large salt glazed baluster shaped jug.** With applied decoration, unmarked, 30.5cm high, 23cm diameter
£80 - 120
- 390 **Caughley - a pair of circa 1795 blue and white and gilt glazed coffee cans.** Together with City of Bristol Arts Gallery provenance, 4.8cm high x 8cm diameter
£30 - 50
- 391 **Tunbridgeware: a hinged letter box with stick ware inlay.** 11.4cm high, 16.1cm wide, 9.1cm deep
£80 - 120
- 392 **A collection of Tunbridgeware.** Comprising a parquetry box, a stick ware stamp box with butterfly, a semi-domed hinge lidded box and a stamp box, largest 3.5cm high, 8.5cm wide, 6.2cm deep
£40 - 60
- 393 **A collection of Mauchlinware.** Comprising a lidded pot showing Manorbar Castle, a circular lidded pot showing Cliftonville Hotel, Margate, Weston-Super-Mare barrel money box, the beach at Worthing hinge lidded box, Shanklin Chine hinged lidded box, lidded box showing Old Brig O'Doon, scene on the Doon and Burns Cottage, Shanklin Chine paperweight, a pea whistle showing Lincoln, largest 5cm high, 12cm wide, 7.2cm deep
£70 - 100
- 394 **An assortment of Tunbridge/Mauchlin.** To include pin wheels, needle keeps, black forest bobbin holder, sewing clamps, etc
£80 - 120
- 395 **Valentine - a 19th century heart shaped pin cushion.** Decorated with a profusion of glass decorated pins with motto to centre "May Good Luck cling to thee", 5.5cm high, 17cm wide, 17.5cm deep
£30 - 50
- 396 **19th Century Photography:** A Sepia 8th December, 1864 view of the opening of Clifton Suspension Bridge. Taken from the roof of Clifton Down Hotel as designed by Isambard Kingdom Brunel. Image 132.3 x 19.7 cm together with an oil highlighted photograph on mahogany fielded panel, indistinctly signed lower left, 11.4cm x 15.9 cm
£40 - 60
- 397 **Poole Pottery limited edition 'Alignment of the Planets' large ceramic charger.** Marked 'Mars' verso, dated 5th May 2000, 41.3cm diameter
£30 - 50
- 398 **Aynsley coffee service.** Comprising of a coffee pot, milk jug, sugar bowl and six cups and saucers, registration number 767001, the pot 20cm high
£40 - 60
- 399 **Beatrix Potter books,** various editions. To include Samuel Whiskers, Jemima Puddleduck, Mrs Tiddywhinkle, Johnny Town-Mouse, Tom Kitten, Timmy Tiptoes, The Floxy Bunnies, Mr Jeremy Fisher, Mr Tod, Squirrel Nutkin, Two Bad Mice, The Tailor Of Gloucester and Ginger Pickles
£100 - 200



Lot 562



Lot 569



Lot 571



Lot 578



Lot 586

400 **An assortment of children's books.** To include The Adventures of Velevt by Hester Wagstaff, Flower Fairies of the Garden, Flower Fairies of the Wayside, Fairies of the Trees, The Story of Little Black Bobtail by H Bannerman, Epaminondas tries to be brave by C Egan, The Little Gentleman in the Black Velvet, Corny Coon by St Vincent and Haywood, The Whimsical Piglet by H Boswell, Watty: A White Puppy by Mrs E Ames, Dabbity Duck by G Smith, The Adventures of Chippybobbie by H Morgan
£100 - 150

400A **Music box: A Swiss eight airs music cabinet.** Number 6098, striking on three bells in a stained rosewood effect case with inlaid top, 24.5cm high, 48.5cm wide, 31.5cm deep
£130 - 150

401 **Two pieces of Folk Art.** Comprising a carved witch elm walking stick in the form of a frigate bird/skewer and a peacock wood horn handle walking stick, the former 93cm long
£80 - 120

402 **A Royal Worcester plate** with impressed mark. Hand painted scene of donkeys and gilded rim, 22.8cm diameter
£30 - 50

403 **A Bumese Shan bronze figure** of Shakyamuni. Seated on a base engraved with a border of lotus petals, old damage to base. H16cm
£80 - 120

404 **A Chinese Qing dynasty or earlier miniature bronze vase** on an integrated base. The vase of flattened form on a scalloped-edge base, all covered in a black patina. Total H12cm
£200 - 300

405 **A Japanese Meiji period bronze bamboo vase.** Of irregular, segmented form with a sparrow perched on the rim. Raised on three low feet, signed Nyoshu to base. H9.7cm
£120 - 180

406 **A pair of 18th/19th century patented bronze busts.** Mounted on turned circular socles depicting a male and a female, approximately 17.5cm high
£150 - 200

407 **A 19th century patented figure of a bronze figure** of Mercury. Stood on a circular fluted socle, 82cm high
£250 - 350

408 **A circa 1915 autograph album.** Containing a large quantity of poems, sketches, watercolours, many relating to the First World War, together with a number of postcards of the era sent by various members of the Armed Forces and a further small autograph album with quotes from soldiers
£50 - 80

409 **Three small 18th century Chinese dishes.** One pair with polychrome and gilt decoration of an assistant carrying baskets towards a figure behind an arch, the third with famille rose decoration of a vase of flowers. Max diameter 13.3cm
£50 - 60

410 **A dark brown glazed ewer.** The spout in the form of a dog's head wearing a wreath of leaves, the body incised with horizontal banding. H27.6cm
£200 - 300

410A **A pair of metal figures** of Hebe and the eagle Zeus, and Amphictyonis, goddess of wine. Both fixed to wooden bases. H53cm
£50 - 80

411 **Two ceramic models of cats.** Comprising a Rosenthal, A Kitten by Theo Kramer, 9cm high, together with a Royal Doulton figure of a kitten
£80 - 120

412 **A near pair of 18th century Chinese blue and white export tankards.** Decorated with pavilions, trees and bridges, with dragon fish handles. H17.8cm and x diameter of mouth 12cm, and H17.2cm x diameter of mouth 10.7cm
£200 - 300

413 **A 19th century lady's vanity box.** With white metal topped boxes, jars, mother of pearl toolset etc and a captive drawer under with watch section and compartments within, 17cm high, 30.4cm wide, 22.7cm deep
£80 - 120

414 **An early 20th century Lalique, France, peach glass relief frosted dish.** 35.5cm diameter
£250 - 350

415 **An 18th century semi domed leather apothecary box.** Opening to reveal a marbled paper divided interior, a series of jars and vials and secret drawer lifting to reveal further small vials and glass stirrers, 17cm high, 23cm long, 20cm deep
£50 - 80

416 **A collection of scent bottles.** Comprising a white metal ruby glass 19th century double ended scent bottle, a white metal Bristol blue glass scent bottle, an 18th century turquoise and gilt decorated scent bottle, a ruby glass scent bottle and a Bristol Blue double ended scent bottle with metal caps, longest 15cm
£100 - 200

417 **Oil lamp: the brass base formed as Charles Atlas holding a globe.** With twin burner section to top and a glass reservoir, 33cm high
£50 - 80

418 **A pair of 20th century handed recumbent spelter lions.** Mounted on rouge marble bases, 15cm high, 32cm long, 12cm deep
£50 - 80

419 No Lot

420 **A Georgian mahogany nine drawer table collectors cabinet.** With swing carry handle, two doors, standing on bracket feet, 23.5cm high, 23cm wide, 16cm deep
£60 - 80

421 No Lot

422 **Ten 18th century Chinese porcelain plates.** Decorated and gilt with famille rose decoration of women entertaining children around a table. Diameter 23cm
£200 - 300

423 **A 19th century black slate mantle clock.** Surmounted by a patented spelter figure of the Greek philosopher, E.Doriot, over an eight day clock, 53.5cm high, 45cm wide, 19.5cm deep
£80 - 120

424 **'Blackmore' - two hand painted armorials** with the motto 'Fide Et Fiducia' together with a copy of the Blackmore Pedigree 1600 -1889, a Somerset family. RD Blackmore was the author of Laura Doone
£100 - 150

425 **Tiffany style: A 1922 gilded table lamp.** In the form of a doric column on a two step square base with three P & S light fittings and having a stained marble glass and brass lightshade, 54cm high, 40cm diameter
£150 - 250

Please note: Buyers Premium at 20% plus VAT is payable on each item in addition to the hammer price

- 426 **A Mulberry Bayswater leather natural grain hand-bag and dust bag.** Tan in colour, with interior belted sides, metal feet to the base, a hanging branded fob with a hidden padlock on the side and an internal zip and two slip pockets, finished with a signature Postman's Lock, H26 x W36 x D16.5 cm (Handle drop: 15.5 cm)
£600 - 800
- 427 **A Mulberry natural grain tan leather wallet and purse.** The wallet featuring eleven card slots, a bill pocket and a photograph compartment, 10cm x 9cm (folded), the purse featuring fifteen card slots, a bill pocket and a coin compartment, finished with a postmans padlock to the front, 18cm x 10.5cm, together with a box and guarantee
£150 - 250
- 428 **Harrods: A carpet bag** with leather handles marked with the Harrods logo, approximately 47cm long, 26cm high and 23cm deep
£80 - 120
- 429 **An ER Watts & Sons surveyor's levelling stand.** With a spirit level in a rounded dish. H15cm
£30 - 50
- 430 **A 19th century pewter quart tankard,** with name and address inscribed to the body. H14.8cm
£30 - 50
- 431 & 432 No Lots
- 433 **A 'Roman' style glass vase** with iridescent exterior. Coil to stem terminating in a handle with impressed grapes, with pontil scar under. 24 cm high
£80 - 120
- 434 **An antique Pocketbook.** 'Das Jahr, Gallerie der Nationen ein Taschenkalendar zum Nutzen und Vergnugen auf das Jahr 1796', Vienna, Wallishauser.
£40 - 60
- 435 **An oval swing mirror** on a round base. H57cm
£40 - 60
- 436 **A collection of corkscrews.** Some with wood or bone handles.
£40 - 60
- 437 **A Norwegian small silver dish** decorated with the steam yacht 'Meteor' of the BDS Line. The yacht was built in 1904 for the Hamburg - Norway line and cruised until she was sunk in 1945 in the Baltic Sea. Diameter 7.2cm
£50 - 80
- 438 **Carlton Ware Persian : A pair of baluster shaped vases** in iridescent blue. Designed by Horace Wain, marked under, H17cm
£50 - 80
- 439 **An Edwardian mahogany tray.** With pierced metal gallery and inlaid with a bouquet of flowers. L67cm.
£60 - 80
- 440 **Book: D Murray Smith, 'Arctic Expeditions from British and Foreign Shores from the Earliest to the Expedition of 1875'**, Folkstone, 1877. Edges of cover and clasp (one missing) in gilt metal, gilt leather cover.
£70 - 100
- 441 **Book: Bronte, Charlotte, Emily and Anne - Works - 'Novels of the Bronte Sisters'**, Thornton edition. Edited by Temple Scott, 12 vols, 8vo, original green cloth gilt, John Grant, Edinburgh, 1924
£150 - 200
- 442 **A Dutch style brass and copper bin.** Decorated with an interior scene with figures, H42cm
£50 - 80
- 443 **An Art Deco style frosted blue glass and brass circular stepped ceiling light.** Circa 30 cm H x 37 cm D
£50 - 80
- 444 **A blue, yellow and white glazed reproduction jardiniere.** With Italian decoration and an ormolu style mount. H35cm
£40 - 60
- 445 **A 19th century mahogany 'Onion Top' five-glass wheel barometer.** H94cm
£30 - 50
- 446 **A large porcelain tureen and serving dish.** Decorated and gilt with birds and flowers, mark to base. Length of dish circa 40cm
£40 - 60
- 447 **R Lalique 'Prunelles' carafe (Pour Cusenier).** With moulded sepia-coloured handle and stopper with grapevine relief work, designed for the wine merchant Cusenier, the stopper marked '29' under), the flask marked under with maker, etc, H26.8cm
£100 - 200
- 448 **A 19th century pedestal cut glass fruit bowl.** With hobnail decoration to sides and star cut under. H18cm x diameter 20cm
£40 - 50
- 449 **A 20th century Chinese blanc de chine figure of Guanyin.** Depicted carrying a basket of flowers and standing on a rocky base. H21.5cm
£40 - 60
- 450 **A pair of Parian ware figures of children.** The girl carrying a cat and a toy house, the boy with two dogs. Both marked Family Cares to front of base. Circa H30cm
£40 - 60
- 451 **A large pair of cream alabaster ewers.** With fruiting vine decoration and raised on round socles. H58cm
£60 - 80
- 452 **A 19th century pendant ceiling gas lamp.** With cast iron frame and white glass domed shade. Diameter of shade 30cm.
£70 - 100
- 453 **A mid 20th century creamware.** Continental break front wall fountain with classical decoration suitable for a conservatory/orangery, 51cm high, 42cm wide, 18cm deep
£150 - 200
- 454 **A 19th century Venetian glass scent bottle.** With air twist decoration etc, 11cm long
£60 - 80
- 455 **A Gamellis reconstituted marble bust** of a young lady. On a turned marble socle, 25cm high
£30 - 50
- 456 **A Royal Worcester, puce mark, a coffee set.** Comprising of coffee pot and six cups and saucers, all with blue diaper and swag decoration
£60 - 80
- 457 **Hicks and Meigh plates/dinner service.** A 19th century hand painted and transfer stone china service, comprising of a tazza, four dessert plates and eleven serving plates together with a triangular serving dish, largest 26.3cm diameter
£100 - 200

458 **A late 19th century Japanese aesthetic movement black lacquered collector's cabinet.** Decorated in gilt with an Asiatic pheasant, and birds amidst foliage, with a hinged lid above two drawers and two doors revealing a six further drawers, above a long drawer (lacking five handles overall), 35.5cm high, 29.5cm wide, 13.75 deep
£100 - 150

459 **An unusual 19th century Persian silver and copper inlay brass charger.** With script to border and court figures etc, 36.9cm diameter
£200 - 300

460 **A circa 1900 silver plate cigar/cigarette box.** Approximately 9.5cm high, 31.5cm wide, 21.5cm deep
£20 - 30

461 **A 'Day Dial Calendar' clockwork mechanical desk calendar.** Mounted on a Regency style stand, dial Diameter 12cm, H20cm
£40 - 60

462 **After D Debut, a patented cast bronze sculpture** of an angel and woman. 32.5cm high
£40 - 60

463 No Lot

464 **Joseph Galea (1904-1986) Maltese, Watercolour.** 'Sliema Harbour Malta', signed and titled lower left and labelled 'Jos Galea's Art Studio 70 South Street Valetta' verso, 8.8 x 14 cm
£25 - 35

465 No Lot

466 **A 19th century Japanned Chatwoods banking box.** With gilt lettering for N Hall with Gothic style handle, 33cm high x 50cm wide x 34.5cm deep
£30 - 40

467 **A Victorian ebonised stereoscopic viewer** together with approximately 450 stereoscopic cards. The cards featuring various subjects including figures and landscapes
£50 - 70

468 **A collection of Stereoscopic glass slides.** Approximately twenty, subjects including men, women and taxidermy
£50 - 70

469 **A collection of Stereoscopic glass slides.** Approximately 27, by the likes of the London Stereoscopic Company, some in verre eglise, subjects including Naples, Paris, Temple of Augustus, Waterfalls, Venice and others
£50 - 70

470 **A large collection of stereographic view cards.** Including examples from 'The Battle Field Series', Niagara Falls, Mt Blanc, etc
£50 - 70

471 **A circa 1900 oak cased miniature Vienna Regulator** with 30 hour movement, approximately 38cm high x 14.8cm wide x 7.5cm deep
£30 - 50

472 **Peter Coates XX-XXI, watercolour pen and pencil.** A quantity of assorted churches to include Holy Trinity Sutton Mantis, Barton St. David, St. Lawrence Priddy, Harrington Bampfylde, St Michaels North Cadbury, Church of the Holy Cross, Weston Blampfylde (2) Stogursey, All signed and and titled lower, some mounted, the largest 37 x 55 cm (8)
£100 - 150

473 **Peter Coates XX-XXI, watercolour pen and pencil.** A quantity of notable churches to include : St. Mary's Moorlynch, Whitchurch Canonicorum, Publow Church, St. Mary's Barrow, All Salnts Alford, Sutton Mallet and Butcombe, some mounted, the largest 42 x 56 cm (7)
£120 - 150

474 **Peter Coates XX-XXI, watercolour pen and pencil.** St Mary's church, 'Luckington Church', signed and and titled lower, 46 x 37 cm
£30 - 50

475 **Peter Coates XX-XXI, watercolour pen and pencil.** 'St Michaels, Somerton', signed and and titled lower, 37cm x 56 cm
£30 - 50

476 **Peter Coates XX-XXI, watercolour pen and pencil.** St Giles church, 'Bradford -on-Tone' Taunton, signed and and titled lower, 37 x 56 cm
£30 - 50

477 **Peter Coate XX-XXI, watercolour and pencil.** 'All Saints, Wraxall', Signed and titled lower, 37 x 55 cm, Mounted
£30 - 50

478 **A watercolour depicting cattle and a cottage** before a boat-strewn waterway in the mountains. Unsigned. 30cm x 50cm. Framed and glazed.
£50 - 80

479 **Peter Coates XX-XXI, watercolour pen and pencil.** 'St Mary's, East Brent' church, signed and and titled lower, 37 x 56 cm. Framed and glazed
£40 - 60

480 **Portrait photograph of the artist 'Albert John',** circa 1900. Labelled verso, as taken by H J Whitelock & Sons Ltd, Birmingham, 20 x 15 cm
£30 - 50

481 **Peter Coates XX-XXI, watercolour pen and pencil.** 'Church of St. John The Baptist, Axbridge', signed lower right and titled verso, 54 x 42 cm
£40 - 60

482 **Thomas Edward Heath, watercolour,** 'A Stormy Morning in Bracelet Bay', Mumbles, 1879 (according to note verso). Initialled lower right. 23cm x 36.5cm. Framed and glazed.
£60 - 80

483 **Ernest William Haslehurst (1866-1949), watercolour.** 'Mordiford, Herweford', signed lower right and titled verso, 23 x 35 cm, framed and glazed
£40 - 60

484 **Elliot Henry Marten (British, act. 1886-1901), watercolour on paper.** Depicting piles of hay before a tree-studded hill. Signed lower left, possibly (illegible) date lower right. 20cm x 32.5cm. Framed and glazed.
£80 - 120

485 **Ernest William Haslehurst (1866-1949), Watercolour.** St Mary's 'Monnington Church, Hereford', signed lower left and titled verso, 35.5 x 23 cm, framed and glazed
£40 - 60

486 **Edith Alice Andrews (exh. 1900-1940), watercolour on paper.** 'A spring basketful', 25cm x 35cm. Framed and glazed.
£150 - 250

487 **Ernest William Haslehurst (1866-1949), watercolour.** 'Shakespeare's Country, North Stratford-upon-Avon', signed lower left and titled verso, 232 x 35 cm, Framed and glazed
£40 - 60

Please note: Buyers Premium at 20% plus VAT is payable on each item in addition to the hammer price



Lot 626



Lot 627



Lot 11



Lot 111



Lot 344



Lot 574

- 488 **After Robert Dighton (1752-1814), caricaturist, printmaker, etc, two handcoloured engravings.** One signed by the sitter.
The first: 'LORD DASHALONG bent on driving 1801' also known as The Viscount Molyneux, William Philip Molyneux, 2nd Earl of Sefton (1772-1838) a renown sportsman, gambler and friend of the Prince Regent, signed 'Lord Sefton'. The second: an 1809 'The - Late- Right Revd Dr Samuel Horsley Lord Bishop of St. Asaph'. Both printed at Charing Cross, 'Drawn from life and Pub by Dighton...', each aperture approximately 22 cm x 29 cm
For similar examples see the British Museum (2)
£40 - 60
- 489 **Circa 1800 English Romantic School oil on canvas,** 'Woman and Child'. Unsigned, possibly after Reynolds, 61cm x 46.5cm, in an ornate gilt frame
£300 - 500
- 490 **A 19th century Chinese school watercolour and gouache painting.** Depicting buildings beside a mountain lake, with figures, unsigned, 13cm x 23.2cm, framed and glazed
£30 - 50
- 491 **Reginald William Gammon (1894-1997) watercolour sketch.** Unloading a laden horse and cart in a rural landscape, bears details verso 38.6 x 56cm from the Peter Coates collection.
£30 - 50
- 492 **Sir George Clausen (1852-1944) RA, RWS, RI, ROI, watercolour;** 'Noon Day Rest'. Signed (lower right), titled under, 32cm x 46.5cm, framed and glazed
£500 - 800
- 493 **Khin Maung XX Burmese, watercolour,** 'Victoria Memorial near Buckingham Palace, London (from Green Park)'. Showing red buses, cars, etc., signed and dated '1950' lower right, 29 x 39.5 cm
£80 - 120
- 494 **A later hand-coloured frontispiece to William Stukeley's Abury** 'A Temple of the British Druids'. Originally published 1743. 42cm x 505cm. Framed and glazed.
£80 - 120
- 495 **Khin Maung XX , Burmese, watercolour.** A river landscape with pagoda etc., signed lower right, 25.6 x 35.6 cm
£30 - 50
- 496 **F Holl after J Absolom, hand coloured print,** 'Saturday Night'. In an impressive cushion moulded birds eye maple frame with gilt slip and glass, 48 x 66 cm (overall)
£60 - 80
- 497 **Vincent Henry Lines (1909-1968) etching** 'After The Rain'. Signed in pencil (lower right) 20cm x 25cm
£80 - 120
- 498 **B Spencer, early 20th century, pencil and watercolour.** Depicting a Scottish lady golfer, signed and dated lower right '1912'. 28cm x 21.5cm, framed and glazed
£80 - 120
- 499 **John Arthur Malcolm Aldridge (1905-1983), pencil.** Dutch canal scene with buildings, bears initials lower right, 20 x 27 cm, mounted
£100 - 150
- 500 **Edgar Thomas Holding (1870-1952), watercolour,** 'Passing Storm Sussex'. Depicting a landscape with cottage behind trees, signed lower right. 25cm x 36.5cm. Framed and glazed.
£30 - 50
- 501 **John Arthur Malcolm Aldridge (1905-1983), pencil.** 'R(iver) by Barfield Bridge(nr. Sudbury, Essex)', bears title and initials lower, 20 x 27 cm, mounted
£140 - 200
- 502 **Arthur Wilde Parsons (1854-1931), watercolour and gouache.** 'Sign of the Times', a motor engine ship tows a retiring sail ship on the seas with an oncoming storm, signed lower right 25.4 x 41.2 cm
£100 - 200
- 503 **John Arthur Malcolm Aldridge (1905-1983), pencil.** 'The Cattle in the Open Yard', bears title and initials lower, 20 x 27 cm, mounted
£100 - 150
- 504 **F Bartolozzi after Hans Holbien 1793. 'In His Majesty's Collection' coloured engravings:** 'Tho Wiatt Knight', 'Charles Winhfield Knight', 'Iohn Poines', 'ch Southwell Knight', 'The Lady Rich' plus Rahl after Wachter 'Cato der Altere' & another (7)
£40 - 60
- 505 **John Arthur Malcolm Aldridge (1905-1983) R. A. , biro ink on paper.** 'Old boat at Thorpness', bears 'JA' stamp and gallery label with title etc. 20 x 25.5 cm
£100 - 150
- 506 **John Bach ? 20th century Venetian School, watercolour.** 'Across the lagoon Venice', signed in pencil lower right, 19 x 37 cm, framed and glazed
£30 - 50
- 507 **Thomas Barclay Hennell (1903-1945), ink sketch.** Depicting the English Rural country side pictures, Hedge laying, two figures laying a hedge, bears artist etc. verso 27.7 x 38 cm
£100 - 200
- 508 **Four pen and ink and colour drawings** of scenes in Asia including Singapore. All signed Wallington and with Chinese red stamp. All under passpartout. Max 22cm x 17.5cm
£30 - 50
- 509 No Lot
- 510 **Oil on panel, 'Cavalier Entering a Room'.** Unsigned, 21cm x 12.5cm, framed
£50 - 100
- 511 **J Alphege Brewer- a pair of coloured etchings** with blind stamps. 'The Chancel of Notre Dame, Dimant', and 'The Cathedral of Ryedale from the Rue de la Collegiele, Brussels', each aperture 64cm x 45.7cm
£40 - 60
- 512 **Geo Hodgson, oil on canvas.** 'Women and children Working the Land', signed lower right. 60cm x 90cm. Framed.
£80 - 120
- 513 **Monogrammed CP, a 20th century print.** 'Fishermans Harbourside Yard', 56cm x 74cm
£50 - 80
- 514 **Eric Dawson (1918 - ?), watercolour,** Dancers at the Bandstand, labelled verso, 31.2cm x 40cm
£100 - 200
- 515 **Peter Oliver (1927-2006), oil on board.** 'Lake Scene', unsigned, 34cm x 42.5cm, framed
£50 - 80
- 516 **Charles W Oswald (British, act. 1890-1899), pair of oils on canvas,** cattle on a track and cattle watering. Both signed lower right. 49cm x 39cm. Framed. .
£150 - 250

517 No Lot

518 **Gerald Woolley (British, born 1929), watercolour**, 'Giazza', Monti Cassini Plateau, Italy. Signed lower right. 48cm x 33.5cm. Framed and glazed. £40 - 60

519 **After David Roberts RA, a coloured lithograph** 'Alexandria' (Circa 1800). Published 1848, contemporary frame and glazed, 41.5cm x 55.5cm £100 - 200

520 **A map of Bedfordshire and map of British Possessions in the Mediterranean**. Max 35cm x 25cm. Both framed and glazed. £100 - 150

521 **After David Roberts RA, a coloured print**. 'The Letter Writer', guaranteed 19th century, framed and glazed, aperture 39cm x 28cm £50 - 100

522 **B Dowse, 20th century Jersey, pallet knife oil**, 'Elizabeth Castle to Noirmont Point, Jersey'. Signed lower right and titled etc verso, 34 x 44.5 cm £40 - 60

523 **J F Herring Jr (1815 - 1907), oil on canvas**. Three horses in a landscape, Phillips, Son & Neale Limited Auctioneers & Valuer, S Herring, three horses in a meadow, label to verso, also bears traces of white chalk mark verso, 45cm x 71.5cm £1000 - 2000

524 **Two paintings**. Comprising J Richards 18th century, gouache, figures by a mountain lake, signed lower left, 12 x 17.5, and circa 1800 Continental school, watercolour, figures and buildings at a lakeside, 16 x 25 cm £30 - 50

525 **Linda Norris, 20th century, mixed media**, 'Sweeping Clouds'. Signed lower left and verso, 58cm x 58cm £200 - 300

526 **John Mace (British 1889-1952), watercolour**, a Continental Landscape. Signed lower right. 30cm x 47cm. Framed and glazed. £80 - 120

527 **John Wilder, watercolour**, 'Brown Hare'. Signed with initials, lower left, artist's label verso, 48cm x 61cm £100 - 200

528 No Lot

529 **Institute of Fine Art, oil on canvas**. An Islamic temple and seated figures, bears label verso, 49.5cm x 39.5cm £30 - 50

530 **18th century English School, watercolour**. Figure fishing within a landscape castle looking over a bridge, possibly signed and dated, lower left, 12.7 x 17.3 cm, framed and glazed £50 - 80

531 **A Victorian alphanumeric sampler**. Featuring a poem encircled by flowers, signed 'Rebecca Frances Patman aged 7 years 1840', 42cm x 31cm, framed and glazed £50 - 80

532 **JA Linus, watercolour**, view of a river before a group of houses with sun-lit mountain. Signed lower right. 26cm x 37cm. Framed and glazed. £50 - 80

533 **Tom Murphy XXI 21st Century Scottish watercolour**, pen ink and gouache picture. 'Whitehaven Harbour', label verso, with border illustration in pencil, framed and glazed, 13cm x 51cm £30 - 50

534 **John Easton (British, born 1929), mixed media on paper**, 'West Coast'. Dated '92 verso. Circa 15.5cm x 39cm. Framed and glazed. £50 - 80

535 **Continental School, oil on canvas**, riverside, indistinctly signed lower right. 46cm x 61cm £100 - 200

536 **John Glover (1767-1849) RBA, watercolour**, A Northern Landscape. With stone village (some timber framed) and mountain to background. Indistinctly signed lower left (obscured by mount) 30.5 x 40.4 cm Whilst English-born, he later emigrated to Van Diemen's land (Australia) and became a pastoralist during the early Colonial periods, and was dubbed 'The Father of Australian Landscape Painting' £400 - 500

537 **John Wilder, watercolour**, Hereford bull, signed with initials lower right and artist's label verso, 28cm x 48cm £100 - 200

538 **Dora Eyret 19th-20th century, pastel**, 'Rhododendrons'. Signed lower right and labelled verso, 60.7 x 47 cm, framed and glazed £100 - 150

539 **A 19th century hand coloured carbon print military photograph** on opaque glass. Of Lieutenant F.W. Clementson (1862-1889) from the 19th Hussars, 38.7cm x 29cm, framed £50 - 80

540 **A 19th century English Equine School, oil on canvas**, grey brood mare under a tree in a field, with a 'ghost foal' beside it. 90cm x 70cm £300 - 500

541 No Lot

542 **Jagmens Haat Der Medert, 18th century Dutch school, three grey scale watercolours**. 'Avenehorn 1789', 'Het Dorp Bruinisje' and 'Schoorlдам 1787', titles verso, largest 16cm x 36cm, framed and glazed £100 - 200

543 **Frank Samuel Eastman (1878 - 1964), 1961, oil on canvas**, portrait of Edmund Lawrence Mann, Chairman of Powell Duffryn, 1928 - 1950, signed and dated upper right, 60cm x 50cm £50 - 100

544 **Audrey Hill 20th century, oil on board**, 'The River Rye' quayside the Docks. Signed lower right and titled verso, 59.5 x 50 cm, framed £50 - 100

545 **J H Summerson, oil on canvas**, circa 1897, social history folk art, Uncle Mack, lead minstrel, Broadstairs social history, signed lower left, 43.2cm x 35.7cm £120 - 150

546 **M G Webb, watercolour**, cows drinking at a river, signed lower left. 33cm x 50.5cm. Framed and glazed. £50 - 80

547 **A pair of Joseph Horlor (1809-1887) oil on canvases**. 'Scotland Horlor' and 'Glencoe Scotland' both signed, 46cm x 36cm, framed £300 - 400



Lot 513



Lot 423



Lot 587



Lot 212



Lot 359

548 **Indistinctly signed, 19th century English School, oil on board**, 'Iffley Mill' Oxford on the Thames. Signed lower left and titled verso. 37.5 x 47.5cm, framed.

£60 - 80

549 **20th century Mongul School, a pair of watercolours**, warriors on horseback, bears script, 26.5cm x 18cm

£60 - 80

550 No Lot

551 **A Victorian mahogany oak stuffed chair** with cabriole front legs and carved back, 94cm high, 45cm wide, 41cm deep

£40 - 60

552 **Arts & Crafts - a pair of mahogany circular open armchairs** with brass stud and upholstered decoration, 93cm high, 57cm wide, 47cm deep

£50 - 80

553 **Neo-gothic - A pair of 19th century inlaid armchairs**, 85.5cm high, 50.5cm wide, 43cm deep

£60 - 80

554 **A Georgian brass and rosewood pole screen** now formed as a standard lamp, 156cm high

£30 - 50

555 **A Victorian mahogany chair**. With upholstered back splat and over stuffed seat on cabriole legs, carved and turned decoration, 103cm high, 49cm wide, 41cm deep

£25 - 35

556 **A pair of Victorian mahogany x framed stools** with over stuffed seats and turned stretchers, each 39.5cm high, 42cm wide, 33cm deep

£50 - 70

557 **A mid-20th century Colonial tea planters chair** with hardwood hinged arms and caned seat, 84cm, high, 72cm, 120cm deep

£100 - 200

558 **An early to mid-20th century oak and chromium ships bell** on stand. 78cm high

£70 - 100

559 **An early 19th century 8 day 30cm break arch long case clock**. With mahogany casing, swan pediment, long trunk door 227cm high

£50 - 80

560 **An early 19th century lacquered papier mache tray** and faux bamboo stand. The tray with foliate and floral decoration and gilt highlighting, approximately 55.5cm high, 77cm long, 59.5cm deep

£30 - 50

560A **A Victorian papier mache cane seated lacquered chair** with gilt decoration. 80cm high, 41cm wide, 35cm deep

£30 - 50

561 **WAS Benson Arts and Crafts - a copper signed telescopic standard lamp** on tripod base. 128.5cm min height

£200 - 300

562 **An early 20th century oak partners pedestal desk**. With gold tooled leather insert to top, and pedestals with drawers to one side and cupboards to the other, 77 cm H x 152 W x 82.5 cm

£150 - 250

563 **A 19th century mahogany table top rotary bookcase** of squared for. 35.5cm high, 35.5cm wide, 35.5cm deep

£50 - 80

564 **A pair of early 20th century George II style wing-back sofas** of two seat form. 98.5cm high, 117cm wide, 78cm deep

£30 - 50

565 **A Victorian burr walnut reading table**. Of adjustable height, sliding, and with two adjustable book rests, on an octagonal shaped column and shaped four section base and casters, 92 cm long

£50 - 70

566 **A late 18th century oak hanging corner cupboard**. With Sheraton inlay of a pedestal vase with flowers to middle and mahogany cross banding, dentil cornice opening the panelled door to reveal 3 of 4 shaped oak shelves within. L66cm x D46cm x H97cm

£35 - 55

567 **A late 17th century Continental oak chest**. With hand made nail construction, dated '1699' with punch work decoration and standing on four shaped square feet, the lid using an unusual hinging method, sword chest size, L107cm x D40cm x H56cm

£80 - 100

568 **A Victorian mahogany bow fronted chest of drawers**. With two short over three graduated long drawers with short turned legs, 105 H x 109 W x 55.5 cm D

£80 - 120

569 **A Georgian mahogany secretaire chest on chest**.

With oak front to back drawer linings, adjustable rake and secret drawer to the secretaire section, having 3 short over 3 graduated long drawers over a base of four graduated long drawers, on bracket feet, 176 cm H x 104.8 W x 57.5 cm D

£250 - 350

570 **A Georgian mahogany of three long graduated drawers** on shaped bracket feet. 79cm high, 115cm wide, 60cm deep

£50 - 80

571 **A Regency wirework and brass fire fender** with turned spherical spindels. 29.5cm high, 86cm wide

£20 - 30

572 **An early 20th century Georgian style astral glazed triangular corner cabinet** on stand. 191cm high, 102.5cm wide, 51.5cm deep

£10 - 20

573 **A mid-20th century hand woven woollen rug**. With central geometric pattern, single border decorated with flowers, in red, green, pink, blue and white, 288cm x 204cm

£60 - 80

574 No Lot

575 **An 18th century oak circular tilt top tripod table** with turned gun barrel, pedestal. 71cm high, 59cm diameter

£40 - 60

576 **A 19th century mahogany butler's tray** and stand. L80cm x D53cm x H72cm

£50 - 70

577 **A gilt painted contemporary 19th century wall mirror** with breakarch top. 105 H x 67.5 cm W

£40 - 60

578 **A 19th century gilt painted framed over mantel mirror**. 92.5cm high x 119.5cm wide x 8.5cm deep

£50 - 60

579 **A Victorian walnut piano stool** of circular form. With adjustable height and three cabriole legs with needlework upholstered seat, approximately 48cm high
£40 - 60

580 **An early 20th century silk rug** with 3 x 9 boteh both in buff, light red and brown colours etc. 104cm x 69cm
£30 - 50

581 **An 18th century elm two plank topped kitchen table.** With capped ends on square tapering legs with trestle like central stretcher. L157cm x D68cm x H73cm
£80 - 120

582 **An early 20th century mahogany tripod standard lamp.** With fluted column and pleated silk shade. 180cm high
£20 - 30

583 No Lot

584 **A pair of mid to late Victorian button back mahogany over stuffed 'knocker' chairs.** 91.5cm high, 47cm wide, 50cm deep
£30 - 50

585 **A 19th century oak serpentine sided tripod table.** With turned central column, H53.5cm x W48.8cm x D38cm
£40 - 60

586 **A Georgian ash and elm seated Windsor wheelback chair** with hooped frame. Crinoline stretcher and curved supports to the arms, H103cm
£100 - 200

587 **A 19th century dark oak wood settle.** The back featuring four panels and carved with figures and script, open arms and hinged storage section to the seat, on bun feet, H135cm x W137cm x D56cm
£200 - 300

588 **A contemporary ash Windsor stick back armchair.** With a one piece ash seat, crinoline stretcher, turned supports to the Victorian style arms, H112.5cm
£30 - 50

589 **A late 19th century American eight-day walnut wall clock.** With 20cm dial inlaid and carved decoration to case, 90cm high, 39.5cm wide, 13.5cm deep
£50 - 80

590 **A late 19th century small mahogany sideboard.** With a single frieze drawer flanked by two cupboard doors on square tapering legs with casters, 77cm high, 106.5cm wide, 51cm deep
Hand made by Dr Aitken, eye surgeon at Truro Treliske Hospital.
£30 - 50

591 **An 18th Century Mahogany Pembroke table.** Cross-banded, with drawer to one end and standing on four square tapering legs, 70 cm H x 70 cm long, 52 wide (un-opened)
£30 - 50

592 **A circa 1800 mahogany small open bookcase** with heart shaped galleried brass to top. 118.5 cm high, 61 cm wide, 41 cm deep
£40 - 60

593 **A William IV mahogany show-wood chaise longue** with carved scroll and acanthus decoration. 98 cm H x 190 cm W x 62 cm D
£100 - 200

594 **A set of ten 19th century oak ladder back dining chairs.** Comprising eight (seven plus one matched) and two carver chairs, with sea grass and rush envelope seats and turned spindles to back. The tallest carver 112 cm high
£400 - 600

595 **A Victorian mahogany circular top breakfast table.** Mounted on on tripod base, approximately 130 cm Diameter x 74 cm H
£40 - 60

596 **A Regency style 20th century mahogany dumbwaiter.** With two circular swivel drop end tiers supported on a turned column with reeded tripod legs, 89 cm H x 57 & 73 cm diameter tiers
£80 - 120

597 **A 20th century French carved and gilded Regency stripe upholstered suite.** With two fauteuils and a two seat open arm sofa, all with carved ribbon crest to centre, 95.5 cm H, the sofa 126.5 cm wide.
£100 - 200

598 **A set of four Regency mahogany and rosewood dining chairs.** With caned seats, turned and carved bobbin and demi-lune decoration, etc, and later tie-on upholstered Regency stripped seats. 85cm high, 43.5cm wide, 46cm deep.
£80 - 120

599 **A late 19th century dark walnut button back two seater parlour sofa.** 95cm H x 119cm W x 57cm D
£30 - 50

600 **A set of six Regency style sabre leg mahogany French Grey painted dining chairs.** With brass roundels and button back drop-in seats, 85.5cm high, 47cm wide, 47cm deep.
£80 - 120

601 **A pair of Georgian mahogany D-end tables** that make useful consul/pier tables. With crossbanding and ebony and boxwood stringing (also make a perfectly circular centre table), 71.5 cm high x 121.5 cm diameter
£100 - 200

602 **A 19th century mahogany bidet.** Raised on turned supports, no basin present, H47cm x W57cm x D36cm
£30 - 50

603 **A 20th century oriental circular coffee table** with carved polychrome figures to centre. 38 cm H x 60.6 cm D
£30 - 50

604 **A pair of armchairs** with fluted and carved details. With stuffed green upholstery, raised on cabriole legs. 85cm high, 56.5cm wide, 50cm deep.
£80 - 120

605 **A Victorian mahogany serving table/small sideboard.** With two frieze drawers, shaped side supports and stretcher, 82.5 cm H x 116 W x 54.5 cm D
£60 - 100

606 **Art Deco : An original peach glass surround bevelled and arched wall mirror.** With a trough to the front and bevelled edge frame, 99cm H x 56 cm W
£100 - 150

607 **A Georgian mahogany D-shaped consul/pier table.** With satinwood cross banding, boxwood and ebony stringing and standing on square tapering legs with spade feet, 83.7 cm H x 1207 cm W x 56.6 cm D
£60 - 80

Please note: Buyers Premium at 20% plus VAT is payable on each item in addition to the hammer price

608 **Victorian inlaid walnut music cabinet** with brass gallery to top and fully glazed door. 94 cm H x 56 W x 33.5 D
£50 - 80

609 **A Victorian stripped pine mule chest** with knob handles and turned short legs. 76.5 cm H x 124.5 cm W x 60 cm D
£150 - 250

610 **A George II mahogany open armchair.** With pierced vase shaped supports, drop in seat, serpentine front, carved knees and ball and claw feet. H84cm.
£60 - 80

611 **A late 20th century mahogany coffee table.** With carved apron, knees, cabriole legs with ball and claw feet, 44 cm H x 107.5 W x 46 cm D
£50 - 80

612 No Lot

613 **A 19th century inlaid mahogany glazed display case.** With arch shaped windows standing on square legs with splayed feet. 170cm high, 91.5cm wide, 33cm deep.
£80 - 120

614 **A Georgian mahogany bow front corner cabinet** with an associated astragal glazed top section. 74 cm W x 198 cm H
£40 - 60

615 **A carved and panelled oak coffer** of peg jointed construction. Probably 18th century, with panelled hinged top revealing a candlebox, above carved frieze with arches and foliate ornament, on stile legs, L115cm x D54cm x H53.5cm
£100 - 150

616 **A 19th century rosewood pole screen.** The adjustable screen holding an embroidered panel, supported on a turned and carved pole on a tripod base with flat bun feet. H147cm.
£40 - 60

617 **A George III oak panelled hanging corner cupboard** containing three shelves. With key. H99cm x W74.5cm x D42.5cm
£30 - 50

618 **A 19th century longcase grandfather clock** 'Thomas Haden, Dudley'. With an 8-day movement, the brass dial with Roman numerals, and a date aperture, decorated with dolphins and motifs, the oak case with columned hood, long door and a plinth base, H210cm
£300 - 400

619 **A late 19th century Continental mirror back break front sideboard.** With glazed cupboards underneath, 194 cm H x 137 cm W x 39.2 cm D
£20 - 30

620 **An early 20th century dimpled brass bevelled edge oval wall mirror.** With ribbon cresting to top and applied cast hair bell rosette decoration, 77 cm high x 99.5 cm wide
£50 - 80

621 **19th century gilt picture frame.** A large and impressive moulded frame with Anthemion to corners, scrolling acanthus and applied decoration to the whole, internal measurement 74 x 61 cm overall 108.4 x 95.3 cm
£250 - 350

622 **An early 20th century brass telescopic standard lamp.** With circular step base and three feet, H144cm (contracted)
£30 - 50

623 **An Arts and Crafts double stretcher beech open armchair.** With spindle back and an envelope rush seat, H100.4cm
£30 - 50

624 **Aesthetic Movement : A brass fire curb / fender** with tool rests. 22 cm H x 142 W x 52 cm D
£40 - 60

625 **An early 20th century mahogany French desk.** With inverted breakfront centre section and flanked by lockable drawers on carved cabriole legs and scroll feet, 76.5 H x 136 w x 72 D
£50 - 100

626 **A Bahrain brass bound, punchwork and brass studied mule chest / trunk.** On turned supports with five short drawers along the bottom and candle box inside. L128cm x D54cm x H69cm
£700 - 900

627 **An 18th century and later American peg jointed crib/cradle bassinet** on bows. 77cm high x 91.8cm long x 44cm wide
£100 - 200

628 **Maple & Co - a glazed top bow fronted inlaid cabinet.** With musical instrument inlay, harebells, convex glass etc, standing on six legs, 183cm high
£500 - 700

629 **An early to mid-20th century silk hand stitched rug.** With central medallion and a foliate decoration, colours of green, rust red, pink, buff, grey, blue etc 176cm x 128cm
£80 - 120

630 **A 19th century gilt brass twelve branch two tiers of six pendant chandelier.** With remains of wiring, 74cm high, 76cm wide
£200 - 300

killens.org.uk



Killens

CHARTERED SURVEYORS & PROPERTY AGENTS



Let us help you with your next move

Offices in Chew Magna, Knightsbridge, Somerton & Wells

CONDITIONS OF SALE FOR BUYERS

Both the sale of goods at our auctions and your relationship with us are governed by the Conditions of Sale for Sellers, the Conditions of Sale for Buyers and any notices displayed in the saleroom or announced by us at the auction (collectively, the "Conditions of Sale").

Please read these Conditions of Sale carefully. Please note that if you register to bid and/or bid at auction, whether at the auction rooms or online, this signifies that you agree to and will comply with these Conditions.

1 Definitions and interpretation

Within these Conditions, the following words have the specific meaning detailed:

"Auctioneer" means Killens LLP a limited liability partnership registered in England and Wales with registration number OC354754 and whose registered office is located at The Cake House, Upper Lodge Farm, Ston Easton, Somerset BA3 4DH or its authorised auctioneer, as appropriate
"Bidder" means a person participating in bidding at the auction;
"Buyer" means the person who makes the highest bid for a Lot accepted by the Auctioneer;

"Deliberate Forgery" means: (a) an imitation made with the intention of deceiving as to authorship, origin, date, age, period, culture or source; (b) which is described in the catalogue as being the work of a particular creator without qualification; and (c) which at the date of the auction had a value materially less than it would have had if it had been as described;

"Hammer Price" means the level of the highest bid for a Lot accepted by the Auctioneer by the fall of the hammer;

"Lot(s)" means the goods that we offer for sale at our auctions;

"Premium" means the premium that we will charge you on your purchase of a Lot to be calculated as set out in Clause 3;

"Reserve" means the minimum hammer price at which a Lot may be sold;

"Sale Proceeds" means the net amount due to the Seller;

"Seller" means the persons who enters Lots for sale at our auctions;

"Terms of Consignment" means the terms on which we agree to offer Lots for sale in our auctions as agent on behalf of Sellers;

"Conditions of Sale" means these terms of sale, as amended or updated from time to time;

"Total Amount Due" means the Hammer Price for a Lot, the Premium, any applicable artist's resale right royalty, any VAT due and any additional charges payable by a defaulting buyer under these Conditions of Sale;

"Trader" means a Seller who is acting for purposes relating to that Seller's trade, business, craft or profession, whether acting personally or through another person acting in the trader's name or on the trader's behalf;

"VAT" means Value Added Tax or any equivalent sales tax; and

"Website" means our website available at mendipauctionrooms.co.uk
In these Conditions of Sale the words 'you', 'yours', etc. refer to you as the Buyer. The words 'we', 'us', etc. refer to the Auctioneer. Any reference to a 'Clause' is to a clause of these Conditions of Sale unless stated otherwise.

2 Bidding procedures and the Buyer

2.1 Bidders must register their details with us before bidding and provide us with any requested proof of identity, in a form acceptable to us, before entering the auction room to view or bid.

2.2 You are responsible for your decision to bid for a particular Lot and we strongly recommend that you attend the auction in person. If you bid on a Lot, whether in person, by placing a commission bid or by telephone and online bidding, we assume and you accept that you have carefully inspected the Lot and satisfied yourself regarding its condition.

2.3 If you instruct us in writing, we may execute commission bids on your behalf. Neither we nor our employees or agents will be responsible for any failure to do so save where such failure is unreasonable. Where two or more commission bids at the same level are recorded we reserve the right in our absolute discretion to prefer the first bid so made.

2.4 The Bidder making the highest bid for a Lot accepted by the Auctioneer will be the Buyer at the Hammer Price and any dispute about a bid will be settled at our absolute discretion by re-offering the lot during the course of the auction or otherwise. We will act reasonably in exercising this discretion.

2.5 Bidders will be deemed to act as principals.

2.6 Our right to bid on behalf of the Seller is expressly reserved up to the amount of any Reserve and we may refuse to accept any bid if it is reasonable for us to do so.

2.7 Bidding increments will be at our sole discretion.

3 The purchase price

As Buyer, you will pay:

- the Hammer Price;
- a buyer's premium at 24% (20% plus VAT) on the hammer price of each lot purchased in our sales
- any artist's resale right royalty payable on the sale of the Lot; and
- any VAT due at the prevailing rate.

4 VAT

4.1 VAT on the Hammer Price and premium is imposed by law on all items identified in the auction catalogue with an asterisk or double asterisk.

4.2 We will charge VAT at the current rate at the date of the auction.

5 The contract between you and the Seller

5.1 The contract for the purchase of the Lot between you and the Seller will be formed when the hammer falls accepting the highest bid for the Lot at the auction.

5.2 You may directly enforce any terms in the Terms of Consignment

against a Seller to the extent that you suffer damages and/or loss as a result of the Seller's breach of the Terms of Consignment.

5.3 If you breach these Conditions of Sale, you may be responsible for damages and/or losses suffered by a Seller or us. If we are contacted by a Seller who wishes to bring a claim against you, we may in our discretion provide the Seller with information or assistance in relation to that claim.

5.4 We normally act as an agent only and will not have any responsibility for default by you or the Seller (unless we are the Seller of the Lot).

6 Payment

6.1 Immediately a lot is sold you will:

6.1.1 give to us, if required, proof of identity; and

6.1.2 pay to us the Total Amount Due in cash (for which there is an upper limit of 10,000 euros equivalent) or in any other way as is agreed by us.

6.2 Any payments by you to us may be applied by us towards any sums owing from you to us on any account whether without regard to any directions of you or your agent, whether express or implied.

7 Title and collection of purchases

7.1 The ownership of any lots purchased shall not pass to you until you have made payment in full to us for the Total Amount Due. No purchase can be claimed until it has been paid for.

7.2 You will (at your own expense) collect any Lots that you have purchased and paid for not later than five working days following the day of the auction.

7.3 If you do not collect the Lot within this time period, then Lots not collected will be subject to a storage charge of £1 per lot per day. After ten days, we may sell the Lot. We will pay the proceeds of any such sale to you, but will deduct any storage charges or other sums that we have incurred in the storage and sale of the Lot. We reserve the right to charge you a selling commission together with a loss/damage fee at our standard rates on any such resale of the Lot.

7.4 Risk of loss or damage to the Lot will pass to you when you (or your agents) take physical possession of the Lot.

7.5 If it becomes apparent that a Lot has been sold without good title or without authorisation then the buyer agrees to return the Lot promptly subject to being reimbursed any purchase costs and any reasonable expenses incurred in returning the item. If the Buyer fails to return the Lot then the Seller agrees to accept the hammer price achieved as recompense for the sale of the item.

8 Remedies for non-payment or failure to collect purchases

8.1 Please do not bid on a Lot if you do not intend to buy it. If your bid is successful, these Conditions of Sale will apply to you. This means that you will have to carry out your obligations set out in these Conditions of Sale. If you do not comply with these Conditions of Sale we may (acting on behalf of the Seller and ourselves) pursue one or more of the following measures:

8.1.1 to proceed against you for damages for breach of contract;

8.1.2 if payment and collection of the Lots does not take place within five days of the day of the auction, at the discretion of the Auctioneer, to rescind the sale of the Lot to you and/or any other Lots sold by us to you;

8.1.3 to resell the Lot (by auction or private treaty) in which case you will have to pay any difference between the price you should have paid for the Lot and the price we sell it for (after crediting any part payment and adding any resale and storage costs). Please note any surplus arising will belong to the Seller;

8.1.4 to remove, store and insure the Lot at your expense;

8.1.5 to charge interest at a rate not exceeding 1.5% per month on the Total Amount Due if you do not pay us within five working days of your successful bid;

8.1.6 to retain that Lot or any other Lot sold to you until you pay the Total Amount Due;

8.1.7 to reject or ignore bids from you or your agent at future auctions or to impose conditions before we accept bids from you; and/or

8.1.8 if we sell any Lots for you, use the money made on these Lots to repay any amount you owe us.

8.2 We will act reasonably when exercising our rights under Clause 8.1. Except where stated, we will contact you before exercising these rights and try to reach an agreement in respect of any non-compliance by you with these Conditions of Sale.

9 Third Party Liability

All members of the public on our premises are there at their own risk and must note the lay-out of the premises and security arrangements. Neither we nor our employees or agents shall incur liability for death or injury (except as a result of our, our employees' or our agents' negligence) or similarly for the safety of the property of persons visiting the premises.

10 Warranties

10.1 The Seller warrants to us and to you that:

10.1.1 the Seller is the true owner of the Lot for sale or is authorised by the true owner to offer and sell the lot at auction;

10.1.2 the Seller is able to transfer good and marketable title to the Lot to you free from any third party rights or claims; and

10.1.3 as far as the Seller is aware, the main characteristics of the Lot set out in the auction catalogue (as amended by any notice displayed in the saleroom or announced by the Auctioneer at the auction) are correct.

- 10.2 If, after you have placed a successful bid and paid for a Lot, any of the warranties above are found not to be true, please notify us in writing. Neither we nor the Seller will be liable to pay you any sums over and above the Total Amount Due and we will not be responsible for any inaccuracies in the information provided by the Seller except as set out below.
- 10.3 Please note that nearly all Lots that you may bid on at our auction are second-hand.
- 10.4 Save as expressly set out above, all other warranties, conditions or other terms which might have effect between the Seller and you, or us and you, or be implied or incorporated by statute, common law or otherwise are excluded.
- 11 Descriptions and condition**
- 11.1 Whilst we seek to describe lots accurately, our descriptions will be based on: (a) information provided to us by the Seller of the Lot (for which we are not liable); and (b) our opinion (although it may be impractical to carry out a detailed inspection of each Lot).
- 11.2 We will give you a number of opportunities to view and inspect the Lots before the auction. You (and any independent consultants acting on your behalf) must satisfy yourself about the accuracy of any description of a Lot. We shall not be responsible for any failure by you or your consultants to properly inspect a Lot.
- 11.3 Prospective buyers also bid on the understanding that representations or statements by us as to authorship, genuineness, origin, date, age, provenance, condition or estimated selling price involve matters of opinion. We undertake that any such opinion will be honestly and reasonably held and accept liability for opinions given negligently or fraudulently.
- 11.4 Please note that Lots are unlikely to be in perfect condition. Lots are sold "as is" (i.e. as you see them at the time of the auction). We encourage absent bidders to request a condition report of the item from us. Neither we nor the Seller nor any employee accept any liability for the condition of second-hand Lots or for any condition issues affecting a Lot which the inspection of a Lot by the Buyer ought to have revealed. We do not accept any liability for the correctness of any opinions given and all conditions and warranties, whether relating to description, condition or quality of lots, express, implied or statutory, are hereby excluded.
- 11.5 In the event that there is a discrepancy between a description and/or a photograph of the lot as displayed online and/or the item lotted in the room then we may cancel the sale of any affected Lot and we will refund the money paid by you for the Lot (including any Premium and applicable VAT).
- 12 Deliberate Forgeries**
- 12.1 You may return any Lot which is found to be a Deliberate Forgery to us within 21 days of the auction provided that you return the Lot to us in the same condition as when it was released to you, accompanied by a written statement identifying the Lot from the relevant catalogue description and a written statement of defects.
- 12.2 If we are reasonably satisfied that the Lot is a Deliberate Forgery we will refund the money paid by you for the Lot (including any Premium and applicable VAT) provided that if:
- 12.2.1 the catalogue description reflected the accepted view of experts as at the date of the auction; or
- 12.2.2 you personally are not able to transfer good and marketable title in the Lot to us, you will have no right to a refund under this clause.
- 13 Our liability to you**
- 13.1 We will not be liable for any loss of opportunity or disappointment suffered as a result of participating in our auction.
- 13.2 In addition to the above, neither we nor the Seller shall be responsible to you and you shall not be responsible to the Seller or us for any other loss or damage that any of us suffer that is not a foreseeable result of any of us not complying with the Conditions of Sale. Loss or damage is foreseeable if it is obvious that it will happen or if at the time of the sale of the Lot, we, you and the Seller knew it might happen.
- 13.3 If we are found to be liable to you for any reason (including, amongst others, if we are found to be negligent, in breach of contract or to have made a misrepresentation), our liability will be limited to the total purchase price paid by you to us for any Lot.
- 14 Notices**
- 14.1 All notices between you and us regarding these Conditions of Sale must be in writing and signed by or on behalf of the party giving it.
- 14.2 Any notice referred in Clause 14.1 may be given:
- 14.2.1 by delivering it by hand;
- 14.2.2 by first class pre-paid post or Recorded Delivery; or
- 14.2.3 by email, provided that a copy is also sent by pre-paid post or Recorded Delivery.
- 14.3 Notices must be sent:
- 14.3.1 by hand or registered post: a. to us, at Mendip Auction Rooms, Rookery Farm, Binegar, Somerset BA3 4UL; and b. to you, at the last postal address that you have given to us as your contact address in writing; or
- 14.3.2 by email:
a. to us, by sending the notice to the following email address: enquiries@mendipauctionrooms.co.uk
b. to you, by sending the notice to any email address that you have given to us as your contact email address in writing.
- 14.4 Notices will be deemed to have been received:
- 14.4.1 if delivered by hand, on the day of delivery;
- 14.4.2 if sent by first class pre-paid post or Recorded Delivery, two business days after posting, exclusive of the day of posting; or
- 14.4.3 if sent by email, at the time of transmission.
- 14.5 Any notice or communication given under these Conditions of Sale will not be validly given if sent by any form of messaging via social media or text message.
- 15 Data Protection and Privacy Statement**
- If you have consented, we will send you marketing material that we consider may be of interest to you. We will not share your data with any third party except for delivery of our material. You may ask to unsubscribe at any time by emailing: enquiries@mendipauctionrooms.co.uk Our Privacy Policy can be viewed at www.mendipauctionrooms.co.uk.
- 16 Online Bidding**
- 16.1 Killens (trading as Mendip Auction Rooms) offer an online bidding service via the-saleroom.com and mendipauctionrooms.co.uk for bidders who cannot attend the sale. In completing the bidder registration on either website and providing your debit or credit card details and unless alternative arrangements are agreed with Killens (trading as Mendip Auction Rooms) you:
- Authorise Killens (trading as Mendip Auction Rooms) if they so wish to charge the debit or credit card given in part or full payment, including all charges, for lots successfully purchased in the auction via either website; and
- Confirm that you are authorised to provide these debit or credit card details to us through either website and agree that Killens (trading as Mendip Auction Rooms) are entitled to ship the goods to the card holder name and card holder address provided in fulfilment of the sale.
- (Please note that any lots purchased via the-saleroom.com live auction service will be subject to an additional 5% charge plus VAT imposed on the hammer price and any lots purchased via mendipauctionrooms.co.uk will be subject to an additional 3% charge plus VAT imposed on the hammer price.
- 16.2 Bidders are strongly advised not to rely solely on the webcast audio to place live bids as both the audio and video can lag behind the sale. Please place live bids only by the text displayed on the bidding window which will accurately reflect the current state of bidding. We do not accept any liability to you for any bid not being registered whether due to technical or other reasons.
- 17 Artists Resale Rights**
- According to the European Union's Artist's Resale Rights Directive, which has been adopted and maintained by the United Kingdom, living artists and artists who died within 70 years prior to the date of the sale are entitled to receive a resale royalty each time their art work is sold by an art market professional in the European Union or United Kingdom, subject to certain conditions. The Mendip Auction Rooms will collect the resale royalty due to the artists or their estates from buyers of lots with a hammer price (excluding buyers premium and VAT) in excess of €1000. Any purchaser of a lot to which Artist's Resale Right applies will be charged the amount of the resale royalty, which will be added to the invoice. VAT is not payable on any royalty. The rate payable for items €0 to €50000 is 4%. Contact us for further rates.
- 18 General**
- 18.1 We may, acting reasonably, refuse admission to our premises or attendance at our auctions by any person.
- 18.2 We act as an agent for our Sellers. The rights we have to claim against you for breach of these Conditions of Sale may be used by either us, our employees or agents, or the Seller, its employees or agents, as appropriate. Other than as set out in this Clause, these Conditions of Sale are between you and us and no other person will have any rights to enforce any of these Conditions of Sale.
- 18.3 We may use special terms in the catalogue descriptions of particular Lots. You must read these terms carefully along with any glossary provided in our auction catalogues.
- 18.4 Each of the clauses of these Conditions of Sale operates separately. If any court or relevant authority decides that any of them are unlawful, the remaining clauses will remain in full force and effect.
- 18.5 We may change these Conditions of Sale from time to time, without notice to you.
- 18.6 Compensation will be paid to the seller for any damaged or lost items equivalent to the lower estimate of value (less any commission charges and other normal selling expenses) as agreed on entering the item for sale or as subsequently set by us. In the event of dispute then the level of compensation payable will be referred to an independent expert for resolution.
- 18.7 These Conditions of Sale and any dispute or claim arising out of or in connection with them (including any non-contractual claims or disputes) shall be governed by and construed in accordance with the laws of England and the parties irrevocably submit to the exclusive jurisdiction of the English courts.



Absent Bidding Form

Paddle number (for office use only)

Sales held at the Mendip Auction Rooms will be conducted in accordance with the Mendip Auction Rooms' Conditions of Sale and bidding and buying at Sales will be regulated by these Conditions. You should read the Conditions in conjunction with the Sale Information relating to the appropriate Sale which sets out the charges payable by you on the purchases you make and other terms relating to bidding and buying at the Sale. You should ask any questions you have about the Conditions before bidding. These Conditions also contain certain undertakings by bidders and buyers and limit Killens' and the Mendip Auction Rooms' liability to bidders and buyers.

Credit and Debit Card Payments

There is no surcharge for payments made by debit cards issued by a UK bank. **With effect from 13th January, credit cards are no longer accepted.**

Notice to Bidders

Clients are requested to provide photographic proof of identification on request—passport, driving licence, ID card, together with proof of address—utility bill, bank or credit card statement etc. Corporate clients should also provide a copy of their articles of association/ company registration documents together with a letter authorising the individual to bid on the company's behalf. Failure to provide this may result in your bids not being processed.

Title	
First Name	Last Name
Company Name (if applicable)	
Address	
Town/City	County
Post Code	Country
Telephone mobile	Telephone daytime
Telephone evening	Fax
Email	

Commission Or Telephone (C/A)	Lot No	Brief Description	MAX bid in GBP (excluding buyers premium & VAT)	Max covering bid in event we are unable to contact you by telephone

BY SIGNING THIS FORM YOU AGREE THAT YOU HAVE READ AND UNDERSTOOD OUR CONDITIONS OF SALE AND WILL READ THEM PRIOR TO BIDDING AT FUTURE SALES AND WISH TO BE BOUND BY THEM AND AGREE TO PAY THE BUYERS PREMIUM, VAT AND ANY OTHER CHARGES MENTIONED IN THE NOTICE TO BIDDERS. YOU ALSO AGREE TO REMOVE PURCHASES PROMPTLY.

Signed	Date
--------	------



Registration Form

To be completed and submitted if you intend to bid

--

Paddle number (for office use only)

Sales held at the Mendip Auction Rooms will be conducted in accordance with the Mendip Auction Rooms' Conditions of Sale and bidding and buying at Sales will be regulated by these Conditions. You should read the Conditions in conjunction with the Sale Information relating to the appropriate Sale which sets out the charges payable by you on the purchases you make and other terms relating to bidding and buying at the Sale. You should ask any questions you have about the Conditions before bidding. These Conditions also contain certain undertakings by bidders and buyers and limit Killens' and the Mendip Auction Rooms' liability to bidders and buyers.

Data Protection

We confirm that we are aware of our obligations under the Data Protection Act 1998 (DPA) and we will take appropriate technical and organisational measures to comply with all our obligations under the DPA when processing personal data supplied by you. All terms used in this paragraph have the same meaning as in the DPA.

In the conduct of our professional services we may need to collect and use personal information about you, your partners, your company, your trustees, your clients or customers and your or their employees, agents or contractors, which we will hold as data controllers under the DPA. You confirm that you will comply with any obligations that you may have under the DPA when providing us with this personal information.

All such personal information will be held and processed strictly in accordance with the provisions of the Data Protection Act 1998 and will only be used to provide professional services agreed under this engagement letter and for related purposes (including updating client records, analysis for management purposes, statutory returns, legal and regulatory compliance). We will not, without consent, provide any such personal information to any third party except that where such transfer is a necessary part of the services provided, or we are required to do so by operation of law.

Credit and Debit Card Payments

There is no surcharge for payments made by debit cards issued by a UK bank. We do not accept credit cards.

Notice to Bidders

If required, clients are requested to provide photographic proof of identification on request—passport, driving licence, ID card, together with proof of address—utility bill, bank or credit card statement etc. Corporate clients should also provide a copy of their articles of association/company registration documents together with a letter authorising the individual to bid on the company's behalf. Failure to provide this may result in your bids not being processed.

Title	
First Name	Last Name
Company Name (if applicable)	
Address	
Town/City	County
Post Code	Country
Telephone mobile	Telephone daytime
Telephone evening	Fax
Email	
By providing your email address above, you authorise Killens to send to this address information relating to Sales, marketing material and news concerning Killens/Mendip Auction Rooms. Killens does not sell or trade email addresses.	

How did you hear of Killens/ Mendip Auction Rooms?

- | | |
|---|--|
| <input type="checkbox"/> Word of mouth | <input type="checkbox"/> Sponsorship |
| <input type="checkbox"/> Internet/website/search engine | <input type="checkbox"/> Show attendance |
| <input type="checkbox"/> Advertising, if so, where: | <input type="checkbox"/> Recommendation |

I am registering to bid as a private buyer <input type="checkbox"/>	I am registering to bid as a trade buyer <input type="checkbox"/>
---	---

BY SIGNING THIS FORM YOU AGREE TO BE BOUND BY OUR CONDITIONS OF SALE AND AGREE TO PAY THE BUYERS PREMIUM, VAT AND ANY OTHER CHARGES MENTIONED.

DON'T MISS OUT! PLEASE TICK IF YOU WOULD LIKE TO RECEIVE CATALOGUES, INFORMATION ABOUT OUR FORTHCOMING SALES AND NEWS BY EMAIL <input type="checkbox"/>
--

Signed
Date

Mendip Auction Rooms is a limited company (number 09771739). A list of members may be inspected at the registered office: Bishopbrook House, Cathedral Avenue, Wells, Somerset. BA5 1FD

