



Killens

Mendip Auction Rooms

The Fine Art, Antiques, Silver & Jewellery Sale

Mendip Auction Rooms | 9 December 2023



Rookery Farm Binegar Somerset BA3 4UL

44 0 1749 840770

www.mendipauctionrooms.co.uk



RICS

Cameras, Accessories & Optical Equipment Sale

Thursday 21st December



The Fine Art, Antiques, Silver & Jewellery Sale

Mendip Auction Rooms | Saturday 9 December 2023 at 10am

Killens

Mendip Auction Rooms
Rookery Farm
Binegar
Somerset BA3 4UL
mendipauctionrooms.co.uk

Viewing

Thursday 7 December
10:00 - 18:00
Friday 8 December
10:00 - 19:00

Sale

Saturday 9 December
From 10:00

Enquiries

+44 (0) 1749 840770
enquiries@mendipauctionrooms.co.uk

Your contacts for this sale

John Dickins
enquiries@mendipauctionrooms.co.uk

Bidding

Bidders are required to register before the sale commences dependent upon method of bidding.

Bid online

By visiting the-saleroom.com and visiting the Mendip Auction Rooms auction or the Killens website, www.mendipauctionrooms.co.uk

Bid in person

Attendance at auctions is now allowed. You can register at reception at the auction rooms.

Bid by Absentee/Commission Bid

We require a completed Bidder Registration Form returned by email to

enquiries@mendipauctionrooms.co.uk.

The form can be found at the back of this catalogue. Absentee or Commission bids can be emailed, submitted by telephone or in person.

Bids should indicate the maximum amount to be bid excluding buyer's premium. They will be executed as cheaply as possible having regard to the reserve (if any) and competing bids. If two buyers submit identical bids the auctioneers will prefer the first bid received.

Telephone bid

All bidders need to be registered by completing and submitting a Bidder Registration Form. You can arrange a telephone bid by contacting the auction rooms.

New bidders

We reserve the right to make online enquiries to verify your identity and we may require proof of identity when registering to bid.

Buyers Premium

Buyers are obliged to pay a buyer's premium at 20% (plus VAT) on the hammer price of each lot purchased.

General Information

Methods of Payment

It is important you are aware of the following regarding registration and payment:

The name and address in which you register will be the name and address on your invoice, if successful.

We cannot amend the details on your invoice, once issued.

Purchases can only be released when full settlement (inclusive of all charges) of all invoices issued to the buyer is received in cleared funds.

Before bidding, you should ensure that you have the necessary funds available and be able to pay according to one of the methods set out below.

• **Bank Transfer:** You may electronically transfer funds to our Auction Rooms Client Account.

Please quote your surname and Invoice number as the reference.

Our Client Account details are as follows.

Bank: National Westminster Bank Plc

Address: 7 High Street, Wells, Somerset BA5 2AD

Sort Code: 60-23-06

Account Name: Killens Auction Rooms Client Account

Account Number: 75152916

IBAN Number: GB 26 NWBK 602306 75152916

If paying by bank transfer, the amount received after the deduction of any bank fees and/or conversion of the currency of payment to pounds sterling must not be less than the sterling amount payable, as set out on the invoice.

Payment may also be made by one of the following methods:

• **Card:** Debit issued by Visa and MasterCard only. There is no limit on payment value if payment is made in person using Chip & Pin verification.

• **Credit cards** issued by Visa and MasterCard only.

• **Cheque:** You may pay by sterling cheque drawn on a UK bank or building society but all cheques must be cleared before you can collect your purchases.

Collection and Storage

Please note what the 'Conditions of Sale for Buyers' as found at the rear of this catalogue state about collection and storage. It is important that goods are paid for and collected promptly. Any delay may involve the buyer paying storage charges.

We offer a limited packing and dispatch service and quotes can be provided on request. We are unable to send:

Glass, Guns, Ammunition, Swords, Knives, Daggers
Ceramics that we deem to be of a fragile delicate nature,
Pictures with glass in frame, over 45cm x 30cm or of a fragile nature, Barometers, Clocks, Items weighing over 10kg (including packaging)

We also recommend the following couriers:

Mailboxes of Bath, 01225-483777

shipping@mbebath.co.uk OR

Jentel Packaging, 01268-776777

enquiries@jentelpacking.co.uk OR

Westbrook Packing & Despatch of Chippenham, 01380 859486,

Info@westbrookpacking.uk

All who visit regularly to assist clients.

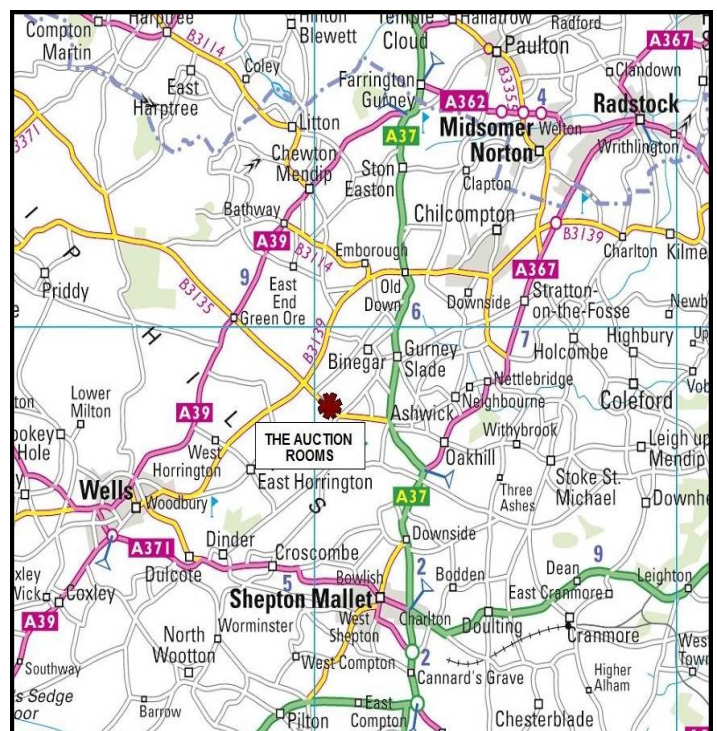
For larger items locally:

ARK Solutions on 07904 431741,

info@arksolutionsgroup.co.uk OR

Andie's on 07739 903068

If items are not collected within five working days, then Lots not collected will be subject to a storage charge of £1 per lot per day. After ten days, we may sell the Lot on your behalf subject to our 'Conditions of Sale for Buyers'.



HOW TO FIND US

1 An early 20th century silver epergne. With a large and three smaller dishes each pierced with scrolls and leaves and with a shaped reed, ribbon and floral border, on a triform stand with leaf chased C-scroll supports, plain branches and leaf quatrefoil feet, mark of Mappin and Webb, Sheffield 1919, approx. 19.5cm high, 41cm wide overall (7 3/4 x 16 inches), 1,870g (66 ozs)
£700 - 1000

2 A pair of silver pedestal fruit dishes or tazzas. Each with a broad border and domed foot, finely chased and embossed with elaborate C-scroll panels enclosing flowers, leaves and fruits, the plain bowls each engraved with a central decorative monogram, pattern number 51758, mark of Walker and Hall, Sheffield 1905, each approx. 9cm high, 26.75cm diameter (3 1/2 x 10 inches), 1,251g (about 40 1/4 ozs); both contained in a contemporary oak rectangular storage box for three dishes (one missing) with an inset shield-shaped brass cartouche engraved with a conforming monogram, and brass drop handles, the box approx. 19cm high, 80cm wide, 35cm deep (7 1/2 x 31 1/2 x 13 3/4 inches)
£500 - 800

3 A set of six vintage silver goblets. Each bowl with a flared-out rim on baluster stem and stepped round foot, each with display hallmarks of Barker Ellis Silver Company, Birmingham 1972, each approx. 12.5cm high (5 inches), the six weigh 872g (28 ozs); in the original blue leatherette fitted box
£400 - 500

4 An early 20th century silver and 'gem' set rectangular trinket box. The cover embossed with a panel of winged putti and putti riding insects on a matt ground, within decorative floral borders collet-set at intervals with coloured pastes and half-pearls, the two long sides with panels of putti pulling a chariot followed by animals, the ends with a neo-classical torch and a quiver of arrows bound by laurel, mark of Levi & Salaman, Birmingham 1912, 6cm high, 13cm wide, 8.5cm deep (2 3/8th x 5 1/8th x 3 3/8ths inches), 432g gross (a little over 13 3/4 ozs)
£250 - 300

5 A Victorian silver baluster shaped milk jug. With a leaf-capped scroll handle, a shaped rim and embossed with flowers and leaves within broad 'melon' flutes, mark of William Hunter, London 1849, 15cm high (6 inches), 344g (a little over 11 ozs)
£140 - 180

6 A silver and tortoiseshell mounted round trinket box. The hinged lid inset with a tortoiseshell panel within shaped moulded borders, the base on three scroll feet, mark of Percy Jones Finch, Birmingham 1921, approx. 4.5cm high overall, 8cm diameter (1 3/4 x 3 1/8th inches)
£40 - 60

7 An Edwardian silver half-pint mug. Engraved with script initials and with a scroll handle, moulded rim and a tucked-under moulded base, mark of Daniel & John Wellby, London 1905, 263g
£100 - 150

8 Local interest, a pair of silver compressed round candle or taper sticks. Each with a raised 'nozzel', mark of Philip Kydd (of Barrow Gurney, Bristol), London 2014, 2.5cm high overall 6.5cm diameter (1 x 2 1/2 inches), probably loaded 162g gross
£30 - 50

9 A George IV Irish silver oblong milk jug. With a double scroll handle, a nulled border, domed bands engraved with flowers and leaves and two rectangular reserves (one with a faint crest), mark of Charles Marsh, Dublin 1821, 11cm high overall 15.5cm long (4 1/4 x 6 inches), 148g (4 3/4 ozs)
£70 - 100

10 A Danish sterling round box and cover. Resembling an apple with a hammered or planished surface and with flush-fit pull-off lid with a ball finial, marked beneath '925S' over 'Sterling' over Holmstead' over 'Denmark', approx. 9cm high overall, 8.25cm diameter (3 1/2 x 3 1/4 inches), 199g (a little under 6 1/2 ozs)
£70 - 100

11 A Victorian silver part fluted christening mug. With a part fluted scroll handle, mark of Gibson & Langman, London 1890, 8cm high, 112g
£40 - 60

12 A silver christening mug and a sauce boat. The straight sided mug with a double-scroll handle, a moulded rim, band and base, mark of Gorham Manufacturing Co., Birmingham 1920, 7.75cm high (3 inches), 120g (a little over 3 3/4 ozs); the sauce boat with a leaf-capped double-scroll handle, a moulded rim and stepped oval foot, mark of Richard Woodman Burbridge (Harrods Ltd), London 1936, 18cm long overall (7 inches), 149g (a little over 3 3/4 ozs)
£80 - 120

13 Two christening mugs including a Victorian silver example with a loop handle and engraved with a floral fern leaf cartouche engraved with initial, mark of George Maudsley Jackson, London 1879, 113g; together with an eastern white metal mug with a wire scroll handle and embossed and engraved with broad leaves and a cartouche, maker's mark only beneath not traced, 10cm high overall (4 inches), 100g
£100 - 150

14 Two silver mounted coasters and a desk clock, The two coasters with wood bases and central bosses, the larger one with moulded borders and hallmarks for Birmingham 1998, 13cm diameter (5 inches); the smaller one with bombe sides, London 1996, 10cm diameter (4 inches); the silver-mounted square-cased desk clock with Sheffield millenium display hallmarks, 10cm (4 inches)
£40 - 60

15 Three vintage silver-mounted graduated rectangular easel-back photograph frames. All by Carrs of Sheffield, the larger one with a wood-back and millennium display hallmarks, approx. 22cm high, 18cm wide (8 5/8ths x 7 inches); the other two with velvet covered backs and hallmarks for Sheffield 1994 16cm x 12cm, and 10.75cm x 8cm (6 1/4 x 4 3/4 inches & 4 3/4 x 4 1/4 inches)
£50 - 80

16 An Indian white metal mounted round hand mirror. Profusely embossed with foliate scrolls on a matt ground around a vacant round reserve, unmarked, approx. 17cm diameter, 26cm long overall, approx. 644g gross
£60 - 80

17 An Indian white metal rectangular box. Profusely embossed with panels of foliate scrolls on a matt ground, unmarked, approx. 3cm high, 25.5cm long, 5.5cm deep, 330g
£100 - 120

18 A silver mounted hobnail-cut clear glass cylindrical dressing table jar. The cover embossed with swirling leaves and flower-heads around a central round reserve engraved with indistinct initials, the mount with the mark of Walker & Hall, Sheffield 1907, 24g
£10 - 20

19 Two Indian white metal boxes and match box holder. All profusely embossed with foliate scrolls on a matt ground, comprising; a rectangular box with a hinged cover, approx. 3.5cm high, 7.75cm long, 5.25cm deep, 113g; a cylindrical box with a slightly-domed pull-off cover, 4.5cm high, 7.25cm diameter, 132g; and a match box holder approx. 1.75cm high, 5.75cm long, 4cm deep, 35g
£80 - 100

20 An Art Deco silver and enamel mounted travelling dressing table set, in a leather case. Comprising an angular hand mirror, two hair brushes, two clothes brushes, two rectangular scent bottles, two round dressing table jars, four-piece manicure set, and a plain steel small scissors, the silver with hallmarks for The Goldsmiths and Silversmiths Company Ltd, Birmingham 1932-35, the black leather case measures approx. 15cm high, 48.25 wide, 36cm deep (6 x 19 x 14 inches); together with a canvas type cover
£100 - 150

21 An early George III silver baluster shaped and embossed coffee pot. With a wicker bound scroll handle, a domed cover with a fluted finial and a gadrooned rim, on a round foot with a gadrooned band, all later profusely embossed with flowers, leaves fruits and scrolls on a matt ground and with a roccoco C-scroll cartouche, mark of John Swift, London 1766, approx. 27cm high overall (10 1/2 inches), 756g gross including the wicker (24 1/4 ozs)
£300 - 500

22 A late Victorian silver rectangular dressing table tray. Embossed with foliate C-scrolls and harebells around a C-scroll bordered reserve engraved with a monogram, the raised straight fluted sides with a crimped rim, mark of Harry Hayes, Birmingham 1900, 1.75cm high, 26cm wide, 17.5cm deep (5/8ths x 10 1/4 x 6 7/8ths inches), 269g (a little under 8 3/4 ozs)
£100 - 150

23 A William IV silver butter dish stand and cover with a glass dish. The broad-fluted cover with a recumbent cow finial, the petal shaped base with a shaped border, mark of Richard William Atkins & William Nathaniel Somersall, London 1835, approx. 17.25cm diameter (6 3/4 inches), 267g gross (a little over 8 1/2 ozs); the clear glass dish with a star-cut base and two lugs, one of which has broken off and is included with the lot
£120 - 150

24 A late Victorian silver jewellery box. The sides and domed hinged lid with broad gadrooned extended rims and profusely embossed with flowers, leaves, scrolls, diaper and a roccoco cartouche, marked beneath 'Mappin Brothers 66 Cheapside E.C.', mark of Mappin Brothers, London 1901, 7cm high, 15.5cm wide, 9.25cm deep (2 3/4 x 6 x 3 5/8ths inches), 340g (almost 11 ozs)
£150 - 250

25 An early 20th century silver concave-oblong half-pint spirit or hip flask. With a hinged screw-cap and engraved with a crest, motto and script initials, mark of William Hutton & Sons Ltd, Sheffield 1914, 15cm high overall (6 inches), 220g (7 ozs)
£100 - 150

26 A pair of Queen Anne cast silver octagonal candlesticks. Later gilded with knopped stems on stepped sunk-centre bases, engraved with a crest beneath, Britannia standard, mark of Humphrey Payne, London 1713, 18cm high (7 inches), 851g (a little over 27 1/4 ozs)
£700 - 1000

27 A silver three piece round pedestal cruet set and two spoons. The mustard and salt each with moulded bands, the mustard also with a pierced scroll handle, together with an old English pattern salt spoon and mustard spoon, all five pieces with the mark of A J Bailey, Birmingham 1918, approx. 114g of weighable silver (a little under 3 3/4 ozs); the mustard and open salt with blue glass liners; in a fitted case
£60 - 80

28 An early 20th century silver and tortoiseshell mounted kidney-shaped jewellery box. The hinged cover inset with a tortoiseshell pique panel decorated with leaves and scrolls, the base on four hoof feet, hallmarks for the Goldsmiths and Silversmiths Company Ltd, London 1919, 6cm high overall, 21cm wide (2 3/8ths x 8 1/4 inches)
£100 - 150

29 A silver shaped-oval pierced and embossed pedestal sweet dish. With a beaded C-scroll border and vacant oval cartouches, hallmarks for Harrison Brothers & Howson, Sheffield 1894, 3.5cm high, 12cm wide overall (1 1/2 inches x 4 3/4 inches), 59g
£30 - 50

30 A small group of Victorian and later silver including a silver mounted opaque-green glass drop-shaped scent bottle and stopper. The hinged lid engraved with scrolling leaves around a C-scroll cartouche, maker's mark probably that of Thomas Diller, London 1841, 7.75cm long overall (3 inches); a small pierced oval sweet dish with an undulating beaded border, mark of Levi & Salaman, Birmingham 1911, 8.5cm wide (3 1/4 inches), 16g; and a silver mounted rectangular easel-back photograph frame, London 1921, 15.25cm high, 11cm wide (6 x 4 1/4 inches)
£60 - 80

Please note: Buyers Premium at 20% plus VAT is payable on each item in addition to the hammer price

31 A silver miniature straight tapering coffee pot. With a scroll handle and a removable lid with a ball finial, engraved beneath 'Wilkinson 1970 - 2000', and with hallmarks for Birmingham 2000, approx. 7.5cm high overall (3 inches), 120g (a little over 3 3/4 ozs); in a presentation box with a card stating that the coffee pot is No. 51 of 350, Presented by Wilkinson Hardware Stores to their management team on the 70 anniversary of their foundation.

£50 - 70

32 A silver baluster sugar caster in George II style. The pierced, gadrooned and engraved dome-shaped top with a chased knob-shaped finial and bayonet fittings, the plain body with moulded bands on a gadrooned foot, stamped beneath 'Thomas 153 New-Bond St.', mark of F B Thomas & Co., London 1912, 20cm high overall (8 inches), 354g (a little over 11 1/4 ozs)

£120 - 180

33 A George III silver ring-handled meat skewer and two later examples. The George III example with a rubbed maker's mark, London 1792, 30cm long, 11 3/4 inches), 72g (a little over 2 1/4 ozs); an Asprey & Co. letter opener in the form of a mid George III meat skewer with a ring and shell terminal, inscribed 'Asprey London' and with hallmarks for Asprey & Co Ltd, Sheffield 1983, 26cm long (10 1/8th inches), 108g (a fraction under 3 1/2 ozs); and a plain unmarked poultry type skewer, 15.5cm long (6 inches)

£70 - 100

34 Three pairs of nips. Comprising; a silver shell bowl example in George III style, Sheffield 1913, 29g (a little under 1 oz), in a fitted case; an early Victorian pair in the form of trailing fruiting vines, marks indistinct, circa 1840, 42g; and another smaller pair, unmarked

£80 - 120

35 A silver shaped round salver. Engraved with a Regimental marriage presentation inscription to Lieutenant Colonel R Leyland by The officers of the East Surrey Regiment... 1955, mark of E Viner, Sheffield 1953, 25.75cm diameter overall (10 inches), 508g (a little over 16 1/4 ozs)

£300 - 400

36 A silver vase shaped sugar caster. The pierced cover with a knob finial, the maker's mark rubbed, hallmarks for London 1935 (Jubilee mark), 15.25cm high overall (6 inches), 144g (a little over 4 1/2 ozs)

£60 - 80

37 No Lot

38 A pair of Swedish lobed candlesticks. With shaped-round octofoil capitals, knopped leaf chased stems and lobed shaped-square bases, mark of C G Hallbergs Guldsmeds, Stockholm 1934, 17cm high (6 3/4 inches), the stems partially wax(?) filled, 522g gross

£200 - 300

39 No Lot

40 A set of six silver Kings pattern fish knives and forks. The filled-handles each engraved with a crest, the shaped blades engraved with foliate scrolls, the blades with the mark of Mappin & Webb, the handles 'FB', both Sheffield 1952, 699g gross including the filled handles

£150 - 200

41 A pair of George III silver table spoons later embossed as berry spoons. The handles each engraved and chased with flowers, leaves and a roccoco scroll cartouche with a script initial 'B', mark of George Wintle, London 1802, 118g (a little over 3 3/4 ozs)

£60 - 80

42 An 18th/19th century medical director and an George III silver rat tail table spoon. The director (resembling a narrow marrow scoop/spoon) with with an elongated fig-shaped bowl at one end and a handle in the form of a slot, apparently un-marked, 12.5cm long overall (5 inches); together with silver rat tail dessert spoon with worn marks and the date letter for 1744, 43g

£40 - 60

43 A Channel Islands old English pattern teaspoon circa 1831-1846, inscribed 'MALRSG', mark of Thomas D Gruchy and John Le Galais only. 9.5g; together with a George IV silver fiddle pattern sugar tongs engraved with script initials, flowers, leaves and wrigglework, mark of William Bateman, London 1826, 44g

£30 - 40

44 A silver rat tail soup ladle. The handle engraved with foliate-script initials, mark of Mappin & Webb, Sheffield 1951, 30.5cm long overall (12 inches), 212g (a little over 6 3/4 ozs)

£80 - 120

45 Four George III silver old English thread pattern dessert spoons and three old English pattern table spoons. The dessert spoons with the mark of George Smith III and William Fern, London 1790; the 'bottom marked' table spoons engraved with a crest and with the mark of George Smith III, London 1779; the seven spoons weigh 347g

£150 - 250

46 A set of six George III silver feather edge tea spoons. Mark of Samuel Godbehere & Edward Wigan, London 1797, 76g

£30 - 50

47 Hester Bateman, a George III silver feather-edge and bright-cut sugar tongs. Engraved with initials 'S' over 'S H', with the maker's mark, lion passant and an incuse duty mark for London 1784 only, 35g; and a single old English pattern table spoon, the handle engraved with initials 'S' over 'T M', London 1790, 64g; the two weigh 99g (a little over 3 ozs)

£80 - 120

48 - 52 No Lots

53 A Mappin and Webb silver-plated pedestal cake stand. together with the original Mappin & Webb card box

£20 - 30

54 A silver-plated tea kettle on stand. The spherical tea pot with a fixed loop handle, a side-hinged lid with a composition finial, and on three leaf-capped scroll feet, the rustic branch stand with a plain lamp, approx. 31cm high overall (12 inches),

£30 - 50

55 An Art Deco silver-plated cocktail shaker and stopper. The straight tapering body engraved with an initial 'H', and with an angular scroll handle with a leaf-chased terminal, on a domed foot, makers mark beneath 'EGW&S', approx. 34.25cm high overall (13 1/2 inches)

£60 - 80



Lot 24



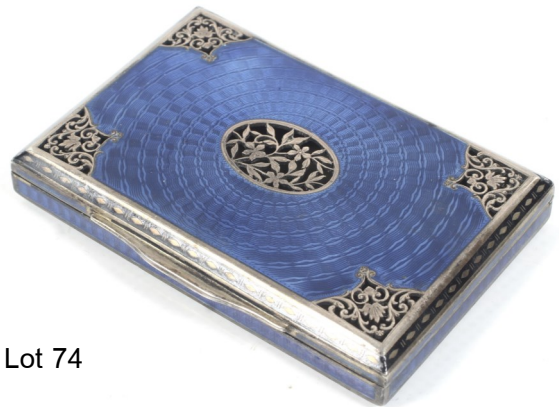
Lot 26



Lot 60



Lot 66



Lot 74



Lot 84



Lot 91

Please note: Buyers Premium at 20% plus VAT is payable on each item in addition to the hammer price

56 A late 19th/early 20th century silver-plated round tea kettle on stand. With a fixed loop handle, a reeded band and side-hinged lid, the stand with three cabriole legs on ball and disc feet, the integral up-swept lamp with a decorative border, approx 29.5cm high overall (11 1/2 inches)

£20 - 30

57 A silver-plated round tea kettle on stand. With a fixed handle and hinged lid, the stand on three cabriole legs with anthemion feet, approx. 30cm high overall (12 inches)

£30 - 50

58 An early 20th century silver-plated round part fluted tea kettle on a stand with a lamp. The kettle with a reeded band and fluted spout and an ebonised handle and finial, on a conforming stand with three acanthus feet and a lamp, approx. 52cm high overall (16 1/2 inches)

£50 - 80

59 A silver-plated oval breakfast dish and an EPNS sardine dish on stand. The revolving breakfast dish engraved with ribbons and floral swags on flower and leaf chased paw feet, 20cm high overall (8 inches); together with a rectangular sardine dish-stand and cover engraved with harebells, flower-heads and leaf scrolls in panels, the stand on bun feet and swing handle, the cover with a knob finial, and with a cut clear-glass glass dish, the stand approx. 18cm wide overall (7 inches)

£30 - 50

60 A Chinese export silver-plated model of a Junk. Modelled with three masts in full sail and a deck with three cannons and a figure, and seven (of eight) oars, mounted on a rustic base carved with stylised waves, approx. 19cm high overall, 15cm long overall (7 1/2 x 6 inches)

£30 - 50

61 A late 19th/early 20th century silver-plated wager cup. In the form of a woman in a floor-length dress holding a smaller cup above her head and with a red paste stone inset to the back. approx. 18cm high (7 inches)

Note; Wager cups were originally used during 16th century German feasts as a drinking game where both cups were filled and the players had to drink from the larger cup without spilling from the smaller one.

£30 - 50

62 A Russian silver and niello cartouche-shaped two-piece belt buckle with a dagger clasp. 1896-1907 national mark, 7.5cm wide overall (3 inches)

£50 - 80

63 A silver straw in the form of a golf club and a square napkin ring. The golf club with hallmarks for William Manton, Birmingham 1984, 16.5cm long (6 1/2 inches), 11g; the napkin ring with shaped borders, mark of Sanders & Mackenzie, Birmingham 1928, 20g

£40 - 60

64 A late Victorian silver box and a child's rattle. The canted rectangular box with bombe sides, the cover depicting a minstrel serenading two ladies in 'Fete Gallante' style after Watteau, mark of Henry Mathews, Birmingham 1900, cm long 10cm long (4 inches), g; together with child's silver rattle and bone teether, the spherical rattle profusely embossed with flowers and scrolls on a matt ground, mark of Saunders and Shepherd, Chester probably 1892

£30 - 40

65 Royal Interest, an Edwardian small brown-leather purse. Inscribed in gilt 'Seaman's Mission, Presented to Her Royal Highness PRINCESS LOUISE, Duchess of Argyll, at the Opening of the Queen Victoria Seaman's Rest, November 13, 1902', 5cm high, 10cm wide (2 x 4 inches)

£20 - 40

66 Cartier, a 9ct gold oval 'star-burst' fluted compact, circa 1946. The body with a central oval raised reserve engraved with an initial 'J', the sides with vertical flutes and with an oval cabochon ruby thumb-piece, the interior with a mirror and cream cloth mesh 'puff', the mirror rim hand-engraved 'X. 1953', the cover rim inscribed inside 'Cartier London', and the base with hallmarks 'J.C' for Cartier Ltd, London 1946, approx. 12mm high, 7.25cm wide, 6cm deep (approx. 1/2 x 4 3/4 x 2 7/8ths inches), 90.5g gross including the mirror and thumb-piece and without the mesh

£1200 - 1500

67 An early Victorian silver decanter label and a small silver and floral mounted smelling salts jar. The label in the form of vine leaves and pierced 'Hock', mark of Rawlings and Summers, London 1840, 6cm wide (2 3/8ths inches); the clear glass bottle with a silver screw-off cover inset with a painted plastic panel depicting flowers in high relief marked verso '7762' over '48', silver hallmarks for Herbert Scott Murdoch, Birmingham 1926, 7.5cm high overall (3 inches)

£50 - 70

68 A collection of 19th century and later glass scent bottles to include a Nailsea small drop-shaped bottle with white spiral twist and decorated with blue dots, a heart above initials 'W.J.' and dated '1821', 6cm long overall (2 3/8th inches); together with 21 other scent bottles in various designs

£50 - 80

69 An Edwardian silver vesta/match case and a later silver match book cover. The vesta all-over engraved with foliate scrolls and a vacant diagonal ribbon reserve, mark of E J Trevitt & Sons, Chester 1902, approx. 5cm high overall (2 inches); the rectangular match book cover with engine turned bands, mark of Mappin & Webb, Birmingham 1925, 6cm long overall (2 3/8ths inches); the two weigh 56g gross (a little under 2 ozs)

£40 - 60

70 An early George III silver and mother of pearl mounted box and a Continental silver mounted drop-shaped glass combined scent bottle and vinaigrette. The three-quarter-round cylindrical box with reeded borders and a hinged cover (detached) inset with a mother of pearl panel carved with a unicorn crest and ribbon latin-motto 'Niltime' (Never), the back engraved with two sets of script initials, makers mark 'IB' only, 3 75cm high overall (1 5/8ths inches); The scent bottle with a hinged cover and a central oval vinaigrette reservoir with a silver pierced and glass-mounted hinged cover, indistinct marks not traced, 7.5cm (3 inches)

£60 - 80

Please note: Buyers Premium at 20% plus VAT is payable on each item in addition to the hammer price

71 A George III silver silver caddy spoon and another modern of Royal interest. The George II example with a deep bowl engraved with tea leaves and a drop-shaped handle with a reeded border and engraved with a foliate-script initial 'E', mark of Thomas Wallis II & Jonathan Hayne, London 1796, 14g; the other with a fluted bowl and a handle in the form of the Prince of Wales plume of feathers, mark of Roberts and Belk, Sheffield 1981, 24g
£40 - 60

72 Two George silver decanter labels including an Irish cartouche-shaped example 'Sherry'. Within a border engraved with trailing fruiting vines mark of John Townsend, Dublin 1813, 5.5cm wide overall (2 1/4 inches); together with a canted-rectangular label 'Port', mark of Thomas Phipps and Edward Robinson, London 1799, 4cm wide (1 1/2 inches), 8.5g
£30 - 50

73 An early 20th century novelty brass cased tape measure in the form of a bottle of Veuve Cliquot champagne. The gilded cap turning to wind the rather tired cloth measure, marked beneath 'Made in Austria', 53mm high overall (2 inches)
£40 - 60

74 An Austro-Hungarian .900 standard silver and blue guilloche enamelled rectangular box. The hinged cover with floral-pierced panels at the corners and centre and a niello decorated bevelled edge, the sides and base also blue guilloche enamelled, Austro-Hungarian 900 standard mark and another possibly a maker's mark not traced, 1.25cm high, 9cm wide, 6cm deep (1/2 x 3 1/2 x 2 3/8ths inches), 157g gross (5 ozs)
£70 - 100

75 A late 19th century German silver chick shaped pepper pot. Naturalistically modeled with small garnet cabochon eyes, unidentified Neresheimer mark and with import hallmarks for Berthold Muller, Chester 1899, approx. 6.5cm high overall, 75g (a little under 2 1/2 ozs)
£200 - 300

76 An early 20th century Danish silver serving spoon. The handle with a pointed end, feather edge borders and engraved with stylised flowers, mark of C F Hammer, Copenhagen 1916, 39.5cm long overall (15 1/2 inches), 168g (a little under 5 1/2 ozs)
£100 - 150

77 A mid 20th century Danish silver serving spoon. The slightly shaped handle with reeded borders, mark of P Hertz, Copenhagen 1967, 38cm long overall (15 inches), 171g (a little under 5 1/2 ozs)
£100 - 150

78 A silver and blue guilloche enamelled round compact with an applied Naval crown. The back engine turned, hallmarks for John William Barrett, Birmingham 1950, approx. 7.5cm diameter (3 inches)
£80 - 120

79 A pair of silver petal shaped pedestal sweet dishes. Each with a floral chased rim, Hallmarks for Adie Bros Ltd, Birmingham 1933, each approx. 3cm high, 9.5cm wide overall (1 1/4 x 3 3/4 inches), 82g (a little under 2 3/4 ozs); in a fitted blue-velvet lined black-leather case
£30 - 50

80 No Lot

81 Local Railway Interest, a rare Winegarten's Railway Regulator nickel cased open face keyless pocket watch circa 1930. The white enamel dial signed 'Winegartens 145, Bishopsgate, London E.C.2' and with black painted Roman numerals, blued-steel 'spade' hands and a subsidiary seconds dial at 6, the 56.5mm diameter three-piece screw case with an oval back panel engraved with a train in full steam within 'Winegarten's Railway Regulator', Swiss 15 jewel movement, Cal.526, signed 'Winegartens Superfine'; together with two curb link watch chains.

Note This watch was formerly the working property of Francis William Frederick Banwell, known as Frank, an engine driver for LMS (London, Midland & Scottish Railway). He was initially based in Highbridge, Somerset from about 1924, later moving his work base to Wells and driving on the old Somerset and Dorset line affectionately known locally as the 'Slow & Dirty'. In 1962 he was made redundant under the Beeching reforms and restructure of the then nationalised railway system.
£80 - 120

82 A WWII military nickel case open face keyless pocket watch. The white enamelled dial with black Roman numerals and subsidiary seconds at 6, 52mm diameter three-piece screw case, the back engraved 'B 44581' and with the War Department broad arrow, Military pocket, Swiss 15 jewel lever movement, Cal. 235N
£30 - 50

83 G.W.R. 03289, a Swiss nickel cased open face keyless pocket watch, no 3712942. The white enamel dial inscribed 'G.W.R. 03289' and with black Roman numerals and subsidiary seconds at 6, the 54mm diameter three-piece screw case engraved on the back 'G.W.R.' over '03289', the Swiss 15 jewel movement marked 'Limit No.2'
£150 - 250

84 Swiss for J W Benson, a 9ct gold half-hunter cased keyless pocket watch, circa 1930, The white dial with black painted Roman numerals, blued-steel spade hands and a subsidiary seconds dial at 6, the Dennison 49.5mm diameter four-piece hinged case with hallmarks for Birmingham 1930, the Swiss 15 Jewel movement signed J W Benson, the watch weighs 96.5g gross; together with a blue-leather watch box inscribed inside 'J. W. Benson, Ltd. Watchmakers 62 & 64 Ludgate Hill, London, E.C.'
£400 - 600

85 J J Stockall, 6 & 8 Clerkenwell Road, London, a late Victorian 18ct gold cased open face keyless pocket watch, circa 1888. No.10418, The white enamel dial with black painted Roman numerals, blued-steel beetle and poker hands and a subsidiary seconds dial at 6, the 49mm diameter four-piece hinged case, the 18ct gold cuvette engraved with a contemporary Silver Wedding Anniversary inscription dated 1889 (the cuvette hinge-pin missing), the back of the case engraved with a monogram and with hallmarks for London 1888, gold-plated bow, the signed three-quarter plate lever movement with a compensated split bi-metallic balance, the watch weighs 117.5g gross
£500 - 800

86 Omega, a 14K hunter cased keyless pocket watch, circa 1928. No. 39000805, the white enamel dial with black painted Arabic numerals, subsidiary seconds dial at 6 and gilt 'Louis' style hands, 49.5mm diameter engine-turned four-piece hinged case case no.4477427, stamped '14K' over '0.58', the base-metal cuvette stamped 'Omega Grand Prix Paris 1900', the case back with a central shield with script initials, the inside engraved with a presentation inscription dated 1928, Omega jewelled lever movement, the watch weighs 69.5g gross; together with a suede pouch
£600 - 800

87 Parkinson & Frodsham, Change Alley, London, a mid-Victorian 18ct gold cased open face fob watch, circa 1870. No. 5603, the floral engraved dial with a black-painted Roman chapter and 'steel beetle' and poker hands, 37mm diameter three piece hinged case, the back engraved at the centre with a shield-shaped floral cartouche within diaper, shell and floral borders, hallmarks for London 1870, 44.5g gross
£500 - 700

88 Waltham U.S.A, an early 20th century 9ct rose gold cased open-face keyless pocket watch. The white enamelled dial with black painted Roman numerals, blued-steel 'spade' hands and a subsidiary seconds dial at 6, 48.5mm diameter four-piece hinged case (snap on bezel), hallmarks for Chester 1927, A.W.W. Co. Waltham Traveller movement no.24826155, ticking, the watch weighs 79.1g gross
£200 - 300

89 Piaget, a mid-size Swiss gold rectangular wrist watch. The black 'mystery' dial with gilt dauphine hands and signed 'Piaget Quartz' the two-piece bevelled-rectangular case with cut corners and decorated with 'tapestry' rows of tiny square pyramids, the screwed back numbered '7144' over '345537', the case measures approx. 28mm x 24mm with back 'concealed' hands-set button, the case back with a SWISS gold Helvetia head mark for 18ct a amakers mark of 'G (stiletto) L' in an oval punch, and two rubbed and unidentified marks; on a Piaget black leather 'crocodile' strap with a Piaget buckle stamped '750', the movement not examined, We have removed the four case-back screws however the case-back hands-set button appears to be fixed and we are unsure how to remove the case back to access the quartz movement without doing any damage to the watch, Please bear this in mind when bidding as the watch may require a new battery to function or it may not be working for another reason(?)
£300 - 500

90 Cyma, an Art Deco lady's platinum and diamond bracelet watch, circa 1930. The small silvered dial with black-painted Arabic numerals, the tonneau shaped case with a diamond set round bezel and tapering lugs, on a two-row cable-link bracelet on a ladder clasp, Cyma 15 jewel unadjusted oblong movement, Cal.(?)F054, the case, glass and bracelet weigh 13.2g gross
£200 - 300

91 Two early 20th century lady's 9ct gold cased round wristwatches including a Rolex, circa 1913. The silvered dial with black painted Arabic numerals, the 23.5mm diameter three-piece hinged case with a broad bezel and import hallmarks for London 1913, the jewelled lever movement signed 'Rolex', 10.9g gross; the other with a cream dial with red 12 and black Roman numerals, the 25mm diameter three-piece hinged case with hallmarks for London 1920, un-named movement, 12.2g gross
£70 - 100

92 Four wristwatches including Longines, a lady's gold-plated and stainless steel round wrist watch, circa 1977. The silvered dial with raised gilt baton indicators and hands, 22mm diameter two-piece case, reference '1147' over '805', Longines 17 jewel unadjusted oval movement, Cal.5602, No.53904945; a lady's silver cased round wrist watch, circa 1915, white enamel dial with a red 12 and black Arabic numerals, 29mm diameter two piece hinged case with a snap-on bezel, Swiss movement not ticking; Rectangular, an Art Deco mid-size 'rustless steel' rectangular wrist watch, circa 1930, No. 3769208, silvered dial with black painted Arabic numerals and a subsidiary seconds dial at 6, 42mm x 21.5mm two-piece curvex case, Swiss 15 jewel 'Patent Shock Absorber' tonneau-shaped movement with 3 adjustments; and a gentleman's nickel cased round wrist watch with cream Arabic chapter on a black ground, 40mm diameter three-piece case, the movement not working and balance staff broken
£50 - 80

93 Two Mudu 'Doublematic' Swiss 'his and hers' watches. Comprising; a lady's Swiss 18ct gold cased automatic round bracelet watch, the silvered dial with raised gilt batons and Arabic 12 & 6, the 17.5mm diameter round two-piece case with Swiss marks and stamped 'Mudu Doublematic' over '18K' over '0,750'; on an associated gold-plated and stainless steel sprung bracelet, un-named automatic movement; together with a gentleman's gold-plated and stainless steel wrist watch, silvered dial signed 'Mudu 25 Jewels' and 'Doublematic' with raised gilt batons and hands, sweep centre seconds and a date aperture at 3, the 33mm diameter round two-piece screw case, on a light-brown leather strap with a deployant clasp, the movement not examined but ticking
£60 - 80

94 A lady's 9ct gold cased bracelet watch, circa 1926. The silvered two-tone dial with black Arabic numerals, the 25mm diameter three piece case with a hinged back and a snap-on bezel, on a rose gold sprung panel bracelet stamped '9ct', the un-named Swiss movement not ticking, the watch weighs 16.4g gross
£70 - 100

95 An early 20th century 9ct gold cushion cased wrist-watch, circa 1930. the silvered 'sunburst' engraved dial with black Arabic numerals and a subsidiary seconds dial at 6, 27mm wide two-piece cushion-shaped case with extended lugs and import hallmarks for Glasgow 1930, on a later black leather strap, un-named Swiss jewelled lever movement with a bi-metallic compensated balance
£50 - 80

96 A Swiss 14ct gold tonneau-shaped bracelet watch, circa 1930. The silvered engine-turned dial with black Arabic numerals, the 29mm x 21mm three-piece case with Swiss marks and stamped '56' over '14K' over '0,585' within a triangle, and numbered 14426; on a sprung-panel bracelet stamped '14K' & '585SG', Swiss jewelled lever movement with a split bi-metallic balance
£200 - 300

Please note: Buyers Premium at 20% plus VAT is payable on each item in addition to the hammer price



Lot 100



Lot 102



Lot 109



Lot 116



Lot 119A



Lot 120D



Lot 123



Lot 125

Please note: Buyers Premium at 20% plus VAT is payable on each item in addition to the hammer price

97 J.W. Benson, a lady's 9ct gold cased bracelet watch, circa 1960. The silvered dial with raised gilt baton indicators and Arabic quarters, 15.5mm diameter round two-piece case with hallmarks for Birmingham 1960, on a later block bracelet, Birmingham 1968, oval 17 jewel movement, the case, glass and bracelet weigh 12.5g gross
£150 - 200

98 Longines, a lady's 9ct gold oval integral bracelet watch, circa 1979. The brushed golden dial with raised baton indicators and hands, 15.5mm wide two-piece case on an integral satinised mesh bracelet with import marks for London 1977, Longines Watch Co. Swiss 17 jewel oval unadjusted movement Cal.5602, no.53852591, the case, bracelet and glass weigh 23.5g gross; together with a Longines brown-leatherette and gilt box
£250 - 350

98A Uno, a lady's 9ct gold cased bracelet watch, circa 1964. The silver silvered dial with raised gilt baton and Arabic numerals and baton hands, two-piece case with hallmarks for Edinburgh 1964, on a later 9ct gold bracelet with hallmarks for Birmingham 1967, Uno, Swiss 21 jewel movement, the case, glass and bracelet weigh 11.2g gross
£120 - 150

99 Rotary, a lady's 9ct gold cased bracelet watch, circa 1961. The silvered dial with raised gilt batons and Arabic quarters, the 19mm diameter two-piece case numbered '268175' and with hallmarks for London 1961, on and unmarked mesh bracelet with a ladder clasp, Swiss 21 jewel movement, Cal. ETA 2410, the case, bracelet and glass weigh 10.7g gross, the watch weighs 14g gross
£150 - 200

100 Rotary, a vintage 9ct cased bracelet watch, circa 1955, on a later bracelet. The silvered dial with alternate raised arrow-head and Arabic numerals and a subsidiary seconds dial at 6, Dennison 31mm diameter two-piece case with flared lugs and hallmarks for Birmingham 1955, on a later fancy hexagonal block bracelet with a deployant clasp and hallmarks for Birmingham 1994, Swiss 15 jewel movement, Cal.445, the case, glass and bracelet weigh 33.3g gross
£450 - 550

101 Seiko, Kinetic, a gentleman's stainless steel bracelet watch. Ref. 5M62-OD40 A4, No.200019, the blue dial with white dot and triangular indicators and a date aperture at 3, the 41mm wide two-piece and a fluted-block bracelet with a deployant clasp
£30 - 50

102 International Watch Company, Schaffhausen, a Swiss 18ct gold round wristwatch, circa 1947. No.1126200, the silvered dial with Roman quarters and baton indicators and gilt hands, the 33.5mm diameter three-piece case with tapering lugs, the back marked '72' over '18C' over '0,750' and numbered 1126200, on a later brown crocodile strap the signed movement numbered 1113902
£600 - 900

103 Citizen, a gentleman's stainless steel diver's quartz wristwatch. Ref. '5812-F80014 TA GN-4-S', No.820562, the green-ish-yellow dial with black dot indicators and a subsidiary dial at 6, date aperture at 3, luminous hands and orange sub-hands, the stainless steel and gilt screw case approx. 46.5mm wide overall with a rotating bezel, on a rubber strap, the movement not examined as the case back states 'Don't Open! Service Centre Repair Only', with instruction manual
£30 - 50

104 Seiko, SQ100, a gentleman's stainless steel chronograph quartz wristwatch. Ref. '7T32-6B5A A\$', No.076726, the white dial with raised gilt baton indicators, luminous hands, sweep centre seconds, three subsidiary dials and a date aperture at 3, the stainless steel screw case approx. 43mm wide overall including the winding-crown, with a blue tachymeter bezel, on a stainless steel and gilt block bracelet with a deployant clasp, the movement not examined
£30 - 50

105 Citizen, a gentleman's stainless steel diver's quartz wristwatch. Ref. '3740-E70014 Y GN-4-S', No.760865, the blue dial with luminous dot indicators and three gilt subsidiary dials and gilt hands and an orange sweep centre seconds, the stainless steel and gilt case approx. 46.5mm wide overall with a rotating bezel, on a rubber strap, the movement not examined as the case back states 'Don't Open! Service Centre Repair Only', with instruction manual
£40 - 60

106 Citizen, a lady's stainless steel diver's quartz wristwatch. Ref. '5813-H19608 TA GN-4-S', No.550194, the green-ish-yellow dial with black dot indicators and a subsidiary dial at 6, date aperture at 3, luminous hands and orange sub-hands, the stainless steel and gilt screw case approx. 42.5mm wide overall with a rotating bezel, on a rubber strap, the movement not examined as the case back states 'Don't Open! Service Centre Repair Only', with instruction manual
£30 - 50

107 Tudor, a mid-size chrome plated and stainless steel round wristwatch, circa 1930(?). The signed two-tone silvered dial with luminous Arabic numerals, skeleton-hands and a subsidiary seconds dial at 6, Rolex Watch Company Ltd (R.W.C. Ltd) 31.5mm diameter three piece case numbered inside 836819 over 1222, 'Swiss Made' lever movement with a compensated mono-metallic balance
£50 - 80

108 Tudor, Prince Oysterdate, a gentleman's stainless steel bracelet watch. Ref. 7966, No. 23763, the brushed silvered dial with raised baton indicators, sweep centre seconds, dauphine hands and a date aperture at 3, 34.5mm diameter two-piece screw case, on a stainless steel block bracelet with deployant clasp, Tudor Auto-Prince' 25 jewel automatic movement
£600 - 800

109 Audemars Piguet, a Swiss 18ct gold automatic round bracelet watch, circa 1989. The brushed golden dial with raised baton indicators and hands, 32.5mm diameter three-piece case, the back numbered 62727 and with internal Swiss hallmarks, '18K' over '0,750' and with London import hallmarks for 1989, Audemars-Piguet 36 jewel automatic movement Cal. K2120(?), No. 791434, adjusted to Heat Cold Isochronism & five (5) positions, the watch weighs 78.3g gross; together with an Audemars Piguet burgundy-leather oval box
£4000 - 6000

110 Patek Philippe 18k tri-colour gold round integral bracelet watch, Ref. 3307. The tri-colour chevron dial with raised baton indicators and hands, 27.5mm diameter three-piece case, the back numbered 311616 and with Swiss hallmarks and '18K' over '0,750', Patek Philippe Watch Co, Geneve, 18 jewel movement Cal. 23-300(?), No. 791434, adjusted to Heat Cold & five (5) positions and isochronism, the watch weighs 93g gross
£4000 - 6000

110A Omega, Seamaster Quartz, a mid size gold-plated and stainless steel oblong bracelet watch. The brushed golden dial with raised gilt baton numerals and hands, sweep centre seconds and a date aperture at 3, 31.5mm x 28.5mm (38mm including the lugs) two-piece case, numbered inside No. '196 0267' over '396 0970'. on a block bracelet with deployant clasp, quartz movement numbered '46726871'; together with an Omega red leather case and outer white card box, International Warranty card, red Chronometer certificate, and operating instructions book
£150 - 200

111 Omega, a gentleman's gold-plated and stainless steel automatic bracelet watch, circa 1979. Case ref; 166 0173 over '3660832', the brushed golden dial with raised gilt baton indicators and hands, sweep centre seconds and a date aperture at 3, 36.2m diameter two piece screw case on a conforming block bracelet with a deployant clasp, Omega 23 jewel movement Cal. 1012, No. '38' over '852740
£200 - 300

112 Longines, Les Grandes Classiques. a lady's gold-plated and stainless steel oblong quartz wristwatch. Ref. 7412, No. 26100347, brushed-golden dial with raised gilt baton indicators and hands, 22mm wide two-piece case on a black crocodile strap with conforming clasp, Swiss 6 jewel quartz movement; together with a Longines black case, outer cream-card box and warranty booklet (lacking the card)
£100 - 200

113 Rolex, a boutique or retailer's suede and aluminium counter top display board. The central panel with 'Rolex' and their trademark on a cream ground beside cut-away pastel leaves and branches, on a navy-blue board with a graduated three-row pale-green suede border, factory mounted on an integral clear-perspex and aluminium stand with rotating-panel feet, approx. 69cm high overall (27 1/2 inches), the panel approx. 60cm high, 45cm wide (23 1/2 x 17 3/4 inches)
£150 - 250

114 Rolex, a green leather framed easel-back table mirror. The bevel-edged plate on a pale-green suede surround within a green-leather border, the bottom inscribed in gilt 'Rolex', approx. 32cm high, 26.5cm wide (12 1/4 x 10 1/4 inches)
£200 - 300

115 A mid-20th century diamond three stone ring. The transition cut stones approx. 0.59cts, 0.82cts & 0.67cts (approx. 2.08cts total), all claw set in a mid-20th century mount on a D-section shank, unmarked, size M, 3.3g gross
£2500 - 3000

116 A cultured-pearl necklace and three rings. Comprising; a cultured pearl single row necklace; a sapphire and diamond five (of seven) stone ring; a mid-20th century single stone ring mount (lacking the stone) with tiny old-cut diamond two-stone shoulders; and a diamond five stone ring in two pieces
£180 - 250

117 A cultured-pearl single row necklace on a 9ct gold clasp. The 63 uniform 5.5-5.75mm diameter cultured-pearls, knotted on an oval clasp, approx. 44.5cm long overall (17 1/2 inches); in a Kemp Brothers, Bristol burgundy-leatherette case and outer card box
£50 - 80

118 A modern 18ct gold and diamond pendant necklace. The millennium-cut diamond, claw set on a cable link necklace to a bolt ring clasp, post 2000 Birmingham import convention hallmarks, approx. 43cm long overall (17 inches), 9.1g gross; in a black necklace box
£300 - 500

119 Ola Gorie, an 18ct gold and diamond necklace. In the form of ten open arch-shaped panels each centred with a small round brilliant diamond approx. 0.03cts (0.30cts total), on a trigger clasp, Edinburgh convention hallmarks, approx. 40.5cm long overall (16 inches), 11.7g gross; together with the original Ola Gorie green leatherette case
£300 - 500

119A A modern cultured freshwater-pearl single row necklace. The 30 graduated baroque-shaped pearls knotted with six small yellow-metal roundels on a large bolt ring clasp, stamped '9ct', approx. 42cm long overall (16 1/2 inches)
£50 - 80

120 A modern 18ct white gold and diamond 'Tennis' bracelet. The 57 'bright and white' round brilliants approx. 2.56cts total, all claw set in white gold with the maker's mark of Alfred Terry and post 2000 convention hallmarks, approx. 18cm long (7 inches), 14.5g gross
£1500 - 1800

120A A modern marquise diamond solitaire ring with small diamond shoulders. The marquise diamond claw set in white between small graduated round brilliant diamond five stone shoulders, on a white D-section shank stamped '750', size L, 2.3g gross. Sold with an Independent Diamond Grading Laboratories, Diamond Grading Report dated 13 November 2017, stating; Cut Grade very good, Weight 1.40, Clarity VS2, Colour Fancy Yellow.
£1200 - 1800

120B A modern 18ct white gold and diamond three row half-eternity ring. The graduated round brilliants approx. 0.38cts total, all claw and grain set to a white D-section shank stamped with the retailer's mark, details and serial number '0.38 22653400412' and with recent London laser hallmarks, size L. 3.6g gross
£250 - 350

Please note: Buyers Premium at 20% plus VAT is payable on each item in addition to the hammer price

120C Forever Diamond, an 18ct white gold and diamond ring. Centred with a round brilliant diamond approx. 0.21cts, claw set between cross-over shoulders each set with seven small eight-cut diamonds, on a D-section shank inscribed inside '750 0.33 TW F7A43951' with an additional internal diamond flush-set into the O of 'Forever', and with post 2000 London laser hallmarks, size J, 3.4g gross; together with the original case, Forever Diamond ribbon tied card box and with a certificate from IGI (International Gemological Institute), Antwerp dated August 21 2017, stating Natural Diamond, Colour Grade; F, Clarity Grade; I1
£150 - 250

120D A modern emerald and diamond five stone ring. Centred with a square step-cut emerald, approx. 4.3mm, between pairs of round brilliant diamonds each approx. 0.13cts (0.52cts total, all grain set in white with square surrounds on a shallow D-section broad band approx. 4.6mm wide and stamped '750'; size T, 7.8g gross
£300 - 500

120E A vintage Continental diamond nine stone abstract cluster ring. The round brilliants approx. 1.00ct total, all claw set in white on a yellow D-section shank stamped '750'; size S+, 6.8g gross
£300 - 500

121 A vintage 9ct gold, garnet and half-pearl dress ring in Victorian style. The three graduated round mixed-cut garnets spaced by pairs of small half-pearls, all claw and grain set between scroll carved shoulders on a D-section shank with hallmarks for London 1965, about size R, 3.5g gross
£50 - 80

121A A ruby and diamond abstract leaf and scroll ring by Erica Sharpe. The three graduated oval mixed-cut rubies rib-over set in yellow gold beside two white leaf-scrolls set with an old-cut and two small round brilliant diamonds, on a D-section shank with the maker's mark 'EJS' for Erica Sharpe and mixed-metal marks for 18ct gold and silver, sizing beads prevent accurate size but approx. Q-R(?), 7.6g gross; in an Erica Sharp ring box
£200 - 300

122 A vintage 18ct white gold and diamond three stone ring. The graduated round brilliants approx. 0.75cts total, all claw set on a square-section shank with London convention hallmarks, size O, 3.2g gross
£300 - 500

122A An early to mid-20th century gold, opal and ruby oval cluster ring. Centred with an oval cabochon white opal displaying a good play of mostly orange and green play of colour, within a small round ruby 15 stone border, all claw set on a D-section shank, stamped '9ct', size M+, 4g gross
£200 - 300

123 A vintage 9ct gold and opal dress ring in Victorian style. The three graduated oval cabochon white opals spaced by pair of smaller round cabochons, all claw set within bead decorated borders between scroll and leaf chased shoulders on a shallow-D-section shank with hallmarks for Birmingham 1975, size Q+, 3.9g gross
£100 - 150

123A A vintage 9ct gold, blue topaz and diamond oval cluster ring. The oval mixed-cut pale blue topaz rub-over set within a tiny eight-cut diamond 20 stone scalloped white border, on a yellow D-section shank with hallmarks for Birmingham 1998, size N, 5g gross
£150 - 200

124 An Edwardian gold and diamond five stone ring. The graduated off-round, old-cut, cushion-shaped and old-mine diamonds approx. 1.75cts total in platinum-tipped claw settings, on a pierced and scroll carved gallery to a plain D-section shank, unmarked, size R, 3.8g gross; together with a 'J W Benson... London' burgundy-leather ring box
£1200 - 1800

124A A vintage sapphire and diamond spiral cluster ring, circa 1970. Centred with a round mixed-cut sapphire within two eight-cut diamond nine stone cross-over spirals, all claw set in white on a D-section shank with split knife shoulders, unmarked, size Q+, 5.3g gross
£150 - 200

125 A late Victorian gold, sapphire and diamond dress ring. Centred with a cushion shaped old-cut diamond approx. 0.38cts, between small rose diamond six stone collets and flanked by oval mixed-cut pale blue sapphires and further rose diamond trefoils, on a D-section shank, unmarked, sizing beads makes an accurate size difficult approx. T/U(?), 5.4g gross
£200 - 300

125A A modern 18ct gold, sapphire and diamond three stone ring. Centred with a oval mixed-cut sapphire between round brilliant diamonds, all claw set in white on a yellow D-section shank with post 2000 London Convention hallmarks, size Q, 4.4g gross
£250 - 350

126 A vintage 18ct gold, sapphire and diamond cast carved half-hoop ring. The three graduated round mixed-cut sapphires spaced by pairs of eight-cut diamonds, all claw and grain set on a scroll carved gallery and D-section shank, with hallmarks for Birmingham, the date letter obscured probably 1982, size O, 3.5g gross
£150 - 200

126A A modern 18ct gold, sapphire and diamond seven stone ring. The four bright blue small round mixed-cut sapphires spaced by small round brilliant diamonds, all claw set in white on a yellow D-section shank with post 2000 Birmingham convention hallmarks, size P, 2.9g gross
£80 - 120

127 A vintage 18ct gold and diamond three stone ring. The graduated round brilliants approx. 0.36cts total, all claw set between knife-edge shoulders with chenirs on a D-section shank with hallmarks for London 1985, size M, 2.3g gross
£180 - 220

127A A vintage 9ct white and yellow gold and diamond solitaire ring. The round brilliant approx. 0.50cts, claw set in white on a yellow D-section shank stamped '50Pts', and with London convention hallmarks, size L, 2.2g gross
£200 - 300



Lot 150A



Lot 152



Lot 171



Lot 175

Lot 192



Lot 195



Lot 214A



Lot 212



Lot 221

Please note: Buyers Premium at 20% plus VAT is payable on each item in addition to the hammer price

128 An early 20th century gold and diamond solitaire gypsy ring. The old-cut stone approx. 1.53cts, claw set between tapering shoulders on a D-section shank stamped '18ct', size Q, 8.2g gross
£1200 - 1800

128A An 18ct white gold and diamond solitaire ring, approx. 0.63cts (thick and faceted girdle)
£300 - 500

129 An early 19th century gold and half-pearl oblong mourning ring. The central glazed woven hair panel within a half-pearl border (one missing), between open floral chased shoulders on a fluted shank, unmarked, size O, 2.2g gross
£100 - 150

130 An Edwardian 18ct gold gypsy ring. Lacking a stone, hallmarks for Birmingham 1910, size P, 2.6g
£80 - 120

131 An early 20th century 18ct gold and diamond three stone gypsy ring, the graduated old-cut stones approx. 0.15cts total, each star-gypsy set to a tapering band with hallmarks for Birmingham 1913, size Q, 3.5g
£100 - 150

131A An aquamarine single stone ring. The pale blue rectangular step cut stone approx. 7.35cts, claw set between plain shoulders on a flat-section shank with an indistinct mark, size U, 6.2g gross
£300 - 500

131B A pair of pear-shaped aquamarine pendent earrings. Each pale blue stone approx. 12.5mm high, in a white metal claw setting, unmarked, approx. 19mm high overall
£50 - 80

132 A late Victorian/Edwardian 15ct gold, coral and half-pearl panel ring. The broad head with a central half-pearl three stone diagonal-scroll between coral three stone bands and a punched decoration, the flat-section shank with partial/rubbed Chester hallmarks, size N, 1.7g gross
£50 - 70

132A A French Art Deco emerald and diamond canted-rectangular cluster ring. Claw set at the centred with an emerald-cut emerald within an eight-cut diamond surround with millegriated borders, on a rectangular-section shank with an outside mark, size M+, 5.1g gross
£1000 - 1500

132B A pair of small small emerald and diamond flower-head quatrefoil cluster stud earrings. Each centred with a small, bright-green square step-cut emerald approx. 2.7mm, claw set within four round brilliant diamond three stone leaf trefoils, set throughout in white on plain posts with the butterfly backs only stamped '18K.750', the pair weigh 1.8g gross
£100 - 150

132C A pair of vintage diamond floral cluster stud earrings. Each centred with a round brilliant diamond approx. 0.25cts, claw set within a surround of further brilliants and calibre baguette and tapered-baguette ribbons, unmarked, post and butterfly backs, approx. 16.5mm wide overall, 6.6g gross
£700 - 800

132D A pair of Italian '18K' and blue topaz cluster clip earrings. Each centred with a seven stone cluster within an organic tropical flower-head surround, on clip fittings stamped '18K Italy', approx. 17.5mm high, 16mm wide, the pair weigh 6.6g gross
£200 - 250

132E A pair of 9ct gold, sapphire and diamond stud earrings. each centred with a small eight-cut diamond within a small round mixed-cut sapphire six stone surround and an alternate sapphire and diamond illusion set border, hallmarks for Birmingham 1986, approx. 1mm diameter overall, 2.1g gross; in a 'T & S Appleton, Gillingham' box
£150 - 200

132F A pair of modern white gold, pink sapphire and diamond earrings. Each set with two small round pink sapphires and two round brilliant diamonds, stamped '18K', approx. 20mm high overall, 5.6g; in a Goldsmiths box
£120 - 180

132G Four pairs of enamelled silver earrings. including a pair of pierced heart design from the Orkney Designer collection by Sheila Fleet; a pair of pale blue enamelled starfish; a pair of graduated pale to navy blue enamel scrolling loops; and a pair of pale blue sinuous organic scroll design, all in boxes
£80 - 120

133 A Victorian 22ct gold wedding band later adapted as a rose diamond five stone ring. The head set with five graduated rose diamonds within a rose gold boat-shaped surround, on a shallow-D-section band with hallmarks for Birmingham 1889, 5.4mm wide, size leading-edge Q, 4.2g gross
£150 - 200

134 Two 9ct gold signet rings and a wedding band. Comprising: an oval signet ring, partial Sheffield hallmarks, the date letter obliterated, size P, 4.2g; an oblong signet ring, hallmarks for Birmingham 1963, size P, 4.5g; and a patterned wedding band, hallmarks for London 1971, 4.5mm wide, leading-edge size M, 2.1g
£150 - 200

134A A vintage 9ct gold and carnelian oblong signet ring. The plain carnelian approx. 12mm x 9.5mm, rub-over set between tapering shoulders on a D-section shank with hallmarks for Birmingham 1966, size P+, 5.3g gross
£70 - 90

135 A Victorian 15ct gold and sard onyx oval signet ring. The stone engraved with a monogram, rub-over set between floral engraved fancy tapering shoulders on a D-section shank with partially obliterated hallmarks, probably Chester 1883, size L, 7.2g gross
£100 - 150

135A A vintage 9ct gold and carnelian oblong signet ring. The plain carnelian approx. 13.5mm x 11.5mm, rub-over set between tapering shoulders on a D-section shank with hallmarks for Birmingham 1986, size P, 6.6g gross
£100 - 150

136 An Edwardian 18ct gold signet ring. The small oval head engraved with a monogram, between tapering shoulders on a D-section shank with hallmarks for Chester 1909, size K+, 4.2g
£120 - 180

Please note: Buyers Premium at 20% plus VAT is payable on each item in addition to the hammer price

136A A vintage 9ct gold and carnelian oval signet ring. The plain oval carnelian approx. 26mm x 18mm, rub-over set between tapering fluted shoulders on a flat section shank with indistinct hallmarks possibly London 1970(?), size Q, 10.4g gross
£150 - 200

137 A 22ct gold signet ring. The rounded-oblong head engraved with script initials, hallmarks for Birmingham 1995, size O, 5.5g
£180 - 220

137A A vintage American gold and synthetic-ruby 'United States Army' college style ring. The oval mixed-cut synthetic-ruby, rub-over set within a surround chased 'United States Army, between shoulders chased with a globe and laurel and the American arms, on a shallow D-section shank stamped '14KT', size leading-edge U, 9.1g gross
£180 - 220

138 An early 20th century 22ct gold broad wedding band. The shallow D-section band with hallmarks for Birmingham 1918, 8mm wide, 8.3g
£350 - 400

139 A vintage 22ct gold wedding band. Hallmarks for London 1958, 4.5mm wide, size leading-edge N, 3.8g
£100 - 150

140 A vintage 22ct gold wedding band. The D-section band with hallmarks for London 1971, 4mm wide, 3g
£100 - 150

141 A textured and faceted 18ct white gold broad wedding band. Hallmarks for London 1983, 4mm wide, size leading-edge K+, 2.7g gross
£70 - 100

142 A 22ct gold wedding band. Hallmarks for Birmingham 1913, 3.5mm wide, 1.7mm high, size N, 3.8g
£150 - 200

143 A mid-Victorian rose gold, opal and pale-blue enamel single stone ring. The round cabochon white opal rub-over set on a pale blue enamelled tapering shank, unmarked, size K, 1.8g gross
£50 - 80

144 A Victorian 22ct gold D-section wedding band. The D-section band with hallmarks for London 1880, 3mm wide, 2.1g
£80 - 120

145 A vintage 9ct gold broad wedding band. hallmarks for London 1960, 7mm wide, size leading edge P, 4.1g
£50 - 80

146 A vintage gold and amethyst single stone ring. The cut-corner rectangular step-cut amethyst approx. 15.20cts, set to an openfluted-fan-shaped gallery on a two-row shank, unmarked, size about Q (culet of stone prevents a more accurate size), 7.4g gross
£80 - 120

146A A Gems TV 18ct gold, orange sapphire and near colourless stone oval cluster ring. The oval mixed-cut sapphire probably beryllium-treated, in a four-claw setting above a near-colourless twelve-stone border, between similarly set V-shaped shoulders, hallmarks for Birmingham 20065, size P, 6.1g gross
£200 - 300

147 An early 20th century gold and diamond solitaire ring. The cushion-shaped old-cut stone approx. 0.78cts, claw set on a tapering D-section band stamped '18ct', size R+, 4.9g gross
£600 - 800

148 An early-mid 20th century diamond three stone ring. The old-cut and transition-cut stones approx. 1.30cts, claw set on a D-section shank, indistinctly stamped 'Pt', size Q, 3.3g gross
£1500 - 2000

149 An early-mid 20th century diamond solitaire ring. The cushion-shaped old-cut stone approx. 0.79cts, in an eight-claw setting on a shallow-faceted D-section band with split knife shoulders with chenirs, indistinctly stamped 'PLAT', size P, 2.7g gross
£600 - 800

150 An early 20th century rose-gold rope twist necklace hung with a gold-plated heart-shaped locket. The necklace on a barrel-shaped clasp and with an applied oval panel '9.C', approx. 41.5cm long overall (16 3/8ths inches), 2.6g; the gold-plated heart-shaped locket inset with a rose diamond and four small red pastes, approx. 24mm high overall
£40 - 60

150A An early 20th century gold mounted 'Masonic' sphere. With a plain suspension loop, the segmented interior unfolding to reveal various masonic symbols, approx. 18mm diameter, 22mm high overall, 7.3g gross
£100 - 150

151 An Edwardian half-sovereign, 1906, later mounted in a vintage gold ring. With an open gallery and straight-sided shoulders on a D-section shank, indistinct marks, size V, 7.7g gross
£150 - 250

152 A half-sovereign 1913, later mounted in a vintage 9ct gold ring. With a diaper-pierced gallery and tapering shoulders to a flat-section shank with hallmarks for London 1977, size P+, 8.7g gross
£180 - 220

153 A pair of Iraqi coin cufflinks. Each link formed of a larger (17.7mm) and a smaller (15mm) round coin with fetter inter-links, one of the larger coins is a later cast/electro-form copy, acid testing suggests the coins are high carat (above 18) with one approx 18, the inter-links acid test as approx. 14, 11.4g gross; together with a 'Gieves Ltd', 'London W1' blue-leather and gilt lined box
£300 - 500

154 A sovereign 1904(P), loosely mounted in a modern 9ct gold pendant mount, hallmarks for Birmingham 1981, 9g; this hung from a fine curb-link chain on a bolt ring clasp, import hallmarks for Birmingham 1981, 46cm long overall (18 inches), 2.5g; the three weigh 11.5g gross
£300 - 400

Please note: Buyers Premium at 20% plus VAT is payable on each item in addition to the hammer price

155 A sovereign 1914. Loosely mounted in a vintage 9ct gold pendant mount with an open scalloped border with hallmarks for Birmingham 1972, 9.6g gross
£300 - 400

156 A sovereign, 1913, later loosely mounted in a 9ct gold pendant mount. With hallmarks for Birmingham 1963, 9.6g gross
£300 - 400

157 A George III gold one-third guinea, 1800. With a later rose gold hard-soldered scrolling pendant mount, 3.1g gross
£100 - 150

158 A modern high carat gold small pseudo coin pendant. The obverse Liberty head & dated '1899', reverse 'Prize Chinese Modern, 1 Elower 1899', in a plain pendant mount, this unmarked however acid testing suggests both are high carat (above 18) gold, 3.3g
£100 - 150

159 A George III gold half-guinea, 1808. Pierced for pendant wear, 4.2g
£200 - 250

160 An Edward VII sovereign, 1905 (M)
£300 - 350

161 A Victorian half-sovereign, 1897
£150 - 200

162 A George V half-sovereign, 1912.
£180 - 220

163 A vintage 9ct gold fancy cross and block link bracelet. On a slide and pull snap, with hallmarks for London 1967, approx. 19.5cm long overall (7 5/8ths inches), 12.7g
£200 - 250

164 A vintage gold fancy link necklace. On a bolt ring clasp and hung with a bead drop, stamped '375 A*D', 40.5cm long overall (16 inches), 24.8g
£350 - 400

165 A modern Italian 9ct gold rope-twist necklace. On a bolt-ring clasp, Birmingham import convention hallmarks, approx. 51cm long overall (20 inches), 7.7g
£100 - 150

165A A modern platinum, tanzanite and diamond oval cluster pendant and chain. The pendant centred with an oval mixed-cut tanzanite measuring approx. 8mm x 5.91mm approx. 1.25cts, claw-set within a small round brilliant diamond 20 stone border approx. 0.20cts total, hallmarks for Birmingham 2013; hung from an Italian platinum fine trace-link chain on a bolt-ring clasp, post 2000 Sheffield import convention hallmarks, approx. 46cm long overall (18 inches); the two weigh 4.4g gross; together with Anchor Cert, Independent Gemstone Certificate, Report No.20009748, giving colour as AAAA Vivid
£300 - 400

166 A pair of oval opal-doublet single stone screw earrings. Each black-ground opal-doublet measures approx. 11.5mm x 6.4mm, rub-over set within a rope-twist border, the screw-fittings each stamped '9ct', 3.7g gross
£50 - 70

166A A pair of boulder opal stud earrings and two pendants. The stud earrings each set with a keystone shaped cabochon displaying a mainly blue and green play of colour, approx. 7.7mm high overall; The pendants each with similarly coloured boulder opals, one of abstract elongated-oval shape, approx. 37mm high overall; the other triangular, approx. 29mm x 13mm
£40 - 60

166B A collection of gold and black-opal-doublet jewellery to include a single stone ring. The oval-doublet approx. 10mm x 8.6mm, rub-over set within a rope-twist border between cross-over scroll shoulders on a D-section shank stamped '9ct', size L, 2g gross; the oval single stone pendent earrings approx. 27mm high overall; the scrolling brooch centred with a drop-shaped stone approx. 10.3mm long, 8mm wide overall, rub-over set between leaves and scrolls, stamped '9ct', approx. 50mm long overall, 2.9g gross
£100 - 150

166C A pair of mid 20th century gold and opal stud earrings. The oval cabochon white opals display a pleasing play of all colours and measure approx. 8.5mm x 6.4mm, each rub-over set in yellow gold on plain unmarked posts, with butterflies stamped '14K', 2.1g gross
£50 - 80

166D A small collection of gold and white opal jewellery to include a single stone ring. The oval cabochon displaying a pleasing play of mostly green and orange play of colour and measuring approx. 11mm x 8.5mm, claw set between raised angular square-section shoulders on an unmarked two-row shank, size U, 5.2g gross; the pendant in the form of spiral scroll centred with a similar white opal, the bale stamped '9ct', approx. 33mm high overall, 1.5g gross; the pendent earrings with claw set oval cabochon white opal swing drops, unmarked, approx. 16mm high overall, 2.6g gross
£100 - 150

166E Four gold and opal rings including a 14ct gold and black-opal-doublet single stone ring. The oval stone rub-over set between stepped shoulders on a D-section shank with hallmarks for London 2003, size M, 1.6g gross; a modern QVC 9ct gold, white opal and diamond oval cluster ring, post 2000 convention hallmarks, size L, 2.2g gross; a vintage 9ct gold and oval white opal five stone ring (two stones cracked), the London hallmarks obscured, size O, 3.8g gross; and a modern 9ct gold graduated oval three stone ring, the stones rub-over set on a D-section shank with post 2000 convention hallmarks, size O+, 2.6g gross
£300 - 400

167 A South American shaped-round, pierced and engraved brooch depicting a llama and figures. The central panel depicting a figure sailing a raft, within a spiral surround with a llama and further figures, unmarked though acid testing suggests approx. 14ct gold, approx. 36mm diameter, 10.5g
£200 - 250

168 A vintage Continental gold and cultured-pearl triangular pendant and chain. The pendant of open abstract form with a central 5mm diameter cultured-pearl swing drop, stamped '583', approx. 38mm high overall, 2g gross; this hung from a fine faceted-trace link chain on a bolt-ring clasp, panel stamped '14K', approx. 43cm long overall (17 inches), 1.7g
£70 - 90

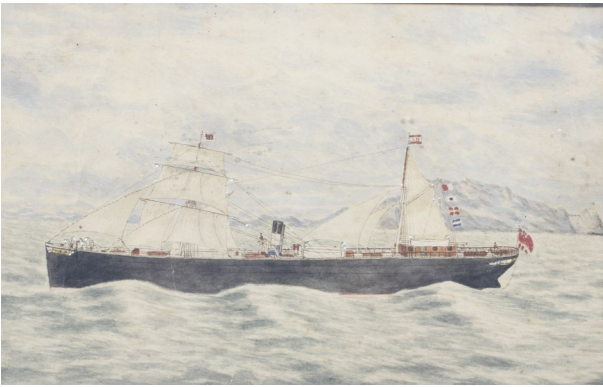
Please note: Buyers Premium at 20% plus VAT is payable on each item in addition to the hammer price



Lot 258A



Lot 265A



Lot 283



Lot 273



Lot 295A



Lot 285A



Please note: Buyers Premium at 20% plus VAT is payable on each item in addition to the hammer price

169 A vintage 9ct gold locket and chain. The part-foliate engraved oval locket with hallmarks for Birmingham 1984, approx. 22mm high excluding the bale, approx. 2.5g; this hung from an early 20th century gold belcher necklace, with an applied disc '9c', on a barrel clasp, approx. 43cm long overall (17 inches), 3.1g
£70 - 100

170 A vintage Italian 9ct gold woven-mesh necklace with a central heart motif. On a trigger clasp, import hallmarks for London 1986, approx. 41cm long overall (16 inches), 8.5g
£120 - 150

171 An early 20th century rose gold hollow-domed slave bangle. Stamped '9ct', 8.5mm wide, 10.7g
£140 - 180

172 An Edwardian 9ct rose gold hollow hinged bangle. The domed band with hallmarks for Birmingham 1908, 7g
£80 - 120

173 An early 20th century gold hollow-curb bracelet. Lacking a clasp, unmarked, approx. 18.5cm long (7 1/4 inches), 14.7g
£200 - 300

174 A late Victoria rose gold fancy link chain adapted as a bracelet. The alternate faceted belcher and shaped-rectangular star-stamped links with two similar shaped-fetter twin-bar interlinks, on a swivel or dog-clip clasp stamped '9ct', and with an applied panel with the maker's mark 'WHW', approx. 19.5cm long (7 1/4 inches), 13.6g
£180 - 220

175 A late Victorian gold hollow-curb link bracelet on a heart-shaped padlock clasp. The clasp set with a central heart-shaped amethyst approx. 5.25cts, rub-over set within a half-pearl 22 stone 'scalloped' border, the links and the clasp both with indistinct applied panels stamped '15ct', approx 18.5cm long overall (7 1/4 inches), 13.3g gross
£250 - 350

175A An early 20th century rose gold curb link 'charm' bracelet on a heart-shaped padlock clasp stamped '9ct'. Hung with a hollow gold pig, applied oval panel '9c' and 19 various non-gold charms including; a boot, a cat, a Latin cross, a bell, an elephant, a carved mother of pearl skull, a fisherman's creel, a pair of shoes and others
£120 - 180

176 An early 20th century rose gold three-bar gate bracelet. On a foliate engraved heart-shaped padlock clasp stamped '9ct', 5.6g gross
£100 - 150

177 A vintage 9ct rose gold fetter and three watch chain. With a T-bar and a swivel terminals, stamped '9' & '.375' and with indistinct marks probably Birmingham 1964(?), 19cm long (7 1/2 inches), 6.7g
£100 - 150

178 A vintage 9ct gold fancy fetter-bar and nine necklace. On a trigger clasp, Birmingham convention hallmarks, 46cm long overall (18 inches), 8.8g
£150 - 180

179 A late Victorian rose gold fancy link guard chain. The continuous chain with a swivel clasp stamped '9ct' 138cm long overall (54 inches), 20g
£350 - 450

180 A late Victorian gold rope-twist necklace. With an applied square panel '15', on a later rose gold barrel-shaped clasp stamped '9ct' and with two rolled gold O-rings, 43.5cm long overall (17 inches), 11.3g gross
£180 - 220

181 A Victorian rose gold oval-belcher link necklace. On a later bolt-ring clasp stamped '9K' and with two base metal O-rings, otherwise unmarked, 47cm long overall (18 1/4 inches), 10g gross
£120 - 150

182 A late Victorian rose gold hollow-curb bracelet. On a heart-shaped padlock clasp stamped '9Ct', approx. 19cm long (7 inches), 15.2g
£200 - 250

183 A Victorian 22ct wedding band with a later applied metal stone collet, hallmarks for Birmingham 1860, 1.6g gross; a late Victorian gold and coral jockey's cap and crop stick pin, unmarked
£50 - 80

184 A vintage New Zealand gold round pendant. In the form of a circlet enclosing a kiwi, a hei-tiki, a hut and fern motifs, stamped '9ct', approx. 23mm diameter, 4.5g; together with a 'James Walker' brown-leather and gilt tooled box
£70 - 90

185 Two New Zealand nephrite jewels. Comprising; a vintage brooch set with a rounded-triangular stone mounted within an abstract frame stamped '9ct', approx. 41mm wide overall, 7.6g gross, in a box marked 'Arahura N.Z. Greenstone'; together with an oblong pendant carved with tropical flowers and fruits, on a base metal pendant bale, approx. 58mm high overall, in a card box marked 'The Weavers Jewellery Shop... Canterbury'
£40 - 60

185A A small collection of jadeite jewellery including a ring. The rectangular domed panel approx. 19.8mm x 12mm, set on a scroll pierced gallery to a D-section shank stamped twice with a Chinese character mark, size U, 9.2g gross; a pair of spherical bead four stone pendent earrings, the beads graduated from approx. 8.5mm to 5mm diameter, on unmarked yellow shepherds-crook fittings, 50mm high overall; a pair of round cabochon stud earrings, each approx. 8mm diameter, unmarked; a pierced round pendant (resembling a donut), with an unmarked yellow mount, approx. 23.5mm diameter; and an oblong 'butterfly' brooch, the pierced and carved stone within a bead and wirework scroll border stamped 'Silver', approx. 30mm high, 35.5mm wide overall
£250 - 350

185B A pair of early 20th century gold and jadeite panel pendent earrings. Each with a gold shepherd's crook fitting suspending a mottled-green jadeite tapering-panel pierced and carved with fruits and leaves, the panels approx. 36.5mm high and slightly-tapering 10.5 to 13.5mm wide, approx. 2.8-3mm thick
£100 - 150

186 A part-strung branch coral bracelet and a collection of loose stones to include an oval cabochon moss agate; an oval white opal; a rectangular smokey quartz, and many others

£30 - 50

187 A Victorian silver oval locket, hung from fancy link necklace. The locket front with a raised panel depicting a rose spray with bloomed gold highlights, the back engraved with foliate scrolls around a vacant rectangular reserve, approx. 44mm high excluding the suspension loop, 35mm wide; This hung from a twin-belcher and star-pierced necklace, unmarked, approx. 38cm long overall (15 inches); the two weigh approx 29g gross

£100 - 150

188 An early 20th century chrysoprase three stone necklace. The graduated oval cabochon deep green chrysoprase each rub-over set within an open floral filigree surround on a bead and intricate-scroll open lozenge-shaped panel back-chain, hook clasp, unmarked, approx. 40.5cm long overall (16 inches), in a box

£30 - 50

189 An Edwardian marcasite and coloured paste necklace. The front designed as an arrow and ribbon suspending a floral pendant, between floral and foliate motifs on a conforming flower-head and twin-leaf back chain, set throughout with marcasites and interspersed with small bright-green and pink paste stones, approx. 43cm long overall (17 inches); in a blue leather case

£80 - 120

190 Four silver and white metal brooches and two pendants. Including; a silver Geoffrey Bellamy for Ivan Tarratt triple ivy leaf brooch, facsimilie signature, mark and hallmarks for George Tarratt Ltd, Birmingham 1965, approx. 51mm high overall; an entwined hollow square-section hoops brooch, unmarked; a filigree 'orchid' brooch with indistinct marks; a part satinised bow brooch, marked '925 Foreign'; a black-stained mother of pearl oval/elliptical pendant, unmarked, 55mm high overall; and a filigree spiral-flower pendant

£80 - 120

191 Gert Thysell for Gussi, a Swedish silver and rock crystal pendant & chain, circa 1970. The round faceted rock crystal approx. 23mm diameter, rub-over set within a plain surround and hung from an elongated bale with a 'G Thysell' facsimilie signature and stamped 'Gussi', 'M' and with Swedish hallmarks for Malmo 1970, approx. 50mm high overall, 16.2g gross; together with a contemporary white metal rope-twist chain on a bolt-ring clasp indistinctly stamped 'Sterling', approx. 46cm long overall (18 inches), 6.4g; together with a 'Guld & Juveler AB, Sigvard Ljungstrom... STOCKHOLM' blue-card box

£50 - 70

192 Sigurd Persson for Atelje Stigbert, a pair of 1950's Swedish modernist silver and chrysoprase pendent earrings and a matching bracelet. From the 1953 modular jewellery range know as 'Bowl and Cube', in the form of dished-oblong panels each centred with a bright-green small round-cabochon chrysoprase, the earrings with screw fittings with

Swedish hallmarks for Stockholm 1955 and marked 'Sweden' over 'Sterling' and with the maker's facsimilie signature and flower mark, the bracelet marked 'Sterling' over 'Sweden' and with conforming maker's facsimilie signature and flower mark only, 18cm long overall (7 inches), 30g gross

£200 - 300

192A A pair of Georg Jensen 'Sterling' round baton-twist cufflink, model 25A. Each link in the form of a domed bosse with a beaded border and a fixed back bar with a chased oval twist panel, maker's mark and 'Sterling Denmark', 13.9g gross, in a Georg Jensen pale-green card box; together with a small stick pin with a gilt terminal in the form of a figure of eight; and a pale blue synthetic-spinel single stone bar brooch with marcasite details, stamped 'Sterling', in a Hamilton & Inches, Edinburgh, brown leather case

£100 - 120

193 An Arts and Crafts moonstone five stone open-round brooch. The oval and round clear 'blue' moonstones each claw set at angles within foliate borders below a three-row hoop, apparently unmarked, approx. 41mm diameter, 11.9g gross

£80 - 120

194 A vintage 9ct gold and oval amethyst brooch. Centred with an oval mixed-cut amethyst, approx. 18.78cts, claw set within an open entwined-loop surround, hallmarks for Birmingham 1966, 8.3g gross

£80 - 120

195 A late Victorian gold, amethyst and half-pearl oval brooch. The oval mixed-cut amethyst approx. 20cts, mille-grain set within and half-pearl 23 stone 'scalloped' border, stamped '18c', approx. 27.5mm wide overall, 10g gross

£150 - 250

196 A vintage rose gold, sapphire, diamond and cultured-pearl floral brooch. In the form of an open-oval set with a 6.2mm diameter cultured-pearl, three marquise-cut sapphires and three eight-cut diamonds, stamped '375', approx. 25mm wide overall, 3.9g gross

£50 - 80

197 A vintage 18ct gold, ruby and diamond three stone bar brooch. Centred with a small oval mixed-cut ruby between round brilliant diamonds, all claw set on a rectangular-section bar with hallmarks for Birmingham 1985, 44.5mm long overall, 3g gross

£80 - 120

198 A twin-bird bar brooch, a pair of yellow metal abstract hoop earrings and a matching pendant. The earrings on screw firrings stamped '9ct'; the open hoop pendant unmarked, 4.8g gross; the two white-metal birds on a yellow metal triangular-section bar, unmarked, 60mm long overall

£80 - 120

199 An early 20th century rose gold and opal single stone bar brooch. The oval cabochon white opal displays a pleasing play of mostly blue and green play of colour, rub-over set on a tapering bar stamped '15ct', (the later rose gold pin unmarked), approx. 70mm long overall, 4.2g gross

£100 - 150

Please note: Buyers Premium at 20% plus VAT is payable on each item in addition to the hammer price

199A A late Victorian gold and green cats eye chrysoberyl cluster bar brooch. The central six stone cluster flanked by pairs of stones on an unmarked knife-edge bar, approx. 49mm long overall, 5.5g gross
£50 - 80

199B An early 20th century bloomed gold 'Owl' bar brooch. With small round cabochon garnet eyes, perched on a rose gold square-section bar stamped '9ct', approx. 49mm long overall, 2.3g
£40 - 60

199C An early-mid 20th century diamond and enamel 'pheasant' brooch, Modelled in a walking pose with a rose diamond body and polychrome enamelled crop and head, set throughout in silver on gold, the pin indistinctly stamped '585', 30mm long overall, 2.7g gross; in a Bishops Ltd, Birmingham fitted case
£400 - 500

199D An early 20th century gold fox mask bar brooch. With small ruby eyes, on a white rectangular bar stamped '9ct', approx. 54mm long overall, 5g; in a box marked 'The Goldsmiths and Silversmiths Company Ltd, 112 Regent Street, London W.' box
£80 - 120

199E A Victorian twin oval shell cameo bar brooch. Each cameo depicting a neo-classical female profile, rub-over set in gold within a hollow leaf and tendril surround, these supported on silver(?) oval panels and a square section bar, approx. 21mm high, 48mm wide overall, 9.5g gross; in a James Walker Ltd case
£300 - 350

200 An early 20th century gold and diamond cluster bar brooch. The nine old-cut diamonds approx. 0.50cts total, all grain and millegrain set within a scalloped border on a platinum-flashed bar stamped '15ct', approx. 61mm long overall, 5g gross
£150 - 180

201 Two early -mid 20th century gold and pale blue stone brooches. Comprising; an early 20th century gold and aquamarine single stone bar brooch, rub-over set at the centre with an oval mixed-cut aquamarine, on a square section bar stamped '15ct', 5cm long (2 inches), 2.6g gross; together with a large pale-blue cushion-shaped paste brooch, claw set in an un-marked gold coronet claw mount, approx. 22mm wide overall
£80 - 120

202 Thee Victorian and later gold brooches and a stick pin. Comprising; a gold-mounted cut-corner rectangular pale smokey quartz brooch, 21mm wide, 3.8g gross; a 9ct rose gold, garnet and half-pearl three stone scroll and twin-bar brooch, hallmarks for Birmingham 1901, 48mm long, 2.1g gross (steel pin); a rose gold and oval shell cameo brooch depicting an unknown female profile, applied panel '9ct', 28mm high overall, 5.7g gross; and a coral and half-pearl flower-head cluster stick pin, unmarked, 50mm long, 1.3g gross
£100 - 150

203 A vintage Scottish 9ct gold and pearl brooch. In the form of an open floral circlet formed of small pearl flower-heads with leaf cinque-foil spacers, hallmarks for Payton, Pepper & Sons Ltd, London 1978, approx. 33mm diameter, 3.9g gross; together with a Cairncross of Perth box and
£80 - 120

203A A vintage 9ct gold, sapphire and cultured-pearl open circlet brooch. Alternately rub-over set with six small round mixed-cut sapphires and six 4mm round cultured-pearls, hallmarks for Cropp & Farr, Birmingham 1964, approx. 26mm diameter overall, 2.9g gross
£70 - 100

204 A vintage 9ct gold and cultured-pearl four stone floral-bud and ribbon-bow brooch. Hallmarks for Birmingham 1960, later base metal pin, 5.1g gross
£80 - 120

205 A late Victorian gold and hardstone cameo oval brooch. Carved in high relief with a neo-classical depiction of a neo classical female profile wearing a diadem, plain rose golds rub-over setting unmarked, approx. 32mm x 25mm overall, in a Cameo Corner blue-leather box
£300 - 400

206 Three Victorian and later gold and gem set brooches. Comprising; an oval cabochon chrysoprase approx. 12.5mm x 10mm, rub-over set between Arts and Crafts style honesty leaves and entwined tendrils, unmarked, approx. 35mm wide overall, 4.3g gross; an early Victorian gold and garnet brooch of lozenge-shaped outline with a central rectangular step-cut garnet within an embossed floral surround, the back with a woven-hair glazed panel and inscribed 'Isabella Smith 28th Jan. 1841', steel pin, 28mm wide overall. 2.8g gross; and an early 20th century small oval amethyst single stone bar brooch, stamped '9ct', steel pin, 48mm long overall, 1.7g gross
£120 - 150

207 An early-mid 20th century white gold and diamond three stone ring. The graduated old-cut & old-mine stones approx. 0.30cts, claw set on a D-section shank with knife-edge shoulders, indistinctly stamped '18', size J+, 1.8g gross
£60 - 80

207A A mid 20th century gold, ruby and diamond oval cluster ring and an Edwardian gold and half-pearl twin 'swifts' brooch. The ring centred with an oval mixed-cut ruby within a small eight-cut diamond twelve stone border, all claw set in white on a yellow D-section shank stamped '18ct', size N, 3.4g gross; the scrolling knife-edge bar brooch with two half-pearl set swifts in flight, hallmarks for Chester 1906, (steel pin), 2.2g gross
£100 - 150

208 A vintage 22ct gold wedding band. The D-section band with hallmarks for Birmingham 1939, 2mm wide, size about K, 2g
£60 - 80



Lot 301



Lot 313



Lot 323



Lot



Lot 346



Lot 352



Lot 367



Lot 391

Please note: Buyers Premium at 20% plus VAT is payable on each item in addition to the hammer price

209 Enchanted by Disney, a 9ct white gold and diamond oblong 'halo' ring. With a central nine stone cluster within and open surround and a 23 (of 24) stone single line border, in a raised head between tiny diamond 20 stone two-row shoulders on a D-section shank engraved '9k' & '0.50ct' and with a facimile Disney signature and London laser convention hallmarks, size P, 4g gross; together with the original deep blue velvet ring box and outer card case
£80 - 120

209A A 19th century gold and rock crystal reliquary-type cross. The three rock-crystal panels removable to reveal a compartmented interior, the gold unmarked, approx 88mm high overall including the suspension loop, 56mm wide overall, 16g gross
£200 - 300

210 Two Victorian gold or gold mounted crosses and a gold and half-pearl small round locket brooch. Comprising a rose gold botonee cross stamped '9ct', 28mm high overall, hung from a fine oval link chain on a rose gold bolt-ring clasp stamped '9', 2.2g; a Carnelian cross with textured gold terminals, 56mm high overall; and a round locket brooch with a tiny half-pearl border, 17.5mm diameter
£100 - 150

211 A Victorian gold and micromosaic rectangular brooch depicting Pliny's Doves. On a black ground, the frame unmarked, 27.5mm high, 33.5mm wide
£200 - 300

211A A late Victorian gold, sapphire and diamond rectangular brooch in Etruscan style. The central panel with three florettes each centred with either a diamond or small sapphires, within a surround decorated with beads and wirework, 44mm long overall, 4.9g gross
£100 - 150

211B A pair of mid Victorian gold and half-pearl oval pendant earrings and a matching brooch. Each with a central half-pearl five stone lozenge motif within an oval surround decorated in Etruscan style with beads and wirework, the earrings approx. 34mm high overall, the brooch with a glazed locket back approx. 42mm wide overall, the three weigh 14.9g gross (include the brooch glass); all in a shaped and fitted brown leather covered case
£800 - 900

211C A late Victorian gold and diamond shaped-oval brooch in Etruscan style. With a glazed locket-back, stamped '15ct' (lacking the pin), approx. 40mm wide overall, 8.8g gross
£120 - 150

211D A 19th century gold and foil-backed citrine fob seal head. The oblong domed and fluted mount with a leaf chased border and later adapted as a pendant, approx. 25mm x 22mm overall; now hung from a gold-plated necklace
£50 - 80

211E A late Victorian gold and half-pearl mounted jet locket. The oval jet two-piece locket with base metal hinge and internal fittings, the front with an applied gold shield depicting a Latin cross within laurel leaves and set with half-pearls, approx. 49mm high x 39mm wide (61mm including the black-painted metal suspension loop; currently hung from a black-velvet ribbon
£50 - 70

211F A 19th century gold and chalcedony marquise-shaped fob seal. The matrix carved with a crest and ribbon motto, approx. 35mm high overall
£120 - 180

211G An early 19th century gold and citrine spinning fob. The three-sided citrine set in a floral chased gold mount with an entwined rope trefoil surmount, approx. 33mm high overall, 31mm wide, 12.5g gross
£100 - 150

212 An early Victorian gold and turquoise quatrefoil flower-head cluster ring. The four drop-shaped cabochon turquoise rub-over set between open scroll chased shoulders on a D-section shank (sawn), unmarked, size about G/H, 2g gross
£50 - 80

213 A Victorian gold, turquoise and diamond flower-head cluster ring. Centred with a small rose diamond within four (of five) turquoise cabochon petals, on a D-section shank with beaded shoulders, unmarked, size K, 1.8g gross
£70 - 100

214 A George IV 18ct gold, half-pearl and black enamel mourning ring. Formerly set with a central woven-hair glazed panel within a black enamel band and half-pearl border, the back in an inscription 'Jno Newball Bacon Esq, obt 25 May 1833 at 68', between black enamel and graduated half-pearl three stone open scroll shoulders, on a reeded shank with hallmarks for London 1826, size M+, 4g gross
£150 - 200

214A A vintage 9ct gold acrostic 'DARLING' ring. Set with a Diamond, Amethyst, Ruby, Lapis lazuli, Iolite, Nephrite and Garnet, on a D-setting shank with scroll-chased shoulders, hallmarks for London 1989, size P, 1.9g gross
£40 - 60

214B A modern 18ct gold and diamond three stone ring. Centred with a princess-cut diamond between round brilliants, all claw set in white on a yellow D-section shank with hallmarks for London 2001, size J, 3.6g gross
£400 - 600

214C A vintage 18ct gold and diamond five stone ring, The graduated eight-cut stones claw set on a D-section shank with hallmarks for London 1991, size O, 2.6g gross
£80 - 120

215 A George III gold 'Spade' guinea, 1792, later mounted in a 9ct rose gold double-sided locket. With hallmarks for Birmingham 1907; this hung from a late Victorian fancy link necklace on a barrel-shaped clasp, approx. 50cm long overall (19 1/2 inches), 7.1g
£300 - 400

216 A vintage Italian 18ct gold fancy-panel bracelet. In the form of six domed open lattice-woven panels on a similar part-panel clasp stamped '750' and with Birmingham import hallmarks, the date letted rubbed probably 1997(?), approx. 21.5cm long (8 1/2 inches), 67.5g
£1900 - 2100

Please note: Buyers Premium at 20% plus VAT is payable on each item in addition to the hammer price

217 **Garrard, a pair of vintage silver and enamel canted-rectangular baton-twist cufflinks.** Each panel with a central red guilloche enamel panel within a blue border, hallmarks for Garrard & Co., Birmingham 1992, in an Garrard navy-blue and gilt bordered leather case and outer pale-blue card box
£30 - 50

218 **A pair of vintage 9ct white gold, black-onyx and seed pearl round twin panel cufflinks.** With chain interlinks, hallmarks for Cropp & Farr, Birmingham 1989, 7.2g gross; in a navy-blue leather case
£100 - 150

219 **Asprey & Garrard, a pair of vintage silver and enamel oval twin-panel cufflinks.** Each oval panel with a central blue lozenge within a red oval surround and further blue border, hallmarks for Asprey & Garrard, Birmingham 1997, in an Asprey purple leather case and outer card box
£30 - 50

220 **Automobilia - Two Powell and Hammer Ltd, Birmingham brass and steel kerosene/ carbine head lamps.** One with left hand side hanger, the other with hanger to either side, both labelled, one indistinctly marked under, the tallest H34.2cm
£50 - 80

221 **Automobilia - A rare pair of 'Wyncott & Son, Lamp Makers Birmingham' brass and steel cased head lamps.** Side mounted, with provision for rear bulbs, labelled, marked under / Patent 105472/17, approximately H33cm
£50 - 100

222 **Automobilia - A pair of 'Lucas King of the Road no 432' brass cased, rear (red glass) stirrup mounted lamps.** Labelled, approximately H31.5cm
£50 - 100

223 **Automobilia - Two DIETZ lamps. 'Jan 22-07 'Champion Steel Lamps & Patent app for .. New York', the other 'Dietz N.Y. U.S.A. Royal Side' (single side mount for left'), the largest approximately H29cm**
£40 - 60

224 **Automobilia - A rare 'Eli Griffiths & Sons, Bradford Street, Birmingham' brass and painted steel cased lamp.** With suspension, labelled, approximately H29.2cm
£40 - 60

225 **Two automobilia lamps.** Ford Brown rear mounted kerosene ?/ carbide ? lamps, repainted in black, steel under, one marked 'Brown' under, the other indistinct, approximately H23cm
£40 - 60

226 **Two automobilia lamps.** One Ford Brown, side mounted kerosene ?/ carbide ? lamp marked 'Ford- O E & J' verso (Edmunds & Jones), repainted in black, steel under, one marked 'Brown' under, the other rear mounted', E & J no.3 -414, PAT MAY 26-14 PAT JUNE 23-14', approximately H23cm
£40 - 60

227 **Two automobilia lamps.** Comprising a Ford Brown side mounted Kerosene ?/ carbide ? lamp, repainted in black, steel under, one marked 'Brown' under, the other 'Ford', both marked 'Ford-O Brown' verso, approximately H24cm
£40 - 60

228 **Three carbide lamps** - Including Two Lucas Carbide head lamps with suspension, and a British Miller made carbide lamp, signed, the tallest H16.5cm
£40 - 60

229 **Two early Motorcycle Carbide lamps** : A Powell & Hammer 'Vulture' lamp and a 'Jos Lucas Ltd 'ACETA No.316 carbide' lamp, the tallest H17.5cm
£40 - 50

230 **Early Bicycle Carbide Lamp** : 'Premier Lamp & Eng Co Ltd, Leeds Eng', brass ridged lamp. Marked 'Premier' to top and under, H9.5cm
£30 - 50

231 **Automobilia - An unusual candle lamp** of pedestal form, with a wartime longitudinal Slit , having hanging piercing to handle, H20.4cm
£30 - 40

232 **Automobilia - A 'Ford the Victor Lamp co cinti-o model -2' brass and painted steel lamp.** With side mounts to either side, labelled, approximately 23cm diameter
£40 - 60

233 **Railway lamp** : A unusual black tole painted and brass fittings Red Glass lamp with hinged cover. Med 'PRESTO', H27.7cm
£25 - 35

234 **Two old oil cans.** A 'Jos Lucas 'Forced Feed No. 62, Birmingham' brass fitting motoring oil can and an old 'KAYES Patent' 1/21 Pt 17 ol can, the longest 30cm
£25 - 35

234A **George Clausen (1852-1944), watercolour,** haystacks in the corner of a field. Ascribed verso, (verified by A. Goldfinch), 22cm x 32.5 cm, framed and glazed
£800 - 1200

235 **Automobilia - Two brass motoring horns.** One with gauze end, curled and rubber bladder, the other a straight brass horn with trumpet end, the longest 51cm
£30 - 50

236 **Automobilia- A brass cased SIEVERT for Benzoline 0.25 liter, type 209 burner.** With inscription reading 'The original 7 genuine apparatus is always stamped thus 'Max Sievert Stockholm signifying the highest....'. H14.3 cm
£20 - 30

237 **Automobilia - A Smiths L brass cased dashboard clock** with silvered dial and winder under. Diameter 9cm
£20 - 30

238 **A 'Tyfon' Patent Marin Manuel foghorn** made by Knockums Mek Verkstad, Malmo, Sweden. A vertical air pump with hand plunger, the iron capped top and bottom attached to a brass cylinder and horn marked, H55.5cm
£80 - 100

239 **A collection of AA books,** from 1935 onwards. Including Foreign Touring Guide 1955-6', 'Members Handbook 1962', etc.
£30 - 50

240 Automobilia : A vintage motoring travel case for fixing to a running board - rack. Apparently removed from a Bentley. H17cm x W69cm x D60.5cm
£20 - 30

241 A self-propelled invalid carriage or tricycle by Lely, The Hague, Netherlands. With a chain-driven front wheel hand operated, padded and sprung seat, hand brake and pneumatic tyres, the rear with a oval plaque stamped with the maker and retailer, overall L200cm (approx)
£80 - 120

242 A vintage polychromed cast iron advertising sign. Marked 'Herbert Morris Ltd, Loughborough, England, Capacity 35 Tons', painted in red on a black ground, surrounded by a shaped border, 50cm x 106cm
£50 - 80

243 – 248 No Lots

249 Francis Barnett, Falcon, 1954 Historic motorcycle. V5 available. Reg. 247 XUL, 197cc, 8E engine. Mileage showing 29927
£1400 - 1600

250 Automobilia Vehicle - A 'barnfind' 1904 Historic Holsman Model 3 two-seat High Wheeler Horseless Carriage Runabout Piano body. Purchased for the London to Brighton Rally. With age related BS 8363 number plate (not SV), Chassis no. 246, with distinguishing Black Detz lights and rear mudguards only.

Fully verified by The Science Museum, Tuckett Brothers, Cherished Car Insurance, State of New Jersey (copies) and DVLA

This Holsman High Wheeler, made in Chicago in 1904, was recently recovered from a local yard clearance where it had languished for years. Its existence was not previously known by the Veteran Car Club of Great Britain. It is thought there is only one other Holsman in this country.

Before it came to the UK in around 2002, the High Wheeler belonged to Franklin B Tucker of New Jersey, who was very well known in US veteran car circles and was a past-President of the AACA (the Antique Automobile Club of America - the equivalent of the VCC in the UK).

December 10th 1972 New York Times

8 Years A-Building

Franklin Tucker of West Caldwell has rebuilt a 1905 rope-driven Holsman literally from a pair of license plates. Mr. Tucker had been summoned to the family's carriage house to appraise what appeared to be an unusual set of license plates, and it was there that he discovered a pile of the original Holsman parts.

Eight years were spent in assembling the rest of the parts, and today the machine, with its high wheels and two- cylinder air-cooled engine, can be seen cruising along with the rest of the antiques.

August 11th 1978 New York Times

Franklin B. Tucker of West Caldwell, in his second term as national president of the club (Antique Automobile Club of America), points out that the hobby involves the entire family. The New Jersey Region Lists 435 members, with the wives admitted free if they belong to the national organization.

Most hobbyists agree that while people seem to be most interested in the value of their restored automobiles they try to discourage inquiries because their automobiles are beyond value to their owners. Mr. Tucker has owned his 1913 Metz Roadster for 30 years. He also owns a 1924 Franklin and a 1905 Holsman.

Eight years were spent in assembling the rest of the parts, and today the machine, with its high wheels and two- cylinder air-cooled engine, can be seen cruising along with the rest of the antiques.

We have traced part of the history of this particular car, chassis number 246, with the help of American experts. We now know that it was discovered around seventy years ago by Franklin B Tucker as a pile of parts. His reassembly and ownership of the remarkable car was the subject of two articles in the New York Times in the 1950s. Copies of these are included with the car.

The English buyer planned to drive it in the annual London to Brighton veteran car run but after an early journey to Ireland, it broke down before he was able to do so and was put away.

'High wheelers' were popular rural America in the first decade of the 20th century, built to straddle rocks in the centre of the road. The Holsman was regarded as the very best of these, coming to be known as 'the Cadillac of high wheelers.' Holsman sold about 2,500 of them over a period of 8 or 9 years from the beginning of the 1900s. This very early example from 1904 is their 'Type 3'.

It has a correct air-cooled flat twin engine which still turns over. Amongst the large quantity of spares which will also be sold (including two more sets of wheels in lot 250A and 250B).

Franklin B Tucker wrote the only book about Holsman cars, part history and part workshop manual. It was printed in 1994 in a very limited edition of 100 copies. We have located one of these and will provide an electronic copy of the whole text to the purchaser.

The provenance pack to accompany the car will include colour photographs from its final trip to the Irish mountains and a number of letters regarding the car and its history, plus the bill of sale from Tucker to its new Somerset owner.

Please note: Buyers Premium at 20% plus VAT is payable on each item in addition to the hammer price

Film of similar Holsman cars can be seen on YouTube listed as:

- The Holsman Automobile 1898 start engine
- A Drive Back in Time: The Holsman Revisits Cow Canyon
- 1907 Holsman Automobile_0001.wmv
- 1906 Holsman Auto buggy ride
- 1902 Holsman High Wheeler
- Neville Museum Minute - Holsman Runabout Automobile
- 1907 Holsman ticking over

We are indebted to Franklin B. Tucker and his thorough research and gathering of Holsman Automobile History photographs, research and advertisements. We also thank the Museums, Curators, Collectors, Associations and Archives who have helped by sending photographs, advertisements, stories and research.

In 1906, (this article was in error in using the 1906 date, it should have been 1907. Also, the company who originally purchased the Holsman was then going by the name of the Pioneer Telegraph & Telephone Co.), the Deschutes Telephone Co., of which H.C. Ellis was manager, found it difficult to obtain horses in the area and decided to buy a horseless carriage. The car was ordered from Chicago. It was a HOLS-MAN, a two-cylinder affair with high wheels. This type was purchased because of high centers in road in the Bend, Prineville, and La Pine areas served by the company. Some of the high centers were caused by lava rocks. Others were stumps of trees. The only use made of Central Oregon roads in those days was by freight wagons, stage coaches and hacks or buggies.

Ellis found it impossible to get fuel in The Dales to bring the new car to Bend. Finally, after a wait of several days, a supply was obtained from Goldendale, across the Columbia River on the Washington side. Some of this supply was shipped up the line, where it could be picked up in transit. The fuel was in five gallon can, two to a case.

The brand new HOLS-MAN caused considerable excitement in The Dales that day in 1906, (1907), when it chugged up the Columbia to a crossing of the Deschutes River at Freebridge. At that time, there was only one other car in The Dales, a Reo owned by Dr. J.A. Reuter, a one cylinder vehicle. From Freebridge, the HOLS-MAN headed for the little known village of Bend, moved up Rattlesnake Canyon to Moro at the pace of a buggy team. There was a temporary delay at Moro while more canned gas was taken aboard. Finally, the car reached Cow Canyon, at night.

The car moved slowly down the rugged canyon, with the driver picking the "trail" by the dim illumination of the primitive headlights. As the grade narrowed, fenders on one side of the car were ripped, and in going through the narrow cut, fenders on the opposite side were torn, By the time the car reached the bottom of the grade, its fenders were in scraps., were tak-

en off at the pioneer Heisler stage station, on Trout Creek, and remained there as a relics for years. They were still in evidence at the site of the old station in the early 1920's.

The car was used by Judge Ellis and members of his crew for seven years, in line maintenance work. Gas for the car was freighted in from Shaniko by E.A. Sather, who operated a store there. Incidentally, gas in those days cost 75 cents a gallon in Bend, and \$1.00 in Roseland, the present La Pine area.

This car now reposes in the Deschutes Historical Center, 129 N.W. Idaho Ave., Bend, Oregon 97701...

£8000 - 10000

250A Automobilia - Holsman spare parts to include : original belt drive, part of primary drive assembly, four wooden spoked wheels, two engine blocks (of the correct age) Burgess air filter, Pannier tanks x 3 various sizes, 3 leaf springs, side member step, hood springs, all manner of castings, brake shoes, sprung loaded wheel caps, luggage box (AF) , etc

£1000 - 2000

250B Automobilia - Holsman spare parts to include, three spoked wheels (including one drive wheel) , three engine blocks (some with pistons etc), upholstered seat back and a tiller arm

£500 - 800

251 Jack Simcock, (British 1929-2012), oil on board, 'Four Gables'. Signed 'Simcock 66' lower right. Aperture size 18.5cm x 29cm. Framed.

Provenance: Paper label to verso for The Piccadilly Gallery, Cork Street, London, listing purchaser as H.L. Pettitt, Esq, and date November 1967.

£200 - 300

252 Kenneth Jack (Australian, 1924-2006), linocut, Flinders Street Facades, Melbourne. Signed in pencil lower right, titled and numbered 51/60 lower left. Image size 36cm x 53.5cm. Framed and glazed.

£200 - 300

252A Gerald M Burn (British 1862-1945) watercolour of HMS 'Uproar'. The Royal Navy U-class submarine built by Vickers-Armstrong at Barrow-in-Furness, signed 'Gerald M. Burn' (lower right) and inscribed 'H.M.S. P31 1918', 18cm x 36cm

£150 - 250

253 An Improved Map of the County of Somerset, by Eman Bowen, hand coloured, late 18th century. Dedication lower right: 'To the Most Noble and Right Honorable John Panlet Earl Panlet, Lord Lieutenant and Custos Rotulorum for the County of Somerset...!'. 56cm x 63cm. Framed and glazed.

£200 - 300

254 Michael Veale (1930-2022), oil on board, still life of flowers in a vase, initialled. 69cm x 53.5cm

£30 - 50

255 William James Mullen (1812-1845), pencil drawing. 'St Leonards Lane', labelled verso, 29.5cm x 22cm, framed and glazed

£80 - 120



Lot 398



Lot 402



Lot 408



Lot 410



Lot 414



Lot 415

255A **William Frederick Mitchell, (British 1845-1954), watercolour, Marine School/ship portrait.** Signed and dated 1905 lower right, annotated 'No 2379' lower left. 9.4cm x 13.7cm. Framed.

£100 - 200

256 **No Lot**

257 **James Jackson Curnock (1939 (Bristol) -1891), pencil and white, 'The Young Gleaner'.** Paper label verso with title and dated circa 1860. Aperture size 13cm x 11.5cm. Framed and glazed.

£80 - 120

258 **Arthur Briscoe, (British 1873-1943), engraving, 'The Three Barges',** 1925. Signed lower right in pencil, numbered (?) 20/75 lower left. Print size 18cm x 27.5cm. framed and glazed.

Provenance: Ex W.A. Trevor-Briscoe Coll.

£100 - 150

258A **Joseph Walter (1783-1856), Marine School, oil on mahogany panel, fishing boat moored on the beach St. Michaels Mount from Penzance Pier to background,** signed lower right and bears ink inscription verso 'J Walter of Bristol Exhibited in ??? france 1834-1849..... and title (twice)32.2 x 27.5 cm

£200 - 400

259 **Michael Veale (1930-2022), acrylic on canvas laid on board, Abstract,** initials and date verso. 48.5cm x 65.5cm

£50 - 80

260 **Arthur Briscoe (British 1873-1945), engraving, 'Oyster Dredgers'.** Signed lower right in pencil and with note 'Last State' (?). Print size 16cm x 25cm. Framed and glazed.

Provenance: Label verso reading: Ex W.A. Trevor-Briscoe Coll.

£100 - 150

260A **A 17th century hand coloured engraving of merry-making outside a tavern.** Sheet size circa 17cm x 23cm. Framed and glazed.

£50 - 100

261 **Karl Taylor, 20th century, oil on board, 'Little Owl'.** Signed lower right. Titled verso. 32cm x 65cm. Framed.

Provenance: Paper label to verso for David Cross Gallery, stock no. 146.

£200 - 300

261A **Karl Taylor, 20th century, oil on board, 'Urban Inhabitant Kestral'.** Signed lower right, 37cm x 76.5cm. Framed.

Provenance: Paper label to verso for David Cross Gallery, stock no. 119.

£200 - 300

262 **Anthony VanDyke Copley Fielding (British 1787-1855) watercolour.** The landscape depicting a figure and his dog walking alongside a lake, a castle in the distance, signed lower left, 29.5cm x 45cm, framed and glazed

£80 - 120

262A **After Herbert Thomas Dicksee (1862-1942)Three framed etchings.** 'The Crest of the Hill', 'Last Furrow' and 'Against the Wind and the Open Sky', largest 41.5cm x 68cm

£80 - 120

263 **Solvieg Kaurin, 20th century oil on board.** Depicting a coastal scene of waves crashing against rocks, signed 'S. Kaurin' (lower right), 47.5cm x 37.5cm, framed

£80 - 120

264 **Alberto Vargas (1896-1982) vintage prints x 4 (circa 1940).** Depicting pin-up girls, comprising two calendar images for November, 20.5cm x 29cm, 'Warning Signal' and 'Heritage', 41.5cm x 27.5cm, all framed and glazed

£30 - 50

265 **Grainger Smith (1892-1961), watercolour,** A Spanish street scene with figures. Signed lower left, 34.5cm x 24.5cm

£20 - 30

265A **Indistinctly signed, Late 19th century oil on canvas,** French children on the shore rocks. The children depicted with pond yacht and beach net in the shallows. Indistinctly signed lower right, bears Phillips Auctioneers blue chalk verso, 61cm x 106.8cm in a Watts type gilt frame (Shades of Newlyn School)

£200 - 400

266 **A pair of Georgian hand coloured steel engravings** of George Armfield dogs and game birds. The burr oak/elm frames 6.5cm wide, overall 27cm x 30.8cm

£120 - 150

267 **Cunard Eagle Airways Aeroplanes x 2. Roy Garner (1946), acrylic on canvas board,** flying aeroplane, 39.5cm x 49.5cm, framed, and GA Penoll (?), dated 1986, watercolour, aeroplane on the runway. 32cm x 46.5cm. Framed and glazed.

£20 - 30

268 **Early 20th century (Richard J Bou....?), watercolour, red roof tops of Chichester and cathedral.** Indistinctly signed lower right, 40cm x 26.8cm, framed and glazed

£70 - 100

268A **Four topographical engravings after J. Kip. 'Budlington, The Seat of the Duke of Beaufort', 'New Park Surrey, The Earl of Rochester', after Swide 'Drottningholmens' and 'Rosersberg',** largest 34.5cm x 49.5cm, all framed and glazed

£150 - 250

269 **Hall Thorpe, (Australian/British, 1874-1947), coloured woodblock print of sweetpeas.** Signed in pencil lower right. Image size 25.7cm x 19.7cm. Framed and glazed.

£100 - 150

270 **John Glover (1767-1849) RBA, watercolour, A Northern Landscape.** With stone village (some timber framed) and mountain to background. Indistinctly signed lower left (obscured by mount), 30.5 x 40.4 cm

£200 - 300

270A **Six 18th/19th century engravings. 'Ostanaa', 'Arx Moorvy', 'Hefslevy', 'Carlberg' and a hand coloured engraving 'Gunnorsbury House', etc.** largest 21.5cm x 33.5cm, all framed and glazed

£200 - 300

271 **Richard Earlom after Claude le Lorrain (1600-1682), sepia engraving.** Published by J & J Boydell, 90 Cheapside 1803, 'From the original in the collection of R P Knight' no. 25, plate 13.8cm x 19cm, framed and glazed

£80 - 120

Please note: Buyers Premium at 20% plus VAT is payable on each item in addition to the hammer price

272 **Graham Petley (born 1944), oil on canvas, 'Fishing for tiddlers-Terling, Essex'**. Signed lower right, 50cm x 76 cm
£100 - 150

273 **Richard Earlum after Claude le Lorrain (1600-1682), six sepia engravings**. Published 1776/7 by John Boydell, Cheap-side, numbers 159,170,171,192,194 and 195, each plate size 21cm x 25.8cm, framed and glazed
£250 - 350

274 **A later hand-coloured frontispiece to William Stukeley's Abury 'A Temple of the British Druids'**. Originally published 1743. 42cm x 50.5cm. Framed and glazed.
£20 - 30

275 **V.Kovow, 20 th century Russian? oil on canvas. Pastoral scene**, signed lower right, dated '1942-1943' to the verso, 80cm x 140cm
£200 - 300

275A **Five 19th and 20th century engravings of European and Eastern stately homes and palaces**. Including 'Rosersberg', 'Erichsberg', etc, largest 27.5cm x 37cm, all framed and glazed
£30 - 40

276 **Indistinctly Signed Continental School, oil on canvas, riverside**. Signed lower right. 46cm x 61cm
£100 - 200

277 **18th century English School, watercolour, The Bowder Stone, Borrowdale, Lake District**. Indistinctly signed lower left, 31.4cm x 46.3cm
£80 - 120

278 **John Alfred (19)'61' topographical acrylic on board, '9 am May Morning Concord College'**. signed and dated lower left and titled verso, Framed. 105cm x 59cm
£400 - 600

278A **Three 19th and 20th century engravings of European and Eastern stately homes and palaces**. Including 'Kiersoo', 'Malmwiik', etc. 28.5cm x 33.5cm, all framed and glazed
£40 - 60

279 **After Johannes Kip (circa 1710), a set of four hand coloured topographical engravings**. Upper Dowdswell the seat of Lionel Rich Esq, Alderly the seat of Mrs. Vale Widdow of Matthew Hale, Shipton Moyne the seat of Mrs. Hodges relict of Tho Hodges, and Alveston the seat of Edward Hill Esq, 37cm x 39cm. Framed
£150 - 250

280 **Chinese Regency, watercolour of a butterfly over a basket of peonies and other flowers**. Within a silk mount and gilt on black grape vine border, image 20cm x 17.2cm
£150 - 200

280A **Two engravings**. After John Hassis, 'The East Front of Blenheim House drawn Orthographically' on Whatman-like paper, and a signed print 4/75 of a Palladian Portico, the largest aperture 48cm x 64cm
£50 - 100

281 **Circa 1900 New Zealand School, oil on canvas laid on board, 'Huka Falls, flowing to lake Taupo New Zealand, 55 x 90 cm, framed**.
Purchased by the vendor in Wellington.
£80 - 120

282 **F Holl after J Absolom, hand coloured print, 'Saturday Night'**. In an impressive cushion moulded bird's eye maple frame with gilt slip and glass, 48cm x 66cm (overall)
£60 - 80

282A **A collection of four assorted Scandinavian 18th and 19th century engravings**: hand coloured 'Charles John, Crown Prince of Sweden, 1845', Coenbium WRETA', 'Saalataad' after W. Swiddle 1693, and 'Wrestra's', the largest 21.5cm x 41.5cm (aperture)
£40 - 60

283 **'SS Cassini off Holyhead' Marine portrait watercolour of the Steam Sail Tyne built cargo ship** launched in 1866, Aperture 13.5 x 19.5 cm
£50 - 70

284 **Charles W Oswald (British, active 1890-1899), pair of oils on canvas, cattle on a track and cattle watering**. Both signed lower right. 49cm x 39cm. Framed.
£50 - 80

285 **After Sir William Russell Flint (1880-1969). Signed Artist's Proo, signed again by subject**. 'The Rythm of the Ballet', bears signatures of 'MOIRA SHEARER' and artist, labelled verso, also has 'Fine Art Trade Guild' blindstamp and 'John Matheson & Co.. Edinburgh.' label, Frost & Reed, aperture 39 x 68 cm.

Moira Shearer King, Lady Kennedy, (1926-2006) was an internationally renown Scottish ballet dancer and actress, married to Sir Ludovic Kennedy, second only to Margot Fonteyn!
£80 - 120

285A **Daniel H Winder, (1870 - circa 1920), oil on canvas, North Country Sheep in the Highlands, 1917**. Signed and dated lower left, bears Sidney P Winder gallery label verso, in a gilt frame and glazed
£1200 - 1800

286 **Reginald Daniel Sherrin (1891-1971), gouache, beach scene**. Signed lower left, 37.5cm x 52.5cm, framed and glazed.
£50 - 60

287 **Manner of Edwin Master (circa 1840-1880), oil on canvas, figures by a cottage**. Labelled verso, 24cm x 32cm
£100 - 200

288 **Eric Dawson (1918 - ?), watercolour, Dancers at the Bandstand**, labelled verso. 31.2cm x 40cm
£50 - 80

288A **Dorothy Mead (1928-1975), engraving 18/20, seated figure**, signed, numbered and dated '78' lower, plate 19.5 x 15 cm
£100 - 200

289 **Steam Ship Fulford 1891 (SS Fulford), Marine Portrait**, gouache titled under, 26 x 39 cm. This ship was eventually sunk in WWI (1916) by the german submarine UC-21.
£80 - 120

290 **Joseph Horlor (1809-1887), a pair of oil on canvas, 'Trossacks Scotland' and 'Glencoe Scotland'**. Both signed, 46cm x 36cm, framed
£100 - 150



Lot 428



Lot 434



Lot 448



Lot 454



Lot 458



Lot 456

290A **Leon Kossoff (1926-2019), etching 88/100, 'Fidelma II'** signed and dated 1984 lower right, aperture 10 x 13 cm has blind stamp 'Studio prints' lower right
£300 - 400

291 **Edward May c. 1907, oil on canvas, figures under trees in a landscape**, signed lower left and has canvas stamp verso, indistinctly pencilled verso, 23 x 33 cm
£50 - 100

292 **After Pieter Van Der Aa (1659-1733), five monochrome engravings**. Arx Rosersberg, Banco Sigill Sweeriges, Bogesvndh & Brvnsholm, Wanngaarn and Interior Arxis Swart-sioensis, all approximately 27cm x 33cm. Framed
£100 - 200

292A **Leon Kossoff (1926-2019), etching 86/100, 'Fidelma 4'** signed and dated 1984 lower right, aperture 19 x 11.5 cm has blind stamp 'Studio prints' lower right
£300 - 400

293 **After Pieter Van Der Aa (1659-1733), five monochrome engravings**. Wenngarn & Icon peramaen Domus et Vivarii Vaenegarnensis, Icon aedificiivqo fervanturrariores arbores ae flos & 7 Palatium Staffundenfe, Almerstaak & Arnoo, Roodsersberg (2), Lindholmen & Lidoon, all approximately 27cm x 33cm, framed
£100 - 200

294 **Percy Lancaster (1878-1950/51), watercolour, 'Grassington Bridge'**. Signed lower right and written verso, with Boydell Galleries label. 33cm x 48cm, framed and glazed
£50 - 80

295 **E Cameron, 57, watercolour and gouache, river valley from on high**. Signed and dated lower right, 30cm x 42cm, framed and glazed
£25 - 45

295A **'Mann 47' monochrome etching, Lancet shaped cloister**, signed and dated in charcoal/pencil lower right, aperture 29 x 18 cm
£50 - 80

296 **Edith Alice Andrews (exh. 1900-1940), watercolour on paper, A Spring Basketful**. 25cm x 35cm. Framed and glazed.
£50 - 100

297 **Arts & Crafts : A circa 1900 moulded relief frame**. With a repainted gilt Watts type slip and an oval hand coloured image of a child and oak barley twist chair, the frame with oak leaf and acorn bas relief, overall measurements H62.2cm x W46.8cm
£30 - 50

298 **Elliot Henry Marten (British, active 1886-1901), watercolour on paper, haystacks before a tree-studded hill**. Signed lower left, possibly (illegible) date lower right. 20cm x 32.5cm. Framed and glazed.
£20 - 30

299 **James W Milliken (English, 1900-1930), a pair of watercolours**, 'Marches aux Herbes, Bruges', and 'A Market Day...'. Signed lower left, both 24cm x 34.5cm. Framed and glazed. Provenance: Both with paper label verso for T. Bromley & Son Ltd, Bolton.
£300 - 400

299A **Manner of J Surtees, 19thc comical hunting chromolithographs, a pair**, 'Don't move there ,we shall clear you' and ' Stop a bit mister reginald and I'll lift on on 'em up. now you just let 'em alone , I coming over', each image approximately 44 x 66 cm
£100 - 200

300 **19th century English School, oil on canvas, The Gambler**. Portrait of a huntsman in the evening losing (and his temper) and resorting to holding a percussion pistol, in an ornate gilt moulded frame with acorn and oak leaf decoration in relief, picture H60cm x 49.5cm
£200 - 300

301 **Two William Moorcroft signed flambe vases**. Of waisted bulbous form, each with tubelined decoration in a 'Leaf and Berries' design on a red ground, the interiors glazed in blue H23cm, with the original sales stickers to the bases and the official 1934 receipt
£400 - 600

302 **A William Moorcroft signed flambe vase**. Of baluster form, with tubelined decoration in a 'Peony' design on a graduated red and blue ground, the original sticker to the base, H24cm
£140 - 180

303 **A pair of 18th/19th century gilt wood cherub wall brackets**. Each modelled as a single cherub holding a shaped shelf, H21cm
£50 - 60

304 **A Sevres porcelain twin handled circular tray**. Hand painted with a scene of cherubs surrounding a crest, bordered in gilt and blue glaze, unsigned, marked 'Chateau des Tuileries'. Part of the King Louis service. Diameter 37cm
£100 - 200

305 **A 19th century Regency style patinated bronze and ormolu inkwell and pair of candlesticks**. The inkwell in the form of a clinker built long ship, flanked serpent handles coiled beneath to act as feet. The centre featuring a rectangular box and lid and two inkwells within a pierced ormolu railing running along the rail of the boat, H7.5cm x W22cm x D7cm. The candlesticks with stems modelled as caryatids, mounted on circular bases, H22.5cm
£100 - 200

306 **An 18/19thC treen 'Coconut' style cup**. The exterior engraved with carved and patterned rings, on a turned stem and foot, H15cm
£50 - 80

307 **An Indian turned wood vessel** with squat bun shaped base and turned long neck with lid the whole profusely carved with floral demi lunes and peacocks, marshland birds, long dogs and deer in scraffito to the ebonised exterior. H31 cm x 18 cm diameter
£30 - 40

308 **Two 19th century copper jelly moulds** by Benham & Froud. One having chain link crest, stamped with maker's Orb mark and '631', L18.5cm, the other having an oval castellated shape, stamped with the makers orb mark and '609', L18.5cm
£80 - 120

Please note: Buyers Premium at 20% plus VAT is payable on each item in addition to the hammer price

309 A Victorian miniature portrait on ivory. Possibly of a mormon gentleman wearing black, in an oval brass surround, japanned mount/frame with oak leaves and acorn decorative gilded brass hanger, image 7cm x 6cm
Ivory declaration 7APE9AHJ
£60 - 80

310 A late 19th century miniature, an oval portrait on ivory of a young child. Within an oval brass surround and in a japanned mount/ frame with decorative brass hanger, 8.5 x 7.5cm, bears remains of Victorian telegraph card verso.
Ivory declaration LMLHVU1T
£60 - 80

311 Two 18th century Staffordshire hollow based figures of Saints. Comprising St. John modelled bearing his chalice and St Luke holding a book before bocage, H20cm (AF)
£30 - 40

312 No Lot

313 A set of three patinated bronze figures of dog musicians, circa 1900. The dogs (probably poodles) are dressed in military uniform and standing on circular socles, each playing the violin, drum and cymbals, each approximately 23cm high
£80 - 120

314 No Lot

315 A Victorian black lacquered papier mache two sectional tea caddy. Of serpentine form with abalone shell and mother of pearl inlay, H14cm x W21cm x D15cm
£50 - 60

316 A 17th/18th century green glass wine bottle. With high kick up, long neck, and now reclaimed under sea finish
H17.5cm
£100 - 200

317 An inlaid 19th century walnut cased music box. With 8 airs and approximately 74 unbroken teeth, some restoration needed, H13.5cm x W51cm x D23cm
£80 - 120

318 A late 18th century carved gilt lime wood wall bracket. With cherub, anthemion and harebell decoration and serpentine shelf to top. H22cm
£50 - 60

319 A pair of Arts and Crafts brass and copper candlesticks, in the manner of WAS Benson. With bulbous copper spherical ends, H28.8cm x L20cm
£80 - 120

320 A circa 1930 Barbola? bevelled circular easel mirror. With gilt back and polychromed plaster painted relief surround, diameter 18cm.
£20 - 30

321 A Robert 'Mouseman' Thompson an oak carved square octagonal bread board with the eponymous mouse.
L30.5cm x W25cm
£60 - 80

322 No Lot

323 A lapis lazuli ovoid bowl. Carved from a single piece of lapis lazuli with natural pyrite inclusions and white veining. With a silver-gilt stand and support stamped '800' and with a maker's monogram. the lapis lazuli foot signed beneath 'H Wolf', H12.5cm x W26.5cm x D20cm
£300 - 500

324 A large lapis lazuli and rock crystal baluster-shaped vase, stand and cover. H67cm overall
£300 - 500

325 A pair of 19th century brass Gothic candlesticks. With weighted turned circular feet, each with three 4 lion's paw feet, turned knob and circular drip tray, engraved to one 'Piam Memoriam MCB' (in living memory of MCB), H40.4cm x Dia.19.5cm
£250 - 350

326 No Lot

327 A French Lalique frosted glass figure of a kneeling/seated figure of a lady. Marked under, H10cm
£40 - 50

328 A French Lalique a frosted glass car mascot / paper-weight. Signed below, H8.5cm
£40 - 50

329 Achille Gamba (Italian, 1881-1944), 'Coupe' circa 1900 Art Nouveau pewter tray. Depicting a frog playing a flute whilst a fish listens, marked under and numbered '339'.
H7.4cm x W23cm x D15.7cm
£300 - 500

330 'Newton & Co Fleet St. London, Optician' set of 15 double mahogany hand painted 'Magic Lantern' slides. Circa 1890, showing planets, the unknown space universe, mathematical workings, travels of the moon, history of measurements, some metamorphic showing eclipses etc., all within a black painted box, box H12.4cm x D23.2cm x W20.7cm, each mahogany slide slide, 20.4cm x 10cm
£600 - 800

331 A collection of approximately 178 Grand Tour Intaglio/plaster seals. In a six drawer collectors cabinet with faux inlaid walnut finish to box and blue sugar paper Georgian drawer lining. Unusually having some American seals including 'Bostonium Recuperation 1776', 'B Franklin Americain' and Napoleon, Lord Viscount Wellington, Georgius IV, Lord Byron, William Shakespeare, Matthew Boulton, George Canning, Colosseum, etc.
£300 - 500

332 A fine silver thread embroidered Islamic Fez or Rabat prayer hat with material lining under. H6.8cm x diameter 16cm
£30 - 50

333 T Goode & Co (retailer) for Spode Copelands china dinner plate and crescent shaped side plate. With hand painted roses, etc, and fruit within a pink and gilt diaper body with a hand painted gilt surround, marked verso and numbered 'C 1545', plate 24cm diameter
£50 - 60



Lot 19



Lot 75



Lot 87



Lot 107



Lot 110



Lot 126A



Lot 129



Lot 211B

334 A pair of 18th century carved wooden 'Chippendale' three-branch wall brackets. With parcel gilt, finish and carved acanthus, scallop shell and C-scroll decoration, H40cm
£80 - 120

335 No Lot

336 A Britains hand painted lead figure group of the 39 Royal Horse Artillery. Comprising six horses (3 riders) pulling a gun carriage with two seated figures and two more on the canon, H8cm x L42cm x W6.9cm
£150 - 200

337 An early 20th century German porcelain Meissen style monkey band group of nine figures. Comprising a conductor, drummer, cellist, oboe, French horn, violin, bugle and bagpipes, the tallest H16.8cm, bearing a blue scissor like maker's mark under.
£900 - 1000

338 An Indonesian carved hardwood stool seat (no legs). Profusely decorated with central image of a bird flanked by two human/bird figures, etc. H35.5cm x W80.5cm
£20 - 30

339 Late 19th century stained glass ;A vintage painted stain glass roundel of a young Gothic man, within a double glazed frame, Diameter 21cm
£70 - 100

340 19th century stained glass: A vintage painted stain glass roundel of a Gothic man, within a double glazed frame.. Diameter 21cm
£70 - 100

341 A circa 1900 East Asian circular adazed back wooden plate/plaque. With applied repousse brass, copper etc., and coral and banded blue agate cabachons and a repeated image of a figure stood holding a trident fork. 40cm diameter
£50 - 80

342 A circa 1758 Sevres oval hand painted dish. 'F' (Double Louis) with a central oval picture of an 18th century couple in a garden sat near a stone fountain, having a gilt diaper surround, turquoise body with six gilt framed vignettes of hand painted flowers, restored, H5cm x L38.2cm x W27.5cm
£50 - 60

343 A cast metal stag mounted on a marble covered plinth. The stag with head thrown back, its front legs raised on the plinth, unsigned, H47cm
£100 - 200

344 Adolphe Jean Lavergne (act.1863-1928), a 19th century bronze sculpture of Pecheur (fisher boy). Signed Lavergne on the plinth, plaque to the front of the base reading 'PECHEUR par lavergne', the underside of the base impressed CHARMEUR PECHEUR and numbered 1012 ...? (illegible). Height to top of rod 34.5cm
£300 - 500

345 A bronze sculpture of a Chinese female water carrier. Standing astride, carrying two vessels suspended on wires from a yoke. Unsigned. Fixed to a wood base. Total H21.5cm
£70 - 100

346 A Robert 'Mouseman' Thompson, oval cheeseboard. With a side handle carved with a mouse, H40cm
£50 - 80

347 A pair of Chinese champleve and cloisonne enamel lidded vessels. Each finial in the form of a fo dog, one with a young animal, the other with a coin string, the lids and vessels decorated with lotus and other flowers. H12.2cm
£150 - 200

348 A Royal Doulton Willow Pattern ceramic jug and basin. Basin diameter 37.5cm
£70 - 100

349 A pair of American Arts and Crafts planned / hammered copper bookends by Fred Brosi, San Francisco. The beaten copper exterior applied with a stylised eucalyptus leaf with acorn accents, H13cm x W15cm x D10cm
£40 - 60

350 A group of 1920 medical microscopic slides. 90 histopathological and histological hand annotated slides, each marked for Path. Lab. Camb. (Pathological Laboratory Cambridge), 88 named and 2 others, all within a black lidded box.
£50 - 80

350A 1846 G Betjemann & Sons no 34 Oromolu unusual easel double photograph frame, retailed by 'W H Russel, 62 Princes Street, Edinburgh ' in blue enamel entitled ' The Garden Gate', opening to reveal two shaped photograph compartments within. Clearly marked verso with Diamond Registration Mark, maker and retailer verso, H13.5 cm x W16 cm
£150 - 200

351 An early 20th century Chinese coconut shell and pewter lidded vessel. The coconut body carved with gilt shou and Daoist symbols. Stamped mark to base. H13.2cm
£60 - 80

352 An Art Nouveau Loetz style green iridescent glass vase. Of 'crumpled' form, unsigned, H8cm
£30 - 50

353 Two ceramic models of cats. Comprising a Rosenthal, 'A Kitten' by Theo Kramer, H9cm, and a Royal Doulton figure of a kitten
£50 - 80

354 A hand coloured copy of a famous picture of a Guan-yin by Zhang Daqian. With four line inscription and two seals lower left. Paper H128cm x W65.5cm, mounted on silk.
£100 - 150

355 A German WMF Ikora patinated metal vase. With painted vine decoration, stamped mark to the base, H9cm
£40 - 60

356 A late 19th century Japanese Aesthetic Movement black lacquered collector's cabinet. Decorated in gilt with an Asiatic pheasant and birds amidst foliage, with a hinged lid above two drawers and two doors revealing a six further drawers, above a long drawer (lacking five small handles), H35.5cm x W29.5cm x D13.75cm
£80 - 120

Please note: Buyers Premium at 20% plus VAT is payable on each item in addition to the hammer price

357 A large 19th century family Holy Bible, by The Revd Robert Jamieson DD. 'A Practical and Explanatory Commentary on The Old Testament, London, James S Virtue, with steel plate engravings throughout. With gilt tooled leather cover and gilt edging.
£60 - 80

358 Four contemporary miniature bronze animals. Comprising a cat marked 'WW' to the base, a hare, a whale and a fox (marked Austrian), Max. H5cm
£40 - 60

359 A 1922 gilded Tiffany style table lamp. In the form of a Doric column on a two step square base, with three P & S light fittings and a stained marble glass and brass lightshade, H54cm x diameter 40cm
£150 - 250

360 Two Royal Dux classical figures. One modelled as a robed woman holding a garland of flowers, a pink triangle mark and impressed number '2083' to the base, H25cm, the other modelled as a recumbent woman, upon a conch shell, a pink triangle mark and impressed number '1750' to the base, H21cm
£100 - 150

361 A collection of wax seals. The red and black seals depicting various crests, predominately mounted on pieces of card, many annotated
£30 - 50

362 An 18/19th century Wedgwood creamware gathered caneware bamboo moulded teapot and lid. Stamped to base Wedgwood and 156. H10.3cm x L17.8cm
£150 - 200

363 A Chinese soapstone seal carved with a crouching figure holding a branch. Gilt symbols and cursive inscription to one side and carved with Western letters RHF to base. H6.1cm
£150 - 250

364 A pair of 19th century continental blue glass vases. Of baluster form, decorated with applied enamel flowers and scrolls, marked 'R. M. 137' to the underside, H21cm
£40 - 60

365 A Mulberry natural grain tan leather wallet and purse. The wallet featuring eleven card slots, a bill pocket and a photograph compartment, 10cm x 9cm (folded), the purse featuring fifteen card slots, a bill pocket and a coin compartment, finished with a postmans padlock to the front, 18cm x 10.5cm, with a box and guarantee
£150 - 250

366 A collection of 20th century glass projector slides. Featuring the British Royal Family, coloured nativity scenes, historical architecture, etc. contained within a wooden box with a lock and brass handle to the top, L36.5cm
£70 - 100

367 A William Moorcroft flambe bowl. With tubelined decoration in a tropical 'floral' design on a red and blue ground, H5cm
£30 - 50

368 A 19th century large lidded tea tin converted into a lamp. The red tin painted with a shaped panel of a Chinese lady with eyes lowered in contemplation. Tin H42cm
£70 - 100

369 A near pair of 18th century Chinese blue and white export tankards. Decorated with pavilions, trees and bridges, with dragon fish handles. H17.8cm x diameter of mouth 12cm, and H17.2cm x diameter of mouth 10.7cm
£150 - 200

370 A Moorcroft vase from the 'William Morris Centenary' collection. With tubelined decoration in the 'Snakeshead' pattern, designed by Rachel Bishop, H32cm
£100 - 150

371 William Bennitt 'Magic' corkscrew framed, an American Bell cap self pulling corkscrew with turned wooden handle with acorn shape ends, stamped to the bell 'Pat. May 15th 1883' with pointed worm etc. approximately 12 cm long
£80 - 120

372 A 1970s patinated bronze sculpture of a romantic couple on a stepped base. Unsigned, H33.5cm
£50 - 80

373 A William Moorcroft 'Cluny Trees' pottery vase designed by Sally Tuffin. c.1990, of waisted cylindrical form, tubelined and painted in polychrome, impressed marks and initials to the base, H30.5cm
£100 - 150

374 A 20th century cream silk embroidered shawl. With floral embroidered decoration and tassel fringe, fabric area 110cm x 110cm
£100 - 200

375 No Lot

376 Royal Interest: a signed 1983 Christmas card from the Prince and Princess of Wales, Charles (b.1948) and Diana (1961-1997). The front of the card bears two royal seals, the interior is printed with the words 'With all Good Wishes for Christmas and the New Year' and 'from Charles and Diana' written in ink, the opposite page features a colour photo of Diana holding Prince William while seated on a wooden rope swing whilst Charles stands beside them, 18.3cm x 13cm
£400 - 600

377 A dark brown glazed ewer. The spout in the form of a dog's head wearing a wreath of leaves, the body incised with horizontal banding. H27.6cm
£150 - 200

378 Book: Aventures de Trois Jeunes Filles en Amerique, E Istivie. Librairie d'education nationale, Paris, early 20th century.
£30 - 50

379 An early 20th century North American electro-formed and bronze patinated bust of Abraham Lincoln and two books. The bust designed by Leonard C. W. York and published by Alva Studios, mounted on a circular plaster plinth, H33cm. The books comprising a copy of 'The Life of Abraham Lincoln' by Stefan Lorant and 'The Civil War as they Knew It' £50 - 100

380 Book: The Thames & Medway, A series of eighty splendid engravings displaying the most picturesque waterside scenery of ten counties from drawings by Tombleson. Thomas Holmes, London
£60 - 80

381 An Edward VII glass and silver pedestal sweet dish. Maker C B Thomas, Birmingham 1908, the flowerhead dish with gilt vine pattern decoration, H10.5cm
£30 - 50

382 A vintage Mulberry shoulder bag, crafted from crocodile embossed brown leather. Featuring a single handle, a zip fastening and four protective base feet, lined in tartan fabric, H50cm (including the strap) x W34cm x D12cm
£150 - 250

383 A pair of Georgian glass mallet decanters and a pint mug. The decanters with ring necks and hexagonal stoppers, H26cm. The mug marked 'Pint GR 64', H13.5cm
£50 - 60

384 A Royal Worcester puce marked hand painted side dish. Signed 'M Ayrton', diameter 15.5cm
£40 - 60

385 No Lot

386 A small maritime handheld foghorn. Constructed of brass and copper with applied punched anchor decoration, L15cm
£40 - 60

387 A pair of Japanese Satsuma miniature vases. Decorated each with two panels of scholars teaching children. H8.4cm
£30 - 50

388 A Wedgwood 'Dragon' lustre vases designed by Daisy Makeig-Jones. Of trumpet form with gilt decoration, on a circular stepped stand, marked 'Z4831' to the underside, H20cm
£50 - 70

389 Two pieces of Royal Worcester. Comprising a blush gilt-heightened moon flask, decorated with flowers, purple stamp to base and marked 'no.553', signed 'JD', H13cm, and a figure of a woman, R.N67079, marked '1202', H20cm
£50 - 60

390 A 1920s Swedish SS Rorstand extensive dinner service. With scenes of castles, notable houses, lakes, etc., in cobalt blue and white. Comprising 14 plates, 2 square serving dishes, 17 side plates, 12 cups (breakfast size) and 15 saucers, 12 dessert dishes, 2 oblong plates, 10 soup bowls, 9 dessert plates, sauce boat and tray, tall jug. (95)
£70 - 100

391 A 1950s Jean Gerbino for Vallauris pottery vase. The vase with angular handles and decorated with a mosaic and neriage pattern, the base impressed with a signature and makers marks, H17cm
£150 - 200

392 A Chinese copper-red tianquiping form bottle vase. Six character Qianlong mark to base. H24cm.
No provenance information.
£300 - 500

393 A pair of 19th century Japanese Satsuma vases. Of ovoid form, each decorated with a crackle glaze scene of figures beside a pagoda within a mountainous landscape, on carved wooden bases, H22cm (including stand)
£50 - 80

394 Welsh Railway Interest, a rare and original Victorian oval brass pocket snuff or tobacco box. The hinged lid engraved at the centre '1888' and with an applied serrated oval band inscribed 'William Banwell Burnham Somerset', the base inscribed 'A present from Garw Valley', 2cm high, 7.25cm wide overall (3/4 x 2 7/8th inches)
Note; Mr Banwell was an engine driver on the Garw Valley Railway in mid Wales when this was given as a gift in 1888. The Garw Valley Railway is now a heritage railway restoring the line from Pontycymer to Brynmenyn
£30 - 50

395 A pair of Japanese Satsuma hexagonal vases. Decorated with two panels of figures in landscapes beneath plum blossom trees. Signature to base. H 24cm and 24.2cm
£80 - 120

396 A Victorian George Jones majolica strawberry basket, circa 1873. With flowering strawberry plant decoration in relief, a looping branch handle and feet and four bowls, registered design lozenge (1873) marker's mark etc.beneath (repaired), H18cm x L30.3cm x W30cm
£60 - 80

397 An early 19th century boxwood 12" four-section slide rule, by Dring & Fage, 20 Tooley St, London Bridge. comprehensively inscribed with scales and calculations and marked 'J. Cheek'
£80 - 120

398 Four German porcelain figures, possibly Potschappel. Modelled as musicians in 17th century attire, Max. H8.5cm (AF)
£30 - 50

399 An amusing porcelain model titled 'My Resting Place at Margate'. Modelled as a boy occupying a toilet stamped 'Engaged' whilst another boy opens the door, the roof of the cubicle marked 'Shut the D_ _ _ _ _ Door', the back impressed 'Foreign 2055', H4.8cm
£30 - 40

400 A late Victorian tea cosy commemorating the Diamond Jubilee of Queen Victoria. The woven fabric exterior extensively hand embroidered with multiple patterned lines, one of which is marked 'Jubilee; flanked by crowns and the Union Jack, the opposite side marked 'Petmo--en House, M. I. Leith, 22nd July 1887', lined with purple satin, L38cm
£50 - 70

401 An oriental wooden travelling vanity box. The multiple hinged compartments opening to reveal a mirror and multiple drawers, raised on bracket supports, the exterior featuring brass plates and hinges, H28cm x W39.5cm x D26cm (compacted)
£50 - 100

402 No Lot



Lot 423

Lot 241



Lot 317



Lot 326



Lot 217



Lot 203A

403 **Two oak plaques with seven squared and circular medallions.** By Exbryant, ER, J Delfech, A Mezaro, KG (greeting a skeleton) and Henry Dropsy (1885-1969)
£50 - 100

404 **Dutch Art Nouveau : A patinated bronze/copper alloy card tray.** Decorated with bas relief of a fishing wife looking out to sea. H12cm x W17.5cm
£30 - 50

405 **No Lot**

406 **Hamo Thorneycroft (1850-1925), a bas relief cast bronze plaque of an Art Deco lady.** 'Presented by Toogood and Sons, Southampton, Seedsman to H M the King', signed lower, 'signed to top' open champion Horticultural Prize won by...;', mounted on oak, H35cm x W22cm
£60 - 100

407 **'C B' A brown patinated bronze bas relief bust plaque.** Depicting a circa 1910 'Nurse' wearing glasses, mounted on oak, the whole H38.7cm x 19.7cm
£40 - 60

408 **Emmanuel Hanaux (1855-1934) (HANNAVX), patinated bronze plaque depicting a seated woman.** Titled 'Le Souvenir', signed, H28.4cm x W20cm
£100 - 200

409 – 411 **No Lots**

412 **Margaret Porter, 20th century, three pen, ink, decoupage and mixed media on acetate.** London and New York Life, London Underground at Kings Cross, London, Rush hour on the underground escalators and the City of New York, the largest 58cm x 40cm
£40 - 80

413 **Possibly Nathalie Gontcharova (Russian 1881-1962), watercolour on paper, The Hot sun in the sky.** Circa 1910-15 Avant Garde Art. Initialled 'NG' lower right, 26cm x 32.5cm. The artist is also known as Natalia Sergueievna Gontcharova/Gontcharoff.
£200 - 300

414 **Sergej Michajlovic Luppov (Russian 1893-1977), pencils and watercolour, five various nude figures.** Some reading, conversing, frolicking on the beach etc., all signed, the largest 48.8cm x 33cm
£200 - 250

415 **A pair of circa 1900 medieval ? carved masks affixed to a pair of oak doors.** An eight-pointed star form, 12.5cm, mounted on a door, each 61cm x 43cm
£50 - 80

416 **A 20th century machine woven tapestry in the 19th century Flemish style.** Depicting a river landscape with multiple couples courting, surrounded by sheep, within a floral and foliate decorated border, 186cm x 78cm (excluding hangings)
£80 - 120

417 **A 20th century marionette of an Asian figure.** Painted wooden face with an articulated mouth and limbs, dressed in traditional costume, H70cm
£30 - 50

418 **An Arts and Crafts beech open armchair.** Raised on turned supports united by double stretchers, with spindle back and an envelope rush seat, H100.5cm
£30 - 50

419 **A circa 1900 French Art Nouveau mahogany sideboard/washstand.** With a rouge marble top over two short drawers and a two cupboard base on shaped supports. H102cm x W130cm x D58.5cm
£40 - 60

420 **A 19th century French walnut oval tilt top table.** With trestle style feet and single fold out stretcher, L131cm x W101cm
£30 - 50

421 **A set of ten 19th century oak ladder back dining chairs.** Comprising eight (seven plus one matched) and two carver chairs, with sea grass and rush envelope seats and turned spindles to back. The tallest carver H112cm
£50 - 80

422 **A mid-17th century Charles II oak table.** With barley twist legs, peg joints, worn foot stretchers and three plank top, H72.5cm x L91cm x W55cm
£80 - 120

423 **No Lot**

424 **A 20th century mahogany reeded X frame upholstered stool.** With turned stretcher and overstuffed upholstered seat, H44.5cm x L53cm x W40.3cm
£30 - 40

425 **An 18th century and later carved oak coffer mule chest** with three drawers. H88cm x W138cm x D51cm
£70 - 100

426 **'Carter's Patent London', Victorian mahogany library/overbed/ Literary Machine.** Of adjustable height, angle and two book rests table. On a turned single pedestal and base with three casters. L81cm x D44cm
£50 - 60

427 **An Edwardian inlaid and crossbanded mahogany bureau.** The quarter cylinder top opening to reveal a pull out writing section, over two drawers, standing on square tapering legs. H108cm x W75cm x D47.5cm
£60 - 80

428 **A Georgian Chinoiserie tripod work table.** The revolving lacquered top with red and gilt hand painted decoration on black lacquer of islands, figures in boats, crossing bridges etc., opening to reveal a fully fitted interior in gilt and black, having mostly lidded compartments and lift out section having further lidded and lift out compartments, H74.5cm x W63.5cm x D42cm
£100 - 200

429 **A Georgian mahogany bow front corner cabinet** with an associated astragal glazed top section. H198cm x W74cm
£40 - 60

430 **An Art Deco oak octagonal two tier occasional table.** Each side with a withdrawing drinks shelf/stand. H47.5cm x diameter 47cm
£20 - 30

431 **A circa 1970, workshop of Robert 'Mouseman' Thompson (Kilburn), oak hanging corner cupboard.** Yorkshire School Arts and Crafts. With a panelled door enclosing three fixed shelves, wrought iron hinges and latch, with a reverse carved mouse lower right. H96cm x W69cm x D46.5cm
£500 - 800

432 **A vintage Barbola circular wall mirror** with typical floral crest. Bevel edge mirror diameter 23cm
£20 - 30

433 **A 19th century gilt picture frame.** A large and impressive moulded frame with anthemion to corners, scrolling acanthus and applied decoration to the whole, internal measurement 74cm x 61cm, overall 108.4cm x 95.3cm
£200 - 300

434 **A pair of Victorian ash and elm low Windsor chairs.** With crinoline stretchers, pierced splats and turned arm supports, legs and stretchers. H93cm
£50 - 100

435 **A large glass mid-late 20th century 'statement' chandelier and electrolier.** With twelve candle arms and sconces (+ 1 central), many faceted crystals, H100cm x diameter 80cm
£200 - 300

436 **A late 19th century Neo-Gothic carved oak and rouge marble topped table.** With moulded edge and canted corners, the quatrefoil shaped supports with gilt highlighted leaf and fruit carved decoration, the white painted body cut down in the leg, H48cm x W153cm x D61.5cm
£300 - 500

437 **A contemporary Italian style parquetry breakfront console table.** With a long frieze drawer flanked by short drawers, sabre feet to the front, H81cm x W125cm x D42cm
£50 - 80

438 **A Regency mahogany Lady's drop leaf work table** with 2 drawers, over a sewing well held by a stirrup shaped base with quatrefoil shaped foot, H74cm x 46.5cm (folded) x 46.8cm
£60 - 80

439 **A French Art Nouveau mahogany wall/overmantel mirror** with carved and pierced cresting. H118cm x W134cm x D9cm
£40 - 60

440 **A Regency mahogany fold over tea table.** With reeded sabre legs, ebonised slim crossbanding and anthemion like rosettes, having two swing out rear legs, standing on brass ball feet, H74cm x W91cm x D45cm
£100 - 200

441 **Two painted plaster Corbel wall brackets** from a Belgian church. Painted in shades of green, gold and red, one with a shield to the front painted in Gothic script 'Bse Bernadette P.P.N.', moulded with swags, leaves and fruits. Metal bar support visible to one. H44.5cm and H37cm
£150 - 250

442 **A 16th/17th century low oak coffer with candle box.** The one piece oak sides having dowels and hand made nail construction with blacksmith made forged iron corner straps, H53cm x L156cm x W48cm
£250 - 350

443 **An Edwardian mahogany and string inlaid display cabinet.** With two-door glazed display case with ribbon and swag inlay, H119cm x W99cm x D31.5cm
£50 - 80

444 **A mahogany occasional table** retailed by 'Heal and Son Tottenham Court Road, London'. Of oval form with two tiers. In the Sheraton style with inlaid and pen work and stringing, standing on square tapering legs, the under tier with wavy edge, stamped to the underside, H67.5cm x W80cm x D53cm
£60 - 80

445 **A Georgian oak bureau.** The fall front over four long drawers on shaped bracket feet, opening to reveal a lancet fretted interior. H104cm x W90cm x D46cm
£50 - 80

446 **A Liberty style Art Nouveau blonde oak armchair.** With a pierced back and side slats, mounted on cabriole supports united by twin stretchers, the seat upholstered with red leather and brass stud decoration, H86.5cm
£80 - 120

447 **A large contemporary brass and blue glazed ceramic urn.** With goat's head, rosette and foliate swag decoration. H98cm
£400 - 500

448 **An unusual early 20th century iron banded Pig Salter of oval shape.** With carry handles, galvanised bands, staved/coopered sides and pine lid, much like the top section of a barrel, H44cm x L84cm x W61cm
£150 - 200

449 **A William IV mahogany show-wood chaise longue** with carved scroll and acanthus decoration. H98cm x W190cm x D62cm
£100 - 200

450 **A circa 1915 mahogany Bergere library chair.** Of Neo-Classical style, with a caned back and arms, on brass castors, H95.5cm x W59.5cm x D66cm
£50 - 80

451 **A Victorian mahogany circular extending dining table and four late 19th century upholstered dining chairs.** The table W120cm, with extra leaf
£80 - 120

452 **A 19th century ship's semi-dome top pine chest.** With twin carry handles opening to reveal a patterned paper lining. H43cm x W69cm x D42.75cm
£50 - 80

453 **A Victorian mahogany showwood chaise longue.** With upholstered foot section and octagonal legs, upholstered in a rich red relief patterned covering, H91cm x W210 x D70cm
£100 - 200

454 **A 19th century mahogany campaign chest** with locks marked 'Craves & Sons, Devonport'. With brass handles being 2 short over 3 long drawers, H 93 x W91.5 x D 48.5 cm
£100 - 150

455 **A Georgian mahogany linen press.** The top converted to a hanging section over a base of two short and two graduated long drawers, on shaped bracket feet. H201cm x W126cm x D60cm
£70 - 100

456 A Georgian mahogany Bonheur du Jour / Writing Desk. The boxwood strung body with a shaped upstand containing five letter racks flanked by two secret drawers formed as leather bound books and three visible drawers, the table with a single frieze drawer, all with inlaid banding, mounted on tapered supports united by stretchers. H103 cm x W 62 cm x D53 cm
£100 - 150

457 A Georgian mahogany chest, on bracket feet, of unusual form with three graduated drawers. H94cm x W110cm x D55cm
£50 - 80

458 An 18th century oak panelled mule chest. With three short drawers under and triple panelled top with later 19th century hinges to opening lid, H77cm x W126cm x D50cm
£70 - 100

459 A Regency brass and iron fender. With brass upper and lower rims and metal mesh between, raised on three bun feet. L96cm
£100 - 150

460 A Georgian mahogany secretaire chest on chest. With oak front to back drawer linings, adjustable rake and secret drawer to the secretaire section, having three short over three graduated long drawers over a base of four graduated long drawers, on bracket feet. H176cm x W104.8cm x D57.5cm
£200 - 300

461 Two similar Victorian walnut hanging corner cabinets. Both with galleried tops, carved in high relief with a boy about to spear a mythological animal, the other with a bouquet of flowers and featuring an Art Nouveau-decorated open shelf. H75cm x W40cm
£100 - 150

462 No Lot

463 A Hereke Yun hand made rug of wool on cotton comprising of a cream center ground with flowers and foliage and having a navy blue ground border and having reds, greens, blue black, and dark mustard colours, 182 x 124 cm
£200 - 300

464 A Hereke Yun hand made carpet of wool on cotton comprising of a navy blue centre ground with flowers and foliage and having a cream ground border and having reds, greens, blue black, and dark mustard colours, 301 cm x 197 cm
£500 - 800

465 A 19th century large cast iron horse trough. finished in black, bolted onto bowed tapering supports complete with lid, H92cm x L364cm x W50cm, shows holes drilled in one side, ideal planter.
£800 - 1200

466 A 19th century large cast iron horse trough. Finished in black on bowed tapering supports, H92cm x L364cm x W50cm, one leg showing damage, showing holes drilled in base, ideal planter.
£600 - 800

467 A four poster bed, 260cm H, 175cm W, 200cm D, with silk covering, one piece upholstered headboard, Vi sprung mattress and base, four pillows, three cushions etc (Please note that this is located at Ston Easton Park).
£500 - 800

468 An early to mid 20th century machine made large wool-len carpet. 412cm x 843cm, of mustard ground with foliate decoration in violet, green and salmon colours (Please note that this is located at Ston Easton Park).
£500 - 800

469 A Sheraton Revival Edwardian Mahogany bureau book-case with cross banding, Ebony stringing, inlaid and pen work decoration, in the form of scallop shell and hare bells, swag and bows, with swan neck pediment, inlaid rosettes and shell work etc H227 cm x W77 x D 48.5 cm
£300 - 500

killens.org.uk



Killens

CHARTERED SURVEYORS & PROPERTY AGENTS



Let us help you with your next move

Offices in Chew Magna, Knightsbridge, Somerton & Wells

CONDITIONS OF SALE FOR BUYERS

Both the sale of goods at our auctions and your relationship with us are governed by the Conditions of Sale for Sellers, the Conditions of Sale for Buyers and any notices displayed in the saleroom or announced by us at the auction (collectively, the "Conditions of Sale").

Please read these Conditions of Sale carefully. Please note that if you register to bid and/or bid at auction, whether at the auction rooms or online, this signifies that you agree to and will comply with these Conditions.

1 Definitions and interpretation

Within these Conditions, the following words have the specific meaning detailed:

"Auctioneer" means Killens LLP a limited liability partnership registered in England and Wales with registration number OC354754 and whose registered office is located at The Cake House, Upper Lodge Farm, Ston Easton, Somerset BA3 4DH or its authorised auctioneer, as appropriate
"Bidder" means a person participating in bidding at the auction;
"Buyer" means the person who makes the highest bid for a Lot accepted by the Auctioneer;

"Deliberate Forgery" means: (a) an imitation made with the intention of deceiving as to authorship, origin, date, age, period, culture or source; (b) which is described in the catalogue as being the work of a particular creator without qualification; and (c) which at the date of the auction had a value materially less than it would have had if it had been as described;

"Hammer Price" means the level of the highest bid for a Lot accepted by the Auctioneer by the fall of the hammer;

"Lot(s)" means the goods that we offer for sale at our auctions;

"Premium" means the premium that we will charge you on your purchase of a Lot to be calculated as set out in Clause 3;

"Reserve" means the minimum hammer price at which a Lot may be sold;

"Sale Proceeds" means the net amount due to the Seller;

"Seller" means the persons who enters Lots for sale at our auctions;

"Terms of Consignment" means the terms on which we agree to offer Lots for sale in our auctions as agent on behalf of Sellers;

"Conditions of Sale" means these terms of sale, as amended or updated from time to time;

"Total Amount Due" means the Hammer Price for a Lot, the Premium, any applicable artist's resale right royalty, any VAT due and any additional charges payable by a defaulting buyer under these Conditions of Sale;

"Trader" means a Seller who is acting for purposes relating to that Seller's trade, business, craft or profession, whether acting personally or through another person acting in the trader's name or on the trader's behalf;

"VAT" means Value Added Tax or any equivalent sales tax; and

"Website" means our website available at mendipauctionrooms.co.uk
In these Conditions of Sale the words 'you', 'yours', etc. refer to you as the Buyer. The words 'we', 'us', etc. refer to the Auctioneer. Any reference to a 'Clause' is to a clause of these Conditions of Sale unless stated otherwise.

2 Bidding procedures and the Buyer

2.1 Bidders must register their details with us before bidding and provide us with any requested proof of identity, in a form acceptable to us, before entering the auction room to view or bid.

2.2 You are responsible for your decision to bid for a particular Lot and we strongly recommend that you attend the auction in person. If you bid on a Lot, whether in person, by placing a commission bid or by telephone and online bidding, we assume and you accept that you have carefully inspected the Lot and satisfied yourself regarding its condition.

2.3 If you instruct us in writing, we may execute commission bids on your behalf. Neither we nor our employees or agents will be responsible for any failure to do so save where such failure is unreasonable. Where two or more commission bids at the same level are recorded we reserve the right in our absolute discretion to prefer the first bid so made.

2.4 The Bidder making the highest bid for a Lot accepted by the Auctioneer will be the Buyer at the Hammer Price and any dispute about a bid will be settled at our absolute discretion by re-offering the lot during the course of the auction or otherwise. We will act reasonably in exercising this discretion.

2.5 Bidders will be deemed to act as principals.

2.6 Our right to bid on behalf of the Seller is expressly reserved up to the amount of any Reserve and we may refuse to accept any bid if it is reasonable for us to do so.

2.7 Bidding increments will be at our sole discretion.

3 The purchase price

As Buyer, you will pay:

- a. the Hammer Price;
- b. a buyer's premium at 24% (20% plus VAT) on the hammer price of each lot purchased in our sales
- c. any artist's resale right royalty payable on the sale of the Lot; and
- d. any VAT due at the prevailing rate.

4 VAT

4.1 VAT on the Hammer Price and premium is imposed by law on all items identified in the auction catalogue with an asterisk or double asterisk.

4.2 We will charge VAT at the current rate at the date of the auction.

5 The contract between you and the Seller

5.1 The contract for the purchase of the Lot between you and the Seller will be formed when the hammer falls accepting the highest bid for the Lot at the auction.

5.2 You may directly enforce any terms in the Terms of Consignment

against a Seller to the extent that you suffer damages and/or loss as a result of the Seller's breach of the Terms of Consignment.

5.3 If you breach these Conditions of Sale, you may be responsible for damages and/or losses suffered by a Seller or us. If we are contacted by a Seller who wishes to bring a claim against you, we may in our discretion provide the Seller with information or assistance in relation to that claim.

5.4 We normally act as an agent only and will not have any responsibility for default by you or the Seller (unless we are the Seller of the Lot).

6 Payment

6.1 Immediately a lot is sold you will:

6.1.1 give to us, if required, proof of identity; and

6.1.2 pay to us the Total Amount Due in cash (for which there is an upper limit of 10,000 euros equivalent) or in any other way as is agreed by us.

6.2 Any payments by you to us may be applied by us towards any sums owing from you to us on any account whether without regard to any directions of you or your agent, whether express or implied.

7 Title and collection of purchases

7.1 The ownership of any lots purchased shall not pass to you until you have made payment in full to us for the Total Amount Due. No purchase can be claimed until it has been paid for.

7.2 You will (at your own expense) collect any Lots that you have purchased and paid for not later than five working days following the day of the auction.

7.3 If you do not collect the Lot within this time period, then Lots not collected will be subject to a storage charge of £1 per lot per day. After ten days, we may sell the Lot. We will pay the proceeds of any such sale to you, but will deduct any storage charges or other sums that we have incurred in the storage and sale of the Lot. We reserve the right to charge you a selling commission together with a loss/damage fee at our standard rates on any such resale of the Lot.

7.4 Risk of loss or damage to the Lot will pass to you when you (or your agents) take physical possession of the Lot.

7.5 If it becomes apparent that a Lot has been sold without good title or without authorisation then the buyer agrees to return the Lot promptly subject to being reimbursed any purchase costs and any reasonable expenses incurred in returning the item. If the Buyer fails to return the Lot then the Seller agrees to accept the hammer price achieved as recompense for the sale of the item.

8 Remedies for non-payment or failure to collect purchases

8.1 Please do not bid on a Lot if you do not intend to buy it. If your bid is successful, these Conditions of Sale will apply to you. This means that you will have to carry out your obligations set out in these Conditions of Sale. If you do not comply with these Conditions of Sale we may (acting on behalf of the Seller and ourselves) pursue one or more of the following measures:

8.1.1 to proceed against you for damages for breach of contract;

8.1.2 if payment and collection of the Lots does not take place within five days of the day of the auction, at the discretion of the Auctioneer, to rescind the sale of the Lot to you and/or any other Lots sold by us to you;

8.1.3 to resell the Lot (by auction or private treaty) in which case you will have to pay any difference between the price you should have paid for the Lot and the price we sell it for (after crediting any part payment and adding any resale and storage costs). Please note any surplus arising will belong to the Seller;

8.1.4 to remove, store and insure the Lot at your expense;

8.1.5 to charge interest at a rate not exceeding 1.5% per month on the Total Amount Due if you do not pay us within five working days of your successful bid;

8.1.6 to retain that Lot or any other Lot sold to you until you pay the Total Amount Due;

8.1.7 to reject or ignore bids from you or your agent at future auctions or to impose conditions before we accept bids from you; and/or

8.1.8 if we sell any Lots for you, use the money made on these Lots to repay any amount you owe us.

8.2 We will act reasonably when exercising our rights under Clause 8.1. Except where stated, we will contact you before exercising these rights and try to reach an agreement in respect of any non-compliance by you with these Conditions of Sale.

9 Third Party Liability

All members of the public on our premises are there at their own risk and must note the lay-out of the premises and security arrangements. Neither we nor our employees or agents shall incur liability for death or injury (except as a result of our, our employees' or our agents' negligence) or similarly for the safety of the property of persons visiting the premises.

10 Warranties

10.1 The Seller warrants to us and to you that:

10.1.1 the Seller is the true owner of the Lot for sale or is authorised by the true owner to offer and sell the lot at auction;

10.1.2 the Seller is able to transfer good and marketable title to the Lot to you free from any third party rights or claims; and

10.1.3 as far as the Seller is aware, the main characteristics of the Lot set out in the auction catalogue (as amended by any notice displayed in the saleroom or announced by the Auctioneer at the auction) are correct.

- 10.2 If, after you have placed a successful bid and paid for a Lot, any of the warranties above are found not to be true, please notify us in writing. Neither we nor the Seller will be liable to pay you any sums over and above the Total Amount Due and we will not be responsible for any inaccuracies in the information provided by the Seller except as set out below.
- 10.3 Please note that nearly all Lots that you may bid on at our auction are second-hand.
- 10.4 Save as expressly set out above, all other warranties, conditions or other terms which might have effect between the Seller and you, or us and you, or be implied or incorporated by statute, common law or otherwise are excluded.
- 11 Descriptions and condition**
- 11.1 Whilst we seek to describe lots accurately, our descriptions will be based on: (a) information provided to us by the Seller of the Lot (for which we are not liable); and (b) our opinion (although it may be impractical to carry out a detailed inspection of each Lot).
- 11.2 We will give you a number of opportunities to view and inspect the Lots before the auction. You (and any independent consultants acting on your behalf) must satisfy yourself about the accuracy of any description of a Lot. We shall not be responsible for any failure by you or your consultants to properly inspect a Lot.
- 11.3 Prospective buyers also bid on the understanding that representations or statements by us as to authorship, genuineness, origin, date, age, provenance, condition or estimated selling price involve matters of opinion. We undertake that any such opinion will be honestly and reasonably held and accept liability for opinions given negligently or fraudulently.
- 11.4 Please note that Lots are unlikely to be in perfect condition. Lots are sold "as is" (i.e. as you see them at the time of the auction). We encourage absent bidders to request a condition report of the item from us. Neither we nor the Seller nor any employee accept any liability for the condition of second-hand Lots or for any condition issues affecting a Lot which the inspection of a Lot by the Buyer ought to have revealed. We do not accept any liability for the correctness of any opinions given and all conditions and warranties, whether relating to description, condition or quality of lots, express, implied or statutory, are hereby excluded.
- 11.5 In the event that there is a discrepancy between a description and/or a photograph of the lot as displayed online and/or the item lotted in the room then we may cancel the sale of any affected Lot and we will refund the money paid by you for the Lot (including any Premium and applicable VAT).
- 12 Deliberate Forgeries**
- 12.1 You may return any Lot which is found to be a Deliberate Forgery to us within 21 days of the auction provided that you return the Lot to us in the same condition as when it was released to you, accompanied by a written statement identifying the Lot from the relevant catalogue description and a written statement of defects.
- 12.2 If we are reasonably satisfied that the Lot is a Deliberate Forgery we will refund the money paid by you for the Lot (including any Premium and applicable VAT) provided that if:
- 12.2.1 the catalogue description reflected the accepted view of experts as at the date of the auction; or
- 12.2.2 you personally are not able to transfer good and marketable title in the Lot to us, you will have no right to a refund under this clause.
- 13 Our liability to you**
- 13.1 We will not be liable for any loss of opportunity or disappointment suffered as a result of participating in our auction.
- 13.2 In addition to the above, neither we nor the Seller shall be responsible to you and you shall not be responsible to the Seller or us for any other loss or damage that any of us suffer that is not a foreseeable result of any of us not complying with the Conditions of Sale. Loss or damage is foreseeable if it is obvious that it will happen or if at the time of the sale of the Lot, we, you and the Seller knew it might happen.
- 13.3 If we are found to be liable to you for any reason (including, amongst others, if we are found to be negligent, in breach of contract or to have made a misrepresentation), our liability will be limited to the total purchase price paid by you to us for any Lot.
- 14 Notices**
- 14.1 All notices between you and us regarding these Conditions of Sale must be in writing and signed by or on behalf of the party giving it.
- 14.2 Any notice referred in Clause 14.1 may be given:
- 14.2.1 by delivering it by hand;
- 14.2.2 by first class pre-paid post or Recorded Delivery; or
- 14.2.3 by email, provided that a copy is also sent by pre-paid post or Recorded Delivery.
- 14.3 Notices must be sent:
- 14.3.1 by hand or registered post: a. to us, at Mendip Auction Rooms, Rookery Farm, Binegar, Somerset BA3 4UL; and b. to you, at the last postal address that you have given to us as your contact address in writing; or
- 14.3.2 by email:
a. to us, by sending the notice to the following email address: enquiries@mendipauctionrooms.co.uk
b. to you, by sending the notice to any email address that you have given to us as your contact email address in writing.
- 14.4 Notices will be deemed to have been received:
- 14.4.1 if delivered by hand, on the day of delivery;
- 14.4.2 if sent by first class pre-paid post or Recorded Delivery, two business days after posting, exclusive of the day of posting; or
- 14.4.3 if sent by email, at the time of transmission.
- 14.5 Any notice or communication given under these Conditions of Sale will not be validly given if sent by any form of messaging via social media or text message.
- 15 Data Protection and Privacy Statement**
- If you have consented, we will send you marketing material that we consider may be of interest to you. We will not share your data with any third party except for delivery of our material. You may ask to unsubscribe at any time by emailing: enquiries@mendipauctionrooms.co.uk Our Privacy Policy can be viewed at www.mendipauctionrooms.co.uk.
- 16 Online Bidding**
- 16.1 Killens (trading as Mendip Auction Rooms) offer an online bidding service via the-saleroom.com and mendipauctionrooms.co.uk for bidders who cannot attend the sale. In completing the bidder registration on either website and providing your debit or credit card details and unless alternative arrangements are agreed with Killens (trading as Mendip Auction Rooms) you:
- Authorise Killens (trading as Mendip Auction Rooms) if they so wish to charge the debit or credit card given in part or full payment, including all charges, for lots successfully purchased in the auction via either website; and
- Confirm that you are authorised to provide these debit or credit card details to us through either website and agree that Killens (trading as Mendip Auction Rooms) are entitled to ship the goods to the card holder name and card holder address provided in fulfilment of the sale.
- (Please note that any lots purchased via the-saleroom.com live auction service will be subject to an additional 5% charge plus VAT imposed on the hammer price and any lots purchased via mendipauctionrooms.co.uk will be subject to an additional 3% charge plus VAT imposed on the hammer price.
- 16.2 Bidders are strongly advised not to rely solely on the webcast audio to place live bids as both the audio and video can lag behind the sale. Please place live bids only by the text displayed on the bidding window which will accurately reflect the current state of bidding. We do not accept any liability to you for any bid not being registered whether due to technical or other reasons.
- 17 Artists Resale Rights**
- According to the European Union's Artist's Resale Rights Directive, which has been adopted and maintained by the United Kingdom, living artists and artists who died within 70 years prior to the date of the sale are entitled to receive a resale royalty each time their art work is sold by an art market professional in the European Union or United Kingdom, subject to certain conditions. The Mendip Auction Rooms will collect the resale royalty due to the artists or their estates from buyers of lots with a hammer price (excluding buyers premium and VAT) in excess of €1000. Any purchaser of a lot to which Artist's Resale Right applies will be charged the amount of the resale royalty, which will be added to the invoice. VAT is not payable on any royalty. The rate payable for items €0 to €50000 is 4%. Contact us for further rates.
- 18 General**
- 18.1 We may, acting reasonably, refuse admission to our premises or attendance at our auctions by any person.
- 18.2 We act as an agent for our Sellers. The rights we have to claim against you for breach of these Conditions of Sale may be used by either us, our employees or agents, or the Seller, its employees or agents, as appropriate. Other than as set out in this Clause, these Conditions of Sale are between you and us and no other person will have any rights to enforce any of these Conditions of Sale.
- 18.3 We may use special terms in the catalogue descriptions of particular Lots. You must read these terms carefully along with any glossary provided in our auction catalogues.
- 18.4 Each of the clauses of these Conditions of Sale operates separately. If any court or relevant authority decides that any of them are unlawful, the remaining clauses will remain in full force and effect.
- 18.5 We may change these Conditions of Sale from time to time, without notice to you.
- 18.6 Compensation will be paid to the seller for any damaged or lost items equivalent to the lower estimate of value (less any commission charges and other normal selling expenses) as agreed on entering the item for sale or as subsequently set by us. In the event of dispute then the level of compensation payable will be referred to an independent expert for resolution.
- 18.7 These Conditions of Sale and any dispute or claim arising out of or in connection with them (including any non-contractual claims or disputes) shall be governed by and construed in accordance with the laws of England and the parties irrevocably submit to the exclusive jurisdiction of the English courts.



Absent Bidding Form

Paddle number (for office use only)

Sales held at the Mendip Auction Rooms will be conducted in accordance with the Mendip Auction Rooms' Conditions of Sale and bidding and buying at Sales will be regulated by these Conditions. You should read the Conditions in conjunction with the Sale Information relating to the appropriate Sale which sets out the charges payable by you on the purchases you make and other terms relating to bidding and buying at the Sale. You should ask any questions you have about the Conditions before bidding. These Conditions also contain certain undertakings by bidders and buyers and limit Killens' and the Mendip Auction Rooms' liability to bidders and buyers.

Credit and Debit Card Payments

There is no surcharge for payments made by debit cards issued by a UK bank. **With effect from 13th January, credit cards are no longer accepted.**

Notice to Bidders

Clients are requested to provide photographic proof of identification on request—passport, driving licence, ID card, together with proof of address—utility bill, bank or credit card statement etc. Corporate clients should also provide a copy of their articles of association/ company registration documents together with a letter authorising the individual to bid on the company's behalf. Failure to provide this may result in your bids not being processed.

Title	
First Name	Last Name
Company Name (if applicable)	
Address	
Town/City	County
Post Code	Country
Telephone mobile	Telephone daytime
Telephone evening	Fax
Email	

Commission Or Telephone (C/A)	Lot No	Brief Description	MAX bid in GBP (excluding buyers premium & VAT)	Max covering bid in event we are unable to contact you by telephone

BY SIGNING THIS FORM YOU AGREE THAT YOU HAVE READ AND UNDERSTOOD OUR CONDITIONS OF SALE AND WILL READ THEM PRIOR TO BIDDING AT FUTURE SALES AND WISH TO BE BOUND BY THEM AND AGREE TO PAY THE BUYERS PREMIUM, VAT AND ANY OTHER CHARGES MENTIONED IN THE NOTICE TO BIDDERS. YOU ALSO AGREE TO REMOVE PURCHASES PROMPTLY.

Signed	Date
--------	------



Registration Form

To be completed and submitted if you intend to bid

--

Paddle number (for office use only)

Sales held at the Mendip Auction Rooms will be conducted in accordance with the Mendip Auction Rooms' Conditions of Sale and bidding and buying at Sales will be regulated by these Conditions. You should read the Conditions in conjunction with the Sale Information relating to the appropriate Sale which sets out the charges payable by you on the purchases you make and other terms relating to bidding and buying at the Sale. You should ask any questions you have about the Conditions before bidding. These Conditions also contain certain undertakings by bidders and buyers and limit Killens' and the Mendip Auction Rooms' liability to bidders and buyers.

Data Protection

We confirm that we are aware of our obligations under the Data Protection Act 1998 (DPA) and we will take appropriate technical and organisational measures to comply with all our obligations under the DPA when processing personal data supplied by you. All terms used in this paragraph have the same meaning as in the DPA.

In the conduct of our professional services we may need to collect and use personal information about you, your partners, your company, your trustees, your clients or customers and your or their employees, agents or contractors, which we will hold as data controllers under the DPA. You confirm that you will comply with any obligations that you may have under the DPA when providing us with this personal information.

All such personal information will be held and processed strictly in accordance with the provisions of the Data Protection Act 1998 and will only be used to provide professional services agreed under this engagement letter and for related purposes (including updating client records, analysis for management purposes, statutory returns, legal and regulatory compliance). We will not, without consent, provide any such personal information to any third party except that where such transfer is a necessary part of the services provided, or we are required to do so by operation of law.

Credit and Debit Card Payments

There is no surcharge for payments made by debit cards issued by a UK bank. We do not accept credit cards.

Notice to Bidders

If required, clients are requested to provide photographic proof of identification on request—passport, driving licence, ID card, together with proof of address—utility bill, bank or credit card statement etc. Corporate clients should also provide a copy of their articles of association/company registration documents together with a letter authorising the individual to bid on the company's behalf. Failure to provide this may result in your bids not being processed.

Title	
First Name	Last Name
Company Name (if applicable)	
Address	
Town/City	County
Post Code	Country
Telephone mobile	Telephone daytime
Telephone evening	Fax
Email	
By providing your email address above, you authorise Killens to send to this address information relating to Sales, marketing material and news concerning Killens/Mendip Auction Rooms. Killens does not sell or trade email addresses.	

How did you hear of Killens/ Mendip Auction Rooms?

- | | |
|---|--|
| <input type="checkbox"/> Word of mouth | <input type="checkbox"/> Sponsorship |
| <input type="checkbox"/> Internet/website/search engine | <input type="checkbox"/> Show attendance |
| <input type="checkbox"/> Advertising, if so, where: | <input type="checkbox"/> Recommendation |

I am registering to bid as a private buyer <input type="checkbox"/>	I am registering to bid as a trade buyer <input type="checkbox"/>
---	---

BY SIGNING THIS FORM YOU AGREE TO BE BOUND BY OUR CONDITIONS OF SALE AND AGREE TO PAY THE BUYERS PREMIUM, VAT AND ANY OTHER CHARGES MENTIONED.

DON'T MISS OUT! PLEASE TICK IF YOU WOULD LIKE TO RECEIVE CATALOGUES, INFORMATION ABOUT OUR FORTHCOMING SALES AND NEWS BY EMAIL <input type="checkbox"/>
--

Signed
Date

Mendip Auction Rooms is a limited company (number 09771739). A list of members may be inspected at the registered office: Bishopbrook House, Cathedral Avenue, Wells, Somerset. BA5 1FD

