

# PUBLIC ONLINE AUCTION

INSPECT ONSITE AND BID ONLINE

## SURPLUS TO ONGOING NEEDS: STEEL UNLIMITED, INC.

ONLINE AUCTION CLOSURE: WEDNESDAY, NOVEMBER 29 STARTING AT 10:00 AM PST

INSPECTION: TUESDAY, NOVEMBER 28 FROM 9:00 AM TO 3:00 PM PST

LOCATION: 3200 MYERS STREET, RIVERSIDE, CA 92503



IRIZAR WELDING MANIPULATOR, MATTISON 60" ROTARY SURFACE GRINDER, PIRANHA P-70 IRONWORKER, BURNEY 4-HEAD PLASMA TABLE, 2005 LION C13 UNIVERSAL & TAKISAWA TSL-800D LATHES, LAGUN FTV-2 VERTICAL MILL, CINCINNATI MILACRON HORIZONTAL MILL, HABERLE H350 COLD SAW, MILLER BIG PRO WELDERS, ABB ROBOT, STRAIGHTENING PRESS, WIGGINS 30,000 LB CAPACITY FORKLIFT, BOOM LIFT, PLATFORM LIFT, AIR COMPRESSORS, 2013 KENWORTH T-800 TRUCK TRACTOR, 2007 WILSON CF-900 FLATBED TRAILER, PALLET RACKING, NUTS & BOLTS AND RELATED ITEMS



**UNITED**

**ASSET SALES**

ROY GAMITYAN, AUCTIONEER

OFFICE 818.264.4232 | ROY@UNITEDASSETSALES.COM

IN CONJUNCTION  
WITH:



**Asset Sales, Inc.**

auctioneers \* appraisers \* liquidators

[www.asset-sales.com](http://www.asset-sales.com)

163 Associates Ln, Indian Trail, NC 28079

**WWW.UNITEDASSETSALES.COM**



# PUBLIC ONLINE AUCTION

INSPECT ONSITE AND BID ONLINE

**SURPLUS TO ONGOING NEEDS:  
STEEL UNLIMITED, INC.**

## ONLINE AUCTION CLOSES:

WEDNESDAY, NOVEMBER 29 STARTING AT 10:00 AM PST

## INSPECTION:

TUESDAY, NOVEMBER 28 FROM 9:00 AM TO 3:00 PM PST

## INSPECTION LOCATION:

3200 MYERS STREET, RIVERSIDE, CA 92503

## TERMS OF PAYMENT:

NO DEBIT OR CREDIT CARDS! CASHIER'S CHECK, BUSINESS CHECK WITH BANK LETTER OF GUARANTEE, BANK WIRE TRANSFER. FULL PAYMENT MUST BE MADE NO LATER THAN 24 HOURS OF WINNING BID.

## REMOVAL:

ALL ITEMS MUST BE REMOVED NO LATER THAN FRIDAY, DECEMBER 8. NO EXCEPTIONS. PREPPING, REMOVAL, LOADING & TRUCKING IS THE RESPONSIBILITY OF THE BUYER.

## BUYER'S PREMIUM:

18% FOR ALL PURCHASES.

FOR COMPLETE SALE INFO: 818.264.4232  
OR VISIT [WWW.UNITEDASSETSALES.COM](http://WWW.UNITEDASSETSALES.COM)  
EMAIL: [ROY@UNITEDASSETSALES.COM](mailto:ROY@UNITEDASSETSALES.COM)

ONLINE BIDDING PROVIDED BY

# BidSpotter



**UNITED**  
ASSET SALES  
ROY GAMITYAN, AUCTIONEER

[WWW.UNITEDASSETSALES.COM](http://WWW.UNITEDASSETSALES.COM)

23945 Calabasas Rd., Ste. 209, Calabasas, CA 91302  
Office 818.264.4232 | [roy@unitedassetsales.com](mailto:roy@unitedassetsales.com)

ROY GAMITYAN, AUCTIONEER  
CA Bond# 63388305

## MACHINE SHOP

2005 LION C13 TYPE C13SH UNIVERSAL LATHE,  
30" CHUCK, 5" HOLE THRU, S/N 5787

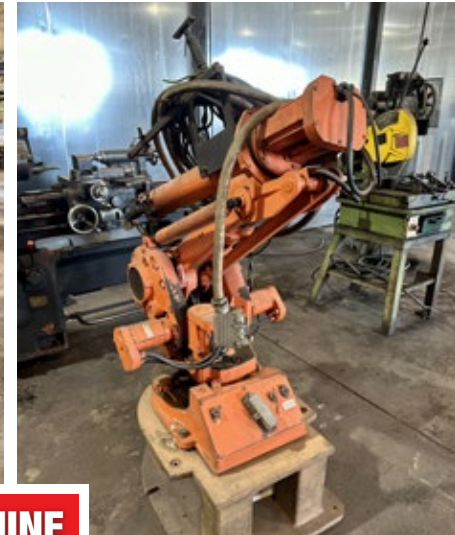
TAKISAWA TSL-800D LATHE, 8" CHUCK,  
TAILSTOCK, S/N BMR800106H

LAGUN FTV-2 VERTICAL MILL, 10" X 50" TABLE  
CINCINNATI MILACRON HORIZONTAL MILL, 14" X  
65" TABLE, S/N 11A23P1AL-27

HABERLE H350 COLD SAW, SERIES B,  
S/N 153360991

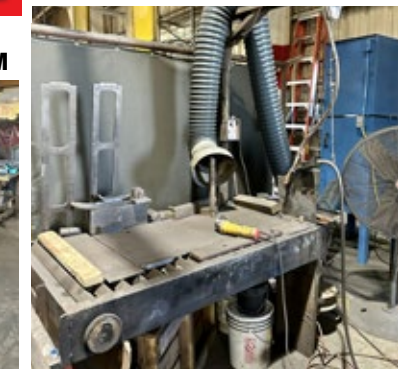
ABB ROBOT, TYPE PS 90/6-38-P-LSS-3613,  
S/N 410.15586

(2) SPEEDAIRE VERTICAL AIR COMPRESSORS



## PLASMA CUTTING MACHINE

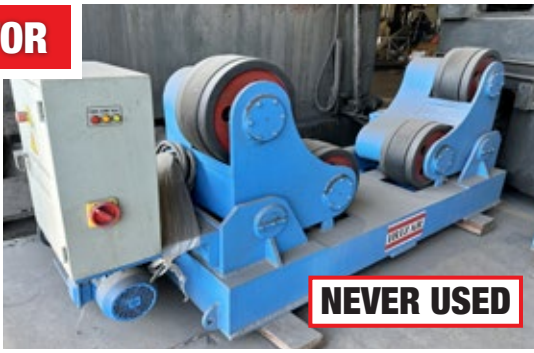
CUSTOM (5) TORCH, 40' X 10' BURNING TABLE,  
LINCOLN ELECTRIC BURNY 3 CNC CONTROL SYSTEM





## WELDING MANIPULATOR

IRIZAR, MODEL WM 3030, VERTICAL HEIGHT OF COLUMN & LENGTH OF BOOM: 10', MOTORIZED TROLLEY & CROSS SLIDE SINGLE HEAD, CONVENTIONAL WR10 & WR20 WELDING POWER ROTATOR & IDLE SETS, SELF ALIGNED SAR 40 WELDING POWER ROTATOR SET, LINCOLN IDEAL ARC DC 1000 POWER SOURCE, NA3S WELDING HEAD CONTROLLER, NA3S LINCOLN WIRE FEEDER, 50# WIRE RAIL, FLUX RECOVERY SYSTEM MODEL FRU-80, S/N 201106



**LIKE NEW**



## FABRICATION EQUIPMENT

PIRANHA P70 IRONWORKER, 70-TON CAPACITY, HYDRAULIC, SINGLE END PUNCH, SHEAR & NOTCH, S/N P70-354

H-FRAME STRAIGHTENING PRESS, 12' X 6' STEEL TABLE

(2) MILLER BIG BLUE 500 & (10) MILLER DIMENSION 652 WELDERS



## ROTARY SURFACE GRINDER

MATTISON, 60" MAGNETIC CHUCK, 72" MAXIMUM SWING, 36" UNDER WHEEL, 32" WHEEL DIAMETER, 146.5 HP, SINGLE VERTICAL SPINDLE HEAD, MOTOR BOSS MOTOR CONTROLLER, S/N 60-620

**60"**



## TRUCK TRACTOR

2013 KENWORTH TRUCK CO., MODEL T-800 SERIES, CUMMINS ISX DIESEL ENGINE, 400 HP, 10-SPEED EATON FULLER TRANSMISSION, GROSS VEHICLE WEIGHT RATING: CLASS 8: 33001 LBS., DRIVE TYPE: 6X4, VIN# 1XKDD49X1DJ353302, CALIFORNIA LIC# 9E76867, ODOMETER READING: 294,000 MILES, (UNIT 101)

**2013**



## FLAT BED TRAILER

2007 WILSON TRAILER CO., MODEL CF-900, 53'L X 102"W ALUMINUM DECK, 80,000 LB MAX LOAD, DUAL AXLE AIR-RIDE SUSPENSION, VIN# 4WWBGB3NX7M611226, CALIFORNIA LIC# 4HA2513, (UNIT 109)

**2007**





# PUBLIC ONLINE AUCTION

INSPECT ONSITE AND BID ONLINE

## SURPLUS TO ONGOING NEEDS: STEEL UNLIMITED, INC.

ONLINE AUCTION CLOSES: WEDNESDAY, NOVEMBER 29 STARTING AT 10:00 AM PST

INSPECTION: TUESDAY, NOVEMBER 28 FROM 9:00 AM TO 3:00 PM PST

LOCATION: 3200 MYERS STREET, RIVERSIDE, CA 92503



LIKE NEW



60"

IRIZAR WELDING MANIPULATOR, MATTISON 60" ROTARY SURFACE GRINDER, PIRANHA P-70 IRONWORKER, BURNEY 4-HEAD PLASMA TABLE, 2005 LION C13 UNIVERSAL & TAKISAWA TSL-800D LATHES, LAGUN FTV-2 VERTICAL MILL, CINCINNATI MILACRON HORIZONTAL MILL, HABERLE H350 COLD SAW, MILLER BIG PRO WELDERS, ABB ROBOT, STRAIGHTENING PRESS, WIGGINS 30,000 LB CAPACITY FORKLIFT, BOOM LIFT, PLATFORM LIFT, AIR COMPRESSORS, 2013 KENWORTH T-800 TRUCK TRACTOR, 2007 WILSON CF-900 FLATBED TRAILER, PALLET RACKING, NUTS & BOLTS AND RELATED ITEMS



2013



2007

### FORKLIFT & ROLLING STOCK

WIGGINS W300Y-130, 30,000 LB CAPACITY, 2-STAGE MAST, DUAL FRONT TIRES, DIESEL POWERED, LOAD LIGHTS, S/N 01 2070, NEEDS NEW ENGINE TELESCOPIC BOOM & JLG SCISSOR LIFT



30,000 LB CAPACITY



### RELATED ITEMS

PALLET RACKING, NUTS & BOLTS, ETC.